

Building statistics

January 2002

Co-operation between Statistics South Africa (Stats SA), the citizens of the country, the private sector and government institutions is essential for a successful statistical system. Without continued co-operation and goodwill, the timely release of relevant and reliable official statistics will not be possible.

Embargo: 13:00
Date: 20 March 2002

Stats SA publishes approximately three hundred different releases each year. It is not economically viable to produce them in more than one of South Africa's eleven official languages. Since the releases are used extensively, not only locally, but also by international economic and social-scientific communities, Stats SA releases are published in English only.

Key figures regarding building plans passed for the month ended January 2002

Actual estimates at constant 1995 prices

	January 2002 R million	Percentage change between January 2001 and January 2002	Percentage change between November 2000 to January 2001 and November 2001 to January 2002
Residential buildings			
Dwelling-houses	404,9	+0,3	-5,6
Flats and townhouses	108,5	+43,3	+49,5
Other residential buildings	1,5	-95,9	-82,2
Total	514,9	-0,2	+0,3
Non-residential buildings	111,6	-67,2	-64,8
Additions and alterations	263,9	+4,6	+8,0
Total	890,4	-19,7	-19,3

Seasonally adjusted estimates at constant 1995 prices

	January 2002 R million	Percentage change between December 2001 and January 2002	Percentage change between August 2001 to October 2001 and November 2001 to January 2002
Residential buildings	655,9	+6,4	+5,6
Non-residential buildings	121,9	-3,4	-19,2
Additions and alterations	336,4	+0,7	+3,3
Total	1 114,2	+3,5	+1,0

Key findings regarding building plans passed for the three months ended January 2002

Seasonally adjusted real value of building plans passed increases

The seasonally adjusted real value of building plans passed (at constant 1995 prices) for the three months ended January 2002 increased by 1,0% compared with the previous three months.

The increase of 1,0% in the seasonally adjusted real value of building plans passed was due to increases in the seasonally adjusted real value of building plans passed for residential buildings (+5,6%) and additions and alterations (+3,3%) during the three months ended January 2002 compared with the previous three months. However, these increases were partially counteracted by a decrease in the seasonally adjusted real value of non-residential building plans passed (-19,2%) during the above-mentioned period.

Key findings regarding building plans passed for the month ended January 2002

Total real value of building plans passed decreases

The total real value of building plans passed (at constant 1995 prices) during January 2002 decreased by 19,7% (-R217,8 million) to R890,4 million compared with January 2001. Large decreases in the real value of building plans passed were reported for non-residential buildings (-R228,4 million, mainly due to decreases reported for office and banking space (-R139,8 million) and shopping space (-R66,5 million)) and 'other' residential buildings (-R35,0 million) during the above-mentioned period. However, the real value of building plans passed for flats and townhouses increased by R32,8 million during this period, mainly due to real increases reported by the selected urban areas of Durban (+R19,3 million) and Pretoria (+R14,5 million).

Six of the nine provinces reported decreases in the total real value of building plans passed

The largest provincial contributor to the decrease of 19,7% (-R217,8 million) in the total real value of building plans passed during January 2002 compared with January 2001 was Gauteng (-9,2 percentage points or R102,5 million), followed by KwaZulu-Natal (-6,2 percentage points or R68,3 million), Western Cape (-2,6 percentage points or R28,5 million) and Eastern Cape (-2,5 percentage points or R27,8 million) (cf. table A). Large real decreases in Gauteng were reported for non-residential buildings (-R94,7 million, mainly due to real decreases reported by Witwatersrand (-R84,9 million)) and dwelling-houses (-R27,3 million, due to decreases reported by Witwatersrand (-R38,2 million)). The largest real decrease in KwaZulu-Natal was reported for office and banking space (-R76,2 million).

Table A - Contribution of provinces to the total real value of building plans passed

Province	Percentage contribution to the total real value of plans passed during January 2001	Percentage change between January 2001 and January 2002	Contribution (percentage points) ^{1/} to the percentage change in the real value of plans passed between January 2001 and January 2002	Difference in total real value of plans passed between January 2001 and January 2002 R million
Gauteng	40,7	-22,7	-9,2	-102,5
KwaZulu-Natal	15,4	-40,0	-6,2	-68,3
Western Cape	27,1	-9,5	-2,6	-28,5
Eastern Cape	6,5	-38,4	-2,5	-27,8
Northern Province	1,7	-39,2	-0,7	-7,6
Northern Cape	0,6	-61,4	-0,4	-4,3
Mpumalanga	3,0	+0,6	+0,0	+0,2
North West	2,9	+20,9	+0,6	+6,7
Free State	2,1	+61,9	+1,3	+14,3
Total	100,0	-19,7	-19,7	-217,8

1/ The contribution (percentage points) is calculated by multiplying the percentage change of each province between January 2001 and January 2002 (cf. column 3) with the percentage contribution of the corresponding province to the total real value of plans passed during January 2001 (cf. column 2) divided by 100.

Key figures regarding buildings completed for the month ended January 2002

Actual estimates at constant 1995 prices

	January 2002 R million	Percentage change between January 2001 and January 2002	Percentage change between November 2000 to January 2001 and November 2001 to January 2002
Residential buildings			
Dwelling-houses	263,6	+32,0	+11,2
Flats and townhouses	134,6	+120,9	+70,0
Other residential buildings	3,0	-98,7	-97,1
Total	401,2	-17,7	-2,4
Non-residential buildings	101,3	-45,8	-35,9
Additions and alterations	123,5	-20,2	-11,0
Total	626,0	-24,5	-12,9

Seasonally adjusted estimates at constant 1995 prices

	January 2002 R million	Percentage change between December 2001 and January 2002	Percentage change between August 2001 to October 2001 and November 2001 to January 2002
Residential buildings	472,2	+24,6	+16,9
Non-residential buildings	127,4	-20,9	-59,6
Additions and alterations	138,2	+4,9	+5,4
Total	737,8	+9,8	-18,3

Key findings regarding buildings completed for the three months ended January 2002

Seasonally adjusted real value of buildings completed decreases

The seasonally adjusted real value of buildings completed (at constant 1995 prices) for the three months ended January 2002 decreased by 18,3% compared with the previous three months.

The decrease of 18,3% in the seasonally adjusted real value of buildings completed during the three months ended January 2002 compared with the previous three months was due to a decrease in the seasonally adjusted real value of non-residential buildings completed (-59,6%, mainly due to the completion of a large shopping centre as reported by North Local Council – Umhlanga Rocks during September 2001). However, this decrease was partially counteracted by increases in the seasonally adjusted real value of residential buildings (+16,9%) and additions and alterations completed (+5,4%) during the above-mentioned period.

Key findings regarding buildings completed for the month ended January 2002

Total real value of buildings completed decreases

The total real value of buildings completed (at constant 1995 prices) during January 2002 decreased by 24,5% (-R203,2 million) to R626,0 million compared with January 2001. Large decreases in the real value of buildings completed were reported for 'other' residential buildings (- R223,7 million, mainly due to the completion of a hotel and casino to the real value of R192,6 million as reported by Southern Metropolitan Local Council of Greater Johannesburg during January 2001), non-residential buildings (-R85,7 million, due to real decreases reported for office and banking space completed (-R86,5 million)) and additions and alterations (-R31,3 million). However, large increases in the real value of buildings completed were reported for flats and townhouses (+R73,7 million, mainly due to increases reported by the selected urban area of Cape Town (+R32,1 million) and Pretoria (+R29,8 million)) and dwelling-houses (+R63,8 million, mainly due to increase reported by the selected urban areas of Cape Town (+R25,7 million), Witwatersrand (+R23,9 million) and Pretoria (+R14,8 million)).

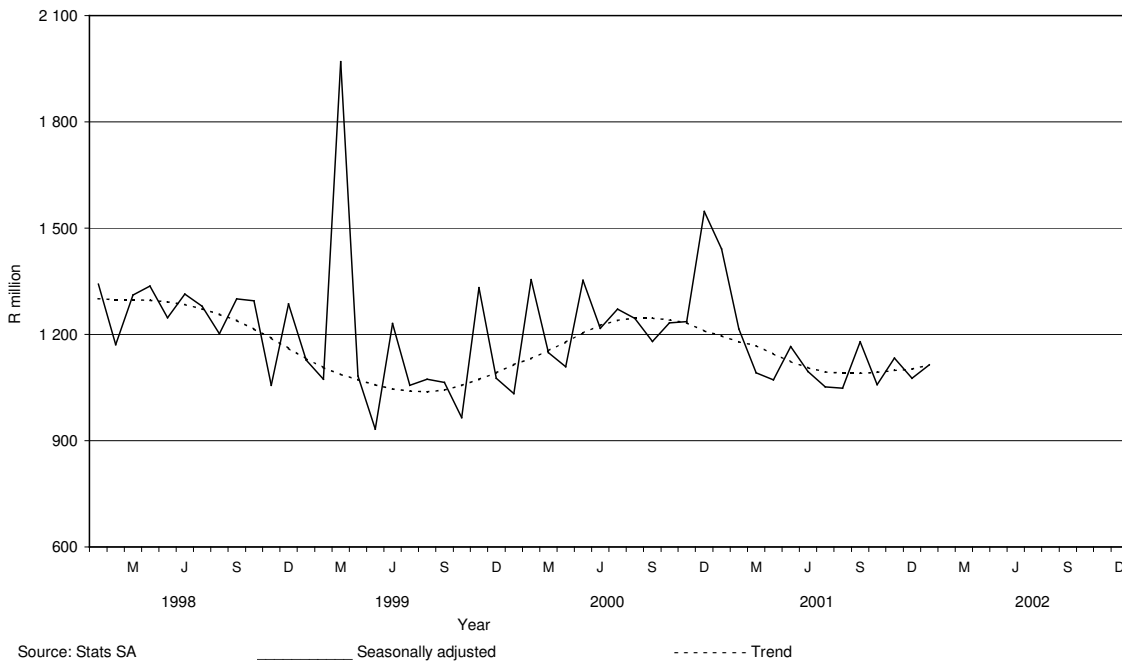
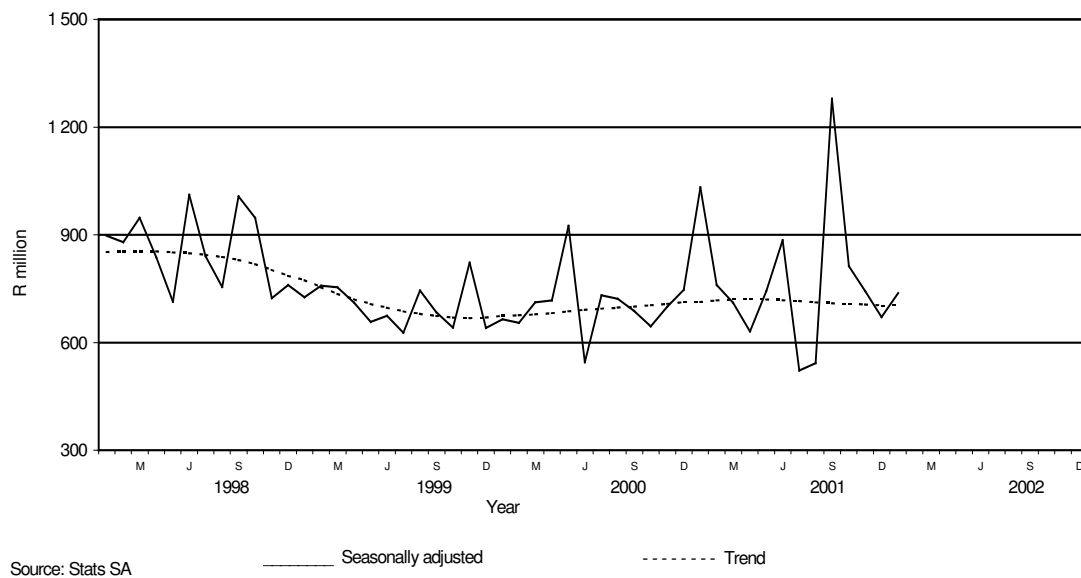
Six of the nine provinces reported decreases in the total real value of buildings completed

The largest provincial contributor to the decrease of 24,5% (-R203,2 million) in the total real value of buildings completed during January 2002 compared with January 2001 was Gauteng (-23,1 percentage points or R191,6 million), mainly due to the completion of a hotel and casino to the real value of R192,6 million during January 2001, followed by KwaZulu-Natal (-5,7 percentage points or R47,5 million) and Northern Cape (-1,9 percentage points or R16,1 million). However, these decreases were partially counteracted by large increases reported by Western Cape (+5,0 percentage points or R41,5 million) and Eastern Cape (+1,7 percentage points or R14,2 million) during the above-mentioned period (cf. table B).

Table B - Contribution of provinces to the total real value of buildings completed

Province	Percentage contribution to the total real value of buildings completed during January 2001	Percentage change between January 2001 and January 2002	Contribution (percentage points) ^{1/} to the percentage change in the real value of buildings completed between January 2001 and January 2002	Difference in total real value of buildings completed between January 2001 and January 2002 R million
Gauteng	53,7	-43,0	-23,1	-191,6
KwaZulu-Natal	13,7	-41,9	-5,7	-47,5
Northern Cape	2,3	-85,3	-1,9	-16,1
North West	2,1	-15,0	-0,3	-2,6
Northern Province	0,8	-35,3	-0,3	-2,4
Mpumalanga	1,2	-4,7	-0,1	-0,4
Free State	2,9	+6,9	+0,2	+1,7
Eastern Cape	1,8	+91,9	+1,7	+14,2
Western Cape	21,5	+23,3	+5,0	+41,5
Total	100,0	-24,5	-24,5	-203,2

1/ The contribution (percentage points) is calculated by multiplying the percentage change of each province between January 2001 and January 2002 (cf. column 3) with the percentage contribution of the corresponding province to the total real value of buildings completed during January 2001 (cf. column 2) divided by 100.

Figure 1 – Total real value of building plans passed**Figure 2 – Total real value of buildings completed**

pp
PJ Lehohla
 Statistician-General: Statistics South Africa

Contents

Page

Notes	7
Tables		
Table 1	Actual values and percentage change of building plans passed at current prices according to type of building	11
Table 2	Seasonally adjusted values and percentage change of building plans passed at current prices according to type of building	12
Table 3	Actual values and percentage change of building plans passed at constant 1995 prices according to type of building	13
Table 4	Seasonally adjusted values and percentage change of building plans passed at constant 1995 prices according to type of building	14
Table 5	Actual values and percentage change of buildings completed at current prices according to type of building	15
Table 6	Seasonally adjusted values and percentage change of buildings completed at current prices according to type of building	16
Table 7	Actual values and percentage change of buildings completed at constant 1995 prices according to type of building	17
Table 8	Seasonally adjusted values and percentage change of buildings completed at constant 1995 prices according to type of building	18
Table 9	Building plans passed according to type of building: Total RSA	19
Table 10	Building plans passed according to type of building and province: Western Cape	20
Table 11	Building plans passed according to type of building and province: Eastern Cape	21
Table 12	Building plans passed according to type of building and province: Northern Cape	22
Table 13	Building plans passed according to type of building and province: Free State	23
Table 14	Building plans passed according to type of building and province: KwaZulu-Natal	24
Table 15	Building plans passed according to type of building and province: North West	25
Table 16	Building plans passed according to type of building and province: Gauteng	26
Table 17	Building plans passed according to type of building and province: Mpumalanga	27
Table 18	Building plans passed according to type of building and province: Northern Province	28
Table 19	Buildings completed according to type of building: Total RSA	29
Table 20	Buildings completed according to type of building and province: Western Cape	30
Table 21	Buildings completed according to type of building and province: Eastern Cape	31
Table 22	Buildings completed according to type of building and province: Northern Cape.....	32
Table 23	Buildings completed according to type of building and province: Free State	33
Table 24	Buildings completed according to type of building and province: KwaZulu-Natal	34
Table 25	Buildings completed according to type of building and province: North West	35
Table 26	Buildings completed according to type of building and province: Gauteng	36
Table 27	Buildings completed according to type of building and province: Mpumalanga	37
Table 28	Buildings completed according to type of building and province: Northern Province	38
Table 29	Building plans passed according to type of building and selected urban area: Cape Town	39
Table 30	Building plans passed according to type of building and selected urban area: Port Elizabeth	40
Table 31	Building plans passed according to type of building and selected urban area: Durban	41
Table 32	Building plans passed according to type of building and selected urban area: Witwatersrand	42
Table 33	Building plans passed according to type of building and selected urban area: Pretoria	43
Table 34	Building plans passed according to type of building and selected urban area: Bloemfontein	44
Table 35	Buildings completed according to type of building and selected urban area: Cape Town	45
Table 36	Buildings completed according to type of building and selected urban area: Port Elizabeth	46
Table 37	Buildings completed according to type of building and selected urban area: Durban	47
Table 38	Buildings completed according to type of building and selected urban area: Witwatersrand	48
Table 39	Buildings completed according to type of building and selected urban area: Pretoria	49
Table 40	Buildings completed according to type of building and selected urban area: Bloemfontein	50
Additional information		
	Explanatory notes	51
	Technical notes	53
	Local government institutions covered in the sample survey	54
	Glossary	57
For more information	58

Notes

Forthcoming issues	Issue	Expected release date
	February 2002	17 April 2002
	March 2002	15 May 2002
	April 2002	19 June 2002
	May 2002	17 July 2002
	June 2002	14 August 2002
	July 2002	18 September 2002
	August 2002	16 October 2002
	September 2002	20 November 2002
	October 2002	18 December 2002
	November 2002	15 January 2003
	December 2002	19 February 2003
Purpose of the survey	<p>The Building Statistics Survey is a countrywide survey covering a sample of local government institutions in South Africa. The information received is used to estimate key economic statistics used by the private and public sectors. The information is also used to compile estimates of the Gross Domestic Product (GDP). These statistics are also used by government to monitor the Reconstruction and Development Program (RDP) in South Africa.</p>	
New questionnaire	<p>In order to lessen the respondent burden and improve reliability, Stats SA has overhauled and redesigned its Building Statistics Survey questionnaire. This resulted in the change of some data items on the old questionnaire. As from November 1999 information regarding dwelling-houses was collected according to size of dwelling-house.</p> <p>The Building Statistics Survey questionnaire collects the numbers, square metres and value of building plans passed and buildings completed for the private sector regarding –</p> <ul style="list-style-type: none"> • residential buildings; • non-residential buildings; and • additions and alterations. 	
Re-engineered building statistics statistical release	<p>Prior to March 2001, Stats SA published selected information per province namely, the value of building plans passed and buildings completed regarding residential buildings, non-residential buildings and additions and alterations. Due to users' needs, specifically compilers of National Accounts, Stats SA has overhauled and re-designed the statistical release. In order to provide users with more provincial information Stats SA extended the information per province to include more detailed information regarding residential buildings (e.g. dwelling-houses equal to or larger than 80 square metre; flats and townhouses; and other residential buildings), non-residential buildings (e.g. office and banking space; shopping space; industrial and warehouse space; and other non-residential space) and additions and alterations (e.g. additions to dwelling-houses and other buildings).</p> <p>Furthermore, to monitor the RDP housing program Stats SA publishes information regarding dwelling-houses smaller than 80 square metres and equal to or larger than 80 square metres according to province.</p>	
Changes in the numbering of tables	<p>It should be noted that the numbering of tables has changed as from March 2001 as indicated in table C, pages 8 to 10.</p>	

Table C – Title of table according to new and old numbers

New number (as from March 2001)	Title of table	Old number (prior to March 2001)
Table 1	Actual values and percentage change of building plans passed at current prices according to type of building	Table 3
Table 2	Seasonally adjusted values and percentage change of building plans passed at current prices according to type of building	Table 7
Table 3	Actual values and percentage change of building plans passed at constant 1995 prices according to type of building	Table 4
Table 4	Seasonally adjusted values and percentage change of building plans passed at constant 1995 prices according to type of building	Table 7
Table 5	Actual values and percentage change of buildings completed at current prices according to type of building	Table 5
Table 6	Seasonally adjusted values and percentage change of buildings completed at current prices according to type of building	Table 8
Table 7	Actual values and percentage change of buildings completed at constant 1995 prices according to type of building	Table 6
Table 8	Seasonally adjusted values and percentage change of buildings completed at constant 1995 prices according to type of building	Table 8
Table 9	Building plans passed according to type of building: Total RSA	Tables 1 and 9
Table 10	Building plans passed according to type of building and province: Western Cape	Table 1
Table 11	Building plans passed according to type of building and province: Eastern Cape	Table 1
Table 12	Building plans passed according to type of building and province: Northern Cape	Table 1
Table 13	Building plans passed according to type of building and province: Free State	Table 1
Table 14	Building plans passed according to type of building and province: KwaZulu-Natal	Table 1
Table 15	Building plans passed according to type of building and province: North West	Table 1
Table 16	Building plans passed according to type of building and province: Gauteng	Table 1
Table 17	Building plans passed according to type of building and province: Mpumalanga	Table 1

Table C – Title of table according to new and old numbers (continued)

New number (as from March 2001)	Title of table	Old number (prior to March 2001)
Table 18	Building plans passed according to type of building and province: Northern Province	Table 1
Table 19	Buildings completed according to type of building: Total RSA	Tables 2 and 11
Table 20	Buildings completed according to type of building and province: Western Cape	Table 2
Table 21	Buildings completed according to type of building and province: Eastern Cape	Table 2
Table 22	Buildings completed according to type of building and province: Northern Cape	Table 2
Table 23	Buildings completed according to type of building and province: Free State	Table 2
Table 24	Buildings completed according to type of building and province: KwaZulu-Natal	Table 2
Table 25	Buildings completed according to type of building and province: North West	Table 2
Table 26	Buildings completed according to type of building and province: Gauteng	Table 2
Table 27	Buildings completed according to type of building and province: Mpumalanga	Table 2
Table 28	Buildings completed according to type of building and province: Northern Province	Table 2
Table 29	Building plans passed according to type of building and selected urban area: Cape Town	Table 10
Table 30	Building plans passed according to type of building and selected urban area: Port Elizabeth	New
Table 31	Building plans passed according to type of building and selected urban area: Durban	Table 10
Table 32	Building plans passed according to type of building and selected urban area: Witwatersrand	Table 10
Table 33	Building plans passed according to type of building and selected urban area: Pretoria	Table 10
Table 34	Building plans passed according to type of building and selected urban area: Bloemfontein	Table 10
Table 35	Buildings completed according to type of building and selected urban area: Cape Town	Table 12
Table 36	Buildings completed according to type of building and selected urban area: Port Elizabeth	New

Table C – Title of table according to new and old numbers (concluded)

New number (as from March 2001)	Title of table	Old number (prior to March 2001)
Table 37	Buildings completed according to type of building and selected urban area: Durban	Table 12
Table 38	Buildings completed according to type of building and selected urban area: Witwatersrand	Table 12
Table 39	Buildings completed according to type of building and selected urban area: Pretoria	Table 12
Table 40	Buildings completed according to type of building and selected urban area: Bloemfontein	Table 12

Table 1 - Actual values and percentage change of building plans passed at current prices according to type of building

Year ^{1/} and month ^{2/}	Residential buildings		Non-residential buildings		Additions and alterations		Total	
	R'000	Percentage change	R'000	Percentage change	R'000	Percentage change	R'000	Percentage change
2000 Jan	490 776	- 11,3	163 926	- 34,0	365 596	+ 26,2	1 020 298	- 4,5
Feb	784 023	+ 48,3	521 389	+ 27,5	399 280	+ 8,3	1 704 692	+ 33,3
Mar	747 421	+ 12,0	359 267	- 76,3	515 668	+ 3,8	1 622 356	- 37,6
Apr	627 642	+ 18,3	271 151	- 30,9	382 300	+ 10,6	1 281 093	+ 3,7
May	874 847	+ 65,8	573 853	+ 98,7	473 062	+ 11,3	1 921 762	+ 59,5
Jun	853 154	+ 1,8	336 324	- 23,6	532 278	+ 25,2	1 721 756	+ 3,7
Jul	908 061	+ 42,5	484 669	- 0,6	549 932	+ 23,6	1 942 662	+ 27,9
Aug	929 836	+ 31,1	353 488	- 14,8	492 627	+ 10,9	1 775 951	+ 23,8
Sep	826 851	+ 37,8	354 456	+ 8,7	465 836	- 9,8	1 647 143	+ 18,5
Oct	916 410	+ 37,9	492 884	+ 39,8	539 561	+ 15,3	1 948 855	+ 36,2
Nov	914 346	+ 28,6	493 166	- 34,4	503 659	- 12,5	1 911 171	- 2,0
Dec	606 148	+ 22,7	704 410	+ 191,1	317 835	- 6,1	1 628 393	+ 57,5
Total	9 479 515	+ 28,4	5 108 983	- 13,5	5 537 634	+ 7,9	20 126 132	+ 13,1
2001 Jan	720 680	+ 46,8	475 089	+ 189,8	352 501	- 3,6	1 548 270	+ 51,7
Feb	817 853	+ 4,3	299 417	- 42,6	473 166	+ 18,5	1 590 436	- 6,7
Mar	923 148	+ 23,5	305 034	- 15,1	438 069	- 15,0	1 666 251	+ 2,7
Apr	732 653	+ 16,7	206 520	- 23,8	375 509	- 1,8	1 314 682	+ 2,6
May	998 520	+ 14,1	289 330	- 49,6	499 431	+ 5,6	1 787 281	- 7,0
Jun	902 916	+ 5,8	314 602	- 6,5	447 975	- 15,8	1 665 493	- 3,3
Jul	908 280	+ 0,0	383 440	- 20,9	428 902	- 22,0	1 720 622	- 11,4
Aug	837 251	- 10,0	260 144	- 26,4	483 666	- 1,8	1 581 061	- 11,0
Sep	959 583	+ 16,1	303 367	- 14,4	524 349	+ 12,6	1 787 299	+ 8,5
Oct	988 949	+ 7,9	185 808	- 62,3	542 974	+ 0,6	1 717 731	- 11,9
Nov	974 051	+ 6,5	320 034	- 35,1	596 263	+ 18,4	1 890 348	- 1,1
Dec*	648 663	+ 7,0	138 554	- 80,3	358 144	+ 12,7	1 145 361	- 29,7
Total	10 412 547	+ 9,8	3 481 339	- 31,9	5 520 949	- 0,3	19 414 835	- 3,5
2002 Jan	774 464	+ 7,5	167 897	- 64,7	396 857	+ 12,6	1 339 218	- 13,5

^{1/} The annual percentage change is the change in the actual values of building plans passed of the relevant year compared with the actual values of building plans passed of the previous year expressed as a percentage.

^{2/} The monthly percentage change is the change in the actual values of building plans passed of the relevant month compared with the actual values of building plans passed of the same month in the previous year expressed as a percentage.

Table 2 - Seasonally adjusted values and percentage change of building plans passed at current prices according to type of building

Year and month ^{1/}	Residential buildings		Non-residential buildings		Additions and alterations		Total	
	R'000	Percentage change	R'000	Percentage change	R'000	Percentage change	R'000	Percentage change
2000 Jan	633 428	- 9,6	182 938	- 38,7	483 022	+ 15,0	1 299 388	- 8,5
Feb	797 553	+ 25,9	580 919	+ 217,5	438 715	- 9,2	1 817 187	+ 39,8
Mar	688 404	- 13,7	360 405	- 38,0	468 547	+ 6,8	1 517 355	- 16,5
Apr	699 609	+ 1,6	323 804	- 10,2	447 105	- 4,6	1 470 518	- 3,1
May	809 562	+ 15,7	545 204	+ 68,4	456 680	+ 2,1	1 811 446	+ 23,2
Jun	806 450	- 0,4	315 937	- 42,1	513 694	+ 12,5	1 636 081	- 9,7
Jul	821 727	+ 1,9	400 340	+ 26,7	501 639	- 2,3	1 723 706	+ 5,4
Aug	883 714	+ 7,5	362 238	- 9,5	467 203	- 6,9	1 713 154	- 0,6
Sep	796 708	- 9,8	353 019	- 2,5	426 007	- 8,8	1 575 734	- 8,0
Oct	802 426	+ 0,7	472 907	+ 34,0	475 539	+ 11,6	1 750 873	+ 11,1
Nov	852 156	+ 6,2	387 444	- 18,1	425 132	- 10,6	1 664 732	- 4,9
Dec	855 463	+ 0,4	937 971	+ 142,1	430 952	+ 1,4	2 224 386	+ 33,6
2001 Jan	920 467	+ 7,6	521 501	- 44,4	455 288	+ 5,6	1 897 256	- 14,7
Feb	837 490	- 9,0	341 169	- 34,6	524 920	+ 15,3	1 703 579	- 10,2
Mar	848 403	+ 1,3	304 374	- 10,8	396 755	- 24,4	1 549 533	- 9,0
Apr	828 212	- 2,4	256 106	- 15,9	443 377	+ 11,8	1 527 695	- 1,4
May	916 381	+ 10,6	270 577	+ 5,7	480 958	+ 8,5	1 667 916	+ 9,2
Jun	848 926	- 7,4	298 615	+ 10,4	431 160	- 10,4	1 578 701	- 5,3
Jul	821 962	- 3,2	307 028	+ 2,8	393 832	- 8,7	1 522 822	- 3,5
Aug	792 277	- 3,6	265 052	- 13,7	460 298	+ 16,9	1 517 628	- 0,3
Sep	925 390	+ 16,8	303 079	+ 14,3	477 856	+ 3,8	1 706 325	+ 12,4
Oct	877 451	- 5,2	182 365	- 39,8	479 743	+ 0,4	1 539 558	- 9,8
Nov	908 959	+ 3,6	250 303	+ 37,3	500 020	+ 4,2	1 659 282	+ 7,8
Dec	910 042	+ 0,1	186 259	- 25,6	492 310	- 1,5	1 588 611	- 4,3
2002 Jan	983 314	+ 8,1	182 146	- 2,2	503 969	+ 2,4	1 669 428	+ 5,1

^{1/} The percentage change is the change in the seasonally adjusted values of building plans passed of the relevant month compared with the seasonally adjusted values of building plans passed of the previous month expressed as a percentage.

Table 3 - Actual values and percentage change of building plans passed at constant 1995 prices according to type of building

Year ^{1/} and month ^{2/}	Residential buildings		Non-residential buildings		Additions and alterations		Total	
	R'000	Percentage change	R'000	Percentage change	R'000	Percentage change	R'000	Percentage change
2000 Jan	378 102	- 15,0	126 291	- 34,0	281 661	+ 26,2	786 054	- 8,5
Feb	602 168	+ 43,1	400 452	+ 27,5	306 667	+ 8,3	1 309 287	+ 28,6
Mar	570 115	+ 7,5	274 040	- 76,3	393 339	+ 3,8	1 237 494	- 40,1
Apr	473 692	+ 12,9	204 642	- 30,9	288 528	+ 10,6	966 862	- 1,0
May	655 807	+ 57,4	430 175	+ 98,7	354 619	+ 11,3	1 440 601	+ 51,4
Jun	637 634	- 3,3	251 363	- 23,6	397 816	+ 25,2	1 286 813	- 1,5
Jul	672 638	+ 34,5	359 014	- 0,6	407 357	+ 23,6	1 439 009	+ 20,8
Aug	682 699	+ 38,0	259 536	- 14,8	361 694	+ 10,9	1 303 929	+ 15,9
Sep	606 196	+ 29,1	259 865	+ 8,7	341 522	- 9,8	1 207 583	+ 11,1
Oct	668 425	+ 28,7	359 507	+ 39,8	393 553	+ 15,3	1 421 485	+ 27,2
Nov	664 013	+ 19,9	358 145	- 34,4	365 765	- 12,5	1 387 923	- 8,6
Dec	438 602	+ 14,2	509 703	+ 191,1	229 982	- 6,1	1 178 287	+ 46,6
Total	7 050 091	+ 28,4	3 792 733	- 13,5	4 122 503	+ 7,9	14 965 327	+ 6,7
2001 Jan	515 877	+ 36,4	340 078	+ 169,3	252 327	- 10,4	1 108 282	+ 41,0
Feb	582 516	- 3,3	213 260	- 46,7	337 013	+ 9,9	1 132 789	- 13,5
Mar	653 325	+ 14,6	215 877	- 21,2	310 028	- 21,2	1 179 230	- 4,7
Apr	515 590	+ 8,8	145 334	- 29,0	264 257	- 8,4	925 181	- 4,3
May	698 754	+ 6,5	202 470	- 52,9	349 497	- 1,4	1 250 721	- 13,2
Jun	630 528	- 1,1	219 694	- 12,6	312 832	- 21,4	1 163 054	- 9,6
Jul	630 750	- 6,2	266 278	- 25,8	297 849	- 26,9	1 194 877	- 17,0
Aug	579 814	- 15,1	180 155	- 30,6	334 949	- 7,4	1 094 918	- 16,0
Sep	663 153	+ 9,4	209 652	- 19,3	362 370	+ 6,1	1 235 175	+ 2,3
Oct	680 157	+ 1,8	127 791	- 64,5	373 435	- 5,1	1 181 383	- 16,9
Nov	666 702	+ 0,4	219 051	- 38,8	408 120	+ 11,6	1 293 873	- 6,8
Dec*	441 869	+ 0,7	94 383	- 81,5	243 967	+ 6,1	780 219	- 33,8
Total	7 259 035	+ 3,0	2 434 023	- 35,8	3 846 644	- 6,7	13 539 702	- 9,5
2002 Jan	514 936	- 0,2	111 634	- 67,2	263 868	+ 4,6	890 438	- 19,7

^{1/} The annual percentage change is the change in the actual values of building plans passed of the relevant year compared with the actual values of building plans passed of the previous year expressed as a percentage.

^{2/} The monthly percentage change is the change in the actual values of building plans passed of the relevant month compared with the actual values of building plans passed of the same month in the previous year expressed as a percentage.

Table 4 - Seasonally adjusted values and percentage change of building plans passed at constant 1995 prices according to type of building

Year and month ^{1/}	Residential buildings		Non-residential buildings		Additions and alterations		Total	
	R'000	Percentage change	R'000	Percentage change	R'000	Percentage change	R'000	Percentage change
2000 Jan	488 625	- 9,9	141 604	- 38,7	372 889	+ 22,5	1 003 117	- 8,7
Feb	612 511	+ 25,4	446 455	+ 215,3	336 938	- 9,6	1 395 904	+ 39,2
Mar	523 951	- 14,5	274 642	- 38,5	357 601	+ 6,1	1 156 194	- 17,2
Apr	528 226	+ 0,8	244 548	- 11,0	337 912	- 5,5	1 110 686	- 3,9
May	608 951	+ 15,3	409 116	+ 67,3	342 888	+ 1,5	1 360 955	+ 22,5
Jun	601 714	- 1,2	235 917	- 42,3	383 832	+ 11,9	1 221 463	- 10,2
Jul	609 622	+ 1,3	296 969	+ 25,9	371 001	- 3,3	1 277 592	+ 4,6
Aug	650 485	+ 6,7	266 457	- 10,3	343 843	- 7,3	1 260 785	- 1,3
Sep	584 486	- 10,1	258 830	- 2,9	312 389	- 9,1	1 155 705	- 8,3
Oct	585 102	+ 0,1	344 777	+ 33,2	346 692	+ 11,0	1 276 570	+ 10,5
Nov	617 402	+ 5,5	280 342	- 18,7	307 938	- 11,2	1 205 681	- 5,6
Dec	615 685	- 0,3	675 115	+ 140,8	310 560	+ 0,9	1 601 360	+ 32,8
2001 Jan	660 695	+ 7,3	375 676	- 44,4	326 937	+ 5,3	1 363 308	- 14,9
Feb	596 279	- 9,7	243 063	- 35,3	373 767	+ 14,3	1 213 109	- 11,0
Mar	599 073	+ 0,5	215 180	- 11,5	281 033	- 24,8	1 095 287	- 9,7
Apr	582 898	- 2,7	180 383	- 16,2	312 556	+ 11,2	1 075 837	- 1,8
May	643 723	+ 10,4	189 539	+ 5,1	337 099	+ 7,9	1 170 362	+ 8,8
Jun	591 864	- 8,1	208 362	+ 9,9	301 023	- 10,7	1 101 249	- 5,9
Jul	571 743	- 3,4	213 520	+ 2,5	273 218	- 9,2	1 058 481	- 3,9
Aug	550 106	- 3,8	183 888	- 13,9	319 440	+ 16,9	1 053 435	- 0,5
Sep	639 894	+ 16,3	209 409	+ 13,9	330 172	+ 3,4	1 179 475	+ 12,0
Oct	603 108	- 5,7	125 333	- 40,1	329 627	- 0,2	1 058 068	- 10,3
Nov	620 590	+ 2,9	170 661	+ 36,2	341 312	+ 3,5	1 132 562	+ 7,0
Dec	616 526	- 0,7	126 204	- 26,0	333 952	- 2,2	1 076 682	- 4,9
2002 Jan	655 878	+ 6,4	121 948	- 3,4	336 391	+ 0,7	1 114 217	+ 3,5

^{1/} The percentage change is the change in the seasonally adjusted values of building plans passed of the relevant month compared with the seasonally adjusted values of building plans passed of the previous month expressed as a percentage.

Table 5 - Actual values and percentage change of buildings completed at current prices according to type of building

Year ^{1/} and month ^{2/}	Residential buildings		Non-residential buildings		Additions and alterations		Total	
	R'000	Percentage change	R'000	Percentage change	R'000	Percentage change	R'000	Percentage change
2000 Jan	299 212	- 4,7	195 988	- 0,6	183 959	- 4,7	679 159	- 3,5
Feb	353 141	- 11,0	205 549	- 4,3	221 978	- 9,3	780 668	- 8,8
Mar	419 416	- 3,0	212 379	- 13,7	268 745	+ 16,5	900 540	- 1,0
Apr	364 713	- 3,5	224 048	+ 23,4	188 808	- 5,8	777 569	+ 2,3
May	473 124	+ 21,0	390 533	+ 99,6	293 343	+ 64,1	1 157 000	+ 51,2
Jun	362 558	- 13,7	174 728	- 16,2	170 986	+ 11,2	708 272	- 9,5
Jul	407 406	- 15,3	472 668	+ 79,0	220 828	- 18,9	1 100 902	+ 8,2
Aug	449 691	- 2,4	285 994	+ 39,6	211 008	- 17,5	946 693	+ 2,7
Sep	510 979	+ 3,6	270 539	+ 37,2	199 622	- 10,6	981 140	+ 7,4
Oct	462 270	+ 10,2	195 491	- 4,0	238 257	+ 3,8	896 018	+ 5,1
Nov	555 802	+ 20,5	186 442	- 54,5	255 900	+ 21,7	998 144	- 7,7
Dec	383 114	+ 9,6	316 801	+ 74,5	149 622	+ 2,2	849 537	+ 25,4
Total	5 041 426	+ 0,9	3 131 160	+ 15,7	2 603 056	+ 2,5	10 775 642	+ 5,2
2001 Jan	643 047	+ 114,9	238 434	+ 21,7	200 985	+ 9,3	1 082 466	+ 59,4
Feb	428 803	+ 21,4	285 620	+ 39,0	243 214	+ 9,6	957 637	+ 22,7
Mar	532 191	+ 26,9	162 697	- 23,4	287 149	+ 6,8	982 037	+ 9,0
Apr	361 022	- 1,0	169 123	- 24,5	184 423	- 2,3	714 568	- 8,1
May	437 971	- 7,4	300 533	- 23,0	295 708	+ 0,8	1 034 212	- 10,6
Jun	553 850	+ 52,8	368 352	+ 110,8	277 374	+ 62,2	1 199 576	+ 69,4
Jul	419 930	+ 3,1	151 692	- 67,9	232 217	+ 5,2	803 839	- 27,0
Aug	430 279	- 4,3	117 944	- 58,8	214 732	+ 1,8	762 955	- 19,4
Sep	456 622	- 10,6	1 417 979	+ 424,1	168 410	- 15,6	2 043 011	+ 108,2
Oct	664 515	+ 43,8	280 091	+ 43,3	237 138	- 0,5	1 181 744	+ 31,9
Nov	619 314	+ 11,4	198 571	+ 6,5	285 877	+ 11,7	1 103 762	+ 10,6
Dec*	466 614	+ 21,8	165 499	- 47,8	121 134	- 19,0	753 247	- 11,3
Total	6 014 158	+ 19,3	3 856 535	+ 23,2	2 748 361	+ 5,6	12 619 054	+ 17,1
2002 Jan	571 758	- 11,1	136 789	- 42,6	172 594	- 14,1	881 141	- 18,6

^{1/} The annual percentage change is the change in the actual values of buildings completed of the relevant year compared with the actual values of buildings completed of the previous year expressed as a percentage.

^{2/} The monthly percentage change is the change in the actual values of buildings completed of the relevant month compared with the actual values of buildings completed of the same month in the previous year expressed as a percentage.

Table 6 - Seasonally adjusted values and percentage change of buildings completed at current prices according to type of building

Year and month ^{1/}	Residential buildings		Non-residential buildings		Additions and alterations		Total	
	R'000	Percentage change	R'000	Percentage change	R'000	Percentage change	R'000	Percentage change
2000 Jan	366 080	- 8,9	239 948	+ 17,6	205 198	- 7,4	811 226	- 2,0
Feb	395 051	+ 7,9	216 447	- 9,8	201 902	- 1,6	813 400	+ 0,3
Mar	396 013	+ 0,2	261 258	+ 20,7	224 989	+ 11,4	882 260	+ 8,5
Apr	414 441	+ 4,7	277 409	+ 6,2	211 275	- 6,1	903 125	+ 2,4
May	461 576	+ 11,4	375 195	+ 35,2	279 906	+ 32,5	1 116 677	+ 23,6
Jun	347 411	- 24,7	171 197	- 54,4	183 786	- 34,3	702 394	- 37,1
Jul	387 972	+ 11,7	346 887	+ 102,6	195 024	+ 6,1	929 883	+ 32,4
Aug	446 821	+ 15,2	265 290	- 23,5	208 962	+ 7,1	921 073	- 0,9
Sep	461 748	+ 3,3	215 413	- 18,8	203 441	- 2,6	880 602	- 4,4
Oct	439 781	- 4,8	175 232	- 18,7	219 581	+ 7,9	834 594	- 5,2
Nov	472 121	+ 7,4	209 893	+ 19,8	239 611	+ 9,1	921 624	+ 10,4
Dec	440 994	- 6,6	383 114	+ 82,5	226 595	- 5,4	1 050 704	+ 14,0
2001 Jan	765 894	+ 73,7	299 994	- 21,7	224 594	- 0,9	1 290 483	+ 22,8
Feb	476 873	- 37,7	295 987	- 1,3	221 940	- 1,2	994 800	- 22,9
Mar	496 452	+ 4,1	203 236	- 31,3	237 322	+ 6,9	937 010	- 5,8
Apr	413 929	- 16,6	216 520	+ 6,5	208 438	- 12,2	838 887	- 10,5
May	431 993	+ 4,4	277 012	+ 27,9	280 545	+ 34,6	989 549	+ 18,0
Jun	530 005	+ 22,7	357 074	+ 28,9	301 569	+ 7,5	1 188 649	+ 20,1
Jul	403 825	- 23,8	106 513	- 70,2	205 781	- 31,8	716 119	- 39,8
Aug	427 752	+ 5,9	107 255	+ 0,7	210 827	+ 2,5	745 834	+ 4,1
Sep	408 153	- 4,6	1 120 573	+ 944,8	172 441	- 18,2	1 701 168	+ 128,1
Oct	631 574	+ 54,7	262 393	- 76,6	217 116	+ 25,9	1 111 083	- 34,7
Nov	529 162	- 16,2	230 102	- 12,3	268 894	+ 23,8	1 028 158	- 7,5
Dec	539 929	+ 2,0	208 951	- 9,2	183 006	- 31,9	931 886	- 9,4
2002 Jan	672 737	+ 24,6	171 215	- 18,1	193 515	+ 5,7	1 037 468	+ 11,3

^{1/} The percentage change is the change in the seasonally adjusted values of buildings completed of the relevant month compared with the seasonally adjusted values of buildings completed of the previous month expressed as a percentage.

Table 7 - Actual values and percentage change of buildings completed at constant 1995 prices according to type of building

Year ^{1/} and month ^{2/}	Residential buildings		Non-residential buildings		Additions and alterations		Total	
	R'000	Percentage change	R'000	Percentage change	R'000	Percentage change	R'000	Percentage change
2000 Jan	236 149	- 10,1	162 916	- 5,6	147 996	- 10,8	547 061	- 9,0
Feb	277 982	- 28,3	168 898	- 13,1	176 734	- 29,2	623 614	- 24,6
Mar	329 523	- 33,7	173 371	- 23,9	213 629	- 24,7	716 523	- 28,7
Apr	285 795	- 24,1	181 857	+ 3,6	149 255	- 12,9	616 907	- 14,3
May	370 120	- 26,2	315 965	- 3,8	231 709	- 1,9	917 794	- 14,5
Jun	282 549	- 31,4	141 251	- 9,6	134 529	+ 14,5	558 329	- 16,3
Jul	314 890	- 31,4	380 264	- 28,2	173 198	- 34,6	868 352	- 35,2
Aug	346 783	- 39,6	227 702	- 7,0	165 496	- 29,6	739 981	- 27,6
Sep	391 744	- 36,1	215 055	- 3,1	156 199	- 18,8	762 998	- 26,8
Oct	352 005	- 40,5	154 538	- 5,6	186 138	- 20,5	692 681	- 21,1
Nov	420 080	- 29,4	147 269	- 52,9	199 299	- 13,0	766 648	- 38,0
Dec	289 205	- 35,5	249 253	+ 6,7	116 347	+ 25,1	654 805	- 0,2
Total	3 896 825	- 4,0	2 518 339	+ 8,4	2 050 529	- 3,1	8 465 693	- 0,4
2001 Jan	487 413	+ 106,4	187 007	+ 14,8	154 842	+ 4,6	829 262	+ 51,6
Feb	318 240	+ 14,5	224 016	+ 32,6	186 800	+ 5,7	729 056	+ 16,9
Mar	394 856	+ 19,8	127 306	- 26,6	219 031	+ 2,5	741 193	+ 3,4
Apr	265 613	- 7,1	132 127	- 27,3	139 187	- 6,7	536 927	- 13,0
May	319 179	- 13,8	234 060	- 25,9	221 670	- 4,3	774 909	- 15,6
Jun	403 634	+ 42,9	286 432	+ 102,8	207 305	+ 54,1	897 371	+ 60,7
Jul	302 158	- 4,0	116 866	- 69,3	172 013	- 0,7	591 037	- 31,9
Aug	308 208	- 11,1	90 587	- 60,2	157 659	- 4,7	556 454	- 24,8
Sep	325 581	- 16,9	1 081 601	+ 402,9	123 468	- 21,0	1 530 650	+ 100,6
Oct	473 024	+ 34,4	211 389	+ 36,8	172 967	- 7,1	857 380	+ 23,8
Nov	438 537	+ 4,4	148 854	+ 1,1	207 609	+ 4,2	795 000	+ 3,7
Dec*	328 019	+ 13,4	123 691	- 50,4	87 651	- 24,7	539 361	- 17,6
Total	4 364 462	+ 12,0	2 963 936	+ 17,7	2 050 202	+ 0,0	9 378 600	+ 10,8
2002 Jan	401 164	- 17,7	101 325	- 45,8	123 546	- 20,2	626 035	- 24,5

^{1/} The annual percentage change is the change in the actual values of buildings completed of the relevant year compared with the actual values of buildings completed of the previous year expressed as a percentage.

^{2/} The monthly percentage change is the change in the actual values of buildings completed of the relevant month compared with the actual values of buildings completed of the same month in the previous year expressed as a percentage.

Table 8 - Seasonally adjusted values and percentage change of buildings completed at constant 1995 prices according to type of building

Year and month ^{1/}	Residential buildings		Non-residential buildings		Additions and alterations		Total	
	R'000	Percentage change	R'000	Percentage change	R'000	Percentage change	R'000	Percentage change
2000 Jan	288 974	- 9,2	199 116	+ 11,9	164 747	- 7,7	652 837	- 3,2
Feb	312 276	+ 8,1	177 629	- 10,8	160 803	- 2,4	650 707	- 0,3
Mar	311 582	- 0,2	212 918	+ 19,9	178 666	+ 11,1	703 166	+ 8,1
Apr	324 619	+ 4,2	226 974	+ 6,6	167 034	- 6,5	718 627	+ 2,2
May	361 048	+ 11,2	308 763	+ 36,0	219 847	+ 31,6	889 658	+ 23,8
Jun	268 477	- 25,6	137 425	- 55,5	144 980	- 34,1	550 883	- 38,1
Jul	299 586	+ 11,6	269 017	+ 95,8	153 177	+ 5,7	721 781	+ 31,0
Aug	345 168	+ 15,2	206 286	- 23,3	164 694	+ 7,5	716 147	- 0,8
Sep	353 656	+ 2,5	172 163	- 16,5	159 971	- 2,9	685 790	- 4,2
Oct	336 368	- 4,9	141 615	- 17,7	171 560	+ 7,2	649 542	- 5,3
Nov	357 082	+ 6,2	166 211	+ 17,4	186 342	+ 8,6	709 635	+ 9,3
Dec	332 382	- 6,9	312 209	+ 87,8	175 379	- 5,9	819 969	+ 15,5
2001 Jan	580 788	+ 74,7	235 874	- 24,4	172 673	- 1,5	989 334	+ 20,7
Feb	355 299	- 38,8	231 990	- 1,6	170 475	- 1,3	757 764	- 23,4
Mar	368 853	+ 3,8	159 028	- 31,5	180 797	+ 6,1	708 678	- 6,5
Apr	304 456	- 17,5	169 208	+ 6,4	157 390	- 12,9	631 054	- 11,0
May	314 892	+ 3,4	220 166	+ 30,1	208 901	+ 32,7	743 960	+ 17,9
Jun	382 841	+ 21,6	276 202	+ 25,5	226 040	+ 8,2	885 083	+ 19,0
Jul	290 341	- 24,2	79 021	- 71,4	152 640	- 32,5	522 001	- 41,0
Aug	306 869	+ 5,7	80 417	+ 1,8	155 546	+ 1,9	542 832	+ 4,0
Sep	290 704	- 5,3	861 126	+ 970,8	127 104	- 18,3	1 278 934	+ 135,6
Oct	451 755	+ 55,4	202 603	- 76,5	158 392	+ 24,6	812 751	- 36,5
Nov	374 947	- 17,0	173 355	- 14,4	195 042	+ 23,1	743 343	- 8,5
Dec	379 007	+ 1,1	161 002	- 7,1	131 798	- 32,4	671 807	- 9,6
2002 Jan	472 195	+ 24,6	127 373	- 20,9	138 233	+ 4,9	737 801	+ 9,8

^{1/} The percentage change is the change in the seasonally adjusted values of buildings completed of the relevant month compared with the seasonally adjusted values of buildings completed of the previous month expressed as a percentage.

Table 9 - Building plans passed according to type of building: Total RSA

Type of building	January 2001 *	December 2001 *	January 2002	Percentage change between January 2001 and January 2002
Residential buildings				
Dwelling-houses smaller than 80 square metres				
Number of dwelling-houses	2 592	1 678	2 449	- 5,5
Total square metres	99 701	68 169	88 844	- 10,9
Total value at current prices (R'000)	113 816	66 161	101 164	- 11,1
Dwelling-houses equal to or larger than 80 square metres				
Number of dwelling-houses	1 472	1 262	1 612	+9,5
Total square metres	315 076	278 330	354 939	+12,7
Total value at current prices (R'000)	450 132	416 947	507 873	+12,8
Flats and townhouses				
Number of flats and townhouses	557	726	761	+36,6
Total square metres	72 811	109 972	108 242	+48,7
Total value at current prices (R'000)	105 747	157 049	163 157	+54,3
Other residential buildings ^{1/}				
Total square metres	6 583	5 519	1 313	- 80,1
Total value at current prices (R'000)	50 985	8 506	2 270	- 95,5
Total value of residential buildings at current prices (R'000)	720 680	648 663	774 464	+7,5
Non-residential buildings				
Office and banking space				
Total square metres	118 138	24 057	23 409	- 80,2
Total value at current prices (R'000)	231 078	33 995	38 558	- 83,3
Shopping space				
Total square metres	98 386	32 419	31 830	- 67,6
Total value at current prices (R'000)	138 308	53 004	48 854	- 64,7
Industrial and warehouse space				
Total square metres	55 122	31 563	48 088	- 12,8
Total value at current prices (R'000)	78 013	33 123	61 218	- 21,5
Other non-residential space ^{2/}				
Total square metres	18 159	12 818	16 053	- 11,6
Total value at current prices (R'000)	27 690	18 432	19 267	- 30,4
Total value of non-residential buildings at current prices (R'000)	475 089	138 554	167 897	- 64,7
Additions and alterations				
Dwelling-houses				
Total square metres	192 323	193 112	209 781	+9,1
Total value at current prices (R'000)	238 479	256 067	269 292	+12,9
Other buildings ^{3/}				
Total square metres	57 743	53 898	65 321	+13,1
Total value at current prices (R'000)	114 022	102 077	127 565	+11,9
Total value of additions and alterations at current prices (R'000)	352 501	358 144	396 857	+12,6
Total value of building plans passed at current prices (R'000)	1548 270	1145 361	1339 218	- 13,5

1/ Other residential buildings include institutions for the disabled, boarding houses, old people's homes, hostels, hotels, motels, guest houses, holiday chalets, entertainment centres, bed-and-breakfast accommodation and casinos.

2/ Other non-residential space includes churches, sport and recreation clubs, schools, crèches, hospitals and all other non-residential space.

3/ Other buildings include additions and alterations to other residential buildings, non-residential buildings and internal alterations.

Table 10 - Building plans passed according to type of building and province: Western Cape

Type of building	January 2001	December 2001 *	January 2002	Percentage change between January 2001 and January 2002
Residential buildings				
Dwelling-houses smaller than 80 square metres				
Number of dwelling-houses	707	363	1 610	+127,7
Total square metres	26 357	14 574	51 683	+96,1
Total value at current prices (R'000)	31 599	17 058	60 435	+91,3
Dwelling-houses equal to or larger than 80 square metres				
Number of dwelling-houses	426	419	574	+34,7
Total square metres	80 004	85 290	113 560	+41,9
Total value at current prices (R'000)	124 424	130 246	172 897	+39,0
Flats and townhouses				
Number of flats and townhouses	123	130	154	+25,2
Total square metres	14 646	19 383	19 223	+31,3
Total value at current prices (R'000)	21 613	28 491	32 819	+51,8
Other residential buildings ^{1/}				
Total square metres	257	0	458	+78,2
Total value at current prices (R'000)	283	0	687	+142,8
Total value of residential buildings at current prices (R'000)	177 919	175 795	266 838	+50,0
Non-residential buildings				
Office and banking space				
Total square metres	21 796	8 377	4 146	- 81,0
Total value at current prices (R'000)	37 998	11 898	7 021	- 81,5
Shopping space				
Total square metres	64 374	16 557	12 634	- 80,4
Total value at current prices (R'000)	81 133	22 068	15 590	- 80,8
Industrial and warehouse space				
Total square metres	11 794	20 481	10 850	- 8,0
Total value at current prices (R'000)	13 422	19 846	10 512	- 21,7
Other non-residential space ^{2/}				
Total square metres	9 022	2 862	6 521	- 27,7
Total value at current prices (R'000)	14 181	5 598	7 859	- 44,6
Total value of non-residential buildings at current prices (R'000)	146 734	59 410	40 982	- 72,1
Additions and alterations				
Dwelling-houses				
Total square metres	53 090	64 446	54 435	+2,5
Total value at current prices (R'000)	65 817	83 812	70 715	+7,4
Other buildings ^{3/}				
Total square metres	14 973	11 320	18 827	+25,7
Total value at current prices (R'000)	28 473	26 666	29 711	+4,3
Total value of additions and alterations at current prices (R'000)	94 290	110 478	100 426	+6,5
Total value of building plans passed at current prices (R'000)	418 943	345 683	408 246	- 2,6

1/ Other residential buildings include institutions for the disabled, boarding houses, old people's homes, hostels, hotels, motels, guest houses, holiday chalets, entertainment centres, bed-and-breakfast accommodation and casinos.

2/ Other non-residential space includes churches, sport and recreation clubs, schools, crèches, hospitals and all other non-residential space.

3/ Other buildings include additions and alterations to other residential buildings, non-residential buildings and internal alterations.

Table 11 - Building plans passed according to type of building and province: Eastern Cape

Type of building	January 2001	December 2001	January 2002	Percentage change between January 2001 and January 2002
Residential buildings				
Dwelling-houses smaller than 80 square metres				
Number of dwelling-houses	182	162	127	- 30,2
Total square metres	7 684	7 077	5 967	- 22,3
Total value at current prices (R'000)	9 513	8 905	9 038	- 5,0
Dwelling-houses equal to or larger than 80 square metres				
Number of dwelling-houses	80	86	88	+10,0
Total square metres	13 082	15 630	15 045	+15,0
Total value at current prices (R'000)	17 142	23 588	20 419	+19,1
Flats and townhouses				
Number of flats and townhouses	20	14	10	- 50,0
Total square metres	2 246	1 475	1 236	- 45,0
Total value at current prices (R'000)	2 891	2 077	1 720	- 40,5
Other residential buildings ^{1/}				
Total square metres	5 820	539	0	..
Total value at current prices (R'000)	50 000	1 056	0	..
Total value of residential buildings at current prices (R'000)	79 546	35 626	31 177	- 60,8
Non-residential buildings				
Office and banking space				
Total square metres	167	0	0	..
Total value at current prices (R'000)	301	0	0	..
Shopping space				
Total square metres	196	0	5 103	+2 503,6
Total value at current prices (R'000)	309	0	11 195	+3 523,0
Industrial and warehouse space				
Total square metres	488	1 749	659	+35,0
Total value at current prices (R'000)	732	2 816	833	+13,8
Other non-residential space ^{2/}				
Total square metres	153	1 275	887	+479,7
Total value at current prices (R'000)	255	2 095	504	+97,6
Total value of non-residential buildings at current prices (R'000)	1 597	4 911	12 532	+684,7
Additions and alterations				
Dwelling-houses				
Total square metres	13 261	16 717	13 372	+0,8
Total value at current prices (R'000)	16 028	25 047	18 219	+13,7
Other buildings ^{3/}				
Total square metres	2 567	1 028	2 568	+0,0
Total value at current prices (R'000)	4 083	1 027	5 255	+28,7
Total value of additions and alterations at current prices (R'000)	20 111	26 074	23 474	+16,7
Total value of building plans passed at current prices (R'000)	101 254	66 611	67 183	- 33,6

1/ Other residential buildings include institutions for the disabled, boarding houses, old people's homes, hostels, hotels, motels, guest houses, holiday chalets, entertainment centres, bed-and-breakfast accommodation and casinos.

2/ Other non-residential space includes churches, sport and recreation clubs, schools, crèches, hospitals and all other non-residential space.

3/ Other buildings include additions and alterations to other residential buildings, non-residential buildings and internal alterations.

Table 12 - Building plans passed according to type of building and province: Northern Cape

Type of building	January 2001	December 2001	January 2002	Percentage change between January 2001 and January 2002
Residential buildings				
Dwelling-houses smaller than 80 square metres				
Number of dwelling-houses	2	11	5	+150,0
Total square metres	112	605	249	+122,3
Total value at current prices (R'000)	170	1 022	410	+141,2
Dwelling-houses equal to or larger than 80 square metres				
Number of dwelling-houses	33	2	4	- 87,9
Total square metres	6 759	402	665	- 90,2
Total value at current prices (R'000)	6 552	563	1 067	- 83,7
Flats and townhouses				
Number of flats and townhouses	1	0	0	..
Total square metres	145	0	0	..
Total value at current prices (R'000)	203	0	0	..
Other residential buildings ^{1/}				
Total square metres	0	0	0	..
Total value at current prices (R'000)	0	0	0	..
Total value of residential buildings at current prices (R'000)	6 925	1 585	1 477	- 78,7
Non-residential buildings				
Office and banking space				
Total square metres	191	0	0	..
Total value at current prices (R'000)	124	0	0	..
Shopping space				
Total square metres	184	1 915	0	..
Total value at current prices (R'000)	191	2 298	0	..
Industrial and warehouse space				
Total square metres	0	0	0	..
Total value at current prices (R'000)	0	0	0	..
Other non-residential space ^{2/}				
Total square metres	88	0	0	..
Total value at current prices (R'000)	123	0	0	..
Total value of non-residential buildings at current prices (R'000)	438	2 298	0	..
Additions and alterations				
Dwelling-houses				
Total square metres	1 439	1 751	1 594	+10,8
Total value at current prices (R'000)	2 046	2 612	2 465	+20,5
Other buildings ^{3/}				
Total square metres	31	270	0	..
Total value at current prices (R'000)	324	564	107	- 67,0
Total value of additions and alterations at current prices (R'000)	2 370	3 176	2 572	+8,5
Total value of building plans passed at current prices (R'000)	9 733	7 059	4 049	- 58,4

1/ Other residential buildings include institutions for the disabled, boarding houses, old people's homes, hostels, hotels, motels, guest houses, holiday chalets, entertainment centres, bed-and-breakfast accommodation and casinos.

2/ Other non-residential space includes churches, sport and recreation clubs, schools, crèches, hospitals and all other non-residential space.

3/ Other buildings include additions and alterations to other residential buildings, non-residential buildings and internal alterations.

Table 13 - Building plans passed according to type of building and province: Free State

Type of building	January 2001	December 2001*	January 2002	Percentage change between January 2001 and January 2002
Residential buildings				
Dwelling-houses smaller than 80 square metres				
Number of dwelling-houses	77	5	91	+18,2
Total square metres	3 557	315	4 117	+15,7
Total value at current prices (R'000)	2 305	328	2 403	+4,3
Dwelling-houses equal to or larger than 80 square metres				
Number of dwelling-houses	65	40	67	+3,1
Total square metres	10 944	6 193	8 114	- 25,9
Total value at current prices (R'000)	12 062	5 605	12 529	+3,9
Flats and townhouses				
Number of flats and townhouses	42	0	88	+109,5
Total square metres	5 326	0	8 676	+62,9
Total value at current prices (R'000)	8 167	0	13 500	+65,3
Other residential buildings ^{1/}				
Total square metres	0	0	0	..
Total value at current prices (R'000)	0	0	0	..
Total value of residential buildings at current prices (R'000)	22 534	5 933	28 432	+26,2
Non-residential buildings				
Office and banking space				
Total square metres	0	0	7 267	..
Total value at current prices (R'000)	0	0	14 000	..
Shopping space				
Total square metres	1 165	0	602	- 48,3
Total value at current prices (R'000)	1 400	0	660	- 52,9
Industrial and warehouse space				
Total square metres	197	0	867	+340,1
Total value at current prices (R'000)	50	0	694	+1 288,0
Other non-residential space ^{2/}				
Total square metres	396	812	566	+42,9
Total value at current prices (R'000)	1 000	818	505	- 49,5
Total value of non-residential buildings at current prices (R'000)	2 450	818	15 859	+547,3
Additions and alterations				
Dwelling-houses				
Total square metres	6 650	5 647	7 475	+12,4
Total value at current prices (R'000)	6 467	6 359	8 073	+24,8
Other buildings ^{3/}				
Total square metres	556	737	2 238	+302,5
Total value at current prices (R'000)	826	538	3 907	+373,0
Total value of additions and alterations at current prices (R'000)	7 293	6 897	11 980	+64,3
Total value of building plans passed at current prices (R'000)	32 277	13 648	56 271	+74,3

1/ Other residential buildings include institutions for the disabled, boarding houses, old people's homes, hostels, hotels, motels, guest houses, holiday chalets, entertainment centres, bed-and-breakfast accommodation and casinos.

2/ Other non-residential space includes churches, sport and recreation clubs, schools, crèches, hospitals and all other non-residential space.

3/ Other buildings include additions and alterations to other residential buildings, non-residential buildings and internal alterations.

Table 14 - Building plans passed according to type of building and province: KwaZulu-Natal

Type of building	January 2001 *	December 2001	January 2002	Percentage change between January 2001 and January 2002
Residential buildings				
Dwelling-houses smaller than 80 square metres				
Number of dwelling-houses	148	58	148	+0,0
Total square metres	7 786	2 789	5 203	- 33,2
Total value at current prices (R'000)	7 737	3 575	5 354	- 30,8
Dwelling-houses equal to or larger than 80 square metres				
Number of dwelling-houses	130	114	122	- 6,2
Total square metres	27 593	23 909	26 884	- 2,6
Total value at current prices (R'000)	43 072	39 207	42 929	- 0,3
Flats and townhouses				
Number of flats and townhouses	49	30	176	+259,2
Total square metres	8 191	5 227	26 596	+224,7
Total value at current prices (R'000)	13 202	8 988	34 038	+157,8
Other residential buildings ^{1/}				
Total square metres	0	98	556	..
Total value at current prices (R'000)	0	127	1 000	..
Total value of residential buildings at current prices (R'000)	64 011	51 897	83 321	+30,2
Non-residential buildings				
Office and banking space				
Total square metres	37 100	8 082	637	- 98,3
Total value at current prices (R'000)	107 334	11 171	956	- 99,1
Shopping space				
Total square metres	758	1 730	1 174	+54,9
Total value at current prices (R'000)	794	5 184	1 874	+136,0
Industrial and warehouse space				
Total square metres	9 846	2 688	13 481	+36,9
Total value at current prices (R'000)	11 593	2 382	14 506	+25,1
Other non-residential space ^{2/}				
Total square metres	3 451	2 811	2 440	- 29,3
Total value at current prices (R'000)	4 652	2 897	3 809	- 18,1
Total value of non-residential buildings at current prices (R'000)	124 373	21 634	21 145	- 83,0
Additions and alterations				
Dwelling-houses				
Total square metres	26 268	23 038	27 944	+6,4
Total value at current prices (R'000)	34 544	27 331	34 228	- 0,9
Other buildings ^{3/}				
Total square metres	9 802	19 384	8 645	- 11,8
Total value at current prices (R'000)	15 591	36 517	15 305	- 1,8
Total value of additions and alterations at current prices (R'000)	50 135	63 848	49 533	- 1,2
Total value of building plans passed at current prices (R'000)	238 519	137 379	153 999	- 35,4

1/ Other residential buildings include institutions for the disabled, boarding houses, old people's homes, hostels, hotels, motels, guest houses, holiday chalets, entertainment centres, bed-and-breakfast accommodation and casinos.

2/ Other non-residential space includes churches, sport and recreation clubs, schools, crèches, hospitals and all other non-residential space.

3/ Other buildings include additions and alterations to other residential buildings, non-residential buildings and internal alterations.

Table 15 - Building plans passed according to type of building and province: North West

Type of building	January 2001	December 2001	January 2002	Percentage change between January 2001 and January 2002
Residential buildings				
Dwelling-houses smaller than 80 square metres				
Number of dwelling-houses	199	18	24	- 87,9
Total square metres	9 160	1 038	1 443	- 84,2
Total value at current prices (R'000)	10 839	1 439	1 768	- 83,7
Dwelling-houses equal to or larger than 80 square metres				
Number of dwelling-houses	63	50	111	+76,2
Total square metres	10 772	9 637	18 507	+71,8
Total value at current prices (R'000)	12 893	17 207	28 094	+117,9
Flats and townhouses				
Number of flats and townhouses	32	71	9	- 71,9
Total square metres	4 553	10 140	2 139	- 53,0
Total value at current prices (R'000)	4 826	9 967	3 078	- 36,2
Other residential buildings ^{1/}				
Total square metres	88	0	0	..
Total value at current prices (R'000)	75	0	0	..
Total value of residential buildings at current prices (R'000)	28 633	28 613	32 940	+15,0
Non-residential buildings				
Office and banking space				
Total square metres	1 346	1 109	2 655	+97,3
Total value at current prices (R'000)	2 225	1 658	4 976	+123,6
Shopping space				
Total square metres	3 621	0	2 109	- 41,8
Total value at current prices (R'000)	5 418	0	4 104	- 24,3
Industrial and warehouse space				
Total square metres	1 173	1 817	2 272	+93,7
Total value at current prices (R'000)	1 320	1 062	4 175	+216,3
Other non-residential space ^{2/}				
Total square metres	0	1 498	861	..
Total value at current prices (R'000)	0	1 960	844	..
Total value of non-residential buildings at current prices (R'000)	8 963	4 680	14 099	+57,3
Additions and alterations				
Dwelling-houses				
Total square metres	4 541	5 027	8 008	+76,3
Total value at current prices (R'000)	4 825	5 657	8 476	+75,7
Other buildings ^{3/}				
Total square metres	1 283	1 087	1 112	- 13,3
Total value at current prices (R'000)	2 056	816	2 386	+16,1
Total value of additions and alterations at current prices (R'000)	6 881	6 473	10 862	+57,9
Total value of building plans passed at current prices (R'000)	44 477	39 766	57 901	+30,2

1/ Other residential buildings include institutions for the disabled, boarding houses, old people's homes, hostels, hotels, motels, guest houses, holiday chalets, entertainment centres, bed-and-breakfast accommodation and casinos.

2/ Other non-residential space includes churches, sport and recreation clubs, schools, crèches, hospitals and all other non-residential space.

3/ Other buildings include additions and alterations to other residential buildings, non-residential buildings and internal alterations.

Table 16 - Building plans passed according to type of building and province: Gauteng

Type of building	January 2001 *	December 2001	January 2002	Percentage change between January 2001 and January 2002
Residential buildings				
Dwelling-houses smaller than 80 square metres				
Number of dwelling-houses	791	587	255	- 67,8
Total square metres	27 881	24 630	13 040	- 53,2
Total value at current prices (R'000)	31 619	24 838	17 011	- 46,2
Dwelling-houses equal to or larger than 80 square metres				
Number of dwelling-houses	580	444	536	- 7,6
Total square metres	148 004	117 244	152 502	+3,0
Total value at current prices (R'000)	212 580	173 486	204 817	- 3,7
Flats and townhouses				
Number of flats and townhouses	274	469	313	+14,2
Total square metres	34 977	71 686	48 868	+39,7
Total value at current prices (R'000)	51 615	105 656	76 004	+47,3
Other residential buildings ^{1/}				
Total square metres	418	4 882	299	- 28,5
Total value at current prices (R'000)	627	7 323	583	- 7,0
Total value of residential buildings at current prices (R'000)	296 441	311 303	298 415	+0,7
Non-residential buildings				
Office and banking space				
Total square metres	57 538	6 489	8 234	- 85,7
Total value at current prices (R'000)	83 096	9 268	11 055	- 86,7
Shopping space				
Total square metres	23 695	12 217	6 954	- 70,7
Total value at current prices (R'000)	42 913	23 454	11 061	- 74,2
Industrial and warehouse space				
Total square metres	28 902	3 340	16 583	- 42,6
Total value at current prices (R'000)	48 110	4 696	26 794	- 44,3
Other non-residential space ^{2/}				
Total square metres	5 049	3 213	3 358	- 33,5
Total value at current prices (R'000)	7 479	4 717	4 141	- 44,6
Total value of non-residential buildings at current prices (R'000)	181 598	42 135	53 051	- 70,8
Additions and alterations				
Dwelling-houses				
Total square metres	76 156	64 508	82 622	+8,5
Total value at current prices (R'000)	97 731	90 687	110 504	+13,1
Other buildings ^{3/}				
Total square metres	24 600	14 925	29 974	+21,8
Total value at current prices (R'000)	54 438	26 825	62 312	+14,5
Total value of additions and alterations at current prices (R'000)	152 169	117 512	172 816	+13,6
Total value of building plans passed at current prices (R'000)	630 208	470 950	524 282	- 16,8

1/ Other residential buildings include institutions for the disabled, boarding houses, old people's homes, hostels, hotels, motels, guest houses, holiday chalets, entertainment centres, bed-and-breakfast accommodation and casinos.

2/ Other non-residential space includes churches, sport and recreation clubs, schools, crèches, hospitals and all other non-residential space.

3/ Other buildings include additions and alterations to other residential buildings, non-residential buildings and internal alterations.

Table 17 - Building plans passed according to type of building and province: Mpumalanga

Type of building	January 2001	December 2001*	January 2002	Percentage change between January 2001 and January 2002
Residential buildings				
Dwelling-houses smaller than 80 square metres				
Number of dwelling-houses	454	462	179	- 60,6
Total square metres	15 286	16 434	6 521	- 57,3
Total value at current prices (R'000)	17 733	8 011	3 870	- 78,2
Dwelling-houses equal to or larger than 80 square metres				
Number of dwelling-houses	59	80	77	+30,5
Total square metres	10 875	14 979	13 262	+21,9
Total value at current prices (R'000)	12 053	19 925	16 913	+40,3
Flats and townhouses				
Number of flats and townhouses	9	8	2	- 77,8
Total square metres	1 166	1 281	328	- 71,9
Total value at current prices (R'000)	1 149	1 000	245	- 78,7
Other residential buildings ^{1/}				
Total square metres	0	0	0	..
Total value at current prices (R'000)	0	0	0	..
Total value of residential buildings at current prices (R'000)	30 935	28 936	21 028	- 32,0
Non-residential buildings				
Office and banking space				
Total square metres	0	0	470	..
Total value at current prices (R'000)	0	0	550	..
Shopping space				
Total square metres	0	0	2 276	..
Total value at current prices (R'000)	0	0	2 732	..
Industrial and warehouse space				
Total square metres	2 722	1 488	3 376	+24,0
Total value at current prices (R'000)	2 786	2 321	3 704	+33,0
Other non-residential space ^{2/}				
Total square metres	0	0	1 420	..
Total value at current prices (R'000)	0	0	1 605	..
Total value of non-residential buildings at current prices (R'000)	2 786	2 321	8 591	+208,4
Additions and alterations				
Dwelling-houses				
Total square metres	8 422	8 374	10 648	+26,4
Total value at current prices (R'000)	7 783	9 548	11 535	+48,2
Other buildings ^{3/}				
Total square metres	2 448	4 844	1 807	- 26,2
Total value at current prices (R'000)	4 216	8 742	8 372	+98,6
Total value of additions and alterations at current prices (R'000)	11 999	18 290	19 907	+65,9
Total value of building plans passed at current prices (R'000)	45 720	49 547	49 526	+8,3

1/ Other residential buildings include institutions for the disabled, boarding houses, old people's homes, hostels, hotels, motels, guest houses, holiday chalets, entertainment centres, bed-and-breakfast accommodation and casinos.

2/ Other non-residential space includes churches, sport and recreation clubs, schools, crèches, hospitals and all other non-residential space.

3/ Other buildings include additions and alterations to other residential buildings, non-residential buildings and internal alterations.

Table 18 - Building plans passed according to type of building and province: Northern Province

Type of building	January 2001	December 2001	January 2002	Percentage change between January 2001 and January 2002
Residential buildings				
Dwelling-houses smaller than 80 square metres				
Number of dwelling-houses	32	12	10	- 68,8
Total square metres	1 878	707	621	- 66,9
Total value at current prices (R'000)	2 301	985	875	- 62,0
Dwelling-houses equal to or larger than 80 square metres				
Number of dwelling-houses	36	27	33	- 8,3
Total square metres	7 043	5 046	6 400	- 9,1
Total value at current prices (R'000)	9 354	7 120	8 208	- 12,3
Flats and townhouses				
Number of flats and townhouses	7	4	9	+28,6
Total square metres	1 561	780	1 176	- 24,7
Total value at current prices (R'000)	2 081	870	1 753	- 15,8
Other residential buildings ^{1/}				
Total square metres	0	0	0	..
Total value at current prices (R'000)	0	0	0	..
Total value of residential buildings at current prices (R'000)	13 736	8 975	10 836	- 21,1
Non-residential buildings				
Office and banking space				
Total square metres	0	0	0	..
Total value at current prices (R'000)	0	0	0	..
Shopping space				
Total square metres	4 393	0	978	- 77,7
Total value at current prices (R'000)	6 150	0	1 638	- 73,4
Industrial and warehouse space				
Total square metres	0	0	0	..
Total value at current prices (R'000)	0	0	0	..
Other non-residential space ^{2/}				
Total square metres	0	347	0	..
Total value at current prices (R'000)	0	347	0	..
Total value of non-residential buildings at current prices (R'000)	6 150	347	1 638	- 73,4
Additions and alterations				
Dwelling-houses				
Total square metres	2 496	3 604	3 683	+47,6
Total value at current prices (R'000)	3 238	5 014	5 077	+56,8
Other buildings ^{3/}				
Total square metres	1 483	303	150	- 89,9
Total value at current prices (R'000)	4 015	382	210	- 94,8
Total value of additions and alterations at current prices (R'000)	7 253	5 396	5 287	- 27,1
Total value of building plans passed at current prices (R'000)	27 139	14 718	17 761	- 34,6

1/ Other residential buildings include institutions for the disabled, boarding houses, old people's homes, hostels, hotels, motels, guest houses, holiday chalets, entertainment centres, bed-and-breakfast accommodation and casinos.

2/ Other non-residential space includes churches, sport and recreation clubs, schools, crèches, hospitals and all other non-residential space.

3/ Other buildings include additions and alterations to other residential buildings, non-residential buildings and internal alterations.

Table 19 - Buildings completed according to type of building: Total RSA

Type of building	January 2001 *	December 2001*	January 2002	Percentage change between January 2001 and January 2002
Residential buildings				
Dwelling-houses smaller than 80 square metres				
Number of dwelling-houses	1 402	1 924	1 986	+41,7
Total square metres	56 316	75 207	75 890	+34,8
Total value at current prices (R'000)	54 515	86 807	83 014	+52,3
Dwelling-houses equal to or larger than 80 square metres				
Number of dwelling-houses	750	852	924	+23,2
Total square metres	159 773	191 783	201 790	+26,3
Total value at current prices (R'000)	215 085	293 884	296 478	+37,8
Flats and townhouses				
Number of flats and townhouses	614	452	1 164	+89,6
Total square metres	58 294	54 988	126 727	+117,4
Total value at current prices (R'000)	79 099	84 944	188 030	+137,7
Other residential buildings ^{1/}				
Total square metres	44 550	699	3 726	- 91,6
Total value at current prices (R'000)	294 348	979	4 236	- 98,6
Total value of residential buildings at current prices (R'000)	643 047	466 614	571 758	- 11,1
Non-residential buildings				
Office and banking space				
Total square metres	113 550	22 354	30 271	- 73,3
Total value at current prices (R'000)	157 131	37 660	49 656	- 68,4
Shopping space				
Total square metres	19 020	91 570	30 005	+57,8
Total value at current prices (R'000)	34 881	99 323	33 480	- 4,0
Industrial and warehouse space				
Total square metres	30 333	10 557	35 186	+16,0
Total value at current prices (R'000)	34 415	11 300	44 197	+28,4
Other non-residential space ^{2/}				
Total square metres	9 145	15 594	7 145	- 21,9
Total value at current prices (R'000)	12 007	17 216	9 456	- 21,2
Total value of non-residential buildings at current prices (R'000)	238 434	165 499	136 789	- 42,6
Additions and alterations				
Dwelling-houses				
Total square metres	105 925	70 460	97 857	- 7,6
Total value at current prices (R'000)	126 493	90 211	120 819	- 4,5
Other buildings ^{3/}				
Total square metres	40 372	16 184	28 376	- 29,7
Total value at current prices (R'000)	74 492	30 923	51 775	- 30,5
Total value of additions and alterations at current prices (R'000)	200 985	121 134	172 594	- 14,1
Total value of buildings completed at current prices (R'000)	1082 466	753 247	881 141	- 18,6

1/ Other residential buildings include institutions for the disabled, boarding houses, old people's homes, hostels, hotels, motels, guest houses, holiday chalets, entertainment centres, bed-and-breakfast accommodation and casinos.

2/ Other non-residential space includes churches, sport and recreation clubs, schools, crèches, hospitals and all other non-residential space.

3/ Other buildings include additions and alterations to other residential buildings, non-residential buildings and internal alterations.

Table 20 - Buildings completed according to type of building and province: Western Cape

Type of building	January 2001	December 2001*	January 2002	Percentage change between January 2001 and January 2002
Residential buildings				
Dwelling-houses smaller than 80 square metres				
Number of dwelling-houses	440	864	889	+102,0
Total square metres	14 603	32 861	32 260	+120,9
Total value at current prices (R'000)	19 139	43 459	39 024	+103,9
Dwelling-houses equal to or larger than 80 square metres				
Number of dwelling-houses	253	310	328	+29,6
Total square metres	48 490	63 143	63 357	+30,7
Total value at current prices (R'000)	73 068	100 382	97 439	+33,4
Flats and townhouses				
Number of flats and townhouses	122	127	355	+191,0
Total square metres	12 702	11 057	46 144	+263,3
Total value at current prices (R'000)	15 662	15 036	81 904	+422,9
Other residential buildings ^{1/}				
Total square metres	1 391	0	208	- 85,0
Total value at current prices (R'000)	1 764	0	292	- 83,4
Total value of residential buildings at current prices (R'000)	109 633	158 877	218 659	+99,4
Non-residential buildings				
Office and banking space				
Total square metres	6 611	6 689	4 783	- 27,7
Total value at current prices (R'000)	8 596	8 450	5 717	- 33,5
Shopping space				
Total square metres	1 742	84 842	20 372	+1 069,5
Total value at current prices (R'000)	3 215	86 530	22 788	+608,8
Industrial and warehouse space				
Total square metres	9 812	3 171	4 984	- 49,2
Total value at current prices (R'000)	9 899	3 389	4 169	- 57,9
Other non-residential space ^{2/}				
Total square metres	4 055	9 727	912	- 77,5
Total value at current prices (R'000)	4 356	9 504	637	- 85,4
Total value of non-residential buildings at current prices (R'000)	26 066	107 873	33 311	+27,8
Additions and alterations				
Dwelling-houses				
Total square metres	41 324	23 604	31 954	- 22,7
Total value at current prices (R'000)	51 840	32 069	41 889	- 19,2
Other buildings ^{3/}				
Total square metres	18 567	4 866	6 483	- 65,1
Total value at current prices (R'000)	46 608	9 586	15 734	- 66,2
Total value of additions and alterations at current prices (R'000)	98 448	41 655	57 623	- 41,5
Total value of buildings completed at current prices (R'000)	234 147	308 405	309 593	+32,2

1/ Other residential buildings include institutions for the disabled, boarding houses, old people's homes, hostels, hotels, motels, guest houses, holiday chalets, entertainment centres, bed-and-breakfast accommodation and casinos.

2/ Other non-residential space includes churches, sport and recreation clubs, schools, crèches, hospitals and all other non-residential space.

3/ Other buildings include additions and alterations to other residential buildings, non-residential buildings and internal alterations.

Table 21 - Buildings completed according to type of building and province: Eastern Cape

Type of building	January 2001	December 2001	January 2002	Percentage change between January 2001 and January 2002
Residential buildings				
Dwelling-houses smaller than 80 square metres				
Number of dwelling-houses	136	87	221	+62,5
Total square metres	5 579	4 024	9 962	+78,6
Total value at current prices (R'000)	4 403	5 132	12 679	+188,0
Dwelling-houses equal to or larger than 80 square metres				
Number of dwelling-houses	28	44	54	+92,9
Total square metres	4 133	7 504	8 815	+113,3
Total value at current prices (R'000)	4 831	9 956	11 287	+133,6
Flats and townhouses				
Number of flats and townhouses	0	10	4	..
Total square metres	0	1 044	668	..
Total value at current prices (R'000)	0	1 717	916	..
Other residential buildings ^{1/}				
Total square metres	0	0	0	..
Total value at current prices (R'000)	0	0	0	..
Total value of residential buildings at current prices (R'000)	9 234	16 805	24 882	+169,5
Non-residential buildings				
Office and banking space				
Total square metres	291	155	0	..
Total value at current prices (R'000)	524	279	0	..
Shopping space				
Total square metres	739	1 469	2 057	+178,3
Total value at current prices (R'000)	1 072	2 107	2 396	+123,5
Industrial and warehouse space				
Total square metres	886	0	478	- 46,0
Total value at current prices (R'000)	1 330	0	392	- 70,5
Other non-residential space ^{2/}				
Total square metres	396	83	1 469	+271,0
Total value at current prices (R'000)	596	163	1 500	+151,7
Total value of non-residential buildings at current prices (R'000)	3 522	2 549	4 288	+21,7
Additions and alterations				
Dwelling-houses				
Total square metres	5 226	7 223	7 501	+43,5
Total value at current prices (R'000)	6 467	10 757	9 006	+39,3
Other buildings ^{3/}				
Total square metres	569	1 121	3 036	+433,6
Total value at current prices (R'000)	1 107	2 107	3 782	+241,6
Total value of additions and alterations at current prices (R'000)	7 574	12 864	12 788	+68,8
Total value of buildings completed at current prices (R'000)	20 330	32 218	41 958	+106,4

1/ Other residential buildings include institutions for the disabled, boarding houses, old people's homes, hostels, hotels, motels, guest houses, holiday chalets, entertainment centres, bed-and-breakfast accommodation and casinos.

2/ Other non-residential space includes churches, sport and recreation clubs, schools, crèches, hospitals and all other non-residential space.

3/ Other buildings include additions and alterations to other residential buildings, non-residential buildings and internal alterations.

Table 22 - Buildings completed according to type of building and province: Northern Cape

Type of building	January 2001	December 2001	January 2002	Percentage change between January 2001 and January 2002
Residential buildings				
Dwelling-houses smaller than 80 square metres				
Number of dwelling-houses	10	1	0	..
Total square metres	563	40	0	..
Total value at current prices (R'000)	942	56	0	..
Dwelling-houses equal to or larger than 80 square metres				
Number of dwelling-houses	11	6	5	- 54,5
Total square metres	1 741	1 354	705	- 59,5
Total value at current prices (R'000)	2 575	2 116	1 150	- 55,3
Flats and townhouses				
Number of flats and townhouses	0	1	0	..
Total square metres	0	200	0	..
Total value at current prices (R'000)	0	280	0	..
Other residential buildings ^{1/}				
Total square metres	346	699	0	..
Total value at current prices (R'000)	277	979	0	..
Total value of residential buildings at current prices (R'000)	3 794	3 431	1 150	- 69,7
Non-residential buildings				
Office and banking space				
Total square metres	7 105	66	0	..
Total value at current prices (R'000)	15 631	92	0	..
Shopping space				
Total square metres	680	3 673	0	..
Total value at current prices (R'000)	2 150	8 080	0	..
Industrial and warehouse space				
Total square metres	0	0	0	..
Total value at current prices (R'000)	0	0	0	..
Other non-residential space ^{2/}				
Total square metres	105	0	0	..
Total value at current prices (R'000)	0	0	0	..
Total value of non-residential buildings at current prices (R'000)	17 949	8 172	0	..
Additions and alterations				
Dwelling-houses				
Total square metres	1 277	1 237	1 685	+31,9
Total value at current prices (R'000)	2 100	1 879	2 402	+14,4
Other buildings ^{3/}				
Total square metres	336	132	132	- 60,7
Total value at current prices (R'000)	457	363	344	- 24,7
Total value of additions and alterations at current prices (R'000)	2 557	2 242	2 746	+7,4
Total value of buildings completed at current prices (R'000)	24 300	13 845	3 896	- 84,0

1/ Other residential buildings include institutions for the disabled, boarding houses, old people's homes, hostels, hotels, motels, guest houses, holiday chalets, entertainment centres, bed-and-breakfast accommodation and casinos.

2/ Other non-residential space includes churches, sport and recreation clubs, schools, crèches, hospitals and all other non-residential space.

3/ Other buildings include additions and alterations to other residential buildings, non-residential buildings and internal alterations.

Table 23 - Buildings completed according to type of building and province: Free State

Type of building	January 2001	December 2001	January 2002	Percentage change between January 2001 and January 2002
Residential buildings				
Dwelling-houses smaller than 80 square metres				
Number of dwelling-houses	40	28	47	+17,5
Total square metres	1 839	1 317	2 571	+39,8
Total value at current prices (R'000)	1 489	1 023	2 411	+61,9
Dwelling-houses equal to or larger than 80 square metres				
Number of dwelling-houses	50	13	21	- 58,0
Total square metres	9 762	1 634	4 530	- 53,6
Total value at current prices (R'000)	11 952	1 885	5 236	- 56,2
Flats and townhouses				
Number of flats and townhouses	22	14	17	- 22,7
Total square metres	2 461	776	2 278	- 7,4
Total value at current prices (R'000)	3 185	895	3 290	+3,3
Other residential buildings ^{1/}				
Total square metres	151	0	1 428	+845,7
Total value at current prices (R'000)	211	0	1 461	+592,4
Total value of residential buildings at current prices (R'000)	16 837	3 803	12 398	- 26,4
Non-residential buildings				
Office and banking space				
Total square metres	302	296	2 055	+580,5
Total value at current prices (R'000)	483	287	3 855	+698,1
Shopping space				
Total square metres	2 050	178	630	- 69,3
Total value at current prices (R'000)	2 000	150	500	- 75,0
Industrial and warehouse space				
Total square metres	2 878	0	2 558	- 11,1
Total value at current prices (R'000)	1 977	0	2 100	+6,2
Other non-residential space ^{2/}				
Total square metres	140	562	0	..
Total value at current prices (R'000)	170	674	0	..
Total value of non-residential buildings at current prices (R'000)	4 630	1 111	6 455	+39,4
Additions and alterations				
Dwelling-houses				
Total square metres	7 762	3 846	11 098	+43,0
Total value at current prices (R'000)	7 873	4 206	12 765	+62,1
Other buildings ^{3/}				
Total square metres	2 073	195	1 428	- 31,1
Total value at current prices (R'000)	2 703	561	4 744	+75,5
Total value of additions and alterations at current prices (R'000)	10 576	4 767	17 509	+65,6
Total value of buildings completed at current prices (R'000)	32 043	9 681	36 362	+13,5

1/ Other residential buildings include institutions for the disabled, boarding houses, old people's homes, hostels, hotels, motels, guest houses, holiday chalets, entertainment centres, bed-and-breakfast accommodation and casinos.

2/ Other non-residential space includes churches, sport and recreation clubs, schools, crèches, hospitals and all other non-residential space.

3/ Other buildings include additions and alterations to other residential buildings, non-residential buildings and internal alterations.

Table 24 - Buildings completed according to type of building and province: KwaZulu-Natal

Type of building	January 2001*	December 2001	January 2002	Percentage change between January 2001 and January 2002
Residential buildings				
Dwelling-houses smaller than 80 square metres				
Number of dwelling-houses	166	85	81	- 51,2
Total square metres	8 341	4 322	3 911	- 53,1
Total value at current prices (R'000)	7 626	5 129	4 787	- 37,2
Dwelling-houses equal to or larger than 80 square metres				
Number of dwelling-houses	111	95	81	- 27,0
Total square metres	24 849	23 582	15 848	- 36,2
Total value at current prices (R'000)	30 950	35 908	22 443	- 27,5
Flats and townhouses				
Number of flats and townhouses	34	50	43	+26,5
Total square metres	9 420	9 570	6 551	- 30,5
Total value at current prices (R'000)	17 438	16 600	11 994	- 31,2
Other residential buildings ^{1/}				
Total square metres	8 450	0	0	..
Total value at current prices (R'000)	40 000	0	0	..
Total value of residential buildings at current prices (R'000)	96 014	57 637	39 224	- 59,1
Non-residential buildings				
Office and banking space				
Total square metres	2 322	2 560	0	..
Total value at current prices (R'000)	4 100	9 000	0	..
Shopping space				
Total square metres	5 939	356	3 223	- 45,7
Total value at current prices (R'000)	15 537	356	3 993	- 74,3
Industrial and warehouse space				
Total square metres	2 233	4 472	10 400	+365,7
Total value at current prices (R'000)	3 740	4 239	11 654	+211,6
Other non-residential space ^{2/}				
Total square metres	1 267	2 712	888	- 29,9
Total value at current prices (R'000)	1 378	3 014	1 074	- 22,1
Total value of non-residential buildings at current prices (R'000)	24 755	16 609	16 721	- 32,5
Additions and alterations				
Dwelling-houses				
Total square metres	19 756	17 183	21 341	+8,0
Total value at current prices (R'000)	22 461	18 819	24 393	+8,6
Other buildings ^{3/}				
Total square metres	2 795	3 959	7 322	+162,0
Total value at current prices (R'000)	5 006	7 415	12 006	+139,8
Total value of additions and alterations at current prices (R'000)	27 467	26 234	36 399	+32,5
Total value of buildings completed at current prices (R'000)	148 236	100 480	92 344	- 37,7

1/ Other residential buildings include institutions for the disabled, boarding houses, old people's homes, hostels, hotels, motels, guest houses, holiday chalets, entertainment centres, bed-and-breakfast accommodation and casinos.

2/ Other non-residential space includes churches, sport and recreation clubs, schools, crèches, hospitals and all other non-residential space.

3/ Other buildings include additions and alterations to other residential buildings, non-residential buildings and internal alterations.

Table 25 - Buildings completed according to type of building and province: North West

Type of building	January 2001	December 2001	January 2002	Percentage change between January 2001 and January 2002
Residential buildings				
Dwelling-houses smaller than 80 square metres				
Number of dwelling-houses	93	107	29	- 68,8
Total square metres	4 794	3 525	1 483	- 69,1
Total value at current prices (R'000)	5 359	1 853	1 528	- 71,5
Dwelling-houses equal to or larger than 80 square metres				
Number of dwelling-houses	34	63	45	+32,4
Total square metres	6 513	11 578	7 771	+19,3
Total value at current prices (R'000)	7 503	18 093	11 292	+50,5
Flats and townhouses				
Number of flats and townhouses	10	0	0	..
Total square metres	1 293	0	0	..
Total value at current prices (R'000)	1 384	0	0	..
Other residential buildings ^{1/}				
Total square metres	0	0	2 090	..
Total value at current prices (R'000)	0	0	2 483	..
Total value of residential buildings at current prices (R'000)	14 246	19 946	15 303	+7,4
Non-residential buildings				
Office and banking space				
Total square metres	0	0	0	..
Total value at current prices (R'000)	0	0	0	..
Shopping space				
Total square metres	1 379	252	575	- 58,3
Total value at current prices (R'000)	2 090	500	403	- 80,7
Industrial and warehouse space				
Total square metres	912	0	360	- 60,5
Total value at current prices (R'000)	1 260	0	180	- 85,7
Other non-residential space ^{2/}				
Total square metres	354	805	1 065	+200,8
Total value at current prices (R'000)	300	1 800	2 343	+681,0
Total value of non-residential buildings at current prices (R'000)	3 650	2 300	2 926	- 19,8
Additions and alterations				
Dwelling-houses				
Total square metres	2 669	156	2 319	- 13,1
Total value at current prices (R'000)	2 494	226	2 254	- 9,6
Other buildings ^{3/}				
Total square metres	2 401	218	309	- 87,1
Total value at current prices (R'000)	2 523	335	359	- 85,8
Total value of additions and alterations at current prices (R'000)	5 017	561	2 613	- 47,9
Total value of buildings completed at current prices (R'000)	22 913	22 807	20 842	- 9,0

1/ Other residential buildings include institutions for the disabled, boarding houses, old people's homes, hostels, hotels, motels, guest houses, holiday chalets, entertainment centres, bed-and-breakfast accommodation and casinos.

2/ Other non-residential space includes churches, sport and recreation clubs, schools, crèches, hospitals and all other non-residential space.

3/ Other buildings include additions and alterations to other residential buildings, non-residential buildings and internal alterations.

Table 26 - Buildings completed according to type of building and province: Gauteng

Type of building	January 2001*	December 2001	January 2002	Percentage change between January 2001 and January 2002
Residential buildings				
Dwelling-houses smaller than 80 square metres				
Number of dwelling-houses	277	433	611	+120,6
Total square metres	11 838	18 137	21 571	+82,2
Total value at current prices (R'000)	9 823	23 085	18 995	+93,4
Dwelling-houses equal to or larger than 80 square metres				
Number of dwelling-houses	216	300	349	+61,6
Total square metres	57 608	79 421	93 004	+61,4
Total value at current prices (R'000)	76 515	121 321	139 079	+81,8
Flats and townhouses				
Number of flats and townhouses	419	208	741	+76,8
Total square metres	30 926	28 080	70 571	+128,2
Total value at current prices (R'000)	40 005	45 152	89 283	+123,2
Other residential buildings ^{1/}				
Total square metres	34 212	0	0	..
Total value at current prices (R'000)	252 096	0	0	..
Total value of residential buildings at current prices (R'000)	378 439	189 558	247 357	- 34,6
Non-residential buildings				
Office and banking space				
Total square metres	95 758	12 588	23 433	- 75,5
Total value at current prices (R'000)	125 597	19 552	40 084	- 68,1
Shopping space				
Total square metres	6 048	800	1 900	- 68,6
Total value at current prices (R'000)	8 517	1 600	1 900	- 77,7
Industrial and warehouse space				
Total square metres	13 612	2 914	15 998	+17,5
Total value at current prices (R'000)	16 209	3 672	25 216	+55,6
Other non-residential space ^{2/}				
Total square metres	2 828	1 705	2 338	- 17,3
Total value at current prices (R'000)	5 039	2 061	3 702	- 26,5
Total value of non-residential buildings at current prices (R'000)	155 362	26 885	70 902	- 54,4
Additions and alterations				
Dwelling-houses				
Total square metres	24 933	15 121	18 700	- 25,0
Total value at current prices (R'000)	29 910	20 568	25 563	- 14,5
Other buildings ^{3/}				
Total square metres	12 830	5 658	8 467	- 34,0
Total value at current prices (R'000)	14 805	10 071	12 867	- 13,1
Total value of additions and alterations at current prices (R'000)	44 715	30 639	38 430	- 14,1
Total value of buildings completed at current prices (R'000)	578 516	247 082	356 689	- 38,3

1/ Other residential buildings include institutions for the disabled, boarding houses, old people's homes, hostels, hotels, motels, guest houses, holiday chalets, entertainment centres, bed-and-breakfast accommodation and casinos.

2/ Other non-residential space includes churches, sport and recreation clubs, schools, crèches, hospitals and all other non-residential space.

3/ Other buildings include additions and alterations to other residential buildings, non-residential buildings and internal alterations.

Table 27 - Buildings completed according to type of building and province: Mpumalanga

Type of building	January 2001	December 2001	January 2002	Percentage change between January 2001 and January 2002
Residential buildings				
Dwelling-houses smaller than 80 square metres				
Number of dwelling-houses	198	313	102	- 48,5
Total square metres	6 721	10 749	3 747	- 44,2
Total value at current prices (R'000)	3 456	6 585	3 092	- 10,5
Dwelling-houses equal to or larger than 80 square metres				
Number of dwelling-houses	28	21	33	+17,9
Total square metres	3 785	3 567	6 494	+71,6
Total value at current prices (R'000)	3 941	4 223	6 798	+72,5
Flats and townhouses				
Number of flats and townhouses	2	9	1	- 50,0
Total square metres	444	1 037	133	- 70,0
Total value at current prices (R'000)	369	1 000	108	- 70,7
Other residential buildings ^{1/}				
Total square metres	0	0	0	..
Total value at current prices (R'000)	0	0	0	..
Total value of residential buildings at current prices (R'000)	7 766	11 808	9 998	+28,7
Non-residential buildings				
Office and banking space				
Total square metres	1 161	0	0	..
Total value at current prices (R'000)	2 200	0	0	..
Shopping space				
Total square metres	443	0	0	..
Total value at current prices (R'000)	300	0	0	..
Industrial and warehouse space				
Total square metres	0	0	408	..
Total value at current prices (R'000)	0	0	486	..
Other non-residential space ^{2/}				
Total square metres	0	0	473	..
Total value at current prices (R'000)	0	0	200	..
Total value of non-residential buildings at current prices (R'000)	2 500	0	686	- 72,6
Additions and alterations				
Dwelling-houses				
Total square metres	2 400	2 011	3 138	+30,8
Total value at current prices (R'000)	2 627	1 568	2 348	- 10,6
Other buildings ^{3/}				
Total square metres	49	35	28	- 42,9
Total value at current prices (R'000)	79	485	299	+278,5
Total value of additions and alterations at current prices (R'000)	2 706	2 053	2 647	- 2,2
Total value of buildings completed at current prices (R'000)	12 972	13 861	13 331	+2,8

1/ Other residential buildings include institutions for the disabled, boarding houses, old people's homes, hostels, hotels, motels, guest houses, holiday chalets, entertainment centres, bed-and-breakfast accommodation and casinos.

2/ Other non-residential space includes churches, sport and recreation clubs, schools, crèches, hospitals and all other non-residential space.

3/ Other buildings include additions and alterations to other residential buildings, non-residential buildings and internal alterations.

Table 28 - Buildings completed according to type of building and province: Northern Province

Type of building	January 2001	December 2001	January 2002	Percentage change between January 2001 and January 2002
Residential buildings				
Dwelling-houses smaller than 80 square metres				
Number of dwelling-houses	42	6	6	- 85,7
Total square metres	2 038	232	385	- 81,1
Total value at current prices (R'000)	2 278	485	498	- 78,1
Dwelling-houses equal to or larger than 80 square metres				
Number of dwelling-houses	19	0	8	- 57,9
Total square metres	2 892	0	1 266	- 56,2
Total value at current prices (R'000)	3 750	0	1 754	- 53,2
Flats and townhouses				
Number of flats and townhouses	5	33	3	- 40,0
Total square metres	1 048	3 224	382	- 63,5
Total value at current prices (R'000)	1 056	4 264	535	- 49,3
Other residential buildings ^{1/}				
Total square metres	0	0	0	..
Total value at current prices (R'000)	0	0	0	..
Total value of residential buildings at current prices (R'000)	7 084	4 749	2 787	- 60,7
Non-residential buildings				
Office and banking space				
Total square metres	0	0	0	..
Total value at current prices (R'000)	0	0	0	..
Shopping space				
Total square metres	0	0	1 248	..
Total value at current prices (R'000)	0	0	1 500	..
Industrial and warehouse space				
Total square metres	0	0	0	..
Total value at current prices (R'000)	0	0	0	..
Other non-residential space ^{2/}				
Total square metres	0	0	0	..
Total value at current prices (R'000)	0	0	0	..
Total value of non-residential buildings at current prices (R'000)	0	0	1 500	..
Additions and alterations				
Dwelling-houses				
Total square metres	578	79	121	- 79,1
Total value at current prices (R'000)	721	119	199	- 72,4
Other buildings ^{3/}				
Total square metres	752	0	1 171	+55,7
Total value at current prices (R'000)	1 204	0	1 640	+36,2
Total value of additions and alterations at current prices (R'000)	1 925	119	1 839	- 4,5
Total value of buildings completed at current prices (R'000)	9 009	4 868	6 126	- 32,0

1/ Other residential buildings include institutions for the disabled, boarding houses, old people's homes, hostels, hotels, motels, guest houses, holiday chalets, entertainment centres, bed-and-breakfast accommodation and casinos.

2/ Other non-residential space includes churches, sport and recreation clubs, schools, crèches, hospitals and all other non-residential sp

3/ Other buildings include additions and alterations to other residential buildings, non-residential buildings and internal alterations.

Table 29 - Building plans passed according to type of building and selected urban area: Cape Town

Type of building	January 2001	December 2001*	January 2002	Percentage change between January 2001 and January 2002
Residential buildings				
Dwelling-houses smaller than 80 square metres				
Number of dwelling-houses	646	293	1 508	+133,4
Total square metres	23 717	11 547	47 996	+102,4
Total value at current prices (R'000)	28 480	14 190	57 534	+102,0
Dwelling-houses equal to or larger than 80 square metres				
Number of dwelling-houses	223	222	334	+49,8
Total square metres	40 607	45 005	59 925	+47,6
Total value at current prices (R'000)	61 654	63 042	83 220	+35,0
Flats and townhouses				
Number of flats and townhouses	54	85	101	+87,0
Total square metres	7 825	13 137	13 268	+69,6
Total value at current prices (R'000)	12 881	20 174	23 386	+81,6
Other residential buildings ^{1/}				
Total square metres	0	0	0	..
Total value at current prices (R'000)	0	0	0	..
Total value of residential buildings at current prices (R'000)	103 015	97 406	164 140	+59,3
Non-residential buildings				
Office and banking space				
Total square metres	21 754	3 130	246	- 98,9
Total value at current prices (R'000)	37 939	5 200	443	- 98,8
Shopping space				
Total square metres	57 993	2 650	12 514	- 78,4
Total value at current prices (R'000)	70 373	4 100	15 410	- 78,1
Industrial and warehouse space				
Total square metres	9 520	11 731	8 766	- 7,9
Total value at current prices (R'000)	10 443	11 566	8 902	- 14,8
Other non-residential space ^{2/}				
Total square metres	8 083	759	4 086	- 49,4
Total value at current prices (R'000)	13 756	1 167	5 542	- 59,7
Total value of non-residential buildings at current prices (R'000)	132 511	22 033	30 297	- 77,1
Additions and alterations				
Dwelling-houses				
Total square metres	35 562	43 204	35 096	- 1,3
Total value at current prices (R'000)	41 090	53 664	45 204	+10,0
Other buildings ^{3/}				
Total square metres	9 119	8 736	12 431	+36,3
Total value at current prices (R'000)	20 820	23 462	16 953	- 18,6
Total value of additions and alterations at current prices (R'000)	61 910	77 126	62 157	+0,4
Total value of building plans passed at current prices (R'000)	297 436	196 565	256 594	- 13,7

1/ Other residential buildings include institutions for the disabled, boarding houses, old people's homes, hostels, hotels, motels, guest houses, holiday chalets, entertainment centres, bed-and-breakfast accommodation and casinos.

2/ Other non-residential space includes churches, sport and recreation clubs, schools, crèches, hospitals and all other non-residential space.

3/ Other buildings include additions and alterations to other residential buildings, non-residential buildings and internal alterations.

Table 30 - Building plans passed according to type of building and selected urban area: Port Elizabeth

Type of building	January 2001	December 2001	January 2002	Percentage change between January 2001 and January 2002
Residential buildings				
Dwelling-houses smaller than 80 square metres				
Number of dwelling-houses	132	15	63	- 52,3
Total square metres	5 589	809	2 706	- 51,6
Total value at current prices (R'000)	7 348	1 099	4 289	- 41,6
Dwelling-houses equal to or larger than 80 square metres				
Number of dwelling-houses	34	46	50	+47,1
Total square metres	5 273	8 327	8 093	+53,5
Total value at current prices (R'000)	6 852	12 865	10 510	+53,4
Flats and townhouses				
Number of flats and townhouses	3	14	9	+200,0
Total square metres	214	1 475	1 171	+447,2
Total value at current prices (R'000)	240	2 077	1 613	+572,1
Other residential buildings ^{1/}				
Total square metres	0	539	0	..
Total value at current prices (R'000)	0	1 056	0	..
Total value of residential buildings at current prices (R'000)	14 440	17 097	16 412	+13,7
Non-residential buildings				
Office and banking space				
Total square metres	0	0	0	..
Total value at current prices (R'000)	0	0	0	..
Shopping space				
Total square metres	0	0	5 103	..
Total value at current prices (R'000)	0	0	11 195	..
Industrial and warehouse space				
Total square metres	0	1 749	659	..
Total value at current prices (R'000)	0	2 816	833	..
Other non-residential space ^{2/}				
Total square metres	39	823	887	+2 174,4
Total value at current prices (R'000)	55	1 236	504	+816,4
Total value of non-residential buildings at current prices (R'000)	55	4 052	12 532	+22 685,5
Additions and alterations				
Dwelling-houses				
Total square metres	5 523	10 305	8 708	+57,7
Total value at current prices (R'000)	6 697	15 797	11 185	+67,0
Other buildings ^{3/}				
Total square metres	734	261	2 468	+236,2
Total value at current prices (R'000)	1 102	328	4 264	+286,9
Total value of additions and alterations at current prices (R'000)	7 799	16 125	15 449	+98,1
Total value of building plans passed at current prices (R'000)	22 294	37 274	44 393	+99,1

1/ Other residential buildings include institutions for the disabled, boarding houses, old people's homes, hostels, hotels, motels, guest houses, holiday chalets, entertainment centres, bed-and-breakfast accommodation and casinos.

2/ Other non-residential space includes churches, sport and recreation clubs, schools, crèches, hospitals and all other non-residential space.

3/ Other buildings include additions and alterations to other residential buildings, non-residential buildings and internal alterations.

Table 31 - Building plans passed according to type of building and selected urban area: Durban

Type of building	January 2001	December 2001	January 2002	Percentage change between January 2001 and January 2002
Residential buildings				
Dwelling-houses smaller than 80 square metres				
Number of dwelling-houses	70	32	125	+78,6
Total square metres	3 802	1 617	4 367	+14,9
Total value at current prices (R'000)	4 881	2 020	4 293	- 12,0
Dwelling-houses equal to or larger than 80 square metres				
Number of dwelling-houses	56	44	50	- 10,7
Total square metres	9 312	7 346	8 840	- 5,1
Total value at current prices (R'000)	12 739	10 632	11 542	- 9,4
Flats and townhouses				
Number of flats and townhouses	0	0	156	..
Total square metres	0	0	23 489	..
Total value at current prices (R'000)	0	0	29 060	..
Other residential buildings ^{1/}				
Total square metres	0	0	556	..
Total value at current prices (R'000)	0	0	1 000	..
Total value of residential buildings at current prices (R'000)	17 620	12 652	45 895	+160,5
Non-residential buildings				
Office and banking space				
Total square metres	1 050	0	0	..
Total value at current prices (R'000)	2 000	0	0	..
Shopping space				
Total square metres	442	1 198	500	+13,1
Total value at current prices (R'000)	442	4 584	1 200	+171,5
Industrial and warehouse space				
Total square metres	6 615	0	11 144	+68,5
Total value at current prices (R'000)	7 628	0	11 000	+44,2
Other non-residential space ^{2/}				
Total square metres	2 141	611	768	- 64,1
Total value at current prices (R'000)	2 808	500	971	- 65,4
Total value of non-residential buildings at current prices (R'000)	12 878	5 084	13 171	+2,3
Additions and alterations				
Dwelling-houses				
Total square metres	18 609	12 452	17 578	- 5,5
Total value at current prices (R'000)	25 086	14 420	20 792	- 17,1
Other buildings ^{3/}				
Total square metres	6 237	6 303	5 570	- 10,7
Total value at current prices (R'000)	11 973	10 616	12 199	+1,9
Total value of additions and alterations at current prices (R'000)	37 059	25 036	32 991	- 11,0
Total value of building plans passed at current prices (R'000)	67 557	42 772	92 057	+36,3

1/ Other residential buildings include institutions for the disabled, boarding houses, old people's homes, hostels, hotels, motels, guest houses, holiday chalets, entertainment centres, bed-and-breakfast accommodation and casinos.

2/ Other non-residential space includes churches, sport and recreation clubs, schools, crèches, hospitals and all other non-residential space.

3/ Other buildings include additions and alterations to other residential buildings, non-residential buildings and internal alterations.

Table 32 - Building plans passed according to type of building and selected urban area: Witwatersrand

Type of building	January 2001	December 2001	January 2002	Percentage change between January 2001 and January 2002
Residential buildings				
Dwelling-houses smaller than 80 square metres				
Number of dwelling-houses	685	556	195	- 71,5
Total square metres	23 541	23 039	9 780	- 58,5
Total value at current prices (R'000)	26 374	22 823	12 949	- 50,9
Dwelling-houses equal to or larger than 80 square metres				
Number of dwelling-houses	376	305	268	- 28,7
Total square metres	92 107	81 843	78 442	- 14,8
Total value at current prices (R'000)	138 788	122 217	107 411	- 22,6
Flats and townhouses				
Number of flats and townhouses	126	159	108	- 14,3
Total square metres	11 481	23 474	11 067	- 3,6
Total value at current prices (R'000)	17 470	33 564	19 021	+8,9
Other residential buildings ^{1/}				
Total square metres	0	4 882	299	..
Total value at current prices (R'000)	0	7 323	583	..
Total value of residential buildings at current prices (R'000)	182 632	185 927	139 964	- 23,4
Non-residential buildings				
Office and banking space				
Total square metres	51 518	2 371	7 107	- 86,2
Total value at current prices (R'000)	73 464	2 315	9 350	- 87,3
Shopping space				
Total square metres	23 314	11 206	6 068	- 74,0
Total value at current prices (R'000)	42 455	22 004	10 131	- 76,1
Industrial and warehouse space				
Total square metres	23 928	3 340	14 623	- 38,9
Total value at current prices (R'000)	40 559	4 696	24 300	- 40,1
Other non-residential space ^{2/}				
Total square metres	3 107	1 406	1 673	- 46,2
Total value at current prices (R'000)	4 531	1 811	1 933	- 57,3
Total value of non-residential buildings at current prices (R'000)	161 009	30 826	45 714	- 71,6
Additions and alterations				
Dwelling-houses				
Total square metres	58 911	49 593	57 639	- 2,2
Total value at current prices (R'000)	77 046	69 718	76 343	- 0,9
Other buildings ^{3/}				
Total square metres	19 749	10 537	27 842	+41,0
Total value at current prices (R'000)	49 928	20 618	59 528	+19,2
Total value of additions and alterations at current prices (R'000)	126 974	90 336	135 871	+7,0
Total value of building plans passed at current prices (R'000)	470 615	307 089	321 549	- 31,7

1/ Other residential buildings include institutions for the disabled, boarding houses, old people's homes, hostels, hotels, motels, guest houses, holiday chalets, entertainment centres, bed-and-breakfast accommodation and casinos.

2/ Other non-residential space includes churches, sport and recreation clubs, schools, crèches, hospitals and all other non-residential space.

3/ Other buildings include additions and alterations to other residential buildings, non-residential buildings and internal alterations.

Table 33 - Building plans passed according to type of building and selected urban area: Pretoria

Type of building	January 2001*	December 2001	January 2002	Percentage change between January 2001 and January 2002
Residential buildings				
Dwelling-houses smaller than 80 square metres				
Number of dwelling-houses	42	26	52	+23,8
Total square metres	2 074	1 361	2 836	+36,7
Total value at current prices (R'000)	2 544	1 704	3 487	+37,1
Dwelling-houses equal to or larger than 80 square metres				
Number of dwelling-houses	174	107	195	+12,1
Total square metres	48 224	26 963	51 020	+5,8
Total value at current prices (R'000)	64 619	41 806	65 782	+1,8
Flats and townhouses				
Number of flats and townhouses	125	310	184	+47,2
Total square metres	20 786	48 212	35 723	+71,9
Total value at current prices (R'000)	30 682	72 092	54 905	+78,9
Other residential buildings ^{1/}				
Total square metres	418	0	0	..
Total value at current prices (R'000)	627	0	0	..
Total value of residential buildings at current prices (R'000)	98 472	115 602	124 174	+26,1
Non-residential buildings				
Office and banking space				
Total square metres	6 020	4 118	1 127	- 81,3
Total value at current prices (R'000)	9 632	6 953	1 705	- 82,3
Shopping space				
Total square metres	111	1 011	0	..
Total value at current prices (R'000)	139	1 450	0	..
Industrial and warehouse space				
Total square metres	3 297	0	1 282	- 61,1
Total value at current prices (R'000)	4 946	0	2 051	- 58,5
Other non-residential space ^{2/}				
Total square metres	1 942	1 792	930	- 52,1
Total value at current prices (R'000)	2 948	2 879	1 408	- 52,2
Total value of non-residential buildings at current prices (R'000)	17 665	11 282	5 164	- 70,8
Additions and alterations				
Dwelling-houses				
Total square metres	13 331	13 016	21 539	+61,6
Total value at current prices (R'000)	16 422	18 706	30 308	+84,6
Other buildings ^{3/}				
Total square metres	673	3 152	555	- 17,5
Total value at current prices (R'000)	1 251	4 970	1 288	+3,0
Total value of additions and alterations at current prices (R'000)	17 673	23 676	31 596	+78,8
Total value of building plans passed at current prices (R'000)	133 810	150 560	160 934	+20,3

1/ Other residential buildings include institutions for the disabled, boarding houses, old people's homes, hostels, hotels, motels, guest houses, holiday chalets, entertainment centres, bed-and-breakfast accommodation and casinos.

2/ Other non-residential space includes churches, sport and recreation clubs, schools, crèches, hospitals and all other non-residential space.

3/ Other buildings include additions and alterations to other residential buildings, non-residential buildings and internal alterations.

Table 34 - Building plans passed according to type of building and selected urban area: Bloemfontein

Type of building	January 2001	December 2001	January 2002	Percentage change between January 2001 and January 2002
Residential buildings				
Dwelling-houses smaller than 80 square metres				
Number of dwelling-houses	53	0	82	+54,7
Total square metres	2 299	0	3 570	+55,3
Total value at current prices (R'000)	1 433	0	2 013	+40,5
Dwelling-houses equal to or larger than 80 square metres				
Number of dwelling-houses	25	12	29	+16,0
Total square metres	4 656	1 591	2 671	- 42,6
Total value at current prices (R'000)	6 049	1 283	7 122	+17,7
Flats and townhouses				
Number of flats and townhouses	41	0	80	+95,1
Total square metres	5 258	0	7 879	+49,8
Total value at current prices (R'000)	8 100	0	12 300	+51,9
Other residential buildings ^{1/}				
Total square metres	0	0	0	..
Total value at current prices (R'000)	0	0	0	..
Total value of residential buildings at current prices (R'000)	15 582	1 283	21 435	+37,6
Non-residential buildings				
Office and banking space				
Total square metres	0	0	7 267	..
Total value at current prices (R'000)	0	0	14 000	..
Shopping space				
Total square metres	0	0	0	..
Total value at current prices (R'000)	0	0	0	..
Industrial and warehouse space				
Total square metres	0	0	867	..
Total value at current prices (R'000)	0	0	694	..
Other non-residential space ^{2/}				
Total square metres	0	0	0	..
Total value at current prices (R'000)	0	0	0	..
Total value of non-residential buildings at current prices (R'000)	0	0	14 694	..
Additions and alterations				
Dwelling-houses				
Total square metres	2 894	1 514	4 501	+55,5
Total value at current prices (R'000)	3 276	1 790	5 303	+61,9
Other buildings ^{3/}				
Total square metres	408	280	1 757	+330,6
Total value at current prices (R'000)	450	180	3 233	+618,4
Total value of additions and alterations at current prices (R'000)	3 726	1 970	8 536	+129,1
Total value of building plans passed at current prices (R'000)	19 308	3 253	44 665	+131,3

1/ Other residential buildings include institutions for the disabled, boarding houses, old people's homes, hostels, hotels, motels, guest houses, holiday chalets, entertainment centres, bed-and-breakfast accommodation and casinos.

2/ Other non-residential space includes churches, sport and recreation clubs, schools, crèches, hospitals and all other non-residential space.

3/ Other buildings include additions and alterations to other residential buildings, non-residential buildings and internal alterations.

Table 35 - Buildings completed according to type of building and selected urban area: Cape Town

Type of building	January 2001	December 2001*	January 2002	Percentage change between January 2001 and January 2002
Residential buildings				
Dwelling-houses smaller than 80 square metres				
Number of dwelling-houses	394	802	805	+104,3
Total square metres	13 490	30 344	29 143	+116,0
Total value at current prices (R'000)	17 546	40 122	35 370	+101,6
Dwelling-houses equal to or larger than 80 square metres				
Number of dwelling-houses	145	142	207	+42,8
Total square metres	26 589	27 341	37 861	+42,4
Total value at current prices (R'000)	35 519	42 025	58 268	+64,0
Flats and townhouses				
Number of flats and townhouses	96	111	142	+47,9
Total square metres	9 220	8 947	31 335	+239,9
Total value at current prices (R'000)	11 544	11 991	60 708	+425,9
Other residential buildings ^{1/}				
Total square metres	514	0	208	- 59,5
Total value at current prices (R'000)	700	0	292	- 58,3
Total value of residential buildings at current prices (R'000)	65 309	94 138	154 638	+136,8
Non-residential buildings				
Office and banking space				
Total square metres	6 611	4 130	4 136	- 37,4
Total value at current prices (R'000)	8 596	2 950	4 600	- 46,5
Shopping space				
Total square metres	1 198	81 768	19 509	+1 528,5
Total value at current prices (R'000)	1 576	81 655	21 322	+1 252,9
Industrial and warehouse space				
Total square metres	4 378	1 704	4 712	+7,6
Total value at current prices (R'000)	4 196	1 850	4 067	- 3,1
Other non-residential space ^{2/}				
Total square metres	575	8 944	0	..
Total value at current prices (R'000)	1 889	8 318	0	..
Total value of non-residential buildings at current prices (R'000)	16 257	94 773	29 989	+84,5
Additions and alterations				
Dwelling-houses				
Total square metres	22 569	15 917	20 660	- 8,5
Total value at current prices (R'000)	25 614	21 085	25 627	+0,1
Other buildings ^{3/}				
Total square metres	15 568	2 721	4 386	- 71,8
Total value at current prices (R'000)	43 500	6 709	7 728	- 82,2
Total value of additions and alterations at current prices (R'000)	69 114	27 794	33 355	- 51,7
Total value of buildings completed at current prices (R'000)	150 680	216 705	217 982	+44,7

1/ Other residential buildings include institutions for the disabled, boarding houses, old people's homes, hostels, hotels, motels, guest houses, holiday chalets, entertainment centres, bed-and-breakfast accommodation and casinos.

2/ Other non-residential space includes churches, sport and recreation clubs, schools, crèches, hospitals and all other non-residential space.

3/ Other buildings include additions and alterations to other residential buildings, non-residential buildings and internal alterations.

Table 36 - Buildings completed according to type of building and selected urban area: Port Elizabeth

Type of building	January 2001	December 2001	January 2002	Percentage change between January 2001 and January 2002
Residential buildings				
Dwelling-houses smaller than 80 square metres				
Number of dwelling-houses	63	36	178	+182,5
Total square metres	2 610	1 624	7 550	+189,3
Total value at current prices (R'000)	3 347	2 169	9 717	+190,3
Dwelling-houses equal to or larger than 80 square metres				
Number of dwelling-houses	13	23	25	+92,3
Total square metres	1 437	3 984	4 268	+197,0
Total value at current prices (R'000)	1 835	5 813	5 245	+185,8
Flats and townhouses				
Number of flats and townhouses	0	4	2	..
Total square metres	0	338	434	..
Total value at current prices (R'000)	0	490	608	..
Other residential buildings ^{1/}				
Total square metres	0	0	0	..
Total value at current prices (R'000)	0	0	0	..
Total value of residential buildings at current prices (R'000)	5 182	8 472	15 570	+200,5
Non-residential buildings				
Office and banking space				
Total square metres	0	0	0	..
Total value at current prices (R'000)	0	0	0	..
Shopping space				
Total square metres	0	249	1 565	..
Total value at current prices (R'000)	0	407	1 526	..
Industrial and warehouse space				
Total square metres	0	0	478	..
Total value at current prices (R'000)	0	0	392	..
Other non-residential space ^{2/}				
Total square metres	0	83	1 469	..
Total value at current prices (R'000)	0	163	1 500	..
Total value of non-residential buildings at current prices (R'000)	0	570	3 418	..
Additions and alterations				
Dwelling-houses				
Total square metres	2 118	3 799	4 118	+94,4
Total value at current prices (R'000)	2 173	6 493	4 703	+116,4
Other buildings ^{3/}				
Total square metres	14	366	2 475	+17 578,6
Total value at current prices (R'000)	40	401	2 746	+6 765,0
Total value of additions and alterations at current prices (R'000)	2 213	6 894	7 449	+236,6
Total value of buildings completed at current prices (R'000)	7 395	15 936	26 437	+257,5

1/ Other residential buildings include institutions for the disabled, boarding houses, old people's homes, hostels, hotels, motels, guest houses, holiday chalets, entertainment centres, bed-and-breakfast accommodation and casinos.

2/ Other non-residential space includes churches, sport and recreation clubs, schools, crèches, hospitals and all other non-residential space.

3/ Other buildings include additions and alterations to other residential buildings, non-residential buildings and internal alterations.

Table 37 - Buildings completed according to type of building and selected urban area: Durban

Type of building	January 2001	December 2001	January 2002	Percentage change between January 2001 and January 2002
Residential buildings				
Dwelling-houses smaller than 80 square metres				
Number of dwelling-houses	85	44	44	- 48,2
Total square metres	4 141	2 663	2 374	- 42,7
Total value at current prices (R'000)	4 397	3 090	2 984	- 32,1
Dwelling-houses equal to or larger than 80 square metres				
Number of dwelling-houses	57	49	37	- 35,1
Total square metres	10 815	10 096	6 049	- 44,1
Total value at current prices (R'000)	11 920	13 637	7 410	- 37,8
Flats and townhouses				
Number of flats and townhouses	21	10	27	+28,6
Total square metres	1 903	1 954	3 386	+77,9
Total value at current prices (R'000)	2 512	2 412	6 124	+143,8
Other residential buildings ^{1/}				
Total square metres	0	0	0	..
Total value at current prices (R'000)	0	0	0	..
Total value of residential buildings at current prices (R'000)	18 829	19 139	16 518	- 12,3
Non-residential buildings				
Office and banking space				
Total square metres	2 322	0	0	..
Total value at current prices (R'000)	4 100	0	0	..
Shopping space				
Total square metres	5 755	356	3 223	- 44,0
Total value at current prices (R'000)	15 317	356	3 993	- 73,9
Industrial and warehouse space				
Total square metres	1 448	4 472	10 259	+608,5
Total value at current prices (R'000)	3 050	4 239	11 534	+278,2
Other non-residential space ^{2/}				
Total square metres	1 267	2 194	466	- 63,2
Total value at current prices (R'000)	1 378	2 194	466	- 66,2
Total value of non-residential buildings at current prices (R'000)	23 845	6 789	15 993	- 32,9
Additions and alterations				
Dwelling-houses				
Total square metres	16 105	14 337	15 465	- 4,0
Total value at current prices (R'000)	18 169	15 484	16 223	- 10,7
Other buildings ^{3/}				
Total square metres	2 117	3 297	5 792	+173,6
Total value at current prices (R'000)	3 820	6 042	9 980	+161,3
Total value of additions and alterations at current prices (R'000)	21 989	21 526	26 203	+19,2
Total value of buildings completed at current prices (R'000)	64 663	47 454	58 714	- 9,2

1/ Other residential buildings include institutions for the disabled, boarding houses, old people's homes, hostels, hotels, motels, guest houses, holiday chalets, entertainment centres, bed-and-breakfast accommodation and casinos.

2/ Other non-residential space includes churches, sport and recreation clubs, schools, crèches, hospitals and all other non-residential space.

3/ Other buildings include additions and alterations to other residential buildings, non-residential buildings and internal alterations.

Table 38 - Buildings completed according to type of building and selected urban area: Witwatersrand

Type of building	January 2001	December 2001	January 2002	Percentage change between January 2001 and January 2002
Residential buildings				
Dwelling-houses smaller than 80 square metres				
Number of dwelling-houses	250	401	563	+125,2
Total square metres	10 519	16 384	19 294	+83,4
Total value at current prices (R'000)	8 581	20 582	15 822	+84,4
Dwelling-houses equal to or larger than 80 square metres				
Number of dwelling-houses	146	190	214	+46,6
Total square metres	39 708	48 724	54 317	+36,8
Total value at current prices (R'000)	54 201	77 455	85 575	+57,9
Flats and townhouses				
Number of flats and townhouses	381	183	286	- 24,9
Total square metres	26 587	23 447	28 510	+7,2
Total value at current prices (R'000)	34 031	38 202	37 583	+10,4
Other residential buildings ^{1/}				
Total square metres	32 600	0	0	..
Total value at current prices (R'000)	250 000	0	0	..
Total value of residential buildings at current prices (R'000)	346 813	136 239	138 980	- 59,9
Non-residential buildings				
Office and banking space				
Total square metres	92 632	5 706	22 895	- 75,3
Total value at current prices (R'000)	121 783	7 800	39 277	- 67,7
Shopping space				
Total square metres	4 131	800	1 900	- 54,0
Total value at current prices (R'000)	5 206	1 600	1 900	- 63,5
Industrial and warehouse space				
Total square metres	13 612	1 329	14 844	+9,1
Total value at current prices (R'000)	16 209	1 957	23 485	+44,9
Other non-residential space ^{2/}				
Total square metres	2 828	1 705	2 338	- 17,3
Total value at current prices (R'000)	5 039	2 061	3 702	- 26,5
Total value of non-residential buildings at current prices (R'000)	148 237	13 418	68 364	- 53,9
Additions and alterations				
Dwelling-houses				
Total square metres	22 333	14 220	16 212	- 27,4
Total value at current prices (R'000)	26 989	19 318	22 523	- 16,5
Other buildings ^{3/}				
Total square metres	12 084	3 436	7 100	- 41,2
Total value at current prices (R'000)	13 622	6 553	10 836	- 20,5
Total value of additions and alterations at current prices (R'000)	40 611	25 871	33 359	- 17,9
Total value of buildings completed at current prices (R'000)	535 661	175 528	240 703	- 55,1

1/ Other residential buildings include institutions for the disabled, boarding houses, old people's homes, hostels, hotels, motels, guest houses, holiday chalets, entertainment centres, bed-and-breakfast accommodation and casinos.

2/ Other non-residential space includes churches, sport and recreation clubs, schools, crèches, hospitals and all other non-residential space.

3/ Other buildings include additions and alterations to other residential buildings, non-residential buildings and internal alterations.

Table 39 - Buildings completed according to type of building and selected urban area: Pretoria

Type of building	January 2001*	December 2001	January 2002	Percentage change between January 2001 and January 2002
Residential buildings				
Dwelling-houses smaller than 80 square metres				
Number of dwelling-houses	15	31	23	+53,3
Total square metres	792	1 703	1 277	+61,2
Total value at current prices (R'000)	948	2 435	1 823	+92,3
Dwelling-houses equal to or larger than 80 square metres				
Number of dwelling-houses	63	104	109	+73,0
Total square metres	16 372	29 295	29 878	+82,5
Total value at current prices (R'000)	20 443	42 119	42 263	+106,7
Flats and townhouses				
Number of flats and townhouses	37	25	443	+1 097,3
Total square metres	4 067	4 633	40 850	+904,4
Total value at current prices (R'000)	5 620	6 950	50 817	+804,2
Other residential buildings ^{1/}				
Total square metres	0	0	0	..
Total value at current prices (R'000)	0	0	0	..
Total value of residential buildings at current prices (R'000)	27 011	51 504	94 903	+251,3
Non-residential buildings				
Office and banking space				
Total square metres	3 126	6 882	538	- 82,8
Total value at current prices (R'000)	3 814	11 752	807	- 78,8
Shopping space				
Total square metres	0	0	0	..
Total value at current prices (R'000)	0	0	0	..
Industrial and warehouse space				
Total square metres	0	1 285	1 154	..
Total value at current prices (R'000)	0	1 625	1 731	..
Other non-residential space ^{2/}				
Total square metres	0	0	0	..
Total value at current prices (R'000)	0	0	0	..
Total value of non-residential buildings at current prices (R'000)	3 814	13 377	2 538	- 33,5
Additions and alterations				
Dwelling-houses				
Total square metres	1 212	732	1 569	+29,5
Total value at current prices (R'000)	1 505	1 081	2 164	+43,8
Other buildings ^{3/}				
Total square metres	746	2 222	1 290	+72,9
Total value at current prices (R'000)	1 183	3 518	1 936	+63,7
Total value of additions and alterations at current prices (R'000)	2 688	4 599	4 100	+52,5
Total value of buildings completed at current prices (R'000)	33 513	69 480	101 541	+203,0

1/ Other residential buildings include institutions for the disabled, boarding houses, old people's homes, hostels, hotels, motels, guest houses, holiday chalets, entertainment centres, bed-and-breakfast accommodation and casinos.

2/ Other non-residential space includes churches, sport and recreation clubs, schools, crèches, hospitals and all other non-residential space.

3/ Other buildings include additions and alterations to other residential buildings, non-residential buildings and internal alterations.

Table 40 - Buildings completed according to type of building and selected urban area: Bloemfontein

Type of building	January 2001	December 2001	January 2002	Percentage change between January 2001 and January 2002
Residential buildings				
Dwelling-houses smaller than 80 square metres				
Number of dwelling-houses	12	7	21	+75,0
Total square metres	657	347	1 200	+82,6
Total value at current prices (R'000)	818	342	1 362	+66,5
Dwelling-houses equal to or larger than 80 square metres				
Number of dwelling-houses	33	4	17	- 48,5
Total square metres	6 910	575	3 543	- 48,7
Total value at current prices (R'000)	8 555	643	4 127	- 51,8
Flats and townhouses				
Number of flats and townhouses	8	11	12	+50,0
Total square metres	1 061	396	1 385	+30,5
Total value at current prices (R'000)	1 500	475	2 430	+62,0
Other residential buildings ^{1/}				
Total square metres	151	0	1 428	+845,7
Total value at current prices (R'000)	211	0	1 461	+592,4
Total value of residential buildings at current prices (R'000)	11 084	1 460	9 380	- 15,4
Non-residential buildings				
Office and banking space				
Total square metres	302	0	2 008	+564,9
Total value at current prices (R'000)	483	0	3 800	+686,7
Shopping space				
Total square metres	2 050	0	630	- 69,3
Total value at current prices (R'000)	2 000	0	500	- 75,0
Industrial and warehouse space				
Total square metres	2 878	0	2 558	- 11,1
Total value at current prices (R'000)	1 977	0	2 100	+6,2
Other non-residential space ^{2/}				
Total square metres	140	562	0	..
Total value at current prices (R'000)	170	674	0	..
Total value of non-residential buildings at current prices (R'000)	4 630	674	6 400	+38,2
Additions and alterations				
Dwelling-houses				
Total square metres	6 717	1 994	9 152	+36,3
Total value at current prices (R'000)	6 821	2 092	10 613	+55,6
Other buildings ^{3/}				
Total square metres	1 553	188	1 428	- 8,0
Total value at current prices (R'000)	2 162	276	4 652	+115,2
Total value of additions and alterations at current prices (R'000)	8 983	2 368	15 265	+69,9
Total value of buildings completed at current prices (R'000)	24 697	4 502	31 045	+25,7

1/ Other residential buildings include institutions for the disabled, boarding houses, old people's homes, hostels, hotels, motels, guest houses, holiday chalets, entertainment centres, bed-and-breakfast accommodation and casinos.

2/ Other non-residential space includes churches, sport and recreation clubs, schools, crèches, hospitals and all other non-residential space.

3/ Other buildings include additions and alterations to other residential buildings, non-residential buildings and internal alterations.

Additional information

Explanatory Notes

Introduction	<ol style="list-style-type: none"> 1 Statistics South Africa (Stats SA) conducts a monthly Building Statistics Survey collecting information regarding building plans approved and buildings completed, financed by the private sector, from a sample of local government institutions in South Africa. This statistical release contains information of building plans passed and buildings completed in respect of residential buildings, non-residential buildings and additions and alterations according to province and selected urban areas. 2 In order to improve timeliness of the publication, some information for the current month have been estimated due to late submission by respondents. These estimates will be revised in the next statistical release(s) as soon as actual information is available. 3 The actual and seasonally adjusted values (at current and at constant 1995 prices) and the percentage change of building plans passed and buildings completed according to type of building are reflected monthly from January 2000 in this statistical release (cf. tables 1 to 8).
Scope of the survey	<ol style="list-style-type: none"> 4 This survey covers local government institutions conducting activities for the private sector regarding - <ul style="list-style-type: none"> • approval of building plans; and • final inspection of completed buildings.
Classification	<ol style="list-style-type: none"> 5 The 1993 edition of the Standard Industrial Classification of all Economic Activities, (SIC) Fifth Edition, Report No. 09-90-02, was used to classify the statistical units. The SIC is based on the 1990 International Standard Industrial Classification of all Economic Activities (ISIC) with suitable adaptations for local conditions. 6 The twelfth and last published edition of the Standard Code List of Areas, Report No. 09-09-03 (1994) was used to classify the statistical units according to province. The cities, towns and non-urban areas listed in this report are codified within magisterial district and province. The code list was compiled by Stats SA in collaboration with other interested bodies and the first edition was distributed in June 1977.
Statistical unit	<ol style="list-style-type: none"> 7 The statistical unit for the collection of information is a local government institution. Local government institutions include municipalities, city councils, metropolitan councils, district councils, transitional councils and development and services boards.
Survey methodology and design	<ol style="list-style-type: none"> 8 The sample for the monthly Building Statistics Survey consists of the largest local government institutions in South Africa, i.e. those that account for approximately 85% of the total rand value of buildings completed by the private sector. 9 The survey is collected by mail each month from a sample of 135 local government institutions.
Constant prices	<ol style="list-style-type: none"> 10 The value of building plans passed and buildings completed at constant prices measure the building activities in terms of ruling prices in a specific base year which is currently 1995. 11 The value of building plans passed at constant prices for each month is obtained by deflating the values at current prices with a price index known as the “lump sum domestic buildings” as published in statistical release P0151 – JBCC Contract Price Adjustment Provisions Work Group Indices. In order to be applicable, these indices (base February 1991=100) are converted to the base year 1995=100.

- 12** The value of buildings completed at constant prices is obtained by deflating the values at current prices with the same price index which is used to calculate building plans passed at constant prices (cf. paragraph 11). The value of buildings completed is reported as at the time the plans were passed. Since the completion of buildings may extend over a few months to a few years, the current value of buildings completed is deflated by price indices as at the time the plans were passed in order to calculate the value of buildings completed at the time the plans were passed. Therefore, the duration of the completion of different types of buildings are taken into account in ascertaining the deflators e.g. the value of dwelling-houses completed at constant prices at January 2000 is obtained by deflating the current value of dwelling-houses completed for January 2000 with the price index of a month six months prior to January 2000. Furthermore, the value of other residential buildings, non-residential buildings and additions and alterations at constant prices is obtained by deflating the current values with price indices of 12 months, 18 months and 12 months prior to the relevant month, respectively.
- Seasonal adjustment**
- 13** Seasonally adjusted estimates of building plans passed and buildings completed are generated each month, using the X-11 Seasonal Adjustment Program developed by US Bureau of the Census Economic Research and Analyses Division, 1968.
- 14** Seasonal adjustment is a means of removing the estimated effects of normal seasonal variation from the series so that the effects of other influences on the series can be more clearly recognised. Seasonal adjustment does not aim to remove irregular or non-seasonal influences which may be present in any particular month. Influences that are volatile or unsystematic can still make it difficult to interpret the movement of the series even after adjustment for seasonal variations. Therefore, the month-to-month movements of seasonally adjusted estimates may not be reliable indicators of trend behaviour.
- Trend cycle**
- 15** The trend is a long-term pattern or movement of a time series. The X-11 Seasonal Adjustment Program is used for smoothing seasonally adjusted data.
- Related publications**
- 16** Users may also wish to refer to the following publications:
- P5041.3 – Building statistics issued annually.
 - P9101.2 – Actual and expected expenditure on construction by the public sector per statistical region issued annually.
 - Bulletin of Statistics issued quarterly.
 - South African Statistics issued annually.
- Unpublished statistics**
- 17** In some cases Stats SA can also make available statistics which are not published. The statistics can be made available in one or more of the following ways: computer printouts, CD and diskette. Generally a charge is made for providing unpublished statistics.
- Rounding-off of figures**
- 18** The figures in the tables have, where necessary, been rounded off to the nearest digit shown. There may, therefore, be slight discrepancies between the sums of the constituent items and the totals shown.
- Pre-release policy**
- 19** Stats SA has adopted the confidential pre-release policy in respect of selected economic indicators and specific government departments. The policy accords with practice among leading statistical agencies. The statistical integrity of the information and strict observance of the release time has been assured by the following procedure:
- 20** In respect of this statistical release, an official representative from the Office of the President, the Department of Trade and Industry (DTI), National Treasury and the South African Reserve Bank (SARB) will receive a copy of the release on a strictly confidential basis two hours in advance of the public issue.
- 21** Stats SA pre-release policy may be inspected at its Website, www.statssa.gov.za

Symbols and abbreviations

..	no meaningful percentage change between two specified periods available since either one or both of the totals are nil
0	nil or figure too small to publish
*	revised
Stats SA	Statistics South Africa
SIC	Standard Industrial Classification of all Economic Activities
ISIC	International Standard Industrial Classification of all Economic Activities
JBCC	Joint Building Contracts Committee
CD	Compact Disc
US	United States
SARB	South African Reserve Bank
DTI	Department of Trade and Industry

Technical notes**Response rate**

The response rate for January 2002 is 100%.

Local government institutions covered in the sample survey

Local government institutions according to province

Western Cape	Blaauwberg (includes Milnerton), Brackenfell, Breede River District Council, Cape Town, City of Tygerberg (Bellville, Durbanville, Goodwood, Lingeletu West, Parow and South Administration), Fish Hoek, George (includes Pacaltsdorp, Thembaletu and Herolds Bay), Gordon's Bay, Hangklip-Kleinmond (includes Kleinmond, Betty's Bay and Rooi-Els), Hermanus (includes Onrus River, Zwelihle, Sandbaai, Vermont, Hawston and Fisher Haven), Ikapa, Klein-Karoo District Council, Knysna (includes Khayaletu), Kuils River, Malmesbury, Mossel Bay (includes Boggom's Bay, Kleinbrak, Rheeboek and Tergniet), Oostenberg (Kraaifontein and Melton Rose - Blue Downs), Oudtshoorn, Overberg District Council, Paarl, Plettenberg Bay, Sedgefield, Simon's Town, Somerset West, South Peninsula, Stellenbosch, Strand, Wellington, West Coast District Council, Western Coast Peninsula (previously Vredenburg-Saldanha), Winelands District Council and Worcester.
Eastern Cape	Aliwal-Maletswai (includes Dukathole), Despatch, East London (includes Beacon Bay, Gomo Town, Gonubie and Mdantsane), Grahamstown (includes Rhini Township), Jeffrey's Bay, King William's Town (includes Bisho and Zwelitsha), Port Alfred, Port Elizabeth (includes Ibhayi and Motherwell), Uitenhage (includes KwaNobuhle), Umtata and Western District Council.
Northern Cape	Benede-Oranje District Council, Keimoes, Kimberley (including Galeshewe), Kuruman, Namaqualand District Council and Upington (includes Paballelo).
Free State	Allanridge, Bethlehem (includes Bohlokong), Bloemfontein (includes Bainsvlei, Bloemspruit and Mangaung), Botshabelo, Deneysville (includes Refengkgotso), Harrismith (includes Tsiamé), Kroonstad (includes Maokeng), Ladybrand (includes Manyatseng), Odendaalsrus (includes Kutlwanong), Parys, Phuthaditjhaba, Sasolburg (includes Zamdela), Virginia (includes Meloding) and Welkom (includes Thabong).
KwaZulu-Natal	Development and Services Board - Inland, Development and Services Board – North Coast, Dolphin Coast Borough (includes Ballito, Etete, Shakaskraal, Tinley Manor Beach and Umhlali Beach), Durban, Edendale, Empangeni (includes Ngwelezana), Hilton, Howick, Inner West City Council (includes Clermont, KwaDabeka, KwaNdengezi, New Germany, Pinetown, Queensburgh, Reservoir Hills, Shallcross and Westville), Kokstad, Kwa-Dukuza/Stanger (includes Blythedale Beach, Shakaville and Stanger), KwaMashu, Ladysmith (includes Emnambithi), Margate (includes Uvongo), Mpenjati/Southbroom (includes Southbroom, Marina Beach, San Lameer and Trafalgar), Newcastle (includes Madadeni, Osizweni and Blaauwboschlaagte), North Local Council - Tongaat (includes Canelands and Hambanati), North Local Council - Umhlanga Rocks (includes Mount Edgecombe and Umdloti Beach), North Local Council - Verulam, Outer West Local Council (includes Assagay, Botha's Hill, Cato Ridge, Drummond, Everton, Gillitts, Hillcrest, Inchanga, Kloof, Mpumalanga and Waterfall), Pennington, Pietermaritzburg/Msundini, Port Shepstone, Richards Bay, South Local Council (includes Amanzimtoti, Isipingo, Kingsburgh, KwaMakuta and Umbogintwini), Umlazi and Umtamvuna/Port Edward (includes Munster, Port Edward and Palm Beach).
North West	Bophirima District Council, Brits (includes Lethabile), Ga-Rankuwa, Klerksdorp, Lichtenburg, Mmabatho, Orkney (includes Kanana), Potchefstroom, Rustenburg, Vryburg and Zeerust.

Gauteng

Akasia (includes Elandsdoorn, Klipfontein, Kruisfontein and Soshanguve), Alberton (includes Tokoza), Benoni (includes Daveyton and Wattville), Boksburg (includes Vosloorus), Brakpan (includes Tsakane), Bronkhorst-spruit, Carletonville (includes Khutsong), Centurion, Duduza, Eastern Services Council - Pretoria Area, Edenvale-Modderfontein, Germiston (includes Bedfordview and Katlehong), Greater Johannesburg - Eastern Metropolitan Local Council (includes Alexandra and Sandton), Greater Johannesburg - Northern Metropolitan Local Council (includes Randburg), Greater Johannesburg - Southern Metropolitan Local Council (includes Ennerdale, Lenasia and Johannesburg), Greater Johannesburg - Western Metropolitan Local Council (includes Diepmeadow, Dobsonville and Roodepoort), Heidelberg (includes Ratanda), Kempton Park (includes Tembisa), Krugersdorp (includes Kagiso and Munsieville), Meyerton, Midrand (includes Rabie Ridge and Ivory Park), Nigel, Pretoria (includes Atteridgeville and Mamelodi), Randfontein (includes Mohlakeng), Sebokeng (includes Boipatong, Bophelong and Sharpeville), Soweto, Springs (includes KwaThema), Vanderbijlpark, Vereeniging (includes Evaton), Western Services Council and Westonaria (includes Bekkersdal).

Mpumalanga

Delmas (includes Botleng), Eastvaal District Council, Ermelo (includes Wesselton and Cassim Park), Highveld District Council, Highveldridge Transitional Council (includes Evander, Embalenhle and Secunda), Komatipoort (includes Kamaqhekeza), KwaGuqa, KwaMhlanga, Malelane (includes Hectorspruit and Kamhlushwa), Middelburg (includes Mhluzi), Nelspruit (includes Kanyamazane and Lowveld Escarpment District Council as from January 2001), White River and Witbank.

Northern Province

Bosveld District Council, Giyani, Letaba (includes Nkowakowa and Tzaneen), Messina, Naboomspruit (includes Mookgophong), Nylstroom, Pietersburg-Polokwane (includes Seshego), Potgietersrus and Thabazimbi.

Local government institutions according to selected urban areas**Cape Town**

Blaauwberg (includes Milnerton), Cape Town, City of Tygerberg (Bellville, Durbanville, Goodwood, Lingeletu West, Parow and South Administration), Fish Hoek, Ikapa, Oostenberg (Kraaifontein and Melton Rose - Blue Downs), Simon's Town and South Peninsula.

Port Elizabeth

Despatch, Port Elizabeth (including Ibhayi and Motherwell) and Uitenhage (including KwaNobuhle)

Durban

Durban, Inner West City Council (includes Clermont, KwaDabeka, KwaNdengezi, New Germany, Pinetown, Queenstown, Reservoir Hills, Shallcross and Westville), North Local Council - Verulam, Outer West Local Council (includes Assagay, Botha's Hill, Cato Ridge, Drummond, Everton, Gillitts, Hillcrest, Inchanga, Kloof, Mpumalanga and Waterfall) and South Local Council (includes Amanzimtoti, Isipingo, Kingsburgh, KwaMakuta and Umbogintwini).

Witwatersrand

Alberton (includes Thokoza), Benoni (includes Daveyton and Wattville), Boksburg (includes Vosloorus), Brakpan (includes Tsakane), Carletonville (includes Khutsong), Duduza, Edenvale-Modderfontein, Germiston (includes Bedfordview and Katlehong), Greater Johannesburg - Eastern Metropolitan Local Council (includes Alexandra and Sandton), Greater Johannesburg - Northern Metropolitan Local Council (includes Randburg), Greater Johannesburg - Southern Metropolitan Local Council (includes Ennerdale, Lenasia and Johannesburg), Greater Johannesburg - Western Metropolitan Local Council (includes Diepmeadow, Dobsonville and Roodepoort), Kempton Park (includes Tembisa), Krugersdorp (includes Kagiso and Munsieville), Midrand (includes Rabie Ridge and Ivory Park), Nigel, Randfontein (includes Mohlakeng), Soweto, Springs (includes KwaThema) and Westonaria (includes Bekkersdal).

Pretoria

Akasia (includes Elandsdoorn, Klipfontein and Soshanguve), Centurion, Eastern Services Council - Pretoria area and Pretoria (includes Atteridgeville and Mamelodi).

Bloemfontein

Bloemfontein (includes Bainsvlei, Bloemspruit and Mangaung).

Glossary

Additions and alterations	Additions and alterations include extensions to existing buildings as well as internal and external alterations of existing buildings.
Blocks of flats	Blocks of flats are regarded as high-density housing consisting of a number of self-contained dwelling-units with at least one living-room together with a kitchen and bathroom conjoined to similar units in one building.
Dwelling-house	A dwelling-house refers to a free-standing, complete structure on a separate stand or a self-contained dwelling-unit, granny flat, on the same premises as an existing residence. Out-buildings and garages are included.
Local government institutions	A local government institution is a generic term referring to any number of institutions involved in the local sphere of government. Local government institutions consist of municipalities, city councils, metropolitan councils, district councils, transitional local councils and development and services boards.
Non-residential buildings	Non-residential buildings comprise factories, commercial, financial and other office buildings, as well as other buildings not used for residential purposes, such as churches, halls, clubs, schools and hospitals.
Other residential buildings	Other residential buildings include institutions for the disabled, boarding houses, old people's homes, hostels, hotels, motels, guest houses, holiday chalets, bed-and-breakfast accommodation, entertainment centres and casinos.
Percentage change	<p>When using monthly actual values, the percentage change is the change in actual values of building activities (building plans passed or buildings completed) of the relevant month compared with the actual values of building activities (building plans passed or buildings completed) of the same month in the previous year expressed as a percentage.</p> <p>When using annual actual values, the percentage change is the change in the actual values of building activities (building plans passed or buildings completed) of the relevant year compared with the actual values of building activities (building plans passed or buildings completed) of the previous year expressed as a percentage.</p> <p>When using seasonally adjusted values, the percentage change is the change in the seasonally adjusted values of building activities (building plans passed or buildings completed) of the relevant month compared with the seasonally adjusted values of building activities (building plans passed or buildings completed) of the previous month expressed as a percentage.</p>
Reference period	Reference period is one calendar month.
Residential buildings	Residential buildings comprise dwelling-houses, flats, townhouses and other residential buildings.
Townhouses	Townhouses are multiple, medium-density dwelling-units and include cluster housing, group housing, simplexes, duplexes, triplexes and other similar dwelling-units which are usually grouped together, with one level of each unit on ground level. This excludes blocks of flats.

For more information

Stats SA publishes approximately 300 different statistical releases each year. It is not economically viable to produce them in more than one of South Africa's eleven official languages. Since the releases are used extensively, not only locally but also by international economic and social-scientific communities, Stats SA releases are published in English only.

Stats SA has copyright on this publication. Users may apply the information as they wish, provided that they acknowledge Stats SA as the source of the basic data wherever they process, apply, utilise, publish or distribute the data and also that they specify that the relevant application and analysis (where applicable) result from their own processing of the data.

Stats SA products

A complete set of Stats SA publications is available at the Stats SA Library and the following libraries:

National Library of South Africa, Pretoria Division
National Library of South Africa, Cape Town Division
Natal Society Library, Pietermaritzburg
Library of Parliament, Cape Town
Bloemfontein Public Library
Johannesburg Public Library
Eastern Cape Library Services, King William's Town
Central Regional Library, Pietersburg
Central Reference Library, Nelspruit
Central Reference Collection, Kimberley
Central Reference Library, Mmabatho

Stats SA also provides a subscription service.

Electronic services

A large range of data are available via on-line services, diskette, CD and computer printouts. For more details about our electronic data services, contact (012) 310 8600/8095/8390/8351

You can visit us on the Internet at: <http://www.statssa.gov.za>

Enquiries

Telephone number: (012) 310 8600/8095/8390/8351 (user enquiries)
(012) 310 8228/310 8007 (technical enquiries)
(012) 310 8161 (publications)
(012) 310 8490 (library)

Fax number: (012) 310 8182

e-mail: Corrieb@statssa.pwv.gov.za
Gretaz@statssa.pwv.gov.za

Postal address: Private Bag X44, Pretoria, 0001