



**Statistics
South Africa**

Preferred supplier of quality statistics



Statistical release

P5041.1

Selected building statistics of the private sector as reported by local government institutions

**February 2008
(Preliminary)**

**Embargoed until:
16 April 2008
13:00**

Enquiries:

User Information Services
Tel: (012) 310 8600 / 4892 / 8390

Forthcoming issue:

March 2008

Expected release date

21 May 2008

Statistics South Africa • Mbalo-mbalo dza Afrika Tshipembe • Tinhlayo-tiko ta Afrika-Dzonga • Dipalopalo tsa Aforika Borwa • Ezezibalo zaseNingizimu Afrika
Dipalopalo tša Afrika Borwa • Dipalopalo tsa Afrika Borwa • Ubalo lwaseMzantsi Afrika • Telubalo eNingizimu Afrika • iNanimbalo leSewula Afrika • Statistiek Suid-Afrika

Contents

	Page
SUMMARY OF FINDINGS	3
Tables	
Table 1 Values and percentage change of recorded building plans passed by larger municipalities at current prices by type of building	9
Table 2 Seasonally adjusted values and percentage change of recorded building plans passed by larger municipalities at current prices by type of building	10
Table 3 Values and percentage change of recorded building plans passed by larger municipalities at constant 2000 prices by type of building	11
Table 4 Seasonally adjusted values and percentage change of recorded building plans passed by larger municipalities at constant 2000 prices by type of building	12
Table 5 Values and percentage change of buildings reported as completed to larger municipalities at current prices by type of building	13
Table 6 Seasonally adjusted values and percentage change of buildings reported as completed to larger municipalities at current prices by type of building	14
Table 7 Values and percentage change of buildings reported as completed to larger municipalities at constant 2000 prices by type of building	15
Table 8 Seasonally adjusted values and percentage change of buildings reported as completed to larger municipalities at constant 2000 prices by type of building	16
Table 9 Recorded building plans passed by larger municipalities at current prices by type of building: South Africa	17
Table 10 Recorded building plans passed by larger municipalities at current prices by type of building: Western Cape	18
Table 11 Recorded building plans passed by larger municipalities at current prices by type of building: Eastern Cape	19
Table 12 Recorded building plans passed by larger municipalities at current prices by type of building: Northern Cape	20
Table 13 Recorded building plans passed by larger municipalities at current prices by type of building: Free State	21
Table 14 Recorded building plans passed by larger municipalities at current prices by type of building: KwaZulu-Natal	22
Table 15 Recorded building plans passed by larger municipalities at current prices by type of building: North West	23
Table 16 Recorded building plans passed by larger municipalities at current prices by type of building: Gauteng	24
Table 17 Recorded building plans passed by larger municipalities at current prices by type of building: Mpumalanga	25
Table 18 Recorded building plans passed by larger municipalities at current prices by type of building: Limpopo.....	26
Table 19 Buildings reported as completed to larger municipalities at current prices by type of building: South Africa	27
Table 20 Buildings reported as completed to larger municipalities at current prices by type of building: Western Cape	28
Table 21 Buildings reported as completed to larger municipalities at current prices by type of building: Eastern Cape	29
Table 22 Buildings reported as completed to larger municipalities at current prices by type of building: Northern Cape.....	30
Table 23 Buildings reported as completed to larger municipalities at current prices by type of building: Free State	31
Table 24 Buildings reported as completed to larger municipalities at current prices by type of building: KwaZulu-Natal	32

Table 25	Buildings reported as completed to larger municipalities at current prices by type of building: North West	33
Table 26	Buildings reported as completed to larger municipalities at current prices by type of building: Gauteng	34
Table 27	Buildings reported as completed to larger municipalities at current prices by type of building: Mpumalanga	35
Table 28	Buildings reported as completed to larger municipalities at current prices by type of building: Limpopo.....	36
Table 29	Subsidised low-cost dwelling-houses completed or under construction by province	37
Table 30	Subsidised low-cost dwelling-houses completed by province	37
Explanatory notes		38
Glossary		41
General information		43

SUMMARY OF FINDINGS

SELECTED BUILDING STATISTICS OF THE PRIVATE SECTOR REGARDING BUILDING PLANS PASSED AT CURRENT PRICES

Table A – Selected key figures regarding recorded building plans passed by larger municipalities at current prices: January to February 2007 versus January to February 2008

Estimates at current prices	January to February 2007	January to February 2008 1/	Difference in value between January to February 2007 and January to February 2008	Percentage change between January to February 2007 and January to February 2008
	R'000	R'000	R'000	
Residential buildings	6 330 962	6 501 057	170 095	2,7
-Dwelling-houses	4 318 823	3 682 039	-636 784	-14,7
-Flats and townhouses	1 847 373	2 486 780	639 407	34,6
-Other residential buildings	164 766	332 238	167 472	101,6
Non-residential buildings	2 354 041	2 692 730	338 689	14,4
Additions and alterations	2 968 121	3 778 455	810 334	27,3
Total	11 653 124	12 972 242	1 319 118	11,3

1/ Feb. 2008 figures should be regarded as preliminary because of possible backlogs and incomplete reporting by municipalities.

Total value of recorded building plans passed at current prices increased

As indicated in Table A, the value of recorded building plans passed by larger municipalities (at current prices) during January to February 2008 rose by 11,3% (R1 319,1 million) compared with January to February 2007.

All the main categories of buildings contributed positively to the 11,3% year-on-year increase recorded for January to February 2008, namely additions and alterations (27,3% or R810,3 million), non-residential buildings (14,4% or R338,7 million) and residential buildings (2,7% or R170,1 million) (see Table A).

Table B – Recorded building plans passed by larger municipalities aggregated to provincial level: January to February 2007 versus January to February 2008

Estimates at current prices	January to February 2007	January to February 2008 1/	Percentage contribution to the total value of building plans passed during January to February 2007	Percentage change between January to February 2007 and January to February 2008	Contribution (percentage points) to the percentage change in the value of building plans passed between January to February 2007 and January to February 2008 2/	Difference in value between January to February 2007 and January to February 2008
	R'000	R'000				R'000
Western Cape	2 677 248	2 872 161	23,0	7,3	1,7	194 913
Eastern Cape	617 674	667 426	5,3	8,1	0,4	49 752
Northern Cape	67 120	100 804	0,6	50,2	0,3	33 684
Free State	343 044	302 587	2,9	-11,8	-0,3	-40 457
KwaZulu-Natal	1 563 060	2 682 226	13,4	71,6	9,6	1 119 166
North West	608 848	357 640	5,2	-41,3	-2,2	-251 208
Gauteng	4 837 975	5 035 143	41,5	4,1	1,7	197 168
Mpumalanga	692 975	702 940	5,9	1,4	0,1	9 965
Limpopo	245 180	251 315	2,1	2,5	0,1	6 135
Total	11 653 124	12 972 242	100,0	11,3	11,3	1 319 118

1/ Feb. 2008 figures should be regarded as preliminary because of possible backlogs and incomplete reporting by municipalities.

2/ The contribution (percentage points) is calculated by multiplying the percentage change of each province between Jan. to Feb. 2007 and Jan. to Feb. 2008 with the percentage contribution of the corresponding province to the total value of building plans passed during Jan. to Feb. 2007, divided by 100.

Seven provinces reported increases in the value of building plans passed (see Table B). The largest contributor to the increase of 11,3% was KwaZulu-Natal (contributing 9,6 percentage points or R1 119,2 million), followed by Gauteng (1,7 percentage points or R197,2 million) and Western Cape (1,7 percentage points or R194,9 million).

SELECTED BUILDING STATISTICS OF THE PRIVATE SECTOR REGARDING BUILDING PLANS PASSED AT CONSTANT PRICES

Table C – Selected key figures regarding recorded building plans passed by larger municipalities at constant 2000 prices: January to February 2007 versus January to February 2008

Estimates at constant 2000 prices	January to February 2007	January to February 2008 1/	Difference in value between January to February 2007 and January to February 2008	Percentage change between January to February 2007 and January to February 2008
	R'000	R'000	R'000	
Residential buildings	3 790 268	3 575 563	-214 705	-5,7
Non-residential buildings	1 409 387	1 484 120	74 733	5,3
Additions and alterations	1 776 936	2 080 515	303 579	17,1
Total	6 976 591	7 140 198	163 607	2,3

1/ Feb. 2008 figures should be regarded as preliminary because of possible backlogs and incomplete reporting by municipalities.

Total real value of recorded building plans passed increased

The real value of recorded building plans passed by larger municipalities (at constant 2000 prices) during January to February 2008 increased by 2,3% (R163,6 million) compared with January to February 2007. This is lower than the 19,5% increase reported for January 2008 compared to January 2007. Increases were reported for additions and alterations (17,1% or R303,6 million) and non-residential buildings (5,3% or R74,7 million). Residential buildings showed a decrease of 5,7% (-R214,7 million) (see Table C).

Table D – Seasonally adjusted key figures regarding recorded building plans passed by larger municipalities at constant 2000 prices: Current quarter versus previous quarter

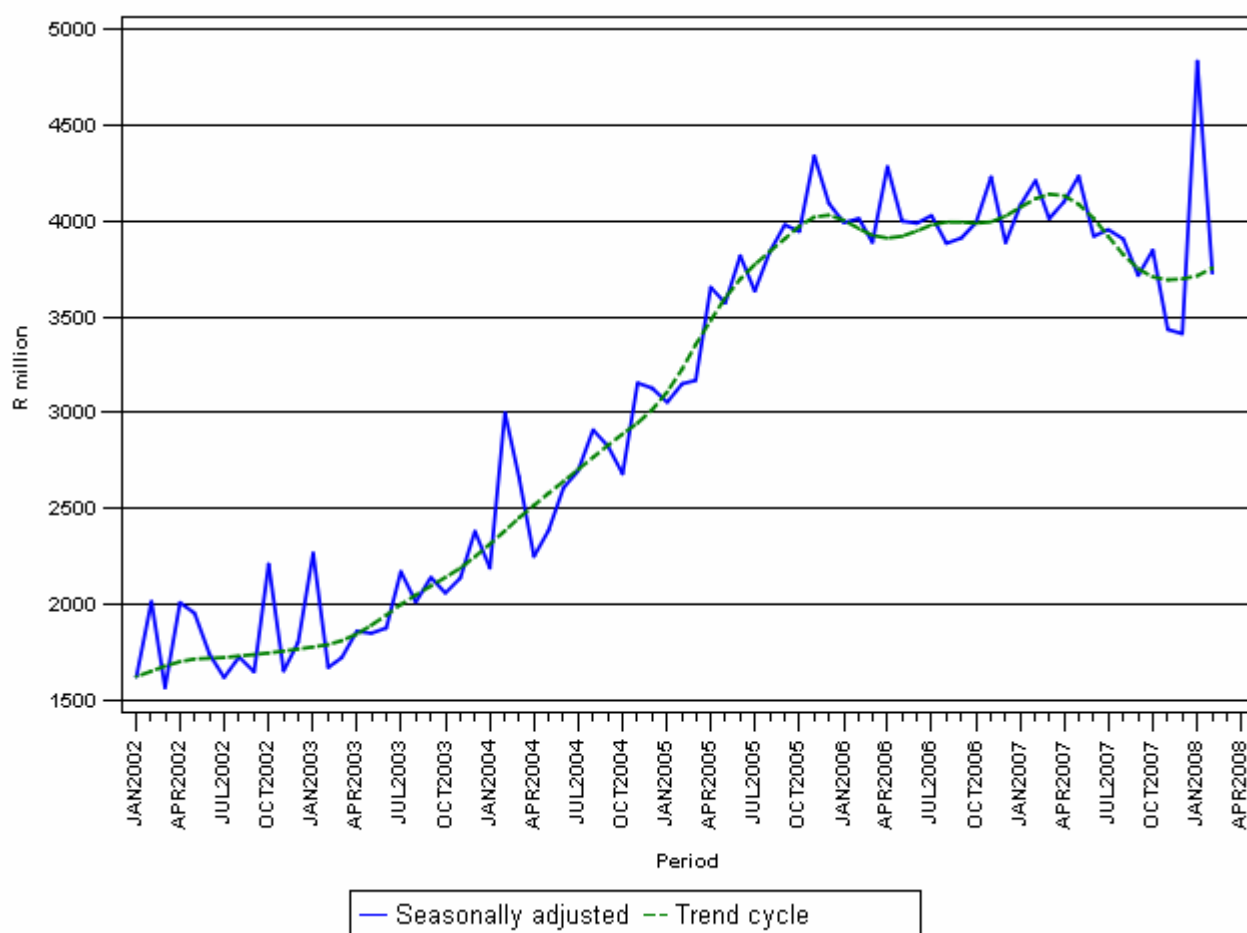
Seasonally adjusted estimates at constant 2000 prices	September to November 2007	December 2007 to February 2008	Percentage change between September to November 2007 and December 2007 to February 2008
	R'000	R'000	
Residential buildings	5 674 453	5 976 672	5,3
Non-residential buildings	2 264 433	2 572 277	13,6
Additions and alterations	3 059 537	3 427 607	12,0
Total	10 998 423	11 976 556	8,9

Seasonally adjusted real value of recorded building plans passed increased

The seasonally adjusted real value of recorded building plans passed by larger municipalities during the quarter ending February 2008 increased by 8,9% compared with the previous quarter. Increases were reported for non-residential buildings (13,6%), followed by additions and alterations (12,0%) and residential buildings (5,3%) (see Table D).

Figure 1 shows both the seasonally adjusted and the trend series for recorded building plans passed at constant 2000 prices between January 2002 and February 2008. The trend series reflects a slight increase in 2002, followed by a steep increase from April 2003 up to the end of 2005. Thereafter the trend levelled off in 2006, followed by a decline since April 2007 up to December 2007. The trend moved sideways from January 2008 till present. The sharp increase in the seasonally adjusted value for January 2008 was mainly due to large projects passed for shopping space and additions to non-residential space.

Figure 1 – Real value of recorded building plans passed by larger municipalities at constant 2000 prices



SELECTED BUILDING STATISTICS OF THE PRIVATE SECTOR REGARDING BUILDINGS COMPLETED AT CURRENT PRICES

Table E – Selected key figures regarding buildings reported as completed to larger municipalities at current prices: January to February 2007 versus January to February 2008

Estimates at current prices	January to February 2007	January to February 2008 1/	Difference in value between January to February 2007 and January to February 2008	Percentage change between January to February 2007 and January to February 2008
	R'000	R'000	R'000	
Residential buildings	3 839 166	3 532 358	-306 808	-8,0
-Dwelling-houses	2 389 098	2 364 609	-24 489	-1,0
-Flats and townhouses	1 223 018	1 107 880	-115 138	-9,4
-Other residential buildings	227 050	59 869	-167 181	-73,6
Non-residential buildings	1 367 732	1 283 324	-84 408	-6,2
Additions and alterations	1 202 172	1 505 865	303 693	25,3
Total	6 409 070	6 321 547	-87 523	-1,4

1/ Feb. 2008 figures should be regarded as preliminary because of possible backlogs and incomplete reporting by municipalities.

Total value of buildings reported as completed at current prices decreased

As indicated in Table E, the value of buildings reported as completed to larger municipalities (at current prices) during January to February 2008 decreased by 1,4% (-R87,5 million) compared with January to February 2007.

Decreases were reported for residential buildings (-8,0% or -R306,8 million) and non-residential buildings (-6,2% or -R84,4 million) for January to February 2008 compared to January to February 2007. These decreases were partially counteracted by an increase reported for additions and alterations of 25,3% (R303,7 million) for the above-mentioned period (see Table E).

Table F – Buildings reported as completed to larger municipalities aggregated to provincial level: January to February 2007 versus January to February 2008

Estimates at current prices	January to February 2007	January to February 2008 1/	Percentage contribution to the total value of buildings completed during January to February 2007	Percentage change between January to February 2007 and January to February 2008	Contribution (percentage points) to the percentage change in the value of buildings completed between January to February 2007 and January to February 2008 2/	Difference in value between January to February 2007 and January to February 2008
	R'000	R'000				R'000
Western Cape	1 731 440	2 022 167	27,0	16,8	4,5	290 727
Eastern Cape	211 293	289 018	3,3	36,8	1,2	77 725
Northern Cape	45 825	53 924	0,7	17,7	0,1	8 099
Free State	193 077	100 405	3,0	-48,0	-1,4	-92 672
KwaZulu-Natal	1 075 449	1 070 952	16,8	-0,4	-0,1	-4 497
North West	271 179	289 661	4,2	6,8	0,3	18 482
Gauteng	2 627 602	2 216 702	41,0	-15,6	-6,4	-410 900
Mpumalanga	174 731	217 912	2,7	24,7	0,7	43 181
Limpopo	78 474	60 806	1,2	-22,5	-0,3	-17 668
Total	6 409 070	6 321 547	100,0	-1,4	-1,4	-87 523

1/ Feb. 2008 figures should be regarded as preliminary because of possible backlogs and incomplete reporting by municipalities.

2/ The contribution (percentage points) is calculated by multiplying the percentage change of each province between Jan. to Feb. 2007 and Jan. to Feb. 2008 with the percentage contribution of the corresponding province to the total value of buildings completed during Jan. to Feb. 2007, divided by 100.

Four provinces reported decreases in the value of buildings completed. The largest contributor to the decrease of 1,4% was Gauteng (-6,4 percentage points or -R410,9 million), followed by Free State (-1,4 percentage points or -R92,7 million) and Limpopo (-0,3 of a percentage point or -R17,7 million) (see Table F). These decreases were to a large extent counteracted by increases reported for Western Cape (4,5 percentage points or R290,7 million) and Eastern Cape (1,2 percentage points or R77,7 million).

SELECTED BUILDING STATISTICS OF THE PRIVATE SECTOR REGARDING BUILDINGS COMPLETED AT CONSTANT PRICES

Table G – Selected key figures regarding buildings reported as completed to larger municipalities at constant 2000 prices: January to February 2007 versus January to February 2008

Estimates at constant 2000 prices	January to February 2007	January to February 2008 1/	Difference in value between January to February 2007 and January to February 2008	Percentage change between January to February 2007 and January to February 2008
	R'000	R'000	R'000	
Residential buildings	2 457 546	2 040 750	-416 796	-17,0
Non-residential buildings	936 059	800 626	-135 433	-14,5
Additions and alterations	804 803	901 603	96 800	12,0
Total	4 198 408	3 742 979	-455 429	-10,8

1/ Feb. 2008 figures should be regarded as preliminary because of possible backlogs and incomplete reporting by municipalities.

Total real value of buildings reported as completed decreased

As indicated in Table G, the real value of buildings reported as completed to larger municipalities (at constant 2000 prices) during January to February 2008 decreased by 10,8% (-R455,4 million) compared with January to February 2007. Decreases in the real value of buildings completed were reported for residential buildings (-17,0% or -R416,8 million) and non-residential buildings (-14,5% or -R135,4 million). However, an increase of 12,0% (R96,8 million) was reported for additions and alterations during the above-mentioned period.

Table H – Seasonally adjusted key figures regarding buildings reported as completed to large municipalities at constant 2000 prices: Current quarter versus previous quarter

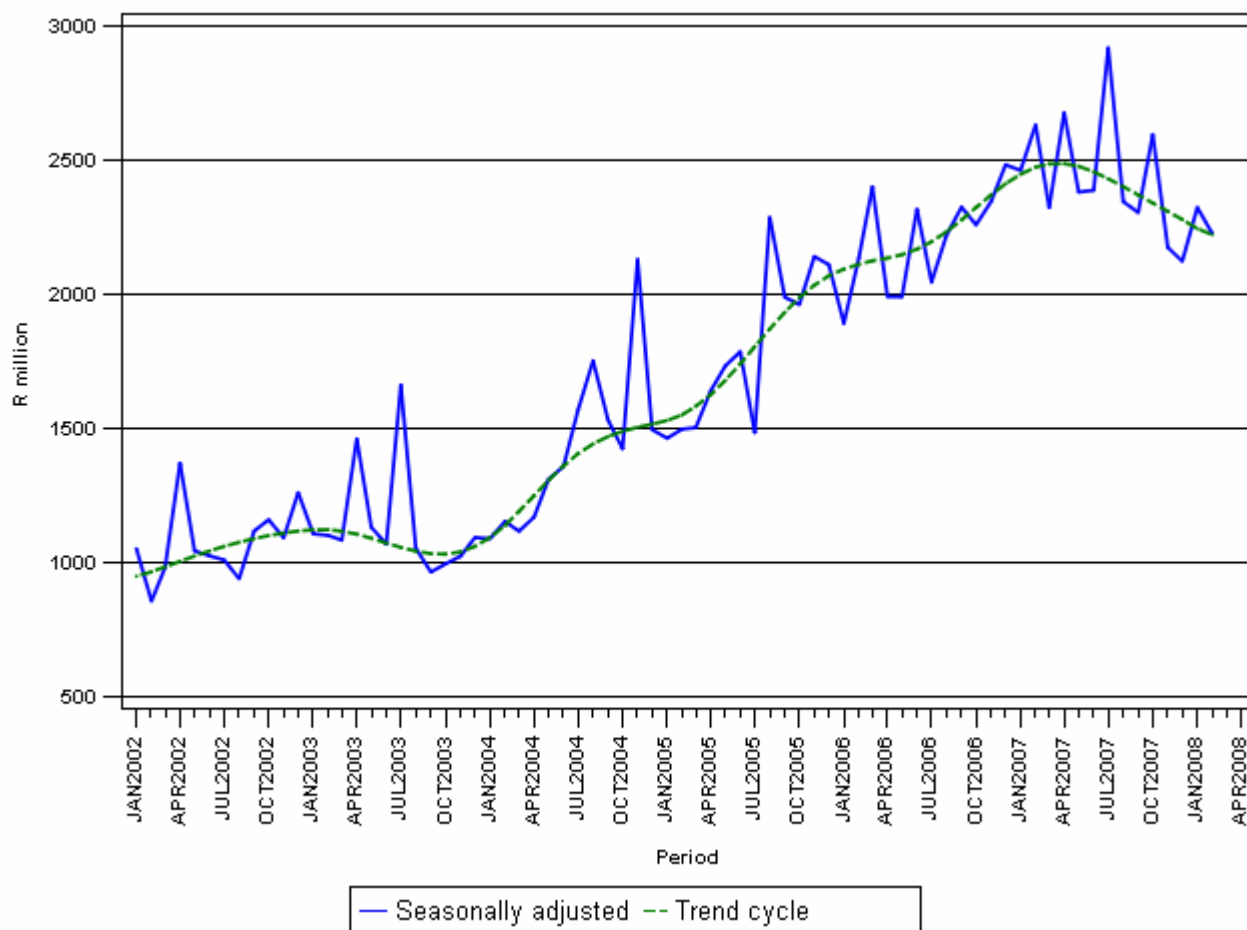
Seasonally adjusted estimates at constant 2000 prices	September to November 2007	December 2007 to February 2008	Percentage change between September to November 2007 and December 2007 to February 2008
	R'000	R'000	
Residential buildings	4 195 453	4 023 744	-4,1
Non-residential buildings	1 565 202	1 378 731	-11,9
Additions and alterations	1 316 709	1 272 868	-3,3
Total	7 077 364	6 675 343	-5,7

Seasonally adjusted real value of buildings reported as completed decreased

The seasonally adjusted real value of buildings reported as completed to larger municipalities during the quarter ending February 2008 decreased by 5,7% compared with the previous quarter. The biggest decrease was reported for non-residential buildings (-11,9%), followed by residential buildings (-4,1%) and additions and alterations (-3,3%) (see Table H).

Figure 2 shows both the seasonally adjusted and trend series for buildings reported as completed to municipalities at constant 2000 prices between January 2002 and February 2008. The trend series reflects a slight increase in 2002, slowing again until October 2003. The trend series increased from November 2003 till March 2007, but has been declining since April 2007.

Figure 2 - Real value of buildings reported as completed to larger municipalities at constant 2000 prices



PJ Lehohla
Statistician-General

Table 1 - Values and percentage change of recorded building plans passed by larger municipalities at current prices by type of building

Year and month		Residential buildings		Non-residential buildings		Additions and alterations		Total	
		R'000	% change 1/	R'000	% change 1/	R'000	% change 1/	R'000	% change 1/
2007*	January	2 789 593	9,1	988 181	26,9	1 346 316	23,4	5 124 090	15,7
	February	3 541 369	11,0	1 365 860	44,9	1 621 805	12,3	6 529 034	17,1
	March	3 980 458	32,7	995 325	-19,8	1 576 921	1,2	6 552 704	13,0
	April	3 493 748	26,4	1 187 202	-29,4	1 583 440	14,3	6 264 390	7,4
	May	4 442 501	22,8	1 461 981	16,6	2 117 343	14,7	8 021 825	19,4
	June	3 944 158	3,1	1 427 671	45,2	1 730 748	4,3	7 102 577	9,8
	July	4 164 978	6,3	1 397 269	-3,2	2 230 946	20,9	7 793 193	8,1
	August	4 009 113	-0,3	1 709 775	15,6	2 201 035	30,2	7 919 923	10,2
	September	3 549 596	-5,6	1 494 949	36,5	1 696 134	-3,5	6 740 679	1,9
	October	4 001 808	2,6	1 524 115	-12,6	2 383 645	29,8	7 909 568	5,7
	November	3 502 401	-12,8	1 005 570	-27,2	1 863 343	0,9	6 371 314	-12,1
	December	2 432 423	-9,6	1 123 502	3,9	1 341 123	-6,8	4 897 048	-6,0
	Total	43 852 146	6,3	15 681 400	3,8	21 692 799	11,8	81 226 345	7,2
2008	January	2 752 556	-1,3	1 785 056	80,6	2 090 063	55,2	6 627 675	29,3
	February 2/	3 748 501	5,8	907 674	-33,5	1 688 392	4,1	6 344 567	-2,8

1/ The annual/monthly percentage change is the change in the values of recorded building plans passed by municipalities of the relevant year/month compared with the values of recorded building plans passed by municipalities of the comparable period of the previous year expressed as a percentage.

2/ Preliminary figures.

*Revised.

Table 2 - Seasonally adjusted values and percentage change of recorded building plans passed by larger municipalities at current prices by type of building

Year and month		Residential buildings		Non-residential buildings		Additions and alterations		Total	
		R'000	% change 1/	R'000	% change 1/	R'000	% change 1/	R'000	% change 1/
2007	January	3 773 487	7,0	1 266 690	-1,3	1 811 291	8,0	6 851 468	5,6
	February	3 738 326	-0,9	1 553 846	22,7	1 766 422	-2,5	7 058 594	3,0
	March	4 267 586	14,2	873 470	-43,8	1 646 024	-6,8	6 787 080	-3,8
	April	3 981 474	-6,7	1 262 705	44,6	1 782 703	8,3	7 026 882	3,5
	May	3 964 275	-0,4	1 449 642	14,8	1 916 726	7,5	7 330 643	4,3
	June	3 698 177	-6,7	1 418 868	-2,1	1 704 533	-11,1	6 821 578	-6,9
	July	3 681 211	-0,5	1 246 875	-12,1	1 989 425	16,7	6 917 511	1,4
	August	3 568 688	-3,1	1 328 827	6,6	1 957 288	-1,6	6 854 803	-0,9
	September	3 257 470	-8,7	1 609 742	21,1	1 673 976	-14,5	6 541 188	-4,6
	October	3 558 575	9,2	1 302 520	-19,1	1 974 734	18,0	6 835 829	4,5
	November	3 238 499	-9,0	1 105 313	-15,1	1 774 960	-10,1	6 118 772	-10,5
	December	3 199 469	-1,2	1 370 237	24,0	1 561 716	-12,0	6 131 422	0,2
2008	January	3 702 947	15,7	2 269 176	65,6	2 803 943	79,5	8 776 066	43,1
	February	3 955 617	6,8	1 027 671	-54,7	1 854 691	-33,9	6 837 979	-22,1
	Sep. - Nov.07	10 054 544		4 017 575		5 423 670		19 495 789	
	Dec.07 - Feb.08 2/	10 858 033	8,0	4 667 084	16,2	6 220 350	14,7	21 745 467	11,5

1/ The percentage change is the change in the seasonally adjusted values of recorded building plans passed by municipalities of the relevant month compared with the seasonally adjusted values of recorded building plans passed by municipalities of the previous month expressed as a percentage.

2/ The percentage change is the change in the seasonally adjusted values of recorded building plans passed by municipalities of the current quarter compared with the seasonally adjusted values of recorded building plans passed by municipalities of the previous quarter expressed as a percentage.

Table 3 - Values and percentage change of recorded building plans passed by larger municipalities at constant 2000 prices by type of building

Year and month		Residential buildings		Non-residential buildings		Additions and alterations		Total	
		R'000	% change 1/	R'000	% change 1/	R'000	% change 1/	R'000	% change 1/
2007*	January	1 668 417	-2,8	591 017	13,1	805 213	10,0	3 064 647	3,1
	February	2 121 851	-0,4	818 370	30,1	971 723	0,8	3 911 944	5,1
	March	2 376 393	18,9	594 224	-28,2	941 445	-9,3	3 912 062	1,2
	April	2 050 322	12,4	696 715	-37,2	929 249	1,6	3 676 286	-4,5
	May	2 567 920	9,0	845 076	3,5	1 223 898	1,8	4 636 894	6,0
	June	2 261 558	-7,6	818 619	30,2	992 401	-6,6	4 072 578	-1,6
	July	2 374 560	-3,9	796 619	-12,5	1 271 919	9,3	4 443 098	-2,2
	August	2 266 316	-8,6	966 521	6,0	1 244 226	19,4	4 477 063	1,0
	September	2 006 555	-13,1	845 081	25,6	958 809	-11,2	3 810 445	-6,2
	October	2 246 944	-5,8	855 764	-19,7	1 338 375	19,1	4 441 083	-2,9
	November	1 964 330	-19,2	563 976	-32,6	1 045 061	-6,5	3 573 367	-18,5
	December	1 359 655	-16,1	628 006	-3,5	749 650	-13,5	2 737 311	-12,8
	Total	25 264 821	-3,5	9 019 988	-5,9	12 471 969	1,4	46 756 778	-2,7
2008	January	1 521 590	-8,8	986 764	67,0	1 155 369	43,5	3 663 723	19,5
	February 2/	2 053 973	-3,2	497 356	-39,2	925 146	-4,8	3 476 475	-11,1

1/ The annual/monthly percentage change is the change in the values of recorded building plans passed by municipalities of the relevant year/month compared with the values of recorded building plans passed by municipalities of the comparable period of the previous year expressed as a percentage.

2/ Preliminary figures.

*Revised.

Table 4 - Seasonally adjusted values and percentage change of recorded building plans passed by larger municipalities at constant 2000 prices by type of building

Year and month		Residential buildings		Non-residential buildings		Additions and alterations		Total	
		R'000	% change 1/	R'000	% change 1/	R'000	% change 1/	R'000	% change 1/
2007	January	2 250 234	6,6	754 885	-1,9	1 079 910	7,3	4 085 029	5,1
	February	2 230 724	-0,9	926 556	22,7	1 054 716	-2,3	4 211 996	3,1
	March	2 518 930	12,9	520 873	-43,8	972 614	-7,8	4 012 417	-4,7
	April	2 321 763	-7,8	740 836	42,2	1 039 141	6,8	4 101 740	2,2
	May	2 293 342	-1,2	835 327	12,8	1 105 977	6,4	4 234 646	3,2
	June	2 127 736	-7,2	813 544	-2,6	979 139	-11,5	3 920 419	-7,4
	July	2 103 464	-1,1	712 795	-12,4	1 139 480	16,4	3 955 739	0,9
	August	2 033 473	-3,3	756 676	6,2	1 116 384	-2,0	3 906 533	-1,2
	September	1 852 564	-8,9	912 653	20,6	950 892	-14,8	3 716 109	-4,9
	October	2 003 437	8,1	732 303	-19,8	1 112 253	17,0	3 847 993	3,5
	November	1 818 452	-9,2	619 477	-15,4	996 392	-10,4	3 434 321	-10,8
	December	1 779 033	-2,2	762 915	23,2	870 320	-12,7	3 412 268	-0,6
2008	January	2 040 533	14,7	1 249 420	63,8	1 544 590	77,5	4 834 543	41,7
	February	2 157 106	5,7	559 942	-55,2	1 012 697	-34,4	3 729 745	-22,9
	Sep. - Nov.07	5 674 453		2 264 433		3 059 537		10 998 423	
	Dec.07 - Feb.08 2/	5 976 672	5,3	2 572 277	13,6	3 427 607	12,0	11 976 556	8,9

1/ The percentage change is the change in the seasonally adjusted values of recorded building plans passed by municipalities of the relevant month compared with the seasonally adjusted values of recorded building plans passed by municipalities of the previous month expressed as a percentage.

2/ The percentage change is the change in the seasonally adjusted values of recorded building plans passed by municipalities of the current quarter compared with the seasonally adjusted values of recorded building plans passed by municipalities of the previous quarter expressed as a percentage.

Table 5 - Values and percentage change of buildings reported as completed to larger municipalities at current prices by type of building

Year and month		Residential buildings		Non-residential buildings		Additions and alterations		Total	
		R'000	% change 1/	R'000	% change 1/	R'000	% change 1/	R'000	% change 1/
2007*	January	1 640 091	30,4	483 947	52,8	637 592	56,7	2 761 630	39,4
	February	2 199 075	24,0	883 785	116,2	564 580	2,1	3 647 440	33,4
	March	2 094 772	-0,9	778 599	18,7	668 881	13,5	3 542 252	5,5
	April	2 309 599	32,1	628 306	134,1	555 225	23,2	3 493 130	41,6
	May	2 657 575	33,6	713 817	40,0	586 416	1,9	3 957 808	28,7
	June	2 568 316	11,2	580 714	19,5	649 720	14,5	3 798 750	13,0
	July	2 777 925	22,5	1 123 723	236,8	720 404	29,9	4 622 052	46,4
	August	2 645 184	11,2	560 927	13,9	783 528	40,5	3 989 639	16,3
	September	2 331 025	-8,2	943 457	133,0	675 620	1,5	3 950 102	9,4
	October	2 775 892	17,1	1 216 247	58,3	844 278	40,0	4 836 417	29,2
	November	2 694 721	1,8	697 396	7,1	897 205	5,1	4 289 322	3,3
	December	2 514 553	-6,0	622 543	14,8	440 118	-19,3	3 577 214	-4,9
	Total	29 208 728	12,0	9 233 461	58,1	8 023 567	15,9	46 465 756	19,6
2008	January	1 605 221	-2,1	673 686	39,2	606 948	-4,8	2 885 855	4,5
	February 2/	1 927 137	-12,4	609 638	-31,0	898 917	59,2	3 435 692	-5,8

1/ The annual/monthly percentage change is the change in the values of buildings reported as completed to municipalities of the relevant year/month compared with the values of buildings reported as completed to municipalities of the comparable period of the previous year expressed as a percentage.

2/ Preliminary figures.

* Revised.

Table 6 - Seasonally adjusted values and percentage change of buildings reported as completed to larger municipalities at current prices by type of building

Year and month		Residential buildings		Non-residential buildings		Additions and alterations		Total	
		R'000	% change 1/	R'000	% change 1/	R'000	% change 1/	R'000	% change 1/
2007	January	2 364 566	-3,6	567 655	-11,3	722 267	15,3	3 654 488	-1,7
	February	2 524 781	6,8	906 002	59,6	583 719	-19,2	4 014 502	9,9
	March	2 275 694	-9,9	649 473	-28,3	669 166	14,6	3 594 333	-10,5
	April	2 601 113	14,3	886 218	36,5	661 525	-1,1	4 148 856	15,4
	May	2 580 655	-0,8	617 757	-30,3	556 230	-15,9	3 754 642	-9,5
	June	2 560 824	-0,8	589 004	-4,7	652 088	17,2	3 801 916	1,3
	July	2 571 253	0,4	1 372 712	133,1	710 570	9,0	4 654 535	22,4
	August	2 452 896	-4,6	620 818	-54,8	762 878	7,4	3 836 592	-17,6
	September	2 203 448	-10,2	860 744	38,6	658 292	-13,7	3 722 484	-3,0
	October	2 606 646	18,3	845 746	-1,7	770 851	17,1	4 223 243	13,5
	November	2 210 629	-15,2	668 083	-21,0	727 772	-5,6	3 606 484	-14,6
	December	2 288 568	3,5	751 142	12,4	503 117	-30,9	3 542 827	-1,8
2008	January	2 329 679	1,8	804 625	7,1	691 300	37,4	3 825 604	8,0
	February	2 210 513	-5,1	617 558	-23,2	935 078	35,3	3 763 149	-1,6
	Sep. - Nov.07	7 020 723		2 374 573		2 156 915		11 552 211	
	Dec.07 - Feb.08 2/	6 828 760	-2,7	2 173 325	-8,5	2 129 495	-1,3	11 131 580	-3,6

1/ The percentage change is the change in the seasonally adjusted values of buildings reported as completed to municipalities of the relevant month compared with the seasonally adjusted values of buildings reported as completed to municipalities of the previous month expressed as a percentage.

2/ The percentage change is the change in the seasonally adjusted values of buildings reported as completed to municipalities of the current quarter compared with the seasonally adjusted values of buildings reported as completed to municipalities of the previous quarter expressed as a percentage.

Table 7 - Values and percentage change of buildings reported as completed to larger municipalities at constant 2000 prices by type of building

Year and month		Residential buildings		Non-residential buildings		Additions and alterations		Total	
		R'000	% change 1/	R'000	% change 1/	R'000	% change 1/	R'000	% change 1/
2007*	January	1 058 853	20,9	332 381	43,0	427 914	48,2	1 819 148	30,2
	February	1 398 693	13,9	603 678	102,4	376 889	-3,8	2 379 260	24,0
	March	1 323 598	-9,2	530 381	11,1	445 624	7,5	2 299 603	-2,2
	April	1 459 602	21,5	427 128	119,9	366 485	16,5	2 253 215	31,8
	May	1 653 833	21,5	483 616	31,8	381 781	-4,8	2 519 230	18,3
	June	1 592 619	0,9	392 640	12,4	415 688	5,5	2 400 947	3,4
	July	1 699 015	10,7	754 177	218,5	454 227	19,2	2 907 419	35,1
	August	1 598 785	-0,3	374 451	7,3	483 063	26,8	2 456 299	5,3
	September	1 408 050	-17,6	628 552	120,6	415 000	-8,5	2 451 602	0,2
	October	1 656 790	4,7	802 803	49,8	516 378	25,9	2 975 971	17,7
	November	1 584 679	-9,5	454 034	-0,0	543 102	-6,1	2 581 815	-7,2
	December	1 466 384	-16,3	398 300	5,8	264 972	-28,2	2 129 656	-14,7
	Total	17 900 901	1,5	6 182 141	48,8	5 091 123	6,6	29 174 165	9,8
2008	January	931 131	-12,1	424 770	27,8	363 007	-15,2	1 718 908	-5,5
	February 2/	1 109 619	-20,7	375 856	-37,7	538 596	42,9	2 024 071	-14,9

1/ The annual/monthly percentage change is the change in the values of buildings reported as completed to municipalities of the relevant year/month compared with the values of buildings reported as completed to municipalities of the comparable period of the previous year expressed as a percentage.

2/ Preliminary figures.

*Revised.

Table 8 - Seasonally adjusted values and percentage change of buildings reported as completed to larger municipalities at constant 2000 prices by type of building

Year and month		Residential buildings		Non-residential buildings		Additions and alterations		Total	
		R'000	%change 1/	R'000	% change 1/	R'000	% change 1/	R'000	% change 1/
2007	January	1 587 196	-1,8	392 305	-12,0	483 365	14,6	2 462 866	-0,8
	February	1 617 825	1,9	625 918	59,5	388 881	-19,5	2 632 624	6,9
	March	1 437 704	-11,1	442 261	-29,3	444 237	14,2	2 324 202	-11,7
	April	1 640 348	14,1	601 369	36,0	436 306	-1,8	2 678 023	15,2
	May	1 602 392	-2,3	416 757	-30,7	362 757	-16,9	2 381 906	-11,1
	June	1 576 657	-1,6	395 010	-5,2	417 114	15,0	2 388 781	0,3
	July	1 552 598	-1,5	918 759	132,6	449 045	7,7	2 920 402	22,3
	August	1 458 360	-6,1	414 116	-54,9	473 834	5,5	2 346 310	-19,7
	September	1 328 508	-8,9	571 558	38,0	405 618	-14,4	2 305 684	-1,7
	October	1 566 594	17,9	558 216	-2,3	471 583	16,3	2 596 393	12,6
	November	1 300 351	-17,0	435 428	-22,0	439 508	-6,8	2 175 287	-16,2
	December	1 339 857	3,0	482 399	10,8	301 947	-31,3	2 124 203	-2,3
2008	January	1 401 477	4,6	510 862	5,9	412 165	36,5	2 324 504	9,4
	February	1 282 410	-8,5	385 470	-24,5	558 756	35,6	2 226 636	-4,2
	Sep. - Nov.07	4 195 453		1 565 202		1 316 709		7 077 364	
	Dec.07 - Feb.08 2/	4 023 744	-4,1	1 378 731	-11,9	1 272 868	-3,3	6 675 343	-5,7

1/ The percentage change is the change in the seasonally adjusted values of buildings reported as completed to municipalities of the relevant month compared with the seasonally adjusted values of buildings reported as completed to municipalities of the previous month expressed as a percentage.

2/ The percentage change is the change in the seasonally adjusted values of buildings reported as completed to municipalities of the current quarter compared with the seasonally adjusted values of buildings reported as completed to municipalities of the previous quarter expressed as a percentage.

Table 9 - Recorded building plans passed by larger municipalities at current prices by type of building: South Africa

			Feb. 2007*	Jan. 2008	Feb. 2008	Jan. - Feb. 2007	Jan. - Feb. 2008	% Change 1/	
Category of building	Type of building	Measuring unit							
1. Residential buildings	1. Dwelling-houses < 80 square metres	Number	2 864	1 013	1 743	6 100	2 756	-54,8	
		square metres	130 380	50 944	86 603	262 840	137 547	-47,7	
		R'000	257 195	108 991	211 797	532 610	320 788	-39,8	
	2. Dwelling-houses >= 80 square metres	Number	2 569	1 690	2 000	4 689	3 690	-21,3	
		square metres	655 169	430 016	503 153	1 181 455	933 169	-21,0	
		R'000	2 169 194	1 548 331	1 812 920	3 786 213	3 361 251	-11,2	
	3. Flats and townhouses	Number	2 564	1 898	3 144	4 658	5 042	8,2	
		square metres	311 207	253 504	356 771	544 577	610 275	12,1	
		R'000	1 021 054	1 021 958	1 464 822	1 847 373	2 486 780	34,6	
	4. Other residential buildings 2/	square metres	27 308	12 261	68 695	47 030	80 956	72,1	
		R'000	93 926	73 276	258 962	164 766	332 238	101,6	
	5. Total residential buildings		R'000	3 541 369	2 752 556	3 748 501	6 330 962	6 501 057	2,7
	2. Non-residential buildings	1. Office and banking space	square metres	82 477	32 989	55 261	115 138	88 250	-23,4
R'000			339 813	152 063	218 220	464 874	370 283	-20,3	
2. Shopping space		square metres	121 582	262 830	50 191	189 801	313 021	64,9	
		R'000	352 147	1 217 940	163 683	617 673	1 381 623	123,7	
3. Industrial and warehouse space		square metres	147 038	115 554	154 237	338 853	269 791	-20,4	
		R'000	466 209	362 892	480 847	1 013 783	843 739	-16,8	
4. Other non-residential buildings 3/		square metres	54 346	15 355	15 991	70 327	31 346	-55,4	
		R'000	207 691	52 161	44 924	257 711	97 085	-62,3	
5. Total non-residential buildings		R'000	1 365 860	1 785 056	907 674	2 354 041	2 692 730	14,4	
3. Additions and alterations	1. Dwelling-houses	square metres	400 287	321 336	333 419	739 960	654 755	-11,5	
		R'000	1 206 508	1 095 241	1 139 216	2 215 289	2 234 457	0,9	
	2. Other buildings 4/	square metres	98 984	227 177	129 606	186 865	356 783	90,9	
		R'000	415 297	994 822	549 176	752 832	1 543 998	105,1	
	3. Total additions and alterations		R'000	1 621 805	2 090 063	1 688 392	2 968 121	3 778 455	27,3
4. Recorded plans passed	1. Total at current prices	R'000	6 529 034	6 627 675	6 344 567	11 653 124	12 972 242	11,3	

1/ The percentage change between cumulative figures for 2007 and 2008.

2/ Other residential buildings include institutions for the disabled, boarding houses, hostels and tourism accommodation e.g. hotels, motels, guesthouses, holiday chalets, bed-and-breakfast accommodation and casinos.

3/ Other non-residential space includes churches, sport and recreation clubs, schools, crèches, hospitals and all other non-residential space.

4/ Other buildings include other residential buildings, non-residential buildings and internal alterations. No square metres are collected for internal alterations.

* Revised.

Table 10 - Recorded building plans passed by larger municipalities at current prices by type of building: Western Cape

			Feb. 2007*	Jan. 2008	Feb. 2008	Jan. - Feb. 2007	Jan. - Feb. 2008	% Change 1/
Category of building	Type of building	Measuring unit						
1. Residential buildings	1. Dwelling-houses < 80 square metres	Number	281	415	196	566	611	8,0
		square metres	14 108	19 300	10 159	26 536	29 459	11,0
		R'000	35 885	26 128	22 947	57 377	49 075	-14,5
	2. Dwelling-houses >= 80 square metres	Number	655	452	491	1 049	943	-10,1
		square metres	154 880	108 845	114 138	251 451	222 983	-11,3
		R'000	511 500	404 323	432 978	817 556	837 301	2,4
	3. Flats and townhouses	Number	361	375	1 417	910	1 792	96,9
		square metres	42 354	42 533	158 802	97 021	201 335	107,5
		R'000	132 375	157 797	571 704	332 906	729 501	119,1
	4. Other residential buildings 2/	square metres	22 415	0	445	34 500	445	-98,7
		R'000	77 054	0	1 689	124 961	1 689	-98,6
	5. Total residential buildings	R'000	756 814	588 248	1 029 318	1 332 800	1 617 566	21,4
2. Non-residential buildings	1. Office and banking space	square metres	30 741	3 689	11 481	33 100	15 170	-54,2
		R'000	103 310	13 932	43 433	108 979	57 365	-47,4
	2. Shopping space	square metres	8 404	0	13 775	20 374	13 775	-32,4
		R'000	25 332	0	54 575	65 456	54 575	-16,6
	3. Industrial and warehouse space	square metres	45 310	50 389	47 170	83 892	97 559	16,3
		R'000	143 782	173 292	158 907	263 987	332 199	25,8
	4. Other non-residential buildings 3/	square metres	22 318	3 106	6 849	24 813	9 955	-59,9
		R'000	68 760	7 720	14 337	76 924	22 057	-71,3
	5. Total non-residential buildings	R'000	341 184	194 944	271 252	515 346	466 196	-9,5
3. Additions and alterations	1. Dwelling-houses	square metres	111 452	72 685	90 304	212 840	162 989	-23,4
		R'000	322 614	235 217	293 489	612 155	528 706	-13,6
	2. Other buildings 4/	square metres	23 909	37 440	18 008	51 635	55 448	7,4
		R'000	121 415	152 706	106 987	216 947	259 693	19,7
	3. Total additions and alterations	R'000	444 029	387 923	400 476	829 102	788 399	-4,9
4. Recorded plans passed	1. Total at current prices	R'000	1 542 027	1 171 115	1 701 046	2 677 248	2 872 161	7,3

1/ The percentage change between cumulative figures for 2007 and 2008.

2/ Other residential buildings include institutions for the disabled, boarding houses, hostels and tourism accommodation e.g. hotels, motels, guesthouses, holiday chalets, bed-and-breakfast accommodation and casinos.

3/ Other non-residential space includes churches, sport and recreation clubs, schools, crèches, hospitals and all other non-residential space.

4/ Other buildings include other residential buildings, non-residential buildings and internal alterations. No square metres are collected for internal alterations.

* Revised.

Table 11 - Recorded building plans passed by larger municipalities at current prices by type of building: Eastern Cape

			Feb. 2007*	Jan. 2008	Feb. 2008	Jan. - Feb. 2007	Jan. - Feb. 2008	% Change 1/
Category of building	Type of building	Measuring unit						
1. Residential buildings	1. Dwelling-houses < 80 square metres	Number	11	44	45	135	89	-34,1
		square metres	679	2 109	2 002	6 008	4 111	-31,6
		R'000	1 329	4 200	3 751	6 076	7 951	30,9
	2. Dwelling-houses >= 80 square metres	Number	177	68	83	295	151	-48,8
		square metres	45 449	20 490	27 053	73 797	47 543	-35,6
		R'000	127 101	81 999	86 554	194 749	168 553	-13,5
	3. Flats and townhouses	Number	21	0	0	44	0	
		square metres	4 440	0	0	7 121	0	
		R'000	10 951	0	0	17 731	0	
	4. Other residential buildings 2/	square metres	421	0	0	421	0	
		R'000	1 108	0	0	1 108	0	
	5. Total residential buildings	R'000	140 489	86 199	90 305	219 664	176 504	-19,6
2. Non-residential buildings	1. Office and banking space	square metres	1 045	0	0	1 129	0	
		R'000	2 742	0	0	2 886	0	
	2. Shopping space	square metres	65 723	83 563	1 936	65 939	85 499	29,7
		R'000	172 523	357 772	4 353	173 105	362 125	109,2
	3. Industrial and warehouse space	square metres	7 302	3 349	7 686	13 922	11 035	-20,7
		R'000	20 607	8 479	16 756	38 534	25 235	-34,5
	4. Other non-residential buildings 3/	square metres	347	383	255	1 504	638	-57,6
		R'000	806	1 071	612	3 816	1 683	-55,9
	5. Total non-residential buildings	R'000	196 678	367 322	21 721	218 341	389 043	78,2
	3. Additions and alterations	1. Dwelling-houses	square metres	37 726	14 796	16 351	63 043	31 147
R'000			93 160	38 406	41 078	156 645	79 484	-49,3
2. Other buildings 4/		square metres	7 138	5 532	850	9 001	6 382	-29,1
		R'000	15 900	14 809	7 586	23 024	22 395	-2,7
3. Total additions and alterations		R'000	109 060	53 215	48 664	179 669	101 879	-43,3
4. Recorded plans passed	1. Total at current prices	R'000	446 227	506 736	160 690	617 674	667 426	8,1

1/ The percentage change between cumulative figures for 2007 and 2008.

2/ Other residential buildings include institutions for the disabled, boarding houses, hostels and tourism accommodation e.g. hotels, motels, guesthouses, holiday chalets, bed-and-breakfast accommodation and casinos.

3/ Other non-residential space includes churches, sport and recreation clubs, schools, crèches, hospitals and all other non-residential space.

4/ Other buildings include other residential buildings, non-residential buildings and internal alterations. No square metres are collected for internal alterations.

* Revised.

Table 12 - Recorded building plans passed by larger municipalities at current prices by type of building: Northern Cape

			Feb. 2007*	Jan. 2008	Feb. 2008	Jan. - Feb. 2007	Jan. - Feb. 2008	% Change 1/
Category of building	Type of building	Measuring unit						
1. Residential buildings	1. Dwelling-houses < 80 square metres	Number	10	7	0	16	7	-56,3
		square metres	465	278	0	847	278	-67,2
		R'000	1 486	469	0	2 788	469	-83,2
	2. Dwelling-houses >= 80 square metres	Number	24	24	23	58	47	-19,0
		square metres	6 110	4 803	5 053	12 600	9 856	-21,8
		R'000	19 701	15 706	15 335	34 894	31 041	-11,0
	3. Flats and townhouses	Number	6	12	1	6	13	116,7
		square metres	1 213	1 885	148	1 213	2 033	67,6
		R'000	3 362	5 278	414	3 362	5 692	69,3
	4. Other residential buildings 2/	square metres	0	1 236	931	0	2 167	
		R'000	0	4 326	3 259	0	7 585	
	5. Total residential buildings	R'000	24 549	25 779	19 008	41 044	44 787	9,1
2. Non-residential buildings	1. Office and banking space	square metres	1 078	563	2 587	1 078	3 150	192,2
		R'000	2 587	1 654	7 736	2 587	9 390	263,0
	2. Shopping space	square metres	3 132	0	2 623	4 590	2 623	-42,9
		R'000	5 304	0	8 516	7 928	8 516	7,4
	3. Industrial and warehouse space	square metres	836	952	898	836	1 850	121,3
		R'000	1 672	2 561	2 514	1 672	5 075	203,5
	4. Other non-residential buildings 3/	square metres	0	324	253	139	577	315,1
		R'000	0	907	708	273	1 615	491,6
	5. Total non-residential buildings	R'000	9 563	5 122	19 474	12 460	24 596	97,4
3. Additions and alterations	1. Dwelling-houses	square metres	3 416	3 146	6 450	5 347	9 596	79,5
		R'000	7 062	9 368	19 293	10 968	28 661	161,3
	2. Other buildings 4/	square metres	579	72	842	579	914	57,9
		R'000	2 148	402	2 358	2 648	2 760	4,2
	3. Total additions and alterations	R'000	9 210	9 770	21 651	13 616	31 421	130,8
4. Recorded plans passed	1. Total at current prices	R'000	43 322	40 671	60 133	67 120	100 804	50,2

1/ The percentage change between cumulative figures for 2007 and 2008.

2/ Other residential buildings include institutions for the disabled, boarding houses, hostels and tourism accommodation e.g. hotels, motels, guesthouses, holiday chalets, bed-and-breakfast accommodation and casinos.

3/ Other non-residential space includes churches, sport and recreation clubs, schools, crèches, hospitals and all other non-residential space.

4/ Other buildings include other residential buildings, non-residential buildings and internal alterations. No square metres are collected for internal alterations.

* Revised.

Table 13 - Recorded building plans passed by larger municipalities at current prices by type of building: Free State

			Feb. 2007*	Jan. 2008	Feb. 2008	Jan. - Feb. 2007	Jan. - Feb. 2008	% Change 1/
Category of building	Type of building	Measuring unit						
1. Residential buildings	1. Dwelling-houses < 80 square metres	Number	56	8	13	66	21	-68,2
		square metres	2 676	463	822	3 333	1 285	-61,4
		R'000	3 373	1 170	1 960	4 801	3 130	-34,8
	2. Dwelling-houses >= 80 square metres	Number	108	75	132	257	207	-19,5
		square metres	21 615	19 392	31 398	53 667	50 790	-5,4
		R'000	58 443	55 065	87 226	133 455	142 291	6,6
	3. Flats and townhouses	Number	167	64	38	255	102	-60,0
		square metres	12 777	6 548	4 950	21 559	11 498	-46,7
		R'000	31 197	18 394	13 591	54 219	31 985	-41,0
	4. Other residential buildings 2/	square metres	0	0	58	391	58	-85,2
		R'000	0	0	128	608	128	-78,9
	5. Total residential buildings	R'000	93 013	74 629	102 905	193 083	177 534	-8,1
2. Non-residential buildings	1. Office and banking space	square metres	0	0	1 018	5 055	1 018	-79,9
		R'000	0	0	2 461	18 198	2 461	-86,5
	2. Shopping space	square metres	1 680	174	820	1 680	994	-40,8
		R'000	6 048	696	2 460	6 048	3 156	-47,8
	3. Industrial and warehouse space	square metres	4 674	0	2 072	7 713	2 072	-73,1
		R'000	6 790	0	5 375	11 630	5 375	-53,8
	4. Other non-residential buildings 3/	square metres	932	1 466	2 606	1 724	4 072	136,2
		R'000	2 423	5 123	7 892	3 849	13 015	238,1
	5. Total non-residential buildings	R'000	15 261	5 819	18 188	39 725	24 007	-39,6
3. Additions and alterations	1. Dwelling-houses	square metres	16 704	11 489	17 619	34 196	29 108	-14,9
		R'000	41 295	27 533	43 050	81 431	70 583	-13,3
	2. Other buildings 4/	square metres	3 395	1 863	4 461	5 705	6 324	10,9
		R'000	19 846	17 250	13 213	28 805	30 463	5,8
	3. Total additions and alterations	R'000	61 141	44 783	56 263	110 236	101 046	-8,3
4. Recorded plans passed	1. Total at current prices	R'000	169 415	125 231	177 356	343 044	302 587	-11,8

1/ The percentage change between cumulative figures for 2007 and 2008.

2/ Other residential buildings include institutions for the disabled, boarding houses, hostels and tourism accommodation e.g. hotels, motels, guesthouses, holiday chalets, bed-and-breakfast accommodation and casinos.

3/ Other non-residential space includes churches, sport and recreation clubs, schools, crèches, hospitals and all other non-residential space.

4/ Other buildings include other residential buildings, non-residential buildings and internal alterations. No square metres are collected for internal alterations.

* Revised.

Table 14 - Recorded building plans passed by larger municipalities at current prices by type of building: KwaZulu-Natal

			Feb. 2007*	Jan. 2008	Feb. 2008	Jan. - Feb. 2007	Jan. - Feb. 2008	% Change 1/	
Category of building	Type of building	Measuring unit							
1. Residential buildings	1. Dwelling-houses < 80 square metres	Number	73	61	79	160	140	-12,5	
		square metres	4 262	3 466	4 386	9 320	7 852	-15,8	
		R'000	14 958	15 011	17 428	31 548	32 439	2,8	
	2. Dwelling-houses >= 80 square metres	Number	207	190	180	367	370	0,8	
		square metres	52 667	55 122	51 186	88 991	106 308	19,5	
		R'000	180 566	249 123	227 298	324 209	476 421	46,9	
	3. Flats and townhouses	Number	679	199	736	1 000	935	-6,5	
		square metres	73 225	36 266	94 984	111 958	131 250	17,2	
		R'000	260 880	210 767	507 341	399 096	718 108	79,9	
	4. Other residential buildings 2/	square metres	580	1 381	205	1 672	1 586	-5,1	
		R'000	2 797	7 000	750	6 310	7 750	22,8	
	5. Total residential buildings		R'000	459 201	481 901	752 817	761 163	1 234 718	62,2
	2. Non-residential buildings	1. Office and banking space	square metres	2 866	7 087	18 048	9 201	25 135	173,2
R'000			8 725	26 244	90 470	43 677	116 714	167,2	
2. Shopping space		square metres	1 867	85 138	15 455	11 129	100 593	803,9	
		R'000	6 985	461 103	48 004	50 495	509 107	908,2	
3. Industrial and warehouse space		square metres	17 030	18 412	36 397	48 794	54 809	12,3	
		R'000	46 258	59 268	108 967	136 663	168 235	23,1	
4. Other non-residential buildings 3/		square metres	10 826	3 674	640	15 655	4 314	-72,4	
		R'000	45 979	16 870	2 798	62 497	19 668	-68,5	
5. Total non-residential buildings		R'000	107 947	563 485	250 239	293 332	813 724	177,4	
3. Additions and alterations	1. Dwelling-houses	square metres	50 621	55 510	53 331	89 985	108 841	21,0	
		R'000	182 712	222 855	225 440	317 358	448 295	41,3	
	2. Other buildings 4/	square metres	30 390	21 773	28 998	42 426	50 771	19,7	
		R'000	137 220	94 766	90 723	191 207	185 489	-3,0	
	3. Total additions and alterations		R'000	319 932	317 621	316 163	508 565	633 784	24,6
4. Recorded plans passed	1. Total at current prices	R'000	887 080	1 363 007	1 319 219	1 563 060	2 682 226	71,6	

1/ The percentage change between cumulative figures for 2007 and 2008.

2/ Other residential buildings include institutions for the disabled, boarding houses, hostels and tourism accommodation e.g. hotels, motels, guesthouses, holiday chalets, bed-and-breakfast accommodation and casinos.

3/ Other non-residential space includes churches, sport and recreation clubs, schools, crèches, hospitals and all other non-residential space.

4/ Other buildings include other residential buildings, non-residential buildings and internal alterations. No square metres are collected for internal alterations.

* Revised.

Table 15 - Recorded building plans passed by larger municipalities at current prices by type of building: North West

			Feb. 2007*	Jan. 2008	Feb. 2008	Jan. - Feb. 2007	Jan. - Feb. 2008	% Change 1/
Category of building	Type of building	Measuring unit						
1. Residential buildings	1. Dwelling-houses < 80 square metres	Number	954	68	48	1 120	116	-89,6
		square metres	36 955	4 850	2 767	42 770	7 617	-82,2
		R'000	42 639	7 329	7 043	51 655	14 372	-72,2
	2. Dwelling-houses >= 80 square metres	Number	208	127	198	397	325	-18,1
		square metres	48 067	28 971	34 383	85 899	63 354	-26,2
		R'000	143 341	70 338	87 610	240 327	157 948	-34,3
	3. Flats and townhouses	Number	237	125	74	334	199	-40,4
		square metres	43 743	13 452	6 585	56 735	20 037	-64,7
		R'000	105 157	33 146	19 592	139 446	52 738	-62,2
	4. Other residential buildings 2/	square metres	801	139	367	3 081	506	-83,6
		R'000	2 005	348	733	9 985	1 081	-89,2
	5. Total residential buildings	R'000	293 142	111 161	114 978	441 413	226 139	-48,8
2. Non-residential buildings	1. Office and banking space	square metres	4 525	0	11 436	4 525	11 436	152,7
		R'000	14 685	0	32 021	14 685	32 021	118,1
	2. Shopping space	square metres	3 847	4 321	9 858	16 596	14 179	-14,6
		R'000	8 465	8 037	28 093	50 137	36 130	-27,9
	3. Industrial and warehouse space	square metres	6 820	0	4 062	9 182	4 062	-55,8
		R'000	15 174	0	5 479	19 050	5 479	-71,2
	4. Other non-residential buildings 3/	square metres	959	0	0	4 654	0	
		R'000	2 434	0	0	14 857	0	
	5. Total non-residential buildings	R'000	40 758	8 037	65 593	98 729	73 630	-25,4
3. Additions and alterations	1. Dwelling-houses	square metres	13 465	8 664	11 854	25 464	20 518	-19,4
		R'000	31 608	19 742	25 779	55 908	45 521	-18,6
	2. Other buildings 4/	square metres	1 540	1 887	4 134	4 454	6 021	35,2
		R'000	4 372	3 297	9 053	12 798	12 350	-3,5
	3. Total additions and alterations	R'000	35 980	23 039	34 832	68 706	57 871	-15,8
4. Recorded plans passed	1. Total at current prices	R'000	369 880	142 237	215 403	608 848	357 640	-41,3

1/ The percentage change between cumulative figures for 2007 and 2008.

2/ Other residential buildings include institutions for the disabled, boarding houses, hostels and tourism accommodation e.g. hotels, motels, guesthouses, holiday chalets, bed-and-breakfast accommodation and casinos.

3/ Other non-residential space includes churches, sport and recreation clubs, schools, crèches, hospitals and all other non-residential space.

4/ Other buildings include other residential buildings, non-residential buildings and internal alterations. No square metres are collected for internal alterations.

* Revised.

Table 16 - Recorded building plans passed by larger municipalities at current prices by type of building: Gauteng

			Feb. 2007*	Jan. 2008	Feb. 2008	Jan. - Feb. 2007	Jan. - Feb. 2008	% Change 1/
Category of building	Type of building	Measuring unit						
1. Residential buildings	1. Dwelling-houses < 80 square metres	Number	1 386	367	1 295	3 552	1 662	-53,2
		square metres	65 337	17 626	62 543	153 573	80 169	-47,8
		R'000	143 248	47 065	149 573	341 403	196 638	-42,4
	2. Dwelling-houses >= 80 square metres	Number	898	590	660	1 642	1 250	-23,9
		square metres	255 430	153 511	187 526	471 205	341 037	-27,6
		R'000	877 367	548 282	721 073	1 611 143	1 269 355	-21,2
	3. Flats and townhouses	Number	933	1 070	725	1 686	1 795	6,5
		square metres	114 372	146 478	77 894	208 800	224 372	7,5
		R'000	429 235	577 011	312 832	784 428	889 843	13,4
	4. Other residential buildings 2/	square metres	1 637	9 051	61 742	1 700	70 793	4 064,3
		R'000	7 064	60 642	240 297	7 212	300 939	4 072,8
	5. Total residential buildings	R'000	1 456 914	1 233 000	1 423 775	2 744 186	2 656 775	-3,2
	2. Non-residential buildings	1. Office and banking space	square metres	38 267	17 684	4 546	51 840	22 230
R'000			197 553	94 369	26 621	249 837	120 990	-51,6
2. Shopping space		square metres	30 774	20 458	5 724	59 947	26 182	-56,3
		R'000	118 163	75 098	17 682	245 328	92 780	-62,2
3. Industrial and warehouse space		square metres	41 006	29 665	50 779	142 408	80 444	-43,5
		R'000	117 765	83 964	169 916	404 565	253 880	-37,2
4. Other non-residential buildings 3/		square metres	17 257	994	1 302	20 131	2 296	-88,6
		R'000	82 365	3 546	4 687	90 571	8 233	-90,9
5. Total non-residential buildings		R'000	515 846	256 977	218 906	990 301	475 883	-51,9
3. Additions and alterations	1. Dwelling-houses	square metres	137 398	135 827	111 722	252 161	247 549	-1,8
		R'000	455 738	487 751	419 790	842 303	907 541	7,7
	2. Other buildings 4/	square metres	28 333	155 060	66 383	66 712	221 443	231,9
		R'000	104 639	698 304	296 640	261 185	994 944	280,9
	3. Total additions and alterations	R'000	560 377	1 186 055	716 430	1 103 488	1 902 485	72,4
4. Recorded plans passed	1. Total at current prices	R'000	2 533 137	2 676 032	2 359 111	4 837 975	5 035 143	4,1

1/ The percentage change between cumulative figures for 2007 and 2008.

2/ Other residential buildings include institutions for the disabled, boarding houses, hostels and tourism accommodation e.g. hotels, motels, guesthouses, holiday chalets, bed-and-breakfast accommodation and casinos.

3/ Other non-residential space includes churches, sport and recreation clubs, schools, crèches, hospitals and all other non-residential space.

4/ Other buildings include other residential buildings, non-residential buildings and internal alterations. No square metres are collected for internal alterations.

* Revised.

Table 17 - Recorded building plans passed by larger municipalities at current prices by type of building: Mpumalanga

			Feb. 2007	Jan. 2008	Feb. 2008	Jan. - Feb. 2007	Jan. - Feb. 2008	% Change 1/
Category of building	Type of building	Measuring unit						
1. Residential buildings	1. Dwelling-houses < 80 square metres	Number	50	25	49	386	74	-80,8
		square metres	3 056	1 687	2 784	14 290	4 471	-68,7
		R'000	6 651	5 079	6 104	20 808	11 183	-46,3
	2. Dwelling-houses >= 80 square metres	Number	192	110	150	444	260	-41,4
		square metres	49 866	26 191	36 341	106 686	62 532	-41,4
		R'000	198 861	83 298	105 098	333 774	188 396	-43,6
	3. Flats and townhouses	Number	73	17	106	276	123	-55,4
		square metres	9 470	2 975	6 609	23 243	9 584	-58,8
		R'000	23 690	7 780	20 283	75 373	28 063	-62,8
	4. Other residential buildings 2/	square metres	0	0	0	3 811	0	
		R'000	0	0	0	10 684	0	
	5. Total residential buildings	R'000	229 202	96 157	131 485	440 639	227 642	-48,3
2. Non-residential buildings	1. Office and banking space	square metres	3 603	3 966	1 680	8 107	5 646	-30,4
		R'000	9 331	15 864	4 315	21 267	20 179	-5,1
	2. Shopping space	square metres	0	59 170	0	894	59 170	6 518,6
		R'000	0	292 843	0	3 378	292 843	8 569,1
	3. Industrial and warehouse space	square metres	22 454	12 519	387	27 777	12 906	-53,5
		R'000	110 146	34 658	968	126 859	35 626	-71,9
	4. Other non-residential buildings 3/	square metres	1 197	1 840	398	1 197	2 238	87,0
		R'000	3 394	6 780	800	3 394	7 580	123,3
	5. Total non-residential buildings	R'000	122 871	350 145	6 083	154 898	356 228	130,0
	3. Additions and alterations	1. Dwelling-houses	square metres	17 632	12 641	17 065	34 485	-13,9
			R'000	43 552	37 923	49 121	84 988	2,4
		2. Other buildings 4/	square metres	2 839	2 496	5 328	4 520	73,1
			R'000	7 760	10 690	21 336	32 026	157,2
	3. Total additions and alterations	R'000	51 312	48 613	70 457	97 438	119 070	22,2
4. Recorded plans passed	1. Total at current prices	R'000	403 385	494 915	208 025	692 975	702 940	1,4

1/ The percentage change between cumulative figures for 2007 and 2008.

2/ Other residential buildings include institutions for the disabled, boarding houses, hostels and tourism accommodation e.g. hotels, motels, guesthouses, holiday chalets, bed-and-breakfast accommodation and casinos.

3/ Other non-residential space includes churches, sport and recreation clubs, schools, crèches, hospitals and all other non-residential space.

4/ Other buildings include other residential buildings, non-residential buildings and internal alterations. No square metres are collected for internal alterations.

Table 18 - Recorded building plans passed by larger municipalities at current prices by type of building: Limpopo

			Feb. 2007	Jan. 2008	Feb. 2008	Jan. - Feb. 2007	Jan. - Feb. 2008	% Change 1/
Category of building	Type of building	Measuring unit						
1. Dwelling-houses < 80 square metres	1. Dwelling-houses < 80 square metres	Number	43	18	18	99	36	-63,6
		square metres	2 842	1 165	1 140	6 163	2 305	-62,6
		R'000	7 626	2 540	2 991	16 154	5 531	-65,8
	2. Dwelling-houses >= 80 square metres	Number	100	54	83	180	137	-23,9
		square metres	21 085	12 691	16 075	37 159	28 766	-22,6
		R'000	52 314	40 197	49 748	96 106	89 945	-6,4
	3. Flats and townhouses	Number	87	36	47	147	83	-43,5
		square metres	9 613	3 367	6 799	16 927	10 166	-39,9
		R'000	24 207	11 785	19 065	40 812	30 850	-24,4
	4. Other residential buildings 2/	square metres	1 454	454	4 947	1 454	5 401	271,5
		R'000	3 898	960	12 106	3 898	13 066	235,2
	5. Total residential buildings	R'000	88 045	55 482	83 910	156 970	139 392	-11,2
	2. Dwelling-houses >= 80 square metres	1. Office and banking space	square metres	352	0	4 465	1 103	4 465
R'000			880	0	11 163	2 758	11 163	304,7
2. Shopping space		square metres	6 155	10 006	0	8 652	10 006	15,6
		R'000	9 327	22 391	0	15 798	22 391	41,7
3. Industrial and warehouse space		square metres	1 606	268	4 786	4 329	5 054	16,7
		R'000	4 015	670	11 965	10 823	12 635	16,7
4. Other non-residential buildings 3/		square metres	510	3 568	3 688	510	7 256	1 322,7
		R'000	1 530	10 144	13 090	1 530	23 234	1 418,6
5. Total non-residential buildings		R'000	15 752	33 205	36 218	30 909	69 423	124,6
3. Flats and townhouses	1. Dwelling-houses	square metres	11 873	6 578	8 723	22 439	15 301	-31,8
		R'000	28 767	16 446	22 176	53 533	38 622	-27,9
	2. Other buildings 4/	square metres	861	1 054	602	1 833	1 656	-9,7
		R'000	1 997	2 598	1 280	3 768	3 878	2,9
	3. Total additions and alterations	R'000	30 764	19 044	23 456	57 301	42 500	-25,8
4. Other residential buildings 2/	1. Total at current prices	R'000	134 561	107 731	143 584	245 180	251 315	2,5

1/ The percentage change between cumulative figures for 2007 and 2008.

2/ Other residential buildings include institutions for the disabled, boarding houses, hostels and tourism accommodation e.g. hotels, motels, guesthouses, holiday chalets, bed-and-breakfast accommodation and casinos.

3/ Other non-residential space includes churches, sport and recreation clubs, schools, crèches, hospitals and all other non-residential space.

4/ Other buildings include other residential buildings, non-residential buildings and internal alterations. No square metres are collected for internal alterations.

Table 19 - Buildings reported as completed to larger municipalities at current prices by type of building: South Africa

			Feb. 2007*	Jan. 2008	Feb. 2008	Jan. - Feb. 2007	Jan. - Feb. 2008	% Change 1/
Category of building	Type of building	Measuring unit						
1. Residential buildings	1. Dwelling-houses < 80 square metres	Number	3 219	773	1 848	4 313	2 621	-39,2
		square metres	123 792	38 215	78 691	172 667	116 906	-32,3
		R'000	197 298	92 926	157 824	306 291	250 750	-18,1
	2. Dwelling-houses >= 80 square metres	Number	1 691	1 297	1 712	3 036	3 009	-0,9
		square metres	382 548	290 269	370 886	690 007	661 155	-4,2
		R'000	1 160 894	941 715	1 172 144	2 082 807	2 113 859	1,5
	3. Flats and townhouses	Number	1 908	1 286	1 593	3 538	2 879	-18,6
		square metres	240 990	141 705	162 031	401 878	303 736	-24,4
		R'000	693 495	538 087	569 793	1 223 018	1 107 880	-9,4
	4. Other residential buildings 2/	square metres	25 811	9 570	5 703	30 988	15 273	-50,7
		R'000	147 388	32 493	27 376	227 050	59 869	-73,6
	5. Total residential buildings	R'000	2 199 075	1 605 221	1 927 137	3 839 166	3 532 358	-8,0
2. Non-residential buildings	1. Office and banking space	square metres	30 607	19 575	65 590	73 691	85 165	15,6
		R'000	130 916	88 737	256 413	273 493	345 150	26,2
	2. Shopping space	square metres	72 369	78 731	29 360	88 085	108 091	22,7
		R'000	282 962	302 322	89 299	327 147	391 621	19,7
	3. Industrial and warehouse space	square metres	140 080	91 364	86 604	208 238	177 968	-14,5
		R'000	405 583	248 076	236 210	609 450	484 286	-20,5
	4. Other non-residential buildings 3/	square metres	19 979	11 653	9 481	45 956	21 134	-54,0
		R'000	64 324	34 551	27 716	157 642	62 267	-60,5
	5. Total non-residential buildings	R'000	883 785	673 686	609 638	1 367 732	1 283 324	-6,2
3. Additions and alterations	1. Dwelling-houses	square metres	151 825	150 498	160 542	338 109	311 040	-8,0
		R'000	417 199	460 763	489 497	928 231	950 260	2,4
	2. Other buildings 4/	square metres	53 443	40 476	122 815	90 728	163 291	80,0
		R'000	147 381	146 185	409 420	273 941	555 605	102,8
	3. Total additions and alterations	R'000	564 580	606 948	898 917	1 202 172	1 505 865	25,3
4. Recorded buildings completed	1. Total at current prices	R'000	3 647 440	2 885 855	3 435 692	6 409 070	6 321 547	-1,4

1/ The percentage change between cumulative figures for 2007 and 2008.

2/ Other residential buildings include institutions for the disabled, boarding houses, hostels and tourism accommodation e.g. hotels, motels, guesthouses, holiday chalets, bed-and-breakfast accommodation and casinos.

3/ Other non-residential space includes churches, sport and recreation clubs, schools, crèches, hospitals and all other non-residential space.

4/ Other buildings include other residential buildings, non-residential buildings and internal alterations. No square metres are collected for internal alterations.

* Revised.

Table 20 - Buildings reported as completed to larger municipalities at current prices by type of building: Western Cape

			Feb. 2007	Jan. 2008	Feb. 2008	Jan. - Feb. 2007	Jan. - Feb. 2008	% Change 1/
Category of building	Type of building	Measuring unit						
1. Residential buildings	1. Dwelling-houses < 80 square metres	Number	1 463	63	272	1 568	335	-78,6
		square metres	49 048	3 127	11 736	54 830	14 863	-72,9
		R'000	54 474	8 210	21 146	68 616	29 356	-57,2
	2. Dwelling-houses >= 80 square metres	Number	437	328	496	832	824	-1,0
		square metres	91 822	82 852	109 997	178 330	192 849	8,1
		R'000	268 293	271 260	345 045	515 739	616 305	19,5
	3. Flats and townhouses	Number	486	179	736	1 273	915	-28,1
		square metres	49 224	21 185	58 009	115 296	79 194	-31,3
		R'000	156 028	73 086	228 410	369 670	301 496	-18,4
	4. Other residential buildings 2/	square metres	13 205	0	0	13 205	0	
		R'000	45 488	0	0	45 488	0	
	5. Total residential buildings	R'000	524 283	352 556	594 601	999 513	947 157	-5,2
2. Non-residential buildings	1. Office and banking space	square metres	848	513	27 371	11 713	27 884	138,1
		R'000	2 761	1 693	89 489	33 624	91 182	171,2
	2. Shopping space	square metres	284	29 134	1 050	5 132	30 184	488,2
		R'000	937	105 847	3 771	11 744	109 618	833,4
	3. Industrial and warehouse space	square metres	64 002	29 327	68 429	75 268	97 756	29,9
		R'000	194 558	77 705	184 665	225 164	262 370	16,5
	4. Other non-residential buildings 3/	square metres	1 964	4 097	1 172	11 077	5 269	-52,4
		R'000	5 865	6 773	4 475	32 966	11 248	-65,9
	5. Total non-residential buildings	R'000	204 121	192 018	282 400	303 498	474 418	56,3
	3. Additions and alterations	1. Dwelling-houses	square metres	59 525	63 044	66 224	119 199	129 268
R'000			152 576	182 904	174 013	311 226	356 917	14,7
2. Other buildings 4/		square metres	26 488	23 227	41 094	39 124	64 321	64,4
		R'000	70 094	75 826	167 849	117 203	243 675	107,9
3. Total additions and alterations		R'000	222 670	258 730	341 862	428 429	600 592	40,2
4. Recorded buildings completed	1. Total at current prices	R'000	951 074	803 304	1 218 863	1 731 440	2 022 167	16,8

1/ The percentage change between cumulative figures for 2007 and 2008.

2/ Other residential buildings include institutions for the disabled, boarding houses, hostels and tourism accommodation e.g. hotels, motels, guesthouses, holiday chalets, bed-and-breakfast accommodation and casinos.

3/ Other non-residential space includes churches, sport and recreation clubs, schools, crèches, hospitals and all other non-residential space.

4/ Other buildings include other residential buildings, non-residential buildings and internal alterations. No square metres are collected for internal alterations.

Table 21 - Buildings reported as completed to larger municipalities at current prices by type of building: Eastern Cape

			Feb. 2007	Jan. 2008	Feb. 2008	Jan. - Feb. 2007	Jan. - Feb. 2008	% Change 1/
Category of building								
1. Residential buildings	1. Dwelling-houses < 80 square metres	Number	57	62	43	163	105	-35,6
		square metres	2 477	2 581	2 120	6 795	4 701	-30,8
		R'000	4 575	3 463	4 260	11 863	7 723	-34,9
	2. Dwelling-houses >= 80 square metres	Number	76	86	80	183	166	-9,3
		square metres	10 892	20 563	16 583	27 862	37 146	33,3
		R'000	27 765	60 345	42 527	71 672	102 872	43,5
	3. Flats and townhouses	Number	29	71	44	83	115	38,6
		square metres	6 149	6 089	5 380	11 032	11 469	4,0
		R'000	13 591	17 072	17 563	25 579	34 635	35,4
	4. Other residential buildings 2/	square metres	0	0	936	0	936	
		R'000	0	0	1 920	0	1 920	
	5. Total residential buildings	R'000	45 931	80 880	66 270	109 114	147 150	34,9
2. Non-residential buildings	1. Office and banking space	square metres	0	0	69	0	69	
		R'000	0	0	158	0	158	
	2. Shopping space	square metres	0	23 359	2 591	1 327	25 950	1 855,5
		R'000	0	77 959	7 101	3 211	85 060	2 549,0
	3. Industrial and warehouse space	square metres	14 123	958	552	15 144	1 510	-90,0
		R'000	37 189	1 288	1 063	39 146	2 351	-94,0
	4. Other non-residential buildings 3/	square metres	707	139	46	707	185	-73,8
		R'000	1 819	338	100	1 819	438	-75,9
	5. Total non-residential buildings	R'000	39 008	79 585	8 422	44 176	88 007	99,2
3. Additions and alterations	1. Dwelling-houses	square metres	6 376	7 169	8 215	20 586	15 384	-25,3
		R'000	12 629	13 952	17 972	39 057	31 924	-18,3
	2. Other buildings 4/	square metres	8 456	696	9 340	8 662	10 036	15,9
		R'000	18 485	738	21 199	18 946	21 937	15,8
	3. Total additions and alterations	R'000	31 114	14 690	39 171	58 003	53 861	-7,1
4. Recorded buildings completed	1. Total at current prices	R'000	116 053	175 155	113 863	211 293	289 018	36,8

1/ The percentage change between cumulative figures for 2007 and 2008.

2/ Other residential buildings include institutions for the disabled, boarding houses, hostels and tourism accommodation e.g. hotels, motels, guesthouses, holiday chalets, bed-and-breakfast accommodation and casinos.

3/ Other non-residential space includes churches, sport and recreation clubs, schools, crèches, hospitals and all other non-residential space.

4/ Other buildings include other residential buildings, non-residential buildings and internal alterations. No square metres are collected for internal alterations.

Table 22 - Buildings reported as completed to larger municipalities at current prices by type of building: Northern Cape

			Feb. 2007	Jan. 2008	Feb. 2008	Jan. - Feb. 2007	Jan. - Feb. 2008	% Change 1/
Category of building	Type of building	Measuring unit						
1. Residential buildings	1. Dwelling-houses < 80 square metres	Number	8	1	0	11	1	-90,9
		square metres	339	40	0	539	40	-92,6
		R'000	400	112	0	760	112	-85,3
	2. Dwelling-houses >= 80 square metres	Number	9	20	15	18	35	94,4
		square metres	1 502	3 024	2 477	3 368	5 501	63,3
		R'000	3 952	8 531	7 418	8 188	15 949	94,8
	3. Flats and townhouses	Number	12	21	6	19	27	42,1
		square metres	1 684	2 752	688	2 687	3 440	28,0
		R'000	3 125	7 706	2 064	4 930	9 770	98,2
	4. Other residential buildings 2/	square metres	0	0	915	0	915	
		R'000	0	0	2 562	0	2 562	
	5. Total residential buildings	R'000	7 477	16 349	12 044	13 878	28 393	104,6
2. Non-residential buildings	1. Office and banking space	square metres	5 682	153	0	5 682	153	-97,3
		R'000	14 000	428	0	14 000	428	-96,9
	2. Shopping space	square metres	446	176	659	2 156	835	-61,3
		R'000	941	634	2 372	4 177	3 006	-28,0
	3. Industrial and warehouse space	square metres	482	302	0	482	302	-37,3
		R'000	1 400	664	0	1 400	664	-52,6
	4. Other non-residential buildings 3/	square metres	0	0	0	0	0	
		R'000	0	0	0	0	0	
	5. Total non-residential buildings	R'000	16 341	1 726	2 372	19 577	4 098	-79,1
	3. Additions and alterations	square metres	3 480	3 135	2 915	5 775	6 050	4,8
		R'000	7 539	10 278	8 587	12 208	18 865	54,5
	2. Other buildings 4/	square metres	0	525	510	34	1 035	2 944,1
		R'000	80	1 140	1 428	162	2 568	1 485,2
	3. Total additions and alterations	R'000	7 619	11 418	10 015	12 370	21 433	73,3
4. Recorded buildings completed	1. Total at current prices	R'000	31 437	29 493	24 431	45 825	53 924	17,7

1/ The percentage change between January 2007 and January 2008.

2/ Other residential buildings include institutions for the disabled, boarding houses, hostels and tourism accommodation e.g. hotels, motels, guesthouses, holiday chalets, bed-and-breakfast accommodation and casinos.

3/ Other non-residential space includes churches, sport and recreation clubs, schools, crèches, hospitals and all other non-residential space.

4/ Other buildings include other residential buildings, non-residential buildings and internal alterations. No square metres are collected for internal alterations.

Table 23 - Buildings reported as completed to larger municipalities at current prices by type of building: Free State

			Feb. 2007*	Jan. 2008	Feb. 2008	Jan. - Feb. 2007	Jan. - Feb. 2008	% Change 1/
Category of building	Type of building	Measuring unit						
1. Residential buildings	1. Dwelling-houses < 80 square metres	Number	29	9	19	54	28	-48,1
		square metres	1 730	493	1 188	3 233	1 681	-48,0
		R'000	2 986	1 041	2 421	5 668	3 462	-38,9
	2. Dwelling-houses >= 80 square metres	Number	75	49	55	160	104	-35,0
		square metres	16 690	8 522	9 251	29 749	17 773	-40,3
		R'000	33 873	23 307	22 857	62 101	46 164	-25,7
	3. Flats and townhouses	Number	17	13	37	47	50	6,4
		square metres	2 543	1 786	5 005	5 929	6 791	14,5
		R'000	6 457	3 340	12 674	18 901	16 014	-15,3
	4. Other residential buildings 2/	square metres	0	213	0	4 987	213	-95,7
		R'000	0	469	0	79 092	469	-99,4
	5. Total residential buildings	R'000	43 316	28 157	37 952	165 762	66 109	-60,1
2. Non-residential buildings	1. Office and banking space	square metres	0	0	0	0	0	
		R'000	0	0	0	0	0	
	2. Shopping space	square metres	1 930	0	0	2 280	0	
		R'000	7 720	0	0	8 971	0	
	3. Industrial and warehouse space	square metres	64	0	1 307	64	1 307	1 942,2
		R'000	141	0	2 875	141	2 875	1 939,0
	4. Other non-residential buildings 3/	square metres	191	0	0	191	0	
		R'000	529	0	0	529	0	
	5. Total non-residential buildings	R'000	8 390	0	2 875	9 641	2 875	-70,2
3. Additions and alterations	1. Dwelling-houses	square metres	2 858	5 280	6 955	7 394	12 235	65,5
		R'000	5 557	13 753	15 125	14 533	28 878	98,7
	2. Other buildings 4/	square metres	759	197	121	759	318	-58,1
		R'000	2 601	1 566	977	3 141	2 543	-19,0
	3. Total additions and alterations	R'000	8 158	15 319	16 102	17 674	31 421	77,8
4. Recorded buildings completed	1. Total at current prices	R'000	59 864	43 476	56 929	193 077	100 405	-48,0

1/ The percentage change between cumulative figures for 2007 and 2008.

2/ Other residential buildings include institutions for the disabled, boarding houses, hostels and tourism accommodation e.g. hotels, motels, guesthouses, holiday chalets, bed-and-breakfast accommodation and casinos.

3/ Other non-residential space includes churches, sport and recreation clubs, schools, crèches, hospitals and all other non-residential space.

4/ Other buildings include other residential buildings, non-residential buildings and internal alterations. No square metres are collected for internal alterations.

* Revised.

Table 24 - Buildings reported as completed to larger municipalities at current prices by type of building: KwaZulu-Natal

			Feb. 2007*	Jan. 2008	Feb. 2008	Jan. - Feb. 2007	Jan. - Feb. 2008	% Change 1/
Category of building	Type of building	Measuring unit						
1. Residential buildings	1. Dwelling-houses < 80 square metres	Number	126	70	131	228	201	-11,8
		square metres	6 073	3 562	5 492	9 925	9 054	-8,8
		R'000	17 260	13 297	15 526	25 860	28 823	11,5
	2. Dwelling-houses >= 80 square metres	Number	168	115	130	252	245	-2,8
		square metres	43 220	26 606	29 181	60 718	55 787	-8,1
		R'000	170 704	114 845	121 646	229 213	236 491	3,2
	3. Flats and townhouses	Number	131	120	51	248	171	-31,0
		square metres	41 086	21 803	12 494	56 454	34 297	-39,2
		R'000	88 657	75 934	43 706	134 602	119 640	-11,1
	4. Other residential buildings 2/	square metres	12 606	0	0	12 606	0	
		R'000	101 900	0	0	101 900	0	
	5. Total residential buildings	R'000	378 521	204 076	180 878	491 575	384 954	-21,7
2. Non-residential buildings	1. Office and banking space	square metres	6 781	9 522	17 182	8 508	26 704	213,9
		R'000	18 251	49 271	80 702	25 126	129 973	417,3
	2. Shopping space	square metres	33 136	0	2 517	33 606	2 517	-92,5
		R'000	112 668	0	8 486	114 876	8 486	-92,6
	3. Industrial and warehouse space	square metres	26 159	26 076	112	61 626	26 188	-57,5
		R'000	70 277	84 023	392	185 027	84 415	-54,4
	4. Other non-residential buildings 3/	square metres	5 349	2 616	2 675	5 349	5 291	-1,1
		R'000	22 009	13 080	8 613	22 009	21 693	-1,4
	5. Total non-residential buildings	R'000	223 205	146 374	98 193	347 038	244 567	-29,5
3. Additions and alterations	1. Dwelling-houses	square metres	30 080	25 978	27 308	48 373	53 286	10,2
		R'000	109 607	116 820	126 801	172 200	243 621	41,5
	2. Other buildings 4/	square metres	6 548	3 353	60 242	22 797	63 595	179,0
		R'000	18 770	17 784	180 026	64 636	197 810	206,0
	3. Total additions and alterations	R'000	128 377	134 604	306 827	236 836	441 431	86,4
4. Recorded buildings completed	1. Total at current prices	R'000	730 103	485 054	585 898	1 075 449	1 070 952	-0,4

1/ The percentage change between cumulative figures for 2007 and 2008.

2/ Other residential buildings include institutions for the disabled, boarding houses, hostels and tourism accommodation e.g. hotels, motels, guesthouses, holiday chalets, bed-and-breakfast accommodation and casinos.

3/ Other non-residential space includes churches, sport and recreation clubs, schools, crèches, hospitals and all other non-residential space.

4/ Other buildings include other residential buildings, non-residential buildings and internal alterations. No square metres are collected for internal alterations.

* Revised.

Table 25 - Buildings reported as completed to larger municipalities at current prices by type of building: North West

			Feb. 2007*	Jan. 2008	Feb. 2008	Jan. - Feb. 2007	Jan. - Feb. 2008	% Change 1/
Category of building	Type of building	Measuring unit						
1. Residential buildings	1. Dwelling-houses < 80 square metres	Number	381	46	364	436	410	-6,0
		square metres	13 324	2 698	11 970	15 297	14 668	-4,1
		R'000	11 770	6 362	20 958	13 844	27 320	97,3
	2. Dwelling-houses >= 80 square metres	Number	132	129	153	212	282	33,0
		square metres	33 979	24 407	27 440	52 923	51 847	-2,0
		R'000	99 586	63 061	76 404	152 572	139 465	-8,6
	3. Flats and townhouses	Number	146	159	153	240	312	30,0
		square metres	8 070	12 690	13 280	14 503	25 970	79,1
		R'000	17 525	42 858	38 050	35 558	80 908	127,5
	4. Other residential buildings 2/	square metres	0	0	0	0	0	
		R'000	0	0	0	0	0	
	5. Total residential buildings	R'000	128 881	112 281	135 412	201 974	247 693	22,6
2. Non-residential buildings	1. Office and banking space	square metres	0	781	2 237	1 286	3 018	134,7
		R'000	0	2 126	5 400	2 829	7 526	166,0
	2. Shopping space	square metres	12 549	0	3 955	16 169	3 955	-75,5
		R'000	40 509	0	8 176	49 999	8 176	-83,6
	3. Industrial and warehouse space	square metres	0	0	921	0	921	
		R'000	0	0	1 400	0	1 400	
	4. Other non-residential buildings 3/	square metres	426	221	2 459	644	2 680	316,1
		R'000	778	80	6 960	1 541	7 040	356,8
	5. Total non-residential buildings	R'000	41 287	2 206	21 936	54 369	24 142	-55,6
	3. Additions and alterations	1. Dwelling-houses	square metres	4 588	6 013	4 257	7 229	10 270
R'000			9 773	8 358	8 163	14 716	16 521	12,3
2. Other buildings 4/		square metres	0	280	421	0	701	
		R'000	10	842	463	120	1 305	987,5
3. Total additions and alterations		R'000	9 783	9 200	8 626	14 836	17 826	20,2
4. Recorded buildings completed	1. Total at current prices	R'000	179 951	123 687	165 974	271 179	289 661	6,8

1/ The percentage change between cumulative figures for 2007 and 2008.

2/ Other residential buildings include institutions for the disabled, boarding houses, hostels and tourism accommodation e.g. hotels, motels, guesthouses, holiday chalets, bed-and-breakfast accommodation and casinos.

3/ Other non-residential space includes churches, sport and recreation clubs, schools, crèches, hospitals and all other non-residential space.

4/ Other buildings include other residential buildings, non-residential buildings and internal alterations. No square metres are collected for internal alterations.

* Revised.

Table 26 - Buildings reported as completed to larger municipalities at current prices by type of building: Gauteng

			Feb. 2007*	Jan. 2008	Feb. 2008	Jan. - Feb. 2007	Jan. - Feb. 2008	% Change 1/
Category of building	Type of building	Measuring unit						
1. Residential buildings	1. Dwelling-houses < 80 square metres	Number	1 090	373	772	1 740	1 145	-34,2
		square metres	46 679	18 128	34 472	74 806	52 600	-29,7
		R'000	94 888	50 894	80 549	160 119	131 443	-17,9
	2. Dwelling-houses >= 80 square metres	Number	628	467	628	1 105	1 095	-0,9
		square metres	153 725	104 688	139 228	284 502	243 916	-14,3
		R'000	485 291	347 503	463 086	914 878	810 589	-11,4
	3. Flats and townhouses	Number	1 029	670	505	1 541	1 175	-23,8
		square metres	124 619	69 716	61 899	183 910	131 615	-28,4
		R'000	388 589	300 503	211 505	603 404	512 008	-15,1
	4. Other residential buildings 2/	square metres	0	9 357	3 852	0	13 209	
		R'000	0	32 024	22 894	0	54 918	
	5. Total residential buildings	R'000	968 768	730 924	778 034	1 678 401	1 508 958	-10,1
2. Non-residential buildings	1. Office and banking space	square metres	15 912	8 606	18 731	42 501	27 337	-35,7
		R'000	88 904	35 219	80 664	184 614	115 883	-37,2
	2. Shopping space	square metres	23 308	25 270	14 378	26 256	39 648	51,0
		R'000	118 989	116 140	49 421	131 862	165 561	25,6
	3. Industrial and warehouse space	square metres	30 459	34 701	13 318	48 318	48 019	-0,6
		R'000	91 833	84 396	40 897	142 559	125 293	-12,1
	4. Other non-residential buildings 3/	square metres	11 342	2 963	1 922	27 185	4 885	-82,0
		R'000	33 324	9 752	5 368	96 561	15 120	-84,3
	5. Total non-residential buildings	R'000	333 050	245 507	176 350	555 596	421 857	-24,1
3. Additions and alterations	1. Dwelling-houses	square metres	35 126	30 457	36 447	112 358	66 904	-40,5
		R'000	98 792	91 595	117 995	327 571	209 590	-36,0
	2. Other buildings 4/	square metres	11 049	10 555	9 335	18 190	19 890	9,3
		R'000	36 657	42 617	33 680	66 034	76 297	15,5
	3. Total additions and alterations	R'000	135 449	134 212	151 675	393 605	285 887	-27,4
4. Recorded buildings completed	1. Total at current prices	R'000	1 437 267	1 110 643	1 106 059	2 627 602	2 216 702	-15,6

1/ The percentage change between cumulative figures for 2007 and 2008.

2/ Other residential buildings include institutions for the disabled, boarding houses, hostels and tourism accommodation e.g. hotels, motels, guesthouses, holiday chalets, bed-and-breakfast accommodation and casinos.

3/ Other non-residential space includes churches, sport and recreation clubs, schools, crèches, hospitals and all other non-residential space.

4/ Other buildings include other residential buildings, non-residential buildings and internal alterations. No square metres are collected for internal alterations.

* Revised.

Table 27 - Buildings reported as completed to larger municipalities at current prices by type of building: Mpumalanga

			Feb. 2007*	Jan. 2008	Feb. 2008	Jan. - Feb. 2007	Jan. - Feb. 2008	% Change 1/
Category of building	Type of building	Measuring unit						
1. Residential buildings	1. Dwelling-houses < 80 square metres	Number	35	140	224	56	364	550,0
		square metres	2 169	6 963	10 214	3 593	17 177	378,1
		R'000	5 845	7 884	9 075	10 096	16 959	68,0
	2. Dwelling-houses >= 80 square metres	Number	107	85	111	179	196	9,5
		square metres	18 462	16 441	24 951	32 999	41 392	25,4
		R'000	44 139	44 127	64 115	82 271	108 242	31,6
	3. Flats and townhouses	Number	41	53	61	57	114	100,0
		square metres	5 365	5 684	5 276	7 861	10 960	39,4
		R'000	14 624	17 588	15 821	22 123	33 409	51,0
	4. Other residential buildings 2/	square metres	0	0	0	190	0	
		R'000	0	0	0	570	0	
	5. Total residential buildings	R'000	64 608	69 599	89 011	115 060	158 610	37,8
2. Non-residential buildings	1. Office and banking space	square metres	1 384	0	0	4 001	0	
		R'000	7 000	0	0	13 300	0	
	2. Shopping space	square metres	0	0	1 547	443	1 547	249,2
		R'000	0	0	4 297	1 109	4 297	287,5
	3. Industrial and warehouse space	square metres	4 263	0	1 965	4 837	1 965	-59,4
		R'000	9 340	0	4 918	10 832	4 918	-54,6
	4. Other non-residential buildings 3/	square metres	0	0	489	803	489	-39,1
		R'000	0	0	620	2 217	620	-72,0
5. Total non-residential buildings	R'000	16 340	0	9 835	27 458	9 835	-64,2	
3. Additions and alterations	1. Dwelling-houses	square metres	7 483	8 753	7 373	13 750	16 126	17,3
		R'000	15 739	21 414	18 583	29 176	39 997	37,1
	2. Other buildings 4/	square metres	143	1 643	1 752	866	3 395	292,0
		R'000	684	5 672	3 798	3 037	9 470	211,8
	3. Total additions and alterations	R'000	16 423	27 086	22 381	32 213	49 467	53,6
4. Recorded buildings completed	1. Total at current prices	R'000	97 371	96 685	121 227	174 731	217 912	24,7

1/ The percentage change between cumulative figures for 2007 and 2008.

2/ Other residential buildings include institutions for the disabled, boarding houses, hostels and tourism accommodation e.g. hotels, motels, guesthouses, holiday chalets, bed-and-breakfast accommodation and casinos.

3/ Other non-residential space includes churches, sport and recreation clubs, schools, crèches, hospitals and all other non-residential space.

4/ Other buildings include other residential buildings, non-residential buildings and internal alterations. No square metres are collected for internal alterations.

* Revised.

Table 28 - Buildings reported as completed to larger municipalities at current prices by type of building: Limpopo

			Feb. 2007	Jan. 2008	Feb. 2008	Jan. - Feb. 2007	Jan. - Feb. 2008	% Change 1/	
Category of building	Type of building	Measuring unit							
1. Residential buildings	1. Dwelling-houses < 80 square metres	Number	30	9	23	57	32	-43,9	
		square metres	1 953	623	1 499	3 649	2 122	-41,8	
		R'000	5 100	1 663	3 889	9 465	5 552	-41,3	
	2. Dwelling-houses >= 80 square metres	Number	59	18	44	95	62	-34,7	
		square metres	12 256	3 166	11 778	19 556	14 944	-23,6	
		R'000	27 291	8 736	29 046	46 173	37 782	-18,2	
	3. Flats and townhouses	Number	17	0	0	30	0		
		square metres	2 250	0	0	4 206	0		
		R'000	4 899	0	0	8 251	0		
	4. Other residential buildings 2/	square metres	0	0	0	0	0		
		R'000	0	0	0	0	0		
	5. Total residential buildings	R'000	37 290	10 399	32 935	63 889	43 334	-32,2	
	2. Non-residential buildings	1. Office and banking space	square metres	0	0	0	0	0	
			R'000	0	0	0	0	0	
2. Shopping space		square metres	716	792	2 663	716	3 455	382,5	
		R'000	1 198	1 742	5 675	1 198	7 417	519,1	
3. Industrial and warehouse space		square metres	528	0	0	2 499	0		
		R'000	845	0	0	5 181	0		
4. Other non-residential buildings 3/		square metres	0	1 617	718	0	2 335		
		R'000	0	4 528	1 580	0	6 108		
5. Total non-residential buildings		R'000	2 043	6 270	7 255	6 379	13 525	112,0	
3. Additions and alterations		1. Dwelling-houses	square metres	2 309	669	848	3 445	1 517	-56,0
	R'000		4 987	1 689	2 258	7 544	3 947	-47,7	
	2. Other buildings 4/	square metres	0	0	0	296	0		
		R'000	0	0	0	662	0		
	3. Total additions and alterations	R'000	4 987	1 689	2 258	8 206	3 947	-51,9	
4. Recorded buildings completed	1. Total at current prices	R'000	44 320	18 358	42 448	78 474	60 806	-22,5	

1/ The percentage change between cumulative figures for 2007 and 2008.

2/ Other residential buildings include institutions for the disabled, boarding houses, hostels and tourism accommodation e.g. hotels, motels, guesthouses, holiday chalets, bed-and-breakfast accommodation and casinos.

3/ Other non-residential space includes churches, sport and recreation clubs, schools, crèches, hospitals and all other non-residential space.

4/ Other buildings include other residential buildings, non-residential buildings and internal alterations. No square metres are collected for internal alterations.

Table 29 - Subsidised low-cost dwelling-houses completed and in process of completion 1/

Province	Year	Number	Square metres 2/	Value R'000 2/
Western Cape	2002	19 534	531 116	168 852
	2003	16 926	507 780	247 187
	2004	12 751	382 530	211 424
Eastern Cape	2002	46 700	1 575 675	473 806
	2003	35 005	1 050 150	511 213
	2004	34 923	1 047 690	579 058
Northern Cape	2002	5 189	164 906	68 078
	2003	4 354	130 620	63 586
	2004	3 645	109 350	60 438
Free State	2002	8 617	348 492	154 121
	2003	14 848	445 440	216 840
	2004	16 522	495 660	273 951
KwaZulu-Natal	2002	21 958	831 349	234 041
	2003	31 372	941 160	458 157
	2004	35 968	1 079 040	596 385
North West	2002	21 309	630 115	210 439
	2003	13 809	414 270	201 667
	2004	10 149	304 470	168 281
Gauteng	2002	29 939	991 571	321 943
	2003	42 862	1 285 860	625 957
	2004	33 260	997 800	551 484
Mpumalanga	2002	19 883	660 505	253 931
	2003	21 336	640 080	246 079
	2004	18 808	564 240	311 855
Limpopo	2002	15 382	605 877	183 769
	2003	15 596	467 880	227 764
	2004	16 338	490 140	270 900
South Africa	2002	188 511	6 339 606	2 068 980
	2003	196 108	5 883 240	2 798 450
	2004	182 364	5 470 920	3 023 777

Table 30 - Subsidised low-cost dwelling-houses completed: 1 April 2005 to 31 March 2006

Province	Number	Square metres 2/	Value R'000 2/
Western Cape	2 040	61 200	52 877
Eastern Cape	16 874	506 220	437 374
Northern Cape	5 293	158 790	137 195
Free State	17 635	529 050	457 099
KwaZulu-Natal	21 601	648 030	559 898
North West	14 445	433 350	374 414
Gauteng	23 409	702 270	606 761
Mpumalanga	14 389	431 670	372 963
Limpopo	21 973	659 190	569 540
South Africa	137 659	4 129 770	3 568 121

Table 31 - Subsidised low-cost dwelling-houses completed and in process of completion 1/: 1 April 2006 to 31 March 2007

Province	Number	Square metres 2/	R'000 2/
Western Cape	34 585	1 037 550	768 200
Eastern Cape	16 526	495 780	637 700
Northern Cape	3 880	116 400	104 800
Free State	19 662	589 860	528 400
KwaZulu-Natal	38 290	1 148 700	1 074 500
North West	46 972	1 409 160	696 500
Gauteng	77 044	2 311 320	1 748 300
Mpumalanga	10 651	319 530	329 900
Limpopo	23 609	708 270	646 700
South Africa	271 219	8 136 570	6 535 000

Source: Housing Subsidy System and Provincial Housing Departments co-ordinated by the National Department of Housing

1/ Includes all top structures completed and sites serviced in respect of the reporting period.

2/ Estimates by the National Department of Housing.

Explanatory notes

Introduction	1	Statistics South Africa (Stats SA) conducts a monthly building statistics survey collecting information regarding building plans passed and buildings completed, financed by the private sector, from the largest local government institutions in South Africa. According to these institutions, they are not always notified about low-cost housing projects and therefore do not include the bulk of low-cost dwelling-houses. Data regarding subsidised low-cost dwelling-houses, supplied by the Housing Subsidy System and Provincial Housing Departments and co-ordinated by the National Department of Housing, are shown in table 29 to table 31 (page 37).
	2	In order to improve timeliness of the publication, some information for the current month has been estimated due to late submission by respondents. These estimates will be revised in the next statistical release(s) as soon as actual information is available.
Purpose of the survey	3	The monthly survey data are used in monitoring the state of economy and formulation of economic policy. Furthermore, the results are important inputs to estimate the Gross Domestic Product (GDP) and to calculate the Composite Leading Business Cycle Indicator. The data are extensively used by the private sector.
Scope of the survey	4	This survey covers local government institutions conducting activities for the private sector regarding - <ul style="list-style-type: none"> • passing of building plans; and • final inspection of completed buildings.
Classification	5	Building activities are classified in division 5 according to the 1993 edition of the <i>Standard Industrial Classification of all Economic Activities, (SIC) Fifth Edition, Report No. 09-90-02</i> . The SIC is based on the 1990 <i>International Standard Industrial Classification of all Economic Activities (ISIC)</i> with suitable adaptations for local conditions.
Response rate	6	The preliminary response rate for the survey on building statistics for February 2008 was 89,7 %. Improved response rate for January 2008 was 99,1%.
Statistical unit	7	The statistical unit for the collection of information is a local government institution. Local government institutions include district municipalities, metropolitan municipalities and local municipalities.
Survey methodology and design	8	<p>Stats SA conducts a monthly survey of metropolitan municipalities and large local municipalities on building plans passed and buildings completed. An annual survey of the remaining municipalities is conducted regarding buildings completed. The monthly survey represents approximately 90 percent of the total value of buildings completed. Information regarding building plans passed and buildings completed for the private sector is collected by mail, fax and telephone.</p> <p>According to the municipalities, they are not always notified about low-cost housing projects. Data regarding subsidised low-cost dwelling-houses, supplied by the provincial governments and co-ordinated by the National Department of Housing, are shown in table 29 to table 31 (page 37).</p>
Constant prices	9	The value of building plans passed and buildings completed at constant prices measures building activities in terms of ruling prices in a specific base year, which is currently 2000. The value of building plans passed at constant prices for each month is obtained by deflating the values at current prices with a price index known as the 'lump sum domestic buildings' as published in statistical release P0151: <i>JBCC Contract Price Adjustment Provisions Work Group Indices</i> . In order to be applicable, these indices (base February 1991=100) are converted to the base year 2000=100.

- 10** The value of buildings completed at constant prices is obtained by deflating the values at current prices with the price index which is used to calculate building plans passed at constant prices (see paragraph 8). Since the completion of buildings may extend over a few months to a few years, the current value of buildings completed is deflated by price indices which prevailed at the time the plans were passed. Therefore, the duration of the completion of different types of buildings are taken into account in ascertaining the deflators e.g. the value of dwelling-houses completed at constant prices at January 2007 is obtained by deflating the current value of dwelling-houses completed for January 2007 with the price index of a month six months prior to January 2007. Furthermore, the value of other residential buildings, non-residential buildings and additions and alterations at constant prices is obtained by deflating the current values with price indices of 12 months, 18 months and 12 months prior to the relevant month, respectively.
- Seasonal adjustment**
- 11** Seasonally adjusted estimates of building plans passed and buildings completed are generated each month, using the X-11 Seasonal Adjustment Program developed by US Bureau of the Census Economic Research and Analyses Division, 1968.
- 12** Seasonal adjustment is a means of removing the estimated effects of normal seasonal variation from the series so that the effects of other influences on the series can be more clearly recognised. Seasonal adjustment does not aim to remove irregular or non-seasonal influences which may be present in any particular month. Influences that are volatile or unsystematic can still make it difficult to interpret the movement of the series even after adjustment for seasonal variations. Therefore, the month-to-month movements of seasonally adjusted estimates may not be reliable indicators of trend behaviour.
- Trend cycle**
- 13** The trend is a long-term pattern or movement of a time series. The X-11 Seasonal Adjustment Program is used for smoothing seasonally adjusted data.
- Revised figures**
- 14** Revised figures are due to late submission of data to Stats SA, or to respondents reporting revisions or corrections to their figures. Figures for the latest month are therefore preliminary. Data are edited at municipal level.
- 15** Once a year the annual statistical release P5041.3 is published with the revised and updated information at provincial and municipal level for the previous calendar year. Due to this comprehensive revision, the monthly statistical release P5041.1 reflects provincial revision for 2007 where applicable.
- Related publications**
- 16** Users may also wish to refer to the following publications:
- P5041.3: Selected building statistics of the private sector as reported by local government institutions issued annually.
 - P9101.2: Actual and expected expenditure on construction by the public sector per statistical region issued annually.
 - Bulletin of Statistics issued quarterly.
 - South African Statistics issued annually.
 - Report 50-11-01 issued annually.
- Rounding-off of figures**
- 17** The figures in the tables have, where necessary, been rounded off to the nearest digit shown.
- Pre-release policy**
- 18** Stats SA's pre-release policy may be inspected at its website, www.statssa.gov.za

Symbols and abbreviations

19	..	no meaningful percentage change between two specified periods available since either one or both of the totals are nil
	0	nil or figure too small to publish
	*	revised
	Stats SA	Statistics South Africa
	SIC	Standard Industrial Classification of all Economic Activities
	ISIC	International Standard Industrial Classification of all Economic Activities
	JBCC	Joint Building Contracts Committee
	CD	Compact Disc
	US	United States
	SARB	South African Reserve Bank
	DTI	Department of Trade and Industry

2010 World Cup note

- 20** Information relating to the 2010 Soccer World Cup new stadia and renovations, as well as other public sector infrastructure spending e.g. Eskom expansions and the Gautrain project, will not be included in the private sector building data series, as these are partially public sector funded.

Glossary

Additions and alterations	They include extensions to existing buildings as well as internal and external alterations of existing buildings.
Blocks of flats	High-density housing consisting of a number of self-contained dwelling-units, each with at least one living-room together with a kitchen and bathroom, conjoined to similar units in one building.
Dwelling-house	A free-standing, complete structure on a separate stand or a self-contained dwelling-unit, e.g. granny flat, on the same premises as an existing residence. Out-buildings and garages are included.
Local government institutions	Include – <ul style="list-style-type: none"> • District municipalities; • Metropolitan municipalities; and • Local municipalities.
Municipality	A generic term describing the “unit” of government in the local spheres responsible for local government in a geographically demarcated area and including district, metropolitan and local municipalities. It is an institution consisting of a municipal council (elected political representatives) and municipal administration (appointed officials).
District municipality	Municipality that has municipal executive and legislative authority in an area that includes more than one municipality, and which is described in section 155(1) of the Constitution as a category C municipality (Refer to Local Government: Municipal Structure Act, 1998 (Act No. 117 of 1998)).
Metropolitan municipality	Municipality that has municipal executive and legislative authority in an area that includes more than one municipality, and which is described in section 155(1) of the Constitution as a category A municipality (Refer to Local Government: Municipal Structure Act, 1998 (Act No. 117 of 1998)).
Local municipality	Municipality that shares municipal executive and legislative authority in its area with a district municipality within whose area it falls, that is described in section 155(1) of the constitution as a category B municipality.
Non-residential buildings	Comprise factories, commercial, financial and other office buildings, as well as other buildings not used for residential purposes, such as churches, halls, clubs, schools and hospitals.
Other residential buildings	Institutions for the disabled, boarding houses, old people’s homes, hostels, hotels, motels, guesthouses, holiday chalets, bed-and-breakfast accommodation, entertainment centres and casinos.
Percentage change	<p>When using monthly actual values, the percentage change is the change in actual values of building activities (building plans passed or buildings completed) of the relevant month compared with the actual values of building activities (building plans passed or buildings completed) of the same month in the previous year expressed as a percentage.</p> <p>When using annual actual values, the percentage change is the change in the actual values of building activities (building plans passed or buildings completed) of the relevant year compared with the actual values of building activities (building plans passed or buildings completed) of the previous year expressed as a percentage.</p> <p>When using seasonally adjusted values, the percentage change is the change in the seasonally adjusted values of building activities (building plans passed or buildings completed) of the relevant month compared with the seasonally adjusted values of building activities (building plans passed or buildings completed) of the previous month expressed as a percentage.</p>

Reference period	One calendar month.
Residential buildings	Comprise dwelling-houses, flats, townhouses and other residential buildings.
Townhouses	Multiple, medium-density dwelling-units and include cluster housing, group housing, simplexes, duplexes, triplexes and other similar dwelling-units which are usually grouped together, with one level of each unit on ground level. This excludes blocks of flats.

General information

Stats SA publishes approximately 300 different statistical releases each year. It is not economically viable to produce them in more than one of South Africa's eleven official languages. Since the releases are used extensively, not only locally but also by international economic and social-scientific communities, Stats SA releases are published in English.

Stats SA has copyright on this publication. Users may apply the information as they wish, provided that they acknowledge Stats SA as the source of the basic data wherever they process, apply, utilise, publish or distribute the data and also that they specify that the relevant application and analysis (where applicable) result from their own processing of the data.

An advance release calendar is disseminated on www.statssa.gov.za

Stats SA products

A complete set of Stats SA publications is available at the Stats SA Library and the following libraries:

National Library of South Africa, Pretoria Division
National Library of South Africa, Cape Town Division
Natal Society Library, Pietermaritzburg
Library of Parliament, Cape Town
Bloemfontein Public Library
Johannesburg Public Library
Eastern Cape Library Services, King William's Town
Central Regional Library, Polokwane
Central Reference Library, Nelspruit
Central Reference Collection, Kimberley
Central Reference Library, Mmabatho

Stats SA also provides a subscription service.

Electronic services

A large range of data are available via on-line services, diskette, CD and computer printouts. For more details about our electronic data services, contact (012) 310 8600/8390/8351/4892/8496/8095.

You can visit us on the Internet at: www.statssa.gov.za

Enquiries

Telephone number: (012) 310 8600/8390/8351/4892/8496/8095 (user information services)
(012) 310 8228/310 8007 (technical enquiries)
(012) 310 8161 (orders)
(012) 310 4883/4885/8018 (library)

Fax number: (012) 310 8664 (technical enquiries)

Email: Gretaz@statssa.gov.za (technical enquiries)
info@statssa.gov.za (user information services)
distribution@statssa.gov.za (orders)

Postal address: Private Bag X44, Pretoria, 0001

Produced by Stats SA