



**Statistics
South Africa**

Preferred supplier of quality statistics



Statistical release

P5041.1

Selected building statistics of the private sector as reported by local government institutions

**February 2007
(Preliminary)**

**Embargoed until:
18 April 2007
13:00**

Enquiries:

User Information Services
Tel: (012) 310 8600 / 4892 / 8390

Forthcoming issue:

March 2007

Expected release date

16 May 2007

Statistics South Africa • Mbalo-mbalo ya Afrika Tshipembe • Tshilayiko ta Afrika-Dzonga • Dipalopalo tsa Aforika Borwa • Ezezibalo zaseNingizimu Afrika
Dipalopalo tša Afrika Borwa • Dipalopalo tsa Afrika Borwa • Ubalo lwaseMzantsi Afrika • Telubalo eNingizimu Afrika • iNanimbalo leSewula Afrika • Statistiek Suid-Afrika

email: info@statssa.gov.za
www.statssa.gov.za

170 Andries Street • Private Bag X44, 0001 Pretoria, South Africa
Tel: +27(12) 310 8911, Fax: +27(12) 321 7381

Contents

Page

SUMMARY OF FINDINGS: SELECTED BUILDING STATISTICS OF THE PRIVATE SECTOR

3

Tables

Table 1	Values and percentage change of recorded building plans passed by larger municipalities at current prices by type of building	9
Table 2	Seasonally adjusted values and percentage change of recorded building plans passed by larger municipalities at current prices by type of building	10
Table 3	Values and percentage change of recorded building plans passed by larger municipalities at constant 2000 prices by type of building	11
Table 4	Seasonally adjusted values and percentage change of recorded building plans passed by larger municipalities at constant 2000 prices by type of building	12
Table 5	Values and percentage change of buildings reported as completed to larger municipalities at current prices by type of building	13
Table 6	Seasonally adjusted values and percentage change of buildings reported as completed to larger municipalities at current prices by type of building	14
Table 7	Values and percentage change of buildings reported as completed to larger municipalities at constant 2000 prices by type of building	15
Table 8	Seasonally adjusted values and percentage change of buildings reported as completed to larger municipalities at constant 2000 prices by type of building	16
Table 9	Recorded building plans passed by larger municipalities at current prices by type of building: South Africa	17
Table 10	Recorded building plans passed by larger municipalities at current prices by type of building: Western Cape	18
Table 11	Recorded building plans passed by larger municipalities at current prices by type of building: Eastern Cape	19
Table 12	Recorded building plans passed by larger municipalities at current prices by type of building: Northern Cape	20
Table 13	Recorded building plans passed by larger municipalities at current prices by type of building: Free State	21
Table 14	Recorded building plans passed by larger municipalities at current prices by type of building: KwaZulu-Natal	22
Table 15	Recorded building plans passed by larger municipalities at current prices by type of building: North West	23
Table 16	Recorded building plans passed by larger municipalities at current prices by type of building: Gauteng	24
Table 17	Recorded building plans passed by larger municipalities at current prices by type of building: Mpumalanga	25
Table 18	Recorded building plans passed by larger municipalities at current prices by type of building: Limpopo	26
Table 19	Buildings reported as completed to larger municipalities at current prices by type of building: South Africa	27
Table 20	Buildings reported as completed to larger municipalities at current prices by type of building: Western Cape	28
Table 21	Buildings reported as completed to larger municipalities at current prices by type of building: Eastern Cape	29
Table 22	Buildings reported as completed to larger municipalities at current prices by type of building: Northern Cape	30
Table 23	Buildings reported as completed to larger municipalities at current prices by type of building: Free State	31
Table 24	Buildings reported as completed to larger municipalities at current prices by type of building: KwaZulu-Natal	32

Table 25	Buildings reported as completed to larger municipalities at current prices by type of building: North West	33
Table 26	Buildings reported as completed to larger municipalities at current prices by type of building: Gauteng	34
Table 27	Buildings reported as completed to larger municipalities at current prices by type of building: Mpumalanga	35
Table 28	Buildings reported as completed to larger municipalities at current prices by type of building: Limpopo.....	36
Table 29	Subsidised low-cost dwelling-houses completed or under construction by province	37
Table 30	Subsidised low-cost dwelling-houses completed by province	37
Explanatory notes		38
Glossary		41
General information		43

SUMMARY OF FINDINGS: SELECTED BUILDING STATISTICS OF THE PRIVATE SECTOR

Table A – Selected key figures regarding recorded building plans passed by larger municipalities at current prices for February 2007

Estimates at current prices	January to February 2006 R'000	January to February 2007 1/ R'000	Difference in value between January to February 2006 and January to February 2007 R'000	Percentage change between January to February 2006 and January to February 2007
Residential buildings	5 587 828	5 825 794	+237 966	+ 4,3
Dwelling-houses	3 439 083	4 130 937	+691 854	+ 20,1
Flats and townhouses	2 011 702	1 576 727	-434 975	- 21,6
Other residential buildings	137 043	118 130	-18 913	- 13,8
Non-residential buildings	1 681 246	2 228 885	+547 639	+ 32,6
Additions and alterations	2 449 251	2 802 939	+353 688	+ 14,4
Total	9 718 325	10 857 618	+1 139 293	+ 11,7

1/ February 2007 figures should be regarded as preliminary because of possible backlogs and incomplete reporting by municipalities.

Total value of recorded building plans passed increased

As indicated in Table A, the value of recorded building plans passed by larger municipalities (at current prices) during the first two months of 2007 increased by 11,7% (+R1 139,3 million) compared with the first two months of 2006.

The largest percentage increase was reported for non-residential buildings (+32,6% or R547,6 million), followed by additions and alterations (+14,4% or R353,7 million) and residential buildings (+4,3% or R238,0 million).

Table B – Recorded building plans passed by larger municipalities aggregated to provincial level for February 2007

Estimates at current prices	January to February 2006 R'000	January to February 2007 1/ R'000	Percentage contribution to the total value of building plans passed during January to February 2006	Percentage change between January to February 2006 and January to February 2007	Contribution (percentage points) to the percentage change in the value of buildings plans passed between January to February 2006 and January to February 2007 2/ 2/	Difference in value between January to February 2006 and January to February 2007 R'000
Western Cape	2 276 618	2 678 544	23,4	+ 17,7	+ 4,1	+ 401 926
Eastern Cape	461 567	617 491	4,8	+ 33,8	+ 1,6	+ 155 924
Northern Cape	96 204	55 925	1,0	-41,9	-0,4	-40 279
Free State	155 835	327 085	1,6	+ 109,9	+ 1,8	+ 171 250
KwaZulu-Natal	1 231 582	1 272 653	12,7	+ 3,3	+ 0,4	+ 41 071
North West	333 315	600 566	3,4	+ 80,2	+ 2,7	+ 267 251
Gauteng	4 567 552	4 362 299	47,0	-4,5	-2,1	-205 253
Mpumalanga	410 360	697 875	4,2	+ 70,1	+ 3,0	+ 287 515
Limpopo	185 292	245 180	1,9	+ 32,3	+ 0,6	+ 59 888
Total	9 718 325	10 857 618	100,0	+ 11,7	+ 11,7	+ 1 139 293

1/ February 2007 figures should be regarded as preliminary because of possible backlogs and incomplete reporting by municipalities.

2/ The contribution (percentage points) is calculated by multiplying the percentage change of each province between January to February 2006 and January to February 2007 with the percentage contribution of the corresponding province to the total value of building plans passed during January to February 2006, divided by 100.

Seven provinces reported increases in the value of recorded building plans passed (see Table B). The largest contributors to the increase of 11,7% were Western Cape (+4,1 percentage points or R401,9 million), followed by Mpumalanga (+3,0 percentage points or R287,5 million) and North West (+2,7 percentage points or R267,3 million).

Table C – Selected key figures regarding recorded building plans passed by larger municipalities at constant 2000 prices for February 2007

Estimates at constant 2000 prices	January to February 2006 R'000	January to February 2007 1/ R'000	Difference in value between January to February 2006 and January to February 2007 R'000	Percentage change between January to February 2006 and January to February 2007
Residential buildings	3 739 059	3 487 923	-251 136	- 6,7
Non-residential buildings	1 124 987	1 334 446	+209 459	+ 18,6
Additions and alterations	1 638 739	1 678 017	+39 278	+ 2,4
Total	6 502 785	6 500 386	-2 399	0,0

1/ February 2007 figures should be regarded as preliminary because of possible backlogs and incomplete reporting by municipalities.

Seasonally adjusted estimates at constant 2000 prices	September to November 2006 R'000	December 2006 to February 2007 R'000	Percentage change between September to November 2006 and December 2006 to February 2007
Residential buildings	6 101 960	6 146 522	+ 0,7
Non-residential buildings	2 376 135	2 360 294	-0,7
Additions and alterations	2 905 236	3 001 180	+ 3,3
Total	11 383 331	11 507 996	+ 1,1

Total real value of recorded building plans passed remained on the same level

As indicated in Table C, the value of recorded building plans passed by larger municipalities (at constant 2000 prices) during the first two months of 2007 remained on the same level compared with the first two months of 2006. The increases reported for non-residential buildings (+18,6% or R209,5 million) and additions and alterations (+2,4% or R39,3 million), were counteracted by the decrease of 6,7% (-R251,1 million) reported for residential buildings.

However, the seasonally adjusted real value of recorded building plans passed by larger municipalities during the quarter ending February 2007 increased by 1,1% compared with the previous quarter, mainly due to increases reported for additions and alterations (+3,3%) and residential building plans passed (+0,7%) (see Table C).

Figure 1 shows both the seasonally adjusted and the trend series for recorded building plans passed at constant 2000 prices between January 2002 and February 2007. The trend series reflects a slight increase in 2002, followed by a steep increase from May 2003 up to the end of 2005. After a short period of downturn in 2006, the trend is currently moving sideways.

Figure 1 – Real value of recorded building plans passed by larger municipalities at constant 2000 prices

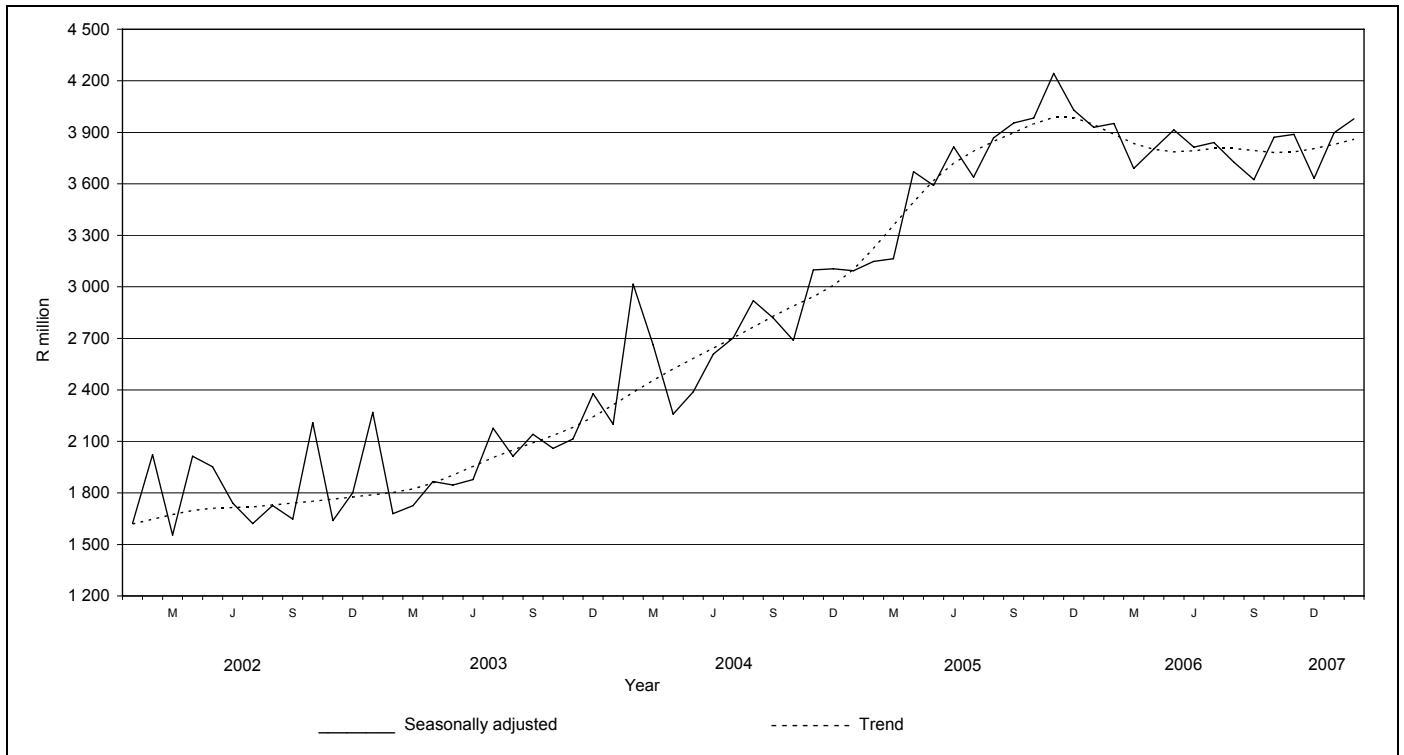


Table D – Selected key figures regarding buildings reported as completed to larger municipalities at current prices for February 2007

Estimates at current prices	January to February 2006 R'000	January to February 2007 1/ R'000	Difference in value between January to February 2006 and January to February 2007 R'000	Percentage change between January to February 2006 and January to February 2007
Residential buildings	2 946 941	3 657 930	+710 989	+ 24,1
Dwelling-houses	1 795 305	2 295 203	+499 898	+ 27,8
Flats and townhouses	1 144 225	1 201 007	+56 782	+ 5,0
Other residential buildings	7 411	161 720	+154 309	+ 2 082,2
Non-residential buildings	716 201	1 302 443	+586 242	+ 81,9
Additions and alterations	937 807	1 181 168	+243 361	+ 26,0
Total	4 600 949	6 141 541	+1 540 592	+ 33,5

1/ February 2007 figures should be regarded as preliminary because of possible backlogs and incomplete reporting by municipalities.

Total value of buildings reported as completed increased

As indicated in Table D, the value of buildings reported as completed to larger municipalities (at current prices) during the first two months of 2007 increased by 33,5% (+R1 540,6 million) compared with the first two months of 2006.

The largest percentage increase in the value of buildings completed was reported for non-residential buildings (+81,9% or R586,2 million), followed by additions and alterations (+26,0% or R243,4 million) and residential buildings (+24,1% or R711,0 million). Within the residential buildings, 'other' residential buildings recorded the highest growth rate, mainly as a result of two casinos and an old age home that were reported as completed to the value of R110,7 million and R45,5 million respectively during the first two months of 2007.

Table E – Buildings reported as completed to larger municipalities aggregated to provincial level for February 2007

Estimates at current prices	January to February 2006 R'000	January to February 2007 1/ R'000	Percentage contribution to the total value of buildings completed during January to February 2006	Percentage change between January to February 2006 and January to February 2007	Contribution (percentage points)2/ to the percentage change in the value of buildings completed between January to February 2006 and January to February 2007	Difference in value between January to February 2006 and January to February 2007
Western Cape	1 314 892	1 769 402	28,6	+ 34,6	+ 9,9	+ 454 510
Eastern Cape	173 202	211 293	3,8	+ 22,0	+ 0,8	+ 38 091
Northern Cape	23 303	45 825	0,5	+ 96,6	+ 0,5	+ 22 522
Free State	94 356	202 134	2,1	+ 114,2	+ 2,3	+ 107 778
KwaZulu-Natal	557 807	873 750	12,1	+ 56,6	+ 6,9	+ 315 943
North West	252 980	269 237	5,5	+ 6,4	+ 0,4	+ 16 257
Gauteng	1 947 566	2 513 870	42,3	+ 29,1	+ 12,3	+ 566 304
Mpumalanga	154 009	177 556	3,3	+ 15,3	+ 0,5	+ 23 547
Limpopo	82 834	78 474	1,8	-5,3	-0,1	-4 360
Total	4 600 949	6 141 541	100,0	+ 33,5	+ 33,5	+ 1 540 592

1/ February 2007 figures should be regarded as preliminary because of possible backlogs and incomplete reporting by municipalities.

2/ The contribution (percentage points) is calculated by multiplying the percentage change of each province between January to February 2006 and January to February 2007 with the percentage contribution of the corresponding province to the total value of buildings completed during January to February 2006, divided by 100.

Eight provinces reported increases in the value of buildings completed. The largest contributors to the increase of 33,5% were Gauteng (+12,3 percentage points or R566,3 million), Western Cape (+9,9 percentage points or R454,5 million) and KwaZulu-Natal (+6,9 percentage points or R315,9 million) (see Table E).

Table F – Selected key figures regarding buildings reported as completed to larger municipalities at constant 2000 prices for February 2007

Estimates at constant 2000 prices	January to February 2006 R'000	January to February 2007 1/ R'000	Difference in value between January to February 2006 and January to February 2007 R'000	Percentage change between January to February 2006 and January to February 2007
Residential buildings	2 045 385	2 340 921	+295 536	+ 14,4
Non-residential buildings	523 738	891 435	+367 697	+ 70,2
Additions and alterations	664 768	790 823	+126 055	+ 19,0
Total	3 233 891	4 023 179	+789 288	+ 24,4

1/ February 2007 figures should be regarded as preliminary because of possible backlogs and incomplete reporting by municipalities.

Seasonally adjusted estimates at constant 2000 prices	September to November 2006 R'000	December 2006 to February 2007 R'000	Percentage change between September to November 2006 and December 2006 to February 2007
Residential buildings	4 249 414	4 662 495	+ 9,7
Non-residential buildings	1 099 060	1 442 889	+ 31,3
Additions and alterations	1 294 062	1 226 215	- 5,2
Total	6 642 536	7 331 599	+ 10,4

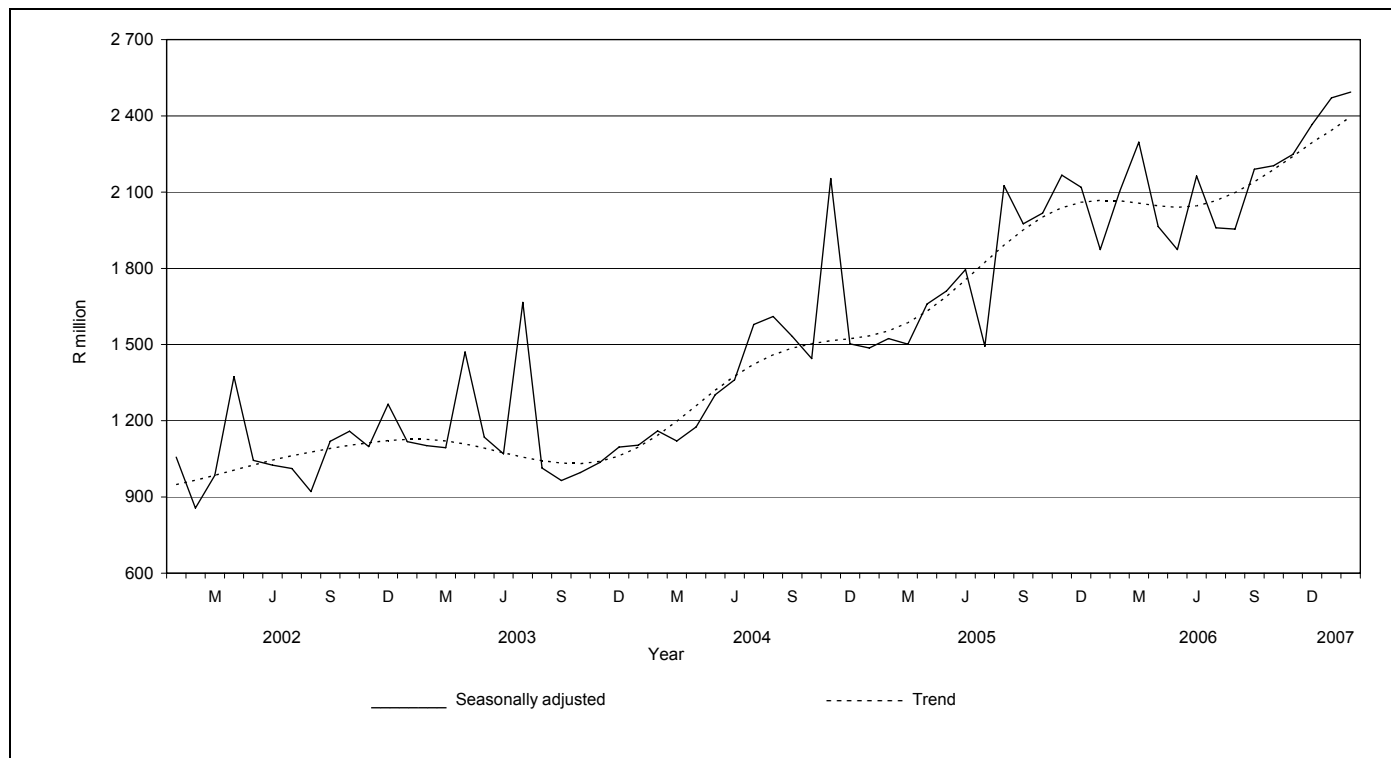
Total real value of buildings reported as completed increased

As indicated in Table F, the value of buildings reported as completed to larger municipalities (at constant 2000 prices) during the first two months of 2007 increased by 24,4% (+R789,3 million) compared with the first two months of 2006. The largest percentage increase in the real value of buildings completed was reported for non-residential buildings (+70,2% or R367,7 million), followed by additions and alterations (+19,0% or R126,1 million) and residential buildings (+14,4% or R295,5 million).

Furthermore, the seasonally adjusted real value of buildings reported as completed to larger municipalities during the quarter ending February 2007 increased by 10,4% compared with the previous quarter. Increases in the seasonally adjusted real value of buildings completed were reported for non-residential buildings (+31,3%) and residential buildings (+9,7%). Reported completions of additions and alterations showed a decrease of 5,2% during the above-mentioned period.

Figure 2 shows both the seasonally adjusted and trend series for buildings reported as completed to municipalities at constant 2000 prices between January 2002 and February 2007. The trend series reflects a slight increase in 2002, slowing again until the end of 2003. A steep increase is evident from January 2004 up to the end of 2005, followed by a slight downturn from January 2006. The trend series increased from May 2006 until present.

Figure 2 - Real value of buildings reported as completed to larger municipalities at constant 2000 prices



PJ Lehohla
Statistician-General

Table 1 - Values and percentage change of recorded building plans passed by larger municipalities at current prices by type of building

Year and month		Residential buildings		Non-residential buildings		Additions and alterations		Total	
		R'000	% change 1/	R'000	% change 1/	R'000	% change 1/	R'000	% change 1/
2006*	January	2 473 754	+41,1	742 112	+37,8	1 039 139	+15,3	4 255 005	+33,2
	February	3 114 074	+32,7	939 134	+58,5	1 410 112	+22,2	5 463 320	+33,5
	March	2 907 723	+24,2	1 155 994	+20,0	1 493 799	+21,2	5 557 516	+22,5
	April	2 549 409	-1,5	1 256 954	+60,3	1 355 457	+4,1	5 161 820	+10,4
	May	3 476 618	-0,2	1 225 043	+55,4	1 787 849	+32,3	6 489 510	+15,4
	June	3 626 925	+12,1	970 765	+0,9	1 592 276	+6,4	6 189 966	+8,7
	July	3 763 946	+7,2	1 365 159	+35,0	1 749 897	+19,6	6 879 002	+14,9
	August	3 805 509	+9,0	1 418 691	+15,0	1 609 868	-0,8	6 834 068	+7,6
	September	3 586 591	-7,2	939 920	+35,9	1 657 543	+5,2	6 184 054	+0,8
	October	3 750 109	+0,7	1 625 417	+66,2	1 752 538	-8,4	7 128 064	+7,7
	November	3 848 665	+3,3	1 280 929	-4,3	1 743 681	+7,2	6 873 275	+2,7
	December	2 577 037	-11,0	1 007 032	+56,3	1 381 123	+2,4	4 965 192	+1,6
	Total	39 480 360	+6,8	13 927 150	+32,3	18 573 282	+9,3	71 980 792	+11,6
2007	January	2 480 562	+0,3	944 529	+27,3	1 297 851	+24,9	4 722 942	+11,0
	February 2/	3 345 232	+7,4	1 284 356	+36,8	1 505 088	+6,7	6 134 676	+12,3

1/ The annual/monthly percentage change is the change in the values of recorded building plans passed by municipalities of the relevant year/month compared with the values of recorded building plans passed by municipalities of the comparable period of the previous year expressed as a percentage.

2/ Preliminary figures.

* Revised.

Table 2 - Seasonally adjusted values and percentage change of recorded building plans passed by larger municipalities at current prices by type of building

Year and month		Residential buildings		Non-residential buildings		Additions and alterations		Total	
		R'000	% change 1/	R'000	% change 1/	R'000	% change 1/	R'000	% change 1/
2006	January	3 449 348	-4,8	1 002 174	+31,6	1 411 274	-11,6	5 862 796	-2,0
	February	3 324 543	-3,6	1 074 279	+7,2	1 537 768	+9,0	5 936 590	+1,3
	March	3 133 088	-5,8	945 566	-12,0	1 508 329	-1,9	5 586 983	-5,9
	April	2 979 785	-4,9	1 278 511	+35,2	1 520 932	+0,8	5 779 228	+3,4
	May	3 170 502	+6,4	1 239 773	-3,0	1 607 149	+5,7	6 017 424	+4,1
	June	3 451 458	+8,9	967 183	-22,0	1 534 596	-4,5	5 953 237	-1,1
	July	3 297 674	-4,5	1 182 498	+22,3	1 587 774	+3,5	6 067 946	+1,9
	August	3 408 532	+3,4	1 133 838	-4,1	1 454 590	-8,4	5 996 960	-1,2
	September	3 223 667	-5,4	1 060 031	-6,5	1 595 962	+9,7	5 879 660	-2,0
	October	3 365 774	+4,4	1 442 187	+36,1	1 517 697	-4,9	6 325 658	+7,6
	November	3 389 091	+0,7	1 379 036	-4,4	1 643 119	+8,3	6 411 246	+1,4
	December	3 244 983	-4,3	1 196 037	-13,3	1 614 072	-1,8	6 055 092	-5,6
2007	January	3 460 949	+6,7	1 288 526	+7,7	1 775 397	+10,0	6 524 872	+7,8
	February	3 572 070	+3,2	1 456 939	+13,1	1 635 395	-7,9	6 664 404	+2,1
	Sep.-Nov. 06	9 978 532		3 881 254		4 756 778		18 616 564	
	Dec. 06-Feb. 07 2/	10 278 002	+3,0	3 941 502	+1,6	5 024 864	+5,6	19 244 368	+3,4

1/ The percentage change is the change in the seasonally adjusted values of recorded building plans passed by municipalities of the relevant month compared with the seasonally adjusted values of recorded building plans passed by municipalities of the previous month expressed as a percentage.

2/ The percentage change is the change in the seasonally adjusted values of recorded building plans passed by municipalities of the current quarter compared with the seasonally adjusted values of recorded building plans passed by municipalities of the previous quarter expressed as a percentage.

Table 3 - Values and percentage change of recorded building plans passed by larger municipalities at constant 2000 prices by type of building

Year and month		Residential buildings		Non-residential buildings		Additions and alterations		Total	
		R'000	% change 1/	R'000	% change 1/	R'000	% change 1/	R'000	% change 1/
2006*	January	1 660 238	+33,4	498 062	+30,3	697 409	+9,0	2 855 709	+26,0
	February	2 078 821	+25,1	626 925	+49,4	941 330	+15,2	3 647 076	+25,8
	March	1 937 191	+17,6	770 149	+13,6	995 203	+14,7	3 702 543	+15,9
	April	1 681 668	-6,9	829 125	+51,5	894 101	-1,6	3 404 894	+4,4
	May	2 263 423	-6,7	797 554	+45,2	1 163 964	+23,6	4 224 941	+7,8
	June	2 320 489	+3,3	621 091	-7,1	1 018 731	-1,9	3 960 311	+0,2
	July	2 373 232	-1,6	860 756	+23,9	1 103 340	+9,8	4 337 328	+5,5
	August	2 346 183	-1,7	874 655	+3,8	992 520	-10,5	4 213 358	-2,9
	September	2 203 066	-16,3	577 346	+22,5	1 018 147	-5,2	3 798 559	-9,1
	October	2 293 645	-9,4	994 139	+49,5	1 071 889	-17,6	4 359 673	-3,1
	November	2 329 700	-7,7	775 381	-14,5	1 055 497	-4,2	4 160 578	-8,2
	December	1 551 497	-20,7	606 281	+39,2	831 501	-8,8	2 989 279	-9,6
	Total	25 039 153	-1,7	8 831 464	+21,6	11 783 632	+0,6	45 654 249	+2,7
2007	January	1 483 590	-10,6	564 910	+13,4	776 227	+11,3	2 824 727	-1,1
	February 2/	2 004 333	-3,6	769 536	+22,7	901 790	-4,2	3 675 659	+0,8

1/ The annual/monthly percentage change is the change in the values of recorded building plans passed by municipalities of the relevant year/month compared with the values of recorded building plans passed by municipalities of the comparable period of the previous year expressed as a percentage.

2/ Preliminary figures.

* Revised.

Table 4 - Seasonally adjusted values and percentage change of recorded building plans passed by larger municipalities at constant 2000 prices by type of building

Year and month		Residential buildings		Non-residential buildings		Additions and alterations		Total	
		R'000	% change 1/	R'000	% change 1/	R'000	% change 1/	R'000	% change 1/
2006	January	2 312 169	-5,2	672 517	+30,8	945 184	-12,2	3 929 870	-2,5
	February	2 214 253	-4,2	716 278	+6,5	1 020 833	+8,0	3 951 364	+0,5
	March	2 078 308	-6,1	610 859	-14,7	1 000 620	-2,0	3 689 787	-6,6
	April	1 956 044	-5,9	844 924	+38,3	1 001 406	+0,1	3 802 374	+3,1
	May	2 059 512	+5,3	809 021	-4,2	1 045 648	+4,4	3 914 181	+2,9
	June	2 209 239	+7,3	621 986	-23,1	983 145	-6,0	3 814 370	-2,5
	July	2 085 181	-5,6	750 831	+20,7	1 005 025	+2,2	3 841 037	+0,7
	August	2 115 472	+1,5	706 190	-5,9	904 566	-10,0	3 726 228	-3,0
	September	1 986 027	-6,1	654 904	-7,3	983 625	+8,7	3 624 556	-2,7
	October	2 059 098	+3,7	884 731	+35,1	927 339	-5,7	3 871 168	+6,8
	November	2 056 835	-0,1	836 500	-5,5	994 272	+7,2	3 887 607	+0,4
	December	1 945 484	-5,4	718 840	-14,1	967 559	-2,7	3 631 883	-6,6
2007	January	2 067 269	+6,3	770 764	+7,2	1 059 665	+9,5	3 897 698	+7,3
	February	2 133 769	+3,2	870 690	+13,0	973 956	-8,1	3 978 415	+2,1
	Sep.-Nov. 06	6 101 960		2 376 135		2 905 236		11 383 331	
	Dec. 06-Feb. 07 2/	6 146 522	+0,7	2 360 294	-0,7	3 001 180	+3,3	11 507 996	+1,1

1/ The percentage change is the change in the seasonally adjusted values of recorded building plans passed by municipalities of the relevant month compared with the seasonally adjusted values of recorded building plans passed by municipalities of the previous month expressed as a percentage.

2/ The percentage change is the change in the seasonally adjusted values of recorded building plans passed by municipalities of the current quarter compared with the seasonally adjusted values of recorded building plans passed by municipalities of the previous quarter expressed as a percentage.

Table 5 - Values and percentage change of buildings reported as completed to larger municipalities at current prices by type of building

Year and month		Residential buildings		Non-residential buildings		Additions and alterations		Total	
		R'000	% change 1/	R'000	% change 1/	R'000	% change 1/	R'000	% change 1/
2006*	January	1 218 487	+40,5	314 128	+9,2	397 047	+25,0	1 929 662	+31,0
	February	1 728 454	+36,2	402 073	+96,6	540 760	+68,3	2 671 287	+48,8
	March	2 042 286	+51,3	599 755	+92,4	569 071	+79,0	3 211 112	+62,2
	April	1 693 547	+20,7	256 817	+30,7	436 368	+31,0	2 386 732	+23,5
	May	1 932 597	+14,7	476 600	+18,1	553 662	+17,2	2 962 859	+15,7
	June	2 219 247	+46,7	374 804	-3,6	538 298	+5,3	3 132 349	+29,8
	July	2 161 280	+37,7	323 492	+33,8	539 489	+52,9	3 024 261	+39,8
	August	2 224 806	-2,3	464 305	-20,8	535 849	+32,5	3 224 960	-1,3
	September	2 402 100	+14,5	393 077	+7,6	641 227	+43,1	3 436 404	+18,0
	October	2 217 277	+12,1	714 824	+34,6	557 047	+10,1	3 489 148	+15,7
	November	2 411 587	-10,5	638 538	+45,0	836 814	+87,4	3 886 939	+8,5
	December	2 534 158	+9,2	517 116	+105,6	501 061	+13,4	3 552 335	+17,8
	Total	24 785 826	+17,9	5 475 529	+30,1	6 646 693	+36,4	36 908 048	+22,6
2007	January	1 599 599	+31,3	476 596	+51,7	648 796	+63,4	2 724 991	+41,2
	February 2/	2 058 331	+19,1	825 847	+105,4	532 372	-1,6	3 416 550	+27,9

1/ The annual/monthly percentage change is the change in the values of buildings reported as completed to municipalities of the relevant year/month compared with the values of buildings reported as completed to municipalities of the comparable period of the previous year expressed as a percentage.

2/ Preliminary figures.

* Revised.

Table 6 - Seasonally adjusted values and percentage change of buildings reported as completed to larger municipalities at current prices by type of building

Year and month		Residential buildings		Non-residential buildings		Additions and alterations		Total	
		R'000	% change 1/	R'000	% change 1/	R'000	% change 1/	R'000	% change 1/
2006	January	1 775 949	-18,4	388 419	+33,1	428 490	-16,1	2 592 858	-13,0
	February	1 992 905	+12,2	435 358	+12,1	551 226	+28,6	2 979 489	+14,9
	March	2 146 649	+7,7	535 185	+22,9	586 255	+6,4	3 268 089	+9,7
	April	1 915 472	-10,8	386 606	-27,8	520 756	-11,2	2 822 834	-13,6
	May	1 835 965	-4,2	369 973	-4,3	499 833	-4,0	2 705 771	-4,1
	June	2 232 567	+21,6	420 780	+13,7	519 001	+3,8	3 172 348	+17,2
	July	2 004 983	-10,2	386 302	-8,2	514 248	-0,9	2 905 533	-8,4
	August	2 052 480	+2,4	354 482	-8,2	517 765	+0,7	2 924 727	+0,7
	September	2 251 647	+9,7	370 660	+4,6	613 047	+18,4	3 235 354	+10,6
	October	2 148 772	-4,6	583 325	+57,4	522 800	-14,7	3 254 897	+0,6
	November	1 948 856	-9,3	617 171	+5,8	771 042	+47,5	3 337 069	+2,5
	December	2 353 035	+20,7	623 934	+1,1	578 563	-25,0	3 555 532	+6,5
2007	January	2 371 778	+0,8	588 359	-5,7	700 152	+21,0	3 660 289	+2,9
	February	2 378 840	+0,3	882 080	+49,9	550 681	-21,3	3 811 601	+4,1
	Sep.-Nov. 06	6 349 275		1 571 156		1 906 889		9 827 320	
	Dec. 06-Feb. 07 2/	7 103 653	+11,9	2 094 373	+33,3	1 829 396	-4,1	11 027 422	+12,2

1/ The percentage change is the change in the seasonally adjusted values of buildings reported as completed to municipalities of the relevant month compared with the seasonally adjusted values of buildings reported as completed to municipalities of the previous month expressed as a percentage.

2/ The percentage change is the change in the seasonally adjusted values of buildings reported as completed to municipalities of the current quarter compared with the seasonally adjusted values of buildings reported as completed to municipalities of the previous quarter expressed as a percentage.

Table 7 - Values and percentage change of buildings reported as completed to larger municipalities at constant 2000 prices by type of building

Year and month		Residential buildings		Non-residential buildings		Additions and alterations		Total	
		R'000	% change 1/	R'000	% change 1/	R'000	% change 1/	R'000	% change 1/
2006*	January	848 051	+31,7	230 468	+3,7	281 793	+15,5	1 360 312	+22,5
	February	1 197 334	+27,4	293 270	+85,8	382 975	+57,2	1 873 579	+39,7
	March	1 409 562	+41,8	436 503	+81,4	400 472	+67,3	2 246 537	+52,4
	April	1 163 562	+13,3	185 830	+22,3	304 514	+22,3	1 653 906	+15,9
	May	1 322 179	+7,9	342 878	+9,8	385 827	+10,0	2 050 884	+8,6
	June	1 516 442	+38,3	269 449	-10,5	373 818	-0,7	2 159 709	+21,7
	July	1 462 064	+29,7	229 590	+23,6	370 528	+43,1	2 062 182	+31,2
	August	1 499 002	-8,2	328 828	-26,0	366 017	+24,1	2 193 847	-7,5
	September	1 615 181	+8,0	276 620	+0,5	436 803	+33,9	2 328 604	+11,1
	October	1 478 254	+5,9	498 830	+25,7	378 686	+3,4	2 355 770	+9,1
	November	1 594 849	-16,2	444 974	+36,1	566 947	+76,5	2 606 770	+2,2
	December	1 659 400	+1,5	359 108	+93,9	338 784	+6,6	2 357 292	+10,3
	Total	16 765 880	+10,9	3 896 348	+21,8	4 587 164	+27,8	25 249 392	+15,3
2007	January	1 032 799	+21,8	327 332	+42,0	435 434	+54,5	1 795 565	+32,0
	February 2/	1 308 122	+9,3	564 103	+92,3	355 389	-7,2	2 227 614	+18,9

1/ The annual/monthly percentage change is the change in the values of buildings reported as completed to municipalities of the relevant year/month compared with the values of buildings reported as completed to municipalities of the comparable period of the previous year expressed as a percentage.

2/ Preliminary figures.

* Revised.

Table 8 - Seasonally adjusted values and percentage change of buildings reported as completed to larger municipalities at constant 2000 prices by type of building

Year and month		Residential buildings		Non-residential buildings		Additions and alterations		Total	
		R'000	% change 1/	R'000	% change 1/	R'000	% change 1/	R'000	% change 1/
2006	January	1 284 547	-16,5	285 257	+31,9	303 862	-16,7	1 873 666	-11,6
	February	1 392 612	+8,4	318 072	+11,5	391 032	+28,7	2 101 716	+12,2
	March	1 495 764	+7,4	387 415	+21,8	413 409	+5,7	2 296 588	+9,3
	April	1 321 591	-11,6	277 888	-28,3	364 969	-11,7	1 964 448	-14,5
	May	1 260 644	-4,6	263 428	-5,2	349 497	-4,2	1 873 569	-4,6
	June	1 507 160	+19,6	299 391	+13,7	357 515	+2,3	2 164 066	+15,5
	July	1 331 770	-11,6	273 381	-8,7	354 283	-0,9	1 959 434	-9,5
	August	1 342 523	+0,8	256 653	-6,1	355 061	+0,2	1 954 237	-0,3
	September	1 512 292	+12,6	259 908	+1,3	417 773	+17,7	2 189 973	+12,1
	October	1 441 016	-4,7	408 242	+57,1	355 031	-15,0	2 204 289	+0,7
	November	1 296 106	-10,1	430 910	+5,6	521 258	+46,8	2 248 274	+2,0
	December	1 544 245	+19,1	433 606	+0,6	388 732	-25,4	2 366 583	+5,3
2007	January	1 596 830	+3,4	405 019	-6,6	469 451	+20,8	2 471 300	+4,4
	February	1 521 420	-4,7	604 264	+49,2	368 032	-21,6	2 493 716	+0,9
	Sep.-Nov. 06	4 249 414		1 099 060		1 294 062		6 642 536	
	Dec. 06-Feb. 07 2/	4 662 495	+9,7	1 442 889	+31,3	1 226 215	-5,2	7 331 599	+10,4

1/ The percentage change is the change in the seasonally adjusted values of buildings reported as completed to municipalities of the relevant month compared with the seasonally adjusted values of buildings reported as completed to municipalities of the previous month expressed as a percentage.

2/ The percentage change is the change in the seasonally adjusted values of buildings reported as completed to municipalities of the current quarter compared with the seasonally adjusted values of buildings reported as completed to municipalities of the previous quarter expressed as a percentage.

Table 9 - Recorded building plans passed by larger municipalities at current prices by type of building: South Africa

Category of building	Type of building	Measuring unit	Feb. 2006*	Jan. 2007	Feb. 2007	Jan. - Feb. 2006	Jan. - Feb. 2007	% Change 1/	
1. Residential buildings	1. Dwelling-houses < 80 square metres	Number	3 314	3 101	2 806	5 472	5 907	+7,9	
		square metres	140 699	128 410	128 548	230 623	256 958	+11,4	
		R'000	224 792	240 172	242 236	375 890	482 408	+28,3	
	2. Dwelling-houses >= 80 square metres	Number	2 512	2 118	2 570	4 621	4 688	+1,4	
		square metres	611 929	525 850	655 241	1 088 653	1 181 091	+8,5	
		R'000	1 711 487	1 563 029	2 085 500	3 063 193	3 648 529	+19,1	
	3. Flats and townhouses	Number	3 215	2 096	2 564	5 334	4 660	-12,6	
		square metres	365 657	233 806	311 207	679 872	545 013	-19,8	
		R'000	1 062 783	648 521	928 206	2 011 702	1 576 727	-21,6	
	4. Other residential buildings 2/	square metres	30 529	9 222	26 507	38 146	35 729	-6,3	
		R'000	115 012	28 840	89 290	137 043	118 130	-13,8	
	5. Total residential buildings	R'000	3 114 074	2 480 562	3 345 232	5 587 828	5 825 794	+4,3	
2. Non-residential buildings	1. Office and banking space	square metres	84 755	32 661	95 915	144 251	128 576	-10,9	
		R'000	263 738	114 672	303 428	459 265	418 100	-9,0	
	2. Shopping space	square metres	40 296	68 249	120 748	122 777	188 997	+53,9	
		R'000	137 768	236 527	351 718	365 156	588 245	+61,1	
	3. Industrial and warehouse space	square metres	150 167	191 975	147 038	260 201	339 013	+30,3	
		R'000	383 006	542 485	463 683	670 562	1 006 168	+50,0	
	4. Other non-residential buildings 3/	square metres	50 607	19 231	53 644	64 223	72 875	+13,5	
		R'000	154 622	50 845	165 527	186 263	216 372	+16,2	
		5. Total non-residential buildings	R'000	939 134	944 529	1 284 356	1 681 246	2 228 885	+32,6
	3. Additions and alterations	1. Dwelling-houses	square metres	423 764	339 508	399 916	760 943	739 424	-2,8
			R'000	1 117 532	940 402	1 124 351	1 971 978	2 064 753	+4,7
2. Other buildings 4/		square metres	99 151	98 381	97 606	164 751	195 987	+19,0	
		R'000	292 580	357 449	380 737	477 273	738 186	+54,7	
		3. Total additions and alterations	R'000	1 410 112	1 297 851	1 505 088	2 449 251	2 802 939	+14,4
4. Recorded plans passed	1. Total at current prices	R'000	5 463 320	4 722 942	6 134 676	9 718 325	10 857 618	+11,7	

1/ The percentage change between cumulative figures for 2006 and 2007.

2/ Other residential buildings include institutions for the disabled, boarding houses, hostels and tourism accommodation e.g. hotels, motels, guesthouses, holiday chalets, bed-and-breakfast accommodation and casinos.

3/ Other non-residential space includes churches, sport and recreation clubs, schools, crèches, hospitals and all other non-residential space.

4/ Other buildings include other residential buildings, non-residential buildings and internal alterations.

* Revised.

Table 10 - Recorded building plans passed by larger municipalities at current prices by type of building: Western Cape

Category of building	Type of building	Measuring unit	Feb. 2006*	Jan. 2007	Feb. 2007	Jan. - Feb. 2006	Jan. - Feb. 2007	% Change 1/	
1. Residential buildings	1. Dwelling-houses < 80 square metres	Number	632	285	281	875	566	-35,3	
		square metres	26 192	12 428	14 108	37 061	26 536	-28,4	
		R'000	33 939	21 492	35 885	52 222	57 377	+9,9	
	2. Dwelling-houses >= 80 square metres	Number	567	394	655	1 119	1 049	-6,3	
		square metres	121 160	96 571	154 880	244 380	251 451	+2,9	
		R'000	355 880	306 056	511 500	730 130	817 556	+12,0	
	3. Flats and townhouses	Number	348	549	361	562	910	+61,9	
		square metres	36 985	54 667	42 354	64 120	97 021	+51,3	
		R'000	120 598	200 531	132 375	197 886	332 906	+68,2	
	4. Other residential buildings 2/	square metres	4 014	1 585	22 415	4 014	24 000	+497,9	
		R'000	40 962	5 907	77 054	40 962	82 961	+102,5	
	5. Total residential buildings	R'000	551 379	533 986	756 814	1 021 200	1 290 800	+26,4	
2. Non-residential buildings	1. Office and banking space	square metres	28 386	2 359	30 741	49 597	33 100	-33,3	
		R'000	92 927	5 669	103 310	163 303	108 979	-33,3	
	2. Shopping space	square metres	6 225	11 970	8 404	10 099	20 374	+101,7	
		R'000	48 159	40 124	25 332	61 584	65 456	+6,3	
	3. Industrial and warehouse space	square metres	38 858	38 582	45 310	107 407	83 892	-21,9	
		R'000	112 419	120 205	143 782	303 022	263 987	-12,9	
	4. Other non-residential buildings 3/	square metres	6 525	2 495	22 498	7 612	24 993	+228,3	
		R'000	20 604	8 164	70 610	23 739	78 774	+231,8	
		5. Total non-residential buildings	R'000	274 109	174 162	343 034	551 648	517 196	-6,2
	3. Additions and alterations	1. Dwelling-houses	square metres	119 549	101 388	111 452	207 856	212 840	+2,4
			R'000	327 219	289 541	322 614	561 406	612 155	+9,0
2. Other buildings 4/		square metres	29 546	38 226	23 729	46 820	61 955	+32,3	
		R'000	90 359	137 532	120 861	142 364	258 393	+81,5	
		3. Total additions and alterations	R'000	417 578	427 073	443 475	703 770	870 548	+23,7
4. Recorded plans passed	1. Total at current prices	R'000	1 243 066	1 135 221	1 543 323	2 276 618	2 678 544	+17,7	

1/ The percentage change between cumulative figures for 2006 and 2007.

2/ Other residential buildings include institutions for the disabled, boarding houses, hostels and tourism accommodation e.g. hotels, motels, guesthouses, holiday chalets, bed-and-breakfast accommodation and casinos.

3/ Other non-residential space includes churches, sport and recreation clubs, schools, crèches, hospitals and all other non-residential space.

4/ Other buildings include other residential buildings, non-residential buildings and internal alterations.

* Revised.

Table 11 - Recorded building plans passed by larger municipalities at current prices by type of building: Eastern Cape

Category of building	Type of building	Measuring unit	Feb. 2006*	Jan. 2007	Feb. 2007	Jan. - Feb. 2006	Jan. - Feb. 2007	% Change 1/	
1. Residential buildings	1. Dwelling-houses < 80 square metres	Number	48	124	11	99	135	+36,4	
		square metres	2 473	5 329	679	5 302	6 008	+13,3	
		R'000	3 686	4 747	1 305	9 103	6 052	-33,5	
	2. Dwelling-houses >= 80 square metres	Number	202	118	177	357	295	-17,4	
		square metres	40 144	28 348	45 449	74 698	73 797	-1,2	
		R'000	96 977	67 648	127 101	175 832	194 749	+10,8	
	3. Flats and townhouses	Number	176	23	21	193	44	-77,2	
		square metres	22 500	2 681	4 440	26 366	7 121	-73,0	
		R'000	51 987	6 780	10 951	59 320	17 731	-70,1	
	4. Other residential buildings 2/	square metres	702	0	421	911	421	-53,8	
		R'000	1 578	0	1 108	1 961	1 108	-43,5	
	5. Total residential buildings	R'000	154 228	79 175	140 465	246 216	219 640	-10,8	
2. Non-residential buildings	1. Office and banking space	square metres	139	84	1 045	2 033	1 129	-44,5	
		R'000	302	144	2 742	4 920	2 886	-41,3	
	2. Shopping space	square metres	1 853	216	65 723	10 724	65 939	+514,9	
		R'000	4 467	582	172 523	24 646	173 105	+602,4	
	3. Industrial and warehouse space	square metres	1 025	6 620	7 302	2 097	13 922	+563,9	
		R'000	1 441	17 927	20 607	3 520	38 534	+994,7	
	4. Other non-residential buildings 3/	square metres	1 786	1 157	347	2 617	1 504	-42,5	
		R'000	3 942	3 010	806	5 966	3 816	-36,0	
		5. Total non-residential buildings	R'000	10 152	21 663	196 678	39 052	218 341	+459,1
	3. Additions and alterations	1. Dwelling-houses	square metres	34 056	25 317	37 726	66 423	63 043	-5,1
			R'000	77 534	63 326	93 160	148 517	156 486	+5,4
2. Other buildings 4/		square metres	6 351	1 863	7 138	12 770	9 001	-29,5	
		R'000	12 810	7 124	15 900	27 782	23 024	-17,1	
		3. Total additions and alterations	R'000	90 344	70 450	109 060	176 299	179 510	+1,8
4. Recorded plans passed	1. Total at current prices	R'000	254 724	171 288	446 203	461 567	617 491	+33,8	

1/ The percentage change between cumulative figures for 2006 and 2007.

2/ Other residential buildings include institutions for the disabled, boarding houses, hostels and tourism accommodation e.g. hotels, motels, guesthouses, holiday chalets, bed-and-breakfast accommodation and casinos.

3/ Other non-residential space includes churches, sport and recreation clubs, schools, crèches, hospitals and all other non-residential space.

4/ Other buildings include other residential buildings, non-residential buildings and internal alterations.

* Revised.

Table 12 - Recorded building plans passed by larger municipalities at current prices by type of building: Northern Cape

Category of building	Type of building	Measuring unit	Feb. 2006*	Jan. 2007	Feb. 2007	Jan. - Feb. 2006	Jan. - Feb. 2007	% Change 1/	
1. Residential buildings	1. Dwelling-houses < 80 square metres	Number	1	6	10	153	16	-89,5	
		square metres	58	382	465	7 734	847	-89,0	
		R'000	116	1 302	661	8 017	1 963	-75,5	
	2. Dwelling-houses >= 80 square metres	Number	35	34	24	48	58	+20,8	
		square metres	7 521	6 490	6 110	9 699	12 600	+29,9	
		R'000	14 518	15 193	11 090	18 328	26 283	+43,4	
	3. Flats and townhouses	Number	16	0	6	52	6	-88,5	
		square metres	2 516	0	1 213	7 207	1 213	-83,2	
		R'000	4 603	0	1 986	13 960	1 986	-85,8	
	4. Other residential buildings 2/	square metres	0	0	0	0	0	..	
		R'000	0	0	0	0	0	..	
5. Total residential buildings		R'000	19 237	16 495	13 737	40 305	30 232	-25,0	
2. Non-residential buildings	1. Office and banking space	square metres	5 692	0	1 078	5 692	1 078	-81,1	
		R'000	14 000	0	2 587	14 000	2 587	-81,5	
	2. Shopping space	square metres	508	1 458	2 298	766	3 756	+390,3	
		R'000	974	2 624	4 921	1 474	7 545	+411,9	
	3. Industrial and warehouse space	square metres	717	0	836	4 874	836	-82,8	
		R'000	1 434	0	1 672	16 148	1 672	-89,6	
	4. Other non-residential buildings 3/	square metres	167	139	0	338	139	-58,9	
		R'000	251	273	0	593	273	-54,0	
	5. Total non-residential buildings		R'000	16 659	2 897	9 180	32 215	12 077	-62,5
	3. Additions and alterations	1. Dwelling-houses	square metres	6 411	1 931	3 416	10 205	5 347	-47,6
R'000			12 212	3 906	7 062	19 589	10 968	-44,0	
2. Other buildings 4/		square metres	1 313	0	579	1 313	579	-55,9	
		R'000	4 055	500	2 148	4 095	2 648	-35,3	
3. Total additions and alterations		R'000	16 267	4 406	9 210	23 684	13 616	-42,5	
4. Recorded plans passed	1. Total at current prices	R'000	52 163	23 798	32 127	96 204	55 925	-41,9	

1/ The percentage change between cumulative figures for 2006 and 2007.

2/ Other residential buildings include institutions for the disabled, boarding houses, hostels and tourism accommodation e.g. hotels, motels, guesthouses, holiday chalets, bed-and-breakfast accommodation and casinos.

3/ Other non-residential space includes churches, sport and recreation clubs, schools, crèches, hospitals and all other non-residential space.

4/ Other buildings include other residential buildings, non-residential buildings and internal alterations.

* Revised.

Table 13 - Recorded building plans passed by larger municipalities at current prices by type of building: Free State

Category of building	Type of building	Measuring unit	Feb. 2006*	Jan. 2007	Feb. 2007	Jan. - Feb. 2006	Jan. - Feb. 2007	% Change 1/	
1. Residential buildings	1. Dwelling-houses < 80 square metres	Number	5	10	56	16	66	+312,5	
		square metres	316	657	2 676	916	3 333	+263,9	
		R'000	569	1 428	3 373	1 651	4 801	+190,8	
	2. Dwelling-houses >= 80 square metres	Number	88	149	108	137	257	+87,6	
		square metres	16 291	32 052	21 634	24 882	53 686	+115,8	
		R'000	32 694	75 012	57 243	50 429	132 255	+162,3	
	3. Flats and townhouses	Number	63	88	167	75	255	+240,0	
		square metres	8 979	8 782	12 777	13 377	21 559	+61,2	
		R'000	20 351	23 022	31 197	30 383	54 219	+78,5	
	4. Other residential buildings 2/	square metres	0	391	0	802	391	-51,2	
		R'000	0	608	0	3 000	608	-79,7	
		5. Total residential buildings	R'000	53 614	100 070	91 813	85 463	191 883	+124,5
	2. Non-residential buildings	1. Office and banking space	square metres	1 394	5 055	0	2 650	5 055	+90,8
			R'000	4 182	18 198	0	7 950	18 198	+128,9
2. Shopping space		square metres	1 101	0	1 680	2 106	1 680	-20,2	
		R'000	2 305	0	6 048	3 955	6 048	+52,9	
3. Industrial and warehouse space		square metres	3 391	3 199	4 674	4 562	7 873	+72,6	
		R'000	2 662	5 320	6 790	5 178	12 110	+133,9	
4. Other non-residential buildings 3/		square metres	0	792	682	154	1 474	+857,1	
		R'000	0	823	1 673	216	2 496	+1 055,6	
5. Total non-residential buildings		R'000	9 149	24 341	14 511	17 299	38 852	+124,6	
3. Additions and alterations		1. Dwelling-houses	square metres	16 252	17 492	16 850	24 888	34 342	+38,0
	R'000		29 013	39 647	40 453	42 866	80 100	+86,9	
	2. Other buildings 4/	square metres	4 672	2 310	2 197	5 008	4 507	-10,0	
		R'000	8 761	8 959	7 291	10 207	16 250	+59,2	
	3. Total additions and alterations	R'000	37 774	48 606	47 744	53 073	96 350	+81,5	
4. Recorded plans passed	1. Total at current prices	R'000	100 537	173 017	154 068	155 835	327 085	+109,9	

1/ The percentage change between cumulative figures for 2006 and 2007.

2/ Other residential buildings include institutions for the disabled, boarding houses, hostels and tourism accommodation e.g. hotels, motels, guesthouses, holiday chalets, bed-and-breakfast accommodation and casinos.

3/ Other non-residential space includes churches, sport and recreation clubs, schools, crèches, hospitals and all other non-residential space.

4/ Other buildings include other residential buildings, non-residential buildings and internal alterations.

* Revised.

Table 14 - Recorded building plans passed by larger municipalities at current prices by type of building: KwaZulu-Natal

Category of building	Type of building	Measuring unit	Feb. 2006*	Jan. 2007	Feb. 2007	Jan. - Feb. 2006	Jan. - Feb. 2007	% Change 1/	
1. Residential buildings	1. Dwelling-houses < 80 square metres	Number	60	87	73	123	160	+30,1	
		square metres	3 236	5 058	4 262	6 414	9 320	+45,3	
		R'000	5 921	12 666	10 528	11 952	23 194	+94,1	
	2. Dwelling-houses >= 80 square metres	Number	219	160	207	460	367	-20,2	
		square metres	47 951	36 324	52 667	96 070	88 991	-7,4	
		R'000	118 922	127 396	153 009	242 947	280 405	+15,4	
	3. Flats and townhouses	Number	323	321	679	641	1 000	+56,0	
		square metres	63 619	38 733	73 225	126 122	111 958	-11,2	
		R'000	197 291	99 823	211 420	383 932	311 243	-18,9	
	4. Other residential buildings 2/	square metres	8 218	1 092	580	8 398	1 672	-80,1	
		R'000	14 382	3 513	1 500	14 552	5 013	-65,6	
	5. Total residential buildings	R'000	336 516	243 398	376 457	653 383	619 855	-5,1	
2. Non-residential buildings	1. Office and banking space	square metres	10 021	6 335	2 866	10 920	9 201	-15,7	
		R'000	23 230	28 768	7 749	24 954	36 517	+46,3	
	2. Shopping space	square metres	11 041	9 262	1 867	14 162	11 129	-21,4	
		R'000	24 452	36 000	6 985	31 480	42 985	+36,5	
	3. Industrial and warehouse space	square metres	54 451	31 764	17 030	68 321	48 794	-28,6	
		R'000	101 649	84 836	43 732	129 574	128 568	-0,8	
	4. Other non-residential buildings 3/	square metres	16 537	4 829	10 826	19 069	15 655	-17,9	
		R'000	39 920	13 292	27 051	44 764	40 343	-9,9	
		5. Total non-residential buildings	R'000	189 251	162 896	85 517	230 772	248 413	+7,6
	3. Additions and alterations	1. Dwelling-houses	square metres	54 825	39 364	50 621	111 002	89 985	-18,9
			R'000	139 164	91 250	129 508	263 873	220 758	-16,3
2. Other buildings 4/		square metres	10 719	12 036	30 390	29 483	42 426	+43,9	
		R'000	36 619	53 030	130 597	83 554	183 627	+119,8	
		3. Total additions and alterations	R'000	175 783	144 280	260 105	347 427	404 385	+16,4
4. Recorded plans passed	1. Total at current prices	R'000	701 550	550 574	722 079	1 231 582	1 272 653	+3,3	

1/ The percentage change between cumulative figures for 2006 and 2007.

2/ Other residential buildings include institutions for the disabled, boarding houses, hostels and tourism accommodation e.g. hotels, motels, guesthouses, holiday chalets, bed-and-breakfast accommodation and casinos.

3/ Other non-residential space includes churches, sport and recreation clubs, schools, crèches, hospitals and all other non-residential space.

4/ Other buildings include other residential buildings, non-residential buildings and internal alterations.

* Revised.

Table 15 - Recorded building plans passed by larger municipalities at current prices by type of building: North West

Category of building	Type of building	Measuring unit	Feb. 2006*	Jan. 2007	Feb. 2007	Jan. - Feb. 2006	Jan. - Feb. 2007	% Change 1/	
1. Residential buildings	1. Dwelling-houses < 80 square metres	Number	96	30	884	154	914	+493,5	
		square metres	5 955	1 688	34 763	9 321	36 451	+291,1	
		R'000	8 067	3 656	39 909	12 981	43 565	+235,6	
	2. Dwelling-houses >= 80 square metres	Number	160	177	200	310	377	+21,6	
		square metres	28 470	35 722	46 696	60 711	82 418	+35,8	
		R'000	67 249	90 866	138 849	147 463	229 715	+55,8	
	3. Flats and townhouses	Number	125	99	224	228	323	+41,7	
		square metres	12 053	13 428	41 275	25 741	54 703	+112,5	
		R'000	31 123	35 057	99 601	70 730	134 658	+90,4	
	4. Other residential buildings 2/	square metres	0	2 280	0	0	2 280	..	
		R'000	0	7 980	0	0	7 980	..	
	5. Total residential buildings	R'000	106 439	137 559	278 359	231 174	415 918	+79,9	
2. Non-residential buildings	1. Office and banking space	square metres	2 903	0	17 751	4 059	17 751	+337,3	
		R'000	5 324	0	43 449	8 928	43 449	+386,7	
	2. Shopping space	square metres	822	12 911	3 847	3 719	16 758	+350,6	
		R'000	2 500	41 774	8 419	7 578	50 193	+562,4	
	3. Industrial and warehouse space	square metres	4 844	2 362	6 820	7 508	9 182	+22,3	
		R'000	20 578	3 876	15 174	25 128	19 050	-24,2	
	4. Other non-residential buildings 3/	square metres	1 382	3 533	0	2 046	3 533	+72,7	
		R'000	8 000	12 123	0	9 649	12 123	+25,6	
		5. Total non-residential buildings	R'000	36 402	57 773	67 042	51 283	124 815	+143,4
	3. Additions and alterations	1. Dwelling-houses	square metres	9 207	11 279	12 171	17 827	23 450	+31,5
R'000			18 293	22 266	28 132	35 071	50 398	+43,7	
2. Other buildings 4/		square metres	2 805	2 494	952	5 029	3 446	-31,5	
		R'000	8 790	6 916	2 519	15 787	9 435	-40,2	
		3. Total additions and alterations	R'000	27 083	29 182	30 651	50 858	59 833	+17,6
4. Recorded plans passed	1. Total at current prices	R'000	169 924	224 514	376 052	333 315	600 566	+80,2	

1/ The percentage change between cumulative figures for 2006 and 2007.

2/ Other residential buildings include institutions for the disabled, boarding houses, hostels and tourism accommodation e.g. hotels, motels, guesthouses, holiday chalets, bed-and-breakfast accommodation and casinos.

3/ Other non-residential space includes churches, sport and recreation clubs, schools, crèches, hospitals and all other non-residential space.

4/ Other buildings include other residential buildings, non-residential buildings and internal alterations.

* Revised.

Table 16 - Recorded building plans passed by larger municipalities at current prices by type of building: Gauteng

Category of building	Type of building	Measuring unit	Feb. 2006*	Jan. 2007	Feb. 2007	Jan. - Feb. 2006	Jan. - Feb. 2007	% Change 1/	
1. Residential buildings	1. Dwelling-houses < 80 square metres	Number	2 392	2 167	1 398	3 891	3 565	-8,4	
		square metres	97 479	88 313	65 697	154 226	154 010	-0,1	
		R'000	159 914	172 196	136 298	257 021	308 494	+20,0	
	2. Dwelling-houses >= 80 square metres	Number	972	754	907	1 702	1 661	-2,4	
		square metres	288 057	217 449	256 854	469 467	474 303	+1,0	
		R'000	867 241	702 153	835 533	1 424 674	1 537 686	+7,9	
	3. Flats and townhouses	Number	2 025	753	946	3 306	1 699	-48,6	
		square metres	199 727	94 428	116 840	380 457	211 268	-44,5	
		R'000	592 392	215 020	392 779	1 173 981	607 799	-48,2	
	4. Other residential buildings 2/	square metres	16 500	63	1 637	16 570	1 700	-89,7	
		R'000	54 943	148	5 730	55 188	5 878	-89,3	
		5. Total residential buildings	R'000	1 674 490	1 089 517	1 370 340	2 910 864	2 459 857	-15,5
	2. Non-residential buildings	1. Office and banking space	square metres	34 360	13 573	38 479	64 666	52 052	-19,5
R'000			119 697	48 079	133 380	225 394	181 459	-19,5	
2. Shopping space		square metres	17 609	29 173	30 774	76 689	59 947	-21,8	
		R'000	51 911	105 904	118 163	224 444	224 067	-0,2	
3. Industrial and warehouse space		square metres	37 529	101 402	41 006	53 944	142 408	+164,0	
		R'000	118 795	286 800	117 765	159 790	404 565	+153,2	
4. Other non-residential buildings 3/		square metres	23 452	2 874	17 584	30 192	20 458	-32,2	
		R'000	79 760	7 930	60 463	96 049	68 393	-28,8	
		5. Total non-residential buildings	R'000	370 163	448 713	429 771	705 677	878 484	+24,5
3. Additions and alterations		1. Dwelling-houses	square metres	155 043	115 318	138 175	267 208	253 493	-5,1
	R'000		453 095	364 264	431 103	786 610	795 367	+1,1	
	2. Other buildings 4/	square metres	39 467	38 799	28 921	53 806	67 720	+25,9	
		R'000	119 295	136 927	91 664	164 401	228 591	+39,0	
		3. Total additions and alterations	R'000	572 390	501 191	522 767	951 011	1 023 958	+7,7
4. Recorded plans passed	1. Total at current prices	R'000	2 617 043	2 039 421	2 322 878	4 567 552	4 362 299	-4,5	

1/ The percentage change between cumulative figures for 2006 and 2007.

2/ Other residential buildings include institutions for the disabled, boarding houses, hostels and tourism accommodation e.g. hotels, motels, guesthouses, holiday chalets, bed-and-breakfast accommodation and casinos.

3/ Other non-residential space includes churches, sport and recreation clubs, schools, crèches, hospitals and all other non-residential space.

4/ Other buildings include other residential buildings, non-residential buildings and internal alterations.

* Revised.

Table 17 - Recorded building plans passed by larger municipalities at current prices by type of building: Mpumalanga

Category of building	Type of building	Measuring unit	Feb. 2006*	Jan. 2007	Feb. 2007	Jan. - Feb. 2006	Jan. - Feb. 2007	% Change 1/	
1. Residential buildings	1. Dwelling-houses < 80 square metres	Number	44	336	50	90	386	+328,9	
		square metres	2 844	11 234	3 056	5 298	14 290	+169,7	
		R'000	7 688	14 157	6 651	12 691	20 808	+64,0	
	2. Dwelling-houses >= 80 square metres	Number	162	252	192	322	444	+37,9	
		square metres	38 645	56 820	49 866	72 331	106 686	+47,5	
		R'000	99 587	134 913	198 861	183 450	333 774	+81,9	
	3. Flats and townhouses	Number	116	203	73	195	276	+41,5	
		square metres	15 204	13 773	9 470	28 477	23 243	-18,4	
		R'000	34 982	51 683	23 690	61 732	75 373	+22,1	
	4. Other residential buildings 2/	square metres	1 095	3 811	0	6 984	3 811	-45,4	
		R'000	3 147	10 684	0	19 380	10 684	-44,9	
	5. Total residential buildings	R'000	145 404	211 437	229 202	277 253	440 639	+58,9	
2. Non-residential buildings	1. Office and banking space	square metres	80	4 504	3 603	1 678	8 107	+383,1	
		R'000	160	11 936	9 331	2 960	21 267	+618,5	
	2. Shopping space	square metres	1 137	762	0	2 419	762	-68,5	
		R'000	3 000	3 048	0	6 647	3 048	-54,1	
	3. Industrial and warehouse space	square metres	7 513	5 323	22 454	9 031	27 777	+207,6	
		R'000	19 772	16 713	110 146	22 649	126 859	+460,1	
	4. Other non-residential buildings 3/	square metres	758	3 412	1 197	2 023	4 609	+127,8	
		R'000	2 145	5 230	3 394	4 687	8 624	+84,0	
		5. Total non-residential buildings	R'000	25 077	36 927	122 871	36 943	159 798	+332,6
	3. Additions and alterations	1. Dwelling-houses	square metres	19 937	16 853	17 632	36 995	34 485	-6,8
			R'000	42 314	41 436	43 552	79 704	84 988	+6,6
2. Other buildings 4/		square metres	2 972	1 681	2 839	5 554	4 520	-18,6	
		R'000	9 706	4 690	7 760	16 460	12 450	-24,4	
		3. Total additions and alterations	R'000	52 020	46 126	51 312	96 164	97 438	+1,3
4. Recorded plans passed	1. Total at current prices	R'000	222 501	294 490	403 385	410 360	697 875	+70,1	

1/ The percentage change between cumulative figures for 2006 and 2007.

2/ Other residential buildings include institutions for the disabled, boarding houses, hostels and tourism accommodation e.g. hotels, motels, guesthouses, holiday chalets, bed-and-breakfast accommodation and casinos.

3/ Other non-residential space includes churches, sport and recreation clubs, schools, crèches, hospitals and all other non-residential space.

4/ Other buildings include other residential buildings, non-residential buildings and internal alterations.

* Revised.

Table 18 - Recorded building plans passed by larger municipalities at current prices by type of building: Limpopo

Category of building	Type of building	Measuring unit	Feb. 2006*	Jan. 2007	Feb. 2007	Jan. - Feb. 2006	Jan. - Feb. 2007	% Change 1/	
1. Residential buildings	1. Dwelling-houses < 80 square metres	Number	36	56	43	71	99	+39,4	
		square metres	2 146	3 321	2 842	4 351	6 163	+41,6	
		R'000	4 892	8 528	7 626	10 252	16 154	+57,6	
	2. Dwelling-houses >= 80 square metres	Number	107	80	100	166	180	+8,4	
		square metres	23 690	16 074	21 085	36 415	37 159	+2,0	
		R'000	58 419	43 792	52 314	89 940	96 106	+6,9	
	3. Flats and townhouses	Number	23	60	87	82	147	+79,3	
		square metres	4 074	7 314	9 613	8 005	16 927	+111,5	
		R'000	9 456	16 605	24 207	19 778	40 812	+106,4	
	4. Other residential buildings 2/	square metres	0	0	1 454	467	1 454	+211,3	
		R'000	0	0	3 898	2 000	3 898	+94,9	
	5. Total residential buildings		R'000	72 767	68 925	88 045	121 970	156 970	+28,7
	2. Non-residential buildings	1. Office and banking space	square metres	1 780	751	352	2 956	1 103	-62,7
R'000			3 916	1 878	880	6 856	2 758	-59,8	
2. Shopping space		square metres	0	2 497	6 155	2 093	8 652	+313,4	
		R'000	0	6 471	9 327	3 348	15 798	+371,9	
3. Industrial and warehouse space		square metres	1 839	2 723	1 606	2 457	4 329	+76,2	
		R'000	4 256	6 808	4 015	5 553	10 823	+94,9	
4. Other non-residential buildings 3/		square metres	0	0	510	172	510	+196,5	
		R'000	0	0	1 530	600	1 530	+155,0	
5. Total non-residential buildings		R'000	8 172	15 157	15 752	16 357	30 909	+89,0	
3. Additions and alterations		1. Dwelling-houses	square metres	8 484	10 566	11 873	18 539	22 439	+21,0
	R'000		18 688	24 766	28 767	34 342	53 533	+55,9	
	2. Other buildings 4/	square metres	1 306	972	861	4 968	1 833	-63,1	
		R'000	2 185	1 771	1 997	12 623	3 768	-70,1	
	3. Total additions and alterations		R'000	20 873	26 537	30 764	46 965	57 301	+22,0
4. Recorded plans passed	1. Total at current prices	R'000	101 812	110 619	134 561	185 292	245 180	+32,3	

1/ The percentage change between cumulative figures for 2006 and 2007.

2/ Other residential buildings include institutions for the disabled, boarding houses, hostels and tourism accommodation e.g. hotels, motels, guesthouses, holiday chalets, bed-and-breakfast accommodation and casinos.

3/ Other non-residential space includes churches, sport and recreation clubs, schools, crèches, hospitals and all other non-residential space.

4/ Other buildings include other residential buildings, non-residential buildings and internal alterations.

* Revised.

Table 19 - Buildings reported as completed to larger municipalities at current prices by type of building: South Africa

Category of building	Type of building	Measuring unit	Feb. 2006*	Jan. 2007	Feb. 2007	Jan. - Feb. 2006	Jan. - Feb. 2007	% Change 1/	
1. Residential buildings	1. Dwelling-houses < 80 square metres	Number	2 272	1 094	3 219	3 606	4 313	+19,6	
		square metres	90 536	48 875	123 792	146 025	172 667	+18,2	
		R'000	145 169	104 232	192 124	247 480	296 356	+19,7	
	2. Dwelling-houses >= 80 square metres	Number	1 599	1 345	1 694	2 656	3 039	+14,4	
		square metres	352 167	307 459	383 320	597 610	690 779	+15,6	
		R'000	919 559	899 052	1 099 795	1 547 825	1 998 847	+29,1	
	3. Flats and townhouses	Number	1 887	1 630	1 931	3 156	3 561	+12,8	
		square metres	221 739	160 888	243 692	403 813	404 580	+0,2	
		R'000	657 075	516 653	684 354	1 144 225	1 201 007	+5,0	
	4. Other residential buildings 2/	square metres	3 233	5 177	25 811	3 655	30 988	+747,8	
		R'000	6 651	79 662	82 058	7 411	161 720	+2 082,2	
	5. Total residential buildings		R'000	1 728 454	1 599 599	2 058 331	2 946 941	3 657 930	+24,1
	2. Non-residential buildings	1. Office and banking space	square metres	15 988	43 084	30 607	28 011	73 691	+163,1
R'000			47 843	140 775	96 144	80 404	236 919	+194,7	
2. Shopping space		square metres	48 766	15 716	72 369	119 870	88 085	-26,5	
		R'000	186 821	39 896	279 467	364 262	319 363	-12,3	
3. Industrial and warehouse space		square metres	62 330	68 158	139 480	96 475	207 638	+115,2	
		R'000	142 254	202 607	399 406	224 131	602 013	+168,6	
4. Other non-residential buildings 3/		square metres	13 767	25 977	19 979	23 071	45 956	+99,2	
		R'000	25 155	93 318	50 830	47 404	144 148	+204,1	
5. Total non-residential buildings		R'000	402 073	476 596	825 847	716 201	1 302 443	+81,9	
3. Additions and alterations	1. Dwelling-houses	square metres	183 715	186 284	156 103	310 236	342 387	+10,4	
		R'000	421 807	491 377	389 589	726 462	880 966	+21,3	
	2. Other buildings 4/	square metres	41 843	37 285	53 813	76 191	91 098	+19,6	
		R'000	118 953	157 419	142 783	211 345	300 202	+42,0	
	3. Total additions and alterations		R'000	540 760	648 796	532 372	937 807	1 181 168	+26,0
4. Recorded buildings completed	1. Total at current prices		R'000	2 671 287	2 724 991	3 416 550	4 600 949	6 141 541	+33,5

1/ The percentage change between cumulative figures for 2006 and 2007.

2/ Other residential buildings include institutions for the disabled, boarding houses, hostels and tourism accommodation e.g. hotels, motels, guesthouses, holiday chalets, bed-and-breakfast accommodation and casinos.

3/ Other non-residential space includes churches, sport and recreation clubs, schools, crèches, hospitals and all other non-residential space.

4/ Other buildings include other residential buildings, non-residential buildings and internal alterations.

* Revised.

Table 20 - Buildings reported as completed to larger municipalities at current prices by type of building: Western Cape

Category of building	Type of building	Measuring unit	Feb. 2006*	Jan. 2007	Feb. 2007	Jan. - Feb. 2006	Jan. - Feb. 2007	% Change 1/
1. Residential buildings	1. Dwelling-houses < 80 square metres	Number	521	105	1 463	686	1 568	+128,6
		square metres	19 128	5 782	49 048	25 477	54 830	+115,2
		R'000	24 423	14 142	54 474	32 530	68 616	+110,9
	2. Dwelling-houses >= 80 square metres	Number	477	395	437	788	832	+5,6
		square metres	102 324	86 508	91 822	178 703	178 330	-0,2
		R'000	271 733	247 446	268 293	474 220	515 739	+8,8
	3. Flats and townhouses	Number	319	787	486	636	1 273	+100,2
		square metres	50 211	66 072	49 224	82 303	115 296	+40,1
		R'000	134 357	213 642	156 028	227 239	369 670	+62,7
	4. Other residential buildings 2/	square metres	2 548	0	13 205	2 548	13 205	+418,2
		R'000	5 081	0	45 488	5 081	45 488	+795,3
	5. Total residential buildings	R'000	435 594	475 230	524 283	739 070	999 513	+35,2
2. Non-residential buildings	1. Office and banking space	square metres	3 289	10 865	848	5 468	11 713	+114,2
		R'000	10 898	30 863	2 761	16 678	33 624	+101,6
	2. Shopping space	square metres	21 322	4 848	284	22 851	5 132	-77,5
		R'000	58 813	10 807	937	63 094	11 744	-81,4
	3. Industrial and warehouse space	square metres	30 928	11 266	64 002	45 586	75 268	+65,1
		R'000	64 979	30 606	194 558	102 580	225 164	+119,5
	4. Other non-residential buildings 3/	square metres	5 570	9 113	1 964	8 920	11 077	+24,2
		R'000	9 836	27 101	5 865	17 879	32 966	+84,4
		5. Total non-residential buildings	R'000	144 526	99 377	204 121	200 231	303 498
3. Additions and alterations	1. Dwelling-houses	square metres	68 975	59 674	59 525	123 965	119 199	-3,8
		R'000	150 182	158 650	152 576	290 978	311 226	+7,0
	2. Other buildings 4/	square metres	12 405	12 636	26 488	28 231	39 124	+38,6
		R'000	36 647	85 071	70 094	84 613	155 165	+83,4
		3. Total additions and alterations	R'000	186 829	243 721	222 670	375 591	466 391
4. Recorded buildings completed	1. Total at current prices	R'000	766 949	818 328	951 074	1 314 892	1 769 402	+34,6

1/ The percentage change between cumulative figures for 2006 and 2007.

2/ Other residential buildings include institutions for the disabled, boarding houses, hostels and tourism accommodation e.g. hotels, motels, guesthouses, holiday chalets, bed-and-breakfast accommodation and casinos.

3/ Other non-residential space includes churches, sport and recreation clubs, schools, crèches, hospitals and all other non-residential space.

4/ Other buildings include other residential buildings, non-residential buildings and internal alterations.

* Revised.

Table 21 - Buildings reported as completed to larger municipalities at current prices by type of building: Eastern Cape

Category of building	Type of building	Measuring unit	Feb. 2006*	Jan. 2007	Feb. 2007	Jan. - Feb. 2006	Jan. - Feb. 2007	% Change 1/
1. Residential buildings	1. Dwelling-houses < 80 square metres	Number	167	106	57	260	163	-37,3
		square metres	6 930	4 318	2 477	11 076	6 795	-38,7
		R'000	7 471	7 288	4 575	14 369	11 863	-17,4
	2. Dwelling-houses >= 80 square metres	Number	76	107	76	198	183	-7,6
		square metres	16 366	16 970	10 892	40 560	27 862	-31,3
		R'000	35 818	43 907	27 765	85 092	71 672	-15,8
	3. Flats and townhouses	Number	7	54	29	39	83	+112,8
		square metres	942	4 883	6 149	5 967	11 032	+84,9
		R'000	1 972	11 988	13 591	13 443	25 579	+90,3
	4. Other residential buildings 2/	square metres	0	0	0	0	0	..
		R'000	0	0	0	0	0	..
	5. Total residential buildings	R'000	45 261	63 183	45 931	112 904	109 114	-3,4
2. Non-residential buildings	1. Office and banking space	square metres	0	0	0	0	0	..
		R'000	0	0	0	0	0	..
	2. Shopping space	square metres	0	1 327	0	0	1 327	..
		R'000	0	3 211	0	0	3 211	..
	3. Industrial and warehouse space	square metres	5 230	1 021	14 123	5 230	15 144	+189,6
		R'000	9 000	1 957	37 189	9 000	39 146	+335,0
	4. Other non-residential buildings 3/	square metres	266	0	707	1 628	707	-56,6
		R'000	620	0	1 819	3 772	1 819	-51,8
		5. Total non-residential buildings	R'000	9 620	5 168	39 008	12 772	44 176
3. Additions and alterations	1. Dwelling-houses	square metres	9 969	14 210	6 376	17 696	20 586	+16,3
		R'000	19 577	26 428	12 629	33 830	39 057	+15,5
	2. Other buildings 4/	square metres	2 796	206	8 456	6 340	8 662	+36,6
		R'000	7 708	461	18 485	13 696	18 946	+38,3
		3. Total additions and alterations	R'000	27 285	26 889	31 114	47 526	58 003
4. Recorded buildings completed	1. Total at current prices	R'000	82 166	95 240	116 053	173 202	211 293	+22,0

1/ The percentage change between cumulative figures for 2006 and 2007.

2/ Other residential buildings include institutions for the disabled, boarding houses, hostels and tourism accommodation e.g. hotels, motels, guesthouses, holiday chalets, bed-and-breakfast accommodation and casinos.

3/ Other non-residential space includes churches, sport and recreation clubs, schools, crèches, hospitals and all other non-residential space.

4/ Other buildings include other residential buildings, non-residential buildings and internal alterations.

* Revised.

Table 22 - Buildings reported as completed to larger municipalities at current prices by type of building: Northern Cape

Category of building	Type of building	Measuring unit	Feb. 2006*	Jan. 2007	Feb. 2007	Jan. - Feb. 2006	Jan. - Feb. 2007	% Change 1/
1. Residential buildings	1. Dwelling-houses < 80 square metres	Number	3	3	8	3	11	+266,7
		square metres	198	200	339	198	539	+172,2
		R'000	356	360	400	356	760	+113,5
	2. Dwelling-houses >= 80 square metres	Number	15	9	9	20	18	-10,0
		square metres	2 165	1 866	1 502	3 172	3 368	+6,2
		R'000	3 936	4 236	3 952	5 950	8 188	+37,6
	3. Flats and townhouses	Number	4	7	12	9	19	+111,1
		square metres	617	1 003	1 684	1 051	2 687	+155,7
		R'000	1 234	1 805	3 125	2 102	4 930	+134,5
	4. Other residential buildings 2/	square metres	0	0	0	0	0	..
		R'000	0	0	0	0	0	..
	5. Total residential buildings	R'000	5 526	6 401	7 477	8 408	13 878	+65,1
2. Non-residential buildings	1. Office and banking space	square metres	1 620	0	5 682	1 620	5 682	+250,7
		R'000	3 240	0	14 000	3 240	14 000	+332,1
	2. Shopping space	square metres	0	1 710	446	0	2 156	..
		R'000	0	3 236	941	0	4 177	..
	3. Industrial and warehouse space	square metres	1 015	0	482	1 015	482	-52,5
		R'000	2 030	0	1 400	2 030	1 400	-31,0
	4. Other non-residential buildings 3/	square metres	0	0	0	0	0	..
		R'000	0	0	0	0	0	..
		5. Total non-residential buildings	R'000	5 270	3 236	16 341	5 270	19 577
3. Additions and alterations	1. Dwelling-houses	square metres	1 226	2 295	3 480	1 627	5 775	+254,9
		R'000	3 657	4 669	7 539	4 421	12 208	+176,1
	2. Other buildings 4/	square metres	2 060	34	0	2 060	34	-98,3
		R'000	5 164	82	80	5 204	162	-96,9
	3. Total additions and alterations	R'000	8 821	4 751	7 619	9 625	12 370	+28,5
4. Recorded buildings completed	1. Total at current prices	R'000	19 617	14 388	31 437	23 303	45 825	+96,6

1/ The percentage change between cumulative figures for 2006 and 2007.

2/ Other residential buildings include institutions for the disabled, boarding houses, hostels and tourism accommodation e.g. hotels, motels, guesthouses, holiday chalets, bed-and-breakfast accommodation and casinos.

3/ Other non-residential space includes churches, sport and recreation clubs, schools, crèches, hospitals and all other non-residential space.

4/ Other buildings include other residential buildings, non-residential buildings and internal alterations.

* Revised.

Table 23 - Buildings reported as completed to larger municipalities at current prices by type of building: Free State

Category of building	Type of building	Measuring unit	Feb. 2006*	Jan. 2007	Feb. 2007	Jan. - Feb. 2006	Jan. - Feb. 2007	% Change 1/	
1. Residential buildings	1. Dwelling-houses < 80 square metres	Number	22	25	29	33	54	+63,6	
		square metres	1 236	1 503	1 730	1 842	3 233	+75,5	
		R'000	2 078	2 682	2 986	3 171	5 668	+78,7	
	2. Dwelling-houses >= 80 square metres	Number	33	85	78	52	163	+213,5	
		square metres	5 425	13 059	17 462	9 393	30 521	+224,9	
		R'000	9 827	28 228	36 283	17 531	64 511	+268,0	
	3. Flats and townhouses	Number	111	30	40	144	70	-51,4	
		square metres	6 445	3 386	5 245	11 887	8 631	-27,4	
		R'000	12 876	12 444	15 457	25 056	27 901	+11,4	
	4. Other residential buildings 2/	square metres	204	4 987	0	626	4 987	+696,6	
		R'000	367	79 092	0	1 127	79 092	+6 917,9	
	5. Total residential buildings	R'000	25 148	122 446	54 726	46 885	177 172	+277,9	
2. Non-residential buildings	1. Office and banking space	square metres	318	0	0	992	0	-100,0	
		R'000	954	0	0	2 454	0	-100,0	
	2. Shopping space	square metres	7 767	350	1 930	8 427	2 280	-72,9	
		R'000	22 898	1 251	7 720	23 998	8 971	-62,6	
	3. Industrial and warehouse space	square metres	651	0	64	1 386	64	-95,4	
		R'000	520	0	141	1 608	141	-91,2	
	4. Other non-residential buildings 3/	square metres	0	0	191	0	191	..	
		R'000	0	0	529	0	529	..	
		5. Total non-residential buildings	R'000	24 372	1 251	8 390	28 060	9 641	-65,6
	3. Additions and alterations	1. Dwelling-houses	square metres	6 949	4 536	2 452	9 928	6 988	-29,6
R'000			10 193	8 624	4 076	15 078	12 700	-15,8	
2. Other buildings 4/		square metres	1 361	0	539	2 153	539	-75,0	
		R'000	2 624	540	2 081	4 333	2 621	-39,5	
		3. Total additions and alterations	R'000	12 817	9 164	6 157	19 411	15 321	-21,1
4. Recorded buildings completed	1. Total at current prices	R'000	62 337	132 861	69 273	94 356	202 134	+114,2	

1/ The percentage change between cumulative figures for 2006 and 2007.

2/ Other residential buildings include institutions for the disabled, boarding houses, hostels and tourism accommodation e.g. hotels, motels, guesthouses, holiday chalets, bed-and-breakfast accommodation and casinos.

3/ Other non-residential space includes churches, sport and recreation clubs, schools, crèches, hospitals and all other non-residential space.

4/ Other buildings include other residential buildings, non-residential buildings and internal alterations.

* Revised.

Table 24 - Buildings reported as completed to larger municipalities at current prices by type of building: KwaZulu-Natal

Category of building	Type of building	Measuring unit	Feb. 2006*	Jan. 2007	Feb. 2007	Jan. - Feb. 2006	Jan. - Feb. 2007	% Change 1/	
1. Residential buildings	1. Dwelling-houses < 80 square metres	Number	126	102	126	231	228	-1,3	
		square metres	5 190	3 852	6 073	10 400	9 925	-4,6	
		R'000	7 553	6 475	14 101	18 890	20 576	+8,9	
	2. Dwelling-houses >= 80 square metres	Number	103	84	168	232	252	+8,6	
		square metres	19 728	17 498	43 220	45 091	60 718	+34,7	
		R'000	48 147	47 202	130 836	110 483	178 038	+61,1	
	3. Flats and townhouses	Number	275	117	131	461	248	-46,2	
		square metres	40 454	15 368	41 086	80 144	56 454	-29,6	
		R'000	109 874	45 945	88 416	212 223	134 361	-36,7	
	4. Other residential buildings 2/	square metres	0	0	12 606	0	12 606	..	
		R'000	0	0	36 570	0	36 570	..	
	5. Total residential buildings	R'000	165 574	99 622	269 923	341 596	369 545	+8,2	
2. Non-residential buildings	1. Office and banking space	square metres	0	1 727	6 781	2 612	8 508	+225,7	
		R'000	0	5 073	17 825	6 918	22 898	+231,0	
	2. Shopping space	square metres	2 719	470	33 136	7 813	33 606	+330,1	
		R'000	11 272	1 175	111 521	18 762	112 696	+500,7	
	3. Industrial and warehouse space	square metres	0	35 467	26 159	13 874	61 626	+344,2	
		R'000	0	113 490	65 100	31 800	178 590	+461,6	
	4. Other non-residential buildings 3/	square metres	6 321	0	5 349	9 481	5 349	-43,6	
		R'000	10 418	0	8 515	17 568	8 515	-51,5	
		5. Total non-residential buildings	R'000	21 690	119 738	202 961	75 048	322 699	+330,0
	3. Additions and alterations	1. Dwelling-houses	square metres	20 268	18 293	30 080	43 010	48 373	+12,5
R'000			46 041	46 587	73 825	97 717	120 412	+23,2	
2. Other buildings 4/		square metres	6 832	16 249	6 548	15 148	22 797	+50,5	
		R'000	23 004	44 254	16 840	43 446	61 094	+40,6	
		3. Total additions and alterations	R'000	69 045	90 841	90 665	141 163	181 506	+28,6
4. Recorded buildings completed	1. Total at current prices	R'000	256 309	310 201	563 549	557 807	873 750	+56,6	

1/ The percentage change between cumulative figures for 2006 and 2007.

2/ Other residential buildings include institutions for the disabled, boarding houses, hostels and tourism accommodation e.g. hotels, motels, guesthouses, holiday chalets, bed-and-breakfast accommodation and casinos.

3/ Other non-residential space includes churches, sport and recreation clubs, schools, crèches, hospitals and all other non-residential space.

4/ Other buildings include other residential buildings, non-residential buildings and internal alterations.

* Revised.

Table 25 - Buildings reported as completed to larger municipalities at current prices by type of building: North West

Category of building	Type of building	Measuring unit	Feb. 2006*	Jan. 2007	Feb. 2007	Jan. - Feb. 2006	Jan. - Feb. 2007	% Change 1/	
1. Residential buildings	1. Dwelling-houses < 80 square metres	Number	23	55	381	47	436	+827,7	
		square metres	1 497	1 973	13 324	2 906	15 297	+426,4	
		R'000	1 875	2 074	11 770	4 081	13 844	+239,2	
	2. Dwelling-houses >= 80 square metres	Number	119	79	131	185	210	+13,5	
		square metres	21 950	18 700	33 746	36 304	52 446	+44,5	
		R'000	47 036	52 255	98 887	84 687	151 142	+78,5	
	3. Flats and townhouses	Number	21	94	146	85	240	+182,4	
		square metres	2 173	6 433	8 070	8 683	14 503	+67,0	
		R'000	4 844	18 033	17 525	18 875	35 558	+88,4	
	4. Other residential buildings 2/	square metres	0	0	0	0	0	..	
		R'000	0	0	0	0	0	..	
		5. Total residential buildings	R'000	53 755	72 362	128 182	107 643	200 544	+86,3
	2. Non-residential buildings	1. Office and banking space	square metres	0	1 286	0	0	1 286	..
R'000			0	2 829	0	0	2 829	..	
2. Shopping space		square metres	6 963	3 620	12 549	26 843	16 169	-39,8	
		R'000	61 790	9 490	40 509	114 650	49 999	-56,4	
3. Industrial and warehouse space		square metres	0	0	0	0	0	..	
		R'000	0	0	0	0	0	..	
4. Other non-residential buildings 3/		square metres	0	218	426	247	644	+160,7	
		R'000	0	763	778	543	1 541	+183,8	
5. Total non-residential buildings		R'000	61 790	13 082	41 287	115 193	54 369	-52,8	
3. Additions and alterations		1. Dwelling-houses	square metres	3 949	2 573	4 444	9 194	7 017	-23,7
	R'000		6 865	4 820	9 384	16 085	14 204	-11,7	
	2. Other buildings 4/	square metres	1 867	0	0	6 210	0	-100,0	
		R'000	3 225	110	10	14 059	120	-99,1	
	3. Total additions and alterations		R'000	10 090	4 930	9 394	30 144	14 324	-52,5
4. Recorded buildings completed	1. Total at current prices	R'000	125 635	90 374	178 863	252 980	269 237	+6,4	

1/ The percentage change between cumulative figures for 2006 and 2007.

2/ Other residential buildings include institutions for the disabled, boarding houses, hostels and tourism accommodation e.g. hotels, motels, guesthouses, holiday chalets, bed-and-breakfast accommodation and casinos.

3/ Other non-residential space includes churches, sport and recreation clubs, schools, crèches, hospitals and all other non-residential space.

4/ Other buildings include other residential buildings, non-residential buildings and internal alterations.

* Revised.

Table 26 - Buildings reported as completed to larger municipalities at current prices by type of building: Gauteng

Category of building	Type of building	Measuring unit	Feb. 2006*	Jan. 2007	Feb. 2007	Jan. - Feb. 2006	Jan. - Feb. 2007	% Change 1/
1. Residential buildings	1. Dwelling-houses < 80 square metres	Number	1 240	650	1 090	2 052	1 740	-15,2
		square metres	50 219	28 127	46 679	83 457	74 806	-10,4
		R'000	93 406	62 726	92 873	157 125	155 599	-1,0
	2. Dwelling-houses >= 80 square metres	Number	649	478	629	957	1 107	+15,7
		square metres	159 724	131 021	153 958	243 552	284 979	+17,0
		R'000	443 719	417 578	462 349	671 081	879 927	+31,1
	3. Flats and townhouses	Number	1 077	512	1 029	1 525	1 541	+1,0
		square metres	113 860	59 291	124 619	186 955	183 910	-1,6
		R'000	370 778	201 945	370 689	584 307	572 634	-2,0
	4. Other residential buildings 2/	square metres	0	0	0	0	0	..
		R'000	0	0	0	0	0	..
	5. Total residential buildings	R'000	907 903	682 249	925 911	1 412 513	1 608 160	+13,9
2. Non-residential buildings	1. Office and banking space	square metres	8 866	26 589	15 912	13 583	42 501	+212,9
		R'000	28 533	95 710	54 558	42 038	150 268	+257,5
	2. Shopping space	square metres	9 034	2 948	23 308	46 931	26 256	-44,1
		R'000	30 511	9 617	116 641	131 221	126 258	-3,8
	3. Industrial and warehouse space	square metres	19 355	17 859	29 859	24 233	47 718	+96,9
		R'000	54 794	50 726	90 833	66 182	141 559	+113,9
	4. Other non-residential buildings 3/	square metres	1 292	15 843	11 342	2 206	27 185	+1 132,3
		R'000	3 486	63 237	33 324	6 477	96 561	+1 390,8
		5. Total non-residential buildings	R'000	117 324	219 290	295 356	245 918	514 646
3. Additions and alterations	1. Dwelling-houses	square metres	67 498	77 300	39 954	95 704	117 254	+22,5
		R'000	175 015	225 605	108 834	250 938	334 439	+33,3
	2. Other buildings 4/	square metres	11 728	7 141	11 049	13 253	18 190	+37,3
		R'000	32 882	23 886	32 739	38 197	56 625	+48,2
		3. Total additions and alterations	R'000	207 897	249 491	141 573	289 135	391 064
4. Recorded buildings completed	1. Total at current prices	R'000	1 233 124	1 151 030	1 362 840	1 947 566	2 513 870	+29,1

1/ The percentage change between cumulative figures for 2006 and 2007.

2/ Other residential buildings include institutions for the disabled, boarding houses, hostels and tourism accommodation e.g. hotels, motels, guesthouses, holiday chalets, bed-and-breakfast accommodation and casinos.

3/ Other non-residential space includes churches, sport and recreation clubs, schools, crèches, hospitals and all other non-residential space.

4/ Other buildings include other residential buildings, non-residential buildings and internal alterations.

* Revised.

Table 27 - Buildings reported as completed to larger municipalities at current prices by type of building: Mpumalanga

Category of building	Type of building	Measuring unit	Feb. 2006*	Jan. 2007	Feb. 2007	Jan. - Feb. 2006	Jan. - Feb. 2007	% Change 1/	
1. Residential buildings	1. Dwelling-houses < 80 square metres	Number	154	21	35	261	56	-78,5	
		square metres	5 067	1 424	2 169	8 524	3 593	-57,8	
		R'000	5 406	4 120	5 845	11 722	9 965	-15,0	
	2. Dwelling-houses >= 80 square metres	Number	90	72	107	162	179	+10,5	
		square metres	16 828	14 537	18 462	28 488	32 999	+15,8	
		R'000	40 274	39 318	44 139	67 531	83 457	+23,6	
	3. Flats and townhouses	Number	41	16	41	173	57	-67,1	
		square metres	3 331	2 496	5 365	15 419	7 861	-49,0	
		R'000	12 450	7 499	14 624	32 928	22 123	-32,8	
	4. Other residential buildings 2/	square metres	481	190	0	481	190	-60,5	
		R'000	1 203	570	0	1 203	570	-52,6	
	5. Total residential buildings	R'000	59 333	51 507	64 608	113 384	116 115	+2,4	
2. Non-residential buildings	1. Office and banking space	square metres	163	2 617	1 384	1 579	4 001	+153,4	
		R'000	408	6 300	7 000	4 203	13 300	+216,4	
	2. Shopping space	square metres	0	443	0	6 044	443	-92,7	
		R'000	0	1 109	0	11 000	1 109	-89,9	
	3. Industrial and warehouse space	square metres	4 031	574	4 263	4 031	4 837	+20,0	
		R'000	7 683	1 492	9 340	7 683	10 832	+41,0	
	4. Other non-residential buildings 3/	square metres	318	803	0	589	803	+36,3	
		R'000	795	2 217	0	1 165	2 217	+90,3	
		5. Total non-residential buildings	R'000	8 886	11 118	16 340	24 051	27 458	+14,2
	3. Additions and alterations	1. Dwelling-houses	square metres	4 046	6 267	7 483	7 305	13 750	+88,2
			R'000	9 015	13 437	15 739	14 246	29 176	+104,8
2. Other buildings 4/		square metres	791	723	733	791	1 456	+84,1	
		R'000	2 234	2 353	2 454	2 328	4 807	+106,5	
		3. Total additions and alterations	R'000	11 249	15 790	18 193	16 574	33 983	+105,0
4. Recorded buildings completed	1. Total at current prices	R'000	79 468	78 415	99 141	154 009	177 556	+15,3	

1/ The percentage change between cumulative figures for 2006 and 2007.

2/ Other residential buildings include institutions for the disabled, boarding houses, hostels and tourism accommodation e.g. hotels, motels, guesthouses, holiday chalets, bed-and-breakfast accommodation and casinos.

3/ Other non-residential space includes churches, sport and recreation clubs, schools, crèches, hospitals and all other non-residential space.

4/ Other buildings include other residential buildings, non-residential buildings and internal alterations.

* Revised.

Table 28 - Buildings reported as completed to larger municipalities at current prices by type of building: Limpopo

Category of building	Type of building	Measuring unit	Feb. 2006*	Jan. 2007	Feb. 2007	Jan. - Feb. 2006	Jan. - Feb. 2007	% Change 1/	
1. Residential buildings	1. Dwelling-houses < 80 square metres	Number	16	27	30	33	57	+72,7	
		square metres	1 071	1 696	1 953	2 145	3 649	+70,1	
		R'000	2 601	4 365	5 100	5 236	9 465	+80,8	
	2. Dwelling-houses >= 80 square metres	Number	37	36	59	62	95	+53,2	
		square metres	7 657	7 300	12 256	12 347	19 556	+58,4	
		R'000	19 069	18 882	27 291	31 250	46 173	+47,8	
	3. Flats and townhouses	Number	32	13	17	84	30	-64,3	
		square metres	3 706	1 956	2 250	11 404	4 206	-63,1	
		R'000	8 690	3 352	4 899	28 052	8 251	-70,6	
	4. Other residential buildings 2/	square metres	0	0	0	0	0	..	
		R'000	0	0	0	0	0	..	
	5. Total residential buildings	R'000	30 360	26 599	37 290	64 538	63 889	-1,0	
2. Non-residential buildings	1. Office and banking space	square metres	1 732	0	0	2 157	0	-100,0	
		R'000	3 810	0	0	4 873	0	-100,0	
	2. Shopping space	square metres	961	0	716	961	716	-25,5	
		R'000	1 537	0	1 198	1 537	1 198	-22,1	
	3. Industrial and warehouse space	square metres	1 120	1 971	528	1 120	2 499	+123,1	
		R'000	3 248	4 336	845	3 248	5 181	+59,5	
	4. Other non-residential buildings 3/	square metres	0	0	0	0	0	..	
		R'000	0	0	0	0	0	..	
		5. Total non-residential buildings	R'000	8 595	4 336	2 043	9 658	6 379	-34,0
	3. Additions and alterations	1. Dwelling-houses	square metres	835	1 136	2 309	1 807	3 445	+90,6
R'000			1 262	2 557	4 987	3 169	7 544	+138,1	
2. Other buildings 4/		square metres	2 003	296	0	2 005	296	-85,2	
		R'000	5 465	662	0	5 469	662	-87,9	
		3. Total additions and alterations	R'000	6 727	3 219	4 987	8 638	8 206	-5,0
4. Recorded buildings completed	1. Total at current prices	R'000	45 682	34 154	44 320	82 834	78 474	-5,3	

1/ The percentage change between cumulative figures for 2006 and 2007.

2/ Other residential buildings include institutions for the disabled, boarding houses, hostels and tourism accommodation e.g. hotels, motels, guesthouses, holiday chalets, bed-and-breakfast accommodation and casinos.

3/ Other non-residential space includes churches, sport and recreation clubs, schools, crèches, hospitals and all other non-residential space.

4/ Other buildings include other residential buildings, non-residential buildings and internal alterations.

* Revised.

Table 29 - Subsidised low-cost dwelling-houses completed or under construction by province

Province	Year	Number 1/	Square metres 2/	Value R'000 2/
Western Cape	2002	19 534	531 116	168 852
	2003	16 926	507 780	247 187
	2004	12 751	382 530	211 424
Eastern Cape	2002	46 700	1 575 675	473 806
	2003	35 005	1 050 150	511 213
	2004	34 923	1 047 690	579 058
Northern Cape	2002	5 189	164 906	68 078
	2003	4 354	130 620	63 586
	2004	3 645	109 350	60 438
Free State	2002	8 617	348 492	154 121
	2003	14 848	445 440	216 840
	2004	16 522	495 660	273 951
KwaZulu-Natal	2002	21 958	831 349	234 041
	2003	31 372	941 160	458 157
	2004	35 968	1 079 040	596 385
North West	2002	21 309	630 115	210 439
	2003	13 809	414 270	201 667
	2004	10 149	304 470	168 281
Gauteng	2002	29 939	991 571	321 943
	2003	42 862	1 285 860	625 957
	2004	33 260	997 800	551 484
Mpumalanga	2002	19 883	660 505	253 931
	2003	21 336	640 080	246 079
	2004	18 808	564 240	311 855
Limpopo	2002	15 382	605 877	183 769
	2003	15 596	467 880	227 764
	2004	16 338	490 140	270 900
South Africa	2002	188 511	6 339 606	2 068 980
	2003	196 108	5 883 240	2 798 450
	2004	182 364	5 470 920	3 023 777

Source: Provincial Governments co-ordinated by the National Department of Housing
 1/ As soon as building commences, dwelling-houses are recorded as completed or under construction.
 2/ Estimates by the National Department of Housing.

Table 30 - Subsidised low-cost dwelling-houses completed by province

Completions during financial year: 1 April 2005 to 31 March 2006			
Province	Number	Square metres 1/	Value R'000 1/
Western Cape	2 040	61 200	52 877
Eastern Cape	16 874	506 220	437 374
Northern Cape	5 293	158 790	137 195
Free State	17 635	529 050	457 099
KwaZulu-Natal	21 601	648 030	559 898
North West	14 445	433 350	374 414
Gauteng	23 409	702 270	606 761
Mpumalanga	14 389	431 670	372 963
Limpopo	21 973	659 190	569 540
South Africa	137 659	4 129 770	3 568 121

Source: Provincial Governments co-ordinated by the National Department of Housing
 1/ Estimates by the National Department of Housing.

Explanatory notes

Introduction	1	Statistics South Africa (Stats SA) conducts a monthly building statistics survey collecting information regarding building plans passed and buildings completed, financed by the private sector, from the largest local government institutions in South Africa. According to these institutions, they are not always notified about low-cost housing projects and therefore do not include the bulk of low-cost dwelling-houses. Data regarding subsidised low-cost dwelling-houses, supplied by the provincial governments and co-ordinated by the National Department of Housing, are shown in table 29 and table 30 (page 37).
	2	In order to improve timeliness of the publication, some information for the current month has been estimated due to late submission by respondents. These estimates will be revised in the next statistical release(s) as soon as actual information is available.
Purpose of the survey	3	The monthly survey data are used in monitoring the state of economy and formulation of economic policy. Furthermore, the results are important inputs to estimate the Gross Domestic Product (GDP) and to calculate the Composite Leading Business Cycle Indicator. The data are extensively used by the private sector.
Scope of the survey	4	This survey covers local government institutions conducting activities for the private sector regarding - <ul style="list-style-type: none"> • passing of building plans; and • final inspection of completed buildings.
Classification	5	Building activities is classified in division 5 according to the 1993 edition of the <i>Standard Industrial Classification of all Economic Activities, (SIC) Fifth Edition, Report No. 09-90-02</i> . The SIC is based on the 1990 <i>International Standard Industrial Classification of all Economic Activities (ISIC)</i> with suitable adaptations for local conditions.
Response rate	6	The preliminary response rate for the survey on building statistics for February 2007 was 96,5%. Improved response rate for January 2006 was 100%.
Statistical unit	7	The statistical unit for the collection of information is a local government institution. Local government institutions include district municipalities, metropolitan municipalities and local municipalities.
Survey methodology and design	8	Stats SA conducts a monthly survey of metropolitan municipalities and large local municipalities on building plans passed and buildings completed. An annual survey of the remaining municipalities is conducted regarding buildings completed. The monthly survey represents approximately 90 percent of the total value of buildings completed. Information regarding building plans passed and buildings completed for the private sector is collected by mail, fax and telephone. According to the municipalities, they are not always notified about low-cost housing projects. Data regarding subsidised low-cost dwelling-houses, supplied by the provincial governments and co-ordinated by the National Department of Housing, are shown in table 29 and table 30 (page 37).
Constant prices	9	The value of building plans passed and buildings completed at constant prices measures building activities in terms of ruling prices in a specific base year, which is currently 2000. The value of building plans passed at constant prices for each month is obtained by deflating the values at current prices with a price index known as the 'lump sum domestic buildings' as published in statistical release P0151: <i>JBCC Contract Price Adjustment Provisions Work Group Indices</i> . In order to be applicable, these indices (base February 1991=100) are converted to the base year 2000=100.

- 10** The value of buildings completed at constant prices is obtained by deflating the values at current prices with the price index which is used to calculate building plans passed at constant prices (see paragraph 8). Since the completion of buildings may extend over a few months to a few years, the current value of buildings completed is deflated by price indices which prevailed at the time the plans were passed. Therefore, the duration of the completion of different types of buildings are taken into account in ascertaining the deflators e.g. the value of dwelling-houses completed at constant prices at January 2007 is obtained by deflating the current value of dwelling-houses completed for January 2007 with the price index of a month six months prior to January 2007. Furthermore, the value of other residential buildings, non-residential buildings and additions and alterations at constant prices is obtained by deflating the current values with price indices of 12 months, 18 months and 12 months prior to the relevant month, respectively.
- Seasonal adjustment**
- 11** Seasonally adjusted estimates of building plans passed and buildings completed are generated each month, using the X-11 Seasonal Adjustment Program developed by US Bureau of the Census Economic Research and Analyses Division, 1968.
- 12** Seasonal adjustment is a means of removing the estimated effects of normal seasonal variation from the series so that the effects of other influences on the series can be more clearly recognised. Seasonal adjustment does not aim to remove irregular or non-seasonal influences which may be present in any particular month. Influences that are volatile or unsystematic can still make it difficult to interpret the movement of the series even after adjustment for seasonal variations. Therefore, the month-to-month movements of seasonally adjusted estimates may not be reliable indicators of trend behaviour.
- Trend cycle**
- 13** The trend is a long-term pattern or movement of a time series. The X-11 Seasonal Adjustment Program is used for smoothing seasonally adjusted data.
- Revised figures**
- 14** Revised figures are due to late submission of data to Stats SA, or to respondents reporting revisions or corrections to their figures. Figures for the latest month are therefore preliminary. Data are edited at municipal level.
- 15** Once a year the annual statistical release P5041.3 is published with the revised and updated information at provincial and municipal level for the previous calendar year. Due to this comprehensive revision, the monthly statistical release P5041.1 reflects provincial revision for 2006 where applicable.
- Related publications**
- 16** Users may also wish to refer to the following publications:
- P5041.3: Selected building statistics of the private sector as reported by local government institutions issued annually.
 - P9101.2: Actual and expected expenditure on construction by the public sector per statistical region issued annually.
 - Bulletin of Statistics issued quarterly.
 - South African Statistics issued annually.
 - Report 50-11-01 issued annually.
- Rounding-off of figures**
- 17** The figures in the tables have, where necessary, been rounded off to the nearest digit shown.
- Pre-release policy**
- 18** Stats SA's pre-release policy may be inspected at its website, www.statssa.gov.za

Symbols and abbreviations

19	..	no meaningful percentage change between two specified periods available since either one or both of the totals are nil
	0	nil or figure too small to publish
	*	revised
	Stats SA	Statistics South Africa
	SIC	Standard Industrial Classification of all Economic Activities
	ISIC	International Standard Industrial Classification of all Economic Activities
	JBCC	Joint Building Contracts Committee
	CD	Compact Disc
	US	United States
	SARB	South African Reserve Bank
	DTI	Department of Trade and Industry

Glossary

Additions and alterations	They include extensions to existing buildings as well as internal and external alterations of existing buildings.
Blocks of flats	High-density housing consisting of a number of self-contained dwelling-units, each with at least one living-room together with a kitchen and bathroom, conjoined to similar units in one building.
Dwelling-house	A free-standing, complete structure on a separate stand or a self-contained dwelling-unit, granny flat, on the same premises as an existing residence. Out-buildings and garages are included.
Local government institutions	Include – <ul style="list-style-type: none"> • District municipalities; • Metropolitan municipalities; and • Local municipalities.
Municipality	A generic term describing the “unit” of government in the local spheres responsible for local government in a geographically demarcated area and including district, metropolitan and local municipalities. It is an institution consisting of a municipal council (elected political representatives) and municipal administration (appointed officials).
District municipality	Municipality that has municipal executive and legislative authority in an area that includes more than one municipality, and which is described in section 155(1) of the Constitution as a category C municipality (Refer to Local Government: Municipal Structure Act, 1998 (Act No. 117 of 1998)).
Metropolitan municipality	Municipality that has municipal executive and legislative authority in an area that includes more than one municipality, and which is described in section 155(1) of the Constitution as a category A municipality (Refer to Local Government: Municipal Structure Act, 1998 (Act No. 117 of 1998)).
Local municipality	Municipality that shares municipal executive and legislative authority in its area with a district municipality within whose area it falls, that is described in section 155(1) of the constitution as a category B municipality.
Non-residential buildings	Comprise factories, commercial, financial and other office buildings, as well as other buildings not used for residential purposes, such as churches, halls, clubs, schools and hospitals.
Other residential buildings	Institutions for the disabled, boarding houses, old people’s homes, hostels, hotels, motels, guesthouses, holiday chalets, bed-and-breakfast accommodation, entertainment centres and casinos.
Percentage change	<p>When using monthly actual values, the percentage change is the change in actual values of building activities (building plans passed or buildings completed) of the relevant month compared with the actual values of building activities (building plans passed or buildings completed) of the same month in the previous year expressed as a percentage.</p> <p>When using annual actual values, the percentage change is the change in the actual values of building activities (building plans passed or buildings completed) of the relevant year compared with the actual values of building activities (building plans passed or buildings completed) of the previous year expressed as a percentage.</p> <p>When using seasonally adjusted values, the percentage change is the change in the seasonally adjusted values of building activities (building plans passed or buildings completed) of the relevant month compared with the seasonally adjusted values of building activities (building plans passed or buildings completed) of the previous month expressed as a percentage.</p>

Reference period	One calendar month.
Residential buildings	Comprise dwelling-houses, flats, townhouses and other residential buildings.
Townhouses	Multiple, medium-density dwelling-units and include cluster housing, group housing, simplexes, duplexes, triplexes and other similar dwelling-units which are usually grouped together, with one level of each unit on ground level. This excludes blocks of flats.

General information

Stats SA publishes approximately 300 different statistical releases each year. It is not economically viable to produce them in more than one of South Africa's eleven official languages. Since the releases are used extensively, not only locally but also by international economic and social-scientific communities, Stats SA releases are published in English.

Stats SA has copyright on this publication. Users may apply the information as they wish, provided that they acknowledge Stats SA as the source of the basic data wherever they process, apply, utilise, publish or distribute the data and also that they specify that the relevant application and analysis (where applicable) result from their own processing of the data.

An advance release calendar is disseminated on www.statssa.gov.za

Stats SA products

A complete set of Stats SA publications is available at the Stats SA Library and the following libraries:

National Library of South Africa, Pretoria Division
National Library of South Africa, Cape Town Division
Natal Society Library, Pietermaritzburg
Library of Parliament, Cape Town
Bloemfontein Public Library
Johannesburg Public Library
Eastern Cape Library Services, King William's Town
Central Regional Library, Polokwane
Central Reference Library, Nelspruit
Central Reference Collection, Kimberley
Central Reference Library, Mmabatho

Stats SA also provides a subscription service.

Electronic services

A large range of data are available via on-line services, diskette, CD and computer printouts. For more details about our electronic data services, contact (012) 310 8600/8390/8351/4892/8496/8095.

You can visit us on the Internet at: www.statssa.gov.za

Enquiries

Telephone number: (012) 310 8600/8390/8351/4892/8496/8095 (user information services)
(012) 310 8228/310 8007 (technical enquiries)
(012) 310 8161 (orders)
(012) 310 4883/4885/8018 (library)

Fax number: (012) 310 8664 (technical enquiries)

Email: Gretaz@statssa.gov.za (technical enquiries)
info@statssa.gov.za (user information services)
distribution@statssa.gov.za (orders)

Postal address: Private Bag X44, Pretoria, 0001

Produced by Stats SA