

# **Selected building statistics of the private sector derived from data reported by local government institutions**

**February 2003**

Co-operation between Statistics South Africa (Stats SA), the citizens of the country, the private sector and government institutions is essential for a successful statistical system. Without continued co-operation and goodwill, the timely release of relevant and reliable official statistics will not be possible.

**Embargo: 13:00  
Date: 16 April 2003**

Stats SA publishes approximately three hundred different releases each year. It is not economically viable to produce them in more than one of South Africa's eleven official languages. Since the releases are used extensively, not only locally, but also by international economic and social-scientific communities, Stats SA releases are published in English only.

### Key figures regarding building plans passed for the month ended February 2003

<b>Actual estimates at constant 2000 prices</b>	<b>February 2003</b>	<b>January 2003 to February 2003</b>	<b>Percentage change between February 2002 and February 2003</b>	<b>Percentage change between December 2001 to February 2002 and December 2002 to February 2003</b>	<b>Percentage change between January 2002 to February 2002 and January 2003 to February 2003</b>
	<b>R million</b>	<b>R million</b>			
Residential buildings					
Dwelling-houses	649,4	1 233,2	+ 1,6	+ 6,3	+ 2,0
Flats and townhouses	239,3	385,6	+ 55,1	+ 26,9	+ 28,2
Other residential buildings	33,8	41,3	- 67,8	+ 85,3	- 61,5
<b>Total</b>	<b>922,5</b>	<b>1 660,1</b>	<b>+ 2,7</b>	<b>+ 14,6</b>	<b>+ 2,7</b>
Non-residential buildings	177,2	533,4	- 18,3	+ 43,6	+ 43,7
Additions and alterations	408,4	814,0	+ 1,4	+ 4,0	+ 4,8
<b>Total</b>	<b>1 508,1</b>	<b>3 007,5</b>	<b>- 0,7</b>	<b>+ 15,3</b>	<b>+ 8,8</b>

### Seasonally adjusted estimates at constant 2000 prices

	<b>February 2003</b>	<b>Percentage change between January 2003 and February 2003</b>	<b>Percentage change between September 2002 to November 2002 and December 2002 to February 2003</b>
	<b>R million</b>		
Residential buildings	915,3	- 0,8	- 8,1
Non-residential buildings	218,0	- 51,3	+ 28,6
Additions and alterations	477,4	- 4,9	- 2,0
<b>Total</b>	<b>1 610,7</b>	<b>- 14,0</b>	<b>- 1,6</b>

### Key findings regarding building plans passed for the three months ended February 2003

#### Seasonally adjusted real value of building plans passed decreases

*The seasonally adjusted real value of building plans passed (at constant 2000 prices) for the three months ended February 2003 decreased by 1,6% compared with the previous three months.*

The decrease of 1,6% in the seasonally adjusted real value of building plans passed was due to decreases reported for residential buildings (-8,1%) and additions and alterations (-2,0%) during the three months ended February 2003 compared with the previous three months. However, these decreases were partially counteracted by an increase in the seasonally adjusted real value of non-residential building plans passed (+28,6%) during the above-mentioned period.

## Key findings regarding building plans passed for the month ended February 2003

### Total real value of building plans passed increases

*The total real value of building plans passed (at constant 2000 prices) during the first two months of 2003 increased by 8,8% (+R242,6 million) to R3 007,5 million compared with the first two months of 2002. The largest increase in the real value of building plans passed was reported for non-residential buildings (+R162,2 million), followed by flats and townhouses (+R84,9 million), additions and alterations (+R37,0 million) and dwelling-houses (+R24,4 million). KwaZulu-Natal reported the largest real increase for non-residential buildings (+R197,4 million, mainly due to the increase of R202,7 million reported for shopping space). Large real increases for flats and townhouses were reported by KwaZulu-Natal (+R56,2 million) and Gauteng (+R50,3 million) during the above-mentioned period.*

### Five of the nine provinces reported increases in the total real value of building plans passed

The largest provincial contributor to the increase of 8,8% (+R242,6 million) in the total real value of building plans passed was KwaZulu-Natal (+11,5 percentage points or R319,1 million), followed by Western Cape (+1,1 percentage points or R30,8 million) and Eastern Cape (+0,4 of a percentage point or R10,9 million) (cf. table A). The largest real increases in KwaZulu-Natal were reported for shopping space (+R202,7 million, due to the real increase of R203,1 million reported by eThekweni Municipality), and flats and townhouses (+R56,2 million, due to the real increase of R68,4 million reported by North Local Council – Umhlanga Rocks).

**Table A - Contribution of provinces to the total real value of building plans passed**

Province	Percentage contribution to the total real value of plans passed during January 2002 to February 2002	Percentage change between January 2002 to February 2002 and January 2003 to February 2003	Contribution (percentage points) <sup>1/</sup> to the percentage change in the real value of plans passed between January 2002 to February 2002 and January 2003 to February 2003	Difference in total real value of plans passed between January 2002 to February 2002 and January 2003 to February 2003  R million
KwaZulu-Natal	10,2	+ 112,9	+ 11,5	+ 319,1
Western Cape	28,8	+ 3,9	+ 1,1	+ 30,8
Eastern Cape	5,9	+ 6,7	+ 0,4	+ 10,9
Northern Cape	0,5	+ 18,8	+ 0,1	+ 2,6
North West	3,1	+ 2,3	+ 0,1	+ 1,9
Free State	3,5	- 3,3	- 0,1	- 3,2
Limpopo	1,7	- 11,1	- 0,2	- 5,2
Gauteng	39,8	- 4,7	- 1,8	- 51,9
Mpumalanga	6,5	- 35,0	- 2,3	- 62,4
<b>Total</b>	<b>100,0</b>	<b>+ 8,8</b>	<b>+ 8,8</b>	<b>+242,6</b>

*1/ The contribution (percentage points) is calculated by multiplying the percentage change of each province between January 2002 to February 2002 and January 2003 to February 2003 (cf. column 3) with the percentage contribution of the corresponding province to the total real value of plans passed during January 2002 to February 2002 (cf. column 2) divided by 100.*

### Key figures regarding buildings completed for the month ended February 2003

<b>Actual estimates at constant 2000 prices</b>	<b>February 2003</b>	<b>January 2003 to February 2003</b>	<b>Percentage change between February 2002 and February 2003</b>	<b>Percentage change between December 2001 to February 2002 and December 2002 to February 2003</b>	<b>Percentage change between January 2002 to February 2002 and January 2003 to February 2003</b>
	<b>R million</b>	<b>R million</b>			
Residential buildings					
Dwelling-houses	381,0	704,0	+ 24,1	+ 13,8	+ 5,8
Flats and townhouses and other residential buildings	179,7	382,1	+ 29,0	+ 27,5	+ 15,6
<b>Total</b>	<b>560,7</b>	<b>1 086,1</b>	<b>+ 25,6</b>	<b>+ 17,8</b>	<b>+ 9,1</b>
Non-residential buildings	145,2	284,8	+ 6,5	+ 40,7	+ 4,6
Additions and alterations	250,4	460,2	+ 29,7	+ 36,7	+ 26,9
<b>Total</b>	<b>956,3</b>	<b>1 831,1</b>	<b>+ 23,3</b>	<b>+ 26,0</b>	<b>+ 12,3</b>

### Seasonally adjusted estimates at constant 2000 prices

	<b>February 2003</b>	<b>Percentage change between January 2003 and February 2003</b>	<b>Percentage change between September 2002 to November 2002 and December 2002 to February 2003</b>
	<b>R million</b>		
Residential buildings	637,3	+ 5,0	- 4,0
Non-residential buildings	184,2	- 2,2	+ 2,0
Additions and alterations	248,8	+ 1,3	+ 10,3
<b>Total</b>	<b>1 070,3</b>	<b>+ 2,9</b>	<b>+ 0,2</b>

### Key findings regarding buildings completed for the three months ended February 2003

#### Seasonally adjusted real value of buildings completed increases slightly

*The seasonally adjusted real value of buildings completed (at constant 2000 prices) for the three months ended February 2003 increased by 0,2% compared with the previous three months.*

The increase of 0,2% in the seasonally adjusted real value of buildings completed during the three months ended February 2003 compared with the previous three months was due to increases in the seasonally adjusted real value of additions and alterations (+10,3%) and non-residential buildings (+2,0%). However, these increases were to a large extent counteracted by a decrease in the seasonally adjusted real value of residential buildings completed (-4,0%) during the above-mentioned period.

## Key findings regarding buildings completed for the month ended February 2003

### Total real value of buildings completed increases

*The total real value of buildings completed (at constant 2000 prices) during first two months of 2003 increased by 12,3% (+R200,3 million) to R1 831,1 million compared with the first two months of 2002. Large real increases were reported for additions and alterations (+R97,5 million, mainly due to real increases reported by KwaZulu-Natal (+R44,7 million) and Western Cape (+R29,8 million)), 'other' residential buildings (+R40,8 million) and dwelling-houses (+R38,8 million).*

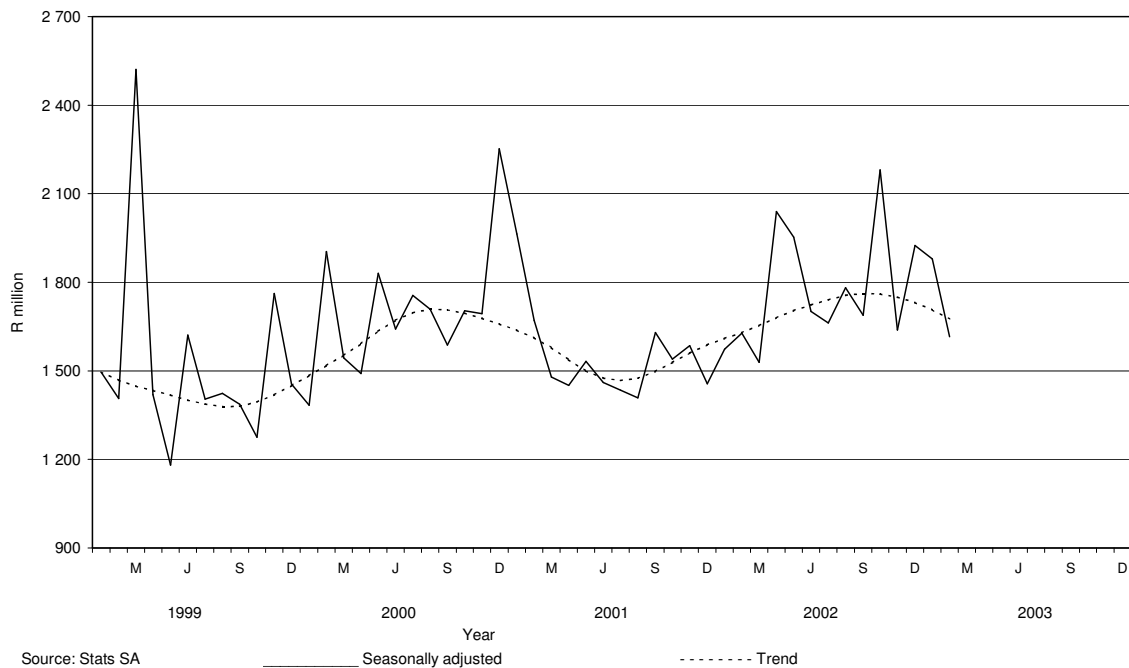
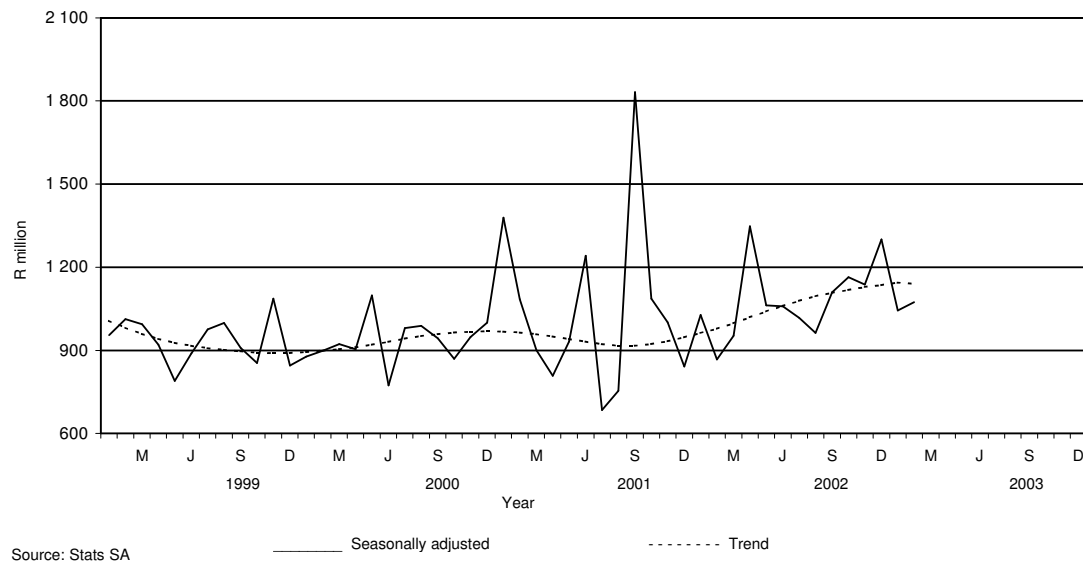
### Eight of the nine provinces reported increases in the total real value of buildings completed

Large increases in the real value of buildings completed were reported by Mpumalanga (+4,0 percentage points or R63,9 million), KwaZulu-Natal (+2,2 percentage points or R36,4 million) North West (+2,0 percentage points or R31,7 million) and Western Cape (+2,0 percentage points or R33,4 million) (cf. table B). Large real increases in Mpumalanga were reported for flats and townhouses (+R31,7 million, mainly due to the completion of flats to the real value of R30,7 million as reported by Middelburg Municipality during January 2003) and shopping space (+R18,9 million, due to the completion of shopping space to the real value of R17,6 million as reported by Mbombela Local Municipality during January 2003). Large real increases in KwaZulu-Natal were reported for additions and alterations (+R44,7 million) and dwelling-houses (+16,9 million). The largest real increase in North West was reported for flats and townhouses (+R21,5 million, mainly due to the large increases reported by Potchefstroom Municipality (+R11,5 million) and Klerksdorp Local Municipality (+R10,6 million)).

**Table B - Contribution of provinces to the total real value of buildings completed**

Province	Percentage contribution to the total real value of buildings completed during January 2002 to February 2002	Percentage change between January 2002 to February 2002 and January 2003 to February 2003	Contribution (percentage points) <sup>1/</sup> to the percentage change in the real value of buildings completed between January 2002 to February 2002 and January 2003 to February 2003	Difference in total real value of buildings completed between January 2002 to February 2002 and January 2003 to February 2003  R million
Mpumalanga	1,8	+ 220,6	+ 4,0	+ 63,9
KwaZulu-Natal	13,8	+ 16,2	+ 2,2	+ 36,4
North West	3,6	+ 54,3	+ 2,0	+ 31,7
Western Cape	34,0	+ 6,0	+ 2,0	+ 33,3
Gauteng	38,0	+ 3,8	+ 1,4	+ 23,5
Eastern Cape	4,3	+ 18,6	+ 0,8	+ 13,2
Limpopo	0,8	+ 23,1	+ 0,2	+ 3,0
Northern Cape	0,5	+ 8,2	+ 0,0	+ 0,8
Free State	3,2	- 10,7	- 0,3	- 5,5
<b>Total</b>	<b>100,0</b>	<b>+ 12,3</b>	<b>+ 12,3</b>	<b>+ 200,3</b>

1/ The contribution (percentage points) is calculated by multiplying the percentage change of each province between January 2002 to February 2002 and January 2003 to February 2003 (cf. column 3) with the percentage contribution of the corresponding province to the total real value of buildings completed during January 2002 to February 2002 (cf. column 2) divided by 100.

**Figure 1 – Total real value of building plans passed****Figure 2 – Total real value of buildings completed**

# Contents

## Page

<b>Notes</b>	7
<b>Tables</b>	
Table 1 Actual values and percentage change of building plans passed at current prices according to type of building	8
Table 2 Seasonally adjusted values and percentage change of building plans passed at current prices according to type of building	9
Table 3 Actual values and percentage change of building plans passed at constant 2000 prices according to type of building	10
Table 4 Seasonally adjusted values and percentage change of building plans passed at constant 2000 prices according to type of building	11
Table 5 Actual values and percentage change of buildings completed at current prices according to type of building	12
Table 6 Seasonally adjusted values and percentage change of buildings completed at current prices according to type of building	13
Table 7 Actual values and percentage change of buildings completed at constant 2000 prices according to type of building	14
Table 8 Seasonally adjusted values and percentage change of buildings completed at constant 2000 prices according to type of building	15
Table 9 Building plans passed according to type of building: Total RSA	16
Table 10 Building plans passed according to type of building and province: Western Cape	17
Table 11 Building plans passed according to type of building and province: Eastern Cape	18
Table 12 Building plans passed according to type of building and province: Northern Cape	19
Table 13 Building plans passed according to type of building and province: Free State	20
Table 14 Building plans passed according to type of building and province: KwaZulu-Natal	21
Table 15 Building plans passed according to type of building and province: North West	22
Table 16 Building plans passed according to type of building and province: Gauteng	23
Table 17 Building plans passed according to type of building and province: Mpumalanga	24
Table 18 Building plans passed according to type of building and province: Limpopo	25
Table 19 Buildings completed according to type of building: Total RSA	26
Table 20 Buildings completed according to type of building and province: Western Cape	27
Table 21 Buildings completed according to type of building and province: Eastern Cape	28
Table 22 Buildings completed according to type of building and province: Northern Cape	29
Table 23 Buildings completed according to type of building and province: Free State	30
Table 24 Buildings completed according to type of building and province: KwaZulu-Natal	31
Table 25 Buildings completed according to type of building and province: North West	32
Table 26 Buildings completed according to type of building and province: Gauteng	33
Table 27 Buildings completed according to type of building and province: Mpumalanga	34
Table 28 Buildings completed according to type of building and province: Limpopo	35
Table 29 Building plans passed according to type of building and selected urban area: Cape Town	36
Table 30 Building plans passed according to type of building and selected urban area: Port Elizabeth	37
Table 31 Building plans passed according to type of building and selected urban area: Durban	38
Table 32 Building plans passed according to type of building and selected urban area: Witwatersrand	39
Table 33 Building plans passed according to type of building and selected urban area: Pretoria	40
Table 34 Building plans passed according to type of building and selected urban area: Bloemfontein	41
Table 35 Buildings completed according to type of building and selected urban area: Cape Town	42
Table 36 Buildings completed according to type of building and selected urban area: Port Elizabeth	43
Table 37 Buildings completed according to type of building and selected urban area: Durban	44
Table 38 Buildings completed according to type of building and selected urban area: Witwatersrand	45
Table 39 Buildings completed according to type of building and selected urban area: Pretoria	46
Table 40 Buildings completed according to type of building and selected urban area: Bloemfontein	47
<b>Additional information</b>	
Explanatory notes	48
Technical notes	50
Local government institutions covered in the sample survey	
Table C – Classification of towns and cities according to new municipalities and previous local government institutions by province	51
Table D – Classification of selected urban areas according to new municipalities and previous local government institutions	63
Glossary	66
<b>For more information</b>	68

## Notes

Forthcoming issues	Issue	Expected release date
	March 2003	21 May 2003
	April 2003	18 June 2003
	May 2003	16 July 2003
	June 2003	20 August 2003
	July 2003	17 September 2003
	August 2003	15 October 2003
	September 2003	19 November 2003
	October 2003	17 December 2003
	November 2003	21 January 2004
	December 2003	18 February 2004
<b>Purpose of the survey</b>	The Building Statistics Survey is a countrywide survey covering a sample of municipalities in South Africa. The information received is used to estimate key economic statistics used by the private and public sectors. The information is also used to compile estimates of the Gross Domestic Product (GDP). These statistics are also used by government to monitor the Reconstruction and Development Programme (RDP) in South Africa.	
<b>Name change of statistical release</b>	As from the November 2002 publication the name of the monthly statistical release P5041.1, <i>Building statistics</i> , has changed to <i>Selected building statistics of the private sector derived from data reported by local government institutions</i> .	
<b>Change in base year of constant prices from 1995 to 2000</b>	Following international practice, the base year of the price index ("lump sum domestic buildings" as published in statistical release P0151 –JBCC Contract Price Adjustment Provision Work Group Indices), which is used to deflate the current prices of building plans passed and buildings completed to constant prices, has been converted to 2000=100 with effect from May 2002. Previously the value of building plans passed and buildings completed was published at constant 1995 prices. It should be borne in mind that the change does not in any way affect the trends.	
<b>Comparability with previously data published at constant prices</b>	Data at constant prices in this release differ slightly from previously published data due to the fact that the price indices known as the "lump sum domestic buildings" as published in statistical release P0151 – JBCC Contract Price Adjustment Provisions Work Group Indices were revised as from January 2000.	



**Table 1 - Actual values and percentage change of building plans passed at current prices according to type of building**

Year and month <sup>2/</sup>	Residential buildings		Non-residential buildings		Additions and alterations		Total	
	R'000	Percentage change	R'000	Percentage change	R'000	Percentage change	R'000	Percentage change
2001 Jan*	725 361	+ 47,3	494 719	+ 195,7	353 381	- 3,7	1 573 461	+ 53,3
Feb*	836 784	+ 6,3	307 366	- 42,7	476 205	+ 18,9	1 620 355	- 6,0
Mar*	933 489	+ 24,6	303 878	- 18,6	438 569	- 15,1	1 675 936	+ 2,3
Apr*	742 978	+ 18,0	209 133	- 24,6	379 527	- 1,0	1 331 638	+ 3,2
May*	1 006 490	+ 14,4	293 506	- 52,9	502 062	+ 5,8	1 802 058	- 8,9
Jun*	904 990	+ 5,8	300 500	- 12,2	448 243	- 15,9	1 653 733	- 4,4
Jul*	893 707	- 2,0	366 953	- 25,1	435 627	- 20,9	1 696 287	- 13,1
Aug*	839 388	+ 3,8	247 416	- 30,7	485 215	- 1,9	1 572 019	- 11,9
Sep*	968 469	+ 16,6	306 265	- 15,0	529 909	+ 13,3	1 804 643	+ 8,8
Oct*	1 196 410	+ 29,8	186 942	- 63,0	540 454	- 0,1	1 923 806	- 2,2
Nov*	982 841	+ 6,9	318 627	- 37,6	597 940	+ 18,5	1 899 408	- 1,8
Dec*	658 017	+ 7,7	140 452	- 80,8	359 110	+ 12,7	1 157 579	- 30,4
<b>Total</b>	<b>10 688 924</b>	<b>+ 12,3</b>	<b>3 475 757</b>	<b>- 34,1</b>	<b>5 546 242</b>	<b>- 0,1</b>	<b>19 710 923</b>	<b>- 3,1</b>
2002 Jan	802 811	+ 10,7	172 455	- 65,1	418 217	+ 18,3	1 393 483	- 11,4
Feb	1 024 424	+ 22,4	247 345	- 19,5	459 378	- 3,5	1 731 147	+ 6,8
Mar	965 876	+ 3,5	495 333	+ 63,0	432 948	- 1,3	1 894 157	+ 13,0
Apr	1 154 488	+ 55,4	350 647	+ 67,7	533 421	+ 40,5	2 038 556	+ 53,1
May	1 191 137	+ 18,3	438 078	+ 49,3	936 496	+ 86,5	2 565 711	+ 42,4
Jun	1 100 299	+ 21,6	497 829	+ 65,7	552 535	+ 23,3	2 150 663	+ 30,0
Jul	1 251 404	+ 40,0	255 959	- 30,2	674 478	+ 54,8	2 181 841	+ 28,6
Aug	1 164 715	+ 38,8	391 026	+ 58,0	698 946	+ 44,0	2 254 687	+ 43,4
Sep	1 222 745	+ 26,3	287 969	- 6,0	617 044	+ 16,4	2 127 758	+ 17,9
Oct	2 030 451	+ 69,7	335 491	+ 79,5	757 380	+ 40,1	3 123 322	+ 62,4
Nov	1 227 675	+ 24,9	309 532	- 2,9	715 756	+ 19,7	2 252 963	+ 18,6
Dec	1 103 944	+ 67,8	230 232	+ 63,9	420 030	+ 17,0	1 754 206	+ 51,5
<b>Total</b>	<b>14 239 969</b>	<b>+ 33,2</b>	<b>4 011 896</b>	<b>+ 15,4</b>	<b>7 216 629</b>	<b>+ 30,1</b>	<b>25 468 494</b>	<b>+ 29,2</b>
2003 Jan*	940 456	+ 17,1	454 141	+ 163,3	517 143	+ 23,7	1 911 740	+ 37,2
Feb	1 184 508	+ 15,6	227 515	- 8,0	524 418	+ 14,2	1 936 441	+ 11,9

<sup>1/</sup> The annual percentage change is the change in the actual values of building plans passed of the relevant year compared with the actual values of building plans passed of the previous year expressed as a percentage.

<sup>2/</sup> The monthly percentage change is the change in the actual values of building plans passed of the relevant month compared with the actual values of building plans passed of the same month in the previous year expressed as a percentage.

**Table 2 - Seasonally adjusted values and percentage change of building plans passed at current prices according to type of building**

Year and month <sup>1/</sup>	Residential buildings		Non-residential buildings		Additions and alterations		Total	
	R'000	Percentage change	R'000	Percentage change	R'000	Percentage change	R'000	Percentage change
2001 Jan	919 141	+ 9,3	690 963	- 33,1	452 238	+ 2,3	2 062 343	- 10,9
Feb	826 581	- 10,1	364 779	- 47,2	547 936	+ 21,2	1 739 296	- 15,7
Mar	889 839	+ 7,7	261 869	- 28,2	403 025	- 26,4	1 554 733	- 10,6
Apr	851 670	- 4,3	242 449	- 7,4	438 631	+ 8,8	1 532 750	- 1,4
May	901 643	+ 5,9	249 404	+ 2,9	471 949	+ 7,6	1 622 997	+ 5,9
Jun	867 887	- 3,7	261 050	+ 4,7	424 316	- 10,1	1 553 253	- 4,3
Jul	822 319	- 5,3	309 742	+ 18,7	400 689	- 5,6	1 532 751	- 1,3
Aug	815 235	- 0,9	240 411	- 22,4	451 291	+ 12,6	1 506 937	- 1,7
Sep	947 458	+ 16,2	310 027	+ 29,0	493 705	+ 9,4	1 751 190	+ 16,2
Oct	1 004 566	+ 6,0	184 828	- 40,4	468 951	- 5,0	1 658 345	- 5,3
Nov	936 251	- 6,8	276 896	+ 49,8	509 630	+ 8,7	1 722 777	+ 3,9
Dec	886 389	- 5,3	201 565	- 27,2	510 366	+ 0,1	1 598 319	- 7,2
2002 Jan	1 008 944	+ 13,8	233 144	+ 15,7	523 082	+ 2,5	1 765 170	+ 10,4
Feb	1 010 508	+ 0,2	298 924	+ 28,2	534 647	+ 2,2	1 844 079	+ 4,5
Mar	931 457	- 7,8	419 664	+ 40,4	399 990	- 25,2	1 751 111	- 5,0
Apr	1 339 373	+ 43,8	412 326	- 1,7	616 915	+ 54,2	2 368 615	+ 35,3
May	1 053 420	- 21,3	363 517	- 11,8	871 249	+ 41,2	2 288 186	- 3,4
Jun	1 055 091	+ 0,2	435 155	+ 19,7	518 841	- 40,4	2 009 088	- 12,2
Jul	1 156 558	+ 9,6	215 038	- 50,6	624 911	+ 20,4	1 996 507	- 0,6
Aug	1 132 657	- 2,1	380 430	+ 76,9	648 599	+ 3,8	2 161 686	+ 8,3
Sep	1 196 877	+ 5,7	292 501	- 23,1	578 263	- 10,8	2 067 641	- 4,4
Oct	1 709 432	+ 42,8	336 388	+ 15,0	655 758	+ 13,4	2 701 579	+ 30,7
Nov	1 167 959	- 31,7	268 928	- 20,1	611 522	- 6,7	2 048 408	- 24,2
Dec	1 478 699	+ 26,6	336 931	+ 25,3	601 462	- 1,6	2 417 092	+ 18,0
2003 Jan	1 177 531	- 20,4	593 964	+ 76,3	641 281	+ 6,6	2 412 776	- 0,2
Feb	1 170 204	- 0,6	279 486	- 52,9	613 253	- 4,4	2 062 944	- 14,5

<sup>1/</sup> The percentage change is the change in the seasonally adjusted values of building plans passed of the relevant month compared with the seasonally adjusted values of building plans passed of the previous month expressed as a percentage.

**Table 3 - Actual values and percentage change of building plans passed at constant 2000 prices according to type of building**

Year <sup>1/</sup> and month <sup>2/</sup>	Residential buildings		Non-residential buildings		Additions and alterations		Total	
	R'000	Percentage change	R'000	Percentage change	R'000	Percentage change	R'000	Percentage change
2001 Jan*	696 124	+ 36,9	474 778	+ 175,0	339 137	- 10,4	1 510 039	+ 42,5
Feb*	799 221	- 1,1	293 568	- 46,7	454 828	+ 10,6	1 547 617	- 12,6
Mar*	887 347	+ 15,9	288 857	- 24,2	416 891	- 21,0	1 593 095	- 4,8
Apr*	700 923	+ 9,6	197 295	- 29,9	358 044	- 8,0	1 256 262	- 4,1
May*	944 174	+ 6,6	275 334	- 56,1	470 977	- 1,5	1 690 485	- 15,1
Jun*	847 369	- 1,2	281 367	- 18,0	419 703	- 21,5	1 548 439	- 10,8
Jul*	832 129	- 8,4	341 669	- 30,0	405 612	- 26,1	1 579 410	- 18,8
Aug*	779 376	- 15,5	229 727	- 35,0	450 525	- 7,9	1 459 628	- 17,3
Sep*	897 562	+ 9,4	283 842	- 20,2	491 111	+ 6,4	1 672 515	+ 2,1
Oct*	1 106 762	+ 22,6	172 934	- 65,0	499 957	- 5,6	1 779 653	- 7,6
Nov*	904 178	+ 0,8	293 125	- 41,1	550 083	+ 11,7	1 747 386	- 7,4
Dec*	599 833	+ 1,0	128 033	- 82,0	327 356	+ 5,7	1 055 222	- 34,7
<b>Total</b>	<b>9 994 998</b>	<b>+ 5,1</b>	<b>3 260 529</b>	<b>- 38,0</b>	<b>5 184 224</b>	<b>- 6,6</b>	<b>18 439 751</b>	<b>- 9,2</b>
2002 Jan*	718 078	+ 3,2	154 253	- 67,5	374 076	+ 10,3	1 246 407	- 17,5
Feb*	898 618	+ 12,4	216 969	- 26,1	402 963	- 11,4	1 518 550	- 1,9
Mar*	842 824	- 5,0	432 228	+ 49,6	377 791	- 9,4	1 652 843	+ 3,8
Apr*	990 127	+ 41,3	300 726	+ 52,4	457 479	+ 27,8	1 748 332	+ 39,2
May*	1 009 438	+ 6,9	371 253	+ 34,8	793 641	+ 68,5	2 174 332	+ 28,6
Jun*	926 178	+ 9,3	419 048	+ 48,9	465 097	+ 10,8	1 810 323	+ 16,9
Jul*	1 035 074	+ 24,4	211 711	- 38,0	557 881	+ 37,5	1 804 666	+ 14,3
Aug*	953 122	+ 22,3	319 989	+ 39,3	571 969	+ 27,0	1 845 080	+ 26,4
Sep*	994 910	+ 10,8	234 312	- 17,4	502 070	+ 2,2	1 731 292	+ 3,5
Oct*	1 634 824	+ 47,7	270 122	+ 56,2	609 807	+ 22,0	2 514 753	+ 41,3
Nov*	982 926	+ 8,7	247 824	- 15,5	573 063	+ 4,2	1 803 813	+ 3,2
Dec*	879 637	+ 46,6	183 452	+ 43,3	334 685	+ 2,2	1 397 774	+ 32,5
<b>Total</b>	<b>11 865 756</b>	<b>+ 18,7</b>	<b>3 361 887</b>	<b>+ 3,1</b>	<b>6 020 522</b>	<b>+ 16,1</b>	<b>21 248 165</b>	<b>+ 15,2</b>
2003 Jan*	737 613	+ 2,7	356 189	+ 130,9	405 602	+ 8,4	1 499 404	+ 20,3
Feb	922 514	+ 2,7	177 192	- 18,3	408 425	+ 1,4	1 508 131	- 0,7

<sup>1/</sup> The annual percentage change is the change in the actual values of building plans passed of the relevant year compared with the actual values of building plans passed of the previous year expressed as a percentage.

<sup>2/</sup> The monthly percentage change is the change in the actual values of building plans passed of the relevant month compared with the actual values of building plans passed of the same month in the previous year expressed as a percentage.

**Table 4 - Seasonally adjusted values and percentage change of building plans passed at constant 2000 prices according to type of building**

Year and month <sup>1/</sup>	Residential buildings		Non-residential buildings		Additions and alterations		Total	
	R'000	Percentage change	R'000	Percentage change	R'000	Percentage change	R'000	Percentage change
2001 Jan	881 889	+ 8,3	641 458	- 36,0	432 512	- 13,0	1 955 858	- 12,8
Feb	794 122	- 10,0	349 550	- 45,5	522 911	+ 20,9	1 666 583	- 14,8
Mar	842 630	+ 6,1	248 267	- 29,0	382 159	- 26,9	1 473 056	- 11,6
Apr	802 282	- 4,8	230 088	- 7,3	414 100	+ 8,4	1 446 469	- 1,8
May	848 764	+ 5,8	234 089	+ 1,7	444 204	+ 7,3	1 527 057	+ 5,6
Jun	811 658	- 4,4	246 162	+ 5,2	398 351	- 10,3	1 456 171	- 4,6
Jul	767 372	- 5,5	287 791	+ 16,9	374 209	- 6,1	1 429 372	- 1,8
Aug	758 699	- 1,1	225 391	- 21,7	420 281	+ 12,3	1 404 372	- 1,7
Sep	877 638	+ 15,7	288 614	+ 28,1	457 556	+ 8,9	1 623 808	+ 15,6
Oct	927 945	+ 5,7	171 806	- 40,5	433 482	- 5,3	1 533 233	- 5,6
Nov	858 726	- 7,5	254 050	+ 47,9	467 196	+ 7,8	1 579 972	+ 3,0
Dec	805 140	- 6,2	183 391	- 27,8	462 837	- 0,9	1 451 368	- 8,1
2002 Jan	902 100	+ 12,0	200 918	+ 9,6	466 583	+ 0,8	1 569 601	+ 8,1
Feb	890 967	- 1,2	262 657	+ 30,7	468 681	+ 0,4	1 622 305	+ 3,4
Mar	810 041	- 9,1	365 618	+ 39,2	348 289	- 25,7	1 523 948	- 6,1
Apr	1 147 218	+ 41,6	355 987	- 2,6	529 666	+ 52,1	2 032 871	+ 33,4
May	895 896	- 21,9	308 910	- 13,2	740 529	+ 39,8	1 945 336	- 4,3
Jun	887 517	- 0,9	369 335	+ 19,6	438 280	- 40,8	1 695 131	- 12,9
Jul	959 171	+ 8,1	177 356	- 52,0	518 708	+ 18,4	1 655 235	- 2,4
Aug	929 153	- 3,1	314 474	+ 77,3	532 395	+ 2,6	1 776 022	+ 7,3
Sep	973 090	+ 4,7	238 995	- 24,0	470 317	- 11,7	1 682 402	- 5,3
Oct	1 373 978	+ 41,2	272 123	+ 13,9	527 313	+ 12,1	2 173 414	+ 29,2
Nov	932 055	- 32,2	214 748	- 21,1	487 725	- 7,5	1 634 528	- 24,8
Dec	1 174 244	+ 26,0	267 910	+ 24,8	476 359	- 2,3	1 918 513	+ 17,4
2003 Jan	923 034	- 21,4	447 825	+ 67,2	501 863	+ 5,4	1 872 722	- 2,4
Feb	915 378	- 0,8	217 970	- 51,3	477 384	- 4,9	1 610 732	- 14,0

<sup>1/</sup> The percentage change is the change in the seasonally adjusted values of building plans passed of the relevant month compared with the seasonally adjusted values of building plans passed of the previous month expressed as a percentage.

**Table 5 - Actual values and percentage change of buildings completed at current prices according to type of building**

Year <sup>1/</sup> and month <sup>2/</sup>	Residential buildings		Non-residential buildings		Additions and alterations		Total	
	R'000	Percentage change	R'000	Percentage change	R'000	Percentage change	R'000	Percentage change
2001 Jan	647 534	+ 114,7	259 518	+ 29,2	202 270	+ 9,1	1 109 322	+ 61,3
Feb	430 827	+ 21,7	286 095	+ 32,2	246 240	+ 10,6	963 162	+ 21,4
Mar	491 002	+ 16,6	166 131	- 23,4	287 103	+ 6,7	944 236	+ 4,1
Apr	367 407	+ 0,5	170 257	- 24,1	185 784	- 1,8	723 448	- 7,1
May	450 136	- 5,1	318 370	- 19,1	296 280	+ 0,9	1 064 786	- 8,3
Jun	540 135	+ 48,6	338 853	+ 89,8	293 697	+ 71,5	1 172 685	+ 64,4
Jul	396 941	- 3,1	121 617	- 74,9	233 487	+ 5,6	752 045	- 32,6
Aug	432 578	- 4,3	117 526	- 58,9	215 777	+ 1,8	765 881	- 19,4
Sep	459 190	- 10,5	1 417 964	+ 400,6	168 922	- 15,6	2 046 076	+ 105,4
Oct	661 378	+ 42,6	281 963	+ 39,6	234 250	- 1,9	1 177 591	+ 30,2
Nov	610 558	+ 9,5	211 109	+ 9,8	286 352	+ 11,6	1 108 019	+ 10,1
Dec	464 851	+ 19,9	173 587	- 45,5	125 061	- 18,2	763 499	- 11,1
<b>Total</b>	<b>5 952 537</b>	<b>+ 17,6</b>	<b>3 862 990</b>	<b>+ 20,8</b>	<b>2 775 223</b>	<b>+ 6,2</b>	<b>12 590 750</b>	<b>+ 15,8</b>
2002 Jan	583 954	- 9,8	136 570	- 47,4	176 643	- 12,7	897 167	- 19,1
Feb	476 506	+ 10,6	137 817	- 51,8	202 239	- 17,9	816 562	- 15,2
Mar	708 527	+ 44,3	171 227	+ 3,1	176 053	- 38,7	1 055 807	+ 11,8
Apr	653 414	+ 77,8	245 773	+ 44,4	390 160	+ 110,0	1 289 347	+ 78,2
May	690 242	+ 53,3	300 836	- 5,5	305 996	+ 3,3	1 297 074	+ 21,8
Jun	585 723	+ 8,4	207 030	- 38,9	251 004	- 14,5	1 043 757	- 11,0
Jul	681 657	+ 71,7	273 139	+ 124,6	242 028	+ 3,7	1 196 824	+ 59,1
Aug	740 221	+ 71,1	96 328	- 18,0	226 414	+ 4,9	1 062 963	+ 38,8
Sep	820 510	+ 78,7	228 610	- 83,9	248 379	+ 47,0	1 297 499	- 36,6
Oct	938 075	+ 41,8	178 099	- 36,8	293 977	+ 25,5	1 410 151	+ 19,7
Nov	847 433	+ 38,8	294 710	+ 39,6	237 143	- 17,2	1 379 286	+ 24,5
Dec	702 892	+ 51,2	366 760	+ 111,3	221 292	+ 76,9	1 290 944	+ 69,1
<b>Total</b>	<b>8 429 154</b>	<b>+ 41,6</b>	<b>2 636 899</b>	<b>- 31,7</b>	<b>2 971 328</b>	<b>+ 7,1</b>	<b>14 037 381</b>	<b>+ 11,5</b>
2003 Jan*	616 863	+ 5,6	149 935	+ 9,8	234 496	+ 32,8	1 001 294	+ 11,6
Feb	670 393	+ 40,7	156 333	+ 13,4	285 510	+ 41,2	1 112 236	+ 36,2

<sup>1/</sup> The annual percentage change is the change in the actual values of buildings completed of the relevant year compared with the actual values of buildings completed of the previous year expressed as a percentage.

<sup>2/</sup> The monthly percentage change is the change in the actual values of buildings completed of the relevant month compared with the actual values of buildings completed of the same month in the previous year expressed as a percentage.

**Table 6 - Seasonally adjusted values and percentage change of buildings completed at current prices according to type of building**

Year and month <sup>1/</sup>	Residential buildings		Non-residential buildings		Additions and alterations		Total	
	R'000	Percentage change	R'000	Percentage change	R'000	Percentage change	R'000	Percentage change
2001 Jan	764 077	+ 74,4	337 701	+ 7,3	233 293	+ 2,8	1 335 070	+ 36,2
Feb	480 804	- 37,1	341 750	+ 1,2	236 684	+ 1,5	1 059 238	- 20,7
Mar	450 680	- 6,3	206 031	- 39,7	232 405	- 1,8	889 116	- 16,1
Apr	399 697	- 11,3	194 200	- 5,7	206 825	- 11,0	800 722	- 9,9
May	426 414	+ 6,7	256 163	+ 31,9	241 167	+ 16,6	923 744	+ 15,4
Jun	586 591	+ 37,6	342 537	+ 33,7	317 564	+ 31,7	1 246 692	+ 35,0
Jul	398 998	- 32,0	82 426	- 75,9	214 878	- 32,3	696 302	- 44,1
Aug	426 679	+ 6,9	125 996	+ 52,9	215 134	+ 0,1	767 809	+ 10,3
Sep	417 796	- 2,1	1 230 215	+ 876,4	181 354	- 15,7	1 829 366	+ 138,3
Oct	599 562	+ 43,5	302 357	- 75,4	214 086	+ 18,0	1 116 005	- 39,0
Nov	524 458	- 12,5	222 363	- 26,5	284 613	+ 32,9	1 031 434	- 7,6
Dec	525 786	+ 0,3	165 345	- 25,6	181 954	- 36,1	873 085	- 15,4
2002 Jan	674 568	+ 28,3	182 505	+ 10,4	205 889	+ 13,2	1 062 962	+ 21,7
Feb	530 505	- 21,4	172 924	- 5,2	197 792	- 3,9	901 221	- 15,2
Mar	647 299	+ 22,0	211 862	+ 22,5	140 975	- 28,7	1 000 136	+ 11,0
Apr	708 861	+ 9,5	278 622	+ 31,5	433 995	+ 207,9	1 421 478	+ 42,1
May	649 948	- 8,3	230 043	- 17,4	242 236	- 44,2	1 122 227	- 21,1
Jun	648 838	- 0,2	213 086	- 7,4	272 595	+ 12,5	1 134 519	+ 1,1
Jul	698 600	+ 7,7	179 000	- 16,0	225 740	- 17,2	1 103 340	- 2,7
Aug	726 640	+ 4,0	104 359	- 41,7	226 306	+ 0,3	1 057 304	- 4,2
Sep	751 405	+ 3,4	203 624	+ 95,1	270 836	+ 19,7	1 225 865	+ 15,9
Oct	843 912	+ 12,3	199 663	- 1,9	267 034	- 1,4	1 310 608	+ 6,9
Nov	724 558	- 14,1	313 344	+ 56,9	234 098	- 12,3	1 271 999	- 2,9
Dec	798 628	+ 10,2	338 018	+ 7,9	321 270	+ 37,2	1 457 916	+ 14,6
2003 Jan	700 767	- 12,3	201 889	- 40,3	275 057	- 14,4	1 177 713	- 19,2
Feb	750 689	+ 7,1	198 008	- 1,9	282 774	+ 2,8	1 231 471	+ 4,6

<sup>1/</sup> The percentage change is the change in the seasonally adjusted values of buildings completed of the relevant month compared with the seasonally adjusted values of buildings completed of the previous month expressed as a percentage.

**Table 7 - Actual values and percentage change of buildings completed at constant 2000 prices according to type of building**

Year <sup>1/</sup> and month <sup>2/</sup>	Residential buildings		Non-residential buildings		Additions and alterations		Total	
	R'000	Percentage change	R'000	Percentage change	R'000	Percentage change	R'000	Percentage change
2001 Jan*	658 496	+ 111,1	266 719	+ 21,9	208 741	+ 6,7	1 133 956	+ 56,1
Feb*	429 923	+ 80,3	294 034	+ 14,5	252 813	- 10,1	976 770	+ 36,6
Mar*	489 834	+ 51,9	170 391	+ 15,0	293 261	- 25,5	953 486	+ 19,9
Apr*	363 080	+ 75,5	174 265	+ 11,8	188 613	+ 6,5	725 958	+ 40,0
May*	440 667	+ 35,4	324 867	- 36,1	298 369	- 31,3	1 063 903	- 6,1
Jun*	528 664	+ 77,4	345 416	+ 41,0	294 581	+ 18,2	1 168 661	+ 53,9
Jul*	383 095	+ 77,4	125 508	- 47,8	232 557	- 8,2	741 160	- 2,3
Aug*	415 855	+ 55,8	120 663	- 10,7	213 429	- 4,1	749 947	+ 15,7
Sep*	439 959	+ 41,9	1 448 380	- 9,6	166 754	+ 1,7	2 055 093	+ 10,7
Oct*	631 622	+ 25,6	286 257	+ 27,5	229 432	- 14,6	1 147 311	+ 22,5
Nov*	579 923	+ 39,6	212 597	+ 34,0	279 368	- 20,3	1 071 888	+ 10,7
Dec*	438 298	+ 16,9	174 109	- 18,7	121 536	+ 34,0	733 943	+ 29,7
<b>Total</b>	<b>5 799 416</b>	<b>+ 12,0</b>	<b>3 943 206</b>	<b>+ 17,0</b>	<b>2 779 454</b>	<b>+ 3,1</b>	<b>12 522 076</b>	<b>+ 11,3</b>
2002 Jan*	549 418	- 16,6	136 026	- 49,0	169 523	- 18,8	854 967	- 24,6
Feb*	446 318	+ 3,8	136 318	- 53,6	193 160	- 23,6	775 796	- 20,6
Mar*	664 041	+ 35,6	169 030	- 0,8	167 351	- 42,9	1 000 422	+ 4,9
Apr*	607 293	+ 67,3	240 718	+ 38,1	368 075	+ 95,1	1 216 086	+ 67,5
May*	639 076	+ 45,0	293 499	- 9,7	287 051	- 3,8	1 219 626	+ 14,6
Jun*	536 531	+ 1,5	201 195	- 41,8	235 022	- 20,2	972 748	- 16,8
Jul*	616 022	+ 60,8	262 130	+ 108,9	225 352	- 3,1	1 103 504	+ 48,9
Aug*	662 349	+ 59,3	92 004	- 23,8	210 227	- 1,5	964 580	+ 28,6
Sep*	731 679	+ 66,3	217 310	- 85,0	230 194	+ 38,0	1 179 183	- 42,6
Oct*	818 450	+ 29,6	168 018	- 41,3	271 949	+ 18,5	1 258 417	+ 9,7
Nov*	734 214	+ 26,6	276 463	+ 30,0	218 163	- 21,9	1 228 840	+ 14,6
Dec*	602 833	+ 37,5	343 408	+ 97,2	201 725	+ 66,0	1 147 966	+ 56,4
<b>Total</b>	<b>7 608 224</b>	<b>+ 31,2</b>	<b>2 536 119</b>	<b>- 35,7</b>	<b>2 777 792</b>	<b>- 0,1</b>	<b>12 922 135</b>	<b>+ 3,2</b>
2003 Jan*	525 463	- 4,4	139 604	+ 2,6	209 746	+ 23,7	874 813	+ 2,3
Feb	560 661	+ 25,6	145 156	+ 6,5	250 447	+ 29,7	956 264	+ 23,3

<sup>1/</sup> The annual percentage change is the change in the actual values of buildings completed of the relevant year compared with the actual values of buildings completed of the previous year expressed as a percentage.

<sup>2/</sup> The monthly percentage change is the change in the actual values of buildings completed of the relevant month compared with the actual values of buildings completed of the same month in the previous year expressed as a percentage.

**Table 8 - Seasonally adjusted values and percentage change of buildings completed at constant 2000 prices according to type of building**

Year and month <sup>1/</sup>	Residential buildings		Non-residential buildings		Additions and alterations		Total	
	R'000	Percentage change	R'000	Percentage change	R'000	Percentage change	R'000	Percentage change
2001 Jan	787 709	+ 78,0	347 243	+ 7,2	239 892	+ 4,1	1 374 844	+ 37,9
Feb	485 294	- 38,4	351 778	+ 1,3	243 171	+ 1,4	1 080 243	- 21,4
Mar	449 940	- 7,3	211 288	- 39,9	236 690	- 2,7	897 918	- 16,9
Apr	396 548	- 11,9	198 570	- 6,0	209 773	- 11,4	804 891	- 10,4
May	422 048	+ 6,4	261 221	+ 31,6	244 111	+ 16,4	927 379	+ 15,2
Jun	571 091	+ 35,3	348 183	+ 33,3	319 199	+ 30,8	1 238 473	+ 33,5
Jul	384 030	- 32,8	84 812	- 75,6	214 277	- 32,9	683 119	- 44,8
Aug	409 090	+ 6,5	130 075	+ 53,4	213 087	- 0,6	752 252	+ 10,1
Sep	394 853	- 3,5	1 252 517	+ 862,9	178 955	- 16,0	1 826 324	+ 142,8
Oct	564 737	+ 43,0	308 844	- 75,3	209 449	+ 17,0	1 083 030	- 40,7
Nov	496 700	- 12,0	223 982	- 27,5	277 277	+ 32,4	997 958	- 7,9
Dec	497 428	+ 0,1	165 724	- 26,0	176 194	- 36,5	839 346	- 15,9
2002 Jan	645 048	+ 29,7	181 948	+ 9,8	197 068	+ 11,8	1 024 065	+ 22,0
Feb	504 424	- 21,8	171 240	- 5,9	189 342	- 3,9	865 006	- 15,5
Mar	606 172	+ 20,2	209 168	+ 22,1	133 593	- 29,4	948 934	+ 9,7
Apr	661 472	+ 9,1	272 700	+ 30,4	409 089	+ 206,2	1 343 261	+ 41,6
May	605 881	- 8,4	224 396	- 17,7	228 353	- 44,2	1 058 629	- 21,2
Jun	593 026	- 2,1	206 702	- 7,9	255 666	+ 12,0	1 055 393	- 0,3
Jul	632 190	+ 6,6	171 365	- 17,1	210 441	- 17,7	1 013 995	- 3,9
Aug	648 560	+ 2,6	100 360	- 41,4	210 402	+ 0,0	959 322	- 5,4
Sep	661 445	+ 2,0	192 899	+ 92,2	250 858	+ 19,2	1 105 203	+ 15,2
Oct	724 975	+ 9,6	188 418	- 2,3	246 670	- 1,7	1 160 062	+ 5,0
Nov	624 794	- 13,8	294 229	+ 56,2	214 999	- 12,8	1 134 022	- 2,2
Dec	686 464	+ 9,9	316 517	+ 7,6	291 879	+ 35,8	1 294 860	+ 14,2
2003 Jan	606 738	- 11,6	188 310	- 40,5	245 455	- 15,9	1 040 502	- 19,6
Feb	637 356	+ 5,0	184 173	- 2,2	248 759	+ 1,3	1 070 288	+ 2,9

<sup>1/</sup> The percentage change is the change in the seasonally adjusted values of buildings completed of the relevant month compared with the seasonally adjusted values of buildings completed of the previous month expressed as a percentage.



**Table 9 - Building plans passed according to type of building: Total RSA**

Type of building	February 2002 *	January 2003 *	February 2003	January 2002 to February 2002	January 2003 to February 2003	Percentage change between January 2002 to February 2002 and January 2003 to February 2003
<b>Residential buildings</b>						
Dwelling-houses smaller than 80 square metres						
Number of dwelling-houses	2 790	4 550	3 125	5 243	7 675	+ 46,4
Total square metres	106 060	160 018	114 529	195 394	274 547	+ 40,5
Total value at current prices (R'000)	102 128	127 203	100 121	206 368	227 324	+ 10,2
Dwelling-houses equal to or larger than 80 square metres						
Number of dwelling-houses	1 865	1 664	1 948	3 485	3 612	+ 3,6
Total square metres	416 869	371 440	427 845	774 016	799 285	+ 3,3
Total value at current prices (R'000)	626 522	617 230	733 678	1 159 135	1 350 908	+ 16,5
Flats and townhouses						
Number of flats and townhouses	1 139	624	834	1 900	1 458	- 23,3
Total square metres	111 233	103 295	137 529	219 475	240 824	+ 9,7
Total value at current prices (R'000)	175 895	186 592	307 222	339 583	493 814	+ 45,4
Other residential buildings <sup>1/</sup>						
Total square metres	45 464	10 856	20 830	46 777	31 686	- 32,3
Total value at current prices (R'000)	119 879	9 431	43 487	122 149	52 918	- 56,7
<b>Total value of residential buildings at current prices (R'000)</b>	<b>1 024 424</b>	<b>940 456</b>	<b>1 184 508</b>	<b>1 827 235</b>	<b>2 124 964</b>	<b>+ 16,3</b>
<b>Non-residential buildings</b>						
Office and banking space						
Total square metres	56 410	25 876	31 485	79 819	57 361	- 28,1
Total value at current prices (R'000)	87 439	45 875	58 426	129 673	104 301	- 19,6
Shopping space						
Total square metres	18 035	44 477	23 943	49 865	68 420	+ 37,2
Total value at current prices (R'000)	27 072	309 220	37 152	75 830	346 372	+ 356,8
Industrial and warehouse space						
Total square metres	63 815	50 253	70 314	112 147	120 567	+ 7,5
Total value at current prices (R'000)	97 026	68 533	103 969	159 721	172 502	+ 8,0
Other non-residential space <sup>2/</sup>						
Total square metres	24 043	18 852	17 862	40 089	36 714	- 8,4
Total value at current prices (R'000)	35 808	30 513	27 968	54 576	58 481	+ 7,2
<b>Total value of non-residential buildings at current prices (R'000)</b>	<b>247 345</b>	<b>454 141</b>	<b>227 515</b>	<b>419 800</b>	<b>681 656</b>	<b>+ 62,4</b>
<b>Additions and alterations</b>						
Dwelling-houses						
Total square metres	246 098	225 115	245 875	458 190	470 990	+ 2,8
Total value at current prices (R'000)	340 968	337 805	366 139	627 035	703 944	+ 12,3
Other buildings <sup>3/</sup>						
Total square metres	62 264	101 151	61 179	127 585	162 330	+ 27,2
Total value at current prices (R'000)	118 410	179 338	158 279	250 560	337 617	+ 34,7
<b>Total value of additions and alterations at current prices (R'000)</b>	<b>459 378</b>	<b>517 143</b>	<b>524 418</b>	<b>877 595</b>	<b>1 041 561</b>	<b>+ 18,7</b>
<b>Total value of building plans passed at current prices (R'000)</b>	<b>1 731 147</b>	<b>1 911 740</b>	<b>1 936 441</b>	<b>3 124 630</b>	<b>3 848 181</b>	<b>+ 23,2</b>

1/ Other residential buildings include institutions for the disabled, boarding houses, old people's homes, hostels, hotels, motels, guest houses, holiday chalets, entertainment centres, bed-and-breakfast accommodation and casinos.

2/ Other non-residential space includes churches, sport and recreation clubs, schools, crèches, hospitals and all other non-residential space.

3/ Other buildings include additions and alterations to other residential buildings, non-residential buildings and internal alterations.

**Table 10 - Building plans passed according to type of building and province: Western Cape**

Type of building	February 2002*	January 2003	February 2003	January 2002 to February 2002	January 2003 to February 2003	Percentage change between January 2002 to February 2002 and January 2003 to February 2003
<b>Residential buildings</b>						
Dwelling-houses smaller than 80 square metres						
Number of dwelling-houses	497	198	517	2 107	715	- 66,1
Total square metres	18 146	8 462	19 172	69 829	27 634	- 60,4
Total value at current prices (R'000)	19 494	10 589	21 327	79 929	31 916	- 60,1
Dwelling-houses equal to or larger than 80 square metres						
Number of dwelling-houses	629	592	745	1 211	1 337	+ 10,4
Total square metres	134 029	123 488	142 015	249 797	265 503	+ 6,3
Total value at current prices (R'000)	209 247	212 182	253 237	384 904	465 419	+ 20,9
Flats and townhouses						
Number of flats and townhouses	506	188	238	660	426	- 35,5
Total square metres	37 536	25 630	28 724	56 759	54 354	- 4,2
Total value at current prices (R'000)	56 905	48 651	71 795	89 724	120 446	+ 34,2
Other residential buildings <sup>1/</sup>						
Total square metres	4 251	892	618	4 709	1 510	- 67,9
Total value at current prices (R'000)	6 660	1 509	1 017	7 347	2 526	- 65,6
<b>Total value of residential buildings at current prices (R'000)</b>	<b>292 306</b>	<b>272 931</b>	<b>347 376</b>	<b>561 904</b>	<b>620 307</b>	<b>+ 10,4</b>
<b>Non-residential buildings</b>						
Office and banking space						
Total square metres	7 300	9 271	4 707	11 446	13 978	+ 22,1
Total value at current prices (R'000)	9 224	14 503	10 733	16 245	25 236	+ 55,3
Shopping space						
Total square metres	1 098	713	5 423	13 732	6 136	- 55,3
Total value at current prices (R'000)	1 809	1 690	5 629	17 399	7 319	- 57,9
Industrial and warehouse space						
Total square metres	9 556	13 934	13 374	20 406	27 308	+ 33,8
Total value at current prices (R'000)	10 079	17 271	22 636	20 591	39 907	+ 93,8
Other non-residential space <sup>2/</sup>						
Total square metres	6 525	2 960	1 923	13 046	4 883	- 62,6
Total value at current prices (R'000)	8 938	4 071	2 638	16 797	6 709	- 60,1
<b>Total value of non-residential buildings at current prices (R'000)</b>	<b>30 050</b>	<b>37 535</b>	<b>41 636</b>	<b>71 032</b>	<b>79 171</b>	<b>+ 11,5</b>
<b>Additions and alterations</b>						
Dwelling-houses						
Total square metres	78 671	69 526	73 501	135 341	143 027	+ 5,7
Total value at current prices (R'000)	105 658	106 528	110 670	179 128	217 198	+ 21,3
Other buildings <sup>3/</sup>						
Total square metres	24 870	52 932	13 855	43 697	66 787	+ 52,8
Total value at current prices (R'000)	58 621	77 250	65 427	88 332	142 677	+ 61,5
<b>Total value of additions and alterations at current prices (R'000)</b>	<b>164 279</b>	<b>183 778</b>	<b>176 097</b>	<b>267 460</b>	<b>359 875</b>	<b>+ 34,6</b>
<b>Total value of building plans passed at current prices (R'000)</b>	<b>486 635</b>	<b>494 244</b>	<b>565 109</b>	<b>900 396</b>	<b>1 059 353</b>	<b>+ 17,7</b>

1/ Other residential buildings include institutions for the disabled, boarding houses, old people's homes, hostels, hotels, motels, guest houses, holiday chalets, entertainment centres, bed-and-breakfast accommodation and casinos.

2/ Other non-residential space includes churches, sport and recreation clubs, schools, crèches, hospitals and all other non-residential space.

3/ Other buildings include additions and alterations to other residential buildings, non-residential buildings and internal alterations.

**Table 11 - Building plans passed according to type of building and province: Eastern Cape**

Type of building	February 2002	January 2003	February 2003	January 2002 to February 2002	January 2003 to February 2003	Percentage change between January 2002 to February 2002 and January 2003 to February 2003
<b>Residential buildings</b>						
Dwelling-houses smaller than 80 square metres						
Number of dwelling-houses	244	540	253	371	793	+ 113,7
Total square metres	10 354	22 811	11 013	16 321	33 824	+ 107,2
Total value at current prices (R'000)	12 936	31 684	10 302	21 974	41 986	+ 91,1
Dwelling-houses equal to or larger than 80 square metres						
Number of dwelling-houses	114	66	115	202	181	-10,4
Total square metres	21 906	10 640	21 011	36 951	31 651	-14,3
Total value at current prices (R'000)	29 601	17 400	43 748	50 020	61 148	+ 22,2
Flats and townhouses						
Number of flats and townhouses	14	0	21	24	21	-12,5
Total square metres	1 818	0	3 495	3 054	3 495	+ 14,4
Total value at current prices (R'000)	3 008	0	7 270	4 728	7 270	+ 53,8
Other residential buildings <sup>1/</sup>						
Total square metres	0	141	323	0	464	..
Total value at current prices (R'000)	0	165	690	0	855	..
<b>Total value of residential buildings at current prices (R'000)</b>	<b>45 545</b>	<b>49 249</b>	<b>62 010</b>	<b>76 722</b>	<b>111 259</b>	<b>+ 45,0</b>
<b>Non-residential buildings</b>						
Office and banking space						
Total square metres	229	2 607	2 178	229	4 785	+ 1 989,5
Total value at current prices (R'000)	450	5 370	3 668	450	9 038	+ 1 908,4
Shopping space						
Total square metres	0	381	0	5 103	381	-92,5
Total value at current prices (R'000)	0	702	0	11 195	702	-93,7
Industrial and warehouse space						
Total square metres	13 097	799	1 906	13 756	2 705	-80,3
Total value at current prices (R'000)	28 588	1 307	2 415	29 421	3 722	-87,3
Other non-residential space <sup>2/</sup>						
Total square metres	5 068	0	2 308	5 955	2 308	-61,2
Total value at current prices (R'000)	9 125	0	4 097	9 629	4 097	-57,5
<b>Total value of non-residential buildings at current prices (R'000)</b>	<b>38 163</b>	<b>7 379</b>	<b>10 180</b>	<b>50 695</b>	<b>17 559</b>	<b>-65,4</b>
<b>Additions and alterations</b>						
Dwelling-houses						
Total square metres	20 893	14 524	21 573	34 265	36 097	+ 5,3
Total value at current prices (R'000)	27 608	21 065	39 546	45 827	60 611	+ 32,3
Other buildings <sup>3/</sup>						
Total square metres	3 279	7 365	7 355	5 847	14 720	+ 151,8
Total value at current prices (R'000)	5 255	14 309	18 087	10 510	32 396	+ 208,2
<b>Total value of additions and alterations at current prices (R'000)</b>	<b>32 863</b>	<b>35 374</b>	<b>57 633</b>	<b>56 337</b>	<b>93 007</b>	<b>+ 65,1</b>
<b>Total value of building plans passed at current prices (R'000)</b>	<b>116 571</b>	<b>92 002</b>	<b>129 823</b>	<b>183 754</b>	<b>221 825</b>	<b>+ 20,7</b>

1/ Other residential buildings include institutions for the disabled, boarding houses, old people's homes, hostels, hotels, motels, guest houses, holiday chalets, entertainment centres, bed-and-breakfast accommodation and casinos.

2/ Other non-residential space includes churches, sport and recreation clubs, schools, crèches, hospitals and all other non-residential space.

3/ Other buildings include additions and alterations to other residential buildings, non-residential buildings and internal alterations.

**Table 12 - Building plans passed according to type of building and province: Northern Cape**

Type of building	February 2002	January 2003	February 2003	January 2002 to February 2002	January 2003 to February 2003	Percentage change between January 2002 to February 2002 and January 2003 to February 2003
<b>Residential buildings</b>						
Dwelling-houses smaller than 80 square metres						
Number of dwelling-houses	8	4	2	13	6	- 53,8
Total square metres	377	162	56	626	218	- 65,2
Total value at current prices (R'000)	674	241	84	1 084	325	- 70,0
Dwelling-houses equal to or larger than 80 square metres						
Number of dwelling-houses	5	10	7	9	17	+ 88,9
Total square metres	895	1 941	1 421	1 560	3 362	+ 115,5
Total value at current prices (R'000)	1 284	3 004	2 332	2 351	5 336	+ 127,0
Flats and townhouses						
Number of flats and townhouses	0	0	1	0	1	..
Total square metres	0	0	114	0	114	..
Total value at current prices (R'000)	0	0	171	0	171	..
Other residential buildings <sup>1/</sup>						
Total square metres	0	0	0	0	0	..
Total value at current prices (R'000)	0	0	0	0	0	..
<b>Total value of residential buildings at current prices (R'000)</b>	<b>1 958</b>	<b>3 245</b>	<b>2 587</b>	<b>3 435</b>	<b>5 832</b>	<b>+ 69,8</b>
<b>Non-residential buildings</b>						
Office and banking space						
Total square metres	0	0	118	0	118	..
Total value at current prices (R'000)	0	0	177	0	177	..
Shopping space						
Total square metres	0	360	176	0	536	..
Total value at current prices (R'000)	0	792	387	0	1 179	..
Industrial and warehouse space						
Total square metres	800	0	446	800	446	- 44,3
Total value at current prices (R'000)	1 120	0	981	1 120	981	- 12,4
Other non-residential space <sup>2/</sup>						
Total square metres	855	0	0	855	0	..
Total value at current prices (R'000)	1 881	0	0	1 881	0	..
<b>Total value of non-residential buildings at current prices (R'000)</b>	<b>3 001</b>	<b>792</b>	<b>1 545</b>	<b>3 001</b>	<b>2 337</b>	<b>- 22,1</b>
<b>Additions and alterations</b>						
Dwelling-houses						
Total square metres	2 900	3 241	2 747	4 494	5 988	+ 33,2
Total value at current prices (R'000)	4 940	5 743	5 016	7 405	10 759	+ 45,3
Other buildings <sup>3/</sup>						
Total square metres	556	308	137	556	445	- 20,0
Total value at current prices (R'000)	1 646	901	1 061	1 753	1 962	+ 11,9
<b>Total value of additions and alterations at current prices (R'000)</b>	<b>6 586</b>	<b>6 644</b>	<b>6 077</b>	<b>9 158</b>	<b>12 721</b>	<b>+ 38,9</b>
<b>Total value of building plans passed at current prices (R'000)</b>	<b>11 545</b>	<b>10 681</b>	<b>10 209</b>	<b>15 594</b>	<b>20 890</b>	<b>+ 34,0</b>

1/ Other residential buildings include institutions for the disabled, boarding houses, old people's homes, hostels, hotels, motels, guest houses, holiday chalets, entertainment centres, bed-and-breakfast accommodation and casinos.

2/ Other non-residential space includes churches, sport and recreation clubs, schools, crèches, hospitals and all other non-residential space.

3/ Other buildings include additions and alterations to other residential buildings, non-residential buildings and internal alterations.

**Table 13 - Building plans passed according to type of building and province: Free State**

Type of building	February 2002	January 2003	February 2003	January 2002 to February 2002	January 2003 to February 2003	Percentage change between January 2002 to February 2002 and January 2003 to February 2003
<b>Residential buildings</b>						
Dwelling-houses smaller than 80 square metres						
Number of dwelling-houses	97	395	57	188	452	+ 140,4
Total square metres	4 192	15 954	2 409	8 309	18 363	+ 121,0
Total value at current prices (R'000)	3 440	8 631	1 961	5 843	10 592	+ 81,3
Dwelling-houses equal to or larger than 80 square metres						
Number of dwelling-houses	78	79	77	145	156	+ 7,6
Total square metres	13 282	13 898	13 193	21 396	27 091	+ 26,6
Total value at current prices (R'000)	15 559	18 540	18 829	28 088	37 369	+ 33,0
Flats and townhouses						
Number of flats and townhouses	68	12	36	156	48	-69,2
Total square metres	7 210	1 381	2 729	15 886	4 110	-74,1
Total value at current prices (R'000)	11 000	1 956	3 988	24 500	5 944	-75,7
Other residential buildings <sup>1/</sup>						
Total square metres	2 683	0	54	2 683	54	-98,0
Total value at current prices (R'000)	7 000	0	110	7 000	110	-98,4
<b>Total value of residential buildings at current prices (R'000)</b>	<b>36 999</b>	<b>29 127</b>	<b>24 888</b>	<b>65 431</b>	<b>54 015</b>	<b>-17,4</b>
<b>Non-residential buildings</b>						
Office and banking space						
Total square metres	117	0	1 616	7 384	1 616	-78,1
Total value at current prices (R'000)	102	0	2 808	14 102	2 808	-80,1
Shopping space						
Total square metres	0	3 499	7 711	602	11 210	+ 1 762,1
Total value at current prices (R'000)	0	8 175	12 044	660	20 219	+ 2 963,5
Industrial and warehouse space						
Total square metres	1 710	1 386	2 259	2 577	3 645	+ 41,4
Total value at current prices (R'000)	1 800	600	1 388	2 494	1 988	-20,3
Other non-residential space <sup>2/</sup>						
Total square metres	2 195	2 189	3 914	2 761	6 103	+ 121,0
Total value at current prices (R'000)	2 107	1 878	6 569	2 612	8 447	+ 223,4
<b>Total value of non-residential buildings at current prices (R'000)</b>	<b>4 009</b>	<b>10 653</b>	<b>22 809</b>	<b>19 868</b>	<b>33 462</b>	<b>+ 68,4</b>
<b>Additions and alterations</b>						
Dwelling-houses						
Total square metres	9 610	9 427	8 267	17 085	17 694	+ 3,6
Total value at current prices (R'000)	10 451	12 006	9 332	18 524	21 338	+ 15,2
Other buildings <sup>3/</sup>						
Total square metres	1 381	1 983	2 009	3 619	3 992	+ 10,3
Total value at current prices (R'000)	2 483	9 276	2 762	6 390	12 038	+ 88,4
<b>Total value of additions and alterations at current prices (R'000)</b>	<b>12 934</b>	<b>21 282</b>	<b>12 094</b>	<b>24 914</b>	<b>33 376</b>	<b>+ 34,0</b>
<b>Total value of building plans passed at current prices (R'000)</b>	<b>53 942</b>	<b>61 062</b>	<b>59 791</b>	<b>110 213</b>	<b>120 853</b>	<b>+ 9,7</b>

1/ Other residential buildings include institutions for the disabled, boarding houses, old people's homes, hostels, hotels, motels, guest houses, holiday chalets, entertainment centres, bed-and-breakfast accommodation and casinos.

2/ Other non-residential space includes churches, sport and recreation clubs, schools, crèches, hospitals and all other non-residential space.

3/ Other buildings include additions and alterations to other residential buildings, non-residential buildings and internal alterations.

**Table 14 - Building plans passed according to type of building and province: KwaZulu-Natal**

Type of building	February 2002*	January 2003	February 2003	January 2002 to February 2002	January 2003 to February 2003	Percentage change between January 2002 to February 2002 and January 2003 to February 2003
<b>Residential buildings</b>						
Dwelling-houses smaller than 80 square metres						
Number of dwelling-houses	107	1 468	95	259	1 563	+ 503,5
Total square metres	5 824	45 605	5 311	11 517	50 916	+ 342,1
Total value at current prices (R'000)	7 363	29 965	6 290	13 237	36 255	+ 173,9
Dwelling-houses equal to or larger than 80 square metres						
Number of dwelling-houses	130	134	156	252	290	+ 15,1
Total square metres	28 082	33 461	37 309	54 966	70 770	+ 28,8
Total value at current prices (R'000)	44 419	55 676	62 203	87 348	117 879	+ 35,0
Flats and townhouses						
Number of flats and townhouses	38	52	140	214	192	- 10,3
Total square metres	5 352	8 352	30 911	31 948	39 263	+ 22,9
Total value at current prices (R'000)	10 258	19 589	103 125	44 296	122 714	+ 177,0
Other residential buildings <sup>1/</sup>						
Total square metres	29 597	0	10 350	30 153	10 350	- 65,7
Total value at current prices (R'000)	30 821	0	28 000	31 821	28 000	- 12,0
<b>Total value of residential buildings at current prices (R'000)</b>	<b>92 861</b>	<b>105 230</b>	<b>199 618</b>	<b>176 702</b>	<b>304 848</b>	<b>+ 72,5</b>
<b>Non-residential buildings</b>						
Office and banking space						
Total square metres	0	311	1 314	637	1 625	+ 155,1
Total value at current prices (R'000)	0	350	1 500	956	1 850	+ 93,5
Shopping space						
Total square metres	3 147	24 620	696	4 321	25 316	+ 485,9
Total value at current prices (R'000)	6 800	266 830	1 377	8 674	268 207	+ 2992,1
Industrial and warehouse space						
Total square metres	10 663	10 026	8 558	24 388	18 584	- 23,8
Total value at current prices (R'000)	12 800	11 449	12 530	27 506	23 979	- 12,8
Other non-residential space <sup>2/</sup>						
Total square metres	3 003	3 122	1 907	5 436	5 029	- 7,5
Total value at current prices (R'000)	3 970	6 013	1 856	7 280	7 869	+ 8,1
<b>Total value of non-residential buildings at current prices (R'000)</b>	<b>23 570</b>	<b>284 642</b>	<b>17 263</b>	<b>44 416</b>	<b>301 905</b>	<b>+ 579,7</b>
<b>Additions and alterations</b>						
Dwelling-houses						
Total square metres	29 048	38 531	42 631	57 068	81 162	+ 42,2
Total value at current prices (R'000)	36 826	47 064	49 819	71 171	96 883	+ 36,1
Other buildings <sup>3/</sup>						
Total square metres	9 084	14 709	22 554	17 729	37 263	+ 110,2
Total value at current prices (R'000)	11 671	27 689	38 094	26 976	65 783	+ 143,9
<b>Total value of additions and alterations at current prices (R'000)</b>	<b>48 497</b>	<b>74 753</b>	<b>87 913</b>	<b>98 147</b>	<b>162 666</b>	<b>+ 65,7</b>
<b>Total value of building plans passed at current prices (R'000)</b>	<b>164 928</b>	<b>464 625</b>	<b>304 794</b>	<b>319 265</b>	<b>769 419</b>	<b>+ 141,0</b>

1/ Other residential buildings include institutions for the disabled, boarding houses, old people's homes, hostels, hotels, motels, guest houses, holiday chalets, entertainment centres, bed-and-breakfast accommodation and casinos.

2/ Other non-residential space includes churches, sport and recreation clubs, schools, crèches, hospitals and all other non-residential space.

3/ Other buildings include additions and alterations to other residential buildings, non-residential buildings and internal alterations.

**Table 15 - Building plans passed according to type of building and province: North West**

Type of building	February 2002	January 2003	February 2003	January 2002 to February 2002	January 2003 to February 2003	Percentage change between January 2002 to February 2002 and January 2003 to February 2003
<b>Residential buildings</b>						
Dwelling-houses smaller than 80 square metres						
Number of dwelling-houses	117	28	30	141	58	- 58,9
Total square metres	7 478	1 753	1 771	8 921	3 524	- 60,5
Total value at current prices (R'000)	12 358	2 236	2 103	14 126	4 339	- 69,3
Dwelling-houses equal to or larger than 80 square metres						
Number of dwelling-houses	45	94	100	156	194	+ 24,4
Total square metres	7 601	17 032	19 311	26 108	36 343	+ 39,2
Total value at current prices (R'000)	9 463	24 779	30 920	37 557	55 699	+ 48,3
Flats and townhouses						
Number of flats and townhouses	27	25	36	36	61	+ 69,4
Total square metres	2 582	2 419	2 679	4 721	5 098	+ 8,0
Total value at current prices (R'000)	3 792	3 474	3 548	6 870	7 022	+ 2,2
Other residential buildings <sup>1/</sup>						
Total square metres	284	0	276	284	276	- 2,8
Total value at current prices (R'000)	200	0	600	200	600	+ 200,0
<b>Total value of residential buildings at current prices (R'000)</b>	<b>25 813</b>	<b>30 489</b>	<b>37 171</b>	<b>58 753</b>	<b>67 660</b>	<b>+ 15,2</b>
<b>Non-residential buildings</b>						
Office and banking space						
Total square metres	649	20	394	3 304	414	-87,5
Total value at current prices (R'000)	1 000	24	433	5 976	457	-92,4
Shopping space						
Total square metres	0	3 319	0	2 109	3 319	+ 57,4
Total value at current prices (R'000)	0	10 738	0	4 104	10 738	+ 161,6
Industrial and warehouse space						
Total square metres	879	3 285	2 484	3 151	5 769	+ 83,1
Total value at current prices (R'000)	1 000	3 467	4 035	5 175	7 502	+ 45,0
Other non-residential space <sup>2/</sup>						
Total square metres	0	419	1 959	861	2 378	+ 176,2
Total value at current prices (R'000)	0	829	3 918	844	4 747	+ 462,4
<b>Total value of non-residential buildings at current prices (R'000)</b>	<b>2 000</b>	<b>15 058</b>	<b>8 386</b>	<b>16 099</b>	<b>23 444</b>	<b>+ 45,6</b>
<b>Additions and alterations</b>						
Dwelling-houses						
Total square metres	7 174	6 780	6 244	15 182	13 024	- 14,2
Total value at current prices (R'000)	8 869	8 818	8 057	17 345	16 875	- 2,7
Other buildings <sup>3/</sup>						
Total square metres	683	59	1 838	1 795	1 897	+ 5,7
Total value at current prices (R'000)	918	177	2 795	3 304	2 972	- 10,0
<b>Total value of additions and alterations at current prices (R'000)</b>	<b>9 787</b>	<b>8 995</b>	<b>10 852</b>	<b>20 649</b>	<b>19 847</b>	<b>- 3,9</b>
<b>Total value of building plans passed at current prices (R'000)</b>	<b>37 600</b>	<b>54 542</b>	<b>56 409</b>	<b>95 501</b>	<b>110 951</b>	<b>+ 16,2</b>

1/ Other residential buildings include institutions for the disabled, boarding houses, old people's homes, hostels, hotels, motels, guest houses, holiday chalets, entertainment centres, bed-and-breakfast accommodation and casinos.

2/ Other non-residential space includes churches, sport and recreation clubs, schools, crèches, hospitals and all other non-residential space.

3/ Other buildings include additions and alterations to other residential buildings, non-residential buildings and internal alterations.

**Table 16 - Building plans passed according to type of building and province: Gauteng**

Type of building	February 2002 *	January 2003*	February 2003	January 2002 to February 2002	January 2003 to February 2003	Percentage change between January 2002 to February 2002 and January 2003 to February 2003
<b>Residential buildings</b>						
Dwelling-houses smaller than 80 square metres						
Number of dwelling-houses	1 548	1 632	1 963	1 803	3 595	+ 99,4
Total square metres	51 625	53 289	65 714	64 665	119 003	+ 84,0
Total value at current prices (R'000)	39 659	38 332	51 497	59 226	89 829	+ 51,7
Dwelling-houses equal to or larger than 80 square metres						
Number of dwelling-houses	636	558	602	1 172	1 160	- 1,0
Total square metres	175 808	144 778	159 264	328 310	304 042	- 7,4
Total value at current prices (R'000)	273 541	249 718	273 339	500 338	523 057	+ 4,5
Flats and townhouses						
Number of flats and townhouses	376	345	352	689	697	+ 1,2
Total square metres	41 618	65 273	67 510	90 486	132 783	+ 46,7
Total value at current prices (R'000)	68 115	112 635	115 769	144 650	228 404	+ 57,9
Other residential buildings <sup>1/</sup>						
Total square metres	3 160	9 823	9 209	3 459	19 032	+ 450,2
Total value at current prices (R'000)	5 198	7 757	13 070	5 781	20 827	+ 260,3
<b>Total value of residential buildings at current prices (R'000)</b>	<b>386 513</b>	<b>408 442</b>	<b>453 675</b>	<b>709 995</b>	<b>862 117</b>	<b>+ 21,4</b>
<b>Non-residential buildings</b>						
Office and banking space						
Total square metres	47 442	12 824	15 680	55 676	28 504	- 48,8
Total value at current prices (R'000)	75 579	24 328	29 934	90 310	54 262	- 39,9
Shopping space						
Total square metres	4 297	8 022	8 356	11 251	16 378	+ 45,6
Total value at current prices (R'000)	7 291	14 212	15 415	18 256	29 627	+ 62,3
Industrial and warehouse space						
Total square metres	23 177	11 842	29 360	39 760	41 202	+ 3,6
Total value at current prices (R'000)	37 568	19 386	49 892	65 639	69 278	+ 5,5
Other non-residential space <sup>2/</sup>						
Total square metres	4 356	9 729	5 116	7 714	14 845	+ 92,4
Total value at current prices (R'000)	7 276	17 061	7 457	11 417	24 518	+ 114,7
<b>Total value of non-residential buildings at current prices (R'000)</b>	<b>127 714</b>	<b>74 987</b>	<b>102 698</b>	<b>185 622</b>	<b>177 685</b>	<b>- 4,3</b>
<b>Additions and alterations</b>						
Dwelling-houses						
Total square metres	84 474	69 092	72 400	167 096	141 492	- 15,3
Total value at current prices (R'000)	131 055	117 935	117 738	255 462	235 673	- 7,7
Other buildings <sup>3/</sup>						
Total square metres	14 946	21 179	9 289	44 920	30 468	- 32,2
Total value at current prices (R'000)	26 369	45 105	22 458	93 266	67 563	- 27,6
<b>Total value of additions and alterations at current prices (R'000)</b>	<b>157 424</b>	<b>163 040</b>	<b>140 196</b>	<b>348 728</b>	<b>303 236</b>	<b>- 13,0</b>
<b>Total value of building plans passed at current prices (R'000)</b>	<b>671 651</b>	<b>646 469</b>	<b>696 569</b>	<b>1 244 345</b>	<b>1 343 038</b>	<b>+ 7,9</b>

1/ Other residential buildings include institutions for the disabled, boarding houses, old people's homes, hostels, hotels, motels, guest houses, holiday chalets, entertainment centres, bed-and-breakfast accommodation and casinos.

2/ Other non-residential space includes churches, sport and recreation clubs, schools, crèches, hospitals and all other non-residential space.

3/ Other buildings include additions and alterations to other residential buildings, non-residential buildings and internal alterations.



**Table 17 - Building plans passed according to type of building and province: Mpumalanga**

Type of building	February 2002	January 2003	February 2003	January 2002 to February 2002	January 2003 to February 2003	Percentage change between January 2002 to February 2002 and January 2003 to February 2003
<b>Residential buildings</b>						
Dwelling-houses smaller than 80 square metres						
Number of dwelling-houses	137	15	183	316	198	- 37,3
Total square metres	6 011	748	7 557	12 532	8 305	- 33,7
Total value at current prices (R'000)	3 228	988	4 310	7 098	5 298	- 25,4
Dwelling-houses equal to or larger than 80 square metres						
Number of dwelling-houses	177	94	105	254	199	- 21,7
Total square metres	26 158	18 526	25 940	39 420	44 466	+ 12,8
Total value at current prices (R'000)	30 792	25 002	36 336	47 705	61 338	+ 28,6
Flats and townhouses						
Number of flats and townhouses	92	1	8	94	9	- 90,4
Total square metres	13 054	123	1 133	13 382	1 256	- 90,6
Total value at current prices (R'000)	20 217	123	1 228	20 462	1 351	- 93,4
Other residential buildings <sup>1/</sup>						
Total square metres	5 489	0	0	5 489	0	..
Total value at current prices (R'000)	70 000	0	0	70 000	0	..
<b>Total value of residential buildings at current prices (R'000)</b>	<b>124 237</b>	<b>26 113</b>	<b>41 874</b>	<b>145 265</b>	<b>67 987</b>	<b>- 53,2</b>
<b>Non-residential buildings</b>						
Office and banking space						
Total square metres	219	843	5 478	689	6 321	+ 817,4
Total value at current prices (R'000)	329	1 300	9 173	879	10 473	+ 1091,5
Shopping space						
Total square metres	9 493	3 433	1 581	11 769	5 014	++57,4
Total value at current prices (R'000)	11 172	5 941	2 300	13 904	8 241	++40,7
Industrial and warehouse space						
Total square metres	3 455	6 774	10 879	6 831	17 653	+ 158,4
Total value at current prices (R'000)	3 471	10 198	8 625	7 175	18 823	+ 162,3
Other non-residential space <sup>2/</sup>						
Total square metres	1 778	296	0	3 198	296	- 90,7
Total value at current prices (R'000)	2 066	360	0	3 671	360	- 90,2
<b>Total value of non-residential buildings at current prices (R'000)</b>	<b>17 038</b>	<b>17 799</b>	<b>20 098</b>	<b>25 629</b>	<b>37 897</b>	<b>+ 47,9</b>
<b>Additions and alterations</b>						
Dwelling-houses						
Total square metres	9 492	10 635	13 665	20 140	24 300	+ 20,7
Total value at current prices (R'000)	10 360	14 967	19 156	21 895	34 123	+ 55,8
Other buildings <sup>3/</sup>						
Total square metres	1 061	1 690	3 177	2 868	4 867	+ 69,7
Total value at current prices (R'000)	1 572	2 769	6 028	9 944	8 797	- 11,5
<b>Total value of additions and alterations at current prices (R'000)</b>	<b>11 932</b>	<b>17 736</b>	<b>25 184</b>	<b>31 839</b>	<b>42 920</b>	<b>+ 34,8</b>
<b>Total value of building plans passed at current prices (R'000)</b>	<b>153 207</b>	<b>61 648</b>	<b>87 156</b>	<b>202 733</b>	<b>148 804</b>	<b>- 26,6</b>

1/ Other residential buildings include institutions for the disabled, boarding houses, old people's homes, hostels, hotels, motels, guest houses, holiday chalets, entertainment centres, bed-and-breakfast accommodation and casinos.

2/ Other non-residential space includes churches, sport and recreation clubs, schools, crèches, hospitals and all other non-residential space.

3/ Other buildings include additions and alterations to other residential buildings, non-residential buildings and internal alterations.

**Table 18 - Building plans passed according to type of building and province: Limpopo**

Type of building	February 2002	January 2003	February 2003	January 2002 to February 2002	January 2003 to February 2003	Percentage change between January 2002 to February 2002 and January 2003 to February 2003
<b>Residential buildings</b>						
Dwelling-houses smaller than 80 square metres						
Number of dwelling-houses	35	270	25	45	295	+ 555,6
Total square metres	2 053	11 234	1 526	2 674	12 760	+ 377,2
Total value at current prices (R'000)	2 976	4 537	2 247	3 851	6 784	+ 76,2
Dwelling-houses equal to or larger than 80 square metres						
Number of dwelling-houses	51	37	41	84	78	-7,1
Total square metres	9 108	7 676	8 381	15 508	16 057	+ 3,5
Total value at current prices (R'000)	12 616	10 929	12 734	20 824	23 663	+ 13,6
Flats and townhouses						
Number of flats and townhouses	18	1	2	27	3	-88,9
Total square metres	2 063	117	234	3 239	351	-89,2
Total value at current prices (R'000)	2 600	164	328	4 353	492	-88,7
Other residential buildings <sup>1/</sup>						
Total square metres	0	0	0	0	0	..
Total value at current prices (R'000)	0	0	0	0	0	..
<b>Total value of residential buildings at current prices (R'000)</b>	<b>18 192</b>	<b>15 630</b>	<b>15 309</b>	<b>29 028</b>	<b>30 939</b>	<b>+ 6,6</b>
<b>Non-residential buildings</b>						
Office and banking space						
Total square metres	454	0	0	454	0	..
Total value at current prices (R'000)	755	0	0	755	0	..
Shopping space						
Total square metres	0	130	0	978	130	-86,7
Total value at current prices (R'000)	0	140	0	1 638	140	-91,5
Industrial and warehouse space						
Total square metres	478	2 207	1 048	478	3 255	+ 581,0
Total value at current prices (R'000)	600	4 855	1 467	600	6 322	+ 953,7
Other non-residential space <sup>2/</sup>						
Total square metres	263	137	735	263	872	+ 231,6
Total value at current prices (R'000)	445	301	1 433	445	1 734	+ 289,7
<b>Total value of non-residential buildings at current prices (R'000)</b>	<b>1 800</b>	<b>5 296</b>	<b>2 900</b>	<b>3 438</b>	<b>8 196</b>	<b>+ 138,4</b>
<b>Additions and alterations</b>						
Dwelling-houses						
Total square metres	3 836	3 359	4 847	7 519	8 206	+ 9,1
Total value at current prices (R'000)	5 201	3 679	6 805	10 278	10 484	+ 2,0
Other buildings <sup>3/</sup>						
Total square metres	6 404	926	965	6 554	1 891	-71,1
Total value at current prices (R'000)	9 875	1 862	1 567	10 085	3 429	-66,0
<b>Total value of additions and alterations at current prices (R'000)</b>	<b>15 076</b>	<b>5 541</b>	<b>8 372</b>	<b>20 363</b>	<b>13 913</b>	<b>-31,7</b>
<b>Total value of building plans passed at current prices (R'000)</b>	<b>35 068</b>	<b>26 467</b>	<b>26 581</b>	<b>52 829</b>	<b>53 048</b>	<b>+ 0,4</b>

1/ Other residential buildings include institutions for the disabled, boarding houses, old people's homes, hostels, hotels, motels, guest houses, holiday chalets, entertainment centres, bed-and-breakfast accommodation and casinos.

2/ Other non-residential space includes churches, sport and recreation clubs, schools, crèches, hospitals and all other non-residential space.

3/ Other buildings include additions and alterations to other residential buildings, non-residential buildings and internal alterations.

**Table 19 - Buildings completed according to type of building: Total RSA**

Type of building	February 2002 *	January 2003*	February 2003	January 2002 to February 2002	January 2003 to February 2003	Percentage change between January 2002 to February 2002 and January 2003 to February 2003
<b>Residential buildings</b>						
Dwelling-houses smaller than 80 square metres						
Number of dwelling-houses	2 273	2 120	3 196	4 262	5 316	+ 24,7
Total square metres	81 464	72 106	118 226	157 634	190 332	+ 20,7
Total value at current prices (R'000)	64 615	56 104	90 397	148 163	146 501	- 1,1
Dwelling-houses equal to or larger than 80 square metres						
Number of dwelling-houses	860	1 080	1 178	1 794	2 258	+ 25,9
Total square metres	178 249	215 554	236 175	385 056	451 729	+ 17,3
Total value at current prices (R'000)	266 065	334 426	375 157	567 142	709 583	+ 25,1
Flats and townhouses						
Number of flats and townhouses	1 127	1 668	769	2 291	2 437	+ 6,4
Total square metres	101 065	143 000	91 865	227 792	234 865	+ 3,1
Total value at current prices (R'000)	145 125	216 891	162 601	340 218	379 492	+ 11,5
Other residential buildings <sup>1/</sup>						
Total square metres	465	10 759	15 283	4 191	26 042	+ 521,4
Total value at current prices (R'000)	701	9 442	42 238	4 937	51 680	+ 946,8
<b>Total value of residential buildings at current prices (R'000)</b>	<b>476 506</b>	<b>616 863</b>	<b>670 393</b>	<b>1 060 460</b>	<b>1 287 256</b>	<b>+ 21,4</b>
<b>Non-residential buildings</b>						
Office and banking space						
Total square metres	39 074	43 536	35 638	69 345	79 174	+ 14,2
Total value at current prices (R'000)	65 507	62 341	53 638	113 205	115 979	+ 2,5
Shopping space						
Total square metres	10 986	17 660	19 594	40 991	37 254	- 9,1
Total value at current prices (R'000)	15 871	26 455	31 025	50 548	57 480	+ 13,7
Industrial and warehouse space						
Total square metres	35 937	44 635	46 300	71 123	90 935	+ 27,9
Total value at current prices (R'000)	38 238	44 848	52 765	82 858	97 613	+ 17,8
Other non-residential space <sup>2/</sup>						
Total square metres	12 626	12 249	12 518	20 136	24 767	+ 23,0
Total value at current prices (R'000)	18 201	16 291	18 905	27 776	35 196	+ 26,7
<b>Total value of non-residential buildings at current prices (R'000)</b>	<b>137 817</b>	<b>149 935</b>	<b>156 333</b>	<b>274 387</b>	<b>306 268</b>	<b>+ 11,6</b>
<b>Additions and alterations</b>						
Dwelling-houses						
Total square metres	118 239	111 844	138 175	217 656	250 019	+ 14,9
Total value at current prices (R'000)	147 427	150 147	187 398	272 277	337 545	+ 24,0
Other buildings <sup>3/</sup>						
Total square metres	33 591	55 438	42 992	61 967	98 430	+ 58,8
Total value at current prices (R'000)	54 812	84 349	98 112	106 605	182 461	+ 71,2
<b>Total value of additions and alterations at current prices (R'000)</b>	<b>202 239</b>	<b>234 496</b>	<b>285 510</b>	<b>378 882</b>	<b>520 006</b>	<b>+ 37,2</b>
<b>Total value of buildings completed at current prices (R'000)</b>	<b>816 562</b>	<b>1 001 294</b>	<b>1 112 236</b>	<b>1 713 729</b>	<b>2 113 530</b>	<b>+ 23,3</b>

1/ Other residential buildings include institutions for the disabled, boarding houses, old people's homes, hostels, hotels, motels, guest houses, holiday chalets, entertainment centres, bed-and-breakfast accommodation and casinos.

2/ Other non-residential space includes churches, sport and recreation clubs, schools, crèches, hospitals and all other non-residential space.

3/ Other buildings include additions and alterations to other residential buildings, non-residential buildings and internal alterations.

**Table 20 - Buildings completed according to type of building and province: Western Cape**

Type of building	February 2002*	January 2003	February 2003	January 2002 to February 2002	January 2003 to February 2003	Percentage change between January 2002 to February 2002 and January 2003 to February 2003
<b>Residential buildings</b>						
Dwelling-houses smaller than 80 square metres						
Number of dwelling-houses	614	141	189	1 503	330	- 78,0
Total square metres	21 571	5 826	9 111	53 831	14 937	- 72,3
Total value at current prices (R'000)	23 135	6 132	12 235	62 159	18 367	- 70,5
Dwelling-houses equal to or larger than 80 square metres						
Number of dwelling-houses	344	392	571	680	963	+ 41,6
Total square metres	75 670	73 754	96 925	143 235	170 679	+ 19,2
Total value at current prices (R'000)	120 489	119 862	157 343	224 928	277 205	+ 23,2
Flats and townhouses						
Number of flats and townhouses	82	118	204	437	322	- 26,3
Total square metres	8 335	7 893	19 533	54 479	27 426	- 49,7
Total value at current prices (R'000)	12 731	11 654	39 568	94 635	51 222	- 45,9
Other residential buildings <sup>1/</sup>						
Total square metres	465	127	13 783	673	13 910	+ 1966,9
Total value at current prices (R'000)	701	174	38 457	993	38 631	+ 3790,3
<b>Total value of residential buildings at current prices (R'000)</b>	<b>157 056</b>	<b>137 822</b>	<b>247 603</b>	<b>382 715</b>	<b>385 425</b>	<b>+ 0,7</b>
<b>Non-residential buildings</b>						
Office and banking space						
Total square metres	9 289	29 809	9 157	14 072	38 966	+ 176,9
Total value at current prices (R'000)	14 027	35 251	15 914	19 744	51 165	+ 159,1
Shopping space						
Total square metres	290	610	5 862	20 662	6 472	- 68,7
Total value at current prices (R'000)	552	976	7 704	23 340	8 680	- 62,8
Industrial and warehouse space						
Total square metres	6 589	17 632	21 604	11 573	39 236	+ 239,0
Total value at current prices (R'000)	6 499	17 846	21 837	10 668	39 683	+ 272,0
Other non-residential space <sup>2/</sup>						
Total square metres	5 103	3 216	3 844	6 015	7 060	+ 17,4
Total value at current prices (R'000)	6 914	4 532	4 625	7 551	9 157	+ 21,3
<b>Total value of non-residential buildings at current prices (R'000)</b>	<b>27 992</b>	<b>58 605</b>	<b>50 080</b>	<b>61 303</b>	<b>108 685</b>	<b>+ 77,3</b>
<b>Additions and alterations</b>						
Dwelling-houses						
Total square metres	41 369	34 688	49 386	74 742	84 074	+ 12,5
Total value at current prices (R'000)	54 930	49 072	71 089	98 835	120 161	+ 21,6
Other buildings <sup>3/</sup>						
Total square metres	15 736	20 790	7 476	22 219	28 266	+ 27,2
Total value at current prices (R'000)	26 105	39 474	26 078	41 839	65 552	+ 56,7
<b>Total value of additions and alterations at current prices (R'000)</b>	<b>81 035</b>	<b>88 546</b>	<b>97 167</b>	<b>140 674</b>	<b>185 713</b>	<b>+ 32,0</b>
<b>Total value of buildings completed at current prices (R'000)</b>	<b>266 083</b>	<b>284 973</b>	<b>394 850</b>	<b>584 692</b>	<b>679 823</b>	<b>+ 16,3</b>

1/ Other residential buildings include institutions for the disabled, boarding houses, old people's homes, hostels, hotels, motels, guest houses, holiday chalets, entertainment centres, bed-and-breakfast accommodation and casinos.

2/ Other non-residential space includes churches, sport and recreation clubs, schools, crèches, hospitals and all other non-residential space.

3/ Other buildings include additions and alterations to other residential buildings, non-residential buildings and internal alterations.

**Table 21 - Buildings completed according to type of building and province: Eastern Cape**

Type of building	February 2002	January 2003	February 2003	January 2002 to February 2002	January 2003 to February 2003	Percentage change between January 2002 to February 2002 and January 2003 to February 2003
<b>Residential buildings</b>						
Dwelling-houses smaller than 80 square metres						
Number of dwelling-houses	52	126	126	273	252	- 7,7
Total square metres	2 616	5 728	5 559	12 578	11 287	- 10,3
Total value at current prices (R'000)	3 246	8 027	5 067	15 925	13 094	- 17,8
Dwelling-houses equal to or larger than 80 square metres						
Number of dwelling-houses	64	32	57	118	89	- 24,6
Total square metres	10 596	6 145	10 034	19 411	16 179	- 16,7
Total value at current prices (R'000)	13 607	9 555	14 395	24 894	23 950	- 3,8
Flats and townhouses						
Number of flats and townhouses	1	1	37	5	38	+ 660,0
Total square metres	117	98	2 576	785	2 674	+ 240,6
Total value at current prices (R'000)	170	137	3 839	1 086	3 976	+ 266,1
Other residential buildings <sup>1/</sup>						
Total square metres	0	646	225	0	871	..
Total value at current prices (R'000)	0	1 270	495	0	1 765	..
<b>Total value of residential buildings at current prices (R'000)</b>	<b>17 023</b>	<b>18 989</b>	<b>23 796</b>	<b>41 905</b>	<b>42 785</b>	<b>+ 2,1</b>
<b>Non-residential buildings</b>						
Office and banking space						
Total square metres	0	0	0	0	0	..
Total value at current prices (R'000)	0	0	0	0	0	..
Shopping space						
Total square metres	343	468	822	2 400	1 290	- 46,3
Total value at current prices (R'000)	652	767	1 225	3 048	1 992	- 34,6
Industrial and warehouse space						
Total square metres	0	1 621	1 911	478	3 532	+ 638,9
Total value at current prices (R'000)	0	2 350	2 969	392	5 319	+ 1256,9
Other non-residential space <sup>2/</sup>						
Total square metres	340	607	917	1 809	1 524	-15,8
Total value at current prices (R'000)	428	1 270	1 877	1 928	3 147	+ 63,2
<b>Total value of non-residential buildings at current prices (R'000)</b>	<b>1 080</b>	<b>4 387</b>	<b>6 071</b>	<b>5 368</b>	<b>10 458</b>	<b>+ 94,8</b>
<b>Additions and alterations</b>						
Dwelling-houses						
Total square metres	8 390	11 477	8 465	15 891	19 942	+ 25,5
Total value at current prices (R'000)	9 839	15 624	11 814	18 845	27 438	+ 45,6
Other buildings <sup>3/</sup>						
Total square metres	3 369	679	7 830	6 405	8 509	+ 32,8
Total value at current prices (R'000)	4 958	1 575	14 744	8 740	16 319	+ 86,7
<b>Total value of additions and alterations at current prices (R'000)</b>	<b>14 797</b>	<b>17 199</b>	<b>26 558</b>	<b>27 585</b>	<b>43 757</b>	<b>+ 58,6</b>
<b>Total value of buildings completed at current prices (R'000)</b>	<b>32 900</b>	<b>40 575</b>	<b>56 425</b>	<b>74 858</b>	<b>97 000</b>	<b>+ 29,6</b>

1/ Other residential buildings include institutions for the disabled, boarding houses, old people's homes, hostels, hotels, motels, guest houses, holiday chalets, entertainment centres, bed-and-breakfast accommodation and casinos.

2/ Other non-residential space includes churches, sport and recreation clubs, schools, crèches, hospitals and all other non-residential space.

3/ Other buildings include additions and alterations to other residential buildings, non-residential buildings and internal alterations.

**Table 22 - Buildings completed according to type of building and province: Northern Cape**

Type of building	February 2002	January 2003	February 2003	January 2002 to February 2002	January 2003 to February 2003	Percentage change between January 2002 to February 2002 and January 2003 to February 2003
<b>Residential buildings</b>						
Dwelling-houses smaller than 80 square metres						
Number of dwelling-houses	8	0	2	8	2	- 75,0
Total square metres	341	0	121	341	121	- 64,5
Total value at current prices (R'000)	278	0	226	278	226	- 18,7
Dwelling-houses equal to or larger than 80 square metres						
Number of dwelling-houses	7	5	4	12	9	- 25,0
Total square metres	975	808	1 059	1 680	1 867	+ 11,1
Total value at current prices (R'000)	990	1 397	1 821	2 140	3 218	+ 50,4
Flats and townhouses						
Number of flats and townhouses	0	0	2	0	2	..
Total square metres	0	0	226	0	226	..
Total value at current prices (R'000)	0	0	317	0	317	..
Other residential buildings <sup>1/</sup>						
Total square metres	0	0	0	0	0	..
Total value at current prices (R'000)	0	0	0	0	0	..
<b>Total value of residential buildings at current prices (R'000)</b>	<b>1 268</b>	<b>1 397</b>	<b>2 364</b>	<b>2 418</b>	<b>3 761</b>	<b>+ 55,5</b>
<b>Non-residential buildings</b>						
Office and banking space						
Total square metres	0	0	0	0	0	..
Total value at current prices (R'000)	0	0	0	0	0	..
Shopping space						
Total square metres	784	0	0	784	0	..
Total value at current prices (R'000)	1 098	0	0	1 098	0	..
Industrial and warehouse space						
Total square metres	0	0	0	0	0	..
Total value at current prices (R'000)	0	0	0	0	0	..
Other non-residential space <sup>2/</sup>						
Total square metres	0	125	0	0	125	..
Total value at current prices (R'000)	0	188	0	0	188	..
<b>Total value of non-residential buildings at current prices (R'000)</b>	<b>1 098</b>	<b>188</b>	<b>0</b>	<b>1 098</b>	<b>188</b>	<b>- 82,9</b>
<b>Additions and alterations</b>						
Dwelling-houses						
Total square metres	1 978	1 791	2 908	3 663	4 699	+ 28,3
Total value at current prices (R'000)	2 776	2 547	4 918	5 178	7 465	+ 44,2
Other buildings <sup>3/</sup>						
Total square metres	0	0	0	132	0	..
Total value at current prices (R'000)	578	0	52	922	52	- 94,4
<b>Total value of additions and alterations at current prices (R'000)</b>	<b>3 354</b>	<b>2 547</b>	<b>4 970</b>	<b>6 100</b>	<b>7 517</b>	<b>+ 23,2</b>
<b>Total value of buildings completed at current prices (R'000)</b>	<b>5 720</b>	<b>4 132</b>	<b>7 334</b>	<b>9 616</b>	<b>11 466</b>	<b>19,2</b>

1/ Other residential buildings include institutions for the disabled, boarding houses, old people's homes, hostels, hotels, motels, guest houses, holiday chalets, entertainment centres, bed-and-breakfast accommodation and casinos.

2/ Other non-residential space includes churches, sport and recreation clubs, schools, crèches, hospitals and all other non-residential space.

3/ Other buildings include additions and alterations to other residential buildings, non-residential buildings and internal alterations.

**Table 23 - Buildings completed according to type of building and province: Free State**

Type of building	February 2002*	January 2003	February 2003	January 2002 to February 2002	January 2003 to February 2003	Percentage change between January 2002 to February 2002 and January 2003 to February 2003
<b>Residential buildings</b>						
Dwelling-houses smaller than 80 square metres						
Number of dwelling-houses	76	17	420	123	437	+ 255,3
Total square metres	3 409	977	16 988	5 980	17 965	+ 200,4
Total value at current prices (R'000)	1 906	1 370	8 172	4 317	9 542	+ 121,0
Dwelling-houses equal to or larger than 80 square metres						
Number of dwelling-houses	16	34	19	37	53	+ 43,2
Total square metres	2 512	5 753	3 204	7 042	8 957	+ 27,2
Total value at current prices (R'000)	2 938	7 199	4 489	8 174	11 688	+ 43,0
Flats and townhouses						
Number of flats and townhouses	19	3	90	36	93	+ 158,3
Total square metres	1 658	494	9 506	3 936	10 000	+ 154,1
Total value at current prices (R'000)	3 174	568	14 203	6 464	14 771	+ 128,5
Other residential buildings <sup>1/</sup>						
Total square metres	0	60	0	1 428	60	-95,8
Total value at current prices (R'000)	0	54	0	1 461	54	-96,3
<b>Total value of residential buildings at current prices (R'000)</b>	<b>8 018</b>	<b>9 191</b>	<b>26 864</b>	<b>20 416</b>	<b>36 055</b>	<b>+ 76,6</b>
<b>Non-residential buildings</b>						
Office and banking space						
Total square metres	0	0	62	2 055	62	-97,0
Total value at current prices (R'000)	0	0	104	3 855	104	-97,3
Shopping space						
Total square metres	0	1 724	180	630	1 904	+ 202,2
Total value at current prices (R'000)	0	3 324	86	500	3 410	+ 582,0
Industrial and warehouse space						
Total square metres	284	0	0	2 842	0	..
Total value at current prices (R'000)	180	0	0	2 280	0	..
Other non-residential space <sup>2/</sup>						
Total square metres	0	0	0	175	0	..
Total value at current prices (R'000)	131	0	0	131	0	..
<b>Total value of non-residential buildings at current prices (R'000)</b>	<b>311</b>	<b>3 324</b>	<b>190</b>	<b>6 766</b>	<b>3 514</b>	<b>-48,1</b>
<b>Additions and alterations</b>						
Dwelling-houses						
Total square metres	6 391	5 021	3 893	17 489	8 914	-49,0
Total value at current prices (R'000)	6 925	5 827	4 522	19 690	10 349	-47,4
Other buildings <sup>3/</sup>						
Total square metres	1 541	571	371	2 969	942	-68,3
Total value at current prices (R'000)	2 606	854	2 997	7 350	3 851	-47,6
<b>Total value of additions and alterations at current prices (R'000)</b>	<b>9 531</b>	<b>6 681</b>	<b>7 519</b>	<b>27 040</b>	<b>14 200</b>	<b>-47,5</b>
<b>Total value of buildings completed at current prices (R'000)</b>	<b>17 860</b>	<b>19 196</b>	<b>34 573</b>	<b>54 222</b>	<b>53 769</b>	<b>-0,8</b>

1/ Other residential buildings include institutions for the disabled, boarding houses, old people's homes, hostels, hotels, motels, guest houses, holiday chalets, entertainment centres, bed-and-breakfast accommodation and casinos.

2/ Other non-residential space includes churches, sport and recreation clubs, schools, crèches, hospitals and all other non-residential space.

3/ Other buildings include additions and alterations to other residential buildings, non-residential buildings and internal alterations.

**Table 24 - Buildings completed according to type of building and province: KwaZulu-Natal**

Type of building	February 2002*	January 2003	February 2003	January 2002 to February 2002	January 2003 to February 2003	Percentage change between January 2002 to February 2002 and January 2003 to February 2003
<b>Residential buildings</b>						
Dwelling-houses smaller than 80 square metres						
Number of dwelling-houses	113	332	336	197	668	+ 239,1
Total square metres	5 682	11 126	11 966	9 873	23 092	+ 133,9
Total value at current prices (R'000)	6 496	8 259	9 268	11 563	17 527	+ 51,6
Dwelling-houses equal to or larger than 80 square metres						
Number of dwelling-houses	122	141	110	205	251	+ 22,4
Total square metres	22 991	27 513	25 021	39 648	52 534	+ 32,5
Total value at current prices (R'000)	30 501	39 162	37 290	53 450	76 452	+ 43,0
Flats and townhouses						
Number of flats and townhouses	67	72	59	110	131	+ 19,1
Total square metres	11 053	9 171	13 221	17 604	22 392	+ 27,2
Total value at current prices (R'000)	17 910	13 734	21 258	29 904	34 992	+ 17,0
Other residential buildings <sup>1/</sup>						
Total square metres	0	103	0	0	103	..
Total value at current prices (R'000)	0	186	0	0	186	..
<b>Total value of residential buildings at current prices (R'000)</b>	<b>54 907</b>	<b>61 341</b>	<b>67 816</b>	<b>94 917</b>	<b>129 157</b>	<b>+ 36,1</b>
<b>Non-residential buildings</b>						
Office and banking space						
Total square metres	19 593	3 735	3 100	19 593	6 835	-65,1
Total value at current prices (R'000)	35 570	8 545	9 000	35 570	17 545	-50,7
Shopping space						
Total square metres	2 905	1 515	5 566	6 128	7 081	+ 15,6
Total value at current prices (R'000)	2 780	1 658	8 650	6 773	10 308	+ 52,2
Industrial and warehouse space						
Total square metres	20 070	15 726	4 446	30 470	20 172	-33,8
Total value at current prices (R'000)	16 912	13 391	5 581	28 566	18 972	-33,6
Other non-residential space <sup>2/</sup>						
Total square metres	4 495	1 046	4 037	5 748	5 083	-11,6
Total value at current prices (R'000)	7 393	1 136	7 210	8 767	8 346	-4,8
<b>Total value of non-residential buildings at current prices (R'000)</b>	<b>62 655</b>	<b>24 730</b>	<b>30 441</b>	<b>79 676</b>	<b>55 171</b>	<b>-30,8</b>
<b>Additions and alterations</b>						
Dwelling-houses						
Total square metres	18 208	28 102	28 673	39 690	56 775	+ 43,0
Total value at current prices (R'000)	18 611	33 048	33 444	43 212	66 492	+ 53,9
Other buildings <sup>3/</sup>						
Total square metres	3 444	22 638	7 500	10 766	30 138	+ 179,9
Total value at current prices (R'000)	4 593	24 427	24 254	16 614	48 681	+ 193,0
<b>Total value of additions and alterations at current prices (R'000)</b>	<b>23 204</b>	<b>57 475</b>	<b>57 698</b>	<b>59 826</b>	<b>115 173</b>	<b>+ 92,5</b>
<b>Total value of buildings completed at current prices (R'000)</b>	<b>140 766</b>	<b>143 546</b>	<b>155 955</b>	<b>234 419</b>	<b>299 501</b>	<b>+ 27,8</b>

1/ Other residential buildings include institutions for the disabled, boarding houses, old people's homes, hostels, hotels, motels, guest houses, holiday chalets, entertainment centres, bed-and-breakfast accommodation and casinos.

2/ Other non-residential space includes churches, sport and recreation clubs, schools, crèches, hospitals and all other non-residential space.

3/ Other buildings include additions and alterations to other residential buildings, non-residential buildings and internal alterations.



**Table 25 - Buildings completed according to type of building and province: North West**

Type of building	February 2002	January 2003	February 2003	January 2002 to February 2002	January 2003 to February 2003	Percentage change between January 2002 to February 2002 and January 2003 to February 2003
<b>Residential buildings</b>						
Dwelling-houses smaller than 80 square metres						
Number of dwelling-houses	298	18	27	327	45	- 86,2
Total square metres	9 384	1 041	1 493	10 867	2 534	- 76,7
Total value at current prices (R'000)	3 834	1 420	1 767	5 362	3 187	- 40,6
Dwelling-houses equal to or larger than 80 square metres						
Number of dwelling-houses	63	74	39	108	113	+ 4,6
Total square metres	9 638	16 779	7 758	17 409	24 537	+ 40,9
Total value at current prices (R'000)	16 108	22 992	12 275	27 400	35 267	+ 28,7
Flats and townhouses						
Number of flats and townhouses	156	304	26	156	330	+ 111,5
Total square metres	8 303	22 167	2 619	8 303	24 786	+ 198,5
Total value at current prices (R'000)	11 884	34 159	2 643	11 884	36 802	+ 209,7
Other residential buildings <sup>1/</sup>						
Total square metres	0	0	579	2 090	579	- 72,3
Total value at current prices (R'000)	0	0	834	2 483	834	- 66,4
<b>Total value of residential buildings at current prices (R'000)</b>	<b>31 826</b>	<b>58 571</b>	<b>17 519</b>	<b>47 129</b>	<b>76 090</b>	<b>+ 61,5</b>
<b>Non-residential buildings</b>						
Office and banking space						
Total square metres	0	0	0	0	0	..
Total value at current prices (R'000)	0	0	0	0	0	..
Shopping space						
Total square metres	0	0	758	575	758	+ 31,8
Total value at current prices (R'000)	0	0	1 866	403	1 866	+ 363,0
Industrial and warehouse space						
Total square metres	486	2 716	956	846	3 672	+ 334,0
Total value at current prices (R'000)	425	2 713	1 263	605	3 976	+ 557,2
Other non-residential space <sup>2/</sup>						
Total square metres	650	1 460	360	1 715	1 820	+ 6,1
Total value at current prices (R'000)	808	1 470	645	3 151	2 115	- 32,9
<b>Total value of non-residential buildings at current prices (R'000)</b>	<b>1 233</b>	<b>4 183</b>	<b>3 774</b>	<b>4 159</b>	<b>7 957</b>	<b>+ 91,3</b>
<b>Additions and alterations</b>						
Dwelling-houses						
Total square metres	8 306	7 032	6 556	10 625	13 588	+ 27,9
Total value at current prices (R'000)	7 101	6 773	5 565	9 355	12 338	+ 31,9
Other buildings <sup>3/</sup>						
Total square metres	696	1 712	4 559	1 005	6 271	+ 524,0
Total value at current prices (R'000)	794	3 030	4 243	1 153	7 273	+ 530,8
<b>Total value of additions and alterations at current prices (R'000)</b>	<b>7 895</b>	<b>9 803</b>	<b>9 808</b>	<b>10 508</b>	<b>19 611</b>	<b>+ 86,6</b>
<b>Total value of buildings completed at current prices (R'000)</b>	<b>40 954</b>	<b>72 557</b>	<b>31 101</b>	<b>61 796</b>	<b>103 658</b>	<b>+ 67,7</b>

1/ Other residential buildings include institutions for the disabled, boarding houses, old people's homes, hostels, hotels, motels, guest houses, holiday chalets, entertainment centres, bed-and-breakfast accommodation and casinos.

2/ Other non-residential space includes churches, sport and recreation clubs, schools, crèches, hospitals and all other non-residential space.

3/ Other buildings include additions and alterations to other residential buildings, non-residential buildings and internal alterations.

Table 26 - Buildings completed according to type of building and province: Gauteng

Type of building	February 2002*	January 2003*	February 2003	January 2002 to February 2002	January 2003 to February 2003	Percentage change between January 2002 to February 2002 and January 2003 to February 2003
<b>Residential buildings</b>						
Dwelling-houses smaller than 80 square metres						
Number of dwelling-houses	856	1 449	1 930	1 467	3 379	+ 130,3
Total square metres	28 051	45 191	65 727	49 622	110 918	+ 123,5
Total value at current prices (R'000)	18 588	27 882	49 442	37 837	77 324	+ 104,4
Dwelling-houses equal to or larger than 80 square metres						
Number of dwelling-houses	193	326	333	542	659	+ 21,6
Total square metres	47 910	69 582	82 073	140 914	151 655	+ 7,6
Total value at current prices (R'000)	71 578	113 312	133 596	207 750	246 908	+ 18,8
Flats and townhouses						
Number of flats and townhouses	796	665	325	1 537	990	-35,6
Total square metres	70 288	74 044	41 149	140 859	115 193	-18,2
Total value at current prices (R'000)	98 028	121 667	76 502	194 374	198 169	+ 2,0
Other residential buildings <sup>1/</sup>						
Total square metres	0	9 823	240	0	10 063	..
Total value at current prices (R'000)	0	7 758	252	0	8 010	..
<b>Total value of residential buildings at current prices (R'000)</b>	<b>188 194</b>	<b>270 619</b>	<b>259 792</b>	<b>439 961</b>	<b>530 411</b>	<b>+ 20,6</b>
<b>Non-residential buildings</b>						
Office and banking space						
Total square metres	10 192	9 992	23 319	33 625	33 311	-0,9
Total value at current prices (R'000)	15 910	18 545	28 620	54 036	47 165	-12,7
Shopping space						
Total square metres	5 748	730	5 206	7 648	5 936	-22,4
Total value at current prices (R'000)	9 354	730	9 694	12 451	10 424	-16,3
Industrial and warehouse space						
Total square metres	8 058	5 426	10 076	24 056	15 502	-35,6
Total value at current prices (R'000)	13 872	6 269	16 415	39 511	22 684	-42,6
Other non-residential space <sup>2/</sup>						
Total square metres	1 863	5 353	3 360	4 201	8 713	+ 107,4
Total value at current prices (R'000)	2 527	7 077	4 548	6 048	11 625	+ 92,2
<b>Total value of non-residential buildings at current prices (R'000)</b>	<b>41 663</b>	<b>32 621</b>	<b>59 277</b>	<b>112 046</b>	<b>91 898</b>	<b>-18,0</b>
<b>Additions and alterations</b>						
Dwelling-houses						
Total square metres	29 712	20 139	34 106	48 412	54 245	+ 12,0
Total value at current prices (R'000)	43 259	31 907	50 905	70 629	82 812	+ 17,2
Other buildings <sup>3/</sup>						
Total square metres	8 145	8 512	14 878	16 612	23 390	+ 40,8
Total value at current prices (R'000)	14 205	13 844	25 348	27 075	39 192	+ 44,8
<b>Total value of additions and alterations at current prices (R'000)</b>	<b>57 464</b>	<b>45 751</b>	<b>76 253</b>	<b>97 704</b>	<b>122 004</b>	<b>+ 24,9</b>
<b>Total value of buildings completed at current prices (R'000)</b>	<b>287 321</b>	<b>348 991</b>	<b>395 322</b>	<b>649 711</b>	<b>744 313</b>	<b>+ 14,6</b>

1/ Other residential buildings include institutions for the disabled, boarding houses, old people's homes, hostels, hotels, motels, guest houses, holiday chalets, entertainment centres, bed-and-breakfast accommodation and casinos.

2/ Other non-residential space includes churches, sport and recreation clubs, schools, crèches, hospitals and all other non-residential space.

3/ Other buildings include additions and alterations to other residential buildings, non-residential buildings and internal alterations.

**Table 27 - Buildings completed according to type of building and province: Mpumalanga**

Type of building	February 2002	January 2003	February 2003	January 2002 to February 2002	January 2003 to February 2003	Percentage change between January 2002 to February 2002 and January 2003 to February 2003
<b>Residential buildings</b>						
Dwelling-houses smaller than 80 square metres						
Number of dwelling-houses	228	19	136	330	155	-53,0
Total square metres	8 686	1 179	5 563	12 433	6 742	-45,8
Total value at current prices (R'000)	4 392	1 543	1 972	7 484	3 515	-53,0
Dwelling-houses equal to or larger than 80 square metres						
Number of dwelling-houses	36	51	30	69	81	+ 17,4
Total square metres	6 123	11 594	7 288	12 617	18 882	+ 49,7
Total value at current prices (R'000)	7 050	15 659	9 980	13 848	25 639	+ 85,1
Flats and townhouses						
Number of flats and townhouses	4	503	7	5	510	+ 10 100,0
Total square metres	1 105	28 865	1 243	1 238	30 108	+ 2 332,0
Total value at current prices (R'000)	940	34 597	2 000	1 048	36 597	+ 3 392,1
Other residential buildings <sup>1/</sup>						
Total square metres	0	0	456	0	456	..
Total value at current prices (R'000)	0	0	2 200	0	2 200	..
<b>Total value of residential buildings at current prices (R'000)</b>	<b>12 382</b>	<b>51 799</b>	<b>16 152</b>	<b>22 380</b>	<b>67 951</b>	<b>+ 203,6</b>
<b>Non-residential buildings</b>						
Office and banking space						
Total square metres	0	0	0	0	0	..
Total value at current prices (R'000)	0	0	0	0	0	..
Shopping space						
Total square metres	308	12 613	1 200	308	13 813	+ 4 384,7
Total value at current prices (R'000)	462	19 000	1 800	462	20 800	+ 4 402,2
Industrial and warehouse space						
Total square metres	450	1 101	7 307	858	8 408	+ 880,0
Total value at current prices (R'000)	350	1 700	4 700	836	6 400	+ 665,6
Other non-residential space <sup>2/</sup>						
Total square metres	0	0	0	473	0	..
Total value at current prices (R'000)	0	0	0	200	0	..
<b>Total value of non-residential buildings at current prices (R'000)</b>	<b>812</b>	<b>20 700</b>	<b>6 500</b>	<b>1 498</b>	<b>27 200</b>	<b>+ 1 715,8</b>
<b>Additions and alterations</b>						
Dwelling-houses						
Total square metres	3 497	3 369	3 385	6 635	6 754	+ 1,8
Total value at current prices (R'000)	3 325	5 033	3 907	5 673	8 940	+ 57,6
Other buildings <sup>3/</sup>						
Total square metres	660	398	61	688	459	-33,3
Total value at current prices (R'000)	973	924	196	1 272	1 120	-11,9
<b>Total value of additions and alterations at current prices (R'000)</b>	<b>4 298</b>	<b>5 957</b>	<b>4 103</b>	<b>6 945</b>	<b>10 060</b>	<b>+ 44,9</b>
<b>Total value of buildings completed at current prices (R'000)</b>	<b>17 492</b>	<b>78 456</b>	<b>26 755</b>	<b>30 823</b>	<b>105 211</b>	<b>+ 241,3</b>

1/ Other residential buildings include institutions for the disabled, boarding houses, old people's homes, hostels, hotels, motels, guest houses, holiday chalets, entertainment centres, bed-and-breakfast accommodation and casinos.

2/ Other non-residential space includes churches, sport and recreation clubs, schools, crèches, hospitals and all other non-residential space.

3/ Other buildings include additions and alterations to other residential buildings, non-residential buildings and internal alterations.

**Table 28 - Buildings completed according to type of building and province: Limpopo**

Type of building	February 2002	January 2003	February 2003	January 2002 to February 2002	January 2003 to February 2003	Percentage change between January 2002 to February 2002 and January 2003 to February 2003
<b>Residential buildings</b>						
Dwelling-houses smaller than 80 square metres						
Number of dwelling-houses	28	18	30	34	48	+ 41,2
Total square metres	1 724	1 038	1 698	2 109	2 736	+ 29,7
Total value at current prices (R'000)	2 740	1 471	2 248	3 238	3 719	+ 14,9
Dwelling-houses equal to or larger than 80 square metres						
Number of dwelling-houses	15	25	15	23	40	+ 73,9
Total square metres	1 834	3 626	2 813	3 100	6 439	+ 107,7
Total value at current prices (R'000)	2 804	5 288	3 968	4 558	9 256	+ 103,1
Flats and townhouses						
Number of flats and townhouses	2	2	19	5	21	+ 320,0
Total square metres	206	268	1 792	588	2 060	+ 250,3
Total value at current prices (R'000)	288	375	2 271	823	2 646	+ 221,5
Other residential buildings <sup>1/</sup>						
Total square metres	0	0	0	0	0	..
Total value at current prices (R'000)	0	0	0	0	0	..
<b>Total value of residential buildings at current prices (R'000)</b>	<b>5 832</b>	<b>7 134</b>	<b>8 487</b>	<b>8 619</b>	<b>15 621</b>	<b>+ 81,2</b>
<b>Non-residential buildings</b>						
Office and banking space						
Total square metres	0	0	0	0	0	..
Total value at current prices (R'000)	0	0	0	0	0	..
Shopping space						
Total square metres	608	0	0	1 856	0	..
Total value at current prices (R'000)	973	0	0	2 473	0	..
Industrial and warehouse space						
Total square metres	0	413	0	0	413	..
Total value at current prices (R'000)	0	579	0	0	579	..
Other non-residential space <sup>2/</sup>						
Total square metres	0	442	0	0	442	..
Total value at current prices (R'000)	0	618	0	0	618	..
<b>Total value of non-residential buildings at current prices (R'000)</b>	<b>973</b>	<b>1 197</b>	<b>0</b>	<b>2 473</b>	<b>1 197</b>	<b>-51,6</b>
<b>Additions and alterations</b>						
Dwelling-houses						
Total square metres	388	225	803	509	1 028	+ 102,0
Total value at current prices (R'000)	661	316	1 234	860	1 550	+ 80,2
Other buildings <sup>3/</sup>						
Total square metres	0	138	317	1 171	455	-61,1
Total value at current prices (R'000)	0	221	200	1 640	421	-74,3
<b>Total value of additions and alterations at current prices (R'000)</b>	<b>661</b>	<b>537</b>	<b>1 434</b>	<b>2 500</b>	<b>1 971</b>	<b>-21,2</b>
<b>Total value of buildings completed at current prices (R'000)</b>	<b>7 466</b>	<b>8 868</b>	<b>9 921</b>	<b>13 592</b>	<b>18 789</b>	<b>+ 38,2</b>

1/ Other residential buildings include institutions for the disabled, boarding houses, old people's homes, hostels, hotels, motels, guest houses, holiday chalets, entertainment centres, bed-and-breakfast accommodation and casinos.

2/ Other non-residential space includes churches, sport and recreation clubs, schools, crèches, hospitals and all other non-residential space.

3/ Other buildings include additions and alterations to other residential buildings, non-residential buildings and internal alterations.

**Table 29 - Building plans passed according to type of building and selected urban area: Cape Town**

Type of building	February 2002*	January 2003	February 2003	January 2002 to February 2002	January 2003 to February 2003	Percentage change between January 2002 to February 2002 and January 2003 to February 2003
<b>Residential buildings</b>						
Dwelling-houses smaller than 80 square metres						
Number of dwelling-houses	157	142	263	1 665	405	- 75,7
Total square metres	7 025	5 698	11 590	55 021	17 288	- 68,6
Total value at current prices (R'000)	8 716	6 762	13 961	66 250	20 723	- 68,7
Dwelling-houses equal to or larger than 80 square metres						
Number of dwelling-houses	283	322	456	625	778	+ 24,5
Total square metres	58 493	61 185	72 343	120 626	133 528	+ 10,7
Total value at current prices (R'000)	78 438	86 073	109 253	164 418	195 326	+ 18,8
Flats and townhouses						
Number of flats and townhouses	321	141	206	422	347	- 17,8
Total square metres	24 257	19 826	24 726	37 525	44 552	+ 18,7
Total value at current prices (R'000)	37 013	39 171	63 222	60 399	102 393	+ 69,5
Other residential buildings <sup>1/</sup>						
Total square metres	3 535	0	0	3 535	0	..
Total value at current prices (R'000)	5 530	0	0	5 530	0	..
<b>Total value of residential buildings at current prices (R'000)</b>	<b>129 697</b>	<b>132 006</b>	<b>186 436</b>	<b>296 597</b>	<b>318 442</b>	<b>+ 7,4</b>
<b>Non-residential buildings</b>						
Office and banking space						
Total square metres	6 731	8 816	1 597	6 977	10 413	+ 49,2
Total value at current prices (R'000)	8 200	13 608	2 471	8 643	16 079	+ 86,0
Shopping space						
Total square metres	0	0	5 196	12 514	5 196	- 58,5
Total value at current prices (R'000)	0	0	5 100	15 410	5 100	- 66,9
Industrial and warehouse space						
Total square metres	5 380	6 831	4 552	14 146	11 383	- 19,5
Total value at current prices (R'000)	6 406	7 864	5 450	15 308	13 314	- 13,0
Other non-residential space <sup>2/</sup>						
Total square metres	4 654	883	0	8 740	883	- 89,9
Total value at current prices (R'000)	5 489	1 206	0	11 031	1 206	- 89,1
<b>Total value of non-residential buildings at current prices (R'000)</b>	<b>20 095</b>	<b>22 678</b>	<b>13 021</b>	<b>50 392</b>	<b>35 699</b>	<b>- 29,2</b>
<b>Additions and alterations</b>						
Dwelling-houses						
Total square metres	53 294	42 222	46 321	90 625	88 543	- 2,3
Total value at current prices (R'000)	67 679	58 180	62 181	115 638	120 361	+ 4,1
Other buildings <sup>3/</sup>						
Total square metres	20 915	41 932	9 645	33 346	51 577	+ 54,7
Total value at current prices (R'000)	39 259	57 904	58 274	56 212	116 178	+ 106,7
<b>Total value of additions and alterations at current prices (R'000)</b>	<b>106 938</b>	<b>116 084</b>	<b>120 455</b>	<b>171 850</b>	<b>236 539</b>	<b>+ 37,6</b>
<b>Total value of building plans passed at current prices (R'000)</b>	<b>256 730</b>	<b>270 768</b>	<b>319 912</b>	<b>518 839</b>	<b>590 680</b>	<b>+ 13,8</b>

1/ Other residential buildings include institutions for the disabled, boarding houses, old people's homes, hostels, hotels, motels, guest houses, holiday chalets, entertainment centres, bed-and-breakfast accommodation and casinos.

2/ Other non-residential space includes churches, sport and recreation clubs, schools, crèches, hospitals and all other non-residential space.

3/ Other buildings include additions and alterations to other residential buildings, non-residential buildings and internal alterations.

**Table 30 - Building plans passed according to type of building and selected urban area: Port Elizabeth**

Type of building	February 2002	January 2003	February 2003	January 2002 to February 2002	January 2003 to February 2003	Percentage change between January 2002 to February 2002 and January 2003 to February 2003
<b>Residential buildings</b>						
Dwelling-houses smaller than 80 square metres						
Number of dwelling-houses	53	442	177	116	619	+ 433,6
Total square metres	2 295	18 632	7 492	5 001	26 124	+ 422,4
Total value at current prices (R'000)	3 179	26 977	5 383	7 468	32 360	+ 333,3
Dwelling-houses equal to or larger than 80 square metres						
Number of dwelling-houses	67	4	65	117	69	- 41,0
Total square metres	12 249	748	10 413	20 342	11 161	- 45,1
Total value at current prices (R'000)	18 466	1 028	29 414	28 976	30 442	+ 5,1
Flats and townhouses						
Number of flats and townhouses	14	0	16	23	16	- 30,4
Total square metres	1 818	0	2 836	2 989	2 836	- 5,1
Total value at current prices (R'000)	3 008	0	5 842	4 621	5 842	+ 26,4
Other residential buildings <sup>1/</sup>						
Total square metres	0	0	0	0	0	..
Total value at current prices (R'000)	0	0	0	0	0	..
<b>Total value of residential buildings at current prices (R'000)</b>	<b>24 653</b>	<b>28 005</b>	<b>40 639</b>	<b>41 065</b>	<b>68 644</b>	<b>+ 67,2</b>
<b>Non-residential buildings</b>						
Office and banking space						
Total square metres	204	2 607	0	204	2 607	+ 1177,9
Total value at current prices (R'000)	400	5 370	0	400	5 370	+ 1242,5
Shopping space						
Total square metres	0	381	0	5 103	381	-92,5
Total value at current prices (R'000)	0	702	0	11 195	702	-93,7
Industrial and warehouse space						
Total square metres	2 126	450	1 691	2 785	2 141	- 23,1
Total value at current prices (R'000)	3 306	609	1 942	4 139	2 551	- 38,4
Other non-residential space <sup>2/</sup>						
Total square metres	4 086	0	2 128	4 973	2 128	- 57,2
Total value at current prices (R'000)	7 299	0	3 836	7 803	3 836	- 50,8
<b>Total value of non-residential buildings at current prices (R'000)</b>	<b>11 005</b>	<b>6 681</b>	<b>5 778</b>	<b>23 537</b>	<b>12 459</b>	<b>- 47,1</b>
<b>Additions and alterations</b>						
Dwelling-houses						
Total square metres	13 012	9 015	10 949	21 720	19 964	- 8,1
Total value at current prices (R'000)	16 726	12 842	21 101	27 911	33 943	+ 21,6
Other buildings <sup>3/</sup>						
Total square metres	3 053	4 507	6 190	5 521	10 697	+ 93,8
Total value at current prices (R'000)	4 555	8 809	15 991	8 819	24 800	+ 181,2
<b>Total value of additions and alterations at current prices (R'000)</b>	<b>21 281</b>	<b>21 651</b>	<b>37 092</b>	<b>36 730</b>	<b>58 743</b>	<b>+ 59,9</b>
<b>Total value of building plans passed at current prices (R'000)</b>	<b>56 939</b>	<b>56 337</b>	<b>83 509</b>	<b>101 332</b>	<b>139 846</b>	<b>+ 38,0</b>

1/ Other residential buildings include institutions for the disabled, boarding houses, old people's homes, hostels, hotels, motels, guest houses, holiday chalets, entertainment centres, bed-and-breakfast accommodation and casinos.

2/ Other non-residential space includes churches, sport and recreation clubs, schools, crèches, hospitals and all other non-residential space.

3/ Other buildings include additions and alterations to other residential buildings, non-residential buildings and internal alterations.

**Table 31 - Building plans passed according to type of building and selected urban area: Durban**

Type of building	February 2002*	January 2003	February 2003	January 2002 to February 2002	January 2003 to February 2003	Percentage change between January 2002 to February 2002 and January 2003 to February 2003
<b>Residential buildings</b>						
Dwelling-houses smaller than 80 square metres						
Number of dwelling-houses	59	48	58	184	106	-42,4
Total square metres	3 295	2 495	3 209	7 662	5 704	-25,6
Total value at current prices (R'000)	4 293	2 892	3 773	8 586	6 665	-22,4
Dwelling-houses equal to or larger than 80 square metres						
Number of dwelling-houses	54	62	70	104	132	+ 26,9
Total square metres	9 544	13 770	13 308	18 384	27 078	+ 47,3
Total value at current prices (R'000)	13 467	19 410	18 134	25 009	37 544	+ 50,1
Flats and townhouses						
Number of flats and townhouses	8	22	11	164	33	-79,9
Total square metres	1 309	2 649	2 830	24 798	5 479	-77,9
Total value at current prices (R'000)	2 860	5 150	5 879	31 920	11 029	-65,4
Other residential buildings <sup>1/</sup>						
Total square metres	29 050	0	0	29 606	0	..
Total value at current prices (R'000)	30 000	0	0	31 000	0	..
<b>Total value of residential buildings at current prices (R'000)</b>	<b>50 620</b>	<b>27 452</b>	<b>27 786</b>	<b>96 515</b>	<b>55 238</b>	<b>-42,8</b>
<b>Non-residential buildings</b>						
Office and banking space						
Total square metres	0	311	1 314	0	1 625	..
Total value at current prices (R'000)	0	350	1 500	0	1 850	..
Shopping space						
Total square metres	0	22 294	87	500	22 381	+ 4 376,2
Total value at current prices (R'000)	0	260 340	150	1 200	260 490	+ 21 607,5
Industrial and warehouse space						
Total square metres	10 515	4 110	4 827	21 659	8 937	-58,7
Total value at current prices (R'000)	12 550	3 500	4 030	23 550	7 530	-68,0
Other non-residential space <sup>2/</sup>						
Total square metres	2 416	1 271	1 492	3 177	2 763	-13,0
Total value at current prices (R'000)	2 810	3 752	1 233	3 282	4 985	+ 51,9
<b>Total value of non-residential buildings at current prices (R'000)</b>	<b>15 360</b>	<b>267 942</b>	<b>6 913</b>	<b>28 032</b>	<b>274 855</b>	<b>+ 880,5</b>
<b>Additions and alterations</b>						
Dwelling-houses						
Total square metres	18 807	27 403	28 031	36 385	55 434	+ 52,4
Total value at current prices (R'000)	22 939	30 882	29 230	43 731	60 112	+ 37,5
Other buildings <sup>3/</sup>						
Total square metres	1 482	5 325	7 736	7 052	13 061	+ 85,2
Total value at current prices (R'000)	1 546	11 712	16 080	13 745	27 792	+ 102,2
<b>Total value of additions and alterations at current prices (R'000)</b>	<b>24 485</b>	<b>42 594</b>	<b>45 310</b>	<b>57 476</b>	<b>87 904</b>	<b>+ 52,9</b>
<b>Total value of building plans passed at current prices (R'000)</b>	<b>90 465</b>	<b>337 988</b>	<b>80 009</b>	<b>182 023</b>	<b>417 997</b>	<b>+ 129,6</b>

1/ Other residential buildings include institutions for the disabled, boarding houses, old people's homes, hostels, hotels, motels, guest houses, holiday chalets, entertainment centres, bed-and-breakfast accommodation and casinos.

2/ Other non-residential space includes churches, sport and recreation clubs, schools, crèches, hospitals and all other non-residential space.

3/ Other buildings include additions and alterations to other residential buildings, non-residential buildings and internal alterations.

**Table 32 - Building plans passed according to type of building and selected urban area: Witwatersrand**

Type of building	February 2002*	January 2003	February 2003	January 2002 to February 2002	January 2003 to February 2003	Percentage change between January 2002 to February 2002 and January 2003 to February 2003
<b>Residential buildings</b>						
Dwelling-houses smaller than 80 square metres						
Number of dwelling-houses	1 485	426	683	1 680	1 109	- 34,0
Total square metres	48 091	15 664	25 440	57 871	41 104	- 29,0
Total value at current prices (R'000)	34 831	15 716	26 760	50 336	42 476	- 15,6
Dwelling-houses equal to or larger than 80 square metres						
Number of dwelling-houses	341	303	353	609	656	+ 7,7
Total square metres	92 359	71 740	89 865	170 801	161 605	- 5,4
Total value at current prices (R'000)	151 034	129 649	162 180	280 425	291 829	+ 4,1
Flats and townhouses						
Number of flats and townhouses	288	142	151	396	293	- 26,0
Total square metres	28 139	21 826	21 277	39 206	43 103	+ 9,9
Total value at current prices (R'000)	47 635	40 161	43 866	67 187	84 027	+ 25,1
Other residential buildings <sup>1/</sup>						
Total square metres	3 160	0	7 065	3 459	7 065	+ 104,2
Total value at current prices (R'000)	5 198	0	9 420	5 781	9 420	+ 62,9
<b>Total value of residential buildings at current prices (R'000)</b>	<b>238 698</b>	<b>185 526</b>	<b>242 226</b>	<b>403 729</b>	<b>427 752</b>	<b>+ 6,0</b>
<b>Non-residential buildings</b>						
Office and banking space						
Total square metres	12 105	5 021	13 803	19 212	18 824	- 2,0
Total value at current prices (R'000)	21 269	9 851	27 052	34 295	36 903	+ 7,6
Shopping space						
Total square metres	4 061	7 782	1 485	10 129	9 267	- 8,5
Total value at current prices (R'000)	6 963	14 008	2 431	16 998	16 439	- 3,3
Industrial and warehouse space						
Total square metres	16 831	11 430	10 169	31 454	21 599	- 31,3
Total value at current prices (R'000)	28 371	19 006	21 445	53 948	40 451	- 25,0
Other non-residential space <sup>2/</sup>						
Total square metres	1 024	6 298	421	2 697	6 719	+ 149,1
Total value at current prices (R'000)	1 991	11 632	818	3 924	12 450	+ 217,3
<b>Total value of non-residential buildings at current prices (R'000)</b>	<b>58 594</b>	<b>54 497</b>	<b>51 746</b>	<b>109 165</b>	<b>106 243</b>	<b>- 2,7</b>
<b>Additions and alterations</b>						
Dwelling-houses						
Total square metres	60 096	42 980	45 562	117 735	88 542	- 24,8
Total value at current prices (R'000)	96 700	75 929	75 394	186 946	151 323	- 19,1
Other buildings <sup>3/</sup>						
Total square metres	5 341	12 811	4 710	33 183	17 521	- 47,2
Total value at current prices (R'000)	10 425	32 613	17 372	74 538	49 985	- 32,9
<b>Total value of additions and alterations at current prices (R'000)</b>	<b>107 125</b>	<b>108 542</b>	<b>92 766</b>	<b>261 484</b>	<b>201 308</b>	<b>- 23,0</b>
<b>Total value of building plans passed at current prices (R'000)</b>	<b>404 417</b>	<b>348 565</b>	<b>386 738</b>	<b>774 378</b>	<b>735 303</b>	<b>- 5,0</b>

1/ Other residential buildings include institutions for the disabled, boarding houses, old people's homes, hostels, hotels, motels, guest houses, holiday chalets, entertainment centres, bed-and-breakfast accommodation and casinos.

2/ Other non-residential space includes churches, sport and recreation clubs, schools, crèches, hospitals and all other non-residential space.

3/ Other buildings include additions and alterations to other residential buildings, non-residential buildings and internal alterations.



**Table 33 - Building plans passed according to type of building and selected urban area: Pretoria**

Type of building	February 2002	January 2003	February 2003	January 2002 to February 2002	January 2003 to February 2003	Percentage change between January 2002 to February 2002 and January 2003 to February 2003
<b>Residential buildings</b>						
Dwelling-houses smaller than 80 square metres						
Number of dwelling-houses	56	1 201	1 271	108	2 472	+ 2188,9
Total square metres	3 097	37 312	39 794	5 933	77 106	+ 1199,6
Total value at current prices (R'000)	4 315	22 207	24 025	7 802	46 232	+ 492,6
Dwelling-houses equal to or larger than 80 square metres						
Number of dwelling-houses	232	187	187	427	374	- 12,4
Total square metres	63 498	50 874	51 152	114 518	102 026	- 10,9
Total value at current prices (R'000)	93 409	88 568	85 756	159 191	174 324	+ 9,5
Flats and townhouses						
Number of flats and townhouses	88	151	193	272	344	+ 26,5
Total square metres	13 479	34 127	44 852	49 202	78 979	+ 60,5
Total value at current prices (R'000)	20 480	55 474	70 040	75 385	125 514	+ 66,5
Other residential buildings <sup>1/</sup>						
Total square metres	0	0	0	0	0	..
Total value at current prices (R'000)	0	0	0	0	0	..
<b>Total value of residential buildings at current prices (R'000)</b>	<b>118 204</b>	<b>166 249</b>	<b>179 821</b>	<b>242 378</b>	<b>346 070</b>	<b>+ 42,8</b>
<b>Non-residential buildings</b>						
Office and banking space						
Total square metres	35 337	7 803	1 877	36 464	9 680	- 73,5
Total value at current prices (R'000)	54 310	14 477	2 882	56 015	17 359	- 69,0
Shopping space						
Total square metres	56	0	4 831	56	4 831	+ 8526,8
Total value at current prices (R'000)	76	0	9 662	76	9 662	+ 12613,2
Industrial and warehouse space						
Total square metres	5 584	0	18 512	6 866	18 512	+ 169,6
Total value at current prices (R'000)	8 376	0	27 768	10 427	27 768	+ 166,3
Other non-residential space <sup>2/</sup>						
Total square metres	3 252	2 437	4 460	4 182	6 897	+ 64,9
Total value at current prices (R'000)	5 100	3 639	6 341	6 508	9 980	+ 53,3
<b>Total value of non-residential buildings at current prices (R'000)</b>	<b>67 862</b>	<b>18 116</b>	<b>46 653</b>	<b>73 026</b>	<b>64 769</b>	<b>- 11,3</b>
<b>Additions and alterations</b>						
Dwelling-houses						
Total square metres	21 138	20 039	20 684	42 677	40 723	- 4,6
Total value at current prices (R'000)	30 693	33 235	34 359	61 001	67 594	+ 10,8
Other buildings <sup>3/</sup>						
Total square metres	9 341	7 619	2 463	9 896	10 082	+ 1,9
Total value at current prices (R'000)	15 612	11 742	3 791	16 900	15 533	- 8,1
<b>Total value of additions and alterations at current prices (R'000)</b>	<b>46 305</b>	<b>44 977</b>	<b>38 150</b>	<b>77 901</b>	<b>83 127</b>	<b>+ 6,7</b>
<b>Total value of building plans passed at current prices (R'000)</b>	<b>232 371</b>	<b>229 342</b>	<b>264 624</b>	<b>393 305</b>	<b>493 966</b>	<b>+ 25,6</b>

1/ Other residential buildings include institutions for the disabled, boarding houses, old people's homes, hostels, hotels, motels, guest houses, holiday chalets, entertainment centres, bed-and-breakfast accommodation and casinos.

2/ Other non-residential space includes churches, sport and recreation clubs, schools, crèches, hospitals and all other non-residential space.

3/ Other buildings include additions and alterations to other residential buildings, non-residential buildings and internal alterations.

**Table 34 - Building plans passed according to type of building and selected urban area: Bloemfontein**

Type of building	February 2002	January 2003	February 2003	January 2002 to February 2002	January 2003 to February 2003	Percentage change between January 2002 to February 2002 and January 2003 to February 2003
<b>Residential buildings</b>						
Dwelling-houses smaller than 80 square metres						
Number of dwelling-houses	71	390	51	153	441	+ 188,2
Total square metres	2 953	15 676	2 085	6 523	17 761	+ 172,3
Total value at current prices (R'000)	2 355	8 267	1 576	4 368	9 843	+ 125,3
Dwelling-houses equal to or larger than 80 square metres						
Number of dwelling-houses	41	40	32	70	72	+ 2,9
Total square metres	7 779	6 321	6 197	10 450	12 518	+ 19,8
Total value at current prices (R'000)	8 950	9 493	9 710	16 072	19 203	+ 19,5
Flats and townhouses						
Number of flats and townhouses	68	6	34	148	40	-73,0
Total square metres	7 210	357	2 391	15 089	2 748	-81,8
Total value at current prices (R'000)	11 000	536	3 588	23 300	4 124	-82,3
Other residential buildings <sup>1/</sup>						
Total square metres	2 683	0	0	2 683	0	..
Total value at current prices (R'000)	7 000	0	0	7 000	0	..
<b>Total value of residential buildings at current prices (R'000)</b>	<b>29 305</b>	<b>18 296</b>	<b>14 874</b>	<b>50 740</b>	<b>33 170</b>	<b>-34,6</b>
<b>Non-residential buildings</b>						
Office and banking space						
Total square metres	0	0	1 616	7 267	1 616	-77,8
Total value at current prices (R'000)	0	0	2 808	14 000	2 808	-79,9
Shopping space						
Total square metres	0	3 359	0	0	3 359	..
Total value at current prices (R'000)	0	8 000	0	0	8 000	..
Industrial and warehouse space						
Total square metres	0	1 386	2 259	867	3 645	+ 320,4
Total value at current prices (R'000)	0	600	1 388	694	1 988	+ 186,5
Other non-residential space <sup>2/</sup>						
Total square metres	0	0	2 206	0	2 206	..
Total value at current prices (R'000)	0	0	3 248	0	3 248	..
<b>Total value of non-residential buildings at current prices (R'000)</b>	<b>0</b>	<b>8 600</b>	<b>7 444</b>	<b>14 694</b>	<b>16 044</b>	<b>+ 9,2</b>
<b>Additions and alterations</b>						
Dwelling-houses						
Total square metres	5 380	4 876	3 460	9 881	8 336	-15,6
Total value at current prices (R'000)	6 386	6 913	4 615	11 689	11 528	-1,4
Other buildings <sup>3/</sup>						
Total square metres	1 343	1 212	178	3 100	1 390	-55,2
Total value at current prices (R'000)	2 241	8 116	685	5 474	8 801	+ 60,8
<b>Total value of additions and alterations at current prices (R'000)</b>	<b>8 627</b>	<b>15 029</b>	<b>5 300</b>	<b>17 163</b>	<b>20 329</b>	<b>+ 18,4</b>
<b>Total value of building plans passed at current prices (R'000)</b>	<b>37 932</b>	<b>41 925</b>	<b>27 618</b>	<b>82 597</b>	<b>69 543</b>	<b>-15,8</b>

1/ Other residential buildings include institutions for the disabled, boarding houses, old people's homes, hostels, hotels, motels, guest houses, holiday chalets, entertainment centres, bed-and-breakfast accommodation and casinos.

2/ Other non-residential space includes churches, sport and recreation clubs, schools, crèches, hospitals and all other non-residential space.

3/ Other buildings include additions and alterations to other residential buildings, non-residential buildings and internal alterations.

**Table 35 - Buildings completed according to type of building and selected urban area: Cape Town**

Type of building	February 2002*	January 2003	February 2003	January 2002 to February 2002	January 2003 to February 2003	Percentage change between January 2002 to February 2002 and January 2003 to February 2003
<b>Residential buildings</b>						
Dwelling-houses smaller than 80 square metres						
Number of dwelling-houses	519	111	141	1 324	252	- 81,0
Total square metres	18 336	4 307	6 572	47 479	10 879	- 77,1
Total value at current prices (R'000)	19 977	3 850	8 047	55 347	11 897	- 78,5
Dwelling-houses equal to or larger than 80 square metres						
Number of dwelling-houses	164	216	353	379	569	+ 50,1
Total square metres	36 870	39 142	50 536	78 939	89 678	+ 13,6
Total value at current prices (R'000)	54 861	53 701	70 497	120 129	124 198	+ 3,4
Flats and townhouses						
Number of flats and townhouses	76	109	106	218	215	- 1,4
Total square metres	7 826	6 569	12 081	39 161	18 650	- 52,4
Total value at current prices (R'000)	11 869	9 363	22 188	72 577	31 551	- 56,5
Other residential buildings <sup>1/</sup>						
Total square metres	335	127	0	543	127	- 76,6
Total value at current prices (R'000)	501	174	0	793	174	- 78,1
<b>Total value of residential buildings at current prices (R'000)</b>	<b>87 208</b>	<b>67 088</b>	<b>100 732</b>	<b>248 846</b>	<b>167 820</b>	<b>- 32,6</b>
<b>Non-residential buildings</b>						
Office and banking space						
Total square metres	8 979	29 809	8 662	13 115	38 471	+ 193,3
Total value at current prices (R'000)	13 469	35 251	14 979	18 069	50 230	+ 178,0
Shopping space						
Total square metres	0	610	5 777	19 509	6 387	- 67,3
Total value at current prices (R'000)	0	976	7 449	21 322	8 425	- 60,5
Industrial and warehouse space						
Total square metres	4 270	13 869	13 756	8 982	27 625	+ 207,6
Total value at current prices (R'000)	4 270	14 931	13 056	8 337	27 987	+ 235,7
Other non-residential space <sup>2/</sup>						
Total square metres	3 867	0	1 349	3 867	1 349	- 65,1
Total value at current prices (R'000)	5 622	0	1 463	5 622	1 463	- 74,0
<b>Total value of non-residential buildings at current prices (R'000)</b>	<b>23 361</b>	<b>51 158</b>	<b>36 947</b>	<b>53 350</b>	<b>88 105</b>	<b>+ 65,1</b>
<b>Additions and alterations</b>						
Dwelling-houses						
Total square metres	29 934	25 029	37 719	52 013	62 748	+ 20,6
Total value at current prices (R'000)	37 876	31 144	48 039	65 519	79 183	+ 20,9
Other buildings <sup>3/</sup>						
Total square metres	8 257	18 620	6 071	12 643	24 691	+ 95,3
Total value at current prices (R'000)	11 259	34 907	22 635	18 987	57 542	+ 203,1
<b>Total value of additions and alterations at current prices (R'000)</b>	<b>49 135</b>	<b>66 051</b>	<b>70 674</b>	<b>84 506</b>	<b>136 725</b>	<b>+ 61,8</b>
<b>Total value of buildings completed at current prices (R'000)</b>	<b>159 704</b>	<b>184 297</b>	<b>208 353</b>	<b>386 702</b>	<b>392 650</b>	<b>+ 1,5</b>

1/ Other residential buildings include institutions for the disabled, boarding houses, old people's homes, hostels, hotels, motels, guest houses, holiday chalets, entertainment centres, bed-and-breakfast accommodation and casinos.

2/ Other non-residential space includes churches, sport and recreation clubs, schools, crèches, hospitals and all other non-residential space.

3/ Other buildings include additions and alterations to other residential buildings, non-residential buildings and internal alterations.

**Table 36 - Buildings completed according to type of building and selected urban area: Port Elizabeth**

Type of building	February 2002	January 2003	February 2003	January 2002 to February 2002	January 2003 to February 2003	Percentage change between January 2002 to February 2002 and January 2003 to February 2003
<b>Residential buildings</b>						
Dwelling-houses smaller than 80 square metres						
Number of dwelling-houses	13	116	91	191	207	+ 8,4
Total square metres	673	5 138	3 743	8 223	8 881	+ 8,0
Total value at current prices (R'000)	882	7 141	2 290	10 599	9 431	- 11,0
Dwelling-houses equal to or larger than 80 square metres						
Number of dwelling-houses	31	1	6	56	7	- 87,5
Total square metres	4 424	128	663	8 692	791	- 90,9
Total value at current prices (R'000)	5 928	148	713	11 173	861	- 92,3
Flats and townhouses						
Number of flats and townhouses	1	1	37	3	38	+ 1166,7
Total square metres	117	98	2 576	551	2 674	+ 385,3
Total value at current prices (R'000)	170	137	3 839	778	3 976	+ 411,1
Other residential buildings <sup>1/</sup>						
Total square metres	0	443	0	0	443	..
Total value at current prices (R'000)	0	1 055	0	0	1 055	..
<b>Total value of residential buildings at current prices (R'000)</b>	<b>6 980</b>	<b>8 481</b>	<b>6 842</b>	<b>22 550</b>	<b>15 323</b>	<b>- 32,0</b>
<b>Non-residential buildings</b>						
Office and banking space						
Total square metres	0	0	0	0	0	..
Total value at current prices (R'000)	0	0	0	0	0	..
Shopping space						
Total square metres	0	468	0	1 565	468	- 70,1
Total value at current prices (R'000)	0	767	0	1 526	767	- 49,7
Industrial and warehouse space						
Total square metres	0	1 621	1 470	478	3 091	+ 546,7
Total value at current prices (R'000)	0	2 350	2 219	392	4 569	+ 1 065,6
Other non-residential space <sup>2/</sup>						
Total square metres	340	221	210	1 809	431	- 76,2
Total value at current prices (R'000)	428	409	323	1 928	732	- 62,0
<b>Total value of non-residential buildings at current prices (R'000)</b>	<b>428</b>	<b>3 526</b>	<b>2 542</b>	<b>3 846</b>	<b>6 068</b>	<b>+ 57,8</b>
<b>Additions and alterations</b>						
Dwelling-houses						
Total square metres	4 863	7 919	3 948	8 981	11 867	+ 32,1
Total value at current prices (R'000)	5 424	10 371	4 813	10 127	15 184	+ 49,9
Other buildings <sup>3/</sup>						
Total square metres	1 281	389	5 280	3 756	5 669	+ 50,9
Total value at current prices (R'000)	1 174	620	8 472	3 920	9 092	+ 131,9
<b>Total value of additions and alterations at current prices (R'000)</b>	<b>6 598</b>	<b>10 991</b>	<b>13 285</b>	<b>14 047</b>	<b>24 276</b>	<b>+ 72,8</b>
<b>Total value of buildings completed at current prices (R'000)</b>	<b>14 006</b>	<b>22 998</b>	<b>22 669</b>	<b>40 443</b>	<b>45 667</b>	<b>+ 12,9</b>

1/ Other residential buildings include institutions for the disabled, boarding houses, old people's homes, hostels, hotels, motels, guest houses, holiday chalets, entertainment centres, bed-and-breakfast accommodation and casinos.

2/ Other non-residential space includes churches, sport and recreation clubs, schools, crèches, hospitals and all other non-residential space.

3/ Other buildings include additions and alterations to other residential buildings, non-residential buildings and internal alterations.

**Table 37 - Buildings completed according to type of building and selected urban area: Durban**

Type of building	February 2002*	January 2003	February 2003	January 2002 to February 2002	January 2003 to February 2003	Percentage change between January 2002 to February 2002 and January 2003 to February 2003
<b>Residential buildings</b>						
Dwelling-houses smaller than 80 square metres						
Number of dwelling-houses	59	24	61	103	85	- 17,5
Total square metres	3 079	1 158	3 043	5 453	4 201	- 23,0
Total value at current prices (R'000)	3 635	1 140	2 952	6 619	4 092	- 38,2
Dwelling-houses equal to or larger than 80 square metres						
Number of dwelling-houses	82	95	42	119	137	+ 15,1
Total square metres	14 316	17 622	9 992	20 365	27 614	+ 35,6
Total value at current prices (R'000)	18 284	23 160	11 876	25 694	35 036	+ 36,4
Flats and townhouses						
Number of flats and townhouses	42	36	17	69	53	- 23,2
Total square metres	6 051	4 556	4 030	9 437	8 586	- 9,0
Total value at current prices (R'000)	9 117	7 011	6 619	15 241	13 630	- 10,6
Other residential buildings <sup>1/</sup>						
Total square metres	0	0	0	0	0	..
Total value at current prices (R'000)	0	0	0	0	0	..
<b>Total value of residential buildings at current prices (R'000)</b>	<b>31 036</b>	<b>31 311</b>	<b>21 447</b>	<b>47 554</b>	<b>52 758</b>	<b>+ 10,9</b>
<b>Non-residential buildings</b>						
Office and banking space						
Total square metres	9 322	3 735	0	9 322	3 735	- 59,9
Total value at current prices (R'000)	11 350	8 545	0	11 350	8 545	- 24,7
Shopping space						
Total square metres	2 905	68	3 896	6 128	3 964	- 35,3
Total value at current prices (R'000)	2 780	52	3 150	6 773	3 202	- 52,7
Industrial and warehouse space						
Total square metres	16 196	12 379	3 727	26 455	16 106	- 39,1
Total value at current prices (R'000)	13 505	11 285	4 646	25 039	15 931	- 36,4
Other non-residential space <sup>2/</sup>						
Total square metres	3 524	1 046	2 041	3 990	3 087	- 22,6
Total value at current prices (R'000)	6 313	1 136	4 145	6 779	5 281	- 22,1
<b>Total value of non-residential buildings at current prices (R'000)</b>	<b>33 948</b>	<b>21 018</b>	<b>11 941</b>	<b>49 941</b>	<b>32 959</b>	<b>- 34,0</b>
<b>Additions and alterations</b>						
Dwelling-houses						
Total square metres	15 287	18 130	20 630	30 752	38 760	+ 26,0
Total value at current prices (R'000)	15 458	20 513	22 475	31 681	42 988	+ 35,7
Other buildings <sup>3/</sup>						
Total square metres	2 750	6 844	5 748	8 542	12 592	+ 47,4
Total value at current prices (R'000)	3 453	8 008	16 947	13 433	24 955	+ 85,8
<b>Total value of additions and alterations at current prices (R'000)</b>	<b>18 911</b>	<b>28 521</b>	<b>39 422</b>	<b>45 114</b>	<b>67 943</b>	<b>+ 50,6</b>
<b>Total value of buildings completed at current prices (R'000)</b>	<b>83 895</b>	<b>80 850</b>	<b>72 810</b>	<b>142 609</b>	<b>153 660</b>	<b>+ 7,7</b>

1/ Other residential buildings include institutions for the disabled, boarding houses, old people's homes, hostels, hotels, motels, guest houses, holiday chalets, entertainment centres, bed-and-breakfast accommodation and casinos.

2/ Other non-residential space includes churches, sport and recreation clubs, schools, crèches, hospitals and all other non-residential space.

3/ Other buildings include additions and alterations to other residential buildings, non-residential buildings and internal alterations.

**Table 38 - Buildings completed according to type of building and selected urban area: Witwatersrand**

Type of building	February 2002*	January 2003	February 2003	January 2002 to February 2002	January 2003 to February 2003	Percentage change between January 2002 to February 2002 and January 2003 to February 2003
<b>Residential buildings</b>						
Dwelling-houses smaller than 80 square metres						
Number of dwelling-houses	556	279	683	1 119	962	-14,0
Total square metres	18 723	9 609	26 959	38 017	36 568	-3,8
Total value at current prices (R'000)	14 521	9 128	26 832	30 597	35 960	+ 17,5
Dwelling-houses equal to or larger than 80 square metres						
Number of dwelling-houses	140	241	181	354	422	+ 19,2
Total square metres	33 202	42 887	41 320	87 519	84 207	-3,8
Total value at current prices (R'000)	51 748	72 189	69 711	134 416	141 900	+ 5,6
Flats and townhouses						
Number of flats and townhouses	371	599	219	657	818	+ 24,5
Total square metres	40 331	68 684	31 888	68 841	100 572	+ 46,1
Total value at current prices (R'000)	62 322	113 644	62 562	106 968	176 206	+ 64,7
Other residential buildings <sup>1/</sup>						
Total square metres	0	0	240	0	240	..
Total value at current prices (R'000)	0	0	252	0	252	..
<b>Total value of residential buildings at current prices (R'000)</b>	<b>128 591</b>	<b>194 961</b>	<b>159 357</b>	<b>271 981</b>	<b>354 318</b>	<b>+ 30,3</b>
<b>Non-residential buildings</b>						
Office and banking space						
Total square metres	5 681	9 992	23 319	28 576	33 311	+ 16,6
Total value at current prices (R'000)	9 260	18 545	28 620	46 579	47 165	+ 1,3
Shopping space						
Total square metres	2 405	730	4 334	4 305	5 064	+ 17,6
Total value at current prices (R'000)	3 656	730	8 124	6 753	8 854	+ 31,1
Industrial and warehouse space						
Total square metres	5 574	3 389	8 869	20 418	12 258	-40,0
Total value at current prices (R'000)	9 739	4 333	14 604	33 647	18 937	-43,7
Other non-residential space <sup>2/</sup>						
Total square metres	478	1 405	762	2 816	2 167	-23,0
Total value at current prices (R'000)	965	2 316	1 143	4 486	3 459	-22,9
<b>Total value of non-residential buildings at current prices (R'000)</b>	<b>23 620</b>	<b>25 924</b>	<b>52 491</b>	<b>91 465</b>	<b>78 415</b>	<b>-14,3</b>
<b>Additions and alterations</b>						
Dwelling-houses						
Total square metres	27 115	17 325	28 810	43 327	46 135	+ 6,5
Total value at current prices (R'000)	39 277	27 901	43 256	63 607	71 157	+ 11,9
Other buildings <sup>3/</sup>						
Total square metres	7 605	7 522	13 120	14 705	20 642	+ 40,4
Total value at current prices (R'000)	13 234	12 810	22 493	24 073	35 303	+ 46,6
<b>Total value of additions and alterations at current prices (R'000)</b>	<b>52 511</b>	<b>40 711</b>	<b>65 749</b>	<b>87 680</b>	<b>106 460</b>	<b>+ 21,4</b>
<b>Total value of buildings completed at current prices (R'000)</b>	<b>204 722</b>	<b>261 596</b>	<b>277 597</b>	<b>451 126</b>	<b>539 193</b>	<b>+ 19,5</b>

1/ Other residential buildings include institutions for the disabled, boarding houses, old people's homes, hostels, hotels, motels, guest houses, holiday chalets, entertainment centres, bed-and-breakfast accommodation and casinos.

2/ Other non-residential space includes churches, sport and recreation clubs, schools, crèches, hospitals and all other non-residential space.

3/ Other buildings include additions and alterations to other residential buildings, non-residential buildings and internal alterations.

**Table 39 - Buildings completed according to type of building and selected urban area: Pretoria**

Type of building	February 2002*	January 2003	February 2003	January 2002 to February 2002	January 2003 to February 2003	Percentage change between January 2002 to February 2002 and January 2003 to February 2003
<b>Residential buildings</b>						
Dwelling-houses smaller than 80 square metres						
Number of dwelling-houses	300	1 167	1 246	323	2 413	+ 647,1
Total square metres	9 328	35 403	38 713	10 605	74 116	+ 598,9
Total value at current prices (R'000)	4 067	18 514	22 545	5 890	41 059	+ 597,1
Dwelling-houses equal to or larger than 80 square metres						
Number of dwelling-houses	34	47	118	143	165	+ 15,4
Total square metres	8 650	10 710	28 242	38 528	38 952	+ 1,1
Total value at current prices (R'000)	12 924	15 848	43 796	55 187	59 644	+ 8,1
Flats and townhouses						
Number of flats and townhouses	425	66	103	868	169	- 80,5
Total square metres	29 957	5 360	8 925	70 807	14 285	- 79,8
Total value at current prices (R'000)	35 706	8 023	13 604	86 523	21 627	- 75,0
Other residential buildings <sup>1/</sup>						
Total square metres	0	0	0	0	0	..
Total value at current prices (R'000)	0	0	0	0	0	..
<b>Total value of residential buildings at current prices (R'000)</b>	<b>52 697</b>	<b>42 385</b>	<b>79 945</b>	<b>147 600</b>	<b>122 330</b>	<b>- 17,1</b>
<b>Non-residential buildings</b>						
Office and banking space						
Total square metres	4 291	0	0	4 829	0	..
Total value at current prices (R'000)	6 430	0	0	7 237	0	..
Shopping space						
Total square metres	0	0	0	0	0	..
Total value at current prices (R'000)	0	0	0	0	0	..
Industrial and warehouse space						
Total square metres	2 484	1 367	0	3 638	1 367	- 62,4
Total value at current prices (R'000)	4 133	1 266	0	5 864	1 266	- 78,4
Other non-residential space <sup>2/</sup>						
Total square metres	1 385	3 948	2 463	1 385	6 411	+ 362,9
Total value at current prices (R'000)	1 562	4 761	3 202	1 562	7 963	+ 409,8
<b>Total value of non-residential buildings at current prices (R'000)</b>	<b>12 125</b>	<b>6 027</b>	<b>3 202</b>	<b>14 663</b>	<b>9 229</b>	<b>- 37,1</b>
<b>Additions and alterations</b>						
Dwelling-houses						
Total square metres	2 406	2 168	4 052	3 975	6 220	+ 56,5
Total value at current prices (R'000)	3 782	3 358	6 460	5 946	9 818	+ 65,1
Other buildings <sup>3/</sup>						
Total square metres	540	990	1 128	1 830	2 118	+ 15,7
Total value at current prices (R'000)	971	1 034	2 072	2 907	3 106	+ 6,8
<b>Total value of additions and alterations at current prices (R'000)</b>	<b>4 753</b>	<b>4 392</b>	<b>8 532</b>	<b>8 853</b>	<b>12 924</b>	<b>+ 46,0</b>
<b>Total value of buildings completed at current prices (R'000)</b>	<b>69 575</b>	<b>52 804</b>	<b>91 679</b>	<b>171 116</b>	<b>144 483</b>	<b>- 15,6</b>

1/ Other residential buildings include institutions for the disabled, boarding houses, old people's homes, hostels, hotels, motels, guest houses, holiday chalets, entertainment centres, bed-and-breakfast accommodation and casinos.

2/ Other non-residential space includes churches, sport and recreation clubs, schools, crèches, hospitals and all other non-residential space.

3/ Other buildings include additions and alterations to other residential buildings, non-residential buildings and internal alterations.

**Table 40 - Buildings completed according to type of building and selected urban area: Bloemfontein**

Type of building	February 2002	January 2003	February 2003	January 2002 to February 2002	January 2003 to February 2003	Percentage change between January 2002 to February 2002 and January 2003 to February 2003
<b>Residential buildings</b>						
Dwelling-houses smaller than 80 square metres						
Number of dwelling-houses	65	17	415	86	432	+ 402,3
Total square metres	2 865	977	16 721	4 065	17 698	+ 335,4
Total value at current prices (R'000)	1 521	1 370	7 918	2 883	9 288	+ 222,2
Dwelling-houses equal to or larger than 80 square metres						
Number of dwelling-houses	12	24	9	29	33	+ 13,8
Total square metres	2 065	3 748	751	5 608	4 499	- 19,8
Total value at current prices (R'000)	2 550	4 737	1 030	6 677	5 767	- 13,6
Flats and townhouses						
Number of flats and townhouses	18	0	76	30	76	+ 153,3
Total square metres	1 507	0	7 962	2 892	7 962	+ 175,3
Total value at current prices (R'000)	3 014	0	12 119	5 444	12 119	+ 122,6
Other residential buildings <sup>1/</sup>						
Total square metres	0	0	0	1 428	0	..
Total value at current prices (R'000)	0	0	0	1 461	0	..
<b>Total value of residential buildings at current prices (R'000)</b>	<b>7 085</b>	<b>6 107</b>	<b>21 067</b>	<b>16 465</b>	<b>27 174</b>	<b>+ 65,0</b>
<b>Non-residential buildings</b>						
Office and banking space						
Total square metres	0	0	0	2 008	0	..
Total value at current prices (R'000)	0	0	0	3 800	0	..
Shopping space						
Total square metres	0	1 557	0	630	1 557	+ 147,1
Total value at current prices (R'000)	0	3 114	0	500	3 114	+ 522,8
Industrial and warehouse space						
Total square metres	284	0	0	2 842	0	..
Total value at current prices (R'000)	180	0	0	2 280	0	..
Other non-residential space <sup>2/</sup>						
Total square metres	0	0	0	0	0	..
Total value at current prices (R'000)	0	0	0	0	0	..
<b>Total value of non-residential buildings at current prices (R'000)</b>	<b>180</b>	<b>3 114</b>	<b>0</b>	<b>6 580</b>	<b>3 114</b>	<b>- 52,7</b>
<b>Additions and alterations</b>						
Dwelling-houses						
Total square metres	4 870	3 630	1 708	14 022	5 338	- 61,9
Total value at current prices (R'000)	5 352	4 265	2 113	15 965	6 378	- 60,1
Other buildings <sup>3/</sup>						
Total square metres	1 448	271	212	2 876	483	- 83,2
Total value at current prices (R'000)	2 399	484	2 431	7 051	2 915	- 58,7
<b>Total value of additions and alterations at current prices (R'000)</b>	<b>7 751</b>	<b>4 749</b>	<b>4 544</b>	<b>23 016</b>	<b>9 293</b>	<b>- 59,6</b>
<b>Total value of buildings completed at current prices (R'000)</b>	<b>15 016</b>	<b>13 970</b>	<b>25 611</b>	<b>46 061</b>	<b>39 581</b>	<b>- 14,1</b>

1/ Other residential buildings include institutions for the disabled, boarding houses, old people's homes, hostels, hotels, motels, guest houses, holiday chalets, entertainment centres, bed-and-breakfast accommodation and casinos.

2/ Other non-residential space includes churches, sport and recreation clubs, schools, crèches, hospitals and all other non-residential space.

3/ Other buildings include additions and alterations to other residential buildings, non-residential buildings and internal alterations.



## Additional information

### Explanatory Notes

<b>Introduction</b>	<p><b>1</b> Statistics South Africa (Stats SA) conducts a monthly Building Statistics Survey collecting information regarding building plans approved and buildings completed, financed by the private sector, from a sample of local government institutions in South Africa. According to these institutions, they are not always notified about low-cost housing projects. This statistical release contains information of building plans passed and buildings completed in respect of residential buildings, non-residential buildings and additions and alterations according to province and selected urban areas.</p> <p><b>2</b> In order to improve timeliness of the publication, some information for the current month have been estimated due to late submission by respondents. These estimates will be revised in the next statistical release(s) as soon as actual information is available.</p> <p><b>3</b> The actual and seasonally adjusted values (at current and at constant 2000 prices) and the percentage change of building plans passed and buildings completed according to type of building are reflected monthly from January 2000 in this statistical release (cf. tables 1 to 8).</p>
<b>Scope of the survey</b>	<p><b>4</b> This survey covers local government institutions conducting activities for the private sector regarding -</p> <ul style="list-style-type: none"> <li>• approval of building plans; and</li> <li>• final inspection of completed buildings.</li> </ul>
<b>Classification</b>	<p><b>5</b> The 1993 edition of the Standard Industrial Classification of all Economic Activities, (SIC) Fifth Edition, Report No. 09-90-02, was used to classify the statistical units. The SIC is based on the 1990 International Standard Industrial Classification of all Economic Activities (ISIC) with suitable adaptations for local conditions.</p> <p><b>6</b> The twelfth and last published edition of the Standard Code List of Areas, Report No. 09-09-03 (1994) was used to classify the statistical units according to province. The cities, towns and non-urban areas listed in this report are codified within province. The code list was compiled by Stats SA in collaboration with other interested bodies and the first edition was distributed in June 1977. However, exceptions occur in respect of the new cross-border municipalities. GaRankuwa, which was previously classified in North West according to the Standard Code List of Areas, Report No. 09-09-03(1994), is included in Gauteng, City of Tshwane as from January 2002.</p>
<b>Statistical unit</b>	<p><b>7</b> The statistical unit for the collection of information is a local government institution. Local government institutions include district municipalities, metropolitan municipalities and local municipalities.</p>
<b>Survey methodology and design</b>	<p><b>8</b> The sample for the monthly Building Statistics Survey consists of the largest local government institutions in South Africa, i.e. those that account for approximately 85% of the total rand value of buildings completed by the private sector.</p> <p><b>9</b> The survey is collected by mail each month from a sample of 128 local government institutions.</p>
<b>Constant prices</b>	<p><b>10</b> The value of building plans passed and buildings completed at constant prices measures building activities in terms of ruling prices in a specific base year, which is 2000 as from May 2002.</p> <p><b>11</b> The value of building plans passed at constant prices for each month is obtained by deflating the values at current prices with a price index known as the “lump sum domestic buildings” as published in statistical release P0151 – JBCC Contract Price Adjustment Provisions Work Group Indices. In order to be applicable, these indices (base February 1991=100) are converted to the base year 2000=100.</p>

- 12** The value of buildings completed at constant prices is obtained by deflating the values at current prices with the same price index which is used to calculate building plans passed at constant prices (cf. paragraph 11). The value of buildings completed is reported as at the time the plans were passed. Since the completion of buildings may extend over a few months to a few years, the current value of buildings completed is deflated by price indices as at the time the plans were passed in order to calculate the value of buildings completed at the time the plans were passed. Therefore, the duration of the completion of different types of buildings are taken into account in ascertaining the deflators e.g. the value of dwelling-houses completed at constant prices at January 2000 is obtained by deflating the current value of dwelling-houses completed for January 2000 with the price index of a month six months prior to January 2000. Furthermore, the value of other residential buildings, non-residential buildings and additions and alterations at constant prices is obtained by deflating the current values with price indices of 12 months, 18 months and 12 months prior to the relevant month, respectively.

#### **Seasonal adjustment**

- 13** Seasonally adjusted estimates of building plans passed and buildings completed are generated each month, using the X-11 Seasonal Adjustment Program developed by US Bureau of the Census Economic Research and Analyses Division, 1968.
- 14** Seasonal adjustment is a means of removing the estimated effects of normal seasonal variation from the series so that the effects of other influences on the series can be more clearly recognised. Seasonal adjustment does not aim to remove irregular or non-seasonal influences which may be present in any particular month. Influences that are volatile or unsystematic can still make it difficult to interpret the movement of the series even after adjustment for seasonal variations. Therefore, the month-to-month movements of seasonally adjusted estimates may not be reliable indicators of trend behaviour.

#### **Trend cycle**

- 15** The trend is a long-term pattern or movement of a time series. The X-11 Seasonal Adjustment Program is used for smoothing seasonally adjusted data.

#### **Related publications**

- 16** Users may also wish to refer to the following publications:
- P5041.3 – Building statistics issued annually.
  - P9101.2 – Actual and expected expenditure on construction by the public sector per statistical region issued annually.
  - Bulletin of Statistics issued quarterly.
  - South African Statistics issued annually.

#### **Unpublished statistics**

- 17** In some cases Stats SA can also make available statistics which are not published. The statistics can be made available in one or more of the following ways: computer printouts, CD and diskette. Generally a charge is made for providing unpublished statistics.

#### **Rounding-off of figures**

- 18** The figures in the tables have, where necessary, been rounded off to the nearest digit shown. There may, therefore, be slight discrepancies between the sums of the constituent items and the totals shown.

#### **Pre-release policy**

- 19** Stats SA has adopted the confidential pre-release policy in respect of selected economic indicators and specific government departments. The policy accords with practice among leading statistical agencies. The statistical integrity of the information and strict observance of the release time has been assured by the following procedure:
- 20** In respect of this statistical release, an official representative from the Office of the President, the Department of Trade and Industry (DTI), National Treasury and the South African Reserve Bank (SARB) will receive a copy of the release on a strictly confidential basis two hours in advance of the public issue.
- 21** Stats SA pre-release policy may be inspected at its Website, [www.statssa.gov.za](http://www.statssa.gov.za)

**Symbols and abbreviations**

..	no meaningful percentage change between two specified periods available since either one or both of the totals are nil
0	nil or figure too small to publish
*	revised
Stats SA	Statistics South Africa
SIC	Standard Industrial Classification of all Economic Activities
ISIC	International Standard Industrial Classification of all Economic Activities
JBCC	Joint Building Contracts Committee
CD	Compact Disc
US	United States
SARB	South African Reserve Bank
DTI	Department of Trade and Industry

**Technical notes****Response rate**

The response rate for February 2003 is 100%.

## Local government institutions covered in the sample survey

**Table C - Classification of towns and cities according to new municipalities and previous local government institution by province**

<b>Western Cape</b>			
<b>Sample survey as from January 2002</b>		<b>Sample survey up to December 2001</b>	
<b>Name of municipality</b>	<b>Cities and towns</b>	<b>Name of previously published local government institution</b>	<b>Cities and towns</b>
Breede Valley Municipality	Worcester Rawsonville De Doorns Touws River	Worcester	Worcester
		Breede River District Council	Rural areas - Dissolved as from July 2001. Activities were taken over by various local government institutions.
<b>City of Cape Town -</b> Blaauwberg Administration	Milnerton	Blaauwberg Municipality	Milnerton
Cape Town Administration	Cape Town	City of Cape Town	Cape Town
Helderberg Administration	Gordon's Bay, Somerset West and Strand	Helderberg Municipality	Gordon's Bay, Somerset West and Strand
Ikapa Administration	Guguletu, Langa, Khayelitsha and Nyanga	Ikapa	Guguletu, Langa, Khayelitsha and Nyanga
Oostenberg Administration -	Brackenfell Kraaifontein Kuils River Melton Rose - Blue Downs	Oostenberg Municipality -	Brackenfell Kraaifontein Kuils River Melton Rose - Blue Downs
South Peninsula Administration -	Fish Hoek Simon's Town Plumstead	Fish Hoek Simon's Town South Peninsula Municipality	Fish Hoek Simon's Town Plumstead
Tygerberg Administration - Bellville Administration Durbanville Administration Goodwood Administration Lingeletu West Administration Parow Administration South Administration	City of Tygerberg - Bellville Durbanville Goodwood Lingeletu West Parow Belhar, Delft, Driftsands and Efuleni	City of Tygerberg - Bellville Administration Durbanville Administration Goodwood Administration Lingeletu West Administration Parow Administration South Administration	Bellville Durbanville Goodwood Lingeletu West Parow Belhar, Delft, Driftsands and Efuleni
Drakenstein Municipality	Paarl Wellington Saron <sup>1/</sup>	Paarl Wellington	Paarl Wellington
George Municipality	George, Herolds Bay, Pacaltsdorp and Thembaletu  Wilderness <sup>1/</sup>	George	George, Herolds Bay, Pacaltsdorp and Thembaletu

<sup>1/</sup> Included in sample survey as from January 2001

**Table C - Classification of towns and cities according to new municipalities and previous local government institution by province (continued)**

<b>Western Cape (concluded)</b>			
<b>Sample survey as from January 2002</b>		<b>Sample survey up to December 2001</b>	
<b>Name of municipality</b>	<b>Cities and towns</b>	<b>Name of previously published local government institution</b>	<b>Cities and towns</b>
Knysna Municipality	Knysna and Khayaletu Sedgfield	Knysna Sedgfield	Knysna and Khayaletu Sedgfield
Mossel Bay Municipality	Mossel Bay, Boggom's Bay, Kleinbrak, Rheeboek and Tergniet Friemersheim, Herbertsdale and Great Brak River <sup>1/</sup>	Mossel Bay	Mossel Bay, Boggom's Bay, Kleinbrak, Rheeboek and Tergniet
Oudtshoorn Municipality	Oudtshoorn De Rust/Blomnek Dysselsdorp	Oudtshoorn	Oudtshoorn
Overberg District Council	Rural areas - Dissolved as from July 2001. Activities were taken over by various local government institutions.	Overberg District Council	Rural areas
Overstrand Municipality	Hermanus, Fisher Haven, Hawston, Onrus River, Sandbaai, Vermont and Zwelihle Hangklip - Kleinmond, Betty's Bay and Rooi-Els Gansbaai and Stanford <sup>1/</sup>	Hermanus  Hangklip - Kleinmond	Hermanus, Fisher Haven, Hawston, Onrus River, Sandbaai, Vermont and Zwelihle Hangklip - Kleinmond, Betty's Bay and Rooi-Els
Plettenberg Bay Municipality	Plettenberg Bay Knoetzie <sup>1/</sup>	Plettenberg Bay	Plettenberg Bay
Saldanha Bay Municipality	Vredenburg and Saldanha Hopefield and Langebaan <sup>1/</sup>	Western Coast Peninsula	Vredenburg and Saldanha
Stellenbosch Municipality	Stellenbosch Franschhoek and Pniel	Stellenbosch	Stellenbosch
Swartland Municipality	Malmesbury Darling, Koringberg, Moorreesburg and Yzerfontein <sup>1/</sup>	Malmesbury	Malmesbury
		West Coast District Council	Rural areas - Dissolved as from July 2001. Activities were taken over by various local government institutions.
		Winelands District Council	Rural areas - Dissolved as from July 2001. Activities were taken over by various local government institutions.

<sup>1/</sup> Included in sample survey as from January 2001

**Table C - Classification of towns and cities according to new municipalities and previous local government institution by province (continued)**

<b>Eastern Cape</b>			
<b>Sample survey as from January 2002</b>		<b>Sample survey up to December 2001</b>	
<b>Name of municipality</b>	<b>Cities and towns</b>	<b>Name of previously published local government institution</b>	<b>Cities and towns</b>
Buffalo City Municipality - East London Area  King William's Town Area	East London, Beacon Bay, Gompo Town, Gonubie and Mdantsane King William's Town, Bisho and Zwelitsha	East London  King William's Town	East London, Beacon Bay, Gompo Town, Gonubie and Mdantsane King William's Town, Bisho and Zwelitsha
King Sabata Dalindyebo Municipality - Umtata Area	Umtata	Umtata	Umtata
Kouga Municipality - Jeffreys Bay Area	Jeffreys Bay	Jeffreys Bay	Jeffreys Bay
Makana Municipality - Grahamstown Area	Grahamstown and Rhini Township	Grahamstown	Grahamstown and Rhini Township
Maletswai Municipality - Aliwal North Area	Aliwal North and Dukathole	Aliwal - Maletswai	Aliwal North and Dukathole
Ndlambe Municipality	Port Alfred Alexandria Bathurst Boesmansriviermond Kenton-on-Sea	Port Alfred	Port Alfred
Nelson Mandela Metropolitan Municipality - Despatch Area  Port Elizabeth Area  Uitenhage Area	Despatch  Port Elizabeth, Ibhayi and Motherwell Uitenhage and KwaNobuhle	Despatch  Port Elizabeth  Uitenhage	Despatch  Port Elizabeth, Ibhayi and Motherwell Uitenhage and KwaNobuhle
		Western District Council	Rural areas - Dissolved as from July 2001. Activities were taken over by various local government institutions.

**Table C - Classification of towns and cities according to new municipalities and previous local government institution by province (continued)**

<b>Northern Cape</b>			
<b>Sample survey as from January 2002</b>		<b>Sample survey up to December 2001</b>	
<b>Name of municipality</b>	<b>Cities and towns</b>	<b>Name of previously published local government institution</b>	<b>Cities and towns</b>
//Khara Hais Municipality	Upington, Mothibistad and Paballelo	Upington	Upington, Mothibistad and Paballelo
		Benede-Oranje District Council	Rural areas - Dissolved as from July 2001. Activities were taken over by various local government institutions.
Ga-Segonyana Municipality	Kuruman	Kuruman	Kuruman
Kai! Garib Municipality - Keimoes Area	Keimoes Eksteenskuil <sup>1/</sup> Kenhardt <sup>1/</sup>	Keimoes	Keimoes
		Namaqualand District Council	Rural areas - Dissolved as from July 2001. Activities were taken over by various local government institutions.
Solplaatjie Municipality	Kimberley and Galeshewe Ritchie <sup>1/</sup>	Kimberley	Kimberley and Galeshewe

<sup>1/</sup> Included in sample survey as from January 2001

**Table C - Classification of towns and cities according to new municipalities and previous local government institution by province (continued)**

<b>Free State</b>			
<b>Sample survey as from January 2002</b>		<b>Sample survey up to December 2001</b>	
<b>Name of municipality</b>	<b>Cities and towns</b>	<b>Name of previously published local government institution</b>	<b>Cities and towns</b>
Dihlabeng Municipality	Bethlehem and Bohlokong Clarens Mashae-Fourie Paul Roux	Bethlehem	Bethlehem and Bohlokong
Maluti a Phofung Municipality Harrismith Area Phuthaditjhaba Area	Harrismith and Tsiamé Phuthaditjhaba	Harrismith Phuthaditjhaba	Harrismith and Tsiamé Phuthaditjhaba
Mangaung Municipality - Bloemfontein Area  Botshabelo Area	Bloemfontein, Bainsvlei, Bloemspruit and Mangaung Botshabelo	Bloemfontein  Botshabelo	Bloemfontein, Bainsvlei, Bloemspruit and Mangaung Botshabelo
Mantsopa Municipality	Ladybrand and Manyatseng Excelsior Hobhouse Thaba Patchoa Tweespruit/Kopano	Ladybrand	Ladybrand and Manyatseng
Matjhabeng Municipality - Odendaalsrus Area  Virginia Area Welkom Area	Odendaalsrus, Allanridge and Kutlwanong Virginia and Meloding Welkom and Thabong	Odendaalsrus  Virginia Welkom	Odendaalsrus, Allanridge and Kutlwanong Virginia and Meloding Welkom and Thabong
Metsimaholo Municipality - Deneysville Area  Sasolburg Area	Deneysville and Refengkgotso  Sasolburg and Zamdela	Deneysville/Refengkgotso  Sasolburg/Zamdela	Deneysville and Refengkgotso Sasolburg and Zamdela
Moghaka Municipality - Kroonstad Area	Kroonstad and Maokeng	Kroonstad	Kroonstad and Maokeng
Nqwathe Municipality	Parys Edenville Heibron Koppies Vredefort	Parys	Parys



**Table C - Classification of towns and cities according to new municipalities and previous local government institution by province (continued)**

<b>KwaZulu-Natal</b>			
<b>Sample survey as from January 2002</b>		<b>Sample survey up to December 2001</b>	
<b>Name of municipality</b>	<b>Cities and towns</b>	<b>Name of previously published local government institution</b>	<b>Cities and towns</b>
Emnambithi Municipality	Ladysmith Colenso	Ladysmith	Ladysmith
eThekwin Municipality - Inner West Operational Entity	Clermont, KwaDabeka, KwaNdengezi, New Germany, Pinetown, Queensburgh, Reservoir Hills, Shallcross and Westville	Inner West City Council	Clermont, KwaDabeka, KwaNdengezi, New Germany, Pinetown, Queensburgh, Reservoir Hills, Shallcross and Westville
Outer West Operational Entity	Assagay, Botha's Hill, Cato Ridge, Drummond, Everton, Gillitts, Hillcrest, Inchanga, Kloof, Mpumalanga and Waterfall	Outer West Local Council	Assagay, Botha's Hill, Cato Ridge, Drummond, Everton, Gillitts, Hillcrest, Inchanga, Kloof, Mpumalanga and Waterfall
KwaMashu	KwaMashu	KwaMashu	KwaMashu
Durban- North, South and Central	Durban	Durban	Durban
North Operational Entity - Tonga	Tonga, Canelands and Hambanati	North Local Council - Tonga	Tonga, Canelands and Hambanati
Umlazi	Umlazi	Umlazi	Umlazi
Verulam	Verulam	Verulam	Verulam
South Operational Entity	Amanzimtoti, Isipingo, Kingsburgh, KwaMakuta and Umbogintwini	South Local Council	Amanzimtoti, Isipingo, Kingsburgh, KwaMakuta and Umbogintwini
Umlazi	Umlazi	Umlazi	Umlazi
Greater Kokstad Municipality	Kokstad	Kokstad	Kokstad
Hibiscus Coast Municipality	Margate and Uvongo Marina Beach, San Lameer, Southbroom and Trafalgar Port Shepstone Hibberdene Munster, Port Edward and Palm Beach	Margate Mpenjati/Southbroom  Port Shepstone  Umtamvuna/Port Edward	Margate and Uvongo Marina Beach, San Lameer, Southbroom and Trafalgar Port Shepstone  Munster, Port Edward and Palm Beach

**Table C - Classification of towns and cities according to new municipalities and previous local government institution by province (continued)**

<b>KwaZulu-Natal (concluded)</b>			
<b>Sample survey as from January 2002</b>		<b>Sample survey up to December 2001</b>	
<b>Name of municipality</b>	<b>Cities and towns</b>	<b>Name of previously published local government institution</b>	<b>Cities and towns</b>
KwaDukuza Municipality - Dolphin Coast Administrative Entity	Ballito, Etete, Shakaskraal, Tinley Manor Beach and Umhlali Beach	Dolphin Coast Borough	Ballito, Etete, Shakaskraal, Tinley Manor Beach and Umhlali Beach
Stanger Administrative Entity	Blythedale Beach, Shakaville and Stanger Nkwazi/Stanger	KwaDukuza/Stanger	Blythedale Beach, Shakaville and Stanger
Msunduzi Municipality	Edendale Ashburton <sup>1/</sup> , Pietermaritzburg and Msundini	Edendale Pietermaritzburg/Msundini	Edendale Pietermaritzburg and Msundini
Newcastle Municipality	Blaauwboschlaagte, Madadeni, Osizweni and Newcastle	Newcastle	Blaauwboschlaagte, Madadeni, Osizweni and Newcastle
Umdoni Municipality	Pennington Scottburgh/Umzinto	Pennington	Pennington
Umhlathuze Municipality	Empangeni and Ngwelezana Richards Bay	Empangeni-Ngwelezana Richards Bay	Empangeni and Ngwelezana Richards Bay
Umngeni Municipality	Hilton Howick	Hilton Howick	Hilton Howick
Uthungulu District Council <sup>1/</sup>	Kwambonati, Nkandla and Ntambanana Municipalities	Development and Services Board - North Coast	Kwambonati, Nkandla, Tugela Mouth, Umlalazi, Mahlabathini, Ukuza, Umbambo, Egwavuma and Hluhlumi

<sup>1/</sup> Included in sample survey as from January 2001

**Table C - Classification of towns and cities according to new municipalities and previous local government institution by province (continued)**

<b>North West</b>			
<b>Sample survey as from January 2002</b>		<b>Sample survey up to December 2001</b>	
<b>Name of municipality</b>	<b>Cities and towns</b>	<b>Name of previously published local government institution</b>	<b>Cities and towns</b>
		Bophirima District Council	Rural areas - Dissolved as from July 2001. Activities were taken over by various local government institutions.
Ditsobotla Local Municipality	Lichtenburg and Itsoseng Biesiesvlei <sup>1/</sup> Coligny <sup>1/</sup>	Lichtenburg	Lichtenburg and Itsoseng
Klerksdorp Local Municipality	Klerksdorp Orkney and Kanana Hartbeesfontein <sup>1/</sup> Stillfontein <sup>1/</sup>	Klerksdorp Orkney	Klerksdorp Orkney and Kanana
GaRankuwa	As from January 2002 included in City of Tshwane - Northern Metropolitan Substructure (Gauteng)	GaRankuwa	GaRankuwa
Madibeng Local Municipality	Brits and Lethabile Hartbeespoort	Brits	Brits and Lethabile
Mafikeng Local Municipality	Mmabatho and Mafikeng	Mmabatho	Mmabatho and Mafikeng
Naledi Municipality	Vryburg	Vryburg	Vryburg
Potchefstroom Municipality	Potchefstroom	Potchefstroom	Potchefstroom
Rustenburg Local Municipality - Rustenburg Area	Rustenburg	Rustenburg	Rustenburg
Zeerust Local Municipality	Zeerust	Zeerust	Zeerust

<sup>1/</sup> Included in sample survey as from January 2001

**Table C - Classification of towns and cities according to new municipalities and previous local government institution by province (continued)**

<b>Gauteng</b>			
<b>Sample survey as from January 2002</b>		<b>Sample survey up to December 2001</b>	
<b>Name of municipality</b>	<b>Cities and towns</b>	<b>Name of previously published local government institution</b>	<b>Cities and towns</b>
<b>City of Johannesburg Metropolitan Municipality</b>	Alexandra and Sandton  Midrand, Rabie Ridge and Ivory Park Randburg  Ennerdale, Lenasia and Johannesburg Diepmeadow, Dobsonville and Roodepoort Soweto	<b>Greater Johannesburg -</b> Eastern Metropolitan Local Council Midrand Metropolitan Local Council Northern Metropolitan Local Council Southern Metropolitan Local Council Western Metropolitan Local Council Soweto	Alexandra and Sandton  Midrand, Rabie Ridge and Ivory Park Randburg  Ennerdale, Lenasia and Johannesburg Diepmeadow, Dobsonville and Roodepoort Soweto
<b>City of Tshwane Metropolitan Municipality -</b> Centurion Town Council City Council of Pretoria  Northern Pretoria Metropolitan Substructure	Centurion Pretoria, Atteridgeville and Mamelodi Akasia, Elandsdoorn, Klipfontein, Kruisfontein and Soshanguve Hammanskraal GaRankuwa <sup>2/</sup> Temba Winterveld <sup>2/</sup>	Centurion Pretoria  Akasia	Centurion Pretoria, Atteridgeville and Mamelodi Akasia, Elandsdoorn, Klipfontein, Kruisfontein and Soshanguve
		Eastern Services Council - Pretoria Area	Rural areas - Dissolved as from July 2001. Activities were taken over by various local government institutions.
<b>Ekurheleni Metropolitan Municipality -</b> Service Delivery Centre of: Edenvale - Modderfontein Alberton Benoni  Boksburg Brakpan Duduza Germiston  Kempton Park Nigel Springs	Edenvale - Modderfontein Alberton and Tokoza Benoni, Daveyton and Wattville Boksburg and Vosloorus Brakpan and Tsakane Duduza Germiston, Bedfordview and Katlehong Kempton Park and Tembisa Nigel Springs and KwaThema	Edenvale - Modderfontein Alberton Benoni  Boksburg Brakpan Duduza Germiston  Kempton Park Nigel Springs	Edenvale - Modderfontein Alberton and Tokoza Benoni, Daveyton and Wattville Boksburg and Vosloorus Brakpan and Tsakane Duduza Germiston, Bedfordview and Katlehong Kempton Park and Tembisa Nigel Springs and KwaThema

<sup>2/</sup> Was previously included under North West

**Table C - Classification of towns and cities according to new municipalities and previous local government institution by province (continued)**

<b>Gauteng (concluded)</b>			
<b>Sample survey as from January 2002</b>		<b>Sample survey up to December 2001</b>	
<b>Name of municipality</b>	<b>Cities and towns</b>	<b>Name of previously published local government institution</b>	<b>Cities and towns</b>
Emfuleni Local Municipality	Vanderbijlpark Vereeniging and Evaton Sebokeng (Boipatong, Bophelong and Sharpville)	Vanderbijlpark Vereeniging Sebokeng	Vanderbijlpark Vereeniging and Evaton Sebokeng (Boipatong, Bophelong and Sharpville)
Kungwini Local Municipality – Bronkhorstspuit Area	Bronkhorstspuit	Bronkhorstspuit	Bronkhorstspuit
Lesedi Local Municipality	Heidelberg and Ratanda	Heidelberg	Heidelberg and Ratanda
Merafong City Local Municipality	Carletonville, Wedela, Khutsong and Wilverdient	Carletonville	Carletonville, Wedela, Khutsong and Wilverdient
Midvaal Local Municipality	Meyerton	Meyerton	Meyerton
Mogale City Municipality	Krugersdorp, Kagiso and Munsieville	Krugersdorp	Krugersdorp, Kagiso and Munsieville
Randfontein Local Municipality	Randfontein and Mohlakeng	Randfontein	Randfontein and Mohlakeng
Westonaria Local Municipality	Westonaria and Bekkersdal	Westonaria	Westonaria and Bekkersdal

**Table C - Classification of towns and cities according to new municipalities and previous local government institution by province (continued)**

<b>Mpumalanga</b>			
<b>Sample survey as from January 2002</b>		<b>Sample survey up to December 2001</b>	
<b>Name of municipality</b>	<b>Cities and towns</b>	<b>Name of previously published local government institution</b>	<b>Cities and towns</b>
Delmas Municipality	Delmas and Botleng	Delmas	Delmas and Botleng
Emalahleni Local Municipal Council- KwaGuqa Area Witbank Area	KwaGuqa Witbank	KwaGuqa Witbank	KwaGuqa Witbank
Govan Mbeki Municipality - Secunda Area	Evander, Embalenhle and Secunda	Highveldridge Transitional Council	Evander, Embalenhle and Secunda
Mbombela Local Municipality	Nelspruit and Kanyamazane White River Hazyview <sup>1/</sup>	Nelspruit White River	Nelspruit White River
Middelburg Municipality	Middelburg and Mhluzi Hendrina <sup>1/</sup>	Middelburg	Middelburg and Mhluzi
Msukaligwa Municipality	Ermelo, Cassim Park and Wesselton	Ermelo	Ermelo, Cassim Park and Wesselton
Nkomazi Municipality - Komatipoort Area  Malelane Area	Komatipoort and Kamaqhekeza Malelane, Hectorspruit and Kamhlushwa	Komatipoort  Malelane	Komatipoort and Kamaqhekeza Malelane, Hectorspruit and Kamhlushwa

<sup>1/</sup> Included in sample survey as from January 2001

**Table C - Classification of towns and cities according to new municipalities and previous local government institution by province (concluded)**

<b>Limpopo</b>			
<b>Sample survey as from January 2002</b>		<b>Sample survey up to December 2001</b>	
<b>Name of municipality</b>	<b>Cities and towns</b>	<b>Name of previously published local government institution</b>	<b>Cities and towns</b>
		Bosveld District Council	Rural areas - Dissolved as from July 2001. Activities were taken over by various local government institutions.
Greater Tzaneen Municipality	Tzaneen and Nkowakowa	Letaba	Tzaneen and Nkowakowa
Musina Municipality	Musina (previously Messina)	Messina	Messina
Modimolle Municipality	Modimolle (previously Nylstroom)	Nylstroom	Nylstroom
Mogolakwena Municipality	Mokopane (previously Potgietersrus)	Potgietersrus	Potgietersrus
Mookgopong Municipality	Naboomspruit and Mookgopong	Naboomspruit	Naboomspruit and Mookgopong
Polokwane Municipality	Polokwane (previously Pietersburg) and Seshego	Pietersburg - Polokwane	Pietersburg and Seshego
Thabazimbi Municipality	Thabazimbi	Thabazimbi	Thabazimbi

**Table D - Classification of selected urban areas according to new municipalities and previous local government institution**

Sample survey as from January 2002		Sample survey up to December 2001	
Name of selected urban area and municipality	Cities and towns	Name of selected urban area and previously published local government institution	Cities and towns
<b>Cape Town</b> City of Cape Town - Blaauwberg Administration	Milnerton	<b>Cape Town</b> Blaauwberg Municipality	Milnerton
Cape Town Administration	Cape Town	City of Cape Town	Cape Town
Ikapa Administration	Guguletu, Langa, Khayelitsha and Nyanga	Ikapa	Guguletu, Langa, Khayelitsha and Nyanga
Oostenberg Administration -	Kraaifontein Melton Rose - Blue Downs	Oostenberg Municipality -	Kraaifontein Melton Rose - Blue Downs
South Peninsula Administration -	Fish Hoek Simon's Town Plumstead	Fish Hoek Simon's Town South Peninsula Municipality	Fish Hoek Simon's Town Plumstead
Tygerberg Administration - Bellville Administration Durbanville Administration Goodwood Administration Lingeletu West Administration Parow Administration South Administration	City of Tygerberg - Bellville Durbanville Goodwood Lingeletu West Parow Belhar, Delft, Driftsands and Efuleni	City of Tygerberg - Bellville Administration Durbanville Administration Goodwood Administration Lingeletu West Administration Parow Administration South Administration	Bellville Durbanville Goodwood Lingeletu West Parow Belhar, Delft, Driftsands and Efuleni
<b>Port Elizabeth</b> Nelson Mandela Metropolitan Municipality - Despatch Area	Despatch	<b>Port Elizabeth</b> Despatch	Despatch
Port Elizabeth Area	Port Elizabeth, Ibhayi and Motherwell	Port Elizabeth	Port Elizabeth, Ibhayi and Motherwell
Uitenhage Area	Uitenhage and KwaNobuhle	Uitenhage	Uitenhage and KwaNobuhle



**Table D - Classification of selected urban areas according to new municipalities and previous local government institution (continued)**

Sample survey as from January 2002		Sample survey up to December 2001	
Name of selected urban area and municipality	Cities and towns	Name of selected urban area and previously published local government institution	Cities and towns
<b>Durban</b> <b>eThekweni Municipality -</b> Inner West Operational Entity	Clermont, KwaDabeka, KwaNdengezi, New Germany, Pinetown, Queensburgh, Reservoir Hills, Shallcross and Westville	<b>Durban</b> Inner West City Council	Clermont, KwaDabeka, KwaNdengezi, New Germany, Pinetown, Queensburgh, Reservoir Hills, Shallcross and Westville
Outer West Operational Entity	Assagay, Botha's Hill, Cato Ridge, Drummond, Everton, Gillitts, Hillcrest, Inchanga, Kloof, Mpumalanga and Waterfall	Outer West Local Council	Assagay, Botha's Hill, Cato Ridge, Drummond, Everton, Gillitts, Hillcrest, Inchanga, Kloof, Mpumalanga and Waterfall
Durban- North, South and Central	Durban	Durban	Durban
North Operational Entity - Verulam	Verulam	North Local Council - Verulam	Verulam
South Operational Entity	Amanzimtoti, Isipingo, Kingsburgh, KwaMakuta and Umbogintwini	South Local Council	Amanzimtoti, Isipingo, Kingsburgh, KwaMakuta and Umbogintwini
<b>Pretoria</b> City of Tshwane Metropolitan Municipality - Centurion Town Council City Council of Pretoria	Centurion Pretoria, Atteridgeville and Mamelodi	<b>Pretoria</b> Centurion Pretoria	Centurion Pretoria, Atteridgeville and Mamelodi
Northern Pretoria Metropolitan Substructure	Akasia, Elandsdoorn, Klipfontein, Kruisfontein and Soshanguve Hammanskraal GaRankuwa Temba Winterveld	Akasia	Akasia, Elandsdoorn, Klipfontein, Kruisfontein and Soshanguve

**Table D - Classification of selected urban areas according to new municipalities and previous local government institution (concluded)**

Sample survey as from January 2002		Sample survey up to December 2001	
Name of selected urban area and municipality	Cities and towns	Name of selected urban area and previously published local government institution	Cities and towns
<b>Witwatersrand</b> City of Johannesburg Metropolitan Municipality	Alexandra and Sandton  Midrand, Rabie Ridge and Ivory Park Randburg  Ennerdale, Lenasia and Johannesburg Diepmeadow, Dobsonville and Roodepoort Soweto	<b>Witwatersrand</b> Greater Johannesburg - Eastern Metropolitan Local Council Midrand Metropolitan Local Council Northern Metropolitan Local Council Southern Metropolitan Local Council Western Metropolitan Local Council Soweto	Alexandra and Sandton  Midrand, Rabie Ridge and Ivory Park Randburg  Ennerdale, Lenasia and Johannesburg Diepmeadow, Dobsonville and Roodepoort Soweto
Ekurheleni Metropolitan Municipality - Service Delivery Centre of: Edenvale - Modderfontein Alberton Benoni	Edenvale - Modderfontein Alberton and Tokoza Benoni, Daveyton and Wattville	Edenvale - Modderfontein Alberton Benoni	Edenvale - Modderfontein Alberton and Tokoza Benoni, Daveyton and Wattville
Boksburg Brakpan Duduza Germiston	Boksburg and Vosloorus Brakpan and Tsakane Duduza Germiston, Bedfordview and Katlehong	Boksburg Brakpan Duduza Germiston	Boksburg and Vosloorus Brakpan and Tsakane Duduza Germiston, Bedfordview and Katlehong
Kempton Park Nigel Springs	Kempton Park and Tembisa Nigel Springs and KwaThema	Kempton Park Nigel Springs	Kempton Park and Tembisa Nigel Springs and KwaThema
Mogale City Municipality	Krugersdorp, Kagiso and Munsieville	Krugersdorp	Krugersdorp, Kagiso and Munsieville
Randfontein Local Municipality	Randfontein and Mohlakeng	Randfontein	Randfontein and Mohlakeng
Westonaria Local Municipality	Westonaria and Bekkersdal	Westonaria	Westonaria and Bekkersdal
Merafong City Local Municipality	Carletonville, Wedela, Khutsong and Welverdiend	Carletonville	Carletonville, Wedela, Khutsong and Welverdiend
<b>Bloemfontein</b> Mangaung Municipality - Bloemfontein Area  Botshabelo Area	 Bloemfontein, Bainsvlei, Bloemspruit and Mangaung Botshabelo	<b>Bloemfontein</b>  Bloemfontein  Botshabelo	 Bloemfontein, Bainsvlei, Bloemspruit and Mangaung Botshabelo

## Glossary

<b>Additions and alterations</b>	Additions and alterations include extensions to existing buildings as well as internal and external alterations of existing buildings.
<b>Blocks of flats</b>	Blocks of flats are regarded as high-density housing consisting of a number of self-contained dwelling-units with at least one living-room together with a kitchen and bathroom conjoined to similar units in one building.
<b>Dwelling-house</b>	A dwelling-house refers to a free-standing, complete structure on a separate stand or a self-contained dwelling-unit, granny flat, on the same premises as an existing residence. Out-buildings and garages are included.
<b>Local government</b>	A local government is a distinct and constitutionally defined sphere of government, pertaining to government that is not national or provincial in nature and is manifested in the form of municipalities. It is a generic term referring to municipalities and local authorities of varied nature and type involved in activities of a governmental nature in the local sphere.
<b>Local government institutions</b>	<p>Up to December 2001 local government institutions included:</p> <ul style="list-style-type: none"> <li>• City councils;</li> <li>• district councils;</li> <li>• development and services boards;</li> <li>• metropolitan councils;</li> <li>• municipalities; and</li> <li>• transitional local councils.</li> </ul> <p>As from January 2002 local government institutions includes:</p> <ul style="list-style-type: none"> <li>• District and metropolitan municipalities; and</li> <li>• local municipalities.</li> </ul>
<b>Metropolitan and district municipalities</b>	Metropolitan and district municipalities means municipalities that has the exclusive executive and legislative authority in its area, and which is described in section 155(1) of the Constitution as category A (metropolitan municipality) and category C (district municipality) (Refer to local government: Municipal Structure Act, Act No. 117.1998).
<b>Non-residential buildings</b>	Non-residential buildings comprise factories, commercial, financial and other office buildings, as well as other buildings not used for residential purposes, such as churches, halls, clubs, schools and hospitals.
<b>Other residential buildings</b>	Other residential buildings include institutions for the disabled, boarding houses, old people's homes, hostels, hotels, motels, guest houses, holiday chalets, bed-and-breakfast accommodation, entertainment centres and casinos.
<b>Percentage change</b>	<p>When using monthly actual values, the percentage change is the change in actual values of building activities (building plans passed or buildings completed) of the relevant month compared with the actual values of building activities (building plans passed or buildings completed) of the same month in the previous year expressed as a percentage.</p> <p>When using annual actual values, the percentage change is the change in the actual values of building activities (building plans passed or buildings completed) of the relevant year compared with the actual values of building activities (building plans passed or buildings completed) of the previous year expressed as a percentage.</p> <p>When using seasonally adjusted values, the percentage change is the change in the seasonally adjusted values of building activities (building plans passed or buildings completed) of the relevant month compared with the seasonally adjusted values of building activities (building plans passed or buildings completed) of the previous month expressed as a percentage.</p>

<b>Reference period</b>	Reference period is one calendar month.
<b>Residential buildings</b>	Residential buildings comprise dwelling-houses, flats, townhouses and other residential buildings.
<b>Townhouses</b>	Townhouses are multiple, medium-density dwelling-units and include cluster housing, group housing, simplexes, duplexes, triplexes and other similar dwelling-units which are usually grouped together, with one level of each unit on ground level. This excludes blocks of flats.

## For more information

Stats SA publishes approximately 300 different statistical releases each year. It is not economically viable to produce them in more than one of South Africa's eleven official languages. Since the releases are used extensively, not only locally but also by international economic and social-scientific communities, Stats SA releases are published in English only.

Stats SA has copyright on this publication. Users may apply the information as they wish, provided that they acknowledge Stats SA as the source of the basic data wherever they process, apply, utilise, publish or distribute the data and also that they specify that the relevant application and analysis (where applicable) result from their own processing of the data.

### Stats SA products

A complete set of Stats SA publications is available at the Stats SA Library and the following libraries:

National Library of South Africa, Pretoria Division  
National Library of South Africa, Cape Town Division  
Natal Society Library, Pietermaritzburg  
Library of Parliament, Cape Town  
Bloemfontein Public Library  
Johannesburg Public Library  
Eastern Cape Library Services, King William's Town  
Central Regional Library, Polokwane  
Central Reference Library, Nelspruit  
Central Reference Collection, Kimberley  
Central Reference Library, Mmabatho

Stats SA also provides a subscription service.

### Electronic services

A large range of data are available via on-line services, diskette, CD and computer printouts. For more details about our electronic data services, contact (012) 310 8600/8390/8351/4892/8496/8095.

You can visit us on the Internet at: <http://www.statssa.gov.za>

### Enquiries

Telephone number: (012) 310 8600/8390/8351/4892/8496/8095 (user enquiries)  
(012) 310 8228/310 8007 (technical enquiries)  
(012) 310 8161 (publications)  
(012) 310 8490 (library)

Fax number: (012) 310 8182

e-mail: Corrieb@statssa.gov.za  
Gretaz@statssa.gov.za

Postal address: Private Bag X44, Pretoria, 0001