

Building statistics

February 2002

Co-operation between Statistics South Africa (Stats SA), the citizens of the country, the private sector and government institutions is essential for a successful statistical system. Without continued co-operation and goodwill, the timely release of relevant and reliable official statistics will not be possible.

Embargo: 13:00
Date: 17 April 2002

Stats SA publishes approximately three hundred different releases each year. It is not economically viable to produce them in more than one of South Africa's eleven official languages. Since the releases are used extensively, not only locally, but also by international economic and social-scientific communities, Stats SA releases are published in English only.

Key figures regarding building plans passed for the month ended February 2002

Actual estimates at constant 1995 prices

| | February 2002 R million | January 2002 to February 2002 R million | Percentage change between February 2001 and February 2002 | Percentage change between December 2000 to February 2001 and December 2001 to February 2002 | Percentage change between January 2001 to February 2001 and January 2002 to February 2002 |
|-----------------------------|----------------------------|--|---|---|---|
| Residential buildings | | | | | |
| Dwelling-houses | 467,6 | 872,6 | - 0,4 | - 0,9 | - 0,0 |
| Flats and townhouses | 112,9 | 221,4 | + 4,7 | + 26,6 | + 20,6 |
| Other residential buildings | 58,4 | 59,9 | + 986,0 | + 1,0 | + 43,0 |
| Total | 638,9 | 1 153,9 | + 9,7 | + 3,8 | + 5,1 |
| Non-residential buildings | 159,5 | 271,2 | - 25,2 | - 65,6 | - 51,0 |
| Additions and alterations | 296,3 | 560,1 | - 12,1 | - 1,9 | - 4,9 |
| Total | 1 094,7 | 1 985,2 | - 3,4 | - 19,1 | - 11,4 |

Seasonally adjusted estimates at constant 1995 prices

| | February 2002 R million | Percentage change between January 2002 and February 2002 | Percentage change between September 2001 to November 2001 and December 2001 to February 2002 |
|---------------------------|----------------------------|--|--|
| Residential buildings | 640,2 | - 2,1 | + 2,2 |
| Non-residential buildings | 166,7 | + 11,8 | - 12,4 |
| Additions and alterations | 334,4 | - 0,4 | + 0,3 |
| Total | 1 141,3 | + 0,2 | - 0,5 |

Key findings regarding building plans passed for the three months ended February 2002

Seasonally adjusted real value of building plans passed decreases slightly

The seasonally adjusted real value of building plans passed (at constant 1995 prices) for the three months ended February 2002 decreased by 0,5% compared with the previous three months.

The decrease of 0,5% in the seasonally adjusted real value of building plans passed was due to a decrease in the seasonally adjusted real value of non-residential building plans passed (-12,4%) during the three months ended February 2002 compared with the previous three months. However, this decrease was partially counteracted by increases in the seasonally adjusted real value of building plans passed for residential buildings (+2,2%) and additions and alterations (+0,3%) during the above-mentioned period.

Key findings regarding building plans passed for the month ended February 2002

Total real value of building plans passed decreases

The total real value of building plans passed (at constant 1995 prices) during the first two months of 2002 decreased by 11,4% (-R255,9 million) to R1 985,2 million compared with the first two months of 2001. The real value of non-residential building plans passed decreased by R282,2 million, mainly due to decreases reported for office and banking space (-R177,6 million) and shopping space (-R69,9 million) during the above-mentioned period. Large decreases in the total real value of non-residential building plans passed were reported by the selected urban areas of Witwatersrand (-R117,6 million) and Cape Town (-R102,1 million). However, large real increases were reported for flats and townhouses (+R37,8 million) and 'other' residential buildings (+R18,0 million) during this period.

Six of the nine provinces reported decreases in the total real value of building plans passed

The largest provincial contributor to the decrease of 11,4% (-R255,9 million) in the total real value of building plans passed during the first two months of 2002 compared with the first two months of 2001 was Gauteng (-6,8 percentage points or R151,6 million), followed by KwaZulu-Natal (-4,7 percentage points or R105,0 million), Western Cape (-2,0 percentage points or R44,1 million) and Eastern Cape (-1,3 percentage points or R28,7 million) (cf. table A). Large real decreases in Gauteng were reported for non-residential buildings (-R103,7 million), dwelling-houses (-R30,4 million) and additions and alterations (-R24,9 million). The largest real decrease in KwaZulu-Natal was reported for office and banking space (-R92,5 million).

Table A - Contribution of provinces to the total real value of building plans passed

| Province | Percentage contribution to the total real value of plans passed during January 2001 to February 2001 | Percentage change between January 2001 to February 2001 and January 2002 to February 2002 | Contribution (percentage points) ^{1/} to the percentage change in the real value of plans passed between January 2001 to February 2001 and January 2002 to February 2002 | Difference in total real value of plans passed between January 2001 to February 2001 and January 2002 to February 2002 R million |
|-------------------|--|---|---|---|
| Gauteng | 41,2 | - 16,4 | - 6,8 | - 151,6 |
| KwaZulu-Natal | 13,3 | - 35,3 | - 4,7 | - 105,0 |
| Western Cape | 28,1 | - 7,0 | - 2,0 | - 44,1 |
| Eastern Cape | 6,6 | - 19,2 | - 1,3 | - 28,7 |
| Northern Cape | 0,6 | - 22,2 | - 0,1 | - 2,9 |
| Northern Province | 1,5 | - 0,4 | - 0,0 | - 0,2 |
| Free State | 2,9 | + 13,4 | + 0,4 | + 8,6 |
| North West | 2,5 | + 14,4 | + 0,4 | + 8,0 |
| Mpumalanga | 3,3 | + 82,2 | + 2,7 | + 60,0 |
| Total | 100,0 | - 11,4 | - 11,4 | - 255,9 |

1/ The contribution (percentage points) is calculated by multiplying the percentage change of each province between January 2001 to February 2001 and January 2002 to February 2002 (cf. column 3) with the percentage contribution of the corresponding province to the total real value of plans passed during January 2001 to February 2001 (cf. column 2) divided by 100.

Key figures regarding buildings completed for the month ended February 2002

Actual estimates at constant 1995 prices

| | February 2002 R million | January 2002 to February 2002 R million | Percentage change between February 2001 and February 2002 | Percentage change between December 2000 to February 2001 and December 2001 to February 2002 | Percentage change between January 2001 to February 2001 and January 2002 to February 2002 |
|-----------------------------|----------------------------|--|---|---|---|
| Residential buildings | | | | | |
| Dwelling-houses | 223,8 | 487,3 | - 7,1 | + 14,8 | + 10,6 |
| Flats and townhouses | 109,5 | 244,1 | + 91,5 | + 81,9 | + 106,7 |
| Other residential buildings | 0,5 | 3,6 | - 97,5 | - 98,4 | - 98,6 |
| Total | 333,8 | 735,0 | + 4,9 | - 2,9 | - 8,8 |
| Non-residential buildings | 101,3 | 202,7 | - 54,8 | - 50,6 | - 50,7 |
| Additions and alterations | 139,4 | 262,9 | - 25,4 | - 23,5 | - 23,0 |
| Total | 574,5 | 1 200,6 | - 21,2 | - 21,4 | - 23,0 |

Seasonally adjusted estimates at constant 1995 prices

| | February 2002 R million | Percentage change between January 2002 and February 2002 | Percentage change between September 2001 to November 2001 and December 2001 to February 2002 |
|---------------------------|----------------------------|--|--|
| Residential buildings | 376,3 | - 19,6 | + 9,6 |
| Non-residential buildings | 114,8 | - 8,4 | - 68,4 |
| Additions and alterations | 130,9 | - 6,1 | - 17,1 |
| Total | 622,0 | - 15,1 | - 28,8 |

Key findings regarding buildings completed for the three months ended February 2002

Seasonally adjusted real value of buildings completed decreases

The seasonally adjusted real value of buildings completed (at constant 1995 prices) for the three months ended February 2002 decreased by 28,8% compared with the previous three months.

The decrease of 28,8% in the seasonally adjusted real value of buildings completed during the three months ended February 2002 compared with the previous three months was due to decreases in the seasonally adjusted real value of non-residential buildings completed (-68,4%, mainly due to the completion of a large shopping centre as reported by North Local Council – Umhlanga Rocks during September 2001) and additions and alterations (-17,1%). However, these decreases were partially counteracted by an increase in the seasonally adjusted real value of residential buildings completed (+9,6%) during the above-mentioned period.

Key findings regarding buildings completed for the month ended February 2002

Total real value of buildings completed decreases

The total real value of buildings completed (at constant 1995 prices) during the first two months of 2002 decreased by 23,0% (-R357,7 million) to R1 200,6 million compared with the first two months of 2001. Large decreases in the real value of buildings completed were reported for 'other' residential buildings (- R243,4 million, mainly due to the completion of a hotel and casino to the real value of R192,6 million as reported by Southern Metropolitan Local Council of Greater Johannesburg during January 2001), non-residential buildings (-R208,3 million, mainly due to real decreases reported for office and banking space (-R97,0 million) and industrial and warehouse space completed (-R84,5 million)) and additions and alterations (-R78,7 million). However, large increases in the real value of buildings completed were reported for flats and townhouses (+R126,0 million, mainly due to increases reported by the selected urban area of Pretoria (+R45,7 million), Witwatersrand (+R35,4 million) and Cape Town (+R28,0 million)) and dwelling-houses (+R46,7 million, mainly due to increase reported by the selected urban areas of Cape Town (+R30,6 million)).

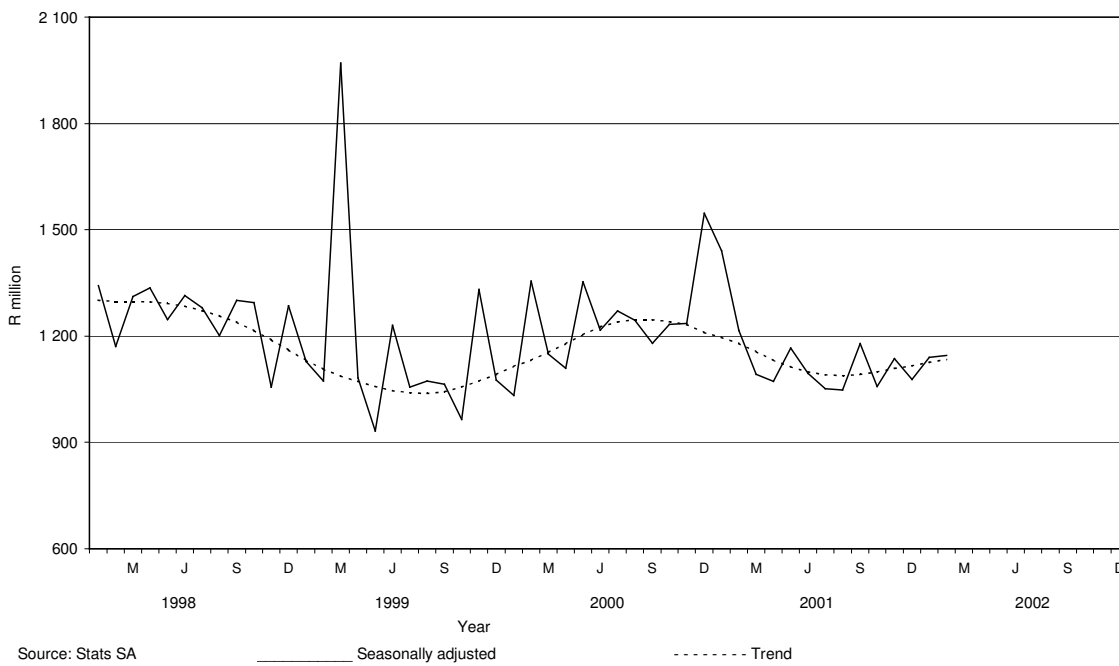
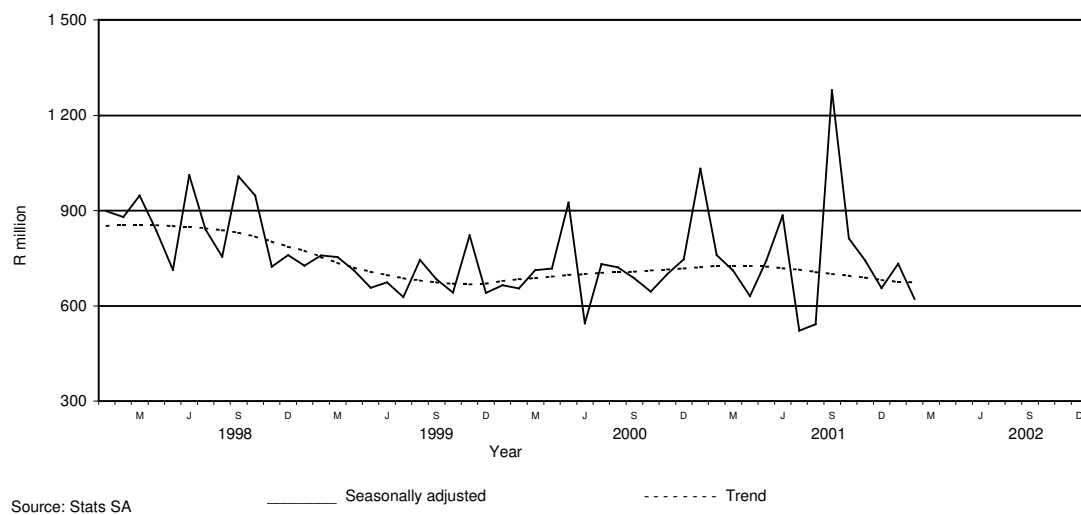
Seven of the nine provinces reported decreases in the total real value of buildings completed

The largest provincial contributor to the decrease of 23,0% (-R357,7 million) in the total real value of buildings completed during the first two months of 2002 compared with the first two months of 2001 was Gauteng (-10,8 percentage points or R167,5 million), followed by Eastern Cape (-3,8 percentage points or R59,7 million) and KwaZulu-Natal (-3,6 percentage points or R55,3 million) and Western Cape (-2,5 percentage points or R38,6 million) during the above-mentioned period (cf. table B). Large real decreases in Gauteng were reported for 'other' residential buildings (-R194,2 million, mainly due to the completion of a hotel and casino to the real value of R192,6 million during January 2001) and non-residential buildings (-R74,4 million, mainly due to decreases reported by Witwatersrand (-R75,1 million)).

Table B - Contribution of provinces to the total real value of buildings completed

| Province | Percentage contribution to the total real value of buildings completed during January 2001 to February 2001 | Percentage change between January 2001 to February 2001 and January 2002 to February 2002 | Contribution (percentage points) ^{1/} to the percentage change in the real value of buildings completed between January 2001 to February 2001 and January 2002 to February 2002 | Difference in total real value of buildings completed between January 2001 to February 2001 and January 2002 to February 2002 R million |
|-------------------|---|---|--|--|
| Gauteng | 40,3 | - 26,7 | - 10,8 | - 167,5 |
| Eastern Cape | 7,2 | - 53,1 | - 3,8 | - 59,7 |
| KwaZulu-Natal | 14,2 | - 25,0 | - 3,6 | - 55,3 |
| Western Cape | 28,2 | - 8,8 | - 2,5 | - 38,6 |
| Northern Cape | 1,6 | - 71,9 | - 1,2 | - 17,5 |
| Mpumalanga | 2,5 | - 44,9 | - 1,1 | - 17,6 |
| Northern Province | 1,2 | - 48,0 | - 0,5 | - 8,9 |
| Free State | 2,4 | + 1,5 | + 0,0 | + 0,6 |
| North West | 2,4 | + 18,7 | + 0,5 | + 6,8 |
| Total | 100,0 | - 23,0 | - 23,0 | - 357,7 |

1/ The contribution (percentage points) is calculated by multiplying the percentage change of each province between January 2001 to February 2001 and January 2002 to February 2002 (cf. column 3) with the percentage contribution of the corresponding province to the total real value of buildings completed during January 2001 to February 2001 (cf. column 2) divided by 100.

Figure 1 – Total real value of building plans passed**Figure 2 – Total real value of buildings completed**

pp
PJ Lehohla
 Statistician-General: Statistics South Africa

Contents

Page

| | | |
|-------------------------------|---|----|
| Notes | | 7 |
| Tables | | |
| Table 1 | Actual values and percentage change of building plans passed at current prices according to type of building | 8 |
| Table 2 | Seasonally adjusted values and percentage change of building plans passed at current prices according to type of building | 9 |
| Table 3 | Actual values and percentage change of building plans passed at constant 1995 prices according to type of building | 10 |
| Table 4 | Seasonally adjusted values and percentage change of building plans passed at constant 1995 prices according to type of building | 11 |
| Table 5 | Actual values and percentage change of buildings completed at current prices according to type of building | 12 |
| Table 6 | Seasonally adjusted values and percentage change of buildings completed at current prices according to type of building | 13 |
| Table 7 | Actual values and percentage change of buildings completed at constant 1995 prices according to type of building | 14 |
| Table 8 | Seasonally adjusted values and percentage change of buildings completed at constant 1995 prices according to type of building | 15 |
| Table 9 | Building plans passed according to type of building: Total RSA | 16 |
| Table 10 | Building plans passed according to type of building and province: Western Cape | 17 |
| Table 11 | Building plans passed according to type of building and province: Eastern Cape | 18 |
| Table 12 | Building plans passed according to type of building and province: Northern Cape | 19 |
| Table 13 | Building plans passed according to type of building and province: Free State | 20 |
| Table 14 | Building plans passed according to type of building and province: KwaZulu-Natal | 21 |
| Table 15 | Building plans passed according to type of building and province: North West | 22 |
| Table 16 | Building plans passed according to type of building and province: Gauteng | 23 |
| Table 17 | Building plans passed according to type of building and province: Mpumalanga | 24 |
| Table 18 | Building plans passed according to type of building and province: Northern Province | 25 |
| Table 19 | Buildings completed according to type of building: Total RSA | 26 |
| Table 20 | Buildings completed according to type of building and province: Western Cape | 27 |
| Table 21 | Buildings completed according to type of building and province: Eastern Cape | 28 |
| Table 22 | Buildings completed according to type of building and province: Northern Cape | 29 |
| Table 23 | Buildings completed according to type of building and province: Free State | 30 |
| Table 24 | Buildings completed according to type of building and province: KwaZulu-Natal | 31 |
| Table 25 | Buildings completed according to type of building and province: North West | 32 |
| Table 26 | Buildings completed according to type of building and province: Gauteng | 33 |
| Table 27 | Buildings completed according to type of building and province: Mpumalanga | 34 |
| Table 28 | Buildings completed according to type of building and province: Northern Province | 35 |
| Table 29 | Building plans passed according to type of building and selected urban area: Cape Town | 36 |
| Table 30 | Building plans passed according to type of building and selected urban area: Port Elizabeth | 37 |
| Table 31 | Building plans passed according to type of building and selected urban area: Durban | 38 |
| Table 32 | Building plans passed according to type of building and selected urban area: Witwatersrand | 39 |
| Table 33 | Building plans passed according to type of building and selected urban area: Pretoria | 40 |
| Table 34 | Building plans passed according to type of building and selected urban area: Bloemfontein | 41 |
| Table 35 | Buildings completed according to type of building and selected urban area: Cape Town | 42 |
| Table 36 | Buildings completed according to type of building and selected urban area: Port Elizabeth | 43 |
| Table 37 | Buildings completed according to type of building and selected urban area: Durban | 44 |
| Table 38 | Buildings completed according to type of building and selected urban area: Witwatersrand | 45 |
| Table 39 | Buildings completed according to type of building and selected urban area: Pretoria | 46 |
| Table 40 | Buildings completed according to type of building and selected urban area: Bloemfontein | 47 |
| Additional information | | |
| | Explanatory notes | 48 |
| | Technical notes | 50 |
| | Local government institutions covered in the sample survey | 51 |
| | Glossary | 54 |
| For more information | | 55 |

Notes

| Forthcoming issues | Issue | Expected release date |
|------------------------------|--|------------------------------|
| | March 2002 | 15 May 2002 |
| | April 2002 | 19 June 2002 |
| | May 2002 | 17 July 2002 |
| | June 2002 | 14 August 2002 |
| | July 2002 | 18 September 2002 |
| | August 2002 | 16 October 2002 |
| | September 2002 | 20 November 2002 |
| | October 2002 | 18 December 2002 |
| | November 2002 | 15 January 2003 |
| | December 2002 | 19 February 2003 |
| Purpose of the survey | <p>The Building Statistics Survey is a countrywide survey covering a sample of local government institutions in South Africa. The information received is used to estimate key economic statistics used by the private and public sectors. The information is also used to compile estimates of the Gross Domestic Product (GDP). These statistics are also used by government to monitor the Reconstruction and Development Program (RDP) in South Africa.</p> | |
| New questionnaire | <p>In order to lessen the respondent burden and improve reliability, Stats SA has overhauled and redesigned its Building Statistics Survey questionnaire. This resulted in the change of some data items on the old questionnaire. As from November 1999 information regarding dwelling-houses was collected according to size of dwelling-house.</p> <p>The Building Statistics Survey questionnaire collects the numbers, square metres and value of building plans passed and buildings completed for the private sector regarding –</p> <ul style="list-style-type: none"> • residential buildings; • non-residential buildings; and • additions and alterations. | |

Table 1 - Actual values and percentage change of building plans passed at current prices according to type of building

| Year ^{1/} and month ^{2/} | Residential buildings | | Non-residential buildings | | Additions and alterations | | Total | |
|--|-----------------------|----------------------|------------------------------|----------------------|------------------------------|----------------------|-------------------|----------------------|
| | R'000 | Percentage change | R'000 | Percentage change | R'000 | Percentage change | R'000 | Percentage change |
| 2000 Jan | 490 776 | - 11,3 | 163 926 | - 34,0 | 365 596 | + 26,2 | 1 020 298 | - 4,5 |
| Feb | 784 023 | + 48,3 | 521 389 | + 27,5 | 399 280 | + 8,3 | 1 704 692 | + 33,3 |
| Mar | 747 421 | + 12,0 | 359 267 | - 76,3 | 515 668 | + 3,8 | 1 622 356 | - 37,6 |
| Apr | 627 642 | + 18,3 | 271 151 | - 30,9 | 382 300 | + 10,6 | 1 281 093 | + 3,7 |
| May | 874 847 | + 65,8 | 573 853 | + 98,7 | 473 062 | + 11,3 | 1 921 762 | + 59,5 |
| Jun | 853 154 | + 1,8 | 336 324 | - 23,6 | 532 278 | + 25,2 | 1 721 756 | + 3,7 |
| Jul | 908 061 | + 42,5 | 484 669 | - 0,6 | 549 932 | + 23,6 | 1 942 662 | + 27,9 |
| Aug | 929 836 | + 31,1 | 353 488 | - 14,8 | 492 627 | + 10,9 | 1 775 951 | + 23,8 |
| Sep | 826 851 | + 37,8 | 354 456 | + 8,7 | 465 836 | - 9,8 | 1 647 143 | + 18,5 |
| Oct | 916 410 | + 37,9 | 492 884 | + 39,8 | 539 561 | + 15,3 | 1 948 855 | + 36,2 |
| Nov | 914 346 | + 28,6 | 493 166 | - 34,4 | 503 659 | - 12,5 | 1 911 171 | - 2,0 |
| Dec | 606 148 | + 22,7 | 704 410 | + 191,1 | 317 835 | - 6,1 | 1 628 393 | + 57,5 |
| Total | 9 479 515 | + 28,4 | 5 108 983 | - 13,5 | 5 537 634 | + 7,9 | 20 126 132 | + 13,1 |
| 2001 Jan | 720 680 | + 46,8 | 475 089 | + 189,8 | 352 501 | - 3,6 | 1 548 270 | + 51,7 |
| Feb | 817 853 | + 4,3 | 299 417 | - 42,6 | 473 166 | + 18,5 | 1 590 436 | - 6,7 |
| Mar | 923 148 | + 23,5 | 305 034 | - 15,1 | 438 069 | - 15,0 | 1 666 251 | + 2,7 |
| Apr | 732 653 | + 16,7 | 207 153 | - 23,6 | 374 876 | - 1,9 | 1 314 682 | + 2,6 |
| May | 998 520 | + 14,1 | 289 330 | - 49,6 | 499 431 | + 5,6 | 1 787 281 | - 7,0 |
| Jun | 902 916 | + 5,8 | 314 602 | - 6,5 | 447 975 | - 15,8 | 1 665 493 | - 3,3 |
| Jul | 908 280 | + 0,0 | 383 440 | - 20,9 | 428 902 | - 22,0 | 1 720 622 | - 11,4 |
| Aug* | 837 251 | - 10,0 | 246 711 | - 30,2 | 483 666 | - 1,8 | 1 567 628 | - 11,7 |
| Sep | 959 583 | + 16,1 | 303 367 | - 14,4 | 524 349 | + 12,6 | 1 787 299 | + 8,5 |
| Oct | 988 949 | + 7,9 | 185 808 | - 62,3 | 542 974 | + 0,6 | 1 717 731 | - 11,9 |
| Nov | 974 051 | + 6,5 | 320 034 | - 35,1 | 596 263 | + 18,4 | 1 890 348 | - 1,1 |
| Dec | 648 663 | + 7,0 | 138 554 | - 80,3 | 358 144 | + 12,7 | 1 145 361 | - 29,7 |
| Total | 10 412 547 | + 9,8 | 3 468 539 | - 32,1 | 5 520 316 | - 0,3 | 19 401 402 | - 3,6 |
| 2002 Jan | 774 464 | + 7,5 | 167 897 | - 64,7 | 396 857 | + 12,6 | 1 339 218 | - 13,5 |
| Feb | 978 203 | + 19,6 | 244 256 | - 18,4 | 453 647 | - 4,1 | 1 676 106 | + 5,4 |

^{1/} The annual percentage change is the change in the actual values of building plans passed of the relevant year compared with the actual values of building plans passed of the previous year expressed as a percentage.

^{2/} The monthly percentage change is the change in the actual values of building plans passed of the relevant month compared with the actual values of building plans passed of the same month in the previous year expressed as a percentage.

Table 2 - Seasonally adjusted values and percentage change of building plans passed at current prices according to type of building

| Year and month ^{1/} | Residential buildings | | Non-residential buildings | | Additions and alterations | | Total | |
|------------------------------|-----------------------|-------------------|---------------------------|-------------------|---------------------------|-------------------|-----------|-------------------|
| | R'000 | Percentage change | R'000 | Percentage change | R'000 | Percentage change | R'000 | Percentage change |
| 2000 Jan | 632 969 | - 9,7 | 200 943 | - 33,6 | 482 987 | + 15,0 | 1 316 900 | - 7,5 |
| Feb | 788 477 | + 24,6 | 548 106 | + 172,8 | 439 935 | - 8,9 | 1 776 518 | + 34,9 |
| Mar | 687 404 | - 12,8 | 358 643 | - 34,6 | 468 266 | + 6,4 | 1 514 312 | - 14,8 |
| Apr | 698 924 | + 1,7 | 322 511 | - 10,1 | 447 040 | - 4,5 | 1 468 475 | - 3,0 |
| May | 809 730 | + 15,9 | 523 929 | + 62,5 | 456 221 | + 2,1 | 1 789 881 | + 21,9 |
| Jun | 807 885 | - 0,2 | 313 847 | - 40,1 | 513 318 | + 12,5 | 1 635 050 | - 8,7 |
| Jul | 824 170 | + 2,0 | 397 472 | + 26,6 | 501 702 | - 2,3 | 1 723 344 | + 5,4 |
| Aug | 886 962 | + 7,6 | 365 088 | - 8,1 | 467 060 | - 6,9 | 1 719 110 | - 0,2 |
| Sep | 799 424 | - 9,9 | 352 906 | - 3,3 | 425 908 | - 8,8 | 1 578 238 | - 8,2 |
| Oct | 804 362 | + 0,6 | 474 035 | + 34,3 | 475 472 | + 11,6 | 1 753 869 | + 11,1 |
| Nov | 853 614 | + 6,1 | 394 947 | - 16,7 | 425 155 | - 10,6 | 1 673 716 | - 4,6 |
| Dec | 856 020 | + 0,3 | 959 028 | + 142,8 | 430 942 | + 1,4 | 2 245 990 | + 34,2 |
| 2001 Jan | 920 124 | + 7,5 | 581 881 | - 39,3 | 455 219 | + 5,6 | 1 957 224 | - 12,9 |
| Feb | 821 531 | - 10,7 | 313 238 | - 46,2 | 527 523 | + 15,9 | 1 662 292 | - 15,1 |
| Mar | 847 574 | + 3,2 | 302 644 | - 3,4 | 396 411 | - 24,9 | 1 546 629 | - 7,0 |
| Apr | 827 867 | - 2,3 | 255 694 | - 15,5 | 442 477 | + 11,6 | 1 526 038 | - 1,3 |
| May | 917 075 | + 10,8 | 258 986 | + 1,3 | 480 344 | + 8,6 | 1 656 405 | + 8,5 |
| Jun | 851 074 | - 7,2 | 296 673 | + 14,6 | 430 734 | - 10,3 | 1 578 481 | - 4,7 |
| Jul | 825 159 | - 3,0 | 305 062 | + 2,8 | 393 813 | - 8,6 | 1 524 033 | - 3,4 |
| Aug | 796 021 | - 3,5 | 253 983 | - 16,7 | 460 289 | + 16,9 | 1 510 292 | - 0,9 |
| Sep | 929 126 | + 16,7 | 303 235 | + 19,4 | 477 929 | + 3,8 | 1 710 290 | + 13,2 |
| Oct | 879 998 | - 5,3 | 182 882 | - 39,7 | 479 863 | + 0,4 | 1 542 744 | - 9,8 |
| Nov | 910 869 | + 3,5 | 255 680 | + 39,8 | 500 260 | + 4,3 | 1 666 809 | + 8,0 |
| Dec | 910 882 | + 0,0 | 190 919 | - 25,3 | 492 523 | - 1,5 | 1 594 324 | - 4,3 |
| 2002 Jan | 983 197 | + 7,9 | 204 979 | + 7,4 | 504 077 | + 2,3 | 1 692 253 | + 6,1 |
| Feb | 975 421 | - 0,8 | 252 747 | + 23,3 | 507 949 | + 0,8 | 1 736 117 | + 2,6 |

^{1/} The percentage change is the change in the seasonally adjusted values of building plans passed of the relevant month compared with the seasonally adjusted values of building plans passed of the previous month expressed as a percentage.

Table 3 - Actual values and percentage change of building plans passed at constant 1995 prices according to type of building

| Year ^{1/} and month ^{2/} | Residential buildings | | Non-residential buildings | | Additions and alterations | | Total | |
|--|-----------------------|----------------------|------------------------------|----------------------|------------------------------|----------------------|-------------------|----------------------|
| | R'000 | Percentage change | R'000 | Percentage change | R'000 | Percentage change | R'000 | Percentage change |
| 2000 Jan | 378 102 | - 15,0 | 126 291 | - 34,0 | 281 661 | + 26,2 | 786 054 | - 8,5 |
| Feb | 602 168 | + 43,1 | 400 452 | + 27,5 | 306 667 | + 8,3 | 1 309 287 | + 28,6 |
| Mar | 570 115 | + 7,5 | 274 040 | - 76,3 | 393 339 | + 3,8 | 1 237 494 | - 40,1 |
| Apr | 473 692 | + 12,9 | 204 642 | - 30,9 | 288 528 | + 10,6 | 966 862 | - 1,0 |
| May | 655 807 | + 57,4 | 430 175 | + 98,7 | 354 619 | + 11,3 | 1 440 601 | + 51,4 |
| Jun | 637 634 | - 3,3 | 251 363 | - 23,6 | 397 816 | + 25,2 | 1 286 813 | - 1,5 |
| Jul | 672 638 | + 34,5 | 359 014 | - 0,6 | 407 357 | + 23,6 | 1 439 009 | + 20,8 |
| Aug | 682 699 | + 38,0 | 259 536 | - 14,8 | 361 694 | + 10,9 | 1 303 929 | + 15,9 |
| Sep | 606 196 | + 29,1 | 259 865 | + 8,7 | 341 522 | - 9,8 | 1 207 583 | + 11,1 |
| Oct | 668 425 | + 28,7 | 359 507 | + 39,8 | 393 553 | + 15,3 | 1 421 485 | + 27,2 |
| Nov | 664 013 | + 19,9 | 358 145 | - 34,4 | 365 765 | - 12,5 | 1 387 923 | - 8,6 |
| Dec | 438 602 | + 14,2 | 509 703 | + 191,1 | 229 982 | - 6,1 | 1 178 287 | + 46,6 |
| Total | 7 050 091 | + 28,4 | 3 792 733 | - 13,5 | 4 122 503 | + 7,9 | 14 965 327 | + 6,7 |
| 2001 Jan | 515 877 | + 36,4 | 340 078 | + 169,3 | 252 327 | - 10,4 | 1 108 282 | + 41,0 |
| Feb | 582 516 | - 3,3 | 213 260 | - 46,7 | 337 013 | + 9,9 | 1 132 789 | - 13,5 |
| Mar | 653 325 | + 14,6 | 215 877 | - 21,2 | 310 028 | - 21,2 | 1 179 230 | - 4,7 |
| Apr | 515 590 | + 8,8 | 145 780 | - 28,8 | 263 811 | - 8,6 | 925 181 | - 4,3 |
| May | 698 754 | + 6,5 | 202 470 | - 52,9 | 349 497 | - 1,4 | 1 250 721 | - 13,2 |
| Jun | 630 528 | - 1,1 | 219 694 | - 12,6 | 312 832 | - 21,4 | 1 163 054 | - 9,6 |
| Jul | 630 750 | - 6,2 | 266 278 | - 25,8 | 297 849 | - 26,9 | 1 194 877 | - 17,0 |
| Aug* | 579 814 | - 15,1 | 170 852 | - 34,2 | 334 949 | - 7,4 | 1 085 615 | - 16,7 |
| Sep | 663 153 | + 9,4 | 209 652 | - 19,3 | 362 370 | + 6,1 | 1 235 175 | + 2,3 |
| Oct | 680 157 | + 1,8 | 127 791 | - 64,5 | 373 435 | - 5,1 | 1 181 383 | - 16,9 |
| Nov | 666 702 | + 0,4 | 219 051 | - 38,8 | 408 120 | + 11,6 | 1 293 873 | - 6,8 |
| Dec | 441 869 | + 0,7 | 94 383 | - 81,5 | 243 967 | + 6,1 | 780 219 | - 33,8 |
| Total | 7 259 035 | + 3,0 | 2 425 166 | - 36,1 | 3 846 198 | - 6,7 | 13 530 399 | - 9,6 |
| 2002 Jan | 514 936 | - 0,2 | 111 634 | - 67,2 | 263 868 | + 4,6 | 890 438 | - 19,7 |
| Feb | 638 931 | + 9,7 | 159 540 | - 25,2 | 296 308 | - 12,1 | 1 094 779 | - 3,4 |

^{1/} The annual percentage change is the change in the actual values of building plans passed of the relevant year compared with the actual values of building plans passed of the previous year expressed as a percentage.

^{2/} The monthly percentage change is the change in the actual values of building plans passed of the relevant month compared with the actual values of building plans passed of the same month in the previous year expressed as a percentage.

Table 4 - Seasonally adjusted values and percentage change of building plans passed at constant 1995 prices according to type of building

| Year and month ^{1/} | Residential buildings | | Non-residential buildings | | Additions and alterations | | Total | |
|------------------------------|-----------------------|-------------------|---------------------------|-------------------|---------------------------|-------------------|-----------|-------------------|
| | R'000 | Percentage change | R'000 | Percentage change | R'000 | Percentage change | R'000 | Percentage change |
| 2000 Jan | 487 586 | - 10,1 | 167 097 | - 28,0 | 372 443 | + 22,5 | 1 027 126 | - 6,6 |
| Feb | 607 730 | + 24,6 | 423 024 | + 153,2 | 339 602 | - 8,8 | 1 370 355 | + 33,4 |
| Mar | 523 151 | - 13,9 | 271 838 | - 35,7 | 357 148 | + 5,2 | 1 152 137 | - 15,9 |
| Apr | 527 680 | + 0,9 | 242 116 | - 10,9 | 337 798 | - 5,4 | 1 107 593 | - 3,9 |
| May | 608 831 | + 15,4 | 390 466 | + 61,3 | 342 483 | + 1,4 | 1 341 780 | + 21,1 |
| Jun | 602 637 | - 1,0 | 232 918 | - 40,3 | 383 548 | + 12,0 | 1 219 103 | - 9,1 |
| Jul | 611 296 | + 1,4 | 292 857 | + 25,7 | 371 246 | - 3,2 | 1 275 398 | + 4,6 |
| Aug | 652 781 | + 6,8 | 266 681 | - 8,9 | 343 649 | - 7,4 | 1 263 110 | - 1,0 |
| Sep | 586 444 | - 10,2 | 256 928 | - 3,7 | 312 172 | - 9,2 | 1 155 544 | - 8,5 |
| Oct | 586 453 | + 0,0 | 343 380 | + 33,6 | 346 381 | + 11,0 | 1 276 214 | + 10,4 |
| Nov | 618 111 | + 5,4 | 284 909 | - 17,0 | 307 590 | - 11,2 | 1 210 610 | - 5,1 |
| Dec | 615 365 | - 0,4 | 684 290 | + 140,2 | 310 081 | + 0,8 | 1 609 736 | + 33,0 |
| 2001 Jan | 659 032 | + 7,1 | 453 167 | - 33,8 | 326 299 | + 5,2 | 1 438 498 | - 10,6 |
| Feb | 587 774 | - 10,8 | 225 071 | - 50,3 | 378 395 | + 16,0 | 1 191 240 | - 17,2 |
| Mar | 598 432 | + 1,8 | 212 572 | - 5,6 | 280 578 | - 25,9 | 1 091 582 | - 8,4 |
| Apr | 582 601 | - 2,6 | 178 750 | - 15,9 | 311 847 | + 11,1 | 1 073 198 | - 1,7 |
| May | 643 911 | + 10,5 | 179 992 | + 0,7 | 336 597 | + 7,9 | 1 160 500 | + 8,1 |
| Jun | 593 186 | - 7,9 | 205 522 | + 14,2 | 300 703 | - 10,7 | 1 099 412 | - 5,3 |
| Jul | 573 793 | - 3,3 | 210 573 | + 2,5 | 273 345 | - 9,1 | 1 057 710 | - 3,8 |
| Aug | 552 599 | - 3,7 | 174 856 | - 17,0 | 319 314 | + 16,8 | 1 046 769 | - 1,0 |
| Sep | 642 454 | + 16,3 | 208 072 | + 19,0 | 330 053 | + 3,4 | 1 180 580 | + 12,8 |
| Oct | 604 807 | - 5,9 | 124 800 | - 40,0 | 329 425 | - 0,2 | 1 059 033 | - 10,3 |
| Nov | 621 513 | + 2,8 | 173 756 | + 39,2 | 341 029 | + 3,5 | 1 136 299 | + 7,3 |
| Dec | 616 293 | - 0,8 | 128 108 | - 26,3 | 333 529 | - 2,2 | 1 077 930 | - 5,1 |
| 2002 Jan | 654 250 | + 6,2 | 149 165 | + 16,4 | 335 784 | + 0,7 | 1 139 199 | + 5,7 |
| Feb | 640 209 | - 2,1 | 166 744 | + 11,8 | 334 440 | - 0,4 | 1 141 394 | + 0,2 |

^{1/} The percentage change is the change in the seasonally adjusted values of building plans passed of the relevant month compared with the seasonally adjusted values of building plans passed of the previous month expressed as a percentage.

Table 5 - Actual values and percentage change of buildings completed at current prices according to type of building

| Year ^{1/} and month ^{2/} | Residential buildings | | Non-residential buildings | | Additions and alterations | | Total | |
|--|-----------------------|----------------------|------------------------------|----------------------|------------------------------|----------------------|-------------------|----------------------|
| | R'000 | Percentage change | R'000 | Percentage change | R'000 | Percentage change | R'000 | Percentage change |
| 2000 Jan | 299 212 | - 4,7 | 195 988 | - 0,6 | 183 959 | - 4,7 | 679 159 | - 3,5 |
| Feb | 353 141 | - 11,0 | 205 549 | - 4,3 | 221 978 | - 9,3 | 780 668 | - 8,8 |
| Mar | 419 416 | - 3,0 | 212 379 | - 13,7 | 268 745 | + 16,5 | 900 540 | - 1,0 |
| Apr | 364 713 | - 3,5 | 224 048 | + 23,4 | 188 808 | - 5,8 | 777 569 | + 2,3 |
| May | 473 124 | + 21,0 | 390 533 | + 99,6 | 293 343 | + 64,1 | 1 157 000 | + 51,2 |
| Jun | 362 558 | - 13,7 | 174 728 | - 16,2 | 170 986 | + 11,2 | 708 272 | - 9,5 |
| Jul | 407 406 | - 15,3 | 472 668 | + 79,0 | 220 828 | - 18,9 | 1 100 902 | + 8,2 |
| Aug | 449 691 | - 2,4 | 285 994 | + 39,6 | 211 008 | - 17,5 | 946 693 | + 2,7 |
| Sep | 510 979 | + 3,6 | 270 539 | + 37,2 | 199 622 | - 10,6 | 981 140 | + 7,4 |
| Oct | 462 270 | + 10,2 | 195 491 | - 4,0 | 238 257 | + 3,8 | 896 018 | + 5,1 |
| Nov | 555 802 | + 20,5 | 186 442 | - 54,5 | 255 900 | + 21,7 | 998 144 | - 7,7 |
| Dec | 383 114 | + 9,6 | 316 801 | + 74,5 | 149 622 | + 2,2 | 849 537 | + 25,4 |
| Total | 5 041 426 | + 0,9 | 3 131 160 | + 15,7 | 2 603 056 | + 2,5 | 10 775 642 | + 5,2 |
| 2001 Jan | 643 047 | + 114,9 | 238 434 | + 21,7 | 200 985 | + 9,3 | 1 082 466 | + 59,4 |
| Feb | 428 803 | + 21,4 | 285 620 | + 39,0 | 243 214 | + 9,6 | 957 637 | + 22,7 |
| Mar | 532 191 | + 26,9 | 162 697 | - 23,4 | 287 149 | + 6,8 | 982 037 | + 9,0 |
| Apr | 361 022 | - 1,0 | 169 123 | - 24,5 | 184 423 | - 2,3 | 714 568 | - 8,1 |
| May | 437 971 | - 7,4 | 300 533 | - 23,0 | 295 708 | + 0,8 | 1 034 212 | - 10,6 |
| Jun | 553 850 | + 52,8 | 368 352 | + 110,8 | 277 374 | + 62,2 | 1 199 576 | + 69,4 |
| Jul* | 417 230 | + 2,4 | 151 692 | - 67,9 | 232 217 | + 5,2 | 801 139 | - 27,2 |
| Aug | 430 279 | - 4,3 | 117 944 | - 58,8 | 214 732 | + 1,8 | 762 955 | - 19,4 |
| Sep | 456 622 | - 10,6 | 1 417 979 | + 424,1 | 168 410 | - 15,6 | 2 043 011 | + 108,2 |
| Oct | 664 515 | + 43,8 | 280 091 | + 43,3 | 237 138 | - 0,5 | 1 181 744 | + 31,9 |
| Nov | 619 314 | + 11,4 | 198 571 | + 6,5 | 285 877 | + 11,7 | 1 103 762 | + 10,6 |
| Dec | 466 614 | + 21,8 | 165 499 | - 47,8 | 121 134 | - 19,0 | 753 247 | - 11,3 |
| Total | 6 011 458 | + 19,2 | 3 856 535 | + 23,2 | 2 748 361 | + 5,6 | 12 616 354 | + 17,1 |
| 2002 Jan | 571 758 | - 11,1 | 136 789 | - 42,6 | 172 594 | - 14,1 | 881 141 | - 18,6 |
| Feb | 477 617 | + 11,4 | 138 037 | - 51,7 | 195 702 | - 19,5 | 811 356 | - 15,3 |

^{1/} The annual percentage change is the change in the actual values of buildings completed of the relevant year compared with the actual values of buildings completed of the previous year expressed as a percentage.

^{2/} The monthly percentage change is the change in the actual values of buildings completed of the relevant month compared with the actual values of buildings completed of the same month in the previous year expressed as a percentage.

Table 6 - Seasonally adjusted values and percentage change of buildings completed at current prices according to type of building

| Year and month ^{1/} | Residential buildings | | Non-residential buildings | | Additions and alterations | | Total | |
|------------------------------|-----------------------|-------------------|---------------------------|-------------------|---------------------------|-------------------|-----------|-------------------|
| | R'000 | Percentage change | R'000 | Percentage change | R'000 | Percentage change | R'000 | Percentage change |
| 2000 Jan | 363 682 | - 9,2 | 238 467 | + 21,9 | 204 764 | - 7,5 | 806 913 | - 1,3 |
| Feb | 397 458 | + 9,3 | 227 858 | - 4,4 | 202 756 | - 1,0 | 828 072 | + 2,6 |
| Mar | 395 476 | - 0,5 | 262 086 | + 15,0 | 225 087 | + 11,0 | 882 648 | + 6,6 |
| Apr | 414 335 | + 4,8 | 277 952 | + 6,1 | 211 413 | - 6,1 | 903 700 | + 2,4 |
| May | 462 090 | + 11,5 | 377 254 | + 35,7 | 279 275 | + 32,1 | 1 118 619 | + 23,8 |
| Jun | 347 760 | - 24,7 | 171 750 | - 54,5 | 183 923 | - 34,1 | 703 433 | - 37,1 |
| Jul | 389 137 | + 11,9 | 348 297 | + 102,8 | 195 280 | + 6,2 | 932 714 | + 32,6 |
| Aug | 447 913 | + 15,1 | 263 486 | - 24,4 | 209 148 | + 7,1 | 920 547 | - 1,3 |
| Sep | 461 909 | + 3,1 | 215 237 | - 18,3 | 202 881 | - 3,0 | 880 027 | - 4,4 |
| Oct | 439 033 | - 5,0 | 174 032 | - 19,1 | 219 342 | + 8,1 | 832 406 | - 5,4 |
| Nov | 470 789 | + 7,2 | 207 295 | + 19,1 | 239 200 | + 9,1 | 917 284 | + 10,2 |
| Dec | 439 021 | - 6,7 | 361 983 | + 74,6 | 225 948 | - 5,5 | 1 026 953 | + 12,0 |
| 2001 Jan | 759 410 | + 73,0 | 296 041 | - 18,2 | 223 706 | - 1,0 | 1 279 158 | + 24,6 |
| Feb | 482 795 | - 36,4 | 319 646 | + 8,0 | 224 484 | + 0,3 | 1 026 926 | - 19,7 |
| Mar | 495 676 | + 2,7 | 203 956 | - 36,2 | 237 333 | + 5,7 | 936 965 | - 8,8 |
| Apr | 413 759 | - 16,5 | 217 213 | + 6,5 | 208 497 | - 12,2 | 839 470 | - 10,4 |
| May | 432 383 | + 4,5 | 278 512 | + 28,2 | 279 694 | + 34,1 | 990 589 | + 18,0 |
| Jun | 530 420 | + 22,7 | 358 051 | + 28,6 | 301 666 | + 7,9 | 1 190 137 | + 20,1 |
| Jul | 402 474 | - 24,1 | 106 847 | - 70,2 | 205 964 | - 31,7 | 715 285 | - 39,9 |
| Aug | 428 965 | + 6,6 | 106 341 | - 0,5 | 210 910 | + 2,4 | 746 216 | + 4,3 |
| Sep | 408 576 | - 4,8 | 1 119 786 | + 953,0 | 171 863 | - 18,5 | 1 700 225 | + 127,8 |
| Oct | 630 760 | + 54,4 | 260 296 | - 76,8 | 216 802 | + 26,1 | 1 107 858 | - 34,8 |
| Nov | 527 823 | - 16,3 | 226 901 | - 12,8 | 268 338 | + 23,8 | 1 023 062 | - 7,7 |
| Dec | 537 533 | + 1,8 | 195 512 | - 13,8 | 182 371 | - 32,0 | 915 416 | - 10,5 |
| 2002 Jan | 666 817 | + 24,1 | 168 756 | - 13,7 | 192 606 | + 5,6 | 1 028 178 | + 12,3 |
| Feb | 537 008 | - 19,5 | 155 848 | - 7,6 | 181 423 | - 5,8 | 874 278 | - 15,0 |

^{1/} The percentage change is the change in the seasonally adjusted values of buildings completed of the relevant month compared with the seasonally adjusted values of buildings completed of the previous month expressed as a percentage.

Table 7 - Actual values and percentage change of buildings completed at constant 1995 prices according to type of building

| Year ^{1/} and month ^{2/} | Residential buildings | | Non-residential buildings | | Additions and alterations | | Total | |
|--|-----------------------|----------------------|------------------------------|----------------------|------------------------------|----------------------|------------------|----------------------|
| | R'000 | Percentage change | R'000 | Percentage change | R'000 | Percentage change | R'000 | Percentage change |
| 2000 Jan | 236 149 | - 10,1 | 162 916 | - 5,6 | 147 996 | - 10,8 | 547 061 | - 9,0 |
| Feb | 277 982 | - 28,3 | 168 898 | - 13,1 | 176 734 | - 29,2 | 623 614 | - 24,6 |
| Mar | 329 523 | - 33,7 | 173 371 | - 23,9 | 213 629 | - 24,7 | 716 523 | - 28,7 |
| Apr | 285 795 | - 24,1 | 181 857 | + 3,6 | 149 255 | - 12,9 | 616 907 | - 14,3 |
| May | 370 120 | - 26,2 | 315 965 | - 3,8 | 231 709 | - 1,9 | 917 794 | - 14,5 |
| Jun | 282 549 | - 31,4 | 141 251 | - 9,6 | 134 529 | + 14,5 | 558 329 | - 16,3 |
| Jul | 314 890 | - 31,4 | 380 264 | - 28,2 | 173 198 | - 34,6 | 868 352 | - 35,2 |
| Aug | 346 783 | - 39,6 | 227 702 | - 7,0 | 165 496 | - 29,6 | 739 981 | - 27,6 |
| Sep | 391 744 | - 36,1 | 215 055 | - 3,1 | 156 199 | - 18,8 | 762 998 | - 26,8 |
| Oct | 352 005 | - 40,5 | 154 538 | - 5,6 | 186 138 | - 20,5 | 692 681 | - 21,1 |
| Nov | 420 080 | - 29,4 | 147 269 | - 52,9 | 199 299 | - 13,0 | 766 648 | - 38,0 |
| Dec | 289 205 | - 35,5 | 249 253 | + 6,7 | 116 347 | + 25,1 | 654 805 | - 0,2 |
| Total | 3 896 825 | - 4,0 | 2 518 339 | + 8,4 | 2 050 529 | - 3,1 | 8 465 693 | - 0,4 |
| 2001 Jan | 487 413 | + 106,4 | 187 007 | + 14,8 | 154 842 | + 4,6 | 829 262 | + 51,6 |
| Feb | 318 240 | + 14,5 | 224 016 | + 32,6 | 186 800 | + 5,7 | 729 056 | + 16,9 |
| Mar | 394 856 | + 19,8 | 127 306 | - 26,6 | 219 031 | + 2,5 | 741 193 | + 3,4 |
| Apr | 265 613 | - 7,1 | 132 127 | - 27,3 | 139 187 | - 6,7 | 536 927 | - 13,0 |
| May | 319 179 | - 13,8 | 234 060 | - 25,9 | 221 670 | - 4,3 | 774 909 | - 15,6 |
| Jun | 403 634 | + 42,9 | 286 432 | + 102,8 | 207 305 | + 54,1 | 897 371 | + 60,7 |
| Jul* | 300 225 | - 4,7 | 116 866 | - 69,3 | 172 013 | - 0,7 | 589 104 | - 32,2 |
| Aug | 308 208 | - 11,1 | 90 587 | - 60,2 | 157 659 | - 4,7 | 556 454 | - 24,8 |
| Sep | 325 581 | - 16,9 | 1 081 601 | + 402,9 | 123 468 | - 21,0 | 1 530 650 | + 100,6 |
| Oct | 473 024 | + 34,4 | 211 389 | + 36,8 | 172 967 | - 7,1 | 857 380 | + 23,8 |
| Nov | 438 537 | + 4,4 | 148 854 | + 1,1 | 207 609 | + 4,2 | 795 000 | + 3,7 |
| Dec | 328 019 | + 13,4 | 123 691 | - 50,4 | 87 651 | - 24,7 | 539 361 | - 17,6 |
| Total | 4 362 529 | + 12,0 | 2 963 936 | + 17,7 | 2 050 202 | + 0,0 | 9 376 667 | + 10,8 |
| 2002 Jan | 401 164 | - 17,7 | 101 325 | - 45,8 | 123 546 | - 20,2 | 626 035 | - 24,5 |
| Feb | 333 806 | + 4,9 | 101 349 | - 54,8 | 139 389 | - 25,4 | 574 544 | - 21,2 |

^{1/} The annual percentage change is the change in the actual values of buildings completed of the relevant year compared with the actual values of buildings completed of the previous year expressed as a percentage.

^{2/} The monthly percentage change is the change in the actual values of buildings completed of the relevant month compared with the actual values of buildings completed of the same month in the previous year expressed as a percentage.

Table 8 - Seasonally adjusted values and percentage change of buildings completed at constant 1995 prices according to type of building

| Year and month ^{1/} | Residential buildings | | Non-residential buildings | | Additions and alterations | | Total | |
|------------------------------|-----------------------|-------------------|---------------------------|-------------------|---------------------------|-------------------|-----------|-------------------|
| | R'000 | Percentage change | R'000 | Percentage change | R'000 | Percentage change | R'000 | Percentage change |
| 2000 Jan | 287 116 | - 9,5 | 198 662 | + 20,9 | 166 324 | - 7,5 | 652 101 | - 1,4 |
| Feb | 314 023 | + 9,4 | 187 871 | - 5,4 | 163 353 | - 1,8 | 665 247 | + 2,0 |
| Mar | 311 161 | - 0,9 | 214 179 | + 14,0 | 181 023 | + 10,8 | 706 362 | + 6,2 |
| Apr | 324 482 | + 4,3 | 225 543 | + 5,3 | 169 351 | - 6,4 | 719 375 | + 1,8 |
| May | 361 368 | + 11,4 | 304 097 | + 34,8 | 223 611 | + 32,0 | 889 076 | + 23,6 |
| Jun | 268 818 | - 25,6 | 138 109 | - 54,6 | 127 145 | - 43,1 | 534 072 | - 39,9 |
| Jul | 300 451 | + 11,8 | 279 592 | + 102,4 | 155 164 | + 22,0 | 735 207 | + 37,7 |
| Aug | 345 969 | + 15,1 | 210 694 | - 24,6 | 165 415 | + 6,6 | 722 078 | - 1,8 |
| Sep | 353 817 | + 2,3 | 170 989 | - 18,8 | 161 265 | - 2,5 | 686 070 | - 5,0 |
| Oct | 335 823 | - 5,1 | 137 742 | - 19,4 | 173 204 | + 7,4 | 646 768 | - 5,7 |
| Nov | 356 181 | + 6,1 | 164 280 | + 19,3 | 188 868 | + 9,0 | 709 329 | + 9,7 |
| Dec | 331 041 | - 7,1 | 284 204 | + 73,0 | 176 930 | - 6,3 | 792 176 | + 11,7 |
| 2001 Jan | 575 968 | + 74,0 | 232 730 | - 18,1 | 174 252 | - 1,5 | 982 949 | + 24,1 |
| Feb | 359 395 | - 37,6 | 251 555 | + 8,1 | 174 649 | + 0,2 | 785 599 | - 20,1 |
| Mar | 368 277 | + 2,5 | 159 822 | - 36,5 | 183 355 | + 5,0 | 711 454 | - 9,4 |
| Apr | 304 273 | - 17,4 | 169 703 | + 6,2 | 159 680 | - 12,9 | 633 656 | - 10,9 |
| May | 315 103 | + 3,6 | 216 068 | + 27,3 | 212 869 | + 33,3 | 744 039 | + 17,4 |
| Jun | 383 258 | + 21,6 | 276 911 | + 28,2 | 194 684 | - 8,5 | 854 853 | + 14,9 |
| Jul | 289 346 | - 24,5 | 82 151 | - 70,3 | 154 871 | - 20,5 | 526 367 | - 38,4 |
| Aug | 307 702 | + 6,3 | 82 058 | - 0,1 | 156 277 | + 0,9 | 546 038 | + 3,7 |
| Sep | 291 038 | - 5,4 | 853 672 | + 940,3 | 128 307 | - 17,9 | 1 273 017 | + 133,1 |
| Oct | 451 213 | + 55,0 | 196 777 | - 76,9 | 160 128 | + 24,8 | 808 117 | - 36,5 |
| Nov | 374 127 | - 17,1 | 170 630 | - 13,3 | 197 916 | + 23,6 | 742 673 | - 8,1 |
| Dec | 377 513 | + 0,9 | 145 716 | - 14,6 | 133 015 | - 32,8 | 656 243 | - 11,6 |
| 2002 Jan | 468 124 | + 24,0 | 125 272 | - 14,0 | 139 446 | + 4,8 | 732 843 | + 11,7 |
| Feb | 376 373 | - 19,6 | 114 759 | - 8,4 | 130 930 | - 6,1 | 622 062 | - 15,1 |

^{1/} The percentage change is the change in the seasonally adjusted values of buildings completed of the relevant month compared with the seasonally adjusted values of buildings completed of the previous month expressed as a percentage.

Table 9 - Building plans passed according to type of building: Total RSA

| Type of building | February 2001 * | January 2002 | February 2002 | January 2001 to February 2001 | January 2002 to February 2002 | Percentage change between January 2001 to February 2001 and January 2002 to February 2002 |
|---|------------------|------------------|------------------|-------------------------------|-------------------------------|---|
| Residential buildings | | | | | | |
| Dwelling-houses smaller than 80 square metres | | | | | | |
| Number of dwelling-houses | 3 529 | 2 449 | 2 782 | 6 121 | 5 231 | - 14,5 |
| Total square metres | 139 046 | 88 844 | 105 465 | 238 747 | 194 309 | - 18,6 |
| Total value at current prices (R'000) | 126 491 | 101 164 | 99 938 | 240 307 | 201 102 | - 16,3 |
| Dwelling-houses equal to or larger than 80 square metres | | | | | | |
| Number of dwelling-houses | 1 939 | 1 612 | 1 853 | 3 411 | 3 465 | + 1,6 |
| Total square metres | 391 042 | 354 939 | 413 724 | 706 118 | 768 663 | + 8,9 |
| Total value at current prices (R'000) | 532 395 | 507 873 | 616 024 | 982 527 | 1 123 897 | + 14,4 |
| Flats and townhouses | | | | | | |
| Number of flats and townhouses | 984 | 761 | 1 137 | 1 541 | 1 898 | + 23,2 |
| Total square metres | 100 631 | 108 242 | 111 144 | 173 442 | 219 386 | + 26,5 |
| Total value at current prices (R'000) | 151 419 | 163 157 | 172 860 | 257 166 | 336 017 | + 30,7 |
| Other residential buildings ^{1/} | | | | | | |
| Total square metres | 5 994 | 1 313 | 16 414 | 12 577 | 17 727 | + 40,9 |
| Total value at current prices (R'000) | 7 548 | 2 270 | 89 381 | 58 533 | 91 651 | + 56,6 |
| Total value of residential buildings at current prices (R'000) | 817 853 | 774 464 | 978 203 | 1 538 533 | 1 752 667 | + 13,9 |
| Non-residential buildings | | | | | | |
| Office and banking space | | | | | | |
| Total square metres | 74 201 | 23 409 | 56 410 | 192 339 | 79 819 | - 58,5 |
| Total value at current prices (R'000) | 133 332 | 38 558 | 87 524 | 364 410 | 126 082 | - 65,4 |
| Shopping space | | | | | | |
| Total square metres | 21 457 | 31 830 | 18 035 | 119 843 | 49 865 | - 58,4 |
| Total value at current prices (R'000) | 28 749 | 48 854 | 26 200 | 167 057 | 75 054 | - 55,1 |
| Industrial and warehouse space | | | | | | |
| Total square metres | 80 933 | 48 088 | 61 614 | 136 055 | 109 702 | - 19,4 |
| Total value at current prices (R'000) | 90 811 | 61 218 | 95 329 | 168 824 | 156 547 | - 7,3 |
| Other non-residential space ^{2/} | | | | | | |
| Total square metres | 33 524 | 16 053 | 23 827 | 51 683 | 39 880 | - 22,8 |
| Total value at current prices (R'000) | 46 525 | 19 267 | 35 203 | 74 215 | 54 470 | - 26,6 |
| Total value of non-residential buildings at current prices (R'000) | 299 417 | 167 897 | 244 256 | 774 506 | 412 153 | - 46,8 |
| Additions and alterations | | | | | | |
| Dwelling-houses | | | | | | |
| Total square metres | 243 842 | 209 781 | 245 027 | 436 165 | 454 808 | + 4,3 |
| Total value at current prices (R'000) | 298 149 | 269 292 | 326 887 | 536 628 | 596 179 | + 11,1 |
| Other buildings ^{3/} | | | | | | |
| Total square metres | 102 081 | 65 321 | 66 474 | 159 824 | 131 795 | - 17,5 |
| Total value at current prices (R'000) | 175 017 | 127 565 | 126 760 | 289 039 | 254 325 | - 12,0 |
| Total value of additions and alterations at current prices (R'000) | 473 166 | 396 857 | 453 647 | 825 667 | 850 504 | + 3,0 |
| Total value of building plans passed at current prices (R'000) | 1 590 436 | 1 339 218 | 1 676 106 | 3 138 706 | 3 015 324 | - 3,9 |

1/ Other residential buildings include institutions for the disabled, boarding houses, old people's homes, hostels, hotels, motels, guest houses, holiday chalets, entertainment centres, bed-and-breakfast accommodation and casinos.

2/ Other non-residential space includes churches, sport and recreation clubs, schools, crèches, hospitals and all other non-residential space.

3/ Other buildings include additions and alterations to other residential buildings, non-residential buildings and internal alterations.

Table 10 - Building plans passed according to type of building and province: Western Cape

| Type of building | February 2001 * | January 2002 | February 2002 | January 2001 to February 2001 | January 2002 to February 2002 | Percentage change between January 2001 to February 2001 and January 2002 to February 2002 |
|---|-----------------|----------------|----------------|-------------------------------|-------------------------------|---|
| Residential buildings | | | | | | |
| Dwelling-houses smaller than 80 square metres | | | | | | |
| Number of dwelling-houses | 813 | 1 610 | 497 | 1 520 | 2 107 | + 38,6 |
| Total square metres | 29 444 | 51 683 | 18 146 | 55 801 | 69 829 | + 25,1 |
| Total value at current prices (R'000) | 36 940 | 60 435 | 19 495 | 68 539 | 79 930 | + 16,6 |
| Dwelling-houses equal to or larger than 80 square metres | | | | | | |
| Number of dwelling-houses | 535 | 574 | 621 | 961 | 1 195 | + 24,3 |
| Total square metres | 130 251 | 113 560 | 131 821 | 210 255 | 245 381 | + 16,7 |
| Total value at current prices (R'000) | 172 995 | 172 897 | 206 487 | 297 419 | 379 384 | + 27,6 |
| Flats and townhouses | | | | | | |
| Number of flats and townhouses | 356 | 154 | 506 | 479 | 660 | + 37,8 |
| Total square metres | 31 591 | 19 223 | 37 536 | 46 237 | 56 759 | + 22,8 |
| Total value at current prices (R'000) | 42 491 | 32 819 | 56 905 | 64 104 | 89 724 | + 40,0 |
| Other residential buildings ^{1/} | | | | | | |
| Total square metres | 1 450 | 458 | 4 251 | 1 707 | 4 709 | + 175,9 |
| Total value at current prices (R'000) | 2 089 | 687 | 6 660 | 2 372 | 7 347 | + 209,7 |
| Total value of residential buildings at current prices (R'000) | 254 515 | 266 838 | 289 547 | 432 434 | 556 385 | + 28,7 |
| Non-residential buildings | | | | | | |
| Office and banking space | | | | | | |
| Total square metres | 26 108 | 4 146 | 7 300 | 47 904 | 11 446 | - 76,1 |
| Total value at current prices (R'000) | 43 275 | 7 021 | 9 224 | 81 273 | 16 245 | - 80,0 |
| Shopping space | | | | | | |
| Total square metres | 3 794 | 12 634 | 1 098 | 68 168 | 13 732 | - 79,9 |
| Total value at current prices (R'000) | 6 434 | 15 590 | 1 809 | 87 567 | 17 399 | - 80,1 |
| Industrial and warehouse space | | | | | | |
| Total square metres | 24 603 | 10 850 | 9 556 | 36 397 | 20 406 | - 43,9 |
| Total value at current prices (R'000) | 20 225 | 10 512 | 10 079 | 33 647 | 20 591 | - 38,8 |
| Other non-residential space ^{2/} | | | | | | |
| Total square metres | 7 623 | 6 521 | 6 525 | 16 645 | 13 046 | - 21,6 |
| Total value at current prices (R'000) | 10 884 | 7 859 | 8 938 | 25 065 | 16 797 | - 33,0 |
| Total value of non-residential buildings at current prices (R'000) | 80 818 | 40 982 | 30 050 | 227 552 | 71 032 | - 68,8 |
| Additions and alterations | | | | | | |
| Dwelling-houses | | | | | | |
| Total square metres | 76 581 | 54 435 | 76 436 | 129 671 | 130 871 | + 0,9 |
| Total value at current prices (R'000) | 93 324 | 70 715 | 102 903 | 159 141 | 173 618 | + 9,1 |
| Other buildings ^{3/} | | | | | | |
| Total square metres | 20 793 | 18 827 | 24 870 | 35 766 | 43 697 | + 22,2 |
| Total value at current prices (R'000) | 34 456 | 29 711 | 58 621 | 62 929 | 88 332 | + 40,4 |
| Total value of additions and alterations at current prices (R'000) | 127 780 | 100 426 | 161 524 | 222 070 | 261 950 | + 18,0 |
| Total value of building plans passed at current prices (R'000) | 463 113 | 408 246 | 481 121 | 882 056 | 889 367 | + 0,8 |

1/ Other residential buildings include institutions for the disabled, boarding houses, old people's homes, hostels, hotels, motels, guest houses, holiday chalets, entertainment centres, bed-and-breakfast accommodation and casinos.

2/ Other non-residential space includes churches, sport and recreation clubs, schools, crèches, hospitals and all other non-residential space.

3/ Other buildings include additions and alterations to other residential buildings, non-residential buildings and internal alterations.

Table 11 - Building plans passed according to type of building and province: Eastern Cape

| Type of building | February 2001 | January 2002 | February 2002 | January 2001 to February 2001 | January 2002 to February 2002 | Percentage change between January 2001 to February 2001 and January 2002 to February 2002 |
|---|----------------|---------------|----------------|-------------------------------|-------------------------------|---|
| Residential buildings | | | | | | |
| Dwelling-houses smaller than 80 square metres | | | | | | |
| Number of dwelling-houses | 260 | 127 | 244 | 442 | 371 | -16,1 |
| Total square metres | 11 887 | 5 967 | 10 354 | 19 571 | 16 321 | -16,6 |
| Total value at current prices (R'000) | 15 423 | 9 038 | 12 936 | 24 936 | 21 974 | -11,9 |
| Dwelling-houses equal to or larger than 80 square metres | | | | | | |
| Number of dwelling-houses | 110 | 88 | 114 | 190 | 202 | + 6,3 |
| Total square metres | 15 307 | 15 045 | 21 906 | 28 389 | 36 951 | + 30,2 |
| Total value at current prices (R'000) | 20 039 | 20 419 | 29 601 | 37 181 | 50 020 | + 34,5 |
| Flats and townhouses | | | | | | |
| Number of flats and townhouses | 27 | 10 | 14 | 47 | 24 | -48,9 |
| Total square metres | 2 784 | 1 236 | 1 818 | 5 030 | 3 054 | -39,3 |
| Total value at current prices (R'000) | 4 539 | 1 720 | 3 008 | 7 430 | 4 728 | -36,4 |
| Other residential buildings ^{1/} | | | | | | |
| Total square metres | 0 | 0 | 0 | 5 820 | 0 | .. |
| Total value at current prices (R'000) | 0 | 0 | 0 | 50 000 | 0 | .. |
| Total value of residential buildings at current prices (R'000) | 40 001 | 31 177 | 45 545 | 119 547 | 76 722 | -35,8 |
| Non-residential buildings | | | | | | |
| Office and banking space | | | | | | |
| Total square metres | 247 | 0 | 229 | 414 | 229 | -44,7 |
| Total value at current prices (R'000) | 779 | 0 | 450 | 1 080 | 450 | -58,3 |
| Shopping space | | | | | | |
| Total square metres | 139 | 5 103 | 0 | 335 | 5 103 | + 1 423,3 |
| Total value at current prices (R'000) | 237 | 11 195 | 0 | 546 | 11 195 | + 1 950,4 |
| Industrial and warehouse space | | | | | | |
| Total square metres | 5 364 | 659 | 13 097 | 5 852 | 13 756 | + 135,1 |
| Total value at current prices (R'000) | 6 664 | 833 | 28 588 | 7 396 | 29 421 | + 297,8 |
| Other non-residential space ^{2/} | | | | | | |
| Total square metres | 1 112 | 887 | 5 068 | 1 265 | 5 955 | + 370,8 |
| Total value at current prices (R'000) | 1 459 | 504 | 9 125 | 1 714 | 9 629 | + 461,8 |
| Total value of non-residential buildings at current prices (R'000) | 9 139 | 12 532 | 38 163 | 10 736 | 50 695 | + 372,2 |
| Additions and alterations | | | | | | |
| Dwelling-houses | | | | | | |
| Total square metres | 18 117 | 13 372 | 20 893 | 31 378 | 34 265 | + 9,2 |
| Total value at current prices (R'000) | 22 317 | 18 219 | 27 608 | 38 345 | 45 827 | + 19,5 |
| Other buildings ^{3/} | | | | | | |
| Total square metres | 23 977 | 2 568 | 3 279 | 26 544 | 5 847 | -78,0 |
| Total value at current prices (R'000) | 36 675 | 5 255 | 5 255 | 40 758 | 10 510 | -74,2 |
| Total value of additions and alterations at current prices (R'000) | 58 992 | 23 474 | 32 863 | 79 103 | 56 337 | -28,8 |
| Total value of building plans passed at current prices (R'000) | 108 132 | 67 183 | 116 571 | 209 386 | 183 754 | -12,2 |

1/ Other residential buildings include institutions for the disabled, boarding houses, old people's homes, hostels, hotels, motels, guest houses, holiday chalets, entertainment centres, bed-and-breakfast accommodation and casinos.

2/ Other non-residential space includes churches, sport and recreation clubs, schools, crèches, hospitals and all other non-residential space.

3/ Other buildings include additions and alterations to other residential buildings, non-residential buildings and internal alterations.

Table 12 - Building plans passed according to type of building and province: Northern Cape

| Type of building | February 2001 | January 2002 | February 2002 | January 2001 to February 2001 | January 2002 to February 2002 | Percentage change between January 2001 to February 2001 and January 2002 to February 2002 |
|---|---------------|--------------|---------------|-------------------------------|-------------------------------|---|
| Residential buildings | | | | | | |
| Dwelling-houses smaller than 80 square metres | | | | | | |
| Number of dwelling-houses | 16 | 5 | 8 | 18 | 13 | - 27,8 |
| Total square metres | 848 | 249 | 377 | 960 | 626 | - 34,8 |
| Total value at current prices (R'000) | 1 217 | 410 | 674 | 1 387 | 1 084 | - 21,8 |
| Dwelling-houses equal to or larger than 80 square metres | | | | | | |
| Number of dwelling-houses | 7 | 4 | 5 | 40 | 9 | - 77,5 |
| Total square metres | 1 169 | 665 | 895 | 7 928 | 1 560 | - 80,3 |
| Total value at current prices (R'000) | 1 631 | 1 067 | 1 284 | 8 183 | 2 351 | - 71,3 |
| Flats and townhouses | | | | | | |
| Number of flats and townhouses | 4 | 0 | 0 | 5 | 0 | .. |
| Total square metres | 699 | 0 | 0 | 844 | 0 | .. |
| Total value at current prices (R'000) | 979 | 0 | 0 | 1 182 | 0 | .. |
| Other residential buildings ^{1/} | | | | | | |
| Total square metres | 0 | 0 | 0 | 0 | 0 | .. |
| Total value at current prices (R'000) | 0 | 0 | 0 | 0 | 0 | .. |
| Total value of residential buildings at current prices (R'000) | 3 827 | 1 477 | 1 958 | 10 752 | 3 435 | - 68,1 |
| Non-residential buildings | | | | | | |
| Office and banking space | | | | | | |
| Total square metres | 0 | 0 | 0 | 191 | 0 | .. |
| Total value at current prices (R'000) | 0 | 0 | 0 | 124 | 0 | .. |
| Shopping space | | | | | | |
| Total square metres | 22 | 0 | 0 | 206 | 0 | .. |
| Total value at current prices (R'000) | 35 | 0 | 0 | 226 | 0 | .. |
| Industrial and warehouse space | | | | | | |
| Total square metres | 0 | 0 | 800 | 0 | 800 | .. |
| Total value at current prices (R'000) | 0 | 0 | 1 120 | 0 | 1 120 | .. |
| Other non-residential space ^{2/} | | | | | | |
| Total square metres | 147 | 0 | 855 | 235 | 855 | + 263,8 |
| Total value at current prices (R'000) | 323 | 0 | 1 881 | 446 | 1 881 | + 321,7 |
| Total value of non-residential buildings at current prices (R'000) | 358 | 0 | 3 001 | 796 | 3 001 | + 277,0 |
| Additions and alterations | | | | | | |
| Dwelling-houses | | | | | | |
| Total square metres | 2 694 | 1 594 | 2 900 | 4 133 | 4 494 | + 8,7 |
| Total value at current prices (R'000) | 4 100 | 2 465 | 4 940 | 6 146 | 7 405 | + 20,5 |
| Other buildings ^{3/} | | | | | | |
| Total square metres | 232 | 0 | 556 | 263 | 556 | + 111,4 |
| Total value at current prices (R'000) | 404 | 107 | 1 646 | 728 | 1 753 | + 140,8 |
| Total value of additions and alterations at current prices (R'000) | 4 504 | 2 572 | 6 586 | 6 874 | 9 158 | + 33,2 |
| Total value of building plans passed at current prices (R'000) | 8 689 | 4 049 | 11 545 | 18 422 | 15 594 | - 15,4 |

1/ Other residential buildings include institutions for the disabled, boarding houses, old people's homes, hostels, hotels, motels, guest houses, holiday chalets, entertainment centres, bed-and-breakfast accommodation and casinos.

2/ Other non-residential space includes churches, sport and recreation clubs, schools, crèches, hospitals and all other non-residential space.

3/ Other buildings include additions and alterations to other residential buildings, non-residential buildings and internal alterations.

Table 13 - Building plans passed according to type of building and province: Free State

| Type of building | February 2001 | January 2002 | February 2002 | January 2001 to February 2001 | January 2002 to February 2002 | Percentage change between January 2001 to February 2001 and January 2002 to February 2002 |
|---|---------------|---------------|---------------|-------------------------------|-------------------------------|---|
| Residential buildings | | | | | | |
| Dwelling-houses smaller than 80 square metres | | | | | | |
| Number of dwelling-houses | 314 | 91 | 97 | 391 | 188 | -51,9 |
| Total square metres | 14 030 | 4 117 | 4 192 | 17 587 | 8 309 | -52,8 |
| Total value at current prices (R'000) | 6 759 | 2 403 | 3 440 | 9 064 | 5 843 | -35,5 |
| Dwelling-houses equal to or larger than 80 square metres | | | | | | |
| Number of dwelling-houses | 72 | 67 | 78 | 137 | 145 | + 5,8 |
| Total square metres | 9 431 | 8 114 | 13 282 | 20 375 | 21 396 | + 5,0 |
| Total value at current prices (R'000) | 10 467 | 12 529 | 15 559 | 22 529 | 28 088 | + 24,7 |
| Flats and townhouses | | | | | | |
| Number of flats and townhouses | 18 | 88 | 68 | 60 | 156 | + 160,0 |
| Total square metres | 3 356 | 8 676 | 7 210 | 8 682 | 15 886 | + 83,0 |
| Total value at current prices (R'000) | 5 369 | 13 500 | 11 000 | 13 536 | 24 500 | + 81,0 |
| Other residential buildings ^{1/} | | | | | | |
| Total square metres | 0 | 0 | 2 683 | 0 | 2 683 | .. |
| Total value at current prices (R'000) | 0 | 0 | 7 000 | 0 | 7 000 | .. |
| Total value of residential buildings at current prices (R'000) | 22 595 | 28 432 | 36 999 | 45 129 | 65 431 | + 45,0 |
| Non-residential buildings | | | | | | |
| Office and banking space | | | | | | |
| Total square metres | 12 488 | 7 267 | 117 | 12 488 | 7 384 | -40,9 |
| Total value at current prices (R'000) | 24 800 | 14 000 | 102 | 24 800 | 14 102 | -43,1 |
| Shopping space | | | | | | |
| Total square metres | 0 | 602 | 0 | 1 165 | 602 | -48,3 |
| Total value at current prices (R'000) | 0 | 660 | 0 | 1 400 | 660 | -52,9 |
| Industrial and warehouse space | | | | | | |
| Total square metres | 1 429 | 867 | 1 710 | 1 626 | 2 577 | + 58,5 |
| Total value at current prices (R'000) | 1 012 | 694 | 1 800 | 1 062 | 2 494 | + 134,8 |
| Other non-residential space ^{2/} | | | | | | |
| Total square metres | 345 | 566 | 2 195 | 741 | 2 761 | + 272,6 |
| Total value at current prices (R'000) | 410 | 505 | 2 107 | 1 410 | 2 612 | + 85,2 |
| Total value of non-residential buildings at current prices (R'000) | 26 222 | 15 859 | 4 009 | 28 672 | 19 868 | -30,7 |
| Additions and alterations | | | | | | |
| Dwelling-houses | | | | | | |
| Total square metres | 7 019 | 7 475 | 9 610 | 13 669 | 17 085 | + 25,0 |
| Total value at current prices (R'000) | 7 506 | 8 073 | 10 451 | 13 973 | 18 524 | + 32,6 |
| Other buildings ^{3/} | | | | | | |
| Total square metres | 628 | 2 238 | 1 381 | 1 184 | 3 619 | + 205,7 |
| Total value at current prices (R'000) | 1 195 | 3 907 | 2 483 | 2 021 | 6 390 | + 216,2 |
| Total value of additions and alterations at current prices (R'000) | 8 701 | 11 980 | 12 934 | 15 994 | 24 914 | + 55,8 |
| Total value of building plans passed at current prices (R'000) | 57 518 | 56 271 | 53 942 | 89 795 | 110 213 | + 22,7 |

1/ Other residential buildings include institutions for the disabled, boarding houses, old people's homes, hostels, hotels, motels, guest houses, holiday chalets, entertainment centres, bed-and-breakfast accommodation and casinos.

2/ Other non-residential space includes churches, sport and recreation clubs, schools, crèches, hospitals and all other non-residential space.

3/ Other buildings include additions and alterations to other residential buildings, non-residential buildings and internal alterations.

Table 14 - Building plans passed according to type of building and province: KwaZulu-Natal

| Type of building | February 2001* | January 2002 | February 2002 | January 2001 to February 2001 | January 2002 to February 2002 | Percentage change between January 2001 to February 2001 and January 2002 to February 2002 |
|---|----------------|----------------|----------------|-------------------------------|-------------------------------|---|
| Residential buildings | | | | | | |
| Dwelling-houses smaller than 80 square metres | | | | | | |
| Number of dwelling-houses | 305 | 148 | 99 | 453 | 247 | - 45,5 |
| Total square metres | 12 859 | 5 203 | 5 229 | 20 645 | 10 432 | - 49,5 |
| Total value at current prices (R'000) | 11 286 | 5 354 | 6 507 | 19 023 | 11 861 | - 37,6 |
| Dwelling-houses equal to or larger than 80 square metres | | | | | | |
| Number of dwelling-houses | 116 | 122 | 126 | 246 | 248 | + 0,8 |
| Total square metres | 29 595 | 26 884 | 27 145 | 57 188 | 54 029 | - 5,5 |
| Total value at current prices (R'000) | 40 173 | 42 929 | 42 411 | 83 245 | 85 340 | + 2,5 |
| Flats and townhouses | | | | | | |
| Number of flats and townhouses | 97 | 176 | 36 | 146 | 212 | + 45,2 |
| Total square metres | 9 535 | 26 596 | 5 263 | 17 726 | 31 859 | + 79,7 |
| Total value at current prices (R'000) | 19 629 | 34 038 | 10 168 | 32 831 | 44 206 | + 34,6 |
| Other residential buildings ^{1/} | | | | | | |
| Total square metres | 0 | 556 | 547 | 0 | 1 103 | .. |
| Total value at current prices (R'000) | 0 | 1 000 | 821 | 0 | 1 821 | .. |
| Total value of residential buildings at current prices (R'000) | 71 088 | 83 321 | 59 907 | 135 099 | 143 228 | + 6,0 |
| Non-residential buildings | | | | | | |
| Office and banking space | | | | | | |
| Total square metres | 12 102 | 637 | 0 | 49 202 | 637 | - 98,7 |
| Total value at current prices (R'000) | 22 910 | 956 | 0 | 130 244 | 956 | - 99,3 |
| Shopping space | | | | | | |
| Total square metres | 7 144 | 1 174 | 3 147 | 7 902 | 4 321 | - 45,3 |
| Total value at current prices (R'000) | 7 416 | 1 874 | 6 800 | 8 210 | 8 674 | + 5,7 |
| Industrial and warehouse space | | | | | | |
| Total square metres | 6 953 | 13 481 | 8 462 | 16 799 | 21 943 | + 30,6 |
| Total value at current prices (R'000) | 7 398 | 14 506 | 10 300 | 18 991 | 24 806 | + 30,6 |
| Other non-residential space ^{2/} | | | | | | |
| Total square metres | 1 097 | 2 440 | 2 787 | 4 548 | 5 227 | + 14,9 |
| Total value at current prices (R'000) | 1 617 | 3 809 | 3 710 | 6 269 | 7 519 | + 19,9 |
| Total value of non-residential buildings at current prices (R'000) | 39 341 | 21 145 | 20 810 | 163 714 | 41 955 | - 74,4 |
| Additions and alterations | | | | | | |
| Dwelling-houses | | | | | | |
| Total square metres | 32 780 | 27 944 | 30 212 | 59 048 | 58 156 | - 1,5 |
| Total value at current prices (R'000) | 40 279 | 34 228 | 37 265 | 74 823 | 71 493 | - 4,5 |
| Other buildings ^{3/} | | | | | | |
| Total square metres | 14 651 | 8 645 | 13 294 | 24 453 | 21 939 | - 10,3 |
| Total value at current prices (R'000) | 27 295 | 15 305 | 20 014 | 42 886 | 35 319 | - 17,6 |
| Total value of additions and alterations at current prices (R'000) | 67 574 | 49 533 | 57 279 | 117 709 | 106 812 | - 9,3 |
| Total value of building plans passed at current prices (R'000) | 178 003 | 153 999 | 137 996 | 416 522 | 291 995 | - 29,9 |

1/ Other residential buildings include institutions for the disabled, boarding houses, old people's homes, hostels, hotels, motels, guest houses, holiday chalets, entertainment centres, bed-and-breakfast accommodation and casinos.

2/ Other non-residential space includes churches, sport and recreation clubs, schools, crèches, hospitals and all other non-residential space.

3/ Other buildings include additions and alterations to other residential buildings, non-residential buildings and internal alterations.

Table 15 - Building plans passed according to type of building and province: North West

| Type of building | February 2001 | January 2002 | February 2002 | January 2001 to February 2001 | January 2002 to February 2002 | Percentage change between January 2001 to February 2001 and January 2002 to February 2002 |
|---|---------------|---------------|---------------|-------------------------------|-------------------------------|---|
| Residential buildings | | | | | | |
| Dwelling-houses smaller than 80 square metres | | | | | | |
| Number of dwelling-houses | 396 | 24 | 117 | 595 | 141 | - 76,3 |
| Total square metres | 12 965 | 1 443 | 7 478 | 22 125 | 8 921 | - 59,7 |
| Total value at current prices (R'000) | 6 316 | 1 768 | 12 358 | 17 155 | 14 126 | - 17,7 |
| Dwelling-houses equal to or larger than 80 square metres | | | | | | |
| Number of dwelling-houses | 57 | 111 | 45 | 120 | 156 | + 30,0 |
| Total square metres | 8 343 | 18 507 | 7 601 | 19 115 | 26 108 | + 36,6 |
| Total value at current prices (R'000) | 10 545 | 28 094 | 9 463 | 23 438 | 37 557 | + 60,2 |
| Flats and townhouses | | | | | | |
| Number of flats and townhouses | 24 | 9 | 27 | 56 | 36 | - 35,7 |
| Total square metres | 3 471 | 2 139 | 2 582 | 8 024 | 4 721 | - 41,2 |
| Total value at current prices (R'000) | 3 565 | 3 078 | 3 792 | 8 391 | 6 870 | - 18,1 |
| Other residential buildings ^{1/} | | | | | | |
| Total square metres | 0 | 0 | 284 | 88 | 284 | + 222,7 |
| Total value at current prices (R'000) | 0 | 0 | 200 | 75 | 200 | + 166,7 |
| Total value of residential buildings at current prices (R'000) | 20 426 | 32 940 | 25 813 | 49 059 | 58 753 | + 19,8 |
| Non-residential buildings | | | | | | |
| Office and banking space | | | | | | |
| Total square metres | 750 | 2 655 | 649 | 2 096 | 3 304 | + 57,6 |
| Total value at current prices (R'000) | 1 400 | 4 976 | 1 000 | 3 625 | 5 976 | + 64,9 |
| Shopping space | | | | | | |
| Total square metres | 1 372 | 2 109 | 0 | 4 993 | 2 109 | - 57,8 |
| Total value at current prices (R'000) | 1 646 | 4 104 | 0 | 7 064 | 4 104 | - 41,9 |
| Industrial and warehouse space | | | | | | |
| Total square metres | 638 | 2 272 | 879 | 1 811 | 3 151 | + 74,0 |
| Total value at current prices (R'000) | 742 | 4 175 | 1 000 | 2 062 | 5 175 | + 151,0 |
| Other non-residential space ^{2/} | | | | | | |
| Total square metres | 0 | 861 | 0 | 0 | 861 | .. |
| Total value at current prices (R'000) | 0 | 844 | 0 | 0 | 844 | .. |
| Total value of non-residential buildings at current prices (R'000) | 3 788 | 14 099 | 2 000 | 12 751 | 16 099 | + 26,3 |
| Additions and alterations | | | | | | |
| Dwelling-houses | | | | | | |
| Total square metres | 6 077 | 8 008 | 7 174 | 10 618 | 15 182 | + 43,0 |
| Total value at current prices (R'000) | 6 843 | 8 476 | 8 869 | 11 668 | 17 345 | + 48,7 |
| Other buildings ^{3/} | | | | | | |
| Total square metres | 1 186 | 1 112 | 683 | 2 469 | 1 795 | - 27,3 |
| Total value at current prices (R'000) | 1 600 | 2 386 | 918 | 3 656 | 3 304 | - 9,6 |
| Total value of additions and alterations at current prices (R'000) | 8 443 | 10 862 | 9 787 | 15 324 | 20 649 | + 34,7 |
| Total value of building plans passed at current prices (R'000) | 32 657 | 57 901 | 37 600 | 77 134 | 95 501 | + 23,8 |

1/ Other residential buildings include institutions for the disabled, boarding houses, old people's homes, hostels, hotels, motels, guest houses, holiday chalets, entertainment centres, bed-and-breakfast accommodation and casinos.

2/ Other non-residential space includes churches, sport and recreation clubs, schools, crèches, hospitals and all other non-residential space.

3/ Other buildings include additions and alterations to other residential buildings, non-residential buildings and internal alterations.

Table 16 - Building plans passed according to type of building and province: Gauteng

| Type of building | February 2001 * | January 2002 | February 2002 | January 2001 to February 2001 | January 2002 to February 2002 | Percentage change between January 2001 to February 2001 and January 2002 to February 2002 |
|---|-----------------|----------------|----------------|-------------------------------|-------------------------------|---|
| Residential buildings | | | | | | |
| Dwelling-houses smaller than 80 square metres | | | | | | |
| Number of dwelling-houses | 544 | 255 | 1 548 | 1 335 | 1 803 | + 35,1 |
| Total square metres | 25 288 | 13 040 | 51 625 | 53 169 | 64 665 | + 21,6 |
| Total value at current prices (R'000) | 29 536 | 17 011 | 38 324 | 61 155 | 55 335 | - 9,5 |
| Dwelling-houses equal to or larger than 80 square metres | | | | | | |
| Number of dwelling-houses | 939 | 536 | 636 | 1 519 | 1 172 | - 22,8 |
| Total square metres | 179 785 | 152 502 | 175 808 | 327 789 | 328 310 | + 0,2 |
| Total value at current prices (R'000) | 255 502 | 204 817 | 267 811 | 468 082 | 472 628 | + 1,0 |
| Flats and townhouses | | | | | | |
| Number of flats and townhouses | 394 | 313 | 376 | 668 | 689 | + 3,1 |
| Total square metres | 43 731 | 48 868 | 41 618 | 78 708 | 90 486 | + 15,0 |
| Total value at current prices (R'000) | 67 209 | 76 004 | 65 170 | 118 824 | 141 174 | + 18,8 |
| Other residential buildings ^{1/} | | | | | | |
| Total square metres | 4 544 | 299 | 3 160 | 4 962 | 3 459 | - 30,3 |
| Total value at current prices (R'000) | 5 459 | 583 | 4 700 | 6 086 | 5 283 | - 13,2 |
| Total value of residential buildings at current prices (R'000) | 357 706 | 298 415 | 376 005 | 654 147 | 674 420 | + 3,1 |
| Non-residential buildings | | | | | | |
| Office and banking space | | | | | | |
| Total square metres | 21 874 | 8 234 | 47 442 | 79 412 | 55 676 | - 29,9 |
| Total value at current prices (R'000) | 39 218 | 11 055 | 75 664 | 122 314 | 86 719 | - 29,1 |
| Shopping space | | | | | | |
| Total square metres | 8 812 | 6 954 | 4 297 | 32 507 | 11 251 | - 65,4 |
| Total value at current prices (R'000) | 12 807 | 11 061 | 6 419 | 55 720 | 17 480 | - 68,6 |
| Industrial and warehouse space | | | | | | |
| Total square metres | 30 511 | 16 583 | 23 177 | 59 413 | 39 760 | - 33,1 |
| Total value at current prices (R'000) | 47 875 | 26 794 | 38 371 | 95 985 | 65 165 | - 32,1 |
| Other non-residential space ^{2/} | | | | | | |
| Total square metres | 21 399 | 3 358 | 4 356 | 26 448 | 7 714 | - 70,8 |
| Total value at current prices (R'000) | 29 519 | 4 141 | 6 931 | 36 998 | 11 072 | - 70,1 |
| Total value of non-residential buildings at current prices (R'000) | 129 419 | 53 051 | 127 385 | 311 017 | 180 436 | - 42,0 |
| Additions and alterations | | | | | | |
| Dwelling-houses | | | | | | |
| Total square metres | 85 397 | 82 622 | 84 474 | 161 553 | 167 096 | + 3,4 |
| Total value at current prices (R'000) | 107 294 | 110 504 | 119 290 | 205 025 | 229 794 | + 12,1 |
| Other buildings ^{3/} | | | | | | |
| Total square metres | 38 730 | 29 974 | 14 946 | 63 330 | 44 920 | - 29,1 |
| Total value at current prices (R'000) | 69 660 | 62 312 | 26 376 | 124 098 | 88 688 | - 28,5 |
| Total value of additions and alterations at current prices (R'000) | 176 954 | 172 816 | 145 666 | 329 123 | 318 482 | - 3,2 |
| Total value of building plans passed at current prices (R'000) | 664 079 | 524 282 | 649 056 | 1 294 287 | 1 173 338 | - 9,3 |

1/ Other residential buildings include institutions for the disabled, boarding houses, old people's homes, hostels, hotels, motels, guest houses, holiday chalets, entertainment centres, bed-and-breakfast accommodation and casinos.

2/ Other non-residential space includes churches, sport and recreation clubs, schools, crèches, hospitals and all other non-residential space.

3/ Other buildings include additions and alterations to other residential buildings, non-residential buildings and internal alterations.

Table 17 - Building plans passed according to type of building and province: Mpumalanga

| Type of building | February 2001 | January 2002 | February 2002 | January 2001 to February 2001 | January 2002 to February 2002 | Percentage change between January 2001 to February 2001 and January 2002 to February 2002 |
|---|---------------|---------------|----------------|-------------------------------|-------------------------------|---|
| Residential buildings | | | | | | |
| Dwelling-houses smaller than 80 square metres | | | | | | |
| Number of dwelling-houses | 847 | 179 | 137 | 1 301 | 316 | - 75,7 |
| Total square metres | 29 708 | 6 521 | 6 011 | 44 994 | 12 532 | - 72,1 |
| Total value at current prices (R'000) | 16 422 | 3 870 | 3 228 | 34 155 | 7 098 | - 79,2 |
| Dwelling-houses equal to or larger than 80 square metres | | | | | | |
| Number of dwelling-houses | 59 | 77 | 177 | 118 | 254 | + 115,3 |
| Total square metres | 9 700 | 13 262 | 26 158 | 20 575 | 39 420 | + 91,6 |
| Total value at current prices (R'000) | 10 931 | 16 913 | 30 792 | 22 984 | 47 705 | + 107,6 |
| Flats and townhouses | | | | | | |
| Number of flats and townhouses | 60 | 2 | 92 | 69 | 94 | + 36,2 |
| Total square metres | 4 876 | 328 | 13 054 | 6 042 | 13 382 | + 121,5 |
| Total value at current prices (R'000) | 6 922 | 245 | 20 217 | 8 071 | 20 462 | + 153,5 |
| Other residential buildings ^{1/} | | | | | | |
| Total square metres | 0 | 0 | 5 489 | 0 | 5 489 | .. |
| Total value at current prices (R'000) | 0 | 0 | 70 000 | 0 | 70 000 | .. |
| Total value of residential buildings at current prices (R'000) | 34 275 | 21 028 | 124 237 | 65 210 | 145 265 | + 122,8 |
| Non-residential buildings | | | | | | |
| Office and banking space | | | | | | |
| Total square metres | 632 | 470 | 219 | 632 | 689 | + 9,0 |
| Total value at current prices (R'000) | 950 | 550 | 329 | 950 | 879 | - 7,5 |
| Shopping space | | | | | | |
| Total square metres | 174 | 2 276 | 9 493 | 174 | 11 769 | +6 663,8 |
| Total value at current prices (R'000) | 174 | 2 732 | 11 172 | 174 | 13 904 | +7 890,8 |
| Industrial and warehouse space | | | | | | |
| Total square metres | 11 435 | 3 376 | 3 455 | 14 157 | 6 831 | - 51,7 |
| Total value at current prices (R'000) | 6 895 | 3 704 | 3 471 | 9 681 | 7 175 | - 25,9 |
| Other non-residential space ^{2/} | | | | | | |
| Total square metres | 1 801 | 1 420 | 1 778 | 1 801 | 3 198 | + 77,6 |
| Total value at current prices (R'000) | 2 313 | 1 605 | 2 066 | 2 313 | 3 671 | + 58,7 |
| Total value of non-residential buildings at current prices (R'000) | 10 332 | 8 591 | 17 038 | 13 118 | 25 629 | + 95,4 |
| Additions and alterations | | | | | | |
| Dwelling-houses | | | | | | |
| Total square metres | 10 013 | 10 648 | 9 492 | 18 435 | 20 140 | + 9,2 |
| Total value at current prices (R'000) | 9 742 | 11 535 | 10 360 | 17 525 | 21 895 | + 24,9 |
| Other buildings ^{3/} | | | | | | |
| Total square metres | 1 144 | 1 807 | 1 061 | 3 592 | 2 868 | - 20,2 |
| Total value at current prices (R'000) | 2 212 | 8 372 | 1 572 | 6 428 | 9 944 | + 54,7 |
| Total value of additions and alterations at current prices (R'000) | 11 954 | 19 907 | 11 932 | 23 953 | 31 839 | + 32,9 |
| Total value of building plans passed at current prices (R'000) | 56 561 | 49 526 | 153 207 | 102 281 | 202 733 | + 98,2 |

1/ Other residential buildings include institutions for the disabled, boarding houses, old people's homes, hostels, hotels, motels, guest houses, holiday chalets, entertainment centres, bed-and-breakfast accommodation and casinos.

2/ Other non-residential space includes churches, sport and recreation clubs, schools, crèches, hospitals and all other non-residential space.

3/ Other buildings include additions and alterations to other residential buildings, non-residential buildings and internal alterations.

Table 18 - Building plans passed according to type of building and province: Northern Province

| Type of building | February 2001 | January 2002 | February 2002 | January 2001 to February 2001 | January 2002 to February 2002 | Percentage change between January 2001 to February 2001 and January 2002 to February 2002 |
|---|---------------|---------------|---------------|-------------------------------|-------------------------------|---|
| Residential buildings | | | | | | |
| Dwelling-houses smaller than 80 square metres | | | | | | |
| Number of dwelling-houses | 34 | 10 | 35 | 66 | 45 | -31,8 |
| Total square metres | 2 017 | 621 | 2 053 | 3 895 | 2 674 | -31,3 |
| Total value at current prices (R'000) | 2 592 | 875 | 2 976 | 4 893 | 3 851 | -21,3 |
| Dwelling-houses equal to or larger than 80 square metres | | | | | | |
| Number of dwelling-houses | 44 | 33 | 51 | 80 | 84 | + 5,0 |
| Total square metres | 7 461 | 6 400 | 9 108 | 14 504 | 15 508 | + 6,9 |
| Total value at current prices (R'000) | 10 112 | 8 208 | 12 616 | 19 466 | 20 824 | + 7,0 |
| Flats and townhouses | | | | | | |
| Number of flats and townhouses | 4 | 9 | 18 | 11 | 27 | + 145,5 |
| Total square metres | 588 | 1 176 | 2 063 | 2 149 | 3 239 | + 50,7 |
| Total value at current prices (R'000) | 716 | 1 753 | 2 600 | 2 797 | 4 353 | + 55,6 |
| Other residential buildings ^{1/} | | | | | | |
| Total square metres | 0 | 0 | 0 | 0 | 0 | .. |
| Total value at current prices (R'000) | 0 | 0 | 0 | 0 | 0 | .. |
| Total value of residential buildings at current prices (R'000) | 13 420 | 10 836 | 18 192 | 27 156 | 29 028 | + 6,9 |
| Non-residential buildings | | | | | | |
| Office and banking space | | | | | | |
| Total square metres | 0 | 0 | 454 | 0 | 454 | .. |
| Total value at current prices (R'000) | 0 | 0 | 755 | 0 | 755 | .. |
| Shopping space | | | | | | |
| Total square metres | 0 | 978 | 0 | 4 393 | 978 | -77,7 |
| Total value at current prices (R'000) | 0 | 1 638 | 0 | 6 150 | 1 638 | -73,4 |
| Industrial and warehouse space | | | | | | |
| Total square metres | 0 | 0 | 478 | 0 | 478 | .. |
| Total value at current prices (R'000) | 0 | 0 | 600 | 0 | 600 | .. |
| Other non-residential space ^{2/} | | | | | | |
| Total square metres | 0 | 0 | 263 | 0 | 263 | .. |
| Total value at current prices (R'000) | 0 | 0 | 445 | 0 | 445 | .. |
| Total value of non-residential buildings at current prices (R'000) | 0 | 1 638 | 1 800 | 6 150 | 3 438 | -44,1 |
| Additions and alterations | | | | | | |
| Dwelling-houses | | | | | | |
| Total square metres | 5 164 | 3 683 | 3 836 | 7 660 | 7 519 | -1,8 |
| Total value at current prices (R'000) | 6 744 | 5 077 | 5 201 | 9 982 | 10 278 | + 3,0 |
| Other buildings ^{3/} | | | | | | |
| Total square metres | 740 | 150 | 6 404 | 2 223 | 6 554 | + 194,8 |
| Total value at current prices (R'000) | 1 520 | 210 | 9 875 | 5 535 | 10 085 | + 82,2 |
| Total value of additions and alterations at current prices (R'000) | 8 264 | 5 287 | 15 076 | 15 517 | 20 363 | + 31,2 |
| Total value of building plans passed at current prices (R'000) | 21 684 | 17 761 | 35 068 | 48 823 | 52 829 | + 8,2 |

1/ Other residential buildings include institutions for the disabled, boarding houses, old people's homes, hostels, hotels, motels, guest houses, holiday chalets, entertainment centres, bed-and-breakfast accommodation and casinos.

2/ Other non-residential space includes churches, sport and recreation clubs, schools, crèches, hospitals and all other non-residential space.

3/ Other buildings include additions and alterations to other residential buildings, non-residential buildings and internal alterations.

Table 19 - Buildings completed according to type of building: Total RSA

| Type of building | February 2001 * | January 2002 | February 2002 | January 2001 to February 2001 | January 2002 to February 2002 | Percentage change between January 2001 to February 2001 and January 2002 to February 2002 |
|---|-----------------|----------------|----------------|-------------------------------|-------------------------------|---|
| Residential buildings | | | | | | |
| Dwelling-houses smaller than 80 square metres | | | | | | |
| Number of dwelling-houses | 2 266 | 1 986 | 1 997 | 3 668 | 3 983 | + 8,6 |
| Total square metres | 87 588 | 75 890 | 72 914 | 143 904 | 148 804 | + 3,4 |
| Total value at current prices (R'000) | 69 445 | 83 014 | 61 418 | 123 960 | 144 432 | + 16,5 |
| Dwelling-houses equal to or larger than 80 square metres | | | | | | |
| Number of dwelling-houses | 996 | 924 | 851 | 1 746 | 1 775 | + 1,7 |
| Total square metres | 190 165 | 201 790 | 173 816 | 349 938 | 375 606 | + 7,3 |
| Total value at current prices (R'000) | 258 654 | 296 478 | 261 742 | 473 739 | 558 220 | + 17,8 |
| Flats and townhouses | | | | | | |
| Number of flats and townhouses | 490 | 1 164 | 1 127 | 1 104 | 2 291 | + 107,5 |
| Total square metres | 48 881 | 126 727 | 101 065 | 107 175 | 227 792 | + 112,5 |
| Total value at current prices (R'000) | 74 441 | 188 030 | 153 756 | 153 540 | 341 786 | + 122,6 |
| Other residential buildings ^{1/} | | | | | | |
| Total square metres | 26 671 | 3 726 | 465 | 71 221 | 4 191 | - 94,1 |
| Total value at current prices (R'000) | 26 263 | 4 236 | 701 | 320 611 | 4 937 | - 98,5 |
| Total value of residential buildings at current prices (R'000) | 428 803 | 571 758 | 477 617 | 1 071 850 | 1 049 375 | - 2,1 |
| Non-residential buildings | | | | | | |
| Office and banking space | | | | | | |
| Total square metres | 36 104 | 30 271 | 39 074 | 149 654 | 69 345 | - 53,7 |
| Total value at current prices (R'000) | 76 790 | 49 656 | 67 609 | 233 921 | 117 265 | - 49,9 |
| Shopping space | | | | | | |
| Total square metres | 34 540 | 30 005 | 10 986 | 53 560 | 40 991 | - 23,5 |
| Total value at current prices (R'000) | 33 162 | 33 480 | 15 671 | 68 043 | 49 151 | - 27,8 |
| Industrial and warehouse space | | | | | | |
| Total square metres | 130 104 | 35 186 | 35 937 | 160 437 | 71 123 | - 55,7 |
| Total value at current prices (R'000) | 149 336 | 44 197 | 36 556 | 183 751 | 80 753 | - 56,1 |
| Other non-residential space ^{2/} | | | | | | |
| Total square metres | 20 927 | 7 145 | 12 469 | 30 072 | 19 614 | - 34,8 |
| Total value at current prices (R'000) | 26 332 | 9 456 | 18 201 | 38 339 | 27 657 | - 27,9 |
| Total value of non-residential buildings at current prices (R'000) | 285 620 | 136 789 | 138 037 | 524 054 | 274 826 | - 47,6 |
| Additions and alterations | | | | | | |
| Dwelling-houses | | | | | | |
| Total square metres | 135 556 | 97 857 | 116 447 | 241 481 | 214 304 | - 11,3 |
| Total value at current prices (R'000) | 159 581 | 120 819 | 140 824 | 286 074 | 261 643 | - 8,5 |
| Other buildings ^{3/} | | | | | | |
| Total square metres | 43 629 | 28 376 | 33 591 | 84 001 | 61 967 | - 26,2 |
| Total value at current prices (R'000) | 83 633 | 51 775 | 54 878 | 158 125 | 106 653 | - 32,6 |
| Total value of additions and alterations at current prices (R'000) | 243 214 | 172 594 | 195 702 | 444 199 | 368 296 | - 17,1 |
| Total value of buildings completed at current prices (R'000) | 957 637 | 881 141 | 811 356 | 2 040 103 | 1 692 497 | - 17,0 |

1/ Other residential buildings include institutions for the disabled, boarding houses, old people's homes, hostels, hotels, motels, guest houses, holiday chalets, entertainment centres, bed-and-breakfast accommodation and casinos.

2/ Other non-residential space includes churches, sport and recreation clubs, schools, crèches, hospitals and all other non-residential space.

3/ Other buildings include additions and alterations to other residential buildings, non-residential buildings and internal alterations.

Table 20 - Buildings completed according to type of building and province: Western Cape

| Type of building | February 2001 | January 2002 | February 2002 | January 2001 to February 2001 | January 2002 to February 2002 | Percentage change between January 2001 to February 2001 and January 2002 to February 2002 |
|---|----------------|----------------|----------------|-------------------------------|-------------------------------|---|
| Residential buildings | | | | | | |
| Dwelling-houses smaller than 80 square metres | | | | | | |
| Number of dwelling-houses | 537 | 889 | 614 | 977 | 1 503 | + 53,8 |
| Total square metres | 18 331 | 32 260 | 21 571 | 32 934 | 53 831 | + 63,5 |
| Total value at current prices (R'000) | 19 791 | 39 024 | 23 135 | 38 930 | 62 159 | + 59,7 |
| Dwelling-houses equal to or larger than 80 square metres | | | | | | |
| Number of dwelling-houses | 297 | 328 | 336 | 550 | 664 | + 20,7 |
| Total square metres | 56 535 | 63 357 | 71 462 | 105 025 | 134 819 | + 28,4 |
| Total value at current prices (R'000) | 82 233 | 97 439 | 113 489 | 155 301 | 210 928 | + 35,8 |
| Flats and townhouses | | | | | | |
| Number of flats and townhouses | 151 | 355 | 82 | 273 | 437 | + 60,1 |
| Total square metres | 14 065 | 46 144 | 8 335 | 26 767 | 54 479 | + 103,5 |
| Total value at current prices (R'000) | 20 600 | 81 904 | 12 731 | 36 262 | 94 635 | + 161,0 |
| Other residential buildings ^{1/} | | | | | | |
| Total square metres | 16 361 | 208 | 465 | 17 752 | 673 | - 96,2 |
| Total value at current prices (R'000) | 12 107 | 292 | 701 | 13 871 | 993 | - 92,8 |
| Total value of residential buildings at current prices (R'000) | 134 731 | 218 659 | 150 056 | 244 364 | 368 715 | + 50,9 |
| Non-residential buildings | | | | | | |
| Office and banking space | | | | | | |
| Total square metres | 27 497 | 4 783 | 9 289 | 34 108 | 14 072 | - 58,7 |
| Total value at current prices (R'000) | 65 544 | 5 717 | 14 027 | 74 140 | 19 744 | - 73,4 |
| Shopping space | | | | | | |
| Total square metres | 7 511 | 20 372 | 290 | 9 253 | 20 662 | + 123,3 |
| Total value at current prices (R'000) | 10 915 | 22 788 | 552 | 14 130 | 23 340 | + 65,2 |
| Industrial and warehouse space | | | | | | |
| Total square metres | 21 940 | 4 984 | 6 589 | 31 752 | 11 573 | - 63,6 |
| Total value at current prices (R'000) | 29 515 | 4 169 | 6 499 | 39 414 | 10 668 | - 72,9 |
| Other non-residential space ^{2/} | | | | | | |
| Total square metres | 10 488 | 912 | 5 103 | 14 543 | 6 015 | - 58,6 |
| Total value at current prices (R'000) | 9 905 | 637 | 6 914 | 14 261 | 7 551 | - 47,1 |
| Total value of non-residential buildings at current prices (R'000) | 115 879 | 33 311 | 27 992 | 141 945 | 61 303 | - 56,8 |
| Additions and alterations | | | | | | |
| Dwelling-houses | | | | | | |
| Total square metres | 48 756 | 31 954 | 39 950 | 90 080 | 71 904 | - 20,2 |
| Total value at current prices (R'000) | 61 272 | 41 889 | 52 914 | 113 112 | 94 803 | - 16,2 |
| Other buildings ^{3/} | | | | | | |
| Total square metres | 11 937 | 6 483 | 15 736 | 30 504 | 22 219 | - 27,2 |
| Total value at current prices (R'000) | 30 157 | 15 734 | 26 105 | 76 765 | 41 839 | - 45,5 |
| Total value of additions and alterations at current prices (R'000) | 91 429 | 57 623 | 79 019 | 189 877 | 136 642 | - 28,0 |
| Total value of buildings completed at current prices (R'000) | 342 039 | 309 593 | 257 067 | 576 186 | 566 660 | -1,7 |

1/ Other residential buildings include institutions for the disabled, boarding houses, old people's homes, hostels, hotels, motels, guest houses, holiday chalets, entertainment centres, bed-and-breakfast accommodation and casinos.

2/ Other non-residential space includes churches, sport and recreation clubs, schools, crèches, hospitals and all other non-residential space.

3/ Other buildings include additions and alterations to other residential buildings, non-residential buildings and internal alterations.

Table 21 - Buildings completed according to type of building and province: Eastern Cape

| Type of building | February 2001* | January 2002 | February 2002 | January 2001 to February 2001 | January 2002 to February 2002 | Percentage change between January 2001 to February 2001 and January 2002 to February 2002 |
|---|----------------|---------------|---------------|-------------------------------|-------------------------------|---|
| Residential buildings | | | | | | |
| Dwelling-houses smaller than 80 square metres | | | | | | |
| Number of dwelling-houses | 338 | 221 | 52 | 474 | 273 | - 42,4 |
| Total square metres | 14 956 | 9 962 | 2 616 | 20 535 | 12 578 | - 38,7 |
| Total value at current prices (R'000) | 12 199 | 12 679 | 3 246 | 16 602 | 15 925 | - 4,1 |
| Dwelling-houses equal to or larger than 80 square metres | | | | | | |
| Number of dwelling-houses | 95 | 54 | 64 | 123 | 118 | - 4,1 |
| Total square metres | 12 337 | 8 815 | 10 596 | 16 470 | 19 411 | + 17,9 |
| Total value at current prices (R'000) | 14 668 | 11 287 | 13 607 | 19 499 | 24 894 | + 27,7 |
| Flats and townhouses | | | | | | |
| Number of flats and townhouses | 23 | 4 | 1 | 23 | 5 | - 78,3 |
| Total square metres | 2 094 | 668 | 117 | 2 094 | 785 | - 62,5 |
| Total value at current prices (R'000) | 2 992 | 916 | 170 | 2 992 | 1 086 | - 63,7 |
| Other residential buildings ^{1/} | | | | | | |
| Total square metres | 4 347 | 0 | 0 | 4 347 | 0 | .. |
| Total value at current prices (R'000) | 7 000 | 0 | 0 | 7 000 | 0 | .. |
| Total value of residential buildings at current prices (R'000) | 36 859 | 24 882 | 17 023 | 46 093 | 41 905 | - 9,1 |
| Non-residential buildings | | | | | | |
| Office and banking space | | | | | | |
| Total square metres | 0 | 0 | 0 | 291 | 0 | .. |
| Total value at current prices (R'000) | 0 | 0 | 0 | 524 | 0 | .. |
| Shopping space | | | | | | |
| Total square metres | 352 | 2 057 | 343 | 1 091 | 2 400 | + 120,0 |
| Total value at current prices (R'000) | 431 | 2 396 | 652 | 1 503 | 3 048 | + 102,8 |
| Industrial and warehouse space | | | | | | |
| Total square metres | 67 693 | 478 | 0 | 68 579 | 478 | - 99,3 |
| Total value at current prices (R'000) | 61 844 | 392 | 0 | 63 174 | 392 | - 99,4 |
| Other non-residential space ^{2/} | | | | | | |
| Total square metres | 3 103 | 1 469 | 340 | 3 499 | 1 809 | -48,3 |
| Total value at current prices (R'000) | 6 326 | 1 500 | 428 | 6 922 | 1 928 | -72,1 |
| Total value of non-residential buildings at current prices (R'000) | 68 601 | 4 288 | 1 080 | 72 123 | 5 368 | - 92,6 |
| Additions and alterations | | | | | | |
| Dwelling-houses | | | | | | |
| Total square metres | 9 961 | 7 501 | 8 390 | 15 187 | 15 891 | + 4,6 |
| Total value at current prices (R'000) | 10 956 | 9 006 | 9 839 | 17 423 | 18 845 | + 8,2 |
| Other buildings ^{3/} | | | | | | |
| Total square metres | 8 307 | 3 036 | 3 369 | 8 876 | 6 405 | - 27,8 |
| Total value at current prices (R'000) | 9 663 | 3 782 | 4 958 | 10 770 | 8 740 | - 18,8 |
| Total value of additions and alterations at current prices (R'000) | 20 619 | 12 788 | 14 797 | 28 193 | 27 585 | - 2,2 |
| Total value of buildings completed at current prices (R'000) | 126 079 | 41 958 | 32 900 | 146 409 | 74 858 | - 48,9 |

1/ Other residential buildings include institutions for the disabled, boarding houses, old people's homes, hostels, hotels, motels, guest houses, holiday chalets, entertainment centres, bed-and-breakfast accommodation and casinos.

2/ Other non-residential space includes churches, sport and recreation clubs, schools, crèches, hospitals and all other non-residential space.

3/ Other buildings include additions and alterations to other residential buildings, non-residential buildings and internal alterations.

Table 22 - Buildings completed according to type of building and province: Northern Cape

| Type of building | February 2001 | January 2002 | February 2002 | January 2001 to February 2001 | January 2002 to February 2002 | Percentage change between January 2001 to February 2001 and January 2002 to February 2002 |
|---|---------------|--------------|---------------|-------------------------------|-------------------------------|---|
| Residential buildings | | | | | | |
| Dwelling-houses smaller than 80 square metres | | | | | | |
| Number of dwelling-houses | 8 | 0 | 8 | 18 | 8 | - 55,6 |
| Total square metres | 454 | 0 | 341 | 1 017 | 341 | - 66,5 |
| Total value at current prices (R'000) | 779 | 0 | 278 | 1 721 | 278 | - 83,8 |
| Dwelling-houses equal to or larger than 80 square metres | | | | | | |
| Number of dwelling-houses | 14 | 5 | 7 | 25 | 12 | - 52,0 |
| Total square metres | 3 116 | 705 | 975 | 4 857 | 1 680 | - 65,4 |
| Total value at current prices (R'000) | 4 120 | 1 150 | 990 | 6 695 | 2 140 | - 68,0 |
| Flats and townhouses | | | | | | |
| Number of flats and townhouses | 0 | 0 | 0 | 0 | 0 | .. |
| Total square metres | 0 | 0 | 0 | 0 | 0 | .. |
| Total value at current prices (R'000) | 0 | 0 | 0 | 0 | 0 | .. |
| Other residential buildings ^{1/} | | | | | | |
| Total square metres | 0 | 0 | 0 | 346 | 0 | .. |
| Total value at current prices (R'000) | 0 | 0 | 0 | 277 | 0 | .. |
| Total value of residential buildings at current prices (R'000) | 4 899 | 1 150 | 1 268 | 8 693 | 2 418 | - 72,2 |
| Non-residential buildings | | | | | | |
| Office and banking space | | | | | | |
| Total square metres | 0 | 0 | 0 | 7 105 | 0 | .. |
| Total value at current prices (R'000) | 0 | 0 | 0 | 15 631 | 0 | .. |
| Shopping space | | | | | | |
| Total square metres | 0 | 0 | 784 | 680 | 784 | + 15,3 |
| Total value at current prices (R'000) | 0 | 0 | 1 098 | 2 150 | 1 098 | - 48,9 |
| Industrial and warehouse space | | | | | | |
| Total square metres | 0 | 0 | 0 | 0 | 0 | .. |
| Total value at current prices (R'000) | 0 | 0 | 0 | 0 | 0 | .. |
| Other non-residential space ^{2/} | | | | | | |
| Total square metres | 76 | 0 | 0 | 181 | 0 | .. |
| Total value at current prices (R'000) | 168 | 0 | 0 | 289 | 0 | .. |
| Total value of non-residential buildings at current prices (R'000) | 121 | 0 | 1 098 | 18 070 | 1 098 | - 93,9 |
| Additions and alterations | | | | | | |
| Dwelling-houses | | | | | | |
| Total square metres | 1 460 | 1 685 | 1 978 | 2 737 | 3 663 | + 33,8 |
| Total value at current prices (R'000) | 2 180 | 2 402 | 2 776 | 4 280 | 5 178 | + 21,0 |
| Other buildings ^{3/} | | | | | | |
| Total square metres | 36 | 132 | 0 | 372 | 132 | - 64,5 |
| Total value at current prices (R'000) | 131 | 344 | 578 | 588 | 922 | + 56,8 |
| Total value of additions and alterations at current prices (R'000) | 2 311 | 2 746 | 3 354 | 4 868 | 6 100 | + 25,3 |
| Total value of buildings completed at current prices (R'000) | 7 331 | 3 896 | 5 720 | 31 631 | 9 616 | -69,6 |

1/ Other residential buildings include institutions for the disabled, boarding houses, old people's homes, hostels, hotels, motels, guest houses, holiday chalets, entertainment centres, bed-and-breakfast accommodation and casinos.

2/ Other non-residential space includes churches, sport and recreation clubs, schools, crèches, hospitals and all other non-residential space.

3/ Other buildings include additions and alterations to other residential buildings, non-residential buildings and internal alterations.

Table 23 - Buildings completed according to type of building and province: Free State

| Type of building | February 2001 | January 2002 | February 2002 | January 2001 to February 2001 | January 2002 to February 2002 | Percentage change between January 2001 to February 2001 and January 2002 to February 2002 |
|---|---------------|---------------|---------------|-------------------------------|-------------------------------|---|
| Residential buildings | | | | | | |
| Dwelling-houses smaller than 80 square metres | | | | | | |
| Number of dwelling-houses | 58 | 47 | 76 | 98 | 123 | + 25,5 |
| Total square metres | 2 495 | 2 571 | 3 409 | 4 334 | 5 980 | + 38,0 |
| Total value at current prices (R'000) | 1 665 | 2 411 | 1 906 | 3 154 | 4 317 | + 36,9 |
| Dwelling-houses equal to or larger than 80 square metres | | | | | | |
| Number of dwelling-houses | 27 | 21 | 16 | 77 | 37 | -51,9 |
| Total square metres | 4 716 | 4 530 | 2 512 | 14 478 | 7 042 | -51,4 |
| Total value at current prices (R'000) | 4 893 | 5 236 | 2 938 | 16 845 | 8 174 | -51,5 |
| Flats and townhouses | | | | | | |
| Number of flats and townhouses | 31 | 17 | 19 | 53 | 36 | -32,1 |
| Total square metres | 2 526 | 2 278 | 1 658 | 4 987 | 3 936 | -21,1 |
| Total value at current prices (R'000) | 3 623 | 3 290 | 3 174 | 6 808 | 6 464 | -5,1 |
| Other residential buildings ^{1/} | | | | | | |
| Total square metres | 0 | 1 428 | 0 | 151 | 1 428 | + 845,7 |
| Total value at current prices (R'000) | 0 | 1 461 | 0 | 211 | 1 461 | + 592,4 |
| Total value of residential buildings at current prices (R'000) | 10 181 | 12 398 | 8 018 | 27 018 | 20 416 | -24,4 |
| Non-residential buildings | | | | | | |
| Office and banking space | | | | | | |
| Total square metres | 792 | 2 055 | 0 | 1 094 | 2 055 | + 87,8 |
| Total value at current prices (R'000) | 420 | 3 855 | 0 | 903 | 3 855 | + 326,9 |
| Shopping space | | | | | | |
| Total square metres | 0 | 630 | 0 | 2 050 | 630 | -69,3 |
| Total value at current prices (R'000) | 0 | 500 | 0 | 2 000 | 500 | -75,0 |
| Industrial and warehouse space | | | | | | |
| Total square metres | 1 055 | 2 558 | 284 | 3 933 | 2 842 | -27,7 |
| Total value at current prices (R'000) | 535 | 2 100 | 180 | 2 512 | 2 280 | -9,2 |
| Other non-residential space ^{2/} | | | | | | |
| Total square metres | 216 | 0 | 175 | 356 | 175 | -50,8 |
| Total value at current prices (R'000) | 225 | 0 | 131 | 395 | 131 | -66,8 |
| Total value of non-residential buildings at current prices (R'000) | 1 180 | 6 455 | 311 | 5 810 | 6 766 | + 16,5 |
| Additions and alterations | | | | | | |
| Dwelling-houses | | | | | | |
| Total square metres | 5 107 | 11 098 | 6 391 | 12 869 | 17 489 | + 35,9 |
| Total value at current prices (R'000) | 5 223 | 12 765 | 6 925 | 13 096 | 19 690 | + 50,4 |
| Other buildings ^{3/} | | | | | | |
| Total square metres | 835 | 1 428 | 1 541 | 2 908 | 2 969 | + 2,1 |
| Total value at current prices (R'000) | 1 567 | 4 744 | 2 606 | 4 270 | 7 350 | + 72,1 |
| Total value of additions and alterations at current prices (R'000) | 6 790 | 17 509 | 9 531 | 17 366 | 27 040 | + 55,7 |
| Total value of buildings completed at current prices (R'000) | 18 151 | 36 362 | 17 860 | 50 194 | 54 222 | + 8,0 |

1/ Other residential buildings include institutions for the disabled, boarding houses, old people's homes, hostels, hotels, motels, guest houses, holiday chalets, entertainment centres, bed-and-breakfast accommodation and casinos.

2/ Other non-residential space includes churches, sport and recreation clubs, schools, crèches, hospitals and all other non-residential space.

3/ Other buildings include additions and alterations to other residential buildings, non-residential buildings and internal alterations.

Table 24 - Buildings completed according to type of building and province: KwaZulu-Natal

| Type of building | February 2001* | January 2002 | February 2002 | January 2001 to February 2001 | January 2002 to February 2002 | Percentage change between January 2001 to February 2001 and January 2002 to February 2002 |
|---|----------------|---------------|----------------|-------------------------------|-------------------------------|---|
| Residential buildings | | | | | | |
| Dwelling-houses smaller than 80 square metres | | | | | | |
| Number of dwelling-houses | 139 | 81 | 111 | 305 | 192 | -37,0 |
| Total square metres | 5 934 | 3 911 | 5 352 | 14 275 | 9 263 | -35,1 |
| Total value at current prices (R'000) | 4 734 | 4 787 | 6 166 | 12 360 | 10 953 | -11,4 |
| Dwelling-houses equal to or larger than 80 square metres | | | | | | |
| Number of dwelling-houses | 144 | 81 | 121 | 255 | 202 | -20,8 |
| Total square metres | 28 256 | 15 848 | 22 766 | 53 105 | 38 614 | -27,3 |
| Total value at current prices (R'000) | 36 526 | 22 443 | 30 236 | 67 476 | 52 679 | -21,9 |
| Flats and townhouses | | | | | | |
| Number of flats and townhouses | 71 | 43 | 67 | 105 | 110 | + 4,8 |
| Total square metres | 10 737 | 6 551 | 11 053 | 20 157 | 17 604 | -12,7 |
| Total value at current prices (R'000) | 18 250 | 11 994 | 17 910 | 35 688 | 29 904 | -16,2 |
| Other residential buildings ^{1/} | | | | | | |
| Total square metres | 0 | 0 | 0 | 8 450 | 0 | .. |
| Total value at current prices (R'000) | 0 | 0 | 0 | 40 000 | 0 | .. |
| Total value of residential buildings at current prices (R'000) | 59 510 | 39 224 | 54 312 | 155 524 | 93 536 | -39,9 |
| Non-residential buildings | | | | | | |
| Office and banking space | | | | | | |
| Total square metres | 3 875 | 0 | 19 593 | 6 197 | 19 593 | + 216,2 |
| Total value at current prices (R'000) | 4 784 | 0 | 35 570 | 8 884 | 35 570 | + 300,4 |
| Shopping space | | | | | | |
| Total square metres | 4 191 | 3 223 | 2 905 | 10 130 | 6 128 | -39,5 |
| Total value at current prices (R'000) | 7 186 | 3 993 | 2 780 | 22 723 | 6 773 | -70,2 |
| Industrial and warehouse space | | | | | | |
| Total square metres | 18 613 | 10 400 | 20 070 | 20 846 | 30 470 | + 46,2 |
| Total value at current prices (R'000) | 22 106 | 11 654 | 16 912 | 25 846 | 28 566 | + 10,5 |
| Other non-residential space ^{2/} | | | | | | |
| Total square metres | 2 417 | 888 | 4 338 | 3 684 | 5 226 | + 41,9 |
| Total value at current prices (R'000) | 3 300 | 1 074 | 7 393 | 4 678 | 8 467 | + 81,0 |
| Total value of non-residential buildings at current prices (R'000) | 37 376 | 16 721 | 62 655 | 62 131 | 79 376 | + 27,8 |
| Additions and alterations | | | | | | |
| Dwelling-houses | | | | | | |
| Total square metres | 29 794 | 21 341 | 17 835 | 49 550 | 39 176 | -20,9 |
| Total value at current prices (R'000) | 33 552 | 24 393 | 18 134 | 56 013 | 42 527 | -24,1 |
| Other buildings ^{3/} | | | | | | |
| Total square metres | 4 492 | 7 322 | 3 444 | 7 287 | 10 766 | + 47,7 |
| Total value at current prices (R'000) | 11 234 | 12 006 | 4 593 | 16 240 | 16 599 | + 2,2 |
| Total value of additions and alterations at current prices (R'000) | 44 786 | 36 399 | 22 727 | 72 253 | 59 126 | -18,2 |
| Total value of buildings completed at current prices (R'000) | 141 672 | 92 344 | 139 694 | 289 908 | 232 038 | -20,0 |

1/ Other residential buildings include institutions for the disabled, boarding houses, old people's homes, hostels, hotels, motels, guest houses, holiday chalets, entertainment centres, bed-and-breakfast accommodation and casinos.

2/ Other non-residential space includes churches, sport and recreation clubs, schools, crèches, hospitals and all other non-residential space.

3/ Other buildings include additions and alterations to other residential buildings, non-residential buildings and internal alterations.

Table 25 - Buildings completed according to type of building and province: North West

| Type of building | February 2001 | January 2002 | February 2002 | January 2001 to February 2001 | January 2002 to February 2002 | Percentage change between January 2001 to February 2001 and January 2002 to February 2002 |
|---|---------------|---------------|---------------|-------------------------------|-------------------------------|---|
| Residential buildings | | | | | | |
| Dwelling-houses smaller than 80 square metres | | | | | | |
| Number of dwelling-houses | 49 | 29 | 298 | 142 | 327 | + 130,3 |
| Total square metres | 2 688 | 1 483 | 9 384 | 7 482 | 10 867 | + 45,2 |
| Total value at current prices (R'000) | 2 905 | 1 528 | 3 834 | 8 264 | 5 362 | - 35,1 |
| Dwelling-houses equal to or larger than 80 square metres | | | | | | |
| Number of dwelling-houses | 47 | 45 | 63 | 81 | 108 | + 33,3 |
| Total square metres | 8 803 | 7 771 | 9 638 | 15 316 | 17 409 | + 13,7 |
| Total value at current prices (R'000) | 10 745 | 11 292 | 16 108 | 18 248 | 27 400 | + 50,2 |
| Flats and townhouses | | | | | | |
| Number of flats and townhouses | 8 | 0 | 156 | 18 | 156 | + 766,7 |
| Total square metres | 896 | 0 | 8 303 | 2 189 | 8 303 | + 279,3 |
| Total value at current prices (R'000) | 980 | 0 | 11 884 | 2 364 | 11 884 | + 402,7 |
| Other residential buildings ^{1/} | | | | | | |
| Total square metres | 2 963 | 2 090 | 0 | 2 963 | 2 090 | - 29,5 |
| Total value at current prices (R'000) | 3 556 | 2 483 | 0 | 3 556 | 2 483 | - 30,2 |
| Total value of residential buildings at current prices (R'000) | 18 186 | 15 303 | 31 826 | 32 432 | 47 129 | + 45,3 |
| Non-residential buildings | | | | | | |
| Office and banking space | | | | | | |
| Total square metres | 750 | 0 | 0 | 750 | 0 | .. |
| Total value at current prices (R'000) | 1 400 | 0 | 0 | 1 400 | 0 | .. |
| Shopping space | | | | | | |
| Total square metres | 0 | 575 | 0 | 1 379 | 575 | - 58,3 |
| Total value at current prices (R'000) | 0 | 403 | 0 | 2 090 | 403 | - 80,7 |
| Industrial and warehouse space | | | | | | |
| Total square metres | 0 | 360 | 486 | 912 | 846 | - 7,2 |
| Total value at current prices (R'000) | 0 | 180 | 425 | 1 260 | 605 | - 52,0 |
| Other non-residential space ^{2/} | | | | | | |
| Total square metres | 1 367 | 1 065 | 650 | 1 721 | 1 715 | - 0,3 |
| Total value at current prices (R'000) | 1 658 | 2 343 | 808 | 1 958 | 3 151 | + 60,9 |
| Total value of non-residential buildings at current prices (R'000) | 3 058 | 2 926 | 1 233 | 6 708 | 4 159 | - 38,0 |
| Additions and alterations | | | | | | |
| Dwelling-houses | | | | | | |
| Total square metres | 2 846 | 2 319 | 8 306 | 5 515 | 10 625 | + 92,7 |
| Total value at current prices (R'000) | 3 074 | 2 254 | 7 101 | 5 568 | 9 355 | + 68,0 |
| Other buildings ^{3/} | | | | | | |
| Total square metres | 1 633 | 309 | 696 | 4 034 | 1 005 | - 75,1 |
| Total value at current prices (R'000) | 1 415 | 359 | 794 | 3 938 | 1 153 | - 70,7 |
| Total value of additions and alterations at current prices (R'000) | 4 489 | 2 613 | 7 895 | 9 506 | 10 508 | + 10,5 |
| Total value of buildings completed at current prices (R'000) | 25 733 | 20 842 | 40 954 | 48 646 | 61 796 | + 27,0 |

1/ Other residential buildings include institutions for the disabled, boarding houses, old people's homes, hostels, hotels, motels, guest houses, holiday chalets, entertainment centres, bed-and-breakfast accommodation and casinos.

2/ Other non-residential space includes churches, sport and recreation clubs, schools, crèches, hospitals and all other non-residential space.

3/ Other buildings include additions and alterations to other residential buildings, non-residential buildings and internal alterations.

Table 26 - Buildings completed according to type of building and province: Gauteng

| Type of building | February 2001* | January 2002 | February 2002 | January 2001 to February 2001 | January 2002 to February 2002 | Percentage change between January 2001 to February 2001 and January 2002 to February 2002 |
|---|----------------|----------------|----------------|-------------------------------|-------------------------------|---|
| Residential buildings | | | | | | |
| Dwelling-houses smaller than 80 square metres | | | | | | |
| Number of dwelling-houses | 754 | 611 | 582 | 1 031 | 1 193 | + 15,7 |
| Total square metres | 28 478 | 21 571 | 19 831 | 40 316 | 41 402 | + 2,7 |
| Total value at current prices (R'000) | 19 678 | 18 995 | 15 721 | 29 501 | 34 716 | + 17,7 |
| Dwelling-houses equal to or larger than 80 square metres | | | | | | |
| Number of dwelling-houses | 317 | 349 | 193 | 533 | 542 | + 1,7 |
| Total square metres | 65 970 | 93 004 | 47 910 | 123 578 | 140 914 | + 14,0 |
| Total value at current prices (R'000) | 92 694 | 139 079 | 74 520 | 169 209 | 213 599 | + 26,2 |
| Flats and townhouses | | | | | | |
| Number of flats and townhouses | 193 | 741 | 796 | 612 | 1 537 | + 151,1 |
| Total square metres | 17 396 | 70 571 | 70 288 | 48 322 | 140 859 | + 191,5 |
| Total value at current prices (R'000) | 26 831 | 89 283 | 106 659 | 66 836 | 195 942 | + 193,2 |
| Other residential buildings ^{1/} | | | | | | |
| Total square metres | 0 | 0 | 0 | 34 212 | 0 | .. |
| Total value at current prices (R'000) | 0 | 0 | 0 | 252 096 | 0 | .. |
| Total value of residential buildings at current prices (R'000) | 139 203 | 247 357 | 196 900 | 517 642 | 444 257 | -14,2 |
| Non-residential buildings | | | | | | |
| Office and banking space | | | | | | |
| Total square metres | 2 558 | 23 433 | 10 192 | 98 316 | 33 625 | -65,8 |
| Total value at current prices (R'000) | 3 692 | 40 084 | 18 012 | 129 289 | 58 096 | -55,1 |
| Shopping space | | | | | | |
| Total square metres | 2 886 | 1 900 | 5 748 | 8 934 | 7 648 | -14,4 |
| Total value at current prices (R'000) | 3 830 | 1 900 | 9 154 | 12 347 | 11 054 | -10,5 |
| Industrial and warehouse space | | | | | | |
| Total square metres | 20 803 | 15 998 | 8 058 | 34 415 | 24 056 | -30,1 |
| Total value at current prices (R'000) | 35 336 | 25 216 | 12 190 | 51 545 | 37 406 | -27,4 |
| Other non-residential space ^{2/} | | | | | | |
| Total square metres | 1 989 | 2 338 | 1 863 | 4 817 | 4 201 | -12,8 |
| Total value at current prices (R'000) | 2 873 | 3 702 | 2 527 | 7 912 | 6 229 | -21,3 |
| Total value of non-residential buildings at current prices (R'000) | 45 731 | 70 902 | 41 883 | 201 093 | 112 785 | -43,9 |
| Additions and alterations | | | | | | |
| Dwelling-houses | | | | | | |
| Total square metres | 30 912 | 18 700 | 29 712 | 55 845 | 48 412 | -13,3 |
| Total value at current prices (R'000) | 37 277 | 25 563 | 39 149 | 67 187 | 64 712 | -3,7 |
| Other buildings ^{3/} | | | | | | |
| Total square metres | 11 150 | 8 467 | 8 145 | 23 980 | 16 612 | -30,7 |
| Total value at current prices (R'000) | 20 298 | 12 867 | 14 271 | 35 103 | 27 138 | -22,7 |
| Total value of additions and alterations at current prices (R'000) | 57 575 | 38 430 | 53 420 | 102 290 | 91 850 | -10,2 |
| Total value of buildings completed at current prices (R'000) | 242 509 | 356 689 | 292 203 | 821 025 | 648 892 | -21,0 |

1/ Other residential buildings include institutions for the disabled, boarding houses, old people's homes, hostels, hotels, motels, guest houses, holiday chalets, entertainment centres, bed-and-breakfast accommodation and casinos.

2/ Other non-residential space includes churches, sport and recreation clubs, schools, crèches, hospitals and all other non-residential space.

3/ Other buildings include additions and alterations to other residential buildings, non-residential buildings and internal alterations.

Table 27 - Buildings completed according to type of building and province: Mpumalanga

| Type of building | February 2001 | January 2002 | February 2002 | January 2001 to February 2001 | January 2002 to February 2002 | Percentage change between January 2001 to February 2001 and January 2002 to February 2002 |
|---|---------------|---------------|---------------|-------------------------------|-------------------------------|---|
| Residential buildings | | | | | | |
| Dwelling-houses smaller than 80 square metres | | | | | | |
| Number of dwelling-houses | 338 | 102 | 228 | 536 | 330 | -38,4 |
| Total square metres | 11 815 | 3 747 | 8 686 | 18 536 | 12 433 | -32,9 |
| Total value at current prices (R'000) | 5 038 | 3 092 | 4 392 | 8 494 | 7 484 | -11,9 |
| Dwelling-houses equal to or larger than 80 square metres | | | | | | |
| Number of dwelling-houses | 37 | 33 | 36 | 65 | 69 | + 6,2 |
| Total square metres | 6 317 | 6 494 | 6 123 | 10 102 | 12 617 | + 24,9 |
| Total value at current prices (R'000) | 7 045 | 6 798 | 7 050 | 10 986 | 13 848 | + 26,1 |
| Flats and townhouses | | | | | | |
| Number of flats and townhouses | 11 | 1 | 4 | 13 | 5 | -61,5 |
| Total square metres | 745 | 133 | 1 105 | 1 189 | 1 238 | + 4,1 |
| Total value at current prices (R'000) | 665 | 108 | 940 | 1 034 | 1 048 | + 1,4 |
| Other residential buildings ^{1/} | | | | | | |
| Total square metres | 0 | 0 | 0 | 0 | 0 | .. |
| Total value at current prices (R'000) | 0 | 0 | 0 | 0 | 0 | .. |
| Total value of residential buildings at current prices (R'000) | 12 748 | 9 998 | 12 382 | 20 514 | 22 380 | + 9,1 |
| Non-residential buildings | | | | | | |
| Office and banking space | | | | | | |
| Total square metres | 632 | 0 | 0 | 1 793 | 0 | .. |
| Total value at current prices (R'000) | 950 | 0 | 0 | 3 150 | 0 | .. |
| Shopping space | | | | | | |
| Total square metres | 19 600 | 0 | 308 | 20 043 | 308 | -98,5 |
| Total value at current prices (R'000) | 10 800 | 0 | 462 | 11 100 | 462 | -95,8 |
| Industrial and warehouse space | | | | | | |
| Total square metres | 0 | 408 | 450 | 0 | 858 | .. |
| Total value at current prices (R'000) | 0 | 486 | 350 | 0 | 836 | .. |
| Other non-residential space ^{2/} | | | | | | |
| Total square metres | 1 019 | 473 | 0 | 1 019 | 473 | -53,6 |
| Total value at current prices (R'000) | 1 370 | 200 | 0 | 1 370 | 200 | -85,4 |
| Total value of non-residential buildings at current prices (R'000) | 13 120 | 686 | 812 | 15 620 | 1 498 | -90,4 |
| Additions and alterations | | | | | | |
| Dwelling-houses | | | | | | |
| Total square metres | 5 889 | 3 138 | 3 497 | 8 289 | 6 635 | -20,0 |
| Total value at current prices (R'000) | 5 051 | 2 348 | 3 325 | 7 678 | 5 673 | -26,1 |
| Other buildings ^{3/} | | | | | | |
| Total square metres | 5 196 | 28 | 660 | 5 245 | 688 | -86,9 |
| Total value at current prices (R'000) | 7 618 | 299 | 973 | 7 697 | 1 272 | -83,5 |
| Total value of additions and alterations at current prices (R'000) | 12 669 | 2 647 | 4 298 | 15 375 | 6 945 | -54,8 |
| Total value of buildings completed at current prices (R'000) | 38 537 | 13 331 | 17 492 | 51 509 | 30 823 | -40,2 |

1/ Other residential buildings include institutions for the disabled, boarding houses, old people's homes, hostels, hotels, motels, guest houses, holiday chalets, entertainment centres, bed-and-breakfast accommodation and casinos.

2/ Other non-residential space includes churches, sport and recreation clubs, schools, crèches, hospitals and all other non-residential space.

3/ Other buildings include additions and alterations to other residential buildings, non-residential buildings and internal alterations.

Table 28 - Buildings completed according to type of building and province: Northern Province

| Type of building | February 2001 | January 2002 | February 2002 | January 2001 to February 2001 | January 2002 to February 2002 | Percentage change between January 2001 to February 2001 and January 2002 to February 2002 |
|---|---------------|--------------|---------------|-------------------------------|-------------------------------|---|
| Residential buildings | | | | | | |
| Dwelling-houses smaller than 80 square metres | | | | | | |
| Number of dwelling-houses | 45 | 6 | 28 | 87 | 34 | -60,9 |
| Total square metres | 2 437 | 385 | 1 724 | 4 475 | 2 109 | -52,9 |
| Total value at current prices (R'000) | 2 656 | 498 | 2 740 | 4 934 | 3 238 | -34,4 |
| Dwelling-houses equal to or larger than 80 square metres | | | | | | |
| Number of dwelling-houses | 18 | 8 | 15 | 37 | 23 | -37,8 |
| Total square metres | 4 115 | 1 266 | 1 834 | 7 007 | 3 100 | -55,8 |
| Total value at current prices (R'000) | 5 730 | 1 754 | 2 804 | 9 480 | 4 558 | -51,9 |
| Flats and townhouses | | | | | | |
| Number of flats and townhouses | 2 | 3 | 2 | 7 | 5 | -28,6 |
| Total square metres | 422 | 382 | 206 | 1 470 | 588 | -60,0 |
| Total value at current prices (R'000) | 500 | 535 | 288 | 1 556 | 823 | -47,1 |
| Other residential buildings ^{1/} | | | | | | |
| Total square metres | 3 000 | 0 | 0 | 3 000 | 0 | .. |
| Total value at current prices (R'000) | 3 600 | 0 | 0 | 3 600 | 0 | .. |
| Total value of residential buildings at current prices (R'000) | 12 486 | 2 787 | 5 832 | 19 570 | 8 619 | -56,0 |
| Non-residential buildings | | | | | | |
| Office and banking space | | | | | | |
| Total square metres | 0 | 0 | 0 | 0 | 0 | .. |
| Total value at current prices (R'000) | 0 | 0 | 0 | 0 | 0 | .. |
| Shopping space | | | | | | |
| Total square metres | 0 | 1 248 | 608 | 0 | 1 856 | .. |
| Total value at current prices (R'000) | 0 | 1 500 | 973 | 0 | 2 473 | .. |
| Industrial and warehouse space | | | | | | |
| Total square metres | 0 | 0 | 0 | 0 | 0 | .. |
| Total value at current prices (R'000) | 0 | 0 | 0 | 0 | 0 | .. |
| Other non-residential space ^{2/} | | | | | | |
| Total square metres | 252 | 0 | 0 | 252 | 0 | .. |
| Total value at current prices (R'000) | 554 | 0 | 0 | 554 | 0 | .. |
| Total value of non-residential buildings at current prices (R'000) | 554 | 1 500 | 973 | 554 | 2 473 | + 346,4 |
| Additions and alterations | | | | | | |
| Dwelling-houses | | | | | | |
| Total square metres | 831 | 121 | 388 | 1 409 | 509 | -63,9 |
| Total value at current prices (R'000) | 996 | 199 | 661 | 1 717 | 860 | -49,9 |
| Other buildings ^{3/} | | | | | | |
| Total square metres | 43 | 1 171 | 0 | 795 | 1 171 | + 47,3 |
| Total value at current prices (R'000) | 1 550 | 1 640 | 0 | 2 754 | 1 640 | -40,5 |
| Total value of additions and alterations at current prices (R'000) | 2 546 | 1 839 | 661 | 4 471 | 2 500 | -44,1 |
| Total value of buildings completed at current prices (R'000) | 15 586 | 6 126 | 7 466 | 24 595 | 13 592 | -44,7 |

1/ Other residential buildings include institutions for the disabled, boarding houses, old people's homes, hostels, hotels, motels, guest houses, holiday chalets, entertainment centres, bed-and-breakfast accommodation and casinos.

2/ Other non-residential space includes churches, sport and recreation clubs, schools, crèches, hospitals and all other non-residential space.

3/ Other buildings include additions and alterations to other residential buildings, non-residential buildings and internal alterations.

Table 29 - Building plans passed according to type of building and selected urban area: Cape Town

| Type of building | February 2001 * | January 2002 | February 2002 | January 2001 to February 2001 | January 2002 to February 2002 | Percentage change between January 2001 to February 2001 and January 2002 to February 2002 |
|---|-----------------|----------------|----------------|-------------------------------|-------------------------------|---|
| Residential buildings | | | | | | |
| Dwelling-houses smaller than 80 square metres | | | | | | |
| Number of dwelling-houses | 678 | 1 508 | 157 | 1 324 | 1 665 | + 25,8 |
| Total square metres | 24 666 | 47 996 | 7 025 | 48 383 | 55 021 | + 13,7 |
| Total value at current prices (R'000) | 31 403 | 57 534 | 8 717 | 59 883 | 66 251 | + 10,6 |
| Dwelling-houses equal to or larger than 80 square metres | | | | | | |
| Number of dwelling-houses | 280 | 334 | 275 | 503 | 609 | + 21,1 |
| Total square metres | 80 060 | 59 925 | 56 285 | 120 667 | 116 210 | - 3,7 |
| Total value at current prices (R'000) | 93 463 | 83 220 | 75 678 | 155 117 | 158 898 | + 2,4 |
| Flats and townhouses | | | | | | |
| Number of flats and townhouses | 89 | 101 | 321 | 143 | 422 | + 195,1 |
| Total square metres | 9 188 | 13 268 | 24 257 | 17 013 | 37 525 | + 120,6 |
| Total value at current prices (R'000) | 12 413 | 23 386 | 37 013 | 25 294 | 60 399 | + 138,8 |
| Other residential buildings ^{1/} | | | | | | |
| Total square metres | 1 044 | 0 | 3 535 | 1 044 | 3 535 | + 238,6 |
| Total value at current prices (R'000) | 1 556 | 0 | 5 530 | 1 556 | 5 530 | + 255,4 |
| Total value of residential buildings at current prices (R'000) | 138 835 | 164 140 | 126 938 | 241 850 | 291 078 | + 20,4 |
| Non-residential buildings | | | | | | |
| Office and banking space | | | | | | |
| Total square metres | 19 992 | 246 | 6 731 | 41 746 | 6 977 | - 83,3 |
| Total value at current prices (R'000) | 37 406 | 443 | 8 200 | 75 345 | 8 643 | - 88,5 |
| Shopping space | | | | | | |
| Total square metres | 1 370 | 12 514 | 0 | 59 363 | 12 514 | - 78,9 |
| Total value at current prices (R'000) | 2 543 | 15 410 | 0 | 72 916 | 15 410 | - 78,9 |
| Industrial and warehouse space | | | | | | |
| Total square metres | 10 749 | 8 766 | 5 380 | 20 269 | 14 146 | - 30,2 |
| Total value at current prices (R'000) | 11 087 | 8 902 | 6 406 | 21 530 | 15 308 | - 28,9 |
| Other non-residential space ^{2/} | | | | | | |
| Total square metres | 3 268 | 4 086 | 4 654 | 11 351 | 8 740 | - 23,0 |
| Total value at current prices (R'000) | 5 821 | 5 542 | 5 489 | 19 577 | 11 031 | - 43,7 |
| Total value of non-residential buildings at current prices (R'000) | 56 857 | 30 297 | 20 095 | 189 368 | 50 392 | - 73,4 |
| Additions and alterations | | | | | | |
| Dwelling-houses | | | | | | |
| Total square metres | 49 737 | 35 096 | 51 059 | 85 299 | 86 155 | + 1,0 |
| Total value at current prices (R'000) | 59 042 | 45 204 | 64 924 | 100 132 | 110 128 | + 10,0 |
| Other buildings ^{3/} | | | | | | |
| Total square metres | 13 664 | 12 431 | 20 915 | 22 783 | 33 346 | + 46,4 |
| Total value at current prices (R'000) | 27 404 | 16 953 | 39 259 | 48 224 | 56 212 | + 16,6 |
| Total value of additions and alterations at current prices (R'000) | 86 446 | 62 157 | 104 183 | 148 356 | 166 340 | + 12,1 |
| Total value of building plans passed at current prices (R'000) | 282 138 | 256 594 | 251 216 | 579 574 | 507 810 | - 12,4 |

1/ Other residential buildings include institutions for the disabled, boarding houses, old people's homes, hostels, hotels, motels, guest houses, holiday chalets, entertainment centres, bed-and-breakfast accommodation and casinos.

2/ Other non-residential space includes churches, sport and recreation clubs, schools, crèches, hospitals and all other non-residential space.

3/ Other buildings include additions and alterations to other residential buildings, non-residential buildings and internal alterations.

Table 30 - Building plans passed according to type of building and selected urban area: Port Elizabeth

| Type of building | February 2001 | January 2002 | February 2002 | January 2001 to February 2001 | January 2002 to February 2002 | Percentage change between January 2001 to February 2001 and January 2002 to February 2002 |
|---|---------------|---------------|---------------|-------------------------------|-------------------------------|---|
| Residential buildings | | | | | | |
| Dwelling-houses smaller than 80 square metres | | | | | | |
| Number of dwelling-houses | 198 | 63 | 53 | 330 | 116 | - 64,8 |
| Total square metres | 8 908 | 2 706 | 2 295 | 14 497 | 5 001 | - 65,5 |
| Total value at current prices (R'000) | 11 653 | 4 289 | 3 179 | 19 001 | 7 468 | - 60,7 |
| Dwelling-houses equal to or larger than 80 square metres | | | | | | |
| Number of dwelling-houses | 58 | 50 | 67 | 92 | 117 | + 27,2 |
| Total square metres | 7 055 | 8 093 | 12 249 | 12 328 | 20 342 | + 65,0 |
| Total value at current prices (R'000) | 9 277 | 10 510 | 18 466 | 16 129 | 28 976 | + 79,7 |
| Flats and townhouses | | | | | | |
| Number of flats and townhouses | 27 | 9 | 14 | 30 | 23 | - 23,3 |
| Total square metres | 2 784 | 1 171 | 1 818 | 2 998 | 2 989 | - 0,3 |
| Total value at current prices (R'000) | 4 539 | 1 613 | 3 008 | 4 779 | 4 621 | - 3,3 |
| Other residential buildings ^{1/} | | | | | | |
| Total square metres | 0 | 0 | 0 | 0 | 0 | .. |
| Total value at current prices (R'000) | 0 | 0 | 0 | 0 | 0 | .. |
| Total value of residential buildings at current prices (R'000) | 25 469 | 16 412 | 24 653 | 39 909 | 41 065 | + 2,9 |
| Non-residential buildings | | | | | | |
| Office and banking space | | | | | | |
| Total square metres | 0 | 0 | 204 | 0 | 204 | .. |
| Total value at current prices (R'000) | 0 | 0 | 400 | 0 | 400 | .. |
| Shopping space | | | | | | |
| Total square metres | 0 | 5 103 | 0 | 0 | 5 103 | .. |
| Total value at current prices (R'000) | 0 | 11 195 | 0 | 0 | 11 195 | .. |
| Industrial and warehouse space | | | | | | |
| Total square metres | 2 113 | 659 | 2 126 | 2 113 | 2 785 | + 31,8 |
| Total value at current prices (R'000) | 3 064 | 833 | 3 306 | 3 064 | 4 139 | + 35,1 |
| Other non-residential space ^{2/} | | | | | | |
| Total square metres | 731 | 887 | 4 086 | 770 | 4 973 | + 545,8 |
| Total value at current prices (R'000) | 1 008 | 504 | 7 299 | 1 063 | 7 803 | + 634,1 |
| Total value of non-residential buildings at current prices (R'000) | 4 072 | 12 532 | 11 005 | 4 127 | 23 537 | + 470,3 |
| Additions and alterations | | | | | | |
| Dwelling-houses | | | | | | |
| Total square metres | 10 408 | 8 708 | 13 012 | 15 931 | 21 720 | + 36,3 |
| Total value at current prices (R'000) | 12 674 | 11 185 | 16 726 | 19 371 | 27 911 | + 44,1 |
| Other buildings ^{3/} | | | | | | |
| Total square metres | 21 570 | 2 468 | 3 053 | 22 304 | 5 521 | - 75,2 |
| Total value at current prices (R'000) | 33 433 | 4 264 | 4 555 | 34 535 | 8 819 | - 74,5 |
| Total value of additions and alterations at current prices (R'000) | 46 107 | 15 449 | 21 281 | 53 906 | 36 730 | - 31,9 |
| Total value of building plans passed at current prices (R'000) | 75 648 | 44 393 | 56 939 | 97 942 | 101 332 | + 3,5 |

1/ Other residential buildings include institutions for the disabled, boarding houses, old people's homes, hostels, hotels, motels, guest houses, holiday chalets, entertainment centres, bed-and-breakfast accommodation and casinos.

2/ Other non-residential space includes churches, sport and recreation clubs, schools, crèches, hospitals and all other non-residential space.

3/ Other buildings include additions and alterations to other residential buildings, non-residential buildings and internal alterations.

Table 31 - Building plans passed according to type of building and selected urban area: Durban

| Type of building | February 2001* | January 2002 | February 2002 | January 2001 to February 2001 | January 2002 to February 2002 | Percentage change between January 2001 to February 2001 and January 2002 to February 2002 |
|---|----------------|---------------|---------------|-------------------------------|-------------------------------|---|
| Residential buildings | | | | | | |
| Dwelling-houses smaller than 80 square metres | | | | | | |
| Number of dwelling-houses | 76 | 125 | 55 | 146 | 180 | + 23,3 |
| Total square metres | 4 110 | 4 367 | 3 049 | 7 912 | 7 416 | -6,3 |
| Total value at current prices (R'000) | 4 527 | 4 293 | 3 786 | 9 408 | 8 079 | -14,1 |
| Dwelling-houses equal to or larger than 80 square metres | | | | | | |
| Number of dwelling-houses | 51 | 50 | 53 | 107 | 103 | -3,7 |
| Total square metres | 12 237 | 8 840 | 9 217 | 21 549 | 18 057 | -16,2 |
| Total value at current prices (R'000) | 11 413 | 11 542 | 12 389 | 24 152 | 23 931 | -0,9 |
| Flats and townhouses | | | | | | |
| Number of flats and townhouses | 43 | 156 | 6 | 43 | 162 | + 276,7 |
| Total square metres | 3 647 | 23 489 | 1 220 | 3 647 | 24 709 | + 577,5 |
| Total value at current prices (R'000) | 5 104 | 29 060 | 2 770 | 5 104 | 31 830 | + 523,6 |
| Other residential buildings ^{1/} | | | | | | |
| Total square metres | 0 | 556 | 0 | 0 | 556 | .. |
| Total value at current prices (R'000) | 0 | 1 000 | 0 | 0 | 1 000 | .. |
| Total value of residential buildings at current prices (R'000) | 21 044 | 45 895 | 18 945 | 38 664 | 64 840 | + 67,7 |
| Non-residential buildings | | | | | | |
| Office and banking space | | | | | | |
| Total square metres | 1 122 | 0 | 0 | 2 172 | 0 | .. |
| Total value at current prices (R'000) | 2 110 | 0 | 0 | 4 110 | 0 | .. |
| Shopping space | | | | | | |
| Total square metres | 3 838 | 500 | 0 | 4 280 | 500 | -88,3 |
| Total value at current prices (R'000) | 3 498 | 1 200 | 0 | 3 940 | 1 200 | -69,5 |
| Industrial and warehouse space | | | | | | |
| Total square metres | 6 585 | 11 144 | 8 314 | 13 200 | 19 458 | + 47,4 |
| Total value at current prices (R'000) | 7 028 | 11 000 | 10 050 | 14 656 | 21 050 | + 43,6 |
| Other non-residential space ^{2/} | | | | | | |
| Total square metres | 898 | 768 | 2 200 | 3 039 | 2 968 | -2,3 |
| Total value at current prices (R'000) | 1 418 | 971 | 2 550 | 4 226 | 3 521 | -16,7 |
| Total value of non-residential buildings at current prices (R'000) | 14 054 | 13 171 | 12 600 | 26 932 | 25 771 | -4,3 |
| Additions and alterations | | | | | | |
| Dwelling-houses | | | | | | |
| Total square metres | 22 486 | 17 578 | 20 057 | 41 095 | 37 635 | -8,4 |
| Total value at current prices (R'000) | 25 951 | 20 792 | 23 483 | 51 037 | 44 275 | -13,2 |
| Other buildings ^{3/} | | | | | | |
| Total square metres | 12 066 | 5 570 | 5 692 | 18 303 | 11 262 | -38,5 |
| Total value at current prices (R'000) | 22 796 | 12 199 | 9 867 | 34 769 | 22 066 | -36,5 |
| Total value of additions and alterations at current prices (R'000) | 48 747 | 32 991 | 33 350 | 85 806 | 66 341 | -22,7 |
| Total value of building plans passed at current prices (R'000) | 83 845 | 92 057 | 64 895 | 151 402 | 156 952 | + 3,7 |

1/ Other residential buildings include institutions for the disabled, boarding houses, old people's homes, hostels, hotels, motels, guest houses, holiday chalets, entertainment centres, bed-and-breakfast accommodation and casinos.

2/ Other non-residential space includes churches, sport and recreation clubs, schools, crèches, hospitals and all other non-residential space.

3/ Other buildings include additions and alterations to other residential buildings, non-residential buildings and internal alterations.

Table 32 - Building plans passed according to type of building and selected urban area: Witwatersrand

| Type of building | February 2001 | January 2002 | February 2002 | January 2001 to February 2001 | January 2002 to February 2002 | Percentage change between January 2001 to February 2001 and January 2002 to February 2002 |
|---|----------------|----------------|----------------|-------------------------------|-------------------------------|---|
| Residential buildings | | | | | | |
| Dwelling-houses smaller than 80 square metres | | | | | | |
| Number of dwelling-houses | 446 | 195 | 1 485 | 1 131 | 1 680 | + 48,5 |
| Total square metres | 20 208 | 9 780 | 48 091 | 43 749 | 57 871 | + 32,3 |
| Total value at current prices (R'000) | 23 756 | 12 949 | 33 496 | 50 130 | 46 445 | - 7,4 |
| Dwelling-houses equal to or larger than 80 square metres | | | | | | |
| Number of dwelling-houses | 661 | 268 | 341 | 1 037 | 609 | - 41,3 |
| Total square metres | 109 060 | 78 442 | 92 359 | 201 167 | 170 801 | - 15,1 |
| Total value at current prices (R'000) | 161 197 | 107 411 | 145 304 | 299 985 | 252 715 | - 15,8 |
| Flats and townhouses | | | | | | |
| Number of flats and townhouses | 349 | 108 | 288 | 475 | 396 | - 16,6 |
| Total square metres | 37 271 | 11 067 | 28 139 | 48 752 | 39 206 | - 19,6 |
| Total value at current prices (R'000) | 57 727 | 19 021 | 44 690 | 75 197 | 63 711 | - 15,3 |
| Other residential buildings ^{1/} | | | | | | |
| Total square metres | 0 | 299 | 3 160 | 0 | 3 459 | .. |
| Total value at current prices (R'000) | 0 | 583 | 4 700 | 0 | 5 283 | .. |
| Total value of residential buildings at current prices (R'000) | 242 680 | 139 964 | 228 190 | 425 312 | 368 154 | - 13,4 |
| Non-residential buildings | | | | | | |
| Office and banking space | | | | | | |
| Total square metres | 11 857 | 7 107 | 12 105 | 63 375 | 19 212 | - 69,7 |
| Total value at current prices (R'000) | 21 133 | 9 350 | 21 354 | 94 597 | 30 704 | - 67,5 |
| Shopping space | | | | | | |
| Total square metres | 6 631 | 6 068 | 4 061 | 29 945 | 10 129 | - 66,2 |
| Total value at current prices (R'000) | 9 538 | 10 131 | 6 091 | 51 993 | 16 222 | - 68,8 |
| Industrial and warehouse space | | | | | | |
| Total square metres | 27 786 | 14 623 | 16 831 | 51 714 | 31 454 | - 39,2 |
| Total value at current prices (R'000) | 44 358 | 24 300 | 29 174 | 84 917 | 53 474 | - 37,0 |
| Other non-residential space ^{2/} | | | | | | |
| Total square metres | 17 589 | 1 673 | 1 024 | 20 696 | 2 697 | - 87,0 |
| Total value at current prices (R'000) | 24 384 | 1 933 | 1 646 | 28 915 | 3 579 | - 87,6 |
| Total value of non-residential buildings at current prices (R'000) | 99 413 | 45 714 | 58 265 | 260 422 | 103 979 | - 60,1 |
| Additions and alterations | | | | | | |
| Dwelling-houses | | | | | | |
| Total square metres | 61 635 | 57 639 | 60 096 | 120 546 | 117 735 | - 2,3 |
| Total value at current prices (R'000) | 79 021 | 76 343 | 84 935 | 156 067 | 161 278 | + 3,3 |
| Other buildings ^{3/} | | | | | | |
| Total square metres | 32 046 | 27 842 | 5 341 | 51 795 | 33 183 | - 35,9 |
| Total value at current prices (R'000) | 59 097 | 59 528 | 10 432 | 109 025 | 69 960 | - 35,8 |
| Total value of additions and alterations at current prices (R'000) | 138 118 | 135 871 | 95 367 | 265 092 | 231 238 | - 12,8 |
| Total value of building plans passed at current prices (R'000) | 480 211 | 321 549 | 381 822 | 950 826 | 703 371 | - 26,0 |

1/ Other residential buildings include institutions for the disabled, boarding houses, old people's homes, hostels, hotels, motels, guest houses, holiday chalets, entertainment centres, bed-and-breakfast accommodation and casinos.

2/ Other non-residential space includes churches, sport and recreation clubs, schools, crèches, hospitals and all other non-residential space.

3/ Other buildings include additions and alterations to other residential buildings, non-residential buildings and internal alterations.

Table 33 - Building plans passed according to type of building and selected urban area: Pretoria

| Type of building | February 2001* | January 2002 | February 2002 | January 2001 to February 2001 | January 2002 to February 2002 | Percentage change between January 2001 to February 2001 and January 2002 to February 2002 |
|---|----------------|----------------|----------------|-------------------------------|-------------------------------|---|
| Residential buildings | | | | | | |
| Dwelling-houses smaller than 80 square metres | | | | | | |
| Number of dwelling-houses | 65 | 52 | 56 | 107 | 108 | + 0,9 |
| Total square metres | 3 396 | 2 836 | 3 097 | 5 470 | 5 933 | + 8,5 |
| Total value at current prices (R'000) | 4 116 | 3 487 | 4 315 | 6 660 | 7 802 | + 17,1 |
| Dwelling-houses equal to or larger than 80 square metres | | | | | | |
| Number of dwelling-houses | 226 | 195 | 232 | 400 | 427 | + 6,7 |
| Total square metres | 61 287 | 51 020 | 63 498 | 109 511 | 114 518 | + 4,6 |
| Total value at current prices (R'000) | 82 963 | 65 782 | 93 409 | 147 582 | 159 191 | + 7,9 |
| Flats and townhouses | | | | | | |
| Number of flats and townhouses | 42 | 184 | 88 | 167 | 272 | + 62,9 |
| Total square metres | 6 040 | 35 723 | 13 479 | 26 826 | 49 202 | + 83,4 |
| Total value at current prices (R'000) | 8 967 | 54 905 | 20 480 | 39 649 | 75 385 | + 90,1 |
| Other residential buildings ^{1/} | | | | | | |
| Total square metres | 0 | 0 | 0 | 418 | 0 | .. |
| Total value at current prices (R'000) | 0 | 0 | 0 | 627 | 0 | .. |
| Total value of residential buildings at current prices (R'000) | 96 046 | 124 174 | 118 204 | 194 518 | 242 378 | + 24,6 |
| Non-residential buildings | | | | | | |
| Office and banking space | | | | | | |
| Total square metres | 10 017 | 1 127 | 35 337 | 16 037 | 36 464 | + 127,4 |
| Total value at current prices (R'000) | 18 085 | 1 705 | 54 310 | 27 717 | 56 015 | + 102,1 |
| Shopping space | | | | | | |
| Total square metres | 1 447 | 0 | 56 | 1 558 | 56 | - 96,4 |
| Total value at current prices (R'000) | 2 315 | 0 | 76 | 2 454 | 76 | - 96,9 |
| Industrial and warehouse space | | | | | | |
| Total square metres | 1 840 | 1 282 | 5 584 | 5 137 | 6 866 | + 33,7 |
| Total value at current prices (R'000) | 2 366 | 2 051 | 8 376 | 7 312 | 10 427 | + 42,6 |
| Other non-residential space ^{2/} | | | | | | |
| Total square metres | 3 577 | 930 | 3 252 | 5 519 | 4 182 | - 24,2 |
| Total value at current prices (R'000) | 4 855 | 1 408 | 5 100 | 7 803 | 6 508 | - 16,6 |
| Total value of non-residential buildings at current prices (R'000) | 27 621 | 5 164 | 67 862 | 45 286 | 73 026 | + 61,3 |
| Additions and alterations | | | | | | |
| Dwelling-houses | | | | | | |
| Total square metres | 17 579 | 21 539 | 21 138 | 30 910 | 42 677 | + 38,1 |
| Total value at current prices (R'000) | 21 521 | 30 308 | 30 693 | 37 943 | 61 001 | + 60,8 |
| Other buildings ^{3/} | | | | | | |
| Total square metres | 5 990 | 555 | 9 341 | 6 663 | 9 896 | + 48,5 |
| Total value at current prices (R'000) | 9 754 | 1 288 | 15 612 | 11 005 | 16 900 | + 53,6 |
| Total value of additions and alterations at current prices (R'000) | 31 275 | 31 596 | 46 305 | 48 948 | 77 901 | + 59,2 |
| Total value of building plans passed at current prices (R'000) | 154 942 | 160 934 | 232 371 | 288 752 | 393 305 | + 36,2 |

1/ Other residential buildings include institutions for the disabled, boarding houses, old people's homes, hostels, hotels, motels, guest houses, holiday chalets, entertainment centres, bed-and-breakfast accommodation and casinos.

2/ Other non-residential space includes churches, sport and recreation clubs, schools, crèches, hospitals and all other non-residential space.

3/ Other buildings include additions and alterations to other residential buildings, non-residential buildings and internal alterations.

Table 34 - Building plans passed according to type of building and selected urban area: Bloemfontein

| Type of building | February 2001 | January 2002 | February 2002 | January 2001 to February 2001 | January 2002 to February 2002 | Percentage change between January 2001 to February 2001 and January 2002 to February 2002 |
|---|---------------|---------------|---------------|-------------------------------|-------------------------------|---|
| Residential buildings | | | | | | |
| Dwelling-houses smaller than 80 square metres | | | | | | |
| Number of dwelling-houses | 301 | 82 | 71 | 354 | 153 | -56,8 |
| Total square metres | 13 309 | 3 570 | 2 953 | 15 608 | 6 523 | -58,2 |
| Total value at current prices (R'000) | 6 162 | 2 013 | 2 355 | 7 595 | 4 368 | -42,5 |
| Dwelling-houses equal to or larger than 80 square metres | | | | | | |
| Number of dwelling-houses | 15 | 29 | 41 | 40 | 70 | + 75,0 |
| Total square metres | 2 501 | 2 671 | 7 779 | 7 157 | 10 450 | + 46,0 |
| Total value at current prices (R'000) | 3 250 | 7 122 | 8 950 | 9 299 | 16 072 | + 72,8 |
| Flats and townhouses | | | | | | |
| Number of flats and townhouses | 18 | 80 | 68 | 59 | 148 | + 150,8 |
| Total square metres | 3 356 | 7 879 | 7 210 | 8 614 | 15 089 | + 75,2 |
| Total value at current prices (R'000) | 5 369 | 12 300 | 11 000 | 13 469 | 23 300 | + 73,0 |
| Other residential buildings ^{1/} | | | | | | |
| Total square metres | 0 | 0 | 2 683 | 0 | 2 683 | .. |
| Total value at current prices (R'000) | 0 | 0 | 7 000 | 0 | 7 000 | .. |
| Total value of residential buildings at current prices (R'000) | 14 781 | 21 435 | 29 305 | 30 363 | 50 740 | + 67,1 |
| Non-residential buildings | | | | | | |
| Office and banking space | | | | | | |
| Total square metres | 12 488 | 7 267 | 0 | 12 488 | 7 267 | -41,8 |
| Total value at current prices (R'000) | 24 800 | 14 000 | 0 | 24 800 | 14 000 | -43,5 |
| Shopping space | | | | | | |
| Total square metres | 0 | 0 | 0 | 0 | 0 | .. |
| Total value at current prices (R'000) | 0 | 0 | 0 | 0 | 0 | .. |
| Industrial and warehouse space | | | | | | |
| Total square metres | 80 | 867 | 0 | 80 | 867 | + 983,8 |
| Total value at current prices (R'000) | 112 | 694 | 0 | 112 | 694 | + 519,6 |
| Other non-residential space ^{2/} | | | | | | |
| Total square metres | 0 | 0 | 0 | 0 | 0 | .. |
| Total value at current prices (R'000) | 0 | 0 | 0 | 0 | 0 | .. |
| Total value of non-residential buildings at current prices (R'000) | 24 912 | 14 694 | 0 | 24 912 | 14 694 | -41,0 |
| Additions and alterations | | | | | | |
| Dwelling-houses | | | | | | |
| Total square metres | 2 633 | 4 501 | 5 380 | 5 527 | 9 881 | + 78,8 |
| Total value at current prices (R'000) | 3 401 | 5 303 | 6 386 | 6 677 | 11 689 | + 75,1 |
| Other buildings ^{3/} | | | | | | |
| Total square metres | 262 | 1 757 | 1 343 | 670 | 3 100 | + 362,7 |
| Total value at current prices (R'000) | 727 | 3 233 | 2 241 | 1 177 | 5 474 | + 365,1 |
| Total value of additions and alterations at current prices (R'000) | 4 128 | 8 536 | 8 627 | 7 854 | 17 163 | + 118,5 |
| Total value of building plans passed at current prices (R'000) | 43 821 | 44 665 | 37 932 | 63 129 | 82 597 | + 30,8 |

1/ Other residential buildings include institutions for the disabled, boarding houses, old people's homes, hostels, hotels, motels, guest houses, holiday chalets, entertainment centres, bed-and-breakfast accommodation and casinos.

2/ Other non-residential space includes churches, sport and recreation clubs, schools, crèches, hospitals and all other non-residential space.

3/ Other buildings include additions and alterations to other residential buildings, non-residential buildings and internal alterations.

Table 35 - Buildings completed according to type of building and selected urban area: Cape Town

| Type of building | February 2001 | January 2002 | February 2002 | January 2001 to February 2001 | January 2002 to February 2002 | Percentage change between January 2001 to February 2001 and January 2002 to February 2002 |
|---|----------------|----------------|----------------|-------------------------------|-------------------------------|---|
| Residential buildings | | | | | | |
| Dwelling-houses smaller than 80 square metres | | | | | | |
| Number of dwelling-houses | 364 | 805 | 519 | 758 | 1 324 | + 74,7 |
| Total square metres | 12 894 | 29 143 | 18 336 | 26 384 | 47 479 | + 80,0 |
| Total value at current prices (R'000) | 16 169 | 35 370 | 19 977 | 33 715 | 55 347 | + 64,2 |
| Dwelling-houses equal to or larger than 80 square metres | | | | | | |
| Number of dwelling-houses | 150 | 207 | 156 | 295 | 363 | + 23,1 |
| Total square metres | 29 825 | 37 861 | 32 662 | 56 414 | 70 523 | + 25,0 |
| Total value at current prices (R'000) | 41 153 | 58 268 | 47 861 | 76 672 | 106 129 | + 38,4 |
| Flats and townhouses | | | | | | |
| Number of flats and townhouses | 113 | 142 | 76 | 209 | 218 | + 4,3 |
| Total square metres | 10 637 | 31 335 | 7 826 | 19 857 | 39 161 | + 97,2 |
| Total value at current prices (R'000) | 16 231 | 60 708 | 11 869 | 27 775 | 72 577 | + 161,3 |
| Other residential buildings ^{1/} | | | | | | |
| Total square metres | 16 104 | 208 | 335 | 16 618 | 543 | - 96,7 |
| Total value at current prices (R'000) | 11 824 | 292 | 501 | 12 524 | 793 | - 93,7 |
| Total value of residential buildings at current prices (R'000) | 85 377 | 154 638 | 80 208 | 150 686 | 234 846 | + 55,9 |
| Non-residential buildings | | | | | | |
| Office and banking space | | | | | | |
| Total square metres | 26 161 | 4 136 | 8 979 | 32 772 | 13 115 | - 60,0 |
| Total value at current prices (R'000) | 62 812 | 4 600 | 13 469 | 71 408 | 18 069 | - 74,7 |
| Shopping space | | | | | | |
| Total square metres | 3 826 | 19 509 | 0 | 5 024 | 19 509 | + 288,3 |
| Total value at current prices (R'000) | 7 184 | 21 322 | 0 | 8 760 | 21 322 | + 143,4 |
| Industrial and warehouse space | | | | | | |
| Total square metres | 9 597 | 4 712 | 4 270 | 13 975 | 8 982 | - 35,7 |
| Total value at current prices (R'000) | 12 518 | 4 067 | 4 270 | 16 714 | 8 337 | - 50,1 |
| Other non-residential space ^{2/} | | | | | | |
| Total square metres | 2 935 | 0 | 3 867 | 3 510 | 3 867 | + 10,2 |
| Total value at current prices (R'000) | 4 058 | 0 | 5 622 | 5 947 | 5 622 | - 5,5 |
| Total value of non-residential buildings at current prices (R'000) | 86 572 | 29 989 | 23 361 | 102 829 | 53 350 | - 48,1 |
| Additions and alterations | | | | | | |
| Dwelling-houses | | | | | | |
| Total square metres | 30 391 | 20 660 | 28 515 | 52 960 | 49 175 | - 7,1 |
| Total value at current prices (R'000) | 32 702 | 25 627 | 35 860 | 58 316 | 61 487 | + 5,4 |
| Other buildings ^{3/} | | | | | | |
| Total square metres | 10 434 | 4 386 | 8 257 | 26 002 | 12 643 | - 51,4 |
| Total value at current prices (R'000) | 27 419 | 7 728 | 11 259 | 70 919 | 18 987 | - 73,2 |
| Total value of additions and alterations at current prices (R'000) | 60 121 | 33 355 | 47 119 | 129 235 | 80 474 | - 37,7 |
| Total value of buildings completed at current prices (R'000) | 232 070 | 217 982 | 150 688 | 382 750 | 368 670 | - 3,7 |

1/ Other residential buildings include institutions for the disabled, boarding houses, old people's homes, hostels, hotels, motels, guest houses, holiday chalets, entertainment centres, bed-and-breakfast accommodation and casinos.

2/ Other non-residential space includes churches, sport and recreation clubs, schools, crèches, hospitals and all other non-residential space.

3/ Other buildings include additions and alterations to other residential buildings, non-residential buildings and internal alterations.

Table 36 - Buildings completed according to type of building and selected urban area: Port Elizabeth

| Type of building | February 2001 | January 2002 | February 2002 | January 2001 to February 2001 | January 2002 to February 2002 | Percentage change between January 2001 to February 2001 and January 2002 to February 2002 |
|---|---------------|---------------|---------------|-------------------------------|-------------------------------|---|
| Residential buildings | | | | | | |
| Dwelling-houses smaller than 80 square metres | | | | | | |
| Number of dwelling-houses | 111 | 178 | 13 | 174 | 191 | + 9,8 |
| Total square metres | 4 669 | 7 550 | 673 | 7 279 | 8 223 | + 13,0 |
| Total value at current prices (R'000) | 6 103 | 9 717 | 882 | 9 450 | 10 599 | + 12,2 |
| Dwelling-houses equal to or larger than 80 square metres | | | | | | |
| Number of dwelling-houses | 48 | 25 | 31 | 61 | 56 | - 8,2 |
| Total square metres | 5 088 | 4 268 | 4 424 | 6 525 | 8 692 | + 33,2 |
| Total value at current prices (R'000) | 6 085 | 5 245 | 5 928 | 7 920 | 11 173 | + 41,1 |
| Flats and townhouses | | | | | | |
| Number of flats and townhouses | 13 | 2 | 1 | 13 | 3 | - 76,9 |
| Total square metres | 902 | 434 | 117 | 902 | 551 | - 38,9 |
| Total value at current prices (R'000) | 1 456 | 608 | 170 | 1 456 | 778 | - 46,6 |
| Other residential buildings ^{1/} | | | | | | |
| Total square metres | 4 347 | 0 | 0 | 4 347 | 0 | .. |
| Total value at current prices (R'000) | 7 000 | 0 | 0 | 7 000 | 0 | .. |
| Total value of residential buildings at current prices (R'000) | 20 644 | 15 570 | 6 980 | 25 826 | 22 550 | - 12,7 |
| Non-residential buildings | | | | | | |
| Office and banking space | | | | | | |
| Total square metres | 0 | 0 | 0 | 0 | 0 | .. |
| Total value at current prices (R'000) | 0 | 0 | 0 | 0 | 0 | .. |
| Shopping space | | | | | | |
| Total square metres | 352 | 1 565 | 0 | 352 | 1 565 | + 344,6 |
| Total value at current prices (R'000) | 431 | 1 526 | 0 | 431 | 1 526 | + 254,1 |
| Industrial and warehouse space | | | | | | |
| Total square metres | 872 | 478 | 0 | 872 | 478 | - 45,2 |
| Total value at current prices (R'000) | 1 244 | 392 | 0 | 1 244 | 392 | -68,5 |
| Other non-residential space ^{2/} | | | | | | |
| Total square metres | 510 | 1 469 | 340 | 510 | 1 809 | + 254,7 |
| Total value at current prices (R'000) | 105 | 1 500 | 428 | 105 | 1 928 | +1 736,2 |
| Total value of non-residential buildings at current prices (R'000) | 1 780 | 3 418 | 428 | 1 780 | 3 846 | + 116,1 |
| Additions and alterations | | | | | | |
| Dwelling-houses | | | | | | |
| Total square metres | 4 509 | 4 118 | 4 863 | 6 627 | 8 981 | + 35,5 |
| Total value at current prices (R'000) | 5 112 | 4 703 | 5 424 | 7 285 | 10 127 | + 39,0 |
| Other buildings ^{3/} | | | | | | |
| Total square metres | 2 856 | 2 475 | 1 281 | 2 870 | 3 756 | + 30,9 |
| Total value at current prices (R'000) | 3 772 | 2 746 | 1 174 | 3 812 | 3 920 | + 2,8 |
| Total value of additions and alterations at current prices (R'000) | 8 884 | 7 449 | 6 598 | 11 097 | 14 047 | + 26,6 |
| Total value of buildings completed at current prices (R'000) | 31 308 | 26 437 | 14 006 | 38 703 | 40 443 | + 4,5 |

1/ Other residential buildings include institutions for the disabled, boarding houses, old people's homes, hostels, hotels, motels, guest houses, holiday chalets, entertainment centres, bed-and-breakfast accommodation and casinos.

2/ Other non-residential space includes churches, sport and recreation clubs, schools, crèches, hospitals and all other non-residential space.

3/ Other buildings include additions and alterations to other residential buildings, non-residential buildings and internal alterations.

Table 37 - Buildings completed according to type of building and selected urban area: Durban

| Type of building | February 2001 | January 2002 | February 2002 | January 2001 to February 2001 | January 2002 to February 2002 | Percentage change between January 2001 to February 2001 and January 2002 to February 2002 |
|---|---------------|---------------|---------------|-------------------------------|-------------------------------|---|
| Residential buildings | | | | | | |
| Dwelling-houses smaller than 80 square metres | | | | | | |
| Number of dwelling-houses | 5 | 44 | 59 | 90 | 103 | + 14,4 |
| Total square metres | 226 | 2 374 | 3 079 | 4 367 | 5 453 | + 24,9 |
| Total value at current prices (R'000) | 332 | 2 984 | 3 635 | 4 729 | 6 619 | + 40,0 |
| Dwelling-houses equal to or larger than 80 square metres | | | | | | |
| Number of dwelling-houses | 102 | 37 | 82 | 159 | 119 | - 25,2 |
| Total square metres | 17 880 | 6 049 | 14 316 | 28 695 | 20 365 | - 29,0 |
| Total value at current prices (R'000) | 20 503 | 7 410 | 18 284 | 32 423 | 25 694 | - 20,8 |
| Flats and townhouses | | | | | | |
| Number of flats and townhouses | 49 | 27 | 42 | 70 | 69 | - 1,4 |
| Total square metres | 7 824 | 3 386 | 6 051 | 9 727 | 9 437 | - 3,0 |
| Total value at current prices (R'000) | 13 087 | 6 124 | 9 117 | 15 599 | 15 241 | - 2,3 |
| Other residential buildings ^{1/} | | | | | | |
| Total square metres | 0 | 0 | 0 | 0 | 0 | .. |
| Total value at current prices (R'000) | 0 | 0 | 0 | 0 | 0 | .. |
| Total value of residential buildings at current prices (R'000) | 33 922 | 16 518 | 31 036 | 52 751 | 47 554 | - 9,9 |
| Non-residential buildings | | | | | | |
| Office and banking space | | | | | | |
| Total square metres | 1 200 | 0 | 9 322 | 3 522 | 9 322 | + 164,7 |
| Total value at current prices (R'000) | 1 400 | 0 | 11 350 | 5 500 | 11 350 | + 106,4 |
| Shopping space | | | | | | |
| Total square metres | 1 747 | 3 223 | 2 905 | 7 502 | 6 128 | - 18,3 |
| Total value at current prices (R'000) | 2 786 | 3 993 | 2 780 | 18 103 | 6 773 | - 62,6 |
| Industrial and warehouse space | | | | | | |
| Total square metres | 15 557 | 10 259 | 16 196 | 17 005 | 26 455 | + 55,6 |
| Total value at current prices (R'000) | 18 990 | 11 534 | 13 505 | 22 040 | 25 039 | + 13,6 |
| Other non-residential space ^{2/} | | | | | | |
| Total square metres | 2 417 | 466 | 3 367 | 3 684 | 3 833 | + 4,0 |
| Total value at current prices (R'000) | 3 300 | 466 | 6 313 | 4 678 | 6 779 | + 44,9 |
| Total value of non-residential buildings at current prices (R'000) | 26 476 | 15 993 | 33 948 | 50 321 | 49 941 | - 0,8 |
| Additions and alterations | | | | | | |
| Dwelling-houses | | | | | | |
| Total square metres | 24 486 | 15 465 | 15 287 | 40 591 | 30 752 | - 24,2 |
| Total value at current prices (R'000) | 27 442 | 16 223 | 15 458 | 45 611 | 31 681 | - 30,5 |
| Other buildings ^{3/} | | | | | | |
| Total square metres | 4 250 | 5 792 | 2 750 | 6 367 | 8 542 | + 34,2 |
| Total value at current prices (R'000) | 10 869 | 9 980 | 3 453 | 14 689 | 13 433 | - 8,6 |
| Total value of additions and alterations at current prices (R'000) | 38 311 | 26 203 | 18 911 | 60 300 | 45 114 | - 25,2 |
| Total value of buildings completed at current prices (R'000) | 98 709 | 58 714 | 83 895 | 163 372 | 142 609 | - 12,7 |

1/ Other residential buildings include institutions for the disabled, boarding houses, old people's homes, hostels, hotels, motels, guest houses, holiday chalets, entertainment centres, bed-and-breakfast accommodation and casinos.

2/ Other non-residential space includes churches, sport and recreation clubs, schools, crèches, hospitals and all other non-residential space.

3/ Other buildings include additions and alterations to other residential buildings, non-residential buildings and internal alterations.

Table 38 - Buildings completed according to type of building and selected urban area: Witwatersrand

| Type of building | February 2001 | January 2002 | February 2002 | January 2001 to February 2001 | January 2002 to February 2002 | Percentage change between January 2001 to February 2001 and January 2002 to February 2002 |
|---|----------------|----------------|----------------|-------------------------------|-------------------------------|---|
| Residential buildings | | | | | | |
| Dwelling-houses smaller than 80 square metres | | | | | | |
| Number of dwelling-houses | 706 | 563 | 556 | 956 | 1 119 | + 17,1 |
| Total square metres | 26 322 | 19 294 | 18 723 | 36 841 | 38 017 | + 3,2 |
| Total value at current prices (R'000) | 17 613 | 15 822 | 14 225 | 26 194 | 30 047 | + 14,7 |
| Dwelling-houses equal to or larger than 80 square metres | | | | | | |
| Number of dwelling-houses | 241 | 214 | 140 | 387 | 354 | -8,5 |
| Total square metres | 46 752 | 54 317 | 33 202 | 86 460 | 87 519 | + 1,2 |
| Total value at current prices (R'000) | 66 654 | 85 575 | 54 690 | 120 855 | 140 265 | + 16,1 |
| Flats and townhouses | | | | | | |
| Number of flats and townhouses | 107 | 286 | 371 | 488 | 657 | + 34,6 |
| Total square metres | 9 100 | 28 510 | 40 331 | 35 687 | 68 841 | + 92,9 |
| Total value at current prices (R'000) | 16 620 | 37 583 | 70 953 | 50 651 | 108 536 | + 114,3 |
| Other residential buildings ^{1/} | | | | | | |
| Total square metres | 0 | 0 | 0 | 32 600 | 0 | .. |
| Total value at current prices (R'000) | 0 | 0 | 0 | 250 000 | 0 | .. |
| Total value of residential buildings at current prices (R'000) | 100 887 | 138 980 | 139 868 | 447 700 | 278 848 | -37,7 |
| Non-residential buildings | | | | | | |
| Office and banking space | | | | | | |
| Total square metres | 541 | 22 895 | 5 681 | 93 173 | 28 576 | -69,3 |
| Total value at current prices (R'000) | 731 | 39 277 | 11 362 | 122 514 | 50 639 | -58,7 |
| Shopping space | | | | | | |
| Total square metres | 1 549 | 1 900 | 2 405 | 5 680 | 4 305 | -24,2 |
| Total value at current prices (R'000) | 2 626 | 1 900 | 3 456 | 7 832 | 5 356 | -31,6 |
| Industrial and warehouse space | | | | | | |
| Total square metres | 17 417 | 14 844 | 5 574 | 31 029 | 20 418 | -34,2 |
| Total value at current prices (R'000) | 30 465 | 23 485 | 8 057 | 46 674 | 31 542 | -32,4 |
| Other non-residential space ^{2/} | | | | | | |
| Total square metres | 426 | 2 338 | 478 | 3 254 | 2 816 | -13,5 |
| Total value at current prices (R'000) | 405 | 3 702 | 965 | 5 444 | 4 667 | -14,3 |
| Total value of non-residential buildings at current prices (R'000) | 34 227 | 68 364 | 23 840 | 182 464 | 92 204 | -49,5 |
| Additions and alterations | | | | | | |
| Dwelling-houses | | | | | | |
| Total square metres | 29 186 | 16 212 | 27 115 | 51 519 | 43 327 | -15,9 |
| Total value at current prices (R'000) | 35 345 | 22 523 | 35 167 | 62 334 | 57 690 | -7,5 |
| Other buildings ^{3/} | | | | | | |
| Total square metres | 10 942 | 7 100 | 7 605 | 23 026 | 14 705 | -36,1 |
| Total value at current prices (R'000) | 19 628 | 10 836 | 13 300 | 33 250 | 24 136 | -27,4 |
| Total value of additions and alterations at current prices (R'000) | 54 973 | 33 359 | 48 467 | 95 584 | 81 826 | -14,4 |
| Total value of buildings completed at current prices (R'000) | 190 087 | 240 703 | 212 175 | 725 748 | 452 878 | -37,6 |

1/ Other residential buildings include institutions for the disabled, boarding houses, old people's homes, hostels, hotels, motels, guest houses, holiday chalets, entertainment centres, bed-and-breakfast accommodation and casinos.

2/ Other non-residential space includes churches, sport and recreation clubs, schools, crèches, hospitals and all other non-residential space.

3/ Other buildings include additions and alterations to other residential buildings, non-residential buildings and internal alterations.

Table 39 - Buildings completed according to type of building and selected urban area: Pretoria

| Type of building | February 2001* | January 2002 | February 2002 | January 2001 to February 2001 | January 2002 to February 2002 | Percentage change between January 2001 to February 2001 and January 2002 to February 2002 |
|---|----------------|----------------|---------------|-------------------------------|-------------------------------|---|
| Residential buildings | | | | | | |
| Dwelling-houses smaller than 80 square metres | | | | | | |
| Number of dwelling-houses | 29 | 23 | 26 | 44 | 49 | + 11,4 |
| Total square metres | 1 355 | 1 277 | 1 108 | 2 147 | 2 385 | + 11,1 |
| Total value at current prices (R'000) | 1 471 | 1 823 | 1 496 | 2 419 | 3 319 | + 37,2 |
| Dwelling-houses equal to or larger than 80 square metres | | | | | | |
| Number of dwelling-houses | 71 | 109 | 34 | 134 | 143 | + 6,7 |
| Total square metres | 18 375 | 29 878 | 8 650 | 34 747 | 38 528 | + 10,9 |
| Total value at current prices (R'000) | 25 097 | 42 263 | 12 924 | 45 540 | 55 187 | + 21,2 |
| Flats and townhouses | | | | | | |
| Number of flats and townhouses | 86 | 443 | 425 | 123 | 868 | + 605,7 |
| Total square metres | 8 296 | 40 850 | 29 957 | 12 363 | 70 807 | + 472,7 |
| Total value at current prices (R'000) | 10 211 | 50 817 | 35 706 | 15 831 | 86 523 | + 446,5 |
| Other residential buildings ^{1/} | | | | | | |
| Total square metres | 0 | 0 | 0 | 0 | 0 | .. |
| Total value at current prices (R'000) | 0 | 0 | 0 | 0 | 0 | .. |
| Total value of residential buildings at current prices (R'000) | 36 779 | 94 903 | 50 126 | 63 790 | 145 029 | + 127,4 |
| Non-residential buildings | | | | | | |
| Office and banking space | | | | | | |
| Total square metres | 2 017 | 538 | 4 291 | 5 143 | 4 829 | - 6,1 |
| Total value at current prices (R'000) | 2 961 | 807 | 6 430 | 6 775 | 7 237 | + 6,8 |
| Shopping space | | | | | | |
| Total square metres | 0 | 0 | 0 | 0 | 0 | .. |
| Total value at current prices (R'000) | 0 | 0 | 0 | 0 | 0 | .. |
| Industrial and warehouse space | | | | | | |
| Total square metres | 2 344 | 1 154 | 2 484 | 2 344 | 3 638 | + 55,2 |
| Total value at current prices (R'000) | 3 516 | 1 731 | 4 133 | 3 516 | 5 864 | + 66,8 |
| Other non-residential space ^{2/} | | | | | | |
| Total square metres | 663 | 0 | 1 385 | 663 | 1 385 | + 108,9 |
| Total value at current prices (R'000) | 1 658 | 0 | 1 562 | 1 658 | 1 562 | - 5,8 |
| Total value of non-residential buildings at current prices (R'000) | 8 135 | 2 538 | 12 125 | 11 949 | 14 663 | + 22,7 |
| Additions and alterations | | | | | | |
| Dwelling-houses | | | | | | |
| Total square metres | 1 050 | 1 569 | 2 406 | 2 262 | 3 975 | + 75,7 |
| Total value at current prices (R'000) | 1 190 | 2 164 | 3 782 | 2 695 | 5 946 | + 120,6 |
| Other buildings ^{3/} | | | | | | |
| Total square metres | 0 | 1 290 | 540 | 746 | 1 830 | + 145,3 |
| Total value at current prices (R'000) | 62 | 1 936 | 971 | 1 245 | 2 907 | + 133,5 |
| Total value of additions and alterations at current prices (R'000) | 1 252 | 4 100 | 4 753 | 3 940 | 8 853 | + 124,7 |
| Total value of buildings completed at current prices (R'000) | 46 166 | 101 541 | 67 004 | 79 679 | 168 545 | + 111,5 |

1/ Other residential buildings include institutions for the disabled, boarding houses, old people's homes, hostels, hotels, motels, guest houses, holiday chalets, entertainment centres, bed-and-breakfast accommodation and casinos.

2/ Other non-residential space includes churches, sport and recreation clubs, schools, crèches, hospitals and all other non-residential space.

3/ Other buildings include additions and alterations to other residential buildings, non-residential buildings and internal alterations.

Table 40 - Buildings completed according to type of building and selected urban area: Bloemfontein

| Type of building | February 2001 | January 2002 | February 2002 | January 2001 to February 2001 | January 2002 to February 2002 | Percentage change between January 2001 to February 2001 and January 2002 to February 2002 |
|---|---------------|---------------|---------------|-------------------------------|-------------------------------|---|
| Residential buildings | | | | | | |
| Dwelling-houses smaller than 80 square metres | | | | | | |
| Number of dwelling-houses | 10 | 21 | 65 | 22 | 86 | + 290,9 |
| Total square metres | 453 | 1 200 | 2 865 | 1 110 | 4 065 | + 266,2 |
| Total value at current prices (R'000) | 532 | 1 362 | 1 521 | 1 350 | 2 883 | + 113,6 |
| Dwelling-houses equal to or larger than 80 square metres | | | | | | |
| Number of dwelling-houses | 9 | 17 | 12 | 42 | 29 | - 31,0 |
| Total square metres | 2 165 | 3 543 | 2 065 | 9 075 | 5 608 | - 38,2 |
| Total value at current prices (R'000) | 2 477 | 4 127 | 2 550 | 11 032 | 6 677 | - 39,5 |
| Flats and townhouses | | | | | | |
| Number of flats and townhouses | 29 | 12 | 18 | 37 | 30 | - 18,9 |
| Total square metres | 2 217 | 1 385 | 1 507 | 3 278 | 2 892 | - 11,8 |
| Total value at current prices (R'000) | 3 313 | 2 430 | 3 014 | 4 813 | 5 444 | + 13,1 |
| Other residential buildings ^{1/} | | | | | | |
| Total square metres | 0 | 1 428 | 0 | 151 | 1 428 | + 845,7 |
| Total value at current prices (R'000) | 0 | 1 461 | 0 | 211 | 1 461 | + 592,4 |
| Total value of residential buildings at current prices (R'000) | 6 322 | 9 380 | 7 085 | 17 406 | 16 465 | - 5,4 |
| Non-residential buildings | | | | | | |
| Office and banking space | | | | | | |
| Total square metres | 0 | 2 008 | 0 | 302 | 2 008 | + 564,9 |
| Total value at current prices (R'000) | 0 | 3 800 | 0 | 483 | 3 800 | + 686,7 |
| Shopping space | | | | | | |
| Total square metres | 0 | 630 | 0 | 2 050 | 630 | - 69,3 |
| Total value at current prices (R'000) | 0 | 500 | 0 | 2 000 | 500 | - 75,0 |
| Industrial and warehouse space | | | | | | |
| Total square metres | 0 | 2 558 | 284 | 2 878 | 2 842 | - 1,3 |
| Total value at current prices (R'000) | 0 | 2 100 | 180 | 1 977 | 2 280 | + 15,3 |
| Other non-residential space ^{2/} | | | | | | |
| Total square metres | 0 | 0 | 0 | 140 | 0 | .. |
| Total value at current prices (R'000) | 0 | 0 | 0 | 170 | 0 | .. |
| Total value of non-residential buildings at current prices (R'000) | 0 | 6 400 | 180 | 4 630 | 6 580 | + 42,1 |
| Additions and alterations | | | | | | |
| Dwelling-houses | | | | | | |
| Total square metres | 2 887 | 9 152 | 4 870 | 9 604 | 14 022 | + 46,0 |
| Total value at current prices (R'000) | 3 071 | 10 613 | 5 352 | 9 892 | 15 965 | + 61,4 |
| Other buildings ^{3/} | | | | | | |
| Total square metres | 110 | 1 428 | 1 448 | 1 663 | 2 876 | + 72,9 |
| Total value at current prices (R'000) | 469 | 4 652 | 2 399 | 2 631 | 7 051 | + 168,0 |
| Total value of additions and alterations at current prices (R'000) | 3 540 | 15 265 | 7 751 | 12 523 | 23 016 | + 83,8 |
| Total value of buildings completed at current prices (R'000) | 9 862 | 31 045 | 15 016 | 34 559 | 46 061 | + 33,3 |

1/ Other residential buildings include institutions for the disabled, boarding houses, old people's homes, hostels, hotels, motels, guest houses, holiday chalets, entertainment centres, bed-and-breakfast accommodation and casinos.

2/ Other non-residential space includes churches, sport and recreation clubs, schools, crèches, hospitals and all other non-residential space.

3/ Other buildings include additions and alterations to other residential buildings, non-residential buildings and internal alterations.

Additional information

Explanatory Notes

| | |
|--------------------------------------|---|
| Introduction | <ol style="list-style-type: none"> 1 Statistics South Africa (Stats SA) conducts a monthly Building Statistics Survey collecting information regarding building plans approved and buildings completed, financed by the private sector, from a sample of local government institutions in South Africa. This statistical release contains information of building plans passed and buildings completed in respect of residential buildings, non-residential buildings and additions and alterations according to province and selected urban areas. 2 In order to improve timeliness of the publication, some information for the current month have been estimated due to late submission by respondents. These estimates will be revised in the next statistical release(s) as soon as actual information is available. 3 The actual and seasonally adjusted values (at current and at constant 1995 prices) and the percentage change of building plans passed and buildings completed according to type of building are reflected monthly from January 2000 in this statistical release (cf. tables 1 to 8). |
| Scope of the survey | <ol style="list-style-type: none"> 4 This survey covers local government institutions conducting activities for the private sector regarding - <ul style="list-style-type: none"> • approval of building plans; and • final inspection of completed buildings. |
| Classification | <ol style="list-style-type: none"> 5 The 1993 edition of the Standard Industrial Classification of all Economic Activities, (SIC) Fifth Edition, Report No. 09-90-02, was used to classify the statistical units. The SIC is based on the 1990 International Standard Industrial Classification of all Economic Activities (ISIC) with suitable adaptations for local conditions. 6 The twelfth and last published edition of the Standard Code List of Areas, Report No. 09-09-03 (1994) was used to classify the statistical units according to province. The cities, towns and non-urban areas listed in this report are codified within magisterial district and province. The code list was compiled by Stats SA in collaboration with other interested bodies and the first edition was distributed in June 1977. |
| Statistical unit | <ol style="list-style-type: none"> 7 The statistical unit for the collection of information is a local government institution. Local government institutions include municipalities, city councils, metropolitan councils, district councils, transitional councils and development and services boards. |
| Survey methodology and design | <ol style="list-style-type: none"> 8 The sample for the monthly Building Statistics Survey consists of the largest local government institutions in South Africa, i.e. those that account for approximately 85% of the total rand value of buildings completed by the private sector. 9 The survey is collected by mail each month from a sample of 135 local government institutions. |
| Constant prices | <ol style="list-style-type: none"> 10 The value of building plans passed and buildings completed at constant prices measure the building activities in terms of ruling prices in a specific base year which is currently 1995. 11 The value of building plans passed at constant prices for each month is obtained by deflating the values at current prices with a price index known as the “lump sum domestic buildings” as published in statistical release P0151 – JBCC Contract Price Adjustment Provisions Work Group Indices. In order to be applicable, these indices (base February 1991=100) are converted to the base year 1995=100. |

- 12** The value of buildings completed at constant prices is obtained by deflating the values at current prices with the same price index which is used to calculate building plans passed at constant prices (cf. paragraph 11). The value of buildings completed is reported as at the time the plans were passed. Since the completion of buildings may extend over a few months to a few years, the current value of buildings completed is deflated by price indices as at the time the plans were passed in order to calculate the value of buildings completed at the time the plans were passed. Therefore, the duration of the completion of different types of buildings are taken into account in ascertaining the deflators e.g. the value of dwelling-houses completed at constant prices at January 2000 is obtained by deflating the current value of dwelling-houses completed for January 2000 with the price index of a month six months prior to January 2000. Furthermore, the value of other residential buildings, non-residential buildings and additions and alterations at constant prices is obtained by deflating the current values with price indices of 12 months, 18 months and 12 months prior to the relevant month, respectively.
- Seasonal adjustment**
- 13** Seasonally adjusted estimates of building plans passed and buildings completed are generated each month, using the X-11 Seasonal Adjustment Program developed by US Bureau of the Census Economic Research and Analyses Division, 1968.
- 14** Seasonal adjustment is a means of removing the estimated effects of normal seasonal variation from the series so that the effects of other influences on the series can be more clearly recognised. Seasonal adjustment does not aim to remove irregular or non-seasonal influences which may be present in any particular month. Influences that are volatile or unsystematic can still make it difficult to interpret the movement of the series even after adjustment for seasonal variations. Therefore, the month-to-month movements of seasonally adjusted estimates may not be reliable indicators of trend behaviour.
- Trend cycle**
- 15** The trend is a long-term pattern or movement of a time series. The X-11 Seasonal Adjustment Program is used for smoothing seasonally adjusted data.
- Related publications**
- 16** Users may also wish to refer to the following publications:
- P5041.3 – Building statistics issued annually.
 - P9101.2 – Actual and expected expenditure on construction by the public sector per statistical region issued annually.
 - Bulletin of Statistics issued quarterly.
 - South African Statistics issued annually.
- Unpublished statistics**
- 17** In some cases Stats SA can also make available statistics which are not published. The statistics can be made available in one or more of the following ways: computer printouts, CD and diskette. Generally a charge is made for providing unpublished statistics.
- Rounding-off of figures**
- 18** The figures in the tables have, where necessary, been rounded off to the nearest digit shown. There may, therefore, be slight discrepancies between the sums of the constituent items and the totals shown.
- Pre-release policy**
- 19** Stats SA has adopted the confidential pre-release policy in respect of selected economic indicators and specific government departments. The policy accords with practice among leading statistical agencies. The statistical integrity of the information and strict observance of the release time has been assured by the following procedure:
- 20** In respect of this statistical release, an official representative from the Office of the President, the Department of Trade and Industry (DTI), National Treasury and the South African Reserve Bank (SARB) will receive a copy of the release on a strictly confidential basis two hours in advance of the public issue.
- 21** Stats SA pre-release policy may be inspected at its Website, www.statssa.gov.za

Symbols and abbreviations

| | |
|----------|--|
| .. | no meaningful percentage change between two specified periods available since either one or both of the totals are nil |
| 0 | nil or figure too small to publish |
| * | revised |
| Stats SA | Statistics South Africa |
| SIC | Standard Industrial Classification of all Economic Activities |
| ISIC | International Standard Industrial Classification of all Economic Activities |
| JBCC | Joint Building Contracts Committee |
| CD | Compact Disc |
| US | United States |
| SARB | South African Reserve Bank |
| DTI | Department of Trade and Industry |

Technical notes**Response rate**

The response rate for February 2002 is 100%.

Local government institutions covered in the sample survey

Local government institutions according to province

| | |
|----------------------|--|
| Western Cape | Blaauwberg (includes Milnerton), Brackenfell, Breede River District Council, Cape Town, City of Tygerberg (Bellville, Durbanville, Goodwood, Lingeletu West, Parow and South Administration), Fish Hoek, George (includes Pacaltsdorp, Thembaletu and Herolds Bay), Gordon's Bay, Hangklip-Kleinmond (includes Kleinmond, Betty's Bay and Rooi-Els), Hermanus (includes Onrus River, Zwelihle, Sandbaai, Vermont, Hawston and Fisher Haven), Ikapa, Klein-Karoo District Council, Knysna (includes Khayaletu), Kuils River, Malmesbury, Mossel Bay (includes Boggom's Bay, Kleinbrak, Rheeboek and Tergniet), Oostenberg (Kraaifontein and Melton Rose - Blue Downs), Oudtshoorn, Overberg District Council, Paarl, Plettenberg Bay, Sedgefield, Simon's Town, Somerset West, South Peninsula, Stellenbosch, Strand, Wellington, West Coast District Council, Western Coast Peninsula (previously Vredenburg-Saldanha), Winelands District Council and Worcester. |
| Eastern Cape | Aliwal-Maletswai (includes Dukathole), Despatch, East London (includes Beacon Bay, Gomo Town, Gonubie and Mdantsane), Grahamstown (includes Rhini Township), Jeffrey's Bay, King William's Town (includes Bisho and Zwelitsha), Port Alfred, Port Elizabeth (includes Ibhayi and Motherwell), Uitenhage (includes KwaNobuhle), Umtata and Western District Council. |
| Northern Cape | Benede-Oranje District Council, Keimoes, Kimberley (including Galeshewe), Kuruman, Namaqualand District Council and Upington (includes Paballelo). |
| Free State | Allanridge, Bethlehem (includes Bohlokong), Bloemfontein (includes Bainsvlei, Bloemspruit and Mangaung), Botshabelo, Deneysville (includes Refengkgotso), Harrismith (includes Tsiamé), Kroonstad (includes Maokeng), Ladybrand (includes Manyatseng), Odendaalsrus (includes Kutlwanong), Parys, Phuthaditjhaba, Sasolburg (includes Zamdela), Virginia (includes Meloding) and Welkom (includes Thabong). |
| KwaZulu-Natal | Development and Services Board - Inland, Development and Services Board – North Coast, Dolphin Coast Borough (includes Ballito, Etete, Shakaskraal, Tinley Manor Beach and Umhlali Beach), Durban, Edendale, Empangeni (includes Ngwelezana), Hilton, Howick, Inner West City Council (includes Clermont, KwaDabeka, KwaNdengezi, New Germany, Pinetown, Queensburgh, Reservoir Hills, Shallcross and Westville), Kokstad, Kwa-Dukuza/Stanger (includes Blythedale Beach, Shakaville and Stanger), KwaMashu, Ladysmith (includes Emnambithi), Margate (includes Uvongo), Mpenjati/Southbroom (includes Southbroom, Marina Beach, San Lameer and Trafalgar), Newcastle (includes Madadeni, Osizweni and Blaauwboschlaagte), North Local Council - Tongaat (includes Canelands and Hambanati), North Local Council - Umhlanga Rocks (includes Mount Edgecombe and Umdloti Beach), North Local Council - Verulam, Outer West Local Council (includes Assagay, Botha's Hill, Cato Ridge, Drummond, Everton, Gillitts, Hillcrest, Inchanga, Kloof, Mpumalanga and Waterfall), Pennington, Pietermaritzburg/Msundini, Port Shepstone, Richards Bay, South Local Council (includes Amanzimtoti, Isipingo, Kingsburgh, KwaMakuta and Umbogintwini), Umlazi and Umtamvuna/Port Edward (includes Munster, Port Edward and Palm Beach). |
| North West | Bophirima District Council, Brits (includes Lethabile), Ga-Rankuwa, Klerksdorp, Lichtenburg, Mmabatho, Orkney (includes Kanana), Potchefstroom, Rustenburg, Vryburg and Zeerust. |

Gauteng

Akasia (includes Elandsdoorn, Klipfontein, Kruisfontein and Soshanguve), Alberton (includes Tokoza), Benoni (includes Daveyton and Wattville), Boksburg (includes Vosloorus), Brakpan (includes Tsakane), Bronkhorst-spruit, Carletonville (includes Khutsong), Centurion, Duduza, Eastern Services Council - Pretoria Area, Edenvale-Modderfontein, Germiston (includes Bedfordview and Katlehong), Greater Johannesburg - Eastern Metropolitan Local Council (includes Alexandra and Sandton), Greater Johannesburg - Northern Metropolitan Local Council (includes Randburg), Greater Johannesburg - Southern Metropolitan Local Council (includes Ennerdale, Lenasia and Johannesburg), Greater Johannesburg - Western Metropolitan Local Council (includes Diepmeadow, Dobsonville and Roodepoort), Heidelberg (includes Ratanda), Kempton Park (includes Tembisa), Krugersdorp (includes Kagiso and Munsieville), Meyerton, Midrand (includes Rabie Ridge and Ivory Park), Nigel, Pretoria (includes Atteridgeville and Mamelodi), Randfontein (includes Mohlakeng), Sebokeng (includes Boipatong, Bophelong and Sharpeville), Soweto, Springs (includes KwaThema), Vanderbijlpark, Vereeniging (includes Evaton), Western Services Council and Westonaria (includes Bekkersdal).

Mpumalanga

Delmas (includes Botleng), Eastvaal District Council, Ermelo (includes Wesselton and Cassim Park), Highveld District Council, Highveldridge Transitional Council (includes Evander, Embalenhle and Secunda), Komatipoort (includes Kamaqhekeza), KwaGuqa, KwaMhlanga, Malelane (includes Hectorspruit and Kamhlushwa), Middelburg (includes Mhluzi), Nelspruit (includes Kanyamazane and Lowveld Escarpment District Council as from January 2001), White River and Witbank.

Northern Province

Bosveld District Council, Giyani, Letaba (includes Nkowakowa and Tzaneen), Messina, Naboomspruit (includes Mookgophong), Nylstroom, Pietersburg-Polokwane (includes Seshego), Potgietersrus and Thabazimbi.

Local government institutions according to selected urban areas**Cape Town**

Blaauwberg (includes Milnerton), Cape Town, City of Tygerberg (Bellville, Durbanville, Goodwood, Lingeletu West, Parow and South Administration), Fish Hoek, Ikapa, Oostenberg (Kraaifontein and Melton Rose - Blue Downs), Simon's Town and South Peninsula.

Port Elizabeth

Despatch, Port Elizabeth (including Ibhayi and Motherwell) and Uitenhage (including KwaNobuhle)

Durban

Durban, Inner West City Council (includes Clermont, KwaDabeka, KwaNdengezi, New Germany, Pinetown, Queenstown, Reservoir Hills, Shallcross and Westville), North Local Council - Verulam, Outer West Local Council (includes Assagay, Botha's Hill, Cato Ridge, Drummond, Everton, Gillitts, Hillcrest, Inchanga, Kloof, Mpumalanga and Waterfall) and South Local Council (includes Amanzimtoti, Isipingo, Kingsburgh, KwaMakuta and Umbogintwini).

Witwatersrand

Alberton (includes Thokoza), Benoni (includes Daveyton and Wattville), Boksburg (includes Vosloorus), Brakpan (includes Tsakane), Carletonville (includes Khutsong), Duduza, Edenvale-Modderfontein, Germiston (includes Bedfordview and Katlehong), Greater Johannesburg - Eastern Metropolitan Local Council (includes Alexandra and Sandton), Greater Johannesburg - Northern Metropolitan Local Council (includes Randburg), Greater Johannesburg - Southern Metropolitan Local Council (includes Ennerdale, Lenasia and Johannesburg), Greater Johannesburg - Western Metropolitan Local Council (includes Diepmeadow, Dobsonville and Roodepoort), Kempton Park (includes Tembisa), Krugersdorp (includes Kagiso and Munsieville), Midrand (includes Rabie Ridge and Ivory Park), Nigel, Randfontein (includes Mohlakeng), Soweto, Springs (includes KwaThema) and Westonaria (includes Bekkersdal).

Pretoria

Akasia (includes Elandsdoorn, Klipfontein and Soshanguve), Centurion, Eastern Services Council - Pretoria area and Pretoria (includes Atteridgeville and Mamelodi).

Bloemfontein

Bloemfontein (includes Bainsvlei, Bloemspruit and Mangaung).

Glossary

| | |
|--------------------------------------|---|
| Additions and alterations | Additions and alterations include extensions to existing buildings as well as internal and external alterations of existing buildings. |
| Blocks of flats | Blocks of flats are regarded as high-density housing consisting of a number of self-contained dwelling-units with at least one living-room together with a kitchen and bathroom conjoined to similar units in one building. |
| Dwelling-house | A dwelling-house refers to a free-standing, complete structure on a separate stand or a self-contained dwelling-unit, granny flat, on the same premises as an existing residence. Out-buildings and garages are included. |
| Local government institutions | A local government institution is a generic term referring to any number of institutions involved in the local sphere of government. Local government institutions consist of municipalities, city councils, metropolitan councils, district councils, transitional local councils and development and services boards. |
| Non-residential buildings | Non-residential buildings comprise factories, commercial, financial and other office buildings, as well as other buildings not used for residential purposes, such as churches, halls, clubs, schools and hospitals. |
| Other residential buildings | Other residential buildings include institutions for the disabled, boarding houses, old people's homes, hostels, hotels, motels, guest houses, holiday chalets, bed-and-breakfast accommodation, entertainment centres and casinos. |
| Percentage change | <p>When using monthly actual values, the percentage change is the change in actual values of building activities (building plans passed or buildings completed) of the relevant month compared with the actual values of building activities (building plans passed or buildings completed) of the same month in the previous year expressed as a percentage.</p> <p>When using annual actual values, the percentage change is the change in the actual values of building activities (building plans passed or buildings completed) of the relevant year compared with the actual values of building activities (building plans passed or buildings completed) of the previous year expressed as a percentage.</p> <p>When using seasonally adjusted values, the percentage change is the change in the seasonally adjusted values of building activities (building plans passed or buildings completed) of the relevant month compared with the seasonally adjusted values of building activities (building plans passed or buildings completed) of the previous month expressed as a percentage.</p> |
| Reference period | Reference period is one calendar month. |
| Residential buildings | Residential buildings comprise dwelling-houses, flats, townhouses and other residential buildings. |
| Townhouses | Townhouses are multiple, medium-density dwelling-units and include cluster housing, group housing, simplexes, duplexes, triplexes and other similar dwelling-units which are usually grouped together, with one level of each unit on ground level. This excludes blocks of flats. |

For more information

Stats SA publishes approximately 300 different statistical releases each year. It is not economically viable to produce them in more than one of South Africa's eleven official languages. Since the releases are used extensively, not only locally but also by international economic and social-scientific communities, Stats SA releases are published in English only.

Stats SA has copyright on this publication. Users may apply the information as they wish, provided that they acknowledge Stats SA as the source of the basic data wherever they process, apply, utilise, publish or distribute the data and also that they specify that the relevant application and analysis (where applicable) result from their own processing of the data.

Stats SA products

A complete set of Stats SA publications is available at the Stats SA Library and the following libraries:

National Library of South Africa, Pretoria Division
National Library of South Africa, Cape Town Division
Natal Society Library, Pietermaritzburg
Library of Parliament, Cape Town
Bloemfontein Public Library
Johannesburg Public Library
Eastern Cape Library Services, King William's Town
Central Regional Library, Pietersburg
Central Reference Library, Nelspruit
Central Reference Collection, Kimberley
Central Reference Library, Mmabatho

Stats SA also provides a subscription service.

Electronic services

A large range of data are available via on-line services, diskette, CD and computer printouts. For more details about our electronic data services, contact (012) 310 8600/8095/8390/8351

You can visit us on the Internet at: <http://www.statssa.gov.za>

Enquiries

Telephone number: (012) 310 8600/8095/8390/8351 (user enquiries)
(012) 310 8228/310 8007 (technical enquiries)
(012) 310 8161 (publications)
(012) 310 8490 (library)

Fax number: (012) 310 8182

e-mail: Corrieb@statssa.pwv.gov.za
Gretaz@statssa.pwv.gov.za

Postal address: Private Bag X44, Pretoria, 0001