

Statistical release

P5041.1

Selected building statistics of the private sector as reported by local government institutions

**December 2007
(Preliminary)**

**Embargoed until:
20 February 2008
13:00**

Enquiries:

User Information Services
Tel: (012) 310 8600 / 4892 / 8390

Forthcoming issue:

January 2008

Expected release date

19 March 2008

Contents

	Page
SUMMARY OF FINDINGS	3
Tables	
Table 1 Values and percentage change of recorded building plans passed by larger municipalities at current prices by type of building	9
Table 2 Seasonally adjusted values and percentage change of recorded building plans passed by larger municipalities at current prices by type of building	10
Table 3 Values and percentage change of recorded building plans passed by larger municipalities at constant 2000 prices by type of building	11
Table 4 Seasonally adjusted values and percentage change of recorded building plans passed by larger municipalities at constant 2000 prices by type of building	12
Table 5 Values and percentage change of buildings reported as completed to larger municipalities at current prices by type of building	13
Table 6 Seasonally adjusted values and percentage change of buildings reported as completed to larger municipalities at current prices by type of building	14
Table 7 Values and percentage change of buildings reported as completed to larger municipalities at constant 2000 prices by type of building	15
Table 8 Seasonally adjusted values and percentage change of buildings reported as completed to larger municipalities at constant 2000 prices by type of building	16
Table 9 Recorded building plans passed by larger municipalities at current prices by type of building: South Africa	17
Table 10 Recorded building plans passed by larger municipalities at current prices by type of building: Western Cape	18
Table 11 Recorded building plans passed by larger municipalities at current prices by type of building: Eastern Cape	19
Table 12 Recorded building plans passed by larger municipalities at current prices by type of building: Northern Cape	20
Table 13 Recorded building plans passed by larger municipalities at current prices by type of building: Free State	21
Table 14 Recorded building plans passed by larger municipalities at current prices by type of building: KwaZulu-Natal	22
Table 15 Recorded building plans passed by larger municipalities at current prices by type of building: North West	23
Table 16 Recorded building plans passed by larger municipalities at current prices by type of building: Gauteng	24
Table 17 Recorded building plans passed by larger municipalities at current prices by type of building: Mpumalanga	25
Table 18 Recorded building plans passed by larger municipalities at current prices by type of building: Limpopo	26
Table 19 Buildings reported as completed to larger municipalities at current prices by type of building: South Africa	27
Table 20 Buildings reported as completed to larger municipalities at current prices by type of building: Western Cape	28
Table 21 Buildings reported as completed to larger municipalities at current prices by type of building: Eastern Cape	29
Table 22 Buildings reported as completed to larger municipalities at current prices by type of building: Northern Cape	30
Table 23 Buildings reported as completed to larger municipalities at current prices by type of building: Free State	31
Table 24 Buildings reported as completed to larger municipalities at current prices by type of building: KwaZulu-Natal	32

Table 25	Buildings reported as completed to larger municipalities at current prices by type of building: North West	33
Table 26	Buildings reported as completed to larger municipalities at current prices by type of building: Gauteng	34
Table 27	Buildings reported as completed to larger municipalities at current prices by type of building: Mpumalanga	35
Table 28	Buildings reported as completed to larger municipalities at current prices by type of building: Limpopo.....	36
Table 29	Subsidised low-cost dwelling-houses completed or under construction by province	37
Table 30	Subsidised low-cost dwelling-houses completed by province	37
Explanatory notes		38
Glossary		41
General information		43

SUMMARY OF FINDINGS

SELECTED BUILDING STATISTICS OF THE PRIVATE SECTOR REGARDING BUILDING PLANS PASSED AT CURRENT PRICES

Table A – Selected key figures regarding recorded building plans passed by larger municipalities at current prices: January to December 2006 versus January to December 2007

Estimates at current prices	January to December 2006	January to December 2007	Difference in value between January to December 2006 and January to December 2007	Percentage change between January to December 2006 and January to December 2007
	R'000	R'000	R'000	
Residential buildings	41 264 841	43 437 343	2 172 502	5,3
-Dwelling-houses	27 221 786	29 581 987	2 360 201	8,7
-Flats and townhouses	13 230 325	13 067 757	-162 568	-1,2
-Other residential buildings	812 730	787 599	-25 131	-3,1
Non-residential buildings	15 105 428	15 371 307	265 879	1,8
Additions and alterations	19 399 541	21 542 929	2 143 388	11,0
Total	75 769 810	80 351 579	4 581 769	6,0

1/ Dec. 2007 figures should be regarded as preliminary because of possible backlogs and incomplete reporting by municipalities.

Total value of recorded building plans passed at current prices increased

As indicated in Table A, the value of recorded building plans passed by larger municipalities (at current prices) during 2007 rose by 6,0% (R4 581,8 million) compared with 2006.

All the main categories of buildings contributed positively to the 6,0% year-on-year increase recorded for 2007, namely additions and alterations (11,0% or R2 143,4 million), residential buildings (5,3% or R2 172,5 million) and non-residential buildings (1,8% or R265,9 million). Regarding residential buildings, dwelling-houses is the only category showing positive growth, recording an increase of 8,7% from R27 221,8 million to R29 582,0 million during the above-mentioned period (see Table A).

Table B – Recorded building plans passed by larger municipalities aggregated to provincial level: January to December 2006 versus January to December 2007

Estimates at current prices	January to December 2006	January to December 2007	Percentage contribution to the total value of building plans passed during January to December 2006	Percentage change between January to December 2006 and January to December 2007	Contribution (percentage points) to the percentage change in the value of building plans passed between January to December 2006 and January to December 2007 2/	Difference in value between January to December 2006 and January to December 2007
	R'000	R'000				R'000
Western Cape	17 345 425	18 567 530	22,9	7,0	1,6	1 222 105
Eastern Cape	3 711 491	4 031 624	4,9	8,6	0,4	320 133
Northern Cape	508 674	688 645	0,7	35,4	0,2	179 971
Free State	1 906 090	2 387 015	2,5	25,2	0,6	480 925
KwaZulu-Natal	10 498 875	11 177 272	13,8	6,5	0,9	678 397
North West	2 713 379	2 717 590	3,6	0,2	0,0	4 211
Gauteng	33 853 277	35 305 141	44,7	4,3	1,9	1 451 864
Mpumalanga	3 846 558	3 747 510	5,1	-2,6	-0,1	-99 048
Limpopo	1 386 041	1 729 252	1,8	24,8	0,5	343 211
Total	75 769 810	80 351 579	100,0	6,0	6,0	4 581 769

1/ Dec. 2007 figures should be regarded as preliminary because of possible backlogs and incomplete reporting by municipalities.

2/ The contribution (percentage points) is calculated by multiplying the percentage change of each province between Jan. to Dec. 2006 and Jan. to Dec. 2007 with the percentage contribution of the corresponding province to the total value of building plans passed during Jan. to Dec. 2006, divided by 100.

Eight provinces reported increases in the value of building plans passed (see Table B). The largest contributor to the increase of 6,0% was Gauteng (contributing 1,9 percentage points or R1 451,9 million), followed by Western Cape (1,6 percentage points or R1 222,1 million) and KwaZulu-Natal (0,9 of a percentage point or R678,4 million). Mpumalanga was the only province to show a decline in 2007 (0,1 of a percentage point or R99,0 million).

SELECTED BUILDING STATISTICS OF THE PRIVATE SECTOR REGARDING BUILDING PLANS PASSED AT CONSTANT PRICES

Table C – Selected key figures regarding recorded building plans passed by larger municipalities at constant 2000 prices: January to December 2006 versus January to December 2007

Estimates at constant 2000 prices	January to December 2006	January to December 2007	Difference in value between January to December 2006 and January to December 2007	Percentage change between January to December 2006 and January to December 2007
	R'000	R'000	R'000	
Residential buildings	26 169 812	25 029 258	-1 140 554	-4,4
Non-residential buildings	9 582 593	8 846 272	-736 321	-7,7
Additions and alterations	12 304 999	12 390 795	85 796	0,7
Total	48 057 404	46 266 325	-1 791 079	-3,7

1/ Dec. 2007 figures should be regarded as preliminary because of possible backlogs and incomplete reporting by municipalities.

Total real value of recorded building plans passed decreased

The real value of recorded building plans passed by larger municipalities (at constant 2000 prices) during 2007 decreased by 3,7% (-R1 791,1 million) compared with 2006. Decreases were reported for non-residential buildings (-7,7% or -R736,3 million) and residential buildings (-4,4% or -R1 140,6 million). An increase was reported for additions and alterations (0,7 % or R85,8 million) for the same period (see Table C).

Table D – Seasonally adjusted key figures regarding recorded building plans passed by larger municipalities at constant 2000 prices: Current quarter versus previous quarter

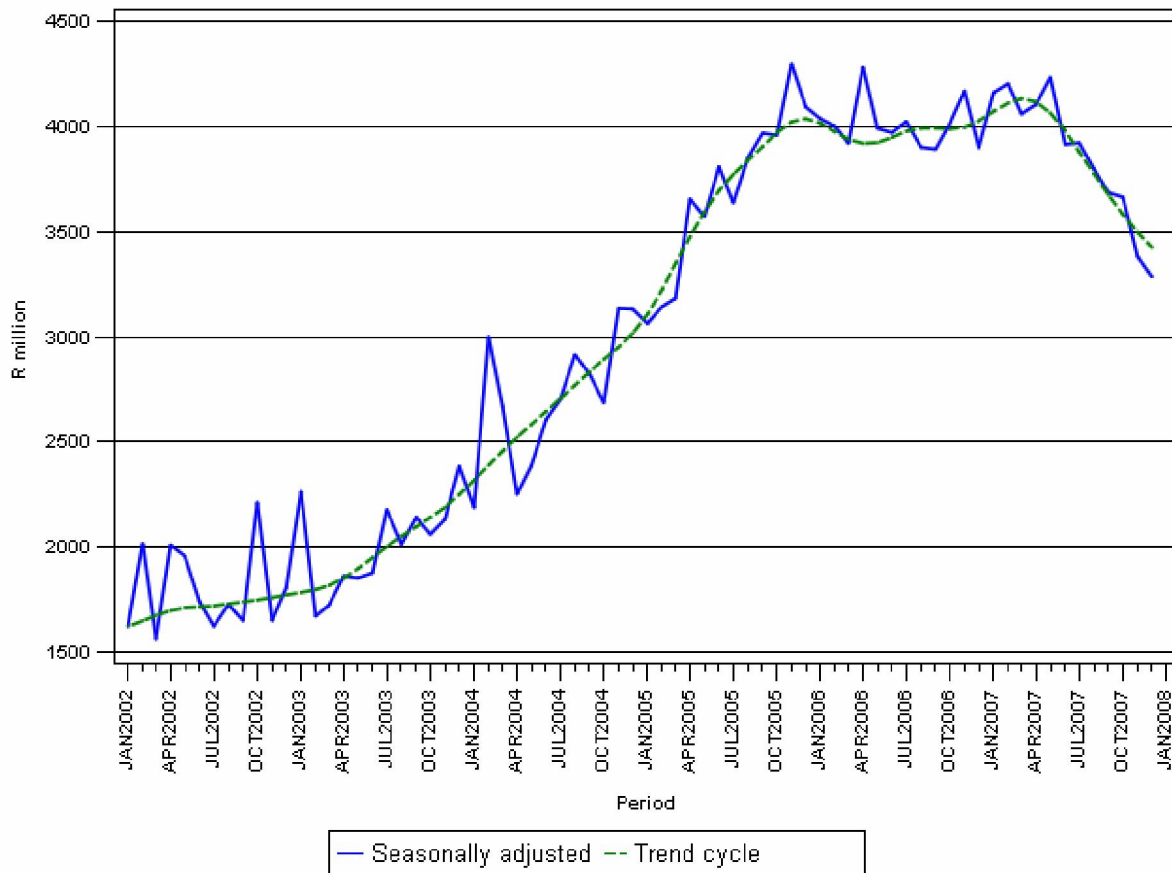
Seasonally adjusted estimates at constant 2000 prices	July to September 2007	October to December 2007	Percentage change between July to September 2007 and October to December 2007
	R'000	R'000	
Residential buildings	5 935 607	5 378 662	-9,4
Non-residential buildings	2 294 885	2 061 759	-10,2
Additions and alterations	3 174 342	2 890 272	-8,9
Total	11 404 834	10 330 693	-9,4

Seasonally adjusted real value of recorded building plans passed decreased

The seasonally adjusted real value of recorded building plans passed by larger municipalities during the fourth quarter of 2007 decreased by 9,4% compared with the previous quarter. Decreases were reported for all three main categories, namely non-residential buildings (-10,2%), residential buildings (-9,4%) and additions and alterations (-8,9%).

Figure 1 shows both the seasonally adjusted and the trend series for recorded building plans passed at constant 2000 prices between January 2002 and December 2007. The trend series reflects a slight increase in 2002, followed by a steep increase from April 2003 up to the end of 2005. Thereafter the trend levelled off in 2006, followed by a decline since the first quarter of 2007.

Figure 1 – Real value of recorded building plans passed by larger municipalities at constant 2000 prices



SELECTED BUILDING STATISTICS OF THE PRIVATE SECTOR REGARDING BUILDINGS COMPLETED AT CURRENT PRICES

Table E – Selected key figures regarding buildings reported as completed to larger municipalities at current prices: January to December 2006 versus January to December 2007

Estimates at current prices	January to December 2006	January to December 2007 1/	Difference in value between January to December 2006 and January to December 2007	Percentage change between January to December 2006 and January to December 2007
	R'000	R'000	R'000	
Residential buildings	26 072 750	28 882 228	2 809 478	10,8
-Dwelling-houses	15 911 310	17 811 846	1 900 536	11,9
-Flats and townhouses	9 881 190	10 384 604	503 414	5,1
-Other residential buildings	280 250	685 778	405 528	144,7
Non-residential buildings	5 838 780	8 957 430	3 118 650	53,4
Additions and alterations	6 923 455	7 721 364	797 909	11,5
Total	38 834 985	45 561 022	6 726 037	17,3

1/ Dec. 2007 figures should be regarded as preliminary because of possible backlogs and incomplete reporting by municipalities.

Total value of buildings reported as completed at current prices increased

As indicated in Table E, the value of buildings reported as completed to larger municipalities (at current prices) during 2007 increased by 17,3% (R6 726,0 million) compared with 2006.

All the main categories of buildings contributed positively to the 17,3% increase reported for buildings completed (see Table E). The value of non-residential buildings completed grew by 53,4% or R3 118,7 million, mainly due to the increase in the completion of more office and banking space (+R1 269,0 million) and industrial and warehouse space (+R1 512,9 million) (see Table 19, page 27).

Table F – Buildings reported as completed to larger municipalities aggregated to provincial level: January to December 2006 versus January to December 2007

Estimates at current prices	January to December 2006	January to December 2007	Percentage contribution to the total value of buildings completed during January to December 2006	Percentage change between January to December 2006 and January to December 2007	Contribution (percentage points) to the percentage change in the value of buildings completed between January to December 2006 and January to December 2007 2/	Difference in value between January to December 2006 and January to December 2007
	R'000	R'000				R'000
Western Cape	10 550 878	12 241 642	27,2	16,0	4,4	1 690 764
Eastern Cape	1 378 428	1 666 528	3,5	20,9	0,7	288 100
Northern Cape	268 791	386 314	0,7	43,7	0,3	117 523
Free State	639 584	1 057 125	1,6	65,3	1,1	417 541
KwaZulu-Natal	5 462 720	6 206 119	14,1	13,6	1,9	743 399
North West	1 315 232	1 663 314	3,4	26,5	0,9	348 082
Gauteng	17 657 321	20 164 578	45,5	14,2	6,4	2 507 257
Mpumalanga	1 063 816	1 615 836	2,7	51,9	1,4	552 020
Limpopo	498 215	559 566	1,3	12,3	0,2	61 351
Total	38 834 985	45 561 022	100,0	17,3	17,3	6 726 037

1/ Dec. 2007 figures should be regarded as preliminary because of possible backlogs and incomplete reporting by municipalities.

2/ The contribution (percentage points) is calculated by multiplying the percentage change of each province between Jan. to Dec. 2006 and Jan. to Dec. 2007 with the percentage contribution of the corresponding province to the total value of buildings completed during Jan. to Dec. 2006, divided by 100.

All the provinces reported increases in the value of buildings completed. The largest contributor to the increase of 17,3% was Gauteng (6,4 percentage points or R2 507,3 million), followed by Western Cape (4,4 percentage points or R1 690,8 million) and KwaZulu-Natal (1,9 percentage points or R743,4 million) (see Table F).

SELECTED BUILDING STATISTICS OF THE PRIVATE SECTOR REGARDING BUILDINGS COMPLETED AT CONSTANT PRICES

Table G – Selected key figures regarding buildings reported as completed to larger municipalities at constant 2000 prices: January to December 2006 versus January to December 2007

Estimates at constant 2000 prices	January to December 2006	January to December 2007 1	Difference in value between January to December 2006 and January to December 2007	Percentage change between January to December 2006 and January to December 2007
	R'000	R'000	R'000	
Residential buildings	17 634 033	17 707 917	73 884	0,4
Non-residential buildings	4 155 580	6 001 753	1 846 173	44,4
Additions and alterations	4 777 509	4 909 606	132 097	2,8
Total	26 567 122	28 619 276	2 052 154	7,7

1/ Dec. 2007 figures should be regarded as preliminary because of possible backlogs and incomplete reporting by municipalities.

Total real value of buildings reported as completed increased

As indicated in Table G, the real value of buildings reported as completed to larger municipalities (at constant 2000 prices) during 2007 increased by 7,7% (R2 052,2 million) compared with 2006. The largest percentage increase in the real value of buildings completed was reported for non-residential buildings (44,4% or R1 846,2 million), followed by additions and alterations (2,8% or R132,1 million) and residential buildings (0,4% or R73,9 million).

Table H – Seasonally adjusted key figures regarding buildings reported as completed to larger municipalities at constant 2000 prices: Current quarter versus previous quarter

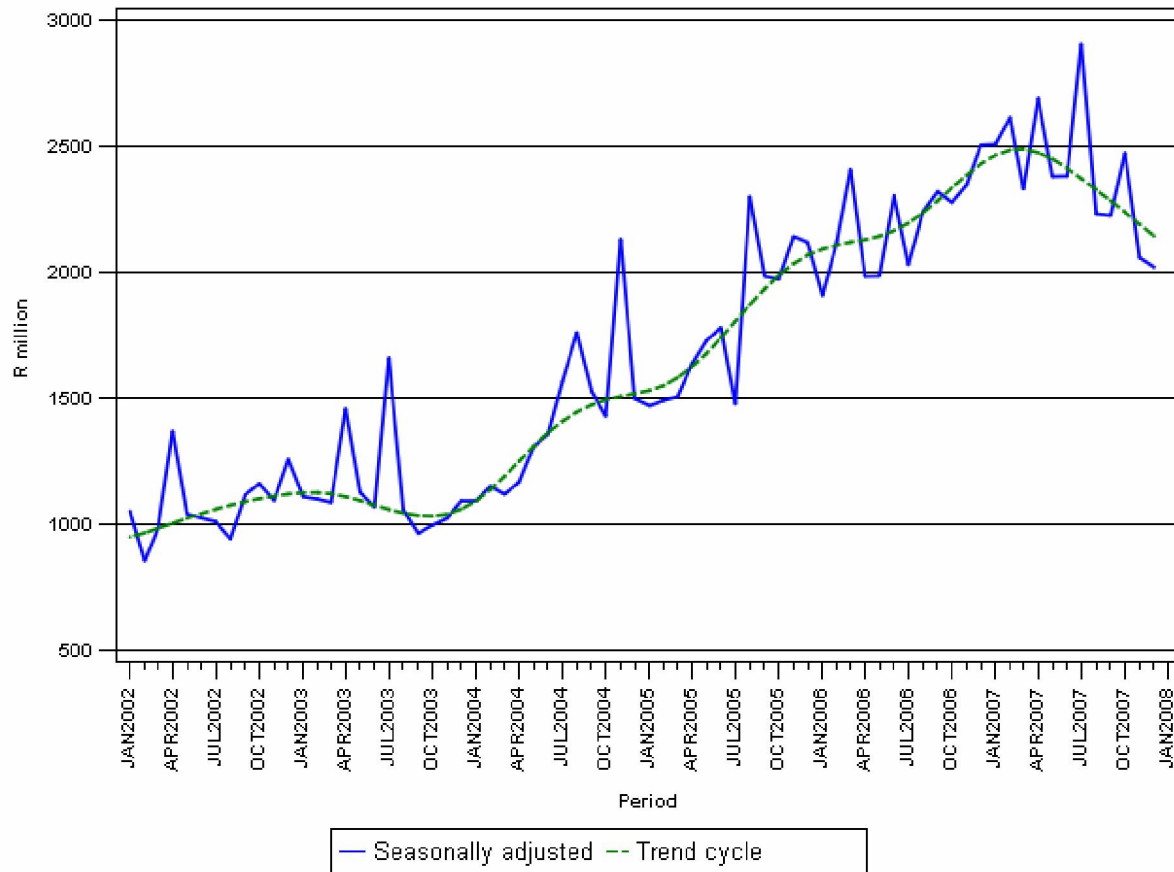
Seasonally adjusted estimates at constant 2000 prices	July to September 2007	October to December 2007	Percentage change between July to September 2007 and October to December 2007
	R'000	R'000	
Residential buildings	4 270 823	4 076 556	-4,5
Non-residential buildings	1 852 146	1 365 780	-26,3
Additions and alterations	1 240 562	1 111 865	-10,4
Total	7 363 531	6 554 201	-11,0

Seasonally adjusted real value of buildings reported as completed decreased

The seasonally adjusted real value of buildings reported as completed to larger municipalities during the fourth quarter of 2007 decreased by 11,0% compared with the previous quarter. The biggest decrease was reported for non-residential buildings (-26,3%), followed by additions and alterations (-10,4%) and residential buildings (-4,5%) (see Table H).

Figure 2 shows both the seasonally adjusted and trend series for buildings reported as completed to municipalities at constant 2000 prices between January 2002 and December 2007. The trend series reflects a slight increase in 2002, slowing again until October 2003. The trend series increased from November 2003 till March 2007, but has been declining since April 2007.

Figure 2 - Real value of buildings reported as completed to larger municipalities at constant 2000 prices



PJ Lehohla
Statistician-General

Table 1 - Values and percentage change of recorded building plans passed by larger municipalities at current prices by type of building

Year and month		Residential buildings		Non-residential buildings		Additions and alterations		Total	
		R'000	% change 1/	R'000	% change 1/	R'000	% change 1/	R'000	% change 1/
2006	January	2 558 041	45,9	778 449	44,6	1 090 691	21,0	4 427 181	38,6
	February	3 190 047	36,0	942 439	53,1	1 443 836	25,1	5 576 322	35,5
	March	2 999 970	28,1	1 241 790	28,9	1 558 522	26,4	5 800 282	27,8
	April	2 763 843	6,8	1 681 707	114,1	1 385 872	6,4	5 831 422	24,7
	May	3 617 721	3,9	1 253 706	59,0	1 845 824	36,6	6 717 251	19,5
	June	3 825 823	18,2	982 965	2,2	1 659 979	11,0	6 468 767	13,6
	July	3 918 713	11,6	1 443 525	42,7	1 845 449	26,1	7 207 687	20,4
	August	4 020 265	15,1	1 478 844	19,9	1 690 353	4,1	7 189 462	13,2
	September	3 758 874	-2,8	1 095 563	58,4	1 757 623	11,5	6 612 060	7,8
	October	3 901 590	4,7	1 743 478	78,3	1 836 658	-4,1	7 481 726	13,1
	November	4 018 174	7,8	1 381 760	3,2	1 846 062	13,5	7 245 996	8,3
	December	2 691 780	-7,0	1 081 202	67,8	1 438 672	6,7	5 211 654	6,6
	Total	41 264 841	11,6	15 105 428	43,2	19 399 541	14,2	75 769 810	17,5
2007	January	2 741 376	7,2	990 949	27,3	1 387 668	27,2	5 119 993	15,6
	February	3 538 610	10,9	1 393 007	47,8	1 623 017	12,4	6 554 634	17,5
	March	3 976 504	32,6	995 325	-19,8	1 575 250	1,1	6 547 079	12,9
	April	3 457 613	25,1	1 186 268	-29,5	1 635 039	18,0	6 278 920	7,7
	May	4 440 979	22,8	1 484 021	18,4	2 120 566	14,9	8 045 566	19,8
	June*	3 989 499	4,3	1 412 005	43,6	1 734 627	4,5	7 136 131	10,3
	July*	4 147 916	5,8	1 356 879	-6,0	2 233 712	21,0	7 738 507	7,4
	August*	3 954 058	-1,6	1 551 833	4,9	2 141 137	26,7	7 647 028	6,4
	September*	3 538 044	-5,9	1 489 710	36,0	1 696 549	-3,5	6 724 303	1,7
	October*	3 789 034	-2,9	1 426 428	-18,2	2 271 227	23,7	7 486 689	0,1
	November	3 488 580	-13,2	993 325	-28,1	1 899 016	2,9	6 380 921	-11,9
	December	2 375 130	-11,8	1 091 557	1,0	1 225 121	-14,8	4 691 808	-10,0
	Total	43 437 343	5,3	15 371 307	1,8	21 542 929	11,0	80 351 579	6,0

1/ The annual/monthly percentage change is the change in the values of recorded building plans passed by municipalities of the relevant year/month compared with the values of recorded building plans passed by municipalities of the comparable period of the previous year expressed as a percentage.

2/ Preliminary figures.

*Revised.

Table 2 - Seasonally adjusted values and percentage change of recorded building plans passed by larger municipalities at current prices by type of building

Year and month		Residential buildings		Non-residential buildings		Additions and alterations		Total	
		R'000	% change 1/	R'000	% change 1/	R'000	% change 1/	R'000	% change 1/
2006	January	3 547 469	-3,8	1 025 404	35,3	1 466 116	-10,7	6 038 989	-0,8
	February	3 441 228	-3,0	1 038 619	1,3	1 565 141	6,8	6 044 988	0,1
	March	3 185 879	-7,4	1 065 388	2,6	1 622 337	3,7	5 873 604	-2,8
	April	3 154 015	-1,0	1 814 940	70,4	1 549 282	-4,5	6 518 237	11,0
	May	3 244 067	2,9	1 230 330	-32,2	1 660 635	7,2	6 135 032	-5,9
	June	3 597 222	10,9	970 422	-21,1	1 634 227	-1,6	6 201 871	1,1
	July	3 447 124	-4,2	1 279 621	31,9	1 637 051	0,2	6 363 796	2,6
	August	3 590 704	4,2	1 185 049	-7,4	1 508 101	-7,9	6 283 854	-1,3
	September	3 438 727	-4,2	1 152 557	-2,7	1 723 923	14,3	6 315 207	0,5
	October	3 493 936	1,6	1 528 297	32,6	1 535 283	-10,9	6 557 516	3,8
	November	3 621 492	3,7	1 530 862	0,2	1 727 038	12,5	6 879 392	4,9
	December	3 457 638	-4,5	1 298 025	-15,2	1 749 630	1,3	6 505 293	-5,4
2007	January	3 796 747	9,8	1 313 585	1,2	1 875 462	7,2	6 985 794	7,4
	February	3 818 027	0,6	1 515 603	15,4	1 751 130	-6,6	7 084 760	1,4
	March	4 262 864	11,7	860 291	-43,2	1 646 233	-6,0	6 769 388	-4,5
	April	3 948 524	-7,4	1 267 493	47,3	1 821 341	10,6	7 037 358	4,0
	May	3 959 647	0,3	1 454 515	14,8	1 918 092	5,3	7 332 254	4,2
	June	3 721 086	-6,0	1 396 529	-4,0	1 708 750	-10,9	6 826 365	-6,9
	July	3 661 139	-1,6	1 210 470	-13,3	1 988 550	16,4	6 860 159	0,5
	August	3 526 740	-3,7	1 228 490	1,5	1 912 126	-3,8	6 667 356	-2,8
	September	3 239 431	-8,1	1 592 530	29,6	1 663 815	-13,0	6 495 776	-2,6
	October	3 392 776	4,7	1 237 486	-22,3	1 886 008	13,4	6 516 270	0,3
	November	3 154 815	-7,0	1 096 453	-11,4	1 770 770	-6,1	6 022 038	-7,6
	December	3 055 663	-3,1	1 349 272	23,1	1 497 146	-15,5	5 902 081	-2,0
	Jul. - Sep.07	10 427 310		4 031 490		5 564 491		20 023 291	
	Oct. - Dec.07 2/	9 603 254	-7,9	3 683 211	-8,6	5 153 924	-7,4	18 440 389	-7,9

1/ The percentage change is the change in the seasonally adjusted values of recorded building plans passed by municipalities of the relevant month compared with the seasonally adjusted values of recorded building plans passed by municipalities of the previous month expressed as a percentage.

2/ The percentage change is the change in the seasonally adjusted values of recorded building plans passed by municipalities of the current quarter compared with the seasonally adjusted values of recorded building plans passed by municipalities of the previous quarter expressed as a percentage.

Table 3 - Values and percentage change of recorded building plans passed by larger municipalities at constant 2000 prices by type of building

Year and month		Residential buildings		Non-residential buildings		Additions and alterations		Total	
		R'000	% change 1/	R'000	% change 1/	R'000	% change 1/	R'000	% change 1/
2006	January	1 716 806	38,0	522 449	36,7	732 007	14,4	2 971 262	31,1
	February	2 129 537	28,2	629 132	44,3	963 842	17,9	3 722 511	27,7
	March	1 998 648	21,3	827 308	22,0	1 038 322	19,7	3 864 278	21,0
	April	1 824 319	1,0	1 110 038	102,5	914 767	0,6	3 849 124	18,0
	May	2 355 287	-2,9	816 215	48,6	1 201 708	27,6	4 373 210	11,6
	June	2 447 743	8,9	628 896	-5,9	1 062 047	2,2	4 138 686	4,7
	July	2 470 815	2,4	910 167	31,0	1 163 587	15,8	4 544 569	10,5
	August	2 478 585	3,9	911 741	8,2	1 042 141	-6,0	4 432 467	2,2
	September	2 308 891	-12,3	672 950	42,8	1 079 621	0,6	4 061 462	-2,8
	October	2 386 294	-5,8	1 066 347	60,4	1 123 338	-13,7	4 575 979	1,7
	November	2 432 309	-3,7	836 416	-7,8	1 117 471	1,4	4 386 196	-3,2
	December	1 620 578	-17,2	650 934	49,4	866 148	-5,0	3 137 660	-5,1
	Total	26 169 812	2,7	9 582 593	31,7	12 304 999	5,0	48 057 404	8,1
2007	January	1 639 579	-4,5	592 673	13,4	829 945	13,4	3 062 197	3,1
	February	2 120 198	-0,4	834 636	32,7	972 449	0,9	3 927 283	5,5
	March	2 374 032	18,8	594 224	-28,2	940 448	-9,4	3 908 704	1,1
	April	2 029 116	11,2	696 167	-37,3	959 530	4,9	3 684 813	-4,3
	May	2 567 040	9,0	857 816	5,1	1 225 761	2,0	4 650 617	6,3
	June*	2 287 557	-6,5	809 636	28,7	994 626	-6,3	4 091 819	-1,1
	July*	2 364 832	-4,3	773 591	-15,0	1 273 496	9,4	4 411 919	-2,9
	August*	2 235 194	-9,8	877 237	-3,8	1 210 366	16,1	4 322 797	-2,5
	September*	2 000 025	-13,4	842 120	25,1	959 044	-11,2	3 801 189	-6,4
	October*	2 127 476	-10,8	800 914	-24,9	1 275 254	13,5	4 203 644	-8,1
	November	1 956 579	-19,6	557 109	-33,4	1 065 068	-4,7	3 578 756	-18,4
	December	1 327 630	-18,1	610 149	-6,3	684 808	-20,9	2 622 587	-16,4
	Total	25 029 258	-4,4	8 846 272	-7,7	12 390 795	0,7	46 266 325	-3,7

1/ The annual/monthly percentage change is the change in the values of recorded building plans passed by municipalities of the relevant year/month compared with the values of recorded building plans passed by municipalities of the comparable period of the previous year expressed as a percentage.

2/ Preliminary figures.

*Revised.

Table 4 - Seasonally adjusted values and percentage change of recorded building plans passed by larger municipalities at constant 2000 prices by type of building

Year and month		Residential buildings		Non-residential buildings		Additions and alterations		Total	
		R'000	% change 1/	R'000	% change 1/	R'000	% change 1/	R'000	% change 1/
2006	January	2 369 454	-4,4	685 371	34,4	982 183	-11,1	4 037 008	-1,4
	February	2 279 659	-3,8	689 007	0,5	1 032 077	5,1	4 000 743	-0,9
	March	2 143 352	-6,0	706 927	2,6	1 070 057	3,7	3 920 336	-2,0
	April	2 066 718	-3,6	1 197 385	69,4	1 020 253	-4,7	4 284 356	9,3
	May	2 107 395	2,0	799 569	-33,2	1 084 960	6,3	3 991 924	-6,8
	June	2 301 382	9,2	621 700	-22,2	1 047 467	-3,5	3 970 549	-0,5
	July	2 176 970	-5,4	809 865	30,3	1 037 626	-0,9	4 024 461	1,4
	August	2 227 967	2,3	736 190	-9,1	937 293	-9,7	3 901 450	-3,1
	September	2 119 096	-4,9	709 845	-3,6	1 063 274	13,4	3 892 215	-0,2
	October	2 138 367	0,9	935 198	31,7	941 625	-11,4	4 015 190	3,2
	November	2 195 923	2,7	927 117	-0,9	1 046 212	11,1	4 169 252	3,8
	December	2 071 326	-5,7	777 940	-16,1	1 049 223	0,3	3 898 489	-6,5
2007	January	2 259 148	9,1	782 549	0,6	1 119 347	6,7	4 161 044	6,7
	February	2 267 440	0,4	900 813	15,1	1 036 859	-7,4	4 205 112	1,1
	March	2 573 523	13,5	514 276	-42,9	972 442	-6,2	4 060 241	-3,4
	April	2 297 815	-10,7	742 466	44,4	1 065 536	9,6	4 105 817	1,1
	May	2 283 867	-0,6	838 070	12,9	1 111 758	4,3	4 233 695	3,1
	June	2 132 754	-6,6	800 941	-4,4	981 335	-11,7	3 915 030	-7,5
	July	2 090 496	-2,0	692 382	-13,6	1 138 882	16,1	3 921 760	0,2
	August	2 007 318	-4,0	699 803	1,1	1 090 502	-4,2	3 797 623	-3,2
	September	1 837 793	-8,4	902 700	29,0	944 958	-13,3	3 685 451	-3,0
	October	1 906 590	3,7	695 334	-23,0	1 062 230	12,4	3 664 154	-0,6
	November	1 771 932	-7,1	615 496	-11,5	994 274	-6,4	3 381 702	-7,7
	December	1 700 140	-4,1	750 929	22,0	833 768	-16,1	3 284 837	-2,9
	Jul. - Sep.07	5 935 607		2 294 885		3 174 342		11 404 834	
	Oct. - Dec.07 2/	5 378 662	-9,4	2 061 759	-10,2	2 890 272	-8,9	10 330 693	-9,4

1/ The percentage change is the change in the seasonally adjusted values of recorded building plans passed by municipalities of the relevant month compared with the seasonally adjusted values of recorded building plans passed by municipalities of the previous month expressed as a percentage.

2/ The percentage change is the change in the seasonally adjusted values of recorded building plans passed by municipalities of the current quarter compared with the seasonally adjusted values of recorded building plans passed by municipalities of the previous quarter expressed as a percentage.

Table 5 - Values and percentage change of buildings reported as completed to larger municipalities at current prices by type of building

Year and month		Residential buildings		Non-residential buildings		Additions and alterations		Total	
		R'000	% change 1/	R'000	% change 1/	R'000	% change 1/	R'000	% change 1/
2006	January	1 257 968	45,0	316 723	10,1	406 962	28,1	1 981 653	34,6
	February	1 772 939	39,7	408 861	125,2	553 237	72,2	2 735 037	54,3
	March	2 113 187	56,6	656 158	110,5	589 069	85,3	3 358 414	69,7
	April	1 748 227	24,6	268 422	36,6	450 681	35,3	2 467 330	27,6
	May	1 989 102	18,0	509 864	26,4	575 749	21,9	3 074 715	20,0
	June	2 309 739	52,7	485 834	24,9	567 380	11,0	3 362 953	39,4
	July	2 268 183	44,5	333 643	38,0	554 641	57,2	3 156 467	45,9
	August	2 379 053	4,4	492 632	-16,0	557 684	37,9	3 429 369	4,9
	September	2 539 730	21,0	404 951	10,8	665 842	48,6	3 610 523	24,0
	October	2 371 124	19,9	768 141	44,7	603 131	19,2	3 742 396	24,1
	November	2 648 334	-1,7	651 400	47,9	853 416	91,1	4 153 150	16,0
	December	2 675 164	15,3	542 151	115,6	545 663	23,4	3 762 978	24,8
	Total	26 072 750	24,0	5 838 780	39,5	6 923 455	42,1	38 834 985	29,1
2007	January	1 640 091	30,4	483 947	52,8	675 202	65,9	2 799 240	41,3
	February	2 198 764	24,0	883 085	116,0	578 317	4,5	3 660 166	33,8
	March	2 094 772	-0,9	778 599	18,7	668 881	13,5	3 542 252	5,5
	April	2 342 044	34,0	630 036	134,7	555 370	23,2	3 527 450	43,0
	May	2 665 216	34,0	713 577	40,0	588 024	2,1	3 966 817	29,0
	June	2 575 887	11,5	579 957	19,4	657 975	16,0	3 813 819	13,4
	July	2 786 031	22,8	1 123 723	236,8	721 990	30,2	4 631 744	46,7
	August*	2 556 899	7,5	520 073	5,6	688 438	23,4	3 765 410	9,8
	September*	2 292 543	-9,7	921 422	127,5	617 955	-7,2	3 831 920	6,1
	October*	2 706 100	14,1	1 143 318	48,8	719 404	19,3	4 568 822	22,1
	November	2 596 772	-1,9	644 723	-1,0	823 294	-3,5	4 064 789	-2,1
	December	2 427 109	-9,3	534 970	-1,3	426 514	-21,8	3 388 593	-9,9
	Total	28 882 228	10,8	8 957 430	53,4	7 721 364	11,5	45 561 022	17,3

1/ The annual/monthly percentage change is the change in the values of buildings reported as completed to municipalities of the relevant year/month compared with the values of buildings reported as completed to municipalities of the comparable period of the previous year expressed as a percentage.

2/ Preliminary figures.

* Revised.

Table 6 - Seasonally adjusted values and percentage change of buildings reported as completed to larger municipalities at current prices by type of building

Year and month		Residential buildings		Non-residential buildings		Additions and alterations		Total	
		R'000	% change 1/	R'000	% change 1/	R'000	% change 1/	R'000	% change 1/
2006	January	1 817 010	-15,6	378 403	31,5	445 804	-14,2	2 641 217	-10,8
	February	2 031 197	11,8	417 537	10,3	563 876	26,5	3 012 610	14,1
	March	2 293 184	12,9	559 614	34,0	595 152	5,5	3 447 950	14,5
	April	1 961 865	-14,4	370 901	-33,7	536 610	-9,8	2 869 376	-16,8
	May	1 913 662	-2,5	417 929	12,7	546 983	1,9	2 878 574	0,3
	June	2 309 042	20,7	504 438	20,7	559 568	2,3	3 373 048	17,2
	July	2 077 741	-10,0	398 175	-21,1	527 253	-5,8	3 003 169	-11,0
	August	2 205 803	6,2	550 760	38,3	552 828	4,9	3 309 391	10,2
	September	2 400 072	8,8	360 241	-34,6	656 960	18,8	3 417 273	3,3
	October	2 292 798	-4,5	555 341	54,2	563 561	-14,2	3 411 700	-0,2
	November	2 147 107	-6,4	630 256	13,5	691 220	22,7	3 468 583	1,7
	December	2 423 224	12,9	658 179	4,4	645 366	-6,6	3 726 769	7,4
2007	January	2 406 707	-0,7	572 809	-13,0	740 143	14,7	3 719 659	-0,2
	February	2 522 119	4,8	883 197	54,2	596 983	-19,3	4 002 299	7,6
	March	2 277 374	-9,7	659 644	-25,3	671 460	12,5	3 608 478	-9,8
	April	2 627 524	15,4	884 979	34,2	661 463	-1,5	4 173 966	15,7
	May	2 587 013	-1,5	614 841	-30,5	559 810	-15,4	3 761 664	-9,9
	June	2 564 130	-0,9	583 892	-5,0	651 061	16,3	3 799 083	1,0
	July	2 564 125	-0,0	1 372 749	135,1	694 796	6,7	4 631 670	21,9
	August	2 375 247	-7,4	575 537	-58,1	687 860	-1,0	3 638 644	-21,4
	September	2 149 529	-9,5	824 548	43,3	606 694	-11,8	3 580 771	-1,6
	October	2 625 448	22,1	798 971	-3,1	672 156	10,8	4 096 575	14,4
	November	2 106 479	-19,8	624 217	-21,9	657 515	-2,2	3 388 211	-17,3
	December	2 178 230	3,4	667 497	6,9	504 517	-23,3	3 350 244	-1,1
	Jul. - Sep.07	7 088 901		2 772 834		1 989 350		11 851 085	
	Oct. - Dec.07 2/	6 910 157	-2,5	2 090 685	-24,6	1 834 188	-7,8	10 835 030	-8,6

1/ The percentage change is the change in the seasonally adjusted values of buildings reported as completed to municipalities of the relevant month compared with the seasonally adjusted values of buildings reported as completed to municipalities of the previous month expressed as a percentage.

2/ The percentage change is the change in the seasonally adjusted values of buildings reported as completed to municipalities of the current quarter compared with the seasonally adjusted values of buildings reported as completed to municipalities of the previous quarter expressed as a percentage.

Table 7 - Values and percentage change of buildings reported as completed to larger municipalities at constant 2000 prices by type of building

Year and month		Residential buildings		Non-residential buildings		Additions and alterations		Total	
		R'000	% change 1/	R'000	% change 1/	R'000	% change 1/	R'000	% change 1/
2006	January	875 518	36,0	232 372	4,6	288 830	18,4	1 396 720	25,8
	February	1 228 110	30,7	298 221	112,9	391 811	60,8	1 918 142	44,9
	March	1 458 509	46,8	477 553	98,4	414 545	73,2	2 350 607	59,5
	April	1 200 870	17,0	194 227	27,9	314 502	26,3	1 709 599	19,8
	May	1 360 922	11,1	366 809	17,5	401 219	14,4	2 128 950	12,7
	June	1 578 421	43,9	349 270	16,0	394 014	4,7	2 321 705	30,9
	July	1 534 451	36,1	236 794	27,5	380 935	47,1	2 152 180	36,9
	August	1 603 497	-1,8	348 890	-21,5	380 932	29,2	2 333 319	-1,7
	September	1 708 000	14,2	284 976	3,6	453 571	39,1	2 446 547	16,7
	October	1 582 226	13,3	536 037	35,1	410 014	12,0	2 528 277	17,1
	November	1 751 468	-8,0	453 937	38,9	578 195	80,0	2 783 600	9,1
	December	1 752 041	7,2	376 494	103,3	368 941	16,1	2 497 476	16,8
	Total	17 634 033	16,7	4 155 580	30,6	4 777 509	33,1	26 567 122	21,4
2007	January	1 058 853	20,9	332 381	43,0	453 156	56,9	1 844 390	32,1
	February	1 398 502	13,9	603 200	102,3	386 059	-1,5	2 387 761	24,5
	March	1 323 598	-9,2	530 381	11,1	445 624	7,5	2 299 603	-2,2
	April	1 481 027	23,3	428 305	120,5	366 581	16,6	2 275 913	33,1
	May	1 658 484	21,9	483 453	31,8	382 828	-4,6	2 524 765	18,6
	June	1 597 177	1,2	392 128	12,3	420 969	6,8	2 410 274	3,8
	July	1 703 863	11,0	754 177	218,5	455 227	19,5	2 913 267	35,4
	August*	1 545 528	-3,6	347 178	-0,5	424 438	11,4	2 317 144	-0,7
	September*	1 384 703	-18,9	613 872	115,4	379 579	-16,3	2 378 154	-2,8
	October*	1 615 251	2,1	754 665	40,8	440 002	7,3	2 809 918	11,1
	November	1 526 456	-12,8	419 742	-7,5	498 362	-13,8	2 444 560	-12,2
	December	1 414 475	-19,3	342 271	-9,1	256 781	-30,4	2 013 527	-19,4
	Total	17 707 917	0,4	6 001 753	44,4	4 909 606	2,8	28 619 276	7,7

1/ The annual/monthly percentage change is the change in the values of buildings reported as completed to municipalities of the relevant year/month compared with the values of buildings reported as completed to municipalities of the comparable period of the previous year expressed as a percentage.

2/ Preliminary figures.

*Revised.

Table 8 - Seasonally adjusted values and percentage change of buildings reported as completed to larger municipalities at constant 2000 prices by type of building

Year and month		Residential buildings		Non-residential buildings		Additions and alterations		Total	
		R'000	%change 1/	R'000	% change 1/	R'000	% change 1/	R'000	% change 1/
2006	January	1 314 412	-14,4	278 408	30,9	315 622	-15,0	1 908 442	-9,9
	February	1 419 743	8,0	305 181	9,6	399 040	26,4	2 123 964	11,3
	March	1 583 952	11,6	407 071	33,4	417 222	4,6	2 408 245	13,4
	April	1 342 575	-15,2	267 947	-34,2	373 790	-10,4	1 984 312	-17,6
	May	1 304 754	-2,8	299 401	11,7	381 573	2,1	1 985 728	0,1
	June	1 556 832	19,3	360 225	20,3	388 344	1,8	2 305 401	16,1
	July	1 384 514	-11,1	282 112	-21,7	364 019	-6,3	2 030 645	-11,9
	August	1 469 479	6,1	390 665	38,5	379 831	4,3	2 239 975	10,3
	September	1 619 142	10,2	253 137	-35,2	448 291	18,0	2 320 570	3,6
	October	1 505 482	-7,0	388 305	53,4	382 750	-14,6	2 276 537	-1,9
	November	1 436 572	-4,6	440 574	13,5	469 148	22,6	2 346 294	3,1
	December	1 612 300	12,2	459 600	4,3	434 104	-7,5	2 506 004	6,8
2007	January	1 619 016	0,4	394 645	-14,1	495 259	14,1	2 508 920	0,1
	February	1 613 937	-0,3	604 671	53,2	397 822	-19,7	2 616 430	4,3
	March	1 436 641	-11,0	449 266	-25,7	445 363	12,0	2 331 270	-10,9
	April	1 654 582	15,2	600 684	33,7	435 627	-2,2	2 690 893	15,4
	May	1 601 342	-3,2	414 845	-30,9	364 705	-16,3	2 380 892	-11,5
	June	1 574 031	-1,7	392 157	-5,5	416 231	14,1	2 382 419	0,1
	July	1 546 061	-1,8	919 231	134,4	440 512	5,8	2 905 804	22,0
	August	1 421 122	-8,1	384 506	-58,2	426 682	-3,1	2 232 310	-23,2
	September	1 303 640	-8,3	548 409	42,6	373 368	-12,5	2 225 417	-0,3
	October	1 535 534	17,8	528 314	-3,7	410 658	10,0	2 474 506	11,2
	November	1 252 302	-18,4	407 636	-22,8	398 965	-2,8	2 058 903	-16,8
	December	1 288 720	2,9	429 830	5,4	302 242	-24,2	2 020 792	-1,9
	Jul. - Sep.07	4 270 823		1 852 146		1 240 562		7 363 531	
	Oct. - Dec.07 2/	4 076 556	-4,5	1 365 780	-26,3	1 111 865	-10,4	6 554 201	-11,0

1/ The percentage change is the change in the seasonally adjusted values of buildings reported as completed to municipalities of the relevant month compared with the seasonally adjusted values of buildings reported as completed to municipalities of the previous month expressed as a percentage.

2/ The percentage change is the change in the seasonally adjusted values of buildings reported as completed to municipalities of the current quarter compared with the seasonally adjusted values of buildings reported as completed to municipalities of the previous quarter expressed as a percentage.

Table 9 - Recorded building plans passed by larger municipalities at current prices by type of building: South Africa

			Dec. 2006*	Nov. 2007	Dec. 2007	Jan. - Dec. 2006	Jan. - Dec. 2007	% Change 1/
Category of building	Type of building	Measuring unit						
1. Residential buildings	1. Dwelling-houses < 80 square metres	Number	2 328	2 519	3 488	37 147	36 631	-1,4
		square metres	103 323	117 966	145 149	1 657 023	1 626 684	-1,8
		R'000	202 607	246 980	225 470	2 984 546	3 163 766	6,0
	2. Dwelling-houses >= 80 square metres	Number	2 248	2 399	1 713	34 846	31 791	-8,8
		square metres	516 354	599 705	408 706	8 082 214	7 984 319	-1,2
		R'000	1 662 412	2 069 640	1 421 041	24 237 240	26 418 221	9,0
	3. Flats and townhouses	Number	2 159	2 620	1 720	31 932	32 361	1,3
		square metres	248 880	293 795	190 406	4 138 546	3 758 210	-9,2
		R'000	814 980	1 088 119	655 623	13 230 325	13 067 757	-1,2
	4. Other residential buildings 2/	square metres	4 713	27 476	20 423	207 859	211 783	1,9
		R'000	11 781	83 841	72 996	812 730	787 599	-3,1
	5. Total residential buildings	R'000	2 691 780	3 488 580	2 375 130	41 264 841	43 437 343	5,3
2. Non-residential buildings	1. Office and banking space	square metres	68 459	26 667	93 223	973 300	917 706	-5,7
		R'000	276 339	101 552	462 316	3 632 646	3 973 983	9,4
	2. Shopping space	square metres	76 416	54 642	51 111	1 185 866	1 037 434	-12,5
		R'000	342 514	259 628	189 642	4 348 580	3 969 541	-8,7
	3. Industrial and warehouse space	square metres	166 309	215 651	129 509	2 197 611	2 217 564	0,9
		R'000	434 373	556 091	364 012	5 996 080	6 162 268	2,8
	4. Other non-residential buildings 3/	square metres	11 111	23 374	16 265	375 858	366 594	-2,5
		R'000	27 976	76 054	75 587	1 128 122	1 265 515	12,2
	5. Total non-residential buildings	R'000	1 081 202	993 325	1 091 557	15 105 428	15 371 307	1,8
3. Additions and alterations	1. Dwelling-houses	square metres	344 182	415 529	278 018	5 288 732	5 143 844	-2,7
		R'000	1 011 814	1 365 197	918 531	14 745 152	15 977 424	8,4
	2. Other buildings 4/	square metres	112 086	136 422	67 359	1 431 718	1 416 626	-1,1
		R'000	426 858	533 819	306 590	4 654 389	5 565 505	19,6
	3. Total additions and alterations	R'000	1 438 672	1 899 016	1 225 121	19 399 541	21 542 929	11,0
4. Recorded plans passed	1. Total at current prices	R'000	5 211 654	6 380 921	4 691 808	75 769 810	80 351 579	6,0

1/ The percentage change between cumulative figures for 2006 and 2007.

2/ Other residential buildings include institutions for the disabled, boarding houses, hostels and tourism accommodation e.g. hotels, motels, guesthouses, holiday chalets, bed-and-breakfast accommodation and casinos.

3/ Other non-residential space includes churches, sport and recreation clubs, schools, crèches, hospitals and all other non-residential space.

4/ Other buildings include other residential buildings, non-residential buildings and internal alterations. No square metres are collected for internal alterations.

* Revised.

Table 10 - Recorded building plans passed by larger municipalities at current prices by type of building: Western Cape

			Dec. 2006*	Nov. 2007	Dec. 2007	Jan. - Dec. 2006	Jan. - Dec. 2007	% Change 1/
Category of building	Type of building	Measuring unit						
1. Residential buildings	1. Dwelling-houses < 80 square metres	Number	503	581	286	6 818	4 028	-40,9
		square metres	18 011	31 006	12 802	294 110	189 487	-35,6
		R'000	26 145	66 043	20 093	487 525	429 926	-11,8
	2. Dwelling-houses >= 80 square metres	Number	423	535	458	7 470	7 028	-5,9
		square metres	94 588	131 235	94 244	1 681 354	1 696 782	0,9
		R'000	306 729	448 402	328 199	5 134 139	5 764 887	12,3
	3. Flats and townhouses	Number	393	633	454	6 289	6 218	-1,1
		square metres	47 811	60 472	56 485	703 715	625 836	-11,1
		R'000	148 711	201 809	200 418	2 224 395	2 154 921	-3,1
	4. Other residential buildings 2/	square metres	255	23 695	3 665	53 041	86 752	63,6
		R'000	821	68 188	7 915	191 666	318 324	66,1
	5. Total residential buildings	R'000	482 406	784 442	556 625	8 037 725	8 668 058	7,8
2. Non-residential buildings	1. Office and banking space	square metres	11 479	5 401	41 027	223 350	272 303	21,9
		R'000	38 393	20 599	162 169	668 229	921 084	37,8
	2. Shopping space	square metres	1 435	528	15 170	153 562	191 158	24,5
		R'000	4 766	1 821	58 306	444 797	693 454	55,9
	3. Industrial and warehouse space	square metres	22 451	51 396	36 496	615 958	547 906	-11,0
		R'000	68 506	159 681	120 028	1 824 624	1 622 195	-11,1
	4. Other non-residential buildings 3/	square metres	1 572	5 319	10 448	105 676	88 480	-16,3
		R'000	4 309	16 386	58 546	319 173	290 711	-8,9
	5. Total non-residential buildings	R'000	115 974	198 487	399 049	3 256 823	3 527 444	8,3
3. Additions and alterations	1. Dwelling-houses	square metres	109 476	148 719	92 195	1 567 737	1 492 561	-4,8
		R'000	307 015	467 714	295 885	4 300 961	4 473 961	4,0
	2. Other buildings 4/	square metres	52 618	49 344	19 613	546 757	418 067	-23,5
		R'000	181 222	211 595	71 834	1 749 916	1 898 067	8,5
	3. Total additions and alterations	R'000	488 237	679 309	367 719	6 050 877	6 372 028	5,3
4. Recorded plans passed	1. Total at current prices	R'000	1 086 617	1 662 238	1 323 393	17 345 425	18 567 530	7,0

1/ The percentage change between cumulative figures for 2006 and 2007.

2/ Other residential buildings include institutions for the disabled, boarding houses, hostels and tourism accommodation e.g. hotels, motels, guesthouses, holiday chalets, bed-and-breakfast accommodation and casinos.

3/ Other non-residential space includes churches, sport and recreation clubs, schools, crèches, hospitals and all other non-residential space.

4/ Other buildings include other residential buildings, non-residential buildings and internal alterations. No square metres are collected for internal alterations.

* Revised.

Table 11 - Recorded building plans passed by larger municipalities at current prices by type of building: Eastern Cape

			Dec. 2006*	Nov. 2007	Dec. 2007	Jan. - Dec. 2006	Jan. - Dec. 2007	% Change 1/
Category of building	Type of building	Measuring unit						
1. Residential buildings	1. Dwelling-houses < 80 square metres	Number	53	37	7	2 372	1 343	-43,4
		square metres	2 433	1 959	329	102 479	60 143	-41,3
		R'000	3 100	4 460	576	128 945	92 074	-28,6
	2. Dwelling-houses >= 80 square metres	Number	175	147	68	2 684	2 040	-24,0
		square metres	38 043	24 066	23 006	548 320	474 295	-13,5
		R'000	110 078	79 266	79 607	1 343 333	1 397 110	4,0
	3. Flats and townhouses	Number	116	26	12	1 393	1 325	-4,9
		square metres	10 910	3 606	1 567	173 925	141 967	-18,4
		R'000	32 693	8 724	3 977	416 022	378 119	-9,1
	4. Other residential buildings 2/	square metres	1 032	0	0	12 889	10 326	-19,9
		R'000	2 490	0	0	28 697	26 162	-8,8
	5. Total residential buildings	R'000	148 361	92 450	84 160	1 916 997	1 893 465	-1,2
2. Non-residential buildings	1. Office and banking space	square metres	1 588	973	0	23 176	16 682	-28,0
		R'000	3 094	2 924	0	62 279	47 898	-23,1
	2. Shopping space	square metres	968	0	2 836	75 783	106 440	40,5
		R'000	1 863	0	6 097	196 195	269 525	37,4
	3. Industrial and warehouse space	square metres	24 814	54 489	2 790	110 351	177 754	61,1
		R'000	50 759	102 608	4 887	226 003	377 048	66,8
	4. Other non-residential buildings 3/	square metres	2 966	10 250	1 190	20 984	43 592	107,7
		R'000	5 982	25 834	3 347	47 502	109 744	131,0
	5. Total non-residential buildings	R'000	61 698	131 366	14 331	531 979	804 215	51,2
3. Additions and alterations	1. Dwelling-houses	square metres	36 190	24 092	13 545	464 493	383 214	-17,5
		R'000	95 138	60 809	33 422	1 072 771	997 412	-7,0
	2. Other buildings 4/	square metres	1 328	10 909	930	73 186	129 406	76,8
		R'000	4 088	29 422	4 902	189 744	336 532	77,4
	3. Total additions and alterations	R'000	99 226	90 231	38 324	1 262 515	1 333 944	5,7
4. Recorded plans passed	1. Total at current prices	R'000	309 285	314 047	136 815	3 711 491	4 031 624	8,6

1/ The percentage change between cumulative figures for 2006 and 2007.

2/ Other residential buildings include institutions for the disabled, boarding houses, hostels and tourism accommodation e.g. hotels, motels, guesthouses, holiday chalets, bed-and-breakfast accommodation and casinos.

3/ Other non-residential space includes churches, sport and recreation clubs, schools, crèches, hospitals and all other non-residential space.

4/ Other buildings include other residential buildings, non-residential buildings and internal alterations. No square metres are collected for internal alterations.

* Revised.

Table 12 - Recorded building plans passed by larger municipalities at current prices by type of building: Northern Cape

			Dec. 2006	Nov. 2007	Dec. 2007	Jan. - Dec. 2006	Jan. - Dec. 2007	% Change 1/
Category of building	Type of building	Measuring unit						
1. Residential buildings	1. Dwelling-houses < 80 square metres	Number	2	1	20	256	64	-75,0
		square metres	112	74	1 235	12 102	3 564	-70,6
		R'000	339	207	3 750	18 657	11 104	-40,5
	2. Dwelling-houses >= 80 square metres	Number	35	28	12	385	399	3,6
		square metres	5 518	5 833	2 740	72 848	73 095	0,3
		R'000	12 583	18 351	8 324	160 000	213 089	33,2
	3. Flats and townhouses	Number	16	14	0	277	133	-52,0
		square metres	3 000	1 627	0	29 007	17 134	-40,9
		R'000	5 400	4 881	0	56 242	50 052	-11,0
	4. Other residential buildings 2/	square metres	0	0	0	8 034	270	-96,6
		R'000	0	0	0	29 346	860	-97,1
	5. Total residential buildings	R'000	18 322	23 439	12 074	264 245	275 105	4,1
2. Non-residential buildings	1. Office and banking space	square metres	0	122	0	5 759	8 223	42,8
		R'000	0	342	0	14 161	24 012	69,6
	2. Shopping space	square metres	0	2 134	1 187	5 930	41 635	602,1
		R'000	0	7 684	3 752	14 540	129 054	787,6
	3. Industrial and warehouse space	square metres	0	1 020	697	12 086	10 698	-11,5
		R'000	0	2 436	2 059	33 134	26 416	-20,3
	4. Other non-residential buildings 3/	square metres	430	1 938	153	8 326	5 301	-36,3
		R'000	800	7 364	600	19 742	16 792	-14,9
	5. Total non-residential buildings	R'000	800	17 826	6 411	81 577	196 274	140,6
3. Additions and alterations	1. Dwelling-houses	square metres	3 010	6 438	2 186	59 632	52 599	-11,8
		R'000	6 440	19 336	6 284	121 658	143 691	18,1
	2. Other buildings 4/	square metres	853	3 538	63	14 814	26 025	75,7
		R'000	3 388	9 940	179	41 194	73 575	78,6
	3. Total additions and alterations	R'000	9 828	29 276	6 463	162 852	217 266	33,4
4. Recorded plans passed	1. Total at current prices	R'000	28 950	70 541	24 948	508 674	688 645	35,4

1/ The percentage change between cumulative figures for 2006 and 2007.

2/ Other residential buildings include institutions for the disabled, boarding houses, hostels and tourism accommodation e.g. hotels, motels, guesthouses, holiday chalets, bed-and-breakfast accommodation and casinos.

3/ Other non-residential space includes churches, sport and recreation clubs, schools, crèches, hospitals and all other non-residential space.

4/ Other buildings include other residential buildings, non-residential buildings and internal alterations. No square metres are collected for internal alterations.

Table 13 - Recorded building plans passed by larger municipalities at current prices by type of building: Free State

Category of building	Type of building	Measuring unit	Dec. 2006*	Nov. 2007	Dec. 2007	Jan. - Dec. 2006	Jan. - Dec. 2007	% Change 1/
1. Residential buildings	1. Dwelling-houses < 80 square metres	Number	11	98	12	2 555	2 049	-19,8
		square metres	742	4 451	783	108 551	89 477	-17,6
		R'000	1 694	7 894	1 852	101 111	98 950	-2,1
	2. Dwelling-houses >= 80 square metres	Number	115	129	85	1 241	1 377	11,0
		square metres	24 690	31 817	17 910	240 446	326 617	35,8
		R'000	58 339	90 067	44 886	552 650	823 045	48,9
	3. Flats and townhouses	Number	60	44	61	1 197	1 383	15,5
		square metres	6 339	6 362	8 791	139 233	150 118	7,8
		R'000	19 272	17 367	22 048	347 617	401 017	15,4
	4. Other residential buildings 2/	square metres	0	997	7 134	7 735	24 797	220,6
		R'000	0	3 645	25 682	87 057	88 218	1,3
	5. Total residential buildings	R'000	79 305	118 973	94 468	1 088 435	1 411 230	29,7
2. Non-residential buildings	1. Office and banking space	square metres	1 254	2 848	0	17 837	10 080	-43,5
		R'000	4 514	9 769	0	52 061	33 907	-34,9
	2. Shopping space	square metres	243	701	141	24 934	49 324	97,8
		R'000	608	2 276	350	79 307	191 287	141,2
	3. Industrial and warehouse space	square metres	1 045	5 914	6 218	51 936	49 267	-5,1
		R'000	2 660	12 272	12 667	80 472	91 081	13,2
	4. Other non-residential buildings 3/	square metres	454	0	0	14 292	4 856	-66,0
		R'000	1 751	0	0	42 185	11 604	-72,5
	5. Total non-residential buildings	R'000	9 533	24 317	13 017	254 025	327 879	29,1
3. Additions and alterations	1. Dwelling-houses	square metres	14 370	15 274	10 584	185 801	189 974	2,2
		R'000	32 064	39 088	24 671	375 154	467 826	24,7
	2. Other buildings 4/	square metres	1 387	9 801	2 546	40 683	39 542	-2,8
		R'000	48 005	30 320	48 682	188 476	180 080	-4,5
	3. Total additions and alterations	R'000	80 069	69 408	73 353	563 630	647 906	15,0
4. Recorded plans passed	1. Total at current prices	R'000	168 907	212 698	180 838	1 906 090	2 387 015	25,2

1/ The percentage change between cumulative figures for 2006 and 2007.

2/ Other residential buildings include institutions for the disabled, boarding houses, hostels and tourism accommodation e.g. hotels, motels, guesthouses, holiday chalets, bed-and-breakfast accommodation and casinos.

3/ Other non-residential space includes churches, sport and recreation clubs, schools, crèches, hospitals and all other non-residential space.

4/ Other buildings include other residential buildings, non-residential buildings and internal alterations. No square metres are collected for internal alterations.

* Revised.

Table 14 - Recorded building plans passed by larger municipalities at current prices by type of building: KwaZulu-Natal

			Dec. 2006*	Nov. 2007	Dec. 2007	Jan. - Dec. 2006	Jan. - Dec. 2007	% Change 1/
Category of building	Type of building	Measuring unit						
1. Residential buildings	1. Dwelling-houses < 80 square metres	Number	55	91	80	1 222	1 114	-8,8
		square metres	2 816	5 500	4 610	64 234	63 223	-1,6
		R'000	9 120	20 204	18 395	160 930	197 908	23,0
	2. Dwelling-houses >= 80 square metres	Number	181	226	179	2 989	2 594	-13,2
		square metres	42 060	51 441	39 164	676 285	614 683	-9,1
		R'000	140 934	228 552	158 056	2 125 969	2 390 542	12,4
	3. Flats and townhouses	Number	341	415	169	4 461	5 619	26,0
		square metres	52 382	61 025	21 099	755 178	682 360	-9,6
		R'000	193 720	307 065	66 253	2 710 063	2 735 649	0,9
	4. Other residential buildings 2/	square metres	0	882	0	30 217	28 850	-4,5
		R'000	0	4 412	0	154 969	136 277	-12,1
	5. Total residential buildings	R'000	343 774	560 233	242 704	5 151 931	5 460 376	6,0
2. Non-residential buildings	1. Office and banking space	square metres	11 157	2 553	4 965	167 739	117 357	-30,0
		R'000	32 300	11 489	24 179	646 213	500 758	-22,5
	2. Shopping space	square metres	2 865	660	12 641	116 218	154 314	32,8
		R'000	21 200	3 630	41 074	394 799	638 538	61,7
	3. Industrial and warehouse space	square metres	17 006	18 338	9 288	450 090	333 987	-25,8
		R'000	45 824	45 146	26 673	1 080 470	869 602	-19,5
	4. Other non-residential buildings 3/	square metres	1 604	1 692	20	59 754	69 974	17,1
		R'000	3 919	8 200	120	183 979	302 258	64,3
	5. Total non-residential buildings	R'000	103 243	68 465	92 046	2 305 461	2 311 156	0,2
3. Additions and alterations	1. Dwelling-houses	square metres	47 501	59 970	39 138	711 948	648 750	-8,9
		R'000	147 765	237 890	158 041	2 116 553	2 286 786	8,0
	2. Other buildings 4/	square metres	28 877	7 742	9 774	288 082	289 664	0,5
		R'000	98 481	51 777	59 748	924 930	1 118 954	21,0
	3. Total additions and alterations	R'000	246 246	289 667	217 789	3 041 483	3 405 740	12,0
4. Recorded plans passed	1. Total at current prices	R'000	693 263	918 365	552 539	10 498 875	11 177 272	6,5

1/ The percentage change between cumulative figures for 2006 and 2007.

2/ Other residential buildings include institutions for the disabled, boarding houses, hostels and tourism accommodation e.g. hotels, motels, guesthouses, holiday chalets, bed-and-breakfast accommodation and casinos.

3/ Other non-residential space includes churches, sport and recreation clubs, schools, crèches, hospitals and all other non-residential space.

4/ Other buildings include other residential buildings, non-residential buildings and internal alterations. No square metres are collected for internal alterations.

* Revised.

Table 15 - Recorded building plans passed by larger municipalities at current prices by type of building: North West

			Dec. 2006*	Nov. 2007	Dec. 2007	Jan. - Dec. 2006	Jan. - Dec. 2007	% Change 1/
Category of building	Type of building	Measuring unit						
1. Residential buildings	1. Dwelling-houses < 80 square metres	Number	43	46	551	1 581	2 220	40,4
		square metres	3 178	2 755	23 720	77 127	104 744	35,8
		R'000	6 467	5 172	25 953	88 869	128 600	44,7
	2. Dwelling-houses >= 80 square metres	Number	108	133	131	2 275	2 315	1,8
		square metres	23 827	30 807	26 771	458 342	516 591	12,7
		R'000	66 913	77 373	79 910	1 147 964	1 390 613	21,1
	3. Flats and townhouses	Number	94	77	156	1 545	1 472	-4,7
		square metres	6 771	5 967	11 062	165 900	169 724	2,3
		R'000	14 896	14 460	34 845	418 032	435 781	4,2
	4. Other residential buildings 2/	square metres	472	0	0	9 287	8 962	-3,5
		R'000	1 418	0	0	26 086	23 801	-8,8
	5. Total residential buildings	R'000	89 694	97 005	140 708	1 680 951	1 978 795	17,7
2. Non-residential buildings	1. Office and banking space	square metres	2 447	641	821	18 584	29 925	61,0
		R'000	6 438	1 305	2 700	45 115	72 633	61,0
	2. Shopping space	square metres	767	115	1 586	165 420	53 612	-67,6
		R'000	3 000	173	5 592	498 171	147 146	-70,5
	3. Industrial and warehouse space	square metres	0	476	4 105	37 536	49 646	32,3
		R'000	0	952	8 877	82 094	93 294	13,6
	4. Other non-residential buildings 3/	square metres	1 613	277	152	15 660	15 973	2,0
		R'000	4 094	886	334	45 410	41 747	-8,1
	5. Total non-residential buildings	R'000	13 532	3 316	17 503	670 790	354 820	-47,1
3. Additions and alterations	1. Dwelling-houses	square metres	9 048	8 135	9 881	147 188	148 796	1,1
		R'000	21 106	18 032	22 775	308 185	341 352	10,8
	2. Other buildings 4/	square metres	1 183	344	267	18 608	13 827	-25,7
		R'000	4 071	1 296	625	53 453	42 623	-20,3
	3. Total additions and alterations	R'000	25 177	19 328	23 400	361 638	383 975	6,2
4. Recorded plans passed	1. Total at current prices	R'000	128 403	119 649	181 611	2 713 379	2 717 590	0,2

1/ The percentage change between cumulative figures for 2006 and 2007.

2/ Other residential buildings include institutions for the disabled, boarding houses, hostels and tourism accommodation e.g. hotels, motels, guesthouses, holiday chalets, bed-and-breakfast accommodation and casinos.

3/ Other non-residential space includes churches, sport and recreation clubs, schools, crèches, hospitals and all other non-residential space.

4/ Other buildings include other residential buildings, non-residential buildings and internal alterations. No square metres are collected for internal alterations.

* Revised.

Table 16 - Recorded building plans passed by larger municipalities at current prices by type of building: Gauteng

			Dec. 2006*	Nov. 2007	Dec. 2007	Jan. - Dec. 2006	Jan. - Dec. 2007	% Change 1/
Category of building	Type of building	Measuring unit						
1. Residential buildings	1. Dwelling-houses < 80 square metres	Number	1 487	1 494	1 995	20 644	23 076	11,8
		square metres	67 154	63 332	77 005	905 904	982 044	8,4
		R'000	137 985	128 262	104 161	1 806 380	1 956 794	8,3
	2. Dwelling-houses >= 80 square metres	Number	846	849	652	13 992	12 419	-11,2
		square metres	223 361	238 310	174 821	3 592 353	3 445 536	-4,1
		R'000	800 815	862 697	638 240	11 643 624	12 039 481	3,4
	3. Flats and townhouses	Number	1 069	1 239	737	14 291	13 426	-6,1
		square metres	116 069	137 011	75 548	1 906 412	1 699 171	-10,9
		R'000	384 428	488 948	289 207	6 375 455	6 181 465	-3,0
	4. Other residential buildings 2/	square metres	2 636	1 334	3 232	74 654	32 162	-56,9
		R'000	6 271	6 003	21 654	260 987	142 383	-45,4
5. Total residential buildings	R'000	1 329 499	1 485 910	1 053 262	20 086 446	20 320 123	1,2	
2. Non-residential buildings	1. Office and banking space	square metres	39 672	8 902	43 525	458 588	404 384	-11,8
		R'000	189 445	40 854	266 005	1 979 083	2 216 536	12,0
	2. Shopping space	square metres	65 245	40 635	10 050	497 684	368 564	-25,9
		R'000	298 527	214 619	34 471	2 002 575	1 688 025	-15,7
	3. Industrial and warehouse space	square metres	95 297	65 374	53 742	811 495	884 558	9,0
		R'000	253 242	176 111	148 514	2 393 262	2 579 257	7,8
	4. Other non-residential buildings 3/	square metres	2 330	2 384	2 424	111 502	106 415	-4,6
		R'000	6 820	13 282	7 757	344 349	417 965	21,4
5. Total non-residential buildings	R'000	748 034	444 866	456 747	6 719 269	6 901 783	2,7	
3. Additions and alterations	1. Dwelling-houses	square metres	103 886	121 894	91 285	1 806 961	1 869 256	3,4
		R'000	352 988	439 556	329 825	5 679 538	6 346 106	11,7
	2. Other buildings 4/	square metres	23 783	46 478	30 124	398 189	440 776	10,7
		R'000	82 273	174 986	109 742	1 368 024	1 737 129	27,0
	3. Total additions and alterations	R'000	435 261	614 542	439 567	7 047 562	8 083 235	14,7
4. Recorded plans passed	1. Total at current prices	R'000	2 512 794	2 545 318	1 949 576	33 853 277	35 305 141	4,3

1/ The percentage change between cumulative figures for 2006 and 2007.

2/ Other residential buildings include institutions for the disabled, boarding houses, hostels and tourism accommodation e.g. hotels, motels, guesthouses, holiday chalets, bed-and-breakfast accommodation and casinos.

3/ Other non-residential space includes churches, sport and recreation clubs, schools, crèches, hospitals and all other non-residential space.

4/ Other buildings include other residential buildings, non-residential buildings and internal alterations. No square metres are collected for internal alterations.

* Revised.

Table 17 - Recorded building plans passed by larger municipalities at current prices by type of building: Mpumalanga

			Dec. 2006	Nov. 2007	Dec. 2007	Jan. - Dec. 2006	Jan. - Dec. 2007	% Change 1/
Category of building	Type of building	Measuring unit						
1. Residential buildings	1. Dwelling-houses < 80 square metres	Number	154	152	28	786	1 402	78,4
		square metres	7 593	7 681	1 553	44 646	65 586	46,9
		R'000	14 445	11 479	3 463	103 450	101 471	-1,9
	2. Dwelling-houses >= 80 square metres	Number	302	225	107	2 516	2 575	2,3
		square metres	51 576	59 001	24 964	551 289	617 344	12,0
		R'000	133 367	171 543	71 368	1 477 480	1 788 129	21,0
	3. Flats and townhouses	Number	46	72	109	1 694	1 845	8,9
		square metres	3 246	5 102	13 344	191 740	163 708	-14,6
		R'000	8 860	14 904	31 990	497 002	465 453	-6,3
	4. Other residential buildings 2/	square metres	0	408	3 780	8 663	8 664	-0,0
		R'000	0	1 200	10 225	24 011	24 691	2,8
	5. Total residential buildings	R'000	156 672	199 126	117 046	2 101 943	2 379 744	13,2
2. Non-residential buildings	1. Office and banking space	square metres	0	1 493	2 718	46 286	23 163	-50,0
		R'000	0	5 975	6 795	136 892	69 499	-49,2
	2. Shopping space	square metres	4 893	4 666	0	118 214	28 111	-76,2
		R'000	12 550	18 132	0	662 235	90 764	-86,3
	3. Industrial and warehouse space	square metres	376	11 270	8 713	77 623	121 455	56,5
		R'000	398	38 450	21 784	205 307	398 419	94,1
	4. Other non-residential buildings 3/	square metres	19	0	1 878	38 261	10 993	-71,3
		R'000	80	0	4 883	123 610	27 196	-78,0
	5. Total non-residential buildings	R'000	13 028	62 557	33 462	1 128 044	585 878	-48,1
3. Additions and alterations	1. Dwelling-houses	square metres	14 056	23 612	15 666	237 464	245 419	3,3
		R'000	32 769	64 068	38 859	529 905	644 542	21,6
	2. Other buildings 4/	square metres	1 357	4 136	2 431	27 236	41 580	52,7
		R'000	4 184	15 618	6 850	86 666	137 346	58,5
	3. Total additions and alterations	R'000	36 953	79 686	45 709	616 571	781 888	26,8
4. Recorded plans passed	1. Total at current prices	R'000	206 653	341 369	196 217	3 846 558	3 747 510	-2,6

1/ The percentage change between cumulative figures for 2006 and 2007.

2/ Other residential buildings include institutions for the disabled, boarding houses, hostels and tourism accommodation e.g. hotels, motels, guesthouses, holiday chalets, bed-and-breakfast accommodation and casinos.

3/ Other non-residential space includes churches, sport and recreation clubs, schools, crèches, hospitals and all other non-residential space.

4/ Other buildings include other residential buildings, non-residential buildings and internal alterations. No square metres are collected for internal alterations.

Table 18 - Recorded building plans passed by larger municipalities at current prices by type of building: Limpopo

			Dec. 2006	Nov. 2007	Dec. 2007	Jan. - Dec. 2006	Jan. - Dec. 2007	% Change 1/
Category of building	Type of building	Measuring unit						
1. Dwelling-houses < 80 square metres	1. Dwelling-houses < 80 square metres	Number	20	19	509	913	1 335	46,2
		square metres	1 284	1 208	23 112	47 870	68 416	42,9
		R'000	3 312	3 259	47 227	88 679	146 939	65,7
	2. Dwelling-houses >= 80 square metres	Number	63	127	21	1 294	1 044	-19,3
		square metres	12 691	27 195	5 086	260 977	219 376	-15,9
		R'000	32 654	93 389	12 451	652 081	611 325	-6,3
	3. Flats and townhouses	Number	24	100	22	785	940	19,7
		square metres	2 352	12 623	2 510	73 436	108 192	47,3
		R'000	7 000	29 961	6 885	185 497	265 300	43,0
	4. Other residential buildings 2/	square metres	318	160	2 612	3 339	11 000	229,4
		R'000	781	393	7 520	9 911	26 883	171,2
	5. Total residential buildings	R'000	43 747	127 002	74 083	936 168	1 050 447	12,2
2. Dwelling-houses >= 80 square metres	1. Office and banking space	square metres	862	3 734	167	11 981	35 589	197,0
		R'000	2 155	8 295	468	28 613	87 656	206,4
	2. Shopping space	square metres	0	5 203	7 500	28 121	44 276	57,4
		R'000	0	11 293	40 000	55 961	121 748	117,6
	3. Industrial and warehouse space	square metres	5 320	7 374	7 460	30 536	42 293	38,5
		R'000	12 984	18 435	18 523	70 714	104 956	48,4
	4. Other non-residential buildings 3/	square metres	123	1 514	0	1 403	21 010	1 397,5
		R'000	221	4 102	0	2 172	47 498	2 086,8
	5. Total non-residential buildings	R'000	15 360	42 125	58 991	157 460	361 858	129,8
	3. Flats and townhouses	1. Dwelling-houses	square metres	6 645	7 395	3 538	107 508	113 275
R'000			16 529	18 704	8 769	240 427	275 748	14,7
2. Other buildings 4/		square metres	700	4 130	1 611	24 163	17 739	-26,6
		R'000	1 146	8 865	4 028	51 986	41 199	-20,7
3. Total additions and alterations		R'000	17 675	27 569	12 797	292 413	316 947	8,4
4. Other residential buildings 2/	1. Total at current prices	R'000	76 782	196 696	145 871	1 386 041	1 729 252	24,8

1/ The percentage change between cumulative figures for 2006 and 2007.

2/ Other residential buildings include institutions for the disabled, boarding houses, hostels and tourism accommodation e.g. hotels, motels, guesthouses, holiday chalets, bed-and-breakfast accommodation and casinos.

3/ Other non-residential space includes churches, sport and recreation clubs, schools, crèches, hospitals and all other non-residential space.

4/ Other buildings include other residential buildings, non-residential buildings and internal alterations. No square metres are collected for internal alterations.

Table 19 - Buildings reported as completed to larger municipalities at current prices by type of building: South Africa

			Dec. 2006*	Nov. 2007	Dec. 2007	Jan. - Dec. 2006	Jan. - Dec. 2007	% Change 1/
Category of building	Type of building	Measuring unit						
1. Residential buildings	1. Dwelling-houses < 80 square metres	Number	1 673	2 166	1 967	24 029	26 195	9,0
		square metres	75 698	91 115	92 450	1 032 528	1 134 003	9,8
		R'000	165 016	183 903	221 257	1 851 863	2 140 940	15,6
	2. Dwelling-houses >= 80 square metres	Number	2 050	2 087	1 715	22 118	22 025	-0,4
		square metres	449 081	458 302	434 142	4 941 428	5 022 077	1,6
		R'000	1 396 023	1 481 023	1 410 678	14 059 447	15 670 906	11,5
	3. Flats and townhouses	Number	2 457	2 303	2 090	23 858	26 917	12,8
		square metres	314 695	270 726	237 991	3 120 296	3 083 107	-1,2
		R'000	1 111 757	915 812	793 792	9 881 190	10 384 604	5,1
	4. Other residential buildings 2/	square metres	1 105	4 581	359	76 101	165 289	117,2
		R'000	2 368	16 034	1 382	280 250	685 778	144,7
	5. Total residential buildings	R'000	2 675 164	2 596 772	2 427 109	26 072 750	28 882 228	10,8
2. Non-residential buildings	1. Office and banking space	square metres	29 598	25 406	59 632	328 190	644 720	96,4
		R'000	110 130	119 626	212 564	1 085 492	2 354 452	116,9
	2. Shopping space	square metres	33 500	55 104	34 424	674 007	613 675	-9,0
		R'000	124 250	255 910	127 384	2 236 569	2 366 352	5,8
	3. Industrial and warehouse space	square metres	100 857	92 991	55 842	879 413	1 322 738	50,4
		R'000	292 915	232 627	172 157	2 216 133	3 728 998	68,3
	4. Other non-residential buildings 3/	square metres	3 280	11 274	7 533	112 027	164 449	46,8
		R'000	14 856	36 560	22 865	300 586	507 628	68,9
	5. Total non-residential buildings	R'000	542 151	644 723	534 970	5 838 780	8 957 430	53,4
3. Additions and alterations	1. Dwelling-houses	square metres	128 654	196 214	103 533	1 987 253	2 018 320	1,6
		R'000	375 699	526 503	301 472	5 065 165	5 626 606	11,1
	2. Other buildings 4/	square metres	37 236	82 622	29 525	637 895	599 160	-6,1
		R'000	169 964	296 791	125 042	1 858 290	2 094 758	12,7
	3. Total additions and alterations	R'000	545 663	823 294	426 514	6 923 455	7 721 364	11,5
4. Recorded buildings completed	1. Total at current prices	R'000	3 762 978	4 064 789	3 388 593	38 834 985	45 561 022	17,3

1/ The percentage change between cumulative figures for 2006 and 2007.

2/ Other residential buildings include institutions for the disabled, boarding houses, hostels and tourism accommodation e.g. hotels, motels, guesthouses, holiday chalets, bed-and-breakfast accommodation and casinos.

3/ Other non-residential space includes churches, sport and recreation clubs, schools, crèches, hospitals and all other non-residential space.

4/ Other buildings include other residential buildings, non-residential buildings and internal alterations. No square metres are collected for internal alterations.

* Revised.

Table 20 - Buildings reported as completed to larger municipalities at current prices by type of building: Western Cape

			Dec. 2006*	Nov. 2007	Dec. 2007	Jan. - Dec. 2006	Jan. - Dec. 2007	% Change 1/
Category of building	Type of building	Measuring unit						
1. Residential buildings	1. Dwelling-houses < 80 square metres	Number	376	288	121	4 525	6 988	54,4
		square metres	16 146	14 029	5 840	183 643	280 396	52,7
		R'000	27 587	31 321	13 591	302 974	458 266	51,3
	2. Dwelling-houses >= 80 square metres	Number	561	629	500	6 218	5 768	-7,2
		square metres	107 092	137 637	128 857	1 358 902	1 294 339	-4,8
		R'000	325 030	438 838	411 946	3 774 026	3 969 989	5,2
	3. Flats and townhouses	Number	706	516	228	6 464	6 515	0,8
		square metres	73 980	65 812	26 540	756 633	716 857	-5,3
		R'000	262 029	211 973	85 651	2 271 065	2 242 446	-1,3
	4. Other residential buildings 2/	square metres	0	0	359	24 782	44 762	80,6
		R'000	0	0	1 382	107 233	159 542	48,8
	5. Total residential buildings	R'000	614 646	682 132	512 570	6 455 298	6 830 243	5,8
2. Non-residential buildings	1. Office and banking space	square metres	7 368	1 325	27 800	69 263	235 461	240,0
		R'000	22 707	5 196	88 355	188 147	698 889	271,5
	2. Shopping space	square metres	9 095	11 136	3 990	128 466	69 249	-46,1
		R'000	28 893	36 703	12 284	300 785	222 777	-25,9
	3. Industrial and warehouse space	square metres	27 430	31 161	38 667	324 784	460 246	41,7
		R'000	84 267	88 213	120 771	848 309	1 322 396	55,9
	4. Other non-residential buildings 3/	square metres	996	9 474	207	41 984	72 156	71,9
		R'000	3 448	31 791	410	107 685	207 622	92,8
	5. Total non-residential buildings	R'000	139 315	161 903	221 820	1 444 926	2 451 684	69,7
	3. Additions and alterations	1. Dwelling-houses	square metres	48 494	85 186	47 381	745 931	756 831
R'000			130 431	214 760	127 011	1 858 060	1 986 333	6,9
2. Other buildings 4/		square metres	6 681	58 537	22 470	266 541	276 542	3,8
		R'000	22 697	215 055	100 244	792 594	973 382	22,8
3. Total additions and alterations		R'000	153 128	429 815	227 255	2 650 654	2 959 715	11,7
4. Recorded buildings completed	1. Total at current prices	R'000	907 089	1 273 850	961 645	10 550 878	12 241 642	16,0

1/ The percentage change between cumulative figures for 2006 and 2007.

2/ Other residential buildings include institutions for the disabled, boarding houses, hostels and tourism accommodation e.g. hotels, motels, guesthouses, holiday chalets, bed-and-breakfast accommodation and casinos.

3/ Other non-residential space includes churches, sport and recreation clubs, schools, crèches, hospitals and all other non-residential space.

4/ Other buildings include other residential buildings, non-residential buildings and internal alterations. No square metres are collected for internal alterations.

* Revised.

Table 21 - Buildings reported as completed to larger municipalities at current prices by type of building: Eastern Cape

			Dec. 2006	Nov. 2007	Dec. 2007	Jan. - Dec. 2006	Jan. - Dec. 2007	% Change 1/
Category of building								
1. Residential buildings	1. Dwelling-houses < 80 square metres	Number	150	255	177	2 335	2 043	-12,5
		square metres	6 144	10 296	7 609	98 511	84 924	-13,8
		R'000	8 441	17 978	13 885	130 326	132 204	1,4
	2. Dwelling-houses >= 80 square metres	Number	102	106	101	1 350	1 263	-6,4
		square metres	17 868	22 008	19 049	233 470	229 800	-1,6
		R'000	43 957	62 256	43 383	519 550	583 294	12,3
	3. Flats and townhouses	Number	25	39	29	649	1 160	78,7
		square metres	4 229	5 526	2 418	72 074	122 530	70,0
		R'000	9 256	14 022	6 530	154 430	314 430	103,6
	4. Other residential buildings 2/	square metres	271	0	0	1 306	3 023	131,5
		R'000	596	0	0	2 898	7 643	163,7
	5. Total residential buildings	R'000	62 250	94 256	63 798	807 204	1 037 571	28,5
2. Non-residential buildings	1. Office and banking space	square metres	0	1 508	14 217	11 222	17 659	57,4
		R'000	0	5 893	37 774	28 168	48 568	72,4
	2. Shopping space	square metres	0	1 142	10 418	14 308	29 816	108,4
		R'000	0	2 552	27 347	33 975	73 926	117,6
	3. Industrial and warehouse space	square metres	1 497	17 777	0	39 017	46 647	19,6
		R'000	2 844	35 803	0	73 598	104 075	41,4
	4. Other non-residential buildings 3/	square metres	0	173	1 433	6 395	5 499	-14,0
		R'000	0	477	3 260	14 105	12 195	-13,5
	5. Total non-residential buildings	R'000	2 844	44 725	68 381	149 846	238 764	59,3
3. Additions and alterations	1. Dwelling-houses	square metres	7 319	12 291	4 770	128 699	142 709	10,9
		R'000	14 027	29 065	11 297	248 032	297 833	20,1
	2. Other buildings 4/	square metres	428	2 592	541	76 275	40 553	-46,8
		R'000	854	5 810	1 498	173 346	92 360	-46,7
	3. Total additions and alterations	R'000	14 881	34 875	12 795	421 378	390 193	-7,4
4. Recorded buildings completed	1. Total at current prices	R'000	79 975	173 856	144 974	1 378 428	1 666 528	20,9

1/ The percentage change between cumulative figures for 2006 and 2007.

2/ Other residential buildings include institutions for the disabled, boarding houses, hostels and tourism accommodation e.g. hotels, motels, guesthouses, holiday chalets, bed-and-breakfast accommodation and casinos.

3/ Other non-residential space includes churches, sport and recreation clubs, schools, crèches, hospitals and all other non-residential space.

4/ Other buildings include other residential buildings, non-residential buildings and internal alterations. No square metres are collected for internal alterations.

Table 22 - Buildings reported as completed to larger municipalities at current prices by type of building: Northern Cape

			Dec. 2006	Nov. 2007	Dec. 2007	Jan. - Dec. 2006	Jan. - Dec. 2007	% Change 1/
Category of building	Type of building	Measuring unit						
1. Residential buildings	1. Dwelling-houses < 80 square metres	Number	7	53	55	36	247	586,1
		square metres	429	2 008	2 266	1 893	9 246	388,4
		R'000	818	2 203	2 880	3 322	11 152	235,7
	2. Dwelling-houses >= 80 square metres	Number	19	16	11	240	191	-20,4
		square metres	4 244	3 639	3 162	44 414	38 656	-13,0
		R'000	8 774	10 783	8 340	93 644	102 634	9,6
	3. Flats and townhouses	Number	10	34	17	122	223	82,8
		square metres	1 576	4 276	2 168	17 210	29 485	71,3
		R'000	3 291	11 973	6 703	33 097	77 337	133,7
	4. Other residential buildings 2/	square metres	0	4 581	0	1 264	11 196	785,8
		R'000	0	16 034	0	2 222	32 982	1 384,3
	5. Total residential buildings	R'000	12 883	40 993	17 923	132 285	224 105	69,4
	2. Non-residential buildings	1. Office and banking space	square metres	0	0	0	2 488	6 485
R'000			0	0	0	5 149	16 161	213,9
2. Shopping space		square metres	0	0	0	5 285	7 008	32,6
		R'000	0	0	0	12 735	16 341	28,3
3. Industrial and warehouse space		square metres	794	1 458	1 445	9 116	7 633	-16,3
		R'000	1 985	3 208	3 961	21 085	19 329	-8,3
4. Other non-residential buildings 3/		square metres	0	0	0	1 224	498	-59,3
		R'000	0	0	0	2 675	1 195	-55,3
5. Total non-residential buildings		R'000	1 985	3 208	3 961	41 644	53 026	27,3
3. Additions and alterations	1. Dwelling-houses	square metres	4 226	2 528	1 242	28 998	31 392	8,3
		R'000	8 650	7 940	3 655	60 887	86 204	41,6
	2. Other buildings 4/	square metres	2 182	1 202	13	15 247	5 881	-61,4
		R'000	5 254	3 366	36	33 975	22 979	-32,4
	3. Total additions and alterations	R'000	13 904	11 306	3 691	94 862	109 183	15,1
4. Recorded buildings completed	1. Total at current prices	R'000	28 772	55 507	25 575	268 791	386 314	43,7

1/ The percentage change between cumulative figures for 2006 and 2007.

2/ Other residential buildings include institutions for the disabled, boarding houses, hostels and tourism accommodation e.g. hotels, motels, guesthouses, holiday chalets, bed-and-breakfast accommodation and casinos.

3/ Other non-residential space includes churches, sport and recreation clubs, schools, crèches, hospitals and all other non-residential space.

4/ Other buildings include other residential buildings, non-residential buildings and internal alterations. No square metres are collected for internal alterations.

Table 23 - Buildings reported as completed to larger municipalities at current prices by type of building: Free State

			Dec. 2006*	Nov. 2007	Dec. 2007	Jan. - Dec. 2006	Jan. - Dec. 2007	% Change 1/
Category of building	Type of building	Measuring unit						
1. Residential buildings	1. Dwelling-houses < 80 square metres	Number	21	104	63	489	725	48,3
		square metres	1 213	4 080	3 394	23 225	36 252	56,1
		R'000	2 593	7 038	7 107	29 194	55 284	89,4
	2. Dwelling-houses >= 80 square metres	Number	42	57	70	476	893	87,6
		square metres	6 801	9 821	10 806	83 275	160 027	92,2
		R'000	12 936	26 088	26 186	154 977	350 320	126,0
	3. Flats and townhouses	Number	23	39	16	501	840	67,7
		square metres	5 357	4 805	1 543	54 131	81 739	51,0
		R'000	10 919	14 978	5 500	114 403	206 250	80,3
	4. Other residential buildings 2/	square metres	0	0	0	8 972	7 830	-12,7
		R'000	0	0	0	37 828	85 155	125,1
	5. Total residential buildings	R'000	26 448	48 104	38 793	336 402	697 009	107,2
2. Non-residential buildings	1. Office and banking space	square metres	506	0	1 182	2 131	8 607	303,9
		R'000	1 100	0	4 234	5 104	27 592	440,6
	2. Shopping space	square metres	0	818	0	22 209	10 830	-51,2
		R'000	0	2 500	0	62 291	37 778	-39,4
	3. Industrial and warehouse space	square metres	1 236	2 468	1 133	19 363	15 943	-17,7
		R'000	2 472	5 000	2 930	50 835	28 235	-44,5
	4. Other non-residential buildings 3/	square metres	0	0	0	4 436	4 994	12,6
		R'000	0	0	0	8 992	19 695	119,0
	5. Total non-residential buildings	R'000	3 572	7 500	7 164	127 222	113 300	-10,9
3. Additions and alterations	1. Dwelling-houses	square metres	3 020	6 126	4 474	67 641	76 312	12,8
		R'000	6 285	13 771	9 925	114 563	153 716	34,2
	2. Other buildings 4/	square metres	323	978	533	16 313	20 263	24,2
		R'000	13 179	3 274	2 404	61 397	93 100	51,6
	3. Total additions and alterations	R'000	19 464	17 045	12 329	175 960	246 816	40,3
4. Recorded buildings completed	1. Total at current prices	R'000	49 484	72 649	58 286	639 584	1 057 125	65,3

1/ The percentage change between cumulative figures for 2006 and 2007.

2/ Other residential buildings include institutions for the disabled, boarding houses, hostels and tourism accommodation e.g. hotels, motels, guesthouses, holiday chalets, bed-and-breakfast accommodation and casinos.

3/ Other non-residential space includes churches, sport and recreation clubs, schools, crèches, hospitals and all other non-residential space.

4/ Other buildings include other residential buildings, non-residential buildings and internal alterations. No square metres are collected for internal alterations.

* Revised.

Table 24 - Buildings reported as completed to larger municipalities at current prices by type of building: KwaZulu-Natal

			Dec. 2006*	Nov. 2007	Dec. 2007	Jan. - Dec. 2006	Jan. - Dec. 2007	% Change 1/
Category of building	Type of building	Measuring unit						
1. Residential buildings	1. Dwelling-houses < 80 square metres	Number	101	165	68	1 221	1 348	10,4
		square metres	4 886	6 850	3 414	55 006	59 660	8,5
		R'000	14 141	12 122	9 808	142 656	152 424	6,8
	2. Dwelling-houses >= 80 square metres	Number	137	110	75	1 465	1 437	-1,9
		square metres	29 954	28 105	20 970	307 356	334 240	8,7
		R'000	97 779	106 513	95 804	950 916	1 288 527	35,5
	3. Flats and townhouses	Number	390	149	300	3 298	2 585	-21,6
		square metres	72 136	31 065	51 785	606 134	482 316	-20,4
		R'000	284 747	96 050	176 097	2 107 194	1 760 577	-16,4
	4. Other residential buildings 2/	square metres	0	0	0	13 252	20 824	57,1
		R'000	0	0	0	52 563	122 445	132,9
	5. Total residential buildings	R'000	396 667	214 685	281 709	3 253 329	3 323 973	2,2
2. Non-residential buildings	1. Office and banking space	square metres	2 772	10 157	6 647	56 794	57 027	0,4
		R'000	10 095	45 744	33 235	171 635	205 069	19,5
	2. Shopping space	square metres	5 258	2 589	6 759	91 596	114 896	25,4
		R'000	22 199	8 673	22 844	433 733	402 687	-7,2
	3. Industrial and warehouse space	square metres	20 547	7 600	2 735	161 240	298 126	84,9
		R'000	57 180	18 504	14 912	387 277	827 186	113,6
	4. Other non-residential buildings 3/	square metres	542	1 171	46	27 805	24 696	-11,2
		R'000	2 305	3 403	230	78 420	86 253	10,0
	5. Total non-residential buildings	R'000	91 779	76 324	71 221	1 071 065	1 521 195	42,0
3. Additions and alterations	1. Dwelling-houses	square metres	19 776	22 467	16 119	263 443	283 802	7,7
		R'000	70 418	90 673	69 023	805 270	1 052 267	30,7
	2. Other buildings 4/	square metres	5 990	4 268	191	114 160	82 177	-28,0
		R'000	39 310	18 200	1 760	333 056	308 684	-7,3
	3. Total additions and alterations	R'000	109 728	108 873	70 783	1 138 326	1 360 951	19,6
4. Recorded buildings completed	1. Total at current prices	R'000	598 174	399 882	423 713	5 462 720	6 206 119	13,6

1/ The percentage change between cumulative figures for 2006 and 2007.

2/ Other residential buildings include institutions for the disabled, boarding houses, hostels and tourism accommodation e.g. hotels, motels, guesthouses, holiday chalets, bed-and-breakfast accommodation and casinos.

3/ Other non-residential space includes churches, sport and recreation clubs, schools, crèches, hospitals and all other non-residential space.

4/ Other buildings include other residential buildings, non-residential buildings and internal alterations. No square metres are collected for internal alterations.

* Revised.

Table 25 - Buildings reported as completed to larger municipalities at current prices by type of building: North West

Category of building	Type of building	Measuring unit	Dec. 2006*	Nov. 2007	Dec. 2007	Jan. - Dec. 2006	Jan. - Dec. 2007	% Change 1/
1. Residential buildings	1. Dwelling-houses < 80 square metres	Number	44	372	103	879	2 602	196,0
		square metres	2 604	12 721	5 396	42 114	101 949	142,1
		R'000	5 196	19 837	11 998	46 349	113 100	144,0
	2. Dwelling-houses >= 80 square metres	Number	187	136	104	1 439	1 519	5,6
		square metres	33 297	28 549	18 712	269 435	319 817	18,7
		R'000	89 713	82 001	51 011	663 554	908 261	36,9
	3. Flats and townhouses	Number	85	87	70	984	1 174	19,3
		square metres	6 722	10 363	4 492	110 210	101 060	-8,3
		R'000	20 800	35 607	10 225	281 499	327 887	16,5
	4. Other residential buildings 2/	square metres	0	0	0	0	0	
		R'000	0	0	0	0	0	
	5. Total residential buildings	R'000	115 709	137 445	73 234	991 402	1 349 248	36,1
2. Non-residential buildings	1. Office and banking space	square metres	0	5 379	0	3 195	12 196	281,7
		R'000	0	18 827	0	6 641	31 836	379,4
	2. Shopping space	square metres	6 183	866	249	44 604	42 815	-4,0
		R'000	21 288	1 875	548	159 672	124 785	-21,8
	3. Industrial and warehouse space	square metres	171	2 376	0	7 012	12 265	74,9
		R'000	427	4 248	0	14 446	23 647	63,7
	4. Other non-residential buildings 3/	square metres	1 672	0	0	6 117	6 003	-1,9
		R'000	8 928	0	0	18 944	13 175	-30,5
	5. Total non-residential buildings	R'000	30 643	24 950	548	199 703	193 443	-3,1
3. Additions and alterations	1. Dwelling-houses	square metres	2 366	7 330	1 234	45 469	51 831	14,0
		R'000	5 234	10 386	3 056	85 391	95 798	12,2
	2. Other buildings 4/	square metres	2 409	503	326	17 148	11 720	-31,7
		R'000	7 094	900	950	38 736	24 825	-35,9
	3. Total additions and alterations	R'000	12 328	11 286	4 006	124 127	120 623	-2,8
4. Recorded buildings completed	1. Total at current prices	R'000	158 680	173 681	77 788	1 315 232	1 663 314	26,5

1/ The percentage change between cumulative figures for 2006 and 2007.

2/ Other residential buildings include institutions for the disabled, boarding houses, hostels and tourism accommodation e.g. hotels, motels, guesthouses, holiday chalets, bed-and-breakfast accommodation and casinos.

3/ Other non-residential space includes churches, sport and recreation clubs, schools, crèches, hospitals and all other non-residential space.

4/ Other buildings include other residential buildings, non-residential buildings and internal alterations. No square metres are collected for internal alterations.

* Revised.

Table 26 - Buildings reported as completed to larger municipalities at current prices by type of building: Gauteng

Category of building	Type of building	Measuring unit	Dec. 2006*	Nov. 2007	Dec. 2007	Jan. - Dec. 2006	Jan. - Dec. 2007	% Change 1/
1. Residential buildings	1. Dwelling-houses < 80 square metres	Number	932	882	1 348	13 667	11 683	-14,5
		square metres	41 548	38 553	62 534	582 735	526 276	-9,7
		R'000	99 146	84 752	156 408	1 100 282	1 124 560	2,2
	2. Dwelling-houses >= 80 square metres	Number	839	768	729	9 158	8 648	-5,6
		square metres	217 765	179 659	197 971	2 318 964	2 212 191	-4,6
		R'000	731 259	619 545	677 568	7 081 985	7 316 792	3,3
	3. Flats and townhouses	Number	1 164	1 226	1 408	11 058	13 554	22,6
		square metres	145 006	136 367	147 828	1 433 504	1 459 488	1,8
		R'000	503 841	496 374	499 787	4 748 107	5 208 060	9,7
	4. Other residential buildings 2/	square metres	730	0	0	24 798	76 103	206,9
		R'000	1 460	0	0	73 210	272 158	271,7
	5. Total residential buildings	R'000	1 335 706	1 200 671	1 333 763	13 003 584	13 921 570	7,1
2. Non-residential buildings	1. Office and banking space	square metres	18 952	7 037	9 786	168 377	284 020	68,7
		R'000	76 228	43 966	48 966	644 050	1 246 003	93,5
	2. Shopping space	square metres	11 204	38 553	13 008	319 188	312 117	-2,2
		R'000	46 188	203 607	64 361	1 095 001	1 411 493	28,9
	3. Industrial and warehouse space	square metres	46 827	24 102	11 264	266 396	408 011	53,2
		R'000	136 892	59 973	28 645	716 339	1 172 075	63,6
	4. Other non-residential buildings 3/	square metres	70	0	5 847	20 605	45 424	120,5
		R'000	175	0	18 965	62 346	158 374	154,0
	5. Total non-residential buildings	R'000	259 483	307 546	160 937	2 517 736	3 987 945	58,4
3. Additions and alterations	1. Dwelling-houses	square metres	38 522	42 840	21 197	632 413	584 267	-7,6
		R'000	128 880	121 581	63 263	1 747 599	1 743 626	-0,2
	2. Other buildings 4/	square metres	18 111	10 991	3 146	116 509	140 490	20,6
		R'000	78 641	40 812	9 339	388 402	511 437	31,7
	3. Total additions and alterations	R'000	207 521	162 393	72 602	2 136 001	2 255 063	5,6
4. Recorded buildings completed	1. Total at current prices	R'000	1 802 710	1 670 610	1 567 302	17 657 321	20 164 578	14,2

1/ The percentage change between cumulative figures for 2006 and 2007.

2/ Other residential buildings include institutions for the disabled, boarding houses, hostels and tourism accommodation e.g. hotels, motels, guesthouses, holiday chalets, bed-and-breakfast accommodation and casinos.

3/ Other non-residential space includes churches, sport and recreation clubs, schools, crèches, hospitals and all other non-residential space.

4/ Other buildings include other residential buildings, non-residential buildings and internal alterations. No square metres are collected for internal alterations.

* Revised.

Table 27 - Buildings reported as completed to larger municipalities at current prices by type of building: Mpumalanga

			Dec. 2006*	Nov. 2007	Dec. 2007	Jan. - Dec. 2006	Jan. - Dec. 2007	% Change 1/
Category of building	Type of building	Measuring unit						
1. Residential buildings	1. Dwelling-houses < 80 square metres	Number	7	26	13	572	270	-52,8
		square metres	484	1 183	771	26 389	16 754	-36,5
		R'000	1 522	4 427	2 410	48 905	45 852	-6,2
	2. Dwelling-houses >= 80 square metres	Number	93	214	109	1 204	1 752	45,5
		square metres	19 758	39 436	30 325	217 726	324 936	49,2
		R'000	54 039	103 204	80 917	534 213	830 365	55,4
	3. Flats and townhouses	Number	54	39	16	537	415	-22,7
		square metres	5 689	2 419	864	42 926	47 287	10,2
		R'000	16 874	7 483	2 592	103 500	137 273	32,6
	4. Other residential buildings 2/	square metres	104	0	0	990	1 095	10,6
		R'000	312	0	0	2 730	3 053	11,8
	5. Total residential buildings	R'000	72 747	115 114	85 919	689 348	1 016 543	47,5
2. Non-residential buildings	1. Office and banking space	square metres	0	0	0	10 427	21 247	103,8
		R'000	0	0	0	27 040	74 954	177,2
	2. Shopping space	square metres	1 508	0	0	31 552	21 855	-30,7
		R'000	5 278	0	0	105 223	64 121	-39,1
	3. Industrial and warehouse space	square metres	2 355	5 235	374	49 032	63 924	30,4
		R'000	6 848	16 049	490	95 289	210 704	121,1
	4. Other non-residential buildings 3/	square metres	0	456	0	1 966	4 006	103,8
		R'000	0	889	0	3 425	6 717	96,1
	5. Total non-residential buildings	R'000	12 126	16 938	490	230 977	356 496	54,3
3. Additions and alterations	1. Dwelling-houses	square metres	3 909	16 835	6 530	62 002	78 313	26,3
		R'000	9 378	36 671	12 759	115 982	179 131	54,4
	2. Other buildings 4/	square metres	1 112	2 951	2 305	11 563	19 414	67,9
		R'000	2 935	8 174	8 811	27 509	63 666	131,4
	3. Total additions and alterations	R'000	12 313	44 845	21 570	143 491	242 797	69,2
4. Recorded buildings completed	1. Total at current prices	R'000	97 186	176 897	107 979	1 063 816	1 615 836	51,9

1/ The percentage change between cumulative figures for 2006 and 2007.

2/ Other residential buildings include institutions for the disabled, boarding houses, hostels and tourism accommodation e.g. hotels, motels, guesthouses, holiday chalets, bed-and-breakfast accommodation and casinos.

3/ Other non-residential space includes churches, sport and recreation clubs, schools, crèches, hospitals and all other non-residential space.

4/ Other buildings include other residential buildings, non-residential buildings and internal alterations. No square metres are collected for internal alterations.

* Revised.

Table 28 - Buildings reported as completed to larger municipalities at current prices by type of building: Limpopo

			Dec. 2006	Nov. 2007	Dec. 2007	Jan. - Dec. 2006	Jan. - Dec. 2007	% Change 1/
Category of building	Type of building	Measuring unit						
1. Residential buildings	1. Dwelling-houses < 80 square metres	Number	35	21	19	305	289	-5,2
		square metres	2 244	1 395	1 226	19 012	18 546	-2,5
		R'000	5 572	4 225	3 170	47 855	48 098	0,5
	2. Dwelling-houses >= 80 square metres	Number	70	51	16	568	554	-2,5
		square metres	12 302	9 448	4 290	107 886	108 071	0,2
		R'000	32 536	31 795	15 523	286 582	320 724	11,9
	3. Flats and townhouses	Number	0	174	6	245	451	84,1
		square metres	0	10 093	353	27 474	42 345	54,1
		R'000	0	27 352	707	67 895	110 344	62,5
	4. Other residential buildings 2/	square metres	0	0	0	737	456	-38,1
		R'000	0	0	0	1 566	2 800	78,8
	5. Total residential buildings	R'000	38 108	63 372	19 400	403 898	481 966	19,3
2. Non-residential buildings	1. Office and banking space	square metres	0	0	0	4 293	2 018	-53,0
		R'000	0	0	0	9 558	5 380	-43,7
	2. Shopping space	square metres	252	0	0	16 799	5 089	-69,7
		R'000	404	0	0	33 154	12 444	-62,5
	3. Industrial and warehouse space	square metres	0	814	224	3 453	9 943	188,0
		R'000	0	1 629	448	8 955	21 351	138,4
	4. Other non-residential buildings 3/	square metres	0	0	0	1 495	1 173	-21,5
		R'000	0	0	0	3 994	2 402	-39,9
	5. Total non-residential buildings	R'000	404	1 629	448	55 661	41 577	-25,3
3. Additions and alterations	1. Dwelling-houses	square metres	1 022	611	586	12 657	12 863	1,6
		R'000	2 396	1 656	1 483	29 381	31 698	7,9
	2. Other buildings 4/	square metres	0	600	0	4 139	2 120	-48,8
		R'000	0	1 200	0	9 275	4 325	-53,4
	3. Total additions and alterations	R'000	2 396	2 856	1 483	38 656	36 023	-6,8
4. Recorded buildings completed	1. Total at current prices	R'000	40 908	67 857	21 331	498 215	559 566	12,3

1/ The percentage change between cumulative figures for 2006 and 2007.

2/ Other residential buildings include institutions for the disabled, boarding houses, hostels and tourism accommodation e.g. hotels, motels, guesthouses, holiday chalets, bed-and-breakfast accommodation and casinos.

3/ Other non-residential space includes churches, sport and recreation clubs, schools, crèches, hospitals and all other non-residential space.

4/ Other buildings include other residential buildings, non-residential buildings and internal alterations. No square metres are collected for internal alterations.

Table 29 - Subsidised low-cost dwelling-houses completed and in process of completion 1/

Province	Year	Number	Square metres 2/	Value R'000 2/
Western Cape	2002	19 534	531 116	168 852
	2003	16 926	507 780	247 187
	2004	12 751	382 530	211 424
Eastern Cape	2002	46 700	1 575 675	473 806
	2003	35 005	1 050 150	511 213
	2004	34 923	1 047 690	579 058
Northern Cape	2002	5 189	164 906	68 078
	2003	4 354	130 620	63 586
	2004	3 645	109 350	60 438
Free State	2002	8 617	348 492	154 121
	2003	14 848	445 440	216 840
	2004	16 522	495 660	273 951
KwaZulu-Natal	2002	21 958	831 349	234 041
	2003	31 372	941 160	458 157
	2004	35 968	1 079 040	596 385
North West	2002	21 309	630 115	210 439
	2003	13 809	414 270	201 667
	2004	10 149	304 470	168 281
Gauteng	2002	29 939	991 571	321 943
	2003	42 862	1 285 860	625 957
	2004	33 260	997 800	551 484
Mpumalanga	2002	19 883	660 505	253 931
	2003	21 336	640 080	246 079
	2004	18 808	564 240	311 855
Limpopo	2002	15 382	605 877	183 769
	2003	15 596	467 880	227 764
	2004	16 338	490 140	270 900
South Africa	2002	188 511	6 339 606	2 068 980
	2003	196 108	5 883 240	2 798 450
	2004	182 364	5 470 920	3 023 777

Table 30 - Subsidised low-cost dwelling-houses completed: 1 April 2005 to 31 March 2006

Province	Number	Square metres 2/	Value R'000 2/
Western Cape	2 040	61 200	52 877
Eastern Cape	16 874	506 220	437 374
Northern Cape	5 293	158 790	137 195
Free State	17 635	529 050	457 099
KwaZulu-Natal	21 601	648 030	559 898
North West	14 445	433 350	374 414
Gauteng	23 409	702 270	606 761
Mpumalanga	14 389	431 670	372 963
Limpopo	21 973	659 190	569 540
South Africa	137 659	4 129 770	3 568 121

Table 31 - Subsidised low-cost dwelling-houses completed and in process of completion 1/: 1 April 2006 to 31 March 2007

Province	Number	Square metres 2/	R'000 2/
Western Cape	34 585	1 037 550	768 200
Eastern Cape	16 526	495 780	637 700
Northern Cape	3 880	116 400	104 800
Free State	19 662	589 860	528 400
KwaZulu-Natal	38 290	1 148 700	1 074 500
North West	46 972	1 409 160	696 500
Gauteng	77 044	2 311 320	1 748 300
Mpumalanga	10 651	319 530	329 900
Limpopo	23 609	708 270	646 700
South Africa	271 219	8 136 570	6 535 000

Source: Housing Subsidy System and Provincial Housing Departments co-ordinated by the National Department of Housing

1/ Includes all top structures completed and sites serviced in respect of the reporting period.

2/ Estimates by the National Department of Housing.

Explanatory notes

- | | | |
|--------------------------------------|---|--|
| Introduction | 1 | Statistics South Africa (Stats SA) conducts a monthly building statistics survey collecting information regarding building plans passed and buildings completed, financed by the private sector, from the largest local government institutions in South Africa. According to these institutions, they are not always notified about low-cost housing projects and therefore do not include the bulk of low-cost dwelling-houses. Data regarding subsidised low-cost dwelling-houses, supplied by the Housing Subsidy System and Provincial Housing Departments and co-ordinated by the National Department of Housing, are shown in table 29 to table 31 (page 37). |
| | 2 | In order to improve timeliness of the publication, some information for the current month has been estimated due to late submission by respondents. These estimates will be revised in the next statistical release(s) as soon as actual information is available. |
| Purpose of the survey | 3 | The monthly survey data are used in monitoring the state of economy and formulation of economic policy. Furthermore, the results are important inputs to estimate the Gross Domestic Product (GDP) and to calculate the Composite Leading Business Cycle Indicator. The data are extensively used by the private sector. |
| Scope of the survey | 4 | This survey covers local government institutions conducting activities for the private sector regarding - <ul style="list-style-type: none"> • passing of building plans; and • final inspection of completed buildings. |
| Classification | 5 | Building activities are classified in division 5 according to the 1993 edition of the <i>Standard Industrial Classification of all Economic Activities, (SIC) Fifth Edition, Report No. 09-90-02</i> . The SIC is based on the 1990 <i>International Standard Industrial Classification of all Economic Activities (ISIC)</i> with suitable adaptations for local conditions. |
| Response rate | 6 | The preliminary response rate for the survey on building statistics for December 2007 was 97,4%. Improved response rate for November 2007 was 98,2%. |
| Statistical unit | 7 | The statistical unit for the collection of information is a local government institution. Local government institutions include district municipalities, metropolitan municipalities and local municipalities. |
| Survey methodology and design | 8 | Stats SA conducts a monthly survey of metropolitan municipalities and large local municipalities on building plans passed and buildings completed. An annual survey of the remaining municipalities is conducted regarding buildings completed. The monthly survey represents approximately 90 percent of the total value of buildings completed. Information regarding building plans passed and buildings completed for the private sector is collected by mail, fax and telephone.

According to the municipalities, they are not always notified about low-cost housing projects. Data regarding subsidised low-cost dwelling-houses, supplied by the provincial governments and co-ordinated by the National Department of Housing, are shown in table 29 and table 30 (page 37). |
| Constant prices | 9 | The value of building plans passed and buildings completed at constant prices measures building activities in terms of ruling prices in a specific base year, which is currently 2000. The value of building plans passed at constant prices for each month is obtained by deflating the values at current prices with a price index known as the 'lump sum domestic buildings' as published in statistical release P0151: <i>JBCC Contract Price Adjustment Provisions Work Group Indices</i> . In order to be applicable, these indices (base February 1991=100) are converted to the base year 2000=100. |

- 10** The value of buildings completed at constant prices is obtained by deflating the values at current prices with the price index which is used to calculate building plans passed at constant prices (see paragraph 8). Since the completion of buildings may extend over a few months to a few years, the current value of buildings completed is deflated by price indices which prevailed at the time the plans were passed. Therefore, the duration of the completion of different types of buildings are taken into account in ascertaining the deflators e.g. the value of dwelling-houses completed at constant prices at January 2007 is obtained by deflating the current value of dwelling-houses completed for January 2007 with the price index of a month six months prior to January 2007. Furthermore, the value of other residential buildings, non-residential buildings and additions and alterations at constant prices is obtained by deflating the current values with price indices of 12 months, 18 months and 12 months prior to the relevant month, respectively.
- Seasonal adjustment** **11** Seasonally adjusted estimates of building plans passed and buildings completed are generated each month, using the X-11 Seasonal Adjustment Program developed by US Bureau of the Census Economic Research and Analyses Division, 1968.
- 12** Seasonal adjustment is a means of removing the estimated effects of normal seasonal variation from the series so that the effects of other influences on the series can be more clearly recognised. Seasonal adjustment does not aim to remove irregular or non-seasonal influences which may be present in any particular month. Influences that are volatile or unsystematic can still make it difficult to interpret the movement of the series even after adjustment for seasonal variations. Therefore, the month-to-month movements of seasonally adjusted estimates may not be reliable indicators of trend behaviour.
- Trend cycle** **13** The trend is a long-term pattern or movement of a time series. The X-11 Seasonal Adjustment Program is used for smoothing seasonally adjusted data.
- Revised figures** **14** Revised figures are due to late submission of data to Stats SA, or to respondents reporting revisions or corrections to their figures. Figures for the latest month are therefore preliminary. Data are edited at municipal level.
- 15** Once a year the annual statistical release P5041.3 is published with the revised and updated information at provincial and municipal level for the previous calendar year. Due to this comprehensive revision, the monthly statistical release P5041.1 reflects provincial revision for 2006 where applicable.
- Related publications** **16** Users may also wish to refer to the following publications:
- P5041.3: Selected building statistics of the private sector as reported by local government institutions issued annually.
 - P9101.2: Actual and expected expenditure on construction by the public sector per statistical region issued annually.
 - Bulletin of Statistics issued quarterly.
 - South African Statistics issued annually.
 - Report 50-11-01 issued annually.
- Rounding-off of figures** **17** The figures in the tables have, where necessary, been rounded off to the nearest digit shown.
- Pre-release policy** **18** Stats SA's pre-release policy may be inspected at its website, www.statssa.gov.za

Symbols and abbreviations

19	..	no meaningful percentage change between two specified periods available since either one or both of the totals are nil
	0	nil or figure too small to publish
	*	revised
	Stats SA	Statistics South Africa
	SIC	Standard Industrial Classification of all Economic Activities
	ISIC	International Standard Industrial Classification of all Economic Activities
	JBCC	Joint Building Contracts Committee
	CD	Compact Disc
	US	United States
	SARB	South African Reserve Bank
	DTI	Department of Trade and Industry

2010 World Cup note

20	Information relating to the 2010 Soccer World Cup new stadia and renovations, as well as other public sector infrastructure spending e.g. Eskom expansions and the Gautrain project, will not be included in the private sector building data series, as these are partially public sector funded.
-----------	--

Glossary

Additions and alterations	They include extensions to existing buildings as well as internal and external alterations of existing buildings.
Blocks of flats	High-density housing consisting of a number of self-contained dwelling-units, each with at least one living-room together with a kitchen and bathroom, conjoined to similar units in one building.
Dwelling-house	A free-standing, complete structure on a separate stand or a self-contained dwelling-unit, e.g. granny flat, on the same premises as an existing residence. Out-buildings and garages are included.
Local government institutions	Include – <ul style="list-style-type: none"> • District municipalities; • Metropolitan municipalities; and • Local municipalities.
Municipality	A generic term describing the “unit” of government in the local spheres responsible for local government in a geographically demarcated area and including district, metropolitan and local municipalities. It is an institution consisting of a municipal council (elected political representatives) and municipal administration (appointed officials).
District municipality	Municipality that has municipal executive and legislative authority in an area that includes more than one municipality, and which is described in section 155(1) of the Constitution as a category C municipality (Refer to Local Government: Municipal Structure Act, 1998 (Act No. 117 of 1998)).
Metropolitan municipality	Municipality that has municipal executive and legislative authority in an area that includes more than one municipality, and which is described in section 155(1) of the Constitution as a category A municipality (Refer to Local Government: Municipal Structure Act, 1998 (Act No. 117 of 1998)).
Local municipality	Municipality that shares municipal executive and legislative authority in its area with a district municipality within whose area it falls, that is described in section 155(1) of the constitution as a category B municipality.
Non-residential buildings	Comprise factories, commercial, financial and other office buildings, as well as other buildings not used for residential purposes, such as churches, halls, clubs, schools and hospitals.
Other residential buildings	Institutions for the disabled, boarding houses, old people's homes, hostels, hotels, motels, guesthouses, holiday chalets, bed-and-breakfast accommodation, entertainment centres and casinos.
Percentage change	<p>When using monthly actual values, the percentage change is the change in actual values of building activities (building plans passed or buildings completed) of the relevant month compared with the actual values of building activities (building plans passed or buildings completed) of the same month in the previous year expressed as a percentage.</p> <p>When using annual actual values, the percentage change is the change in the actual values of building activities (building plans passed or buildings completed) of the relevant year compared with the actual values of building activities (building plans passed or buildings completed) of the previous year expressed as a percentage.</p> <p>When using seasonally adjusted values, the percentage change is the change in the seasonally adjusted values of building activities (building plans passed or buildings completed) of the relevant month compared with the seasonally adjusted values of building activities (building plans passed or buildings completed) of the previous month expressed as a percentage.</p>

Reference period	One calendar month.
Residential buildings	Comprise dwelling-houses, flats, townhouses and other residential buildings.
Townhouses	Multiple, medium-density dwelling-units and include cluster housing, group housing, simplexes, duplexes, triplexes and other similar dwelling-units which are usually grouped together, with one level of each unit on ground level. This excludes blocks of flats.

General information

Stats SA publishes approximately 300 different statistical releases each year. It is not economically viable to produce them in more than one of South Africa's eleven official languages. Since the releases are used extensively, not only locally but also by international economic and social-scientific communities, Stats SA releases are published in English.

Stats SA has copyright on this publication. Users may apply the information as they wish, provided that they acknowledge Stats SA as the source of the basic data wherever they process, apply, utilise, publish or distribute the data and also that they specify that the relevant application and analysis (where applicable) result from their own processing of the data.

An advance release calendar is disseminated on www.statssa.gov.za

Stats SA products

A complete set of Stats SA publications is available at the Stats SA Library and the following libraries:

National Library of South Africa, Pretoria Division
National Library of South Africa, Cape Town Division
Natal Society Library, Pietermaritzburg
Library of Parliament, Cape Town
Bloemfontein Public Library
Johannesburg Public Library
Eastern Cape Library Services, King William's Town
Central Regional Library, Polokwane
Central Reference Library, Nelspruit
Central Reference Collection, Kimberley
Central Reference Library, Mmabatho

Stats SA also provides a subscription service.

Electronic services

A large range of data are available via on-line services, diskette, CD and computer printouts. For more details about our electronic data services, contact (012) 310 8600/8390/8351/4892/8496/8095.

You can visit us on the Internet at: www.statssa.gov.za

Enquiries

Telephone number: (012) 310 8600/8390/8351/4892/8496/8095 (user information services)
(012) 310 8228/310 8007 (technical enquiries)
(012) 310 8161 (orders)
(012) 310 4883/4885/8018 (library)

Fax number: (012) 310 8664 (technical enquiries)

Email: Gretaz@statssa.gov.za (technical enquiries)
info@statssa.gov.za (user information services)
distribution@statssa.gov.za (orders)

Postal address: Private Bag X44, Pretoria, 0001

Produced by Stats SA