



**Statistics
South Africa**

Preferred supplier of quality statistics



Statistical release

P5041.1

Selected building statistics of the private sector as reported by local government institutions

**December 2006
(Preliminary)**

**Embargoed until:
21 February 2007
13:00**

Enquiries:

User Information Services
Tel: (012) 310 8600 / 4892 / 8390

Forthcoming issue:

January 2007

Expected release date

20 March 2007

Statistics South Africa • Mbalo-mbalo ya Afrika Tshipembe • Tinhlayo-tiko ta Afrika-Dzonga • Dipalopalo tsa Aforika Borwa • Ezezibalo zaseNingizimu Afrika
Dipalopalo tša Afrika Borwa • Dipalopalo tsa Afrika Borwa • Ubalo lwaseMzantsi Afrika • Telubalo eNingizimu Afrika • iNanimbalo leSewula Afrika • Statistiek Suid-Afrika

email: info@statssa.gov.za
www.statssa.gov.za

170 Andries Street • Private Bag X44, 0001 Pretoria, South Africa
Tel: +27(12) 310 8911, Fax: +27(12) 321 7381

Contents

Page

SUMMARY OF FINDINGS: SELECTED BUILDING STATISTICS OF THE PRIVATE SECTOR

3

Tables

Table 1	Values and percentage change of recorded building plans passed by larger municipalities at current prices by type of building	9
Table 2	Seasonally adjusted values and percentage change of recorded building plans passed by larger municipalities at current prices by type of building	10
Table 3	Values and percentage change of recorded building plans passed by larger municipalities at constant 2000 prices by type of building	11
Table 4	Seasonally adjusted values and percentage change of recorded building plans passed by larger municipalities at constant 2000 prices by type of building	12
Table 5	Values and percentage change of buildings reported as completed to larger municipalities at current prices by type of building	13
Table 6	Seasonally adjusted values and percentage change of buildings reported as completed to larger municipalities at current prices by type of building	14
Table 7	Values and percentage change of buildings reported as completed to larger municipalities at constant 2000 prices by type of building	15
Table 8	Seasonally adjusted values and percentage change of buildings reported as completed to larger municipalities at constant 2000 prices by type of building	16
Table 9	Recorded building plans passed by larger municipalities at current prices by type of building: South Africa	17
Table 10	Recorded building plans passed by larger municipalities at current prices by type of building: Western Cape	18
Table 11	Recorded building plans passed by larger municipalities at current prices by type of building: Eastern Cape	19
Table 12	Recorded building plans passed by larger municipalities at current prices by type of building: Northern Cape	20
Table 13	Recorded building plans passed by larger municipalities at current prices by type of building: Free State	21
Table 14	Recorded building plans passed by larger municipalities at current prices by type of building: KwaZulu-Natal	22
Table 15	Recorded building plans passed by larger municipalities at current prices by type of building: North West	23
Table 16	Recorded building plans passed by larger municipalities at current prices by type of building: Gauteng	24
Table 17	Recorded building plans passed by larger municipalities at current prices by type of building: Mpumalanga	25
Table 18	Recorded building plans passed by larger municipalities at current prices by type of building: Limpopo	26
Table 19	Buildings reported as completed to larger municipalities at current prices by type of building: South Africa	27
Table 20	Buildings reported as completed to larger municipalities at current prices by type of building: Western Cape	28
Table 21	Buildings reported as completed to larger municipalities at current prices by type of building: Eastern Cape	29
Table 22	Buildings reported as completed to larger municipalities at current prices by type of building: Northern Cape	30
Table 23	Buildings reported as completed to larger municipalities at current prices by type of building: Free State	31
Table 24	Buildings reported as completed to larger municipalities at current prices by type of building: KwaZulu-Natal	32

Table 25	Buildings reported as completed to larger municipalities at current prices by type of building: North West	33
Table 26	Buildings reported as completed to larger municipalities at current prices by type of building: Gauteng	34
Table 27	Buildings reported as completed to larger municipalities at current prices by type of building: Mpumalanga	35
Table 28	Buildings reported as completed to larger municipalities at current prices by type of building: Limpopo.....	36
Table 29	Subsidised low-cost dwelling-houses completed or under construction by province	37
Table 30	Subsidised low-cost dwelling-houses completed by province	37
Explanatory notes		38
Glossary		41
General information		43

SUMMARY OF FINDINGS: SELECTED BUILDING STATISTICS OF THE PRIVATE SECTOR

Table A – Selected key figures regarding recorded building plans passed by larger municipalities at current prices for December 2006

Estimates at current prices	January to December 2005 R'000	January to December 2006 1/ R'000	Difference in value between January to December 2005 and January to December 2006 R'000	Percentage change between January to December 2005 and January to December 2006
Residential buildings	36 964 649	39 348 143	+2 383 494	+ 6,4
Dwelling-houses	23 798 928	26 264 676	+2 465 748	+ 10,4
Flats and townhouses	12 611 499	12 524 712	-86 787	- 0,7
Other residential buildings	554 222	558 755	+4 533	+ 0,8
Non-residential buildings	10 526 733	13 852 029	+3 325 296	+ 31,6
Additions and alterations	16 989 335	18 520 872	+1 531 537	+ 9,0
Total	64 480 717	71 721 044	+7 240 327	+ 11,2

1/ December 2006 figures should be regarded as preliminary because of possible backlogs and incomplete reporting by municipalities.

Increase in total value of recorded building plans passed slows down

As indicated in Table A, the value of recorded building plans passed by larger municipalities (at current prices) during 2006 increased by 11,2% (+R7 240,3 million) compared with 2005, slowing down from 12,0% for the first eleven months of 2006 compared with the first eleven months of 2005. The slowdown is a result of the slight increase of 1,5% between December 2005 and December 2006.

The largest percentage increase was reported for non-residential buildings (+31,6% or R3 325,3 million), followed by additions and alterations (+9,0% or R1 531,5 million) and residential buildings (+6,4% or R2 383,5 million).

Table B – Recorded building plans passed by larger municipalities aggregated to provincial level for December 2006

Estimates at current prices	January to December 2005 R'000	January to December 2006 1/ R'000	Percentage contribution to the total value of building plans passed during January to December 2005	Percentage change between January to December 2005 and January to December 2006	Contribution (percentage points) to the percentage change in the value of buildings plans passed between January to December 2005 and January to December 2006 2/ 2/	Difference in value between January to December 2005 and January to December 2006 R'000
Western Cape	18 441 988	17 328 494	28,6	-6,0	-1,7	-1 113 494
Eastern Cape	3 084 849	3 521 936	4,8	+ 14,2	+ 0,7	+ 437 087
Northern Cape	501 785	478 462	0,8	-4,6	-0,0	-23 323
Free State	1 809 856	1 802 877	2,8	-0,4	-0,0	-6 979
KwaZulu-Natal	8 404 878	9 361 183	13,0	+ 11,4	+ 1,5	+ 956 305
North West	2 124 123	2 457 828	3,3	+ 15,7	+ 0,5	+ 333 705
Gauteng	26 089 217	31 517 785	40,5	+ 20,8	+ 8,4	+ 5 428 568
Mpumalanga	2 854 949	3 866 438	4,4	+ 35,4	+ 1,5	+ 1 011 489
Limpopo	1 169 072	1 386 041	1,8	+ 18,6	+ 0,3	+ 216 969
Total	64 480 717	71 721 044	100,0	+ 11,2	+ 11,2	+ 7 240 327

1/ December 2006 figures should be regarded as preliminary because of possible backlogs and incomplete reporting by municipalities.

2/ The contribution (percentage points) is calculated by multiplying the percentage change of each province between January to December 2005 and January to December 2006 with the percentage contribution of the corresponding province to the total value of building plans passed during January to December 2005, divided by 100.

Six provinces reported increases in the value of recorded building plans passed (see Table B). The largest contributor to the increase of 11,2% was Gauteng (+8,4 percentage points or R5 428,6 million), followed by Mpumalanga (+1,5 percentage points or R1 011,5 million) and KwaZulu-Natal (+1,5 percentage points or R956,3 million).

Table C – Selected key figures regarding recorded building plans passed by larger municipalities at constant 2000 prices for December 2006

Estimates at constant 2000 prices	January to December 2005 R'000	January to December 2006 1/ R'000	Difference in value between January to December 2005 and January to December 2006 R'000	Percentage change between January to December 2005 and January to December 2006
Residential buildings	25 479 517	24 956 478	-523 039	- 2,1
Non-residential buildings	7 260 429	8 784 912	+1 524 483	+ 21,0
Additions and alterations	11 716 182	11 751 714	+35 532	+ 0,3
Total	44 456 128	45 493 104	+1 036 976	+ 2,3

1/ December 2006 figures should be regarded as preliminary because of possible backlogs and incomplete reporting by municipalities.

Seasonally adjusted estimates at constant 2000 prices	July to September 2006 R'000	October to December 2006 R'000	Percentage change between July to September 2006 and October to December 2006
Residential buildings	6 167 777	6 021 680	-2,4
Non-residential buildings	2 078 186	2 425 183	+ 16,7
Additions and alterations	2 876 457	2 855 005	-0,7
Total	11 122 420	11 301 868	+ 1,6

Increase in total real value of recorded building plans passed slows down

As indicated in Table C, the value of recorded building plans passed by larger municipalities (at constant 2000 prices) during 2006 increased by 2,3% (+R1 037,0 million) compared with 2005, slowing down from 3,3% for the first eleven months of 2006 compared with the first eleven months of 2005. The largest percentage increase was reported for non-residential buildings (+21,0% or +R1 524,5 million), whereas additions and alterations increased by 0,3% (+R35,5 million). Residential buildings showed a decrease of 2,1% or R523,0 million. The real value of building plans passed during December 2006 decreased by 9,6% (-R316,7 million) compared with December 2005 (see table 3, page 11).

The seasonally adjusted real value of recorded building plans passed by larger municipalities during the last quarter of 2006 increased by 1,6% compared with the previous quarter, mainly due to increases reported in non-residential building plans passed (+16,7%) (see table C).

Figure 1 shows both the seasonally adjusted and the trend series for recorded building plans passed at constant 2000 prices between January 2002 and December 2006. The trend series reflects a slight increase in 2002, showing a steep increase from May 2003, followed by a downturn from December 2005 up to the present period.

Figure 1 – Real value of recorded building plans passed by larger municipalities at constant 2000 prices

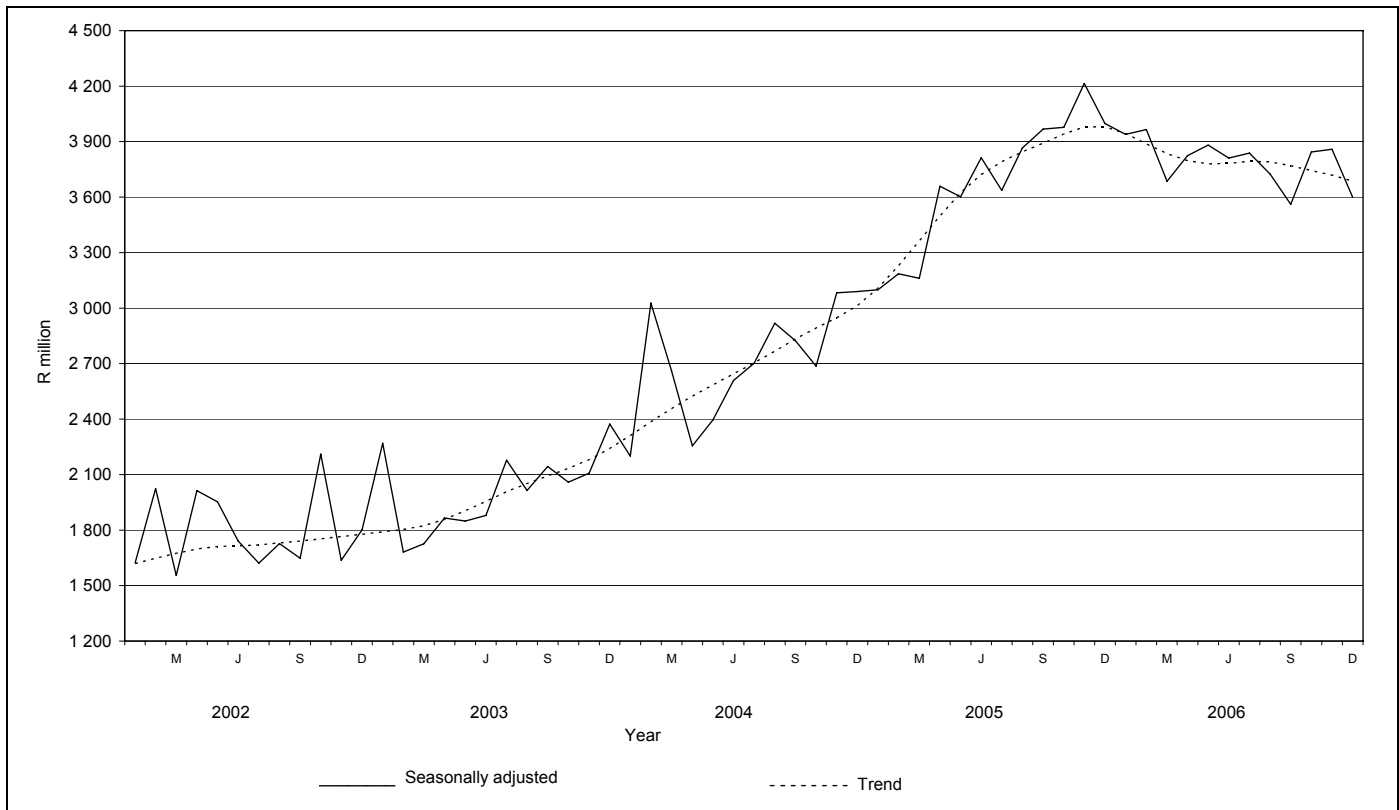


Table D – Selected key figures regarding buildings reported as completed to larger municipalities at current prices for December 2006

Estimates at current prices	January to December 2005 R'000	January to December 2006 1/ R'000	Difference in value between January to December 2005 and January to December 2006 R'000	Percentage change between January to December 2005 and January to December 2006
Residential buildings	21 027 611	24 775 437	+3 747 826	+ 17,8
Dwelling-houses	13 393 601	15 255 138	+1 861 537	+ 13,9
Flats and townhouses	7 479 810	9 254 267	+1 774 457	+ 23,7
Other residential buildings	154 200	266 032	+111 832	+ 72,5
Non-residential buildings	4 209 046	5 475 607	+1 266 561	+ 30,1
Additions and alterations	4 873 475	6 626 132	+1 752 657	+ 36,0
Total	30 110 132	36 877 176	+6 767 044	+ 22,5

1/ December 2006 figures should be regarded as preliminary because of possible backlogs and incomplete reporting by municipalities.

Total value of buildings reported as completed increased

As indicated in Table D, the value of buildings reported as completed to larger municipalities (at current prices) during 2006 increased by 22,5% (+R6 767,0 million) compared with 2005.

The largest percentage increase in the value of buildings completed was reported for additions and alterations (+36,0% or R1 752,7 million), followed by non-residential buildings (+30,1% or R1 266,6 million) and residential buildings (+17,8% or R3 747,8 million).

Table E – Buildings reported as completed to larger municipalities aggregated to provincial level for December 2006

Estimates at current prices	January to December 2005 R'000	January to December 2006 1/ R'000	Percentage contribution to the total value of buildings completed during January to December 2005	Percentage change between January to December 2005 and January to December 2006	Contribution (percentage points)2/ to the percentage change in the value of buildings completed between January to December 2005 and January to December 2006	Difference in value between January to December 2005 and January to December 2006
Western Cape	8 309 668	10 369 252	27,6	+ 24,8	+ 6,8	+ 2 059 584
Eastern Cape	1 229 905	1 334 214	4,1	+ 8,5	+ 0,3	+ 104 309
Northern Cape	209 078	265 159	0,7	+ 26,8	+ 0,2	+ 56 081
Free State	639 446	616 493	2,1	-3,6	-0,1	-22 953
KwaZulu-Natal	4 292 291	4 686 032	14,3	+ 9,2	+ 1,3	+ 393 741
North West	1 130 726	1 337 866	3,8	+ 18,3	+ 0,7	+ 207 140
Gauteng	13 361 151	16 701 081	44,4	+ 25,0	+ 11,1	+ 3 339 930
Mpumalanga	543 435	1 068 909	1,8	+ 96,7	+ 1,7	+ 525 474
Limpopo	394 432	498 170	1,3	+ 26,3	+ 0,3	+ 103 738
Total	30 110 132	36 877 176	100,0	+ 22,5	+ 22,5	+ 6 767 044

1/ December 2006 figures should be regarded as preliminary because of possible backlogs and incomplete reporting by municipalities.

2/ The contribution (percentage points) is calculated by multiplying the percentage change of each province between January to December 2005 and January to December 2006 with the percentage contribution of the corresponding province to the total value of buildings completed during January to December 2005, divided by 100.

Eight provinces reported increases in the value of buildings completed. The largest contributors to the increase of 22,5% were Gauteng (+11,1 percentage points or R3 339,9 million) and the Western Cape (+6,8 percentage points or R2 059,6 million) (see Table E).

Table F – Selected key figures regarding buildings reported as completed to larger municipalities at constant 2000 prices for December 2006

Estimates at constant 2000 prices	January to December 2005 R'000	January to December 2006 1/ R'000	Difference in value between January to December 2005 and January to December 2006 R'000	Percentage change between January to December 2005 and January to December 2006
Residential buildings	15 115 657	16 758 611	+1 642 954	+ 10,9
Non-residential buildings	3 200 082	3 896 346	+696 264	+ 21,8
Additions and alterations	3 588 189	4 573 580	+985 391	+ 27,5
Total	21 903 928	25 228 537	+3 324 609	+ 15,2

1/ December 2006 figures should be regarded as preliminary because of possible backlogs and incomplete reporting by municipalities.

Seasonally adjusted estimates at constant 2000 prices	July to September 2006 R'000	October to December 2006 R'000	Percentage change between July to September 2006 and October to December 2006
Residential buildings	4 204 487	4 263 228	+ 1,4
Non-residential buildings	788 839	1 241 366	+ 57,4
Additions and alterations	1 128 102	1 230 320	+ 9,1
Total	6 121 428	6 734 914	+ 10,0

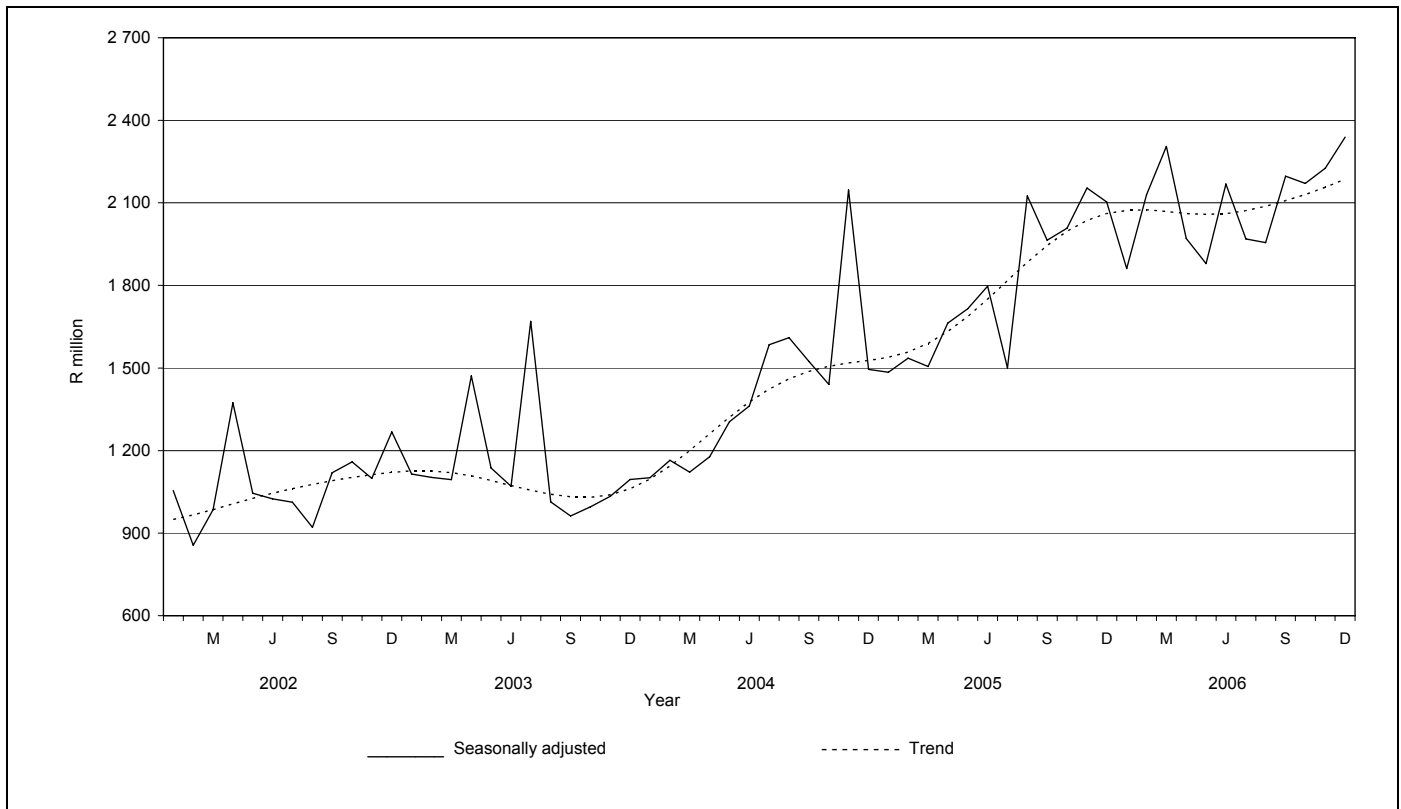
Total real value of buildings reported as completed increased

As indicated in Table F, the value of buildings reported as completed to larger municipalities (at constant 2000 prices) during 2006 increased by 15,2% (+R3 324,6 million) compared with 2005. The largest percentage increase in the value of buildings completed was reported for additions and alterations (+27,5% or R985,4 million), followed by non-residential buildings (+21,8% or R696,3 million) and residential buildings (+10,9% or R1 643,0 million).

Furthermore, the seasonally adjusted real value of buildings reported as completed to larger municipalities during the last quarter of 2006 increased by 10,0% compared with the previous quarter. Increases in the seasonally adjusted real value of buildings completed were reported for non-residential buildings (+57,4%), additions and alterations (+9,1%) and residential buildings (+1,4%) during the above-mentioned period.

Figure 2 shows both the seasonally adjusted and trend series for buildings reported as completed to municipalities at constant 2000 prices between January 2002 and December 2006. The trend series reflects a slight increase in 2002, slowing again until November 2003. A steep increase is evident from December 2003 to end of 2005, followed by a sideward flattening out up to May 2006. The trend series increased from June 2006.

Figure 2 - Real value of buildings reported as completed to larger municipalities at constant 2000 prices



PJ Lehohla
Statistician-General

Table 1 - Values and percentage change of recorded building plans passed by larger municipalities at current prices by type of building

Year and month		Residential buildings		Non-residential buildings		Additions and alterations		Total	
		R'000	% change 1/	R'000	% change 1/	R'000	% change 1/	R'000	% change 1/
2005	January	1 753 163	+36,9	538 523	+64,8	901 583	+71,2	3 193 269	+49,6
	February	2 346 104	-4,4	592 460	+47,7	1 154 142	+42,2	4 092 706	+11,6
	March	2 341 680	+18,5	963 528	+31,9	1 232 716	+38,9	4 537 924	+26,2
	April	2 588 285	+63,0	784 202	+89,5	1 302 488	+92,9	4 674 975	+74,6
	May	3 482 417	+54,8	788 456	+101,6	1 351 073	+49,5	5 621 946	+58,6
	June	3 235 897	+45,2	962 252	+95,1	1 496 107	+59,0	5 694 256	+55,5
	July	3 511 577	+38,5	1 011 449	+85,0	1 463 012	+37,4	5 986 038	+44,3
	August	3 492 507	+38,2	1 233 520	+78,2	1 623 527	+35,7	6 349 554	+43,8
	September	3 865 708	+56,8	691 600	+21,9	1 576 154	+49,2	6 133 462	+50,0
	October	3 725 395	+46,0	977 859	+53,8	1 914 222	+88,7	6 617 476	+57,5
	November	3 726 772	+27,0	1 338 510	+136,0	1 625 858	+37,7	6 691 140	+42,9
	December	2 895 144	+55,3	644 374	-3,8	1 348 453	+36,7	4 887 971	+38,8
	Total	36 964 649	+38,7	10 526 733	+63,6	16 989 335	+51,1	64 480 717	+45,4
2006	January	2 477 400	+41,3	743 879	+38,1	1 034 019	+14,7	4 255 298	+33,3
	February	3 114 088	+32,7	874 034	+47,5	1 408 647	+22,1	5 396 769	+31,9
	March	2 906 768	+24,1	1 153 382	+19,7	1 493 783	+21,2	5 553 933	+22,4
	April	2 549 416	-1,5	1 311 954	+67,3	1 354 980	+4,0	5 216 350	+11,6
	May	3 401 618	-2,3	1 224 893	+55,4	1 787 849	+32,3	6 414 360	+14,1
	June	3 626 992	+12,1	970 765	+0,9	1 592 187	+6,4	6 189 944	+8,7
	July	3 764 006	+7,2	1 365 159	+35,0	1 749 837	+19,6	6 879 002	+14,9
	August	3 805 509	+9,0	1 418 691	+15,0	1 609 868	-0,8	6 834 068	+7,6
	September	3 534 304	-8,6	884 098	+27,8	1 640 303	+4,1	6 058 705	-1,2
	October	3 743 458	+0,5	1 618 920	+65,6	1 725 605	-9,9	7 087 983	+7,1
	November	3 847 547	+3,2	1 280 072	-4,4	1 743 551	+7,2	6 871 170	+2,7
	December 2/	2 577 037	-11,0	1 006 182	+56,1	1 380 243	+2,4	4 963 462	+1,5
	Total	39 348 143	+6,4	13 852 029	+31,6	18 520 872	+9,0	71 721 044	+11,2

1/ The annual/monthly percentage change is the change in the values of recorded building plans passed by municipalities of the relevant year/month compared with the values of recorded building plans passed by municipalities of the comparable period of the previous year expressed as a percentage.

2/ Preliminary figures.

Table 2 - Seasonally adjusted values and percentage change of recorded building plans passed by larger municipalities at current prices by type of building

Year and month		Residential buildings		Non-residential buildings		Additions and alterations		Total	
		R'000	% change 1/	R'000	% change 1/	R'000	% change 1/	R'000	% change 1/
2005	January	2 422 159	+4,3	718 619	-9,7	1 231 180	+3,1	4 371 958	+1,4
	February	2 503 872	+3,4	715 362	-0,5	1 275 254	+3,6	4 494 488	+2,8
	March	2 502 736	-0,0	776 654	+8,6	1 249 645	-2,0	4 529 035	+0,8
	April	3 008 856	+20,2	791 946	+2,0	1 456 953	+16,6	5 257 755	+16,1
	May	3 196 339	+6,2	780 374	-1,5	1 202 652	-17,5	5 179 365	-1,5
	June	3 095 265	-3,2	934 836	+19,8	1 452 950	+20,8	5 483 051	+5,9
	July	3 074 746	-0,7	881 452	-5,7	1 319 247	-9,2	5 275 445	-3,8
	August	3 151 340	+2,5	1 003 155	+13,8	1 462 326	+10,8	5 616 821	+6,5
	September	3 503 470	+11,2	782 051	-22,0	1 521 251	+4,0	5 806 772	+3,4
	October	3 322 436	-5,2	875 171	+11,9	1 650 705	+8,5	5 848 312	+0,7
	November	3 267 901	-1,6	1 436 138	+64,1	1 515 483	-8,2	6 219 522	+6,3
	December	3 592 174	+9,9	757 474	-47,3	1 585 434	+4,6	5 935 082	-4,6
2006	January	3 463 431	-3,6	983 568	+29,8	1 431 003	-9,7	5 878 002	-1,0
	February	3 344 079	-3,4	1 052 536	+7,0	1 540 547	+7,7	5 937 162	+1,0
	March	3 126 996	-6,5	939 106	-10,8	1 513 476	-1,8	5 579 578	-6,0
	April	2 973 971	-4,9	1 313 153	+39,8	1 523 449	+0,7	5 810 573	+4,1
	May	3 123 230	+5,0	1 238 875	-5,7	1 608 748	+5,6	5 970 853	+2,8
	June	3 447 365	+10,4	966 389	-22,0	1 534 464	-4,6	5 948 218	-0,4
	July	3 297 053	-4,4	1 181 310	+22,2	1 584 865	+3,3	6 063 228	+1,9
	August	3 410 894	+3,5	1 131 782	-4,2	1 450 446	-8,5	5 993 122	-1,2
	September	3 191 314	-6,4	1 009 949	-10,8	1 576 871	+8,7	5 778 134	-3,6
	October	3 358 610	+5,2	1 433 061	+41,9	1 490 457	-5,5	6 282 128	+8,7
	November	3 367 759	+0,3	1 373 015	-4,2	1 630 782	+9,4	6 371 556	+1,4
	December	3 212 486	-4,6	1 188 071	-13,5	1 600 096	-1,9	6 000 653	-5,8
	Jul.-Sep. 06	9 899 261		3 323 041		4 612 182		17 834 484	
	Oct.-Dec. 06 2/	9 938 855	+0,4	3 994 147	+20,2	4 721 335	+2,4	18 654 337	+4,6

1/ The percentage change is the change in the seasonally adjusted values of recorded building plans passed by municipalities of the relevant month compared with the seasonally adjusted values of recorded building plans passed by municipalities of the previous month expressed as a percentage.

2/ The percentage change is the change in the seasonally adjusted values of recorded building plans passed by municipalities of the current quarter compared with the seasonally adjusted values of recorded building plans passed by municipalities of the previous quarter expressed as a percentage.

Table 3 - Values and percentage change of recorded building plans passed by larger municipalities at constant 2000 prices by type of building

Year and month		Residential buildings		Non-residential buildings		Additions and alterations		Total	
		R'000	% change 1/	R'000	% change 1/	R'000	% change 1/	R'000	% change 1/
2005	January	1 244 260	+26,5	382 202	+52,2	639 874	+58,2	2 266 336	+38,3
	February	1 661 547	-10,7	419 589	+38,0	817 381	+32,8	2 898 517	+4,3
	March	1 647 910	+10,7	678 063	+23,2	867 499	+29,8	3 193 472	+18,0
	April	1 806 200	+52,2	547 245	+77,0	908 924	+80,1	3 262 369	+63,1
	May	2 426 771	+45,3	549 447	+89,2	941 514	+40,3	3 917 732	+48,9
	June	2 247 151	+37,0	668 231	+84,0	1 038 963	+49,9	3 954 345	+46,6
	July	2 411 797	+29,6	694 677	+73,2	1 004 816	+28,6	4 111 290	+35,1
	August	2 385 592	+29,4	842 568	+66,9	1 108 967	+27,1	4 337 127	+34,7
	September	2 633 316	+46,7	471 117	+14,1	1 073 674	+39,7	4 178 107	+40,4
	October	2 532 559	+37,2	664 758	+44,5	1 301 307	+77,3	4 498 624	+48,0
	November	2 524 913	+19,6	906 850	+122,2	1 101 530	+29,6	4 533 293	+34,6
	December	1 957 501	+46,0	435 682	-9,5	911 733	+28,5	3 304 916	+30,6
	Total	25 479 517	+29,8	7 260 429	+53,3	11 716 182	+41,6	44 456 128	+36,2
2006	January	1 662 685	+33,6	499 248	+30,6	693 972	+8,5	2 855 905	+26,0
	February	2 078 830	+25,1	583 467	+39,1	940 352	+15,0	3 602 649	+24,3
	March	1 936 554	+17,5	768 409	+13,3	995 192	+14,7	3 700 155	+15,9
	April	1 682 783	-6,8	865 976	+58,2	894 376	-1,6	3 443 135	+5,5
	May	2 214 595	-8,7	797 456	+45,1	1 163 964	+23,6	4 176 015	+6,6
	June	2 320 532	+3,3	621 091	-7,1	1 018 674	-2,0	3 960 297	+0,2
	July	2 373 270	-1,6	860 756	+23,9	1 103 302	+9,8	4 337 328	+5,5
	August	2 346 183	-1,7	874 655	+3,8	992 520	-10,5	4 213 358	-2,9
	September	2 170 948	-17,6	543 058	+15,3	1 007 557	-6,2	3 721 563	-10,9
	October	2 289 577	-9,6	990 165	+49,0	1 055 416	-18,9	4 335 158	-3,6
	November	2 329 024	-7,8	774 862	-14,6	1 055 418	-4,2	4 159 304	-8,2
	December 2/	1 551 497	-20,7	605 769	+39,0	830 971	-8,9	2 988 237	-9,6
	Total	24 956 478	-2,1	8 784 912	+21,0	11 751 714	+0,3	45 493 104	+2,3

1/ The annual/monthly percentage change is the change in the values of recorded building plans passed by municipalities of the relevant year/month compared with the values of recorded building plans passed by municipalities of the comparable period of the previous year expressed as a percentage.

2/ Preliminary figures.

Table 4 - Seasonally adjusted values and percentage change of recorded building plans passed by larger municipalities at constant 2000 prices by type of building

Year and month		Residential buildings		Non-residential buildings		Additions and alterations		Total	
		R'000	% change 1/	R'000	% change 1/	R'000	% change 1/	R'000	% change 1/
2005	January	1 717 225	+3,4	509 898	-11,1	872 134	+2,0	3 099 257	+0,3
	February	1 776 155	+3,4	507 749	-0,4	901 684	+3,4	3 185 588	+2,8
	March	1 754 707	-1,2	530 531	+4,5	876 268	-2,8	3 161 506	-0,8
	April	2 091 404	+19,2	553 090	+4,3	1 014 783	+15,8	3 659 277	+15,7
	May	2 219 450	+6,1	544 713	-1,5	838 031	-17,4	3 602 194	-1,6
	June	2 150 666	-3,1	651 817	+19,7	1 010 172	+20,5	3 812 655	+5,8
	July	2 117 900	-1,5	609 079	-6,6	909 257	-10,0	3 636 236	-4,6
	August	2 166 194	+2,3	692 057	+13,6	1 006 719	+10,7	3 864 970	+6,3
	September	2 392 943	+10,5	535 795	-22,6	1 038 998	+3,2	3 967 736	+2,7
	October	2 260 278	-5,5	597 024	+11,4	1 120 436	+7,8	3 977 738	+0,3
	November	2 214 057	-2,0	975 404	+63,4	1 025 367	-8,5	4 214 828	+6,0
	December	2 419 087	+9,3	510 985	-47,6	1 067 531	+4,1	3 997 603	-5,2
2006	January	2 321 253	-4,0	659 698	+29,1	958 394	-10,2	3 939 345	-1,5
	February	2 234 761	-3,7	704 242	+6,8	1 025 935	+7,0	3 964 938	+0,6
	March	2 074 379	-7,2	607 292	-13,8	1 003 999	-2,1	3 685 670	-7,0
	April	1 953 581	-5,8	867 732	+42,9	1 003 089	-0,1	3 824 402	+3,8
	May	2 026 038	+3,7	808 025	-6,9	1 046 705	+4,3	3 880 768	+1,5
	June	2 206 835	+8,9	621 165	-23,1	982 844	-6,1	3 810 844	-1,8
	July	2 084 764	-5,5	749 778	+20,7	1 002 924	+2,0	3 837 466	+0,7
	August	2 116 897	+1,5	704 667	-6,0	901 923	-10,1	3 723 487	-3,0
	September	1 966 116	-7,1	623 741	-11,5	971 610	+7,7	3 561 467	-4,4
	October	2 055 114	+4,5	879 031	+40,9	910 189	-6,3	3 844 334	+7,9
	November	2 039 499	-0,8	832 856	-5,3	986 312	+8,4	3 858 667	+0,4
	December	1 927 067	-5,5	713 296	-14,4	958 504	-2,8	3 598 867	-6,7
Jul.-Sep. 06		6 167 777		2 078 186		2 876 457		11 122 420	
Oct.-Dec. 06 2/		6 021 680	-2,4	2 425 183	+16,7	2 855 005	-0,7	11 301 868	+1,6

1/ The percentage change is the change in the seasonally adjusted values of recorded building plans passed by municipalities of the relevant month compared with the seasonally adjusted values of recorded building plans passed by municipalities of the previous month expressed as a percentage.

2/ The percentage change is the change in the seasonally adjusted values of recorded building plans passed by municipalities of the current quarter compared with the seasonally adjusted values of recorded building plans passed by municipalities of the previous quarter expressed as a percentage.

Table 5 - Values and percentage change of buildings reported as completed to larger municipalities at current prices by type of building

Year and month		Residential buildings		Non-residential buildings		Additions and alterations		Total	
		R'000	% change 1/	R'000	% change 1/	R'000	% change 1/	R'000	% change 1/
2005	January	867 330	+41,0	287 719	+42,0	317 720	+19,7	1 472 769	+36,0
	February	1 269 158	+65,9	204 546	-11,8	321 363	+3,5	1 795 067	+37,3
	March	1 349 746	+46,4	311 687	+44,8	317 894	+12,3	1 979 327	+39,4
	April	1 403 416	+49,9	196 564	+21,6	333 048	+49,1	1 933 028	+46,3
	May	1 685 377	+36,2	403 475	+25,4	472 494	+49,4	2 561 346	+36,6
	June	1 512 977	+28,4	388 942	+79,9	511 032	+58,4	2 412 951	+40,5
	July	1 569 236	+9,0	241 768	-28,9	352 856	-3,3	2 163 860	+0,9
	August	2 278 192	+68,0	586 230	+7,6	404 375	+3,3	3 268 797	+42,6
	September	2 098 387	+70,4	365 443	-32,1	448 070	+31,1	2 911 900	+37,9
	October	1 977 971	+52,8	530 888	+39,9	506 074	+33,8	3 014 933	+46,9
	November	2 694 788	+3,1	440 305	+54,2	446 512	+4,1	3 581 605	+7,6
	December	2 321 033	+78,7	251 479	-24,8	442 037	+50,5	3 014 549	+56,5
	Total	21 027 611	+41,3	4 209 046	+11,6	4 873 475	+24,3	30 110 132	+33,4
2006	January	1 215 572	+40,2	314 128	+9,2	397 047	+25,0	1 926 747	+30,8
	February	1 728 454	+36,2	399 432	+95,3	540 680	+68,2	2 668 566	+48,7
	March	2 042 286	+51,3	599 555	+92,4	569 071	+79,0	3 210 912	+62,2
	April	1 684 803	+20,1	256 817	+30,7	445 112	+33,6	2 386 732	+23,5
	May	1 921 188	+14,0	476 600	+18,1	565 071	+19,6	2 962 859	+15,7
	June	2 218 897	+46,7	374 804	-3,6	538 648	+5,4	3 132 349	+29,8
	July	2 161 280	+37,7	323 492	+33,8	539 489	+52,9	3 024 261	+39,8
	August	2 218 752	-2,6	464 305	-20,8	541 903	+34,0	3 224 960	-1,3
	September	2 425 487	+15,6	397 862	+8,9	643 575	+43,6	3 466 924	+19,1
	October	2 224 328	+12,5	716 444	+35,0	512 364	+1,2	3 453 136	+14,5
	November	2 402 277	-10,9	635 227	+44,3	836 179	+87,3	3 873 683	+8,2
	December 2/	2 532 113	+9,1	516 941	+105,6	496 993	+12,4	3 546 047	+17,6
	Total	24 775 437	+17,8	5 475 607	+30,1	6 626 132	+36,0	36 877 176	+22,5

1/ The annual/monthly percentage change is the change in the values of buildings reported as completed to municipalities of the relevant year/month compared with the values of buildings reported as completed to municipalities of the comparable period of the previous year expressed as a percentage.

2/ Preliminary figures.

Table 6 - Seasonally adjusted values and percentage change of buildings reported as completed to larger municipalities at current prices by type of building

Year and month		Residential buildings		Non-residential buildings		Additions and alterations		Total	
		R'000	% change 1/	R'000	% change 1/	R'000	% change 1/	R'000	% change 1/
2005	January	1 208 612	-3,3	359 176	-5,3	362 491	+5,0	1 930 279	-2,2
	February	1 474 845	+22,0	251 587	-30,0	315 507	-13,0	2 041 939	+5,8
	March	1 410 458	-4,4	280 741	+11,6	325 982	+3,3	2 017 181	-1,2
	April	1 579 373	+12,0	273 697	-2,5	392 804	+20,5	2 245 874	+11,3
	May	1 599 895	+1,3	302 088	+10,4	419 098	+6,7	2 321 081	+3,3
	June	1 535 866	-4,0	435 764	+44,3	491 560	+17,3	2 463 190	+6,1
	July	1 461 225	-4,9	277 029	-36,4	336 200	-31,6	2 074 454	-15,8
	August	2 106 044	+44,1	469 200	+69,4	391 139	+16,3	2 966 383	+43,0
	September	1 963 233	-6,8	343 877	-26,7	429 707	+9,9	2 736 817	-7,7
	October	1 886 347	-3,9	442 203	+28,6	474 060	+10,3	2 802 610	+2,4
	November	2 212 069	+17,3	409 222	-7,5	415 305	-12,4	3 036 596	+8,3
	December	2 168 228	-2,0	286 119	-30,1	508 209	+22,4	2 962 556	-2,4
2006	January	1 735 647	-20,0	380 901	+33,1	453 817	-10,7	2 570 365	-13,2
	February	2 007 016	+15,6	479 387	+25,9	531 331	+17,1	3 017 734	+17,4
	March	2 158 393	+7,5	536 766	+12,0	589 091	+10,9	3 284 250	+8,8
	April	1 913 943	-11,3	387 648	-27,8	530 486	-9,9	2 832 077	-13,8
	May	1 828 556	-4,5	371 785	-4,1	508 498	-4,1	2 708 839	-4,4
	June	2 227 121	+21,8	421 434	+13,4	520 188	+2,3	3 168 743	+17,0
	July	2 001 547	-10,1	386 224	-8,4	515 663	-0,9	2 903 434	-8,4
	August	2 045 250	+2,2	352 853	-8,6	519 433	+0,7	2 917 536	+0,5
	September	2 268 280	+10,9	369 136	+4,6	611 556	+17,7	3 248 972	+11,4
	October	2 156 074	-4,9	574 259	+55,6	482 705	-21,1	3 213 038	-1,1
	November	1 960 538	-9,1	601 137	+4,7	767 747	+59,1	3 329 422	+3,6
	December	2 341 070	+19,4	604 543	+0,6	570 915	-25,6	3 516 528	+5,6
Jul.-Sep. 06		6 315 077		1 108 213		1 646 652		9 069 942	
Oct.-Dec. 06 2/		6 457 682	+2,3	1 779 939	+60,6	1 821 367	+10,6	10 058 988	+10,9

1/ The percentage change is the change in the seasonally adjusted values of buildings reported as completed to municipalities of the relevant month compared with the seasonally adjusted values of buildings reported as completed to municipalities of the previous month expressed as a percentage.

2/ The percentage change is the change in the seasonally adjusted values of buildings reported as completed to municipalities of the current quarter compared with the seasonally adjusted values of buildings reported as completed to municipalities of the previous quarter expressed as a percentage.

Table 7 - Values and percentage change of buildings reported as completed to larger municipalities at constant 2000 prices by type of building

Year and month		Residential buildings		Non-residential buildings		Additions and alterations		Total	
		R'000	% change 1/	R'000	% change 1/	R'000	% change 1/	R'000	% change 1/
2005	January	643 867	+34,9	222 177	+32,2	244 025	+16,8	1 110 069	+29,9
	February	939 989	+58,7	157 829	-17,0	243 641	+0,3	1 341 459	+30,8
	March	993 768	+39,3	240 685	+37,1	239 378	+8,5	1 473 831	+32,8
	April	1 026 653	+41,8	151 904	+16,5	248 915	+43,8	1 427 472	+38,9
	May	1 225 236	+27,9	312 287	+20,9	350 775	+43,1	1 888 298	+29,2
	June	1 096 624	+20,3	301 039	+74,2	376 312	+50,9	1 773 975	+33,0
	July	1 127 094	+1,7	185 690	-30,7	258 882	-8,1	1 571 666	-5,2
	August	1 633 115	+57,9	444 450	+4,3	294 949	-2,4	2 372 514	+34,6
	September	1 495 076	+60,1	275 183	-34,4	326 106	+23,6	2 096 365	+29,6
	October	1 396 194	+43,0	396 777	+34,9	366 190	+25,3	2 159 161	+38,2
	November	1 903 641	-4,3	326 878	+47,8	321 232	-3,3	2 551 751	+0,3
	December	1 634 400	+68,2	185 183	-28,3	317 784	+39,8	2 137 367	+46,6
	Total	15 115 657	+32,7	3 200 082	+7,3	3 588 189	+18,1	21 903 928	+25,8
2006	January	845 982	+31,4	230 468	+3,7	281 793	+15,5	1 358 243	+22,4
	February	1 197 343	+27,4	291 344	+84,6	382 918	+57,2	1 871 605	+39,5
	March	1 409 562	+41,8	436 357	+81,3	400 472	+67,3	2 246 391	+52,4
	April	1 157 477	+12,7	185 830	+22,3	310 615	+24,8	1 653 922	+15,9
	May	1 314 228	+7,3	342 878	+9,8	393 778	+12,3	2 050 884	+8,6
	June	1 516 199	+38,3	269 449	-10,5	374 061	-0,6	2 159 709	+21,7
	July	1 462 064	+29,7	229 590	+23,6	370 528	+43,1	2 062 182	+31,2
	August	1 494 866	-8,5	328 828	-26,0	370 152	+25,5	2 193 846	-7,5
	September	1 630 716	+9,1	279 987	+1,7	438 403	+34,4	2 349 106	+12,1
	October	1 483 527	+6,3	499 961	+26,0	348 310	-4,9	2 331 798	+8,0
	November	1 588 555	-16,6	442 667	+35,4	566 517	+76,4	2 597 739	+1,8
	December 2/	1 658 092	+1,4	358 987	+93,9	336 033	+5,7	2 353 112	+10,1
	Total	16 758 611	+10,9	3 896 346	+21,8	4 573 580	+27,5	25 228 537	+15,2

1/ The annual/monthly percentage change is the change in the values of buildings reported as completed to municipalities of the relevant year/month compared with the values of buildings reported as completed to municipalities of the comparable period of the previous year expressed as a percentage.

2/ Preliminary figures.

Table 8 - Seasonally adjusted values and percentage change of buildings reported as completed to larger municipalities at constant 2000 prices by type of building

Year and month		Residential buildings		Non-residential buildings		Additions and alterations		Total	
		R'000	% change 1/	R'000	% change 1/	R'000	% change 1/	R'000	% change 1/
2005	January	928 884	-0,9	277 227	-5,2	278 203	+4,9	1 484 314	-0,7
	February	1 102 171	+18,7	193 925	-30,0	239 707	-13,8	1 535 803	+3,5
	March	1 043 527	-5,3	215 951	+11,4	245 880	+2,6	1 505 358	-2,0
	April	1 157 950	+11,0	210 425	-2,6	294 768	+19,9	1 663 143	+10,5
	May	1 171 675	+1,2	231 240	+9,9	312 269	+5,9	1 715 184	+3,1
	June	1 104 288	-5,8	333 949	+44,4	359 343	+15,1	1 797 580	+4,8
	July	1 040 900	-5,7	212 248	-36,4	247 448	-31,1	1 500 596	-16,5
	August	1 473 965	+41,6	365 456	+72,2	286 389	+15,7	2 125 810	+41,7
	September	1 393 183	-5,5	258 410	-29,3	312 770	+9,2	1 964 363	-7,6
	October	1 334 039	-4,2	331 345	+28,2	342 668	+9,6	2 008 052	+2,2
	November	1 552 006	+16,3	304 333	-8,2	297 926	-13,1	2 154 265	+7,3
	December	1 529 618	-1,4	210 572	-30,8	362 867	+21,8	2 103 057	-2,4
2006	January	1 260 430	-17,6	279 305	+32,6	321 832	-11,3	1 861 567	-11,5
	February	1 402 966	+11,3	349 207	+25,0	377 054	+17,2	2 129 227	+14,4
	March	1 500 800	+7,0	389 012	+11,4	415 464	+10,2	2 305 276	+8,3
	April	1 319 970	-12,0	278 917	-28,3	371 822	-10,5	1 970 709	-14,5
	May	1 258 794	-4,6	264 639	-5,1	355 569	-4,4	1 879 002	-4,7
	June	1 509 971	+20,0	299 884	+13,3	358 188	+0,7	2 168 043	+15,4
	July	1 340 752	-11,2	273 351	-8,8	355 233	-0,8	1 969 336	-9,2
	August	1 342 698	+0,1	256 304	-6,2	356 174	+0,3	1 955 176	-0,7
	September	1 521 037	+13,3	259 184	+1,1	416 695	+17,0	2 196 916	+12,4
	October	1 441 144	-5,3	401 752	+55,0	327 950	-21,3	2 170 846	-1,2
	November	1 287 207	-10,7	419 611	+4,4	518 908	+58,2	2 225 726	+2,5
	December	1 534 877	+19,2	420 003	+0,1	383 462	-26,1	2 338 342	+5,1
Jul.-Sep. 06		4 204 487		788 839		1 128 102		6 121 428	
Oct.-Dec. 06 2/		4 263 228	+1,4	1 241 366	+57,4	1 230 320	+9,1	6 734 914	+10,0

1/ The percentage change is the change in the seasonally adjusted values of buildings reported as completed to municipalities of the relevant month compared with the seasonally adjusted values of buildings reported as completed to municipalities of the previous month expressed as a percentage.

2/ The percentage change is the change in the seasonally adjusted values of buildings reported as completed to municipalities of the current quarter compared with the seasonally adjusted values of buildings reported as completed to municipalities of the previous quarter expressed as a percentage.

Table 9 - Recorded building plans passed by larger municipalities at current prices by type of building: South Africa

Category of building	Type of building	Measuring unit	Dec. 2005*	Nov. 2006	Dec. 2006	Jan. - Dec. 2005	Jan. - Dec. 2006	% Change 1/
1. Residential buildings	1. Dwelling-houses < 80 square metres	Number	2 193	2 947	2 326	37 658	37 354	-0,8
		square metres	102 986	135 364	103 177	1 629 746	1 665 630	+2,2
		R'000	166 072	272 531	192 162	2 402 820	2 837 636	+18,1
	2. Dwelling-houses >= 80 square metres	Number	2 345	3 228	2 234	34 121	34 717	+1,7
		square metres	567 768	771 256	513 616	8 116 811	8 052 982	-0,8
		R'000	1 355 492	2 337 257	1 601 880	21 396 108	23 427 040	+9,5
	3. Flats and townhouses	Number	3 038	2 362	2 123	30 479	31 387	+3,0
		square metres	474 158	371 343	247 260	4 464 780	4 100 553	-8,2
		R'000	1 362 960	1 179 349	771 244	12 611 499	12 524 712	-0,7
	4. Other residential buildings 2/	square metres	5 044	18 272	4 713	184 983	157 402	-14,9
2. Non-residential buildings		R'000	10 620	58 410	11 751	554 222	558 755	+0,8
	5. Total residential buildings	R'000	2 895 144	3 847 547	2 577 037	36 964 649	39 348 143	+6,4
	1. Office and banking space	square metres	28 978	74 606	67 652	609 368	959 506	+57,5
		R'000	95 123	218 597	233 679	1 799 698	3 178 352	+76,6
	2. Shopping space	square metres	83 448	113 580	75 649	1 254 332	1 034 220	-17,5
		R'000	246 563	346 511	313 835	3 628 065	3 593 001	-1,0
	3. Industrial and warehouse space	square metres	112 824	203 174	166 469	1 747 998	2 286 729	+30,8
		R'000	269 123	548 484	433 534	4 229 573	6 059 135	+43,3
	4. Other non-residential buildings 3/	square metres	16 335	55 603	9 970	323 734	356 905	+10,2
		R'000	33 565	166 480	25 134	869 397	1 021 541	+17,5
3. Additions and alterations	5. Total non-residential buildings	R'000	644 374	1 280 072	1 006 182	10 526 733	13 852 029	+31,6
	1. Dwelling-houses	square metres	414 652	471 747	342 074	5 200 397	5 273 138	+1,4
		R'000	1 048 847	1 280 151	957 937	12 688 103	14 004 087	+10,4
	2. Other buildings 4/	square metres	108 330	153 805	113 706	1 425 240	1 432 491	+0,5
		R'000	299 606	463 400	422 306	4 301 232	4 516 785	+5,0
	3. Total additions and alterations	R'000	1 348 453	1 743 551	1 380 243	16 989 335	18 520 872	+9,0
4. Recorded plans passed	1. Total at current prices	R'000	4 887 971	6 871 170	4 963 462	64 480 717	71 721 044	+11,2

1/ The percentage change between cumulative figures for 2005 and 2006.

2/ Other residential buildings include institutions for the disabled, boarding houses, hostels and tourism accommodation e.g. hotels, motels, guesthouses, holiday chalets, bed-and-breakfast accommodation and casinos.

3/ Other non-residential space includes churches, sport and recreation clubs, schools, crèches, hospitals and all other non-residential space.

4/ Other buildings include other residential buildings, non-residential buildings and internal alterations.

* Revised.

Table 10 - Recorded building plans passed by larger municipalities at current prices by type of building: Western Cape

Category of building	Type of building	Measuring unit	Dec. 2005	Nov. 2006	Dec. 2006	Jan. - Dec. 2005	Jan. - Dec. 2006	% Change 1/
1. Residential buildings	1. Dwelling-houses < 80 square metres	Number	361	407	503	5 394	6 818	+26,4
		square metres	15 653	18 276	18 011	251 590	294 110	+16,9
		R'000	22 999	31 751	26 120	381 952	486 947	+27,5
	2. Dwelling-houses >= 80 square metres	Number	543	733	423	8 302	7 470	-10,0
		square metres	125 618	159 057	94 588	1 983 846	1 681 354	-15,2
		R'000	377 059	504 430	305 440	5 743 738	5 096 002	-11,3
	3. Flats and townhouses	Number	1 066	366	393	8 733	6 289	-28,0
		square metres	142 770	49 249	47 811	1 108 488	703 715	-36,5
		R'000	348 902	141 683	146 999	3 159 654	2 206 301	-30,2
	4. Other residential buildings 2/	square metres	0	14 409	255	87 770	53 041	-39,6
2. Non-residential buildings		R'000	0	48 647	821	266 273	190 338	-28,5
	5. Total residential buildings	R'000	748 960	726 511	479 380	9 551 617	7 979 588	-16,5
	1. Office and banking space	square metres	6 341	9 055	11 479	118 472	223 621	+88,8
		R'000	19 749	23 541	38 393	359 953	668 988	+85,9
	2. Shopping space	square metres	3 528	10 584	1 435	342 511	102 598	-70,0
		R'000	11 373	20 446	4 766	971 244	343 781	-64,6
	3. Industrial and warehouse space	square metres	36 754	64 786	22 451	632 658	717 989	+13,5
		R'000	94 445	185 049	68 506	1 672 158	2 001 560	+19,7
	4. Other non-residential buildings 3/	square metres	4 597	24 788	1 572	90 342	105 676	+17,0
		R'000	10 243	72 372	4 143	291 513	315 277	+8,2
3. Additions and alterations	5. Total non-residential buildings	R'000	135 810	301 408	115 808	3 294 868	3 329 606	+1,1
	1. Dwelling-houses	square metres	122 597	127 060	109 476	1 603 830	1 567 736	-2,3
		R'000	319 874	359 076	305 655	4 218 792	4 272 913	+1,3
	2. Other buildings 4/	square metres	26 854	81 047	52 618	437 305	546 487	+25,0
		R'000	87 828	225 018	181 222	1 376 711	1 746 387	+26,9
	3. Total additions and alterations	R'000	407 702	584 094	486 877	5 595 503	6 019 300	+7,6
4. Recorded plans passed	1. Total at current prices	R'000	1 292 472	1 612 013	1 082 065	18 441 988	17 328 494	-6,0

1/ The percentage change between cumulative figures for 2005 and 2006.

2/ Other residential buildings include institutions for the disabled, boarding houses, hostels and tourism accommodation e.g. hotels, motels, guesthouses, holiday chalets, bed-and-breakfast accommodation and casinos.

3/ Other non-residential space includes churches, sport and recreation clubs, schools, crèches, hospitals and all other non-residential space.

4/ Other buildings include other residential buildings, non-residential buildings and internal alterations.

Table 11 - Recorded building plans passed by larger municipalities at current prices by type of building: Eastern Cape

Category of building	Type of building	Measuring unit	Dec. 2005	Nov. 2006	Dec. 2006	Jan. - Dec. 2005	Jan. - Dec. 2006	% Change 1/
1. Residential buildings	1. Dwelling-houses < 80 square metres	Number	347	101	53	3 287	2 557	-22,2
		square metres	15 379	4 927	2 433	142 828	110 345	-22,7
		R'000	15 008	6 278	3 020	148 707	114 707	-22,9
	2. Dwelling-houses >= 80 square metres	Number	220	226	175	2 440	2 659	+9,0
		square metres	37 529	43 924	38 043	505 093	542 595	+7,4
		R'000	90 881	112 946	110 078	1 229 862	1 314 782	+6,9
	3. Flats and townhouses	Number	40	76	116	705	1 161	+64,7
		square metres	10 168	8 533	10 910	118 092	162 540	+37,6
		R'000	20 820	21 193	32 693	258 470	389 657	+50,8
	4. Other residential buildings 2/	square metres	535	1 740	1 032	10 052	8 469	-15,7
2. Non-residential buildings		R'000	955	4 104	2 490	21 630	18 431	-14,8
	5. Total residential buildings	R'000	127 664	144 521	148 281	1 658 669	1 837 577	+10,8
	1. Office and banking space	square metres	0	2 403	1 588	4 645	12 073	+159,9
		R'000	0	6 749	3 094	11 190	30 189	+169,8
	2. Shopping space	square metres	4 622	15 346	968	22 981	76 583	+233,2
		R'000	10 493	41 373	1 863	44 860	196 905	+338,9
	3. Industrial and warehouse space	square metres	7 882	2 868	24 814	90 453	97 236	+7,5
		R'000	13 259	5 706	50 759	164 557	200 352	+21,8
	4. Other non-residential buildings 3/	square metres	778	2 011	2 966	14 645	18 742	+28,0
		R'000	1 724	5 069	5 982	29 425	42 426	+44,2
3. Additions and alterations	5. Total non-residential buildings	R'000	25 476	58 897	61 698	250 032	469 872	+87,9
	1. Dwelling-houses	square metres	35 713	40 043	36 190	455 785	464 253	+1,9
		R'000	72 468	96 368	95 138	911 653	1 050 166	+15,2
	2. Other buildings 4/	square metres	13 699	6 169	1 328	112 830	62 505	-44,6
		R'000	29 550	15 330	4 088	264 495	164 321	-37,9
	3. Total additions and alterations	R'000	102 018	111 698	99 226	1 176 148	1 214 487	+3,3
4. Recorded plans passed	1. Total at current prices	R'000	255 158	315 116	309 205	3 084 849	3 521 936	+14,2

1/ The percentage change between cumulative figures for 2005 and 2006.

2/ Other residential buildings include institutions for the disabled, boarding houses, hostels and tourism accommodation e.g. hotels, motels, guesthouses, holiday chalets, bed-and-breakfast accommodation and casinos.

3/ Other non-residential space includes churches, sport and recreation clubs, schools, crèches, hospitals and all other non-residential space.

4/ Other buildings include other residential buildings, non-residential buildings and internal alterations.

Table 12 - Recorded building plans passed by larger municipalities at current prices by type of building: Northern Cape

Category of building	Type of building	Measuring unit	Dec. 2005	Nov. 2006	Dec. 2006	Jan. - Dec. 2005	Jan. - Dec. 2006	% Change 1/	
1. Residential buildings	1. Dwelling-houses < 80 square metres	Number	151	0	2	1 068	250	-76,6	
		square metres	5 645	0	112	38 678	11 832	-69,4	
		R'000	4 381	0	339	26 975	14 994	-44,4	
	2. Dwelling-houses >= 80 square metres	Number	13	39	35	341	385	+12,9	
		square metres	2 388	7 297	5 518	64 317	72 848	+13,3	
		R'000	4 734	14 335	12 583	119 153	146 193	+22,7	
	3. Flats and townhouses	Number	3	42	16	143	292	+104,2	
		square metres	1 129	3 677	3 000	21 700	29 621	+36,5	
		R'000	2 123	5 885	5 400	39 623	54 547	+37,7	
	4. Other residential buildings 2/	square metres	2 005	0	0	4 818	7 690	+59,6	
		R'000	4 010	0	0	10 762	28 346	+163,4	
	5. Total residential buildings		R'000	15 248	20 220	18 322	196 513	244 080	+24,2
	2. Non-residential buildings	1. Office and banking space	square metres	0	0	0	2 655	5 759	+116,9
			R'000	0	0	0	5 974	14 161	+137,0
2. Shopping space		square metres	4 943	0	0	48 438	5 930	-87,8	
		R'000	10 146	0	0	136 869	10 581	-92,3	
3. Industrial and warehouse space		square metres	790	129	0	9 411	12 086	+28,4	
		R'000	1 580	194	0	18 562	32 967	+77,6	
4. Other non-residential buildings 3/		square metres	149	505	430	4 928	8 326	+69,0	
		R'000	298	1 010	800	10 852	13 835	+27,5	
5. Total non-residential buildings		R'000	12 024	1 204	800	172 257	71 544	-58,5	
3. Additions and alterations		1. Dwelling-houses	square metres	4 138	6 211	3 010	54 826	59 632	+8,8
	R'000		8 276	12 504	6 440	105 214	121 644	+15,6	
	2. Other buildings 4/	square metres	897	1 722	853	11 041	14 814	+34,2	
		R'000	1 914	3 322	3 388	27 801	41 194	+48,2	
	3. Total additions and alterations		R'000	10 190	15 826	9 828	133 015	162 838	+22,4
4. Recorded plans passed	1. Total at current prices	R'000	37 462	37 250	28 950	501 785	478 462	-4,6	

1/ The percentage change between cumulative figures for 2005 and 2006.

2/ Other residential buildings include institutions for the disabled, boarding houses, hostels and tourism accommodation e.g. hotels, motels, guesthouses, holiday chalets, bed-and-breakfast accommodation and casinos.

3/ Other non-residential space includes churches, sport and recreation clubs, schools, crèches, hospitals and all other non-residential space.

4/ Other buildings include other residential buildings, non-residential buildings and internal alterations.

Table 13 - Recorded building plans passed by larger municipalities at current prices by type of building: Free State

Category of building	Type of building	Measuring unit	Dec. 2005	Nov. 2006	Dec. 2006	Jan. - Dec. 2005	Jan. - Dec. 2006	% Change 1/	
1. Residential buildings	1. Dwelling-houses < 80 square metres	Number	10	131	11	3 205	2 554	-20,3	
		square metres	633	5 699	742	136 335	108 426	-20,5	
		R'000	1 160	5 267	1 694	104 175	100 784	-3,3	
	2. Dwelling-houses >= 80 square metres	Number	91	127	115	1 261	1 237	-1,9	
		square metres	17 786	26 081	24 690	229 896	239 604	+4,2	
		R'000	34 264	61 773	58 339	442 228	544 686	+23,2	
	3. Flats and townhouses	Number	56	58	60	1 342	1 197	-10,8	
		square metres	7 973	9 738	6 339	147 208	139 113	-5,5	
		R'000	19 272	25 154	19 272	316 915	342 578	+8,1	
	4. Other residential buildings 2/	square metres	0	88	0	10 764	4 322	-59,8	
		R'000	0	264	0	41 070	12 057	-70,6	
5. Total residential buildings		R'000	54 696	92 458	79 305	904 388	1 000 105	+10,6	
2. Non-residential buildings	1. Office and banking space	square metres	0	0	1 254	4 006	17 837	+345,3	
		R'000	0	0	4 514	11 664	52 061	+346,3	
	2. Shopping space	square metres	668	0	243	84 515	24 829	-70,6	
		R'000	1 520	0	608	399 344	79 157	-80,2	
	3. Industrial and warehouse space	square metres	0	160	1 205	19 160	52 096	+171,9	
		R'000	0	480	3 140	29 477	80 995	+174,8	
	4. Other non-residential buildings 3/	square metres	666	2 136	454	27 570	14 292	-48,2	
		R'000	1 272	9 895	1 751	92 649	39 301	-57,6	
	5. Total non-residential buildings	R'000	2 792	10 375	10 013	533 134	251 514	-52,8	
	3. Additions and alterations	1. Dwelling-houses	square metres	10 141	19 949	14 370	177 795	185 445	+4,3
			R'000	17 264	40 528	31 967	288 811	365 792	+26,7
2. Other buildings 4/		square metres	2 404	1 986	1 387	32 065	40 928	+27,6	
		R'000	7 381	15 250	48 005	83 523	185 466	+122,1	
3. Total additions and alterations		R'000	24 645	55 778	79 972	372 334	551 258	+48,1	
4. Recorded plans passed	1. Total at current prices	R'000	82 133	158 611	169 290	1 809 856	1 802 877	-0,4	

1/ The percentage change between cumulative figures for 2005 and 2006.

2/ Other residential buildings include institutions for the disabled, boarding houses, hostels and tourism accommodation e.g. hotels, motels, guesthouses, holiday chalets, bed-and-breakfast accommodation and casinos.

3/ Other non-residential space includes churches, sport and recreation clubs, schools, crèches, hospitals and all other non-residential space.

4/ Other buildings include other residential buildings, non-residential buildings and internal alterations.

Table 14 - Recorded building plans passed by larger municipalities at current prices by type of building: KwaZulu-Natal

Category of building	Type of building	Measuring unit	Dec. 2005	Nov. 2006	Dec. 2006	Jan. - Dec. 2005	Jan. - Dec. 2006	% Change 1/	
1. Residential buildings	1. Dwelling-houses < 80 square metres	Number	46	78	55	2 598	1 222	-53,0	
		square metres	2 538	4 320	2 816	108 182	64 234	-40,6	
		R'000	5 343	10 393	6 840	137 245	124 323	-9,4	
	2. Dwelling-houses >= 80 square metres	Number	213	239	181	2 735	2 989	+9,3	
		square metres	48 468	55 393	42 060	620 971	676 285	+8,9	
		R'000	123 438	174 358	123 881	1 559 941	1 888 900	+21,1	
	3. Flats and townhouses	Number	305	483	341	5 682	4 460	-21,5	
		square metres	50 219	76 764	52 382	1 040 863	758 736	-27,1	
		R'000	144 916	239 374	183 554	3 111 305	2 460 678	-20,9	
	4. Other residential buildings 2/	square metres	2 073	935	0	10 246	30 481	+197,5	
		R'000	4 146	3 111	0	33 546	147 899	+340,9	
	5. Total residential buildings	R'000	277 843	427 236	314 275	4 842 037	4 621 800	-4,5	
2. Non-residential buildings	1. Office and banking space	square metres	2 793	35 249	11 157	63 849	167 739	+162,7	
		R'000	8 000	89 149	32 300	144 800	597 937	+312,9	
	2. Shopping space	square metres	9 264	39 741	2 865	157 503	116 218	-26,2	
		R'000	27 666	133 027	21 200	469 172	384 172	-18,1	
	3. Industrial and warehouse space	square metres	40 497	48 130	17 006	360 788	450 740	+24,9	
		R'000	89 607	105 890	44 505	665 670	992 140	+49,0	
	4. Other non-residential buildings 3/	square metres	810	1 108	1 604	34 319	59 754	+74,1	
		R'000	1 705	3 343	3 919	78 729	174 465	+121,6	
		5. Total non-residential buildings	R'000	126 978	331 409	101 924	1 358 371	2 148 714	+58,2
	3. Additions and alterations	1. Dwelling-houses	square metres	61 939	71 772	47 501	663 084	711 948	+7,4
			R'000	133 111	173 741	116 964	1 389 606	1 692 194	+21,8
2. Other buildings 4/		square metres	18 787	16 085	28 877	243 626	288 082	+18,2	
		R'000	47 486	41 594	93 630	814 864	898 475	+10,3	
		3. Total additions and alterations	R'000	180 597	215 335	210 594	2 204 470	2 590 669	+17,5
4. Recorded plans passed	1. Total at current prices	R'000	585 418	973 980	626 793	8 404 878	9 361 183	+11,4	

1/ The percentage change between cumulative figures for 2005 and 2006.

2/ Other residential buildings include institutions for the disabled, boarding houses, hostels and tourism accommodation e.g. hotels, motels, guesthouses, holiday chalets, bed-and-breakfast accommodation and casinos.

3/ Other non-residential space includes churches, sport and recreation clubs, schools, crèches, hospitals and all other non-residential space.

4/ Other buildings include other residential buildings, non-residential buildings and internal alterations.

Table 15 - Recorded building plans passed by larger municipalities at current prices by type of building: North West

Category of building	Type of building	Measuring unit	Dec. 2005*	Nov. 2006	Dec. 2006	Jan. - Dec. 2005	Jan. - Dec. 2006	% Change 1/
1. Residential buildings	1. Dwelling-houses < 80 square metres	Number	20	71	41	636	1 597	+151,1
		square metres	1 251	4 223	3 032	34 987	78 012	+123,0
		R'000	2 319	4 932	6 148	55 952	90 578	+61,9
	2. Dwelling-houses >= 80 square metres	Number	127	178	94	2 266	2 173	-4,1
		square metres	21 625	30 258	21 089	443 319	435 203	-1,8
		R'000	57 074	74 688	59 838	1 034 751	1 090 736	+5,4
	3. Flats and townhouses	Number	33	89	94	1 465	1 388	-5,3
		square metres	3 688	13 640	6 771	146 571	144 529	-1,4
		R'000	9 166	34 321	14 896	367 079	366 872	-0,1
	4. Other residential buildings 2/	square metres	0	0	472	8 553	8 875	+3,8
2. Non-residential buildings		R'000	0	0	1 418	39 183	25 180	-35,7
	5. Total residential buildings	R'000	68 559	113 941	82 300	1 496 965	1 573 366	+5,1
	1. Office and banking space	square metres	0	1 407	1 640	6 683	15 622	+133,8
		R'000	0	3 096	4 596	14 269	37 534	+163,0
	2. Shopping space	square metres	13 708	166	0	39 979	121 681	+204,4
		R'000	43 103	323	0	102 353	395 974	+286,9
	3. Industrial and warehouse space	square metres	0	4 034	0	30 759	36 965	+20,2
		R'000	0	9 120	0	55 940	80 883	+44,6
	4. Other non-residential buildings 3/	square metres	1 605	1 894	472	16 594	14 519	-12,5
		R'000	3 413	5 301	1 418	37 001	39 534	+6,8
3. Additions and alterations	5. Total non-residential buildings	R'000	46 516	17 840	6 014	209 563	553 925	+164,3
	1. Dwelling-houses	square metres	16 577	10 091	6 940	148 849	130 705	-12,2
		R'000	39 362	21 915	16 524	305 476	271 613	-11,1
	2. Other buildings 4/	square metres	415	128	1 183	40 452	21 560	-46,7
		R'000	2 082	858	3 901	112 119	58 924	-47,4
	3. Total additions and alterations	R'000	41 444	22 773	20 425	417 595	330 537	-20,8
4. Recorded plans passed	1. Total at current prices	R'000	156 519	154 554	108 739	2 124 123	2 457 828	+15,7

1/ The percentage change between cumulative figures for 2005 and 2006.

2/ Other residential buildings include institutions for the disabled, boarding houses, hostels and tourism accommodation e.g. hotels, motels, guesthouses, holiday chalets, bed-and-breakfast accommodation and casinos.

3/ Other non-residential space includes churches, sport and recreation clubs, schools, crèches, hospitals and all other non-residential space.

4/ Other buildings include other residential buildings, non-residential buildings and internal alterations.

* Revised.

Table 16 - Recorded building plans passed by larger municipalities at current prices by type of building: Gauteng

Category of building	Type of building	Measuring unit	Dec. 2005*	Nov. 2006	Dec. 2006	Jan. - Dec. 2005	Jan. - Dec. 2006	% Change 1/
1. Residential buildings	1. Dwelling-houses < 80 square metres	Number	1 162	1 976	1 487	19 462	20 649	+6,1
		square metres	56 920	86 746	67 154	817 565	905 995	+10,8
		R'000	107 709	186 060	130 244	1 399 768	1 712 863	+22,4
	2. Dwelling-houses >= 80 square metres	Number	951	1 253	846	13 158	13 995	+6,4
		square metres	271 393	356 076	223 361	3 557 157	3 592 914	+1,0
		R'000	568 530	1 154 744	765 700	9 604 875	11 216 313	+16,8
	3. Flats and townhouses	Number	1 410	1 164	1 069	10 736	14 246	+32,7
		square metres	242 974	199 593	116 069	1 685 214	1 903 183	+12,9
		R'000	784 087	686 268	357 430	4 917 705	6 039 761	+22,8
	4. Other residential buildings 2/	square metres	0	30	2 636	31 063	32 756	+5,5
		R'000	0	105	6 241	81 679	103 357	+26,5
	5. Total residential buildings	R'000	1 460 326	2 027 177	1 259 615	16 004 027	19 072 294	+19,2
2. Non-residential buildings	1. Office and banking space	square metres	19 844	21 894	39 672	377 278	458 588	+21,6
		R'000	67 374	81 769	148 627	1 162 753	1 611 977	+38,6
	2. Shopping space	square metres	36 825	25 170	65 245	368 408	432 523	+17,4
		R'000	112 052	69 227	272 848	1 064 169	1 441 434	+35,5
	3. Industrial and warehouse space	square metres	20 525	65 938	95 297	523 761	811 458	+54,9
		R'000	57 384	200 528	253 242	1 440 912	2 394 217	+66,2
	4. Other non-residential buildings 3/	square metres	7 730	20 614	2 330	100 186	95 815	-4,4
		R'000	14 910	64 472	6 820	255 921	270 801	+5,8
		5. Total non-residential buildings	R'000	251 720	415 996	681 537	3 923 755	5 718 429
3. Additions and alterations	1. Dwelling-houses	square metres	136 826	156 795	103 886	1 745 185	1 808 513	+3,6
		R'000	401 246	493 171	335 951	4 765 544	5 459 582	+14,6
	2. Other buildings 4/	square metres	15 198	43 779	23 783	459 983	401 421	-12,7
		R'000	48 463	153 325	77 882	1 395 891	1 267 480	-9,2
	3. Total additions and alterations	R'000	449 709	646 496	413 833	6 161 435	6 727 062	+9,2
4. Recorded plans passed	1. Total at current prices	R'000	2 161 755	3 089 669	2 354 985	26 089 217	31 517 785	+20,8

1/ The percentage change between cumulative figures for 2005 and 2006.

2/ Other residential buildings include institutions for the disabled, boarding houses, hostels and tourism accommodation e.g. hotels, motels, guesthouses, holiday chalets, bed-and-breakfast accommodation and casinos.

3/ Other non-residential space includes churches, sport and recreation clubs, schools, crèches, hospitals and all other non-residential space.

4/ Other buildings include other residential buildings, non-residential buildings and internal alterations.

* Revised.

Table 17 - Recorded building plans passed by larger municipalities at current prices by type of building: Mpumalanga

Category of building	Type of building	Measuring unit	Dec. 2005	Nov. 2006	Dec. 2006	Jan. - Dec. 2005	Jan. - Dec. 2006	% Change 1/	
1. Residential buildings	1. Dwelling-houses < 80 square metres	Number	72	107	154	976	793	-18,8	
		square metres	3 460	6 436	7 593	51 390	44 769	-12,9	
		R'000	3 841	15 996	14 445	81 970	103 702	+26,5	
	2. Dwelling-houses >= 80 square metres	Number	147	317	302	2 625	2 516	-4,2	
		square metres	35 021	71 811	51 576	519 553	551 289	+6,1	
		R'000	82 512	181 697	133 367	1 234 627	1 477 480	+19,7	
	3. Flats and townhouses	Number	49	49	10	1 016	1 569	+54,4	
		square metres	5 799	5 078	1 626	123 148	185 680	+50,8	
		R'000	13 025	13 612	4 000	258 140	478 821	+85,5	
	4. Other residential buildings 2/	square metres	431	70	0	16 397	8 380	-48,9	
		R'000	1 509	170	0	47 943	23 162	-51,7	
	5. Total residential buildings		R'000	100 887	211 475	151 812	1 622 680	2 083 165	+28,4
	2. Non-residential buildings	1. Office and banking space	square metres	0	1 550	0	6 767	46 286	+584,0
R'000			0	6 865	0	16 176	136 892	+746,3	
2. Shopping space		square metres	7 631	19 226	4 893	145 683	125 737	-13,7	
		R'000	25 078	76 061	12 550	346 277	685 036	+97,8	
3. Industrial and warehouse space		square metres	4 115	13 718	376	56 138	77 623	+38,3	
		R'000	7 874	34 212	398	128 426	205 307	+59,9	
4. Other non-residential buildings 3/		square metres	0	2 547	19	27 892	38 378	+37,6	
		R'000	0	5 018	80	59 625	123 730	+107,5	
5. Total non-residential buildings		R'000	32 952	122 156	13 028	550 504	1 150 965	+109,1	
3. Additions and alterations		1. Dwelling-houses	square metres	20 075	31 104	14 056	239 323	237 398	-0,8
	R'000		43 804	62 353	32 769	492 711	529 756	+7,5	
	2. Other buildings 4/	square metres	29 068	1 609	2 977	68 925	32 531	-52,8	
		R'000	72 924	5 224	9 044	189 054	102 552	-45,8	
	3. Total additions and alterations		R'000	116 728	67 577	41 813	681 765	632 308	-7,3
4. Recorded plans passed	1. Total at current prices		R'000	250 567	401 208	206 653	2 854 949	3 866 438	+35,4

1/ The percentage change between cumulative figures for 2005 and 2006.

2/ Other residential buildings include institutions for the disabled, boarding houses, hostels and tourism accommodation e.g. hotels, motels, guesthouses, holiday chalets, bed-and-breakfast accommodation and casinos.

3/ Other non-residential space includes churches, sport and recreation clubs, schools, crèches, hospitals and all other non-residential space.

4/ Other buildings include other residential buildings, non-residential buildings and internal alterations.

Table 18 - Recorded building plans passed by larger municipalities at current prices by type of building: Limpopo

Category of building	Type of building	Measuring unit	Dec. 2005*	Nov. 2006	Dec. 2006	Jan. - Dec. 2005	Jan. - Dec. 2006	% Change 1/
1. Residential buildings	1. Dwelling-houses < 80 square metres	Number	24	76	20	1 032	914	-11,4
		square metres	1 507	4 737	1 284	48 191	47 907	-0,6
		R'000	3 312	11 854	3 312	66 076	88 738	+34,3
	2. Dwelling-houses >= 80 square metres	Number	40	116	63	993	1 293	+30,2
		square metres	7 940	21 359	12 691	192 659	260 890	+35,4
		R'000	17 000	58 286	32 654	426 933	651 948	+52,7
	3. Flats and townhouses	Number	76	35	24	657	785	+19,5
		square metres	9 438	5 071	2 352	73 496	73 436	-0,1
		R'000	20 649	11 859	7 000	182 608	185 497	+1,6
	4. Other residential buildings 2/	square metres	0	1 000	318	5 320	3 388	-36,3
2. Non-residential buildings		R'000	0	2 009	781	12 136	9 985	-17,7
	5. Total residential buildings	R'000	40 961	84 008	43 747	687 753	936 168	+36,1
	1. Office and banking space	square metres	0	3 048	862	25 013	11 981	-52,1
		R'000	0	7 428	2 155	72 919	28 613	-60,8
	2. Shopping space	square metres	2 259	3 347	0	44 314	28 121	-36,5
		R'000	5 132	6 054	0	93 777	55 961	-40,3
	3. Industrial and warehouse space	square metres	2 261	3 411	5 320	24 870	30 536	+22,8
		R'000	4 974	7 305	12 984	53 871	70 714	+31,3
	4. Other non-residential buildings 3/	square metres	0	0	123	7 258	1 403	-80,7
		R'000	0	0	221	13 682	2 172	-84,1
3. Additions and alterations	5. Total non-residential buildings	R'000	10 106	20 787	15 360	234 249	157 460	-32,8
	1. Dwelling-houses	square metres	6 646	8 722	6 645	111 720	107 508	-3,8
		R'000	13 442	20 495	16 529	210 296	240 427	+14,3
	2. Other buildings 4/	square metres	1 008	1 280	700	19 013	24 163	+27,1
		R'000	1 978	3 479	1 146	36 774	51 986	+41,4
	3. Total additions and alterations	R'000	15 420	23 974	17 675	247 070	292 413	+18,4
4. Recorded plans passed	1. Total at current prices	R'000	66 487	128 769	76 782	1 169 072	1 386 041	+18,6

1/ The percentage change between cumulative figures for 2005 and 2006.

2/ Other residential buildings include institutions for the disabled, boarding houses, hostels and tourism accommodation e.g. hotels, motels, guesthouses, holiday chalets, bed-and-breakfast accommodation and casinos.

3/ Other non-residential space includes churches, sport and recreation clubs, schools, crèches, hospitals and all other non-residential space.

4/ Other buildings include other residential buildings, non-residential buildings and internal alterations.

* Revised.

Table 19 - Buildings reported as completed to larger municipalities at current prices by type of building: South Africa

Category of building	Type of building	Measuring unit	Dec. 2005*	Nov. 2006	Dec. 2006	Jan. - Dec. 2005	Jan. - Dec. 2006	% Change 1/
1. Residential buildings	1. Dwelling-houses < 80 square metres	Number	2 072	4 588	1 678	26 307	24 238	-7,9
		square metres	93 972	181 811	75 963	1 049 189	1 042 032	-0,7
		R'000	170 756	251 580	151 961	1 380 403	1 712 700	+24,1
	2. Dwelling-houses >= 80 square metres	Number	1 998	2 062	2 057	22 251	22 067	-0,8
		square metres	461 701	451 072	450 363	4 913 800	4 928 718	+0,3
		R'000	1 227 598	1 222 204	1 332 778	12 013 198	13 542 438	+12,7
	3. Flats and townhouses	Number	2 205	2 252	2 444	22 066	23 653	+7,2
		square metres	325 265	284 816	317 865	2 826 268	3 109 989	+10,0
		R'000	907 992	849 614	1 045 006	7 479 810	9 254 267	+23,7
	4. Other residential buildings 2/	square metres	5 832	16 474	1 105	64 947	76 984	+18,5
		R'000	14 687	78 879	2 368	154 200	266 032	+72,5
2. Non-residential buildings	5. Total residential buildings	R'000	2 321 033	2 402 277	2 532 113	21 027 611	24 775 437	+17,8
	1. Office and banking space	square metres	17 063	57 424	29 598	495 014	326 876	-34,0
		R'000	44 373	183 551	102 252	1 302 535	979 528	-24,8
	2. Shopping space	square metres	33 843	75 734	34 267	398 919	631 776	+58,4
		R'000	100 921	198 511	111 975	972 500	2 010 680	+106,8
	3. Industrial and warehouse space	square metres	41 801	96 407	100 857	750 562	884 513	+17,8
		R'000	98 424	239 818	289 063	1 598 420	2 205 389	+38,0
	4. Other non-residential buildings 3/	square metres	2 948	5 387	3 210	167 362	111 477	-33,4
		R'000	7 761	13 347	13 651	335 591	280 010	-16,6
	5. Total non-residential buildings	R'000	251 479	635 227	516 941	4 209 046	5 475 607	+30,1
3. Additions and alterations	1. Dwelling-houses	square metres	123 167	201 385	127 298	1 662 014	1 968 476	+18,4
		R'000	298 559	478 892	343 742	3 483 871	4 772 861	+37,0
	2. Other buildings 4/	square metres	59 482	158 609	38 169	565 331	675 705	+19,5
		R'000	143 478	357 287	153 251	1 389 604	1 853 271	+33,4
4. Recorded buildings completed	3. Total additions and alterations	R'000	442 037	836 179	496 993	4 873 475	6 626 132	+36,0
	1. Total at current prices	R'000	3 014 549	3 873 683	3 546 047	30 110 132	36 877 176	+22,5

1/ The percentage change between cumulative figures for 2005 and 2006.

2/ Other residential buildings include institutions for the disabled, boarding houses, hostels and tourism accommodation e.g. hotels, motels, guesthouses, holiday chalets, bed-and-breakfast accommodation and casinos.

3/ Other non-residential space includes churches, sport and recreation clubs, schools, crèches, hospitals and all other non-residential space.

4/ Other buildings include other residential buildings, non-residential buildings and internal alterations.

* Revised.

Table 20 - Buildings reported as completed to larger municipalities at current prices by type of building: Western Cape

Category of building	Type of building	Measuring unit	Dec. 2005	Nov. 2006	Dec. 2006	Jan. - Dec. 2005	Jan. - Dec. 2006	% Change 1/
1. Residential buildings	1. Dwelling-houses < 80 square metres	Number	499	465	376	7 059	4 525	-35,9
		square metres	19 451	19 845	16 146	254 631	183 643	-27,9
		R'000	31 937	37 405	27 470	298 263	302 491	+1,4
	2. Dwelling-houses >= 80 square metres	Number	653	578	561	7 245	6 218	-14,2
		square metres	139 558	122 733	107 092	1 544 873	1 359 672	-12,0
		R'000	371 668	362 940	319 870	3 604 786	3 724 681	+3,3
	3. Flats and townhouses	Number	787	579	706	5 294	6 464	+22,1
		square metres	105 821	59 308	73 980	619 377	755 855	+22,0
		R'000	292 809	168 437	259 661	1 473 196	2 247 943	+52,6
	4. Other residential buildings 2/	square metres	5 008	11 446	0	33 183	24 782	-25,3
		R'000	12 520	64 818	0	84 136	107 233	+27,5
	5. Total residential buildings	R'000	708 934	633 600	607 001	5 460 381	6 382 348	+16,9
2. Non-residential buildings	1. Office and banking space	square metres	2 362	10 857	7 368	103 369	69 263	-33,0
		R'000	6 101	31 181	22 707	227 346	188 147	-17,2
	2. Shopping space	square metres	9 837	3 567	9 095	112 024	84 336	-24,7
		R'000	31 847	10 930	28 893	240 132	218 420	-9,0
	3. Industrial and warehouse space	square metres	20 067	22 500	27 430	252 638	324 784	+28,6
		R'000	43 937	64 861	84 267	472 817	847 311	+79,2
	4. Other non-residential buildings 3/	square metres	1 330	2 625	996	71 407	41 984	-41,2
		R'000	3 301	7 382	3 448	98 781	106 532	+7,8
	5. Total non-residential buildings	R'000	85 186	114 354	139 315	1 039 076	1 360 410	+30,9
3. Additions and alterations	1. Dwelling-houses	square metres	48 272	73 461	48 494	625 105	745 931	+19,3
		R'000	119 718	190 424	126 205	1 256 155	1 833 715	+46,0
	2. Other buildings 4/	square metres	38 080	92 594	7 264	229 718	283 398	+23,4
		R'000	93 852	179 277	23 155	554 056	792 779	+43,1
	3. Total additions and alterations	R'000	213 570	369 701	149 360	1 810 211	2 626 494	+45,1
4. Recorded buildings completed	1. Total at current prices	R'000	1 007 690	1 117 655	895 676	8 309 668	10 369 252	+24,8

1/ The percentage change between cumulative figures for 2005 and 2006.

2/ Other residential buildings include institutions for the disabled, boarding houses, hostels and tourism accommodation e.g. hotels, motels, guesthouses, holiday chalets, bed-and-breakfast accommodation and casinos.

3/ Other non-residential space includes churches, sport and recreation clubs, schools, crèches, hospitals and all other non-residential space.

4/ Other buildings include other residential buildings, non-residential buildings and internal alterations.

Table 21 - Buildings reported as completed to larger municipalities at current prices by type of building: Eastern Cape

Category of building	Type of building	Measuring unit	Dec. 2005	Nov. 2006	Dec. 2006	Jan. - Dec. 2005	Jan. - Dec. 2006	% Change 1/
1. Residential buildings	1. Dwelling-houses < 80 square metres	Number	152	558	150	2 655	2 490	-6,2
		square metres	6 323	23 465	6 144	111 095	106 647	-4,0
		R'000	7 278	18 123	8 441	120 387	114 493	-4,9
	2. Dwelling-houses >= 80 square metres	Number	161	130	102	1 465	1 371	-6,4
		square metres	26 204	23 549	17 868	260 791	243 026	-6,8
		R'000	56 123	59 761	43 957	558 349	536 281	-4,0
	3. Flats and townhouses	Number	56	37	25	497	644	+29,6
		square metres	9 339	5 661	4 229	63 151	77 591	+22,9
		R'000	16 978	12 257	9 256	119 705	162 730	+35,9
	4. Other residential buildings 2/	square metres	0	915	271	868	1 306	+50,5
		R'000	0	2 038	596	1 515	2 898	+91,3
	5. Total residential buildings	R'000	80 379	92 179	62 250	799 956	816 402	+2,1
2. Non-residential buildings	1. Office and banking space	square metres	0	6 680	0	2 356	11 600	+392,4
		R'000	0	18 009	0	4 804	29 111	+506,0
	2. Shopping space	square metres	0	0	0	12 542	14 308	+14,1
		R'000	0	0	0	22 806	33 975	+49,0
	3. Industrial and warehouse space	square metres	2 593	4 991	1 497	27 233	40 221	+47,7
		R'000	3 100	9 968	2 844	47 173	80 758	+71,2
	4. Other non-residential buildings 3/	square metres	0	752	0	2 786	6 350	+127,9
		R'000	0	1 692	0	5 793	13 656	+135,7
	5. Total non-residential buildings	R'000	3 100	29 669	2 844	80 576	157 500	+95,5
	3. Total additions and alterations	R'000	19 009	77 006	10 813	349 373	360 312	+3,1
3. Additions and alterations	1. Dwelling-houses	square metres	6 716	16 192	5 497	142 704	113 223	-20,7
		R'000	13 038	31 428	9 959	253 905	218 890	-13,8
	2. Other buildings 4/	square metres	2 750	19 729	428	38 938	69 104	+77,5
		R'000	5 971	45 578	854	95 468	141 422	+48,1
4. Recorded buildings completed	1. Total at current prices	R'000	102 488	198 854	75 907	1 229 905	1 334 214	+8,5

1/ The percentage change between cumulative figures for 2005 and 2006.

2/ Other residential buildings include institutions for the disabled, boarding houses, hostels and tourism accommodation e.g. hotels, motels, guesthouses, holiday chalets, bed-and-breakfast accommodation and casinos.

3/ Other non-residential space includes churches, sport and recreation clubs, schools, crèches, hospitals and all other non-residential space.

4/ Other buildings include other residential buildings, non-residential buildings and internal alterations.

Table 22 - Buildings reported as completed to larger municipalities at current prices by type of building: Northern Cape

Category of building	Type of building	Measuring unit	Dec. 2005	Nov. 2006	Dec. 2006	Jan. - Dec. 2005	Jan. - Dec. 2006	% Change 1/	
1. Residential buildings	1. Dwelling-houses < 80 square metres	Number	1	0	7	19	27	+42,1	
		square metres	54	0	429	1 069	1 425	+33,3	
		R'000	108	0	818	1 627	2 480	+52,4	
	2. Dwelling-houses >= 80 square metres	Number	22	26	19	225	240	+6,7	
		square metres	4 037	5 334	4 244	42 633	44 414	+4,2	
		R'000	8 074	11 150	8 774	78 380	91 676	+17,0	
	3. Flats and townhouses	Number	20	18	10	194	145	-25,3	
		square metres	2 551	2 370	1 576	25 415	18 535	-27,1	
		R'000	4 592	4 266	3 291	46 768	35 476	-24,1	
	4. Other residential buildings 2/	square metres	0	552	0	4 471	707	-84,2	
		R'000	0	850	0	8 980	1 222	-86,4	
5. Total residential buildings		R'000	12 774	16 266	12 883	135 755	130 854	-3,6	
2. Non-residential buildings	1. Office and banking space	square metres	0	0	0	268	2 488	+828,4	
		R'000	0	0	0	536	5 149	+860,6	
	2. Shopping space	square metres	0	0	0	2 068	5 285	+155,6	
		R'000	0	0	0	4 165	12 120	+191,0	
	3. Industrial and warehouse space	square metres	634	3 157	794	2 250	9 116	+305,2	
		R'000	1 282	7 879	1 985	5 078	21 085	+315,2	
	4. Other non-residential buildings 3/	square metres	0	475	0	482	1 224	+153,9	
		R'000	0	1 220	0	901	2 675	+196,9	
	5. Total non-residential buildings	R'000	1 282	9 099	1 985	10 680	41 029	+284,2	
	3. Additions and alterations	1. Dwelling-houses	square metres	1 828	4 549	4 226	26 122	28 998	+11,0
			R'000	3 656	9 374	8 650	49 747	60 740	+22,1
2. Other buildings 4/		square metres	0	822	2 182	5 427	14 947	+175,4	
		R'000	0	1 750	5 254	12 896	32 536	+152,3	
3. Total additions and alterations		R'000	3 656	11 124	13 904	62 643	93 276	+48,9	
4. Recorded buildings completed	1. Total at current prices	R'000	17 712	36 489	28 772	209 078	265 159	+26,8	

1/ The percentage change between cumulative figures for 2005 and 2006.

2/ Other residential buildings include institutions for the disabled, boarding houses, hostels and tourism accommodation e.g. hotels, motels, guesthouses, holiday chalets, bed-and-breakfast accommodation and casinos.

3/ Other non-residential space includes churches, sport and recreation clubs, schools, crèches, hospitals and all other non-residential space.

4/ Other buildings include other residential buildings, non-residential buildings and internal alterations.

Table 23 - Buildings reported as completed to larger municipalities at current prices by type of building: Free State

Category of building	Type of building	Measuring unit	Dec. 2005	Nov. 2006	Dec. 2006	Jan. - Dec. 2005	Jan. - Dec. 2006	% Change 1/	
1. Residential buildings	1. Dwelling-houses < 80 square metres	Number	18	19	21	1 997	470	-76,5	
		square metres	1 013	1 089	1 213	83 967	22 282	-73,5	
		R'000	1 416	1 860	2 593	61 603	28 155	-54,3	
	2. Dwelling-houses >= 80 square metres	Number	11	53	42	440	455	+3,4	
		square metres	1 868	8 832	6 801	81 839	79 822	-2,5	
		R'000	3 863	16 519	12 936	155 036	147 246	-5,0	
	3. Flats and townhouses	Number	17	0	23	994	492	-50,5	
		square metres	2 337	0	5 357	101 967	53 040	-48,0	
		R'000	4 674	0	10 919	183 069	111 442	-39,1	
	4. Other residential buildings 2/	square metres	0	0	0	4 697	8 972	+91,0	
		R'000	0	0	0	8 185	37 828	+362,2	
	5. Total residential buildings	R'000	9 953	18 379	26 448	407 893	324 671	-20,4	
2. Non-residential buildings	1. Office and banking space	square metres	289	0	506	4 947	2 131	-56,9	
		R'000	867	0	1 100	11 619	5 104	-56,1	
	2. Shopping space	square metres	0	1 724	0	10 149	21 759	+114,4	
		R'000	0	3 400	0	19 013	61 172	+221,7	
	3. Industrial and warehouse space	square metres	0	689	1 236	10 944	18 773	+71,5	
		R'000	0	1 400	2 472	14 178	49 950	+252,3	
	4. Other non-residential buildings 3/	square metres	404	596	0	2 758	4 359	+58,0	
		R'000	800	817	0	4 835	8 436	+74,5	
		5. Total non-residential buildings	R'000	1 667	5 617	3 572	49 645	124 662	+151,1
	3. Additions and alterations	1. Dwelling-houses	square metres	2 634	4 859	3 020	65 812	63 929	-2,9
			R'000	4 686	8 513	6 285	98 792	106 284	+7,6
2. Other buildings 4/		square metres	622	1 447	323	47 521	16 313	-65,7	
		R'000	1 636	3 662	13 179	83 116	60 876	-26,8	
		3. Total additions and alterations	R'000	6 322	12 175	19 464	181 908	167 160	-8,1
4. Recorded buildings completed		1. Total at current prices	R'000	17 942	36 171	49 484	639 446	616 493	-3,6

1/ The percentage change between cumulative figures for 2005 and 2006.

2/ Other residential buildings include institutions for the disabled, boarding houses, hostels and tourism accommodation e.g. hotels, motels, guesthouses, holiday chalets, bed-and-breakfast accommodation and casinos.

3/ Other non-residential space includes churches, sport and recreation clubs, schools, crèches, hospitals and all other non-residential space.

4/ Other buildings include other residential buildings, non-residential buildings and internal alterations.

Table 24 - Buildings reported as completed to larger municipalities at current prices by type of building: KwaZulu-Natal

Category of building	Type of building	Measuring unit	Dec. 2005*	Nov. 2006	Dec. 2006	Jan. - Dec. 2005	Jan. - Dec. 2006	% Change 1/
1. Residential buildings	1. Dwelling-houses < 80 square metres	Number	183	127	101	3 356	1 221	-63,6
		square metres	8 419	6 095	4 886	121 864	55 006	-54,9
		R'000	11 330	12 047	10 546	142 593	105 536	-26,0
	2. Dwelling-houses >= 80 square metres	Number	155	146	137	1 934	1 465	-24,3
		square metres	37 129	25 477	29 954	398 533	307 356	-22,9
		R'000	97 091	70 438	80 404	984 636	818 718	-16,9
	3. Flats and townhouses	Number	435	493	384	2 899	3 292	+13,6
		square metres	75 862	73 489	75 656	447 273	609 200	+36,2
		R'000	211 284	229 675	243 592	1 312 841	1 824 616	+39,0
	4. Other residential buildings 2/	square metres	0	3 080	0	10 972	13 252	+20,8
		R'000	0	10 060	0	22 069	36 239	+64,2
	5. Total residential buildings	R'000	319 705	322 220	334 542	2 462 139	2 785 109	+13,1
2. Non-residential buildings	1. Office and banking space	square metres	3 451	1 690	2 772	71 645	56 794	-20,7
		R'000	6 714	1 501	10 095	183 041	136 845	-25,2
	2. Shopping space	square metres	9 007	0	5 258	48 989	91 596	+87,0
		R'000	25 329	0	13 261	118 835	399 046	+235,8
	3. Industrial and warehouse space	square metres	1 371	26 006	20 547	187 763	161 890	-13,8
		R'000	2 467	60 970	53 328	365 833	366 643	+0,2
	4. Other non-residential buildings 3/	square metres	98	154	542	70 093	27 872	-60,2
		R'000	200	154	1 275	178 652	63 904	-64,2
		5. Total non-residential buildings	R'000	34 710	62 625	77 959	846 361	966 438
3. Additions and alterations	1. Dwelling-houses	square metres	25 771	18 102	19 776	326 390	263 443	-19,3
		R'000	59 051	46 542	49 265	707 715	610 384	-13,8
	2. Other buildings 4/	square metres	13 467	7 498	5 990	100 396	117 188	+16,7
		R'000	30 446	24 151	39 212	276 076	324 101	+17,4
	3. Total additions and alterations	R'000	89 497	70 693	88 477	983 791	934 485	-5,0
4. Recorded buildings completed	1. Total at current prices	R'000	443 912	455 538	500 978	4 292 291	4 686 032	+9,2

1/ The percentage change between cumulative figures for 2005 and 2006.

2/ Other residential buildings include institutions for the disabled, boarding houses, hostels and tourism accommodation e.g. hotels, motels, guesthouses, holiday chalets, bed-and-breakfast accommodation and casinos.

3/ Other non-residential space includes churches, sport and recreation clubs, schools, crèches, hospitals and all other non-residential space.

4/ Other buildings include other residential buildings, non-residential buildings and internal alterations.

* Revised.

Table 25 - Buildings reported as completed to larger municipalities at current prices by type of building: North West

Category of building	Type of building	Measuring unit	Dec. 2005*	Nov. 2006	Dec. 2006	Jan. - Dec. 2005	Jan. - Dec. 2006	% Change 1/	
1. Residential buildings	1. Dwelling-houses < 80 square metres	Number	42	354	49	2 141	890	-58,4	
		square metres	2 545	12 216	2 869	73 671	42 860	-41,8	
		R'000	3 112	11 354	5 756	60 866	48 194	-20,8	
	2. Dwelling-houses >= 80 square metres	Number	151	129	194	1 353	1 457	+7,7	
		square metres	28 997	21 260	34 579	249 996	269 562	+7,8	
		R'000	76 043	48 567	92 443	585 814	667 152	+13,9	
	3. Flats and townhouses	Number	89	186	85	630	853	+35,4	
		square metres	6 966	13 052	6 722	69 323	96 354	+39,0	
		R'000	17 364	32 032	20 800	174 694	241 902	+38,5	
	4. Other residential buildings 2/	square metres	293	412	0	4 705	1 540	-67,3	
		R'000	722	906	0	13 533	3 106	-77,0	
5. Total residential buildings		R'000	97 241	92 859	118 999	834 907	960 354	+15,0	
2. Non-residential buildings	1. Office and banking space	square metres	1 855	0	0	4 688	1 503	-67,9	
		R'000	3 710	0	0	15 524	3 307	-78,7	
	2. Shopping space	square metres	1 187	1 069	6 950	45 807	44 358	-3,2	
		R'000	1 790	1 740	24 288	108 919	159 527	+46,5	
	3. Industrial and warehouse space	square metres	0	0	171	10 440	11 352	+8,7	
		R'000	0	0	427	17 979	19 715	+9,7	
	4. Other non-residential buildings 3/	square metres	101	0	1 672	4 163	5 692	+36,7	
		R'000	252	0	8 928	8 854	18 044	+103,8	
	5. Total non-residential buildings	R'000	5 752	1 740	33 643	151 276	200 593	+32,6	
	3. Additions and alterations	1. Dwelling-houses	square metres	1 644	3 974	2 832	49 630	45 218	-8,9
			R'000	3 279	8 961	6 124	89 781	85 974	-4,2
2. Other buildings 4/		square metres	1 051	1 157	2 409	24 186	36 577	+51,2	
		R'000	1 983	1 741	7 094	54 762	90 945	+66,1	
3. Total additions and alterations		R'000	5 262	10 702	13 218	144 543	176 919	+22,4	
4. Recorded buildings completed	1. Total at current prices	R'000	108 255	105 301	165 860	1 130 726	1 337 866	+18,3	

1/ The percentage change between cumulative figures for 2005 and 2006.

2/ Other residential buildings include institutions for the disabled, boarding houses, hostels and tourism accommodation e.g. hotels, motels, guesthouses, holiday chalets, bed-and-breakfast accommodation and casinos.

3/ Other non-residential space includes churches, sport and recreation clubs, schools, crèches, hospitals and all other non-residential space.

4/ Other buildings include other residential buildings, non-residential buildings and internal alterations.

* Revised.

Table 26 - Buildings reported as completed to larger municipalities at current prices by type of building: Gauteng

Category of building	Type of building	Measuring unit	Dec. 2005*	Nov. 2006	Dec. 2006	Jan. - Dec. 2005	Jan. - Dec. 2006	% Change 1/	
1. Residential buildings	1. Dwelling-houses < 80 square metres	Number	1 121	3 019	932	8 065	13 738	+70,3	
		square metres	52 711	116 208	41 548	348 544	584 768	+67,8	
		R'000	108 401	163 382	89 243	616 578	1 014 480	+64,5	
	2. Dwelling-houses >= 80 square metres	Number	716	786	839	8 150	9 092	+11,6	
		square metres	202 538	209 946	217 765	2 070 604	2 299 658	+11,1	
		R'000	562 189	565 333	687 819	5 484 377	6 736 849	+22,8	
	3. Flats and townhouses	Number	793	835	1 164	11 218	11 026	-1,7	
		square metres	120 861	122 744	145 006	1 457 010	1 431 200	-1,8	
		R'000	357 111	381 060	481 668	4 083 850	4 465 583	+9,3	
	4. Other residential buildings 2/	square metres	0	0	730	2 570	24 798	+864,9	
		R'000	0	0	1 460	7 105	73 210	+930,4	
	5. Total residential buildings	R'000	1 027 701	1 109 775	1 260 190	10 191 910	12 290 122	+20,6	
2. Non-residential buildings	1. Office and banking space	square metres	8 354	37 954	18 952	298 382	168 377	-43,6	
		R'000	25 199	132 180	68 350	840 750	575 267	-31,6	
	2. Shopping space	square metres	13 812	63 701	11 204	146 064	321 783	+120,3	
		R'000	41 955	157 680	39 851	424 739	983 051	+131,4	
	3. Industrial and warehouse space	square metres	13 691	38 506	46 827	239 123	265 892	+11,2	
		R'000	39 638	93 565	136 892	638 359	715 683	+12,1	
	4. Other non-residential buildings 3/	square metres	1 015	595	0	11 945	20 535	+71,9	
		R'000	3 208	1 742	0	29 213	59 344	+103,1	
		5. Total non-residential buildings	R'000	110 000	385 167	245 093	1 933 061	2 333 345	+20,7
	3. Additions and alterations	1. Dwelling-houses	square metres	32 230	74 072	38 522	378 016	632 740	+67,4
R'000			87 685	171 562	125 480	941 531	1 711 244	+81,8	
2. Other buildings 4/		square metres	3 512	32 696	18 111	112 453	119 886	+6,6	
		R'000	9 571	96 022	60 518	294 649	366 370	+24,3	
		3. Total additions and alterations	R'000	97 256	267 584	185 998	1 236 180	2 077 614	+68,1
4. Recorded buildings completed	1. Total at current prices	R'000	1 234 957	1 762 526	1 691 281	13 361 151	16 701 081	+25,0	

1/ The percentage change between cumulative figures for 2005 and 2006.

2/ Other residential buildings include institutions for the disabled, boarding houses, hostels and tourism accommodation e.g. hotels, motels, guesthouses, holiday chalets, bed-and-breakfast accommodation and casinos.

3/ Other non-residential space includes churches, sport and recreation clubs, schools, crèches, hospitals and all other non-residential space.

4/ Other buildings include other residential buildings, non-residential buildings and internal alterations.

* Revised.

Table 27 - Buildings reported as completed to larger municipalities at current prices by type of building: Mpumalanga

Category of building	Type of building	Measuring unit	Dec. 2005	Nov. 2006	Dec. 2006	Jan. - Dec. 2005	Jan. - Dec. 2006	% Change 1/
1. Residential buildings	1. Dwelling-houses < 80 square metres	Number	14	6	7	737	572	-22,4
		square metres	750	340	484	36 891	26 389	-28,5
		R'000	1 777	772	1 522	43 666	49 016	+12,3
	2. Dwelling-houses >= 80 square metres	Number	79	160	93	895	1 201	+34,2
		square metres	12 818	24 155	19 758	164 360	217 322	+32,2
		R'000	32 177	59 109	54 039	336 795	533 253	+58,3
	3. Flats and townhouses	Number	6	55	47	201	492	+144,8
		square metres	1 095	4 306	5 339	23 768	40 740	+71,4
		R'000	1 947	12 019	15 819	47 205	96 680	+104,8
	4. Other residential buildings 2/	square metres	531	69	104	1 681	890	-47,1
		R'000	1 445	207	312	3 277	2 730	-16,7
5. Total residential buildings		R'000	37 346	72 107	71 692	430 943	681 679	+58,2
2. Non-residential buildings	1. Office and banking space	square metres	591	0	0	3 758	10 427	+177,5
		R'000	1 476	0	0	7 729	27 040	+249,9
	2. Shopping space	square metres	0	5 270	1 508	14 112	31 552	+123,6
		R'000	0	24 116	5 278	18 318	110 215	+501,7
	3. Industrial and warehouse space	square metres	3 445	117	2 355	14 184	49 032	+245,7
		R'000	8 000	75	6 848	29 019	95 289	+228,4
	4. Other non-residential buildings 3/	square metres	0	0	0	2 004	1 966	-1,9
		R'000	0	0	0	4 874	3 425	-29,7
	5. Total non-residential buildings	R'000	9 476	24 191	12 126	59 940	235 969	+293,7
3. Additions and alterations	1. Dwelling-houses	square metres	1 292	4 696	3 909	27 295	62 002	+127,2
		R'000	2 000	9 622	9 378	45 450	115 982	+155,2
	2. Other buildings 4/	square metres	0	713	1 462	1 545	14 153	+816,1
		R'000	19	1 784	3 985	7 102	35 279	+396,7
	3. Total additions and alterations	R'000	2 019	11 406	13 363	52 552	151 261	+187,8
4. Recorded buildings completed	1. Total at current prices	R'000	48 841	107 704	97 181	543 435	1 068 909	+96,7

1/ The percentage change between cumulative figures for 2005 and 2006.

2/ Other residential buildings include institutions for the disabled, boarding houses, hostels and tourism accommodation e.g. hotels, motels, guesthouses, holiday chalets, bed-and-breakfast accommodation and casinos.

3/ Other non-residential space includes churches, sport and recreation clubs, schools, crèches, hospitals and all other non-residential space.

4/ Other buildings include other residential buildings, non-residential buildings and internal alterations.

Table 28 - Buildings reported as completed to larger municipalities at current prices by type of building: Limpopo

Category of building	Type of building	Measuring unit	Dec. 2005*	Nov. 2006	Dec. 2006	Jan. - Dec. 2005	Jan. - Dec. 2006	% Change 1/
1. Residential buildings	1. Dwelling-houses < 80 square metres	Number	42	40	35	278	305	+9,7
		square metres	2 706	2 553	2 244	17 457	19 012	+8,9
		R'000	5 397	6 637	5 572	34 820	47 855	+37,4
	2. Dwelling-houses >= 80 square metres	Number	50	54	70	544	568	+4,4
		square metres	8 552	9 786	12 302	100 171	107 886	+7,7
		R'000	20 370	28 387	32 536	225 025	286 582	+27,4
	3. Flats and townhouses	Number	2	49	0	139	245	+76,3
		square metres	433	3 886	0	18 984	27 474	+44,7
		R'000	1 233	9 868	0	38 482	67 895	+76,4
	4. Other residential buildings 2/	square metres	0	0	0	1 800	737	-59,1
		R'000	0	0	0	5 400	1 566	-71,0
	5. Total residential buildings	R'000	27 000	44 892	38 108	303 727	403 898	+33,0
2. Non-residential buildings	1. Office and banking space	square metres	161	243	0	5 601	4 293	-23,4
		R'000	306	680	0	11 186	9 558	-14,6
	2. Shopping space	square metres	0	403	252	7 164	16 799	+134,5
		R'000	0	645	404	15 573	33 154	+112,9
	3. Industrial and warehouse space	square metres	0	441	0	5 987	3 453	-42,3
		R'000	0	1 100	0	7 984	8 955	+12,2
	4. Other non-residential buildings 3/	square metres	0	190	0	1 724	1 495	-13,3
		R'000	0	340	0	3 688	3 994	+8,3
	5. Total non-residential buildings	R'000	306	2 765	404	38 431	55 661	+44,8
3. Additions and alterations	1. Dwelling-houses	square metres	2 780	1 480	1 022	20 940	12 992	-38,0
		R'000	5 446	2 466	2 396	40 795	29 648	-27,3
	2. Other buildings 4/	square metres	0	1 953	0	5 147	4 139	-19,6
		R'000	0	3 322	0	11 479	8 963	-21,9
	3. Total additions and alterations	R'000	5 446	5 788	2 396	52 274	38 611	-26,1
4. Recorded buildings completed	1. Total at current prices	R'000	32 752	53 445	40 908	394 432	498 170	+26,3

1/ The percentage change between cumulative figures for 2005 and 2006.

2/ Other residential buildings include institutions for the disabled, boarding houses, hostels and tourism accommodation e.g. hotels, motels, guesthouses, holiday chalets, bed-and-breakfast accommodation and casinos.

3/ Other non-residential space includes churches, sport and recreation clubs, schools, crèches, hospitals and all other non-residential space.

4/ Other buildings include other residential buildings, non-residential buildings and internal alterations.

* Revised.

Table 29 - Subsidised low-cost dwelling-houses completed or under construction by province

Province	Year	Number 1/	Square metres 2/	Value R'000 2/
Western Cape	2002	19 534	531 116	168 852
	2003	16 926	507 780	247 187
	2004	12 751	382 530	211 424
Eastern Cape	2002	46 700	1 575 675	473 806
	2003	35 005	1 050 150	511 213
	2004	34 923	1 047 690	579 058
Northern Cape	2002	5 189	164 906	68 078
	2003	4 354	130 620	63 586
	2004	3 645	109 350	60 438
Free State	2002	8 617	348 492	154 121
	2003	14 848	445 440	216 840
	2004	16 522	495 660	273 951
KwaZulu-Natal	2002	21 958	831 349	234 041
	2003	31 372	941 160	458 157
	2004	35 968	1 079 040	596 385
North West	2002	21 309	630 115	210 439
	2003	13 809	414 270	201 667
	2004	10 149	304 470	168 281
Gauteng	2002	29 939	991 571	321 943
	2003	42 862	1 285 860	625 957
	2004	33 260	997 800	551 484
Mpumalanga	2002	19 883	660 505	253 931
	2003	21 336	640 080	246 079
	2004	18 808	564 240	311 855
Limpopo	2002	15 382	605 877	183 769
	2003	15 596	467 880	227 764
	2004	16 338	490 140	270 900
South Africa	2002	188 511	6 339 606	2 068 980
	2003	196 108	5 883 240	2 798 450
	2004	182 364	5 470 920	3 023 777

Source: Provincial Governments co-ordinated by the National Department of Housing
 1/ As soon as building commences, dwelling-houses are recorded as completed or under construction.
 2/ Estimates by the National Department of Housing.

Table 30 - Subsidised low-cost dwelling-houses completed by province

Completions during financial year: 1 April 2005 to 31 March 2006			
Province	Number	Square metres 1/	Value R'000 1/
Western Cape	2 040	61 200	52 877
Eastern Cape	16 874	506 220	437 374
Northern Cape	5 293	158 790	137 195
Free State	17 635	529 050	457 099
KwaZulu-Natal	21 601	648 030	559 898
North West	14 445	433 350	374 414
Gauteng	23 409	702 270	606 761
Mpumalanga	14 389	431 670	372 963
Limpopo	21 973	659 190	569 540
South Africa	137 659	4 129 770	3 568 121

Source: Provincial Governments co-ordinated by the National Department of Housing
 1/ Estimates by the National Department of Housing.

Explanatory notes

Introduction	1	Statistics South Africa (Stats SA) conducts a monthly building statistics survey collecting information regarding building plans passed and buildings completed, financed by the private sector, from the largest local government institutions in South Africa. According to these institutions, they are not always notified about low-cost housing projects and therefore do not include the bulk of low-cost dwelling-houses. Data regarding subsidised low-cost dwelling-houses, supplied by the provincial governments and co-ordinated by the National Department of Housing, are shown in table 29 and table 30 (page 37).
	2	In order to improve timeliness of the publication, some information for the current month has been estimated due to late submission by respondents. These estimates will be revised in the next statistical release(s) as soon as actual information is available.
Purpose of the survey	3	The monthly survey data are used in monitoring the state of economy and formulation of economic policy. Furthermore, the results are important inputs to estimate the Gross Domestic Product (GDP) and to calculate the Composite Leading Business Cycle Indicator. The data are extensively used by the private sector.
Scope of the survey	4	This survey covers local government institutions conducting activities for the private sector regarding - <ul style="list-style-type: none"> • passing of building plans; and • final inspection of completed buildings.
Classification	5	Building activities is classified in division 5 according to the 1993 edition of the <i>Standard Industrial Classification of all Economic Activities, (SIC) Fifth Edition, Report No. 09-90-02</i> . The SIC is based on the 1990 <i>International Standard Industrial Classification of all Economic Activities (ISIC)</i> with suitable adaptations for local conditions.
Response rate	6	The preliminary response rate for the survey on building statistics for December 2006 was 98,2%. Improved response rate for November 2006 was 99,1%.
Statistical unit	7	The statistical unit for the collection of information is a local government institution. Local government institutions include district municipalities, metropolitan municipalities and local municipalities.
Survey methodology and design	8	<p>Stats SA conducts a monthly survey of metropolitan municipalities and large local municipalities on building plans passed and buildings completed. An annual survey of the remaining municipalities is conducted regarding buildings completed. The monthly survey represents approximately 90 percent of the total value of buildings completed. Information regarding building plans passed and buildings completed for the private sector is collected by mail, fax and telephone.</p> <p>According to the municipalities, they are not always notified about low-cost housing projects. Data regarding subsidised low-cost dwelling-houses, supplied by the provincial governments and co-ordinated by the National Department of Housing, are shown in table 29 and table 30 (page 37).</p>
Constant prices	9	The value of building plans passed and buildings completed at constant prices measures building activities in terms of ruling prices in a specific base year, which is currently 2000. The value of building plans passed at constant prices for each month is obtained by deflating the values at current prices with a price index known as the 'lump sum domestic buildings' as published in statistical release P0151: <i>JBCC Contract Price Adjustment Provisions Work Group Indices</i> . In order to be applicable, these indices (base February 1991=100) are converted to the base year 2000=100.

- 10** The value of buildings completed at constant prices is obtained by deflating the values at current prices with the price index which is used to calculate building plans passed at constant prices (see paragraph 8). Since the completion of buildings may extend over a few months to a few years, the current value of buildings completed is deflated by price indices which prevailed at the time the plans were passed. Therefore, the duration of the completion of different types of buildings are taken into account in ascertaining the deflators e.g. the value of dwelling-houses completed at constant prices at January 2006 is obtained by deflating the current value of dwelling-houses completed for January 2006 with the price index of a month six months prior to January 2006. Furthermore, the value of other residential buildings, non-residential buildings and additions and alterations at constant prices is obtained by deflating the current values with price indices of 12 months, 18 months and 12 months prior to the relevant month, respectively.
- Seasonal adjustment**
- 11** Seasonally adjusted estimates of building plans passed and buildings completed are generated each month, using the X-11 Seasonal Adjustment Program developed by US Bureau of the Census Economic Research and Analyses Division, 1968.
- 12** Seasonal adjustment is a means of removing the estimated effects of normal seasonal variation from the series so that the effects of other influences on the series can be more clearly recognised. Seasonal adjustment does not aim to remove irregular or non-seasonal influences which may be present in any particular month. Influences that are volatile or unsystematic can still make it difficult to interpret the movement of the series even after adjustment for seasonal variations. Therefore, the month-to-month movements of seasonally adjusted estimates may not be reliable indicators of trend behaviour.
- Trend cycle**
- 13** The trend is a long-term pattern or movement of a time series. The X-11 Seasonal Adjustment Program is used for smoothing seasonally adjusted data.
- Revised figures**
- 14** Revised figures are due to late submission of data to Stats SA, or to respondents reporting revisions or corrections to their figures. Figures for the latest month are therefore preliminary. Data are edited at municipal level.
- 15** Once a year the annual statistical release P5041.3 is published with the revised and updated information at provincial and municipal level for the previous calendar year. Due to this comprehensive revision, the monthly statistical release P5041.1 reflects provincial revision for 2005 where applicable.
- Related publications**
- 16** Users may also wish to refer to the following publications:
- P5041.3: Selected building statistics of the private sector as reported by local government institutions issued annually.
 - P9101.2: Actual and expected expenditure on construction by the public sector per statistical region issued annually.
 - Bulletin of Statistics issued quarterly.
 - South African Statistics issued annually.
 - Report 50-11-01 issued annually.
- Rounding-off of figures**
- 17** The figures in the tables have, where necessary, been rounded off to the nearest digit shown.
- Pre-release policy**
- 18** Stats SA's pre-release policy may be inspected at its website, www.statssa.gov.za

Symbols and abbreviations

19	..	no meaningful percentage change between two specified periods available since either one or both of the totals are nil
	0	nil or figure too small to publish
	*	revised
	Stats SA	Statistics South Africa
	SIC	Standard Industrial Classification of all Economic Activities
	ISIC	International Standard Industrial Classification of all Economic Activities
	JBCC	Joint Building Contracts Committee
	CD	Compact Disc
	US	United States
	SARB	South African Reserve Bank
	DTI	Department of Trade and Industry

2010 World Cup note

20	Please note that a plan worth R1,3 billion was approved for a 2010 Soccer World Cup stadium by the eThekweni (Durban) Municipality during November 2006. 2010 Soccer World Cup new stadia and renovations will not be included in the private sector building data series, as these are partially public sector funded. However, Statistics South Africa will include the data regarding these stadia in the Explanatory notes of this statistical release.	
-----------	---	--

Glossary

Additions and alterations	They include extensions to existing buildings as well as internal and external alterations of existing buildings.
Blocks of flats	High-density housing consisting of a number of self-contained dwelling-units, each with at least one living-room together with a kitchen and bathroom, conjoined to similar units in one building.
Dwelling-house	A free-standing, complete structure on a separate stand or a self-contained dwelling-unit, granny flat, on the same premises as an existing residence. Out-buildings and garages are included.
Local government institutions	Include – <ul style="list-style-type: none"> • District municipalities; • Metropolitan municipalities; and • Local municipalities.
Municipality	A generic term describing the “unit” of government in the local spheres responsible for local government in a geographically demarcated area and including district, metropolitan and local municipalities. It is an institution consisting of a municipal council (elected political representatives) and municipal administration (appointed officials).
District municipality	Municipality that has municipal executive and legislative authority in an area that includes more than one municipality, and which is described in section 155(1) of the Constitution as a category C municipality (Refer to Local Government: Municipal Structure Act, 1998 (Act No. 117 of 1998)).
Metropolitan municipality	Municipality that has municipal executive and legislative authority in an area that includes more than one municipality, and which is described in section 155(1) of the Constitution as a category A municipality (Refer to Local Government: Municipal Structure Act, 1998 (Act No. 117 of 1998)).
Local municipality	Municipality that shares municipal executive and legislative authority in its area with a district municipality within whose area it falls, that is described in section 155(1) of the constitution as a category B municipality.
Non-residential buildings	Comprise factories, commercial, financial and other office buildings, as well as other buildings not used for residential purposes, such as churches, halls, clubs, schools and hospitals.
Other residential buildings	Institutions for the disabled, boarding houses, old people’s homes, hostels, hotels, motels, guesthouses, holiday chalets, bed-and-breakfast accommodation, entertainment centres and casinos.
Percentage change	<p>When using monthly actual values, the percentage change is the change in actual values of building activities (building plans passed or buildings completed) of the relevant month compared with the actual values of building activities (building plans passed or buildings completed) of the same month in the previous year expressed as a percentage.</p> <p>When using annual actual values, the percentage change is the change in the actual values of building activities (building plans passed or buildings completed) of the relevant year compared with the actual values of building activities (building plans passed or buildings completed) of the previous year expressed as a percentage.</p> <p>When using seasonally adjusted values, the percentage change is the change in the seasonally adjusted values of building activities (building plans passed or buildings completed) of the relevant month compared with the seasonally adjusted values of building activities (building plans passed or buildings completed) of the previous month expressed as a percentage.</p>

Reference period	One calendar month.
Residential buildings	Comprise dwelling-houses, flats, townhouses and other residential buildings.
Townhouses	Multiple, medium-density dwelling-units and include cluster housing, group housing, simplexes, duplexes, triplexes and other similar dwelling-units which are usually grouped together, with one level of each unit on ground level. This excludes blocks of flats.

General information

Stats SA publishes approximately 300 different statistical releases each year. It is not economically viable to produce them in more than one of South Africa's eleven official languages. Since the releases are used extensively, not only locally but also by international economic and social-scientific communities, Stats SA releases are published in English.

Stats SA has copyright on this publication. Users may apply the information as they wish, provided that they acknowledge Stats SA as the source of the basic data wherever they process, apply, utilise, publish or distribute the data and also that they specify that the relevant application and analysis (where applicable) result from their own processing of the data.

An advance release calendar is disseminated on www.statssa.gov.za

Stats SA products

A complete set of Stats SA publications is available at the Stats SA Library and the following libraries:

National Library of South Africa, Pretoria Division
National Library of South Africa, Cape Town Division
Natal Society Library, Pietermaritzburg
Library of Parliament, Cape Town
Bloemfontein Public Library
Johannesburg Public Library
Eastern Cape Library Services, King William's Town
Central Regional Library, Polokwane
Central Reference Library, Nelspruit
Central Reference Collection, Kimberley
Central Reference Library, Mmabatho

Stats SA also provides a subscription service.

Electronic services

A large range of data are available via on-line services, diskette, CD and computer printouts. For more details about our electronic data services, contact (012) 310 8600/8390/8351/4892/8496/8095.

You can visit us on the Internet at: www.statssa.gov.za

Enquiries

Telephone number: (012) 310 8600/8390/8351/4892/8496/8095 (user information services)
(012) 310 8228/310 8007 (technical enquiries)
(012) 310 8161 (orders)
(012) 310 4883/4885/8018 (library)

Fax number: (012) 310 8664 (technical enquiries)

Email: Gretaz@statssa.gov.za (technical enquiries)
info@statssa.gov.za (user information services)
distribution@statssa.gov.za (orders)

Postal address: Private Bag X44, Pretoria, 0001

Produced by Stats SA