

Selected building statistics of the private sector derived from data reported by local government institutions

December 2002

Co-operation between Statistics South Africa (Stats SA), the citizens of the country, the private sector and government institutions is essential for a successful statistical system. Without continued co-operation and goodwill, the timely release of relevant and reliable official statistics will not be possible.

**Embargo: 13:00
Date: 19 February 2003**

Stats SA publishes approximately three hundred different releases each year. It is not economically viable to produce them in more than one of South Africa's eleven official languages. Since the releases are used extensively, not only locally, but also by international economic and social-scientific communities, Stats SA releases are published in English only.

Key figures regarding building plans passed for the month ended December 2002

Actual estimates at constant 2000 prices	December 2002	January 2002 to December 2002	Percentage change between December 2001 and December 2002	Percentage change between October 2001 to December 2001 and October 2002 to December 2002	Percentage change between January 2001 to December 2001 and January 2002 to December 2002
	R million	R million			
Residential buildings					
Dwelling-houses	518,7	8 371,9	+ 17,2	+ 17,7	+ 11,5
Flats and townhouses	171,3	2 329,6	+ 18,6	+ 15,1	+ 17,6
Other residential buildings	172,0	778,2	+ 2 108,2	+ 163,3	+ 68,6
Total	862,0	11 479,7	+ 44,9	+ 28,8	+ 15,4
Non-residential buildings	181,9	3 286,5	+ 41,5	+ 14,5	+ 1,9
Additions and alterations	333,2	5 897,6	+ 1,8	+ 8,1	+ 14,1
Total	1 377,1	20 663,8	+ 31,1	+ 20,7	+ 12,6

Seasonally adjusted estimates at constant 2000 prices	December 2002	Percentage change between November 2002 and December 2002	Percentage change between July 2002 to September 2002 and October 2002 to December 2002
	R million		
Residential buildings	1 177,8	+ 34,1	+ 20,8
Non-residential buildings	258,0	+ 25,4	+ 2,1
Additions and alterations	471,3	- 0,9	- 2,4
Total	1 907,1	+ 22,3	+ 11,1

Key findings regarding building plans passed for the fourth quarter 2002

Seasonally adjusted real value of building plans passed increases

The seasonally adjusted real value of building plans passed (at constant 2000 prices) for the fourth quarter of 2002 increased by 11,1% compared with the third quarter of 2002.

The increase of 11,1% in the seasonally adjusted real value of building plans passed was due to increases reported for residential buildings (+20,8%) and non-residential buildings (+2,1%) during the fourth quarter of 2002 compared with the third quarter of 2002. However, these increases were partially counteracted by a decrease in the seasonally adjusted real value of building plans passed for additions and alterations (-2,4%) during the above-mentioned period.

Key findings regarding building plans passed for the year 2002

Total real value of building plans passed increases

The total real value of building plans passed (at constant 2000 prices) during 2002 increased by 12,6% (+R2 318,2 million) to R20 663,8 million compared with 2001. Large increases in the real value of building plans passed were reported for residential buildings (+R1 527,7 million) and additions and alterations (+R728,5 million). Large real increases regarding residential buildings were reported for dwelling-houses (+R861,7 million), flats and townhouses (+R349,2 million) and 'other' residential buildings (+R316,7 million). Large real increases for additions and alterations were reported by Gauteng (+R263,1 million), KwaZulu-Natal (+R219,3 million) and Western Cape (+R204,4 million).

Seven of the nine provinces reported increases in the total real value of building plans passed

The largest provincial contributors to the increase of 12,6% (+R2 318,2 million) in the total real value of building plans passed were KwaZulu-Natal (+4,5 percentage points or R817,1 million), Western Cape (+4,1 percentage points or R751,7 million) and Gauteng (+1,7 percentage points or R309,4 million) (cf. table A). The largest real increase in KwaZulu-Natal was reported for 'other' residential buildings and tourism accommodation and casinos (+R328,3 million, due to the passing of building plans during October 2002 for a casino, to the real value of R374,7 million, by eThekweni Municipality) and additions and alterations (+R219,3 million, mainly due to the real increase reported by Umhlathuze Municipality, Richards Bay Area for additions and alterations to non-residential buildings (+R214,0 million)). The largest real increase in Western Cape was reported for dwelling-houses (+R561,7 million, mainly due to increases reported by the selected urban areas of Cape Town (+R181,7 million), Knysna Municipality (+R100,4 million), Overstrand Municipality (+R99,4 million), George Municipality (+R51,9 million) and Helderberg Municipality (+R46,0 million)). Large real increases in Gauteng were reported for additions and alterations (+R263,1 million) and flats and townhouses (+R171,6 million). The real increase for flats and townhouses in Gauteng was mainly due to increases reported by Kungwini Local Municipality, Bronkhorstspuit Area (+R112,1 million) and the selected urban areas of Pretoria (+R51,6 million).

Table A - Contribution of provinces to the total real value of building plans passed

Province	Percentage contribution to the total real value of plans passed during January 2001 to December 2001	Percentage change between January 2001 to December 2001 and January 2002 to December 2002	Contribution (percentage points) ^{1/} to the percentage change in the real value of plans passed between January 2001 to December 2001 and January 2002 to December 2002	Difference in total real value of plans passed between January 2001 to December 2001 and January 2002 to December 2002 R million
KwaZulu-Natal	12,2	+ 36,5	+ 4,5	+ 817,1
Western Cape	28,9	+ 14,2	+ 4,1	+ 751,7
Gauteng	41,2	+ 4,1	+ 1,7	+ 309,4
Free State	2,4	+ 31,6	+ 0,7	+ 138,0
Mpumalanga	3,4	+ 19,7	+ 0,7	+ 123,0
Eastern Cape	5,7	+ 10,7	+ 0,6	+ 112,2
North West	2,9	+ 17,3	+ 0,5	+ 92,2
Limpopo	2,6	- 2,3	- 0,1	- 11,1
Northern Cape	0,7	- 10,6	- 0,1	- 14,3
Total	100,0	+ 12,6	+ 12,6	+2 318,2

1/ The contribution (percentage points) is calculated by multiplying the percentage change of each province between January 2001 to December 2001 and January 2002 to December 2002 (cf. column 3) with the percentage contribution of the corresponding province to the total real value of plans passed during January 2001 to December 2001 (cf. column 2) divided by 100.

Key figures regarding buildings completed for the month ended December 2002

Actual estimates at constant 2000 prices

	December 2002 R million	January 2002 to December 2002 R million	Percentage change between December 2001 and December 2002	Percentage change between October 2001 to December 2001 and October 2002 to December 2002	Percentage change between January 2001 to December 2001 and January 2002 to December 2002
Residential buildings					
Dwelling-houses	443,9	5 237,8	+ 23,6	+ 32,9	+ 25,0
Flats and townhouses	90,0	1 761,6	+ 8,4	+ 9,2	+ 50,8
Other residential buildings	52,7	479,3	+5 438,7	- 0,9	+ 6,8
Total	586,6	7 478,7	+ 32,3	+ 25,5	+ 28,8
Non-residential buildings	340,1	2 495,6	+ 95,3	+ 15,4	- 36,1
Additions and alterations	199,6	2 740,5	+ 64,8	+ 7,8	- 1,4
Total	1 126,3	12 714,8	+ 52,5	+ 19,5	+ 1,8

Seasonally adjusted estimates at constant 2000 prices

	December 2002 R million	Percentage change between November 2002 and December 2002	Percentage change between July 2002 to September 2002 and October 2002 to December 2002
Residential buildings	677,0	+ 10,3	+ 4,5
Non-residential buildings	326,4	+ 9,6	+ 80,7
Additions and alterations	294,2	+ 37,1	+ 13,2
Total	1 297,6	+ 15,2	+ 17,8

Key findings regarding buildings completed for the fourth quarter of 2002

Seasonally adjusted real value of buildings completed increases

The seasonally adjusted real value of buildings completed (at constant 2000 prices) for the fourth quarter of 2002 increased by 17,8% compared with the third quarter of 2002.

The increase of 17,8% in the seasonally adjusted real value of buildings completed during the fourth quarter of 2002 compared with the third quarter of 2002 was due to increases in the seasonally adjusted real value of non-residential buildings (+80,7%), additions and alterations (+13,2%) and residential buildings (+4,5%).

Key findings regarding buildings completed for the year 2002

Total real value of buildings completed increases

The total real value of buildings completed (at constant 2000 prices) during 2002 increased by 1,8% (+R219,6 million) to R12 714,8 million compared with 2001. A large real increase was reported for residential buildings (+R1 672,5 million, mainly due to real increases reported for dwelling-houses (+R1 048,5 million) and flats and townhouses (+R593,4 million). However, these increases were to a certain extent counteracted by a large real decrease reported for non-residential buildings (-R1 412,6 million, mainly due to the decrease in the real value of shopping space completed (-R1 372,3 million)) during the above-mentioned period.

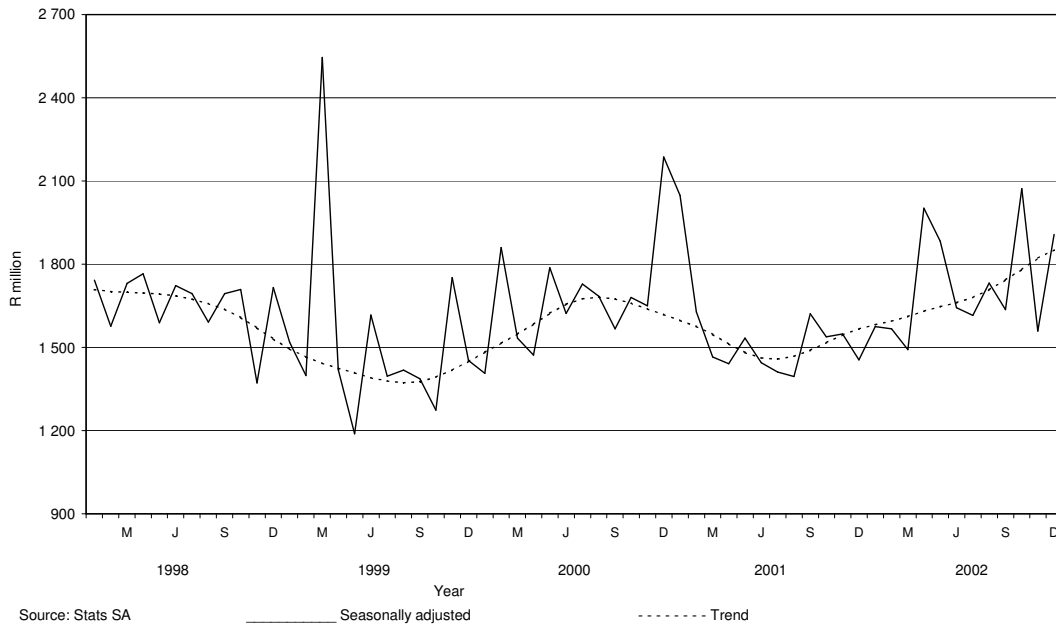
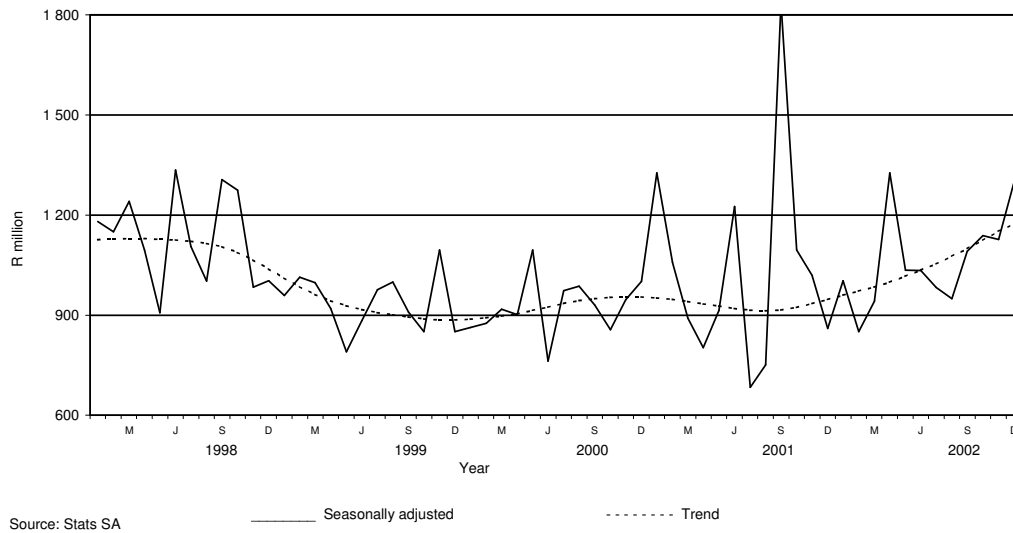
Five of the nine provinces reported increases in the total real value of buildings completed

Large increases in the real value of buildings completed were reported by Gauteng (+5,6 percentage points or R706,0 million) and Western Cape (+4,1 percentage points or R514,6 million) (cf. table B). Large real increases in Gauteng were reported for dwelling-houses (+R636,5 million, mainly due to increases reported by the selected urban areas of Pretoria (+R291,2 million), Witwatersrand (+R220,0 million) and Kungwini Local Municipality – Bronkhorstspuit Area (+R119,6 million)) and flats and townhouses (+R379,2 million, mainly due to the large increases reported by the selected urban areas of Witwatersrand (+R191,7 million) and Pretoria (+R177,4 million)). The largest real increase in Western Cape was reported for dwelling-houses (+R474,9 million, mainly due to the large increase reported by the selected urban areas of Cape Town (+R300,3 million)). However, large decreases in the total real value of buildings completed was reported by KwaZulu-Natal (-8,5 percentage points or R1 067,4 million, mainly due to the decrease in real value of shopping space completed as reported by North Local Council Umhlanga Rocks (-R1 052,0 million)).

Table B - Contribution of provinces to the total real value of buildings completed

Province	Percentage contribution to the total real value of buildings completed during January 2001 to December 2001	Percentage change between January 2001 to December 2001 and January 2002 to December 2002	Contribution (percentage points) ^{1/} to the percentage change in the real value of buildings completed between January 2001 to December 2001 and January 2002 to December 2002	Difference in total real value of buildings completed between January 2001 to December 2001 and January 2002 to December 2002 R million
Gauteng	32,6	+ 17,3	+ 5,6	+ 706,0
Western Cape	26,8	+ 15,4	+ 4,1	+ 514,6
Limpopo	0,8	+ 182,3	+ 1,5	+ 183,6
Mpumalanga	2,0	+ 40,0	+ 0,8	+ 102,0
North West	2,9	+ 17,0	+ 0,5	+ 60,5
Free State	3,2	- 5,8	- 0,2	- 23,3
Northern Cape	1,2	- 39,7	- 0,4	- 56,8
Eastern Cape	6,7	- 23,9	- 1,6	- 199,6
KwaZulu-Natal	23,8	- 35,9	- 8,5	-1 067,4
Total	100,0	+ 1,8	+ 1,8	+ 219,6

1/ The contribution (percentage points) is calculated by multiplying the percentage change of each province between January 2001 to December 2001 and January 2002 to December 2002 (cf. column 3) with the percentage contribution of the corresponding province to the total real value of buildings completed during January 2001 to December 2001 (cf. column 2) divided by 100.

Figure 1 – Total real value of building plans passed**Figure 2 – Total real value of buildings completed**

As from the November 2002 publication the name of the monthly statistical release P5041.1, *Building statistics*, has changed to *Selected building statistics of the private sector derived from data reported by local government institutions*.

pp
PJ Lehohla
 Statistician-General: Statistics South Africa

Contents

	Page
Notes	7
Tables	
Table 1 Actual values and percentage change of building plans passed at current prices according to type of building	8
Table 2 Seasonally adjusted values and percentage change of building plans passed at current prices according to type of building	9
Table 3 Actual values and percentage change of building plans passed at constant 2000 prices according to type of building	10
Table 4 Seasonally adjusted values and percentage change of building plans passed at constant 2000 prices according to type of building	11
Table 5 Actual values and percentage change of buildings completed at current prices according to type of building	12
Table 6 Seasonally adjusted values and percentage change of buildings completed at current prices according to type of building	13
Table 7 Actual values and percentage change of buildings completed at constant 2000 prices according to type of building	14
Table 8 Seasonally adjusted values and percentage change of buildings completed at constant 2000 prices according to type of building	15
Table 9 Building plans passed according to type of building: Total RSA	16
Table 10 Building plans passed according to type of building and province: Western Cape	17
Table 11 Building plans passed according to type of building and province: Eastern Cape	18
Table 12 Building plans passed according to type of building and province: Northern Cape	19
Table 13 Building plans passed according to type of building and province: Free State	20
Table 14 Building plans passed according to type of building and province: KwaZulu-Natal	21
Table 15 Building plans passed according to type of building and province: North West	22
Table 16 Building plans passed according to type of building and province: Gauteng	23
Table 17 Building plans passed according to type of building and province: Mpumalanga	24
Table 18 Building plans passed according to type of building and province: Limpopo.....	25
Table 19 Buildings completed according to type of building: Total RSA	26
Table 20 Buildings completed according to type of building and province: Western Cape	27
Table 21 Buildings completed according to type of building and province: Eastern Cape	28
Table 22 Buildings completed according to type of building and province: Northern Cape.....	29
Table 23 Buildings completed according to type of building and province: Free State	30
Table 24 Buildings completed according to type of building and province: KwaZulu-Natal	31
Table 25 Buildings completed according to type of building and province: North West	32
Table 26 Buildings completed according to type of building and province: Gauteng	33
Table 27 Buildings completed according to type of building and province: Mpumalanga	34
Table 28 Buildings completed according to type of building and province: Limpopo.....	35
Table 29 Building plans passed according to type of building and selected urban area: Cape Town	36
Table 30 Building plans passed according to type of building and selected urban area: Port Elizabeth	37
Table 31 Building plans passed according to type of building and selected urban area: Durban	38
Table 32 Building plans passed according to type of building and selected urban area: Witwatersrand	39
Table 33 Building plans passed according to type of building and selected urban area: Pretoria	40
Table 34 Building plans passed according to type of building and selected urban area: Bloemfontein	41
Table 35 Buildings completed according to type of building and selected urban area: Cape Town	42
Table 36 Buildings completed according to type of building and selected urban area: Port Elizabeth	43
Table 37 Buildings completed according to type of building and selected urban area: Durban	44
Table 38 Buildings completed according to type of building and selected urban area: Witwatersrand	45
Table 39 Buildings completed according to type of building and selected urban area: Pretoria	46
Table 40 Buildings completed according to type of building and selected urban area: Bloemfontein	47
Additional information	
Explanatory notes	48
Technical notes	50
Local government institutions covered in the sample survey	
Table C – Classification of towns and cities according to new municipalities and previous local government institutions by province	51
Table D – Classification of selected urban areas according to new municipalities and previous local government institutions	63
Glossary	66
For more information	68

Notes

Forthcoming issues	Issue	Expected release date
	January 2003	19 March 2003
	February 2003	16 April 2003
	March 2003	21 May 2003
	April 2003	18 June 2003
	May 2003	16 July 2003
	June 2003	20 August 2003
	July 2003	17 September 2003
	August 2003	15 October 2003
	September 2003	19 November 2003
	October 2003	17 December 2003
	November 2003	21 January 2004
	December 2003	18 February 2004
Purpose of the survey	<p>The Building Statistics Survey is a countrywide survey covering a sample of municipalities in South Africa. The information received is used to estimate key economic statistics used by the private and public sectors. The information is also used to compile estimates of the Gross Domestic Product (GDP). These statistics are also used by government to monitor the Reconstruction and Development Programme (RDP) in South Africa.</p>	
Name change of statistical release	<p>As from the November 2002 publication the name of the monthly statistical release P5041.1, <i>Building statistics</i>, has changed to <i>Selected building statistics of the private sector derived from data reported by local government institutions</i>.</p>	
Change in base year of constant prices from 1995 to 2000	<p>Following international practice, the base year of the price index ("lump sum domestic buildings" as published in statistical release P0151 –JBCC Contract Price Adjustment Provision Work Group Indices), which is used to deflate the current prices of building plans passed and buildings completed to constant prices, has been converted to 2000=100 with effect from May 2002. Previously the value of building plans passed and buildings completed was published at constant 1995 prices. It should be borne in mind that the change does not in any way affect the trends.</p>	

Table 1 - Actual values and percentage change of building plans passed at current prices according to type of building

Year ^{1/} and month ^{2/}	Residential buildings		Non-residential buildings		Additions and alterations		Total	
	R'000	Percentage change	R'000	Percentage change	R'000	Percentage change	R'000	Percentage change
2000 Jan	490 776	- 11,3	163 926	- 31,0	365 596	+ 31,8	1 020 298	- 4,5
Feb	784 023	+ 48,3	521 389	+ 32,1	399 280	+ 12,3	1 704 692	+ 33,3
Mar	747 421	+ 12,0	359 267	- 75,3	515 668	+ 8,2	1 622 356	- 37,6
Apr	627 642	+ 18,3	271 151	- 27,6	382 300	+ 15,8	1 281 093	+ 3,7
May	874 847	+ 65,8	573 853	+ 109,3	473 062	+ 17,3	1 921 762	+ 59,5
Jun	853 154	+ 1,8	336 324	- 19,6	532 278	+ 31,8	1 721 756	+ 3,7
Jul	908 061	+ 42,5	484 669	+ 5,2	549 932	+ 30,8	1 942 662	+ 27,9
Aug	929 836	+ 31,1	353 488	- 9,0	492 627	+ 18,5	1 775 951	+ 23,8
Sep	826 851	+ 37,8	354 456	+ 16,0	465 836	- 3,8	1 647 143	+ 18,5
Oct	916 410	+ 37,9	492 884	+ 49,8	539 561	+ 23,5	1 948 855	+ 36,2
Nov	914 346	+ 28,6	493 166	- 29,7	503 659	- 6,2	1 911 171	- 2,0
Dec	606 148	+ 22,7	704 410	+ 212,8	317 835	+ 0,9	1 628 393	+ 57,5
Total	9 479 515	+ 28,4	5 108 983	- 8,2	5 537 634	+ 14,1	20 126 132	+ 13,1
2001 Jan	721 003	+ 46,9	477 489	+ 191,3	352 193	- 3,7	1 550 685	+ 52,0
Feb	826 607	+ 5,4	300 417	- 42,4	474 953	+ 19,0	1 601 977	- 6,0
Mar*	928 030	+ 24,2	297 078	- 17,3	436 472	- 15,4	1 661 580	+ 2,4
Apr	738 858	+ 17,7	207 874	- 23,3	377 373	- 1,3	1 324 105	+ 3,4
May	999 426	+ 14,2	289 330	- 49,6	499 673	+ 5,6	1 788 429	- 6,9
Jun	901 450	+ 5,7	299 913	- 10,8	447 228	- 16,0	1 648 591	- 4,2
Jul	891 483	- 1,8	366 953	- 24,3	427 464	- 22,3	1 685 900	- 13,2
Aug	836 033	- 10,1	245 865	- 30,4	482 883	- 2,0	1 564 781	- 11,9
Sep	960 995	+ 16,2	303 367	- 14,4	526 113	+ 12,9	1 790 475	+ 8,7
Oct	1 196 455	+ 30,6	185 828	- 62,3	542 954	+ 0,6	1 925 237	- 1,2
Nov	974 628	+ 6,6	317 506	- 35,6	595 512	+ 18,2	1 887 646	- 1,2
Dec	649 614	+ 7,2	140 365	- 80,1	357 449	+ 12,5	1 147 428	- 29,5
Total	10 624 582	+ 12,1	3 431 985	- 32,8	5 520 267	- 0,3	19 576 834	- 2,7
2002 Jan	777 744	+ 7,9	167 598	- 64,9	399 729	+ 13,5	1 345 071	- 13,3
Feb	1 013 916	+ 22,7	247 016	- 17,8	447 620	- 5,8	1 708 552	+ 6,7
Mar*	962 925	+ 3,8	465 942	+ 56,8	421 614	- 3,4	1 850 481	+ 11,4
Apr	1 138 926	+ 54,1	347 885	+ 67,4	519 452	+ 37,6	2 006 263	+ 51,5
May	1 105 380	+ 10,6	437 175	+ 51,1	926 607	+ 85,4	2 469 162	+ 38,1
Jun	1 080 086	+ 19,8	489 168	+ 63,1	538 147	+ 20,3	2 107 401	+ 27,8
Jul	1 218 655	+ 36,7	254 211	- 30,7	662 885	+ 55,1	2 135 751	+ 26,7
Aug	1 127 329	+ 34,8	387 234	+ 57,5	686 825	+ 42,2	2 201 388	+ 40,7
Sep	1 166 862	+ 21,4	279 042	- 8,0	606 232	+ 15,2	2 052 136	+ 14,6
Oct*	1 903 252	+ 59,1	320 271	+ 72,3	742 878	+ 36,8	2 966 401	+ 54,1
Nov*	1 191 411	+ 22,2	298 608	- 6,0	698 473	+ 17,3	2 188 492	+ 15,9
Dec	1 080 123	+ 66,3	227 976	+ 62,4	417 471	+ 16,8	1 725 570	+ 50,4
Total	13 766 609	29,6	3 922 126	14,3	7 067 933	28,0	24 756 668	26,5

^{1/} The annual percentage change is the change in the actual values of building plans passed of the relevant year compared with the actual values of building plans passed of the previous year expressed as a percentage.

^{2/} The monthly percentage change is the change in the actual values of building plans passed of the relevant month compared with the actual values of building plans passed of the same month in the previous year expressed as a percentage.

Table 2 - Seasonally adjusted values and percentage change of building plans passed at current prices according to type of building

Year and month ^{1/}	Residential buildings		Non-residential buildings		Additions and alterations		Total	
	R'000	Percentage change	R'000	Percentage change	R'000	Percentage change	R'000	Percentage change
2000 Jan	627 535	- 10,1	251 025	- 17,6	485 411	+ 14,4	1 363 971	- 4,4
Feb	775 337	+ 23,6	583 677	+ 132,5	447 538	- 7,8	1 806 551	+ 32,4
Mar	700 159	- 9,7	330 117	- 43,4	472 584	+ 5,6	1 502 861	- 16,8
Apr	704 591	+ 0,6	305 329	- 7,5	441 351	- 6,6	1 451 271	- 3,4
May	808 339	+ 14,7	509 312	+ 66,8	451 073	+ 2,2	1 768 724	+ 21,9
Jun	815 940	+ 0,9	293 411	- 42,4	506 949	+ 12,4	1 616 301	- 8,6
Jul	831 217	+ 1,9	400 391	+ 36,5	500 969	- 1,2	1 732 577	+ 7,2
Aug	899 460	+ 8,2	342 786	- 14,4	460 226	- 8,1	1 702 471	- 1,7
Sep	811 441	- 9,8	351 658	+ 2,6	429 690	- 6,6	1 592 789	- 6,4
Oct	771 048	- 5,0	472 960	+ 34,5	470 497	+ 9,5	1 714 506	+ 7,6
Nov	850 116	+ 10,3	418 406	- 11,5	428 791	- 8,9	1 697 312	- 1,0
Dec	845 044	- 0,6	976 873	+ 133,5	439 037	+ 2,4	2 260 954	+ 33,2
2001 Jan	913 256	+ 8,1	769 810	- 21,2	459 368	+ 4,6	2 142 434	- 5,2
Feb	812 899	- 11,0	347 798	- 54,8	543 392	+ 18,3	1 704 088	- 20,5
Mar	880 689	+ 8,3	262 117	- 24,6	401 615	- 26,1	1 544 420	- 9,4
Apr	847 423	- 3,8	239 056	- 8,8	436 808	+ 8,8	1 523 287	- 1,4
May	910 949	+ 7,5	243 244	+ 1,8	470 490	+ 7,7	1 624 683	+ 6,7
Jun	860 039	- 5,6	257 303	+ 5,8	421 033	- 10,5	1 538 374	- 5,3
Jul	816 422	- 5,1	299 868	+ 16,5	392 738	- 6,7	1 509 028	- 1,9
Aug	810 879	- 0,7	235 045	- 21,6	448 855	+ 14,3	1 494 779	- 0,9
Sep	948 758	+ 17,0	305 642	+ 30,0	490 233	+ 9,2	1 744 633	+ 16,7
Oct	1 009 955	+ 6,5	183 529	- 40,0	469 729	- 4,2	1 663 212	- 4,7
Nov	905 425	- 10,3	274 885	+ 49,8	507 412	+ 8,0	1 687 722	+ 1,5
Dec	894 987	- 1,2	197 245	- 28,2	505 445	- 0,4	1 597 677	- 5,3
2002 Jan	979 311	+ 9,4	277 075	+ 40,5	512 867	+ 1,5	1 769 253	+ 10,7
Feb	987 542	+ 0,8	285 737	+ 3,1	515 350	+ 0,5	1 788 629	+ 1,1
Mar	924 399	- 6,4	404 194	+ 41,5	389 969	- 24,3	1 718 562	- 3,9
Apr	1 323 275	+ 43,1	404 910	+ 0,2	601 859	+ 54,3	2 330 043	+ 35,6
May	995 759	- 24,8	357 320	- 11,8	862 712	+ 43,3	2 215 791	- 4,9
Jun	1 030 140	+ 3,5	421 251	+ 17,9	502 307	- 41,8	1 953 699	- 11,8
Jul	1 120 951	+ 8,8	206 063	- 51,1	613 683	+ 22,2	1 940 698	- 0,7
Aug	1 094 829	- 2,3	370 377	+ 79,7	637 216	+ 3,8	2 102 422	+ 8,3
Sep	1 153 757	+ 5,4	282 100	- 23,8	568 363	- 10,8	2 004 219	- 4,7
Oct	1 611 682	+ 39,7	320 948	+ 13,8	641 209	+ 12,8	2 573 839	+ 28,4
Nov	1 101 686	- 31,6	258 694	- 19,4	596 707	- 6,9	1 957 087	- 24,0
Dec	1 484 008	+ 34,7	325 664	+ 25,9	594 513	- 0,4	2 404 185	+ 22,8

^{1/} The percentage change is the change in the seasonally adjusted values of building plans passed of the relevant month compared with the seasonally adjusted values of building plans passed of the previous month expressed as a percentage.

Table 3 - Actual values and percentage change of building plans passed at constant 2000 prices according to type of building

Year ^{1/} and month ^{2/}	Residential buildings		Non-residential buildings		Additions and alterations		Total	
	R'000	Percentage change	R'000	Percentage change	R'000	Percentage change	R'000	Percentage change
2000 Jan	508 050	- 13,2	169 696	- 32,5	378 464	+ 28,9	1 056 210	- 6,6
Feb	808 271	+ 46,0	537 514	+ 30,1	411 629	+ 10,6	1 757 414	+ 31,2
Mar	765 016	+ 9,7	367 725	- 75,8	527 808	+ 6,0	1 660 549	- 38,8
Apr	636 554	+ 15,4	275 001	- 29,4	387 728	+ 13,0	1 299 283	+ 1,2
May	881 014	+ 60,8	577 898	+ 103,0	476 397	+ 13,8	1 935 309	+ 54,7
Jun	855 721	- 1,2	337 336	- 22,0	533 880	+ 27,8	1 726 937	+ 0,6
Jul	903 543	+ 37,5	482 258	+ 1,5	547 196	+ 26,3	1 932 997	+ 23,5
Aug	917 903	+ 41,0	348 952	- 13,0	486 305	+ 13,4	1 753 160	+ 18,4
Sep	813 029	+ 31,7	348 531	+ 10,9	458 049	- 8,0	1 619 609	+ 13,3
Oct	897 561	+ 31,5	482 746	+ 42,9	528 463	+ 17,9	1 908 770	+ 29,9
Nov	891 175	+ 22,3	480 669	- 33,1	490 896	- 10,8	1 862 740	- 6,7
Dec	589 065	+ 16,7	684 558	+ 197,3	308 878	- 4,1	1 582 501	+ 49,7
Total	9 466 902	+ 23,9	5 092 884	- 11,7	5 535 693	+ 10,2	20 095 479	+ 9,0
2001 Jan	692 606	+ 36,3	458 683	+ 170,3	338 322	- 10,6	1 489 611	+ 41,0
Feb	791 011	- 2,1	287 480	- 46,5	454 500	+ 10,4	1 532 991	- 12,8
Mar*	882 997	+ 15,4	282 662	- 23,1	415 292	- 21,3	1 580 951	- 4,8
Apr	699 014	+ 9,8	196 664	- 28,5	357 023	- 7,9	1 252 701	- 3,6
May	939 310	+ 6,6	271 927	- 52,9	469 617	- 1,4	1 680 854	- 13,1
Jun	845 638	- 1,2	281 344	- 16,6	419 538	- 21,4	1 546 520	- 10,4
Jul	831 607	- 8,0	342 307	- 29,0	398 754	- 27,1	1 572 668	- 18,6
Aug	778 429	- 15,2	228 925	- 34,4	449 612	- 7,5	1 456 966	- 16,9
Sep	893 118	+ 9,9	281 940	- 19,1	488 953	+ 6,7	1 664 011	+ 2,7
Oct	1 106 804	+ 23,3	171 904	- 64,4	502 270	- 5,0	1 780 978	- 6,7
Nov	896 622	+ 0,6	292 094	- 39,2	547 849	+ 11,6	1 736 565	- 6,8
Dec	594 885	+ 1,0	128 539	- 81,2	327 334	+ 6,0	1 050 758	- 33,6
Total	9 952 041	+ 5,1	3 224 469	- 36,7	5 169 064	- 6,6	18 345 574	- 8,7
2002 Jan	695 035	+ 0,4	149 775	- 67,3	357 220	+ 5,6	1 202 030	- 19,3
Feb	889 400	+ 12,4	216 681	- 24,6	392 649	- 13,6	1 498 730	- 2,2
Mar	838 055	- 5,1	405 520	+ 43,5	366 940	- 11,6	1 610 515	+ 1,9
Apr	977 619	+ 39,9	298 614	+ 51,8	445 882	+ 24,9	1 722 115	+ 37,5
May	935 178	- 0,4	369 860	+ 36,0	783 931	+ 66,9	2 088 969	+ 24,3
Jun	906 112	+ 7,2	410 376	+ 45,9	451 466	+ 7,6	1 767 954	+ 14,3
Jul	1 012 172	+ 21,7	211 139	- 38,3	550 569	+ 38,1	1 773 880	+ 12,8
Aug	926 318	+ 19,0	318 187	+ 39,0	564 359	+ 25,5	1 808 864	+ 24,2
Sep	952 540	+ 6,7	227 789	- 19,2	494 883	+ 1,2	1 675 212	+ 0,7
Oct*	1 533 644	+ 38,6	258 075	+ 50,1	598 612	+ 19,2	2 390 331	+ 34,2
Nov*	951 606	+ 6,1	238 505	- 18,3	557 886	+ 1,8	1 747 997	+ 0,7
Dec	862 030	+ 44,9	181 944	+ 41,5	333 177	+ 1,8	1 377 151	+ 31,1
Total	11 479 709	+ 15,4	3 286 465	+ 1,9	5 897 574	+ 14,1	20 663 748	+ 12,6

^{1/} The annual percentage change is the change in the actual values of building plans passed of the relevant year compared with the actual values of building plans passed of the previous year expressed as a percentage.

^{2/} The monthly percentage change is the change in the actual values of building plans passed of the relevant month compared with the actual values of building plans passed of the same month in the previous year expressed as a percentage.

Table 4 - Seasonally adjusted values and percentage change of building plans passed at constant 2000 prices according to type of building

Year and month ^{1/}	Residential buildings		Non-residential buildings		Additions and alterations		Total	
	R'000	Percentage change	R'000	Percentage change	R'000	Percentage change	R'000	Percentage change
2000 Jan	648 371	- 8,8	257 850	- 16,8	500 842	+ 25,5	1 407 063	- 3,2
Feb	797 501	+ 23,0	602 209	+ 133,6	460 949	- 8,0	1 860 660	+ 32,2
Mar	714 957	- 10,4	337 269	- 44,0	481 475	+ 4,5	1 533 701	- 17,6
Apr	714 854	+ 0,0	309 857	- 8,1	447 892	- 7,0	1 472 602	- 4,0
May	817 971	+ 14,4	514 582	+ 66,1	455 394	+ 1,7	1 787 947	+ 21,4
Jun	818 262	+ 0,0	294 720	- 42,7	509 268	+ 11,8	1 622 250	- 9,3
Jul	828 639	+ 1,3	399 527	+ 35,6	500 624	- 1,7	1 728 791	+ 6,6
Aug	889 583	+ 7,4	339 423	- 15,0	455 447	- 9,0	1 684 453	- 2,6
Sep	798 307	- 10,3	346 200	+ 2,0	422 925	- 7,1	1 567 432	- 6,9
Oct	755 302	- 5,4	463 727	+ 33,9	460 983	+ 9,0	1 680 011	+ 7,2
Nov	827 434	+ 9,6	406 110	- 12,4	416 916	- 9,6	1 650 460	- 1,8
Dec	817 592	- 1,2	944 248	+ 132,5	424 783	+ 1,9	2 186 624	+ 32,5
2001 Jan	875 731	+ 7,1	733 023	- 22,4	439 585	+ 3,5	2 048 339	- 6,3
Feb	776 325	- 11,4	332 959	- 54,6	519 526	+ 18,2	1 628 810	- 20,5
Mar	836 177	+ 7,7	248 868	- 25,3	380 613	- 26,7	1 465 657	- 10,0
Apr	801 807	- 4,1	226 368	- 9,0	413 801	+ 8,7	1 441 977	- 1,6
May	860 543	+ 7,3	229 549	+ 1,4	443 603	+ 7,2	1 533 694	+ 6,4
Jun	807 385	- 6,2	241 943	+ 5,4	396 142	- 10,7	1 445 470	- 5,8
Jul	763 314	- 5,5	280 510	+ 15,9	367 286	- 7,3	1 411 110	- 2,4
Aug	756 563	- 0,9	219 601	- 21,7	419 055	+ 14,1	1 395 219	- 1,1
Sep	881 687	+ 16,5	284 225	+ 29,4	455 848	+ 8,8	1 621 759	+ 16,2
Oct	933 929	+ 5,9	169 904	- 40,2	434 538	- 4,7	1 538 371	- 5,1
Nov	831 499	- 11,0	251 835	+ 48,2	465 836	+ 7,2	1 549 171	+ 0,7
Dec	815 440	- 1,9	179 453	- 28,7	460 189	- 1,2	1 455 083	- 6,1
2002 Jan	873 470	+ 7,1	245 197	+ 36,6	456 548	- 0,8	1 575 215	+ 8,3
Feb	864 673	- 1,0	250 751	+ 2,3	451 555	- 1,1	1 566 979	- 0,5
Mar	802 996	- 7,1	351 008	+ 40,0	338 214	- 25,1	1 492 218	- 4,8
Apr	1 136 288	+ 41,5	347 926	- 0,9	517 400	+ 53,0	2 001 615	+ 34,1
May	846 813	- 25,5	303 749	- 12,7	732 500	+ 41,6	1 883 062	- 5,9
Jun	865 369	+ 2,2	354 490	+ 16,7	422 970	- 42,3	1 642 829	- 12,8
Jul	933 386	+ 7,9	171 646	- 51,6	511 085	+ 20,8	1 616 117	- 1,6
Aug	901 533	- 3,4	305 386	+ 77,9	524 972	+ 2,7	1 731 891	+ 7,2
Sep	941 426	+ 4,4	230 287	- 24,6	463 955	- 11,6	1 635 667	- 5,6
Oct	1 297 733	+ 37,8	258 671	+ 12,3	516 396	+ 11,3	2 072 800	+ 26,7
Nov	878 092	- 32,3	205 720	- 20,5	475 590	- 7,9	1 559 402	- 24,8
Dec	1 177 814	+ 34,1	258 014	+ 25,4	471 311	- 0,9	1 907 139	+ 22,3

^{1/} The percentage change is the change in the seasonally adjusted values of building plans passed of the relevant month compared with the seasonally adjusted values of building plans passed of the previous month expressed as a percentage.

Table 5 - Actual values and percentage change of buildings completed at current prices according to type of building

Year ^{1/} and month ^{2/}	Residential buildings		Non-residential buildings		Additions and alterations		Total	
	R'000	Percentage change	R'000	Percentage change	R'000	Percentage change	R'000	Percentage change
2000 Jan	299 212	- 4,7	195 988	- 0,6	183 959	- 4,7	679 159	- 3,5
Feb	353 141	- 11,0	205 549	- 4,3	221 978	- 9,3	780 668	- 8,8
Mar	419 416	- 3,0	212 379	- 13,7	268 745	+ 16,5	900 540	- 1,0
Apr	364 713	- 3,5	224 048	+ 23,4	188 808	- 5,8	777 569	+ 2,3
May	473 124	+ 21,0	390 533	+ 99,6	293 343	+ 64,1	1 157 000	+ 51,2
Jun	362 558	- 13,7	174 728	- 16,2	170 986	+ 11,2	708 272	- 9,5
Jul	407 406	- 15,3	472 668	+ 79,0	220 828	- 18,9	1 100 902	+ 8,2
Aug	449 691	- 2,4	285 994	+ 39,6	211 008	- 17,5	946 693	+ 2,7
Sep	510 979	+ 3,6	270 539	+ 37,2	199 622	- 10,6	981 140	+ 7,4
Oct	462 270	+ 10,2	195 491	- 4,0	238 257	+ 3,8	896 018	+ 5,1
Nov	555 802	+ 20,5	186 442	- 54,5	255 900	+ 21,7	998 144	- 7,7
Dec	383 114	+ 9,6	316 801	+ 74,5	149 622	+ 2,2	849 537	+ 25,4
Total	5 041 426	+ 0,9	3 131 160	+ 15,7	2 603 056	+ 2,5	10 775 642	+ 5,2
2001 Jan	643 047	+ 114,9	238 434	+ 21,7	201 057	+ 9,3	1 082 538	+ 59,4
Feb	428 803	+ 21,4	285 619	+ 39,0	244 636	+ 10,2	959 058	+ 22,9
Mar*	489 220	+ 16,6	159 637	- 24,8	286 396	+ 6,6	935 253	+ 3,9
Apr	366 061	+ 0,4	169 796	- 24,2	185 541	- 1,7	721 398	- 7,2
May	447 895	- 5,3	300 533	- 23,0	295 847	+ 0,9	1 044 275	- 9,7
Jun	539 545	+ 48,8	338 853	+ 93,9	294 854	+ 72,4	1 173 252	+ 65,6
Jul	396 717	- 2,6	121 617	- 74,3	232 836	+ 5,4	751 170	- 31,8
Aug	431 845	- 4,0	117 368	- 59,0	214 644	+ 1,7	763 857	- 19,3
Sep	461 515	- 9,7	1 417 979	+ 424,1	169 974	- 14,9	2 049 468	+ 108,9
Oct	667 250	+ 44,3	285 644	+ 46,1	237 138	- 0,5	1 190 032	+ 32,8
Nov	616 443	+ 10,9	211 109	+ 13,2	288 778	+ 12,8	1 116 330	+ 11,8
Dec	469 410	+ 22,5	173 587	- 45,2	124 610	- 16,7	767 607	- 9,6
Total	5 957 751	+ 18,2	3 820 176	+ 22,0	2 776 311	+ 6,7	12 554 238	+ 16,5
2002 Jan	579 544	- 9,9	137 089	- 42,5	174 833	- 13,0	891 466	- 17,7
Feb	487 783	+ 13,8	138 037	- 51,7	198 195	- 19,0	824 015	- 14,1
Mar*	699 202	+ 42,9	169 849	+ 6,4	174 052	- 39,2	1 043 103	+ 11,5
Apr	641 454	+ 75,2	248 263	+ 46,2	381 482	+ 105,6	1 271 199	+ 76,2
May	671 871	+ 50,0	293 306	- 2,4	298 168	+ 0,8	1 263 345	+ 21,0
Jun	576 813	+ 6,9	206 136	- 39,2	248 350	- 15,8	1 031 299	- 12,1
Jul	665 914	+ 67,9	250 131	+ 105,7	236 281	+ 1,5	1 152 326	+ 53,4
Aug	732 614	+ 69,6	94 396	- 19,6	225 042	+ 4,8	1 052 052	+ 37,7
Sep	804 955	+ 74,4	226 372	- 84,0	246 064	+ 44,8	1 277 391	- 37,7
Oct	905 380	+ 35,7	181 127	- 36,6	291 109	+ 22,8	1 377 616	+ 15,8
Nov*	828 469	+ 34,4	286 336	+ 35,6	234 460	- 18,8	1 349 265	+ 20,9
Dec	684 969	+ 45,9	362 516	+ 108,8	217 937	+ 74,9	1 265 422	+ 64,9
Total	8 278 968	+ 39,0	2 593 558	- 32,1	2 925 973	+ 5,4	13 798 499	+ 9,9

^{1/} The annual percentage change is the change in the actual values of buildings completed of the relevant year compared with the actual values of buildings completed of the previous year expressed as a percentage.

^{2/} The monthly percentage change is the change in the actual values of buildings completed of the relevant month compared with the actual values of buildings completed of the same month in the previous year expressed as a percentage.

Table 6 - Seasonally adjusted values and percentage change of buildings completed at current prices according to type of building

Year and month ^{1/}	Residential buildings		Non-residential buildings		Additions and alterations		Total	
	R'000	Percentage change	R'000	Percentage change	R'000	Percentage change	R'000	Percentage change
2000 Jan	362 004	- 9,1	243 472	+ 35,0	209 116	- 5,7	814 591	+ 1,8
Feb	393 239	+ 8,6	231 388	- 5,0	207 308	- 0,9	831 935	+ 2,1
Mar	394 566	+ 0,3	257 541	+ 11,3	224 207	+ 8,2	876 315	+ 5,3
Apr	400 910	+ 1,6	254 055	- 1,4	209 469	- 6,6	864 435	- 1,4
May	455 695	+ 13,7	345 488	+ 36,0	249 793	+ 19,3	1 050 976	+ 21,6
Jun	383 079	- 15,9	173 047	- 49,9	182 184	- 27,1	738 310	- 29,8
Jul	396 827	+ 3,6	340 099	+ 96,5	198 581	+ 9,0	935 507	+ 26,7
Aug	441 226	+ 11,2	301 560	- 11,3	210 122	+ 5,8	952 908	+ 1,9
Sep	462 259	+ 4,8	230 770	- 23,5	210 368	+ 0,1	903 396	- 5,2
Oct	421 423	- 8,8	192 665	- 16,5	219 787	+ 4,5	833 875	- 7,7
Nov	473 305	+ 12,3	200 216	+ 3,9	251 763	+ 14,5	925 284	+ 11,0
Dec	436 678	- 7,7	319 882	+ 59,8	224 059	- 11,0	980 618	+ 6,0
2001 Jan	757 684	+ 73,5	305 282	- 4,6	230 797	+ 3,0	1 293 764	+ 31,9
Feb	477 839	- 36,9	327 915	+ 7,4	233 930	+ 1,4	1 039 685	- 19,6
Mar	450 788	- 5,7	199 013	- 39,3	232 785	- 0,5	882 585	- 15,1
Apr	400 367	- 11,2	191 805	- 3,6	207 381	- 10,9	799 553	- 9,4
May	431 444	+ 7,8	242 295	+ 26,3	241 438	+ 16,4	915 176	+ 14,5
Jun	583 607	+ 35,3	334 988	+ 38,3	314 164	+ 30,1	1 232 758	+ 34,7
Jul	398 499	- 31,7	83 577	- 75,1	214 664	- 31,7	696 740	- 43,5
Aug	424 117	+ 6,4	127 405	+ 52,4	215 069	+ 0,2	766 591	+ 10,0
Sep	416 136	- 1,9	1 232 760	+ 867,6	182 271	- 15,2	1 831 167	+ 138,9
Oct	596 338	+ 43,3	305 209	- 75,2	216 403	+ 18,7	1 117 949	- 38,9
Nov	529 441	- 11,2	230 585	- 24,5	288 514	+ 33,3	1 048 541	- 6,2
Dec	537 291	+ 1,5	171 783	- 25,5	183 531	- 36,4	892 605	- 14,9
2002 Jan	673 140	+ 25,3	175 261	+ 2,0	201 505	+ 9,8	1 049 906	+ 17,6
Feb	541 339	- 19,6	161 129	- 8,1	191 110	- 5,2	893 579	- 14,9
Mar	640 344	+ 18,3	211 631	+ 31,3	140 105	- 26,7	992 080	+ 11,0
Apr	699 672	+ 9,3	278 715	+ 31,7	426 439	+ 204,4	1 404 826	+ 41,6
May	638 954	- 8,7	225 148	- 19,2	237 567	- 44,3	1 101 670	- 21,6
Jun	636 252	- 0,4	207 357	- 7,9	266 503	+ 12,2	1 110 111	+ 0,8
Jul	685 169	+ 7,7	166 703	- 19,6	220 972	- 17,1	1 072 844	- 3,4
Aug	716 053	+ 4,5	103 766	- 37,8	226 049	+ 2,3	1 045 867	- 2,5
Sep	731 210	+ 2,1	202 151	+ 94,8	268 078	+ 18,6	1 201 439	+ 14,9
Oct	801 608	+ 9,6	202 092	+ 0,0	264 147	- 1,5	1 267 847	+ 5,5
Nov	706 965	- 11,8	316 671	+ 56,7	233 006	- 11,8	1 256 641	- 0,9
Dec	786 527	+ 11,3	348 133	+ 9,9	321 093	+ 37,8	1 455 753	+ 15,8

^{1/} The percentage change is the change in the seasonally adjusted values of buildings completed of the relevant month compared with the seasonally adjusted values of buildings completed of the previous month expressed as a percentage.

Table 7 - Actual values and percentage change of buildings completed at constant 2000 prices according to type of building

Year ^{1/} and month ^{2/}	Residential buildings		Non-residential buildings		Additions and alterations		Total	
	R'000	Percentage change	R'000	Percentage change	R'000	Percentage change	R'000	Percentage change
2000 Jan	310 456	- 10,1	214 195	- 5,7	194 666	- 10,8	719 317	- 9,0
Feb	365 724	- 28,3	222 215	- 13,2	232 438	- 29,2	820 377	- 24,7
Mar	433 235	- 33,7	227 874	- 23,9	280 820	- 24,7	941 929	- 28,7
Apr	375 641	- 24,1	239 112	+ 3,6	196 266	- 12,8	811 019	- 14,3
May	486 811	- 26,2	415 461	- 3,9	304 614	- 1,9	1 206 886	- 14,6
Jun	371 504	- 31,4	185 683	- 9,6	176 821	+ 14,5	734 008	- 16,3
Jul	421 432	- 31,4	500 178	- 28,2	227 658	- 34,6	1 149 268	- 35,2
Aug	463 689	- 39,6	299 470	- 7,0	217 759	- 29,6	980 918	- 27,6
Sep	523 538	- 36,2	282 695	- 3,1	205 372	- 18,7	1 011 605	- 26,7
Oct	470 304	- 40,4	203 213	- 5,6	244 617	- 20,5	918 134	- 21,1
Nov	561 785	- 29,4	193 605	- 52,9	262 193	- 13,0	1 017 583	- 38,0
Dec	386 117	- 35,5	327 612	+ 6,6	152 988	+ 25,2	866 717	- 0,2
Total	5 170 236	- 3,1	3 311 313	+ 8,4	2 696 212	- 3,1	11 177 761	+ 0,0
2001 Jan	654 850	+ 110,9	245 808	+ 14,8	208 134	+ 6,9	1 108 792	+ 54,1
Feb	427 706	+ 16,9	294 756	+ 32,6	252 202	+ 8,5	974 664	+ 18,8
Mar*	487 070	+ 12,4	164 236	- 27,9	293 138	+ 4,4	944 444	+ 0,3
Apr	361 669	- 3,7	174 329	- 27,1	188 175	- 4,1	724 173	- 10,7
May	438 090	- 10,0	307 923	- 25,9	297 933	- 2,2	1 043 946	- 13,5
Jun	528 083	+ 42,1	346 475	+ 86,6	295 741	+ 67,3	1 170 299	+ 59,4
Jul	383 132	- 9,1	125 898	- 74,8	231 678	+ 1,8	740 708	- 35,5
Aug	415 640	- 10,4	120 998	- 59,6	211 889	- 2,7	748 527	- 23,7
Sep	442 133	- 15,5	1 451 360	+ 413,4	167 133	- 18,6	2 060 626	+ 103,7
Oct	638 358	+ 35,7	289 700	+ 42,6	232 261	- 5,1	1 160 319	+ 26,4
Nov	586 177	+ 4,3	212 597	+ 9,8	281 460	+ 7,3	1 080 234	+ 6,2
Dec	443 262	+ 14,8	174 109	- 46,9	121 098	- 20,8	738 469	- 14,8
Total	5 806 170	+ 12,3	3 908 189	+ 18,0	2 780 842	+ 3,1	12 495 201	+ 11,8
2002 Jan	545 960	- 16,6	136 407	- 44,5	167 947	- 19,3	850 314	- 23,3
Feb	458 165	+ 7,1	136 266	- 53,8	189 660	- 24,8	784 091	- 19,6
Mar*	656 718	+ 34,8	167 010	+ 1,7	165 606	- 43,5	989 334	+ 4,8
Apr	596 575	+ 65,0	243 157	+ 39,5	360 910	+ 91,8	1 200 642	+ 65,8
May	622 362	+ 42,1	285 873	- 7,2	280 233	- 5,9	1 188 468	+ 13,8
Jun	530 538	+ 0,5	200 327	- 42,2	232 974	- 21,2	963 839	- 17,6
Jul	601 678	+ 57,0	240 280	+ 90,9	220 411	- 4,9	1 062 369	+ 43,4
Aug	655 975	+ 57,8	90 331	- 25,3	209 536	- 1,1	955 842	+ 27,7
Sep	717 245	+ 62,2	215 387	- 85,2	228 684	+ 36,8	1 161 316	- 43,6
Oct	790 164	+ 23,8	171 360	- 40,8	269 296	+ 15,9	1 230 820	+ 6,1
Nov*	716 671	+ 22,3	269 113	+ 26,6	215 695	- 23,4	1 201 479	+ 11,2
Dec	586 613	+ 32,3	340 071	+ 95,3	199 576	+ 64,8	1 126 260	+ 52,5
Total	7 478 664	+ 28,8	2 495 582	- 36,1	2 740 528	- 1,4	12 714 774	+ 1,8

^{1/} The annual percentage change is the change in the actual values of buildings completed of the relevant year compared with the actual values of buildings completed of the previous year expressed as a percentage.

^{2/} The monthly percentage change is the change in the actual values of buildings completed of the relevant month compared with the actual values of buildings completed of the same month in the previous year expressed as a percentage.

Table 8 - Seasonally adjusted values and percentage change of buildings completed at constant 2000 prices according to type of building

Year and month ^{1/}	Residential buildings		Non-residential buildings		Additions and alterations		Total	
	R'000	Percentage change	R'000	Percentage change	R'000	Percentage change	R'000	Percentage change
2000 Jan	376 820	- 9,4	266 535	+ 33,6	220 074	- 6,3	863 430	+ 1,5
Feb	408 627	+ 8,4	250 835	- 5,9	216 380	- 1,7	875 842	+ 1,4
Mar	407 878	- 0,2	276 897	+ 10,4	233 517	+ 7,9	918 292	+ 4,8
Apr	412 999	+ 1,3	271 278	- 2,0	217 251	- 7,0	901 527	- 1,8
May	466 487	+ 13,0	367 432	+ 35,4	261 620	+ 20,4	1 095 539	+ 21,5
Jun	388 135	- 16,8	183 459	- 50,1	190 563	- 27,2	762 158	- 30,4
Jul	409 833	+ 5,6	358 936	+ 95,6	204 731	+ 7,4	973 499	+ 27,7
Aug	455 198	+ 11,1	316 572	- 11,8	215 448	+ 5,2	987 218	+ 1,4
Sep	473 355	+ 4,0	240 571	- 24,0	216 618	+ 0,5	930 544	- 5,7
Oct	430 714	- 9,0	200 075	- 16,8	225 776	+ 4,2	856 565	- 8,0
Nov	480 291	+ 11,5	208 266	+ 4,1	258 090	+ 14,3	946 647	+ 10,5
Dec	441 342	- 8,1	330 579	+ 58,7	228 728	- 11,4	1 000 649	+ 5,7
2001 Jan	773 919	+ 75,4	315 280	- 4,6	237 703	+ 3,9	1 326 902	+ 32,6
Feb	477 654	- 38,3	339 305	+ 7,6	240 340	+ 1,1	1 057 299	- 20,3
Mar	448 541	- 6,1	205 310	- 39,5	237 474	- 1,2	891 324	- 15,7
Apr	395 382	- 11,9	197 133	- 4,0	210 063	- 11,5	802 577	- 10,0
May	420 600	+ 6,4	248 220	+ 25,9	244 619	+ 16,5	913 439	+ 13,8
Jun	565 867	+ 34,5	341 763	+ 37,7	318 168	+ 30,1	1 225 797	+ 34,2
Jul	384 083	- 32,1	86 312	- 74,7	213 739	- 32,8	684 133	- 44,2
Aug	407 991	+ 6,2	131 697	+ 52,6	211 166	- 1,2	750 853	+ 9,8
Sep	398 066	- 2,4	1 258 482	+ 855,6	179 362	- 15,1	1 835 910	+ 144,5
Oct	573 301	+ 44,0	309 286	- 75,4	212 107	+ 18,3	1 094 694	- 40,4
Nov	505 531	- 11,8	232 482	- 24,8	281 499	+ 32,7	1 019 512	- 6,9
Dec	509 424	+ 0,8	172 198	- 25,9	178 338	- 36,6	859 960	- 15,6
2002 Jan	635 883	+ 24,8	174 650	+ 1,4	192 589	+ 8,0	1 003 121	+ 16,6
Feb	509 141	- 19,9	159 386	- 8,7	182 235	- 5,4	850 762	- 15,2
Mar	600 475	+ 17,9	208 672	+ 30,9	132 899	- 27,1	942 046	+ 10,7
Apr	649 912	+ 8,2	273 321	+ 31,0	403 220	+ 203,4	1 326 453	+ 40,8
May	590 973	- 9,1	219 466	- 19,7	224 126	- 44,4	1 034 564	- 22,0
Jun	581 060	- 1,7	201 158	- 8,3	252 023	+ 12,4	1 034 240	+ 0,0
Jul	617 341	+ 6,2	159 782	- 20,6	206 393	- 18,1	983 516	- 4,9
Aug	640 208	+ 3,7	99 570	- 37,7	209 660	+ 1,6	949 438	- 3,5
Sep	650 139	+ 1,6	191 780	+ 92,6	249 378	+ 18,9	1 091 296	+ 14,9
Oct	702 778	+ 8,1	191 040	- 0,4	244 574	- 1,9	1 138 392	+ 4,3
Nov	614 082	- 12,6	297 847	+ 55,9	214 591	- 12,3	1 126 520	- 1,0
Dec	677 026	+ 10,3	326 422	+ 9,6	294 214	+ 37,1	1 297 662	+ 15,2

^{1/} The percentage change is the change in the seasonally adjusted values of buildings completed of the relevant month compared with the seasonally adjusted values of buildings completed of the previous month expressed as a percentage.

Table 9 - Building plans passed according to type of building: Total RSA

Type of building	December 2001 *	November 2002 *	December 2002	January 2001 to December 2001	January 2002 to December 2002	Percentage change between January 2001 to December 2001 and January 2002 to December 2002
Residential buildings						
Dwelling-houses smaller than 80 square metres						
Number of dwelling-houses	1 677	4 454	3 055	36 800	46 391	+ 26,1
Total square metres	68 120	183 009	106 088	1 461 590	1 770 302	+ 21,1
Total value at current prices (R'000)	66 097	146 182	99 506	1 406 856	1 629 019	+ 15,8
Dwelling-houses equal to or larger than 80 square metres						
Number of dwelling-houses	1 267	2 132	1 568	21 175	24 304	+ 14,8
Total square metres	278 409	475 756	345 312	4 589 374	5 486 996	+ 19,6
Total value at current prices (R'000)	417 181	768 748	550 405	6 606 211	8 393 899	+ 27,1
Flats and townhouses						
Number of flats and townhouses	731	1 518	868	12 006	14 526	+ 21,0
Total square metres	110 492	169 643	123 731	1 402 078	1 757 413	+ 25,3
Total value at current prices (R'000)	157 830	274 387	214 702	2 117 283	2 791 439	+ 31,8
Other residential buildings ^{1/}						
Total square metres	5 519	1 423	47 746	130 268	199 483	+ 53,1
Total value at current prices (R'000)	8 506	2 094	215 510	494 232	952 252	+ 92,7
Total value of residential buildings at current prices (R'000)	649 614	1 191 411	1 080 123	10 624 582	13 766 609	+ 29,6
Non-residential buildings						
Office and banking space						
Total square metres	24 057	34 445	19 629	736 748	395 673	- 46,3
Total value at current prices (R'000)	33 995	59 139	81 895	1 238 007	787 367	- 36,4
Shopping space						
Total square metres	34 652	49 473	30 110	451 038	499 150	+ 10,7
Total value at current prices (R'000)	56 354	80 082	56 037	666 445	869 866	+ 30,5
Industrial and warehouse space						
Total square metres	30 945	90 826	54 282	772 205	1 053 003	+ 36,4
Total value at current prices (R'000)	32 598	126 047	69 221	1 014 767	1 648 011	+ 62,4
Other non-residential space ^{2/}						
Total square metres	11 546	21 152	11 844	377 543	403 402	+ 6,8
Total value at current prices (R'000)	17 418	33 340	20 823	512 766	616 882	+ 20,3
Total value of non-residential buildings at current prices (R'000)	140 365	298 608	227 976	3 431 985	3 922 126	+ 14,3
Additions and alterations						
Dwelling-houses						
Total square metres	192 746	305 090	186 382	2 973 871	3 273 045	+ 10,1
Total value at current prices (R'000)	255 579	434 083	271 087	3 758 375	4 550 470	+ 21,1
Other buildings ^{3/}						
Total square metres	53 849	138 434	71 687	1 024 467	1 259 908	+ 23,0
Total value at current prices (R'000)	101 870	264 390	146 384	1 761 892	2 517 463	+ 42,9
Total value of additions and alterations at current prices (R'000)	357 449	698 473	417 471	5 520 267	7 067 933	+ 28,0
Total value of building plans passed at current prices (R'000)	1 147 428	2 188 492	1 725 570	19 576 834	24 756 668	+ 26,5

1/ Other residential buildings include institutions for the disabled, boarding houses, old people's homes, hostels, hotels, motels, guest houses, holiday chalets, entertainment centres, bed-and-breakfast accommodation and casinos.

2/ Other non-residential space includes churches, sport and recreation clubs, schools, crèches, hospitals and all other non-residential space.

3/ Other buildings include additions and alterations to other residential buildings, non-residential buildings and internal alterations.

Table 10 - Building plans passed according to type of building and province: Western Cape

Type of building	December 2001*	November 2002	December 2002	January 2001 to December 2001	January 2002 to December 2002	Percentage change between January 2001 to December 2001 and January 2002 to December 2002
Residential buildings						
Dwelling-houses smaller than 80 square metres						
Number of dwelling-houses	363	500	711	7 706	14 515	+ 88,4
Total square metres	14 574	19 669	24 981	314 737	489 725	+ 55,6
Total value at current prices (R'000)	17 058	23 010	31 340	369 279	552 433	+ 49,6
Dwelling-houses equal to or larger than 80 square metres						
Number of dwelling-houses	419	675	658	6 949	8 634	+ 24,2
Total square metres	85 290	154 504	137 880	1 438 892	1 840 580	+ 27,9
Total value at current prices (R'000)	130 246	266 274	226 272	2 162 634	2 958 709	+ 36,8
Flats and townhouses						
Number of flats and townhouses	130	839	276	2 910	3 721	+ 27,9
Total square metres	19 383	53 200	30 722	285 050	342 942	+ 20,3
Total value at current prices (R'000)	28 491	86 639	67 363	425 577	580 958	+ 36,5
Other residential buildings ^{1/}						
Total square metres	0	0	47 746	37 906	99 577	+ 162,7
Total value at current prices (R'000)	0	0	215 510	84 949	344 404	+ 305,4
Total value of residential buildings at current prices (R'000)	175 795	375 923	540 485	3 042 439	4 436 504	+ 45,8
Non-residential buildings						
Office and banking space						
Total square metres	8 377	3 388	11 926	233 670	87 883	- 62,4
Total value at current prices (R'000)	11 898	4 855	68 973	336 051	198 630	- 40,9
Shopping space						
Total square metres	16 557	3 396	7 594	172 051	59 088	- 65,7
Total value at current prices (R'000)	22 068	5 884	12 408	235 808	83 492	- 64,6
Industrial and warehouse space						
Total square metres	20 481	22 889	17 634	257 179	253 544	- 1,4
Total value at current prices (R'000)	19 846	26 094	20 241	261 453	314 171	+ 20,2
Other non-residential space ^{2/}						
Total square metres	2 862	7 326	2 387	101 618	76 993	- 24,2
Total value at current prices (R'000)	5 598	11 871	3 187	119 263	119 114	- 0,1
Total value of non-residential buildings at current prices (R'000)	59 410	48 704	104 809	952 575	715 407	- 24,9
Additions and alterations						
Dwelling-houses						
Total square metres	64 446	91 267	61 141	927 832	1 019 889	+ 9,9
Total value at current prices (R'000)	83 812	126 336	88 310	1 174 981	1 404 110	+ 19,5
Other buildings ^{3/}						
Total square metres	11 320	26 468	18 672	265 443	353 393	+ 33,1
Total value at current prices (R'000)	26 666	51 792	56 073	488 368	706 720	+ 44,7
Total value of additions and alterations at current prices (R'000)	110 478	178 128	144 383	1 663 349	2 110 830	+ 26,9
Total value of building plans passed at current prices (R'000)	345 683	602 755	789 677	5 658 363	7 262 741	+ 28,4

1/ Other residential buildings include institutions for the disabled, boarding houses, old people's homes, hostels, hotels, motels, guest houses, holiday chalets, entertainment centres, bed-and-breakfast accommodation and casinos.

2/ Other non-residential space includes churches, sport and recreation clubs, schools, crèches, hospitals and all other non-residential space.

3/ Other buildings include additions and alterations to other residential buildings, non-residential buildings and internal alterations.

Table 11 - Building plans passed according to type of building and province: Eastern Cape

Type of building	December 2001	November 2002	December 2002	January 2001 to December 2001	January 2002 to December 2002	Percentage change between January 2001 to December 2001 and January 2002 to December 2002
Residential buildings						
Dwelling-houses smaller than 80 square metres						
Number of dwelling-houses	162	335	140	2 545	4 990	+ 96,1
Total square metres	7 077	14 065	5 801	113 995	212 033	+ 86,0
Total value at current prices (R'000)	8 905	19 688	8 611	143 511	252 491	+ 75,9
Dwelling-houses equal to or larger than 80 square metres						
Number of dwelling-houses	86	183	74	1 282	1 363	+ 6,3
Total square metres	15 630	27 106	18 996	207 414	264 831	+ 27,7
Total value at current prices (R'000)	23 588	44 334	29 389	278 676	390 220	+ 40,0
Flats and townhouses						
Number of flats and townhouses	14	12	26	747	481	-35,6
Total square metres	1 475	1 938	3 215	42 415	45 319	+ 6,8
Total value at current prices (R'000)	2 077	2 785	6 071	51 663	74 665	+ 44,5
Other residential buildings ^{1/}						
Total square metres	539	0	0	26 932	1 135	-95,8
Total value at current prices (R'000)	1 056	0	0	78 678	1 654	-97,9
Total value of residential buildings at current prices (R'000)	35 626	66 807	44 071	552 528	719 030	+ 30,1
Non-residential buildings						
Office and banking space						
Total square metres	0	0	1 180	13 652	10 040	-26,5
Total value at current prices (R'000)	0	0	2 841	22 163	16 745	-24,4
Shopping space						
Total square metres	0	2 148	1 978	13 458	30 923	+ 129,8
Total value at current prices (R'000)	0	3 880	3 757	20 985	53 877	+ 156,7
Industrial and warehouse space						
Total square metres	1 749	4 055	2 832	39 019	51 434	+ 31,8
Total value at current prices (R'000)	2 816	6 669	4 539	43 714	89 305	+ 104,3
Other non-residential space ^{2/}						
Total square metres	1 275	3 181	1 914	18 564	32 134	+ 73,1
Total value at current prices (R'000)	2 095	6 131	4 332	32 893	54 194	+ 64,8
Total value of non-residential buildings at current prices (R'000)	4 911	16 680	15 469	119 755	214 121	+ 78,8
Additions and alterations						
Dwelling-houses						
Total square metres	16 717	26 552	14 279	228 966	234 290	+ 2,3
Total value at current prices (R'000)	25 047	41 071	25 884	304 005	347 619	+ 14,3
Other buildings ^{3/}						
Total square metres	1 028	4 663	3 904	112 848	58 719	-48,0
Total value at current prices (R'000)	1 027	10 442	10 054	142 768	107 193	-24,9
Total value of additions and alterations at current prices (R'000)	26 074	51 513	35 938	446 773	454 812	+ 1,8
Total value of building plans passed at current prices (R'000)	66 611	135 000	95 478	1 119 056	1 387 963	+ 24,0

1/ Other residential buildings include institutions for the disabled, boarding houses, old people's homes, hostels, hotels, motels, guest houses, holiday chalets, entertainment centres, bed-and-breakfast accommodation and casinos.

2/ Other non-residential space includes churches, sport and recreation clubs, schools, crèches, hospitals and all other non-residential space.

3/ Other buildings include additions and alterations to other residential buildings, non-residential buildings and internal alterations.

Table 12 - Building plans passed according to type of building and province: Northern Cape

Type of building	December 2001*	November 2002	December 2002	January 2001 to December 2001	January 2002 to December 2002	Percentage change between January 2001 to December 2001 and January 2002 to December 2002
Residential buildings						
Dwelling-houses smaller than 80 square metres						
Number of dwelling-houses	11	4	1	99	66	- 33,3
Total square metres	605	132	18	5 348	2 928	- 45,3
Total value at current prices (R'000)	1 022	199	28	8 256	4 811	- 41,7
Dwelling-houses equal to or larger than 80 square metres						
Number of dwelling-houses	2	7	8	163	99	- 39,3
Total square metres	402	1 641	2 063	28 050	20 431	- 27,2
Total value at current prices (R'000)	563	2 670	3 392	39 310	32 196	- 18,1
Flats and townhouses						
Number of flats and townhouses	0	3	2	14	29	+ 107,1
Total square metres	0	492	471	2 581	4 662	+ 80,6
Total value at current prices (R'000)	0	886	797	3 727	8 209	+ 120,3
Other residential buildings ^{1/}						
Total square metres	0	0	0	0	0	..
Total value at current prices (R'000)	0	0	0	0	0	..
Total value of residential buildings at current prices (R'000)	1 585	3 755	4 217	51 293	45 216	- 11,8
Non-residential buildings						
Office and banking space						
Total square metres	0	0	0	257	1 207	+ 369,6
Total value at current prices (R'000)	0	0	0	216	2 213	+ 924,5
Shopping space						
Total square metres	1 915	2 997	0	6 058	4 204	- 30,6
Total value at current prices (R'000)	2 298	6 593	0	11 186	8 980	- 19,7
Industrial and warehouse space						
Total square metres	0	0	0	2 336	2 969	+ 27,1
Total value at current prices (R'000)	0	0	0	2 744	4 385	+ 59,8
Other non-residential space ^{2/}						
Total square metres	0	0	0	2 594	3 107	+ 19,8
Total value at current prices (R'000)	0	0	0	4 174	6 735	+ 61,4
Total value of non-residential buildings at current prices (R'000)	2 298	6 593	0	18 320	22 313	+ 21,8
Additions and alterations						
Dwelling-houses						
Total square metres	1 751	2 311	3 351	30 492	34 482	+ 13,1
Total value at current prices (R'000)	2 612	3 924	5 609	50 389	57 851	+ 14,8
Other buildings ^{3/}						
Total square metres	270	2 730	0	9 571	7 679	- 19,8
Total value at current prices (R'000)	564	4 715	35	23 592	18 862	- 20,0
Total value of additions and alterations at current prices (R'000)	3 176	8 639	5 644	73 981	76 713	+ 3,7
Total value of building plans passed at current prices (R'000)	7 059	18 987	9 861	143 594	144 242	+ 0,5

1/ Other residential buildings include institutions for the disabled, boarding houses, old people's homes, hostels, hotels, motels, guest houses, holiday chalets, entertainment centres, bed-and-breakfast accommodation and casinos.

2/ Other non-residential space includes churches, sport and recreation clubs, schools, crèches, hospitals and all other non-residential space.

3/ Other buildings include additions and alterations to other residential buildings, non-residential buildings and internal alterations.

Table 13 - Building plans passed according to type of building and province: Free State

Type of building	December 2001*	November 2002	December 2002	January 2001 to December 2001	January 2002 to December 2002	Percentage change between January 2001 to December 2001 and January 2002 to December 2002
Residential buildings						
Dwelling-houses smaller than 80 square metres						
Number of dwelling-houses	5	190	23	2 411	5 323	+ 120,8
Total square metres	315	8 440	1 212	106 932	205 826	+ 92,5
Total value at current prices (R'000)	328	5 420	1 673	67 082	120 727	+ 80,0
Dwelling-houses equal to or larger than 80 square metres						
Number of dwelling-houses	40	68	35	733	893	+ 21,8
Total square metres	6 193	9 678	6 541	116 584	145 340	+ 24,7
Total value at current prices (R'000)	5 605	12 729	9 324	127 080	177 834	+ 39,9
Flats and townhouses						
Number of flats and townhouses	0	81	48	388	714	+ 84,0
Total square metres	0	5 301	4 165	45 461	66 849	+ 47,0
Total value at current prices (R'000)	0	7 806	6 131	66 156	96 237	+ 45,5
Other residential buildings ^{1/}						
Total square metres	0	20	0	8 596	5 247	-39,0
Total value at current prices (R'000)	0	19	0	10 864	10 448	-3,8
Total value of residential buildings at current prices (R'000)	5 933	25 974	17 128	271 182	405 246	+ 49,4
Non-residential buildings						
Office and banking space						
Total square metres	0	849	62	14 295	14 871	+ 4,0
Total value at current prices (R'000)	0	1 698	103	27 483	24 988	-9,1
Shopping space						
Total square metres	0	1 144	0	9 167	19 520	+ 112,9
Total value at current prices (R'000)	0	1 832	0	10 112	34 676	+ 242,9
Industrial and warehouse space						
Total square metres	0	1 178	166	8 510	17 499	+ 105,6
Total value at current prices (R'000)	0	2 312	170	6 567	18 555	+ 182,5
Other non-residential space ^{2/}						
Total square metres	812	398	0	11 572	14 129	+ 22,1
Total value at current prices (R'000)	818	398	0	15 318	17 851	+ 16,5
Total value of non-residential buildings at current prices (R'000)	818	6 240	273	59 480	96 070	+ 61,5
Additions and alterations						
Dwelling-houses						
Total square metres	5 647	10 982	6 984	93 136	106 244	+ 14,1
Total value at current prices (R'000)	6 359	13 697	8 692	99 063	123 151	+ 24,3
Other buildings ^{3/}						
Total square metres	737	1 411	4 999	19 445	29 895	+ 53,7
Total value at current prices (R'000)	538	3 982	9 796	35 505	62 543	+ 76,2
Total value of additions and alterations at current prices (R'000)	6 897	17 679	18 488	134 568	185 694	+ 38,0
Total value of building plans passed at current prices (R'000)	13 648	49 893	35 889	465 230	687 010	+ 47,7

1/ Other residential buildings include institutions for the disabled, boarding houses, old people's homes, hostels, hotels, motels, guest houses, holiday chalets, entertainment centres, bed-and-breakfast accommodation and casinos.

2/ Other non-residential space includes churches, sport and recreation clubs, schools, crèches, hospitals and all other non-residential space.

3/ Other buildings include additions and alterations to other residential buildings, non-residential buildings and internal alterations.

Table 14 - Building plans passed according to type of building and province: KwaZulu-Natal

Type of building	December 2001*	November 2002	December 2002	January 2001 to December 2001	January 2002 to December 2002	Percentage change between January 2001 to December 2001 and January 2002 to December 2002
Residential buildings						
Dwelling-houses smaller than 80 square metres						
Number of dwelling-houses	57	147	111	2 304	2 294	- 0,4
Total square metres	2 740	6 811	5 027	100 391	95 304	- 5,1
Total value at current prices (R'000)	3 511	7 420	5 832	100 275	94 407	- 5,9
Dwelling-houses equal to or larger than 80 square metres						
Number of dwelling-houses	113	174	136	1 685	1 930	+ 14,5
Total square metres	23 322	38 866	31 100	356 855	438 836	+ 23,0
Total value at current prices (R'000)	38 443	71 648	56 006	527 142	711 803	+ 35,0
Flats and townhouses						
Number of flats and townhouses	30	107	59	868	1 077	+ 24,1
Total square metres	5 227	23 080	8 569	121 235	183 782	+ 51,6
Total value at current prices (R'000)	8 988	40 907	13 474	204 203	323 665	+ 58,5
Other residential buildings ^{1/}						
Total square metres	98	226	0	20 300	70 552	+ 247,5
Total value at current prices (R'000)	127	285	0	82 558	499 730	+ 505,3
Total value of residential buildings at current prices (R'000)	51 069	120 260	75 312	914 178	1 629 605	+ 78,3
Non-residential buildings						
Office and banking space						
Total square metres	8 082	2 572	1 383	138 357	52 951	- 61,7
Total value at current prices (R'000)	11 171	8 732	2 400	286 472	122 286	- 57,3
Shopping space						
Total square metres	1 730	10 728	16 800	38 232	126 199	+ 230,1
Total value at current prices (R'000)	5 184	18 669	34 285	58 312	298 042	+ 411,1
Industrial and warehouse space						
Total square metres	2 070	29 813	7 514	132 408	164 162	+ 24,0
Total value at current prices (R'000)	1 857	43 464	6 264	192 015	304 354	+ 58,5
Other non-residential space ^{2/}						
Total square metres	1 024	3 862	1 894	61 265	86 470	+ 41,1
Total value at current prices (R'000)	1 110	4 666	4 652	88 520	110 709	+ 25,1
Total value of non-residential buildings at current prices (R'000)	19 322	75 531	47 601	625 319	835 391	+ 33,6
Additions and alterations						
Dwelling-houses						
Total square metres	22 500	47 328	35 057	394 058	462 406	+ 17,3
Total value at current prices (R'000)	26 585	64 071	47 747	480 643	609 506	+ 26,8
Other buildings ^{3/}						
Total square metres	19 335	10 670	9 365	183 240	223 430	+ 21,9
Total value at current prices (R'000)	36 310	22 468	20 077	366 084	603 541	+ 64,9
Total value of additions and alterations at current prices (R'000)	62 895	86 539	67 824	846 727	1 213 047	+ 43,3
Total value of building plans passed at current prices (R'000)	133 286	282 330	190 737	2 386 224	3 678 043	+ 54,1

1/ Other residential buildings include institutions for the disabled, boarding houses, old people's homes, hostels, hotels, motels, guest houses, holiday chalets, entertainment centres, bed-and-breakfast accommodation and casinos.

2/ Other non-residential space includes churches, sport and recreation clubs, schools, crèches, hospitals and all other non-residential space.

3/ Other buildings include additions and alterations to other residential buildings, non-residential buildings and internal alterations.

Table 15 - Building plans passed according to type of building and province: North West

Type of building	December 2001	November 2002	December 2002	January 2001 to December 2001	January 2002 to December 2002	Percentage change between January 2001 to December 2001 and January 2002 to December 2002
Residential buildings						
Dwelling-houses smaller than 80 square metres						
Number of dwelling-houses	18	34	26	4 354	838	- 80,8
Total square metres	1 038	1 954	1 638	155 736	39 754	- 74,5
Total value at current prices (R'000)	1 439	2 339	2 206	92 869	44 354	- 52,2
Dwelling-houses equal to or larger than 80 square metres						
Number of dwelling-houses	50	153	86	888	1 310	+ 47,5
Total square metres	9 637	29 697	17 208	158 426	245 760	+ 55,1
Total value at current prices (R'000)	17 207	41 628	23 406	214 374	314 693	+ 46,8
Flats and townhouses						
Number of flats and townhouses	71	46	70	412	860	+ 108,7
Total square metres	10 140	6 601	7 045	47 790	71 370	+ 49,3
Total value at current prices (R'000)	9 967	13 716	9 455	66 988	111 937	+ 67,1
Other residential buildings ^{1/}						
Total square metres	0	0	0	2 606	768	- 70,5
Total value at current prices (R'000)	0	0	0	2 590	781	- 69,8
Total value of residential buildings at current prices (R'000)	28 613	57 683	35 067	376 821	471 765	+ 25,2
Non-residential buildings						
Office and banking space						
Total square metres	1 109	164	0	4 871	6 874	+ 41,1
Total value at current prices (R'000)	1 658	328	0	7 719	10 312	+ 33,6
Shopping space						
Total square metres	0	5 708	1 478	25 521	24 106	- 5,5
Total value at current prices (R'000)	0	8 397	2 100	32 275	37 700	+ 16,8
Industrial and warehouse space						
Total square metres	1 817	0	277	13 279	9 232	- 30,5
Total value at current prices (R'000)	1 062	0	236	15 336	12 634	- 17,6
Other non-residential space ^{2/}						
Total square metres	1 498	1 456	414	11 895	18 298	+ 53,8
Total value at current prices (R'000)	1 960	2 503	460	13 628	43 257	+ 217,4
Total value of non-residential buildings at current prices (R'000)	4 680	11 228	2 796	68 958	103 903	+ 50,7
Additions and alterations						
Dwelling-houses						
Total square metres	5 027	8 311	6 264	76 117	107 985	+ 41,9
Total value at current prices (R'000)	5 657	9 833	7 623	84 999	131 284	+ 54,5
Other buildings ^{3/}						
Total square metres	1 050	785	3 576	23 946	23 790	- 0,7
Total value at current prices (R'000)	816	877	5 654	37 414	39 141	+ 4,6
Total value of additions and alterations at current prices (R'000)	6 473	10 710	13 277	122 413	170 425	+ 39,2
Total value of building plans passed at current prices (R'000)	39 766	79 621	51 140	568 192	746 093	+ 31,3

1/ Other residential buildings include institutions for the disabled, boarding houses, old people's homes, hostels, hotels, motels, guest houses, holiday chalets, entertainment centres, bed-and-breakfast accommodation and casinos.

2/ Other non-residential space includes churches, sport and recreation clubs, schools, crèches, hospitals and all other non-residential space.

3/ Other buildings include additions and alterations to other residential buildings, non-residential buildings and internal alterations.

Table 16 - Building plans passed according to type of building and province: Gauteng

Type of building	December 2001	November 2002*	December 2002	January 2001 to December 2001	January 2002 to December 2002	Percentage change between January 2001 to December 2001 and January 2002 to December 2002
Residential buildings						
Dwelling-houses smaller than 80 square metres						
Number of dwelling-houses	587	3 166	2 009	11 400	16 237	+ 42,4
Total square metres	24 630	127 683	65 440	444 792	628 629	+ 41,3
Total value at current prices (R'000)	24 838	82 325	46 962	486 306	485 207	- 0,2
Dwelling-houses equal to or larger than 80 square metres						
Number of dwelling-houses	444	727	505	8 127	8 285	+ 1,9
Total square metres	117 244	185 075	119 143	2 026 893	2 187 574	+ 7,9
Total value at current prices (R'000)	173 486	289 280	185 326	2 926 459	3 344 093	+ 14,3
Flats and townhouses						
Number of flats and townhouses	469	403	376	5 648	7 239	+ 28,2
Total square metres	71 686	75 528	67 887	766 234	990 309	+ 29,2
Total value at current prices (R'000)	105 656	117 722	109 224	1 178 741	1 524 980	+ 29,4
Other residential buildings ^{1/}						
Total square metres	4 882	259	0	16 275	4 227	- 74,0
Total value at current prices (R'000)	7 323	447	0	22 032	6 700	- 69,6
Total value of residential buildings at current prices (R'000)	311 303	489 774	341 512	4 613 538	5 360 980	+ 16,2
Non-residential buildings						
Office and banking space						
Total square metres	6 489	27 472	4 758	326 976	214 808	- 34,3
Total value at current prices (R'000)	9 268	43 526	6 874	550 733	400 643	- 27,3
Shopping space						
Total square metres	12 217	15 060	1 160	163 570	169 554	+ 3,7
Total value at current prices (R'000)	23 454	22 655	1 837	264 806	271 153	+ 2,4
Industrial and warehouse space						
Total square metres	3 340	24 026	20 945	286 366	410 846	+ 43,5
Total value at current prices (R'000)	4 696	39 920	30 372	462 254	637 507	+ 37,9
Other non-residential space ^{2/}						
Total square metres	3 213	3 555	4 153	148 824	146 159	- 1,8
Total value at current prices (R'000)	4 717	5 671	6 424	215 353	228 744	+ 6,2
Total value of non-residential buildings at current prices (R'000)	42 135	111 772	45 507	1 493 146	1 538 047	+ 3,0
Additions and alterations						
Dwelling-houses						
Total square metres	64 508	91 892	48 093	1 046 919	1 092 006	+ 4,3
Total value at current prices (R'000)	90 687	146 349	73 027	1 369 514	1 617 729	+ 18,1
Other buildings ^{3/}						
Total square metres	14 925	85 982	30 703	370 164	517 187	+ 39,7
Total value at current prices (R'000)	26 825	160 163	43 545	590 169	898 343	+ 52,2
Total value of additions and alterations at current prices (R'000)	117 512	306 512	116 572	1 959 683	2 516 072	+ 28,4
Total value of building plans passed at current prices (R'000)	470 950	908 058	503 591	8 066 367	9 415 099	+ 16,7

1/ Other residential buildings include institutions for the disabled, boarding houses, old people's homes, hostels, hotels, motels, guest houses, holiday chalets, entertainment centres, bed-and-breakfast accommodation and casinos.

2/ Other non-residential space includes churches, sport and recreation clubs, schools, crèches, hospitals and all other non-residential space.

3/ Other buildings include additions and alterations to other residential buildings, non-residential buildings and internal alterations.

Table 17 - Building plans passed according to type of building and province: Mpumalanga

Type of building	December 2001*	November 2002	December 2002	January 2001 to December 2001	January 2002 to December 2002	Percentage change between January 2001 to December 2001 and January 2002 to December 2002
Residential buildings						
Dwelling-houses smaller than 80 square metres						
Number of dwelling-houses	462	47	20	5 561	1 827	- 67,1
Total square metres	16 434	2 474	1 109	194 911	77 717	- 60,1
Total value at current prices (R'000)	8 011	3 263	1 590	106 448	48 309	- 54,6
Dwelling-houses equal to or larger than 80 square metres						
Number of dwelling-houses	86	103	47	851	1 252	+ 47,1
Total square metres	15 645	22 084	8 274	162 452	238 919	+ 47,1
Total value at current prices (R'000)	20 923	30 305	11 112	208 090	319 104	+ 53,3
Flats and townhouses						
Number of flats and townhouses	13	24	10	960	303	- 68,4
Total square metres	1 801	3 075	1 401	83 281	39 185	- 52,9
Total value at current prices (R'000)	1 781	3 327	1 829	110 142	50 353	- 54,3
Other residential buildings ^{1/}						
Total square metres	0	566	0	3 502	14 637	+ 318,0
Total value at current prices (R'000)	0	850	0	4 959	83 331	+ 1580,4
Total value of residential buildings at current prices (R'000)	30 715	37 745	14 531	429 639	501 097	+ 16,6
Non-residential buildings						
Office and banking space						
Total square metres	0	0	0	3 671	3 325	- 9,4
Total value at current prices (R'000)	0	0	0	5 750	4 494	- 21,8
Shopping space						
Total square metres	2 233	7 851	1 100	9 466	57 658	+509,1
Total value at current prices (R'000)	3 350	11 467	1 650	12 834	69 367	+440,5
Industrial and warehouse space						
Total square metres	1 488	8 609	4 914	29 899	44 376	+ 48,4
Total value at current prices (R'000)	2 321	7 025	7 399	27 277	51 729	+ 89,6
Other non-residential space ^{2/}						
Total square metres	515	1 374	1 082	17 353	22 873	+ 31,8
Total value at current prices (R'000)	773	2 100	1 768	17 649	30 120	+ 70,7
Total value of non-residential buildings at current prices (R'000)	6 444	20 592	10 817	63 510	155 710	+ 145,2
Additions and alterations						
Dwelling-houses						
Total square metres	8 546	21 135	8 268	128 308	162 921	+ 27,0
Total value at current prices (R'000)	9 806	21 518	10 052	131 745	187 151	+ 42,1
Other buildings ^{3/}						
Total square metres	4 844	4 554	247	24 329	25 474	+ 4,7
Total value at current prices (R'000)	8 742	7 071	578	40 246	43 924	+ 9,1
Total value of additions and alterations at current prices (R'000)	18 548	28 589	10 630	171 991	231 075	+ 34,4
Total value of building plans passed at current prices (R'000)	55 707	86 926	35 978	665 140	887 882	+ 33,5

1/ Other residential buildings include institutions for the disabled, boarding houses, old people's homes, hostels, hotels, motels, guest houses, holiday chalets, entertainment centres, bed-and-breakfast accommodation and casinos.

2/ Other non-residential space includes churches, sport and recreation clubs, schools, crèches, hospitals and all other non-residential space.

3/ Other buildings include additions and alterations to other residential buildings, non-residential buildings and internal alterations.

Table 18 - Building plans passed according to type of building and province: Limpopo

Type of building	December 2001	November 2002	December 2002	January 2001 to December 2001	January 2002 to December 2002	Percentage change between January 2001 to December 2001 and January 2002 to December 2002
Residential buildings						
Dwelling-houses smaller than 80 square metres						
Number of dwelling-houses	12	31	14	420	301	-28,3
Total square metres	707	1 781	862	24 748	18 386	-25,7
Total value at current prices (R'000)	985	2 518	1 264	32 830	26 280	-20,0
Dwelling-houses equal to or larger than 80 square metres						
Number of dwelling-houses	27	42	19	497	538	+ 8,2
Total square metres	5 046	7 105	4 107	93 808	104 725	+ 11,6
Total value at current prices (R'000)	7 120	9 880	6 178	122 446	145 247	+ 18,6
Flats and townhouses						
Number of flats and townhouses	4	3	1	59	102	+ 72,9
Total square metres	780	428	256	8 031	12 995	+ 61,8
Total value at current prices (R'000)	870	599	358	10 086	20 435	+ 102,6
Other residential buildings ^{1/}						
Total square metres	0	352	0	14 151	3 340	-76,4
Total value at current prices (R'000)	0	493	0	207 602	5 204	-97,5
Total value of residential buildings at current prices (R'000)	8 975	13 490	7 800	372 964	197 166	-47,1
Non-residential buildings						
Office and banking space						
Total square metres	0	0	320	999	3 714	+ 271,8
Total value at current prices (R'000)	0	0	704	1 420	7 056	+ 396,9
Shopping space						
Total square metres	0	441	0	13 515	7 898	-41,6
Total value at current prices (R'000)	0	705	0	20 127	12 579	-37,5
Industrial and warehouse space						
Total square metres	0	256	0	3 209	98 941	+ 2 983,2
Total value at current prices (R'000)	0	563	0	3 407	215 371	+ 6 221,4
Other non-residential space ^{2/}						
Total square metres	347	0	0	3 858	3 239	-16,0
Total value at current prices (R'000)	347	0	0	5 968	6 158	+ 3,2
Total value of non-residential buildings at current prices (R'000)	347	1 268	704	30 922	241 164	+ 679,9
Additions and alterations						
Dwelling-houses						
Total square metres	3 604	5 312	2 945	48 043	52 822	+ 9,9
Total value at current prices (R'000)	5 014	7 284	4 143	63 036	72 069	+ 14,3
Other buildings ^{3/}						
Total square metres	303	1 171	221	15 481	20 341	+ 31,4
Total value at current prices (R'000)	382	2 880	572	37 746	37 196	-1,5
Total value of additions and alterations at current prices (R'000)	5 396	10 164	4 715	100 782	109 265	+ 8,4
Total value of building plans passed at current prices (R'000)	14 718	24 922	13 219	504 668	547 595	+ 8,5

1/ Other residential buildings include institutions for the disabled, boarding houses, old people's homes, hostels, hotels, motels, guest houses, holiday chalets, entertainment centres, bed-and-breakfast accommodation and casinos.

2/ Other non-residential space includes churches, sport and recreation clubs, schools, crèches, hospitals and all other non-residential space.

3/ Other buildings include additions and alterations to other residential buildings, non-residential buildings and internal alterations.

Table 19 - Buildings completed according to type of building: Total RSA

Type of building	December 2001 *	November 2002*	December 2002	January 2001 to December 2001	January 2002 to December 2002	Percentage change between January 2001 to December 2001 and January 2002 to December 2002
Residential buildings						
Dwelling-houses smaller than 80 square metres						
Number of dwelling-houses	1 925	4 465	3 052	27 287	36 600	+ 34,1
Total square metres	75 261	178 316	106 154	1 084 435	1 423 913	+ 31,3
Total value at current prices (R'000)	86 888	134 380	96 669	997 578	1 227 369	+ 23,0
Dwelling-houses equal to or larger than 80 square metres						
Number of dwelling-houses	866	1 472	1 227	11 653	14 455	+ 24,0
Total square metres	193 646	314 247	276 417	2 399 334	3 083 462	+ 28,5
Total value at current prices (R'000)	296 076	480 852	432 425	3 350 417	4 660 792	+ 39,1
Flats and townhouses						
Number of flats and townhouses	456	1 052	577	7 093	10 458	+ 47,4
Total square metres	55 336	118 890	67 572	804 997	1 218 287	+ 51,3
Total value at current prices (R'000)	85 467	191 694	98 356	1 170 817	1 879 934	+ 60,6
Other residential buildings ^{1/}						
Total square metres	699	12 063	9 100	117 037	110 568	- 5,5
Total value at current prices (R'000)	979	21 543	57 519	438 939	510 873	+ 16,4
Total value of residential buildings at current prices (R'000)	469 410	828 469	684 969	5 957 751	8 278 968	+ 39,0
Non-residential buildings						
Office and banking space						
Total square metres	22 354	109 638	67 013	587 789	600 200	+ 2,1
Total value at current prices (R'000)	37 660	176 927	108 077	963 054	993 269	+ 3,1
Shopping space						
Total square metres	95 763	16 776	27 059	729 953	281 120	- 61,5
Total value at current prices (R'000)	105 861	31 478	40 820	1 809 754	496 512	- 72,6
Industrial and warehouse space						
Total square metres	11 202	36 517	102 892	659 217	582 397	- 11,7
Total value at current prices (R'000)	12 267	48 947	142 126	792 320	759 094	- 4,2
Other non-residential space ^{2/}						
Total square metres	15 983	17 532	44 155	210 434	231 422	+ 10,0
Total value at current prices (R'000)	17 799	28 984	71 493	255 048	344 683	+ 35,1
Total value of non-residential buildings at current prices (R'000)	173 587	286 336	362 516	3 820 176	2 593 558	- 32,1
Additions and alterations						
Dwelling-houses						
Total square metres	73 044	123 520	102 757	1 431 749	1 530 430	+ 6,9
Total value at current prices (R'000)	93 582	161 659	139 571	1 712 030	1 984 566	+ 15,9
Other buildings ^{3/}						
Total square metres	16 289	32 344	48 532	533 406	535 867	+ 0,5
Total value at current prices (R'000)	31 028	72 801	78 366	1 064 281	941 407	- 11,5
Total value of additions and alterations at current prices (R'000)	124 610	234 460	217 937	2 776 311	2 925 973	+ 5,4
Total value of buildings completed at current prices (R'000)	767 607	1 349 265	1 265 422	12 554 238	13 798 499	+ 9,9

1/ Other residential buildings include institutions for the disabled, boarding houses, old people's homes, hostels, hotels, motels, guest houses, holiday chalets, entertainment centres, bed-and-breakfast accommodation and casinos.

2/ Other non-residential space includes churches, sport and recreation clubs, schools, crèches, hospitals and all other non-residential space.

3/ Other buildings include additions and alterations to other residential buildings, non-residential buildings and internal alterations.

Table 20 - Buildings completed according to type of building and province: Western Cape

Type of building	December 2001*	November 2002	December 2002	January 2001 to December 2001	January 2002 to December 2002	Percentage change between January 2001 to December 2001 and January 2002 to December 2002
Residential buildings						
Dwelling-houses smaller than 80 square metres						
Number of dwelling-houses	864	615	677	5 792	7 457	+ 28,7
Total square metres	32 861	23 185	25 523	234 663	271 731	+ 15,8
Total value at current prices (R'000)	43 459	24 529	33 477	265 614	312 207	+ 17,5
Dwelling-houses equal to or larger than 80 square metres						
Number of dwelling-houses	310	587	466	4 099	5 659	+ 38,1
Total square metres	63 143	109 685	94 917	800 822	1 122 998	+ 40,2
Total value at current prices (R'000)	100 382	175 802	160 244	1 169 702	1 769 314	+ 51,3
Flats and townhouses						
Number of flats and townhouses	127	450	209	1 860	2 436	+ 31,0
Total square metres	11 057	38 661	20 825	217 189	260 855	+ 20,1
Total value at current prices (R'000)	15 036	68 317	29 865	299 930	411 201	+ 37,1
Other residential buildings ^{1/}						
Total square metres	0	4 439	634	39 183	13 747	- 64,9
Total value at current prices (R'000)	0	8 022	1 141	52 730	23 178	- 56,0
Total value of residential buildings at current prices (R'000)	158 877	276 670	224 727	1 787 976	2 515 900	+ 40,7
Non-residential buildings						
Office and banking space						
Total square metres	6 689	9 187	5 903	128 099	102 365	- 20,1
Total value at current prices (R'000)	8 450	19 356	10 712	204 247	163 473	- 20,0
Shopping space						
Total square metres	84 842	4 111	3 461	131 713	85 209	- 35,3
Total value at current prices (R'000)	86 530	8 656	7 186	147 018	124 265	- 15,5
Industrial and warehouse space						
Total square metres	3 171	8 378	14 135	144 526	154 990	+ 7,2
Total value at current prices (R'000)	3 389	8 896	18 567	159 100	171 795	+ 8,0
Other non-residential space ^{2/}						
Total square metres	9 727	2 429	23 432	80 328	94 755	+ 18,0
Total value at current prices (R'000)	9 504	4 411	40 332	73 986	138 308	+ 86,9
Total value of non-residential buildings at current prices (R'000)	107 873	41 319	76 797	584 351	597 841	+ 2,3
Additions and alterations						
Dwelling-houses						
Total square metres	23 604	44 933	43 060	523 614	544 676	+ 4,0
Total value at current prices (R'000)	32 069	61 456	61 603	661 806	727 567	+ 9,9
Other buildings ^{3/}						
Total square metres	4 866	17 420	21 247	151 411	215 839	+ 42,6
Total value at current prices (R'000)	9 586	34 384	27 235	355 384	367 514	+ 3,4
Total value of additions and alterations at current prices (R'000)	41 655	95 840	88 838	1 017 190	1 095 081	+ 7,7
Total value of buildings completed at current prices (R'000)	308 405	413 829	390 362	3 389 517	4 208 822	+ 24,2

1/ Other residential buildings include institutions for the disabled, boarding houses, old people's homes, hostels, hotels, motels, guest houses, holiday chalets, entertainment centres, bed-and-breakfast accommodation and casinos.

2/ Other non-residential space includes churches, sport and recreation clubs, schools, crèches, hospitals and all other non-residential space.

3/ Other buildings include additions and alterations to other residential buildings, non-residential buildings and internal alterations.

Table 21 - Buildings completed according to type of building and province: Eastern Cape

Type of building	December 2001*	November 2002	December 2002	January 2001 to December 2001	January 2002 to December 2002	Percentage change between January 2001 to December 2001 and January 2002 to December 2002
Residential buildings						
Dwelling-houses smaller than 80 square metres						
Number of dwelling-houses	87	205	188	2 820	3 331	+ 18,1
Total square metres	4 024	8 912	8 878	122 144	151 727	+ 24,2
Total value at current prices (R'000)	5 132	11 602	12 220	122 013	189 827	+ 55,6
Dwelling-houses equal to or larger than 80 square metres						
Number of dwelling-houses	55	39	28	943	648	- 31,3
Total square metres	8 826	9 727	6 056	139 563	112 273	- 19,6
Total value at current prices (R'000)	11 357	13 933	11 819	172 903	159 558	- 7,7
Flats and townhouses						
Number of flats and townhouses	10	13	0	244	364	+ 49,2
Total square metres	1 044	2 306	0	28 031	24 352	- 13,1
Total value at current prices (R'000)	1 717	3 331	0	31 743	35 511	+ 11,9
Other residential buildings ^{1/}						
Total square metres	0	0	0	12 813	15 865	+ 23,8
Total value at current prices (R'000)	0	0	0	60 955	26 589	- 56,4
Total value of residential buildings at current prices (R'000)	18 206	28 866	24 039	387 614	411 485	+ 6,2
Non-residential buildings						
Office and banking space						
Total square metres	155	3 934	640	28 383	6 334	-77,7
Total value at current prices (R'000)	279	7 868	660	33 209	11 762	-64,6
Shopping space						
Total square metres	2 470	496	3 928	35 920	9 071	- 74,7
Total value at current prices (R'000)	4 077	836	7 699	47 008	15 479	- 67,1
Industrial and warehouse space						
Total square metres	0	5 006	1 333	119 195	37 525	- 68,5
Total value at current prices (R'000)	0	2 805	2 233	113 882	45 449	- 60,1
Other non-residential space ^{2/}						
Total square metres	83	1 238	0	22 938	4 832	-78,9
Total value at current prices (R'000)	163	1 277	0	30 099	5 697	-81,1
Total value of non-residential buildings at current prices (R'000)	4 519	12 786	10 592	224 198	78 387	- 65,0
Additions and alterations						
Dwelling-houses						
Total square metres	8 953	5 220	5 221	110 993	99 454	- 10,4
Total value at current prices (R'000)	12 835	5 833	8 485	134 017	126 563	- 5,6
Other buildings ^{3/}						
Total square metres	1 121	1 454	1 477	64 690	53 827	- 16,8
Total value at current prices (R'000)	2 107	2 812	3 480	93 738	75 289	- 19,7
Total value of additions and alterations at current prices (R'000)	14 942	8 645	11 965	227 755	201 852	- 11,4
Total value of buildings completed at current prices (R'000)	37 667	50 297	46 596	839 567	691 724	- 17,6

1/ Other residential buildings include institutions for the disabled, boarding houses, old people's homes, hostels, hotels, motels, guest houses, holiday chalets, entertainment centres, bed-and-breakfast accommodation and casinos.

2/ Other non-residential space includes churches, sport and recreation clubs, schools, crèches, hospitals and all other non-residential space.

3/ Other buildings include additions and alterations to other residential buildings, non-residential buildings and internal alterations.

Table 22 - Buildings completed according to type of building and province: Northern Cape

Type of building	December 2001	November 2002	December 2002	January 2001 to December 2001	January 2002 to December 2002	Percentage change between January 2001 to December 2001 and January 2002 to December 2002
Residential buildings						
Dwelling-houses smaller than 80 square metres						
Number of dwelling-houses	1	0	21	126	116	- 7,9
Total square metres	40	0	829	6 152	4 944	- 19,6
Total value at current prices (R'000)	56	0	594	9 076	5 187	- 42,8
Dwelling-houses equal to or larger than 80 square metres						
Number of dwelling-houses	6	3	11	165	60	- 63,6
Total square metres	1 354	619	1 946	25 538	10 047	- 60,7
Total value at current prices (R'000)	2 116	1 114	3 288	36 079	15 146	- 58,0
Flats and townhouses						
Number of flats and townhouses	1	4	8	80	46	- 42,5
Total square metres	200	543	1 312	6 143	7 354	+ 19,7
Total value at current prices (R'000)	280	907	2 321	8 950	12 543	+ 40,1
Other residential buildings ^{1/}						
Total square metres	699	0	0	1 045	0	..
Total value at current prices (R'000)	979	0	0	1 256	0	..
Total value of residential buildings at current prices (R'000)	3 431	2 021	6 203	55 361	32 876	- 40,6
Non-residential buildings						
Office and banking space						
Total square metres	66	0	0	7 171	0	..
Total value at current prices (R'000)	92	0	0	15 723	0	..
Shopping space						
Total square metres	3 673	0	0	12 039	784	-93,5
Total value at current prices (R'000)	8 080	0	0	20 636	1 098	- 94,7
Industrial and warehouse space						
Total square metres	0	0	0	854	1 572	+ 84,1
Total value at current prices (R'000)	0	0	0	691	2 327	+ 236,8
Other non-residential space ^{2/}						
Total square metres	0	0	128	1 822	1 129	- 38,0
Total value at current prices (R'000)	0	0	282	3 198	1 591	- 50,3
Total value of non-residential buildings at current prices (R'000)	8 172	0	282	40 248	5 016	- 87,5
Additions and alterations						
Dwelling-houses						
Total square metres	1 237	2 005	2 273	20 460	27 879	+ 36,3
Total value at current prices (R'000)	1 879	2 904	3 508	33 512	40 986	+ 22,3
Other buildings ^{3/}						
Total square metres	132	391	494	6 077	5 155	- 15,2
Total value at current prices (R'000)	363	1 411	1 477	14 473	14 061	- 2,8
Total value of additions and alterations at current prices (R'000)	2 242	4 315	4 985	47 985	55 047	+ 14,7
Total value of buildings completed at current prices (R'000)	13 845	6 336	11 470	143 594	92 939	-35,3

1/ Other residential buildings include institutions for the disabled, boarding houses, old people's homes, hostels, hotels, motels, guest houses, holiday chalets, entertainment centres, bed-and-breakfast accommodation and casinos.

2/ Other non-residential space includes churches, sport and recreation clubs, schools, crèches, hospitals and all other non-residential space.

3/ Other buildings include additions and alterations to other residential buildings, non-residential buildings and internal alterations.

Table 23 - Buildings completed according to type of building and province: Free State

Type of building	December 2001	November 2002	December 2002	January 2001 to December 2001	January 2002 to December 2002	Percentage change between January 2001 to December 2001 and January 2002 to December 2002
Residential buildings						
Dwelling-houses smaller than 80 square metres						
Number of dwelling-houses	28	220	22	2 155	2 896	+ 34,4
Total square metres	1 317	9 167	1 173	90 265	125 962	+ 39,5
Total value at current prices (R'000)	1 023	5 288	1 593	49 875	70 689	+ 41,7
Dwelling-houses equal to or larger than 80 square metres						
Number of dwelling-houses	13	37	15	317	373	+ 17,7
Total square metres	1 634	6 569	2 125	55 073	61 707	+ 12,0
Total value at current prices (R'000)	1 885	8 090	2 335	65 145	74 308	+ 14,1
Flats and townhouses						
Number of flats and townhouses	14	27	7	195	356	+ 82,6
Total square metres	776	3 540	1 414	18 280	41 506	+ 127,1
Total value at current prices (R'000)	895	6 228	1 948	25 551	60 447	+ 136,6
Other residential buildings ^{1/}						
Total square metres	0	0	0	853	3 466	+ 306,3
Total value at current prices (R'000)	0	0	0	1 048	3 474	+ 231,5
Total value of residential buildings at current prices (R'000)	3 803	19 606	5 876	141 619	208 918	+ 47,5
Non-residential buildings						
Office and banking space						
Total square metres	296	5 031	0	18 746	10 135	-45,9
Total value at current prices (R'000)	287	10 000	0	33 990	18 728	-44,9
Shopping space						
Total square metres	178	7 429	650	12 444	12 017	-3,4
Total value at current prices (R'000)	150	16 000	896	12 800	22 049	+ 72,3
Industrial and warehouse space						
Total square metres	0	2 479	333	14 990	8 045	-46,3
Total value at current prices (R'000)	0	2 061	200	13 730	6 165	-55,1
Other non-residential space ^{2/}						
Total square metres	562	0	0	14 645	14 809	+ 1,1
Total value at current prices (R'000)	674	0	0	24 313	32 639	+ 34,2
Total value of non-residential buildings at current prices (R'000)	1 111	28 061	1 096	84 833	79 581	-6,2
Additions and alterations						
Dwelling-houses						
Total square metres	3 846	6 378	3 779	60 895	75 446	+ 23,9
Total value at current prices (R'000)	4 206	5 565	4 464	63 808	80 622	+ 26,4
Other buildings ^{3/}						
Total square metres	195	1 525	1 844	30 056	20 279	-32,5
Total value at current prices (R'000)	561	1 764	2 321	113 896	41 032	-64,0
Total value of additions and alterations at current prices (R'000)	4 767	7 329	6 785	177 704	121 654	-31,5
Total value of buildings completed at current prices (R'000)	9 681	54 996	13 757	404 156	410 153	+ 1,5

1/ Other residential buildings include institutions for the disabled, boarding houses, old people's homes, hostels, hotels, motels, guest houses, holiday chalets, entertainment centres, bed-and-breakfast accommodation and casinos.

2/ Other non-residential space includes churches, sport and recreation clubs, schools, crèches, hospitals and all other non-residential space.

3/ Other buildings include additions and alterations to other residential buildings, non-residential buildings and internal alterations.

Table 24 - Buildings completed according to type of building and province: KwaZulu-Natal

Type of building	December 2001*	November 2002	December 2002	January 2001 to December 2001	January 2002 to December 2002	Percentage change between January 2001 to December 2001 and January 2002 to December 2002
Residential buildings						
Dwelling-houses smaller than 80 square metres						
Number of dwelling-houses	85	227	244	2 307	2 430	+ 5,3
Total square metres	4 322	7 437	9 232	100 631	97 593	-3,0
Total value at current prices (R'000)	5 129	8 154	8 787	103 023	97 506	-5,4
Dwelling-houses equal to or larger than 80 square metres						
Number of dwelling-houses	94	124	106	1 618	1 388	-14,2
Total square metres	23 449	29 238	24 352	351 405	288 073	-18,0
Total value at current prices (R'000)	35 735	45 637	42 606	479 379	423 434	-11,7
Flats and townhouses						
Number of flats and townhouses	50	80	54	780	741	-5,0
Total square metres	9 570	11 705	7 879	103 243	104 813	+ 1,5
Total value at current prices (R'000)	16 600	19 876	13 241	149 134	185 063	+ 24,1
Other residential buildings ^{1/}						
Total square metres	0	7 517	0	10 023	33 853	+ 237,8
Total value at current prices (R'000)	0	13 351	0	42 290	101 609	+ 140,3
Total value of residential buildings at current prices (R'000)	57 464	87 018	64 634	773 826	807 612	+ 4,4
Non-residential buildings						
Office and banking space						
Total square metres	2 560	7 587	4 823	76 389	94 395	+ 23,6
Total value at current prices (R'000)	9 000	12 574	10 378	137 491	207 459	+ 50,9
Shopping space						
Total square metres	694	1 960	37	364 679	77 834	-78,7
Total value at current prices (R'000)	643	2 224	140	1 273 940	179 752	-85,9
Industrial and warehouse space						
Total square metres	4 472	978	18 672	157 258	166 761	+ 6,0
Total value at current prices (R'000)	4 239	1 586	18 207	170 304	208 376	+ 22,4
Other non-residential space ^{2/}						
Total square metres	2 712	5 569	11 349	30 084	42 714	+ 42,0
Total value at current prices (R'000)	3 014	9 575	16 332	35 626	64 132	+ 80,0
Total value of non-residential buildings at current prices (R'000)	16 896	25 959	45 057	1 617 361	659 719	-59,2
Additions and alterations						
Dwelling-houses						
Total square metres	16 992	20 636	21 647	330 296	303 967	-8,0
Total value at current prices (R'000)	18 633	27 057	25 739	368 652	369 462	+ 0,2
Other buildings ^{3/}						
Total square metres	3 959	7 724	8 415	107 801	97 594	-9,5
Total value at current prices (R'000)	7 415	22 837	19 735	195 066	204 848	+ 5,0
Total value of additions and alterations at current prices (R'000)	26 048	49 894	45 474	563 718	574 310	+ 1,9
Total value of buildings completed at current prices (R'000)	100 408	162 871	155 165	2 954 905	2 041 641	-30,9

1/ Other residential buildings include institutions for the disabled, boarding houses, old people's homes, hostels, hotels, motels, guest houses, holiday chalets, entertainment centres, bed-and-breakfast accommodation and casinos.

2/ Other non-residential space includes churches, sport and recreation clubs, schools, crèches, hospitals and all other non-residential space.

3/ Other buildings include additions and alterations to other residential buildings, non-residential buildings and internal alterations.

Table 25 - Buildings completed according to type of building and province: North West

Type of building	December 2001	November 2002	December 2002	January 2001 to December 2001	January 2002 to December 2002	Percentage change between January 2001 to December 2001 and January 2002 to December 2002
Residential buildings						
Dwelling-houses smaller than 80 square metres						
Number of dwelling-houses	107	87	16	2 510	1 826	- 27,3
Total square metres	3 525	3 453	828	94 666	63 160	- 33,3
Total value at current prices (R'000)	1 853	3 009	849	61 630	35 208	- 42,9
Dwelling-houses equal to or larger than 80 square metres						
Number of dwelling-houses	63	84	64	577	803	+ 39,2
Total square metres	11 578	17 468	17 434	110 031	152 862	+ 38,9
Total value at current prices (R'000)	18 093	20 706	17 880	144 952	206 809	+ 42,7
Flats and townhouses						
Number of flats and townhouses	0	47	29	169	612	+ 262,1
Total square metres	0	4 017	4 460	14 192	55 232	+ 289,2
Total value at current prices (R'000)	0	8 234	5 597	16 600	89 314	+ 438,0
Other residential buildings ^{1/}						
Total square metres	0	0	0	5 586	2 090	- 62,6
Total value at current prices (R'000)	0	0	0	5 476	2 483	- 54,7
Total value of residential buildings at current prices (R'000)	19 946	31 949	24 326	228 658	333 814	+ 46,0
Non-residential buildings						
Office and banking space						
Total square metres	0	118	1 848	2 008	6 847	+ 241,0
Total value at current prices (R'000)	0	142	1 786	3 112	12 210	+ 292,4
Shopping space						
Total square metres	252	2 267	7 741	8 755	15 925	+ 81,9
Total value at current prices (R'000)	500	3 210	8 925	13 127	18 721	+ 42,6
Industrial and warehouse space						
Total square metres	0	0	7 965	10 155	13 760	+ 35,5
Total value at current prices (R'000)	0	0	7 282	9 869	13 371	+ 35,5
Other non-residential space ^{2/}						
Total square metres	805	0	1 620	21 039	6 599	- 68,6
Total value at current prices (R'000)	1 800	0	2 511	30 091	10 078	- 66,5
Total value of non-residential buildings at current prices (R'000)	2 300	3 352	20 504	56 199	54 380	- 3,2
Additions and alterations						
Dwelling-houses						
Total square metres	156	4 659	2 272	49 645	42 044	- 15,3
Total value at current prices (R'000)	226	5 185	2 059	46 940	43 612	- 7,1
Other buildings ^{3/}						
Total square metres	218	154	3 885	20 024	14 097	- 29,6
Total value at current prices (R'000)	335	704	5 819	31 618	24 297	- 23,2
Total value of additions and alterations at current prices (R'000)	561	5 889	7 878	78 558	67 909	- 13,6
Total value of buildings completed at current prices (R'000)	22 807	41 190	52 708	363 415	456 103	+ 25,5

1/ Other residential buildings include institutions for the disabled, boarding houses, old people's homes, hostels, hotels, motels, guest houses, holiday chalets, entertainment centres, bed-and-breakfast accommodation and casinos.

2/ Other non-residential space includes churches, sport and recreation clubs, schools, crèches, hospitals and all other non-residential space.

3/ Other buildings include additions and alterations to other residential buildings, non-residential buildings and internal alterations.

Table 26 - Buildings completed according to type of building and province: Gauteng

Type of building	December 2001	November 2002*	December 2002	January 2001 to December 2001	January 2002 to December 2002	Percentage change between January 2001 to December 2001 and January 2002 to December 2002
Residential buildings						
Dwelling-houses smaller than 80 square metres						
Number of dwelling-houses	433	3 034	1 849	7 986	16 303	+ 104,1
Total square metres	18 137	122 089	57 867	306 112	616 186	+ 101,3
Total value at current prices (R'000)	23 085	76 835	37 081	299 744	455 506	+ 52,0
Dwelling-houses equal to or larger than 80 square metres						
Number of dwelling-houses	300	513	495	3 421	4 939	+ 44,4
Total square metres	79 421	126 136	121 277	826 313	1 230 156	+ 48,9
Total value at current prices (R'000)	121 321	195 968	180 500	1 182 440	1 873 542	+ 58,4
Flats and townhouses						
Number of flats and townhouses	208	423	264	3 544	5 670	+ 60,0
Total square metres	28 080	57 194	30 896	390 985	698 930	+ 78,8
Total value at current prices (R'000)	45 152	83 902	44 562	611 453	1 055 292	+ 72,6
Other residential buildings ^{1/}						
Total square metres	0	0	3 366	44 534	15 416	-65,4
Total value at current prices (R'000)	0	0	4 378	271 584	21 784	-92,0
Total value of residential buildings at current prices (R'000)	189 558	356 705	266 521	2 365 221	3 406 124	+ 44,0
Non-residential buildings						
Office and banking space						
Total square metres	12 588	83 781	53 799	317 058	376 739	+ 18,8
Total value at current prices (R'000)	19 552	126 987	84 541	514 509	574 242	+ 11,6
Shopping space						
Total square metres	800	513	9 671	128 582	62 173	-51,6
Total value at current prices (R'000)	1 600	552	14 372	261 797	106 924	-59,2
Industrial and warehouse space						
Total square metres	2 914	17 916	59 302	206 929	189 627	-8,4
Total value at current prices (R'000)	3 672	30 769	94 601	318 685	299 172	-6,1
Other non-residential space ^{2/}						
Total square metres	1 705	8 296	7 626	35 920	51 183	+ 42,5
Total value at current prices (R'000)	2 061	13 721	12 036	53 265	78 423	+ 47,2
Total value of non-residential buildings at current prices (R'000)	26 885	172 029	205 550	1 148 256	1 058 761	-7,8
Additions and alterations						
Dwelling-houses						
Total square metres	15 121	35 593	22 258	282 661	388 700	+ 37,5
Total value at current prices (R'000)	20 568	49 451	30 909	354 173	544 505	+ 53,7
Other buildings ^{3/}						
Total square metres	5 658	3 032	11 036	133 904	118 847	-11,2
Total value at current prices (R'000)	10 071	6 978	17 851	232 056	197 084	-15,1
Total value of additions and alterations at current prices (R'000)	30 639	56 429	48 760	586 229	741 589	+ 26,5
Total value of buildings completed at current prices (R'000)	247 082	585 163	520 831	4 099 706	5 206 474	+ 27,0

1/ Other residential buildings include institutions for the disabled, boarding houses, old people's homes, hostels, hotels, motels, guest houses, holiday chalets, entertainment centres, bed-and-breakfast accommodation and casinos.

2/ Other non-residential space includes churches, sport and recreation clubs, schools, crèches, hospitals and all other non-residential space.

3/ Other buildings include additions and alterations to other residential buildings, non-residential buildings and internal alterations.

Table 27 - Buildings completed according to type of building and province: Mpumalanga

Type of building	December 2001*	November 2002	December 2002	January 2001 to December 2001	January 2002 to December 2002	Percentage change between January 2001 to December 2001 and January 2002 to December 2002
Residential buildings						
Dwelling-houses smaller than 80 square metres						
Number of dwelling-houses	314	46	8	3 165	2 010	-36,5
Total square metres	10 803	2 295	522	108 187	79 127	-26,9
Total value at current prices (R'000)	6 666	2 700	843	64 123	42 295	-34,0
Dwelling-houses equal to or larger than 80 square metres						
Number of dwelling-houses	24	61	29	354	407	+ 15,0
Total square metres	4 085	10 786	6 699	64 167	75 105	+ 17,0
Total value at current prices (R'000)	5 000	13 746	11 058	65 074	94 836	+ 45,7
Flats and townhouses						
Number of flats and townhouses	13	7	5	149	207	+ 38,9
Total square metres	1 385	786	668	17 406	22 399	+ 28,7
Total value at current prices (R'000)	1 523	706	657	16 021	26 440	+ 65,0
Other residential buildings ^{1/}						
Total square metres	0	107	5 100	0	12 172	..
Total value at current prices (R'000)	0	170	52 000	0	124 250	..
Total value of residential buildings at current prices (R'000)	13 189	17 322	64 558	145 218	287 821	+ 98,2
Non-residential buildings						
Office and banking space						
Total square metres	0	0	0	8 937	2 969	-66,8
Total value at current prices (R'000)	0	0	0	19 647	4 763	-75,8
Shopping space						
Total square metres	2 854	0	1 571	30 373	9 576	-68,5
Total value at current prices (R'000)	4 281	0	1 602	25 251	16 244	-35,7
Industrial and warehouse space						
Total square metres	645	1 488	1 152	3 453	8 794	+ 154,7
Total value at current prices (R'000)	967	2 232	1 036	3 349	10 462	+ 212,4
Other non-residential space ^{2/}						
Total square metres	389	0	0	3 234	14 854	+ 359,3
Total value at current prices (R'000)	583	0	0	3 744	13 101	+ 249,9
Total value of non-residential buildings at current prices (R'000)	5 831	2 232	2 638	51 991	44 570	-14,3
Additions and alterations						
Dwelling-houses						
Total square metres	2 878	3 610	2 172	44 756	42 681	-4,6
Total value at current prices (R'000)	2 869	3 461	2 733	38 867	43 085	+ 10,9
Other buildings ^{3/}						
Total square metres	35	520	0	15 812	7 393	-53,2
Total value at current prices (R'000)	485	1 638	53	21 302	12 458	-41,5
Total value of additions and alterations at current prices (R'000)	3 354	5 099	2 786	60 169	55 543	-7,7
Total value of buildings completed at current prices (R'000)	22 374	24 653	69 982	257 378	387 934	+ 50,7

1/ Other residential buildings include institutions for the disabled, boarding houses, old people's homes, hostels, hotels, motels, guest houses, holiday chalets, entertainment centres, bed-and-breakfast accommodation and casinos.

2/ Other non-residential space includes churches, sport and recreation clubs, schools, crèches, hospitals and all other non-residential space.

3/ Other buildings include additions and alterations to other residential buildings, non-residential buildings and internal alterations.

Table 28 - Buildings completed according to type of building and province: Limpopo

Type of building	December 2001*	November 2002	December 2002	January 2001 to December 2001	January 2002 to December 2002	Percentage change between January 2001 to December 2001 and January 2002 to December 2002
Residential buildings						
Dwelling-houses smaller than 80 square metres						
Number of dwelling-houses	6	31	27	426	231	-45,8
Total square metres	232	1 778	1 302	21 615	13 483	-37,6
Total value at current prices (R'000)	485	2 263	1 225	22 480	18 944	-15,7
Dwelling-houses equal to or larger than 80 square metres						
Number of dwelling-houses	1	24	13	159	178	+ 11,9
Total square metres	156	4 019	1 611	26 422	30 241	+ 14,5
Total value at current prices (R'000)	187	5 856	2 695	34 743	43 845	+ 26,2
Flats and townhouses						
Number of flats and townhouses	33	1	1	72	26	-63,9
Total square metres	3 224	138	118	9 528	2 846	-70,1
Total value at current prices (R'000)	4 264	193	165	11 435	4 123	-63,9
Other residential buildings ^{1/}						
Total square metres	0	0	0	3 000	13 959	+ 365,3
Total value at current prices (R'000)	0	0	0	3 600	207 506	+ 5 664,1
Total value of residential buildings at current prices (R'000)	4 936	8 312	4 085	72 258	274 418	+ 279,8
Non-residential buildings						
Office and banking space						
Total square metres	0	0	0	998	416	-58,3
Total value at current prices (R'000)	0	0	0	1 126	632	-43,9
Shopping space						
Total square metres	0	0	0	5 448	8 531	+ 56,6
Total value at current prices (R'000)	0	0	0	8 177	11 980	+ 46,5
Industrial and warehouse space						
Total square metres	0	272	0	1 857	1 323	-28,8
Total value at current prices (R'000)	0	598	0	2 710	1 977	-27,0
Other non-residential space ^{2/}						
Total square metres	0	0	0	424	547	+ 29,0
Total value at current prices (R'000)	0	0	0	726	714	-1,7
Total value of non-residential buildings at current prices (R'000)	0	598	0	12 739	15 303	+ 20,1
Additions and alterations						
Dwelling-houses						
Total square metres	257	486	75	8 429	5 583	-33,8
Total value at current prices (R'000)	297	747	71	10 255	8 164	-20,4
Other buildings ^{3/}						
Total square metres	105	124	134	3 631	2 836	-21,9
Total value at current prices (R'000)	105	273	395	6 748	4 824	-28,5
Total value of additions and alterations at current prices (R'000)	402	1 020	466	17 003	12 988	-23,6
Total value of buildings completed at current prices (R'000)	5 338	9 930	4 551	102 000	302 709	+ 196,8

1/ Other residential buildings include institutions for the disabled, boarding houses, old people's homes, hostels, hotels, motels, guest houses, holiday chalets, entertainment centres, bed-and-breakfast accommodation and casinos.

2/ Other non-residential space includes churches, sport and recreation clubs, schools, crèches, hospitals and all other non-residential space.

3/ Other buildings include additions and alterations to other residential buildings, non-residential buildings and internal alterations.

Table 29 - Building plans passed according to type of building and selected urban area: Cape Town

Type of building	December 2001*	November 2002	December 2002	January 2001 to December 2001	January 2002 to December 2002	Percentage change between January 2001 to December 2001 and January 2002 to December 2002
Residential buildings						
Dwelling-houses smaller than 80 square metres						
Number of dwelling-houses	293	450	667	5 452	9 945	+ 82,4
Total square metres	11 547	17 126	22 478	233 530	345 263	+ 47,8
Total value at current prices (R'000)	14 190	19 056	27 643	288 380	409 843	+ 42,1
Dwelling-houses equal to or larger than 80 square metres						
Number of dwelling-houses	222	374	345	3 470	4 224	+ 21,7
Total square metres	45 005	85 017	70 383	716 982	861 251	+ 20,1
Total value at current prices (R'000)	63 042	130 904	91 289	994 908	1 215 349	+ 22,2
Flats and townhouses						
Number of flats and townhouses	85	200	218	1 787	1 777	- 0,6
Total square metres	13 137	27 627	23 880	173 139	179 642	+ 3,8
Total value at current prices (R'000)	20 174	41 978	54 588	261 639	288 758	+ 10,4
Other residential buildings ^{1/}						
Total square metres	0	0	47 356	33 316	17 064	- 48,8
Total value at current prices (R'000)	0	0	214 808	78 369	23 505	- 70,0
Total value of residential buildings at current prices (R'000)	97 406	191 938	388 328	1 623 296	1 937 455	+ 19,4
Non-residential buildings						
Office and banking space						
Total square metres	3 130	0	11 926	195 137	54 041	- 72,3
Total value at current prices (R'000)	5 200	0	68 973	281 407	91 393	- 67,5
Shopping space						
Total square metres	2 650	714	5 140	98 925	26 829	- 72,9
Total value at current prices (R'000)	4 100	1 141	8 120	125 515	35 348	- 71,8
Industrial and warehouse space						
Total square metres	11 731	11 812	8 903	136 801	123 074	- 10,0
Total value at current prices (R'000)	11 566	13 439	8 036	147 219	134 849	- 8,4
Other non-residential space ^{2/}						
Total square metres	759	1 613	1 672	53 580	40 526	- 24,4
Total value at current prices (R'000)	1 167	2 133	2 469	72 359	57 479	- 20,6
Total value of non-residential buildings at current prices (R'000)	22 033	16 713	87 598	626 500	319 069	- 49,1
Additions and alterations						
Dwelling-houses						
Total square metres	43 204	59 054	41 383	570 151	607 642	+ 6,6
Total value at current prices (R'000)	53 664	77 829	55 413	680 115	786 210	+ 15,6
Other buildings ^{3/}						
Total square metres	8 736	14 435	13 820	179 741	243 481	+ 35,5
Total value at current prices (R'000)	23 462	31 154	47 314	342 920	484 343	+ 41,2
Total value of additions and alterations at current prices (R'000)	77 126	108 983	102 727	1 023 035	1 270 553	+ 24,2
Total value of building plans passed at current prices (R'000)	196 565	317 634	578 653	3 272 831	3 527 077	+ 7,8

1/ Other residential buildings include institutions for the disabled, boarding houses, old people's homes, hostels, hotels, motels, guest houses, holiday chalets, entertainment centres, bed-and-breakfast accommodation and casinos.

2/ Other non-residential space includes churches, sport and recreation clubs, schools, crèches, hospitals and all other non-residential space.

3/ Other buildings include additions and alterations to other residential buildings, non-residential buildings and internal alterations.

Table 30 - Building plans passed according to type of building and selected urban area: Port Elizabeth

Type of building	December 2001	November 2002	December 2002	January 2001 to December 2001	January 2002 to December 2002	Percentage change between January 2001 to December 2001 and January 2002 to December 2002
Residential buildings						
Dwelling-houses smaller than 80 square metres						
Number of dwelling-houses	15	212	109	1 378	2 711	+ 96,7
Total square metres	809	8 542	4 373	61 858	113 303	+ 83,2
Total value at current prices (R'000)	1 099	12 390	6 268	82 525	146 925	+ 78,0
Dwelling-houses equal to or larger than 80 square metres						
Number of dwelling-houses	46	121	30	656	677	+ 3,2
Total square metres	8 327	14 963	9 473	92 524	121 833	+ 31,7
Total value at current prices (R'000)	12 865	22 465	14 124	126 013	175 180	+ 39,0
Flats and townhouses						
Number of flats and townhouses	14	10	22	158	237	+ 50,0
Total square metres	1 475	1 713	1 606	14 214	27 653	+ 94,5
Total value at current prices (R'000)	2 077	2 290	3 086	19 618	43 063	+ 119,5
Other residential buildings ^{1/}						
Total square metres	539	0	0	3 052	323	- 89,4
Total value at current prices (R'000)	1 056	0	0	3 629	550	- 84,8
Total value of residential buildings at current prices (R'000)	17 097	37 145	23 478	231 785	365 718	+ 57,8
Non-residential buildings						
Office and banking space						
Total square metres	0	0	0	5 293	8 373	+ 58,2
Total value at current prices (R'000)	0	0	0	5 907	13 241	+ 124,2
Shopping space						
Total square metres	0	332	1 200	5 529	20 574	+ 272,1
Total value at current prices (R'000)	0	515	2 220	8 669	37 898	+ 337,2
Industrial and warehouse space						
Total square metres	1 749	4 055	2 543	24 507	32 782	+ 33,8
Total value at current prices (R'000)	2 816	6 669	4 120	22 972	51 545	+ 124,4
Other non-residential space ^{2/}						
Total square metres	823	1 895	404	13 196	24 285	+ 84,0
Total value at current prices (R'000)	1 236	3 759	1 312	24 053	39 035	+ 62,3
Total value of non-residential buildings at current prices (R'000)	4 052	10 943	7 652	61 601	141 719	+ 130,1
Additions and alterations						
Dwelling-houses						
Total square metres	10 305	14 244	9 135	117 041	128 966	+ 10,2
Total value at current prices (R'000)	15 797	22 239	17 885	153 518	183 236	+ 19,4
Other buildings ^{3/}						
Total square metres	261	3 334	2 393	72 765	35 637	- 51,0
Total value at current prices (R'000)	328	7 322	4 351	80 920	57 618	- 28,8
Total value of additions and alterations at current prices (R'000)	16 125	29 561	22 236	234 438	240 854	+ 2,7
Total value of building plans passed at current prices (R'000)	37 274	77 649	53 366	527 824	748 291	+ 41,8

1/ Other residential buildings include institutions for the disabled, boarding houses, old people's homes, hostels, hotels, motels, guest houses, holiday chalets, entertainment centres, bed-and-breakfast accommodation and casinos.

2/ Other non-residential space includes churches, sport and recreation clubs, schools, crèches, hospitals and all other non-residential space.

3/ Other buildings include additions and alterations to other residential buildings, non-residential buildings and internal alterations.

Table 31 - Building plans passed according to type of building and selected urban area: Durban

Type of building	December 2001	November 2002	December 2002	January 2001 to December 2001	January 2002 to December 2002	Percentage change between January 2001 to December 2001 and January 2002 to December 2002
Residential buildings						
Dwelling-houses smaller than 80 square metres						
Number of dwelling-houses	32	46	30	881	661	-25,0
Total square metres	1 617	2 301	1 699	42 599	31 580	-25,9
Total value at current prices (R'000)	2 020	2 865	1 916	49 004	36 211	-26,1
Dwelling-houses equal to or larger than 80 square metres						
Number of dwelling-houses	44	67	56	748	737	-1,5
Total square metres	7 346	12 628	11 448	140 282	147 999	+ 5,5
Total value at current prices (R'000)	10 632	22 740	15 597	181 896	213 753	+ 17,5
Flats and townhouses						
Number of flats and townhouses	0	24	28	154	330	+ 114,3
Total square metres	0	7 390	3 563	20 567	62 720	+ 205,0
Total value at current prices (R'000)	0	12 651	4 250	23 298	98 185	+ 321,4
Other residential buildings ^{1/}						
Total square metres	0	226	0	2 377	29 956	+ 1 160,2
Total value at current prices (R'000)	0	285	0	2 431	31 449	+ 1 193,7
Total value of residential buildings at current prices (R'000)	12 652	38 541	21 763	256 629	379 598	+ 47,9
Non-residential buildings						
Office and banking space						
Total square metres	0	0	678	22 843	10 957	-52,0
Total value at current prices (R'000)	0	0	1 000	37 295	18 850	-49,5
Shopping space						
Total square metres	1 198	2 954	0	12 167	12 205	+ 0,3
Total value at current prices (R'000)	4 584	3 466	0	14 785	16 414	+ 11,0
Industrial and warehouse space						
Total square metres	0	24 980	161	86 074	79 813	-7,3
Total value at current prices (R'000)	0	37 700	425	143 008	103 038	-27,9
Other non-residential space ^{2/}						
Total square metres	611	2 124	887	33 102	70 502	+ 113,0
Total value at current prices (R'000)	500	2 963	945	44 668	85 975	+ 92,5
Total value of non-residential buildings at current prices (R'000)	5 084	44 129	2 370	239 756	224 277	-6,5
Additions and alterations						
Dwelling-houses						
Total square metres	12 452	28 797	21 097	245 644	258 014	+ 5,0
Total value at current prices (R'000)	14 420	37 094	24 968	291 485	328 718	+ 12,8
Other buildings ^{3/}						
Total square metres	6 303	6 824	7 964	96 890	78 836	-18,6
Total value at current prices (R'000)	10 616	16 001	17 527	200 431	154 690	-22,8
Total value of additions and alterations at current prices (R'000)	25 036	53 095	42 495	491 916	483 408	-1,7
Total value of building plans passed at current prices (R'000)	42 772	135 765	66 628	988 301	1 087 283	+ 10,0

1/ Other residential buildings include institutions for the disabled, boarding houses, old people's homes, hostels, hotels, motels, guest houses, holiday chalets, entertainment centres, bed-and-breakfast accommodation and casinos.

2/ Other non-residential space includes churches, sport and recreation clubs, schools, crèches, hospitals and all other non-residential space.

3/ Other buildings include additions and alterations to other residential buildings, non-residential buildings and internal alterations.

Table 32 - Building plans passed according to type of building and selected urban area: Witwatersrand

Type of building	December 2001	November 2002	December 2002	January 2001 to December 2001	January 2002 to December 2002	Percentage change between January 2001 to December 2001 and January 2002 to December 2002
Residential buildings						
Dwelling-houses smaller than 80 square metres						
Number of dwelling-houses	556	577	417	7 595	6 981	- 8,1
Total square metres	23 039	23 151	16 714	302 072	262 448	- 13,1
Total value at current prices (R'000)	22 823	25 347	20 350	324 355	244 543	- 24,6
Dwelling-houses equal to or larger than 80 square metres						
Number of dwelling-houses	305	445	338	4 600	4 448	- 3,3
Total square metres	81 843	109 388	70 267	1 066 686	1 148 257	+ 7,6
Total value at current prices (R'000)	122 217	167 105	107 340	1 582 570	1 772 382	+ 12,0
Flats and townhouses						
Number of flats and townhouses	159	113	240	2 820	3 080	+ 9,2
Total square metres	23 474	17 378	42 592	346 236	396 125	+ 14,4
Total value at current prices (R'000)	33 564	24 443	64 106	550 858	606 872	+ 10,2
Other residential buildings ^{1/}						
Total square metres	4 882	259	0	2 936	4 227	+ 44,0
Total value at current prices (R'000)	7 323	447	0	3 340	6 700	+ 100,6
Total value of residential buildings at current prices (R'000)	185 927	217 342	191 796	2 461 123	2 630 497	+ 6,9
Non-residential buildings						
Office and banking space						
Total square metres	2 371	25 517	4 248	204 942	129 942	- 36,6
Total value at current prices (R'000)	2 315	39 971	6 334	354 472	267 021	- 24,7
Shopping space						
Total square metres	11 206	10 600	986	76 299	85 053	+ 11,5
Total value at current prices (R'000)	22 004	15 900	1 663	126 277	146 446	+ 16,0
Industrial and warehouse space						
Total square metres	3 340	19 035	12 375	220 301	257 419	+ 16,8
Total value at current prices (R'000)	4 696	31 764	19 879	369 377	418 194	+ 13,2
Other non-residential space ^{2/}						
Total square metres	1 406	681	1 386	84 047	97 953	+ 16,5
Total value at current prices (R'000)	1 811	869	2 373	126 401	155 205	+ 22,8
Total value of non-residential buildings at current prices (R'000)	30 826	88 504	30 249	976 527	986 866	+ 1,1
Additions and alterations						
Dwelling-houses						
Total square metres	49 593	61 216	35 362	711 273	703 755	- 1,1
Total value at current prices (R'000)	69 718	97 255	54 951	924 032	1 047 754	+ 13,4
Other buildings ^{3/}						
Total square metres	10 537	60 106	6 916	202 891	337 467	+ 66,3
Total value at current prices (R'000)	20 618	99 990	12 374	360 075	596 302	+ 65,6
Total value of additions and alterations at current prices (R'000)	90 336	197 245	67 325	1 284 107	1 644 056	+ 28,0
Total value of building plans passed at current prices (R'000)	307 089	503 091	289 370	4 721 757	5 261 419	+ 11,4

1/ Other residential buildings include institutions for the disabled, boarding houses, old people's homes, hostels, hotels, motels, guest houses, holiday chalets, entertainment centres, bed-and-breakfast accommodation and casinos.

2/ Other non-residential space includes churches, sport and recreation clubs, schools, crèches, hospitals and all other non-residential space.

3/ Other buildings include additions and alterations to other residential buildings, non-residential buildings and internal alterations.

Table 33 - Building plans passed according to type of building and selected urban area: Pretoria

Type of building	December 2001	November 2002*	December 2002	January 2001 to December 2001	January 2002 to December 2002	Percentage change between January 2001 to December 2001 and January 2002 to December 2002
Residential buildings						
Dwelling-houses smaller than 80 square metres						
Number of dwelling-houses	26	2 581	1 585	1 320	7 127	+ 439,9
Total square metres	1 361	104 061	48 312	55 445	295 376	+ 432,7
Total value at current prices (R'000)	1 704	56 328	26 053	67 541	186 855	+ 176,7
Dwelling-houses equal to or larger than 80 square metres						
Number of dwelling-houses	107	236	110	2 641	2 419	- 8,4
Total square metres	26 963	61 352	32 997	749 841	631 929	- 15,7
Total value at current prices (R'000)	41 806	99 519	53 341	1 054 919	942 242	- 10,7
Flats and townhouses						
Number of flats and townhouses	310	290	136	2 264	3 070	+ 35,6
Total square metres	48 212	58 150	25 295	335 753	449 939	+ 34,0
Total value at current prices (R'000)	72 092	93 279	45 118	507 811	659 724	+ 29,9
Other residential buildings ^{1/}						
Total square metres	0	0	0	3 913	0	..
Total value at current prices (R'000)	0	0	0	5 910	0	..
Total value of residential buildings at current prices (R'000)	115 602	249 126	124 512	1 636 181	1 788 821	+ 9,3
Non-residential buildings						
Office and banking space						
Total square metres	4 118	1 955	110	115 500	78 417	- 32,1
Total value at current prices (R'000)	6 953	3 555	160	186 918	124 333	- 33,5
Shopping space						
Total square metres	1 011	898	0	62 307	68 981	+ 10,7
Total value at current prices (R'000)	1 450	1 347	0	94 568	100 633	+ 6,4
Industrial and warehouse space						
Total square metres	0	4 991	4 605	58 111	114 998	+ 97,9
Total value at current prices (R'000)	0	8 156	6 528	82 209	168 856	+ 105,4
Other non-residential space ^{2/}						
Total square metres	1 792	2 348	2 589	58 937	29 287	- 50,3
Total value at current prices (R'000)	2 879	4 013	3 871	80 772	45 781	- 43,3
Total value of non-residential buildings at current prices (R'000)	11 282	17 071	10 559	444 467	439 603	- 1,1
Additions and alterations						
Dwelling-houses						
Total square metres	13 016	25 845	7 878	223 798	280 598	+ 25,4
Total value at current prices (R'000)	18 706	42 502	11 416	302 310	417 154	+ 38,0
Other buildings ^{3/}						
Total square metres	3 152	1 668	20 882	136 985	117 958	- 13,9
Total value at current prices (R'000)	4 970	18 498	26 814	186 830	194 181	+ 3,9
Total value of additions and alterations at current prices (R'000)	23 676	61 000	38 230	489 140	611 335	+ 25,0
Total value of building plans passed at current prices (R'000)	150 560	327 197	173 301	2 569 788	2 839 759	+ 10,5

1/ Other residential buildings include institutions for the disabled, boarding houses, old people's homes, hostels, hotels, motels, guest houses, holiday chalets, entertainment centres, bed-and-breakfast accommodation and casinos.

2/ Other non-residential space includes churches, sport and recreation clubs, schools, crèches, hospitals and all other non-residential space.

3/ Other buildings include additions and alterations to other residential buildings, non-residential buildings and internal alterations.

Table 34 - Building plans passed according to type of building and selected urban area: Bloemfontein

Type of building	December 2001	November 2002	December 2002	January 2001 to December 2001	January 2002 to December 2002	Percentage change between January 2001 to December 2001 and January 2002 to December 2002
Residential buildings						
Dwelling-houses smaller than 80 square metres						
Number of dwelling-houses	0	179	17	1 352	2 030	+ 50,1
Total square metres	0	7 800	838	60 150	85 871	+ 42,8
Total value at current prices (R'000)	0	4 722	1 171	36 817	50 312	+ 36,7
Dwelling-houses equal to or larger than 80 square metres						
Number of dwelling-houses	12	32	22	249	319	+ 28,1
Total square metres	1 591	4 525	3 936	42 837	50 728	+ 18,4
Total value at current prices (R'000)	1 283	6 879	5 890	55 280	73 007	+ 32,1
Flats and townhouses						
Number of flats and townhouses	0	74	32	347	608	+ 75,2
Total square metres	0	4 484	2 144	40 166	56 368	+ 40,3
Total value at current prices (R'000)	0	6 724	3 216	60 151	82 084	+ 36,5
Other residential buildings ^{1/}						
Total square metres	0	0	0	3 867	4 087	+ 5,7
Total value at current prices (R'000)	0	0	0	4 970	9 300	+ 87,1
Total value of residential buildings at current prices (R'000)	1 283	18 325	10 277	157 218	214 703	+ 36,6
Non-residential buildings						
Office and banking space						
Total square metres	0	849	0	13 256	14 272	+ 7,7
Total value at current prices (R'000)	0	1 698	0	26 025	24 298	-6,6
Shopping space						
Total square metres	0	375	0	4 923	15 726	+ 219,4
Total value at current prices (R'000)	0	938	0	5 000	30 402	+ 508,0
Industrial and warehouse space						
Total square metres	0	1 178	166	4 661	12 897	+ 176,7
Total value at current prices (R'000)	0	2 312	170	3 626	13 311	+ 267,1
Other non-residential space ^{2/}						
Total square metres	0	0	0	3 199	1 963	-38,6
Total value at current prices (R'000)	0	0	0	6 208	2 030	-67,3
Total value of non-residential buildings at current prices (R'000)	0	4 948	170	40 859	70 041	+ 71,4
Additions and alterations						
Dwelling-houses						
Total square metres	1 514	5 277	4 080	34 896	49 723	+ 42,5
Total value at current prices (R'000)	1 790	7 339	5 271	42 859	63 659	+ 48,5
Other buildings ^{3/}						
Total square metres	280	1 109	1 091	11 407	15 239	+ 33,6
Total value at current prices (R'000)	180	2 775	1 673	23 360	36 818	+ 57,6
Total value of additions and alterations at current prices (R'000)	1 970	10 114	6 944	66 219	100 477	+ 51,7
Total value of building plans passed at current prices (R'000)	3 253	33 387	17 391	264 296	385 221	+ 45,8

1/ Other residential buildings include institutions for the disabled, boarding houses, old people's homes, hostels, hotels, motels, guest houses, holiday chalets, entertainment centres, bed-and-breakfast accommodation and casinos.

2/ Other non-residential space includes churches, sport and recreation clubs, schools, crèches, hospitals and all other non-residential space.

3/ Other buildings include additions and alterations to other residential buildings, non-residential buildings and internal alterations.

Table 35 - Buildings completed according to type of building and selected urban area: Cape Town

Type of building	December 2001*	November 2002	December 2002	January 2001 to December 2001	January 2002 to December 2002	Percentage change between January 2001 to December 2001 and January 2002 to December 2002
Residential buildings						
Dwelling-houses smaller than 80 square metres						
Number of dwelling-houses	802	530	621	3 740	5 226	+ 39,7
Total square metres	30 344	20 077	22 921	157 487	192 561	+ 22,3
Total value at current prices (R'000)	40 122	20 808	29 693	178 154	226 926	+ 27,4
Dwelling-houses equal to or larger than 80 square metres						
Number of dwelling-houses	142	349	231	1 716	2 884	+ 68,1
Total square metres	27 341	61 707	42 724	326 745	552 450	+ 69,1
Total value at current prices (R'000)	42 025	88 920	59 848	454 992	795 873	+ 74,9
Flats and townhouses						
Number of flats and townhouses	111	284	177	1 270	1 385	+ 9,1
Total square metres	8 947	21 729	16 272	140 362	155 290	+ 10,6
Total value at current prices (R'000)	11 991	37 362	22 616	188 147	245 456	+ 30,5
Other residential buildings ^{1/}						
Total square metres	0	0	0	23 274	6 730	- 71,1
Total value at current prices (R'000)	0	0	0	27 692	9 935	- 64,1
Total value of residential buildings at current prices (R'000)	94 138	147 090	112 157	848 985	1 278 190	+ 50,6
Non-residential buildings						
Office and banking space						
Total square metres	4 130	8 767	1 165	79 049	85 801	+ 8,5
Total value at current prices (R'000)	2 950	18 600	2 473	139 392	132 321	- 5,1
Shopping space						
Total square metres	81 768	2 477	570	29 671	44 881	+ 51,3
Total value at current prices (R'000)	81 655	5 020	907	37 413	54 393	+ 45,4
Industrial and warehouse space						
Total square metres	1 704	6 893	10 800	70 059	93 832	+ 33,9
Total value at current prices (R'000)	1 850	6 794	11 874	76 314	100 819	+ 32,1
Other non-residential space ^{2/}						
Total square metres	8 944	105	16 132	17 203	24 606	+ 43,0
Total value at current prices (R'000)	8 318	123	24 514	22 226	27 035	+ 21,6
Total value of non-residential buildings at current prices (R'000)	94 773	30 537	39 768	275 345	314 568	+ 14,2
Additions and alterations						
Dwelling-houses						
Total square metres	15 917	29 102	27 512	310 514	322 645	+ 3,9
Total value at current prices (R'000)	21 085	34 777	34 699	352 691	395 449	+ 12,1
Other buildings ^{3/}						
Total square metres	2 721	8 419	17 675	99 213	148 479	+ 49,7
Total value at current prices (R'000)	6 709	18 943	19 978	281 835	257 285	- 8,7
Total value of additions and alterations at current prices (R'000)	27 794	53 720	54 677	634 526	652 734	+ 2,9
Total value of buildings completed at current prices (R'000)	216 705	231 347	206 602	1 758 856	2 245 492	+ 27,7

1/ Other residential buildings include institutions for the disabled, boarding houses, old people's homes, hostels, hotels, motels, guest houses, holiday chalets, entertainment centres, bed-and-breakfast accommodation and casinos.

2/ Other non-residential space includes churches, sport and recreation clubs, schools, crèches, hospitals and all other non-residential space.

3/ Other buildings include additions and alterations to other residential buildings, non-residential buildings and internal alterations.

Table 36 - Buildings completed according to type of building and selected urban area: Port Elizabeth

Type of building	December 2001	November 2002	December 2002	January 2001 to December 2001	January 2002 to December 2002	Percentage change between January 2001 to December 2001 and January 2002 to December 2002
Residential buildings						
Dwelling-houses smaller than 80 square metres						
Number of dwelling-houses	36	143	138	1 321	2 269	+ 71,8
Total square metres	1 624	6 033	6 570	56 130	103 894	+ 85,1
Total value at current prices (R'000)	2 169	8 419	9 591	72 499	135 533	+ 86,9
Dwelling-houses equal to or larger than 80 square metres						
Number of dwelling-houses	23	15	4	507	298	- 41,2
Total square metres	3 984	3 585	539	61 747	45 336	- 26,6
Total value at current prices (R'000)	5 813	5 243	582	77 116	61 555	- 20,2
Flats and townhouses						
Number of flats and townhouses	4	11	0	169	59	- 65,1
Total square metres	338	2 090	0	19 613	8 511	- 56,6
Total value at current prices (R'000)	490	2 912	0	21 559	12 473	- 42,1
Other residential buildings ^{1/}						
Total square metres	0	0	0	4 347	2 744	- 36,9
Total value at current prices (R'000)	0	0	0	7 000	3 312	- 52,7
Total value of residential buildings at current prices (R'000)	8 472	16 574	10 173	178 174	212 873	+ 19,5
Non-residential buildings						
Office and banking space						
Total square metres	0	0	640	22 627	1 184	- 94,8
Total value at current prices (R'000)	0	0	660	23 374	2 049	- 91,2
Shopping space						
Total square metres	249	496	3 928	24 379	3 948	- 83,8
Total value at current prices (R'000)	407	836	7 699	28 844	5 574	- 80,7
Industrial and warehouse space						
Total square metres	0	4 961	1 333	45 849	34 138	- 25,5
Total value at current prices (R'000)	0	2 706	2 233	44 174	40 554	- 8,2
Other non-residential space ^{2/}						
Total square metres	83	536	0	7 552	3 560	- 52,9
Total value at current prices (R'000)	163	303	0	8 337	3 927	- 52,9
Total value of non-residential buildings at current prices (R'000)	570	3 845	10 592	104 729	52 104	- 50,2
Additions and alterations						
Dwelling-houses						
Total square metres	3 799	1 220	2 521	60 522	45 451	- 24,9
Total value at current prices (R'000)	6 493	1 189	4 422	68 118	52 644	- 22,7
Other buildings ^{3/}						
Total square metres	366	510	768	41 786	35 232	- 15,7
Total value at current prices (R'000)	401	814	2 247	57 142	42 991	- 24,8
Total value of additions and alterations at current prices (R'000)	6 894	2 003	6 669	125 260	95 635	- 23,7
Total value of buildings completed at current prices (R'000)	15 936	22 422	27 434	408 163	360 612	- 11,7

1/ Other residential buildings include institutions for the disabled, boarding houses, old people's homes, hostels, hotels, motels, guest houses, holiday chalets, entertainment centres, bed-and-breakfast accommodation and casinos.

2/ Other non-residential space includes churches, sport and recreation clubs, schools, crèches, hospitals and all other non-residential space.

3/ Other buildings include additions and alterations to other residential buildings, non-residential buildings and internal alterations.

Table 37 - Buildings completed according to type of building and selected urban area: Durban

Type of building	December 2001	November 2002	December 2002	January 2001 to December 2001	January 2002 to December 2002	Percentage change between January 2001 to December 2001 and January 2002 to December 2002
Residential buildings						
Dwelling-houses smaller than 80 square metres						
Number of dwelling-houses	44	52	76	733	715	- 2,5
Total square metres	2 663	2 940	3 738	38 595	36 295	- 6,0
Total value at current prices (R'000)	3 090	3 442	4 161	45 129	42 014	- 6,9
Dwelling-houses equal to or larger than 80 square metres						
Number of dwelling-houses	49	64	47	949	755	- 20,4
Total square metres	10 096	12 174	7 802	185 932	139 050	- 25,2
Total value at current prices (R'000)	13 637	16 138	11 304	223 228	177 199	- 20,6
Flats and townhouses						
Number of flats and townhouses	10	31	28	507	237	- 53,3
Total square metres	1 954	4 614	4 824	50 828	33 539	- 34,0
Total value at current prices (R'000)	2 412	6 581	8 188	68 474	51 985	- 24,1
Other residential buildings ^{1/}						
Total square metres	0	0	0	0	1 246	..
Total value at current prices (R'000)	0	0	0	0	1 263	..
Total value of residential buildings at current prices (R'000)	19 139	26 161	23 653	336 831	272 461	- 19,1
Non-residential buildings						
Office and banking space						
Total square metres	0	1 019	2 084	35 773	38 960	+ 8,9
Total value at current prices (R'000)	0	1 224	4 428	56 749	57 771	+ 1,8
Shopping space						
Total square metres	356	1 304	37	24 141	32 399	+ 34,2
Total value at current prices (R'000)	356	1 404	140	40 298	49 768	+ 23,5
Industrial and warehouse space						
Total square metres	4 472	978	14 306	107 528	126 610	+ 17,7
Total value at current prices (R'000)	4 239	1 586	13 903	127 340	156 436	+ 22,8
Other non-residential space ^{2/}						
Total square metres	2 194	264	10 487	21 254	20 251	- 4,7
Total value at current prices (R'000)	2 194	200	14 752	24 741	30 262	+ 22,3
Total value of non-residential buildings at current prices (R'000)	6 789	4 414	33 223	249 128	294 237	+ 18,1
Additions and alterations						
Dwelling-houses						
Total square metres	14 337	15 536	17 593	271 003	233 371	- 13,9
Total value at current prices (R'000)	15 484	19 428	19 835	298 733	278 898	- 6,6
Other buildings ^{3/}						
Total square metres	3 297	5 957	7 421	85 641	66 031	- 22,9
Total value at current prices (R'000)	6 042	20 141	16 540	160 843	149 735	- 6,9
Total value of additions and alterations at current prices (R'000)	21 526	39 569	36 375	459 576	428 633	- 6,7
Total value of buildings completed at current prices (R'000)	47 454	70 144	93 251	1 045 535	995 331	- 4,8

1/ Other residential buildings include institutions for the disabled, boarding houses, old people's homes, hostels, hotels, motels, guest houses, holiday chalets, entertainment centres, bed-and-breakfast accommodation and casinos.

2/ Other non-residential space includes churches, sport and recreation clubs, schools, crèches, hospitals and all other non-residential space.

3/ Other buildings include additions and alterations to other residential buildings, non-residential buildings and internal alterations.

Table 38 - Buildings completed according to type of building and selected urban area: Witwatersrand

Type of building	December 2001	November 2002*	December 2002	January 2001 to December 2001	January 2002 to December 2002	Percentage change between January 2001 to December 2001 and January 2002 to December 2002
Residential buildings						
Dwelling-houses smaller than 80 square metres						
Number of dwelling-houses	401	408	272	6 682	7 080	+ 6,0
Total square metres	16 384	15 290	9 997	252 161	257 733	+ 2,2
Total value at current prices (R'000)	20 582	15 581	12 202	240 802	230 646	-4,2
Dwelling-houses equal to or larger than 80 square metres						
Number of dwelling-houses	190	324	346	2 011	2 870	+ 42,7
Total square metres	48 724	69 723	81 811	450 192	644 426	+ 43,1
Total value at current prices (R'000)	77 455	102 164	121 250	659 389	953 272	+ 44,6
Flats and townhouses						
Number of flats and townhouses	183	293	189	1 939	2 933	+ 51,3
Total square metres	23 447	39 442	19 005	204 476	400 928	+ 96,1
Total value at current prices (R'000)	38 202	52 226	26 744	338 449	577 382	+ 70,6
Other residential buildings ^{1/}						
Total square metres	0	0	2 579	42 714	11 978	-72,0
Total value at current prices (R'000)	0	0	3 353	269 217	17 333	-93,6
Total value of residential buildings at current prices (R'000)	136 239	169 971	163 549	1 507 857	1 778 633	+ 18,0
Non-residential buildings						
Office and banking space						
Total square metres	5 706	71 788	53 064	291 246	273 388	-6,1
Total value at current prices (R'000)	7 800	107 798	83 806	475 752	417 168	-12,3
Shopping space						
Total square metres	800	412	9 671	115 555	39 655	-65,7
Total value at current prices (R'000)	1 600	350	14 372	244 439	70 435	-71,2
Industrial and warehouse space						
Total square metres	1 329	17 916	6 735	181 665	111 766	-38,5
Total value at current prices (R'000)	1 957	30 769	10 238	292 703	176 958	-39,5
Other non-residential space ^{2/}						
Total square metres	1 705	6 049	6 761	20 696	36 404	+ 75,9
Total value at current prices (R'000)	2 061	9 227	10 860	31 642	53 419	+ 68,8
Total value of non-residential buildings at current prices (R'000)	13 418	148 144	119 276	1 044 536	717 980	-31,3
Additions and alterations						
Dwelling-houses						
Total square metres	14 220	26 096	19 949	233 381	308 647	+ 32,3
Total value at current prices (R'000)	19 318	34 909	27 406	293 982	428 613	+ 45,8
Other buildings ^{3/}						
Total square metres	3 436	2 906	4 246	117 095	86 767	-25,9
Total value at current prices (R'000)	6 553	5 984	7 140	207 051	144 467	-30,2
Total value of additions and alterations at current prices (R'000)	25 871	40 893	34 546	501 033	573 080	+ 14,4
Total value of buildings completed at current prices (R'000)	175 528	359 008	317 371	3 053 426	3 069 693	+ 0,5

1/ Other residential buildings include institutions for the disabled, boarding houses, old people's homes, hostels, hotels, motels, guest houses, holiday chalets, entertainment centres, bed-and-breakfast accommodation and casinos.

2/ Other non-residential space includes churches, sport and recreation clubs, schools, crèches, hospitals and all other non-residential space.

3/ Other buildings include additions and alterations to other residential buildings, non-residential buildings and internal alterations.

Table 39 - Buildings completed according to type of building and selected urban area: Pretoria

Type of building	December 2001	November 2002*	December 2002	January 2001 to December 2001	January 2002 to December 2002	Percentage change between January 2001 to December 2001 and January 2002 to December 2002
Residential buildings						
Dwelling-houses smaller than 80 square metres						
Number of dwelling-houses	31	2 621	1 569	399	7 217	+ 1708,8
Total square metres	1 703	106 553	47 510	19 762	293 485	+ 1385,1
Total value at current prices (R'000)	2 435	60 922	24 529	24 712	178 073	+ 620,6
Dwelling-houses equal to or larger than 80 square metres						
Number of dwelling-houses	104	155	105	1 037	1 250	+ 20,5
Total square metres	29 295	40 249	25 498	279 519	353 350	+ 26,4
Total value at current prices (R'000)	42 119	70 543	37 913	383 204	589 542	+ 53,8
Flats and townhouses						
Number of flats and townhouses	25	130	75	1 328	2 321	+ 74,8
Total square metres	4 633	17 752	11 891	149 654	261 571	+ 74,8
Total value at current prices (R'000)	6 950	31 676	17 818	217 117	416 310	+ 91,7
Other residential buildings ^{1/}						
Total square metres	0	0	0	50	72	+ 44,0
Total value at current prices (R'000)	0	0	0	81	73	- 9,9
Total value of residential buildings at current prices (R'000)	51 504	163 141	80 260	625 114	1 183 998	+ 89,4
Non-residential buildings						
Office and banking space						
Total square metres	6 882	11 993	735	13 224	49 261	+ 272,5
Total value at current prices (R'000)	11 752	19 189	735	19 205	72 173	+ 275,8
Shopping space						
Total square metres	0	101	0	4 504	8 564	+ 90,1
Total value at current prices (R'000)	0	202	0	6 959	14 866	+ 113,6
Industrial and warehouse space						
Total square metres	1 285	0	52 441	14 432	17 296	+ 19,8
Total value at current prices (R'000)	1 625	0	84 193	14 417	25 896	+ 79,6
Other non-residential space ^{2/}						
Total square metres	0	2 247	464	10 942	4 904	- 55,2
Total value at current prices (R'000)	0	4 494	696	17 102	8 448	- 50,6
Total value of non-residential buildings at current prices (R'000)	13 377	23 885	85 624	57 683	121 383	+ 110,4
Additions and alterations						
Dwelling-houses						
Total square metres	732	9 030	2 123	19 590	44 097	+ 125,1
Total value at current prices (R'000)	1 081	13 777	3 310	25 053	67 996	+ 171,4
Other buildings ^{3/}						
Total square metres	2 222	126	5 877	6 705	16 576	+ 147,2
Total value at current prices (R'000)	3 518	994	9 515	9 537	28 247	+ 196,2
Total value of additions and alterations at current prices (R'000)	4 599	14 771	12 825	34 590	96 243	+ 178,2
Total value of buildings completed at current prices (R'000)	69 480	201 797	178 709	717 387	1 401 624	+ 95,4

1/ Other residential buildings include institutions for the disabled, boarding houses, old people's homes, hostels, hotels, motels, guest houses, holiday chalets, entertainment centres, bed-and-breakfast accommodation and casinos.

2/ Other non-residential space includes churches, sport and recreation clubs, schools, crèches, hospitals and all other non-residential space.

3/ Other buildings include additions and alterations to other residential buildings, non-residential buildings and internal alterations.

Table 40 - Buildings completed according to type of building and selected urban area: Bloemfontein

Type of building	December 2001	November 2002	December 2002	January 2001 to December 2001	January 2002 to December 2002	Percentage change between January 2001 to December 2001 and January 2002 to December 2002
Residential buildings						
Dwelling-houses smaller than 80 square metres						
Number of dwelling-houses	7	218	20	804	2 254	+ 180,3
Total square metres	347	9 050	1 076	34 115	96 336	+ 182,4
Total value at current prices (R'000)	342	5 212	1 498	20 016	49 075	+ 145,2
Dwelling-houses equal to or larger than 80 square metres						
Number of dwelling-houses	4	24	12	163	235	+ 44,2
Total square metres	575	4 142	1 706	31 462	38 969	+ 23,9
Total value at current prices (R'000)	643	5 096	1 851	39 607	48 110	+ 21,5
Flats and townhouses						
Number of flats and townhouses	11	24	4	143	323	+ 125,9
Total square metres	396	3 188	920	13 046	36 327	+ 178,5
Total value at current prices (R'000)	475	5 700	1 380	19 434	53 834	+ 177,0
Other residential buildings ^{1/}						
Total square metres	0	0	0	540	1 428	+ 164,4
Total value at current prices (R'000)	0	0	0	678	1 461	+ 115,5
Total value of residential buildings at current prices (R'000)	1 460	16 008	4 729	79 735	152 480	+ 91,2
Non-residential buildings						
Office and banking space						
Total square metres	0	5 031	0	12 358	9 275	- 24,9
Total value at current prices (R'000)	0	10 000	0	23 383	17 800	- 23,9
Shopping space						
Total square metres	0	7 429	0	9 132	9 959	+ 9,1
Total value at current prices (R'000)	0	16 000	0	8 378	19 450	+ 132,2
Industrial and warehouse space						
Total square metres	0	1 584	333	6 178	5 772	- 6,6
Total value at current prices (R'000)	0	1 311	200	4 693	4 501	- 4,1
Other non-residential space ^{2/}						
Total square metres	562	0	0	7 287	8 233	+ 13,0
Total value at current prices (R'000)	674	0	0	13 319	23 240	+ 74,5
Total value of non-residential buildings at current prices (R'000)	674	27 311	200	49 773	64 991	+ 30,6
Additions and alterations						
Dwelling-houses						
Total square metres	1 994	5 127	2 296	34 306	51 051	+ 48,8
Total value at current prices (R'000)	2 092	4 330	2 889	38 255	55 940	+ 46,2
Other buildings ^{3/}						
Total square metres	188	1 310	1 776	21 127	13 413	- 36,5
Total value at current prices (R'000)	276	1 365	1 827	97 349	27 880	- 71,4
Total value of additions and alterations at current prices (R'000)	2 368	5 695	4 716	135 604	83 820	- 38,2
Total value of buildings completed at current prices (R'000)	4 502	49 014	9 645	265 112	301 291	+ 13,6

1/ Other residential buildings include institutions for the disabled, boarding houses, old people's homes, hostels, hotels, motels, guest houses, holiday chalets, entertainment centres, bed-and-breakfast accommodation and casinos.

2/ Other non-residential space includes churches, sport and recreation clubs, schools, crèches, hospitals and all other non-residential space.

3/ Other buildings include additions and alterations to other residential buildings, non-residential buildings and internal alterations.

Additional information

Explanatory Notes

Introduction	<ol style="list-style-type: none"> 1 Statistics South Africa (Stats SA) conducts a monthly Building Statistics Survey collecting information regarding building plans approved and buildings completed, financed by the private sector, from a sample of local government institutions in South Africa. According to these institutions, they are not always notified about low-cost housing projects. This statistical release contains information of building plans passed and buildings completed in respect of residential buildings, non-residential buildings and additions and alterations according to province and selected urban areas. 2 In order to improve timeliness of the publication, some information for the current month have been estimated due to late submission by respondents. These estimates will be revised in the next statistical release(s) as soon as actual information is available. 3 The actual and seasonally adjusted values (at current and at constant 2000 prices) and the percentage change of building plans passed and buildings completed according to type of building are reflected monthly from January 2000 in this statistical release (cf. tables 1 to 8).
Scope of the survey	<ol style="list-style-type: none"> 4 This survey covers local government institutions conducting activities for the private sector regarding - <ul style="list-style-type: none"> • approval of building plans; and • final inspection of completed buildings.
Classification	<ol style="list-style-type: none"> 5 The 1993 edition of the Standard Industrial Classification of all Economic Activities, (SIC) Fifth Edition, Report No. 09-90-02, was used to classify the statistical units. The SIC is based on the 1990 International Standard Industrial Classification of all Economic Activities (ISIC) with suitable adaptations for local conditions. 6 The twelfth and last published edition of the Standard Code List of Areas, Report No. 09-09-03 (1994) was used to classify the statistical units according to province. The cities, towns and non-urban areas listed in this report are codified within province. The code list was compiled by Stats SA in collaboration with other interested bodies and the first edition was distributed in June 1977.
Statistical unit	<ol style="list-style-type: none"> 7 The statistical unit for the collection of information is a local government institution. Local government institutions include district municipalities, metropolitan municipalities and local municipalities.
Survey methodology and design	<ol style="list-style-type: none"> 8 The sample for the monthly Building Statistics Survey consists of the largest local government institutions in South Africa, i.e. those that account for approximately 85% of the total rand value of buildings completed by the private sector. 9 The survey is collected by mail each month from a sample of 128 local government institutions.
Constant prices	<ol style="list-style-type: none"> 10 The value of building plans passed and buildings completed at constant prices measures building activities in terms of ruling prices in a specific base year, which is 2000 as from May 2002. 11 The value of building plans passed at constant prices for each month is obtained by deflating the values at current prices with a price index known as the “lump sum domestic buildings” as published in statistical release P0151 – JBCC Contract Price Adjustment Provisions Work Group Indices. In order to be applicable, these indices (base February 1991=100) are converted to the base year 2000=100.

- 12 The value of buildings completed at constant prices is obtained by deflating the values at current prices with the same price index which is used to calculate building plans passed at constant prices (cf. paragraph 11). The value of buildings completed is reported as at the time the plans were passed. Since the completion of buildings may extend over a few months to a few years, the current value of buildings completed is deflated by price indices as at the time the plans were passed in order to calculate the value of buildings completed at the time the plans were passed. Therefore, the duration of the completion of different types of buildings are taken into account in ascertaining the deflators e.g. the value of dwelling-houses completed at constant prices at January 2000 is obtained by deflating the current value of dwelling-houses completed for January 2000 with the price index of a month six months prior to January 2000. Furthermore, the value of other residential buildings, non-residential buildings and additions and alterations at constant prices is obtained by deflating the current values with price indices of 12 months, 18 months and 12 months prior to the relevant month, respectively.

Seasonal adjustment

- 13 Seasonally adjusted estimates of building plans passed and buildings completed are generated each month, using the X-11 Seasonal Adjustment Program developed by US Bureau of the Census Economic Research and Analyses Division, 1968.
- 14 Seasonal adjustment is a means of removing the estimated effects of normal seasonal variation from the series so that the effects of other influences on the series can be more clearly recognised. Seasonal adjustment does not aim to remove irregular or non-seasonal influences which may be present in any particular month. Influences that are volatile or unsystematic can still make it difficult to interpret the movement of the series even after adjustment for seasonal variations. Therefore, the month-to-month movements of seasonally adjusted estimates may not be reliable indicators of trend behaviour.

Trend cycle

- 15 The trend is a long-term pattern or movement of a time series. The X-11 Seasonal Adjustment Program is used for smoothing seasonally adjusted data.

Related publications

- 16 Users may also wish to refer to the following publications:
- P5041.3 – Building statistics issued annually.
 - P9101.2 – Actual and expected expenditure on construction by the public sector per statistical region issued annually.
 - Bulletin of Statistics issued quarterly.
 - South African Statistics issued annually.

Unpublished statistics

- 17 In some cases Stats SA can also make available statistics which are not published. The statistics can be made available in one or more of the following ways: computer printouts, CD and diskette. Generally a charge is made for providing unpublished statistics.

Rounding-off of figures

- 18 The figures in the tables have, where necessary, been rounded off to the nearest digit shown. There may, therefore, be slight discrepancies between the sums of the constituent items and the totals shown.

Pre-release policy

- 19 Stats SA has adopted the confidential pre-release policy in respect of selected economic indicators and specific government departments. The policy accords with practice among leading statistical agencies. The statistical integrity of the information and strict observance of the release time has been assured by the following procedure:
- 20 In respect of this statistical release, an official representative from the Office of the President, the Department of Trade and Industry (DTI), National Treasury and the South African Reserve Bank (SARB) will receive a copy of the release on a strictly confidential basis two hours in advance of the public issue.
- 21 Stats SA pre-release policy may be inspected at its Website, www.statssa.gov.za

Symbols and abbreviations

..	no meaningful percentage change between two specified periods available since either one or both of the totals are nil
0	nil or figure too small to publish
*	revised
Stats SA	Statistics South Africa
SIC	Standard Industrial Classification of all Economic Activities
ISIC	International Standard Industrial Classification of all Economic Activities
JBCC	Joint Building Contracts Committee
CD	Compact Disc
US	United States
SARB	South African Reserve Bank
DTI	Department of Trade and Industry

Technical notes**Response rate**

The response rate for December 2002 is 96,9%.

Local government institutions covered in the sample survey

Table C - Classification of towns and cities according to new municipalities and previous local government institution by province

Western Cape			
Sample survey as from January 2002		Sample survey up to December 2001	
Name of municipality	Cities and towns	Name of previously published local government institution	Cities and towns
Breede Valley Municipality	Worcester Rawsonville De Doorns Touws River	Worcester	Worcester
		Breede River District Council	Rural areas - Dissolved as from July 2001. Activities were taken over by various local government institutions.
City of Cape Town - Blaauwberg Administration	Milnerton	Blaauwberg Municipality	Milnerton
Cape Town Administration	Cape Town	City of Cape Town	Cape Town
Helderberg Administration	Gordon's Bay, Somerset West and Strand	Helderberg Municipality	Gordon's Bay, Somerset West and Strand
Ikapa Administration	Guguletu, Langa, Khayelitsha and Nyanga	Ikapa	Guguletu, Langa, Khayelitsha and Nyanga
Oostenberg Administration -	Brackenfell Kraaifontein Kuils River Melton Rose - Blue Downs	Oostenberg Municipality -	Brackenfell Kraaifontein Kuils River Melton Rose - Blue Downs
South Peninsula Administration -	Fish Hoek Simon's Town Plumstead	Fish Hoek Simon's Town South Peninsula Municipality	Fish Hoek Simon's Town Plumstead
Tygerberg Administration - Bellville Administration Durbanville Administration Goodwood Administration Lingeletu West Administration Parow Administration South Administration	City of Tygerberg - Bellville Durbanville Goodwood Lingeletu West Parow Belhar, Delft, Driftsands and Efuleni	City of Tygerberg - Bellville Administration Durbanville Administration Goodwood Administration Lingeletu West Administration Parow Administration South Administration	Bellville Durbanville Goodwood Lingeletu West Parow Belhar, Delft, Driftsands and Efuleni
Drakenstein Municipality	Paarl Wellington Saron ^{1/}	Paarl Wellington	Paarl Wellington
George Municipality	George, Herolds Bay, Pacaltsdorp and Thembaletu Wilderness ^{1/}	George	George, Herolds Bay, Pacaltsdorp and Thembaletu

^{1/} Included in sample survey as from January 2001

Table C - Classification of towns and cities according to new municipalities and previous local government institution by province (continued)

Western Cape (concluded)			
Sample survey as from January 2002		Sample survey up to December 2001	
Name of municipality	Cities and towns	Name of previously published local government institution	Cities and towns
Knysna Municipality	Knysna and Khayaletu Sedgefield	Knysna Sedgefield	Knysna and Khayaletu Sedgefield
Mossel Bay Municipality	Mossel Bay, Boggom's Bay, Kleinbrak, Rheebook and Tergniet Friemersheim, Herbertsdale and Great Brak River ^{1/}	Mossel Bay	Mossel Bay, Boggom's Bay, Kleinbrak, Rheebook and Tergniet
Oudtshoorn Municipality	Oudtshoorn De Rust/Blomnek Dysselsdorp	Oudtshoorn	Oudtshoorn
Overberg District Council	Rural areas - Dissolved as from July 2001. Activities were taken over by various local government institutions.	Overberg District Council	Rural areas
Overstrand Municipality	Hermanus, Fisher Haven, Hawston, Onrus River, Sandbaai, Vermont and Zwelihle Hangklip - Kleinmond, Betty's Bay and Rooi-Els Gansbaai and Stanford ^{1/}	Hermanus Hangklip - Kleinmond	Hermanus, Fisher Haven, Hawston, Onrus River, Sandbaai, Vermont and Zwelihle Hangklip - Kleinmond, Betty's Bay and Rooi-Els
Plettenberg Bay Municipality	Plettenberg Bay Knoetzie ^{1/}	Plettenberg Bay	Plettenberg Bay
Saldanha Bay Municipality	Vredenburg and Saldanha Hopefield and Langebaan ^{1/}	Western Coast Peninsula	Vredenburg and Saldanha
Stellenbosch Municipality	Stellenbosch Franschhoek and Pniel	Stellenbosch	Stellenbosch
Swartland Municipality	Malmesbury Darling, Koringberg, Moorreesburg and Yzerfontein ^{1/}	Malmesbury	Malmesbury
		West Coast District Council	Rural areas - Dissolved as from July 2001. Activities were taken over by various local government institutions.
		Winelands District Council	Rural areas - Dissolved as from July 2001. Activities were taken over by various local government institutions.

^{1/} Included in sample survey as from January 2001

Table C - Classification of towns and cities according to new municipalities and previous local government institution by province (continued)

Eastern Cape			
Sample survey as from January 2002		Sample survey up to December 2001	
Name of municipality	Cities and towns	Name of previously published local government institution	Cities and towns
Buffalo City Municipality - East London Area	East London, Beacon Bay, Gompo Town, Gonubie and Mdantsane	East London	East London, Beacon Bay, Gompo Town, Gonubie and Mdantsane
King William's Town Area	King William's Town, Bisho and Zwelitsha	King William's Town	King William's Town, Bisho and Zwelitsha
King Sabata Dalindyebo Municipality - Umtata Area	Umtata	Umtata	Umtata
Kouga Municipality - Jeffreys Bay Area	Jeffreys Bay	Jeffreys Bay	Jeffreys Bay
Makana Municipality - Grahamstown Area	Grahamstown and Rhini Township	Grahamstown	Grahamstown and Rhini Township
Maletswai Municipality - Aliwal North Area	Aliwal North and Dukathole	Aliwal - Maletswai	Aliwal North and Dukathole
Ndlambe Municipality	Port Alfred Alexandria Bathurst Boesmansriviermond Kenton-on-Sea	Port Alfred	Port Alfred
Nelson Mandela Metropolitan Municipality - Despatch Area	Despatch	Despatch	Despatch
Port Elizabeth Area	Port Elizabeth, Ibhayi and Motherwell	Port Elizabeth	Port Elizabeth, Ibhayi and Motherwell
Uitenhage Area	Uitenhage and KwaNobuhle	Uitenhage	Uitenhage and KwaNobuhle
		Western District Council	Rural areas - Dissolved as from July 2001. Activities were taken over by various local government institutions.

Table C - Classification of towns and cities according to new municipalities and previous local government institution by province (continued)

Northern Cape			
Sample survey as from January 2002		Sample survey up to December 2001	
Name of municipality	Cities and towns	Name of previously published local government institution	Cities and towns
//Khara Hais Municipality	Upington, Mothibistad and Paballelo	Upington	Upington, Mothibistad and Paballelo
		Benede-Oranje District Council	Rural areas - Dissolved as from July 2001. Activities were taken over by various local government institutions.
Ga-Segonyana Municipality	Kuruman	Kuruman	Kuruman
Kai! Garib Municipality - Keimoes Area	Keimoes Eksteenskuil ^{1/} Kenhardt ^{1/}	Keimoes	Keimoes
		Namaqualand District Council	Rural areas - Dissolved as from July 2001. Activities were taken over by various local government institutions.
Solplaatjie Municipality	Kimberley and Galeshewe Ritchie ^{1/}	Kimberley	Kimberley and Galeshewe

^{1/} Included in sample survey as from January 2001

Table C - Classification of towns and cities according to new municipalities and previous local government institution by province (continued)

Free State			
Sample survey as from January 2002		Sample survey up to December 2001	
Name of municipality	Cities and towns	Name of previously published local government institution	Cities and towns
Dihlabeng Municipality	Bethlehem and Bohlokong Clarens Mashae-Fourie Paul Roux	Bethlehem	Bethlehem and Bohlokong
Maluti a Phofung Municipality Harrismith Area Phuthaditjhaba Area	Harrismith and Tsiamé Phuthaditjhaba	Harrismith Phuthaditjhaba	Harrismith and Tsiamé Phuthaditjhaba
Mangaung Municipality - Bloemfontein Area Botshabelo Area	Bloemfontein, Bainsvlei, Bloemspuit and Mangaung Botshabelo	Bloemfontein Botshabelo	Bloemfontein, Bainsvlei, Bloemspuit and Mangaung Botshabelo
Mantsopa Municipality	Ladybrand and Manyatseng Excelsior Hobhouse Thaba Patchoa Tweespruit/Kopano	Ladybrand	Ladybrand and Manyatseng
Matjhabeng Municipality - Odendaalsrus Area Virginia Area Welkom Area	Odendaalsrus, Allanridge and Kutlwanong Virginia and Meloding Welkom and Thabong	Odendaalsrus Virginia Welkom	Odendaalsrus, Allanridge and Kutlwanong Virginia and Meloding Welkom and Thabong
Metsimaholo Municipality - Deneysville Area Sasolburg Area	Deneysville and Refengkgotso Sasolburg and Zamdela	Deneysville/Refengkgotso Sasolburg/Zamdela	Deneysville and Refengkgotso Sasolburg and Zamdela
Moqhaka Municipality - Kroonstad Area	Kroonstad and Maokeng	Kroonstad	Kroonstad and Maokeng
Nqwathe Municipality	Parys Edenville Heibron Koppies Vredefort	Parys	Parys

Table C - Classification of towns and cities according to new municipalities and previous local government institution by province (continued)

KwaZulu-Natal			
Sample survey as from January 2002		Sample survey up to December 2001	
Name of municipality	Cities and towns	Name of previously published local government institution	Cities and towns
Emnambithi Municipality	Ladysmith Colenso	Ladysmith	Ladysmith
eThekweni Municipality - Inner West Operational Entity	Clermont, KwaDabeka, KwaNdengezi, New Germany, Pinetown, Queensburgh, Reservoir Hills, Shallcross and Westville	Inner West City Council	Clermont, KwaDabeka, KwaNdengezi, New Germany, Pinetown, Queensburgh, Reservoir Hills, Shallcross and Westville
Outer West Operational Entity	Assagay, Botha's Hill, Cato Ridge, Drummond, Everton, Gillitts, Hillcrest, Inchanga, Kloof, Mpumalanga and Waterfall	Outer West Local Council	Assagay, Botha's Hill, Cato Ridge, Drummond, Everton, Gillitts, Hillcrest, Inchanga, Kloof, Mpumalanga and Waterfall
KwaMashu	KwaMashu	KwaMashu	KwaMashu
Durban- North, South and Central	Durban	Durban	Durban
North Operational Entity - Tonga	Tonga	North Local Council - Tonga	Tonga
Umhlanga Rocks	Umhlanga Rocks, Mount Edgecombe and Umdloti Beach	North Local Council - Umhlanga	Umhlanga Rocks, Mount Edgecombe and Umdloti Beach
Verulam	Verulam	North Local Council - Verulam	Verulam
South Operational Entity	Amanzimtoti, Isipingo, Kingsburgh, KwaMakuta and Umbogintwini	South Local Council	Amanzimtoti, Isipingo, Kingsburgh, KwaMakuta and Umbogintwini
Umlazi	Umlazi	Umlazi	Umlazi
Greater Kokstad Municipality	Kokstad	Kokstad	Kokstad
Hibiscus Coast Municipality	Margate and Uvongo Marina Beach, San Lameer, Southbroom and Trafalgar Port Shepstone Hibberdene Munster, Port Edward and Palm Beach	Margate Mpenjati/Southbroom Port Shepstone Umtamvuna/Port Edward	Margate and Uvongo Marina Beach, San Lameer, Southbroom and Trafalgar Port Shepstone Munster, Port Edward and Palm Beach

Table C - Classification of towns and cities according to new municipalities and previous local government institution by province (continued)

KwaZulu-Natal (concluded)			
Sample survey as from January 2002		Sample survey up to December 2001	
Name of municipality	Cities and towns	Name of previously published local government institution	Cities and towns
KwaDukuza Municipality - Dolphin Coast Administrative Entity	Ballito, Etete, Shakaskraal, Tinley Manor Beach and Umhlali Beach	Dolphin Coast Borough	Ballito, Etete, Shakaskraal, Tinley Manor Beach and Umhlali Beach
Stanger Administrative Entity	Blythedale Beach, Shakaville and Stanger Nkwazi/Stanger	KwaDukuza/Stanger	Blythedale Beach, Shakaville and Stanger
Msunduzi Municipality	Edendale Ashburton ^{1/} , Pietermaritzburg and Msundini	Edendale Pietermaritzburg/Msundini	Edendale Pietermaritzburg and Msundini
Newcastle Municipality	Blaauwboschlaagte, Madadeni, Osizweni and Newcastle	Newcastle	Blaauwboschlaagte, Madadeni, Osizweni and Newcastle
Umdoni Municipality	Pennington Scottburgh/Umzinto	Pennington	Pennington
Umdlathuze Municipality	Empangeni and Ngwelezana Richards Bay	Empangeni-Ngwelezana Richards Bay	Empangeni and Ngwelezana Richards Bay
Umnjeni Municipality	Hilton Howick	Hilton Howick	Hilton Howick
Uthungulu District Council ^{1/}	Kwambonati, Nkandla and Ntambanana Municipalities	Development and Services Board - North Coast	Kwambonati, Nkandla, Tugela Mouth, Umlalazi, Mahlabathini, Ukuza, Umbambo, Egwavuma and Hluhlumi

^{1/} Included in sample survey as from January 2001

Table C - Classification of towns and cities according to new municipalities and previous local government institution by province (continued)

North West			
Sample survey as from January 2002		Sample survey up to December 2001	
Name of municipality	Cities and towns	Name of previously published local government institution	Cities and towns
		Bophirima District Council	Rural areas - Dissolved as from July 2001. Activities were taken over by various local government institutions.
Ditsobotla Local Municipality	Lichtenburg and Itsoseng Biesiesvlei ^{1/} Coligny ^{1/}	Lichtenburg	Lichtenburg and Itsoseng
Klerksdorp Local Municipality	Klerksdorp Orkney and Kanana Hartbeesfontein ^{1/} Stillfontein ^{1/}	Klerksdorp Orkney	Klerksdorp Orkney and Kanana
GaRankuwa	As from January 2002 included in City of Tshwane - Northern Metropolitan Substructure (Gauteng)	GaRankuwa	GaRankuwa
Madibeng Local Municipality	Brits and Lethabile Hartbeespoort	Brits	Brits and Lethabile
Mafikeng Local Municipality	Mmabatho and Mafikeng	Mmabatho	Mmabatho and Mafikeng
Naledi Municipality	Vryburg	Vryburg	Vryburg
Potchefstroom Municipality	Potchefstroom	Potchefstroom	Potchefstroom
Rustenburg Local Municipality - Rustenburg Area	Rustenburg	Rustenburg	Rustenburg
Zeerust Local Municipality	Zeerust	Zeerust	Zeerust

^{1/} Included in sample survey as from January 2001

Table C - Classification of towns and cities according to new municipalities and previous local government institution by province (continued)

Gauteng			
Sample survey as from January 2002		Sample survey up to December 2001	
Name of municipality	Cities and towns	Name of previously published local government institution	Cities and towns
City of Johannesburg Metropolitan Municipality	Alexandra and Sandton Midrand, Rabie Ridge and Ivory Park Randburg Ennerdale, Lenasia and Johannesburg Diepmeadow, Dobsonville and Roodepoort Soweto	Greater Johannesburg - Eastern Metropolitan Local Council Midrand Metropolitan Local Council Northern Metropolitan Local Council Southern Metropolitan Local Council Western Metropolitan Local Council Soweto	Alexandra and Sandton Midrand, Rabie Ridge and Ivory Park Randburg Ennerdale, Lenasia and Johannesburg Diepmeadow, Dobsonville and Roodepoort Soweto
City of Tshwane Metropolitan Municipality - Centurion Town Council City Council of Pretoria Northern Pretoria Metropolitan Substructure	Centurion Pretoria, Atteridgeville and Mamelodi Akasia, Elandsdoorn, Klipfontein, Kruisfontein and Soshanguve Hammanskraal GaRankuwa ^{2/} Temba Winterveld ^{2/}	Centurion Pretoria Akasia	Centurion Pretoria, Atteridgeville and Mamelodi Akasia, Elandsdoorn, Klipfontein, Kruisfontein and Soshanguve
		Eastern Services Council - Pretoria Area	Rural areas - Dissolved as from July 2001. Activities were taken over by various local government institutions.
Ekurheleni Metropolitan Municipality - Service Delivery Centre of: Edenvale - Modderfontein Alberton Benoni Boksburg Brakpan Duduza Germiston Kempton Park Nigel Springs	Edenvale - Modderfontein Alberton and Tokoza Benoni, Daveyton and Wattville Boksburg and Vosloorus Brakpan and Tsakane Duduza Germiston, Bedfordview and Katlehong Kempton Park and Tembisa Nigel Springs and KwaThema	Edenvale - Modderfontein Alberton Benoni Boksburg Brakpan Duduza Germiston Kempton Park Nigel Springs	Edenvale - Modderfontein Alberton and Tokoza Benoni, Daveyton and Wattville Boksburg and Vosloorus Brakpan and Tsakane Duduza Germiston, Bedfordview and Katlehong Kempton Park and Tembisa Nigel Springs and KwaThema

^{2/} Was previously included under North West

Table C - Classification of towns and cities according to new municipalities and previous local government institution by province (continued)

Gauteng (concluded)			
Sample survey as from January 2002		Sample survey up to December 2001	
Name of municipality	Cities and towns	Name of previously published local government institution	Cities and towns
Emfuleni Local Municipality	Vanderbijlpark Vereeniging and Evaton Sebokeng (Boipatong, Bophelong and Sharpville)	Vanderbijlpark Vereeniging Sebokeng	Vanderbijlpark Vereeniging and Evaton Sebokeng (Boipatong, Bophelong and Sharpville)
Kungwini Local Municipality – Bronkhorstspuit Area	Bronkhorstspuit	Bronkhorstspuit	Bronkhorstspuit
Lesedi Local Municipality	Heidelberg and Ratanda	Heidelberg	Heidelberg and Ratanda
Merafong City Local Municipality	Carletonville, Wedela, Khutsong and Wilverdient	Carletonville	Carletonville, Wedela, Khutsong and Wilverdient
Midvaal Local Municipality	Meyerton	Meyerton	Meyerton
Mogale City Municipality	Krugersdorp, Kagiso and Munsieville	Krugersdorp	Krugersdorp, Kagiso and Munsieville
Randfontein Local Municipality	Randfontein and Mohlakeng	Randfontein	Randfontein and Mohlakeng
Westonaria Local Municipality	Westonaria and Bekkersdal	Westonaria	Westonaria and Bekkersdal

Table C - Classification of towns and cities according to new municipalities and previous local government institution by province (continued)

Mpumalanga			
Sample survey as from January 2002		Sample survey up to December 2001	
Name of municipality	Cities and towns	Name of previously published local government institution	Cities and towns
Delmas Municipality	Delmas and Botleng	Delmas	Delmas and Botleng
Emalahleni Local Municipal Council- KwaGuqa Area Witbank Area	KwaGuqa Witbank	KwaGuqa Witbank	KwaGuqa Witbank
Govan Mbeki Municipality - Secunda Area	Evander, Embalenhle and Secunda	Highveldridge Transitional Council	Evander, Embalenhle and Secunda
Mbombela Local Municipality	Nelspruit and Kanyamazane White River Hazyview ^{1/}	Nelspruit White River	Nelspruit White River
Middelburg Municipality	Middelburg and Mhluzi Hendrina ^{1/}	Middelburg	Middelburg and Mhluzi
Msukaligwa Municipality	Ermelo, Cassim Park and Wesselton	Ermelo	Ermelo, Cassim Park and Wesselton
Nkomazi Municipality - Komatipoort Area Malelane Area	Komatipoort and Kamaqhekeza Malelane, Hectorspruit and Kamhlushwa	Komatipoort Malelane	Komatipoort and Kamaqhekeza Malelane, Hectorspruit and Kamhlushwa

^{1/} Included in sample survey as from January 2001

Table C - Classification of towns and cities according to new municipalities and previous local government institution by province (concluded)

Limpopo			
Sample survey as from January 2002		Sample survey up to December 2001	
Name of municipality	Cities and towns	Name of previously published local government institution	Cities and towns
		Bosveld District Council	Rural areas - Dissolved as from July 2001. Activities were taken over by various local government institutions.
Greater Tzaneen Municipality	Tzaneen and Nkowakowa	Letaba	Tzaneen and Nkowakowa
Musina Municipality	Musina (previously Messina)	Messina	Messina
Modimolle Municipality	Modimolle (previously Nylstroom)	Nylstroom	Nylstroom
Mogolakwena Municipality	Mokopane (previously Potgietersrus)	Potgietersrus	Potgietersrus
Mookgopong Municipality	Naboomspruit and Mookgopong	Naboomspruit	Naboomspruit and Mookgopong
Polokwane Municipality	Polokwane (previously Pietersburg) and Seshego	Pietersburg - Polokwane	Pietersburg and Seshego
Thabazimbi Municipality	Thabazimbi	Thabazimbi	Thabazimbi

Table D - Classification of selected urban areas according to new municipalities and previous local government institution

Sample survey as from January 2002		Sample survey up to December 2001	
Name of selected urban area and municipality	Cities and towns	Name of selected urban area and previously published local government institution	Cities and towns
Cape Town City of Cape Town - Blaauwberg Administration	Milnerton	Cape Town Blaauwberg Municipality	Milnerton
Cape Town Administration	Cape Town	City of Cape Town	Cape Town
Ikapa Administration	Guguletu, Langa, Khayelitsha and Nyanga	Ikapa	Guguletu, Langa, Khayelitsha and Nyanga
Oostenberg Administration -	Kraaifontein Melton Rose - Blue Downs	Oostenberg Municipality -	Kraaifontein Melton Rose - Blue Downs
South Peninsula Administration -	Fish Hoek Simon's Town Plumstead	Fish Hoek Simon's Town South Peninsula Municipality	Fish Hoek Simon's Town Plumstead
Tygerberg Administration - Bellville Administration Durbanville Administration Goodwood Administration Lingeletu West Administration	City of Tygerberg - Bellville Durbanville Goodwood Lingeletu West	City of Tygerberg - Bellville Administration Durbanville Administration Goodwood Administration Lingeletu West Administration	Bellville Durbanville Goodwood Lingeletu West
Parow Administration South Administration	Parow Belhar, Delft, Driftsands and Efuleni	Parow Administration South Administration	Parow Belhar, Delft, Driftsands and Efuleni
Port Elizabeth Nelson Mandela Metropolitan Municipality - Despatch Area	Despatch	Port Elizabeth Despatch	Despatch
Port Elizabeth Area	Port Elizabeth, Ibhayi and Motherwell	Port Elizabeth	Port Elizabeth, Ibhayi and Motherwell
Uitenhage Area	Uitenhage and KwaNobuhle	Uitenhage	Uitenhage and KwaNobuhle

Table D - Classification of selected urban areas according to new municipalities and previous local government institution (continued)

Sample survey as from January 2002		Sample survey up to December 2001	
Name of selected urban area and municipality	Cities and towns	Name of selected urban area and previously published local government institution	Cities and towns
Durban eThekweni Municipality - Inner West Operational Entity	Clermont, KwaDabeka, KwaNdengezi, New Germany, Pinetown, Queensburgh, Reservoir Hills, Shallcross and Westville	Durban Inner West City Council	Clermont, KwaDabeka, KwaNdengezi, New Germany, Pinetown, Queensburgh, Reservoir Hills, Shallcross and Westville
Outer West Operational Entity	Assagay, Botha's Hill, Cato Ridge, Drummond, Everton, Gillitts, Hillcrest, Inchanga, Kloof, Mpumalanga and Waterfall	Outer West Local Council	Assagay, Botha's Hill, Cato Ridge, Drummond, Everton, Gillitts, Hillcrest, Inchanga, Kloof, Mpumalanga and Waterfall
Durban- North, South and Central	Durban	Durban	Durban
North Operational Entity - Verulam	Verulam	North Local Council - Verulam	Verulam
South Operational Entity	Amanzimtoti, Isipingo, Kingsburgh, KwaMakuta and Umbogintwini	South Local Council	Amanzimtoti, Isipingo, Kingsburgh, KwaMakuta and Umbogintwini
Pretoria City of Tshwane Metropolitan Municipality - Centurion Town Council City Council of Pretoria	Centurion Pretoria, Atteridgeville and Mamelodi	Pretoria Centurion Pretoria	Centurion Pretoria, Atteridgeville and Mamelodi
Northern Pretoria Metropolitan Substructure	Akasia, Elandsdoorn, Klipfontein, Kruisfontein and Soshanguve Hammanskraal GaRankuwa Temba Winterveld	Akasia	Akasia, Elandsdoorn, Klipfontein, Kruisfontein and Soshanguve

Table D - Classification of selected urban areas according to new municipalities and previous local government institution (concluded)

Sample survey as from January 2002		Sample survey up to December 2001	
Name of selected urban area and municipality	Cities and towns	Name of selected urban area and previously published local government institution	Cities and towns
Witwatersrand City of Johannesburg Metropolitan Municipality	Alexandra and Sandton Midrand, Rabie Ridge and Ivory Park Randburg Ennerdale, Lenasia and Johannesburg Diepmeadow, Dobsonville and Roodepoort Soweto	Witwatersrand Greater Johannesburg - Eastern Metropolitan Local Council Midrand Metropolitan Local Council Northern Metropolitan Local Council Southern Metropolitan Local Council Western Metropolitan Local Council Soweto	Alexandra and Sandton Midrand, Rabie Ridge and Ivory Park Randburg Ennerdale, Lenasia and Johannesburg Diepmeadow, Dobsonville and Roodepoort Soweto
Ekurheleni Metropolitan Municipality - Service Delivery Centre of: Edenvale - Modderfontein Alberton Benoni Boksburg Brakpan Duduza Germiston Kempton Park Nigel Springs	Edenvale - Modderfontein Alberton and Tokoza Benoni, Daveyton and Wattville Boksburg and Vosloorus Brakpan and Tsakane Duduza Germiston, Bedfordview and Katlehong Kempton Park and Tembisa Nigel Springs and KwaThema	Edenvale - Modderfontein Alberton Benoni Boksburg Brakpan Duduza Germiston Kempton Park Nigel Springs	Edenvale - Modderfontein Alberton and Tokoza Benoni, Daveyton and Wattville Boksburg and Vosloorus Brakpan and Tsakane Duduza Germiston, Bedfordview and Katlehong Kempton Park and Tembisa Nigel Springs and KwaThema
Mogale City Municipality	Krugersdorp, Kagiso and Munsieville	Krugersdorp	Krugersdorp, Kagiso and Munsieville
Randfontein Local Municipality	Randfontein and Mohlakeng	Randfontein	Randfontein and Mohlakeng
Westonaria Local Municipality	Westonaria and Bekkersdal	Westonaria	Westonaria and Bekkersdal
Merafong City Local Municipality	Carletonville, Wedela, Khutsong and Welverdiend	Carletonville	Carletonville, Wedela, Khutsong and Welverdiend
Bloemfontein Mangaung Municipality - Bloemfontein Area Botshabelo Area	Bloemfontein, Bainsvlei, Bloemspruit and Mangaung Botshabelo	Bloemfontein Bloemfontein Botshabelo	Bloemfontein, Bainsvlei, Bloemspruit and Mangaung Botshabelo

Glossary

Additions and alterations	Additions and alterations include extensions to existing buildings as well as internal and external alterations of existing buildings.
Blocks of flats	Blocks of flats are regarded as high-density housing consisting of a number of self-contained dwelling-units with at least one living-room together with a kitchen and bathroom conjoined to similar units in one building.
Dwelling-house	A dwelling-house refers to a free-standing, complete structure on a separate stand or a self-contained dwelling-unit, granny flat, on the same premises as an existing residence. Out-buildings and garages are included.
Local government	A local government is a distinct and constitutionally defined sphere of government, pertaining to government that is not national or provincial in nature and is manifested in the form of municipalities. It is a generic term referring to municipalities and local authorities of varied nature and type involved in activities of a governmental nature in the local sphere.
Local government institutions	<p>Up to December 2001 local government institutions included:</p> <ul style="list-style-type: none"> • City councils; • district councils; • development and services boards; • metropolitan councils; • municipalities; and • transitional local councils. <p>As from January 2002 local government institutions includes:</p> <ul style="list-style-type: none"> • District and metropolitan municipalities; and • local municipalities.
Metropolitan and district municipalities	Metropolitan and district municipalities means municipalities that has the exclusive executive and legislative authority in its area, and which is described in section 155(1) of the Constitution as category A (metropolitan municipality) and category C (district municipality) (Refer to local government: Municipal Structure Act, Act No. 117.1998).
Non-residential buildings	Non-residential buildings comprise factories, commercial, financial and other office buildings, as well as other buildings not used for residential purposes, such as churches, halls, clubs, schools and hospitals.
Other residential buildings	Other residential buildings include institutions for the disabled, boarding houses, old people's homes, hostels, hotels, motels, guest houses, holiday chalets, bed-and-breakfast accommodation, entertainment centres and casinos.
Percentage change	<p>When using monthly actual values, the percentage change is the change in actual values of building activities (building plans passed or buildings completed) of the relevant month compared with the actual values of building activities (building plans passed or buildings completed) of the same month in the previous year expressed as a percentage.</p> <p>When using annual actual values, the percentage change is the change in the actual values of building activities (building plans passed or buildings completed) of the relevant year compared with the actual values of building activities (building plans passed or buildings completed) of the previous year expressed as a percentage.</p> <p>When using seasonally adjusted values, the percentage change is the change in the seasonally adjusted values of building activities (building plans passed or buildings completed) of the relevant month compared with the seasonally adjusted values of building activities (building plans passed or buildings completed) of the previous month expressed as a percentage.</p>

Reference period	Reference period is one calendar month.
Residential buildings	Residential buildings comprise dwelling-houses, flats, townhouses and other residential buildings.
Townhouses	Townhouses are multiple, medium-density dwelling-units and include cluster housing, group housing, simplexes, duplexes, triplexes and other similar dwelling-units which are usually grouped together, with one level of each unit on ground level. This excludes blocks of flats.

For more information

Stats SA publishes approximately 300 different statistical releases each year. It is not economically viable to produce them in more than one of South Africa's eleven official languages. Since the releases are used extensively, not only locally but also by international economic and social-scientific communities, Stats SA releases are published in English only.

Stats SA has copyright on this publication. Users may apply the information as they wish, provided that they acknowledge Stats SA as the source of the basic data wherever they process, apply, utilise, publish or distribute the data and also that they specify that the relevant application and analysis (where applicable) result from their own processing of the data.

Stats SA products

A complete set of Stats SA publications is available at the Stats SA Library and the following libraries:

National Library of South Africa, Pretoria Division
 National Library of South Africa, Cape Town Division
 Natal Society Library, Pietermaritzburg
 Library of Parliament, Cape Town
 Bloemfontein Public Library
 Johannesburg Public Library
 Eastern Cape Library Services, King William's Town
 Central Regional Library, Polokwane
 Central Reference Library, Nelspruit
 Central Reference Collection, Kimberley
 Central Reference Library, Mmabatho

Stats SA also provides a subscription service.

Electronic services

A large range of data are available via on-line services, diskette, CD and computer printouts. For more details about our electronic data services, contact (012) 310 8600/8390/8351/4892/8496/8095.

You can visit us on the Internet at: <http://www.statssa.gov.za>

Enquiries

Telephone number: (012) 310 8600/8390/8351/4892/8496/8095 (user enquiries)
 (012) 310 8228/310 8007 (technical enquiries)
 (012) 310 8161 (publications)
 (012) 310 8490 (library)

Fax number: (012) 310 8182

e-mail: Corrieb@statssa.gov.za
Gretaz@statssa.gov.za

Postal address: Private Bag X44, Pretoria, 0001