

Building statistics

December 2001

Co-operation between Statistics South Africa (Stats SA), the citizens of the country, the private sector and government institutions is essential for a successful statistical system. Without continued co-operation and goodwill, the timely release of relevant and reliable official statistics will not be possible.

Embargo: 13:00
Date: 20 February 2002

Stats SA publishes approximately three hundred different releases each year. It is not economically viable to produce them in more than one of South Africa's eleven official languages. Since the releases are used extensively, not only locally, but also by international economic and social-scientific communities, Stats SA releases are published in English only.

Key figures regarding building plans passed for the month ended December 2001

Actual estimates at constant 1995 prices	December 2001	January 2001 to December 2001	Percentage change between December 2000 and December 2001	Percentage change between October 2000 to December 2000 and October 2001 to December 2001	Percentage change between January 2000 to December 2000 and January 2001 to December 2001
	R million	R million			
Residential buildings					
Dwelling-houses	330,1	5 584,8	-2,8	-5,4	+1,4
Flats and townhouses	107,0	1 472,7	+40,9	+49,1	+10,1
Other residential buildings	5,8	202,5	-75,0	-79,6	-0,3
Total	442,9	7 260,0	+1,0	+1,1	+3,0
Non-residential buildings	92,1	2 431,8	-81,9	-64,2	-35,9
Additions and alterations	245,4	3 848,0	+6,7	+3,8	-6,7
Total	780,4	13 539,8	-33,8	-18,4	-9,5

Seasonally adjusted estimates at constant 1995 prices	December 2001	Percentage change between November 2001 and December 2001	Percentage change between July 2001 to September 2001 and October 2001 to December 2001
	R million		
Residential buildings	615,3	-0,6	+4,4
Non-residential buildings	119,9	-27,5	-31,4
Additions and alterations	335,5	-1,7	+9,3
Total	1 070,7	-4,9	-0,7

Key findings regarding building plans passed for the fourth quarter of 2001

Seasonally adjusted real value of building plans passed decreases

The seasonally adjusted real value of building plans passed (at constant 1995 prices) for the fourth quarter of 2001 decreased by 0,7% compared with the third quarter of 2001.

The decrease of 0,7% in the seasonally adjusted real value of building plans passed was due to a decrease in the seasonally adjusted real value of non-residential building plans passed (-31,4%) during the fourth quarter of 2001 compared with the third quarter of 2001. However, this decrease was partially counteracted by increases in the seasonally adjusted real value of building plans passed for additions and alterations (+9,3%) and residential buildings (+4,4%) during the above-mentioned period.

Key findings regarding building plans passed for the year 2001

Total real value of building plans passed decreases

The total real value of building plans passed (at constant 1995 prices) during 2001 decreased by 9,5% (-R1 425,5 million) to R13 539,8 million compared with 2000. Large decreases in the real value of building plans passed were reported for non-residential buildings (-35,9% or R1 361,0 million, mainly due to decreases reported for office and banking space (-R437,5 million), industrial and warehouse space (-R427,8 million) and shopping space (-R326,1 million)) and additions and alterations (-6,7% or R274,4 million) during the above-mentioned period. However, the real value of residential building plans passed increased by 3,0% or R209,9 million, mainly due to large increases in the real value of building plans passed for flats and townhouses (+R135,1 million) and dwelling-houses (+R75,4 million) during this period.

Seven of the nine provinces reported decreases in the total real value of building plans passed

The largest provincial contributor to the decrease of 9,5% (-R1 425,5 million) in the total real value of building plans passed during 2001 compared with 2000 was Gauteng (-5,5 percentage points or R830,1 million), followed by KwaZulu-Natal (-1,6 percentage points or R234,7 million), Western Cape (-1,0 percentage point or R144,1 million) and Free State (-0,9 of a percentage point or R143,3 million) (cf. table A). Large real decreases in Gauteng were reported for non-residential buildings (-R846,4 million), mainly due to decreases reported by the selected urban areas of Witwatersrand (-R923,7 million).

Table A - Contribution of provinces to the total real value of building plans passed

Province	Percentage contribution to the total real value of plans passed during January 2000 to December 2000	Percentage change between January 2000 to December 2000 and January 2001 to December 2001	Contribution (percentage points) ^{1/} to the percentage change in the real value of plans passed between January 2000 to December 2000 and January 2001 to December 2001	Difference in total real value of plans passed between January 2000 to December 2000 and January 2001 to December 2001 R million
Gauteng	43,5	-12,7	-5,5	-830,1
KwaZulu-Natal	12,7	-12,3	-1,6	-234,7
Western Cape	27,2	-3,5	-1,0	-144,1
Free State	3,2	-30,5	-0,9	-143,3
Eastern Cape	5,6	-6,8	-0,4	-57,0
Northern Cape	0,9	-28,6	-0,3	-39,6
Northern Province	1,6	-14,7	-0,2	-35,7
Mpumalanga	3,0	+3,1	+0,1	+13,8
North West	2,3	+13,2	+0,3	+45,2
Total	100,0	-9,5	-9,5	-1 425,5

1/ The contribution (percentage points) is calculated by multiplying the percentage change of each province between January 2000 to December 2000 and January 2001 to December 2001 (cf. column 3) with the percentage contribution of the corresponding province to the total real value of plans passed during January 2000 to December 2000 (cf. column 2) divided by 100.

Key figures regarding buildings completed for the month ended December 2001

Actual estimates at constant 1995 prices

	December 2001 R million	January 2001 to December 2001 R million	Percentage change between December 2000 and December 2001	Percentage change between October 2000 to December 2000 and October 2001 to December 2001	Percentage change between January 2000 to December 2000 and January 2001 to December 2001
Residential buildings					
Dwelling-houses	264,9	3 152,4	+23,0	+9,7	+5,8
Flats and townhouses	60,7	876,0	+21,7	+44,3	+7,8
Other residential buildings	0,7	334,2	-97,1	+13,8	+219,3
Total	326,3	4 362,6	+12,8	+16,6	+12,0
Non-residential buildings	123,7	2 964,0	-50,4	-12,2	+17,7
Additions and alterations	88,1	2 050,7	-24,3	-6,6	+0,0
Total	538,1	9 377,3	-17,8	+3,6	+10,8

Seasonally adjusted estimates at constant 1995 prices

	December 2001 R million	Percentage change between November 2001 and December 2001	Percentage change between July 2001 to September 2001 and October 2001 to December 2001
Residential buildings	364,3	+0,1	+34,2
Non-residential buildings	137,8	-23,1	-49,4
Additions and alterations	132,4	-32,2	+11,7
Total	634,5	-14,0	-6,9

Key findings regarding buildings completed for the fourth quarter of 2001

Seasonally adjusted real value of buildings completed decreases

The seasonally adjusted real value of buildings completed (at constant 1995 prices) for the fourth quarter of 2001 decreased by 6,9% compared with the third quarter of 2001.

The decrease of 6,9% in the seasonally adjusted real value of buildings completed during the fourth quarter of 2001 compared with the third quarter of 2001 was due to a decrease in the seasonally adjusted real value of non-residential buildings completed (-49,4%, mainly due to the completion of a large shopping centre as reported by North Local Council – Umhlanga Rocks during September 2001). However, this decrease was partially counteracted by increases in the seasonally adjusted real value of residential buildings (+34,2%) and additions and alterations completed (+11,7%) during the above-mentioned period.

Key findings regarding buildings completed for the year 2001

Total real value of buildings completed increases

The total real value of buildings completed (at constant 1995 prices) during 2001 increased by 10,8% (+R911,6 million) to R9 377,3 million compared with 2000. Large increases in the real value of buildings completed were reported for residential buildings (+12,0% or R465,9 million, due to real increases reported for 'other' residential buildings (+R229,5 million) and dwelling-houses (+R173,0 million)) and non-residential buildings (+R445,6 million, due to real increases reported for shopping space completed (+R502,7 million)). The real increase regarding 'other' residential buildings (+R229,5 million) was mainly due to the completion of a hotel and casino to the real value of R192,6 million as reported by Southern Metropolitan Local Council of Greater Johannesburg during January 2001.

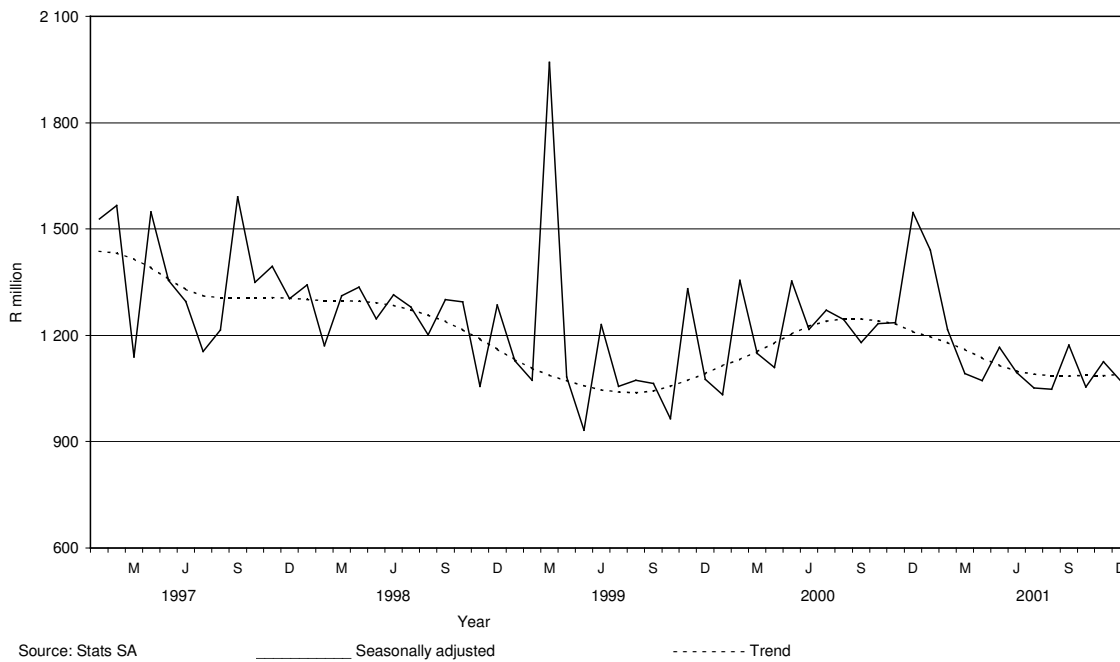
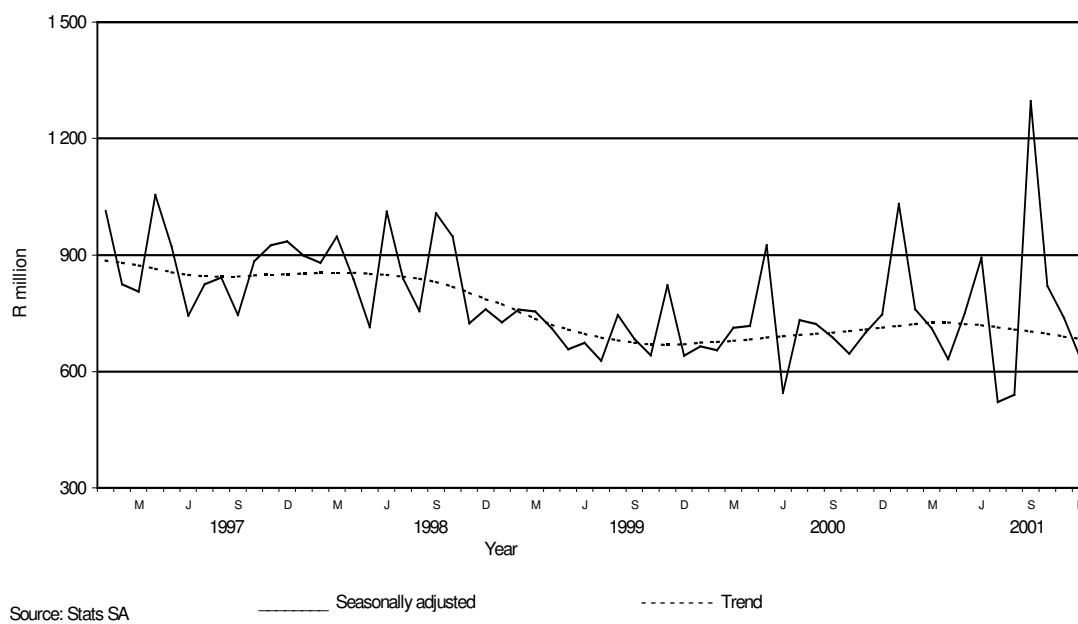
Six of the nine provinces reported increases in the total real value of buildings completed

The largest provincial contributor to the increase of 10,8% (+R911,6 million) in the total real value of buildings completed during 2001 compared with 2000 was KwaZulu-Natal (+10,1 percentage points or R852,9 million), mainly due to the completion of a large shopping centre to the real value of R795,0 million as reported by North Local Council - Umhlanga Rocks during September 2001, followed by Western Cape (+2,1 percentage points or R181,0 million) and Eastern Cape (+1,9 percentage points or R158,7 million). However, these increases were partially counteracted by a large decrease reported by Gauteng (-3,4 percentage points or R287,5 million) during the above-mentioned period (cf. table B).

Table B - Contribution of provinces to the total real value of buildings completed

Province	Percentage contribution to the total real value of buildings completed during January 2000 to December 2000	Percentage change between January 2000 to December 2000 and January 2001 to December 2001	Contribution (percentage points) ^{1/} to the percentage change in the real value of buildings completed between January 2000 to December 2000 and January 2001 to December 2001	Difference in total real value of buildings completed between January 2000 to December 2000 and January 2001 to December 2001 R million
KwaZulu-Natal	16,3	+62,0	+10,1	+852,9
Western Cape	27,5	+7,8	+2,1	+181,0
Eastern Cape	5,4	+34,4	+1,9	+158,7
Free State	3,0	+19,1	+0,6	+47,9
North West	2,7	+10,2	+0,3	+23,8
Northern Cape	1,1	+5,4	+0,0	+4,9
Mpumalanga	2,3	-5,0	-0,1	-9,7
Northern Province	1,6	-45,2	-0,7	-60,4
Gauteng	40,1	-8,5	-3,4	-287,5
Total	100,0	+10,8	+10,8	+911,6

1/ The contribution (percentage points) is calculated by multiplying the percentage change of each province between January 2000 to December 2000 and January 2001 to December 2001 (cf. column 3) with the percentage contribution of the corresponding province to the total real value of buildings completed during January 2000 to December 2000 (cf. column 2) divided by 100.

Figure 1 – Total real value of building plans passed**Figure 2 – Total real value of buildings completed**

Contents

Page

Notes	7
Tables		
Table 1	Actual values and percentage change of building plans passed at current prices according to type of building	11
Table 2	Seasonally adjusted values and percentage change of building plans passed at current prices according to type of building	12
Table 3	Actual values and percentage change of building plans passed at constant 1995 prices according to type of building	13
Table 4	Seasonally adjusted values and percentage change of building plans passed at constant 1995 prices according to type of building	14
Table 5	Actual values and percentage change of buildings completed at current prices according to type of building	15
Table 6	Seasonally adjusted values and percentage change of buildings completed at current prices according to type of building	16
Table 7	Actual values and percentage change of buildings completed at constant 1995 prices according to type of building	17
Table 8	Seasonally adjusted values and percentage change of buildings completed at constant 1995 prices according to type of building	18
Table 9	Building plans passed according to type of building: Total RSA	19
Table 10	Building plans passed according to type of building and province: Western Cape	20
Table 11	Building plans passed according to type of building and province: Eastern Cape	21
Table 12	Building plans passed according to type of building and province: Northern Cape	22
Table 13	Building plans passed according to type of building and province: Free State	23
Table 14	Building plans passed according to type of building and province: KwaZulu-Natal	24
Table 15	Building plans passed according to type of building and province: North West	25
Table 16	Building plans passed according to type of building and province: Gauteng	26
Table 17	Building plans passed according to type of building and province: Mpumalanga	27
Table 18	Building plans passed according to type of building and province: Northern Province	28
Table 19	Buildings completed according to type of building: Total RSA	29
Table 20	Buildings completed according to type of building and province: Western Cape	30
Table 21	Buildings completed according to type of building and province: Eastern Cape	31
Table 22	Buildings completed according to type of building and province: Northern Cape	32
Table 23	Buildings completed according to type of building and province: Free State	33
Table 24	Buildings completed according to type of building and province: KwaZulu-Natal	34
Table 25	Buildings completed according to type of building and province: North West	35
Table 26	Buildings completed according to type of building and province: Gauteng	36
Table 27	Buildings completed according to type of building and province: Mpumalanga	37
Table 28	Buildings completed according to type of building and province: Northern Province	38
Table 29	Building plans passed according to type of building and selected urban area: Cape Town	39
Table 30	Building plans passed according to type of building and selected urban area: Port Elizabeth	40
Table 31	Building plans passed according to type of building and selected urban area: Durban	41
Table 32	Building plans passed according to type of building and selected urban area: Witwatersrand	42
Table 33	Building plans passed according to type of building and selected urban area: Pretoria	43
Table 34	Building plans passed according to type of building and selected urban area: Bloemfontein	44
Table 35	Buildings completed according to type of building and selected urban area: Cape Town	45
Table 36	Buildings completed according to type of building and selected urban area: Port Elizabeth	46
Table 37	Buildings completed according to type of building and selected urban area: Durban	47
Table 38	Buildings completed according to type of building and selected urban area: Witwatersrand	48
Table 39	Buildings completed according to type of building and selected urban area: Pretoria	49
Table 40	Buildings completed according to type of building and selected urban area: Bloemfontein	50
Additional information		
	Explanatory notes	51
	Technical notes	53
	Local government institutions covered in the sample survey	54
	Glossary	57
For more information	58

Notes

Forthcoming issues	Issue	Expected release date
	January 2002	20 March 2002
	February 2002	17 April 2002
	March 2002	15 May 2002
	April 2002	19 June 2002
	May 2002	17 July 2002
	June 2002	14 August 2002
	July 2002	18 September 2002
	August 2002	16 October 2002
	September 2002	20 November 2002
	October 2002	18 December 2002
	November 2002	15 January 2003
	December 2002	19 February 2003
Purpose of the survey	<p>The Building Statistics Survey is a countrywide survey covering a sample of local government institutions in South Africa. The information received is used to estimate key economic statistics used by the private and public sectors. The information is also used to compile estimates of the Gross Domestic Product (GDP). These statistics are also used by government to monitor the Reconstruction and Development Program (RDP) in South Africa.</p>	
New questionnaire	<p>In order to lessen the respondent burden and improve reliability, Stats SA has overhauled and redesigned its Building Statistics Survey questionnaire. This resulted in the change of some data items on the old questionnaire. As from November 1999 information regarding dwelling-houses was collected according to size of dwelling-house.</p> <p>The Building Statistics Survey questionnaire collects the numbers, square metres and value of building plans passed and buildings completed for the private sector regarding –</p> <ul style="list-style-type: none"> • residential buildings; • non-residential buildings; and • additions and alterations. 	
Re-engineered building statistics statistical release	<p>Prior to March 2001, Stats SA published selected information per province namely, the value of building plans passed and buildings completed regarding residential buildings, non-residential buildings and additions and alterations. Due to users' needs, specifically compilers of National Accounts, Stats SA has overhauled and re-designed the statistical release. In order to provide users with more provincial information Stats SA extended the information per province to include more detailed information regarding residential buildings (e.g. dwelling-houses equal to or larger than 80 square metre; flats and townhouses; and other residential buildings), non-residential buildings (e.g. office and banking space; shopping space; industrial and warehouse space; and other non-residential space) and additions and alterations (e.g. additions to dwelling-houses and other buildings).</p> <p>Furthermore, to monitor the RDP housing program Stats SA publishes information regarding dwelling-houses smaller than 80 square metres and equal to or larger than 80 square metres according to province.</p>	
Changes in the numbering of tables	<p>It should be noted that the numbering of tables has changed as from March 2001 as indicated in table C, pages 8 to 10.</p>	

Table C – Title of table according to new and old numbers

New number (as from March 2001)	Title of table	Old number (prior to March 2001)
Table 1	Actual values and percentage change of building plans passed at current prices according to type of building	Table 3
Table 2	Seasonally adjusted values and percentage change of building plans passed at current prices according to type of building	Table 7
Table 3	Actual values and percentage change of building plans passed at constant 1995 prices according to type of building	Table 4
Table 4	Seasonally adjusted values and percentage change of building plans passed at constant 1995 prices according to type of building	Table 7
Table 5	Actual values and percentage change of buildings completed at current prices according to type of building	Table 5
Table 6	Seasonally adjusted values and percentage change of buildings completed at current prices according to type of building	Table 8
Table 7	Actual values and percentage change of buildings completed at constant 1995 prices according to type of building	Table 6
Table 8	Seasonally adjusted values and percentage change of buildings completed at constant 1995 prices according to type of building	Table 8
Table 9	Building plans passed according to type of building: Total RSA	Tables 1 and 9
Table 10	Building plans passed according to type of building and province: Western Cape	Table 1
Table 11	Building plans passed according to type of building and province: Eastern Cape	Table 1
Table 12	Building plans passed according to type of building and province: Northern Cape	Table 1
Table 13	Building plans passed according to type of building and province: Free State	Table 1
Table 14	Building plans passed according to type of building and province: KwaZulu-Natal	Table 1
Table 15	Building plans passed according to type of building and province: North West	Table 1
Table 16	Building plans passed according to type of building and province: Gauteng	Table 1
Table 17	Building plans passed according to type of building and province: Mpumalanga	Table 1

Table C – Title of table according to new and old numbers (continued)

New number (as from March 2001)	Title of table	Old number (prior to March 2001)
Table 18	Building plans passed according to type of building and province: Northern Province	Table 1
Table 19	Buildings completed according to type of building: Total RSA	Tables 2 and 11
Table 20	Buildings completed according to type of building and province: Western Cape	Table 2
Table 21	Buildings completed according to type of building and province: Eastern Cape	Table 2
Table 22	Buildings completed according to type of building and province: Northern Cape	Table 2
Table 23	Buildings completed according to type of building and province: Free State	Table 2
Table 24	Buildings completed according to type of building and province: KwaZulu-Natal	Table 2
Table 25	Buildings completed according to type of building and province: North West	Table 2
Table 26	Buildings completed according to type of building and province: Gauteng	Table 2
Table 27	Buildings completed according to type of building and province: Mpumalanga	Table 2
Table 28	Buildings completed according to type of building and province: Northern Province	Table 2
Table 29	Building plans passed according to type of building and selected urban area: Cape Town	Table 10
Table 30	Building plans passed according to type of building and selected urban area: Port Elizabeth	New
Table 31	Building plans passed according to type of building and selected urban area: Durban	Table 10
Table 32	Building plans passed according to type of building and selected urban area: Witwatersrand	Table 10
Table 33	Building plans passed according to type of building and selected urban area: Pretoria	Table 10
Table 34	Building plans passed according to type of building and selected urban area: Bloemfontein	Table 10
Table 35	Buildings completed according to type of building and selected urban area: Cape Town	Table 12
Table 36	Buildings completed according to type of building and selected urban area: Port Elizabeth	New

Table C – Title of table according to new and old numbers (concluded)

New number (as from March 2001)	Title of table	Old number (prior to March 2001)
Table 37	Buildings completed according to type of building and selected urban area: Durban	Table 12
Table 38	Buildings completed according to type of building and selected urban area: Witwatersrand	Table 12
Table 39	Buildings completed according to type of building and selected urban area: Pretoria	Table 12
Table 40	Buildings completed according to type of building and selected urban area: Bloemfontein	Table 12

Table 1 - Actual values and percentage change of building plans passed at current prices according to type of building

Year ^{1/} and month ^{2/}	Residential buildings		Non-residential buildings		Additions and alterations		Total	
	R'000	Percentage change	R'000	Percentage change	R'000	Percentage change	R'000	Percentage change
1999 Jan	553,051	+ 9.8	237,671	- 45.6	277,444	+ 9.9	1,068,166	- 7.0
Feb	528,673	- 18.9	394,629	- 4.6	355,506	- 2.0	1,278,809	- 7.0
Mar	667,232	- 17.0	1,454,021	+ 219.5	476,726	+ 10.2	2,597,979	+ 59.3
Apr	530,570	- 22.1	374,625	- 23.8	330,044	- 6.9	1,235,239	- 16.0
May	527,616	- 19.3	274,148	- 46.9	403,206	+ 14.2	1,204,970	- 17.9
Jun	837,779	+ 18.8	418,343	- 32.5	403,838	+ 2.5	1,659,959	+ 0.4
Jul	637,414	- 19.6	460,734	- 7.1	420,306	- 15.4	1,518,454	- 12.2
Aug	630,628	- 14.1	388,580	- 14.5	415,686	- 6.2	1,434,895	- 7.7
Sep	599,986	- 14.7	305,439	- 38.8	484,091	+ 9.7	1,389,516	- 13.4
Oct	664,785	- 22.6	329,137	- 38.8	436,746	- 11.1	1,430,668	- 22.7
Nov	710,950	+ 14.0	701,437	+ 44.0	536,870	+ 39.6	1,949,257	+ 33.3
Dec	493,844	+ 16.1	225,184	- 40.9	314,898	- 23.4	1,033,926	- 12.9
Total	7,382,530	- 8.9	5,563,948	- 3.8	4,855,360	+ 0.8	17,801,839	- 1.8
2000 Jan	490,776	- 11.3	163,926	- 31.0	365,596	+ 31.8	1,020,298	- 4.5
Feb	784,023	+ 48.3	521,389	+ 32.1	399,280	+ 12.3	1,704,692	+ 33.3
Mar	747,421	+ 12.0	359,267	- 75.3	515,668	+ 8.2	1,622,356	- 37.6
Apr	627,642	+ 18.3	271,151	- 27.6	382,300	+ 15.8	1,281,093	+ 3.7
May	874,847	+ 65.8	573,853	+ 109.3	473,062	+ 17.3	1,921,762	+ 59.5
Jun	853,154	+ 1.8	336,324	- 19.6	532,278	+ 31.8	1,721,756	+ 3.7
Jul	908,061	+ 42.5	484,669	+ 5.2	549,932	+ 30.8	1,942,662	+ 27.9
Aug	929,836	+ 47.4	353,488	- 9.0	492,627	+ 18.5	1,775,951	+ 23.8
Sep	826,851	+ 37.8	354,456	+ 16.0	465,836	- 3.8	1,647,143	+ 18.5
Oct	916,410	+ 37.9	492,884	+ 49.8	539,561	+ 23.5	1,948,855	+ 36.2
Nov	914,346	+ 28.6	493,166	- 29.7	503,659	- 6.2	1,911,171	- 2.0
Dec	606,148	+ 22.7	704,410	+ 212.8	317,835	+ 0.9	1,628,393	+ 57.5
Total	9,479,515	+ 28.4	5,108,983	- 8.2	5,537,634	+ 14.1	20,126,132	+ 13.1
2001 Jan	720,680	+ 46.8	475,089	+ 189.8	352,501	- 3.6	1,548,270	+ 51.7
Feb	817,853	+ 4.3	299,417	- 42.6	473,166	+ 18.5	1,590,436	- 6.7
Mar	923,148	+ 23.5	305,034	- 15.1	438,069	- 15.0	1,666,251	+ 2.7
Apr	732,653	+ 16.7	206,520	- 23.8	375,509	- 1.8	1,314,682	+ 2.6
May	998,520	+ 14.1	289,330	- 49.6	499,431	+ 5.6	1,787,281	- 7.0
Jun	902,916	+ 5.8	314,602	- 6.5	447,975	- 15.8	1,665,493	- 3.3
Jul	908,280	+ 0.0	383,440	- 20.9	428,902	- 22.0	1,720,622	- 11.4
Aug	837,251	- 10.0	260,144	- 26.4	483,666	- 1.8	1,581,061	- 11.0
Sep	959,583	+ 16.1	303,367	- 14.4	524,349	+ 12.6	1,787,299	+ 8.5
Oct*	988,949	+ 7.9	185,808	- 62.3	542,974	+ 0.6	1,717,731	- 11.9
Nov*	974,051	+ 6.5	320,034	- 35.1	596,263	+ 18.4	1,890,348	- 1.1
Dec	650,087	+ 7.2	135,258	- 80.8	360,230	+ 13.3	1,145,575	- 29.6
Total	10,413,971	9.9	3,478,043	-31.9	5,523,035	-0.3	19,415,049	-3.5

^{1/} The annual percentage change is the change in the actual values of building plans passed of the relevant year compared with the actual values of building plans passed of the previous year expressed as a percentage.

^{2/} The monthly percentage change is the change in the actual values of building plans passed of the relevant month compared with the actual values of building plans passed of the same month in the previous year expressed as a percentage.

Table 2 - Seasonally adjusted values and percentage change of building plans passed at current prices according to type of building

Year and month ^{1/}	Residential buildings		Non-residential buildings		Additions and alterations		Total	
	R'000	Percentage change	R'000	Percentage change	R'000	Percentage change	R'000	Percentage change
1999 Jan	728,342	+ 20.4	312,932	- 35.4	380,051	- 27.0	1,421,326	- 11.7
Feb	530,997	- 27.1	420,733	+ 34.4	384,847	+ 1.3	1,336,577	- 6.0
Mar	621,080	+ 17.0	1,427,702	+ 239.3	438,014	+ 13.8	2,486,796	+ 86.1
Apr	578,110	- 6.9	417,266	- 70.8	379,646	- 13.3	1,375,021	- 44.7
May	497,851	- 13.9	260,463	- 37.6	392,387	+ 3.4	1,150,701	- 16.3
Jun	793,247	+ 59.3	390,972	+ 50.1	387,426	- 1.3	1,571,645	+ 36.6
Jul	572,256	- 27.9	399,522	+ 2.2	375,031	- 3.2	1,346,808	- 14.3
Aug	599,215	+ 4.7	385,082	- 3.6	391,901	+ 4.5	1,376,198	+ 2.2
Sep	583,407	- 2.6	308,701	- 19.8	445,534	+ 13.7	1,337,642	- 2.8
Oct	568,617	- 2.5	297,744	- 3.5	385,331	- 13.5	1,251,692	- 6.4
Nov	665,364	+ 17.0	550,522	+ 84.9	460,915	+ 19.6	1,676,800	+ 34.0
Dec	698,755	+ 5.0	293,316	- 46.7	420,162	- 8.8	1,412,233	- 15.8
2000 Jan	642,414	- 8.1	215,330	- 26.6	490,365	+ 16.7	1,348,108	- 4.5
Feb	798,641	+ 24.3	575,349	+ 167.2	435,553	- 11.2	1,809,543	+ 34.2
Mar	688,786	- 13.8	356,202	- 38.1	468,696	+ 7.6	1,513,684	- 16.3
Apr	699,387	+ 1.5	320,152	- 10.1	447,262	- 4.6	1,466,801	- 3.1
May	809,145	+ 15.7	538,504	+ 68.2	456,769	+ 2.1	1,804,418	+ 23.0
Jun	804,836	- 0.5	312,761	- 41.9	513,164	+ 12.3	1,630,760	- 9.6
Jul	820,193	+ 1.9	395,949	+ 26.6	500,656	- 2.4	1,716,797	+ 5.3
Aug	882,386	+ 7.6	357,475	- 9.7	466,239	- 6.9	1,706,100	- 0.6
Sep	795,949	- 9.8	347,935	- 2.7	425,206	- 8.8	1,569,090	- 8.0
Oct	801,153	+ 0.7	465,716	+ 33.9	474,975	+ 11.7	1,741,844	+ 11.0
Nov	849,440	+ 6.0	380,729	- 18.2	424,724	- 10.6	1,654,892	- 5.0
Dec	850,885	+ 0.2	920,964	+ 141.9	430,236	+ 1.3	2,202,085	+ 33.1
2001 Jan	939,806	+ 10.5	632,691	- 31.3	468,301	+ 8.8	2,040,797	- 7.3
Feb	838,686	- 10.8	336,936	- 46.7	520,334	+ 11.1	1,695,956	- 16.9
Mar	848,786	+ 1.2	300,028	- 11.0	396,666	- 23.8	1,545,480	- 8.9
Apr	827,840	- 2.5	252,425	- 15.9	443,292	+ 11.8	1,523,556	- 1.4
May	915,684	+ 10.6	266,627	+ 5.6	480,673	+ 8.4	1,662,984	+ 9.2
Jun	846,782	- 7.5	294,976	+ 10.6	430,348	- 10.5	1,572,106	- 5.5
Jul	819,897	- 3.2	303,440	+ 2.9	392,926	- 8.7	1,516,263	- 3.6
Aug	790,825	- 3.5	261,581	- 13.8	459,268	+ 16.9	1,511,674	- 0.3
Sep	924,281	+ 16.9	298,818	+ 14.2	476,868	+ 3.8	1,699,967	+ 12.5
Oct	875,773	- 5.2	179,450	- 39.9	479,129	+ 0.5	1,534,351	- 9.7
Nov	905,591	+ 3.4	245,699	+ 36.9	499,518	+ 4.3	1,650,808	+ 7.6
Dec	906,463	+ 0.1	178,302	- 27.4	494,109	- 1.1	1,578,874	- 4.4

^{1/} The percentage change is the change in the seasonally adjusted values of building plans passed of the relevant month compared with the seasonally adjusted values of building plans passed of the previous month expressed as a percentage.

Table 3 - Actual values and percentage change of building plans passed at constant 1995 prices according to type of building

Year ^{1/} and month ^{2/}	Residential buildings		Non-residential buildings		Additions and alterations		Total	
	R'000	Percentage change	R'000	Percentage change	R'000	Percentage change	R'000	Percentage change
1999 Jan	444,933	+ 2.8	191,208	- 45.6	223,205	+ 9.9	859,346	- 13.0
Feb	420,918	- 24.5	314,195	- 4.6	283,046	- 2.0	1,018,159	- 13.4
Mar	530,391	- 22.6	1,155,820	+ 219.5	378,955	+ 10.2	2,065,166	+ 48.5
Apr	419,423	- 27.3	296,146	- 23.8	260,904	- 6.9	976,473	- 21.6
May	416,759	- 24.5	216,546	- 46.9	318,488	+ 14.2	951,793	- 23.2
Jun	659,150	+ 11.2	329,145	- 32.5	317,732	+ 2.5	1,306,027	- 6.1
Jul	499,933	- 24.1	361,360	- 7.1	329,651	- 15.4	1,190,944	- 17.2
Aug	494,610	- 13.8	304,769	- 14.5	326,028	- 6.2	1,125,407	- 11.9
Sep	469,473	- 18.3	238,998	- 38.8	378,788	+ 9.7	1,087,259	- 17.0
Oct	519,363	- 25.5	257,138	- 38.8	341,208	- 11.1	1,117,709	- 25.6
Nov	553,699	+ 9.8	546,290	+ 44.0	418,123	+ 39.6	1,518,112	+ 28.3
Dec	384,016	+ 11.7	175,104	- 40.9	244,866	- 23.4	803,986	- 16.3
Total	5,812,668	- 8.9	4,386,719	- 3.8	3,820,994	+ 0.8	14,020,381	- 7.1
2000 Jan	378,102	- 15.0	126,291	- 34.0	281,661	+ 26.2	786,054	- 8.5
Feb	602,168	+ 43.1	400,452	+ 27.5	306,667	+ 8.3	1,309,287	+ 28.6
Mar	570,115	+ 7.5	274,040	- 76.3	393,339	+ 3.8	1,237,494	- 40.1
Apr	473,692	+ 12.9	204,642	- 30.9	288,528	+ 10.6	966,862	- 1.0
May	655,807	+ 57.4	430,175	+ 98.7	354,619	+ 11.3	1,440,601	+ 51.4
Jun	637,634	- 3.3	251,363	- 23.6	397,816	+ 25.2	1,286,813	- 1.5
Jul	672,638	+ 34.5	359,014	- 0.6	407,357	+ 23.6	1,439,009	+ 20.8
Aug	682,699	+ 38.0	259,536	- 14.8	361,694	+ 10.9	1,303,929	+ 15.9
Sep	606,196	+ 29.1	259,865	+ 8.7	341,522	- 9.8	1,207,583	+ 11.1
Oct	668,425	+ 28.7	359,507	+ 39.8	393,553	+ 15.3	1,421,485	+ 27.2
Nov	664,013	+ 19.9	358,145	- 34.4	365,765	- 12.5	1,387,923	- 8.6
Dec	438,602	+ 14.2	509,703	+ 191.1	229,982	- 6.1	1,178,287	+ 46.6
Total	7,050,091	+ 21.3	3,792,733	- 13.5	4,122,503	+ 7.9	14,965,327	+ 6.7
2001 Jan	515,877	+ 36.4	340,078	+ 169.3	252,327	- 10.4	1,108,282	+ 41.0
Feb	582,516	- 3.3	213,260	- 46.7	337,013	+ 9.9	1,132,789	- 13.5
Mar	653,325	+ 14.6	215,877	- 21.2	310,028	- 21.2	1,179,230	- 4.7
Apr	515,590	+ 8.8	145,334	- 29.0	264,257	- 8.4	925,181	- 4.3
May	698,754	+ 6.5	202,470	- 52.9	349,497	- 1.4	1,250,721	- 13.2
Jun	630,528	- 1.1	219,694	- 12.6	312,832	- 21.4	1,163,054	- 9.6
Jul	630,750	- 6.2	266,278	- 25.8	297,849	- 26.9	1,194,877	- 17.0
Aug	579,814	- 15.1	180,155	- 30.6	334,949	- 7.4	1,094,918	- 16.0
Sep	663,153	+ 9.4	209,652	- 19.3	362,370	+ 6.1	1,235,175	+ 2.3
Oct*	680,157	+ 1.8	127,791	- 64.5	373,435	- 5.1	1,181,383	- 16.9
Nov*	666,702	+ 0.4	219,051	- 38.8	408,120	+ 11.6	1,293,873	- 6.8
Dec	442,839	+ 1.0	92,138	- 81.9	245,388	+ 6.7	780,365	- 33.8
Total	7,260,005	+ 3.0	2,431,778	- 35.9	3,848,065	- 6.7	13,539,848	- 9.5

^{1/} The annual percentage change is the change in the actual values of building plans passed of the relevant year compared with the actual values of building plans passed of the previous year expressed as a percentage.

^{2/} The monthly percentage change is the change in the actual values of building plans passed of the relevant month compared with the actual values of building plans passed of the same month in the previous year expressed as a percentage.

Table 4 - Seasonally adjusted values and percentage change of building plans passed at constant 1995 prices according to type of building

Year and month ^{1/}	Residential buildings		Non-residential buildings		Additions and alterations		Total	
	R'000	Percentage change	R'000	Percentage change	R'000	Percentage change	R'000	Percentage change
1999 Jan	585,256	+ 20.1	269,492	- 30.5	305,390	+ 7.4	1,160,139	- 10.3
Feb	422,960	- 27.7	333,947	+ 23.9	307,340	+ 0.6	1,064,246	- 8.3
Mar	492,716	+ 16.5	1,131,697	+ 238.9	348,190	+ 13.3	1,972,603	+ 85.4
Apr	457,305	- 7.2	329,111	- 70.9	300,448	- 13.7	1,086,865	- 44.9
May	394,457	- 13.7	205,955	- 37.4	310,225	+ 3.3	910,637	- 16.2
Jun	623,035	+ 57.9	306,204	+ 48.7	304,618	- 1.8	1,233,857	+ 35.5
Jul	449,474	- 27.9	311,955	+ 1.9	293,598	- 3.6	1,055,027	- 14.5
Aug	470,674	+ 4.7	300,589	- 3.6	308,257	+ 5.0	1,079,521	+ 2.3
Sep	457,043	- 2.9	239,816	- 20.2	348,877	+ 13.2	1,045,735	- 3.1
Oct	444,410	- 2.8	230,942	- 3.7	301,026	- 13.7	976,378	- 6.6
Nov	517,488	+ 16.4	422,993	+ 83.2	358,128	+ 19.0	1,298,609	+ 33.0
Dec	541,251	+ 4.6	225,494	- 46.7	325,499	- 9.1	1,092,244	- 15.9
2000 Jan	494,491	- 8.6	183,940	- 18.4	377,186	+ 15.9	1,055,617	- 3.4
Feb	613,315	+ 24.0	439,043	+ 138.7	336,057	- 10.9	1,388,414	+ 31.5
Mar	524,306	- 14.5	270,352	- 38.4	357,657	+ 6.4	1,152,315	- 17.0
Apr	528,116	+ 0.7	240,656	- 11.0	337,889	- 5.5	1,106,661	- 4.0
May	608,611	+ 15.2	403,466	+ 67.7	342,746	+ 1.4	1,354,822	+ 22.4
Jun	600,522	- 1.3	232,212	- 42.4	383,301	+ 11.8	1,216,034	- 10.2
Jul	608,427	+ 1.3	291,638	+ 25.6	370,127	- 3.4	1,270,192	+ 4.5
Aug	649,412	+ 6.7	261,000	- 10.5	343,082	- 7.3	1,253,494	- 1.3
Sep	583,865	- 10.1	253,014	- 3.1	311,794	- 9.1	1,148,673	- 8.4
Oct	584,376	+ 0.1	336,715	+ 33.1	346,320	+ 11.1	1,267,411	+ 10.3
Nov	616,020	+ 5.4	272,343	- 19.1	307,805	- 11.1	1,196,168	- 5.6
Dec	613,463	- 0.4	658,338	+ 141.7	310,306	+ 0.8	1,582,107	+ 32.3
2001 Jan	672,358	+ 9.6	510,901	- 22.4	334,579	+ 7.8	1,517,838	- 4.1
Feb	597,102	- 11.2	238,137	- 53.4	372,442	+ 11.3	1,207,682	- 20.4
Mar	599,425	+ 0.4	211,193	- 11.3	280,908	- 24.6	1,091,526	- 9.6
Apr	582,704	- 2.8	176,826	- 16.3	312,339	+ 11.2	1,071,869	- 1.8
May	643,214	+ 10.4	186,476	+ 5.5	336,688	+ 7.8	1,166,378	+ 8.8
Jun	590,408	- 8.2	204,493	+ 9.7	300,352	- 10.8	1,095,253	- 6.1
Jul	570,263	- 3.4	209,494	+ 2.4	272,471	- 9.3	1,052,228	- 3.9
Aug	548,999	- 3.7	180,104	- 14.0	318,678	+ 17.0	1,047,781	- 0.4
Sep	639,037	+ 16.4	204,822	+ 13.7	329,498	+ 3.4	1,173,357	+ 12.0
Oct	602,183	- 5.8	122,207	- 40.3	329,263	- 0.1	1,053,653	- 10.2
Nov	618,945	+ 2.8	165,454	+ 35.4	341,176	+ 3.6	1,125,575	+ 6.8
Dec	615,298	- 0.6	119,908	- 27.5	335,503	- 1.7	1,070,708	- 4.9

^{1/} The percentage change is the change in the seasonally adjusted values of building plans passed of the relevant month compared with the seasonally adjusted values of building plans passed of the previous month expressed as a percentage.

Table 5 - Actual values and percentage change of buildings completed at current prices according to type of building

Year ^{1/} and month ^{2/}	Residential buildings		Non-residential buildings		Additions and alterations		Total	
	R'000	Percentage change	R'000	Percentage change	R'000	Percentage change	R'000	Percentage change
1999 Jan	313,975	- 17.7	197,076	- 12.3	193,050	- 3.3	704,102	- 12.6
Feb	396,737	- 2.1	214,816	- 29.4	244,641	+ 26.9	856,194	- 5.1
Mar	432,499	- 38.0	246,125	+ 39.7	230,685	+ 8.8	909,309	- 16.2
Apr	377,800	- 17.0	181,550	- 25.2	200,507	+ 28.2	759,858	- 11.1
May	390,986	- 11.7	195,652	+ 10.4	178,758	- 2.4	765,395	- 4.7
Jun	420,016	- 30.4	208,557	- 38.5	153,702	- 21.1	782,276	- 31.2
Jul	480,991	- 18.3	264,068	+ 0.3	272,372	+ 26.1	1,017,432	- 4.7
Aug	460,657	+ 7.6	204,898	- 24.8	255,878	+ 47.4	921,432	+ 5.4
Sep	493,450	- 11.4	197,152	- 58.4	223,191	+ 10.3	913,793	- 25.9
Oct	419,578	- 15.9	203,652	- 58.9	229,463	+ 12.4	852,693	- 28.8
Nov	461,147	- 8.9	409,997	+ 45.4	210,237	+ 20.2	1,081,381	+ 12.3
Dec	349,510	- 15.3	181,596	- 13.0	146,343	+ 3.3	677,449	- 11.3
Total	4,997,346	- 16.4	2,705,139	- 21.8	2,538,827	+ 12.8	10,241,312	- 12.4
2000 Jan	299,212	- 4.7	195,988	- 0.6	183,959	- 4.7	679,159	- 3.5
Feb	353,141	- 11.0	205,549	- 4.3	221,978	- 9.3	780,668	- 8.8
Mar	419,416	- 3.0	212,379	- 13.7	268,745	+ 16.5	900,540	- 1.0
Apr	364,713	- 3.5	224,048	+ 23.4	188,808	- 5.8	777,569	+ 2.3
May	473,124	+ 21.0	390,533	+ 99.6	293,343	+ 64.1	1,157,000	+ 51.2
Jun	362,558	- 13.7	174,728	- 16.2	170,986	+ 11.2	708,272	- 9.5
Jul	407,406	- 15.3	472,668	+ 79.0	220,828	- 18.9	1,100,902	+ 8.2
Aug	449,691	- 2.4	285,994	+ 39.6	211,008	- 17.5	946,693	+ 2.7
Sep	510,979	+ 3.6	270,539	+ 37.2	199,622	- 10.6	981,140	+ 7.4
Oct	462,270	+ 10.2	195,491	- 4.0	238,257	+ 3.8	896,018	+ 5.1
Nov	555,802	+ 20.5	186,442	- 54.5	255,900	+ 21.7	998,144	- 7.7
Dec	383,114	+ 9.6	316,801	+ 74.5	149,622	+ 2.2	849,537	+ 25.4
Total	5,041,426	+ 0.9	3,131,160	+ 15.7	2,603,056	+ 2.5	10,775,642	+ 5.2
2001 Jan	643,047	+ 114.9	238,434	+ 21.7	200,985	+ 9.3	1,082,466	+ 59.4
Feb	428,803	+ 21.4	285,620	+ 39.0	243,214	+ 9.6	957,637	+ 22.7
Mar	532,191	+ 26.9	162,697	- 23.4	287,149	+ 6.8	982,037	+ 9.0
Apr	361,022	- 1.0	169,123	- 24.5	184,423	- 2.3	714,568	- 8.1
May	437,971	- 7.4	300,533	- 23.0	295,708	+ 0.8	1,034,212	- 10.6
Jun	553,850	+ 52.8	368,352	+ 110.8	277,374	+ 62.2	1,199,576	+ 69.4
Jul	419,930	+ 3.1	151,692	- 67.9	232,217	+ 5.2	803,839	- 27.0
Aug	430,279	- 4.3	117,944	- 58.8	214,732	+ 1.8	762,955	- 19.4
Sep	456,622	- 10.6	1,417,979	+ 424.1	168,410	- 15.6	2,043,011	+ 108.2
Oct*	664,515	+ 43.8	280,091	+ 43.3	237,138	- 0.5	1,181,744	+ 31.9
Nov	619,314	+ 11.4	198,571	+ 6.5	285,877	+ 11.7	1,103,762	+ 10.6
Dec	464,126	+ 21.1	165,547	- 47.7	121,771	- 18.6	751,444	- 11.5
Total	6,011,670	+ 19.2	3,856,583	+ 23.2	2,748,998	+ 5.6	12,617,251	+ 17.1

^{1/} The annual percentage change is the change in the actual values of buildings completed of the relevant year compared with the actual values of buildings completed of the previous year expressed as a percentage.

^{2/} The monthly percentage change is the change in the actual values of buildings completed of the relevant month compared with the actual values of buildings completed of the same month in the previous year expressed as a percentage.

Table 6 - Seasonally adjusted values and percentage change of buildings completed at current prices according to type of building

Year and month ^{1/}	Residential buildings		Non-residential buildings		Additions and alterations		Total	
	R'000	Percentage change	R'000	Percentage change	R'000	Percentage change	R'000	Percentage change
1999 Jan	408,941	- 11.9	233,027	+ 12.4	216,653	+ 1.2	858,621	- 3.0
Feb	443,510	+ 8.5	232,902	- 0.1	221,739	+ 2.3	898,151	+ 4.6
Mar	415,048	- 6.4	283,610	+ 21.8	197,289	- 11.0	895,947	- 0.2
Apr	419,778	+ 1.1	215,203	- 24.1	220,153	+ 11.6	855,134	- 4.6
May	377,954	- 10.0	199,379	- 7.4	173,513	- 21.2	750,846	- 12.2
Jun	413,468	+ 9.4	209,964	+ 5.3	162,167	- 6.5	785,600	+ 4.6
Jul	449,624	+ 8.7	202,044	- 3.8	237,369	+ 46.4	889,037	+ 13.2
Aug	451,076	+ 0.3	198,964	- 1.5	255,433	+ 7.6	905,473	+ 1.8
Sep	444,526	- 1.5	166,363	- 16.4	226,226	- 11.4	837,114	- 7.5
Oct	397,304	- 10.6	184,353	+ 10.8	215,102	- 4.9	796,759	- 4.8
Nov	381,790	- 3.9	441,194	+ 139.3	195,314	- 9.2	1,018,298	+ 27.8
Dec	394,253	+ 3.3	187,403	- 57.5	221,583	+ 13.4	803,239	- 21.1
2000 Jan	389,608	- 1.2	229,712	+ 22.6	205,507	- 7.3	824,828	+ 2.7
Feb	395,001	+ 1.4	217,309	- 5.4	201,980	- 1.7	814,289	- 1.3
Mar	396,031	+ 0.3	261,025	+ 20.1	224,909	+ 11.4	881,965	+ 8.3
Apr	413,811	+ 4.5	280,965	+ 7.6	210,990	- 6.2	905,766	+ 2.7
May	464,905	+ 12.3	387,796	+ 38.0	278,419	+ 32.0	1,131,120	+ 24.9
Jun	351,239	- 24.4	173,093	- 55.4	184,212	- 33.8	708,544	- 37.4
Jul	385,077	+ 9.6	341,009	+ 97.0	194,579	+ 5.6	920,665	+ 29.9
Aug	439,928	+ 14.2	261,948	- 23.2	208,908	+ 7.4	910,783	- 1.1
Sep	457,217	+ 3.9	220,884	- 15.7	204,967	- 1.9	883,068	- 3.0
Oct	441,032	- 3.5	185,136	- 16.2	219,383	+ 7.0	845,551	- 4.2
Nov	459,821	+ 4.3	215,334	+ 16.3	239,968	+ 9.4	915,124	+ 8.2
Dec	427,727	- 7.0	345,664	+ 60.5	226,464	- 5.6	999,854	+ 9.3
2001 Jan	843,850	+ 97.3	281,480	- 18.6	224,273	- 1.0	1,349,604	+ 35.0
Feb	477,081	- 43.5	297,583	+ 5.7	222,088	- 1.0	996,752	- 26.1
Mar	496,557	+ 4.1	203,481	- 31.6	237,287	+ 6.8	937,325	- 6.0
Apr	413,377	- 16.8	217,613	+ 6.9	208,193	- 12.3	839,183	- 10.5
May	433,786	+ 4.9	288,002	+ 32.3	278,957	+ 34.0	1,000,745	+ 19.3
Jun	535,711	+ 23.5	362,854	+ 26.0	302,463	+ 8.4	1,201,028	+ 20.0
Jul	400,285	- 25.3	104,890	- 71.1	205,295	- 32.1	710,470	- 40.8
Aug	421,160	+ 5.2	106,069	+ 1.1	210,785	+ 2.7	738,014	+ 3.9
Sep	404,034	- 4.1	1,152,334	+ 986.4	173,929	- 17.5	1,730,297	+ 134.5
Oct	634,181	+ 57.0	277,945	- 75.9	216,909	+ 24.7	1,129,035	- 34.7
Nov	513,440	- 19.0	237,834	- 14.4	269,300	+ 24.2	1,020,574	- 9.6
Dec	519,058	+ 1.1	185,392	- 22.0	183,849	- 31.7	888,299	- 13.0

^{1/} The percentage change is the change in the seasonally adjusted values of buildings completed of the relevant month compared with the seasonally adjusted values of buildings completed of the previous month expressed as a percentage.

Table 7 - Actual values and percentage change of buildings completed at constant 1995 prices according to type of building

Year ^{1/} and month ^{2/}	Residential buildings		Non-residential buildings		Additions and alterations		Total	
	R'000	Percentage change	R'000	Percentage change	R'000	Percentage change	R'000	Percentage change
1999 Jan	262,682	- 22.6	172,571	- 18.3	165,993	- 9.2	601,246	- 18.0
Feb	329,271	- 26.3	187,449	- 39.0	209,095	- 4.5	725,815	- 26.1
Mar	356,192	- 57.5	214,208	+ 5.4	196,662	- 12.9	767,062	- 38.1
Apr	311,031	- 34.2	157,322	- 23.5	169,922	+ 18.7	638,275	- 21.4
May	319,828	- 31.9	169,395	+ 5.1	150,851	+ 2.4	640,074	- 15.6
Jun	344,231	- 50.0	180,257	- 44.7	129,270	- 3.4	653,758	- 40.4
Jul	391,124	- 50.0	227,058	- 28.4	226,411	- 12.3	844,593	- 36.0
Aug	369,731	- 48.5	175,126	- 29.7	210,253	+ 9.6	755,110	- 21.4
Sep	396,579	- 28.6	168,075	- 59.5	182,196	- 5.7	746,850	- 44.4
Oct	334,635	- 45.1	172,586	- 61.0	186,252	- 6.2	693,473	- 42.4
Nov	366,364	- 38.2	345,989	- 30.9	170,095	+ 9.6	882,448	- 27.6
Dec	277,236	- 38.9	152,730	- 6.3	118,305	+ 35.6	548,271	- 8.6
Total	4,058,904	- 21.7	2,322,766	- 26.2	2,115,305	+ 6.4	8,496,975	- 17.7
2000 Jan	236,149	- 10.1	162,916	- 5.6	147,996	- 10.8	547,061	- 9.0
Feb	277,982	- 15.6	168,898	- 9.9	176,734	- 15.5	623,614	- 14.1
Mar	329,523	- 7.5	173,371	- 19.1	213,629	+ 8.6	716,523	- 6.6
Apr	285,795	- 8.1	181,857	+ 15.6	149,255	- 12.2	616,907	- 3.3
May	370,120	+ 15.7	315,965	+ 86.5	231,709	+ 53.6	917,794	+ 43.4
Jun	282,549	- 17.9	141,251	- 21.6	134,529	+ 4.1	558,329	- 14.6
Jul	314,890	- 19.5	380,264	+ 67.5	173,198	- 23.5	868,352	+ 2.8
Aug	346,783	- 6.2	227,702	+ 30.0	165,496	- 21.3	739,981	- 2.0
Sep	391,744	- 1.2	215,055	+ 28.0	156,199	- 14.3	762,998	+ 2.2
Oct	352,005	+ 5.2	154,538	- 10.5	186,138	- 0.1	692,681	- 0.1
Nov	420,080	+ 14.7	147,269	- 57.4	199,299	+ 17.2	766,648	- 13.1
Dec	289,205	+ 4.3	249,253	+ 63.2	116,347	- 1.7	654,805	+ 19.4
Total	3,896,825	- 4.0	2,518,339	+ 8.4	2,050,529	- 3.1	8,465,693	- 0.4
2001 Jan	487,413	+ 106.4	187,007	+ 14.8	154,842	+ 4.6	829,262	+ 51.6
Feb	318,240	+ 14.5	224,016	+ 32.6	186,800	+ 5.7	729,056	+ 16.9
Ma	394,856	+ 19.8	127,306	- 26.6	219,031	+ 2.5	741,193	+ 3.4
Apr	265,613	- 7.1	132,127	- 27.3	139,187	- 6.7	536,927	- 13.0
May	319,179	- 13.8	234,060	- 25.9	221,670	- 4.3	774,909	- 15.6
Jun	403,634	+ 42.9	286,432	+ 102.8	207,305	+ 54.1	897,371	+ 60.7
Jul	302,158	- 4.0	116,866	- 69.3	172,013	- 0.7	591,037	- 31.9
Aug	308,208	- 11.1	90,587	- 60.2	157,659	- 4.7	556,454	- 24.8
Sep	325,581	- 16.9	1,081,601	+ 402.9	123,468	- 21.0	1,530,650	+ 100.6
Oct*	473,024	+ 34.4	211,389	+ 36.8	172,967	- 7.1	857,380	+ 23.8
Nov	438,537	+ 4.4	148,854	+ 1.1	207,609	+ 4.2	795,000	+ 3.7
Dec	326,253	+ 12.8	123,727	- 50.4	88,112	- 24.3	538,092	- 17.8
Total	4,362,696	+ 12.0	2,963,972	+ 17.7	2,050,663	+ 0.0	9,377,331	+ 10.8

^{1/} The annual percentage change is the change in the actual values of buildings completed of the relevant year compared with the actual values of buildings completed of the previous year expressed as a percentage.

^{2/} The monthly percentage change is the change in the actual values of buildings completed of the relevant month compared with the actual values of buildings completed of the same month in the previous year expressed as a percentage.

Table 8 - Seasonally adjusted values and percentage change of buildings completed at constant 1995 prices according to type of building

Year and month ^{1/}	Residential buildings		Non-residential buildings		Additions and alterations		Total	
	R'000	Percentage change	R'000	Percentage change	R'000	Percentage change	R'000	Percentage change
1999 Jan	341,932	- 13.3	204,284	+ 11.8	185,770	+ 0.8	731,986	- 3.9
Feb	369,618	+ 8.1	203,864	- 0.2	189,652	+ 2.1	763,134	+ 4.3
Mar	342,322	- 7.4	247,010	+ 21.2	167,996	- 11.4	757,329	- 0.8
Apr	344,816	+ 0.7	186,433	- 24.5	186,391	+ 10.9	717,640	- 5.2
May	309,325	- 10.3	171,988	- 7.7	147,043	- 21.1	628,357	- 12.4
Jun	335,905	+ 8.6	180,356	+ 4.9	136,593	- 7.1	652,853	+ 3.9
Jul	365,151	+ 8.7	173,183	- 4.0	197,524	+ 44.6	735,858	+ 12.7
Aug	365,034	+ 0.0	170,551	- 1.5	210,459	+ 6.5	746,043	+ 1.4
Sep	356,873	- 2.2	142,019	- 16.7	184,889	- 12.1	683,781	- 8.3
Oct	317,125	- 11.1	156,616	+ 10.3	174,554	- 5.6	648,295	- 5.2
Nov	303,279	- 4.4	373,942	+ 138.8	157,650	- 9.7	834,871	+ 28.8
Dec	312,195	+ 2.9	157,206	- 58.0	178,288	+ 13.1	647,688	- 22.4
2000 Jan	307,443	- 1.5	191,270	+ 21.7	164,849	- 7.5	663,562	+ 2.5
Feb	312,154	+ 1.5	179,073	- 6.4	160,726	- 2.5	651,953	- 1.7
Mar	311,649	- 0.2	213,283	+ 19.1	178,460	+ 11.0	703,392	+ 7.9
Apr	324,138	+ 4.0	228,029	+ 6.9	166,713	- 6.6	718,879	+ 2.2
May	364,035	+ 12.3	312,506	+ 37.0	220,906	+ 32.5	897,446	+ 24.8
Jun	270,969	- 25.6	139,154	- 55.5	145,185	- 34.3	555,308	- 38.1
Jul	297,403	+ 9.8	273,678	+ 96.7	152,793	+ 5.2	723,874	+ 30.4
Aug	341,459	+ 14.8	209,123	- 23.6	164,314	+ 7.5	714,896	- 1.2
Sep	350,197	+ 2.6	175,779	- 15.9	160,614	- 2.3	686,591	- 4.0
Oct	336,156	- 4.0	146,825	- 16.5	171,385	+ 6.7	654,366	- 4.7
Nov	347,600	+ 3.4	170,921	+ 16.4	186,463	+ 8.8	704,983	+ 7.7
Dec	322,369	- 7.3	270,709	+ 58.4	175,237	- 6.0	768,315	+ 9.0
2001 Jan	640,099	+ 98.6	221,170	- 18.3	172,261	- 1.7	1,033,530	+ 34.5
Feb	355,379	- 44.5	234,044	+ 5.8	170,432	- 1.1	759,855	- 26.5
Mar	369,021	+ 3.8	159,436	- 31.9	180,621	+ 6.0	709,079	- 6.7
Apr	304,092	- 17.6	170,024	+ 6.6	157,094	- 13.0	631,210	- 11.0
May	316,475	+ 4.1	223,387	+ 31.4	210,097	+ 33.7	749,958	+ 18.8
Jun	386,183	+ 22.0	280,580	+ 25.6	226,468	+ 7.8	893,232	+ 19.1
Jul	287,901	- 25.4	80,628	- 71.3	152,236	- 32.8	520,765	- 41.7
Aug	303,381	+ 5.4	81,701	+ 1.3	155,155	+ 1.9	540,237	+ 3.7
Sep	287,830	- 5.1	879,998	+ 977.1	127,694	- 17.7	1,295,522	+ 139.8
Oct	451,902	+ 57.0	210,565	- 76.1	158,217	+ 23.9	820,685	- 36.7
Nov	363,830	- 19.5	179,183	- 14.9	195,176	+ 23.4	738,189	- 10.1
Dec	364,353	+ 0.1	137,757	- 23.1	132,384	- 32.2	634,494	- 14.0

^{1/} The percentage change is the change in the seasonally adjusted values of buildings completed of the relevant month compared with the seasonally adjusted values of buildings completed of the previous month expressed as a percentage.

Table 9 - Building plans passed according to type of building: Total RSA

Type of building	December 2000 *	November 2001 *	December 2001	January 2000 to December 2000	January 2001 to December 2001	Percentage change between January 2000 to December 2000 and January 2001 to December 2001
Residential buildings						
Dwelling-houses smaller than 80 square metres						
Number of dwelling-houses	3,080	2,221	1,664	49,816	36,011	- 27.7
Total square metres	124,602	93,877	67,400	1,951,843	1,430,423	- 26.7
Total value at current prices (R'000)	104,067	101,708	65,384	1,526,572	1,389,545	- 9.0
Dwelling-houses equal to or larger than 80 square metres						
Number of dwelling-houses	1,189	1,732	1,282	20,782	21,159	+ 1.8
Total square metres	257,027	396,482	282,569	4,299,007	4,615,408	+ 7.4
Total value at current prices (R'000)	365,103	574,345	419,148	5,881,358	6,618,804	+ 12.5
Flats and townhouses						
Number of flats and townhouses	738	1,131	726	11,059	11,971	+ 8.2
Total square metres	74,464	182,387	109,972	1,220,680	1,400,442	+ 14.7
Total value at current prices (R'000)	104,942	289,443	157,049	1,798,667	2,116,070	+ 17.6
Other residential buildings ^{1/}						
Total square metres	24,101	5,827	5,519	194,770	118,353	- 39.2
Total value at current prices (R'000)	32,036	8,555	8,506	272,918	289,552	+ 6.1
Total value of residential buildings at current prices (R'000)	606,148	974,051	650,087	9,479,515	10,413,971	+ 9.9
Non-residential buildings						
Office and banking space						
Total square metres	70,525	52,854	24,057	1,147,121	754,295	- 34.2
Total value at current prices (R'000)	112,028	87,252	33,995	1,777,846	1,261,410	- 29.0
Shopping space						
Total square metres	80,485	62,179	32,355	599,702	454,843	- 24.2
Total value at current prices (R'000)	344,239	94,258	52,908	1,079,354	676,048	- 37.4
Industrial and warehouse space						
Total square metres	65,007	55,535	27,594	1,205,512	869,253	- 27.9
Total value at current prices (R'000)	80,106	66,350	29,923	1,529,720	1,018,474	- 33.4
Other non-residential space ^{2/}						
Total square metres	129,800	53,653	12,818	565,149	385,493	- 31.8
Total value at current prices (R'000)	168,037	72,174	18,432	722,063	522,111	- 27.7
Total value of non-residential buildings at current prices (R'000)	704,410	320,034	135,258	5,108,983	3,478,043	- 31.9
Additions and alterations						
Dwelling-houses						
Total square metres	189,704	292,678	195,127	3,051,421	2,974,294	- 2.5
Total value at current prices (R'000)	228,609	364,611	258,533	3,690,999	3,761,940	+ 1.9
Other buildings ^{3/}						
Total square metres	59,101	156,704	54,079	1,036,547	1,020,123	- 1.6
Total value at current prices (R'000)	89,226	231,652	101,697	1,846,635	1,761,095	- 4.6
Total value of additions and alterations at current prices (R'000)	317,835	596,263	360,230	5,537,634	5,523,035	- 0.3
Total value of building plans passed at current prices (R'000)	1,628,393	1,890,348	1,145,575	20,126,132	19,415,049	- 3.5

1/ Other residential buildings include institutions for the disabled, boarding houses, old people's homes, hostels, hotels, motels, guest houses, holiday chalets, entertainment centres, bed-and-breakfast accommodation and casinos.

2/ Other non-residential space includes churches, sport and recreation clubs, schools, crèches, hospitals and all other non-residential space.

3/ Other buildings include additions and alterations to other residential buildings, non-residential buildings and internal alterations.

Table 10 - Building plans passed according to type of building and province: Western Cape

Type of building	December 2000 *	November 2001	December 2001	January 2000 to December 2000	January 2001 to December 2001	Percentage change between January 2000 to December 2000 and January 2001 to December 2001
Residential buildings						
Dwelling-houses smaller than 80 square metres						
Number of dwelling-houses	1,172	689	360	9,889	7,696	- 22.2
Total square metres	46,153	27,515	14,495	382,651	314,296	- 17.9
Total value at current prices (R'000)	44,932	30,553	16,986	326,968	368,638	+ 12.7
Dwelling-houses equal to or larger than 80 square metres						
Number of dwelling-houses	415	538	417	6,291	6,854	+ 8.9
Total square metres	84,374	114,709	85,105	1,226,109	1,423,981	+ 16.1
Total value at current prices (R'000)	125,612	172,242	130,063	1,780,251	2,138,722	+ 20.1
Flats and townhouses						
Number of flats and townhouses	234	175	130	2,767	2,910	+ 5.2
Total square metres	24,401	21,865	19,383	305,343	285,050	- 6.6
Total value at current prices (R'000)	36,255	32,019	28,491	468,595	425,577	- 9.2
Other residential buildings ^{1/}						
Total square metres	7,835	185	0	68,233	37,612	- 44.9
Total value at current prices (R'000)	11,781	276	0	95,081	84,735	- 10.9
Total value of residential buildings at current prices (R'000)	218,580	235,090	175,540	2,670,895	3,017,672	+ 13.0
Non-residential buildings						
Office and banking space						
Total square metres	26,337	19,771	8,377	251,973	233,670	- 7.3
Total value at current prices (R'000)	35,884	31,789	11,898	431,903	336,051	- 22.2
Shopping space						
Total square metres	1,754	11,012	16,493	197,583	172,545	- 12.7
Total value at current prices (R'000)	2,374	15,593	21,972	258,072	236,828	- 8.2
Industrial and warehouse space						
Total square metres	13,383	36,339	16,512	337,776	349,989	+ 3.6
Total value at current prices (R'000)	12,430	40,956	16,646	355,594	258,160	- 27.4
Other non-residential space ^{2/}						
Total square metres	4,527	3,087	2,862	149,451	100,983	- 32.4
Total value at current prices (R'000)	5,241	4,271	5,598	135,555	118,211	- 12.8
Total value of non-residential buildings at current prices (R'000)	55,929	92,609	56,114	1,181,124	949,250	- 19.6
Additions and alterations						
Dwelling-houses						
Total square metres	64,247	98,136	66,151	928,982	924,906	- 0.4
Total value at current prices (R'000)	77,431	114,888	85,968	1,128,163	1,171,253	+ 3.8
Other buildings ^{3/}						
Total square metres	14,540	35,139	11,501	252,496	265,623	+ 5.2
Total value at current prices (R'000)	23,333	62,387	26,286	484,530	487,916	+ 0.7
Total value of additions and alterations at current prices (R'000)	100,764	177,275	112,254	1,612,693	1,659,169	+ 2.9
Total value of building plans passed at current prices (R'000)	375,273	504,974	343,908	5,464,712	5,626,091	+ 3.0

1/ Other residential buildings include institutions for the disabled, boarding houses, old people's homes, hostels, hotels, motels, guest houses, holiday chalets, entertainment centres, bed-and-breakfast accommodation and casinos.

2/ Other non-residential space includes churches, sport and recreation clubs, schools, crèches, hospitals and all other non-residential space.

3/ Other buildings include additions and alterations to other residential buildings, non-residential buildings and internal alterations.

Table 11 - Building plans passed according to type of building and province: Eastern Cape

Type of building	December 2000	November 2001	December 2001	January 2000 to December 2000	January 2001 to December 2001	Percentage change between January 2000 to December 2000 and January 2001 to December 2001
Residential buildings						
Dwelling-houses smaller than 80 square metres						
Number of dwelling-houses	141	131	162	4,956	2,545	-48.6
Total square metres	6,441	5,876	7,077	211,814	113,995	-46.2
Total value at current prices (R'000)	8,559	8,867	8,905	182,120	143,511	-21.2
Dwelling-houses equal to or larger than 80 square metres						
Number of dwelling-houses	73	84	86	1,164	1,282	+ 10.1
Total square metres	11,843	15,102	15,630	190,647	207,414	+ 8.8
Total value at current prices (R'000)	15,435	21,500	23,588	242,797	278,676	+ 14.8
Flats and townhouses						
Number of flats and townhouses	25	10	14	501	747	+ 49.1
Total square metres	2,980	1,030	1,475	41,443	42,415	+ 2.3
Total value at current prices (R'000)	4,170	1,494	2,077	55,250	51,663	-6.5
Other residential buildings ^{1/}						
Total square metres	0	0	539	7,482	26,932	+ 260.0
Total value at current prices (R'000)	0	0	1,056	9,946	78,678	+ 691.1
Total value of residential buildings at current prices (R'000)	28,164	31,861	35,626	490,113	552,528	+ 12.7
Non-residential buildings						
Office and banking space						
Total square metres	0	0	0	5,436	13,652	+ 151.1
Total value at current prices (R'000)	0	0	0	7,992	22,163	+ 177.3
Shopping space						
Total square metres	263	461	0	24,428	10,789	-55.8
Total value at current prices (R'000)	272	509	0	36,989	16,985	-54.1
Industrial and warehouse space						
Total square metres	6,840	918	1,749	141,831	39,614	-72.1
Total value at current prices (R'000)	8,682	566	2,816	151,481	45,314	-70.1
Other non-residential space ^{2/}						
Total square metres	748	2,933	1,275	40,961	18,552	-54.7
Total value at current prices (R'000)	1,058	5,749	2,095	59,260	32,873	-44.5
Total value of non-residential buildings at current prices (R'000)	10,012	6,824	4,911	255,722	117,335	-54.1
Additions and alterations						
Dwelling-houses						
Total square metres	14,250	21,963	16,717	211,731	229,405	+ 8.3
Total value at current prices (R'000)	17,912	30,240	25,047	268,074	304,478	+ 13.6
Other buildings ^{3/}						
Total square metres	6,216	4,796	1,028	76,878	113,162	+ 47.2
Total value at current prices (R'000)	8,368	6,897	1,027	111,478	145,037	+ 30.1
Total value of additions and alterations at current prices (R'000)	26,280	37,137	26,074	379,552	449,515	+ 18.4
Total value of building plans passed at current prices (R'000)	64,456	75,822	66,611	1,125,387	1,119,378	-0.5

1/ Other residential buildings include institutions for the disabled, boarding houses, old people's homes, hostels, hotels, motels, guest houses, holiday chalets, entertainment centres, bed-and-breakfast accommodation and casinos.

2/ Other non-residential space includes churches, sport and recreation clubs, schools, crèches, hospitals and all other non-residential space.

3/ Other buildings include additions and alterations to other residential buildings, non-residential buildings and internal alterations.

Table 12 - Building plans passed according to type of building and province: Northern Cape

Type of building	December 2000	November 2001	December 2001	January 2000 to December 2000	January 2001 to December 2001	Percentage change between January 2000 to December 2000 and January 2001 to December 2001
Residential buildings						
Dwelling-houses smaller than 80 square metres						
Number of dwelling-houses	1	9	11	80	94	+ 17.5
Total square metres	65	400	605	4,521	5,128	+ 13.4
Total value at current prices (R'000)	117	537	1,022	6,695	7,922	+ 18.3
Dwelling-houses equal to or larger than 80 square metres						
Number of dwelling-houses	3	9	2	132	156	+ 18.2
Total square metres	593	1,262	402	21,406	27,000	+ 26.1
Total value at current prices (R'000)	1,067	2,038	563	27,862	37,751	+ 35.5
Flats and townhouses						
Number of flats and townhouses	2	2	0	45	14	- 68.9
Total square metres	317	496	0	5,866	2,581	- 56.0
Total value at current prices (R'000)	380	893	0	8,830	3,727	- 57.8
Other residential buildings ^{1/}						
Total square metres	346	0	0	673	0	..
Total value at current prices (R'000)	277	0	0	543	0	..
Total value of residential buildings at current prices (R'000)	1,841	3,468	1,585	43,930	49,400	+ 12.5
Non-residential buildings						
Office and banking space						
Total square metres	113	66	0	7,828	257	- 96.7
Total value at current prices (R'000)	158	92	0	16,521	216	- 98.7
Shopping space						
Total square metres	799	3,673	1,915	8,279	6,058	- 26.8
Total value at current prices (R'000)	1,998	8,081	2,298	13,091	11,186	- 14.6
Industrial and warehouse space						
Total square metres	0	0	0	3,609	2,336	- 35.3
Total value at current prices (R'000)	0	0	0	5,414	2,744	- 49.3
Other non-residential space ^{2/}						
Total square metres	105	219	0	5,778	2,594	- 55.1
Total value at current prices (R'000)	168	328	0	9,551	4,174	- 56.3
Total value of non-residential buildings at current prices (R'000)	2,324	8,501	2,298	44,577	18,320	- 58.9
Additions and alterations						
Dwelling-houses						
Total square metres	3,029	3,564	1,751	36,176	30,505	- 15.7
Total value at current prices (R'000)	5,034	6,141	2,612	57,435	50,421	- 12.2
Other buildings ^{3/}						
Total square metres	75	599	270	16,474	9,571	- 41.9
Total value at current prices (R'000)	361	2,302	564	39,418	23,592	- 40.1
Total value of additions and alterations at current prices (R'000)	5,395	8,443	3,176	96,853	74,013	- 23.6
Total value of building plans passed at current prices (R'000)	9,560	20,412	7,059	185,360	141,733	- 23.5

1/ Other residential buildings include institutions for the disabled, boarding houses, old people's homes, hostels, hotels, motels, guest houses, holiday chalets, entertainment centres, bed-and-breakfast accommodation and casinos.

2/ Other non-residential space includes churches, sport and recreation clubs, schools, crèches, hospitals and all other non-residential space.

3/ Other buildings include additions and alterations to other residential buildings, non-residential buildings and internal alterations.

Table 13 - Building plans passed according to type of building and province: Free State

Type of building	December 2000	November 2001	December 2001	January 2000 to December 2000	January 2001 to December 2001	Percentage change between January 2000 to December 2000 and January 2001 to December 2001
Residential buildings						
Dwelling-houses smaller than 80 square metres						
Number of dwelling-houses	718	77	9	5,698	2,415	-57.6
Total square metres	29,806	3,556	442	237,075	107,059	-54.8
Total value at current prices (R'000)	13,612	3,197	440	124,343	67,194	-46.0
Dwelling-houses equal to or larger than 80 square metres						
Number of dwelling-houses	48	81	58	769	751	-2.3
Total square metres	6,196	13,793	8,684	117,040	119,075	+ 1.7
Total value at current prices (R'000)	7,590	16,040	7,796	132,855	129,271	-2.7
Flats and townhouses						
Number of flats and townhouses	22	39	0	393	388	-1.3
Total square metres	2,645	4,596	0	34,463	45,461	+ 31.9
Total value at current prices (R'000)	3,768	6,391	0	49,637	66,156	+ 33.3
Other residential buildings ^{1/}						
Total square metres	0	1,811	0	2,597	8,596	+ 231.0
Total value at current prices (R'000)	0	2,443	0	3,842	10,864	+ 182.8
Total value of residential buildings at current prices (R'000)	24,970	28,071	8,236	310,677	273,485	-12.0
Non-residential buildings						
Office and banking space						
Total square metres	1,255	0	0	15,814	14,295	-9.6
Total value at current prices (R'000)	2,000	0	0	22,424	27,483	+ 22.6
Shopping space						
Total square metres	2,417	0	0	24,028	9,167	-61.8
Total value at current prices (R'000)	2,686	0	0	27,747	10,112	-63.6
Industrial and warehouse space						
Total square metres	327	2,700	0	19,093	8,510	-55.4
Total value at current prices (R'000)	327	2,000	0	17,864	6,567	-63.2
Other non-residential space ^{2/}						
Total square metres	484	128	812	13,110	11,572	-11.7
Total value at current prices (R'000)	684	139	818	19,874	15,318	-22.9
Total value of non-residential buildings at current prices (R'000)	5,697	2,139	818	87,909	59,480	-32.3
Additions and alterations						
Dwelling-houses						
Total square metres	5,549	11,283	5,647	95,175	93,136	-2.1
Total value at current prices (R'000)	6,147	12,776	6,359	99,330	99,063	-0.3
Other buildings ^{3/}						
Total square metres	4,717	3,534	737	46,838	19,445	-58.5
Total value at current prices (R'000)	7,772	5,062	538	134,249	35,505	-73.6
Total value of additions and alterations at current prices (R'000)	13,919	17,838	6,897	233,579	134,568	-42.4
Total value of building plans passed at current prices (R'000)	44,586	48,048	15,951	632,165	467,533	-26.0

1/ Other residential buildings include institutions for the disabled, boarding houses, old people's homes, hostels, hotels, motels, guest houses, holiday chalets, entertainment centres, bed-and-breakfast accommodation and casinos.

2/ Other non-residential space includes churches, sport and recreation clubs, schools, crèches, hospitals and all other non-residential space.

3/ Other buildings include additions and alterations to other residential buildings, non-residential buildings and internal alterations.

Table 14 - Building plans passed according to type of building and province: KwaZulu-Natal

Type of building	December 2000	November 2001	December 2001	January 2000 to December 2000	January 2001 to December 2001	Percentage change between January 2000 to December 2000 and January 2001 to December 2001
Residential buildings						
Dwelling-houses smaller than 80 square metres						
Number of dwelling-houses	64	160	58	2,315	2,308	- 0.3
Total square metres	2,960	7,250	2,789	103,760	100,590	- 3.1
Total value at current prices (R'000)	3,190	8,688	3,575	108,725	100,443	- 7.6
Dwelling-houses equal to or larger than 80 square metres						
Number of dwelling-houses	117	155	114	1,916	1,682	- 12.2
Total square metres	25,147	30,812	23,909	396,065	359,631	- 9.2
Total value at current prices (R'000)	38,769	44,380	39,207	582,712	524,055	- 10.1
Flats and townhouses						
Number of flats and townhouses	32	50	30	784	880	+ 12.2
Total square metres	5,501	9,929	5,227	116,964	122,769	+ 5.0
Total value at current prices (R'000)	9,373	20,524	8,988	191,124	207,200	+ 8.4
Other residential buildings ^{1/}						
Total square metres	329	0	98	12,412	20,300	+ 63.6
Total value at current prices (R'000)	330	0	127	24,855	82,558	+ 232.2
Total value of residential buildings at current prices (R'000)	51,662	73,592	51,897	907,416	914,256	+ 0.8
Non-residential buildings						
Office and banking space						
Total square metres	1,945	2,036	8,082	56,288	138,049	+ 145.3
Total value at current prices (R'000)	2,874	3,800	11,171	102,794	285,633	+ 177.9
Shopping space						
Total square metres	55,867	1,305	1,730	84,729	41,072	- 51.5
Total value at current prices (R'000)	302,833	1,950	5,184	338,871	60,812	- 82.1
Industrial and warehouse space						
Total square metres	14,311	1,338	2,688	170,077	134,508	- 20.9
Total value at current prices (R'000)	17,750	1,371	2,382	217,270	194,765	- 10.4
Other non-residential space ^{2/}						
Total square metres	4,876	18,108	2,811	53,950	63,052	+ 16.9
Total value at current prices (R'000)	5,342	30,259	2,897	72,446	90,307	+ 24.7
Total value of non-residential buildings at current prices (R'000)	328,799	37,380	21,634	731,381	631,517	- 13.7
Additions and alterations						
Dwelling-houses						
Total square metres	29,968	36,047	23,038	423,728	394,584	- 6.9
Total value at current prices (R'000)	35,517	42,581	27,331	515,937	482,338	- 6.5
Other buildings ^{3/}						
Total square metres	8,503	13,878	19,384	242,816	183,541	- 24.4
Total value at current prices (R'000)	11,050	30,472	36,517	413,886	366,614	- 11.4
Total value of additions and alterations at current prices (R'000)	46,567	73,053	63,848	929,823	848,952	- 8.7
Total value of building plans passed at current prices (R'000)	427,028	184,025	137,379	2,568,620	2,394,725	- 6.8

1/ Other residential buildings include institutions for the disabled, boarding houses, old people's homes, hostels, hotels, motels, guest houses, holiday chalets, entertainment centres, bed-and-breakfast accommodation and casinos.

2/ Other non-residential space includes churches, sport and recreation clubs, schools, crèches, hospitals and all other non-residential space.

3/ Other buildings include additions and alterations to other residential buildings, non-residential buildings and internal alterations.

Table 15 - Building plans passed according to type of building and province: North West

Type of building	December 2000	November 2001	December 2001	January 2000 to December 2000	January 2001 to December 2001	Percentage change between January 2000 to December 2000 and January 2001 to December 2001
Residential buildings						
Dwelling-houses smaller than 80 square metres						
Number of dwelling-houses	36	71	18	2,158	3,655	+ 69.4
Total square metres	1,891	3,925	1,038	77,701	131,554	+ 69.3
Total value at current prices (R'000)	2,092	4,974	1,439	60,009	84,087	+ 40.1
Dwelling-houses equal to or larger than 80 square metres						
Number of dwelling-houses	61	106	50	994	879	- 11.6
Total square metres	11,031	19,116	9,637	157,552	158,546	+ 0.6
Total value at current prices (R'000)	12,481	30,130	17,207	178,729	212,611	+ 19.0
Flats and townhouses						
Number of flats and townhouses	0	96	71	214	412	+ 92.5
Total square metres	0	11,090	10,140	21,757	47,790	+ 119.7
Total value at current prices (R'000)	0	22,181	9,967	24,721	66,988	+ 171.0
Other residential buildings ^{1/}						
Total square metres	986	0	0	5,765	2,606	- 54.8
Total value at current prices (R'000)	440	0	0	6,059	2,590	- 57.3
Total value of residential buildings at current prices (R'000)	15,013	57,285	28,613	269,518	366,276	+ 35.9
Non-residential buildings						
Office and banking space						
Total square metres	0	0	1,109	2,228	4,871	+ 118.6
Total value at current prices (R'000)	0	0	1,658	2,442	7,719	+ 216.1
Shopping space						
Total square metres	323	8,127	0	15,760	25,521	+ 61.9
Total value at current prices (R'000)	652	8,242	0	21,603	32,275	+ 49.4
Industrial and warehouse space						
Total square metres	230	2,512	1,817	5,957	13,279	+ 122.9
Total value at current prices (R'000)	200	5,024	1,062	6,283	15,336	+ 144.1
Other non-residential space ^{2/}						
Total square metres	662	3,071	1,498	18,924	11,895	- 37.1
Total value at current prices (R'000)	1,127	4,162	1,960	24,250	13,628	- 43.8
Total value of non-residential buildings at current prices (R'000)	1,979	17,428	4,680	54,578	68,958	+ 26.3
Additions and alterations						
Dwelling-houses						
Total square metres	4,859	8,750	5,027	77,955	75,256	- 3.5
Total value at current prices (R'000)	5,124	11,867	5,657	78,349	83,975	+ 7.2
Other buildings ^{3/}						
Total square metres	1,755	3,917	1,087	31,802	23,228	- 27.0
Total value at current prices (R'000)	2,224	7,461	816	56,168	36,650	- 34.7
Total value of additions and alterations at current prices (R'000)	7,348	19,328	6,473	134,517	120,625	- 10.3
Total value of building plans passed at current prices (R'000)	24,340	94,041	39,766	458,613	555,859	+ 21.2

1/ Other residential buildings include institutions for the disabled, boarding houses, old people's homes, hostels, hotels, motels, guest houses, holiday chalets, entertainment centres, bed-and-breakfast accommodation and casinos.

2/ Other non-residential space includes churches, sport and recreation clubs, schools, crèches, hospitals and all other non-residential space.

3/ Other buildings include additions and alterations to other residential buildings, non-residential buildings and internal alterations.

Table 16 - Building plans passed according to type of building and province: Gauteng

Type of building	December 2000 *	November 2001*	December 2001	January 2000 to December 2000	January 2001 to December 2001	Percentage change between January 2000 to December 2000 and January 2001 to December 2001
Residential buildings						
Dwelling-houses smaller than 80 square metres						
Number of dwelling-houses	596	733	587	18,137	11,331	- 37.5
Total square metres	24,054	32,608	24,630	689,816	438,907	- 36.4
Total value at current prices (R'000)	23,094	37,160	24,838	557,483	479,195	- 14.0
Dwelling-houses equal to or larger than 80 square metres						
Number of dwelling-houses	384	680	444	8,064	8,204	+ 1.7
Total square metres	102,074	184,228	117,244	1,946,352	2,060,746	+ 5.9
Total value at current prices (R'000)	144,241	265,405	173,486	2,642,228	2,965,396	+ 12.2
Flats and townhouses						
Number of flats and townhouses	417	716	469	6,046	5,606	- 7.3
Total square metres	37,810	129,425	71,686	660,358	763,584	+ 15.6
Total value at current prices (R'000)	49,997	201,125	105,656	959,062	1,175,312	+ 22.5
Other residential buildings ^{1/}						
Total square metres	14,160	1,924	4,882	92,387	18,613	- 79.9
Total value at current prices (R'000)	18,408	2,982	7,323	125,561	25,072	- 80.0
Total value of residential buildings at current prices (R'000)	235,740	506,672	311,303	4,284,334	4,644,975	+ 8.4
Non-residential buildings						
Office and banking space						
Total square metres	40,712	30,981	6,489	764,661	344,831	- 54.9
Total value at current prices (R'000)	70,753	51,571	9,268	1,134,514	574,975	- 49.3
Shopping space						
Total square metres	18,705	35,164	12,217	214,680	168,943	- 21.3
Total value at current prices (R'000)	33,066	57,193	23,454	348,890	278,239	- 20.3
Industrial and warehouse space						
Total square metres	28,606	9,600	3,340	487,908	285,573	- 41.5
Total value at current prices (R'000)	39,463	13,893	4,696	727,070	461,604	- 36.5
Other non-residential space ^{2/}						
Total square metres	118,080	23,617	3,213	264,130	155,603	- 41.1
Total value at current prices (R'000)	154,165	25,980	4,717	377,459	223,986	- 40.7
Total value of non-residential buildings at current prices (R'000)	297,447	148,637	42,135	2,587,933	1,538,804	- 40.5
Additions and alterations						
Dwelling-houses						
Total square metres	56,744	95,793	64,508	1,090,328	1,049,726	- 3.7
Total value at current prices (R'000)	71,444	127,806	90,687	1,352,048	1,375,409	+ 1.7
Other buildings ^{3/}						
Total square metres	22,561	88,745	14,925	326,999	365,736	+ 11.8
Total value at current prices (R'000)	34,756	104,816	26,825	535,384	587,786	+ 9.8
Total value of additions and alterations at current prices (R'000)	106,200	232,622	117,512	1,887,432	1,963,195	+ 4.0
Total value of building plans passed at current prices (R'000)	639,387	887,931	470,950	8,759,699	8,146,974	- 7.0

1/ Other residential buildings include institutions for the disabled, boarding houses, old people's homes, hostels, hotels, motels, guest houses, holiday chalets, entertainment centres, bed-and-breakfast accommodation and casinos.

2/ Other non-residential space includes churches, sport and recreation clubs, schools, crèches, hospitals and all other non-residential space.

3/ Other buildings include additions and alterations to other residential buildings, non-residential buildings and internal alterations.

Table 17 - Building plans passed according to type of building and province: Mpumalanga

Type of building	December 2000	November 2001	December 2001	January 2000 to December 2000	January 2001 to December 2001	Percentage change between January 2000 to December 2000 and January 2001 to December 2001
Residential buildings						
Dwelling-houses smaller than 80 square metres						
Number of dwelling-houses	306	321	447	4,924	5,547	+ 12.7
Total square metres	10,596	10,979	15,617	169,028	194,146	+ 14.9
Total value at current prices (R'000)	5,133	5,227	7,194	100,131	105,725	+ 5.6
Dwelling-houses equal to or larger than 80 square metres						
Number of dwelling-houses	54	42	84	972	854	- 12.1
Total square metres	9,234	8,068	16,912	163,149	165,207	+ 1.3
Total value at current prices (R'000)	10,662	10,681	20,118	184,846	209,876	+ 13.5
Flats and townhouses						
Number of flats and townhouses	2	42	8	206	955	+ 363.6
Total square metres	318	3,807	1,281	19,644	82,761	+ 321.3
Total value at current prices (R'000)	310	4,613	1,000	22,987	109,361	+ 375.8
Other residential buildings ^{1/}						
Total square metres	445	1,907	0	1,998	3,502	+ 75.3
Total value at current prices (R'000)	800	2,854	0	3,051	4,959	+ 62.5
Total value of residential buildings at current prices (R'000)	16,905	23,375	28,312	311,015	429,921	+ 38.2
Non-residential buildings						
Office and banking space						
Total square metres	0	0	0	36,930	3,671	- 90.1
Total value at current prices (R'000)	0	0	0	53,663	5,750	- 89.3
Shopping space						
Total square metres	357	2,437	0	22,929	7,233	- 68.5
Total value at current prices (R'000)	358	2,690	0	25,918	9,484	- 63.4
Industrial and warehouse space						
Total square metres	1,310	924	1,488	35,208	32,235	- 8.4
Total value at current prices (R'000)	1,254	1,562	2,321	44,250	30,577	- 30.9
Other non-residential space ^{2/}						
Total square metres	318	2,150	0	13,624	17,384	+ 27.6
Total value at current prices (R'000)	252	538	0	14,283	17,646	+ 23.5
Total value of non-residential buildings at current prices (R'000)	1,864	4,790	2,321	138,114	63,457	- 54.1
Additions and alterations						
Dwelling-houses						
Total square metres	9,212	11,901	8,684	138,006	128,733	- 6.7
Total value at current prices (R'000)	7,619	11,205	9,858	126,880	131,967	+ 4.0
Other buildings ^{3/}						
Total square metres	538	1,803	4,844	19,259	24,336	+ 26.4
Total value at current prices (R'000)	1,097	3,626	8,742	29,624	40,249	+ 35.9
Total value of additions and alterations at current prices (R'000)	8,716	14,831	18,600	156,504	172,216	+ 10.0
Total value of building plans passed at current prices (R'000)	27,485	42,996	49,233	605,633	665,594	+ 9.9

1/ Other residential buildings include institutions for the disabled, boarding houses, old people's homes, hostels, hotels, motels, guest houses, holiday chalets, entertainment centres, bed-and-breakfast accommodation and casinos.

2/ Other non-residential space includes churches, sport and recreation clubs, schools, crèches, hospitals and all other non-residential space.

3/ Other buildings include additions and alterations to other residential buildings, non-residential buildings and internal alterations.

Table 18 - Building plans passed according to type of building and province: Northern Province

Type of building	December 2000	November 2001	December 2001	January 2000 to December 2000	January 2001 to December 2001	Percentage change between January 2000 to December 2000 and January 2001 to December 2001
Residential buildings						
Dwelling-houses smaller than 80 square metres						
Number of dwelling-houses	46	30	12	1,659	420	-74.7
Total square metres	2,636	1,768	707	75,477	24,748	-67.2
Total value at current prices (R'000)	3,338	2,505	985	60,098	32,830	-45.4
Dwelling-houses equal to or larger than 80 square metres						
Number of dwelling-houses	34	37	27	480	497	+ 3.5
Total square metres	6,535	9,392	5,046	80,687	93,808	+ 16.3
Total value at current prices (R'000)	9,246	11,929	7,120	109,078	122,446	+ 12.3
Flats and townhouses						
Number of flats and townhouses	4	1	4	103	59	-42.7
Total square metres	492	149	780	14,842	8,031	-45.9
Total value at current prices (R'000)	689	203	870	18,461	10,086	-45.4
Other residential buildings ^{1/}						
Total square metres	0	0	0	3,223	192	-94.0
Total value at current prices (R'000)	0	0	0	3,980	96	-97.6
Total value of residential buildings at current prices (R'000)	13,273	14,637	8,975	191,617	165,458	-13.7
Non-residential buildings						
Office and banking space						
Total square metres	163	0	0	5,963	999	-83.2
Total value at current prices (R'000)	359	0	0	5,593	1,420	-74.6
Shopping space						
Total square metres	0	0	0	7,286	13,515	+ 85.5
Total value at current prices (R'000)	0	0	0	8,173	20,127	+ 146.3
Industrial and warehouse space						
Total square metres	0	1,204	0	4,053	3,209	-20.8
Total value at current prices (R'000)	0	978	0	4,494	3,407	-24.2
Other non-residential space ^{2/}						
Total square metres	0	340	347	5,221	3,858	-26.1
Total value at current prices (R'000)	0	748	347	9,385	5,968	-36.4
Total value of non-residential buildings at current prices (R'000)	359	1,726	347	27,645	30,922	+ 11.9
Additions and alterations						
Dwelling-houses						
Total square metres	1,846	5,241	3,604	49,340	48,043	-2.6
Total value at current prices (R'000)	2,381	7,107	5,014	64,783	63,036	-2.7
Other buildings ^{3/}						
Total square metres	165	4,293	303	22,985	15,481	-32.6
Total value at current prices (R'000)	265	8,629	382	41,898	37,746	-9.9
Total value of additions and alterations at current prices (R'000)	2,646	15,736	5,396	106,681	100,782	-5.5
Total value of building plans passed at current prices (R'000)	16,278	32,099	14,718	325,943	297,162	-8.8

1/ Other residential buildings include institutions for the disabled, boarding houses, old people's homes, hostels, hotels, motels, guest houses, holiday chalets, entertainment centres, bed-and-breakfast accommodation and casinos.

2/ Other non-residential space includes churches, sport and recreation clubs, schools, crèches, hospitals and all other non-residential space.

3/ Other buildings include additions and alterations to other residential buildings, non-residential buildings and internal alterations.

Table 19 - Buildings completed according to type of building: Total RSA

Type of building	December 2000 *	November 2001	December 2001	January 2000 to December 2000	January 2001 to December 2001	Percentage change between January 2000 to December 2000 and January 2001 to December 2001
Residential buildings						
Dwelling-houses smaller than 80 square metres						
Number of dwelling-houses	2,086	1,870	1,905	37,860	26,232	- 30.7
Total square metres	76,979	76,822	74,484	1,411,988	1,049,913	- 25.6
Total value at current prices (R'000)	64,066	76,598	85,736	1,094,888	986,435	- 9.9
Dwelling-houses equal to or larger than 80 square metres						
Number of dwelling-houses	781	1,167	851	10,734	11,732	+ 9.3
Total square metres	163,545	241,468	191,571	2,122,119	2,407,658	+ 13.5
Total value at current prices (R'000)	224,061	347,918	293,580	2,781,170	3,407,442	+ 22.5
Flats and townhouses						
Number of flats and townhouses	428	1,103	439	7,527	7,104	- 5.6
Total square metres	46,464	128,390	54,245	753,732	808,917	+ 7.3
Total value at current prices (R'000)	64,086	189,582	83,831	1,032,306	1,178,506	+ 14.2
Other residential buildings ^{1/}						
Total square metres	22,223	4,631	699	87,467	117,955	+ 34.9
Total value at current prices (R'000)	30,901	5,216	979	133,062	439,287	+ 230.1
Total value of residential buildings at current prices (R'000)	383,114	619,314	464,126	5,041,426	6,011,670	+ 19.2
Non-residential buildings						
Office and banking space						
Total square metres	47,765	35,972	22,386	589,880	610,857	+ 3.6
Total value at current prices (R'000)	79,650	108,706	37,708	923,542	993,048	+ 7.5
Shopping space						
Total square metres	65,652	17,664	91,570	522,415	721,337	+ 38.1
Total value at current prices (R'000)	177,652	22,443	99,323	1,085,734	1,797,172	+ 65.5
Industrial and warehouse space						
Total square metres	24,429	27,395	10,557	710,473	661,842	- 6.8
Total value at current prices (R'000)	39,614	24,073	11,300	810,143	793,740	- 2.0
Other non-residential space ^{2/}						
Total square metres	10,680	32,495	15,594	285,112	223,837	- 21.5
Total value at current prices (R'000)	19,885	43,349	17,216	311,741	272,623	- 12.5
Total value of non-residential buildings at current prices (R'000)	316,801	198,571	165,547	3,131,160	3,856,583	+ 23.2
Additions and alterations						
Dwelling-houses						
Total square metres	73,109	133,106	71,022	1,378,552	1,416,594	+ 2.8
Total value at current prices (R'000)	87,811	166,046	90,979	1,563,122	1,688,965	+ 8.1
Other buildings ^{3/}						
Total square metres	51,381	61,112	16,104	596,462	530,557	- 11.0
Total value at current prices (R'000)	61,811	119,831	30,792	1,039,934	1,060,033	+ 1.9
Total value of additions and alterations at current prices (R'000)	149,622	285,877	121,771	2,603,056	2,748,998	+ 5.6
Total value of buildings completed at current prices (R'000)	849,537	1,103,762	751,444	10,775,642	12,617,251	+ 17.1

1/ Other residential buildings include institutions for the disabled, boarding houses, old people's homes, hostels, hotels, motels, guest houses, holiday chalets, entertainment centres, bed-and-breakfast accommodation and casinos.

2/ Other non-residential space includes churches, sport and recreation clubs, schools, crèches, hospitals and all other non-residential space.

3/ Other buildings include additions and alterations to other residential buildings, non-residential buildings and internal alterations.

Table 20 - Buildings completed according to type of building and province: Western Cape

Type of building	December 2000 *	November 2001	December 2001	January 2000 to December 2000	January 2001 to December 2001	Percentage change between January 2000 to December 2000 and January 2001 to December 2001
Residential buildings						
Dwelling-houses smaller than 80 square metres						
Number of dwelling-houses	636	477	845	8,943	5,773	- 35.4
Total square metres	19,575	17,862	32,138	298,511	233,947	- 21.6
Total value at current prices (R'000)	18,610	15,628	42,388	204,059	264,592	+ 29.7
Dwelling-houses equal to or larger than 80 square metres						
Number of dwelling-houses	264	394	309	3,771	4,048	+ 7.3
Total square metres	45,790	78,110	62,931	686,561	792,376	+ 15.4
Total value at current prices (R'000)	64,999	117,276	100,078	943,703	1,197,906	+ 26.9
Flats and townhouses						
Number of flats and townhouses	39	141	114	1,929	1,847	- 4.3
Total square metres	4,331	15,591	10,314	193,705	216,446	+ 11.7
Total value at current prices (R'000)	6,233	21,098	13,923	257,003	298,817	+ 16.3
Other residential buildings ^{1/}						
Total square metres	1,760	1,469	0	39,805	39,375	- 1.1
Total value at current prices (R'000)	4,400	2,135	0	67,339	53,078	- 21.2
Total value of residential buildings at current prices (R'000)	94,242	156,137	156,389	1,472,104	1,814,393	+ 23.3
Non-residential buildings						
Office and banking space						
Total square metres	13,472	2,746	6,721	143,538	128,131	- 10.7
Total value at current prices (R'000)	32,123	3,884	8,498	235,777	204,295	- 13.4
Shopping space						
Total square metres	8,805	3,555	84,842	78,053	131,713	+ 68.7
Total value at current prices (R'000)	10,746	6,345	86,530	109,604	147,018	+ 34.1
Industrial and warehouse space						
Total square metres	6,399	4,483	3,171	219,510	144,526	- 34.2
Total value at current prices (R'000)	6,569	6,503	3,389	203,278	159,100	- 21.7
Other non-residential space ^{2/}						
Total square metres	2,189	10,257	9,727	126,569	81,048	- 36.0
Total value at current prices (R'000)	2,884	8,922	9,504	101,600	75,138	- 26.0
Total value of non-residential buildings at current prices (R'000)	52,322	25,654	107,921	650,259	585,551	- 10.0
Additions and alterations						
Dwelling-houses						
Total square metres	25,176	37,596	24,166	529,706	513,225	- 3.1
Total value at current prices (R'000)	32,506	52,078	32,837	610,129	643,987	+ 5.5
Other buildings ^{3/}						
Total square metres	12,334	9,339	4,786	160,245	151,284	- 5.6
Total value at current prices (R'000)	6,473	20,704	9,455	235,852	355,166	+ 50.6
Total value of additions and alterations at current prices (R'000)	38,979	72,782	42,292	845,981	999,153	+ 18.1
Total value of buildings completed at current prices (R'000)	185,543	254,573	306,602	2,968,344	3,399,097	14.5

1/ Other residential buildings include institutions for the disabled, boarding houses, old people's homes, hostels, hotels, motels, guest houses, holiday chalets, entertainment centres, bed-and-breakfast accommodation and casinos.

2/ Other non-residential space includes churches, sport and recreation clubs, schools, crèches, hospitals and all other non-residential space.

3/ Other buildings include additions and alterations to other residential buildings, non-residential buildings and internal alterations.

Table 21 - Buildings completed according to type of building and province: Eastern Cape

Type of building	December 2000*	November 2001	December 2001	January 2000 to December 2000	January 2001 to December 2001	Percentage change between January 2000 to December 2000 and January 2001 to December 2001
Residential buildings						
Dwelling-houses smaller than 80 square metres						
Number of dwelling-houses	336	96	87	2,542	2,820	+ 10.9
Total square metres	13,518	4,734	4,024	108,645	122,144	+ 12.4
Total value at current prices (R'000)	9,262	6,775	5,132	102,686	122,013	+ 18.8
Dwelling-houses equal to or larger than 80 square metres						
Number of dwelling-houses	55	65	44	618	932	+ 50.8
Total square metres	10,575	11,489	7,504	107,107	138,241	+ 29.1
Total value at current prices (R'000)	13,116	14,675	9,956	129,530	171,502	+ 32.4
Flats and townhouses						
Number of flats and townhouses	46	30	10	394	269	- 31.7
Total square metres	5,393	3,474	1,044	35,778	28,757	- 19.6
Total value at current prices (R'000)	5,878	3,509	1,717	43,597	32,330	- 25.8
Other residential buildings ^{1/}						
Total square metres	0	0	0	1,287	13,539	+ 952.0
Total value at current prices (R'000)	0	0	0	1,440	60,955	+ 4133.0
Total value of residential buildings at current prices (R'000)	28,256	24,959	16,805	277,253	386,800	+ 39.5
Non-residential buildings						
Office and banking space						
Total square metres	1,554	27	155	2,810	28,383	+ 910.1
Total value at current prices (R'000)	1,709	34	279	3,657	33,209	+ 808.1
Shopping space						
Total square metres	3,898	0	1,469	66,978	34,919	- 47.9
Total value at current prices (R'000)	4,646	0	2,107	90,275	45,038	- 50.1
Industrial and warehouse space						
Total square metres	0	10,061	0	37,431	119,195	+ 218.4
Total value at current prices (R'000)	0	1,192	0	34,565	113,882	+ 229.5
Other non-residential space ^{2/}						
Total square metres	1,252	959	83	9,128	22,938	+ 151.3
Total value at current prices (R'000)	1,919	1,272	163	11,458	30,099	+ 162.7
Total value of non-residential buildings at current prices (R'000)	8,274	2,498	2,549	139,955	222,228	+ 58.8
Additions and alterations						
Dwelling-houses						
Total square metres	3,969	12,088	7,223	99,246	109,263	+ 10.1
Total value at current prices (R'000)	6,228	14,881	10,757	105,683	131,939	+ 24.8
Other buildings ^{3/}						
Total square metres	982	18,641	1,121	48,386	64,690	+ 33.7
Total value at current prices (R'000)	1,831	29,342	2,107	65,940	93,738	+ 42.2
Total value of additions and alterations at current prices (R'000)	8,059	44,223	12,864	171,623	225,677	+ 31.5
Total value of buildings completed at current prices (R'000)	44,589	71,680	32,218	588,831	834,705	+ 41.8

1/ Other residential buildings include institutions for the disabled, boarding houses, old people's homes, hostels, hotels, motels, guest houses, holiday chalets, entertainment centres, bed-and-breakfast accommodation and casinos.

2/ Other non-residential space includes churches, sport and recreation clubs, schools, crèches, hospitals and all other non-residential space.

3/ Other buildings include additions and alterations to other residential buildings, non-residential buildings and internal alterations.

Table 22 - Buildings completed according to type of building and province: Northern Cape

Type of building	December 2000	November 2001	December 2001	January 2000 to December 2000	January 2001 to December 2001	Percentage change between January 2000 to December 2000 and January 2001 to December 2001
Residential buildings						
Dwelling-houses smaller than 80 square metres						
Number of dwelling-houses	13	1	1	267	120	- 55.1
Total square metres	732	75	40	10,974	5,782	- 47.3
Total value at current prices (R'000)	1,086	150	56	11,443	8,521	- 25.5
Dwelling-houses equal to or larger than 80 square metres						
Number of dwelling-houses	4	9	6	107	132	+ 23.4
Total square metres	666	1,387	1,354	16,409	19,761	+ 20.4
Total value at current prices (R'000)	1,242	2,115	2,116	20,791	29,449	+ 41.6
Flats and townhouses						
Number of flats and townhouses	0	0	1	13	40	+ 207.7
Total square metres	0	0	200	1,715	4,320	+ 151.9
Total value at current prices (R'000)	0	0	280	2,305	6,215	+ 169.6
Other residential buildings ^{1/}						
Total square metres	0	0	699	2,758	1,045	- 62.1
Total value at current prices (R'000)	0	0	979	3,193	1,256	- 60.7
Total value of residential buildings at current prices (R'000)	2,328	2,265	3,431	37,732	45,441	+ 20.4
Non-residential buildings						
Office and banking space						
Total square metres	0	0	66	0	7,171	..
Total value at current prices (R'000)	0	0	92	0	15,723	..
Shopping space						
Total square metres	0	0	3,673	9,543	8,448	-11.5
Total value at current prices (R'000)	0	0	8,080	11,813	15,341	+ 29.9
Industrial and warehouse space						
Total square metres	0	0	0	8,239	772	- 90.6
Total value at current prices (R'000)	0	0	0	11,689	618	- 94.7
Other non-residential space ^{2/}						
Total square metres	0	0	0	1,869	1,603	- 14.2
Total value at current prices (R'000)	1,733	0	0	3,267	2,870	- 12.2
Total value of non-residential buildings at current prices (R'000)	0	0	8,172	26,769	34,552	+ 29.1
Additions and alterations						
Dwelling-houses						
Total square metres	1,755	2,414	1,237	20,412	21,164	+ 3.7
Total value at current prices (R'000)	2,530	3,424	1,879	27,952	34,459	+ 23.3
Other buildings ^{3/}						
Total square metres	85	557	132	9,257	6,046	- 34.7
Total value at current prices (R'000)	780	1,189	363	23,399	14,453	- 38.2
Total value of additions and alterations at current prices (R'000)	3,310	4,613	2,242	51,351	48,912	- 4.7
Total value of buildings completed at current prices (R'000)	5,638	6,878	13,845	115,852	128,905	11.3

1/ Other residential buildings include institutions for the disabled, boarding houses, old people's homes, hostels, hotels, motels, guest houses, holiday chalets, entertainment centres, bed-and-breakfast accommodation and casinos.

2/ Other non-residential space includes churches, sport and recreation clubs, schools, crèches, hospitals and all other non-residential space.

3/ Other buildings include additions and alterations to other residential buildings, non-residential buildings and internal alterations.

Table 23 - Buildings completed according to type of building and province: Free State

Type of building	December 2000	November 2001	December 2001	January 2000 to December 2000	January 2001 to December 2001	Percentage change between January 2000 to December 2000 and January 2001 to December 2001
Residential buildings						
Dwelling-houses smaller than 80 square metres						
Number of dwelling-houses	21	300	28	3,195	2,155	-32.6
Total square metres	1,045	13,290	1,317	126,940	90,265	-28.9
Total value at current prices (R'000)	1,122	7,163	1,023	72,170	49,875	-30.9
Dwelling-houses equal to or larger than 80 square metres						
Number of dwelling-houses	23	18	13	306	305	-0.3
Total square metres	3,403	2,761	1,634	49,234	53,574	+ 8.8
Total value at current prices (R'000)	3,256	3,386	1,885	56,144	63,815	+ 13.7
Flats and townhouses						
Number of flats and townhouses	19	24	14	338	195	-42.3
Total square metres	2,150	2,723	776	32,008	18,280	-42.9
Total value at current prices (R'000)	2,562	4,730	895	42,192	25,551	-39.4
Other residential buildings ^{1/}						
Total square metres	0	389	0	4,211	853	-79.7
Total value at current prices (R'000)	0	467	0	5,401	1,048	-80.6
Total value of residential buildings at current prices (R'000)	6,940	15,746	3,803	175,907	140,289	-20.2
Non-residential buildings						
Office and banking space						
Total square metres	448	1,255	296	7,362	18,746	+ 154.6
Total value at current prices (R'000)	700	1,500	287	13,109	33,990	+ 159.3
Shopping space						
Total square metres	743	6,320	178	18,138	12,200	-32.7
Total value at current prices (R'000)	369	5,372	150	23,083	12,580	-45.5
Industrial and warehouse space						
Total square metres	0	327	0	17,928	14,990	-16.4
Total value at current prices (R'000)	0	327	0	14,355	13,730	-4.4
Other non-residential space ^{2/}						
Total square metres	330	1,661	562	6,258	14,645	+ 134.0
Total value at current prices (R'000)	660	3,018	674	8,859	24,313	+ 174.4
Total value of non-residential buildings at current prices (R'000)	1,729	10,217	1,111	59,406	84,613	+ 42.4
Additions and alterations						
Dwelling-houses						
Total square metres	2,535	8,221	3,846	51,499	58,709	+ 14.0
Total value at current prices (R'000)	2,403	9,492	4,206	52,383	62,342	+ 19.0
Other buildings ^{3/}						
Total square metres	250	1,132	195	19,236	29,864	+ 55.3
Total value at current prices (R'000)	2,999	2,384	561	32,264	113,647	+ 252.2
Total value of additions and alterations at current prices (R'000)	5,402	11,876	4,767	84,647	175,989	+ 107.9
Total value of buildings completed at current prices (R'000)	14,071	37,839	9,681	319,960	400,891	+ 25.3

1/ Other residential buildings include institutions for the disabled, boarding houses, old people's homes, hostels, hotels, motels, guest houses, holiday chalets, entertainment centres, bed-and-breakfast accommodation and casinos.

2/ Other non-residential space includes churches, sport and recreation clubs, schools, crèches, hospitals and all other non-residential space.

3/ Other buildings include additions and alterations to other residential buildings, non-residential buildings and internal alterations.

Table 24 - Buildings completed according to type of building and province: KwaZulu-Natal

Type of building	December 2000*	November 2001	December 2001	January 2000 to December 2000	January 2001 to December 2001	Percentage change between January 2000 to December 2000 and January 2001 to December 2001
Residential buildings						
Dwelling-houses smaller than 80 square metres						
Number of dwelling-houses	78	158	85	2,910	2,297	-21.1
Total square metres	3,663	5,845	4,322	121,313	99,964	-17.6
Total value at current prices (R'000)	3,922	6,947	5,129	120,166	102,370	-14.8
Dwelling-houses equal to or larger than 80 square metres						
Number of dwelling-houses	82	159	95	1,586	1,624	+ 2.4
Total square metres	15,500	31,997	23,582	285,225	353,974	+ 24.1
Total value at current prices (R'000)	19,733	43,906	35,908	344,363	481,638	+ 39.9
Flats and townhouses						
Number of flats and townhouses	87	48	50	690	809	+ 17.2
Total square metres	11,399	6,587	9,570	106,215	107,216	+ 0.9
Total value at current prices (R'000)	18,477	9,560	16,600	154,757	157,551	+ 1.8
Other residential buildings ^{1/}						
Total square metres	337	871	0	4,370	10,023	+ 129.4
Total value at current prices (R'000)	364	1,300	0	6,030	42,290	+ 601.3
Total value of residential buildings at current prices (R'000)	42,496	61,713	57,637	625,316	783,849	+ 25.4
Non-residential buildings						
Office and banking space						
Total square metres	12,410	718	2,560	70,659	76,389	+ 8.1
Total value at current prices (R'000)	15,500	1,400	9,000	145,916	137,491	-5.8
Shopping space						
Total square metres	3,881	2,960	356	33,801	364,341	+ 977.9
Total value at current prices (R'000)	8,030	2,960	356	46,301	1,273,653	+ 2,650.8
Industrial and warehouse space						
Total square metres	7,895	2,705	4,472	194,909	159,578	-18.1
Total value at current prices (R'000)	10,443	3,025	4,239	210,874	173,064	-17.9
Other non-residential space ^{2/}						
Total square metres	2,624	1,146	2,712	27,142	30,271	+ 11.5
Total value at current prices (R'000)	6,760	1,242	3,014	37,671	35,926	-4.6
Total value of non-residential buildings at current prices (R'000)	40,733	8,627	16,609	440,762	1,620,134	+ 267.6
Additions and alterations						
Dwelling-houses						
Total square metres	17,400	26,809	17,183	292,849	330,835	+ 13.0
Total value at current prices (R'000)	19,564	29,744	18,819	324,334	369,339	+ 13.9
Other buildings ^{3/}						
Total square metres	3,194	6,838	3,959	181,663	108,138	-40.5
Total value at current prices (R'000)	5,086	10,682	7,415	357,128	195,318	-45.3
Total value of additions and alterations at current prices (R'000)	24,650	40,426	26,234	681,462	564,657	-17.1
Total value of buildings completed at current prices (R'000)	107,879	110,766	100,480	1,747,540	2,968,640	+ 69.9

1/ Other residential buildings include institutions for the disabled, boarding houses, old people's homes, hostels, hotels, motels, guest houses, holiday chalets, entertainment centres, bed-and-breakfast accommodation and casinos.

2/ Other non-residential space includes churches, sport and recreation clubs, schools, crèches, hospitals and all other non-residential space.

3/ Other buildings include additions and alterations to other residential buildings, non-residential buildings and internal alterations.

Table 25 - Buildings completed according to type of building and province: North West

Type of building	December 2000	November 2001	December 2001	January 2000 to December 2000	January 2001 to December 2001	Percentage change between January 2000 to December 2000 and January 2001 to December 2001
Residential buildings						
Dwelling-houses smaller than 80 square metres						
Number of dwelling-houses	487	211	107	2,517	1,602	- 36.4
Total square metres	15,875	7,736	3,525	92,746	64,006	- 31.0
Total value at current prices (R'000)	6,005	5,191	1,853	64,596	51,188	- 20.8
Dwelling-houses equal to or larger than 80 square metres						
Number of dwelling-houses	27	70	63	382	576	+ 50.8
Total square metres	4,676	13,933	11,578	65,791	109,678	+ 66.7
Total value at current prices (R'000)	5,351	18,463	18,093	72,615	144,602	+ 99.1
Flats and townhouses						
Number of flats and townhouses	13	10	0	180	169	- 6.1
Total square metres	1,580	1,085	0	20,738	14,192	- 31.6
Total value at current prices (R'000)	2,287	1,051	0	22,522	16,600	- 26.3
Other residential buildings ^{1/}						
Total square metres	59	1,902	0	807	5,586	+ 592.2
Total value at current prices (R'000)	50	1,314	0	815	5,476	+ 571.9
Total value of residential buildings at current prices (R'000)	13,693	26,019	19,946	160,548	217,866	+ 35.7
Non-residential buildings						
Office and banking space						
Total square metres	0	156	0	12,362	2,008	- 83.8
Total value at current prices (R'000)	0	180	0	13,405	3,112	- 76.8
Shopping space						
Total square metres	0	1,301	252	26,126	8,755	- 66.5
Total value at current prices (R'000)	0	1,730	500	30,672	13,127	- 57.2
Industrial and warehouse space						
Total square metres	604	1,957	0	16,299	10,155	- 37.7
Total value at current prices (R'000)	1,100	1,905	0	13,691	9,869	- 27.9
Other non-residential space ^{2/}						
Total square metres	482	13,098	805	12,867	21,039	+ 63.5
Total value at current prices (R'000)	500	19,759	1,800	16,741	30,091	+ 79.7
Total value of non-residential buildings at current prices (R'000)	1,600	23,574	2,300	74,509	56,199	- 24.6
Additions and alterations						
Dwelling-houses						
Total square metres	1,264	9,494	156	47,213	48,591	+ 2.9
Total value at current prices (R'000)	1,189	9,282	226	44,529	45,394	+ 1.9
Other buildings ^{3/}						
Total square metres	506	2,370	218	20,439	20,024	- 2.0
Total value at current prices (R'000)	354	4,386	335	18,140	31,618	+ 74.3
Total value of additions and alterations at current prices (R'000)	1,543	13,668	561	62,669	77,012	+ 22.9
Total value of buildings completed at current prices (R'000)	16,836	63,261	22,807	297,726	351,077	+ 17.9

1/ Other residential buildings include institutions for the disabled, boarding houses, old people's homes, hostels, hotels, motels, guest houses, holiday chalets, entertainment centres, bed-and-breakfast accommodation and casinos.

2/ Other non-residential space includes churches, sport and recreation clubs, schools, crèches, hospitals and all other non-residential space.

3/ Other buildings include additions and alterations to other residential buildings, non-residential buildings and internal alterations.

Table 26 - Buildings completed according to type of building and province: Gauteng

Type of building	December 2000	November 2001	December 2001	January 2000 to December 2000	January 2001 to December 2001	Percentage change between January 2000 to December 2000 and January 2001 to December 2001
Residential buildings						
Dwelling-houses smaller than 80 square metres						
Number of dwelling-houses	402	475	433	14,592	7,876	-46.0
Total square metres	18,443	22,210	18,137	542,850	304,134	-44.0
Total value at current prices (R'000)	19,266	30,759	23,085	428,061	301,416	-29.6
Dwelling-houses equal to or larger than 80 square metres						
Number of dwelling-houses	280	405	300	3,266	3,605	+ 10.4
Total square metres	76,153	92,532	79,421	802,677	850,046	+ 5.9
Total value at current prices (R'000)	108,296	137,898	121,321	1,081,511	1,219,553	+ 12.8
Flats and townhouses						
Number of flats and townhouses	220	829	208	3,866	3,565	-7.8
Total square metres	20,793	96,100	28,080	348,848	394,053	+ 13.0
Total value at current prices (R'000)	27,908	147,387	45,152	492,969	615,442	+ 24.8
Other residential buildings ^{1/}						
Total square metres	20,067	0	0	32,060	44,534	+ 38.9
Total value at current prices (R'000)	26,087	0	0	45,367	271,584	+ 498.6
Total value of residential buildings at current prices (R'000)	181,557	316,044	189,558	2,047,908	2,407,995	+ 17.6
Non-residential buildings						
Office and banking space						
Total square metres	19,881	31,011	12,588	340,637	340,094	-0.2
Total value at current prices (R'000)	29,618	101,531	19,552	490,776	544,455	+ 10.9
Shopping space						
Total square metres	46,199	3,528	800	268,178	128,582	-52.1
Total value at current prices (R'000)	150,885	6,036	1,600	735,805	261,798	-64.4
Industrial and warehouse space						
Total square metres	8,853	6,773	2,914	189,224	207,961	+ 9.9
Total value at current prices (R'000)	20,752	9,487	3,672	293,412	318,385	+ 8.5
Other non-residential space ^{2/}						
Total square metres	3,513	5,374	1,705	91,983	49,024	-46.7
Total value at current prices (R'000)	6,524	9,136	2,061	119,934	70,299	-41.4
Total value of non-residential buildings at current prices (R'000)	207,779	126,190	26,885	1,639,927	1,194,937	-27.1
Additions and alterations						
Dwelling-houses						
Total square metres	16,449	29,489	15,121	288,743	282,909	-2.0
Total value at current prices (R'000)	19,792	41,061	20,568	353,943	354,070	+ 0.0
Other buildings ^{3/}						
Total square metres	34,030	22,026	5,658	139,647	131,173	-6.1
Total value at current prices (R'000)	44,288	50,624	10,071	277,243	228,148	-17.7
Total value of additions and alterations at current prices (R'000)	64,080	91,685	30,639	631,186	582,218	-7.8
Total value of buildings completed at current prices (R'000)	453,416	533,919	247,082	4,319,021	4,185,150	-3.1

1/ Other residential buildings include institutions for the disabled, boarding houses, old people's homes, hostels, hotels, motels, guest houses, holiday chalets, entertainment centres, bed-and-breakfast accommodation and casinos.

2/ Other non-residential space includes churches, sport and recreation clubs, schools, crèches, hospitals and all other non-residential space.

3/ Other buildings include additions and alterations to other residential buildings, non-residential buildings and internal alterations.

Table 27 - Buildings completed according to type of building and province: Mpumalanga

Type of building	December 2000	November 2001	December 2001	January 2000 to December 2000	January 2001 to December 2001	Percentage change between January 2000 to December 2000 and January 2001 to December 2001
Residential buildings						
Dwelling-houses smaller than 80 square metres						
Number of dwelling-houses	63	136	313	2,276	3,164	+ 39.0
Total square metres	1,433	4,221	10,749	77,983	108,133	+ 38.7
Total value at current prices (R'000)	1,215	2,942	6,585	57,311	64,042	+ 11.7
Dwelling-houses equal to or larger than 80 square metres						
Number of dwelling-houses	31	40	21	459	354	-22.9
Total square metres	4,265	6,964	3,567	74,929	64,042	-14.5
Total value at current prices (R'000)	4,836	6,670	4,223	88,825	64,764	-27.1
Flats and townhouses						
Number of flats and townhouses	2	21	9	50	145	+ 190.0
Total square metres	470	2,830	1,037	5,795	17,058	+ 194.4
Total value at current prices (R'000)	381	2,247	1,000	5,588	15,498	+ 177.3
Other residential buildings ^{1/}						
Total square metres	0	0	0	1,444	0	..
Total value at current prices (R'000)	0	0	0	2,462	0	..
Total value of residential buildings at current prices (R'000)	6,432	11,859	11,808	154,186	144,304	-6.4
Non-residential buildings						
Office and banking space						
Total square metres	0	59	0	9,241	8,937	-3.3
Total value at current prices (R'000)	0	177	0	15,835	19,647	+ 24.1
Shopping space						
Total square metres	0	0	0	8,860	27,519	+ 210.6
Total value at current prices (R'000)	0	0	0	10,345	20,970	+ 102.7
Industrial and warehouse space						
Total square metres	678	0	0	20,284	2,808	-86.2
Total value at current prices (R'000)	750	0	0	20,752	2,382	-88.5
Other non-residential space ^{2/}						
Total square metres	0	0	0	7,145	2,845	-60.2
Total value at current prices (R'000)	0	0	0	9,113	3,161	-65.3
Total value of non-residential buildings at current prices (R'000)	750	177	0	56,045	46,160	-17.6
Additions and alterations						
Dwelling-houses						
Total square metres	4,167	6,950	2,011	35,008	43,889	+ 25.4
Total value at current prices (R'000)	3,277	6,021	1,568	28,022	37,566	+ 34.1
Other buildings ^{3/}						
Total square metres	0	0	35	6,547	15,812	+ 141.5
Total value at current prices (R'000)	0	120	485	9,428	21,302	+ 125.9
Total value of additions and alterations at current prices (R'000)	3,277	6,141	2,053	37,450	58,868	+ 57.2
Total value of buildings completed at current prices (R'000)	10,459	18,177	13,861	247,681	249,332	+ 0.7

1/ Other residential buildings include institutions for the disabled, boarding houses, old people's homes, hostels, hotels, motels, guest houses, holiday chalets, entertainment centres, bed-and-breakfast accommodation and casinos.

2/ Other non-residential space includes churches, sport and recreation clubs, schools, crèches, hospitals and all other non-residential space.

3/ Other buildings include additions and alterations to other residential buildings, non-residential buildings and internal alterations.

Table 28 - Buildings completed according to type of building and province: Northern Province

Type of building	December 2000	November 2001	December 2001	January 2000 to December 2000	January 2001 to December 2001	Percentage change between January 2000 to December 2000 and January 2001 to December 2001
Residential buildings						
Dwelling-houses smaller than 80 square metres						
Number of dwelling-houses	50	16	6	618	425	-31.2
Total square metres	2,695	849	232	32,026	21,538	-32.7
Total value at current prices (R'000)	3,578	1,043	485	34,396	22,418	-34.8
Dwelling-houses equal to or larger than 80 square metres						
Number of dwelling-houses	15	7	0	239	156	-34.7
Total square metres	2,517	2,295	0	34,186	25,966	-24.0
Total value at current prices (R'000)	3,232	3,529	0	43,688	34,213	-21.7
Flats and townhouses						
Number of flats and townhouses	2	0	33	67	65	-3.0
Total square metres	348	0	3,224	8,930	8,595	-3.8
Total value at current prices (R'000)	360	0	4,264	11,373	10,502	-7.7
Other residential buildings ^{1/}						
Total square metres	0	0	0	725	3,000	+ 313.8
Total value at current prices (R'000)	0	0	0	1,015	3,600	+ 254.7
Total value of residential buildings at current prices (R'000)	7,170	4,572	4,749	90,472	70,733	-21.8
Non-residential buildings						
Office and banking space						
Total square metres	0	0	0	3,271	998	-69.5
Total value at current prices (R'000)	0	0	0	5,067	1,126	-77.8
Shopping space						
Total square metres	2,126	0	0	12,738	4,860	-61.8
Total value at current prices (R'000)	2,976	0	0	27,836	7,647	-72.5
Industrial and warehouse space						
Total square metres	0	1,089	0	6,649	1,857	-72.1
Total value at current prices (R'000)	0	1,634	0	7,527	2,710	-64.0
Other non-residential space ^{2/}						
Total square metres	290	0	0	2,151	424	-80.3
Total value at current prices (R'000)	638	0	0	3,098	726	-76.6
Total value of non-residential buildings at current prices (R'000)	3,614	1,634	0	43,528	12,209	-72.0
Additions and alterations						
Dwelling-houses						
Total square metres	394	45	79	13,876	8,009	-42.3
Total value at current prices (R'000)	322	63	119	16,147	9,869	-38.9
Other buildings ^{3/}						
Total square metres	0	209	0	11,042	3,526	-68.1
Total value at current prices (R'000)	0	400	0	20,540	6,643	-67.7
Total value of additions and alterations at current prices (R'000)	322	463	119	36,687	16,512	-55.0
Total value of buildings completed at current prices (R'000)	11,106	6,669	4,868	170,687	99,454	-41.7

1/ Other residential buildings include institutions for the disabled, boarding houses, old people's homes, hostels, hotels, motels, guest houses, holiday chalets, entertainment centres, bed-and-breakfast accommodation and casinos.

2/ Other non-residential space includes churches, sport and recreation clubs, schools, crèches, hospitals and all other non-residential space.

3/ Other buildings include additions and alterations to other residential buildings, non-residential buildings and internal alterations.

Table 29 - Building plans passed according to type of building and selected urban area: Cape Town

Type of building	December 2000 *	November 2001	December 2001	January 2000 to December 2000	January 2001 to December 2001	Percentage change between January 2000 to December 2000 and January 2001 to December 2001
Residential buildings						
Dwelling-houses smaller than 80 square metres						
Number of dwelling-houses	835	455	290	6,028	5,452	- 9.6
Total square metres	35,921	19,430	11,468	245,401	233,530	- 4.8
Total value at current prices (R'000)	37,949	23,720	14,118	207,237	288,380	+ 39.2
Dwelling-houses equal to or larger than 80 square metres						
Number of dwelling-houses	219	290	220	3,228	3,470	+ 7.5
Total square metres	43,842	59,689	44,820	604,162	716,982	+ 18.7
Total value at current prices (R'000)	64,798	83,269	62,859	868,168	994,908	+ 14.6
Flats and townhouses						
Number of flats and townhouses	222	159	85	1,672	1,787	+ 6.9
Total square metres	23,210	18,360	13,137	191,406	173,139	- 9.5
Total value at current prices (R'000)	34,593	27,112	20,174	307,933	261,639	- 15.0
Other residential buildings ^{1/}						
Total square metres	5,987	185	0	48,719	33,316	- 31.6
Total value at current prices (R'000)	8,995	276	0	66,689	78,369	+ 17.5
Total value of residential buildings at current prices (R'000)	146,335	134,377	97,151	1,450,027	1,623,296	+ 11.9
Non-residential buildings						
Office and banking space						
Total square metres	24,186	9,505	3,130	211,068	195,137	- 7.5
Total value at current prices (R'000)	32,228	18,728	5,200	371,854	281,407	- 24.3
Shopping space						
Total square metres	627	1,078	2,586	169,480	98,925	- 41.6
Total value at current prices (R'000)	686	2,538	4,004	206,332	125,515	- 39.2
Industrial and warehouse space						
Total square metres	9,889	17,392	7,762	194,811	136,801	- 29.8
Total value at current prices (R'000)	8,912	19,400	8,366	218,877	147,219	- 32.7
Other non-residential space ^{2/}						
Total square metres	2,602	1,872	759	65,415	53,580	- 18.1
Total value at current prices (R'000)	3,485	2,541	1,167	78,552	72,359	- 7.9
Total value of non-residential buildings at current prices (R'000)	45,311	43,207	18,737	875,615	626,500	- 28.5
Additions and alterations						
Dwelling-houses						
Total square metres	43,459	69,725	44,909	562,121	570,151	+ 1.4
Total value at current prices (R'000)	50,235	73,881	55,820	648,775	680,115	+ 4.8
Other buildings ^{3/}						
Total square metres	13,575	29,863	8,917	162,043	179,741	+ 10.9
Total value at current prices (R'000)	22,041	50,924	23,082	358,022	342,920	- 4.2
Total value of additions and alterations at current prices (R'000)	72,276	124,805	78,902	1,006,797	1,023,035	+ 1.6
Total value of building plans passed at current prices (R'000)	263,922	302,389	194,790	3,332,439	3,272,831	- 1.8

1/ Other residential buildings include institutions for the disabled, boarding houses, old people's homes, hostels, hotels, motels, guest houses, holiday chalets, entertainment centres, bed-and-breakfast accommodation and casinos.

2/ Other non-residential space includes churches, sport and recreation clubs, schools, crèches, hospitals and all other non-residential space.

3/ Other buildings include additions and alterations to other residential buildings, non-residential buildings and internal alterations.

Table 30 - Building plans passed according to type of building and selected urban area: Port Elizabeth

Type of building	December 2000	November 2001	December 2001	January 2000 to December 2000	January 2001 to December 2001	Percentage change between January 2000 to December 2000 and January 2001 to December 2001
Residential buildings						
Dwelling-houses smaller than 80 square metres						
Number of dwelling-houses	102	68	15	1,809	1,378	- 23.8
Total square metres	4,256	3,070	809	75,694	61,858	- 18.3
Total value at current prices (R'000)	5,596	4,269	1,099	91,037	82,525	- 9.4
Dwelling-houses equal to or larger than 80 square metres						
Number of dwelling-houses	37	48	46	411	656	+ 59.6
Total square metres	5,654	9,049	8,327	54,179	92,524	+ 70.8
Total value at current prices (R'000)	7,577	12,835	12,865	68,770	126,013	+ 83.2
Flats and townhouses						
Number of flats and townhouses	25	10	14	157	158	+ 0.6
Total square metres	2,980	1,030	1,475	22,232	14,214	- 36.1
Total value at current prices (R'000)	4,170	1,494	2,077	27,537	19,618	- 28.8
Other residential buildings ^{1/}						
Total square metres	0	0	539	7,209	3,052	- 57.7
Total value at current prices (R'000)	0	0	1,056	9,640	3,629	- 62.4
Total value of residential buildings at current prices (R'000)	17,343	18,598	17,097	196,984	231,785	+ 17.7
Non-residential buildings						
Office and banking space						
Total square metres	0	0	0	0	5,293	..
Total value at current prices (R'000)	0	0	0	0	5,907	..
Shopping space						
Total square metres	263	461	0	17,002	5,529	- 67.5
Total value at current prices (R'000)	272	509	0	25,970	8,669	- 66.6
Industrial and warehouse space						
Total square metres	2,301	918	1,749	52,345	24,507	- 53.2
Total value at current prices (R'000)	3,689	566	2,816	64,124	22,972	- 64.2
Other non-residential space ^{2/}						
Total square metres	473	2,933	823	22,827	13,196	- 42.2
Total value at current prices (R'000)	728	5,749	1,236	34,506	24,053	- 30.3
Total value of non-residential buildings at current prices (R'000)	4,689	6,824	4,052	124,600	61,601	- 50.6
Additions and alterations						
Dwelling-houses						
Total square metres	8,295	13,852	10,305	103,332	117,041	+ 13.3
Total value at current prices (R'000)	10,299	18,130	15,797	132,326	153,518	+ 16.0
Other buildings ^{3/}						
Total square metres	5,845	1,700	261	31,393	72,765	+ 131.8
Total value at current prices (R'000)	6,857	2,544	328	44,422	80,920	+ 82.2
Total value of additions and alterations at current prices (R'000)	17,156	20,674	16,125	176,748	234,438	+ 32.6
Total value of building plans passed at current prices (R'000)	39,188	46,096	37,274	498,332	527,824	+ 5.9

1/ Other residential buildings include institutions for the disabled, boarding houses, old people's homes, hostels, hotels, motels, guest houses, holiday chalets, entertainment centres, bed-and-breakfast accommodation and casinos.

2/ Other non-residential space includes churches, sport and recreation clubs, schools, crèches, hospitals and all other non-residential space.

3/ Other buildings include additions and alterations to other residential buildings, non-residential buildings and internal alterations.

Table 31 - Building plans passed according to type of building and selected urban area: Durban

Type of building	December 2000	November 2001	December 2001	January 2000 to December 2000	January 2001 to December 2001	Percentage change between January 2000 to December 2000 and January 2001 to December 2001
Residential buildings						
Dwelling-houses smaller than 80 square metres						
Number of dwelling-houses	31	115	32	1,255	884	-29.6
Total square metres	1,650	5,115	1,617	62,683	42,749	-31.8
Total value at current prices (R'000)	1,692	5,911	2,020	66,760	49,108	-26.4
Dwelling-houses equal to or larger than 80 square metres						
Number of dwelling-houses	57	78	44	857	744	-13.2
Total square metres	9,427	14,346	7,346	144,525	142,471	-1.4
Total value at current prices (R'000)	12,713	19,924	10,632	186,658	178,045	-4.6
Flats and townhouses						
Number of flats and townhouses	3	2	0	229	166	-27.5
Total square metres	316	480	0	36,108	22,111	-38.8
Total value at current prices (R'000)	350	600	0	51,003	26,295	-48.4
Other residential buildings ^{1/}						
Total square metres	0	0	0	0	2,377	..
Total value at current prices (R'000)	0	0	0	0	2,431	..
Total value of residential buildings at current prices (R'000)	14,755	26,435	12,652	304,421	255,879	-15.9
Non-residential buildings						
Office and banking space						
Total square metres	0	0	0	10,027	22,535	+ 124.7
Total value at current prices (R'000)	0	0	0	20,668	36,456	+ 76.4
Shopping space						
Total square metres	462	1,163	1,198	17,104	15,007	-12.3
Total value at current prices (R'000)	565	1,700	4,584	23,547	17,285	-26.6
Industrial and warehouse space						
Total square metres	7,969	0	0	105,631	87,556	-17.1
Total value at current prices (R'000)	9,650	0	0	127,874	145,233	+ 13.6
Other non-residential space ^{2/}						
Total square metres	4,452	6,575	611	23,687	33,102	+ 39.7
Total value at current prices (R'000)	4,564	8,072	500	36,525	44,668	+ 22.3
Total value of non-residential buildings at current prices (R'000)	14,779	9,772	5,084	208,614	243,642	+ 16.8
Additions and alterations						
Dwelling-houses						
Total square metres	19,760	21,470	12,452	259,641	245,632	-5.4
Total value at current prices (R'000)	21,843	24,922	14,420	309,415	292,434	-5.5
Other buildings ^{3/}						
Total square metres	4,123	6,537	6,303	166,844	97,142	-41.8
Total value at current prices (R'000)	5,546	8,433	10,616	319,999	200,754	-37.3
Total value of additions and alterations at current prices (R'000)	27,389	33,355	25,036	629,414	493,188	-21.6
Total value of building plans passed at current prices (R'000)	56,923	69,562	42,772	1,142,449	992,709	-13.1

1/ Other residential buildings include institutions for the disabled, boarding houses, old people's homes, hostels, hotels, motels, guest houses, holiday chalets, entertainment centres, bed-and-breakfast accommodation and casinos.

2/ Other non-residential space includes churches, sport and recreation clubs, schools, crèches, hospitals and all other non-residential space.

3/ Other buildings include additions and alterations to other residential buildings, non-residential buildings and internal alterations.

Table 32 - Building plans passed according to type of building and selected urban area: Witwatersrand

Type of building	December 2000	November 2001*	December 2001	January 2000 to December 2000	January 2001 to December 2001	Percentage change between January 2000 to December 2000 and January 2001 to December 2001
Residential buildings						
Dwelling-houses smaller than 80 square metres						
Number of dwelling-houses	513	649	556	13,592	7,526	- 44.6
Total square metres	20,489	28,067	23,039	523,502	296,187	- 43.4
Total value at current prices (R'000)	19,766	30,440	22,823	425,180	317,194	- 25.4
Dwelling-houses equal to or larger than 80 square metres						
Number of dwelling-houses	204	396	305	4,352	4,677	+ 7.5
Total square metres	53,896	110,936	81,843	1,036,565	1,100,539	+ 6.2
Total value at current prices (R'000)	79,104	163,237	122,217	1,455,274	1,621,507	+ 11.4
Flats and townhouses						
Number of flats and townhouses	270	439	159	3,274	2,778	- 15.1
Total square metres	26,553	72,372	23,474	335,112	343,586	+ 2.5
Total value at current prices (R'000)	37,260	114,206	33,564	529,147	548,074	+ 3.6
Other residential buildings ^{1/}						
Total square metres	14,160	0	4,882	10,233	10,274	+ 0.4
Total value at current prices (R'000)	18,408	0	7,323	16,020	11,380	- 29.0
Total value of residential buildings at current prices (R'000)	154,538	307,883	185,927	2,425,621	2,498,155	+ 3.0
Non-residential buildings						
Office and banking space						
Total square metres	37,154	16,052	2,371	636,441	222,797	- 65.0
Total value at current prices (R'000)	65,333	27,978	2,315	946,256	378,891	- 60.0
Shopping space						
Total square metres	18,705	5,966	11,206	145,723	76,299	- 47.6
Total value at current prices (R'000)	33,066	11,804	22,004	254,342	126,277	- 50.4
Industrial and warehouse space						
Total square metres	16,035	5,482	3,340	387,903	240,381	- 38.0
Total value at current prices (R'000)	23,229	8,506	4,696	606,660	395,864	- 34.7
Other non-residential space ^{2/}						
Total square metres	104,417	7,213	1,406	98,408	90,826	- 7.7
Total value at current prices (R'000)	136,366	8,860	1,811	158,126	135,034	- 14.6
Total value of non-residential buildings at current prices (R'000)	257,994	57,148	30,826	1,965,384	1,036,066	- 47.3
Additions and alterations						
Dwelling-houses						
Total square metres	38,056	65,159	49,593	741,975	714,080	- 3.8
Total value at current prices (R'000)	48,864	86,119	69,718	937,250	929,928	- 0.8
Other buildings ^{3/}						
Total square metres	8,257	20,001	10,537	231,654	198,041	- 14.5
Total value at current prices (R'000)	11,472	33,111	20,618	392,577	357,081	- 9.0
Total value of additions and alterations at current prices (R'000)	60,336	119,230	90,336	1,329,827	1,287,009	- 3.2
Total value of building plans passed at current prices (R'000)	472,868	484,261	307,089	5,720,832	4,821,230	- 15.7

1/ Other residential buildings include institutions for the disabled, boarding houses, old people's homes, hostels, hotels, motels, guest houses, holiday chalets, entertainment centres, bed-and-breakfast accommodation and casinos.

2/ Other non-residential space includes churches, sport and recreation clubs, schools, crèches, hospitals and all other non-residential space.

3/ Other buildings include additions and alterations to other residential buildings, non-residential buildings and internal alterations.

Table 33 - Building plans passed according to type of building and selected urban area: Pretoria

Type of building	December 2000	November 2001	December 2001	January 2000 to December 2000	January 2001 to December 2001	Percentage change between January 2000 to December 2000 and January 2001 to December 2001
Residential buildings						
Dwelling-houses smaller than 80 square metres						
Number of dwelling-houses	24	69	26	2,825	1,320	- 53.3
Total square metres	1,208	3,783	1,361	101,794	55,445	- 45.5
Total value at current prices (R'000)	1,452	5,689	1,704	82,993	67,541	- 18.6
Dwelling-houses equal to or larger than 80 square metres						
Number of dwelling-houses	141	233	107	2,712	2,641	- 2.6
Total square metres	40,695	61,268	26,963	693,822	749,841	+ 8.1
Total value at current prices (R'000)	55,942	85,653	41,806	908,064	1,054,919	+ 16.2
Flats and townhouses						
Number of flats and townhouses	138	268	310	2,238	2,264	+ 1.2
Total square metres	10,159	56,177	48,212	277,128	335,753	+ 21.2
Total value at current prices (R'000)	11,502	85,778	72,092	369,804	507,811	+ 37.3
Other residential buildings ^{1/}						
Total square metres	0	1,924	0	38,442	3,913	- 89.8
Total value at current prices (R'000)	0	2,982	0	51,403	5,910	- 88.5
Total value of residential buildings at current prices (R'000)	68,896	180,102	115,602	1,412,264	1,636,181	+ 15.9
Non-residential buildings						
Office and banking space						
Total square metres	3,397	14,929	4,118	84,647	115,500	+ 36.4
Total value at current prices (R'000)	5,220	23,593	6,953	113,804	186,918	+ 64.2
Shopping space						
Total square metres	0	29,198	1,011	39,955	62,307	+ 55.9
Total value at current prices (R'000)	0	45,389	1,450	49,505	94,568	+ 91.0
Industrial and warehouse space						
Total square metres	12,571	4,118	0	52,831	58,111	+ 10.0
Total value at current prices (R'000)	16,234	5,387	0	63,062	82,209	+ 30.4
Other non-residential space ^{2/}						
Total square metres	8,003	16,404	1,792	34,406	58,937	+ 71.3
Total value at current prices (R'000)	10,743	17,120	2,879	46,965	80,772	+ 72.0
Total value of non-residential buildings at current prices (R'000)	32,197	91,489	11,282	273,336	444,467	+ 62.6
Additions and alterations						
Dwelling-houses						
Total square metres	13,330	25,737	13,016	226,517	223,798	- 1.2
Total value at current prices (R'000)	16,713	35,463	18,706	272,592	302,310	+ 10.9
Other buildings ^{3/}						
Total square metres	14,143	68,321	3,152	60,661	136,985	+ 125.8
Total value at current prices (R'000)	23,043	71,142	4,970	91,957	186,830	+ 103.2
Total value of additions and alterations at current prices (R'000)	39,756	106,605	23,676	364,549	489,140	+ 34.2
Total value of building plans passed at current prices (R'000)	140,849	378,196	150,560	2,050,149	2,569,788	+ 25.3

1/ Other residential buildings include institutions for the disabled, boarding houses, old people's homes, hostels, hotels, motels, guest houses, holiday chalets, entertainment centres, bed-and-breakfast accommodation and casinos.

2/ Other non-residential space includes churches, sport and recreation clubs, schools, crèches, hospitals and all other non-residential space.

3/ Other buildings include additions and alterations to other residential buildings, non-residential buildings and internal alterations.

Table 34 - Building plans passed according to type of building and selected urban area: Bloemfontein

Type of building	December 2000	November 2001	December 2001	January 2000 to December 2000	January 2001 to December 2001	Percentage change between January 2000 to December 2000 and January 2001 to December 2001
Residential buildings						
Dwelling-houses smaller than 80 square metres						
Number of dwelling-houses	646	60	0	2,652	1,352	-49.0
Total square metres	26,792	2,809	0	117,251	60,150	-48.7
Total value at current prices (R'000)	11,739	2,522	0	55,802	36,817	-34.0
Dwelling-houses equal to or larger than 80 square metres						
Number of dwelling-houses	18	36	12	276	249	-9.8
Total square metres	2,451	6,435	1,591	49,207	42,837	-12.9
Total value at current prices (R'000)	3,158	8,421	1,283	63,623	55,280	-13.1
Flats and townhouses						
Number of flats and townhouses	14	37	0	287	347	+ 20.9
Total square metres	1,646	4,213	0	23,965	40,166	+ 67.6
Total value at current prices (R'000)	2,348	6,011	0	36,735	60,151	+ 63.7
Other residential buildings ^{1/}						
Total square metres	0	0	0	600	3,867	+ 544.5
Total value at current prices (R'000)	0	0	0	1,500	4,970	+ 231.3
Total value of residential buildings at current prices (R'000)	17,245	16,954	1,283	157,660	157,218	-0.3
Non-residential buildings						
Office and banking space						
Total square metres	1,255	0	0	9,222	13,256	+ 43.7
Total value at current prices (R'000)	2,000	0	0	14,571	26,025	+ 78.6
Shopping space						
Total square metres	762	0	0	6,992	4,923	-29.6
Total value at current prices (R'000)	1,006	0	0	6,614	5,000	-24.4
Industrial and warehouse space						
Total square metres	327	2,700	0	10,648	4,661	-56.2
Total value at current prices (R'000)	327	2,000	0	10,473	3,626	-65.4
Other non-residential space ^{2/}						
Total square metres	0	0	0	5,240	3,199	-39.0
Total value at current prices (R'000)	0	0	0	9,841	6,208	-36.9
Total value of non-residential buildings at current prices (R'000)	3,333	2,000	0	41,499	40,859	-1.5
Additions and alterations						
Dwelling-houses						
Total square metres	2,735	7,214	1,514	43,307	34,896	-19.4
Total value at current prices (R'000)	3,348	8,551	1,790	53,227	42,859	-19.5
Other buildings ^{3/}						
Total square metres	3,711	3,232	280	29,443	11,407	-61.3
Total value at current prices (R'000)	6,335	4,592	180	111,449	23,360	-79.0
Total value of additions and alterations at current prices (R'000)	9,683	13,143	1,970	164,676	66,219	-59.8
Total value of building plans passed at current prices (R'000)	30,261	32,097	3,253	363,835	264,296	-27.4

1/ Other residential buildings include institutions for the disabled, boarding houses, old people's homes, hostels, hotels, motels, guest houses, holiday chalets, entertainment centres, bed-and-breakfast accommodation and casinos.

2/ Other non-residential space includes churches, sport and recreation clubs, schools, crèches, hospitals and all other non-residential space.

3/ Other buildings include additions and alterations to other residential buildings, non-residential buildings and internal alterations.

Table 35 - Buildings completed according to type of building and selected urban area: Cape Town

Type of building	December 2000 *	November 2001	December 2001	January 2000 to December 2000	January 2001 to December 2001	Percentage change between January 2000 to December 2000 and January 2001 to December 2001
Residential buildings						
Dwelling-houses smaller than 80 square metres						
Number of dwelling-houses	259	347	783	5,717	3,740	- 34.6
Total square metres	8,794	13,029	29,621	204,900	157,487	- 23.1
Total value at current prices (R'000)	11,345	11,293	39,051	134,632	178,154	+ 32.3
Dwelling-houses equal to or larger than 80 square metres						
Number of dwelling-houses	140	185	141	1,832	1,716	- 6.3
Total square metres	18,741	37,139	27,129	316,515	326,745	+ 3.2
Total value at current prices (R'000)	25,054	51,978	41,721	427,822	454,992	+ 6.4
Flats and townhouses						
Number of flats and townhouses	26	98	98	960	1,270	+ 32.3
Total square metres	2,672	10,793	8,204	85,150	140,362	+ 64.8
Total value at current prices (R'000)	3,839	15,066	10,878	109,205	188,147	+ 72.3
Other residential buildings ^{1/}						
Total square metres	1,760	865	0	18,115	23,274	+ 28.5
Total value at current prices (R'000)	4,400	1,290	0	28,881	27,692	- 4.1
Total value of residential buildings at current prices (R'000)	44,638	79,627	91,650	700,540	848,985	+ 21.2
Non-residential buildings						
Office and banking space						
Total square metres	13,104	2,642	4,162	111,734	79,049	- 29.3
Total value at current prices (R'000)	31,571	3,726	2,998	173,041	139,392	- 19.4
Shopping space						
Total square metres	8,379	907	81,768	38,056	29,671	- 22.0
Total value at current prices (R'000)	10,107	1,899	81,655	59,613	37,413	- 37.2
Industrial and warehouse space						
Total square metres	2,779	77	1,704	146,310	70,059	- 52.1
Total value at current prices (R'000)	2,890	94	1,850	125,343	76,314	- 39.1
Other non-residential space ^{2/}						
Total square metres	723	925	8,944	28,584	17,203	- 39.8
Total value at current prices (R'000)	1,115	842	8,318	35,780	22,226	- 37.9
Total value of non-residential buildings at current prices (R'000)	45,683	6,561	94,821	393,777	275,345	- 30.1
Additions and alterations						
Dwelling-houses						
Total square metres	17,105	25,534	16,479	316,424	310,514	- 1.9
Total value at current prices (R'000)	21,675	32,590	21,853	340,492	352,691	+ 3.6
Other buildings ^{3/}						
Total square metres	10,704	6,195	2,641	97,221	99,213	+ 2.0
Total value at current prices (R'000)	5,214	14,747	6,578	165,419	281,835	+ 70.4
Total value of additions and alterations at current prices (R'000)	26,889	47,337	28,431	505,911	634,526	+ 25.4
Total value of buildings completed at current prices (R'000)	117,210	133,525	214,902	1,600,228	1,758,856	+ 9.9

1/ Other residential buildings include institutions for the disabled, boarding houses, old people's homes, hostels, hotels, motels, guest houses, holiday chalets, entertainment centres, bed-and-breakfast accommodation and casinos.

2/ Other non-residential space includes churches, sport and recreation clubs, schools, crèches, hospitals and all other non-residential space.

3/ Other buildings include additions and alterations to other residential buildings, non-residential buildings and internal alterations.

Table 36 - Buildings completed according to type of building and selected urban area: Port Elizabeth

Type of building	December 2000	November 2001	December 2001	January 2000 to December 2000	January 2001 to December 2001	Percentage change between January 2000 to December 2000 and January 2001 to December 2001
Residential buildings						
Dwelling-houses smaller than 80 square metres						
Number of dwelling-houses	51	56	36	888	1,321	+ 48.8
Total square metres	2,197	2,378	1,624	39,654	56,130	+ 41.5
Total value at current prices (R'000)	2,842	3,254	2,169	46,464	72,499	+ 56.0
Dwelling-houses equal to or larger than 80 square metres						
Number of dwelling-houses	22	35	23	212	507	+ 139.2
Total square metres	2,867	5,888	3,984	28,172	61,747	+ 119.2
Total value at current prices (R'000)	3,771	7,768	5,813	35,791	77,116	+ 115.5
Flats and townhouses						
Number of flats and townhouses	28	30	4	164	194	+ 18.3
Total square metres	4,679	3,474	338	19,882	20,339	+ 2.3
Total value at current prices (R'000)	4,678	3,509	490	23,758	22,146	- 6.8
Other residential buildings ^{1/}						
Total square metres	0	0	0	367	5,073	+ 1282.3
Total value at current prices (R'000)	0	0	0	440	7,000	+ 1490.9
Total value of residential buildings at current prices (R'000)	11,291	14,531	8,472	106,453	178,761	+ 67.9
Non-residential buildings						
Office and banking space						
Total square metres	1,554	27	0	55	22,627	+ 41040.0
Total value at current prices (R'000)	1,709	34	0	89	23,374	+ 26162.9
Shopping space						
Total square metres	3,898	0	249	31,404	24,379	- 22.4
Total value at current prices (R'000)	4,646	0	407	42,838	28,844	- 32.7
Industrial and warehouse space						
Total square metres	0	10,061	0	19,086	45,849	+ 140.2
Total value at current prices (R'000)	0	1,192	0	16,005	44,174	+ 176.0
Other non-residential space ^{2/}						
Total square metres	641	959	83	5,991	7,552	+ 26.1
Total value at current prices (R'000)	1,186	1,272	163	7,379	8,337	+ 13.0
Total value of non-residential buildings at current prices (R'000)	7,541	2,498	570	66,311	104,729	+ 57.9
Additions and alterations						
Dwelling-houses						
Total square metres	2,697	9,039	3,799	51,928	60,522	+ 16.5
Total value at current prices (R'000)	4,713	10,887	6,493	51,114	68,118	+ 33.3
Other buildings ^{3/}						
Total square metres	24	18,460	366	29,052	41,786	+ 43.8
Total value at current prices (R'000)	28	29,096	401	39,416	57,142	+ 45.0
Total value of additions and alterations at current prices (R'000)	4,741	39,983	6,894	90,530	125,260	+ 38.4
Total value of buildings completed at current prices (R'000)	23,573	57,012	15,936	263,294	408,750	+ 55.2

1/ Other residential buildings include institutions for the disabled, boarding houses, old people's homes, hostels, hotels, motels, guest houses, holiday chalets, entertainment centres, bed-and-breakfast accommodation and casinos.

2/ Other non-residential space includes churches, sport and recreation clubs, schools, crèches, hospitals and all other non-residential space.

3/ Other buildings include additions and alterations to other residential buildings, non-residential buildings and internal alterations.

Table 37 - Buildings completed according to type of building and selected urban area: Durban

Type of building	December 2000	November 2001	December 2001	January 2000 to December 2000	January 2001 to December 2001	Percentage change between January 2000 to December 2000 and January 2001 to December 2001
Residential buildings						
Dwelling-houses smaller than 80 square metres						
Number of dwelling-houses	36	19	44	1,157	732	- 36.7
Total square metres	1,946	1,382	2,663	60,824	38,529	- 36.7
Total value at current prices (R'000)	1,966	1,426	3,090	64,238	45,077	- 29.8
Dwelling-houses equal to or larger than 80 square metres						
Number of dwelling-houses	54	114	49	1,062	945	- 11.0
Total square metres	9,383	18,798	10,096	177,144	185,067	+ 4.5
Total value at current prices (R'000)	10,727	21,958	13,637	192,150	222,013	+ 15.5
Flats and townhouses						
Number of flats and townhouses	27	21	10	320	536	+ 67.5
Total square metres	3,721	3,273	1,954	53,288	54,801	+ 2.8
Total value at current prices (R'000)	7,169	6,120	2,412	70,606	76,891	+ 8.9
Other residential buildings ^{1/}						
Total square metres	0	0	0	0	0	..
Total value at current prices (R'000)	0	0	0	0	0	..
Total value of residential buildings at current prices (R'000)	19,862	29,504	19,139	326,994	343,981	+ 5.2
Non-residential buildings						
Office and banking space						
Total square metres	11,912	718	0	24,557	35,773	+ 45.7
Total value at current prices (R'000)	15,000	1,400	0	68,997	56,749	- 17.8
Shopping space						
Total square metres	3,244	2,960	356	22,079	24,141	+ 9.3
Total value at current prices (R'000)	7,350	2,960	356	29,324	40,298	+ 37.4
Industrial and warehouse space						
Total square metres	7,092	1,482	4,472	132,145	109,848	- 16.9
Total value at current prices (R'000)	8,843	2,225	4,239	158,084	130,100	- 17.7
Other non-residential space ^{2/}						
Total square metres	293	1,146	2,194	16,457	21,441	+ 30.3
Total value at current prices (R'000)	260	1,242	2,194	20,743	25,041	+ 20.7
Total value of non-residential buildings at current prices (R'000)	31,453	7,827	6,789	277,148	252,188	- 9.0
Additions and alterations						
Dwelling-houses						
Total square metres	13,344	23,335	14,337	232,251	271,351	+ 16.8
Total value at current prices (R'000)	14,839	25,593	15,484	252,738	299,234	+ 18.4
Other buildings ^{3/}						
Total square metres	3,148	6,260	3,297	163,261	85,978	- 47.3
Total value at current prices (R'000)	4,956	10,407	6,042	329,658	161,095	- 51.1
Total value of additions and alterations at current prices (R'000)	19,795	36,000	21,526	582,396	460,329	- 21.0
Total value of buildings completed at current prices (R'000)	71,110	73,331	47,454	1,186,538	1,056,498	- 11.0

1/ Other residential buildings include institutions for the disabled, boarding houses, old people's homes, hostels, hotels, motels, guest houses, holiday chalets, entertainment centres, bed-and-breakfast accommodation and casinos.

2/ Other non-residential space includes churches, sport and recreation clubs, schools, crèches, hospitals and all other non-residential space.

3/ Other buildings include additions and alterations to other residential buildings, non-residential buildings and internal alterations.

Table 38 - Buildings completed according to type of building and selected urban area: Witwatersrand

Type of building	December 2000	November 2001	December 2001	January 2000 to December 2000	January 2001 to December 2001	Percentage change between January 2000 to December 2000 and January 2001 to December 2001
Residential buildings						
Dwelling-houses smaller than 80 square metres						
Number of dwelling-houses	341	414	401	10,715	6,572	-38.7
Total square metres	15,920	18,911	16,384	405,338	250,183	-38.3
Total value at current prices (R'000)	16,357	26,132	20,582	319,759	242,474	-24.2
Dwelling-houses equal to or larger than 80 square metres						
Number of dwelling-houses	185	261	190	1,940	2,195	+ 13.1
Total square metres	49,984	54,588	48,724	451,702	474,025	+ 4.9
Total value at current prices (R'000)	72,563	86,106	77,455	644,378	696,502	+ 8.1
Flats and townhouses						
Number of flats and townhouses	188	312	183	2,501	1,960	-21.6
Total square metres	17,604	37,037	23,447	188,948	207,544	+ 9.8
Total value at current prices (R'000)	23,769	59,935	38,202	295,948	342,630	+ 15.8
Other residential buildings ^{1/}						
Total square metres	20,067	0	0	9,736	42,714	+ 338.7
Total value at current prices (R'000)	26,087	0	0	16,769	269,217	+ 1,505.4
Total value of residential buildings at current prices (R'000)	138,776	172,173	136,239	1,276,854	1,550,823	+ 21.5
Non-residential buildings						
Office and banking space						
Total square metres	8,317	31,011	5,706	294,726	314,282	+ 6.6
Total value at current prices (R'000)	11,144	101,531	7,800	430,775	505,698	+ 17.4
Shopping space						
Total square metres	5,536	1,764	800	178,651	115,555	-35.3
Total value at current prices (R'000)	10,776	3,302	1,600	450,323	244,439	-45.7
Industrial and warehouse space						
Total square metres	8,853	4,390	1,329	161,655	182,697	+ 13.0
Total value at current prices (R'000)	20,752	7,046	1,957	253,016	292,403	+ 15.6
Other non-residential space ^{2/}						
Total square metres	3,003	0	1,705	75,096	33,378	-55.6
Total value at current prices (R'000)	5,924	0	2,061	98,643	48,043	-51.3
Total value of non-residential buildings at current prices (R'000)	48,596	111,879	13,418	1,232,757	1,090,583	-11.5
Additions and alterations						
Dwelling-houses						
Total square metres	14,891	25,281	14,220	220,507	233,629	+ 6.0
Total value at current prices (R'000)	17,959	35,509	19,318	275,660	293,918	+ 6.6
Other buildings ^{3/}						
Total square metres	33,804	21,567	3,436	83,209	114,364	+ 37.4
Total value at current prices (R'000)	43,925	49,937	6,553	208,558	203,791	-2.3
Total value of additions and alterations at current prices (R'000)	61,884	85,446	25,871	484,218	497,709	+ 2.8
Total value of buildings completed at current prices (R'000)	249,256	369,498	175,528	2,993,829	3,139,115	+ 4.9

1/ Other residential buildings include institutions for the disabled, boarding houses, old people's homes, hostels, hotels, motels, guest houses, holiday chalets, entertainment centres, bed-and-breakfast accommodation and casinos.

2/ Other non-residential space includes churches, sport and recreation clubs, schools, crèches, hospitals and all other non-residential space.

3/ Other buildings include additions and alterations to other residential buildings, non-residential buildings and internal alterations.

Table 39 - Buildings completed according to type of building and selected urban area: Pretoria

Type of building	December 2000	November 2001	December 2001	January 2000 to December 2000	January 2001 to December 2001	Percentage change between January 2000 to December 2000 and January 2001 to December 2001
Residential buildings						
Dwelling-houses smaller than 80 square metres						
Number of dwelling-houses	22	60	31	2,708	399	- 85.3
Total square metres	1,155	3,241	1,703	91,855	19,762	- 78.5
Total value at current prices (R'000)	1,910	4,569	2,435	72,706	24,712	- 66.0
Dwelling-houses equal to or larger than 80 square metres						
Number of dwelling-houses	88	144	104	956	1,037	+ 8.5
Total square metres	25,130	37,944	29,295	255,997	279,519	+ 9.2
Total value at current prices (R'000)	34,535	51,792	42,119	306,944	383,204	+ 24.8
Flats and townhouses						
Number of flats and townhouses	32	498	25	1,118	1,328	+ 18.8
Total square metres	3,189	57,278	4,633	135,275	149,654	+ 10.6
Total value at current prices (R'000)	4,139	85,188	6,950	164,425	217,117	+ 32.0
Other residential buildings ^{1/}						
Total square metres	0	0	0	1,851	50	- 97.3
Total value at current prices (R'000)	0	0	0	2,024	81	- 96.0
Total value of residential buildings at current prices (R'000)	40,584	141,549	51,504	546,099	625,114	+ 14.5
Non-residential buildings						
Office and banking space						
Total square metres	11,564	0	6,882	25,994	13,224	- 49.1
Total value at current prices (R'000)	18,474	0	11,752	30,373	19,205	- 36.8
Shopping space						
Total square metres	40,663	1,764	0	36,492	4,504	- 87.7
Total value at current prices (R'000)	140,109	2,734	0	123,961	6,959	- 94.4
Industrial and warehouse space						
Total square metres	0	2,383	1,285	14,529	14,432	- 0.7
Total value at current prices (R'000)	0	2,441	1,625	15,840	14,417	- 9.0
Other non-residential space ^{2/}						
Total square metres	510	5,374	0	11,589	10,942	- 5.6
Total value at current prices (R'000)	600	9,136	0	12,419	17,102	+ 37.7
Total value of non-residential buildings at current prices (R'000)	159,183	14,311	13,377	182,593	57,683	- 68.4
Additions and alterations						
Dwelling-houses						
Total square metres	1,063	3,802	732	37,107	19,590	- 47.2
Total value at current prices (R'000)	1,307	5,119	1,081	43,363	25,053	- 42.2
Other buildings ^{3/}						
Total square metres	133	459	2,222	18,225	6,705	- 63.2
Total value at current prices (R'000)	208	687	3,518	19,361	9,537	- 50.7
Total value of additions and alterations at current prices (R'000)	1,515	5,806	4,599	62,724	34,590	- 44.9
Total value of buildings completed at current prices (R'000)	201,282	161,666	69,480	791,416	717,387	- 9.4

1/ Other residential buildings include institutions for the disabled, boarding houses, old people's homes, hostels, hotels, motels, guest houses, holiday chalets, entertainment centres, bed-and-breakfast accommodation and casinos.

2/ Other non-residential space includes churches, sport and recreation clubs, schools, crèches, hospitals and all other non-residential space.

3/ Other buildings include additions and alterations to other residential buildings, non-residential buildings and internal alterations.

Table 40 - Buildings completed according to type of building and selected urban area: Bloemfontein

Type of building	December 2000	November 2001	December 2001	January 2000 to December 2000	January 2001 to December 2001	Percentage change between January 2000 to December 2000 and January 2001 to December 2001
Residential buildings						
Dwelling-houses smaller than 80 square metres						
Number of dwelling-houses	12	223	7	450	804	+ 78.7
Total square metres	631	9,618	347	18,706	34,115	+ 82.4
Total value at current prices (R'000)	775	5,026	342	11,322	20,016	+ 76.8
Dwelling-houses equal to or larger than 80 square metres						
Number of dwelling-houses	4	15	4	86	163	+ 89.5
Total square metres	893	2,354	575	17,689	31,462	+ 77.9
Total value at current prices (R'000)	1,110	2,962	643	23,706	39,607	+ 67.1
Flats and townhouses						
Number of flats and townhouses	18	19	11	278	143	- 48.6
Total square metres	2,041	1,888	396	24,365	13,046	- 46.5
Total value at current prices (R'000)	2,450	3,700	475	33,095	19,434	- 41.3
Other residential buildings ^{1/}						
Total square metres	0	389	0	3,651	540	- 85.2
Total value at current prices (R'000)	0	467	0	4,753	678	- 85.7
Total value of residential buildings at current prices (R'000)	4,335	12,155	1,460	72,876	79,735	+ 9.4
Non-residential buildings						
Office and banking space						
Total square metres	448	1,255	0	6,210	12,358	+ 99.0
Total value at current prices (R'000)	700	1,500	0	11,739	23,383	+ 99.2
Shopping space						
Total square metres	0	6,320	0	2,660	9,132	+ 243.3
Total value at current prices (R'000)	0	5,372	0	3,527	8,378	+ 137.5
Industrial and warehouse space						
Total square metres	0	327	0	15,646	6,178	- 60.5
Total value at current prices (R'000)	0	327	0	12,281	4,693	- 61.8
Other non-residential space ^{2/}						
Total square metres	330	1,534	562	3,903	7,287	+ 86.7
Total value at current prices (R'000)	660	2,868	674	5,545	13,319	+ 140.2
Total value of non-residential buildings at current prices (R'000)	1,360	10,067	674	33,092	49,773	+ 50.4
Additions and alterations						
Dwelling-houses						
Total square metres	1,158	6,372	1,994	22,934	34,306	+ 49.6
Total value at current prices (R'000)	1,322	7,578	2,092	27,306	38,255	+ 40.1
Other buildings ^{3/}						
Total square metres	0	506	188	9,775	21,127	+ 116.1
Total value at current prices (R'000)	2,692	1,691	276	19,766	97,349	+ 392.5
Total value of additions and alterations at current prices (R'000)	4,014	9,269	2,368	47,072	135,604	+ 188.1
Total value of buildings completed at current prices (R'000)	9,709	31,491	4,502	153,040	265,112	+ 73.2

1/ Other residential buildings include institutions for the disabled, boarding houses, old people's homes, hostels, hotels, motels, guest houses, holiday chalets, entertainment centres, bed-and-breakfast accommodation and casinos.

2/ Other non-residential space includes churches, sport and recreation clubs, schools, crèches, hospitals and all other non-residential space.

3/ Other buildings include additions and alterations to other residential buildings, non-residential buildings and internal alterations.

Additional information

Explanatory Notes

Introduction	<ol style="list-style-type: none"> 1 Statistics South Africa (Stats SA) conducts a monthly Building Statistics Survey collecting information regarding building plans approved and buildings completed, financed by the private sector, from a sample of local government institutions in South Africa. This statistical release contains information of building plans passed and buildings completed in respect of residential buildings, non-residential buildings and additions and alterations according to province and selected urban areas. 2 In order to improve timeliness of the publication, some information for the current month have been estimated due to late submission by respondents. These estimates will be revised in the next statistical release(s) as soon as actual information is available. 3 The actual and seasonally adjusted values (at current and at constant 1995 prices) and the percentage change of building plans passed and buildings completed according to type of building are reflected monthly from January 1999 in this statistical release (cf. tables 1 to 8).
Scope of the survey	<ol style="list-style-type: none"> 4 This survey covers local government institutions conducting activities for the private sector regarding - <ul style="list-style-type: none"> • approval of building plans; and • final inspection of completed buildings.
Classification	<ol style="list-style-type: none"> 5 The 1993 edition of the Standard Industrial Classification of all Economic Activities, (SIC) Fifth Edition, Report No. 09-90-02, was used to classify the statistical units. The SIC is based on the 1990 International Standard Industrial Classification of all Economic Activities (ISIC) with suitable adaptations for local conditions. 6 The twelfth and last published edition of the Standard Code List of Areas, Report No. 09-09-03 (1994) was used to classify the statistical units according to province. The cities, towns and non-urban areas listed in this report are codified within magisterial district and province. The code list was compiled by Stats SA in collaboration with other interested bodies and the first edition was distributed in June 1977.
Statistical unit	<ol style="list-style-type: none"> 7 The statistical unit for the collection of information is a local government institution. Local government institutions include municipalities, city councils, metropolitan councils, district councils, transitional councils and development and services boards.
Survey methodology and design	<ol style="list-style-type: none"> 8 The sample for the monthly Building Statistics Survey consists of the largest local government institutions in South Africa, i.e. those that account for approximately 85% of the total rand value of buildings completed by the private sector. 9 The survey is collected by mail each month from a sample of 158 local government institutions.
Constant prices	<ol style="list-style-type: none"> 10 The value of building plans passed and buildings completed at constant prices measure the building activities in terms of ruling prices in a specific base year which is currently 1995. 11 The value of building plans passed at constant prices for each month is obtained by deflating the values at current prices with a price index known as the “lump sum domestic buildings” as published in statistical release P0151 – JBCC Contract Price Adjustment Provisions Work Group Indices. In order to be applicable, these indices (base February 1991=100) are converted to the base year 1995=100.

- 12** The value of buildings completed at constant prices is obtained by deflating the values at current prices with the same price index which is used to calculate building plans passed at constant prices (cf. paragraph 11). The value of buildings completed is reported as at the time the plans were passed. Since the completion of buildings may extend over a few months to a few years, the current value of buildings completed is deflated by price indices as at the time the plans were passed in order to calculate the value of buildings completed at the time the plans were passed. Therefore, the duration of the completion of different types of buildings are taken into account in ascertaining the deflators e.g. the value of dwelling-houses completed at constant prices at January 2000 is obtained by deflating the current value of dwelling-houses completed for January 2000 with the price index of a month six months prior to January 2000. Furthermore, the value of other residential buildings, non-residential buildings and additions and alterations at constant prices is obtained by deflating the current values with price indices of 12 months, 18 months and 12 months prior to the relevant month, respectively.
- Seasonal adjustment**
- 13** Seasonally adjusted estimates of building plans passed and buildings completed are generated each month, using the X-11 Seasonal Adjustment Program developed by US Bureau of the Census Economic Research and Analyses Division, 1968.
- 14** Seasonal adjustment is a means of removing the estimated effects of normal seasonal variation from the series so that the effects of other influences on the series can be more clearly recognised. Seasonal adjustment does not aim to remove irregular or non-seasonal influences which may be present in any particular month. Influences that are volatile or unsystematic can still make it difficult to interpret the movement of the series even after adjustment for seasonal variations. Therefore, the month-to-month movements of seasonally adjusted estimates may not be reliable indicators of trend behaviour.
- Trend cycle**
- 15** The trend is a long-term pattern or movement of a time series. The X-11 Seasonal Adjustment Program is used for smoothing seasonally adjusted data.
- Related publications**
- 16** Users may also wish to refer to the following publications:
- P5041.3 – Building statistics issued annually.
 - P9101.2 – Actual and expected expenditure on construction by the public sector per statistical region issued annually.
 - Bulletin of Statistics issued quarterly.
 - South African Statistics issued annually.
- Unpublished statistics**
- 17** In some cases Stats SA can also make available statistics which are not published. The statistics can be made available in one or more of the following ways: computer printouts, CD and diskette. Generally a charge is made for providing unpublished statistics.
- Rounding-off of figures**
- 18** The figures in the tables have, where necessary, been rounded off to the nearest digit shown. There may, therefore, be slight discrepancies between the sums of the constituent items and the totals shown.
- Pre-release policy**
- 19** Stats SA has adopted the confidential pre-release policy in respect of selected economic indicators and specific government departments. The policy accords with practice among leading statistical agencies. The statistical integrity of the information and strict observance of the release time has been assured by the following procedure:
- 20** In respect of this statistical release, an official representative from the Office of the President, the Department of Trade and Industry (DTI), National Treasury and the South African Reserve Bank (SARB) will receive a copy of the release on a strictly confidential basis two hours in advance of the public issue.
- 21** Stats SA pre-release policy may be inspected at its Website, www.statssa.gov.za

Symbols and abbreviations

..	no meaningful percentage change between two specified periods available since either one or both of the totals are nil
0	nil or figure too small to publish
*	revised
Stats SA	Statistics South Africa
SIC	Standard Industrial Classification of all Economic Activities
ISIC	International Standard Industrial Classification of all Economic Activities
JBCC	Joint Building Contracts Committee
CD	Compact Disc
US	United States
SARB	South African Reserve Bank
DTI	Department of Trade and Industry

Technical notes**Response rate**

The response rate for December is 98,1%.

Local government institutions covered in the sample survey

Local government institutions according to province

Western Cape	Blaauwberg (includes Milnerton), Brackenfell, Breede River District Council, Cape Town, City of Tygerberg (Bellville, Durbanville, Goodwood, Lingeletu West, Parow and South Administration), Fish Hoek, George (includes Pacaltsdorp, Thembaletu and Herolds Bay), Gordon's Bay, Hangklip-Kleinmond (includes Kleinmond, Betty's Bay and Rooi-Els), Hermanus (includes Onrus River, Zwelihle, Sandbaai, Vermont, Hawston and Fisher Haven), Ikapa, Klein-Karoo District Council, Knysna (includes Khayaletu), Kuils River, Malmesbury, Mossel Bay (includes Boggom's Bay, Kleinbrak, Rheeboek and Tergniet), Oostenberg (Kraaifontein and Melton Rose - Blue Downs), Oudtshoorn, Overberg District Council, Paarl, Plettenberg Bay, Sedgefield, Simon's Town, Somerset West, South Peninsula, Stellenbosch, Strand, Wellington, West Coast District Council, Western Coast Peninsula (previously Vredenburg-Saldanha), Winelands District Council and Worcester.
Eastern Cape	Aliwal-Maletswai (includes Dukathole), Despatch, East London (includes Beacon Bay, Gomo Town, Gonubie and Mdantsane), Grahamstown (includes Rhini Township), Jeffrey's Bay, King William's Town (includes Bisho and Zwelitsha), Port Alfred, Port Elizabeth (includes Ibhayi and Motherwell), Uitenhage (includes KwaNobuhle), Umtata and Western District Council.
Northern Cape	Benede-Oranje District Council, Keimoes, Kimberley (including Galeshewe), Kuruman, Namaqualand District Council and Upington (includes Paballelo).
Free State	Allanridge, Bethlehem (includes Bohlokong), Bloemfontein (includes Bainsvlei, Bloemspuit and Mangaung), Botshabelo, Deneysville (includes Refengkgotso), Harrismith (includes Tsiamé), Kroonstad (includes Maokeng), Ladybrand (includes Manyatseng), Odendaalsrus (includes Kutlwanong), Parys, Phuthaditjhaba, Sasolburg (includes Zamdela), Virginia (includes Meloding) and Welkom (includes Thabong).
KwaZulu-Natal	Development and Services Board - Inland, Development and Services Board – North Coast, Dolphin Coast Borough (includes Ballito, Etete, Shakaskraal, Tinley Manor Beach and Umhlali Beach), Durban, Edendale, Empangeni (includes Ngwelezana), Hilton, Howick, Inner West City Council (includes Clermont, KwaDabeka, KwaNdengezi, New Germany, Pinetown, Queensburgh, Reservoir Hills, Shallcross and Westville), Kokstad, Kwa-Dukuza/Stanger (includes Blythedale Beach, Shakaville and Stanger), KwaMashu, Ladysmith (includes Emnambithi), Margate (includes Uvongo), Mpenjati/Southbroom (includes Southbroom, Marina Beach, San Lameer and Trafalgar), Newcastle (includes Madadeni, Osizweni and Blaauwboschlaagte), North Local Council - Tongaat (includes Canelands and Hambanati), North Local Council - Umhlanga Rocks (includes Mount Edgecombe and Umdloti Beach), North Local Council - Verulam, Outer West Local Council (includes Assagay, Botha's Hill, Cato Ridge, Drummond, Everton, Gillitts, Hillcrest, Inchanga, Kloof, Mpumalanga and Waterfall), Pennington, Pietermaritzburg/Msundini, Port Shepstone, Richards Bay, South Local Council (includes Amanzimtoti, Isipingo, Kingsburgh, KwaMakuta and Umbogintwini), Umlazi and Umtamvuna/Port Edward (includes Munster, Port Edward and Palm Beach).
North West	Bophirima District Council, Brits (includes Lethabile), Ga-Rankuwa, Klerksdorp, Lichtenburg, Mmabatho, Orkney (includes Kanana), Potchefstroom, Rustenburg, Vryburg and Zeerust.

Gauteng

Akasia (includes Elandsdoorn, Klipfontein, Kruisfontein and Soshanguve), Alberton (includes Tokoza), Benoni (includes Daveyton and Wattville), Boksburg (includes Vosloorus), Brakpan (includes Tsakane), Bronkhorst-spruit, Carletonville (includes Khutsong), Centurion, Duduza, Eastern Services Council - Pretoria Area, Edenvale-Modderfontein, Germiston (includes Bedfordview and Katlehong), Greater Johannesburg - Eastern Metropolitan Local Council (includes Alexandra and Sandton), Greater Johannesburg - Northern Metropolitan Local Council (includes Randburg), Greater Johannesburg - Southern Metropolitan Local Council (includes Ennerdale, Lenasia and Johannesburg), Greater Johannesburg - Western Metropolitan Local Council (includes Diepmeadow, Dobsonville and Roodepoort), Heidelberg (includes Ratanda), Kempton Park (includes Tembisa), Krugersdorp (includes Kagiso and Munsieville), Meyerton, Midrand (includes Rabie Ridge and Ivory Park), Nigel, Pretoria (includes Atteridgeville and Mamelodi), Randfontein (includes Mohlakeng), Sebokeng (includes Boipatong, Bophelong and Sharpeville), Soweto, Springs (includes KwaThema), Vanderbijlpark, Vereeniging (includes Evaton), Western Services Council and Westonaria (includes Bekkersdal).

Mpumalanga

Delmas (includes Botleng), Eastvaal District Council, Ermelo (includes Wesselton and Cassim Park), Highveld District Council, Highveldridge Transitional Council (includes Evander, Embalenhle and Secunda), Komatipoort (includes Kamaqhekeza), KwaGuqa, KwaMhlanga, Malelane (includes Hectorspruit and Kamhlushwa), Middelburg (includes Mhluzi), Nelspruit (includes Kanyamazane and Lowveld Escarpment District Council as from January 2001), White River and Witbank.

Northern Province

Bosveld District Council, Giyani, Letaba (includes Nkowakowa and Tzaneen), Messina, Naboomspruit (includes Mookgophong), Nylstroom, Pietersburg-Polokwane (includes Seshego), Potgietersrus and Thabazimbi.

Local government institutions according to selected urban areas**Cape Town**

Blaauwberg (includes Milnerton), Cape Town, City of Tygerberg (Bellville, Durbanville, Goodwood, Lingeletu West, Parow and South Administration), Fish Hoek, Ikapa, Oostenberg (Kraaifontein and Melton Rose - Blue Downs), Simon's Town and South Peninsula.

Port Elizabeth

Despatch, Port Elizabeth (including Ibhayi and Motherwell) and Uitenhage (including KwaNobuhle)

Durban

Durban, Inner West City Council (includes Clermont, KwaDabeka, KwaNdengezi, New Germany, Pinetown, Queenstown, Reservoir Hills, Shallcross and Westville), North Local Council - Verulam, Outer West Local Council (includes Assagay, Botha's Hill, Cato Ridge, Drummond, Everton, Gillitts, Hillcrest, Inchanga, Kloof, Mpumalanga and Waterfall) and South Local Council (includes Amanzimtoti, Isipingo, Kingsburgh, KwaMakuta and Umbogintwini).

Witwatersrand

Alberton (includes Thokoza), Benoni (includes Daveyton and Wattville), Boksburg (includes Vosloorus), Brakpan (includes Tsakane), Carletonville (includes Khutsong), Duduza, Edenvale-Modderfontein, Germiston (includes Bedfordview and Katlehong), Greater Johannesburg - Eastern Metropolitan Local Council (includes Alexandra and Sandton), Greater Johannesburg - Northern Metropolitan Local Council (includes Randburg), Greater Johannesburg - Southern Metropolitan Local Council (includes Ennerdale, Lenasia and Johannesburg), Greater Johannesburg - Western Metropolitan Local Council (includes Diepmeadow, Dobsonville and Roodepoort), Kempton Park (includes Tembisa), Krugersdorp (includes Kagiso and Munsieville), Midrand (includes Rabie Ridge and Ivory Park), Nigel, Randfontein (includes Mohlakeng), Soweto, Springs (includes KwaThema) and Westonaria (includes Bekkersdal).

Pretoria

Akasia (includes Elandsdoorn, Klipfontein and Soshanguve), Centurion, Eastern Services Council - Pretoria area and Pretoria (includes Atteridgeville and Mamelodi).

Bloemfontein

Bloemfontein (includes Bainsvlei, Bloemspruit and Mangaung).

Glossary

Additions and alterations	Additions and alterations include extensions to existing buildings as well as internal and external alterations of existing buildings.
Blocks of flats	Blocks of flats are regarded as high-density housing consisting of a number of self-contained dwelling-units with at least one living-room together with a kitchen and bathroom conjoined to similar units in one building.
Dwelling-house	A dwelling-house refers to a free-standing, complete structure on a separate stand or a self-contained dwelling-unit, granny flat, on the same premises as an existing residence. Out-buildings and garages are included.
Local government institutions	A local government institution is a generic term referring to any number of institutions involved in the local sphere of government. Local government institutions consist of municipalities, city councils, metropolitan councils, district councils, transitional local councils and development and services boards.
Non-residential buildings	Non-residential buildings comprise factories, commercial, financial and other office buildings, as well as other buildings not used for residential purposes, such as churches, halls, clubs, schools and hospitals.
Other residential buildings	Other residential buildings include institutions for the disabled, boarding houses, old people's homes, hostels, hotels, motels, guest houses, holiday chalets, bed-and-breakfast accommodation, entertainment centres and casinos.
Percentage change	<p>When using monthly actual values, the percentage change is the change in actual values of building activities (building plans passed or buildings completed) of the relevant month compared with the actual values of building activities (building plans passed or buildings completed) of the same month in the previous year expressed as a percentage.</p> <p>When using annual actual values, the percentage change is the change in the actual values of building activities (building plans passed or buildings completed) of the relevant year compared with the actual values of building activities (building plans passed or buildings completed) of the previous year expressed as a percentage.</p> <p>When using seasonally adjusted values, the percentage change is the change in the seasonally adjusted values of building activities (building plans passed or buildings completed) of the relevant month compared with the seasonally adjusted values of building activities (building plans passed or buildings completed) of the previous month expressed as a percentage.</p>
Reference period	Reference period is one calendar month.
Residential buildings	Residential buildings comprise dwelling-houses, flats, townhouses and other residential buildings.
Townhouses	Townhouses are multiple, medium-density dwelling-units and include cluster housing, group housing, simplexes, duplexes, triplexes and other similar dwelling-units which are usually grouped together, with one level of each unit on ground level. This excludes blocks of flats.

For more information

Stats SA publishes approximately 300 different statistical releases each year. It is not economically viable to produce them in more than one of South Africa's eleven official languages. Since the releases are used extensively, not only locally but also by international economic and social-scientific communities, Stats SA releases are published in English only.

Stats SA has copyright on this publication. Users may apply the information as they wish, provided that they acknowledge Stats SA as the source of the basic data wherever they process, apply, utilise, publish or distribute the data and also that they specify that the relevant application and analysis (where applicable) result from their own processing of the data.

Stats SA products

A complete set of Stats SA publications is available at the Stats SA Library and the following libraries:

National Library of South Africa, Pretoria Division
National Library of South Africa, Cape Town Division
Natal Society Library, Pietermaritzburg
Library of Parliament, Cape Town
Bloemfontein Public Library
Johannesburg Public Library
Eastern Cape Library Services, King William's Town
Central Regional Library, Pietersburg
Central Reference Library, Nelspruit
Central Reference Collection, Kimberley
Central Reference Library, Mmabatho

Stats SA also provides a subscription service.

Electronic services

A large range of data are available via on-line services, diskette, CD and computer printouts. For more details about our electronic data services, contact (012) 310 8600/8095/8390/8351

You can visit us on the Internet at: <http://www.statssa.gov.za>

Enquiries

Telephone number: (012) 310 8600/8095/8390/8351 (user enquiries)
(012) 310 8228/310 8007 (technical enquiries)
(012) 310 8161 (publications)
(012) 310 8490 (library)

Fax number: (012) 310 8182

e-mail: Corrieb@statssa.pwv.gov.za
Gretaz@statssa.pwv.gov.za

Postal address: Private Bag X44, Pretoria, 0001