



**Statistics
South Africa**

Preferred supplier of quality statistics



Statistical release

P5041.1

Selected building statistics of the private sector as reported by local government institutions

**August 2007
(Preliminary)**

**Embargoed until:
17 October 2007
13:00**

Enquiries:

User Information Services
Tel: (012) 310 8600 / 4892 / 8390

Forthcoming issue:

September 2007

Expected release date

21 November 2007

Statistics South Africa • Mbalo-mbalo dza Afrika Tshipembe • Tinhlayo-tiko ta Afrika-Dzonga • Dipalopalo tsa Aforika Borwa • Ezezibalo zaseNingizimu Afrika
Dipalopalo tša Afrika Borwa • Dipalopalo tsa Afrika Borwa • Ubalo lwaseMzantsi Afrika • Telubalo eNingizimu Afrika • iNanimbalo leSewula Afrika • Statistiek Suid-Afrika

Contents

Page

SUMMARY OF FINDINGS: SELECTED BUILDING STATISTICS OF THE PRIVATE SECTOR

3

Tables

Table 1	Values and percentage change of recorded building plans passed by larger municipalities at current prices by type of building	9
Table 2	Seasonally adjusted values and percentage change of recorded building plans passed by larger municipalities at current prices by type of building	10
Table 3	Values and percentage change of recorded building plans passed by larger municipalities at constant 2000 prices by type of building	11
Table 4	Seasonally adjusted values and percentage change of recorded building plans passed by larger municipalities at constant 2000 prices by type of building	12
Table 5	Values and percentage change of buildings reported as completed to larger municipalities at current prices by type of building	13
Table 6	Seasonally adjusted values and percentage change of buildings reported as completed to larger municipalities at current prices by type of building	14
Table 7	Values and percentage change of buildings reported as completed to larger municipalities at constant 2000 prices by type of building	15
Table 8	Seasonally adjusted values and percentage change of buildings reported as completed to larger municipalities at constant 2000 prices by type of building	16
Table 9	Recorded building plans passed by larger municipalities at current prices by type of building: South Africa	17
Table 10	Recorded building plans passed by larger municipalities at current prices by type of building: Western Cape	18
Table 11	Recorded building plans passed by larger municipalities at current prices by type of building: Eastern Cape	19
Table 12	Recorded building plans passed by larger municipalities at current prices by type of building: Northern Cape	20
Table 13	Recorded building plans passed by larger municipalities at current prices by type of building: Free State	21
Table 14	Recorded building plans passed by larger municipalities at current prices by type of building: KwaZulu-Natal	22
Table 15	Recorded building plans passed by larger municipalities at current prices by type of building: North West	23
Table 16	Recorded building plans passed by larger municipalities at current prices by type of building: Gauteng	24
Table 17	Recorded building plans passed by larger municipalities at current prices by type of building: Mpumalanga	25
Table 18	Recorded building plans passed by larger municipalities at current prices by type of building: Limpopo	26
Table 19	Buildings reported as completed to larger municipalities at current prices by type of building: South Africa	27
Table 20	Buildings reported as completed to larger municipalities at current prices by type of building: Western Cape	28
Table 21	Buildings reported as completed to larger municipalities at current prices by type of building: Eastern Cape	29
Table 22	Buildings reported as completed to larger municipalities at current prices by type of building: Northern Cape	30
Table 23	Buildings reported as completed to larger municipalities at current prices by type of building: Free State	31
Table 24	Buildings reported as completed to larger municipalities at current prices by type of building: KwaZulu-Natal	32

Table 25	Buildings reported as completed to larger municipalities at current prices by type of building: North West	33
Table 26	Buildings reported as completed to larger municipalities at current prices by type of building: Gauteng	34
Table 27	Buildings reported as completed to larger municipalities at current prices by type of building: Mpumalanga	35
Table 28	Buildings reported as completed to larger municipalities at current prices by type of building: Limpopo.....	36
Table 29	Subsidised low-cost dwelling-houses completed or under construction by province	37
Table 30	Subsidised low-cost dwelling-houses completed by province	37
Explanatory notes		38
Glossary		41
General information		43

SUMMARY OF FINDINGS: SELECTED BUILDING STATISTICS OF THE PRIVATE SECTOR

Table A – Selected key figures regarding recorded building plans passed by larger municipalities at current prices for January to August 2007

Estimates at current prices	January to August 2006	January to August 2007 1/	Difference in value between January to August 2006 and January to August 2007	Percentage change between January to August 2006 and January to August 2007
	R'000	R'000	R'000	
Residential buildings	26 894 423	30 150 545	3 256 122	12,1
-Dwelling-houses	17 520 939	20 380 999	2 860 060	16,3
-Flats and townhouses	8 722 950	9 338 286	615 336	7,1
-Other residential buildings	650 534	431 260	-219 274	-33,7
Non-residential buildings	9 433 425	10 274 041	840 616	8,9
Additions and alterations	12 520 526	14 246 949	1 726 423	13,8
Total	48 848 374	54 671 535	5 823 161	11,9

1/ Aug. 2007 figures should be regarded as preliminary because of possible backlogs and incomplete reporting by municipalities.

Total value of recorded building plans passed at current prices increased

As indicated in Table A, the value of recorded building plans passed by larger municipalities (at current prices) during the first eight months of 2007 increased by 11,9% (R5 823,2 million) compared with the first eight months of 2006.

The largest percentage increase was reported for additions and alterations (13,8% or R1 726,4 million), followed by residential buildings (12,1% or R3 256,1 million) and non-residential buildings (8,9% or R840,6 million).

Table B – Recorded building plans passed by larger municipalities aggregated to provincial level for January to August 2007

Estimates at current prices	January to August 2006	January to August 2007 1/	Percentage contribution to the total value of building plans passed during January to August 2006	Percentage change between January to August 2006 and January to August 2007	Contribution (percentage points) to the percentage change in the value of building plans passed between January to August 2006 and January to August 2007 2/	Difference in value between January to August 2006 and January to August 2007
	R'000	R'000				R'000
Western Cape	11 616 580	12 235 365	23,8	5,3	1,3	618 785
Eastern Cape	2 282 826	2 896 530	4,7	26,9	1,3	613 704
Northern Cape	328 945	515 362	0,7	56,7	0,4	186 417
Free State	1 221 276	1 548 013	2,5	26,8	0,7	326 737
KwaZulu-Natal	6 879 015	7 863 565	14,1	14,3	2,0	984 550
North West	1 927 141	1 933 172	3,9	0,3	0,0	6 031
Gauteng	21 131 452	24 000 000	43,3	13,6	5,9	2 868 548
Mpumalanga	2 584 807	2 581 880	5,3	-0,1	-0,0	-2 927
Limpopo	876 332	1 097 648	1,8	25,3	0,5	221 316
Total	48 848 374	54 671 535	100,0	11,9	11,9	5 823 161

1/ Aug. 2007 figures should be regarded as preliminary because of possible backlogs and incomplete reporting by municipalities.

2/ The contribution (percentage points) is calculated by multiplying the percentage change of each province between Jan. to Aug. 2006 and Jan. to Aug. 2007 with the percentage contribution of the corresponding province to the total value of building plans passed during Jan. to Aug. 2006, divided by 100.

Eight provinces reported increases in the value of recorded building plans passed (see Table B). The largest contributor to the increase of 11,9% was Gauteng (5,9 percentage points or R2 868,5 million), followed by KwaZulu-Natal (2,0 percentage points or R984,6 million), Western Cape (1,3 percentage points or R618,8 million) and Eastern Cape (1,3 percentage points or R613,7 million).

Table C – Selected key figures regarding recorded building plans passed by larger municipalities at constant 2000 prices for January to August 2007

Estimates at constant 2000 prices	January to August 2006	January to August 2007	Difference in value between January to August 2006 and January to August 2007	Percentage change between January to August 2006 and January to August 2007
	R'000	R'000 1/		
Residential buildings	17 421 740	17 566 649	144 909	0,8
Non-residential buildings	6 111 721	5 982 569	-129 152	-2,1
Additions and alterations	8 118 421	8 292 203	173 782	2,1
Total	31 651 882	31 841 421	189 539	0,6

1/ Aug. 2007 figures should be regarded as preliminary because of possible backlogs and incomplete reporting by municipalities.

Seasonally adjusted estimates at constant 2000 prices	March to May 2007	June to August 2007	Percentage change between March to May 2007 and June to August 2007
	R'000	R'000	
Residential buildings	7 151 842	6 230 686	-12,9
Non-residential buildings	2 054 115	2 164 863	5,4
Additions and alterations	3 116 652	3 153 463	1,2
Total	12 322 609	11 549 012	-6,3

Total real value of recorded building plans passed increased

As indicated in Table C, the value of recorded building plans passed by larger municipalities (at constant 2000 prices) during the first eight months of 2007 increased by 0,6% (R189,5 million) compared with the first eight months of 2006. Increases were reported for additions and alterations (2,1% or R173,8 million) and residential buildings (0,8% or R144,9 million). A decrease was reported for non-residential buildings (-2,1% or -R129,2 million) for the same period.

The seasonally adjusted real value of recorded building plans passed by larger municipalities during the three months ending August 2007 decreased by 6,3% compared with the previous three months, mainly due to a decrease reported for residential building plans passed (-12,9%). This decrease was partially counteracted by increases reported for non-residential buildings (5,4%) and additions and alterations (1,2%) (see Table C).

Figure 1 shows both the seasonally adjusted and the trend series for recorded building plans passed at constant 2000 prices between January 2002 and August 2007. The trend series reflects a slight increase in 2002, followed by a steep increase from April 2003 up to the end of 2005. After a short period of downturn in 2006, the trend series started moving upwards from November 2006 up until March 2007. The trend series moved downwards from April 2007 till present.

Figure 1 – Real value of recorded building plans passed by larger municipalities at constant 2000 prices

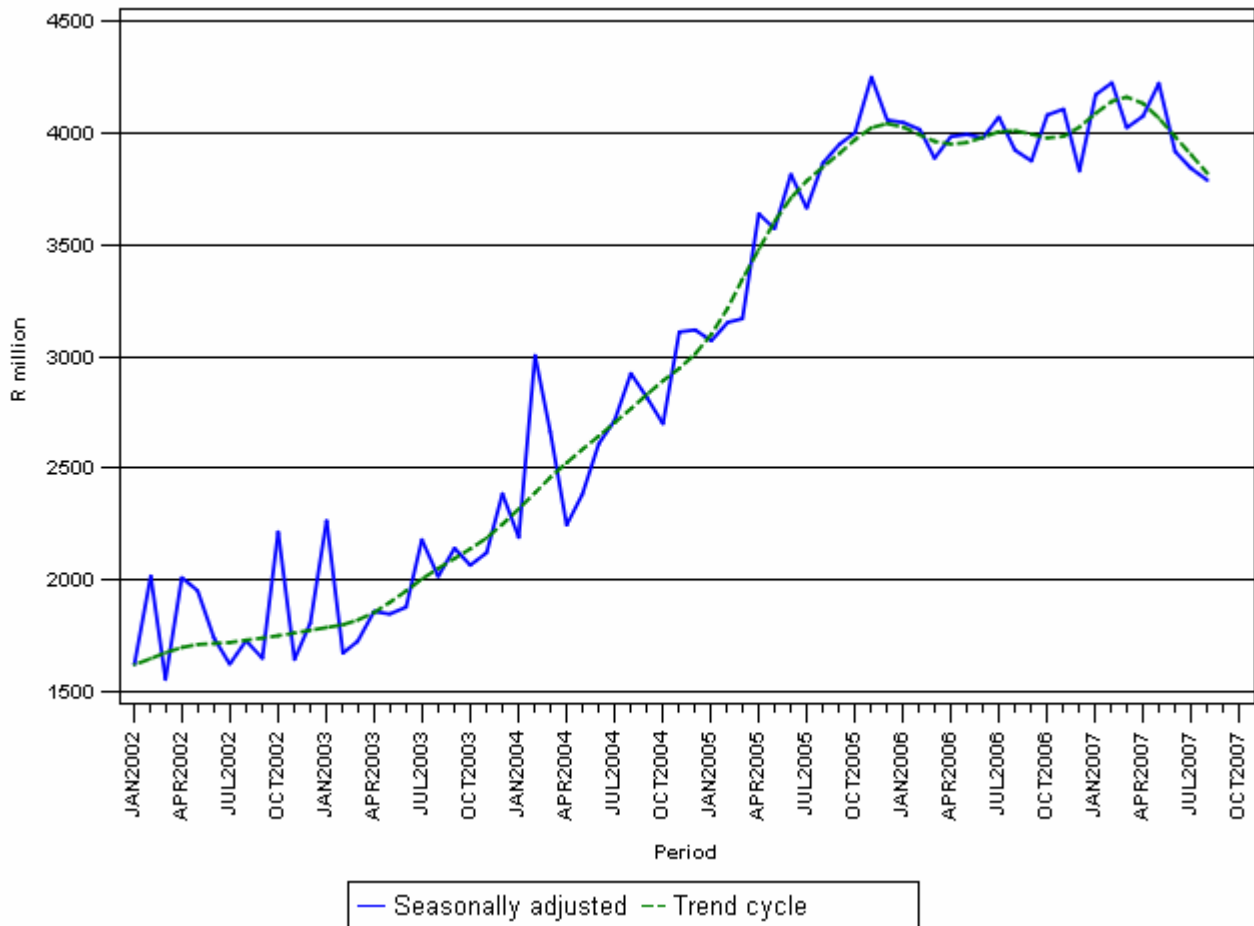


Table D – Selected key figures regarding buildings reported as completed to larger municipalities at current prices for January to August 2007

Estimates at current prices	January to August 2006	January to August 2007 1/	Difference in value between January to August 2006 and January to August 2007	Percentage change between January to August 2006 and January to August 2007
	R'000	R'000	R'000	
Residential buildings	15 838 398	18 607 963	2 769 565	17,5
-Dwelling-houses	9 756 440	11 476 612	1 720 172	17,6
-Flats and townhouses	5 972 606	6 568 423	595 817	10,0
-Other residential buildings	109 352	562 928	453 576	414,8
Non-residential buildings	3 472 137	5 446 672	1 974 535	56,9
Additions and alterations	4 255 403	5 155 680	900 277	21,2
Total	23 565 938	29 210 315	5 644 377	24,0

1/ Aug. 2007 figures should be regarded as preliminary because of possible backlogs and incomplete reporting by municipalities.

Total value of buildings reported as completed at current prices increased

As indicated in Table D, the value of buildings reported as completed to larger municipalities (at current prices) during the first eight months of 2007 increased by 24,0% (R5 644,4 million) compared with the first eight months of 2006.

The largest percentage increase in the value of buildings completed was reported for non-residential buildings (56,9% or R1 974,5 million), followed by residential buildings (17,5% or R2 769,6 million) and additions and alterations (21,2% or R900,3 million).

Table E – Buildings reported as completed to larger municipalities aggregated to provincial level for January to August 2007

Estimates at current prices	January to August 2006	January to August 2007 1/	Percentage contribution to the total value of buildings completed during January to August 2006	Percentage change between January to August 2006 and January to August 2007	Contribution (percentage points) to the percentage change in the value of buildings completed between January to August 2006 and January to August 2007 2/	Difference in value between January to August 2006 and January to August 2007
	R'000	R'000				R'000
Western Cape	6 717 995	7 781 470	28,5	15,8	4,5	1 063 475
Eastern Cape	846 368	1 059 673	3,6	25,2	0,9	213 305
Northern Cape	142 346	245 163	0,6	72,2	0,4	102 817
Free State	441 022	753 151	1,9	70,8	1,3	312 129
KwaZulu-Natal	2 984 975	4 130 245	12,7	38,4	4,9	1 145 270
North West	825 623	1 130 961	3,5	37,0	1,3	305 338
Gauteng	10 627 432	12 847 705	45,1	20,9	9,4	2 220 273
Mpumalanga	657 382	925 951	2,8	40,9	1,1	268 569
Limpopo	322 795	335 996	1,4	4,1	0,1	13 201
Total	23 565 938	29 210 315	100,0	24,0	24,0	5 644 377

1/ Aug. 2007 figures should be regarded as preliminary because of possible backlogs and incomplete reporting by municipalities.

2/ The contribution (percentage points) is calculated by multiplying the percentage change of each province between Jan. to Aug. 2006 and Jan. to Aug. 2007 with the percentage contribution of the corresponding province to the total value of buildings completed during Jan. to Aug. 2006, divided by 100.

All the provinces reported increases in the value of buildings completed. The largest contributor to the increase of 24,0% was Gauteng (9,4 percentage points or R2 220,3 million), followed by KwaZulu-Natal (4,9 percentage points or R1 145,3 million) and Western Cape (4,5 percentage points or R1 063,5 million) (see Table E).

Table F – Selected key figures regarding buildings reported as completed to larger municipalities at constant 2000 prices for January to August 2007

Estimates at constant 2000 prices	January to August 2006	January to August 2007 1/	Difference in value between January to August 2006 and January to August 2007	Percentage change between January to August 2006 and January to August 2007
	R'000	R'000	R'000	
Residential buildings	10 840 298	11 610 562	770 264	7,1
Non-residential buildings	2 504 136	3 692 612	1 188 476	47,5
Additions and alterations	2 966 788	3 347 540	380 752	12,8
Total	16 311 222	18 650 714	2 339 492	14,3

1/ Aug 2007 figures should be regarded as preliminary because of possible backlogs and incomplete reporting by municipalities.

Seasonally adjusted estimates at constant 2000 prices	March to May 2007	June to August 2007	Percentage change between March to May 2007 and June to August 2007
	R'000	R'000	
Residential buildings	4 660 682	4 488 772	-3,7
Non-residential buildings	1 441 342	1 476 076	2,4
Additions and alterations	1 229 142	1 291 259	5,1
Total	7 331 166	7 256 107	-1,0

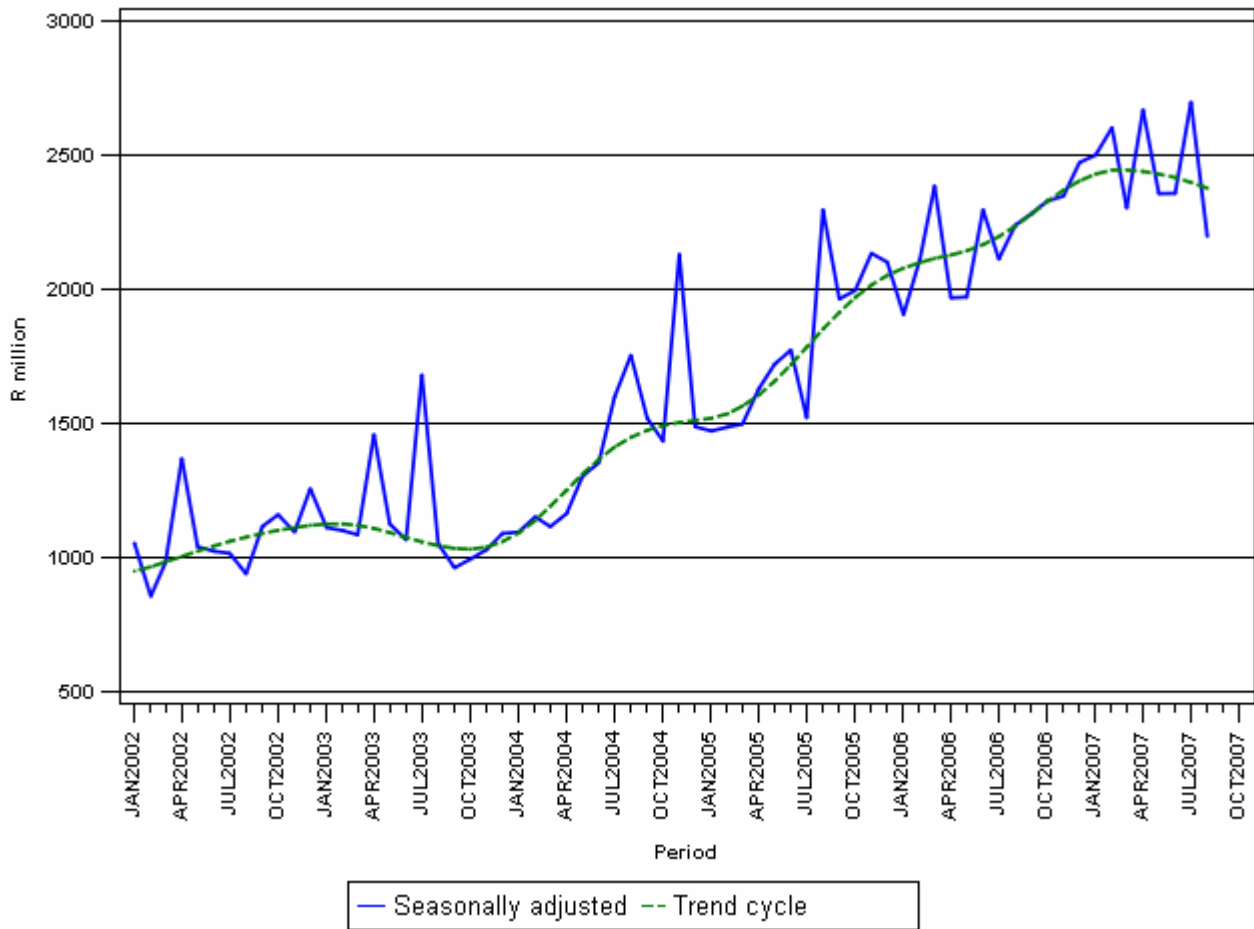
Total real value of buildings reported as completed increased

As indicated in Table F, the value of buildings reported as completed to larger municipalities (at constant 2000 prices) during the first eight months of 2007 increased by 14,3% (R2 339,5 million) compared with the first eight months of 2006. The largest percentage increase in the real value of buildings completed was reported for non-residential buildings (47,5% or R1 188,5 million), followed by additions and alterations (12,8% or R380,8 million) and residential buildings (7,1% or R770,3 million).

However, the seasonally adjusted real value of buildings reported as completed to larger municipalities during the three months ending August 2007 decreased by 1,0% compared with the previous three months, mainly due to a decrease reported for residential buildings (-3,7%). This decrease was partially counteracted by increases reported for additions and alterations (5,1%) and non-residential buildings (2,4%).

Figure 2 shows both the seasonally adjusted and trend series for buildings reported as completed to municipalities at constant 2000 prices between January 2002 and August 2007. The trend series reflects a slight increase in 2002, slowing again until October 2003. The trend series increased from November 2003 till March 2007. The trend series decreased marginally from April 2007 till present.

Figure 2 - Real value of buildings reported as completed to larger municipalities at constant 2000 prices



PJ Lehohla
Statistician-General

Table 1 - Values and percentage change of recorded building plans passed by larger municipalities at current prices by type of building

Year and month		Residential buildings		Non-residential buildings		Additions and alterations		Total	
		R'000	% change 1/	R'000	% change 1/	R'000	% change 1/	R'000	% change 1/
2006	January	2 558 041	45,9	778 449	44,6	1 090 691	21,0	4 427 181	38,6
	February	3 190 047	36,0	942 439	53,1	1 443 836	25,1	5 576 322	35,5
	March	2 999 970	28,1	1 241 790	28,9	1 558 522	26,4	5 800 282	27,8
	April	2 763 843	6,8	1 311 707	67,0	1 385 872	6,4	5 461 422	16,8
	May	3 617 721	3,9	1 253 706	59,0	1 845 824	36,6	6 717 251	19,5
	June	3 825 823	18,2	982 965	2,2	1 659 979	11,0	6 468 767	13,6
	July	3 918 713	11,6	1 443 525	42,7	1 845 449	26,1	7 207 687	20,4
	August	4 020 265	15,1	1 478 844	19,9	1 690 353	4,1	7 189 462	13,2
	September	3 758 874	-2,8	1 095 563	58,4	1 757 623	11,5	6 612 060	7,8
	October	3 901 590	4,7	1 743 478	78,3	1 836 658	-4,1	7 481 726	13,1
	November	4 018 174	7,8	1 381 760	3,2	1 846 062	13,5	7 245 996	8,3
	December	2 691 780	-7,0	1 081 202	67,8	1 438 672	6,7	5 211 654	6,6
	Total	41 264 841	11,6	14 735 428	39,7	19 399 541	14,2	75 399 810	16,9
2007*	January	2 741 376	7,2	990 949	27,3	1 387 668	27,2	5 119 993	15,6
	February	3 538 610	10,9	1 394 857	48,0	1 622 463	12,4	6 555 930	17,6
	March	3 976 504	32,6	995 325	-19,8	1 575 250	1,1	6 547 079	12,9
	April	3 462 168	25,3	1 186 268	-9,6	1 622 678	17,1	6 271 114	14,8
	May	4 410 198	21,9	1 478 660	17,9	2 123 522	15,0	8 012 380	19,3
	June	3 987 661	4,2	1 403 481	42,8	1 728 070	4,1	7 119 212	10,1
	July	4 098 090	4,6	1 302 275	-9,8	2 071 624	12,3	7 471 989	3,7
	August 2/	3 935 938	-2,1	1 522 226	2,9	2 115 674	25,2	7 573 838	5,3

1/ The annual/monthly percentage change is the change in the values of recorded building plans passed by municipalities of the relevant year/month compared with the values of recorded building plans passed by municipalities of the comparable period of the previous year expressed as a percentage.

2/ Preliminary figures.

* Revised.

Table 2 - Seasonally adjusted values and percentage change of recorded building plans passed by larger municipalities at current prices by type of building

Year and month		Residential buildings		Non-residential buildings		Additions and alterations		Total	
		R'000	% change 1/	R'000	% change 1/	R'000	% change 1/	R'000	% change 1/
2006	January	3 548 041	-3,2	1 030 529	36,5	1 460 056	-9,0	6 038 626	0,3
	February	3 456 020	-2,6	1 041 709	1,1	1 554 394	6,5	6 052 123	0,2
	March	3 205 646	-7,2	1 073 261	3,0	1 611 854	3,7	5 890 761	-2,7
	April	3 174 596	-1,0	1 340 481	24,9	1 541 878	-4,3	6 056 955	2,8
	May	3 262 964	2,8	1 234 961	-7,9	1 641 999	6,5	6 139 924	1,4
	June	3 607 382	10,6	972 734	-21,2	1 632 690	-0,6	6 212 806	1,2
	July	3 464 365	-4,0	1 295 462	33,2	1 675 091	2,6	6 434 918	3,6
	August	3 600 131	3,9	1 187 013	-8,4	1 523 926	-9,0	6 311 070	-1,9
	September	3 383 160	-6,0	1 212 389	2,1	1 685 463	10,6	6 281 012	-0,5
	October	3 515 897	3,9	1 544 655	27,4	1 597 584	-5,2	6 658 136	6,0
	November	3 562 642	1,3	1 474 204	-4,6	1 734 194	8,6	6 771 040	1,7
	December	3 426 642	-3,8	1 271 799	-13,7	1 685 005	-2,8	6 383 446	-5,7
2007	January	3 797 896	10,8	1 321 997	3,9	1 864 984	10,7	6 984 877	9,4
	February	3 837 319	1,0	1 524 072	15,3	1 737 191	-6,9	7 098 582	1,6
	March	4 294 013	11,9	871 440	-42,8	1 634 174	-5,9	6 799 627	-4,2
	April	3 982 675	-7,3	1 195 112	37,1	1 797 642	10,0	6 975 429	2,6
	May	3 958 589	-0,6	1 457 139	21,9	1 898 739	5,6	7 314 467	4,9
	June	3 732 280	-5,7	1 392 952	-4,4	1 700 703	-10,4	6 825 935	-6,7
	July	3 638 497	-2,5	1 178 164	-15,4	1 892 075	11,3	6 708 736	-1,7
	August	3 521 851	-3,2	1 207 491	2,5	1 911 067	1,0	6 640 409	-1,0
	Mar. - May 07	12 235 277		3 523 691		5 330 555		21 089 523	
	Jun. - Aug.07 2/	10 892 628	-11,0	3 778 607	7,2	5 503 845	3,3	20 175 080	-4,3

1/ The percentage change is the change in the seasonally adjusted values of recorded building plans passed by municipalities of the relevant month compared with the seasonally adjusted values of recorded building plans passed by municipalities of the previous month expressed as a percentage.

2/ The percentage change is the change in the seasonally adjusted values of recorded building plans passed by municipalities of the current quarter compared with the seasonally adjusted values of recorded building plans passed by municipalities of the previous quarter expressed as a percentage.

Table 3 - Values and percentage change of recorded building plans passed by larger municipalities at constant 2000 prices by type of building

Year and month		Residential buildings		Non-residential buildings		Additions and alterations		Total	
		R'000	% change 1/	R'000	% change 1/	R'000	% change 1/	R'000	% change 1/
2006	January	1 716 806	38,0	522 449	36,7	732 007	14,4	2 971 262	31,1
	February	2 129 537	28,2	629 132	44,3	963 842	17,9	3 722 511	27,7
	March	1 998 648	21,3	827 308	22,0	1 038 322	19,7	3 864 278	21,0
	April	1 824 319	1,0	865 813	57,9	914 767	0,6	3 604 899	10,5
	May	2 355 287	-2,9	816 215	48,6	1 201 708	27,6	4 373 210	11,6
	June	2 447 743	8,9	628 896	-5,9	1 062 047	2,2	4 138 686	4,7
	July	2 470 815	2,4	910 167	31,0	1 163 587	15,8	4 544 569	10,5
	August	2 478 585	3,9	911 741	8,2	1 042 141	-6,0	4 432 467	2,2
	September	2 308 891	-12,3	672 950	42,8	1 079 621	0,6	4 061 462	-2,8
	October	2 386 294	-5,8	1 066 347	60,4	1 123 338	-13,7	4 575 979	1,7
	November	2 432 309	-3,7	836 416	-7,8	1 117 471	1,4	4 386 196	-3,2
	December	1 620 578	-17,2	650 934	49,4	866 148	-5,0	3 137 660	-5,1
	Total	26 169 812	2,7	9 338 368	28,3	12 304 999	5,0	47 813 179	7,5
2007*	January	1 639 579	-4,5	592 673	13,4	829 945	13,4	3 062 197	3,1
	February	2 120 198	-0,4	835 744	32,8	972 117	0,9	3 928 059	5,5
	March	2 374 032	18,8	594 224	-28,2	940 448	-9,4	3 908 704	1,1
	April	2 031 789	11,4	696 167	-19,6	952 276	4,1	3 680 232	2,1
	May	2 549 247	8,2	854 717	4,7	1 227 469	2,1	4 631 433	5,9
	June	2 286 503	-6,6	804 748	28,0	990 866	-6,7	4 082 117	-1,4
	July	2 339 092	-5,3	743 308	-18,3	1 182 434	1,6	4 264 834	-6,2
	August 2/	2 226 209	-10,2	860 988	-5,6	1 196 648	14,8	4 283 845	-3,4

1/ The annual/monthly percentage change is the change in the values of recorded building plans passed by municipalities of the relevant year/month compared with the values of recorded building plans passed by municipalities of the comparable period of the previous year expressed as a percentage.

2/ Preliminary figures.

* Revised.

Table 4 - Seasonally adjusted values and percentage change of recorded building plans passed by larger municipalities at constant 2000 prices by type of building

Year and month		Residential buildings		Non-residential buildings		Additions and alterations		Total	
		R'000	% change 1/	R'000	% change 1/	R'000	% change 1/	R'000	% change 1/
2006	January	2 378 041	-3,7	690 446	35,7	978 482	-9,4	4 046 969	-0,3
	February	2 297 017	-3,4	692 783	0,3	1 026 086	4,9	4 015 886	-0,8
	March	2 121 250	-7,7	702 470	1,4	1 063 878	3,7	3 887 598	-3,2
	April	2 086 102	-1,7	882 733	25,7	1 015 130	-4,6	3 983 965	2,5
	May	2 119 015	1,6	804 206	-8,9	1 070 658	5,5	3 993 879	0,2
	June	2 308 400	8,9	624 296	-22,4	1 046 467	-2,3	3 979 163	-0,4
	July	2 189 815	-5,1	821 034	31,5	1 061 279	1,4	4 072 128	2,3
	August	2 236 134	2,1	738 227	-10,1	948 706	-10,6	3 923 067	-3,7
	September	2 086 750	-6,7	749 122	1,5	1 039 291	9,5	3 875 163	-1,2
	October	2 154 385	3,2	947 106	26,4	979 502	-5,8	4 080 993	5,3
	November	2 163 814	0,4	893 383	-5,7	1 050 070	7,2	4 107 267	0,6
	December	2 056 605	-5,0	762 956	-14,6	1 010 663	-3,8	3 830 224	-6,7
2007	January	2 268 685	10,3	789 429	3,5	1 113 768	10,2	4 171 882	8,9
	February	2 287 577	0,8	908 155	15,0	1 029 833	-7,5	4 225 565	1,3
	March	2 543 730	11,2	514 246	-43,4	966 178	-6,2	4 024 154	-4,8
	April	2 325 487	-8,6	698 540	35,8	1 051 585	8,8	4 075 612	1,3
	May	2 282 625	-1,8	841 329	20,4	1 098 889	4,5	4 222 843	3,6
	June	2 140 040	-6,2	800 330	-4,9	976 875	-11,1	3 917 245	-7,2
	July	2 082 341	-2,7	675 583	-15,6	1 084 496	11,0	3 842 420	-1,9
	August	2 008 305	-3,6	688 950	2,0	1 092 092	0,7	3 789 347	-1,4
	Mar. - May 07	7 151 842		2 054 115		3 116 652		12 322 609	
	Jun. - Aug.07 2/	6 230 686	-12,9	2 164 863	5,4	3 153 463	1,2	11 549 012	-6,3

1/ The percentage change is the change in the seasonally adjusted values of recorded building plans passed by municipalities of the relevant month compared with the seasonally adjusted values of recorded building plans passed by municipalities of the previous month expressed as a percentage.

2/ The percentage change is the change in the seasonally adjusted values of recorded building plans passed by municipalities of the current quarter compared with the seasonally adjusted values of recorded building plans passed by municipalities of the previous quarter expressed as a percentage.

Table 5 - Values and percentage change of buildings reported as completed to larger municipalities at current prices by type of building

Year and month		Residential buildings		Non-residential buildings		Additions and alterations		Total	
		R'000	% change 1/	R'000	% change 1/	R'000	% change 1/	R'000	% change 1/
2006	January	1 257 968	45,0	316 723	10,1	406 962	28,1	1 981 653	34,6
	February	1 772 939	39,7	408 861	125,2	553 237	72,2	2 735 037	54,3
	March	2 113 187	56,6	656 158	110,5	589 069	85,3	3 358 414	69,7
	April	1 748 227	24,6	268 422	36,6	450 681	35,3	2 467 330	27,6
	May	1 989 102	18,0	509 864	26,4	575 749	21,9	3 074 715	20,0
	June	2 309 739	52,7	485 834	24,9	567 380	11,0	3 362 953	39,4
	July	2 268 183	44,5	333 643	38,0	554 641	57,2	3 156 467	45,9
	August	2 379 053	4,4	492 632	-16,0	557 684	37,9	3 429 369	4,9
	September	2 539 730	21,0	404 951	10,8	665 842	48,6	3 610 523	24,0
	October	2 371 124	19,9	768 141	44,7	603 131	19,2	3 742 396	24,1
	November	2 648 334	-1,7	651 400	47,9	853 416	91,1	4 153 150	16,0
	December	2 675 164	15,3	542 151	115,6	545 663	23,4	3 762 978	24,8
	Total	26 072 750	24,0	5 838 780	39,5	6 923 455	42,1	38 834 985	29,1
2007*	January	1 640 091	30,4	483 947	52,8	675 202	65,9	2 799 240	41,3
	February	2 198 764	24,0	883 085	116,0	578 317	4,5	3 660 166	33,8
	March	2 094 772	-0,9	778 599	18,7	668 881	13,5	3 542 252	5,5
	April	2 348 307	34,3	630 387	134,8	556 496	23,5	3 535 190	43,3
	May	2 666 559	34,1	711 629	39,6	583 369	1,3	3 961 557	28,8
	June	2 572 713	11,4	566 836	16,7	657 794	15,9	3 797 343	12,9
	July	2 562 332	13,0	935 401	180,4	688 380	24,1	4 186 113	32,6
	August 2/	2 524 425	6,1	456 788	-7,3	747 241	34,0	3 728 454	8,7

1/ The annual/monthly percentage change is the change in the values of buildings reported as completed to municipalities of the relevant year/month compared with the values of buildings reported as completed to municipalities of the comparable period of the previous year expressed as a percentage.

2/ Preliminary figures.

* Revised.

Table 6 - Seasonally adjusted values and percentage change of buildings reported as completed to larger municipalities at current prices by type of building

Year and month		Residential buildings		Non-residential buildings		Additions and alterations		Total	
		R'000	% change 1/	R'000	% change 1/	R'000	% change 1/	R'000	% change 1/
2006	January	1 837 915	-15,0	378 384	34,3	440 073	-13,2	2 656 372	-10,0
	February	2 013 618	9,6	423 798	12,0	557 720	26,7	2 995 136	12,8
	March	2 267 315	12,6	551 705	30,2	589 959	5,8	3 408 979	13,8
	April	1 947 936	-14,1	367 007	-33,5	531 972	-9,8	2 846 915	-16,5
	May	1 903 129	-2,3	411 351	12,1	535 222	0,6	2 849 702	0,1
	June	2 302 815	21,0	496 313	20,7	553 833	3,5	3 352 961	17,7
	July	2 168 565	-5,8	397 193	-20,0	541 656	-2,2	3 107 414	-7,3
	August	2 223 680	2,5	550 155	38,5	536 161	-1,0	3 309 996	6,5
	September	2 370 557	6,6	367 620	-33,2	638 826	19,1	3 377 003	2,0
	October	2 278 818	-3,9	600 356	63,3	561 934	-12,0	3 441 108	1,9
	November	2 112 359	-7,3	610 377	1,7	782 149	39,2	3 504 885	1,9
	December	2 458 381	16,4	624 777	2,4	624 018	-20,2	3 707 176	5,8
2007	January	2 434 424	-1,0	572 054	-8,4	729 145	16,8	3 735 623	0,8
	February	2 494 636	2,5	896 932	56,8	589 476	-19,2	3 981 044	6,6
	March	2 246 165	-10,0	648 565	-27,7	664 181	12,7	3 558 911	-10,6
	April	2 610 624	16,2	874 630	34,9	655 375	-1,3	4 140 629	16,3
	May	2 568 975	-1,6	602 194	-31,1	541 801	-17,3	3 712 970	-10,3
	June	2 550 199	-0,7	560 335	-7,0	643 323	18,7	3 753 857	1,1
	July	2 473 408	-3,0	1 138 365	103,2	682 991	6,2	4 294 764	14,4
	August	2 365 646	-4,4	504 586	-55,7	721 931	5,7	3 592 163	-16,4
	Mar. - May 07	7 425 764		2 125 389		1 861 357		11 412 510	
	Jun. - Aug. 07 2/	7 389 253	-0,5	2 203 286	3,7	2 048 245	10,0	11 640 784	2,0

1/ The percentage change is the change in the seasonally adjusted values of buildings reported as completed to municipalities of the relevant month compared with the seasonally adjusted values of buildings reported as completed to municipalities of the previous month expressed as a percentage.

2/ The percentage change is the change in the seasonally adjusted values of buildings reported as completed to municipalities of the current quarter compared with the seasonally adjusted values of buildings reported as completed to municipalities of the previous quarter expressed as a percentage.

Table 7 - Values and percentage change of buildings reported as completed to larger municipalities at constant 2000 prices by type of building

Year and month		Residential buildings		Non-residential buildings		Additions and alterations		Total	
		R'000	% change 1/	R'000	% change 1/	R'000	% change 1/	R'000	% change 1/
2006	January	875 518	36,0	232 372	4,6	288 830	18,4	1 396 720	25,8
	February	1 228 110	30,7	298 221	112,9	391 811	60,8	1 918 142	44,9
	March	1 458 509	46,8	477 553	98,4	414 545	73,2	2 350 607	59,5
	April	1 200 870	17,0	194 227	27,9	314 502	26,3	1 709 599	19,8
	May	1 360 922	11,1	366 809	17,5	401 219	14,4	2 128 950	12,7
	June	1 578 421	43,9	349 270	16,0	394 014	4,7	2 321 705	30,9
	July	1 534 451	36,1	236 794	27,5	380 935	47,1	2 152 180	36,9
	August	1 603 497	-1,8	348 890	-21,5	380 932	29,2	2 333 319	-1,7
	September	1 708 000	14,2	284 976	3,6	453 571	39,1	2 446 547	16,7
	October	1 582 226	13,3	536 037	35,1	410 014	12,0	2 528 277	17,1
	November	1 751 468	-8,0	453 937	38,9	578 195	80,0	2 783 600	9,1
	December	1 752 041	7,2	376 494	103,3	368 941	16,1	2 497 476	16,8
	Total	17 634 033	16,7	4 155 580	30,6	4 777 509	33,1	26 567 122	21,4
2007*	January	1 058 853	20,9	332 381	43,0	453 156	56,9	1 844 390	32,1
	February	1 398 502	13,9	603 200	102,3	386 059	-1,5	2 387 761	24,5
	March	1 323 598	-9,2	530 381	11,1	445 624	7,5	2 299 603	-2,2
	April	1 484 890	23,7	428 543	120,6	367 324	16,8	2 280 757	33,4
	May	1 659 312	21,9	482 133	31,4	379 798	-5,3	2 521 243	18,4
	June	1 594 973	1,0	383 256	9,7	420 853	6,8	2 399 082	3,3
	July	1 564 470	2,0	627 786	165,1	434 035	13,9	2 626 291	22,0
	August 2/	1 525 964	-4,8	304 932	-12,6	460 691	20,9	2 291 587	-1,8

1/ The annual/monthly percentage change is the change in the values of buildings reported as completed to municipalities of the relevant year/month compared with the values of buildings reported as completed to municipalities of the comparable period of the previous year expressed as a percentage.

2/ Preliminary figures.

* Revised.

Table 8 - Seasonally adjusted values and percentage change of buildings reported as completed to larger municipalities at constant 2000 prices by type of building

Year and month		Residential buildings		Non-residential buildings		Additions and alterations		Total	
		R'000	%change 1/	R'000	% change 1/	R'000	% change 1/	R'000	% change 1/
2006	January	1 316 010	-14,1	278 307	34,0	312 054	-13,8	1 906 371	-9,3
	February	1 406 893	6,9	309 848	11,3	394 717	26,5	2 111 458	10,8
	March	1 571 398	11,7	401 173	29,5	413 170	4,7	2 385 741	13,0
	April	1 332 875	-15,2	265 061	-33,9	370 756	-10,3	1 968 692	-17,5
	May	1 299 804	-2,5	294 693	11,2	377 174	1,7	1 971 671	0,2
	June	1 558 729	19,9	354 197	20,2	383 848	1,8	2 296 774	16,5
	July	1 458 731	-6,4	281 518	-20,5	372 771	-2,9	2 113 020	-8,0
	August	1 478 878	1,4	390 650	38,8	369 337	-0,9	2 238 865	6,0
	September	1 588 095	7,4	258 869	-33,7	435 798	18,0	2 282 762	2,0
	October	1 527 145	-3,8	420 475	62,4	381 869	-12,4	2 329 489	2,0
	November	1 396 238	-8,6	426 323	1,4	526 142	37,8	2 348 703	0,8
	December	1 619 407	16,0	434 431	1,9	419 117	-20,3	2 472 955	5,3
2007	January	1 618 912	-0,0	393 963	-9,3	488 848	16,6	2 501 723	1,2
	February	1 596 039	-1,4	614 243	55,9	392 926	-19,6	2 603 208	4,1
	March	1 422 620	-10,9	441 521	-28,1	440 103	12,0	2 304 244	-11,5
	April	1 644 036	15,6	593 479	34,4	431 935	-1,9	2 669 450	15,8
	May	1 594 026	-3,0	406 342	-31,5	357 104	-17,3	2 357 472	-11,7
	June	1 571 899	-1,4	376 060	-7,5	410 694	15,0	2 358 653	0,1
	July	1 504 636	-4,3	762 540	102,8	431 479	5,1	2 698 655	14,4
	August	1 412 237	-6,1	337 476	-55,7	449 086	4,1	2 198 799	-18,5
	Mar. - May 07	4 660 682		1 441 342		1 229 142		7 331 166	
	Jun. - Aug.07 2/	4 488 772	-3,7	1 476 076	2,4	1 291 259	5,1	7 256 107	-1,0

1/ The percentage change is the change in the seasonally adjusted values of buildings reported as completed to municipalities of the relevant month compared with the seasonally adjusted values of buildings reported as completed to municipalities of the previous month expressed as a percentage.

2/ The percentage change is the change in the seasonally adjusted values of buildings reported as completed to municipalities of the current quarter compared with the seasonally adjusted values of buildings reported as completed to municipalities of the previous quarter expressed as a percentage.

Table 9 - Recorded building plans passed by larger municipalities at current prices by type of building: South Africa

			Aug. 2006*	Jul. 2007	Aug. 2007	Jan. - Aug. 2006	Jan. - Aug. 2007	% Change 1/
Category of building	Type of building	Measuring unit						
1. Residential buildings	1. Dwelling-houses < 80 square metres	Number	4 098	4 039	3 349	24 684	25 965	5,2
		square metres	183 732	173 539	155 058	1 099 564	1 147 068	4,3
		R'000	293 405	294 394	317 898	1 908 967	2 216 412	16,1
	2. Dwelling-houses >= 80 square metres	Number	3 362	2 948	3 175	23 086	22 281	-3,5
		square metres	771 636	750 310	745 005	5 327 061	5 572 647	4,6
		R'000	2 297 512	2 581 017	2 470 654	15 611 972	18 164 587	16,4
	3. Flats and townhouses	Number	3 287	2 665	2 665	21 464	22 656	5,6
		square metres	438 848	352 158	311 948	2 769 271	2 724 487	-1,6
		R'000	1 409 334	1 204 700	1 043 032	8 722 950	9 338 286	7,1
	4. Other residential buildings 2/	square metres	7 382	5 228	15 633	157 684	109 237	-30,7
		R'000	20 014	17 979	104 354	650 534	431 260	-33,7
	5. Total residential buildings	R'000	4 020 265	4 098 090	3 935 938	26 894 423	30 150 545	12,1
2. Non-residential buildings	1. Office and banking space	square metres	113 259	63 647	82 580	635 601	638 143	0,4
		R'000	521 699	276 923	288 459	2 370 959	2 583 235	9,0
	2. Shopping space	square metres	58 966	104 833	135 975	656 048	731 848	11,6
		R'000	160 070	435 726	601 842	2 330 947	2 771 337	18,9
	3. Industrial and warehouse space	square metres	255 162	178 835	197 393	1 441 051	1 466 467	1,8
		R'000	692 210	508 652	547 290	3 945 038	4 065 235	3,0
	4. Other non-residential buildings 3/	square metres	35 408	22 135	28 241	263 396	252 633	-4,1
		R'000	104 865	80 974	84 635	786 481	854 234	8,6
	5. Total non-residential buildings	R'000	1 478 844	1 302 275	1 522 226	9 433 425	10 274 041	8,9
3. Additions and alterations	1. Dwelling-houses	square metres	498 050	495 229	481 756	3 506 167	3 501 345	-0,1
		R'000	1 355 642	1 529 915	1 505 038	9 570 581	10 582 598	10,6
	2. Other buildings 4/	square metres	96 795	140 548	162 459	922 296	958 959	4,0
		R'000	334 711	541 709	610 636	2 949 945	3 664 351	24,2
	3. Total additions and alterations	R'000	1 690 353	2 071 624	2 115 674	12 520 526	14 246 949	13,8
4. Recorded plans passed	1. Total at current prices	R'000	7 189 462	7 471 989	7 573 838	48 848 374	54 671 535	11,9

1/ The percentage change between cumulative figures for 2006 and 2007.

2/ Other residential buildings include institutions for the disabled, boarding houses, hostels and tourism accommodation e.g. hotels, motels, guesthouses, holiday chalets, bed-and-breakfast accommodation and casinos.

3/ Other non-residential space includes churches, sport and recreation clubs, schools, crèches, hospitals and all other non-residential space.

4/ Other buildings include other residential buildings, non-residential buildings and internal alterations.

* Revised.

Table 10 - Recorded building plans passed by larger municipalities at current prices by type of building: Western Cape

			Aug. 2006*	Jul. 2007	Aug. 2007	Jan. - Aug. 2006	Jan. - Aug. 2007	% Change 1/
Category of building	Type of building	Measuring unit						
1. Residential buildings	1. Dwelling-houses < 80 square metres	Number	1 119	397	427	4 771	2 709	-43,2
		square metres	45 602	18 481	20 665	208 022	123 976	-40,4
		R'000	64 460	41 117	47 103	347 064	292 981	-15,6
	2. Dwelling-houses >= 80 square metres	Number	677	658	738	4 964	4 893	-1,4
		square metres	160 762	158 027	170 546	1 123 666	1 198 094	6,6
		R'000	504 344	540 483	604 007	3 386 728	4 062 180	19,9
	3. Flats and townhouses	Number	741	541	646	4 351	4 224	-2,9
		square metres	86 042	54 685	58 338	480 381	421 441	-12,3
		R'000	289 021	190 413	205 755	1 524 710	1 476 965	-3,1
	4. Other residential buildings 2/	square metres	4 928	0	8 146	35 031	41 329	18,0
		R'000	13 395	0	56 525	132 510	172 134	29,9
	5. Total residential buildings	R'000	871 220	772 013	913 390	5 391 012	6 004 260	11,4
2. Non-residential buildings	1. Office and banking space	square metres	13 665	20 535	24 383	166 585	202 257	21,4
		R'000	40 927	69 221	66 445	492 254	666 331	35,4
	2. Shopping space	square metres	19 094	6 936	32 452	126 175	86 453	-31,5
		R'000	59 348	27 646	120 546	367 976	295 357	-19,7
	3. Industrial and warehouse space	square metres	81 511	43 747	37 518	425 492	359 890	-15,4
		R'000	250 537	138 664	118 208	1 265 352	1 034 300	-18,3
	4. Other non-residential buildings 3/	square metres	6 212	3 840	2 929	67 292	59 855	-11,1
		R'000	15 750	11 276	9 997	205 636	177 531	-13,7
	5. Total non-residential buildings	R'000	366 562	246 807	315 196	2 331 218	2 173 519	-6,8
3. Additions and alterations	1. Dwelling-houses	square metres	146 030	133 988	139 128	1 039 083	980 051	-5,7
		R'000	391 629	402 193	437 586	2 798 750	2 868 803	2,5
	2. Other buildings 4/	square metres	29 823	49 674	29 658	339 636	262 843	-22,6
		R'000	108 895	202 198	183 412	1 095 600	1 188 783	8,5
	3. Total additions and alterations	R'000	500 524	604 391	620 998	3 894 350	4 057 586	4,2
4. Recorded plans passed	1. Total at current prices	R'000	1 738 306	1 623 211	1 849 584	11 616 580	12 235 365	5,3

1/ The percentage change between cumulative figures for 2006 and 2007.

2/ Other residential buildings include institutions for the disabled, boarding houses, hostels and tourism accommodation e.g. hotels, motels, guesthouses, holiday chalets, bed-and-breakfast accommodation and casinos.

3/ Other non-residential space includes churches, sport and recreation clubs, schools, crèches, hospitals and all other non-residential space.

4/ Other buildings include other residential buildings, non-residential buildings and internal alterations.

* Revised.

Table 11 - Recorded building plans passed by larger municipalities at current prices by type of building: Eastern Cape

			Aug. 2006*	Jul. 2007	Aug. 2007	Jan. - Aug. 2006	Jan. - Aug. 2007	% Change 1/
Category of building	Type of building	Measuring unit						
1. Residential buildings	1. Dwelling-houses < 80 square metres	Number	286	94	146	1 370	1 015	-25,9
		square metres	11 785	4 637	6 521	61 118	45 427	-25,7
		R'000	19 990	10 069	13 751	94 270	72 019	-23,6
	2. Dwelling-houses >= 80 square metres	Number	215	181	250	1 859	1 500	-19,3
		square metres	39 911	35 854	49 554	385 057	345 103	-10,4
		R'000	93 842	102 345	136 936	903 737	982 559	8,7
	3. Flats and townhouses	Number	111	287	295	864	1 026	18,8
		square metres	25 296	28 410	19 182	121 210	111 659	-7,9
		R'000	61 726	78 107	49 240	275 572	294 434	6,8
	4. Other residential buildings 2/	square metres	0	1 560	0	5 234	5 207	-0,5
		R'000	0	4 043	0	10 899	12 053	10,6
	5. Total residential buildings	R'000	175 558	194 564	199 927	1 284 478	1 361 065	6,0
2. Non-residential buildings	1. Office and banking space	square metres	0	0	3 567	2 795	13 256	374,3
		R'000	0	0	10 692	6 796	36 627	438,9
	2. Shopping space	square metres	2 965	18 647	1 200	18 728	98 914	428,2
		R'000	7 425	49 040	2 831	44 999	251 336	458,5
	3. Industrial and warehouse space	square metres	9 207	17 490	22 042	52 256	94 859	81,5
		R'000	17 384	36 798	45 082	104 295	209 046	100,4
	4. Other non-residential buildings 3/	square metres	1 563	1 182	15 270	11 366	20 985	84,6
		R'000	3 733	3 086	39 359	25 956	54 257	109,0
	5. Total non-residential buildings	R'000	28 542	88 924	97 964	182 046	551 266	202,8
	3. Additions and alterations	1. Dwelling-houses	square metres	42 968	35 143	32 490	310 673	277 835
R'000			84 079	90 559	87 880	693 381	725 397	4,6
2. Other buildings 4/		square metres	4 712	10 059	20 990	46 785	101 219	116,3
		R'000	10 544	24 516	54 168	122 921	258 802	110,5
3. Total additions and alterations		R'000	94 623	115 075	142 048	816 302	984 199	20,6
4. Recorded plans passed	1. Total at current prices	R'000	298 723	398 563	439 939	2 282 826	2 896 530	26,9

1/ The percentage change between cumulative figures for 2006 and 2007.

2/ Other residential buildings include institutions for the disabled, boarding houses, hostels and tourism accommodation e.g. hotels, motels, guesthouses, holiday chalets, bed-and-breakfast accommodation and casinos.

3/ Other non-residential space includes churches, sport and recreation clubs, schools, crèches, hospitals and all other non-residential space.

4/ Other buildings include other residential buildings, non-residential buildings and internal alterations.

* Revised.

Table 12 - Recorded building plans passed by larger municipalities at current prices by type of building: Northern Cape

			Aug. 2006*	Jul. 2007	Aug. 2007	Jan. - Aug. 2006	Jan. - Aug. 2007	% Change 1/	
Category of building	Type of building	Measuring unit							
1. Residential buildings	1. Dwelling-houses < 80 square metres	Number	10	4	7	236	42	-82,2	
		square metres	572	206	367	11 128	2 177	-80,4	
		R'000	1 276	682	1 023	16 768	6 929	-58,7	
	2. Dwelling-houses >= 80 square metres	Number	43	31	35	251	302	20,3	
		square metres	6 715	5 142	7 213	49 201	52 873	7,5	
		R'000	15 356	15 655	23 197	104 477	150 349	43,9	
	3. Flats and townhouses	Number	3	9	14	214	107	-50,0	
		square metres	334	1 298	1 325	20 723	14 064	-32,1	
		R'000	735	3 894	3 789	38 817	41 271	6,3	
	4. Other residential buildings 2/	square metres	344	0	117	1 016	117	-88,5	
		R'000	1 000	0	410	2 253	410	-81,8	
	5. Total residential buildings		R'000	18 367	20 231	28 419	162 315	198 959	22,6
	2. Non-residential buildings	1. Office and banking space	square metres	0	3 425	1 464	5 759	7 674	33,3
R'000			0	8 666	5 124	14 161	22 522	59,0	
2. Shopping space		square metres	1 396	3 456	22 643	3 351	33 274	893,0	
		R'000	3 637	9 012	79 251	7 798	103 733	1 230,3	
3. Industrial and warehouse space		square metres	1 713	2 511	0	9 128	6 531	-28,5	
		R'000	4 239	6 278	0	26 417	15 238	-42,3	
4. Other non-residential buildings 3/		square metres	0	1 448	75	6 014	2 507	-58,3	
		R'000	0	4 085	225	14 645	7 037	-51,9	
5. Total non-residential buildings		R'000	7 876	28 041	84 600	63 021	148 530	135,7	
3. Additions and alterations	1. Dwelling-houses	square metres	2 665	5 913	6 490	38 695	40 812	5,5	
		R'000	6 741	17 336	18 245	78 828	108 517	37,7	
	2. Other buildings 4/	square metres	0	17 634	603	8 536	21 480	151,6	
		R'000	1 666	44 102	2 639	24 781	59 356	139,5	
	3. Total additions and alterations		R'000	8 407	61 438	20 884	103 609	167 873	62,0
4. Recorded plans passed	1. Total at current prices	R'000	34 650	109 710	133 903	328 945	515 362	56,7	

1/ The percentage change between cumulative figures for 2006 and 2007.

2/ Other residential buildings include institutions for the disabled, boarding houses, hostels and tourism accommodation e.g. hotels, motels, guesthouses, holiday chalets, bed-and-breakfast accommodation and casinos.

3/ Other non-residential space includes churches, sport and recreation clubs, schools, crèches, hospitals and all other non-residential space.

4/ Other buildings include other residential buildings, non-residential buildings and internal alterations.

* Revised.

Table 13 - Recorded building plans passed by larger municipalities at current prices by type of building: Free State

			Aug. 2006*	Jul. 2007	Aug. 2007	Jan. - Aug. 2006	Jan. - Aug. 2007	% Change 1/
Category of building	Type of building	Measuring unit						
1. Residential buildings	1. Dwelling-houses < 80 square metres	Number	73	274	134	2 041	1 722	-15,6
		square metres	3 536	12 548	6 351	85 475	74 656	-12,7
		R'000	4 675	10 689	6 924	76 520	73 565	-3,9
	2. Dwelling-houses >= 80 square metres	Number	120	124	112	747	922	23,4
		square metres	26 307	26 402	25 733	143 665	206 647	43,8
		R'000	63 737	70 416	66 882	325 285	521 502	60,3
	3. Flats and townhouses	Number	64	1	263	755	1 143	51,4
		square metres	8 218	138	40 901	88 404	122 198	38,2
		R'000	19 164	552	107 519	212 597	323 813	52,3
	4. Other residential buildings 2/	square metres	1 196	0	0	6 985	15 518	122,2
		R'000	2 745	0	0	84 837	54 283	-36,0
	5. Total residential buildings	R'000	90 321	81 657	181 325	699 239	973 163	39,2
2. Non-residential buildings	1. Office and banking space	square metres	2 114	941	0	14 419	7 232	-49,8
		R'000	4 010	1 650	0	39 755	24 138	-39,3
	2. Shopping space	square metres	184	4 354	0	20 346	29 255	43,8
		R'000	405	15 674	0	61 798	122 040	97,5
	3. Industrial and warehouse space	square metres	6 883	1 366	2 118	32 648	30 063	-7,9
		R'000	6 759	3 470	2 438	56 481	54 059	-4,3
	4. Other non-residential buildings 3/	square metres	0	876	0	10 265	3 644	-64,5
		R'000	0	1 628	0	27 015	7 317	-72,9
	5. Total non-residential buildings	R'000	11 174	22 422	2 438	185 049	207 554	12,2
3. Additions and alterations	1. Dwelling-houses	square metres	19 611	15 222	15 839	120 536	124 998	3,7
		R'000	41 772	36 239	39 420	236 057	297 358	26,0
	2. Other buildings 4/	square metres	7 724	2 381	2 034	31 641	20 535	-35,1
		R'000	13 839	5 381	5 904	100 931	69 938	-30,7
	3. Total additions and alterations	R'000	55 611	41 620	45 324	336 988	367 296	9,0
4. Recorded plans passed	1. Total at current prices	R'000	157 106	145 699	229 087	1 221 276	1 548 013	26,8

1/ The percentage change between cumulative figures for 2006 and 2007.

2/ Other residential buildings include institutions for the disabled, boarding houses, hostels and tourism accommodation e.g. hotels, motels, guesthouses, holiday chalets, bed-and-breakfast accommodation and casinos.

3/ Other non-residential space includes churches, sport and recreation clubs, schools, crèches, hospitals and all other non-residential space.

4/ Other buildings include other residential buildings, non-residential buildings and internal alterations.

* Revised.

Table 14 - Recorded building plans passed by larger municipalities at current prices by type of building: KwaZulu-Natal

			Aug. 2006*	Jul. 2007	Aug. 2007	Jan. - Aug. 2006	Jan. - Aug. 2007	% Change 1/
Category of building	Type of building	Measuring unit						
1. Residential buildings	1. Dwelling-houses < 80 square metres	Number	131	79	97	818	760	-7,1
		square metres	7 210	4 485	5 631	42 699	41 869	-1,9
		R'000	18 416	12 515	14 903	99 109	117 335	18,4
	2. Dwelling-houses >= 80 square metres	Number	313	236	188	2 021	1 748	-13,5
		square metres	67 762	64 607	47 260	448 844	418 000	-6,9
		R'000	217 884	274 087	178 357	1 354 326	1 561 917	15,3
	3. Flats and townhouses	Number	530	256	441	2 835	4 385	54,7
		square metres	89 993	43 753	62 003	497 604	510 007	2,5
		R'000	319 912	225 728	234 198	1 750 966	2 025 576	15,7
	4. Other residential buildings 2/	square metres	214	3 668	0	24 888	20 478	-17,7
		R'000	882	13 936	0	132 978	89 699	-32,5
	5. Total residential buildings	R'000	557 094	526 266	427 458	3 337 379	3 794 527	13,7
2. Non-residential buildings	1. Office and banking space	square metres	52 129	8 562	16 663	105 766	89 737	-15,2
		R'000	301 939	41 110	85 423	460 349	399 406	-13,2
	2. Shopping space	square metres	9 072	7 702	42 671	54 049	129 170	139,0
		R'000	22 988	37 430	232 033	181 182	553 707	205,6
	3. Industrial and warehouse space	square metres	52 872	11 958	56 222	337 323	254 852	-24,4
		R'000	113 361	33 708	138 727	807 452	662 586	-17,9
	4. Other non-residential buildings 3/	square metres	15 540	7 521	876	47 102	57 166	21,4
		R'000	54 928	29 720	2 285	144 015	238 007	65,3
	5. Total non-residential buildings	R'000	493 216	141 968	458 468	1 592 998	1 853 706	16,4
3. Additions and alterations	1. Dwelling-houses	square metres	64 566	77 849	65 866	464 792	454 468	-2,2
		R'000	192 288	258 648	197 109	1 340 750	1 483 771	10,7
	2. Other buildings 4/	square metres	14 457	16 447	45 003	187 319	204 095	9,0
		R'000	67 905	74 745	126 716	607 888	731 561	20,3
	3. Total additions and alterations	R'000	260 193	333 393	323 825	1 948 638	2 215 332	13,7
4. Recorded plans passed	1. Total at current prices	R'000	1 310 503	1 001 627	1 209 751	6 879 015	7 863 565	14,3

1/ The percentage change between cumulative figures for 2006 and 2007.

2/ Other residential buildings include institutions for the disabled, boarding houses, hostels and tourism accommodation e.g. hotels, motels, guesthouses, holiday chalets, bed-and-breakfast accommodation and casinos.

3/ Other non-residential space includes churches, sport and recreation clubs, schools, crèches, hospitals and all other non-residential space.

4/ Other buildings include other residential buildings, non-residential buildings and internal alterations.

* Revised.

Table 15 - Recorded building plans passed by larger municipalities at current prices by type of building: North West

			Aug. 2006*	Jul. 2007	Aug. 2007	Jan. - Aug. 2006	Jan. - Aug. 2007	% Change 1/	
Category of building	Type of building	Measuring unit							
1. Residential buildings	1. Dwelling-houses < 80 square metres	Number	910	72	102	1 360	1 463	7,6	
		square metres	36 125	5 043	6 053	63 163	69 187	9,5	
		R'000	34 758	7 725	7 602	69 333	85 396	23,2	
	2. Dwelling-houses >= 80 square metres	Number	247	152	187	1 618	1 592	-1,6	
		square metres	58 474	36 111	44 133	332 325	357 494	7,6	
		R'000	139 505	101 621	95 213	822 900	955 410	16,1	
	3. Flats and townhouses	Number	332	148	23	939	1 038	10,5	
		square metres	29 663	16 023	1 951	99 635	131 993	32,5	
		R'000	61 784	40 972	4 581	244 044	328 469	34,6	
	4. Other residential buildings 2/	square metres	0	0	174	6 372	5 091	-20,1	
		R'000	0	0	383	16 044	14 336	-10,6	
	5. Total residential buildings		R'000	236 047	150 318	107 779	1 152 321	1 383 611	20,1
	2. Non-residential buildings	1. Office and banking space	square metres	1 309	827	1 994	8 687	25 236	190,5
R'000			2 907	2 200	5 589	20 723	61 226	195,4	
2. Shopping space		square metres	208	2 793	157	125 393	40 906	-67,4	
		R'000	492	7 020	314	402 375	118 798	-70,5	
3. Industrial and warehouse space		square metres	5 439	1 700	1 614	32 257	34 662	7,5	
		R'000	10 816	4 125	3 194	70 490	66 065	-6,3	
4. Other non-residential buildings 3/		square metres	971	115	195	10 139	11 248	10,9	
		R'000	2 124	287	462	31 362	30 461	-2,9	
5. Total non-residential buildings		R'000	16 339	13 632	9 559	524 950	276 550	-47,3	
3. Additions and alterations	1. Dwelling-houses	square metres	18 696	12 704	12 250	102 248	106 054	3,7	
		R'000	35 538	27 860	26 904	207 000	234 980	13,5	
	2. Other buildings 4/	square metres	2 219	435	1 103	14 941	12 452	-16,7	
		R'000	5 673	1 244	3 286	42 870	38 031	-11,3	
	3. Total additions and alterations		R'000	41 211	29 104	30 190	249 870	273 011	9,3
4. Recorded plans passed	1. Total at current prices	R'000	293 597	193 054	147 528	1 927 141	1 933 172	0,3	

1/ The percentage change between cumulative figures for 2006 and 2007.

2/ Other residential buildings include institutions for the disabled, boarding houses, hostels and tourism accommodation e.g. hotels, motels, guesthouses, holiday chalets, bed-and-breakfast accommodation and casinos.

3/ Other non-residential space includes churches, sport and recreation clubs, schools, crèches, hospitals and all other non-residential space.

4/ Other buildings include other residential buildings, non-residential buildings and internal alterations.

* Revised.

Table 16 - Recorded building plans passed by larger municipalities at current prices by type of building: Gauteng

			Aug. 2006*	Jul. 2007	Aug. 2007	Jan. - Aug. 2006	Jan. - Aug. 2007	% Change 1/
Category of building	Type of building	Measuring unit						
1. Residential buildings	1. Dwelling-houses < 80 square metres	Number	1 501	3 010	2 296	12 987	16 766	29,1
		square metres	74 869	122 555	102 099	569 508	716 211	25,8
		R'000	140 056	199 401	213 773	1 094 017	1 422 444	30,0
	2. Dwelling-houses >= 80 square metres	Number	1 460	1 264	1 348	9 260	8 792	-5,1
		square metres	349 715	355 027	332 408	2 321 308	2 411 263	3,9
		R'000	1 095 831	1 278 322	1 162 213	7 344 997	8 307 633	13,1
	3. Flats and townhouses	Number	1 314	1 193	799	9 779	9 105	-6,9
		square metres	173 919	179 825	105 909	1 270 891	1 233 726	-2,9
		R'000	597 848	587 154	382 352	4 205 285	4 365 371	3,8
	4. Other residential buildings 2/	square metres	279	0	7 196	68 834	9 953	-85,5
		R'000	939	0	47 036	243 214	59 887	-75,4
	5. Total residential buildings	R'000	1 834 674	2 064 877	1 805 374	12 887 513	14 155 335	9,8
2. Non-residential buildings	1. Office and banking space	square metres	40 155	23 342	10 452	302 755	244 703	-19,2
		R'000	163 498	134 279	55 220	1 250 621	1 245 638	-0,4
	2. Shopping space	square metres	15 890	57 492	34 241	212 493	268 597	26,4
		R'000	43 019	281 989	162 782	700 084	1 210 714	72,9
	3. Industrial and warehouse space	square metres	85 975	78 956	68 447	494 482	566 932	14,7
		R'000	257 868	217 421	204 239	1 473 175	1 644 896	11,7
	4. Other non-residential buildings 3/	square metres	9 795	6 352	6 399	78 433	84 743	8,0
		R'000	26 277	29 086	26 277	233 326	310 168	32,9
5. Total non-residential buildings	R'000	490 662	662 775	448 518	3 657 206	4 411 416	20,6	
3. Additions and alterations	1. Dwelling-houses	square metres	176 309	168 236	180 163	1 213 092	1 268 742	4,6
		R'000	542 726	580 534	615 848	3 740 909	4 236 163	13,2
	2. Other buildings 4/	square metres	33 754	40 661	55 716	251 625	296 280	17,7
		R'000	114 996	178 188	212 344	845 824	1 197 086	41,5
	3. Total additions and alterations	R'000	657 722	758 722	828 192	4 586 733	5 433 249	18,5
4. Recorded plans passed	1. Total at current prices	R'000	2 983 058	3 486 374	3 082 084	21 131 452	24 000 000	13,6

1/ The percentage change between cumulative figures for 2006 and 2007.

2/ Other residential buildings include institutions for the disabled, boarding houses, hostels and tourism accommodation e.g. hotels, motels, guesthouses, holiday chalets, bed-and-breakfast accommodation and casinos.

3/ Other non-residential space includes churches, sport and recreation clubs, schools, crèches, hospitals and all other non-residential space.

4/ Other buildings include other residential buildings, non-residential buildings and internal alterations.

* Revised.

Table 17 - Recorded building plans passed by larger municipalities at current prices by type of building: Mpumalanga

			Aug. 2006	Jul. 2007	Aug. 2007	Jan. - Aug. 2006	Jan. - Aug. 2007	% Change 1/	
Category of building	Type of building	Measuring unit							
1. Residential buildings	1. Dwelling-houses < 80 square metres	Number	29	78	112	420	741	76,4	
		square metres	1 571	3 563	5 634	25 033	33 354	33,2	
		R'000	3 594	6 639	8 367	59 293	60 008	1,2	
	2. Dwelling-houses >= 80 square metres	Number	177	221	220	1 502	1 845	22,8	
		square metres	40 575	51 921	50 985	346 867	436 848	25,9	
		R'000	111 808	148 530	160 181	943 419	1 230 684	30,4	
	3. Flats and townhouses	Number	107	149	116	1 289	1 092	-15,3	
		square metres	16 468	10 501	13 965	145 705	109 327	-25,0	
		R'000	37 049	32 430	37 557	358 723	311 748	-13,1	
	4. Other residential buildings 2/	square metres	421	0	0	8 377	3 889	-53,6	
		R'000	1 053	0	0	23 299	10 918	-53,1	
	5. Total residential buildings		R'000	153 504	187 599	206 105	1 384 734	1 613 358	16,5
	2. Non-residential buildings	1. Office and banking space	square metres	2 299	4 424	224	23 005	16 680	-27,5
R'000			5 437	16 031	627	73 248	49 254	-32,8	
2. Shopping space		square metres	394	3 195	1 588	71 100	20 695	-70,9	
		R'000	1 576	7 400	2 040	515 595	62 855	-87,8	
3. Industrial and warehouse space		square metres	10 805	18 963	5 806	43 319	91 899	112,1	
		R'000	29 353	62 901	26 382	108 071	312 597	189,3	
4. Other non-residential buildings 3/		square metres	421	801	1 784	31 531	8 402	-73,4	
		R'000	1 053	1 806	4 461	102 644	19 843	-80,7	
5. Total non-residential buildings		R'000	37 419	88 138	33 510	799 558	444 549	-44,4	
3. Additions and alterations	1. Dwelling-houses	square metres	19 505	34 228	20 647	149 699	165 642	10,7	
		R'000	43 296	87 707	58 047	332 503	425 885	28,1	
	2. Other buildings 4/	square metres	2 493	2 917	4 411	22 148	30 754	38,9	
		R'000	8 274	10 525	15 121	68 012	98 088	44,2	
	3. Total additions and alterations		R'000	51 570	98 232	73 168	400 515	523 973	30,8
4. Recorded plans passed	1. Total at current prices	R'000	242 493	373 969	312 783	2 584 807	2 581 880	-0,1	

1/ The percentage change between cumulative figures for 2006 and 2007.

2/ Other residential buildings include institutions for the disabled, boarding houses, hostels and tourism accommodation e.g. hotels, motels, guesthouses, holiday chalets, bed-and-breakfast accommodation and casinos.

3/ Other non-residential space includes churches, sport and recreation clubs, schools, crèches, hospitals and all other non-residential space.

4/ Other buildings include other residential buildings, non-residential buildings and internal alterations.

Table 18 - Recorded building plans passed by larger municipalities at current prices by type of building: Limpopo

			Aug. 2006*	Jul. 2007	Aug. 2007	Jan. - Aug. 2006	Jan. - Aug. 2007	% Change 1/
Category of building	Type of building	Measuring unit						
1. Dwelling-houses < 80 square metres	1. Dwelling-houses < 80 square metres	Number	39	31	28	681	747	9,7
		square metres	2 462	2 021	1 737	33 418	40 211	20,3
		R'000	6 180	5 557	4 452	52 593	85 735	63,0
	2. Dwelling-houses >= 80 square metres	Number	110	81	97	864	687	-20,5
		square metres	21 415	17 219	17 173	176 128	146 325	-16,9
		R'000	55 205	49 558	43 668	426 103	392 353	-7,9
	3. Flats and townhouses	Number	85	81	68	438	536	22,4
		square metres	8 915	17 525	8 374	44 718	70 072	56,7
		R'000	22 095	45 450	18 041	112 236	170 639	52,0
	4. Other residential buildings 2/	square metres	0	0	0	947	7 655	708,3
		R'000	0	0	0	4 500	17 540	289,8
	5. Total residential buildings	R'000	83 480	100 565	66 161	595 432	666 267	11,9
2. Dwelling-houses >= 80 square metres	1. Office and banking space	square metres	1 588	1 591	23 833	5 830	31 368	438,0
		R'000	2 981	3 766	59 339	13 052	78 093	498,3
	2. Shopping space	square metres	9 763	258	1 023	24 413	24 584	0,7
		R'000	21 180	515	2 045	49 140	52 797	7,4
	3. Industrial and warehouse space	square metres	757	2 144	3 626	14 146	26 779	89,3
		R'000	1 893	5 287	9 020	33 305	66 448	99,5
	4. Other non-residential buildings 3/	square metres	906	0	713	1 254	4 083	225,6
		R'000	1 000	0	1 569	1 882	9 613	410,8
	5. Total non-residential buildings	R'000	27 054	9 568	71 973	97 379	206 951	112,5
	3. Flats and townhouses	1. Dwelling-houses	square metres	7 700	11 946	9 369	67 349	83 229
R'000			17 573	28 839	23 999	142 403	201 724	41,7
2. Other buildings 4/		square metres	1 613	340	2 941	19 665	9 301	-52,7
		R'000	2 919	810	7 046	41 118	22 706	-44,8
3. Total additions and alterations		R'000	20 492	29 649	31 045	183 521	224 430	22,3
4. Other residential buildings 2/	1. Total at current prices	R'000	131 026	139 782	169 179	876 332	1 097 648	25,3

1/ The percentage change between cumulative figures for 2006 and 2007.

2/ Other residential buildings include institutions for the disabled, boarding houses, hostels and tourism accommodation e.g. hotels, motels, guesthouses, holiday chalets, bed-and-breakfast accommodation and casinos.

3/ Other non-residential space includes churches, sport and recreation clubs, schools, crèches, hospitals and all other non-residential space.

4/ Other buildings include other residential buildings, non-residential buildings and internal alterations.

*Revised.

Table 19 - Buildings reported as completed to larger municipalities at current prices by type of building: South Africa

			Aug. 2006*	Jul. 2007	Aug. 2007	Jan. - Aug. 2006	Jan. - Aug. 2007	% Change 1/
Category of building	Type of building	Measuring unit						
1. Residential buildings	1. Dwelling-houses < 80 square metres	Number	1 484	2 153	3 273	13 589	18 313	34,8
		square metres	67 015	94 769	143 230	589 584	777 270	31,8
		R'000	131 219	167 697	242 924	1 064 309	1 365 529	28,3
	2. Dwelling-houses >= 80 square metres	Number	2 009	1 887	2 212	13 672	14 639	7,1
		square metres	440 010	446 052	486 763	3 108 542	3 295 282	6,0
		R'000	1 258 025	1 408 723	1 508 134	8 692 131	10 111 083	16,3
	3. Flats and townhouses	Number	2 117	2 545	3 040	14 715	18 793	27,7
		square metres	303 579	292 903	215 802	1 935 361	1 989 830	2,8
		R'000	987 583	985 912	714 615	5 972 606	6 568 423	10,0
	4. Other residential buildings 2/	square metres	958	0	17 341	32 038	127 282	297,3
		R'000	2 226	0	58 752	109 352	562 928	414,8
	5. Total residential buildings	R'000	2 379 053	2 562 332	2 524 425	15 838 398	18 607 963	17,5
2. Non-residential buildings	1. Office and banking space	square metres	24 803	103 715	22 252	194 582	440 601	126,4
		R'000	95 945	350 870	86 884	616 155	1 545 882	150,9
	2. Shopping space	square metres	19 897	21 384	24 754	420 372	333 741	-20,6
		R'000	95 883	70 422	72 794	1 326 574	1 090 186	-17,8
	3. Industrial and warehouse space	square metres	108 382	173 252	88 979	516 849	889 440	72,1
		R'000	278 353	476 776	275 800	1 284 695	2 497 764	94,4
	4. Other non-residential buildings 3/	square metres	8 611	13 824	9 488	91 976	103 437	12,5
		R'000	22 451	37 333	21 310	244 713	312 840	27,8
	5. Total non-residential buildings	R'000	492 632	935 401	456 788	3 472 137	5 446 672	56,9
3. Additions and alterations	1. Dwelling-houses	square metres	175 627	201 044	183 194	1 303 947	1 376 519	5,6
		R'000	461 596	558 214	503 998	3 254 602	3 799 999	16,8
	2. Other buildings 4/	square metres	32 276	40 343	62 568	335 832	388 464	15,7
		R'000	96 088	130 166	243 243	1 000 801	1 355 681	35,5
	3. Total additions and alterations	R'000	557 684	688 380	747 241	4 255 403	5 155 680	21,2
4. Recorded buildings completed	1. Total at current prices	R'000	3 429 369	4 186 113	3 728 454	23 565 938	29 210 315	24,0

1/ The percentage change between cumulative figures for 2006 and 2007.

2/ Other residential buildings include institutions for the disabled, boarding houses, hostels and tourism accommodation e.g. hotels, motels, guesthouses, holiday chalets, bed-and-breakfast accommodation and casinos.

3/ Other non-residential space includes churches, sport and recreation clubs, schools, crèches, hospitals and all other non-residential space.

4/ Other buildings include other residential buildings, non-residential buildings and internal alterations.

* Revised.

Table 20 - Buildings reported as completed to larger municipalities at current prices by type of building: Western Cape

			Aug. 2006*	Jul. 2007	Aug. 2007	Jan. - Aug. 2006	Jan. - Aug. 2007	% Change 1/
Category of building	Type of building	Measuring unit						
1. Residential buildings	1. Dwelling-houses < 80 square metres	Number	364	475	726	3 079	5 731	86,1
		square metres	14 820	21 950	32 391	120 203	224 247	86,6
		R'000	25 237	41 608	62 440	185 763	344 967	85,7
	2. Dwelling-houses >= 80 square metres	Number	548	496	547	3 973	3 736	-6,0
		square metres	122 034	107 289	119 492	910 181	817 216	-10,2
		R'000	334 219	334 497	373 414	2 471 728	2 479 740	0,3
	3. Flats and townhouses	Number	381	520	403	4 187	4 457	6,4
		square metres	42 198	52 033	37 856	501 510	457 999	-8,7
		R'000	120 152	160 281	118 414	1 489 948	1 447 928	-2,8
	4. Other residential buildings 2/	square metres	493	0	2 344	12 424	21 507	73,1
		R'000	911	0	7 501	39 497	79 216	100,6
	5. Total residential buildings	R'000	480 519	536 386	561 769	4 186 936	4 351 851	3,9
2. Non-residential buildings	1. Office and banking space	square metres	8 960	42 782	7 758	43 969	167 772	281,6
		R'000	24 730	131 546	17 636	110 779	480 675	333,9
	2. Shopping space	square metres	7 046	1 533	1 768	102 817	39 459	-61,6
		R'000	23 351	5 218	6 170	227 385	126 530	-44,4
	3. Industrial and warehouse space	square metres	25 841	56 018	33 423	203 650	310 507	52,5
		R'000	64 317	137 996	101 647	514 848	875 743	70,1
	4. Other non-residential buildings 3/	square metres	341	5 804	5 980	33 624	35 926	6,8
		R'000	797	17 290	13 527	86 243	96 436	11,8
	5. Total non-residential buildings	R'000	113 195	292 050	138 980	939 255	1 579 384	68,2
3. Additions and alterations	1. Dwelling-houses	square metres	71 050	69 046	70 566	493 727	492 370	-0,3
		R'000	176 328	186 618	192 055	1 201 157	1 300 922	8,3
	2. Other buildings 4/	square metres	12 006	13 142	36 829	120 388	157 230	30,6
		R'000	38 239	54 092	125 405	390 647	549 313	40,6
	3. Total additions and alterations	R'000	214 567	240 710	317 460	1 591 804	1 850 235	16,2
4. Recorded buildings completed	1. Total at current prices	R'000	808 281	1 069 146	1 018 209	6 717 995	7 781 470	15,8

1/ The percentage change between cumulative figures for 2006 and 2007.

2/ Other residential buildings include institutions for the disabled, boarding houses, hostels and tourism accommodation e.g. hotels, motels, guesthouses, holiday chalets, bed-and-breakfast accommodation and casinos.

3/ Other non-residential space includes churches, sport and recreation clubs, schools, crèches, hospitals and all other non-residential space.

4/ Other buildings include other residential buildings, non-residential buildings and internal alterations.

* Revised.

Table 21 - Buildings reported as completed to larger municipalities at current prices by type of building: Eastern Cape

			Aug. 2006*	Jul. 2007	Aug. 2007	Jan. - Aug. 2006	Jan. - Aug. 2007	% Change 1/
Category of building								
1. Residential buildings	1. Dwelling-houses < 80 square metres	Number	168	181	317	1 290	1 226	-5,0
		square metres	7 080	7 817	12 171	55 069	50 912	-7,5
		R'000	9 505	10 816	20 548	80 493	74 806	-7,1
	2. Dwelling-houses >= 80 square metres	Number	135	116	140	832	819	-1,6
		square metres	23 006	20 338	22 289	148 244	140 871	-5,0
		R'000	48 025	45 768	60 408	317 648	356 950	12,4
	3. Flats and townhouses	Number	51	330	149	493	921	86,8
		square metres	8 814	29 246	25 984	49 705	96 730	94,6
		R'000	18 175	83 376	70 815	104 214	250 135	140,0
	4. Other residential buildings 2/	square metres	0	0	105	120	2 517	1 997,5
		R'000	0	0	284	264	6 384	2 318,2
	5. Total residential buildings	R'000	75 705	139 960	152 055	502 619	688 275	36,9
2. Non-residential buildings	1. Office and banking space	square metres	350	50	333	4 492	1 637	-63,6
		R'000	770	131	940	10 038	4 234	-57,8
	2. Shopping space	square metres	0	3 015	0	12 287	16 326	32,9
		R'000	0	6 707	0	28 400	39 741	39,9
	3. Industrial and warehouse space	square metres	6 459	1 419	921	27 758	22 956	-17,3
		R'000	12 377	3 026	1 465	52 863	54 422	2,9
	4. Other non-residential buildings 3/	square metres	35	394	459	5 544	3 273	-41,0
		R'000	72	774	1 000	12 234	7 100	-42,0
	5. Total non-residential buildings	R'000	13 219	10 638	3 405	103 535	105 497	1,9
3. Additions and alterations	1. Dwelling-houses	square metres	7 462	20 574	11 136	79 779	100 322	25,7
		R'000	15 680	44 037	22 763	153 232	203 754	33,0
	2. Other buildings 4/	square metres	1 580	3 393	2 208	45 491	27 890	-38,7
		R'000	2 738	6 218	6 076	86 982	62 147	-28,6
	3. Total additions and alterations	R'000	18 418	50 255	28 839	240 214	265 901	10,7
4. Recorded buildings completed	1. Total at current prices	R'000	107 342	200 853	184 299	846 368	1 059 673	25,2

1/ The percentage change between cumulative figures for 2006 and 2007.

2/ Other residential buildings include institutions for the disabled, boarding houses, hostels and tourism accommodation e.g. hotels, motels, guesthouses, holiday chalets, bed-and-breakfast accommodation and casinos.

3/ Other non-residential space includes churches, sport and recreation clubs, schools, crèches, hospitals and all other non-residential space.

4/ Other buildings include other residential buildings, non-residential buildings and internal alterations.

* Revised.

Table 22 - Buildings reported as completed to larger municipalities at current prices by type of building: Northern Cape

			Aug. 2006	Jul. 2007	Aug. 2007	Jan. - Aug. 2006	Jan. - Aug. 2007	% Change 1/
Category of building	Type of building	Measuring unit						
1. Residential buildings	1. Dwelling-houses < 80 square metres	Number	0	0	4	19	48	152,6
		square metres	0	0	178	930	2 001	115,2
		R'000	0	0	555	1 561	2 836	81,7
	2. Dwelling-houses >= 80 square metres	Number	39	15	15	150	127	-15,3
		square metres	4 713	3 268	3 107	25 427	24 978	-1,8
		R'000	10 056	9 363	9 008	53 602	64 896	21,1
	3. Flats and townhouses	Number	11	19	9	81	144	77,8
		square metres	1 571	2 629	1 291	10 950	20 342	85,8
		R'000	2 916	7 887	3 615	20 810	51 668	148,3
	4. Other residential buildings 2/	square metres	0	0	0	712	174	-75,6
		R'000	0	0	0	1 372	609	-55,6
	5. Total residential buildings	R'000	12 972	17 250	13 178	77 345	120 009	55,2
2. Non-residential buildings	1. Office and banking space	square metres	0	293	0	1 620	6 191	282,2
		R'000	0	820	0	3 240	15 338	373,4
	2. Shopping space	square metres	0	1 455	786	627	7 008	1 017,7
		R'000	0	3 638	2 201	1 556	16 341	950,2
	3. Industrial and warehouse space	square metres	823	1 301	0	4 371	4 730	8,2
		R'000	2 058	3 194	0	9 236	12 160	31,7
	4. Other non-residential buildings 3/	square metres	0	0	0	749	498	-33,5
		R'000	0	0	0	1 455	1 195	-17,9
	5. Total non-residential buildings	R'000	2 058	7 652	2 201	15 487	45 034	190,8
3. Additions and alterations	1. Dwelling-houses	square metres	2 925	3 371	2 411	14 207	23 322	64,2
		R'000	6 509	9 935	6 050	29 813	61 557	106,5
	2. Other buildings 4/	square metres	428	200	819	9 486	4 627	-51,2
		R'000	1 467	500	2 263	19 701	18 563	-5,8
	3. Total additions and alterations	R'000	7 976	10 435	8 313	49 514	80 120	61,8
4. Recorded buildings completed	1. Total at current prices	R'000	23 006	35 337	23 692	142 346	245 163	72,2

1/ The percentage change between cumulative figures for 2006 and 2007.

2/ Other residential buildings include institutions for the disabled, boarding houses, hostels and tourism accommodation e.g. hotels, motels, guesthouses, holiday chalets, bed-and-breakfast accommodation and casinos.

3/ Other non-residential space includes churches, sport and recreation clubs, schools, crèches, hospitals and all other non-residential space.

4/ Other buildings include other residential buildings, non-residential buildings and internal alterations.

Table 23 - Buildings reported as completed to larger municipalities at current prices by type of building: Free State

			Aug. 2006*	Jul. 2007	Aug. 2007	Jan. - Aug. 2006	Jan. - Aug. 2007	% Change 1/
Category of building	Type of building	Measuring unit						
1. Residential buildings	1. Dwelling-houses < 80 square metres	Number	75	107	137	317	389	22,7
		square metres	3 338	5 067	6 860	14 814	20 710	39,8
		R'000	4 028	5 358	8 706	17 330	30 134	73,9
	2. Dwelling-houses >= 80 square metres	Number	52	100	94	278	656	136,0
		square metres	9 049	21 256	16 608	51 521	119 813	132,6
		R'000	15 984	47 613	39 774	96 438	257 711	167,2
	3. Flats and townhouses	Number	19	67	81	310	414	33,5
		square metres	2 573	5 970	9 727	37 434	48 858	30,5
		R'000	5 829	12 818	22 183	75 881	126 083	66,2
	4. Other residential buildings 2/	square metres	0	0	0	8 310	5 467	-34,2
		R'000	0	0	0	35 872	79 956	122,9
	5. Total residential buildings	R'000	25 841	65 789	70 663	225 521	493 884	119,0
2. Non-residential buildings	1. Office and banking space	square metres	0	2 323	0	992	7 425	648,5
		R'000	0	6 680	0	2 454	23 358	851,8
	2. Shopping space	square metres	148	4 770	0	16 318	9 354	-42,7
		R'000	367	17 208	0	46 063	33 305	-27,7
	3. Industrial and warehouse space	square metres	9 702	6 690	0	14 447	11 253	-22,1
		R'000	33 247	5 922	0	42 879	17 605	-58,9
	4. Other non-residential buildings 3/	square metres	0	107	0	3 759	3 060	-18,6
		R'000	0	160	0	7 809	8 008	2,5
	5. Total non-residential buildings	R'000	33 614	29 970	0	99 205	82 276	-17,1
3. Additions and alterations	1. Dwelling-houses	square metres	7 726	11 720	4 722	45 633	50 506	10,7
		R'000	13 462	19 857	12 520	76 056	99 708	31,1
	2. Other buildings 4/	square metres	3 865	3 172	1 007	13 115	15 507	18,2
		R'000	11 732	3 588	47 700	40 240	77 283	92,1
	3. Total additions and alterations	R'000	25 194	23 445	60 220	116 296	176 991	52,2
4. Recorded buildings completed	1. Total at current prices	R'000	84 649	119 204	130 883	441 022	753 151	70,8

1/ The percentage change between cumulative figures for 2006 and 2007.

2/ Other residential buildings include institutions for the disabled, boarding houses, hostels and tourism accommodation e.g. hotels, motels, guesthouses, holiday chalets, bed-and-breakfast accommodation and casinos.

3/ Other non-residential space includes churches, sport and recreation clubs, schools, crèches, hospitals and all other non-residential space.

4/ Other buildings include other residential buildings, non-residential buildings and internal alterations.

* Revised.

Table 24 - Buildings reported as completed to larger municipalities at current prices by type of building: KwaZulu-Natal

			Aug. 2006*	Jul. 2007	Aug. 2007	Jan. - Aug. 2006	Jan. - Aug. 2007	% Change 1/
Category of building	Type of building	Measuring unit						
1. Residential buildings	1. Dwelling-houses < 80 square metres	Number	88	55	216	790	954	20,8
		square metres	4 072	3 360	7 351	35 058	41 109	17,3
		R'000	10 159	10 042	12 212	89 691	99 629	11,1
	2. Dwelling-houses >= 80 square metres	Number	131	134	102	950	1 025	7,9
		square metres	26 200	27 171	24 039	199 479	229 414	15,0
		R'000	79 914	95 737	90 023	597 358	842 750	41,1
	3. Flats and townhouses	Number	408	225	206	1 757	1 704	-3,0
		square metres	73 932	39 889	37 227	315 908	314 587	-0,4
		R'000	226 043	128 768	131 971	999 068	1 111 787	11,3
	4. Other residential buildings 2/	square metres	160	0	0	4 103	20 824	407,5
		R'000	400	0	0	16 155	122 445	657,9
	5. Total residential buildings	R'000	316 516	234 547	234 206	1 702 272	2 176 611	27,9
2. Non-residential buildings	1. Office and banking space	square metres	5 744	9 326	89	46 367	29 792	-35,7
		R'000	22 274	23 313	150	135 763	83 155	-38,7
	2. Shopping space	square metres	11 826	2 579	10 125	35 646	69 167	94,0
		R'000	69 712	10 066	28 962	128 356	218 311	70,1
	3. Industrial and warehouse space	square metres	41 213	41 529	10 979	105 836	231 972	119,2
		R'000	97 481	116 393	28 256	245 922	633 801	157,7
	4. Other non-residential buildings 3/	square metres	2 988	3 044	249	27 109	18 519	-31,7
		R'000	4 303	8 001	623	75 805	61 035	-19,5
	5. Total non-residential buildings	R'000	193 770	157 773	57 991	585 846	996 302	70,1
	3. Additions and alterations	1. Dwelling-houses	square metres	20 489	25 573	30 247	170 706	205 107
R'000			58 390	85 485	93 751	488 934	690 159	41,2
2. Other buildings 4/		square metres	4 601	3 215	11 576	60 903	71 278	17,0
		R'000	18 072	11 433	32 298	207 923	267 173	28,5
3. Total additions and alterations		R'000	76 462	96 918	126 049	696 857	957 332	37,4
4. Recorded buildings completed	1. Total at current prices	R'000	586 748	489 238	418 246	2 984 975	4 130 245	38,4

1/ The percentage change between cumulative figures for 2006 and 2007.

2/ Other residential buildings include institutions for the disabled, boarding houses, hostels and tourism accommodation e.g. hotels, motels, guesthouses, holiday chalets, bed-and-breakfast accommodation and casinos.

3/ Other non-residential space includes churches, sport and recreation clubs, schools, crèches, hospitals and all other non-residential space.

4/ Other buildings include other residential buildings, non-residential buildings and internal alterations.

* Revised.

Table 25 - Buildings reported as completed to larger municipalities at current prices by type of building: North West

			Aug. 2006*	Jul. 2007	Aug. 2007	Jan. - Aug. 2006	Jan. - Aug. 2007	% Change 1/
Category of building	Type of building	Measuring unit						
1. Residential buildings	1. Dwelling-houses < 80 square metres	Number	71	215	136	359	1 832	410,3
		square metres	4 228	8 741	6 310	19 982	70 896	254,8
		R'000	4 333	10 231	9 069	21 408	64 659	202,0
	2. Dwelling-houses >= 80 square metres	Number	116	130	124	879	1 055	20,0
		square metres	20 916	26 966	30 275	169 613	229 940	35,6
		R'000	47 660	77 312	93 171	408 991	657 977	60,9
	3. Flats and townhouses	Number	47	39	97	521	847	62,6
		square metres	9 713	4 525	7 509	64 005	66 812	4,4
		R'000	19 970	15 872	31 433	158 810	184 896	16,4
	4. Other residential buildings 2/	square metres	0	0	0	0	0	
		R'000	0	0	0	0	0	
	5. Total residential buildings	R'000	71 963	103 415	133 673	589 209	907 532	54,0
2. Non-residential buildings	1. Office and banking space	square metres	0	0	332	2 487	3 233	30,0
		R'000	0	0	730	5 320	7 178	34,9
	2. Shopping space	square metres	0	3 889	1 947	29 304	35 085	19,7
		R'000	0	10 980	5 257	121 564	102 759	-15,5
	3. Industrial and warehouse space	square metres	0	1 128	0	5 058	9 458	87,0
		R'000	0	1 225	0	11 109	18 968	70,7
	4. Other non-residential buildings 3/	square metres	425	0	2 800	4 424	4 423	-0,0
		R'000	900	0	6 160	9 954	9 898	-0,6
	5. Total non-residential buildings	R'000	900	12 205	12 147	147 947	138 803	-6,2
	3. Additions and alterations	1. Dwelling-houses	square metres	2 389	3 731	1 701	34 789	30 433
R'000			4 313	8 428	4 279	64 250	62 975	-2,0
2. Other buildings 4/		square metres	94	3 331	0	11 013	10 161	-7,7
		R'000	188	7 530	0	24 217	21 651	-10,6
3. Total additions and alterations		R'000	4 501	15 958	4 279	88 467	84 626	-4,3
4. Recorded buildings completed	1. Total at current prices	R'000	77 364	131 578	150 099	825 623	1 130 961	37,0

1/ The percentage change between cumulative figures for 2006 and 2007.

2/ Other residential buildings include institutions for the disabled, boarding houses, hostels and tourism accommodation e.g. hotels, motels, guesthouses, holiday chalets, bed-and-breakfast accommodation and casinos.

3/ Other non-residential space includes churches, sport and recreation clubs, schools, crèches, hospitals and all other non-residential space.

4/ Other buildings include other residential buildings, non-residential buildings and internal alterations.

* Revised.

Table 26 - Buildings reported as completed to larger municipalities at current prices by type of building: Gauteng

			Aug. 2006*	Jul. 2007	Aug. 2007	Jan. - Aug. 2006	Jan. - Aug. 2007	% Change 1/
Category of building	Type of building	Measuring unit						
1. Residential buildings	1. Dwelling-houses < 80 square metres	Number	659	1 095	1 712	7 058	7 786	10,3
		square metres	30 061	46 143	76 267	310 382	345 366	11,3
		R'000	69 426	85 547	124 984	602 525	689 981	14,5
	2. Dwelling-houses >= 80 square metres	Number	824	728	878	5 486	5 707	4,0
		square metres	204 569	207 644	218 477	1 397 400	1 468 281	5,1
		R'000	646 579	706 266	710 101	4 236 286	4 759 648	12,4
	3. Flats and townhouses	Number	1 144	1 169	2 023	6 857	9 828	43,3
		square metres	160 878	136 314	88 599	910 410	927 848	1,9
		R'000	584 699	519 739	311 795	3 013 018	3 237 991	7,5
	4. Other residential buildings 2/	square metres	0	0	14 892	5 352	76 103	1 322,0
		R'000	0	0	50 967	13 381	272 158	1 933,9
	5. Total residential buildings	R'000	1 300 704	1 311 552	1 197 847	7 865 210	8 959 778	13,9
2. Non-residential buildings	1. Office and banking space	square metres	9 266	44 826	9 464	83 091	201 776	142,8
		R'000	47 097	173 121	54 654	319 789	852 688	166,6
	2. Shopping space	square metres	877	4 143	9 339	191 276	133 646	-30,1
		R'000	2 453	16 605	28 468	683 042	487 056	-28,7
	3. Industrial and warehouse space	square metres	22 153	61 118	39 650	130 542	274 732	110,5
		R'000	65 573	200 859	135 619	356 042	833 186	134,0
	4. Other non-residential buildings 3/	square metres	3 996	1 372	0	14 047	33 015	135,0
		R'000	14 879	6 822	0	44 894	120 938	169,4
	5. Total non-residential buildings	R'000	130 002	397 407	218 741	1 403 767	2 293 868	63,4
3. Additions and alterations	1. Dwelling-houses	square metres	58 811	62 025	50 594	416 250	423 271	1,7
		R'000	177 249	191 910	146 378	1 153 522	1 264 667	9,6
	2. Other buildings 4/	square metres	5 938	12 430	8 116	64 668	92 341	42,8
		R'000	17 817	44 678	23 576	204 933	329 392	60,7
	3. Total additions and alterations	R'000	195 066	236 588	169 954	1 358 455	1 594 059	17,3
4. Recorded buildings completed	1. Total at current prices	R'000	1 625 772	1 945 547	1 586 542	10 627 432	12 847 705	20,9

1/ The percentage change between cumulative figures for 2006 and 2007.

2/ Other residential buildings include institutions for the disabled, boarding houses, hostels and tourism accommodation e.g. hotels, motels, guesthouses, holiday chalets, bed-and-breakfast accommodation and casinos.

3/ Other non-residential space includes churches, sport and recreation clubs, schools, crèches, hospitals and all other non-residential space.

4/ Other buildings include other residential buildings, non-residential buildings and internal alterations.

* Revised.

Table 27 - Buildings reported as completed to larger municipalities at current prices by type of building: Mpumalanga

			Aug. 2006	Jul. 2007	Aug. 2007	Jan. - Aug. 2006	Jan. - Aug. 2007	% Change 1/
Category of building	Type of building	Measuring unit						
1. Residential buildings	1. Dwelling-houses < 80 square metres	Number	32	7	9	504	126	-75,0
		square metres	1 785	445	598	22 398	7 939	-64,6
		R'000	4 190	876	1 543	38 925	22 467	-42,3
	2. Dwelling-houses >= 80 square metres	Number	112	114	272	769	1 133	47,3
		square metres	20 253	20 690	44 652	137 861	193 480	40,3
		R'000	51 682	57 557	111 037	329 330	490 887	49,1
	3. Flats and townhouses	Number	43	145	50	332	333	0,3
		square metres	2 248	19 083	5 890	24 460	41 316	68,9
		R'000	6 872	47 639	19 717	59 062	116 419	97,1
	4. Other residential buildings 2/	square metres	105	0	0	817	690	-15,5
		R'000	315	0	0	2 211	2 160	-2,3
	5. Total residential buildings	R'000	63 059	106 072	132 297	429 528	631 933	47,1
	2. Non-residential buildings	1. Office and banking space	square metres	483	4 115	3 924	9 139	21 247
R'000			1 074	15 259	12 000	23 469	74 954	219,4
2. Shopping space		square metres	0	0	0	17 996	18 734	4,1
		R'000	0	0	0	64 103	53 953	-15,8
3. Industrial and warehouse space		square metres	2 191	4 049	0	23 474	17 327	-26,2
		R'000	3 300	8 161	0	46 799	37 885	-19,0
4. Other non-residential buildings 3/		square metres	826	2 210	0	1 415	3 550	150,9
		R'000	1 500	2 500	0	2 665	5 828	118,7
5. Total non-residential buildings		R'000	5 874	25 920	12 000	137 036	172 620	26,0
3. Additions and alterations	1. Dwelling-houses	square metres	4 081	4 322	10 194	41 645	41 906	0,6
		R'000	7 722	10 207	22 386	70 396	94 337	34,0
	2. Other buildings 4/	square metres	3 764	1 377	2 013	8 763	7 924	-9,6
		R'000	5 835	1 944	5 925	20 422	27 061	32,5
	3. Total additions and alterations	R'000	13 557	12 151	28 311	90 818	121 398	33,7
4. Recorded buildings completed	1. Total at current prices	R'000	82 490	144 143	172 608	657 382	925 951	40,9

1/ The percentage change between cumulative figures for 2006 and 2007.

2/ Other residential buildings include institutions for the disabled, boarding houses, hostels and tourism accommodation e.g. hotels, motels, guesthouses, holiday chalets, bed-and-breakfast accommodation and casinos.

3/ Other non-residential space includes churches, sport and recreation clubs, schools, crèches, hospitals and all other non-residential space.

4/ Other buildings include other residential buildings, non-residential buildings and internal alterations.

Table 28 - Buildings reported as completed to larger municipalities at current prices by type of building: Limpopo

			Aug. 2006	Jul. 2007	Aug. 2007	Jan. - Aug. 2006	Jan. - Aug. 2007	% Change 1/
Category of building	Type of building	Measuring unit						
1. Residential buildings	1. Dwelling-houses < 80 square metres	Number	27	18	16	173	221	27,7
		square metres	1 631	1 246	1 104	10 748	14 090	31,1
		R'000	4 341	3 219	2 867	26 613	36 050	35,5
	2. Dwelling-houses >= 80 square metres	Number	52	54	40	355	381	7,3
		square metres	9 270	11 430	7 824	68 816	71 289	3,6
		R'000	23 906	34 610	21 198	180 750	200 524	10,9
	3. Flats and townhouses	Number	13	31	22	177	145	-18,1
		square metres	1 652	3 214	1 719	20 979	15 338	-26,9
		R'000	2 927	9 532	4 672	51 795	41 516	-19,8
	4. Other residential buildings 2/	square metres	200	0	0	200	0	
		R'000	600	0	0	600	0	
	5. Total residential buildings	R'000	31 774	47 361	28 737	259 758	278 090	7,1
	2. Non-residential buildings	1. Office and banking space	square metres	0	0	352	2 425	1 528
R'000			0	0	774	5 303	4 302	-18,9
2. Shopping space		square metres	0	0	789	14 101	4 962	-64,8
		R'000	0	0	1 736	26 105	12 190	-53,3
3. Industrial and warehouse space		square metres	0	0	4 006	1 713	6 505	279,7
		R'000	0	0	8 813	4 997	13 994	180,0
4. Other non-residential buildings 3/		square metres	0	893	0	1 305	1 173	-10,1
		R'000	0	1 786	0	3 654	2 402	-34,3
5. Total non-residential buildings		R'000	0	1 786	11 323	40 059	32 888	-17,9
3. Additions and alterations		1. Dwelling-houses	square metres	694	682	1 623	7 211	9 282
	R'000		1 943	1 737	3 816	17 242	21 920	27,1
	2. Other buildings 4/	square metres	0	83	0	2 005	1 506	-24,9
		R'000	0	183	0	5 736	3 098	-46,0
	3. Total additions and alterations	R'000	1 943	1 920	3 816	22 978	25 018	8,9
4. Recorded buildings completed	1. Total at current prices	R'000	33 717	51 067	43 876	322 795	335 996	4,1

1/ The percentage change between cumulative figures for 2006 and 2007.

2/ Other residential buildings include institutions for the disabled, boarding houses, hostels and tourism accommodation e.g. hotels, motels, guesthouses, holiday chalets, bed-and-breakfast accommodation and casinos.

3/ Other non-residential space includes churches, sport and recreation clubs, schools, crèches, hospitals and all other non-residential space.

4/ Other buildings include other residential buildings, non-residential buildings and internal alterations.

Table 29 - Subsidised low-cost dwelling-houses completed and in process of completion 1/

Province	Year	Number	Square metres 2/	Value R'000 2/
Western Cape	2002	19 534	531 116	168 852
	2003	16 926	507 780	247 187
	2004	12 751	382 530	211 424
Eastern Cape	2002	46 700	1 575 675	473 806
	2003	35 005	1 050 150	511 213
	2004	34 923	1 047 690	579 058
Northern Cape	2002	5 189	164 906	68 078
	2003	4 354	130 620	63 586
	2004	3 645	109 350	60 438
Free State	2002	8 617	348 492	154 121
	2003	14 848	445 440	216 840
	2004	16 522	495 660	273 951
KwaZulu-Natal	2002	21 958	831 349	234 041
	2003	31 372	941 160	458 157
	2004	35 968	1 079 040	596 385
North West	2002	21 309	630 115	210 439
	2003	13 809	414 270	201 667
	2004	10 149	304 470	168 281
Gauteng	2002	29 939	991 571	321 943
	2003	42 862	1 285 860	625 957
	2004	33 260	997 800	551 484
Mpumalanga	2002	19 883	660 505	253 931
	2003	21 336	640 080	246 079
	2004	18 808	564 240	311 855
Limpopo	2002	15 382	605 877	183 769
	2003	15 596	467 880	227 764
	2004	16 338	490 140	270 900
South Africa	2002	188 511	6 339 606	2 068 980
	2003	196 108	5 883 240	2 798 450
	2004	182 364	5 470 920	3 023 777

Table 30 - Subsidised low-cost dwelling-houses completed: 1 April 2005 to 31 March 2006

Province	Number	Square metres 2/	Value R'000 2/
Western Cape	2 040	61 200	52 877
Eastern Cape	16 874	506 220	437 374
Northern Cape	5 293	158 790	137 195
Free State	17 635	529 050	457 099
KwaZulu-Natal	21 601	648 030	559 898
North West	14 445	433 350	374 414
Gauteng	23 409	702 270	606 761
Mpumalanga	14 389	431 670	372 963
Limpopo	21 973	659 190	569 540
South Africa	137 659	4 129 770	3 568 121

Table 31 - Subsidised low-cost dwelling-houses completed and in process of completion 1/: 1 April 2006 to 31 March 2007

Province	Number	Square metres 2/	R'000 2/
Western Cape	34 585	1 037 550	768 200
Eastern Cape	16 526	495 780	637 700
Northern Cape	3 880	116 400	104 800
Free State	19 662	589 860	528 400
KwaZulu-Natal	38 290	1 148 700	1 074 500
North West	46 972	1 409 160	696 500
Gauteng	77 044	2 311 320	1 748 300
Mpumalanga	10 651	319 530	329 900
Limpopo	23 609	708 270	646 700
South Africa	271 219	8 136 570	6 535 000

Source: Housing Subsidy System and Provincial Housing Departments co-ordinated by the National Department of Housing

1/ Includes all top structures completed and sites serviced in respect of the reporting period.

2/ Estimates by the National Department of Housing.

Explanatory notes

Introduction	1	Statistics South Africa (Stats SA) conducts a monthly building statistics survey collecting information regarding building plans passed and buildings completed, financed by the private sector, from the largest local government institutions in South Africa. According to these institutions, they are not always notified about low-cost housing projects and therefore do not include the bulk of low-cost dwelling-houses. Data regarding subsidised low-cost dwelling-houses, supplied by the Housing Subsidy System and Provincial Housing Departments and co-ordinated by the National Department of Housing, are shown in table 29 to table 31 (page 37).
	2	In order to improve timeliness of the publication, some information for the current month has been estimated due to late submission by respondents. These estimates will be revised in the next statistical release(s) as soon as actual information is available.
Purpose of the survey	3	The monthly survey data are used in monitoring the state of economy and formulation of economic policy. Furthermore, the results are important inputs to estimate the Gross Domestic Product (GDP) and to calculate the Composite Leading Business Cycle Indicator. The data are extensively used by the private sector.
Scope of the survey	4	This survey covers local government institutions conducting activities for the private sector regarding - <ul style="list-style-type: none"> • passing of building plans; and • final inspection of completed buildings.
Classification	5	Building activities is classified in division 5 according to the 1993 edition of the <i>Standard Industrial Classification of all Economic Activities, (SIC) Fifth Edition, Report No. 09-90-02</i> . The SIC is based on the 1990 <i>International Standard Industrial Classification of all Economic Activities (ISIC)</i> with suitable adaptations for local conditions.
Response rate	6	The preliminary response rate for the survey on building statistics for August 2007 was 93,9%. Improved response rate for July 2007 was 96,5%.
Statistical unit	7	The statistical unit for the collection of information is a local government institution. Local government institutions include district municipalities, metropolitan municipalities and local municipalities.
Survey methodology and design	8	<p>Stats SA conducts a monthly survey of metropolitan municipalities and large local municipalities on building plans passed and buildings completed. An annual survey of the remaining municipalities is conducted regarding buildings completed. The monthly survey represents approximately 90 percent of the total value of buildings completed. Information regarding building plans passed and buildings completed for the private sector is collected by mail, fax and telephone.</p> <p>According to the municipalities, they are not always notified about low-cost housing projects. Data regarding subsidised low-cost dwelling-houses, supplied by the provincial governments and co-ordinated by the National Department of Housing, are shown in table 29 and table 30 (page 37).</p>
Constant prices	9	The value of building plans passed and buildings completed at constant prices measures building activities in terms of ruling prices in a specific base year, which is currently 2000. The value of building plans passed at constant prices for each month is obtained by deflating the values at current prices with a price index known as the 'lump sum domestic buildings' as published in statistical release P0151: <i>JBCC Contract Price Adjustment Provisions Work Group Indices</i> . In order to be applicable, these indices (base February 1991=100) are converted to the base year 2000=100.

- 10** The value of buildings completed at constant prices is obtained by deflating the values at current prices with the price index which is used to calculate building plans passed at constant prices (see paragraph 8). Since the completion of buildings may extend over a few months to a few years, the current value of buildings completed is deflated by price indices which prevailed at the time the plans were passed. Therefore, the duration of the completion of different types of buildings are taken into account in ascertaining the deflators e.g. the value of dwelling-houses completed at constant prices at January 2007 is obtained by deflating the current value of dwelling-houses completed for January 2007 with the price index of a month six months prior to January 2007. Furthermore, the value of other residential buildings, non-residential buildings and additions and alterations at constant prices is obtained by deflating the current values with price indices of 12 months, 18 months and 12 months prior to the relevant month, respectively.
- Seasonal adjustment**
- 11** Seasonally adjusted estimates of building plans passed and buildings completed are generated each month, using the X-11 Seasonal Adjustment Program developed by US Bureau of the Census Economic Research and Analyses Division, 1968.
- 12** Seasonal adjustment is a means of removing the estimated effects of normal seasonal variation from the series so that the effects of other influences on the series can be more clearly recognised. Seasonal adjustment does not aim to remove irregular or non-seasonal influences which may be present in any particular month. Influences that are volatile or unsystematic can still make it difficult to interpret the movement of the series even after adjustment for seasonal variations. Therefore, the month-to-month movements of seasonally adjusted estimates may not be reliable indicators of trend behaviour.
- Trend cycle**
- 13** The trend is a long-term pattern or movement of a time series. The X-11 Seasonal Adjustment Program is used for smoothing seasonally adjusted data.
- Revised figures**
- 14** Revised figures are due to late submission of data to Stats SA, or to respondents reporting revisions or corrections to their figures. Figures for the latest month are therefore preliminary. Data are edited at municipal level.
- 15** Once a year the annual statistical release P5041.3 is published with the revised and updated information at provincial and municipal level for the previous calendar year. Due to this comprehensive revision, the monthly statistical release P5041.1 reflects provincial revision for 2006 where applicable.
- Related publications**
- 16** Users may also wish to refer to the following publications:
- P5041.3: Selected building statistics of the private sector as reported by local government institutions issued annually.
 - P9101.2: Actual and expected expenditure on construction by the public sector per statistical region issued annually.
 - Bulletin of Statistics issued quarterly.
 - South African Statistics issued annually.
 - Report 50-11-01 issued annually.
- Rounding-off of figures**
- 17** The figures in the tables have, where necessary, been rounded off to the nearest digit shown.
- Pre-release policy**
- 18** Stats SA's pre-release policy may be inspected at its website, www.statssa.gov.za

**Symbols and
abbreviations**

19	..	no meaningful percentage change between two specified periods available since either one or both of the totals are nil
	0	nil or figure too small to publish
	*	revised
	Stats SA	Statistics South Africa
	SIC	Standard Industrial Classification of all Economic Activities
	ISIC	International Standard Industrial Classification of all Economic Activities
	JBCC	Joint Building Contracts Committee
	CD	Compact Disc
	US	United States
	SARB	South African Reserve Bank
	DTI	Department of Trade and Industry

Glossary

Additions and alterations	They include extensions to existing buildings as well as internal and external alterations of existing buildings.
Blocks of flats	High-density housing consisting of a number of self-contained dwelling-units, each with at least one living-room together with a kitchen and bathroom, conjoined to similar units in one building.
Dwelling-house	A free-standing, complete structure on a separate stand or a self-contained dwelling-unit, granny flat, on the same premises as an existing residence. Out-buildings and garages are included.
Local government institutions	Include – <ul style="list-style-type: none"> • District municipalities; • Metropolitan municipalities; and • Local municipalities.
Municipality	A generic term describing the “unit” of government in the local spheres responsible for local government in a geographically demarcated area and including district, metropolitan and local municipalities. It is an institution consisting of a municipal council (elected political representatives) and municipal administration (appointed officials).
District municipality	Municipality that has municipal executive and legislative authority in an area that includes more than one municipality, and which is described in section 155(1) of the Constitution as a category C municipality (Refer to Local Government: Municipal Structure Act, 1998 (Act No. 117 of 1998)).
Metropolitan municipality	Municipality that has municipal executive and legislative authority in an area that includes more than one municipality, and which is described in section 155(1) of the Constitution as a category A municipality (Refer to Local Government: Municipal Structure Act, 1998 (Act No. 117 of 1998)).
Local municipality	Municipality that shares municipal executive and legislative authority in its area with a district municipality within whose area it falls, that is described in section 155(1) of the constitution as a category B municipality.
Non-residential buildings	Comprise factories, commercial, financial and other office buildings, as well as other buildings not used for residential purposes, such as churches, halls, clubs, schools and hospitals.
Other residential buildings	Institutions for the disabled, boarding houses, old people’s homes, hostels, hotels, motels, guesthouses, holiday chalets, bed-and-breakfast accommodation, entertainment centres and casinos.
Percentage change	<p>When using monthly actual values, the percentage change is the change in actual values of building activities (building plans passed or buildings completed) of the relevant month compared with the actual values of building activities (building plans passed or buildings completed) of the same month in the previous year expressed as a percentage.</p> <p>When using annual actual values, the percentage change is the change in the actual values of building activities (building plans passed or buildings completed) of the relevant year compared with the actual values of building activities (building plans passed or buildings completed) of the previous year expressed as a percentage.</p> <p>When using seasonally adjusted values, the percentage change is the change in the seasonally adjusted values of building activities (building plans passed or buildings completed) of the relevant month compared with the seasonally adjusted values of building activities (building plans passed or buildings completed) of the previous month expressed as a percentage.</p>

Reference period	One calendar month.
Residential buildings	Comprise dwelling-houses, flats, townhouses and other residential buildings.
Townhouses	Multiple, medium-density dwelling-units and include cluster housing, group housing, simplexes, duplexes, triplexes and other similar dwelling-units which are usually grouped together, with one level of each unit on ground level. This excludes blocks of flats.

General information

Stats SA publishes approximately 300 different statistical releases each year. It is not economically viable to produce them in more than one of South Africa's eleven official languages. Since the releases are used extensively, not only locally but also by international economic and social-scientific communities, Stats SA releases are published in English.

Stats SA has copyright on this publication. Users may apply the information as they wish, provided that they acknowledge Stats SA as the source of the basic data wherever they process, apply, utilise, publish or distribute the data and also that they specify that the relevant application and analysis (where applicable) result from their own processing of the data.

An advance release calendar is disseminated on www.statssa.gov.za

Stats SA products

A complete set of Stats SA publications is available at the Stats SA Library and the following libraries:

National Library of South Africa, Pretoria Division
National Library of South Africa, Cape Town Division
Natal Society Library, Pietermaritzburg
Library of Parliament, Cape Town
Bloemfontein Public Library
Johannesburg Public Library
Eastern Cape Library Services, King William's Town
Central Regional Library, Polokwane
Central Reference Library, Nelspruit
Central Reference Collection, Kimberley
Central Reference Library, Mmabatho

Stats SA also provides a subscription service.

Electronic services

A large range of data are available via on-line services, diskette, CD and computer printouts. For more details about our electronic data services, contact (012) 310 8600/8390/8351/4892/8496/8095.

You can visit us on the Internet at: www.statssa.gov.za

Enquiries

Telephone number: (012) 310 8600/8390/8351/4892/8496/8095 (user information services)
(012) 310 8228/310 8007 (technical enquiries)
(012) 310 8161 (orders)
(012) 310 4883/4885/8018 (library)

Fax number: (012) 310 8664 (technical enquiries)

Email: Gretaz@statssa.gov.za (technical enquiries)
info@statssa.gov.za (user information services)
distribution@statssa.gov.za (orders)

Postal address: Private Bag X44, Pretoria, 0001

Produced by Stats SA