

# **Selected building statistics of the private sector derived from data reported by local government institutions**

**August 2003**

Co-operation between Statistics South Africa (Stats SA), the citizens of the country, the private sector and government institutions is essential for a successful statistical system. Without continued co-operation and goodwill, the timely release of relevant and reliable official statistics will not be possible.

**Embargo: 13:00  
Date: 15 October 2003**

Stats SA publishes approximately three hundred different releases each year. It is not economically viable to produce them in more than one of South Africa's eleven official languages. Since the releases are used extensively, not only locally, but also by international economic and social-scientific communities, Stats SA releases are published in English only.

### Key figures regarding building plans passed for the month ended August 2003

#### Actual estimates at constant 2000 prices

	August 2003 R million	January 2003 to August 2003 R million	Percentage change between August 2002 and August 2003	Percentage change between June 2002 to August 2002 and June 2003 to August 2003	Percentage change between January 2002 to August 2002 and January 2003 to August 2003
Residential buildings					
Dwelling-houses	819,6	5 914,5	+ 3,9	+ 9,2	+ 4,4
Flats and townhouses	432,6	2 388,8	+ 171,6	+ 127,9	+ 61,0
Other residential buildings	8,0	121,8	+ 18,9	- 61,5	- 46,3
<b>Total</b>	<b>1 260,2</b>	<b>8 425,1</b>	<b>+ 32,0</b>	<b>+ 29,5</b>	<b>+ 14,3</b>
Non-residential buildings	307,0	2 359,9	- 4,2	+ 0,1	- 14,4
Additions and alterations	531,0	4 110,4	- 7,3	+ 7,5	+ 2,6
<b>Total</b>	<b>2 098,2</b>	<b>14 895,4</b>	<b>+ 13,5</b>	<b>+ 17,9</b>	<b>+ 5,4</b>

#### Seasonally adjusted estimates at constant 2000 prices

	August 2003 R million	Percentage change between July 2003 and August 2003	Percentage change between March 2003 to May 2003 and June 2003 to August 2003
Residential buildings	1 244,5	- 1,0	+ 21,2
Non-residential buildings	290,3	+ 2,5	+ 23,4
Additions and alterations	495,0	- 20,5	+ 4,9
<b>Total</b>	<b>2 029,8</b>	<b>- 6,2</b>	<b>+ 16,7</b>

### Key findings regarding building plans passed for the three months ended August 2003

#### Seasonally adjusted real value of building plans passed increases

*The seasonally adjusted real value of building plans passed (at constant 2000 prices) for the three months ended August 2003 increased by 16,7%, compared with the previous three months.*

The increase of 16,7% in the seasonally adjusted real value of building plans passed during the three months ended August 2003 compared with the previous three months was due to increases reported for non-residential buildings (+23,4%), residential buildings (+21,2%) and additions and alterations (+4,9%).

## Key findings regarding building plans passed for the first eight months of 2003

### Total real value of building plans passed increases

*The total real value of building plans passed (at constant 2000 prices) during the first eight months of 2003 increased by 5,4% (+R756,5 million) to R14 895,4 million, compared with the first eight months of 2002. Large real increases in the value of building plans passed were reported for flats and townhouses (+R904,9 million), dwelling-houses (+R250,8 million) and additions and alterations (+R104,2 million). Large increases for flats and townhouses were reported by Gauteng (+R421,2 million), KwaZulu-Natal (+R294,4 million) and Western Cape (+R258,8 million), whereas large increases for dwelling-house plans passed were reported by Gauteng (+R349,1 million) and KwaZulu-Natal (+R148,0 million). However, these increases were to a certain extent counteracted by real decreases reported for non-residential buildings (-R398,5 million) and 'other' residential buildings (-R104,9 million).*

### Four of the nine provinces reported increases in the total real value of building plans passed

The largest provincial contributors to the increase of 5,4% (+R756,5 million) in the total real value of building plans passed were Gauteng (+3,7 percentage points or R525,0 million) and KwaZulu-Natal (+3,0 percentage points or R421,4 million) (see table A). In Gauteng, large real increases for flats and townhouses were reported by Witwatersrand (+R280,3 million) and City of Tshwane (+R153,6 million). Regarding dwelling-houses, the largest real increase was reported by Witwatersrand (+R285,8 million), followed by City of Tshwane (+R50,1 million) and Kungwini Local Municipality (+R11,9 million). Large real increases in KwaZulu-Natal were reported for shopping space (+R295,0 million, mainly due to real increases reported by the selected urban areas of eThekweni Municipality (+R226,2 million) and Msunduzi Municipality (+R185,0 million)), flats and townhouses (+R294,4 million, mainly due to real increases reported by North Operational Entity, Umhlanga Rocks (+R119,8 million) and Outer West Operational Entity (+R70,3 million)) and dwelling-houses (+R148,0 million).

**Table A - Contribution of provinces to the total real value of building plans passed**

Province	Percentage contribution to the total real value of plans passed during January 2002 to August 2002	Percentage change between January 2002 to August 2002 and January 2003 to August 2003	Contribution (percentage points) <sup>1/</sup> to the percentage change in the real value of plans passed between January 2002 to August 2002 and January 2003 to August 2003	Difference in total real value of plans passed between January 2002 to August 2002 and January 2003 to August 2003  R million
Gauteng	40,6	+ 9,1	+ 3,7	+ 525,0
KwaZulu-Natal	12,8	+ 23,2	+ 3,0	+ 421,4
Western Cape	27,9	+ 2,5	+ 0,7	+ 97,9
North West	3,0	+ 3,5	+ 0,1	+ 14,7
Northern Cape	0,5	- 2,0	- 0,0	- 1,6
Free State	2,7	- 5,2	- 0,1	- 19,7
Eastern Cape	5,7	- 5,2	- 0,3	- 42,4
Mpumalanga	4,1	- 16,8	- 0,7	- 96,2
Limpopo	2,7	- 37,2	- 1,0	- 142,6
<b>Total</b>	<b>100,0</b>	<b>+ 5,4</b>	<b>+ 5,4</b>	<b>+756,5</b>

<sup>1/</sup> The contribution (percentage points) is calculated by multiplying the percentage change of each province between January 2002 to August 2002 and January 2003 to August 2003 (see column 3) with the percentage contribution of the corresponding province to the total real value of plans passed during January 2002 to August 2002 (see column 2) divided by 100.

### Key figures regarding buildings completed for the month ended August 2003

#### Actual estimates at constant 2000 prices

	August 2003 R million	January 2003 to August 2003 R million	Percentage change between August 2002 and August 2003	Percentage change between June 2002 to August 2002 and June 2003 to August 2003	Percentage change between January 2002 to August 2002 and January 2003 to August 2003
Residential buildings					
Dwelling-houses	441,3	3 364,3	+ 3,5	+ 3,1	+ 3,8
Flats, townhouses and other residential buildings	224,3	1 987,6	- 4,9	+ 149,3	+ 34,5
<b>Total</b>	<b>665,6</b>	<b>5 351,9</b>	<b>+ 0,5</b>	<b>+ 43,0</b>	<b>+ 13,4</b>
Non-residential buildings	133,6	2 074,1	+ 45,2	- 18,3	+ 35,5
Additions and alterations	229,6	1 882,7	+ 9,2	+ 12,5	+ 1,4
<b>Total</b>	<b>1 028,8</b>	<b>9 308,7</b>	<b>+ 6,7</b>	<b>+ 25,1</b>	<b>+ 14,9</b>

#### Seasonally adjusted estimates at constant 2000 prices

	August 2003 R million	Percentage change between July 2003 and August 2003	Percentage change between March 2003 to May 2003 and June 2003 to August 2003
Residential buildings	646,7	- 52,6	+ 61,5
Non-residential buildings	190,2	+ 51,9	- 58,9
Additions and alterations	237,2	- 7,8	+ 20,2
<b>Total</b>	<b>1 074,1</b>	<b>- 38,5</b>	<b>+ 13,7</b>

### Key findings regarding buildings completed for the three months ended August 2003

#### Seasonally adjusted real value of buildings completed increases

*The seasonally adjusted real value of buildings completed (at constant 2000 prices) for the three months ended August 2003 increased by 13,7%, compared with the previous three months.*

The increase of 13,7% in the seasonally adjusted real value of buildings completed during the three months ended August 2003 compared with the previous three months was due to increases in the seasonally adjusted real value of residential buildings (+61,5%) and additions and alterations (+20,2%). However, these increases were partially counteracted by a decrease in the seasonally adjusted real value of non-residential buildings completed (-58,9%) during the above-mentioned period.

## Key findings regarding buildings completed for the first eight months of 2003

### Total real value of buildings completed increases

*The total real value of buildings completed (at constant 2000 prices) during the first eight months of 2003 increased by 14,9% (+R1 203,8 million) to R9 308,7 million, compared with the first eight months of 2002. The largest increases in the real value of buildings completed were reported for non-residential buildings (+R543,2 million, mainly due to real increases reported by Gauteng (+R638,0 million)) and 'other' residential buildings (+R403,9, mainly due to real increases reported by KwaZulu-Natal (+R380,5 million) and Western Cape (+R215,3 million)).*

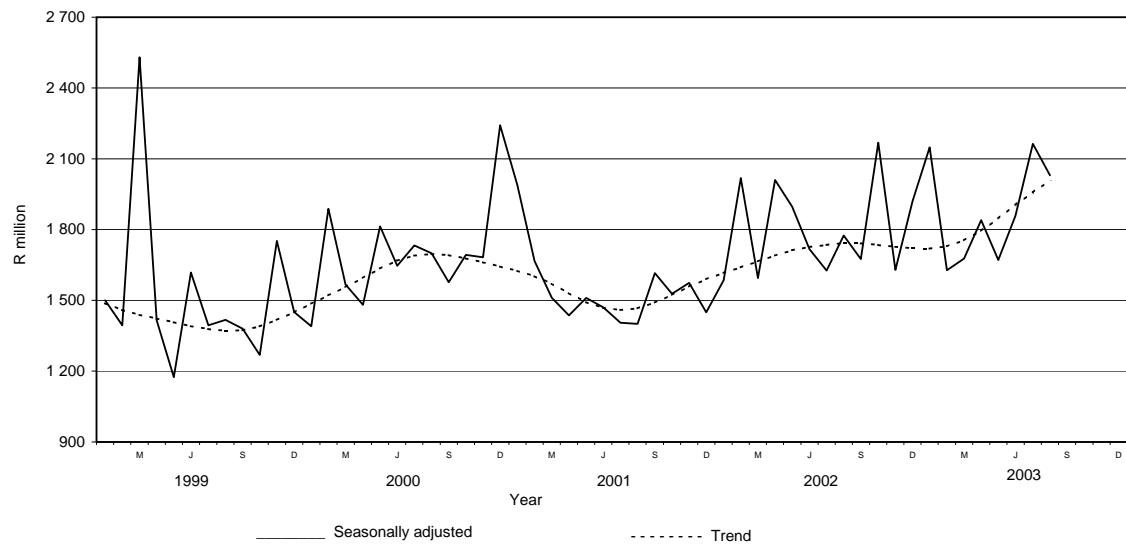
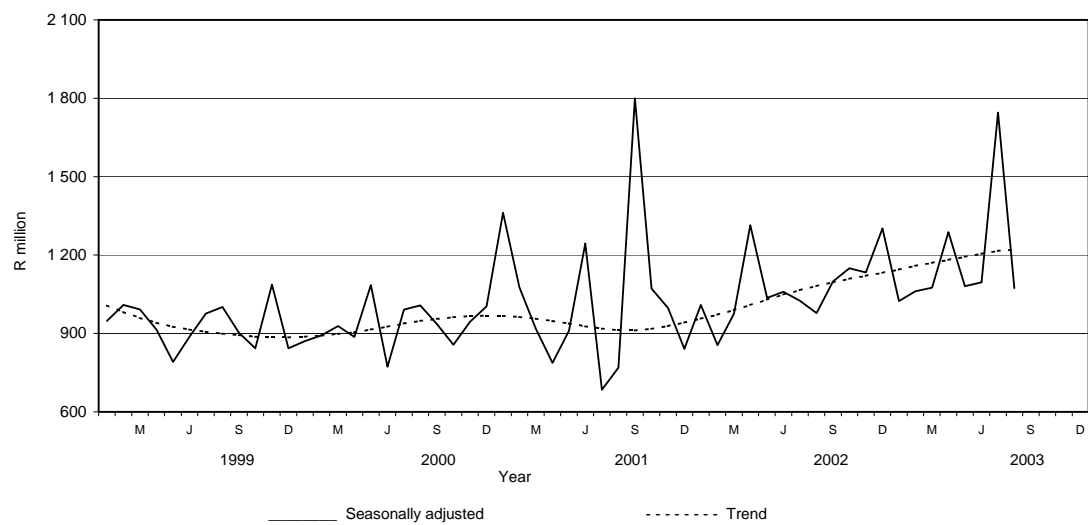
### Six of the nine provinces reported increases in the total real value of buildings completed

The largest provincial contributor to the increase of 14,9% (+R1 203,8 million) in the total real value of buildings completed was Gauteng (+12,9 percentage points or R1 046,1 million), followed by KwaZulu-Natal (+1,6 percentage points or R132,3 million), Western Cape (+1,3 percentage point or R107,1 million) and Mpumalanga (+1,1 percentage points or R92,2 million) (see table B). The largest real increases in Gauteng were reported for non-residential buildings (+R638,0 million, mainly due to increases reported by City of Johannesburg (+R576,0 million)) and dwelling-houses (+R286,8 million, mainly due to increases reported by Witwatersrand (+R147,7 million) and City of Tshwane (+R99,5 million)).

**Table B - Contribution of provinces to the total real value of buildings completed**

Province	Percentage contribution to the total real value of buildings completed during January 2002 to August 2002	Percentage change between January 2002 to August 2002 and January 2003 to August 2003	Contribution (percentage points) <sup>1/</sup> to the percentage change in the real value of buildings completed between January 2002 to August 2002 and January 2003 to August 2003	Difference in total real value of buildings completed between January 2002 to August 2002 and January 2003 to August 2003  R million
Gauteng	36,3	+ 35,5	+ 12,9	+1 046,1
KwaZulu-Natal	14,8	+ 11,0	+ 1,6	+ 132,3
Western Cape	31,6	+ 4,2	+ 1,3	+ 107,1
Mpumalanga	2,0	+ 56,3	+ 1,1	+ 92,2
North West	3,3	+ 16,1	+ 0,6	+ 42,8
Northern Cape	0,7	+ 1,0	+ 0,0	+ 0,5
Free State	3,2	- 7,9	- 0,2	- 20,7
Eastern Cape	4,9	- 5,9	- 0,3	- 23,5
Limpopo	3,2	- 67,4	- 2,1	- 173,0
<b>Total</b>	<b>100,0</b>	<b>+ 14,9</b>	<b>+ 14,9</b>	<b>+1 203,8</b>

<sup>1/</sup> The contribution (percentage points) is calculated by multiplying the percentage change of each province between January 2002 to August 2002 and January 2003 to August 2003 (see column 3) with the percentage contribution of the corresponding province to the total real value of buildings completed during January 2002 to August 2002 (see column 2) divided by 100.

**Figure 1 – Total real value of building plans passed****Figure 2 – Total real value of buildings completed**

PP  
**PJ Lehohla**  
**Statistician-General**

# Contents

<b>Page</b>		
<b>Notes</b>	.....	7
<b>Tables</b>		
Table 1	Actual values and percentage change of building plans passed at current prices according to type of building .....	8
Table 2	Seasonally adjusted values and percentage change of building plans passed at current prices according to type of building .....	9
Table 3	Actual values and percentage change of building plans passed at constant 2000 prices according to type of building .....	10
Table 4	Seasonally adjusted values and percentage change of building plans passed at constant 2000 prices according to type of building .....	11
Table 5	Actual values and percentage change of buildings completed at current prices according to type of building .....	12
Table 6	Seasonally adjusted values and percentage change of buildings completed at current prices according to type of building .....	13
Table 7	Actual values and percentage change of buildings completed at constant 2000 prices according to type of building .....	14
Table 8	Seasonally adjusted values and percentage change of buildings completed at constant 2000 prices according to type of building .....	15
Table 9	Building plans passed according to type of building: Total RSA .....	16
Table 10	Building plans passed according to type of building and province: Western Cape .....	17
Table 11	Building plans passed according to type of building and province: Eastern Cape .....	18
Table 12	Building plans passed according to type of building and province: Northern Cape .....	19
Table 13	Building plans passed according to type of building and province: Free State .....	20
Table 14	Building plans passed according to type of building and province: KwaZulu-Natal .....	21
Table 15	Building plans passed according to type of building and province: North West .....	22
Table 16	Building plans passed according to type of building and province: Gauteng .....	23
Table 17	Building plans passed according to type of building and province: Mpumalanga .....	24
Table 18	Building plans passed according to type of building and province: Limpopo.....	25
Table 19	Buildings completed according to type of building: Total RSA .....	26
Table 20	Buildings completed according to type of building and province: Western Cape .....	27
Table 21	Buildings completed according to type of building and province: Eastern Cape .....	28
Table 22	Buildings completed according to type of building and province: Northern Cape.....	29
Table 23	Buildings completed according to type of building and province: Free State .....	30
Table 24	Buildings completed according to type of building and province: KwaZulu-Natal .....	31
Table 25	Buildings completed according to type of building and province: North West .....	32
Table 26	Buildings completed according to type of building and province: Gauteng .....	33
Table 27	Buildings completed according to type of building and province: Mpumalanga .....	34
Table 28	Buildings completed according to type of building and province: Limpopo.....	35
Table 29	Building plans passed according to type of building and selected urban area: Cape Town .....	36
Table 30	Building plans passed according to type of building and selected urban area: Port Elizabeth ....	37
Table 31	Building plans passed according to type of building and selected urban area: Durban .....	38
Table 32	Building plans passed according to type of building and selected urban area: Witwatersrand .....	39
Table 33	Building plans passed according to type of building and selected urban area: Pretoria .....	40
Table 34	Building plans passed according to type of building and selected urban area: Bloemfontein .....	41
Table 35	Buildings completed according to type of building and selected urban area: Cape Town .....	42
Table 36	Buildings completed according to type of building and selected urban area: Port Elizabeth .....	43
Table 37	Buildings completed according to type of building and selected urban area: Durban .....	44
Table 38	Buildings completed according to type of building and selected urban area: Witwatersrand .....	45
Table 39	Buildings completed according to type of building and selected urban area: Pretoria .....	46
Table 40	Buildings completed according to type of building and selected urban area: Bloemfontein .....	47
<b>Additional information</b>		
Explanatory	notes	48
.....		50
Technical notes .....		
Table C – Classification of towns and cities according to names of local government institutions before and after boundaries and name changes by province.....		51
Table D – Classification of selected urban areas according to names of local government institutions before and after boundaries and name changes .....		63
Glossary .....		66
<b>For more information</b> .....		68

## Notes

Forthcoming issues	Issue	Expected release date
	September 2003	19 November 2003
	October 2003	17 December 2003
	November 2003	21 January 2004
	December 2003	18 February 2004
<b>Purpose of the survey</b>	The Building Statistics Survey is a survey covering a sample of local government institutions in South Africa. The information received is used to estimate key economic statistics used by the private and public sectors. The information is also used to compile estimates of the Gross Domestic Product (GDP).	
<b>Name change of statistical release</b>	As from the November 2002 publication, the name of the monthly Statistical Release P5041.1: <i>Building Statistics</i> , has changed to <i>Selected building statistics of the private sector derived from data reported by local government institutions</i> .	
<b>Change in base year of constant prices from 1995 to 2000</b>	Following international practice, the base year of the price index ('lump sum domestic buildings' as published in Statistical Release P0151: <i>JBCC Contract Price Adjustment Provision Work Group Indices</i> , which is used to deflate the current prices of building plans passed and buildings completed to constant prices, has been converted to 2000=100 with effect from May 2002. Previously the value of building plans passed and buildings completed was published at constant 1995 prices. It should be borne in mind that the change does not in any way affect the trends.	
<b>Name and boundary changes of local government institutions</b>	Due to the Local Government: Municipal Structures Act (Act No. 117 of 1998) and the Local Government Municipal Demarcation Bill (B36B-98), the boundaries and the names of local government institutions have changed. In order to assist the reader to identify the approximate geographical locality and the names of the new local government institutions covered in the monthly sample survey, Table C (page 51) and Table D (page 63) provide lists of old and new names.	
	Further information may also be found on the website of the South African Government at <a href="http://www.gov.za">www.gov.za</a> , see section GOVZA: Government System, and the website of the Municipal Demarcation Board at <a href="http://www.demarcation.org.za">www.demarcation.org.za</a>	
<b>Response rate</b>	The response rate for August 2003 was 96,1%	



**Table 1 - Actual values and percentage change of building plans passed at current prices according to type of building**

Year <sup>1/</sup> and month <sup>2/</sup>	Residential buildings		Non-residential buildings		Additions and alterations		Total	
	R'000	Percentage change	R'000	Percentage change	R'000	Percentage change	R'000	Percentage change
2001 Jan	725 361	+ 47,3	494 719	+ 195,7	353 381	- 3,7	1 573 461	+ 53,3
Feb	836 784	+ 6,3	307 366	- 42,7	476 205	+ 18,9	1 620 355	- 6,0
Mar	933 489	+ 24,6	303 878	- 18,6	438 569	- 15,1	1 675 936	+ 2,3
Apr	742 978	+ 18,0	209 133	- 24,6	379 527	- 1,0	1 331 638	+ 3,2
May	1 006 490	+ 14,4	293 506	- 52,9	502 062	+ 5,8	1 802 058	- 8,9
Jun	904 990	+ 5,8	300 500	- 12,2	448 243	- 15,9	1 653 733	- 4,4
Jul	893 707	- 2,0	366 953	- 25,1	435 627	- 20,9	1 696 287	- 13,1
Aug	839 388	+ 3,8	247 416	- 30,7	485 215	- 1,9	1 572 019	- 11,9
Sep	968 469	+ 16,6	306 265	- 15,0	529 909	+ 13,3	1 804 643	+ 8,8
Oct	1 196 410	+ 29,8	186 942	- 63,0	540 454	- 0,1	1 923 806	- 2,2
Nov	982 841	+ 6,9	318 627	- 37,6	597 940	+ 18,5	1 899 408	- 1,8
Dec	658 017	+ 7,7	140 452	- 80,8	359 110	+ 12,7	1 157 579	- 30,4
<b>Total</b>	<b>10 688 924</b>	<b>+ 12,3</b>	<b>3 475 757</b>	<b>- 34,1</b>	<b>5 546 242</b>	<b>- 0,1</b>	<b>19 710 923</b>	<b>- 3,1</b>
2002 Jan	801 712	+ 10,5	172 295	- 65,2	418 217	+ 18,3	1 392 224	- 11,5
Feb	1 024 424	+ 22,4	622 559	+ 102,5	459 378	- 3,5	2 106 361	+ 30,0
Mar	965 121	+ 3,4	495 333	+ 63,0	432 948	- 1,3	1 893 402	+ 13,0
Apr	1 152 506	+ 55,1	350 647	+ 67,7	533 421	+ 40,5	2 036 574	+ 52,9
May	1 184 437	+ 17,7	438 078	+ 49,3	936 496	+ 86,5	2 559 011	+ 42,0
Jun	1 100 299	+ 21,6	497 829	+ 65,7	552 535	+ 23,3	2 150 663	+ 30,0
Jul	1 251 404	+ 40,0	255 959	- 30,2	674 478	+ 54,8	2 181 841	+ 28,6
Aug	1 164 715	+ 38,8	391 026	+ 58,0	698 946	+ 44,0	2 254 687	+ 43,4
Sep	1 222 745	+ 26,3	287 969	- 6,0	617 044	+ 16,4	2 127 758	+ 17,9
Oct	2 030 451	+ 69,7	335 491	+ 79,5	757 380	+ 40,1	3 123 322	+ 62,4
Nov	1 226 825	+ 24,8	309 532	- 2,9	715 756	+ 19,7	2 252 113	+ 18,6
Dec	1 103 944	+ 67,8	230 232	+ 63,9	420 030	+ 17,0	1 754 206	+ 51,5
<b>Total</b>	<b>14 228 583</b>	<b>+ 33,1</b>	<b>4 386 950</b>	<b>+ 26,2</b>	<b>7 216 629</b>	<b>+ 30,1</b>	<b>25 832 162</b>	<b>+ 31,1</b>
2003 Jan	940 456	+ 17,3	684 141	+ 297,1	517 143	+ 23,7	2 141 740	+ 53,8
Feb	1 184 508	+ 15,6	227 515	- 63,5	524 418	+ 14,2	1 936 441	- 8,1
Mar	1 379 225	+ 42,9	223 313	- 54,9	598 067	+ 38,1	2 200 605	+ 16,2
Apr	1 199 250	+ 4,1	281 248	- 19,8	589 838	+ 10,6	2 070 336	+ 1,7
May	1 255 211	+ 6,0	383 890	- 12,4	841 658	- 10,1	2 480 759	- 3,1
Jun	1 472 746	+ 33,8	380 987	- 23,5	656 205	+ 18,8	2 509 938	+ 16,7
Jul	1 791 810	+ 43,2	456 508	+ 78,4	880 539	+ 30,6	3 128 857	+ 43,4
Aug	1 634 434	+ 40,3	398 222	+ 1,8	688 643	- 1,5	2 721 299	+ 20,7

<sup>1/</sup> The annual percentage change is the change in the actual values of building plans passed of the relevant year compared with the actual values of building plans passed of the previous year expressed as a percentage.

<sup>2/</sup> The monthly percentage change is the change in the actual values of building plans passed of the relevant month compared with the actual values of building plans passed of the same month in the previous year expressed as a percentage.

**Table 2 - Seasonally adjusted values and percentage change of building plans passed at current prices according to type of building**

Year and month <sup>1/</sup>	Residential buildings		Non-residential buildings		Additions and alterations		Total	
	R'000	Percentage change	R'000	Percentage change	R'000	Percentage change	R'000	Percentage change
2001 Jan	925 325	+ 10,3	707 047	- 31,6	452 929	+ 2,4	2 085 301	- 9,9
Feb	838 624	- 9,4	353 512	- 50,0	549 957	+ 21,4	1 742 093	- 16,5
Mar	892 528	+ 6,4	281 707	- 20,3	419 690	- 23,7	1 593 926	- 8,5
Apr	846 167	- 5,2	241 649	- 14,2	434 553	+ 3,5	1 522 369	- 4,5
May	910 303	+ 7,6	243 089	+ 0,6	450 994	+ 3,8	1 604 386	+ 5,4
Jun	875 631	- 3,8	261 146	+ 7,4	432 556	- 4,1	1 569 333	- 2,2
Jul	812 447	- 7,2	298 899	+ 14,5	394 448	- 8,8	1 505 793	- 4,0
Aug	812 717	+ 0,0	238 271	- 20,3	453 271	+ 14,9	1 504 259	- 0,1
Sep	938 199	+ 15,4	311 759	+ 30,8	493 322	+ 8,8	1 743 280	+ 15,9
Oct	999 802	+ 6,6	184 541	- 40,8	468 344	- 5,1	1 652 687	- 5,2
Nov	929 894	- 7,0	275 722	+ 49,4	509 971	+ 8,9	1 715 586	+ 3,8
Dec	883 815	- 5,0	201 271	- 27,0	511 433	+ 0,3	1 596 519	- 6,9
2002 Jan	1 015 845	+ 14,9	238 607	+ 18,6	524 623	+ 2,6	1 779 075	+ 11,4
Feb	1 028 247	+ 1,2	727 465	+ 204,9	537 887	+ 2,5	2 293 599	+ 28,9
Mar	934 692	- 9,1	469 834	- 35,4	424 639	- 21,1	1 829 165	- 20,2
Apr	1 322 716	+ 41,5	408 446	- 13,1	605 490	+ 42,6	2 336 652	+ 27,7
May	1 057 934	- 20,0	359 288	- 12,0	811 460	+ 34,0	2 228 682	- 4,6
Jun	1 071 032	+ 1,2	428 218	+ 19,2	535 003	- 34,1	2 034 252	- 8,7
Jul	1 135 941	+ 6,1	204 984	- 52,1	615 492	+ 15,0	1 956 417	- 3,8
Aug	1 137 080	+ 0,1	370 222	+ 80,6	652 924	+ 6,1	2 160 226	+ 10,4
Sep	1 182 445	+ 4,0	294 460	- 20,5	577 949	- 11,5	2 054 854	- 4,9
Oct	1 697 909	+ 43,6	336 177	+ 14,2	655 105	+ 13,3	2 689 191	+ 30,9
Nov	1 156 720	- 31,9	268 025	- 20,3	611 714	- 6,6	2 036 459	- 24,3
Dec	1 472 658	+ 27,3	336 927	+ 25,7	602 391	- 1,5	2 411 976	+ 18,4
2003 Jan	1 185 903	- 19,5	919 457	+ 172,9	643 062	+ 6,8	2 748 421	+ 13,9
Feb	1 189 174	+ 0,3	269 180	- 70,7	617 306	- 4,0	2 075 661	- 24,5
Mar	1 344 897	+ 13,1	214 729	- 20,2	594 819	- 3,6	2 154 444	+ 3,8
Apr	1 376 519	+ 2,4	328 847	+ 53,1	664 838	+ 11,8	2 370 204	+ 10,0
May	1 117 085	- 18,8	314 749	- 4,3	718 447	+ 8,1	2 150 282	- 9,3
Jun	1 439 598	+ 28,9	323 002	+ 2,6	639 016	- 11,1	2 401 616	+ 11,7
Jul	1 625 109	+ 12,9	366 321	+ 13,4	805 193	+ 26,0	2 796 623	+ 16,4
Aug	1 609 722	- 0,9	375 151	+ 2,4	641 572	- 20,3	2 626 446	- 6,1

<sup>1/</sup> The percentage change is the change in the seasonally adjusted values of building plans passed of the relevant month compared with the seasonally adjusted values of building plans passed of the previous month expressed as a percentage.

**Table 3 - Actual values and percentage change of building plans passed at constant 2000 prices according to type of building**

Year <sup>1/</sup> and month <sup>2/</sup>	Residential buildings		Non-residential buildings		Additions and alterations		Total	
	R'000	Percentage change	R'000	Percentage change	R'000	Percentage change	R'000	Percentage change
2001 Jan	696 124	+ 36,9	474 778	+ 175,0	339 137	- 10,4	1 510 039	+ 42,5
Feb	799 221	- 1,1	293 568	- 46,7	454 828	+ 10,6	1 547 617	- 12,6
Mar	887 347	+ 15,9	288 857	- 24,2	416 891	- 21,0	1 593 095	- 4,8
Apr	700 923	+ 9,6	197 295	- 29,9	358 044	- 8,0	1 256 262	- 4,1
May	944 174	+ 6,6	275 334	- 56,1	470 977	- 1,5	1 690 485	- 15,1
Jun	847 369	- 1,2	281 367	- 18,0	419 703	- 21,5	1 548 439	- 10,8
Jul	832 129	- 8,4	341 669	- 30,0	405 612	- 26,1	1 579 410	- 18,8
Aug	779 376	- 15,5	229 727	- 35,0	450 525	- 7,9	1 459 628	- 17,3
Sep	897 562	+ 9,4	283 842	- 20,2	491 111	+ 6,4	1 672 515	+ 2,1
Oct	1 106 762	+ 22,6	172 934	- 65,0	499 957	- 5,6	1 779 653	- 7,6
Nov	904 178	+ 0,8	293 125	- 41,1	550 083	+ 11,7	1 747 386	- 7,4
Dec	599 833	+ 1,0	128 033	- 82,0	327 356	+ 5,7	1 055 222	- 34,7
<b>Total</b>	<b>9 994 998</b>	<b>+ 5,1</b>	<b>3 260 529</b>	<b>- 38,0</b>	<b>5 184 224</b>	<b>- 6,6</b>	<b>18 439 751</b>	<b>- 9,2</b>
2002 Jan	717 095	+ 3,0	154 110	- 67,5	374 076	+ 10,3	1 245 281	- 17,5
Feb	898 618	+ 12,4	546 104	+ 86,0	402 963	- 11,4	1 847 685	+ 19,4
Mar	842 900	- 5,0	432 605	+ 49,8	378 121	- 9,3	1 653 626	+ 3,8
Apr	990 977	+ 41,4	301 502	+ 52,8	458 660	+ 28,1	1 751 139	+ 39,4
May	1 004 612	+ 6,4	371 567	+ 35,0	794 314	+ 68,7	2 170 493	+ 28,4
Jun	927 739	+ 9,5	419 755	+ 49,2	465 881	+ 11,0	1 813 375	+ 17,1
Jul	1 037 648	+ 24,7	212 238	- 37,9	559 269	+ 37,9	1 809 155	+ 14,5
Aug	954 684	+ 22,5	320 513	+ 39,5	572 907	+ 27,2	1 848 104	+ 26,6
Sep	997 345	+ 11,1	234 885	- 17,2	503 299	+ 2,5	1 735 529	+ 3,8
Oct	1 638 782	+ 48,1	270 776	+ 56,6	611 283	+ 22,3	2 520 841	+ 41,6
Nov	984 611	+ 8,9	248 421	- 15,3	574 443	+ 4,4	1 807 475	+ 3,4
Dec	882 449	+ 47,1	184 038	+ 43,7	335 755	+ 2,6	1 402 242	+ 32,9
<b>Total</b>	<b>11 877 460</b>	<b>+ 18,8</b>	<b>3 696 514</b>	<b>+ 13,4</b>	<b>6 030 971</b>	<b>+ 16,3</b>	<b>21 604 945</b>	<b>+ 17,2</b>
2003 Jan	740 517	+ 3,3	538 694	+ 249,6	407 199	+ 8,9	1 686 410	+ 35,4
Feb	926 845	+ 3,1	178 024	- 67,4	410 343	+ 1,8	1 515 212	- 18,0
Mar	1 075 000	+ 27,5	174 055	- 59,8	466 147	+ 23,3	1 715 202	+ 3,7
Apr	929 651	- 6,2	218 022	- 27,7	457 239	- 0,3	1 604 912	- 8,4
May	972 278	- 3,2	297 359	- 20,0	651 943	- 17,9	1 921 580	- 11,5
Jun	1 138 134	+ 22,7	294 426	- 29,9	507 114	+ 8,9	1 939 674	+ 7,0
Jul	1 382 569	+ 33,2	352 244	+ 66,0	679 428	+ 21,5	2 414 241	+ 33,4
Aug	1 260 165	+ 32,0	307 033	- 4,2	530 951	- 7,3	2 098 149	+ 13,5

<sup>1/</sup> The annual percentage change is the change in the actual values of building plans passed of the relevant year compared with the actual values of building plans passed of the previous year expressed as a percentage.

<sup>2/</sup> The monthly percentage change is the change in the actual values of building plans passed of the relevant month compared with the actual values of building plans passed of the same month in the previous year expressed as a percentage.

**Table 4 - Seasonally adjusted values and percentage change of building plans passed at constant 2000 prices according to type of building**

Year and month <sup>1/</sup>	Residential buildings		Non-residential buildings		Additions and alterations		Total	
	R'000	Percentage change	R'000	Percentage change	R'000	Percentage change	R'000	Percentage change
2001 Jan	886 791	+ 9,1	667 882	- 33,3	433 390	- 12,8	1 988 063	- 11,3
Feb	801 970	- 9,6	339 601	- 49,2	525 312	+ 21,2	1 666 883	- 16,2
Mar	846 338	+ 5,5	266 918	- 21,4	398 160	- 24,2	1 511 417	- 9,3
Apr	798 072	- 5,7	228 264	- 14,5	410 204	+ 3,0	1 436 539	- 5,0
May	857 185	+ 7,4	228 924	+ 0,3	424 351	+ 3,4	1 510 460	+ 5,1
Jun	819 252	- 4,4	244 780	+ 6,9	406 360	- 4,2	1 470 392	- 2,7
Jul	757 997	- 7,5	278 947	+ 14,0	368 016	- 9,4	1 404 960	- 4,4
Aug	756 537	- 0,2	222 081	- 20,4	421 576	+ 14,6	1 400 194	- 0,3
Sep	869 176	+ 14,9	289 216	+ 30,2	457 032	+ 8,4	1 615 424	+ 15,4
Oct	924 052	+ 6,3	170 961	- 40,9	432 779	- 5,3	1 527 792	- 5,4
Nov	853 239	- 7,7	252 944	+ 48,0	467 545	+ 8,0	1 573 728	+ 3,0
Dec	803 053	- 5,9	182 669	- 27,8	463 950	- 0,8	1 449 672	- 7,9
2002 Jan	907 554	+ 13,0	209 562	+ 14,7	468 284	+ 0,9	1 585 399	+ 9,4
Feb	903 487	- 0,4	642 418	+ 206,6	472 143	+ 0,8	2 018 049	+ 27,3
Mar	814 670	- 9,8	409 088	- 36,3	370 560	- 21,5	1 594 318	- 21,0
Apr	1 137 574	+ 39,6	352 015	- 14,0	521 253	+ 40,7	2 010 842	+ 26,1
May	900 419	- 20,8	306 016	- 13,1	690 065	+ 32,4	1 896 500	- 5,7
Jun	902 776	+ 0,3	361 716	+ 18,2	452 940	- 34,4	1 717 432	- 9,4
Jul	944 059	+ 4,6	170 353	- 52,9	511 650	+ 13,0	1 626 062	- 5,3
Aug	934 439	- 1,0	304 526	+ 78,8	535 656	+ 4,7	1 774 620	+ 9,1
Sep	963 728	+ 3,1	240 317	- 21,1	470 991	- 12,1	1 675 035	- 5,6
Oct	1 368 580	+ 42,0	271 656	+ 13,0	527 853	+ 12,1	2 168 089	+ 29,4
Nov	925 461	- 32,4	214 442	- 21,1	489 093	- 7,3	1 628 997	- 24,9
Dec	1 173 126	+ 26,8	268 057	+ 25,0	478 768	- 2,1	1 919 951	+ 17,9
2003 Jan	932 825	- 20,5	710 269	+ 165,0	505 598	+ 5,6	2 148 692	+ 11,9
Feb	932 487	+ 0,0	212 202	- 70,1	483 468	- 4,4	1 628 156	- 24,2
Mar	1 046 528	+ 12,2	166 852	- 21,4	463 544	- 4,1	1 676 924	+ 3,0
Apr	1 067 739	+ 2,0	255 680	+ 53,2	516 028	+ 11,3	1 839 446	+ 9,7
May	867 712	- 18,7	244 837	- 4,2	558 033	+ 8,1	1 670 582	- 9,2
Jun	1 112 230	+ 28,2	250 126	+ 2,2	495 974	- 11,1	1 858 331	+ 11,2
Jul	1 256 961	+ 13,0	283 300	+ 13,3	622 774	+ 25,6	2 163 035	+ 16,4
Aug	1 244 550	- 1,0	290 303	+ 2,5	494 962	- 20,5	2 029 815	- 6,2

<sup>1/</sup> The percentage change is the change in the seasonally adjusted values of building plans passed of the relevant month compared with the seasonally adjusted values of building plans passed of the previous month expressed as a percentage.

**Table 5 - Actual values and percentage change of buildings completed at current prices according to type of building**

Year <sup>1/</sup> and month <sup>2/</sup>	Residential buildings		Non-residential buildings		Additions and alterations		Total	
	R'000	Percentage change	R'000	Percentage change	R'000	Percentage change	R'000	Percentage change
2001 Jan	647 534	+ 114,7	259 518	+ 29,2	202 270	+ 9,1	1 109 322	+ 61,3
Feb	430 827	+ 21,7	286 095	+ 32,2	246 240	+ 10,6	963 162	+ 21,4
Mar	491 002	+ 16,6	166 131	- 23,4	287 103	+ 6,7	944 236	+ 4,1
Apr	367 407	+ 0,5	170 257	- 24,1	185 784	- 1,8	723 448	- 7,1
May	450 136	- 5,1	318 370	- 19,1	296 280	+ 0,9	1 064 786	- 8,3
Jun	540 135	+ 48,6	338 853	+ 89,8	293 697	+ 71,5	1 172 685	+ 64,4
Jul	396 941	- 3,1	121 617	- 74,9	233 487	+ 5,6	752 045	- 32,6
Aug	432 578	- 4,3	117 526	- 58,9	215 777	+ 1,8	765 881	- 19,4
Sep	459 190	- 10,5	1 417 964	+ 400,6	168 922	- 15,6	2 046 076	+ 105,4
Oct	661 378	+ 42,6	281 963	+ 39,6	234 250	- 1,9	1 177 591	+ 30,2
Nov	610 558	+ 9,5	211 109	+ 9,8	286 352	+ 11,6	1 108 019	+ 10,1
Dec	464 851	+ 19,9	173 587	- 45,5	125 061	- 18,2	763 499	- 11,1
<b>Total</b>	<b>5 952 537</b>	<b>+ 17,6</b>	<b>3 862 990</b>	<b>+ 20,8</b>	<b>2 775 223</b>	<b>+ 6,2</b>	<b>12 590 750</b>	<b>+ 15,8</b>
2002 Jan	583 954	- 9,8	136 570	- 47,4	176 643	- 12,7	897 167	- 19,1
Feb	473 568	+ 9,9	137 817	- 51,8	202 239	- 17,9	813 624	- 15,5
Mar	708 471	+ 44,3	171 227	+ 3,1	176 053	- 38,7	1 055 751	+ 11,8
Apr	653 414	+ 77,8	245 773	+ 44,4	390 160	+ 110,0	1 289 347	+ 78,2
May	690 242	+ 53,3	300 836	- 5,5	305 996	+ 3,3	1 297 074	+ 21,8
Jun	585 723	+ 8,4	207 030	- 38,9	251 004	- 14,5	1 043 757	- 11,0
Jul	681 657	+ 71,7	273 139	+ 124,6	242 028	+ 3,7	1 196 824	+ 59,1
Aug	740 221	+ 71,1	96 328	- 18,0	226 414	+ 4,9	1 062 963	+ 38,8
Sep	820 510	+ 78,7	228 610	- 83,9	248 379	+ 47,0	1 297 499	- 36,6
Oct	938 075	+ 41,8	178 099	- 36,8	293 977	+ 25,5	1 410 151	+ 19,7
Nov	847 433	+ 38,8	294 710	+ 39,6	237 143	- 17,2	1 379 286	+ 24,5
Dec	702 892	+ 51,2	366 760	+ 111,3	221 292	+ 76,9	1 290 944	+ 69,1
<b>Total</b>	<b>8 426 160</b>	<b>+ 41,6</b>	<b>2 636 899</b>	<b>- 31,7</b>	<b>2 971 328</b>	<b>+ 7,1</b>	<b>14 034 387</b>	<b>+ 11,5</b>
2003 Jan	616 863	+ 5,6	149 935	+ 9,8	234 496	+ 32,8	1 001 294	+ 11,6
Feb	670 393	+ 41,6	156 333	+ 13,4	285 510	+ 41,2	1 112 236	+ 36,7
Mar	695 346	- 1,9	309 700	+ 80,9	238 216	+ 35,3	1 243 262	+ 17,8
Apr	674 992	+ 3,3	533 635	+ 117,1	234 615	- 39,9	1 443 242	+ 11,9
May	666 678	- 3,4	603 424	+ 100,6	304 362	- 0,5	1 574 464	+ 21,4
Jun	742 277	+ 26,7	165 197	- 20,2	295 403	+ 17,7	1 202 877	+ 15,2
Jul*	1 631 494	+ 139,3	189 363	- 30,7	332 736	+ 37,5	2 153 593	+ 79,9
Aug	837 681	+ 13,2	152 320	+ 58,1	280 067	+ 23,7	1 270 068	+ 19,5

<sup>1/</sup> The annual percentage change is the change in the actual values of buildings completed of the relevant year compared with the actual values of buildings completed of the previous year expressed as a percentage.

<sup>2/</sup> The monthly percentage change is the change in the actual values of buildings completed of the relevant month compared with the actual values of buildings completed of the same month in the previous year expressed as a percentage.

\* The figures were revised due to information obtained from eThekweni Municipality regarding the completion of a casino.

**Table 6 - Seasonally adjusted values and percentage change of buildings completed at current prices according to type of building**

Year and month <sup>1/</sup>	Residential buildings		Non-residential buildings		Additions and alterations		Total	
	R'000	Percentage change	R'000	Percentage change	R'000	Percentage change	R'000	Percentage change
2001 Jan	759 360	+ 74,0	345 196	+ 6,0	229 806	+ 2,0	1 334 362	+ 35,2
Feb	485 166	- 36,1	342 395	- 0,8	233 103	+ 1,4	1 060 663	- 20,5
Mar	462 279	- 4,7	202 059	- 41,0	245 084	+ 5,1	909 422	- 14,3
Apr	407 277	- 11,9	169 128	- 16,3	209 177	- 14,7	785 582	- 13,6
May	432 769	+ 6,3	234 024	+ 38,4	244 988	+ 17,1	911 782	+ 16,1
Jun	595 291	+ 37,6	353 120	+ 50,9	303 518	+ 23,9	1 251 929	+ 37,3
Jul	396 407	- 33,4	87 641	- 75,2	213 243	- 29,7	697 291	- 44,3
Aug	422 226	+ 6,5	142 747	+ 62,9	217 339	+ 1,9	782 312	+ 12,2
Sep	412 776	- 2,2	1 204 674	+ 743,9	180 935	- 16,7	1 798 385	+ 129,9
Oct	581 087	+ 40,8	301 379	- 75,0	212 202	+ 17,3	1 094 667	- 39,1
Nov	517 751	- 10,9	228 699	- 24,1	281 449	+ 32,6	1 027 900	- 6,1
Dec	521 691	+ 0,8	174 099	- 23,9	180 315	- 35,9	876 106	- 14,8
2002 Jan	669 156	+ 28,3	189 002	+ 8,6	201 307	+ 11,6	1 059 465	+ 20,9
Feb	533 381	- 20,3	173 067	- 8,4	193 057	- 4,1	899 505	- 15,1
Mar	670 853	+ 25,8	206 467	+ 19,3	152 580	- 21,0	1 029 900	+ 14,5
Apr	728 183	+ 8,5	225 485	+ 9,2	441 926	+ 189,6	1 395 594	+ 35,5
May	655 587	- 10,0	201 976	- 10,4	247 504	- 44,0	1 105 067	- 20,8
Jun	663 201	+ 1,2	222 262	+ 10,0	254 326	+ 2,8	1 139 789	+ 3,1
Jul	694 582	+ 4,7	199 039	- 10,4	222 661	- 12,5	1 116 282	- 2,1
Aug	716 818	+ 3,2	127 709	- 35,8	229 873	+ 3,2	1 074 399	- 3,8
Sep	742 950	+ 3,6	198 329	+ 55,3	270 058	+ 17,5	1 211 337	+ 12,7
Oct	815 726	+ 9,8	198 209	- 0,1	264 669	- 2,0	1 278 604	+ 5,6
Nov	713 899	- 12,5	320 481	+ 61,7	231 478	- 12,5	1 265 858	- 1,0
Dec	790 387	+ 10,7	354 566	+ 10,6	318 887	+ 37,8	1 463 840	+ 15,6
2003 Jan	693 311	- 12,3	208 934	- 41,1	268 507	- 15,8	1 170 751	- 20,0
Feb	758 365	+ 9,4	197 752	- 5,4	275 121	+ 2,5	1 231 238	+ 5,2
Mar	657 360	- 13,3	381 289	+ 92,8	207 170	- 24,7	1 245 819	+ 1,2
Apr	753 345	+ 14,6	475 375	+ 24,7	267 846	+ 29,3	1 496 565	+ 20,1
May	630 982	- 16,2	395 015	- 16,9	242 342	- 9,5	1 268 339	- 15,2
Jun	848 425	+ 34,5	176 307	- 55,4	293 646	+ 21,2	1 318 377	+ 3,9
Jul	1 681 625	+ 98,2	140 148	- 20,5	309 091	+ 5,3	2 130 864	+ 61,6
Aug	815 227	- 51,5	213 743	+ 52,5	288 443	- 6,7	1 317 412	- 38,2

<sup>1/</sup> The percentage change is the change in the seasonally adjusted values of buildings completed of the relevant month compared with the seasonally adjusted values of buildings completed of the previous month expressed as a percentage.

**Table 7 - Actual values and percentage change of buildings completed at constant 2000 prices according to type of building**

Year <sup>1/</sup> and month <sup>2/</sup>	Residential buildings		Non-residential buildings		Additions and alterations		Total	
	R'000	Percentage change	R'000	Percentage change	R'000	Percentage change	R'000	Percentage change
2001 Jan	658 496	+ 111,1	266 719	+ 21,9	208 741	+ 6,7	1 133 956	+ 56,1
Feb	429 923	+ 80,3	294 034	+ 14,5	252 813	- 10,1	976 770	+ 36,6
Mar	489 834	+ 51,9	170 391	+ 15,0	293 261	- 25,5	953 486	+ 19,9
Apr	363 080	+ 75,5	174 265	+ 11,8	188 613	+ 6,5	725 958	+ 40,0
May	440 667	+ 35,4	324 867	- 36,1	298 369	- 31,3	1 063 903	- 6,1
Jun	528 664	+ 77,4	345 416	+ 41,0	294 581	+ 18,2	1 168 661	+ 53,9
Jul	383 095	+ 77,4	125 508	- 47,8	232 557	- 8,2	741 160	- 2,3
Aug	415 855	+ 55,8	120 663	- 10,7	213 429	- 4,1	749 947	+ 15,7
Sep	439 959	+ 41,9	1 448 380	- 9,6	166 754	+ 1,7	2 055 093	+ 10,7
Oct	631 622	+ 25,6	286 257	+ 27,5	229 432	- 14,6	1 147 311	+ 22,5
Nov	579 923	+ 39,6	212 597	+ 34,0	279 368	- 20,3	1 071 888	+ 10,7
Dec	438 298	+ 16,9	174 109	- 18,7	121 536	+ 34,0	733 943	+ 29,7
<b>Total</b>	<b>5 799 416</b>	<b>+ 12,0</b>	<b>3 943 206</b>	<b>+ 17,0</b>	<b>2 779 454</b>	<b>+ 3,1</b>	<b>12 522 076</b>	<b>+ 11,3</b>
2002 Jan	549 418	- 16,6	136 026	- 49,0	169 523	- 18,8	854 967	- 24,6
Feb	443 590	+ 3,2	136 318	- 53,6	193 160	- 23,6	773 068	- 20,9
Mar	663 989	+ 35,6	169 030	- 0,8	167 351	- 42,9	1 000 370	+ 4,9
Apr	607 293	+ 67,3	240 718	+ 38,1	368 075	+ 95,1	1 216 086	+ 67,5
May	639 076	+ 45,0	293 499	- 9,7	287 051	- 3,8	1 219 626	+ 14,6
Jun	536 531	+ 1,5	201 195	- 41,8	235 022	- 20,2	972 748	- 16,8
Jul	616 022	+ 60,8	262 130	+ 108,9	225 352	- 3,1	1 103 504	+ 48,9
Aug	662 349	+ 59,3	92 004	- 23,8	210 227	- 1,5	964 580	+ 28,6
Sep	732 084	+ 66,4	217 310	- 85,0	230 194	+ 38,0	1 179 588	- 42,6
Oct	820 069	+ 29,8	168 018	- 41,3	271 949	+ 18,5	1 260 036	+ 9,8
Nov	734 664	+ 26,7	276 463	+ 30,0	218 163	- 21,9	1 229 290	+ 14,7
Dec	603 604	+ 37,7	343 408	+ 97,2	201 725	+ 66,0	1 148 737	+ 56,5
<b>Total</b>	<b>7 608 689</b>	<b>+ 31,2</b>	<b>2 536 119</b>	<b>- 35,7</b>	<b>2 777 792</b>	<b>- 0,1</b>	<b>12 922 600</b>	<b>+ 3,2</b>
2003 Jan	526 267	- 4,2	139 604	+ 2,6	209 746	+ 23,7	875 617	+ 2,4
Feb	561 286	+ 26,5	145 156	+ 6,5	250 447	+ 29,7	956 889	+ 23,8
Mar	575 386	- 13,3	287 025	+ 69,8	208 049	+ 24,3	1 070 460	+ 7,0
Apr	553 134	- 8,9	493 649	+ 105,1	201 733	- 45,2	1 248 516	+ 2,7
May	541 089	- 15,3	555 128	+ 89,1	258 153	- 10,1	1 354 370	+ 11,0
Jun	603 471	+ 12,5	150 590	- 25,2	249 075	+ 6,0	1 003 136	+ 3,1
Jul*	1 325 644	+ 115,2	169 377	- 35,4	275 900	+ 22,4	1 770 921	+ 60,5
Aug	665 643	+ 0,5	133 614	+ 45,2	229 563	+ 9,2	1 028 820	+ 6,7

<sup>1/</sup> The annual percentage change is the change in the actual values of buildings completed of the relevant year compared with the actual values of buildings completed of the previous year expressed as a percentage.

<sup>2/</sup> The monthly percentage change is the change in the actual values of buildings completed of the relevant month compared with the actual values of buildings completed of the same month in the previous year expressed as a percentage.

\* The figures were revised due to information obtained from eThekweni Municipality regarding the completion of a casino.

**Table 8 - Seasonally adjusted values and percentage change of buildings completed at constant 2000 prices according to type of building**

Year and month <sup>1/</sup>	Residential buildings		Non-residential buildings		Additions and alterations		Total	
	R'000	Percentage change	R'000	Percentage change	R'000	Percentage change	R'000	Percentage change
2001 Jan	771 502	+ 75,4	355 096	+ 5,9	236 048	+ 3,0	1 362 647	+ 35,7
Feb	485 312	- 37,1	352 586	- 0,7	239 078	+ 1,3	1 076 976	- 21,0
Mar	460 540	- 5,1	207 365	- 41,2	249 554	+ 4,4	917 459	- 14,8
Apr	402 405	- 12,6	173 313	- 16,4	212 203	- 15,0	787 921	- 14,1
May	422 835	+ 5,1	238 708	+ 37,7	248 205	+ 17,0	909 747	+ 15,5
Jun	581 073	+ 37,4	358 905	+ 50,4	304 840	+ 22,8	1 244 819	+ 36,8
Jul	381 460	- 34,4	90 424	- 74,8	212 852	- 30,2	684 736	- 45,0
Aug	405 682	+ 6,3	147 791	+ 63,4	215 457	+ 1,2	768 930	+ 12,3
Sep	394 678	- 2,7	1 226 568	+ 729,9	178 562	- 17,1	1 799 807	+ 134,1
Oct	558 847	+ 41,6	305 416	- 75,1	207 564	+ 16,2	1 071 827	- 40,4
Nov	492 931	- 11,8	230 380	- 24,6	274 211	+ 32,1	997 521	- 6,9
Dec	492 613	- 0,1	174 316	- 24,3	175 029	- 36,2	841 958	- 15,6
2002 Jan	628 638	+ 27,6	188 364	+ 8,1	192 308	+ 9,9	1 009 310	+ 19,9
Feb	500 723	- 20,3	171 335	- 9,0	184 253	- 4,2	856 311	- 15,2
Mar	627 229	+ 25,3	203 852	+ 19,0	144 568	- 21,5	975 649	+ 13,9
Apr	676 781	+ 7,9	221 149	+ 8,5	416 827	+ 188,3	1 314 756	+ 34,8
May	605 684	- 10,5	197 053	- 10,9	233 433	- 44,0	1 036 169	- 21,2
Jun	605 804	+ 0,0	215 428	+ 9,3	238 275	+ 2,1	1 059 507	+ 2,3
Jul	626 059	+ 3,3	190 837	- 11,4	207 934	- 12,7	1 024 829	- 3,3
Aug	640 475	+ 2,3	123 460	- 35,3	214 064	+ 2,9	977 999	- 4,6
Sep	661 606	+ 3,3	187 845	+ 52,2	250 146	+ 16,9	1 099 598	+ 12,4
Oct	718 594	+ 8,6	186 655	- 0,6	244 406	- 2,3	1 149 655	+ 4,6
Nov	620 536	- 13,6	300 549	+ 61,0	212 603	- 13,0	1 133 688	- 1,4
Dec	680 325	+ 9,6	331 395	+ 10,3	290 474	+ 36,6	1 302 194	+ 14,9
2003 Jan	590 357	- 13,2	194 622	- 41,3	239 054	- 17,7	1 024 033	- 21,4
Feb	636 210	+ 7,8	183 712	- 5,6	241 173	+ 0,9	1 061 095	+ 3,6
Mar	542 179	- 14,8	353 370	+ 92,3	180 373	- 25,2	1 075 923	+ 1,4
Apr	617 252	+ 13,8	440 350	+ 24,6	230 348	+ 27,7	1 287 951	+ 19,7
May	511 010	- 17,2	363 460	- 17,5	206 542	- 10,3	1 081 012	- 16,1
Jun	687 888	+ 34,6	160 314	- 55,9	247 605	+ 19,9	1 095 807	+ 1,4
Jul	1 363 513	+ 98,2	125 188	- 21,9	257 226	+ 3,9	1 745 927	+ 59,3
Aug	646 695	- 52,6	190 192	+ 51,9	237 213	- 7,8	1 074 099	- 38,5

<sup>1/</sup> The percentage change is the change in the seasonally adjusted values of buildings completed of the relevant month compared with the seasonally adjusted values of buildings completed of the previous month expressed as a percentage.



**Table 9 - Building plans passed according to type of building: Total RSA**

Type of building	August 2002 *	July 2003	August 2003	January 2002 to August 2002	January 2003 to August 2003	Percentage change between January 2002 to August 2002 and January 2003 to August 2003
<b>Residential buildings</b>						
Dwelling-houses smaller than 80 square metres						
Number of dwelling-houses	4 019	2 794	2 733	26 380	21 715	- 17,7
Total square metres	144 357	115 696	117 068	1 003 346	874 386	- 12,9
Total value at current prices (R'000)	158 001	133 589	139 104	1 046 932	902 679	- 13,8
Dwelling-houses equal to or larger than 80 square metres						
Number of dwelling-houses	2 340	2 437	1 954	16 160	16 252	+ 0,6
Total square metres	517 141	582 721	493 087	3 636 712	3 792 867	+ 4,3
Total value at current prices (R'000)	804 203	1 063 012	923 898	5 597 370	6 717 685	+ 20,0
Flats and townhouses						
Number of flats and townhouses	820	2 866	1 902	8 961	11 904	+ 32,8
Total square metres	118 255	339 704	281 382	1 065 291	1 633 589	+ 53,3
Total value at current prices (R'000)	194 306	585 753	561 058	1 736 654	3 080 810	+ 77,4
Other residential buildings <sup>1/</sup>						
Total square metres	4 968	4 874	6 693	104 393	87 726	- 16,0
Total value at current prices (R'000)	8 205	9 456	10 374	263 662	156 466	- 40,7
<b>Total value of residential buildings at current prices (R'000)</b>	<b>1 164 715</b>	<b>1 791 810</b>	<b>1 634 434</b>	<b>8 644 618</b>	<b>10 857 640</b>	<b>+ 25,6</b>
<b>Non-residential buildings</b>						
Office and banking space						
Total square metres	18 899	21 570	53 330	332 025	287 475	- 13,4
Total value at current prices (R'000)	30 080	38 772	101 605	672 300	558 272	- 17,0
Shopping space						
Total square metres	112 311	93 311	55 164	325 502	428 706	+ 31,7
Total value at current prices (R'000)	226 400	135 856	105 213	577 843	1 096 018	+ 89,7
Industrial and warehouse space						
Total square metres	75 837	141 812	94 872	750 832	652 886	- 13,0
Total value at current prices (R'000)	100 245	219 859	145 516	1 244 873	983 739	- 21,0
Other non-residential space <sup>2/</sup>						
Total square metres	22 946	34 923	30 581	432 847	228 870	- 47,1
Total value at current prices (R'000)	34 301	62 021	45 888	728 710	397 795	- 45,4
<b>Total value of non-residential buildings at current prices (R'000)</b>	<b>391 026</b>	<b>456 508</b>	<b>398 222</b>	<b>3 223 726</b>	<b>3 035 824</b>	<b>- 5,8</b>
<b>Additions and alterations</b>						
Dwelling-houses						
Total square metres	300 490	337 472	318 688	2 160 892	2 268 914	+ 5,0
Total value at current prices (R'000)	437 646	542 891	501 388	3 028 489	3 529 680	+ 16,5
Other buildings <sup>3/</sup>						
Total square metres	121 740	168 260	94 829	800 272	887 037	+ 10,8
Total value at current prices (R'000)	261 300	337 648	187 255	1 677 930	1 766 831	+ 5,3
<b>Total value of additions and alterations at current prices (R'000)</b>	<b>698 946</b>	<b>880 539</b>	<b>688 643</b>	<b>4 706 419</b>	<b>5 296 511</b>	<b>+ 12,5</b>
<b>Total value of building plans passed at current prices (R'000)</b>	<b>2 254 687</b>	<b>3 128 857</b>	<b>2 721 299</b>	<b>16 574 763</b>	<b>19 189 975</b>	<b>+ 15,8</b>

1/ Other residential buildings include institutions for the disabled, boarding houses, old people's homes, hostels, hotels, motels, guest houses, holiday chalets, entertainment centres, bed-and-breakfast accommodation and casinos.

2/ Other non-residential space includes churches, sport and recreation clubs, schools, crèches, hospitals and all other non-residential space.

3/ Other buildings include additions and alterations to other residential buildings, non-residential buildings and internal alterations.

**Table 10 - Building plans passed according to type of building and province: Western Cape**

Type of building	August 2002*	July 2003	August 2003	January 2002 to August 2002	January 2003 to August 2003	Percentage change between January 2002 to August 2002 and January 2003 to August 2003
<b>Residential buildings</b>						
Dwelling-houses smaller than 80 square metres						
Number of dwelling-houses	2 466	675	617	10 934	4 065	- 62,8
Total square metres	80 332	29 640	26 332	366 916	172 653	- 52,9
Total value at current prices (R'000)	88 231	41 192	29 553	415 256	214 011	- 48,5
Dwelling-houses equal to or larger than 80 square metres						
Number of dwelling-houses	837	784	483	5 866	5 237	- 10,7
Total square metres	159 732	183 085	113 461	1 237 888	1 140 900	- 7,8
Total value at current prices (R'000)	252 876	333 818	207 710	1 961 383	2 061 712	+ 5,1
Flats and townhouses						
Number of flats and townhouses	206	1 724	560	2 208	4 542	+ 105,7
Total square metres	23 902	144 915	66 170	222 909	427 395	+ 91,7
Total value at current prices (R'000)	38 050	218 113	118 802	365 143	737 487	+ 102,0
Other residential buildings <sup>1/</sup>						
Total square metres	1 783	959	874	46 775	10 805	- 76,9
Total value at current prices (R'000)	3 115	1 872	1 082	81 953	16 826	- 79,5
<b>Total value of residential buildings at current prices (R'000)</b>	<b>382 272</b>	<b>594 995</b>	<b>357 147</b>	<b>2 823 735</b>	<b>3 030 036</b>	<b>+ 7,3</b>
<b>Non-residential buildings</b>						
Office and banking space						
Total square metres	5 787	5 445	694	63 473	80 662	+ 27,1
Total value at current prices (R'000)	9 515	11 432	1 670	101 769	168 471	+ 65,5
Shopping space						
Total square metres	6 623	2 464	2 606	41 204	71 400	+ 73,3
Total value at current prices (R'000)	10 356	4 197	5 476	56 261	90 095	+ 60,1
Industrial and warehouse space						
Total square metres	15 875	19 308	22 277	150 851	174 630	+ 15,8
Total value at current prices (R'000)	19 140	25 355	29 576	189 359	244 438	+ 29,1
Other non-residential space <sup>2/</sup>						
Total square metres	5 985	12 038	9 107	49 639	53 647	+ 8,1
Total value at current prices (R'000)	8 829	20 758	9 825	76 123	82 747	+ 8,7
<b>Total value of non-residential buildings at current prices (R'000)</b>	<b>47 840</b>	<b>61 742</b>	<b>46 547</b>	<b>423 512</b>	<b>585 751</b>	<b>+ 38,3</b>
<b>Additions and alterations</b>						
Dwelling-houses						
Total square metres	85 593	97 708	88 343	691 564	660 236	- 4,5
Total value at current prices (R'000)	120 974	152 223	141 484	927 482	1 019 763	+ 9,9
Other buildings <sup>3/</sup>						
Total square metres	40 706	47 206	30 226	228 333	277 404	+ 21,5
Total value at current prices (R'000)	75 160	98 076	70 824	451 483	566 910	+ 25,6
<b>Total value of additions and alterations at current prices (R'000)</b>	<b>196 134</b>	<b>250 299</b>	<b>212 308</b>	<b>1 378 965</b>	<b>1 586 673</b>	<b>+ 15,1</b>
<b>Total value of building plans passed at current prices (R'000)</b>	<b>626 246</b>	<b>907 036</b>	<b>616 002</b>	<b>4 626 212</b>	<b>5 202 460</b>	<b>+ 12,5</b>

1/ Other residential buildings include institutions for the disabled, boarding houses, old people's homes, hostels, hotels, motels, guest houses, holiday chalets, entertainment centres, bed-and-breakfast accommodation and casinos.

2/ Other non-residential space includes churches, sport and recreation clubs, schools, crèches, hospitals and all other non-residential space.

3/ Other buildings include additions and alterations to other residential buildings, non-residential buildings and internal alterations.

**Table 11 - Building plans passed according to type of building and province: Eastern Cape**

Type of building	August 2002	July 2003	August 2003	January 2002 to August 2002	January 2003 to August 2003	Percentage change between January 2002 to August 2002 and January 2003 to August 2003
<b>Residential buildings</b>						
Dwelling-houses smaller than 80 square metres						
Number of dwelling-houses	527	572	1 208	3 852	3 558	-7,6
Total square metres	21 866	23 363	48 955	164 309	149 958	-8,7
Total value at current prices (R'000)	25 934	25 563	56 007	202 597	184 590	-8,9
Dwelling-houses equal to or larger than 80 square metres						
Number of dwelling-houses	103	195	117	884	862	-2,5
Total square metres	20 732	37 219	22 113	176 183	164 227	-6,8
Total value at current prices (R'000)	33 064	64 172	38 301	248 635	279 156	+ 12,3
Flats and townhouses						
Number of flats and townhouses	26	19	20	374	102	-72,7
Total square metres	4 084	4 725	4 101	34 058	18 653	-45,2
Total value at current prices (R'000)	7 125	6 554	7 317	57 541	32 574	-43,4
Other residential buildings <sup>1/</sup>						
Total square metres	0	0	1 721	1 135	4 529	+ 299,0
Total value at current prices (R'000)	0	0	2 755	1 654	7 570	+ 357,7
<b>Total value of residential buildings at current prices (R'000)</b>	<b>66 123</b>	<b>96 289</b>	<b>104 380</b>	<b>510 427</b>	<b>503 890</b>	<b>-1,3</b>
<b>Non-residential buildings</b>						
Office and banking space						
Total square metres	0	0	3 069	6 283	9 775	+ 55,6
Total value at current prices (R'000)	0	0	6 368	9 523	18 755	+ 96,9
Shopping space						
Total square metres	3 689	5 278	356	19 605	7 825	-60,1
Total value at current prices (R'000)	4 594	6 175	691	36 111	11 351	-68,6
Industrial and warehouse space						
Total square metres	2 129	760	2 100	41 539	18 594	-55,2
Total value at current prices (R'000)	3 855	1 176	3 658	73 313	29 978	-59,1
Other non-residential space <sup>2/</sup>						
Total square metres	2 486	1 339	1 884	23 729	8 884	-62,6
Total value at current prices (R'000)	3 840	2 988	3 228	38 557	16 453	-57,3
<b>Total value of non-residential buildings at current prices (R'000)</b>	<b>12 289</b>	<b>10 339</b>	<b>13 945</b>	<b>157 504</b>	<b>76 537</b>	<b>-51,4</b>
<b>Additions and alterations</b>						
Dwelling-houses						
Total square metres	17 729	29 809	30 483	154 532	178 801	+ 15,7
Total value at current prices (R'000)	27 111	46 231	43 383	213 109	282 688	+ 32,6
Other buildings <sup>3/</sup>						
Total square metres	2 507	14 957	5 764	38 854	53 454	+ 37,6
Total value at current prices (R'000)	3 352	25 872	10 405	67 410	125 688	+ 86,5
<b>Total value of additions and alterations at current prices (R'000)</b>	<b>30 463</b>	<b>72 103</b>	<b>53 788</b>	<b>280 519</b>	<b>408 376</b>	<b>+ 45,6</b>
<b>Total value of building plans passed at current prices (R'000)</b>	<b>108 875</b>	<b>178 731</b>	<b>172 113</b>	<b>948 450</b>	<b>988 803</b>	<b>+ 4,3</b>

1/ Other residential buildings include institutions for the disabled, boarding houses, old people's homes, hostels, hotels, motels, guest houses, holiday chalets, entertainment centres, bed-and-breakfast accommodation and casinos.

2/ Other non-residential space includes churches, sport and recreation clubs, schools, crèches, hospitals and all other non-residential space.

3/ Other buildings include additions and alterations to other residential buildings, non-residential buildings and internal alterations.

**Table 12 - Building plans passed according to type of building and province: Northern Cape**

Type of building	August 2002	July 2003	August 2003	January 2002 to August 2002	January 2003 to August 2003	Percentage change between January 2002 to August 2002 and January 2003 to August 2003
<b>Residential buildings</b>						
Dwelling-houses smaller than 80 square metres						
Number of dwelling-houses	6	1	2	48	15	- 68,8
Total square metres	161	50	68	2 228	599	- 73,1
Total value at current prices (R'000)	251	90	102	3 681	924	- 74,9
Dwelling-houses equal to or larger than 80 square metres						
Number of dwelling-houses	6	11	8	67	75	+ 11,9
Total square metres	1 069	1 810	1 356	13 628	13 521	- 0,8
Total value at current prices (R'000)	1 808	2 700	2 084	21 214	20 909	- 1,4
Flats and townhouses						
Number of flats and townhouses	8	12	24	20	49	+ 145,0
Total square metres	1 102	1 762	2 474	2 909	6 280	+ 115,9
Total value at current prices (R'000)	1 851	3 172	3 885	5 104	10 702	+ 109,7
Other residential buildings <sup>1/</sup>						
Total square metres	0	0	0	0	0	..
Total value at current prices (R'000)	0	0	0	0	0	..
<b>Total value of residential buildings at current prices (R'000)</b>	<b>3 910</b>	<b>5 962</b>	<b>6 071</b>	<b>29 999</b>	<b>32 535</b>	<b>+ 8,5</b>
<b>Non-residential buildings</b>						
Office and banking space						
Total square metres	128	382	1 602	574	3 123	+ 444,1
Total value at current prices (R'000)	192	573	2 403	820	4 685	+ 471,3
Shopping space						
Total square metres	1 015	0	653	1 207	3 397	+ 181,4
Total value at current prices (R'000)	2 099	0	980	2 387	6 965	+ 191,8
Industrial and warehouse space						
Total square metres	0	0	493	2 415	2 972	+ 23,1
Total value at current prices (R'000)	0	0	740	3 469	5 325	+ 53,5
Other non-residential space <sup>2/</sup>						
Total square metres	0	150	361	2 128	511	- 76,0
Total value at current prices (R'000)	0	330	541	4 581	871	- 81,0
<b>Total value of non-residential buildings at current prices (R'000)</b>	<b>2 291</b>	<b>903</b>	<b>4 664</b>	<b>11 257</b>	<b>17 846</b>	<b>+ 58,5</b>
<b>Additions and alterations</b>						
Dwelling-houses						
Total square metres	3 188	2 596	3 526	21 832	21 130	- 3,2
Total value at current prices (R'000)	5 412	4 604	6 258	37 129	37 736	+ 1,6
Other buildings <sup>3/</sup>						
Total square metres	687	99	944	3 980	2 961	- 25,6
Total value at current prices (R'000)	3 267	229	2 426	11 898	8 697	- 26,9
<b>Total value of additions and alterations at current prices (R'000)</b>	<b>8 679</b>	<b>4 833</b>	<b>8 684</b>	<b>49 027</b>	<b>46 433</b>	<b>- 5,3</b>
<b>Total value of building plans passed at current prices (R'000)</b>	<b>14 880</b>	<b>11 698</b>	<b>19 419</b>	<b>90 283</b>	<b>96 814</b>	<b>+ 7,2</b>

1/ Other residential buildings include institutions for the disabled, boarding houses, old people's homes, hostels, hotels, motels, guest houses, holiday chalets, entertainment centres, bed-and-breakfast accommodation and casinos.

2/ Other non-residential space includes churches, sport and recreation clubs, schools, crèches, hospitals and all other non-residential space.

3/ Other buildings include additions and alterations to other residential buildings, non-residential buildings and internal alterations.

**Table 13 - Building plans passed according to type of building and province: Free State**

Type of building	August 2002	July 2003	August 2003	January 2002 to August 2002	January 2003 to August 2003	Percentage change between January 2002 to August 2002 and January 2003 to August 2003
<b>Residential buildings</b>						
Dwelling-houses smaller than 80 square metres						
Number of dwelling-houses	101	451	167	1 664	2 611	+ 56,9
Total square metres	4 526	12 391	7 153	71 386	102 441	+ 43,5
Total value at current prices (R'000)	3 911	8 546	5 152	43 174	59 929	+ 38,8
Dwelling-houses equal to or larger than 80 square metres						
Number of dwelling-houses	105	75	78	622	601	-3,4
Total square metres	21 141	12 884	13 335	102 035	100 324	-1,7
Total value at current prices (R'000)	22 424	18 373	18 543	119 932	142 354	+ 18,7
Flats and townhouses						
Number of flats and townhouses	2	8	1	462	199	-56,9
Total square metres	334	942	211	48 660	22 685	-53,4
Total value at current prices (R'000)	358	1 413	265	69 451	32 836	-52,7
Other residential buildings <sup>1/</sup>						
Total square metres	1 433	0	0	4 458	1 854	-58,4
Total value at current prices (R'000)	1 999	0	0	9 362	2 110	-77,5
<b>Total value of residential buildings at current prices (R'000)</b>	<b>28 692</b>	<b>28 332</b>	<b>23 960</b>	<b>241 919</b>	<b>237 229</b>	<b>-1,9</b>
<b>Non-residential buildings</b>						
Office and banking space						
Total square metres	0	149	1 183	12 914	7 326	-43,3
Total value at current prices (R'000)	0	237	1 788	21 802	11 551	-47,0
Shopping space						
Total square metres	0	2 199	3 848	13 926	21 685	+ 55,7
Total value at current prices (R'000)	0	4 337	3 277	27 808	36 256	+ 30,4
Industrial and warehouse space						
Total square metres	1 515	2 056	805	14 662	14 848	+ 1,3
Total value at current prices (R'000)	2 070	1 411	483	14 373	9 391	-34,7
Other non-residential space <sup>2/</sup>						
Total square metres	3 562	1 726	0	12 002	11 583	-3,5
Total value at current prices (R'000)	5 244	2 727	0	15 280	17 261	+ 13,0
<b>Total value of non-residential buildings at current prices (R'000)</b>	<b>7 314</b>	<b>8 712</b>	<b>5 548</b>	<b>79 263</b>	<b>74 459</b>	<b>-6,1</b>
<b>Additions and alterations</b>						
Dwelling-houses						
Total square metres	10 345	8 325	12 235	69 404	72 547	+ 4,5
Total value at current prices (R'000)	12 875	9 202	16 046	77 866	89 208	+ 14,6
Other buildings <sup>3/</sup>						
Total square metres	1 902	6 716	6 131	19 515	27 611	+ 41,5
Total value at current prices (R'000)	4 882	13 056	7 545	44 073	60 780	+ 37,9
<b>Total value of additions and alterations at current prices (R'000)</b>	<b>17 757</b>	<b>22 258</b>	<b>23 591</b>	<b>121 939</b>	<b>149 988</b>	<b>+ 23,0</b>
<b>Total value of building plans passed at current prices (R'000)</b>	<b>53 763</b>	<b>59 302</b>	<b>53 099</b>	<b>443 121</b>	<b>461 676</b>	<b>+ 4,2</b>

1/ Other residential buildings include institutions for the disabled, boarding houses, old people's homes, hostels, hotels, motels, guest houses, holiday chalets, entertainment centres, bed-and-breakfast accommodation and casinos.

2/ Other non-residential space includes churches, sport and recreation clubs, schools, crèches, hospitals and all other non-residential space.

3/ Other buildings include additions and alterations to other residential buildings, non-residential buildings and internal alterations.

**Table 14 - Building plans passed according to type of building and province: KwaZulu-Natal**

Type of building	August 2002*	July 2003	August 2003	January 2002 to August 2002	January 2003 to August 2003	Percentage change between January 2002 to August 2002 and January 2003 to August 2003
<b>Residential buildings</b>						
Dwelling-houses smaller than 80 square metres						
Number of dwelling-houses	252	151	155	1 697	2 572	+ 51,6
Total square metres	10 022	6 693	6 760	67 637	94 687	+ 40,0
Total value at current prices (R'000)	9 283	7 059	6 780	64 243	81 997	+ 27,6
Dwelling-houses equal to or larger than 80 square metres						
Number of dwelling-houses	183	207	207	1 207	1 449	+ 20,0
Total square metres	42 148	48 606	47 180	271 180	346 673	+ 27,8
Total value at current prices (R'000)	66 874	97 744	87 784	423 399	643 886	+ 52,1
Flats and townhouses						
Number of flats and townhouses	81	124	503	581	1 458	+ 150,9
Total square metres	18 975	27 800	49 172	97 800	225 422	+ 130,5
Total value at current prices (R'000)	33 611	67 253	111 842	165 979	562 371	+ 238,8
Other residential buildings <sup>1/</sup>						
Total square metres	0	423	586	31 840	16 795	- 47,3
Total value at current prices (R'000)	0	600	614	34 015	40 167	+ 18,1
<b>Total value of residential buildings at current prices (R'000)</b>	<b>109 768</b>	<b>172 656</b>	<b>207 020</b>	<b>687 636</b>	<b>1 328 421</b>	<b>+ 93,2</b>
<b>Non-residential buildings</b>						
Office and banking space						
Total square metres	7 697	3 246	1 510	32 990	21 824	- 33,8
Total value at current prices (R'000)	11 678	3 450	3 120	77 650	52 148	- 32,8
Shopping space						
Total square metres	39 800	4 075	10 316	70 357	96 404	+ 37,0
Total value at current prices (R'000)	120 200	6 336	24 844	177 519	563 314	+ 217,3
Industrial and warehouse space						
Total square metres	9 447	27 602	19 023	121 087	96 163	- 20,6
Total value at current prices (R'000)	12 730	30 143	23 995	245 726	114 570	- 53,4
Other non-residential space <sup>2/</sup>						
Total square metres	1 626	4 435	4 021	72 194	25 228	- 65,1
Total value at current prices (R'000)	1 860	7 910	5 552	85 945	45 737	- 46,8
<b>Total value of non-residential buildings at current prices (R'000)</b>	<b>146 468</b>	<b>47 839</b>	<b>57 511</b>	<b>586 840</b>	<b>775 769</b>	<b>+ 32,2</b>
<b>Additions and alterations</b>						
Dwelling-houses						
Total square metres	41 633	50 434	43 682	285 874	344 138	+ 20,4
Total value at current prices (R'000)	56 075	78 219	64 408	375 418	487 915	+ 30,0
Other buildings <sup>3/</sup>						
Total square metres	27 325	21 901	16 883	166 009	139 519	- 16,0
Total value at current prices (R'000)	92 137	56 078	29 356	489 313	284 451	- 41,9
<b>Total value of additions and alterations at current prices (R'000)</b>	<b>148 212</b>	<b>134 297</b>	<b>93 764</b>	<b>864 731</b>	<b>772 366</b>	<b>- 10,7</b>
<b>Total value of building plans passed at current prices (R'000)</b>	<b>404 448</b>	<b>354 792</b>	<b>358 295</b>	<b>2 139 207</b>	<b>2 876 556</b>	<b>+ 34,5</b>

1/ Other residential buildings include institutions for the disabled, boarding houses, old people's homes, hostels, hotels, motels, guest houses, holiday chalets, entertainment centres, bed-and-breakfast accommodation and casinos.

2/ Other non-residential space includes churches, sport and recreation clubs, schools, crèches, hospitals and all other non-residential space.

3/ Other buildings include additions and alterations to other residential buildings, non-residential buildings and internal alterations.

**Table 15 - Building plans passed according to type of building and province: North West**

Type of building	August 2002	July 2003	August 2003	January 2002 to August 2002	January 2003 to August 2003	Percentage change between January 2002 to August 2002 and January 2003 to August 2003
<b>Residential buildings</b>						
Dwelling-houses smaller than 80 square metres						
Number of dwelling-houses	36	40	30	607	266	- 56,2
Total square metres	2 158	2 390	1 544	28 587	15 376	- 46,2
Total value at current prices (R'000)	2 581	2 779	1 865	31 956	18 675	- 41,6
Dwelling-houses equal to or larger than 80 square metres						
Number of dwelling-houses	108	109	97	840	746	- 11,2
Total square metres	21 433	22 738	23 421	156 376	148 968	- 4,7
Total value at current prices (R'000)	27 071	38 231	40 140	196 202	236 197	+ 20,4
Flats and townhouses						
Number of flats and townhouses	19	121	38	600	542	- 9,7
Total square metres	2 376	11 986	3 963	40 025	46 089	+ 15,2
Total value at current prices (R'000)	5 491	26 254	5 587	62 453	79 190	+ 26,8
Other residential buildings <sup>1/</sup>						
Total square metres	0	0	0	768	9 676	+ 1159,9
Total value at current prices (R'000)	0	0	0	781	15 033	+ 1824,8
<b>Total value of residential buildings at current prices (R'000)</b>	<b>35 143</b>	<b>67 264</b>	<b>47 592</b>	<b>291 392</b>	<b>349 095</b>	<b>+ 19,8</b>
<b>Non-residential buildings</b>						
Office and banking space						
Total square metres	0	0	844	5 874	5 637	-4,0
Total value at current prices (R'000)	0	0	1 568	9 148	11 546	+ 26,2
Shopping space						
Total square metres	202	1 940	1 363	15 110	10 292	- 31,9
Total value at current prices (R'000)	242	3 338	1 678	23 199	21 015	- 9,4
Industrial and warehouse space						
Total square metres	0	9 342	2 736	8 672	20 811	+ 140,0
Total value at current prices (R'000)	0	14 000	2 974	12 098	27 163	+ 124,5
Other non-residential space <sup>2/</sup>						
Total square metres	239	734	6 615	15 792	20 441	+ 29,4
Total value at current prices (R'000)	347	1 519	13 230	39 624	38 519	- 2,8
<b>Total value of non-residential buildings at current prices (R'000)</b>	<b>589</b>	<b>18 857</b>	<b>19 450</b>	<b>84 069</b>	<b>98 243</b>	<b>+ 16,9</b>
<b>Additions and alterations</b>						
Dwelling-houses						
Total square metres	10 444	12 444	9 437	73 490	67 315	- 8,4
Total value at current prices (R'000)	14 302	18 992	12 715	90 340	93 520	+ 3,5
Other buildings <sup>3/</sup>						
Total square metres	1 743	3 823	2 800	15 284	12 106	- 20,8
Total value at current prices (R'000)	3 632	6 728	3 801	26 528	19 579	- 26,2
<b>Total value of additions and alterations at current prices (R'000)</b>	<b>17 934</b>	<b>25 720</b>	<b>16 516</b>	<b>116 868</b>	<b>113 099</b>	<b>- 3,2</b>
<b>Total value of building plans passed at current prices (R'000)</b>	<b>53 666</b>	<b>111 841</b>	<b>83 558</b>	<b>492 329</b>	<b>560 437</b>	<b>+ 13,8</b>

1/ Other residential buildings include institutions for the disabled, boarding houses, old people's homes, hostels, hotels, motels, guest houses, holiday chalets, entertainment centres, bed-and-breakfast accommodation and casinos.

2/ Other non-residential space includes churches, sport and recreation clubs, schools, crèches, hospitals and all other non-residential space.

3/ Other buildings include additions and alterations to other residential buildings, non-residential buildings and internal alterations.

**Table 16 - Building plans passed according to type of building and province: Gauteng**

Type of building	August 2002 *	July 2003	August 2003	January 2002 to August 2002	January 2003 to August 2003	Percentage change between January 2002 to August 2002 and January 2003 to August 2003
<b>Residential buildings</b>						
Dwelling-houses smaller than 80 square metres						
Number of dwelling-houses	489	850	484	5 797	7 522	+ 29,8
Total square metres	18 457	38 081	22 110	224 205	287 528	+ 28,2
Total value at current prices (R'000)	22 032	44 323	33 845	230 451	296 735	+ 28,8
Dwelling-houses equal to or larger than 80 square metres						
Number of dwelling-houses	815	884	805	5 362	5 872	+ 9,5
Total square metres	215 235	239 735	239 731	1 434 651	1 592 069	+ 11,0
Total value at current prices (R'000)	351 853	458 004	484 152	2 298 633	2 934 317	+ 27,7
Flats and townhouses						
Number of flats and townhouses	463	815	744	4 410	4 833	+ 9,6
Total square metres	64 684	141 667	153 410	579 525	865 841	+ 49,4
Total value at current prices (R'000)	104 881	254 465	311 294	955 589	1 595 326	+ 66,9
Other residential buildings <sup>1/</sup>						
Total square metres	0	3 492	3 014	3 968	41 790	+ 953,2
Total value at current prices (R'000)	0	6 984	5 423	6 751	70 810	+ 948,9
<b>Total value of residential buildings at current prices (R'000)</b>	<b>478 766</b>	<b>763 776</b>	<b>834 714</b>	<b>3 491 424</b>	<b>4 897 188</b>	<b>+ 40,3</b>
<b>Non-residential buildings</b>						
Office and banking space						
Total square metres	5 072	10 958	44 428	204 041	148 440	- 27,2
Total value at current prices (R'000)	8 480	20 939	84 688	441 922	272 911	- 38,2
Shopping space						
Total square metres	49 335	71 710	24 101	123 611	143 557	+ 16,1
Total value at current prices (R'000)	77 069	102 537	43 830	202 706	227 494	+ 12,2
Industrial and warehouse space						
Total square metres	35 723	81 994	42 786	285 779	282 837	- 1,0
Total value at current prices (R'000)	49 670	146 574	77 331	458 714	498 812	+ 8,7
Other non-residential space <sup>2/</sup>						
Total square metres	8 279	14 188	6 206	238 199	99 318	- 58,3
Total value at current prices (R'000)	13 007	25 368	10 289	441 893	182 109	- 58,8
<b>Total value of non-residential buildings at current prices (R'000)</b>	<b>148 226</b>	<b>295 418</b>	<b>216 138</b>	<b>1 545 235</b>	<b>1 181 326</b>	<b>- 23,6</b>
<b>Additions and alterations</b>						
Dwelling-houses						
Total square metres	107 414	120 399	113 711	724 942	792 014	+ 9,3
Total value at current prices (R'000)	169 819	215 189	196 255	1 138 399	1 350 016	+ 18,6
Other buildings <sup>3/</sup>						
Total square metres	42 863	68 054	29 571	300 882	341 391	+ 13,5
Total value at current prices (R'000)	70 220	128 566	58 890	536 866	648 971	+ 20,9
<b>Total value of additions and alterations at current prices (R'000)</b>	<b>240 039</b>	<b>343 755</b>	<b>255 145</b>	<b>1 675 265</b>	<b>1 998 987</b>	<b>+ 19,3</b>
<b>Total value of building plans passed at current prices (R'000)</b>	<b>867 031</b>	<b>1 402 949</b>	<b>1 305 997</b>	<b>6 711 924</b>	<b>8 077 501</b>	<b>+ 20,3</b>

1/ Other residential buildings include institutions for the disabled, boarding houses, old people's homes, hostels, hotels, motels, guest houses, holiday chalets, entertainment centres, bed-and-breakfast accommodation and casinos.

2/ Other non-residential space includes churches, sport and recreation clubs, schools, crèches, hospitals and all other non-residential space.

3/ Other buildings include additions and alterations to other residential buildings, non-residential buildings and internal alterations.



**Table 17 - Building plans passed according to type of building and province: Mpumalanga**

Type of building	August 2002*	July 2003	August 2003	January 2002 to August 2002	January 2003 to August 2003	Percentage change between January 2002 to August 2002 and January 2003 to August 2003
<b>Residential buildings</b>						
Dwelling-houses smaller than 80 square metres						
Number of dwelling-houses	109	23	40	1 575	616	- 60,9
Total square metres	4 814	1 276	2 223	65 555	27 709	- 57,7
Total value at current prices (R'000)	2 903	1 523	2 805	37 544	23 840	- 36,5
Dwelling-houses equal to or larger than 80 square metres						
Number of dwelling-houses	123	127	107	933	958	+ 2,7
Total square metres	24 032	27 742	21 866	170 665	201 938	+ 18,3
Total value at current prices (R'000)	32 509	37 808	29 814	224 662	279 138	+ 24,2
Flats and townhouses						
Number of flats and townhouses	15	27	11	226	84	- 62,8
Total square metres	2 798	3 447	1 623	29 549	10 515	- 64,4
Total value at current prices (R'000)	2 939	5 085	1 705	39 314	15 032	- 61,8
Other residential buildings <sup>1/</sup>						
Total square metres	949	0	498	14 125	2 277	- 83,9
Total value at current prices (R'000)	1 806	0	500	126 931	3 950	- 96,9
<b>Total value of residential buildings at current prices (R'000)</b>	<b>40 157</b>	<b>44 416</b>	<b>34 824</b>	<b>428 451</b>	<b>321 960</b>	<b>- 24,9</b>
<b>Non-residential buildings</b>						
Office and banking space						
Total square metres	215	80	0	3 325	7 845	+ 135,9
Total value at current prices (R'000)	215	120	0	4 494	12 811	+ 185,1
Shopping space						
Total square metres	11 647	3 807	1 897	34 828	44 760	+28,5
Total value at current prices (R'000)	11 840	5 648	2 900	42 341	70 717	+67,0
Industrial and warehouse space						
Total square metres	11 148	750	4 652	28 092	38 217	+ 36,0
Total value at current prices (R'000)	12 780	1 200	6 759	34 100	46 845	+ 37,4
Other non-residential space <sup>2/</sup>						
Total square metres	641	258	2 387	15 925	6 320	- 60,3
Total value at current prices (R'000)	1 021	300	3 223	20 549	8 104	- 60,6
<b>Total value of non-residential buildings at current prices (R'000)</b>	<b>25 856</b>	<b>7 268</b>	<b>12 882</b>	<b>101 484</b>	<b>138 477</b>	<b>+ 36,5</b>
<b>Additions and alterations</b>						
Dwelling-houses						
Total square metres	18 281	11 475	13 137	103 007	96 906	- 5,9
Total value at current prices (R'000)	23 181	12 293	15 283	119 268	119 966	+ 0,6
Other buildings <sup>3/</sup>						
Total square metres	1 221	3 280	2 460	11 595	25 800	+ 122,5
Total value at current prices (R'000)	2 661	4 596	2 676	22 442	35 203	+ 56,9
<b>Total value of additions and alterations at current prices (R'000)</b>	<b>25 842</b>	<b>16 889</b>	<b>17 959</b>	<b>141 710</b>	<b>155 169</b>	<b>+ 9,5</b>
<b>Total value of building plans passed at current prices (R'000)</b>	<b>91 855</b>	<b>68 573</b>	<b>65 665</b>	<b>671 645</b>	<b>615 606</b>	<b>- 8,3</b>

1/ Other residential buildings include institutions for the disabled, boarding houses, old people's homes, hostels, hotels, motels, guest houses, holiday chalets, entertainment centres, bed-and-breakfast accommodation and casinos.

2/ Other non-residential space includes churches, sport and recreation clubs, schools, crèches, hospitals and all other non-residential space.

3/ Other buildings include additions and alterations to other residential buildings, non-residential buildings and internal alterations.

**Table 18 - Building plans passed according to type of building and province: Limpopo**

Type of building	August 2002	July 2003	August 2003	January 2002 to August 2002	January 2003 to August 2003	Percentage change between January 2002 to August 2002 and January 2003 to August 2003
<b>Residential buildings</b>						
Dwelling-houses smaller than 80 square metres						
Number of dwelling-houses	33	31	30	206	490	+ 137,9
Total square metres	2 021	1 812	1 923	12 523	23 435	+ 87,1
Total value at current prices (R'000)	2 875	2 514	2 995	18 030	21 978	+ 21,9
Dwelling-houses equal to or larger than 80 square metres						
Number of dwelling-houses	60	45	52	379	452	+ 19,3
Total square metres	11 619	8 902	10 624	74 106	84 247	+ 13,7
Total value at current prices (R'000)	15 724	12 162	15 370	103 310	120 016	+ 16,2
Flats and townhouses						
Number of flats and townhouses	0	16	1	80	95	+ 18,8
Total square metres	0	2 460	258	9 856	10 709	+ 8,7
Total value at current prices (R'000)	0	3 444	361	16 080	15 292	-4,9
Other residential buildings <sup>1/</sup>						
Total square metres	803	0	0	1 324	0	..
Total value at current prices (R'000)	1 285	0	0	2 215	0	..
<b>Total value of residential buildings at current prices (R'000)</b>	<b>19 884</b>	<b>18 120</b>	<b>18 726</b>	<b>139 635</b>	<b>157 286</b>	<b>+ 12,6</b>
<b>Non-residential buildings</b>						
Office and banking space						
Total square metres	0	1 310	0	2 551	2 843	+ 11,4
Total value at current prices (R'000)	0	2 021	0	5 172	5 394	+ 4,3
Shopping space						
Total square metres	0	1 838	10 024	5 654	29 386	+ 419,7
Total value at current prices (R'000)	0	3 288	21 537	9 511	68 811	+ 623,5
Industrial and warehouse space						
Total square metres	0	0	0	97 735	3 814	-96,1
Total value at current prices (R'000)	0	0	0	213 721	7 217	-96,6
Other non-residential space <sup>2/</sup>						
Total square metres	128	55	0	3 239	2 938	-9,3
Total value at current prices (R'000)	153	121	0	6 158	5 994	-2,7
<b>Total value of non-residential buildings at current prices (R'000)</b>	<b>153</b>	<b>5 430</b>	<b>21 537</b>	<b>234 562</b>	<b>87 416</b>	<b>-62,7</b>
<b>Additions and alterations</b>						
Dwelling-houses						
Total square metres	5 863	4 282	4 134	36 247	35 827	-1,2
Total value at current prices (R'000)	7 897	5 938	5 556	49 478	48 868	-1,2
Other buildings <sup>3/</sup>						
Total square metres	2 766	2 224	50	15 820	6 791	-57,1
Total value at current prices (R'000)	5 989	4 447	1 332	27 917	16 552	-40,7
<b>Total value of additions and alterations at current prices (R'000)</b>	<b>13 886</b>	<b>10 385</b>	<b>6 888</b>	<b>77 395</b>	<b>65 420</b>	<b>-15,5</b>
<b>Total value of building plans passed at current prices (R'000)</b>	<b>33 923</b>	<b>33 935</b>	<b>47 151</b>	<b>451 592</b>	<b>310 122</b>	<b>-31,3</b>

1/ Other residential buildings include institutions for the disabled, boarding houses, old people's homes, hostels, hotels, motels, guest houses, holiday chalets, entertainment centres, bed-and-breakfast accommodation and casinos.

2/ Other non-residential space includes churches, sport and recreation clubs, schools, crèches, hospitals and all other non-residential space.

3/ Other buildings include additions and alterations to other residential buildings, non-residential buildings and internal alterations.

**Table 19 - Buildings completed according to type of building: Total RSA**

Type of building	August 2002	July 2003*	August 2003	January 2002 to August 2002	January 2003 to August 2003	Percentage change between January 2002 to August 2002 and January 2003 to August 2003
<b>Residential buildings</b>						
Dwelling-houses smaller than 80 square metres						
Number of dwelling-houses	2 497	1 686	1 220	19 712	16 221	- 17,7
Total square metres	97 747	71 563	50 133	763 131	617 444	- 19,1
Total value at current prices (R'000)	99 179	72 718	54 487	706 596	570 315	- 19,3
Dwelling-houses equal to or larger than 80 square metres						
Number of dwelling-houses	1 147	1 457	1 499	8 964	10 176	+ 13,5
Total square metres	248 282	333 540	310 609	1 878 339	2 178 570	+ 16,0
Total value at current prices (R'000)	387 063	577 501	509 509	2 843 649	3 615 197	+ 27,1
Flats and townhouses						
Number of flats and townhouses	978	1 707	907	6 946	8 051	+ 15,9
Total square metres	133 605	180 153	132 481	809 532	903 596	+ 11,6
Total value at current prices (R'000)	249 494	297 966	257 253	1 289 762	1 551 012	+ 20,3
Other residential buildings <sup>1/</sup>						
Total square metres	4 981	87 056	12 155	62 186	146 571	+ 135,7
Total value at current prices (R'000)	4 485	683 309	16 432	277 243	799 200	+ 188,3
<b>Total value of residential buildings at current prices (R'000)</b>	<b>740 221</b>	<b>1 631 494</b>	<b>837 681</b>	<b>5 117 250</b>	<b>6 535 724</b>	<b>+ 27,7</b>
<b>Non-residential buildings</b>						
Office and banking space						
Total square metres	13 805	27 770	43 957	369 677	382 781	+ 3,5
Total value at current prices (R'000)	29 698	64 959	75 247	637 539	765 448	+ 20,1
Shopping space						
Total square metres	9 548	51 045	7 547	175 816	218 908	+ 24,5
Total value at current prices (R'000)	16 330	79 628	14 124	287 095	385 680	+ 34,3
Industrial and warehouse space						
Total square metres	31 550	22 345	33 806	356 071	349 327	- 1,9
Total value at current prices (R'000)	36 404	38 012	48 236	440 971	472 720	+ 7,2
Other non-residential space <sup>2/</sup>						
Total square metres	10 350	3 802	5 692	138 649	330 737	+ 138,5
Total value at current prices (R'000)	13 896	6 764	14 713	203 115	636 059	+ 213,2
<b>Total value of non-residential buildings at current prices (R'000)</b>	<b>96 328</b>	<b>189 363</b>	<b>152 320</b>	<b>1 568 720</b>	<b>2 259 907</b>	<b>+ 44,1</b>
<b>Additions and alterations</b>						
Dwelling-houses						
Total square metres	118 350	122 152	127 604	1 034 524	991 235	- 4,2
Total value at current prices (R'000)	156 504	170 555	160 386	1 341 465	1 332 779	- 0,6
Other buildings <sup>3/</sup>						
Total square metres	43 213	65 848	60 001	372 336	399 296	+ 7,2
Total value at current prices (R'000)	69 910	162 181	119 681	629 072	872 626	+ 38,7
<b>Total value of additions and alterations at current prices (R'000)</b>	<b>226 414</b>	<b>332 736</b>	<b>280 067</b>	<b>1 970 537</b>	<b>2 205 405</b>	<b>+ 11,9</b>
<b>Total value of buildings completed at current prices (R'000)</b>	<b>1 062 963</b>	<b>2 153 593</b>	<b>1 270 068</b>	<b>8 656 507</b>	<b>11 001 036</b>	<b>+ 27,1</b>

1/ Other residential buildings include institutions for the disabled, boarding houses, old people's homes, hostels, hotels, motels, guest houses, holiday chalets, entertainment centres, bed-and-breakfast accommodation and casinos.

2/ Other non-residential space includes churches, sport and recreation clubs, schools, crèches, hospitals and all other non-residential space.

3/ Other buildings include additions and alterations to other residential buildings, non-residential buildings and internal alterations.

**Table 20 - Buildings completed according to type of building and province: Western Cape**

Type of building	August 2002*	July 2003	August 2003	January 2002 to August 2002	January 2003 to August 2003	Percentage change between January 2002 to August 2002 and January 2003 to August 2003
<b>Residential buildings</b>						
Dwelling-houses smaller than 80 square metres						
Number of dwelling-houses	535	464	558	4 822	2 827	- 41,4
Total square metres	19 944	18 879	19 761	174 840	107 357	- 38,6
Total value at current prices (R'000)	24 606	23 251	17 365	202 107	125 519	- 37,9
Dwelling-houses equal to or larger than 80 square metres						
Number of dwelling-houses	463	477	516	3 590	3 777	+ 5,2
Total square metres	89 874	105 173	102 163	719 729	745 111	+ 3,5
Total value at current prices (R'000)	137 659	173 991	164 107	1 117 294	1 232 292	+ 10,3
Flats and townhouses						
Number of flats and townhouses	291	949	198	1 489	2 112	+ 41,8
Total square metres	23 179	64 716	30 922	173 524	199 151	+ 14,8
Total value at current prices (R'000)	31 413	97 680	69 000	271 488	344 974	+ 27,1
Other residential buildings <sup>1/</sup>						
Total square metres	156	47 415	9 032	6 087	72 446	+ 1090,2
Total value at current prices (R'000)	312	214 896	11 398	9 802	268 487	+ 2639,1
<b>Total value of residential buildings at current prices (R'000)</b>	<b>193 990</b>	<b>509 818</b>	<b>261 870</b>	<b>1 600 691</b>	<b>1 971 272</b>	<b>+ 23,2</b>
<b>Non-residential buildings</b>						
Office and banking space						
Total square metres	691	2 787	5 298	75 409	100 855	+ 33,7
Total value at current prices (R'000)	1 142	3 643	8 364	113 090	182 984	+ 61,8
Shopping space						
Total square metres	256	677	882	68 598	23 758	- 65,4
Total value at current prices (R'000)	640	649	2 646	94 723	36 395	- 61,6
Industrial and warehouse space						
Total square metres	12 666	11 217	14 444	114 561	119 790	+ 4,6
Total value at current prices (R'000)	11 819	22 442	19 574	123 874	155 364	+ 25,4
Other non-residential space <sup>2/</sup>						
Total square metres	6 761	1 977	1 778	59 773	40 228	- 32,7
Total value at current prices (R'000)	7 125	3 386	2 162	82 448	55 252	- 33,0
<b>Total value of non-residential buildings at current prices (R'000)</b>	<b>20 726</b>	<b>30 120</b>	<b>32 746</b>	<b>414 135</b>	<b>429 995</b>	<b>+ 3,8</b>
<b>Additions and alterations</b>						
Dwelling-houses						
Total square metres	44 680	43 676	38 664	364 215	349 148	- 4,1
Total value at current prices (R'000)	58 034	61 721	53 478	481 529	470 454	- 2,3
Other buildings <sup>3/</sup>						
Total square metres	13 041	21 155	16 017	144 880	135 553	- 6,4
Total value at current prices (R'000)	23 464	39 780	38 449	242 805	304 874	+ 25,6
<b>Total value of additions and alterations at current prices (R'000)</b>	<b>81 498</b>	<b>101 501</b>	<b>91 927</b>	<b>724 334</b>	<b>775 328</b>	<b>+ 7,0</b>
<b>Total value of buildings completed at current prices (R'000)</b>	<b>296 214</b>	<b>641 439</b>	<b>386 543</b>	<b>2 739 160</b>	<b>3 176 595</b>	<b>+ 16,0</b>

1/ Other residential buildings include institutions for the disabled, boarding houses, old people's homes, hostels, hotels, motels, guest houses, holiday chalets, entertainment centres, bed-and-breakfast accommodation and casinos.

2/ Other non-residential space includes churches, sport and recreation clubs, schools, crèches, hospitals and all other non-residential space.

3/ Other buildings include additions and alterations to other residential buildings, non-residential buildings and internal alterations.

**Table 21 - Buildings completed according to type of building and province: Eastern Cape**

Type of building	August 2002	July 2003	August 2003	January 2002 to August 2002	January 2003 to August 2003	Percentage change between January 2002 to August 2002 and January 2003 to August 2003
<b>Residential buildings</b>						
Dwelling-houses smaller than 80 square metres						
Number of dwelling-houses	232	154	154	2 012	1 095	- 45,6
Total square metres	11 794	6 433	6 724	86 978	47 767	- 45,1
Total value at current prices (R'000)	16 068	6 442	10 241	111 654	59 495	- 46,7
Dwelling-houses equal to or larger than 80 square metres						
Number of dwelling-houses	21	105	125	500	510	+ 2,0
Total square metres	4 252	21 906	16 856	80 698	95 913	+ 18,9
Total value at current prices (R'000)	6 242	34 724	27 672	109 543	146 286	+ 33,5
Flats and townhouses						
Number of flats and townhouses	2	12	40	322	219	-32,0
Total square metres	213	1 339	6 412	17 841	17 284	- 3,1
Total value at current prices (R'000)	298	2 076	11 458	25 760	28 161	+ 9,3
Other residential buildings <sup>1/</sup>						
Total square metres	0	223	0	15 865	6 307	- 60,2
Total value at current prices (R'000)	0	483	0	26 589	10 507	- 60,5
<b>Total value of residential buildings at current prices (R'000)</b>	<b>22 608</b>	<b>43 725</b>	<b>49 371</b>	<b>273 546</b>	<b>244 449</b>	<b>- 10,6</b>
<b>Non-residential buildings</b>						
Office and banking space						
Total square metres	868	0	0	1 444	160	-88,9
Total value at current prices (R'000)	1 701	0	0	2 886	267	-90,7
Shopping space						
Total square metres	0	11 977	0	2 779	16 206	+ 483,2
Total value at current prices (R'000)	0	15 039	0	3 520	22 394	+ 536,2
Industrial and warehouse space						
Total square metres	0	0	0	11 239	13 203	+ 17,5
Total value at current prices (R'000)	0	0	0	10 482	19 685	+ 87,8
Other non-residential space <sup>2/</sup>						
Total square metres	0	0	0	2 870	6 529	+ 127,5
Total value at current prices (R'000)	0	0	0	3 460	10 204	+ 194,9
<b>Total value of non-residential buildings at current prices (R'000)</b>	<b>1 701</b>	<b>15 039</b>	<b>0</b>	<b>20 348</b>	<b>52 550</b>	<b>+ 158,3</b>
<b>Additions and alterations</b>						
Dwelling-houses						
Total square metres	7 234	9 588	5 439	72 648	64 029	- 11,9
Total value at current prices (R'000)	11 131	14 520	9 420	90 365	90 690	+ 0,4
Other buildings <sup>3/</sup>						
Total square metres	4 531	6 430	920	36 490	37 531	+ 2,9
Total value at current prices (R'000)	5 929	5 728	3 818	46 295	61 353	+ 32,5
<b>Total value of additions and alterations at current prices (R'000)</b>	<b>17 060</b>	<b>20 248</b>	<b>13 238</b>	<b>136 660</b>	<b>152 043</b>	<b>+ 11,3</b>
<b>Total value of buildings completed at current prices (R'000)</b>	<b>41 369</b>	<b>79 012</b>	<b>62 609</b>	<b>430 554</b>	<b>449 042</b>	<b>+ 4,3</b>

1/ Other residential buildings include institutions for the disabled, boarding houses, old people's homes, hostels, hotels, motels, guest houses, holiday chalets, entertainment centres, bed-and-breakfast accommodation and casinos.

2/ Other non-residential space includes churches, sport and recreation clubs, schools, crèches, hospitals and all other non-residential space.

3/ Other buildings include additions and alterations to other residential buildings, non-residential buildings and internal alterations.

**Table 22 - Buildings completed according to type of building and province: Northern Cape**

Type of building	August 2002	July 2003	August 2003	January 2002 to August 2002	January 2003 to August 2003	Percentage change between January 2002 to August 2002 and January 2003 to August 2003
<b>Residential buildings</b>						
Dwelling-houses smaller than 80 square metres						
Number of dwelling-houses	1	2	5	62	55	- 11,3
Total square metres	60	109	180	2 900	2 144	- 26,1
Total value at current prices (R'000)	120	164	135	3 718	2 007	- 46,0
Dwelling-houses equal to or larger than 80 square metres						
Number of dwelling-houses	2	2	5	37	40	+ 8,1
Total square metres	749	225	1 149	6 094	7 170	+ 17,7
Total value at current prices (R'000)	1 295	238	1 628	8 743	11 453	+ 31,0
Flats and townhouses						
Number of flats and townhouses	4	0	0	28	7	- 75,0
Total square metres	602	0	0	4 361	1 312	- 69,9
Total value at current prices (R'000)	985	0	0	7 385	2 272	- 69,2
Other residential buildings <sup>1/</sup>						
Total square metres	0	0	0	0	0	..
Total value at current prices (R'000)	0	0	0	0	0	..
<b>Total value of residential buildings at current prices (R'000)</b>	<b>2 400</b>	<b>402</b>	<b>1 763</b>	<b>19 846</b>	<b>15 732</b>	<b>- 20,7</b>
<b>Non-residential buildings</b>						
Office and banking space						
Total square metres	0	0	0	0	0	..
Total value at current prices (R'000)	0	0	0	0	0	..
Shopping space						
Total square metres	0	0	765	784	4 098	+ 422,7
Total value at current prices (R'000)	0	0	1 683	1 098	9 016	+ 721,1
Industrial and warehouse space						
Total square metres	0	0	446	1 023	1 463	+ 43,0
Total value at current prices (R'000)	0	0	981	1 229	3 038	+ 147,2
Other non-residential space <sup>2/</sup>						
Total square metres	0	0	0	1 001	125	- 87,5
Total value at current prices (R'000)	0	0	0	1 309	188	- 85,6
<b>Total value of non-residential buildings at current prices (R'000)</b>	<b>0</b>	<b>0</b>	<b>2 664</b>	<b>3 636</b>	<b>12 242</b>	<b>+ 236,7</b>
<b>Additions and alterations</b>						
Dwelling-houses						
Total square metres	1 807	1 374	1 611	17 994	16 312	- 9,3
Total value at current prices (R'000)	2 573	2 410	2 758	25 413	26 597	+ 4,7
Other buildings <sup>3/</sup>						
Total square metres	1 129	1 029	0	3 057	4 502	+ 47,3
Total value at current prices (R'000)	2 938	2 074	303	8 532	8 879	+ 4,1
<b>Total value of additions and alterations at current prices (R'000)</b>	<b>5 511</b>	<b>4 484</b>	<b>3 061</b>	<b>33 945</b>	<b>35 476</b>	<b>+ 4,5</b>
<b>Total value of buildings completed at current prices (R'000)</b>	<b>7 911</b>	<b>4 886</b>	<b>7 488</b>	<b>57 427</b>	<b>63 450</b>	<b>10,5</b>

1/ Other residential buildings include institutions for the disabled, boarding houses, old people's homes, hostels, hotels, motels, guest houses, holiday chalets, entertainment centres, bed-and-breakfast accommodation and casinos.

2/ Other non-residential space includes churches, sport and recreation clubs, schools, crèches, hospitals and all other non-residential space.

3/ Other buildings include additions and alterations to other residential buildings, non-residential buildings and internal alterations.

**Table 23 - Buildings completed according to type of building and province: Free State**

Type of building	August 2002	July 2003	August 2003	January 2002 to August 2002	January 2003 to August 2003	Percentage change between January 2002 to August 2002 and January 2003 to August 2003
<b>Residential buildings</b>						
Dwelling-houses smaller than 80 square metres						
Number of dwelling-houses	286	271	183	2 262	1 913	-15,4
Total square metres	11 855	11 489	7 526	97 966	80 569	-17,8
Total value at current prices (R'000)	7 000	6 536	4 499	54 179	46 726	-13,8
Dwelling-houses equal to or larger than 80 square metres						
Number of dwelling-houses	28	37	32	227	227	+ 0,0
Total square metres	4 775	6 121	5 776	38 622	37 460	-3,0
Total value at current prices (R'000)	5 134	8 062	7 906	46 746	49 051	+ 4,9
Flats and townhouses						
Number of flats and townhouses	143	51	141	297	348	+ 17,2
Total square metres	16 193	5 471	13 492	34 561	36 964	+ 7,0
Total value at current prices (R'000)	23 163	7 767	22 443	49 491	56 732	+ 14,6
Other residential buildings <sup>1/</sup>						
Total square metres	1 963	0	0	3 466	2 743	-20,9
Total value at current prices (R'000)	1 949	0	0	3 474	7 054	+ 103,1
<b>Total value of residential buildings at current prices (R'000)</b>	<b>37 246</b>	<b>22 365</b>	<b>34 848</b>	<b>153 890</b>	<b>159 563</b>	<b>+ 3,7</b>
<b>Non-residential buildings</b>						
Office and banking space						
Total square metres	0	1 400	626	5 104	7 756	+ 52,0
Total value at current prices (R'000)	0	900	900	8 728	9 647	+ 10,5
Shopping space						
Total square metres	0	1 625	211	1 941	12 743	+ 556,5
Total value at current prices (R'000)	0	2 665	291	3 220	20 226	+ 528,1
Industrial and warehouse space						
Total square metres	0	0	1 926	5 233	11 235	+ 114,7
Total value at current prices (R'000)	0	0	4 966	3 904	13 143	+ 236,7
Other non-residential space <sup>2/</sup>						
Total square metres	0	0	0	10 203	3 240	-68,2
Total value at current prices (R'000)	142	0	0	26 321	4 558	-82,7
<b>Total value of non-residential buildings at current prices (R'000)</b>	<b>142</b>	<b>3 565</b>	<b>6 157</b>	<b>42 173</b>	<b>47 574</b>	<b>+ 12,8</b>
<b>Additions and alterations</b>						
Dwelling-houses						
Total square metres	5 751	4 463	5 356	54 058	39 017	-27,8
Total value at current prices (R'000)	5 950	5 082	6 408	59 156	44 327	-25,1
Other buildings <sup>3/</sup>						
Total square metres	3 176	2 806	864	11 502	10 339	-10,1
Total value at current prices (R'000)	5 072	7 817	3 352	25 362	34 188	+ 34,8
<b>Total value of additions and alterations at current prices (R'000)</b>	<b>11 022</b>	<b>12 899</b>	<b>9 760</b>	<b>84 518</b>	<b>78 515</b>	<b>-7,1</b>
<b>Total value of buildings completed at current prices (R'000)</b>	<b>48 410</b>	<b>38 829</b>	<b>50 765</b>	<b>280 581</b>	<b>285 652</b>	<b>+ 1,8</b>

1/ Other residential buildings include institutions for the disabled, boarding houses, old people's homes, hostels, hotels, motels, guest houses, holiday chalets, entertainment centres, bed-and-breakfast accommodation and casinos.

2/ Other non-residential space includes churches, sport and recreation clubs, schools, crèches, hospitals and all other non-residential space.

3/ Other buildings include additions and alterations to other residential buildings, non-residential buildings and internal alterations.

**Table 24 - Buildings completed according to type of building and province: KwaZulu-Natal**

Type of building	August 2002*	July 2003*	August 2003	January 2002 to August 2002	January 2003 to August 2003	Percentage change between January 2002 to August 2002 and January 2003 to August 2003
<b>Residential buildings</b>						
Dwelling-houses smaller than 80 square metres						
Number of dwelling-houses	345	72	98	1 633	1 608	-1,5
Total square metres	12 262	4 177	5 338	66 636	63 534	-4,7
Total value at current prices (R'000)	12 618	5 059	7 105	66 026	61 113	-7,4
Dwelling-houses equal to or larger than 80 square metres						
Number of dwelling-houses	126	103	108	921	837	-9,1
Total square metres	24 781	22 980	21 869	184 130	175 170	-4,9
Total value at current prices (R'000)	37 019	36 706	32 754	262 060	264 048	+ 0,8
Flats and townhouses						
Number of flats and townhouses	37	97	19	523	445	-14,9
Total square metres	4 823	21 831	3 918	70 305	71 917	+ 2,3
Total value at current prices (R'000)	8 479	43 000	9 410	123 802	125 842	+ 1,6
Other residential buildings <sup>1/</sup>						
Total square metres	2 862	38 932	0	7 265	39 118	+ 438,4
Total value at current prices (R'000)	2 224	466 430	0	6 995	466 716	+ 6 572,1
<b>Total value of residential buildings at current prices (R'000)</b>	<b>60 340</b>	<b>551 195</b>	<b>49 269</b>	<b>458 883</b>	<b>917 719</b>	<b>+ 100,0</b>
<b>Non-residential buildings</b>						
Office and banking space						
Total square metres	4 773	15 344	2 229	79 562	31 129	-60,9
Total value at current prices (R'000)	12 602	47 520	3 900	180 610	78 457	-56,6
Shopping space						
Total square metres	1 730	1 330	988	41 944	35 181	-16,1
Total value at current prices (R'000)	1 950	3 700	1 600	84 361	67 778	-19,7
Industrial and warehouse space						
Total square metres	13 243	6 926	4 128	128 101	66 713	-47,9
Total value at current prices (R'000)	17 662	8 115	3 440	153 384	73 153	-52,3
Other non-residential space <sup>2/</sup>						
Total square metres	1 182	662	2 854	20 762	20 276	-2,3
Total value at current prices (R'000)	3 300	1 210	10 830	31 565	42 633	+ 35,1
<b>Total value of non-residential buildings at current prices (R'000)</b>	<b>35 514</b>	<b>60 545</b>	<b>19 770</b>	<b>449 920</b>	<b>262 021</b>	<b>-41,8</b>
<b>Additions and alterations</b>						
Dwelling-houses						
Total square metres	24 711	24 634	24 735	197 459	197 387	+ 0,0
Total value at current prices (R'000)	28 458	28 049	29 887	222 725	233 575	+ 4,9
Other buildings <sup>3/</sup>						
Total square metres	3 512	4 770	2 767	72 258	63 295	-12,4
Total value at current prices (R'000)	4 747	25 026	3 443	136 594	159 782	+ 17,0
<b>Total value of additions and alterations at current prices (R'000)</b>	<b>33 205</b>	<b>53 075</b>	<b>33 330</b>	<b>359 319</b>	<b>393 357</b>	<b>+ 9,5</b>
<b>Total value of buildings completed at current prices (R'000)</b>	<b>129 059</b>	<b>664 815</b>	<b>102 369</b>	<b>1 268 122</b>	<b>1 573 097</b>	<b>+ 24,0</b>

1/ Other residential buildings include institutions for the disabled, boarding houses, old people's homes, hostels, hotels, motels, guest houses, holiday chalets, entertainment centres, bed-and-breakfast accommodation and casinos.

2/ Other non-residential space includes churches, sport and recreation clubs, schools, crèches, hospitals and all other non-residential space.

3/ Other buildings include additions and alterations to other residential buildings, non-residential buildings and internal alterations.



**Table 25 - Buildings completed according to type of building and province: North West**

Type of building	August 2002	July 2003	August 2003	January 2002 to August 2002	January 2003 to August 2003	Percentage change between January 2002 to August 2002 and January 2003 to August 2003
<b>Residential buildings</b>						
Dwelling-houses smaller than 80 square metres						
Number of dwelling-houses	70	25	31	1 355	191	- 85,9
Total square metres	2 437	1 461	1 768	46 962	11 010	- 76,6
Total value at current prices (R'000)	1 907	1 660	1 913	25 662	12 588	- 50,9
Dwelling-houses equal to or larger than 80 square metres						
Number of dwelling-houses	103	43	60	497	575	+ 15,7
Total square metres	21 995	7 771	13 272	90 088	110 733	+ 22,9
Total value at current prices (R'000)	36 007	14 087	19 528	133 463	168 867	+ 26,5
Flats and townhouses						
Number of flats and townhouses	44	89	5	370	501	+ 35,4
Total square metres	4 570	10 129	600	29 586	45 020	+ 52,2
Total value at current prices (R'000)	9 317	17 782	1 500	54 602	73 958	+ 35,4
Other residential buildings <sup>1/</sup>						
Total square metres	0	0	0	2 090	732	- 65,0
Total value at current prices (R'000)	0	0	0	2 483	1 140	- 54,1
<b>Total value of residential buildings at current prices (R'000)</b>	<b>47 231</b>	<b>33 529</b>	<b>22 941</b>	<b>216 210</b>	<b>256 553</b>	<b>+ 18,7</b>
<b>Non-residential buildings</b>						
Office and banking space						
Total square metres	3 020	0	0	3 743	7 692	+ 105,5
Total value at current prices (R'000)	7 000	0	0	8 140	11 494	+ 41,2
Shopping space						
Total square metres	767	1 138	1 521	5 184	6 657	+ 28,4
Total value at current prices (R'000)	862	4 400	2 844	5 853	13 738	+ 134,7
Industrial and warehouse space						
Total square metres	0	0	932	5 211	4 994	- 4,2
Total value at current prices (R'000)	0	0	932	5 457	5 508	+ 0,9
Other non-residential space <sup>2/</sup>						
Total square metres	429	0	0	3 991	7 342	+ 84,0
Total value at current prices (R'000)	489	0	0	6 199	27 900	+ 350,1
<b>Total value of non-residential buildings at current prices (R'000)</b>	<b>8 351</b>	<b>4 400</b>	<b>3 776</b>	<b>25 649</b>	<b>58 640</b>	<b>+ 128,6</b>
<b>Additions and alterations</b>						
Dwelling-houses						
Total square metres	3 480	452	3 404	29 416	29 486	+ 0,2
Total value at current prices (R'000)	3 936	530	3 846	29 790	29 760	- 0,1
Other buildings <sup>3/</sup>						
Total square metres	444	422	4 453	8 942	14 693	+ 64,3
Total value at current prices (R'000)	784	475	5 745	14 885	20 193	+ 35,7
<b>Total value of additions and alterations at current prices (R'000)</b>	<b>4 720</b>	<b>1 005</b>	<b>9 591</b>	<b>44 675</b>	<b>49 953</b>	<b>+ 11,8</b>
<b>Total value of buildings completed at current prices (R'000)</b>	<b>60 302</b>	<b>38 934</b>	<b>36 308</b>	<b>286 534</b>	<b>365 146</b>	<b>+ 27,4</b>

1/ Other residential buildings include institutions for the disabled, boarding houses, old people's homes, hostels, hotels, motels, guest houses, holiday chalets, entertainment centres, bed-and-breakfast accommodation and casinos.

2/ Other non-residential space includes churches, sport and recreation clubs, schools, crèches, hospitals and all other non-residential space.

3/ Other buildings include additions and alterations to other residential buildings, non-residential buildings and internal alterations.

Table 26 - Buildings completed according to type of building and province: Gauteng

Type of building	August 2002*	July 2003	August 2003	January 2002 to August 2002	January 2003 to August 2003	Percentage change between January 2002 to August 2002 and January 2003 to August 2003
<b>Residential buildings</b>						
Dwelling-houses smaller than 80 square metres						
Number of dwelling-houses	978	338	114	5 824	7 512	+ 29,0
Total square metres	36 885	16 089	5 033	216 355	260 974	+ 20,6
Total value at current prices (R'000)	33 965	23 273	8 399	198 656	227 036	+ 14,3
Dwelling-houses equal to or larger than 80 square metres						
Number of dwelling-houses	341	554	580	2 813	3 653	+ 29,9
Total square metres	89 991	143 893	134 381	693 402	892 030	+ 28,6
Total value at current prices (R'000)	149 089	273 742	236 883	1 082 379	1 585 163	+ 46,5
Flats and townhouses						
Number of flats and townhouses	442	501	433	3 756	3 794	+ 1,0
Total square metres	82 396	75 578	68 429	462 903	488 186	+ 5,5
Total value at current prices (R'000)	173 699	128 137	129 951	736 507	862 357	+ 17,1
Other residential buildings <sup>1/</sup>						
Total square metres	0	0	2 891	11 978	22 792	+ 90,3
Total value at current prices (R'000)	0	0	4 756	18 314	39 268	+ 114,4
<b>Total value of residential buildings at current prices (R'000)</b>	<b>356 753</b>	<b>425 152</b>	<b>379 989</b>	<b>2 035 856</b>	<b>2 713 824</b>	<b>+ 33,3</b>
<b>Non-residential buildings</b>						
Office and banking space						
Total square metres	4 453	4 026	35 543	203 539	228 231	+ 12,1
Total value at current prices (R'000)	7 253	6 689	61 691	322 890	472 833	+ 46,4
Shopping space						
Total square metres	6 379	5 591	3 044	39 883	74 984	+ 88,0
Total value at current prices (R'000)	12 378	11 791	4 856	70 498	149 435	+ 112,0
Industrial and warehouse space						
Total square metres	4 864	4 202	8 743	87 373	112 545	+ 28,8
Total value at current prices (R'000)	6 223	7 455	14 119	139 451	184 836	+ 32,5
Other non-residential space <sup>2/</sup>						
Total square metres	1 846	917	375	25 643	251 473	+ 880,7
Total value at current prices (R'000)	2 840	1 834	630	38 942	492 949	+ 1 165,9
<b>Total value of non-residential buildings at current prices (R'000)</b>	<b>28 694</b>	<b>27 769</b>	<b>81 296</b>	<b>571 781</b>	<b>1 300 053</b>	<b>+ 127,4</b>
<b>Additions and alterations</b>						
Dwelling-houses						
Total square metres	27 180	34 185	44 764	264 543	268 203	+ 1,4
Total value at current prices (R'000)	41 754	52 727	50 433	397 020	401 519	+ 1,1
Other buildings <sup>3/</sup>						
Total square metres	12 770	27 862	33 370	87 410	126 573	+ 44,8
Total value at current prices (R'000)	20 026	78 613	61 137	142 304	270 538	+ 90,1
<b>Total value of additions and alterations at current prices (R'000)</b>	<b>61 780</b>	<b>131 340</b>	<b>111 570</b>	<b>539 324</b>	<b>672 057</b>	<b>+ 24,6</b>
<b>Total value of buildings completed at current prices (R'000)</b>	<b>447 227</b>	<b>584 261</b>	<b>572 855</b>	<b>3 146 961</b>	<b>4 685 934</b>	<b>+ 48,9</b>

1/ Other residential buildings include institutions for the disabled, boarding houses, old people's homes, hostels, hotels, motels, guest houses, holiday chalets, entertainment centres, bed-and-breakfast accommodation and casinos.

2/ Other non-residential space includes churches, sport and recreation clubs, schools, crèches, hospitals and all other non-residential space.

3/ Other buildings include additions and alterations to other residential buildings, non-residential buildings and internal alterations.

Table 27 - Buildings completed according to type of building and province: Mpumalanga

Type of building	August 2002*	July 2003	August 2003	January 2002 to August 2002	January 2003 to August 2003	Percentage change between January 2002 to August 2002 and January 2003 to August 2003
<b>Residential buildings</b>						
Dwelling-houses smaller than 80 square metres						
Number of dwelling-houses	43	86	55	1 609	588	-63,5
Total square metres	2 068	1 529	2 416	62 645	23 531	-62,4
Total value at current prices (R'000)	2 129	1 692	2 715	32 745	18 514	-43,5
Dwelling-houses equal to or larger than 80 square metres						
Number of dwelling-houses	50	63	50	265	359	+ 35,5
Total square metres	9 206	10 201	11 232	46 136	78 920	+ 71,1
Total value at current prices (R'000)	11 429	12 666	13 773	55 432	104 813	+ 89,1
Flats and townhouses						
Number of flats and townhouses	11	0	71	144	583	+ 304,9
Total square metres	1 138	0	8 708	14 664	39 051	+ 166,3
Total value at current prices (R'000)	1 452	0	13 491	18 093	50 358	+ 178,3
Other residential buildings <sup>1/</sup>						
Total square metres	0	486	0	1 476	2 201	+ 49,1
Total value at current prices (R'000)	0	1 500	0	2 080	5 750	+ 176,4
<b>Total value of residential buildings at current prices (R'000)</b>	<b>15 010</b>	<b>15 858</b>	<b>29 979</b>	<b>108 350</b>	<b>179 435</b>	<b>+ 65,6</b>
<b>Non-residential buildings</b>						
Office and banking space						
Total square metres	0	3 283	261	460	5 841	+ 1 169,8
Total value at current prices (R'000)	0	4 836	392	563	7 984	+ 1 318,1
Shopping space						
Total square metres	416	27 542	136	6 172	42 272	+ 584,9
Total value at current prices (R'000)	500	40 000	204	11 842	61 722	+ 421,2
Industrial and warehouse space						
Total square metres	777	0	2 411	2 828	17 495	+ 518,6
Total value at current prices (R'000)	700	0	3 224	2 571	15 154	+ 489,4
Other non-residential space <sup>2/</sup>						
Total square metres	0	0	371	13 859	371	-97,3
Total value at current prices (R'000)	0	0	400	12 157	400	-96,7
<b>Total value of non-residential buildings at current prices (R'000)</b>	<b>1 200</b>	<b>44 836</b>	<b>4 220</b>	<b>27 133</b>	<b>85 260</b>	<b>+ 214,2</b>
<b>Additions and alterations</b>						
Dwelling-houses						
Total square metres	2 889	862	1 794	30 752	19 859	-35,4
Total value at current prices (R'000)	3 556	1 356	1 690	30 148	24 666	-18,2
Other buildings <sup>3/</sup>						
Total square metres	4 610	1 374	1 200	6 368	5 731	-10,0
Total value at current prices (R'000)	6 950	2 668	2 785	10 154	10 771	+ 6,1
<b>Total value of additions and alterations at current prices (R'000)</b>	<b>10 506</b>	<b>4 024</b>	<b>4 475</b>	<b>40 302</b>	<b>35 437</b>	<b>-12,1</b>
<b>Total value of buildings completed at current prices (R'000)</b>	<b>26 716</b>	<b>64 718</b>	<b>38 674</b>	<b>175 785</b>	<b>300 132</b>	<b>+ 70,7</b>

1/ Other residential buildings include institutions for the disabled, boarding houses, old people's homes, hostels, hotels, motels, guest houses, holiday chalets, entertainment centres, bed-and-breakfast accommodation and casinos.

2/ Other non-residential space includes churches, sport and recreation clubs, schools, crèches, hospitals and all other non-residential space.

3/ Other buildings include additions and alterations to other residential buildings, non-residential buildings and internal alterations.

**Table 28 - Buildings completed according to type of building and province: Limpopo**

Type of building	August 2002	July 2003	August 2003	January 2002 to August 2002	January 2003 to August 2003	Percentage change between January 2002 to August 2002 and January 2003 to August 2003
<b>Residential buildings</b>						
Dwelling-houses smaller than 80 square metres						
Number of dwelling-houses	7	274	22	133	432	+ 224,8
Total square metres	442	11 397	1 387	7 849	20 558	+ 161,9
Total value at current prices (R'000)	766	4 641	2 115	11 849	17 317	+ 46,1
Dwelling-houses equal to or larger than 80 square metres						
Number of dwelling-houses	13	73	23	114	198	+ 73,7
Total square metres	2 659	15 270	3 911	19 440	36 063	+ 85,5
Total value at current prices (R'000)	3 189	23 285	5 258	27 989	53 224	+ 90,2
Flats and townhouses						
Number of flats and townhouses	4	8	0	17	42	+ 147,1
Total square metres	491	1 089	0	1 787	4 711	+ 163,6
Total value at current prices (R'000)	688	1 524	0	2 634	6 358	+ 141,4
Other residential buildings <sup>1/</sup>						
Total square metres	0	0	232	13 959	232	-98,3
Total value at current prices (R'000)	0	0	278	207 506	278	-99,9
<b>Total value of residential buildings at current prices (R'000)</b>	<b>4 643</b>	<b>29 450</b>	<b>7 651</b>	<b>249 978</b>	<b>77 177</b>	<b>-69,1</b>
<b>Non-residential buildings</b>						
Office and banking space						
Total square metres	0	930	0	416	1 117	+ 168,5
Total value at current prices (R'000)	0	1 371	0	632	1 782	+ 182,0
Shopping space						
Total square metres	0	1 165	0	8 531	3 009	-64,7
Total value at current prices (R'000)	0	1 384	0	11 980	4 976	-58,5
Industrial and warehouse space						
Total square metres	0	0	776	502	1 889	+ 276,3
Total value at current prices (R'000)	0	0	1 000	619	2 839	+ 358,6
Other non-residential space <sup>2/</sup>						
Total square metres	0	246	314	547	1 153	+ 110,8
Total value at current prices (R'000)	0	334	691	714	1 975	+ 176,6
<b>Total value of non-residential buildings at current prices (R'000)</b>	<b>0</b>	<b>3 089</b>	<b>1 691</b>	<b>13 945</b>	<b>11 572</b>	<b>-17,0</b>
<b>Additions and alterations</b>						
Dwelling-houses						
Total square metres	618	2 918	1 837	3 439	7 794	+ 126,6
Total value at current prices (R'000)	1 112	4 160	2 466	5 319	11 191	+ 110,4
Other buildings <sup>3/</sup>						
Total square metres	0	0	410	1 429	1 079	-24,5
Total value at current prices (R'000)	0	0	649	2 141	2 048	-4,3
<b>Total value of additions and alterations at current prices (R'000)</b>	<b>1 112</b>	<b>4 160</b>	<b>3 115</b>	<b>7 460</b>	<b>13 239</b>	<b>+ 77,5</b>
<b>Total value of buildings completed at current prices (R'000)</b>	<b>5 755</b>	<b>36 699</b>	<b>12 457</b>	<b>271 383</b>	<b>101 988</b>	<b>-62,4</b>

1/ Other residential buildings include institutions for the disabled, boarding houses, old people's homes, hostels, hotels, motels, guest houses, holiday chalets, entertainment centres, bed-and-breakfast accommodation and casinos.

2/ Other non-residential space includes churches, sport and recreation clubs, schools, crèches, hospitals and all other non-residential space.

3/ Other buildings include additions and alterations to other residential buildings, non-residential buildings and internal alterations.

**Table 29 - Building plans passed according to type of building and selected urban area: Cape Town**

Type of building	August 2002	July 2003	August 2003	January 2002 to August 2002	January 2003 to August 2003	Percentage change between January 2002 to August 2002 and January 2003 to August 2003
<b>Residential buildings</b>						
Dwelling-houses smaller than 80 square metres						
Number of dwelling-houses	1 893	634	486	8 131	3 123	- 61,6
Total square metres	63 525	27 232	20 338	279 761	133 245	- 52,4
Total value at current prices (R'000)	75 517	36 837	22 393	334 077	163 940	- 50,9
Dwelling-houses equal to or larger than 80 square metres						
Number of dwelling-houses	482	314	194	3 123	2 609	- 16,5
Total square metres	82 142	78 792	49 050	619 064	538 623	- 13,0
Total value at current prices (R'000)	115 149	111 646	81 195	860 319	787 058	- 8,5
Flats and townhouses						
Number of flats and townhouses	154	1 502	464	1 383	3 680	+ 166,1
Total square metres	15 298	115 540	52 433	136 111	320 419	+ 135,4
Total value at current prices (R'000)	22 961	175 941	88 012	221 511	528 938	+ 138,8
Other residential buildings <sup>1/</sup>						
Total square metres	1 448	0	0	17 064	0	..
Total value at current prices (R'000)	2 277	0	0	23 505	0	..
<b>Total value of residential buildings at current prices (R'000)</b>	<b>215 904</b>	<b>324 424</b>	<b>191 600</b>	<b>1 439 412</b>	<b>1 479 936</b>	<b>+ 2,8</b>
<b>Non-residential buildings</b>						
Office and banking space						
Total square metres	4 634	2 492	251	48 756	72 116	+ 47,9
Total value at current prices (R'000)	7 803	5 174	562	77 786	148 973	+ 91,5
Shopping space						
Total square metres	6 472	1 288	327	20 995	61 081	+ 190,9
Total value at current prices (R'000)	10 098	2 411	687	29 225	69 160	+ 136,6
Industrial and warehouse space						
Total square metres	7 236	4 711	16 551	88 037	81 177	- 7,8
Total value at current prices (R'000)	7 643	5 308	18 615	97 460	94 904	- 2,6
Other non-residential space <sup>2/</sup>						
Total square metres	4 171	8 300	2 577	30 188	18 907	- 37,4
Total value at current prices (R'000)	4 920	15 000	3 687	41 995	30 572	- 27,2
<b>Total value of non-residential buildings at current prices (R'000)</b>	<b>30 464</b>	<b>27 893</b>	<b>23 551</b>	<b>246 466</b>	<b>343 609</b>	<b>+ 39,4</b>
<b>Additions and alterations</b>						
Dwelling-houses						
Total square metres	53 215	62 461	59 840	440 145	429 579	- 2,4
Total value at current prices (R'000)	70 069	88 380	91 131	556 345	608 794	+ 9,4
Other buildings <sup>3/</sup>						
Total square metres	34 010	40 932	20 245	167 429	216 567	+ 29,3
Total value at current prices (R'000)	62 836	70 402	44 259	336 792	420 812	+ 24,9
<b>Total value of additions and alterations at current prices (R'000)</b>	<b>132 905</b>	<b>158 782</b>	<b>135 390</b>	<b>893 137</b>	<b>1 029 606</b>	<b>+ 15,3</b>
<b>Total value of building plans passed at current prices (R'000)</b>	<b>379 273</b>	<b>511 099</b>	<b>350 541</b>	<b>2 579 015</b>	<b>2 853 151</b>	<b>+ 10,6</b>

1/ Other residential buildings include institutions for the disabled, boarding houses, old people's homes, hostels, hotels, motels, guest houses, holiday chalets, entertainment centres, bed-and-breakfast accommodation and casinos.

2/ Other non-residential space includes churches, sport and recreation clubs, schools, crèches, hospitals and all other non-residential space.

3/ Other buildings include additions and alterations to other residential buildings, non-residential buildings and internal alterations.

**Table 30 - Building plans passed according to type of building and selected urban area: Port Elizabeth**

Type of building	August 2002	July 2003	August 2003	January 2002 to August 2002	January 2003 to August 2003	Percentage change between January 2002 to August 2002 and January 2003 to August 2003
<b>Residential buildings</b>						
Dwelling-houses smaller than 80 square metres						
Number of dwelling-houses	313	317	663	2 102	2 108	+ 0,3
Total square metres	12 973	12 719	26 599	88 636	86 857	- 2,0
Total value at current prices (R'000)	17 941	19 381	41 778	125 122	123 816	- 1,0
Dwelling-houses equal to or larger than 80 square metres						
Number of dwelling-houses	44	55	22	451	239	- 47,0
Total square metres	8 768	9 672	3 233	86 653	43 386	- 49,9
Total value at current prices (R'000)	13 055	15 379	5 353	122 940	76 035	- 38,2
Flats and townhouses						
Number of flats and townhouses	26	2	16	174	53	- 69,5
Total square metres	4 084	354	3 493	20 983	10 594	- 49,5
Total value at current prices (R'000)	7 125	637	6 000	34 400	18 807	- 45,3
Other residential buildings <sup>1/</sup>						
Total square metres	0	0	0	323	470	+ 45,5
Total value at current prices (R'000)	0	0	0	550	969	+ 76,2
<b>Total value of residential buildings at current prices (R'000)</b>	<b>38 121</b>	<b>35 397</b>	<b>53 131</b>	<b>283 012</b>	<b>219 627</b>	<b>- 22,4</b>
<b>Non-residential buildings</b>						
Office and banking space						
Total square metres	0	0	1 000	5 855	4 348	- 25,7
Total value at current prices (R'000)	0	0	1 860	8 946	8 205	- 8,3
Shopping space						
Total square metres	2 867	5 278	356	15 861	6 390	-59,7
Total value at current prices (R'000)	3 369	6 175	691	29 334	8 279	-71,8
Industrial and warehouse space						
Total square metres	805	760	1 620	26 101	13 280	- 49,1
Total value at current prices (R'000)	1 578	1 176	2 658	40 761	20 294	- 50,2
Other non-residential space <sup>2/</sup>						
Total square metres	2 322	492	1 037	20 295	4 104	- 79,8
Total value at current prices (R'000)	3 569	868	1 468	32 835	6 763	- 79,4
<b>Total value of non-residential buildings at current prices (R'000)</b>	<b>8 516</b>	<b>8 219</b>	<b>6 677</b>	<b>111 876</b>	<b>43 541</b>	<b>- 61,1</b>
<b>Additions and alterations</b>						
Dwelling-houses						
Total square metres	8 715	14 352	17 272	91 894	81 278	- 11,6
Total value at current prices (R'000)	12 628	21 852	21 807	120 506	124 903	+ 3,6
Other buildings <sup>3/</sup>						
Total square metres	2 392	11 118	4 622	25 753	37 054	+ 43,9
Total value at current prices (R'000)	2 791	16 426	5 689	39 703	88 670	+ 123,3
<b>Total value of additions and alterations at current prices (R'000)</b>	<b>15 419</b>	<b>38 278</b>	<b>27 496</b>	<b>160 209</b>	<b>213 573</b>	<b>+ 33,3</b>
<b>Total value of building plans passed at current prices (R'000)</b>	<b>62 056</b>	<b>81 894</b>	<b>87 304</b>	<b>555 097</b>	<b>476 741</b>	<b>- 14,1</b>

1/ Other residential buildings include institutions for the disabled, boarding houses, old people's homes, hostels, hotels, motels, guest houses, holiday chalets, entertainment centres, bed-and-breakfast accommodation and casinos.

2/ Other non-residential space includes churches, sport and recreation clubs, schools, crèches, hospitals and all other non-residential space.

3/ Other buildings include additions and alterations to other residential buildings, non-residential buildings and internal alterations.

**Table 31 - Building plans passed according to type of building and selected urban area: Durban**

Type of building	August 2002	July 2003	August 2003	January 2002 to August 2002	January 2003 to August 2003	Percentage change between January 2002 to August 2002 and January 2003 to August 2003
<b>Residential buildings</b>						
Dwelling-houses smaller than 80 square metres						
Number of dwelling-houses	61	45	46	504	449	-10,9
Total square metres	3 286	2 539	2 453	23 277	23 727	+ 1,9
Total value at current prices (R'000)	3 688	2 812	2 468	26 280	26 450	+ 0,6
Dwelling-houses equal to or larger than 80 square metres						
Number of dwelling-houses	70	104	75	488	619	+ 26,8
Total square metres	13 405	21 834	14 570	96 726	129 157	+ 33,5
Total value at current prices (R'000)	18 918	34 404	23 586	129 380	211 762	+ 63,7
Flats and townhouses						
Number of flats and townhouses	47	42	85	251	498	+ 98,4
Total square metres	11 270	9 790	18 596	43 280	83 584	+ 93,1
Total value at current prices (R'000)	21 446	25 124	36 863	63 429	184 339	+ 190,6
Other residential buildings <sup>1/</sup>						
Total square metres	0	423	372	29 606	1 668	-94,4
Total value at current prices (R'000)	0	600	400	31 000	2 300	-92,6
<b>Total value of residential buildings at current prices (R'000)</b>	<b>44 052</b>	<b>62 940</b>	<b>63 317</b>	<b>250 089</b>	<b>424 851</b>	<b>+ 69,9</b>
<b>Non-residential buildings</b>						
Office and banking space						
Total square metres	2 179	959	0	7 044	6 374	-9,5
Total value at current prices (R'000)	3 000	850	0	9 450	13 828	+ 46,3
Shopping space						
Total square metres	180	500	3 422	4 362	40 789	+ 835,1
Total value at current prices (R'000)	200	1 000	6 844	5 897	296 204	+ 4 923,0
Industrial and warehouse space						
Total square metres	5 906	24 548	15 560	51 040	64 775	+ 26,9
Total value at current prices (R'000)	9 700	26 000	20 150	58 759	70 633	+ 20,2
Other non-residential space <sup>2/</sup>						
Total square metres	884	2 810	2 044	63 738	9 488	-85,1
Total value at current prices (R'000)	1 050	5 600	2 900	74 441	17 640	-76,3
<b>Total value of non-residential buildings at current prices (R'000)</b>	<b>13 950</b>	<b>33 450</b>	<b>29 894</b>	<b>148 547</b>	<b>398 305</b>	<b>+ 168,1</b>
<b>Additions and alterations</b>						
Dwelling-houses						
Total square metres	24 508	32 710	25 899	168 741	220 872	+ 30,9
Total value at current prices (R'000)	31 431	50 476	35 499	215 239	292 459	+ 35,9
Other buildings <sup>3/</sup>						
Total square metres	9 785	20 008	7 809	51 157	81 188	+ 58,7
Total value at current prices (R'000)	11 870	53 100	10 998	94 432	190 532	+ 101,8
<b>Total value of additions and alterations at current prices (R'000)</b>	<b>43 301</b>	<b>103 576</b>	<b>46 497</b>	<b>309 671</b>	<b>482 991</b>	<b>+ 56,0</b>
<b>Total value of building plans passed at current prices (R'000)</b>	<b>101 303</b>	<b>199 966</b>	<b>139 708</b>	<b>708 307</b>	<b>1 306 147</b>	<b>+ 84,4</b>

1/ Other residential buildings include institutions for the disabled, boarding houses, old people's homes, hostels, hotels, motels, guest houses, holiday chalets, entertainment centres, bed-and-breakfast accommodation and casinos.

2/ Other non-residential space includes churches, sport and recreation clubs, schools, crèches, hospitals and all other non-residential space.

3/ Other buildings include additions and alterations to other residential buildings, non-residential buildings and internal alterations.

**Table 32 - Building plans passed according to type of building and selected urban area: Witwatersrand**

Type of building	August 2002*	July 2003	August 2003	January 2002 to August 2002	January 2003 to August 2003	Percentage change between January 2002 to August 2002 and January 2003 to August 2003
<b>Residential buildings</b>						
Dwelling-houses smaller than 80 square metres						
Number of dwelling-houses	430	729	344	5 247	3 446	- 34,3
Total square metres	15 231	32 834	16 160	194 983	148 665	- 23,8
Total value at current prices (R'000)	17 398	38 116	23 230	189 267	182 725	- 3,5
Dwelling-houses equal to or larger than 80 square metres						
Number of dwelling-houses	439	598	514	2 994	3 585	+ 19,7
Total square metres	123 030	156 912	146 265	769 637	940 231	+ 22,2
Total value at current prices (R'000)	214 770	325 954	327 227	1 331 402	1 855 602	+ 39,4
Flats and townhouses						
Number of flats and townhouses	339	346	557	2 035	2 524	+ 24,0
Total square metres	41 999	68 896	119 121	269 481	457 835	+ 69,9
Total value at current prices (R'000)	70 082	126 299	245 679	468 563	877 817	+ 87,3
Other residential buildings <sup>1/</sup>						
Total square metres	0	0	0	3 968	21 216	+ 434,7
Total value at current prices (R'000)	0	0	0	6 751	43 299	+ 541,4
<b>Total value of residential buildings at current prices (R'000)</b>	<b>302 250</b>	<b>490 369</b>	<b>596 136</b>	<b>1 995 983</b>	<b>2 959 443</b>	<b>+ 48,3</b>
<b>Non-residential buildings</b>						
Office and banking space						
Total square metres	4 638	9 057	36 954	132 698	92 127	- 30,6
Total value at current prices (R'000)	8 130	17 785	72 691	330 563	178 162	- 46,1
Shopping space						
Total square metres	4 483	70 606	24 101	58 457	124 563	+ 113,1
Total value at current prices (R'000)	7 859	100 550	43 830	107 221	193 079	+ 80,1
Industrial and warehouse space						
Total square metres	8 315	37 669	27 515	183 163	166 372	- 9,2
Total value at current prices (R'000)	13 818	81 682	51 296	316 321	321 078	+ 1,5
Other non-residential space <sup>2/</sup>						
Total square metres	948	12 154	3 423	211 375	61 367	- 71,0
Total value at current prices (R'000)	1 696	22 144	6 114	402 394	126 041	- 68,7
<b>Total value of non-residential buildings at current prices (R'000)</b>	<b>31 503</b>	<b>222 161</b>	<b>173 931</b>	<b>1 156 499</b>	<b>818 360</b>	<b>- 29,2</b>
<b>Additions and alterations</b>						
Dwelling-houses						
Total square metres	74 359	82 435	77 121	495 388	528 153	+ 6,6
Total value at current prices (R'000)	122 529	157 189	134 508	812 252	931 751	+ 14,7
Other buildings <sup>3/</sup>						
Total square metres	34 482	58 969	20 145	247 511	172 762	- 30,2
Total value at current prices (R'000)	57 947	113 418	44 676	452 370	367 833	- 18,7
<b>Total value of additions and alterations at current prices (R'000)</b>	<b>180 476</b>	<b>270 607</b>	<b>179 184</b>	<b>1 264 622</b>	<b>1 299 584</b>	<b>+ 2,8</b>
<b>Total value of building plans passed at current prices (R'000)</b>	<b>514 229</b>	<b>983 137</b>	<b>949 251</b>	<b>4 417 104</b>	<b>5 077 387</b>	<b>+ 14,9</b>

1/ Other residential buildings include institutions for the disabled, boarding houses, old people's homes, hostels, hotels, motels, guest houses, holiday chalets, entertainment centres, bed-and-breakfast accommodation and casinos.

2/ Other non-residential space includes churches, sport and recreation clubs, schools, crèches, hospitals and all other non-residential space.

3/ Other buildings include additions and alterations to other residential buildings, non-residential buildings and internal alterations.



**Table 33 - Building plans passed according to type of building and selected urban area: Pretoria**

Type of building	August 2002	July 2003	August 2003	January 2002 to August 2002	January 2003 to August 2003	Percentage change between January 2002 to August 2002 and January 2003 to August 2003
<b>Residential buildings</b>						
Dwelling-houses smaller than 80 square metres						
Number of dwelling-houses	58	83	134	448	3 981	+ 788,6
Total square metres	3 148	3 963	5 708	24 722	134 220	+ 442,9
Total value at current prices (R'000)	4 555	5 090	10 400	35 377	108 423	+ 206,5
Dwelling-houses equal to or larger than 80 square metres						
Number of dwelling-houses	264	193	200	1 730	1 537	- 11,2
Total square metres	60 952	55 091	61 313	454 441	422 168	- 7,1
Total value at current prices (R'000)	91 683	86 721	103 413	650 496	709 403	+ 9,1
Flats and townhouses						
Number of flats and townhouses	119	468	184	1 823	1 912	+ 4,9
Total square metres	21 623	72 413	33 972	262 125	353 669	+ 34,9
Total value at current prices (R'000)	33 286	127 683	65 297	384 717	622 053	+ 61,7
Other residential buildings <sup>1/</sup>						
Total square metres	0	3 492	0	0	4 759	..
Total value at current prices (R'000)	0	6 984	0	0	9 481	..
<b>Total value of residential buildings at current prices (R'000)</b>	<b>129 524</b>	<b>226 478</b>	<b>179 110</b>	<b>1 070 590</b>	<b>1 449 360</b>	<b>+ 35,4</b>
<b>Non-residential buildings</b>						
Office and banking space						
Total square metres	0	1 901	7 474	70 909	55 679	- 21,5
Total value at current prices (R'000)	0	3 154	11 997	111 009	94 029	- 15,3
Shopping space						
Total square metres	39 598	0	0	54 575	14 402	- 73,6
Total value at current prices (R'000)	60 033	0	0	80 018	27 079	- 66,2
Industrial and warehouse space						
Total square metres	20 507	43 434	13 421	85 694	111 733	+ 30,4
Total value at current prices (R'000)	27 757	64 001	20 535	122 559	169 384	+ 38,2
Other non-residential space <sup>2/</sup>						
Total square metres	7 015	2 034	2 783	18 445	32 683	+ 77,2
Total value at current prices (R'000)	10 911	3 224	4 175	27 804	49 961	+ 79,7
<b>Total value of non-residential buildings at current prices (R'000)</b>	<b>98 701</b>	<b>70 379</b>	<b>36 707</b>	<b>341 390</b>	<b>340 453</b>	<b>- 0,3</b>
<b>Additions and alterations</b>						
Dwelling-houses						
Total square metres	26 513	29 501	30 650	192 821	206 869	+ 7,3
Total value at current prices (R'000)	39 044	46 097	53 416	281 100	339 735	+ 20,9
Other buildings <sup>3/</sup>						
Total square metres	8 291	4 238	6 860	48 330	155 608	+ 222,0
Total value at current prices (R'000)	12 183	8 393	11 617	78 227	266 885	+ 241,2
<b>Total value of additions and alterations at current prices (R'000)</b>	<b>51 227</b>	<b>54 490</b>	<b>65 033</b>	<b>359 327</b>	<b>606 620</b>	<b>+ 68,8</b>
<b>Total value of building plans passed at current prices (R'000)</b>	<b>279 452</b>	<b>351 347</b>	<b>280 850</b>	<b>1 771 307</b>	<b>2 396 433</b>	<b>+ 35,3</b>

1/ Other residential buildings include institutions for the disabled, boarding houses, old people's homes, hostels, hotels, motels, guest houses, holiday chalets, entertainment centres, bed-and-breakfast accommodation and casinos.

2/ Other non-residential space includes churches, sport and recreation clubs, schools, crèches, hospitals and all other non-residential space.

3/ Other buildings include additions and alterations to other residential buildings, non-residential buildings and internal alterations.

**Table 34 - Building plans passed according to type of building and selected urban area: Bloemfontein**

Type of building	August 2002	July 2003	August 2003	January 2002 to August 2002	January 2003 to August 2003	Percentage change between January 2002 to August 2002 and January 2003 to August 2003
<b>Residential buildings</b>						
Dwelling-houses smaller than 80 square metres						
Number of dwelling-houses	51	373	32	1 456	2 171	+ 49,1
Total square metres	2 254	9 123	1 497	60 905	83 609	+ 37,3
Total value at current prices (R'000)	2 058	6 337	1 403	34 445	46 241	+ 34,2
Dwelling-houses equal to or larger than 80 square metres						
Number of dwelling-houses	16	34	24	231	260	+ 12,6
Total square metres	3 529	5 939	3 444	37 312	42 369	+ 13,6
Total value at current prices (R'000)	5 603	8 748	5 151	52 451	64 337	+ 22,7
Flats and townhouses						
Number of flats and townhouses	0	0	0	419	155	-63,0
Total square metres	0	0	0	44 257	16 552	-62,6
Total value at current prices (R'000)	0	0	0	63 919	24 831	-61,2
Other residential buildings <sup>1/</sup>						
Total square metres	1 017	0	0	3 700	0	..
Total value at current prices (R'000)	1 600	0	0	8 600	0	..
<b>Total value of residential buildings at current prices (R'000)</b>	<b>9 261</b>	<b>15 085</b>	<b>6 554</b>	<b>159 415</b>	<b>135 409</b>	<b>-15,1</b>
<b>Non-residential buildings</b>						
Office and banking space						
Total square metres	0	0	1 034	12 797	6 406	-49,9
Total value at current prices (R'000)	0	0	1 551	21 700	9 749	-55,1
Shopping space						
Total square metres	0	0	0	11 584	5 778	-50,1
Total value at current prices (R'000)	0	0	0	25 364	13 906	-45,2
Industrial and warehouse space						
Total square metres	356	0	805	11 441	6 396	-44,1
Total value at current prices (R'000)	320	0	483	10 443	3 956	-62,1
Other non-residential space <sup>2/</sup>						
Total square metres	0	280	0	1 483	2 959	+ 99,5
Total value at current prices (R'000)	0	560	0	1 310	4 754	+ 262,9
<b>Total value of non-residential buildings at current prices (R'000)</b>	<b>320</b>	<b>560</b>	<b>2 034</b>	<b>58 817</b>	<b>32 365</b>	<b>-45,0</b>
<b>Additions and alterations</b>						
Dwelling-houses						
Total square metres	5 025	1 724	5 837	36 432	36 219	-0,6
Total value at current prices (R'000)	7 239	2 345	8 132	44 948	48 876	+ 8,7
Other buildings <sup>3/</sup>						
Total square metres	871	1 796	4 479	12 574	12 560	-0,1
Total value at current prices (R'000)	3 863	9 779	4 822	32 083	42 127	+ 31,3
<b>Total value of additions and alterations at current prices (R'000)</b>	<b>11 102</b>	<b>12 124</b>	<b>12 954</b>	<b>77 031</b>	<b>91 003</b>	<b>+ 18,1</b>
<b>Total value of building plans passed at current prices (R'000)</b>	<b>20 683</b>	<b>27 769</b>	<b>21 542</b>	<b>295 263</b>	<b>258 777</b>	<b>-12,4</b>

1/ Other residential buildings include institutions for the disabled, boarding houses, old people's homes, hostels, hotels, motels, guest houses, holiday chalets, entertainment centres, bed-and-breakfast accommodation and casinos.

2/ Other non-residential space includes churches, sport and recreation clubs, schools, crèches, hospitals and all other non-residential space.

3/ Other buildings include additions and alterations to other residential buildings, non-residential buildings and internal alterations.

**Table 35 - Buildings completed according to type of building and selected urban area: Cape Town**

Type of building	August 2002	July 2003	August 2003	January 2002 to August 2002	January 2003 to August 2003	Percentage change between January 2002 to August 2002 and January 2003 to August 2003
<b>Residential buildings</b>						
Dwelling-houses smaller than 80 square metres						
Number of dwelling-houses	472	451	188	3 975	2 201	- 44,6
Total square metres	17 415	18 149	8 709	143 749	84 143	- 41,5
Total value at current prices (R'000)	21 404	21 981	11 197	169 878	99 874	- 41,2
Dwelling-houses equal to or larger than 80 square metres						
Number of dwelling-houses	285	275	295	2 001	2 043	+ 2,1
Total square metres	51 561	57 607	53 115	391 800	387 772	- 1,0
Total value at current prices (R'000)	72 531	85 459	71 307	565 067	543 630	- 3,8
Flats and townhouses						
Number of flats and townhouses	156	925	180	886	1 841	+ 107,8
Total square metres	12 563	61 567	28 321	116 113	168 791	+ 45,4
Total value at current prices (R'000)	16 878	91 023	63 300	184 666	280 482	+ 51,9
Other residential buildings <sup>1/</sup>						
Total square metres	0	47 415	1 448	4 143	48 990	+ 1082,5
Total value at current prices (R'000)	0	214 896	2 277	5 722	217 347	+ 3698,4
<b>Total value of residential buildings at current prices (R'000)</b>	<b>110 813</b>	<b>413 359</b>	<b>148 081</b>	<b>925 333</b>	<b>1 141 333</b>	<b>+ 23,3</b>
<b>Non-residential buildings</b>						
Office and banking space						
Total square metres	0	2 644	4 286	67 472	95 867	+ 42,1
Total value at current prices (R'000)	0	3 457	7 030	99 514	171 779	+ 72,6
Shopping space						
Total square metres	0	0	0	36 373	20 862	- 42,6
Total value at current prices (R'000)	0	0	0	42 563	30 943	- 27,3
Industrial and warehouse space						
Total square metres	8 774	3 180	6 537	74 726	64 968	- 13,1
Total value at current prices (R'000)	6 641	4 245	6 801	78 271	71 526	- 8,6
Other non-residential space <sup>2/</sup>						
Total square metres	2 356	738	1 233	21 569	23 648	+ 9,6
Total value at current prices (R'000)	3 153	1 400	1 567	22 896	32 090	+ 40,2
<b>Total value of non-residential buildings at current prices (R'000)</b>	<b>9 794</b>	<b>9 102</b>	<b>15 398</b>	<b>243 244</b>	<b>306 338</b>	<b>+ 25,9</b>
<b>Additions and alterations</b>						
Dwelling-houses						
Total square metres	31 939	34 038	27 291	238 335	259 271	+ 8,8
Total value at current prices (R'000)	37 206	45 775	34 275	293 232	327 708	+ 11,8
Other buildings <sup>3/</sup>						
Total square metres	9 186	18 891	14 855	113 494	116 147	+ 2,3
Total value at current prices (R'000)	18 674	34 572	35 257	185 426	262 595	+ 41,6
<b>Total value of additions and alterations at current prices (R'000)</b>	<b>55 880</b>	<b>80 347</b>	<b>69 532</b>	<b>478 658</b>	<b>590 303</b>	<b>+ 23,3</b>
<b>Total value of buildings completed at current prices (R'000)</b>	<b>176 487</b>	<b>502 808</b>	<b>233 011</b>	<b>1 647 235</b>	<b>2 037 974</b>	<b>+ 23,7</b>

1/ Other residential buildings include institutions for the disabled, boarding houses, old people's homes, hostels, hotels, motels, guest houses, holiday chalets, entertainment centres, bed-and-breakfast accommodation and casinos.

2/ Other non-residential space includes churches, sport and recreation clubs, schools, crèches, hospitals and all other non-residential space.

3/ Other buildings include additions and alterations to other residential buildings, non-residential buildings and internal alterations.

**Table 36 - Buildings completed according to type of building and selected urban area: Port Elizabeth**

Type of building	August 2002	July 2003	August 2003	January 2002 to August 2002	January 2003 to August 2003	Percentage change between January 2002 to August 2002 and January 2003 to August 2003
<b>Residential buildings</b>						
Dwelling-houses smaller than 80 square metres						
Number of dwelling-houses	192	74	116	1 401	729	- 48,0
Total square metres	9 926	3 021	4 757	59 928	31 156	- 48,0
Total value at current prices (R'000)	13 908	4 256	7 385	81 462	41 510	- 49,0
Dwelling-houses equal to or larger than 80 square metres						
Number of dwelling-houses	1	40	75	243	162	- 33,3
Total square metres	152	9 573	7 080	34 020	25 298	- 25,6
Total value at current prices (R'000)	161	14 855	11 140	44 374	38 708	- 12,8
Flats and townhouses						
Number of flats and townhouses	0	12	0	25	81	+ 224,0
Total square metres	0	1 339	0	3 128	6 732	+ 115,2
Total value at current prices (R'000)	0	2 076	0	4 438	9 403	+ 111,9
Other residential buildings <sup>1/</sup>						
Total square metres	0	0	0	2 744	5 656	+ 106,1
Total value at current prices (R'000)	0	0	0	3 312	9 314	+ 181,2
<b>Total value of residential buildings at current prices (R'000)</b>	<b>14 069</b>	<b>21 187</b>	<b>18 525</b>	<b>133 586</b>	<b>98 935</b>	<b>- 25,9</b>
<b>Non-residential buildings</b>						
Office and banking space						
Total square metres	868	0	0	868	0	..
Total value at current prices (R'000)	1 701	0	0	1 701	0	..
Shopping space						
Total square metres	0	11 977	0	1 944	13 913	+ 615,7
Total value at current prices (R'000)	0	15 039	0	1 998	18 484	+ 825,1
Industrial and warehouse space						
Total square metres	0	0	0	9 230	12 314	+ 33,4
Total value at current prices (R'000)	0	0	0	7 919	18 196	+ 129,8
Other non-residential space <sup>2/</sup>						
Total square metres	0	0	0	2 300	1 705	- 25,9
Total value at current prices (R'000)	0	0	0	2 664	2 160	- 18,9
<b>Total value of non-residential buildings at current prices (R'000)</b>	<b>1 701</b>	<b>15 039</b>	<b>0</b>	<b>14 282</b>	<b>38 840</b>	<b>+ 172,0</b>
<b>Additions and alterations</b>						
Dwelling-houses						
Total square metres	3 372	4 568	1 976	35 623	29 358	- 17,6
Total value at current prices (R'000)	4 005	6 977	4 006	40 103	39 922	- 0,5
Other buildings <sup>3/</sup>						
Total square metres	315	4 640	108	23 246	25 406	+ 9,3
Total value at current prices (R'000)	299	2 504	2 119	24 750	37 166	+ 50,2
<b>Total value of additions and alterations at current prices (R'000)</b>	<b>4 304</b>	<b>9 481</b>	<b>6 125</b>	<b>64 853</b>	<b>77 088</b>	<b>+ 18,9</b>
<b>Total value of buildings completed at current prices (R'000)</b>	<b>20 074</b>	<b>45 707</b>	<b>24 650</b>	<b>212 721</b>	<b>214 863</b>	<b>+ 1,0</b>

1/ Other residential buildings include institutions for the disabled, boarding houses, old people's homes, hostels, hotels, motels, guest houses, holiday chalets, entertainment centres, bed-and-breakfast accommodation and casinos.

2/ Other non-residential space includes churches, sport and recreation clubs, schools, crèches, hospitals and all other non-residential space.

3/ Other buildings include additions and alterations to other residential buildings, non-residential buildings and internal alterations.

**Table 37 - Buildings completed according to type of building and selected urban area: Durban**

Type of building	August 2002	July 2003*	August 2003	January 2002 to August 2002	January 2003 to August 2003	Percentage change between January 2002 to August 2002 and January 2003 to August 2003
<b>Residential buildings</b>						
Dwelling-houses smaller than 80 square metres						
Number of dwelling-houses	41	59	65	555	588	+ 5,9
Total square metres	2 475	3 364	3 336	27 645	27 679	+ 0,1
Total value at current prices (R'000)	2 755	3 922	4 353	32 002	31 271	- 2,3
Dwelling-houses equal to or larger than 80 square metres						
Number of dwelling-houses	67	57	51	557	401	- 28,0
Total square metres	11 685	9 015	8 703	101 403	71 101	- 29,9
Total value at current prices (R'000)	15 148	9 917	9 214	129 052	82 946	- 35,7
Flats and townhouses						
Number of flats and townhouses	9	2	0	184	160	- 13,0
Total square metres	432	346	0	24 782	20 996	- 15,3
Total value at current prices (R'000)	778	759	0	39 271	32 674	- 16,8
Other residential buildings <sup>1/</sup>						
Total square metres	0	38 932	0	0	38 932	..
Total value at current prices (R'000)	0	466 430	0	0	466 430	..
<b>Total value of residential buildings at current prices (R'000)</b>	<b>18 681</b>	<b>481 028</b>	<b>13 567</b>	<b>200 325</b>	<b>613 321</b>	<b>+ 206,2</b>
<b>Non-residential buildings</b>						
Office and banking space						
Total square metres	220	4 346	2 229	36 598	16 799	- 54,1
Total value at current prices (R'000)	332	12 882	3 900	55 020	34 541	- 37,2
Shopping space						
Total square metres	1 730	600	404	23 707	11 735	- 50,5
Total value at current prices (R'000)	1 950	1 200	400	37 623	19 472	- 48,2
Industrial and warehouse space						
Total square metres	10 997	6 197	928	111 149	51 507	- 53,7
Total value at current prices (R'000)	13 470	7 386	940	128 282	58 085	- 54,7
Other non-residential space <sup>2/</sup>						
Total square metres	1 182	662	1 149	16 301	9 876	- 39,4
Total value at current prices (R'000)	3 300	1 210	2 330	24 869	17 129	- 31,1
<b>Total value of non-residential buildings at current prices (R'000)</b>	<b>19 052</b>	<b>22 678</b>	<b>7 570</b>	<b>245 794</b>	<b>129 227</b>	<b>- 47,4</b>
<b>Additions and alterations</b>						
Dwelling-houses						
Total square metres	18 813	20 028	20 547	162 816	143 984	- 11,6
Total value at current prices (R'000)	20 470	20 724	23 096	177 895	156 541	- 12,0
Other buildings <sup>3/</sup>						
Total square metres	1 787	4 316	1 939	57 337	38 805	- 32,3
Total value at current prices (R'000)	2 619	24 442	2 368	114 046	126 314	+ 10,8
<b>Total value of additions and alterations at current prices (R'000)</b>	<b>23 089</b>	<b>45 166</b>	<b>25 464</b>	<b>291 941</b>	<b>282 855</b>	<b>- 3,1</b>
<b>Total value of buildings completed at current prices (R'000)</b>	<b>60 822</b>	<b>548 872</b>	<b>46 601</b>	<b>738 060</b>	<b>1 025 403</b>	<b>+ 38,9</b>

1/ Other residential buildings include institutions for the disabled, boarding houses, old people's homes, hostels, hotels, motels, guest houses, holiday chalets, entertainment centres, bed-and-breakfast accommodation and casinos.

2/ Other non-residential space includes churches, sport and recreation clubs, schools, crèches, hospitals and all other non-residential space.

3/ Other buildings include additions and alterations to other residential buildings, non-residential buildings and internal alterations.

**Table 38 - Buildings completed according to type of building and selected urban area: Witwatersrand**

Type of building	August 2002*	July 2003	August 2003	January 2002 to August 2002	January 2003 to August 2003	Percentage change between January 2002 to August 2002 and January 2003 to August 2003
<b>Residential buildings</b>						
Dwelling-houses smaller than 80 square metres						
Number of dwelling-houses	902	197	61	5 135	2 307	-55,1
Total square metres	33 165	9 554	2 528	187 273	96 267	-48,6
Total value at current prices (R'000)	27 563	14 475	4 636	165 725	121 617	-26,6
Dwelling-houses equal to or larger than 80 square metres						
Number of dwelling-houses	178	362	404	1 859	2 434	+ 30,9
Total square metres	43 602	88 867	74 147	411 480	533 689	+ 29,7
Total value at current prices (R'000)	70 040	173 582	136 116	650 543	989 148	+ 52,0
Flats and townhouses						
Number of flats and townhouses	281	296	420	1 857	2 745	+ 47,8
Total square metres	35 715	40 360	66 895	265 226	357 198	+ 34,7
Total value at current prices (R'000)	59 029	64 854	128 365	416 708	641 800	+ 54,0
Other residential buildings <sup>1/</sup>						
Total square metres	0	0	2 891	11 978	12 969	+ 8,3
Total value at current prices (R'000)	0	0	4 756	18 314	31 510	+ 72,1
<b>Total value of residential buildings at current prices (R'000)</b>	<b>156 632</b>	<b>252 911</b>	<b>273 873</b>	<b>1 251 290</b>	<b>1 784 075</b>	<b>+ 42,6</b>
<b>Non-residential buildings</b>						
Office and banking space						
Total square metres	4 132	3 128	35 543	169 621	210 572	+ 24,1
Total value at current prices (R'000)	6 771	5 342	61 691	276 828	441 703	+ 59,6
Shopping space						
Total square metres	5 779	2 250	3 044	27 137	49 256	+ 81,5
Total value at current prices (R'000)	11 298	5 109	4 856	48 583	104 415	+ 114,9
Industrial and warehouse space						
Total square metres	3 597	4 202	7 351	71 047	94 410	+ 32,9
Total value at current prices (R'000)	4 513	7 455	12 719	115 881	159 736	+ 37,8
Other non-residential space <sup>2/</sup>						
Total square metres	1 606	0	210	23 399	235 430	+ 906,2
Total value at current prices (R'000)	2 600	0	315	35 652	469 355	+ 1 216,5
<b>Total value of non-residential buildings at current prices (R'000)</b>	<b>25 182</b>	<b>17 906</b>	<b>79 581</b>	<b>476 944</b>	<b>1 175 209</b>	<b>+ 146,4</b>
<b>Additions and alterations</b>						
Dwelling-houses						
Total square metres	19 570	23 935	33 928	232 920	204 786	-12,1
Total value at current prices (R'000)	29 919	34 626	35 388	352 085	305 138	-13,3
Other buildings <sup>3/</sup>						
Total square metres	7 418	15 718	20 326	69 199	87 620	+ 26,6
Total value at current prices (R'000)	11 377	53 010	43 102	113 815	198 449	+ 74,4
<b>Total value of additions and alterations at current prices (R'000)</b>	<b>41 296</b>	<b>87 636</b>	<b>78 490</b>	<b>465 900</b>	<b>503 587</b>	<b>+ 8,1</b>
<b>Total value of buildings completed at current prices (R'000)</b>	<b>223 110</b>	<b>358 453</b>	<b>431 944</b>	<b>2 194 134</b>	<b>3 462 871</b>	<b>+ 57,8</b>

1/ Other residential buildings include institutions for the disabled, boarding houses, old people's homes, hostels, hotels, motels, guest houses, holiday chalets, entertainment centres, bed-and-breakfast accommodation and casinos.

2/ Other non-residential space includes churches, sport and recreation clubs, schools, crèches, hospitals and all other non-residential space.

3/ Other buildings include additions and alterations to other residential buildings, non-residential buildings and internal alterations.

**Table 39 - Buildings completed according to type of building and selected urban area: Pretoria**

Type of building	August 2002	July 2003	August 2003	January 2002 to August 2002	January 2003 to August 2003	Percentage change between January 2002 to August 2002 and January 2003 to August 2003
<b>Residential buildings</b>						
Dwelling-houses smaller than 80 square metres						
Number of dwelling-houses	76	138	49	632	5 159	+ 716,3
Total square metres	3 720	6 365	2 373	26 594	163 313	+ 514,1
Total value at current prices (R'000)	6 402	8 517	3 699	30 029	103 761	+ 245,5
Dwelling-houses equal to or larger than 80 square metres						
Number of dwelling-houses	131	144	143	741	935	+ 26,2
Total square metres	36 012	41 205	50 668	208 175	256 344	+ 23,1
Total value at current prices (R'000)	64 993	75 407	84 816	330 516	429 464	+ 29,9
Flats and townhouses						
Number of flats and townhouses	160	205	0	1 886	793	- 58,0
Total square metres	46 171	35 218	0	195 956	105 807	- 46,0
Total value at current prices (R'000)	114 005	63 283	0	318 251	171 545	- 46,1
Other residential buildings <sup>1/</sup>						
Total square metres	0	0	0	0	0	..
Total value at current prices (R'000)	0	0	0	0	0	..
<b>Total value of residential buildings at current prices (R'000)</b>	<b>185 400</b>	<b>147 207</b>	<b>88 515</b>	<b>678 796</b>	<b>704 770</b>	<b>+ 3,8</b>
<b>Non-residential buildings</b>						
Office and banking space						
Total square metres	321	898	0	33 627	17 659	- 47,5
Total value at current prices (R'000)	482	1 347	0	45 702	31 130	- 31,9
Shopping space						
Total square metres	0	3 341	0	8 463	12 319	+ 45,6
Total value at current prices (R'000)	0	6 682	0	14 664	23 759	+ 62,0
Industrial and warehouse space						
Total square metres	1 267	0	0	15 063	13 716	- 8,9
Total value at current prices (R'000)	1 710	0	0	21 853	19 790	- 9,4
Other non-residential space <sup>2/</sup>						
Total square metres	0	917	0	2 004	14 079	+ 602,5
Total value at current prices (R'000)	0	1 834	0	3 050	21 343	+ 599,8
<b>Total value of non-residential buildings at current prices (R'000)</b>	<b>2 192</b>	<b>9 863</b>	<b>0</b>	<b>85 269</b>	<b>96 022</b>	<b>+ 12,6</b>
<b>Additions and alterations</b>						
Dwelling-houses						
Total square metres	5 744	9 802	9 945	23 488	55 808	+ 137,6
Total value at current prices (R'000)	9 506	17 436	13 873	35 218	86 767	+ 146,4
Other buildings <sup>3/</sup>						
Total square metres	5 290	12 144	12 634	14 063	33 453	+ 137,9
Total value at current prices (R'000)	8 587	25 250	17 317	22 283	63 714	+ 185,9
<b>Total value of additions and alterations at current prices (R'000)</b>	<b>18 093</b>	<b>42 686</b>	<b>31 190</b>	<b>57 501</b>	<b>150 481</b>	<b>+ 161,7</b>
<b>Total value of buildings completed at current prices (R'000)</b>	<b>205 685</b>	<b>199 756</b>	<b>119 705</b>	<b>821 566</b>	<b>951 273</b>	<b>+ 15,8</b>

1/ Other residential buildings include institutions for the disabled, boarding houses, old people's homes, hostels, hotels, motels, guest houses, holiday chalets, entertainment centres, bed-and-breakfast accommodation and casinos.

2/ Other non-residential space includes churches, sport and recreation clubs, schools, crèches, hospitals and all other non-residential space.

3/ Other buildings include additions and alterations to other residential buildings, non-residential buildings and internal alterations.

**Table 40 - Buildings completed according to type of building and selected urban area: Bloemfontein**

Type of building	August 2002	July 2003	August 2003	January 2002 to August 2002	January 2003 to August 2003	Percentage change between January 2002 to August 2002 and January 2003 to August 2003
<b>Residential buildings</b>						
Dwelling-houses smaller than 80 square metres						
Number of dwelling-houses	226	156	60	1 725	1 455	- 15,7
Total square metres	9 413	6 824	2 546	73 308	61 373	- 16,3
Total value at current prices (R'000)	5 329	3 967	1 593	36 687	35 634	- 2,9
Dwelling-houses equal to or larger than 80 square metres						
Number of dwelling-houses	20	24	17	166	144	- 13,3
Total square metres	3 529	4 287	3 600	28 546	22 609	- 20,8
Total value at current prices (R'000)	3 703	6 134	5 162	34 786	29 889	- 14,1
Flats and townhouses						
Number of flats and townhouses	140	46	131	280	304	+ 8,6
Total square metres	15 771	4 989	12 374	31 985	31 938	- 0,1
Total value at current prices (R'000)	22 533	7 044	21 008	46 434	50 091	+ 7,9
Other residential buildings <sup>1/</sup>						
Total square metres	0	0	0	1 428	2 683	+ 87,9
Total value at current prices (R'000)	0	0	0	1 461	7 000	+ 379,1
<b>Total value of residential buildings at current prices (R'000)</b>	<b>31 565</b>	<b>17 145</b>	<b>27 763</b>	<b>119 368</b>	<b>122 614</b>	<b>+ 2,7</b>
<b>Non-residential buildings</b>						
Office and banking space						
Total square metres	0	1 400	626	4 244	7 656	+ 80,4
Total value at current prices (R'000)	0	900	900	7 800	9 500	+ 21,8
Shopping space						
Total square metres	0	1 419	0	1 340	6 833	+ 409,9
Total value at current prices (R'000)	0	2 438	0	2 500	12 352	+ 394,1
Industrial and warehouse space						
Total square metres	0	0	1 926	4 188	10 590	+ 152,9
Total value at current prices (R'000)	0	0	4 966	3 190	12 678	+ 297,4
Other non-residential space <sup>2/</sup>						
Total square metres	0	0	0	5 764	2 181	- 62,2
Total value at current prices (R'000)	0	0	0	20 000	3 080	- 84,6
<b>Total value of non-residential buildings at current prices (R'000)</b>	<b>0</b>	<b>3 338</b>	<b>5 866</b>	<b>33 490</b>	<b>37 610</b>	<b>+ 12,3</b>
<b>Additions and alterations</b>						
Dwelling-houses						
Total square metres	3 367	1 723	3 151	40 117	21 332	- 46,8
Total value at current prices (R'000)	3 794	2 335	3 993	45 212	25 626	- 43,3
Other buildings <sup>3/</sup>						
Total square metres	2 903	2 185	39	8 852	3 964	- 55,2
Total value at current prices (R'000)	4 727	5 765	2 055	21 456	22 264	+ 3,8
<b>Total value of additions and alterations at current prices (R'000)</b>	<b>8 521</b>	<b>8 100</b>	<b>6 048</b>	<b>66 668</b>	<b>47 890</b>	<b>- 28,2</b>
<b>Total value of buildings completed at current prices (R'000)</b>	<b>40 086</b>	<b>28 583</b>	<b>39 677</b>	<b>219 526</b>	<b>208 114</b>	<b>- 5,2</b>

1/ Other residential buildings include institutions for the disabled, boarding houses, old people's homes, hostels, hotels, motels, guest houses, holiday chalets, entertainment centres, bed-and-breakfast accommodation and casinos.

2/ Other non-residential space includes churches, sport and recreation clubs, schools, crèches, hospitals and all other non-residential space.

3/ Other buildings include additions and alterations to other residential buildings, non-residential buildings and internal alterations.



## Additional information

### Explanatory Notes

<b>Introduction</b>	<p>1 Statistics South Africa (Stats SA) conducts a monthly Building Statistics Survey collecting information regarding building plans passed and buildings completed, financed by the private sector, from a sample of 128 local government institutions in South Africa. According to these institutions, they are not always notified about low-cost housing projects. This statistical release contains information of building plans passed and buildings completed in respect of residential buildings, non-residential buildings and additions and alterations according to province and selected urban areas.</p> <p>2 In order to improve timeliness of the publication, some information for the current month have been estimated due to late submission by respondents. These estimates will be revised in the next statistical release(s) as soon as actual information is available.</p> <p>3 The actual and seasonally adjusted values (at current and at constant 2000 prices) and the percentage change of building plans passed and buildings completed according to type of building are reflected monthly from January 2000 in this statistical release (see tables 1 to 8).</p>
<b>Scope of the survey</b>	<p>4 This survey covers local government institutions conducting activities for the private sector regarding -</p> <ul style="list-style-type: none"> <li>• approval of building plans; and</li> <li>• final inspection of completed buildings.</li> </ul>
<b>Classification</b>	<p>5 The 1993 edition of the <i>Standard Industrial Classification of all Economic Activities</i>, (SIC) Fifth Edition, Report No. 09-90-02, was used to classify the statistical units. The SIC is based on the 1990 <i>International Standard Industrial Classification of all Economic Activities</i> (ISIC) with suitable adaptations for local conditions.</p> <p>6 The twelfth and last published edition of the <i>Standard Code List of Areas</i>, Report No. 09-09-03 (1994) was used to classify the statistical units according to province. The cities, towns and non-urban areas listed in this report are codified within province. The code list was compiled by Stats SA in collaboration with other interested bodies and the first edition was distributed in June 1977. However, exceptions occur in respect of the new cross-border municipalities. GaRankuwa, which was previously classified in North West according to the <i>Standard Code List of Areas</i>, Report No. 09-09-03(1994), is included in Gauteng, City of Tshwane as from January 2002.</p>
<b>Statistical unit</b>	<p>7 The statistical unit for the collection of information is a local government institution. Local government institutions include district municipalities, metropolitan municipalities and local municipalities.</p>
<b>Survey methodology and design</b>	<p>8 The sample for the monthly Building Statistics Survey consists of the largest local government institutions in South Africa. The survey is collected by mail each month from a sample of 128 local government institutions.</p>
<b>Constant prices</b>	<p>9 The value of building plans passed and buildings completed at constant prices measures building activities in terms of ruling prices in a specific base year, which is 2000 as from May 2002.</p> <p>10 The value of building plans passed at constant prices for each month is obtained by deflating the values at current prices with a price index known as the “lump sum domestic buildings” as published in statistical release P0151: <i>JBCC Contract Price Adjustment Provisions Work Group Indices</i>. In order to be applicable, these indices (base February 1991=100) are converted to the base year 2000=100.</p>

- 11 The value of buildings completed at constant prices is obtained by deflating the values at current prices with the same price index which is used to calculate building plans passed at constant prices (see paragraph 10). The value of buildings completed is reported as at the time the plans were passed. Since the completion of buildings may extend over a few months to a few years, the current value of buildings completed is deflated by price indices as at the time the plans were passed in order to calculate the value of buildings completed at the time the plans were passed. Therefore, the duration of the completion of different types of buildings are taken into account in ascertaining the deflators e.g. the value of dwelling-houses completed at constant prices at January 2000 is obtained by deflating the current value of dwelling-houses completed for January 2000 with the price index of a month six months prior to January 2000. Furthermore, the value of other residential buildings, non-residential buildings and additions and alterations at constant prices is obtained by deflating the current values with price indices of 12 months, 18 months and 12 months prior to the relevant month, respectively.

#### Seasonal adjustment

- 12 Seasonally adjusted estimates of building plans passed and buildings completed are generated each month, using the X-11 Seasonal Adjustment Program developed by US Bureau of the Census Economic Research and Analyses Division, 1968.
- 13 Seasonal adjustment is a means of removing the estimated effects of normal seasonal variation from the series so that the effects of other influences on the series can be more clearly recognised. Seasonal adjustment does not aim to remove irregular or non-seasonal influences which may be present in any particular month. Influences that are volatile or unsystematic can still make it difficult to interpret the movement of the series even after adjustment for seasonal variations. Therefore, the month-to-month movements of seasonally adjusted estimates may not be reliable indicators of trend behaviour.

#### Trend cycle

- 14 The trend is a long-term pattern or movement of a time series. The X-11 Seasonal Adjustment Program is used for smoothing seasonally adjusted data.

#### Related publications

- 15 Users may also wish to refer to the following publications:
- P5041.3: *Building Statistics* issued annually.
  - P9101.2: *Actual and expected expenditure on construction by the public sector per statistical region* issued annually.
  - *Bulletin of Statistics* issued quarterly.
  - *South African Statistics* issued annually.

#### Unpublished statistics

- 16 In some cases Stats SA can also make available statistics which are not published. The statistics can be made available in one or more of the following ways: computer printouts, CD and diskette. Generally a charge is made for providing unpublished statistics.

#### Rounding-off of figures

- 17 The figures in the tables have, where necessary, been rounded off to the nearest digit shown. There may, therefore, be slight discrepancies between the sums of the constituent items and the totals shown.

#### Pre-release policy

- 18 Stats SA pre-release policy may be inspected at its Website, [www.statssa.gov.za](http://www.statssa.gov.za)

**Symbols and abbreviations**

..	no meaningful percentage change between two specified periods available since either one or both of the totals are nil
0	nil or figure too small to publish
*	revised
Stats SA	Statistics South Africa
SIC	Standard Industrial Classification of all Economic Activities
ISIC	International Standard Industrial Classification of all Economic Activities
JBCC	Joint Building Contracts Committee
CD	Compact Disc
US	United States
SARB	South African Reserve Bank
DTI	Department of Trade and Industry

## Local government institutions covered in the sample survey

**Table C - Classification of towns and cities according to names of local government institutions before and after boundaries and name changes by province**

<b>Western Cape</b>			
<b>Sample survey as from January 2002</b>		<b>Sample survey up to December 2001</b>	
<b>Name of local government institution after boundaries and name changes</b>	<b>Cities and towns</b>	<b>Name of local government institution before boundaries and name changes</b>	<b>Cities and towns</b>
Breede Valley Municipality	Worcester Rawsonville De Doorns Touws River	Worcester	Worcester
		Breede River District Council	Rural areas - Dissolved as from July 2001. Activities were taken over by various local government institutions.
<b>City of Cape Town -</b> Blaauwberg Administration	Milnerton	Blaauwberg Municipality	Milnerton
Cape Town Administration	Cape Town	City of Cape Town	Cape Town
Helderberg Administration	Gordon's Bay, Somerset West and Strand	Helderberg Municipality	Gordon's Bay, Somerset West and Strand
Ikapa Administration	Guguletu, Langa, Khayelitsha and Nyanga	Ikapa	Guguletu, Langa, Khayelitsha and Nyanga
Oostenberg Administration -	Brackenfell Kraaifontein Kuils River Melton Rose - Blue Downs	Oostenberg Municipality -	Brackenfell Kraaifontein Kuils River Melton Rose - Blue Downs
South Peninsula Administration -	Fish Hoek Simon's Town Plumstead	Fish Hoek Simon's Town South Peninsula Municipality	Fish Hoek Simon's Town Plumstead
Tygerberg Administration - Bellville Administration Durbanville Administration Goodwood Administration Lingeletu West Administration Parow Administration South Administration	City of Tygerberg - Bellville Durbanville Goodwood Lingeletu West Parow Belhar, Delft, Driftsands and Efuleni	City of Tygerberg - Bellville Administration Durbanville Administration Goodwood Administration Lingeletu West Administration Parow Administration South Administration	Bellville Durbanville Goodwood Lingeletu West Parow Belhar, Delft, Driftsands and Efuleni
Drakenstein Municipality	Paarl Wellington Saron <sup>1</sup>	Paarl Wellington	Paarl Wellington
George Municipality	George, Herolds Bay, Pacaltsdorp and Thembaletu  Wilderness <sup>1</sup>	George	George, Herolds Bay, Pacaltsdorp and Thembaletu

<sup>1</sup> Included in sample survey as from January 2001.

**Table C - Classification of towns and cities according to names of local government institutions before and after boundaries and name changes by province (continued)**

<b>Western Cape (concluded)</b>			
<b>Sample survey as from January 2002</b>		<b>Sample survey up to December 2001</b>	
<b>Name of local government institution after boundaries and name changes</b>	<b>Cities and towns</b>	<b>Name of local government institution before boundaries and name changes</b>	<b>Cities and towns</b>
Knysna Municipality	Knysna and Khayaletu Sedgefield	Knysna Sedgefield	Knysna and Khayaletu Sedgefield
Mossel Bay Municipality	Mossel Bay, Boggom's Bay, Kleinbrak, Rheeboek and Tergniet Friemersheim, Herbertsdale and Great Brak River <sup>1</sup>	Mossel Bay	Mossel Bay, Boggom's Bay, Kleinbrak, Rheeboek and Tergniet
Oudtshoorn Municipality	Oudtshoorn De Rust/Blomnek Dysselsdorp	Oudtshoorn	Oudtshoorn
Overberg District Council	Rural areas - Dissolved as from July 2001. Activities were taken over by various local government institutions.	Overberg District Council	Rural areas
Overstrand Municipality	Hermanus, Fisher Haven, Hawston, Onrus River, Sandbaai, Vermont and Zwelihle Hangklip - Kleinmond, Betty's Bay and Rooi-Els Gansbaai and Stanford <sup>1</sup>	Hermanus  Hangklip - Kleinmond	Hermanus, Fisher Haven, Hawston, Onrus River, Sandbaai, Vermont and Zwelihle Hangklip - Kleinmond, Betty's Bay and Rooi-Els
Plettenberg Bay Municipality	Plettenberg Bay Knoetzie <sup>1</sup>	Plettenberg Bay	Plettenberg Bay
Saldanha Bay Municipality	Vredenburg and Saldanha Hopefield and Langebaan <sup>1</sup>	Western Coast Peninsula	Vredenburg and Saldanha
Stellenbosch Municipality	Stellenbosch Franschhoek and Pniel	Stellenbosch	Stellenbosch
Swartland Municipality	Malmesbury Darling, Koringberg, Moorreesburg and Yzerfontein <sup>1</sup>	Malmesbury	Malmesbury
		West Coast District Council	Rural areas - Dissolved as from July 2001. Activities were taken over by various local government institutions.
		Winelands District Council	Rural areas - Dissolved as from July 2001. Activities were taken over by various local government institutions.

<sup>1</sup> Included in sample survey as from January 2001.

**Table C - Classification of towns and cities according to names of local government institutions before and after boundaries and name changes by province (continued)**

<b>Eastern Cape</b>			
<b>Sample survey as from January 2002</b>		<b>Sample survey up to December 2001</b>	
<b>Name of local government institution after boundaries and name changes</b>	<b>Cities and towns</b>	<b>Name of local government institution before boundaries and name changes</b>	<b>Cities and towns</b>
Buffalo City Municipality - East London Area  King William's Town Area	East London, Beacon Bay, Gompo Town, Gonubie and Mdantsane King William's Town, Bisho and Zwelitsha	East London  King William's Town	East London, Beacon Bay, Gompo Town, Gonubie and Mdantsane King William's Town, Bisho and Zwelitsha
King Sabata Dalindyebo Municipality - Umtata Area	Umtata	Umtata	Umtata
Kouga Municipality - Jeffreys Bay Area	Jeffreys Bay Humansdorp Hankey Patensie Oesterbaai Gamtoos St Francis Bay <sup>1</sup> Cape St Francis <sup>1</sup> Kromrivier <sup>1</sup>	Jeffreys Bay	Jeffreys Bay
Makana Municipality - Grahamstown Area	Grahamstown and Rhini Township	Grahamstown	Grahamstown and Rhini Township
Maletswai Municipality - Aliwal North Area	Aliwal North and Dukathole	Aliwal - Maletswai	Aliwal North and Dukathole
Ndlambe Municipality	Port Alfred Alexandria Bathurst Boesmansriviermond Kenton-on-Sea	Port Alfred	Port Alfred
Nelson Mandela Metropolitan Municipality - Despatch Area  Port Elizabeth Area  Uitenhage Area	Despatch  Port Elizabeth, Ibhayi and Motherwell Uitenhage and KwaNobuhle	Despatch  Port Elizabeth Uitenhage	Despatch  Port Elizabeth, Ibhayi and Motherwell Uitenhage and KwaNobuhle
		Western District Council	Rural areas - Dissolved as from July 2001. Activities were taken over by various local government institutions.

<sup>1</sup> Included in sample survey as from January 2003.

**Table C - Classification of towns and cities according to names of local government institutions before and after boundaries and name changes by province (continued)**

<b>Northern Cape</b>			
<b>Sample survey as from January 2002</b>		<b>Sample survey up to December 2001</b>	
<b>Name of local government institution after boundaries and name changes</b>	<b>Cities and towns</b>	<b>Name of local government institution before boundaries and name changes</b>	<b>Cities and towns</b>
//Khara Hais Municipality	Upington and Paballelo	Upington	Upington and Paballelo
		Benede-Oranje District Council	Rural areas - Dissolved as from July 2001. Activities were taken over by various local government institutions.
Ga-Segonyana Municipality	Kuruman and Mothibistad	Kuruman	Kuruman and Mothibistad
Kai! Garib Municipality - Keimoes Area	Keimoes Eksteenskuil <sup>1</sup> Kenhardt <sup>1</sup>	Keimoes	Keimoes
		Namaqualand District Council	Rural areas - Dissolved as from July 2001. Activities were taken over by various local government institutions.
Sol Plaatje Municipality	Kimberley and Galeshewe Ritchie <sup>1</sup>	Kimberley	Kimberley and Galeshewe

<sup>1</sup> Included in sample survey as from January 2001.

**Table C - Classification of towns and cities according to names of local government institutions before and after boundaries and name changes by province (continued)**

<b>Free State</b>			
<b>Sample survey as from January 2002</b>		<b>Sample survey up to December 2001</b>	
<b>Name of local government institution after boundaries and name changes</b>	<b>Cities and towns</b>	<b>Name of local government institution before boundaries and name changes</b>	<b>Cities and towns</b>
Dihlabeng Municipality	Bethlehem and Bohlokong Clarens Fouriesburg Paul Roux Rosendal	Bethlehem	Bethlehem and Bohlokong
Maluti a Phofung Municipality Harrismith Area Phuthaditjhaba Area	Harrismith and Tsiamé Phuthaditjhaba	Harrismith Phuthaditjhaba	Harrismith and Tsiamé Phuthaditjhaba
Mangaung Municipality - Bloemfontein Area  Botshabelo Area	Bloemfontein, Bainsvlei, Bloemspruit and Mangaung Botshabelo	Bloemfontein  Botshabelo	Bloemfontein, Bainsvlei, Bloemspruit and Mangaung Botshabelo
Mantsopa Municipality	Ladybrand and Manyatseng Excelsior Hobhouse Thaba Patchoa Tweespruit/Kopano	Ladybrand	Ladybrand and Manyatseng
Matjhabeng Municipality - Odendaalsrus Area  Virginia Area Welkom Area	Odendaalsrus, Allanridge and Kutlwanong Virginia and Meloding Welkom and Thabong	Odendaalsrus  Virginia Welkom	Odendaalsrus, Allanridge and Kutlwanong Virginia and Meloding Welkom and Thabong
Metsimaholo Municipality - Deneysville Area  Sasolburg Area	Deneysville , Refengkgotso and Oranjeville Sasolburg and Zamdela	Deneysville/Refengkgotso  Sasolburg/Zamdela	Deneysville and Refengkgotso Sasolburg and Zamdela
Moqhaka Municipality - Kroonstad Area	Kroonstad and Maokeng	Kroonstad	Kroonstad and Maokeng
Nqwathe Municipality	Parys Edenville Heibron Koppies Vredefort	Parys	Parys



**Table C - Classification of towns and cities according to names of local government institutions before and after boundaries and name changes by province (continued)**

<b>KwaZulu-Natal</b>			
<b>Sample survey as from January 2002</b>		<b>Sample survey up to December 2001</b>	
<b>Name of local government institution after boundaries and name changes</b>	<b>Cities and towns</b>	<b>Name of local government institution before boundaries and name changes</b>	<b>Cities and towns</b>
Emnambithi Municipality	Ladysmith Colenso Nkanyesi	Ladysmith	Ladysmith
eThekweni Municipality - Inner West Operational Entity	Clermont, KwaDabeka, KwaNdengezi, New Germany, Pinetown, Queensburgh, Reservoir Hills, Shallcross and Westville	Inner West City Council	Clermont, KwaDabeka, KwaNdengezi, New Germany, Pinetown, Queensburgh, Reservoir Hills, Shallcross and Westville
Outer West Operational Entity	Assagay, Botha's Hill, Cato Ridge, Drummond, Everton, Gillitts, Hillcrest, Inchanga, Kloof, Mpumalanga and Waterfall	Outer West Local Council	Assagay, Botha's Hill, Cato Ridge, Drummond, Everton, Gillitts, Hillcrest, Inchanga, Kloof, Mpumalanga and Waterfall
KwaMashu	KwaMashu	KwaMashu	KwaMashu
Durban- North, South and Central	Durban	Durban	Durban
North Operational Entity - Tonga	Tonga, Canelands and Hambanati	North Local Council - Tonga	Tonga, Canelands and Hambanati
Umhlanga Rocks	Umhlanga Rocks, Mount Edgecombe and Umdloti Beach	North Local Council - Umhlanga	Umhlanga Rocks, Mount Edgecombe and Umdloti Beach
Verulam	Verulam	North Local Council - Verulam	Verulam
South Operational Entity	Amanzimtoti, Isipingo, Kingsburgh, KwaMakuta and Umbogintwini	South Local Council	Amanzimtoti, Isipingo, Kingsburgh, KwaMakuta and Umbogintwini
Umlazi	Umlazi	Umlazi	Umlazi
Greater Kokstad Municipality	Kokstad	Kokstad	Kokstad
Hibiscus Coast Municipality	Margate and Uvongo Marina Beach, San Lameer, Southbroom and Trafalgar Port Shepstone Hibberdene Munster, Port Edward and Palm Beach	Margate Mpenjati/Southbroom  Port Shepstone  Umtamvuna/Port Edward	Margate and Uvongo Marina Beach, San Lameer, Southbroom and Trafalgar Port Shepstone  Munster, Port Edward and Palm Beach

**Table C - Classification of towns and cities according to names of local government institutions before and after boundaries and name changes by province (continued)**

<b>KwaZulu-Natal (concluded)</b>			
<b>Sample survey as from January 2002</b>		<b>Sample survey up to December 2001</b>	
<b>Name of local government institution after boundaries and name changes</b>	<b>Cities and towns</b>	<b>Name of local government institution before boundaries and name changes</b>	<b>Cities and towns</b>
KwaDukuza Municipality - Dolphin Coast Administrative Entity	Ballito, Etete, Shakaskraal, Tinley Manor Beach and Umhlali Beach	Dolphin Coast Borough	Ballito, Etete, Shakaskraal, Tinley Manor Beach and Umhlali Beach
Stanger Administrative Entity	Blythedale Beach, Shakaville and Stanger Nkwazi/Zinkwazi	KwaDukuza/Stanger	Blythedale Beach, Shakaville and Stanger
Msunduzi Municipality	Edendale Ashburton <sup>1</sup> , Pietermaritzburg and Msundini	Edendale Pietermaritzburg/Msundini	Edendale Pietermaritzburg and Msundini
Newcastle Municipality	Blaauwboschlaagte, Madadeni, Osizweni and Newcastle	Newcastle	Blaauwboschlaagte, Madadeni, Osizweni and Newcastle
Umdoni Municipality	Pennington Scottburgh/Umzinto	Pennington	Pennington
Umhlatuze Municipality	Empangeni and Ngwelezana Richards Bay	Empangeni-Ngwelezana Richards Bay	Empangeni and Ngwelezana Richards Bay
Umngeni Municipality	Hilton Howick	Hilton Howick	Hilton Howick
Uthungulu District Council <sup>1</sup>	KwaMbonambi, Nkandla and Ntambanana Municipalities	Development and Services Board - North Coast	KwaMbonambi, Nkandla, Tugela Mouth, Umlalazi, Mahlabathini, Ukuza, Umbambo, Engwavuma and Hluhluwe

<sup>1</sup> Included in sample survey as from January 2001.

**Table C - Classification of towns and cities according to names of local government institutions before and after boundaries and name changes by province (continued)**

<b>North West</b>			
<b>Sample survey as from January 2002</b>		<b>Sample survey up to December 2001</b>	
<b>Name of local government institution after boundaries and name changes</b>	<b>Cities and towns</b>	<b>Name of local government institution before boundaries and name changes</b>	<b>Cities and towns</b>
		Bophirima District Council	Rural areas - Dissolved as from July 2001. Activities were taken over by various local government institutions.
Ditsobotla Local Municipality	Lichtenburg and Itsoseng Biesiesvlei <sup>1</sup> Coligny <sup>1</sup>	Lichtenburg	Lichtenburg and Itsoseng
Klerksdorp Local Municipality	Klerksdorp Orkney and Kanana Hartbeesfontein <sup>1</sup> Stillfontein <sup>1</sup>	Klerksdorp Orkney	Klerksdorp Orkney and Kanana
GaRankuwa	As from January 2002 included in City of Tshwane - Northern Metropolitan Substructure (Gauteng)	GaRankuwa	GaRankuwa
Madibeng Local Municipality	Brits and Lethabile Hartbeespoort	Brits	Brits and Lethabile
Mafikeng Local Municipality	Mmabatho and Mafikeng	Mmabatho	Mmabatho and Mafikeng
Naledi Municipality	Vryburg	Vryburg	Vryburg
Potchefstroom Municipality	Potchefstroom	Potchefstroom	Potchefstroom
Rustenburg Local Municipality - Rustenburg Area	Rustenburg	Rustenburg	Rustenburg
Zeerust Local Municipality	Zeerust	Zeerust	Zeerust

<sup>1</sup> Included in sample survey as from January 2001.

**Table C - Classification of towns and cities according to names of local government institutions before and after**

**boundaries and name changes by province (continued)**

<b>Gauteng</b>			
<b>Sample survey as from January 2002</b>		<b>Sample survey up to December 2001</b>	
<b>Name of local government institution after boundaries and name changes</b>	<b>Cities and towns</b>	<b>Name of local government institution before boundaries and name changes</b>	<b>Cities and towns</b>
<b>City of Johannesburg Metropolitan Municipality</b>	Alexandra and Sandton  Midrand, Rabie Ridge and Ivory Park Randburg  Ennerdale, Lenasia and Johannesburg Diepmeadow, Dobsonville and Roodepoort Soweto	<b>Greater Johannesburg -</b> Eastern Metropolitan Local Council Midrand Metropolitan Local Council Northern Metropolitan Local Council Southern Metropolitan Local Council Western Metropolitan Local Council Soweto	Alexandra and Sandton  Midrand, Rabie Ridge and Ivory Park Randburg  Ennerdale, Lenasia and Johannesburg Diepmeadow, Dobsonville and Roodepoort Soweto
<b>City of Tshwane Metropolitan Municipality -</b> Centurion Town Council City Council of Pretoria  Northern Pretoria Metropolitan Substructure	Centurion Pretoria, Atteridgeville and Mamelodi Akasia, Elandsdoorn, Klipfontein, Kruisfontein and Soshanguve Hammanskraal GaRankuwa <sup>2</sup> Temba <sup>1</sup> Winterveld <sup>2</sup>	Centurion Pretoria  Akasia	Centurion Pretoria, Atteridgeville and Mamelodi Akasia, Elandsdoorn, Klipfontein, Kruisfontein and Soshanguve
		Eastern Services Council - Pretoria Area	Rural areas - Dissolved as from July 2001. Activities were taken over by various local government institutions.
<b>Ekurhuleni Metropolitan Municipality -</b> Service Delivery Centre of: Edenvale - Modderfontein Alberton Benoni  Boksburg Brakpan Duduza Germiston  Kempton Park Nigel Springs	Edenvale - Modderfontein Alberton and Tokoza Benoni, Daveyton and Wattville Boksburg and Vosloorus Brakpan and Tsakane Duduza Germiston, Bedfordview and Katlehong Kempton Park and Tembisa Nigel Springs and KwaThema	Edenvale - Modderfontein Alberton Benoni  Boksburg Brakpan Duduza Germiston  Kempton Park Nigel Springs	Edenvale - Modderfontein Alberton and Tokoza Benoni, Daveyton and Wattville Boksburg and Vosloorus Brakpan and Tsakane Duduza Germiston, Bedfordview and Katlehong Kempton Park and Tembisa Nigel Springs and KwaThema

<sup>2</sup> Was previously included under North West.



**Table C - Classification of towns and cities according to names of local government institutions before and after boundaries and name changes by province (continued)**

<b>Gauteng (concluded)</b>			
<b>Sample survey as from January 2002</b>		<b>Sample survey up to December 2001</b>	
<b>Name of local government institution after boundaries and name changes</b>	<b>Cities and towns</b>	<b>Name of local government institution before boundaries and name changes</b>	<b>Cities and towns</b>
Emfuleni Local Municipality	Vanderbijlpark Vereeniging and Evaton Sebokeng (Boipatong, Bophelong and Sharpville)	Vanderbijlpark Vereeniging Sebokeng	Vanderbijlpark Vereeniging and Evaton Sebokeng (Boipatong, Bophelong and Sharpville)
Kungwini Local Municipality –	Bronkhorstspuit Silver Lakes Mooikloof and rural areas Ekangala <sup>1</sup>	Bronkhorstspuit	Bronkhorstspuit
Lesedi Local Municipality	Heidelberg and Ratanda	Heidelberg	Heidelberg and Ratanda
Merafong City Local Municipality	Carletonville, Wedela, Khutsong and Wolverdient	Carletonville	Carletonville, Wedela, Khutsong and Wolverdient
Midvaal Local Municipality	Meyerton	Meyerton	Meyerton
Mogale City Municipality	Krugersdorp, Kagiso and Munsieville	Krugersdorp	Krugersdorp, Kagiso and Munsieville
Randfontein Local Municipality	Randfontein and Mohlakeng	Randfontein	Randfontein and Mohlakeng
Westonaria Local Municipality	Westonaria and Bekkersdal	Westonaria	Westonaria and Bekkersdal

<sup>1</sup> Included in sample survey as from January 2003.

**Table C - Classification of towns and cities according to names of local government institutions before and after boundaries and name changes by province (continued)**

<b>Mpumalanga</b>			
<b>Sample survey as from January 2002</b>		<b>Sample survey up to December 2001</b>	
<b>Name of local government institution after boundaries and name changes</b>	<b>Cities and towns</b>	<b>Name of local government institution before boundaries and name changes</b>	<b>Cities and towns</b>
Delmas Municipality	Delmas and Botleng	Delmas	Delmas and Botleng
Emalahleni Local Municipal Council- KwaGuqa Area Witbank Area	KwaGuqa Witbank	KwaGuqa Witbank	KwaGuqa Witbank
Govan Mbeki Municipality - Secunda Area	Evander, Embalenhle and Secunda	Highveldridge Transitional Council	Evander, Embalenhle and Secunda
Mbombela Local Municipality	Nelspruit and Kanyamazane White River Hazyview <sup>1</sup>	Nelspruit White River	Nelspruit White River
Middelburg Municipality	Middelburg and Mhluzi Hendrina and KwaZamokhule <sup>1</sup>	Middelburg	Middelburg and Mhluzi
Msukaligwa Municipality	Ermelo, Cassim Park and Wesselton Breyton	Ermelo	Ermelo, Cassim Park and Wesselton
Nkomazi Municipality - Komatipoort Area  Malelane Area	Komatipoort and Kamaqhekeza Malelane, Hectorspruit and Kamhlushwa	Komatipoort  Malelane	Komatipoort and Kamaqhekeza Malelane, Hectorspruit and Kamhlushwa

<sup>1</sup> Included in sample survey as from January 2001.

**Table C - Classification of towns and cities according to names of local government institutions before and after boundaries and name changes by province (concluded)**

<b>Limpopo</b>			
<b>Sample survey as from January 2002</b>		<b>Sample survey up to December 2001</b>	
<b>Name of local government institution after boundaries and name changes</b>	<b>Cities and towns</b>	<b>Name of local government institution before boundaries and name changes</b>	<b>Cities and towns</b>
		Bosveld District Council	Rural areas - Dissolved as from July 2001. Activities were taken over by various local government institutions.
Greater Tzaneen Municipality	Tzaneen and Nkowakowa	Letaba	Tzaneen and Nkowakowa
Musina Municipality	Musina (previously Messina)	Messina	Messina
Modimolle Municipality	Modimolle (previously Nylstroom)	Nylstroom	Nylstroom
Mogolakwena Municipality	Mokopane (previously Potgietersrus)	Potgietersrus	Potgietersrus
Mookgopong Municipality	Naboomspruit and Mookgopong	Naboomspruit	Naboomspruit and Mookgopong
Polokwane Municipality	Polokwane (previously Pietersburg) and Seshego	Pietersburg - Polokwane	Pietersburg and Seshego
Thabazimbi Municipality	Thabazimbi	Thabazimbi	Thabazimbi



**Table D - Classification of selected urban areas according to names of local government institutions before and after boundaries and name changes**

Sample survey as from January 2002		Sample survey up to December 2001	
Name of local government institution after boundaries and name changes	Cities and towns	Name of local government institution before boundaries and name changes	Cities and towns
<b>Selected urban areas: Cape Town</b>		<b>Selected urban areas: Cape Town</b>	
City of Cape Town - Blaauwberg Administration	Milnerton	Blaauwberg Municipality	Milnerton
Cape Town Administration	Cape Town	City of Cape Town	Cape Town
Ikapa Administration	Guguletu, Langa, Khayelitsha and Nyanga	Ikapa	Guguletu, Langa, Khayelitsha and Nyanga
Oostenberg Administration -	Kraaifontein Melton Rose - Blue Downs	Oostenberg Municipality -	Kraaifontein Melton Rose - Blue Downs
South Peninsula Administration -	Fish Hoek Simon's Town Plumstead	Fish Hoek Simon's Town South Peninsula Municipality	Fish Hoek Simon's Town Plumstead
Tygerberg Administration - Bellville Administration Durbanville Administration Goodwood Administration Lingeletu West Administration	City of Tygerberg - Bellville Durbanville Goodwood Lingeletu West	City of Tygerberg - Bellville Administration Durbanville Administration Goodwood Administration Lingeletu West Administration	Bellville Durbanville Goodwood Lingeletu West
Parow Administration South Administration	Parow Belhar, Delft, Driftsands and Efuleni	Parow Administration South Administration	Parow Belhar, Delft, Driftsands and Efuleni
<b>Selected urban areas: Port Elizabeth</b>		<b>Selected urban areas: Port Elizabeth</b>	
Nelson Mandela Metropolitan Municipality - Despatch Area	Despatch	Despatch	Despatch
Port Elizabeth Area	Port Elizabeth, Ibhayi and Motherwell	Port Elizabeth	Port Elizabeth, Ibhayi and Motherwell
Uitenhage Area	Uitenhage and KwaNobuhle	Uitenhage	Uitenhage and KwaNobuhle

**Table D - Classification of selected urban areas according to names of local government institutions before and after boundaries and name changes (continued)**

Sample survey as from January 2002		Sample survey up to December 2001	
Name of local government institution after boundaries and name changes	Cities and towns	Name of local government institution before boundaries and name changes	Cities and towns
<b>Selected urban areas: Durban eThekweni Municipality -</b>		<b>Selected urban areas: Durban</b>	
Inner West Operational Entity	Clermont, KwaDabeka, KwaNdengezi, New Germany, Pinetown, Queensburgh, Reservoir Hills, Shallcross and Westville	Inner West City Council	Clermont, KwaDabeka, KwaNdengezi, New Germany, Pinetown, Queensburgh, Reservoir Hills, Shallcross and Westville
Outer West Operational Entity	Assagay, Botha's Hill, Cato Ridge, Drummond, Everton, Gillitts, Hillcrest, Inchanga, Kloof, Mpumalanga and Waterfall	Outer West Local Council	Assagay, Botha's Hill, Cato Ridge, Drummond, Everton, Gillitts, Hillcrest, Inchanga, Kloof, Mpumalanga and Waterfall
Durban- North, South and Central	Durban	Durban	Durban
North Operational Entity - Verulam	Verulam	North Local Council - Verulam	Verulam
South Operational Entity	Amanzimtoti, Isipingo, Kingsburgh, KwaMakuta and Umbogintwini	South Local Council	Amanzimtoti, Isipingo, Kingsburgh, KwaMakuta and Umbogintwini
<b>Selected urban areas: Pretoria</b>		<b>Selected urban areas: Pretoria</b>	
City of Tshwane Metropolitan Municipality - Southern Region	Centurion	Centurion	Centurion
Central Region	Pretoria, Atteridgeville and Mamelodi	Pretoria	Pretoria, Atteridgeville and Mamelodi
Northern Region	Akasia, Elandsdoorn, Klipfontein, Kruisfontein and Soshanguve	Akasia	Akasia, Elandsdoorn, Klipfontein, Kruisfontein and Soshanguve
	Hammanskraal		
	GaRankuwa		
	Temba		
	Winterveld		

**Table D - Classification of selected urban areas according to names of local government institutions before and after boundaries and name changes (concluded)**

Sample survey as from January 2002		Sample survey up to December 2001	
Name of local government institution after boundaries and name changes	Cities and towns	Name of local government institution before boundaries and name changes	Cities and towns
<b>Selected urban areas:</b> <b>Witwatersrand</b> City of Johannesburg Metropolitan Municipality	Alexandra and Sandton  Midrand, Rabie Ridge and Ivory Park Randburg  Ennerdale, Lenasia and Johannesburg Diepmeadow, Dobsonville and Roodepoort Soweto	<b>Selected urban areas:</b> <b>Witwatersrand</b> Greater Johannesburg - Eastern Metropolitan Local Council Midrand Metropolitan Local Council Northern Metropolitan Local Council Southern Metropolitan Local Council Western Metropolitan Local Council Soweto	Alexandra and Sandton  Midrand, Rabie Ridge and Ivory Park Randburg  Ennerdale, Lenasia and Johannesburg Diepmeadow, Dobsonville and Roodepoort Soweto
Ekurhuleni Metropolitan Municipality - Service Delivery Centre of: Edenvale - Modderfontein Alberton Benoni  Boksburg Brakpan Duduza Germiston  Kempton Park Nigel Springs	Edenvale - Modderfontein Alberton and Tokoza Benoni, Daveyton and Wattville Boksburg and Vosloorus Brakpan and Tsakane Duduza Germiston, Bedfordview and Katlehong Kempton Park and Tembisa Nigel Springs and KwaThema	Edenvale - Modderfontein Alberton Benoni  Boksburg Brakpan Duduza Germiston  Kempton Park Nigel Springs	Edenvale - Modderfontein Alberton and Tokoza Benoni, Daveyton and Wattville Boksburg and Vosloorus Brakpan and Tsakane Duduza Germiston, Bedfordview and Katlehong Kempton Park and Tembisa Nigel Springs and KwaThema
Mogale City Municipality	Krugersdorp, Kagiso and Munsieville	Krugersdorp	Krugersdorp, Kagiso and Munsieville
Randfontein Local Municipality	Randfontein and Mohlakeng	Randfontein	Randfontein and Mohlakeng
Westonaria Local Municipality	Westonaria and Bekkersdal	Westonaria	Westonaria and Bekkersdal
Merafong City Local Municipality	Carletonville, Wedela, Khutsong and Welverdiend	Carletonville	Carletonville, Wedela, Khutsong and Welverdiend
Lesedi Local Municipality	Heidelberg and Ratanda	Heidelberg	Heidelberg and Ratanda
<b>Selected urban area:</b> <b>Bloemfontein</b> Mangaung Municipality - Bloemfontein Area	Bloemfontein, Bainsvlei, Bloemspuit and Mangaung	<b>Selected urban area:</b> <b>Bloemfontein</b> Bloemfontein	Bloemfontein, Bainsvlei, Bloemspuit and Mangaung

# Glossary

<b>Additions and alterations</b>	Additions and alterations include extensions to existing buildings as well as internal and external alterations of existing buildings.
<b>Blocks of flats</b>	Blocks of flats are regarded as high-density housing consisting of a number of self-contained dwelling-units with at least one living-room together with a kitchen and bathroom conjoined to similar units in one building.
<b>Dwelling-house</b>	A dwelling-house refers to a free-standing, complete structure on a separate stand or a self-contained dwelling-unit, granny flat, on the same premises as an existing residence. Out-buildings and garages are included.
<b>Local government</b>	A local government is a distinct and constitutionally defined sphere of government, pertaining to government that is not national or provincial in nature and is manifested in the form of municipalities. It is a generic term referring to municipalities and local authorities of varied nature and type involved in activities of a governmental nature in the local sphere.
<b>Local government institutions</b>	<p>Local government institutions consist of local authorities and district councils as defined in terms of-</p> <ul style="list-style-type: none"> <li>• South African Constitution, 1996(Act 108 of 1996);</li> <li>• Local Government Transition Act, 1993 (Act 209 of 1993): and the</li> <li>• Local Government Transition Act, Second Amendment Act,1996 (Act 97 of 1996).</li> <li>• Municipal Structures Act, 1998 (Act 117 of 1998).</li> </ul>
<b>Non-residential buildings</b>	Non-residential buildings comprise factories, commercial, financial and other office buildings, as well as other buildings not used for residential purposes, such as churches, halls, clubs, schools and hospitals.
<b>Other residential buildings</b>	Other residential buildings include institutions for the disabled, boarding houses, old people's homes, hostels, hotels, motels, guest houses, holiday chalets, bed-and-breakfast accommodation, entertainment centres and casinos.
<b>Percentage change</b>	<p>When using monthly actual values, the percentage change is the change in actual values of building activities (building plans passed or buildings completed) of the relevant month compared with the actual values of building activities (building plans passed or buildings completed) of the same month in the previous year expressed as a percentage.</p> <p>When using annual actual values, the percentage change is the change in the actual values of building activities (building plans passed or buildings completed) of the relevant year compared with the actual values of building activities (building plans passed or buildings completed) of the previous year expressed as a percentage.</p> <p>When using seasonally adjusted values, the percentage change is the change in the seasonally adjusted values of building activities (building plans passed or buildings completed) of the relevant month compared with the seasonally adjusted values of building activities (building plans passed or buildings completed) of the previous month expressed as a percentage.</p>

<b>Reference period</b>	Reference period is one calendar month.
<b>Residential buildings</b>	Residential buildings comprise dwelling-houses, flats, townhouses and other residential buildings.
<b>Townhouses</b>	Townhouses are multiple, medium-density dwelling-units and include cluster housing, group housing, simplexes, duplexes, triplexes and other similar dwelling-units which are usually grouped together, with one level of each unit on ground level. This excludes blocks of flats.

## For more information

Stats SA publishes approximately 300 different statistical releases each year. It is not economically viable to produce them in more than one of South Africa's eleven official languages. Since the releases are used extensively, not only locally but also by international economic and social-scientific communities, Stats SA releases are published in English only.

Stats SA has copyright on this publication. Users may apply the information as they wish, provided that they acknowledge Stats SA as the source of the basic data wherever they process, apply, utilise, publish or distribute the data and also that they specify that the relevant application and analysis (where applicable) result from their own processing of the data.

### Stats SA products

A complete set of Stats SA publications is available at the Stats SA Library and the following libraries:

National Library of South Africa, Pretoria Division  
 National Library of South Africa, Cape Town Division  
 Natal Society Library, Pietermaritzburg  
 Library of Parliament, Cape Town  
 Bloemfontein Public Library  
 Johannesburg Public Library  
 Eastern Cape Library Services, King William's Town  
 Central Regional Library, Polokwane  
 Central Reference Library, Nelspruit  
 Central Reference Collection, Kimberley  
 Central Reference Library, Mmabatho

Stats SA also provides a subscription service.

### Electronic services

A large range of data are available via on-line services, diskette, CD and computer printouts. For more details about our electronic data services, contact (012) 310 8600/8390/8351/4892/8496/8095.

You can visit us on the Internet at: [www.statssa.gov.za](http://www.statssa.gov.za)

### Enquiries

Telephone number:	(012) 310 8600/8390/8351/4892/8496/8095 (user information services) (012) 310 8228/310 8007 (technical enquiries) (012) 310 8161 (orders) (012) 310 8490 (library)
Fax number:	(012) 310 8182 (technical enquiries)
e-mail:	Thabelom@statssa.gov.za Gretaz@statssa.gov.za
Postal address:	Private Bag X44, Pretoria, 0001