

# **Building statistics**

**August 2002**

Co-operation between Statistics South Africa (Stats SA), the citizens of the country, the private sector and government institutions is essential for a successful statistical system. Without continued co-operation and goodwill, the timely release of relevant and reliable official statistics will not be possible.

**Embargo: 13:00  
Date: 16 October 2002**

Stats SA publishes approximately three hundred different releases each year. It is not economically viable to produce them in more than one of South Africa's eleven official languages. Since the releases are used extensively, not only locally, but also by international economic and social-scientific communities, Stats SA releases are published in English only.

### Key figures regarding building plans passed for the month ended August 2002

#### Actual estimates at constant 2000 prices

	August 2002 R million	January 2002 to August 2002 R million	Percentage change between August 2001 and August 2002	Percentage change between June 2001 to August 2001 and June 2002 to August 2002	Percentage change between January 2001 to August 2001 and January 2002 to August 2002
Residential buildings					
Dwelling-houses	760,9	5 534,0	+ 18,3	+ 14,8	+ 8,6
Flats and townhouses	149,9	1 449,5	+ 23,3	+ 14,5	+ 21,6
Other residential buildings	6,7	187,6	- 50,7	+ 71,7	+ 7,9
<b>Total</b>	<b>917,5</b>	<b>7 171,1</b>	<b>+ 17,9</b>	<b>+ 15,5</b>	<b>+ 11,0</b>
Non-residential buildings	316,9	2 379,2	+ 38,4	+ 10,1	+ 1,1
Additions and alterations	561,4	3 910,1	+ 24,9	+ 23,3	+ 18,4
<b>Total</b>	<b>1 795,8</b>	<b>13 460,4</b>	<b>+ 23,3</b>	<b>+ 16,6</b>	<b>+ 11,1</b>

#### Seasonally adjusted estimates at constant 2000 prices

	August 2002 R million	Percentage change between July 2002 and August 2002	Percentage change between March 2002 to May 2002 and June 2002 to August 2002
Residential buildings	888,6	- 4,4	- 3,2
Non-residential buildings	325,0	+ 95,8	- 16,3
Additions and alterations	532,6	+ 2,4	- 7,4
<b>Total</b>	<b>1 746,2</b>	<b>+ 8,1</b>	<b>- 6,9</b>

### Key findings regarding building plans passed for the three months ended August 2002

#### Seasonally adjusted real value of building plans passed decreases

*The seasonally adjusted real value of building plans passed (at constant 2000 prices) for the three months ended August 2002 decreased by 6,9% compared with the previous three months.*

The decrease of 6,9% in the seasonally adjusted real value of building plans passed was due to decreases reported for non-residential buildings (-16,3%), additions and alterations (-7,4%) and residential buildings (-3,2%) during the three months ended August 2002 compared with the previous three months.

## Key findings regarding building plans passed for the first eight months of 2002

### Total real value of building plans passed increases

*The total real value of building plans passed (at constant 2000 prices) during the first eight months of 2002 increased by 11,1% (+R1 342,0 million) to R13 460,4 million compared with the first eight months of 2001. Large increases in the real value of building plans passed were reported for additions and alterations (+R607,2 million), dwelling-houses (+R438,3 million) and flats and townhouses (+R257,3 million). Large real increases for additions and alterations were reported by KwaZulu-Natal (+R211,7 million), Gauteng (+R179,7 million) and Western Cape (+R175,4 million). The largest real increases for dwelling-houses were reported by Western Cape (+R366,3 million) and Eastern Cape (+R104,2 million), whereas the largest real increase for flats and townhouses was reported by Gauteng (+R194,7 million) during the above-mentioned period.*

### Eight of the nine provinces reported increases in the total real value of building plans passed

The largest provincial contributors to the increase of 11,1% (+R1 342,0 million) in the total real value of building plans passed were KwaZulu-Natal (+2,8 percentage points or R341,0 million), Western Cape (+2,3 percentage points or R275,0 million), Limpopo (+1,6 percentage points or R198,3 million) and Gauteng (+1,5 percentage points or R185,2 million) (cf. table A). Large real increases in KwaZulu-Natal were reported for additions and alterations (+R211,7 million, mainly due to the large increase reported for additions and alterations to non-residential buildings to the real value of R255,4 million by Umhlathuze Municipality – Richards Bay Area during the above-mentioned period), industrial and warehouse space (+R120,4 million, mainly due to the approval of building plans for industrial and warehouse space to the real value of R126,9 million by Msunduzi Municipality – Pietermaritzburg Area during May 2002) and shopping space (+R111,4 million, mainly due to the large increase reported for shopping space to the real value of R128,3 million by North Local Council – Umhlanga Rocks). The largest increase in Western Cape was reported for dwelling-houses (+R366,3 million, mainly due to increases reported by the selected urban areas of Cape Town (+R115,5 million), Knysna Municipality (+R79,6 million), Overstrand Municipality (+R46,5 million) and Drakenstein Municipality (+R27,4 million)).

**Table A - Contribution of provinces to the total real value of building plans passed**

Province	Percentage contribution to the total real value of plans passed during January 2001 to August 2001	Percentage change between January 2001 to August 2001 and January 2002 to August 2002	Contribution (percentage points) <sup>1/</sup> to the percentage change in the real value of plans passed between January 2001 to August 2001 and January 2002 to August 2002	Difference in total real value of plans passed between January 2001 to August 2001 and January 2002 to August 2002  R million
KwaZulu-Natal	12,2	+ 23,2	+ 2,8	+ 341,0
Western Cape	30,1	+ 7,5	+ 2,3	+ 275,0
Limpopo	1,5	+ 107,9	+ 1,6	+ 198,3
Gauteng	40,7	+ 3,8	+ 1,6	+ 185,2
Mpumalanga	3,5	+ 25,7	+ 0,9	+ 109,4
North West	2,7	+ 29,8	+ 0,8	+ 97,2
Eastern Cape	6,1	+ 9,8	+ 0,6	+ 72,1
Free State	2,5	+ 23,4	+ 0,6	+ 71,9
Northern Cape	0,7	- 9,5	- 0,1	- 8,1
<b>Total</b>	<b>100,0</b>	<b>+ 11,1</b>	<b>+ 11,1</b>	<b>+1 342,0</b>

1/ The contribution (percentage points) is calculated by multiplying the percentage change of each province between January 2001 to August 2001 and January 2002 to August 2002 (cf. column 3) with the percentage contribution of the corresponding province to the total real value of plans passed during January 2001 to August 2001 (cf. column 2) divided by 100.

### Key figures regarding buildings completed for the month ended August 2002

#### Actual estimates at constant 2000 prices

	August 2002	January 2002 to August 2002	Percentage change between August 2001 and August 2002	Percentage change between June 2001 to August 2001 and June 2002 to August 2002	Percentage change between January 2001 to August 2001 and January 2002 to August 2002
	R million	R million			
Residential buildings					
Dwelling-houses	428,7	3 212,0	+ 27,0	+ 22,2	+ 20,9
Flats and townhouses	228,8	1 199,5	+ 262,8	+ 102,4	+ 78,9
Other residential buildings	4,2	262,2	- 72,2	- 64,9	- 29,1
<b>Total</b>	<b>661,7</b>	<b>4 673,7</b>	<b>+ 59,2</b>	<b>+ 35,2</b>	<b>+ 26,4</b>
Non-residential buildings	88,7	1 498,0	- 26,7	- 10,8	- 15,9
Additions and alterations	211,1	1 828,8	- 0,4	- 10,1	- 7,6
<b>Total</b>	<b>961,5</b>	<b>8 000,5</b>	<b>+ 28,4</b>	<b>+ 12,3</b>	<b>+ 7,3</b>

#### Seasonally adjusted estimates at constant 2000 prices

	August 2002	Percentage change between July 2002 and August 2002	Percentage change between March 2002 to May 2002 and June 2002 to August 2002
	R million		
Residential buildings	642,3	+ 4,4	+ 0,2
Non-residential buildings	103,6	- 32,8	- 35,8
Additions and alterations	210,8	+ 2,0	- 14,4
<b>Total</b>	<b>956,7</b>	<b>- 2,0</b>	<b>- 10,9</b>

### Key findings regarding buildings completed for the three months ended August 2002

#### Seasonally adjusted real value of buildings completed decreases

*The seasonally adjusted real value of buildings completed (at constant 2000 prices) for the three months ended August 2002 decreased by 10,9% compared with the previous three months.*

The decrease of 10,9% in the seasonally adjusted real value of buildings completed during the three months ended August 2002 compared with the previous three months was mainly due to decreases in the seasonally adjusted real value of non-residential buildings (-35,8%) and additions and alterations (-14,4%).

## Key findings regarding buildings completed for the first eight months of 2002

### Total real value of buildings completed increases

*The total real value of buildings completed (at constant 2000 prices) during the first eight months of 2002 increased by 7,3% (+R544,5 million) to R8 000,5 million compared with the first eight months of 2001. Large increases in the real value of buildings completed were reported for dwelling-houses (+R556,1 million, mainly due to increases reported by Western Cape (+R356,9 million) and Gauteng (+R292,5 million)) and flats and townhouses (+R528,8 million, mainly due to increases reported by Gauteng (+R353,6 million)). However, these increases were partially counteracted by decreases in the real value of non-residential buildings completed (-R282,4 million, mainly due to decreases reported for industrial and warehouse space (-R186,5 million), office and banking space (-R79,8 million) and shopping space (-R48,8 million) and additions and alterations (-R150,1 million) during the above-mentioned period.*

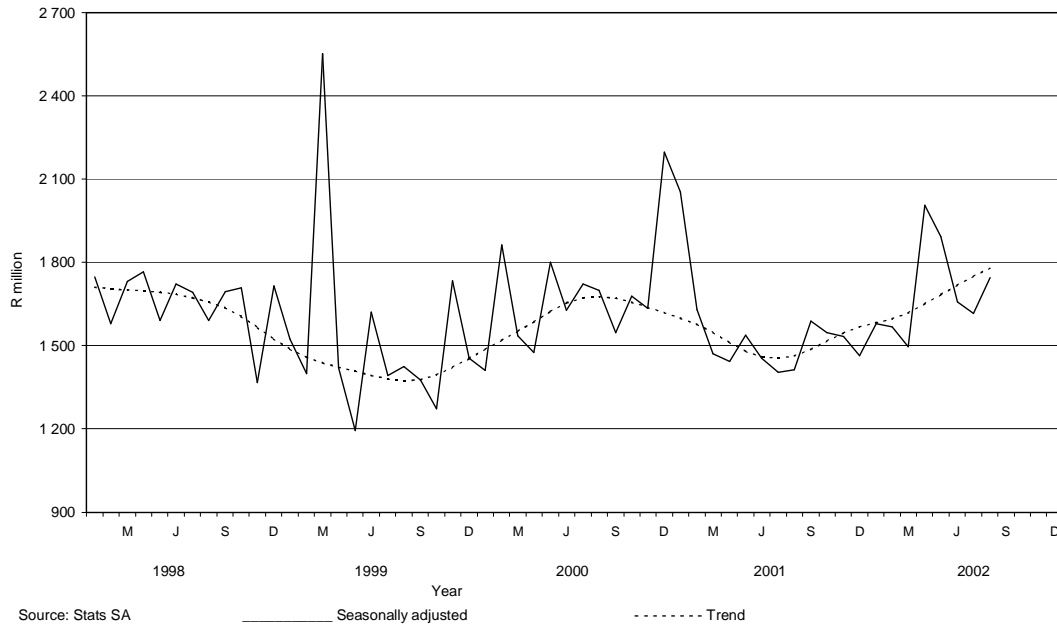
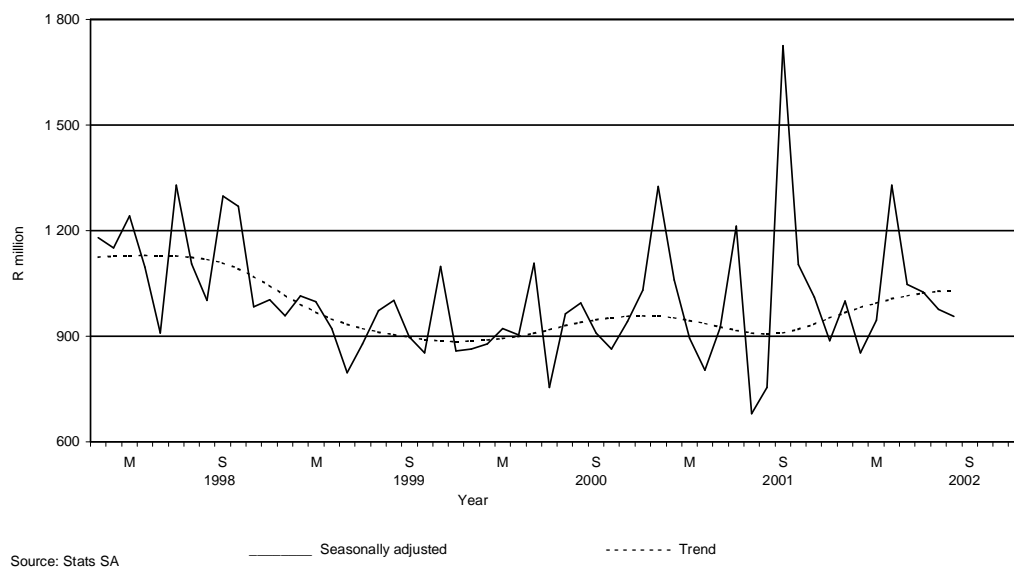
### Five of the nine provinces reported increases in the total real value of buildings completed

The largest provincial contributor to the increase of 7,3% (+R544,5 million) in the total real value of buildings completed was Western Cape (+4,5 percentage points or R335,4 million), Gauteng (+3,7 percentage points or R279,5 million) and Limpopo (+2,4 percentage points or R180,4 million) (cf. table B). The largest real increase in Western Cape was reported for dwelling-houses (+R356,9 million, mainly due to the large increase reported by the selected urban areas of Cape Town (+R246,9 million)). Large real increases in Gauteng were reported for flats and townhouses (+R353,6 million, mainly due to the large increases reported by the selected urban areas of Pretoria (+R205,0 million) and Witwatersrand (+R155,9 million)), dwelling-houses (+R292,5 million, mainly due to increases reported by the selected urban areas of Witwatersrand (+R161,7 million), Kungwini Local Municipality –Bronkhorstspuit Area (+R66,1 million) and Pretoria (+R58,0 million)) and additions and alterations (+R115,0 million). Large real increases in Limpopo were reported for 'other' residential buildings (+R193,7 million), mainly due to the completion of a hotel and casino to the real value of R195,1 million as reported by Polokwane Municipality (previously Pietersburg) during March 2002.

**Table B - Contribution of provinces to the total real value of buildings completed**

Province	Percentage contribution to the total real value of buildings completed during January 2001 to August 2001	Percentage change between January 2001 to August 2001 and January 2002 to August 2002	Contribution (percentage points) <sup>1/</sup> to the percentage change in the real value of buildings completed between January 2001 to August 2001 and January 2002 to August 2002	Difference in total real value of buildings completed between January 2001 to August 2001 and January 2002 to August 2002  R million
Western Cape	29,8	+ 15,1	+ 4,5	+ 335,4
Gauteng	34,3	+ 10,9	+ 3,7	+ 279,5
Limpopo	1,0	+ 235,6	+ 2,4	+ 180,4
North West	2,9	+ 23,4	+ 0,7	+ 50,9
KwaZulu-Natal	16,0	+ 0,4	+ 0,1	+ 4,8
Mpumalanga	2,6	- 15,5	- 0,4	- 29,3
Northern Cape	1,4	- 46,3	- 0,6	- 46,6
Free State	4,3	- 18,1	- 0,8	- 58,1
Eastern Cape	7,7	- 30,0	- 2,3	- 172,5
<b>Total</b>	<b>100,0</b>	<b>+ 7,3</b>	<b>+ 7,3</b>	<b>+ 544,5</b>

1/ The contribution (percentage points) is calculated by multiplying the percentage change of each province between January 2001 to August 2001 and January 2002 to August 2002 (cf. column 3) with the percentage contribution of the corresponding province to the total real value of buildings completed during January 2001 to August 2001 (cf. column 2) divided by 100.

**Figure 1 – Total real value of building plans passed****Figure 2 – Total real value of buildings completed**

# Contents

## Page

<b>Notes</b>	.....	7
<b>Tables</b>		
Table 1	Actual values and percentage change of building plans passed at current prices according to type of building .....	8
Table 2	Seasonally adjusted values and percentage change of building plans passed at current prices according to type of building .....	9
Table 3	Actual values and percentage change of building plans passed at constant 2000 prices according to type of building .....	10
Table 4	Seasonally adjusted values and percentage change of building plans passed at constant 2000 prices according to type of building .....	11
Table 5	Actual values and percentage change of buildings completed at current prices according to type of building .....	12
Table 6	Seasonally adjusted values and percentage change of buildings completed at current prices according to type of building .....	13
Table 7	Actual values and percentage change of buildings completed at constant 2000 prices according to type of building .....	14
Table 8	Seasonally adjusted values and percentage change of buildings completed at constant 2000 prices according to type of building .....	15
Table 9	Building plans passed according to type of building: Total RSA .....	16
Table 10	Building plans passed according to type of building and province: Western Cape .....	17
Table 11	Building plans passed according to type of building and province: Eastern Cape .....	18
Table 12	Building plans passed according to type of building and province: Northern Cape .....	19
Table 13	Building plans passed according to type of building and province: Free State .....	20
Table 14	Building plans passed according to type of building and province: KwaZulu-Natal .....	21
Table 15	Building plans passed according to type of building and province: North West .....	22
Table 16	Building plans passed according to type of building and province: Gauteng .....	23
Table 17	Building plans passed according to type of building and province: Mpumalanga .....	24
Table 18	Building plans passed according to type of building and province: Limpopo.....	25
Table 19	Buildings completed according to type of building: Total RSA .....	26
Table 20	Buildings completed according to type of building and province: Western Cape .....	27
Table 21	Buildings completed according to type of building and province: Eastern Cape .....	28
Table 22	Buildings completed according to type of building and province: Northern Cape.....	29
Table 23	Buildings completed according to type of building and province: Free State .....	30
Table 24	Buildings completed according to type of building and province: KwaZulu-Natal .....	31
Table 25	Buildings completed according to type of building and province: North West .....	32
Table 26	Buildings completed according to type of building and province: Gauteng .....	33
Table 27	Buildings completed according to type of building and province: Mpumalanga .....	34
Table 28	Buildings completed according to type of building and province: Limpopo.....	35
Table 29	Building plans passed according to type of building and selected urban area: Cape Town .....	36
Table 30	Building plans passed according to type of building and selected urban area: Port Elizabeth ....	37
Table 31	Building plans passed according to type of building and selected urban area: Durban .....	38
Table 32	Building plans passed according to type of building and selected urban area: Witwatersrand .....	39
Table 33	Building plans passed according to type of building and selected urban area: Pretoria .....	40
Table 34	Building plans passed according to type of building and selected urban area: Bloemfontein .....	41
Table 35	Buildings completed according to type of building and selected urban area: Cape Town .....	42
Table 36	Buildings completed according to type of building and selected urban area: Port Elizabeth .....	43
Table 37	Buildings completed according to type of building and selected urban area: Durban .....	44
Table 38	Buildings completed according to type of building and selected urban area: Witwatersrand .....	45
Table 39	Buildings completed according to type of building and selected urban area: Pretoria .....	46
Table 40	Buildings completed according to type of building and selected urban area: Bloemfontein .....	47
<b>Additional information</b>		
	Explanatory notes .....	48
	Technical notes .....	50
	Local government institutions covered in the sample survey	
	Table C – Classification of towns and cities according to new municipalities and previous local government institutions by province .....	51
	Table D – Classification of selected urban areas according to new municipalities and previous local government institutions .....	63
	Glossary .....	66
<b>For more information</b>	.....	67

## Notes

<b>Forthcoming issues</b>	<b>Issue</b>	<b>Expected release date</b>
	September 2002	20 November 2002
	October 2002	18 December 2002
	November 2002	15 January 2003
	December 2002	19 February 2003
<b>Purpose of the survey</b>	<p>The Building Statistics Survey is a countrywide survey covering a sample of municipalities in South Africa. The information received is used to estimate key economic statistics used by the private and public sectors. The information is also used to compile estimates of the Gross Domestic Product (GDP). These statistics are also used by government to monitor the Reconstruction and Development Program (RDP) in South Africa.</p>	
<b>Change in base year of constant prices from 1995 to 2000</b>	<p>Following international practice, the base year of the price index ("lump sum domestic buildings" as published in statistical release P0151 –JBCC Contract Price Adjustment Provision Work Group Indices), which is used to deflate the current prices of building plans passed and buildings completed to constant prices, has been converted to 2000=100 with effect from May 2002. Previously the value of building plans passed and buildings completed was published at constant 1995 prices. It should be borne in mind that the change does not in any way affect the trends.</p>	



**Table 1 - Actual values and percentage change of building plans passed at current prices according to type of building**

Year <sup>1/</sup> and month <sup>2/</sup>	Residential buildings		Non-residential buildings		Additions and alterations		Total	
	R'000	Percentage change	R'000	Percentage change	R'000	Percentage change	R'000	Percentage change
2000 Jan	490,776	- 11.3	163,926	- 31.0	365,596	+ 31.8	1,020,298	- 4.5
Feb	784,023	+ 48.3	521,389	+ 32.1	399,280	+ 12.3	1,704,692	+ 33.3
Mar	747,421	+ 12.0	359,267	- 75.3	515,668	+ 8.2	1,622,356	- 37.6
Apr	627,642	+ 18.3	271,151	- 27.6	382,300	+ 15.8	1,281,093	+ 3.7
May	874,847	+ 65.8	573,853	+ 109.3	473,062	+ 17.3	1,921,762	+ 59.5
Jun	853,154	+ 1.8	336,324	- 19.6	532,278	+ 31.8	1,721,756	+ 3.7
Jul	908,061	+ 42.5	484,669	+ 5.2	549,932	+ 30.8	1,942,662	+ 27.9
Aug	929,836	+ 31.1	353,488	- 9.0	492,627	+ 18.5	1,775,951	+ 23.8
Sep	826,851	+ 37.8	354,456	+ 16.0	465,836	- 3.8	1,647,143	+ 18.5
Oct	916,410	+ 37.9	492,884	+ 49.8	539,561	+ 23.5	1,948,855	+ 36.2
Nov	914,346	+ 28.6	493,166	- 29.7	503,659	- 6.2	1,911,171	- 2.0
Dec	606,148	+ 22.7	704,410	+ 212.8	317,835	+ 0.9	1,628,393	+ 57.5
<b>Total</b>	<b>9,479,515</b>	<b>+ 28.4</b>	<b>5,108,983</b>	<b>- 8.2</b>	<b>5,537,634</b>	<b>+ 14.1</b>	<b>20,126,132</b>	<b>+ 13.1</b>
2001 Jan	721,003	+ 46.9	477,489	+ 191.3	352,193	- 3.7	1,550,685	+ 52.0
Feb	826,607	+ 5.4	300,417	- 42.4	474,953	+ 19.0	1,601,977	- 6.0
Mar	929,196	+ 24.3	301,148	- 16.2	436,645	- 15.3	1,666,989	+ 2.8
Apr	738,858	+ 17.7	207,874	- 23.3	377,373	- 1.3	1,324,105	+ 3.4
May	999,426	+ 14.2	289,330	- 49.6	499,673	+ 5.6	1,788,429	- 6.9
Jun	901,450	+ 5.7	299,913	- 10.8	447,228	- 16.0	1,648,591	- 4.2
Jul	891,483	- 1.8	366,953	- 24.3	427,464	- 22.3	1,685,900	- 13.2
Aug	836,033	- 10.1	245,865	- 30.4	482,883	- 2.0	1,564,781	- 11.9
Sep	960,995	+ 16.2	303,367	- 14.4	526,113	+ 12.9	1,790,475	+ 8.7
Oct	1,196,455	+ 30.6	185,828	- 62.3	542,954	+ 0.6	1,925,237	- 1.2
Nov	974,628	+ 6.6	317,506	- 35.6	595,512	+ 18.2	1,887,646	- 1.2
Dec	649,614	+ 7.2	140,365	- 80.1	357,449	+ 12.5	1,147,428	- 29.5
<b>Total</b>	<b>10,625,748</b>	<b>+ 12.1</b>	<b>3,436,055</b>	<b>- 32.7</b>	<b>5,520,440</b>	<b>- 0.3</b>	<b>19,582,243</b>	<b>- 2.7</b>
2002 Jan	777,744	+ 7.9	168,097	- 64.8	399,729	+ 13.5	1,345,570	- 13.2
Feb	1,013,916	+ 22.7	247,016	- 17.8	447,620	- 5.8	1,708,552	+ 6.7
Mar	962,925	+ 3.6	465,942	+ 54.7	421,614	- 3.4	1,850,481	+ 11.0
Apr	1,138,926	+ 54.1	347,885	+ 67.4	519,452	+ 37.6	2,006,263	+ 51.5
May	1,105,380	+ 10.6	437,175	+ 51.1	926,607	+ 85.4	2,469,162	+ 38.1
Jun*	1,080,086	+ 19.8	489,168	+ 63.1	538,147	+ 20.3	2,107,401	+ 27.8
Jul*	1,218,655	+ 36.7	254,211	- 30.7	662,885	+ 55.1	2,135,751	+ 26.7
Aug	1,116,609	+ 33.6	385,600	+ 56.8	683,240	+ 41.5	2,185,449	+ 39.7

<sup>1/</sup> The annual percentage change is the change in the actual values of building plans passed of the relevant year compared with the actual values of building plans passed of the previous year expressed as a percentage.

<sup>2/</sup> The monthly percentage change is the change in the actual values of building plans passed of the relevant month compared with the actual values of building plans passed of the same month in the previous year expressed as a percentage.

**Table 2 - Seasonally adjusted values and percentage change of building plans passed at current prices according to type of building**

Year and month <sup>1/</sup>	Residential buildings		Non-residential buildings		Additions and alterations		Total	
	R'000	Percentage change	R'000	Percentage change	R'000	Percentage change	R'000	Percentage change
2000 Jan	629,427	- 10.4	251,527	- 17.7	485,696	+ 15.2	1,366,650	- 4.4
Feb	775,474	+ 23.2	582,412	+ 131.6	446,317	- 8.1	1,804,203	+ 32.0
Mar	698,816	- 9.9	333,415	- 42.8	473,383	+ 6.1	1,505,614	- 16.5
Apr	703,024	+ 0.6	309,568	- 7.2	442,182	- 6.6	1,454,775	- 3.4
May	805,897	+ 14.6	523,228	+ 69.0	451,907	+ 2.2	1,781,032	+ 22.4
Jun	814,398	+ 1.1	301,281	- 42.4	507,306	+ 12.3	1,622,984	- 8.9
Jul	829,357	+ 1.8	393,494	+ 30.6	505,292	- 0.4	1,728,144	+ 6.5
Aug	896,518	+ 8.1	354,109	- 10.0	464,336	- 8.1	1,714,962	- 0.8
Sep	807,291	- 10.0	339,862	- 4.0	423,311	- 8.8	1,570,465	- 8.4
Oct	772,501	- 4.3	465,737	+ 37.0	474,175	+ 12.0	1,712,413	+ 9.0
Nov	858,543	+ 11.1	397,591	- 14.6	425,818	- 10.2	1,681,953	- 1.8
Dec	858,591	+ 0.0	981,201	+ 146.8	433,851	+ 1.9	2,273,643	+ 35.2
2001 Jan	915,388	+ 6.6	771,496	- 21.4	458,999	+ 5.8	2,145,883	- 5.6
Feb	812,163	- 11.3	347,266	- 55.0	541,419	+ 18.0	1,700,848	- 20.7
Mar	878,870	+ 8.2	269,259	- 22.5	402,469	- 25.7	1,550,599	- 8.8
Apr	844,101	- 4.0	244,232	- 9.3	438,124	+ 8.9	1,526,457	- 1.6
May	907,397	+ 7.5	252,156	+ 3.2	471,707	+ 7.7	1,631,260	+ 6.9
Jun	858,144	- 5.4	268,321	+ 6.4	421,679	- 10.6	1,548,144	- 5.1
Jul	813,783	- 5.2	291,392	+ 8.6	398,244	- 5.6	1,503,418	- 2.9
Aug	806,393	- 0.9	248,424	- 14.7	455,913	+ 14.5	1,510,730	+ 0.5
Sep	939,961	+ 16.6	291,282	+ 17.3	476,342	+ 4.5	1,707,584	+ 13.0
Oct	1,015,337	+ 8.0	179,168	- 38.5	478,394	+ 0.4	1,672,899	- 2.0
Nov	916,291	- 9.8	255,220	+ 42.4	500,391	+ 4.6	1,671,902	- 0.1
Dec	914,489	- 0.2	198,122	- 22.4	495,283	- 1.0	1,607,894	- 3.8
2002 Jan	981,359	+ 7.3	279,270	+ 41.0	512,764	+ 3.5	1,773,393	+ 10.3
Feb	986,204	+ 0.5	285,993	+ 2.4	513,796	+ 0.2	1,785,993	+ 0.7
Mar	920,712	- 6.6	411,223	+ 43.8	391,020	- 23.9	1,722,954	- 3.5
Apr	1,317,339	+ 43.1	416,222	+ 1.2	604,546	+ 54.6	2,338,107	+ 35.7
May	991,933	- 24.7	372,207	- 10.6	866,076	+ 43.3	2,230,216	- 4.6
Jun	1,028,023	+ 3.6	442,276	+ 18.8	503,646	- 41.8	1,973,945	- 11.5
Jul	1,117,462	+ 8.7	199,703	- 54.8	623,936	+ 23.9	1,941,102	- 1.7
Aug	1,078,207	- 3.5	393,063	+ 96.8	645,609	+ 3.5	2,116,878	+ 9.1

<sup>1/</sup> The percentage change is the change in the seasonally adjusted values of building plans passed of the relevant month compared with the seasonally adjusted values of building plans passed of the previous month expressed as a percentage.

**Table 3 - Actual values and percentage change of building plans passed at constant 2000 prices according to type of building**

Year and month <sup>2/</sup>	Residential buildings		Non-residential buildings		Additions and alterations		Total	
	R'000	Percentage change	R'000	Percentage change	R'000	Percentage change	R'000	Percentage change
2000 Jan	508,050	- 13.2	169,696	- 32.5	378,464	+ 28.9	1,056,210	- 6.6
Feb	808,271	+ 46.0	537,514	+ 30.1	411,629	+ 10.6	1,757,414	+ 31.2
Mar	765,016	+ 9.7	367,725	- 75.8	527,808	+ 6.0	1,660,549	- 38.8
Apr	636,554	+ 15.4	275,001	- 29.4	387,728	+ 13.0	1,299,283	+ 1.2
May	881,014	+ 60.8	577,898	+ 103.0	476,397	+ 13.8	1,935,309	+ 54.7
Jun	855,721	- 1.2	337,336	- 22.0	533,880	+ 27.8	1,726,937	+ 0.6
Jul	903,543	+ 37.5	482,258	+ 1.5	547,196	+ 26.3	1,932,997	+ 23.5
Aug	917,903	+ 41.0	348,952	- 13.0	486,305	+ 13.4	1,753,160	+ 18.4
Sep	813,029	+ 31.7	348,531	+ 10.9	458,049	- 8.0	1,619,609	+ 13.3
Oct	897,561	+ 31.5	482,746	+ 42.9	528,463	+ 17.9	1,908,770	+ 29.9
Nov	891,175	+ 22.3	480,669	- 33.1	490,896	- 10.8	1,862,740	- 6.7
Dec	589,065	+ 16.7	684,558	+ 197.3	308,878	- 4.1	1,582,501	+ 49.7
<b>Total</b>	<b>9,466,902</b>	<b>+ 23.9</b>	<b>5,092,884</b>	<b>- 11.7</b>	<b>5,535,693</b>	<b>+ 10.2</b>	<b>20,095,479</b>	<b>+ 9.0</b>
2001 Jan	692,606	+ 36.3	458,683	+ 170.3	338,322	- 10.6	1,489,611	+ 41.0
Feb	791,011	- 2.1	287,480	- 46.5	454,500	+ 10.4	1,532,991	- 12.8
Mar	884,107	+ 15.6	286,535	- 22.1	415,457	- 21.3	1,586,099	- 4.5
Apr	699,014	+ 9.8	196,664	- 28.5	357,023	- 7.9	1,252,701	- 3.6
May	939,310	+ 6.6	271,927	- 52.9	469,617	- 1.4	1,680,854	- 13.1
Jun	845,638	- 1.2	281,344	- 16.6	419,538	- 21.4	1,546,520	- 10.4
Jul	831,607	- 8.0	342,307	- 29.0	398,754	- 27.1	1,572,668	- 18.6
Aug	778,429	- 15.2	228,925	- 34.4	449,612	- 7.5	1,456,966	- 16.9
Sep	893,118	+ 9.9	281,940	- 19.1	488,953	+ 6.7	1,664,011	+ 2.7
Oct	1,106,804	+ 23.3	171,904	- 64.4	502,270	- 5.0	1,780,978	- 6.7
Nov	896,622	+ 0.6	292,094	- 39.2	547,849	+ 11.6	1,736,565	- 6.8
Dec	594,885	+ 1.0	128,539	- 81.2	327,334	+ 6.0	1,050,758	- 33.6
<b>Total</b>	<b>9,953,151</b>	<b>+ 5.1</b>	<b>3,228,342</b>	<b>- 36.6</b>	<b>5,169,229</b>	<b>- 6.6</b>	<b>18,350,722</b>	<b>- 8.7</b>
2002 Jan	695,035	+ 0.4	150,221	- 67.2	357,220	+ 5.6	1,202,476	- 19.3
Feb	889,400	+ 12.4	216,681	- 24.6	392,649	- 13.6	1,498,730	- 2.2
Mar	838,055	- 5.2	405,520	+ 41.5	366,940	- 11.7	1,610,515	+ 1.5
Apr	977,619	+ 39.9	298,614	+ 51.8	445,882	+ 24.9	1,722,115	+ 37.5
May	935,178	- 0.4	369,860	+ 36.0	783,931	+ 66.9	2,088,969	+ 24.3
Jun*	906,112	+ 7.2	410,376	+ 45.9	451,466	+ 7.6	1,767,954	+ 14.3
Jul*	1,012,172	+ 21.7	211,139	- 38.3	550,569	+ 38.1	1,773,880	+ 12.8
Aug	917,509	+ 17.9	316,845	+ 38.4	561,413	+ 24.9	1,795,767	+ 23.3

<sup>1/</sup> The annual percentage change is the change in the actual values of building plans passed of the relevant year compared with the actual values of building plans passed of the previous year expressed as a percentage.

<sup>2/</sup> The monthly percentage change is the change in the actual values of building plans passed of the relevant month compared with the actual values of building plans passed of the same month in the previous year expressed as a percentage.

**Table 4 - Seasonally adjusted values and percentage change of building plans passed at constant 2000 prices according to type of building**

Year and month <sup>1/</sup>	Residential buildings		Non-residential buildings		Additions and alterations		Total	
	R'000	Percentage change	R'000	Percentage change	R'000	Percentage change	R'000	Percentage change
2000 Jan	652,062	- 8.8	258,374	- 16.9	501,130	+ 25.5	1,411,566	- 2.9
Feb	802,335	+ 23.0	600,684	+ 132.5	459,688	- 8.3	1,862,706	+ 32.0
Mar	712,214	- 11.2	340,483	- 43.3	482,871	+ 5.0	1,535,568	- 17.6
Apr	712,242	+ 0.0	314,148	- 7.7	448,805	- 7.1	1,475,196	- 3.9
May	813,467	+ 14.2	529,178	+ 68.4	456,942	+ 1.8	1,799,588	+ 22.0
Jun	815,745	+ 0.3	302,866	- 42.8	509,486	+ 11.5	1,628,096	- 9.5
Jul	826,577	+ 1.3	392,286	+ 29.5	503,979	- 1.1	1,722,841	+ 5.8
Aug	887,120	+ 7.3	351,243	- 10.5	459,976	- 8.7	1,698,338	- 1.4
Sep	794,596	- 10.4	334,681	- 4.7	416,938	- 9.4	1,546,214	- 9.0
Oct	756,584	- 4.8	456,377	+ 36.4	464,537	+ 11.4	1,677,498	+ 8.5
Nov	835,377	+ 10.4	385,438	- 15.5	414,096	- 10.9	1,634,911	- 2.5
Dec	830,279	- 0.6	948,761	+ 146.2	418,690	+ 1.1	2,197,729	+ 34.4
2001 Jan	879,598	+ 5.9	734,596	- 22.6	439,118	+ 4.9	2,053,311	- 6.6
Feb	779,618	- 11.4	332,285	- 54.8	517,416	+ 17.8	1,629,320	- 20.6
Mar	833,094	+ 6.9	255,526	- 23.1	381,772	- 26.2	1,470,392	- 9.8
Apr	797,522	- 4.3	231,269	- 9.5	414,986	+ 8.7	1,443,777	- 1.8
May	854,913	+ 7.2	238,273	+ 3.0	445,086	+ 7.3	1,538,271	+ 6.5
Jun	804,411	- 5.9	252,621	+ 6.0	396,373	- 10.9	1,453,405	- 5.5
Jul	760,569	- 5.5	272,120	+ 7.7	372,613	- 6.0	1,405,303	- 3.3
Aug	753,045	- 1.0	232,727	- 14.5	426,120	+ 14.4	1,411,892	+ 0.5
Sep	874,264	+ 16.1	270,995	+ 16.4	443,238	+ 4.0	1,588,497	+ 12.5
Oct	938,872	+ 7.4	165,746	- 38.8	442,350	- 0.2	1,546,968	- 2.6
Nov	841,439	- 10.4	233,377	+ 40.8	459,146	+ 3.8	1,533,963	- 0.8
Dec	833,278	- 1.0	180,472	- 22.7	450,729	- 1.8	1,464,479	- 4.5
2002 Jan	876,595	+ 5.2	247,117	+ 36.9	456,188	+ 1.2	1,579,900	+ 7.9
Feb	867,381	- 1.1	250,824	+ 1.5	449,907	- 1.4	1,568,112	- 0.7
Mar	798,637	- 7.9	356,933	+ 42.3	339,338	- 24.6	1,494,908	- 4.7
Apr	1,129,353	+ 41.4	357,627	+ 0.2	519,591	+ 53.1	2,006,571	+ 34.2
May	841,328	- 25.5	316,841	- 11.4	735,431	+ 41.5	1,893,599	- 5.6
Jun	862,176	+ 2.5	372,662	+ 17.6	423,623	- 42.4	1,658,460	- 12.4
Jul	930,027	+ 7.9	166,006	- 55.5	519,948	+ 22.7	1,615,982	- 2.6
Aug	888,645	- 4.4	325,035	+ 95.8	532,584	+ 2.4	1,746,264	+ 8.1

<sup>1/</sup> The percentage change is the change in the seasonally adjusted values of building plans passed of the relevant month compared with the seasonally adjusted values of building plans passed of the previous month expressed as a percentage.

Table 5 - Actual values and percentage change of buildings completed at current prices according to type of building

Year <sup>1/</sup> and month <sup>2/</sup>	Residential buildings		Non-residential buildings		Additions and alterations		Total	
	R'000	Percentage change	R'000	Percentage change	R'000	Percentage change	R'000	Percentage change
2000 Jan	299,212	- 4.7	195,988	- 0.6	183,959	- 4.7	679,159	- 3.5
Feb	353,141	- 11.0	205,549	- 4.3	221,978	- 9.3	780,668	- 8.8
Mar	419,416	- 3.0	212,379	- 13.7	268,745	+ 16.5	900,540	- 1.0
Apr	364,713	- 3.5	224,048	+ 23.4	188,808	- 5.8	777,569	+ 2.3
May	473,124	+ 21.0	390,533	+ 99.6	293,343	+ 64.1	1,157,000	+ 51.2
Jun	362,558	- 13.7	174,728	- 16.2	170,986	+ 11.2	708,272	- 9.5
Jul	407,406	- 15.3	472,668	+ 79.0	220,828	- 18.9	1,100,902	+ 8.2
Aug	449,691	- 2.4	285,994	+ 39.6	211,008	- 17.5	946,693	+ 2.7
Sep	510,979	+ 3.6	270,539	+ 37.2	199,622	- 10.6	981,140	+ 7.4
Oct	462,270	+ 10.2	195,491	- 4.0	238,257	+ 3.8	896,018	+ 5.1
Nov	555,802	+ 20.5	186,442	- 54.5	255,900	+ 21.7	998,144	- 7.7
Dec	383,114	+ 9.6	316,801	+ 74.5	149,622	+ 2.2	849,537	+ 25.4
<b>Total</b>	<b>5,041,426</b>	<b>+ 0.9</b>	<b>3,131,160</b>	<b>+ 15.7</b>	<b>2,603,056</b>	<b>+ 2.5</b>	<b>10,775,642</b>	<b>+ 5.2</b>
2001 Jan	643,047	+ 114.9	238,434	+ 21.7	201,057	+ 9.3	1,082,538	+ 59.4
Feb	428,803	+ 21.4	285,619	+ 39.0	244,636	+ 10.2	959,058	+ 22.9
Mar	489,687	+ 16.8	159,637	- 24.8	286,396	+ 6.6	935,720	+ 3.9
Apr	366,061	+ 0.4	169,796	- 24.2	185,541	- 1.7	721,398	- 7.2
May	447,895	- 5.3	300,533	- 23.0	295,847	+ 0.9	1,044,275	- 9.7
Jun	539,545	+ 48.8	338,853	+ 93.9	294,854	+ 72.4	1,173,252	+ 65.6
Jul	396,717	- 2.6	121,617	- 74.3	232,836	+ 5.4	751,170	- 31.8
Aug	431,845	- 4.0	117,368	- 59.0	214,644	+ 1.7	763,857	- 19.3
Sep	461,515	- 9.7	1,417,979	+ 424.1	169,974	- 14.9	2,049,468	+ 108.9
Oct	667,250	+ 44.3	285,644	+ 46.1	237,138	- 0.5	1,190,032	+ 32.8
Nov	616,443	+ 10.9	211,109	+ 13.2	288,778	+ 12.8	1,116,330	+ 11.8
Dec	469,410	+ 22.5	173,587	- 45.2	124,610	- 16.7	767,607	- 9.6
<b>Total</b>	<b>5,958,218</b>	<b>+ 18.2</b>	<b>3,820,176</b>	<b>+ 22.0</b>	<b>2,776,311</b>	<b>+ 6.7</b>	<b>12,554,705</b>	<b>+ 16.5</b>
2002 Jan	579,544	- 9.9	137,089	- 42.5	174,833	- 13.0	891,466	- 17.7
Feb	487,783	+ 13.8	138,037	- 51.7	198,195	- 19.0	824,015	- 14.1
Mar	699,202	+ 42.8	169,849	+ 6.4	174,052	- 39.2	1,043,103	+ 11.5
Apr	641,454	+ 75.2	248,263	+ 46.2	381,482	+ 105.6	1,271,199	+ 76.2
May	671,871	+ 50.0	293,306	- 2.4	298,168	+ 0.8	1,263,345	+ 21.0
Jun	576,813	+ 6.9	206,136	- 39.2	248,350	- 15.8	1,031,299	- 12.1
Jul*	665,914	+ 67.9	250,131	+ 105.7	236,281	+ 1.5	1,152,326	+ 53.4
Aug	738,994	+ 71.1	92,649	- 21.1	226,698	+ 5.6	1,058,341	+ 38.6

<sup>1/</sup> The annual percentage change is the change in the actual values of buildings completed of the relevant year compared with the actual values of buildings completed of the previous year expressed as a percentage.

<sup>2/</sup> The monthly percentage change is the change in the actual values of buildings completed of the relevant month compared with the actual values of buildings completed of the same month in the previous year expressed as a percentage.

**Table 6 - Seasonally adjusted values and percentage change of buildings completed at current prices according to type of building**

Year and month <sup>1/</sup>	Residential buildings		Non-residential buildings		Additions and alterations		Total	
	R'000	Percentage change	R'000	Percentage change	R'000	Percentage change	R'000	Percentage change
2000 Jan	361,600	- 8.9	245,000	+ 30.8	209,622	- 6.6	816,221	+ 0.9
Feb	394,228	+ 9.0	233,598	- 4.7	207,479	- 1.0	835,305	+ 2.3
Mar	395,467	+ 0.3	261,552	+ 12.0	224,518	+ 8.2	881,536	+ 5.5
Apr	401,114	+ 1.4	256,896	- 1.8	209,472	- 6.7	867,482	- 1.6
May	446,829	+ 11.4	349,770	+ 36.2	259,479	+ 23.9	1,056,079	+ 21.7
Jun	382,962	- 14.3	173,297	- 50.5	175,873	- 32.2	732,132	- 30.7
Jul	395,330	+ 3.2	331,182	+ 91.1	198,906	+ 13.1	925,418	+ 26.4
Aug	435,156	+ 10.1	310,665	- 6.2	209,054	+ 5.1	954,875	+ 3.2
Sep	460,135	+ 5.7	216,767	- 30.2	207,603	- 0.7	884,506	- 7.4
Oct	443,830	- 3.5	180,114	- 16.9	221,028	+ 6.5	844,972	- 4.5
Nov	467,535	+ 5.3	207,757	+ 15.3	246,019	+ 11.3	921,310	+ 9.0
Dec	435,648	- 6.8	346,061	+ 66.6	230,626	- 6.3	1,012,335	+ 9.9
2001 Jan	754,825	+ 73.3	308,188	- 10.9	231,722	+ 0.5	1,294,735	+ 27.9
Feb	480,152	- 36.4	332,542	+ 7.9	233,982	+ 1.0	1,046,676	- 19.2
Mar	453,566	- 5.5	203,511	- 38.8	232,766	- 0.5	889,842	- 15.0
Apr	400,960	- 11.6	194,227	- 4.6	207,014	- 11.1	802,201	- 9.8
May	425,632	+ 6.2	245,825	+ 26.6	252,095	+ 21.8	923,551	+ 15.1
Jun	582,194	+ 36.8	334,187	+ 35.9	303,569	+ 20.4	1,219,950	+ 32.1
Jul	394,016	- 32.3	80,425	- 75.9	214,840	- 29.2	689,280	- 43.5
Aug	416,251	+ 5.6	133,280	+ 65.7	213,398	- 0.7	762,930	+ 10.7
Sep	410,753	- 1.3	1,134,372	+ 751.1	178,397	- 16.4	1,723,522	+ 125.9
Oct	640,572	+ 56.0	274,105	- 75.8	218,914	+ 22.7	1,133,591	- 34.2
Nov	519,859	- 18.8	242,175	- 11.6	278,644	+ 27.3	1,040,678	- 8.2
Dec	535,154	+ 2.9	195,523	- 19.3	191,681	- 31.2	922,358	- 11.4
2002 Jan	670,510	+ 25.3	177,122	- 9.4	202,449	+ 5.6	1,050,081	+ 13.8
Feb	544,501	- 18.8	163,694	- 7.6	191,067	- 5.6	899,262	- 14.4
Mar	644,251	+ 18.3	217,182	+ 32.7	140,049	- 26.7	1,001,482	+ 11.4
Apr	700,738	+ 8.8	282,840	+ 30.2	425,517	+ 203.8	1,409,095	+ 40.7
May	634,566	- 9.4	229,102	- 19.0	249,086	- 41.5	1,112,753	- 21.0
Jun	633,816	- 0.1	207,419	- 9.5	257,518	+ 3.4	1,098,752	- 1.3
Jul	672,712	+ 6.1	160,753	- 22.5	221,104	- 14.1	1,054,569	- 4.0
Aug	706,794	+ 5.1	107,841	- 32.9	225,817	+ 2.1	1,040,451	- 1.3

<sup>1/</sup> The percentage change is the change in the seasonally adjusted values of buildings completed of the relevant month compared with the seasonally adjusted values of buildings completed of the previous month expressed as a percentage.

**Table 7 - Actual values and percentage change of buildings completed at constant 2000 prices according to type of building**

Year <sup>1/</sup> and month <sup>2/</sup>	Residential buildings		Non-residential buildings		Additions and alterations		Total	
	R'000	Percentage change	R'000	Percentage change	R'000	Percentage change	R'000	Percentage change
2000 Jan	310,456	- 10.1	214,195	- 5.7	194,666	- 10.8	719,317	- 9.0
Feb	365,724	- 28.3	222,215	- 13.2	232,438	- 29.2	820,377	- 24.7
Mar	433,235	- 33.7	227,874	- 23.9	280,820	- 24.7	941,929	- 28.7
Apr	375,641	- 24.1	239,112	+ 3.6	196,266	- 12.8	811,019	- 14.3
May	486,811	- 26.2	415,461	- 3.9	304,614	- 1.9	1,206,886	- 14.6
Jun	371,504	- 31.4	185,683	- 9.6	176,821	+ 14.5	734,008	- 16.3
Jul	421,432	- 31.4	500,178	- 28.2	227,658	- 34.6	1,149,268	- 35.2
Aug	463,689	- 39.6	299,470	- 7.0	217,759	- 29.6	980,918	- 27.6
Sep	523,538	- 36.2	282,695	- 3.1	205,372	- 18.7	1,011,605	- 26.7
Oct	470,304	- 40.4	203,213	- 5.6	244,617	- 20.5	918,134	- 21.1
Nov	561,785	- 29.4	193,605	- 52.9	262,193	- 13.0	1,017,583	- 38.0
Dec	386,117	- 35.5	327,612	+ 6.6	152,988	+ 25.2	866,717	- 0.2
<b>Total</b>	<b>5,170,236</b>	<b>- 3.1</b>	<b>3,311,313</b>	<b>+ 8.4</b>	<b>2,696,212</b>	<b>- 3.1</b>	<b>11,177,761</b>	<b>+ 0.0</b>
2001 Jan	654,850	+ 110.9	245,808	+ 14.8	208,134	+ 6.9	1,108,792	+ 54.1
Feb	427,706	+ 16.9	294,756	+ 32.6	252,202	+ 8.5	974,664	+ 18.8
Mar	487,529	+ 12.5	164,236	- 27.9	293,138	+ 4.4	944,903	+ 0.3
Apr	361,669	- 3.7	174,329	- 27.1	188,175	- 4.1	724,173	- 10.7
May	438,090	- 10.0	307,923	- 25.9	297,933	- 2.2	1,043,946	- 13.5
Jun	528,083	+ 42.1	346,475	+ 86.6	295,741	+ 67.3	1,170,299	+ 59.4
Jul	383,132	- 9.1	125,898	- 74.8	231,678	+ 1.8	740,708	- 35.5
Aug	415,640	- 10.4	120,998	- 59.6	211,889	- 2.7	748,527	- 23.7
Sep	442,133	- 15.5	1,451,360	+ 413.4	167,133	- 18.6	2,060,626	+ 103.7
Oct	638,358	+ 35.7	289,700	+ 42.6	232,261	- 5.1	1,160,319	+ 26.4
Nov	586,177	+ 4.3	212,597	+ 9.8	281,460	+ 7.3	1,080,234	+ 6.2
Dec	443,262	+ 14.8	174,109	- 46.9	121,098	- 20.8	738,469	- 14.8
<b>Total</b>	<b>5,806,629</b>	<b>+ 12.3</b>	<b>3,908,189</b>	<b>+ 18.0</b>	<b>2,780,842</b>	<b>+ 3.1</b>	<b>12,495,660</b>	<b>+ 11.8</b>
2002 Jan	545,960	- 16.6	136,407	- 44.5	167,947	- 19.3	850,314	- 23.3
Feb	458,165	+ 7.1	136,266	- 53.8	189,660	- 24.8	784,091	- 19.6
Mar	656,718	+ 34.7	167,010	+ 1.7	165,606	- 43.5	989,334	+ 4.7
Apr	596,575	+ 65.0	243,157	+ 39.5	360,910	+ 91.8	1,200,642	+ 65.8
May	622,362	+ 42.1	285,873	- 7.2	280,233	- 5.9	1,188,468	+ 13.8
Jun	530,538	+ 0.5	200,327	- 42.2	232,974	- 21.2	963,839	- 17.6
Jul*	601,678	+ 57.0	240,280	+ 90.9	220,411	- 4.9	1,062,369	+ 43.4
Aug	661,728	+ 59.2	88,659	- 26.7	211,078	- 0.4	961,465	+ 28.4

<sup>1/</sup> The annual percentage change is the change in the actual values of buildings completed of the relevant year compared with the actual values of buildings completed of the previous year expressed as a percentage.

<sup>2/</sup> The monthly percentage change is the change in the actual values of buildings completed of the relevant month compared with the actual values of buildings completed of the same month in the previous year expressed as a percentage.

**Table 8 - Seasonally adjusted values and percentage change of buildings completed at constant 2000 prices according to type of building**

Year and month <sup>1/</sup>	Residential buildings		Non-residential buildings		Additions and alterations		Total	
	R'000	Percentage change	R'000	Percentage change	R'000	Percentage change	R'000	Percentage change
2000 Jan	375,661	- 9.5	268,144	+ 29.6	220,727	- 7.2	864,531	+ 0.6
Feb	408,745	+ 8.8	253,173	- 5.6	216,700	- 1.8	878,617	+ 1.6
Mar	407,817	- 0.2	281,125	+ 11.0	233,876	+ 7.9	922,819	+ 5.0
Apr	412,396	+ 1.1	274,398	- 2.4	217,448	- 7.0	904,242	- 2.0
May	464,809	+ 12.7	372,056	+ 35.6	270,769	+ 24.5	1,107,634	+ 22.5
Jun	389,008	- 16.3	183,717	- 50.6	181,985	- 32.8	754,710	- 31.9
Jul	408,512	+ 5.0	349,712	+ 90.4	205,362	+ 12.8	963,586	+ 27.7
Aug	452,692	+ 10.8	326,389	- 6.7	216,314	+ 5.3	995,395	+ 3.3
Sep	469,311	+ 3.7	226,127	- 30.7	213,918	- 1.1	909,356	- 8.6
Oct	450,972	- 3.9	186,978	- 17.3	227,262	+ 6.2	865,211	- 4.9
Nov	473,400	+ 5.0	216,176	+ 15.6	252,400	+ 11.1	941,977	+ 8.9
Dec	439,504	- 7.2	357,072	+ 65.2	235,133	- 6.8	1,031,710	+ 9.5
2001 Jan	768,999	+ 75.0	318,136	- 10.9	238,644	+ 1.5	1,325,779	+ 28.5
Feb	477,224	- 37.9	343,941	+ 8.1	240,392	+ 0.7	1,061,557	- 19.9
Mar	448,390	- 6.0	209,846	- 39.0	237,456	- 1.2	895,692	- 15.6
Apr	394,605	- 12.0	199,691	- 4.8	209,773	- 11.7	804,070	- 10.2
May	419,030	+ 6.2	251,903	+ 26.1	254,990	+ 21.6	925,923	+ 15.2
Jun	567,416	+ 35.4	341,001	+ 35.4	304,662	+ 19.5	1,213,079	+ 31.0
Jul	382,948	- 32.5	83,125	- 75.6	214,155	- 29.7	680,228	- 43.9
Aug	405,788	+ 6.0	137,884	+ 65.9	211,151	- 1.4	754,823	+ 11.0
Sep	391,347	- 3.6	1,158,944	+ 740.5	175,693	- 16.8	1,725,984	+ 128.7
Oct	611,072	+ 56.1	277,649	- 76.0	214,790	+ 22.3	1,103,511	- 36.1
Nov	495,483	- 18.9	244,262	- 12.0	272,070	+ 26.7	1,011,815	- 8.3
Dec	505,704	+ 2.1	195,569	- 19.9	185,806	- 31.7	887,079	- 12.3
2002 Jan	631,404	+ 24.9	176,414	- 9.8	193,427	+ 4.1	1,001,245	+ 12.9
Feb	508,678	- 19.4	161,841	- 8.3	182,114	- 5.8	852,633	- 14.8
Mar	599,541	+ 17.9	214,029	+ 32.2	132,799	- 27.1	946,368	+ 11.0
Apr	648,822	+ 8.2	277,482	+ 29.6	402,337	+ 203.0	1,328,641	+ 40.4
May	589,031	- 9.2	223,387	- 19.5	235,044	- 41.6	1,047,463	- 21.2
Jun	582,907	- 1.0	201,254	- 9.9	241,732	+ 2.8	1,025,893	- 2.1
Jul	615,349	+ 5.6	154,212	- 23.4	206,679	- 14.5	976,240	- 4.8
Aug	642,344	+ 4.4	103,576	- 32.8	210,766	+ 2.0	956,686	- 2.0

<sup>1/</sup> The percentage change is the change in the seasonally adjusted values of buildings completed of the relevant month compared with the seasonally adjusted values of buildings completed of the previous month expressed as a percentage.



**Table 9 - Building plans passed according to type of building: Total RSA**

Type of building	August 2001 *	July 2002 *	August 2002	January 2001 to August 2001	January 2002 to August 2002	Percentage change between January 2001 to August 2001 and January 2002 to August 2002
<b>Residential buildings</b>						
Dwelling-houses smaller than 80 square metres						
Number of dwelling-houses	2,892	3,579	3,508	27,777	25,894	- 6.8
Total square metres	127,234	137,278	130,012	1,095,472	990,587	- 9.6
Total value at current prices (R'000)	143,757	145,039	148,263	1,036,857	1,027,285	- 0.9
Dwelling-houses equal to or larger than 80 square metres						
Number of dwelling-houses	1,776	2,310	2,328	14,239	16,172	+ 13.6
Total square metres	378,425	535,180	514,894	3,064,940	3,637,472	+ 18.7
Total value at current prices (R'000)	547,009	815,472	777,695	4,360,624	5,471,285	+ 25.5
Flats and townhouses						
Number of flats and townhouses	762	1,204	824	8,166	8,965	+ 9.8
Total square metres	85,461	140,460	117,978	838,029	1,065,014	+ 27.1
Total value at current prices (R'000)	130,591	243,427	182,446	1,262,971	1,697,807	+ 34.4
Other residential buildings <sup>1/</sup>						
Total square metres	7,773	13,036	4,968	82,664	103,773	+ 25.5
Total value at current prices (R'000)	14,676	14,717	8,205	183,604	217,864	+ 18.7
<b>Total value of residential buildings at current prices (R'000)</b>	<b>836,033</b>	<b>1,218,655</b>	<b>1,116,609</b>	<b>6,844,056</b>	<b>8,414,241</b>	<b>+ 22.9</b>
<b>Non-residential buildings</b>						
Office and banking space						
Total square metres	72,947	38,869	18,026	564,926	279,192	- 50.6
Total value at current prices (R'000)	124,834	56,028	28,293	963,976	531,283	- 44.9
Shopping space						
Total square metres	26,684	26,962	112,311	321,767	325,502	+ 1.2
Total value at current prices (R'000)	39,000	51,402	225,266	462,626	572,090	+ 23.7
Industrial and warehouse space						
Total square metres	43,755	69,083	75,133	556,718	748,690	+ 34.5
Total value at current prices (R'000)	52,614	108,052	98,858	707,419	1,224,222	+ 73.1
Other non-residential space <sup>2/</sup>						
Total square metres	22,734	25,466	22,225	269,157	310,030	+ 15.2
Total value at current prices (R'000)	29,417	38,729	33,183	354,968	467,499	+ 31.7
<b>Total value of non-residential buildings at current prices (R'000)</b>	<b>245,865</b>	<b>254,211</b>	<b>385,600</b>	<b>2,488,989</b>	<b>2,795,094</b>	<b>+ 12.3</b>
<b>Additions and alterations</b>						
Dwelling-houses						
Total square metres	272,152	289,286	298,061	1,938,681	2,159,901	+ 11.4
Total value at current prices (R'000)	354,273	407,253	425,324	2,420,866	2,940,101	+ 21.4
Other buildings <sup>3/</sup>						
Total square metres	91,137	124,457	122,286	624,882	801,613	+ 28.3
Total value at current prices (R'000)	128,610	255,632	257,916	1,077,546	1,659,193	+ 54.0
<b>Total value of additions and alterations at current prices (R'000)</b>	<b>482,883</b>	<b>662,885</b>	<b>683,240</b>	<b>3,498,412</b>	<b>4,599,294</b>	<b>+ 31.5</b>
<b>Total value of building plans passed at current prices (R'000)</b>	<b>1,564,781</b>	<b>2,135,751</b>	<b>2,185,449</b>	<b>12,831,457</b>	<b>15,808,629</b>	<b>+ 23.2</b>

1/ Other residential buildings include institutions for the disabled, boarding houses, old people's homes, hostels, hotels, motels, guest houses, holiday chalets, entertainment centres, bed-and-breakfast accommodation and casinos.

2/ Other non-residential space includes churches, sport and recreation clubs, schools, crèches, hospitals and all other non-residential space.

3/ Other buildings include additions and alterations to other residential buildings, non-residential buildings and internal alterations.

Table 10 - Building plans passed according to type of building and province: Western Cape

Type of building	August 2001 *	July 2002 *	August 2002	January 2001 to August 2001	January 2002 to August 2002	Percentage change between January 2001 to August 2001 and January 2002 to August 2002
<b>Residential buildings</b>						
Dwelling-houses smaller than 80 square metres						
Number of dwelling-houses	767	1,749	1,948	5,406	10,416	+ 92.7
Total square metres	35,767	58,782	66,536	224,065	353,120	+ 57.6
Total value at current prices (R'000)	45,867	68,030	80,700	270,822	407,725	+ 50.6
Dwelling-houses equal to or larger than 80 square metres						
Number of dwelling-houses	665	887	833	4,748	5,862	+ 23.5
Total square metres	132,688	187,460	159,125	983,617	1,237,281	+ 25.8
Total value at current prices (R'000)	200,405	303,327	251,784	1,475,870	1,960,291	+ 32.8
Flats and townhouses						
Number of flats and townhouses	232	280	210	1,936	2,212	+ 14.3
Total square metres	21,526	28,151	23,625	183,872	222,632	+ 21.1
Total value at current prices (R'000)	33,025	44,837	37,552	279,948	364,645	+ 30.3
Other residential buildings <sup>1/</sup>						
Total square metres	5,516	12,286	1,783	37,183	46,775	+ 25.8
Total value at current prices (R'000)	12,199	13,669	3,115	83,962	81,953	- 2.4
<b>Total value of residential buildings at current prices (R'000)</b>	<b>291,496</b>	<b>429,863</b>	<b>373,151</b>	<b>2,110,602</b>	<b>2,814,614</b>	<b>+ 33.4</b>
<b>Non-residential buildings</b>						
Office and banking space						
Total square metres	12,510	13,783	5,787	176,044	63,473	- 63.9
Total value at current prices (R'000)	22,033	17,775	9,515	250,900	101,769	- 59.4
Shopping space						
Total square metres	12,099	4,296	6,623	140,049	41,204	- 70.6
Total value at current prices (R'000)	19,176	8,179	10,356	190,099	56,261	- 70.4
Industrial and warehouse space						
Total square metres	17,002	21,793	15,171	166,782	150,147	- 10.0
Total value at current prices (R'000)	16,645	33,278	18,154	164,529	188,373	+ 14.5
Other non-residential space <sup>2/</sup>						
Total square metres	5,444	5,128	5,985	85,648	49,639	- 42.0
Total value at current prices (R'000)	4,737	9,379	8,829	95,885	76,123	- 20.6
<b>Total value of non-residential buildings at current prices (R'000)</b>	<b>62,591</b>	<b>68,611</b>	<b>46,854</b>	<b>701,413</b>	<b>422,526</b>	<b>- 39.8</b>
<b>Additions and alterations</b>						
Dwelling-houses						
Total square metres	84,349	97,274	84,363	605,088	690,334	+ 14.1
Total value at current prices (R'000)	114,090	137,790	118,932	768,147	925,440	+ 20.5
Other buildings <sup>3/</sup>						
Total square metres	16,622	33,656	41,252	165,985	228,879	+ 37.9
Total value at current prices (R'000)	32,075	67,506	75,902	287,024	452,225	+ 57.6
<b>Total value of additions and alterations at current prices (R'000)</b>	<b>146,165</b>	<b>205,296</b>	<b>194,834</b>	<b>1,055,171</b>	<b>1,377,665</b>	<b>+ 30.6</b>
<b>Total value of building plans passed at current prices (R'000)</b>	<b>500,252</b>	<b>703,770</b>	<b>614,839</b>	<b>3,867,186</b>	<b>4,614,805</b>	<b>+ 19.3</b>

1/ Other residential buildings include institutions for the disabled, boarding houses, old people's homes, hostels, hotels, motels, guest houses, holiday chalets, entertainment centres, bed-and-breakfast accommodation and casinos.

2/ Other non-residential space includes churches, sport and recreation clubs, schools, crèches, hospitals and all other non-residential space.

3/ Other buildings include additions and alterations to other residential buildings, non-residential buildings and internal alterations.

Table 11 - Building plans passed according to type of building and province: Eastern Cape

Type of building	August 2001*	July 2002	August 2002	January 2001 to August 2001	January 2002 to August 2002	Percentage change between January 2001 to August 2001 and January 2002 to August 2002
<b>Residential buildings</b>						
Dwelling-houses smaller than 80 square metres						
Number of dwelling-houses	163	530	527	1,926	3,852	+ 100.0
Total square metres	8,010	22,908	21,866	86,135	164,309	+ 90.8
Total value at current prices (R'000)	10,377	28,307	25,934	106,114	202,597	+ 90.9
Dwelling-houses equal to or larger than 80 square metres						
Number of dwelling-houses	143	118	103	923	884	-4.2
Total square metres	27,543	24,052	20,732	144,795	176,183	+ 21.7
Total value at current prices (R'000)	38,273	34,746	33,064	190,472	248,635	+ 30.5
Flats and townhouses						
Number of flats and townhouses	0	18	26	688	374	-45.6
Total square metres	0	2,337	4,084	36,731	34,058	-7.3
Total value at current prices (R'000)	0	4,218	7,125	44,165	57,541	+ 30.3
Other residential buildings <sup>1/</sup>						
Total square metres	129	323	0	26,085	1,135	-95.6
Total value at current prices (R'000)	277	550	0	77,305	1,654	-97.9
<b>Total value of residential buildings at current prices (R'000)</b>	<b>48,927</b>	<b>67,821</b>	<b>66,123</b>	<b>418,056</b>	<b>510,427</b>	<b>+ 22.1</b>
<b>Non-residential buildings</b>						
Office and banking space						
Total square metres	1,159	2,482	0	4,903	6,283	+ 28.1
Total value at current prices (R'000)	2,224	3,600	0	9,251	9,523	+ 2.9
Shopping space						
Total square metres	2,496	1,664	3,689	11,182	19,605	+ 75.3
Total value at current prices (R'000)	4,499	3,261	4,594	17,343	36,111	+ 108.2
Industrial and warehouse space						
Total square metres	3,791	5,439	2,129	31,683	41,539	+ 31.1
Total value at current prices (R'000)	5,496	8,556	3,855	33,977	73,313	+ 115.8
Other non-residential space <sup>2/</sup>						
Total square metres	353	2,632	2,486	7,270	23,729	+ 226.4
Total value at current prices (R'000)	668	4,070	3,840	11,762	38,557	+ 227.8
<b>Total value of non-residential buildings at current prices (R'000)</b>	<b>12,887</b>	<b>19,487</b>	<b>12,289</b>	<b>72,333</b>	<b>157,504</b>	<b>+ 117.7</b>
<b>Additions and alterations</b>						
Dwelling-houses						
Total square metres	20,537	23,554	17,729	149,555	154,532	+ 3.3
Total value at current prices (R'000)	27,897	33,373	27,111	193,549	213,109	+ 10.1
Other buildings <sup>3/</sup>						
Total square metres	24,156	5,249	2,507	79,340	38,854	-51.0
Total value at current prices (R'000)	16,286	5,565	3,352	95,734	67,410	-29.6
<b>Total value of additions and alterations at current prices (R'000)</b>	<b>44,183</b>	<b>38,938</b>	<b>30,463</b>	<b>289,283</b>	<b>280,519</b>	<b>-3.0</b>
<b>Total value of building plans passed at current prices (R'000)</b>	<b>105,997</b>	<b>126,246</b>	<b>108,875</b>	<b>779,672</b>	<b>948,450</b>	<b>+ 21.6</b>

1/ Other residential buildings include institutions for the disabled, boarding houses, old people's homes, hostels, hotels, motels, guest houses, holiday chalets, entertainment centres, bed-and-breakfast accommodation and casinos.

2/ Other non-residential space includes churches, sport and recreation clubs, schools, crèches, hospitals and all other non-residential space.

3/ Other buildings include additions and alterations to other residential buildings, non-residential buildings and internal alterations.

Table 12 - Building plans passed according to type of building and province: Northern Cape

Type of building	August 2001	July 2002	August 2002	January 2001 to August 2001	January 2002 to August 2002	Percentage change between January 2001 to August 2001 and January 2002 to August 2002
<b>Residential buildings</b>						
Dwelling-houses smaller than 80 square metres						
Number of dwelling-houses	5	9	6	50	49	- 2.0
Total square metres	288	437	161	2,883	2,298	- 20.3
Total value at current prices (R'000)	366	750	251	4,342	3,793	- 12.6
Dwelling-houses equal to or larger than 80 square metres						
Number of dwelling-houses	10	12	6	129	67	- 48.1
Total square metres	1,777	2,127	1,069	22,372	13,628	- 39.1
Total value at current prices (R'000)	2,677	3,380	1,808	30,301	21,214	- 30.0
Flats and townhouses						
Number of flats and townhouses	0	6	8	12	20	+ 66.7
Total square metres	0	828	1,102	2,085	2,909	+ 39.5
Total value at current prices (R'000)	0	1,490	1,851	2,834	5,104	+ 80.1
Other residential buildings <sup>1/</sup>						
Total square metres	0	0	0	0	0	..
Total value at current prices (R'000)	0	0	0	0	0	..
<b>Total value of residential buildings at current prices (R'000)</b>	<b>3,043</b>	<b>5,620</b>	<b>3,910</b>	<b>37,477</b>	<b>30,111</b>	<b>- 19.7</b>
<b>Non-residential buildings</b>						
Office and banking space						
Total square metres	0	0	128	191	574	+ 200.5
Total value at current prices (R'000)	0	0	192	124	820	+ 561.3
Shopping space						
Total square metres	264	192	1,015	470	1,207	+ 156.8
Total value at current prices (R'000)	581	288	2,099	807	2,387	+ 195.8
Industrial and warehouse space						
Total square metres	0	0	0	2,336	2,415	+ 3.4
Total value at current prices (R'000)	0	0	0	2,744	3,469	+ 26.4
Other non-residential space <sup>2/</sup>						
Total square metres	0	207	0	1,632	2,128	+ 30.4
Total value at current prices (R'000)	0	455	0	2,312	4,581	+ 98.1
<b>Total value of non-residential buildings at current prices (R'000)</b>	<b>581</b>	<b>743</b>	<b>2,291</b>	<b>5,987</b>	<b>11,257</b>	<b>+ 88.0</b>
<b>Additions and alterations</b>						
Dwelling-houses						
Total square metres	2,444	3,796	3,188	19,377	21,832	+ 12.7
Total value at current prices (R'000)	4,398	6,390	5,412	31,690	37,129	+ 17.2
Other buildings <sup>3/</sup>						
Total square metres	1,506	876	687	6,877	3,980	- 42.1
Total value at current prices (R'000)	3,626	2,291	3,267	14,768	11,898	- 19.4
<b>Total value of additions and alterations at current prices (R'000)</b>	<b>8,024</b>	<b>8,681</b>	<b>8,679</b>	<b>46,458</b>	<b>49,027</b>	<b>+ 5.5</b>
<b>Total value of building plans passed at current prices (R'000)</b>	<b>11,648</b>	<b>15,044</b>	<b>14,880</b>	<b>89,922</b>	<b>90,395</b>	<b>+ 0.5</b>

1/ Other residential buildings include institutions for the disabled, boarding houses, old people's homes, hostels, hotels, motels, guest houses, holiday chalets, entertainment centres, bed-and-breakfast accommodation and casinos.

2/ Other non-residential space includes churches, sport and recreation clubs, schools, crèches, hospitals and all other non-residential space.

3/ Other buildings include additions and alterations to other residential buildings, non-residential buildings and internal alterations.

Table 13 - Building plans passed according to type of building and province: Free State

Type of building	August 2001	July 2002	August 2002	January 2001 to August 2001	January 2002 to August 2002	Percentage change between January 2001 to August 2001 and January 2002 to August 2002
<b>Residential buildings</b>						
Dwelling-houses smaller than 80 square metres						
Number of dwelling-houses	161	340	101	1,767	1,664	-5.8
Total square metres	7,584	14,061	4,526	80,614	71,404	-11.4
Total value at current prices (R'000)	5,732	7,495	3,911	47,715	43,195	-9.5
Dwelling-houses equal to or larger than 80 square metres						
Number of dwelling-houses	57	69	105	485	622	+ 28.2
Total square metres	10,383	10,598	21,141	74,881	102,089	+ 36.3
Total value at current prices (R'000)	13,102	13,071	22,424	82,430	119,997	+ 45.6
Flats and townhouses						
Number of flats and townhouses	4	139	2	237	462	+ 94.9
Total square metres	920	17,210	334	30,995	48,660	+ 57.0
Total value at current prices (R'000)	1,380	25,277	358	46,689	69,451	+ 48.8
Other residential buildings <sup>1/</sup>						
Total square metres	0	267	1,433	4,406	4,458	+ 1.2
Total value at current prices (R'000)	0	258	1,999	4,912	9,362	+ 90.6
<b>Total value of residential buildings at current prices (R'000)</b>	<b>20,214</b>	<b>46,101</b>	<b>28,692</b>	<b>181,746</b>	<b>242,005</b>	<b>+ 33.2</b>
<b>Non-residential buildings</b>						
Office and banking space						
Total square metres	447	0	0	14,248	12,914	-9.4
Total value at current prices (R'000)	825	0	0	27,425	21,802	-20.5
Shopping space						
Total square metres	3,615	2,768	0	7,116	13,926	+ 95.7
Total value at current prices (R'000)	4,000	6,300	0	8,312	27,808	+ 234.6
Industrial and warehouse space						
Total square metres	365	5,053	1,515	4,750	14,662	+ 208.7
Total value at current prices (R'000)	329	6,000	2,070	3,655	14,373	+ 293.2
Other non-residential space <sup>2/</sup>						
Total square metres	1,665	712	3,562	8,704	12,002	+ 37.9
Total value at current prices (R'000)	3,340	875	5,244	12,586	15,280	+ 21.4
<b>Total value of non-residential buildings at current prices (R'000)</b>	<b>8,494</b>	<b>13,175</b>	<b>7,314</b>	<b>51,978</b>	<b>79,263</b>	<b>+ 52.5</b>
<b>Additions and alterations</b>						
Dwelling-houses						
Total square metres	10,715	9,334	10,345	63,288	69,495	+ 9.8
Total value at current prices (R'000)	11,566	10,951	12,875	66,629	77,916	+ 16.9
Other buildings <sup>3/</sup>						
Total square metres	1,516	4,998	1,902	12,802	20,310	+ 58.6
Total value at current prices (R'000)	2,341	7,441	4,882	24,487	44,764	+ 82.8
<b>Total value of additions and alterations at current prices (R'000)</b>	<b>13,907</b>	<b>18,392</b>	<b>17,757</b>	<b>91,116</b>	<b>122,680</b>	<b>+ 34.6</b>
<b>Total value of building plans passed at current prices (R'000)</b>	<b>42,615</b>	<b>77,668</b>	<b>53,763</b>	<b>324,840</b>	<b>443,948</b>	<b>+ 36.7</b>

1/ Other residential buildings include institutions for the disabled, boarding houses, old people's homes, hostels, hotels, motels, guest houses, holiday chalets, entertainment centres, bed-and-breakfast accommodation and casinos.

2/ Other non-residential space includes churches, sport and recreation clubs, schools, crèches, hospitals and all other non-residential space.

3/ Other buildings include additions and alterations to other residential buildings, non-residential buildings and internal alterations.

**Table 14 - Building plans passed according to type of building and province: KwaZulu-Natal**

Type of building	August 2001	July 2002	August 2002	January 2001 to August 2001	January 2002 to August 2002	Percentage change between January 2001 to August 2001 and January 2002 to August 2002
<b>Residential buildings</b>						
Dwelling-houses smaller than 80 square metres						
Number of dwelling-houses	107	165	252	1,721	1,695	- 1.5
Total square metres	5,294	7,043	10,022	76,784	67,569	- 12.0
Total value at current prices (R'000)	6,213	6,872	9,283	73,346	64,138	- 12.6
Dwelling-houses equal to or larger than 80 square metres						
Number of dwelling-houses	169	158	178	1,109	1,201	+ 8.3
Total square metres	35,077	34,638	40,958	242,451	269,903	+ 11.3
Total value at current prices (R'000)	54,705	56,167	65,275	356,272	421,669	+ 18.4
Flats and townhouses						
Number of flats and townhouses	88	85	81	638	581	- 8.9
Total square metres	11,584	16,252	18,975	87,704	97,800	+ 11.5
Total value at current prices (R'000)	21,125	27,688	33,611	144,981	165,979	+ 14.5
Other residential buildings <sup>1/</sup>						
Total square metres	1,104	0	0	2,377	31,840	+ 1239.5
Total value at current prices (R'000)	1,200	0	0	2,431	34,015	+ 1299.2
<b>Total value of residential buildings at current prices (R'000)</b>	<b>83,243</b>	<b>90,727</b>	<b>108,169</b>	<b>577,030</b>	<b>685,801</b>	<b>+ 18.9</b>
<b>Non-residential buildings</b>						
Office and banking space						
Total square metres	34,311	6,567	7,039	122,064	32,332	- 73.5
Total value at current prices (R'000)	57,469	9,054	11,278	254,845	77,250	- 69.7
Shopping space						
Total square metres	3,259	0	39,800	28,880	70,357	+ 143.6
Total value at current prices (R'000)	5,169	0	120,200	38,718	177,519	+ 358.5
Industrial and warehouse space						
Total square metres	3,233	14,164	9,447	84,017	121,087	+ 44.1
Total value at current prices (R'000)	3,446	23,904	12,730	93,269	245,726	+ 163.5
Other non-residential space <sup>2/</sup>						
Total square metres	2,683	6,115	1,544	34,955	72,160	+ 106.4
Total value at current prices (R'000)	5,124	7,565	2,020	43,872	86,689	+ 97.6
<b>Total value of non-residential buildings at current prices (R'000)</b>	<b>71,208</b>	<b>40,523</b>	<b>146,228</b>	<b>430,704</b>	<b>587,184</b>	<b>+ 36.3</b>
<b>Additions and alterations</b>						
Dwelling-houses						
Total square metres	38,521	38,756	40,722	267,294	284,964	+ 6.6
Total value at current prices (R'000)	52,220	50,343	53,821	325,173	373,164	+ 14.8
Other buildings <sup>3/</sup>						
Total square metres	12,372	15,029	27,325	109,109	166,009	+ 52.1
Total value at current prices (R'000)	19,230	57,067	92,158	224,046	489,334	+ 118.4
<b>Total value of additions and alterations at current prices (R'000)</b>	<b>71,450</b>	<b>107,410</b>	<b>145,979</b>	<b>549,219</b>	<b>862,498</b>	<b>+ 57.0</b>
<b>Total value of building plans passed at current prices (R'000)</b>	<b>225,901</b>	<b>238,660</b>	<b>400,376</b>	<b>1,556,953</b>	<b>2,135,483</b>	<b>+ 37.2</b>

1/ Other residential buildings include institutions for the disabled, boarding houses, old people's homes, hostels, hotels, motels, guest houses, holiday chalets, entertainment centres, bed-and-breakfast accommodation and casinos.

2/ Other non-residential space includes churches, sport and recreation clubs, schools, crèches, hospitals and all other non-residential space.

3/ Other buildings include additions and alterations to other residential buildings, non-residential buildings and internal alterations.

| ∴ |

Table 15 - Building plans passed according to type of building and province: North West

Type of building	August 2001	July 2002	August 2002	January 2001 to August 2001	January 2002 to August 2002	Percentage change between January 2001 to August 2001 and January 2002 to August 2002
<b>Residential buildings</b>						
Dwelling-houses smaller than 80 square metres						
Number of dwelling-houses	134	43	36	3,959	624	- 84.2
Total square metres	6,749	2,500	2,158	137,981	29,639	- 78.5
Total value at current prices (R'000)	6,331	2,797	2,581	76,898	33,341	- 56.6
Dwelling-houses equal to or larger than 80 square metres						
Number of dwelling-houses	54	135	108	546	855	+ 56.6
Total square metres	8,966	28,358	21,433	94,929	158,108	+ 66.6
Total value at current prices (R'000)	12,549	33,706	27,071	114,404	198,541	+ 73.5
Flats and townhouses						
Number of flats and townhouses	26	47	19	226	600	+ 165.5
Total square metres	2,673	4,827	2,376	25,884	40,025	+ 54.6
Total value at current prices (R'000)	3,426	5,366	5,491	34,056	62,453	+ 83.4
Other residential buildings <sup>1/</sup>						
Total square metres	0	0	0	1,989	768	- 61.4
Total value at current prices (R'000)	0	0	0	1,664	781	- 53.1
<b>Total value of residential buildings at current prices (R'000)</b>	<b>22,306</b>	<b>41,869</b>	<b>35,143</b>	<b>227,022</b>	<b>295,116</b>	<b>+ 30.0</b>
<b>Non-residential buildings</b>						
Office and banking space						
Total square metres	0	322	0	3,644	5,874	+ 61.2
Total value at current prices (R'000)	0	600	0	5,999	9,148	+ 52.5
Shopping space						
Total square metres	270	1,146	202	16,978	15,110	- 11.0
Total value at current prices (R'000)	432	1,839	242	23,565	23,199	- 1.6
Industrial and warehouse space						
Total square metres	480	0	0	7,802	8,672	+ 11.2
Total value at current prices (R'000)	413	0	0	7,876	12,098	+ 53.6
Other non-residential space <sup>2/</sup>						
Total square metres	588	685	239	6,508	16,098	+ 147.4
Total value at current prices (R'000)	511	741	347	5,812	39,784	+ 584.5
<b>Total value of non-residential buildings at current prices (R'000)</b>	<b>1,356</b>	<b>3,180</b>	<b>589</b>	<b>43,252</b>	<b>84,229</b>	<b>+ 94.7</b>
<b>Additions and alterations</b>						
Dwelling-houses						
Total square metres	6,595	14,712	10,444	46,690	73,490	+ 57.4
Total value at current prices (R'000)	7,862	19,801	14,302	50,450	90,340	+ 79.1
Other buildings <sup>3/</sup>						
Total square metres	1,830	334	1,763	15,192	15,284	+ 0.6
Total value at current prices (R'000)	2,686	769	3,632	24,264	26,528	+ 9.3
<b>Total value of additions and alterations at current prices (R'000)</b>	<b>10,548</b>	<b>20,570</b>	<b>17,934</b>	<b>74,714</b>	<b>116,868</b>	<b>+ 56.4</b>
<b>Total value of building plans passed at current prices (R'000)</b>	<b>34,210</b>	<b>65,619</b>	<b>53,666</b>	<b>344,988</b>	<b>496,213</b>	<b>+ 43.8</b>

1/ Other residential buildings include institutions for the disabled, boarding houses, old people's homes, hostels, hotels, motels, guest houses, holiday chalets, entertainment centres, bed-and-breakfast accommodation and casinos.

2/ Other non-residential space includes churches, sport and recreation clubs, schools, crèches, hospitals and all other non-residential space.

3/ Other buildings include additions and alterations to other residential buildings, non-residential buildings and internal alterations.



Table 16 - Building plans passed according to type of building and province: Gauteng

Type of building	August 2001 *	July 2002*	August 2002	January 2001 to August 2001	January 2002 to August 2002	Percentage change between January 2001 to August 2001 and January 2002 to August 2002
<b>Residential buildings</b>						
Dwelling-houses smaller than 80 square metres						
Number of dwelling-houses	1,175	596	489	8,315	5,808	- 30.2
Total square metres	48,513	24,327	17,457	317,646	223,764	- 29.6
Total value at current prices (R'000)	57,924	24,919	19,374	350,235	216,516	- 38.2
Dwelling-houses equal to or larger than 80 square metres						
Number of dwelling-houses	573	739	815	5,421	5,376	- 0.8
Total square metres	142,989	214,049	215,235	1,342,471	1,436,444	+ 7.0
Total value at current prices (R'000)	200,761	324,480	328,486	1,904,557	2,173,901	+ 14.1
Flats and townhouses						
Number of flats and townhouses	371	607	463	3,529	4,410	+ 25.0
Total square metres	44,836	68,724	64,684	401,088	579,525	+ 44.5
Total value at current prices (R'000)	66,593	130,859	93,519	622,694	917,240	+ 47.3
Other residential buildings <sup>1/</sup>						
Total square metres	1,024	0	0	8,837	3,968	- 55.1
Total value at current prices (R'000)	1,000	0	0	11,129	6,253	- 43.8
<b>Total value of residential buildings at current prices (R'000)</b>	<b>326,278</b>	<b>480,258</b>	<b>441,379</b>	<b>2,888,615</b>	<b>3,313,910</b>	<b>+ 14.7</b>
<b>Non-residential buildings</b>						
Office and banking space						
Total square metres	24,491	15,715	5,072	239,256	152,081	- 36.4
Total value at current prices (R'000)	42,254	24,999	7,308	408,394	301,520	- 26.2
Shopping space						
Total square metres	3,051	14,073	49,335	102,480	123,611	+ 20.6
Total value at current prices (R'000)	3,308	27,655	75,935	162,574	196,953	+ 21.1
Industrial and warehouse space						
Total square metres	17,423	17,338	35,723	229,207	284,341	+ 24.1
Total value at current prices (R'000)	24,564	28,300	49,269	374,308	439,049	+ 17.3
Other non-residential space <sup>2/</sup>						
Total square metres	9,915	8,438	7,548	107,770	114,926	+ 6.6
Total value at current prices (R'000)	13,202	13,401	11,637	162,842	179,594	+ 10.3
<b>Total value of non-residential buildings at current prices (R'000)</b>	<b>83,328</b>	<b>94,355</b>	<b>144,149</b>	<b>1,108,118</b>	<b>1,117,116</b>	<b>+ 0.8</b>
<b>Additions and alterations</b>						
Dwelling-houses						
Total square metres	92,923	82,977	107,408	674,620	726,552	+ 7.7
Total value at current prices (R'000)	118,199	126,607	162,075	862,678	1,054,809	+ 22.3
Other buildings <sup>3/</sup>						
Total square metres	26,116	59,998	42,863	211,436	300,882	+ 42.3
Total value at current prices (R'000)	42,560	107,727	66,159	363,397	516,761	+ 42.2
<b>Total value of additions and alterations at current prices (R'000)</b>	<b>160,759</b>	<b>234,334</b>	<b>228,234</b>	<b>1,226,075</b>	<b>1,571,570</b>	<b>+ 28.2</b>
<b>Total value of building plans passed at current prices (R'000)</b>	<b>570,365</b>	<b>808,947</b>	<b>813,762</b>	<b>5,222,808</b>	<b>6,002,596</b>	<b>+ 14.9</b>

1/ Other residential buildings include institutions for the disabled, boarding houses, old people's homes, hostels, hotels, motels, guest houses, holiday chalets, entertainment centres, bed-and-breakfast accommodation and casinos.

2/ Other non-residential space includes churches, sport and recreation clubs, schools, crèches, hospitals and all other non-residential space.

3/ Other buildings include additions and alterations to other residential buildings, non-residential buildings and internal alterations.

Table 17 - Building plans passed according to type of building and province: Mpumalanga

Type of building	August 2001	July 2002	August 2002	January 2001 to August 2001	January 2002 to August 2002	Percentage change between January 2001 to August 2001 and January 2002 to August 2002
<b>Residential buildings</b>						
Dwelling-houses smaller than 80 square metres						
Number of dwelling-houses	345	121	116	4,315	1,580	- 63.4
Total square metres	12,975	5,584	5,265	150,613	65,961	- 56.2
Total value at current prices (R'000)	8,072	3,606	3,354	82,968	37,950	- 54.3
Dwelling-houses equal to or larger than 80 square metres						
Number of dwelling-houses	54	151	120	551	926	+ 68.1
Total square metres	10,491	25,760	23,582	103,005	169,730	+ 64.8
Total value at current prices (R'000)	13,466	35,559	32,059	130,645	223,727	+ 71.2
Flats and townhouses						
Number of flats and townhouses	32	15	15	851	226	- 73.4
Total square metres	2,730	1,572	2,798	63,191	29,549	- 53.2
Total value at current prices (R'000)	3,746	2,492	2,939	79,463	39,314	- 50.5
Other residential buildings <sup>1/</sup>						
Total square metres	0	160	949	1,595	13,505	+ 746.7
Total value at current prices (R'000)	0	240	1,806	2,105	81,631	+ 3778.0
<b>Total value of residential buildings at current prices (R'000)</b>	<b>25,284</b>	<b>41,897</b>	<b>40,158</b>	<b>295,181</b>	<b>382,622</b>	<b>+ 29.6</b>
<b>Non-residential buildings</b>						
Office and banking space						
Total square metres	0	0	0	3,671	3,110	- 15.3
Total value at current prices (R'000)	0	0	0	5,750	4,279	- 25.6
Shopping space						
Total square metres	422	2,223	11,647	1,951	34,828	+1,685.1
Total value at current prices (R'000)	335	3,400	11,840	2,595	42,341	+1,531.6
Industrial and warehouse space						
Total square metres	1,461	3,857	11,148	28,436	28,092	- 1.2
Total value at current prices (R'000)	1,721	5,356	12,780	25,132	34,100	+ 35.7
Other non-residential space <sup>2/</sup>						
Total square metres	2,086	1,549	733	13,751	16,109	+ 17.1
Total value at current prices (R'000)	1,835	2,243	1,113	15,387	20,733	+ 34.7
<b>Total value of non-residential buildings at current prices (R'000)</b>	<b>3,891</b>	<b>10,999</b>	<b>25,733</b>	<b>48,864</b>	<b>101,453</b>	<b>+ 107.6</b>
<b>Additions and alterations</b>						
Dwelling-houses						
Total square metres	12,337	13,963	17,999	81,384	102,455	+ 25.9
Total value at current prices (R'000)	13,154	15,749	22,899	81,832	118,716	+ 45.1
Other buildings <sup>3/</sup>						
Total square metres	6,840	2,824	1,221	16,144	11,595	- 28.2
Total value at current prices (R'000)	8,538	3,166	2,575	24,696	22,356	- 9.5
<b>Total value of additions and alterations at current prices (R'000)</b>	<b>21,692</b>	<b>18,915</b>	<b>25,474</b>	<b>106,528</b>	<b>141,072</b>	<b>+ 32.4</b>
<b>Total value of building plans passed at current prices (R'000)</b>	<b>50,867</b>	<b>71,811</b>	<b>91,365</b>	<b>450,573</b>	<b>625,147</b>	<b>+ 38.7</b>

1/ Other residential buildings include institutions for the disabled, boarding houses, old people's homes, hostels, hotels, motels, guest houses, holiday chalets, entertainment centres, bed-and-breakfast accommodation and casinos.

2/ Other non-residential space includes churches, sport and recreation clubs, schools, crèches, hospitals and all other non-residential space.

3/ Other buildings include additions and alterations to other residential buildings, non-residential buildings and internal alterations.

Table 18 - Building plans passed according to type of building and province: Limpopo

Type of building	August 2001	July 2002*	August 2002	January 2001 to August 2001	January 2002 to August 2002	Percentage change between January 2001 to August 2001 and January 2002 to August 2002
<b>Residential buildings</b>						
Dwelling-houses smaller than 80 square metres						
Number of dwelling-houses	35	26	33	318	206	-35.2
Total square metres	2,054	1,636	2,021	18,751	12,523	-33.2
Total value at current prices (R'000)	2,875	2,263	2,875	24,417	18,030	-26.2
Dwelling-houses equal to or larger than 80 square metres						
Number of dwelling-houses	51	41	60	327	379	+ 15.9
Total square metres	8,511	8,138	11,619	56,419	74,106	+ 31.3
Total value at current prices (R'000)	11,071	11,036	15,724	75,673	103,310	+ 36.5
Flats and townhouses						
Number of flats and townhouses	9	7	0	49	80	+ 63.3
Total square metres	1,192	559	0	6,479	9,856	+ 52.1
Total value at current prices (R'000)	1,296	1,200	0	8,141	16,080	+ 97.5
Other residential buildings <sup>1/</sup>						
Total square metres	0	0	803	192	1,324	+ 589.6
Total value at current prices (R'000)	0	0	1,285	96	2,215	+ 2,207.3
<b>Total value of residential buildings at current prices (R'000)</b>	<b>15,242</b>	<b>14,499</b>	<b>19,884</b>	<b>108,327</b>	<b>139,635</b>	<b>+ 28.9</b>
<b>Non-residential buildings</b>						
Office and banking space						
Total square metres	29	0	0	905	2,551	+ 181.9
Total value at current prices (R'000)	29	0	0	1,288	5,172	+ 301.6
Shopping space						
Total square metres	1,208	600	0	12,661	5,654	-55.3
Total value at current prices (R'000)	1,500	480	0	18,613	9,511	-48.9
Industrial and warehouse space						
Total square metres	0	1,439	0	1,705	97,735	+ 5,632.3
Total value at current prices (R'000)	0	2,658	0	1,929	213,721	+ 10,979.4
Other non-residential space <sup>2/</sup>						
Total square metres	0	0	128	2,919	3,239	+ 11.0
Total value at current prices (R'000)	0	0	153	4,510	6,158	+ 36.5
<b>Total value of non-residential buildings at current prices (R'000)</b>	<b>1,529</b>	<b>3,138</b>	<b>153</b>	<b>26,340</b>	<b>234,562</b>	<b>+ 790.5</b>
<b>Additions and alterations</b>						
Dwelling-houses						
Total square metres	3,731	4,920	5,863	31,385	36,247	+ 15.5
Total value at current prices (R'000)	4,887	6,249	7,897	40,718	49,478	+ 21.5
Other buildings <sup>3/</sup>						
Total square metres	122	1,493	2,766	7,997	15,820	+ 97.8
Total value at current prices (R'000)	1,268	4,100	5,989	19,130	27,917	+ 45.9
<b>Total value of additions and alterations at current prices (R'000)</b>	<b>6,155</b>	<b>10,349</b>	<b>13,886</b>	<b>59,848</b>	<b>77,395</b>	<b>+ 29.3</b>
<b>Total value of building plans passed at current prices (R'000)</b>	<b>22,926</b>	<b>27,986</b>	<b>33,923</b>	<b>194,515</b>	<b>451,592</b>	<b>+ 132.2</b>

1/ Other residential buildings include institutions for the disabled, boarding houses, old people's homes, hostels, hotels, motels, guest houses, holiday chalets, entertainment centres, bed-and-breakfast accommodation and casinos.

2/ Other non-residential space includes churches, sport and recreation clubs, schools, crèches, hospitals and all other non-residential space.

3/ Other buildings include additions and alterations to other residential buildings, non-residential buildings and internal alterations.

| ..|

**Table 19 - Buildings completed according to type of building: Total RSA**

Type of building	August 2001 *	July 2002*	August 2002	January 2001 to August 2001	January 2002 to August 2002	Percentage change between January 2001 to August 2001 and January 2002 to August 2002
<b>Residential buildings</b>						
Dwelling-houses smaller than 80 square metres						
Number of dwelling-houses	2,630	2,922	2,501	18,109	19,975	+ 10.3
Total square metres	109,360	116,313	97,777	730,073	770,543	+ 5.5
Total value at current prices (R'000)	115,698	104,777	97,961	655,059	700,977	+ 7.0
Dwelling-houses equal to or larger than 80 square metres						
Number of dwelling-houses	804	1,278	1,160	7,567	8,961	+ 18.4
Total square metres	168,885	260,639	252,186	1,517,919	1,879,118	+ 23.8
Total value at current prices (R'000)	237,025	393,179	390,815	2,068,250	2,813,491	+ 36.0
Flats and townhouses						
Number of flats and townhouses	458	981	984	4,425	6,952	+ 57.1
Total square metres	47,239	110,772	135,216	469,040	811,143	+ 72.9
Total value at current prices (R'000)	63,886	166,560	245,733	661,560	1,270,845	+ 92.1
Other residential buildings <sup>1/</sup>						
Total square metres	6,864	921	4,981	91,824	62,186	- 32.3
Total value at current prices (R'000)	15,236	1,398	4,485	358,731	276,262	- 23.0
<b>Total value of residential buildings at current prices (R'000)</b>	<b>431,845</b>	<b>665,914</b>	<b>738,994</b>	<b>3,743,600</b>	<b>5,061,575</b>	<b>+ 35.2</b>
<b>Non-residential buildings</b>						
Office and banking space						
Total square metres	21,608	81,504	13,805	435,354	369,677	- 15.1
Total value at current prices (R'000)	31,165	105,324	28,425	664,371	617,561	- 7.0
Shopping space						
Total square metres	13,461	34,343	9,292	202,617	175,560	- 13.4
Total value at current prices (R'000)	20,470	57,375	15,690	318,559	285,380	- 10.4
Industrial and warehouse space						
Total square metres	42,021	36,887	30,041	481,439	353,639	- 26.5
Total value at current prices (R'000)	56,557	49,330	34,828	590,239	431,612	- 26.9
Other non-residential space <sup>2/</sup>						
Total square metres	8,113	20,959	10,350	132,866	138,430	+ 4.2
Total value at current prices (R'000)	9,176	38,102	13,706	158,688	200,907	+ 26.6
<b>Total value of non-residential buildings at current prices (R'000)</b>	<b>117,368</b>	<b>250,131</b>	<b>92,649</b>	<b>1,731,857</b>	<b>1,535,460</b>	<b>- 11.3</b>
<b>Additions and alterations</b>						
Dwelling-houses						
Total square metres	120,648	129,617	118,945	981,796	1,033,015	+ 5.2
Total value at current prices (R'000)	145,539	160,221	156,466	1,155,181	1,307,321	+ 13.2
Other buildings <sup>3/</sup>						
Total square metres	38,544	36,127	43,457	389,691	373,354	- 4.2
Total value at current prices (R'000)	69,105	76,060	70,232	800,630	630,738	- 21.2
<b>Total value of additions and alterations at current prices (R'000)</b>	<b>214,644</b>	<b>236,281</b>	<b>226,698</b>	<b>1,955,811</b>	<b>1,938,059</b>	<b>- 0.9</b>
<b>Total value of buildings completed at current prices (R'000)</b>	<b>763,857</b>	<b>1,152,326</b>	<b>1,058,341</b>	<b>7,431,268</b>	<b>8,535,094</b>	<b>+ 14.9</b>

1/ Other residential buildings include institutions for the disabled, boarding houses, old people's homes, hostels, hotels, motels, guest houses, holiday chalets, entertainment centres, bed-and-breakfast accommodation and casinos.

2/ Other non-residential space includes churches, sport and recreation clubs, schools, crèches, hospitals and all other non-residential space.

3/ Other buildings include additions and alterations to other residential buildings, non-residential buildings and internal alterations.

Table 20 - Buildings completed according to type of building and province: Western Cape

Type of building	August 2001*	July 2002	August 2002	January 2001 to August 2001	January 2002 to August 2002	Percentage change between January 2001 to August 2001 and January 2002 to August 2002
<b>Residential buildings</b>						
Dwelling-houses smaller than 80 square metres						
Number of dwelling-houses	559	611	539	3,690	4,826	+ 30.8
Total square metres	25,299	20,992	20,221	152,685	175,117	+ 14.7
Total value at current prices (R'000)	34,966	23,444	25,105	173,781	202,606	+ 16.6
Dwelling-houses equal to or larger than 80 square metres						
Number of dwelling-houses	275	525	470	2,555	3,585	+ 40.3
Total square metres	55,460	96,537	91,628	497,334	718,963	+ 44.6
Total value at current prices (R'000)	81,414	151,039	140,817	698,182	1,116,781	+ 60.0
Flats and townhouses						
Number of flats and townhouses	263	141	297	1,258	1,495	+ 18.8
Total square metres	24,957	16,363	24,790	139,756	175,135	+ 25.3
Total value at current prices (R'000)	34,523	24,026	34,313	182,485	274,388	+ 50.4
Other residential buildings <sup>1/</sup>						
Total square metres	5,314	446	156	33,125	6,087	- 81.6
Total value at current prices (R'000)	13,168	734	312	44,992	9,802	- 78.2
<b>Total value of residential buildings at current prices (R'000)</b>	<b>164,071</b>	<b>199,243</b>	<b>200,547</b>	<b>1,099,440</b>	<b>1,603,577</b>	<b>+ 45.9</b>
<b>Non-residential buildings</b>						
Office and banking space						
Total square metres	2,249	7,388	691	94,449	75,409	- 20.2
Total value at current prices (R'000)	3,422	12,751	1,142	153,907	113,090	- 26.5
Shopping space						
Total square metres	5,071	21,079	0	34,181	68,342	+ 99.9
Total value at current prices (R'000)	6,136	30,190	0	42,280	94,083	+ 122.5
Industrial and warehouse space						
Total square metres	9,343	17,488	11,279	96,533	112,251	+ 16.3
Total value at current prices (R'000)	11,452	21,864	9,877	112,406	120,937	+ 7.6
Other non-residential space <sup>2/</sup>						
Total square metres	4,829	3,493	6,761	54,365	59,711	+ 9.8
Total value at current prices (R'000)	4,196	2,888	7,125	51,768	82,373	+ 59.1
<b>Total value of non-residential buildings at current prices (R'000)</b>	<b>25,206</b>	<b>67,693</b>	<b>18,144</b>	<b>360,361</b>	<b>410,483</b>	<b>+ 13.9</b>
<b>Additions and alterations</b>						
Dwelling-houses						
Total square metres	41,084	43,965	45,485	381,214	364,270	- 4.4
Total value at current prices (R'000)	52,824	54,065	59,065	477,838	481,279	+ 0.7
Other buildings <sup>3/</sup>						
Total square metres	9,406	9,001	13,285	119,016	145,124	+ 21.9
Total value at current prices (R'000)	17,702	16,379	23,979	286,924	243,295	- 15.2
<b>Total value of additions and alterations at current prices (R'000)</b>	<b>70,526</b>	<b>70,444</b>	<b>83,044</b>	<b>764,762</b>	<b>724,574</b>	<b>- 5.3</b>
<b>Total value of buildings completed at current prices (R'000)</b>	<b>259,803</b>	<b>337,380</b>	<b>301,735</b>	<b>2,224,563</b>	<b>2,738,634</b>	<b>+ 23.1</b>

1/ Other residential buildings include institutions for the disabled, boarding houses, old people's homes, hostels, hotels, motels, guest houses, holiday chalets, entertainment centres, bed-and-breakfast accommodation and casinos.

2/ Other non-residential space includes churches, sport and recreation clubs, schools, crèches, hospitals and all other non-residential space.

3/ Other buildings include additions and alterations to other residential buildings, non-residential buildings and internal alterations.

Table 21 - Buildings completed according to type of building and province: Eastern Cape

Type of building	August 2001	July 2002	August 2002	January 2001 to August 2001	January 2002 to August 2002	Percentage change between January 2001 to August 2001 and January 2002 to August 2002
<b>Residential buildings</b>						
Dwelling-houses smaller than 80 square metres						
Number of dwelling-houses	190	298	232	2,307	2,012	- 12.8
Total square metres	7,748	12,603	11,794	99,271	86,978	- 12.4
Total value at current prices (R'000)	10,008	16,857	16,068	92,228	111,654	+ 21.1
Dwelling-houses equal to or larger than 80 square metres						
Number of dwelling-houses	55	83	21	689	500	- 27.4
Total square metres	12,134	14,109	4,252	93,098	80,698	- 13.3
Total value at current prices (R'000)	13,253	20,690	6,242	116,978	109,543	- 6.4
Flats and townhouses						
Number of flats and townhouses	4	13	2	169	322	+ 90.5
Total square metres	628	1,649	213	17,104	17,841	+ 4.3
Total value at current prices (R'000)	855	2,391	298	19,270	25,760	+ 33.7
Other residential buildings <sup>1/</sup>						
Total square metres	0	0	0	6,993	15,865	+ 126.9
Total value at current prices (R'000)	0	0	0	10,955	26,589	+ 142.7
<b>Total value of residential buildings at current prices (R'000)</b>	<b>24,116</b>	<b>39,938</b>	<b>22,608</b>	<b>239,431</b>	<b>273,546</b>	<b>+ 14.2</b>
<b>Non-residential buildings</b>						
Office and banking space						
Total square metres	1,561	0	868	27,344	1,444	-94.7
Total value at current prices (R'000)	2,174	0	1,701	30,766	2,886	-90.6
Shopping space						
Total square metres	0	0	0	27,870	2,779	- 90.0
Total value at current prices (R'000)	0	0	0	35,685	3,520	- 90.1
Industrial and warehouse space						
Total square metres	0	457	0	104,074	11,239	- 89.2
Total value at current prices (R'000)	0	248	0	105,383	10,482	- 90.1
Other non-residential space <sup>2/</sup>						
Total square metres	0	570	0	19,514	2,870	-85.3
Total value at current prices (R'000)	0	796	0	24,938	3,460	-86.1
<b>Total value of non-residential buildings at current prices (R'000)</b>	<b>2,174</b>	<b>1,044</b>	<b>1,701</b>	<b>196,772</b>	<b>20,348</b>	<b>- 89.7</b>
<b>Additions and alterations</b>						
Dwelling-houses						
Total square metres	11,820	10,153	7,234	71,942	73,115	+ 1.6
Total value at current prices (R'000)	13,894	12,993	11,131	84,903	91,143	+ 7.3
Other buildings <sup>3/</sup>						
Total square metres	896	2,054	4,531	38,692	37,138	- 4.0
Total value at current prices (R'000)	1,492	2,865	5,929	51,655	47,512	- 8.0
<b>Total value of additions and alterations at current prices (R'000)</b>	<b>15,386</b>	<b>15,858</b>	<b>17,060</b>	<b>136,558</b>	<b>138,655</b>	<b>+ 1.5</b>
<b>Total value of buildings completed at current prices (R'000)</b>	<b>41,676</b>	<b>56,840</b>	<b>41,369</b>	<b>572,761</b>	<b>432,549</b>	<b>- 24.5</b>

1/ Other residential buildings include institutions for the disabled, boarding houses, old people's homes, hostels, hotels, motels, guest houses, holiday chalets, entertainment centres, bed-and-breakfast accommodation and casinos.

2/ Other non-residential space includes churches, sport and recreation clubs, schools, crèches, hospitals and all other non-residential space.

3/ Other buildings include additions and alterations to other residential buildings, non-residential buildings and internal alterations.

Table 22 - Buildings completed according to type of building and province: Northern Cape

Type of building	August 2001	July 2002	August 2002	January 2001 to August 2001	January 2002 to August 2002	Percentage change between January 2001 to August 2001 and January 2002 to August 2002
<b>Residential buildings</b>						
Dwelling-houses smaller than 80 square metres						
Number of dwelling-houses	16	1	1	101	63	- 37.6
Total square metres	877	77	60	5,122	2,970	- 42.0
Total value at current prices (R'000)	1,394	139	120	7,600	3,830	- 49.6
Dwelling-houses equal to or larger than 80 square metres						
Number of dwelling-houses	19	7	2	151	37	- 75.5
Total square metres	2,890	1,029	749	22,899	6,094	- 73.4
Total value at current prices (R'000)	4,377	1,477	1,295	31,905	8,743	- 72.6
Flats and townhouses						
Number of flats and townhouses	2	20	4	21	28	+ 33.3
Total square metres	151	3,122	602	2,052	4,361	+ 112.5
Total value at current prices (R'000)	211	5,621	985	3,019	7,385	+ 144.6
Other residential buildings <sup>1/</sup>						
Total square metres	0	0	0	346	0	..
Total value at current prices (R'000)	0	0	0	277	0	..
<b>Total value of residential buildings at current prices (R'000)</b>	<b>5,982</b>	<b>7,237</b>	<b>2,400</b>	<b>42,801</b>	<b>19,958</b>	<b>- 53.4</b>
<b>Non-residential buildings</b>						
Office and banking space						
Total square metres	0	0	0	7,105	0	..
Total value at current prices (R'000)	0	0	0	15,631	0	..
Shopping space						
Total square metres	0	0	0	4,883	784	-83.9
Total value at current prices (R'000)	0	0	0	7,331	1,098	- 85.0
Industrial and warehouse space						
Total square metres	0	800	0	854	1,023	+ 19.8
Total value at current prices (R'000)	0	1,120	0	691	1,229	+ 77.9
Other non-residential space <sup>2/</sup>						
Total square metres	0	0	0	956	1,001	+ 4.7
Total value at current prices (R'000)	181	0	0	1,725	1,309	- 24.1
<b>Total value of non-residential buildings at current prices (R'000)</b>	<b>0</b>	<b>1,120</b>	<b>0</b>	<b>25,378</b>	<b>3,636</b>	<b>- 85.7</b>
<b>Additions and alterations</b>						
Dwelling-houses						
Total square metres	1,810	2,456	1,807	13,794	17,994	+ 30.4
Total value at current prices (R'000)	3,209	3,436	2,573	22,340	25,413	+ 13.8
Other buildings <sup>3/</sup>						
Total square metres	1,361	226	1,129	4,037	3,057	- 24.3
Total value at current prices (R'000)	3,488	592	2,938	10,082	8,532	- 15.4
<b>Total value of additions and alterations at current prices (R'000)</b>	<b>6,697</b>	<b>4,028</b>	<b>5,511</b>	<b>32,422</b>	<b>33,945</b>	<b>+ 4.7</b>
<b>Total value of buildings completed at current prices (R'000)</b>	<b>12,679</b>	<b>12,385</b>	<b>7,911</b>	<b>100,601</b>	<b>57,539</b>	<b>-42.8</b>

1/ Other residential buildings include institutions for the disabled, boarding houses, old people's homes, hostels, hotels, motels, guest houses, holiday chalets, entertainment centres, bed-and-breakfast accommodation and casinos.

2/ Other non-residential space includes churches, sport and recreation clubs, schools, crèches, hospitals and all other non-residential space.

3/ Other buildings include additions and alterations to other residential buildings, non-residential buildings and internal alterations.



Table 23 - Buildings completed according to type of building and province: Free State

Type of building	August 2001	July 2002	August 2002	January 2001 to August 2001	January 2002 to August 2002	Percentage change between January 2001 to August 2001 and January 2002 to August 2002
<b>Residential buildings</b>						
Dwelling-houses smaller than 80 square metres						
Number of dwelling-houses	230	604	286	1,323	2,262	+ 71.0
Total square metres	9,997	25,302	11,855	56,154	97,966	+ 74.5
Total value at current prices (R'000)	5,486	12,399	7,000	31,755	54,179	+ 70.6
Dwelling-houses equal to or larger than 80 square metres						
Number of dwelling-houses	20	32	28	252	228	-9.5
Total square metres	4,779	5,727	4,775	45,021	38,769	-13.9
Total value at current prices (R'000)	6,832	7,653	5,134	53,247	47,056	-11.6
Flats and townhouses						
Number of flats and townhouses	17	41	143	145	297	+ 104.8
Total square metres	2,167	6,721	16,193	12,995	34,561	+ 166.0
Total value at current prices (R'000)	2,645	8,892	23,163	17,461	49,491	+ 183.4
Other residential buildings <sup>1/</sup>						
Total square metres	0	75	1,963	464	3,466	+ 647.0
Total value at current prices (R'000)	0	64	1,949	581	3,474	+ 497.9
<b>Total value of residential buildings at current prices (R'000)</b>	<b>14,963</b>	<b>29,008</b>	<b>37,246</b>	<b>103,044</b>	<b>154,200</b>	<b>+ 49.6</b>
<b>Non-residential buildings</b>						
Office and banking space						
Total square metres	2,876	410	0	17,195	5,104	-70.3
Total value at current prices (R'000)	7,000	473	0	32,203	8,728	-72.9
Shopping space						
Total square metres	0	37	0	5,702	1,941	-66.0
Total value at current prices (R'000)	0	61	0	7,058	3,220	-54.4
Industrial and warehouse space						
Total square metres	872	563	0	13,622	5,233	-61.6
Total value at current prices (R'000)	1,212	501	0	12,860	3,904	-69.6
Other non-residential space <sup>2/</sup>						
Total square metres	396	6,596	132	12,009	10,203	-15.0
Total value at current prices (R'000)	1,586	20,998	142	20,187	26,321	+ 30.4
<b>Total value of non-residential buildings at current prices (R'000)</b>	<b>9,798</b>	<b>22,033</b>	<b>142</b>	<b>72,308</b>	<b>42,173</b>	<b>-41.7</b>
<b>Additions and alterations</b>						
Dwelling-houses						
Total square metres	2,888	4,770	5,751	39,681	53,969	+ 36.0
Total value at current prices (R'000)	2,621	5,178	5,950	40,894	59,110	+ 44.5
Other buildings <sup>3/</sup>						
Total square metres	309	721	3,176	24,631	11,628	-52.8
Total value at current prices (R'000)	5,394	1,383	5,072	103,240	25,512	-75.3
<b>Total value of additions and alterations at current prices (R'000)</b>	<b>8,015</b>	<b>6,561</b>	<b>11,022</b>	<b>144,134</b>	<b>84,622</b>	<b>-41.3</b>
<b>Total value of buildings completed at current prices (R'000)</b>	<b>32,776</b>	<b>57,602</b>	<b>48,410</b>	<b>319,486</b>	<b>280,995</b>	<b>-12.0</b>

1/ Other residential buildings include institutions for the disabled, boarding houses, old people's homes, hostels, hotels, motels, guest houses, holiday chalets, entertainment centres, bed-and-breakfast accommodation and casinos.

2/ Other non-residential space includes churches, sport and recreation clubs, schools, crèches, hospitals and all other non-residential space.

3/ Other buildings include additions and alterations to other residential buildings, non-residential buildings and internal alterations.

Table 24 - Buildings completed according to type of building and province: KwaZulu-Natal

Type of building	August 2001	July 2002	August 2002	January 2001 to August 2001	January 2002 to August 2002	Percentage change between January 2001 to August 2001 and January 2002 to August 2002
<b>Residential buildings</b>						
Dwelling-houses smaller than 80 square metres						
Number of dwelling-houses	261	163	344	1,716	1,632	-4.9
Total square metres	10,625	6,665	12,217	76,250	66,591	-12.7
Total value at current prices (R'000)	11,086	6,291	12,557	75,907	65,965	-13.1
Dwelling-houses equal to or larger than 80 square metres						
Number of dwelling-houses	152	119	123	1,090	918	-15.8
Total square metres	33,274	25,710	23,702	229,634	183,051	-20.3
Total value at current prices (R'000)	47,326	38,309	35,625	316,178	260,666	-17.6
Flats and townhouses						
Number of flats and townhouses	43	121	37	559	523	-6.4
Total square metres	7,682	16,171	4,823	67,716	70,305	+ 3.8
Total value at current prices (R'000)	10,927	29,384	8,479	96,588	123,802	+ 28.2
Other residential buildings <sup>1/</sup>						
Total square metres	280	0	2,862	8,730	7,265	-16.8
Total value at current prices (R'000)	540	0	2,224	40,540	6,995	-82.7
<b>Total value of residential buildings at current prices (R'000)</b>	<b>69,879</b>	<b>73,984</b>	<b>58,885</b>	<b>529,213</b>	<b>457,428</b>	<b>-13.6</b>
<b>Non-residential buildings</b>						
Office and banking space						
Total square metres	9,480	4,540	4,773	46,792	79,562	+ 70.0
Total value at current prices (R'000)	13,169	7,650	12,602	73,812	180,610	+ 144.7
Shopping space						
Total square metres	1,714	9,045	1,730	23,117	41,944	+ 81.4
Total value at current prices (R'000)	1,885	20,450	1,950	38,585	84,361	+ 118.6
Industrial and warehouse space						
Total square metres	8,035	2,743	12,657	106,406	127,515	+ 19.8
Total value at current prices (R'000)	7,033	3,260	17,193	123,621	152,915	+ 23.7
Other non-residential space <sup>2/</sup>						
Total square metres	1,664	4,435	1,182	15,548	20,605	+ 32.5
Total value at current prices (R'000)	2,735	6,509	3,300	18,530	31,565	+ 70.3
<b>Total value of non-residential buildings at current prices (R'000)</b>	<b>24,822</b>	<b>37,869</b>	<b>35,045</b>	<b>254,548</b>	<b>449,451</b>	<b>+ 76.6</b>
<b>Additions and alterations</b>						
Dwelling-houses						
Total square metres	27,219	29,993	23,594	236,076	196,342	-16.8
Total value at current prices (R'000)	32,484	33,494	27,132	262,267	221,399	-15.6
Other buildings <sup>3/</sup>						
Total square metres	14,434	9,931	3,512	75,388	72,258	-4.2
Total value at current prices (R'000)	23,139	25,892	4,717	143,242	136,564	-4.7
<b>Total value of additions and alterations at current prices (R'000)</b>	<b>55,623</b>	<b>59,386</b>	<b>31,849</b>	<b>405,509</b>	<b>357,963</b>	<b>-11.7</b>
<b>Total value of buildings completed at current prices (R'000)</b>	<b>150,324</b>	<b>171,239</b>	<b>125,779</b>	<b>1,189,270</b>	<b>1,264,842</b>	<b>+ 6.4</b>

1/ Other residential buildings include institutions for the disabled, boarding houses, old people's homes, hostels, hotels, motels, guest houses, holiday chalets, entertainment centres, bed-and-breakfast accommodation and casinos.

2/ Other non-residential space includes churches, sport and recreation clubs, schools, crèches, hospitals and all other non-residential space.

3/ Other buildings include additions and alterations to other residential buildings, non-residential buildings and internal alterations.

Table 25 - Buildings completed according to type of building and province: North West

Type of building	August 2001	July 2002	August 2002	January 2001 to August 2001	January 2002 to August 2002	Percentage change between January 2001 to August 2001 and January 2002 to August 2002
<b>Residential buildings</b>						
Dwelling-houses smaller than 80 square metres						
Number of dwelling-houses	211	96	70	1,599	1,636	+ 2.3
Total square metres	8,672	3,285	2,437	60,543	55,412	- 8.5
Total value at current prices (R'000)	6,050	2,338	1,907	42,539	28,357	- 33.3
Dwelling-houses equal to or larger than 80 square metres						
Number of dwelling-houses	51	60	103	346	498	+ 43.9
Total square metres	8,796	10,564	21,995	65,469	90,226	+ 37.8
Total value at current prices (R'000)	13,960	14,531	36,007	83,037	133,650	+ 61.0
Flats and townhouses						
Number of flats and townhouses	0	52	44	84	370	+ 340.5
Total square metres	0	5,367	4,570	8,650	29,586	+ 242.0
Total value at current prices (R'000)	0	9,168	9,317	9,636	54,602	+ 466.6
Other residential buildings <sup>1/</sup>						
Total square metres	0	0	0	3,684	2,090	- 43.3
Total value at current prices (R'000)	0	0	0	4,162	2,483	- 40.3
<b>Total value of residential buildings at current prices (R'000)</b>	<b>20,010</b>	<b>26,037</b>	<b>47,231</b>	<b>139,374</b>	<b>219,092</b>	<b>+ 57.2</b>
<b>Non-residential buildings</b>						
Office and banking space						
Total square metres	0	0	3,020	897	3,743	+ 317.3
Total value at current prices (R'000)	0	0	7,000	1,550	8,140	+ 425.2
Shopping space						
Total square metres	723	0	767	5,095	5,184	+ 1.7
Total value at current prices (R'000)	2,400	0	862	7,721	5,853	- 24.2
Industrial and warehouse space						
Total square metres	540	767	0	6,805	5,211	- 23.4
Total value at current prices (R'000)	594	862	0	6,999	5,457	- 22.0
Other non-residential space <sup>2/</sup>						
Total square metres	500	0	429	7,136	3,991	- 44.1
Total value at current prices (R'000)	500	0	489	8,532	6,199	- 27.3
<b>Total value of non-residential buildings at current prices (R'000)</b>	<b>3,494</b>	<b>862</b>	<b>8,351</b>	<b>24,802</b>	<b>25,649</b>	<b>+ 3.4</b>
<b>Additions and alterations</b>						
Dwelling-houses						
Total square metres	8,649	1,914	3,480	31,609	29,416	- 6.9
Total value at current prices (R'000)	8,034	2,041	3,936	28,904	29,790	+ 3.1
Other buildings <sup>3/</sup>						
Total square metres	1,786	4,837	444	17,156	8,942	- 47.9
Total value at current prices (R'000)	1,582	6,435	784	26,288	14,885	- 43.4
<b>Total value of additions and alterations at current prices (R'000)</b>	<b>9,616</b>	<b>8,476</b>	<b>4,720</b>	<b>55,192</b>	<b>44,675</b>	<b>- 19.1</b>
<b>Total value of buildings completed at current prices (R'000)</b>	<b>33,120</b>	<b>35,375</b>	<b>60,302</b>	<b>219,368</b>	<b>289,416</b>	<b>+ 31.9</b>

1/ Other residential buildings include institutions for the disabled, boarding houses, old people's homes, hostels, hotels, motels, guest houses, holiday chalets, entertainment centres, bed-and-breakfast accommodation and casinos.

2/ Other non-residential space includes churches, sport and recreation clubs, schools, crèches, hospitals and all other non-residential space.

3/ Other buildings include additions and alterations to other residential buildings, non-residential buildings and internal alterations.

Table 26 - Buildings completed according to type of building and province: Gauteng

Type of building	August 2001*	July 2002*	August 2002	January 2001 to August 2001	January 2002 to August 2002	Percentage change between January 2001 to August 2001 and January 2002 to August 2002
<b>Residential buildings</b>						
Dwelling-houses smaller than 80 square metres						
Number of dwelling-houses	951	1,013	975	4,646	5,800	+ 24.8
Total square metres	38,420	40,912	36,727	182,024	215,453	+ 18.4
Total value at current prices (R'000)	40,343	38,475	32,353	169,706	190,230	+ 12.1
Dwelling-houses equal to or larger than 80 square metres						
Number of dwelling-houses	196	401	358	2,107	2,831	+ 34.4
Total square metres	44,001	98,656	94,220	498,537	697,588	+ 39.9
Total value at current prices (R'000)	61,252	147,539	152,077	696,445	1,055,478	+ 51.6
Flats and townhouses						
Number of flats and townhouses	114	542	442	2,047	3,756	+ 83.5
Total square metres	10,328	57,727	82,396	202,820	462,903	+ 128.2
Total value at current prices (R'000)	13,296	82,327	167,038	315,472	714,690	+ 126.5
Other residential buildings <sup>1/</sup>						
Total square metres	1,270	0	0	35,482	11,978	-66.2
Total value at current prices (R'000)	1,528	0	0	253,624	17,333	-93.2
<b>Total value of residential buildings at current prices (R'000)</b>	<b>116,419</b>	<b>268,341</b>	<b>351,468</b>	<b>1,435,247</b>	<b>1,977,731</b>	<b>+ 37.8</b>
<b>Non-residential buildings</b>						
Office and banking space						
Total square metres	5,442	68,844	4,453	233,340	203,539	-12.8
Total value at current prices (R'000)	5,400	83,950	5,980	337,505	302,912	-10.2
Shopping space						
Total square metres	3,265	2,593	6,379	69,733	39,883	-42.8
Total value at current prices (R'000)	5,321	4,710	12,378	152,552	69,423	-54.5
Industrial and warehouse space						
Total square metres	23,231	13,952	5,328	149,863	87,837	-41.4
Total value at current prices (R'000)	36,266	21,369	7,058	225,085	133,498	-40.7
Other non-residential space <sup>2/</sup>						
Total square metres	151	5,662	1,846	20,069	25,643	+ 27.8
Total value at current prices (R'000)	159	6,679	2,650	29,121	36,809	+ 26.4
<b>Total value of non-residential buildings at current prices (R'000)</b>	<b>47,146</b>	<b>116,708</b>	<b>28,066</b>	<b>744,263</b>	<b>542,642</b>	<b>-27.1</b>
<b>Additions and alterations</b>						
Dwelling-houses						
Total square metres	23,966	31,900	28,087	171,708	265,653	+ 54.7
Total value at current prices (R'000)	29,175	44,811	42,011	205,552	365,655	+ 77.9
Other buildings <sup>3/</sup>						
Total square metres	9,544	9,219	12,770	93,110	87,410	-6.1
Total value at current prices (R'000)	15,537	22,100	19,863	153,796	142,143	-7.6
<b>Total value of additions and alterations at current prices (R'000)</b>	<b>44,712</b>	<b>66,911</b>	<b>61,874</b>	<b>359,348</b>	<b>507,798</b>	<b>+ 41.3</b>
<b>Total value of buildings completed at current prices (R'000)</b>	<b>208,277</b>	<b>451,960</b>	<b>441,408</b>	<b>2,538,858</b>	<b>3,028,171</b>	<b>+ 19.3</b>

1/ Other residential buildings include institutions for the disabled, boarding houses, old people's homes, hostels, hotels, motels, guest houses, holiday chalets, entertainment centres, bed-and-breakfast accommodation and casinos.

2/ Other non-residential space includes churches, sport and recreation clubs, schools, crèches, hospitals and all other non-residential space.

3/ Other buildings include additions and alterations to other residential buildings, non-residential buildings and internal alterations.

Table 27 - Buildings completed according to type of building and province: Mpumalanga

Type of building	August 2001	July 2002	August 2002	January 2001 to August 2001	January 2002 to August 2002	Percentage change between January 2001 to August 2001 and January 2002 to August 2002
<b>Residential buildings</b>						
Dwelling-houses smaller than 80 square metres						
Number of dwelling-houses	191	117	47	2,377	1,611	-32.2
Total square metres	6,502	5,258	2,024	80,683	62,207	-22.9
Total value at current prices (R'000)	4,758	3,082	2,085	44,952	32,307	-28.1
Dwelling-houses equal to or larger than 80 square metres						
Number of dwelling-houses	25	32	42	246	250	+ 1.6
Total square metres	5,483	5,320	8,206	45,080	44,289	-1.8
Total value at current prices (R'000)	6,072	6,565	10,429	45,450	53,585	+ 17.9
Flats and townhouses						
Number of flats and townhouses	14	44	11	115	144	+ 25.2
Total square metres	1,188	3,049	1,138	13,191	14,664	+ 11.2
Total value at current prices (R'000)	1,263	3,775	1,452	12,251	18,093	+ 47.7
Other residential buildings <sup>1/</sup>						
Total square metres	0	400	0	0	1,476	..
Total value at current prices (R'000)	0	600	0	0	2,080	..
<b>Total value of residential buildings at current prices (R'000)</b>	<b>12,093</b>	<b>14,022</b>	<b>13,966</b>	<b>102,653</b>	<b>106,065</b>	<b>+ 3.3</b>
<b>Non-residential buildings</b>						
Office and banking space						
Total square metres	0	0	0	7,263	460	-93.7
Total value at current prices (R'000)	0	0	0	17,900	563	-96.9
Shopping space						
Total square metres	1,518	673	416	26,588	6,172	-76.8
Total value at current prices (R'000)	3,000	764	500	19,170	11,842	-38.2
Industrial and warehouse space						
Total square metres	0	117	777	2,514	2,828	+ 12.5
Total value at current prices (R'000)	0	106	700	2,118	2,571	+ 21.4
Other non-residential space <sup>2/</sup>						
Total square metres	0	0	0	2,845	13,859	+ 387.1
Total value at current prices (R'000)	0	0	0	3,161	12,157	+ 284.6
<b>Total value of non-residential buildings at current prices (R'000)</b>	<b>3,000</b>	<b>870</b>	<b>1,200</b>	<b>42,349</b>	<b>27,133</b>	<b>-35.9</b>
<b>Additions and alterations</b>						
Dwelling-houses						
Total square metres	1,727	4,074	2,889	29,467	28,817	-2.2
Total value at current prices (R'000)	1,676	3,654	3,556	24,898	28,213	+ 13.3
Other buildings <sup>3/</sup>						
Total square metres	808	138	4,610	14,703	6,368	-56.7
Total value at current prices (R'000)	707	330	6,950	19,603	10,154	-48.2
<b>Total value of additions and alterations at current prices (R'000)</b>	<b>2,383</b>	<b>3,984</b>	<b>10,506</b>	<b>44,501</b>	<b>38,367</b>	<b>-13.8</b>
<b>Total value of buildings completed at current prices (R'000)</b>	<b>17,476</b>	<b>18,876</b>	<b>25,672</b>	<b>189,503</b>	<b>171,565</b>	<b>-9.5</b>

1/ Other residential buildings include institutions for the disabled, boarding houses, old people's homes, hostels, hotels, motels, guest houses, holiday chalets, entertainment centres, bed-and-breakfast accommodation and casinos.

2/ Other non-residential space includes churches, sport and recreation clubs, schools, crèches, hospitals and all other non-residential space.

3/ Other buildings include additions and alterations to other residential buildings, non-residential buildings and internal alterations.

Table 28 - Buildings completed according to type of building and province: Limpopo

Type of building	August 2001*	July 2002	August 2002	January 2001 to August 2001	January 2002 to August 2002	Percentage change between January 2001 to August 2001 and January 2002 to August 2002
<b>Residential buildings</b>						
Dwelling-houses smaller than 80 square metres						
Number of dwelling-houses	21	19	7	350	133	-62.0
Total square metres	1,220	1,219	442	17,341	7,849	-54.7
Total value at current prices (R'000)	1,607	1,752	766	16,591	11,849	-28.6
Dwelling-houses equal to or larger than 80 square metres						
Number of dwelling-houses	11	19	13	131	114	-13.0
Total square metres	2,068	2,987	2,659	20,847	19,440	-6.7
Total value at current prices (R'000)	2,539	5,376	3,189	26,828	27,989	+ 4.3
Flats and townhouses						
Number of flats and townhouses	1	7	4	27	17	-37.0
Total square metres	138	603	491	4,756	1,787	-62.4
Total value at current prices (R'000)	166	976	688	5,378	2,634	-51.0
Other residential buildings <sup>1/</sup>						
Total square metres	0	0	0	3,000	13,959	+ 365.3
Total value at current prices (R'000)	0	0	0	3,600	207,506	+ 5,664.1
<b>Total value of residential buildings at current prices (R'000)</b>	<b>4,312</b>	<b>8,104</b>	<b>4,643</b>	<b>52,397</b>	<b>249,978</b>	<b>+ 377.1</b>
<b>Non-residential buildings</b>						
Office and banking space						
Total square metres	0	322	0	969	416	-57.1
Total value at current prices (R'000)	0	500	0	1,097	632	-42.4
Shopping space						
Total square metres	1,170	916	0	5,448	8,531	+ 56.6
Total value at current prices (R'000)	1,728	1,200	0	8,177	11,980	+ 46.5
Industrial and warehouse space						
Total square metres	0	0	0	768	502	-34.6
Total value at current prices (R'000)	0	0	0	1,076	619	-42.5
Other non-residential space <sup>2/</sup>						
Total square metres	0	203	0	424	547	+ 29.0
Total value at current prices (R'000)	0	232	0	726	714	-1.7
<b>Total value of non-residential buildings at current prices (R'000)</b>	<b>1,728</b>	<b>1,932</b>	<b>0</b>	<b>11,076</b>	<b>13,945</b>	<b>+ 25.9</b>
<b>Additions and alterations</b>						
Dwelling-houses						
Total square metres	1,485	392	618	6,305	3,439	-45.5
Total value at current prices (R'000)	1,622	549	1,112	7,585	5,319	-29.9
Other buildings <sup>3/</sup>						
Total square metres	0	0	0	2,958	1,429	-51.7
Total value at current prices (R'000)	64	84	0	5,800	2,141	-63.1
<b>Total value of additions and alterations at current prices (R'000)</b>	<b>1,686</b>	<b>633</b>	<b>1,112</b>	<b>13,385</b>	<b>7,460</b>	<b>-44.3</b>
<b>Total value of buildings completed at current prices (R'000)</b>	<b>7,726</b>	<b>10,669</b>	<b>5,755</b>	<b>76,858</b>	<b>271,383</b>	<b>+ 253.1</b>

1/ Other residential buildings include institutions for the disabled, boarding houses, old people's homes, hostels, hotels, motels, guest houses, holiday chalets, entertainment centres, bed-and-breakfast accommodation and casinos.

2/ Other non-residential space includes churches, sport and recreation clubs, schools, crèches, hospitals and all other non-residential space.

3/ Other buildings include additions and alterations to other residential buildings, non-residential buildings and internal alterations.

Table 29 - Building plans passed according to type of building and selected urban area: Cape Town

Type of building	August 2001	July 2002	August 2002	January 2001 to August 2001	January 2002 to August 2002	Percentage change between January 2001 to August 2001 and January 2002 to August 2002
<b>Residential buildings</b>						
Dwelling-houses smaller than 80 square metres						
Number of dwelling-houses	527	1,493	1,893	4,295	8,131	+ 89.3
Total square metres	27,814	50,324	63,525	182,981	279,761	+ 52.9
Total value at current prices (R'000)	38,325	60,802	75,517	228,183	334,077	+ 46.4
Dwelling-houses equal to or larger than 80 square metres						
Number of dwelling-houses	357	506	482	2,538	3,123	+ 23.0
Total square metres	69,033	97,346	82,142	525,745	619,064	+ 17.7
Total value at current prices (R'000)	97,661	136,729	115,149	726,807	860,319	+ 18.4
Flats and townhouses						
Number of flats and townhouses	133	218	154	1,057	1,383	+ 30.8
Total square metres	14,621	20,781	15,298	106,045	136,111	+ 28.4
Total value at current prices (R'000)	21,633	29,253	22,961	165,515	221,511	+ 33.8
Other residential buildings <sup>1/</sup>						
Total square metres	5,516	0	1,448	32,993	17,064	- 48.3
Total value at current prices (R'000)	12,199	0	2,277	77,942	23,505	- 69.8
<b>Total value of residential buildings at current prices (R'000)</b>	<b>169,818</b>	<b>226,784</b>	<b>215,904</b>	<b>1,198,447</b>	<b>1,439,412</b>	<b>+ 20.1</b>
<b>Non-residential buildings</b>						
Office and banking space						
Total square metres	9,284	9,497	4,634	159,641	48,756	- 69.5
Total value at current prices (R'000)	16,868	13,092	7,803	226,898	77,786	- 65.7
Shopping space						
Total square metres	8,283	323	6,472	96,355	20,995	- 78.2
Total value at current prices (R'000)	12,880	700	10,098	120,908	29,225	- 75.8
Industrial and warehouse space						
Total square metres	13,999	8,302	7,236	106,320	88,037	- 17.2
Total value at current prices (R'000)	13,364	8,427	7,643	113,421	97,460	- 14.1
Other non-residential space <sup>2/</sup>						
Total square metres	4,777	1,865	4,171	46,998	30,188	- 35.8
Total value at current prices (R'000)	3,573	2,695	4,920	63,343	41,995	- 33.7
<b>Total value of non-residential buildings at current prices (R'000)</b>	<b>46,685</b>	<b>24,914</b>	<b>30,464</b>	<b>524,570</b>	<b>246,466</b>	<b>- 53.0</b>
<b>Additions and alterations</b>						
Dwelling-houses						
Total square metres	54,789	64,290	53,215	397,013	440,145	+ 10.9
Total value at current prices (R'000)	70,145	84,729	70,069	477,133	556,345	+ 16.6
Other buildings <sup>3/</sup>						
Total square metres	10,262	28,982	34,010	115,989	167,429	+ 44.3
Total value at current prices (R'000)	22,963	57,431	62,836	214,683	336,792	+ 56.9
<b>Total value of additions and alterations at current prices (R'000)</b>	<b>93,108</b>	<b>142,160</b>	<b>132,905</b>	<b>691,816</b>	<b>893,137</b>	<b>+ 29.1</b>
<b>Total value of building plans passed at current prices (R'000)</b>	<b>309,611</b>	<b>393,858</b>	<b>379,273</b>	<b>2,414,833</b>	<b>2,579,015</b>	<b>+ 6.8</b>

1/ Other residential buildings include institutions for the disabled, boarding houses, old people's homes, hostels, hotels, motels, guest houses, holiday chalets, entertainment centres, bed-and-breakfast accommodation and casinos.

2/ Other non-residential space includes churches, sport and recreation clubs, schools, crèches, hospitals and all other non-residential space.

3/ Other buildings include additions and alterations to other residential buildings, non-residential buildings and internal alterations.

**Table 30 - Building plans passed according to type of building and selected urban area: Port Elizabeth**

Type of building	August 2001	July 2002	August 2002	January 2001 to August 2001	January 2002 to August 2002	Percentage change between January 2001 to August 2001 and January 2002 to August 2002
<b>Residential buildings</b>						
Dwelling-houses smaller than 80 square metres						
Number of dwelling-houses	60	268	313	1,175	2,102	+ 78.9
Total square metres	3,119	11,024	12,973	52,928	88,636	+ 67.5
Total value at current prices (R'000)	4,051	15,739	17,941	70,177	125,122	+ 78.3
Dwelling-houses equal to or larger than 80 square metres						
Number of dwelling-houses	68	62	44	508	451	- 11.2
Total square metres	12,822	11,925	8,768	66,139	86,653	+ 31.0
Total value at current prices (R'000)	17,820	16,751	13,055	89,648	122,940	+ 37.1
Flats and townhouses						
Number of flats and townhouses	0	13	26	113	174	+ 54.0
Total square metres	0	1,573	4,084	10,005	20,983	+ 109.7
Total value at current prices (R'000)	0	2,751	7,125	14,197	34,400	+ 142.3
Other residential buildings <sup>1/</sup>						
Total square metres	0	323	0	2,744	323	- 88.2
Total value at current prices (R'000)	0	550	0	3,312	550	- 83.4
<b>Total value of residential buildings at current prices (R'000)</b>	<b>21,871</b>	<b>35,791</b>	<b>38,121</b>	<b>177,334</b>	<b>283,012</b>	<b>+ 59.6</b>
<b>Non-residential buildings</b>						
Office and banking space						
Total square metres	1,159	2,482	0	1,159	5,855	+ 405.2
Total value at current prices (R'000)	2,224	3,600	0	2,224	8,946	+ 302.2
Shopping space						
Total square metres	2,170	1,664	2,867	3,870	15,861	+ 309.8
Total value at current prices (R'000)	3,879	3,261	3,369	6,109	29,334	+ 380.2
Industrial and warehouse space						
Total square metres	2,607	4,278	805	20,500	26,101	+ 27.3
Total value at current prices (R'000)	3,512	6,833	1,578	18,372	40,761	+ 121.9
Other non-residential space <sup>2/</sup>						
Total square metres	180	2,480	2,322	4,907	20,295	+ 313.6
Total value at current prices (R'000)	333	3,781	3,569	7,828	32,835	+ 319.5
<b>Total value of non-residential buildings at current prices (R'000)</b>	<b>9,948</b>	<b>17,475</b>	<b>8,516</b>	<b>34,533</b>	<b>111,876</b>	<b>+ 224.0</b>
<b>Additions and alterations</b>						
Dwelling-houses						
Total square metres	11,325	13,604	8,715	79,746	91,894	+ 15.2
Total value at current prices (R'000)	15,235	17,848	12,628	104,495	120,506	+ 15.3
Other buildings <sup>3/</sup>						
Total square metres	22,795	3,453	2,392	63,053	25,753	- 59.2
Total value at current prices (R'000)	13,426	1,746	2,791	69,315	39,703	- 42.7
<b>Total value of additions and alterations at current prices (R'000)</b>	<b>28,661</b>	<b>19,594</b>	<b>15,419</b>	<b>173,810</b>	<b>160,209</b>	<b>- 7.8</b>
<b>Total value of building plans passed at current prices (R'000)</b>	<b>60,480</b>	<b>72,860</b>	<b>62,056</b>	<b>385,677</b>	<b>555,097</b>	<b>+ 43.9</b>

1/ Other residential buildings include institutions for the disabled, boarding houses, old people's homes, hostels, hotels, motels, guest houses, holiday chalets, entertainment centres, bed-and-breakfast accommodation and casinos.

2/ Other non-residential space includes churches, sport and recreation clubs, schools, crèches, hospitals and all other non-residential space.

3/ Other buildings include additions and alterations to other residential buildings, non-residential buildings and internal alterations.



Table 31 - Building plans passed according to type of building and selected urban area: Durban

Type of building	August 2001	July 2002	August 2002	January 2001 to August 2001	January 2002 to August 2002	Percentage change between January 2001 to August 2001 and January 2002 to August 2002
<b>Residential buildings</b>						
Dwelling-houses smaller than 80 square metres						
Number of dwelling-houses	56	35	61	570	504	-11.6
Total square metres	2,994	1,894	3,286	29,731	23,277	-21.7
Total value at current prices (R'000)	3,283	2,123	3,688	34,040	26,280	-22.8
Dwelling-houses equal to or larger than 80 square metres						
Number of dwelling-houses	89	73	70	502	488	-2.8
Total square metres	17,433	15,399	13,405	96,141	96,726	+ 0.6
Total value at current prices (R'000)	24,897	24,018	18,918	123,613	129,380	+ 4.7
Flats and townhouses						
Number of flats and townhouses	7	16	47	133	251	+ 88.7
Total square metres	1,122	2,864	11,270	17,272	43,280	+ 150.6
Total value at current prices (R'000)	1,632	4,230	21,446	18,045	63,429	+ 251.5
Other residential buildings <sup>1/</sup>						
Total square metres	1,104	0	0	2,377	29,606	+ 1,145.5
Total value at current prices (R'000)	1,200	0	0	2,431	31,000	+ 1,175.2
<b>Total value of residential buildings at current prices (R'000)</b>	<b>31,012</b>	<b>30,371</b>	<b>44,052</b>	<b>178,129</b>	<b>250,089</b>	<b>+ 40.4</b>
<b>Non-residential buildings</b>						
Office and banking space						
Total square metres	7,039	4,639	2,179	20,158	7,044	-65.1
Total value at current prices (R'000)	5,600	6,200	3,000	31,639	9,450	-70.1
Shopping space						
Total square metres	869	0	180	9,491	4,362	-54.0
Total value at current prices (R'000)	869	0	200	11,325	5,897	-47.9
Industrial and warehouse space						
Total square metres	0	6,424	5,906	55,115	51,040	-7.4
Total value at current prices (R'000)	0	7,520	9,700	62,412	58,759	-5.9
Other non-residential space <sup>2/</sup>						
Total square metres	2,037	3,756	884	23,626	63,745	+ 169.8
Total value at current prices (R'000)	4,350	5,400	1,050	30,473	74,940	+ 145.9
<b>Total value of non-residential buildings at current prices (R'000)</b>	<b>10,819</b>	<b>19,120</b>	<b>13,950</b>	<b>135,849</b>	<b>149,046</b>	<b>+ 9.7</b>
<b>Additions and alterations</b>						
Dwelling-houses						
Total square metres	23,792	23,848	24,508	177,572	168,741	-5.0
Total value at current prices (R'000)	32,603	30,153	31,431	209,715	215,239	+ 2.6
Other buildings <sup>3/</sup>						
Total square metres	5,643	5,371	9,785	68,918	51,157	-25.8
Total value at current prices (R'000)	10,720	11,859	11,870	155,512	94,432	-39.3
<b>Total value of additions and alterations at current prices (R'000)</b>	<b>43,323</b>	<b>42,012</b>	<b>43,301</b>	<b>365,227</b>	<b>309,671</b>	<b>-15.2</b>
<b>Total value of building plans passed at current prices (R'000)</b>	<b>85,154</b>	<b>91,503</b>	<b>101,303</b>	<b>679,205</b>	<b>708,806</b>	<b>+ 4.4</b>

1/ Other residential buildings include institutions for the disabled, boarding houses, old people's homes, hostels, hotels, motels, guest houses, holiday chalets, entertainment centres, bed-and-breakfast accommodation and casinos.

2/ Other non-residential space includes churches, sport and recreation clubs, schools, crèches, hospitals and all other non-residential space.

3/ Other buildings include additions and alterations to other residential buildings, non-residential buildings and internal alterations.

Table 32 - Building plans passed according to type of building and selected urban area: Witwatersrand

Type of building	August 2001*	July 2002*	August 2002	January 2001 to August 2001	January 2002 to August 2002	Percentage change between January 2001 to August 2001 and January 2002 to August 2002
<b>Residential buildings</b>						
Dwelling-houses smaller than 80 square metres						
Number of dwelling-houses	524	499	430	5,376	5,247	- 2.4
Total square metres	26,932	20,199	14,231	214,593	193,983	- 9.6
Total value at current prices (R'000)	28,758	19,180	14,740	235,621	174,037	- 26.1
Dwelling-houses equal to or larger than 80 square metres						
Number of dwelling-houses	282	447	439	3,233	2,994	- 7.4
Total square metres	63,687	121,577	123,030	737,388	769,637	+ 4.4
Total value at current prices (R'000)	86,496	182,550	191,403	1,079,091	1,203,445	+ 11.5
Flats and townhouses						
Number of flats and townhouses	11	185	339	1,976	2,035	+ 3.0
Total square metres	2,021	26,764	41,999	212,543	269,481	+ 26.8
Total value at current prices (R'000)	3,518	38,448	58,720	347,450	430,214	+ 23.8
Other residential buildings <sup>1/</sup>						
Total square metres	1,024	0	0	2,347	3,968	+ 69.1
Total value at current prices (R'000)	1,000	0	0	2,751	6,253	+ 127.3
<b>Total value of residential buildings at current prices (R'000)</b>	<b>119,772</b>	<b>240,178</b>	<b>264,863</b>	<b>1,664,913</b>	<b>1,813,949</b>	<b>+ 9.0</b>
<b>Non-residential buildings</b>						
Office and banking space						
Total square metres	7,497	15,715	4,638	162,503	80,738	- 50.3
Total value at current prices (R'000)	16,320	24,999	6,958	284,403	190,161	- 33.1
Shopping space						
Total square metres	2,946	13,155	4,483	60,067	58,457	- 2.7
Total value at current prices (R'000)	3,145	26,250	6,725	98,875	101,468	+ 2.6
Industrial and warehouse space						
Total square metres	11,051	12,127	8,315	177,438	183,163	+ 3.2
Total value at current prices (R'000)	15,476	22,010	13,417	300,594	298,382	- 0.7
Other non-residential space <sup>2/</sup>						
Total square metres	7,396	2,479	217	72,008	88,102	+ 22.4
Total value at current prices (R'000)	10,505	4,100	326	110,174	140,095	+ 27.2
<b>Total value of non-residential buildings at current prices (R'000)</b>	<b>45,446</b>	<b>77,359</b>	<b>27,426</b>	<b>794,046</b>	<b>730,106</b>	<b>- 8.1</b>
<b>Additions and alterations</b>						
Dwelling-houses						
Total square metres	60,717	55,027	74,353	492,254	495,382	+ 0.6
Total value at current prices (R'000)	74,930	85,271	114,785	630,003	726,480	+ 15.3
Other buildings <sup>3/</sup>						
Total square metres	20,854	54,693	34,482	156,109	247,511	+ 58.6
Total value at current prices (R'000)	36,062	99,278	53,886	278,397	432,265	+ 55.3
<b>Total value of additions and alterations at current prices (R'000)</b>	<b>110,992</b>	<b>184,549</b>	<b>168,671</b>	<b>908,400</b>	<b>1,158,745</b>	<b>+ 27.6</b>
<b>Total value of building plans passed at current prices (R'000)</b>	<b>276,210</b>	<b>502,086</b>	<b>460,960</b>	<b>3,367,359</b>	<b>3,702,800</b>	<b>+ 10.0</b>

1/ Other residential buildings include institutions for the disabled, boarding houses, old people's homes, hostels, hotels, motels, guest houses, holiday chalets, entertainment centres, bed-and-breakfast accommodation and casinos.

2/ Other non-residential space includes churches, sport and recreation clubs, schools, crèches, hospitals and all other non-residential space.

3/ Other buildings include additions and alterations to other residential buildings, non-residential buildings and internal alterations.

Table 33 - Building plans passed according to type of building and selected urban area: Pretoria

Type of building	August 2001	July 2002	August 2002	January 2001 to August 2001	January 2002 to August 2002	Percentage change between January 2001 to August 2001 and January 2002 to August 2002
<b>Residential buildings</b>						
Dwelling-houses smaller than 80 square metres						
Number of dwelling-houses	75	42	58	1,077	459	- 57.4
Total square metres	3,968	2,323	3,148	42,279	25,281	- 40.2
Total value at current prices (R'000)	5,676	3,327	4,555	47,252	36,672	- 22.4
Dwelling-houses equal to or larger than 80 square metres						
Number of dwelling-houses	249	199	264	1,866	1,744	- 6.5
Total square metres	71,189	56,376	60,952	539,973	456,234	- 15.5
Total value at current prices (R'000)	103,437	82,752	91,683	744,933	653,721	- 12.2
Flats and townhouses						
Number of flats and townhouses	349	135	119	1,497	1,823	+ 21.8
Total square metres	41,502	17,166	21,623	181,830	262,125	+ 44.2
Total value at current prices (R'000)	61,762	25,683	33,286	266,997	384,717	+ 44.1
Other residential buildings <sup>1/</sup>						
Total square metres	0	0	0	1,946	0	..
Total value at current prices (R'000)	0	0	0	2,919	0	..
<b>Total value of residential buildings at current prices (R'000)</b>	<b>170,875</b>	<b>111,762</b>	<b>129,524</b>	<b>1,062,101</b>	<b>1,075,110</b>	<b>+ 1.2</b>
<b>Non-residential buildings</b>						
Office and banking space						
Total square metres	16,994	0	0	76,708	70,909	- 7.6
Total value at current prices (R'000)	25,934	0	0	123,916	111,009	- 10.4
Shopping space						
Total square metres	105	413	39,598	33,009	54,575	+ 65.3
Total value at current prices (R'000)	163	620	60,033	48,891	80,018	+ 63.7
Industrial and warehouse space						
Total square metres	5,817	0	20,507	47,155	84,256	+ 78.7
Total value at current prices (R'000)	8,538	0	27,757	67,742	120,833	+ 78.4
Other non-residential space <sup>2/</sup>						
Total square metres	1,665	812	7,015	34,133	18,445	- 46.0
Total value at current prices (R'000)	1,750	1,096	10,911	50,825	27,804	- 45.3
<b>Total value of non-residential buildings at current prices (R'000)</b>	<b>36,385</b>	<b>1,716</b>	<b>98,701</b>	<b>291,374</b>	<b>339,664</b>	<b>+ 16.6</b>
<b>Additions and alterations</b>						
Dwelling-houses						
Total square metres	26,216	23,792	26,513	148,010	194,437	+ 31.4
Total value at current prices (R'000)	37,185	35,944	39,044	195,038	283,282	+ 45.2
Other buildings <sup>3/</sup>						
Total square metres	3,415	4,286	8,291	41,295	48,330	+ 17.0
Total value at current prices (R'000)	4,600	6,860	12,183	70,292	78,227	+ 11.3
<b>Total value of additions and alterations at current prices (R'000)</b>	<b>41,785</b>	<b>42,804</b>	<b>51,227</b>	<b>265,330</b>	<b>361,509</b>	<b>+ 36.2</b>
<b>Total value of building plans passed at current prices (R'000)</b>	<b>249,045</b>	<b>156,282</b>	<b>279,452</b>	<b>1,618,805</b>	<b>1,776,283</b>	<b>+ 9.7</b>

1/ Other residential buildings include institutions for the disabled, boarding houses, old people's homes, hostels, hotels, motels, guest houses, holiday chalets, entertainment centres, bed-and-breakfast accommodation and casinos.

2/ Other non-residential space includes churches, sport and recreation clubs, schools, crèches, hospitals and all other non-residential space.

3/ Other buildings include additions and alterations to other residential buildings, non-residential buildings and internal alterations.

**Table 34 - Building plans passed according to type of building and selected urban area: Bloemfontein**

Type of building	August 2001	July 2002	August 2002	January 2001 to August 2001	January 2002 to August 2002	Percentage change between January 2001 to August 2001 and January 2002 to August 2002
<b>Residential buildings</b>						
Dwelling-houses smaller than 80 square metres						
Number of dwelling-houses	68	333	51	1,215	1,456	+ 19.8
Total square metres	3,488	13,685	2,254	53,521	60,905	+ 13.8
Total value at current prices (R'000)	2,923	7,187	2,058	27,909	34,445	+ 23.4
Dwelling-houses equal to or larger than 80 square metres						
Number of dwelling-houses	25	28	16	161	231	+ 43.5
Total square metres	5,242	4,643	3,529	27,978	37,312	+ 33.4
Total value at current prices (R'000)	7,479	6,788	5,603	36,274	52,451	+ 44.6
Flats and townhouses						
Number of flats and townhouses	4	138	0	208	419	+ 101.4
Total square metres	920	17,096	0	27,660	44,257	+ 60.0
Total value at current prices (R'000)	1,380	25,137	0	42,544	63,919	+ 50.2
Other residential buildings <sup>1/</sup>						
Total square metres	0	0	1,017	1,488	3,700	+ 148.7
Total value at current prices (R'000)	0	0	1,600	1,461	8,600	+ 488.6
<b>Total value of residential buildings at current prices (R'000)</b>	<b>11,782</b>	<b>39,112</b>	<b>9,261</b>	<b>108,188</b>	<b>159,415</b>	<b>+ 47.3</b>
<b>Non-residential buildings</b>						
Office and banking space						
Total square metres	447	0	0	13,256	12,797	-3.5
Total value at current prices (R'000)	825	0	0	26,025	21,700	-16.6
Shopping space						
Total square metres	3,615	2,468	0	3,615	11,584	+ 220.4
Total value at current prices (R'000)	4,000	6,000	0	4,000	25,364	+ 534.1
Industrial and warehouse space						
Total square metres	157	5,053	356	1,961	11,441	+ 483.4
Total value at current prices (R'000)	188	6,000	320	1,626	10,443	+ 542.3
Other non-residential space <sup>2/</sup>						
Total square metres	1,665	240	0	3,199	1,483	-53.6
Total value at current prices (R'000)	3,340	260	0	6,208	1,310	-78.9
<b>Total value of non-residential buildings at current prices (R'000)</b>	<b>8,353</b>	<b>12,260</b>	<b>320</b>	<b>37,859</b>	<b>58,817</b>	<b>+ 55.4</b>
<b>Additions and alterations</b>						
Dwelling-houses						
Total square metres	3,888	4,649	5,025	24,408	36,432	+ 49.3
Total value at current prices (R'000)	4,503	6,047	7,239	30,397	44,948	+ 47.9
Other buildings <sup>3/</sup>						
Total square metres	682	3,358	871	8,032	12,574	+ 56.5
Total value at current prices (R'000)	856	5,397	3,863	17,718	32,083	+ 81.1
<b>Total value of additions and alterations at current prices (R'000)</b>	<b>5,359</b>	<b>11,444</b>	<b>11,102</b>	<b>48,115</b>	<b>77,031</b>	<b>+ 60.1</b>
<b>Total value of building plans passed at current prices (R'000)</b>	<b>25,494</b>	<b>62,816</b>	<b>20,683</b>	<b>194,162</b>	<b>295,263</b>	<b>+ 52.1</b>

1/ Other residential buildings include institutions for the disabled, boarding houses, old people's homes, hostels, hotels, motels, guest houses, holiday chalets, entertainment centres, bed-and-breakfast accommodation and casinos.

2/ Other non-residential space includes churches, sport and recreation clubs, schools, crèches, hospitals and all other non-residential space.

3/ Other buildings include additions and alterations to other residential buildings, non-residential buildings and internal alterations.

Table 35 - Buildings completed according to type of building and selected urban area: Cape Town

Type of building	August 2001	July 2002	August 2002	January 2001 to August 2001	January 2002 to August 2002	Percentage change between January 2001 to August 2001 and January 2002 to August 2002
<b>Residential buildings</b>						
Dwelling-houses smaller than 80 square metres						
Number of dwelling-houses	506	337	472	2,779	3,975	+ 43.0
Total square metres	22,505	12,377	17,415	119,490	143,749	+ 20.3
Total value at current prices (R'000)	31,569	14,873	21,404	141,656	169,878	+ 19.9
Dwelling-houses equal to or larger than 80 square metres						
Number of dwelling-houses	129	245	285	1,115	2,001	+ 79.5
Total square metres	24,040	45,290	51,561	214,193	391,800	+ 82.9
Total value at current prices (R'000)	34,921	64,468	72,531	293,914	565,067	+ 92.3
Flats and townhouses						
Number of flats and townhouses	190	120	156	1,006	886	- 11.9
Total square metres	18,318	13,069	12,563	110,344	116,113	+ 5.2
Total value at current prices (R'000)	26,469	18,229	16,878	142,623	184,666	+ 29.5
Other residential buildings <sup>1/</sup>						
Total square metres	5,314	0	0	22,149	4,143	- 81.3
Total value at current prices (R'000)	13,168	0	0	26,015	5,722	- 78.0
<b>Total value of residential buildings at current prices (R'000)</b>	<b>106,127</b>	<b>97,570</b>	<b>110,813</b>	<b>604,208</b>	<b>925,333</b>	<b>+ 53.1</b>
<b>Non-residential buildings</b>						
Office and banking space						
Total square metres	409	2,849	0	63,942	67,472	+ 5.5
Total value at current prices (R'000)	588	5,320	0	118,270	99,514	- 15.9
Shopping space						
Total square metres	3,135	5,976	0	24,217	36,373	+ 50.2
Total value at current prices (R'000)	3,136	8,992	0	28,181	42,563	+ 51.0
Industrial and warehouse space						
Total square metres	3,174	12,015	8,774	46,585	74,726	+ 60.4
Total value at current prices (R'000)	4,705	15,314	6,641	52,884	78,271	+ 48.0
Other non-residential space <sup>2/</sup>						
Total square metres	2,914	1,705	2,356	15,066	21,569	+ 43.2
Total value at current prices (R'000)	2,579	1,448	3,153	20,002	22,896	+ 14.5
<b>Total value of non-residential buildings at current prices (R'000)</b>	<b>11,008</b>	<b>31,074</b>	<b>9,794</b>	<b>219,337</b>	<b>243,244</b>	<b>+ 10.9</b>
<b>Additions and alterations</b>						
Dwelling-houses						
Total square metres	22,526	28,063	31,939	235,436	238,335	+ 1.2
Total value at current prices (R'000)	26,306	31,159	37,206	263,115	293,232	+ 11.4
Other buildings <sup>3/</sup>						
Total square metres	3,048	7,044	9,186	85,315	113,494	+ 33.0
Total value at current prices (R'000)	10,247	13,657	18,674	242,985	185,426	- 23.7
<b>Total value of additions and alterations at current prices (R'000)</b>	<b>36,553</b>	<b>44,816</b>	<b>55,880</b>	<b>506,100</b>	<b>478,658</b>	<b>- 5.4</b>
<b>Total value of buildings completed at current prices (R'000)</b>	<b>153,688</b>	<b>173,460</b>	<b>176,487</b>	<b>1,329,645</b>	<b>1,647,235</b>	<b>+ 23.9</b>

1/ Other residential buildings include institutions for the disabled, boarding houses, old people's homes, hostels, hotels, motels, guest houses, holiday chalets, entertainment centres, bed-and-breakfast accommodation and casinos.

2/ Other non-residential space includes churches, sport and recreation clubs, schools, crèches, hospitals and all other non-residential space.

3/ Other buildings include additions and alterations to other residential buildings, non-residential buildings and internal alterations.

**Table 36 - Buildings completed according to type of building and selected urban area: Port Elizabeth**

Type of building	August 2001	July 2002	August 2002	January 2001 to August 2001	January 2002 to August 2002	Percentage change between January 2001 to August 2001 and January 2002 to August 2002
<b>Residential buildings</b>						
Dwelling-houses smaller than 80 square metres						
Number of dwelling-houses	149	233	192	1,045	1,401	+ 34.1
Total square metres	6,032	9,455	9,926	44,706	59,928	+ 34.0
Total value at current prices (R'000)	7,741	12,864	13,908	57,464	81,462	+ 41.8
Dwelling-houses equal to or larger than 80 square metres						
Number of dwelling-houses	23	42	1	402	243	- 39.6
Total square metres	2,993	7,305	152	43,317	34,020	- 21.5
Total value at current prices (R'000)	3,931	10,655	161	56,382	44,374	- 21.3
Flats and townhouses						
Number of flats and townhouses	1	13	0	104	25	- 76.0
Total square metres	326	1,649	0	9,730	3,128	- 67.9
Total value at current prices (R'000)	326	2,391	0	10,803	4,438	- 58.9
Other residential buildings <sup>1/</sup>						
Total square metres	0	0	0	4,347	2,744	- 36.9
Total value at current prices (R'000)	0	0	0	7,000	3,312	- 52.7
<b>Total value of residential buildings at current prices (R'000)</b>	<b>11,998</b>	<b>25,910</b>	<b>14,069</b>	<b>131,649</b>	<b>133,586</b>	<b>+ 1.5</b>
<b>Non-residential buildings</b>						
Office and banking space						
Total square metres	106	0	868	22,600	868	- 96.2
Total value at current prices (R'000)	150	0	1,701	23,340	1,701	- 92.7
Shopping space						
Total square metres	0	0	0	19,754	1,944	- 90.2
Total value at current prices (R'000)	0	0	0	23,317	1,998	- 91.4
Industrial and warehouse space						
Total square metres	0	0	0	33,616	9,230	- 72.5
Total value at current prices (R'000)	0	0	0	40,098	7,919	-80.3
Other non-residential space <sup>2/</sup>						
Total square metres	0	0	0	4,396	2,300	- 47.7
Total value at current prices (R'000)	0	0	0	3,561	2,664	+25.2
<b>Total value of non-residential buildings at current prices (R'000)</b>	<b>150</b>	<b>0</b>	<b>1,701</b>	<b>90,316</b>	<b>14,282</b>	<b>- 84.2</b>
<b>Additions and alterations</b>						
Dwelling-houses						
Total square metres	5,954	4,227	3,372	38,800	36,090	- 7.0
Total value at current prices (R'000)	6,267	4,592	4,005	43,695	40,881	- 6.4
Other buildings <sup>3/</sup>						
Total square metres	268	1,360	315	21,383	23,894	+ 11.7
Total value at current prices (R'000)	490	2,278	299	25,445	25,967	+ 2.1
<b>Total value of additions and alterations at current prices (R'000)</b>	<b>6,757</b>	<b>6,870</b>	<b>4,304</b>	<b>69,140</b>	<b>66,848</b>	<b>- 3.3</b>
<b>Total value of buildings completed at current prices (R'000)</b>	<b>18,905</b>	<b>32,780</b>	<b>20,074</b>	<b>291,105</b>	<b>214,716</b>	<b>- 26.2</b>

1/ Other residential buildings include institutions for the disabled, boarding houses, old people's homes, hostels, hotels, motels, guest houses, holiday chalets, entertainment centres, bed-and-breakfast accommodation and casinos.

2/ Other non-residential space includes churches, sport and recreation clubs, schools, crèches, hospitals and all other non-residential space.

3/ Other buildings include additions and alterations to other residential buildings, non-residential buildings and internal alterations.

Table 37 - Buildings completed according to type of building and selected urban area: Durban

Type of building	August 2001	July 2002	August 2002	January 2001 to August 2001	January 2002 to August 2002	Percentage change between January 2001 to August 2001 and January 2002 to August 2002
<b>Residential buildings</b>						
Dwelling-houses smaller than 80 square metres						
Number of dwelling-houses	81	63	41	556	555	- 0.2
Total square metres	4,650	3,200	2,475	29,342	27,645	- 5.8
Total value at current prices (R'000)	5,419	3,574	2,755	34,688	32,002	- 7.7
Dwelling-houses equal to or larger than 80 square metres						
Number of dwelling-houses	100	68	67	689	557	- 19.2
Total square metres	19,923	12,982	11,685	132,115	101,403	- 23.2
Total value at current prices (R'000)	22,323	16,227	15,148	168,555	129,052	- 23.4
Flats and townhouses						
Number of flats and townhouses	37	33	9	426	184	- 56.8
Total square metres	6,152	5,431	432	42,698	24,782	- 42.0
Total value at current prices (R'000)	8,627	7,954	778	55,227	39,271	- 28.9
Other residential buildings <sup>1/</sup>						
Total square metres	0	0	0	0	0	..
Total value at current prices (R'000)	0	0	0	0	0	..
<b>Total value of residential buildings at current prices (R'000)</b>	<b>36,369</b>	<b>27,755</b>	<b>18,681</b>	<b>258,470</b>	<b>200,325</b>	<b>- 22.5</b>
<b>Non-residential buildings</b>						
Office and banking space						
Total square metres	8,080	4,540	220	34,139	36,598	+ 7.2
Total value at current prices (R'000)	11,069	7,650	332	52,849	55,020	+ 4.1
Shopping space						
Total square metres	0	9,045	1,730	17,984	23,707	+ 31.8
Total value at current prices (R'000)	0	20,450	1,950	30,689	37,623	+ 22.6
Industrial and warehouse space						
Total square metres	1,399	2,743	10,997	78,146	111,149	+ 42.2
Total value at current prices (R'000)	1,392	3,260	13,470	99,457	128,282	+ 29.0
Other non-residential space <sup>2/</sup>						
Total square metres	1,576	3,718	1,182	10,649	16,144	+ 51.6
Total value at current prices (R'000)	2,658	5,792	3,300	13,598	24,869	+ 82.9
<b>Total value of non-residential buildings at current prices (R'000)</b>	<b>15,119</b>	<b>37,152</b>	<b>19,052</b>	<b>196,593</b>	<b>245,794</b>	<b>+ 25.0</b>
<b>Additions and alterations</b>						
Dwelling-houses						
Total square metres	23,328	26,532	18,813	203,974	162,816	- 20.2
Total value at current prices (R'000)	27,252	29,399	20,470	223,323	177,895	- 20.3
Other buildings <sup>3/</sup>						
Total square metres	10,675	9,467	1,787	64,482	57,337	- 11.1
Total value at current prices (R'000)	16,495	25,273	2,619	123,825	114,046	- 7.9
<b>Total value of additions and alterations at current prices (R'000)</b>	<b>43,747</b>	<b>54,672</b>	<b>23,089</b>	<b>347,148</b>	<b>291,941</b>	<b>- 15.9</b>
<b>Total value of buildings completed at current prices (R'000)</b>	<b>95,235</b>	<b>119,579</b>	<b>60,822</b>	<b>802,211</b>	<b>738,060</b>	<b>- 8.0</b>

1/ Other residential buildings include institutions for the disabled, boarding houses, old people's homes, hostels, hotels, motels, guest houses, holiday chalets, entertainment centres, bed-and-breakfast accommodation and casinos.

2/ Other non-residential space includes churches, sport and recreation clubs, schools, crèches, hospitals and all other non-residential space.

3/ Other buildings include additions and alterations to other residential buildings, non-residential buildings and internal alterations.

Table 38 - Buildings completed according to type of building and selected urban area: Witwatersrand

Type of building	August 2001*	July 2002 *	August 2002	January 2001 to August 2001	January 2002 to August 2002	Percentage change between January 2001 to August 2001 and January 2002 to August 2002
<b>Residential buildings</b>						
Dwelling-houses smaller than 80 square metres						
Number of dwelling-houses	805	951	899	3,899	5,132	+ 31.6
Total square metres	32,871	37,273	33,007	152,857	187,115	+ 22.4
Total value at current prices (R'000)	33,357	32,593	25,951	143,211	158,261	+ 10.5
Dwelling-houses equal to or larger than 80 square metres						
Number of dwelling-houses	99	270	195	1,363	1,876	+ 37.6
Total square metres	21,718	62,347	47,831	297,654	415,709	+ 39.7
Total value at current prices (R'000)	30,676	89,673	73,028	423,633	623,544	+ 47.2
Flats and townhouses						
Number of flats and townhouses	73	152	281	1,313	1,857	+ 41.4
Total square metres	6,446	25,270	35,715	127,807	265,226	+ 107.5
Total value at current prices (R'000)	7,893	35,153	52,368	213,913	394,891	+ 84.6
Other residential buildings <sup>1/</sup>						
Total square metres	1,270	0	0	33,870	11,978	-64.6
Total value at current prices (R'000)	1,528	0	0	251,528	17,333	-93.1
<b>Total value of residential buildings at current prices (R'000)</b>	<b>73,454</b>	<b>157,419</b>	<b>151,347</b>	<b>1,032,285</b>	<b>1,194,029</b>	<b>+ 15.7</b>
<b>Non-residential buildings</b>						
Office and banking space						
Total square metres	5,442	48,415	4,132	226,016	169,621	-25.0
Total value at current prices (R'000)	5,400	57,023	5,498	327,458	256,850	-21.6
Shopping space						
Total square metres	477	2,006	5,779	60,592	27,137	-55.2
Total value at current prices (R'000)	954	3,829	11,298	140,095	47,508	-66.1
Industrial and warehouse space						
Total square metres	22,245	9,382	4,061	134,571	71,511	-46.9
Total value at current prices (R'000)	34,738	15,473	5,348	209,979	109,928	-47.6
Other non-residential space <sup>2/</sup>						
Total square metres	151	5,662	1,606	12,974	23,399	+ 80.4
Total value at current prices (R'000)	159	6,679	2,410	19,895	33,519	+ 68.5
<b>Total value of non-residential buildings at current prices (R'000)</b>	<b>41,251</b>	<b>83,004</b>	<b>24,554</b>	<b>697,427</b>	<b>447,805</b>	<b>-35.8</b>
<b>Additions and alterations</b>						
Dwelling-houses						
Total square metres	20,364	27,787	20,477	153,700	233,827	+ 52.1
Total value at current prices (R'000)	24,866	38,533	30,176	184,162	320,446	+ 74.0
Other buildings <sup>3/</sup>						
Total square metres	9,341	8,489	7,418	85,150	69,199	-18.7
Total value at current prices (R'000)	15,258	19,928	11,214	142,523	113,654	-20.3
<b>Total value of additions and alterations at current prices (R'000)</b>	<b>40,124</b>	<b>58,461</b>	<b>41,390</b>	<b>326,685</b>	<b>434,100</b>	<b>+ 32.9</b>
<b>Total value of buildings completed at current prices (R'000)</b>	<b>154,829</b>	<b>298,884</b>	<b>217,291</b>	<b>2,056,397</b>	<b>2,075,934</b>	<b>+ 1.0</b>

1/ Other residential buildings include institutions for the disabled, boarding houses, old people's homes, hostels, hotels, motels, guest houses, holiday chalets, entertainment centres, bed-and-breakfast accommodation and casinos.

2/ Other non-residential space includes churches, sport and recreation clubs, schools, crèches, hospitals and all other non-residential space.

3/ Other buildings include additions and alterations to other residential buildings, non-residential buildings and internal alterations.



Table 39 - Buildings completed according to type of building and selected urban area: Pretoria

Type of building	August 2001	July 2002	August 2002	January 2001 to August 2001	January 2002 to August 2002	Percentage change between January 2001 to August 2001 and January 2002 to August 2002
<b>Residential buildings</b>						
Dwelling-houses smaller than 80 square metres						
Number of dwelling-houses	47	59	76	279	611	+ 119.0
Total square metres	2,388	3,472	3,720	13,310	25,850	+ 94.2
Total value at current prices (R'000)	3,293	5,664	6,402	15,557	29,067	+ 86.8
Dwelling-houses equal to or larger than 80 square metres						
Number of dwelling-houses	93	110	131	703	742	+ 5.5
Total square metres	21,585	27,090	36,012	191,611	208,132	+ 8.6
Total value at current prices (R'000)	29,770	44,806	64,993	262,051	330,614	+ 26.2
Flats and townhouses						
Number of flats and townhouses	40	390	160	688	1,886	+ 174.1
Total square metres	3,722	32,457	46,171	68,975	195,956	+ 184.1
Total value at current prices (R'000)	5,211	47,174	114,005	94,127	318,251	+ 238.1
Other residential buildings <sup>1/</sup>						
Total square metres	0	0	0	0	0	..
Total value at current prices (R'000)	0	0	0	0	0	..
<b>Total value of residential buildings at current prices (R'000)</b>	<b>38,274</b>	<b>97,644</b>	<b>185,400</b>	<b>371,735</b>	<b>677,932</b>	<b>+ 82.4</b>
<b>Non-residential buildings</b>						
Office and banking space						
Total square metres	0	20,429	321	7,324	33,627	+ 359.1
Total value at current prices (R'000)	0	26,927	482	10,047	45,702	+ 354.9
Shopping space						
Total square metres	2,588	587	0	2,740	8,463	+ 208.9
Total value at current prices (R'000)	4,027	881	0	4,225	14,664	+ 247.1
Industrial and warehouse space						
Total square metres	986	4,570	1,267	8,604	15,063	+ 75.1
Total value at current prices (R'000)	1,528	5,896	1,710	8,062	21,853	+ 171.1
Other non-residential space <sup>2/</sup>						
Total square metres	0	0	0	5,568	2,004	- 64.0
Total value at current prices (R'000)	0	0	0	7,966	3,050	- 61.7
<b>Total value of non-residential buildings at current prices (R'000)</b>	<b>5,555</b>	<b>33,704</b>	<b>2,192</b>	<b>30,300</b>	<b>85,269</b>	<b>+ 181.4</b>
<b>Additions and alterations</b>						
Dwelling-houses						
Total square metres	2,526	3,390	5,744	10,618	23,691	+ 123.1
Total value at current prices (R'000)	3,171	5,368	9,506	13,350	35,492	+ 165.9
Other buildings <sup>3/</sup>						
Total square metres	153	704	5,290	4,774	14,063	+ 194.6
Total value at current prices (R'000)	214	2,130	8,587	6,999	22,283	+ 218.4
<b>Total value of additions and alterations at current prices (R'000)</b>	<b>3,385</b>	<b>7,498</b>	<b>18,093</b>	<b>20,349</b>	<b>57,775</b>	<b>+ 183.9</b>
<b>Total value of buildings completed at current prices (R'000)</b>	<b>47,214</b>	<b>138,846</b>	<b>205,685</b>	<b>422,384</b>	<b>820,976</b>	<b>+ 94.4</b>

1/ Other residential buildings include institutions for the disabled, boarding houses, old people's homes, hostels, hotels, motels, guest houses, holiday chalets, entertainment centres, bed-and-breakfast accommodation and casinos.

2/ Other non-residential space includes churches, sport and recreation clubs, schools, crèches, hospitals and all other non-residential space.

3/ Other buildings include additions and alterations to other residential buildings, non-residential buildings and internal alterations.

**Table 40 - Buildings completed according to type of building and selected urban area: Bloemfontein**

Type of building	August 2001	July 2002	August 2002	January 2001 to August 2001	January 2002 to August 2002	Percentage change between January 2001 to August 2001 and January 2002 to August 2002
<b>Residential buildings</b>						
Dwelling-houses smaller than 80 square metres						
Number of dwelling-houses	130	520	226	506	1,725	+ 240.9
Total square metres	5,575	21,820	9,413	21,114	73,308	+ 247.2
Total value at current prices (R'000)	2,622	10,225	5,329	12,560	36,687	+ 192.1
Dwelling-houses equal to or larger than 80 square metres						
Number of dwelling-houses	10	27	20	129	166	+ 28.7
Total square metres	2,941	4,460	3,529	26,021	28,546	+ 9.7
Total value at current prices (R'000)	4,763	5,796	3,703	32,832	34,786	+ 6.0
Flats and townhouses						
Number of flats and townhouses	15	39	140	114	280	+ 145.6
Total square metres	1,996	6,553	15,771	9,728	31,985	+ 228.8
Total value at current prices (R'000)	2,395	8,572	22,533	13,589	46,434	+ 241.7
Other residential buildings <sup>1/</sup>						
Total square metres	0	0	0	151	1,428	+ 845.7
Total value at current prices (R'000)	0	0	0	211	1,461	+ 592.4
<b>Total value of residential buildings at current prices (R'000)</b>	<b>9,780</b>	<b>24,593</b>	<b>31,565</b>	<b>59,192</b>	<b>119,368</b>	<b>+ 101.7</b>
<b>Non-residential buildings</b>						
Office and banking space						
Total square metres	0	0	0	11,103	4,244	- 61.8
Total value at current prices (R'000)	0	0	0	21,883	7,800	- 64.4
Shopping space						
Total square metres	0	0	0	2,812	1,340	- 52.3
Total value at current prices (R'000)	0	0	0	3,006	2,500	- 16.8
Industrial and warehouse space						
Total square metres	0	326	0	4,810	4,188	- 12.9
Total value at current prices (R'000)	0	196	0	3,823	3,190	- 16.6
Other non-residential space <sup>2/</sup>						
Total square metres	234	5,764	0	5,753	5,764	+ 0.2
Total value at current prices (R'000)	281	20,000	0	10,451	20,000	+ 91.4
<b>Total value of non-residential buildings at current prices (R'000)</b>	<b>281</b>	<b>20,196</b>	<b>0</b>	<b>39,163</b>	<b>33,490</b>	<b>- 14.5</b>
<b>Additions and alterations</b>						
Dwelling-houses						
Total square metres	1,383	3,249	3,367	24,386	40,117	+ 64.5
Total value at current prices (R'000)	1,439	3,890	3,794	26,599	45,212	+ 70.0
Other buildings <sup>3/</sup>						
Total square metres	45	657	2,903	18,247	8,852	- 51.5
Total value at current prices (R'000)	111	1,192	4,727	89,868	21,456	- 76.1
<b>Total value of additions and alterations at current prices (R'000)</b>	<b>1,550</b>	<b>5,082</b>	<b>8,521</b>	<b>116,467</b>	<b>66,668</b>	<b>- 42.8</b>
<b>Total value of buildings completed at current prices (R'000)</b>	<b>11,611</b>	<b>49,871</b>	<b>40,086</b>	<b>214,822</b>	<b>219,526</b>	<b>+ 2.2</b>

1/ Other residential buildings include institutions for the disabled, boarding houses, old people's homes, hostels, hotels, motels, guest houses, holiday chalets, entertainment centres, bed-and-breakfast accommodation and casinos.

2/ Other non-residential space includes churches, sport and recreation clubs, schools, crèches, hospitals and all other non-residential space.

3/ Other buildings include additions and alterations to other residential buildings, non-residential buildings and internal alterations.

## Additional information

### Explanatory Notes

<b>Introduction</b>	<p><b>1</b> Statistics South Africa (Stats SA) conducts a monthly Building Statistics Survey collecting information regarding building plans approved and buildings completed, financed by the private sector, from a sample of local government institutions in South Africa. This statistical release contains information of building plans passed and buildings completed in respect of residential buildings, non-residential buildings and additions and alterations according to province and selected urban areas.</p> <p><b>2</b> In order to improve timeliness of the publication, some information for the current month have been estimated due to late submission by respondents. These estimates will be revised in the next statistical release(s) as soon as actual information is available.</p> <p><b>3</b> The actual and seasonally adjusted values (at current and at constant 2000 prices) and the percentage change of building plans passed and buildings completed according to type of building are reflected monthly from January 2000 in this statistical release (cf. tables 1 to 8).</p>
<b>Scope of the survey</b>	<p><b>4</b> This survey covers local government institutions conducting activities for the private sector regarding -</p> <ul style="list-style-type: none"> <li>• approval of building plans; and</li> <li>• final inspection of completed buildings.</li> </ul>
<b>Classification</b>	<p><b>5</b> The 1993 edition of the Standard Industrial Classification of all Economic Activities, (SIC) Fifth Edition, Report No. 09-90-02, was used to classify the statistical units. The SIC is based on the 1990 International Standard Industrial Classification of all Economic Activities (ISIC) with suitable adaptations for local conditions.</p> <p><b>6</b> The twelfth and last published edition of the Standard Code List of Areas, Report No. 09-09-03 (1994) was used to classify the statistical units according to province. The cities, towns and non-urban areas listed in this report are codified within magisterial district and province. The code list was compiled by Stats SA in collaboration with other interested bodies and the first edition was distributed in June 1977.</p>
<b>Statistical unit</b>	<p><b>7</b> The statistical unit for the collection of information is a local government institution. Local government institutions include district municipalities, metropolitan municipalities and local municipalities.</p>
<b>Survey methodology and design</b>	<p><b>8</b> The sample for the monthly Building Statistics Survey consists of the largest local government institutions in South Africa, i.e. those that account for approximately 85% of the total rand value of buildings completed by the private sector.</p> <p><b>9</b> The survey is collected by mail each month from a sample of 128 local government institutions.</p>
<b>Constant prices</b>	<p><b>10</b> The value of building plans passed and buildings completed at constant prices measures building activities in terms of ruling prices in a specific base year, which is 2000 as from May 2002.</p> <p><b>11</b> The value of building plans passed at constant prices for each month is obtained by deflating the values at current prices with a price index known as the “lump sum domestic buildings” as published in statistical release P0151 – JBCC Contract Price Adjustment Provisions Work Group Indices. In order to be applicable, these indices (base February 1991=100) are converted to the base year 2000=100.</p>

- 12 The value of buildings completed at constant prices is obtained by deflating the values at current prices with the same price index which is used to calculate building plans passed at constant prices (cf. paragraph 11). The value of buildings completed is reported as at the time the plans were passed. Since the completion of buildings may extend over a few months to a few years, the current value of buildings completed is deflated by price indices as at the time the plans were passed in order to calculate the value of buildings completed at the time the plans were passed. Therefore, the duration of the completion of different types of buildings are taken into account in ascertaining the deflators e.g. the value of dwelling-houses completed at constant prices at January 2000 is obtained by deflating the current value of dwelling-houses completed for January 2000 with the price index of a month six months prior to January 2000. Furthermore, the value of other residential buildings, non-residential buildings and additions and alterations at constant prices is obtained by deflating the current values with price indices of 12 months, 18 months and 12 months prior to the relevant month, respectively.
- Seasonal adjustment**
- 13 Seasonally adjusted estimates of building plans passed and buildings completed are generated each month, using the X-11 Seasonal Adjustment Program developed by US Bureau of the Census Economic Research and Analyses Division, 1968.
- 14 Seasonal adjustment is a means of removing the estimated effects of normal seasonal variation from the series so that the effects of other influences on the series can be more clearly recognised. Seasonal adjustment does not aim to remove irregular or non-seasonal influences which may be present in any particular month. Influences that are volatile or unsystematic can still make it difficult to interpret the movement of the series even after adjustment for seasonal variations. Therefore, the month-to-month movements of seasonally adjusted estimates may not be reliable indicators of trend behaviour.
- Trend cycle**
- 15 The trend is a long-term pattern or movement of a time series. The X-11 Seasonal Adjustment Program is used for smoothing seasonally adjusted data.
- Related publications**
- 16 Users may also wish to refer to the following publications:
- P5041.3 – Building statistics issued annually.
  - P9101.2 – Actual and expected expenditure on construction by the public sector per statistical region issued annually.
  - Bulletin of Statistics issued quarterly.
  - South African Statistics issued annually.
- Unpublished statistics**
- 17 In some cases Stats SA can also make available statistics which are not published. The statistics can be made available in one or more of the following ways: computer printouts, CD and diskette. Generally a charge is made for providing unpublished statistics.
- Rounding-off of figures**
- 18 The figures in the tables have, where necessary, been rounded off to the nearest digit shown. There may, therefore, be slight discrepancies between the sums of the constituent items and the totals shown.
- Pre-release policy**
- 19 Stats SA has adopted the confidential pre-release policy in respect of selected economic indicators and specific government departments. The policy accords with practice among leading statistical agencies. The statistical integrity of the information and strict observance of the release time has been assured by the following procedure:
- 20 In respect of this statistical release, an official representative from the Office of the President, the Department of Trade and Industry (DTI), National Treasury and the South African Reserve Bank (SARB) will receive a copy of the release on a strictly confidential basis two hours in advance of the public issue.
- 21 Stats SA pre-release policy may be inspected at its Website, [www.statssa.gov.za](http://www.statssa.gov.za)

**Symbols and abbreviations**

..	no meaningful percentage change between two specified periods available since either one or both of the totals are nil
0	nil or figure too small to publish
*	revised
Stats SA	Statistics South Africa
SIC	Standard Industrial Classification of all Economic Activities
ISIC	International Standard Industrial Classification of all Economic Activities
JBCC	Joint Building Contracts Committee
CD	Compact Disc
US	United States
SARB	South African Reserve Bank
DTI	Department of Trade and Industry

**Technical notes****Response rate**

The response rate for August 2002 is 99,2%.

## Local government institutions covered in the sample survey

**Table C - Classification of towns and cities according to new municipalities and previous local government institution by province**

<b>Western Cape</b>			
<b>Sample survey as from January 2002</b>		<b>Sample survey up to December 2001</b>	
<b>Name of municipality</b>	<b>Cities and towns</b>	<b>Name of previously published local government institution</b>	<b>Cities and towns</b>
Breede Valley Municipality	Worcester Rawsonville De Doorns Touws River	Worcester	Worcester
		Breede River District Council	Rural areas - Dissolved as from July 2001. Activities were taken over by various local government institutions.
<b>City of Cape Town -</b> Blaauwberg Administration	Milnerton	Blaauwberg Municipality	Milnerton
Cape Town Administration	Cape Town	City of Cape Town	Cape Town
Helderberg Administration	Gordon's Bay, Somerset West and Strand	Helderberg Municipality	Gordon's Bay, Somerset West and Strand
Ikapa Administration	Guguletu, Langa, Khayelitsha and Nyanga	Ikapa	Guguletu, Langa, Khayelitsha and Nyanga
Oostenberg Administration -	Brackenfell Kraaifontein Kuils River Melton Rose - Blue Downs	Oostenberg Municipality -	Brackenfell Kraaifontein Kuils River Melton Rose - Blue Downs
South Peninsula Administration -	Fish Hoek Simon's Town Plumstead	Fish Hoek Simon's Town South Peninsula Municipality	Fish Hoek Simon's Town Plumstead
Tygerberg Administration - Bellville Administration Durbanville Administration Goodwood Administration Lingeletu West Administration Parow Administration South Administration	City of Tygerberg - Bellville Durbanville Goodwood Lingeletu West Parow Belhar, Delft, Driftsands and Efuleni	City of Tygerberg - Bellville Administration Durbanville Administration Goodwood Administration Lingeletu West Administration Parow Administration South Administration	Bellville Durbanville Goodwood Lingeletu West Parow Belhar, Delft, Driftsands and Efuleni
Drakenstein Municipality	Paarl Wellington Saron <sup>1/</sup>	Paarl Wellington	Paarl Wellington
George Municipality	George, Herolds Bay, Pacaltsdorp and Thembalethu Wilderness <sup>1/</sup>	George	George, Herolds Bay, Pacaltsdorp and Thembalethu

<sup>1/</sup> Included in sample survey as from January 2001

**Table C - Classification of towns and cities according to new municipalities and previous local government institution by province (continued)**

<b>Western Cape (concluded)</b>			
<b>Sample survey as from January 2002</b>		<b>Sample survey up to December 2001</b>	
<b>Name of municipality</b>	<b>Cities and towns</b>	<b>Name of previously published local government institution</b>	<b>Cities and towns</b>
Knysna Municipality	Knysna and Khayaletu Sedgfield	Knysna Sedgfield	Knysna and Khayaletu Sedgfield
Mossel Bay Municipality	Mossel Bay, Boggom's Bay, Kleinbrak, Rheeboek and Tergniet Friemersheim, Herbertsdale and Great Brak River <sup>1/</sup>	Mossel Bay	Mossel Bay, Boggom's Bay, Kleinbrak, Rheeboek and Tergniet
Oudtshoorn Municipality	Oudtshoorn De Rust/Blomnek Dysselsdorp	Oudtshoorn	Oudtshoorn
Overberg District Council	Rural areas - Dissolved as from July 2001. Activities were taken over by various local government institutions.	Overberg District Council	Rural areas
Overstrand Municipality	Hermanus, Fisher Haven, Hawston, Onrus River, Sandbaai, Vermont and Zwelihle Hangklip - Kleinmond, Betty's Bay and Rooi-Els Gansbaai and Stanford <sup>1/</sup>	Hermanus Hangklip - Kleinmond	Hermanus, Fisher Haven, Hawston, Onrus River, Sandbaai, Vermont and Zwelihle Hangklip - Kleinmond, Betty's Bay and Rooi-Els
Plettenberg Bay Municipality	Plettenberg Bay Knoetzie <sup>1/</sup>	Plettenberg Bay	Plettenberg Bay
Saldanha Bay Municipality	Vredenburg and Saldanha Hopefield and Langebaan <sup>1/</sup>	Western Coast Peninsula	Vredenburg and Saldanha
Stellenbosch Municipality	Stellenbosch Franschhoek and Pniel	Stellenbosch	Stellenbosch
Swartland Municipality	Malmesbury Darling, Koringberg, Moorreesburg and Yzerfontein <sup>1/</sup>	Malmesbury	Malmesbury
		West Coast District Council	Rural areas - Dissolved as from July 2001. Activities were taken over by various local government institutions.
		Winelands District Council	Rural areas - Dissolved as from July 2001. Activities were taken over by various local government institutions.

<sup>1/</sup> Included in sample survey as from January 2001

**Table C - Classification of towns and cities according to new municipalities and previous local government institution by province (continued)**

<b>Eastern Cape</b>			
<b>Sample survey as from January 2002</b>		<b>Sample survey up to December 2001</b>	
<b>Name of municipality</b>	<b>Cities and towns</b>	<b>Name of previously published local government institution</b>	<b>Cities and towns</b>
Buffalo City Municipality - East London Area	East London, Beacon Bay, Gompo Town, Gonubie and Mdantsane	East London	East London, Beacon Bay, Gompo Town, Gonubie and Mdantsane
King William's Town Area	King William's Town, Bisho and Zwelitsha	King William's Town	King William's Town, Bisho and Zwelitsha
King Sabata Dalindyebo Municipality - Umtata Area	Umtata	Umtata	Umtata
Kouga Municipality - Jeffreys Bay Area	Jeffreys Bay	Jeffreys Bay	Jeffreys Bay
Makana Municipality - Grahamstown Area	Grahamstown and Rhini Township	Grahamstown	Grahamstown and Rhini Township
Maletswai Municipality - Aliwal North Area	Aliwal North and Dukathole	Aliwal - Maletswai	Aliwal North and Dukathole
Ndlambe Municipality	Port Alfred Alexandria Bathurst Boesmansriviermond Kenton-on-Sea	Port Alfred	Port Alfred
Nelson Mandela Metropolitan Municipality - Despatch Area	Despatch	Despatch	Despatch
Port Elizabeth Area	Port Elizabeth, Ibhayi and Motherwell	Port Elizabeth	Port Elizabeth, Ibhayi and Motherwell
Uitenhage Area	Uitenhage and KwaNobuhle	Uitenhage	Uitenhage and KwaNobuhle
		Western District Council	Rural areas - Dissolved as from July 2001. Activities were taken over by various local government institutions.



**Table C - Classification of towns and cities according to new municipalities and previous local government institution by province (continued)**

<b>Northern Cape</b>			
<b>Sample survey as from January 2002</b>		<b>Sample survey up to December 2001</b>	
<b>Name of municipality</b>	<b>Cities and towns</b>	<b>Name of previously published local government institution</b>	<b>Cities and towns</b>
//Khara Hais Municipality	Upington, Mothibistad and Paballelo	Upington	Upington, Mothibistad and Paballelo
		Benede-Oranje District Council	Rural areas - Dissolved as from July 2001. Activities were taken over by various local government institutions.
Ga-Segonyana Municipality	Kuruman	Kuruman	Kuruman
Kai! Garib Municipality - Keimoes Area	Keimoes Eksteenskuil <sup>1/</sup> Kenhardt <sup>1/</sup>	Keimoes	Keimoes
		Namaqualand District Council	Rural areas - Dissolved as from July 2001. Activities were taken over by various local government institutions.
Solplaatjie Municipality	Kimberley and Galeshewe Ritchie <sup>1/</sup>	Kimberley	Kimberley and Galeshewe

<sup>1/</sup> Included in sample survey as from January 2001

**Table C - Classification of towns and cities according to new municipalities and previous local government institution by province (continued)**

<b>Free State</b>			
<b>Sample survey as from January 2002</b>		<b>Sample survey up to December 2001</b>	
<b>Name of municipality</b>	<b>Cities and towns</b>	<b>Name of previously published local government institution</b>	<b>Cities and towns</b>
Dihlabeng Municipality	Bethlehem and Bohlokong Clarens Mashae-Fourie Paul Roux	Bethlehem	Bethlehem and Bohlokong
Maluti a Phofung Municipality Harrismith Area Phuthaditjhaba Area	Harrismith and Tsiamé Phuthaditjhaba	Harrismith Phuthaditjhaba	Harrismith and Tsiamé Phuthaditjhaba
Mangaung Municipality - Bloemfontein Area  Botshabelo Area	Bloemfontein, Bainsvlei, Bloemspuit and Mangaung Botshabelo	Bloemfontein  Botshabelo	Bloemfontein, Bainsvlei, Bloemspuit and Mangaung Botshabelo
Mantsopa Municipality	Ladybrand and Manyatseng Excelsior Hobhouse Thaba Patchoa Tweespruit/Kopano	Ladybrand	Ladybrand and Manyatseng
Matjhabeng Municipality - Odendaalsrus Area  Virginia Area Welkom Area	Odendaalsrus, Allanridge and Kutlwanong Virginia and Meloding Welkom and Thabong	Odendaalsrus  Virginia Welkom	Odendaalsrus, Allanridge and Kutlwanong Virginia and Meloding Welkom and Thabong
Metsimaholo Municipality - Deneysville Area  Sasolburg Area	Deneysville and Refengkgotso  Sasolburg and Zamdela	Deneysville/Refengkgotso  Sasolburg/Zamdela	Deneysville and Refengkgotso Sasolburg and Zamdela
Moqhaka Municipality - Kroonstad Area	Kroonstad and Maokeng	Kroonstad	Kroonstad and Maokeng
Nqwathe Municipality	Parys Edenville Heibron Koppies Vredefort	Parys	Parys

**Table C - Classification of towns and cities according to new municipalities and previous local government institution by province (continued)**

<b>KwaZulu-Natal</b>			
<b>Sample survey as from January 2002</b>		<b>Sample survey up to December 2001</b>	
<b>Name of municipality</b>	<b>Cities and towns</b>	<b>Name of previously published local government institution</b>	<b>Cities and towns</b>
Emnambithi Municipality	Ladysmith Colenso	Ladysmith	Ladysmith
eThekwinini Municipality - Inner West Operational Entity	Clermont, KwaDabeka, KwaNdengezi, New Germany, Pinetown, Queensburgh, Reservoir Hills, Shallcross and Westville	Inner West City Council	Clermont, KwaDabeka, KwaNdengezi, New Germany, Pinetown, Queensburgh, Reservoir Hills, Shallcross and Westville
Outer West Operational Entity	Assagay, Botha's Hill, Cato Ridge, Drummond, Everton, Gillitts, Hillcrest, Inchanga, Kloof, Mpumalanga and Waterfall	Outer West Local Council	Assagay, Botha's Hill, Cato Ridge, Drummond, Everton, Gillitts, Hillcrest, Inchanga, Kloof, Mpumalanga and Waterfall
KwaMashu	KwaMashu	KwaMashu	KwaMashu
Durban- North, South and Central	Durban	Durban	Durban
North Operational Entity - Tonga	Tonga, Canelands and Hambanati	North Local Council - Tonga	Tonga, Canelands and Hambanati
Umhlanga Rocks	Umhlanga Rocks, Mount Edgecombe and Umdloti Beach	North Local Council - Umhlanga	Umhlanga Rocks, Mount Edgecombe and Umdloti Beach
Verulam	Verulam	North Local Council - Verulam	Verulam
South Operational Entity	Amanzimtoti, Isipingo, Kingsburgh, KwaMakuta and Umbogintwini	South Local Council	Amanzimtoti, Isipingo, Kingsburgh, KwaMakuta and Umbogintwini
Umlazi	Umlazi	Umlazi	Umlazi
Greater Kokstad Municipality	Kokstad	Kokstad	Kokstad
Hibiscus Coast Municipality	Margate and Uvongo Marina Beach, San Lameer, Southbroom and Trafalgar Port Shepstone Hibberdene Munster, Port Edward and Palm Beach	Margate Mpenjati/Southbroom  Port Shepstone  Umtamvuna/Port Edward	Margate and Uvongo Marina Beach, San Lameer, Southbroom and Trafalgar Port Shepstone  Munster, Port Edward and Palm Beach

**Table C - Classification of towns and cities according to new municipalities and previous local government institution by province (continued)**

<b>KwaZulu-Natal (concluded)</b>			
<b>Sample survey as from January 2002</b>		<b>Sample survey up to December 2001</b>	
<b>Name of municipality</b>	<b>Cities and towns</b>	<b>Name of previously published local government institution</b>	<b>Cities and towns</b>
KwaDukuza Municipality - Dolphin Coast Administrative Entity	Ballito, Etete, Shakaskraal, Tinley Manor Beach and Umhlali Beach	Dolphin Coast Borough	Ballito, Etete, Shakaskraal, Tinley Manor Beach and Umhlali Beach
Stanger Administrative Entity	Blythedale Beach, Shakaville and Stanger Nkwazi/Stanger	KwaDukuza/Stanger	Blythedale Beach, Shakaville and Stanger
Msunduzi Municipality	Edendale Ashburton <sup>1/</sup> , Pietermaritzburg and Msundini	Edendale Pietermaritzburg/Msundini	Edendale Pietermaritzburg and Msundini
Newcastle Municipality	Blaauwboschlaagte, Madadeni, Osizweni and Newcastle	Newcastle	Blaauwboschlaagte, Madadeni, Osizweni and Newcastle
Umdoni Municipality	Pennington Scottburgh/Umzinto	Pennington	Pennington
Umhlathuze Municipality	Empangeni and Ngwelezana Richards Bay	Empangeni-Ngwelezana Richards Bay	Empangeni and Ngwelezana Richards Bay
Umnjeni Municipality	Hilton Howick	Hilton Howick	Hilton Howick
Uthungulu District Council <sup>1/</sup>	Kwambonati, Nkandla and Ntambanana Municipalities	Development and Services Board - North Coast	Kwambonati, Nkandla, Tugela Mouth, Umlalazi, Mahlabathini, Ukuza, Umbambo, Egwavuma and Hluhlumi

<sup>1/</sup> Included in sample survey as from January 2001

**Table C - Classification of towns and cities according to new municipalities and previous local government institution by province (continued)**

<b>North West</b>			
<b>Sample survey as from January 2002</b>		<b>Sample survey up to December 2001</b>	
<b>Name of municipality</b>	<b>Cities and towns</b>	<b>Name of previously published local government institution</b>	<b>Cities and towns</b>
		Bophirima District Council	Rural areas - Dissolved as from July 2001. Activities were taken over by various local government institutions.
Ditsobotla Local Municipality	Lichtenburg and Itsoseng Biesiesvlei <sup>1/</sup> Coligny <sup>1/</sup>	Lichtenburg	Lichtenburg and Itsoseng
Klerksdorp Local Municipality	Klerksdorp Orkney and Kanana Hartbeesfontein <sup>1/</sup> Stillfontein <sup>1/</sup>	Klerksdorp Orkney	Klerksdorp Orkney and Kanana
GaRankuwa	As from January 2002 included in City of Tshwane - Northern Metropolitan Substructure (Gauteng)	GaRankuwa	GaRankuwa
Madibeng Local Municipality	Brits and Lethabile Hartbeespoort	Brits	Brits and Lethabile
Mafikeng Local Municipality	Mmabatho and Mafikeng	Mmabatho	Mmabatho and Mafikeng
Naledi Municipality	Vryburg	Vryburg	Vryburg
Potchefstroom Municipality	Potchefstroom	Potchefstroom	Potchefstroom
Rustenburg Local Municipality - Rustenburg Area	Rustenburg	Rustenburg	Rustenburg
Zeerust Local Municipality	Zeerust	Zeerust	Zeerust

<sup>1/</sup> Included in sample survey as from January 2001

**Table C - Classification of towns and cities according to new municipalities and previous local government institution by province (continued)**

<b>Gauteng</b>			
<b>Sample survey as from January 2002</b>		<b>Sample survey up to December 2001</b>	
<b>Name of municipality</b>	<b>Cities and towns</b>	<b>Name of previously published local government institution</b>	<b>Cities and towns</b>
<b>City of Johannesburg Metropolitan Municipality</b>	Alexandra and Sandton  Midrand, Rabie Ridge and Ivory Park Randburg  Ennerdale, Lenasia and Johannesburg Diepmeadow, Dobsonville and Roodepoort Soweto	<b>Greater Johannesburg -</b> Eastern Metropolitan Local Council Midrand Metropolitan Local Council Northern Metropolitan Local Council Southern Metropolitan Local Council Western Metropolitan Local Council Soweto	Alexandra and Sandton  Midrand, Rabie Ridge and Ivory Park Randburg  Ennerdale, Lenasia and Johannesburg Diepmeadow, Dobsonville and Roodepoort Soweto
<b>City of Tshwane Metropolitan Municipality -</b> Centurion Town Council City Council of Pretoria  Northern Pretoria Metropolitan Substructure	Centurion Pretoria, Atteridgeville and Mamelodi Akasia, Elandsdoorn, Klipfontein, Kruisfontein and Soshanguve Hammanskraal GaRankuwa <sup>2/</sup> Temba Winterveld <sup>2/</sup>	Centurion Pretoria  Akasia	Centurion Pretoria, Atteridgeville and Mamelodi Akasia, Elandsdoorn, Klipfontein, Kruisfontein and Soshanguve
		Eastern Services Council - Pretoria Area	Rural areas - Dissolved as from July 2001. Activities were taken over by various local government institutions.
<b>Ekurheleni Metropolitan Municipality -</b> Service Delivery Centre of: Edenvale - Modderfontein Alberton Benoni  Boksburg Brakpan Duduza Germiston  Kempton Park Nigel Springs	Edenvale - Modderfontein Alberton and Tokoza Benoni, Daveyton and Wattville Boksburg and Vosloorus Brakpan and Tsakane Duduza Germiston, Bedfordview and Katlehong Kempton Park and Tembisa Nigel Springs and KwaThema	Edenvale - Modderfontein Alberton Benoni  Boksburg Brakpan Duduza Germiston  Kempton Park Nigel Springs	Edenvale - Modderfontein Alberton and Tokoza Benoni, Daveyton and Wattville Boksburg and Vosloorus Brakpan and Tsakane Duduza Germiston, Bedfordview and Katlehong Kempton Park and Tembisa Nigel Springs and KwaThema

<sup>2/</sup> Was previously included under North West

**Table C - Classification of towns and cities according to new municipalities and previous local government institution by province (continued)**

<b>Gauteng (concluded)</b>			
<b>Sample survey as from January 2002</b>		<b>Sample survey up to December 2001</b>	
<b>Name of municipality</b>	<b>Cities and towns</b>	<b>Name of previously published local government institution</b>	<b>Cities and towns</b>
Emfuleni Local Municipality	Vanderbijlpark Vereeniging and Evaton Sebokeng (Boipatong, Bophelong and Sharpville)	Vanderbijlpark Vereeniging Sebokeng	Vanderbijlpark Vereeniging and Evaton Sebokeng (Boipatong, Bophelong and Sharpville)
Kungwini Local Municipality – Bronkhorstspuit Area	Bronkhorstspuit	Bronkhorstspuit	Bronkhorstspuit
Lesedi Local Municipality	Heidelberg and Ratanda	Heidelberg	Heidelberg and Ratanda
Merafong City Local Municipality	Carletonville, Wedela, Khutsong and Wilverdient	Carletonville	Carletonville, Wedela, Khutsong and Wilverdient
Midvaal Local Municipality	Meyerton	Meyerton	Meyerton
Mogale City Municipality	Krugersdorp, Kagiso and Munsieville	Krugersdorp	Krugersdorp, Kagiso and Munsieville
Randfontein Local Municipality	Randfontein and Mohlakeng	Randfontein	Randfontein and Mohlakeng
Westonaria Local Municipality	Westonaria and Bekkersdal	Westonaria	Westonaria and Bekkersdal

**Table C - Classification of towns and cities according to new municipalities and previous local government institution by province (continued)**

<b>Mpumalanga</b>			
<b>Sample survey as from January 2002</b>		<b>Sample survey up to December 2001</b>	
<b>Name of municipality</b>	<b>Cities and towns</b>	<b>Name of previously published local government institution</b>	<b>Cities and towns</b>
Delmas Municipality	Delmas and Botleng	Delmas	Delmas and Botleng
Emalahleni Local Municipal Council- KwaGuqa Area Witbank Area	KwaGuqa Witbank	KwaGuqa Witbank	KwaGuqa Witbank
Govan Mbeki Municipality - Secunda Area	Evander, Embalenhle and Secunda	Highveldridge Transitional Council	Evander, Embalenhle and Secunda
Mbombela Local Municipality	Nelspruit and Kanyamazane White River Hazyview <sup>1/</sup>	Nelspruit White River	Nelspruit White River
Middelburg Municipality	Middelburg and Mhluzi Hendrina <sup>1/</sup>	Middelburg	Middelburg and Mhluzi
Msukaligwa Municipality	Ermelo, Cassim Park and Wesselton	Ermelo	Ermelo, Cassim Park and Wesselton
Nkomazi Municipality - Komatipoort Area  Malelane Area	Komatipoort and Kamaqhekeza Malelane, Hectorspruit and Kamhlushwa	Komatipoort  Malelane	Komatipoort and Kamaqhekeza Malelane, Hectorspruit and Kamhlushwa

<sup>1/</sup> Included in sample survey as from January 2001



**Table C - Classification of towns and cities according to new municipalities and previous local government institution by province (concluded)**

<b>Limpopo</b>			
<b>Sample survey as from January 2002</b>		<b>Sample survey up to December 2001</b>	
<b>Name of municipality</b>	<b>Cities and towns</b>	<b>Name of previously published local government institution</b>	<b>Cities and towns</b>
		Bosveld District Council	Rural areas - Dissolved as from July 2001. Activities were taken over by various local government institutions.
Greater Tzaneen Municipality	Tzaneen and Nkowakowa	Letaba	Tzaneen and Nkowakowa
Musina Municipality	Musina (previously Messina)	Messina	Messina
Modimolle Municipality	Modimolle (previously Nylstroom)	Nylstroom	Nylstroom
Mogolakwena Municipality	Mokopane (previously Potgietersrus)	Potgietersrus	Potgietersrus
Mookgopong Municipality	Naboomspruit and Mookgopong	Naboomspruit	Naboomspruit and Mookgopong
Polokwane Municipality	Polokwane (previously Pietersburg) and Seshego	Pietersburg - Polokwane	Pietersburg and Seshego
Thabazimbi Municipality	Thabazimbi	Thabazimbi	Thabazimbi

**Table D - Classification of selected urban areas according to new municipalities and previous local government institution**

<b>Sample survey as from January 2002</b>		<b>Sample survey up to December 2001</b>	
<b>Name of selected urban area and municipality</b>	<b>Cities and towns</b>	<b>Name of selected urban area and previously published local government institution</b>	<b>Cities and towns</b>
<b>Cape Town</b> City of Cape Town - Blaauwberg Administration	Milnerton	<b>Cape Town</b> Blaauwberg Municipality	Milnerton
Cape Town Administration	Cape Town	City of Cape Town	Cape Town
Ikapa Administration	Guguletu, Langa, Khayelitsha and Nyanga	Ikapa	Guguletu, Langa, Khayelitsha and Nyanga
Oostenberg Administration -	Kraaifontein Melton Rose - Blue Downs	Oostenberg Municipality -	Kraaifontein Melton Rose - Blue Downs
South Peninsula Administration -	Fish Hoek Simon's Town Plumstead	Fish Hoek Simon's Town South Peninsula Municipality	Fish Hoek Simon's Town Plumstead
Tygerberg Administration - Bellville Administration Durbanville Administration Goodwood Administration Lingeletu West Administration	City of Tygerberg - Bellville Durbanville Goodwood Lingeletu West	City of Tygerberg - Bellville Administration Durbanville Administration Goodwood Administration Lingeletu West Administration	Bellville Durbanville Goodwood Lingeletu West
Parow Administration South Administration	Parow Belhar, Delft, Driftsands and Efuleni	Parow Administration South Administration	Parow Belhar, Delft, Driftsands and Efuleni
<b>Port Elizabeth</b> Nelson Mandela Metropolitan Municipality - Despatch Area	Despatch	<b>Port Elizabeth</b> Despatch	Despatch
Port Elizabeth Area	Port Elizabeth, Ibhayi and Motherwell	Port Elizabeth	Port Elizabeth, Ibhayi and Motherwell
Uitenhage Area	Uitenhage and KwaNobuhle	Uitenhage	Uitenhage and KwaNobuhle

**Table D - Classification of selected urban areas according to new municipalities and previous local government institution (continued)**

Sample survey as from January 2002		Sample survey up to December 2001	
Name of selected urban area and municipality	Cities and towns	Name of selected urban area and previously published local government institution	Cities and towns
<b>Durban</b> <b>eThekweni Municipality -</b> Inner West Operational Entity	Clermont, KwaDabeka, KwaNdengezi, New Germany, Pinetown, Queensburgh, Reservoir Hills, Shallcross and Westville	<b>Durban</b> Inner West City Council	Clermont, KwaDabeka, KwaNdengezi, New Germany, Pinetown, Queensburgh, Reservoir Hills, Shallcross and Westville
Outer West Operational Entity	Assagay, Botha's Hill, Cato Ridge, Drummond, Everton, Gillitts, Hillcrest, Inchanga, Kloof, Mpumalanga and Waterfall	Outer West Local Council	Assagay, Botha's Hill, Cato Ridge, Drummond, Everton, Gillitts, Hillcrest, Inchanga, Kloof, Mpumalanga and Waterfall
Durban- North, South and Central	Durban	Durban	Durban
North Operational Entity - Verulam	Verulam	North Local Council - Verulam	Verulam
South Operational Entity	Amanzimtoti, Isipingo, Kingsburgh, KwaMakuta and Umbogintwini	South Local Council	Amanzimtoti, Isipingo, Kingsburgh, KwaMakuta and Umbogintwini
<b>Pretoria</b> City of Tshwane Metropolitan Municipality - Centurion Town Council City Council of Pretoria	Centurion Pretoria, Atteridgeville and Mamelodi	<b>Pretoria</b> Centurion Pretoria	Centurion Pretoria, Atteridgeville and Mamelodi
Northern Pretoria Metropolitan Substructure	Akasia, Elandsdoorn, Klipfontein, Kruisfontein and Soshanguve Hammanskraal GaRankuwa Temba Winterveld	Akasia	Akasia, Elandsdoorn, Klipfontein, Kruisfontein and Soshanguve

**Table D - Classification of selected urban areas according to new municipalities and previous local government institution (concluded)**

Sample survey as from January 2002		Sample survey up to December 2001	
Name of selected urban area and municipality	Cities and towns	Name of selected urban area and previously published local government institution	Cities and towns
<b>Witwatersrand</b> City of Johannesburg Metropolitan Municipality	Alexandra and Sandton  Midrand, Rabie Ridge and Ivory Park Randburg  Ennerdale, Lenasia and Johannesburg Diepmeadow, Dobsonville and Roodepoort Soweto	<b>Witwatersrand</b> Greater Johannesburg - Eastern Metropolitan Local Council Midrand Metropolitan Local Council Northern Metropolitan Local Council Southern Metropolitan Local Council Western Metropolitan Local Council Soweto	Alexandra and Sandton  Midrand, Rabie Ridge and Ivory Park Randburg  Ennerdale, Lenasia and Johannesburg Diepmeadow, Dobsonville and Roodepoort Soweto
Ekurheleni Metropolitan Municipality - Service Delivery Centre of: Edenvale - Modderfontein Alberton Benoni  Boksburg Brakpan Duduza Germiston  Kempton Park Nigel Springs	Edenvale - Modderfontein Alberton and Tokoza Benoni, Daveyton and Wattville Boksburg and Vosloorus Brakpan and Tsakane Duduza Germiston, Bedfordview and Katlehong Kempton Park and Tembisa Nigel Springs and KwaThema	Edenvale - Modderfontein Alberton Benoni  Boksburg Brakpan Duduza Germiston  Kempton Park Nigel Springs	Edenvale - Modderfontein Alberton and Tokoza Benoni, Daveyton and Wattville Boksburg and Vosloorus Brakpan and Tsakane Duduza Germiston, Bedfordview and Katlehong Kempton Park and Tembisa Nigel Springs and KwaThema
Mogale City Municipality	Krugersdorp, Kagiso and Munsieville	Krugersdorp	Krugersdorp, Kagiso and Munsieville
Randfontein Local Municipality	Randfontein and Mohlakeng	Randfontein	Randfontein and Mohlakeng
Westonaria Local Municipality	Westonaria and Bekkersdal	Westonaria	Westonaria and Bekkersdal
Merafong City Local Municipality	Carletonville, Wedela, Khutsong and Welverdiend	Carletonville	Carletonville, Wedela, Khutsong and Welverdiend
<b>Bloemfontein</b> Mangaung Municipality - Bloemfontein Area  Botshabelo Area	Bloemfontein, Bainsvlei, Bloemspruit and Mangaung Botshabelo	<b>Bloemfontein</b> Bloemfontein  Botshabelo	Bloemfontein, Bainsvlei, Bloemspruit and Mangaung Botshabelo

## Glossary

<b>Additions and alterations</b>	Additions and alterations include extensions to existing buildings as well as internal and external alterations of existing buildings.
<b>Blocks of flats</b>	Blocks of flats are regarded as high-density housing consisting of a number of self-contained dwelling-units with at least one living-room together with a kitchen and bathroom conjoined to similar units in one building.
<b>Dwelling-house</b>	A dwelling-house refers to a free-standing, complete structure on a separate stand or a self-contained dwelling-unit, granny flat, on the same premises as an existing residence. Out-buildings and garages are included.
<b>Local government institution</b>	A local government institution is a generic term referring to any number of institutions involved in the local sphere of government. Local government institutions in the past consisted of municipalities, city councils, metropolitan councils, district councils, transitional local councils and development and services boards.
<b>Non-residential buildings</b>	Non-residential buildings comprise factories, commercial, financial and other office buildings, as well as other buildings not used for residential purposes, such as churches, halls, clubs, schools and hospitals.
<b>Other residential buildings</b>	Other residential buildings include institutions for the disabled, boarding houses, old people's homes, hostels, hotels, motels, guest houses, holiday chalets, bed-and-breakfast accommodation, entertainment centres and casinos.
<b>Percentage change</b>	<p>When using monthly actual values, the percentage change is the change in actual values of building activities (building plans passed or buildings completed) of the relevant month compared with the actual values of building activities (building plans passed or buildings completed) of the same month in the previous year expressed as a percentage.</p> <p>When using annual actual values, the percentage change is the change in the actual values of building activities (building plans passed or buildings completed) of the relevant year compared with the actual values of building activities (building plans passed or buildings completed) of the previous year expressed as a percentage.</p> <p>When using seasonally adjusted values, the percentage change is the change in the seasonally adjusted values of building activities (building plans passed or buildings completed) of the relevant month compared with the seasonally adjusted values of building activities (building plans passed or buildings completed) of the previous month expressed as a percentage.</p>
<b>Reference period</b>	Reference period is one calendar month.
<b>Residential buildings</b>	Residential buildings comprise dwelling-houses, flats, townhouses and other residential buildings.
<b>Townhouses</b>	Townhouses are multiple, medium-density dwelling-units and include cluster housing, group housing, simplexes, duplexes, triplexes and other similar dwelling-units which are usually grouped together, with one level of each unit on ground level. This excludes blocks of flats.

## For more information

Stats SA publishes approximately 300 different statistical releases each year. It is not economically viable to produce them in more than one of South Africa's eleven official languages. Since the releases are used extensively, not only locally but also by international economic and social-scientific communities, Stats SA releases are published in English only.

Stats SA has copyright on this publication. Users may apply the information as they wish, provided that they acknowledge Stats SA as the source of the basic data wherever they process, apply, utilise, publish or distribute the data and also that they specify that the relevant application and analysis (where applicable) result from their own processing of the data.

### Stats SA products

A complete set of Stats SA publications is available at the Stats SA Library and the following libraries:

National Library of South Africa, Pretoria Division  
 National Library of South Africa, Cape Town Division  
 Natal Society Library, Pietermaritzburg  
 Library of Parliament, Cape Town  
 Bloemfontein Public Library  
 Johannesburg Public Library  
 Eastern Cape Library Services, King William's Town  
 Central Regional Library, Polokwane  
 Central Reference Library, Nelspruit  
 Central Reference Collection, Kimberley  
 Central Reference Library, Mmabatho

Stats SA also provides a subscription service.

### Electronic services

A large range of data are available via on-line services, diskette, CD and computer printouts. For more details about our electronic data services, contact (012) 310 8600/8390/8351/4892/8496/8095.

You can visit us on the Internet at: <http://www.statssa.gov.za>

### Enquiries

Telephone number: (012) 310 8600/8390/8351/4892/8496/8095 (user enquiries)  
 (012) 310 8228/310 8007 (technical enquiries)  
 (012) 310 8161 (publications)  
 (012) 310 8490 (library)

Fax number: (012) 310 8182

e-mail: Corrieb@statssa.pwv.gov.za  
 Gretaz@statssa.pwv.gov.za

Postal address: Private Bag X44, Pretoria, 0001