



**Statistics  
South Africa**

Preferred supplier of quality statistics



# Statistical release

## P5041.1

### Selected building statistics of the private sector as reported by local government institutions

**April 2007  
(Preliminary)**

**Embargoed until:  
20 June 2007  
13:00**

**Enquiries:**

User Information Services  
Tel: (012) 310 8600 / 4892 / 8390

**Forthcoming issue:**

May 2007

**Expected release date**

18 July 2007

Statistics South Africa • Mbalo-mbalo ya Afrika Tshipembe • Tinhlayo-tiko ta Afrika-Dzonga • Dipalopalo tsa Aforika Borwa • Ezezibalo zaseNingizimu Afrika  
Dipalopalo tša Afrika Borwa • Dipalopalo tsa Afrika Borwa • Ubalo lwaseMzantsi Afrika • Telubalo eNingizimu Afrika • iNanimbalo leSewula Afrika • Statistiek Suid-Afrika

## Contents

### Page

### SUMMARY OF FINDINGS: SELECTED BUILDING STATISTICS OF THE PRIVATE SECTOR

3

#### Tables

Table 1	Values and percentage change of recorded building plans passed by larger municipalities at current prices by type of building .....	9
Table 2	Seasonally adjusted values and percentage change of recorded building plans passed by larger municipalities at current prices by type of building .....	10
Table 3	Values and percentage change of recorded building plans passed by larger municipalities at constant 2000 prices by type of building .....	11
Table 4	Seasonally adjusted values and percentage change of recorded building plans passed by larger municipalities at constant 2000 prices by type of building .....	12
Table 5	Values and percentage change of buildings reported as completed to larger municipalities at current prices by type of building .....	13
Table 6	Seasonally adjusted values and percentage change of buildings reported as completed to larger municipalities at current prices by type of building .....	14
Table 7	Values and percentage change of buildings reported as completed to larger municipalities at constant 2000 prices by type of building .....	15
Table 8	Seasonally adjusted values and percentage change of buildings reported as completed to larger municipalities at constant 2000 prices by type of building .....	16
Table 9	Recorded building plans passed by larger municipalities at current prices by type of building: South Africa .....	17
Table 10	Recorded building plans passed by larger municipalities at current prices by type of building: Western Cape .....	18
Table 11	Recorded building plans passed by larger municipalities at current prices by type of building: Eastern Cape .....	19
Table 12	Recorded building plans passed by larger municipalities at current prices by type of building: Northern Cape .....	20
Table 13	Recorded building plans passed by larger municipalities at current prices by type of building: Free State .....	21
Table 14	Recorded building plans passed by larger municipalities at current prices by type of building: KwaZulu-Natal .....	22
Table 15	Recorded building plans passed by larger municipalities at current prices by type of building: North West .....	23
Table 16	Recorded building plans passed by larger municipalities at current prices by type of building: Gauteng .....	24
Table 17	Recorded building plans passed by larger municipalities at current prices by type of building: Mpumalanga .....	25
Table 18	Recorded building plans passed by larger municipalities at current prices by type of building: Limpopo .....	26
Table 19	Buildings reported as completed to larger municipalities at current prices by type of building: South Africa .....	27
Table 20	Buildings reported as completed to larger municipalities at current prices by type of building: Western Cape .....	28
Table 21	Buildings reported as completed to larger municipalities at current prices by type of building: Eastern Cape .....	29
Table 22	Buildings reported as completed to larger municipalities at current prices by type of building: Northern Cape .....	30
Table 23	Buildings reported as completed to larger municipalities at current prices by type of building: Free State .....	31
Table 24	Buildings reported as completed to larger municipalities at current prices by type of building: KwaZulu-Natal .....	32

Table 25	Buildings reported as completed to larger municipalities at current prices by type of building: North West .....	33
Table 26	Buildings reported as completed to larger municipalities at current prices by type of building: Gauteng .....	34
Table 27	Buildings reported as completed to larger municipalities at current prices by type of building: Mpumalanga .....	35
Table 28	Buildings reported as completed to larger municipalities at current prices by type of building: Limpopo.....	36
Table 29	Subsidised low-cost dwelling-houses completed or under construction by province .....	37
Table 30	Subsidised low-cost dwelling-houses completed by province .....	37
<b>Explanatory notes</b> .....		38
<b>Glossary</b> .....		41
<b>General information</b> .....		43

## SUMMARY OF FINDINGS: SELECTED BUILDING STATISTICS OF THE PRIVATE SECTOR

**Table A – Selected key figures regarding recorded building plans passed by larger municipalities at current prices for January to April 2007**

Estimates at current prices	January to April 2006	January to April 2007 1/	Difference in value between January to April 2006 and January to April 2007	Percentage change between January to April 2006 and January to April 2007
	R'000	R'000	R'000	
<b>Residential buildings</b>	11 082 336	12 973 016	+1 890 680	+17,1
-Dwelling-houses	7 470 890	8 728 200	+1 257 310	+16,8
-Flats and townhouses	3 455 491	3 978 275	+522 784	+15,1
-Other residential buildings	155 955	266 541	+110 586	+70,9
<b>Non-residential buildings</b>	4 088 568	4 209 835	+121 267	+3,0
<b>Additions and alterations</b>	5 298 841	5 787 281	+488 440	+9,2
<b>Total</b>	<b>20 469 745</b>	<b>22 970 132</b>	<b>+2 500 387</b>	<b>+12,2</b>

1/ April 2007 figures should be regarded as preliminary because of possible backlogs and incomplete reporting by municipalities.

### Total value of recorded building plans passed increased

*As indicated in Table A, the value of recorded building plans passed by larger municipalities (at current prices) during the first four months of 2007 increased by 12,2% (+R2 500,4 million) compared with the first four months of 2006.*

The largest percentage increase was reported for residential buildings (+17,1% or R1 890,7 million), followed by additions and alterations (+9,2% or R488,4 million) and non-residential buildings (+3,0% or R121,3 million).

**Table B – Recorded building plans passed by larger municipalities aggregated to provincial level for January to April 2007**

Estimates at current prices	January to April 2006	January to April 2007	Percentage contribution to the total value of building plans passed during January to April 2006	Percentage change between January to April 2006 and January to April 2007	Contribution (percentage points) to the percentage change in the value of building plans passed between January to April 2006 and January to April 2007 2/	Difference in value between January to April 2006 and January to April 2007
	R'000	R'000				R'000
<b>Western Cape</b>	5 208 701	5 472 445	25,4	+5,1	+1,3	+263 744
<b>Eastern Cape</b>	958 444	1 313 150	4,7	+37,0	+1,8	+354 706
<b>Northern Cape</b>	165 738	148 982	0,8	-10,1	-0,1	-16 756
<b>Free State</b>	412 507	703 076	2,0	+70,4	+1,4	+290 569
<b>KwaZulu-Natal</b>	2 437 568	2 790 468	11,9	+14,5	+1,7	+352 900
<b>North West</b>	675 254	1 105 708	3,3	+63,7	+2,1	+430 454
<b>Gauteng</b>	8 836 174	9 711 948	43,2	+9,9	+4,3	+875 774
<b>Mpumalanga</b>	1 364 028	1 264 667	6,7	-7,3	-0,5	-99 361
<b>Limpopo</b>	411 331	459 688	2,0	+11,8	+0,2	+48 357
<b>Total</b>	<b>20 469 745</b>	<b>22 970 132</b>	<b>100,0</b>	<b>+12,2</b>	<b>+12,2</b>	<b>+2 500 387</b>

1/ April 2007 figures should be regarded as preliminary because of possible backlogs and incomplete reporting by municipalities.

2/ The contribution (percentage points) is calculated by multiplying the percentage change of each province between January to April 2006 and January to April 2007 with the percentage contribution of the corresponding province to the total value of building plans passed during January to April 2006, divided by 100.

Seven provinces reported increases in the value of recorded building plans passed (see Table B). The largest contributors to the increase of 12,2% were Gauteng (+4,3 percentage points or R875,8 million), followed by North West (+2,1 percentage points or R430,5 million), Eastern Cape (+1,8 percentage points or R354,7 million) and KwaZulu-Natal (+1,7 percentage points or R352,9 million).

**Table C – Selected key figures regarding recorded building plans passed by larger municipalities at constant 2000 prices for January to April 2007**

Estimates at constant 2000 prices	January to April 2006	January to April 2007	Difference in value between January to April 2006 and January to April 2007	Percentage change between January to April 2006 and January to April 2007
	R'000	R'000 1/		
<b>Residential buildings</b>	7 383 961	7 721 291	+337 330	+4,6
<b>Non-residential buildings</b>	2 721 020	2 506 560	-214 460	-7,9
<b>Additions and alterations</b>	3 528 849	3 444 317	-84 532	-2,4
<b>Total</b>	<b>13 633 830</b>	<b>13 672 168</b>	<b>+38 338</b>	<b>+0,3</b>

1/ April 2007 figures should be regarded as preliminary because of possible backlogs and incomplete reporting by municipalities.

Seasonally adjusted estimates at constant 2000 prices	November 2006 to January 2007	February to April 2007	Percentage change between November 2006 to January 2007 and February to April 2007
	R'000	R'000	
<b>Residential buildings</b>	6 083 664	6 903 602	+13,5
<b>Non-residential buildings</b>	2 293 757	1 950 920	-14,9
<b>Additions and alterations</b>	3 019 358	2 860 509	-5,3
<b>Total</b>	<b>11 396 779</b>	<b>11 715 031</b>	<b>+2,8</b>

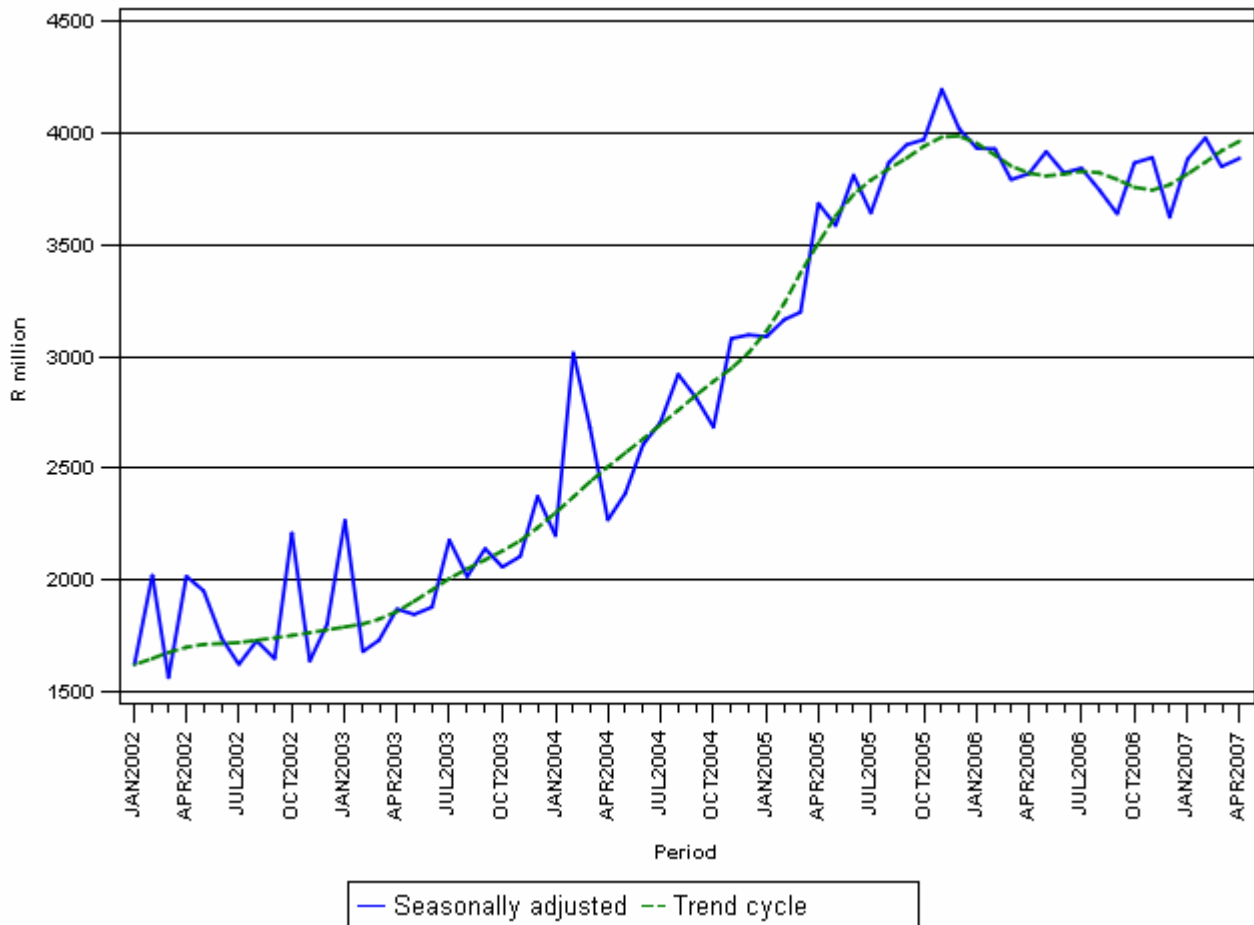
### Total real value of recorded building plans passed remained on the same level

*As indicated in Table C, the value of recorded building plans passed by larger municipalities (at constant 2000 prices) during the first four months of 2007 remained unchanged compared with the first four months of 2006. The increase reported for residential buildings (+4,6% or R337,3 million) was largely counteracted by the decreases reported for non-residential buildings (-7,9% or -R214,5 million) and additions and alterations (-2,4% or -R84,5 million).*

However, the seasonally adjusted real value of recorded building plans passed by larger municipalities during the three months ending April 2007 increased by 2,8% compared with the previous three months, mainly due to increases reported for residential building plans passed (+13,5%). This increase was partially counteracted by decreases reported for non-residential buildings (-14,9%) and additions and alterations (-5,3%) (see Table C).

Figure 1 shows both the seasonally adjusted and the trend series for recorded building plans passed at constant 2000 prices between January 2002 and April 2007. The trend series reflects a slight increase in 2002, followed by a steep increase from April 2003 up to the end of 2005. After a short period of downturn in 2006, the trend is currently moving upwards.

**Figure 1 – Real value of recorded building plans passed by larger municipalities at constant 2000 prices**



**Table D – Selected key figures regarding buildings reported as completed to larger municipalities at current prices for January to April 2007**

Estimates at current prices	January to April 2006	January to April 2007 1/	Difference in value between January to April 2006 and January to April 2007	Percentage change between January to April 2006 and January to April 2007
	R'000	R'000	R'000	
<b>Residential buildings</b>	6 717 667	7 784 567	+1 066 900	+15,9
-Dwelling-houses	4 061 276	4 888 701	+827 425	+20,4
-Flats and townhouses	2 592 908	2 493 276	-99 632	-3,8
-Other residential buildings	63 483	402 590	+339 107	+534,2
<b>Non-residential buildings</b>	1 577 532	2 659 840	+1 082 308	+68,6
Additions and alterations	1 949 562	2 324 830	+375 268	+19,2
<b>Total</b>	<b>10 244 761</b>	<b>12 769 237</b>	<b>+2 524 476</b>	<b>+24,6</b>

1/ April 2007 figures should be regarded as preliminary because of possible backlogs and incomplete reporting by municipalities.

### Total value of buildings reported as completed increased

*As indicated in Table D, the value of buildings reported as completed to larger municipalities (at current prices) during the first four months of 2007 increased by 24,6% (+R2 524,5 million) compared with the first four months of 2006.*

The largest percentage increase in the value of buildings completed was reported for non-residential buildings (+68,6% or R1 082,3 million), followed by additions and alterations (+19,2% or R375,3 million) and residential buildings (+15,9% or R1 067,0 million). Within the residential buildings, 'other' residential buildings recorded the highest growth rate, mainly as a result of two casinos, one hotel and an old age home that were reported as completed to the value of R110,7 million, R154,9 million and R45,5 million respectively during the first four months of 2007.

**Table E – Buildings reported as completed to larger municipalities aggregated to provincial level for January to April 2007**

Estimates at current prices	January to April 2006	January to April 2007	Percentage contribution to the total value of buildings completed during January to April 2006	Percentage change between January to April 2006 and January to April 2007	Contribution (percentage points) to the percentage change in the value of buildings completed between January to April 2006 and January to April 2007 2/	Difference in value between January to April 2006 and January to April 2007
	R'000	R'000				R'000
<b>Western Cape</b>	3 146 810	3 655 836	30,7	+16,2	+5,0	+509 026
<b>Eastern Cape</b>	449 560	416 460	4,4	-7,4	-0,3	-33 100
<b>Northern Cape</b>	60 574	117 114	0,6	+93,3	+0,6	+56 540
<b>Free State</b>	253 056	314 026	2,5	+24,1	+0,6	+60 970
<b>KwaZulu-Natal</b>	1 152 354	1 794 532	11,2	+55,7	+6,3	+642 178
<b>North West</b>	456 107	551 552	4,5	+20,9	+0,9	+95 445
<b>Gauteng</b>	4 278 703	5 331 121	41,8	+24,6	+10,3	+1 052 418
<b>Mpumalanga</b>	287 573	418 083	2,8	+45,4	+1,3	+130 510
<b>Limpopo</b>	160 024	170 513	1,6	+6,6	+0,1	+10 489
<b>Total</b>	<b>10 244 761</b>	<b>12 769 237</b>	<b>100,0</b>	<b>+24,6</b>	<b>+24,6</b>	<b>+2 524 476</b>

1/ April 2007 figures should be regarded as preliminary because of possible backlogs and incomplete reporting by municipalities.

2/ The contribution (percentage points) is calculated by multiplying the percentage change of each province between January to April 2006 and January to April 2007 with the percentage contribution of the corresponding province to the total value of buildings completed during January to April 2006, divided by 100.

Eight provinces reported increases in the value of buildings completed. The largest contributor to the increase of 24,6% was Gauteng (+10,3 percentage points or R1 052,4 million), followed by KwaZulu-Natal (+6,3 percentage points or R642,2 million) and Western Cape (+5,0 percentage points or R509,0 million) (see Table E).

**Table F – Selected key figures regarding buildings reported as completed to larger municipalities at constant 2000 prices for January to April 2007**

Estimates at constant 2000 prices	January to April 2006	January to April 2007 1/	Difference in value between January to April 2006 and January to April 2007	Percentage change between January to April 2006 and January to April 2007
	R'000	R'000	R'000	
<b>Residential buildings</b>	4 642 530	4 946 509	+303 979	+6,5
<b>Non-residential buildings</b>	1 149 537	1 815 283	+665 746	+57,9
<b>Additions and alterations</b>	1 374 196	1 549 557	+175 361	+12,8
<b>Total</b>	<b>7 166 263</b>	<b>8 311 349</b>	<b>+1 145 086</b>	<b>+16,0</b>

1/ April 2007 figures should be regarded as preliminary because of possible backlogs and incomplete reporting by municipalities.

Seasonally adjusted estimates at constant 2000 prices	November 2006 to January 2007	February to April 2007	Percentage change between November 2006 to January 2007 and February to April 2007
	R'000	R'000	
<b>Residential buildings</b>	4 451 004	4 411 672	-0,9
<b>Non-residential buildings</b>	1 275 859	1 733 532	+35,9
<b>Additions and alterations</b>	1 381 459	1 202 662	-12,9
<b>Total</b>	<b>7 108 322</b>	<b>7 347 866</b>	<b>+3,4</b>

### Total real value of buildings reported as completed increased

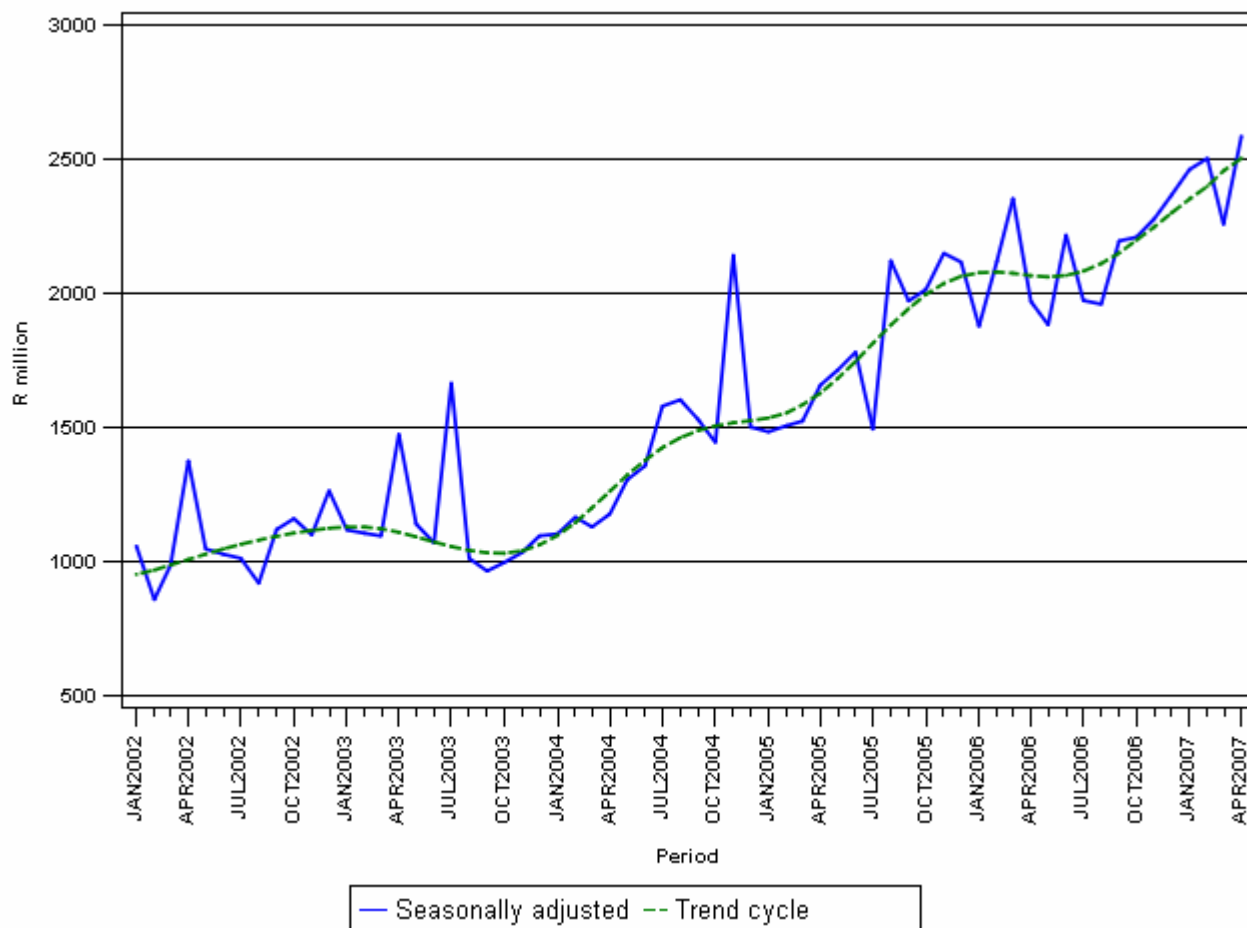
*As indicated in Table F, the value of buildings reported as completed to larger municipalities (at constant 2000 prices) during the first four months of 2007 increased by 16,0% (+R1 145,1 million) compared with the first four months of 2006. The largest percentage increase in the real value of buildings completed was reported for non-residential buildings (+57,9% or R665,7 million), followed by additions and alterations (+12,8% or R175,4 million) and residential buildings (+6,5% or R304,0 million).*

Furthermore, the seasonally adjusted real value of buildings reported as completed to larger municipalities during the three months ending April 2007 increased by 3,4% compared with the previous three months. A large increase in the seasonally adjusted real value of buildings completed was reported for non-residential buildings (+35,9%). This increase was partially counteracted by decreases reported for additions and alterations (-12,9%) and residential buildings (-0,9%).



Figure 2 shows both the seasonally adjusted and trend series for buildings reported as completed to municipalities at constant 2000 prices between January 2002 and April 2007. The trend series reflects a slight increase in 2002, slowing again until October 2003. A steep increase is evident from January 2004 to end of 2005, followed by a slight downturn from January 2006. The trend series increased from May 2006 till present.

**Figure 2 - Real value of buildings reported as completed to larger municipalities at constant 2000 prices**



**PJ Lehohla**  
Statistician-General

**Table 1 - Values and percentage change of recorded building plans passed by larger municipalities at current prices by type of building**

Year and month		Residential buildings		Non-residential buildings		Additions and alterations		Total	
		R'000	% change 1/	R'000	% change 1/	R'000	% change 1/	R'000	% change 1/
2006 *	January	2 482 335	+41,6	743 394	+38,0	1 039 712	+15,3	4 265 441	+33,6
	February	3 125 700	+33,2	911 301	+48,1	1 405 808	+21,8	5 442 809	+32,2
	March	2 920 754	+24,7	1 175 380	+22,0	1 497 286	+21,5	5 593 420	+23,3
	April	2 553 547	-1,3	1 258 493	+60,2	1 356 035	+4,1	5 168 075	+10,5
	May	3 484 288	+0,1	1 233 030	+56,4	1 792 239	+32,7	6 509 557	+15,8
	June	3 645 692	+12,7	970 929	+0,9	1 596 963	+6,7	6 213 584	+9,1
	July	3 768 345	+7,3	1 357 958	+34,3	1 754 138	+19,9	6 880 441	+14,9
	August	3 832 661	+9,7	1 424 786	+15,5	1 618 120	-0,3	6 875 567	+8,3
	September	3 601 116	-6,8	955 007	+38,1	1 666 915	+5,8	6 223 038	+1,5
	October	3 771 549	+1,2	1 615 321	+65,2	1 761 525	-8,0	7 148 395	+8,0
	November	3 863 966	+3,7	1 341 589	+0,2	1 749 055	+7,6	6 954 610	+3,9
	December	2 582 701	-10,8	1 010 386	+56,8	1 385 939	+2,8	4 979 026	+1,9
	<b>Total</b>	<b>39 632 654</b>	<b>+7,2</b>	<b>13 997 574</b>	<b>+32,7</b>	<b>18 623 735</b>	<b>+9,6</b>	<b>72 253 963</b>	<b>+12,0</b>
2007	January *	2 480 562	-0,1	944 049	+27,0	1 297 851	+24,8	4 722 462	+10,7
	February *	3 357 178	+7,4	1 285 489	+41,1	1 518 213	+8,0	6 160 880	+13,2
	March	3 822 865	+30,9	942 386	-19,8	1 453 094	-3,0	6 218 345	+11,2
	April 2/	3 312 411	+29,7	1 037 911	-17,5	1 518 123	+12,0	5 868 445	+13,6

1/ The annual/monthly percentage change is the change in the values of recorded building plans passed by municipalities of the relevant year/month compared with the values of recorded building plans passed by municipalities of the comparable period of the previous year expressed as a percentage.

2/ Preliminary figures.

\* Revised.

**Table 2 - Seasonally adjusted values and percentage change of recorded building plans passed by larger municipalities at current prices by type of building**

Year and month		Residential buildings		Non-residential buildings		Additions and alterations		Total	
		R'000	% change 1/	R'000	% change 1/	R'000	% change 1/	R'000	% change 1/
2006*	January	3 483 863	-3,9	975 869	+30,8	1 406 820	-11,7	5 866 552	-1,7
	February	3 384 068	-2,9	998 762	+2,3	1 524 780	+8,4	5 907 610	+0,7
	March	3 120 303	-7,8	1 064 828	+6,6	1 565 839	+2,7	5 750 970	-2,7
	April	3 026 900	-3,0	1 283 042	+20,5	1 499 604	-4,2	5 809 546	+1,0
	May	3 172 088	+4,8	1 244 871	-3,0	1 607 007	+7,2	6 023 966	+3,7
	June	3 460 557	+9,1	967 588	-22,3	1 537 800	-4,3	5 965 945	-1,0
	July	3 298 519	-4,7	1 180 728	+22,0	1 590 986	+3,5	6 070 233	+1,7
	August	3 424 803	+3,8	1 138 572	-3,6	1 462 215	-8,1	6 025 590	-0,7
	September	3 226 368	-5,8	1 070 578	-6,0	1 601 944	+9,6	5 898 890	-2,1
	October	3 365 524	+4,3	1 425 696	+33,2	1 521 894	-5,0	6 313 114	+7,0
	November	3 378 720	+0,4	1 392 927	-2,3	1 644 433	+8,1	6 416 080	+1,6
	December	3 250 495	-3,8	1 174 088	-15,7	1 614 186	-1,8	6 038 769	-5,9
2007	January*	3 483 045	+7,2	1 248 849	+6,4	1 768 698	+9,6	6 500 592	+7,6
	February *	3 637 414	+4,4	1 392 195	+11,5	1 640 033	-7,3	6 669 642	+2,6
	March	4 127 299	+13,5	866 071	-37,8	1 526 935	-6,9	6 520 305	-2,2
	April	3 937 019	-4,6	1 043 813	+20,5	1 673 178	+9,6	6 654 010	+2,1
	Nov.06 - Jan.07	10 112 260		3 815 864		5 027 317		18 955 441	
	Feb. - Apr.07 2/	11 701 732	+15,7	3 302 079	-13,5	4 840 146	-3,7	19 843 957	+4,7

1/ The percentage change is the change in the seasonally adjusted values of recorded building plans passed by municipalities of the relevant month compared with the seasonally adjusted values of recorded building plans passed by municipalities of the previous month expressed as a percentage.

2/ The percentage change is the change in the seasonally adjusted values of recorded building plans passed by municipalities of the current quarter compared with the seasonally adjusted values of recorded building plans passed by municipalities of the previous quarter expressed as a percentage.

\*Revised.

**Table 3 - Values and percentage change of recorded building plans passed by larger municipalities at constant 2000 prices by type of building**

Year and month		Residential buildings		Non-residential buildings		Additions and alterations		Total	
		R'000	% change 1/	R'000	% change 1/	R'000	% change 1/	R'000	% change 1/
2006*	January	1 665 997	+33,9	498 922	+30,5	697 793	+9,1	2 862 712	+26,3
	February	2 086 582	+25,6	608 345	+39,6	938 457	+14,8	3 633 384	+24,7
	March	1 945 872	+18,1	783 065	+15,5	997 526	+15,0	3 726 463	+16,7
	April	1 685 510	-6,7	830 688	+51,5	895 073	-1,5	3 411 271	+4,5
	May	2 268 417	-6,5	802 754	+46,1	1 166 822	+23,9	4 237 993	+8,2
	June	2 332 496	+3,8	621 196	-7,0	1 021 729	-1,7	3 975 421	+0,5
	July	2 376 006	-1,5	856 216	+23,3	1 106 014	+10,1	4 338 236	+5,5
	August	2 362 923	-1,0	878 413	+4,3	997 608	-10,0	4 238 944	-2,3
	September	2 211 988	-16,0	586 614	+24,5	1 023 904	-4,6	3 822 506	-8,5
	October	2 306 758	-8,9	987 964	+48,6	1 077 385	-17,2	4 372 107	-2,8
	November	2 338 962	-7,4	812 100	-10,4	1 058 750	-3,9	4 209 812	-7,1
	December	1 554 907	-20,6	608 300	+39,6	834 400	-8,5	2 997 607	-9,3
	<b>Total</b>	<b>25 136 418</b>	<b>-1,3</b>	<b>8 874 577</b>	<b>+21,9</b>	<b>11 815 461</b>	<b>+0,8</b>	<b>45 826 456</b>	<b>+3,0</b>
2007	January *	1 483 590	-10,9	564 623	+13,2	776 227	+11,2	2 824 440	-1,3
	February *	2 011 491	-3,6	770 215	+26,6	909 654	-3,1	3 691 360	+1,6
	March	2 282 307	+17,3	562 619	-28,2	867 519	-13,0	3 712 445	-0,4
	April 2/	1 943 903	+15,3	609 103	-26,7	890 917	-0,5	3 443 923	+1,0

1/ The annual/monthly percentage change is the change in the values of recorded building plans passed by municipalities of the relevant year/month compared with the values of recorded building plans passed by municipalities of the comparable period of the previous year expressed as a percentage.

2/ Preliminary figures.

**Table 4 - Seasonally adjusted values and percentage change of recorded building plans passed by larger municipalities at constant 2000 prices by type of building**

Year and month		Residential buildings		Non-residential buildings		Additions and alterations		Total	
		R'000	% change 1/	R'000	% change 1/	R'000	% change 1/	R'000	% change 1/
2006*	January	2 335 540	-4,4	653 569	+29,9	942 590	-12,1	3 931 699	-2,2
	February	2 251 731	-3,6	664 195	+1,6	1 013 467	+7,5	3 929 393	-0,1
	March	2 057 762	-8,6	699 075	+5,3	1 034 814	+2,1	3 791 651	-3,5
	April	1 986 358	-3,5	844 545	+20,8	987 601	-4,6	3 818 504	+0,7
	May	2 059 696	+3,7	810 749	-4,0	1 046 592	+6,0	3 917 037	+2,6
	June	2 215 924	+7,6	620 962	-23,4	985 006	-5,9	3 821 892	-2,4
	July	2 087 368	-5,8	748 358	+20,5	1 007 269	+2,3	3 842 995	+0,6
	August	2 128 176	+2,0	708 009	-5,4	909 722	-9,7	3 745 907	-2,5
	September	1 990 919	-6,4	660 318	-6,7	987 487	+8,5	3 638 724	-2,9
	October	2 062 632	+3,6	873 283	+32,3	930 578	-5,8	3 866 493	+6,3
	November	2 051 660	-0,5	843 677	-3,4	995 416	+7,0	3 890 753	+0,6
	December	1 950 987	-4,9	704 435	-16,5	967 897	-2,8	3 623 319	-6,9
2007	January *	2 081 017	+6,7	745 645	+5,9	1 056 045	+9,1	3 882 707	+7,2
	February *	2 170 796	+4,3	829 734	+11,3	977 739	-7,4	3 978 269	+2,5
	March	2 435 272	+12,2	511 228	-38,4	903 726	-7,6	3 850 226	-3,2
	April	2 297 534	-5,7	609 958	+19,3	979 044	+8,3	3 886 536	+0,9
	Nov.06 - Jan.07	6 083 664		2 293 757		3 019 358		11 396 779	
	Feb. - Apr.07 2/	6 903 602	+13,5	1 950 920	-14,9	2 860 509	-5,3	11 715 031	+2,8

1/ The percentage change is the change in the seasonally adjusted values of recorded building plans passed by municipalities of the relevant month compared with the seasonally adjusted values of recorded building plans passed by municipalities of the previous month expressed as a percentage.

2/ The percentage change is the change in the seasonally adjusted values of recorded building plans passed by municipalities of the current quarter compared with the seasonally adjusted values of recorded building plans passed by municipalities of the previous quarter expressed as a percentage.

\* Revised.

**Table 5 - Values and percentage change of buildings reported as completed to larger municipalities at current prices by type of building**

Year and month		Residential buildings		Non-residential buildings		Additions and alterations		Total	
		R'000	% change 1/	R'000	% change 1/	R'000	% change 1/	R'000	% change 1/
2006 *	January	1 225 970	+41,3	314 434	+9,3	398 419	+25,4	1 938 823	+31,6
	February	1 739 716	+37,1	402 291	+121,6	542 290	+68,7	2 684 297	+51,5
	March	2 050 329	+51,9	603 866	+93,7	569 681	+79,2	3 223 876	+62,9
	April	1 701 652	+21,3	256 941	+30,7	439 172	+31,9	2 397 765	+24,0
	May	1 938 387	+15,0	476 952	+18,2	557 303	+17,9	2 972 642	+16,1
	June	2 225 503	+47,1	458 294	+17,8	540 069	+5,7	3 223 866	+33,6
	July	2 182 863	+39,1	322 974	+33,6	541 772	+53,5	3 047 609	+40,8
	August	2 233 137	-2,0	464 055	-20,8	537 948	+33,0	3 235 140	-1,0
	September	2 414 155	+15,0	392 598	+7,4	645 521	+44,1	3 452 274	+18,6
	October	2 226 182	+12,5	717 651	+35,2	558 153	+10,3	3 501 986	+16,2
	November	2 499 679	-7,2	640 837	+45,5	833 605	+86,7	3 974 121	+11,0
	December	2 532 527	+9,1	517 116	+105,6	504 308	+14,1	3 553 951	+17,9
	<b>Total</b>	<b>24 970 100</b>	<b>+18,7</b>	<b>5 568 009</b>	<b>+33,0</b>	<b>6 668 241</b>	<b>+36,8</b>	<b>37 206 350</b>	<b>+23,7</b>
2007	January *	1 598 544	+30,4	476 596	+51,6	648 796	+62,8	2 723 936	+40,5
	February *	2 046 610	+17,6	825 847	+105,3	533 922	-1,5	3 406 379	+26,9
	March	1 965 121	-4,2	774 352	+28,2	622 210	+9,2	3 361 683	+4,3
	April 2/	2 174 292	+27,8	583 045	+126,9	519 902	+18,4	3 277 239	+36,7

1/ The annual/monthly percentage change is the change in the values of buildings reported as completed to municipalities of the relevant year/month compared with the values of buildings reported as completed to municipalities of the comparable period of the previous year expressed as a percentage.

2/ Preliminary figures.

\* Revised.

**Table 6 - Seasonally adjusted values and percentage change of buildings reported as completed to larger municipalities at current prices by type of building**

Year and month		Residential buildings		Non-residential buildings		Additions and alterations		Total	
		R'000	% change 1/	R'000	% change 1/	R'000	% change 1/	R'000	% change 1/
2006	January	1 765 236	-18,8	391 133	+33,2	432 206	-15,5	2 588 575	-13,1
	February	1 998 696	+13,2	450 180	+15,1	554 003	+28,2	3 002 879	+16,0
	March	2 217 321	+10,9	551 613	+22,5	579 936	+4,7	3 348 870	+11,5
	April	1 907 706	-14,0	392 651	-28,8	524 911	-9,5	2 825 268	-15,6
	May	1 847 973	-3,1	370 068	-5,8	503 103	-4,2	2 721 144	-3,7
	June	2 242 707	+21,4	482 598	+30,4	522 480	+3,9	3 247 785	+19,4
	July	2 023 623	-9,8	384 725	-20,3	515 559	-1,3	2 923 907	-10,0
	August	2 061 447	+1,9	352 846	-8,3	520 398	+0,9	2 934 691	+0,4
	September	2 254 587	+9,4	368 257	+4,4	616 537	+18,5	3 239 381	+10,4
	October	2 151 798	-4,6	584 079	+58,6	524 642	-14,9	3 260 519	+0,7
	November	2 011 071	-6,5	619 162	+6,0	766 249	+46,1	3 396 482	+4,2
	December	2 348 449	+16,8	626 103	+1,1	583 188	-23,9	3 557 740	+4,7
2007	January	2 337 426	-0,5	592 317	-5,4	704 083	+20,7	3 633 826	+2,1
	February	2 355 810	+0,8	914 905	+54,5	553 516	-21,4	3 824 231	+5,2
	March	2 128 294	-9,7	707 983	-22,6	630 341	+13,9	3 466 618	-9,4
	April	2 436 538	+14,5	919 524	+29,9	621 839	-1,3	3 977 901	+14,7
	Nov.06 - Jan.07	6 696 946		1 837 582		2 053 520		10 588 048	
	Feb. - Apr.07 2/	6 920 642	+3,3	2 542 412	+38,4	1 805 696	-12,1	11 268 750	+6,4

1/ The percentage change is the change in the seasonally adjusted values of buildings reported as completed to municipalities of the relevant month compared with the seasonally adjusted values of buildings reported as completed to municipalities of the previous month expressed as a percentage.

2/ The percentage change is the change in the seasonally adjusted values of buildings reported as completed to municipalities of the current quarter compared with the seasonally adjusted values of buildings reported as completed to municipalities of the previous quarter expressed as a percentage.

**Table 7 - Values and percentage change of buildings reported as completed to larger municipalities at constant 2000 prices by type of building**

Year and month		Residential buildings		Non-residential buildings		Additions and alterations		Total	
		R'000	% change 1/	R'000	% change 1/	R'000	% change 1/	R'000	% change 1/
2006 *	January	853 288	+32,5	230 693	+3,8	282 767	+15,9	1 366 748	+23,1
	February	1 205 070	+28,2	293 429	109,5	384 058	+57,6	1 882 557	+42,2
	March	1 415 051	+42,4	439 495	+82,6	400 901	+67,5	2 255 447	+53,0
	April	1 169 121	+13,9	185 920	+22,4	306 470	+23,1	1 661 511	+16,4
	May	1 326 116	+8,2	343 131	+9,9	388 364	+10,7	2 057 611	+9,0
	June	1 520 676	+38,7	329 471	+9,4	375 048	-0,3	2 225 195	+25,4
	July	1 476 576	+31,0	229 222	+23,4	372 096	+43,7	2 077 894	+32,2
	August	1 504 576	-7,9	328 651	-26,1	367 451	+24,6	2 200 678	-7,2
	September	1 623 212	+8,6	276 283	+0,4	439 728	+34,8	2 339 223	+11,6
	October	1 484 868	+6,4	500 803	+26,2	379 438	+3,6	2 365 109	+9,5
	November	1 652 517	-13,2	446 576	+36,6	564 773	+75,8	2 663 866	+4,4
	December	1 658 123	+1,5	359 108	+93,9	340 979	+7,3	2 358 210	+10,3
	<b>Total</b>	<b>16 889 194</b>	<b>+11,7</b>	<b>3 962 782</b>	<b>+24,5</b>	<b>4 602 073</b>	<b>+28,3</b>	<b>25 454 049</b>	<b>+16,3</b>
2007	January *	1 032 133	+21,0	327 332	+41,9	435 434	+54,0	1 794 899	+31,3
	February *	1 300 436	+7,9	564 103	+92,2	356 423	-7,2	2 220 962	+18,0
	March	1 241 145	-12,3	527 488	+20,0	414 530	+3,4	2 183 163	-3,2
	April 2/	1 372 795	+17,4	396 360	113,2	343 170	+12,0	2 112 325	+27,1

1/ The annual/monthly percentage change is the change in the values of buildings reported as completed to municipalities of the relevant year/month compared with the values of buildings reported as completed to municipalities of the comparable period of the previous year expressed as a percentage.

2/ Preliminary figures.

\* Revised.



**Table 8 - Seasonally adjusted values and percentage change of buildings reported as completed to larger municipalities at constant 2000 prices by type of building**

Year and month		Residential buildings		Non-residential buildings		Additions and alterations		Total	
		R'000	%change 1/	R'000	% change 1/	R'000	% change 1/	R'000	% change 1/
2006*	January	1 283 739	-16,4	287 727	+32,9	305 816	-16,3	1 877 282	-11,3
	February	1 397 228	+8,8	329 229	+14,4	392 870	+28,5	2 119 327	+12,9
	March	1 544 246	+10,5	401 293	+21,9	408 538	+4,0	2 354 077	+11,1
	April	1 318 040	-14,6	283 833	-29,3	368 009	-9,9	1 969 882	-16,3
	May	1 266 585	-3,9	264 938	-6,7	351 557	-4,5	1 883 080	-4,4
	June	1 513 359	+19,5	344 079	+29,9	360 759	+2,6	2 218 197	+17,8
	July	1 344 942	-11,1	272 922	-20,7	355 765	-1,4	1 973 629	-11,0
	August	1 353 092	+0,6	250 344	-8,3	356 607	+0,2	1 960 043	-0,7
	September	1 516 592	+12,1	259 263	+3,6	419 978	+17,8	2 195 833	+12,0
	October	1 444 534	-4,8	409 098	+57,8	356 120	-15,2	2 209 752	+0,6
	November	1 327 168	-8,1	432 460	+5,7	518 853	+45,7	2 278 481	+3,1
	December	1 540 360	+16,1	435 409	+0,7	391 693	-24,5	2 367 462	+3,9
2007	January *	1 583 476	+2,8	407 990	-6,3	470 913	+20,2	2 462 379	+4,0
	February *	1 507 277	-4,8	626 743	+53,6	369 796	-21,5	2 503 816	+1,7
	March	1 355 251	-10,1	482 221	-23,1	420 423	+13,7	2 257 895	-9,8
	April	1 549 144	+14,3	624 568	+29,5	412 443	-1,9	2 586 155	+14,5
	Nov.06 - Jan.07	4 451 004		1 275 859		1 381 459		7 108 322	
	Feb. - Apr.07 2/	4 411 672	-0,9	1 733 532	+35,9	1 202 662	-12,9	7 347 866	+3,4

1/ The percentage change is the change in the seasonally adjusted values of buildings reported as completed to municipalities of the relevant month compared with the seasonally adjusted values of buildings reported as completed to municipalities of the previous month expressed as a percentage.

2/ The percentage change is the change in the seasonally adjusted values of buildings reported as completed to municipalities of the current quarter compared with the seasonally adjusted values of buildings reported as completed to municipalities of the previous quarter expressed as a percentage.

Table 9 - Recorded building plans passed by larger municipalities at current prices by type of building: South Africa

			Apr. 2006*	Mar. 2007	Apr. 2007	Jan. - Apr. 2006	Jan. - Apr. 2007	% Change 1/
Category of building	Type of building	Measuring unit						
1. Residential buildings	1. Dwelling-houses < 80 square metres	Number	1 775	2 302	2 767	11 453	10 976	-4,2
		square metres	85 169	103 240	123 519	503 125	483 717	-3,9
		R'000	184 546	203 818	228 216	873 665	915 291	+4,8
	2. Dwelling-houses >= 80 square metres	Number	2 385	3 082	2 584	10 106	10 354	+2,5
		square metres	542 825	730 666	635 975	2 339 466	2 547 713	+8,9
		R'000	1 509 736	2 239 157	1 915 502	6 597 225	7 812 909	+18,4
	3. Flats and townhouses	Number	2 066	3 108	2 492	9 024	10 260	+13,7
		square metres	277 876	399 215	326 797	1 168 308	1 271 025	+8,8
		R'000	852 738	1 326 003	1 074 169	3 455 491	3 978 275	+15,1
	4. Other residential buildings 2/	square metres	3 103	18 653	25 498	45 425	79 880	+75,9
		R'000	6 527	53 887	94 524	155 955	266 541	+70,9
	5. Total residential buildings	R'000	2 553 547	3 822 865	3 312 411	11 082 336	12 973 016	+17,1
2. Non-residential buildings	1. Office and banking space	square metres	70 920	102 538	82 188	300 867	313 302	+4,1
		R'000	243 161	333 401	272 722	980 963	1 024 223	+4,4
	2. Shopping space	square metres	127 986	42 880	83 978	334 376	316 689	-5,3
		R'000	650 752	124 986	310 499	1 248 784	1 024 113	-18,0
	3. Industrial and warehouse space	square metres	123 439	163 363	187 313	603 058	689 529	+14,3
		R'000	322 330	444 789	421 443	1 536 600	1 871 920	+21,8
	4. Other non-residential buildings 3/	square metres	15 835	14 721	12 519	114 781	100 365	-12,6
		R'000	42 250	39 210	33 247	322 221	289 579	-10,1
	5. Total non-residential buildings	R'000	1 258 493	942 386	1 037 911	4 088 568	4 209 835	+3,0
	3. Additions and alterations	1. Dwelling-houses	square metres	397 821	439 801	384 094	1 579 094	1 563 173
R'000			1 031 622	1 227 161	1 067 939	4 130 600	4 360 423	+5,6
2. Other buildings 4/		square metres	98 403	60 088	135 775	372 480	393 048	+5,5
		R'000	324 413	225 933	450 184	1 168 241	1 426 858	+22,1
3. Total additions and alterations		R'000	1 356 035	1 453 094	1 518 123	5 298 841	5 787 281	+9,2
4. Recorded plans passed	1. Total at current prices	R'000	5 168 075	6 218 345	5 868 445	20 469 745	22 970 132	+12,2

1/ The percentage change between cumulative figures for 2006 and 2007.

2/ Other residential buildings include institutions for the disabled, boarding houses, hostels and tourism accommodation e.g. hotels, motels, guesthouses, holiday chalets, bed-and-breakfast accommodation and casinos.

3/ Other non-residential space includes churches, sport and recreation clubs, schools, crèches, hospitals and all other non-residential space.

4/ Other buildings include other residential buildings, non-residential buildings and internal alterations.

\* Revised.

Table 10 - Recorded building plans passed by larger municipalities at current prices by type of building: Western Cape

			Apr. 2006*	Mar. 2007	Apr. 2007	Jan. - Apr. 2006	Jan. - Apr. 2007	% Change 1/
Category of building	Type of building	Measuring unit						
1. Residential buildings	1. Dwelling-houses < 80 square metres	Number	634	228	175	2 088	969	-53,6
		square metres	25 938	9 832	7 951	89 939	44 319	-50,7
		R'000	39 913	17 742	13 881	141 139	89 000	-36,9
	2. Dwelling-houses >= 80 square metres	Number	439	720	594	2 274	2 363	+3,9
		square metres	110 561	163 399	151 484	517 301	566 334	+9,5
		R'000	330 355	554 970	508 405	1 546 782	1 880 931	+21,6
	3. Flats and townhouses	Number	748	583	315	1 611	1 808	+12,2
		square metres	98 610	66 225	29 242	196 035	192 488	-1,8
		R'000	322 202	265 633	98 084	621 474	696 623	+12,1
	4. Other residential buildings 2/	square metres	0	282	8 270	5 473	32 552	+494,8
		R'000	0	1 096	29 667	44 532	113 724	+155,4
5. Total residential buildings	R'000	692 470	839 441	650 037	2 353 927	2 780 278	+18,1	
2. Non-residential buildings	1. Office and banking space	square metres	840	57 432	6 886	83 683	97 418	+16,4
		R'000	2 943	190 676	25 264	276 822	324 919	+17,4
	2. Shopping space	square metres	58 130	6 059	7 944	87 571	34 377	-60,7
		R'000	149 682	17 747	27 065	247 300	110 268	-55,4
	3. Industrial and warehouse space	square metres	31 137	22 621	57 733	193 340	164 246	-15,0
		R'000	90 880	64 673	96 075	562 165	424 735	-24,4
	4. Other non-residential buildings 3/	square metres	2 817	2 550	2 973	20 743	30 516	+47,1
		R'000	8 418	8 529	7 449	62 412	94 752	+51,8
	5. Total non-residential buildings	R'000	251 923	281 625	155 853	1 148 699	954 674	-16,9
3. Additions and alterations	1. Dwelling-houses	square metres	125 184	122 460	110 893	463 049	446 193	-3,6
		R'000	333 432	344 186	308 166	1 249 002	1 264 507	+1,2
	2. Other buildings 4/	square metres	48 034	12 062	34 784	138 937	108 801	-21,7
		R'000	155 020	71 383	143 210	457 073	472 986	+3,5
	3. Total additions and alterations	R'000	488 452	415 569	451 376	1 706 075	1 737 493	+1,8
4. Recorded plans passed	1. Total at current prices	R'000	1 432 845	1 536 635	1 257 266	5 208 701	5 472 445	+5,1

1/ The percentage change between cumulative figures for 2006 and 2007.

2/ Other residential buildings include institutions for the disabled, boarding houses, hostels and tourism accommodation e.g. hotels, motels, guesthouses, holiday chalets, bed-and-breakfast accommodation and casinos.

3/ Other non-residential space includes churches, sport and recreation clubs, schools, crèches, hospitals and all other non-residential space.

4/ Other buildings include other residential buildings, non-residential buildings and internal alterations.

\* Revised.

Table 11 - Recorded building plans passed by larger municipalities at current prices by type of building: Eastern Cape

			Apr. 2006*	Mar. 2007	Apr. 2007	Jan. - Apr. 2006	Jan. - Apr. 2007	% Change 1/
Category of building	Type of building	Measuring unit						
1. Residential buildings	1. Dwelling-houses < 80 square metres	Number	57	145	83	372	363	-2,4
		square metres	2 923	6 380	3 715	17 758	16 103	-9,3
		R'000	4 564	9 475	4 226	29 853	19 777	-33,8
	2. Dwelling-houses >= 80 square metres	Number	201	145	178	710	618	-13,0
		square metres	43 845	38 682	47 174	152 235	159 653	+4,9
		R'000	94 952	109 652	139 997	355 269	444 398	+25,1
	3. Flats and townhouses	Number	163	84	118	437	246	-43,7
		square metres	15 899	14 545	20 904	54 833	42 570	-22,4
		R'000	32 904	32 422	56 034	118 239	106 187	-10,2
	4. Other residential buildings 2/	square metres	2 379	2 240	986	3 290	3 647	+10,9
		R'000	5 042	4 502	2 400	7 003	8 010	+14,4
5. Total residential buildings	R'000	137 462	156 051	202 657	510 364	578 372	+13,3	
2. Non-residential buildings	1. Office and banking space	square metres	0	3 918	3 832	2 033	8 879	+336,7
		R'000	0	11 006	10 545	4 920	24 437	+396,7
	2. Shopping space	square metres	1 176	9 846	2 392	13 244	78 177	+490,3
		R'000	2 505	18 608	5 933	31 682	197 646	+523,8
	3. Industrial and warehouse space	square metres	7 022	37	7 156	17 343	21 115	+21,7
		R'000	14 354	100	14 923	34 623	53 557	+54,7
	4. Other non-residential buildings 3/	square metres	4 077	276	887	8 264	2 667	-67,7
		R'000	9 507	602	2 395	18 792	6 813	-63,7
5. Total non-residential buildings	R'000	26 366	30 316	33 796	90 017	282 453	+213,8	
3. Additions and alterations	1. Dwelling-houses	square metres	38 583	36 282	33 462	133 154	132 787	-0,3
		R'000	80 456	103 965	77 539	309 620	337 990	+9,2
	2. Other buildings 4/	square metres	6 407	1 164	32 146	22 317	42 311	+89,6
		R'000	12 923	6 931	84 380	48 443	114 335	+136,0
	3. Total additions and alterations	R'000	93 379	110 896	161 919	358 063	452 325	+26,3
4. Recorded plans passed	1. Total at current prices	R'000	257 207	297 263	398 372	958 444	1 313 150	+37,0

1/ The percentage change between cumulative figures for 2006 and 2007.

2/ Other residential buildings include institutions for the disabled, boarding houses, hostels and tourism accommodation e.g. hotels, motels, guesthouses, holiday chalets, bed-and-breakfast accommodation and casinos.

3/ Other non-residential space includes churches, sport and recreation clubs, schools, crèches, hospitals and all other non-residential space.

4/ Other buildings include other residential buildings, non-residential buildings and internal alterations.

\* Revised.

Table 12 - Recorded building plans passed by larger municipalities at current prices by type of building: Northern Cape

			Apr. 2006*	Mar. 2007	Apr. 2007	Jan. - Apr. 2006	Jan. - Apr. 2007	% Change 1/
Category of building	Type of building	Measuring unit						
1. Residential buildings	1. Dwelling-houses < 80 square metres	Number	0	10	0	219	26	-88,1
		square metres	0	507	0	10 301	1 354	-86,9
		R'000	0	1 587	0	14 882	4 375	-70,6
	2. Dwelling-houses >= 80 square metres	Number	36	89	25	117	172	+47,0
		square metres	7 384	9 977	4 598	22 830	27 175	+19,0
		R'000	13 731	22 921	14 076	44 974	71 891	+59,9
	3. Flats and townhouses	Number	4	2	6	84	14	-83,3
		square metres	639	218	325	10 303	1 756	-83,0
		R'000	1 150	786	1 138	19 792	5 286	-73,3
	4. Other residential buildings 2/	square metres	0	0	0	115	0	-100,0
		R'000	0	0	0	253	0	-100,0
	5. Total residential buildings	R'000	14 881	25 294	15 214	79 901	81 552	+2,1
2. Non-residential buildings	1. Office and banking space	square metres	0	0	0	5 692	1 078	-81,1
		R'000	0	0	0	14 000	2 587	-81,5
	2. Shopping space	square metres	997	260	96	1 763	4 946	+180,5
		R'000	2 000	572	344	3 661	8 844	+141,6
	3. Industrial and warehouse space	square metres	350	239	1 915	5 850	2 990	-48,9
		R'000	850	220	4 596	18 250	6 488	-64,4
	4. Other non-residential buildings 3/	square metres	16	0	710	354	849	+139,8
		R'000	32	0	2 130	750	2 403	+220,4
	5. Total non-residential buildings	R'000	2 882	792	7 070	36 661	20 322	-44,6
3. Additions and alterations	1. Dwelling-houses	square metres	5 645	7 934	4 960	20 930	18 241	-12,8
		R'000	11 562	15 557	14 520	40 501	41 045	+1,3
	2. Other buildings 4/	square metres	488	612	650	3 564	1 841	-48,3
		R'000	1 531	1 526	1 889	8 675	6 063	-30,1
	3. Total additions and alterations	R'000	13 093	17 083	16 409	49 176	47 108	-4,2
4. Recorded plans passed	1. Total at current prices	R'000	30 856	43 169	38 693	165 738	148 982	-10,1

1/ The percentage change between cumulative figures for 2006 and 2007.

2/ Other residential buildings include institutions for the disabled, boarding houses, hostels and tourism accommodation e.g. hotels, motels, guesthouses, holiday chalets, bed-and-breakfast accommodation and casinos.

3/ Other non-residential space includes churches, sport and recreation clubs, schools, crèches, hospitals and all other non-residential space.

4/ Other buildings include other residential buildings, non-residential buildings and internal alterations.

\*Revised.

Table 13 - Recorded building plans passed by larger municipalities at current prices by type of building: Free State

			Apr. 2006*	Mar. 2007	Apr. 2007	Jan. - Apr. 2006	Jan. - Apr. 2007	% Change 1/
Category of building	Type of building	Measuring unit						
1. Residential buildings	1. Dwelling-houses < 80 square metres	Number	46	28	53	1 563	147	-90,6
		square metres	2 158	1 598	2 917	64 585	7 848	-87,8
		R'000	2 475	3 202	4 943	55 239	12 946	-76,6
	2. Dwelling-houses >= 80 square metres	Number	80	115	92	278	464	+66,9
		square metres	15 757	26 685	20 221	51 398	100 573	+95,7
		R'000	31 886	65 584	46 151	105 415	245 100	+132,5
	3. Flats and townhouses	Number	67	142	110	272	507	+86,4
		square metres	7 570	21 025	11 301	33 754	53 885	+59,6
		R'000	16 592	58 448	35 555	77 679	148 222	+90,8
	4. Other residential buildings 2/	square metres	0	11 242	907	802	12 540	+1 463,6
		R'000	0	37 471	3 628	3 000	41 707	+1 290,2
	5. Total residential buildings	R'000	50 953	164 705	90 277	241 333	447 975	+85,6
2. Non-residential buildings	1. Office and banking space	square metres	0	0	225	9 064	5 280	-41,7
		R'000	0	0	672	26 492	18 870	-28,8
	2. Shopping space	square metres	2 852	0	431	5 289	2 111	-60,1
		R'000	7 809	0	1 100	12 864	7 148	-44,4
	3. Industrial and warehouse space	square metres	1 798	3 415	2 637	9 607	13 765	+43,3
		R'000	2 443	7 929	5 920	13 684	25 479	+86,2
	4. Other non-residential buildings 3/	square metres	800	0	0	3 279	1 724	-47,4
		R'000	800	0	0	7 607	3 246	-57,3
	5. Total non-residential buildings	R'000	11 052	7 929	7 692	60 647	54 743	-9,7
3. Additions and alterations	1. Dwelling-houses	square metres	10 529	14 722	15 149	46 392	64 067	+38,1
		R'000	18 264	33 852	35 764	82 605	150 286	+81,9
	2. Other buildings 4/	square metres	3 374	4 325	2 982	11 356	13 012	+14,6
		R'000	8 879	10 005	11 262	27 922	50 072	+79,3
	3. Total additions and alterations	R'000	27 143	43 857	47 026	110 527	200 358	+81,3
4. Recorded plans passed	1. Total at current prices	R'000	89 148	216 491	144 995	412 507	703 076	+70,4

1/ The percentage change between cumulative figures for 2006 and 2007.

2/ Other residential buildings include institutions for the disabled, boarding houses, hostels and tourism accommodation e.g. hotels, motels, guesthouses, holiday chalets, bed-and-breakfast accommodation and casinos.

3/ Other non-residential space includes churches, sport and recreation clubs, schools, crèches, hospitals and all other non-residential space.

4/ Other buildings include other residential buildings, non-residential buildings and internal alterations.

\* Revised.

**Table 14 - Recorded building plans passed by larger municipalities at current prices by type of building: KwaZulu-Natal**

			Apr. 2006	Mar. 2007	Apr. 2007	Jan. - Apr. 2006	Jan. - Apr. 2007	% Change 1/
Category of building	Type of building	Measuring unit						
1. Residential buildings	1. Dwelling-houses < 80 square metres	Number	79	113	95	284	368	+29,6
		square metres	4 201	6 034	5 046	14 975	20 400	+36,2
		R'000	8 520	11 395	10 375	29 783	44 964	+51,0
	2. Dwelling-houses >= 80 square metres	Number	214	249	218	909	834	-8,3
		square metres	48 596	52 059	48 322	193 910	189 372	-2,3
		R'000	132 039	158 051	150 136	497 637	588 592	+18,3
	3. Flats and townhouses	Number	179	748	374	1 078	2 122	+96,8
		square metres	37 070	68 508	48 121	210 392	228 587	+8,6
		R'000	137 066	235 647	182 861	667 331	729 751	+9,4
	4. Other residential buildings 2/	square metres	0	0	14 542	9 848	16 214	+64,6
		R'000	0	0	56 053	18 262	61 066	+234,4
	5. Total residential buildings	R'000	277 625	405 093	399 425	1 213 013	1 424 373	+17,4
2. Non-residential buildings	1. Office and banking space	square metres	7 405	7 558	23 725	26 699	40 484	+51,6
		R'000	26 735	25 908	76 335	73 014	138 760	+90,0
	2. Shopping space	square metres	4 292	7 795	17 286	24 712	36 210	+46,5
		R'000	8 292	23 652	39 925	56 582	106 562	+88,3
	3. Industrial and warehouse space	square metres	25 554	26 258	51 545	165 241	126 597	-23,4
		R'000	63 070	71 963	116 610	327 394	317 141	-3,1
	4. Other non-residential buildings 3/	square metres	1 350	3 518	1 349	23 460	20 522	-12,5
		R'000	3 620	8 965	3 372	54 785	52 680	-3,8
	5. Total non-residential buildings	R'000	101 717	130 488	236 242	511 775	615 143	+20,2
	3. Additions and alterations	1. Dwelling-houses	square metres	51 101	61 665	39 795	214 380	191 445
R'000			127 077	149 983	105 812	506 312	476 553	-5,9
2. Other buildings 4/		square metres	14 761	12 470	21 057	62 911	75 953	+20,7
		R'000	60 745	35 127	55 645	206 468	274 399	+32,9
3. Total additions and alterations		R'000	187 822	185 110	161 457	712 780	750 952	+5,4
4. Recorded plans passed	1. Total at current prices	R'000	567 164	720 691	797 124	2 437 568	2 790 468	+14,5

1/ The percentage change between cumulative figures for 2006 and 2007.

2/ Other residential buildings include institutions for the disabled, boarding houses, hostels and tourism accommodation e.g. hotels, motels, guesthouses, holiday chalets, bed-and-breakfast accommodation and casinos.

3/ Other non-residential space includes churches, sport and recreation clubs, schools, crèches, hospitals and all other non-residential space.

4/ Other buildings include other residential buildings, non-residential buildings and internal alterations.

**Table 15 - Recorded building plans passed by larger municipalities at current prices by type of building: North West**

			Apr. 2006*	Mar. 2007	Apr. 2007	Jan. - Apr. 2006	Jan. - Apr. 2007	% Change 1/
Category of building	Type of building	Measuring unit						
1. Residential buildings	1. Dwelling-houses < 80 square metres	Number	52	82	95	253	1 091	+331,2
		square metres	3 003	4 798	5 611	15 218	46 860	+207,9
		R'000	3 588	6 119	6 739	20 525	56 423	+174,9
	2. Dwelling-houses >= 80 square metres	Number	184	260	173	671	810	+20,7
		square metres	38 988	60 407	41 965	134 019	184 790	+37,9
		R'000	106 540	163 614	113 101	336 955	506 430	+50,3
	3. Flats and townhouses	Number	61	118	300	356	741	+108,1
		square metres	7 161	12 141	31 045	40 411	97 889	+142,2
		R'000	19 300	38 222	71 920	106 777	244 800	+129,3
	4. Other residential buildings 2/	square metres	0	0	0	0	2 280	
		R'000	0	0	0	0	7 980	
	5. Total residential buildings		R'000	129 428	207 955	191 760	464 257	815 633
2. Non-residential buildings	1. Office and banking space	square metres	3 875	1 523	490	8 707	19 764	+127,0
		R'000	9 081	3 756	900	19 809	48 105	+142,8
	2. Shopping space	square metres	1 078	4 336	1 068	10 896	22 162	+103,4
		R'000	2 349	14 031	2 267	21 543	66 491	+208,6
	3. Industrial and warehouse space	square metres	6 238	5 307	9 868	14 798	24 357	+64,6
		R'000	10 174	12 197	15 333	37 502	46 580	+24,2
	4. Other non-residential buildings 3/	square metres	3 978	3 364	1 919	6 626	8 816	+33,1
		R'000	11 529	7 921	4 501	22 375	24 545	+9,7
	5. Total non-residential buildings		R'000	33 133	37 905	23 001	101 229	185 721
3. Additions and alterations	1. Dwelling-houses	square metres	11 518	11 283	8 319	40 387	43 052	+6,6
		R'000	21 986	23 615	17 282	80 609	91 295	+13,3
	2. Other buildings 4/	square metres	2 315	1 073	289	9 474	4 808	-49,3
		R'000	7 987	2 976	648	29 159	13 059	-55,2
	3. Total additions and alterations		R'000	29 973	26 591	17 930	109 768	104 354
4. Recorded plans passed	1. Total at current prices	R'000	192 534	272 451	232 691	675 254	1 105 708	+63,7

1/ The percentage change between cumulative figures for 2006 and 2007.

2/ Other residential buildings include institutions for the disabled, boarding houses, hostels and tourism accommodation e.g. hotels, motels, guesthouses, holiday chalets, bed-and-breakfast accommodation and casinos.

3/ Other non-residential space includes churches, sport and recreation clubs, schools, crèches, hospitals and all other non-residential space.

4/ Other buildings include other residential buildings, non-residential buildings and internal alterations.

\*Revised.



Table 16 - Recorded building plans passed by larger municipalities at current prices by type of building: Gauteng

			Apr. 2006*	Mar. 2007	Apr. 2007	Jan. - Apr. 2006	Jan. - Apr. 2007	% Change 1/
Category of building	Type of building	Measuring unit						
1. Residential buildings	1. Dwelling-houses < 80 square metres	Number	824	1 624	2 201	6 330	7 390	+16,7
		square metres	41 756	69 661	94 074	269 627	317 745	+17,8
		R'000	112 795	142 385	176 562	531 966	627 441	+17,9
	2. Dwelling-houses >= 80 square metres	Number	955	1 216	967	4 072	3 844	-5,6
		square metres	220 035	309 263	253 329	1 029 540	1 036 895	+0,7
		R'000	652 495	985 062	768 336	3 106 984	3 291 084	+5,9
	3. Flats and townhouses	Number	516	1 263	1 099	4 422	4 061	-8,2
		square metres	78 903	196 751	165 560	538 918	573 579	+6,4
		R'000	242 478	646 489	562 361	1 641 420	1 816 649	+10,7
	4. Other residential buildings 2/	square metres	629	0	793	17 871	2 493	-86,1
		R'000	1 200	0	2 776	58 740	8 654	-85,3
	5. Total residential buildings	R'000	1 008 968	1 773 936	1 510 035	5 339 110	5 743 828	+7,6
2. Non-residential buildings	1. Office and banking space	square metres	56 365	30 293	44 948	155 730	127 293	-18,3
		R'000	198 387	95 343	154 303	540 626	431 105	-20,3
	2. Shopping space	square metres	6 612	10 804	48 010	119 827	118 761	-0,9
		R'000	21 383	39 581	207 685	366 048	471 333	+28,8
	3. Industrial and warehouse space	square metres	48 659	99 400	40 690	170 438	282 498	+65,7
		R'000	134 888	271 331	127 794	480 489	803 690	+67,3
	4. Other non-residential buildings 3/	square metres	2 573	3 337	2 880	45 823	26 675	-41,8
		R'000	7 883	9 177	8 420	139 027	85 990	-38,1
	5. Total non-residential buildings	R'000	362 541	415 432	498 202	1 526 190	1 792 118	+17,4
3. Additions and alterations	1. Dwelling-houses	square metres	130 462	155 073	150 916	555 856	559 482	+0,7
		R'000	383 520	483 626	455 982	1 639 827	1 734 975	+5,8
	2. Other buildings 4/	square metres	17 866	18 840	39 510	100 521	126 070	+25,4
		R'000	65 721	71 849	140 587	331 047	441 027	+33,2
	3. Total additions and alterations	R'000	449 241	555 475	596 569	1 970 874	2 176 002	+10,4
4. Recorded plans passed	1. Total at current prices	R'000	1 820 750	2 744 843	2 604 806	8 836 174	9 711 948	+9,9

1/ The percentage change between cumulative figures for 2006 and 2007.

2/ Other residential buildings include institutions for the disabled, boarding houses, hostels and tourism accommodation e.g. hotels, motels, guesthouses, holiday chalets, bed-and-breakfast accommodation and casinos.

3/ Other non-residential space includes churches, sport and recreation clubs, schools, crèches, hospitals and all other non-residential space.

4/ Other buildings include other residential buildings, non-residential buildings and internal alterations.

\* Revised.

**Table 17 - Recorded building plans passed by larger municipalities at current prices by type of building: Mpumalanga**

			Apr. 2006*	Mar. 2007	Apr. 2007	Jan. - Apr. 2006	Jan. - Apr. 2007	% Change 1/
Category of building	Type of building	Measuring unit						
1. Residential buildings	1. Dwelling-houses < 80 square metres	Number	52	36	42	209	464	+122,0
		square metres	3 200	2 039	2 724	12 406	19 053	+53,6
		R'000	7 986	5 754	7 176	30 344	33 738	+11,2
	2. Dwelling-houses >= 80 square metres	Number	175	205	259	676	908	+34,3
		square metres	37 506	52 107	55 591	152 954	214 384	+40,2
		R'000	102 052	129 502	136 754	397 613	600 030	+50,9
	3. Flats and townhouses	Number	221	118	127	554	521	-6,0
		square metres	20 485	15 126	13 691	61 779	52 060	-15,7
		R'000	51 424	36 160	49 763	147 495	161 296	+9,4
	4. Other residential buildings 2/	square metres	95	78	0	7 079	3 889	-45,1
		R'000	285	234	0	19 665	10 918	-44,5
	5. Total residential buildings	R'000	161 747	171 650	193 693	595 117	805 982	+35,4
2. Non-residential buildings	1. Office and banking space	square metres	1 149	1 100	2 082	5 017	11 289	+125,0
		R'000	2 800	4 800	4 703	15 209	30 770	+102,3
	2. Shopping space	square metres	52 095	3 780	6 329	67 507	10 871	-83,9
		R'000	455 562	10 795	25 252	503 186	39 095	-92,2
	3. Industrial and warehouse space	square metres	1 241	3 729	11 029	19 934	42 535	+113,4
		R'000	2 192	10 629	28 372	47 719	165 860	+247,6
	4. Other non-residential buildings 3/	square metres	224	349	468	6 060	5 426	-10,5
		R'000	461	1 048	1 874	15 873	11 546	-27,3
	5. Total non-residential buildings	R'000	461 015	27 272	60 201	581 987	247 271	-57,5
3. Additions and alterations	1. Dwelling-houses	square metres	16 596	21 087	11 433	70 649	67 005	-5,2
		R'000	36 310	50 242	30 661	153 205	165 891	+8,3
	2. Other buildings 4/	square metres	3 135	8 292	3 232	11 689	16 044	+37,3
		R'000	8 020	23 184	9 889	33 719	45 523	+35,0
	3. Total additions and alterations	R'000	44 330	73 426	40 550	186 924	211 414	+13,1
4. Recorded plans passed	1. Total at current prices	R'000	667 092	272 348	294 444	1 364 028	1 264 667	-7,3

1/ The percentage change between cumulative figures for 2006 and 2007.

2/ Other residential buildings include institutions for the disabled, boarding houses, hostels and tourism accommodation e.g. hotels, motels, guesthouses, holiday chalets, bed-and-breakfast accommodation and casinos.

3/ Other non-residential space includes churches, sport and recreation clubs, schools, crèches, hospitals and all other non-residential space.

4/ Other buildings include other residential buildings, non-residential buildings and internal alterations.

\* Revised.

**Table 18 - Recorded building plans passed by larger municipalities at current prices by type of building: Limpopo**

			Apr. 2006	Mar. 2007	Apr. 2007	Jan. - Apr. 2006	Jan. - Apr. 2007	% Change 1/
Category of building	Type of building	Measuring unit						
1. Dwelling-houses < 80 square metres	1. Dwelling-houses < 80 square metres	Number	31	36	23	135	158	+17,0
		square metres	1 990	2 391	1 481	8 316	10 035	+20,7
		R'000	4 705	6 159	4 314	19 934	26 627	+33,6
	2. Dwelling-houses >= 80 square metres	Number	101	83	78	399	341	-14,5
		square metres	20 153	18 087	13 291	85 279	68 537	-19,6
		R'000	45 686	49 801	38 546	205 596	184 453	-10,3
	3. Flats and townhouses	Number	107	50	43	210	240	+14,3
		square metres	11 539	4 676	6 608	21 883	28 211	+28,9
		R'000	29 622	12 196	16 453	55 284	69 461	+25,6
	4. Other residential buildings 2/	square metres	0	4 811	0	947	6 265	+561,6
		R'000	0	10 584	0	4 500	14 482	+221,8
	5. Total residential buildings	R'000	80 013	78 740	59 313	285 314	295 023	+3,4
	2. Dwelling-houses >= 80 square metres	1. Office and banking space	square metres	1 286	714	0	4 242	1 817
R'000			3 215	1 912	0	10 071	4 670	-53,6
2. Shopping space		square metres	754	0	422	3 567	9 074	+154,4
		R'000	1 170	0	928	5 918	16 726	+182,6
3. Industrial and warehouse space		square metres	1 440	2 357	4 740	6 507	11 426	+75,6
		R'000	3 479	5 747	11 820	14 774	28 390	+92,2
4. Other non-residential buildings 3/		square metres	0	1 327	1 333	172	3 170	+1 743,0
		R'000	0	2 968	3 106	600	7 604	+1 167,3
5. Total non-residential buildings		R'000	7 864	10 627	15 854	31 363	57 390	+83,0
3. Flats and townhouses		1. Dwelling-houses	square metres	8 203	9 295	9 167	34 297	40 901
	R'000		19 015	22 135	22 213	68 919	97 881	+42,0
	2. Other buildings 4/	square metres	2 023	1 250	1 125	11 711	4 208	-64,1
		R'000	3 587	2 952	2 674	25 735	9 394	-63,5
	3. Total additions and alterations	R'000	22 602	25 087	24 887	94 654	107 275	+13,3
4. Other residential buildings 2/	1. Total at current prices	R'000	110 479	114 454	100 054	411 331	459 688	+11,8

1/ The percentage change between cumulative figures for 2006 and 2007.

2/ Other residential buildings include institutions for the disabled, boarding houses, hostels and tourism accommodation e.g. hotels, motels, guesthouses, holiday chalets, bed-and-breakfast accommodation and casinos.

3/ Other non-residential space includes churches, sport and recreation clubs, schools, crèches, hospitals and all other non-residential space.

4/ Other buildings include other residential buildings, non-residential buildings and internal alterations.

Table 19 - Buildings reported as completed to larger municipalities at current prices by type of building: South Africa

			Apr. 2006*	Mar. 2007	Apr. 2007	Jan. - Apr. 2006	Jan. - Apr. 2007	% Change 1/
Category of building	Type of building	Measuring unit						
1. Residential buildings	1. Dwelling-houses < 80 square metres	Number	1 164	2 245	1 375	6 433	7 933	+23,3
		square metres	50 177	92 075	62 376	270 454	327 118	+21,0
		R'000	88 655	154 845	112 223	470 442	563 555	+19,8
	2. Dwelling-houses >= 80 square metres	Number	1 526	1 709	1 923	5 996	6 668	+11,2
		square metres	341 617	391 696	407 355	1 362 338	1 489 058	+9,3
		R'000	929 476	1 154 776	1 175 430	3 590 834	4 325 146	+20,4
	3. Flats and townhouses	Number	1 604	1 946	2 250	6 852	7 734	+12,9
		square metres	207 890	208 638	216 153	886 320	826 669	-6,7
		R'000	629 866	635 670	665 599	2 592 908	2 493 276	-3,8
	4. Other residential buildings 2/	square metres	12 210	3 477	61 221	16 672	95 686	+473,9
		R'000	53 655	19 830	221 040	63 483	402 590	+534,2
	5. Total residential buildings	R'000	1 701 652	1 965 121	2 174 292	6 717 667	7 784 567	+15,9
2. Non-residential buildings	1. Office and banking space	square metres	11 409	89 269	40 016	74 503	202 976	+172,4
		R'000	23 400	245 911	135 083	192 465	617 913	+221,1
	2. Shopping space	square metres	39 387	75 713	28 495	255 240	192 293	-24,7
		R'000	102 266	181 267	81 763	762 194	582 393	-23,6
	3. Industrial and warehouse space	square metres	41 172	135 597	106 815	215 328	450 050	+109,0
		R'000	118 590	318 522	340 971	536 015	1 261 506	+135,3
	4. Other non-residential buildings 3/	square metres	4 155	12 639	8 454	38 314	67 049	+75,0
		R'000	12 685	28 652	25 228	86 858	198 028	+128,0
	5. Total non-residential buildings	R'000	256 941	774 352	583 045	1 577 532	2 659 840	+68,6
3. Additions and alterations	1. Dwelling-houses	square metres	144 712	173 482	124 135	621 528	640 410	+3,0
		R'000	348 884	443 251	330 768	1 472 816	1 656 015	+12,4
	2. Other buildings 4/	square metres	28 600	65 807	41 518	175 473	198 643	+13,2
		R'000	90 288	178 959	189 134	476 746	668 815	+40,3
	3. Total additions and alterations	R'000	439 172	622 210	519 902	1 949 562	2 324 830	+19,2
4. Recorded buildings completed	1. Total at current prices	R'000	2 397 765	3 361 683	3 277 239	10 244 761	12 769 237	+24,6

1/ The percentage change between cumulative figures for 2006 and 2007.

2/ Other residential buildings include institutions for the disabled, boarding houses, hostels and tourism accommodation e.g. hotels, motels, guesthouses, holiday chalets, bed-and-breakfast accommodation and casinos.

3/ Other non-residential space includes churches, sport and recreation clubs, schools, crèches, hospitals and all other non-residential space.

4/ Other buildings include other residential buildings, non-residential buildings and internal alterations.

\*Revised.

Table 20 - Buildings reported as completed to larger municipalities at current prices by type of building: Western Cape

			Apr. 2006*	Mar. 2007	Apr. 2007	Jan. - Apr. 2006	Jan. - Apr. 2007	% Change 1/
Category of building	Type of building	Measuring unit						
1. Residential buildings	1. Dwelling-houses < 80 square metres	Number	250	860	399	1 312	2 827	+115,5
		square metres	10 252	30 760	16 742	52 590	102 332	+94,6
		R'000	18 977	42 585	25 299	83 365	136 500	+63,7
	2. Dwelling-houses >= 80 square metres	Number	415	435	435	1 709	1 702	-0,4
		square metres	96 155	108 468	97 736	393 277	384 534	-2,2
		R'000	266 087	324 800	297 739	1 052 311	1 138 278	+8,2
	3. Flats and townhouses	Number	773	538	376	2 187	2 187	-0,0
		square metres	103 901	57 767	45 188	282 052	218 251	-22,6
		R'000	330 038	178 426	128 360	841 304	676 456	-19,6
	4. Other residential buildings 2/	square metres	4 526	3 177	0	7 625	16 382	+114,8
		R'000	18 910	18 930	0	25 765	64 418	+150,0
	5. Total residential buildings	R'000	634 012	564 741	451 398	2 002 745	2 015 652	+0,6
2. Non-residential buildings	1. Office and banking space	square metres	4 003	63 079	1 568	19 135	76 360	+299,1
		R'000	9 711	168 231	3 710	53 529	205 565	+284,0
	2. Shopping space	square metres	4 662	3 969	4 651	36 823	13 752	-62,7
		R'000	9 324	13 691	15 348	90 676	40 783	-55,0
	3. Industrial and warehouse space	square metres	32 052	50 698	36 619	108 641	162 585	+49,7
		R'000	93 022	130 486	106 666	281 237	462 316	+64,4
	4. Other non-residential buildings 3/	square metres	610	8 220	2 187	11 748	21 484	+82,9
		R'000	1 941	18 223	6 694	26 457	57 883	+118,8
	5. Total non-residential buildings	R'000	113 998	330 631	132 418	451 899	766 547	+69,6
	3. Additions and alterations	1. Dwelling-houses	square metres	50 584	60 888	39 788	227 349	219 875
R'000			127 456	158 363	104 236	549 504	573 825	+4,4
2. Other buildings 4/		square metres	10 990	35 842	15 018	49 906	89 984	+80,3
		R'000	29 196	85 269	59 378	142 662	299 812	+110,2
3. Total additions and alterations		R'000	156 652	243 632	163 614	692 166	873 637	+26,2
4. Recorded buildings completed	1. Total at current prices	R'000	904 662	1 139 004	747 430	3 146 810	3 655 836	+16,2

1/ The percentage change between cumulative figures for 2006 and 2007.

2/ Other residential buildings include institutions for the disabled, boarding houses, hostels and tourism accommodation e.g. hotels, motels, guesthouses, holiday chalets, bed-and-breakfast accommodation and casinos.

3/ Other non-residential space includes churches, sport and recreation clubs, schools, crèches, hospitals and all other non-residential space.

4/ Other buildings include other residential buildings, non-residential buildings and internal alterations.

\* Revised.

Table 21 - Buildings reported as completed to larger municipalities at current prices by type of building: Eastern Cape

			Apr. 2006*	Mar. 2007	Apr. 2007	Jan. - Apr. 2006	Jan. - Apr. 2007	% Change 1/
Category of building								
1. Residential buildings	1. Dwelling-houses < 80 square metres	Number	42	87	201	525	451	-14,1
		square metres	1 904	3 959	8 075	22 530	18 829	-16,4
		R'000	3 154	7 830	11 302	33 443	30 995	-7,3
	2. Dwelling-houses >= 80 square metres	Number	102	94	75	395	352	-10,9
		square metres	16 970	12 352	18 876	75 948	59 090	-22,2
		R'000	35 985	30 212	53 004	161 994	154 888	-4,4
	3. Flats and townhouses	Number	121	0	60	249	143	-42,6
		square metres	7 676	0	5 979	22 158	17 011	-23,2
		R'000	15 935	0	13 762	46 161	39 341	-14,8
	4. Other residential buildings 2/	square metres	0	0	0	120	0	
		R'000	0	0	0	264	0	
	5. Total residential buildings	R'000	55 074	38 042	78 068	241 862	225 224	-6,9
	2. Non-residential buildings	1. Office and banking space	square metres	0	1 254	0	3 183	1 254
R'000			0	3 163	0	6 870	3 163	-54,0
2. Shopping space		square metres	672	285	0	7 054	1 612	-77,1
		R'000	1 307	627	0	15 846	3 838	-75,8
3. Industrial and warehouse space		square metres	0	0	2 538	15 920	17 682	+11,1
		R'000	0	0	4 881	29 255	44 027	+50,5
4. Other non-residential buildings 3/		square metres	0	1 488	0	2 885	2 195	-23,9
		R'000	0	2 976	0	6 651	4 795	-27,9
5. Total non-residential buildings		R'000	1 307	6 766	4 881	58 622	55 823	-4,8
3. Additions and alterations		1. Dwelling-houses	square metres	8 922	16 121	10 315	45 573	47 022
	R'000		16 632	32 969	20 577	86 687	92 603	+6,8
	2. Other buildings 4/	square metres	598	8 050	2 863	33 660	19 575	-41,8
		R'000	2 007	19 438	4 426	62 389	42 810	-31,4
	3. Total additions and alterations	R'000	18 639	52 407	25 003	149 076	135 413	-9,2
4. Recorded buildings completed	1. Total at current prices	R'000	75 020	97 215	107 952	449 560	416 460	-7,4

1/ The percentage change between cumulative figures for 2006 and 2007.

2/ Other residential buildings include institutions for the disabled, boarding houses, hostels and tourism accommodation e.g. hotels, motels, guesthouses, holiday chalets, bed-and-breakfast accommodation and casinos.

3/ Other non-residential space includes churches, sport and recreation clubs, schools, crèches, hospitals and all other non-residential space.

4/ Other buildings include other residential buildings, non-residential buildings and internal alterations.

\* Revised.

Table 22 - Buildings reported as completed to larger municipalities at current prices by type of building: Northern Cape

			Apr. 2006*	Mar. 2007	Apr. 2007	Jan. - Apr. 2006	Jan. - Apr. 2007	% Change 1/
Category of building	Type of building	Measuring unit						
1. Residential buildings	1. Dwelling-houses < 80 square metres	Number	15	3	0	18	14	-22,2
		square metres	667	204	0	865	743	-14,1
		R'000	1 075	441	0	1 431	1 201	-16,1
	2. Dwelling-houses >= 80 square metres	Number	29	22	15	65	55	-15,4
		square metres	4 737	3 830	3 055	10 607	10 253	-3,3
		R'000	10 503	8 550	9 427	22 178	26 165	+18,0
	3. Flats and townhouses	Number	13	25	24	36	68	+88,9
		square metres	1 577	3 817	3 177	5 042	9 681	+92,0
		R'000	2 970	10 358	8 968	9 451	24 256	+156,7
	4. Other residential buildings 2/	square metres	0	0	0	0	0	
		R'000	0	0	0	0	0	
	5. Total residential buildings	R'000	14 548	19 349	18 395	33 060	51 622	+56,1
2. Non-residential buildings	1. Office and banking space	square metres	0	0	0	1 620	5 682	+250,7
		R'000	0	0	0	3 240	14 000	+332,1
	2. Shopping space	square metres	0	1 532	562	0	4 250	
		R'000	0	3 677	1 614	0	9 468	
	3. Industrial and warehouse space	square metres	0	591	1 133	1 458	2 206	+51,3
		R'000	0	1 418	2 719	2 916	5 537	+89,9
	4. Other non-residential buildings 3/	square metres	0	0	0	100	0	-100,0
		R'000	0	0	0	200	0	-100,0
	5. Total non-residential buildings	R'000	0	5 095	4 333	6 356	29 005	+356,3
3. Additions and alterations	1. Dwelling-houses	square metres	2 552	2 595	2 572	5 610	10 942	+95,0
		R'000	4 776	6 005	7 988	11 751	26 201	+123,0
	2. Other buildings 4/	square metres	2 037	223	1 510	5 658	1 767	-68,8
		R'000	1 019	535	9 589	9 407	10 286	+9,3
	3. Total additions and alterations	R'000	5 795	6 540	17 577	21 158	36 487	+72,5
4. Recorded buildings completed	1. Total at current prices	R'000	20 343	30 984	40 305	60 574	117 114	+93,3

1/ The percentage change between cumulative figures for 2006 and 2007.

2/ Other residential buildings include institutions for the disabled, boarding houses, hostels and tourism accommodation e.g. hotels, motels, guesthouses, holiday chalets, bed-and-breakfast accommodation and casinos.

3/ Other non-residential space includes churches, sport and recreation clubs, schools, crèches, hospitals and all other non-residential space.

4/ Other buildings include other residential buildings, non-residential buildings and internal alterations.

\*Revised.

**Table 23 - Buildings reported as completed to larger municipalities at current prices by type of building: Free State**

			Apr. 2006	Mar. 2007	Apr. 2007	Jan. - Apr. 2006	Jan. - Apr. 2007	% Change 1/
Category of building	Type of building	Measuring unit						
<b>1. Residential buildings</b>	<b>1. Dwelling-houses &lt; 80 square metres</b>	Number	35	15	4	205	73	-64,4
		square metres	1 555	897	263	9 530	4 393	-53,9
		R'000	1 549	1 890	458	10 887	8 016	-26,4
	<b>2. Dwelling-houses &gt;= 80 square metres</b>	Number	36	44	53	123	257	+108,9
		square metres	8 640	9 387	10 141	24 863	49 277	+98,2
		R'000	17 832	19 286	21 905	48 224	102 981	+113,5
	<b>3. Flats and townhouses</b>	Number	14	29	31	244	107	-56,1
		square metres	2 313	2 856	4 238	28 040	13 023	-53,6
		R'000	4 946	7 119	12 576	55 969	38 596	-31,0
	<b>4. Other residential buildings 2/</b>	square metres	7 684	0	0	8 310	4 987	-40,0
		R'000	34 745	0	0	35 872	79 092	+120,5
	<b>5. Total residential buildings</b>	R'000	<b>59 072</b>	<b>28 295</b>	<b>34 939</b>	<b>150 952</b>	<b>228 685</b>	<b>+51,5</b>
<b>2. Non-residential buildings</b>	<b>1. Office and banking space</b>	square metres	0	1 254	3 307	992	4 561	+359,8
		R'000	0	4 514	10 000	2 454	14 514	+491,4
	<b>2. Shopping space</b>	square metres	4 875	0	1 875	13 692	4 155	-69,7
		R'000	14 227	0	5 625	39 446	14 596	-63,0
	<b>3. Industrial and warehouse space</b>	square metres	166	775	1 362	1 552	2 201	+41,8
		R'000	170	1 799	4 093	1 778	6 033	+239,3
	<b>4. Other non-residential buildings 3/</b>	square metres	698	0	0	3 064	191	-93,8
		R'000	1 698	0	0	6 277	529	-91,6
	<b>5. Total non-residential buildings</b>	R'000	<b>16 095</b>	<b>6 313</b>	<b>19 718</b>	<b>49 955</b>	<b>35 672</b>	<b>-28,6</b>
<b>3. Additions and alterations</b>	<b>1. Dwelling-houses</b>	square metres	5 747	6 165	5 627	21 895	19 186	-12,4
		R'000	9 898	11 007	10 613	35 328	35 350	+0,1
	<b>2. Other buildings 4/</b>	square metres	952	2 793	2 943	5 683	6 495	+14,3
		R'000	4 492	6 131	5 047	16 821	14 319	-14,9
	<b>3. Total additions and alterations</b>	R'000	<b>14 390</b>	<b>17 138</b>	<b>15 660</b>	<b>52 149</b>	<b>49 669</b>	<b>-4,8</b>
<b>4. Recorded buildings completed</b>	<b>1. Total at current prices</b>	R'000	<b>89 557</b>	<b>51 746</b>	<b>70 317</b>	<b>253 056</b>	<b>314 026</b>	<b>+24,1</b>

1/ The percentage change between cumulative figures for 2006 and 2007.

2/ Other residential buildings include institutions for the disabled, boarding houses, hostels and tourism accommodation e.g. hotels, motels, guesthouses, holiday chalets, bed-and-breakfast accommodation and casinos.

3/ Other non-residential space includes churches, sport and recreation clubs, schools, crèches, hospitals and all other non-residential space.

4/ Other buildings include other residential buildings, non-residential buildings and internal alterations.



Table 24 - Buildings reported as completed to larger municipalities at current prices by type of building: KwaZulu-Natal

			Apr. 2006	Mar. 2007	Apr. 2007	Jan. - Apr. 2006	Jan. - Apr. 2007	% Change 1/
Category of building	Type of building	Measuring unit						
1. Residential buildings	1. Dwelling-houses < 80 square metres	Number	146	151	96	480	475	-1,0
		square metres	5 010	6 100	4 877	20 121	20 902	+3,9
		R'000	8 846	10 425	11 966	36 143	42 967	+18,9
	2. Dwelling-houses >= 80 square metres	Number	88	140	129	458	521	+13,8
		square metres	22 677	30 200	28 053	96 493	118 971	+23,3
		R'000	58 631	83 086	80 600	241 423	341 724	+41,5
	3. Flats and townhouses	Number	167	346	178	786	772	-1,8
		square metres	27 181	41 885	29 821	136 624	128 160	-6,2
		R'000	94 129	125 123	93 072	413 855	352 556	-14,8
	4. Other residential buildings 2/	square metres	0	0	0	36	12 606	+34 916,7
		R'000	0	0	0	79	36 570	+46 191,1
	5. Total residential buildings	R'000	161 606	218 634	185 638	691 500	773 817	+11,9
2. Non-residential buildings	1. Office and banking space	square metres	6 835	3 227	1 531	16 880	13 266	-21,4
		R'000	12 439	8 675	1 500	31 750	33 073	+4,2
	2. Shopping space	square metres	5 774	833	6 869	14 520	41 308	+184,5
		R'000	8 661	2 857	15 372	29 756	130 925	+340,0
	3. Industrial and warehouse space	square metres	2 937	41 696	51 205	22 844	154 527	+576,4
		R'000	8 593	66 177	178 917	56 705	423 684	+647,2
	4. Other non-residential buildings 3/	square metres	209	573	3 755	11 233	9 677	-13,9
		R'000	523	1 514	10 663	21 947	20 692	-5,7
	5. Total non-residential buildings	R'000	30 216	79 223	206 452	140 158	608 374	+334,1
	3. Additions and alterations	1. Dwelling-houses	square metres	16 463	26 671	19 746	85 434	94 790
R'000			36 707	63 750	49 150	195 509	233 312	+19,3
2. Other buildings 4/		square metres	9 117	6 225	14 418	36 163	43 440	+20,1
		R'000	40 328	25 806	92 129	125 187	179 029	+43,0
3. Total additions and alterations		R'000	77 035	89 556	141 279	320 696	412 341	+28,6
4. Recorded buildings completed	1. Total at current prices	R'000	268 857	387 413	533 369	1 152 354	1 794 532	+55,7

1/ The percentage change between cumulative figures for 2006 and 2007.

2/ Other residential buildings include institutions for the disabled, boarding houses, hostels and tourism accommodation e.g. hotels, motels, guesthouses, holiday chalets, bed-and-breakfast accommodation and casinos.

3/ Other non-residential space includes churches, sport and recreation clubs, schools, crèches, hospitals and all other non-residential space.

4/ Other buildings include other residential buildings, non-residential buildings and internal alterations.

Table 25 - Buildings reported as completed to larger municipalities at current prices by type of building: North West

			Apr. 2006*	Mar. 2007	Apr. 2007	Jan. - Apr. 2006	Jan. - Apr. 2007	% Change 1/
Category of building	Type of building	Measuring unit						
1. Residential buildings	1. Dwelling-houses < 80 square metres	Number	80	177	183	188	796	+323,4
		square metres	3 845	7 914	7 224	10 375	30 435	+193,3
		R'000	3 728	6 997	5 134	12 103	25 975	+114,6
	2. Dwelling-houses >= 80 square metres	Number	143	171	106	457	487	+6,6
		square metres	25 137	39 041	18 044	84 211	109 531	+30,1
		R'000	64 241	115 019	52 054	200 084	318 215	+59,0
	3. Flats and townhouses	Number	40	193	159	303	592	+95,4
		square metres	4 951	17 430	13 503	22 198	45 436	+104,7
		R'000	12 512	42 408	33 620	49 214	111 586	+126,7
	4. Other residential buildings 2/	square metres	0	0	0	0	0	
		R'000	0	0	0	0	0	
	5. Total residential buildings	R'000	80 481	164 424	90 808	261 401	455 776	+74,4
2. Non-residential buildings	1. Office and banking space	square metres	571	1 509	0	593	2 795	+371,3
		R'000	1 250	3 319	0	1 305	6 148	+371,1
	2. Shopping space	square metres	0	3 720	0	30 176	19 889	-34,1
		R'000	0	9 300	0	120 366	59 299	-50,7
	3. Industrial and warehouse space	square metres	0	0	0	4 300	0	-100,0
		R'000	0	0	0	9 971	0	-100,0
	4. Other non-residential buildings 3/	square metres	0	885	0	1 405	1 529	+8,8
		R'000	0	1 947	0	3 090	3 488	+12,9
	5. Total non-residential buildings	R'000	1 250	14 566	0	134 732	68 935	-48,8
	3. Additions and alterations	1. Dwelling-houses	square metres	5 312	3 132	885	18 697	11 034
R'000			9 722	6 926	1 998	33 525	23 128	-31,0
2. Other buildings 4/		square metres	1 370	1 517	0	12 578	1 517	-87,9
		R'000	2 541	3 593	0	26 449	3 713	-86,0
3. Total additions and alterations		R'000	12 263	10 519	1 998	59 974	26 841	-55,2
4. Recorded buildings completed	1. Total at current prices	R'000	93 994	189 509	92 806	456 107	551 552	+20,9

1/ The percentage change between cumulative figures for 2006 and 2007.

2/ Other residential buildings include institutions for the disabled, boarding houses, hostels and tourism accommodation e.g. hotels, motels, guesthouses, holiday chalets, bed-and-breakfast accommodation and casinos.

3/ Other non-residential space includes churches, sport and recreation clubs, schools, crèches, hospitals and all other non-residential space.

4/ Other buildings include other residential buildings, non-residential buildings and internal alterations.

\* Revised.

**Table 26 - Buildings reported as completed to larger municipalities at current prices by type of building: Gauteng**

			Apr. 2006*	Mar. 2007	Apr. 2007	Jan. - Apr. 2006	Jan. - Apr. 2007	% Change 1/
Category of building	Type of building	Measuring unit						
1. Residential buildings	1. Dwelling-houses < 80 square metres	Number	560	913	416	3 331	3 069	-7,9
		square metres	24 660	39 872	20 464	138 733	135 142	-2,6
		R'000	46 337	78 772	45 026	263 710	279 397	+5,9
	2. Dwelling-houses >= 80 square metres	Number	609	687	815	2 313	2 609	+12,8
		square metres	147 955	166 072	190 466	590 295	641 517	+8,7
		R'000	427 257	515 171	558 254	1 650 708	1 953 352	+18,3
	3. Flats and townhouses	Number	466	757	1 399	2 766	3 697	+33,7
		square metres	59 224	79 766	111 948	360 829	375 624	+4,1
		R'000	166 512	256 885	368 313	1 109 272	1 197 832	+8,0
	4. Other residential buildings 2/	square metres	0	0	61 021	0	61 021	
		R'000	0	0	220 350	0	220 350	
	5. Total residential buildings	R'000	640 106	850 828	1 191 943	3 023 690	3 650 931	+20,7
2. Non-residential buildings	1. Office and banking space	square metres	0	15 391	27 707	23 278	85 599	+267,7
		R'000	0	45 223	97 230	71 766	292 721	+307,9
	2. Shopping space	square metres	13 104	59 600	902	130 833	86 758	-33,7
		R'000	50 247	135 360	3 157	425 367	264 775	-37,8
	3. Industrial and warehouse space	square metres	5 936	39 489	13 805	45 309	101 012	+122,9
		R'000	16 756	113 643	43 095	123 973	298 297	+140,6
	4. Other non-residential buildings 3/	square metres	2 638	1 056	2 392	7 290	30 633	+320,2
		R'000	8 523	2 991	7 761	21 071	107 313	+409,3
	5. Total non-residential buildings	R'000	75 526	297 217	151 243	642 177	963 106	+50,0
	3. Additions and alterations	1. Dwelling-houses	square metres	51 156	52 822	40 749	200 337	210 825
R'000			136 382	153 485	124 869	528 312	612 793	+16,0
2. Other buildings 4/		square metres	3 315	10 494	4 306	28 733	32 990	+14,8
		R'000	9 893	35 275	12 391	84 524	104 291	+23,4
3. Total additions and alterations		R'000	146 275	188 760	137 260	612 836	717 084	+17,0
4. Recorded buildings completed	1. Total at current prices	R'000	861 907	1 336 805	1 480 446	4 278 703	5 331 121	+24,6

1/ The percentage change between cumulative figures for 2006 and 2007.

2/ Other residential buildings include institutions for the disabled, boarding houses, hostels and tourism accommodation e.g. hotels, motels, guesthouses, holiday chalets, bed-and-breakfast accommodation and casinos.

3/ Other non-residential space includes churches, sport and recreation clubs, schools, crèches, hospitals and all other non-residential space.

4/ Other buildings include other residential buildings, non-residential buildings and internal alterations.

\* Revised.

Table 27 - Buildings reported as completed to larger municipalities at current prices by type of building: Mpumalanga

			Apr. 2006	Mar. 2007	Apr. 2007	Jan. - Apr. 2006	Jan. - Apr. 2007	% Change 1/
Category of building	Type of building	Measuring unit						
1. Residential buildings	1. Dwelling-houses < 80 square metres	Number	12	16	19	301	91	-69,8
		square metres	694	972	1 246	11 010	5 811	-47,2
		R'000	1 890	2 546	3 805	18 491	16 447	-11,1
	2. Dwelling-houses >= 80 square metres	Number	66	70	244	333	493	+48,0
		square metres	11 946	14 311	33 685	59 254	80 995	+36,7
		R'000	28 928	35 066	78 345	138 886	195 682	+40,9
	3. Flats and townhouses	Number	10	10	11	187	78	-58,3
		square metres	1 067	606	863	16 809	9 330	-44,5
		R'000	2 824	1 818	2 468	36 720	26 409	-28,1
	4. Other residential buildings 2/	square metres	0	300	200	581	690	+18,8
		R'000	0	900	690	1 503	2 160	+43,7
	5. Total residential buildings	R'000	33 642	40 330	85 308	195 600	240 698	+23,1
	2. Non-residential buildings	1. Office and banking space	square metres	0	2 379	5 903	6 397	12 283
R'000			0	9 258	22 643	16 248	45 201	+178,2
2. Shopping space		square metres	0	4 017	13 174	10 881	17 634	+62,1
		R'000	0	10 044	40 000	20 700	51 153	+147,1
3. Industrial and warehouse space		square metres	0	2 348	153	13 591	7 338	-46,0
		R'000	0	4 999	600	25 183	16 431	-34,8
4. Other non-residential buildings 3/		square metres	0	417	120	589	1 340	+127,5
		R'000	0	1 001	110	1 165	3 328	+185,7
5. Total non-residential buildings		R'000	0	25 302	63 353	63 296	116 113	+83,4
3. Additions and alterations	1. Dwelling-houses	square metres	2 862	4 206	3 641	12 933	21 597	+67,0
		R'000	5 146	8 695	9 508	24 839	47 379	+90,7
	2. Other buildings 4/	square metres	221	663	460	1 087	2 579	+137,3
		R'000	812	2 912	6 174	3 838	13 893	+262,0
	3. Total additions and alterations	R'000	5 958	11 607	15 682	28 677	61 272	+113,7
4. Recorded buildings completed	1. Total at current prices	R'000	39 600	77 239	164 343	287 573	418 083	+45,4

1/ The percentage change between cumulative figures for 2006 and 2007.

2/ Other residential buildings include institutions for the disabled, boarding houses, hostels and tourism accommodation e.g. hotels, motels, guesthouses, holiday chalets, bed-and-breakfast accommodation and casinos.

3/ Other non-residential space includes churches, sport and recreation clubs, schools, crèches, hospitals and all other non-residential space.

4/ Other buildings include other residential buildings, non-residential buildings and internal alterations.

**Table 28 - Buildings reported as completed to larger municipalities at current prices by type of building: Limpopo**

			Apr. 2006*	Mar. 2007	Apr. 2007	Jan. - Apr. 2006	Jan. - Apr. 2007	% Change 1/
Category of building	Type of building	Measuring unit						
1. Residential buildings	1. Dwelling-houses < 80 square metres	Number	24	23	57	73	137	+87,7
		square metres	1 590	1 397	3 485	4 700	8 531	+81,5
		R'000	3 099	3 359	9 233	10 869	22 057	+102,9
	2. Dwelling-houses >= 80 square metres	Number	38	46	51	143	192	+34,3
		square metres	7 400	8 035	7 299	27 390	34 890	+27,4
		R'000	20 012	23 586	24 102	75 026	93 861	+25,1
	3. Flats and townhouses	Number	0	48	12	94	90	-4,3
		square metres	0	4 511	1 436	12 568	10 153	-19,2
		R'000	0	13 533	4 460	30 962	26 244	-15,2
	4. Other residential buildings 2/	square metres	0	0	0	0	0	
		R'000	0	0	0	0	0	
	5. Total residential buildings	R'000	23 111	40 478	37 795	116 857	142 162	+21,7
2. Non-residential buildings	1. Office and banking space	square metres	0	1 176	0	2 425	1 176	-51,5
		R'000	0	3 528	0	5 303	3 528	-33,5
	2. Shopping space	square metres	10 300	1 757	462	11 261	2 935	-73,9
		R'000	18 500	5 711	647	20 037	7 556	-62,3
	3. Industrial and warehouse space	square metres	81	0	0	1 713	2 499	+45,9
		R'000	49	0	0	4 997	5 181	+3,7
	4. Other non-residential buildings 3/	square metres	0	0	0	0	0	
		R'000	0	0	0	0	0	
	5. Total non-residential buildings	R'000	18 549	9 239	647	30 337	16 265	-46,4
3. Additions and alterations	1. Dwelling-houses	square metres	1 114	882	812	3 700	5 139	+38,9
		R'000	2 165	2 051	1 829	7 361	11 424	+55,2
	2. Other buildings 4/	square metres	0	0	0	2 005	296	-85,2
		R'000	0	0	0	5 469	662	-87,9
	3. Total additions and alterations	R'000	2 165	2 051	1 829	12 830	12 086	-5,8
4. Recorded buildings completed	1. Total at current prices	R'000	43 825	51 768	40 271	160 024	170 513	+6,6

1/ The percentage change between cumulative figures for 2006 and 2007.

2/ Other residential buildings include institutions for the disabled, boarding houses, hostels and tourism accommodation e.g. hotels, motels, guesthouses, holiday chalets, bed-and-breakfast accommodation and casinos.

3/ Other non-residential space includes churches, sport and recreation clubs, schools, crèches, hospitals and all other non-residential space.

4/ Other buildings include other residential buildings, non-residential buildings and internal alterations.

\*Revised.

**Table 29 - Subsidised low-cost dwelling-houses completed or under construction by province**

Province	Year	Number 1/	Square metres 2/	Value R'000 2/
Western Cape	2002	19 534	531 116	168 852
	2003	16 926	507 780	247 187
	2004	12 751	382 530	211 424
Eastern Cape	2002	46 700	1 575 675	473 806
	2003	35 005	1 050 150	511 213
	2004	34 923	1 047 690	579 058
Northern Cape	2002	5 189	164 906	68 078
	2003	4 354	130 620	63 586
	2004	3 645	109 350	60 438
Free State	2002	8 617	348 492	154 121
	2003	14 848	445 440	216 840
	2004	16 522	495 660	273 951
KwaZulu-Natal	2002	21 958	831 349	234 041
	2003	31 372	941 160	458 157
	2004	35 968	1 079 040	596 385
North West	2002	21 309	630 115	210 439
	2003	13 809	414 270	201 667
	2004	10 149	304 470	168 281
Gauteng	2002	29 939	991 571	321 943
	2003	42 862	1 285 860	625 957
	2004	33 260	997 800	551 484
Mpumalanga	2002	19 883	660 505	253 931
	2003	21 336	640 080	246 079
	2004	18 808	564 240	311 855
Limpopo	2002	15 382	605 877	183 769
	2003	15 596	467 880	227 764
	2004	16 338	490 140	270 900
<b>South Africa</b>	<b>2002</b>	<b>188 511</b>	<b>6 339 606</b>	<b>2 068 980</b>
	<b>2003</b>	<b>196 108</b>	<b>5 883 240</b>	<b>2 798 450</b>
	<b>2004</b>	<b>182 364</b>	<b>5 470 920</b>	<b>3 023 777</b>

Source: Provincial Governments co-ordinated by the National Department of Housing  
 1/ As soon as building commences, dwelling-houses are recorded as completed or under construction.

2/ Estimates by the National Department of Housing.

**Table 30 - Subsidised low-cost dwelling-houses completed by province**

Completions during financial year: 1 April 2005 to 31 March 2006			
Province	Number	Square metres 1/	Value R'000 1/
Western Cape	2 040	61 200	52 877
Eastern Cape	16 874	506 220	437 374
Northern Cape	5 293	158 790	137 195
Free State	17 635	529 050	457 099
KwaZulu-Natal	21 601	648 030	559 898
North West	14 445	433 350	374 414
Gauteng	23 409	702 270	606 761
Mpumalanga	14 389	431 670	372 963
Limpopo	21 973	659 190	569 540
<b>South Africa</b>	<b>137 659</b>	<b>4 129 770</b>	<b>3 568 121</b>

Source: Provincial Governments co-ordinated by the National Department of Housing  
 1/ Estimates by the National Department of Housing.

## Explanatory notes

<b>Introduction</b>	1	Statistics South Africa (Stats SA) conducts a monthly building statistics survey collecting information regarding building plans passed and buildings completed, financed by the private sector, from the largest local government institutions in South Africa. According to these institutions, they are not always notified about low-cost housing projects and therefore do not include the bulk of low-cost dwelling-houses. Data regarding subsidised low-cost dwelling-houses, supplied by the provincial governments and co-ordinated by the National Department of Housing, are shown in table 29 and table 30 (page 37).
	2	In order to improve timeliness of the publication, some information for the current month has been estimated due to late submission by respondents. These estimates will be revised in the next statistical release(s) as soon as actual information is available.
<b>Purpose of the survey</b>	3	The monthly survey data are used in monitoring the state of economy and formulation of economic policy. Furthermore, the results are important inputs to estimate the Gross Domestic Product (GDP) and to calculate the Composite Leading Business Cycle Indicator. The data are extensively used by the private sector.
<b>Scope of the survey</b>	4	This survey covers local government institutions conducting activities for the private sector regarding - <ul style="list-style-type: none"> <li>• passing of building plans; and</li> <li>• final inspection of completed buildings.</li> </ul>
<b>Classification</b>	5	Building activities is classified in division 5 according to the 1993 edition of the <i>Standard Industrial Classification of all Economic Activities, (SIC) Fifth Edition, Report No. 09-90-02</i> . The SIC is based on the 1990 <i>International Standard Industrial Classification of all Economic Activities (ISIC)</i> with suitable adaptations for local conditions.
<b>Response rate</b>	6	The preliminary response rate for the survey on building statistics for April 2007 was 94,7%. Improved response rate for March 2007 was 100%.
<b>Statistical unit</b>	7	The statistical unit for the collection of information is a local government institution. Local government institutions include district municipalities, metropolitan municipalities and local municipalities.
<b>Survey methodology and design</b>	8	<p>Stats SA conducts a monthly survey of metropolitan municipalities and large local municipalities on building plans passed and buildings completed. An annual survey of the remaining municipalities is conducted regarding buildings completed. The monthly survey represents approximately 90 percent of the total value of buildings completed. Information regarding building plans passed and buildings completed for the private sector is collected by mail, fax and telephone.</p> <p>According to the municipalities, they are not always notified about low-cost housing projects. Data regarding subsidised low-cost dwelling-houses, supplied by the provincial governments and co-ordinated by the National Department of Housing, are shown in table 29 and table 30 (page 37).</p>
<b>Constant prices</b>	9	The value of building plans passed and buildings completed at constant prices measures building activities in terms of ruling prices in a specific base year, which is currently 2000. The value of building plans passed at constant prices for each month is obtained by deflating the values at current prices with a price index known as the 'lump sum domestic buildings' as published in statistical release P0151: <i>JBCC Contract Price Adjustment Provisions Work Group Indices</i> . In order to be applicable, these indices (base February 1991=100) are converted to the base year 2000=100.



- 10** The value of buildings completed at constant prices is obtained by deflating the values at current prices with the price index which is used to calculate building plans passed at constant prices (see paragraph 8). Since the completion of buildings may extend over a few months to a few years, the current value of buildings completed is deflated by price indices which prevailed at the time the plans were passed. Therefore, the duration of the completion of different types of buildings are taken into account in ascertaining the deflators e.g. the value of dwelling-houses completed at constant prices at January 2007 is obtained by deflating the current value of dwelling-houses completed for January 2007 with the price index of a month six months prior to January 2007. Furthermore, the value of other residential buildings, non-residential buildings and additions and alterations at constant prices is obtained by deflating the current values with price indices of 12 months, 18 months and 12 months prior to the relevant month, respectively.
- Seasonal adjustment**
- 11** Seasonally adjusted estimates of building plans passed and buildings completed are generated each month, using the X-11 Seasonal Adjustment Program developed by US Bureau of the Census Economic Research and Analyses Division, 1968.
- 12** Seasonal adjustment is a means of removing the estimated effects of normal seasonal variation from the series so that the effects of other influences on the series can be more clearly recognised. Seasonal adjustment does not aim to remove irregular or non-seasonal influences which may be present in any particular month. Influences that are volatile or unsystematic can still make it difficult to interpret the movement of the series even after adjustment for seasonal variations. Therefore, the month-to-month movements of seasonally adjusted estimates may not be reliable indicators of trend behaviour.
- Trend cycle**
- 13** The trend is a long-term pattern or movement of a time series. The X-11 Seasonal Adjustment Program is used for smoothing seasonally adjusted data.
- Revised figures**
- 14** Revised figures are due to late submission of data to Stats SA, or to respondents reporting revisions or corrections to their figures. Figures for the latest month are therefore preliminary. Data are edited at municipal level.
- 15** Once a year the annual statistical release P5041.3 is published with the revised and updated information at provincial and municipal level for the previous calendar year. Due to this comprehensive revision, the monthly statistical release P5041.1 reflects provincial revision for 2006 where applicable.
- Related publications**
- 16** Users may also wish to refer to the following publications:
- P5041.3: Selected building statistics of the private sector as reported by local government institutions issued annually.
  - P9101.2: Actual and expected expenditure on construction by the public sector per statistical region issued annually.
  - Bulletin of Statistics issued quarterly.
  - South African Statistics issued annually.
  - Report 50-11-01 issued annually.
- Rounding-off of figures**
- 17** The figures in the tables have, where necessary, been rounded off to the nearest digit shown.
- Pre-release policy**
- 18** Stats SA's pre-release policy may be inspected at its website, [www.statssa.gov.za](http://www.statssa.gov.za)



**Symbols and  
abbreviations**

<b>19</b>	..	no meaningful percentage change between two specified periods available since either one or both of the totals are nil
	0	nil or figure too small to publish
	*	revised
	Stats SA	Statistics South Africa
	SIC	Standard Industrial Classification of all Economic Activities
	ISIC	International Standard Industrial Classification of all Economic Activities
	JBCC	Joint Building Contracts Committee
	CD	Compact Disc
	US	United States
	SARB	South African Reserve Bank
	DTI	Department of Trade and Industry

## Glossary

<b>Additions and alterations</b>	They include extensions to existing buildings as well as internal and external alterations of existing buildings.
<b>Blocks of flats</b>	High-density housing consisting of a number of self-contained dwelling-units, each with at least one living-room together with a kitchen and bathroom, conjoined to similar units in one building.
<b>Dwelling-house</b>	A free-standing, complete structure on a separate stand or a self-contained dwelling-unit, granny flat, on the same premises as an existing residence. Out-buildings and garages are included.
<b>Local government institutions</b>	Include – <ul style="list-style-type: none"> <li>• District municipalities;</li> <li>• Metropolitan municipalities; and</li> <li>• Local municipalities.</li> </ul>
<b>Municipality</b>	A generic term describing the “unit” of government in the local spheres responsible for local government in a geographically demarcated area and including district, metropolitan and local municipalities. It is an institution consisting of a municipal council (elected political representatives) and municipal administration (appointed officials).
<b>District municipality</b>	Municipality that has municipal executive and legislative authority in an area that includes more than one municipality, and which is described in section 155(1) of the Constitution as a category C municipality (Refer to Local Government: Municipal Structure Act, 1998 (Act No. 117 of 1998)).
<b>Metropolitan municipality</b>	Municipality that has municipal executive and legislative authority in an area that includes more than one municipality, and which is described in section 155(1) of the Constitution as a category A municipality (Refer to Local Government: Municipal Structure Act, 1998 (Act No. 117 of 1998)).
<b>Local municipality</b>	Municipality that shares municipal executive and legislative authority in its area with a district municipality within whose area it falls, that is described in section 155(1) of the constitution as a category B municipality.
<b>Non-residential buildings</b>	Comprise factories, commercial, financial and other office buildings, as well as other buildings not used for residential purposes, such as churches, halls, clubs, schools and hospitals.
<b>Other residential buildings</b>	Institutions for the disabled, boarding houses, old people’s homes, hostels, hotels, motels, guesthouses, holiday chalets, bed-and-breakfast accommodation, entertainment centres and casinos.
<b>Percentage change</b>	<p>When using monthly actual values, the percentage change is the change in actual values of building activities (building plans passed or buildings completed) of the relevant month compared with the actual values of building activities (building plans passed or buildings completed) of the same month in the previous year expressed as a percentage.</p> <p>When using annual actual values, the percentage change is the change in the actual values of building activities (building plans passed or buildings completed) of the relevant year compared with the actual values of building activities (building plans passed or buildings completed) of the previous year expressed as a percentage.</p> <p>When using seasonally adjusted values, the percentage change is the change in the seasonally adjusted values of building activities (building plans passed or buildings completed) of the relevant month compared with the seasonally adjusted values of building activities (building plans passed or buildings completed) of the previous month expressed as a percentage.</p>

<b>Reference period</b>	One calendar month.
<b>Residential buildings</b>	Comprise dwelling-houses, flats, townhouses and other residential buildings.
<b>Townhouses</b>	Multiple, medium-density dwelling-units and include cluster housing, group housing, simplexes, duplexes, triplexes and other similar dwelling-units which are usually grouped together, with one level of each unit on ground level. This excludes blocks of flats.

## General information

Stats SA publishes approximately 300 different statistical releases each year. It is not economically viable to produce them in more than one of South Africa's eleven official languages. Since the releases are used extensively, not only locally but also by international economic and social-scientific communities, Stats SA releases are published in English.

Stats SA has copyright on this publication. Users may apply the information as they wish, provided that they acknowledge Stats SA as the source of the basic data wherever they process, apply, utilise, publish or distribute the data and also that they specify that the relevant application and analysis (where applicable) result from their own processing of the data.

An advance release calendar is disseminated on [www.statssa.gov.za](http://www.statssa.gov.za)

## Stats SA products

A complete set of Stats SA publications is available at the Stats SA Library and the following libraries:

National Library of South Africa, Pretoria Division  
National Library of South Africa, Cape Town Division  
Natal Society Library, Pietermaritzburg  
Library of Parliament, Cape Town  
Bloemfontein Public Library  
Johannesburg Public Library  
Eastern Cape Library Services, King William's Town  
Central Regional Library, Polokwane  
Central Reference Library, Nelspruit  
Central Reference Collection, Kimberley  
Central Reference Library, Mmabatho

Stats SA also provides a subscription service.

## Electronic services

A large range of data are available via on-line services, diskette, CD and computer printouts. For more details about our electronic data services, contact (012) 310 8600/8390/8351/4892/8496/8095.

You can visit us on the Internet at: [www.statssa.gov.za](http://www.statssa.gov.za)

## Enquiries

Telephone number: (012) 310 8600/8390/8351/4892/8496/8095 (user information services)  
(012) 310 8228/310 8007 (technical enquiries)  
(012) 310 8161 (orders)  
(012) 310 4883/4885/8018 (library)

Fax number: (012) 310 8664 (technical enquiries)

Email: [Gretaz@statssa.gov.za](mailto:Gretaz@statssa.gov.za) (technical enquiries)  
[info@statssa.gov.za](mailto:info@statssa.gov.za) (user information services)  
[distribution@statssa.gov.za](mailto:distribution@statssa.gov.za) (orders)

Postal address: Private Bag X44, Pretoria, 0001

*Produced by Stats SA*