

Selected building statistics of the private sector derived from data reported by local government institutions

April 2003

Co-operation between Statistics South Africa (Stats SA), the citizens of the country, the private sector and government institutions is essential for a successful statistical system. Without continued co-operation and goodwill, the timely release of relevant and reliable official statistics will not be possible.

**Embargo: 13:00
Date: 18 June 2003**

Stats SA publishes approximately three hundred different releases each year. It is not economically viable to produce them in more than one of South Africa's eleven official languages. Since the releases are used extensively, not only locally, but also by international economic and social-scientific communities, Stats SA releases are published in English only.

Key figures regarding building plans passed for the month ended April 2003

Actual estimates at constant 2000 prices

	April 2003	January 2003 to April 2003	Percentage change between April 2002 and April 2003	Percentage change between February 2002 to April 2002 and February 2003 to April 2003	Percentage change between January 2002 to April 2002 and January 2003 to April 2003
	R million	R million			
Residential buildings					
Dwelling-houses	669,3	2 629,7	- 7,5	+ 2,4	+ 2,5
Flats and townhouses	241,8	948,3	- 5,2	+ 29,6	+ 24,0
Other residential buildings	18,6	91,7	+ 48,4	- 28,7	- 23,8
Total	929,7	3 669,7	- 6,2	+ 7,2	+ 6,4
Non-residential buildings	218,0	927,7	- 27,7	- 40,1	- 16,1
Additions and alterations	457,2	1 741,4	- 0,3	+ 7,6	+ 7,9
Total	1 604,9	6 338,8	- 8,4	- 1,8	+ 2,8

Seasonally adjusted estimates at constant 2000 prices

	April 2003	Percentage change between March 2003 and April 2003	Percentage change between November 2002 to January 2003 and February 2003 to April 2003
	R million		
Residential buildings	1 055,3	+ 1,3	- 0,2
Non-residential buildings	242,6	+ 48,9	- 34,8
Additions and alterations	507,9	+ 11,3	- 1,5
Total	1 805,8	+ 8,7	- 6,6

Key findings regarding building plans passed for the three months ended April 2003

Seasonally adjusted real value of building plans passed decreases

The seasonally adjusted real value of building plans passed (at constant 2000 prices) for the three months ended April 2003 decreased by 6,6% compared with the previous three months.

The decrease of 6,6% in the seasonally adjusted real value of building plans passed was due to decreases reported for non-residential buildings (-34,8%), additions and alterations (-1,5%) and residential buildings (-0,2%) during the three months ended April 2003 compared with the previous three months.

Key findings regarding building plans passed for the month ended April 2003

Total real value of building plans passed increases

The total real value of building plans passed (at constant 2000 prices) during the first four months of 2003 increased by 2,8% (+R170,2 million) to R6 338,8 million compared with the first four months of 2002. Large increases in the real value of building plans passed were reported for residential buildings (+R220,1 million, mainly due to real increases reported for flats and townhouses (+R183,4 million) and dwelling-houses (+R65,3 million)) and additions and alterations (+R127,5 million). The largest real increase for flats and townhouses was reported by KwaZulu-Natal (+R127,7 million), followed by Gauteng (+R69,7 million) and Western Cape (+R21,2 million). Regarding dwelling-houses, large real increases were reported by KwaZulu-Natal (+R68,1 million) and Gauteng (+R35,1 million). Large real increases for additions and alterations were reported by Western Cape (+R91,6 million) and KwaZulu-Natal (+R72,2 million) during the above-mentioned period.

Five of the nine provinces reported increases in the total real value of building plans passed

The largest provincial contributors to the increase of 2,8% (+R170,2 million) in the total real value of building plans passed were KwaZulu-Natal (+6,5 percentage points or R401,7 million) and Western Cape (+2,0 percentage points or R122,7 million). However, these increases were partially counteracted by decreases reported by Gauteng (-3,3 percentage points or R202,0 million), Eastern Cape (-1,6 percentage points or R100,0 million) and Mpumalanga (-1,0 percentage point or R60,2 million) (cf. table A). Large real increases in KwaZulu-Natal were reported for shopping space (+R205,8 million, due to a real increase of R220,2 million reported by the selected urban areas of eThekweni Municipality), flats and townhouses (+R127,7 million, mainly due to a real increase of R118,0 million reported by North Operational Entity - Umhlanga Rocks) and additions and alterations (+R72,2 million). Western Cape reported large real increases for additions and alterations (+R91,6 million, mainly due to real increases reported by the selected urban areas of City of Cape Town (+R83,5 million)).

Table A - Contribution of provinces to the total real value of building plans passed

Province	Percentage contribution to the total real value of plans passed during January 2002 to April 2002	Percentage change between January 2002 to April 2002 and January 2003 to April 2003	Contribution (percentage points) ¹ to the percentage change in the real value of plans passed between January 2002 to April 2002 and January 2003 to April 2003	Difference in total real value of plans passed between January 2002 to April 2002 and January 2003 to April 2003 R million
KwaZulu-Natal	10,4	+ 62,9	+ 6,5	+ 401,7
Western Cape	26,6	+ 7,5	+ 2,0	+ 122,7
Limpopo	1,6	+ 10,1	+ 0,2	+ 10,1
Free State	2,9	+ 0,4	+ 0,0	+ 0,6
North West	2,9	+ 0,3	+ 0,0	+ 0,5
Northern Cape	0,5	- 9,5	- 0,0	- 3,2
Mpumalanga	4,6	- 21,0	- 1,0	- 60,2
Eastern Cape	6,6	- 24,7	- 1,6	- 100,0
Gauteng	43,9	- 7,5	- 3,3	- 202,0
Total	100,0	+ 2,8	+ 2,8	+170,2

¹ The contribution (percentage points) is calculated by multiplying the percentage change of each province between January 2002 to April 2002 and January 2003 to April 2003 (cf. column 3) with the percentage contribution of the corresponding province to the total real value of plans passed during January 2002 to April 2002 (cf. column 2) divided by 100.

Key figures regarding buildings completed for the month ended April 2003

Actual estimates at constant 2000 prices	April 2003	January 2003 to April 2003	Percentage change between April 2002 and April 2003	Percentage change between February 2002 to April 2002 and February 2003 to April 2003	Percentage change between January 2002 to April 2002 and January 2003 to April 2003
	R million	R million			
Residential buildings					
Dwelling-houses	417,1	1 574,2	- 9,6	+ 10,3	+ 5,5
Flats and townhouses	102,0	557,5	- 25,5	- 1,2	+ 0,4
Other residential buildings	34,1	85,1	+ 266,7	- 64,0	- 60,8
Total	553,2	2 216,8	- 8,9	- 1,4	- 2,1
Non-residential buildings	493,6	1 064,0	+ 105,1	+ 69,3	+ 56,0
Additions and alterations	201,7	870,1	- 45,2	- 9,4	- 3,1
Total	1 248,5	4 150,9	+ 2,7	+ 9,6	+ 8,0

Seasonally adjusted estimates at constant 2000 prices

	April 2003	Percentage change between March 2003 and April 2003	Percentage change between November 2002 to January 2003 and February 2003 to April 2003
	R million		
Residential buildings	599,6	+ 11,2	- 6,7
Non-residential buildings	483,4	+ 30,3	+ 24,3
Additions and alterations	228,9	+ 30,4	- 12,7
Total	1 311,9	+ 20,8	- 0,5

Key findings regarding buildings completed for the three months ended April 2003

Seasonally adjusted real value of buildings completed decreases slightly

The seasonally adjusted real value of buildings completed (at constant 2000 prices) for the three months ended April 2003 decreased by 0,5% compared with the previous three months.

The decrease of 0,5% in the seasonally adjusted real value of buildings completed during the three months ended April 2003 compared with the previous three months was due to decreases in the seasonally adjusted real value of additions and alterations (-12,7%) and residential buildings (-6,7%). However, these decreases were to a large extent counteracted by an increase in the seasonally adjusted real value on non-residential buildings completed (+24,3%) during the above-mentioned period.

Key findings regarding buildings completed for the month ended April 2003

Total real value of buildings completed increases

The total real value of buildings completed (at constant 2000 prices) during the first four months of 2003 increased by 8,0% (+R306,4 million) to R4 150,9 million compared with the first four months of 2002. Large real increases were reported for non-residential buildings (+R381,9 million, mainly due to real increases reported by Gauteng (+R426,7 million)) and dwelling-houses (+R82,0 million, mainly due to increases reported by Gauteng (+R123,4 million)).

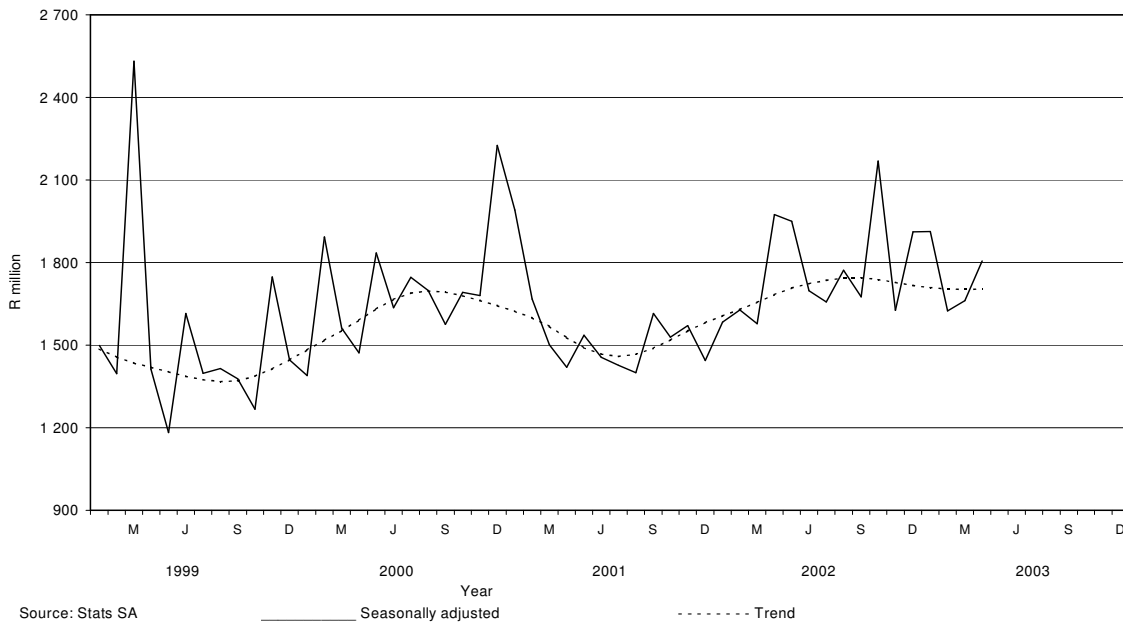
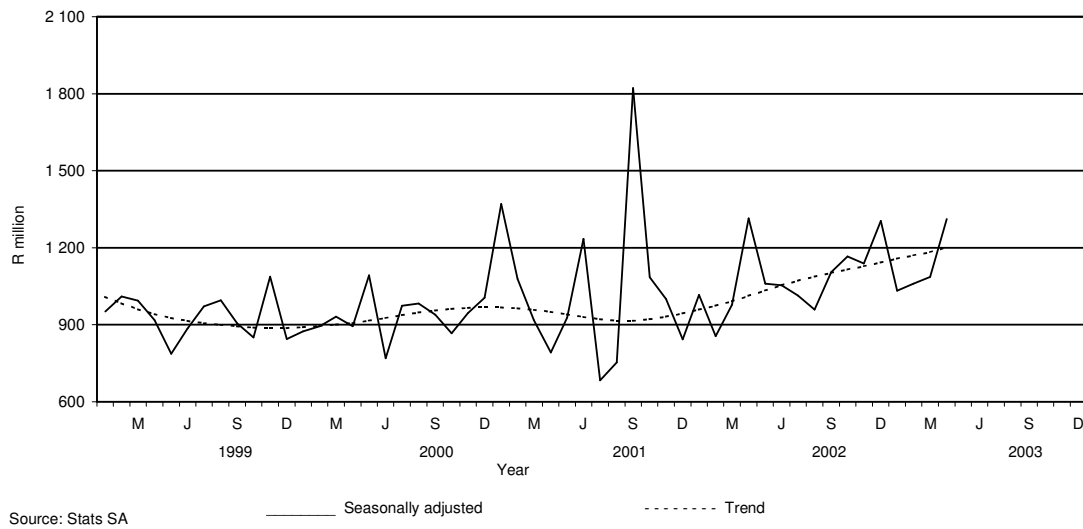
Five of the nine provinces reported increases in the total real value of buildings completed

The largest provincial contributor to the increase of 8,0% (+R306,4 million) in the total real value of buildings completed was Gauteng (+14,4 percentage points or R553,8 million), followed by Mpumalanga (+1,7 percentage points or R67,1 million) and North West (+1,7 percentage points or R63,2 million). However, these increases were partially counteracted by large decreases reported by Limpopo (-5,0 percentage points or R189,3 million) and KwaZulu-Natal (-3,6 percentage points or R141,0 million) (cf. table B). Large real increases in Gauteng were reported for non-residential buildings (+R426,7 million, mainly due to increases reported by Witwatersrand (+R386,9 million)) and dwelling-houses (+R123,4 million, mainly due to increases reported by the selected urban areas of City of Tshwane (+R51,1 million), Witwatersrand (+R43,3 million) and Kungwini Local Municipality (+R28,0 million)). In Mpumalanga the largest real increase was reported for flats and townhouses (+R30,5 million, mainly due to the completion of flats and townhouses to the real value of R30,7 million as reported by Middelburg Municipality during January 2003) and non-residential buildings (+R26,6 million, mainly due to real increases reported for shopping space (+R15,5 million) and industrial and warehouse space (+R9,5 million)).

Table B - Contribution of provinces to the total real value of buildings completed

Province	Percentage contribution to the total real value of buildings completed during January 2002 to April 2002	Percentage change between January 2002 to April 2002 and January 2003 to April 2003	Contribution (percentage points) ¹ to the percentage change in the real value of buildings completed between January 2002 to April 2002 and January 2003 to April 2003	Difference in total real value of buildings completed between January 2002 to April 2002 and January 2003 to April 2003 R million
Gauteng	34,8	+ 41,3	+ 14,4	+ 553,8
Mpumalanga	1,7	+ 100,2	+ 1,7	+ 67,1
North West	2,8	+ 59,3	+ 1,7	+ 63,2
Free State	2,5	+ 21,4	+ 0,5	+ 20,5
Eastern Cape	4,7	+ 4,7	+ 0,2	+ 8,4
Northern Cape	0,6	- 6,1	- 0,0	- 1,4
Western Cape	31,7	- 6,1	- 1,9	- 74,9
KwaZulu-Natal	15,5	- 23,6	- 3,6	- 141,0
Limpopo	5,7	- 86,9	- 5,0	- 189,3
Total	100,0	+ 8,0	+ 8,0	+ 306,4

¹ The contribution (percentage points) is calculated by multiplying the percentage change of each province between January 2002 to April 2002 and January 2003 to April 2003 (cf. column 3) with the percentage contribution of the corresponding province to the total real value of buildings completed during January 2002 to April 2002 (cf. column 2) divided by 100.

Figure 1 – Total real value of building plans passed**Figure 2 – Total real value of buildings completed**

pp
PJ Lehohla
 Statistician-General: Statistics South Africa

Contents

Page

Notes	7
Tables	
Table 1 Actual values and percentage change of building plans passed at current prices according to type of building	8
Table 2 Seasonally adjusted values and percentage change of building plans passed at current prices according to type of building	9
Table 3 Actual values and percentage change of building plans passed at constant 2000 prices according to type of building	10
Table 4 Seasonally adjusted values and percentage change of building plans passed at constant 2000 prices according to type of building	11
Table 5 Actual values and percentage change of buildings completed at current prices according to type of building	12
Table 6 Seasonally adjusted values and percentage change of buildings completed at current prices according to type of building	13
Table 7 Actual values and percentage change of buildings completed at constant 2000 prices according to type of building	14
Table 8 Seasonally adjusted values and percentage change of buildings completed at constant 2000 prices according to type of building	15
Table 9 Building plans passed according to type of building: Total RSA	16
Table 10 Building plans passed according to type of building and province: Western Cape	17
Table 11 Building plans passed according to type of building and province: Eastern Cape	18
Table 12 Building plans passed according to type of building and province: Northern Cape	19
Table 13 Building plans passed according to type of building and province: Free State	20
Table 14 Building plans passed according to type of building and province: KwaZulu-Natal	21
Table 15 Building plans passed according to type of building and province: North West	22
Table 16 Building plans passed according to type of building and province: Gauteng	23
Table 17 Building plans passed according to type of building and province: Mpumalanga	24
Table 18 Building plans passed according to type of building and province: Limpopo	25
Table 19 Buildings completed according to type of building: Total RSA	26
Table 20 Buildings completed according to type of building and province: Western Cape	27
Table 21 Buildings completed according to type of building and province: Eastern Cape	28
Table 22 Buildings completed according to type of building and province: Northern Cape	29
Table 23 Buildings completed according to type of building and province: Free State	30
Table 24 Buildings completed according to type of building and province: KwaZulu-Natal	31
Table 25 Buildings completed according to type of building and province: North West	32
Table 26 Buildings completed according to type of building and province: Gauteng	33
Table 27 Buildings completed according to type of building and province: Mpumalanga	34
Table 28 Buildings completed according to type of building and province: Limpopo	35
Table 29 Building plans passed according to type of building and selected urban area: Cape Town	36
Table 30 Building plans passed according to type of building and selected urban area: Port Elizabeth	37
Table 31 Building plans passed according to type of building and selected urban area: Durban	38
Table 32 Building plans passed according to type of building and selected urban area: Witwatersrand	39
Table 33 Building plans passed according to type of building and selected urban area: Pretoria	40
Table 34 Building plans passed according to type of building and selected urban area: Bloemfontein	41
Table 35 Buildings completed according to type of building and selected urban area: Cape Town	42
Table 36 Buildings completed according to type of building and selected urban area: Port Elizabeth	43
Table 37 Buildings completed according to type of building and selected urban area: Durban	44
Table 38 Buildings completed according to type of building and selected urban area: Witwatersrand	45
Table 39 Buildings completed according to type of building and selected urban area: Pretoria	46
Table 40 Buildings completed according to type of building and selected urban area: Bloemfontein	47
Additional information	
Explanatory notes	48
Technical notes	50
Local government institutions covered in the sample survey	
Table C – Classification of towns and cities according to new municipalities and previous local government institutions by province	51
Table D – Classification of selected urban areas according to new municipalities and previous local government institutions	63
Glossary	66
For more information	68

Notes

Forthcoming issues	Issue	Expected release date
	May 2003	16 July 2003
	June 2003	20 August 2003
	July 2003	17 September 2003
	August 2003	15 October 2003
	September 2003	19 November 2003
	October 2003	17 December 2003
	November 2003	21 January 2004
	December 2003	18 February 2004
Purpose of the survey	The Building statistics survey is a countrywide survey covering a sample of municipalities in South Africa. The information received is used to estimate key economic statistics used by the private and public sectors. The information is also used to compile estimates of the Gross Domestic Product (GDP). These statistics are also used by government to monitor the Reconstruction and Development Programme (RDP) in South Africa.	
Name change of statistical release	As from the November 2002 publication the name of the monthly Statistical release P5041.1, <i>Building statistics</i> , has changed to <i>Selected building statistics of the private sector derived from data reported by local government institutions</i> .	
Change in base year of constant prices from 1995 to 2000	Following international practice, the base year of the price index ('lump sum domestic buildings' as published in statistical release P0151 – JBCC Contract Price Adjustment Provision Work Group Indices), which is used to deflate the current prices of building plans passed and buildings completed to constant prices, has been converted to 2000=100 with effect from May 2002. Previously the value of building plans passed and buildings completed was published at constant 1995 prices. It should be borne in mind that the change does not in any way affect the trends.	
Name and boundary changes of local government institutions	Due to the Local Government: Municipal structures Act (Act No. 117 of 1998) and the Local Government Municipal Demarcation Bill (B36B-98), the boundaries and the names of local government institutions have changed. In order to assist the reader to identify the approximate geographical locality and the names of the new local government institutions covered in the monthly sample survey, Table C (page 51) and Table D (page 63) provide lists of old and new names.	
Comparability with previously data published at constant prices	Data at constant prices in this release differ slightly from previously published data due to the fact that the price indices known as the "lump sum domestic buildings" as published in statistical release P0151 – JBCC Contract Price Adjustment Provisions Work Group Indices were revised as from February 2002.	

Table 1 - Actual values and percentage change of building plans passed at current prices according to type of building

Year ^{1/} and month ^{2/}	Residential buildings		Non-residential buildings		Additions and alterations		Total	
	R'000	Percentage change	R'000	Percentage change	R'000	Percentage change	R'000	Percentage change
2001 Jan	725 361	+ 47.3	494 719	+ 195.7	353 381	- 3.7	1 573 461	+ 53.3
Feb	836 784	+ 6.3	307 366	- 42.7	476 205	+ 18.9	1 620 355	- 6.0
Mar	933 489	+ 24.6	303 878	- 18.6	438 569	- 15.1	1 675 936	+ 2.3
Apr	742 978	+ 18.0	209 133	- 24.6	379 527	- 1.0	1 331 638	+ 3.2
May	1 006 490	+ 14.4	293 506	- 52.9	502 062	+ 5.8	1 802 058	- 8.9
Jun	904 990	+ 5.8	300 500	- 12.2	448 243	- 15.9	1 653 733	- 4.4
Jul	893 707	- 2.0	366 953	- 25.1	435 627	- 20.9	1 696 287	- 13.1
Aug	839 388	+ 3.8	247 416	- 30.7	485 215	- 1.9	1 572 019	- 11.9
Sep	968 469	+ 16.6	306 265	- 15.0	529 909	+ 13.3	1 804 643	+ 8.8
Oct	1 196 410	+ 29.8	186 942	- 63.0	540 454	- 0.1	1 923 806	- 2.2
Nov	982 841	+ 6.9	318 627	- 37.6	597 940	+ 18.5	1 899 408	- 1.8
Dec	658 017	+ 7.7	140 452	- 80.8	359 110	+ 12.7	1 157 579	- 30.4
Total	10 688 924	+ 12.3	3 475 757	- 34.1	5 546 242	- 0.1	19 710 923	- 3.1
2002 Jan*	801 712	+ 10.5	172 295	- 65.2	418 217	+ 18.3	1 392 224	- 11.5
Feb	1 024 424	+ 22.4	247 345	- 19.5	459 378	- 3.5	1 731 147	+ 6.8
Mar*	965 121	+ 3.4	495 333	+ 63.0	432 948	- 1.3	1 893 402	+ 13.0
Apr*	1 152 506	+ 55.1	350 647	+ 67.7	533 421	+ 40.5	2 036 574	+ 52.9
May*	1 184 437	+ 17.7	438 078	+ 49.3	936 496	+ 86.5	2 559 011	+ 42.0
Jun	1 100 299	+ 21.6	497 829	+ 65.7	552 535	+ 23.3	2 150 663	+ 30.0
Jul	1 251 404	+ 40.0	255 959	- 30.2	674 478	+ 54.8	2 181 841	+ 28.6
Aug	1 164 715	+ 38.8	391 026	+ 58.0	698 946	+ 44.0	2 254 687	+ 43.4
Sep	1 222 745	+ 26.3	287 969	- 6.0	617 044	+ 16.4	2 127 758	+ 17.9
Oct	2 030 451	+ 69.7	335 491	+ 79.5	757 380	+ 40.1	3 123 322	+ 62.4
Nov*	1 226 825	+ 24.8	309 532	- 2.9	715 756	+ 19.7	2 252 113	+ 18.6
Dec	1 103 944	+ 67.8	230 232	+ 63.9	420 030	+ 17.0	1 754 206	+ 51.5
Total	14 228 583	+ 33.1	4 011 736	+ 15.4	7 216 629	+ 30.1	25 456 948	+ 29.2
2003 Jan	940 456	+ 17.3	454 141	+ 163.6	517 143	+ 23.7	1 911 740	+ 37.3
Feb	1 184 508	+ 15.6	227 515	- 8.0	524 418	+ 14.2	1 936 441	+ 11.9
Mar*	1 376 249	+ 42.6	223 353	- 54.9	598 623	+ 38.3	2 198 225	+ 16.1
Apr	1 199 250	+ 4.1	281 248	- 19.8	589 838	+ 10.6	2 070 336	+ 1.7

^{1/} The annual percentage change is the change in the actual values of building plans passed of the relevant year compared with the actual values of building plans passed of the previous year expressed as a percentage.

^{2/} The monthly percentage change is the change in the actual values of building plans passed of the relevant month compared with the actual values of building plans passed of the same month in the previous year expressed as a percentage.

Table 2 - Seasonally adjusted values and percentage change of building plans passed at current prices according to type of building

Year and month ^{1/}	Residential buildings		Non-residential buildings		Additions and alterations		Total	
	R'000	Percentage change	R'000	Percentage change	R'000	Percentage change	R'000	Percentage change
2001 Jan	923 347	+ 9.9	680 142	- 33.5	450 901	+ 2.3	2 054 390	- 10.8
Feb	834 747	- 9.6	361 422	- 46.9	546 652	+ 21.2	1 742 821	- 15.2
Mar	891 343	+ 6.8	280 513	- 22.4	414 509	- 24.2	1 586 364	- 9.0
Apr	839 750	- 5.8	235 401	- 16.1	431 477	+ 4.1	1 506 628	- 5.0
May	910 081	+ 8.4	249 820	+ 6.1	471 993	+ 9.4	1 631 894	+ 8.3
Jun	870 728	- 4.3	261 587	+ 4.7	423 772	- 10.2	1 556 087	- 4.6
Jul	821 880	- 5.6	305 654	+ 16.8	400 766	- 5.4	1 528 300	- 1.8
Aug	812 004	- 1.2	240 688	- 21.3	451 085	+ 12.6	1 503 777	- 1.6
Sep	941 231	+ 15.9	309 277	+ 28.5	492 818	+ 9.3	1 743 326	+ 15.9
Oct	1 002 656	+ 6.5	183 783	- 40.6	467 464	- 5.1	1 653 903	- 5.1
Nov	932 174	- 7.0	274 180	+ 49.2	507 739	+ 8.6	1 714 094	+ 3.6
Dec	884 836	- 5.1	198 688	- 27.5	508 272	+ 0.1	1 591 795	- 7.1
2002 Jan	1 014 787	+ 14.7	228 745	+ 15.1	520 901	+ 2.5	1 764 433	+ 10.8
Feb	1 025 469	+ 1.1	295 302	+ 29.1	532 925	+ 2.3	1 853 696	+ 5.1
Mar	932 973	- 9.0	464 121	+ 57.2	418 488	- 21.5	1 815 583	- 2.1
Apr	1 308 981	+ 40.3	392 265	- 15.5	598 429	+ 43.0	2 299 675	+ 26.7
May	1 057 764	- 19.2	363 603	- 7.3	871 122	+ 45.6	2 292 489	- 0.3
Jun	1 059 074	+ 0.1	435 875	+ 19.9	518 018	- 40.5	2 012 966	- 12.2
Jul	1 156 113	+ 9.2	211 660	- 51.4	624 927	+ 20.6	1 992 701	- 1.0
Aug	1 127 991	- 2.4	380 535	+ 79.8	648 106	+ 3.7	2 156 632	+ 8.2
Sep	1 188 119	+ 5.3	291 519	- 23.4	576 925	- 11.0	2 056 563	- 4.6
Oct	1 704 970	+ 43.5	334 114	+ 14.6	653 167	+ 13.2	2 692 251	+ 30.9
Nov	1 160 543	- 31.9	265 712	- 20.5	608 383	- 6.9	2 034 639	- 24.4
Dec	1 474 776	+ 27.1	331 056	+ 24.6	598 091	- 1.7	2 403 923	+ 18.1
2003 Jan	1 186 337	- 19.6	582 192	+ 75.9	637 654	+ 6.6	2 406 184	+ 0.1
Feb	1 188 680	+ 0.2	275 552	- 52.7	610 417	- 4.3	2 074 649	- 13.8
Mar	1 339 283	+ 12.7	211 495	- 23.2	586 477	- 3.9	2 137 255	+ 3.0
Apr	1 360 755	+ 1.6	314 480	+ 48.7	655 558	+ 11.8	2 330 793	+ 9.1

^{1/} The percentage change is the change in the seasonally adjusted values of building plans passed of the relevant month compared with the seasonally adjusted values of building plans passed of the previous month expressed as a percentage.

Table 3 - Actual values and percentage change of building plans passed at constant 2000 prices according to type of building

Year ^{1/} and month ^{2/}	Residential buildings		Non-residential buildings		Additions and alterations		Total	
	R'000	Percentage change	R'000	Percentage change	R'000	Percentage change	R'000	Percentage change
2001 Jan	696 124	+ 36.9	474 778	+ 175.0	339 137	- 10.4	1 510 039	+ 42.5
Feb	799 221	- 1.1	293 568	- 46.7	454 828	+ 10.6	1 547 617	- 12.6
Mar	887 347	+ 15.9	288 857	- 24.2	416 891	- 21.0	1 593 095	- 4.8
Apr	700 923	+ 9.6	197 295	- 29.9	358 044	- 8.0	1 256 262	- 4.1
May	944 174	+ 6.6	275 334	- 56.1	470 977	- 1.5	1 690 485	- 15.1
Jun	847 369	- 1.2	281 367	- 18.0	419 703	- 21.5	1 548 439	- 10.8
Jul	832 129	- 8.4	341 669	- 30.0	405 612	- 26.1	1 579 410	- 18.8
Aug	779 376	- 15.5	229 727	- 35.0	450 525	- 7.9	1 459 628	- 17.3
Sep	897 562	+ 9.4	283 842	- 20.2	491 111	+ 6.4	1 672 515	+ 2.1
Oct	1 106 762	+ 22.6	172 934	- 65.0	499 957	- 5.6	1 779 653	- 7.6
Nov	904 178	+ 0.8	293 125	- 41.1	550 083	+ 11.7	1 747 386	- 7.4
Dec	599 833	+ 1.0	128 033	- 82.0	327 356	+ 5.7	1 055 222	- 34.7
Total	9 994 998	+ 5.1	3 260 529	- 38.0	5 184 224	- 6.6	18 439 751	- 9.2
2002 Jan*	717 095	+ 3.0	154 110	- 67.5	374 076	+ 10.3	1 245 281	- 17.5
Feb	898 618	+ 12.4	216 969	- 26.1	402 963	- 11.4	1 518 550	- 1.9
Mar*	842 900	- 5.0	432 605	+ 49.8	378 121	- 9.3	1 653 626	+ 3.8
Apr*	990 977	+ 41.4	301 502	+ 52.8	458 660	+ 28.1	1 751 139	+ 39.4
May*	1 004 612	+ 6.4	371 567	+ 35.0	794 314	+ 68.7	2 170 493	+ 28.4
Jun*	927 739	+ 9.5	419 755	+ 49.2	465 881	+ 11.0	1 813 375	+ 17.1
Jul*	1 037 648	+ 24.7	212 238	- 37.9	559 269	+ 37.9	1 809 155	+ 14.5
Aug*	954 684	+ 22.5	320 513	+ 39.5	572 907	+ 27.2	1 848 104	+ 26.6
Sep*	997 345	+ 11.1	234 885	- 17.2	503 299	+ 2.5	1 735 529	+ 3.8
Oct*	1 638 782	+ 48.1	270 776	+ 56.6	611 283	+ 22.3	2 520 841	+ 41.6
Nov*	984 611	+ 8.9	248 421	- 15.3	574 443	+ 4.4	1 807 475	+ 3.4
Dec*	882 449	+ 47.1	184 038	+ 43.7	335 755	+ 2.6	1 402 242	+ 32.9
Total	11 877 460	+ 18.8	3 367 379	+ 3.3	6 030 971	+ 16.3	21 275 810	+ 15.4
2003 Jan*	740 517	+ 3.3	357 591	+ 132.0	407 199	+ 8.9	1 505 307	+ 20.9
Feb*	926 845	+ 3.1	178 024	- 17.9	410 343	+ 1.8	1 515 212	- 0.2
Mar*	1 072 680	+ 27.3	174 087	- 59.8	466 581	+ 23.4	1 713 348	+ 3.6
Apr	929 651	- 6.2	218 022	- 27.7	457 239	- 0.3	1 604 912	- 8.4

^{1/} The annual percentage change is the change in the actual values of building plans passed of the relevant year compared with the actual values of building plans passed of the previous year expressed as a percentage.

^{2/} The monthly percentage change is the change in the actual values of building plans passed of the relevant month compared with the actual values of building plans passed of the same month in the previous year expressed as a percentage.

Table 4 - Seasonally adjusted values and percentage change of building plans passed at constant 2000 prices according to type of building

Year and month ^{1/}	Residential buildings		Non-residential buildings		Additions and alterations		Total	
	R'000	Percentage change	R'000	Percentage change	R'000	Percentage change	R'000	Percentage change
2001 Jan	885 744	+ 8.9	673 912	- 31.6	431 386	- 13.0	1 991 042	- 10.6
Feb	800 549	- 9.6	345 234	- 48.8	521 255	+ 20.8	1 667 038	- 16.3
Mar	844 488	+ 5.5	264 192	- 23.5	393 031	- 24.6	1 501 712	- 9.9
Apr	791 551	- 6.3	221 263	- 16.2	406 851	+ 3.5	1 419 665	- 5.5
May	856 621	+ 8.2	234 831	+ 6.1	444 304	+ 9.2	1 535 756	+ 8.2
Jun	814 268	- 4.9	244 223	+ 4.0	397 886	- 10.4	1 456 378	- 5.2
Jul	766 951	- 5.8	285 872	+ 17.1	374 150	- 6.0	1 426 973	- 2.0
Aug	755 969	- 1.4	223 711	- 21.7	420 189	+ 12.3	1 399 868	- 1.9
Sep	872 049	+ 15.4	286 182	+ 27.9	456 781	+ 8.7	1 615 011	+ 15.4
Oct	926 385	+ 6.2	169 590	- 40.7	432 237	- 5.4	1 528 212	- 5.4
Nov	855 089	- 7.7	250 735	+ 47.8	465 734	+ 7.7	1 571 558	+ 2.8
Dec	803 711	- 6.0	179 434	- 28.4	461 169	- 1.0	1 444 314	- 8.1
2002 Jan	906 933	+ 12.8	212 563	+ 18.5	464 867	+ 0.8	1 584 363	+ 9.7
Feb	902 455	- 0.5	258 856	+ 21.8	466 768	+ 0.4	1 628 079	+ 2.8
Mar	812 877	- 9.9	401 063	+ 54.9	364 708	- 21.9	1 578 647	- 3.0
Apr	1 125 284	+ 38.4	335 727	- 16.3	514 252	+ 41.0	1 975 263	+ 25.1
May	900 201	- 20.0	308 984	- 8.0	741 162	+ 44.1	1 950 348	- 1.3
Jun	892 244	- 0.9	366 487	+ 18.6	438 378	- 40.9	1 697 109	- 13.0
Jul	961 085	+ 7.7	176 405	- 51.9	519 806	+ 18.6	1 657 297	- 2.3
Aug	927 140	- 3.5	312 239	+ 77.0	533 010	+ 2.5	1 772 389	+ 6.9
Sep	968 494	+ 4.5	237 287	- 24.0	470 435	- 11.7	1 676 216	- 5.4
Oct	1 373 936	+ 41.9	268 807	+ 13.3	526 673	+ 12.0	2 169 416	+ 29.4
Nov	928 421	- 32.4	211 841	- 21.2	486 690	- 7.6	1 626 951	- 25.0
Dec	1 174 731	+ 26.5	261 857	+ 23.6	475 457	- 2.3	1 912 045	+ 17.5
2003 Jan	933 076	- 20.6	477 901	+ 82.5	501 257	+ 5.4	1 912 233	+ 0.0
Feb	932 467	- 0.1	215 358	- 54.9	476 932	- 4.9	1 624 757	- 15.0
Mar	1 042 223	+ 11.8	162 939	- 24.3	456 271	- 4.3	1 661 433	+ 2.3
Apr	1 055 350	+ 1.3	242 581	+ 48.9	507 872	+ 11.3	1 805 803	+ 8.7

^{1/} The percentage change is the change in the seasonally adjusted values of building plans passed of the relevant month compared with the seasonally adjusted values of building plans passed of the previous month expressed as a percentage.

Table 5 - Actual values and percentage change of buildings completed at current prices according to type of building

Year ^{1/} and month ^{2/}	Residential buildings		Non-residential buildings		Additions and alterations		Total	
	R'000	Percentage change	R'000	Percentage change	R'000	Percentage change	R'000	Percentage change
2001 Jan	647 534	+ 114.7	259 518	+ 29.2	202 270	+ 9.1	1 109 322	+ 61.3
Feb	430 827	+ 21.7	286 095	+ 32.2	246 240	+ 10.6	963 162	+ 21.4
Mar	491 002	+ 16.6	166 131	- 23.4	287 103	+ 6.7	944 236	+ 4.1
Apr	367 407	+ 0.5	170 257	- 24.1	185 784	- 1.8	723 448	- 7.1
May	450 136	- 5.1	318 370	- 19.1	296 280	+ 0.9	1 064 786	- 8.3
Jun	540 135	+ 48.6	338 853	+ 89.8	293 697	+ 71.5	1 172 685	+ 64.4
Jul	396 941	- 3.1	121 617	- 74.9	233 487	+ 5.6	752 045	- 32.6
Aug	432 578	- 4.3	117 526	- 58.9	215 777	+ 1.8	765 881	- 19.4
Sep	459 190	- 10.5	1 417 964	+ 400.6	168 922	- 15.6	2 046 076	+ 105.4
Oct	661 378	+ 42.6	281 963	+ 39.6	234 250	- 1.9	1 177 591	+ 30.2
Nov	610 558	+ 9.5	211 109	+ 9.8	286 352	+ 11.6	1 108 019	+ 10.1
Dec	464 851	+ 19.9	173 587	- 45.5	125 061	- 18.2	763 499	- 11.1
Total	5 952 537	+ 17.6	3 862 990	+ 20.8	2 775 223	+ 6.2	12 590 750	+ 15.8
2002 Jan	583 954	- 9.8	136 570	- 47.4	176 643	- 12.7	897 167	- 19.1
Feb*	473 568	+ 9.9	137 817	- 51.8	202 239	- 17.9	813 624	- 15.5
Mar*	708 471	+ 44.3	171 227	+ 3.1	176 053	- 38.7	1 055 751	+ 11.8
Apr	653 414	+ 77.8	245 773	+ 44.4	390 160	+ 110.0	1 289 347	+ 78.2
May	690 242	+ 53.3	300 836	- 5.5	305 996	+ 3.3	1 297 074	+ 21.8
Jun	585 723	+ 8.4	207 030	- 38.9	251 004	- 14.5	1 043 757	- 11.0
Jul	681 657	+ 71.7	273 139	+ 124.6	242 028	+ 3.7	1 196 824	+ 59.1
Aug	740 221	+ 71.1	96 328	- 18.0	226 414	+ 4.9	1 062 963	+ 38.8
Sep	820 510	+ 78.7	228 610	- 83.9	248 379	+ 47.0	1 297 499	- 36.6
Oct	938 075	+ 41.8	178 099	- 36.8	293 977	+ 25.5	1 410 151	+ 19.7
Nov	847 433	+ 38.8	294 710	+ 39.6	237 143	- 17.2	1 379 286	+ 24.5
Dec	702 892	+ 51.2	366 760	+ 111.3	221 292	+ 76.9	1 290 944	+ 69.1
Total	8 426 160	+ 41.6	2 636 899	- 31.7	2 971 328	+ 7.1	14 034 387	+ 11.5
2003 Jan	616 863	+ 5.6	149 935	+ 9.8	234 496	+ 32.8	1 001 294	+ 11.6
Feb	670 393	+ 41.6	156 333	+ 13.4	285 510	+ 41.2	1 112 236	+ 36.7
Mar*	696 233	- 1.7	308 189	+ 80.0	238 307	+ 35.4	1 242 729	+ 17.7

^{1/} The annual percentage change is the change in the actual values of buildings completed of the relevant year compared with the actual values of buildings completed of the previous year expressed as a percentage.

^{2/} The monthly percentage change is the change in the actual values of buildings completed of the relevant month compared with the actual values of buildings completed of the same month in the previous year expressed as a percentage.

Table 6 - Seasonally adjusted values and percentage change of buildings completed at current prices according to type of building

Year and month ^{1/}	Residential buildings		Non-residential buildings		Additions and alterations		Total	
	R'000	Percentage change	R'000	Percentage change	R'000	Percentage change	R'000	Percentage change
2001 Jan	758 334	+ 73.6	347 105	+ 6.3	230 783	+ 2.4	1 336 221	+ 35.1
Feb	480 342	- 36.7	345 245	- 0.5	233 825	+ 1.3	1 059 413	- 20.7
Mar	456 989	- 4.9	208 180	- 39.7	242 755	+ 3.8	907 924	- 14.3
Apr	396 847	- 13.2	179 862	- 13.6	207 852	- 14.4	784 561	- 13.6
May	429 226	+ 8.2	254 702	+ 41.6	239 163	+ 15.1	923 090	+ 17.7
Jun	589 042	+ 37.2	339 929	+ 33.5	314 626	+ 31.6	1 243 596	+ 34.7
Jul	399 816	- 32.1	81 081	- 76.1	215 042	- 31.7	695 939	- 44.0
Aug	426 008	+ 6.6	124 295	+ 53.3	216 783	+ 0.8	767 086	+ 10.2
Sep	416 323	- 2.3	1 224 386	+ 885.1	180 869	- 16.6	1 821 578	+ 137.5
Oct	599 002	+ 43.9	306 364	- 75.0	212 621	+ 17.6	1 117 986	- 38.6
Nov	522 652	- 12.7	229 962	- 24.9	280 904	+ 32.1	1 033 518	- 7.6
Dec	523 835	+ 0.2	174 974	- 23.9	180 123	- 35.9	878 932	- 15.0
2002 Jan	668 239	+ 27.6	190 838	+ 9.1	202 181	+ 12.2	1 061 259	+ 20.7
Feb	525 833	- 21.3	175 521	- 8.0	193 669	- 4.2	895 023	- 15.7
Mar	660 353	+ 25.6	216 831	+ 23.5	150 196	- 22.4	1 027 381	+ 14.8
Apr	699 092	+ 5.9	246 211	+ 13.5	437 832	+ 191.5	1 383 134	+ 34.6
May	654 872	- 6.3	228 490	- 7.2	240 551	- 45.1	1 123 912	- 18.7
Jun	652 268	- 0.4	211 294	- 7.5	270 236	+ 12.3	1 133 799	+ 0.9
Jul	700 663	+ 7.4	176 063	- 16.7	225 565	- 16.5	1 102 291	- 2.8
Aug	725 733	+ 3.6	102 966	- 41.5	227 290	+ 0.8	1 055 988	- 4.2
Sep	748 685	+ 3.2	202 779	+ 96.9	269 560	+ 18.6	1 221 024	+ 15.6
Oct	843 483	+ 12.7	202 582	- 0.1	264 834	- 1.8	1 310 898	+ 7.4
Nov	721 907	- 14.4	324 678	+ 60.3	230 677	- 12.9	1 277 263	- 2.6
Dec	795 454	+ 10.2	358 704	+ 10.5	317 541	+ 37.7	1 471 698	+ 15.2
2003 Jan	693 669	- 12.8	211 843	- 40.9	269 320	- 15.2	1 174 833	- 20.2
Feb	748 580	+ 7.9	200 761	- 5.2	275 844	+ 2.4	1 225 185	+ 4.3
Mar	648 575	- 13.4	400 062	+ 99.3	203 311	- 26.3	1 251 948	+ 2.2
Apr	721 377	+ 11.2	522 021	+ 30.5	264 658	+ 30.2	1 508 056	+ 20.5

^{1/} The percentage change is the change in the seasonally adjusted values of buildings completed of the relevant month compared with the seasonally adjusted values of buildings completed of the previous month expressed as a percentage.

Table 7 - Actual values and percentage change of buildings completed at constant 2000 prices according to type of building

Year ^{1/} and month ^{2/}	Residential buildings		Non-residential buildings		Additions and alterations		Total	
	R'000	Percentage change	R'000	Percentage change	R'000	Percentage change	R'000	Percentage change
2001 Jan	658 496	+ 111.1	266 719	+ 21.9	208 741	+ 6.7	1 133 956	+ 56.1
Feb	429 923	+ 80.3	294 034	+ 14.5	252 813	- 10.1	976 770	+ 36.6
Mar	489 834	+ 51.9	170 391	+ 15.0	293 261	- 25.5	953 486	+ 19.9
Apr	363 080	+ 75.5	174 265	+ 11.8	188 613	+ 6.5	725 958	+ 40.0
May	440 667	+ 35.4	324 867	- 36.1	298 369	- 31.3	1 063 903	- 6.1
Jun	528 664	+ 77.4	345 416	+ 41.0	294 581	+ 18.2	1 168 661	+ 53.9
Jul	383 095	+ 77.4	125 508	- 47.8	232 557	- 8.2	741 160	- 2.3
Aug	415 855	+ 55.8	120 663	- 10.7	213 429	- 4.1	749 947	+ 15.7
Sep	439 959	+ 41.9	1 448 380	- 9.6	166 754	+ 1.7	2 055 093	+ 10.7
Oct	631 622	+ 25.6	286 257	+ 27.5	229 432	- 14.6	1 147 311	+ 22.5
Nov	579 923	+ 39.6	212 597	+ 34.0	279 368	- 20.3	1 071 888	+ 10.7
Dec	438 298	+ 16.9	174 109	- 18.7	121 536	+ 34.0	733 943	+ 29.7
Total	5 799 416	+ 12.0	3 943 206	+ 17.0	2 779 454	+ 3.1	12 522 076	+ 11.3
2002 Jan	549 418	- 16.6	136 026	- 49.0	169 523	- 18.8	854 967	- 24.6
Feb*	443 590	+ 3.2	136 318	- 53.6	193 160	- 23.6	773 068	- 20.9
Mar*	663 989	+ 35.6	169 030	- 0.8	167 351	- 42.9	1 000 370	+ 4.9
Apr	607 293	+ 67.3	240 718	+ 38.1	368 075	+ 95.1	1 216 086	+ 67.5
May	639 076	+ 45.0	293 499	- 9.7	287 051	- 3.8	1 219 626	+ 14.6
Jun	536 531	+ 1.5	201 195	- 41.8	235 022	- 20.2	972 748	- 16.8
Jul	616 022	+ 60.8	262 130	+ 108.9	225 352	- 3.1	1 103 504	+ 48.9
Aug	662 349	+ 59.3	92 004	- 23.8	210 227	- 1.5	964 580	+ 28.6
Sep*	732 084	+ 66.4	217 310	- 85.0	230 194	+ 38.0	1 179 588	- 42.6
Oct*	820 069	+ 29.8	168 018	- 41.3	271 949	+ 18.5	1 260 036	+ 9.8
Nov*	734 664	+ 26.7	276 463	+ 30.0	218 163	- 21.9	1 229 290	+ 14.7
Dec*	603 604	+ 37.7	343 408	+ 97.2	201 725	+ 66.0	1 148 737	+ 56.5
Total	7 608 689	+ 31.2	2 536 119	- 35.7	2 777 792	- 0.1	12 922 600	+ 3.2
2003 Jan*	526 267	- 4.2	139 604	+ 2.6	209 746	+ 23.7	875 617	+ 2.4
Feb*	561 286	+ 26.5	145 156	+ 6.5	250 447	+ 29.7	956 889	+ 23.8
Mar*	576 109	- 13.2	285 625	+ 69.0	208 128	+ 24.4	1 069 862	+ 6.9
Apr	553 134	- 8.9	493 649	+ 105.1	201 733	- 45.2	1 248 516	+ 2.7

^{1/} The annual percentage change is the change in the actual values of buildings completed of the relevant year compared with the actual values of buildings completed of the previous year expressed as a percentage.

^{2/} The monthly percentage change is the change in the actual values of buildings completed of the relevant month compared with the actual values of buildings completed of the same month in the previous year expressed as a percentage.

Table 8 - Seasonally adjusted values and percentage change of buildings completed at constant 2000 prices according to type of building

Year and month ^{1/}	Residential buildings		Non-residential buildings		Additions and alterations		Total	
	R'000	Percentage change	R'000	Percentage change	R'000	Percentage change	R'000	Percentage change
2001 Jan	775 498	+ 76.2	357 282	+ 6.2	237 190	+ 3.7	1 369 970	+ 36.3
Feb	482 314	- 37.8	355 821	- 0.4	240 104	+ 1.2	1 078 238	- 21.3
Mar	458 002	- 5.0	213 801	- 39.9	245 948	+ 2.4	917 750	- 14.9
Apr	395 547	- 13.6	184 332	- 13.8	211 409	- 14.0	791 287	- 13.8
May	423 619	+ 7.1	259 841	+ 41.0	243 760	+ 15.3	927 220	+ 17.2
Jun	573 167	+ 35.3	345 658	+ 33.0	315 767	+ 29.5	1 234 592	+ 33.1
Jul	385 096	- 32.8	83 507	- 75.8	214 307	- 32.1	682 909	- 44.7
Aug	409 724	+ 6.4	128 027	+ 53.3	214 341	+ 0.0	752 092	+ 10.1
Sep	395 110	- 3.6	1 247 949	+ 874.8	178 395	- 16.8	1 821 454	+ 142.2
Oct	566 717	+ 43.4	310 787	- 75.1	207 923	+ 16.6	1 085 426	- 40.4
Nov	493 890	- 12.9	231 900	- 25.4	274 104	+ 31.8	999 894	- 7.9
Dec	493 013	- 0.2	175 367	- 24.4	174 308	- 36.4	842 688	- 15.7
2002 Jan	631 817	+ 28.2	190 342	+ 8.5	193 416	+ 11.0	1 015 575	+ 20.5
Feb	495 919	- 21.5	173 954	- 8.6	185 303	- 4.2	855 175	- 15.8
Mar	622 458	+ 25.5	214 257	+ 23.2	141 217	- 23.8	977 932	+ 14.4
Apr	658 287	+ 5.8	241 448	+ 12.7	414 952	+ 193.8	1 314 687	+ 34.4
May	608 538	- 7.6	222 936	- 7.7	228 379	- 45.0	1 059 854	- 19.4
Jun	595 855	- 2.1	204 920	- 8.1	253 085	+ 10.8	1 053 859	- 0.6
Jul	634 437	+ 6.5	168 665	- 17.7	210 123	- 17.0	1 013 225	- 3.9
Aug	649 673	+ 2.4	98 689	- 41.5	210 967	+ 0.4	959 328	- 5.3
Sep	662 423	+ 2.0	192 300	+ 94.9	249 514	+ 18.3	1 104 237	+ 15.1
Oct	729 767	+ 10.2	191 000	- 0.7	244 479	- 2.0	1 165 246	+ 5.5
Nov	621 508	- 14.8	304 867	+ 59.6	212 219	- 13.2	1 138 593	- 2.3
Dec	680 728	+ 9.5	335 642	+ 10.1	288 304	+ 35.9	1 304 674	+ 14.6
2003 Jan	594 134	- 12.7	197 516	- 41.2	240 217	- 16.7	1 031 867	- 20.9
Feb	630 519	+ 6.1	186 738	- 5.5	242 561	+ 1.0	1 059 819	+ 2.7
Mar	539 383	- 14.5	371 069	+ 98.7	175 509	- 27.6	1 085 961	+ 2.5
Apr	599 556	+ 11.2	483 445	+ 30.3	228 900	+ 30.4	1 311 901	+ 20.8

^{1/} The percentage change is the change in the seasonally adjusted values of buildings completed of the relevant month compared with the seasonally adjusted values of buildings completed of the previous month expressed as a percentage.

Table 9 - Building plans passed according to type of building: Total RSA

Type of building	April 2002 *	March 2003 *	April 2003	January 2002 to April 2002	January 2003 to April 2003	Percentage change between January 2002 to April 2002 and January 2003 to April 2003
Residential buildings						
Dwelling-houses smaller than 80 square metres						
Number of dwelling-houses	3 326	2 617	1 788	11 169	12 080	+ 8.2
Total square metres	129 010	101 571	78 032	432 092	454 150	+ 5.1
Total value at current prices (R'000)	130 005	101 252	90 212	448 885	418 788	- 6.7
Dwelling-houses equal to or larger than 80 square metres						
Number of dwelling-houses	2 128	2 081	1 918	7 361	7 611	+ 3.4
Total square metres	467 121	472 160	449 465	1 625 027	1 720 910	+ 5.9
Total value at current prices (R'000)	711 396	824 786	773 187	2 481 820	2 948 881	+ 18.8
Flats and townhouses						
Number of flats and townhouses	1 612	1 509	1 160	4 535	4 127	- 9.0
Total square metres	179 839	203 645	172 455	544 183	616 924	+ 13.4
Total value at current prices (R'000)	296 536	409 522	311 862	875 585	1 215 198	+ 38.8
Other residential buildings ^{1/}						
Total square metres	9 178	16 250	16 828	56 440	64 764	+ 14.7
Total value at current prices (R'000)	14 569	40 689	23 989	137 473	117 596	- 14.5
Total value of residential buildings at current prices (R'000)	1 152 506	1 376 249	1 199 250	3 943 763	4 700 463	+ 19.2
Non-residential buildings						
Office and banking space						
Total square metres	60 163	36 664	25 801	174 939	119 826	- 31.5
Total value at current prices (R'000)	116 862	62 322	63 312	364 736	229 935	- 37.0
Shopping space						
Total square metres	28 761	20 728	33 206	117 926	122 354	+ 3.8
Total value at current prices (R'000)	41 784	40 524	53 716	190 597	440 612	+ 131.2
Industrial and warehouse space						
Total square metres	94 464	51 159	71 233	277 843	242 959	- 12.6
Total value at current prices (R'000)	145 634	78 962	111 589	410 353	363 053	- 11.5
Other non-residential space ^{2/}						
Total square metres	29 017	24 002	28 378	198 793	89 094	- 55.2
Total value at current prices (R'000)	46 367	41 545	52 631	299 934	152 657	- 49.1
Total value of non-residential buildings at current prices (R'000)	350 647	223 353	281 248	1 265 620	1 186 257	- 6.3
Additions and alterations						
Dwelling-houses						
Total square metres	283 075	270 837	270 495	989 673	1 012 322	+ 2.3
Total value at current prices (R'000)	397 385	421 707	416 004	1 369 956	1 541 655	+ 12.5
Other buildings ^{3/}						
Total square metres	72 602	97 829	88 578	244 554	348 737	+ 42.6
Total value at current prices (R'000)	136 036	176 916	173 834	474 008	688 367	+ 45.2
Total value of additions and alterations at current prices (R'000)	533 421	598 623	589 838	1 843 964	2 230 022	+ 20.9
Total value of building plans passed at current prices (R'000)	2 036 574	2 198 225	2 070 336	7 053 347	8 116 742	+ 15.1

1/ Other residential buildings include institutions for the disabled, boarding houses, old people's homes, hostels, hotels, motels, guest houses, holiday chalets, entertainment centres, bed-and-breakfast accommodation and casinos.

2/ Other non-residential space includes churches, sport and recreation clubs, schools, crèches, hospitals and all other non-residential space.

3/ Other buildings include additions and alterations to other residential buildings, non-residential buildings and internal alterations.

Table 10 - Building plans passed according to type of building and province: Western Cape

Type of building	April 2002*	March 2003	April 2003	January 2002 to April 2002	January 2003 to April 2003	Percentage change between January 2002 to April 2002 and January 2003 to April 2003
Residential buildings						
Dwelling-houses smaller than 80 square metres						
Number of dwelling-houses	738	617	456	3 198	1 788	- 44.1
Total square metres	23 836	23 671	21 304	109 013	72 609	- 33.4
Total value at current prices (R'000)	25 876	28 021	26 679	125 250	86 616	- 30.8
Dwelling-houses equal to or larger than 80 square metres						
Number of dwelling-houses	733	618	705	2 541	2 660	+ 4.7
Total square metres	160 624	134 586	153 328	534 710	553 417	+ 3.5
Total value at current prices (R'000)	257 188	242 925	278 356	840 894	986 700	+ 17.3
Flats and townhouses						
Number of flats and townhouses	258	299	287	1 157	1 012	- 12.5
Total square metres	23 303	36 855	23 304	113 355	114 513	+ 1.0
Total value at current prices (R'000)	37 288	74 777	43 859	189 103	239 082	+ 26.4
Other residential buildings ^{1/}						
Total square metres	6 903	2 011	4 137	12 022	7 658	- 36.3
Total value at current prices (R'000)	12 142	4 517	4 600	20 139	11 643	- 42.2
Total value of residential buildings at current prices (R'000)	332 494	350 240	353 494	1 175 386	1 324 041	+ 12.6
Non-residential buildings						
Office and banking space						
Total square metres	6 354	13 246	10 749	24 021	37 973	+ 58.1
Total value at current prices (R'000)	12 060	19 917	28 192	37 590	73 345	+ 95.1
Shopping space						
Total square metres	242	714	6 668	14 997	13 518	- 9.9
Total value at current prices (R'000)	436	901	9 755	18 996	17 975	- 5.4
Industrial and warehouse space						
Total square metres	11 827	15 210	21 484	58 950	64 002	+ 8.6
Total value at current prices (R'000)	15 092	23 072	27 368	67 338	90 347	+ 34.2
Other non-residential space ^{2/}						
Total square metres	7 636	5 137	7 900	21 819	17 920	- 17.9
Total value at current prices (R'000)	12 597	7 263	12 216	31 192	26 188	- 16.0
Total value of non-residential buildings at current prices (R'000)	40 185	51 153	77 531	155 116	207 855	+ 34.0
Additions and alterations						
Dwelling-houses						
Total square metres	73 001	80 568	78 755	291 837	302 350	+ 3.6
Total value at current prices (R'000)	98 977	124 352	122 673	388 059	464 223	+ 19.6
Other buildings ^{3/}						
Total square metres	28 956	44 899	25 534	81 108	137 220	+ 69.2
Total value at current prices (R'000)	53 539	67 071	52 467	155 937	262 215	+ 68.2
Total value of additions and alterations at current prices (R'000)	152 516	191 423	175 140	543 996	726 438	+ 33.5
Total value of building plans passed at current prices (R'000)	525 195	592 816	606 165	1 874 498	2 258 334	+ 20.5

1/ Other residential buildings include institutions for the disabled, boarding houses, old people's homes, hostels, hotels, motels, guest houses, holiday chalets, entertainment centres, bed-and-breakfast accommodation and casinos.

2/ Other non-residential space includes churches, sport and recreation clubs, schools, crèches, hospitals and all other non-residential space.

3/ Other buildings include additions and alterations to other residential buildings, non-residential buildings and internal alterations.

Table 11 - Building plans passed according to type of building and province: Eastern Cape

Type of building	April 2002	March 2003	April 2003	January 2002 to April 2002	January 2003 to April 2003	Percentage change between January 2002 to April 2002 and January 2003 to April 2003
Residential buildings						
Dwelling-houses smaller than 80 square metres						
Number of dwelling-houses	858	163	140	1 603	1 096	-31.6
Total square metres	35 158	7 028	6 666	69 593	47 518	-31.7
Total value at current prices (R'000)	43 819	11 679	10 240	91 867	63 905	-30.4
Dwelling-houses equal to or larger than 80 square metres						
Number of dwelling-houses	121	105	61	438	347	-20.8
Total square metres	26 668	22 673	11 087	85 217	65 411	-23.2
Total value at current prices (R'000)	36 340	38 073	17 519	116 532	116 740	+ 0.2
Flats and townhouses						
Number of flats and townhouses	214	3	15	265	39	-85.3
Total square metres	14 297	543	3 150	20 057	7 188	-64.2
Total value at current prices (R'000)	24 541	842	4 883	33 906	12 995	-61.7
Other residential buildings ^{1/}						
Total square metres	472	600	875	472	1 939	+ 310.8
Total value at current prices (R'000)	661	1 257	1 236	661	3 348	+ 406.5
Total value of residential buildings at current prices (R'000)	105 361	51 851	33 878	242 966	196 988	-18.9
Non-residential buildings						
Office and banking space						
Total square metres	2 832	0	764	3 353	5 549	+ 65.5
Total value at current prices (R'000)	4 060	0	1 604	5 045	10 642	+ 110.9
Shopping space						
Total square metres	0	0	0	7 143	381	-94.7
Total value at current prices (R'000)	0	0	0	15 071	702	-95.3
Industrial and warehouse space						
Total square metres	10 656	566	2 994	25 566	6 265	-75.5
Total value at current prices (R'000)	16 599	872	5 240	47 884	9 834	-79.5
Other non-residential space ^{2/}						
Total square metres	5 950	581	685	12 143	3 574	-70.6
Total value at current prices (R'000)	9 384	949	1 400	19 400	6 446	-66.8
Total value of non-residential buildings at current prices (R'000)	30 043	1 821	8 244	87 400	27 624	-68.4
Additions and alterations						
Dwelling-houses						
Total square metres	21 288	17 706	17 204	72 162	71 007	-1.6
Total value at current prices (R'000)	28 654	28 579	29 148	95 871	118 338	+ 23.4
Other buildings ^{3/}						
Total square metres	6 291	2 939	3 317	18 865	20 976	+ 11.2
Total value at current prices (R'000)	12 520	6 931	7 008	37 231	46 335	+ 24.5
Total value of additions and alterations at current prices (R'000)	41 174	35 510	36 156	133 102	164 673	+ 23.7
Total value of building plans passed at current prices (R'000)	176 578	89 182	78 278	463 468	389 285	-16.0

1/ Other residential buildings include institutions for the disabled, boarding houses, old people's homes, hostels, hotels, motels, guest houses, holiday chalets, entertainment centres, bed-and-breakfast accommodation and casinos.

2/ Other non-residential space includes churches, sport and recreation clubs, schools, crèches, hospitals and all other non-residential space.

3/ Other buildings include additions and alterations to other residential buildings, non-residential buildings and internal alterations.

Table 12 - Building plans passed according to type of building and province: Northern Cape

Type of building	April 2002	March 2003	April 2003	January 2002 to April 2002	January 2003 to April 2003	Percentage change between January 2002 to April 2002 and January 2003 to April 2003
Residential buildings						
Dwelling-houses smaller than 80 square metres						
Number of dwelling-houses	8	1	2	22	9	- 59.1
Total square metres	471	70	68	1 089	356	- 67.3
Total value at current prices (R'000)	730	105	114	1 795	544	- 69.7
Dwelling-houses equal to or larger than 80 square metres						
Number of dwelling-houses	10	14	7	29	38	+ 31.0
Total square metres	2 601	2 516	1 560	5 769	7 438	+ 28.9
Total value at current prices (R'000)	4 120	3 803	2 426	8 720	11 565	+ 32.6
Flats and townhouses						
Number of flats and townhouses	2	1	1	2	3	+ 50.0
Total square metres	352	205	239	352	558	+ 58.5
Total value at current prices (R'000)	634	369	430	634	970	+ 53.0
Other residential buildings ^{1/}						
Total square metres	0	0	0	0	0	..
Total value at current prices (R'000)	0	0	0	0	0	..
Total value of residential buildings at current prices (R'000)	5 484	4 277	2 970	11 149	13 079	+ 17.3
Non-residential buildings						
Office and banking space						
Total square metres	100	0	0	130	118	- 9.2
Total value at current prices (R'000)	120	0	0	186	177	- 4.8
Shopping space						
Total square metres	0	75	0	0	611	..
Total value at current prices (R'000)	0	113	0	0	1 292	..
Industrial and warehouse space						
Total square metres	669	0	792	1 469	1 238	- 15.7
Total value at current prices (R'000)	1 228	0	1 742	2 348	2 723	+ 16.0
Other non-residential space ^{2/}						
Total square metres	0	0	0	999	0	..
Total value at current prices (R'000)	0	0	0	2 198	0	..
Total value of non-residential buildings at current prices (R'000)	1 348	113	1 742	4 732	4 192	- 11.4
Additions and alterations						
Dwelling-houses						
Total square metres	4 272	1 024	2 364	10 210	9 376	- 8.2
Total value at current prices (R'000)	7 519	1 817	3 950	17 186	16 526	- 3.8
Other buildings ^{3/}						
Total square metres	1 264	420	977	2 166	1 842	- 15.0
Total value at current prices (R'000)	3 065	1 132	1 900	5 417	4 994	- 7.8
Total value of additions and alterations at current prices (R'000)	10 584	2 949	5 850	22 603	21 520	- 4.8
Total value of building plans passed at current prices (R'000)	17 416	7 339	10 562	38 484	38 791	+ 0.8

1/ Other residential buildings include institutions for the disabled, boarding houses, old people's homes, hostels, hotels, motels, guest houses, holiday chalets, entertainment centres, bed-and-breakfast accommodation and casinos.

2/ Other non-residential space includes churches, sport and recreation clubs, schools, crèches, hospitals and all other non-residential space.

3/ Other buildings include additions and alterations to other residential buildings, non-residential buildings and internal alterations.

Table 13 - Building plans passed according to type of building and province: Free State

Type of building	April 2002	March 2003	April 2003	January 2002 to April 2002	January 2003 to April 2003	Percentage change between January 2002 to April 2002 and January 2003 to April 2003
Residential buildings						
Dwelling-houses smaller than 80 square metres						
Number of dwelling-houses	324	257	144	559	853	+ 52.6
Total square metres	13 916	11 295	6 230	25 061	35 888	+ 43.2
Total value at current prices (R'000)	7 945	6 252	4 724	16 727	21 568	+ 28.9
Dwelling-houses equal to or larger than 80 square metres						
Number of dwelling-houses	67	67	78	307	301	-2.0
Total square metres	11 453	10 530	12 148	46 586	49 769	+ 6.8
Total value at current prices (R'000)	13 208	15 344	17 164	55 688	69 877	+ 25.5
Flats and townhouses						
Number of flats and townhouses	6	70	39	191	157	-17.8
Total square metres	768	7 484	5 597	18 847	17 191	-8.8
Total value at current prices (R'000)	922	10 530	8 359	28 401	24 833	-12.6
Other residential buildings ^{1/}						
Total square metres	0	0	900	2 758	954	-65.4
Total value at current prices (R'000)	0	0	1 000	7 105	1 110	-84.4
Total value of residential buildings at current prices (R'000)	22 075	32 126	31 247	107 921	117 388	+ 8.8
Non-residential buildings						
Office and banking space						
Total square metres	0	128	0	7 384	1 744	-76.4
Total value at current prices (R'000)	0	128	0	14 102	2 936	-79.2
Shopping space						
Total square metres	130	1 566	0	8 161	12 776	+ 56.5
Total value at current prices (R'000)	250	2 029	0	16 910	22 248	+ 31.6
Industrial and warehouse space						
Total square metres	2 565	395	308	5 142	4 348	-15.4
Total value at current prices (R'000)	1 418	225	191	3 912	2 404	-38.5
Other non-residential space ^{2/}						
Total square metres	2 450	1 661	1 077	6 082	8 841	+ 45.4
Total value at current prices (R'000)	4 100	2 521	1 738	7 703	12 706	+ 64.9
Total value of non-residential buildings at current prices (R'000)	5 768	4 903	1 929	42 627	40 294	-5.5
Additions and alterations						
Dwelling-houses						
Total square metres	8 462	9 831	8 527	32 324	36 052	+ 11.5
Total value at current prices (R'000)	9 201	12 573	10 294	35 114	44 205	+ 25.9
Other buildings ^{3/}						
Total square metres	3 469	4 734	1 083	7 645	9 809	+ 28.3
Total value at current prices (R'000)	8 306	8 563	4 936	16 212	25 537	+ 57.5
Total value of additions and alterations at current prices (R'000)	17 507	21 136	15 230	51 326	69 742	+ 35.9
Total value of building plans passed at current prices (R'000)	45 350	58 165	48 406	201 874	227 424	+ 12.7

1/ Other residential buildings include institutions for the disabled, boarding houses, old people's homes, hostels, hotels, motels, guest houses, holiday chalets, entertainment centres, bed-and-breakfast accommodation and casinos.

2/ Other non-residential space includes churches, sport and recreation clubs, schools, crèches, hospitals and all other non-residential space.

3/ Other buildings include additions and alterations to other residential buildings, non-residential buildings and internal alterations.

Table 14 - Building plans passed according to type of building and province: KwaZulu-Natal

Type of building	April 2002*	March 2003	April 2003	January 2002 to April 2002	January 2003 to April 2003	Percentage change between January 2002 to April 2002 and January 2003 to April 2003
Residential buildings						
Dwelling-houses smaller than 80 square metres						
Number of dwelling-houses	229	91	412	738	2 066	+ 179.9
Total square metres	9 125	4 805	14 931	30 565	70 652	+ 131.2
Total value at current prices (R'000)	9 160	6 303	13 156	31 861	55 714	+ 74.9
Dwelling-houses equal to or larger than 80 square metres						
Number of dwelling-houses	160	189	153	534	632	+ 18.4
Total square metres	40 223	45 459	36 710	119 831	152 939	+ 27.6
Total value at current prices (R'000)	58 838	81 441	69 080	179 655	268 400	+ 49.4
Flats and townhouses						
Number of flats and townhouses	65	130	156	351	478	+ 36.2
Total square metres	8 125	30 130	24 988	51 876	94 381	+ 81.9
Total value at current prices (R'000)	13 938	92 539	46 242	86 785	261 495	+ 201.3
Other residential buildings ^{1/}						
Total square metres	0	2 619	474	30 153	13 443	- 55.4
Total value at current prices (R'000)	0	5 800	720	31 821	34 520	+ 8.5
Total value of residential buildings at current prices (R'000)	81 936	186 083	129 198	330 122	620 129	+ 87.8
Non-residential buildings						
Office and banking space						
Total square metres	8 080	641	2 681	10 900	4 947	- 54.6
Total value at current prices (R'000)	29 470	1 200	9 028	35 226	12 078	- 65.7
Shopping space						
Total square metres	10 806	6 753	6 297	19 116	38 366	+ 100.7
Total value at current prices (R'000)	11 525	14 821	10 077	28 464	293 105	+ 929.7
Industrial and warehouse space						
Total square metres	5 304	7 903	4 692	35 650	31 179	- 12.5
Total value at current prices (R'000)	6 696	9 120	3 225	42 828	36 324	- 15.2
Other non-residential space ^{2/}						
Total square metres	1 775	2 720	2 466	57 892	10 215	- 82.4
Total value at current prices (R'000)	3 026	6 800	6 252	65 489	20 921	- 68.1
Total value of non-residential buildings at current prices (R'000)	50 717	31 941	28 582	172 007	362 428	+ 110.7
Additions and alterations						
Dwelling-houses						
Total square metres	43 875	36 409	40 423	126 408	157 994	+ 25.0
Total value at current prices (R'000)	56 130	56 039	50 564	162 175	203 486	+ 25.5
Other buildings ^{3/}						
Total square metres	9 047	19 793	18 726	34 508	75 782	+ 119.6
Total value at current prices (R'000)	20 094	43 707	35 015	66 063	144 505	+ 118.7
Total value of additions and alterations at current prices (R'000)	76 224	99 746	85 579	228 238	347 991	+ 52.5
Total value of building plans passed at current prices (R'000)	208 877	317 770	243 359	730 367	1 330 548	+ 82.2

1/ Other residential buildings include institutions for the disabled, boarding houses, old people's homes, hostels, hotels, motels, guest houses, holiday chalets, entertainment centres, bed-and-breakfast accommodation and casinos.

2/ Other non-residential space includes churches, sport and recreation clubs, schools, crèches, hospitals and all other non-residential space.

3/ Other buildings include additions and alterations to other residential buildings, non-residential buildings and internal alterations.

Table 15 - Building plans passed according to type of building and province: North West

Type of building	April 2002*	March 2003*	April 2003	January 2002 to April 2002	January 2003 to April 2003	Percentage change between January 2002 to April 2002 and January 2003 to April 2003
Residential buildings						
Dwelling-houses smaller than 80 square metres						
Number of dwelling-houses	35	30	30	476	118	- 75.2
Total square metres	1 939	1 706	1 639	21 083	6 869	- 67.4
Total value at current prices (R'000)	2 132	2 080	1 898	23 165	8 317	- 64.1
Dwelling-houses equal to or larger than 80 square metres						
Number of dwelling-houses	85	100	74	342	368	+ 7.6
Total square metres	14 938	18 057	14 525	58 827	68 925	+ 17.2
Total value at current prices (R'000)	18 841	28 099	20 522	79 741	104 320	+ 30.8
Flats and townhouses						
Number of flats and townhouses	1	141	34	45	236	+ 424.4
Total square metres	108	9 282	3 211	5 935	17 591	+ 196.4
Total value at current prices (R'000)	103	15 766	4 104	8 110	26 892	+ 231.6
Other residential buildings ^{1/}						
Total square metres	484	0	8 836	768	9 112	+ 1086.5
Total value at current prices (R'000)	581	0	13 433	781	14 033	+ 1696.8
Total value of residential buildings at current prices (R'000)	21 657	45 945	39 957	111 797	153 562	+ 37.4
Non-residential buildings						
Office and banking space						
Total square metres	749	1 642	463	4 461	2 519	-43.5
Total value at current prices (R'000)	1 124	3 252	695	7 386	4 404	-40.4
Shopping space						
Total square metres	6 548	0	0	8 657	3 319	- 61.7
Total value at current prices (R'000)	10 454	0	0	14 558	10 738	- 26.2
Industrial and warehouse space						
Total square metres	2 700	0	0	6 811	5 769	- 15.3
Total value at current prices (R'000)	3 240	0	0	9 915	7 502	- 24.3
Other non-residential space ^{2/}						
Total square metres	970	4 337	270	6 762	6 985	+ 3.3
Total value at current prices (R'000)	2 363	5 952	675	14 604	11 374	- 22.1
Total value of non-residential buildings at current prices (R'000)	17 181	9 204	1 370	46 463	34 018	- 26.8
Additions and alterations						
Dwelling-houses						
Total square metres	8 451	8 636	8 689	30 738	30 349	- 1.3
Total value at current prices (R'000)	10 147	11 153	11 125	36 009	39 153	+ 8.7
Other buildings ^{3/}						
Total square metres	5 418	852	539	8 803	3 288	- 62.6
Total value at current prices (R'000)	6 165	1 246	1 178	12 042	5 396	- 55.2
Total value of additions and alterations at current prices (R'000)	16 312	12 399	12 303	48 051	44 549	- 7.3
Total value of building plans passed at current prices (R'000)	55 150	67 548	53 630	206 311	232 129	+ 12.5

1/ Other residential buildings include institutions for the disabled, boarding houses, old people's homes, hostels, hotels, motels, guest houses, holiday chalets, entertainment centres, bed-and-breakfast accommodation and casinos.

2/ Other non-residential space includes churches, sport and recreation clubs, schools, crèches, hospitals and all other non-residential space.

3/ Other buildings include additions and alterations to other residential buildings, non-residential buildings and internal alterations.

Table 16 - Building plans passed according to type of building and province: Gauteng

Type of building	April 2002 *	March 2003*	April 2003	January 2002 to April 2002	January 2003 to April 2003	Percentage change between January 2002 to April 2002 and January 2003 to April 2003
Residential buildings						
Dwelling-houses smaller than 80 square metres						
Number of dwelling-houses	780	1 354	396	3 579	5 345	+ 49.3
Total square metres	29 609	48 020	18 822	133 741	185 845	+ 39.0
Total value at current prices (R'000)	31 597	41 748	24 874	131 913	156 451	+ 18.6
Dwelling-houses equal to or larger than 80 square metres						
Number of dwelling-houses	782	781	665	2 528	2 606	+ 3.1
Total square metres	172 609	199 475	188 090	654 999	691 607	+ 5.6
Total value at current prices (R'000)	270 582	360 881	322 074	1 043 199	1 206 012	+ 15.6
Flats and townhouses						
Number of flats and townhouses	991	854	552	2 295	2 103	- 8.4
Total square metres	122 846	118 028	103 870	304 377	354 681	+ 16.5
Total value at current prices (R'000)	204 613	212 492	192 123	486 661	633 019	+ 30.1
Other residential buildings ^{1/}						
Total square metres	0	11 020	1 606	3 459	31 658	+ 815.2
Total value at current prices (R'000)	0	29 115	3 000	5 781	52 942	+ 815.8
Total value of residential buildings at current prices (R'000)	506 792	644 236	542 071	1 667 554	2 048 424	+ 22.8
Non-residential buildings						
Office and banking space						
Total square metres	41 173	20 624	10 839	122 672	59 967	- 51.1
Total value at current prices (R'000)	68 933	37 365	23 335	262 472	114 962	- 56.2
Shopping space						
Total square metres	9 283	11 238	6 985	39 283	34 601	- 11.9
Total value at current prices (R'000)	16 659	22 167	8 722	69 109	60 516	- 12.4
Industrial and warehouse space						
Total square metres	57 680	18 731	37 838	133 772	97 771	- 26.9
Total value at current prices (R'000)	96 900	34 227	70 497	223 757	174 002	- 22.2
Other non-residential space ^{2/}						
Total square metres	8 420	8 687	15 282	87 056	38 814	- 55.4
Total value at current prices (R'000)	12 311	16 309	29 293	151 419	70 120	- 53.7
Total value of non-residential buildings at current prices (R'000)	194 803	110 068	131 847	706 757	419 600	- 40.6
Additions and alterations						
Dwelling-houses						
Total square metres	107 407	96 374	99 859	367 092	337 725	- 8.0
Total value at current prices (R'000)	167 644	160 728	169 798	566 866	566 199	- 0.1
Other buildings ^{3/}						
Total square metres	16 023	21 653	34 326	78 367	86 447	+ 10.3
Total value at current prices (R'000)	29 307	42 370	65 459	155 624	175 392	+ 12.7
Total value of additions and alterations at current prices (R'000)	196 951	203 098	235 257	722 490	741 591	+ 2.6
Total value of building plans passed at current prices (R'000)	898 546	957 402	909 175	3 096 801	3 209 615	+ 3.6

1/ Other residential buildings include institutions for the disabled, boarding houses, old people's homes, hostels, hotels, motels, guest houses, holiday chalets, entertainment centres, bed-and-breakfast accommodation and casinos.

2/ Other non-residential space includes churches, sport and recreation clubs, schools, crèches, hospitals and all other non-residential space.

3/ Other buildings include additions and alterations to other residential buildings, non-residential buildings and internal alterations.

Table 17 - Building plans passed according to type of building and province: Mpumalanga

Type of building	April 2002	March 2003	April 2003	January 2002 to April 2002	January 2003 to April 2003	Percentage change between January 2002 to April 2002 and January 2003 to April 2003
Residential buildings						
Dwelling-houses smaller than 80 square metres						
Number of dwelling-houses	324	84	150	896	432	- 51.8
Total square metres	13 227	3 817	5 943	36 217	18 065	- 50.1
Total value at current prices (R'000)	6 133	3 396	5 028	17 957	13 722	- 23.6
Dwelling-houses equal to or larger than 80 square metres						
Number of dwelling-houses	102	121	92	451	412	- 8.6
Total square metres	22 728	24 935	18 790	81 007	88 191	+ 8.9
Total value at current prices (R'000)	30 092	33 140	26 912	104 905	121 390	+ 15.7
Flats and townhouses						
Number of flats and townhouses	49	8	9	176	26	- 85.2
Total square metres	6 377	735	1 646	22 482	3 637	- 83.8
Total value at current prices (R'000)	7 849	1 670	2 533	30 984	5 554	- 82.1
Other residential buildings ^{1/}						
Total square metres	1 319	0	0	6 808	0	..
Total value at current prices (R'000)	1 185	0	0	71 185	0	..
Total value of residential buildings at current prices (R'000)	45 259	38 206	34 473	225 031	140 666	- 37.5
Non-residential buildings						
Office and banking space						
Total square metres	600	383	305	1 289	7 009	+ 443.8
Total value at current prices (R'000)	600	460	458	1 479	11 391	+ 670.2
Shopping space						
Total square metres	1 634	195	8 484	17 900	13 693	++23.5
Total value at current prices (R'000)	2 260	118	12 462	22 832	20 821	++8.8
Industrial and warehouse space						
Total square metres	2 702	7 795	3 125	9 644	28 573	+ 196.3
Total value at current prices (R'000)	4 003	10 551	3 326	11 313	32 700	+ 189.0
Other non-residential space ^{2/}						
Total square metres	970	364	698	4 588	1 358	- 70.4
Total value at current prices (R'000)	922	618	1 057	5 097	2 035	- 60.1
Total value of non-residential buildings at current prices (R'000)	7 785	11 747	17 303	40 721	66 947	+ 64.4
Additions and alterations						
Dwelling-houses						
Total square metres	11 989	15 282	10 393	43 731	49 975	+ 14.3
Total value at current prices (R'000)	13 106	19 374	12 636	48 235	66 133	+ 37.1
Other buildings ^{3/}						
Total square metres	750	1 237	3 220	5 046	9 324	+ 84.8
Total value at current prices (R'000)	1 035	3 748	3 127	13 008	15 672	+ 20.5
Total value of additions and alterations at current prices (R'000)	14 141	23 122	15 763	61 243	81 805	+ 33.6
Total value of building plans passed at current prices (R'000)	67 185	73 075	67 539	326 995	289 418	- 11.5

1/ Other residential buildings include institutions for the disabled, boarding houses, old people's homes, hostels, hotels, motels, guest houses, holiday chalets, entertainment centres, bed-and-breakfast accommodation and casinos.

2/ Other non-residential space includes churches, sport and recreation clubs, schools, crèches, hospitals and all other non-residential space.

3/ Other buildings include additions and alterations to other residential buildings, non-residential buildings and internal alterations.

Table 18 - Building plans passed according to type of building and province: Limpopo

Type of building	April 2002	March 2003*	April 2003	January 2002 to April 2002	January 2003 to April 2003	Percentage change between January 2002 to April 2002 and January 2003 to April 2003
Residential buildings						
Dwelling-houses smaller than 80 square metres						
Number of dwelling-houses	30	20	58	98	373	+ 280.6
Total square metres	1 729	1 159	2 429	5 730	16 348	+ 185.3
Total value at current prices (R'000)	2 613	1 668	3 499	8 350	11 951	+ 43.1
Dwelling-houses equal to or larger than 80 square metres						
Number of dwelling-houses	68	86	83	191	247	+ 29.3
Total square metres	15 277	13 929	13 227	38 081	43 213	+ 13.5
Total value at current prices (R'000)	22 187	21 080	19 134	52 486	63 877	+ 21.7
Flats and townhouses						
Number of flats and townhouses	26	3	67	53	73	+ 37.7
Total square metres	3 663	383	6 450	6 902	7 184	+ 4.1
Total value at current prices (R'000)	6 648	537	9 329	11 001	10 358	-5.8
Other residential buildings ^{1/}						
Total square metres	0	0	0	0	0	..
Total value at current prices (R'000)	0	0	0	0	0	..
Total value of residential buildings at current prices (R'000)	31 448	23 285	31 962	71 837	86 186	+ 20.0
Non-residential buildings						
Office and banking space						
Total square metres	275	0	0	729	0	..
Total value at current prices (R'000)	495	0	0	1 250	0	..
Shopping space						
Total square metres	118	187	4 772	2 669	5 089	+ 90.7
Total value at current prices (R'000)	200	375	12 700	4 657	13 215	+ 183.8
Industrial and warehouse space						
Total square metres	361	559	0	839	3 814	+ 354.6
Total value at current prices (R'000)	458	895	0	1 058	7 217	+ 582.1
Other non-residential space ^{2/}						
Total square metres	846	515	0	1 452	1 387	-4.5
Total value at current prices (R'000)	1 664	1 133	0	2 832	2 867	+ 1.2
Total value of non-residential buildings at current prices (R'000)	2 817	2 403	12 700	9 797	23 299	+ 137.8
Additions and alterations						
Dwelling-houses						
Total square metres	4 330	5 007	4 281	15 171	17 494	+ 15.3
Total value at current prices (R'000)	6 007	7 092	5 816	20 441	23 392	+ 14.4
Other buildings ^{3/}						
Total square metres	1 384	1 302	856	8 046	4 049	-49.7
Total value at current prices (R'000)	2 005	2 148	2 744	12 474	8 321	-33.3
Total value of additions and alterations at current prices (R'000)	8 012	9 240	8 560	32 915	31 713	-3.7
Total value of building plans passed at current prices (R'000)	42 277	34 928	53 222	114 549	141 198	+ 23.3

1/ Other residential buildings include institutions for the disabled, boarding houses, old people's homes, hostels, hotels, motels, guest houses, holiday chalets, entertainment centres, bed-and-breakfast accommodation and casinos.

2/ Other non-residential space includes churches, sport and recreation clubs, schools, crèches, hospitals and all other non-residential space.

3/ Other buildings include additions and alterations to other residential buildings, non-residential buildings and internal alterations.

Table 19 - Buildings completed according to type of building: Total RSA

Type of building	April 2002 *	March 2003*	April 2003	January 2002 to April 2002	January 2003 to April 2003	Percentage change between January 2002 to April 2002 and January 2003 to April 2003
Residential buildings						
Dwelling-houses smaller than 80 square metres						
Number of dwelling-houses	3 552	2 728	2 569	9 450	10 613	+ 12.3
Total square metres	132 138	98 918	93 342	354 816	382 592	+ 7.8
Total value at current prices (R'000)	107 233	84 702	82 845	318 058	314 048	- 1.3
Dwelling-houses equal to or larger than 80 square metres						
Number of dwelling-houses	1 198	1 336	1 154	4 166	4 748	+ 14.0
Total square metres	256 178	288 483	247 009	863 758	987 221	+ 14.3
Total value at current prices (R'000)	391 224	469 096	433 906	1 290 584	1 612 585	+ 25.0
Flats and townhouses						
Number of flats and townhouses	763	790	614	3 765	3 841	+ 2.0
Total square metres	95 605	91 648	73 303	388 670	399 816	+ 2.9
Total value at current prices (R'000)	145 113	136 138	118 631	582 506	634 261	+ 8.9
Other residential buildings ^{1/}						
Total square metres	7 591	3 987	16 357	30 225	46 386	+ 53.5
Total value at current prices (R'000)	9 844	6 297	39 610	228 259	97 587	- 57.2
Total value of residential buildings at current prices (R'000)	653 414	696 233	674 992	2 419 407	2 658 481	+ 9.9
Non-residential buildings						
Office and banking space						
Total square metres	72 912	38 541	76 234	184 106	193 949	+ 5.3
Total value at current prices (R'000)	127 136	74 851	171 951	322 408	362 781	+ 12.5
Shopping space						
Total square metres	23 267	37 807	40 772	74 972	115 833	+ 54.5
Total value at current prices (R'000)	43 253	63 119	90 763	109 654	211 362	+ 92.8
Industrial and warehouse space						
Total square metres	43 767	100 810	33 531	134 498	225 276	+ 67.5
Total value at current prices (R'000)	59 310	141 772	51 133	165 083	290 518	+ 76.0
Other non-residential space ^{2/}						
Total square metres	12 267	15 256	110 324	58 181	150 347	+ 158.4
Total value at current prices (R'000)	16 074	28 447	219 788	94 242	283 431	+ 200.7
Total value of non-residential buildings at current prices (R'000)	245 773	308 189	533 635	691 387	1 148 092	+ 66.1
Additions and alterations						
Dwelling-houses						
Total square metres	148 186	121 085	115 273	467 615	486 377	+ 4.0
Total value at current prices (R'000)	196 916	158 329	158 392	601 212	654 266	+ 8.8
Other buildings ^{3/}						
Total square metres	130 120	41 488	32 710	214 491	172 628	- 19.5
Total value at current prices (R'000)	193 244	79 978	76 223	343 883	338 662	- 1.5
Total value of additions and alterations at current prices (R'000)	390 160	238 307	234 615	945 095	992 928	+ 5.1
Total value of buildings completed at current prices (R'000)	1 289 347	1 242 729	1 443 242	4 055 889	4 799 501	+ 18.3

1/ Other residential buildings include institutions for the disabled, boarding houses, old people's homes, hostels, hotels, motels, guest houses, holiday chalets, entertainment centres, bed-and-breakfast accommodation and casinos.

2/ Other non-residential space includes churches, sport and recreation clubs, schools, crèches, hospitals and all other non-residential space.

3/ Other buildings include additions and alterations to other residential buildings, non-residential buildings and internal alterations.

Table 20 - Buildings completed according to type of building and province: Western Cape

Type of building	April 2002*	March 2003	April 2003	January 2002 to April 2002	January 2003 to April 2003	Percentage change between January 2002 to April 2002 and January 2003 to April 2003
Residential buildings						
Dwelling-houses smaller than 80 square metres						
Number of dwelling-houses	686	571	300	2 604	1 201	- 53.9
Total square metres	26 372	20 421	10 859	95 142	46 217	- 51.4
Total value at current prices (R'000)	33 902	22 704	12 506	112 164	53 577	- 52.2
Dwelling-houses equal to or larger than 80 square metres						
Number of dwelling-houses	494	443	417	1 590	1 823	+ 14.7
Total square metres	90 061	88 857	79 391	315 948	338 927	+ 7.3
Total value at current prices (R'000)	139 610	143 773	144 142	495 691	565 120	+ 14.0
Flats and townhouses						
Number of flats and townhouses	144	172	218	667	712	+ 6.7
Total square metres	23 427	21 977	29 345	87 809	78 748	- 10.3
Total value at current prices (R'000)	33 757	36 268	45 762	143 087	133 252	- 6.9
Other residential buildings ^{1/}						
Total square metres	2 100	1 681	0	2 773	15 591	+ 462.2
Total value at current prices (R'000)	3 129	2 540	0	4 122	41 171	+ 898.8
Total value of residential buildings at current prices (R'000)	210 398	205 285	202 410	755 064	793 120	+ 5.0
Non-residential buildings						
Office and banking space						
Total square metres	22 219	20 463	2 493	39 721	61 922	+ 55.9
Total value at current prices (R'000)	32 268	44 248	4 172	59 157	99 585	+ 68.3
Shopping space						
Total square metres	10 006	5 234	4 772	31 291	16 478	- 47.3
Total value at current prices (R'000)	14 216	7 995	7 719	38 690	24 394	- 37.0
Industrial and warehouse space						
Total square metres	14 514	13 966	8 061	31 433	61 263	+ 94.9
Total value at current prices (R'000)	16 601	19 178	9 415	33 082	68 276	+ 106.4
Other non-residential space ^{2/}						
Total square metres	4 444	3 531	3 999	27 201	14 590	- 46.4
Total value at current prices (R'000)	4 481	4 563	5 347	48 924	19 067	- 61.0
Total value of non-residential buildings at current prices (R'000)	67 566	75 984	26 653	179 853	211 322	+ 17.5
Additions and alterations						
Dwelling-houses						
Total square metres	44 420	35 279	39 374	150 085	158 727	+ 5.8
Total value at current prices (R'000)	59 825	46 945	51 107	200 830	218 213	+ 8.7
Other buildings ^{3/}						
Total square metres	76 565	14 501	7 012	102 030	49 779	- 51.2
Total value at current prices (R'000)	102 140	25 280	20 244	152 999	111 076	- 27.4
Total value of additions and alterations at current prices (R'000)	161 965	72 225	71 351	353 829	329 289	- 6.9
Total value of buildings completed at current prices (R'000)	439 929	353 494	300 414	1 288 746	1 333 731	+ 3.5

1/ Other residential buildings include institutions for the disabled, boarding houses, old people's homes, hostels, hotels, motels, guest houses, holiday chalets, entertainment centres, bed-and-breakfast accommodation and casinos.

2/ Other non-residential space includes churches, sport and recreation clubs, schools, crèches, hospitals and all other non-residential space.

3/ Other buildings include additions and alterations to other residential buildings, non-residential buildings and internal alterations.

Table 21 - Buildings completed according to type of building and province: Eastern Cape

Type of building	April 2002	March 2003	April 2003	January 2002 to April 2002	January 2003 to April 2003	Percentage change between January 2002 to April 2002 and January 2003 to April 2003
Residential buildings						
Dwelling-houses smaller than 80 square metres						
Number of dwelling-houses	274	155	156	718	563	- 21.6
Total square metres	11 358	6 389	6 993	31 512	24 669	- 21.7
Total value at current prices (R'000)	14 400	6 668	9 938	40 724	29 700	- 27.1
Dwelling-houses equal to or larger than 80 square metres						
Number of dwelling-houses	69	71	38	227	198	- 12.8
Total square metres	12 076	15 881	7 134	38 684	39 194	+ 1.3
Total value at current prices (R'000)	15 044	23 653	11 072	49 948	58 675	+ 17.5
Flats and townhouses						
Number of flats and townhouses	0	8	23	299	69	-76.9
Total square metres	0	1 154	1 565	15 146	5 393	- 64.4
Total value at current prices (R'000)	0	1 295	2 056	21 785	7 327	- 66.4
Other residential buildings ^{1/}						
Total square metres	0	0	5 213	2 744	6 084	+ 121.7
Total value at current prices (R'000)	0	0	8 259	3 312	10 024	+ 202.7
Total value of residential buildings at current prices (R'000)	29 444	31 616	31 325	115 769	105 726	- 8.7
Non-residential buildings						
Office and banking space						
Total square metres	551	0	0	576	0	..
Total value at current prices (R'000)	1 135	0	0	1 185	0	..
Shopping space						
Total square metres	302	1 653	0	2 779	2 943	+ 5.9
Total value at current prices (R'000)	369	2 920	0	3 520	4 912	+ 39.5
Industrial and warehouse space						
Total square metres	0	0	1 863	478	5 395	+ 1028.7
Total value at current prices (R'000)	0	0	2 925	392	8 244	+ 2003.1
Other non-residential space ^{2/}						
Total square metres	0	204	496	2 300	2 224	-3.3
Total value at current prices (R'000)	0	364	440	2 664	3 951	+ 48.3
Total value of non-residential buildings at current prices (R'000)	1 504	3 284	3 365	7 761	17 107	+ 120.4
Additions and alterations						
Dwelling-houses						
Total square metres	11 610	9 573	7 481	37 284	36 996	- 0.8
Total value at current prices (R'000)	14 172	12 355	10 247	44 239	50 040	+ 13.1
Other buildings ^{3/}						
Total square metres	7 012	12 395	6 311	17 260	27 215	+ 57.7
Total value at current prices (R'000)	9 044	20 230	10 294	22 934	46 843	+ 104.3
Total value of additions and alterations at current prices (R'000)	23 216	32 585	20 541	67 173	96 883	+ 44.2
Total value of buildings completed at current prices (R'000)	54 164	67 485	55 231	190 703	219 716	+ 15.2

1/ Other residential buildings include institutions for the disabled, boarding houses, old people's homes, hostels, hotels, motels, guest houses, holiday chalets, entertainment centres, bed-and-breakfast accommodation and casinos.

2/ Other non-residential space includes churches, sport and recreation clubs, schools, crèches, hospitals and all other non-residential space.

3/ Other buildings include additions and alterations to other residential buildings, non-residential buildings and internal alterations.

Table 22 - Buildings completed according to type of building and province: Northern Cape

Type of building	April 2002	March 2003	April 2003	January 2002 to April 2002	January 2003 to April 2003	Percentage change between January 2002 to April 2002 and January 2003 to April 2003
Residential buildings						
Dwelling-houses smaller than 80 square metres						
Number of dwelling-houses	19	1	43	34	46	+ 35.3
Total square metres	987	46	1 548	1 688	1 715	+ 1.6
Total value at current prices (R'000)	1 556	69	1 161	2 407	1 456	- 39.5
Dwelling-houses equal to or larger than 80 square metres						
Number of dwelling-houses	5	6	4	19	19	+ 0.0
Total square metres	1 325	1 066	653	3 198	3 586	+ 12.1
Total value at current prices (R'000)	1 892	1 594	980	4 302	5 792	+ 34.6
Flats and townhouses						
Number of flats and townhouses	1	0	3	1	5	+ 400.0
Total square metres	180	0	616	180	842	+ 367.8
Total value at current prices (R'000)	252	0	1 109	252	1 426	+ 465.9
Other residential buildings ^{1/}						
Total square metres	0	0	0	0	0	..
Total value at current prices (R'000)	0	0	0	0	0	..
Total value of residential buildings at current prices (R'000)	3 700	1 663	3 250	6 961	8 674	+ 24.6
Non-residential buildings						
Office and banking space						
Total square metres	0	0	0	0	0	..
Total value at current prices (R'000)	0	0	0	0	0	..
Shopping space						
Total square metres	0	0	0	784	0	..
Total value at current prices (R'000)	0	0	0	1 098	0	..
Industrial and warehouse space						
Total square metres	0	0	0	0	0	..
Total value at current prices (R'000)	0	0	0	0	0	..
Other non-residential space ^{2/}						
Total square metres	157	0	0	622	125	- 79.9
Total value at current prices (R'000)	433	0	0	778	188	- 75.8
Total value of non-residential buildings at current prices (R'000)	345	0	0	1 876	188	- 90.0
Additions and alterations						
Dwelling-houses						
Total square metres	2 390	2 700	1 342	8 491	8 741	+ 2.9
Total value at current prices (R'000)	3 370	4 382	1 769	11 450	13 616	+ 18.9
Other buildings ^{3/}						
Total square metres	706	851	0	1 153	851	- 26.2
Total value at current prices (R'000)	1 786	1 994	201	3 589	2 247	- 37.4
Total value of additions and alterations at current prices (R'000)	5 156	6 376	1 970	15 039	15 863	+ 5.5
Total value of buildings completed at current prices (R'000)	9 201	8 039	5 220	23 876	24 725	3.6

1/ Other residential buildings include institutions for the disabled, boarding houses, old people's homes, hostels, hotels, motels, guest houses, holiday chalets, entertainment centres, bed-and-breakfast accommodation and casinos.

2/ Other non-residential space includes churches, sport and recreation clubs, schools, crèches, hospitals and all other non-residential space.

3/ Other buildings include additions and alterations to other residential buildings, non-residential buildings and internal alterations.

Table 23 - Buildings completed according to type of building and province: Free State

Type of building	April 2002	March 2003	April 2003	January 2002 to April 2002	January 2003 to April 2003	Percentage change between January 2002 to April 2002 and January 2003 to April 2003
Residential buildings						
Dwelling-houses smaller than 80 square metres						
Number of dwelling-houses	138	161	284	316	882	+ 179.1
Total square metres	7 765	6 924	11 662	16 164	36 551	+ 126.1
Total value at current prices (R'000)	6 625	4 160	6 161	12 356	19 863	+ 60.8
Dwelling-houses equal to or larger than 80 square metres						
Number of dwelling-houses	37	30	20	105	103	-1.9
Total square metres	6 234	5 124	3 197	18 107	17 278	-4.6
Total value at current prices (R'000)	7 687	6 434	3 824	21 838	21 946	+ 0.5
Flats and townhouses						
Number of flats and townhouses	9	1	25	45	119	+ 164.4
Total square metres	938	192	2 936	4 874	13 128	+ 169.3
Total value at current prices (R'000)	1 124	195	4 372	7 588	19 338	+ 154.8
Other residential buildings ^{1/}						
Total square metres	0	0	2 683	1 428	2 743	+ 92.1
Total value at current prices (R'000)	0	0	7 000	1 461	7 054	+ 382.8
Total value of residential buildings at current prices (R'000)	15 436	10 789	21 357	43 243	68 201	+ 57.7
Non-residential buildings						
Office and banking space						
Total square metres	0	38	5 630	2 055	5 730	+ 178.8
Total value at current prices (R'000)	0	43	7 700	3 855	7 847	+ 103.6
Shopping space						
Total square metres	564	3 012	213	1 904	5 129	+ 169.4
Total value at current prices (R'000)	659	4 688	290	3 159	8 388	+ 165.5
Industrial and warehouse space						
Total square metres	0	6 439	0	3 650	6 439	+ 76.4
Total value at current prices (R'000)	0	6 600	0	2 689	6 600	+ 145.4
Other non-residential space ^{2/}						
Total square metres	3 105	2 799	0	3 280	2 799	-14.7
Total value at current prices (R'000)	4 768	4 005	0	4 899	4 005	-18.2
Total value of non-residential buildings at current prices (R'000)	5 427	15 336	7 990	14 602	26 840	+ 83.8
Additions and alterations						
Dwelling-houses						
Total square metres	7 638	7 802	3 215	28 904	19 931	-31.0
Total value at current prices (R'000)	8 113	8 401	3 871	31 827	22 621	-28.9
Other buildings ^{3/}						
Total square metres	1 184	1 290	1 088	5 456	3 320	-39.1
Total value at current prices (R'000)	2 315	6 163	6 228	10 885	16 242	+ 49.2
Total value of additions and alterations at current prices (R'000)	10 428	14 564	10 099	42 712	38 863	-9.0
Total value of buildings completed at current prices (R'000)	31 291	40 689	39 446	100 557	133 904	+ 33.2

1/ Other residential buildings include institutions for the disabled, boarding houses, old people's homes, hostels, hotels, motels, guest houses, holiday chalets, entertainment centres, bed-and-breakfast accommodation and casinos.

2/ Other non-residential space includes churches, sport and recreation clubs, schools, crèches, hospitals and all other non-residential space.

3/ Other buildings include additions and alterations to other residential buildings, non-residential buildings and internal alterations.

Table 24 - Buildings completed according to type of building and province: KwaZulu-Natal

Type of building	April 2002	March 2003	April 2003	January 2002 to April 2002	January 2003 to April 2003	Percentage change between January 2002 to April 2002 and January 2003 to April 2003
Residential buildings						
Dwelling-houses smaller than 80 square metres						
Number of dwelling-houses	252	299	80	724	1 047	+ 44.6
Total square metres	10 264	10 693	4 164	30 643	37 949	+ 23.8
Total value at current prices (R'000)	9 708	9 271	4 795	30 616	31 593	+ 3.2
Dwelling-houses equal to or larger than 80 square metres						
Number of dwelling-houses	128	116	87	446	454	+ 1.8
Total square metres	24 013	22 773	18 649	86 566	93 956	+ 8.5
Total value at current prices (R'000)	32 587	35 095	23 563	118 296	135 110	+ 14.2
Flats and townhouses						
Number of flats and townhouses	114	33	42	267	206	-22.8
Total square metres	12 582	6 640	4 716	33 849	33 748	-0.3
Total value at current prices (R'000)	22 163	12 569	7 192	57 280	54 753	-4.4
Other residential buildings ^{1/}						
Total square metres	3 177	83	0	3 177	186	-94.1
Total value at current prices (R'000)	3 177	100	0	3 177	286	-91.0
Total value of residential buildings at current prices (R'000)	67 635	57 035	35 550	209 369	221 742	+ 5.9
Non-residential buildings						
Office and banking space						
Total square metres	12 353	2 771	2 772	56 016	12 378	-77.9
Total value at current prices (R'000)	31 800	3 632	3 560	119 258	24 737	-79.3
Shopping space						
Total square metres	9 589	6 793	2 065	18 903	15 939	-15.7
Total value at current prices (R'000)	23 487	13 020	4 000	33 562	27 328	-18.6
Industrial and warehouse space						
Total square metres	15 395	17 720	5 061	52 766	42 953	-18.6
Total value at current prices (R'000)	20 271	18 846	4 700	55 519	42 518	-23.4
Other non-residential space ^{2/}						
Total square metres	4 194	1 602	2 000	12 239	8 685	-29.0
Total value at current prices (R'000)	6 180	3 245	4 000	18 531	15 591	-15.9
Total value of non-residential buildings at current prices (R'000)	81 738	38 743	16 260	226 870	110 174	-51.4
Additions and alterations						
Dwelling-houses						
Total square metres	26 930	26 483	21 117	89 747	104 375	+ 16.3
Total value at current prices (R'000)	30 931	31 424	26 266	100 211	124 182	+ 23.9
Other buildings ^{3/}						
Total square metres	31 779	3 412	7 642	48 202	41 192	-14.5
Total value at current prices (R'000)	57 878	5 013	15 610	88 078	69 304	-21.3
Total value of additions and alterations at current prices (R'000)	88 809	36 437	41 876	188 289	193 486	+ 2.8
Total value of buildings completed at current prices (R'000)	238 182	132 215	93 686	624 528	525 402	-15.9

1/ Other residential buildings include institutions for the disabled, boarding houses, old people's homes, hostels, hotels, motels, guest houses, holiday chalets, entertainment centres, bed-and-breakfast accommodation and casinos.

2/ Other non-residential space includes churches, sport and recreation clubs, schools, crèches, hospitals and all other non-residential space.

3/ Other buildings include additions and alterations to other residential buildings, non-residential buildings and internal alterations.

Table 25 - Buildings completed according to type of building and province: North West

Type of building	April 2002	March 2003*	April 2003	January 2002 to April 2002	January 2003 to April 2003	Percentage change between January 2002 to April 2002 and January 2003 to April 2003
Residential buildings						
Dwelling-houses smaller than 80 square metres						
Number of dwelling-houses	909	18	32	1 013	95	- 90.6
Total square metres	28 645	993	1 805	33 971	5 332	- 84.3
Total value at current prices (R'000)	9 193	1 063	1 974	14 882	6 224	- 58.2
Dwelling-houses equal to or larger than 80 square metres						
Number of dwelling-houses	44	93	98	195	304	+ 55.9
Total square metres	8 547	16 345	17 655	34 058	58 537	+ 71.9
Total value at current prices (R'000)	12 033	23 635	28 198	50 494	87 100	+ 72.5
Flats and townhouses						
Number of flats and townhouses	0	45	4	170	379	+ 122.9
Total square metres	0	4 293	412	10 591	29 491	+ 178.5
Total value at current prices (R'000)	0	5 304	720	14 227	42 826	+ 201.0
Other residential buildings ^{1/}						
Total square metres	0	0	153	2 090	732	- 65.0
Total value at current prices (R'000)	0	0	306	2 483	1 140	- 54.1
Total value of residential buildings at current prices (R'000)	21 226	30 002	31 198	82 086	137 290	+ 67.3
Non-residential buildings						
Office and banking space						
Total square metres	237	1 669	3 600	683	5 269	+ 671.4
Total value at current prices (R'000)	300	2 358	5 760	1 100	8 118	+ 638.0
Shopping space						
Total square metres	0	2 043	563	3 542	3 364	- 5.0
Total value at current prices (R'000)	0	2 452	1 126	4 045	5 444	+ 34.6
Industrial and warehouse space						
Total square metres	985	0	0	2 382	3 672	+ 54.2
Total value at current prices (R'000)	1 490	0	0	2 595	3 976	+ 53.2
Other non-residential space ^{2/}						
Total square metres	367	2 161	875	2 660	4 856	+ 82.6
Total value at current prices (R'000)	300	7 700	2 065	4 403	11 880	+ 169.8
Total value of non-residential buildings at current prices (R'000)	2 090	12 510	8 951	12 143	29 418	+ 142.3
Additions and alterations						
Dwelling-houses						
Total square metres	3 208	3 988	4 141	16 110	21 717	+ 34.8
Total value at current prices (R'000)	3 933	3 990	3 812	15 558	20 140	+ 29.5
Other buildings ^{3/}						
Total square metres	272	1 222	470	2 216	7 963	+ 259.3
Total value at current prices (R'000)	576	1 440	1 947	3 272	10 660	+ 225.8
Total value of additions and alterations at current prices (R'000)	4 509	5 430	5 759	18 830	30 800	+ 63.6
Total value of buildings completed at current prices (R'000)	27 825	47 942	45 908	113 059	197 508	+ 74.7

1/ Other residential buildings include institutions for the disabled, boarding houses, old people's homes, hostels, hotels, motels, guest houses, holiday chalets, entertainment centres, bed-and-breakfast accommodation and casinos.

2/ Other non-residential space includes churches, sport and recreation clubs, schools, crèches, hospitals and all other non-residential space.

3/ Other buildings include additions and alterations to other residential buildings, non-residential buildings and internal alterations.

Table 26 - Buildings completed according to type of building and province: Gauteng

Type of building	April 2002*	March 2003*	April 2003	January 2002 to April 2002	January 2003 to April 2003	Percentage change between January 2002 to April 2002 and January 2003 to April 2003
Residential buildings						
Dwelling-houses smaller than 80 square metres						
Number of dwelling-houses	820	1 485	1 530	2 820	6 394	+ 126.7
Total square metres	29 507	51 161	50 515	98 059	212 594	+ 116.8
Total value at current prices (R'000)	23 440	37 550	40 779	77 573	155 653	+ 100.7
Dwelling-houses equal to or larger than 80 square metres						
Number of dwelling-houses	383	522	427	1 417	1 608	+ 13.5
Total square metres	107 380	126 435	107 699	338 655	385 789	+ 13.9
Total value at current prices (R'000)	174 180	219 594	202 872	515 507	669 374	+ 29.8
Flats and townhouses						
Number of flats and townhouses	491	528	296	2 293	1 814	-20.9
Total square metres	58 043	57 005	33 419	232 899	205 617	-11.7
Total value at current prices (R'000)	87 240	80 024	57 008	334 890	335 201	+ 0.1
Other residential buildings ^{1/}						
Total square metres	2 314	2 223	7 615	4 054	19 901	+ 390.9
Total value at current prices (R'000)	3 538	3 657	22 845	6 198	34 512	+ 456.8
Total value of residential buildings at current prices (R'000)	288 398	340 825	323 504	934 168	1 194 740	+ 27.9
Non-residential buildings						
Office and banking space						
Total square metres	37 552	11 303	61 739	85 055	106 353	+ 25.0
Total value at current prices (R'000)	61 633	21 814	150 759	137 853	219 738	+ 59.4
Shopping space						
Total square metres	2 806	18 877	32 416	11 469	57 229	+ 399.0
Total value at current prices (R'000)	4 522	31 926	76 683	18 545	119 033	+ 541.9
Industrial and warehouse space						
Total square metres	12 873	58 572	16 629	42 931	90 703	+ 111.3
Total value at current prices (R'000)	20 948	95 378	31 098	69 970	149 160	+ 113.2
Other non-residential space ^{2/}						
Total square metres	0	4 959	102 954	8 541	116 626	+ 1 265.5
Total value at current prices (R'000)	0	8 570	207 936	13 022	228 131	+ 1 651.9
Total value of non-residential buildings at current prices (R'000)	87 103	157 688	466 476	239 390	716 062	+ 199.1
Additions and alterations						
Dwelling-houses						
Total square metres	48 249	30 829	36 369	121 681	121 443	-0.2
Total value at current prices (R'000)	72 818	45 313	58 291	181 817	186 416	+ 2.5
Other buildings ^{3/}						
Total square metres	12 058	7 696	9 454	35 771	40 540	+ 13.3
Total value at current prices (R'000)	18 678	19 534	20 323	58 387	79 049	+ 35.4
Total value of additions and alterations at current prices (R'000)	91 496	64 847	78 614	240 204	265 465	+ 10.5
Total value of buildings completed at current prices (R'000)	466 997	563 360	868 594	1 413 762	2 176 267	+ 53.9

1/ Other residential buildings include institutions for the disabled, boarding houses, old people's homes, hostels, hotels, motels, guest houses, holiday chalets, entertainment centres, bed-and-breakfast accommodation and casinos.

2/ Other non-residential space includes churches, sport and recreation clubs, schools, crèches, hospitals and all other non-residential space.

3/ Other buildings include additions and alterations to other residential buildings, non-residential buildings and internal alterations.

Table 27 - Buildings completed according to type of building and province: Mpumalanga

Type of building	April 2002	March 2003	April 2003	January 2002 to April 2002	January 2003 to April 2003	Percentage change between January 2002 to April 2002 and January 2003 to April 2003
Residential buildings						
Dwelling-houses smaller than 80 square metres						
Number of dwelling-houses	441	13	116	1 156	284	-75.4
Total square metres	16 424	805	4 243	43 718	11 790	-73.0
Total value at current prices (R'000)	7 074	1 090	3 505	21 354	8 110	-62.0
Dwelling-houses equal to or larger than 80 square metres						
Number of dwelling-houses	33	38	49	125	168	+ 34.4
Total square metres	5 736	9 010	10 204	22 067	38 096	+ 72.6
Total value at current prices (R'000)	7 063	10 982	15 489	25 464	52 110	+ 104.6
Flats and townhouses						
Number of flats and townhouses	4	2	0	18	512	+ 2 744.4
Total square metres	435	235	0	2 734	30 343	+ 1 009.8
Total value at current prices (R'000)	577	270	0	2 574	36 867	+ 1 332.3
Other residential buildings ^{1/}						
Total square metres	0	0	693	0	1 149	..
Total value at current prices (R'000)	0	0	1 200	0	3 400	..
Total value of residential buildings at current prices (R'000)	14 714	12 342	20 194	49 392	100 487	+ 103.4
Non-residential buildings						
Office and banking space						
Total square metres	0	2 297	0	0	2 297	..
Total value at current prices (R'000)	0	2 756	0	0	2 756	..
Shopping space						
Total square metres	0	195	586	2 444	14 594	+ 497.1
Total value at current prices (R'000)	0	118	600	4 562	21 518	+ 371.7
Industrial and warehouse space						
Total square metres	0	4 113	1 917	858	14 438	+ 1 582.8
Total value at current prices (R'000)	0	1 770	2 995	836	11 165	+ 1 235.5
Other non-residential space ^{2/}						
Total square metres	0	0	0	1 338	0	..
Total value at current prices (R'000)	0	0	0	1 021	0	..
Total value of non-residential buildings at current prices (R'000)	0	4 644	3 595	6 419	35 439	+ 452.1
Additions and alterations						
Dwelling-houses						
Total square metres	3 461	3 523	1 711	14 117	11 988	-15.1
Total value at current prices (R'000)	3 297	4 138	2 262	13 360	15 340	+ 14.8
Other buildings ^{3/}						
Total square metres	544	101	733	1 232	1 293	+ 5.0
Total value at current prices (R'000)	827	288	1 376	2 099	2 784	+ 32.6
Total value of additions and alterations at current prices (R'000)	4 124	4 426	3 638	15 459	18 124	+ 17.2
Total value of buildings completed at current prices (R'000)	18 838	21 412	27 427	71 270	154 050	+ 116.1

1/ Other residential buildings include institutions for the disabled, boarding houses, old people's homes, hostels, hotels, motels, guest houses, holiday chalets, entertainment centres, bed-and-breakfast accommodation and casinos.

2/ Other non-residential space includes churches, sport and recreation clubs, schools, crèches, hospitals and all other non-residential space.

3/ Other buildings include additions and alterations to other residential buildings, non-residential buildings and internal alterations.

Table 28 - Buildings completed according to type of building and province: Limpopo

Type of building	April 2002	March 2003	April 2003	January 2002 to April 2002	January 2003 to April 2003	Percentage change between January 2002 to April 2002 and January 2003 to April 2003
Residential buildings						
Dwelling-houses smaller than 80 square metres						
Number of dwelling-houses	13	25	28	65	101	+ 55.4
Total square metres	816	1 486	1 553	3 919	5 775	+ 47.4
Total value at current prices (R'000)	1 335	2 127	2 026	5 982	7 872	+ 31.6
Dwelling-houses equal to or larger than 80 square metres						
Number of dwelling-houses	5	17	14	42	71	+ 69.0
Total square metres	806	2 992	2 427	6 475	11 858	+ 83.1
Total value at current prices (R'000)	1 128	4 336	3 766	9 044	17 358	+ 91.9
Flats and townhouses						
Number of flats and townhouses	0	1	3	5	25	+ 400.0
Total square metres	0	152	294	588	2 506	+ 326.2
Total value at current prices (R'000)	0	213	412	823	3 271	+ 297.4
Other residential buildings ^{1/}						
Total square metres	0	0	0	13 959	0	..
Total value at current prices (R'000)	0	0	0	207 506	0	..
Total value of residential buildings at current prices (R'000)	2 463	6 676	6 204	223 355	28 501	-87.2
Non-residential buildings						
Office and banking space						
Total square metres	0	0	0	0	0	..
Total value at current prices (R'000)	0	0	0	0	0	..
Shopping space						
Total square metres	0	0	157	1 856	157	-91.5
Total value at current prices (R'000)	0	0	345	2 473	345	-86.0
Industrial and warehouse space						
Total square metres	0	0	0	0	413	..
Total value at current prices (R'000)	0	0	0	0	579	..
Other non-residential space ^{2/}						
Total square metres	0	0	0	0	442	..
Total value at current prices (R'000)	0	0	0	0	618	..
Total value of non-residential buildings at current prices (R'000)	0	0	345	2 473	1 542	-37.6
Additions and alterations						
Dwelling-houses						
Total square metres	280	908	523	1 196	2 459	+ 105.6
Total value at current prices (R'000)	457	1 381	767	1 920	3 698	+ 92.6
Other buildings ^{3/}						
Total square metres	0	20	0	1 171	475	-59.4
Total value at current prices (R'000)	0	36	0	1 640	457	-72.1
Total value of additions and alterations at current prices (R'000)	457	1 417	767	3 560	4 155	+ 16.7
Total value of buildings completed at current prices (R'000)	2 920	8 093	7 316	229 388	34 198	-85.1

1/ Other residential buildings include institutions for the disabled, boarding houses, old people's homes, hostels, hotels, motels, guest houses, holiday chalets, entertainment centres, bed-and-breakfast accommodation and casinos.

2/ Other non-residential space includes churches, sport and recreation clubs, schools, crèches, hospitals and all other non-residential space.

3/ Other buildings include additions and alterations to other residential buildings, non-residential buildings and internal alterations.

Table 29 - Building plans passed according to type of building and selected urban area: Cape Town

Type of building	April 2002*	March 2003	April 2003	January 2002 to April 2002	January 2003 to April 2003	Percentage change between January 2002 to April 2002 and January 2003 to April 2003
Residential buildings						
Dwelling-houses smaller than 80 square metres						
Number of dwelling-houses	112	552	434	2 071	1 391	- 32.8
Total square metres	6 094	20 512	19 930	73 359	57 730	- 21.3
Total value at current prices (R'000)	7 648	23 624	24 390	89 237	68 737	- 23.0
Dwelling-houses equal to or larger than 80 square metres						
Number of dwelling-houses	387	299	370	1 290	1 447	+ 12.2
Total square metres	79 343	54 153	72 842	255 315	260 523	+ 2.0
Total value at current prices (R'000)	110 731	79 275	104 442	354 413	379 043	+ 6.9
Flats and townhouses						
Number of flats and townhouses	183	141	186	710	674	- 5.1
Total square metres	14 167	13 391	12 780	69 328	70 723	+ 2.0
Total value at current prices (R'000)	19 323	22 092	18 980	116 379	143 465	+ 23.3
Other residential buildings ^{1/}						
Total square metres	4 763	0	0	8 298	0	..
Total value at current prices (R'000)	6 924	0	0	12 454	0	..
Total value of residential buildings at current prices (R'000)	144 626	124 991	147 812	572 483	591 245	+ 3.3
Non-residential buildings						
Office and banking space						
Total square metres	5 522	12 712	10 632	16 666	33 757	+ 102.6
Total value at current prices (R'000)	10 922	19 161	27 982	23 522	63 222	+ 168.8
Shopping space						
Total square metres	0	139	5 538	12 802	10 873	- 15.1
Total value at current prices (R'000)	0	110	8 325	15 708	13 535	- 13.8
Industrial and warehouse space						
Total square metres	7 165	3 168	6 321	35 190	20 872	- 40.7
Total value at current prices (R'000)	8 979	3 472	7 084	40 853	23 870	- 41.6
Other non-residential space ^{2/}						
Total square metres	4 287	3 301	1 872	13 516	6 056	- 55.2
Total value at current prices (R'000)	6 390	4 875	2 637	18 102	8 718	- 51.8
Total value of non-residential buildings at current prices (R'000)	26 291	27 618	46 028	98 185	109 345	+ 11.4
Additions and alterations						
Dwelling-houses						
Total square metres	43 460	53 334	53 405	187 510	195 282	+ 4.1
Total value at current prices (R'000)	53 547	74 511	81 113	234 468	275 985	+ 17.7
Other buildings ^{3/}						
Total square metres	15 081	36 859	19 973	52 279	108 409	+ 107.4
Total value at current prices (R'000)	36 439	50 127	40 430	100 808	206 735	+ 105.1
Total value of additions and alterations at current prices (R'000)	89 986	124 638	121 543	335 276	482 720	+ 44.0
Total value of building plans passed at current prices (R'000)	260 903	277 247	315 383	1 005 944	1 183 310	+ 17.6

1/ Other residential buildings include institutions for the disabled, boarding houses, old people's homes, hostels, hotels, motels, guest houses, holiday chalets, entertainment centres, bed-and-breakfast accommodation and casinos.

2/ Other non-residential space includes churches, sport and recreation clubs, schools, crèches, hospitals and all other non-residential space.

3/ Other buildings include additions and alterations to other residential buildings, non-residential buildings and internal alterations.

Table 30 - Building plans passed according to type of building and selected urban area: Port Elizabeth

Type of building	April 2002	March 2003	April 2003	January 2002 to April 2002	January 2003 to April 2003	Percentage change between January 2002 to April 2002 and January 2003 to April 2003
Residential buildings						
Dwelling-houses smaller than 80 square metres						
Number of dwelling-houses	571	40	70	955	729	- 23.7
Total square metres	23 216	1 650	3 538	41 423	31 312	- 24.4
Total value at current prices (R'000)	32 677	2 346	4 765	58 919	39 471	- 33.0
Dwelling-houses equal to or larger than 80 square metres						
Number of dwelling-houses	69	34	3	234	106	- 54.7
Total square metres	15 486	8 054	653	44 390	19 868	- 55.2
Total value at current prices (R'000)	21 970	12 561	889	63 526	43 892	- 30.9
Flats and townhouses						
Number of flats and townhouses	20	3	15	70	34	- 51.4
Total square metres	2 051	543	3 150	7 746	6 529	- 15.7
Total value at current prices (R'000)	2 974	842	4 883	12 232	11 567	- 5.4
Other residential buildings ^{1/}						
Total square metres	0	410	0	0	410	..
Total value at current prices (R'000)	0	845	0	0	845	..
Total value of residential buildings at current prices (R'000)	57 621	16 594	10 537	134 677	95 775	- 28.9
Non-residential buildings						
Office and banking space						
Total square metres	2 482	0	0	2 925	2 607	- 10.9
Total value at current prices (R'000)	3 600	0	0	4 468	5 370	+ 20.2
Shopping space						
Total square metres	0	0	0	5 103	381	-92.5
Total value at current prices (R'000)	0	0	0	11 195	702	-93.7
Industrial and warehouse space						
Total square metres	10 470	566	0	14 409	2 707	- 81.2
Total value at current prices (R'000)	16 292	872	0	22 295	3 423	- 84.6
Other non-residential space ^{2/}						
Total square metres	4 992	256	0	9 965	2 384	- 76.1
Total value at current prices (R'000)	7 951	265	0	15 754	4 101	- 74.0
Total value of non-residential buildings at current prices (R'000)	27 843	1 137	0	53 712	13 596	- 74.7
Additions and alterations						
Dwelling-houses						
Total square metres	13 520	9 238	6 669	44 303	35 871	- 19.0
Total value at current prices (R'000)	18 035	14 822	10 751	56 691	59 516	+ 5.0
Other buildings ^{3/}						
Total square metres	3 927	1 554	735	13 521	12 986	- 4.0
Total value at current prices (R'000)	7 322	4 591	975	24 000	30 366	+ 26.5
Total value of additions and alterations at current prices (R'000)	25 357	19 413	11 726	80 691	89 882	+ 11.4
Total value of building plans passed at current prices (R'000)	110 821	37 144	22 263	269 080	199 253	- 26.0

1/ Other residential buildings include institutions for the disabled, boarding houses, old people's homes, hostels, hotels, motels, guest houses, holiday chalets, entertainment centres, bed-and-breakfast accommodation and casinos.

2/ Other non-residential space includes churches, sport and recreation clubs, schools, crèches, hospitals and all other non-residential space.

3/ Other buildings include additions and alterations to other residential buildings, non-residential buildings and internal alterations.

Table 31 - Building plans passed according to type of building and selected urban area: Durban

Type of building	April 2002*	March 2003	April 2003	January 2002 to April 2002	January 2003 to April 2003	Percentage change between January 2002 to April 2002 and January 2003 to April 2003
Residential buildings						
Dwelling-houses smaller than 80 square metres						
Number of dwelling-houses	80	46	67	355	219	-38.3
Total square metres	3 748	2 288	3 752	15 083	11 744	-22.1
Total value at current prices (R'000)	4 513	2 639	4 386	16 797	13 690	-18.5
Dwelling-houses equal to or larger than 80 square metres						
Number of dwelling-houses	67	80	57	216	269	+ 24.5
Total square metres	16 963	17 518	11 309	42 735	55 905	+ 30.8
Total value at current prices (R'000)	19 783	27 053	18 854	53 124	83 451	+ 57.1
Flats and townhouses						
Number of flats and townhouses	6	24	100	178	157	-11.8
Total square metres	1 448	3 670	17 298	27 136	26 447	-2.5
Total value at current prices (R'000)	1 888	8 342	31 453	34 698	50 824	+ 46.5
Other residential buildings ^{1/}						
Total square metres	0	599	0	29 606	599	-98.0
Total value at current prices (R'000)	0	800	0	31 000	800	-97.4
Total value of residential buildings at current prices (R'000)	26 184	38 834	54 693	135 619	148 765	+ 9.7
Non-residential buildings						
Office and banking space						
Total square metres	226	641	2 681	226	4 947	+ 2 088.9
Total value at current prices (R'000)	250	1 200	9 028	250	12 078	+ 4 731.2
Shopping space						
Total square metres	1 981	6 261	6 272	2 518	34 914	+ 1 286.6
Total value at current prices (R'000)	2 700	14 420	10 050	3 937	284 960	+ 7 138.0
Industrial and warehouse space						
Total square metres	3 370	3 885	316	27 252	13 138	-51.8
Total value at current prices (R'000)	3 000	3 397	400	29 224	11 327	-61.2
Other non-residential space ^{2/}						
Total square metres	1 178	0	0	54 738	2 763	-95.0
Total value at current prices (R'000)	2 355	0	0	60 237	4 985	-91.7
Total value of non-residential buildings at current prices (R'000)	8 305	19 017	19 478	93 648	313 350	+ 234.6
Additions and alterations						
Dwelling-houses						
Total square metres	25 513	23 731	23 793	77 679	102 958	+ 32.5
Total value at current prices (R'000)	34 161	37 163	24 888	98 332	122 163	+ 24.2
Other buildings ^{3/}						
Total square metres	1 998	13 676	12 065	13 078	38 802	+ 196.7
Total value at current prices (R'000)	4 304	34 828	25 691	32 183	88 311	+ 174.4
Total value of additions and alterations at current prices (R'000)	38 465	71 991	50 579	130 515	210 474	+ 61.3
Total value of building plans passed at current prices (R'000)	72 954	129 842	124 750	359 782	672 589	+ 86.9

1/ Other residential buildings include institutions for the disabled, boarding houses, old people's homes, hostels, hotels, motels, guest houses, holiday chalets, entertainment centres, bed-and-breakfast accommodation and casinos.

2/ Other non-residential space includes churches, sport and recreation clubs, schools, crèches, hospitals and all other non-residential space.

3/ Other buildings include additions and alterations to other residential buildings, non-residential buildings and internal alterations.

Table 32 - Building plans passed according to type of building and selected urban area: Witwatersrand

Type of building	April 2002*	March 2003	April 2003	January 2002 to April 2002	January 2003 to April 2003	Percentage change between January 2002 to April 2002 and January 2003 to April 2003
Residential buildings						
Dwelling-houses smaller than 80 square metres						
Number of dwelling-houses	695	415	255	3 324	1 779	- 46.5
Total square metres	25 014	17 952	12 693	119 849	71 749	- 40.1
Total value at current prices (R'000)	25 409	22 640	16 958	111 678	82 074	- 26.5
Dwelling-houses equal to or larger than 80 square metres						
Number of dwelling-houses	440	520	385	1 356	1 561	+ 15.1
Total square metres	79 409	124 024	106 981	327 264	392 610	+ 20.0
Total value at current prices (R'000)	136 137	235 506	180 911	574 747	708 246	+ 23.2
Flats and townhouses						
Number of flats and townhouses	429	513	317	1 115	1 123	+ 0.7
Total square metres	59 545	60 840	60 143	135 742	164 086	+ 20.9
Total value at current prices (R'000)	113 355	105 991	108 686	243 784	298 704	+ 22.5
Other residential buildings ^{1/}						
Total square metres	0	10 770	1 606	3 459	19 441	+ 462.0
Total value at current prices (R'000)	0	28 652	3 000	5 781	41 072	+ 610.5
Total value of residential buildings at current prices (R'000)	274 901	392 789	309 555	935 990	1 130 096	+ 20.7
Non-residential buildings						
Office and banking space						
Total square metres	12 825	3 656	7 072	56 566	29 552	- 47.8
Total value at current prices (R'000)	22 482	7 352	16 021	158 065	60 276	- 61.9
Shopping space						
Total square metres	9 283	7 915	6 371	37 726	23 553	- 37.6
Total value at current prices (R'000)	16 659	16 364	7 801	67 338	40 604	- 39.7
Industrial and warehouse space						
Total square metres	52 892	13 792	31 346	112 035	66 737	- 40.4
Total value at current prices (R'000)	90 014	25 556	59 764	192 216	125 771	- 34.6
Other non-residential space ^{2/}						
Total square metres	5 311	3 008	10 642	75 763	20 369	- 73.1
Total value at current prices (R'000)	7 779	7 940	20 874	135 395	41 264	- 69.5
Total value of non-residential buildings at current prices (R'000)	136 934	57 212	104 460	553 014	267 915	- 51.6
Additions and alterations						
Dwelling-houses						
Total square metres	71 742	71 768	69 258	249 639	229 568	- 8.0
Total value at current prices (R'000)	118 572	122 955	121 489	403 175	395 767	- 1.8
Other buildings ^{3/}						
Total square metres	12 195	12 503	15 329	52 580	45 353	- 13.7
Total value at current prices (R'000)	23 514	27 829	34 122	110 983	111 936	+ 0.9
Total value of additions and alterations at current prices (R'000)	142 086	150 784	155 611	514 158	507 703	- 1.3
Total value of building plans passed at current prices (R'000)	553 921	600 785	569 626	2 003 162	1 905 714	- 4.9

1/ Other residential buildings include institutions for the disabled, boarding houses, old people's homes, hostels, hotels, motels, guest houses, holiday chalets, entertainment centres, bed-and-breakfast accommodation and casinos.

2/ Other non-residential space includes churches, sport and recreation clubs, schools, crèches, hospitals and all other non-residential space.

3/ Other buildings include additions and alterations to other residential buildings, non-residential buildings and internal alterations.

Table 33 - Building plans passed according to type of building and selected urban area: Pretoria

Type of building	April 2002	March 2003	April 2003	January 2002 to April 2002	January 2003 to April 2003	Percentage change between January 2002 to April 2002 and January 2003 to April 2003
Residential buildings						
Dwelling-houses smaller than 80 square metres						
Number of dwelling-houses	77	934	135	227	3 541	+ 1459.9
Total square metres	4 168	29 731	5 723	12 311	112 560	+ 814.3
Total value at current prices (R'000)	5 635	18 677	7 397	18 251	72 306	+ 296.2
Dwelling-houses equal to or larger than 80 square metres						
Number of dwelling-houses	262	193	187	880	754	- 14.3
Total square metres	69 374	52 713	52 817	234 597	207 556	- 11.5
Total value at current prices (R'000)	100 695	86 810	96 918	331 190	358 052	+ 8.1
Flats and townhouses						
Number of flats and townhouses	555	119	158	1 117	621	- 44.4
Total square metres	62 167	36 636	26 064	158 712	141 679	- 10.7
Total value at current prices (R'000)	89 720	68 759	51 233	229 051	245 506	+ 7.2
Other residential buildings ^{1/}						
Total square metres	0	250	0	0	250	..
Total value at current prices (R'000)	0	463	0	0	463	..
Total value of residential buildings at current prices (R'000)	196 050	174 709	155 548	578 492	676 327	+ 16.9
Non-residential buildings						
Office and banking space						
Total square metres	28 348	16 334	3 767	66 106	29 781	- 54.9
Total value at current prices (R'000)	46 451	29 293	7 314	104 407	53 966	- 48.3
Shopping space						
Total square metres	0	3 323	614	56	8 768	+ 15557.1
Total value at current prices (R'000)	0	5 803	921	76	16 386	+ 21460.5
Industrial and warehouse space						
Total square metres	3 412	4 039	6 492	17 714	29 043	+ 64.0
Total value at current prices (R'000)	5 321	7 771	10 733	26 902	46 272	+ 72.0
Other non-residential space ^{2/}						
Total square metres	2 566	4 050	4 121	8 655	15 068	+ 74.1
Total value at current prices (R'000)	3 978	6 769	8 078	13 225	24 827	+ 87.7
Total value of non-residential buildings at current prices (R'000)	55 750	49 636	27 046	144 610	141 451	- 2.2
Additions and alterations						
Dwelling-houses						
Total square metres	28 814	19 473	21 033	99 415	81 229	- 18.3
Total value at current prices (R'000)	41 365	31 420	35 892	142 851	134 906	- 5.6
Other buildings ^{3/}						
Total square metres	3 119	9 071	17 955	23 163	37 108	+ 60.2
Total value at current prices (R'000)	4 852	14 378	30 419	41 795	60 330	+ 44.3
Total value of additions and alterations at current prices (R'000)	46 217	45 798	66 311	184 646	195 236	+ 5.7
Total value of building plans passed at current prices (R'000)	298 017	270 143	248 905	907 748	1 013 014	+ 11.6

1/ Other residential buildings include institutions for the disabled, boarding houses, old people's homes, hostels, hotels, motels, guest houses, holiday chalets, entertainment centres, bed-and-breakfast accommodation and casinos.

2/ Other non-residential space includes churches, sport and recreation clubs, schools, crèches, hospitals and all other non-residential space.

3/ Other buildings include additions and alterations to other residential buildings, non-residential buildings and internal alterations.

Table 34 - Building plans passed according to type of building and selected urban area: Bloemfontein

Type of building	April 2002	March 2003	April 2003	January 2002 to April 2002	January 2003 to April 2003	Percentage change between January 2002 to April 2002 and January 2003 to April 2003
Residential buildings						
Dwelling-houses smaller than 80 square metres						
Number of dwelling-houses	295	254	94	472	789	+ 67.2
Total square metres	12 362	11 113	3 981	20 408	32 855	+ 61.0
Total value at current prices (R'000)	6 544	6 058	2 768	12 673	18 669	+ 47.3
Dwelling-houses equal to or larger than 80 square metres						
Number of dwelling-houses	23	38	34	126	144	+ 14.3
Total square metres	4 295	5 139	5 138	18 884	22 795	+ 20.7
Total value at current prices (R'000)	5 765	7 520	7 632	26 903	34 355	+ 27.7
Flats and townhouses						
Number of flats and townhouses	6	51	34	180	125	-30.6
Total square metres	768	5 275	4 672	17 557	12 695	-27.7
Total value at current prices (R'000)	922	7 912	7 009	26 741	19 045	-28.8
Other residential buildings ^{1/}						
Total square metres	0	0	0	2 683	0	..
Total value at current prices (R'000)	0	0	0	7 000	0	..
Total value of residential buildings at current prices (R'000)	13 231	21 490	17 409	73 317	72 069	-1.7
Non-residential buildings						
Office and banking space						
Total square metres	0	0	0	7 267	1 616	-77.8
Total value at current prices (R'000)	0	0	0	14 000	2 808	-79.9
Shopping space						
Total square metres	130	0	0	7 559	3 359	-55.6
Total value at current prices (R'000)	250	0	0	16 250	8 000	-50.8
Industrial and warehouse space						
Total square metres	2 565	0	0	3 432	3 645	+ 6.2
Total value at current prices (R'000)	1 418	0	0	2 112	1 988	-5.9
Other non-residential space ^{2/}						
Total square metres	0	473	0	0	2 679	..
Total value at current prices (R'000)	0	946	0	0	4 194	..
Total value of non-residential buildings at current prices (R'000)	1 668	946	0	32 362	16 990	-47.5
Additions and alterations						
Dwelling-houses						
Total square metres	4 595	6 465	5 339	18 006	20 140	+ 11.9
Total value at current prices (R'000)	5 367	8 814	6 447	21 327	26 789	+ 25.6
Other buildings ^{3/}						
Total square metres	3 019	2 773	354	6 476	4 517	-30.3
Total value at current prices (R'000)	3 780	7 065	4 022	10 314	19 888	+ 92.8
Total value of additions and alterations at current prices (R'000)	9 147	15 879	10 469	31 641	46 677	+ 47.5
Total value of building plans passed at current prices (R'000)	24 046	38 315	27 878	137 320	135 736	-1.2

1/ Other residential buildings include institutions for the disabled, boarding houses, old people's homes, hostels, hotels, motels, guest houses, holiday chalets, entertainment centres, bed-and-breakfast accommodation and casinos.

2/ Other non-residential space includes churches, sport and recreation clubs, schools, crèches, hospitals and all other non-residential space.

3/ Other buildings include additions and alterations to other residential buildings, non-residential buildings and internal alterations.

Table 35 - Buildings completed according to type of building and selected urban area: Cape Town

Type of building	April 2002*	March 2003	April 2003	January 2002 to April 2002	January 2003 to April 2003	Percentage change between January 2002 to April 2002 and January 2003 to April 2003
Residential buildings						
Dwelling-houses smaller than 80 square metres						
Number of dwelling-houses	597	524	268	2 261	1 044	- 53.8
Total square metres	22 477	18 258	9 090	81 749	38 227	- 53.2
Total value at current prices (R'000)	30 013	19 655	9 750	98 159	41 302	- 57.9
Dwelling-houses equal to or larger than 80 square metres						
Number of dwelling-houses	319	245	205	913	1 019	+ 11.6
Total square metres	56 115	49 979	41 142	176 981	180 799	+ 2.2
Total value at current prices (R'000)	82 416	70 083	60 447	263 023	254 728	- 3.2
Flats and townhouses						
Number of flats and townhouses	90	140	185	370	540	+ 45.9
Total square metres	16 527	17 981	25 239	63 686	61 870	- 2.9
Total value at current prices (R'000)	24 703	27 875	37 693	109 307	97 119	- 11.2
Other residential buildings ^{1/}						
Total square metres	2 100	0	0	2 643	127	- 95.2
Total value at current prices (R'000)	3 129	0	0	3 922	174	- 95.6
Total value of residential buildings at current prices (R'000)	140 261	117 613	107 890	474 411	393 323	- 17.1
Non-residential buildings						
Office and banking space						
Total square metres	22 009	19 383	2 457	38 477	60 311	+ 56.7
Total value at current prices (R'000)	31 890	41 078	4 100	56 984	95 408	+ 67.4
Shopping space						
Total square metres	0	5 093	4 433	19 509	15 913	- 18.4
Total value at current prices (R'000)	0	7 640	7 119	21 322	23 184	+ 8.7
Industrial and warehouse space						
Total square metres	11 087	7 233	4 552	24 848	39 410	+ 58.6
Total value at current prices (R'000)	12 768	11 645	5 006	26 038	44 638	+ 71.4
Other non-residential space ^{2/}						
Total square metres	759	2 648	2 962	6 352	6 959	+ 9.6
Total value at current prices (R'000)	1 522	2 891	3 782	9 886	8 136	- 17.7
Total value of non-residential buildings at current prices (R'000)	46 180	63 254	20 007	114 230	171 366	+ 50.0
Additions and alterations						
Dwelling-houses						
Total square metres	29 698	26 676	29 604	104 006	119 028	+ 14.4
Total value at current prices (R'000)	37 180	32 542	36 191	130 410	147 916	+ 13.4
Other buildings ^{3/}						
Total square metres	70 158	11 542	3 650	85 392	39 883	- 53.3
Total value at current prices (R'000)	92 619	19 314	12 187	119 557	89 043	- 25.5
Total value of additions and alterations at current prices (R'000)	129 799	51 856	48 378	249 967	236 959	- 5.2
Total value of buildings completed at current prices (R'000)	316 240	232 723	176 275	838 608	801 648	- 4.4

1/ Other residential buildings include institutions for the disabled, boarding houses, old people's homes, hostels, hotels, motels, guest houses, holiday chalets, entertainment centres, bed-and-breakfast accommodation and casinos.

2/ Other non-residential space includes churches, sport and recreation clubs, schools, crèches, hospitals and all other non-residential space.

3/ Other buildings include additions and alterations to other residential buildings, non-residential buildings and internal alterations.

Table 36 - Buildings completed according to type of building and selected urban area: Port Elizabeth

Type of building	April 2002	March 2003	April 2003	January 2002 to April 2002	January 2003 to April 2003	Percentage change between January 2002 to April 2002 and January 2003 to April 2003
Residential buildings						
Dwelling-houses smaller than 80 square metres						
Number of dwelling-houses	214	54	144	499	405	- 18.8
Total square metres	8 611	2 259	6 341	20 904	17 481	- 16.4
Total value at current prices (R'000)	11 774	3 061	8 922	27 621	21 414	- 22.5
Dwelling-houses equal to or larger than 80 square metres						
Number of dwelling-houses	24	20	2	87	29	- 66.7
Total square metres	3 909	4 182	175	13 375	5 148	- 61.5
Total value at current prices (R'000)	3 859	6 511	209	16 160	7 581	- 53.1
Flats and townhouses						
Number of flats and townhouses	0	8	23	9	69	+ 666.7
Total square metres	0	1 154	1 565	1 086	5 393	+ 396.6
Total value at current prices (R'000)	0	1 295	2 056	1 477	7 327	+ 396.1
Other residential buildings ^{1/}						
Total square metres	0	0	5 213	2 744	5 656	+ 106.1
Total value at current prices (R'000)	0	0	8 259	3 312	9 314	+ 181.2
Total value of residential buildings at current prices (R'000)	15 633	10 867	19 446	48 570	45 636	- 6.0
Non-residential buildings						
Office and banking space						
Total square metres	0	0	0	0	0	..
Total value at current prices (R'000)	0	0	0	0	0	..
Shopping space						
Total square metres	302	1 468	0	1 944	1 936	- 0.4
Total value at current prices (R'000)	369	2 678	0	1 998	3 445	+ 72.4
Industrial and warehouse space						
Total square metres	0	0	1 863	478	4 954	+ 936.4
Total value at current prices (R'000)	0	0	2 925	392	7 494	+ 1 811.7
Other non-residential space ^{2/}						
Total square metres	0	0	496	2 300	927	- 59.7
Total value at current prices (R'000)	0	0	440	2 664	1 172	- 56.0
Total value of non-residential buildings at current prices (R'000)	369	2 678	3 365	5 054	12 111	+ 139.6
Additions and alterations						
Dwelling-houses						
Total square metres	4 567	3 883	6 094	19 557	21 844	+ 11.7
Total value at current prices (R'000)	5 007	4 368	8 152	21 463	27 704	+ 29.1
Other buildings ^{3/}						
Total square metres	4 810	6 903	6 311	12 241	18 883	+ 54.3
Total value at current prices (R'000)	4 966	10 875	10 294	13 115	30 261	+ 130.7
Total value of additions and alterations at current prices (R'000)	9 973	15 243	18 446	34 578	57 965	+ 67.6
Total value of buildings completed at current prices (R'000)	25 975	28 788	41 257	88 202	115 712	+ 31.2

1/ Other residential buildings include institutions for the disabled, boarding houses, old people's homes, hostels, hotels, motels, guest houses, holiday chalets, entertainment centres, bed-and-breakfast accommodation and casinos.

2/ Other non-residential space includes churches, sport and recreation clubs, schools, crèches, hospitals and all other non-residential space.

3/ Other buildings include additions and alterations to other residential buildings, non-residential buildings and internal alterations.

Table 37 - Buildings completed according to type of building and selected urban area: Durban

Type of building	April 2002	March 2003	April 2003	January 2002 to April 2002	January 2003 to April 2003	Percentage change between January 2002 to April 2002 and January 2003 to April 2003
Residential buildings						
Dwelling-houses smaller than 80 square metres						
Number of dwelling-houses	102	69	64	331	218	- 34.1
Total square metres	4 852	2 943	3 273	15 443	10 417	- 32.5
Total value at current prices (R'000)	5 774	3 316	3 593	17 840	11 001	- 38.3
Dwelling-houses equal to or larger than 80 square metres						
Number of dwelling-houses	83	49	51	287	237	- 17.4
Total square metres	14 480	7 532	8 716	51 108	43 862	- 14.2
Total value at current prices (R'000)	17 744	8 036	8 764	63 866	51 836	- 18.8
Flats and townhouses						
Number of flats and townhouses	15	17	5	105	75	- 28.6
Total square metres	3 173	4 124	1 164	15 076	13 874	- 8.0
Total value at current prices (R'000)	6 128	7 359	2 552	24 719	23 541	- 4.8
Other residential buildings ^{1/}						
Total square metres	0	0	0	0	0	..
Total value at current prices (R'000)	0	0	0	0	0	..
Total value of residential buildings at current prices (R'000)	29 646	18 711	14 909	106 425	86 378	- 18.8
Non-residential buildings						
Office and banking space						
Total square metres	7 403	2 539	2 772	30 645	9 046	- 70.5
Total value at current prices (R'000)	16 800	3 354	3 560	45 038	15 459	- 65.7
Shopping space						
Total square metres	3 035	6 085	682	11 810	10 731	- 9.1
Total value at current prices (R'000)	4 350	12 170	2 500	13 823	17 872	+ 29.3
Industrial and warehouse space						
Total square metres	8 951	17 459	3 783	40 505	37 348	- 7.8
Total value at current prices (R'000)	8 092	18 586	3 850	38 281	38 367	+ 0.2
Other non-residential space ^{2/}						
Total square metres	3 764	1 602	0	8 700	4 689	- 46.1
Total value at current prices (R'000)	5 430	3 245	0	12 952	8 526	- 34.2
Total value of non-residential buildings at current prices (R'000)	34 672	37 355	9 910	110 094	80 224	- 27.1
Additions and alterations						
Dwelling-houses						
Total square metres	21 740	17 128	15 785	71 793	71 673	- 0.2
Total value at current prices (R'000)	24 528	19 269	18 283	77 313	80 540	+ 4.2
Other buildings ^{3/}						
Total square metres	26 137	2 359	6 364	38 020	21 315	- 43.9
Total value at current prices (R'000)	50 807	3 668	13 408	72 751	42 031	- 42.2
Total value of additions and alterations at current prices (R'000)	75 335	22 937	31 691	150 064	122 571	- 18.3
Total value of buildings completed at current prices (R'000)	139 653	79 003	56 510	366 583	289 173	- 21.1

1/ Other residential buildings include institutions for the disabled, boarding houses, old people's homes, hostels, hotels, motels, guest houses, holiday chalets, entertainment centres, bed-and-breakfast accommodation and casinos.

2/ Other non-residential space includes churches, sport and recreation clubs, schools, crèches, hospitals and all other non-residential space.

3/ Other buildings include additions and alterations to other residential buildings, non-residential buildings and internal alterations.

Table 38 - Buildings completed according to type of building and selected urban area: Witwatersrand

Type of building	April 2002*	March 2003*	April 2003	January 2002 to April 2002	January 2003 to April 2003	Percentage change between January 2002 to April 2002 and January 2003 to April 2003
Residential buildings						
Dwelling-houses smaller than 80 square metres						
Number of dwelling-houses	764	602	178	2 378	1 742	-26.7
Total square metres	26 724	23 986	8 480	81 752	69 034	-15.6
Total value at current prices (R'000)	19 839	22 604	15 524	64 163	74 088	+ 15.5
Dwelling-houses equal to or larger than 80 square metres						
Number of dwelling-houses	241	340	303	1 008	1 065	+ 5.7
Total square metres	63 002	82 728	70 485	214 686	237 420	+ 10.6
Total value at current prices (R'000)	99 531	146 240	142 807	333 984	430 947	+ 29.0
Flats and townhouses						
Number of flats and townhouses	245	493	287	1 129	1 598	+ 41.5
Total square metres	42 760	50 653	31 713	138 575	182 938	+ 32.0
Total value at current prices (R'000)	66 544	70 883	53 895	215 745	300 984	+ 39.5
Other residential buildings ^{1/}						
Total square metres	2 314	2 223	7 615	4 054	10 078	+ 148.6
Total value at current prices (R'000)	3 538	3 657	22 845	6 198	26 754	+ 331.7
Total value of residential buildings at current prices (R'000)	189 452	243 384	235 071	620 090	832 773	+ 34.3
Non-residential buildings						
Office and banking space						
Total square metres	37 552	488	61 034	74 537	94 833	+ 27.2
Total value at current prices (R'000)	61 633	1 123	150 336	121 919	198 624	+ 62.9
Shopping space						
Total square metres	2 806	7 704	30 799	7 906	43 567	+ 451.1
Total value at current prices (R'000)	4 522	11 113	73 923	12 627	93 890	+ 643.6
Industrial and warehouse space						
Total square metres	12 506	51 136	14 599	36 688	77 993	+ 112.6
Total value at current prices (R'000)	20 397	84 224	28 053	60 375	131 214	+ 117.3
Other non-residential space ^{2/}						
Total square metres	0	1 102	102 856	6 851	106 125	+ 1 449.0
Total value at current prices (R'000)	0	1 668	207 886	11 063	213 013	+ 1 825.5
Total value of non-residential buildings at current prices (R'000)	86 552	98 128	460 198	205 984	636 741	+ 209.1
Additions and alterations						
Dwelling-houses						
Total square metres	43 944	22 800	28 213	110 190	97 148	-11.8
Total value at current prices (R'000)	66 973	33 579	46 064	166 450	150 800	-9.4
Other buildings ^{3/}						
Total square metres	6 399	7 215	7 455	28 035	35 312	+ 26.0
Total value at current prices (R'000)	10 954	18 070	17 326	47 465	70 699	+ 48.9
Total value of additions and alterations at current prices (R'000)	77 927	51 649	63 390	213 915	221 499	+ 3.5
Total value of buildings completed at current prices (R'000)	353 931	393 161	758 659	1 039 989	1 691 013	+ 62.6

1/ Other residential buildings include institutions for the disabled, boarding houses, old people's homes, hostels, hotels, motels, guest houses, holiday chalets, entertainment centres, bed-and-breakfast accommodation and casinos.

2/ Other non-residential space includes churches, sport and recreation clubs, schools, crèches, hospitals and all other non-residential space.

3/ Other buildings include additions and alterations to other residential buildings, non-residential buildings and internal alterations.

Table 39 - Buildings completed according to type of building and selected urban area: Pretoria

Type of building	April 2002*	March 2003	April 2003	January 2002 to April 2002	January 2003 to April 2003	Percentage change between January 2002 to April 2002 and January 2003 to April 2003
Residential buildings						
Dwelling-houses smaller than 80 square metres						
Number of dwelling-houses	51	882	1 350	410	4 645	+ 1032.9
Total square metres	2 507	27 123	41 939	14 947	143 178	+ 857.9
Total value at current prices (R'000)	3 277	14 876	25 105	11 639	81 040	+ 596.3
Dwelling-houses equal to or larger than 80 square metres						
Number of dwelling-houses	111	139	99	307	403	+ 31.3
Total square metres	34 052	29 637	26 614	89 390	95 203	+ 6.5
Total value at current prices (R'000)	60 362	46 292	43 774	136 476	149 710	+ 9.7
Flats and townhouses						
Number of flats and townhouses	246	35	9	1 152	213	- 81.5
Total square metres	15 283	6 352	1 706	93 113	22 343	- 76.0
Total value at current prices (R'000)	20 696	9 141	3 113	118 262	33 881	- 71.4
Other residential buildings ^{1/}						
Total square metres	0	0	0	0	0	..
Total value at current prices (R'000)	0	0	0	0	0	..
Total value of residential buildings at current prices (R'000)	84 335	70 309	71 992	266 377	264 631	- 0.7
Non-residential buildings						
Office and banking space						
Total square metres	0	10 815	705	10 298	11 520	+ 11.9
Total value at current prices (R'000)	0	20 691	423	15 714	21 114	+ 34.4
Shopping space						
Total square metres	0	5 285	572	0	5 857	..
Total value at current prices (R'000)	0	10 471	1 144	0	11 615	..
Industrial and warehouse space						
Total square metres	367	7 436	2 030	5 358	10 833	+ 102.2
Total value at current prices (R'000)	551	11 154	3 045	8 445	15 465	+ 83.1
Other non-residential space ^{2/}						
Total square metres	0	3 857	0	1 690	10 268	+ 507.6
Total value at current prices (R'000)	0	6 902	0	1 959	14 865	+ 658.8
Total value of non-residential buildings at current prices (R'000)	551	49 218	4 612	26 118	63 059	+ 141.4
Additions and alterations						
Dwelling-houses						
Total square metres	3 772	7 316	6 459	8 998	19 995	+ 122.2
Total value at current prices (R'000)	5 224	10 837	10 084	12 676	30 739	+ 142.5
Other buildings ^{3/}						
Total square metres	5 659	106	1 999	7 569	4 223	- 44.2
Total value at current prices (R'000)	7 724	900	2 997	10 737	7 003	- 34.8
Total value of additions and alterations at current prices (R'000)	12 948	11 737	13 081	23 413	37 742	+ 61.2
Total value of buildings completed at current prices (R'000)	97 834	131 264	89 685	315 908	365 432	+ 15.7

1/ Other residential buildings include institutions for the disabled, boarding houses, old people's homes, hostels, hotels, motels, guest houses, holiday chalets, entertainment centres, bed-and-breakfast accommodation and casinos.

2/ Other non-residential space includes churches, sport and recreation clubs, schools, crèches, hospitals and all other non-residential space.

3/ Other buildings include additions and alterations to other residential buildings, non-residential buildings and internal alterations.

Table 40 - Buildings completed according to type of building and selected urban area: Bloemfontein

Type of building	April 2002	March 2003	April 2003	January 2002 to April 2002	January 2003 to April 2003	Percentage change between January 2002 to April 2002 and January 2003 to April 2003
Residential buildings						
Dwelling-houses smaller than 80 square metres						
Number of dwelling-houses	14	159	281	148	872	+ 489.2
Total square metres	842	6 814	11 495	7 002	36 007	+ 414.2
Total value at current prices (R'000)	955	4 070	5 979	4 836	19 337	+ 299.9
Dwelling-houses equal to or larger than 80 square metres						
Number of dwelling-houses	25	21	14	78	68	- 12.8
Total square metres	4 583	3 500	1 957	14 062	9 956	- 29.2
Total value at current prices (R'000)	6 012	4 439	2 130	17 525	12 336	- 29.6
Flats and townhouses						
Number of flats and townhouses	8	0	23	38	99	+ 160.5
Total square metres	896	0	2 588	3 788	10 550	+ 178.5
Total value at current prices (R'000)	1 075	0	3 882	6 519	16 001	+ 145.5
Other residential buildings ^{1/}						
Total square metres	0	0	2 683	1 428	2 683	+ 87.9
Total value at current prices (R'000)	0	0	7 000	1 461	7 000	+ 379.1
Total value of residential buildings at current prices (R'000)	8 042	8 509	18 991	30 341	54 674	+ 80.2
Non-residential buildings						
Office and banking space						
Total square metres	0	0	5 630	2 008	5 630	+ 180.4
Total value at current prices (R'000)	0	0	7 700	3 800	7 700	+ 102.6
Shopping space						
Total square metres	0	3 012	0	1 340	4 569	+ 241.0
Total value at current prices (R'000)	0	4 688	0	2 500	7 802	+ 212.1
Industrial and warehouse space						
Total square metres	0	6 439	0	2 842	6 439	+ 126.6
Total value at current prices (R'000)	0	6 600	0	2 280	6 600	+ 189.5
Other non-residential space ^{2/}						
Total square metres	0	1 977	0	0	1 977	..
Total value at current prices (R'000)	0	2 836	0	0	2 836	..
Total value of non-residential buildings at current prices (R'000)	0	14 124	7 700	8 580	24 938	+ 190.7
Additions and alterations						
Dwelling-houses						
Total square metres	5 892	5 529	1 042	22 844	11 909	- 47.9
Total value at current prices (R'000)	6 155	6 250	1 324	25 256	13 952	- 44.8
Other buildings ^{3/}						
Total square metres	811	1 029	0	4 744	1 512	- 68.1
Total value at current prices (R'000)	1 458	5 937	4 842	9 123	13 694	+ 50.1
Total value of additions and alterations at current prices (R'000)	7 613	12 187	6 166	34 379	27 646	- 19.6
Total value of buildings completed at current prices (R'000)	15 655	34 820	32 857	73 300	107 258	+ 46.3

1/ Other residential buildings include institutions for the disabled, boarding houses, old people's homes, hostels, hotels, motels, guest houses, holiday chalets, entertainment centres, bed-and-breakfast accommodation and casinos.

2/ Other non-residential space includes churches, sport and recreation clubs, schools, crèches, hospitals and all other non-residential space.

3/ Other buildings include additions and alterations to other residential buildings, non-residential buildings and internal alterations.

Additional information

Explanatory Notes

Introduction	<p>1 Statistics South Africa (Stats SA) conducts a monthly Building Statistics Survey collecting information regarding building plans approved and buildings completed, financed by the private sector, from a sample of local government institutions in South Africa. According to these institutions, they are not always notified about low-cost housing projects. This statistical release contains information of building plans passed and buildings completed in respect of residential buildings, non-residential buildings and additions and alterations according to province and selected urban areas.</p> <p>2 In order to improve timeliness of the publication, some information for the current month have been estimated due to late submission by respondents. These estimates will be revised in the next statistical release(s) as soon as actual information is available.</p> <p>3 The actual and seasonally adjusted values (at current and at constant 2000 prices) and the percentage change of building plans passed and buildings completed according to type of building are reflected monthly from January 2000 in this statistical release (cf. tables 1 to 8).</p>
Scope of the survey	<p>4 This survey covers local government institutions conducting activities for the private sector regarding -</p> <ul style="list-style-type: none"> • approval of building plans; and • final inspection of completed buildings.
Classification	<p>5 The 1993 edition of the Standard Industrial Classification of all Economic Activities, (SIC) Fifth Edition, Report No. 09-90-02, was used to classify the statistical units. The SIC is based on the 1990 International Standard Industrial Classification of all Economic Activities (ISIC) with suitable adaptations for local conditions.</p> <p>6 The twelfth and last published edition of the Standard Code List of Areas, Report No. 09-09-03 (1994) was used to classify the statistical units according to province. The cities, towns and non-urban areas listed in this report are codified within province. The code list was compiled by Stats SA in collaboration with other interested bodies and the first edition was distributed in June 1977. However, exceptions occur in respect of the new cross-border municipalities. GaRankuwa, which was previously classified in North West according to the Standard Code List of Areas, Report No. 09-09-03(1994), is included in Gauteng, City of Tshwane as from January 2002.</p>
Statistical unit	<p>7 The statistical unit for the collection of information is a local government institution. Local government institutions include district municipalities, metropolitan municipalities and local municipalities.</p>
Survey methodology and design	<p>8 The sample for the monthly Building Statistics Survey consists of the largest local government institutions in South Africa, i.e. those that account for approximately 85% of the total rand value of buildings completed by the private sector.</p> <p>9 The survey is collected by mail each month from a sample of 128 local government institutions.</p>
Constant prices	<p>10 The value of building plans passed and buildings completed at constant prices measures building activities in terms of ruling prices in a specific base year, which is 2000 as from May 2002.</p> <p>11 The value of building plans passed at constant prices for each month is obtained by deflating the values at current prices with a price index known as the “lump sum domestic buildings” as published in statistical release P0151 – JBCC Contract Price Adjustment Provisions Work Group Indices. In order to be applicable, these indices (base February 1991=100) are converted to the base year 2000=100.</p>

- 12** The value of buildings completed at constant prices is obtained by deflating the values at current prices with the same price index which is used to calculate building plans passed at constant prices (cf. paragraph 11). The value of buildings completed is reported as at the time the plans were passed. Since the completion of buildings may extend over a few months to a few years, the current value of buildings completed is deflated by price indices as at the time the plans were passed in order to calculate the value of buildings completed at the time the plans were passed. Therefore, the duration of the completion of different types of buildings are taken into account in ascertaining the deflators e.g. the value of dwelling-houses completed at constant prices at January 2000 is obtained by deflating the current value of dwelling-houses completed for January 2000 with the price index of a month six months prior to January 2000. Furthermore, the value of other residential buildings, non-residential buildings and additions and alterations at constant prices is obtained by deflating the current values with price indices of 12 months, 18 months and 12 months prior to the relevant month, respectively.

Seasonal adjustment

- 13** Seasonally adjusted estimates of building plans passed and buildings completed are generated each month, using the X-11 Seasonal Adjustment Program developed by US Bureau of the Census Economic Research and Analyses Division, 1968.
- 14** Seasonal adjustment is a means of removing the estimated effects of normal seasonal variation from the series so that the effects of other influences on the series can be more clearly recognised. Seasonal adjustment does not aim to remove irregular or non-seasonal influences which may be present in any particular month. Influences that are volatile or unsystematic can still make it difficult to interpret the movement of the series even after adjustment for seasonal variations. Therefore, the month-to-month movements of seasonally adjusted estimates may not be reliable indicators of trend behaviour.

Trend cycle

- 15** The trend is a long-term pattern or movement of a time series. The X-11 Seasonal Adjustment Program is used for smoothing seasonally adjusted data.

Related publications

- 16** Users may also wish to refer to the following publications:
- P5041.3 – Building statistics issued annually.
 - P9101.2 – Actual and expected expenditure on construction by the public sector per statistical region issued annually.
 - Bulletin of Statistics issued quarterly.
 - South African Statistics issued annually.

Unpublished statistics

- 17** In some cases Stats SA can also make available statistics which are not published. The statistics can be made available in one or more of the following ways: computer printouts, CD and diskette. Generally a charge is made for providing unpublished statistics.

Rounding-off of figures

- 18** The figures in the tables have, where necessary, been rounded off to the nearest digit shown. There may, therefore, be slight discrepancies between the sums of the constituent items and the totals shown.

Pre-release policy

- 19** Stats SA has adopted the confidential pre-release policy in respect of selected economic indicators and specific government departments. The policy accords with practice among leading statistical agencies. The statistical integrity of the information and strict observance of the release time has been assured by the following procedure:
- 20** In respect of this statistical release, an official representative from the Office of the President, the Department of Trade and Industry (DTI), National Treasury and the South African Reserve Bank (SARB) will receive a copy of the release on a strictly confidential basis two hours in advance of the public issue.
- 21** Stats SA pre-release policy may be inspected at its Website, www.statssa.gov.za

Symbols and abbreviations

..	no meaningful percentage change between two specified periods available since either one or both of the totals are nil
0	nil or figure too small to publish
*	revised
Stats SA	Statistics South Africa
SIC	Standard Industrial Classification of all Economic Activities
ISIC	International Standard Industrial Classification of all Economic Activities
JBCC	Joint Building Contracts Committee
CD	Compact Disc
US	United States
SARB	South African Reserve Bank
DTI	Department of Trade and Industry

Technical notes**Response rate**

The response rate for April 2003 is 97,7%.

Local government institutions covered in the sample survey

Table C - Classification of towns and cities according to new municipalities and previous local government institution by province

Western Cape			
Sample survey as from January 2002		Sample survey up to December 2001	
Name of municipality	Cities and towns	Name of previously published local government institution	Cities and towns
Breede Valley Municipality	Worcester Rawsonville De Doorns Touws River	Worcester	Worcester
		Breede River District Council	Rural areas - Dissolved as from July 2001. Activities were taken over by various local government institutions.
City of Cape Town - Blaauwberg Administration	Milnerton	Blaauwberg Municipality	Milnerton
Cape Town Administration	Cape Town	City of Cape Town	Cape Town
Helderberg Administration	Gordon's Bay, Somerset West and Strand	Helderberg Municipality	Gordon's Bay, Somerset West and Strand
Ikapa Administration	Guguletu, Langa, Khayelitsha and Nyanga	Ikapa	Guguletu, Langa, Khayelitsha and Nyanga
Oostenberg Administration -	Brackenfell Kraaifontein Kuils River Melton Rose - Blue Downs	Oostenberg Municipality -	Brackenfell Kraaifontein Kuils River Melton Rose - Blue Downs
South Peninsula Administration -	Fish Hoek Simon's Town Plumstead	Fish Hoek Simon's Town South Peninsula Municipality	Fish Hoek Simon's Town Plumstead
Tygerberg Administration - Bellville Administration Durbanville Administration Goodwood Administration Lingeletu West Administration Parow Administration South Administration	City of Tygerberg - Bellville Durbanville Goodwood Lingeletu West Parow Belhar, Delft, Driftsands and Efuleni	City of Tygerberg - Bellville Administration Durbanville Administration Goodwood Administration Lingeletu West Administration Parow Administration South Administration	Bellville Durbanville Goodwood Lingeletu West Parow Belhar, Delft, Driftsands and Efuleni
Drakenstein Municipality	Paarl Wellington Saron ¹	Paarl Wellington	Paarl Wellington
George Municipality	George, Herolds Bay, Pacaltsdorp and Thembaletu Wilderness ¹	George	George, Herolds Bay, Pacaltsdorp and Thembaletu

¹ Included in sample survey as from January 2001

Table C - Classification of towns and cities according to new municipalities and previous local government institution by province (continued)

Western Cape (concluded)			
Sample survey as from January 2002		Sample survey up to December 2001	
Name of municipality	Cities and towns	Name of previously published local government institution	Cities and towns
Knysna Municipality	Knysna and Khayaletu Sedgfield	Knysna Sedgfield	Knysna and Khayaletu Sedgfield
Mossel Bay Municipality	Mossel Bay, Boggom's Bay, Kleinbrak, Rheeboek and Tergniet Friemersheim, Herbertsdale and Great Brak River ¹	Mossel Bay	Mossel Bay, Boggom's Bay, Kleinbrak, Rheeboek and Tergniet
Oudtshoorn Municipality	Oudtshoorn De Rust/Blomnek Dysselsdorp	Oudtshoorn	Oudtshoorn
Overberg District Council	Rural areas - Dissolved as from July 2001. Activities were taken over by various local government institutions.	Overberg District Council	Rural areas
Overstrand Municipality	Hermanus, Fisher Haven, Hawston, Onrus River, Sandbaai, Vermont and Zwelihle Hangklip - Kleinmond, Betty's Bay and Rooi-Els Gansbaai and Stanford ¹	Hermanus Hangklip - Kleinmond	Hermanus, Fisher Haven, Hawston, Onrus River, Sandbaai, Vermont and Zwelihle Hangklip - Kleinmond, Betty's Bay and Rooi-Els
Plettenberg Bay Municipality	Plettenberg Bay Knoetzie ¹	Plettenberg Bay	Plettenberg Bay
Saldanha Bay Municipality	Vredenburg and Saldanha Hopefield and Langebaan ¹	Western Coast Peninsula	Vredenburg and Saldanha
Stellenbosch Municipality	Stellenbosch Franschhoek and Pniel	Stellenbosch	Stellenbosch
Swartland Municipality	Malmesbury Darling, Koringberg, Moorreesburg and Yzerfontein ¹	Malmesbury	Malmesbury
		West Coast District Council	Rural areas - Dissolved as from July 2001. Activities were taken over by various local government institutions.
		Winelands District Council	Rural areas - Dissolved as from July 2001. Activities were taken over by various local government institutions.

¹ Included in sample survey as from January 2001

Table C - Classification of towns and cities according to new municipalities and previous local government institution by province (continued)

Eastern Cape			
Sample survey as from January 2002		Sample survey up to December 2001	
Name of municipality	Cities and towns	Name of previously published local government institution	Cities and towns
Buffalo City Municipality - East London Area	East London, Beacon Bay, Gompo Town, Gonubie and Mdantsane	East London	East London, Beacon Bay, Gompo Town, Gonubie and Mdantsane
King William's Town Area	King William's Town, Bisho and Zwelitsha	King William's Town	King William's Town, Bisho and Zwelitsha
King Sabata Dalindyebo Municipality - Umtata Area	Umtata	Umtata	Umtata
Kouga Municipality - Jeffreys Bay Area	Jeffreys Bay Humansdorp Hankey Patensie Oesterbaai Gamtoos St Francis Bay ¹ Cape St Francis ¹ Kromrivier ¹	Jeffreys Bay	Jeffreys Bay
Makana Municipality - Grahamstown Area	Grahamstown and Rhini Township	Grahamstown	Grahamstown and Rhini Township
Maletswai Municipality - Aliwal North Area	Aliwal North and Dukathole	Aliwal - Maletswai	Aliwal North and Dukathole
Ndlambe Municipality	Port Alfred Alexandria Bathurst Boesmansriviermond Kenton-on-Sea	Port Alfred	Port Alfred
Nelson Mandela Metropolitan Municipality - Despatch Area	Despatch	Despatch	Despatch
Port Elizabeth Area	Port Elizabeth, Ibhayi and Motherwell	Port Elizabeth	Port Elizabeth, Ibhayi and Motherwell
Uitenhage Area	Uitenhage and KwaNobuhle	Uitenhage	Uitenhage and KwaNobuhle
		Western District Council	Rural areas - Dissolved as from July 2001. Activities were taken over by various local government institutions.

¹ Included in sample survey as from January 2003

Table C - Classification of towns and cities according to new municipalities and previous local government institution by province (continued)

Northern Cape			
Sample survey as from January 2002		Sample survey up to December 2001	
Name of municipality	Cities and towns	Name of previously published local government institution	Cities and towns
//Khara Hais Municipality	Upington and Paballelo	Upington	Upington and Paballelo
		Benede-Oranje District Council	Rural areas - Dissolved as from July 2001. Activities were taken over by various local government institutions.
Ga-Segonyana Municipality	Kuruman and Mothibistad	Kuruman	Kuruman and Mothibistad
Kai! Garib Municipality - Keimoes Area	Keimoes Eksteenskuil ¹ Kenhardt ¹	Keimoes	Keimoes
		Namaqualand District Council	Rural areas - Dissolved as from July 2001. Activities were taken over by various local government institutions.
Sol Plaatje Municipality	Kimberley and Galeshewe Ritchie ¹	Kimberley	Kimberley and Galeshewe

¹ Included in sample survey as from January 2001

Table C - Classification of towns and cities according to new municipalities and previous local government institution by province (continued)

Free State			
Sample survey as from January 2002		Sample survey up to December 2001	
Name of municipality	Cities and towns	Name of previously published local government institution	Cities and towns
Dihlabeng Municipality	Bethlehem and Bohlokong Clarens Fouriesburg Paul Roux Rosendal	Bethlehem	Bethlehem and Bohlokong
Maluti a Phofung Municipality Harrismith Area Phuthaditjhaba Area	Harrismith and Tsiamé Phuthaditjhaba	Harrismith Phuthaditjhaba	Harrismith and Tsiamé Phuthaditjhaba
Mangaung Municipality - Bloemfontein Area Botshabelo Area	Bloemfontein, Bainsvlei, Bloemspruit and Mangaung Botshabelo	Bloemfontein Botshabelo	Bloemfontein, Bainsvlei, Bloemspruit and Mangaung Botshabelo
Mantsopa Municipality	Ladybrand and Manyatseng Excelsior Hobhouse Thaba Patchoa Tweespruit/Kopano	Ladybrand	Ladybrand and Manyatseng
Matjhabeng Municipality - Odendaalsrus Area Virginia Area Welkom Area	Odendaalsrus, Allanridge and Kutlwanong Virginia and Meloding Welkom and Thabong	Odendaalsrus Virginia Welkom	Odendaalsrus, Allanridge and Kutlwanong Virginia and Meloding Welkom and Thabong
Metsimaholo Municipality - Deneysville Area Sasolburg Area	Deneysville , Refengkgotso and Oranjeville Sasolburg and Zamdela	Deneysville/Refengkgotso Sasolburg/Zamdela	Deneysville and Refengkgotso Sasolburg and Zamdela
Moqhaka Municipality - Kroonstad Area	Kroonstad and Maokeng	Kroonstad	Kroonstad and Maokeng
Nqwathe Municipality	Parys Edenville Heibron Koppies Vredefort	Parys	Parys

Table C - Classification of towns and cities according to new municipalities and previous local government institution by province (continued)

KwaZulu-Natal			
Sample survey as from January 2002		Sample survey up to December 2001	
Name of municipality	Cities and towns	Name of previously published local government institution	Cities and towns
Emnambithi Municipality	Ladysmith Colenso Nkanyesi	Ladysmith	Ladysmith
eThekweni Municipality - Inner West Operational Entity	Clermont, KwaDabeka, KwaNdengezi, New Germany, Pinetown, Queensburgh, Reservoir Hills, Shallcross and Westville	Inner West City Council	Clermont, KwaDabeka, KwaNdengezi, New Germany, Pinetown, Queensburgh, Reservoir Hills, Shallcross and Westville
Outer West Operational Entity	Assagay, Botha's Hill, Cato Ridge, Drummond, Everton, Gillitts, Hillcrest, Inchanga, Kloof, Mpumalanga and Waterfall	Outer West Local Council	Assagay, Botha's Hill, Cato Ridge, Drummond, Everton, Gillitts, Hillcrest, Inchanga, Kloof, Mpumalanga and Waterfall
KwaMashu	KwaMashu	KwaMashu	KwaMashu
Durban- North, South and Central	Durban	Durban	Durban
North Operational Entity - Tonga	Tonga, Canelands and Hambanati	North Local Council - Tonga	Tonga, Canelands and Hambanati
Umhlanga Rocks	Umhlanga Rocks, Mount Edgecombe and Umdloti Beach	North Local Council - Umhlanga	Umhlanga Rocks, Mount Edgecombe and Umdloti Beach
Verulam	Verulam	North Local Council - Verulam	Verulam
South Operational Entity	Amanzimtoti, Isipingo, Kingsburgh, KwaMakuta and Umbogintwini	South Local Council	Amanzimtoti, Isipingo, Kingsburgh, KwaMakuta and Umbogintwini
Umlazi	Umlazi	Umlazi	Umlazi
Greater Kokstad Municipality	Kokstad	Kokstad	Kokstad
Hibiscus Coast Municipality	Margate and Uvongo Marina Beach, San Lameer, Southbroom and Trafalgar Port Shepstone Hibberdene Munster, Port Edward and Palm Beach	Margate Mpenjati/Southbroom Port Shepstone Umtamvuna/Port Edward	Margate and Uvongo Marina Beach, San Lameer, Southbroom and Trafalgar Port Shepstone Munster, Port Edward and Palm Beach

Table C - Classification of towns and cities according to new municipalities and previous local government institution by province (continued)

KwaZulu-Natal (concluded)			
Sample survey as from January 2002		Sample survey up to December 2001	
Name of municipality	Cities and towns	Name of previously published local government institution	Cities and towns
KwaDukuza Municipality - Dolphin Coast Administrative Entity	Ballito, Etete, Shakaskraal, Tinley Manor Beach and Umhlali Beach	Dolphin Coast Borough	Ballito, Etete, Shakaskraal, Tinley Manor Beach and Umhlali Beach
Stanger Administrative Entity	Blythedale Beach, Shakaville and Stanger Nkwazi/Zinkwazi	KwaDukuza/Stanger	Blythedale Beach, Shakaville and Stanger
Msunduzi Municipality	Edendale Ashburton ¹ , Pietermaritzburg and Msundini	Edendale Pietermaritzburg/Msundini	Edendale Pietermaritzburg and Msundini
Newcastle Municipality	Blaauwboschlaagte, Madadeni, Osizweni and Newcastle	Newcastle	Blaauwboschlaagte, Madadeni, Osizweni and Newcastle
Umdoni Municipality	Pennington Scottburgh/Umzinto	Pennington	Pennington
Umhlathuze Municipality	Empangeni and Ngwelezana Richards Bay	Empangeni-Ngwelezana Richards Bay	Empangeni and Ngwelezana Richards Bay
Umngeni Municipality	Hilton Howick	Hilton Howick	Hilton Howick
Uthungulu District Council ¹	KwaMbonambi, Nkandla and Ntambanana Municipalities	Development and Services Board - North Coast	KwaMbonambi, Nkandla, Tugela Mouth, Umlalazi, Mahlabathini, Ukuza, Umbambo, Engwavuma and Hluhluwe

¹ Included in sample survey as from January 2001

Table C - Classification of towns and cities according to new municipalities and previous local government institution by province (continued)

North West			
Sample survey as from January 2002		Sample survey up to December 2001	
Name of municipality	Cities and towns	Name of previously published local government institution	Cities and towns
		Bophirima District Council	Rural areas - Dissolved as from July 2001. Activities were taken over by various local government institutions.
Ditsobotla Local Municipality	Lichtenburg and Itsoseng Biesiesvlei ¹ Coligny ¹	Lichtenburg	Lichtenburg and Itsoseng
Klerksdorp Local Municipality	Klerksdorp Orkney and Kanana Hartbeesfontein ¹ Stillfontein ¹	Klerksdorp Orkney	Klerksdorp Orkney and Kanana
GaRankuwa	As from January 2002 included in City of Tshwane - Northern Metropolitan Substructure (Gauteng)	GaRankuwa	GaRankuwa
Madibeng Local Municipality	Brits and Lethabile Hartbeespoort	Brits	Brits and Lethabile
Mafikeng Local Municipality	Mmabatho and Mafikeng	Mmabatho	Mmabatho and Mafikeng
Naledi Municipality	Vryburg	Vryburg	Vryburg
Potchefstroom Municipality	Potchefstroom	Potchefstroom	Potchefstroom
Rustenburg Local Municipality - Rustenburg Area	Rustenburg	Rustenburg	Rustenburg
Zeerust Local Municipality	Zeerust	Zeerust	Zeerust

¹ Included in sample survey as from January 2001

Table C - Classification of towns and cities according to new municipalities and previous local government institution by province (continued)

Gauteng			
Sample survey as from January 2002		Sample survey up to December 2001	
Name of municipality	Cities and towns	Name of previously published local government institution	Cities and towns
City of Johannesburg Metropolitan Municipality	Alexandra and Sandton Midrand, Rabie Ridge and Ivory Park Randburg Ennerdale, Lenasia and Johannesburg Diepmeadow, Dobsonville and Roodepoort Soweto	Greater Johannesburg - Eastern Metropolitan Local Council Midrand Metropolitan Local Council Northern Metropolitan Local Council Southern Metropolitan Local Council Western Metropolitan Local Council Soweto	Alexandra and Sandton Midrand, Rabie Ridge and Ivory Park Randburg Ennerdale, Lenasia and Johannesburg Diepmeadow, Dobsonville and Roodepoort Soweto
City of Tshwane Metropolitan Municipality - Centurion Town Council City Council of Pretoria Northern Pretoria Metropolitan Substructure	Centurion Pretoria, Atteridgeville and Mamelodi Akasia, Elandsdoorn, Klipfontein, Kruisfontein and Soshanguve Hammanskraal GaRankuwa ² Temba Winterveld ²	Centurion Pretoria Akasia	Centurion Pretoria, Atteridgeville and Mamelodi Akasia, Elandsdoorn, Klipfontein, Kruisfontein and Soshanguve
		Eastern Services Council - Pretoria Area	Rural areas - Dissolved as from July 2001. Activities were taken over by various local government institutions.
Ekurhuleni Metropolitan Municipality - Service Delivery Centre of: Edenvale - Modderfontein Alberton Benoni Boksburg Brakpan Duduza Germiston Kempton Park Nigel Springs	Edenvale - Modderfontein Alberton and Tokoza Benoni, Daveyton and Wattville Boksburg and Vosloorus Brakpan and Tsakane Duduza Germiston, Bedfordview and Katlehong Kempton Park and Tembisa Nigel Springs and KwaThema	Edenvale - Modderfontein Alberton Benoni Boksburg Brakpan Duduza Germiston Kempton Park Nigel Springs	Edenvale - Modderfontein Alberton and Tokoza Benoni, Daveyton and Wattville Boksburg and Vosloorus Brakpan and Tsakane Duduza Germiston, Bedfordview and Katlehong Kempton Park and Tembisa Nigel Springs and KwaThema

² Was previously included under North West

Table C - Classification of towns and cities according to new municipalities and previous local government institution by province (continued)

Gauteng (concluded)			
Sample survey as from January 2002		Sample survey up to December 2001	
Name of municipality	Cities and towns	Name of previously published local government institution	Cities and towns
Emfuleni Local Municipality	Vanderbijlpark Vereeniging and Evaton Sebokeng (Boipatong, Bophelong and Sharpville)	Vanderbijlpark Vereeniging Sebokeng	Vanderbijlpark Vereeniging and Evaton Sebokeng (Boipatong, Bophelong and Sharpville)
Kungwini Local Municipality – Bronkhorstspuit Area	Bronkhorstspuit	Bronkhorstspuit	Bronkhorstspuit
Lesedi Local Municipality	Heidelberg and Ratanda	Heidelberg	Heidelberg and Ratanda
Merafong City Local Municipality	Carletonville, Wedela, Khutsong and Wilverdient	Carletonville	Carletonville, Wedela, Khutsong and Wilverdient
Midvaal Local Municipality	Meyerton	Meyerton	Meyerton
Mogale City Municipality	Krugersdorp, Kagiso and Munsieville	Krugersdorp	Krugersdorp, Kagiso and Munsieville
Randfontein Local Municipality	Randfontein and Mohlakeng	Randfontein	Randfontein and Mohlakeng
Westonaria Local Municipality	Westonaria and Bekkersdal	Westonaria	Westonaria and Bekkersdal

Table C - Classification of towns and cities according to new municipalities and previous local government institution by province (continued)

Mpumalanga			
Sample survey as from January 2002		Sample survey up to December 2001	
Name of municipality	Cities and towns	Name of previously published local government institution	Cities and towns
Delmas Municipality	Delmas and Botleng	Delmas	Delmas and Botleng
Emalahleni Local Municipal Council- KwaGuqa Area Witbank Area	KwaGuqa Witbank	KwaGuqa Witbank	KwaGuqa Witbank
Govan Mbeki Municipality - Secunda Area	Evander, Embalenhle and Secunda	Highveldridge Transitional Council	Evander, Embalenhle and Secunda
Mbombela Local Municipality	Nelspruit and Kanyamazane White River Hazyview ¹	Nelspruit White River	Nelspruit White River
Middelburg Municipality	Middelburg and Mhluzi Hendrina and KwaZamokhule ¹	Middelburg	Middelburg and Mhluzi
Msukaligwa Municipality	Ermelo, Cassim Park and Wesselton Breyton	Ermelo	Ermelo, Cassim Park and Wesselton
Nkomazi Municipality - Komatipoort Area Malelane Area	Komatipoort and Kamaqhekeza Malelane, Hectorspruit and Kamhlushwa	Komatipoort Malelane	Komatipoort and Kamaqhekeza Malelane, Hectorspruit and Kamhlushwa

¹ Included in sample survey as from January 2001

Table C - Classification of towns and cities according to new municipalities and previous local government institution by province (concluded)

Limpopo			
Sample survey as from January 2002		Sample survey up to December 2001	
Name of municipality	Cities and towns	Name of previously published local government institution	Cities and towns
		Bosveld District Council	Rural areas - Dissolved as from July 2001. Activities were taken over by various local government institutions.
Greater Tzaneen Municipality	Tzaneen and Nkowakowa	Letaba	Tzaneen and Nkowakowa
Musina Municipality	Musina (previously Messina)	Messina	Messina
Modimolle Municipality	Modimolle (previously Nylstroom)	Nylstroom	Nylstroom
Mogolakwena Municipality	Mokopane (previously Potgietersrus)	Potgietersrus	Potgietersrus
Mookgopong Municipality	Naboomspruit and Mookgopong	Naboomspruit	Naboomspruit and Mookgopong
Polokwane Municipality	Polokwane (previously Pietersburg) and Seshego	Pietersburg - Polokwane	Pietersburg and Seshego
Thabazimbi Municipality	Thabazimbi	Thabazimbi	Thabazimbi

Table D - Classification of selected urban areas according to new municipalities and previous local government institution

Sample survey as from January 2002		Sample survey up to December 2001	
Name of selected urban area and municipality	Cities and towns	Name of selected urban area and previously published local government institution	Cities and towns
Cape Town City of Cape Town - Blaauwberg Administration	Milnerton	Cape Town Blaauwberg Municipality	Milnerton
Cape Town Administration	Cape Town	City of Cape Town	Cape Town
Ikapa Administration	Guguletu, Langa, Khayelitsha and Nyanga	Ikapa	Guguletu, Langa, Khayelitsha and Nyanga
Oostenberg Administration -	Kraaifontein Melton Rose - Blue Downs	Oostenberg Municipality -	Kraaifontein Melton Rose - Blue Downs
South Peninsula Administration -	Fish Hoek Simon's Town Plumstead	Fish Hoek Simon's Town South Peninsula Municipality	Fish Hoek Simon's Town Plumstead
Tygerberg Administration - Bellville Administration Durbanville Administration Goodwood Administration Lingeletu West Administration Parow Administration South Administration	City of Tygerberg - Bellville Durbanville Goodwood Lingeletu West Parow Belhar, Delft, Driftsands and Efuleni	City of Tygerberg - Bellville Administration Durbanville Administration Goodwood Administration Lingeletu West Administration Parow Administration South Administration	Bellville Durbanville Goodwood Lingeletu West Parow Belhar, Delft, Driftsands and Efuleni
Port Elizabeth Nelson Mandela Metropolitan Municipality - Despatch Area	Despatch	Port Elizabeth Despatch	Despatch
Port Elizabeth Area	Port Elizabeth, Ibhayi and Motherwell	Port Elizabeth	Port Elizabeth, Ibhayi and Motherwell
Uitenhage Area	Uitenhage and KwaNobuhle	Uitenhage	Uitenhage and KwaNobuhle

Table D - Classification of selected urban areas according to new municipalities and previous local government institution (continued)

Sample survey as from January 2002		Sample survey up to December 2001	
Name of selected urban area and municipality	Cities and towns	Name of selected urban area and previously published local government institution	Cities and towns
Durban eThekweni Municipality - Inner West Operational Entity	Clermont, KwaDabeka, KwaNdengezi, New Germany, Pinetown, Queensburgh, Reservoir Hills, Shallcross and Westville	Durban Inner West City Council	Clermont, KwaDabeka, KwaNdengezi, New Germany, Pinetown, Queensburgh, Reservoir Hills, Shallcross and Westville
Outer West Operational Entity	Assagay, Botha's Hill, Cato Ridge, Drummond, Everton, Gillitts, Hillcrest, Inchanga, Kloof, Mpumalanga and Waterfall	Outer West Local Council	Assagay, Botha's Hill, Cato Ridge, Drummond, Everton, Gillitts, Hillcrest, Inchanga, Kloof, Mpumalanga and Waterfall
Durban- North, South and Central	Durban	Durban	Durban
North Operational Entity - Verulam	Verulam	North Local Council - Verulam	Verulam
South Operational Entity	Amanzimtoti, Isipingo, Kingsburgh, KwaMakuta and Umbogintwini	South Local Council	Amanzimtoti, Isipingo, Kingsburgh, KwaMakuta and Umbogintwini
Pretoria City of Tshwane Metropolitan Municipality - Southern Region City Council of Pretoria Northern Region	Centurion Pretoria, Atteridgeville and Mamelodi Akasia, Elandsdoorn, Klipfontein, Kruisfontein and Soshanguve Hammanskraal GaRankuwa Temba Winterveld	Pretoria Centurion Pretoria Akasia	Centurion Pretoria, Atteridgeville and Mamelodi Akasia, Elandsdoorn, Klipfontein, Kruisfontein and Soshanguve

Table D - Classification of selected urban areas according to new municipalities and previous local government institution (concluded)

Sample survey as from January 2002		Sample survey up to December 2001	
Name of selected urban area and municipality	Cities and towns	Name of selected urban area and previously published local government institution	Cities and towns
Witwatersrand City of Johannesburg Metropolitan Municipality	Alexandra and Sandton Midrand, Rabie Ridge and Ivory Park Randburg Ennerdale, Lenasia and Johannesburg Diepmeadow, Dobsonville and Roodepoort Soweto	Witwatersrand Greater Johannesburg - Eastern Metropolitan Local Council Midrand Metropolitan Local Council Northern Metropolitan Local Council Southern Metropolitan Local Council Western Metropolitan Local Council Soweto	Alexandra and Sandton Midrand, Rabie Ridge and Ivory Park Randburg Ennerdale, Lenasia and Johannesburg Diepmeadow, Dobsonville and Roodepoort Soweto
Ekurhuleni Metropolitan Municipality - Service Delivery Centre of: Edenvale - Modderfontein Alberton Benoni	Edenvale - Modderfontein Alberton and Tokoza Benoni, Daveyton and Wattville	Edenvale - Modderfontein Alberton Benoni	Edenvale - Modderfontein Alberton and Tokoza Benoni, Daveyton and Wattville
Boksburg Brakpan Duduza Germiston	Boksburg and Vosloorus Brakpan and Tsakane Duduza Germiston, Bedfordview and Katlehong	Boksburg Brakpan Duduza Germiston	Boksburg and Vosloorus Brakpan and Tsakane Duduza Germiston, Bedfordview and Katlehong
Kempton Park Nigel Springs	Kempton Park and Tembisa Nigel Springs and KwaThema	Kempton Park Nigel Springs	Kempton Park and Tembisa Nigel Springs and KwaThema
Mogale City Municipality	Krugersdorp, Kagiso and Munsieville	Krugersdorp	Krugersdorp, Kagiso and Munsieville
Randfontein Local Municipality	Randfontein and Mohlakeng	Randfontein	Randfontein and Mohlakeng
Westonaria Local Municipality	Westonaria and Bekkersdal	Westonaria	Westonaria and Bekkersdal
Merafong City Local Municipality	Carletonville, Wedela, Khutsong and Welverdiend	Carletonville	Carletonville, Wedela, Khutsong and Welverdiend
Lesedi Local Municipality	Heidelberg and Ratanda	Heidelberg	Heidelberg and Ratanda
Bloemfontein Mangaung Municipality - Bloemfontein Area	Bloemfontein, Bainsvlei, Bloemspruit and Mangaung	Bloemfontein Bloemfontein	Bloemfontein, Bainsvlei, Bloemspruit and Mangaung

Glossary

Additions and alterations	Additions and alterations include extensions to existing buildings as well as internal and external alterations of existing buildings.
Blocks of flats	Blocks of flats are regarded as high-density housing consisting of a number of self-contained dwelling-units with at least one living-room together with a kitchen and bathroom conjoined to similar units in one building.
Dwelling-house	A dwelling-house refers to a free-standing, complete structure on a separate stand or a self-contained dwelling-unit, granny flat, on the same premises as an existing residence. Out-buildings and garages are included.
Local government	A local government is a distinct and constitutionally defined sphere of government, pertaining to government that is not national or provincial in nature and is manifested in the form of municipalities. It is a generic term referring to municipalities and local authorities of varied nature and type involved in activities of a governmental nature in the local sphere.
Local government institutions	<p>Up to December 2001 local government institutions included:</p> <ul style="list-style-type: none"> • City councils; • district councils; • development and services boards; • metropolitan councils; • municipalities; and • transitional local councils. <p>As from January 2002 local government institutions includes:</p> <ul style="list-style-type: none"> • District and metropolitan municipalities; and • local municipalities.
Metropolitan and district municipalities	Metropolitan and district municipalities means municipalities that has the exclusive executive and legislative authority in its area, and which is described in section 155(1) of the Constitution as category A (metropolitan municipality) and category C (district municipality) (Refer to local government: Municipal Structure Act, Act No. 117.1998).
Non-residential buildings	Non-residential buildings comprise factories, commercial, financial and other office buildings, as well as other buildings not used for residential purposes, such as churches, halls, clubs, schools and hospitals.
Other residential buildings	Other residential buildings include institutions for the disabled, boarding houses, old people's homes, hostels, hotels, motels, guest houses, holiday chalets, bed-and-breakfast accommodation, entertainment centres and casinos.
Percentage change	<p>When using monthly actual values, the percentage change is the change in actual values of building activities (building plans passed or buildings completed) of the relevant month compared with the actual values of building activities (building plans passed or buildings completed) of the same month in the previous year expressed as a percentage.</p> <p>When using annual actual values, the percentage change is the change in the actual values of building activities (building plans passed or buildings completed) of the relevant year compared with the actual values of building activities (building plans passed or buildings completed) of the previous year expressed as a percentage.</p> <p>When using seasonally adjusted values, the percentage change is the change in the seasonally adjusted values of building activities (building plans passed or buildings completed) of the relevant month compared with the seasonally adjusted values of building activities (building plans passed or buildings completed) of the previous month expressed as a percentage.</p>

Reference period	Reference period is one calendar month.
Residential buildings	Residential buildings comprise dwelling-houses, flats, townhouses and other residential buildings.
Townhouses	Townhouses are multiple, medium-density dwelling-units and include cluster housing, group housing, simplexes, duplexes, triplexes and other similar dwelling-units which are usually grouped together, with one level of each unit on ground level. This excludes blocks of flats.

For more information

Stats SA publishes approximately 300 different statistical releases each year. It is not economically viable to produce them in more than one of South Africa's eleven official languages. Since the releases are used extensively, not only locally but also by international economic and social-scientific communities, Stats SA releases are published in English only.

Stats SA has copyright on this publication. Users may apply the information as they wish, provided that they acknowledge Stats SA as the source of the basic data wherever they process, apply, utilise, publish or distribute the data and also that they specify that the relevant application and analysis (where applicable) result from their own processing of the data.

Stats SA products

A complete set of Stats SA publications is available at the Stats SA Library and the following libraries:

National Library of South Africa, Pretoria Division
National Library of South Africa, Cape Town Division
Natal Society Library, Pietermaritzburg
Library of Parliament, Cape Town
Bloemfontein Public Library
Johannesburg Public Library
Eastern Cape Library Services, King William's Town
Central Regional Library, Polokwane
Central Reference Library, Nelspruit
Central Reference Collection, Kimberley
Central Reference Library, Mmabatho

Stats SA also provides a subscription service.

Electronic services

A large range of data are available via on-line services, diskette, CD and computer printouts. For more details about our electronic data services, contact (012) 310 8600/8390/8351/4892/8496/8095.

You can visit us on the Internet at: <http://www.statssa.gov.za>

Enquiries

Telephone number: (012) 310 8600/8390/8351/4892/8496/8095 (user enquiries)
(012) 310 8228/310 8007 (technical enquiries)
(012) 310 8161 (publications)
(012) 310 8490 (library)

Fax number: (012) 310 8182

e-mail: Thabelom@statssa.gov.za
Gretaz@statssa.gov.za

Postal address: Private Bag X44, Pretoria, 0001