

# **Building statistics**

**April 2002**

Co-operation between Statistics South Africa (Stats SA), the citizens of the country, the private sector and government institutions is essential for a successful statistical system. Without continued co-operation and goodwill, the timely release of relevant and reliable official statistics will not be possible.

**Embargo: 13:00**  
**Date: 19 June 2002**

Stats SA publishes approximately three hundred different releases each year. It is not economically viable to produce them in more than one of South Africa's eleven official languages. Since the releases are used extensively, not only locally, but also by international economic and social-scientific communities, Stats SA releases are published in English only.

---

Private Bag X44 • 0001 Pretoria • South Africa • Steyn's Building • Steyn's Arcade • 274 Schoeman Street • Pretoria

Users enquiries Tel: +27(12) 310 8600 • Fax: +27(12) 310 8500

E-mail address: [info@statssa.pwv.gov.za](mailto:info@statssa.pwv.gov.za) • Website: <http://www.statssa.gov.za>

### Key figures regarding building plans passed for the month ended April 2002

<b>Actual estimates at constant 1995 prices</b>	<b>April 2002</b>	<b>January 2002 to April 2002</b>	<b>Percentage change between April 2001 and April 2002</b>	<b>Percentage change between February 2001 to April 2001 and February 2002 to April 2002</b>	<b>Percentage change between January 2001 to April 2001 and January 2002 to April 2002</b>
	<b>R million</b>	<b>R million</b>			
Residential buildings					
Dwelling-houses	525,6	1 867,2	+ 31,4	+ 4,9	+ 3,9
Flats and townhouses	188,8	564,9	+ 128,9	+ 38,2	+ 39,1
Other residential buildings	9,3	89,2	- 75,2	+ 104,4	+ 12,4
<b>Total</b>	<b>723,7</b>	<b>2 521,3</b>	<b>+ 39,2</b>	<b>+ 13,6</b>	<b>+ 10,5</b>
Non-residential buildings	221,6	796,5	+ 51,5	+ 19,4	- 13,0
Additions and alterations	329,1	1 154,9	+ 23,9	- 2,4	- 0,9
<b>Total</b>	<b>1 274,4</b>	<b>4 472,7</b>	<b>+ 36,8</b>	<b>+ 10,1</b>	<b>+ 2,5</b>

### Seasonally adjusted estimates at constant 1995 prices

	<b>April 2002</b>	<b>Percentage change between March 2002 and April 2002</b>	<b>Percentage change between November 2001 to January 2002 and February 2002 to April 2002</b>
	<b>R million</b>		
Residential buildings	824,2	+ 38,0	+ 9,4
Non-residential buildings	265,2	+ 0,7	+ 45,4
Additions and alterations	393,7	+ 55,9	- 3,2
<b>Total</b>	<b>1 483,1</b>	<b>+ 33,2</b>	<b>+ 10,9</b>

### Key findings regarding building plans passed for the three months ended April 2002

#### Seasonally adjusted real value of building plans passed increases

*The seasonally adjusted real value of building plans passed (at constant 1995 prices) for the three months ended April 2002 increased by 10,9% compared with the previous three months.*

The increase of 10,9% in the seasonally adjusted real value of building plans passed was due to increases reported for non-residential buildings (+45,4%) and residential buildings (+9,4%) during the three months ended April 2002 compared with the previous three months. However, these increases were partially counteracted by a decrease in the seasonally adjusted real value of building plans passed for additions and alterations (-3,2%) during the above-mentioned period.

## Key findings regarding building plans passed for the month ended April 2002

### Total real value of building plans passed increases

*The total real value of building plans passed (at constant 1995 prices) during the first four months of 2002 increased by 2,5% (+R110,1 million) to R4 472,7 million compared with the first four months of 2001. Large increases in the real value of building plans passed were reported for flats and townhouses (+R158,8 million) and dwelling-houses (+R70,2 million). The largest real increase for flats and townhouses was reported by the selected urban areas of Pretoria (+R67,9 million), followed by Witwatersrand (+R38,3 million), Cape Town (+R19,8 million), Durban (+R16,3 million) and East London (+R12,7 million). However, these increases were partially counteracted by a decrease in the real value of non-residential building plans passed (-R118,7 million, mainly due to decreases reported for office and banking space (-R97,4 million) and shopping space (-R58,7 million)) during the above-mentioned period.*

### Six of the nine provinces reported increases in the total real value of building plans passed

The largest provincial contributor to the increase of 2,5% (+R110,1 million) in the total real value of building plans passed during the first four months of 2002 compared with the first four months of 2001 was Gauteng (+2,1 percentage points or R90,6 million) and Mpumalanga (+1,7 percentage points or R72,4 million) (cf. table A). Large real increases in Gauteng were reported for flats and townhouses (+R111,3 million) and non-residential buildings (+R33,4 million).

The largest real increase in Mpumalanga was reported for 'other' residential buildings (+R46,5 million), mainly due to the approval of building plans for a hotel to the real value of R45,7 million by Emalahleni Municipality (previously Witbank) during February 2002. However, these increases were partially counteracted by decreases in the total real value of building plans passed as reported by Western Cape (-1,9 percentage points or R81,4 million) and KwaZulu-Natal (-1,5 percentage points or R64,3 million) (cf. table A).

**Table A - Contribution of provinces to the total real value of building plans passed**

Province	Percentage contribution to the total real value of plans passed during January 2001 to April 2001	Percentage change between January 2001 to April 2001 and January 2002 to April 2002	Contribution (percentage points) <sup>1/</sup> to the percentage change in the real value of plans passed between January 2001 to April 2001 and January 2002 to April 2002	Difference in total real value of plans passed between January 2001 to April 2001 and January 2002 to April 2002  R million
Gauteng	41,8	+ 5,0	+ 2,1	+ 90,6
Mpumalanga	3,2	+ 51,6	+ 1,7	+ 72,4
Eastern Cape	5,9	+ 15,8	+ 0,9	+ 40,9
North West	2,6	+ 21,9	+ 0,5	+ 24,6
Free State	2,5	+ 18,5	+ 0,5	+ 20,6
Northern Province	1,5	+ 12,6	+ 0,2	+ 8,3
Northern Cape	0,6	- 6,0	- 0,0	- 1,6
KwaZulu-Natal	12,4	- 11,9	- 1,5	- 64,3
Western Cape	29,5	- 6,3	- 1,9	- 81,4
<b>Total</b>	<b>100,0</b>	<b>+ 2,5</b>	<b>+ 2,5</b>	<b>+ 110,1</b>

1/ The contribution (percentage points) is calculated by multiplying the percentage change of each province between January 2001 to April 2001 and January 2002 to April 2002 (cf. column 3) with the percentage contribution of the corresponding province to the total real value of plans passed during January 2001 to April 2001 (cf. column 2) divided by 100.

### Key figures regarding buildings completed for the month ended April 2002

#### Actual estimates at constant 1995 prices

	April 2002	January 2002 to April 2002	Percentage change between April 2001 and April 2002	Percentage change between February 2001 to April 2001 and February 2002 to April 2002	Percentage change between January 2001 to April 2001 and January 2002 to April 2002
	R million	R million			
Residential buildings					
Dwelling-houses	332,1	1 082,9	+ 65,1	+ 18,4	+ 21,5
Flats and townhouses	99,8	414,3	+ 46,7	+ 23,2	+ 43,9
Other residential buildings	6,9	161,0	+ 10 458,5	+ 384,1	- 37,9
<b>Total</b>	<b>438,8</b>	<b>1 658,2</b>	<b>+ 62,9</b>	<b>+ 32,1</b>	<b>+ 15,3</b>
Non-residential buildings	181,1	508,5	+ 36,5	- 15,5	- 23,9
Additions and alterations	267,0	650,8	+ 90,7	- 3,5	- 7,2
<b>Total</b>	<b>886,9</b>	<b>2 817,5</b>	<b>+ 63,6</b>	<b>+ 10,7</b>	<b>+ 0,3</b>

#### Seasonally adjusted estimates at constant 1995 prices

	April 2002	Percentage change between March 2002 and April 2002	Percentage change between November 2001 to January 2002 and February 2002 to April 2002
	R million		
Residential buildings	489,6	+ 8,3	+ 6,4
Non-residential buildings	207,8	+ 30,5	+ 3,5
Additions and alterations	291,4	+ 205,1	+ 8,5
<b>Total</b>	<b>988,8</b>	<b>+ 39,9</b>	<b>+ 6,2</b>

### Key findings regarding buildings completed for the three months ended April 2002

#### Seasonally adjusted real value of buildings completed increases

*The seasonally adjusted real value of buildings completed (at constant 1995 prices) for the three months ended April 2002 increased by 6,2% compared with the previous three months.*

The increase of 6,2% in the seasonally adjusted real value of buildings completed during the three months ended April 2002 compared with the previous three months was due to increases in the seasonally adjusted real value of additions and alterations (+8,5%), residential buildings (+6,4%) and non-residential buildings (+3,5%).

## Key findings regarding buildings completed for the month ended April 2002

### Total real value of buildings completed increases slightly

*The total real value of buildings completed (at constant 1995 prices) during the first four months of 2002 increased by 0,3% (+R9,3 million) to R2 817,5 million compared with the first four months of 2001. Large increases in the real value of buildings completed were reported for dwelling-houses (+R191,9 million, mainly due to increases reported by the selected urban areas of Cape Town (+R93,8 million) and Witwatersrand (+R57,5 million)) and flats and townhouses (+R126,3 million, mainly due to increases reported by the selected urban areas of Cape Town (+R42,3 million), Witwatersrand (+R41,7 million) and Pretoria (+R19,3 million)). However, these increases were partially counteracted by decreases in the real value of non-residential buildings (-R160,1 million, mainly due to decreases reported for industrial and warehouse space (-R138,4 million)) and additions and alterations (-R50,5 million) during the above-mentioned period.*

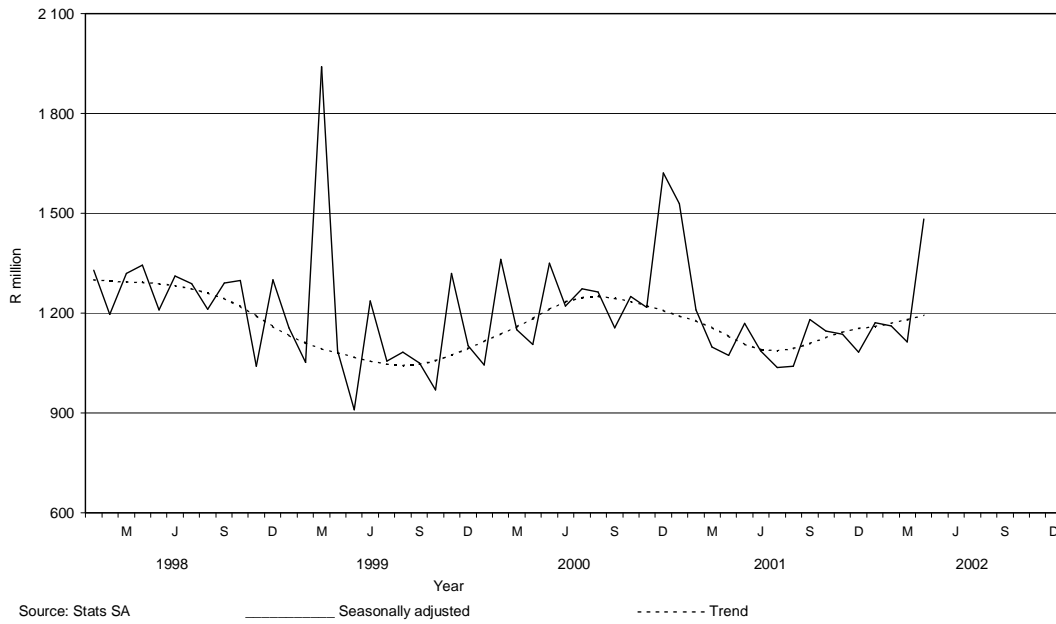
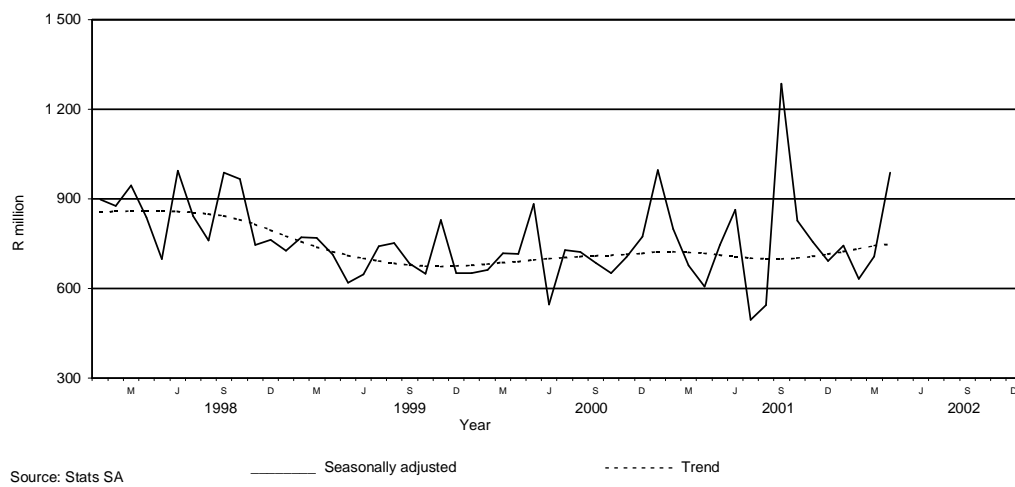
### Four of the nine provinces reported increases in the total real value of buildings completed

The largest provincial contributor to the increase of 0,3% (+R9,3 million) in the total real value of buildings completed during the first four months of 2002 compared with the first four months of 2001 was Northern Province (+4,7 percentage points or R133,6 million) and Western Cape (+3,7 percentage points or R104,0 million) (cf. table B). Large real increases in Northern Province were reported for 'other' residential buildings (+R144,1 million), mainly due to the completion of a hotel and casino to the real value of R118,8 million as reported by Polokwane Municipality (previously Pietersburg) during March 2002. Large real increases in Western Cape were reported for dwelling-houses (+R129,7 million) and flats and townhouses (+R59,6 million) during the above-mentioned period. However, these increases were partially counteracted by decreases in the total real value of buildings completed as reported by Eastern Cape (-3,4 percentage points or R96,7 million), Gauteng (-2,8 percentage points or R79,4 million), Mpumalanga (-1,3 percentage points or R35,9 million), Northern Cape (-0,8 of a percentage point or R23,4 million) and Free State (-0,4 of a percentage point or R12,2 million) (cf. table B).

**Table B - Contribution of provinces to the total real value of buildings completed**

Province	Percentage contribution to the total real value of buildings completed during January 2001 to April 2001	Percentage change between January 2001 to April 2001 and January 2002 to April 2002	Contribution (percentage points) <sup>1/</sup> to the percentage change in the real value of buildings completed between January 2001 to April 2001 and January 2002 to April 2002	Difference in total real value of buildings completed between January 2001 to April 2001 and January 2002 to April 2002  R million
Northern Province	1,0	+ 467,3	+ 4,7	+ 133,6
Western Cape	27,6	+ 13,4	+ 3,7	+ 104,0
North West	2,4	+ 20,1	+ 0,5	+ 13,6
KwaZulu-Natal	15,7	+ 1,3	+ 0,2	+ 5,7
Free State	3,0	- 14,6	- 0,4	- 12,2
Northern Cape	1,4	- 58,1	- 0,8	- 23,4
Mpumalanga	3,1	- 41,8	- 1,3	- 35,9
Gauteng	37,6	- 7,5	- 2,8	- 79,4
Eastern Cape	8,2	- 42,0	- 3,5	- 96,7
<b>Total</b>	<b>100,0</b>	<b>+ 0,3</b>	<b>+ 0,3</b>	<b>+ 9,3</b>

1/ The contribution (percentage points) is calculated by multiplying the percentage change of each province between January 2001 to April 2001 and January 2002 to April 2002 (cf. column 3) with the percentage contribution of the corresponding province to the total real value of buildings completed during January 2001 to April 2001 (cf. column 2) divided by 100.

**Figure 1 – Total real value of building plans passed****Figure 2 – Total real value of buildings completed**

# Contents

## Page

<b>Notes</b>	.....	7
<b>Tables</b>		
Table 1	Actual values and percentage change of building plans passed at current prices according to type of building .....	8
Table 2	Seasonally adjusted values and percentage change of building plans passed at current prices according to type of building .....	9
Table 3	Actual values and percentage change of building plans passed at constant 1995 prices according to type of building .....	10
Table 4	Seasonally adjusted values and percentage change of building plans passed at constant 1995 prices according to type of building .....	11
Table 5	Actual values and percentage change of buildings completed at current prices according to type of building .....	12
Table 6	Seasonally adjusted values and percentage change of buildings completed at current prices according to type of building .....	13
Table 7	Actual values and percentage change of buildings completed at constant 1995 prices according to type of building .....	14
Table 8	Seasonally adjusted values and percentage change of buildings completed at constant 1995 prices according to type of building .....	15
Table 9	Building plans passed according to type of building: Total RSA .....	16
Table 10	Building plans passed according to type of building and province: Western Cape .....	17
Table 11	Building plans passed according to type of building and province: Eastern Cape .....	18
Table 12	Building plans passed according to type of building and province: Northern Cape .....	19
Table 13	Building plans passed according to type of building and province: Free State .....	20
Table 14	Building plans passed according to type of building and province: KwaZulu-Natal .....	21
Table 15	Building plans passed according to type of building and province: North West .....	22
Table 16	Building plans passed according to type of building and province: Gauteng .....	23
Table 17	Building plans passed according to type of building and province: Mpumalanga .....	24
Table 18	Building plans passed according to type of building and province: Northern Province .....	25
Table 19	Buildings completed according to type of building: Total RSA .....	26
Table 20	Buildings completed according to type of building and province: Western Cape .....	27
Table 21	Buildings completed according to type of building and province: Eastern Cape .....	28
Table 22	Buildings completed according to type of building and province: Northern Cape .....	29
Table 23	Buildings completed according to type of building and province: Free State .....	30
Table 24	Buildings completed according to type of building and province: KwaZulu-Natal .....	31
Table 25	Buildings completed according to type of building and province: North West .....	32
Table 26	Buildings completed according to type of building and province: Gauteng .....	33
Table 27	Buildings completed according to type of building and province: Mpumalanga .....	34
Table 28	Buildings completed according to type of building and province: Northern Province .....	35
Table 29	Building plans passed according to type of building and selected urban area: Cape Town .....	36
Table 30	Building plans passed according to type of building and selected urban area: Port Elizabeth .....	37
Table 31	Building plans passed according to type of building and selected urban area: Durban .....	38
Table 32	Building plans passed according to type of building and selected urban area: Witwatersrand .....	39
Table 33	Building plans passed according to type of building and selected urban area: Pretoria .....	40
Table 34	Building plans passed according to type of building and selected urban area: Bloemfontein .....	41
Table 35	Buildings completed according to type of building and selected urban area: Cape Town .....	42
Table 36	Buildings completed according to type of building and selected urban area: Port Elizabeth .....	43
Table 37	Buildings completed according to type of building and selected urban area: Durban .....	44
Table 38	Buildings completed according to type of building and selected urban area: Witwatersrand .....	45
Table 39	Buildings completed according to type of building and selected urban area: Pretoria .....	46
Table 40	Buildings completed according to type of building and selected urban area: Bloemfontein .....	47
<b>Additional information</b>		
	Explanatory notes .....	48
	Technical notes .....	50
	Local government institutions covered in the sample survey .....	51
	Glossary .....	54





## Notes

### Forthcoming issues

Issue	Expected release date
May 2002	17 July 2002
June 2002	14 August 2002
July 2002	18 September 2002
August 2002	16 October 2002
September 2002	20 November 2002
October 2002	18 December 2002
November 2002	15 January 2003
December 2002	19 February 2003

### Purpose of the survey

The Building Statistics Survey is a countrywide survey covering a sample of local government institutions in South Africa. The information received is used to estimate key economic statistics used by the private and public sectors. The information is also used to compile estimates of the Gross Domestic Product (GDP). These statistics are also used by government to monitor the Reconstruction and Development Program (RDP) in South Africa.

### New questionnaire

In order to lessen the respondent burden and improve reliability, Stats SA has overhauled and redesigned its Building Statistics Survey questionnaire. This resulted in the change of some data items on the old questionnaire. As from November 1999 information regarding dwelling-houses was collected according to size of dwelling-house.

The Building Statistics Survey questionnaire collects the numbers, square metres and value of building plans passed and buildings completed for the private sector regarding

- residential buildings;
- non-residential buildings; and
- additions and alterations.

**Table 1 - Actual values and percentage change of building plans passed at current prices according to type of building**

Year <sup>1/</sup> and month <sup>2/</sup>	Residential buildings		Non-residential buildings		Additions and alterations		Total	
	R'000	Percentage change	R'000	Percentage change	R'000	Percentage change	R'000	Percentage change
2000 Jan	490,776	- 11.3	163,926	- 34.0	365,596	+ 26.2	1,020,298	- 4.5
Feb	784,023	+ 48.3	521,389	+ 27.5	399,280	+ 8.3	1,704,692	+ 33.3
Mar	747,421	+ 12.0	359,267	- 76.3	515,668	+ 3.8	1,622,356	- 37.6
Apr	627,642	+ 18.3	271,151	- 30.9	382,300	+ 10.6	1,281,093	+ 3.7
May	874,847	+ 65.8	573,853	+ 98.7	473,062	+ 11.3	1,921,762	+ 59.5
Jun	853,154	+ 1.8	336,324	- 23.6	532,278	+ 25.2	1,721,756	+ 3.7
Jul	908,061	+ 42.5	484,669	- 0.6	549,932	+ 23.6	1,942,662	+ 27.9
Aug	929,836	+ 31.1	353,488	- 14.8	492,627	+ 10.9	1,775,951	+ 23.8
Sep	826,851	+ 37.8	354,456	+ 8.7	465,836	- 9.8	1,647,143	+ 18.5
Oct	916,410	+ 37.9	492,884	+ 39.8	539,561	+ 15.3	1,948,855	+ 36.2
Nov	914,346	+ 28.6	493,166	- 34.4	503,659	- 12.5	1,911,171	- 2.0
Dec	606,148	+ 22.7	704,410	+ 191.1	317,835	- 6.1	1,628,393	+ 57.5
<b>Total</b>	<b>9,479,515</b>	<b>+ 28.4</b>	<b>5,108,983</b>	<b>- 13.5</b>	<b>5,537,634</b>	<b>+ 7.9</b>	<b>20,126,132</b>	<b>+ 13.1</b>
2001 Jan	721,003	+ 46.9	477,489	+ 191.3	352,192	- 3.7	1,550,684	+ 52.0
Feb	826,607	+ 5.4	300,417	- 42.4	474,952	+ 19.0	1,601,976	- 6.0
Mar	929,196	+ 24.3	301,148	- 16.2	436,645	- 15.3	1,666,989	+ 2.8
Apr	738,858	+ 17.7	207,874	- 23.3	377,373	- 1.3	1,324,105	+ 3.4
May	999,426	+ 14.2	289,330	- 49.6	499,673	+ 5.6	1,788,429	- 6.9
Jun	901,450	+ 5.7	299,913	- 10.8	447,228	- 16.0	1,648,591	- 4.2
Jul	891,483	- 1.8	366,953	- 24.3	427,464	- 22.3	1,685,900	- 13.2
Aug	836,033	- 10.1	245,865	- 30.4	482,863	- 2.0	1,564,761	- 11.9
Sep	960,995	+ 16.2	303,367	- 14.4	526,112	+ 12.9	1,790,474	+ 8.7
Oct	1,196,455	+ 30.6	185,828	- 62.3	542,954	+ 0.6	1,925,237	- 1.2
Nov	974,678	+ 6.6	317,506	- 35.6	595,512	+ 18.2	1,887,696	- 1.2
Dec	649,614	+ 7.2	140,365	- 80.1	357,449	+ 12.5	1,147,428	- 29.5
<b>Total</b>	<b>10,625,798</b>	<b>+ 12.1</b>	<b>3,436,055</b>	<b>- 32.7</b>	<b>5,520,417</b>	<b>- 0.3</b>	<b>19,582,270</b>	<b>- 2.7</b>
2002 Jan*	774,984	+ 7.5	168,097	- 64.8	396,974	+ 12.7	1,340,055	- 13.6
Feb*	1,011,157	+ 22.3	247,016	- 17.8	444,865	- 6.3	1,703,038	+ 6.3
Mar*	960,165	+ 3.3	465,942	+ 54.7	418,859	- 4.1	1,844,966	+ 10.7
Apr	1,136,166	+ 53.8	347,885	+ 67.4	516,697	+ 36.9	2,000,748	+ 51.1

<sup>1/</sup> The annual percentage change is the change in the actual values of building plans passed of the relevant year compared with the actual values of building plans passed of the previous year expressed as a percentage.

<sup>2/</sup> The monthly percentage change is the change in the actual values of building plans passed of the relevant month compared with the actual values of building plans passed of the same month in the previous year expressed as a percentage.

**Table 2 - Seasonally adjusted values and percentage change of building plans passed at current prices according to type of building**

Year and month <sup>1/</sup>	Residential buildings		Non-residential buildings		Additions and alterations		Total	
	R'000	Percentage change	R'000	Percentage change	R'000	Percentage change	R'000	Percentage change
2000 Jan	632,644	- 9.8	252,236	- 17.5	482,116	+ 15.0	1,366,997	- 4.2
Feb	783,813	+ 23.9	579,722	+ 129.8	439,107	- 8.9	1,802,642	+ 31.9
Mar	698,167	- 10.9	330,642	- 43.0	473,629	+ 7.9	1,502,438	- 16.7
Apr	696,032	- 0.3	309,501	- 6.4	447,600	- 5.5	1,453,132	- 3.3
May	816,954	+ 17.4	519,310	+ 67.8	456,242	+ 1.9	1,792,506	+ 23.4
Jun	811,100	- 0.7	307,754	- 40.7	513,135	+ 12.5	1,631,988	- 9.0
Jul	830,920	+ 2.4	387,323	+ 25.9	500,606	- 2.4	1,718,849	+ 5.3
Aug	891,133	+ 7.2	352,881	- 8.9	466,723	- 6.8	1,710,736	- 0.5
Sep	803,795	- 9.8	343,234	- 2.7	424,801	- 9.0	1,571,830	- 8.1
Oct	769,648	- 4.2	466,893	+ 36.0	474,353	+ 11.7	1,710,894	+ 8.8
Nov	856,179	+ 11.2	400,511	- 14.2	424,125	- 10.6	1,680,815	- 1.8
Dec	857,118	+ 0.1	978,987	+ 144.4	429,818	+ 1.3	2,265,923	+ 34.8
2001 Jan	920,318	+ 7.4	771,714	- 21.2	453,212	+ 5.4	2,145,244	- 5.3
Feb	821,672	- 10.7	344,354	- 55.4	528,260	+ 16.6	1,694,285	- 21.0
Mar	880,605	+ 7.2	266,437	- 22.6	402,785	- 23.8	1,549,827	- 8.5
Apr	832,116	- 5.5	243,816	- 8.5	446,869	+ 10.9	1,522,801	- 1.7
May	925,624	+ 11.2	255,753	+ 4.9	480,110	+ 7.4	1,661,487	+ 9.1
Jun	852,288	- 7.9	276,066	+ 7.9	429,489	- 10.5	1,557,843	- 6.2
Jul	816,368	- 4.2	283,573	+ 2.7	391,145	- 8.9	1,491,086	- 4.3
Aug	798,022	- 2.2	243,892	- 14.0	458,761	+ 17.3	1,500,675	+ 0.6
Sep	935,436	+ 17.2	294,596	+ 20.8	477,728	+ 4.1	1,707,759	+ 13.8
Oct	1,011,254	+ 8.1	179,649	- 39.0	478,197	+ 0.1	1,669,100	- 2.3
Nov	913,803	- 9.6	257,464	+ 43.3	497,945	+ 4.1	1,669,212	+ 0.0
Dec	912,870	- 0.1	197,861	- 23.2	489,873	- 1.6	1,600,604	- 4.1
2002 Jan	983,179	+ 7.7	279,595	+ 41.3	501,903	+ 2.5	1,764,676	+ 10.3
Feb	995,239	+ 1.2	282,979	+ 1.2	496,464	- 1.1	1,774,682	+ 0.6
Mar	921,381	- 7.4	406,193	+ 43.5	388,891	- 21.7	1,716,465	- 3.3
Apr	1,293,722	+ 40.4	414,719	+ 2.1	614,974	+ 58.1	2,323,415	+ 35.4

<sup>1/</sup> The percentage change is the change in the seasonally adjusted values of building plans passed of the relevant month compared with the seasonally adjusted values of building plans passed of the previous month expressed as a percentage.

**Table 3 - Actual values and percentage change of building plans passed at constant 1995 prices according to type of building**

Year <sup>1/</sup> and month <sup>2/</sup>	Residential buildings		Non-residential buildings		Additions and alterations		Total	
	R'000	Percentage change	R'000	Percentage change	R'000	Percentage change	R'000	Percentage change
2000 Jan	378,102	- 15.0	126,291	- 34.0	281,661	+ 26.2	786,054	- 8.5
Feb	602,168	+ 43.1	400,452	+ 27.5	306,667	+ 8.3	1,309,287	+ 28.6
Mar	570,115	+ 7.5	274,040	- 76.3	393,339	+ 3.8	1,237,494	- 40.1
Apr	473,692	+ 12.9	204,642	- 30.9	288,528	+ 10.6	966,862	- 1.0
May	655,807	+ 57.4	430,175	+ 98.7	354,619	+ 11.3	1,440,601	+ 51.4
Jun	637,634	- 3.3	251,363	- 23.6	397,816	+ 25.2	1,286,813	- 1.5
Jul	672,638	+ 34.5	359,014	- 0.6	407,357	+ 23.6	1,439,009	+ 20.8
Aug	682,699	+ 38.0	259,536	- 14.8	361,694	+ 10.9	1,303,929	+ 15.9
Sep	606,196	+ 29.1	259,865	+ 8.7	341,522	- 9.8	1,207,583	+ 11.1
Oct	668,425	+ 28.7	359,507	+ 39.8	393,553	+ 15.3	1,421,485	+ 27.2
Nov	664,013	+ 19.9	358,145	- 34.4	365,765	- 12.5	1,387,923	- 8.6
Dec	438,602	+ 14.2	509,703	+ 191.1	229,982	- 6.1	1,178,287	+ 46.6
<b>Total</b>	<b>7,050,091</b>	<b>+ 28.4</b>	<b>3,792,733</b>	<b>- 13.5</b>	<b>4,122,503</b>	<b>+ 7.9</b>	<b>14,965,327</b>	<b>+ 6.7</b>
2001 Jan	516,108	+ 36.5	341,796	+ 170.6	252,106	- 10.5	1,110,010	+ 41.2
Feb	588,751	- 2.2	213,972	- 46.6	338,285	+ 10.3	1,141,008	- 12.9
Mar	657,605	+ 15.3	213,127	- 22.2	309,020	- 21.4	1,179,752	- 4.7
Apr	519,956	+ 9.8	146,287	- 28.5	265,569	- 8.0	931,812	- 3.6
May	699,388	+ 6.6	202,470	- 52.9	349,666	- 1.4	1,251,524	- 13.1
Jun	629,504	- 1.3	209,436	- 16.7	312,310	- 21.5	1,151,250	- 10.5
Jul	619,085	- 8.0	254,828	- 29.0	296,850	- 27.1	1,170,763	- 18.6
Aug	578,970	- 15.2	170,267	- 34.4	334,393	- 7.5	1,083,630	- 16.9
Sep	664,129	+ 9.6	209,652	- 19.3	363,588	+ 6.5	1,237,369	+ 2.5
Oct	822,871	+ 23.1	127,805	- 64.4	373,421	- 5.1	1,324,097	- 6.9
Nov	667,131	+ 0.5	217,321	- 39.3	407,606	+ 11.4	1,292,058	- 6.9
Dec	442,516	+ 0.9	95,616	- 81.2	243,494	+ 5.9	781,626	- 33.7
<b>Total</b>	<b>7,406,014</b>	<b>+ 5.0</b>	<b>2,402,577</b>	<b>- 36.7</b>	<b>3,846,308</b>	<b>- 6.7</b>	<b>13,654,899</b>	<b>- 8.8</b>
2002 Jan*	515,282	- 0.2	111,767	- 67.3	263,945	+ 4.7	890,994	- 19.7
Feb*	660,455	+ 12.2	161,343	- 24.6	290,572	- 14.1	1,112,370	- 2.5
Mar*	621,869	- 5.4	301,776	+ 41.6	271,282	- 12.2	1,194,927	+ 1.3
Apr	723,673	+ 39.2	221,583	+ 51.5	329,106	+ 23.9	1,274,362	+ 36.8

<sup>1/</sup> The annual percentage change is the change in the actual values of building plans passed of the relevant year compared with the actual values of building plans passed of the previous year expressed as a percentage.

<sup>2/</sup> The monthly percentage change is the change in the actual values of building plans passed of the relevant month compared with the actual values of building plans passed of the same month in the previous year expressed as a percentage.

**Table 4 - Seasonally adjusted values and percentage change of building plans passed at constant 1995 prices according to type of building**

Year and month <sup>1/</sup>	Residential buildings		Non-residential buildings		Additions and alterations		Total	
	R'000	Percentage change	R'000	Percentage change	R'000	Percentage change	R'000	Percentage change
2000 Jan	487,419	- 10.1	192,118	- 18.4	371,481	+ 22.3	1,051,018	- 4.6
Feb	603,008	+ 23.7	444,456	+ 131.3	338,203	- 9.0	1,385,666	+ 31.8
Mar	532,224	- 11.7	252,559	- 43.2	361,972	+ 7.0	1,146,755	- 17.2
Apr	525,539	- 1.3	233,974	- 7.4	338,817	- 6.4	1,098,330	- 4.2
May	614,513	+ 16.9	398,396	+ 70.3	342,676	+ 1.1	1,355,585	+ 23.4
Jun	605,277	- 1.5	230,030	- 42.3	383,498	+ 11.9	1,218,806	- 10.1
Jul	616,321	+ 1.8	287,607	+ 25.0	370,187	- 3.5	1,274,114	+ 4.5
Aug	655,703	+ 6.4	259,723	- 9.7	343,491	- 7.2	1,258,916	- 1.2
Sep	589,436	- 10.1	251,564	- 3.1	311,378	- 9.3	1,152,377	- 8.5
Oct	560,951	- 4.8	340,080	+ 35.2	345,496	+ 11.0	1,246,527	+ 8.2
Nov	619,948	+ 10.5	286,794	- 15.7	306,694	- 11.2	1,213,436	- 2.7
Dec	616,097	- 0.6	701,363	+ 144.6	309,004	+ 0.8	1,626,464	+ 34.0
2001 Jan	659,049	+ 7.0	545,296	- 22.3	324,481	+ 5.0	1,528,826	- 6.0
Feb	586,508	- 11.0	244,725	- 55.1	377,747	+ 16.4	1,208,980	- 20.9
Mar	623,342	+ 6.3	188,779	- 22.9	285,782	- 24.3	1,097,903	- 9.2
Apr	585,652	- 6.0	172,095	- 8.8	315,853	+ 10.5	1,073,601	- 2.2
May	650,210	+ 11.0	183,615	+ 6.7	336,619	+ 6.6	1,170,443	+ 9.0
Jun	594,292	- 8.6	192,833	+ 5.0	299,912	- 10.9	1,087,037	- 7.1
Jul	567,683	- 4.5	197,419	+ 2.4	271,270	- 9.6	1,036,372	- 4.7
Aug	553,815	- 2.4	169,299	- 14.2	318,337	+ 17.4	1,041,451	+ 0.5
Sep	646,510	+ 16.7	203,427	+ 20.2	329,910	+ 3.6	1,179,847	+ 13.3
Oct	694,732	+ 7.5	123,340	- 39.4	328,194	- 0.5	1,146,266	- 2.8
Nov	623,473	- 10.3	173,534	+ 40.7	339,268	+ 3.4	1,136,275	- 0.9
Dec	617,557	- 0.9	133,410	- 23.1	331,421	- 2.3	1,082,389	- 4.7
2002 Jan	654,011	+ 5.9	183,313	+ 37.4	333,902	+ 0.7	1,171,227	+ 8.2
Feb	651,623	- 0.4	184,469	+ 0.6	325,728	- 2.4	1,161,820	- 0.8
Mar	597,117	- 8.4	263,403	+ 42.8	252,564	- 22.5	1,113,084	- 4.2
Apr	824,196	+ 38.0	265,175	+ 0.7	393,682	+ 55.9	1,483,054	+ 33.2

<sup>1/</sup> The percentage change is the change in the seasonally adjusted values of building plans passed of the relevant month compared with the seasonally adjusted values of building plans passed of the previous month expressed as a percentage.

**Table 5 - Actual values and percentage change of buildings completed at current prices according to type of building**

Year <sup>1/</sup> and month <sup>2/</sup>	Residential buildings		Non-residential buildings		Additions and alterations		Total	
	R'000	Percentage change	R'000	Percentage change	R'000	Percentage change	R'000	Percentage change
2000 Jan	299,212	- 4.7	195,988	- 0.6	183,959	- 4.7	679,159	- 3.5
Feb	353,141	- 11.0	205,549	- 4.3	221,978	- 9.3	780,668	- 8.8
Mar	419,416	- 3.0	212,379	- 13.7	268,745	+ 16.5	900,540	- 1.0
Apr	364,713	- 3.5	224,048	+ 23.4	188,808	- 5.8	777,569	+ 2.3
May	473,124	+ 21.0	390,533	+ 99.6	293,343	+ 64.1	1,157,000	+ 51.2
Jun	362,558	- 13.7	174,728	- 16.2	170,986	+ 11.2	708,272	- 9.5
Jul	407,406	- 15.3	472,668	+ 79.0	220,828	- 18.9	1,100,902	+ 8.2
Aug	449,691	- 2.4	285,994	+ 39.6	211,008	- 17.5	946,693	+ 2.7
Sep	510,979	+ 3.6	270,539	+ 37.2	199,622	- 10.6	981,140	+ 7.4
Oct	462,270	+ 10.2	195,491	- 4.0	238,257	+ 3.8	896,018	+ 5.1
Nov	555,802	+ 20.5	186,442	- 54.5	255,900	+ 21.7	998,144	- 7.7
Dec	383,114	+ 9.6	316,801	+ 74.5	149,622	+ 2.2	849,537	+ 25.4
<b>Total</b>	<b>5,041,426</b>	<b>+ 0.9</b>	<b>3,131,160</b>	<b>+ 15.7</b>	<b>2,603,056</b>	<b>+ 2.5</b>	<b>10,775,642</b>	<b>+ 5.2</b>
2001 Jan	643,047	+ 114.9	238,434	+ 21.7	201,057	+ 9.3	1,082,538	+ 59.4
Feb	428,803	+ 21.4	285,620	+ 39.0	244,637	+ 10.2	959,060	+ 22.9
Mar	489,687	+ 16.8	159,637	- 24.8	286,396	+ 6.6	935,720	+ 3.9
Apr	366,061	+ 0.4	169,796	- 24.2	185,541	- 1.7	721,398	- 7.2
May	447,895	- 5.3	300,533	- 23.0	295,847	+ 0.9	1,044,275	- 9.7
Jun	539,545	+ 48.8	338,853	+ 93.9	294,854	+ 72.4	1,173,252	+ 65.6
Jul	396,717	- 2.6	121,617	- 74.3	232,836	+ 5.4	751,170	- 31.8
Aug	431,845	- 4.0	117,368	- 59.0	214,644	+ 1.7	763,857	- 19.3
Sep	462,102	- 9.6	1,417,979	+ 424.1	169,956	- 14.9	2,050,037	+ 108.9
Oct	667,250	+ 44.3	285,644	+ 46.1	237,138	- 0.5	1,190,032	+ 32.8
Nov	616,443	+ 10.9	211,109	+ 13.2	288,778	+ 12.8	1,116,330	+ 11.8
Dec*	492,030	+ 28.4	195,782	- 38.2	125,010	- 16.4	812,822	- 4.3
<b>Total</b>	<b>5,981,425</b>	<b>+ 18.6</b>	<b>3,842,372</b>	<b>+ 22.7</b>	<b>2,776,694</b>	<b>+ 6.7</b>	<b>12,600,491</b>	<b>+ 16.9</b>
2002 Jan*	572,544	- 11.0	137,089	- 42.5	172,817	- 14.0	882,450	- 18.5
Feb*	478,212	+ 11.5	138,037	- 51.7	196,179	- 19.8	812,428	- 15.3
Mar*	692,146	+ 41.3	169,849	+ 6.4	170,020	- 40.6	1,032,015	+ 10.3
Apr	634,454	+ 73.3	248,263	+ 46.2	379,466	+ 104.5	1,262,183	+ 75.0

<sup>1/</sup> The annual percentage change is the change in the actual values of buildings completed of the relevant year compared with the actual values of buildings completed of the previous year expressed as a percentage.

<sup>2/</sup> The monthly percentage change is the change in the actual values of buildings completed of the relevant month compared with the actual values of buildings completed of the same month in the previous year expressed as a percentage.

**Table 6 - Seasonally adjusted values and percentage change of buildings completed at current prices according to type of building**

Year and month <sup>1/</sup>	Residential buildings		Non-residential buildings		Additions and alterations		Total	
	R'000	Percentage change	R'000	Percentage change	R'000	Percentage change	R'000	Percentage change
2000 Jan	365,573	- 8.3	243,165	+ 33.1	208,382	- 6.7	817,120	+ 1.6
Feb	398,662	+ 9.1	233,358	- 4.0	206,776	- 0.8	838,796	+ 2.7
Mar	399,724	+ 0.3	263,576	+ 12.9	223,081	+ 7.9	886,381	+ 5.7
Apr	405,228	+ 1.4	260,147	- 1.3	206,659	- 7.4	872,034	- 1.6
May	454,832	+ 12.2	379,246	+ 45.8	283,092	+ 37.0	1,117,170	+ 28.1
Jun	352,224	- 22.6	177,273	- 53.3	168,952	- 40.3	698,449	- 37.5
Jul	390,862	+ 11.0	339,435	+ 91.5	196,932	+ 16.6	927,229	+ 32.8
Aug	444,713	+ 13.8	269,052	- 20.7	209,012	+ 6.1	922,776	- 0.5
Sep	461,677	+ 3.8	217,508	- 19.2	206,315	- 1.3	885,500	- 4.0
Oct	443,531	- 3.9	180,335	- 17.1	222,179	+ 7.7	846,045	- 4.5
Nov	472,492	+ 6.5	207,785	+ 15.2	243,972	+ 9.8	924,248	+ 9.2
Dec	435,788	- 7.8	332,989	+ 60.3	228,811	- 6.2	997,588	+ 7.9
2001 Jan	765,748	+ 75.7	304,989	- 8.4	229,549	+ 0.3	1,300,286	+ 30.3
Feb	486,619	- 36.5	331,567	+ 8.7	232,550	+ 1.3	1,050,736	- 19.2
Mar	459,265	- 5.6	205,116	- 38.1	230,922	- 0.7	895,303	- 14.8
Apr	407,205	- 11.3	197,184	- 3.9	202,621	- 12.3	807,009	- 9.9
May	434,684	+ 6.7	280,105	+ 42.1	284,618	+ 40.5	999,407	+ 23.8
Jun	524,104	+ 20.6	341,376	+ 21.9	291,646	+ 2.5	1,157,126	+ 15.8
Jul	384,741	- 26.6	83,297	- 75.6	208,939	- 28.4	676,977	- 41.5
Aug	427,381	+ 11.1	108,382	+ 30.1	211,193	+ 1.1	746,956	+ 10.3
Sep	413,557	- 3.2	1,134,803	+ 947.0	177,148	- 16.1	1,725,508	+ 131.0
Oct	640,951	+ 55.0	274,105	- 75.8	220,178	+ 24.3	1,135,234	- 34.2
Nov	527,487	- 17.7	241,631	- 11.8	276,890	+ 25.8	1,046,008	- 7.9
Dec	562,063	+ 6.6	210,709	- 12.8	190,859	- 31.1	963,631	- 7.9
2002 Jan	674,025	+ 19.9	174,759	- 17.1	198,359	+ 3.9	1,047,143	+ 8.7
Feb	542,528	- 19.5	162,385	- 7.1	187,905	- 5.3	892,817	- 14.7
Mar	647,280	+ 19.3	217,501	+ 33.9	135,601	- 27.8	1,000,382	+ 12.0
Apr	706,765	+ 9.2	285,603	+ 31.3	413,105	+ 204.6	1,405,473	+ 40.5

<sup>1/</sup> The percentage change is the change in the seasonally adjusted values of buildings completed of the relevant month compared with the seasonally adjusted values of buildings completed of the previous month expressed as a percentage.

**Table 7 - Actual values and percentage change of buildings completed at constant 1995 prices according to type of building**

Year <sup>1/</sup> and month <sup>2/</sup>	Residential buildings		Non-residential buildings		Additions and alterations		Total	
	R'000	Percentage change	R'000	Percentage change	R'000	Percentage change	R'000	Percentage change
2000 Jan	236,149	- 10.1	162,916	- 5.6	147,996	- 10.8	547,061	- 9.0
Feb	277,982	- 28.3	168,898	- 13.1	176,734	- 29.2	623,614	- 24.6
Mar	329,523	- 33.7	173,371	- 23.9	213,629	- 24.7	716,523	- 28.7
Apr	285,795	- 24.1	181,857	+ 3.6	149,255	- 12.9	616,907	- 14.3
May	370,120	- 26.2	315,965	- 3.8	231,709	- 1.9	917,794	- 14.5
Jun	282,549	- 31.4	141,251	- 9.6	134,529	+ 14.5	558,329	- 16.3
Jul	314,890	- 31.4	380,264	- 28.2	173,198	- 34.6	868,352	- 35.2
Aug	346,783	- 39.6	227,702	- 7.0	165,496	- 29.6	739,981	- 27.6
Sep	391,744	- 36.1	215,055	- 3.1	156,199	- 18.8	762,998	- 26.8
Oct	352,005	- 40.5	154,538	- 5.6	186,138	- 20.5	692,681	- 21.1
Nov	420,080	- 29.4	147,269	- 52.9	199,299	- 13.0	766,648	- 38.0
Dec	289,205	- 35.5	249,253	+ 6.7	116,347	+ 25.1	654,805	- 0.2
<b>Total</b>	<b>3,896,825</b>	<b>- 4.0</b>	<b>2,518,339</b>	<b>+ 8.4</b>	<b>2,050,529</b>	<b>- 3.1</b>	<b>8,465,693</b>	<b>- 0.4</b>
2001 Jan	487,413	+ 106.4	187,007	+ 14.8	154,898	+ 4.7	829,318	+ 51.6
Feb	318,240	+ 14.5	224,016	+ 32.6	187,893	+ 6.3	730,149	+ 17.1
Mar	363,446	+ 10.3	124,912	- 28.0	218,456	+ 2.3	706,814	- 1.4
Apr*	269,288	- 5.8	132,653	- 27.1	140,031	- 6.2	541,972	- 12.1
May	326,386	- 11.8	234,060	- 25.9	221,774	- 4.3	782,220	- 14.8
Jun	393,265	+ 39.2	263,494	+ 86.5	220,369	+ 63.8	877,128	+ 57.1
Jul	285,456	- 9.3	93,696	- 75.4	172,471	- 0.4	551,623	- 36.5
Aug	309,319	- 10.8	90,144	- 60.4	157,595	- 4.8	557,058	- 24.7
Sep	329,460	- 15.9	1,081,601	+ 402.9	124,601	- 20.2	1,535,662	+ 101.3
Oct	475,019	+ 34.9	215,580	+ 39.5	172,967	- 7.1	863,566	+ 24.7
Nov	436,553	+ 3.9	158,253	+ 7.5	209,715	+ 5.2	804,521	+ 4.9
Dec*	345,798	+ 19.6	146,324	- 41.3	90,456	- 22.3	582,578	- 11.0
<b>Total</b>	<b>4,339,643</b>	<b>+ 11.4</b>	<b>2,951,740</b>	<b>+ 17.2</b>	<b>2,071,226</b>	<b>+ 1.0</b>	<b>9,362,609</b>	<b>+ 10.6</b>
2002 Jan*	401,710	- 17.6	101,547	- 45.7	123,706	- 20.1	626,963	- 24.4
Feb*	334,218	+ 5.0	101,349	- 54.8	139,729	- 25.6	575,296	- 21.2
Mar*	483,524	+ 33.0	124,523	- 0.3	120,326	- 44.9	728,373	+ 3.1
Apr	438,772	+ 62.9	181,082	+ 36.5	267,042	+ 90.7	886,896	+ 63.6

<sup>1/</sup> The annual percentage change is the change in the actual values of buildings completed of the relevant year compared with the actual values of buildings completed of the previous year expressed as a percentage.

<sup>2/</sup> The monthly percentage change is the change in the actual values of buildings completed of the relevant month compared with the actual values of buildings completed of the same month in the previous year expressed as a percentage.



**Table 8 - Seasonally adjusted values and percentage change of buildings completed at constant 1995 prices according to type of building**

Year and month <sup>1/</sup>	Residential buildings		Non-residential buildings		Additions and alterations		Total	
	R'000	Percentage change	R'000	Percentage change	R'000	Percentage change	R'000	Percentage change
2000 Jan	288,662	- 8.6	201,890	+ 30.7	166,814	- 7.0	657,366	+ 1.2
Feb	315,047	+ 9.1	191,765	- 5.0	164,109	- 1.6	670,922	+ 2.1
Mar	314,368	- 0.2	214,700	+ 12.0	176,879	+ 7.8	705,947	+ 5.2
Apr	317,770	+ 1.1	211,372	- 1.6	163,381	- 7.6	692,523	- 1.9
May	355,438	+ 11.9	305,384	+ 44.5	223,437	+ 36.8	884,258	+ 27.7
Jun	271,970	- 23.5	142,259	- 53.4	135,187	- 39.5	549,416	- 37.9
Jul	301,955	+ 11.0	272,140	+ 91.3	154,253	+ 14.1	728,348	+ 32.6
Aug	343,572	+ 13.8	215,143	- 20.9	163,211	+ 5.8	721,926	- 0.9
Sep	353,829	+ 3.0	171,748	- 20.2	162,652	- 0.3	688,230	- 4.7
Oct	338,678	- 4.3	144,558	- 15.8	173,167	+ 6.5	656,402	- 4.6
Nov	357,647	+ 5.6	164,425	+ 13.7	190,290	+ 9.9	712,362	+ 8.5
Dec	328,774	- 8.1	263,839	+ 60.5	176,610	- 7.2	769,223	+ 8.0
2001 Jan	581,070	+ 76.7	238,982	- 9.4	175,964	- 0.4	996,015	+ 29.5
Feb	362,306	- 37.6	260,060	+ 8.8	177,934	+ 1.1	800,300	- 19.6
Mar	340,991	- 5.9	160,274	- 38.4	175,333	- 1.5	676,598	- 15.5
Apr	299,987	- 12.0	153,632	- 4.1	153,172	- 12.6	606,790	- 10.3
May	316,585	+ 5.5	217,188	+ 41.4	213,139	+ 39.2	746,912	+ 23.1
Jun	378,282	+ 19.5	263,625	+ 21.4	222,199	+ 4.3	864,107	+ 15.7
Jul	276,749	- 26.8	63,999	- 75.7	154,537	- 30.5	495,284	- 42.7
Aug	306,657	+ 10.8	83,700	+ 30.8	154,241	- 0.2	544,597	+ 10.0
Sep	294,724	- 3.9	860,101	+ 927.6	130,993	- 15.1	1,285,818	+ 136.1
Oct	457,633	+ 55.3	209,457	- 75.6	160,208	+ 22.3	827,298	- 35.7
Nov	374,157	- 18.2	181,475	- 13.4	201,209	+ 25.6	756,841	- 8.5
Dec	394,871	+ 5.5	158,869	- 12.5	137,089	- 31.9	690,829	- 8.7
2002 Jan	473,441	+ 19.9	129,282	- 18.6	141,296	+ 3.1	744,018	+ 7.7
Feb	380,306	- 19.7	119,135	- 7.8	133,292	- 5.7	632,733	- 15.0
Mar	452,198	+ 18.9	159,229	+ 33.7	95,520	- 28.3	706,947	+ 11.7
Apr	489,599	+ 8.3	207,760	+ 30.5	291,428	+ 205.1	988,786	+ 39.9

<sup>1/</sup> The percentage change is the change in the seasonally adjusted values of buildings completed of the relevant month compared with the seasonally adjusted values of buildings completed of the previous month expressed as a percentage.

**Table 9 - Building plans passed according to type of building: Total RSA**

Type of building	April 2001 *	March 2002 *	April 2002	January 2001 to April 2001	January 2002 to April 2002	Percentage change between January 2001 to April 2001 and January 2002 to April 2002
<b>Residential buildings</b>						
Dwelling-houses smaller than 80 square metres						
Number of dwelling-houses	3,656	2,610	3,334	14,089	11,187	- 20.6
Total square metres	136,154	108,291	129,529	542,087	433,214	- 20.1
Total value at current prices (R'000)	112,349	111,132	128,546	505,874	442,156	- 12.6
Dwelling-houses equal to or larger than 80 square metres						
Number of dwelling-houses	1,447	1,747	2,128	6,801	7,344	+ 8.0
Total square metres	327,731	382,465	465,862	1,444,325	1,617,927	+ 12.0
Total value at current prices (R'000)	456,042	609,587	696,615	2,025,730	2,432,107	+ 20.1
Flats and townhouses						
Number of flats and townhouses	616	1,023	1,612	3,204	4,535	+ 41.5
Total square metres	76,216	144,869	179,839	370,992	544,183	+ 46.7
Total value at current prices (R'000)	117,205	238,691	296,436	572,168	871,234	+ 52.3
Other residential buildings <sup>1/</sup>						
Total square metres	23,341	485	9,178	35,998	56,440	+ 56.8
Total value at current prices (R'000)	53,262	755	14,569	111,892	136,975	+ 22.4
<b>Total value of residential buildings at current prices (R'000)</b>	<b>738,858</b>	<b>960,165</b>	<b>1,136,166</b>	<b>3,215,664</b>	<b>3,882,472</b>	<b>+ 20.7</b>
<b>Non-residential buildings</b>						
Office and banking space						
Total square metres	30,431	34,957	60,163	252,540	174,939	- 30.7
Total value at current prices (R'000)	50,614	118,201	112,980	461,322	357,263	- 22.6
Shopping space						
Total square metres	21,413	39,300	28,761	181,766	117,926	- 35.1
Total value at current prices (R'000)	27,344	70,799	40,125	252,246	185,978	- 26.3
Industrial and warehouse space						
Total square metres	64,306	71,232	94,464	291,464	277,843	- 4.7
Total value at current prices (R'000)	84,202	92,080	148,328	382,843	399,655	+ 4.4
Other non-residential space <sup>2/</sup>						
Total square metres	39,453	129,993	29,058	142,267	199,147	+ 40.0
Total value at current prices (R'000)	45,714	184,862	46,452	190,517	286,044	+ 50.1
<b>Total value of non-residential buildings at current prices (R'000)</b>	<b>207,874</b>	<b>465,942</b>	<b>347,885</b>	<b>1,286,928</b>	<b>1,228,940</b>	<b>- 4.5</b>
<b>Additions and alterations</b>						
Dwelling-houses						
Total square metres	214,367	246,174	280,840	898,052	980,734	+ 9.2
Total value at current prices (R'000)	268,280	331,092	381,410	1,108,350	1,308,359	+ 18.0
Other buildings <sup>3/</sup>						
Total square metres	69,304	44,367	72,602	305,614	244,554	- 20.0
Total value at current prices (R'000)	109,093	87,767	135,287	532,812	469,036	- 12.0
<b>Total value of additions and alterations at current prices (R'000)</b>	<b>377,373</b>	<b>418,859</b>	<b>516,697</b>	<b>1,641,162</b>	<b>1,777,395</b>	<b>+ 8.3</b>
<b>Total value of building plans passed at current prices (R'000)</b>	<b>1,324,105</b>	<b>1,844,966</b>	<b>2,000,748</b>	<b>6,143,754</b>	<b>6,888,807</b>	<b>+ 12.1</b>

1/ Other residential buildings include institutions for the disabled, boarding houses, old people's homes, hostels, hotels, motels, guest houses, holiday chalets, entertainment centres, bed-and-breakfast accommodation and casinos.

2/ Other non-residential space includes churches, sport and recreation clubs, schools, crèches, hospitals and all other non-residential space.

3/ Other buildings include additions and alterations to other residential buildings, non-residential buildings and internal alterations.

**Table 10 - Building plans passed according to type of building and province: Western Cape**

Type of building	April 2001 *	March 2002	April 2002	January 2001 to April 2001	January 2002 to April 2002	Percentage change between January 2001 to April 2001 and January 2002 to April 2002
<b>Residential buildings</b>						
Dwelling-houses smaller than 80 square metres						
Number of dwelling-houses	347	353	738	2,550	3,198	+ 25.4
Total square metres	16,652	15,348	23,836	99,285	109,013	+ 9.8
Total value at current prices (R'000)	18,823	19,445	25,876	119,996	125,251	+ 4.4
Dwelling-houses equal to or larger than 80 square metres						
Number of dwelling-houses	494	589	725	2,060	2,509	+ 21.8
Total square metres	107,001	122,081	158,416	444,414	525,878	+ 18.3
Total value at current prices (R'000)	157,170	196,042	254,428	646,935	829,854	+ 28.3
Flats and townhouses						
Number of flats and townhouses	114	239	258	927	1,157	+ 24.8
Total square metres	13,079	33,293	23,303	94,753	113,355	+ 19.6
Total value at current prices (R'000)	19,272	62,091	37,288	144,680	189,103	+ 30.7
Other residential buildings <sup>1/</sup>						
Total square metres	20,028	410	6,903	21,783	12,022	- 44.8
Total value at current prices (R'000)	49,737	650	12,142	52,195	20,139	- 61.4
<b>Total value of residential buildings at current prices (R'000)</b>	<b>245,002</b>	<b>278,228</b>	<b>329,734</b>	<b>963,806</b>	<b>1,164,347</b>	<b>+ 20.8</b>
<b>Non-residential buildings</b>						
Office and banking space						
Total square metres	14,621	6,221	6,354	69,304	24,021	- 65.3
Total value at current prices (R'000)	20,827	9,285	12,060	114,983	37,590	- 67.3
Shopping space						
Total square metres	10,373	1,023	242	92,262	14,997	- 83.7
Total value at current prices (R'000)	10,779	1,161	436	116,187	18,996	- 83.7
Industrial and warehouse space						
Total square metres	18,573	26,717	11,827	71,940	58,950	- 18.1
Total value at current prices (R'000)	19,167	31,655	15,092	73,075	67,338	- 7.9
Other non-residential space <sup>2/</sup>						
Total square metres	12,650	1,137	7,636	52,417	21,819	- 58.4
Total value at current prices (R'000)	11,680	1,798	12,597	65,319	31,192	- 52.2
<b>Total value of non-residential buildings at current prices (R'000)</b>	<b>62,453</b>	<b>43,899</b>	<b>40,185</b>	<b>369,564</b>	<b>155,116</b>	<b>- 58.0</b>
<b>Additions and alterations</b>						
Dwelling-houses						
Total square metres	71,906	81,260	70,766	281,892	282,897	+ 0.4
Total value at current prices (R'000)	91,734	107,199	96,222	352,274	377,039	+ 7.0
Other buildings <sup>3/</sup>						
Total square metres	21,178	8,455	28,956	74,505	81,108	+ 8.9
Total value at current prices (R'000)	32,876	14,066	53,539	124,974	155,937	+ 24.8
<b>Total value of additions and alterations at current prices (R'000)</b>	<b>124,610</b>	<b>121,265</b>	<b>149,761</b>	<b>477,248</b>	<b>532,976</b>	<b>+ 11.7</b>
<b>Total value of building plans passed at current prices (R'000)</b>	<b>432,065</b>	<b>443,392</b>	<b>519,680</b>	<b>1,810,618</b>	<b>1,852,439</b>	<b>+ 2.3</b>

1/ Other residential buildings include institutions for the disabled, boarding houses, old people's homes, hostels, hotels, motels, guest houses, holiday chalets, entertainment centres, bed-and-breakfast accommodation and casinos.

2/ Other non-residential space includes churches, sport and recreation clubs, schools, crèches, hospitals and all other non-residential space.

3/ Other buildings include additions and alterations to other residential buildings, non-residential buildings and internal alterations.

**Table 11 - Building plans passed according to type of building and province: Eastern Cape**

Type of building	April 2001*	March 2002	April 2002	January 2001 to April 2001	January 2002 to April 2002	Percentage change between January 2001 to April 2001 and January 2002 to April 2002
<b>Residential buildings</b>						
Dwelling-houses smaller than 80 square metres						
Number of dwelling-houses	165	374	858	857	1,603	+ 87.0
Total square metres	7,612	18,114	35,158	38,534	69,593	+ 80.6
Total value at current prices (R'000)	10,039	26,074	43,819	49,941	91,867	+ 84.0
Dwelling-houses equal to or larger than 80 square metres						
Number of dwelling-houses	86	115	121	465	438	-5.8
Total square metres	14,261	21,598	26,668	64,822	85,217	+ 31.5
Total value at current prices (R'000)	18,422	30,172	36,340	85,459	116,532	+ 36.4
Flats and townhouses						
Number of flats and townhouses	21	27	214	99	265	+ 167.7
Total square metres	1,854	2,706	14,297	10,083	20,057	+ 98.9
Total value at current prices (R'000)	2,519	4,637	24,541	14,219	33,906	+ 138.5
Other residential buildings <sup>1/</sup>						
Total square metres	0	0	472	5,820	472	-91.9
Total value at current prices (R'000)	0	0	661	50,000	661	-98.7
<b>Total value of residential buildings at current prices (R'000)</b>	<b>30,980</b>	<b>60,883</b>	<b>105,361</b>	<b>199,619</b>	<b>242,966</b>	<b>+ 21.7</b>
<b>Non-residential buildings</b>						
Office and banking space						
Total square metres	785	292	2,832	1,199	3,353	+ 179.6
Total value at current prices (R'000)	2,000	535	4,060	3,080	5,045	+ 63.8
Shopping space						
Total square metres	1,367	2,040	0	5,052	7,143	+ 41.4
Total value at current prices (R'000)	3,029	3,876	0	8,045	15,071	+ 87.3
Industrial and warehouse space						
Total square metres	90	1,154	10,656	9,633	25,566	+ 165.4
Total value at current prices (R'000)	113	1,864	16,599	12,857	47,884	+ 272.4
Other non-residential space <sup>2/</sup>						
Total square metres	1,139	238	5,950	3,322	12,143	+ 265.5
Total value at current prices (R'000)	2,190	387	9,384	5,005	19,400	+ 287.6
<b>Total value of non-residential buildings at current prices (R'000)</b>	<b>7,332</b>	<b>6,662</b>	<b>30,043</b>	<b>28,987</b>	<b>87,400</b>	<b>+ 201.5</b>
<b>Additions and alterations</b>						
Dwelling-houses						
Total square metres	18,531	16,609	21,288	64,627	72,162	+ 11.7
Total value at current prices (R'000)	25,947	21,390	28,654	83,319	95,871	+ 15.1
Other buildings <sup>3/</sup>						
Total square metres	5,137	6,727	6,291	35,889	18,865	-47.4
Total value at current prices (R'000)	6,960	14,201	12,520	52,825	37,231	-29.5
<b>Total value of additions and alterations at current prices (R'000)</b>	<b>32,907</b>	<b>35,591</b>	<b>41,174</b>	<b>136,144</b>	<b>133,102</b>	<b>-2.2</b>
<b>Total value of building plans passed at current prices (R'000)</b>	<b>71,219</b>	<b>103,136</b>	<b>176,578</b>	<b>364,750</b>	<b>463,468</b>	<b>+ 27.1</b>

1/ Other residential buildings include institutions for the disabled, boarding houses, old people's homes, hostels, hotels, motels, guest houses, holiday chalets, entertainment centres, bed-and-breakfast accommodation and casinos.

2/ Other non-residential space includes churches, sport and recreation clubs, schools, crèches, hospitals and all other non-residential space.

3/ Other buildings include additions and alterations to other residential buildings, non-residential buildings and internal alterations.

**Table 12 - Building plans passed according to type of building and province: Northern Cape**

Type of building	April 2001	March 2002	April 2002	January 2001 to April 2001	January 2002 to April 2002	Percentage change between January 2001 to April 2001 and January 2002 to April 2002
<b>Residential buildings</b>						
Dwelling-houses smaller than 80 square metres						
Number of dwelling-houses	4	2	8	26	23	- 11.5
Total square metres	196	62	471	1,410	1,159	- 17.8
Total value at current prices (R'000)	291	93	730	2,082	1,907	- 8.4
Dwelling-houses equal to or larger than 80 square metres						
Number of dwelling-houses	9	10	10	58	29	- 50.0
Total square metres	2,243	1,608	2,601	11,524	5,769	- 49.9
Total value at current prices (R'000)	3,354	2,249	4,120	13,457	8,720	- 35.2
Flats and townhouses						
Number of flats and townhouses	4	0	2	10	2	- 80.0
Total square metres	677	0	352	1,661	352	- 78.8
Total value at current prices (R'000)	948	0	634	2,242	634	- 71.7
Other residential buildings <sup>1/</sup>						
Total square metres	0	0	0	0	0	..
Total value at current prices (R'000)	0	0	0	0	0	..
<b>Total value of residential buildings at current prices (R'000)</b>	<b>4,593</b>	<b>2,342</b>	<b>5,484</b>	<b>17,781</b>	<b>11,261</b>	<b>- 36.7</b>
<b>Non-residential buildings</b>						
Office and banking space						
Total square metres	0	30	100	191	130	- 31.9
Total value at current prices (R'000)	0	66	120	124	186	+ 50.0
Shopping space						
Total square metres	0	0	0	206	0	..
Total value at current prices (R'000)	0	0	0	226	0	..
Industrial and warehouse space						
Total square metres	320	0	669	1,092	1,469	+ 34.5
Total value at current prices (R'000)	384	0	1,228	1,002	2,348	+ 134.3
Other non-residential space <sup>2/</sup>						
Total square metres	710	144	0	1,143	999	- 12.6
Total value at current prices (R'000)	921	317	0	1,645	2,198	+ 33.6
<b>Total value of non-residential buildings at current prices (R'000)</b>	<b>1,305</b>	<b>383</b>	<b>1,348</b>	<b>2,997</b>	<b>4,732</b>	<b>+ 57.9</b>
<b>Additions and alterations</b>						
Dwelling-houses						
Total square metres	1,673	1,444	4,272	8,135	10,210	+ 25.5
Total value at current prices (R'000)	2,783	2,262	7,519	12,382	17,186	+ 38.8
Other buildings <sup>3/</sup>						
Total square metres	437	346	1,264	1,780	2,166	+ 21.7
Total value at current prices (R'000)	768	599	3,065	4,233	5,417	+ 28.0
<b>Total value of additions and alterations at current prices (R'000)</b>	<b>3,551</b>	<b>2,861</b>	<b>10,584</b>	<b>16,615</b>	<b>22,603</b>	<b>+ 36.0</b>
<b>Total value of building plans passed at current prices (R'000)</b>	<b>9,449</b>	<b>5,586</b>	<b>17,416</b>	<b>37,393</b>	<b>38,596</b>	<b>+ 3.2</b>

1/ Other residential buildings include institutions for the disabled, boarding houses, old people's homes, hostels, hotels, motels, guest houses, holiday chalets, entertainment centres, bed-and-breakfast accommodation and casinos.

2/ Other non-residential space includes churches, sport and recreation clubs, schools, crèches, hospitals and all other non-residential space.

3/ Other buildings include additions and alterations to other residential buildings, non-residential buildings and internal alterations.

**Table 13 - Building plans passed according to type of building and province: Free State**

Type of building	April 2001	March 2002	April 2002	January 2001 to April 2001	January 2002 to April 2002	Percentage change between January 2001 to April 2001 and January 2002 to April 2002
<b>Residential buildings</b>						
Dwelling-houses smaller than 80 square metres						
Number of dwelling-houses	331	47	324	994	559	-43.8
Total square metres	14,723	2,836	13,916	44,575	25,061	-43.8
Total value at current prices (R'000)	7,923	2,939	7,945	23,514	16,727	-28.9
Dwelling-houses equal to or larger than 80 square metres						
Number of dwelling-houses	46	95	67	249	307	+ 23.3
Total square metres	7,183	13,737	11,453	37,967	46,586	+ 22.7
Total value at current prices (R'000)	7,363	14,392	13,208	40,943	55,688	+ 36.0
Flats and townhouses						
Number of flats and townhouses	0	29	6	79	191	+ 141.8
Total square metres	0	2,193	768	11,039	18,847	+ 70.7
Total value at current prices (R'000)	0	2,979	922	17,311	28,401	+ 64.1
Other residential buildings <sup>1/</sup>						
Total square metres	1,220	75	0	1,252	2,758	+ 120.3
Total value at current prices (R'000)	1,840	105	0	1,851	7,105	+ 283.8
<b>Total value of residential buildings at current prices (R'000)</b>	<b>17,126</b>	<b>20,415</b>	<b>22,075</b>	<b>83,619</b>	<b>107,921</b>	<b>+ 29.1</b>
<b>Non-residential buildings</b>						
Office and banking space						
Total square metres	0	0	0	12,822	7,384	-42.4
Total value at current prices (R'000)	0	0	0	25,216	14,102	-44.1
Shopping space						
Total square metres	789	7,429	130	2,207	8,161	+ 269.8
Total value at current prices (R'000)	1,181	16,000	250	2,871	16,910	+ 489.0
Industrial and warehouse space						
Total square metres	931	0	2,565	2,557	5,142	+ 101.1
Total value at current prices (R'000)	616	0	1,418	1,678	3,912	+ 133.1
Other non-residential space <sup>2/</sup>						
Total square metres	0	871	2,450	2,271	6,082	+ 167.8
Total value at current prices (R'000)	0	991	4,100	3,890	7,703	+ 98.0
<b>Total value of non-residential buildings at current prices (R'000)</b>	<b>1,797</b>	<b>16,991</b>	<b>5,768</b>	<b>33,655</b>	<b>42,627</b>	<b>+ 26.7</b>
<b>Additions and alterations</b>						
Dwelling-houses						
Total square metres	8,795	6,777	8,462	29,353	32,324	+ 10.1
Total value at current prices (R'000)	8,882	7,389	9,201	30,261	35,114	+ 16.0
Other buildings <sup>3/</sup>						
Total square metres	1,812	557	3,469	4,639	7,645	+ 64.8
Total value at current prices (R'000)	4,190	1,516	8,306	8,691	16,212	+ 86.5
<b>Total value of additions and alterations at current prices (R'000)</b>	<b>13,072</b>	<b>8,905</b>	<b>17,507</b>	<b>38,952</b>	<b>51,326</b>	<b>+ 31.8</b>
<b>Total value of building plans passed at current prices (R'000)</b>	<b>31,995</b>	<b>46,311</b>	<b>45,350</b>	<b>156,226</b>	<b>201,874</b>	<b>+ 29.2</b>

1/ Other residential buildings include institutions for the disabled, boarding houses, old people's homes, hostels, hotels, motels, guest houses, holiday chalets, entertainment centres, bed-and-breakfast accommodation and casinos.

2/ Other non-residential space includes churches, sport and recreation clubs, schools, crèches, hospitals and all other non-residential space.

3/ Other buildings include additions and alterations to other residential buildings, non-residential buildings and internal alterations.

**Table 14 - Building plans passed according to type of building and province: KwaZulu-Natal**

Type of building	April 2001	March 2002*	April 2002	January 2001 to April 2001	January 2002 to April 2002	Percentage change between January 2001 to April 2001 and January 2002 to April 2002
<b>Residential buildings</b>						
Dwelling-houses smaller than 80 square metres						
Number of dwelling-houses	291	250	229	1,122	738	- 34.2
Total square metres	9,892	9,923	9,125	50,022	30,565	- 38.9
Total value at current prices (R'000)	8,824	9,464	9,160	43,495	31,861	- 26.7
Dwelling-houses equal to or larger than 80 square metres						
Number of dwelling-houses	87	122	160	499	534	+ 7.0
Total square metres	20,632	24,642	40,223	112,044	119,831	+ 6.9
Total value at current prices (R'000)	28,753	33,469	58,838	163,838	179,655	+ 9.7
Flats and townhouses						
Number of flats and townhouses	53	72	65	316	351	+ 11.1
Total square metres	8,220	11,803	8,125	41,729	51,876	+ 24.3
Total value at current prices (R'000)	13,016	28,551	13,938	73,251	86,785	+ 18.5
Other residential buildings <sup>1/</sup>						
Total square metres	0	0	0	0	30,153	..
Total value at current prices (R'000)	0	0	0	0	31,821	..
<b>Total value of residential buildings at current prices (R'000)</b>	<b>50,593</b>	<b>71,484</b>	<b>81,936</b>	<b>280,584</b>	<b>330,122</b>	<b>+ 17.7</b>
<b>Non-residential buildings</b>						
Office and banking space						
Total square metres	2,032	2,183	8,080	51,573	10,900	- 78.9
Total value at current prices (R'000)	7,090	4,800	29,470	138,188	35,226	- 74.5
Shopping space						
Total square metres	1,832	3,989	10,806	10,805	19,116	+ 76.9
Total value at current prices (R'000)	3,230	8,265	11,525	13,240	28,464	+ 115.0
Industrial and warehouse space						
Total square metres	11,593	5,958	5,304	52,133	35,650	- 31.6
Total value at current prices (R'000)	12,130	8,626	6,696	55,257	42,828	- 22.5
Other non-residential space <sup>2/</sup>						
Total square metres	12,563	50,681	1,816	20,057	57,940	+ 188.9
Total value at current prices (R'000)	12,870	55,183	3,111	22,655	66,073	+ 191.6
<b>Total value of non-residential buildings at current prices (R'000)</b>	<b>35,320</b>	<b>76,874</b>	<b>50,802</b>	<b>229,340</b>	<b>172,591</b>	<b>- 24.7</b>
<b>Additions and alterations</b>						
Dwelling-houses						
Total square metres	27,466	25,466	43,875	122,510	126,409	+ 3.2
Total value at current prices (R'000)	32,664	34,874	56,130	149,583	162,175	+ 8.4
Other buildings <sup>3/</sup>						
Total square metres	11,022	7,732	9,047	52,134	34,508	- 33.8
Total value at current prices (R'000)	18,581	18,993	20,094	99,121	66,063	- 33.4
<b>Total value of additions and alterations at current prices (R'000)</b>	<b>51,245</b>	<b>53,867</b>	<b>76,224</b>	<b>248,704</b>	<b>228,238</b>	<b>- 8.2</b>
<b>Total value of building plans passed at current prices (R'000)</b>	<b>137,158</b>	<b>202,225</b>	<b>208,962</b>	<b>758,628</b>	<b>730,951</b>	<b>- 3.6</b>

1/ Other residential buildings include institutions for the disabled, boarding houses, old people's homes, hostels, hotels, motels, guest houses, holiday chalets, entertainment centres, bed-and-breakfast accommodation and casinos.

2/ Other non-residential space includes churches, sport and recreation clubs, schools, crèches, hospitals and all other non-residential space.

3/ Other buildings include additions and alterations to other residential buildings, non-residential buildings and internal alterations.

**Table 15 - Building plans passed according to type of building and province: North West**

Type of building	April 2001	March 2002	April 2002	January 2001 to April 2001	January 2002 to April 2002	Percentage change between January 2001 to April 2001 and January 2002 to April 2002
<b>Residential buildings</b>						
Dwelling-houses smaller than 80 square metres						
Number of dwelling-houses	340	309	43	1,435	493	- 65.6
Total square metres	11,140	10,756	2,458	51,172	22,135	- 56.7
Total value at current prices (R'000)	5,332	7,591	2,833	34,024	24,550	- 27.8
Dwelling-houses equal to or larger than 80 square metres						
Number of dwelling-houses	42	108	93	235	357	+ 51.9
Total square metres	8,603	18,564	15,887	40,358	60,559	+ 50.1
Total value at current prices (R'000)	8,407	24,401	20,122	46,945	82,080	+ 74.8
Flats and townhouses						
Number of flats and townhouses	17	8	1	120	45	- 62.5
Total square metres	1,734	1,106	108	15,084	5,935	- 60.7
Total value at current prices (R'000)	1,778	1,137	103	18,989	8,110	- 57.3
Other residential buildings <sup>1/</sup>						
Total square metres	1,901	0	484	1,989	768	- 61.4
Total value at current prices (R'000)	1,589	0	581	1,664	781	- 53.1
<b>Total value of residential buildings at current prices (R'000)</b>	<b>17,106</b>	<b>33,129</b>	<b>23,639</b>	<b>101,622</b>	<b>115,521</b>	<b>+ 13.7</b>
<b>Non-residential buildings</b>						
Office and banking space						
Total square metres	758	408	749	3,304	4,461	+ 35.0
Total value at current prices (R'000)	1,200	286	1,124	5,625	7,386	+ 31.3
Shopping space						
Total square metres	45	0	6,548	10,047	8,657	- 13.8
Total value at current prices (R'000)	68	0	10,454	11,583	14,558	+ 25.7
Industrial and warehouse space						
Total square metres	0	960	2,700	2,849	6,811	+ 139.1
Total value at current prices (R'000)	0	1,500	3,240	2,955	9,915	+ 235.5
Other non-residential space <sup>2/</sup>						
Total square metres	159	5,237	970	546	7,068	+ 1,194.5
Total value at current prices (R'000)	160	11,557	2,363	678	14,764	+ 2,077.6
<b>Total value of non-residential buildings at current prices (R'000)</b>	<b>1,428</b>	<b>13,343</b>	<b>17,181</b>	<b>20,841</b>	<b>46,623</b>	<b>+ 123.7</b>
<b>Additions and alterations</b>						
Dwelling-houses						
Total square metres	5,144	7,105	8,451	21,700	30,738	+ 41.6
Total value at current prices (R'000)	4,901	8,517	10,147	22,928	36,009	+ 57.1
Other buildings <sup>3/</sup>						
Total square metres	3,210	1,590	5,418	7,356	8,803	+ 19.7
Total value at current prices (R'000)	6,391	2,573	6,165	12,492	12,042	- 3.6
<b>Total value of additions and alterations at current prices (R'000)</b>	<b>11,292</b>	<b>11,090</b>	<b>16,312</b>	<b>35,420</b>	<b>48,051</b>	<b>+ 35.7</b>
<b>Total value of building plans passed at current prices (R'000)</b>	<b>29,826</b>	<b>57,562</b>	<b>57,132</b>	<b>157,883</b>	<b>210,195</b>	<b>+ 33.1</b>

1/ Other residential buildings include institutions for the disabled, boarding houses, old people's homes, hostels, hotels, motels, guest houses, holiday chalets, entertainment centres, bed-and-breakfast accommodation and casinos.

2/ Other non-residential space includes churches, sport and recreation clubs, schools, crèches, hospitals and all other non-residential space.

3/ Other buildings include additions and alterations to other residential buildings, non-residential buildings and internal alterations.



Table 16 - Building plans passed according to type of building and province: Gauteng

Type of building	April 2001 *	March 2002	April 2002	January 2001 to April 2001	January 2002 to April 2002	Percentage change between January 2001 to April 2001 and January 2002 to April 2002
<b>Residential buildings</b>						
Dwelling-houses smaller than 80 square metres						
Number of dwelling-houses	1,369	996	780	4,267	3,579	- 16.1
Total square metres	47,725	39,467	29,609	157,125	133,741	- 14.9
Total value at current prices (R'000)	48,336	38,914	29,437	168,246	123,686	- 26.5
Dwelling-houses equal to or larger than 80 square metres						
Number of dwelling-houses	569	574	782	2,826	2,528	- 10.5
Total square metres	145,460	154,080	172,609	657,688	654,999	- 0.4
Total value at current prices (R'000)	203,568	272,279	257,280	932,963	1,002,187	+ 7.4
Flats and townhouses						
Number of flats and townhouses	390	615	991	1,519	2,295	+ 51.1
Total square metres	49,029	91,045	122,846	182,220	304,377	+ 67.0
Total value at current prices (R'000)	78,087	136,623	204,513	282,833	482,310	+ 70.5
Other residential buildings <sup>1/</sup>						
Total square metres	0	0	0	4,962	3,459	- 30.3
Total value at current prices (R'000)	0	0	0	6,086	5,283	- 13.2
<b>Total value of residential buildings at current prices (R'000)</b>	<b>329,991</b>	<b>447,816</b>	<b>491,230</b>	<b>1,390,128</b>	<b>1,613,466</b>	<b>+ 16.1</b>
<b>Non-residential buildings</b>						
Office and banking space						
Total square metres	11,125	25,823	41,173	112,405	122,672	+ 9.1
Total value at current prices (R'000)	18,289	103,229	65,051	171,948	254,999	+ 48.3
Shopping space						
Total square metres	5,759	18,749	9,283	53,631	39,283	- 26.8
Total value at current prices (R'000)	8,057	32,010	15,000	88,940	64,490	- 27.5
Industrial and warehouse space						
Total square metres	30,403	36,332	57,680	130,616	133,772	+ 2.4
Total value at current prices (R'000)	49,229	48,300	99,594	218,242	213,059	- 2.4
Other non-residential space <sup>2/</sup>						
Total square metres	10,019	70,922	8,420	56,314	87,056	+ 54.6
Total value at current prices (R'000)	14,696	113,402	12,311	83,245	136,785	+ 64.3
<b>Total value of non-residential buildings at current prices (R'000)</b>	<b>90,271</b>	<b>296,941</b>	<b>191,956</b>	<b>562,375</b>	<b>669,333</b>	<b>+ 19.0</b>
<b>Additions and alterations</b>						
Dwelling-houses						
Total square metres	70,327	92,589	107,407	320,052	367,092	+ 14.7
Total value at current prices (R'000)	89,300	132,071	154,424	405,521	516,289	+ 27.3
Other buildings <sup>3/</sup>						
Total square metres	23,969	17,424	16,023	118,974	78,367	- 34.1
Total value at current prices (R'000)	34,644	33,406	28,558	209,713	150,652	- 28.2
<b>Total value of additions and alterations at current prices (R'000)</b>	<b>123,944</b>	<b>165,477</b>	<b>182,982</b>	<b>615,234</b>	<b>666,941</b>	<b>+ 8.4</b>
<b>Total value of building plans passed at current prices (R'000)</b>	<b>544,206</b>	<b>910,234</b>	<b>866,168</b>	<b>2,567,737</b>	<b>2,949,740</b>	<b>+ 14.9</b>

1/ Other residential buildings include institutions for the disabled, boarding houses, old people's homes, hostels, hotels, motels, guest houses, holiday chalets, entertainment centres, bed-and-breakfast accommodation and casinos.

2/ Other non-residential space includes churches, sport and recreation clubs, schools, crèches, hospitals and all other non-residential space.

3/ Other buildings include additions and alterations to other residential buildings, non-residential buildings and internal alterations.

**Table 17 - Building plans passed according to type of building and province: Mpumalanga**

Type of building	April 2001	March 2002	April 2002	January 2001 to April 2001	January 2002 to April 2002	Percentage change between January 2001 to April 2001 and January 2002 to April 2002
<b>Residential buildings</b>						
Dwelling-houses smaller than 80 square metres						
Number of dwelling-houses	776	256	324	2,699	896	- 66.8
Total square metres	26,119	10,458	13,227	91,634	36,217	- 60.5
Total value at current prices (R'000)	9,833	4,726	6,133	53,691	17,957	- 66.6
Dwelling-houses equal to or larger than 80 square metres						
Number of dwelling-houses	80	95	102	258	451	+ 74.8
Total square metres	15,755	18,859	22,728	48,246	81,007	+ 67.9
Total value at current prices (R'000)	20,125	27,108	30,092	58,335	104,905	+ 79.8
Flats and townhouses						
Number of flats and townhouses	12	33	49	116	176	+ 51.7
Total square metres	1,020	2,723	6,377	11,394	22,482	+ 97.3
Total value at current prices (R'000)	901	2,673	7,849	14,850	30,984	+ 108.6
Other residential buildings <sup>1/</sup>						
Total square metres	0	0	1,319	0	6,808	..
Total value at current prices (R'000)	0	0	1,185	0	71,185	..
<b>Total value of residential buildings at current prices (R'000)</b>	<b>30,859</b>	<b>34,507</b>	<b>45,259</b>	<b>126,876</b>	<b>225,031</b>	<b>+ 77.4</b>
<b>Non-residential buildings</b>						
Office and banking space						
Total square metres	530	0	600	1,162	1,289	+ 10.9
Total value at current prices (R'000)	600	0	600	1,550	1,479	- 4.6
Shopping space						
Total square metres	0	4,497	1,634	174	17,900	+10,187.4
Total value at current prices (R'000)	0	6,668	2,260	174	22,832	+13,021.8
Industrial and warehouse space						
Total square metres	2,396	111	2,702	20,644	9,644	- 53.3
Total value at current prices (R'000)	2,563	135	4,003	17,777	11,313	- 36.4
Other non-residential space <sup>2/</sup>						
Total square metres	2,008	420	970	5,722	4,588	- 19.8
Total value at current prices (R'000)	2,997	504	922	7,580	5,097	- 32.8
<b>Total value of non-residential buildings at current prices (R'000)</b>	<b>6,160</b>	<b>7,307</b>	<b>7,785</b>	<b>27,081</b>	<b>40,721</b>	<b>+ 50.4</b>
<b>Additions and alterations</b>						
Dwelling-houses						
Total square metres	7,345	11,602	11,989	35,147	43,731	+ 24.4
Total value at current prices (R'000)	8,112	13,234	13,106	33,592	48,235	+ 43.6
Other buildings <sup>3/</sup>						
Total square metres	832	1,428	750	5,793	5,046	- 12.9
Total value at current prices (R'000)	1,105	2,029	1,035	10,153	13,008	+ 28.1
<b>Total value of additions and alterations at current prices (R'000)</b>	<b>9,217</b>	<b>15,263</b>	<b>14,141</b>	<b>43,745</b>	<b>61,243</b>	<b>+ 40.0</b>
<b>Total value of building plans passed at current prices (R'000)</b>	<b>46,236</b>	<b>57,077</b>	<b>67,185</b>	<b>197,702</b>	<b>326,995</b>	<b>+ 65.4</b>

1/ Other residential buildings include institutions for the disabled, boarding houses, old people's homes, hostels, hotels, motels, guest houses, holiday chalets, entertainment centres, bed-and-breakfast accommodation and casinos.

2/ Other non-residential space includes churches, sport and recreation clubs, schools, crèches, hospitals and all other non-residential space.

3/ Other buildings include additions and alterations to other residential buildings, non-residential buildings and internal alterations.

**Table 18 - Building plans passed according to type of building and province: Northern Province**

Type of building	April 2001	March 2002	April 2002	January 2001 to April 2001	January 2002 to April 2002	Percentage change between January 2001 to April 2001 and January 2002 to April 2002
<b>Residential buildings</b>						
Dwelling-houses smaller than 80 square metres						
Number of dwelling-houses	33	23	30	139	98	-29.5
Total square metres	2,095	1,327	1,729	8,330	5,730	-31.2
Total value at current prices (R'000)	2,948	1,886	2,613	10,885	8,350	-23.3
Dwelling-houses equal to or larger than 80 square metres						
Number of dwelling-houses	34	39	68	151	191	+ 26.5
Total square metres	6,593	7,296	15,277	27,262	38,081	+ 39.7
Total value at current prices (R'000)	8,880	9,475	22,187	36,855	52,486	+ 42.4
Flats and townhouses						
Number of flats and townhouses	5	0	26	18	53	+ 194.4
Total square metres	603	0	3,663	3,029	6,902	+ 127.9
Total value at current prices (R'000)	684	0	6,648	3,793	11,001	+ 190.0
Other residential buildings <sup>1/</sup>						
Total square metres	192	0	0	192	0	..
Total value at current prices (R'000)	96	0	0	96	0	..
<b>Total value of residential buildings at current prices (R'000)</b>	<b>12,608</b>	<b>11,361</b>	<b>31,448</b>	<b>51,629</b>	<b>71,837</b>	<b>+ 39.1</b>
<b>Non-residential buildings</b>						
Office and banking space						
Total square metres	580	0	275	580	729	+ 25.7
Total value at current prices (R'000)	608	0	495	608	1,250	+ 105.6
Shopping space						
Total square metres	1,248	1,573	118	7,382	2,669	-63.8
Total value at current prices (R'000)	1,000	2,819	200	10,980	4,657	-57.6
Industrial and warehouse space						
Total square metres	0	0	361	0	839	..
Total value at current prices (R'000)	0	0	458	0	1,058	..
Other non-residential space <sup>2/</sup>						
Total square metres	205	343	846	475	1,452	+ 205.7
Total value at current prices (R'000)	200	723	1,664	500	2,832	+ 466.4
<b>Total value of non-residential buildings at current prices (R'000)</b>	<b>1,808</b>	<b>3,542</b>	<b>2,817</b>	<b>12,088</b>	<b>9,797</b>	<b>-19.0</b>
<b>Additions and alterations</b>						
Dwelling-houses						
Total square metres	3,180	3,322	4,330	14,636	15,171	+ 3.7
Total value at current prices (R'000)	3,957	4,156	6,007	18,490	20,441	+ 10.6
Other buildings <sup>3/</sup>						
Total square metres	1,707	108	1,384	4,544	8,046	+ 77.1
Total value at current prices (R'000)	3,578	384	2,005	10,610	12,474	+ 17.6
<b>Total value of additions and alterations at current prices (R'000)</b>	<b>7,535</b>	<b>4,540</b>	<b>8,012</b>	<b>29,100</b>	<b>32,915</b>	<b>+ 13.1</b>
<b>Total value of building plans passed at current prices (R'000)</b>	<b>21,951</b>	<b>19,443</b>	<b>42,277</b>	<b>92,817</b>	<b>114,549</b>	<b>+ 23.4</b>

1/ Other residential buildings include institutions for the disabled, boarding houses, old people's homes, hostels, hotels, motels, guest houses, holiday chalets, entertainment centres, bed-and-breakfast accommodation and casinos.

2/ Other non-residential space includes churches, sport and recreation clubs, schools, crèches, hospitals and all other non-residential space.

3/ Other buildings include additions and alterations to other residential buildings, non-residential buildings and internal alterations.

Table 19 - Buildings completed according to type of building: Total RSA

Type of building	April 2001 *	March 2002*	April 2002	January 2001 to April 2001	January 2002 to April 2002	Percentage change between January 2001 to April 2001 and January 2002 to April 2002
<b>Residential buildings</b>						
Dwelling-houses smaller than 80 square metres						
Number of dwelling-houses	1,687	1,912	3,552	7,922	9,452	+ 19.3
Total square metres	69,244	73,384	132,138	315,923	354,936	+ 12.3
Total value at current prices (R'000)	53,684	64,920	106,123	265,212	316,085	+ 19.2
Dwelling-houses equal to or larger than 80 square metres						
Number of dwelling-houses	833	1,167	1,187	3,664	4,132	+ 12.8
Total square metres	164,339	218,454	251,499	727,126	846,593	+ 16.4
Total value at current prices (R'000)	222,138	315,013	376,694	948,279	1,250,698	+ 31.9
Flats and townhouses						
Number of flats and townhouses	609	711	763	2,591	3,765	+ 45.3
Total square metres	65,752	65,273	95,605	261,569	388,670	+ 48.6
Total value at current prices (R'000)	90,153	99,395	141,884	377,160	583,065	+ 54.6
Other residential buildings <sup>1/</sup>						
Total square metres	48	18,443	7,591	80,194	30,225	- 62.3
Total value at current prices (R'000)	86	212,818	9,753	336,947	227,508	- 32.5
<b>Total value of residential buildings at current prices (R'000)</b>	<b>366,061</b>	<b>692,146</b>	<b>634,454</b>	<b>1,927,598</b>	<b>2,377,356</b>	<b>+ 23.3</b>
<b>Non-residential buildings</b>						
Office and banking space						
Total square metres	16,915	41,849	72,912	203,837	184,106	- 9.7
Total value at current prices (R'000)	29,830	81,009	132,528	326,217	330,802	+ 1.4
Shopping space						
Total square metres	21,139	10,714	23,267	87,017	74,972	- 13.8
Total value at current prices (R'000)	25,791	15,853	42,870	111,711	107,874	- 3.4
Industrial and warehouse space						
Total square metres	58,542	19,608	43,089	279,583	133,820	- 52.1
Total value at current prices (R'000)	77,679	23,119	56,791	327,358	160,663	- 50.9
Other non-residential space <sup>2/</sup>						
Total square metres	29,704	25,778	12,267	73,102	58,024	- 20.6
Total value at current prices (R'000)	36,496	49,868	16,074	88,201	93,899	+ 6.5
<b>Total value of non-residential buildings at current prices (R'000)</b>	<b>169,796</b>	<b>169,849</b>	<b>248,263</b>	<b>853,487</b>	<b>693,238</b>	<b>- 18.8</b>
<b>Additions and alterations</b>						
Dwelling-houses						
Total square metres	98,815	98,935	146,267	456,627	460,020	+ 0.7
Total value at current prices (R'000)	113,551	125,747	186,363	537,675	574,438	+ 6.8
Other buildings <sup>3/</sup>						
Total square metres	45,601	22,404	130,120	183,072	214,491	+ 17.2
Total value at current prices (R'000)	71,990	44,273	193,103	379,956	344,044	- 9.5
<b>Total value of additions and alterations at current prices (R'000)</b>	<b>185,541</b>	<b>170,020</b>	<b>379,466</b>	<b>917,631</b>	<b>918,482</b>	<b>+ 0.1</b>
<b>Total value of buildings completed at current prices (R'000)</b>	<b>721,398</b>	<b>1,032,015</b>	<b>1,262,183</b>	<b>3,698,716</b>	<b>3,989,076</b>	<b>+ 7.9</b>

1/ Other residential buildings include institutions for the disabled, boarding houses, old people's homes, hostels, hotels, motels, guest houses, holiday chalets, entertainment centres, bed-and-breakfast accommodation and casinos.

2/ Other non-residential space includes churches, sport and recreation clubs, schools, crèches, hospitals and all other non-residential space.

3/ Other buildings include additions and alterations to other residential buildings, non-residential buildings and internal alterations.

**Table 20 - Buildings completed according to type of building and province: Western Cape**

Type of building	April 2001*	March 2002	April 2002	January 2001 to April 2001	January 2002 to April 2002	Percentage change between January 2001 to April 2001 and January 2002 to April 2002
<b>Residential buildings</b>						
Dwelling-houses smaller than 80 square metres						
Number of dwelling-houses	226	415	686	1,606	2,604	+ 62.1
Total square metres	9,423	14,939	26,372	56,339	95,142	+ 68.9
Total value at current prices (R'000)	10,619	16,103	33,902	63,770	112,164	+ 75.9
Dwelling-houses equal to or larger than 80 square metres						
Number of dwelling-houses	266	408	483	1,223	1,555	+ 27.1
Total square metres	50,253	78,444	85,382	234,269	298,645	+ 27.5
Total value at current prices (R'000)	74,402	124,153	131,903	304,687	466,984	+ 53.3
Flats and townhouses						
Number of flats and townhouses	118	86	144	425	667	+ 56.9
Total square metres	11,322	9,903	23,427	41,685	87,809	+ 110.6
Total value at current prices (R'000)	14,031	14,695	33,757	55,275	143,087	+ 158.9
Other residential buildings <sup>1/</sup>						
Total square metres	48	0	2,100	26,725	2,773	- 89.6
Total value at current prices (R'000)	86	0	3,129	30,207	4,122	- 86.4
<b>Total value of residential buildings at current prices (R'000)</b>	<b>99,138</b>	<b>154,951</b>	<b>202,691</b>	<b>453,939</b>	<b>726,357</b>	<b>+ 60.0</b>
<b>Non-residential buildings</b>						
Office and banking space						
Total square metres	3,519	3,430	22,219	46,568	39,721	- 14.7
Total value at current prices (R'000)	5,872	7,145	32,268	89,518	59,157	- 33.9
Shopping space						
Total square metres	8,397	623	10,006	19,684	31,291	+ 59.0
Total value at current prices (R'000)	10,037	1,134	14,216	26,442	38,690	+ 46.3
Industrial and warehouse space						
Total square metres	5,364	5,346	13,836	45,045	30,755	- 31.7
Total value at current prices (R'000)	6,462	5,813	15,900	54,688	32,381	- 40.8
Other non-residential space <sup>2/</sup>						
Total square metres	5,082	16,742	4,444	28,429	27,201	- 4.3
Total value at current prices (R'000)	3,347	36,892	4,481	26,430	48,924	+ 85.1
<b>Total value of non-residential buildings at current prices (R'000)</b>	<b>25,718</b>	<b>50,984</b>	<b>66,865</b>	<b>197,078</b>	<b>179,152</b>	<b>- 9.1</b>
<b>Additions and alterations</b>						
Dwelling-houses						
Total square metres	31,508	28,085	42,501	166,069	142,490	- 14.2
Total value at current prices (R'000)	39,049	38,138	56,801	209,423	189,742	- 9.4
Other buildings <sup>3/</sup>						
Total square metres	7,732	3,246	76,565	50,201	102,030	+ 103.2
Total value at current prices (R'000)	9,358	9,020	102,140	162,803	152,999	- 6.0
<b>Total value of additions and alterations at current prices (R'000)</b>	<b>48,407</b>	<b>47,158</b>	<b>158,941</b>	<b>372,226</b>	<b>342,741</b>	<b>- 7.9</b>
<b>Total value of buildings completed at current prices (R'000)</b>	<b>173,263</b>	<b>253,093</b>	<b>428,497</b>	<b>1,023,243</b>	<b>1,248,250</b>	<b>22.0</b>

1/ Other residential buildings include institutions for the disabled, boarding houses, old people's homes, hostels, hotels, motels, guest houses, holiday chalets, entertainment centres, bed-and-breakfast accommodation and casinos.

2/ Other non-residential space includes churches, sport and recreation clubs, schools, crèches, hospitals and all other non-residential space.

3/ Other buildings include additions and alterations to other residential buildings, non-residential buildings and internal alterations.

**Table 21 - Buildings completed according to type of building and province: Eastern Cape**

Type of building	April 2001	March 2002	April 2002	January 2001 to April 2001	January 2002 to April 2002	Percentage change between January 2001 to April 2001 and January 2002 to April 2002
<b>Residential buildings</b>						
Dwelling-houses smaller than 80 square metres						
Number of dwelling-houses	324	171	274	1,165	718	- 38.4
Total square metres	14,057	7,576	11,358	50,454	31,512	- 37.5
Total value at current prices (R'000)	9,174	10,399	14,400	41,535	40,724	- 2.0
Dwelling-houses equal to or larger than 80 square metres						
Number of dwelling-houses	127	40	69	304	227	- 25.3
Total square metres	16,486	7,197	12,076	40,771	38,684	- 5.1
Total value at current prices (R'000)	21,060	10,010	15,044	50,378	49,948	- 0.9
Flats and townhouses						
Number of flats and townhouses	69	294	0	92	299	+ 225.0
Total square metres	6,658	14,361	0	8,752	15,146	+ 73.1
Total value at current prices (R'000)	5,956	20,699	0	8,948	21,785	+ 143.5
Other residential buildings <sup>1/</sup>						
Total square metres	0	2,744	0	4,347	2,744	- 36.9
Total value at current prices (R'000)	0	3,312	0	7,000	3,312	- 52.7
<b>Total value of residential buildings at current prices (R'000)</b>	<b>36,190</b>	<b>44,420</b>	<b>29,444</b>	<b>107,861</b>	<b>115,769</b>	<b>+ 7.3</b>
<b>Non-residential buildings</b>						
Office and banking space						
Total square metres	91	25	551	1,444	576	-60.1
Total value at current prices (R'000)	119	50	1,135	2,367	1,185	-49.9
Shopping space						
Total square metres	4,361	77	302	8,560	2,779	- 67.5
Total value at current prices (R'000)	7,126	103	369	13,633	3,520	- 74.2
Industrial and warehouse space						
Total square metres	23,047	0	0	91,835	478	- 99.5
Total value at current prices (R'000)	29,039	0	0	92,516	392	- 99.6
Other non-residential space <sup>2/</sup>						
Total square metres	12,216	491	0	16,265	2,300	-85.9
Total value at current prices (R'000)	12,959	736	0	20,486	2,664	-87.0
<b>Total value of non-residential buildings at current prices (R'000)</b>	<b>49,243</b>	<b>889</b>	<b>1,504</b>	<b>129,002</b>	<b>7,761</b>	<b>- 94.0</b>
<b>Additions and alterations</b>						
Dwelling-houses						
Total square metres	8,669	9,783	11,610	30,104	37,284	+ 23.9
Total value at current prices (R'000)	10,461	11,222	14,172	34,865	44,239	+ 26.9
Other buildings <sup>3/</sup>						
Total square metres	6,393	3,843	7,012	22,848	17,260	- 24.5
Total value at current prices (R'000)	8,873	5,150	9,044	30,606	22,934	- 25.1
<b>Total value of additions and alterations at current prices (R'000)</b>	<b>19,334</b>	<b>16,372</b>	<b>23,216</b>	<b>65,471</b>	<b>67,173</b>	<b>+ 2.6</b>
<b>Total value of buildings completed at current prices (R'000)</b>	<b>104,767</b>	<b>61,681</b>	<b>54,164</b>	<b>302,334</b>	<b>190,703</b>	<b>- 36.9</b>

1/ Other residential buildings include institutions for the disabled, boarding houses, old people's homes, hostels, hotels, motels, guest houses, holiday chalets, entertainment centres, bed-and-breakfast accommodation and casinos.

2/ Other non-residential space includes churches, sport and recreation clubs, schools, crèches, hospitals and all other non-residential space.

3/ Other buildings include additions and alterations to other residential buildings, non-residential buildings and internal alterations.

Table 22 - Buildings completed according to type of building and province: Northern Cape

Type of building	April 2001*	March 2002	April 2002	January 2001 to April 2001	January 2002 to April 2002	Percentage change between January 2001 to April 2001 and January 2002 to April 2002
<b>Residential buildings</b>						
Dwelling-houses smaller than 80 square metres						
Number of dwelling-houses	8	8	19	59	35	- 40.7
Total square metres	421	430	987	2,781	1,758	- 36.8
Total value at current prices (R'000)	732	685	1,556	3,720	2,519	- 32.3
Dwelling-houses equal to or larger than 80 square metres						
Number of dwelling-houses	31	2	5	59	19	- 67.8
Total square metres	4,950	193	1,325	10,220	3,198	- 68.7
Total value at current prices (R'000)	5,110	270	1,892	12,445	4,302	- 65.4
Flats and townhouses						
Number of flats and townhouses	9	0	1	14	1	- 92.9
Total square metres	892	0	180	1,312	180	- 86.3
Total value at current prices (R'000)	1,323	0	252	1,911	252	- 86.8
Other residential buildings <sup>1/</sup>						
Total square metres	0	0	0	346	0	..
Total value at current prices (R'000)	0	0	0	277	0	..
<b>Total value of residential buildings at current prices (R'000)</b>	<b>7,165</b>	<b>955</b>	<b>3,700</b>	<b>18,353</b>	<b>7,073</b>	<b>- 61.5</b>
<b>Non-residential buildings</b>						
Office and banking space						
Total square metres	0	0	0	7,105	0	..
Total value at current prices (R'000)	0	0	0	15,631	0	..
Shopping space						
Total square metres	2,118	0	0	3,320	784	-76.4
Total value at current prices (R'000)	2,258	0	0	5,143	1,098	- 78.7
Industrial and warehouse space						
Total square metres	854	0	0	854	0	..
Total value at current prices (R'000)	691	0	0	691	0	..
Other non-residential space <sup>2/</sup>						
Total square metres	0	465	157	181	622	+ 243.6
Total value at current prices (R'000)	0	433	345	289	778	+ 169.2
<b>Total value of non-residential buildings at current prices (R'000)</b>	<b>2,949</b>	<b>433</b>	<b>345</b>	<b>21,754</b>	<b>1,876</b>	<b>- 91.4</b>
<b>Additions and alterations</b>						
Dwelling-houses						
Total square metres	2,025	2,438	2,390	6,031	8,491	+ 40.8
Total value at current prices (R'000)	3,095	2,902	3,370	9,358	11,450	+ 22.4
Other buildings <sup>3/</sup>						
Total square metres	866	315	706	1,770	1,153	- 34.9
Total value at current prices (R'000)	2,075	881	1,786	3,491	3,589	+ 2.8
<b>Total value of additions and alterations at current prices (R'000)</b>	<b>5,170</b>	<b>3,783</b>	<b>5,156</b>	<b>12,849</b>	<b>15,039</b>	<b>+ 17.0</b>
<b>Total value of buildings completed at current prices (R'000)</b>	<b>15,284</b>	<b>5,171</b>	<b>9,201</b>	<b>52,956</b>	<b>23,988</b>	<b>-54.7</b>

1/ Other residential buildings include institutions for the disabled, boarding houses, old people's homes, hostels, hotels, motels, guest houses, holiday chalets, entertainment centres, bed-and-breakfast accommodation and casinos.

2/ Other non-residential space includes churches, sport and recreation clubs, schools, crèches, hospitals and all other non-residential space.

3/ Other buildings include additions and alterations to other residential buildings, non-residential buildings and internal alterations.

Table 23 - Buildings completed according to type of building and province: Free State

Type of building	April 2001*	March 2002	April 2002	January 2001 to April 2001	January 2002 to April 2002	Percentage change between January 2001 to April 2001 and January 2002 to April 2002
<b>Residential buildings</b>						
Dwelling-houses smaller than 80 square metres						
Number of dwelling-houses	347	55	138	542	316	-41.7
Total square metres	14,233	2,419	7,765	22,657	16,164	-28.7
Total value at current prices (R'000)	7,959	1,414	6,625	13,540	12,356	-8.7
Dwelling-houses equal to or larger than 80 square metres						
Number of dwelling-houses	31	31	37	135	105	-22.2
Total square metres	5,160	4,831	6,234	24,145	18,107	-25.0
Total value at current prices (R'000)	5,782	5,977	7,687	27,478	21,838	-20.5
Flats and townhouses						
Number of flats and townhouses	45	0	9	118	45	-61.9
Total square metres	2,533	0	938	9,297	4,874	-47.6
Total value at current prices (R'000)	3,515	0	1,124	12,719	7,588	-40.3
Other residential buildings <sup>1/</sup>						
Total square metres	0	0	0	151	1,428	+ 845.7
Total value at current prices (R'000)	0	0	0	211	1,461	+ 592.4
<b>Total value of residential buildings at current prices (R'000)</b>	<b>17,256</b>	<b>7,391</b>	<b>15,436</b>	<b>53,948</b>	<b>43,243</b>	<b>-19.8</b>
<b>Non-residential buildings</b>						
Office and banking space						
Total square metres	0	0	0	1,094	2,055	+ 87.8
Total value at current prices (R'000)	0	0	0	903	3,855	+ 326.9
Shopping space						
Total square metres	491	710	564	2,541	1,904	-25.1
Total value at current prices (R'000)	280	2,000	659	2,280	3,159	+ 38.6
Industrial and warehouse space						
Total square metres	1,852	808	0	9,972	3,650	-63.4
Total value at current prices (R'000)	1,734	409	0	8,844	2,689	-69.6
Other non-residential space <sup>2/</sup>						
Total square metres	5,410	0	3,105	5,917	3,280	-44.6
Total value at current prices (R'000)	11,284	0	4,768	11,843	4,899	-58.6
<b>Total value of non-residential buildings at current prices (R'000)</b>	<b>13,298</b>	<b>2,409</b>	<b>5,427</b>	<b>23,870</b>	<b>14,602</b>	<b>-38.8</b>
<b>Additions and alterations</b>						
Dwelling-houses						
Total square metres	4,609	3,777	7,638	22,248	28,904	+ 29.9
Total value at current prices (R'000)	5,015	4,024	8,113	23,308	31,827	+ 36.5
Other buildings <sup>3/</sup>						
Total square metres	1,926	1,303	1,184	5,872	5,456	-7.1
Total value at current prices (R'000)	3,471	1,220	2,315	8,966	10,885	+ 21.4
<b>Total value of additions and alterations at current prices (R'000)</b>	<b>8,486</b>	<b>5,244</b>	<b>10,428</b>	<b>32,274</b>	<b>42,712</b>	<b>+ 32.3</b>
<b>Total value of buildings completed at current prices (R'000)</b>	<b>39,040</b>	<b>15,044</b>	<b>31,291</b>	<b>110,092</b>	<b>100,557</b>	<b>-8.7</b>

1/ Other residential buildings include institutions for the disabled, boarding houses, old people's homes, hostels, hotels, motels, guest houses, holiday chalets, entertainment centres, bed-and-breakfast accommodation and casinos.

2/ Other non-residential space includes churches, sport and recreation clubs, schools, crèches, hospitals and all other non-residential space.

3/ Other buildings include additions and alterations to other residential buildings, non-residential buildings and internal alterations.



**Table 24 - Buildings completed according to type of building and province: KwaZulu-Natal**

Type of building	April 2001	March 2002*	April 2002	January 2001 to April 2001	January 2002 to April 2002	Percentage change between January 2001 to April 2001 and January 2002 to April 2002
<b>Residential buildings</b>						
Dwelling-houses smaller than 80 square metres						
Number of dwelling-houses	144	275	252	870	724	-16.8
Total square metres	5,627	10,506	10,264	40,980	30,643	-25.2
Total value at current prices (R'000)	5,432	9,345	9,708	34,795	30,616	-12.0
Dwelling-houses equal to or larger than 80 square metres						
Number of dwelling-houses	109	113	128	489	446	-8.8
Total square metres	21,464	22,905	24,013	99,028	86,566	-12.6
Total value at current prices (R'000)	28,059	32,259	32,587	128,050	118,296	-7.6
Flats and townhouses						
Number of flats and townhouses	20	43	114	409	267	-34.7
Total square metres	4,136	3,663	12,582	44,472	33,849	-23.9
Total value at current prices (R'000)	4,921	5,213	22,163	61,688	57,280	-7.1
Other residential buildings <sup>1/</sup>						
Total square metres	0	0	3,177	8,450	3,177	-62.4
Total value at current prices (R'000)	0	0	3,177	40,000	3,177	-92.1
<b>Total value of residential buildings at current prices (R'000)</b>	<b>38,412</b>	<b>46,817</b>	<b>67,635</b>	<b>264,533</b>	<b>209,369</b>	<b>-20.9</b>
<b>Non-residential buildings</b>						
Office and banking space						
Total square metres	5,583	24,070	12,353	18,492	56,016	+ 202.9
Total value at current prices (R'000)	11,326	51,888	31,800	33,733	119,258	+ 253.5
Shopping space						
Total square metres	4,053	3,186	9,589	16,386	18,903	+ 15.4
Total value at current prices (R'000)	4,114	3,302	23,487	29,895	33,562	+ 12.3
Industrial and warehouse space						
Total square metres	13,351	6,901	15,395	55,462	52,766	-4.9
Total value at current prices (R'000)	13,941	6,682	20,271	59,260	55,519	-6.3
Other non-residential space <sup>2/</sup>						
Total square metres	2,691	2,297	4,194	7,673	12,082	+ 57.5
Total value at current prices (R'000)	2,430	3,584	6,180	8,470	18,531	+ 118.8
<b>Total value of non-residential buildings at current prices (R'000)</b>	<b>31,811</b>	<b>65,456</b>	<b>81,738</b>	<b>131,358</b>	<b>226,870</b>	<b>+ 72.7</b>
<b>Additions and alterations</b>						
Dwelling-houses						
Total square metres	25,420	23,127	26,930	101,493	89,747	-11.6
Total value at current prices (R'000)	28,581	26,068	30,931	115,431	100,211	-13.2
Other buildings <sup>3/</sup>						
Total square metres	15,595	5,657	31,779	35,456	48,202	+ 35.9
Total value at current prices (R'000)	26,796	13,586	57,878	66,962	88,078	+ 31.5
<b>Total value of additions and alterations at current prices (R'000)</b>	<b>55,377</b>	<b>39,654</b>	<b>88,809</b>	<b>182,393</b>	<b>188,289</b>	<b>+ 3.2</b>
<b>Total value of buildings completed at current prices (R'000)</b>	<b>125,600</b>	<b>151,927</b>	<b>238,182</b>	<b>578,284</b>	<b>624,528</b>	<b>+ 8.0</b>

1/ Other residential buildings include institutions for the disabled, boarding houses, old people's homes, hostels, hotels, motels, guest houses, holiday chalets, entertainment centres, bed-and-breakfast accommodation and casinos.

2/ Other non-residential space includes churches, sport and recreation clubs, schools, crèches, hospitals and all other non-residential space.

3/ Other buildings include additions and alterations to other residential buildings, non-residential buildings and internal alterations.

**Table 25 - Buildings completed according to type of building and province: North West**

Type of building	April 2001	March 2002	April 2002	January 2001 to April 2001	January 2002 to April 2002	Percentage change between January 2001 to April 2001 and January 2002 to April 2002
<b>Residential buildings</b>						
Dwelling-houses smaller than 80 square metres						
Number of dwelling-houses	60	58	909	307	1,294	+ 321.5
Total square metres	3,069	2,909	28,645	15,541	42,421	+ 173.0
Total value at current prices (R'000)	3,975	3,022	9,193	17,897	17,577	- 1.8
Dwelling-houses equal to or larger than 80 square metres						
Number of dwelling-houses	29	44	44	149	196	+ 31.5
Total square metres	7,572	8,240	8,547	27,711	34,196	+ 23.4
Total value at current prices (R'000)	8,372	11,248	12,033	32,928	50,681	+ 53.9
Flats and townhouses						
Number of flats and townhouses	34	14	0	52	170	+ 226.9
Total square metres	3,359	2,288	0	5,548	10,591	+ 90.9
Total value at current prices (R'000)	3,380	2,343	0	5,744	14,227	+ 147.7
Other residential buildings <sup>1/</sup>						
Total square metres	0	0	0	2,963	2,090	- 29.5
Total value at current prices (R'000)	0	0	0	3,556	2,483	- 30.2
<b>Total value of residential buildings at current prices (R'000)</b>	<b>15,727</b>	<b>16,613</b>	<b>21,226</b>	<b>60,125</b>	<b>84,968</b>	<b>+ 41.3</b>
<b>Non-residential buildings</b>						
Office and banking space						
Total square metres	0	446	237	750	683	- 8.9
Total value at current prices (R'000)	0	800	300	1,400	1,100	- 21.4
Shopping space						
Total square metres	220	2,967	0	1,599	3,542	+ 121.5
Total value at current prices (R'000)	352	3,642	0	2,442	4,045	+ 65.6
Industrial and warehouse space						
Total square metres	0	551	985	1,611	2,382	+ 47.9
Total value at current prices (R'000)	0	500	1,490	1,960	2,595	+ 32.4
Other non-residential space <sup>2/</sup>						
Total square metres	209	578	367	2,083	2,660	+ 27.7
Total value at current prices (R'000)	177	952	300	2,315	4,403	+ 90.2
<b>Total value of non-residential buildings at current prices (R'000)</b>	<b>529</b>	<b>5,894</b>	<b>2,090</b>	<b>8,117</b>	<b>12,143</b>	<b>+ 49.6</b>
<b>Additions and alterations</b>						
Dwelling-houses						
Total square metres	4,384	2,277	3,208	12,768	16,110	+ 26.2
Total value at current prices (R'000)	3,258	2,270	3,933	11,653	15,558	+ 33.5
Other buildings <sup>3/</sup>						
Total square metres	2,554	939	272	7,945	2,216	- 72.1
Total value at current prices (R'000)	2,569	1,543	576	10,567	3,272	- 69.0
<b>Total value of additions and alterations at current prices (R'000)</b>	<b>5,827</b>	<b>3,813</b>	<b>4,509</b>	<b>22,220</b>	<b>18,830</b>	<b>- 15.3</b>
<b>Total value of buildings completed at current prices (R'000)</b>	<b>22,083</b>	<b>26,320</b>	<b>27,825</b>	<b>90,462</b>	<b>115,941</b>	<b>+ 28.2</b>

1/ Other residential buildings include institutions for the disabled, boarding houses, old people's homes, hostels, hotels, motels, guest houses, holiday chalets, entertainment centres, bed-and-breakfast accommodation and casinos.

2/ Other non-residential space includes churches, sport and recreation clubs, schools, crèches, hospitals and all other non-residential space.

3/ Other buildings include additions and alterations to other residential buildings, non-residential buildings and internal alterations.

**Table 26 - Buildings completed according to type of building and province: Gauteng**

Type of building	April 2001*	March 2002	April 2002	January 2001 to April 2001	January 2002 to April 2002	Percentage change between January 2001 to April 2001 and January 2002 to April 2002
<b>Residential buildings</b>						
Dwelling-houses smaller than 80 square metres						
Number of dwelling-houses	223	527	820	1,957	2,540	+ 29.8
Total square metres	10,147	18,750	29,507	76,325	89,659	+ 17.5
Total value at current prices (R'000)	10,910	15,747	22,330	63,503	72,793	+ 14.6
Dwelling-houses equal to or larger than 80 square metres						
Number of dwelling-houses	208	492	383	1,094	1,417	+ 29.5
Total square metres	52,252	90,361	107,380	254,591	338,655	+ 33.0
Total value at current prices (R'000)	73,308	123,185	167,357	352,407	504,141	+ 43.1
Flats and townhouses						
Number of flats and townhouses	305	265	491	1,444	2,293	+ 58.8
Total square metres	35,819	33,997	58,043	145,768	232,899	+ 59.8
Total value at current prices (R'000)	55,976	55,496	84,011	226,020	335,449	+ 48.4
Other residential buildings <sup>1/</sup>						
Total square metres	0	1,740	2,314	34,212	4,054	-88.2
Total value at current prices (R'000)	0	2,000	3,447	252,096	5,447	-97.8
<b>Total value of residential buildings at current prices (R'000)</b>	<b>140,194</b>	<b>196,428</b>	<b>277,145</b>	<b>894,026</b>	<b>917,830</b>	<b>+ 2.7</b>
<b>Non-residential buildings</b>						
Office and banking space						
Total square metres	4,844	13,878	37,552	121,121	85,055	-29.8
Total value at current prices (R'000)	9,513	21,126	67,025	164,765	146,247	-11.2
Shopping space						
Total square metres	911	1,015	2,806	13,277	11,469	-13.6
Total value at current prices (R'000)	1,094	1,572	4,139	18,876	16,765	-11.2
Industrial and warehouse space						
Total square metres	14,074	6,002	12,873	74,804	42,931	-42.6
Total value at current prices (R'000)	25,812	9,715	19,130	109,399	66,251	-39.4
Other non-residential space <sup>2/</sup>						
Total square metres	3,255	4,340	0	9,776	8,541	-12.6
Total value at current prices (R'000)	5,458	6,450	0	15,020	12,679	-15.6
<b>Total value of non-residential buildings at current prices (R'000)</b>	<b>41,877</b>	<b>38,863</b>	<b>90,294</b>	<b>308,060</b>	<b>241,942</b>	<b>-21.5</b>
<b>Additions and alterations</b>						
Dwelling-houses						
Total square metres	17,239	25,020	48,249	93,517	121,681	+ 30.1
Total value at current prices (R'000)	20,519	36,130	65,289	112,690	166,131	+ 47.4
Other buildings <sup>3/</sup>						
Total square metres	10,054	7,101	12,058	44,753	35,771	-20.1
Total value at current prices (R'000)	18,509	12,873	18,537	75,306	58,548	-22.3
<b>Total value of additions and alterations at current prices (R'000)</b>	<b>39,028</b>	<b>49,003</b>	<b>83,826</b>	<b>187,996</b>	<b>224,679</b>	<b>+ 19.5</b>
<b>Total value of buildings completed at current prices (R'000)</b>	<b>221,099</b>	<b>284,294</b>	<b>451,265</b>	<b>1,390,082</b>	<b>1,384,451</b>	<b>-0.4</b>

1/ Other residential buildings include institutions for the disabled, boarding houses, old people's homes, hostels, hotels, motels, guest houses, holiday chalets, entertainment centres, bed-and-breakfast accommodation and casinos.

2/ Other non-residential space includes churches, sport and recreation clubs, schools, crèches, hospitals and all other non-residential space.

3/ Other buildings include additions and alterations to other residential buildings, non-residential buildings and internal alterations.

Table 27 - Buildings completed according to type of building and province: Mpumalanga

Type of building	April 2001	March 2002	April 2002	January 2001 to April 2001	January 2002 to April 2002	Percentage change between January 2001 to April 2001 and January 2002 to April 2002
<b>Residential buildings</b>						
Dwelling-houses smaller than 80 square metres						
Number of dwelling-houses	321	385	441	1,196	1,156	-3.3
Total square metres	10,877	14,861	16,424	40,662	43,718	+ 7.5
Total value at current prices (R'000)	4,214	6,796	7,074	18,248	21,354	+ 17.0
Dwelling-houses equal to or larger than 80 square metres						
Number of dwelling-houses	21	23	33	143	125	-12.6
Total square metres	4,172	3,714	5,736	25,139	22,067	-12.2
Total value at current prices (R'000)	3,527	4,553	7,063	24,867	25,464	+ 2.4
Flats and townhouses						
Number of flats and townhouses	6	9	4	23	18	-21.7
Total square metres	649	1,061	435	2,138	2,734	+ 27.9
Total value at current prices (R'000)	514	949	577	1,788	2,574	+ 44.0
Other residential buildings <sup>1/</sup>						
Total square metres	0	0	0	0	0	..
Total value at current prices (R'000)	0	0	0	0	0	..
<b>Total value of residential buildings at current prices (R'000)</b>	<b>8,255</b>	<b>12,298</b>	<b>14,714</b>	<b>44,903</b>	<b>49,392</b>	<b>+ 10.0</b>
<b>Non-residential buildings</b>						
Office and banking space						
Total square metres	2,878	0	0	7,263	0	..
Total value at current prices (R'000)	3,000	0	0	17,900	0	..
Shopping space						
Total square metres	0	2,136	0	21,062	2,444	-88.4
Total value at current prices (R'000)	0	4,100	0	12,470	4,562	-63.4
Industrial and warehouse space						
Total square metres	0	0	0	0	858	..
Total value at current prices (R'000)	0	0	0	0	836	..
Other non-residential space <sup>2/</sup>						
Total square metres	841	865	0	2,526	1,338	-47.0
Total value at current prices (R'000)	841	821	0	2,794	1,021	-63.5
<b>Total value of non-residential buildings at current prices (R'000)</b>	<b>3,841</b>	<b>4,921</b>	<b>0</b>	<b>33,164</b>	<b>6,419</b>	<b>-80.6</b>
<b>Additions and alterations</b>						
Dwelling-houses						
Total square metres	4,403	4,021	3,461	21,722	14,117	-35.0
Total value at current prices (R'000)	2,856	4,390	3,297	17,819	13,360	-25.0
Other buildings <sup>3/</sup>						
Total square metres	481	0	544	12,482	1,232	-90.1
Total value at current prices (R'000)	339	0	827	17,140	2,099	-87.8
<b>Total value of additions and alterations at current prices (R'000)</b>	<b>3,195</b>	<b>4,390</b>	<b>4,124</b>	<b>34,959</b>	<b>15,459</b>	<b>-55.8</b>
<b>Total value of buildings completed at current prices (R'000)</b>	<b>15,291</b>	<b>21,609</b>	<b>18,838</b>	<b>113,026</b>	<b>71,270</b>	<b>-36.9</b>

1/ Other residential buildings include institutions for the disabled, boarding houses, old people's homes, hostels, hotels, motels, guest houses, holiday chalets, entertainment centres, bed-and-breakfast accommodation and casinos.

2/ Other non-residential space includes churches, sport and recreation clubs, schools, crèches, hospitals and all other non-residential space.

3/ Other buildings include additions and alterations to other residential buildings, non-residential buildings and internal alterations.

**Table 28 - Buildings completed according to type of building and province: Northern Province**

Type of building	April 2001*	March 2002	April 2002	January 2001 to April 2001	January 2002 to April 2002	Percentage change between January 2001 to April 2001 and January 2002 to April 2002
<b>Residential buildings</b>						
Dwelling-houses smaller than 80 square metres						
Number of dwelling-houses	34	18	13	220	65	-70.5
Total square metres	1,390	994	816	10,184	3,919	-61.5
Total value at current prices (R'000)	669	1,409	1,335	8,204	5,982	-27.1
Dwelling-houses equal to or larger than 80 square metres						
Number of dwelling-houses	11	14	5	68	42	-38.2
Total square metres	2,030	2,569	806	11,252	6,475	-42.5
Total value at current prices (R'000)	2,518	3,358	1,128	15,039	9,044	-39.9
Flats and townhouses						
Number of flats and townhouses	3	0	0	14	5	-64.3
Total square metres	384	0	0	2,597	588	-77.4
Total value at current prices (R'000)	537	0	0	3,067	823	-73.2
Other residential buildings <sup>1/</sup>						
Total square metres	0	13,959	0	3,000	13,959	+ 365.3
Total value at current prices (R'000)	0	207,506	0	3,600	207,506	+ 5,664.1
<b>Total value of residential buildings at current prices (R'000)</b>	<b>3,724</b>	<b>212,273</b>	<b>2,463</b>	<b>29,910</b>	<b>223,355</b>	<b>+ 646.8</b>
<b>Non-residential buildings</b>						
Office and banking space						
Total square metres	0	0	0	0	0	..
Total value at current prices (R'000)	0	0	0	0	0	..
Shopping space						
Total square metres	588	0	0	588	1,856	+ 215.6
Total value at current prices (R'000)	530	0	0	530	2,473	+ 366.6
Industrial and warehouse space						
Total square metres	0	0	0	0	0	..
Total value at current prices (R'000)	0	0	0	0	0	..
Other non-residential space <sup>2/</sup>						
Total square metres	0	0	0	252	0	..
Total value at current prices (R'000)	0	0	0	554	0	..
<b>Total value of non-residential buildings at current prices (R'000)</b>	<b>530</b>	<b>0</b>	<b>0</b>	<b>1,084</b>	<b>2,473</b>	<b>+ 128.1</b>
<b>Additions and alterations</b>						
Dwelling-houses						
Total square metres	558	407	280	2,675	1,196	-55.3
Total value at current prices (R'000)	717	603	457	3,128	1,920	-38.6
Other buildings <sup>3/</sup>						
Total square metres	0	0	0	1,745	1,171	-32.9
Total value at current prices (R'000)	0	0	0	4,115	1,640	-60.1
<b>Total value of additions and alterations at current prices (R'000)</b>	<b>717</b>	<b>603</b>	<b>457</b>	<b>7,243</b>	<b>3,560</b>	<b>-50.8</b>
<b>Total value of buildings completed at current prices (R'000)</b>	<b>4,971</b>	<b>212,876</b>	<b>2,920</b>	<b>38,237</b>	<b>229,388</b>	<b>+ 499.9</b>

1/ Other residential buildings include institutions for the disabled, boarding houses, old people's homes, hostels, hotels, motels, guest houses, holiday chalets, entertainment centres, bed-and-breakfast accommodation and casinos.

2/ Other non-residential space includes churches, sport and recreation clubs, schools, crèches, hospitals and all other non-residential space.

3/ Other buildings include additions and alterations to other residential buildings, non-residential buildings and internal alterations.

**Table 29 - Building plans passed according to type of building and selected urban area: Cape Town**

Type of building	April 2001	March 2002	April 2002	January 2001 to April 2001	January 2002 to April 2002	Percentage change between January 2001 to April 2001 and January 2002 to April 2002
<b>Residential buildings</b>						
Dwelling-houses smaller than 80 square metres						
Number of dwelling-houses	292	294	112	2,207	2,071	- 6.2
Total square metres	13,722	12,244	6,094	85,463	73,359	- 14.2
Total value at current prices (R'000)	15,121	15,339	7,648	104,226	89,238	- 14.4
Dwelling-houses equal to or larger than 80 square metres						
Number of dwelling-houses	253	270	379	1,041	1,258	+ 20.8
Total square metres	55,326	53,138	77,135	239,838	246,483	+ 2.8
Total value at current prices (R'000)	75,353	76,504	107,971	323,315	343,373	+ 6.2
Flats and townhouses						
Number of flats and townhouses	70	105	183	433	710	+ 64.0
Total square metres	9,055	17,636	14,167	47,622	69,328	+ 45.6
Total value at current prices (R'000)	12,482	36,657	19,323	78,384	116,379	+ 48.5
Other residential buildings <sup>1/</sup>						
Total square metres	18,970	0	4,763	20,014	8,298	- 58.5
Total value at current prices (R'000)	48,550	0	6,924	50,106	12,454	- 75.1
<b>Total value of residential buildings at current prices (R'000)</b>	<b>151,506</b>	<b>128,500</b>	<b>141,866</b>	<b>556,031</b>	<b>561,444</b>	<b>+ 1.0</b>
<b>Non-residential buildings</b>						
Office and banking space						
Total square metres	13,581	4,167	5,522	59,203	16,666	- 71.8
Total value at current prices (R'000)	19,043	3,957	10,922	101,668	23,522	- 76.9
Shopping space						
Total square metres	9,486	288	0	72,679	12,802	- 82.4
Total value at current prices (R'000)	9,719	298	0	87,498	15,708	- 82.0
Industrial and warehouse space						
Total square metres	13,504	13,879	7,165	42,856	35,190	- 17.9
Total value at current prices (R'000)	14,750	16,566	8,979	45,419	40,853	- 10.1
Other non-residential space <sup>2/</sup>						
Total square metres	3,282	489	4,287	32,897	13,516	- 58.9
Total value at current prices (R'000)	4,459	681	6,390	47,467	18,102	- 61.9
<b>Total value of non-residential buildings at current prices (R'000)</b>	<b>47,971</b>	<b>21,502</b>	<b>26,291</b>	<b>282,052</b>	<b>98,185</b>	<b>- 65.2</b>
<b>Additions and alterations</b>						
Dwelling-houses						
Total square metres	46,221	51,190	41,225	181,041	178,570	- 1.4
Total value at current prices (R'000)	56,488	62,528	50,792	215,422	223,448	+ 3.7
Other buildings <sup>3/</sup>						
Total square metres	16,578	3,852	15,081	51,986	52,279	+ 0.6
Total value at current prices (R'000)	27,130	8,157	36,439	99,977	100,808	+ 0.8
<b>Total value of additions and alterations at current prices (R'000)</b>	<b>83,618</b>	<b>70,685</b>	<b>87,231</b>	<b>315,399</b>	<b>324,256</b>	<b>+ 2.8</b>
<b>Total value of building plans passed at current prices (R'000)</b>	<b>283,095</b>	<b>220,687</b>	<b>255,388</b>	<b>1,153,482</b>	<b>983,885</b>	<b>- 14.7</b>

1/ Other residential buildings include institutions for the disabled, boarding houses, old people's homes, hostels, hotels, motels, guest houses, holiday chalets, entertainment centres, bed-and-breakfast accommodation and casinos.

2/ Other non-residential space includes churches, sport and recreation clubs, schools, crèches, hospitals and all other non-residential space.

3/ Other buildings include additions and alterations to other residential buildings, non-residential buildings and internal alterations.

**Table 30 - Building plans passed according to type of building and selected urban area: Port Elizabeth**

Type of building	April 2001	March 2002	April 2002	January 2001 to April 2001	January 2002 to April 2002	Percentage change between January 2001 to April 2001 and January 2002 to April 2002
<b>Residential buildings</b>						
Dwelling-houses smaller than 80 square metres						
Number of dwelling-houses	133	268	571	637	955	+ 49.9
Total square metres	5,844	13,206	23,216	28,749	41,423	+ 44.1
Total value at current prices (R'000)	7,582	18,774	32,677	38,286	58,919	+ 53.9
Dwelling-houses equal to or larger than 80 square metres						
Number of dwelling-houses	44	48	69	277	234	- 15.5
Total square metres	6,548	8,562	15,486	30,925	44,390	+ 43.5
Total value at current prices (R'000)	8,461	12,580	21,970	41,109	63,526	+ 54.5
Flats and townhouses						
Number of flats and townhouses	19	27	20	76	70	- 7.9
Total square metres	1,496	2,706	2,051	7,125	7,746	+ 8.7
Total value at current prices (R'000)	1,924	4,637	2,974	10,251	12,232	+ 19.3
Other residential buildings <sup>1/</sup>						
Total square metres	0	0	0	0	0	..
Total value at current prices (R'000)	0	0	0	0	0	..
<b>Total value of residential buildings at current prices (R'000)</b>	<b>17,967</b>	<b>35,991</b>	<b>57,621</b>	<b>89,646</b>	<b>134,677</b>	<b>+ 50.2</b>
<b>Non-residential buildings</b>						
Office and banking space						
Total square metres	0	239	2,482	0	2,925	..
Total value at current prices (R'000)	0	468	3,600	0	4,468	..
Shopping space						
Total square metres	772	0	0	1,124	5,103	+ 354.0
Total value at current prices (R'000)	1,429	0	0	1,799	11,195	+ 522.3
Industrial and warehouse space						
Total square metres	0	1,154	10,470	2,113	14,409	+ 581.9
Total value at current prices (R'000)	0	1,864	16,292	3,064	22,295	+ 627.6
Other non-residential space <sup>2/</sup>						
Total square metres	991	0	4,992	2,270	9,965	+ 339.0
Total value at current prices (R'000)	2,005	0	7,951	3,649	15,754	+ 331.7
<b>Total value of non-residential buildings at current prices (R'000)</b>	<b>3,434</b>	<b>2,332</b>	<b>27,843</b>	<b>8,512</b>	<b>53,712</b>	<b>+ 531.0</b>
<b>Additions and alterations</b>						
Dwelling-houses						
Total square metres	9,779	9,063	13,520	33,922	44,303	+ 30.6
Total value at current prices (R'000)	14,732	10,745	18,035	44,845	56,691	+ 26.4
Other buildings <sup>3/</sup>						
Total square metres	4,133	4,073	3,927	29,913	13,521	- 54.8
Total value at current prices (R'000)	4,168	7,859	7,322	42,565	24,000	- 43.6
<b>Total value of additions and alterations at current prices (R'000)</b>	<b>18,900</b>	<b>18,604</b>	<b>25,357</b>	<b>87,410</b>	<b>80,691</b>	<b>- 7.7</b>
<b>Total value of building plans passed at current prices (R'000)</b>	<b>40,301</b>	<b>56,927</b>	<b>110,821</b>	<b>185,568</b>	<b>269,080</b>	<b>+ 45.0</b>

1/ Other residential buildings include institutions for the disabled, boarding houses, old people's homes, hostels, hotels, motels, guest houses, holiday chalets, entertainment centres, bed-and-breakfast accommodation and casinos.

2/ Other non-residential space includes churches, sport and recreation clubs, schools, crèches, hospitals and all other non-residential space.

3/ Other buildings include additions and alterations to other residential buildings, non-residential buildings and internal alterations.

**Table 31 - Building plans passed according to type of building and selected urban area: Durban**

Type of building	April 2001	March 2002*	April 2002	January 2001 to April 2001	January 2002 to April 2002	Percentage change between January 2001 to April 2001 and January 2002 to April 2002
<b>Residential buildings</b>						
Dwelling-houses smaller than 80 square metres						
Number of dwelling-houses	75	91	80	285	355	+ 24.6
Total square metres	3,858	3,673	3,748	15,132	15,083	-0.3
Total value at current prices (R'000)	4,381	3,698	4,513	17,333	16,797	-3.1
Dwelling-houses equal to or larger than 80 square metres						
Number of dwelling-houses	39	45	67	222	216	-2.7
Total square metres	8,089	7,388	16,963	43,296	42,735	-1.3
Total value at current prices (R'000)	10,688	8,332	19,783	52,846	53,124	+ 0.5
Flats and townhouses						
Number of flats and townhouses	11	8	6	66	178	+ 169.7
Total square metres	1,417	890	1,448	6,322	27,136	+ 329.2
Total value at current prices (R'000)	2,174	890	1,888	8,678	34,698	+ 299.8
Other residential buildings <sup>1/</sup>						
Total square metres	0	0	0	0	29,606	..
Total value at current prices (R'000)	0	0	0	0	31,000	..
<b>Total value of residential buildings at current prices (R'000)</b>	<b>17,243</b>	<b>12,920</b>	<b>26,184</b>	<b>78,857</b>	<b>135,619</b>	<b>+ 72.0</b>
<b>Non-residential buildings</b>						
Office and banking space						
Total square metres	2,032	0	226	4,512	226	-95.0
Total value at current prices (R'000)	7,090	0	250	12,039	250	-97.9
Shopping space						
Total square metres	1,832	37	1,981	6,542	2,518	-61.5
Total value at current prices (R'000)	3,230	37	2,700	7,770	3,937	-49.3
Industrial and warehouse space						
Total square metres	8,389	2,223	3,370	29,940	27,252	-9.0
Total value at current prices (R'000)	9,966	2,674	3,000	33,312	29,224	-12.3
Other non-residential space <sup>2/</sup>						
Total square metres	12,486	50,383	1,178	17,439	54,745	+ 213.9
Total value at current prices (R'000)	12,750	54,600	2,355	19,436	60,736	+ 212.5
<b>Total value of non-residential buildings at current prices (R'000)</b>	<b>33,036</b>	<b>57,311</b>	<b>8,305</b>	<b>72,557</b>	<b>94,147</b>	<b>+ 29.8</b>
<b>Additions and alterations</b>						
Dwelling-houses						
Total square metres	16,843	15,781	25,513	82,497	77,679	-5.8
Total value at current prices (R'000)	18,406	20,440	34,161	96,828	98,332	+ 1.6
Other buildings <sup>3/</sup>						
Total square metres	7,845	4,028	1,998	40,360	13,078	-67.6
Total value at current prices (R'000)	11,586	14,134	4,304	78,440	32,183	-59.0
<b>Total value of additions and alterations at current prices (R'000)</b>	<b>29,992</b>	<b>34,574</b>	<b>38,465</b>	<b>175,268</b>	<b>130,515</b>	<b>-25.5</b>
<b>Total value of building plans passed at current prices (R'000)</b>	<b>80,271</b>	<b>104,805</b>	<b>72,954</b>	<b>326,682</b>	<b>360,281</b>	<b>+ 10.3</b>

1/ Other residential buildings include institutions for the disabled, boarding houses, old people's homes, hostels, hotels, motels, guest houses, holiday chalets, entertainment centres, bed-and-breakfast accommodation and casinos.

2/ Other non-residential space includes churches, sport and recreation clubs, schools, crèches, hospitals and all other non-residential space.

3/ Other buildings include additions and alterations to other residential buildings, non-residential buildings and internal alterations.



**Table 32 - Building plans passed according to type of building and selected urban area: Witwatersrand**

Type of building	April 2001*	March 2002	April 2002	January 2001 to April 2001	January 2002 to April 2002	Percentage change between January 2001 to April 2001 and January 2002 to April 2002
<b>Residential buildings</b>						
Dwelling-houses smaller than 80 square metres						
Number of dwelling-houses	1,325	949	695	2,869	3,324	+ 15.9
Total square metres	45,582	36,964	25,014	107,024	119,849	+ 12.0
Total value at current prices (R'000)	45,912	33,757	23,249	115,960	103,451	- 10.8
Dwelling-houses equal to or larger than 80 square metres						
Number of dwelling-houses	334	307	440	1,778	1,356	- 23.7
Total square metres	81,896	77,054	79,409	378,829	327,264	- 13.6
Total value at current prices (R'000)	118,753	158,185	122,835	560,725	533,735	- 4.8
Flats and townhouses						
Number of flats and townhouses	215	290	429	954	1,115	+ 16.9
Total square metres	25,069	36,991	59,545	101,060	135,742	+ 34.3
Total value at current prices (R'000)	41,915	62,467	113,255	164,855	239,433	+ 45.2
Other residential buildings <sup>1/</sup>						
Total square metres	0	0	0	0	3,459	..
Total value at current prices (R'000)	0	0	0	0	5,283	..
<b>Total value of residential buildings at current prices (R'000)</b>	<b>206,580</b>	<b>254,409</b>	<b>259,339</b>	<b>841,540</b>	<b>881,902</b>	<b>+ 4.8</b>
<b>Non-residential buildings</b>						
Office and banking space						
Total square metres	10,040	24,529	12,825	94,424	56,566	- 40.1
Total value at current prices (R'000)	16,579	101,288	18,600	141,410	150,592	+ 6.5
Shopping space						
Total square metres	3,857	18,314	9,283	41,419	37,726	- 8.9
Total value at current prices (R'000)	5,204	31,497	15,000	70,198	62,719	- 10.7
Industrial and warehouse space						
Total square metres	24,370	27,689	52,892	113,038	112,035	- 0.9
Total value at current prices (R'000)	40,303	35,336	92,708	193,526	181,518	- 6.2
Other non-residential space <sup>2/</sup>						
Total square metres	3,497	67,755	5,311	38,238	75,763	+ 98.1
Total value at current prices (R'000)	4,595	109,403	7,779	56,169	120,761	+ 115.0
<b>Total value of non-residential buildings at current prices (R'000)</b>	<b>66,681</b>	<b>277,524</b>	<b>134,087</b>	<b>461,303</b>	<b>515,590</b>	<b>+ 11.8</b>
<b>Additions and alterations</b>						
Dwelling-houses						
Total square metres	54,894	60,162	71,742	239,465	249,639	+ 4.2
Total value at current prices (R'000)	70,433	85,968	105,352	307,559	352,598	+ 14.6
Other buildings <sup>3/</sup>						
Total square metres	14,824	7,202	12,195	93,540	52,580	- 43.8
Total value at current prices (R'000)	21,915	13,286	22,765	175,094	106,011	- 39.5
<b>Total value of additions and alterations at current prices (R'000)</b>	<b>92,348</b>	<b>99,254</b>	<b>128,117</b>	<b>482,653</b>	<b>458,609</b>	<b>- 5.0</b>
<b>Total value of building plans passed at current prices (R'000)</b>	<b>365,609</b>	<b>631,187</b>	<b>521,543</b>	<b>1,785,496</b>	<b>1,856,101</b>	<b>+ 4.0</b>

1/ Other residential buildings include institutions for the disabled, boarding houses, old people's homes, hostels, hotels, motels, guest houses, holiday chalets, entertainment centres, bed-and-breakfast accommodation and casinos.

2/ Other non-residential space includes churches, sport and recreation clubs, schools, crèches, hospitals and all other non-residential space.

3/ Other buildings include additions and alterations to other residential buildings, non-residential buildings and internal alterations.

**Table 33 - Building plans passed according to type of building and selected urban area: Pretoria**

Type of building	April 2001*	March 2002	April 2002	January 2001 to April 2001	January 2002 to April 2002	Percentage change between January 2001 to April 2001 and January 2002 to April 2002
<b>Residential buildings</b>						
Dwelling-houses smaller than 80 square metres						
Number of dwelling-houses	39	42	77	243	227	- 6.6
Total square metres	1,912	2,210	4,168	12,545	12,311	- 1.9
Total value at current prices (R'000)	2,149	4,814	5,635	14,899	18,251	+ 22.5
Dwelling-houses equal to or larger than 80 square metres						
Number of dwelling-houses	195	191	262	872	880	+ 0.9
Total square metres	56,467	50,705	69,374	244,329	234,597	- 4.0
Total value at current prices (R'000)	76,754	71,304	100,695	331,030	331,190	+ 0.0
Flats and townhouses						
Number of flats and townhouses	175	290	555	537	1,117	+ 108.0
Total square metres	23,960	47,343	62,167	77,729	158,712	+ 104.2
Total value at current prices (R'000)	36,172	63,946	89,720	113,609	229,051	+ 101.6
Other residential buildings <sup>1/</sup>						
Total square metres	0	0	0	418	0	..
Total value at current prices (R'000)	0	0	0	627	0	..
<b>Total value of residential buildings at current prices (R'000)</b>	<b>115,075</b>	<b>140,064</b>	<b>196,050</b>	<b>460,165</b>	<b>578,492</b>	<b>+ 25.7</b>
<b>Non-residential buildings</b>						
Office and banking space						
Total square metres	1,040	1,294	28,348	17,936	66,106	+ 268.6
Total value at current prices (R'000)	1,635	1,941	46,451	30,463	104,407	+ 242.7
Shopping space						
Total square metres	1,902	0	0	11,208	56	- 99.5
Total value at current prices (R'000)	2,853	0	0	17,469	76	- 99.6
Industrial and warehouse space						
Total square metres	6,033	7,436	3,412	13,519	17,714	+ 31.0
Total value at current prices (R'000)	8,926	11,154	5,321	19,294	26,902	+ 39.4
Other non-residential space <sup>2/</sup>						
Total square metres	6,522	1,907	2,566	17,843	8,655	- 51.5
Total value at current prices (R'000)	10,101	2,739	3,978	26,796	13,225	- 50.6
<b>Total value of non-residential buildings at current prices (R'000)</b>	<b>23,515</b>	<b>15,834</b>	<b>55,750</b>	<b>94,022</b>	<b>144,610</b>	<b>+ 53.8</b>
<b>Additions and alterations</b>						
Dwelling-houses						
Total square metres	12,354	27,924	28,814	60,748	99,415	+ 63.7
Total value at current prices (R'000)	15,452	40,485	41,365	75,819	142,851	+ 88.4
Other buildings <sup>3/</sup>						
Total square metres	7,973	10,148	3,119	17,822	23,163	+ 30.0
Total value at current prices (R'000)	11,662	20,043	4,852	27,623	41,795	+ 51.3
<b>Total value of additions and alterations at current prices (R'000)</b>	<b>27,114</b>	<b>60,528</b>	<b>46,217</b>	<b>103,442</b>	<b>184,646</b>	<b>+ 78.5</b>
<b>Total value of building plans passed at current prices (R'000)</b>	<b>165,704</b>	<b>216,426</b>	<b>298,017</b>	<b>657,629</b>	<b>907,748</b>	<b>+ 38.0</b>

1/ Other residential buildings include institutions for the disabled, boarding houses, old people's homes, hostels, hotels, motels, guest houses, holiday chalets, entertainment centres, bed-and-breakfast accommodation and casinos.

2/ Other non-residential space includes churches, sport and recreation clubs, schools, crèches, hospitals and all other non-residential space.

3/ Other buildings include additions and alterations to other residential buildings, non-residential buildings and internal alterations.

**Table 34 - Building plans passed according to type of building and selected urban area: Bloemfontein**

Type of building	April 2001	March 2002	April 2002	January 2001 to April 2001	January 2002 to April 2002	Percentage change between January 2001 to April 2001 and January 2002 to April 2002
<b>Residential buildings</b>						
Dwelling-houses smaller than 80 square metres						
Number of dwelling-houses	250	24	295	794	472	-40.6
Total square metres	10,641	1,523	12,362	34,620	20,408	-41.1
Total value at current prices (R'000)	4,970	1,761	6,544	16,579	12,673	-23.6
Dwelling-houses equal to or larger than 80 square metres						
Number of dwelling-houses	15	33	23	78	126	+ 61.5
Total square metres	3,178	4,139	4,295	13,604	18,884	+ 38.8
Total value at current prices (R'000)	3,903	5,066	5,765	17,462	26,903	+ 54.1
Flats and townhouses						
Number of flats and townhouses	0	26	6	65	180	+ 176.9
Total square metres	0	1,700	768	9,574	17,557	+ 83.4
Total value at current prices (R'000)	0	2,519	922	15,389	26,741	+ 73.8
Other residential buildings <sup>1/</sup>						
Total square metres	0	0	0	0	2,683	..
Total value at current prices (R'000)	0	0	0	0	7,000	..
<b>Total value of residential buildings at current prices (R'000)</b>	<b>8,873</b>	<b>9,346</b>	<b>13,231</b>	<b>49,430</b>	<b>73,317</b>	<b>+ 48.3</b>
<b>Non-residential buildings</b>						
Office and banking space						
Total square metres	0	0	0	12,809	7,267	-43.3
Total value at current prices (R'000)	0	0	0	25,200	14,000	-44.4
Shopping space						
Total square metres	0	7,429	130	0	7,559	..
Total value at current prices (R'000)	0	16,000	250	0	16,250	..
Industrial and warehouse space						
Total square metres	544	0	2,565	624	3,432	+ 450.0
Total value at current prices (R'000)	326	0	1,418	438	2,112	+ 382.2
Other non-residential space <sup>2/</sup>						
Total square metres	0	0	0	850	0	..
Total value at current prices (R'000)	0	0	0	1,500	0	..
<b>Total value of non-residential buildings at current prices (R'000)</b>	<b>326</b>	<b>16,000</b>	<b>1,668</b>	<b>27,138</b>	<b>32,362</b>	<b>+ 19.2</b>
<b>Additions and alterations</b>						
Dwelling-houses						
Total square metres	3,613	3,530	4,595	11,823	18,006	+ 52.3
Total value at current prices (R'000)	4,241	4,271	5,367	14,350	21,327	+ 48.6
Other buildings <sup>3/</sup>						
Total square metres	1,425	357	3,019	2,630	6,476	+ 146.2
Total value at current prices (R'000)	3,757	1,060	3,780	6,372	10,314	+ 61.9
<b>Total value of additions and alterations at current prices (R'000)</b>	<b>7,998</b>	<b>5,331</b>	<b>9,147</b>	<b>20,722</b>	<b>31,641</b>	<b>+ 52.7</b>
<b>Total value of building plans passed at current prices (R'000)</b>	<b>17,197</b>	<b>30,677</b>	<b>24,046</b>	<b>97,290</b>	<b>137,320</b>	<b>+ 41.1</b>

1/ Other residential buildings include institutions for the disabled, boarding houses, old people's homes, hostels, hotels, motels, guest houses, holiday chalets, entertainment centres, bed-and-breakfast accommodation and casinos.

2/ Other non-residential space includes churches, sport and recreation clubs, schools, crèches, hospitals and all other non-residential space.

3/ Other buildings include additions and alterations to other residential buildings, non-residential buildings and internal alterations.

**Table 35 - Buildings completed according to type of building and selected urban area: Cape Town**

Type of building	April 2001	March 2002	April 2002	January 2001 to April 2001	January 2002 to April 2002	Percentage change between January 2001 to April 2001 and January 2002 to April 2002
<b>Residential buildings</b>						
Dwelling-houses smaller than 80 square metres						
Number of dwelling-houses	181	340	597	1,266	2,261	+ 78.6
Total square metres	6,692	11,793	22,477	44,322	81,749	+ 84.4
Total value at current prices (R'000)	6,718	12,799	30,013	52,833	98,159	+ 85.8
Dwelling-houses equal to or larger than 80 square metres						
Number of dwelling-houses	95	207	311	501	881	+ 75.8
Total square metres	18,958	37,719	51,907	98,145	160,149	+ 63.2
Total value at current prices (R'000)	25,811	53,478	75,416	133,083	235,023	+ 76.6
Flats and townhouses						
Number of flats and townhouses	97	62	90	322	370	+ 14.9
Total square metres	8,831	7,998	16,527	30,698	63,686	+ 107.5
Total value at current prices (R'000)	9,669	12,027	24,703	40,262	109,307	+ 171.5
Other residential buildings <sup>1/</sup>						
Total square metres	0	0	2,100	16,618	2,643	- 84.1
Total value at current prices (R'000)	0	0	3,129	12,524	3,922	- 68.7
<b>Total value of residential buildings at current prices (R'000)</b>	<b>42,198</b>	<b>78,304</b>	<b>133,261</b>	<b>238,702</b>	<b>446,411</b>	<b>+ 87.0</b>
<b>Non-residential buildings</b>						
Office and banking space						
Total square metres	3,519	3,353	22,009	39,087	38,477	- 1.6
Total value at current prices (R'000)	5,872	7,025	31,890	80,851	56,984	- 29.5
Shopping space						
Total square metres	7,058	0	0	13,605	19,509	+ 43.4
Total value at current prices (R'000)	8,214	0	0	18,524	21,322	+ 15.1
Industrial and warehouse space						
Total square metres	1,166	4,779	11,087	20,393	24,848	+ 21.8
Total value at current prices (R'000)	806	4,933	12,768	24,020	26,038	+ 8.4
Other non-residential space <sup>2/</sup>						
Total square metres	475	1,726	759	6,892	6,352	- 7.8
Total value at current prices (R'000)	555	2,742	1,522	10,975	9,886	- 9.9
<b>Total value of non-residential buildings at current prices (R'000)</b>	<b>15,447</b>	<b>14,700</b>	<b>46,180</b>	<b>134,370</b>	<b>114,230</b>	<b>- 15.0</b>
<b>Additions and alterations</b>						
Dwelling-houses						
Total square metres	20,460	19,457	28,279	103,168	96,911	- 6.1
Total value at current prices (R'000)	24,243	23,679	35,164	117,493	120,330	+ 2.4
Other buildings <sup>3/</sup>						
Total square metres	3,478	2,591	70,158	38,045	85,392	+ 124.4
Total value at current prices (R'000)	5,819	7,951	92,619	150,036	119,557	- 20.3
<b>Total value of additions and alterations at current prices (R'000)</b>	<b>30,062</b>	<b>31,630</b>	<b>127,783</b>	<b>267,529</b>	<b>239,887</b>	<b>- 10.3</b>
<b>Total value of buildings completed at current prices (R'000)</b>	<b>87,707</b>	<b>124,634</b>	<b>307,224</b>	<b>640,601</b>	<b>800,528</b>	<b>+ 25.0</b>

1/ Other residential buildings include institutions for the disabled, boarding houses, old people's homes, hostels, hotels, motels, guest houses, holiday chalets, entertainment centres, bed-and-breakfast accommodation and casinos.

2/ Other non-residential space includes churches, sport and recreation clubs, schools, crèches, hospitals and all other non-residential space.

3/ Other buildings include additions and alterations to other residential buildings, non-residential buildings and internal alterations.

**Table 36 - Buildings completed according to type of building and selected urban area: Port Elizabeth**

Type of building	April 2001	March 2002	April 2002	January 2001 to April 2001	January 2002 to April 2002	Percentage change between January 2001 to April 2001 and January 2002 to April 2002
<b>Residential buildings</b>						
Dwelling-houses smaller than 80 square metres						
Number of dwelling-houses	81	94	214	382	499	+ 30.6
Total square metres	3,665	4,070	8,611	16,213	20,904	+ 28.9
Total value at current prices (R'000)	3,988	5,248	11,774	20,150	27,621	+ 37.1
Dwelling-houses equal to or larger than 80 square metres						
Number of dwelling-houses	71	7	24	151	87	- 42.4
Total square metres	7,661	774	3,909	16,812	13,375	- 20.4
Total value at current prices (R'000)	9,634	1,128	3,859	20,772	16,160	- 22.2
Flats and townhouses						
Number of flats and townhouses	36	6	0	49	9	- 81.6
Total square metres	2,917	535	0	3,819	1,086	- 71.6
Total value at current prices (R'000)	2,189	699	0	3,645	1,477	- 59.5
Other residential buildings <sup>1/</sup>						
Total square metres	0	2,744	0	4,347	2,744	- 36.9
Total value at current prices (R'000)	0	3,312	0	7,000	3,312	- 52.7
<b>Total value of residential buildings at current prices (R'000)</b>	<b>15,811</b>	<b>10,387</b>	<b>15,633</b>	<b>51,567</b>	<b>48,570</b>	<b>- 5.8</b>
<b>Non-residential buildings</b>						
Office and banking space						
Total square metres	0	0	0	0	0	..
Total value at current prices (R'000)	0	0	0	0	0	..
Shopping space						
Total square metres	965	77	302	4,425	1,944	- 56.1
Total value at current prices (R'000)	1,554	103	369	6,989	1,998	- 71.4
Industrial and warehouse space						
Total square metres	23,047	0	0	24,128	478	- 98.0
Total value at current prices (R'000)	29,039	0	0	30,586	392	-98.7
Other non-residential space <sup>2/</sup>						
Total square metres	2,748	491	0	3,808	2,300	- 39.6
Total value at current prices (R'000)	2,337	736	0	3,047	2,664	-+12.6
<b>Total value of non-residential buildings at current prices (R'000)</b>	<b>32,930</b>	<b>839</b>	<b>369</b>	<b>40,622</b>	<b>5,054</b>	<b>- 87.6</b>
<b>Additions and alterations</b>						
Dwelling-houses						
Total square metres	5,818	6,009	4,567	14,770	19,557	+ 32.4
Total value at current prices (R'000)	6,887	6,329	5,007	16,690	21,463	+ 28.6
Other buildings <sup>3/</sup>						
Total square metres	4,012	3,675	4,810	9,392	12,241	+ 30.3
Total value at current prices (R'000)	5,380	4,229	4,966	11,624	13,115	+ 12.8
<b>Total value of additions and alterations at current prices (R'000)</b>	<b>12,267</b>	<b>10,558</b>	<b>9,973</b>	<b>28,314</b>	<b>34,578</b>	<b>+ 22.1</b>
<b>Total value of buildings completed at current prices (R'000)</b>	<b>61,008</b>	<b>21,784</b>	<b>25,975</b>	<b>120,503</b>	<b>88,202</b>	<b>- 26.8</b>

1/ Other residential buildings include institutions for the disabled, boarding houses, old people's homes, hostels, hotels, motels, guest houses, holiday chalets, entertainment centres, bed-and-breakfast accommodation and casinos.

2/ Other non-residential space includes churches, sport and recreation clubs, schools, crèches, hospitals and all other non-residential space.

3/ Other buildings include additions and alterations to other residential buildings, non-residential buildings and internal alterations.

**Table 37 - Buildings completed according to type of building and selected urban area: Durban**

Type of building	April 2001	March 2002*	April 2002	January 2001 to April 2001	January 2002 to April 2002	Percentage change between January 2001 to April 2001 and January 2002 to April 2002
<b>Residential buildings</b>						
Dwelling-houses smaller than 80 square metres						
Number of dwelling-houses	50	126	102	234	331	+ 41.5
Total square metres	2,913	5,138	4,852	12,639	15,443	+ 22.2
Total value at current prices (R'000)	3,332	5,447	5,774	14,634	17,840	+ 21.9
Dwelling-houses equal to or larger than 80 square metres						
Number of dwelling-houses	76	85	83	309	287	- 7.1
Total square metres	13,507	16,263	14,480	54,756	51,108	- 6.7
Total value at current prices (R'000)	15,910	20,428	17,744	63,353	63,866	+ 0.8
Flats and townhouses						
Number of flats and townhouses	16	21	15	331	105	- 68.3
Total square metres	3,879	2,466	3,173	29,203	15,076	- 48.4
Total value at current prices (R'000)	4,621	3,350	6,128	35,985	24,719	- 31.3
Other residential buildings <sup>1/</sup>						
Total square metres	0	0	0	0	0	..
Total value at current prices (R'000)	0	0	0	0	0	..
<b>Total value of residential buildings at current prices (R'000)</b>	<b>23,863</b>	<b>29,225</b>	<b>29,646</b>	<b>113,972</b>	<b>106,425</b>	<b>- 6.6</b>
<b>Non-residential buildings</b>						
Office and banking space						
Total square metres	4,368	13,920	7,403	11,885	30,645	+ 157.8
Total value at current prices (R'000)	9,700	16,888	16,800	24,870	45,038	+ 81.1
Shopping space						
Total square metres	3,881	2,647	3,035	13,046	11,810	- 9.5
Total value at current prices (R'000)	3,908	2,700	4,350	23,989	13,823	- 42.4
Industrial and warehouse space						
Total square metres	13,351	5,099	8,951	39,799	40,505	+ 1.8
Total value at current prices (R'000)	13,941	5,150	8,092	46,070	38,281	- 16.9
Other non-residential space <sup>2/</sup>						
Total square metres	402	946	3,764	4,304	8,543	+ 98.5
Total value at current prices (R'000)	430	743	5,430	5,326	12,952	+ 143.2
<b>Total value of non-residential buildings at current prices (R'000)</b>	<b>27,979</b>	<b>25,481</b>	<b>34,672</b>	<b>100,255</b>	<b>110,094</b>	<b>+ 9.8</b>
<b>Additions and alterations</b>						
Dwelling-houses						
Total square metres	22,632	19,301	21,740	86,119	71,793	- 16.6
Total value at current prices (R'000)	25,391	21,104	24,528	96,782	77,313	- 20.1
Other buildings <sup>3/</sup>						
Total square metres	13,996	3,341	26,137	31,799	38,020	+ 19.6
Total value at current prices (R'000)	23,083	8,511	50,807	58,039	72,751	+ 25.3
<b>Total value of additions and alterations at current prices (R'000)</b>	<b>48,474</b>	<b>29,615</b>	<b>75,335</b>	<b>154,821</b>	<b>150,064</b>	<b>- 3.1</b>
<b>Total value of buildings completed at current prices (R'000)</b>	<b>100,316</b>	<b>84,321</b>	<b>139,653</b>	<b>369,048</b>	<b>366,583</b>	<b>- 0.7</b>

1/ Other residential buildings include institutions for the disabled, boarding houses, old people's homes, hostels, hotels, motels, guest houses, holiday chalets, entertainment centres, bed-and-breakfast accommodation and casinos.

2/ Other non-residential space includes churches, sport and recreation clubs, schools, crèches, hospitals and all other non-residential space.

3/ Other buildings include additions and alterations to other residential buildings, non-residential buildings and internal alterations.

**Table 38 - Buildings completed according to type of building and selected urban area: Witwatersrand**

Type of building	April 2001*	March 2002	April 2002	January 2001 to April 2001	January 2002 to April 2002	Percentage change between January 2001 to April 2001 and January 2002 to April 2002
<b>Residential buildings</b>						
Dwelling-houses smaller than 80 square metres						
Number of dwelling-houses	188	495	764	1,499	2,378	+ 58.6
Total square metres	8,482	17,011	26,724	59,155	81,752	+ 38.2
Total value at current prices (R'000)	8,861	13,234	18,729	50,362	62,010	+ 23.1
Dwelling-houses equal to or larger than 80 square metres						
Number of dwelling-houses	142	413	241	764	1,008	+ 31.9
Total square metres	34,260	64,165	63,002	166,693	214,686	+ 28.8
Total value at current prices (R'000)	48,431	89,645	92,708	233,387	322,618	+ 38.2
Flats and townhouses						
Number of flats and townhouses	135	227	245	784	1,129	+ 44.0
Total square metres	16,876	26,974	42,760	80,835	138,575	+ 71.4
Total value at current prices (R'000)	32,005	44,453	63,315	138,969	216,304	+ 55.6
Other residential buildings <sup>1/</sup>						
Total square metres	0	1,740	2,314	32,600	4,054	-87.6
Total value at current prices (R'000)	0	2,000	3,447	250,000	5,447	-97.8
<b>Total value of residential buildings at current prices (R'000)</b>	<b>89,297</b>	<b>149,332</b>	<b>178,199</b>	<b>672,718</b>	<b>606,379</b>	<b>-9.9</b>
<b>Non-residential buildings</b>						
Office and banking space						
Total square metres	4,844	8,409	37,552	115,978	74,537	-35.7
Total value at current prices (R'000)	9,513	12,649	67,025	157,990	130,313	-17.5
Shopping space						
Total square metres	350	795	2,806	9,092	7,906	-13.0
Total value at current prices (R'000)	700	1,352	4,139	13,590	10,847	-20.2
Industrial and warehouse space						
Total square metres	14,074	3,764	12,506	69,572	36,688	-47.3
Total value at current prices (R'000)	25,812	6,535	18,579	102,645	56,656	-44.8
Other non-residential space <sup>2/</sup>						
Total square metres	735	4,035	0	3,989	6,851	+ 71.7
Total value at current prices (R'000)	2,458	6,053	0	7,902	10,720	+ 35.7
<b>Total value of non-residential buildings at current prices (R'000)</b>	<b>38,483</b>	<b>26,589</b>	<b>89,743</b>	<b>282,127</b>	<b>208,536</b>	<b>-26.1</b>
<b>Additions and alterations</b>						
Dwelling-houses						
Total square metres	15,065	22,919	43,944	85,529	110,190	+ 28.8
Total value at current prices (R'000)	17,786	33,630	59,444	103,229	150,764	+ 46.0
Other buildings <sup>3/</sup>						
Total square metres	9,409	6,931	6,399	43,095	28,035	-34.9
Total value at current prices (R'000)	17,268	12,677	10,813	72,116	47,626	-34.0
<b>Total value of additions and alterations at current prices (R'000)</b>	<b>35,054</b>	<b>46,307</b>	<b>70,257</b>	<b>175,345</b>	<b>198,390</b>	<b>+ 13.1</b>
<b>Total value of buildings completed at current prices (R'000)</b>	<b>162,834</b>	<b>222,228</b>	<b>338,199</b>	<b>1,130,190</b>	<b>1,013,305</b>	<b>-10.3</b>

1/ Other residential buildings include institutions for the disabled, boarding houses, old people's homes, hostels, hotels, motels, guest houses, holiday chalets, entertainment centres, bed-and-breakfast accommodation and casinos.

2/ Other non-residential space includes churches, sport and recreation clubs, schools, crèches, hospitals and all other non-residential space.

3/ Other buildings include additions and alterations to other residential buildings, non-residential buildings and internal alterations.

**Table 39 - Buildings completed according to type of building and selected urban area: Pretoria**

Type of building	April 2001*	March 2002	April 2002	January 2001 to April 2001	January 2002 to April 2002	Percentage change between January 2001 to April 2001 and January 2002 to April 2002
<b>Residential buildings</b>						
Dwelling-houses smaller than 80 square metres						
Number of dwelling-houses	24	30	51	131	130	- 0.8
Total square metres	1,199	1,655	2,507	6,137	6,547	+ 6.7
Total value at current prices (R'000)	1,474	2,416	3,277	6,944	9,012	+ 29.8
Dwelling-houses equal to or larger than 80 square metres						
Number of dwelling-houses	58	53	111	304	307	+ 1.0
Total square metres	16,361	16,810	34,052	82,518	89,390	+ 8.3
Total value at current prices (R'000)	22,887	20,927	60,362	112,726	136,476	+ 21.1
Flats and townhouses						
Number of flats and townhouses	147	38	246	621	1,152	+ 85.5
Total square metres	16,362	7,023	15,283	59,973	93,113	+ 55.3
Total value at current prices (R'000)	20,559	11,043	20,696	80,895	118,262	+ 46.2
Other residential buildings <sup>1/</sup>						
Total square metres	0	0	0	0	0	..
Total value at current prices (R'000)	0	0	0	0	0	..
<b>Total value of residential buildings at current prices (R'000)</b>	<b>44,920</b>	<b>34,386</b>	<b>84,335</b>	<b>200,565</b>	<b>263,750</b>	<b>+ 31.5</b>
<b>Non-residential buildings</b>						
Office and banking space						
Total square metres	0	5,469	0	5,143	10,298	+ 100.2
Total value at current prices (R'000)	0	8,477	0	6,775	15,714	+ 131.9
Shopping space						
Total square metres	0	0	0	0	0	..
Total value at current prices (R'000)	0	0	0	0	0	..
Industrial and warehouse space						
Total square metres	0	1,353	367	2,344	5,358	+ 128.6
Total value at current prices (R'000)	0	2,030	551	3,516	8,445	+ 140.2
Other non-residential space <sup>2/</sup>						
Total square metres	2,520	305	0	4,260	1,690	- 60.3
Total value at current prices (R'000)	3,000	397	0	5,858	1,959	- 66.6
<b>Total value of non-residential buildings at current prices (R'000)</b>	<b>3,000</b>	<b>10,904</b>	<b>551</b>	<b>16,149</b>	<b>26,118</b>	<b>+ 61.7</b>
<b>Additions and alterations</b>						
Dwelling-houses						
Total square metres	789	1,251	3,772	4,235	8,998	+ 112.5
Total value at current prices (R'000)	1,060	1,506	5,224	5,305	12,676	+ 138.9
Other buildings <sup>3/</sup>						
Total square metres	152	80	5,659	957	7,569	+ 690.9
Total value at current prices (R'000)	220	106	7,724	1,554	10,737	+ 590.9
<b>Total value of additions and alterations at current prices (R'000)</b>	<b>1,280</b>	<b>1,612</b>	<b>12,948</b>	<b>6,859</b>	<b>23,413</b>	<b>+ 241.3</b>
<b>Total value of buildings completed at current prices (R'000)</b>	<b>49,200</b>	<b>46,902</b>	<b>97,834</b>	<b>223,573</b>	<b>313,281</b>	<b>+ 40.1</b>

1/ Other residential buildings include institutions for the disabled, boarding houses, old people's homes, hostels, hotels, motels, guest houses, holiday chalets, entertainment centres, bed-and-breakfast accommodation and casinos.

2/ Other non-residential space includes churches, sport and recreation clubs, schools, crèches, hospitals and all other non-residential space.

3/ Other buildings include additions and alterations to other residential buildings, non-residential buildings and internal alterations.



**Table 40 - Buildings completed according to type of building and selected urban area: Bloemfontein**

Type of building	April 2001	March 2002	April 2002	January 2001 to April 2001	January 2002 to April 2002	Percentage change between January 2001 to April 2001 and January 2002 to April 2002
<b>Residential buildings</b>						
Dwelling-houses smaller than 80 square metres						
Number of dwelling-houses	142	48	14	172	148	- 14.0
Total square metres	5,238	2,095	842	6,763	7,002	+ 3.5
Total value at current prices (R'000)	3,099	998	955	4,939	4,836	- 2.1
Dwelling-houses equal to or larger than 80 square metres						
Number of dwelling-houses	23	24	25	79	78	- 1.3
Total square metres	3,583	3,871	4,583	15,215	14,062	- 7.6
Total value at current prices (R'000)	4,174	4,836	6,012	18,097	17,525	- 3.2
Flats and townhouses						
Number of flats and townhouses	43	0	8	96	38	- 60.4
Total square metres	2,339	0	896	7,014	3,788	- 46.0
Total value at current prices (R'000)	3,276	0	1,075	10,045	6,519	- 35.1
Other residential buildings <sup>1/</sup>						
Total square metres	0	0	0	151	1,428	+ 845.7
Total value at current prices (R'000)	0	0	0	211	1,461	+ 592.4
<b>Total value of residential buildings at current prices (R'000)</b>	<b>10,549</b>	<b>5,834</b>	<b>8,042</b>	<b>33,292</b>	<b>30,341</b>	<b>- 8.9</b>
<b>Non-residential buildings</b>						
Office and banking space						
Total square metres	0	0	0	302	2,008	+ 564.9
Total value at current prices (R'000)	0	0	0	483	3,800	+ 686.7
Shopping space						
Total square metres	0	710	0	2,050	1,340	- 34.6
Total value at current prices (R'000)	0	2,000	0	2,000	2,500	+ 25.0
Industrial and warehouse space						
Total square metres	1,852	0	0	4,730	2,842	- 39.9
Total value at current prices (R'000)	1,734	0	0	3,711	2,280	- 38.6
Other non-residential space <sup>2/</sup>						
Total square metres	4,539	0	0	4,679	0	..
Total value at current prices (R'000)	9,000	0	0	9,170	0	..
<b>Total value of non-residential buildings at current prices (R'000)</b>	<b>10,734</b>	<b>2,000</b>	<b>0</b>	<b>15,364</b>	<b>8,580</b>	<b>- 44.2</b>
<b>Additions and alterations</b>						
Dwelling-houses						
Total square metres	3,071	2,930	5,892	15,854	22,844	+ 44.1
Total value at current prices (R'000)	3,550	3,136	6,155	16,733	25,256	+ 50.9
Other buildings <sup>3/</sup>						
Total square metres	270	1,057	811	2,028	4,744	+ 133.9
Total value at current prices (R'000)	1,092	614	1,458	3,772	9,123	+ 141.9
<b>Total value of additions and alterations at current prices (R'000)</b>	<b>4,642</b>	<b>3,750</b>	<b>7,613</b>	<b>20,505</b>	<b>34,379</b>	<b>+ 67.7</b>
<b>Total value of buildings completed at current prices (R'000)</b>	<b>25,925</b>	<b>11,584</b>	<b>15,655</b>	<b>69,161</b>	<b>73,300</b>	<b>+ 6.0</b>

1/ Other residential buildings include institutions for the disabled, boarding houses, old people's homes, hostels, hotels, motels, guest houses, holiday chalets, entertainment centres, bed-and-breakfast accommodation and casinos.

2/ Other non-residential space includes churches, sport and recreation clubs, schools, crèches, hospitals and all other non-residential space.

3/ Other buildings include additions and alterations to other residential buildings, non-residential buildings and internal alterations.

## Additional information

### Explanatory Notes

<b>Introduction</b>	<p><b>1</b> Statistics South Africa (Stats SA) conducts a monthly Building Statistics Survey collecting information regarding building plans approved and buildings completed, financed by the private sector, from a sample of local government institutions in South Africa. This statistical release contains information of building plans passed and buildings completed in respect of residential buildings, non-residential buildings and additions and alterations according to province and selected urban areas.</p> <p><b>2</b> In order to improve timeliness of the publication, some information for the current month have been estimated due to late submission by respondents. These estimates will be revised in the next statistical release(s) as soon as actual information is available.</p> <p><b>3</b> The actual and seasonally adjusted values (at current and at constant 1995 prices) and the percentage change of building plans passed and buildings completed according to type of building are reflected monthly from January 2000 in this statistical release (cf. tables 1 to 8).</p>
<b>Scope of the survey</b>	<p><b>4</b> This survey covers local government institutions conducting activities for the private sector regarding -</p> <ul style="list-style-type: none"> <li>• approval of building plans; and</li> <li>• final inspection of completed buildings.</li> </ul>
<b>Classification</b>	<p><b>5</b> The 1993 edition of the Standard Industrial Classification of all Economic Activities, (SIC) Fifth Edition, Report No. 09-90-02, was used to classify the statistical units. The SIC is based on the 1990 International Standard Industrial Classification of all Economic Activities (ISIC) with suitable adaptations for local conditions.</p> <p><b>6</b> The twelfth and last published edition of the Standard Code List of Areas, Report No. 09-09-03 (1994) was used to classify the statistical units according to province. The cities, towns and non-urban areas listed in this report are codified within magisterial district and province. The code list was compiled by Stats SA in collaboration with other interested bodies and the first edition was distributed in June 1977.</p>
<b>Statistical unit</b>	<p><b>7</b> The statistical unit for the collection of information is a local government institution. Local government institutions include municipalities, city councils, metropolitan councils, district councils, transitional councils and development and services boards.</p>
<b>Survey methodology and design</b>	<p><b>8</b> The sample for the monthly Building Statistics Survey consists of the largest local government institutions in South Africa, i.e. those that account for approximately 85% of the total rand value of buildings completed by the private sector.</p> <p><b>9</b> The survey is collected by mail each month from a sample of 135 local government institutions.</p>
<b>Constant prices</b>	<p><b>10</b> The value of building plans passed and buildings completed at constant prices measure the building activities in terms of ruling prices in a specific base year which is currently 1995.</p> <p><b>11</b> The value of building plans passed at constant prices for each month is obtained by deflating the values at current prices with a price index known as the “lump sum domestic buildings” as published in statistical release P0151 – JBCC Contract Price Adjustment Provisions Work Group Indices. In order to be applicable, these indices (base February 1991=100) are converted to the base year 1995=100.</p>

- 12** The value of buildings completed at constant prices is obtained by deflating the values at current prices with the same price index which is used to calculate building plans passed at constant prices (cf. paragraph 11). The value of buildings completed is reported as at the time the plans were passed. Since the completion of buildings may extend over a few months to a few years, the current value of buildings completed is deflated by price indices as at the time the plans were passed in order to calculate the value of buildings completed at the time the plans were passed. Therefore, the duration of the completion of different types of buildings are taken into account in ascertaining the deflators e.g. the value of dwelling-houses completed at constant prices at January 2000 is obtained by deflating the current value of dwelling-houses completed for January 2000 with the price index of a month six months prior to January 2000. Furthermore, the value of other residential buildings, non-residential buildings and additions and alterations at constant prices is obtained by deflating the current values with price indices of 12 months, 18 months and 12 months prior to the relevant month, respectively.
- Seasonal adjustment**
- 13** Seasonally adjusted estimates of building plans passed and buildings completed are generated each month, using the X-11 Seasonal Adjustment Program developed by US Bureau of the Census Economic Research and Analyses Division, 1968.
- 14** Seasonal adjustment is a means of removing the estimated effects of normal seasonal variation from the series so that the effects of other influences on the series can be more clearly recognised. Seasonal adjustment does not aim to remove irregular or non-seasonal influences which may be present in any particular month. Influences that are volatile or unsystematic can still make it difficult to interpret the movement of the series even after adjustment for seasonal variations. Therefore, the month-to-month movements of seasonally adjusted estimates may not be reliable indicators of trend behaviour.
- Trend cycle**
- 15** The trend is a long-term pattern or movement of a time series. The X-11 Seasonal Adjustment Program is used for smoothing seasonally adjusted data.
- Related publications**
- 16** Users may also wish to refer to the following publications:
- P5041.3 – Building statistics issued annually.
  - P9101.2 – Actual and expected expenditure on construction by the public sector per statistical region issued annually.
  - Bulletin of Statistics issued quarterly.
  - South African Statistics issued annually.
- Unpublished statistics**
- 17** In some cases Stats SA can also make available statistics which are not published. The statistics can be made available in one or more of the following ways: computer printouts, CD and diskette. Generally a charge is made for providing unpublished statistics.
- Rounding-off of figures**
- 18** The figures in the tables have, where necessary, been rounded off to the nearest digit shown. There may, therefore, be slight discrepancies between the sums of the constituent items and the totals shown.
- Pre-release policy**
- 19** Stats SA has adopted the confidential pre-release policy in respect of selected economic indicators and specific government departments. The policy accords with practice among leading statistical agencies. The statistical integrity of the information and strict observance of the release time has been assured by the following procedure:
- 20** In respect of this statistical release, an official representative from the Office of the President, the Department of Trade and Industry (DTI), National Treasury and the South African Reserve Bank (SARB) will receive a copy of the release on a strictly confidential basis two hours in advance of the public issue.
- 21** Stats SA pre-release policy may be inspected at its Website, [www.statssa.gov.za](http://www.statssa.gov.za)

**Symbols and abbreviations**

..	no meaningful percentage change between two specified periods available since either one or both of the totals are nil
0	nil or figure too small to publish
*	revised
Stats SA	Statistics South Africa
SIC	Standard Industrial Classification of all Economic Activities
ISIC	International Standard Industrial Classification of all Economic Activities
JBCC	Joint Building Contracts Committee
CD	Compact Disc
US	United States
SARB	South African Reserve Bank
DTI	Department of Trade and Industry

**Technical notes****Response rate**

The response rate for April 2002 is 100%.

## Local government institutions covered in the sample survey

### Local government institutions according to province

#### Western Cape

Blaauwberg (includes Milnerton), Brackenfell, Breede River District Council, Cape Town, City of Tygerberg (Bellville, Durbanville, Goodwood, Lingeletu West, Parow and South Administration), Fish Hoek, George (includes Pacaltsdorp, Thembalethu and Herolds Bay), Gordon's Bay, Hangklip-Kleinmond (includes Kleinmond, Betty's Bay and Rooi-Els), Hermanus (includes Onrus River, Zwelihle, Sandbaai, Vermont, Hawston and Fisher Haven), Ikapa, Klein-Karoo District Council, Knysna (includes Khayaletu), Kuils River, Malmesbury, Mossel Bay (includes Boggom's Bay, Kleinbrak, Rheeboek and Tergniet), Oostenberg (Kraaifontein and Melton Rose - Blue Downs), Oudtshoorn, Overberg District Council, Paarl, Plettenberg Bay, Sedgefield, Simon's Town, Somerset West, South Peninsula, Stellenbosch, Strand, Wellington, West Coast District Council, Western Coast Peninsula (previously Vredenburg-Saldanha), Winelands District Council and Worcester.

#### Eastern Cape

Aliwal-Maletswai (includes Dukathole), Despatch, East London (includes Beacon Bay, Gomo Town, Gonubie and Mdantsane), Grahamstown (includes Rhini Township), Jeffrey's Bay, King William's Town (includes Bisho and Zwelitsha), Port Alfred, Port Elizabeth (includes Ibhayi and Motherwell), Uitenhage (includes KwaNobuhle), Umtata and Western District Council.

#### Northern Cape

Benede-Oranje District Council, Keimoes, Kimberley (including Galeshewe), Kuruman, Namaqualand District Council and Upington (includes Paballelo).

#### Free State

Allanridge, Bethlehem (includes Bohlokong), Bloemfontein (includes Bainsvlei, Bloemspuit and Mangaung), Botshabelo, Deneysville (includes Refengkgotso), Harrismith (includes Tsiamé), Kroonstad (includes Maokeng), Ladybrand (includes Manyatseng), Odendaalsrus (includes Kutlwanong), Parys, Phuthaditjhaba, Sasolburg (includes Zamdela), Virginia (includes Meloding) and Welkom (includes Thabong).

#### KwaZulu-Natal

Development and Services Board - Inland, Development and Services Board – North Coast, Dolphin Coast Borough (includes Ballito, Etete, Shakaskraal, Tinley Manor Beach and Umhlali Beach), Durban, Edendale, Empangeni (includes Ngwelezana), Hilton, Howick, Inner West City Council (includes Clermont, KwaDabeka, KwaNdengezi, New Germany, Pinetown, Queensburgh, Reservoir Hills, Shallcross and Westville), Kokstad, Kwa-Dukuza/Stanger (includes Blythedale Beach, Shakaville and Stanger), KwaMashu, Ladysmith (includes Emnambithi), Margate (includes Uvongo), Mpenjati/Southbroom (includes Southbroom, Marina Beach, San Lameer and Trafalgar), Newcastle (includes Madadeni, Osizweni and Blaauwboschlaagte), North Local Council - Tongaat (includes Canelands and Hambanati), North Local Council - Umhlanga Rocks (includes Mount Edgecombe and Umdloti Beach), North Local Council - Verulam, Outer West Local Council (includes Assagay, Botha's Hill, Cato Ridge, Drummond, Everton, Gillitts, Hillcrest, Inchanga, Kloof, Mpumalanga and Waterfall), Pennington, Pietermaritzburg/Msundini, Port Shepstone, Richards Bay, South Local Council (includes Amanzimtoti, Isipingo, Kingsburgh, KwaMakuta and Umbogintwini), Umlazi and Umtamvuna/Port Edward (includes Munster, Port Edward and Palm Beach).

#### North West

Bophirima District Council, Brits (includes Lethabile), Ga-Rankuwa, Klerksdorp, Lichtenburg, Mmabatho, Orkney (includes Kanana), Potchefstroom, Rustenburg, Vryburg and Zeerust.

<b>Gauteng</b>	Akasia (includes Elandsdoorn, Klipfontein, Kruisfontein and Soshanguve), Alberton (includes Tokoza), Benoni (includes Daveyton and Wattville), Boksburg (includes Vosloorus), Brakpan (includes Tsakane), Bronkhorstspuit, Carletonville (includes Khutsong), Centurion, Duduza, Eastern Services Council - Pretoria Area, Edenvale-Modderfontein, Germiston (includes Bedfordview and Katlehong), Greater Johannesburg - Eastern Metropolitan Local Council (includes Alexandra and Sandton), Greater Johannesburg - Northern Metropolitan Local Council (includes Randburg), Greater Johannesburg - Southern Metropolitan Local Council (includes Ennerdale, Lenasia and Johannesburg), Greater Johannesburg - Western Metropolitan Local Council (includes Diepmeadow, Dobsonville and Roodepoort), Heidelberg (includes Ratanda), Kempton Park (includes Tembisa), Krugersdorp (includes Kagiso and Munsieville), Meyerton, Midrand (includes Rabie Ridge and Ivory Park), Nigel, Pretoria (includes Atteridgeville and Mamelodi), Randfontein (includes Mohlakeng), Sebokeng (includes Boipatong, Bophelong and Sharpeville), Soweto, Springs (includes KwaThema), Vanderbijlpark, Vereeniging (includes Evaton), Western Services Council and Westonaria (includes Bekkersdal).
<b>Mpumalanga</b>	Delmas (includes Botleng), Eastvaal District Council, Ermelo (includes Wesselton and Cassim Park), Highveld District Council, Highveldridge Transitional Council (includes Evander, Embalenhle and Secunda), Komatipoort (includes Kamaqhekeza), KwaGuqa, KwaMhlanga, Malelane (includes Hectorspruit and Kamhlushwa), Middelburg (includes Mhluzi), Nelspruit (includes Kanyamazane and Lowveld Escarpment District Council as from January 2001), White River and Witbank.
<b>Northern Province</b>	Bosveld District Council, Giyani, Letaba (includes Nkowakowa and Tzaneen), Messina, Naboomspruit (includes Mookgophong), Nylstroom, Pietersburg-Polokwane (includes Seshego), Potgietersrus and Thabazimbi.

## Local government institutions according to selected urban areas

<b>Cape Town</b>	Blaauwberg (includes Milnerton), Cape Town, City of Tygerberg (Bellville, Durbanville, Goodwood, Lingeletu West, Parow and South Administration), Fish Hoek, Ikapa, Oostenberg (Kraaifontein and Melton Rose - Blue Downs), Simon's Town and South Peninsula.
<b>Port Elizabeth</b>	Despatch, Port Elizabeth (including Ibhayi and Motherwell) and Uitenhage (including KwaNobuhle)
<b>Durban</b>	Durban, Inner West City Council (includes Clermont, KwaDabeka, KwaNdengezi, New Germany, Pinetown, Queenstown, Reservoir Hills, Shallcross and Westville), North Local Council - Verulam, Outer West Local Council (includes Assagay, Botha's Hill, Cato Ridge, Drummond, Everton, Gillitts, Hillcrest, Inchanga, Kloof, Mpumalanga and Waterfall) and South Local Council (includes Amanzimtoti, Isipingo, Kingsburgh, KwaMakuta and Umbogintwini).
<b>Witwatersrand</b>	Alberton (includes Thokoza), Benoni (includes Daveyton and Wattville), Boksburg (includes Vosloorus), Brakpan (includes Tsakane), Carletonville (includes Khutsong), Duduza, Edenvale-Modderfontein, Germiston (includes Bedfordview and Katlehong), Greater Johannesburg - Eastern Metropolitan Local Council (includes Alexandra and Sandton), Greater Johannesburg - Northern Metropolitan Local Council (includes Randburg), Greater Johannesburg - Southern Metropolitan Local Council (includes Ennerdale, Lenasia and Johannesburg), Greater Johannesburg - Western Metropolitan Local Council (includes Diepmeadow, Dobsonville and Roodepoort), Kempton Park (includes Tembisa), Krugersdorp (includes Kagiso and Munsieville), Midrand (includes Rabie Ridge and Ivory Park), Nigel, Randfontein (includes Mohlakeng), Soweto, Springs (includes KwaThema) and Westonaria (includes Bekkersdal).

**Pretoria**

Akasia (includes Elandsdoorn, Klipfontein and Soshanguve), Centurion, Eastern Services Council - Pretoria area and Pretoria (includes Atteridgeville and Mamelodi).

**Bloemfontein**

Bloemfontein (includes Bainsvlei, Bloemspruit and Mangaung).

## Glossary

<b>Additions and alterations</b>	Additions and alterations include extensions to existing buildings as well as internal and external alterations of existing buildings.
<b>Blocks of flats</b>	Blocks of flats are regarded as high-density housing consisting of a number of self-contained dwelling-units with at least one living-room together with a kitchen and bathroom conjoined to similar units in one building.
<b>Dwelling-house</b>	A dwelling-house refers to a free-standing, complete structure on a separate stand or a self-contained dwelling-unit, granny flat, on the same premises as an existing residence. Out-buildings and garages are included.
<b>Local government institutions</b>	A local government institution is a generic term referring to any number of institutions involved in the local sphere of government. Local government institutions consist of municipalities, city councils, metropolitan councils, district councils, transitional local councils and development and services boards.
<b>Non-residential buildings</b>	Non-residential buildings comprise factories, commercial, financial and other office buildings, as well as other buildings not used for residential purposes, such as churches, halls, clubs, schools and hospitals.
<b>Other residential buildings</b>	Other residential buildings include institutions for the disabled, boarding houses, old people's homes, hostels, hotels, motels, guest houses, holiday chalets, bed-and-breakfast accommodation, entertainment centres and casinos.
<b>Percentage change</b>	<p>When using monthly actual values, the percentage change is the change in actual values of building activities (building plans passed or buildings completed) of the relevant month compared with the actual values of building activities (building plans passed or buildings completed) of the same month in the previous year expressed as a percentage.</p> <p>When using annual actual values, the percentage change is the change in the actual values of building activities (building plans passed or buildings completed) of the relevant year compared with the actual values of building activities (building plans passed or buildings completed) of the previous year expressed as a percentage.</p> <p>When using seasonally adjusted values, the percentage change is the change in the seasonally adjusted values of building activities (building plans passed or buildings completed) of the relevant month compared with the seasonally adjusted values of building activities (building plans passed or buildings completed) of the previous month expressed as a percentage.</p>
<b>Reference period</b>	Reference period is one calendar month.
<b>Residential buildings</b>	Residential buildings comprise dwelling-houses, flats, townhouses and other residential buildings.
<b>Townhouses</b>	Townhouses are multiple, medium-density dwelling-units and include cluster housing, group housing, simplexes, duplexes, triplexes and other similar dwelling-units which are usually grouped together, with one level of each unit on ground level. This excludes blocks of flats.



## For more information

Stats SA publishes approximately 300 different statistical releases each year. It is not economically viable to produce them in more than one of South Africa's eleven official languages. Since the releases are used extensively, not only locally but also by international economic and social-scientific communities, Stats SA releases are published in English only.

Stats SA has copyright on this publication. Users may apply the information as they wish, provided that they acknowledge Stats SA as the source of the basic data wherever they process, apply, utilise, publish or distribute the data and also that they specify that the relevant application and analysis (where applicable) result from their own processing of the data.

### Stats SA products

A complete set of Stats SA publications is available at the Stats SA Library and the following libraries:

National Library of South Africa, Pretoria Division  
National Library of South Africa, Cape Town Division  
Natal Society Library, Pietermaritzburg  
Library of Parliament, Cape Town  
Bloemfontein Public Library  
Johannesburg Public Library  
Eastern Cape Library Services, King William's Town  
Central Regional Library, Pietersburg  
Central Reference Library, Nelspruit  
Central Reference Collection, Kimberley  
Central Reference Library, Mmabatho

Stats SA also provides a subscription service.

### Electronic services

A large range of data are available via on-line services, diskette, CD and computer printouts. For more details about our electronic data services, contact (012) 310 8600/8095/8390/8351

You can visit us on the Internet at: <http://www.statssa.gov.za>

### Enquiries

Telephone number: (012) 310 8600/8095/8390/8351 (user enquiries)  
(012) 310 8228/310 8007 (technical enquiries)  
(012) 310 8161 (publications)  
(012) 310 8490 (library)

Fax number: (012) 310 8182

e-mail: Corrieb@statssa.pwv.gov.za  
Gretaz@statssa.pwv.gov.za

Postal address: Private Bag X44, Pretoria, 0001