

# **Building statistics**

**April 2001**

Co-operation between Statistics South Africa (Stats SA), the citizens of the country, the private sector and government institutions is essential for a successful statistical system. Without continued co-operation and goodwill, the timely release of relevant and reliable official statistics will not be possible.

**Embargo: 13:00**  
**Date: 20 June 2001**

Stats SA publishes approximately three hundred different releases each year. It is not economically viable to produce them in more than one of South Africa's eleven official languages. Since the releases are used extensively, not only locally, but also by international economic and social-scientific communities, Stats SA releases are published in English only.

---

Private Bag X44 • 0001 Pretoria • South Africa • Steyn's Building • Steyn's Arcade • 274 Schoeman Street • Pretoria

Users enquiries Tel: +27(12) 310 8600 • Fax: +27(12) 310 8500

E-mail address: [info@statssa.pwv.gov.za](mailto:info@statssa.pwv.gov.za) • Website: <http://www.statssa.gov.za>

## Key figures regarding building plans passed for the month ended April 2001

### Actual estimates at constant 1995 prices

	April 2001 R million	January 2001 to April 2001 R million	Percentage change between April 2000 and April 2001	Percentage change between February 2000 to April 2000 and February 2001 to April 2001	Percentage change between January 2000 to April 2000 and January 2001 to April 2001
Residential buildings					
Dwelling-houses	406,6	1 796,0	+ 6,0	+ 9,6	+ 12,1
Flats and townhouses	82,5	408,1	- 5,6	+ 4,4	+ 11,4
Other residential buildings	37,2	79,1	+ 1 217,1	- 23,9	+ 28,2
<b>Total</b>	<b>526,3</b>	<b>2 283,2</b>	<b>+ 11,1</b>	<b>+ 7,4</b>	<b>+ 12,5</b>
Non-residential buildings	147,9	918,9	- 27,7	- 31,4	- 5,2
Additions and alterations	269,7	1 166,4	- 6,5	- 7,5	- 8,2
<b>Total</b>	<b>943,9</b>	<b>4 368,5</b>	<b>- 2,4</b>	<b>- 6,2</b>	<b>+ 2,3</b>

### Seasonally adjusted estimates at constant 1995 prices

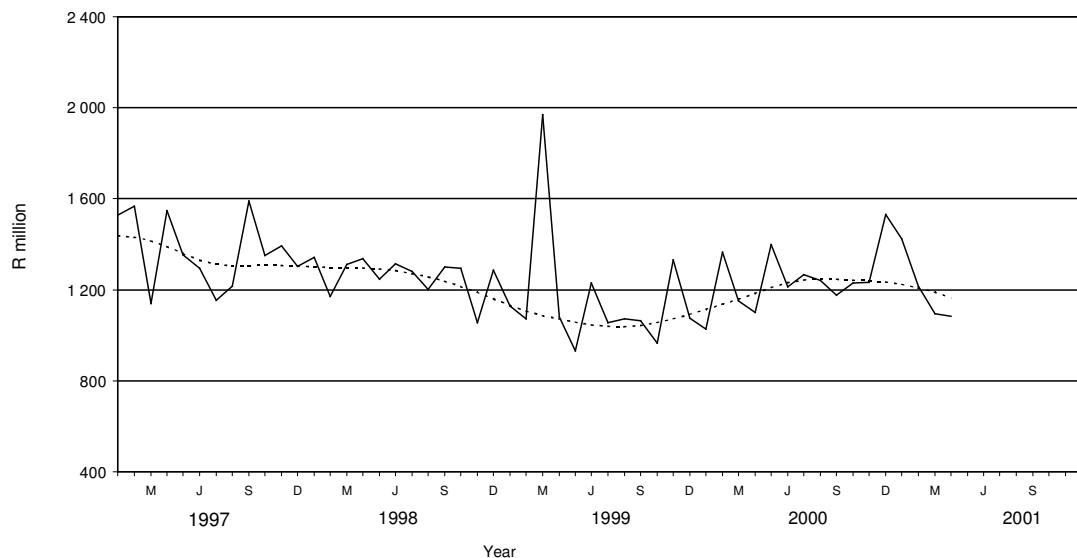
	April 2001 R million	Percentage change between March 2001 and April 2001	Percentage change between November 2000 to January 2001 and February 2001 to April 2001
Residential buildings	588,1	- 2,0	- 5,7
Non-residential buildings	181,2	- 15,5	- 52,2
Additions and alterations	314,5	+ 12,4	+ 1,6
<b>Total</b>	<b>1 083,8</b>	<b>- 1,0</b>	<b>- 19,0</b>

## Key findings regarding building plans passed for the three months ended April 2001

### Seasonally adjusted real value of building plans passed decreases

*The seasonally adjusted real value of building plans passed (at constant 1995 prices) for the three months ended April 2001 decreased by 19,0% compared with the previous three months.*

The decrease of 19,0% in the seasonally adjusted real value of building plans passed was due to decreases in the seasonally adjusted real value of building plans passed for non-residential buildings (-52,2%) and residential buildings (-5,7%) during the three months ended April 2001 compared with the previous three months. However, this decrease was partially counteracted by an increase of 1,6% in the seasonally adjusted real value for additions and alterations during the above-mentioned period.

**Figure 1 - Total real value of building plans passed**

Source: Stats SA

—— Seasonally

----- Trend

## **Key findings regarding building plans passed for the first four months of 2001**

### ***Total real value of building plans passed increases***

*The total real value of building plans passed (at constant 1995 prices) during the first four months of 2001 increased by 2,3% (+R99,1 million) to R4 368,5 million compared with the first four months of 2000. Large real increases were reported for dwelling-houses (+12,1% or R194,4 million, mainly due to increases reported by Gauteng (+R105,4 million) and Western Cape (+R86,6 million)); and flats and townhouses (+11,4% or R41,9 million, mainly due to increases reported by Gauteng (+R48,0 million)).*

### **Four of the nine provinces reported increases in the total real value of building plans passed**

The largest provincial contributors to the increase of 2,3% (+R99,1 million) in the total real value of building plans passed during the first four months of 2001 compared with the first four months of 2000 were Gauteng (+2,4 percentage points or R104,1 million) and KwaZulu-Natal (+1,5 percentage points or R63,7 million) (cf. table A). The largest real increases in Gauteng were reported for dwelling-houses (+R105,4 million, mainly due to increases reported by the selected urban areas of the Witwatersrand (+R50,6 million), Pretoria (+R38,7 million) and Vereeniging (+R20,7 million)); and flats and townhouses (+R48,0 million, mainly due to increases reported by the selected urban areas of Pretoria (+R24,5 million) and Witwatersrand (+R20,4 million)). KwaZulu-Natal reported a large increase in the value of building plans passed for non-residential buildings (+R71,3 million, mainly due to the approval of building plans for office and banking space to the real value of R73,0 million by North Local Council – Umhlanga Rocks during January 2001).

**Table A - Contribution of provinces to the total real value of building plans passed**

Province	Percentage contribution to the total real value of plans passed during January 2000 to April 2000	Percentage change between January 2000 to April 2000 and January 2001 to April 2001	Contribution (percentage points) <sup>1/</sup> to the percentage change in the real value of plans passed between January 2000 to April 2000 and January 2001 to April 2001	Difference in total real value of plans passed between January 2000 to April 2000 and January 2001 to April 2001  R million
Gauteng	40,8	+ 6,0	+ 2,4	+ 104,1
KwaZulu-Natal	11,2	+ 13,3	+ 1,5	+ 63,7
Mpumalanga	3,1	+ 7,4	+ 0,2	+ 9,8
North West	2,6	+ 1,9	+ 0,0	+ 2,1
Free State	2,7	- 4,4	- 0,1	- 5,1
Western Cape	29,8	- 0,5	- 0,1	- 6,6
Northern Province	1,9	- 17,1	- 0,3	- 13,6
Eastern Cape	6,5	- 7,2	- 0,5	- 20,1
Northern Cape	1,4	- 57,0	- 0,8	- 35,2
<b>Total</b>	<b>100,0</b>	<b>+ 2,3</b>	<b>+ 2,3</b>	<b>+ 99,1</b>

1/ The contribution (percentage points) is calculated by multiplying the percentage change of each province with the percentage contribution of the corresponding province.

### **Total real value of residential building plans passed increases**

The total real value of residential building plans passed during the first four months of 2001 increased by 12,5% (+R253,6 million) to R2 283,2 million compared with the first four months of 2000. Increases were reported by seven of the nine provinces. The largest increase in the total real value of residential building plans passed was reported by Gauteng (+R155,2 million, mainly due to the increase in the real value of plans passed for dwelling-houses (+R105,4 million)); followed by Western Cape (+R54,5 million), Eastern Cape (+R23,5 million), KwaZulu-Natal (+R19,4 million), Mpumalanga (+R15,0 million) and North West (+R13,3 million). Increases in the real value of residential building plans passed were reported for dwelling-houses (+R194,4 million), flats and townhouses (+R41,9 million) and other residential buildings (+R17,4 million) during the above-mentioned period.

### **Total real value of dwelling-house plans passed increases**

The total real value of dwelling-house plans passed during the first four months of 2001 increased by 12,1% (+R194,4 million) to R1 796,0 million compared with the first four months of 2000. Increases were reported by seven of the nine provinces. The largest increases in the real value of dwelling-house plans passed were reported by Gauteng (+R105,4 million) and Western Cape (+R86,6 million). Large real increases were reported by the selected urban areas of Cape Town (+R55,6 million), the Witwatersrand (+R50,6 million), Pretoria (+R38,7 million) and Vereeniging (+R20,7 million).

The increase of 12,1% in the total real value of dwelling-house plans passed during the above-mentioned period can mainly be attributed to the increase in the real value of plans passed for dwelling-houses equal to or larger than 80 square metres (+13,3% or R167,4 million).

**Total real value of plans passed for flats and townhouses increases**

The total real value of plans passed for flats and townhouses during the first four months of 2001 increased by 11,4% (+R41,9 million) to R408,1 million compared with the first four months of 2000. Real increases were reported by four of the nine provinces. The largest increase in the real value of plans passed for flats and townhouses was reported by Gauteng (+R48,0 million), followed by KwaZulu-Natal (+R19,2 million) and North West (+R9,4 million). Large real increases were reported by the selected urban areas of Pretoria (+R24,5 million), the Witwatersrand (+R20,4 million), North Local Council – Umhlanga Rocks (+R10,5 million) and Rustenburg (+R10,0 million). However, large decreases in the real value of building plans passed for flats and townhouses were reported by the selected urban areas of Cape Town (-R30,4 million) and East London (-R13,9 million) during the above-mentioned period.

**Total real value of 'other' residential building plans passed increases**

The total real value of 'other' residential building plans passed during the four months of 2001 increased by 28,2% (+R17,4 million) to R79,1 million compared with the first four months of 2000. The largest real increase was reported by Eastern Cape (+R35,6 million, mainly due to the approval of building plans passed for a casino, to the real value of R35,8 million, by the local government institution of East London during January 2001.

**Total real value of non-residential building plans passed decreases**

The total real value of non-residential building plans passed during the first four months of 2001 decreased by 5,2% (-R50,7 million) to R918,9 million compared with the first four months of 2000. Large real decreases in the total value of non-residential building plans passed were reported by Eastern Cape (-R59,3 million) and Gauteng (-R58,5 million). However, KwaZulu-Natal reported a large increase in the total real value of non-residential building plans passed (+R71,3 million). This increase was mainly due to the increase in the total real value of non-residential building plans passed as reported by North Local Council – Umhlanga Rocks (+R75,8 million) during the above-mentioned period.

**Total real value of building plans passed for additions and alterations decreases**

The total real value of building plans passed for additions and alterations during the first four months of 2001 decreased by 8,2% (-R103,8 million) to R1 166,4 million compared with the first four months of 2000. The largest decrease in the real value of building plans passed for additions and alterations was reported by Western Cape (-R57,8 million), followed by KwaZulu-Natal (-R27,0 million), Northern Cape (-R19,1 million), North West (-R10,6 million) and Northern Province (-R7,1 million).

## Key figures regarding buildings completed for the month ended April 2001

### Actual estimates at constant 1995 prices

	April 2001	January 2001 to April 2001	Percentage change between April 2000 and April 2001	Percentage change between February 2000 to April 2000 and February 2001 to April 2001	Percentage change between January to April 2000 and January to April 2001
	R million	R million			
Residential buildings					
Dwelling-houses	199,7	916,3	- 5,9	+ 7,6	+ 8,6
Flats and townhouses	74,9	301,2	+ 9,8	+ 14,4	+ 18,8
Other residential buildings	0,1	259,5	- 97,6	+ 92,9	+ 649,6
<b>Total</b>	<b>274,7</b>	<b>1 477,0</b>	<b>- 3,9</b>	<b>+ 10,8</b>	<b>+ 30,5</b>
Non-residential buildings	135,7	664,8	- 25,4	- 8,8	- 3,2
Additions and alterations	139,3	700,3	- 6,6	+ 1,1	+ 1,8
<b>Total</b>	<b>549,7</b>	<b>2 842,1</b>	<b>- 10,9</b>	<b>+ 2,9</b>	<b>+ 13,4</b>

### Seasonally adjusted estimates at constant 1995 prices

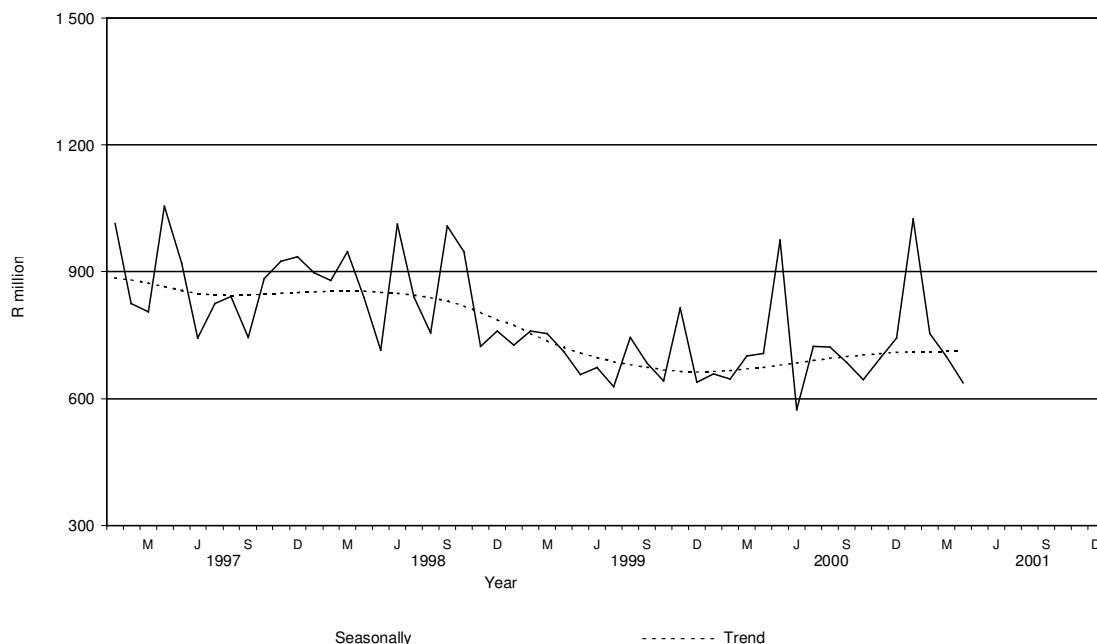
	April 2001	Percentage change between March 2001 and April 2001	Percentage change between November 2000 to January 2001 and February 2001 to April 2001
	R million		
Residential buildings	317,2	- 15,9	- 20,6
Non-residential buildings	162,9	+ 14,0	- 13,2
Additions and alterations	156,4	- 12,7	- 3,8
<b>Total</b>	<b>636,5</b>	<b>- 9,0</b>	<b>- 15,2</b>

## Key findings regarding buildings completed for the three months ended April 2001

### Seasonally adjusted real value of buildings completed decreases

*The seasonally adjusted real value of buildings completed (at constant 1995 prices) for the three months ended April 2001 decreased by 15,2% compared with the previous three months.*

The decrease of 15,2% in the seasonally adjusted real value of buildings completed was due to decreases in the seasonally adjusted real value of residential buildings (-20,6%), non-residential buildings (-13,2%) and additions and alterations (-3,8%) during the three months ended April 2001 compared with the previous three months.

**Figure 2 - Total real value of buildings completed**

## Key findings regarding buildings completed for the first four months of 2001

### *Total real value of buildings completed increases*

*The total real value of buildings completed (at constant 1995 prices) during the first four months of 2001 increased by 13,4% (+R335,6 million) to R2 842,1 million compared with the first four months of 2000. Increases in the real value of buildings completed were reported for other residential buildings (+R224,9 million, mainly due to the completion of a hotel and casino, to the real value of R192,6 million, as reported by the Southern Metropolitan Local Council of Greater Johannesburg during January 2001); dwelling-houses (+R72,5 million), flats and townhouses (+R47,7 million) and additions and alterations (+R12,7 million). However, the real value of non-residential buildings completed decreased by 3,2% or R22,2 million during the above-mentioned period.*

### **Six of the nine provinces reported increases in the total real value of buildings completed**

The largest provincial contributors to the increase of 13,4% (+R335,6 million) in the total real value of buildings completed during the first four months of 2001 compared with the first four months of 2000 were Gauteng (+10,2 percentage points or R255,7 million) and Eastern Cape (+3,5 percentage points or R88,2 million) (cf. table B). The largest real increases in Gauteng were reported for 'other' residential buildings (+R184,9 million, due to the completion of a hotel and casino to the real value of R192,6 million as reported during January 2001) and flats and townhouses (+R85,6 million).

**Table B - Contribution of provinces to the total real value of buildings completed**

Province	Percentage contribution to the total real value of buildings completed during January 2000 to April 2000	Percentage change between January 2000 to April 2000 and January 2001 to April 2001	Contribution (percentage points) <sup>1/</sup> to the percentage change in the real value of buildings completed between January 2000 to April 2000 and January 2001 to April 2001	Difference in total real value of buildings completed between January 2000 to April 2000 and January 2001 to April 2001 R million
Gauteng	32,6	+ 31,3	+ 10,2	+ 255,7
Eastern Cape	5,7	+ 62,0	+ 3,5	+ 88,2
Northern Cape	1,0	+ 41,4	+ 0,5	+ 11,0
North West	2,3	+ 19,0	+ 0,4	+ 10,8
Mpumalanga	3,0	+ 2,3	+ 0,1	+ 1,8
Western Cape	31,8	+ 0,1	+ 0,0	+ 1,1
Free State	3,4	- 2,3	- 0,1	- 1,9
Northern Province	1,4	- 21,5	- 0,3	- 7,7
KwaZulu-Natal	18,8	- 5,0	- 0,9	- 23,4
<b>Total</b>	<b>100,0</b>	<b>+ 13,4</b>	<b>+ 13,4</b>	<b>+ 335,6</b>

1/ The contribution (percentage points) is calculated by multiplying the percentage change of each province with the percentage contribution of the corresponding province.

### **Total real value of residential buildings completed increases**

The total real value of residential buildings completed during the first four months of 2001 increased by 30,5% (+R345,1 million) to R1 477,0 million compared with the first four months of 2000. Increases in the real value of residential buildings completed were reported for 'other' residential buildings (+R224,9 million, mainly due to the completion of a hotel and casino in Gauteng to the real value of R192,6 million as reported during January 2001), dwelling-houses (+R72,5 million) and flats and townhouses (+R47,7 million). The largest provincial increase in the total real value of residential buildings completed was reported by Gauteng (+R263,8 million, mainly due to real increases reported for 'other' residential buildings (+R184,9 million)); followed by KwaZulu-Natal (+R65,8 million), North West (+R13,3 million), Eastern Cape (+R8,8 million) and Northern Province (+R7,1 million).

### **Total real value of dwelling-houses completed increases**

The total real value of dwelling-houses completed during the first four months of 2001 increased by 8,6% (+R72,5 million) to R916,3 million compared with the first four months of 2000. Large real increases were reported by KwaZulu-Natal (+R28,8 million), Western Cape (+R28,0 million), Eastern Cape (+R13,2 million) and North West (+R11,5 million). Large increases in the real value of dwelling-houses completed were reported by the selected urban areas of Mossel Bay (+R22,2 million), Durban (+R13,4 million), North Local Council – Umhlanga Rocks (+R13,1 million), Cape Town (+R12,4 million) and Rustenburg (+R9,1 million).

The increase of 8,6% in the total real value of dwelling-houses completed during the first four months of 2001 compared with the first four months of 2000 can be attributed to the increase in the completion of dwelling-houses equal to or larger than 80 square metres (+19,0% or R114,7 million).



### **Total real value of flats and townhouses completed increases**

The total real value of flats and townhouses completed during the first four months of 2001 increased by 18,8% (+R47,7 million) to R301,2 million compared with the first four months of 2000. Four of the nine provinces reported increases in the real value of flats and townhouses completed. Gauteng reported the largest increase (+R85,6 million), mainly due to increases as reported by the selected urban areas of the Witwatersrand (+R47,3 million) and Pretoria (+R25,2 million) during the above-mentioned period.

### **Total real value of 'other' residential buildings completed increases**

The total real value of 'other' residential buildings completed during the first four months of 2001 increased by R224,9 million to R259,5 million compared with the first four months of 2000. Large real increases were reported by Gauteng (+R184,9 million, mainly due to the completion of a hotel and casino to the real value of R192,6 million, as reported by the Southern Metropolitan Local Council of Greater Johannesburg during January 2001) and KwaZulu-Natal (+R30,2 million, due to the completion of a casino to the real value of R30,8 million, as reported by the North Local Council – Umhlanga Rocks during January 2001).

### **Total real value of non-residential buildings completed decreases**

The total real value of non-residential buildings completed during the first four months of 2001 decreased by 3,2% (-R22,2 million) to R664,8 million compared with the first four months of 2000. Large real decreases were reported by KwaZulu-Natal (-R61,1 million), Western Cape (-R27,9 million) and Northern Province (-R18,1 million). Large decreases in the real value of non-residential buildings completed were reported for office and banking space (-R44,1 million) and shopping space (-R24,8 million). However, a large increase in the total real value of non-residential buildings completed was reported by Eastern Cape (+R67,0 million), mainly due to the real increase as reported by Port Elizabeth (+R27,8 million) and East London (+R23,8 million) during the above-mentioned period.

### **Total real value of additions and alterations completed increases**

The total real value of additions and alterations completed during the first four months of 2001 increased by 1,8% (+R12,7 million) to R700,3 million compared with the first four months of 2000. The largest real increase was reported by Western Cape (+R31,8 million), followed by Mpumalanga (+R16,7 million) and Eastern Cape (+R12,4 million). Large increases were reported by the selected urban areas of Cape Town (+R41,2 million), Nelspruit (+R11,7 million) and East London (+R10,7 million).

pp

**PJ Lehohla**

**Statistician-General: Statistics South Africa**

# Contents

## Page

<b>Notes</b>	10
<b>Tables</b>	
Table 1	Actual values and percentage change of building plans passed at current prices according to type of building ..... 14
Table 2	Seasonally adjusted values and percentage change of building plans passed at current prices according to type of building ..... 15
Table 3	Actual values and percentage change of building plans passed at constant 1995 prices according to type of building ..... 16
Table 4	Seasonally adjusted values and percentage change of building plans passed at constant 1995 prices according to type of building ..... 17
Table 5	Actual values and percentage change of buildings completed at current prices according to type of building ..... 18
Table 6	Seasonally adjusted values and percentage change of buildings completed at current prices according to type of building ..... 19
Table 7	Actual values and percentage change of buildings completed at constant 1995 prices according to type of building ..... 20
Table 8	Seasonally adjusted values and percentage change of buildings completed at constant 1995 prices according to type of building ..... 21
Table 9	Building plans passed according to type of building: Total RSA ..... 22
Table 10	Building plans passed according to type of building and province: Western Cape ..... 23
Table 11	Building plans passed according to type of building and province: Eastern Cape ..... 24
Table 12	Building plans passed according to type of building and province: Northern Cape ..... 25
Table 13	Building plans passed according to type of building and province: Free State ..... 26
Table 14	Building plans passed according to type of building and province: KwaZulu-Natal ..... 27
Table 15	Building plans passed according to type of building and province: North West ..... 28
Table 16	Building plans passed according to type of building and province: Gauteng ..... 29
Table 17	Building plans passed according to type of building and province: Mpumalanga ..... 30
Table 18	Building plans passed according to type of building and province: Northern Province ..... 31
Table 19	Buildings completed according to type of building: Total RSA ..... 32
Table 20	Buildings completed according to type of building and province: Western Cape ..... 33
Table 21	Buildings completed according to type of building and province: Eastern Cape ..... 34
Table 22	Buildings completed according to type of building and province: Northern Cape ..... 35
Table 23	Buildings completed according to type of building and province: Free State ..... 36
Table 24	Buildings completed according to type of building and province: KwaZulu-Natal ..... 37
Table 25	Buildings completed according to type of building and province: North West ..... 38
Table 26	Buildings completed according to type of building and province: Gauteng ..... 39
Table 27	Buildings completed according to type of building and province: Mpumalanga ..... 40
Table 28	Buildings completed according to type of building and province: Northern Province ..... 41
Table 29	Building plans passed according to type of building and selected urban area: Cape Town ..... 42
Table 30	Building plans passed according to type of building and selected urban area: Port Elizabeth ..... 43
Table 31	Building plans passed according to type of building and selected urban area: Durban ..... 44
Table 32	Building plans passed according to type of building and selected urban area: Witwatersrand ..... 45
Table 33	Building plans passed according to type of building and selected urban area: Pretoria ..... 46
Table 34	Building plans passed according to type of building and selected urban area: Bloemfontein ..... 47
Table 35	Buildings completed according to type of building and selected urban area: Cape Town ..... 48
Table 36	Buildings completed according to type of building and selected urban area: Port Elizabeth ..... 49
Table 37	Buildings completed according to type of building and selected urban area: Durban ..... 50
Table 38	Buildings completed according to type of building and selected urban area: Witwatersrand ..... 51
Table 39	Buildings completed according to type of building and selected urban area: Pretoria ..... 52
Table 40	Buildings completed according to type of building and selected urban area: Bloemfontein ..... 53
<b>Additional information</b>	
Explanatory notes	54
Technical notes	56
Local government institutions covered in the sample survey	57
Glossary	58
<b>For more information</b>	61

# Notes

## Forthcoming issues

### Issue

### Expected release date

May 2001	18 July 2001
June 2001	15 August 2001
July 2001	19 September 2001
August 2001	17 October 2001
September 2001	14 November 2001
October 2001	19 December 2001
November 2001	16 January 2002
December 2001	20 February 2002

## Purpose of the survey

The Building Statistics Survey is a countrywide survey covering a sample of local government institutions in South Africa. The information received is used to estimate key economic statistics used by the private and public sectors. The information is also used to compile estimates of the Gross Domestic Product (GDP). These statistics are also used by government to monitor the Reconstruction and Development Program (RDP) in South Africa.

## New questionnaire

In order to lessen the respondent burden and improve reliability, Stats SA has overhauled and redesigned its Building Statistics Survey questionnaire. This resulted in the change of some data items on the old questionnaire. As from November 1999 information regarding dwelling-houses was collected according to size of dwelling-house.

The Building Statistics Survey questionnaire collects the numbers, square metres and value of building plans passed and buildings completed for the private sector regarding

—

- residential buildings;
- non-residential buildings; and
- additions and alterations.

## Re-engineered building statistics statistical release

Prior to March 2001, Stats SA published selected information per province namely, the value of building plans passed and buildings completed regarding residential buildings, non-residential buildings and additions and alterations. Due to users' needs, specifically compilers of National Accounts, Stats SA has overhauled and re-designed the statistical release. In order to provide users with more provincial information Stats SA extended the information per province to include more detailed information regarding residential buildings (e.g. dwelling-houses equal to or larger than 80 square metre; flats and townhouses; and other residential buildings), non-residential buildings (e.g. office and banking space; shopping space; industrial and warehouse space; and other non-residential space) and additions and alterations (e.g. additions to dwelling-houses and other buildings).

Furthermore, to monitor the RDP housing program Stats SA publishes information regarding dwelling-houses smaller than 80 square metres and equal to or larger than 80 square metres according to province.

## Changes in the numbering of tables

It should be noted that the numbering of tables has changed as from March 2001 as indicated in table A, pages 11 to 13.

**Table A – Title of table according to new and old numbers**

<b>New number (as from March 2001)</b>	<b>Title of table</b>	<b>Old number (prior to March 2001)</b>
Table 1	Actual values and percentage change of building plans passed at current prices according to type of building	Table 3
Table 2	Seasonally adjusted values and percentage change of building plans passed at current prices according to type of building	Table 7
Table 3	Actual values and percentage change of building plans passed at constant 1995 prices according to type of building	Table 4
Table 4	Seasonally adjusted values and percentage change of building plans passed at constant 1995 prices according to type of building	Table 7
Table 5	Actual values and percentage change of buildings completed at current prices according to type of building	Table 5
Table 6	Seasonally adjusted values and percentage change of buildings completed at current prices according to type of building	Table 8
Table 7	Actual values and percentage change of buildings completed at constant 1995 prices according to type of building	Table 6
Table 8	Seasonally adjusted values and percentage change of buildings completed at constant 1995 prices according to type of building	Table 8
Table 9	Building plans passed according to type of building: Total RSA	Tables 1 and 9
Table 10	Building plans passed according to type of building and province: Western Cape	Table 1
Table 11	Building plans passed according to type of building and province: Eastern Cape	Table 1
Table 12	Building plans passed according to type of building and province: Northern Cape	Table 1
Table 13	Building plans passed according to type of building and province: Free State	Table 1
Table 14	Building plans passed according to type of building and province: KwaZulu-Natal	Table 1
Table 15	Building plans passed according to type of building and province: North West	Table 1
Table 16	Building plans passed according to type of building and province: Gauteng	Table 1
Table 17	Building plans passed according to type of building and province: Mpumalanga	Table 1

**Table A – Title of table according to new and old numbers (continued)**

<b>New number (as from March 2001)</b>	<b>Title of table</b>	<b>Old number (prior to March 2001)</b>
Table 18	Building plans passed according to type of building and province: Northern Province	Table 1
Table 19	Buildings completed according to type of building: Total RSA	Tables 2 and 11
Table 20	Buildings completed according to type of building and province: Western Cape	Table 2
Table 21	Buildings completed according to type of building and province: Eastern Cape	Table 2
Table 22	Buildings completed according to type of building and province: Northern Cape	Table 2
Table 23	Buildings completed according to type of building and province: Free State	Table 2
Table 24	Buildings completed according to type of building and province: KwaZulu-Natal	Table 2
Table 25	Buildings completed according to type of building and province: North West	Table 2
Table 26	Buildings completed according to type of building and province: Gauteng	Table 2
Table 27	Buildings completed according to type of building and province: Mpumalanga	Table 2
Table 28	Buildings completed according to type of building and province: Northern Province	Table 2
Table 29	Building plans passed according to type of building and selected urban area: Cape Town	Table 10
Table 30	Building plans passed according to type of building and selected urban area: Port Elizabeth	New
Table 31	Building plans passed according to type of building and selected urban area: Durban	Table 10
Table 32	Building plans passed according to type of building and selected urban area: Witwatersrand	Table 10
Table 33	Building plans passed according to type of building and selected urban area: Pretoria	Table 10
Table 34	Building plans passed according to type of building and selected urban area: Bloemfontein	Table 10
Table 35	Buildings completed according to type of building and selected urban area: Cape Town	Table 12
Table 36	Buildings completed according to type of building and selected urban area: Port Elizabeth	New

**Table A – Title of table according to new and old numbers (concluded)**

<b>New number (as from March 2001)</b>	<b>Title of table</b>	<b>Old number (prior to March 2001)</b>
Table 37	Buildings completed according to type of building and selected urban area: Durban	Table 12
Table 38	Buildings completed according to type of building and selected urban area: Witwatersrand	Table 12
Table 39	Buildings completed according to type of building and selected urban area: Pretoria	Table 12
Table 40	Buildings completed according to type of building and selected urban area: Bloemfontein	Table 12

**Table 1 - Actual values and percentage change of building plans passed at current prices according to type of building**

Year and month <sup>2/</sup>	Residential buildings		Non-residential buildings		Additions and alterations		Total	
	R'000	Percentage change	R'000	Percentage change	R'000	Percentage change	R'000	Percentage change
1999 Jan	553 051	+ 9,8	237 671	- 45,6	277 444	+ 9,9	1 068 166	- 7,0
Feb	528 673	- 18,9	394 629	- 4,6	355 506	- 2,0	1 278 809	- 7,0
Mar	667 232	- 17,0	1 454 021	+ 219,5	476 726	+ 10,2	2 597 979	+ 59,3
Apr	530 570	- 22,1	374 625	- 23,8	330 044	- 6,9	1 235 239	- 16,0
May	527 616	- 19,3	274 148	- 46,9	403 206	+ 14,2	1 204 970	- 17,9
Jun	837 779	+ 18,8	418 343	- 32,5	403 838	+ 2,5	1 659 959	+ 0,4
Jul	637 414	- 19,6	460 734	- 7,1	420 306	- 15,4	1 518 454	- 12,2
Aug	630 628	- 14,1	388 580	- 14,5	415 686	- 6,2	1 434 895	- 7,7
Sep	599 986	- 14,7	305 439	- 38,8	484 091	+ 9,7	1 389 516	- 13,4
Oct	664 785	- 22,6	329 137	- 38,8	436 746	- 11,1	1 430 668	- 22,7
Nov	710 950	+ 14,0	701 437	+ 44,0	536 870	+ 39,6	1 949 257	+ 33,3
Dec	493 844	+ 16,1	225 184	- 40,9	314 898	- 23,4	1 033 926	- 12,9
<b>Total</b>	<b>7 382 530</b>	<b>- 8,9</b>	<b>5 563 948</b>	<b>- 3,8</b>	<b>4 855 360</b>	<b>+ 0,8</b>	<b>17 801 839</b>	<b>- 1,8</b>
2000 Jan*	497 965	- 10,0	163 926	- 31,0	365 596	+ 31,8	1 027 487	- 3,8
Feb*	784 023	+ 48,3	474 732	+ 20,3	399 280	+ 12,3	1 658 035	+ 29,7
Mar*	747 421	+ 12,0	359 267	- 75,3	515 668	+ 8,2	1 622 356	- 37,6
Apr	627 642	+ 18,3	271 151	- 27,6	382 300	+ 15,8	1 281 093	+ 3,7
May*	874 847	+ 65,8	573 853	+ 109,3	473 062	+ 17,3	1 921 762	+ 59,5
Jun	853 154	+ 1,8	336 324	- 19,6	532 278	+ 31,8	1 721 756	+ 3,7
Jul*	908 061	+ 42,5	484 669	+ 5,2	549 932	+ 30,8	1 942 662	+ 27,9
Aug*	929 836	+ 47,4	353 488	- 9,0	492 627	+ 18,5	1 775 951	+ 23,8
Sep*	826 851	+ 37,8	354 456	+ 16,0	465 836	- 3,8	1 647 143	+ 18,5
Oct*	916 410	+ 37,9	492 884	+ 49,8	539 561	+ 23,5	1 948 855	+ 36,2
Nov*	914 346	+ 28,6	493 166	- 29,7	503 659	- 6,2	1 911 171	- 2,0
Dec	606 148	+ 22,7	704 410	+ 212,8	317 835	+ 0,9	1 628 393	+ 57,5
<b>Total*</b>	<b>9 486 704</b>	<b>+ 28,5</b>	<b>5 062 326</b>	<b>- 9,0</b>	<b>5 537 634</b>	<b>+ 14,1</b>	<b>20 086 664</b>	<b>+ 12,8</b>
2001 Jan	719 247	+ 44,4	475 094	+ 189,8	351 676	- 3,8	1 546 017	+ 50,5
Feb	817 492	+ 4,3	299 535	- 36,9	472 567	+ 18,4	1 589 594	- 4,1
Mar*	932 343	+ 24,7	307 449	- 14,4	435 650	- 15,5	1 675 442	+ 3,3
Apr	747 870	+ 19,2	210 194	- 22,5	383 265	+ 0,3	1 341 329	+ 4,7

<sup>1/</sup> The annual percentage change is the change in the actual values of building plans passed of the relevant year compared with the actual values of building plans passed of the previous year expressed as a percentage.

<sup>2/</sup> The monthly percentage change is the change in the actual values of building plans passed of the relevant month compared with the actual values of building plans passed of the same month in the previous year expressed as a percentage.

**Table 2 - Seasonally adjusted values and percentage change of building plans passed at current prices according to type of building**

Year and month <sup>1/</sup>	Residential buildings		Non-residential buildings		Additions and alterations		Total	
	R'000	Percentage change	R'000	Percentage change	R'000	Percentage change	R'000	Percentage change
1999 Jan	714 748	+ 18,1	307 077	- 34,7	380 108	- 25,5	1 401 933	- 11,6
Feb	531 774	- 25,6	428 348	+ 39,5	385 618	+ 1,4	1 345 741	- 4,0
Mar	617 411	+ 16,1	1 423 002	+ 232,2	438 396	+ 13,7	2 478 809	+ 84,2
Apr	574 537	- 6,9	415 330	- 70,8	377 715	- 13,8	1 367 582	- 44,8
May	522 446	- 9,1	255 156	- 38,6	404 351	+ 7,1	1 181 953	- 13,6
Jun	798 115	+ 52,8	383 908	+ 50,5	385 827	- 4,6	1 567 850	+ 32,6
Jul	567 141	- 28,9	411 462	+ 7,2	365 844	- 5,2	1 344 447	- 14,2
Aug	589 274	+ 3,9	384 421	- 6,6	391 398	+ 7,0	1 365 093	+ 1,5
Sep	587 818	- 0,2	321 886	- 16,3	448 377	+ 14,6	1 358 081	- 0,5
Oct	563 320	- 4,2	285 745	- 11,2	385 689	- 14,0	1 234 754	- 9,1
Nov	664 677	+ 18,0	579 530	+ 102,8	468 184	+ 21,4	1 712 391	+ 38,7
Dec	700 929	+ 5,5	278 076	- 52,0	410 293	- 12,4	1 389 298	- 18,9
2000 Jan	637 293	- 9,1	207 540	- 25,4	489 978	+ 19,4	1 334 811	- 3,9
Feb	798 705	+ 25,3	538 122	+ 159,3	436 326	- 10,9	1 773 153	+ 32,8
Mar	682 627	- 14,5	356 890	- 33,7	468 858	+ 7,5	1 508 376	- 14,9
Apr	692 132	+ 1,4	320 153	- 10,3	442 417	- 5,6	1 454 702	- 3,6
May	866 756	+ 25,2	523 578	+ 63,5	478 248	+ 8,1	1 868 582	+ 28,5
Jun	813 052	- 6,2	302 235	- 42,3	511 416	+ 6,9	1 626 703	- 12,9
Jul	807 490	- 0,7	419 720	+ 38,9	479 955	- 6,2	1 707 165	+ 4,9
Aug	863 443	+ 6,9	357 167	- 14,9	464 259	- 3,3	1 684 870	- 1,3
Sep	805 377	- 6,7	367 882	+ 3,0	430 053	- 7,4	1 603 312	- 4,8
Oct	782 259	- 2,9	430 137	+ 16,9	474 187	+ 10,3	1 686 582	+ 5,2
Nov	852 789	+ 9,0	411 607	- 4,3	435 683	- 8,1	1 700 079	+ 0,8
Dec	858 372	+ 0,7	850 361	+ 106,6	417 495	- 4,2	2 126 227	+ 25,1
2001 Jan	915 559	+ 6,7	605 311	- 28,8	467 348	+ 11,9	1 988 218	- 6,5
Feb	838 843	- 8,4	347 286	- 42,6	520 887	+ 11,5	1 707 016	- 14,1
Mar	849 217	+ 1,2	302 849	- 12,8	394 931	- 24,2	1 546 996	- 9,4
Apr	835 098	- 1,7	257 007	- 15,1	447 159	+ 13,2	1 539 264	- 0,5

<sup>1/</sup> The percentage change is the change in the seasonally adjusted values of building plans passed of the relevant month compared with the seasonally adjusted values of building plans passed of the previous month expressed as a percentage.



**Table 3 - Actual values and percentage change of building plans passed at constant 1995 prices according to type of building**

Year and month <sup>2/</sup>	Residential buildings		Non-residential buildings		Additions and alterations		Total	
	R'000	Percentage change	R'000	Percentage change	R'000	Percentage change	R'000	Percentage change
1999 Jan	444 933	+ 2,8	191 208	- 45,6	223 205	+ 9,9	859 346	- 13,0
Feb	420 918	- 24,5	314 195	- 4,6	283 046	- 2,0	1 018 159	- 13,4
Mar	530 391	- 22,6	1 155 820	+ 219,5	378 955	+ 10,2	2 065 166	+ 48,5
Apr	419 423	- 27,3	296 146	- 23,8	260 904	- 6,9	976 473	- 21,6
May	416 759	- 24,5	216 546	- 46,9	318 488	+ 14,2	951 793	- 23,2
Jun	659 150	+ 11,2	329 145	- 32,5	317 732	+ 2,5	1 306 027	- 6,1
Jul	499 933	- 24,1	361 360	- 7,1	329 651	- 15,4	1 190 944	- 17,2
Aug	494 610	- 13,8	304 769	- 14,5	326 028	- 6,2	1 125 407	- 11,9
Sep	469 473	- 18,3	238 998	- 38,8	378 788	+ 9,7	1 087 259	- 17,0
Oct	519 363	- 25,5	257 138	- 38,8	341 208	- 11,1	1 117 709	- 25,6
Nov	553 699	+ 9,8	546 290	+ 44,0	418 123	+ 39,6	1 518 112	+ 28,3
Dec	384 016	+ 11,7	175 104	- 40,9	244 866	- 23,4	803 986	- 16,3
<b>Total</b>	<b>5 812 668</b>	<b>- 8,9</b>	<b>4 386 719</b>	<b>- 3,8</b>	<b>3 820 994</b>	<b>+ 0,8</b>	<b>14 020 381</b>	<b>- 7,1</b>
2000 Jan*	383 640	- 13,8	126 291	- 34,0	281 661	+ 26,2	791 592	- 7,9
Feb*	602 168	+ 43,1	364 618	+ 16,0	306 667	+ 8,3	1 273 453	+ 25,1
Mar*	570 115	+ 7,5	274 040	- 76,3	393 339	+ 3,8	1 237 494	- 40,1
Apr	473 692	+ 12,9	204 642	- 30,9	288 528	+ 10,6	966 862	- 1,0
May*	655 807	+ 57,4	430 175	+ 98,7	354 619	+ 11,3	1 440 601	+ 51,4
Jun	637 634	- 3,3	251 363	- 23,6	397 816	+ 25,2	1 286 813	- 1,5
Jul*	672 638	+ 34,5	359 014	- 0,6	407 357	+ 23,6	1 439 009	+ 20,8
Aug*	682 699	+ 38,0	259 536	- 14,8	361 694	+ 10,9	1 303 929	+ 15,9
Sep*	606 196	+ 29,1	259 865	+ 8,7	341 522	- 9,8	1 207 583	+ 11,1
Oct*	668 425	+ 28,7	359 507	+ 39,8	393 553	+ 15,3	1 421 485	+ 27,2
Nov*	664 013	+ 19,9	358 145	- 34,4	365 765	- 12,5	1 387 923	- 8,6
Dec	438 602	+ 14,2	509 703	+ 191,1	229 982	- 6,1	1 178 287	+ 46,6
<b>Total*</b>	<b>7 055 629</b>	<b>+ 21,4</b>	<b>3 756 899</b>	<b>- 14,4</b>	<b>4 122 503</b>	<b>+ 7,9</b>	<b>14 935 031</b>	<b>+ 6,5</b>
2001 Jan	514 851	+ 34,2	340 082	+ 169,3	251 737	- 10,6	1 106 670	+ 39,8
Feb	582 259	- 3,3	213 344	- 41,5	336 586	+ 9,8	1 132 189	- 11,1
Mar*	659 832	+ 15,7	217 586	- 20,6	308 316	- 21,6	1 185 734	- 4,2
Apr	526 298	+ 11,1	147 920	- 27,7	269 715	- 6,5	943 933	- 2,4

<sup>1/</sup> The annual percentage change is the change in the actual values of building plans passed of the relevant year compared with the actual values of building plans passed of the previous year expressed as a percentage.

<sup>2/</sup> The monthly percentage change is the change in the actual values of building plans passed of the relevant month compared with the actual values of building plans passed of the same month in the previous year expressed as a percentage.

**Table 4 - Seasonally adjusted values and percentage change of building plans passed at constant 1995 prices according to type of building**

Year and month <sup>1/</sup>	Residential buildings		Non-residential buildings		Additions and alterations		Total	
	R'000	Percentage change	R'000	Percentage change	R'000	Percentage change	R'000	Percentage change
1999 Jan	575 540	+ 18,1	247 026	- 34,7	305 591	+ 7,4	1 128 157	- 11,6
Feb	423 617	- 26,4	341 681	+ 38,3	307 738	+ 0,7	1 073 036	- 4,9
Mar	489 980	+ 15,7	1 130 927	+ 231,0	348 856	+ 13,4	1 969 763	+ 83,6
Apr	454 572	- 7,2	328 613	- 70,9	298 728	- 14,4	1 081 913	- 45,1
May	412 611	- 9,2	201 416	- 38,7	317 783	+ 6,4	931 811	- 13,9
Jun	626 411	+ 51,8	301 678	+ 49,8	303 205	- 4,6	1 231 294	+ 32,1
Jul	445 394	- 28,9	323 140	+ 7,1	287 193	- 5,3	1 055 727	- 14,3
Aug	462 987	+ 3,9	302 194	- 6,5	307 949	+ 7,2	1 073 131	+ 1,6
Sep	460 772	- 0,5	252 279	- 16,5	351 233	+ 14,1	1 064 284	- 0,8
Oct	440 522	- 4,4	223 332	- 11,5	301 381	- 14,2	965 236	- 9,3
Nov	517 176	+ 17,4	450 228	+ 101,6	364 950	+ 21,1	1 332 354	+ 38,0
Dec	542 908	+ 5,0	215 391	- 52,2	317 651	- 13,0	1 075 950	- 19,2
2000 Jan	491 742	- 9,4	160 012	- 25,7	376 904	+ 18,7	1 028 658	- 4,4
Feb	613 453	+ 24,8	413 962	+ 158,7	336 320	- 10,8	1 363 735	+ 32,6
Mar	519 849	- 15,3	272 231	- 34,2	358 070	+ 6,5	1 150 150	- 15,7
Apr	522 819	+ 0,6	241 970	- 11,1	333 766	- 6,8	1 098 555	- 4,5
May	649 413	+ 24,2	391 986	+ 62,0	356 381	+ 6,8	1 397 780	+ 27,2
Jun	605 979	- 6,7	225 504	- 42,5	381 734	+ 7,1	1 213 216	- 13,2
Jul	598 813	- 1,2	311 266	+ 38,0	355 919	- 6,8	1 265 998	+ 4,4
Aug	635 763	+ 6,2	262 903	- 15,5	341 908	- 3,9	1 240 575	- 2,0
Sep	591 381	- 7,0	270 137	+ 2,8	315 673	- 7,7	1 177 191	- 5,1
Oct	571 134	- 3,4	313 937	+ 16,2	346 013	+ 9,6	1 231 083	+ 4,6
Nov	618 735	+ 8,3	298 223	- 5,0	316 847	- 8,4	1 233 805	+ 0,2
Dec	618 535	+ 0,0	612 904	+ 105,5	300 804	- 5,1	1 532 244	+ 24,2
2001 Jan	656 738	+ 6,2	433 858	- 29,2	333 711	+ 10,9	1 424 307	- 7,0
Feb	597 270	- 9,1	247 666	- 42,9	372 388	+ 11,6	1 217 324	- 14,5
Mar	600 010	+ 0,5	214 319	- 13,5	279 867	- 24,8	1 094 195	- 10,1
Apr	588 074	- 2,0	181 163	- 15,5	314 555	+ 12,4	1 083 792	- 1,0

<sup>1/</sup> The percentage change is the change in the seasonally adjusted values of building plans passed of the relevant month compared with the seasonally adjusted values of building plans passed of the previous month expressed as a percentage.

**Table 5 - Actual values and percentage change of buildings completed at current prices according to type of building**

Year <sup>1/</sup> and month <sup>2/</sup>	Residential buildings		Non-residential buildings		Additions and alterations		Total	
	R'000	Percentage change	R'000	Percentage change	R'000	Percentage change	R'000	Percentage change
1999 Jan	313 975	- 17,7	197 076	- 12,3	193 050	- 3,3	704 102	- 12,6
Feb	396 737	- 2,1	214 816	- 29,4	244 641	+ 26,9	856 194	- 5,1
Mar	432 499	- 38,0	246 125	+ 39,7	230 685	+ 8,8	909 309	- 16,2
Apr	377 800	- 17,0	181 550	- 25,2	200 507	+ 28,2	759 858	- 11,1
May	390 986	- 11,7	195 652	+ 10,4	178 758	- 2,4	765 395	- 4,7
Jun	420 016	- 30,4	208 557	- 38,5	153 702	- 21,1	782 276	- 31,2
Jul	480 991	- 18,3	264 068	+ 0,3	272 372	+ 26,1	1 017 432	- 4,7
Aug	460 657	+ 7,6	204 898	- 24,8	255 878	+ 47,4	921 432	+ 5,4
Sep	493 450	- 11,4	197 152	- 58,4	223 191	+ 10,3	913 793	- 25,9
Oct	419 578	- 15,9	203 652	- 58,9	229 463	+ 12,4	852 693	- 28,8
Nov	461 147	- 8,9	409 997	+ 45,4	210 237	+ 20,2	1 081 381	+ 12,3
Dec	349 510	- 15,3	181 596	- 13,0	146 343	+ 3,3	677 449	- 11,3
<b>Total</b>	<b>4 997 346</b>	<b>- 16,4</b>	<b>2 705 139</b>	<b>- 21,8</b>	<b>2 538 827</b>	<b>+ 12,8</b>	<b>10 241 312</b>	<b>- 12,4</b>
2000 Jan*	302 241	- 3,7	195 988	- 0,6	183 959	- 4,7	682 188	- 3,1
Feb*	353 141	- 11,0	205 549	- 4,3	221 978	- 9,3	780 668	- 8,8
Mar*	419 416	- 3,0	212 379	- 13,7	268 745	+ 16,5	900 540	- 1,0
Apr*	364 713	- 3,5	224 048	+ 23,4	188 808	- 5,8	777 569	+ 2,3
May*	474 324	+ 21,3	390 533	+ 99,6	293 343	+ 64,1	1 158 200	+ 51,3
Jun*	362 558	- 13,7	174 728	- 16,2	170 986	+ 11,2	708 272	- 9,5
Jul*	407 406	- 15,3	472 668	+ 79,0	220 828	- 18,9	1 100 902	+ 8,2
Aug*	449 691	- 2,4	285 994	+ 39,6	211 008	- 17,5	946 693	+ 2,7
Sep*	510 979	+ 3,6	270 539	+ 37,2	199 622	- 10,6	981 140	+ 7,4
Oct*	462 270	+ 10,2	195 491	- 4,0	238 257	+ 3,8	896 018	+ 5,1
Nov*	555 802	+ 20,5	186 442	- 54,5	255 900	+ 21,7	998 144	- 7,7
Dec*	383 114	+ 9,6	316 801	+ 74,5	149 622	+ 2,2	849 537	+ 25,4
<b>Total*</b>	<b>5 045 655</b>	<b>+ 1,0</b>	<b>3 131 160</b>	<b>+ 15,7</b>	<b>2 603 056</b>	<b>+ 2,5</b>	<b>10 779 871</b>	<b>+ 5,3</b>
2001 Jan	643 036	+ 112,8	238 434	+ 21,7	200 993	+ 9,3	1 082 463	+ 58,7
Feb	428 998	+ 21,5	285 620	+ 39,0	243 491	+ 9,7	958 109	+ 22,7
Mar*	534 418	+ 27,4	150 947	- 28,9	287 215	+ 6,9	972 580	+ 8,0
Apr	373 202	+ 2,3	173 682	- 22,5	184 616	- 2,2	731 500	- 5,9

<sup>1/</sup> The annual percentage change is the change in the actual values of buildings completed of the relevant year compared with the actual values of buildings completed of the previous year expressed as a percentage.

<sup>2/</sup> The monthly percentage change is the change in the actual values of buildings completed of the relevant month compared with the actual values of buildings completed of the same month in the previous year expressed as a percentage.

**Table 6 - Seasonally adjusted values and percentage change of buildings completed at current prices according to type of building**

Year and month <sup>1/</sup>	Residential buildings		Non-residential buildings		Additions and alterations		Total	
	R'000	Percentage change	R'000	Percentage change	R'000	Percentage change	R'000	Percentage change
1999 Jan	406 336	- 13,0	228 707	+ 15,3	214 987	+ 1,8	850 029	- 3,0
Feb	445 697	+ 9,7	226 371	- 1,0	219 871	+ 2,3	891 939	+ 4,9
Mar	419 124	- 6,0	276 998	+ 22,4	195 305	- 11,2	891 428	- 0,1
Apr	421 714	+ 0,6	206 227	- 25,5	218 865	+ 12,1	846 805	- 5,0
May	369 218	- 12,4	227 946	+ 10,5	187 391	- 14,4	784 554	- 7,4
Jun	437 576	+ 18,5	220 078	- 3,5	161 102	- 14,0	818 755	+ 4,4
Jul	438 806	+ 0,3	206 522	- 6,2	233 724	+ 45,1	879 052	+ 7,4
Aug	440 156	+ 0,3	205 782	- 0,4	261 476	+ 11,9	907 414	+ 3,2
Sep	437 744	- 0,5	175 778	- 14,6	222 199	- 15,0	835 720	- 7,9
Oct	397 835	- 9,1	173 743	- 1,2	217 131	- 2,3	788 709	- 5,6
Nov	385 613	- 3,1	415 057	+ 138,9	191 595	- 11,8	992 264	+ 25,8
Dec	400 413	+ 3,8	172 006	- 58,6	217 426	+ 13,5	789 844	- 20,4
2000 Jan	390 821	- 2,4	223 883	+ 30,2	203 338	- 6,5	818 042	+ 3,6
Feb	398 124	+ 1,9	208 386	- 6,9	199 634	- 1,8	806 144	- 1,5
Mar	401 686	+ 0,9	252 307	+ 21,1	222 394	+ 11,4	876 386	+ 8,7
Apr	417 040	+ 3,8	263 560	+ 4,5	209 427	- 5,8	890 027	+ 1,6
May	453 425	+ 8,7	466 416	+ 77,0	307 847	+ 47,0	1 227 688	+ 37,9
Jun	373 696	- 17,6	184 079	- 60,5	180 997	- 41,2	738 771	- 39,8
Jul	368 366	- 1,4	361 822	+ 96,6	190 023	+ 5,0	920 210	+ 24,6
Aug	427 852	+ 16,1	278 436	- 23,0	216 125	+ 13,7	922 414	+ 0,2
Sep	447 017	+ 4,5	235 179	- 15,5	198 683	- 8,1	880 879	- 4,5
Oct	442 141	- 1,1	166 006	- 29,4	223 747	+ 12,6	831 894	- 5,6
Nov	470 486	+ 6,4	193 860	+ 16,8	235 412	+ 5,2	899 757	+ 8,2
Dec	437 939	- 6,9	306 836	+ 58,3	220 691	- 6,3	965 466	+ 7,3
2001 Jan	839 526	+ 91,7	273 975	- 10,7	221 975	+ 0,6	1 335 475	+ 38,3
Feb	481 903	- 42,6	284 711	+ 3,9	219 751	- 1,0	986 364	- 26,1
Mar	506 273	+ 5,1	182 222	- 36,0	235 004	+ 6,9	923 499	- 6,4
Apr	430 715	- 14,9	208 303	+ 14,3	206 862	- 12,0	845 880	- 8,4

<sup>1/</sup> The percentage change is the change in the seasonally adjusted values of buildings completed of the relevant month compared with the seasonally adjusted values of buildings completed of the previous month expressed as a percentage.

**Table 7 - Actual values and percentage change of buildings completed at constant 1995 prices according to type of building**

Year and month <sup>2/</sup>	Residential buildings		Non-residential buildings		Additions and alterations		Total	
	R'000	Percentage change	R'000	Percentage change	R'000	Percentage change	R'000	Percentage change
1999 Jan	262 682	- 22,6	172 571	- 18,3	165 993	- 9,2	601 246	- 18,0
Feb	329 271	- 26,3	187 449	- 39,0	209 095	- 4,5	725 815	- 26,1
Mar	356 192	- 57,5	214 208	+ 5,4	196 662	- 12,9	767 062	- 38,1
Apr	311 031	- 34,2	157 322	- 23,5	169 922	+ 18,7	638 275	- 21,4
May	319 828	- 31,9	169 395	+ 5,1	150 851	+ 2,4	640 074	- 15,6
Jun	344 231	- 50,0	180 257	- 44,7	129 270	- 3,4	653 758	- 40,4
Jul	391 124	- 50,0	227 058	- 28,4	226 411	- 12,3	844 593	- 36,0
Aug	369 731	- 48,5	175 126	- 29,7	210 253	+ 9,6	755 110	- 21,4
Sep	396 579	- 28,6	168 075	- 59,5	182 196	- 5,7	746 850	- 44,4
Oct	334 635	- 45,1	172 586	- 61,0	186 252	- 6,2	693 473	- 42,4
Nov	366 364	- 38,2	345 989	- 30,9	170 095	+ 9,6	882 448	- 27,6
Dec	277 236	- 38,9	152 730	- 6,3	118 305	+ 35,6	548 271	- 8,6
<b>Total</b>	<b>4 058 904</b>	<b>- 21,7</b>	<b>2 322 766</b>	<b>- 26,2</b>	<b>2 115 305</b>	<b>+ 6,4</b>	<b>8 496 975</b>	<b>- 17,7</b>
2000 Jan*	238 585	- 9,2	162 916	- 5,6	147 996	- 10,8	549 497	- 8,6
Feb*	277 982	- 15,6	168 898	- 9,9	176 734	- 15,5	623 614	- 14,1
Mar*	329 523	- 7,5	173 371	- 19,1	213 629	+ 8,6	716 523	- 6,6
Apr*	285 795	- 8,1	181 857	+ 15,6	149 255	- 12,2	616 907	- 3,3
May*	371 081	+ 16,0	315 965	+ 86,5	231 709	+ 53,6	918 755	+ 43,5
Jun*	282 549	- 17,9	141 251	- 21,6	134 529	+ 4,1	558 329	- 14,6
Jul*	314 890	- 19,5	380 264	+ 67,5	173 198	- 23,5	868 352	+ 2,8
Aug*	346 783	- 6,2	227 702	+ 30,0	165 496	- 21,3	739 981	- 2,0
Sep*	391 744	- 1,2	215 055	+ 28,0	156 199	- 14,3	762 998	+ 2,2
Oct*	352 005	+ 5,2	154 538	- 10,5	186 138	- 0,1	692 681	- 0,1
Nov*	420 080	+ 14,7	147 269	- 57,4	199 299	+ 17,2	766 648	- 13,1
Dec*	289 205	+ 4,3	249 253	+ 63,2	116 347	- 1,7	654 805	+ 19,4
<b>Total*</b>	<b>3 900 222</b>	<b>- 3,9</b>	<b>2 518 339</b>	<b>+ 8,4</b>	<b>2 050 529</b>	<b>- 3,1</b>	<b>8 469 090</b>	<b>- 0,3</b>
2001 Jan	487 405	+ 104,3	187 007	+ 14,8	154 848	+ 4,6	829 260	+ 50,9
Feb	318 383	+ 14,5	224 016	+ 32,6	187 013	+ 5,8	729 412	+ 17,0
Mar*	396 489	+ 20,3	118 112	- 31,9	219 081	+ 2,6	733 682	+ 2,4
Apr	274 728	- 3,9	135 689	- 25,4	139 333	- 6,6	549 750	- 10,9

<sup>1/</sup> The annual percentage change is the change in the actual values of buildings completed of the relevant year compared with the actual values of buildings completed of the previous year expressed as a percentage.

<sup>2/</sup> The monthly percentage change is the change in the actual values of buildings completed of the relevant month compared with the actual values of buildings completed of the same month in the previous year expressed as a percentage.

**Table 8 - Seasonally adjusted values and percentage change of buildings completed at constant 1995 prices according to type of building**

Year and month <sup>1/</sup>	Residential buildings		Non-residential buildings		Additions and alterations		Total	
	R'000	Percentage change	R'000	Percentage change	R'000	Percentage change	R'000	Percentage change
1999 Jan	341 502	- 14,1	200 510	+ 14,6	184 412	+ 1,4	726 424	- 3,7
Feb	372 386	+ 9,0	198 213	- 1,1	188 198	+ 2,1	758 797	+ 4,5
Mar	346 434	- 7,0	241 343	+ 21,8	166 490	- 11,5	754 267	- 0,6
Apr	346 946	+ 0,1	178 805	- 25,9	185 522	+ 11,4	711 273	- 5,7
May	302 153	- 12,9	196 914	+ 10,1	158 429	- 14,6	657 496	- 7,6
Jun	348 661	+ 15,4	189 180	- 3,9	135 693	- 14,4	673 534	+ 2,4
Jul	356 896	+ 2,4	176 880	- 6,5	194 497	+ 43,3	728 273	+ 8,1
Aug	354 099	- 0,8	176 245	- 0,4	215 033	+ 10,6	745 377	+ 2,3
Sep	352 161	- 0,5	149 939	- 14,9	181 608	- 15,5	683 708	- 8,3
Oct	318 341	- 9,6	147 101	- 1,9	176 214	- 3,0	641 656	- 6,2
Nov	307 976	- 3,3	351 400	+ 138,9	154 654	- 12,2	814 031	+ 26,9
Dec	317 829	+ 3,2	144 714	- 58,8	174 993	+ 13,2	637 536	- 21,7
2000 Jan	309 819	- 2,5	186 444	+ 28,8	163 195	- 6,7	659 458	+ 3,4
Feb	315 488	+ 1,8	171 816	- 7,8	159 025	- 2,6	646 329	- 2,0
Mar	316 892	+ 0,4	206 308	+ 20,1	176 733	+ 11,1	699 933	+ 8,3
Apr	326 908	+ 3,2	214 146	+ 3,8	165 778	- 6,2	706 832	+ 1,0
May	354 770	+ 8,5	376 484	+ 75,8	243 593	+ 46,9	974 847	+ 37,9
Jun	283 029	- 20,2	148 113	- 60,7	142 619	- 41,5	573 760	- 41,1
Jul	284 790	+ 0,6	290 020	+ 95,8	149 217	+ 4,6	724 027	+ 26,2
Aug	330 646	+ 16,1	222 014	- 23,4	169 604	+ 13,7	722 265	- 0,2
Sep	343 046	+ 3,8	186 991	- 15,8	155 682	- 8,2	685 719	- 5,1
Oct	337 948	- 1,5	131 064	- 29,9	174 818	+ 12,3	643 830	- 6,1
Nov	357 485	+ 5,8	153 600	+ 17,2	182 914	+ 4,6	693 999	+ 7,8
Dec	330 707	- 7,5	241 448	+ 57,2	170 827	- 6,6	742 983	+ 7,1
2001 Jan	638 995	+ 93,2	215 323	- 10,8	170 608	- 0,1	1 024 925	+ 37,9
Feb	359 990	- 43,7	224 069	+ 4,1	168 838	- 1,0	752 896	- 26,5
Mar	377 232	+ 4,8	142 901	- 36,2	179 179	+ 6,1	699 312	- 7,1
Apr	317 168	- 15,9	162 943	+ 14,0	156 412	- 12,7	636 523	- 9,0

<sup>1/</sup> The percentage change is the change in the seasonally adjusted values of buildings completed of the relevant month compared with the seasonally adjusted values of buildings completed of the previous month expressed as a percentage.

**Table 9 - Building plans passed according to type of building: Total RSA**

Type of building	April 2000 *	March 2001 *	April 2001	January 2000 to April 2000	January 2001 to April 2001	Percentage change between January 2000 to April 2000 and January 2001 to April 2001
<b>Residential buildings</b>						
Dwelling-houses smaller than 80 square metres						
Number of dwelling-houses	3 005	4 348	3 810	16 115	14 293	- 11,3
Total square metres	118 139	168 219	148 693	616 000	556 837	- 9,6
Total value at current prices (R'000)	95 148	155 052	129 376	453 291	526 142	+ 16,1
Dwelling-houses equal to or larger than 80 square metres						
Number of dwelling-houses	1 590	1 921	1 417	6 242	6 734	+ 7,9
Total square metres	304 387	410 618	322 538	1 237 954	1 436 919	+ 16,1
Total value at current prices (R'000)	412 938	576 400	448 417	1 643 623	2 004 143	+ 21,9
Flats and townhouses						
Number of flats and townhouses	681	1 059	616	3 033	3 216	+ 6,0
Total square metres	80 265	122 878	76 216	324 586	372 536	+ 14,8
Total value at current prices (R'000)	115 813	200 794	117 205	479 644	575 165	+ 19,9
Other residential buildings <sup>1/</sup>						
Total square metres	2 329	80	22 951	57 587	35 608	- 38,2
Total value at current prices (R'000)	3 743	97	52 872	80 493	111 502	+ 38,5
<b>Total value of residential buildings at current prices (R'000)</b>	<b>627 642</b>	<b>932 343</b>	<b>747 870</b>	<b>2 657 051</b>	<b>3 216 952</b>	<b>+ 21,1</b>
<b>Non-residential buildings</b>						
Office and banking space						
Total square metres	55 876	29 462	30 431	281 934	252 232	- 10,5
Total value at current prices (R'000)	83 811	45 459	50 614	434 491	460 483	+ 6,0
Shopping space						
Total square metres	25 916	41 387	20 929	146 925	182 159	+ 24,0
Total value at current prices (R'000)	32 930	58 089	25 888	196 897	251 039	+ 27,5
Industrial and warehouse space						
Total square metres	117 745	93 900	66 888	385 965	296 843	- 23,1
Total value at current prices (R'000)	120 386	133 950	88 493	464 795	391 399	- 15,8
Other non-residential space <sup>2/</sup>						
Total square metres	43 383	50 434	39 011	157 757	141 128	- 10,5
Total value at current prices (R'000)	34 024	69 951	45 199	172 893	189 351	+ 9,5
<b>Total value of non-residential buildings at current prices (R'000)</b>	<b>271 151</b>	<b>307 449</b>	<b>210 194</b>	<b>1 269 076</b>	<b>1 292 272</b>	<b>+ 1,8</b>
<b>Additions and alterations</b>						
Dwelling-houses						
Total square metres	213 955	244 490	217 430	918 035	897 060	- 2,3
Total value at current prices (R'000)	256 350	300 746	271 734	1 087 222	1 107 684	+ 1,9
Other buildings <sup>3/</sup>						
Total square metres	67 290	76 609	70 073	298 811	306 506	+ 2,6
Total value at current prices (R'000)	125 950	134 904	111 531	575 622	535 474	- 7,0
<b>Total value of additions and alterations at current prices (R'000)</b>	<b>382 300</b>	<b>435 650</b>	<b>383 265</b>	<b>1 662 844</b>	<b>1 643 158</b>	<b>- 1,2</b>
<b>Total value of building plans passed at current prices (R'000)</b>	<b>1 281 093</b>	<b>1 675 442</b>	<b>1 341 329</b>	<b>5 588 971</b>	<b>6 152 382</b>	<b>+ 10,1</b>

1/ Other residential buildings include institutions for the disabled, boarding houses, old people's homes, hostels, hotels, motels, guest houses, holiday chalets, entertainment centres, bed-and-breakfast accommodation and casinos.

2/ Other non-residential space includes churches, sport and recreation clubs, schools, crèches, hospitals and all other non-residential space.

3/ Other buildings include additions and alterations to other residential buildings, non-residential buildings and internal alterations.

**Table 10 - Building plans passed according to type of building and province: Western Cape**

Type of building	April 2000 *	March 2001	April 2001	January 2000 to April 2000	January 2001 to April 2001	Percentage change between January 2000 to April 2000 and January 2001 to April 2001
<b>Residential buildings</b>						
Dwelling-houses smaller than 80 square metres						
Number of dwelling-houses	546	680	343	3 426	2 543	- 25,8
Total square metres	19 196	26 651	16 471	128 669	98 923	- 23,1
Total value at current prices (R'000)	14 333	32 311	18 577	81 283	119 427	+ 46,9
Dwelling-houses equal to or larger than 80 square metres						
Number of dwelling-houses	417	546	477	1 917	1 984	+ 3,5
Total square metres	78 417	118 756	103 331	359 545	432 342	+ 20,2
Total value at current prices (R'000)	112 364	177 823	151 601	498 598	626 843	+ 25,7
Flats and townhouses						
Number of flats and townhouses	120	334	114	919	927	+ 0,9
Total square metres	15 827	35 437	13 079	102 142	94 753	- 7,2
Total value at current prices (R'000)	26 567	61 304	19 272	161 451	144 680	- 10,4
Other residential buildings <sup>1/</sup>						
Total square metres	1 672	48	19 638	44 187	21 393	- 51,6
Total value at current prices (R'000)	2 813	86	49 347	62 240	51 805	- 16,8
<b>Total value of residential buildings at current prices (R'000)</b>	<b>156 077</b>	<b>271 524</b>	<b>238 797</b>	<b>803 572</b>	<b>942 755</b>	<b>+ 17,3</b>
<b>Non-residential buildings</b>						
Office and banking space						
Total square metres	12 595	6 779	14 621	50 881	69 304	+ 36,2
Total value at current prices (R'000)	19 988	12 883	20 827	102 008	114 983	+ 12,7
Shopping space						
Total square metres	10 768	13 721	10 373	48 900	92 262	+ 88,7
Total value at current prices (R'000)	10 572	17 841	10 779	74 049	116 187	+ 56,9
Industrial and warehouse space						
Total square metres	33 002	16 970	18 449	117 998	71 816	- 39,1
Total value at current prices (R'000)	31 555	20 261	19 074	112 484	72 982	- 35,1
Other non-residential space <sup>2/</sup>						
Total square metres	27 270	22 146	12 127	72 270	50 918	- 29,5
Total value at current prices (R'000)	12 302	27 574	11 052	58 268	63 691	+ 9,3
<b>Total value of non-residential buildings at current prices (R'000)</b>	<b>74 417</b>	<b>78 559</b>	<b>61 732</b>	<b>346 809</b>	<b>367 843</b>	<b>+ 6,1</b>
<b>Additions and alterations</b>						
Dwelling-houses						
Total square metres	67 746	78 506	69 278	285 458	277 455	- 2,8
Total value at current prices (R'000)	79 733	99 594	87 637	333 894	346 372	+ 3,7
Other buildings <sup>3/</sup>						
Total square metres	18 996	17 392	21 178	66 894	74 336	+ 11,1
Total value at current prices (R'000)	34 054	28 915	32 876	179 494	124 720	- 30,5
<b>Total value of additions and alterations at current prices (R'000)</b>	<b>113 787</b>	<b>128 509</b>	<b>120 513</b>	<b>513 388</b>	<b>471 092</b>	<b>- 8,2</b>
<b>Total value of building plans passed at current prices (R'000)</b>	<b>344 281</b>	<b>478 592</b>	<b>421 042</b>	<b>1 663 769</b>	<b>1 781 690</b>	<b>+ 7,1</b>

1/ Other residential buildings include institutions for the disabled, boarding houses, old people's homes, hostels, hotels, motels, guest houses, holiday chalets, entertainment centres, bed-and-breakfast accommodation and casinos.

2/ Other non-residential space includes churches, sport and recreation clubs, schools, crèches, hospitals and all other non-residential space.

3/ Other buildings include additions and alterations to other residential buildings, non-residential buildings and internal alterations.



Table 11 - Building plans passed according to type of building and province: Eastern Cape

Type of building	April 2000	March 2001	April 2001	January 2000 to April 2000	January 2001 to April 2001	Percentage change between January 2000 to April 2000 and January 2001 to April 2001
<b>Residential buildings</b>						
Dwelling-houses smaller than 80 square metres						
Number of dwelling-houses	210	250	165	886	857	-3,3
Total square metres	9 294	11 351	7 612	40 190	38 534	-4,1
Total value at current prices (R'000)	7 907	14 966	10 039	42 334	49 941	+ 18,0
Dwelling-houses equal to or larger than 80 square metres						
Number of dwelling-houses	103	189	86	401	465	+ 16,0
Total square metres	15 625	22 172	14 261	62 970	64 822	+ 2,9
Total value at current prices (R'000)	19 495	29 856	18 422	80 495	85 459	+ 6,2
Flats and townhouses						
Number of flats and townhouses	22	31	21	349	99	-71,6
Total square metres	3 340	3 199	1 854	22 864	10 083	-55,9
Total value at current prices (R'000)	3 762	4 270	2 519	31 824	14 219	-55,3
Other residential buildings <sup>1/</sup>						
Total square metres	0	0	0	273	5 820	+ 2 031,9
Total value at current prices (R'000)	0	0	0	306	50 000	+ 16 239,9
<b>Total value of residential buildings at current prices (R'000)</b>	<b>31 164</b>	<b>49 092</b>	<b>30 980</b>	<b>154 959</b>	<b>199 619</b>	<b>+ 28,8</b>
<b>Non-residential buildings</b>						
Office and banking space						
Total square metres	2 101	0	785	3 088	1 199	-61,2
Total value at current prices (R'000)	3 187	0	2 000	4 659	3 080	-33,9
Shopping space						
Total square metres	262	1 276	772	4 646	2 383	-48,7
Total value at current prices (R'000)	361	2 070	1 429	6 317	4 045	-36,0
Industrial and warehouse space						
Total square metres	60 886	3 691	685	80 406	10 228	-87,3
Total value at current prices (R'000)	55 333	5 348	1 713	78 558	14 457	-81,6
Other non-residential space <sup>2/</sup>						
Total square metres	67	918	1 139	10 210	3 322	-67,5
Total value at current prices (R'000)	108	1 101	2 190	13 374	5 005	-62,6
<b>Total value of non-residential buildings at current prices (R'000)</b>	<b>58 989</b>	<b>8 519</b>	<b>7 332</b>	<b>102 908</b>	<b>26 587</b>	<b>-74,2</b>
<b>Additions and alterations</b>						
Dwelling-houses						
Total square metres	14 176	15 138	18 356	66 763	64 872	-2,8
Total value at current prices (R'000)	17 621	19 506	25 758	81 467	83 609	+ 2,6
Other buildings <sup>3/</sup>						
Total square metres	5 306	4 248	5 472	18 990	36 264	+ 91,0
Total value at current prices (R'000)	7 361	5 362	8 749	26 634	54 869	+ 106,0
<b>Total value of additions and alterations at current prices (R'000)</b>	<b>24 982</b>	<b>24 868</b>	<b>34 507</b>	<b>108 101</b>	<b>138 478</b>	<b>+ 28,1</b>
<b>Total value of building plans passed at current prices (R'000)</b>	<b>115 135</b>	<b>82 479</b>	<b>72 819</b>	<b>365 968</b>	<b>364 684</b>	<b>-0,4</b>

1/ Other residential buildings include institutions for the disabled, boarding houses, old people's homes, hostels, hotels, motels, guest houses, holiday chalets, entertainment centres, bed-and-breakfast accommodation and casinos.

2/ Other non-residential space includes churches, sport and recreation clubs, schools, crèches, hospitals and all other non-residential space.

3/ Other buildings include additions and alterations to other residential buildings, non-residential buildings and internal alterations.

Table 12 - Building plans passed according to type of building and province: Northern Cape

Type of building	April 2000	March 2001	April 2001	January 2000 to April 2000	January 2001 to April 2001	Percentage change between January 2000 to April 2000 and January 2001 to April 2001
<b>Residential buildings</b>						
Dwelling-houses smaller than 80 square metres						
Number of dwelling-houses	1	4	4	23	26	+ 13,0
Total square metres	40	254	196	1 260	1 410	+ 11,9
Total value at current prices (R'000)	48	404	291	1 935	2 082	+ 7,6
Dwelling-houses equal to or larger than 80 square metres						
Number of dwelling-houses	6	9	9	31	58	+ 87,1
Total square metres	919	1 353	2 243	5 062	11 524	+ 127,7
Total value at current prices (R'000)	1 171	1 920	3 354	7 110	13 457	+ 89,3
Flats and townhouses						
Number of flats and townhouses	0	1	4	21	10	- 52,4
Total square metres	0	140	677	2 987	1 661	- 44,4
Total value at current prices (R'000)	0	112	948	5 056	2 242	- 55,7
Other residential buildings <sup>1/</sup>						
Total square metres	0	0	0	0	0	..
Total value at current prices (R'000)	0	0	0	0	0	..
<b>Total value of residential buildings at current prices (R'000)</b>	<b>1 219</b>	<b>2 436</b>	<b>4 593</b>	<b>14 101</b>	<b>17 781</b>	<b>+ 26,1</b>
<b>Non-residential buildings</b>						
Office and banking space						
Total square metres	0	0	0	7 715	191	- 97,5
Total value at current prices (R'000)	0	0	0	16 363	124	- 99,2
Shopping space						
Total square metres	0	0	0	911	206	- 77,4
Total value at current prices (R'000)	0	0	0	1 411	226	- 84,0
Industrial and warehouse space						
Total square metres	0	772	320	1 571	1 092	- 30,5
Total value at current prices (R'000)	0	618	384	2 405	1 002	- 58,3
Other non-residential space <sup>2/</sup>						
Total square metres	489	198	710	4 058	1 143	- 71,8
Total value at current prices (R'000)	978	278	921	6 089	1 645	- 73,0
<b>Total value of non-residential buildings at current prices (R'000)</b>	<b>978</b>	<b>896</b>	<b>1 305</b>	<b>26 268</b>	<b>2 997</b>	<b>- 88,6</b>
<b>Additions and alterations</b>						
Dwelling-houses						
Total square metres	3 124	2 329	1 673	12 704	8 135	- 36,0
Total value at current prices (R'000)	5 150	3 453	2 783	19 193	12 382	- 35,5
Other buildings <sup>3/</sup>						
Total square metres	7 775	1 080	437	9 372	1 780	- 81,0
Total value at current prices (R'000)	17 007	2 737	768	21 408	4 233	- 80,2
<b>Total value of additions and alterations at current prices (R'000)</b>	<b>22 157</b>	<b>6 190</b>	<b>3 551</b>	<b>40 601</b>	<b>16 615</b>	<b>- 59,1</b>
<b>Total value of building plans passed at current prices (R'000)</b>	<b>24 354</b>	<b>9 522</b>	<b>9 449</b>	<b>80 970</b>	<b>37 393</b>	<b>- 53,8</b>

1/ Other residential buildings include institutions for the disabled, boarding houses, old people's homes, hostels, hotels, motels, guest houses, holiday chalets, entertainment centres, bed-and-breakfast accommodation and casinos.

2/ Other non-residential space includes churches, sport and recreation clubs, schools, crèches, hospitals and all other non-residential space.

3/ Other buildings include additions and alterations to other residential buildings, non-residential buildings and internal alterations.

Table 13 - Building plans passed according to type of building and province: Free State

Type of building	April 2000*	March 2001	April 2001	January 2000 to April 2000	January 2001 to April 2001	Percentage change between January 2000 to April 2000 and January 2001 to April 2001
<b>Residential buildings</b>						
Dwelling-houses smaller than 80 square metres						
Number of dwelling-houses	164	272	331	2 077	994	-52,1
Total square metres	7 312	12 265	14 723	79 251	44 575	-43,8
Total value at current prices (R'000)	4 475	6 527	7 923	43 459	23 514	-45,9
Dwelling-houses equal to or larger than 80 square metres						
Number of dwelling-houses	51	66	46	252	249	-1,2
Total square metres	7 723	10 409	7 183	38 296	37 967	-0,9
Total value at current prices (R'000)	9 423	11 051	7 363	44 289	40 943	-7,6
Flats and townhouses						
Number of flats and townhouses	61	19	0	77	79	+ 2,6
Total square metres	6 407	2 357	0	7 786	11 039	+ 41,8
Total value at current prices (R'000)	9 775	3 775	0	11 261	17 311	+ 53,7
Other residential buildings <sup>1/</sup>						
Total square metres	0	32	1 220	600	1 252	+ 108,7
Total value at current prices (R'000)	0	11	1 840	1 500	1 851	+ 23,4
<b>Total value of residential buildings at current prices (R'000)</b>	<b>23 673</b>	<b>21 364</b>	<b>17 126</b>	<b>100 509</b>	<b>83 619</b>	<b>-16,8</b>
<b>Non-residential buildings</b>						
Office and banking space						
Total square metres	0	334	0	1 614	12 822	+ 694,4
Total value at current prices (R'000)	0	416	0	2 694	25 216	+ 836,0
Shopping space						
Total square metres	173	253	789	1 310	2 207	+ 68,5
Total value at current prices (R'000)	173	290	1 181	1 608	2 871	+ 78,5
Industrial and warehouse space						
Total square metres	3 445	0	931	6 299	2 557	-59,4
Total value at current prices (R'000)	2 131	0	616	4 912	1 678	-65,8
Other non-residential space <sup>2/</sup>						
Total square metres	43	1 530	0	455	2 271	+ 399,1
Total value at current prices (R'000)	17	2 480	0	342	3 890	+ 1 037,4
<b>Total value of non-residential buildings at current prices (R'000)</b>	<b>2 321</b>	<b>3 186</b>	<b>1 797</b>	<b>9 556</b>	<b>33 655</b>	<b>+ 252,2</b>
<b>Additions and alterations</b>						
Dwelling-houses						
Total square metres	6 252	6 889	8 795	29 854	29 353	-1,7
Total value at current prices (R'000)	6 131	7 406	8 882	29 968	30 261	+ 1,0
Other buildings <sup>3/</sup>						
Total square metres	1 737	1 643	1 812	8 884	4 639	-47,8
Total value at current prices (R'000)	2 572	2 480	4 190	11 853	8 691	-26,7
<b>Total value of additions and alterations at current prices (R'000)</b>	<b>8 703</b>	<b>9 886</b>	<b>13 072</b>	<b>41 821</b>	<b>38 952</b>	<b>-6,9</b>
<b>Total value of building plans passed at current prices (R'000)</b>	<b>34 697</b>	<b>34 436</b>	<b>31 995</b>	<b>151 886</b>	<b>156 226</b>	<b>+ 2,9</b>

1/ Other residential buildings include institutions for the disabled, boarding houses, old people's homes, hostels, hotels, motels, guest houses, holiday chalets, entertainment centres, bed-and-breakfast accommodation and casinos.

2/ Other non-residential space includes churches, sport and recreation clubs, schools, crèches, hospitals and all other non-residential space.

3/ Other buildings include additions and alterations to other residential buildings, non-residential buildings and internal alterations.

Table 14 - Building plans passed according to type of building and province: KwaZulu-Natal

Type of building	April 2000*	March 2001	April 2001	January 2000 to April 2000	January 2001 to April 2001	Percentage change between January 2000 to April 2000 and January 2001 to April 2001
<b>Residential buildings</b>						
Dwelling-houses smaller than 80 square metres						
Number of dwelling-houses	138	381	291	537	1 125	+ 109,5
Total square metres	6 457	19 635	9 892	27 622	50 172	+ 81,6
Total value at current prices (R'000)	6 795	15 752	8 824	31 896	43 599	+ 36,7
Dwelling-houses equal to or larger than 80 square metres						
Number of dwelling-houses	147	162	87	558	495	- 11,3
Total square metres	27 659	36 413	20 632	110 055	114 233	+ 3,8
Total value at current prices (R'000)	39 809	47 989	28 753	153 690	159 987	+ 4,1
Flats and townhouses						
Number of flats and townhouses	49	129	53	171	328	+ 91,8
Total square metres	6 250	17 327	8 220	27 522	43 273	+ 57,2
Total value at current prices (R'000)	10 092	30 401	13 016	45 737	76 248	+ 66,7
Other residential buildings <sup>1/</sup>						
Total square metres	0	0	0	1 825	0	..
Total value at current prices (R'000)	0	0	0	3 500	0	..
<b>Total value of residential buildings at current prices (R'000)</b>	<b>56 696</b>	<b>94 142</b>	<b>50 593</b>	<b>234 823</b>	<b>279 834</b>	<b>+ 19,2</b>
<b>Non-residential buildings</b>						
Office and banking space						
Total square metres	0	31	2 032	20 259	51 265	+ 153,0
Total value at current prices (R'000)	0	15	7 090	38 555	137 349	+ 256,2
Shopping space						
Total square metres	313	3 911	1 832	9 222	13 645	+ 48,0
Total value at current prices (R'000)	313	4 300	3 230	9 204	15 740	+ 71,0
Industrial and warehouse space						
Total square metres	4 998	25 223	11 593	33 606	53 615	+ 59,5
Total value at current prices (R'000)	7 500	26 361	12 130	61 657	57 482	- 6,8
Other non-residential space <sup>2/</sup>						
Total square metres	700	2 946	12 563	12 161	20 057	+ 64,9
Total value at current prices (R'000)	780	3 516	12 870	14 292	22 655	+ 58,5
<b>Total value of non-residential buildings at current prices (R'000)</b>	<b>8 593</b>	<b>34 192</b>	<b>35 320</b>	<b>123 708</b>	<b>233 226</b>	<b>+ 88,5</b>
<b>Additions and alterations</b>						
Dwelling-houses						
Total square metres	28 212	35 984	27 466	123 840	122 498	- 1,1
Total value at current prices (R'000)	33 113	43 045	32 664	146 381	150 532	+ 2,8
Other buildings <sup>3/</sup>						
Total square metres	14 899	16 911	11 022	62 713	52 386	- 16,5
Total value at current prices (R'000)	30 074	37 977	18 581	121 297	99 444	- 18,0
<b>Total value of additions and alterations at current prices (R'000)</b>	<b>63 187</b>	<b>81 022</b>	<b>51 245</b>	<b>267 678</b>	<b>249 976</b>	<b>- 6,6</b>
<b>Total value of building plans passed at current prices (R'000)</b>	<b>128 476</b>	<b>209 356</b>	<b>137 158</b>	<b>626 209</b>	<b>763 036</b>	<b>+ 21,9</b>

1/ Other residential buildings include institutions for the disabled, boarding houses, old people's homes, hostels, hotels, motels, guest houses, holiday chalets, entertainment centres, bed-and-breakfast accommodation and casinos.

2/ Other non-residential space includes churches, sport and recreation clubs, schools, crèches, hospitals and all other non-residential space.

3/ Other buildings include additions and alterations to other residential buildings, non-residential buildings and internal alterations.

Table 15 - Building plans passed according to type of building and province: North West

Type of building	April 2000*	March 2001	April 2001	January 2000 to April 2000	January 2001 to April 2001	Percentage change between January 2000 to April 2000 and January 2001 to April 2001
<b>Residential buildings</b>						
Dwelling-houses smaller than 80 square metres						
Number of dwelling-houses	53	500	340	329	1 435	+ 336,2
Total square metres	2 796	17 907	11 140	16 730	51 172	+ 205,9
Total value at current prices (R'000)	3 236	11 537	5 332	17 918	34 024	+ 89,9
Dwelling-houses equal to or larger than 80 square metres						
Number of dwelling-houses	63	73	42	298	235	- 21,1
Total square metres	9 769	12 640	8 603	45 622	40 358	- 11,5
Total value at current prices (R'000)	10 981	15 100	8 407	48 998	46 945	- 4,2
Flats and townhouses						
Number of flats and townhouses	0	47	17	59	120	+ 103,4
Total square metres	0	5 326	1 734	4 831	15 084	+ 212,2
Total value at current prices (R'000)	0	8 820	1 778	5 336	18 989	+ 255,9
Other residential buildings <sup>1/</sup>						
Total square metres	657	0	1 901	4 024	1 989	- 50,6
Total value at current prices (R'000)	930	0	1 589	4 786	1 664	- 65,2
<b>Total value of residential buildings at current prices (R'000)</b>	<b>15 147</b>	<b>35 457</b>	<b>17 106</b>	<b>77 038</b>	<b>101 622</b>	<b>+ 31,9</b>
<b>Non-residential buildings</b>						
Office and banking space						
Total square metres	124	450	758	124	3 304	+ 2 564,5
Total value at current prices (R'000)	132	800	1 200	132	5 625	+ 4 161,4
Shopping space						
Total square metres	304	5 009	45	2 940	10 047	+ 241,7
Total value at current prices (R'000)	243	4 451	68	4 790	11 583	+ 141,8
Industrial and warehouse space						
Total square metres	608	1 038	0	2 300	2 849	+ 23,9
Total value at current prices (R'000)	800	893	0	2 365	2 955	+ 24,9
Other non-residential space <sup>2/</sup>						
Total square metres	3 935	387	159	10 896	546	- 95,0
Total value at current prices (R'000)	5 418	518	160	12 950	678	- 94,8
<b>Total value of non-residential buildings at current prices (R'000)</b>	<b>6 593</b>	<b>6 662</b>	<b>1 428</b>	<b>20 237</b>	<b>20 841</b>	<b>+ 3,0</b>
<b>Additions and alterations</b>						
Dwelling-houses						
Total square metres	4 122	5 938	5 144	23 926	21 700	- 9,3
Total value at current prices (R'000)	4 762	6 359	4 901	23 877	22 928	- 4,0
Other buildings <sup>3/</sup>						
Total square metres	1 634	1 677	3 210	7 302	7 356	+ 0,7
Total value at current prices (R'000)	1 989	2 445	6 391	22 804	12 492	- 45,2
<b>Total value of additions and alterations at current prices (R'000)</b>	<b>6 751</b>	<b>8 804</b>	<b>11 292</b>	<b>46 681</b>	<b>35 420</b>	<b>- 24,1</b>
<b>Total value of building plans passed at current prices (R'000)</b>	<b>28 491</b>	<b>50 923</b>	<b>29 826</b>	<b>143 956</b>	<b>157 883</b>	<b>+ 9,7</b>

1/ Other residential buildings include institutions for the disabled, boarding houses, old people's homes, hostels, hotels, motels, guest houses, holiday chalets, entertainment centres, bed-and-breakfast accommodation and casinos.

2/ Other non-residential space includes churches, sport and recreation clubs, schools, crèches, hospitals and all other non-residential space.

3/ Other buildings include additions and alterations to other residential buildings, non-residential buildings and internal alterations.

Table 16 - Building plans passed according to type of building and province: Gauteng

Type of building	April 2000 *	March 2001*	April 2001	January 2000 to April 2000	January 2001 to April 2001	Percentage change between January 2000 to April 2000 and January 2001 to April 2001
<b>Residential buildings</b>						
Dwelling-houses smaller than 80 square metres						
Number of dwelling-houses	1 603	1 598	1 527	7 571	4 474	- 40,9
Total square metres	61 087	57 243	60 445	270 016	172 035	- 36,3
Total value at current prices (R'000)	45 326	60 714	65 609	190 120	188 885	- 0,6
Dwelling-houses equal to or larger than 80 square metres						
Number of dwelling-houses	698	774	556	2 346	2 834	+ 20,8
Total square metres	145 874	189 629	143 937	538 401	659 000	+ 22,4
Total value at current prices (R'000)	198 544	268 425	201 512	716 433	934 818	+ 30,5
Flats and townhouses						
Number of flats and townhouses	408	461	390	1 276	1 519	+ 19,0
Total square metres	45 476	54 483	49 029	140 590	182 220	+ 29,6
Total value at current prices (R'000)	61 858	85 922	78 087	200 168	282 833	+ 41,3
Other residential buildings <sup>1/</sup>						
Total square metres	0	0	0	2 815	4 962	+ 76,3
Total value at current prices (R'000)	0	0	0	3 199	6 086	+ 90,2
<b>Total value of residential buildings at current prices (R'000)</b>	<b>305 728</b>	<b>415 061</b>	<b>345 208</b>	<b>1 109 920</b>	<b>1 412 622</b>	<b>+ 27,3</b>
<b>Non-residential buildings</b>						
Office and banking space						
Total square metres	41 056	21 868	11 125	190 004	112 405	- 40,8
Total value at current prices (R'000)	60 504	31 345	18 289	258 447	171 948	- 33,5
Shopping space						
Total square metres	12 227	15 476	5 870	75 266	53 853	- 28,4
Total value at current prices (R'000)	18 573	25 307	8 201	94 401	89 233	- 5,5
Industrial and warehouse space						
Total square metres	13 949	42 115	32 514	130 897	134 042	+ 2,4
Total value at current prices (R'000)	21 862	74 936	52 013	189 991	223 066	+ 17,4
Other non-residential space <sup>2/</sup>						
Total square metres	10 879	20 126	10 100	42 704	56 674	+ 32,7
Total value at current prices (R'000)	14 421	31 914	14 809	61 647	83 707	+ 35,8
<b>Total value of non-residential buildings at current prices (R'000)</b>	<b>115 360</b>	<b>163 502</b>	<b>93 312</b>	<b>604 486</b>	<b>567 954</b>	<b>- 6,0</b>
<b>Additions and alterations</b>						
Dwelling-houses						
Total square metres	80 303	85 506	76 193	323 929	322 227	- 0,5
Total value at current prices (R'000)	99 283	107 597	97 040	399 455	408 238	+ 2,2
Other buildings <sup>3/</sup>						
Total square metres	14 026	31 675	24 403	108 873	119 408	+ 9,7
Total value at current prices (R'000)	29 557	50 971	35 293	165 932	210 362	+ 26,8
<b>Total value of additions and alterations at current prices (R'000)</b>	<b>128 840</b>	<b>158 568</b>	<b>132 333</b>	<b>565 387</b>	<b>618 600</b>	<b>+ 9,4</b>
<b>Total value of building plans passed at current prices (R'000)</b>	<b>549 928</b>	<b>737 131</b>	<b>570 853</b>	<b>2 279 793</b>	<b>2 599 176</b>	<b>+ 14,0</b>

1/ Other residential buildings include institutions for the disabled, boarding houses, old people's homes, hostels, hotels, motels, guest houses, holiday chalets, entertainment centres, bed-and-breakfast accommodation and casinos.

2/ Other non-residential space includes churches, sport and recreation clubs, schools, crèches, hospitals and all other non-residential space.

3/ Other buildings include additions and alterations to other residential buildings, non-residential buildings and internal alterations.

Table 17 - Building plans passed according to type of building and province: Mpumalanga

Type of building	April 2000	March 2001	April 2001	January 2000 to April 2000	January 2001 to April 2001	Percentage change between January 2000 to April 2000 and January 2001 to April 2001
<b>Residential buildings</b>						
Dwelling-houses smaller than 80 square metres						
Number of dwelling-houses	179	623	776	598	2 700	+ 351,5
Total square metres	6 839	20 573	26 119	23 170	91 686	+ 295,7
Total value at current prices (R'000)	6 009	9 797	9 833	23 503	53 785	+ 128,8
Dwelling-houses equal to or larger than 80 square metres						
Number of dwelling-houses	65	65	80	297	263	- 11,4
Total square metres	12 555	13 081	15 755	52 949	49 411	- 6,7
Total value at current prices (R'000)	13 733	15 727	20 125	59 954	58 836	- 1,9
Flats and townhouses						
Number of flats and townhouses	15	35	12	137	116	- 15,3
Total square metres	2 178	4 332	1 020	11 895	11 394	- 4,2
Total value at current prices (R'000)	2 817	5 878	901	14 005	14 850	+ 6,0
Other residential buildings <sup>1/</sup>						
Total square metres	0	0	0	863	0	..
Total value at current prices (R'000)	0	0	0	1 362	0	..
<b>Total value of residential buildings at current prices (R'000)</b>	<b>22 559</b>	<b>31 402</b>	<b>30 859</b>	<b>98 824</b>	<b>127 471</b>	<b>+ 29,0</b>
<b>Non-residential buildings</b>						
Office and banking space						
Total square metres	0	0	530	7 600	1 162	- 84,7
Total value at current prices (R'000)	0	0	600	10 549	1 550	- 85,3
Shopping space						
Total square metres	1 869	0	0	3 571	174	- 95,1
Total value at current prices (R'000)	2 695	0	0	4 912	174	- 96,5
Industrial and warehouse space						
Total square metres	857	4 091	2 396	11 174	20 644	+ 84,8
Total value at current prices (R'000)	1 205	5 533	2 563	10 658	17 777	+ 66,8
Other non-residential space <sup>2/</sup>						
Total square metres	0	1 913	2 008	3 810	5 722	+ 50,2
Total value at current prices (R'000)	0	2 270	2 997	4 646	7 580	+ 63,2
<b>Total value of non-residential buildings at current prices (R'000)</b>	<b>3 900</b>	<b>7 803</b>	<b>6 160</b>	<b>30 765</b>	<b>27 081</b>	<b>- 12,0</b>
<b>Additions and alterations</b>						
Dwelling-houses						
Total square metres	7 507	10 404	7 345	37 692	36 184	- 4,0
Total value at current prices (R'000)	7 363	9 235	8 112	35 068	34 872	- 0,6
Other buildings <sup>3/</sup>						
Total square metres	2 436	1 369	832	6 710	5 793	- 13,7
Total value at current prices (R'000)	2 863	2 520	1 105	7 886	10 053	+ 27,5
<b>Total value of additions and alterations at current prices (R'000)</b>	<b>10 226</b>	<b>11 755</b>	<b>9 217</b>	<b>42 954</b>	<b>44 925</b>	<b>+ 4,6</b>
<b>Total value of building plans passed at current prices (R'000)</b>	<b>36 685</b>	<b>50 960</b>	<b>46 236</b>	<b>172 543</b>	<b>199 477</b>	<b>+ 15,6</b>

1/ Other residential buildings include institutions for the disabled, boarding houses, old people's homes, hostels, hotels, motels, guest houses, holiday chalets, entertainment centres, bed-and-breakfast accommodation and casinos.

2/ Other non-residential space includes churches, sport and recreation clubs, schools, crèches, hospitals and all other non-residential space.

3/ Other buildings include additions and alterations to other residential buildings, non-residential buildings and internal alterations.

Table 18 - Building plans passed according to type of building and province: Northern Province

Type of building	April 2000*	March 2001	April 2001	January 2000 to April 2000	January 2001 to April 2001	Percentage change between January 2000 to April 2000 and January 2001 to April 2001
<b>Residential buildings</b>						
Dwelling-houses smaller than 80 square metres						
Number of dwelling-houses	111	40	33	668	139	-79,2
Total square metres	5 118	2 340	2 095	29 092	8 330	-71,4
Total value at current prices (R'000)	7 019	3 044	2 948	20 843	10 885	-47,8
Dwelling-houses equal to or larger than 80 square metres						
Number of dwelling-houses	40	37	34	142	151	+ 6,3
Total square metres	5 846	6 165	6 593	25 054	27 262	+ 8,8
Total value at current prices (R'000)	7 418	8 509	8 880	34 056	36 855	+ 8,2
Flats and townhouses						
Number of flats and townhouses	6	2	5	24	18	-25,0
Total square metres	787	277	603	3 969	3 029	-23,7
Total value at current prices (R'000)	942	312	684	4 806	3 793	-21,1
Other residential buildings <sup>1/</sup>						
Total square metres	0	0	192	3 000	192	-93,6
Total value at current prices (R'000)	0	0	96	3 600	96	-97,3
<b>Total value of residential buildings at current prices (R'000)</b>	<b>15 379</b>	<b>11 865</b>	<b>12 608</b>	<b>63 305</b>	<b>51 629</b>	<b>-18,4</b>
<b>Non-residential buildings</b>						
Office and banking space						
Total square metres	0	0	580	649	580	-10,6
Total value at current prices (R'000)	0	0	608	1 084	608	-43,9
Shopping space						
Total square metres	0	1 741	1 248	159	7 382	+ 4 542,8
Total value at current prices (R'000)	0	3 830	1 000	205	10 980	+ 5 256,1
Industrial and warehouse space						
Total square metres	0	0	0	1 714	0	..
Total value at current prices (R'000)	0	0	0	1 765	0	..
Other non-residential space <sup>2/</sup>						
Total square metres	0	270	205	1 193	475	-60,2
Total value at current prices (R'000)	0	300	200	1 285	500	-61,1
<b>Total value of non-residential buildings at current prices (R'000)</b>	<b>0</b>	<b>4 130</b>	<b>1 808</b>	<b>4 339</b>	<b>12 088</b>	<b>+ 178,6</b>
<b>Additions and alterations</b>						
Dwelling-houses						
Total square metres	2 513	3 796	3 180	13 869	14 636	+ 5,5
Total value at current prices (R'000)	3 194	4 551	3 957	17 919	18 490	+ 3,2
Other buildings <sup>3/</sup>						
Total square metres	481	614	1 707	9 073	4 544	-49,9
Total value at current prices (R'000)	473	1 497	3 578	18 314	10 610	-42,1
<b>Total value of additions and alterations at current prices (R'000)</b>	<b>3 667</b>	<b>6 048</b>	<b>7 535</b>	<b>36 233</b>	<b>29 100</b>	<b>-19,7</b>
<b>Total value of building plans passed at current prices (R'000)</b>	<b>19 046</b>	<b>22 043</b>	<b>21 951</b>	<b>103 877</b>	<b>92 817</b>	<b>-10,6</b>

1/ Other residential buildings include institutions for the disabled, boarding houses, old people's homes, hostels, hotels, motels, guest houses, holiday chalets, entertainment centres, bed-and-breakfast accommodation and casinos.

2/ Other non-residential space includes churches, sport and recreation clubs, schools, crèches, hospitals and all other non-residential space.

3/ Other buildings include additions and alterations to other residential buildings, non-residential buildings and internal alterations.



Table 19 - Buildings completed according to type of building: Total RSA

Type of building	April 2000 *	March 2001 *	April 2001	January 2000 to April 2000	January 2001 to April 2001	Percentage change between January 2000 to April 2000 and January 2001 to April 2001
<b>Residential buildings</b>						
Dwelling-houses smaller than 80 square metres						
Number of dwelling-houses	4 154	2 582	1 744	11 705	7 994	- 31,7
Total square metres	137 279	103 351	72 225	411 514	319 522	- 22,4
Total value at current prices (R'000)	100 001	88 595	57 371	307 244	270 231	- 12,0
Dwelling-houses equal to or larger than 80 square metres						
Number of dwelling-houses	674	1 055	805	2 970	3 605	+ 21,4
Total square metres	130 877	208 122	159 033	598 711	717 011	+ 19,8
Total value at current prices (R'000)	171 556	287 689	216 446	770 361	977 753	+ 26,9
Flats and townhouses						
Number of flats and townhouses	529	907	681	2 264	2 692	+ 18,9
Total square metres	67 737	92 615	72 721	239 003	272 511	+ 14,0
Total value at current prices (R'000)	86 233	141 884	99 213	318 610	394 637	+ 23,9
Other residential buildings <sup>1/</sup>						
Total square metres	5 568	8 925	96	27 555	80 242	+ 191,2
Total value at current prices (R'000)	6 923	16 250	172	43 296	337 033	+ 678,4
<b>Total value of residential buildings at current prices (R'000)</b>	<b>364 713</b>	<b>534 418</b>	<b>373 202</b>	<b>1 439 511</b>	<b>1 979 654</b>	<b>+ 37,5</b>
<b>Non-residential buildings</b>						
Office and banking space						
Total square metres	21 098	34 676	15 782	197 963	200 112	+ 1,1
Total value at current prices (R'000)	46 875	50 716	28 357	352 439	312 994	- 11,2
Shopping space						
Total square metres	49 527	11 299	20 443	92 617	85 302	- 7,9
Total value at current prices (R'000)	68 899	16 507	25 191	135 485	109 741	- 19,0
Industrial and warehouse space						
Total square metres	77 588	62 924	62 077	289 928	285 438	- 1,5
Total value at current prices (R'000)	93 620	68 688	82 348	293 601	334 787	+ 14,0
Other non-residential space <sup>2/</sup>						
Total square metres	20 597	14 532	30 696	64 844	75 300	+ 16,1
Total value at current prices (R'000)	14 654	15 036	37 786	56 439	91 161	+ 61,5
<b>Total value of non-residential buildings at current prices (R'000)</b>	<b>224 048</b>	<b>150 947</b>	<b>173 682</b>	<b>837 964</b>	<b>848 683</b>	<b>+ 1,3</b>
<b>Additions and alterations</b>						
Dwelling-houses						
Total square metres	97 760	115 766	98 025	458 628	455 482	- 0,7
Total value at current prices (R'000)	111 892	137 328	112 866	515 045	536 539	+ 4,2
Other buildings <sup>3/</sup>						
Total square metres	49 735	53 771	45 418	171 646	183 200	+ 6,7
Total value at current prices (R'000)	76 916	149 887	71 750	348 445	379 776	+ 9,0
<b>Total value of additions and alterations at current prices (R'000)</b>	<b>188 808</b>	<b>287 215</b>	<b>184 616</b>	<b>863 490</b>	<b>916 315</b>	<b>+ 6,1</b>
<b>Total value of buildings completed at current prices (R'000)</b>	<b>777 569</b>	<b>972 580</b>	<b>731 500</b>	<b>3 140 965</b>	<b>3 744 652</b>	<b>+ 19,2</b>

1/ Other residential buildings include institutions for the disabled, boarding houses, old people's homes, hostels, hotels, motels, guest houses, holiday chalets, entertainment centres, bed-and-breakfast accommodation and casinos.

2/ Other non-residential space includes churches, sport and recreation clubs, schools, crèches, hospitals and all other non-residential space.

3/ Other buildings include additions and alterations to other residential buildings, non-residential buildings and internal alterations.

Table 20 - Buildings completed according to type of building and province: Western Cape

Type of building	April 2000 *	March 2001*	April 2001	January 2000 to April 2000	January 2001 to April 2001	Percentage change between January 2000 to April 2000 and January 2001 to April 2001
<b>Residential buildings</b>						
Dwelling-houses smaller than 80 square metres						
Number of dwelling-houses	448	402	226	2 678	1 605	- 40,1
Total square metres	12 440	13 898	9 423	78 878	56 255	- 28,7
Total value at current prices (R'000)	8 248	14 095	10 619	53 016	63 644	+ 20,0
Dwelling-houses equal to or larger than 80 square metres						
Number of dwelling-houses	265	378	260	1 172	1 188	+ 1,4
Total square metres	50 450	74 783	48 931	214 877	228 739	+ 6,5
Total value at current prices (R'000)	69 302	111 019	72 513	288 710	338 833	+ 17,4
Flats and townhouses						
Number of flats and townhouses	260	34	118	646	425	- 34,2
Total square metres	35 471	3 596	11 322	75 934	41 685	- 45,1
Total value at current prices (R'000)	44 141	4 982	14 031	96 302	55 275	- 42,6
Other residential buildings <sup>1/</sup>						
Total square metres	134	8 925	96	14 915	26 773	+ 79,5
Total value at current prices (R'000)	150	16 250	172	24 549	30 293	+ 23,4
<b>Total value of residential buildings at current prices (R'000)</b>	<b>121 841</b>	<b>146 346</b>	<b>97 335</b>	<b>462 577</b>	<b>488 045</b>	<b>+ 5,5</b>
<b>Non-residential buildings</b>						
Office and banking space						
Total square metres	11 199	8 941	3 519	54 892	46 568	- 15,2
Total value at current prices (R'000)	28 521	9 506	5 872	102 378	89 518	- 12,6
Shopping space						
Total square metres	7 884	2 034	8 397	12 590	19 684	+ 56,3
Total value at current prices (R'000)	13 138	2 275	10 037	18 283	26 442	+ 44,6
Industrial and warehouse space						
Total square metres	15 891	7 929	5 364	90 360	45 045	- 50,1
Total value at current prices (R'000)	11 216	8 812	6 462	72 087	54 688	- 24,1
Other non-residential space <sup>2/</sup>						
Total square metres	14 133	8 804	5 082	39 784	28 429	- 28,5
Total value at current prices (R'000)	9 129	8 822	3 347	30 050	26 430	- 12,0
<b>Total value of non-residential buildings at current prices (R'000)</b>	<b>62 004</b>	<b>29 415</b>	<b>25 718</b>	<b>222 798</b>	<b>197 078</b>	<b>- 11,5</b>
<b>Additions and alterations</b>						
Dwelling-houses						
Total square metres	42 938	43 436	30 528	186 090	164 044	- 11,8
Total value at current prices (R'000)	52 603	55 880	38 034	217 336	207 026	- 4,7
Other buildings <sup>3/</sup>						
Total square metres	7 015	11 890	7 732	56 365	50 126	- 11,1
Total value at current prices (R'000)	11 458	76 567	9 358	97 881	162 690	+ 66,2
<b>Total value of additions and alterations at current prices (R'000)</b>	<b>64 061</b>	<b>132 447</b>	<b>47 392</b>	<b>315 217</b>	<b>369 716</b>	<b>+ 17,3</b>
<b>Total value of buildings completed at current prices (R'000)</b>	<b>247 906</b>	<b>308 208</b>	<b>170 445</b>	<b>1 000 592</b>	<b>1 054 839</b>	<b>5,4</b>

1/ Other residential buildings include institutions for the disabled, boarding houses, old people's homes, hostels, hotels, motels, guest houses, holiday chalets, entertainment centres, bed-and-breakfast accommodation and casinos.

2/ Other non-residential space includes churches, sport and recreation clubs, schools, crèches, hospitals and all other non-residential space.

3/ Other buildings include additions and alterations to other residential buildings, non-residential buildings and internal alterations.

Table 21 - Buildings completed according to type of building and province: Eastern Cape

Type of building	April 2000*	March 2001	April 2001	January 2000 to April 2000	January 2001 to April 2001	Percentage change between January 2000 to April 2000 and January 2001 to April 2001
<b>Residential buildings</b>						
Dwelling-houses smaller than 80 square metres						
Number of dwelling-houses	73	367	324	649	1 165	+ 79,5
Total square metres	3 599	15 862	14 057	27 808	50 454	+ 81,4
Total value at current prices (R'000)	4 204	15 759	9 174	33 703	41 535	+ 23,2
Dwelling-houses equal to or larger than 80 square metres						
Number of dwelling-houses	50	54	127	183	304	+ 66,1
Total square metres	6 402	7 815	16 486	31 966	40 771	+ 27,5
Total value at current prices (R'000)	7 695	9 819	21 060	35 381	50 378	+ 42,4
Flats and townhouses						
Number of flats and townhouses	19	0	69	227	92	- 59,5
Total square metres	2 097	0	6 658	17 278	8 752	- 49,3
Total value at current prices (R'000)	2 853	0	5 956	20 824	8 948	- 57,0
Other residential buildings <sup>1/</sup>						
Total square metres	0	0	0	0	4 347	..
Total value at current prices (R'000)	0	0	0	0	7 000	..
<b>Total value of residential buildings at current prices (R'000)</b>	<b>14 752</b>	<b>25 578</b>	<b>36 190</b>	<b>89 908</b>	<b>107 861</b>	<b>+ 20,0</b>
<b>Non-residential buildings</b>						
Office and banking space						
Total square metres	0	1 062	91	121	1 444	+ 1 093,4
Total value at current prices (R'000)	0	1 724	119	149	2 367	+ 1 488,6
Shopping space						
Total square metres	21 946	3 108	4 361	23 716	8 560	- 63,9
Total value at current prices (R'000)	28 530	5 004	7 126	30 838	13 633	- 55,8
Industrial and warehouse space						
Total square metres	4 093	209	23 047	11 383	91 835	+ 706,8
Total value at current prices (R'000)	3 000	303	29 039	9 669	92 516	+ 856,8
Other non-residential space <sup>2/</sup>						
Total square metres	245	550	12 216	785	16 265	+ 1 972,0
Total value at current prices (R'000)	270	605	12 959	1 139	20 486	+ 1 698,6
<b>Total value of non-residential buildings at current prices (R'000)</b>	<b>31 800</b>	<b>7 636</b>	<b>49 243</b>	<b>41 795</b>	<b>129 002</b>	<b>+ 208,7</b>
<b>Additions and alterations</b>						
Dwelling-houses						
Total square metres	7 435	6 248	8 669	33 149	30 104	- 9,2
Total value at current prices (R'000)	7 502	6 981	10 461	32 459	34 865	+ 7,4
Other buildings <sup>3/</sup>						
Total square metres	2 171	7 579	6 393	11 695	22 848	+ 95,4
Total value at current prices (R'000)	6 521	10 963	8 873	14 692	30 606	+ 108,3
<b>Total value of additions and alterations at current prices (R'000)</b>	<b>14 023</b>	<b>17 944</b>	<b>19 334</b>	<b>47 151</b>	<b>65 471</b>	<b>+ 38,9</b>
<b>Total value of buildings completed at current prices (R'000)</b>	<b>60 575</b>	<b>51 158</b>	<b>104 767</b>	<b>178 854</b>	<b>302 334</b>	<b>+ 69,0</b>

1/ Other residential buildings include institutions for the disabled, boarding houses, old people's homes, hostels, hotels, motels, guest houses, holiday chalets, entertainment centres, bed-and-breakfast accommodation and casinos.

2/ Other non-residential space includes churches, sport and recreation clubs, schools, crèches, hospitals and all other non-residential space.

3/ Other buildings include additions and alterations to other residential buildings, non-residential buildings and internal alterations.

Table 22 - Buildings completed according to type of building and province: Northern Cape

Type of building	April 2000	March 2001	April 2001	January 2000 to April 2000	January 2001 to April 2001	Percentage change between January 2000 to April 2000 and January 2001 to April 2001
<b>Residential buildings</b>						
Dwelling-houses smaller than 80 square metres						
Number of dwelling-houses	160	27	8	184	53	- 71,2
Total square metres	5 611	973	421	6 830	2 411	- 64,7
Total value at current prices (R'000)	3 450	712	732	5 413	3 165	- 41,5
Dwelling-houses equal to or larger than 80 square metres						
Number of dwelling-houses	17	3	11	29	39	+ 34,5
Total square metres	2 412	413	1 450	4 548	6 720	+ 47,8
Total value at current prices (R'000)	2 353	640	1 960	5 209	9 295	+ 78,4
Flats and townhouses						
Number of flats and townhouses	2	5	9	13	14	+ 7,7
Total square metres	254	420	892	1 715	1 312	- 23,5
Total value at current prices (R'000)	354	588	1 323	2 305	1 911	- 17,1
Other residential buildings <sup>1/</sup>						
Total square metres	2 466	0	0	2 466	346	- 86,0
Total value at current prices (R'000)	2 959	0	0	2 959	277	- 90,6
<b>Total value of residential buildings at current prices (R'000)</b>	<b>9 116</b>	<b>1 940</b>	<b>4 015</b>	<b>15 886</b>	<b>14 648</b>	<b>- 7,8</b>
<b>Non-residential buildings</b>						
Office and banking space						
Total square metres	0	0	0	0	7 105	..
Total value at current prices (R'000)	0	0	0	0	15 631	..
Shopping space						
Total square metres	0	522	2 010	236	3 212	+ 1 261,0
Total value at current prices (R'000)	0	735	2 188	523	5 073	+ 870,0
Industrial and warehouse space						
Total square metres	0	0	772	1 645	772	- 53,1
Total value at current prices (R'000)	0	0	618	1 569	618	- 60,6
Other non-residential space <sup>2/</sup>						
Total square metres	272	0	0	272	181	- 33,5
Total value at current prices (R'000)	0	0	0	544	289	- 46,9
<b>Total value of non-residential buildings at current prices (R'000)</b>	<b>544</b>	<b>735</b>	<b>2 806</b>	<b>2 636</b>	<b>21 611</b>	<b>+ 719,8</b>
<b>Additions and alterations</b>						
Dwelling-houses						
Total square metres	1 816	1 269	1 898	5 655	5 904	+ 4,4
Total value at current prices (R'000)	2 677	1 983	3 012	8 079	9 275	+ 14,8
Other buildings <sup>3/</sup>						
Total square metres	228	532	835	2 354	1 739	- 26,1
Total value at current prices (R'000)	330	828	2 055	6 764	3 471	- 48,7
<b>Total value of additions and alterations at current prices (R'000)</b>	<b>3 007</b>	<b>2 811</b>	<b>5 067</b>	<b>14 843</b>	<b>12 746</b>	<b>- 14,1</b>
<b>Total value of buildings completed at current prices (R'000)</b>	<b>12 667</b>	<b>5 486</b>	<b>11 888</b>	<b>33 365</b>	<b>49 005</b>	<b>46,9</b>

1/ Other residential buildings include institutions for the disabled, boarding houses, old people's homes, hostels, hotels, motels, guest houses, holiday chalets, entertainment centres, bed-and-breakfast accommodation and casinos.

2/ Other non-residential space includes churches, sport and recreation clubs, schools, crèches, hospitals and all other non-residential space.

3/ Other buildings include additions and alterations to other residential buildings, non-residential buildings and internal alterations.

Table 23 - Buildings completed according to type of building and province: Free State

Type of building	April 2000*	March 2001	April 2001	January 2000 to April 2000	January 2001 to April 2001	Percentage change between January 2000 to April 2000 and January 2001 to April 2001
<b>Residential buildings</b>						
Dwelling-houses smaller than 80 square metres						
Number of dwelling-houses	124	97	347	991	542	-45,3
Total square metres	4 975	4 090	14 233	40 356	22 657	-43,9
Total value at current prices (R'000)	2 591	2 427	7 959	21 684	13 540	-37,6
Dwelling-houses equal to or larger than 80 square metres						
Number of dwelling-houses	26	27	31	86	135	+ 57,0
Total square metres	4 520	4 507	5 160	15 310	24 145	+ 57,7
Total value at current prices (R'000)	8 171	4 851	5 782	18 951	27 478	+ 45,0
Flats and townhouses						
Number of flats and townhouses	15	20	45	75	118	+ 57,3
Total square metres	1 053	1 777	2 533	9 045	9 297	+ 2,8
Total value at current prices (R'000)	1 228	2 396	3 515	11 672	12 719	+ 9,0
Other residential buildings <sup>1/</sup>						
Total square metres	0	0	0	560	151	-73,0
Total value at current prices (R'000)	0	0	0	648	211	-67,4
<b>Total value of residential buildings at current prices (R'000)</b>	<b>11 990</b>	<b>9 674</b>	<b>17 256</b>	<b>52 955</b>	<b>53 948</b>	<b>+ 1,9</b>
<b>Non-residential buildings</b>						
Office and banking space						
Total square metres	145	0	0	2 979	1 094	-63,3
Total value at current prices (R'000)	145	0	0	3 951	903	-77,1
Shopping space						
Total square metres	12 195	0	491	12 657	2 541	-79,9
Total value at current prices (R'000)	15 053	0	280	15 530	2 280	-85,3
Industrial and warehouse space						
Total square metres	1 221	4 187	1 852	6 936	9 972	+ 43,8
Total value at current prices (R'000)	1 465	4 598	1 734	5 325	8 844	+ 66,1
Other non-residential space <sup>2/</sup>						
Total square metres	24	151	5 410	1 031	5 917	+ 473,9
Total value at current prices (R'000)	36	164	11 284	764	11 843	+ 1 450,1
<b>Total value of non-residential buildings at current prices (R'000)</b>	<b>16 699</b>	<b>4 762</b>	<b>13 298</b>	<b>25 570</b>	<b>23 870</b>	<b>-6,6</b>
<b>Additions and alterations</b>						
Dwelling-houses						
Total square metres	3 035	4 770	4 609	19 394	22 248	+ 14,7
Total value at current prices (R'000)	2 999	5 197	5 015	18 978	23 308	+ 22,8
Other buildings <sup>3/</sup>						
Total square metres	688	1 038	1 926	4 327	5 872	+ 35,7
Total value at current prices (R'000)	1 003	1 225	3 471	9 683	8 966	-7,4
<b>Total value of additions and alterations at current prices (R'000)</b>	<b>4 002</b>	<b>6 422</b>	<b>8 486</b>	<b>28 661</b>	<b>32 274</b>	<b>+ 12,6</b>
<b>Total value of buildings completed at current prices (R'000)</b>	<b>32 691</b>	<b>20 858</b>	<b>39 040</b>	<b>107 186</b>	<b>110 092</b>	<b>+ 2,7</b>

1/ Other residential buildings include institutions for the disabled, boarding houses, old people's homes, hostels, hotels, motels, guest houses, holiday chalets, entertainment centres, bed-and-breakfast accommodation and casinos.

2/ Other non-residential space includes churches, sport and recreation clubs, schools, crèches, hospitals and all other non-residential space.

3/ Other buildings include additions and alterations to other residential buildings, non-residential buildings and internal alterations.

Table 24 - Buildings completed according to type of building and province: KwaZulu-Natal

Type of building	April 2000*	March 2001	April 2001	January 2000 to April 2000	January 2001 to April 2001	Percentage change between January 2000 to April 2000 and January 2001 to April 2001
<b>Residential buildings</b>						
Dwelling-houses smaller than 80 square metres						
Number of dwelling-houses	983	420	144	1 292	869	-32,7
Total square metres	29 381	21 012	5 627	43 191	40 914	-5,3
Total value at current prices (R'000)	20 220	16 951	5 432	36 862	34 743	-5,7
Dwelling-houses equal to or larger than 80 square metres						
Number of dwelling-houses	96	121	109	329	485	+ 47,4
Total square metres	18 690	23 594	21 464	64 485	98 163	+ 52,2
Total value at current prices (R'000)	23 375	31 300	28 059	77 951	126 835	+ 62,7
Flats and townhouses						
Number of flats and townhouses	37	313	20	236	438	+ 85,6
Total square metres	4 435	24 152	4 136	37 113	48 445	+ 30,5
Total value at current prices (R'000)	5 461	29 496	4 921	58 883	70 105	+ 19,1
Other residential buildings <sup>1/</sup>						
Total square metres	0	0	0	728	8 450	+ 1 060,7
Total value at current prices (R'000)	0	0	0	833	40 000	+ 4 701,9
<b>Total value of residential buildings at current prices (R'000)</b>	<b>49 056</b>	<b>77 747</b>	<b>38 412</b>	<b>174 529</b>	<b>271 683</b>	<b>+ 55,7</b>
<b>Non-residential buildings</b>						
Office and banking space						
Total square metres	7 253	6 712	5 583	34 322	18 492	-46,1
Total value at current prices (R'000)	14 970	13 523	11 326	90 696	33 733	-62,8
Shopping space						
Total square metres	1 536	2 203	4 053	7 155	16 386	+ 129,0
Total value at current prices (R'000)	1 800	3 058	4 114	10 119	29 895	+ 195,4
Industrial and warehouse space						
Total square metres	30 563	23 585	13 351	91 115	57 782	-36,6
Total value at current prices (R'000)	39 997	22 233	13 941	95 844	62 020	-35,3
Other non-residential space <sup>2/</sup>						
Total square metres	2 408	1 485	2 691	5 494	7 860	+ 43,1
Total value at current prices (R'000)	2 296	1 662	2 430	5 880	8 770	+ 49,1
<b>Total value of non-residential buildings at current prices (R'000)</b>	<b>59 063</b>	<b>40 476</b>	<b>31 811</b>	<b>202 539</b>	<b>134 418</b>	<b>-33,6</b>
<b>Additions and alterations</b>						
Dwelling-houses						
Total square metres	18 643	26 871	25 420	87 293	101 841	+ 16,7
Total value at current prices (R'000)	21 087	31 338	28 581	99 784	115 932	+ 16,2
Other buildings <sup>3/</sup>						
Total square metres	27 382	12 911	15 595	65 406	35 793	-45,3
Total value at current prices (R'000)	39 604	24 178	26 796	110 918	67 214	-39,4
<b>Total value of additions and alterations at current prices (R'000)</b>	<b>60 691</b>	<b>55 516</b>	<b>55 377</b>	<b>210 702</b>	<b>183 146</b>	<b>-13,1</b>
<b>Total value of buildings completed at current prices (R'000)</b>	<b>168 810</b>	<b>173 739</b>	<b>125 600</b>	<b>587 770</b>	<b>589 247</b>	<b>+ 0,3</b>

1/ Other residential buildings include institutions for the disabled, boarding houses, old people's homes, hostels, hotels, motels, guest houses, holiday chalets, entertainment centres, bed-and-breakfast accommodation and casinos.

2/ Other non-residential space includes churches, sport and recreation clubs, schools, crèches, hospitals and all other non-residential space.

3/ Other buildings include additions and alterations to other residential buildings, non-residential buildings and internal alterations.

Table 25 - Buildings completed according to type of building and province: North West

Type of building	April 2000*	March 2001	April 2001	January 2000 to April 2000	January 2001 to April 2001	Percentage change between January 2000 to April 2000 and January 2001 to April 2001
<b>Residential buildings</b>						
Dwelling-houses smaller than 80 square metres						
Number of dwelling-houses	56	105	60	288	307	+ 6,6
Total square metres	3 264	4 990	3 069	14 498	15 541	+ 7,2
Total value at current prices (R'000)	3 081	5 658	3 975	14 870	17 897	+ 20,4
Dwelling-houses equal to or larger than 80 square metres						
Number of dwelling-houses	20	39	29	88	149	+ 69,3
Total square metres	3 879	4 823	7 572	15 940	27 711	+ 73,8
Total value at current prices (R'000)	4 923	6 308	8 372	18 110	32 928	+ 81,8
Flats and townhouses						
Number of flats and townhouses	11	0	34	36	52	+ 44,4
Total square metres	1 621	0	3 359	5 587	5 548	- 0,7
Total value at current prices (R'000)	1 478	0	3 380	6 109	5 744	- 6,0
Other residential buildings <sup>1/</sup>						
Total square metres	0	0	0	344	2 963	+ 761,3
Total value at current prices (R'000)	0	0	0	465	3 556	+ 664,7
<b>Total value of residential buildings at current prices (R'000)</b>	<b>9 482</b>	<b>11 966</b>	<b>15 727</b>	<b>39 554</b>	<b>60 125</b>	<b>+ 52,0</b>
<b>Non-residential buildings</b>						
Office and banking space						
Total square metres	0	0	0	1 282	750	- 41,5
Total value at current prices (R'000)	0	0	0	1 538	1 400	- 9,0
Shopping space						
Total square metres	4 336	0	220	5 831	1 599	- 72,6
Total value at current prices (R'000)	6 303	0	352	8 615	2 442	- 71,7
Industrial and warehouse space						
Total square metres	0	699	0	539	1 611	+ 198,9
Total value at current prices (R'000)	0	700	0	534	1 960	+ 267,0
Other non-residential space <sup>2/</sup>						
Total square metres	2 504	153	209	4 282	2 083	- 51,4
Total value at current prices (R'000)	1 403	180	177	3 003	2 315	- 22,9
<b>Total value of non-residential buildings at current prices (R'000)</b>	<b>7 706</b>	<b>880</b>	<b>529</b>	<b>13 690</b>	<b>8 117</b>	<b>- 40,7</b>
<b>Additions and alterations</b>						
Dwelling-houses						
Total square metres	2 990	2 869	4 384	17 944	12 768	- 28,8
Total value at current prices (R'000)	2 337	2 827	3 258	15 965	11 653	- 27,0
Other buildings <sup>3/</sup>						
Total square metres	765	1 357	2 554	3 096	7 945	+ 156,6
Total value at current prices (R'000)	779	4 060	2 569	2 422	10 567	+ 336,3
<b>Total value of additions and alterations at current prices (R'000)</b>	<b>3 116</b>	<b>6 887</b>	<b>5 827</b>	<b>18 387</b>	<b>22 220</b>	<b>+ 20,8</b>
<b>Total value of buildings completed at current prices (R'000)</b>	<b>20 304</b>	<b>19 733</b>	<b>22 083</b>	<b>71 631</b>	<b>90 462</b>	<b>+ 26,3</b>

1/ Other residential buildings include institutions for the disabled, boarding houses, old people's homes, hostels, hotels, motels, guest houses, holiday chalets, entertainment centres, bed-and-breakfast accommodation and casinos.

2/ Other non-residential space includes churches, sport and recreation clubs, schools, crèches, hospitals and all other non-residential space.

3/ Other buildings include additions and alterations to other residential buildings, non-residential buildings and internal alterations.

Table 26 - Buildings completed according to type of building and province: Gauteng

Type of building	April 2000*	March 2001*	April 2001	January 2000 to April 2000	January 2001 to April 2001	Percentage change between January 2000 to April 2000 and January 2001 to April 2001
<b>Residential buildings</b>						
Dwelling-houses smaller than 80 square metres						
Number of dwelling-houses	1 963	726	280	4 677	2 037	-56,4
Total square metres	65 731	26 958	13 128	165 102	80 444	-51,3
Total value at current prices (R'000)	50 399	24 852	14 597	116 332	69 255	-40,5
Dwelling-houses equal to or larger than 80 square metres						
Number of dwelling-houses	174	356	206	883	1 094	+ 23,9
Total square metres	39 996	79 107	51 768	218 663	254 371	+ 16,3
Total value at current prices (R'000)	51 093	110 357	72 655	287 404	352 100	+ 22,5
Flats and townhouses						
Number of flats and townhouses	184	527	377	986	1 516	+ 53,8
Total square metres	22 668	61 627	42 788	88 462	152 737	+ 72,7
Total value at current prices (R'000)	30 525	103 208	65 036	117 637	235 080	+ 99,8
Other residential buildings <sup>1/</sup>						
Total square metres	2 968	0	0	7 087	34 212	+ 382,7
Total value at current prices (R'000)	3 814	0	0	11 727	252 096	+ 2 049,7
<b>Total value of residential buildings at current prices (R'000)</b>	<b>135 831</b>	<b>238 417</b>	<b>152 288</b>	<b>533 100</b>	<b>908 531</b>	<b>+ 70,4</b>
<b>Non-residential buildings</b>						
Office and banking space						
Total square metres	2 501	17 961	3 711	96 160	119 988	+ 24,8
Total value at current prices (R'000)	3 239	25 963	8 040	139 207	163 292	+ 17,3
Shopping space						
Total square metres	1 630	3 432	911	22 285	13 277	-40,4
Total value at current prices (R'000)	4 075	5 435	1 094	30 613	18 876	-38,3
Industrial and warehouse space						
Total square metres	25 820	26 315	17 691	77 714	78 421	+ 0,9
Total value at current prices (R'000)	37 942	32 042	30 554	98 230	114 141	+ 16,2
Other non-residential space <sup>2/</sup>						
Total square metres	1 011	1 704	4 247	8 393	10 768	+ 28,3
Total value at current prices (R'000)	976	1 650	6 748	8 992	16 310	+ 81,4
<b>Total value of non-residential buildings at current prices (R'000)</b>	<b>46 232</b>	<b>65 090</b>	<b>46 436</b>	<b>277 042</b>	<b>312 619</b>	<b>+ 12,8</b>
<b>Additions and alterations</b>						
Dwelling-houses						
Total square metres	18 064	20 565	17 556	94 658	94 176	-0,5
Total value at current prices (R'000)	20 224	25 143	20 932	111 295	113 533	+ 2,0
Other buildings <sup>3/</sup>						
Total square metres	10 788	10 774	9 902	24 795	44 666	+ 80,1
Total value at current prices (R'000)	16 141	21 766	18 289	101 943	75 172	-26,3
<b>Total value of additions and alterations at current prices (R'000)</b>	<b>36 365</b>	<b>46 909</b>	<b>39 221</b>	<b>213 238</b>	<b>188 705</b>	<b>-11,5</b>
<b>Total value of buildings completed at current prices (R'000)</b>	<b>218 428</b>	<b>350 416</b>	<b>237 945</b>	<b>1 023 380</b>	<b>1 409 855</b>	<b>+ 37,8</b>

1/ Other residential buildings include institutions for the disabled, boarding houses, old people's homes, hostels, hotels, motels, guest houses, holiday chalets, entertainment centres, bed-and-breakfast accommodation and casinos.

2/ Other non-residential space includes churches, sport and recreation clubs, schools, crèches, hospitals and all other non-residential space.

3/ Other buildings include additions and alterations to other residential buildings, non-residential buildings and internal alterations.



Table 27 - Buildings completed according to type of building and province: Mpumalanga

Type of building	April 2000	March 2001	April 2001	January 2000 to April 2000	January 2001 to April 2001	Percentage change between January 2000 to April 2000 and January 2001 to April 2001
<b>Residential buildings</b>						
Dwelling-houses smaller than 80 square metres						
Number of dwelling-houses	312	339	321	728	1 196	+ 64,3
Total square metres	10 250	11 249	10 877	24 610	40 662	+ 65,2
Total value at current prices (R'000)	5 176	5 540	4 214	17 386	18 248	+ 5,0
Dwelling-houses equal to or larger than 80 square metres						
Number of dwelling-houses	17	57	21	141	143	+ 1,4
Total square metres	3 490	10 865	4 172	25 430	25 139	-1,1
Total value at current prices (R'000)	3 392	10 354	3 527	29 495	24 867	-15,7
Flats and townhouses						
Number of flats and townhouses	0	4	6	40	23	-42,5
Total square metres	0	300	649	3 006	2 138	-28,9
Total value at current prices (R'000)	0	240	514	3 745	1 788	-52,3
Other residential buildings <sup>1/</sup>						
Total square metres	0	0	0	730	0	..
Total value at current prices (R'000)	0	0	0	1 100	0	..
<b>Total value of residential buildings at current prices (R'000)</b>	<b>8 568</b>	<b>16 134</b>	<b>8 255</b>	<b>51 726</b>	<b>44 903</b>	<b>-13,2</b>
<b>Non-residential buildings</b>						
Office and banking space						
Total square metres	0	0	2 878	7 371	4 671	-36,6
Total value at current prices (R'000)	0	0	3 000	13 350	6 150	-53,9
Shopping space						
Total square metres	0	0	0	951	20 043	+ 2 007,6
Total value at current prices (R'000)	0	0	0	960	11 100	+ 1 056,3
Industrial and warehouse space						
Total square metres	0	0	0	9 083	0	..
Total value at current prices (R'000)	0	0	0	9 062	0	..
Other non-residential space <sup>2/</sup>						
Total square metres	0	1 685	841	4 458	3 545	-20,5
Total value at current prices (R'000)	0	1 953	841	5 821	4 164	-28,5
<b>Total value of non-residential buildings at current prices (R'000)</b>	<b>0</b>	<b>1 953</b>	<b>3 841</b>	<b>29 193</b>	<b>21 414</b>	<b>-26,6</b>
<b>Additions and alterations</b>						
Dwelling-houses						
Total square metres	2 047	9 030	4 403	12 716	21 722	+ 70,8
Total value at current prices (R'000)	1 511	7 285	2 856	9 221	17 819	+ 93,2
Other buildings <sup>3/</sup>						
Total square metres	387	6 740	481	3 150	12 466	+ 295,7
Total value at current prices (R'000)	396	8 939	339	3 256	16 975	+ 421,3
<b>Total value of additions and alterations at current prices (R'000)</b>	<b>1 907</b>	<b>16 224</b>	<b>3 195</b>	<b>12 477</b>	<b>34 794</b>	<b>+ 178,9</b>
<b>Total value of buildings completed at current prices (R'000)</b>	<b>10 475</b>	<b>34 311</b>	<b>15 291</b>	<b>93 396</b>	<b>101 111</b>	<b>+ 8,3</b>

1/ Other residential buildings include institutions for the disabled, boarding houses, old people's homes, hostels, hotels, motels, guest houses, holiday chalets, entertainment centres, bed-and-breakfast accommodation and casinos.

2/ Other non-residential space includes churches, sport and recreation clubs, schools, crèches, hospitals and all other non-residential space.

3/ Other buildings include additions and alterations to other residential buildings, non-residential buildings and internal alterations.

Table 28 - Buildings completed according to type of building and province: Northern Province

Type of building	April 2000*	March 2001	April 2001	January 2000 to April 2000	January 2001 to April 2001	Percentage change between January 2000 to April 2000 and January 2001 to April 2001
<b>Residential buildings</b>						
Dwelling-houses smaller than 80 square metres						
Number of dwelling-houses	35	99	34	218	220	+ 0,9
Total square metres	2 028	4 319	1 390	10 241	10 184	-0,6
Total value at current prices (R'000)	2 632	2 601	669	7 978	8 204	+ 2,8
Dwelling-houses equal to or larger than 80 square metres						
Number of dwelling-houses	9	20	11	59	68	+ 15,3
Total square metres	1 038	2 215	2 030	7 492	11 252	+ 50,2
Total value at current prices (R'000)	1 252	3 041	2 518	9 150	15 039	+ 64,4
Flats and townhouses						
Number of flats and townhouses	1	4	3	5	14	+ 180,0
Total square metres	138	743	384	863	2 597	+ 200,9
Total value at current prices (R'000)	193	974	537	1 133	3 067	+ 170,7
Other residential buildings <sup>1/</sup>						
Total square metres	0	0	0	725	3 000	+ 313,8
Total value at current prices (R'000)	0	0	0	1 015	3 600	+ 254,7
<b>Total value of residential buildings at current prices (R'000)</b>	<b>4 077</b>	<b>6 616</b>	<b>3 724</b>	<b>19 276</b>	<b>29 910</b>	<b>+ 55,2</b>
<b>Non-residential buildings</b>						
Office and banking space						
Total square metres	0	0	0	836	0	..
Total value at current prices (R'000)	0	0	0	1 170	0	..
Shopping space						
Total square metres	0	0	0	7 196	0	..
Total value at current prices (R'000)	0	0	0	20 004	0	..
Industrial and warehouse space						
Total square metres	0	0	0	1 153	0	..
Total value at current prices (R'000)	0	0	0	1 281	0	..
Other non-residential space <sup>2/</sup>						
Total square metres	0	0	0	345	252	-27,0
Total value at current prices (R'000)	0	0	0	246	554	+ 125,2
<b>Total value of non-residential buildings at current prices (R'000)</b>	<b>0</b>	<b>0</b>	<b>0</b>	<b>22 701</b>	<b>554</b>	<b>-97,6</b>
<b>Additions and alterations</b>						
Dwelling-houses						
Total square metres	792	708	558	1 729	2 675	+ 54,7
Total value at current prices (R'000)	952	694	717	1 928	3 128	+ 62,2
Other buildings <sup>3/</sup>						
Total square metres	311	950	0	458	1 745	+ 281,0
Total value at current prices (R'000)	684	1 361	0	886	4 115	+ 364,4
<b>Total value of additions and alterations at current prices (R'000)</b>	<b>1 636</b>	<b>2 055</b>	<b>717</b>	<b>2 814</b>	<b>7 243</b>	<b>+ 157,4</b>
<b>Total value of buildings completed at current prices (R'000)</b>	<b>5 713</b>	<b>8 671</b>	<b>4 441</b>	<b>44 791</b>	<b>37 707</b>	<b>-15,8</b>

1/ Other residential buildings include institutions for the disabled, boarding houses, old people's homes, hostels, hotels, motels, guest houses, holiday chalets, entertainment centres, bed-and-breakfast accommodation and casinos.

2/ Other non-residential space includes churches, sport and recreation clubs, schools, crèches, hospitals and all other non-residential space.

3/ Other buildings include additions and alterations to other residential buildings, non-residential buildings and internal alterations.

**Table 29 - Building plans passed according to type of building and selected urban area: Cape Town**

Type of building	April 2000 *	March 2001	April 2001	January 2000 to April 2000	January 2001 to April 2001	Percentage change between January 2000 to April 2000 and January 2001 to April 2001
<b>Residential buildings</b>						
Dwelling-houses smaller than 80 square metres						
Number of dwelling-houses	418	591	292	2 536	2 207	- 13,0
Total square metres	14 957	23 358	13 722	98 967	85 463	- 13,6
Total value at current prices (R'000)	9 930	29 222	15 121	56 934	104 226	+ 83,1
Dwelling-houses equal to or larger than 80 square metres						
Number of dwelling-houses	234	285	253	1 106	1 041	- 5,9
Total square metres	41 752	63 845	55 326	193 128	239 838	+ 24,2
Total value at current prices (R'000)	58 793	92 845	75 353	267 536	323 315	+ 20,8
Flats and townhouses						
Number of flats and townhouses	37	220	70	618	433	- 29,9
Total square metres	4 558	21 554	9 055	66 410	47 622	- 28,3
Total value at current prices (R'000)	6 736	40 608	12 482	112 629	78 384	- 30,4
Other residential buildings <sup>1/</sup>						
Total square metres	379	0	18 970	41 900	20 014	- 52,2
Total value at current prices (R'000)	564	0	48 550	58 843	50 106	- 14,8
<b>Total value of residential buildings at current prices (R'000)</b>	<b>76 023</b>	<b>162 675</b>	<b>151 506</b>	<b>495 942</b>	<b>556 031</b>	<b>+ 12,1</b>
<b>Non-residential buildings</b>						
Office and banking space						
Total square metres	12 470	3 876	13 581	47 948	59 203	+ 23,5
Total value at current prices (R'000)	19 944	7 280	19 043	98 405	101 668	+ 3,3
Shopping space						
Total square metres	10 570	3 830	9 486	33 351	72 679	+ 117,9
Total value at current prices (R'000)	10 372	4 863	9 719	43 143	87 498	+ 102,8
Industrial and warehouse space						
Total square metres	19 124	9 083	13 504	77 293	42 856	- 44,6
Total value at current prices (R'000)	21 880	9 139	14 750	78 693	45 419	- 42,3
Other non-residential space <sup>2/</sup>						
Total square metres	3 250	18 264	3 282	28 035	32 897	+ 17,3
Total value at current prices (R'000)	4 301	23 431	4 459	34 027	47 467	+ 39,5
<b>Total value of non-residential buildings at current prices (R'000)</b>	<b>56 497</b>	<b>44 713</b>	<b>47 971</b>	<b>254 268</b>	<b>282 052</b>	<b>+ 10,9</b>
<b>Additions and alterations</b>						
Dwelling-houses						
Total square metres	46 030	49 521	46 221	186 484	181 041	- 2,9
Total value at current prices (R'000)	50 771	58 802	56 488	206 982	215 422	+ 4,1
Other buildings <sup>3/</sup>						
Total square metres	14 744	12 625	16 578	40 965	51 986	+ 26,9
Total value at current prices (R'000)	24 327	24 623	27 130	144 851	99 977	- 31,0
<b>Total value of additions and alterations at current prices (R'000)</b>	<b>75 098</b>	<b>83 425</b>	<b>83 618</b>	<b>351 833</b>	<b>315 399</b>	<b>- 10,4</b>
<b>Total value of building plans passed at current prices (R'000)</b>	<b>207 618</b>	<b>290 813</b>	<b>283 095</b>	<b>1 102 043</b>	<b>1 153 482</b>	<b>+ 4,7</b>

1/ Other residential buildings include institutions for the disabled, boarding houses, old people's homes, hostels, hotels, motels, guest houses, holiday chalets, entertainment centres, bed-and-breakfast accommodation and casinos.

2/ Other non-residential space includes churches, sport and recreation clubs, schools, crèches, hospitals and all other non-residential space.

3/ Other buildings include additions and alterations to other residential buildings, non-residential buildings and internal alterations.

**Table 30 - Building plans passed according to type of building and selected urban area: Port Elizabeth**

Type of building	April 2000	March 2001	April 2001	January 2000 to April 2000	January 2001 to April 2001	Percentage change between January 2000 to April 2000 and January 2001 to April 2001
<b>Residential buildings</b>						
Dwelling-houses smaller than 80 square metres						
Number of dwelling-houses	76	174	133	528	637	+ 20,6
Total square metres	3 241	8 408	5 844	21 929	28 749	+ 31,1
Total value at current prices (R'000)	3 764	11 703	7 582	25 877	38 286	+ 48,0
Dwelling-houses equal to or larger than 80 square metres						
Number of dwelling-houses	40	141	44	156	277	+ 77,6
Total square metres	3 719	12 049	6 548	19 474	30 925	+ 58,8
Total value at current prices (R'000)	5 072	16 519	8 461	25 339	41 109	+ 62,2
Flats and townhouses						
Number of flats and townhouses	22	27	19	57	76	+ 33,3
Total square metres	3 340	2 631	1 496	8 496	7 125	- 16,1
Total value at current prices (R'000)	3 762	3 548	1 924	11 189	10 251	- 8,4
Other residential buildings <sup>1/</sup>						
Total square metres	0	0	0	0	0	..
Total value at current prices (R'000)	0	0	0	0	0	..
<b>Total value of residential buildings at current prices (R'000)</b>	<b>12 598</b>	<b>31 770</b>	<b>17 967</b>	<b>62 405</b>	<b>89 646</b>	<b>+ 43,7</b>
<b>Non-residential buildings</b>						
Office and banking space						
Total square metres	0	0	0	0	0	..
Total value at current prices (R'000)	0	0	0	0	0	..
Shopping space						
Total square metres	262	352	772	2 933	1 124	- 61,7
Total value at current prices (R'000)	361	370	1 429	3 880	1 799	- 53,6
Industrial and warehouse space						
Total square metres	0	0	0	15 745	2 113	- 86,6
Total value at current prices (R'000)	0	0	0	19 072	3 064	- 83,9
Other non-residential space <sup>2/</sup>						
Total square metres	67	509	991	6 679	2 270	- 66,0
Total value at current prices (R'000)	108	581	2 005	9 403	3 649	- 61,2
<b>Total value of non-residential buildings at current prices (R'000)</b>	<b>469</b>	<b>951</b>	<b>3 434</b>	<b>32 355</b>	<b>8 512</b>	<b>- 73,7</b>
<b>Additions and alterations</b>						
Dwelling-houses						
Total square metres	6 521	8 212	9 779	36 139	33 922	- 6,1
Total value at current prices (R'000)	8 196	10 742	14 732	43 541	44 845	+ 3,0
Other buildings <sup>3/</sup>						
Total square metres	2 674	3 476	4 133	9 622	29 913	+ 210,9
Total value at current prices (R'000)	3 553	3 862	4 168	12 273	42 565	+ 246,8
<b>Total value of additions and alterations at current prices (R'000)</b>	<b>11 749</b>	<b>14 604</b>	<b>18 900</b>	<b>55 814</b>	<b>87 410</b>	<b>+ 56,6</b>
<b>Total value of building plans passed at current prices (R'000)</b>	<b>24 816</b>	<b>47 325</b>	<b>40 301</b>	<b>150 574</b>	<b>185 568</b>	<b>+ 23,2</b>

1/ Other residential buildings include institutions for the disabled, boarding houses, old people's homes, hostels, hotels, motels, guest houses, holiday chalets, entertainment centres, bed-and-breakfast accommodation and casinos.

2/ Other non-residential space includes churches, sport and recreation clubs, schools, crèches, hospitals and all other non-residential space.

3/ Other buildings include additions and alterations to other residential buildings, non-residential buildings and internal alterations.

Table 31 - Building plans passed according to type of building and selected urban area: Durban

Type of building	April 2000	March 2001	April 2001	January 2000 to April 2000	January 2001 to April 2001	Percentage change between January 2000 to April 2000 and January 2001 to April 2001
<b>Residential buildings</b>						
Dwelling-houses smaller than 80 square metres						
Number of dwelling-houses	70	67	75	347	288	-17,0
Total square metres	3 752	3 512	3 858	18 797	15 282	-18,7
Total value at current prices (R'000)	3 893	3 648	4 381	21 056	17 437	-17,2
Dwelling-houses equal to or larger than 80 square metres						
Number of dwelling-houses	63	72	39	259	218	-15,8
Total square metres	10 267	15 847	8 089	41 169	45 485	+ 10,5
Total value at current prices (R'000)	12 231	14 155	10 688	49 314	48 995	-0,6
Flats and townhouses						
Number of flats and townhouses	3	24	11	29	78	+ 169,0
Total square metres	559	2 802	1 417	6 070	7 866	+ 29,6
Total value at current prices (R'000)	597	4 397	2 174	7 062	11 675	+ 65,3
Other residential buildings <sup>1/</sup>						
Total square metres	0	0	0	0	0	..
Total value at current prices (R'000)	0	0	0	0	0	..
<b>Total value of residential buildings at current prices (R'000)</b>	<b>16 721</b>	<b>22 200</b>	<b>17 243</b>	<b>77 432</b>	<b>78 107</b>	<b>+ 0,9</b>
<b>Non-residential buildings</b>						
Office and banking space						
Total square metres	0	0	2 032	3 322	4 204	+ 26,6
Total value at current prices (R'000)	0	0	7 090	7 186	11 200	+ 55,9
Shopping space						
Total square metres	313	3 270	1 832	6 638	9 382	+ 41,3
Total value at current prices (R'000)	313	3 100	3 230	6 704	10 270	+ 53,2
Industrial and warehouse space						
Total square metres	1 894	9 833	8 389	19 506	31 422	+ 61,1
Total value at current prices (R'000)	2 500	10 915	9 966	25 287	35 537	+ 40,5
Other non-residential space <sup>2/</sup>						
Total square metres	480	1 914	12 486	5 246	17 439	+ 232,4
Total value at current prices (R'000)	450	2 460	12 750	5 388	19 436	+ 260,7
<b>Total value of non-residential buildings at current prices (R'000)</b>	<b>3 263</b>	<b>16 475</b>	<b>33 036</b>	<b>44 565</b>	<b>76 443</b>	<b>+ 71,5</b>
<b>Additions and alterations</b>						
Dwelling-houses						
Total square metres	17 490	24 547	16 843	84 556	82 485	-2,4
Total value at current prices (R'000)	19 749	28 334	18 406	97 287	97 777	+ 0,5
Other buildings <sup>3/</sup>						
Total square metres	7 963	14 464	7 845	36 991	40 612	+ 9,8
Total value at current prices (R'000)	22 141	32 408	11 586	93 909	78 763	-16,1
<b>Total value of additions and alterations at current prices (R'000)</b>	<b>41 890</b>	<b>60 742</b>	<b>29 992</b>	<b>191 196</b>	<b>176 540</b>	<b>-7,7</b>
<b>Total value of building plans passed at current prices (R'000)</b>	<b>61 874</b>	<b>99 417</b>	<b>80 271</b>	<b>313 193</b>	<b>331 090</b>	<b>+ 5,7</b>

1/ Other residential buildings include institutions for the disabled, boarding houses, old people's homes, hostels, hotels, motels, guest houses, holiday chalets, entertainment centres, bed-and-breakfast accommodation and casinos.

2/ Other non-residential space includes churches, sport and recreation clubs, schools, crèches, hospitals and all other non-residential space.

3/ Other buildings include additions and alterations to other residential buildings, non-residential buildings and internal alterations.

Table 32 - Building plans passed according to type of building and selected urban area: Witwatersrand

Type of building	April 2000*	March 2001*	April 2001	January 2000 to April 2000	January 2001 to April 2001	Percentage change between January 2000 to April 2000 and January 2001 to April 2001
<b>Residential buildings</b>						
Dwelling-houses smaller than 80 square metres						
Number of dwelling-houses	1 470	413	1 325	4 974	2 869	- 42,3
Total square metres	55 003	17 693	45 582	185 264	107 024	- 42,2
Total value at current prices (R'000)	39 152	19 918	45 912	134 153	115 960	- 13,6
Dwelling-houses equal to or larger than 80 square metres						
Number of dwelling-houses	450	407	334	1 343	1 778	+ 32,4
Total square metres	86 022	95 766	81 896	309 658	378 829	+ 22,3
Total value at current prices (R'000)	121 210	141 987	118 753	428 506	560 725	+ 30,9
Flats and townhouses						
Number of flats and townhouses	277	264	215	813	954	+ 17,3
Total square metres	30 857	27 239	25 069	79 690	101 060	+ 26,8
Total value at current prices (R'000)	44 248	47 743	41 915	126 466	164 855	+ 30,4
Other residential buildings <sup>1/</sup>						
Total square metres	0	0	0	1 024	0	..
Total value at current prices (R'000)	0	0	0	1 000	0	..
<b>Total value of residential buildings at current prices (R'000)</b>	<b>204 610</b>	<b>209 648</b>	<b>206 580</b>	<b>690 125</b>	<b>841 540</b>	<b>+ 21,9</b>
<b>Non-residential buildings</b>						
Office and banking space						
Total square metres	35 703	21 009	10 040	171 475	94 424	- 44,9
Total value at current prices (R'000)	52 593	30 234	16 579	232 949	141 410	- 39,3
Shopping space						
Total square metres	10 599	7 617	3 857	62 841	41 419	- 34,1
Total value at current prices (R'000)	17 083	13 001	5 204	81 579	70 198	- 14,0
Industrial and warehouse space						
Total square metres	10 650	36 954	24 370	107 109	113 038	+ 5,5
Total value at current prices (R'000)	17 478	68 306	40 303	163 492	193 526	+ 18,4
Other non-residential space <sup>2/</sup>						
Total square metres	3 959	14 045	3 075	29 649	37 816	+ 27,5
Total value at current prices (R'000)	5 986	22 659	3 962	46 000	55 536	+ 20,7
<b>Total value of non-residential buildings at current prices (R'000)</b>	<b>93 140</b>	<b>134 200</b>	<b>66 048</b>	<b>524 020</b>	<b>460 670</b>	<b>- 12,1</b>
<b>Additions and alterations</b>						
Dwelling-houses						
Total square metres	61 350	64 025	54 894	231 302	239 465	+ 3,5
Total value at current prices (R'000)	77 834	81 059	70 433	292 504	307 559	+ 5,1
Other buildings <sup>3/</sup>						
Total square metres	11 329	26 921	14 824	90 203	93 540	+ 3,7
Total value at current prices (R'000)	24 908	44 154	21 915	136 330	175 094	+ 28,4
<b>Total value of additions and alterations at current prices (R'000)</b>	<b>102 742</b>	<b>125 213</b>	<b>92 348</b>	<b>428 834</b>	<b>482 653</b>	<b>+ 12,6</b>
<b>Total value of building plans passed at current prices (R'000)</b>	<b>400 492</b>	<b>469 061</b>	<b>364 976</b>	<b>1 642 979</b>	<b>1 784 863</b>	<b>+ 8,6</b>

1/ Other residential buildings include institutions for the disabled, boarding houses, old people's homes, hostels, hotels, motels, guest houses, holiday chalets, entertainment centres, bed-and-breakfast accommodation and casinos.

2/ Other non-residential space includes churches, sport and recreation clubs, schools, crèches, hospitals and all other non-residential space.

3/ Other buildings include additions and alterations to other residential buildings, non-residential buildings and internal alterations.

Table 33 - Building plans passed according to type of building and selected urban area: Pretoria

Type of building	April 2000	March 2001	April 2001	January 2000 to April 2000	January 2001 to April 2001	Percentage change between January 2000 to April 2000 and January 2001 to April 2001
<b>Residential buildings</b>						
Dwelling-houses smaller than 80 square metres						
Number of dwelling-houses	81	132	197	2 193	450	- 79,5
Total square metres	3 814	6 175	14 632	70 667	27 455	- 61,1
Total value at current prices (R'000)	4 230	8 049	19 422	47 094	35 538	- 24,5
Dwelling-houses equal to or larger than 80 square metres						
Number of dwelling-houses	196	313	182	803	880	+ 9,6
Total square metres	49 023	83 541	54 944	191 818	245 641	+ 28,1
Total value at current prices (R'000)	63 869	113 806	74 698	244 606	332 885	+ 36,1
Flats and townhouses						
Number of flats and townhouses	131	195	175	461	537	+ 16,5
Total square metres	14 619	26 943	23 960	60 697	77 729	+ 28,1
Total value at current prices (R'000)	17 610	37 788	36 172	73 499	113 609	+ 54,6
Other residential buildings <sup>1/</sup>						
Total square metres	0	0	0	0	418	..
Total value at current prices (R'000)	0	0	0	0	627	..
<b>Total value of residential buildings at current prices (R'000)</b>	<b>85 709</b>	<b>159 643</b>	<b>130 292</b>	<b>365 199</b>	<b>482 659</b>	<b>+ 32,2</b>
<b>Non-residential buildings</b>						
Office and banking space						
Total square metres	5 317	859	1 040	17 295	17 936	+ 3,7
Total value at current prices (R'000)	7 901	1 111	1 635	23 474	30 463	+ 29,8
Shopping space						
Total square metres	983	7 859	2 013	7 438	11 430	+ 53,7
Total value at current prices (R'000)	990	12 306	2 997	8 161	17 762	+ 117,6
Industrial and warehouse space						
Total square metres	3 299	3 664	8 144	19 128	16 945	- 11,4
Total value at current prices (R'000)	4 384	4 964	11 710	21 801	24 118	+ 10,6
Other non-residential space <sup>2/</sup>						
Total square metres	1 640	6 081	7 025	6 336	18 625	+ 194,0
Total value at current prices (R'000)	2 099	9 255	10 847	7 850	27 891	+ 255,3
<b>Total value of non-residential buildings at current prices (R'000)</b>	<b>15 374</b>	<b>27 636</b>	<b>27 189</b>	<b>61 286</b>	<b>100 234</b>	<b>+ 63,6</b>
<b>Additions and alterations</b>						
Dwelling-houses						
Total square metres	14 704	14 818	18 220	70 020	62 923	- 10,1
Total value at current prices (R'000)	16 842	18 825	23 192	82 652	78 536	- 5,0
Other buildings <sup>3/</sup>						
Total square metres	2 277	3 186	7 985	16 780	17 834	+ 6,3
Total value at current prices (R'000)	4 116	4 956	11 678	27 196	27 639	+ 1,6
<b>Total value of additions and alterations at current prices (R'000)</b>	<b>20 958</b>	<b>23 781</b>	<b>34 870</b>	<b>109 848</b>	<b>106 175</b>	<b>- 3,3</b>
<b>Total value of building plans passed at current prices (R'000)</b>	<b>122 041</b>	<b>211 060</b>	<b>192 351</b>	<b>536 333</b>	<b>689 068</b>	<b>+ 28,5</b>

1/ Other residential buildings include institutions for the disabled, boarding houses, old people's homes, hostels, hotels, motels, guest houses, holiday chalets, entertainment centres, bed-and-breakfast accommodation and casinos.

2/ Other non-residential space includes churches, sport and recreation clubs, schools, crèches, hospitals and all other non-residential space.

3/ Other buildings include additions and alterations to other residential buildings, non-residential buildings and internal alterations.

**Table 34 - Building plans passed according to type of building and selected urban area: Bloemfontein**

Type of building	April 2000	March 2001	April 2001	January 2000 to April 2000	January 2001 to April 2001	Percentage change between January 2000 to April 2000 and January 2001 to April 2001
<b>Residential buildings</b>						
Dwelling-houses smaller than 80 square metres						
Number of dwelling-houses	145	190	250	467	794	+ 70,0
Total square metres	6 277	8 371	10 641	20 161	34 620	+ 71,7
Total value at current prices (R'000)	3 575	4 014	4 970	10 831	16 579	+ 53,1
Dwelling-houses equal to or larger than 80 square metres						
Number of dwelling-houses	24	23	15	90	78	-13,3
Total square metres	3 417	3 269	3 178	16 387	13 604	-17,0
Total value at current prices (R'000)	4 562	4 260	3 903	21 315	17 462	-18,1
Flats and townhouses						
Number of flats and townhouses	60	6	0	74	65	-12,2
Total square metres	6 329	960	0	7 259	9 574	+ 31,9
Total value at current prices (R'000)	9 695	1 920	0	10 811	15 389	+ 42,3
Other residential buildings <sup>1/</sup>						
Total square metres	0	0	0	600	0	..
Total value at current prices (R'000)	0	0	0	1 500	0	..
<b>Total value of residential buildings at current prices (R'000)</b>	<b>17 832</b>	<b>10 194</b>	<b>8 873</b>	<b>44 457</b>	<b>49 430</b>	<b>+ 11,2</b>
<b>Non-residential buildings</b>						
Office and banking space						
Total square metres	0	321	0	1 315	12 809	+ 874,1
Total value at current prices (R'000)	0	400	0	2 245	25 200	+ 1 022,5
Shopping space						
Total square metres	0	0	0	334	0	..
Total value at current prices (R'000)	0	0	0	735	0	..
Industrial and warehouse space						
Total square metres	3 445	0	544	3 445	624	-81,9
Total value at current prices (R'000)	2 131	0	326	2 131	438	-79,4
Other non-residential space <sup>2/</sup>						
Total square metres	0	850	0	0	850	..
Total value at current prices (R'000)	0	1 500	0	0	1 500	..
<b>Total value of non-residential buildings at current prices (R'000)</b>	<b>2 131</b>	<b>1 900</b>	<b>326</b>	<b>5 111</b>	<b>27 138</b>	<b>+ 431,0</b>
<b>Additions and alterations</b>						
Dwelling-houses						
Total square metres	2 229	2 683	3 613	13 617	11 823	-13,2
Total value at current prices (R'000)	2 771	3 432	4 241	16 111	14 350	-10,9
Other buildings <sup>3/</sup>						
Total square metres	934	535	1 425	4 744	2 630	-44,6
Total value at current prices (R'000)	1 266	1 438	3 757	6 454	6 372	-1,3
<b>Total value of additions and alterations at current prices (R'000)</b>	<b>4 037</b>	<b>4 870</b>	<b>7 998</b>	<b>22 565</b>	<b>20 722</b>	<b>-8,2</b>
<b>Total value of building plans passed at current prices (R'000)</b>	<b>24 000</b>	<b>16 964</b>	<b>17 197</b>	<b>72 133</b>	<b>97 290</b>	<b>+ 34,9</b>

1/ Other residential buildings include institutions for the disabled, boarding houses, old people's homes, hostels, hotels, motels, guest houses, holiday chalets, entertainment centres, bed-and-breakfast accommodation and casinos.

2/ Other non-residential space includes churches, sport and recreation clubs, schools, crèches, hospitals and all other non-residential space.

3/ Other buildings include additions and alterations to other residential buildings, non-residential buildings and internal alterations.



Table 35 - Buildings completed according to type of building and selected urban area: Cape Town

Type of building	April 2000 *	March 2001*	April 2001	January 2000 to April 2000	January 2001 to April 2001	Percentage change between January 2000 to April 2000 and January 2001 to April 2001
<b>Residential buildings</b>						
Dwelling-houses smaller than 80 square metres						
Number of dwelling-houses	250	327	181	1 516	1 266	- 16,5
Total square metres	7 380	11 246	6 692	47 251	44 322	- 6,2
Total value at current prices (R'000)	4 943	12 400	6 718	32 244	52 833	+ 63,9
Dwelling-houses equal to or larger than 80 square metres						
Number of dwelling-houses	115	111	95	534	501	- 6,2
Total square metres	23 199	22 773	18 958	99 301	98 145	- 1,2
Total value at current prices (R'000)	28 434	30 600	25 811	126 294	133 083	+ 5,4
Flats and townhouses						
Number of flats and townhouses	105	16	97	329	322	- 2,1
Total square metres	9 955	2 010	8 831	32 552	30 698	- 5,7
Total value at current prices (R'000)	11 441	2 818	9 669	42 816	40 262	- 6,0
Other residential buildings <sup>1/</sup>						
Total square metres	0	0	0	11 988	16 618	+ 38,6
Total value at current prices (R'000)	0	0	0	20 874	12 524	- 40,0
<b>Total value of residential buildings at current prices (R'000)</b>	<b>44 818</b>	<b>45 818</b>	<b>42 198</b>	<b>222 228</b>	<b>238 702</b>	<b>+ 7,4</b>
<b>Non-residential buildings</b>						
Office and banking space						
Total square metres	11 152	2 796	3 519	48 338	39 087	- 19,1
Total value at current prices (R'000)	28 411	3 571	5 872	91 766	80 851	- 11,9
Shopping space						
Total square metres	7 812	1 523	7 058	8 631	13 605	+ 57,6
Total value at current prices (R'000)	13 043	1 550	8 214	14 465	18 524	+ 28,1
Industrial and warehouse space						
Total square metres	14 142	5 252	1 166	67 268	20 393	- 69,7
Total value at current prices (R'000)	9 349	6 500	806	53 717	24 020	- 55,3
Other non-residential space <sup>2/</sup>						
Total square metres	2 077	2 907	475	7 602	6 892	- 9,3
Total value at current prices (R'000)	2 266	4 473	555	9 075	10 975	+ 20,9
<b>Total value of non-residential buildings at current prices (R'000)</b>	<b>53 069</b>	<b>16 094</b>	<b>15 447</b>	<b>169 023</b>	<b>134 370</b>	<b>- 20,5</b>
<b>Additions and alterations</b>						
Dwelling-houses						
Total square metres	31 613	29 748	20 460	116 948	103 168	- 11,8
Total value at current prices (R'000)	36 823	34 934	24 243	124 528	117 493	- 5,6
Other buildings <sup>3/</sup>						
Total square metres	5 331	8 565	3 478	42 442	38 045	- 10,4
Total value at current prices (R'000)	9 170	73 298	5 819	80 511	150 036	+ 86,4
<b>Total value of additions and alterations at current prices (R'000)</b>	<b>45 993</b>	<b>108 232</b>	<b>30 062</b>	<b>205 039</b>	<b>267 529</b>	<b>+ 30,5</b>
<b>Total value of building plans passed at current prices (R'000)</b>	<b>143 880</b>	<b>170 144</b>	<b>87 707</b>	<b>596 290</b>	<b>640 601</b>	<b>+ 7,4</b>

1/ Other residential buildings include institutions for the disabled, boarding houses, old people's homes, hostels, hotels, motels, guest houses, holiday chalets, entertainment centres, bed-and-breakfast accommodation and casinos.

2/ Other non-residential space includes churches, sport and recreation clubs, schools, crèches, hospitals and all other non-residential space.

3/ Other buildings include additions and alterations to other residential buildings, non-residential buildings and internal alterations.

Table 36 - Buildings completed according to type of building and selected urban area: Port Elizabeth

Type of building	April 2000	March 2001	April 2001	January 2000 to April 2000	January 2001 to April 2001	Percentage change between January 2000 to April 2000 and January 2001 to April 2001
<b>Residential buildings</b>						
Dwelling-houses smaller than 80 square metres						
Number of dwelling-houses	60	127	81	389	382	- 1,8
Total square metres	2 818	5 269	3 665	17 407	16 213	- 6,9
Total value at current prices (R'000)	3 225	6 712	3 988	20 913	20 150	- 3,6
Dwelling-houses equal to or larger than 80 square metres						
Number of dwelling-houses	27	19	71	86	151	+ 75,6
Total square metres	2 429	2 626	7 661	13 937	16 812	+ 20,6
Total value at current prices (R'000)	2 929	3 218	9 634	14 780	20 772	+ 40,5
Flats and townhouses						
Number of flats and townhouses	17	0	36	71	49	- 31,0
Total square metres	1 849	0	2 917	7 993	3 819	- 52,2
Total value at current prices (R'000)	2 555	0	2 189	8 709	3 645	- 58,1
Other residential buildings <sup>1/</sup>						
Total square metres	0	0	0	0	4 347	..
Total value at current prices (R'000)	0	0	0	0	7 000	..
<b>Total value of residential buildings at current prices (R'000)</b>	<b>8 709</b>	<b>9 930</b>	<b>15 811</b>	<b>44 402</b>	<b>51 567</b>	<b>+ 16,1</b>
<b>Non-residential buildings</b>						
Office and banking space						
Total square metres	0	0	0	0	0	..
Total value at current prices (R'000)	0	0	0	0	0	..
Shopping space						
Total square metres	0	3 108	965	1 436	4 425	+ 208,1
Total value at current prices (R'000)	0	5 004	1 554	1 777	6 989	+ 293,3
Industrial and warehouse space						
Total square metres	0	209	23 047	2 250	24 128	+ 972,4
Total value at current prices (R'000)	0	303	29 039	1 986	30 586	+ 1 440,1
Other non-residential space <sup>2/</sup>						
Total square metres	245	550	2 748	785	3 808	+ 385,1
Total value at current prices (R'000)	270	605	2 337	1 139	3 047	+ 167,5
<b>Total value of non-residential buildings at current prices (R'000)</b>	<b>270</b>	<b>5 912</b>	<b>32 930</b>	<b>4 902</b>	<b>40 622</b>	<b>+ 728,7</b>
<b>Additions and alterations</b>						
Dwelling-houses						
Total square metres	4 530	2 325	5 818	21 360	14 770	- 30,9
Total value at current prices (R'000)	4 434	2 518	6 887	19 340	16 690	- 13,7
Other buildings <sup>3/</sup>						
Total square metres	826	2 510	4 012	4 029	9 392	+ 133,1
Total value at current prices (R'000)	1 096	2 432	5 380	5 007	11 624	+ 132,2
<b>Total value of additions and alterations at current prices (R'000)</b>	<b>5 530</b>	<b>4 950</b>	<b>12 267</b>	<b>24 347</b>	<b>28 314</b>	<b>+ 16,3</b>
<b>Total value of building plans passed at current prices (R'000)</b>	<b>14 509</b>	<b>20 792</b>	<b>61 008</b>	<b>73 651</b>	<b>120 503</b>	<b>+ 63,6</b>

1/ Other residential buildings include institutions for the disabled, boarding houses, old people's homes, hostels, hotels, motels, guest houses, holiday chalets, entertainment centres, bed-and-breakfast accommodation and casinos.

2/ Other non-residential space includes churches, sport and recreation clubs, schools, crèches, hospitals and all other non-residential space.

3/ Other buildings include additions and alterations to other residential buildings, non-residential buildings and internal alterations.

Table 37 - Buildings completed according to type of building and selected urban area: Durban

Type of building	April 2000	March 2001	April 2001	January 2000 to April 2000	January 2001 to April 2001	Percentage change between January 2000 to April 2000 and January 2001 to April 2001
<b>Residential buildings</b>						
Dwelling-houses smaller than 80 square metres						
Number of dwelling-houses	56	93	50	263	233	- 11,4
Total square metres	2 920	5 293	2 913	11 775	12 573	+ 6,8
Total value at current prices (R'000)	3 198	6 521	3 332	13 583	14 582	+ 7,4
Dwelling-houses equal to or larger than 80 square metres						
Number of dwelling-houses	53	70	76	201	305	+ 51,7
Total square metres	9 164	11 689	13 507	37 778	53 891	+ 42,7
Total value at current prices (R'000)	9 652	13 805	15 910	41 280	62 138	+ 50,5
Flats and townhouses						
Number of flats and townhouses	16	274	16	105	360	+ 242,9
Total square metres	1 691	19 570	3 879	18 478	33 176	+ 79,5
Total value at current prices (R'000)	1 997	24 182	4 621	29 342	44 402	+ 51,3
Other residential buildings <sup>1/</sup>						
Total square metres	0	0	0	0	0	..
Total value at current prices (R'000)	0	0	0	0	0	..
<b>Total value of residential buildings at current prices (R'000)</b>	<b>14 847</b>	<b>44 508</b>	<b>23 863</b>	<b>84 205</b>	<b>121 122</b>	<b>+ 43,8</b>
<b>Non-residential buildings</b>						
Office and banking space						
Total square metres	0	3 995	4 368	21 963	11 885	- 45,9
Total value at current prices (R'000)	0	9 670	9 700	65 526	24 870	- 62,0
Shopping space						
Total square metres	1 158	1 663	3 881	4 857	13 046	+ 168,6
Total value at current prices (R'000)	1 500	1 978	3 908	6 550	23 989	+ 266,2
Industrial and warehouse space						
Total square metres	26 509	11 763	13 351	67 660	42 119	- 37,7
Total value at current prices (R'000)	35 903	12 849	13 941	78 372	48 830	- 37,7
Other non-residential space <sup>2/</sup>						
Total square metres	1 830	405	402	4 838	4 491	- 7,2
Total value at current prices (R'000)	1 400	518	430	4 890	5 626	+ 15,1
<b>Total value of non-residential buildings at current prices (R'000)</b>	<b>38 803</b>	<b>25 015</b>	<b>27 979</b>	<b>155 338</b>	<b>103 315</b>	<b>- 33,5</b>
<b>Additions and alterations</b>						
Dwelling-houses						
Total square metres	15 125	23 244	22 632	74 889	86 467	+ 15,5
Total value at current prices (R'000)	16 784	26 281	25 391	85 122	97 283	+ 14,3
Other buildings <sup>3/</sup>						
Total square metres	25 811	11 773	13 996	61 411	32 136	- 47,7
Total value at current prices (R'000)	37 766	20 519	23 083	99 926	58 291	- 41,7
<b>Total value of additions and alterations at current prices (R'000)</b>	<b>54 550</b>	<b>46 800</b>	<b>48 474</b>	<b>185 048</b>	<b>155 574</b>	<b>- 15,9</b>
<b>Total value of building plans passed at current prices (R'000)</b>	<b>108 200</b>	<b>116 323</b>	<b>100 316</b>	<b>424 591</b>	<b>380 011</b>	<b>- 10,5</b>

1/ Other residential buildings include institutions for the disabled, boarding houses, old people's homes, hostels, hotels, motels, guest houses, holiday chalets, entertainment centres, bed-and-breakfast accommodation and casinos.

2/ Other non-residential space includes churches, sport and recreation clubs, schools, crèches, hospitals and all other non-residential space.

3/ Other buildings include additions and alterations to other residential buildings, non-residential buildings and internal alterations.

Table 38 - Buildings completed according to type of building and selected urban area: Witwatersrand

Type of building	April 2000*	March 2001*	April #REF!	January 2000 to April 2000	January 2001 to April 2001	Percentage change between January 2000 to April 2000 and January 2001 to April 2001
<b>Residential buildings</b>						
Dwelling-houses smaller than 80 square metres						
Number of dwelling-houses	888	355	188	3 354	1 499	-55,3
Total square metres	32 383	13 832	8 482	121 046	59 155	-51,1
Total value at current prices (R'000)	29 541	15 307	8 861	86 573	50 362	-41,8
Dwelling-houses equal to or larger than 80 square metres						
Number of dwelling-houses	116	235	142	585	764	+ 30,6
Total square metres	23 073	45 973	34 260	141 061	166 693	+ 18,2
Total value at current prices (R'000)	31 797	64 101	48 431	197 016	233 387	+ 18,5
Flats and townhouses						
Number of flats and townhouses	177	161	207	662	856	+ 29,3
Total square metres	21 288	28 272	23 845	51 713	87 804	+ 69,8
Total value at current prices (R'000)	28 708	56 313	41 065	75 529	148 029	+ 96,0
Other residential buildings <sup>1/</sup>						
Total square metres	2 241	0	0	5 954	32 600	+ 447,5
Total value at current prices (R'000)	2 914	0	0	10 340	250 000	+ 2 317,8
<b>Total value of residential buildings at current prices (R'000)</b>	<b>92 960</b>	<b>135 721</b>	<b>98 357</b>	<b>369 458</b>	<b>681 778</b>	<b>+ 84,5</b>
<b>Non-residential buildings</b>						
Office and banking space						
Total square metres	2 465	17 961	3 711	93 900	114 845	+ 22,3
Total value at current prices (R'000)	3 229	25 963	8 040	136 847	156 517	+ 14,4
Shopping space						
Total square metres	1 630	3 062	350	20 495	9 092	-55,6
Total value at current prices (R'000)	4 075	5 058	700	28 173	13 590	-51,8
Industrial and warehouse space						
Total square metres	21 997	24 469	16 895	72 713	72 393	-0,4
Total value at current prices (R'000)	34 119	30 159	29 479	92 934	106 312	+ 14,4
Other non-residential space <sup>2/</sup>						
Total square metres	1 011	0	1 727	5 779	4 981	-13,8
Total value at current prices (R'000)	976	0	3 748	7 262	9 192	+ 26,6
<b>Total value of non-residential buildings at current prices (R'000)</b>	<b>42 399</b>	<b>61 180</b>	<b>41 967</b>	<b>265 216</b>	<b>285 611</b>	<b>+ 7,7</b>
<b>Additions and alterations</b>						
Dwelling-houses						
Total square metres	15 378	18 945	15 065	78 245	85 529	+ 9,3
Total value at current prices (R'000)	17 499	23 109	17 786	94 409	103 229	+ 9,3
Other buildings <sup>3/</sup>						
Total square metres	10 087	10 660	9 409	22 209	43 095	+ 94,0
Total value at current prices (R'000)	15 408	21 598	17 268	98 899	72 116	-27,1
<b>Total value of additions and alterations at current prices (R'000)</b>	<b>32 907</b>	<b>44 707</b>	<b>35 054</b>	<b>193 308</b>	<b>175 345</b>	<b>-9,3</b>
<b>Total value of building plans passed at current prices (R'000)</b>	<b>168 266</b>	<b>241 608</b>	<b>175 378</b>	<b>827 982</b>	<b>1 142 734</b>	<b>+ 38,0</b>

1/ Other residential buildings include institutions for the disabled, boarding houses, old people's homes, hostels, hotels, motels, guest houses, holiday chalets, entertainment centres, bed-and-breakfast accommodation and casinos.

2/ Other non-residential space includes churches, sport and recreation clubs, schools, crèches, hospitals and all other non-residential space.

3/ Other buildings include additions and alterations to other residential buildings, non-residential buildings and internal alterations.

Table 39 - Buildings completed according to type of building and selected urban area: Pretoria

Type of building	April 2000*	March 2001	April 2001	January 2000 to April 2000	January 2001 to April 2001	Percentage change between January 2000 to April 2000 and January 2001 to April 2001
<b>Residential buildings</b>						
Dwelling-houses smaller than 80 square metres						
Number of dwelling-houses	1 037	86	81	1 212	211	- 82,6
Total square metres	31 859	3 887	4 180	39 374	10 256	- 74,0
Total value at current prices (R'000)	19 823	4 811	5 161	26 200	12 696	- 51,5
Dwelling-houses equal to or larger than 80 square metres						
Number of dwelling-houses	48	115	56	263	304	+ 15,6
Total square metres	14 849	31 756	15 877	70 717	82 298	+ 16,4
Total value at current prices (R'000)	16 854	44 766	22 234	82 777	112 419	+ 35,8
Flats and townhouses						
Number of flats and townhouses	7	351	147	324	621	+ 91,7
Total square metres	1 380	31 248	16 362	36 749	59 973	+ 63,2
Total value at current prices (R'000)	1 817	44 505	20 559	42 108	80 895	+ 92,1
Other residential buildings <sup>1/</sup>						
Total square metres	727	0	0	727	0	..
Total value at current prices (R'000)	900	0	0	900	0	..
<b>Total value of residential buildings at current prices (R'000)</b>	<b>39 394</b>	<b>94 082</b>	<b>47 954</b>	<b>151 985</b>	<b>206 010</b>	<b>+ 35,5</b>
<b>Non-residential buildings</b>						
Office and banking space						
Total square metres	0	0	0	2 224	5 143	+ 131,3
Total value at current prices (R'000)	0	0	0	2 350	6 775	+ 188,3
Shopping space						
Total square metres	0	0	0	1 492	0	..
Total value at current prices (R'000)	0	0	0	2 086	0	..
Industrial and warehouse space						
Total square metres	3 823	0	796	5 001	3 140	- 37,2
Total value at current prices (R'000)	3 823	0	1 075	5 296	4 591	- 13,3
Other non-residential space <sup>2/</sup>						
Total square metres	0	1 077	2 520	2 614	4 260	+ 63,0
Total value at current prices (R'000)	0	1 200	3 000	1 730	5 858	+ 238,6
<b>Total value of non-residential buildings at current prices (R'000)</b>	<b>3 823</b>	<b>1 200</b>	<b>4 075</b>	<b>11 462</b>	<b>17 224</b>	<b>+ 50,3</b>
<b>Additions and alterations</b>						
Dwelling-houses						
Total square metres	1 843	1 316	1 106	8 858	4 894	- 44,8
Total value at current prices (R'000)	1 874	1 709	1 473	9 260	6 148	- 33,6
Other buildings <sup>3/</sup>						
Total square metres	300	114	0	1 275	870	- 31,8
Total value at current prices (R'000)	350	161	0	1 627	1 420	- 12,7
<b>Total value of additions and alterations at current prices (R'000)</b>	<b>2 224</b>	<b>1 870</b>	<b>1 473</b>	<b>10 887</b>	<b>7 568</b>	<b>- 30,5</b>
<b>Total value of building plans passed at current prices (R'000)</b>	<b>45 441</b>	<b>97 152</b>	<b>53 502</b>	<b>174 334</b>	<b>230 802</b>	<b>+ 32,4</b>

1/ Other residential buildings include institutions for the disabled, boarding houses, old people's homes, hostels, hotels, motels, guest houses, holiday chalets, entertainment centres, bed-and-breakfast accommodation and casinos.

2/ Other non-residential space includes churches, sport and recreation clubs, schools, crèches, hospitals and all other non-residential space.

3/ Other buildings include additions and alterations to other residential buildings, non-residential buildings and internal alterations.

**Table 40 - Buildings completed according to type of building and selected urban area: Bloemfontein**

Type of building	April 2000	March 2001	April 2001	January 2000 to April 2000	January 2001 to April 2001	Percentage change between January 2000 to April 2000 and January 2001 to April 2001
<b>Residential buildings</b>						
Dwelling-houses smaller than 80 square metres						
Number of dwelling-houses	32	8	142	302	172	- 43,0
Total square metres	1 360	415	5 238	12 042	6 763	- 43,8
Total value at current prices (R'000)	710	490	3 099	5 897	4 939	- 16,2
Dwelling-houses equal to or larger than 80 square metres						
Number of dwelling-houses	13	14	23	35	79	+ 125,7
Total square metres	2 380	2 557	3 583	6 832	15 215	+ 122,7
Total value at current prices (R'000)	6 335	2 891	4 174	10 658	18 097	+ 69,8
Flats and townhouses						
Number of flats and townhouses	14	16	43	52	96	+ 84,6
Total square metres	930	1 397	2 339	5 633	7 014	+ 24,5
Total value at current prices (R'000)	1 116	1 956	3 276	7 550	10 045	+ 33,0
Other residential buildings <sup>1/</sup>						
Total square metres	0	0	0	0	151	..
Total value at current prices (R'000)	0	0	0	0	211	..
<b>Total value of residential buildings at current prices (R'000)</b>	<b>8 161</b>	<b>5 337</b>	<b>10 549</b>	<b>24 105</b>	<b>33 292</b>	<b>+ 38,1</b>
<b>Non-residential buildings</b>						
Office and banking space						
Total square metres	145	0	0	2 945	302	- 89,7
Total value at current prices (R'000)	145	0	0	3 934	483	- 87,7
Shopping space						
Total square metres	558	0	0	558	2 050	+ 267,4
Total value at current prices (R'000)	670	0	0	670	2 000	+ 198,5
Industrial and warehouse space						
Total square metres	0	0	1 852	5 258	4 730	- 10,0
Total value at current prices (R'000)	0	0	1 734	3 614	3 711	+ 2,7
Other non-residential space <sup>2/</sup>						
Total square metres	0	0	4 539	0	4 679	..
Total value at current prices (R'000)	0	0	9 000	0	9 170	..
<b>Total value of non-residential buildings at current prices (R'000)</b>	<b>815</b>	<b>0</b>	<b>10 734</b>	<b>8 218</b>	<b>15 364</b>	<b>+ 87,0</b>
<b>Additions and alterations</b>						
Dwelling-houses						
Total square metres	941	3 179	3 071	10 310	15 854	+ 53,8
Total value at current prices (R'000)	976	3 291	3 550	10 653	16 733	+ 57,1
Other buildings <sup>3/</sup>						
Total square metres	0	95	270	1 879	2 028	+ 7,9
Total value at current prices (R'000)	80	49	1 092	6 187	3 772	- 39,0
<b>Total value of additions and alterations at current prices (R'000)</b>	<b>1 056</b>	<b>3 340</b>	<b>4 642</b>	<b>16 840</b>	<b>20 505</b>	<b>+ 21,8</b>
<b>Total value of building plans passed at current prices (R'000)</b>	<b>10 032</b>	<b>8 677</b>	<b>25 925</b>	<b>49 163</b>	<b>69 161</b>	<b>+ 40,7</b>

1/ Other residential buildings include institutions for the disabled, boarding houses, old people's homes, hostels, hotels, motels, guest houses, holiday chalets, entertainment centres, bed-and-breakfast accommodation and casinos.

2/ Other non-residential space includes churches, sport and recreation clubs, schools, crèches, hospitals and all other non-residential space.

3/ Other buildings include additions and alterations to other residential buildings, non-residential buildings and internal alterations.

## Additional information

### Explanatory Notes

<b>Introduction</b>	<ol style="list-style-type: none"> <li>1 Statistics South Africa (Stats SA) conducts a monthly Building Statistics Survey collecting information regarding building plans approved and buildings completed, financed by the private sector, from a sample of local government institutions in South Africa. This statistical release contains information of building plans passed and buildings completed in respect of residential buildings, non-residential buildings and additions and alterations according to province and selected urban areas.</li> <li>2 In order to improve timeliness of the publication, some information for the current month have been estimated due to late submission by respondents. These estimates will be revised in the next statistical release(s) as soon as actual information is available.</li> <li>3 The actual and seasonally adjusted values (at current and at constant 1995 prices) and the percentage change of building plans passed and buildings completed according to type of building are reflected monthly from January 1999 in this statistical release (cf. tables 1 to 8).</li> </ol>
<b>Scope of the survey</b>	<ol style="list-style-type: none"> <li>4 This survey covers local government institutions conducting activities for the private sector regarding - <ul style="list-style-type: none"> <li>• approval of building plans; and</li> <li>• final inspection of completed buildings.</li> </ul> </li> </ol>
<b>Classification</b>	<ol style="list-style-type: none"> <li>5 The 1993 edition of the Standard Industrial Classification of all Economic Activities, (SIC) Fifth Edition, Report No. 09-90-02, was used to classify the statistical units. The SIC is based on the 1990 International Standard Industrial Classification of all Economic Activities (ISIC) with suitable adaptations for local conditions.</li> <li>6 The twelfth and last published edition of the Standard Code List of Areas, Report No. 09-09-03 (1994) was used to classify the statistical units according to province. The cities, towns and non-urban areas listed in this report are codified within magisterial district and province. The code list was compiled by Stats SA in collaboration with other interested bodies and the first edition was distributed in June 1977.</li> </ol>
<b>Statistical unit</b>	<ol style="list-style-type: none"> <li>7 The statistical unit for the collection of information is a local government institution. Local government institutions include municipalities, city councils, metropolitan councils, district councils, transitional councils and development and services boards.</li> </ol>
<b>Survey methodology and design</b>	<ol style="list-style-type: none"> <li>8 The sample for the monthly Building Statistics Survey consists of the largest local government institutions in South Africa, i.e. those that account for approximately 85% of the total rand value of buildings completed by the private sector.</li> <li>9 The survey is collected by mail each month from a sample of 158 local government institutions.</li> </ol>
<b>Constant prices</b>	<ol style="list-style-type: none"> <li>10 The value of building plans passed and buildings completed at constant prices measure the building activities in terms of ruling prices in a specific base year which is currently 1995.</li> <li>11 The value of building plans passed at constant prices for each month is obtained by deflating the values at current prices with a price index known as the “lump sum domestic buildings” as published in statistical release P0151 – JBCC Contract Price Adjustment Provisions Work Group Indices. In order to be applicable, these indices (base February 1991=100) are converted to the base year 1995=100.</li> </ol>

- 12** The value of buildings completed at constant prices is obtained by deflating the values at current prices with the same price index which is used to calculate building plans passed at constant prices (cf. paragraph 11). The value of buildings completed is reported as at the time the plans were passed. Since the completion of buildings may extend over a few months to a few years, the current value of buildings completed is deflated by price indices as at the time the plans were passed in order to calculate the value of buildings completed at the time the plans were passed. Therefore, the duration of the completion of different types of buildings are taken into account in ascertaining the deflators e.g. the value of dwelling-houses completed at constant prices at January 2000 is obtained by deflating the current value of dwelling-houses completed for January 2000 with the price index of a month six months prior to January 2000. Furthermore, the value of other residential buildings, non-residential buildings and additions and alterations at constant prices is obtained by deflating the current values with price indices of 12 months, 18 months and 12 months prior to the relevant month, respectively.

#### **Seasonal adjustment**

- 13** Seasonally adjusted estimates of building plans passed and buildings completed are generated each month, using the X-11 Seasonal Adjustment Program developed by US Bureau of the Census Economic Research and Analyses Division, 1968.
- 14** Seasonal adjustment is a means of removing the estimated effects of normal seasonal variation from the series so that the effects of other influences on the series can be more clearly recognised. Seasonal adjustment does not aim to remove irregular or non-seasonal influences which may be present in any particular month. Influences that are volatile or unsystematic can still make it difficult to interpret the movement of the series even after adjustment for seasonal variations. Therefore, the month-to-month movements of seasonally adjusted estimates may not be reliable indicators of trend behaviour.

#### **Trend cycle**

- 15** The trend is a long-term pattern or movement of a time series. The X-11 Seasonal Adjustment Program is used for smoothing seasonally adjusted data.

#### **Related publications**

- 16** Users may also wish to refer to the following publications:
- P5041.3 – Building statistics issued annually.
  - P9101.2 – Actual and expected expenditure on construction by the public sector per region issued annually.
  - Bulletin of Statistics issued quarterly.
  - South African Statistics issued annually.

#### **Unpublished statistics**

- 17** In some cases Stats SA can also make available statistics which are not published. The statistics can be made available in one or more of the following ways: computer printouts, CD and diskette. Generally a charge is made for providing unpublished statistics.

#### **Rounding-off of figures**

- 18** The figures in the tables have, where necessary, been rounded off to the nearest digit shown. There may, therefore, be slight discrepancies between the sums of the constituent items and the totals shown.

#### **Pre-release policy**

- 19** Stats SA has adopted the confidential pre-release policy in respect of selected economic indicators and specific government departments. The policy accords with practice among leading statistical agencies. The statistical integrity of the information and strict observance of the release time has been assured by the following procedure:
- 20** In respect of this statistical release, an official representative from the Office of the President, the Department of Trade and Industry (DTI), National Treasury and the South African Reserve Bank (SARB) will receive a copy of the release on a strictly confidential basis two hours in advance of the public issue.
- 21** Stats SA pre-release policy may be inspected at its Website, [www.statssa.gov.za](http://www.statssa.gov.za)



**Symbols and abbreviations**

..	no meaningful percentage change between two specified periods available since either one or both of the totals are nil
0	nil or figure too small to publish
*	revised
Stats SA	Statistics South Africa
SIC	Standard Industrial Classification of all Economic Activities
ISIC	International Standard Industrial Classification of all Economic Activities
JBCC	Joint Building Contracts Committee
CD	Compact Disc
US	United States
SARB	South African Reserve Bank
DTI	Department of Trade and Industry

**Technical notes****Response rate**

The response rate for April 2001 is 99,4%.

## Local government institutions covered in the sample survey

### Local government institutions according to province

#### Western Cape

Blaauwberg (includes Milnerton), Brackenfell, Breede River District Council, Cape Town, City of Tygerberg (Bellville, Durbanville, Goodwood, Lingeletu West, Parow and South Administration), Fish Hoek, George (includes Pacaltsdorp, Thembalethu and Herolds Bay), Gordon's Bay, Hangklip-Kleinmond (includes Kleinmond, Betty's Bay and Rooi-El's), Hermanus (includes Onrus River, Zwelihle, Sandbaai, Vermont, Hawston and Fisher Haven), Ikapa, Klein-Karoo District Council, Knysna (includes Khayaletu), Kuils River, Malmesbury, Mossel Bay (includes Boggom's Bay, Kleinbrak, Rheeboek and Tergniet), Oostenberg (Kraaifontein and Melton Rose - Blue Downs), Oudtshoorn, Overberg District Council, Paarl, Plettenberg Bay, Sedgfield, Simon's Town, Somerset West, South Peninsula, Stellenbosch, Strand, Wellington, West Coast District Council, Western Coast Peninsula (previously Vredenburg-Saldanha), Winelands District Council and Worcester.

#### Eastern Cape

Aliwal-Maletswai (includes Dukathole), Despatch, East London (includes Beacon Bay, Gomo Town, Gonubie and Mdantsane), Grahamstown (includes Rhini Township), Jeffrey's Bay, King William's Town (includes Bisho and Zwelitsha), Port Alfred, Port Elizabeth (includes Ibhayi and Motherwell), Uitenhage (includes KwaNobuhle), Umtata and Western District Council.

#### Northern Cape

Benede-Oranje District Council, Keimoes, Kimberley (including Galeshewe), Kuruman, Namaqualand District Council and Upington (includes Paballelo).

#### Free State

Allanridge, Bethlehem (includes Bohlokong), Bloemfontein (includes Bainsvlei, Bloemspuit and Mangaung), Botshabelo, Deneysville (includes Refengkgotso), Harrismith (includes Tsiamé), Kroonstad (includes Maokeng), Ladybrand (includes Manyatseng), Odendaalsrus (includes Kutlwano), Parys, Phuthaditjhaba, Sasolburg (includes Zamdela), Virginia (includes Meloding) and Welkom (includes Thabong).

#### KwaZulu-Natal

Development and Services Board - Inland, Development and Services Board – North Coast, Dolphin Coast Borough (includes Ballito, Etete, Shakaskraal, Tinley Manor Beach and Umhlali Beach), Durban, Edendale, Empangeni (includes Ngwelezana), Hilton, Howick, Inner West City Council (includes Clermont, KwaDabeka, KwaNdengezi, New Germany, Pinetown, Queensburgh, Reservoir Hills, Shallcross and Westville), Kokstad, Kwa-Dukuza/Stanger (includes Blythedale Beach, Shakaville and Stanger), KwaMashu, Ladysmith (includes Emnambithi), Margate (includes Uvongo), Mpenjati/Southbroom (includes Southbroom, Marina Beach, San Lameer and Trafalgar), Newcastle (includes Madadeni, Osizweni and Blaauwboschlaagte), North Local Council - Tongaat (includes Canelands and Hambanati), North Local Council - Umhlanga Rocks (includes Mount Edgecombe and Umdloti Beach), North Local Council - Verulam, Outer West Local Council (includes Assagay, Botha's Hill, Cato Ridge, Drummond, Everton, Gillitts, Hillcrest, Inchanga, Kloof, Mpumalanga and Waterfall), Pennington, Pietermaritzburg/Msundini, Port Shepstone, Richards Bay, South Local Council (includes Amanzimtoti, Isipingo, Kingsburgh, KwaMakuta and Umbogintwini), Umlazi and Umtamvuna/Port Edward (includes Munster, Port Edward and Palm Beach).

#### North West

Bophirima District Council, Brits (includes Lethabile), Ga-Rankuwa, Klerksdorp, Lichtenburg, Mmabatho, Orkney (includes Kanana), Potchefstroom, Rustenburg, Vryburg and Zeerust.

## **Gauteng**

Akasia (includes Elandsdoorn, Klipfontein, Kruisfontein and Soshanguve), Alberton (includes Tokoza), Benoni (includes Daveyton and Wattville), Boksburg (includes Vosloorus), Brakpan (includes Tsakane), Bronkhorstspuit, Carletonville (includes Khutsong), Centurion, Duduza, Eastern Services Council - Pretoria Area, Edenvale-Modderfontein, Germiston (includes Bedfordview and Katlehong), Greater Johannesburg - Eastern Metropolitan Local Council (includes Alexandra and Sandton), Greater Johannesburg - Northern Metropolitan Local Council (includes Randburg), Greater Johannesburg - Southern Metropolitan Local Council (includes Ennerdale, Lenasia and Johannesburg), Greater Johannesburg - Western Metropolitan Local Council (includes Diepmeadow, Dobsonville and Roodepoort), Heidelberg (includes Ratanda), Kempton Park (includes Tembisa), Krugersdorp (includes Kagiso and Munsieville), Meyerton, Midrand (includes Rabie Ridge and Ivory Park), Nigel, Pretoria (includes Atteridgeville and Mamelodi), Randfontein (includes Mohlakeng), Sebokeng (includes Boipatong, Bophelong and Sharpeville), Soweto, Springs (includes KwaThema), Vanderbijlpark, Vereeniging (includes Evaton), Western Services Council and Westonaria (includes Bekkersdal).

## **Mpumalanga**

Delmas (includes Botleng), Eastvaal District Council, Ermelo (includes Wesselson and Cassim Park), Highveld District Council, Highveldridge Transitional Council (includes Evander, Embalenhle and Secunda), Komatipoort (includes Kamaqhekeza), KwaGuqa, KwaMhlanga, Malelane (includes Hectorspruit and Kamhlushwa), Middelburg (includes Mhluzi), Nelspruit (includes Kanyamazane and Lowveld Escarpment District Council as from January 2001), White River and Witbank.

## **Northern Province**

Bosveld District Council, Giyani, Letaba (includes Nkowakowa and Tzaneen), Messina, Naboomspruit (includes Mookgophong), Nylstroom, Pietersburg-Polokwane (includes Seshego), Potgietersrus and Thabazimbi.

## **Local government institutions according to selected urban areas**

### **Cape Town**

Blaauwberg (includes Milnerton), Cape Town, City of Tygerberg (Bellville, Durbanville, Goodwood, Lingeletu West, Parow and South Administration), Fish Hoek, Ikapa, Oostenberg (Kraaifontein and Melton Rose - Blue Downs), Simon's Town and South Peninsula.

### **Port Elizabeth**

Despatch, Port Elizabeth (including Ibhayi and Motherwell) and Uitenhage (including KwaNobuhle)

### **Durban**

Durban, Inner West City Council (includes Clermont, KwaDabeka, KwaNdengezi, New Germany, Pinetown, Queenstown, Reservoir Hills, Shallcross and Westville), North Local Council - Verulam, Outer West Local Council (includes Assagay, Botha's Hill, Cato Ridge, Drummond, Everton, Gillitts, Hillcrest, Inchanga, Kloof, Mpumalanga and Waterfall) and South Local Council (includes Amanzimtoti, Isipingo, Kingsburgh, KwaMakuta and Umbogintwini).

### **Witwatersrand**

Alberton (includes Thokoza), Benoni (includes Daveyton and Wattville), Boksburg (includes Vosloorus), Brakpan (includes Tsakane), Carletonville (includes Khutsong), Duduza, Edenvale-Modderfontein, Germiston (includes Bedfordview and Katlehong), Greater Johannesburg - Eastern Metropolitan Local Council (includes Alexandra and Sandton), Greater Johannesburg - Northern Metropolitan Local Council (includes Randburg), Greater Johannesburg - Southern Metropolitan Local Council (includes Ennerdale, Lenasia and Johannesburg), Greater Johannesburg - Western Metropolitan Local Council (includes Diepmeadow, Dobsonville and Roodepoort), Kempton Park (includes Tembisa), Krugersdorp (includes Kagiso and Munsieville), Midrand (includes Rabie Ridge and Ivory Park), Nigel, Randfontein (includes Mohlakeng), Soweto, Springs (includes KwaThema) and Westonaria (includes Bekkersdal).

**Pretoria**

Akasia (includes Elandsdoorn, Klipfontein and Soshanguve), Centurion, Eastern Services Council - Pretoria area and Pretoria (includes Atteridgeville and Mamelodi).

**Bloemfontein**

Bloemfontein (includes Bainsvlei, Bloemspruit and Mangaung).

## Glossary

<b>Additions and alterations</b>	Additions and alterations include extensions to existing buildings as well as internal and external alterations of existing buildings.
<b>Blocks of flats</b>	Blocks of flats are regarded as high-density housing consisting of a number of self-contained dwelling-units with at least one living-room together with a kitchen and bathroom conjoined to similar units in one building.
<b>Dwelling-house</b>	A dwelling-house refers to a free-standing, complete structure on a separate stand or a self-contained dwelling-unit, granny flat, on the same premises as an existing residence. Out-buildings and garages are included.
<b>Local government institutions</b>	A local government institution is a generic term referring to any number of institutions involved in the local sphere of government. Local government institutions consist of municipalities, city councils, metropolitan councils, district councils, transitional local councils and development and services boards.
<b>Non-residential buildings</b>	Non-residential buildings comprise factories, commercial, financial and other office buildings, as well as other buildings not used for residential purposes, such as churches, halls, clubs, schools and hospitals.
<b>Other residential buildings</b>	Other residential buildings include institutions for the disabled, boarding houses, old people's homes, hostels, hotels, motels, guest houses, holiday chalets, bed-and-breakfast accommodation, entertainment centres and casinos.
<b>Percentage change</b>	<p>When using monthly actual values, the percentage change is the change in actual values of building activities (building plans passed or buildings completed) of the relevant month compared with the actual values of building activities (building plans passed or buildings completed) of the same month in the previous year expressed as a percentage.</p> <p>When using annual actual values, the percentage change is the change in the actual values of building activities (building plans passed or buildings completed) of the relevant year compared with the actual values of building activities (building plans passed or buildings completed) of the previous year expressed as a percentage.</p> <p>When using seasonally adjusted values, the percentage change is the change in the seasonally adjusted values of building activities (building plans passed or buildings completed) of the relevant month compared with the seasonally adjusted values of building activities (building plans passed or buildings completed) of the previous month expressed as a percentage.</p>
<b>Reference period</b>	Reference period is one calendar month.
<b>Residential buildings</b>	Residential buildings comprise dwelling-houses, flats, townhouses and other residential buildings.
<b>Townhouses</b>	Townhouses are multiple, medium-density dwelling-units and include cluster housing, group housing, simplexes, duplexes, triplexes and other similar dwelling-units which are usually grouped together, with one level of each unit on ground level. This excludes blocks of flats.

## For more information

Stats SA publishes approximately 300 different statistical releases each year. It is not economically viable to produce them in more than one of South Africa's eleven official languages. Since the releases are used extensively, not only locally but also by international economic and social-scientific communities, Stats SA releases are published in English only.

Stats SA has copyright on this publication. Users may apply the information as they wish, provided that they acknowledge Stats SA as the source of the basic data wherever they process, apply, utilise, publish or distribute the data and also that they specify that the relevant application and analysis (where applicable) result from their own processing of the data.

### Stats SA products

A complete set of Stats SA publications is available at the Stats SA Library and the following libraries:

National Library of South Africa, Pretoria Division  
 National Library of South Africa, Cape Town Division  
 Natal Society Library, Pietermaritzburg  
 Library of Parliament, Cape Town  
 Bloemfontein Public Library  
 Johannesburg Public Library  
 Eastern Cape Library Services, King William's Town  
 Central Regional Library, Pietersburg  
 Central Reference Library, Nelspruit  
 Central Reference Collection, Kimberley  
 Central Reference Library, Mmabatho

Stats SA also provides a subscription service.

### Electronic services

A large range of data are available via on-line services, diskette, CD and computer printouts. For more details about our electronic data services, contact (012) 310 8600.

You can visit us on the Internet at: <http://www.statssa.gov.za>

### Enquiries

Telephone number: (012) 310 8095/8390/8351 (user enquiries)  
 (012) 310 8228/310 8007 (technical enquiries)  
 (012) 310 8161 (publications)  
 (012) 310 8490 (library)

Fax number: (012) 310 8182

e-mail: Corrieb@statssa.pwv.gov.za  
 Gretaz@statssa.pwv.gov.za

Postal address: Private Bag X44, Pretoria, 0001