



**stats sa**

Department:  
Statistics South Africa  
**REPUBLIC OF SOUTH AFRICA**

Private Bag X44, Pretoria, 0001, South Africa, ISibalo House, Koch Street, Salvokop, Pretoria, 0002  
www.statssa.gov.za, info@statssa.gov.za, Tel +27 12 310 8911

## **STATISTICAL RELEASE**

### **P4141**

# Electricity generated and available for distribution (Preliminary)

October 2023

Embargoed until:  
7 December 2023  
13:00

ENQUIRIES:  
Nicolai Claassen  
Tel: 072 310 5351

FORTHCOMING ISSUE:  
November 2023

EXPECTED RELEASE DATE:  
16 January 2024



## Contents

<b>Electricity generated (produced) in South Africa: results for October 2023 .....</b>	<b>2</b>
Table A – Key growth rates in the volume of electricity generated .....	2
Figure 1 – Electricity generated in South Africa .....	2
<b>Electricity distributed (consumed) in South Africa: results for October 2023 .....</b>	<b>3</b>
Table B – Key growth rates in the volume of electricity distributed.....	3
Figure 2 – Electricity distributed in South Africa: year-on-year percentage change .....	3
<b>Tables .....</b>	<b>4</b>
Table 1 – Index of the volume of electricity generated (Base: 2019=100).....	4
Table 2 – Year-on-year percentage change in the volume of electricity generated .....	4
Table 3 – Seasonally adjusted index of the volume of electricity generated .....	4
Table 4 – Volume of electricity distributed in South Africa (gigawatt-hours).....	5
Table 5 – Year-on-year percentage change in electricity distributed in South Africa .....	5
Table 6 – Seasonally adjusted volume of electricity distributed in South Africa .....	5
Table 7 – Volume of electricity by category (gigawatt-hours) .....	6
Table 8 – Year-to-date volume of electricity by category: year-on-year percentage change and difference .....	6
Table 9 – Volume of electricity delivered to provinces (gigawatt-hours).....	6
<b>Survey information.....</b>	<b>7</b>
<b>Technical notes .....</b>	<b>8</b>
<b>Glossary .....</b>	<b>9</b>
<b>Technical enquiries.....</b>	<b>9</b>
<b>General information .....</b>	<b>10</b>

### Electricity generated (produced) in South Africa: results for October 2023

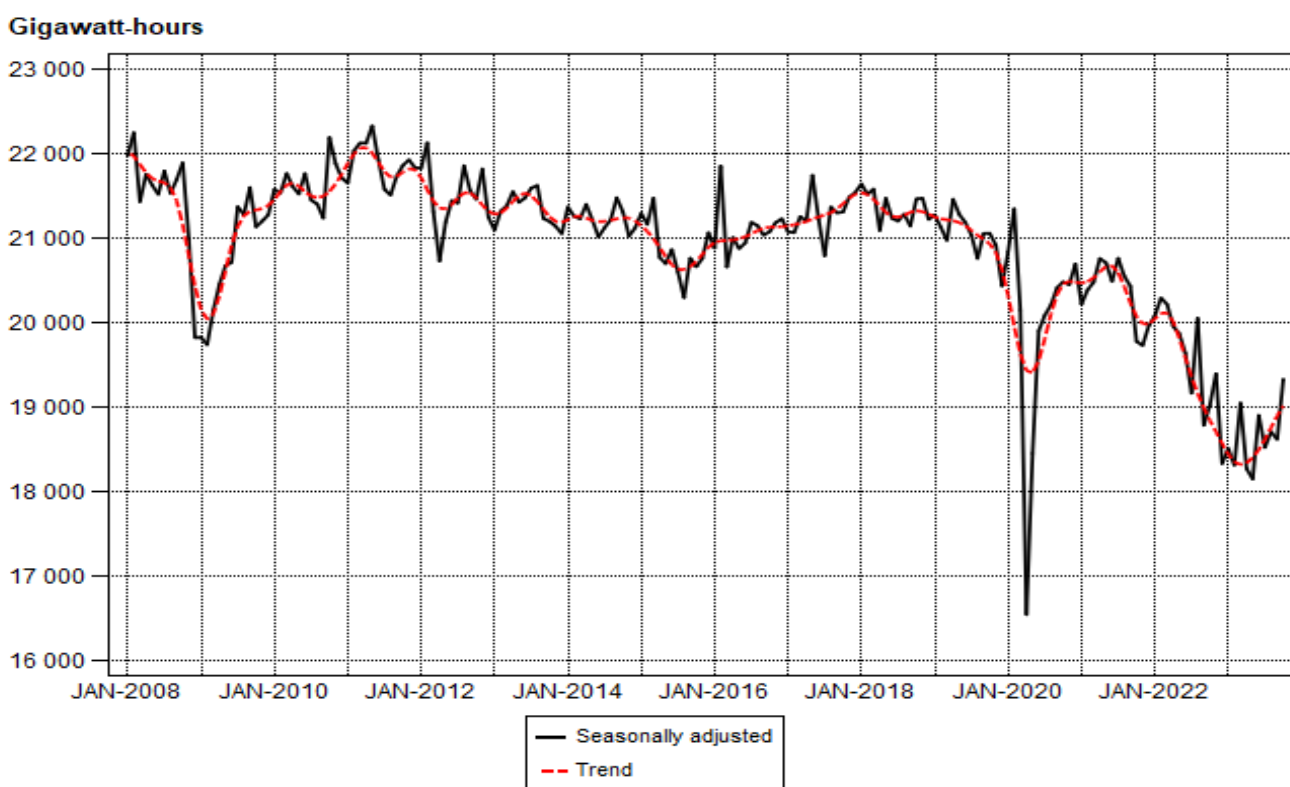
**Table A – Key growth rates in the volume of electricity generated**

	May-23	Jun-23	Jul-23	Aug-23	Sep-23	Oct-23
Year-on-year % change, unadjusted	-8,7	-3,7	-3,4	-6,4	-1,0	1,6
Month-on-month % change, seasonally adjusted	-0,7	4,2	-2,0	1,0	-0,4	3,7
3-month % change, seasonally adjusted <sup>1</sup>	0,5	-1,0	-0,1	1,2	1,0	2,0

<sup>1</sup> Percentage change between the previous 3 months and the 3 months ending in the month indicated.

Electricity generation (production) increased by 1,6% year-on-year in October 2023. Seasonally adjusted electricity generation increased by 3,7% in October 2023 compared with September 2023. This followed month-on-month changes of -0,4% in September 2023 and 1,0% in August 2023. Seasonally adjusted electricity generation increased by 2,0% in the three months ended October 2023 compared with the previous three months.

**Figure 1 – Electricity generated in South Africa**



**Electricity distributed (consumed) in South Africa: results for October 2023**

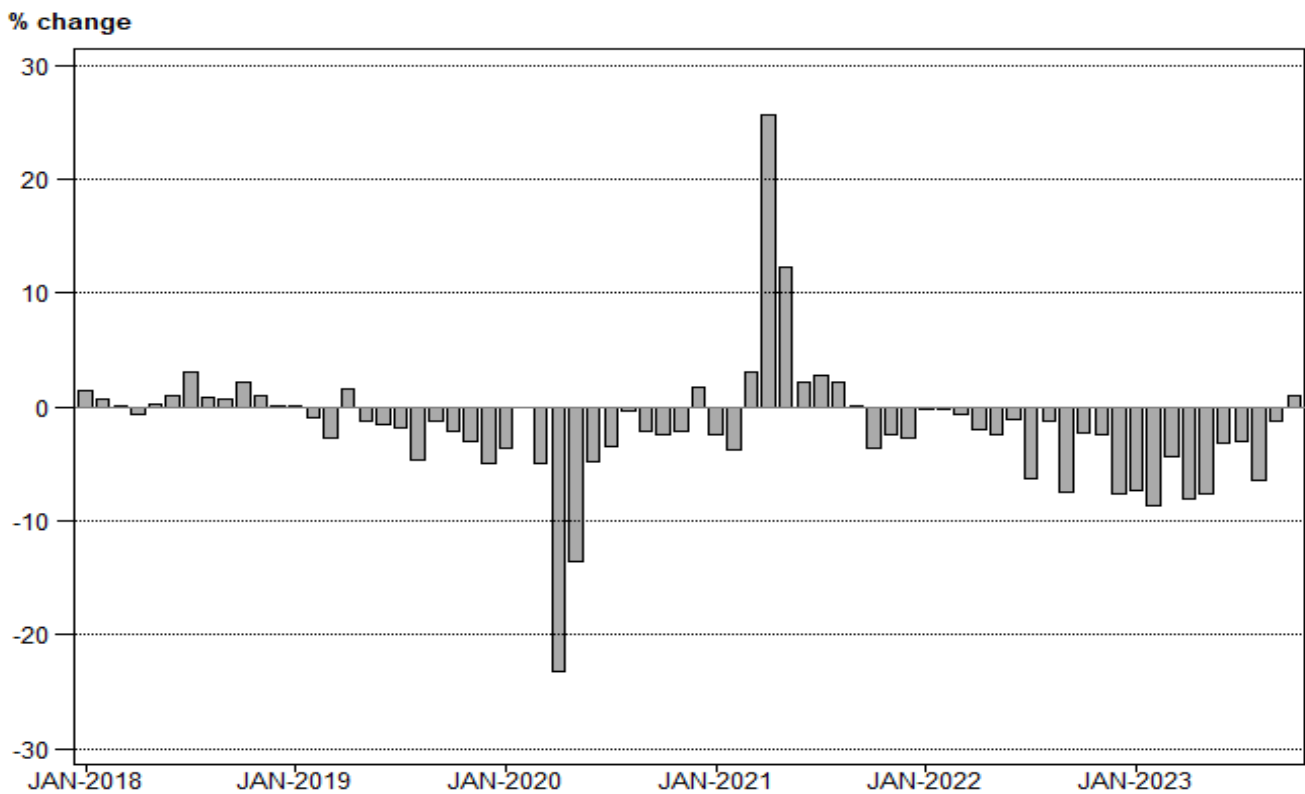
**Table B – Key growth rates in the volume of electricity distributed**

	May-23	Jun-23	Jul-23	Aug-23	Sep-23	Oct-23
Year-on-year % change, unadjusted	-7,7	-3,2	-3,1	-6,4	-1,2	1,0
Month-on-month % change, seasonally adjusted	0,4	3,9	-2,2	1,1	-1,5	3,9
3-month % change, seasonally adjusted <sup>1</sup>	0,6	-0,7	0,6	1,3	0,6	1,1

<sup>1</sup> Percentage change between the previous 3 months and the 3 months ending in the month indicated.

Electricity distribution (consumption) increased by 1,0% year-on-year in October 2023. Seasonally adjusted electricity distribution increased by 3,9% month-on-month in October 2023, following month-on-month changes of -1,5% in September 2023 and 1,1% in August 2023. Seasonally adjusted electricity distribution increased by 1,1% in the three months ended October 2023 compared with the previous three months.

**Figure 2 – Electricity distributed in South Africa: year-on-year percentage change**



**Risenga Maluleke**  
**Statistician-General**

## Tables

**Table 1 – Index of the volume of electricity generated (Base: 2019=100)**

Month	2017	2018	2019	2020	2021	2022	2023 <sup>1</sup>
Jan	99,2	101,5	99,5	97,1	93,9	93,0	85,7
Feb	91,4	93,1	91,3	92,2	88,2	87,9	79,4
Mar	101,3	102,5	99,5	95,5	97,2	96,2	90,8
Apr	97,3	96,8	98,5	76,1	95,5	91,9	84,1
May	106,4	105,5	104,9	91,1	102,2	97,9	89,4
Jun	103,9	104,2	104,3	98,3	101,4	97,3	93,7
Jul	105,6	107,9	107,1	102,3	105,7	97,6	94,3
Aug	105,0	104,6	102,1	99,7	101,7	99,5	93,1
Sep	100,0	99,2	98,7	95,7	95,7	87,9	87,0
Oct	103,7	104,5	102,5	99,7	96,2	92,5	94,0
Nov	101,0	100,9	98,2	95,7	92,2	90,5	
Dec	98,8	97,1	93,3	94,3	90,8	83,3	
<b>Total</b>	<b>101,1</b>	<b>101,5</b>	<b>100,0</b>	<b>94,8</b>	<b>96,7</b>	<b>93,0</b>	

<sup>1</sup> Latest month is preliminary.

**Table 2 – Year-on-year percentage change in the volume of electricity generated**

Month	2018	2019	2020	2021	2022	2023	2023 year-to-date
Jan	2,3	-2,0	-2,4	-3,3	-1,0	-7,8	-7,8
Feb	1,9	-1,9	1,0	-4,3	-0,3	-9,7	-8,7
Mar	1,2	-2,9	-4,0	1,8	-1,0	-5,6	-7,7
Apr	-0,5	1,8	-22,7	25,5	-3,8	-8,5	-7,9
May	-0,8	-0,6	-13,2	12,2	-4,2	-8,7	-8,0
Jun	0,3	0,1	-5,8	3,2	-4,0	-3,7	-7,3
Jul	2,2	-0,7	-4,5	3,3	-7,7	-3,4	-6,7
Aug	-0,4	-2,4	-2,4	2,0	-2,2	-6,4	-6,7
Sep	-0,8	-0,5	-3,0	0,0	-8,2	-1,0	-6,1
Oct	0,8	-1,9	-2,7	-3,5	-3,8	1,6	-5,3
Nov	-0,1	-2,7	-2,5	-3,7	-1,8		
Dec	-1,7	-3,9	1,1	-3,7	-8,3		
<b>Total</b>	<b>0,4</b>	<b>-1,5</b>	<b>-5,2</b>	<b>2,0</b>	<b>-3,8</b>		

**Table 3 – Seasonally adjusted index of the volume of electricity generated**

Month	Base: 2019=100				Month-on-month % change			
	2020	2021	2022	2023	2020	2021	2022	2023
Jan	99,0	96,1	95,4	88,0	2,0	-2,2	0,5	1,0
Feb	101,4	96,9	96,4	87,0	2,4	0,8	1,0	-1,1
Mar	95,7	97,3	96,1	90,5	-5,6	0,4	-0,3	4,0
Apr	78,6	98,6	94,8	86,8	-17,9	1,3	-1,4	-4,1
May	87,7	98,4	94,4	86,2	11,6	-0,2	-0,4	-0,7
Jun	94,6	97,4	93,3	89,8	7,9	-1,0	-1,2	4,2
Jul	95,4	98,6	91,1	88,0	0,8	1,2	-2,4	-2,0
Aug	96,0	97,6	95,3	88,9	0,6	-1,0	4,6	1,0
Sep	97,0	97,1	89,3	88,5	1,0	-0,5	-6,3	-0,4
Oct	97,3	94,0	90,4	91,8	0,3	-3,2	1,2	3,7
Nov	97,2	93,8	92,2		-0,1	-0,2	2,0	
Dec	98,3	94,9	87,1		1,1	1,2	-5,5	

**Table 4 – Volume of electricity distributed in South Africa (gigawatt-hours)**

Month	2018	2019	2020	2021	2022	2023 <sup>1</sup>
Jan	19 106	19 132	18 444	18 002	17 974	16 664
Feb	17 667	17 493	17 491	16 825	16 815	15 362
Mar	19 470	18 930	17 976	18 522	18 408	17 592
Apr	18 421	18 711	14 379	18 078	17 709	16 271
May	20 207	19 943	17 254	19 371	18 897	17 433
Jun	19 926	19 609	18 664	19 049	18 838	18 232
Jul	20 626	20 224	19 533	20 082	18 814	18 239
Aug	20 053	19 105	19 038	19 459	19 220	17 981
Sep	18 839	18 605	18 216	18 230	16 857	16 648
Oct	19 785	19 367	18 883	18 203	17 784	17 965
Nov	19 123	18 539	18 153	17 713	17 281	
Dec	18 582	17 678	17 979	17 496	16 173	
<b>Total</b>	<b>231 805</b>	<b>227 336</b>	<b>216 010</b>	<b>221 030</b>	<b>214 770</b>	

<sup>1</sup> Latest month is preliminary.

**Table 5 – Year-on-year percentage change in electricity distributed in South Africa**

Month	2019	2020	2021	2022	2023	2023 year-to-date
Jan	0,1	-3,6	-2,4	-0,2	-7,3	-7,3
Feb	-1,0	0,0	-3,8	-0,1	-8,6	-7,9
Mar	-2,8	-5,0	3,0	-0,6	-4,4	-6,7
Apr	1,6	-23,2	25,7	-2,0	-8,1	-7,1
May	-1,3	-13,5	12,3	-2,4	-7,7	-7,2
Jun	-1,6	-4,8	2,1	-1,1	-3,2	-6,5
Jul	-1,9	-3,4	2,8	-6,3	-3,1	-6,0
Aug	-4,7	-0,4	2,2	-1,2	-6,4	-6,1
Sep	-1,2	-2,1	0,1	-7,5	-1,2	-5,6
Oct	-2,1	-2,5	-3,6	-2,3	1,0	-4,9
Nov	-3,1	-2,1	-2,4	-2,4		
Dec	-4,9	1,7	-2,7	-7,6		
<b>Total</b>	<b>-1,9</b>	<b>-5,0</b>	<b>2,3</b>	<b>-2,8</b>		

**Table 6 – Seasonally adjusted volume of electricity distributed in South Africa**

Month	Gigawatt-hours				Month-on-month % change			
	2020	2021	2022	2023	2020	2021	2022	2023
Jan	18 800	18 403	18 429	17 103	2,0	-2,0	0,8	1,1
Feb	19 156	18 393	18 368	16 719	1,9	-0,1	-0,3	-2,2
Mar	17 976	18 513	18 373	17 530	-6,2	0,7	0,0	4,9
Apr	14 795	18 622	18 214	16 733	-17,7	0,6	-0,9	-4,5
May	16 558	18 594	18 182	16 793	11,9	-0,2	-0,2	0,4
Jun	17 931	18 238	18 035	17 445	8,3	-1,9	-0,8	3,9
Jul	18 227	18 730	17 571	17 058	1,7	2,7	-2,6	-2,2
Aug	18 395	18 740	18 459	17 238	0,9	0,1	5,1	1,1
Sep	18 501	18 536	17 161	16 975	0,6	-1,1	-7,0	-1,5
Oct	18 540	17 867	17 467	17 630	0,2	-3,6	1,8	3,9
Nov	18 465	18 045	17 631		-0,4	1,0	0,9	
Dec	18 781	18 291	16 922		1,7	1,4	-4,0	

**Table 7 – Volume of electricity by category (gigawatt-hours)**

	Jun-23	Jul-23	Aug-23	Sep-23	Oct-23 <sup>1</sup>	Oct-23 year-on-year % change
<b>Total - all producers</b>						
Generated	19 728	19 844	19 588	18 308	19 786	1,6
Inflow into South Africa	922	991	954	808	786	-11,1
Consumed in power stations and auxiliary systems	1 566	1 686	1 633	1 495	1 575	2,1
Outflow from South Africa	852	909	927	973	1 033	0,7
Distributed in South Africa	18 232	18 239	17 981	16 648	17 965	1,0
<b>Eskom</b>						
Generated	17 112	17 298	16 862	15 804	17 250	0,6
Inflow into South Africa	922	991	954	808	786	-11,1
Consumed in power stations and auxiliary systems	1 454	1 569	1 513	1 400	1 481	2,8
Outflow from South Africa	852	909	927	973	1 033	0,7
Distributed in South Africa	15 728	15 811	15 376	14 239	15 522	-0,3

<sup>1</sup> Preliminary.**Table 8 – Year-to-date volume of electricity by category: year-on-year percentage change and difference**

	Jan – Oct 2022 (GWh)	Jan – Oct 2023 (GWh)	% change between Jan – Oct 2022 and Jan – Oct 2023	Difference between Jan – Oct 2022 and Jan – Oct 2023 (GWh)
<b>Total - all producers</b>				
Generated	198 208	187 613	-5,3	-10 595
Inflow into South Africa	9 002	8 866	-1,5	-136
Consumed in power stations and auxiliary systems	15 620	14 838	-5,0	-782
Outflow from South Africa	10 271	9 252	-9,9	-1 019
Distributed in South Africa	181 316	172 387	-4,9	-8 929
<b>Eskom</b>				
Generated	177 040	162 805	-8,0	-14 235
Inflow into South Africa	9 002	8 866	-1,5	-136
Consumed in power stations and auxiliary systems	14 755	13 840	-6,2	-915
Outflow from South Africa	10 271	9 252	-9,9	-1 019
Distributed in South Africa	161 014	148 578	-7,7	-12 436

**Table 9 – Volume of electricity delivered to provinces (gigawatt-hours)**

Province	Jun-23	Jul-23	Aug-23	Sep-23	Oct-23 <sup>1</sup>	Oct-23 year-on-year % change
Western Cape *	1 674	1 630	1 612	1 500	1 566	0,3
Eastern Cape	774	781	774	707	760	6,7
Northern Cape	472	482	506	473	505	-2,3
Free State	932	914	894	783	863	-0,3
KwaZulu-Natal	3 266	3 313	3 309	3 103	3 233	-1,1
North West	1 601	1 550	1 549	1 674	1 832	-5,8
Gauteng	5 003	5 102	4 834	4 122	4 455	1,8
Mpumalanga	2 614	2 539	2 497	2 341	2 630	4,2
Limpopo	1 661	1 673	1 730	1 686	1 848	9,7
<b>Total *</b>	<b>17 997</b>	<b>17 984</b>	<b>17 706</b>	<b>16 390</b>	<b>17 693</b>	<b>1,3</b>

<sup>1</sup> Preliminary.

\* Revised.

## Survey information

<b>Introduction</b>	<p><b>1</b> Statistics South Africa (Stats SA) conducts a monthly survey covering electricity undertakings and establishments (branches) in the electricity industry. This statistical release contains monthly information regarding the volume of electricity units:</p> <ul style="list-style-type: none"> <li>• generated and distributed in South Africa;</li> <li>• flowing into and out from South Africa as measured by the metering systems at the South African borders; and</li> <li>• delivered to provinces.</li> </ul> <p>Both unadjusted and seasonally adjusted figures are published.</p> <p><b>2</b> In accordance with international practice, the indices are usually re-based every five years to a new base year. The current base period of the index is 2019.</p> <p><b>3</b> Some information for the current month may have been estimated due to late submission by respondents. These estimates will be revised in the next statistical release(s) as soon as actual information is available.</p>
<b>Purpose of the survey</b>	<p><b>4</b> The results of the monthly electricity survey are used to compile estimates of the gross domestic product (GDP) and its components, which are used in monitoring the state of the economy and formulation of economic policy.</p>
<b>Scope of the survey</b>	<p><b>5</b> This survey covers electricity undertakings and establishments conducting activities concerned with the generation and/or distribution of electricity (excluding the distribution of purchased electric energy). It includes electrical power installations, which, as subsidiary divisions of undertakings, produce electricity for regular use by these undertakings.</p>
<b>Classification</b>	<p><b>6</b> The 1993 edition of the <i>Standard Industrial Classification of All Economic Activities</i> (SIC), Fifth Edition, Report No. 09-90-02, was used to classify the statistical units in the survey. The SIC is based on the 1990 <i>International Standard Industrial Classification of All Economic Activities</i> (ISIC) with suitable adaptations for local conditions. Each statistical unit is classified to an industry which reflects the predominant activity of the electricity undertaking or establishment.</p>
<b>Collection rate</b>	<p><b>7</b> The collection rate for the survey on electricity generated and available for distribution for October 2023 was 92%. The collection rate for September 2023 was 96%.</p>
<b>Statistical unit</b>	<p><b>8</b> The statistical unit for the collection of information is the electricity undertaking or establishment. The electricity undertaking or establishment is the smallest economic unit that functions as a separate entity (see point 5).</p>
<b>Revised figures</b>	<p><b>9</b> Normally revised figures are due to:</p> <ul style="list-style-type: none"> <li>• late submission of data to Stats SA; and</li> <li>• revisions or corrections by respondents to previous reported data.</li> </ul> <p>Data are edited at enterprise level.</p>
<b>Rounding-off of figures</b>	<p><b>10</b> Where figures have been rounded off, discrepancies may occur between sums of the component items and the totals.</p>
<b>Historical data</b>	<p><b>11</b> Historical electricity data are available on the Stats SA webpage. Click on the following link (<a href="#">Time series data</a>) to access the data electronically.</p>
<b>Past publications</b>	<p><b>12</b> Past electricity releases are available on the Stats SA webpage. Click on the following link (<a href="#">Past publications</a>) to access the releases electronically.</p>



## Technical notes

<b>Survey methodology and design</b>	1	All statistical units are stratified by type of economic activity according to the <i>Standard Industrial Classification of All Economic Activities</i> (SIC) and measure of size, where measure of size is the volume of electricity generated by the electricity undertaking or establishment. All large undertakings or establishments (size group one) are completely enumerated. A sample is drawn from medium and small size undertakings and establishments by systematically selecting undertakings or establishments within each size category. An electricity undertaking or establishment with a total generating capacity of less than 500 kilowatts is excluded from the sample.
	2	The survey is conducted by email and telephone. Information is collected from a sample of 24 electricity undertakings or establishments. As from September 2013, Eskom supplied additional data for independent power producers (IPPs) that were not in the original sample of 24 establishments.
<b>Monthly index of electricity generated</b>	3	The calculation of the monthly index of electricity generated is based on the volume of electricity units produced.
<b>Benchmarking</b>	4	<p>The index of the volume of electricity generated should provide an accurate reflection of the trend of activities of the relevant industry. The level of activities, as measured by the monthly electricity survey, is based on information received from a sample of electricity undertakings and establishments. These levels are weighted according to the original sample and designed to represent the population of electricity undertakings and establishments.</p> <p>The results of the 1995 Census of electricity, gas and steam served as a benchmark to verify or adjust the level of the monthly index of the volume of electricity generated collected through the monthly survey. The level adjustments were done on the volume index for July of the relevant census year (the 1995 census year covered the period 1 January to 31 December 1995 and therefore, the benchmarking was done using the index of July 1995 as reference point).</p>
<b>Seasonal adjustment</b>	5	<p>Seasonally adjusted estimates are generated each month using the X-12 Seasonal Adjustment Program developed by the United States Census Bureau. Seasonal adjustment is a means of removing the estimated effects of normal seasonal variation from the series so that the effects of other influences on the series can be more clearly recognised. Seasonal adjustment does not aim to remove irregular or non-seasonal influences, which may be present in any particular month. Influences that are volatile or unsystematic can still make it difficult to interpret the movement of the series even after adjustment for seasonal variations. This means the month-to-month movements of seasonally adjusted estimates may not be reliable indicators of trend behaviour. The X12-ARIMA procedure for electricity generated and available for distribution is described in more detail on the Stats SA website:</p> <p><a href="#">Click to download Electricity seasonal adjustment February 2022.</a></p>
<b>Trend cycle</b>	6	The trend is the long-term pattern or movement of a time series. The X-12-ARIMA Seasonal Adjustment Program is used for smoothing seasonally adjusted estimates to estimate the underlying trend cycle.
<b>Month-on-month percentage change</b>	7	The month-on-month percentage change in a variable for any given month is the change between that month and the previous month, expressed as a percentage of the latter.
<b>Year-on-year percentage change</b>	8	The year-on-year percentage change in a variable for any given period is the change between that period and the corresponding period of the previous year, expressed as a percentage of the latter.

## Glossary

<b>Electricity undertaking</b>	An undertaking concerned with the generation and distribution of electricity, including electrical power installations, which, as subsidiary divisions of undertakings, produce electricity for regular use by these undertakings.																
<b>Index of the volume of electricity generated</b>	A statistical measure of the change in the volume of electricity generated in a given period and the volume of electricity generated in the base period. The base period is 2019. The production in the base period is set at 100.																
<b>Industry</b>	An industry is made up of enterprises engaged in the same or similar kinds of economic activity. Industries are defined in the System of National Accounts (SNA) in the same way as in the <i>Standard Industrial Classification of All Economic Activities</i> (SIC), Fifth Edition, Report No. 09-90-02 of January 1993.																
<b>Inflow into SA</b>	Electricity flowing into South Africa as measured by the metering systems at the South African borders.																
<b>Outflow from SA</b>	Electricity flowing from South Africa as measured by the metering systems at the South African borders.																
<b>Unit of electricity</b>	One gigawatt-hour of electricity is equal to one million kilowatt-hours. A kilowatt-hour is the basic unit of electrical energy equal to one kilowatt of power supplied to or taken from an electric circuit steadily for one hour. One kilowatt-hour equals one thousand watt-hours.																
<b>Symbols and abbreviations</b>	<table> <tr> <td>GDP</td> <td>Gross domestic product</td> </tr> <tr> <td>GWh</td> <td>Gigawatt-hour</td> </tr> <tr> <td>IPPs</td> <td>Independent Power Producers</td> </tr> <tr> <td>ISIC</td> <td>International Standard Industrial Classification</td> </tr> <tr> <td>SIC</td> <td>Standard Industrial Classification of All Economic Activities</td> </tr> <tr> <td>SA</td> <td>South Africa</td> </tr> <tr> <td>Stats SA</td> <td>Statistics South Africa</td> </tr> <tr> <td>*</td> <td>Revised figures</td> </tr> </table>	GDP	Gross domestic product	GWh	Gigawatt-hour	IPPs	Independent Power Producers	ISIC	International Standard Industrial Classification	SIC	Standard Industrial Classification of All Economic Activities	SA	South Africa	Stats SA	Statistics South Africa	*	Revised figures
GDP	Gross domestic product																
GWh	Gigawatt-hour																
IPPs	Independent Power Producers																
ISIC	International Standard Industrial Classification																
SIC	Standard Industrial Classification of All Economic Activities																
SA	South Africa																
Stats SA	Statistics South Africa																
*	Revised figures																
<b>Technical enquiries</b>																	
<b>Tsholofelo Ditinti</b>	Telephone number: (012) 310 6990 Email: tsholofelod@statssa.gov.za																
<b>Nicolai Claassen</b>	Telephone number: (012) 310 8007 / 072 310 5351 Email: nicolaic@statssa.gov.za																

## General information

Stats SA publishes approximately 300 different statistical releases each year. It is not economically viable to produce them in more than one of South Africa's 12 official languages. Since the releases are used extensively, not only locally but also by international economic and social-scientific communities, Stats SA releases are published in English only.

Stats SA has copyright on this publication. Users may apply the information as they wish, provided that they acknowledge Stats SA as the source of the basic data wherever they process, apply, utilise, publish or distribute the data; and also that they specify that the relevant application and analysis (where applicable) result from their own processing of the data.

## Advance release calendar

An advance release calendar is disseminated on [www.statssa.gov.za](http://www.statssa.gov.za).

## Stats SA products

A complete set of Stats SA publications is available at the Stats SA Library and the following libraries:

National Library of South Africa, Pretoria Division  
National Library of South Africa, Cape Town Division  
Natal Society Library, Pietermaritzburg  
Library of Parliament, Cape Town  
Bloemfontein Public Library  
Johannesburg Public Library  
Eastern Cape Library Services, Qonce  
Central Regional Library, Polokwane  
Central Reference Library, Mbombela  
Central Reference Collection, Kimberley  
Central Reference Library, Mmabatho

Stats SA also provides a subscription service.

## Electronic services

A large range of data is available via online services. For more details about our electronic data services, contact Stats SA's user information service at (012) 310 8600.

You can visit us on the internet at: [www.statssa.gov.za](http://www.statssa.gov.za).

## General enquiries

User information services	Telephone number: (012) 310 8600 Email address: <a href="mailto:info@statssa.gov.za">info@statssa.gov.za</a>
Orders/subscription services	Telephone number: (012) 310 8619 Email address: <a href="mailto:millies@statssa.gov.za">millies@statssa.gov.za</a>
Postal address	Private Bag X44, Pretoria, 0001

*Produced by Stats SA*