



stats sa

Department:
Statistics South Africa
REPUBLIC OF SOUTH AFRICA

Private Bag X44, Pretoria, 0001, South Africa, ISibalo House, Koch Street, Salvokop, Pretoria, 0002
www.statssa.gov.za, info@statssa.gov.za, Tel +27 12 310 8911

STATISTICAL RELEASE

P4141

Electricity generated and available for distribution (Preliminary)

June 2023

Embargoed until:
3 August 2023
13:00

ENQUIRIES:
Nicolai Claassen
Tel: 072 310 5351

FORTHCOMING ISSUE:
July 2023

EXPECTED RELEASE DATE:
7 September 2023



Contents

| | |
|---|-----------|
| Electricity generated (produced) in South Africa: results for June 2023 | 2 |
| Table A – Key growth rates in the volume of electricity generated | 2 |
| Figure 1 – Electricity generated in South Africa | 2 |
| Electricity distributed (consumed) in South Africa: results for June 2023 | 3 |
| Table B – Key growth rates in the volume of electricity distributed..... | 3 |
| Figure 2 – Electricity distributed in South Africa: year-on-year percentage change | 3 |
| Tables | 4 |
| Table 1 – Index of the volume of electricity generated (Base: 2019=100)..... | 4 |
| Table 2 – Year-on-year percentage change in the volume of electricity generated | 4 |
| Table 3 – Seasonally adjusted index of the volume of electricity generated | 4 |
| Table 4 – Volume of electricity distributed in South Africa (gigawatt-hours)..... | 5 |
| Table 5 – Year-on-year percentage change in electricity distributed in South Africa | 5 |
| Table 6 – Seasonally adjusted volume of electricity distributed in South Africa | 5 |
| Table 7 – Volume of electricity by category (gigawatt-hours) | 6 |
| Table 8 – Year-to-date volume of electricity by category: year-on-year percentage change and difference | 6 |
| Table 9 – Volume of electricity delivered to provinces (gigawatt-hours)..... | 6 |
| Survey information | 7 |
| Technical notes | 8 |
| Glossary | 9 |
| Technical enquiries | 9 |
| General information | 10 |

Electricity generated (produced) in South Africa: results for June 2023

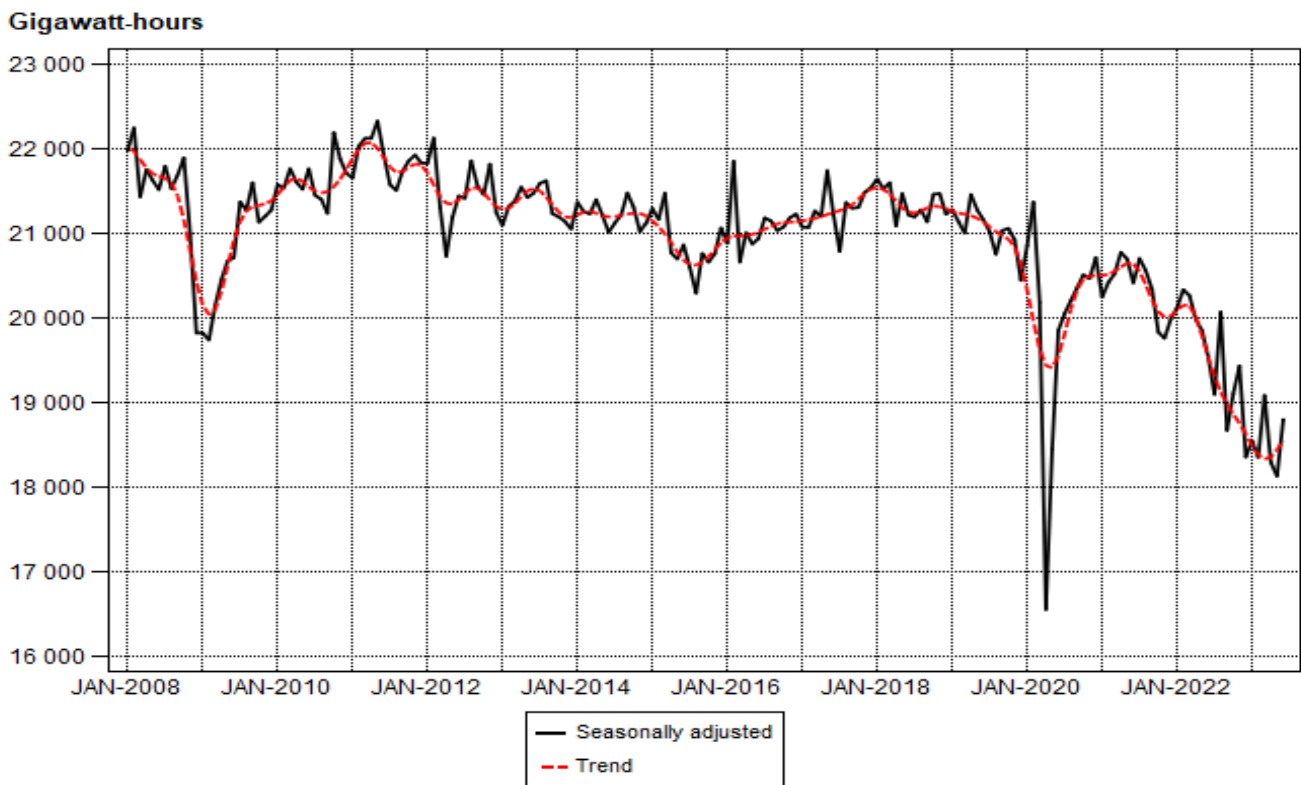
Table A – Key growth rates in the volume of electricity generated

| | Jan-23 | Feb-23 | Mar-23 | Apr-23 | May-23 | Jun-23 |
|--|--------|--------|--------|--------|--------|--------|
| Year-on-year % change, unadjusted | -8,0 | -9,7 | -5,6 | -8,6 | -8,7 | -3,7 |
| Month-on-month % change, seasonally adjusted | 1,0 | -1,0 | 4,0 | -4,2 | -0,8 | 3,6 |
| 3-month % change, seasonally adjusted ¹ | -2,7 | -3,4 | -1,6 | -1,0 | 0,5 | -1,4 |

¹ Percentage change between the previous 3 months and the 3 months ending in the month indicated.

Electricity generation (production) decreased by 3,7% year-on-year in June 2023. Seasonally adjusted electricity generation increased by 3,6% in June 2023 compared with May 2023. This followed month-on-month changes of -0,8% in May 2023 and -4,2% in April 2023. Seasonally adjusted electricity generation decreased by 1,4% in the second quarter of 2023 compared with the first quarter of 2023.

Figure 1 – Electricity generated in South Africa



Electricity distributed (consumed) in South Africa: results for June 2023

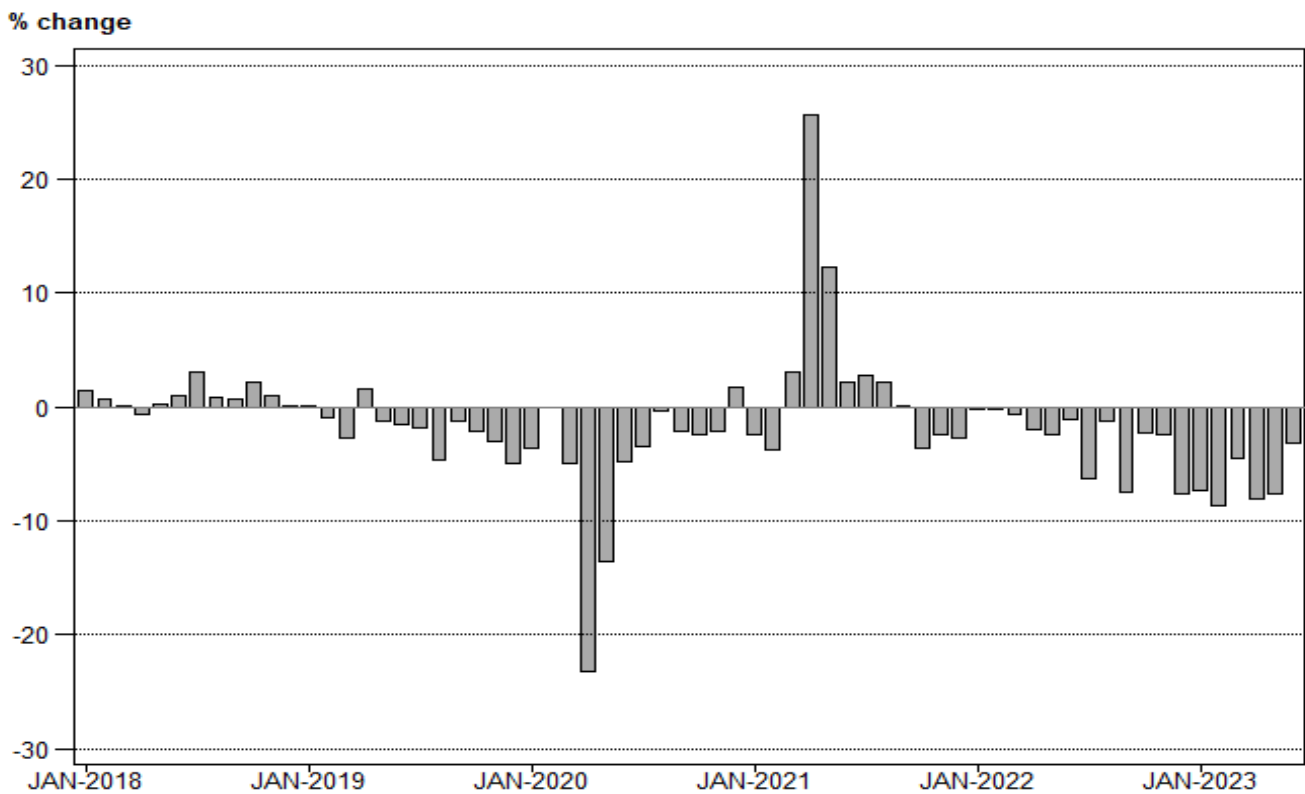
Table B – Key growth rates in the volume of electricity distributed

| | Jan-23 | Feb-23 | Mar-23 | Apr-23 | May-23 | Jun-23 |
|--|--------|--------|--------|--------|--------|--------|
| Year-on-year % change, unadjusted | -7,3 | -8,7 | -4,5 | -8,1 | -7,7 | -3,2 |
| Month-on-month % change, seasonally adjusted | 1,2 | -2,2 | 4,8 | -4,6 | 0,1 | 3,4 |
| 3-month % change, seasonally adjusted ¹ | -2,5 | -2,7 | -1,3 | -1,3 | 0,5 | -1,2 |

¹ Percentage change between the previous 3 months and the 3 months ending in the month indicated.

Electricity distribution (consumption) decreased by 3,2% year-on-year in June 2023. Seasonally adjusted electricity distribution increased by 3,4% month-on-month in June 2023, following month-on-month changes of 0,1% in May 2023 and -4,6% in April 2023. Seasonally adjusted electricity distribution decreased by 1,2% in the second quarter of 2023 compared with the first quarter of 2023.

Figure 2 – Electricity distributed in South Africa: year-on-year percentage change



Risenga Maluleke
Statistician-General

Tables

Table 1 – Index of the volume of electricity generated (Base: 2019=100)

| Month | 2017 | 2018 | 2019 | 2020 | 2021 | 2022 | 2023 ¹ |
|--------------|--------------|--------------|--------------|-------------|-------------|-------------|-------------------|
| Jan | 99,2 | 101,5 | 99,5 | 97,1 | 93,9 | 93,0 | 85,6 |
| Feb | 91,4 | 93,1 | 91,3 | 92,2 | 88,2 | 87,9 | 79,4 |
| Mar | 101,3 | 102,5 | 99,5 | 95,5 | 97,2 | 96,2 | 90,8 |
| Apr | 97,3 | 96,8 | 98,5 | 76,1 | 95,5 | 91,9 | 84,0 |
| May | 106,4 | 105,5 | 104,9 | 91,1 | 102,2 | 97,9 | 89,4 |
| Jun | 103,9 | 104,2 | 104,3 | 98,3 | 101,4 | 97,3 | 93,7 |
| Jul | 105,6 | 107,9 | 107,1 | 102,3 | 105,7 | 97,6 | |
| Aug | 105,0 | 104,6 | 102,1 | 99,7 | 101,7 | 99,5 | |
| Sep | 100,0 | 99,2 | 98,7 | 95,7 | 95,7 | 87,9 | |
| Oct | 103,7 | 104,5 | 102,5 | 99,7 | 96,2 | 92,5 | |
| Nov | 101,0 | 100,9 | 98,2 | 95,7 | 92,2 | 90,5 | |
| Dec | 98,8 | 97,1 | 93,3 | 94,3 | 90,8 | 83,3 | |
| Total | 101,1 | 101,5 | 100,0 | 94,8 | 96,7 | 93,0 | |

¹ Latest month is preliminary.

Table 2 – Year-on-year percentage change in the volume of electricity generated

| Month | 2018 | 2019 | 2020 | 2021 | 2022 | 2023 | 2023 year-to-date |
|--------------|------------|-------------|-------------|------------|-------------|------|----------------------|
| Jan | 2,3 | -2,0 | -2,4 | -3,3 | -1,0 | -8,0 | -8,0 |
| Feb | 1,9 | -1,9 | 1,0 | -4,3 | -0,3 | -9,7 | -8,8 |
| Mar | 1,2 | -2,9 | -4,0 | 1,8 | -1,0 | -5,6 | -7,7 |
| Apr | -0,5 | 1,8 | -22,7 | 25,5 | -3,8 | -8,6 | -7,9 |
| May | -0,8 | -0,6 | -13,2 | 12,2 | -4,2 | -8,7 | -8,1 |
| Jun | 0,3 | 0,1 | -5,8 | 3,2 | -4,0 | -3,7 | -7,3 |
| Jul | 2,2 | -0,7 | -4,5 | 3,3 | -7,7 | | |
| Aug | -0,4 | -2,4 | -2,4 | 2,0 | -2,2 | | |
| Sep | -0,8 | -0,5 | -3,0 | 0,0 | -8,2 | | |
| Oct | 0,8 | -1,9 | -2,7 | -3,5 | -3,8 | | |
| Nov | -0,1 | -2,7 | -2,5 | -3,7 | -1,8 | | |
| Dec | -1,7 | -3,9 | 1,1 | -3,7 | -8,3 | | |
| Total | 0,4 | -1,5 | -5,2 | 2,0 | -3,8 | | |

Table 3 – Seasonally adjusted index of the volume of electricity generated

| Month | Base: 2019=100 | | | | Month-on-month % change | | | |
|-------|----------------|------|------|------|-------------------------|------|------|------|
| | 2020 | 2021 | 2022 | 2023 | 2020 | 2021 | 2022 | 2023 |
| Jan | 99,1 | 96,2 | 95,6 | 88,1 | 2,1 | -2,2 | 0,6 | 1,0 |
| Feb | 101,5 | 97,0 | 96,6 | 87,2 | 2,4 | 0,8 | 1,0 | -1,0 |
| Mar | 95,9 | 97,5 | 96,3 | 90,7 | -5,5 | 0,5 | -0,3 | 4,0 |
| Apr | 78,7 | 98,7 | 95,0 | 86,9 | -17,9 | 1,2 | -1,3 | -4,2 |
| May | 87,7 | 98,3 | 94,3 | 86,2 | 11,4 | -0,4 | -0,7 | -0,8 |
| Jun | 94,3 | 97,0 | 92,8 | 89,3 | 7,5 | -1,3 | -1,6 | 3,6 |
| Jul | 95,3 | 98,4 | 90,7 | | 1,1 | 1,4 | -2,3 | |
| Aug | 96,0 | 97,7 | 95,4 | | 0,7 | -0,7 | 5,2 | |
| Sep | 96,7 | 96,6 | 88,7 | | 0,7 | -1,1 | -7,0 | |
| Oct | 97,5 | 94,2 | 90,8 | | 0,8 | -2,5 | 2,4 | |
| Nov | 97,2 | 93,9 | 92,3 | | -0,3 | -0,3 | 1,7 | |
| Dec | 98,4 | 95,0 | 87,2 | | 1,2 | 1,2 | -5,5 | |

Table 4 – Volume of electricity distributed in South Africa (gigawatt-hours)

| Month | 2018 | 2019 | 2020 | 2021 | 2022 | 2023 ¹ |
|--------------|----------------|----------------|----------------|----------------|----------------|-------------------|
| Jan | 19 106 | 19 132 | 18 444 | 18 002 | 17 974 | 16 658 |
| Feb | 17 667 | 17 493 | 17 491 | 16 825 | 16 815 | 15 357 |
| Mar | 19 470 | 18 930 | 17 976 | 18 522 | 18 408 | 17 585 |
| Apr | 18 421 | 18 711 | 14 379 | 18 078 | 17 709 | * 16 268 |
| May | 20 207 | 19 943 | 17 254 | 19 371 | 18 897 | 17 433 |
| Jun | 19 926 | 19 609 | 18 664 | 19 049 | 18 838 | 18 239 |
| Jul | 20 626 | 20 224 | 19 533 | 20 082 | 18 814 | |
| Aug | 20 053 | 19 105 | 19 038 | 19 459 | 19 220 | |
| Sep | 18 839 | 18 605 | 18 216 | 18 230 | 16 857 | |
| Oct | 19 785 | 19 367 | 18 883 | 18 203 | 17 784 | |
| Nov | 19 123 | 18 539 | 18 153 | 17 713 | 17 281 | |
| Dec | 18 582 | 17 678 | 17 979 | 17 496 | 16 169 | |
| Total | 231 805 | 227 336 | 216 010 | 221 030 | 214 766 | |

¹ Latest month is preliminary.

* Revised.

Table 5 – Year-on-year percentage change in electricity distributed in South Africa

| Month | 2019 | 2020 | 2021 | 2022 | 2023 | 2023 year-to-date |
|--------------|-------------|-------------|------------|-------------|------|----------------------|
| Jan | 0,1 | -3,6 | -2,4 | -0,2 | -7,3 | -7,3 |
| Feb | -1,0 | 0,0 | -3,8 | -0,1 | -8,7 | -8,0 |
| Mar | -2,8 | -5,0 | 3,0 | -0,6 | -4,5 | -6,8 |
| Apr | 1,6 | -23,2 | 25,7 | -2,0 | -8,1 | -7,1 |
| May | -1,3 | -13,5 | 12,3 | -2,4 | -7,7 | -7,2 |
| Jun | -1,6 | -4,8 | 2,1 | -1,1 | -3,2 | -6,5 |
| Jul | -1,9 | -3,4 | 2,8 | -6,3 | | |
| Aug | -4,7 | -0,4 | 2,2 | -1,2 | | |
| Sep | -1,2 | -2,1 | 0,1 | -7,5 | | |
| Oct | -2,1 | -2,5 | -3,6 | -2,3 | | |
| Nov | -3,1 | -2,1 | -2,4 | -2,4 | | |
| Dec | -4,9 | 1,7 | -2,7 | -7,6 | | |
| Total | -1,9 | -5,0 | 2,3 | -2,8 | | |

Table 6 – Seasonally adjusted volume of electricity distributed in South Africa

| Month | Gigawatt-hours | | | | Month-on-month % change | | | |
|-------|----------------|--------|--------|--------|-------------------------|------|------|------|
| | 2020 | 2021 | 2022 | 2023 | 2020 | 2021 | 2022 | 2023 |
| Jan | 18 818 | 18 432 | 18 470 | 17 142 | 2,1 | -2,0 | 0,8 | 1,2 |
| Feb | 19 180 | 18 427 | 18 413 | 16 761 | 1,9 | 0,0 | -0,3 | -2,2 |
| Mar | 18 013 | 18 559 | 18 422 | 17 570 | -6,1 | 0,7 | 0,0 | 4,8 |
| Apr | 14 802 | 18 640 | 18 243 | 16 760 | -17,8 | 0,4 | -1,0 | -4,6 |
| May | 16 552 | 18 581 | 18 162 | 16 772 | 11,8 | -0,3 | -0,4 | 0,1 |
| Jun | 17 886 | 18 164 | 17 938 | 17 347 | 8,1 | -2,2 | -1,2 | 3,4 |
| Jul | 18 193 | 18 675 | 17 505 | | 1,7 | 2,8 | -2,4 | |
| Aug | 18 393 | 18 749 | 18 477 | | 1,1 | 0,4 | 5,6 | |
| Sep | 18 445 | 18 441 | 17 045 | | 0,3 | -1,6 | -7,8 | |
| Oct | 18 565 | 17 919 | 17 547 | | 0,7 | -2,8 | 2,9 | |
| Nov | 18 480 | 18 072 | 17 666 | | -0,5 | 0,9 | 0,7 | |
| Dec | 18 801 | 18 316 | 16 944 | | 1,7 | 1,4 | -4,1 | |

Table 7 – Volume of electricity by category (gigawatt-hours)

| | Feb-23 | Mar-23 | Apr-23 | May-23 | Jun-23 ¹ | Jun-23 year-on-year % change |
|--|--------|--------|----------|--------|---------------------|------------------------------------|
| Total - all producers | | | | | | |
| Generated | 16 709 | 19 107 | 17 690 | 18 807 | 19 732 | -3,7 |
| Inflow into South Africa | 761 | 883 | 807 | 951 | 922 | 0,4 |
| Consumed in power stations and auxiliary systems | 1 259 | 1 433 | * 1 362 | 1 459 | 1 563 | -3,4 |
| Outflow from South Africa | 855 | 971 | 867 | 866 | 852 | -10,0 |
| Distributed in South Africa | 15 357 | 17 585 | * 16 268 | 17 433 | 18 239 | -3,2 |
| Eskom | | | | | | |
| Generated | 14 420 | 16 591 | 15 443 | 16 574 | 17 112 | -6,9 |
| Inflow into South Africa | 761 | 883 | 807 | 951 | 922 | 0,4 |
| Consumed in power stations and auxiliary systems | 1 174 | 1 347 | 1 270 | 1 358 | 1 454 | -4,8 |
| Outflow from South Africa | 855 | 971 | 867 | 866 | 852 | -10,0 |
| Distributed in South Africa | 13 152 | 15 156 | 14 112 | 15 301 | 15 728 | -6,5 |

¹ Preliminary.

* Revised.

Table 8 – Year-to-date volume of electricity by category: year-on-year percentage change and difference

| | Jan – Jun 2022 (GWh) | Jan – Jun 2023 (GWh) | % change between Jan – Jun 2022 and Jan – Jun 2023 | Difference between Jan – Jun 2022 and Jan – Jun 2023 (GWh) |
|--|-------------------------|-------------------------|--|---|
| Total - all producers | | | | |
| Generated | 118 745 | 110 069 | -7,3 | -8 676 |
| Inflow into South Africa | 5 540 | 5 327 | -3,8 | -213 |
| Consumed in power stations and auxiliary systems | 9 413 | 8 446 | -10,3 | -967 |
| Outflow from South Africa | 6 227 | 5 410 | -13,1 | -817 |
| Distributed in South Africa | 108 641 | 101 540 | -6,5 | -7 101 |
| Eskom | | | | |
| Generated | 106 886 | 95 562 | -10,6 | -11 324 |
| Inflow into South Africa | 5 540 | 5 327 | -3,8 | -213 |
| Consumed in power stations and auxiliary systems | 8 953 | 7 877 | -12,0 | -1 076 |
| Outflow from South Africa | 6 227 | 5 410 | -13,1 | -817 |
| Distributed in South Africa | 97 243 | 87 601 | -9,9 | -9 642 |

Table 9 – Volume of electricity delivered to provinces (gigawatt-hours)

| Province | Feb-23 | Mar-23 | Apr-23 | May-23 | Jun-23 ¹ | Jun-23 year-on-year % change |
|---------------|---------------|---------------|-----------------|---------------|---------------------|------------------------------------|
| Western Cape | 1 389 | 1 546 | 1 396 | 1 489 | 1 648 | 5,7 |
| Eastern Cape | 581 | 678 | 632 | 701 | 774 | -0,5 |
| Northern Cape | 409 | 504 | 433 | 442 | 472 | -1,9 |
| Free State | 767 | 859 | 786 | 848 | 932 | 3,9 |
| KwaZulu-Natal | 2 826 | 3 204 | 3 005 | 3 175 | 3 270 | -1,7 |
| North West | 1 659 | 1 902 | 1 801 | 1 929 | 1 601 | -17,0 |
| Gauteng | 3 692 | 4 220 | 3 975 | 4 493 | 5 003 | -5,0 |
| Mpumalanga | 2 247 | 2 581 | * 2 441 | 2 580 | 2 614 | 2,2 |
| Limpopo | 1 507 | 1 762 | 1 625 | 1 645 | 1 661 | -2,9 |
| Total | 15 075 | 17 256 | * 16 094 | 17 300 | 17 975 | -2,9 |

¹ Preliminary.

* Revised.

Survey information

| | |
|--------------------------------|--|
| Introduction | <p>1 Statistics South Africa (Stats SA) conducts a monthly survey covering electricity undertakings and establishments (branches) in the electricity industry. This statistical release contains monthly information regarding the volume of electricity units:</p> <ul style="list-style-type: none"> • generated and distributed in South Africa; • flowing into and out from South Africa as measured by the metering systems at the South African borders; and • delivered to provinces. <p>Both unadjusted and seasonally adjusted figures are published.</p> <p>2 In accordance with international practice, the indices are usually re-based every five years to a new base year. The current base period of the index is 2019.</p> <p>3 Some information for the current month may have been estimated due to late submission by respondents. These estimates will be revised in the next statistical release(s) as soon as actual information is available.</p> |
| Purpose of the survey | <p>4 The results of the monthly electricity survey are used to compile estimates of the gross domestic product (GDP) and its components, which are used in monitoring the state of the economy and formulation of economic policy.</p> |
| Scope of the survey | <p>5 This survey covers electricity undertakings and establishments conducting activities concerned with the generation and/or distribution of electricity (excluding the distribution of purchased electric energy). It includes electrical power installations, which, as subsidiary divisions of undertakings, produce electricity for regular use by these undertakings.</p> |
| Classification | <p>6 The 1993 edition of the <i>Standard Industrial Classification of All Economic Activities</i> (SIC), Fifth Edition, Report No. 09-90-02, was used to classify the statistical units in the survey. The SIC is based on the 1990 <i>International Standard Industrial Classification of All Economic Activities</i> (ISIC) with suitable adaptations for local conditions. Each statistical unit is classified to an industry which reflects the predominant activity of the electricity undertaking or establishment.</p> |
| Collection rate | <p>7 The collection rate for the survey on electricity generated and available for distribution for June 2023 was 88%. The collection rate for May 2023 was 88%.</p> |
| Statistical unit | <p>8 The statistical unit for the collection of information is the electricity undertaking or establishment. The electricity undertaking or establishment is the smallest economic unit that functions as a separate entity (see point 5).</p> |
| Revised figures | <p>9 Normally revised figures are due to:</p> <ul style="list-style-type: none"> • late submission of data to Stats SA; and • revisions or corrections by respondents to previous reported data. <p>Data are edited at enterprise level.</p> |
| Rounding-off of figures | <p>10 Where figures have been rounded off, discrepancies may occur between sums of the component items and the totals.</p> |
| Historical data | <p>11 Historical electricity data are available on the Stats SA webpage. Click on the following link (Time series data) to access the data electronically.</p> |
| Past publications | <p>12 Past electricity releases are available on the Stats SA webpage. Click on the following link (Past publications) to access the releases electronically.</p> |

Technical notes

- | | | |
|---|----------|---|
| Survey methodology and design | 1 | All statistical units are stratified by type of economic activity according to the <i>Standard Industrial Classification of All Economic Activities</i> (SIC) and measure of size, where measure of size is the volume of electricity generated by the electricity undertaking or establishment. All large undertakings or establishments (size group one) are completely enumerated. A sample is drawn from medium and small size undertakings and establishments by systematically selecting undertakings or establishments within each size category. An electricity undertaking or establishment with a total generating capacity of less than 500 kilowatts is excluded from the sample. |
| | 2 | The survey is conducted by email and telephone. Information is collected from a sample of 24 electricity undertakings or establishments. As from September 2013, Eskom supplied additional data for independent power producers (IPPs) that were not in the original sample of 24 establishments. |
| Monthly index of electricity generated | 3 | The calculation of the monthly index of electricity generated is based on the volume of electricity units produced. |
| Benchmarking | 4 | <p>The index of the volume of electricity generated should provide an accurate reflection of the trend of activities of the relevant industry. The level of activities, as measured by the monthly electricity survey, is based on information received from a sample of electricity undertakings and establishments. These levels are weighted according to the original sample and designed to represent the population of electricity undertakings and establishments.</p> <p>The results of the 1995 Census of electricity, gas and steam served as a benchmark to verify or adjust the level of the monthly index of the volume of electricity generated collected through the monthly survey. The level adjustments were done on the volume index for July of the relevant census year (the 1995 census year covered the period 1 January to 31 December 1995 and therefore, the benchmarking was done using the index of July 1995 as reference point).</p> |
| Seasonal adjustment | 5 | <p>Seasonally adjusted estimates are generated each month using the X-12 Seasonal Adjustment Program developed by the United States Census Bureau. Seasonal adjustment is a means of removing the estimated effects of normal seasonal variation from the series so that the effects of other influences on the series can be more clearly recognised. Seasonal adjustment does not aim to remove irregular or non-seasonal influences, which may be present in any particular month. Influences that are volatile or unsystematic can still make it difficult to interpret the movement of the series even after adjustment for seasonal variations. This means the month-to-month movements of seasonally adjusted estimates may not be reliable indicators of trend behaviour. The X12-ARIMA procedure for electricity generated and available for distribution is described in more detail on the Stats SA website:</p> <p>Click to download Electricity seasonal adjustment February 2022.</p> |
| Trend cycle | 6 | The trend is the long-term pattern or movement of a time series. The X-12-ARIMA Seasonal Adjustment Program is used for smoothing seasonally adjusted estimates to estimate the underlying trend cycle. |
| Month-on-month percentage change | 7 | The month-on-month percentage change in a variable for any given month is the change between that month and the previous month, expressed as a percentage of the latter. |
| Year-on-year percentage change | 8 | The year-on-year percentage change in a variable for any given period is the change between that period and the corresponding period of the previous year, expressed as a percentage of the latter. |

Glossary

| | | | | | | | | | | | | | | | |
|---|---|-----|------------------------|-----|---------------|------|--|-----|---|----|--------------|----------|-------------------------|---|-----------------|
| Electricity undertaking | An undertaking concerned with the generation and distribution of electricity, including electrical power installations, which, as subsidiary divisions of undertakings, produce electricity for regular use by these undertakings. | | | | | | | | | | | | | | |
| Index of the volume of electricity generated | A statistical measure of the change in the volume of electricity generated in a given period and the volume of electricity generated in the base period. The base period is 2019. The production in the base period is set at 100. | | | | | | | | | | | | | | |
| Industry | An industry is made up of enterprises engaged in the same or similar kinds of economic activity. Industries are defined in the System of National Accounts (SNA) in the same way as in the <i>Standard Industrial Classification of All Economic Activities</i> (SIC), Fifth Edition, Report No. 09-90-02 of January 1993. | | | | | | | | | | | | | | |
| Inflow into SA | Electricity flowing into South Africa as measured by the metering systems at the South African borders. | | | | | | | | | | | | | | |
| Outflow from SA | Electricity flowing from South Africa as measured by the metering systems at the South African borders. | | | | | | | | | | | | | | |
| Unit of electricity | One gigawatt-hour of electricity is equal to one million kilowatt-hours. A kilowatt-hour is the basic unit of electrical energy equal to one kilowatt of power supplied to or taken from an electric circuit steadily for one hour. One kilowatt-hour equals one thousand watt-hours. | | | | | | | | | | | | | | |
| Symbols and abbreviations | <table> <tr> <td>GDP</td> <td>Gross domestic product</td> </tr> <tr> <td>GWh</td> <td>Gigawatt-hour</td> </tr> <tr> <td>ISIC</td> <td>International Standard Industrial Classification</td> </tr> <tr> <td>SIC</td> <td>Standard Industrial Classification of All Economic Activities</td> </tr> <tr> <td>SA</td> <td>South Africa</td> </tr> <tr> <td>Stats SA</td> <td>Statistics South Africa</td> </tr> <tr> <td>*</td> <td>Revised figures</td> </tr> </table> | GDP | Gross domestic product | GWh | Gigawatt-hour | ISIC | International Standard Industrial Classification | SIC | Standard Industrial Classification of All Economic Activities | SA | South Africa | Stats SA | Statistics South Africa | * | Revised figures |
| GDP | Gross domestic product | | | | | | | | | | | | | | |
| GWh | Gigawatt-hour | | | | | | | | | | | | | | |
| ISIC | International Standard Industrial Classification | | | | | | | | | | | | | | |
| SIC | Standard Industrial Classification of All Economic Activities | | | | | | | | | | | | | | |
| SA | South Africa | | | | | | | | | | | | | | |
| Stats SA | Statistics South Africa | | | | | | | | | | | | | | |
| * | Revised figures | | | | | | | | | | | | | | |

Technical enquiries

| | |
|---------------------------|---|
| Tsholofelo Ditinti | Telephone number: (012) 310 6990 Email: tsholofelod@statssa.gov.za |
| Nicolai Claassen | Telephone number: (012) 310 8007 / 072 310 5351 Email: nicolaic@statssa.gov.za |

General information

Stats SA publishes approximately 300 different statistical releases each year. It is not economically viable to produce them in more than one of South Africa's 11 official languages. Since the releases are used extensively, not only locally but also by international economic and social-scientific communities, Stats SA releases are published in English only.

Stats SA has copyright on this publication. Users may apply the information as they wish, provided that they acknowledge Stats SA as the source of the basic data wherever they process, apply, utilise, publish or distribute the data; and also that they specify that the relevant application and analysis (where applicable) result from their own processing of the data.

Advance release calendar

An advance release calendar is disseminated on www.statssa.gov.za.

Stats SA products

A complete set of Stats SA publications is available at the Stats SA Library and the following libraries:

National Library of South Africa, Pretoria Division
National Library of South Africa, Cape Town Division
Natal Society Library, Pietermaritzburg
Library of Parliament, Cape Town
Bloemfontein Public Library
Johannesburg Public Library
Eastern Cape Library Services, Qonce
Central Regional Library, Polokwane
Central Reference Library, Mbombela
Central Reference Collection, Kimberley
Central Reference Library, Mmabatho

Stats SA also provides a subscription service.

Electronic services

A large range of data is available via online services. For more details about our electronic data services, contact Stats SA's user information service at (012) 310 8600.

You can visit us on the internet at: www.statssa.gov.za.

General enquiries

| | |
|------------------------------|---|
| User information services | Telephone number: (012) 310 8600 Email address: info@statssa.gov.za |
| Orders/subscription services | Telephone number: (012) 310 8619 Email address: millies@statssa.gov.za |
| Postal address | Private Bag X44, Pretoria, 0001 |

Produced by Stats SA