

# Statistical release

## P4141

# Electricity generated and available for distribution (preliminary)

February 2008

Embargoed until:  
3 April 2008  
13:00

**Enquiries:**

User information services  
Tel: (012) 310 8600/ 8390/ 8351

**Forthcoming issue:**

March 2008

**Expected release date**

6 May 2008

**Contents**

**Page**

**SUMMARY OF FINDINGS: ELECTRICITY GENERATED AND AVAILABLE FOR DISTRIBUTION (FEBRUARY 2008)** ..... **2**

**Key findings**..... **2**

Consumption of electricity increases ..... 2

Production of electricity increases..... 2

Distribution of electricity by Eskom to the provinces decreases ..... 2

**Key figures**..... **2**

Table A - Selected key figures regarding electricity generated and available for distribution for February 2008 ..... 2

Table B - Percentage change in the seasonally adjusted quantity of electricity generated and available for distribution between the current quarter and the previous quarter ..... 3

Table C - Percentage change between the current quarter and the corresponding quarter of the previous year ..... 3

Figure 1 - Electricity produced and available for distribution in South Africa from 2005 to 2008 ..... 4

Table 1 - Total volume of electricity available for distribution in South Africa: 2003 to 2008 ..... 5

Table 2 - Percentage change in electricity available for distribution in South Africa: 2003 to 2008 ..... 5

Table 3 - Seasonally adjusted total volume of electricity available for distribution in South Africa: 2003 to 2008 ..... 6

Table 4 - Indices of the physical volume of electricity production: 2003 to 2008..... 7

Table 5 - Percentage change in indices of the physical volume of electricity production: 2003 to 2008..... 7

Table 6 - Seasonally adjusted indices of the physical volume of electricity production: 2003 to 2008 ..... 8

Table 7 - Total volume of electricity imported: 2003 to 2008 ..... 9

Table 8 - Total volume of electricity exported: 2003 to 2008 ..... 9

Table 9a - Electricity produced and consumed in power stations, purchased and sold outside South Africa and available for distribution in South Africa (monthly figures)..... 10

Table 9b - Electricity produced and consumed in power stations, purchased and sold outside South Africa and available for distribution in South Africa (cumulative figures)..... 10

Table 10 - Electricity distributed by Eskom by province for 2007 and 2008 1/ ..... 11

**Explanatory Notes**..... **12**

**Glossary** ..... **14**

**General information** ..... **15**

## SUMMARY OF FINDINGS: ELECTRICITY GENERATED AND AVAILABLE FOR DISTRIBUTION (FEBRUARY 2008)

### Key findings

#### Consumption of electricity increases

The estimated consumption of electricity in February 2008 increased by 2,3% (416 Gigawatt-hours) compared with February 2007 (see tables A and 9a). The estimated volume of electricity consumed (available for distribution) for the three months ending February 2008 increased by 0,7% (398 Gigawatt-hours) compared with the three months ending February 2007 (see tables A and C). Electricity consumption after seasonal adjustment for February 2008 increased by 3,4% compared with the previous month (see table A).

#### Production of electricity increases

The estimated production of electricity in February 2008 increased by 2,7% (532 Gigawatt-hours) compared with February 2007, of which Eskom reported an increase of 2,1% (403 Gigawatt-hours) (see tables A and 9a). The estimated production of electricity for the three months ending February 2008 increased by 2,5% (1 558 Gigawatt-hours) compared with the three months ending February 2007 (see tables A and C). Furthermore, the estimated production of electricity, after seasonal adjustment, increased by 0,9% for February 2008 compared with the previous month (see table A).

#### Distribution of electricity by Eskom to the provinces

Electricity distributed to the provinces decreased marginally by 0,2% for the first two months of 2008 compared with the first two months of 2007. However, there were provinces that reported increases in the first two months of 2008 compared with the first two months of 2007, namely North West (1,6% or 67 Gigawatt-hours), Gauteng (1,2% or 109 Gigawatt-hours) and KwaZulu-Natal (1,1% or 75 Gigawatt-hours). Decreases were reported for Northern Cape (-8,5% or -74 Gigawatt-hours), Free State (-3,3% or -49 Gigawatt-hours), Mpumalanga (-2,5% or -135 Gigawatt-hours), and Limpopo (-2,0% or -36 Gigawatt-hours).

### Key figures

**Table A - Selected key figures regarding electricity generated and available for distribution for February 2008**

Estimates	February 2008 1/	% change between February 2007 and February 2008	% change between December 2006 to February 2007 and December 2007 to February 2008	% change between January to February 2007 and January to February 2008
Electricity available for distribution (Gigawatt-hours)	18 714	2,3	0,7	0,4
Index of the physical volume of electricity production (2005=100)	99,8	2,7	2,5	2,0

1/ Preliminary.

Seasonally adjusted estimates	February 2008	% change between January and February 2008	% change between September 2007 to November 2007 and December 2007 to February 2008
Electricity available for distribution (Gigawatt-hours)	20 309	3,4	-1,1
Index of the physical volume of electricity production (2005=100)	108,8	0,9	0,7

**Table B - Percentage change in the seasonally adjusted quantity of electricity generated and available for distribution between the current quarter and the previous quarter**

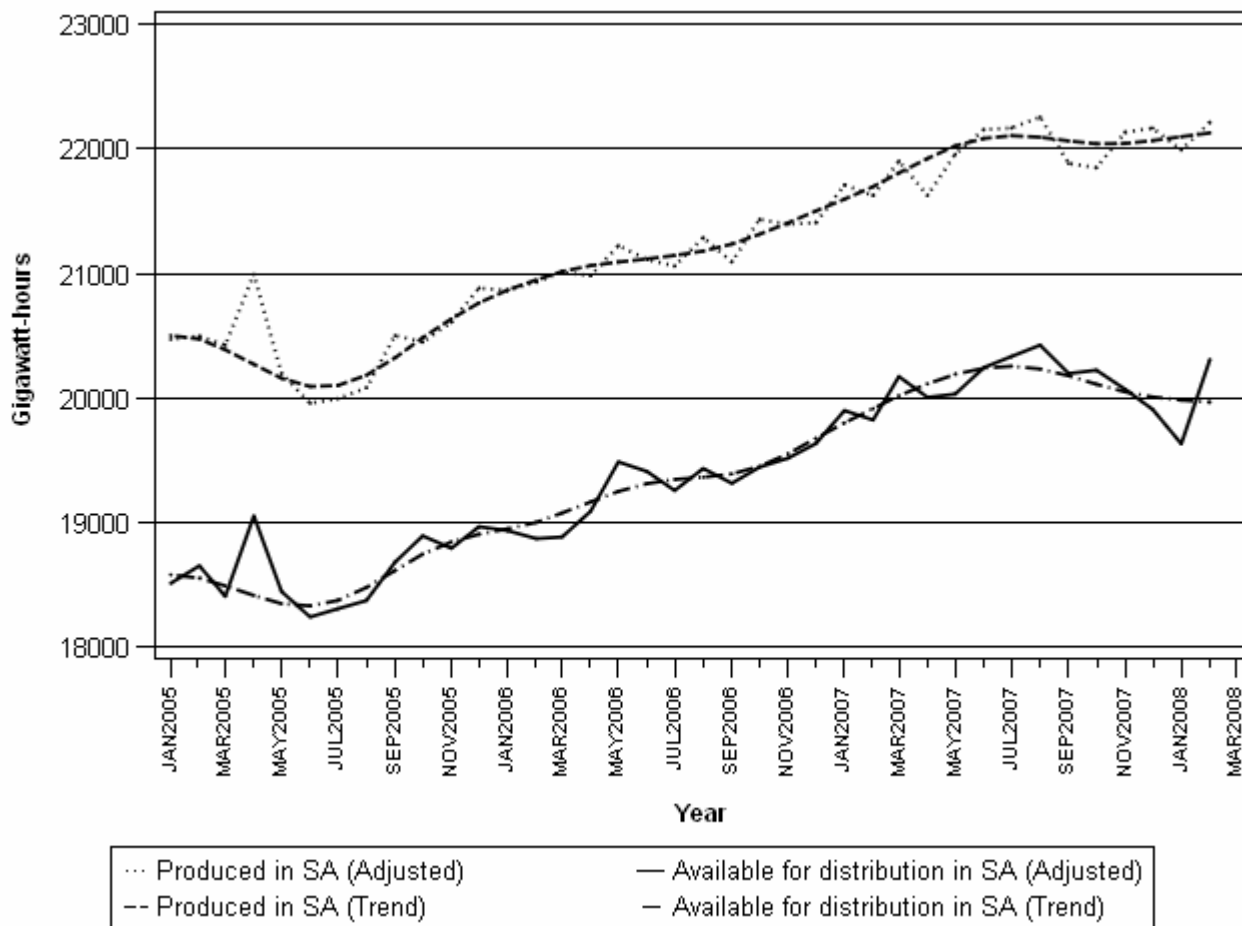
Gigawatt-hours	Seasonally adjusted quantity September to November 2007	Seasonally adjusted quantity December 2007 to February 2008	% change between September to November 2007 and December 2007 to February 2008	Quantity difference between September to November 2007 and December 2007 to February 2008
Electricity produced	65 862	66 369	0,8	507
Electricity available for distribution in South Africa	60 489	59 849	-1,1	-640

**Table C - Percentage change between the current quarter and the corresponding quarter of the previous year**

Gigawatt-hours	Actual quantity December 2006 to February 2007	Actual quantity December 2007 to February 2008	% change between December 2006 to February 2007 and December 2007 to February 2008	Quantity difference between December 2006 to February 2007 and December 2007 to February 2008
Electricity produced	61 658	63 216	2,5	1 558
Purchased outside South Africa (import)	2 990	2 140	-28,4	-850
Consumed in Power stations and auxiliary systems	4 559	4 585	0,6	26
Sold outside South Africa (export)	3 322	3 604	8,5	282
Electricity available for distribution in South Africa	56 767	57 165	0,7	398

Figure 1 below shows the seasonally adjusted and trend patterns for electricity produced and available for distribution in South Africa between January 2005 and February 2008. The trends in both electricity produced and available for distribution generally increased from mid-2005 up to mid-2007. Thereafter, electricity generated levelled off and electricity available for distribution declined.

**Figure 1 - Electricity produced and available for distribution in South Africa from 2005 to 2008**



**P J Lehohla**  
**Statistician-General**

**Detailed results: Tables**

**Table 1 - Total volume of electricity available for distribution in South Africa: 2003 to 2008**

	2003	2004	2005	2006	2007	2008
January	17 095	17 850	18 149	18 603	19 560	19 285
February	16 168	17 277	17 169	17 396	18 298	1/ 18 714
March	17 655	18 476	18 487	18 982	20 269	
April	16 905	17 524	18 133	18 122	18 984	
May	18 159	18 909	19 224	20 312	20 907	
June	18 330	19 337	18 983	20 166	21 027	
July	19 183	20 156	19 657	20 632	21 785	
August	18 714	19 265	19 191	20 307	21 350	
September	17 526	18 362	18 384	18 987	19 850	
October	18 480	18 714	19 127	19 663	20 433	
November	17 790	18 314	18 523	19 244	19 785	
December	17 456	17 754	18 230	18 909	19 166	
Year	213 461	221 938	223 257	231 323	241 414	

1/ Preliminary.

**Table 2 - Percentage change in electricity available for distribution in South Africa: 2003 to 2008**

	Percentage					
	2003	2004	2005	2006	2007	2008
January	5,6	4,4	1,7	2,5	5,1	-1,4
February	6,3	6,9	-0,6	1,3	5,2	2,3
March	6,7	4,7	0,1	2,7	6,8	
April	3,3	3,7	3,5	-0,1	4,8	
May	1,7	4,1	1,7	5,7	2,9	
June	1,7	5,5	-1,8	6,2	4,3	
July	1,2	5,1	-2,5	5,0	5,6	
August	3,6	2,9	-0,4	5,8	5,1	
September	2,3	4,8	0,1	3,3	4,5	
October	4,2	1,3	2,2	2,8	3,9	
November	3,2	2,9	1,1	3,9	2,8	
December	4,5	1,7	2,7	3,7	1,4	
Year	3,6	4,0	0,6	3,6	4,4	

**Table 3 - Seasonally adjusted total volume of electricity available for distribution in South Africa: 2003 to 2008**

	Gigawatt-hours						% change between current and previous month
	2003	2004	2005	2006	2007	2008	
<b>January</b>	17 451	18 209	18 513	18 935	19 899	19 632	-1,4
<b>February</b>	17 609	18 758	18 653	18 871	19 823	20 309	3,4
<b>March</b>	17 588	18 386	18 408	18 884	20 172		
<b>April</b>	17 686	18 359	19 053	19 091	20 005		
<b>May</b>	17 434	18 153	18 446	19 487	20 031		
<b>June</b>	17 591	18 561	18 242	19 410	20 244		
<b>July</b>	17 820	18 737	18 308	19 257	20 333		
<b>August</b>	17 934	18 467	18 374	19 434	20 424		
<b>September</b>	17 778	18 634	18 682	19 315	20 196		
<b>October</b>	18 210	18 457	18 893	19 445	20 223		
<b>November</b>	18 080	18 607	18 793	19 517	20 070		
<b>December</b>	18 328	18 543	18 967	19 634	19 908		

**Table 4 - Indices of the physical volume of electricity production: 2003 to 2008**

	Base : 2005=100					
	2003	2004	2005	2006	2007	2008
January	89,6	95,5	97,6	99,8	103,9	105,3
February	84,7	92,2	91,7	94,0	97,2	1/ 99,8
March	92,9	98,7	100,2	103,3	107,8	
April	90,1	94,7	98,1	98,0	100,9	
May	97,2	102,4	102,9	108,1	112,0	
June	98,5	105,0	101,6	107,3	112,5	
July	102,5	109,5	105,5	110,8	116,6	
August	102,4	104,3	103,0	109,1	114,1	
September	97,0	99,5	99,1	101,8	105,5	
October	102,2	102,1	102,5	107,2	109,1	
November	96,4	98,5	99,4	103,3	106,9	
December	94,0	96,0	98,2	100,9	104,6	
Year	95,6	99,9	100,0	103,6	107,6	

1/ Preliminary.

**Table 5 - Percentage change in indices of the physical volume of electricity production: 2003 to 2008**

	2003	2004	2005	2006	2007	2008
January	5,8	6,6	2,2	2,3	4,1	1,3
February	7,2	8,9	-0,5	2,5	3,4	2,7
March	8,4	6,2	1,5	3,1	4,4	
April	5,9	5,1	3,6	-0,1	3,0	
May	3,3	5,3	0,5	5,1	3,6	
June	3,9	6,6	-3,2	5,6	4,8	
July	3,1	6,8	-3,7	5,0	5,2	
August	8,4	1,9	-1,2	5,9	4,6	
September	7,4	2,6	-0,4	2,7	3,6	
October	8,4	-0,1	0,4	4,6	1,8	
November	5,4	2,2	0,9	3,9	3,5	
December	7,6	2,1	2,3	2,7	3,7	
Year	6,2	4,4	0,1	3,7	3,8	

The percentage change is the change in the index of the physical volume of electricity production of the relevant year compared with the index of the physical volume of electricity production of the previous year expressed as a percentage.



**Table 6 - Seasonally adjusted indices of the physical volume of electricity production: 2003 to 2008**

	Base : 2005=100						% change between current and previous month
	2003	2004	2005	2006	2007	2008	
<b>January</b>	92,0	98,1	100,3	102,3	106,4	107,8	-0,7
<b>February</b>	93,0	101,1	100,4	102,6	105,9	108,8	0,9
<b>March</b>	93,1	98,7	100,0	103,0	107,3		
<b>April</b>	94,4	99,3	102,9	103,1	106,3		
<b>May</b>	93,6	98,7	99,1	104,1	107,8		
<b>June</b>	94,3	100,6	97,4	103,0	108,0		
<b>July</b>	94,8	101,5	98,0	103,1	108,6		
<b>August</b>	97,8	99,7	98,5	104,3	109,1		
<b>September</b>	97,7	100,5	100,4	103,4	107,3		
<b>October</b>	99,4	99,6	100,2	105,1	107,1		
<b>November</b>	98,0	100,1	100,9	104,9	108,5		
<b>December</b>	99,0	100,5	102,3	104,9	108,6		

**Table 7 - Total volume of electricity imported: 2003 to 2008**

Month	Gigawatt-hours					
	2003	2004	2005	2006	2007	2008
January	705	828	729	872	1 086	638
February	637	811	714	646	939	1/ 885
March	706	863	533	581	970	
April	547	641	598	587	1 052	
May	569	547	849	879	897	
June	518	560	813	881	880	
July	792	607	856	926	980	
August	424	618	883	930	1 041	
September	266	590	686	971	1 024	
October	272	536	836	682	1 038	
November	583	746	865	862	794	
December	720	679	837	965	617	
<b>Year</b>	<b>6 739</b>	<b>8 026</b>	<b>9 199</b>	<b>9 782</b>	<b>11 318</b>	

1/ Preliminary.

**Table 8 - Total volume of electricity exported: 2003 to 2008**

Month	Gigawatt-hours					
	2003	2004	2005	2006	2007	2008
January	578	1 037	1 030	1 056	1 133	1 278
February	508	977	901	1 050	1 060	1/ 1 101
March	607	1 027	968	1 129	1 119	
April	619	951	991	1 017	1 127	
May	805	944	1 083	1 046	1 193	
June	798	1 057	1 096	1 102	1 248	
July	944	1 140	1 102	1 239	1 292	
August	1 030	1 049	1 144	1 262	1 251	
September	1 051	1 048	1 134	1 239	1 065	
October	1 116	1 112	1 161	1 311	1 251	
November	1 025	1 082	1 119	1 186	1 253	
December	1 055	1 029	1 155	1 129	1 225	
<b>Year</b>	<b>10 136</b>	<b>12 453</b>	<b>12 884</b>	<b>13 766</b>	<b>14 217</b>	

1/ Preliminary.

**Table 9a - Electricity produced and consumed in power stations, purchased and sold outside South Africa and available for distribution in South Africa**

		Gigawatt-hours				
		February 2007	January 2008	February 2008 1/	% Change between February 2007 and February 2008	Difference between February 2007 and February 2008
<b>Total - All producers</b>	Electricity produced	19 847	21 494	20 379	2,7	532
	Purchased outside South Africa (import)	939	638	885	-5,8	-54
	Consumed in power stations and auxiliary systems	1 428	1 568	1 448	1,4	20
	Sold outside South Africa (export)	1 060	1 278	1 101	3,9	41
	Electricity available for distribution in South Africa	18 298	19 285	18 714	2,3	416
<b>ESKOM</b>	Electricity produced	19 139	20 699	19 542	2,1	403
	Purchased outside South Africa (import)	939	638	885	-5,8	-54
	Consumed in power stations and auxiliary systems	1 374	1 502	1 379	0,4	5
	Sold outside South Africa (export)	1 060	1 278	1 101	3,9	41
	Electricity available for distribution in South Africa	17 645	18 556	17 947	1,7	302

**Table 9b - Electricity produced and consumed in power stations, purchased and sold outside South Africa and available for distribution in South Africa (cumulative figures)**

		Gigawatt-hours			
		January to February 2007	January to February 2008 1/	% Change between January to February 2007 and January to February 2008	Difference between January to February 2007 and January to February 2008
<b>Total - All producers</b>	Electricity produced	41 062	41 873	2,0	811
	Purchased outside South Africa (import)	2 025	1 523	-24,8	-502
	Consumed in power stations and auxiliary systems	3 036	3 016	-0,7	-20
	Sold outside South Africa (export)	2 193	2 379	8,5	186
	Electricity available for distribution in South Africa	37 858	37 999	0,4	141
<b>ESKOM</b>	Electricity produced	39 552	40 241	1,7	689
	Purchased outside South Africa (import)	2 025	1 523	-24,8	-502
	Consumed in power stations and auxiliary systems	2 906	2 881	-0,9	-25
	Sold outside South Africa (export)	2 193	2 379	8,5	186
	Electricity available for distribution in South Africa	36 478	36 503	0,1	25

1/ Preliminary.

**Table 10 - Electricity distributed by Eskom by province for 2007 and 2008 1/**

		Gigawatt-hours									
		Western Cape	Eastern Cape	Northern Cape	Free State	KwaZulu-Natal	North West	Gauteng	Mpumalanga	Limpopo	Total South Africa
<b>2007</b>	<b>January</b>	1 955	770	456	780	3 541	2 168	4 809	2 835	930	18 244
	<b>February</b>	1 817	746	410	718	3 326	2 074	4 583	2 561	878	17 113
	<b>March</b>	2 018	816	467	793	3 650	2 299	5 070	2 884	965	18 962
	<b>April</b>	1 861	854	371	769	3 416	2 079	4 758	2 665	915	17 688
	<b>May</b>	2 012	951	401	825	3 702	2 279	5 563	2 866	975	19 574
	<b>June</b>	1 989	828	413	841	3 643	2 231	5 788	2 814	957	19 504
	<b>July</b>	2 007	820	442	884	3 805	2 257	6 013	2 974	966	20 168
	<b>August</b>	2 060	825	417	840	3 738	2 268	5 635	2 918	961	19 662
	<b>September</b>	1 904	884	401	790	3 581	2 254	4 930	2 764	927	18 435
	<b>October</b>	1 985	812	413	775	3 693	2 335	5 125	2 878	944	18 960
	<b>November</b>	1 907	763	419	801	3 574	2 285	4 963	2 773	915	18 400
	<b>December</b>	1 895	696	417	740	3 524	1 986	4 760	2 770	937	17 725
	<b>Year</b>	<b>23 410</b>	<b>9 765</b>	<b>5 027</b>	<b>9 556</b>	<b>43 193</b>	<b>26 515</b>	<b>61 997</b>	<b>33 702</b>	<b>11 270</b>	<b>224 435</b>
	<b>Year to date</b>	3 772	1 516	866	1 498	6 867	4 242	9 392	5 396	1 808	35 357
<b>2008</b>	<b>January</b>	1 928	749	396	749	3 552	2 207	4 861	2 661	874	17 977
	<b>February 2/</b>	1 839	758	396	700	3 390	2 102	4 640	2 600	898	17 323
	<b>Year to date</b>	3 767	1 507	792	1 449	6 942	4 309	9 501	5 261	1 772	35 300

1/ Wholesale energy as delivered by Eskom to the various provinces.

2/ Preliminary.

## Explanatory Notes

<b>Introduction</b>	1	Statistics South Africa (Stats SA) conducts a monthly sample survey of the electricity industry covering electricity undertakings and establishments (branches). This statistical release contains information regarding the number of electricity units generated and available for distribution in South Africa, the number of units purchased and sold outside South Africa and the number of units distributed by Eskom by province on a monthly basis. Both actual and seasonally adjusted figures are published.
	2	This statistical release reflects indices of the physical volume of electricity production on the basis of 2005=100. In accordance with international practice, the indices have to be rebased every five years to a new base year.
	3	In order to improve timeliness of the publication, some information for the current month may have been estimated due to late submission by respondents. These estimates will be revised in the next statistical release(s) as soon as actual information is available.
<b>Purpose of the survey</b>	4	The results of the monthly electricity generated and available for distribution survey are used to compile estimates of the Gross Domestic Product (GDP) and its components, which are used in monitoring the state of the economy and formulation of economic policy.
<b>Scope of the survey</b>	5	This survey covers electricity undertakings and establishments conducting activities concerned with the generation or transmission and distribution of electricity, including electrical power installations, which, as subsidiary divisions of undertakings, produce electricity for regular use by these undertakings.
<b>Classification</b>	6	The 1993 edition of the <i>Standard Industrial Classification of all Economic Activities (SIC)</i> , Fifth Edition, Report No. 09-90-02, was used to classify the statistical units in the survey. The SIC is based on the 1990 <i>International Standard Industrial Classification of all Economic Activities (ISIC)</i> with suitable adaptations for local conditions. Each statistical unit is classified to an industry, which reflects the predominant activity of the electricity undertaking or establishment.
<b>Response rate</b>	7	The response rate for the survey on electricity generated and available for distribution for February 2008 was 99%.
<b>Statistical unit</b>	8	The basic statistical unit for the collection of information is the electricity undertaking or establishment. The electricity undertaking or establishment is the smallest economic unit that functions as a separate entity. Each statistical unit is classified to an industry (see paragraph 6).
<b>Survey methodology and design</b>	9	All statistical units are stratified by type of economic activity according to the <i>Standard Industrial Classification of all Economic Activities (SIC)</i> and measure of size, where measure of size is the volume of electricity generated by the electricity undertaking or establishment. All large undertakings or establishments (size category one cases) are completely enumerated. A sample is drawn from medium and small size undertakings and establishments by systematically selecting undertakings or establishments within each size category. An electricity undertaking or establishment with a total generating capacity of less than 500 kilowatt is excluded from the sample.
	10	The survey is conducted by mail each month collecting information from a sample of 22 electricity undertakings or establishments.

<b>Monthly production indices</b>	<b>11</b>	The calculation of the monthly production indices is based on the number of electricity units produced.
<b>Benchmarking</b>	<b>12</b>	The index of physical volume of electricity production should provide an accurate reflection of the trend of activities of the relevant industry. The level of activities as measured by the monthly electricity generated and available for distribution survey is based on information received from a sample of electricity undertakings and establishments, which are weighted according to the original sample, designed in order to represent the population of electricity undertakings and establishments. It is necessary to adjust the level of activities as measured by the monthly sample survey to the level of activities as measured periodically by the Census of electricity, gas and steam. This procedure, whereby the latest results of an economic census are used to compile more accurate level estimates for a certain year, is known as benchmarking.
	<b>13</b>	The results of the 1995 Census of electricity, gas and steam served as benchmarks to verify or adjust the level of the monthly physical volume of electricity production indices collected through the monthly sample survey. The level adjustments were done on the volume indices for August of the relevant census year (the 1995 census year covered the period 1 January 1995 to 31 December 1995 and therefore, the benchmarking was done using the index of July 1995 as reference point).
<b>Seasonal adjustment</b>	<b>14</b>	Seasonally adjusted estimates of all items are generated each month, using the X-11 Seasonal Adjustment Program developed by US Bureau of the Census Economic Research and Analyses Division, 1968. Seasonal adjustment is a means of removing the estimated effects of normal seasonal variation from the series so that the effects of other influences on the series can be more clearly recognized. Seasonal adjustment does not aim to remove irregular or non-seasonal influences, which may be present in any particular month. Influences that are volatile or unsystematic can still make it difficult to interpret the movement of the series even after adjustment for seasonal variations. This means the month-to-month movements of seasonally adjusted estimates may not be reliable indicators of trend behaviour.
<b>Trend cycle</b>	<b>15</b>	The trend is the long-term pattern or movement of a time series. The X-11 Seasonal Adjustment Program is used for smoothing seasonally adjusted estimates.
<b>Related publications</b>	<b>16</b>	Users may also wish to refer to the following publications which are available from Stats SA - <ul style="list-style-type: none"> <li>• <i>Bulletin of Statistics.</i></li> <li>• <i>SA Statistics.</i></li> </ul>
<b>Unpublished statistics</b>	<b>17</b>	In some cases Stats SA can also make available statistics, which are not published. The statistics can be made available as computer printouts, on diskette or CD. Generally a charge is made for providing unpublished statistics.
<b>Rounding-off figures</b>	<b>18</b>	The figures in the tables have, where necessary, been rounded off to the nearest digit shown. There may, therefore, be slight discrepancies between the sums of the constituent items and the totals shown.
<b>Pre-release policy</b>	<b>19</b>	Stats SA pre-release policy may be inspected at its website, <a href="http://www.statssa.gov.za">www.statssa.gov.za</a> .

## Glossary

<b>Electricity undertaking</b>	An electricity undertaking is an undertaking concerned with the generation or transmission and distribution of electricity, including electrical power installations, which as subsidiary divisions of undertakings produce electricity for regular use by these undertakings.										
<b>Index of physical volume of electricity production</b>	A statistical measure of the change in the volume of production of electricity in a given period and the volume of production of electricity in the base period. The base period is 2005. The production in the base period is set at 100.										
<b>Industry</b>	An industry consists of a group of undertakings or establishments engaged in the same or similar kinds of economic activity. Industries are defined in the 1993 <i>System of National Accounts (1993 SNA)</i> in the same way as in the <i>Standard Industrial Classification of all Economic Activities (SIC)</i> , Fifth Edition, Report No. 09-90-02.										
<b>Unit of electricity</b>	One gigawatt-hour of electricity is equal to one million kilowatt-hours. A kilowatt-hour is the basic unit of electrical energy equal to one kilowatt of power supplied to or taken from an electric circuit steadily for one hour. One kilowatt-hour equals one thousand watt-hours.										
<b>Symbols and abbreviations</b>	<table border="0"> <tr> <td>GDP</td> <td>Gross Domestic Product</td> </tr> <tr> <td>ISIC</td> <td>International Standard Industrial Classification</td> </tr> <tr> <td>SIC</td> <td>Standard Industrial Classification of all Economic Activities</td> </tr> <tr> <td>Stats SA</td> <td>Statistics South Africa</td> </tr> <tr> <td>*</td> <td>Revised figures</td> </tr> </table>	GDP	Gross Domestic Product	ISIC	International Standard Industrial Classification	SIC	Standard Industrial Classification of all Economic Activities	Stats SA	Statistics South Africa	*	Revised figures
GDP	Gross Domestic Product										
ISIC	International Standard Industrial Classification										
SIC	Standard Industrial Classification of all Economic Activities										
Stats SA	Statistics South Africa										
*	Revised figures										

## General information

Stats SA publishes approximately 300 different statistical releases each year. It is not economically viable to produce them in more than one of South Africa's eleven official languages. Since the releases are used extensively, not only locally but also by international economic and social-scientific communities, Stats SA releases are published in English only.

Stats SA has copyright on this publication. Users may apply the information as they wish, provided that they acknowledge Stats SA as the source of the basic data wherever they process, apply, utilise, publish or distribute the data: and also that they specify that the relevant application and analysis (where applicable) result from their own processing of the data.

## Advanced release calendar

An advanced release calendar is disseminated on [www.statssa.gov.za](http://www.statssa.gov.za)

## Stats SA products

A complete set of Stats SA publications is available at the Stats SA Library and the following libraries:

National Library of South Africa, Pretoria Division  
National Library of South Africa, Cape Town Division  
Natal Society Library, Pietermaritzburg  
Library of Parliament, Cape Town  
Bloemfontein Public Library  
Johannesburg Public Library  
Eastern Cape Library Services, King William's Town  
Central Regional Library, Polokwane  
Central Reference Library, Nelspruit  
Central Reference Collection, Kimberley  
Central Reference Library, Mmabatho

Stats SA also provides a subscription service.

## Electronic services

A large range of data is available via on-line services, diskette, CD and computer printouts. For more details about our electronic data services, contact (012) 310 8600/8390/8351/8496/4892/8095.

You can visit us on the Internet at: [www.statssa.gov.za](http://www.statssa.gov.za)

## General enquiries

Telephone number: (012) 336 0142 (technical enquiries)  
(012) 310 8161 (orders)  
(012) 310 4883/ 4885/ 8018 (library)

Fax number: (012) 310 8664 (technical enquiries)

email: [gerdab@statssa.gov.za](mailto:gerdab@statssa.gov.za) (technical enquiries)  
[nicolaic@statssa.gov.za](mailto:nicolaic@statssa.gov.za) (technical enquiries)  
[info@statssa.gov.za](mailto:info@statssa.gov.za) (user information services)  
[distribution@statssa.gov.za](mailto:distribution@statssa.gov.za) (orders)

Postal address: Private Bag X44, Pretoria, 0001

*Produced by Stats SA*