



stats sa

Department:
Statistics South Africa
REPUBLIC OF SOUTH AFRICA

Private Bag X44, Pretoria, 0001, South Africa, ISibalo House, Koch Street, Salvokop, Pretoria, 0002
www.statssa.gov.za, info@statssa.gov.za, Tel +27 12 310 8911

STATISTICAL RELEASE

P3041.2

Manufacturing: Production and sales (Preliminary)

May 2026

**Embargoed until:
9 July 2026
13:00**

ENQUIRIES:
Nicolai Claassen
Tel: 072 310 5351

FORTHCOMING ISSUE:
June 2026

EXPECTED RELEASE DATE:
11 August 2026

Contents

Production: results for May 2026	2
Table A – Key growth rates in the volume of manufacturing production	2
Table B – Seasonally adjusted manufacturing production for the latest three months by division and major group (Base: 2019=100)	3
Figure 1 – Volume of manufacturing production (Base: 2019=100).....	4
Figure 2 – Volume of manufacturing production (Base: 2019=100): year-on-year percentage change	4
Sales: results for May 2026	5
Table C – Key growth rates in manufacturing sales at current prices	5
Table D – Seasonally adjusted manufacturing sales at current prices for the latest three months by division	5
Tables	6
Table 1 – Index of the volume of manufacturing production (Base: 2019=100).....	6
Table 2 – Year-on-year percentage change in the volume of manufacturing production	6
Table 3 – Seasonally adjusted volume of manufacturing production	6
Table 4 – Index of the volume of manufacturing production by division and major group (Base: 2019=100)	7
Table 5 – Year-on-year percentage change in the volume of manufacturing production by division and major group (Base: 2019=100)	8
Table 6 – Contribution of each division and major group to the year-on-year percentage change in the volume of manufacturing production (percentage points)	9
Table 7 – Seasonally adjusted index of the volume of manufacturing production by division and major group (Base: 2019=100)	10
Table 8 – Manufacturing sales at current prices (R million)	11
Table 9 – Year-on-year percentage change in manufacturing sales at current prices.....	11
Table 10 – Seasonally adjusted manufacturing sales at current prices	11
Table 11 – Manufacturing sales at current prices by division and major group (R million)	12
Table 12 – Year-on-year percentage change in manufacturing sales at current prices by division and major group.....	13
Table 13 – Contribution of each division and major group to the year-on-year percentage change in manufacturing sales at current prices (percentage points)	14
Table 14 – Seasonally adjusted manufacturing sales at current prices by division and major group (R million)	15
Explanatory notes	16
Technical notes	17
Table E – Weights by division and major group	20
Glossary	22
Technical enquiries	22
General information	23

Production: results for May 2026

Table A – Key growth rates in the volume of manufacturing production

	Dec-25	Jan-26	Feb-26	Mar-26	Apr-26	May-26
Year-on-year % change, unadjusted	-1,4	-0,2	-2,2	1,5	-2,9	-4,3
Month-on-month % change, seasonally adjusted	-1,4	1,8	-1,8	1,1	-2,6	1,1
3-month % change, seasonally adjusted ¹	-0,5	-1,8	-2,0	-0,9	-1,3	-1,0

¹ Percentage change between the previous 3 months and the 3 months ending in the month indicated.

Manufacturing production decreased by 4,3% in May 2026 compared with May 2025. The largest negative contributions were made by the following divisions:

- food and beverages (-6,4% and contributing -1,6 percentage points);
- basic iron and steel, non-ferrous metal products, metal products and machinery (-5,6% and contributing -1,3 percentage points); and
- wood and wood products, paper, publishing and printing (-11,0% and contributing -1,0 percentage point) – see Table 5 and Table 6.

Seasonally adjusted manufacturing production increased by 1,1% in May 2026 compared with April 2026. This followed month-on-month changes of -2,6% in April 2026 and 1,1% in March 2026 – see Table A.

Seasonally adjusted manufacturing production decreased by 1,0% in the three months ended May 2026 compared with the previous three months. Six of the ten manufacturing divisions reported negative growth rates over this period. The following divisions reported the largest negative contributions:

- wood and wood products, paper, publishing and printing (-3,3% and contributing -0,3 of a percentage point);
- petroleum, chemical products, rubber and plastic products (-1,5% and contributing -0,3 of a percentage point); and
- furniture and 'other' manufacturing (-5,4% and contributing -0,2 of a percentage point) – see Table B.

Table B – Seasonally adjusted manufacturing production for the latest three months by division and major group (Base: 2019=100)

Manufacturing division and major group	Weight	Dec 2025 – Feb 2026	Mar – May 2026	% change between Dec 2025 – Feb 2026 and Mar – May 2026	Contribution (% points) to the total % change
Food and beverages	22,19	102,7	102,1	-0,6	-0,1
Meat, fish, fruit, etc.	3,72	102,5	104,2	1,7	0,1
Dairy products	1,20	94,0	92,2	-1,9	0,0
Grain mill products	1,94	103,0	106,1	3,0	0,1
Other food products	7,55	86,1	85,4	-0,8	-0,1
Beverages	7,78	120,2	117,8	-2,0	-0,2
Textiles, clothing, leather and footwear	3,68	88,6	91,3	3,0	0,1
Textiles	0,85	101,0	99,2	-1,8	0,0
Other textile products	0,55	93,5	97,7	4,5	0,0
Knitted, crocheted articles	0,07	72,0	72,5	0,7	0,0
Wearing apparel	1,65	83,5	86,5	3,6	0,1
Leather and leather products	0,26	73,4	85,6	16,6	0,0
Footwear	0,30	89,5	92,8	3,7	0,0
Wood and wood products, paper, publishing and printing	9,98	88,3	85,4	-3,3	-0,3
Sawmilling and planing of wood	0,74	92,6	104,1	12,4	0,1
Products of wood	0,85	121,6	130,0	6,9	0,1
Paper and paper products	5,27	83,5	80,7	-3,4	-0,2
Publishing	1,94	85,1	70,7	-16,9	-0,3
Printing, recorded media	1,18	88,3	86,5	-2,0	0,0
Petroleum, chemical products, rubber and plastic products	23,91	81,3	80,1	-1,5	-0,3
Coke, petroleum products and nuclear fuel	11,12	62,3	62,1	-0,3	0,0
Basic chemicals	3,60	108,7	99,0	-8,9	-0,4
Other chemical products	6,63	89,7	90,9	1,3	0,1
Rubber products	0,69	85,8	75,2	-12,4	-0,1
Plastic products	1,87	109,7	114,5	4,4	0,1
Glass and non-metallic mineral products	3,11	101,9	98,6	-3,2	-0,1
Glass and glass products	0,61	102,4	106,0	3,5	0,0
Non-metallic mineral products	2,50	101,9	96,8	-5,0	-0,1
Basic iron and steel, non-ferrous metal products, metal products and machinery	21,85	90,1	90,2	0,1	0,0
Basic iron and steel products	3,20	54,2	58,1	7,2	0,1
Non-ferrous metal products	4,16	85,5	84,0	-1,8	-0,1
Structural metal products	1,98	109,3	107,5	-1,6	0,0
Other fabricated metal products	3,72	98,2	103,0	4,9	0,2
General purpose machinery	4,04	98,5	95,9	-2,6	-0,1
Special purpose machinery	4,01	92,1	89,7	-2,6	-0,1
Household appliances	0,74	122,6	125,4	2,3	0,0
Electrical machinery	2,15	109,0	106,4	-2,4	-0,1
Radio, television and communication apparatus and professional equipment	1,00	95,6	95,9	0,3	0,0
Radio, television and communication apparatus	0,19	91,6	95,0	3,7	0,0
Professional equipment	0,81	96,5	96,2	-0,3	0,0
Motor vehicles, parts and accessories and other transport equipment	7,84	84,2	85,7	1,8	0,1
Motor vehicles	2,33	87,5	93,5	6,9	0,2
Bodies for motor vehicles, trailers and semi-trailers	0,65	91,8	99,8	8,7	0,1
Parts and accessories	3,95	79,9	77,2	-3,4	-0,1
Other transport equipment	0,91	88,9	92,6	4,2	0,0
Furniture and other manufacturing	4,29	87,0	82,3	-5,4	-0,2
Furniture	0,84	89,3	91,9	2,9	0,0
Other manufacturing groups	3,45	86,5	79,9	-7,6	-0,3
Total	100	90,8	89,9	-1,0	-1,0

Figure 1 – Volume of manufacturing production (Base: 2019=100)

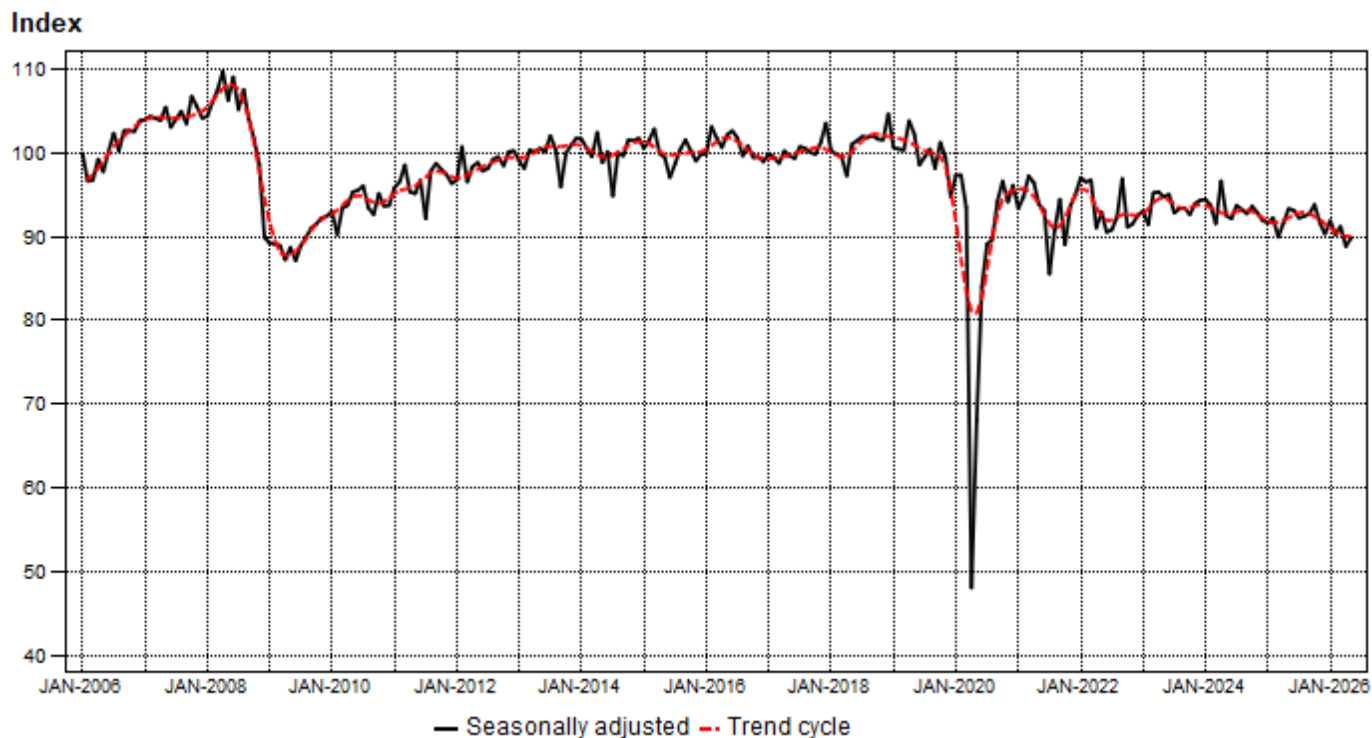
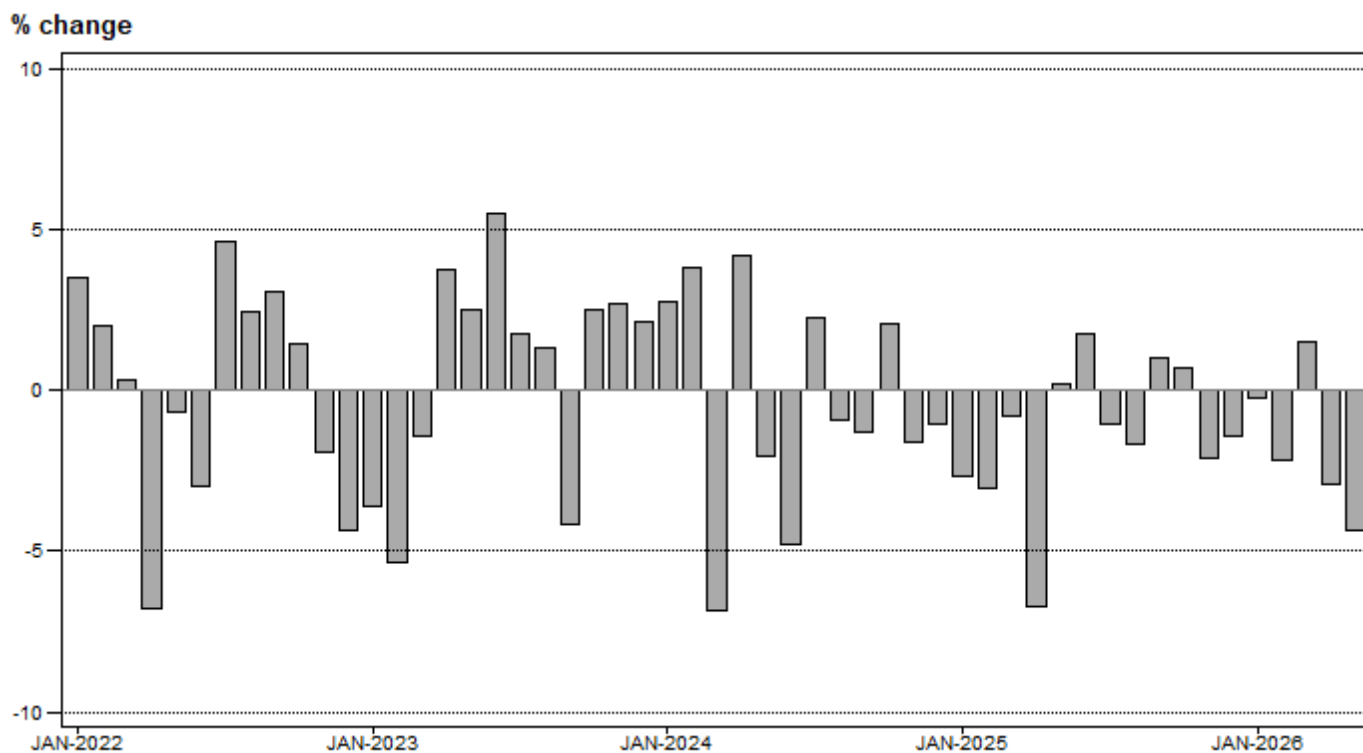


Figure 2 – Volume of manufacturing production (Base: 2019=100): year-on-year percentage change



Sales: results for May 2026**Table C – Key growth rates in manufacturing sales at current prices**

	Dec-25	Jan-26	Feb-26	Mar-26	Apr-26	May-26
Year-on-year % change, unadjusted	-3,1	-1,9	-0,7	3,4	4,8	-0,7
Month-on-month % change, seasonally adjusted	-4,5	3,2	0,0	2,2	0,7	-1,8
3-month % change, seasonally adjusted ¹	-2,1	-2,9	-3,1	0,6	2,3	3,2

¹ Percentage change between the previous 3 months and the 3 months ending in the month indicated.

Seasonally adjusted manufacturing sales decreased by 1,8% in May 2026 compared with April 2026. This followed month-on-month changes of 0,7% in April 2026 and 2,2% in March 2026 – see Table C.

Table D – Seasonally adjusted manufacturing sales at current prices for the latest three months by division

Manufacturing division	Dec 2025 – Feb 2026 (R million)	Mar – May 2026 (R million)	% change between Dec 2025 – Feb 2026 and Mar – May 2026	Contribution (% points) to the total % change
Food and beverages	221 379	224 932	1,6	0,4
Textiles, clothing, leather and footwear	19 621	20 529	4,6	0,1
Wood and wood products, paper, publishing and printing	52 877	53 173	0,6	0,0
Petroleum, chemical products, rubber and plastic products	182 028	191 899	5,4	1,2
Glass and non-metallic mineral products	25 915	26 263	1,3	0,0
Basic iron and steel, non-ferrous metal products, metal products and machinery	176 967	178 254	0,7	0,1
Electrical machinery	21 188	21 041	-0,7	0,0
Radio, television and communication apparatus and professional equipment	7 177	7 350	2,4	0,0
Motor vehicles, parts and accessories and other transport equipment	109 239	123 232	12,8	1,6
Furniture and other manufacturing	36 629	33 282	-9,1	-0,4
Total	853 019	879 954	3,2	3,2

Seasonally adjusted manufacturing sales increased by 3,2% in the three months ended May 2026 compared with the previous three months. The largest positive contributions were made by the motor vehicles, parts and accessories and other transport equipment division (12,8% and contributing 1,6 percentage points) and the petroleum, chemical products, rubber and plastic products division (5,4% and contributing 1,2 percentage points) – see Table D.


Risenga Maluleke
Statistician-General

Tables

Table 1 – Index of the volume of manufacturing production (Base: 2019=100)

Month	2020	2021	2022	2023	2024	2025	2026
Jan	85,7	80,3	83,1	80,1	82,3	80,1	79,9
Feb	92,4	89,5	91,3	86,4	89,7	87,0	85,1
Mar	94,5	99,2	99,5	98,1	91,4	90,7	92,1
Apr	45,3	91,2	85,0	88,2	91,9	85,7	83,2
May	67,2	92,3	91,7	94,0	92,1	92,3	88,3
Jun	84,1	93,8	91,0	96,0	91,4	93,0	
Jul	91,4	86,8	90,8	92,4	94,5	93,5	
Aug	92,9	94,5	96,8	98,1	97,2	95,6	
Sep	99,4	100,0	103,1	98,8	97,5	98,5	
Oct	106,8	97,3	98,7	101,2	103,3	104,0	
Nov	104,7	104,9	102,9	105,7	104,0	101,8	
Dec	87,6	87,6	83,8	85,6	84,7	83,5	
Total	87,7	93,1	93,1	93,7	93,3	92,1	

Table 2 – Year-on-year percentage change in the volume of manufacturing production

Month	2021	2022	2023	2024	2025	2026	2026 year-to-date
Jan	-6,3	3,5	-3,6	2,7	-2,7	-0,2	-0,2
Feb	-3,1	2,0	-5,4	3,8	-3,0	-2,2	-1,3
Mar	5,0	0,3	-1,4	-6,8	-0,8	1,5	-0,2
Apr	101,3	-6,8	3,8	4,2	-6,7	-2,9	-0,9
May	37,4	-0,7	2,5	-2,0	0,2	-4,3	-1,7
Jun	11,5	-3,0	5,5	-4,8	1,8		
Jul	-5,0	4,6	1,8	2,3	-1,1		
Aug	1,7	2,4	1,3	-0,9	-1,6		
Sep	0,6	3,1	-4,2	-1,3	1,0		
Oct	-8,9	1,4	2,5	2,1	0,7		
Nov	0,2	-1,9	2,7	-1,6	-2,1		
Dec	0,0	-4,3	2,1	-1,1	-1,4		
Total	6,2	0,0	0,6	-0,4	-1,3		

Table 3 – Seasonally adjusted volume of manufacturing production

Month	Index (Base: 2019=100)				Month-on-month % change			
	2023	2024	2025	2026	2023	2024	2025	2026
Jan	93,0	94,4	91,6	91,9	0,5	0,1	-0,3	1,8
Feb	91,4	93,7	92,2	90,2	-1,7	-0,7	0,7	-1,8
Mar	95,2	91,5	89,9	91,2	4,2	-2,3	-2,5	1,1
Apr	95,3	96,6	91,6	88,8	0,1	5,6	1,9	-2,6
May	94,7	92,5	93,3	89,8	-0,6	-4,2	1,9	1,1
Jun	95,0	92,1	93,1		0,3	-0,4	-0,2	
Jul	92,8	93,7	92,2		-2,3	1,7	-1,0	
Aug	93,3	93,2	92,4		0,5	-0,5	0,2	
Sep	93,4	92,7	92,7		0,1	-0,5	0,3	
Oct	92,6	93,6	93,8		-0,9	1,0	1,2	
Nov	93,9	92,8	91,6		1,4	-0,9	-2,3	
Dec	94,3	91,9	90,3		0,4	-1,0	-1,4	

Table 4 – Index of the volume of manufacturing production by division and major group (Base: 2019=100)

Manufacturing division and major group	Weight	Dec-25	Jan-26	Feb-26	Mar-26	Apr-26	May-26
Food and beverages	22,19	113,4	90,7	93,1	105,7	93,7	96,8
Meat, fish, fruit, etc.	3,72	105,5	91,4	102,0	113,7	95,1	101,9
Dairy products	1,20	97,0	94,2	87,9	96,0	85,9	82,9
Grain mill products	1,94	100,5	94,4	94,3	115,4	99,9	103,7
Other food products	7,55	76,7	71,5	75,2	81,8	81,3	88,3
Beverages	7,78	158,6	107,4	106,6	124,3	104,7	102,9
Textiles, clothing, leather and footwear	3,68	70,6	68,8	83,2	90,4	90,0	91,0
Textiles	0,85	64,2	83,1	100,7	111,3	93,8	101,4
Other textile products	0,55	76,2	72,0	90,3	99,2	99,6	92,0
Knitted, crocheted articles	0,07	50,0	45,0	61,3	65,6	58,4	78,9
Wearing apparel	1,65	72,3	62,7	76,7	80,8	86,7	86,6
Leather and leather products	0,26	53,3	71,7	71,7	73,6	88,3	89,7
Footwear	0,30	89,2	58,4	72,0	87,8	88,4	87,7
Wood and wood products, paper, publishing and printing	9,98	86,9	82,2	79,7	82,0	75,3	78,7
Sawmilling and planing of wood	0,74	78,5	73,9	103,2	108,8	94,3	94,9
Products of wood	0,85	101,2	102,7	113,2	130,2	114,5	124,8
Paper and paper products	5,27	86,6	79,9	76,4	78,0	74,2	78,4
Publishing	1,94	88,3	88,6	67,6	59,5	52,2	54,2
Printing, recorded media	1,18	81,0	72,1	75,7	85,4	77,9	76,8
Petroleum, chemical products, rubber and plastic products	23,91	79,3	76,2	75,3	79,4	75,1	79,7
Coke, petroleum products and nuclear fuel	11,12	65,8	63,8	56,6	56,7	59,5	69,8
Basic chemicals	3,60	106,4	105,4	97,7	107,3	91,0	85,8
Other chemical products	6,63	84,0	77,3	87,2	90,7	84,1	87,0
Rubber products	0,69	64,1	64,4	78,4	93,0	71,2	69,0
Plastic products	1,87	96,7	94,8	100,1	115,3	106,8	105,3
Glass and non-metallic mineral products	3,11	82,9	91,1	96,6	97,7	94,1	102,1
Glass and glass products	0,61	90,2	98,4	96,6	100,4	95,8	107,2
Non-metallic mineral products	2,50	81,1	89,3	96,6	97,0	93,7	100,9
Basic iron and steel, non-ferrous metal products, metal products and machinery	21,85	73,0	74,9	86,4	95,7	83,9	92,0
Basic iron and steel products	3,20	47,2	51,0	52,8	59,9	60,3	62,6
Non-ferrous metal products	4,16	80,3	79,8	80,2	88,3	78,7	85,8
Structural metal products	1,98	88,3	76,1	112,3	129,7	99,7	103,6
Other fabricated metal products	3,72	67,1	80,0	97,7	109,1	96,9	105,5
General purpose machinery	4,04	83,4	78,4	83,4	99,0	84,3	96,9
Special purpose machinery	4,01	69,2	73,8	92,3	91,6	79,6	95,1
Household appliances	0,74	96,5	107,8	125,2	138,3	129,7	111,0
Electrical machinery	2,15	75,9	89,3	105,9	116,8	100,1	115,0
Radio, television and communication apparatus and professional equipment	1,00	97,1	73,2	95,2	103,4	91,6	97,5
Radio, television and communication apparatus	0,19	118,7	59,8	74,4	94,6	78,7	88,7
Professional equipment	0,81	92,1	76,3	100,0	105,5	94,6	99,6
Motor vehicles, parts and accessories and other transport equipment	7,84	45,5	70,2	84,1	93,2	79,6	86,1
Motor vehicles	2,33	38,2	77,6	95,2	106,0	81,0	88,7
Bodies for motor vehicles, trailers and semi-trailers	0,65	66,8	64,8	81,0	113,9	103,8	96,7
Parts and accessories	3,95	38,3	65,3	75,7	76,2	73,5	83,9
Other transport equipment	0,91	80,3	75,9	94,0	119,8	85,7	81,5
Furniture and other manufacturing	4,29	79,2	81,4	86,1	76,9	70,6	72,7
Furniture	0,84	84,2	67,2	80,8	85,1	80,9	92,6
Other manufacturing groups	3,45	78,0	84,9	87,4	74,9	68,1	67,9
Total	100	83,5	79,9	85,1	92,1	83,2	88,3

Table 5 – Year-on-year percentage change in the volume of manufacturing production by division and major group (Base: 2019=100)

Manufacturing division and major group	Dec-25	Jan-26	Feb-26	Mar-26	Apr-26	May-26
Food and beverages	-4,9	1,6	-2,2	4,4	1,0	-6,4
Meat, fish, fruit, etc.	-13,5	-7,9	-3,8	3,9	-6,8	-6,7
Dairy products	-5,7	-1,9	-1,3	-10,1	-3,4	-5,8
Grain mill products	3,5	-1,0	-3,2	7,1	-3,1	-5,6
Other food products	-4,2	-2,9	-3,3	-2,3	2,8	-8,9
Beverages	-3,2	10,4	-0,6	11,3	4,9	-4,5
Textiles, clothing, leather and footwear	-2,5	6,8	-2,1	2,7	7,1	0,6
Textiles	6,8	34,5	5,1	14,0	9,5	-3,3
Other textile products	-3,7	8,1	-4,1	4,0	9,0	-5,0
Knitted, crocheted articles	-12,7	-12,5	-7,5	-26,4	-14,4	0,8
Wearing apparel	-7,1	2,5	-3,0	-0,2	4,6	3,0
Leather and leather products	8,3	-14,6	-9,9	-6,1	26,3	15,0
Footwear	0,1	-18,5	-8,6	-6,1	0,6	0,0
Wood and wood products, paper, publishing and printing	-5,4	-10,7	-9,8	-8,1	-10,6	-11,0
Sawmilling and planing of wood	-0,8	-12,0	5,0	25,1	5,5	-2,1
Products of wood	6,6	2,6	-1,4	5,1	16,5	15,1
Paper and paper products	-11,3	-17,2	-15,7	-14,9	-17,1	-15,1
Publishing	5,6	5,5	-2,0	-6,0	-15,7	-20,3
Printing, recorded media	-5,9	-14,7	-11,0	-12,0	-6,5	-8,9
Petroleum, chemical products, rubber and plastic products	7,7	6,4	2,9	3,0	0,9	2,7
Coke, petroleum products and nuclear fuel	2,5	22,0	10,5	-5,8	-4,8	11,7
Basic chemicals	12,5	11,8	4,5	14,1	3,4	-9,4
Other chemical products	11,1	-8,2	-2,8	4,7	6,5	-1,2
Rubber products	34,4	-25,3	-14,5	-11,5	-25,1	-5,7
Plastic products	5,1	2,3	0,7	14,2	12,3	5,9
Glass and non-metallic mineral products	-5,7	2,4	5,6	-5,0	-2,9	-7,4
Glass and glass products	-6,7	5,9	3,2	-1,1	4,8	0,9
Non-metallic mineral products	-5,5	1,4	6,2	-5,9	-4,6	-9,3
Basic iron and steel, non-ferrous metal products, metal products and machinery	-2,3	-5,9	-4,5	1,2	-6,2	-5,6
Basic iron and steel products	-28,6	-34,0	-28,0	-24,3	-21,8	-25,4
Non-ferrous metal products	0,6	-6,2	-9,8	-7,3	-13,9	-11,2
Structural metal products	12,8	-2,4	4,4	12,4	-10,7	-10,9
Other fabricated metal products	-2,9	-6,0	1,3	5,3	9,7	4,7
General purpose machinery	-12,9	-2,5	-9,4	-0,3	-9,4	-4,1
Special purpose machinery	22,3	6,8	6,1	13,9	-3,4	2,7
Household appliances	15,7	22,4	16,5	27,0	36,8	8,8
Electrical machinery	6,0	4,8	6,6	11,9	-4,2	0,4
Radio, television and communication apparatus and professional equipment	1,3	0,7	-3,4	-3,5	0,9	-4,5
Radio, television and communication apparatus	0,8	-5,1	-5,3	2,8	-0,1	-18,5
Professional equipment	1,3	1,9	-3,0	-4,6	1,1	-0,9
Motor vehicles, parts and accessories and other transport equipment	-2,4	0,6	-3,1	2,0	-11,2	-3,8
Motor vehicles	-8,0	2,4	-1,6	5,5	3,2	-1,1
Bodies for motor vehicles, trailers and semi-trailers	-5,0	2,9	-4,7	13,6	10,9	7,6
Parts and accessories	0,8	1,6	-4,9	-3,3	-24,8	-8,4
Other transport equipment	0,5	-8,8	0,0	2,6	7,1	2,5
Furniture and other manufacturing	-6,7	1,4	-5,7	0,3	-3,6	-8,9
Furniture	-4,9	-12,5	2,8	-0,6	-2,9	-6,7
Other manufacturing groups	-7,1	4,7	-7,4	0,5	-3,7	-9,7
Total	-1,4	-0,2	-2,2	1,5	-2,9	-4,3

Table 6 – Contribution of each division and major group to the year-on-year percentage change in the volume of manufacturing production (percentage points)

Manufacturing division and major group	Weight	Dec-25	Jan-26	Feb-26	Mar-26	Apr-26	May-26
Food and beverages	22,19	-1,5	0,4	-0,5	1,1	0,2	-1,6
Meat, fish, fruit, etc.	3,72	-0,7	-0,4	-0,2	0,2	-0,3	-0,3
Dairy products	1,20	-0,1	0,0	0,0	-0,1	0,0	-0,1
Grain mill products	1,94	0,1	0,0	-0,1	0,2	-0,1	-0,1
Other food products	7,55	-0,3	-0,2	-0,2	-0,2	0,2	-0,7
Beverages	7,78	-0,5	1,0	-0,1	1,1	0,4	-0,4
Textiles, clothing, leather and footwear	3,68	-0,1	0,2	-0,1	0,1	0,3	0,0
Textiles	0,85	0,0	0,2	0,0	0,1	0,1	0,0
Other textile products	0,55	0,0	0,0	0,0	0,0	0,1	0,0
Knitted, crocheted articles	0,07	0,0	0,0	0,0	0,0	0,0	0,0
Wearing apparel	1,65	-0,1	0,0	0,0	0,0	0,1	0,0
Leather and leather products	0,26	0,0	0,0	0,0	0,0	0,1	0,0
Footwear	0,30	0,0	0,0	0,0	0,0	0,0	0,0
Wood and wood products, paper, publishing and printing	9,98	-0,6	-1,2	-1,0	-0,8	-1,0	-1,0
Sawmilling and planing of wood	0,74	0,0	-0,1	0,0	0,2	0,0	0,0
Products of wood	0,85	0,1	0,0	0,0	0,1	0,2	0,2
Paper and paper products	5,27	-0,7	-1,1	-0,9	-0,8	-0,9	-0,8
Publishing	1,94	0,1	0,1	0,0	-0,1	-0,2	-0,3
Printing, recorded media	1,18	-0,1	-0,2	-0,1	-0,2	-0,1	-0,1
Petroleum, chemical products, rubber and plastic products	23,91	1,6	1,4	0,6	0,6	0,2	0,5
Coke, petroleum products and nuclear fuel	11,12	0,2	1,6	0,7	-0,4	-0,4	0,9
Basic chemicals	3,60	0,5	0,5	0,2	0,5	0,1	-0,3
Other chemical products	6,63	0,7	-0,6	-0,2	0,3	0,4	-0,1
Rubber products	0,69	0,1	-0,2	-0,1	-0,1	-0,2	0,0
Plastic products	1,87	0,1	0,0	0,0	0,3	0,3	0,1
Glass and non-metallic mineral products	3,11	-0,2	0,1	0,2	-0,2	-0,1	-0,3
Glass and glass products	0,61	0,0	0,0	0,0	0,0	0,0	0,0
Non-metallic mineral products	2,50	-0,1	0,0	0,2	-0,2	-0,1	-0,3
Basic iron and steel, non-ferrous metal products, metal products and machinery	21,85	-0,4	-1,3	-1,0	0,3	-1,4	-1,3
Basic iron and steel products	3,20	-0,7	-1,1	-0,8	-0,7	-0,6	-0,7
Non-ferrous metal products	4,16	0,0	-0,3	-0,4	-0,3	-0,6	-0,5
Structural metal products	1,98	0,2	0,0	0,1	0,3	-0,3	-0,3
Other fabricated metal products	3,72	-0,1	-0,2	0,1	0,2	0,4	0,2
General purpose machinery	4,04	-0,6	-0,1	-0,4	0,0	-0,4	-0,2
Special purpose machinery	4,01	0,6	0,2	0,2	0,5	-0,1	0,1
Household appliances	0,74	0,1	0,2	0,2	0,2	0,3	0,1
Electrical machinery	2,15	0,1	0,1	0,2	0,3	-0,1	0,0
Radio, television and communication apparatus and professional equipment	1,00	0,0	0,0	0,0	0,0	0,0	0,0
Radio, television and communication apparatus	0,19	0,0	0,0	0,0	0,0	0,0	0,0
Professional equipment	0,81	0,0	0,0	0,0	0,0	0,0	0,0
Motor vehicles, parts and accessories and other transport equipment	7,84	-0,1	0,0	-0,2	0,2	-0,9	-0,3
Motor vehicles	2,33	-0,1	0,1	0,0	0,1	0,1	0,0
Bodies for motor vehicles, trailers and semi-trailers	0,65	0,0	0,0	0,0	0,1	0,1	0,0
Parts and accessories	3,95	0,0	0,0	-0,2	-0,1	-1,1	-0,3
Other transport equipment	0,91	0,0	-0,1	0,0	0,0	0,1	0,0
Furniture and other manufacturing	4,29	-0,3	0,1	-0,3	0,0	-0,1	-0,3
Furniture	0,84	0,0	-0,1	0,0	0,0	0,0	-0,1
Other manufacturing groups	3,45	-0,2	0,2	-0,3	0,0	-0,1	-0,3
Total	100	-1,4	-0,2	-2,2	1,5	-2,9	-4,3

Table 7 – Seasonally adjusted index of the volume of manufacturing production by division and major group (Base: 2019=100)

Manufacturing division and major group	Weight	Jan-26	Feb-26	Mar-26	Apr-26	May-26	Month-on-month % change
Food and beverages	22,19	103,7	102,7	104,8	101,0	100,4	-0,6
Meat, fish, fruit, etc.	3,72	101,9	104,7	108,9	101,9	101,8	-0,1
Dairy products	1,20	94,3	96,3	94,9	91,5	90,1	-1,5
Grain mill products	1,94	103,7	101,9	110,9	103,9	103,5	-0,4
Other food products	7,55	86,2	87,2	86,7	82,9	86,5	4,3
Beverages	7,78	122,9	118,0	120,4	118,8	114,1	-4,0
Textiles, clothing, leather and footwear	3,68	91,5	87,5	90,1	93,4	90,3	-3,3
Textiles	0,85	105,1	101,8	101,9	100,2	95,5	-4,7
Other textile products	0,55	99,3	88,9	99,3	100,6	93,1	-7,5
Knitted, crocheted articles	0,07	70,8	74,3	70,4	70,1	77,1	10,0
Wearing apparel	1,65	86,6	82,0	83,9	88,3	87,3	-1,1
Leather and leather products	0,26	74,4	71,8	75,6	93,0	88,1	-5,3
Footwear	0,30	85,1	91,8	91,3	94,8	92,2	-2,7
Wood and wood products, paper, publishing and printing	9,98	89,2	86,2	84,4	85,9	85,9	0,0
Sawmilling and planing of wood	0,74	78,6	102,1	114,0	100,6	97,6	-3,0
Products of wood	0,85	121,2	120,4	129,5	129,3	131,1	1,4
Paper and paper products	5,27	85,7	80,8	75,8	82,2	84,1	2,3
Publishing	1,94	90,2	78,4	74,9	70,0	67,2	-4,0
Printing, recorded media	1,18	86,4	88,5	87,2	87,7	84,5	-3,6
Petroleum, chemical products, rubber and plastic products	23,91	80,3	79,9	79,0	79,1	82,3	4,0
Coke, petroleum products and nuclear fuel	11,12	63,1	61,2	55,0	59,6	71,8	20,5
Basic chemicals	3,60	108,9	106,0	109,9	97,7	89,4	-8,5
Other chemical products	6,63	86,2	90,3	91,4	92,5	88,7	-4,1
Rubber products	0,69	67,0	72,9	82,1	71,0	72,6	2,3
Plastic products	1,87	111,3	106,1	117,3	114,6	111,7	-2,5
Glass and non-metallic mineral products	3,11	105,6	102,3	98,8	99,8	97,1	-2,7
Glass and glass products	0,61	106,1	105,6	104,3	106,4	107,3	0,8
Non-metallic mineral products	2,50	105,5	101,5	97,5	98,3	94,6	-3,8
Basic iron and steel, non-ferrous metal products, metal products and machinery	21,85	90,7	90,4	92,6	88,3	89,7	1,6
Basic iron and steel products	3,20	51,3	55,6	56,4	58,1	59,8	2,9
Non-ferrous metal products	4,16	86,2	85,1	86,3	81,8	83,9	2,6
Structural metal products	1,98	104,7	109,4	119,5	101,6	101,5	-0,1
Other fabricated metal products	3,72	97,8	99,3	102,9	103,5	102,5	-1,0
General purpose machinery	4,04	102,4	94,1	99,2	92,6	95,8	3,5
Special purpose machinery	4,01	95,3	95,8	91,4	85,9	91,9	7,0
Household appliances	0,74	123,8	125,4	130,6	133,6	111,9	-16,2
Electrical machinery	2,15	111,6	108,4	110,9	101,8	106,5	4,6
Radio, television and communication apparatus and professional equipment	1,00	94,8	95,7	94,8	97,0	96,0	-1,0
Radio, television and communication apparatus	0,19	88,2	89,6	97,2	94,1	93,6	-0,5
Professional equipment	0,81	96,3	97,2	94,3	97,7	96,5	-1,2
Motor vehicles, parts and accessories and other transport equipment	7,84	88,2	84,6	88,8	82,9	85,4	3,0
Motor vehicles	2,33	95,2	91,6	99,6	91,0	89,9	-1,2
Bodies for motor vehicles, trailers and semi-trailers	0,65	92,8	86,4	102,9	100,5	96,1	-4,4
Parts and accessories	3,95	83,1	78,8	79,3	72,6	79,7	9,8
Other transport equipment	0,91	88,8	90,8	92,4	94,1	91,2	-3,1
Furniture and other manufacturing	4,29	94,4	85,0	87,1	80,5	79,2	-1,6
Furniture	0,84	87,4	93,4	92,1	90,9	92,6	1,9
Other manufacturing groups	3,45	96,1	83,0	85,9	78,0	75,9	-2,7
Total	100	91,9	90,2	91,2	88,8	89,8	1,1

Table 8 – Manufacturing sales at current prices (R million)

Month	2020	2021	2022	2023	2024	2025	2026
Jan	188 904	187 321	211 089	231 718	253 650	249 626	244 887
Feb	210 330	215 111	238 381	259 006	286 861	274 778	272 727
Mar	210 477	248 468	269 658	302 213	291 315	291 434	301 433
Apr	104 263	225 547	232 822	263 028	290 216	267 085	279 859
May	153 176	231 852	258 900	280 985	292 763	289 049	287 162
Jun	185 789	238 443	260 671	283 175	288 974	295 978	
Jul	200 480	206 482	255 030	277 945	297 763	296 413	
Aug	206 571	228 601	266 928	296 255	295 260	298 650	
Sep	221 995	240 283	283 884	300 624	294 593	309 667	
Oct	243 349	238 083	275 181	308 749	321 680	324 619	
Nov	247 095	266 853	297 743	326 392	318 576	321 048	
Dec	204 564	224 354	245 372	269 248	269 381	261 002	
Total	2 376 993	2 751 398	3 095 659	3 399 338	3 501 032	3 479 349	

Table 9 – Year-on-year percentage change in manufacturing sales at current prices

Month	2021	2022	2023	2024	2025	2026	2026 year-to-date
Jan	-0,8	12,7	9,8	9,5	-1,6	-1,9	-1,9
Feb	2,3	10,8	8,7	10,8	-4,2	-0,7	-1,3
Mar	18,0	8,5	12,1	-3,6	0,0	3,4	0,4
Apr	116,3	3,2	13,0	10,3	-8,0	4,8	1,5
May	51,4	11,7	8,5	4,2	-1,3	-0,7	1,0
Jun	28,3	9,3	8,6	2,0	2,4		
Jul	3,0	23,5	9,0	7,1	-0,5		
Aug	10,7	16,8	11,0	-0,3	1,1		
Sep	8,2	18,1	5,9	-2,0	5,1		
Oct	-2,2	15,6	12,2	4,2	0,9		
Nov	8,0	11,6	9,6	-2,4	0,8		
Dec	9,7	9,4	9,7	0,0	-3,1		
Total	15,8	12,5	9,8	3,0	-0,6		

Table 10 – Seasonally adjusted manufacturing sales at current prices

Month	R million				Month-on-month % change			
	2023	2024	2025	2026	2023	2024	2025	2026
Jan	271 201	295 189	290 104	287 351	0,7	-1,1	-0,7	3,2
Feb	272 525	296 820	289 192	287 285	0,5	0,6	-0,3	0,0
Mar	287 870	289 547	286 449	293 697	5,6	-2,5	-0,9	2,2
Apr	285 067	300 930	283 093	295 760	-1,0	3,9	-1,2	0,7
May	279 553	290 632	289 128	290 497	-1,9	-3,4	2,1	-1,8
Jun	274 794	288 799	292 976		-1,7	-0,6	1,3	
Jul	279 565	294 196	292 090		1,7	1,9	-0,3	
Aug	287 639	287 737	294 329		2,9	-2,2	0,8	
Sep	289 354	285 103	295 426		0,6	-0,9	0,4	
Oct	283 288	292 536	293 122		-2,1	2,6	-0,8	
Nov	291 824	284 503	291 468		3,0	-2,7	-0,6	
Dec	298 423	292 114	278 383		2,3	2,7	-4,5	

Table 11 – Manufacturing sales at current prices by division and major group (R million)

Manufacturing division and major group	Dec-25	Jan-26	Feb-26	Mar-26	Apr-26	May-26
Food and beverages	82 575	64 685	67 412	77 084	71 805	69 897
Meat, fish, fruit, etc.	22 702	18 550	19 921	22 576	20 513	20 967
Dairy products	6 317	5 811	5 713	6 468	5 782	5 582
Grain mill products	11 619	10 577	10 378	12 187	11 196	11 458
Other food products	15 669	12 788	13 428	15 948	17 844	15 757
Beverages	26 269	16 960	17 972	19 904	16 470	16 133
Textiles, clothing, leather and footwear	5 342	5 091	6 056	6 581	6 725	6 944
Textiles	524	609	733	788	749	780
Other textile products	1 561	1 592	1 966	2 153	2 171	2 200
Knitted, crocheted articles	150	130	180	188	170	222
Wearing apparel	1 978	1 759	2 099	2 210	2 306	2 344
Leather and leather products	430	530	530	558	650	726
Footwear	698	470	547	684	679	672
Wood and wood products, paper, publishing and printing	17 106	15 884	16 163	16 816	15 681	16 598
Sawmilling and planing of wood	1 019	957	1 334	1 460	1 244	1 233
Products of wood	2 015	2 181	2 474	2 640	2 412	2 563
Paper and paper products	9 788	8 712	8 637	8 955	8 435	9 134
Publishing	1 600	1 654	1 223	1 075	964	1 039
Printing, recorded media	2 684	2 379	2 496	2 687	2 626	2 629
Petroleum, chemical products, rubber and plastic products	57 598	54 050	55 050	62 562	59 358	65 657
Coke, petroleum products and nuclear fuel	20 772	19 979	18 419	20 736	20 926	26 084
Basic chemicals	10 792	9 670	9 418	11 577	11 236	11 197
Other chemical products	17 032	15 798	17 690	18 920	16 899	17 590
Rubber products	1 671	1 498	1 720	2 065	1 651	1 633
Plastic products	7 330	7 105	7 802	9 264	8 645	9 153
Glass and non-metallic mineral products	6 829	7 491	8 042	8 783	8 119	8 713
Glass and glass products	1 320	1 764	1 486	1 560	1 569	1 664
Non-metallic mineral products	5 509	5 727	6 556	7 223	6 550	7 049
Basic iron and steel, non-ferrous metal products, metal products and machinery	48 232	47 987	58 971	62 937	60 127	59 741
Basic iron and steel products	5 694	6 903	7 213	7 723	7 749	8 501
Non-ferrous metal products	18 634	17 758	22 316	22 452	23 948	19 804
Structural metal products	3 662	3 370	5 088	6 283	4 526	4 885
Other fabricated metal products	7 389	8 818	10 385	11 700	10 915	11 623
General purpose machinery	5 206	4 698	5 010	5 528	4 832	5 647
Special purpose machinery	6 512	5 322	7 761	7 866	6 879	8 055
Household appliances	1 136	1 118	1 199	1 384	1 278	1 227
Electrical machinery	5 346	5 675	6 994	8 044	6 441	7 137
Radio, television and communication apparatus and professional equipment	2 904	1 643	2 169	2 618	2 147	2 464
Radio, television and communication apparatus	1 715	688	901	1 239	890	1 155
Professional equipment	1 189	955	1 268	1 379	1 257	1 309
Motor vehicles, parts and accessories and other transport equipment	23 134	31 386	40 248	45 128	38 645	39 553
Motor vehicles	15 013	19 482	26 179	28 788	25 725	25 981
Bodies for motor vehicles, trailers and semi-trailers	909	824	1 032	1 462	1 329	1 225
Parts and accessories	4 547	8 563	9 922	10 866	8 636	9 462
Other transport equipment	2 665	2 516	3 115	4 013	2 955	2 885
Furniture and other manufacturing	11 936	10 995	11 623	10 880	10 811	10 458
Furniture	1 767	1 360	1 654	1 737	1 708	1 985
Other manufacturing groups	10 169	9 635	9 969	9 143	9 102	8 473
Total	261 002	244 887	272 727	301 433	279 859	287 162

Table 12 – Year-on-year percentage change in manufacturing sales at current prices by division and major group

Manufacturing division and major group	Dec-25	Jan-26	Feb-26	Mar-26	Apr-26	May-26
Food and beverages	-0,6	1,0	-0,4	6,5	4,2	-6,5
Meat, fish, fruit, etc.	-9,4	-1,6	0,1	7,6	-3,0	-6,4
Dairy products	2,3	-5,6	0,1	-2,6	-3,3	-1,2
Grain mill products	-2,1	-5,4	-8,7	-7,8	-10,4	-13,0
Other food products	11,2	-1,3	-2,1	7,7	26,7	-5,4
Beverages	1,7	13,8	6,0	19,3	8,5	-4,2
Textiles, clothing, leather and footwear	-2,1	4,6	-3,3	1,7	5,2	3,8
Textiles	-3,1	1,2	-10,4	-2,2	-8,2	-13,9
Other textile products	-1,7	15,9	2,3	10,4	15,5	8,9
Knitted, crocheted articles	-9,1	-9,7	-9,1	-24,2	-15,8	-0,4
Wearing apparel	-4,3	6,4	0,0	2,0	2,2	3,0
Leather and leather products	15,9	-1,9	-12,4	-2,1	22,0	27,1
Footwear	-3,3	-14,7	-12,1	-6,6	-3,6	-3,0
Wood and wood products, paper, publishing and printing	-1,1	-12,4	-7,5	-5,8	1,2	-3,1
Sawmilling and planing of wood	3,8	-2,8	16,4	34,9	8,3	3,2
Products of wood	-2,4	0,6	-0,3	-1,9	18,9	6,7
Paper and paper products	-0,7	-19,7	-13,4	-9,8	-1,8	-5,8
Publishing	5,2	12,9	4,0	-4,6	-9,9	-10,4
Printing, recorded media	-6,3	-10,5	-7,1	-11,1	-1,2	-1,6
Petroleum, chemical products, rubber and plastic products	1,7	-4,2	-3,8	2,4	6,0	6,5
Coke, petroleum products and nuclear fuel	-1,5	-3,3	-1,9	-11,7	1,6	9,3
Basic chemicals	5,7	-8,6	-12,2	16,6	14,7	7,2
Other chemical products	3,6	-3,8	-1,8	6,9	4,9	-0,2
Rubber products	15,3	-11,0	-8,4	1,8	-8,6	-7,3
Plastic products	-1,4	0,1	-0,4	16,8	12,1	14,9
Glass and non-metallic mineral products	-2,3	10,7	8,6	8,3	5,2	0,2
Glass and glass products	-14,6	30,5	0,5	-0,3	16,4	7,7
Non-metallic mineral products	1,2	5,8	10,6	10,3	2,8	-1,4
Basic iron and steel, non-ferrous metal products, metal products and machinery	-3,3	-3,5	7,5	8,7	10,6	2,5
Basic iron and steel products	-24,8	-37,7	-26,1	-20,6	-15,7	-22,9
Non-ferrous metal products	-6,5	13,5	28,9	17,7	35,5	14,3
Structural metal products	1,5	-4,3	10,1	22,4	-4,4	-3,0
Other fabricated metal products	-1,0	2,2	4,2	10,9	11,8	14,0
General purpose machinery	-8,7	5,2	-8,6	-2,7	-12,1	-3,1
Special purpose machinery	41,2	0,7	19,3	19,9	7,0	4,8
Household appliances	11,9	-0,7	0,5	16,7	17,1	4,4
Electrical machinery	10,3	10,8	17,5	26,4	2,5	2,0
Radio, television and communication apparatus and professional equipment	5,1	-4,5	-3,0	5,9	2,2	-2,8
Radio, television and communication apparatus	7,3	-10,8	-4,7	13,0	-7,2	-13,0
Professional equipment	2,0	0,5	-1,9	0,3	10,2	8,3
Motor vehicles, parts and accessories and other transport equipment	-26,0	-4,5	-10,2	-6,2	-2,0	-4,9
Motor vehicles	-34,9	-9,9	-16,0	-11,8	-2,5	-5,0
Bodies for motor vehicles, trailers and semi-trailers	3,5	17,5	-1,2	15,8	14,0	16,6
Parts and accessories	-4,4	9,1	4,0	4,6	-6,5	-10,8
Other transport equipment	3,4	-6,8	1,8	4,9	12,3	10,6
Furniture and other manufacturing	6,4	10,9	6,6	1,8	3,9	-2,6
Furniture	9,0	8,5	14,1	4,3	6,1	13,1
Other manufacturing groups	6,0	11,3	5,5	1,3	3,5	-5,7
Total	-3,1	-1,9	-0,7	3,4	4,8	-0,7

Table 13 – Contribution of each division and major group to the year-on-year percentage change in manufacturing sales at current prices (percentage points)

Manufacturing division and major group	Dec-25	Jan-26	Feb-26	Mar-26	Apr-26	May-26
Food and beverages	-0,2	0,3	-0,1	1,6	1,1	-1,7
Meat, fish, fruit, etc.	-0,9	-0,1	0,0	0,5	-0,2	-0,5
Dairy products	0,1	-0,1	0,0	-0,1	-0,1	0,0
Grain mill products	-0,1	-0,2	-0,4	-0,4	-0,5	-0,6
Other food products	0,6	-0,1	-0,1	0,4	1,4	-0,3
Beverages	0,2	0,8	0,4	1,1	0,5	-0,2
Textiles, clothing, leather and footwear	0,0	0,1	-0,1	0,0	0,1	0,1
Textiles	0,0	0,0	0,0	0,0	0,0	0,0
Other textile products	0,0	0,1	0,0	0,1	0,1	0,1
Knitted, crocheted articles	0,0	0,0	0,0	0,0	0,0	0,0
Wearing apparel	0,0	0,0	0,0	0,0	0,0	0,0
Leather and leather products	0,0	0,0	0,0	0,0	0,0	0,1
Footwear	0,0	0,0	0,0	0,0	0,0	0,0
Wood and wood products, paper, publishing and printing	-0,1	-0,9	-0,5	-0,4	0,1	-0,2
Sawmilling and planing of wood	0,0	0,0	0,1	0,1	0,0	0,0
Products of wood	0,0	0,0	0,0	0,0	0,1	0,1
Paper and paper products	0,0	-0,9	-0,5	-0,3	-0,1	-0,2
Publishing	0,0	0,1	0,0	0,0	0,0	0,0
Printing, recorded media	-0,1	-0,1	-0,1	-0,1	0,0	0,0
Petroleum, chemical products, rubber and plastic products	0,4	-0,9	-0,8	0,5	1,3	1,4
Coke, petroleum products and nuclear fuel	-0,1	-0,3	-0,1	-0,9	0,1	0,8
Basic chemicals	0,2	-0,4	-0,5	0,6	0,5	0,3
Other chemical products	0,2	-0,3	-0,1	0,4	0,3	0,0
Rubber products	0,1	-0,1	-0,1	0,0	-0,1	0,0
Plastic products	0,0	0,0	0,0	0,5	0,3	0,4
Glass and non-metallic mineral products	-0,1	0,3	0,2	0,2	0,2	0,0
Glass and glass products	-0,1	0,2	0,0	0,0	0,1	0,0
Non-metallic mineral products	0,0	0,1	0,2	0,2	0,1	0,0
Basic iron and steel, non-ferrous metal products, metal products and machinery	-0,6	-0,7	1,5	1,7	2,2	0,5
Basic iron and steel products	-0,7	-1,7	-0,9	-0,7	-0,5	-0,9
Non-ferrous metal products	-0,5	0,8	1,8	1,2	2,3	0,9
Structural metal products	0,0	-0,1	0,2	0,4	-0,1	-0,1
Other fabricated metal products	0,0	0,1	0,2	0,4	0,4	0,5
General purpose machinery	-0,2	0,1	-0,2	-0,1	-0,2	-0,1
Special purpose machinery	0,7	0,0	0,5	0,4	0,2	0,1
Household appliances	0,0	0,0	0,0	0,1	0,1	0,0
Electrical machinery	0,2	0,2	0,4	0,6	0,1	0,0
Radio, television and communication apparatus and professional equipment	0,1	0,0	0,0	0,1	0,0	0,0
Radio, television and communication apparatus	0,0	0,0	0,0	0,0	0,0	-0,1
Professional equipment	0,0	0,0	0,0	0,0	0,0	0,0
Motor vehicles, parts and accessories and other transport equipment	-3,0	-0,6	-1,7	-1,0	-0,3	-0,7
Motor vehicles	-3,0	-0,9	-1,8	-1,3	-0,2	-0,5
Bodies for motor vehicles, trailers and semi-trailers	0,0	0,0	0,0	0,1	0,1	0,1
Parts and accessories	-0,1	0,3	0,1	0,2	-0,2	-0,4
Other transport equipment	0,0	-0,1	0,0	0,1	0,1	0,1
Furniture and other manufacturing	0,3	0,4	0,3	0,1	0,2	-0,1
Furniture	0,1	0,0	0,1	0,0	0,0	0,1
Other manufacturing groups	0,2	0,4	0,2	0,0	0,1	-0,2
Total	-3,1	-1,9	-0,7	3,4	4,8	-0,7

Table 14 – Seasonally adjusted manufacturing sales at current prices by division and major group (R million)

Manufacturing division and major group	Jan-26	Feb-26	Mar-26	Apr-26	May-26	Month-on-month % change
Food and beverages	74 032	72 895	76 373	75 674	72 885	-3,7
Meat, fish, fruit, etc.	21 519	21 736	22 394	21 885	21 362	-2,4
Dairy products	5 956	6 175	6 137	5 980	6 021	0,7
Grain mill products	11 681	11 439	11 601	11 406	11 357	-0,4
Other food products	15 071	14 588	16 709	17 685	15 920	-10,0
Beverages	19 805	18 957	19 531	18 719	18 225	-2,6
Textiles, clothing, leather and footwear	6 836	6 415	6 730	6 920	6 879	-0,6
Textiles	766	752	759	766	735	-4,0
Other textile products	2 143	1 916	2 137	2 217	2 155	-2,8
Knitted, crocheted articles	209	218	198	201	212	5,5
Wearing apparel	2 453	2 269	2 329	2 336	2 355	0,8
Leather and leather products	571	557	590	667	700	4,9
Footwear	694	702	719	734	722	-1,6
Wood and wood products, paper, publishing and printing	17 784	17 381	17 375	18 049	17 749	-1,7
Sawmilling and planing of wood	1 128	1 362	1 483	1 308	1 263	-3,4
Products of wood	2 600	2 623	2 622	2 628	2 586	-1,6
Paper and paper products	9 558	9 097	9 051	9 920	9 754	-1,7
Publishing	1 596	1 425	1 373	1 324	1 287	-2,8
Printing, recorded media	2 902	2 874	2 846	2 869	2 859	-0,3
Petroleum, chemical products, rubber and plastic products	60 762	59 617	62 952	63 381	65 566	3,4
Coke, petroleum products and nuclear fuel	21 676	20 766	20 730	21 860	24 308	11,2
Basic chemicals	10 726	9 976	11 929	11 862	11 763	-0,8
Other chemical products	17 898	18 830	18 881	18 733	18 274	-2,5
Rubber products	1 745	1 721	1 947	1 692	1 697	0,3
Plastic products	8 717	8 324	9 465	9 233	9 524	3,2
Glass and non-metallic mineral products	9 086	8 703	8 764	8 787	8 712	-0,9
Glass and glass products	2 072	1 611	1 645	1 781	1 769	-0,7
Non-metallic mineral products	7 014	7 093	7 120	7 005	6 943	-0,9
Basic iron and steel, non-ferrous metal products, metal products and machinery	58 239	61 824	59 740	61 200	57 314	-6,3
Basic iron and steel products	7 581	7 752	7 351	8 013	7 665	-4,3
Non-ferrous metal products	19 973	23 103	20 803	22 791	18 527	-18,7
Structural metal products	4 565	4 944	5 729	4 654	4 727	1,6
Other fabricated metal products	10 945	10 802	11 197	11 380	11 646	2,3
General purpose machinery	6 212	5 564	5 608	5 315	5 590	5,2
Special purpose machinery	7 689	8 402	7 722	7 696	7 901	2,7
Household appliances	1 273	1 257	1 330	1 351	1 258	-6,9
Electrical machinery	7 173	7 236	7 578	6 689	6 774	1,3
Radio, television and communication apparatus and professional equipment	2 297	2 388	2 498	2 427	2 425	-0,1
Radio, television and communication apparatus	1 085	1 124	1 272	1 133	1 156	2,0
Professional equipment	1 212	1 264	1 226	1 294	1 269	-1,9
Motor vehicles, parts and accessories and other transport equipment	37 919	39 108	40 453	41 494	41 285	-0,5
Motor vehicles	24 206	25 579	25 689	27 641	27 571	-0,3
Bodies for motor vehicles, trailers and semi-trailers	1 234	1 124	1 369	1 288	1 254	-2,6
Parts and accessories	9 505	9 372	10 292	9 343	9 276	-0,7
Other transport equipment	2 975	3 033	3 104	3 222	3 184	-1,2
Furniture and other manufacturing	13 224	11 718	11 235	11 139	10 908	-2,1
Furniture	1 844	1 900	1 859	1 855	1 985	7,0
Other manufacturing groups	11 381	9 818	9 376	9 284	8 924	-3,9
Total	287 351	287 285	293 697	295 760	290 497	-1,8

Explanatory notes

- Introduction**
- 1 Statistics South Africa (Stats SA) conducts a monthly survey of the manufacturing industry, covering manufacturing enterprises. This statistical release contains the results of a sample drawn from the statistical business register (SBR), with enhanced coverage of South African businesses (see point 3). The release contains monthly indices of the volume of manufacturing production and monthly value of sales of manufactured products by division and major group.
 - 2 In accordance with international practice, the indices are usually re-based every five years to a new base year. The current base period of the index is 2019. Both estimated and seasonally adjusted figures are presented.
 - 3 Stats SA is continuously updating its SBR, based on units registered for value-added tax (VAT) and income tax (IT) obtained from the South African Revenue Service (SARS).
- Purpose of the survey**
- 4 The results of the monthly manufacturing production and sales survey are used to calculate the volume of manufacturing production indices in order to estimate the gross domestic product (GDP) and its components, which in turn are used to develop and monitor government policy. These indices provide an indicator of the real level of manufacturing activity in the economy.
- Special Data Dissemination Standard of the IMF**
- 5 The data in this statistical release adhere to the Special Data Dissemination Standard (SDDS) of the International Monetary Fund (IMF), which sets out standards on coverage, periodicity and timeliness of data, access by the public, integrity, and quality of the disseminated data.
- Scope of the survey**
- 6 This survey covers manufacturing enterprises, i.e. those conducting activities in:
 - the manufacturing, processing, making or packing of products;
 - the slaughtering of animals, including poultry; and
 - installation, assembly, completion, repair and related work.
- Classification**
- 7 The 1993 edition of the *Standard Industrial Classification of All Economic Activities* (SIC), Fifth Edition, Report No. 09-90-02, was used to classify the statistical units in the survey. The SIC is based on the 1990 *International Standard Industrial Classification of All Economic Activities* (ISIC) with suitable adaptations for local conditions. Each enterprise is classified to an industry which reflects its predominant activity. Statistics in this publication are presented at SIC division (two-digit) and major group (three-digit) level.
- Collection rate**
- 8 The preliminary collection rate for the survey on manufacturing production and sales was 73,2% for May 2026. The revised collection rate for April 2026 was 76,5%.
- Statistical unit**
- 9 The statistical unit for which information is compiled and published is an enterprise, defined as a legal unit or a combination of legal units that includes and directly controls all functions necessary to carry out its production activities. The statistical units are derived from and linked to the South African Revenue Service (SARS) administrative data.

Revised figures

10 Revised figures are mainly due to late submission of data to Stats SA, or respondents reporting revisions or corrections to their figures. The reasons for routine revisions are outlined in the following schedule. Any unscheduled revisions will be promptly indicated in relevant tables to maintain transparency and accuracy. It is important to note that seasonally adjusted figures are revised monthly.

Statistical release	Reason for revision	Period subject to revision
May-26	Additional information from respondents	Feb-26 - Apr-26
Jun-26	Additional information from respondents	Mar-26 - May-26
Jul-26	Additional information from respondents	Apr-26 - Jun-26
Aug-26	Additional information from respondents	May-26 - Jul-26
Sep-26	Additional information from respondents	Jun-26 - Aug-26
Oct-26	Additional information from respondents	Jul-26 - Sep-26
Nov-26	Additional information from respondents	Aug-26 - Oct-26
Dec-26	Additional information from respondents	Sep-26 - Nov-26
Jan-27	Additional information from respondents New weights for manufacturing production New base year for manufacturing production	Jan-98 - Dec-26
Feb-27	Additional information from respondents	Nov-26 - Jan-27
Mar-27	Additional information from respondents	Dec-26 - Feb-27
Apr-27	Additional information from respondents	Jan-27 - Mar-27
New base year in 2026/27 - periodic, approximately four- to five-year intervals		

Related publications

11 Users may also wish to refer to *Stats in Brief* available from Stats SA.

Rounding-off of figures

12 Where necessary, the figures in the tables have been rounded off to the nearest digit shown. There may, therefore, be slight discrepancies between the sums of the constituent items and the totals shown.

Historical data

13 Historical manufacturing data are available on the Stats SA webpage. Click on the following link ([Time series data](#)) to access the data electronically.

Past publications

14 Past manufacturing releases are available on the Stats SA webpage. Click on the following link ([Past publications](#)) to access the releases electronically.

Technical notes

Survey methodology and design

1 The survey is conducted monthly. Questionnaires are sent to a sample of 3 011 enterprises from a population of 27 305 manufacturing enterprises. Completed questionnaires are required to be returned to Stats SA within 10 days after the end of the reference month. Email and telephone reminders are used to follow up on non-respondents.

2 A stratified random sample was drawn at the Standard Industrial Classification (SIC) three-digit level in April 2025 from Stats SA’s statistical business register (SBR). Strata were formed using a combination of the SIC and the measure of size classes for enterprises (see point 3 on the following page).

The Neyman optimal allocation formula used to allocate samples to each stratum is given by a formula below:

$$n_h = \frac{N_h S_h}{\sum N_h S_h}$$

N_h and S_h are the stratum population size and the stratum variance respectively.

- Class limits** **3** Each manufacturing major group is divided into four size groups. All large enterprises (size group one) are completely enumerated. Simple random sampling is applied to medium (size group two) and to small (size groups three and four) enterprises. The total value of sales of manufactured products of large enterprises (size group one) in a major group is added to the weighted totals of size groups two, three and four of that major group to reflect the total value of sales of the major group.

Measure of size classes (Rand)

Enterprise size	Size group	Lower limit	Upper limit
Very small	4	3 984 745	27 500 000
Small	3	27 500 001	71 500 000
Medium	2	71 500 001	280 500 000
Large	1	280 500 001	

- Sample weighting** **4** For those strata not completely enumerated, the weights to produce estimates are the inverse ratio of the sampling fraction, modified to take account of non-response in the survey. Stratum estimates are calculated and then aggregated with the completely enumerated stratum to form major group and division estimates. These procedures are consistent with international best practice.

- Index of the volume of manufacturing production** **5** The index of the volume of manufacturing production, also known as a production index, is a statistical measure of the change in the volume of production. The production index of a major group is the ratio between the volume of production of a major group in a given period and the volume of production of the same major group in the base period. The current base period is 2019. The production in the base period is set at 100.

- Calculation of production index** **6** The calculation of the monthly production indices is based on the value of sales of products and articles manufactured and change in monthly value of stocks of manufactured products, after the effect of price changes has been eliminated through deflation using appropriate indices of the producer price index (PPI). For 38 of the 44 major groups in manufacturing, the value of production is calculated from the value of sales and stocks of manufactured products obtained from the monthly survey of manufacturing enterprises.

- 7** More direct indicators are used for the value of production of the following major groups:
- tobacco;
 - coke and refined petroleum products;
 - basic iron and steel products;
 - basic precious and non-ferrous metal products;
 - motor vehicles; and
 - parts and accessories for motor vehicles.

The volume indices for these major groups are calculated on the basis of quantities. This method is used by the national statistical agencies of many other countries for petroleum products as the results are considered more satisfactory (mainly because these commodities are relatively homogeneous).

Index weighting

- 8** For indices, a weight is calculated for every major group according to the value added of the major group (i.e. output of a major group minus intermediate consumption) relative to the total value added of the manufacturing industry as a whole, based on the results of the most recent census of manufacturing, large sample survey (LSS) of the manufacturing industry or national accounts (NA) value added data. The production indices of all divisions are multiplied by the applicable weights and aggregated to produce the index for the total volume of manufacturing production. Weights between census/LSS/NA years are fixed. The table below reflects the period and the census/LSS/NA which were used as base year for the given period.

Period	Source
1998 to 2000	1996 Census of manufacturing
2001 to 2004	2001 LSS
2005 to 2009	2005 LSS
2010 to 2026	National accounts

- 9** The weights reflect the importance of the major group/division to the total manufacturing industry. The weights change over time due to changes in the relative performance of industries, due to factors such as quality changes, changes in relative prices, and changes in customer preferences. New weights are calculated and implemented annually.

Table E – Weights by division and major group

Manufacturing division and major group	Weights used for manufacturing indices by period			
	2019 (based on value added for 2017 – 2019)	2020 (based on value added for 2018 – 2020)	2021 (based on value added for 2019 – 2021)	2022 – 2026 (based on value added for 2022)
Food and beverages	20,75	21,44	22,07	22,19
Meat, fish, fruit, etc.	3,27	3,42	3,53	3,72
Dairy products	1,39	1,47	1,48	1,20
Grain mill products	1,68	1,85	2,01	1,94
Other food products	7,75	7,81	7,61	7,55
Beverages	6,66	6,89	7,44	7,78
Textiles, clothing, leather and footwear	4,26	4,07	3,89	3,68
Textiles	1,08	1,04	0,96	0,85
Other textile products	0,61	0,58	0,55	0,55
Knitted, crocheted articles	0,06	0,06	0,06	0,07
Wearing apparel	1,98	1,88	1,83	1,65
Leather and leather products	0,27	0,26	0,24	0,26
Footwear	0,25	0,25	0,25	0,30
Wood and wood products, paper, publishing and printing	10,63	10,48	10,29	9,98
Sawmilling and planing of wood	0,87	0,86	0,83	0,74
Products of wood	0,88	0,90	0,93	0,85
Paper and paper products	5,34	5,26	5,18	5,27
Publishing	2,18	2,10	2,02	1,94
Printing, recorded media	1,35	1,36	1,33	1,18
Petroleum, chemical products, rubber and plastic products	24,95	24,86	24,38	23,91
Coke, petroleum products and nuclear fuel	11,85	11,92	11,63	11,12
Basic chemicals	3,50	3,39	3,35	3,60
Other chemical products	6,64	6,82	6,81	6,63
Rubber products	0,76	0,68	0,65	0,69
Plastic products	2,20	2,05	1,94	1,87
Glass and non-metallic mineral products	3,24	3,10	3,06	3,11
Glass and glass products	0,49	0,48	0,50	0,61
Non-metallic mineral products	2,75	2,62	2,56	2,50
Basic iron and steel, non-ferrous metal products, metal products and machinery	19,73	19,96	20,86	21,85
Basic iron and steel products	2,92	2,92	3,18	3,20
Non-ferrous metal products (including precious metals)	3,32	3,54	3,98	4,16
Structural metal products	1,99	2,01	2,01	1,98
Other fabricated metal products	3,53	3,65	3,74	3,72
General purpose machinery	3,42	3,45	3,52	4,04
Special purpose machinery	3,85	3,73	3,77	4,01
Household appliances	0,70	0,66	0,66	0,74
Electrical machinery	2,21	2,14	2,09	2,15
Radio, television and communication apparatus and professional equipment	1,07	1,06	1,06	1,00
Radio, television and communication apparatus	0,04	0,08	0,16	0,19
Professional equipment	1,03	0,98	0,90	0,81
Motor vehicles, parts and accessories and other transport equipment	8,89	8,72	8,21	7,84
Motor vehicles	2,78	2,62	2,39	2,33
Bodies for motor vehicles, trailers and semi-trailers	0,73	0,75	0,72	0,65
Parts and accessories	3,97	4,03	3,96	3,95
Other transport equipment	1,40	1,32	1,14	0,91
Furniture and other manufacturing	4,27	4,17	4,09	4,29
Furniture	0,78	0,69	0,70	0,84
Other manufacturing groups	3,49	3,48	3,39	3,45
Total	100	100	100	100

Seasonal adjustment 10 Seasonally adjusted estimates are generated each month, using the X-12 Seasonal Adjustment Program developed by the United States Census Bureau. Seasonal adjustment is a means of removing the estimated effects of normal seasonal variation from the series so that the effects of other influences on the series can be more clearly recognised. Seasonal adjustment does not aim to remove irregular or non-seasonal influences, which may be present in any particular month. Influences that are volatile or unsystematic can still make it difficult to interpret the movement of the series even after adjustment for seasonal variations. This means the month-to-month movements of seasonally adjusted estimates may not be reliable indicators of trend behaviour. The X-12-ARIMA procedure for manufacturing production and sales is described in more detail on the Stats SA website:
[Click to download Manufacturing seasonal adjustment February 2022.](#)

Trend cycle 11 The trend is the long-term pattern or movement of a time series. The X-12 Seasonal Adjustment Programme is used for smoothing seasonally adjusted estimates to estimates of the underlying trend.

Reliability of estimates 12 Data presented in this publication are based on information obtained from a sample and are, therefore, subject to sampling variability; that is, they may differ from the figures that would have been produced if the data had been obtained from all enterprises in the manufacturing industry in South Africa. Estimates are subject to sampling and non-sampling errors.

13 Inaccuracies may occur because of imperfections in reporting by enterprises and errors made in the collection and processing of the data. Inaccuracies of this kind are referred to as non-sampling errors. Every effort is made to minimise non-sampling errors by careful design of questionnaires, testing them in pilot studies, editing reported data and implementing efficient operating procedures. Fluctuations may occur in consecutive months as a result of seasonal and economic factors.

Relative standard error 14 One measure of the likely difference is given by the standard error (SE), which indicates the extent to which an estimate might have varied by chance because only a sample of enterprises was used. The relative standard error (RSE) provides an immediate indication of the percentage errors likely to have occurred due to sampling, and thus avoids the need to refer to the size of the estimate.

Estimates of total industry sales within 95% confidence limits – May 2026

	Lower limit (R million)	Estimate (R million)	Upper limit (R million)	Relative standard error (RSE) %
Total sales	283 344	287 162	290 981	0,7

Month-on-month percentage change 15 The month-on-month percentage change in a variable for any given month is the change between that month and the previous month, expressed as a percentage of the latter.

Year-on-year (annual) percentage change 16 The year-on-year percentage change in a variable for any given period is the change between that period and the corresponding period of the previous year, expressed as a percentage of the latter.

Index contribution (percentage points) 17 The contribution (percentage points) of a major group or division to the total manufacturing production percentage change for a given period is calculated by multiplying the difference in the index of each major group or division by the weight of the major group or division and then dividing by the previous period total manufacturing index.

Sales contribution (percentage points) 18 The contribution (percentage points) of a division or major group to the percentage change in total manufacturing sales for a given period is calculated by multiplying the percentage change of each major group or division with its percentage contribution to the total sales of the previous period, divided by 100.

Glossary

Enterprise	The enterprise is a legal entity or a combination of legal units that includes and directly controls all functions necessary to carry out its production activities.	
Industry	An industry is made up of enterprises engaged in the same or similar kinds of economic activity. Industries are defined in the <i>System of National Accounts (SNA)</i> in the same way as in the <i>Standard Industrial Classification of All Economic Activities (SIC)</i> , Fifth Edition, Report No. 09-90-02 of January 1993.	
Sales	Sales are the total value of sales and transfers-out of all own manufactured products/articles and the amounts received for installation, erection or assembly or other services rendered.	
Symbols and abbreviations	GDP	Gross domestic product
	IMF	International Monetary Fund
	ISIC	International Standard Industrial Classification of All Economic Activities
	LSS	Large sample survey
	NA	National accounts
	PPI	Producer price index
	SARS	South African Revenue Service
	SBR	Statistical business register
	SDDS	Special Data Dissemination Standard
	SIC	Standard Industrial Classification of All Economic Activities
	Stats SA	Statistics South Africa
	VAT	Value-added tax
	*	Revised figures

Technical enquiries

Nicolai Claassen

Telephone number: (012) 310 8007 / 072 310 5351
Email: nicolaic@statssa.gov.za

General information

Stats SA publishes approximately 300 different statistical releases each year. It is not economically viable to produce them in more than one of South Africa's 12 official languages. Since the releases are used extensively locally and by international economic and social-scientific communities, Stats SA releases are published in English.

Stats SA has copyright on this publication. Users may apply the information as they wish, provided that they acknowledge Stats SA as the source of the basic data wherever they process, apply, utilise, publish or distribute the data; and also that they specify that the relevant application and analysis (where applicable) result from their own processing of the data.

Advance release calendar

An advance release calendar is disseminated on www.statssa.gov.za.

Stats SA products

A complete set of Stats SA publications is available at the Stats SA Library and the following libraries:

National Library of South Africa, Pretoria Division
National Library of South Africa, Cape Town Division
Natal Society Library, Pietermaritzburg
Library of Parliament, Cape Town
Bloemfontein Public Library
Johannesburg Public Library
Eastern Cape Library Services, Qonce
Central Regional Library, Polokwane
Central Reference Library, Mbombela
Central Reference Collection, Kimberley
Central Reference Library, Mmabatho

Stats SA also provides a subscription service.

Electronic services

A large range of data is available via online services. For more details about our electronic data services, contact Stats SA's user information service at (012) 310 8600.

You can visit us on the internet at: www.statssa.gov.za.

General enquiries

User information services	Telephone number: (012) 310 8600 Email address: info@statssa.gov.za
Orders/subscription services	Telephone number: (012) 310 8619 Email address: millies@statssa.gov.za
Postal address	Private Bag X44, Pretoria, 0001

Produced by Stats SA