



**stats sa**

Department:  
Statistics South Africa  
**REPUBLIC OF SOUTH AFRICA**

Private Bag X44, Pretoria, 0001, South Africa, ISibalo House, Koch Street, Salvokop, Pretoria, 0002  
www.statssa.gov.za, info@statssa.gov.za, Tel +27 12 310 8911

## **STATISTICAL RELEASE**

### **P3041.2**

# **Manufacturing: Production and sales (Preliminary)**

**March 2026**

**Embargoed until:  
12 May 2026  
13:00**

**ENQUIRIES:**  
Nicolai Claassen  
Tel: 072 310 5351

**FORTHCOMING ISSUE:**  
April 2026

**EXPECTED RELEASE DATE:**  
11 June 2026



## Contents

<b>Production: results for March 2026</b> .....	<b>2</b>
Table A – Key growth rates in the volume of manufacturing production .....	2
Table B – Seasonally adjusted manufacturing production for the latest three months by division and major group (Base: 2019=100) .....	3
Figure 1 – Volume of manufacturing production (Base: 2019=100).....	4
Figure 2 – Volume of manufacturing production (Base: 2019=100): year-on-year percentage change .....	4
<b>Sales: results for March 2026</b> .....	<b>5</b>
Table C – Key growth rates in manufacturing sales at current prices .....	5
Table D – Seasonally adjusted manufacturing sales at current prices for the latest three months by division .....	5
<b>Tables</b> .....	<b>6</b>
Table 1 – Index of the volume of manufacturing production (Base: 2019=100).....	6
Table 2 – Year-on-year percentage change in the volume of manufacturing production .....	6
Table 3 – Seasonally adjusted volume of manufacturing production .....	6
Table 4 – Index of the volume of manufacturing production by division and major group (Base: 2019=100) .....	7
Table 5 – Year-on-year percentage change in the volume of manufacturing production by division and major group (Base: 2019=100).....	8
Table 6 – Contribution of each division and major group to the year-on-year percentage change in the volume of manufacturing production (percentage points) .....	9
Table 7 – Seasonally adjusted index of the volume of manufacturing production by division and major group (Base: 2019=100).....	10
Table 8 – Manufacturing sales at current prices (R million) .....	11
Table 9 – Year-on-year percentage change in manufacturing sales at current prices.....	11
Table 10 – Seasonally adjusted manufacturing sales at current prices .....	11
Table 11 – Manufacturing sales at current prices by division and major group (R million) .....	12
Table 12 – Year-on-year percentage change in manufacturing sales at current prices by division and major group.....	13
Table 13 – Contribution of each division and major group to the year-on-year percentage change in manufacturing sales at current prices (percentage points) .....	14
Table 14 – Seasonally adjusted manufacturing sales at current prices by division and major group (R million) .....	15
<b>Explanatory notes</b> .....	<b>16</b>
<b>Technical notes</b> .....	<b>17</b>
Table E – Weights by division and major group .....	20
<b>Glossary</b> .....	<b>22</b>
<b>Technical enquiries</b> .....	<b>22</b>
<b>General information</b> .....	<b>23</b>

## Production: results for March 2026

**Table A – Key growth rates in the volume of manufacturing production**

	Oct-25	Nov-25	Dec-25	Jan-26	Feb-26	Mar-26
Year-on-year % change, unadjusted	0,7	-2,1	-1,4	-0,2	-2,3	0,9
Month-on-month % change, seasonally adjusted	1,2	-2,3	-1,2	1,7	-1,8	0,8
3-month % change, seasonally adjusted <sup>1</sup>	0,2	0,1	-0,5	-1,7	-1,9	-1,0

<sup>1</sup> Percentage change between the previous 3 months and the 3 months ending in the month indicated.

Manufacturing production increased by 0,9% in March 2026 compared with March 2025. The largest positive contributions were made by the following divisions:

- food and beverages (3,5% and contributing 0,9 of a percentage point);
- petroleum, chemical products, rubber and plastic products (1,8% and contributing 0,4 of a percentage point); and
- electrical machinery (11,9% and contributing 0,3 of a percentage point).

The largest negative contributor was the wood and wood products, paper, publishing and printing division (-8,6% and contributing -0,8 of a percentage point) – see Table 5 and Table 6.

Seasonally adjusted manufacturing production increased by 0,8% in March 2026 compared with February 2026. This followed month-on-month changes of -1,8% in February 2026 and 1,7% in January 2026 – see Table A.

Seasonally adjusted manufacturing production decreased by 1,0% in the first quarter of 2026 compared with the fourth quarter of 2025. Five of the ten manufacturing divisions reported negative growth rates over this period. The following divisions reported the largest negative contributions:

- petroleum, chemical products, rubber and plastic products (-3,4% and contributing -0,7 of a percentage point);
- basic iron and steel, non-ferrous metal products, metal products and machinery (-1,4% and contributing -0,3 of a percentage point); and
- wood and wood products, paper, publishing and printing (-2,4% and contributing -0,2 of a percentage point) – see Table B.

**Table B – Seasonally adjusted manufacturing production for the latest three months by division and major group (Base: 2019=100)**

Manufacturing division and major group	Weight	Oct – Dec 2025	Jan – Mar 2026	% change between Oct – Dec 2025 and Jan – Mar 2026	Contribution (% points) to the total % change
<b>Food and beverages</b>	<b>22,19</b>	<b>104,2</b>	<b>103,7</b>	<b>-0,5</b>	<b>-0,1</b>
Meat, fish, fruit, etc.	3,72	103,0	104,1	1,1	0,0
Dairy products	1,20	93,8	99,7	6,3	0,1
Grain mill products	1,94	105,8	105,6	-0,2	0,0
Other food products	7,55	86,8	87,3	0,6	0,0
Beverages	7,78	122,9	119,7	-2,6	-0,3
<b>Textiles, clothing, leather and footwear</b>	<b>3,68</b>	<b>89,0</b>	<b>89,5</b>	<b>0,6</b>	<b>0,0</b>
Textiles	0,85	100,0	103,5	3,5	0,0
Other textile products	0,55	95,6	95,9	0,3	0,0
Knitted, crocheted articles	0,07	77,8	73,0	-6,2	0,0
Wearing apparel	1,65	83,1	83,5	0,5	0,0
Leather and leather products	0,26	75,4	72,2	-4,2	0,0
Footwear	0,30	92,7	89,3	-3,7	0,0
<b>Wood and wood products, paper, publishing and printing</b>	<b>9,98</b>	<b>88,7</b>	<b>86,6</b>	<b>-2,4</b>	<b>-0,2</b>
Sawmilling and planing of wood	0,74	100,9	98,7	-2,2	0,0
Products of wood	0,85	119,7	121,7	1,7	0,0
Paper and paper products	5,27	83,4	80,4	-3,6	-0,2
Publishing	1,94	85,3	82,7	-3,0	-0,1
Printing, recorded media	1,18	87,6	87,5	-0,1	0,0
<b>Petroleum, chemical products, rubber and plastic products</b>	<b>23,91</b>	<b>82,2</b>	<b>79,4</b>	<b>-3,4</b>	<b>-0,7</b>
Coke, petroleum products and nuclear fuel	11,12	59,7	59,3	-0,7	0,0
Basic chemicals	3,60	114,0	109,2	-4,2	-0,2
Other chemical products	6,63	93,5	88,3	-5,6	-0,4
Rubber products	0,69	90,0	73,9	-17,9	-0,1
Plastic products	1,87	111,7	111,2	-0,4	0,0
<b>Glass and non-metallic mineral products</b>	<b>3,11</b>	<b>98,0</b>	<b>102,5</b>	<b>4,6</b>	<b>0,2</b>
Glass and glass products	0,61	100,9	105,0	4,1	0,0
Non-metallic mineral products	2,50	97,2	101,9	4,8	0,1
<b>Basic iron and steel, non-ferrous metal products, metal products and machinery</b>	<b>21,85</b>	<b>92,7</b>	<b>91,4</b>	<b>-1,4</b>	<b>-0,3</b>
Basic iron and steel products	3,20	58,0	54,5	-6,0	-0,1
Non-ferrous metal products	4,16	86,5	86,3	-0,2	0,0
Structural metal products	1,98	108,5	110,4	1,8	0,0
Other fabricated metal products	3,72	100,0	99,7	-0,3	0,0
General purpose machinery	4,04	104,8	98,9	-5,6	-0,3
Special purpose machinery	4,01	94,4	94,9	0,5	0,0
Household appliances	0,74	123,7	126,4	2,2	0,0
<b>Electrical machinery</b>	<b>2,15</b>	<b>109,6</b>	<b>110,0</b>	<b>0,4</b>	<b>0,0</b>
<b>Radio, television and communication apparatus and professional equipment</b>	<b>1,00</b>	<b>96,0</b>	<b>95,4</b>	<b>-0,6</b>	<b>0,0</b>
Radio, television and communication apparatus	0,19	93,9	90,7	-3,4	0,0
Professional equipment	0,81	96,5	96,5	0,0	0,0
<b>Motor vehicles, parts and accessories and other transport equipment</b>	<b>7,84</b>	<b>85,3</b>	<b>87,8</b>	<b>2,9</b>	<b>0,2</b>
Motor vehicles	2,33	89,0	96,3	8,2	0,2
Bodies for motor vehicles, trailers and semi-trailers	0,65	92,8	93,8	1,1	0,0
Parts and accessories	3,95	80,8	81,1	0,4	0,0
Other transport equipment	0,91	90,4	90,4	0,0	0,0
<b>Furniture and other manufacturing</b>	<b>4,29</b>	<b>87,8</b>	<b>88,9</b>	<b>1,3</b>	<b>0,1</b>
Furniture	0,84	91,8	90,7	-1,2	0,0
Other manufacturing groups	3,45	86,8	88,5	2,0	0,1
<b>Total</b>	<b>100</b>	<b>92,0</b>	<b>91,1</b>	<b>-1,0</b>	<b>-1,0</b>

Figure 1 – Volume of manufacturing production (Base: 2019=100)

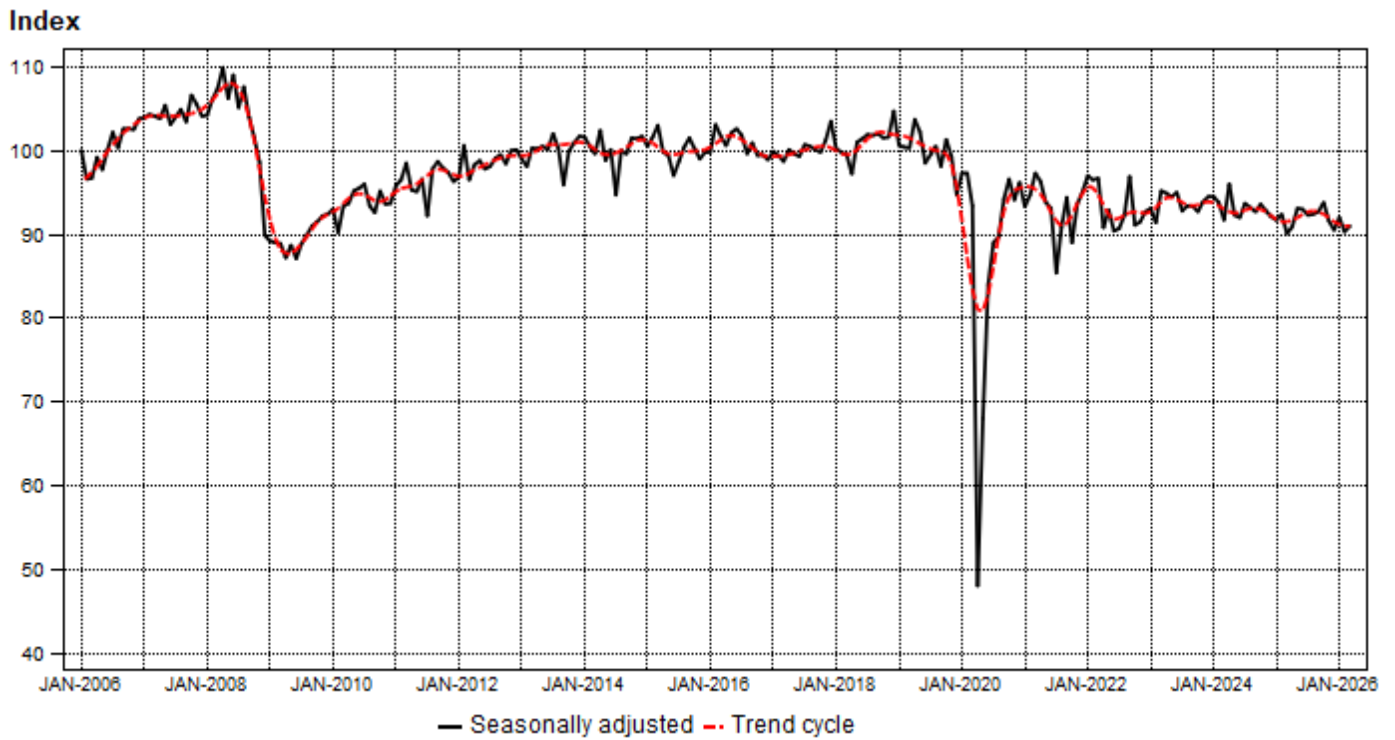
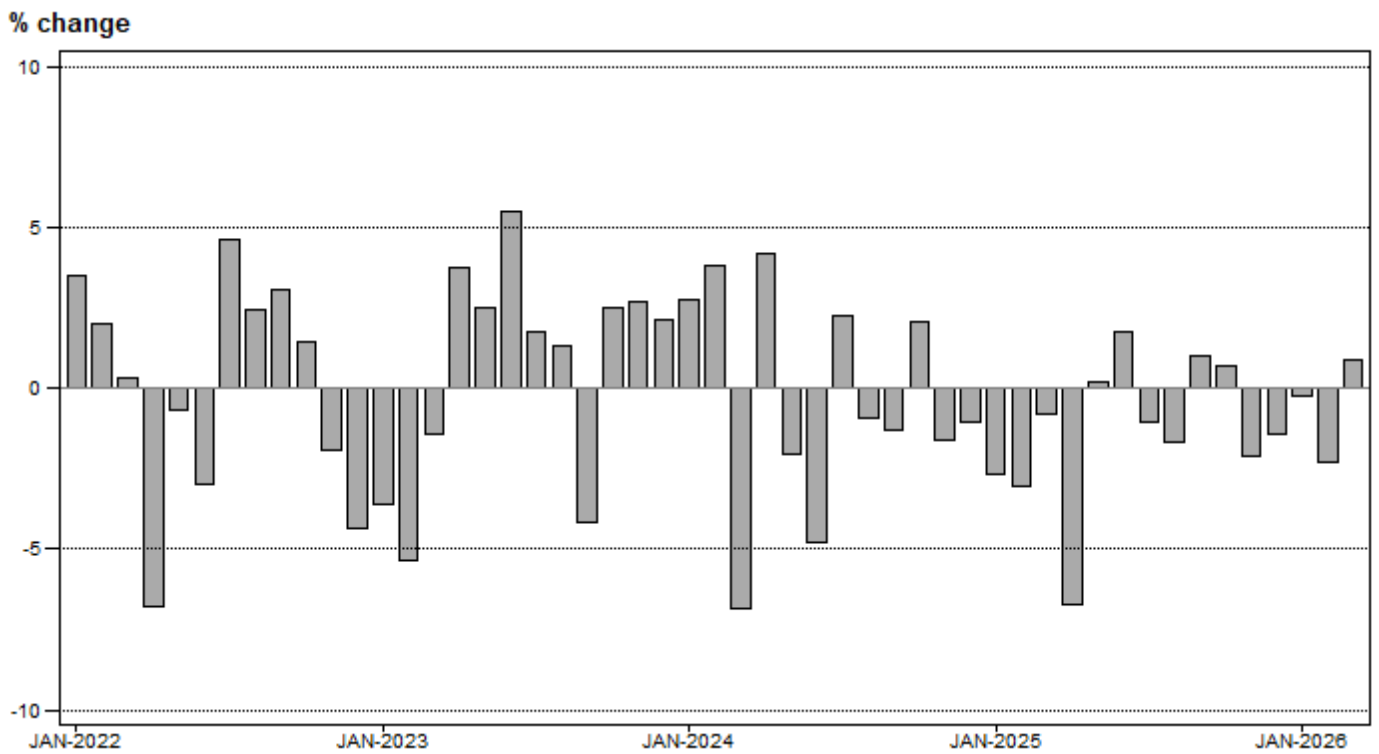


Figure 2 – Volume of manufacturing production (Base: 2019=100): year-on-year percentage change



**Sales: results for March 2026****Table C – Key growth rates in manufacturing sales at current prices**

	Oct-25	Nov-25	Dec-25	Jan-26	Feb-26	Mar-26
Year-on-year % change, unadjusted	0,9	0,8	-3,1	-2,0	-0,6	2,9
Month-on-month % change, seasonally adjusted	-0,8	-0,7	-4,4	3,1	0,1	1,6
3-month % change, seasonally adjusted <sup>1</sup>	0,7	-0,2	-2,3	-3,0	-3,1	0,4

<sup>1</sup> Percentage change between the previous 3 months and the 3 months ending in the month indicated.

Seasonally adjusted manufacturing sales increased by 1,6% in March 2026 compared with February 2026. This followed month-on-month changes of 0,1% in February 2026 and 3,1% in January 2026 – see Table C.

**Table D – Seasonally adjusted manufacturing sales at current prices for the latest three months by division**

Manufacturing division	Oct – Dec 2025 (R million)	Jan – Mar 2026 (R million)	% change between Oct – Dec 2025 and Jan – Mar 2026	Contribution (% points) to the total % change
Food and beverages	223 721	222 915	-0,4	-0,1
Textiles, clothing, leather and footwear	19 676	19 895	1,1	0,0
Wood and wood products, paper, publishing and printing	52 916	52 152	-1,4	-0,1
Petroleum, chemical products, rubber and plastic products	184 826	180 812	-2,2	-0,5
Glass and non-metallic mineral products	24 248	26 656	9,9	0,3
Basic iron and steel, non-ferrous metal products, metal products and machinery	174 460	179 804	3,1	0,6
Electrical machinery	20 789	22 093	6,3	0,2
Radio, television and communication apparatus and professional equipment	7 185	7 136	-0,7	0,0
Motor vehicles, parts and accessories and other transport equipment	119 041	117 522	-1,3	-0,2
Furniture and other manufacturing	35 246	36 483	3,5	0,1
<b>Total</b>	<b>862 109</b>	<b>865 467</b>	<b>0,4</b>	<b>0,4</b>

Seasonally adjusted manufacturing sales increased by 0,4% in the first quarter of 2026 compared with the fourth quarter of 2025. The largest positive contributions were made by the basic iron and steel, non-ferrous metal products, metal products and machinery division (3,1% and contributing 0,6 of a percentage point) and the glass and non-metallic mineral products division (9,9% and contributing 0,3 of a percentage point).

The largest negative contributor was the petroleum, chemical products, rubber and plastic products division (-2,2% and contributing -0,5 of a percentage point) – see Table D.

  
**Risenga Maluleke**  
**Statistician-General**

## Tables

**Table 1 – Index of the volume of manufacturing production (Base: 2019=100)**

Month	2020	2021	2022	2023	2024	2025	2026
Jan	85,7	80,3	83,1	80,1	82,3	80,1	79,9
Feb	92,4	89,5	91,3	86,4	89,7	87,0	85,0
Mar	94,5	99,2	99,5	98,1	91,4	90,7	91,5
Apr	45,3	91,2	85,0	88,2	91,9	85,7	
May	67,2	92,3	91,7	94,0	92,1	92,3	
Jun	84,1	93,8	91,0	96,0	91,4	93,0	
Jul	91,4	86,8	90,8	92,4	94,5	93,5	
Aug	92,9	94,5	96,8	98,1	97,2	95,6	
Sep	99,4	100,0	103,1	98,8	97,5	98,5	
Oct	106,8	97,3	98,7	101,2	103,3	104,0	
Nov	104,7	104,9	102,9	105,7	104,0	101,8	
Dec	87,6	87,6	83,8	85,6	84,7	83,5	
<b>Total</b>	<b>87,7</b>	<b>93,1</b>	<b>93,1</b>	<b>93,7</b>	<b>93,3</b>	<b>92,1</b>	

**Table 2 – Year-on-year percentage change in the volume of manufacturing production**

Month	2021	2022	2023	2024	2025	2026	2026 year-to-date
Jan	-6,3	3,5	-3,6	2,7	-2,7	-0,2	-0,2
Feb	-3,1	2,0	-5,4	3,8	-3,0	-2,3	-1,3
Mar	5,0	0,3	-1,4	-6,8	-0,8	0,9	-0,5
Apr	101,3	-6,8	3,8	4,2	-6,7		
May	37,4	-0,7	2,5	-2,0	0,2		
Jun	11,5	-3,0	5,5	-4,8	1,8		
Jul	-5,0	4,6	1,8	2,3	-1,1		
Aug	1,7	2,4	1,3	-0,9	-1,6		
Sep	0,6	3,1	-4,2	-1,3	1,0		
Oct	-8,9	1,4	2,5	2,1	0,7		
Nov	0,2	-1,9	2,7	-1,6	-2,1		
Dec	0,0	-4,3	2,1	-1,1	-1,4		
<b>Total</b>	<b>6,2</b>	<b>0,0</b>	<b>0,6</b>	<b>-0,4</b>	<b>-1,3</b>		

**Table 3 – Seasonally adjusted volume of manufacturing production**

Month	Index (Base: 2019=100)				Month-on-month % change			
	2023	2024	2025	2026	2023	2024	2025	2026
Jan	93,1	94,5	91,7	92,0	0,4	0,0	-0,4	1,7
Feb	91,4	93,8	92,4	90,3	-1,8	-0,7	0,8	-1,8
Mar	95,2	91,7	90,1	91,0	4,2	-2,2	-2,5	0,8
Apr	94,9	96,0	90,9		-0,3	4,7	0,9	
May	94,5	92,3	93,1		-0,4	-3,9	2,4	
Jun	95,0	92,0	93,0		0,5	-0,3	-0,1	
Jul	92,8	93,7	92,3		-2,3	1,8	-0,8	
Aug	93,4	93,2	92,4		0,6	-0,5	0,1	
Sep	93,4	92,7	92,7		0,0	-0,5	0,3	
Oct	92,7	93,6	93,8		-0,7	1,0	1,2	
Nov	93,9	92,8	91,6		1,3	-0,9	-2,3	
Dec	94,5	92,1	90,5		0,6	-0,8	-1,2	

**Table 4 – Index of the volume of manufacturing production by division and major group (Base: 2019=100)**

Manufacturing division and major group	Weight	Oct-25	Nov-25	Dec-25	Jan-26	Feb-26	Mar-26
<b>Food and beverages</b>	<b>22,19</b>	<b>113,6</b>	<b>112,5</b>	<b>113,4</b>	<b>90,6</b>	<b>92,9</b>	<b>104,7</b>
Meat, fish, fruit, etc.	3,72	107,9	107,6	105,5	91,3	101,9	109,6
Dairy products	1,20	110,4	100,5	97,0	94,2	87,6	108,3
Grain mill products	1,94	114,6	109,3	100,5	94,0	93,9	115,7
Other food products	7,55	92,1	93,2	76,7	71,4	74,2	83,7
Beverages	7,78	137,4	136,1	158,6	107,4	107,4	119,5
<b>Textiles, clothing, leather and footwear</b>	<b>3,68</b>	<b>104,5</b>	<b>111,0</b>	<b>70,6</b>	<b>68,8</b>	<b>83,1</b>	<b>90,8</b>
Textiles	0,85	106,7	129,2	64,2	83,1	100,7	111,9
Other textile products	0,55	120,8	114,3	76,2	72,0	90,4	99,7
Knitted, crocheted articles	0,07	102,5	99,7	50,0	45,0	61,1	70,6
Wearing apparel	1,65	98,5	105,2	72,3	62,7	76,8	80,5
Leather and leather products	0,26	93,7	82,2	53,3	71,7	72,2	73,5
Footwear	0,30	111,3	113,5	89,2	58,4	69,1	90,9
<b>Wood and wood products, paper, publishing and printing</b>	<b>9,98</b>	<b>98,8</b>	<b>100,3</b>	<b>86,9</b>	<b>82,4</b>	<b>80,1</b>	<b>81,5</b>
Sawmilling and planing of wood	0,74	109,6	103,0	78,5	73,6	103,3	109,2
Products of wood	0,85	138,9	140,1	101,2	102,4	112,6	128,8
Paper and paper products	5,27	89,2	91,8	86,6	80,4	77,1	77,0
Publishing	1,94	103,5	97,0	88,3	88,6	67,6	59,7
Printing, recorded media	1,18	98,1	113,1	81,0	72,4	75,7	85,6
<b>Petroleum, chemical products, rubber and plastic products</b>	<b>23,91</b>	<b>89,7</b>	<b>87,0</b>	<b>79,3</b>	<b>76,2</b>	<b>74,9</b>	<b>78,5</b>
Coke, petroleum products and nuclear fuel	11,12	62,1	60,3	65,8	63,8	56,6	56,7
Basic chemicals	3,60	128,1	119,1	106,4	105,4	97,7	106,4
Other chemical products	6,63	104,0	102,0	84,0	77,3	85,7	88,1
Rubber products	0,69	78,4	85,0	64,1	64,4	78,4	93,4
Plastic products	1,87	133,9	131,1	96,7	94,8	100,0	115,2
<b>Glass and non-metallic mineral products</b>	<b>3,11</b>	<b>111,3</b>	<b>110,7</b>	<b>82,9</b>	<b>91,1</b>	<b>96,9</b>	<b>97,8</b>
Glass and glass products	0,61	116,4	118,3	90,2	98,4	96,1	100,5
Non-metallic mineral products	2,50	110,0	108,9	81,1	89,3	97,1	97,1
<b>Basic iron and steel, non-ferrous metal products, metal products and machinery</b>	<b>21,85</b>	<b>108,0</b>	<b>103,0</b>	<b>73,0</b>	<b>74,8</b>	<b>86,4</b>	<b>95,3</b>
Basic iron and steel products	3,20	65,1	54,4	47,2	51,0	52,8	59,9
Non-ferrous metal products	4,16	100,3	87,7	80,3	79,8	80,2	88,3
Structural metal products	1,98	117,8	121,1	88,3	76,1	112,3	125,3
Other fabricated metal products	3,72	119,8	111,9	67,1	79,8	97,6	109,5
General purpose machinery	4,04	121,8	118,0	83,4	78,4	83,4	99,0
Special purpose machinery	4,01	114,7	119,9	69,2	73,8	92,4	91,5
Household appliances	0,74	138,2	133,6	96,5	107,8	125,2	137,2
<b>Electrical machinery</b>	<b>2,15</b>	<b>126,6</b>	<b>115,9</b>	<b>75,9</b>	<b>89,2</b>	<b>105,4</b>	<b>116,8</b>
<b>Radio, television and communication apparatus and professional equipment</b>	<b>1,00</b>	<b>110,1</b>	<b>102,2</b>	<b>97,1</b>	<b>72,9</b>	<b>95,3</b>	<b>105,4</b>
Radio, television and communication apparatus	0,19	118,6	111,2	118,7	58,1	75,2	92,4
Professional equipment	0,81	108,1	100,1	92,1	76,3	100,0	108,4
<b>Motor vehicles, parts and accessories and other transport equipment</b>	<b>7,84</b>	<b>104,0</b>	<b>104,6</b>	<b>45,5</b>	<b>70,2</b>	<b>84,1</b>	<b>93,1</b>
Motor vehicles	2,33	125,2	101,2	38,2	77,6	95,2	106,0
Bodies for motor vehicles, trailers and semi-trailers	0,65	106,9	102,1	66,8	64,8	80,8	111,7
Parts and accessories	3,95	91,9	106,3	38,3	65,3	75,7	76,2
Other transport equipment	0,91	100,3	107,9	80,3	75,9	94,0	119,9
<b>Furniture and other manufacturing</b>	<b>4,29</b>	<b>106,8</b>	<b>100,0</b>	<b>79,2</b>	<b>81,4</b>	<b>86,0</b>	<b>76,7</b>
Furniture	0,84	114,5	107,8	84,2	67,2	80,4	84,3
Other manufacturing groups	3,45	104,9	98,1	78,0	84,9	87,4	74,9
<b>Total</b>	<b>100</b>	<b>104,0</b>	<b>101,8</b>	<b>83,5</b>	<b>79,9</b>	<b>85,0</b>	<b>91,5</b>

**Table 5 – Year-on-year percentage change in the volume of manufacturing production by division and major group (Base: 2019=100)**

Manufacturing division and major group	Oct-25	Nov-25	Dec-25	Jan-26	Feb-26	Mar-26
<b>Food and beverages</b>	<b>2,2</b>	<b>-1,3</b>	<b>-4,9</b>	<b>1,5</b>	<b>-2,4</b>	<b>3,5</b>
Meat, fish, fruit, etc.	-3,5	-6,4	-13,5	-8,0	-3,9	0,2
Dairy products	2,3	-5,7	-5,7	-1,9	-1,7	1,4
Grain mill products	6,9	5,4	3,5	-1,5	-3,6	7,3
Other food products	2,2	-2,6	-4,2	-3,0	-4,6	0,0
Beverages	3,5	0,7	-3,2	10,4	0,2	7,0
<b>Textiles, clothing, leather and footwear</b>	<b>2,2</b>	<b>5,6</b>	<b>-2,5</b>	<b>6,8</b>	<b>-2,2</b>	<b>3,2</b>
Textiles	-2,7	17,5	6,8	34,5	5,1	14,7
Other textile products	9,5	5,4	-3,7	8,1	-4,0	4,5
Knitted, crocheted articles	-3,6	2,9	-12,7	-12,5	-7,8	-20,8
Wearing apparel	3,6	2,6	-7,1	2,5	-2,9	-0,6
Leather and leather products	0,2	-8,9	8,3	-14,6	-9,3	-6,3
Footwear	-1,3	-0,7	0,1	-18,5	-12,3	-2,8
<b>Wood and wood products, paper, publishing and printing</b>	<b>-5,2</b>	<b>-9,5</b>	<b>-5,4</b>	<b>-10,4</b>	<b>-9,4</b>	<b>-8,6</b>
Sawmilling and planing of wood	9,3	1,1	-0,8	-12,4	5,1	25,5
Products of wood	2,4	-1,3	6,6	2,3	-1,9	4,0
Paper and paper products	-13,6	-14,9	-11,3	-16,7	-14,9	-16,0
Publishing	13,4	-3,8	5,6	5,5	-2,0	-5,7
Printing, recorded media	-10,4	-8,3	-5,9	-14,3	-11,0	-11,8
<b>Petroleum, chemical products, rubber and plastic products</b>	<b>1,2</b>	<b>3,2</b>	<b>7,7</b>	<b>6,4</b>	<b>2,3</b>	<b>1,8</b>
Coke, petroleum products and nuclear fuel	-5,6	0,3	2,5	22,0	10,5	-5,8
Basic chemicals	14,4	5,9	12,5	11,8	4,5	13,2
Other chemical products	2,3	3,8	11,1	-8,2	-4,5	1,7
Rubber products	-16,0	-8,7	34,4	-25,3	-14,5	-11,1
Plastic products	2,7	8,4	5,1	2,3	0,6	14,1
<b>Glass and non-metallic mineral products</b>	<b>-5,4</b>	<b>-8,4</b>	<b>-5,7</b>	<b>2,4</b>	<b>5,9</b>	<b>-4,9</b>
Glass and glass products	1,3	-1,7	-6,7	5,9	2,7	-1,0
Non-metallic mineral products	-7,0	-10,0	-5,5	1,4	6,7	-5,8
<b>Basic iron and steel, non-ferrous metal products, metal products and machinery</b>	<b>0,6</b>	<b>-2,8</b>	<b>-2,3</b>	<b>-6,0</b>	<b>-4,5</b>	<b>0,7</b>
Basic iron and steel products	-23,1	-26,2	-28,6	-34,0	-28,0	-24,3
Non-ferrous metal products	-0,4	-11,7	0,6	-6,2	-9,8	-7,3
Structural metal products	0,9	-2,3	12,8	-2,4	4,4	8,6
Other fabricated metal products	3,6	-6,2	-2,9	-6,2	1,2	5,7
General purpose machinery	5,4	9,5	-12,9	-2,5	-9,4	-0,3
Special purpose machinery	4,3	4,3	22,3	6,8	6,2	13,8
Household appliances	18,0	20,3	15,7	22,4	16,5	26,0
<b>Electrical machinery</b>	<b>6,3</b>	<b>2,4</b>	<b>6,0</b>	<b>4,7</b>	<b>6,1</b>	<b>11,9</b>
<b>Radio, television and communication apparatus and professional equipment</b>	<b>2,7</b>	<b>-2,8</b>	<b>1,3</b>	<b>0,3</b>	<b>-3,2</b>	<b>-1,6</b>
Radio, television and communication apparatus	-4,5	1,6	0,8	-7,8	-4,3	0,4
Professional equipment	4,7	-3,8	1,3	1,9	-3,0	-2,0
<b>Motor vehicles, parts and accessories and other transport equipment</b>	<b>1,7</b>	<b>-6,4</b>	<b>-2,4</b>	<b>0,6</b>	<b>-3,1</b>	<b>1,9</b>
Motor vehicles	17,0	-3,0	-8,0	2,4	-1,6	5,5
Bodies for motor vehicles, trailers and semi-trailers	-12,9	2,2	-5,0	2,9	-4,9	11,4
Parts and accessories	-6,5	-11,3	0,8	1,6	-4,9	-3,3
Other transport equipment	7,8	3,8	0,5	-8,8	0,0	2,7
<b>Furniture and other manufacturing</b>	<b>1,4</b>	<b>-4,6</b>	<b>-6,7</b>	<b>1,4</b>	<b>-5,8</b>	<b>0,0</b>
Furniture	10,5	-1,6	-4,9	-12,5	2,3	-1,5
Other manufacturing groups	-0,8	-5,4	-7,1	4,7	-7,4	0,5
<b>Total</b>	<b>0,7</b>	<b>-2,1</b>	<b>-1,4</b>	<b>-0,2</b>	<b>-2,3</b>	<b>0,9</b>

**Table 6 – Contribution of each division and major group to the year-on-year percentage change in the volume of manufacturing production (percentage points)**

Manufacturing division and major group	Weight	Oct-25	Nov-25	Dec-25	Jan-26	Feb-26	Mar-26
<b>Food and beverages</b>	<b>22,19</b>	<b>0,5</b>	<b>-0,3</b>	<b>-1,5</b>	<b>0,4</b>	<b>-0,6</b>	<b>0,9</b>
Meat, fish, fruit, etc.	3,72	-0,1	-0,3	-0,7	-0,4	-0,2	0,0
Dairy products	1,20	0,0	-0,1	-0,1	0,0	0,0	0,0
Grain mill products	1,94	0,1	0,1	0,1	0,0	-0,1	0,2
Other food products	7,55	0,1	-0,2	-0,3	-0,2	-0,3	0,0
Beverages	7,78	0,3	0,1	-0,5	1,0	0,0	0,7
<b>Textiles, clothing, leather and footwear</b>	<b>3,68</b>	<b>0,1</b>	<b>0,2</b>	<b>-0,1</b>	<b>0,2</b>	<b>-0,1</b>	<b>0,1</b>
Textiles	0,85	0,0	0,2	0,0	0,2	0,0	0,1
Other textile products	0,55	0,1	0,0	0,0	0,0	0,0	0,0
Knitted, crocheted articles	0,07	0,0	0,0	0,0	0,0	0,0	0,0
Wearing apparel	1,65	0,1	0,0	-0,1	0,0	0,0	0,0
Leather and leather products	0,26	0,0	0,0	0,0	0,0	0,0	0,0
Footwear	0,30	0,0	0,0	0,0	0,0	0,0	0,0
<b>Wood and wood products, paper, publishing and printing</b>	<b>9,98</b>	<b>-0,5</b>	<b>-1,0</b>	<b>-0,6</b>	<b>-1,2</b>	<b>-1,0</b>	<b>-0,8</b>
Sawmilling and planing of wood	0,74	0,1	0,0	0,0	-0,1	0,0	0,2
Products of wood	0,85	0,0	0,0	0,1	0,0	0,0	0,0
Paper and paper products	5,27	-0,7	-0,8	-0,7	-1,1	-0,8	-0,9
Publishing	1,94	0,2	-0,1	0,1	0,1	0,0	-0,1
Printing, recorded media	1,18	-0,1	-0,1	-0,1	-0,2	-0,1	-0,1
<b>Petroleum, chemical products, rubber and plastic products</b>	<b>23,91</b>	<b>0,3</b>	<b>0,6</b>	<b>1,6</b>	<b>1,4</b>	<b>0,5</b>	<b>0,4</b>
Coke, petroleum products and nuclear fuel	11,12	-0,4	0,0	0,2	1,6	0,7	-0,4
Basic chemicals	3,60	0,6	0,2	0,5	0,5	0,2	0,5
Other chemical products	6,63	0,1	0,2	0,7	-0,6	-0,3	0,1
Rubber products	0,69	-0,1	-0,1	0,1	-0,2	-0,1	-0,1
Plastic products	1,87	0,1	0,2	0,1	0,0	0,0	0,3
<b>Glass and non-metallic mineral products</b>	<b>3,11</b>	<b>-0,2</b>	<b>-0,3</b>	<b>-0,2</b>	<b>0,1</b>	<b>0,2</b>	<b>-0,2</b>
Glass and glass products	0,61	0,0	0,0	0,0	0,0	0,0	0,0
Non-metallic mineral products	2,50	-0,2	-0,3	-0,1	0,0	0,2	-0,2
<b>Basic iron and steel, non-ferrous metal products, metal products and machinery</b>	<b>21,85</b>	<b>0,1</b>	<b>-0,6</b>	<b>-0,4</b>	<b>-1,3</b>	<b>-1,0</b>	<b>0,2</b>
Basic iron and steel products	3,20	-0,6	-0,6	-0,7	-1,1	-0,8	-0,7
Non-ferrous metal products	4,16	0,0	-0,5	0,0	-0,3	-0,4	-0,3
Structural metal products	1,98	0,0	-0,1	0,2	0,0	0,1	0,2
Other fabricated metal products	3,72	0,2	-0,3	-0,1	-0,2	0,1	0,2
General purpose machinery	4,04	0,2	0,4	-0,6	-0,1	-0,4	0,0
Special purpose machinery	4,01	0,2	0,2	0,6	0,2	0,2	0,5
Household appliances	0,74	0,2	0,2	0,1	0,2	0,2	0,2
<b>Electrical machinery</b>	<b>2,15</b>	<b>0,2</b>	<b>0,1</b>	<b>0,1</b>	<b>0,1</b>	<b>0,2</b>	<b>0,3</b>
<b>Radio, television and communication apparatus and professional equipment</b>	<b>1,00</b>	<b>0,0</b>	<b>0,0</b>	<b>0,0</b>	<b>0,0</b>	<b>0,0</b>	<b>0,0</b>
Radio, television and communication apparatus	0,19	0,0	0,0	0,0	0,0	0,0	0,0
Professional equipment	0,81	0,0	0,0	0,0	0,0	0,0	0,0
<b>Motor vehicles, parts and accessories and other transport equipment</b>	<b>7,84</b>	<b>0,1</b>	<b>-0,5</b>	<b>-0,1</b>	<b>0,0</b>	<b>-0,2</b>	<b>0,1</b>
Motor vehicles	2,33	0,4	-0,1	-0,1	0,1	0,0	0,1
Bodies for motor vehicles, trailers and semi-trailers	0,65	-0,1	0,0	0,0	0,0	0,0	0,1
Parts and accessories	3,95	-0,2	-0,5	0,0	0,0	-0,2	-0,1
Other transport equipment	0,91	0,1	0,0	0,0	-0,1	0,0	0,0
<b>Furniture and other manufacturing</b>	<b>4,29</b>	<b>0,1</b>	<b>-0,2</b>	<b>-0,3</b>	<b>0,1</b>	<b>-0,3</b>	<b>0,0</b>
Furniture	0,84	0,1	0,0	0,0	-0,1	0,0	0,0
Other manufacturing groups	3,45	0,0	-0,2	-0,2	0,2	-0,3	0,0
<b>Total</b>	<b>100</b>	<b>0,7</b>	<b>-2,1</b>	<b>-1,4</b>	<b>-0,2</b>	<b>-2,3</b>	<b>0,9</b>

**Table 7 – Seasonally adjusted index of the volume of manufacturing production by division and major group (Base: 2019=100)**

Manufacturing division and major group	Weight	Nov-25	Dec-25	Jan-26	Feb-26	Mar-26	Month-on-month % change
<b>Food and beverages</b>	<b>22,19</b>	<b>104,6</b>	<b>102,7</b>	<b>103,9</b>	<b>102,8</b>	<b>104,5</b>	<b>1,7</b>
Meat, fish, fruit, etc.	3,72	104,0	101,0	102,1	105,0	105,3	0,3
Dairy products	1,20	94,3	92,1	95,3	97,7	106,0	8,5
Grain mill products	1,94	106,2	103,5	103,7	101,5	111,5	9,9
Other food products	7,55	87,5	85,2	86,4	86,9	88,6	2,0
Beverages	7,78	122,6	122,0	123,1	118,3	117,6	-0,6
<b>Textiles, clothing, leather and footwear</b>	<b>3,68</b>	<b>91,8</b>	<b>86,7</b>	<b>91,4</b>	<b>87,2</b>	<b>89,8</b>	<b>3,0</b>
Textiles	0,85	108,6	96,5	105,2	102,4	102,9	0,5
Other textile products	0,55	97,5	92,2	99,3	89,0	99,4	11,7
Knitted, crocheted articles	0,07	80,6	71,0	71,3	74,3	73,4	-1,2
Wearing apparel	1,65	84,6	81,6	86,4	81,4	82,7	1,6
Leather and leather products	0,26	72,6	73,6	73,7	70,4	72,5	3,0
Footwear	0,30	92,6	91,3	85,2	90,0	92,7	3,0
<b>Wood and wood products, paper, publishing and printing</b>	<b>9,98</b>	<b>87,0</b>	<b>89,5</b>	<b>89,3</b>	<b>86,4</b>	<b>84,0</b>	<b>-2,8</b>
Sawmilling and planing of wood	0,74	101,3	97,7	78,4	103,3	114,4	10,7
Products of wood	0,85	117,9	123,0	120,5	118,9	125,8	5,8
Paper and paper products	5,27	81,9	83,7	85,8	80,6	74,7	-7,3
Publishing	1,94	83,0	87,4	91,0	80,0	77,1	-3,6
Printing, recorded media	1,18	84,9	90,0	86,4	88,6	87,6	-1,1
<b>Petroleum, chemical products, rubber and plastic products</b>	<b>23,91</b>	<b>81,5</b>	<b>83,4</b>	<b>80,4</b>	<b>79,1</b>	<b>78,6</b>	<b>-0,6</b>
Coke, petroleum products and nuclear fuel	11,12	59,5	61,7	62,5	60,1	55,4	-7,8
Basic chemicals	3,60	110,0	112,2	110,0	107,1	110,6	3,3
Other chemical products	6,63	94,2	92,5	86,9	88,7	89,2	0,6
Rubber products	0,69	78,0	117,9	66,7	73,5	81,4	10,7
Plastic products	1,87	112,9	111,8	111,3	106,0	116,4	9,8
<b>Glass and non-metallic mineral products</b>	<b>3,11</b>	<b>97,0</b>	<b>98,3</b>	<b>104,7</b>	<b>103,3</b>	<b>99,5</b>	<b>-3,7</b>
Glass and glass products	0,61	102,9	95,5	106,0	105,0	103,9	-1,0
Non-metallic mineral products	2,50	95,5	99,0	104,4	102,9	98,4	-4,4
<b>Basic iron and steel, non-ferrous metal products, metal products and machinery</b>	<b>21,85</b>	<b>91,9</b>	<b>89,4</b>	<b>90,9</b>	<b>90,8</b>	<b>92,6</b>	<b>2,0</b>
Basic iron and steel products	3,20	57,1	55,6	51,5	55,6	56,4	1,4
Non-ferrous metal products	4,16	84,9	85,3	86,5	85,5	87,0	1,8
Structural metal products	1,98	105,0	114,2	105,2	110,4	115,7	4,8
Other fabricated metal products	3,72	96,2	97,3	97,5	99,0	102,7	3,7
General purpose machinery	4,04	105,2	99,3	102,6	94,5	99,7	5,5
Special purpose machinery	4,01	97,4	85,5	95,9	96,5	92,4	-4,2
Household appliances	0,74	122,4	118,6	123,0	127,0	129,2	1,7
<b>Electrical machinery</b>	<b>2,15</b>	<b>108,4</b>	<b>106,3</b>	<b>110,3</b>	<b>108,2</b>	<b>111,5</b>	<b>3,0</b>
<b>Radio, television and communication apparatus and professional equipment</b>	<b>1,00</b>	<b>93,0</b>	<b>96,2</b>	<b>94,4</b>	<b>95,8</b>	<b>95,9</b>	<b>0,1</b>
Radio, television and communication apparatus	0,19	91,8	96,9	86,5	90,0	95,5	6,1
Professional equipment	0,81	93,3	96,1	96,3	97,1	96,0	-1,1
<b>Motor vehicles, parts and accessories and other transport equipment</b>	<b>7,84</b>	<b>86,4</b>	<b>79,7</b>	<b>88,4</b>	<b>85,1</b>	<b>89,8</b>	<b>5,5</b>
Motor vehicles	2,33	88,1	76,0	95,8	92,4	100,7	9,0
Bodies for motor vehicles, trailers and semi-trailers	0,65	90,7	95,2	91,9	86,9	102,7	18,2
Parts and accessories	3,95	83,7	77,7	83,4	79,3	80,7	1,8
Other transport equipment	0,91	90,6	87,0	88,6	90,5	92,2	1,9
<b>Furniture and other manufacturing</b>	<b>4,29</b>	<b>87,6</b>	<b>83,0</b>	<b>95,7</b>	<b>86,3</b>	<b>84,8</b>	<b>-1,7</b>
Furniture	0,84	91,2	87,1	87,6	93,0	91,5	-1,6
Other manufacturing groups	3,45	86,6	82,1	97,7	84,7	83,2	-1,8
<b>Total</b>	<b>100</b>	<b>91,6</b>	<b>90,5</b>	<b>92,0</b>	<b>90,3</b>	<b>91,0</b>	<b>0,8</b>

**Table 8 – Manufacturing sales at current prices (R million)**

Month	2020	2021	2022	2023	2024	2025	2026
Jan	188 904	187 321	211 089	231 718	253 650	249 626	244 739
Feb	210 330	215 111	238 381	259 006	286 861	274 778	273 001
Mar	210 477	248 468	269 658	302 213	291 315	291 434	299 860
Apr	104 263	225 547	232 822	263 028	290 216	267 085	
May	153 176	231 852	258 900	280 985	292 763	289 049	
Jun	185 789	238 443	260 671	283 175	288 974	295 978	
Jul	200 480	206 482	255 030	277 945	297 763	296 413	
Aug	206 571	228 601	266 928	296 255	295 260	298 650	
Sep	221 995	240 283	283 884	300 624	294 593	309 667	
Oct	243 349	238 083	275 181	308 749	321 680	324 619	
Nov	247 095	266 853	297 743	326 392	318 576	321 048	
Dec	204 564	224 354	245 372	269 248	269 381	261 002	
<b>Total</b>	<b>2 376 993</b>	<b>2 751 398</b>	<b>3 095 659</b>	<b>3 399 338</b>	<b>3 501 032</b>	<b>3 479 349</b>	

**Table 9 – Year-on-year percentage change in manufacturing sales at current prices**

Month	2021	2022	2023	2024	2025	2026	2026 year-to-date
Jan	-0,8	12,7	9,8	9,5	-1,6	-2,0	-2,0
Feb	2,3	10,8	8,7	10,8	-4,2	-0,6	-1,3
Mar	18,0	8,5	12,1	-3,6	0,0	2,9	0,2
Apr	116,3	3,2	13,0	10,3	-8,0		
May	51,4	11,7	8,5	4,2	-1,3		
Jun	28,3	9,3	8,6	2,0	2,4		
Jul	3,0	23,5	9,0	7,1	-0,5		
Aug	10,7	16,8	11,0	-0,3	1,1		
Sep	8,2	18,1	5,9	-2,0	5,1		
Oct	-2,2	15,6	12,2	4,2	0,9		
Nov	8,0	11,6	9,6	-2,4	0,8		
Dec	9,7	9,4	9,7	0,0	-3,1		
<b>Total</b>	<b>15,8</b>	<b>12,5</b>	<b>9,8</b>	<b>3,0</b>	<b>-0,6</b>		

**Table 10 – Seasonally adjusted manufacturing sales at current prices**

Month	R million				Month-on-month % change			
	2023	2024	2025	2026	2023	2024	2025	2026
Jan	270 867	294 744	289 618	286 820	0,6	-1,1	-0,8	3,1
Feb	272 022	296 215	288 529	287 021	0,4	0,5	-0,4	0,1
Mar	287 242	288 830	285 724	291 626	5,6	-2,5	-1,0	1,6
Apr	285 562	301 585	283 805		-0,6	4,4	-0,7	
May	279 314	290 492	289 001		-2,2	-3,7	1,8	
Jun	275 434	289 670	294 069		-1,4	-0,3	1,8	
Jul	280 689	295 349	293 061		1,9	2,0	-0,3	
Aug	287 746	287 831	294 325		2,5	-2,5	0,4	
Sep	289 148	285 038	295 373		0,5	-1,0	0,4	
Oct	283 020	292 353	292 978		-2,1	2,6	-0,8	
Nov	291 528	283 963	290 948		3,0	-2,9	-0,7	
Dec	298 121	291 871	278 183		2,3	2,8	-4,4	

**Table 11 – Manufacturing sales at current prices by division and major group (R million)**

Manufacturing division and major group	Oct-25	Nov-25	Dec-25	Jan-26	Feb-26	Mar-26
<b>Food and beverages</b>	<b>80 563</b>	<b>80 520</b>	<b>82 575</b>	<b>64 602</b>	<b>67 437</b>	<b>76 159</b>
Meat, fish, fruit, etc.	23 228	22 974	22 702	18 536	20 071	21 752
Dairy products	6 866	6 509	6 317	5 812	5 690	6 787
Grain mill products	12 923	12 566	11 619	10 526	10 334	12 196
Other food products	16 571	16 609	15 669	12 769	13 247	16 252
Beverages	20 975	21 861	26 269	16 960	18 095	19 172
<b>Textiles, clothing, leather and footwear</b>	<b>8 017</b>	<b>8 003</b>	<b>5 342</b>	<b>5 093</b>	<b>6 055</b>	<b>6 592</b>
Textiles	965	958	524	609	733	792
Other textile products	2 527	2 375	1 561	1 592	1 968	2 163
Knitted, crocheted articles	300	288	150	130	180	194
Wearing apparel	2 691	2 883	1 978	1 759	2 101	2 202
Leather and leather products	661	616	430	530	534	551
Footwear	872	884	698	473	539	691
<b>Wood and wood products, paper, publishing and printing</b>	<b>19 464</b>	<b>20 361</b>	<b>17 106</b>	<b>15 937</b>	<b>16 249</b>	<b>16 524</b>
Sawmilling and planing of wood	1 472	1 393	1 019	954	1 336	1 466
Products of wood	2 884	2 912	2 015	2 182	2 478	2 605
Paper and paper products	9 935	10 561	9 788	8 761	8 713	8 695
Publishing	1 898	1 750	1 600	1 654	1 223	1 078
Printing, recorded media	3 275	3 744	2 684	2 386	2 499	2 679
<b>Petroleum, chemical products, rubber and plastic products</b>	<b>67 858</b>	<b>68 746</b>	<b>57 598</b>	<b>54 054</b>	<b>54 902</b>	<b>62 031</b>
Coke, petroleum products and nuclear fuel	20 871	22 202	20 772	19 979	18 404	20 669
Basic chemicals	13 337	12 857	10 792	9 675	9 425	11 583
Other chemical products	21 157	21 521	17 032	15 798	17 555	18 413
Rubber products	2 127	1 984	1 671	1 498	1 720	2 073
Plastic products	10 365	10 182	7 330	7 105	7 798	9 293
<b>Glass and non-metallic mineral products</b>	<b>9 362</b>	<b>9 231</b>	<b>6 829</b>	<b>7 491</b>	<b>8 064</b>	<b>8 793</b>
Glass and glass products	2 000	1 876	1 320	1 764	1 477	1 557
Non-metallic mineral products	7 362	7 355	5 509	5 727	6 588	7 236
<b>Basic iron and steel, non-ferrous metal products, metal products and machinery</b>	<b>65 257</b>	<b>63 327</b>	<b>48 232</b>	<b>47 989</b>	<b>58 961</b>	<b>62 693</b>
Basic iron and steel products	8 564	8 302	5 694	6 903	7 213	7 580
Non-ferrous metal products	21 311	20 083	18 634	17 758	22 316	22 372
Structural metal products	5 337	5 372	3 662	3 370	5 088	6 278
Other fabricated metal products	12 296	11 789	7 389	8 820	10 366	11 724
General purpose machinery	6 979	6 658	5 206	4 698	5 010	5 528
Special purpose machinery	9 299	9 685	6 512	5 322	7 770	7 850
Household appliances	1 470	1 439	1 136	1 118	1 199	1 361
<b>Electrical machinery</b>	<b>7 799</b>	<b>7 555</b>	<b>5 346</b>	<b>5 628</b>	<b>6 957</b>	<b>8 005</b>
<b>Radio, television and communication apparatus and professional equipment</b>	<b>2 698</b>	<b>2 725</b>	<b>2 904</b>	<b>1 647</b>	<b>2 168</b>	<b>2 569</b>
Radio, television and communication apparatus	1 394	1 433	1 715	692	900	1 164
Professional equipment	1 305	1 292	1 189	955	1 268	1 405
<b>Motor vehicles, parts and accessories and other transport equipment</b>	<b>50 305</b>	<b>47 623</b>	<b>23 134</b>	<b>31 302</b>	<b>40 593</b>	<b>45 631</b>
Motor vehicles	33 369	31 437	15 013	19 482	26 601	29 283
Bodies for motor vehicles, trailers and semi-trailers	1 258	1 341	909	824	1 029	1 433
Parts and accessories	12 353	11 267	4 547	8 480	9 847	10 899
Other transport equipment	3 324	3 578	2 665	2 516	3 115	4 016
<b>Furniture and other manufacturing</b>	<b>13 298</b>	<b>12 958</b>	<b>11 936</b>	<b>10 995</b>	<b>11 615</b>	<b>10 864</b>
Furniture	2 241	2 274	1 767	1 360	1 647	1 721
Other manufacturing groups	11 056	10 684	10 169	9 635	9 969	9 143
<b>Total</b>	<b>324 619</b>	<b>321 048</b>	<b>261 002</b>	<b>244 739</b>	<b>273 001</b>	<b>299 860</b>

**Table 12 – Year-on-year percentage change in manufacturing sales at current prices by division and major group**

Manufacturing division and major group	Oct-25	Nov-25	Dec-25	Jan-26	Feb-26	Mar-26
<b>Food and beverages</b>	<b>3,6</b>	<b>1,3</b>	<b>-0,6</b>	<b>0,9</b>	<b>-0,3</b>	<b>5,3</b>
Meat, fish, fruit, etc.	2,6	-0,2	-9,4	-1,7	0,8	3,6
Dairy products	1,1	-2,2	2,3	-5,6	-0,4	2,2
Grain mill products	1,9	0,2	-2,1	-5,8	-9,1	-7,8
Other food products	6,3	-1,2	11,2	-1,4	-3,5	9,7
Beverages	4,6	7,0	1,7	13,8	6,7	14,9
<b>Textiles, clothing, leather and footwear</b>	<b>7,5</b>	<b>5,2</b>	<b>-2,1</b>	<b>4,7</b>	<b>-3,3</b>	<b>1,8</b>
Textiles	6,3	3,9	-3,1	1,2	-10,4	-1,7
Other textile products	16,6	11,1	-1,7	15,9	2,4	10,9
Knitted, crocheted articles	0,7	4,0	-9,1	-9,7	-9,1	-21,8
Wearing apparel	7,8	6,3	-4,3	6,4	0,1	1,7
Leather and leather products	-0,5	-5,8	15,9	-1,9	-11,7	-3,3
Footwear	-5,4	-2,0	-3,3	-14,2	-13,3	-5,6
<b>Wood and wood products, paper, publishing and printing</b>	<b>-3,6</b>	<b>-5,8</b>	<b>-1,1</b>	<b>-12,1</b>	<b>-7,0</b>	<b>-7,4</b>
Sawmilling and planing of wood	8,6	7,4	3,8	-3,1	16,6	35,5
Products of wood	-4,5	-5,2	-2,4	0,7	-0,1	-3,2
Paper and paper products	-7,9	-8,8	-0,7	-19,3	-12,7	-12,4
Publishing	19,2	1,7	5,2	12,9	4,0	-4,3
Printing, recorded media	-4,9	-4,8	-6,3	-10,2	-7,0	-11,4
<b>Petroleum, chemical products, rubber and plastic products</b>	<b>0,0</b>	<b>5,5</b>	<b>1,7</b>	<b>-4,2</b>	<b>-4,1</b>	<b>1,6</b>
Coke, petroleum products and nuclear fuel	-8,8	0,4	-1,5	-3,3	-2,0	-12,0
Basic chemicals	10,2	9,8	5,7	-8,6	-12,1	16,7
Other chemical products	5,3	10,5	3,6	-3,8	-2,6	4,0
Rubber products	5,7	-3,1	15,3	-11,0	-8,4	2,2
Plastic products	-3,7	3,9	-1,4	0,1	-0,5	17,2
<b>Glass and non-metallic mineral products</b>	<b>-3,8</b>	<b>-5,8</b>	<b>-2,3</b>	<b>10,7</b>	<b>8,9</b>	<b>8,4</b>
Glass and glass products	-5,1	-12,1	-14,6	30,5	-0,1	-0,5
Non-metallic mineral products	-3,4	-4,1	1,2	5,8	11,2	10,5
<b>Basic iron and steel, non-ferrous metal products, metal products and machinery</b>	<b>-2,3</b>	<b>-0,2</b>	<b>-3,3</b>	<b>-3,5</b>	<b>7,5</b>	<b>8,3</b>
Basic iron and steel products	-32,6	-31,0	-24,8	-37,7	-26,1	-22,0
Non-ferrous metal products	4,3	17,9	-6,5	13,5	28,9	17,3
Structural metal products	7,4	1,5	1,5	-4,3	10,1	22,3
Other fabricated metal products	-1,2	-3,4	-1,0	2,2	4,1	11,1
General purpose machinery	6,7	9,3	-8,7	5,2	-8,6	-2,7
Special purpose machinery	11,5	2,3	41,2	0,7	19,4	19,7
Household appliances	7,5	10,7	11,9	-0,7	0,5	14,8
<b>Electrical machinery</b>	<b>1,1</b>	<b>7,1</b>	<b>10,3</b>	<b>9,9</b>	<b>16,9</b>	<b>25,8</b>
<b>Radio, television and communication apparatus and professional equipment</b>	<b>-8,4</b>	<b>-1,8</b>	<b>5,1</b>	<b>-4,3</b>	<b>-3,1</b>	<b>4,0</b>
Radio, television and communication apparatus	-13,6	0,1	7,3	-10,2	-4,8	6,2
Professional equipment	-2,1	-3,9	2,0	0,5	-1,9	2,2
<b>Motor vehicles, parts and accessories and other transport equipment</b>	<b>2,9</b>	<b>-3,8</b>	<b>-26,0</b>	<b>-4,8</b>	<b>-9,4</b>	<b>-5,2</b>
Motor vehicles	-1,9	-7,9	-34,9	-9,9	-14,6	-10,3
Bodies for motor vehicles, trailers and semi-trailers	-1,4	7,5	3,5	17,5	-1,5	13,5
Parts and accessories	16,7	4,5	-4,4	8,0	3,2	4,9
Other transport equipment	10,9	6,9	3,4	-6,8	1,8	5,0
<b>Furniture and other manufacturing</b>	<b>7,6</b>	<b>6,5</b>	<b>6,4</b>	<b>10,9</b>	<b>6,5</b>	<b>1,6</b>
Furniture	21,0	19,3	9,0	8,5	13,6	3,3
Other manufacturing groups	5,2	4,1	6,0	11,3	5,5	1,3
<b>Total</b>	<b>0,9</b>	<b>0,8</b>	<b>-3,1</b>	<b>-2,0</b>	<b>-0,6</b>	<b>2,9</b>

**Table 13 – Contribution of each division and major group to the year-on-year percentage change in manufacturing sales at current prices (percentage points)**

Manufacturing division and major group	Oct-25	Nov-25	Dec-25	Jan-26	Feb-26	Mar-26
<b>Food and beverages</b>	<b>0,9</b>	<b>0,3</b>	<b>-0,2</b>	<b>0,2</b>	<b>-0,1</b>	<b>1,3</b>
Meat, fish, fruit, etc.	0,2	0,0	-0,9	-0,1	0,1	0,3
Dairy products	0,0	0,0	0,1	-0,1	0,0	0,1
Grain mill products	0,1	0,0	-0,1	-0,3	-0,4	-0,4
Other food products	0,3	-0,1	0,6	-0,1	-0,2	0,5
Beverages	0,3	0,4	0,2	0,8	0,4	0,9
<b>Textiles, clothing, leather and footwear</b>	<b>0,2</b>	<b>0,1</b>	<b>0,0</b>	<b>0,1</b>	<b>-0,1</b>	<b>0,0</b>
Textiles	0,0	0,0	0,0	0,0	0,0	0,0
Other textile products	0,1	0,1	0,0	0,1	0,0	0,1
Knitted, crocheted articles	0,0	0,0	0,0	0,0	0,0	0,0
Wearing apparel	0,1	0,1	0,0	0,0	0,0	0,0
Leather and leather products	0,0	0,0	0,0	0,0	0,0	0,0
Footwear	0,0	0,0	0,0	0,0	0,0	0,0
<b>Wood and wood products, paper, publishing and printing</b>	<b>-0,2</b>	<b>-0,4</b>	<b>-0,1</b>	<b>-0,9</b>	<b>-0,4</b>	<b>-0,5</b>
Sawmilling and planing of wood	0,0	0,0	0,0	0,0	0,1	0,1
Products of wood	0,0	-0,1	0,0	0,0	0,0	0,0
Paper and paper products	-0,3	-0,3	0,0	-0,8	-0,5	-0,4
Publishing	0,1	0,0	0,0	0,1	0,0	0,0
Printing, recorded media	-0,1	-0,1	-0,1	-0,1	-0,1	-0,1
<b>Petroleum, chemical products, rubber and plastic products</b>	<b>0,0</b>	<b>1,1</b>	<b>0,4</b>	<b>-0,9</b>	<b>-0,9</b>	<b>0,3</b>
Coke, petroleum products and nuclear fuel	-0,6	0,0	-0,1	-0,3	-0,1	-1,0
Basic chemicals	0,4	0,4	0,2	-0,4	-0,5	0,6
Other chemical products	0,3	0,6	0,2	-0,3	-0,2	0,2
Rubber products	0,0	0,0	0,1	-0,1	-0,1	0,0
Plastic products	-0,1	0,1	0,0	0,0	0,0	0,5
<b>Glass and non-metallic mineral products</b>	<b>-0,1</b>	<b>-0,2</b>	<b>-0,1</b>	<b>0,3</b>	<b>0,2</b>	<b>0,2</b>
Glass and glass products	0,0	-0,1	-0,1	0,2	0,0	0,0
Non-metallic mineral products	-0,1	-0,1	0,0	0,1	0,2	0,2
<b>Basic iron and steel, non-ferrous metal products, metal products and machinery</b>	<b>-0,5</b>	<b>0,0</b>	<b>-0,6</b>	<b>-0,7</b>	<b>1,5</b>	<b>1,6</b>
Basic iron and steel products	-1,3	-1,2	-0,7	-1,7	-0,9	-0,7
Non-ferrous metal products	0,3	1,0	-0,5	0,8	1,8	1,1
Structural metal products	0,1	0,0	0,0	-0,1	0,2	0,4
Other fabricated metal products	0,0	-0,1	0,0	0,1	0,1	0,4
General purpose machinery	0,1	0,2	-0,2	0,1	-0,2	-0,1
Special purpose machinery	0,3	0,1	0,7	0,0	0,5	0,4
Household appliances	0,0	0,0	0,0	0,0	0,0	0,1
<b>Electrical machinery</b>	<b>0,0</b>	<b>0,2</b>	<b>0,2</b>	<b>0,2</b>	<b>0,4</b>	<b>0,6</b>
<b>Radio, television and communication apparatus and professional equipment</b>	<b>-0,1</b>	<b>0,0</b>	<b>0,1</b>	<b>0,0</b>	<b>0,0</b>	<b>0,0</b>
Radio, television and communication apparatus	-0,1	0,0	0,0	0,0	0,0	0,0
Professional equipment	0,0	0,0	0,0	0,0	0,0	0,0
<b>Motor vehicles, parts and accessories and other transport equipment</b>	<b>0,4</b>	<b>-0,6</b>	<b>-3,0</b>	<b>-0,6</b>	<b>-1,5</b>	<b>-0,9</b>
Motor vehicles	-0,2	-0,8	-3,0	-0,9	-1,7	-1,2
Bodies for motor vehicles, trailers and semi-trailers	0,0	0,0	0,0	0,0	0,0	0,1
Parts and accessories	0,5	0,2	-0,1	0,3	0,1	0,2
Other transport equipment	0,1	0,1	0,0	-0,1	0,0	0,1
<b>Furniture and other manufacturing</b>	<b>0,3</b>	<b>0,2</b>	<b>0,3</b>	<b>0,4</b>	<b>0,3</b>	<b>0,1</b>
Furniture	0,1	0,1	0,1	0,0	0,1	0,0
Other manufacturing groups	0,2	0,1	0,2	0,4	0,2	0,0
<b>Total</b>	<b>0,9</b>	<b>0,8</b>	<b>-3,1</b>	<b>-2,0</b>	<b>-0,6</b>	<b>2,9</b>

**Table 14 – Seasonally adjusted manufacturing sales at current prices by division and major group (R million)**

Manufacturing division and major group	Nov-25	Dec-25	Jan-26	Feb-26	Mar-26	Month-on-month % change
<b>Food and beverages</b>	<b>74 419</b>	<b>74 575</b>	<b>73 909</b>	<b>72 967</b>	<b>76 039</b>	<b>4,2</b>
Meat, fish, fruit, etc.	21 495	20 617	21 509	21 839	21 818	-0,1
Dairy products	6 157	6 109	5 943	6 223	6 401	2,9
Grain mill products	12 173	11 763	11 654	11 414	11 635	1,9
Other food products	14 892	16 751	14 963	14 421	17 068	18,4
Beverages	19 702	19 335	19 840	19 070	19 116	0,2
<b>Textiles, clothing, leather and footwear</b>	<b>6 664</b>	<b>6 348</b>	<b>6 818</b>	<b>6 399</b>	<b>6 678</b>	<b>4,4</b>
Textiles	835	727	768	752	762	1,3
Other textile products	2 049	1 940	2 142	1 937	2 116	9,2
Knitted, crocheted articles	235	209	209	218	202	-7,3
Wearing apparel	2 278	2 211	2 444	2 263	2 320	2,5
Leather and leather products	546	561	562	539	565	4,8
Footwear	721	700	693	691	713	3,2
<b>Wood and wood products, paper, publishing and printing</b>	<b>17 412</b>	<b>17 635</b>	<b>17 695</b>	<b>17 345</b>	<b>17 112</b>	<b>-1,3</b>
Sawmilling and planing of wood	1 335	1 243	1 125	1 373	1 498	9,1
Products of wood	2 499	2 529	2 547	2 569	2 591	0,9
Paper and paper products	9 284	9 351	9 508	9 079	8 782	-3,3
Publishing	1 498	1 578	1 612	1 444	1 394	-3,5
Printing, recorded media	2 796	2 935	2 903	2 881	2 846	-1,2
<b>Petroleum, chemical products, rubber and plastic products</b>	<b>62 776</b>	<b>61 178</b>	<b>60 219</b>	<b>58 841</b>	<b>61 752</b>	<b>4,9</b>
Coke, petroleum products and nuclear fuel	21 386	20 727	21 063	20 073	19 915	-0,8
Basic chemicals	11 513	11 418	10 714	10 002	11 842	18,4
Other chemical products	19 454	18 413	17 998	18 725	18 553	-0,9
Rubber products	1 780	2 076	1 764	1 741	1 927	10,7
Plastic products	8 644	8 544	8 680	8 300	9 514	14,6
<b>Glass and non-metallic mineral products</b>	<b>8 071</b>	<b>8 130</b>	<b>9 114</b>	<b>8 742</b>	<b>8 800</b>	<b>0,7</b>
Glass and glass products	1 513	1 409	2 069	1 589	1 615	1,6
Non-metallic mineral products	6 558	6 721	7 046	7 153	7 185	0,4
<b>Basic iron and steel, non-ferrous metal products, metal products and machinery</b>	<b>57 956</b>	<b>56 899</b>	<b>58 316</b>	<b>61 937</b>	<b>59 551</b>	<b>-3,9</b>
Basic iron and steel products	8 120	7 414	7 541	7 687	7 138	-7,1
Non-ferrous metal products	19 195	19 683	19 909	23 254	20 760	-10,7
Structural metal products	4 657	4 705	4 604	5 002	5 747	14,9
Other fabricated metal products	10 498	10 312	10 915	10 739	11 142	3,8
General purpose machinery	6 150	6 097	6 247	5 611	5 671	1,1
Special purpose machinery	8 008	7 364	7 826	8 386	7 771	-7,3
Household appliances	1 328	1 325	1 274	1 257	1 322	5,2
<b>Electrical machinery</b>	<b>6 998</b>	<b>6 811</b>	<b>7 199</b>	<b>7 302</b>	<b>7 592</b>	<b>4,0</b>
<b>Radio, television and communication apparatus and professional equipment</b>	<b>2 353</b>	<b>2 489</b>	<b>2 298</b>	<b>2 379</b>	<b>2 459</b>	<b>3,4</b>
Radio, television and communication apparatus	1 174	1 260	1 089	1 124	1 223	8,8
Professional equipment	1 178	1 228	1 209	1 256	1 235	-1,7
<b>Motor vehicles, parts and accessories and other transport equipment</b>	<b>42 738</b>	<b>32 351</b>	<b>37 937</b>	<b>39 230</b>	<b>40 355</b>	<b>2,9</b>
Motor vehicles	28 546	21 347	24 252	25 681	25 653	-0,1
Bodies for motor vehicles, trailers and semi-trailers	1 159	1 181	1 225	1 122	1 338	19,3
Parts and accessories	10 024	6 922	9 503	9 414	10 285	9,3
Other transport equipment	3 009	2 900	2 957	3 012	3 079	2,2
<b>Furniture and other manufacturing</b>	<b>11 561</b>	<b>11 767</b>	<b>13 315</b>	<b>11 879</b>	<b>11 289</b>	<b>-5,0</b>
Furniture	1 892	1 827	1 841	1 888	1 836	-2,8
Other manufacturing groups	9 670	9 940	11 474	9 991	9 453	-5,4
<b>Total</b>	<b>290 948</b>	<b>278 183</b>	<b>286 820</b>	<b>287 021</b>	<b>291 626</b>	<b>1,6</b>

## Explanatory notes

- Introduction**
- 1 Statistics South Africa (Stats SA) conducts a monthly survey of the manufacturing industry, covering manufacturing enterprises. This statistical release contains the results of a sample drawn from the statistical business register (SBR), with enhanced coverage of South African businesses (see point 3). The release contains monthly indices of the volume of manufacturing production and monthly value of sales of manufactured products by division and major group.
  - 2 In accordance with international practice, the indices are usually re-based every five years to a new base year. The current base period of the index is 2019. Both estimated and seasonally adjusted figures are presented.
  - 3 Stats SA is continuously updating its SBR, based on units registered for value-added tax (VAT) and income tax (IT) obtained from the South African Revenue Service (SARS).
- Purpose of the survey**
- 4 The results of the monthly manufacturing production and sales survey are used to calculate the volume of manufacturing production indices in order to estimate the gross domestic product (GDP) and its components, which in turn are used to develop and monitor government policy. These indices provide an indicator of the real level of manufacturing activity in the economy.
- Special Data Dissemination Standard of the IMF**
- 5 The data in this statistical release adhere to the Special Data Dissemination Standard (SDDS) of the International Monetary Fund (IMF), which sets out standards on coverage, periodicity and timeliness of data, access by the public, integrity, and quality of the disseminated data.
- Scope of the survey**
- 6 This survey covers manufacturing enterprises, i.e. those conducting activities in:
    - the manufacturing, processing, making or packing of products;
    - the slaughtering of animals, including poultry; and
    - installation, assembly, completion, repair and related work.
- Classification**
- 7 The 1993 edition of the *Standard Industrial Classification of All Economic Activities* (SIC), Fifth Edition, Report No. 09-90-02, was used to classify the statistical units in the survey. The SIC is based on the 1990 *International Standard Industrial Classification of All Economic Activities* (ISIC) with suitable adaptations for local conditions. Each enterprise is classified to an industry which reflects its predominant activity. Statistics in this publication are presented at SIC division (two-digit) and major group (three-digit) level.
- Collection rate**
- 8 The preliminary collection rate for the survey on manufacturing production and sales was 71,1% for March 2026. The revised collection rate for February 2026 was 75,6%.
- Statistical unit**
- 9 The statistical unit for which information is compiled and published is an enterprise, defined as a legal unit or a combination of legal units that includes and directly controls all functions necessary to carry out its production activities. The statistical units are derived from and linked to the South African Revenue Service (SARS) administrative data.

**Revised figures**

**10** Revised figures are mainly due to late submission of data to Stats SA, or respondents reporting revisions or corrections to their figures. The reasons for routine revisions are outlined in the following schedule. Any unscheduled revisions will be promptly indicated in relevant tables to maintain transparency and accuracy. It is important to note that seasonally adjusted figures are revised monthly.

Statistical release	Reason for revision	Period subject to revision
Mar-26	Additional information from respondents	Dec-25 - Feb-26
Apr-26	Additional information from respondents	Jan-26 - Mar-26
May-26	Additional information from respondents	Feb-26 - Apr-26
Jun-26	Additional information from respondents	Mar-26 - May-26
Jul-26	Additional information from respondents	Apr-26 - Jun-26
Aug-26	Additional information from respondents	May-26 - Jul-26
Sep-26	Additional information from respondents	Jun-26 - Aug-26
Oct-26	Additional information from respondents	Jul-26 - Sep-26
Nov-26	Additional information from respondents	Aug-26 - Oct-26
Dec-26	Additional information from respondents	Sep-26 - Nov-26
Jan-27	Additional information from respondents New weights for manufacturing production New base year for manufacturing production	Jan-98 - Dec-26
Feb-27	Additional information from respondents	Nov-26 - Jan-27
New base year in 2026/27 - periodic, approximately four- to five-year intervals		

**Related publications**

**11** Users may also wish to refer to *Stats in Brief* available from Stats SA.

**Rounding-off of figures**

**12** Where necessary, the figures in the tables have been rounded off to the nearest digit shown. There may, therefore, be slight discrepancies between the sums of the constituent items and the totals shown.

**Historical data**

**13** Historical manufacturing data are available on the Stats SA webpage. Click on the following link ([Time series data](#)) to access the data electronically.

**Past publications**

**14** Past manufacturing releases are available on the Stats SA webpage. Click on the following link ([Past publications](#)) to access the releases electronically.

**Technical notes**

**Survey methodology and design**

**1** The survey is conducted monthly. Questionnaires are sent to a sample of 3 011 enterprises from a population of 27 305 manufacturing enterprises. Completed questionnaires are required to be returned to Stats SA within 10 days after the end of the reference month. Email and telephone reminders are used to follow up on non-respondents.

**2** A stratified random sample was drawn at the Standard Industrial Classification (SIC) three-digit level in April 2025 from Stats SA’s statistical business register (SBR). Strata were formed using a combination of the SIC and the measure of size classes for enterprises (see point 3 on the following page).

The Neyman optimal allocation formula used to allocate samples to each stratum is given by a formula below:

$$n_h = \frac{N_h S_h}{\sum N_h S_h}$$

$N_h$  and  $S_h$  are the stratum population size and the stratum variance respectively.

- Class limits**                    **3**    Each manufacturing major group is divided into four size groups. All large enterprises (size group one) are completely enumerated. Simple random sampling is applied to medium (size group two) and to small (size groups three and four) enterprises. The total value of sales of manufactured products of large enterprises (size group one) in a major group is added to the weighted totals of size groups two, three and four of that major group to reflect the total value of sales of the major group.

**Measure of size classes (Rand)**

Enterprise size	Size group	Lower limit	Upper limit
Very small	4	3 984 745	27 500 000
Small	3	27 500 001	71 500 000
Medium	2	71 500 001	280 500 000
Large	1	280 500 001	

- Sample weighting**                    **4**    For those strata not completely enumerated, the weights to produce estimates are the inverse ratio of the sampling fraction, modified to take account of non-response in the survey. Stratum estimates are calculated and then aggregated with the completely enumerated stratum to form major group and division estimates. These procedures are consistent with international best practice.

- Index of the volume of manufacturing production**                    **5**    The index of the volume of manufacturing production, also known as a production index, is a statistical measure of the change in the volume of production. The production index of a major group is the ratio between the volume of production of a major group in a given period and the volume of production of the same major group in the base period. The current base period is 2019. The production in the base period is set at 100.

- Calculation of production index**                    **6**    The calculation of the monthly production indices is based on the value of sales of products and articles manufactured and change in monthly value of stocks of manufactured products, after the effect of price changes has been eliminated through deflation using appropriate indices of the producer price index (PPI). For 38 of the 44 major groups in manufacturing, the value of production is calculated from the value of sales and stocks of manufactured products obtained from the monthly survey of manufacturing enterprises.

- 7**    More direct indicators are used for the value of production of the following major groups:
- tobacco;
  - coke and refined petroleum products;
  - basic iron and steel products;
  - basic precious and non-ferrous metal products;
  - motor vehicles; and
  - parts and accessories for motor vehicles.

The volume indices for these major groups are calculated on the basis of quantities. This method is used by the national statistical agencies of many other countries for petroleum products as the results are considered more satisfactory (mainly because these commodities are relatively homogeneous).

**Index weighting**

- 8** For indices, a weight is calculated for every major group according to the value added of the major group (i.e. output of a major group minus intermediate consumption) relative to the total value added of the manufacturing industry as a whole, based on the results of the most recent census of manufacturing, large sample survey (LSS) of the manufacturing industry or national accounts (NA) value added data. The production indices of all divisions are multiplied by the applicable weights and aggregated to produce the index for the total volume of manufacturing production. Weights between census/LSS/NA years are fixed. The table below reflects the period and the census/LSS/NA which were used as base year for the given period.

Period	Source
1998 to 2000	1996 Census of manufacturing
2001 to 2004	2001 LSS
2005 to 2009	2005 LSS
2010 to 2026	National accounts

- 9** The weights reflect the importance of the major group/division to the total manufacturing industry. The weights change over time due to changes in the relative performance of industries, due to factors such as quality changes, changes in relative prices, and changes in customer preferences. New weights are calculated and implemented annually.

**Table E – Weights by division and major group**

Manufacturing division and major group	Weights used for manufacturing indices by period			
	2019 (based on value added for 2017 – 2019)	2020 (based on value added for 2018 – 2020)	2021 (based on value added for 2019 – 2021)	2022 – 2026 (based on value added for 2022)
<b>Food and beverages</b>	<b>20,75</b>	<b>21,44</b>	<b>22,07</b>	<b>22,19</b>
Meat, fish, fruit, etc.	3,27	3,42	3,53	3,72
Dairy products	1,39	1,47	1,48	1,20
Grain mill products	1,68	1,85	2,01	1,94
Other food products	7,75	7,81	7,61	7,55
Beverages	6,66	6,89	7,44	7,78
<b>Textiles, clothing, leather and footwear</b>	<b>4,26</b>	<b>4,07</b>	<b>3,89</b>	<b>3,68</b>
Textiles	1,08	1,04	0,96	0,85
Other textile products	0,61	0,58	0,55	0,55
Knitted, crocheted articles	0,06	0,06	0,06	0,07
Wearing apparel	1,98	1,88	1,83	1,65
Leather and leather products	0,27	0,26	0,24	0,26
Footwear	0,25	0,25	0,25	0,30
<b>Wood and wood products, paper, publishing and printing</b>	<b>10,63</b>	<b>10,48</b>	<b>10,29</b>	<b>9,98</b>
Sawmilling and planing of wood	0,87	0,86	0,83	0,74
Products of wood	0,88	0,90	0,93	0,85
Paper and paper products	5,34	5,26	5,18	5,27
Publishing	2,18	2,10	2,02	1,94
Printing, recorded media	1,35	1,36	1,33	1,18
<b>Petroleum, chemical products, rubber and plastic products</b>	<b>24,95</b>	<b>24,86</b>	<b>24,38</b>	<b>23,91</b>
Coke, petroleum products and nuclear fuel	11,85	11,92	11,63	11,12
Basic chemicals	3,50	3,39	3,35	3,60
Other chemical products	6,64	6,82	6,81	6,63
Rubber products	0,76	0,68	0,65	0,69
Plastic products	2,20	2,05	1,94	1,87
<b>Glass and non-metallic mineral products</b>	<b>3,24</b>	<b>3,10</b>	<b>3,06</b>	<b>3,11</b>
Glass and glass products	0,49	0,48	0,50	0,61
Non-metallic mineral products	2,75	2,62	2,56	2,50
<b>Basic iron and steel, non-ferrous metal products, metal products and machinery</b>	<b>19,73</b>	<b>19,96</b>	<b>20,86</b>	<b>21,85</b>
Basic iron and steel products	2,92	2,92	3,18	3,20
Non-ferrous metal products (including precious metals)	3,32	3,54	3,98	4,16
Structural metal products	1,99	2,01	2,01	1,98
Other fabricated metal products	3,53	3,65	3,74	3,72
General purpose machinery	3,42	3,45	3,52	4,04
Special purpose machinery	3,85	3,73	3,77	4,01
Household appliances	0,70	0,66	0,66	0,74
<b>Electrical machinery</b>	<b>2,21</b>	<b>2,14</b>	<b>2,09</b>	<b>2,15</b>
<b>Radio, television and communication apparatus and professional equipment</b>	<b>1,07</b>	<b>1,06</b>	<b>1,06</b>	<b>1,00</b>
Radio, television and communication apparatus	0,04	0,08	0,16	0,19
Professional equipment	1,03	0,98	0,90	0,81
<b>Motor vehicles, parts and accessories and other transport equipment</b>	<b>8,89</b>	<b>8,72</b>	<b>8,21</b>	<b>7,84</b>
Motor vehicles	2,78	2,62	2,39	2,33
Bodies for motor vehicles, trailers and semi-trailers	0,73	0,75	0,72	0,65
Parts and accessories	3,97	4,03	3,96	3,95
Other transport equipment	1,40	1,32	1,14	0,91
<b>Furniture and other manufacturing</b>	<b>4,27</b>	<b>4,17</b>	<b>4,09</b>	<b>4,29</b>
Furniture	0,78	0,69	0,70	0,84
Other manufacturing groups	3,49	3,48	3,39	3,45
<b>Total</b>	<b>100</b>	<b>100</b>	<b>100</b>	<b>100</b>

**Seasonal adjustment** 10 Seasonally adjusted estimates are generated each month, using the X-12 Seasonal Adjustment Program developed by the United States Census Bureau. Seasonal adjustment is a means of removing the estimated effects of normal seasonal variation from the series so that the effects of other influences on the series can be more clearly recognised. Seasonal adjustment does not aim to remove irregular or non-seasonal influences, which may be present in any particular month. Influences that are volatile or unsystematic can still make it difficult to interpret the movement of the series even after adjustment for seasonal variations. This means the month-to-month movements of seasonally adjusted estimates may not be reliable indicators of trend behaviour. The X-12-ARIMA procedure for manufacturing production and sales is described in more detail on the Stats SA website:  
[Click to download Manufacturing seasonal adjustment February 2022.](#)

**Trend cycle** 11 The trend is the long-term pattern or movement of a time series. The X-12 Seasonal Adjustment Programme is used for smoothing seasonally adjusted estimates to estimates of the underlying trend.

**Reliability of estimates** 12 Data presented in this publication are based on information obtained from a sample and are, therefore, subject to sampling variability; that is, they may differ from the figures that would have been produced if the data had been obtained from all enterprises in the manufacturing industry in South Africa. Estimates are subject to sampling and non-sampling errors.

13 Inaccuracies may occur because of imperfections in reporting by enterprises and errors made in the collection and processing of the data. Inaccuracies of this kind are referred to as non-sampling errors. Every effort is made to minimise non-sampling errors by careful design of questionnaires, testing them in pilot studies, editing reported data and implementing efficient operating procedures. Fluctuations may occur in consecutive months as a result of seasonal and economic factors.

**Relative standard error** 14 One measure of the likely difference is given by the standard error (SE), which indicates the extent to which an estimate might have varied by chance because only a sample of enterprises was used. The relative standard error (RSE) provides an immediate indication of the percentage errors likely to have occurred due to sampling, and thus avoids the need to refer to the size of the estimate.

#### Estimates of total industry sales within 95% confidence limits – March 2026

	Lower limit (R million)	Estimate (R million)	Upper limit (R million)	Relative standard error (RSE) %
Total sales	295 556	299 860	304 163	0,7

**Month-on-month percentage change** 15 The month-on-month percentage change in a variable for any given month is the change between that month and the previous month, expressed as a percentage of the latter.

**Year-on-year (annual) percentage change** 16 The year-on-year percentage change in a variable for any given period is the change between that period and the corresponding period of the previous year, expressed as a percentage of the latter.

**Index contribution (percentage points)** 17 The contribution (percentage points) of a major group or division to the total manufacturing production percentage change for a given period is calculated by multiplying the difference in the index of each major group or division by the weight of the major group or division and then dividing by the previous period total manufacturing index.

**Sales contribution (percentage points)** 18 The contribution (percentage points) of a division or major group to the percentage change in total manufacturing sales for a given period is calculated by multiplying the percentage change of each major group or division with its percentage contribution to the total sales of the previous period, divided by 100.

## Glossary

<b>Enterprise</b>	The enterprise is a legal entity or a combination of legal units that includes and directly controls all functions necessary to carry out its production activities.	
<b>Industry</b>	An industry is made up of enterprises engaged in the same or similar kinds of economic activity. Industries are defined in the <i>System of National Accounts (SNA)</i> in the same way as in the <i>Standard Industrial Classification of All Economic Activities (SIC)</i> , Fifth Edition, Report No. 09-90-02 of January 1993.	
<b>Sales</b>	Sales are the total value of sales and transfers-out of all own manufactured products/articles and the amounts received for installation, erection or assembly or other services rendered.	
<b>Symbols and abbreviations</b>	GDP	Gross domestic product
	IMF	International Monetary Fund
	ISIC	International Standard Industrial Classification of All Economic Activities
	LSS	Large sample survey
	NA	National accounts
	PPI	Producer price index
	SARS	South African Revenue Service
	SBR	Statistical business register
	SDDS	Special Data Dissemination Standard
	SIC	Standard Industrial Classification of All Economic Activities
	Stats SA	Statistics South Africa
	VAT	Value-added tax
	*	Revised figures

## Technical enquiries

**Nicolai Claassen** Telephone number: (012) 310 8007 / 072 310 5351  
Email: [nicolaic@statssa.gov.za](mailto:nicolaic@statssa.gov.za)

## General information

Stats SA publishes approximately 300 different statistical releases each year. It is not economically viable to produce them in more than one of South Africa's 12 official languages. Since the releases are used extensively locally and by international economic and social-scientific communities, Stats SA releases are published in English.

Stats SA has copyright on this publication. Users may apply the information as they wish, provided that they acknowledge Stats SA as the source of the basic data wherever they process, apply, utilise, publish or distribute the data; and also that they specify that the relevant application and analysis (where applicable) result from their own processing of the data.

## Advance release calendar

An advance release calendar is disseminated on [www.statssa.gov.za](http://www.statssa.gov.za).

## Stats SA products

A complete set of Stats SA publications is available at the Stats SA Library and the following libraries:

National Library of South Africa, Pretoria Division  
National Library of South Africa, Cape Town Division  
Natal Society Library, Pietermaritzburg  
Library of Parliament, Cape Town  
Bloemfontein Public Library  
Johannesburg Public Library  
Eastern Cape Library Services, Qonce  
Central Regional Library, Polokwane  
Central Reference Library, Mbombela  
Central Reference Collection, Kimberley  
Central Reference Library, Mmabatho

Stats SA also provides a subscription service.

## Electronic services

A large range of data is available via online services. For more details about our electronic data services, contact Stats SA's user information service at (012) 310 8600.

You can visit us on the internet at: [www.statssa.gov.za](http://www.statssa.gov.za).

## General enquiries

User information services	Telephone number: (012) 310 8600 Email address: <a href="mailto:info@statssa.gov.za">info@statssa.gov.za</a>
Orders/subscription services	Telephone number: (012) 310 8619 Email address: <a href="mailto:millies@statssa.gov.za">millies@statssa.gov.za</a>
Postal address	Private Bag X44, Pretoria, 0001

*Produced by Stats SA*