



stats sa

Department:
Statistics South Africa
REPUBLIC OF SOUTH AFRICA

Private Bag X44, Pretoria, 0001, South Africa, ISibalo House, Koch Street, Salvokop, Pretoria, 0002
www.statssa.gov.za, info@statssa.gov.za, Tel +27 12 310 8911

STATISTICAL RELEASE

P2041

Mining: Production and sales (Preliminary)

November 2025

Embargoed until:
20 January 2026
11:30

ENQUIRIES:
Juan-Pierre Terblanche
Tel: 066 470 2112

FORTHCOMING ISSUE:
December 2025

EXPECTED RELEASE DATE:
12 February 2026

Contents

Production: results for November 2025	2
Table A – Key growth rates in the volume of mining production.....	2
Table B – Seasonally adjusted index of the volume of mining production for the latest three months by mineral group and mineral (Base: 2019=100).....	2
Figure 1 – Volume of mining production (Base: 2019=100).....	3
Figure 2 – Volume of mining production (Base: 2019=100): year-on-year percentage change.....	3
Sales: results for November 2025	4
Table C – Key growth rates in mineral sales at current prices.....	4
Figure 3 – Total value of mineral sales at current prices.....	4
Tables	5
Table 1 – Index of the volume of mining production (Base: 2019=100).....	5
Table 2 – Year-on-year percentage change in the volume of mining production.....	5
Table 3 – Seasonally adjusted volume of total mining production.....	5
Table 4 – Index of the volume of mining production by mineral group and mineral (Base: 2019=100).....	6
Table 5 – Seasonally adjusted index of the volume of mining production by mineral group and mineral (Base: 2019=100).....	6
Table 6 – Year-on-year percentage change in the volume of mining production by mineral group and mineral.....	7
Table 7 – Contribution of each mineral group and mineral to the year-on-year percentage change in the volume of mining production (percentage points).....	7
Table 8 – Mineral sales at current prices (R million).....	8
Table 9 – Year-on-year percentage change in mineral sales at current prices.....	8
Table 10 – Seasonally adjusted total mineral sales at current prices.....	8
Table 11 – Mineral sales at current prices by mineral group and mineral (R million).....	9
Table 12 – Year-on-year percentage change in mineral sales at current prices by mineral group and mineral.....	9
Table 13 – Contribution of each mineral group and mineral to the year-on-year percentage change in mineral sales at current prices (percentage points).....	9
Explanatory notes	10
Technical notes	11
Glossary	12
Technical enquiries	12
General information	13

Production: results for November 2025

Table A – Key growth rates in the volume of mining production

	Jun-25	Jul-25	Aug-25	Sep-25	Oct-25	Nov-25
Year-on-year % change, unadjusted	2,5	5,4	0,4	1,4	6,1	-2,7
Month-on-month % change, seasonally adjusted	0,1	1,3	-0,9	2,0	2,7	-5,9
3-month % change, seasonally adjusted ¹	3,8	5,3	3,0	2,6	2,1	1,6

¹ Percentage change between the previous three months and the three months ending in the month indicated.

Mining production decreased by 2,7% year-on-year in November 2025. The largest negative contributors were:

- coal (-7,9% and contributing -2,1 percentage points);
- iron ore (-7,6% and contributing -1,1 percentage points);
- PGMs (-2,8% and contributing -0,8 of a percentage point); and
- gold (-6,0% and contributing -0,5 of a percentage point).

Manganese ore (17,0% and contributing 1,1 percentage points) was the largest positive contributor – see Table 6 and Table 7.

Seasonally adjusted mining production decreased by 5,9% in November 2025 compared with October 2025. This followed month-on-month changes of 2,7% in October 2025 and 2,0% in September 2025 – see Table A.

Table B – Seasonally adjusted index of the volume of mining production for the latest three months by mineral group and mineral (Base: 2019=100)

Mineral group and mineral	Weight	Jun – Aug 2025	Sep – Nov 2025	% change between Jun – Aug 2025 and Sep – Nov 2025	Contribution (% points) to the % change in total mining production
Gold	10,48	85,3	83,6	-2,0	-0,2
Iron ore	16,41	87,1	92,1	5,7	0,9
Chromium ore	4,08	136,5	140,0	2,6	0,2
Copper ¹	0,75	85,4	105,7	23,8	0,2
Manganese ore	5,65	119,0	126,7	6,5	0,5
PGMs	27,11	94,8	98,4	3,8	1,0
Nickel ¹	1,38	71,0	86,8	22,3	0,2
Other metallic minerals ¹	2,81	102,0	93,7	-8,1	-0,2
Diamonds ¹	2,05	90,5	87,9	-2,9	-0,1
Coal	26,32	93,2	90,1	-3,3	-0,9
Building materials	2,58	93,4	96,1	2,9	0,1
Other non-metallic minerals	0,38	91,9	89,6	-2,5	0,0
Total	100,00	94,9	96,4	1,6	1,6

¹ Unadjusted. See notes 4, 5 and 6 on page 11.

Seasonally adjusted mining production increased by 1,6% in the three months ended November 2025 compared with the previous three months. The largest positive contributors were:

- PGMs (3,8% and contributing 1,0 percentage point);
- iron ore (5,7% and contributing 0,9 of a percentage point); and
- manganese ore (6,5% and contributing 0,5 of a percentage point) – see Table B.

Figure 1 – Volume of mining production (Base: 2019=100)

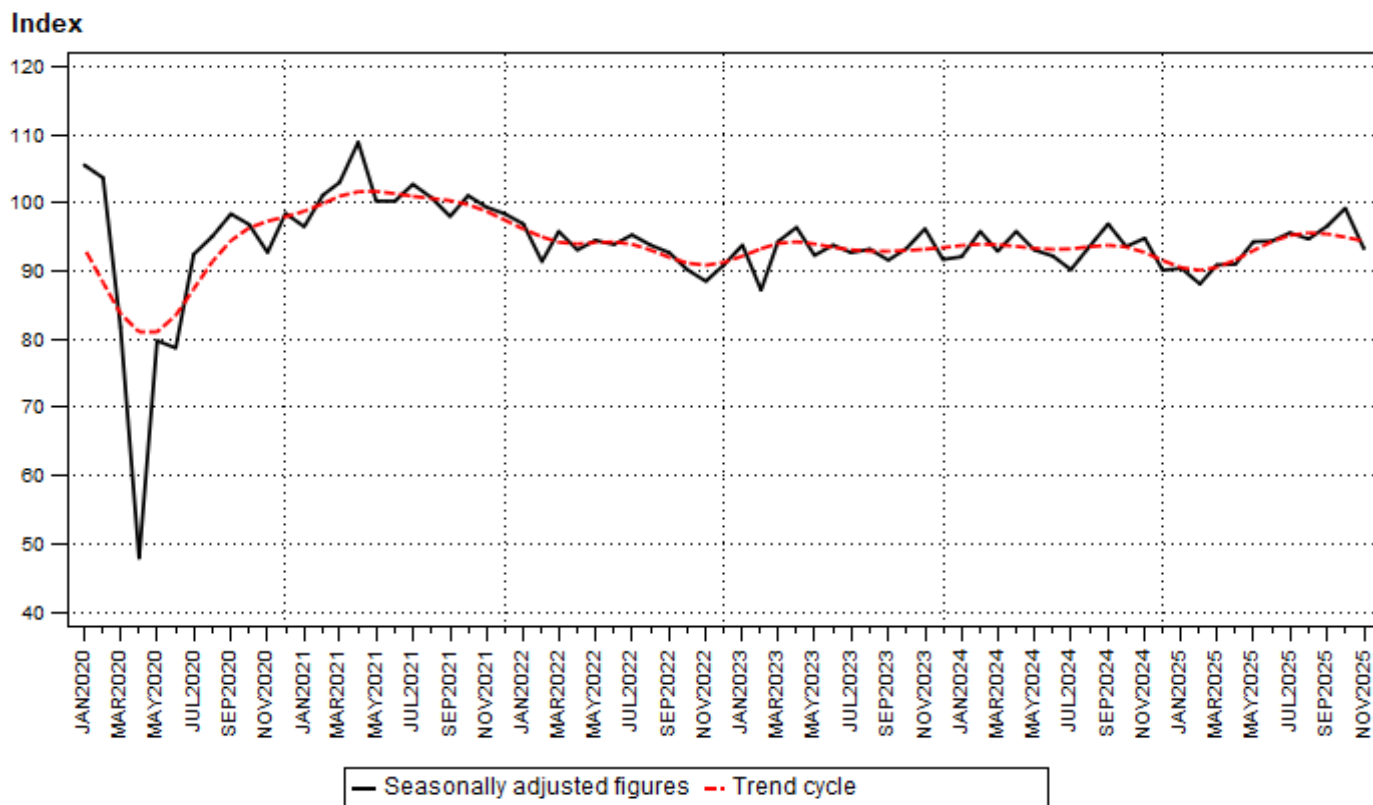
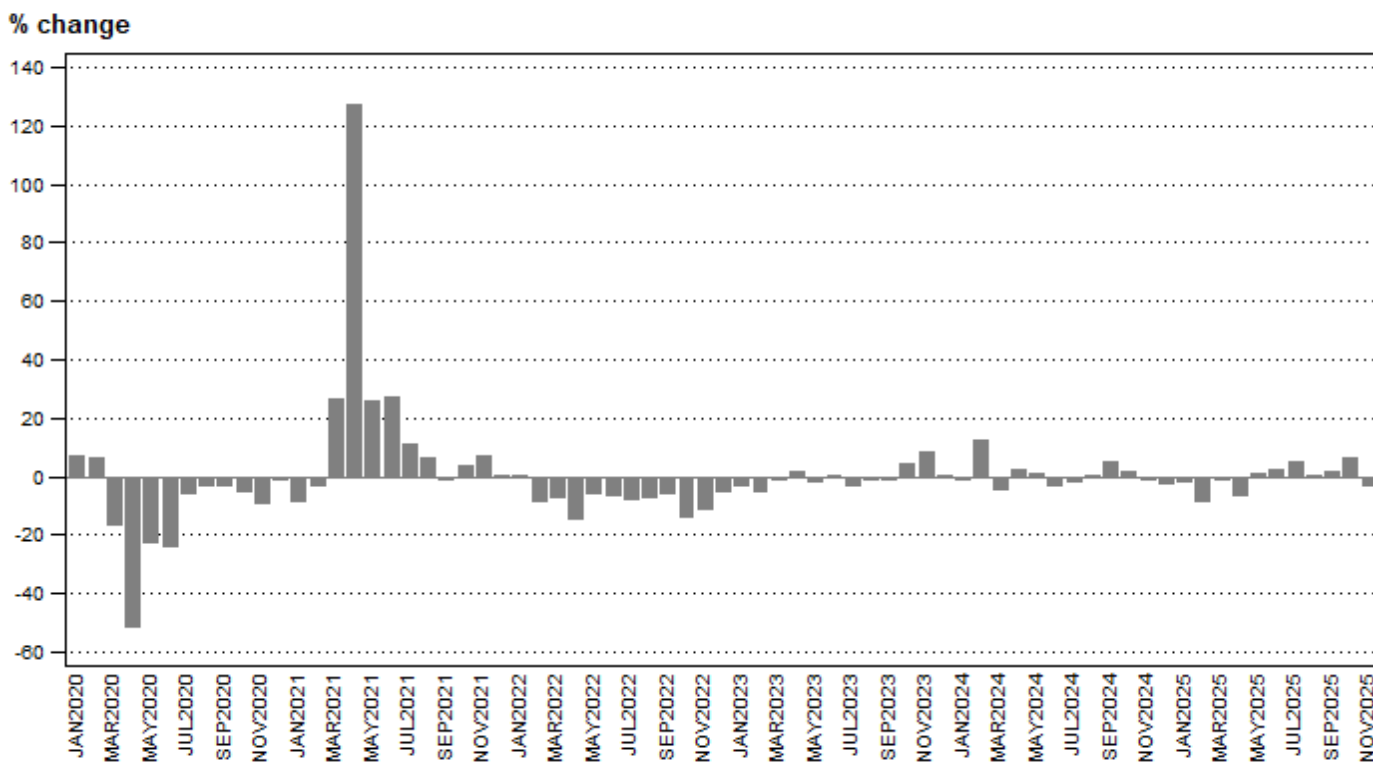


Figure 2 – Volume of mining production (Base: 2019=100): year-on-year percentage change



Sales: results for November 2025

Table C – Key growth rates in mineral sales at current prices

	Jun-25	Jul-25	Aug-25	Sep-25	Oct-25	Nov-25
Year-on-year % change, unadjusted	-14,0	2,3	22,8	16,4	13,6	-0,3
Month-on-month % change, seasonally adjusted	-6,8	10,3	-3,0	7,9	-0,9	-2,4
3-month % change, seasonally adjusted ¹	9,2	10,7	4,7	7,6	6,1	7,7

¹ Percentage change between the previous three months and the three months ending in the month indicated.

Mineral sales at current prices decreased by 0,3% year-on-year in November 2025. The largest negative contributors were:

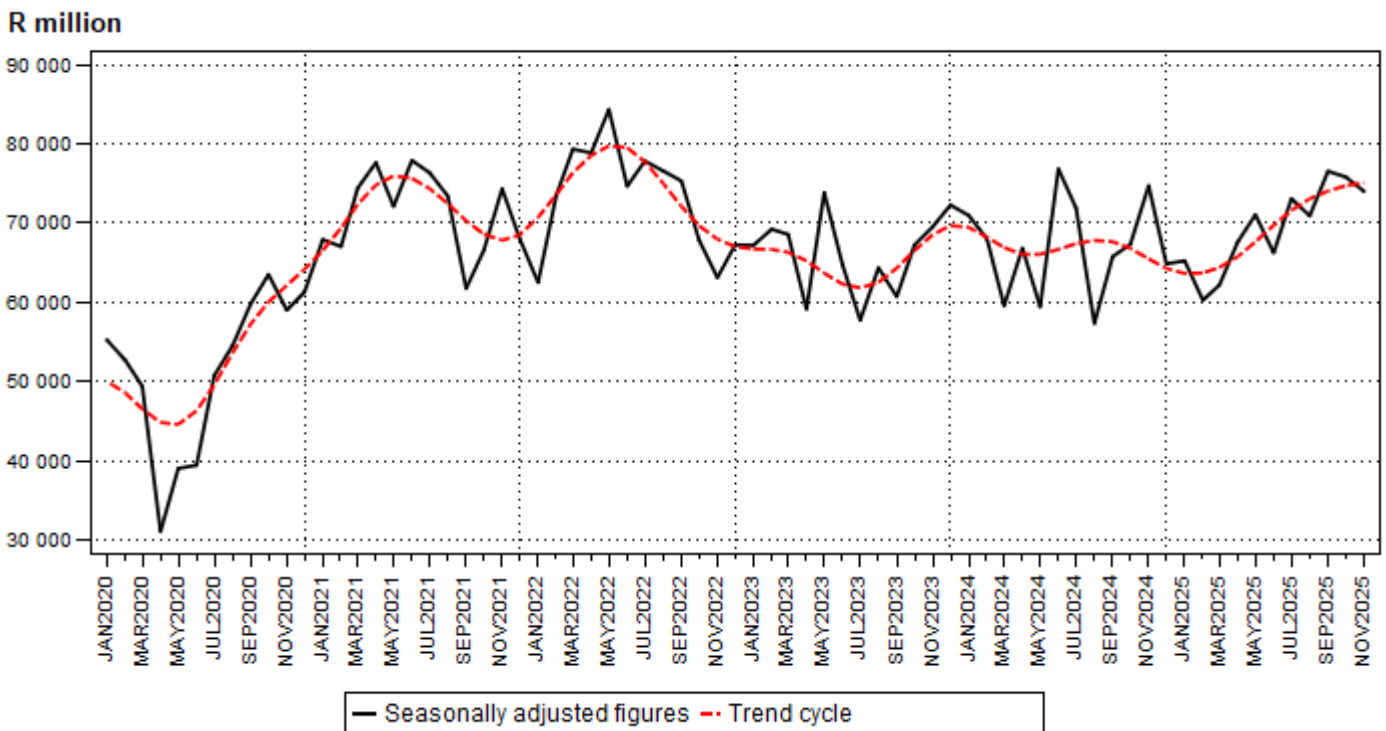
- gold (-27,9% and contributing -6,0 percentage points);
- coal (-15,0% and contributing -3,8 percentage points); and
- iron ore (-16,6% and contributing -1,7 percentage points).

The largest positive contributor was PGMs (42,3% and contributing 9,7 percentage points) – see Table 12 and Table 13.

Seasonally adjusted mineral sales at current prices decreased by 2,4% in November 2025 compared with October 2025. This followed month-on-month changes of -0,9% in October 2025 and 7,9% in September 2025.

Seasonally adjusted mineral sales at current prices increased by 7,7% in the three months ended November 2025 compared with the previous three months.

Figure 3 – Total value of mineral sales at current prices



Risenga Maluleke
Risenga Maluleke
 Statistician-General

Tables

Table 1 – Index of the volume of mining production (Base: 2019=100)

Month	2019	2020	2021	2022	2023	2024	2025
Jan	86,3	92,6	84,9	85,2	82,9	82,1	80,6
Feb	83,5	88,8	86,2	79,1	74,9	84,2	77,2
Mar	99,3	83,2	105,3	97,8	96,5	92,2	91,0
Apr	93,1	45,1	102,6	87,6	89,1	91,0	85,0
May	106,3	82,7	103,9	97,8	96,2	97,2	98,1
Jun	110,3	84,3	107,1	100,4	100,5	97,6	100,0
Jul	101,9	95,9	106,8	98,4	95,2	93,4	98,4
Aug	105,6	102,4	108,9	101,4	100,9	101,1	101,5
Sep	105,5	102,5	102,3	96,2	95,7	100,4	101,8
Oct	107,5	101,9	105,7	91,5	95,5	96,8	102,7
Nov	106,0	96,4	103,3	92,0	100,0	99,6	96,9
Dec	94,5	93,4	93,5	88,7	88,8	86,8	
Year	100,0	89,1	100,9	93,0	93,0	93,5	

Table 2 – Year-on-year percentage change in the volume of mining production

Month	2020	2021	2022	2023	2024	2025	2025 year-to-date
Jan	7,3	-8,3	0,4	-2,7	-1,0	-1,8	-1,8
Feb	6,3	-2,9	-8,2	-5,3	12,4	-8,3	-5,1
Mar	-16,2	26,6	-7,1	-1,3	-4,5	-1,3	-3,8
Apr	-51,6	127,5	-14,6	1,7	2,1	-6,6	-4,5
May	-22,2	25,6	-5,9	-1,6	1,0	0,9	-3,3
Jun	-23,6	27,0	-6,3	0,1	-2,9	2,5	-2,3
Jul	-5,9	11,4	-7,9	-3,3	-1,9	5,4	-1,2
Aug	-3,0	6,3	-6,9	-0,5	0,2	0,4	-0,9
Sep	-2,8	-0,2	-6,0	-0,5	4,9	1,4	-0,7
Oct	-5,2	3,7	-13,4	4,4	1,4	6,1	0,0
Nov	-9,1	7,2	-10,9	8,7	-0,4	-2,7	-0,2
Dec	-1,2	0,1	-5,1	0,1	-2,3		
Year	-10,9	13,2	-7,8	0,0	0,5		

Table 3 – Seasonally adjusted volume of total mining production

Month	Index (Base: 2019=100)				Month-on-month % change			
	2022	2023	2024	2025	2022	2023	2024	2025
Jan	96,9	93,8	92,1	90,4	-1,5	3,2	0,4	0,3
Feb	91,4	87,2	95,8	88,1	-5,7	-7,0	4,0	-2,5
Mar	95,8	94,3	92,9	90,9	4,8	8,1	-3,0	3,2
Apr	93,1	96,4	95,8	91,0	-2,8	2,2	3,1	0,1
May	94,5	92,3	93,1	94,3	1,5	-4,3	-2,8	3,6
Jun	93,9	93,8	92,2	94,4	-0,6	1,6	-1,0	0,1
Jul	95,3	92,7	90,2	95,6	1,5	-1,2	-2,2	1,3
Aug	93,8	93,2	93,6	94,7	-1,6	0,5	3,8	-0,9
Sep	92,7	91,6	96,9	96,6	-1,2	-1,7	3,5	2,0
Oct	90,2	93,3	93,6	99,2	-2,7	1,9	-3,4	2,7
Nov	88,5	96,2	94,8	93,3	-1,9	3,1	1,3	-5,9
Dec	90,9	91,7	90,1		2,7	-4,7	-5,0	

Table 4 – Index of the volume of mining production by mineral group and mineral (Base: 2019=100) ¹

Mineral group and mineral	Weight	Jun-25	Jul-25	Aug-25	Sep-25	Oct-25	Nov-25
Gold	10,48	87,5	90,8	89,1	95,5	97,2	81,4
Iron ore	16,41	92,2	95,9	92,9	87,6	86,5	79,5
Chromium ore	4,08	145,6	146,4	149,2	146,5	154,1	142,1
Copper	0,75	76,8	79,9	99,6	99,4	113,7	104,1
Manganese ore	5,65	118,3	135,6	137,3	118,3	132,6	133,0
PGMs	27,11	106,6	87,6	101,6	111,0	106,3	106,9
Nickel	1,38	81,4	61,5	70,0	83,4	95,9	81,1
Other metallic minerals	2,81	100,5	105,0	100,5	91,9	102,6	86,5
Diamonds	2,05	93,8	91,7	86,1	90,2	81,9	91,6
Coal	26,32	95,3	100,2	99,7	96,0	97,9	90,6
Building materials	2,58	90,5	106,9	100,2	105,3	111,6	103,3
Other non-metallic minerals	0,38	89,2	103,1	102,7	100,0	91,8	87,0
Total	100,00	100,0	98,4	101,5	101,8	102,7	96,9

¹ Annual averages and annual percentage changes are available on the following link: [Annual data](#).

Table 5 – Seasonally adjusted index of the volume of mining production by mineral group and mineral (Base: 2019=100)

Mineral group and mineral	Jun-25	Jul-25	Aug-25	Sep-25	Oct-25	Nov-25	Month-on-month % change
Gold	85,9	86,6	83,5	88,2	85,7	76,9	-10,3
Iron ore	85,5	89,9	85,8	91,3	100,4	84,6	-15,7
Chromium ore	138,4	137,1	134,0	137,5	148,0	134,4	-9,2
Copper ¹	76,8	79,9	99,6	99,4	113,7	104,1	-8,4
Manganese ore	110,4	122,9	123,6	117,2	128,3	134,7	5,0
PGMs	95,4	95,1	94,0	99,7	100,2	95,4	-4,8
Nickel ¹	81,4	61,5	70,0	83,4	95,9	81,1	-15,4
Other metallic minerals ¹	100,5	105,0	100,5	91,9	102,6	86,5	-15,7
Diamonds ¹	93,8	91,7	86,1	90,2	81,9	91,6	11,8
Coal	92,9	92,3	94,4	90,8	90,6	88,9	-1,9
Building materials	89,8	97,1	93,4	99,2	94,3	94,8	0,5
Other non-metallic minerals	91,9	92,1	91,8	92,2	85,9	90,7	5,6
Total	94,4	95,6	94,7	96,6	99,2	93,3	-5,9

¹ Unadjusted. See notes 4, 5 and 6 on page 11.

Table 6 – Year-on-year percentage change in the volume of mining production by mineral group and mineral

Mineral group and mineral	Jun-25	Jul-25	Aug-25	Sep-25	Oct-25	Nov-25
Gold	2,9	-0,4	-3,6	5,1	-0,3	-6,0
Iron ore	-1,5	12,2	2,4	-2,2	24,8	-7,6
Chromium ore	10,6	3,7	-2,2	3,4	13,4	-2,2
Copper	-30,6	-6,7	-19,7	-19,4	-5,5	8,2
Manganese ore	-12,8	-5,0	-2,1	-5,9	15,1	17,0
PGMs	3,0	6,3	-3,0	3,9	3,9	-2,8
Nickel	15,0	-9,2	-21,7	-11,0	31,2	3,2
Other metallic minerals	20,6	53,3	22,9	-7,2	4,4	14,9
Diamonds	27,3	5,9	29,1	2,9	-13,2	27,9
Coal	4,8	3,2	4,1	1,6	0,3	-7,9
Building materials	3,1	12,4	3,1	18,4	5,5	1,6
Other non-metallic minerals	-12,0	5,6	-10,2	-6,5	-9,7	-0,7
Total	2,5	5,4	0,4	1,4	6,1	-2,7

Table 7 – Contribution of each mineral group and mineral to the year-on-year percentage change in the volume of mining production (percentage points)

Mineral group and mineral	Jun-25	Jul-25	Aug-25	Sep-25	Oct-25	Nov-25
Gold	0,3	0,0	-0,3	0,5	0,0	-0,5
Iron ore	-0,2	1,8	0,4	-0,3	2,9	-1,1
Chromium ore	0,6	0,2	-0,1	0,2	0,8	-0,1
Copper	-0,3	0,0	-0,2	-0,2	-0,1	0,1
Manganese ore	-1,0	-0,4	-0,2	-0,4	1,0	1,1
PGMs	0,9	1,5	-0,8	1,1	1,1	-0,8
Nickel	0,1	-0,1	-0,3	-0,1	0,3	0,0
Other metallic minerals	0,5	1,1	0,5	-0,2	0,1	0,3
Diamonds	0,4	0,1	0,4	0,1	-0,3	0,4
Coal	1,2	0,9	1,0	0,4	0,1	-2,1
Building materials	0,1	0,3	0,1	0,4	0,2	0,0
Other non-metallic minerals	0,0	0,0	0,0	0,0	0,0	0,0
Total	2,5	5,4	0,4	1,4	6,1	-2,7

Table 8 – Mineral sales at current prices (R million)

Month	2019	2020	2021	2022	2023	2024	2025
Jan	41 070,7	51 128,5	63 518,6	59 050,2	63 640,8	67 356,0	62 046,7
Feb	38 202,9	45 135,2	56 927,3	61 698,4	57 573,5	56 147,4	49 640,6
Mar	45 585,3	51 606,4	78 213,1	83 573,6	71 667,9	61 535,8	63 306,7
Apr	44 538,7	31 064,5	78 533,6	80 279,4	60 098,5	67 633,1	68 105,2
May	46 519,8	40 521,7	75 976,9	89 818,5	79 471,8	64 369,6	76 862,0
Jun	48 295,2	41 962,5	82 049,6	77 693,5	66 609,1	78 628,2	67 606,1
Jul	43 596,0	48 588,4	73 935,4	76 368,5	57 344,8	71 883,4	73 552,2
Aug	47 069,2	56 868,0	77 095,1	80 551,6	67 474,6	59 717,0	73 351,8
Sep	50 009,3	63 394,0	65 086,8	78 856,7	63 315,9	68 323,5	79 531,7
Oct	50 051,2	66 165,3	69 099,3	70 397,8	70 071,2	70 635,6	80 223,0
Nov	50 450,7	58 255,9	72 147,3	60 931,6	67 144,9	72 774,3	72 539,1
Dec	47 491,9	58 501,2	64 696,9	64 521,0	70 216,5	63 677,5	
Total	552 880,9	613 191,6	857 279,9	883 740,8	794 629,5	802 681,4	

Table 9 – Year-on-year percentage change in mineral sales at current prices

Month	2020	2021	2022	2023	2024	2025	2025 year-to-date
Jan	24,5	24,2	-7,0	7,8	5,8	-7,9	-7,9
Feb	18,1	26,1	8,4	-6,7	-2,5	-11,6	-9,6
Mar	13,2	51,6	6,9	-14,2	-14,1	2,9	-5,4
Apr	-30,3	152,8	2,2	-25,1	12,5	0,7	-3,8
May	-12,9	87,5	18,2	-11,5	-19,0	19,4	0,9
Jun	-13,1	95,5	-5,3	-14,3	18,0	-14,0	-2,0
Jul	11,5	52,2	3,3	-24,9	25,4	2,3	-1,4
Aug	20,8	35,6	4,5	-16,2	-11,5	22,8	1,4
Sep	26,8	2,7	21,2	-19,7	7,9	16,4	3,1
Oct	32,2	4,4	1,9	-0,5	0,8	13,6	4,2
Nov	15,5	23,8	-15,5	10,2	8,4	-0,3	3,8
Dec	23,2	10,6	-0,3	8,8	-9,3		
Total	10,9	39,8	3,1	-10,1	1,0		

Table 10 – Seasonally adjusted total mineral sales at current prices

Month	R million				Month-on-month % change			
	2022	2023	2024	2025	2022	2023	2024	2025
Jan	62 485,5	67 183,7	70 948,9	65 223,8	-8,1	-0,1	-1,8	0,6
Feb	73 532,8	69 214,0	67 992,1	60 247,9	17,7	3,0	-4,2	-7,6
Mar	79 327,1	68 548,1	59 548,9	62 167,5	7,9	-1,0	-12,4	3,2
Apr	78 848,1	59 099,3	66 824,3	67 606,4	-0,6	-13,8	12,2	8,7
May	84 340,0	73 844,0	59 415,3	71 037,3	7,0	24,9	-11,1	5,1
Jun	74 651,8	64 734,9	76 835,0	66 232,9	-11,5	-12,3	29,3	-6,8
Jul	77 824,4	57 716,9	71 876,6	73 063,6	4,2	-10,8	-6,5	10,3
Aug	76 576,9	64 347,6	57 315,0	70 907,9	-1,6	11,5	-20,3	-3,0
Sep	75 305,6	60 694,5	65 759,6	76 527,5	-1,7	-5,7	14,7	7,9
Oct	67 825,2	67 210,8	67 304,9	75 816,7	-9,9	10,7	2,3	-0,9
Nov	63 101,0	69 529,8	74 707,8	74 001,6	-7,0	3,5	11,0	-2,4
Dec	67 229,2	72 268,6	64 835,7		6,5	3,9	-13,2	

Table 11 – Mineral sales at current prices by mineral group and mineral (R million)

Mineral group and mineral	Jun-25	Jul-25	Aug-25	Sep-25	Oct-25	Nov-25
Gold	9 184,1	18 707,9	12 962,4	17 424,2	16 488,1	11 382,5
Iron ore	6 967,4	6 678,9	7 543,3	7 046,1	5 274,9	6 305,2
Chromium ore	5 132,5	5 952,6	6 075,0	6 514,2	6 819,0	5 685,0
Copper	566,7	547,7	626,8	801,3	796,0	759,6
Manganese ore	4 272,9	3 953,0	4 243,2	4 020,2	3 578,1	3 574,7
PGMs	18 357,3	17 022,8	18 492,3	22 113,2	23 484,0	23 727,3
Nickel	785,0	564,1	784,9	727,4	916,3	884,8
Other metallic minerals	2 102,5	1 663,4	1 974,9	1 906,1	1 976,8	1 824,6
Coal	16 434,8	15 049,1	17 645,0	15 775,9	17 163,0	15 584,9
Building materials	1 206,5	1 345,1	1 302,2	1 305,5	1 358,6	1 277,6
Other non-metallic minerals	2 596,4	2 067,6	1 701,9	1 897,7	2 368,2	1 532,8
Total	67 606,1	73 552,2	73 351,8	79 531,7	80 223,0	72 539,1

Table 12 – Year-on-year percentage change in mineral sales at current prices by mineral group and mineral

Mineral group and mineral	Jun-25	Jul-25	Aug-25	Sep-25	Oct-25	Nov-25
Gold	-53,7	-8,7	471,5	60,4	4,6	-27,9
Iron ore	0,7	20,3	-14,2	-1,3	0,8	-16,6
Chromium ore	-14,1	6,2	8,1	12,5	27,0	18,2
Copper	-31,7	19,7	11,9	-11,0	37,2	11,5
Manganese ore	-32,2	-30,8	-25,4	-23,1	14,9	23,0
PGMs	23,5	24,9	44,1	53,8	50,6	42,3
Nickel	-36,4	-15,5	-9,7	-3,5	0,8	-5,4
Other metallic minerals	5,4	13,0	-1,8	-6,8	-4,7	-4,8
Coal	-4,9	-2,3	-0,9	-9,4	-5,6	-15,0
Building materials	6,5	7,2	1,8	8,6	4,3	2,4
Other non-metallic minerals	16,4	27,1	-14,6	-27,2	-6,1	-20,8
Total	-14,0	2,3	22,8	16,4	13,6	-0,3

Table 13 – Contribution of each mineral group and mineral to the year-on-year percentage change in mineral sales at current prices (percentage points)

Mineral group and mineral	Jun-25	Jul-25	Aug-25	Sep-25	Oct-25	Nov-25
Gold	-13,6	-2,5	17,9	9,6	1,0	-6,0
Iron ore	0,1	1,6	-2,1	-0,1	0,1	-1,7
Chromium ore	-1,1	0,5	0,8	1,1	2,1	1,2
Copper	-0,3	0,1	0,1	-0,1	0,3	0,1
Manganese ore	-2,6	-2,4	-2,4	-1,8	0,7	0,9
PGMs	4,4	4,7	9,5	11,3	11,2	9,7
Nickel	-0,6	-0,1	-0,1	0,0	0,0	-0,1
Other metallic minerals	0,1	0,3	-0,1	-0,2	-0,1	-0,1
Coal	-1,1	-0,5	-0,3	-2,4	-1,4	-3,8
Building materials	0,1	0,1	0,0	0,2	0,1	0,0
Other non-metallic minerals	0,5	0,6	-0,5	-1,0	-0,2	-0,6
Total	-14,0	2,3	22,8	16,4	13,6	-0,3

Explanatory notes

- Introduction**
- 1 Statistics South Africa (Stats SA) publishes monthly mining production indices and mineral sales based on the information furnished by the Department of Mineral and Petroleum Resources (DMPR). Data in this release are presented by mineral group and mineral.
 - 2 In accordance with international practice, the indices are usually re-based every five years to a new base year. The current base year of the index of the volume of mining production is 2019=100. Both actual and seasonally adjusted figures are presented.
 - 3 The value of mineral sales is calculated, in general, on a free-on-rail/free-on-board basis.
- Purpose of the survey**
- 4 The monthly mining production and sales survey is conducted by the DMPR, covering all mining establishments operating in the South African economy. The results of this survey are used to calculate the volume of mining production indices in order to estimate the gross domestic product (GDP) and its components, which in turn are used to develop and monitor government policy.
- Scope of the survey**
- 5 This survey covers mining establishments conducting activities regarding the extracting, dressing and beneficiating of minerals occurring naturally, for example solids such as coal and ores.
- Classification**
- 6 The 1993 edition of the *Standard Industrial Classification of All Economic Activities* (SIC), Fifth Edition, Report No. 09-90-02, Fifth Edition of January 1993, was used to classify the statistical units in the survey. The SIC is based on the 1990 *International Standard Industrial Classification of All Economic Activities* (ISIC) with suitable adaptations for local conditions. Each statistical unit is classified to an industry which reflects the predominant activity of the establishment. Statistics in this publication are presented by mineral group and mineral.
- Statistical unit**
- 7 The statistical unit for the collection of information is the mining establishment. An establishment is the smallest economic unit that functions as a separate entity.
- Revised figures**
- 8 Revised figures are mainly due to late submission of data to the DMPR, or the DMPR reporting revisions or corrections to their figures. The reasons for routine revisions are outlined in the following schedule. Any unscheduled revisions will be promptly indicated in relevant tables to maintain transparency and accuracy. It is important to note that seasonally adjusted figures are revised monthly.

Statistical release	Reason for revision	Period subject to revision
Nov-25	Additional information from the DMPR	Jan-24 - Oct-25
Dec-25	Additional information from the DMPR	Jan-24 - Nov-25
Jan-26	Additional information from the DMPR	Jan-24 - Dec-25
Feb-26	Additional information from the DMPR	Jan-24 - Jan-26
Mar-26	Additional information from the DMPR	Jan-24 - Feb-26
Apr-26	Additional information from the DMPR	Jan-24 - Mar-26
May-26	Additional information from the DMPR	Jan-24 - Apr-26
Jun-26	Additional information from the DMPR	Jan-24 - May-26
Jul-26	Additional information from the DMPR	Jan-24 - Jun-26
Aug-26	Additional information from the DMPR	Jan-24 - Jul-26
Sep-26	Additional information from the DMPR	Jan-24 - Aug-26
Oct-26	Additional information from the DMPR	Jan-24 - Sep-26
New base year in 2027/28 - periodic, approximately four- to five-year intervals		

- Rounding-off of figures**
- 9 The figures in the tables have, where necessary, been rounded off to the nearest digit shown. There may, therefore, be slight discrepancies between the sums of the constituent items and the totals shown.

Historical data and past publications	10	Historical mining data and past publications are available on the Stats SA website. Click on the following link (Time series data) or (Past publications) to access the data and releases electronically. Annual averages and annual percentage changes are available on the following link: Annual data .
Technical notes		
Index of the volume of mining production	1	The index of the volume of mining production, also known as the production index, is a statistical measure of the change in the volume of production. The production index of a mineral group is the ratio between the volume of production of a mineral group in a given period and the volume of production of the same mineral group in the base period. The current base period is 2019. The production in the base period is set at 100.
Index weighting	2	The weight of a mineral group is the ratio of its value added to the total value added of the mining industry. The weight of a mineral group reflects the importance of the mineral group in the total mining industry. The weights change over time due to quality improvements and changes in relative prices. New weights will be calculated annually.
	3	The weights used to aggregate minerals into mineral groups and mineral groups into total mining are derived from national accounts value added data. The latest set of weights (introduced in the September 2025 publication) is based on 2022 value added data and is applicable from January 2022.
Seasonal adjustment	4	Seasonally adjusted estimates are generated each month using the X-12-ARIMA Seasonal Adjustment Program developed by the United States Census Bureau. Seasonal adjustment is a means of removing the estimated effects of normal seasonal variation from the series so that the effects of other influences on the series can be recognised more clearly. Seasonal adjustment does not aim to remove irregular or non-seasonal influences which may be present in any particular month.
	5	Influences that are volatile or unsystematic can still make it difficult to interpret the movement of the series even after adjustment for seasonal variations. This means the month-to-month movements of seasonally adjusted estimates may not be reliable indicators of trend behaviour. The X-12-ARIMA procedure for mining production and sales is described in more detail on the Stats SA website at: Click to download seasonal adjustment for mining production and sales February 2022 .
Calendar effects	6	These are effects due to calendar variations. Such calendar effects include the number of working/trading days in a week, moving holidays such as Easter and the length of month (some months have more days than others).
Trend cycle	7	The trend is the long-term pattern or movement of a time series. The X-12-ARIMA Seasonal Adjustment Program is used for smoothing seasonally adjusted estimates to estimate the underlying trend cycle.
Month-on-month percentage change	8	The month-on-month percentage change in a variable for any given month is the change between that month and the previous month, expressed as a percentage of the latter.
Year-on-year percentage change	9	The year-on-year percentage change in a variable for any given period is the change between that period and the corresponding period of the previous year, expressed as a percentage of the latter.
Index contribution (percentage points)	10	The contribution (percentage points) of a mineral group or mineral to the percentage change in the total mining production for a given period is calculated by multiplying the difference in the index for each mineral group or mineral by the weight of the mineral group or mineral and then dividing by the previous period's total index.

- Sales contribution (percentage points)** **11** The contribution (percentage points) to the percentage change in total sales for a given period is calculated by multiplying the percentage change of each mineral group or mineral with its percentage contribution to total mineral sales of the previous period, divided by 100.

Glossary

Free-on-rail	Free-on-rail relates to goods sold on the local market where no rail or road transport costs are involved.																
Free-on-board	Free-on-board relates to goods destined for the export market. Rail, road transport and docking charges are involved but no charges are made for transport by sea.																
Industry	An industry consists of a group of establishments engaged in the same or similar kinds of economic activity. Industries are defined in the <i>System of National Accounts (SNA)</i> in the same way as in the <i>Standard Industrial Classification of All Economic Activities (SIC)</i> , Fifth Edition of January 1993.																
PGMs – Platinum group metals	Platinum group metals include platinum, iridium, osmiridium, palladium, rhodium, ruthenium and osmium.																
Sales	Sales are the total value of sales of primary minerals at the first point of saleability by the mining establishment.																
Symbols and abbreviations	<table> <tr> <td>DMPR</td> <td>Department of Mineral and Petroleum Resources</td> </tr> <tr> <td>GDP</td> <td>Gross domestic product</td> </tr> <tr> <td>ISIC</td> <td>International Standard Industrial Classification of All Economic Activities</td> </tr> <tr> <td>PGMs</td> <td>Platinum group metals</td> </tr> <tr> <td>SIC</td> <td>Standard Industrial Classification of All Economic Activities</td> </tr> <tr> <td>SNA</td> <td>System of National Accounts</td> </tr> <tr> <td>Stats SA</td> <td>Statistics South Africa</td> </tr> <tr> <td>*</td> <td>Revised</td> </tr> </table>	DMPR	Department of Mineral and Petroleum Resources	GDP	Gross domestic product	ISIC	International Standard Industrial Classification of All Economic Activities	PGMs	Platinum group metals	SIC	Standard Industrial Classification of All Economic Activities	SNA	System of National Accounts	Stats SA	Statistics South Africa	*	Revised
DMPR	Department of Mineral and Petroleum Resources																
GDP	Gross domestic product																
ISIC	International Standard Industrial Classification of All Economic Activities																
PGMs	Platinum group metals																
SIC	Standard Industrial Classification of All Economic Activities																
SNA	System of National Accounts																
Stats SA	Statistics South Africa																
*	Revised																

Technical enquiries

JP Terblanche	Telephone number: (012) 310 2965 / 066 470 2112 Email: juan-pierret@statssa.gov.za
Mpuleng Galane	Telephone number: (012) 444 3735 Email: mpuleng.galane@dmp.gov.za

General information

Stats SA publishes approximately 300 different statistical releases each year. It is not economically viable to produce them in more than one of South Africa's 12 official languages. Since the releases are used extensively locally and by international economic and social-scientific communities, Stats SA releases are published in English only.

Stats SA has copyright on this publication. Users may apply the information as they wish, provided that they acknowledge Stats SA as the source of the basic data wherever they process, apply, utilise, publish or distribute the data and also that they specify that the relevant application and analysis (where applicable) result from their own processing of the data.

Advance release calendar

An advance release calendar is disseminated on www.statssa.gov.za.

Stats SA products

A complete set of Stats SA publications is available at the Stats SA Library and the following libraries:

National Library of South Africa, Pretoria Division
National Library of South Africa, Cape Town Division
Natal Society Library, Pietermaritzburg
Library of Parliament, Cape Town
Bloemfontein Public Library
Johannesburg Public Library
Eastern Cape Library Services, Qonce
Central Regional Library, Polokwane
Central Reference Library, Mbombela
Central Reference Collection, Kimberley
Central Reference Library, Mmabatho

Stats SA also provides a subscription service.

Electronic services

A large range of data is available via online services. For more details about our electronic services, contact Stats SA's user information service.

You can visit us on the internet at: www.statssa.gov.za.

General enquiries

User information services	Telephone number: (012) 310 8600 Email: info@statssa.gov.za
Orders/subscription services	Telephone number: (012) 310 8619 Email: millies@statssa.gov.za
Postal address	Private Bag X44, Pretoria, 0001

Produced by Stats SA