
Statistical release

P0305

Recorded live births

2012

**Embargoed until:
18 November 2013
11:00**

Enquiries:

User Information Services
Tel.: (012) 310 8600

Forthcoming issue:

2013

Expected release date

August 2014

Published by Statistics South Africa, Private Bag X44, Pretoria 0001

© Statistics South Africa, 2013

Users may apply or process these data, provided Statistics South Africa (Stats SA) is acknowledged as the original source of the data; that it is specified that the application and/or analysis is the result of the users independent processing of the data; and that neither the basic data nor any processed version or application thereof may be sold or offered for sale in any form whatsoever without the prior permission of Stats SA.

A complete set of Stats SA publications is available at the Stats SA Library and the following libraries:

- National Library of South Africa, Pretoria Division
- National Library of South Africa, Cape Town Division
- Natal Society Library, Pietermaritzburg
- Library of Parliament, Cape Town
- Bloemfontein Public Library
- Johannesburg Public Library
- Eastern Cape Library Services, King William's Town
- Central Regional Library, Polokwane
- Central Reference Library, Nelspruit
- Central Reference Collection, Kimberley
- Central Reference Library, Mmabatho

This publication is also available in hard copy and on the Stats SA website www.statssa.gov.za

Stats SA also provides a subscription service.

Enquiries:

Printing and distribution

Tel: (012) 310 8358

Email: magdaj@statssa.gov.za

User information services

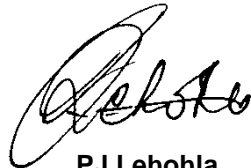
(012) 310 8600

(012) 310 8500 / 8495

info@statssa.gov.za

Preface

This statistical release presents information on recorded live births in South Africa, based on data from the national birth registration system at the Department of Home Affairs. The release reports on birth registrations and birth occurrences for 2012. It also provides information on trends and patterns of recorded live births from 1992, highlighting provincial differences in the registration and occurrence of births.



PJ Lehohla
Statistician-General

Contents

Preface	ii
Key findings	1
1. Introduction	1
2. Birth registrations.....	1
2.1 Completeness of birth registration.....	1
2.2 Trends in birth registration.....	2
2.3 Birth registrations by selected variables	5
3. Birth occurrences.....	9
3.1 Birth occurrences as at 28 February 2013	10
3.2 Birth occurrences as at 30 June 2013.....	14
4. Concluding remarks.....	16
References	18
Appendices	19
Appendix A: Notice of birth form (DHA-24)	19
Appendix B: Total birth registrations for 2012 by year of birth occurrence, province and district municipality	21
Appendix C: Birth registrations by registration status, sex, province and district municipality, 2012	23
Appendix D: Birth occurrences by year of birth and age of the mother, 2008–2012.....	25
Appendix E: Birth occurrences by province of birth occurrence and age of the mother, 2012	25
Appendix F: Birth occurrences by year of birth and province and district municipality of birth occurrence, 2008–2012	26
Appendix G: Total birth occurrences by sex, month and citizenship, 1992–1994.....	28
Appendix G.1: Total birth occurrences by sex, month and citizenship, 1995–1997	29
Appendix G.2: Total birth occurrences by sex, month and citizenship, 1998–2000.....	30
Appendix G.3: Total birth occurrences by sex, month and citizenship, 2001–2003.....	31
Appendix G.4: Total birth occurrences by sex, month and citizenship, 2004–2006.....	32
Appendix G.5: Total birth occurrences by sex, month and citizenship, 2007–2009.....	33
Appendix G.6: Total birth occurrences by sex, month and citizenship, 2010–2012.....	34
Explanatory Notes	35

List of tables

Table 1: Birth registrations by status of registration, South Africa: 1992–2012 3

Table 2: Birth registrations by age of the mother and status of registration, South Africa: 2012 6

Table 3: Birth occurrences by year of birth and reference period, South Africa: 1992–2012 10

Table 4: Birth occurrences (as at end of February 2013) by year of birth occurrence and year of birth registration, South Africa: 1993–2012 11

Table 5: Number of births by month of birth occurrence and month of birth registration, South Africa: 2012 12

Table 6: Number and percentage of births by age of the mother, South Africa: 2012 13

Table 7: Birth occurrences (as at 30 June 2013) by sex, year of birth and citizenship, South Africa: 15

List of figures

Figure 1: Estimated completeness levels of birth registrations, South Africa: 2003–2012 2

Figure 2: Birth registrations by status of registration, South Africa: 1992–2012 4

Figure 3: Late birth registrations by year of birth, South Africa: 1981–2011 5

Figure 4: Birth registration by age of mother and status of registration, South Africa: 2012 6

Figure 5: Birth registrations by province of occurrence and status of registration, South Africa: 2012 8

Figure 6: Sex ratios by province of birth occurrence, South Africa: 2012 9

Figure 7: Median age of the mother by year of birth, South Africa: 1998–2012 13

Figure 8: Birth occurrences by province of registration, South Africa: 2012 14

Figure 9: Percentage distribution of birth occurrences by year and month of birth, South Africa: 2008–2012 16

Key findings

1. Introduction

The registration of births has far-reaching implications beyond the individual acknowledgement of a person's existence. Birth registration is important as it provides statistics required for government social and economic planning and monitoring. Additionally, the number of births provides the numerator for measures of fertility and can be used as a denominator for assessing mortality levels. Goals four and five of the Millennium Development Goals are to decrease child and maternal mortality. All these estimates require the number of live births for the estimation of rates and ratios. The number of births can also be used to estimate the inter-censal population and the rate of population growth, and for the preparation of population projections.

In South Africa, the registration of births is governed by the Births and Deaths Registration Act of 1992 (Act No. 51, as amended). According to the Act, a child ought to be registered within 30 days of birth. Outside this period the Act makes provision for late registration of births, but certain conditions must be met. These conditions include the provision of a clinic card, letter from the hospital of birth occurrence, a letter from the first school that the child attended, and an affidavit prescribed for late registration.

This report presents information on the number of live births recorded on the South African birth register maintained by the Department of Home Affairs (DHA) up to 30 June 2013. The report includes data on items collected using birth notification form DHA-24 and late birth notification form DHA-24/LRB. The release also presents data for 1992 to 2011 to provide information on trends and patterns in birth occurrences and birth registrations over this time period. The year of birth occurrence refers to the year in which the birth occurred whereas the year of birth registration refers to the year in which the birth was registered irrespective of when it occurred.

2. Birth registrations

2.1 Completeness of birth registration

The estimation of completeness of the South African civil registration system for recording vital events and other characteristics is an important undertaking that provides an indication of the efficiency of the Department of Home Affairs. Furthermore, the number of births and deaths adjusted for incompleteness of registration can be used in the analysis of birth and death statistics and for estimating the overall population size of the country.

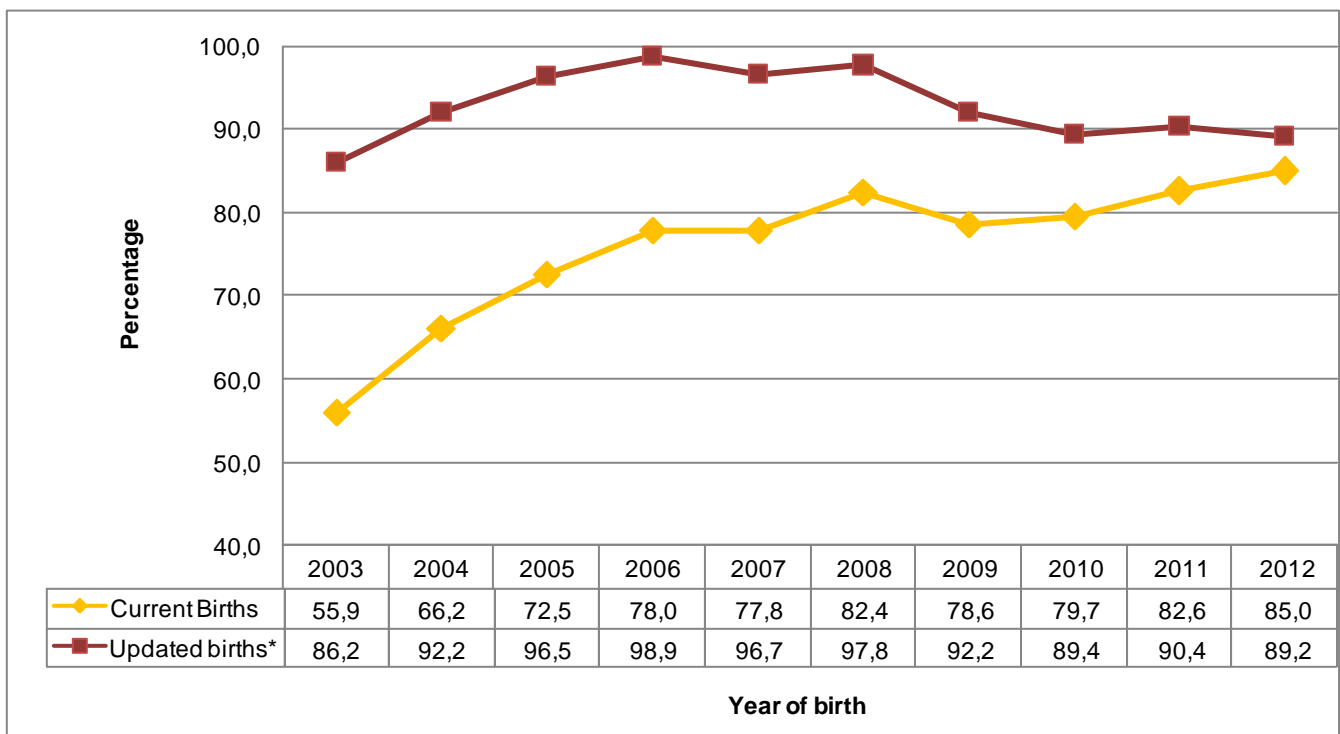
The Brass P/F ratio method (1975) and the Zlotnik and Hill method (1981) are some of the demographic methods that can be used to estimate the level of completeness of birth registration. The methods provide estimates of the level of completeness of birth registration over an inter-censal period. For South Africa, these estimates can be provided for 1996–2001; 2001–2007; and 2007–2011. At the time of preparing this release, the 2011 fertility data from the population census were not yet available. As such, these methods will be considered in the next statistical release to allow for at least three data points which are deemed sufficient to assess the reliability of estimates derived.

Statistics South Africa publishes annual statistical releases on mid-year population estimates for South Africa. Information on recorded live births is used as an input in the estimation of the population of South Africa at mid-year. The 2013 statistical release provided estimates of the number of births for 2002–2013 (Stats SA, 2013). These estimates are compared with the births derived from the birth registration system to provide an indication of the level of completeness of birth registration. The number of births from the birth registration system is based on the calendar year while those from the mid-year estimates are reported at mid-year. As such, proportions of 50,4% for the first half of the year of interest and 49,6% for the second half of the following year were used to adjust the number of births at mid-year to estimate the number of births occurring to the calendar years of interest.

Figure 1 provides estimates of completeness of the number of births covered by the South African birth registration system from 2003 to 2012. These are provided for current births (births registered within the year of birth in the birth registration system) and for updated births (recorded births as at 30 June 2013 in the National Population Register). The results show that the level of completeness of birth registration for births registered within the year of birth increased consistently from just over half (55,9%) in 2003 to nearly 90% (85,0%) in 2012. Completeness of birth registration is higher when late registrations are taken into consideration. The completeness of birth registrations for updated births increased from 86,2% in 2003 and reached a high of 98,9% in 2006. By June 2013, 89,2% of the expected 2012 births had been registered.

The completeness levels of birth registration for the updated births in the last four years (2009–2012) are lower as they are still to be updated with relatively more late registrations compared to the other years. In recent years, the differences in the completeness of birth registration for current and late registrations are not wide, which indicates that there has been an improvement in timely birth registrations in the country.

Figure 1: Estimated completeness levels of birth registrations, South Africa: 2003–2012



*Updated births as at 30 June 2013.

2.2 Trends in birth registration

The total number of birth registrations consists of live births registered in the year in which they occurred and live births registered later than the year of birth occurrence. The former are referred to as current registrations, whereas the latter are referred to as late registrations. As such, the total number provided by the Department of Home Affairs in any reporting period will include both current and late registrations.

Trends in birth registration provide us with an understanding of the patterns of registration over time. These are depicted in Table 1 and Figure 2 over a 21-year period (1992 to 2012), classified by status of registration (current or late). A total of 1 168 403 births were registered in 2012. This represents a 2,8% decline from the 1 202 377 births registered in 2011.

Over time, the total number of birth registrations has varied. There was a consistent increase between 1992 and 2003, when total birth registrations increased from 501 461 to 1 677 415. Between 2004 and 2007, there was a decline from 1 475 809 to 1 199 712; and since 2008, total birth registrations have fluctuated. From 1992 to 2004, the number of late birth registrations was higher than the number of current registrations. However, since 2005, current registrations have been higher than late registrations, indicating that the majority of births were registered the same year they occurred. By 2012, nearly 80% (79,3%) of total birth registrations were current registrations. This shows some improvement in the registration of current births.

Table 1: Birth registrations by status of registration, South Africa: 1992–2012

Year of registration	Number of birth registrations			Percentages		
	Total	Current	Late	Total	Current	Late
1992	501 461	228 445	273 016	100,0	45,6	54,4
1993	557 995	199 460	358 535	100,0	35,7	64,3
1994	667 107	246 345	420 762	100,0	36,9	63,1
1995	809 439	260 880	548 559	100,0	32,2	67,8
1996	998 798	295 719	703 079	100,0	29,6	70,4
1997	1 046 095	309 723	736 372	100,0	29,6	70,4
1998	1 216 337	273 180	943 157	100,0	22,5	77,5
1999	1 363 800	344 700	1 019 100	100,0	25,3	74,7
2000	1 407 833	409 707	998 126	100,0	29,1	70,9
2001	1 433 432	477 489	955 943	100,0	33,3	66,7
2002	1 517 671	557 573	960 098	100,0	36,7	63,3
2003	1 677 415	621 887	1 055 528	100,0	37,1	62,9
2004	1 475 809	728 283	747 526	100,0	49,3	50,7
2005	1 380 496	793 788	586 708	100,0	57,5	42,5
2006	1 346 119	860 263	485 856	100,0	63,9	36,1
2007	1 199 712	858 866	340 846	100,0	71,6	28,4
2008	1 277 763	915 674	362 089	100,0	71,7	28,3
2009	1 254 707	879 707	375 000	100,0	70,1	29,9
2010	1 294 694	889 691	405 003	100,0	68,7	31,3
2011	1 202 377	911 353	291 024	100,0	75,8	24,2
2012	1 168 403	926 726	241 677	100,0	79,3	20,7

Figure 2: Birth registrations by status of registration, South Africa: 1992–2012

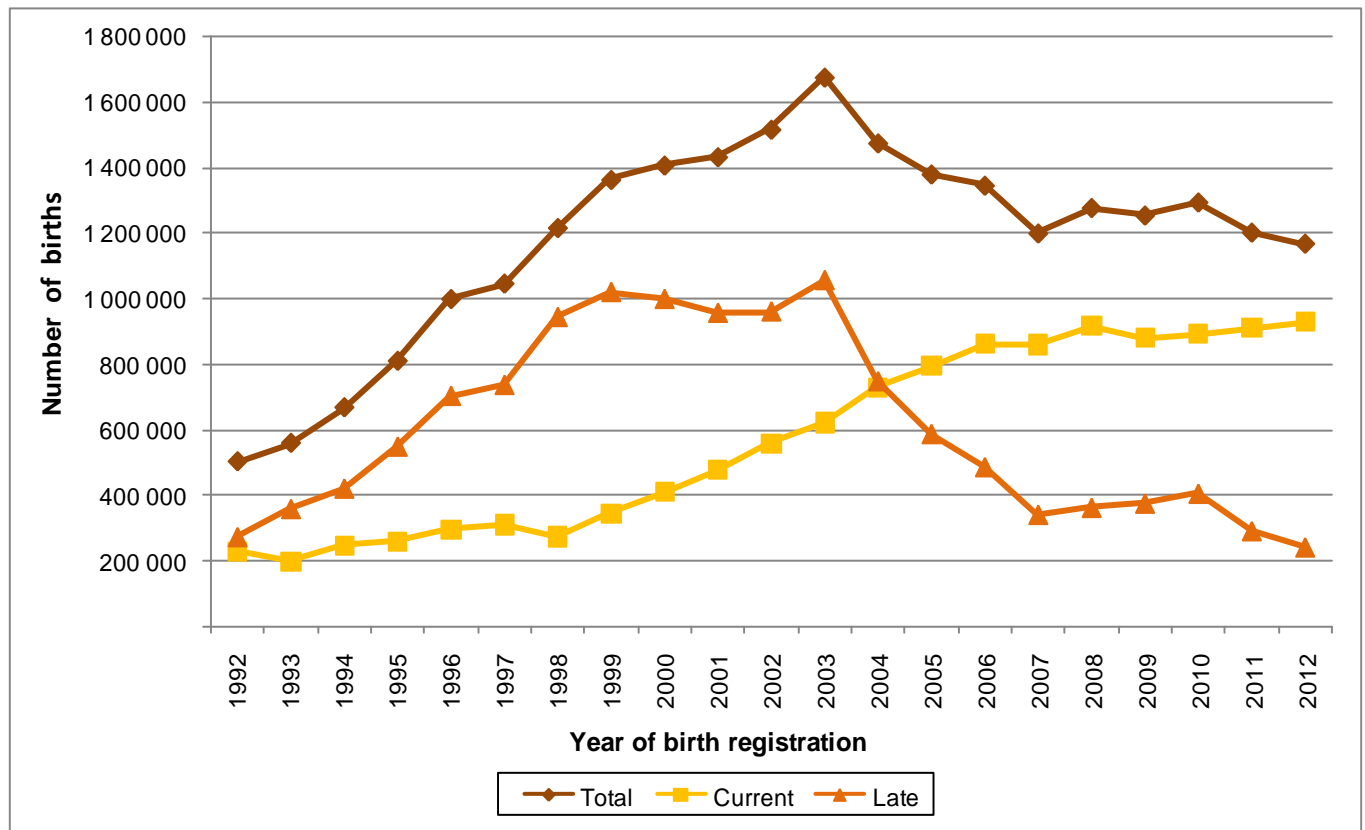


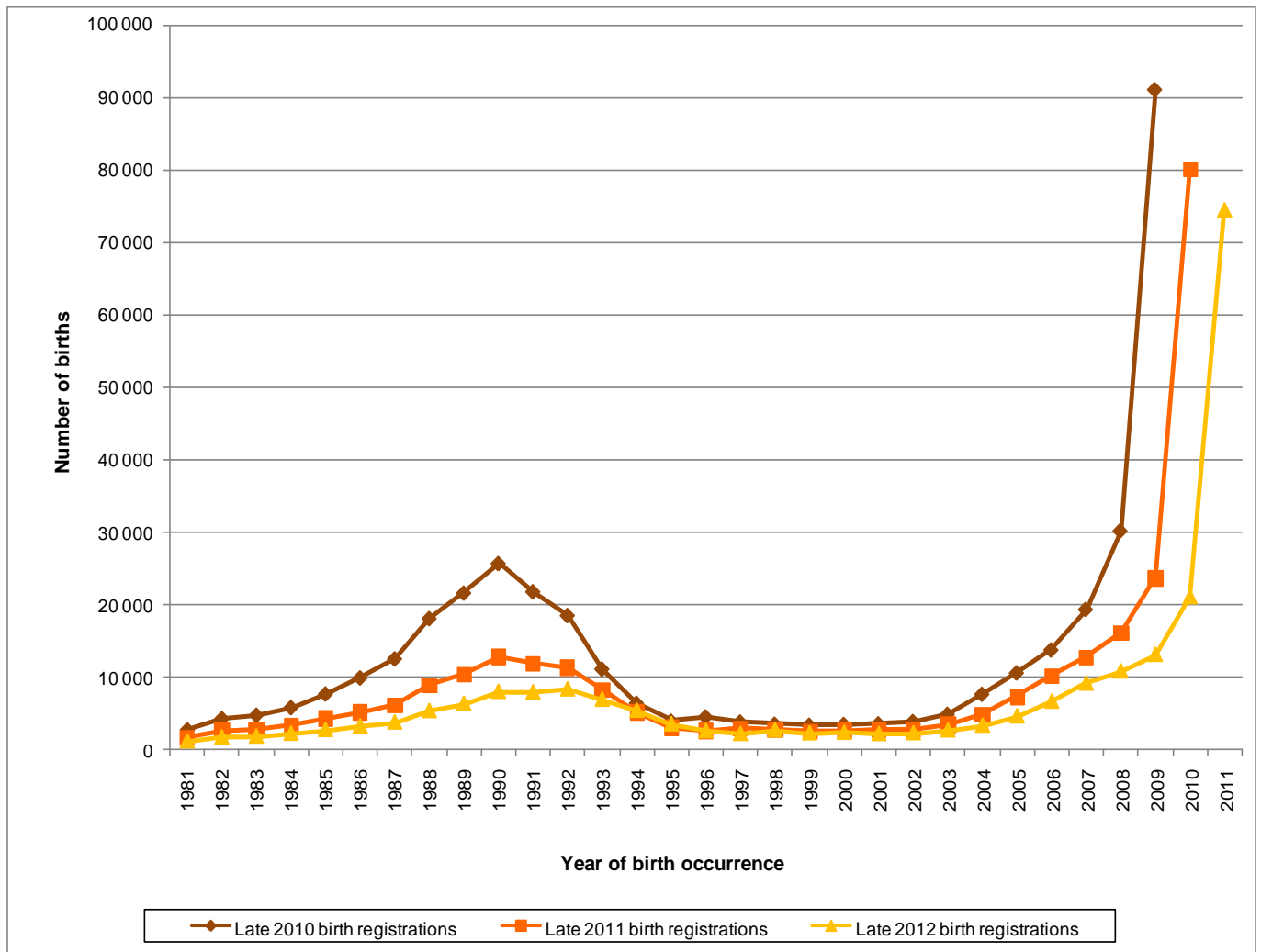
Figure 3 tracks late registrations for births that occurred during the period 1981–2011 and were registered in 2010, 2011 and 2012. The figure shows a considerable reduction in late registrations in 2012 compared to 2011 and similarly, late registrations in 2011 were fewer than those in 2010. This confirms the trends seen in Table 1 where late registrations have been declining since 2010.

The figure also shows that the differences in late registrations between the three observation periods were more pronounced between 1987 and 1992 as well as between 2006 and 2011. There were no marked differences in late registrations between 2010 and 2012 for births that occurred before 1987 and births occurring between 1993 and 2005.

Generally, most late birth registrations were higher in the year preceding the year of observation. For example, in 2012, most late registrations (30%) were births that occurred in 2011. These were followed by births occurring in 2010 and then 2009 retrospectively up to 2007. This pattern shows that 53,0% of these births were registered in the first five years of birth occurrence.

It is clear from the pattern of late registrations that it is becoming increasingly important to have a birth registered much earlier as observed in the decline in the number of late registrations of births for those aged 19 and 23. For instance, in 2010, 24, 1% births were registered by this age group compared to 18,9% in 2011 and 15,4% in 2012. These registrations take place three to seven years after individuals are eligible for an identity document which can be acquired by all South African citizens and permanent residents from age 16. Additionally, the high number of late registrations at ages eligible for Identity Documents (IDs) in 2010 may be associated with the demand for ID documents in preparation for participation in the 2011 South African municipal elections.

Figure 3: Late birth registrations by year of birth, South Africa: 1981–2011



2.3 Birth registrations by selected variables

Age of the mother

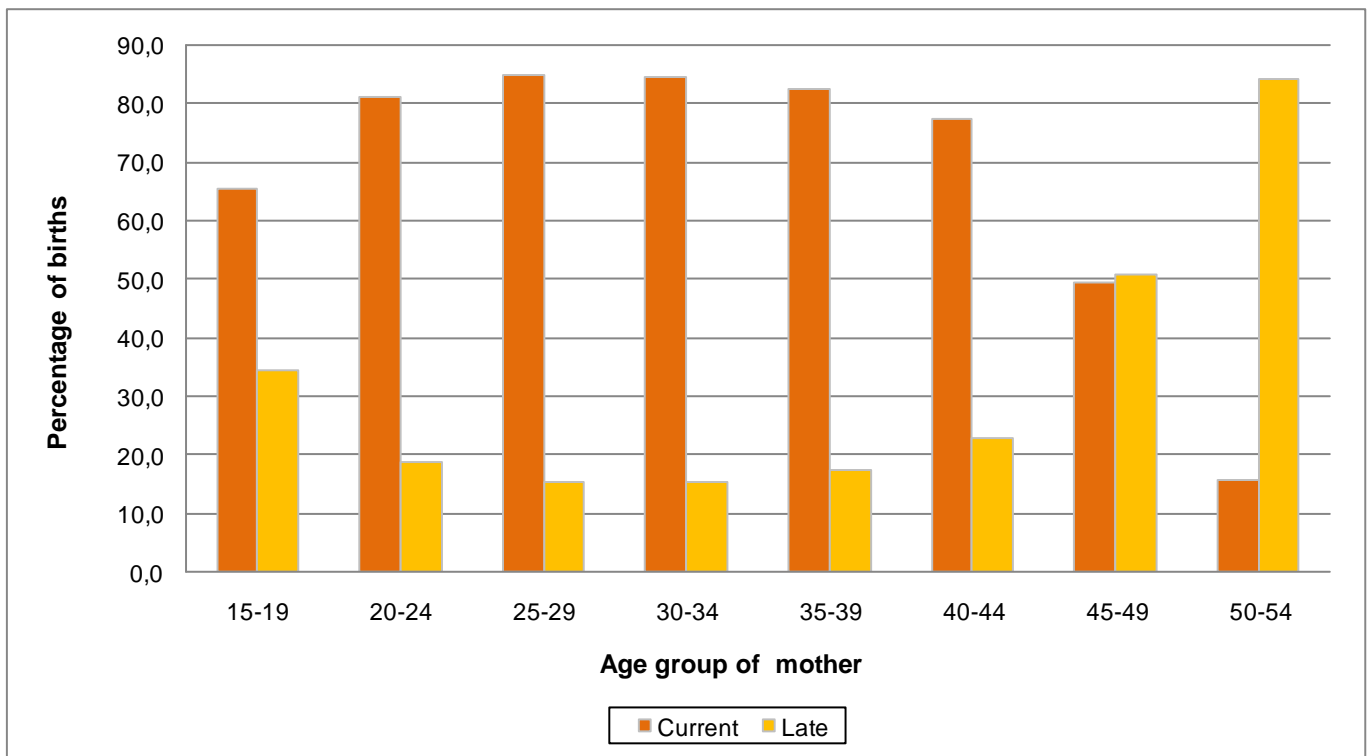
The Notice of Birth form (DHA–24) makes provision for the inclusion of the details of the biological parents of a child. However, more than two-thirds (66,6%) of the births registered in 2012 did not have the details of the father. Given the dearth of information on the fathers, this section will only report on mothers.

Table 2 and Figure 4 show the distribution of births registered in 2012 by the age of the mother and status of registration. Women aged 25–34 had the highest percentage of births registered in the current year (84,7%), whereas women aged 50–54 had the lowest (15,8%). This shows that older women (aged 50–54) had particularly higher proportions of late registrations compared to younger women. Notwithstanding, women aged 15–19 lag behind the other younger women where only 65,4% of their births were registered within the year of birth occurrence compared to more than 80% for those aged 20–29.

Table 2: Birth registrations by age of the mother and status of registration, South Africa: 2012

Age of mother	Number of birth registrations			Percentages		
	Total	Current	Late	Total	Current	Late
15–19	172 082	112 605	59 477	100,0	65,4	34,6
20–24	312 639	253 843	58 796	100,0	81,2	18,8
25–29	288 007	244 006	44 001	100,0	84,7	15,3
30–34	211 096	178 694	32 402	100,0	84,7	15,3
35–39	123 126	101 654	21 472	100,0	82,6	17,4
40–44	41 454	32 046	9 408	100,0	77,3	22,7
45–49	5 244	2 584	2 660	100,0	49,3	50,7
50–54	1 504	237	1 267	100,0	15,8	84,2
Unspecified/ outside the 15–54 age range	13 251	1 057	12 194	100,0	8,0	92,0
Total	1 168 403	926 726	241 677	100,0	79,3	20,7

Figure 4: Birth registrations by age of the mother and status of registration, South Africa: 2012*



*Excluding 13 251 births whose mothers' ages were not stated or were outside the age range of 15–54 years.

Province of birth

Previous publications on recorded live births have discussed how Statistics South Africa derives geographical levels from the Department of Home Affairs birth registration system [see for example *Recorded Live Births 2011* (Stats SA, 2012)]. A further discussion on municipal boundaries is available on page 35 of this report. In this report, the district code variable in the dataset refers to the district of birth occurrence for births registered before 15 years of age. For those that are registered from 15 years of age, district refers to the district of birth registration, which is usually Pretoria, where late registrations of birth are centralised for processing.

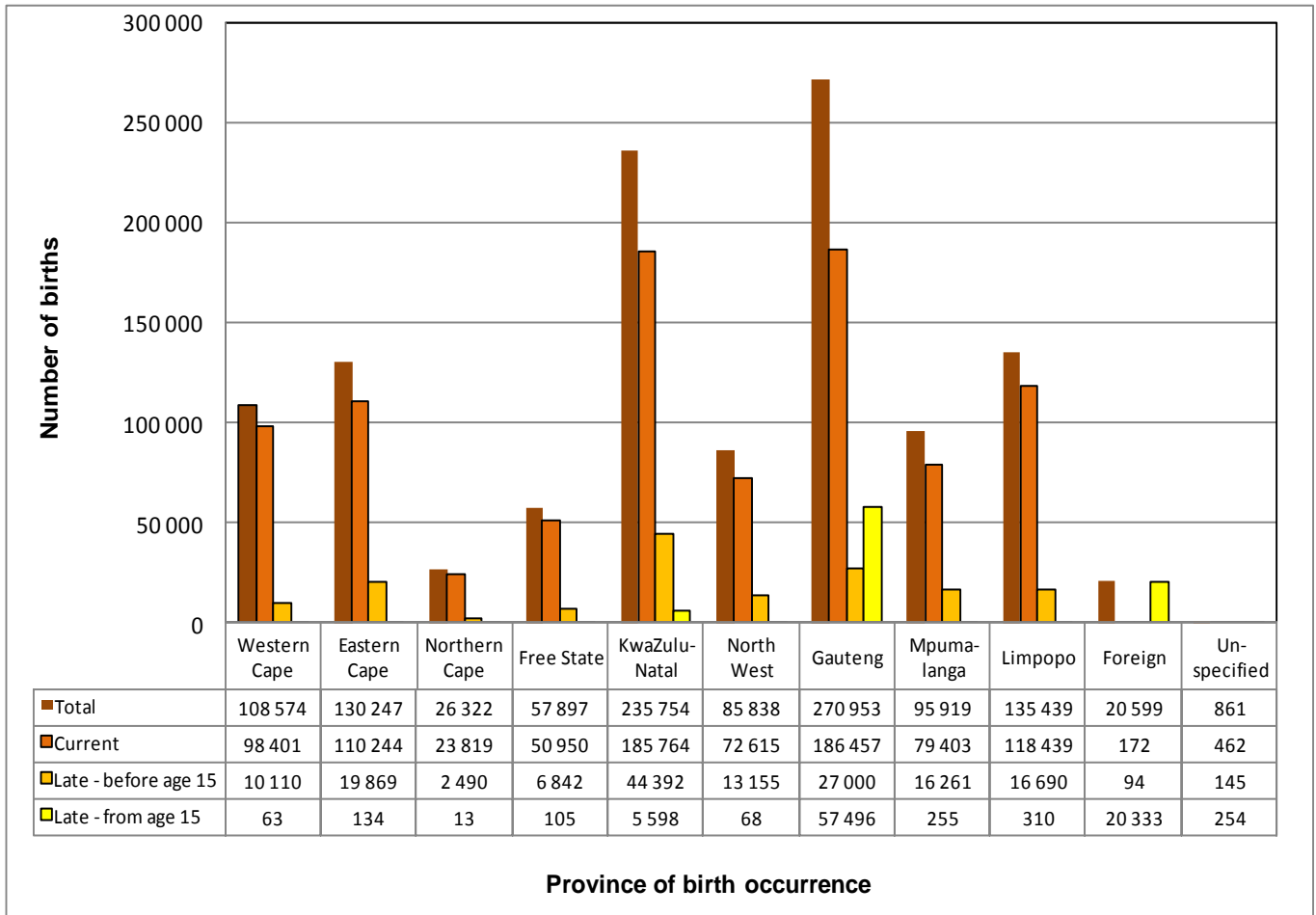
The distribution of all births registered in 2012 by province of occurrence/registration and status of registration is presented in Figure 5. The following categories were used to illustrate status of registration in the provinces: current refers to those births registered within the year of birth occurrence; late – before age 15 (those births registered after the year of birth occurrence but before age 15); and late – from age 15 (those births registered from 15 years of age).

In 2012, the highest number of birth registrations occurred in Gauteng (270 953), followed by KwaZulu-Natal (235 754). The least number of registrations were in Northern Cape (26 322). Registrations in Gauteng accounted for 23,1% of the total registrations compared to 2,3% in Northern Cape. Figure 4 shows that all provinces had more current registrations than late registrations. Gauteng had the least percentage of current registrations when compared to the other provinces. Western Cape and Northern Cape had the highest percentages (90,3% each) compared to Gauteng which had 68,8% of current registrations. As indicated earlier, this is because late registrations are mainly processed at the Department of Home Affairs head office in Pretoria, Gauteng.

The proportion of births that occurred outside South Africa shows that the majority of these births were registered very late, with 98,7% (20 333) of these births registered 15 years or later. In addition, Gauteng also has a disproportionate percentage of late birth registrations compared to the other provinces. The province had 21,2% of late birth registrations from age 15 in 2012. Thus contributing 67,9% of the 84 629 late birth registrations in the 15 years and above category.

Detailed information on 2012 total registrations by year of birth occurrence and status of registration, province and district municipality is provided in Appendix B. The information shows late registrations annually from 2007 up to 2011. Total birth registrations were highest in City of Tshwane (106 097), followed by City of eThekweni (75 089) and City of Cape Town (74 718). Cape Town and eThekweni Metros had higher current registrations compared to the City of Tshwane, where late registrations were prevalent.

Figure 5: Birth registrations by province of occurrence and status of registration, South Africa: 2012

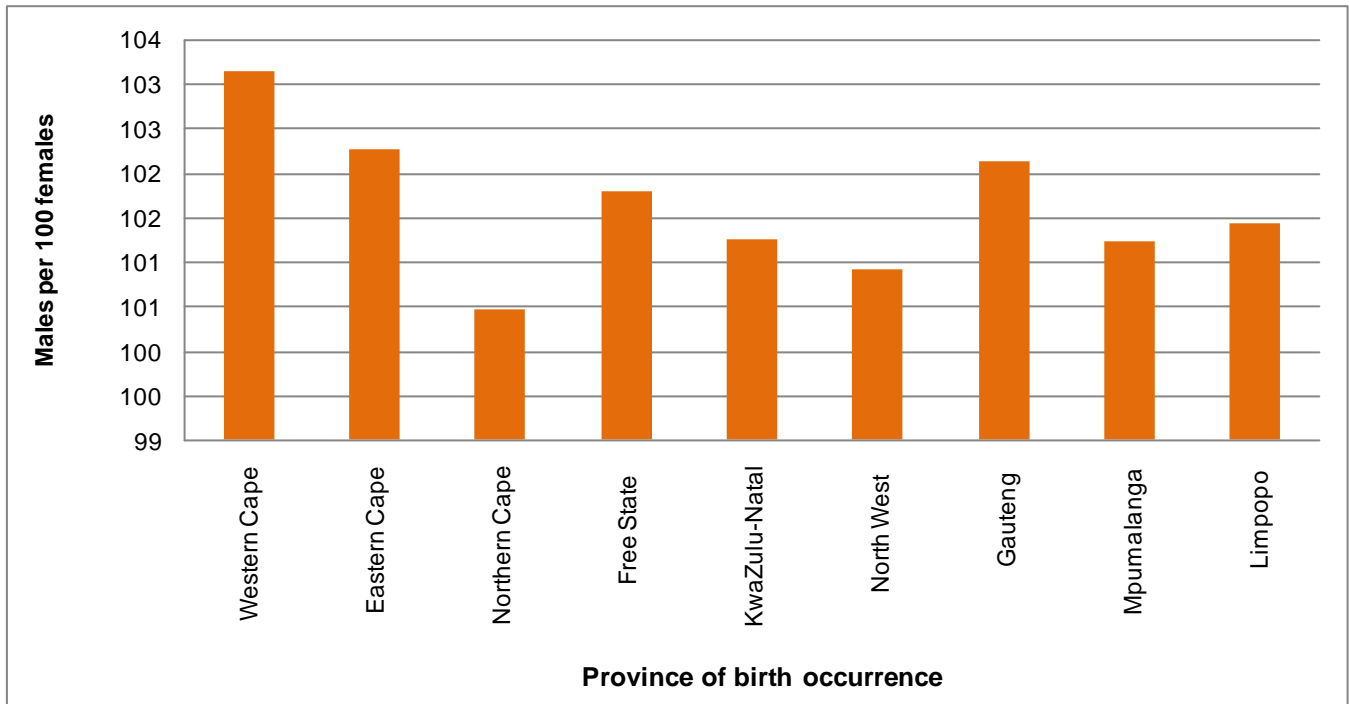


Sex of the child

The proportion of male births relative to female births is shown in Figure 6. The sex ratio in 2012 was 101 male births per 100 female births registered, therefore implying that more male births were registered compared to female births. Generally, more males are born than females, which may explain relatively higher registration of male births. All provinces had sex ratios of between 100 and 103 males per 100 females. Western Cape had the highest sex ratio of 103 male per 100 female birth registrations.

Appendix C shows birth registrations by sex, status of registration, province and district municipality.

Figure 6: Sex ratios by province of birth occurrence, South Africa: 2012



3. Birth occurrences

This section reports on birth occurrences based on year of birth data captured in the birth registration system up to 28 February 2013 (this being the cut-off date for processing by Stats SA). Birth occurrences extracted from the National Population Register on 30 June 2013 are also presented.

Year of birth occurrence refers to the year in which a birth actually occurred and was registered at the Department of Home Affairs (DHA). Each time a birth for any particular year is registered, the birth occurrences for that particular year are updated to include those that were registered late. Consequently, whenever data are extracted from the population register, these are updated and information on birth occurrences is also revised.

Table 3 shows birth occurrences for the period 1992 to 2012 based on date of extraction of data. By 28 February 2013, 926 726 births that occurred in 2012 were registered. These were updated to 972 858 by 30 June 2013. This implies that the birth register was updated by 46 132 births between the two periods.

As previously indicated, birth occurrences for other years have been updated with new data for the two periods. The updates show that the highest number of birth occurrences was in 2008 for both periods, and the lowest were in 1998. Table 3 also shows that there has been a decline in the total number of birth occurrences between 2011 and 2012. As of 28 February 2013, there were 59 001 fewer births in 2012, and as at June 30 2013, there were 24 036 fewer births in 2012 compared to the same period in 2011.

Table 3: Birth occurrences by year of birth and reference period, South Africa: 1992–2012

Year of birth occurrence	Birth occurrences (as at 28 Feb. 2013)	Updated birth occurrences (as at 30 Jun 2013)
1992	970 293	987 312
1993	946 755	968 170
1994	929 099	975 993
1995	924 207	948 007
1996	967 012	974 642
1997	960 007	960 333
1998	901 197	944 492
1999	930 696	959 569
2000	928 776	971 124
2001	923 685	954 819
2002	911 797	965 021
2003	918 923	958 901
2004	1 005 888	1 014 908
2005	1 051 070	1 055 594
2006	1 007 131	1 083 448
2007	1 060 142	1 066 846
2008	1 074 448	1 086 499
2009	1 007 501	1 031 390
2010	990 775	998 489
2011	985 727	996 894
2012	926 726	972 858

3.1 Birth occurrences as at 28 February 2013

Table 4 shows the number of births that occurred during the period 1993 to 2012 by year of birth and year of registration. All births that were registered within the year in which they occurred are in bold, while those not in bold are late registrations, showing the year in which the births were eventually registered.

The average number of birth occurrences increases each year due to the updating of the birth register with late registrations, as well as registrations for the current year. In 2012, the average number of births per year was about 971 000. This is an increase of approximately 9 000 births from the average annual number of births reported in 2011 (962 000).

When considering birth occurrences between 1993 and 2012, the pattern has not been consistent. Fluctuations in updated birth occurrences were evident between 1993 and 2008, but since 2009, decreases have been observed. Table 4 also shows that late registrations play an important role in the updating of birth occurrences. For example, in 1993, only 199 460 births were registered in the same year of birth occurrence. However, by 2012, there were 946 755 births registered that occurred in 1993. Table 4 further demonstrates that most late birth registrations were registered the year following the year of birth occurrence. Thereafter, late registrations start to dwindle as the year of birth occurrence moves further away from the period under observation.

Table 4: Birth occurrences (as at end of February 2013) by year of birth occurrence and year of birth registration, South Africa: 1993–2012

Year of birth registration	Year of birth occurrences																			
	1993	1994	1995	1996	1997	1998	1999	2000	2001	2002	2003	2004	2005	2006	2007	2008	2009	2010	2011	2012
1993	199 460																			
1994	63 813	246 345																		
1995	43 097	73 336	260 880																	
1996	48 338	51 748	89 566	295 719																
1997	50 708	50 627	54 198	93 807	309 723															
1998	77 021	61 919	59 942	70 261	105 766	273 180														
1999	84 143	84 563	80 362	92 276	104 453	146 055	344 700													
2000	85 000	58 170	78 122	92 269	102 179	114 781	178 516	409 707												
2001	36 441	43 932	65 682	79 095	87 285	96 809	116 374	192 410	477 489											
2002	34 709	34 679	36 685	58 125	73 665	86 859	98 553	118 600	218 256	557 573										
2003	53 491	63 494	73 845	69 465	68 289	69 795	72 533	77 256	94 588	194 204	621 887									
2004	49 237	58 549	44 477	41 014	38 700	41 372	42 511	43 503	48 197	63 234	165 662	728 283								
2005	48 398	36 883	28 386	25 341	23 240	23 162	24 996	24 807	23 798	27 701	43 404	150 546	793 788							
2006	20 039	20 002	18 034	18 217	17 623	19 518	21 911	26 516	24 057	26 042	34 601	54 941	154 331	860 263						
2007	11 421	10 178	9 472	9 309	9 227	9 897	10 969	14 158	15 200	16 766	20 009	26 769	42 569	126 358	858 866					
2008	10 740	11 767	7 955	7 105	6 548	6 691	6 927	8 327	8 722	11 378	14 085	17 869	23 732	40 554	128 336	915 674				
2009	4 555	6 024	6 204	5 406	4 489	4 317	4 609	5 128	5 072	6 053	8 322	11 793	14 208	19 510	31 885	101 743	879 707			
2010	11 094	6 389	3 913	4 495	3 790	3 483	3 340	3 450	3 535	3 844	4 852	7 623	10 566	13 736	19 323	30 164	91 064	889 691		
2011	8 178	5 148	2 991	2 576	2 879	2 624	2 517	2 604	2 632	2 743	3 457	4 763	7 298	10 111	12 628	16 091	23 665	80 079	911 353	
2012	6 872	5 346	3 493	2 532	2 151	2 654	2 240	2 310	2 139	2 259	2 644	3 301	4 578	6 599	9 104	10 776	13 065	21 005	74 374	926 726
TOTAL	946 755	929 099	924 207	967 012	960 007	901 197	930 696	928 776	923 685	911 797	918 923	1 005 888	1 051 070	1 077 131	1 060 142	1 074 448	1 007 501	990 775	985 727	926 726

By law, births should be registered within 30 days. However, in the absence of the date of birth occurrence and the date for birth registration, the time lag between the month of birth occurrence and the month of birth registration can be used to assess the functioning of the civil registration system. Table 5 shows that at least 32,5% of births were registered in the same month of birth occurrence. The highest percentage was in November (46,3%).

Table 5: Number of births by month of birth occurrence and month of birth registration, South Africa: 2012

Month of birth registration	Month of birth occurrence												Total
	Jan.	Feb.	Mar.	Apr.	May	Jun.	Jul.	Aug.	Sep.	Oct.	Nov.	Dec.	
January	31 463												31 463
February	28 694	28 543											57 237
March	10 059	27 208	31 253										68 520
April	4 590	8 395	28 003	26 776									67 764
May	3 222	5 060	11 847	31 982	32 511								84 622
June	1 838	2 483	5 054	9 770	28 548	29 584							77 277
July	1 637	1 861	3 384	5 373	10 632	30 112	31 296						84 295
August	1 046	1 238	2 007	2 791	4 662	9 243	28 200	32 776					81 963
September	677	824	1 189	1 519	2 300	3 816	8 298	24 809	26 723				70 155
October	730	785	1 083	1 391	1 887	2 847	4 922	10 411	32 065	28 582			84 703
November	538	554	788	961	1 160	1 591	2 367	4 211	9 203	24 782	29 908		76 063
December	322	302	420	494	589	747	1 148	1 692	3 244	5 535	19 379	23 755	57 627
January	571	482	634	684	877	1 040	1 371	2 039	3 447	5 029	10 627	33 474	60 275
February	379	413	491	579	637	785	975	1 354	2 147	2 776	4 640	9 586	24 762
Total	85 766	78 148	86 153	82 320	83 803	79 765	78 577	77 292	76 829	66 704	64 554	66 815	926 726

Age of the mother for births occurring in 2012

The age of the mother is a useful variable for the study of fertility and its differentials. As such, it is important in the analysis of live births. The distribution of births occurring in 2012 by age of the mother is presented in Table 6. Women aged 20–24 had the highest percentage of births (27,4%), followed by those aged 25–29 (26,3%), and those aged 30–34 (19,3%). Fewer births (3,9%) occurred after age 40–54, which is expected, because fecundability decreases as women grow older.

More information on the number of births by age of mother in the past five years (2008–2012) is provided in Appendix D.

Table 6: Number and percentage of births by age of the mother, South Africa: 2012

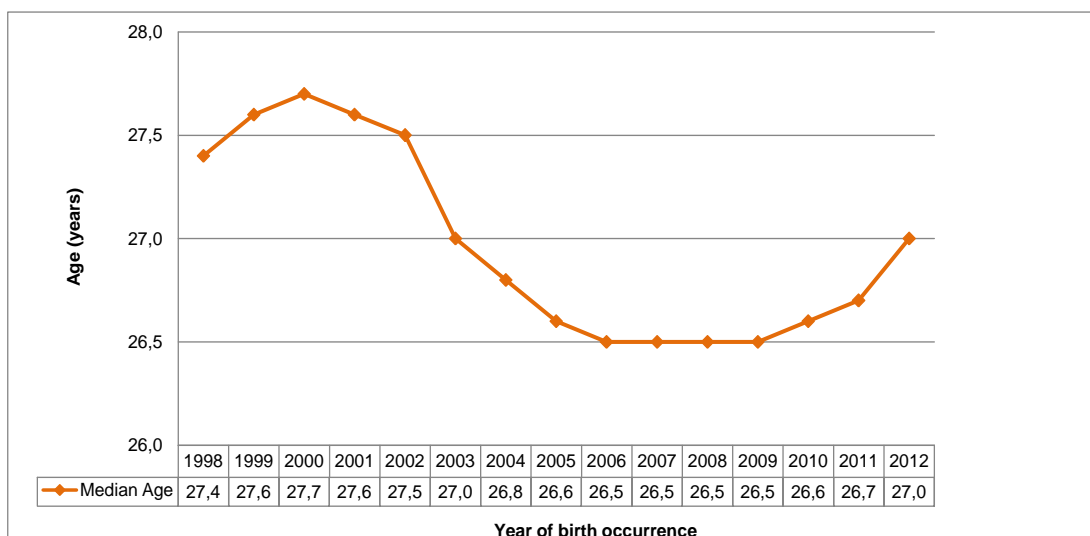
Age of the mother	Number of birth occurrences	Percentage
15–19	112 605	12,2
20–24	253 843	27,4
25–29	244 006	26,3
30–34	178 694	19,3
35–39	101 654	11,0
40–44	32 046	3,5
45–49	2 584	0,3
50–54	237	0,0
Unspecified/outside the 15–54 age range	1 057	0,1
Total	926 726	100,0

Median age of the mother from 1999 to 2012

The median age of mothers in any given year divides the mothers of children into two numerically equal groups where half of the mothers are younger than this age group and the other half are older. A higher median age indicates that, on average, child bearing occurs at older ages and vice versa for a lower median age.

Figure 7 shows the median ages of mothers for births occurring between 1998 and 2012 (updated with late registrations). The median age decreased consistently from 2000 to 2006, was constant between 2006 and 2009, and an increase was observed thereafter. The highest median age was 27,7 years observed in 2000 and the lowest was 26,5 years which was consistent for a period of four years (2006–2009). The median age of mothers for all births registered in 2012 was 27 years. This is slightly higher than the median age observed in 2011. Increasing median ages observed since 2010 indicates that women are having children later and later in life.

Figure 7: Median age of the mother by year of birth, South Africa: 1998–2012



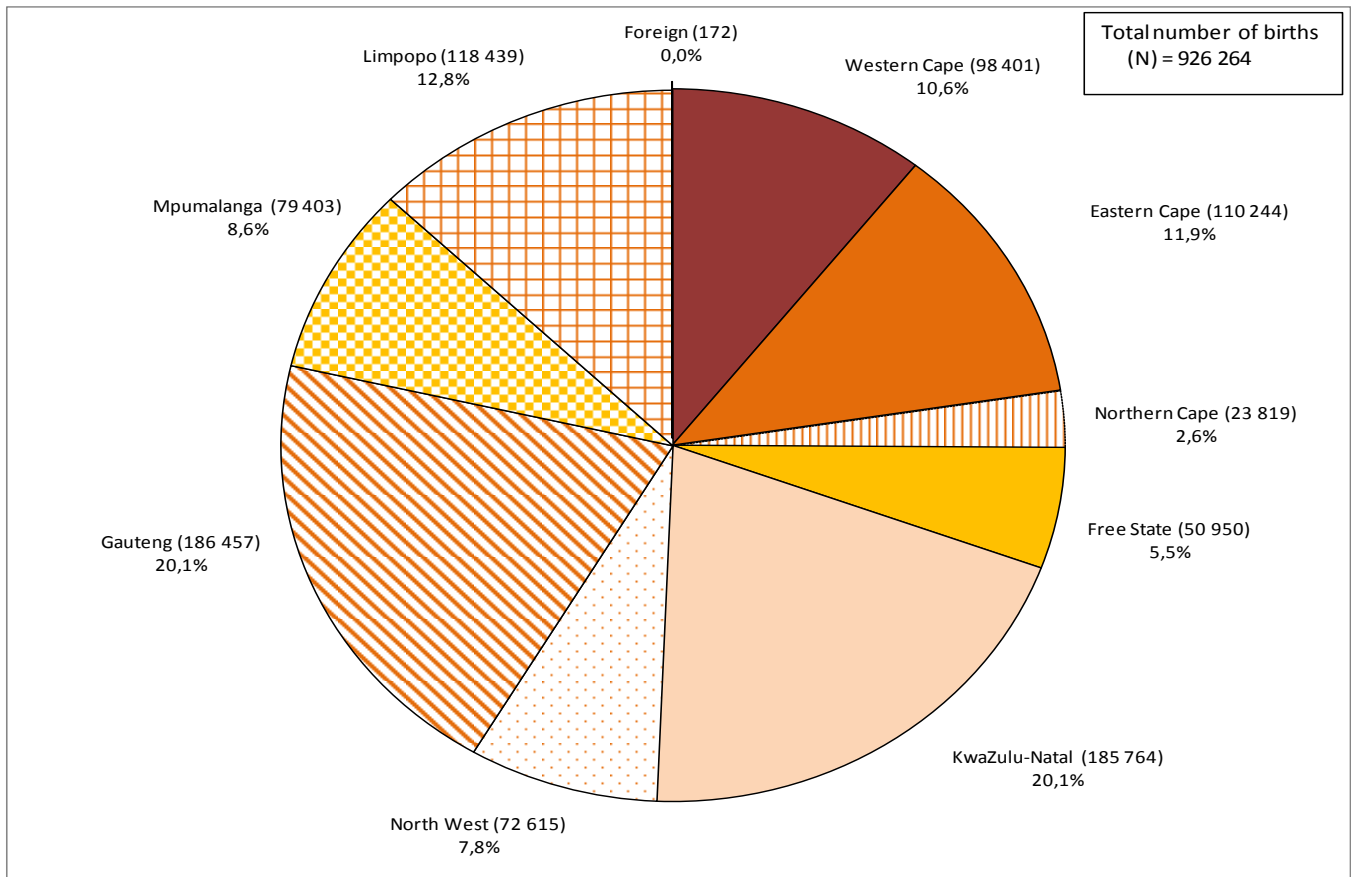
Provincial distribution of births in 2012

Figure 8 shows the distribution of births that occurred in 2012 by province of birth occurrence. The highest proportion of births occurred in Gauteng and KwaZulu-Natal (20,1% each). The lowest proportion of births occurred in Northern Cape (2,6%) and Free State (5,5%). These patterns are similar to 2011.

Further information on birth occurrences by province and age of mother is provided in Appendix E. The table in the appendix shows that KwaZulu-Natal had the highest number of births among ages 15–24, whereas Gauteng had the largest number of births among ages 25 and above.

Additional information on the distribution of birth occurrences by province and district municipality of birth occurrence is provided in Appendix F. The period covered for analysis is 2008–2012. Birth occurrences were highest in KwaZulu-Natal from 2008–2011, but highest in Gauteng in 2012.

Figure 8: Birth occurrences by province of registration, South Africa: 2012*



* Excluding 462 births with unspecified province.

3.2 Birth occurrences as at 30 June 2013

Table 7 indicates that a total of about 20,8 million births occurred in South Africa between 1992 and 2012, with an average of about 987 720 births per year over the 21-year period. The number of birth occurrences fluctuated between 944 000 and around one million (per year) over the period 1992–2012, with the highest number occurring in 2008 and the lowest in 1998.

Sex of the child

The overall number of birth occurrences by year of birth, sex and citizenship from 1992–2012 is provided in Table 7. Sex ratios were between 100 and 102 male per 100 female births. Generally, there were slightly more male births than female births during the observation period except in 1992, where there were slightly more female births than male births.

Citizenship

Table 7 shows birth occurrences by citizenship for 1992–2012. Over 99% of all birth occurrences were for South African citizens throughout the observation period. In 2012, birth occurrences among non-South African citizens (non-citizens with permanent residence permits) and those classified as ‘other’ continued to decline from 2011.

Table 7: Birth occurrences (as at 30 June 2013) by sex, year of birth and citizenship, South Africa: 1992–2012

Year	Grand total			South African citizens			Non-South African citizens			Other*		
	Total	Male	Female	Total	Male	Female	Total	Male	Female	Total	Male	Female
1992	987 312	493 072	494 240	985 086	491 924	493 162	1 332	655	677	894	493	401
1993	968 170	485 360	482 810	966 332	484 428	481 904	1 191	602	589	647	330	317
1994	975 993	489 460	486 533	974 271	488 566	485 705	1 077	555	522	645	339	306
1995	948 007	475 236	472 771	946 230	474 367	471 863	961	474	487	816	395	421
1996	974 642	488 898	485 744	973 235	488 176	485 059	740	383	357	667	339	328
1997	960 333	480 888	479 445	959 395	480 404	478 991	424	225	199	514	259	255
1998	944 492	472 531	471 961	943 661	472 092	471 569	348	184	164	483	255	228
1999	959 569	480 098	479 471	958 757	479 678	479 079	353	182	171	459	238	221
2000	971 124	486 486	484 638	970 671	486 274	484 397	262	128	134	191	84	107
2001	954 819	478 263	476 556	954 473	478 069	476 404	238	135	103	108	59	49
2002	965 021	483 142	481 879	964 678	482 973	481 705	221	107	114	122	62	60
2003	958 901	481 462	477 439	958 601	481 301	477 300	204	113	91	96	48	48
2004	1 014 908	510 108	504 800	1 014 594	509 932	504 662	203	115	88	111	61	50
2005	1 055 594	530 959	524 635	1 055 299	530 807	524 492	177	94	83	118	58	60
2006	1 083 448	544 086	539 362	1 083 146	543 915	539 231	150	79	71	152	92	60
2007	1 066 846	536 920	529 926	1 066 584	536 782	529 802	134	79	55	128	59	69
2008	1 086 499	546 222	540 277	1 086 326	546 142	540 184	72	34	38	101	46	55
2009	1 031 390	519 266	512 124	1 031 268	519 193	512 075	45	32	13	77	41	36
2010	998 489	503 718	494 771	998 424	503 684	494 740	12	5	7	53	29	24
2011	996 894	502 742	494 152	996 843	502 710	494 133				51	32	19
2012	972 858	490 603	482 255	972 828	490 586	482 242	1		1	29	17	12
Total	20 875 309	10 479 520	10 395 789	20 860 702	10 472 003	10 388 699	8 145	4 181	3 964	6 462	3 336	3 126

* 'Other' refers to those people whose citizenship was under investigation and had not yet been resolved by 30 June 2013.

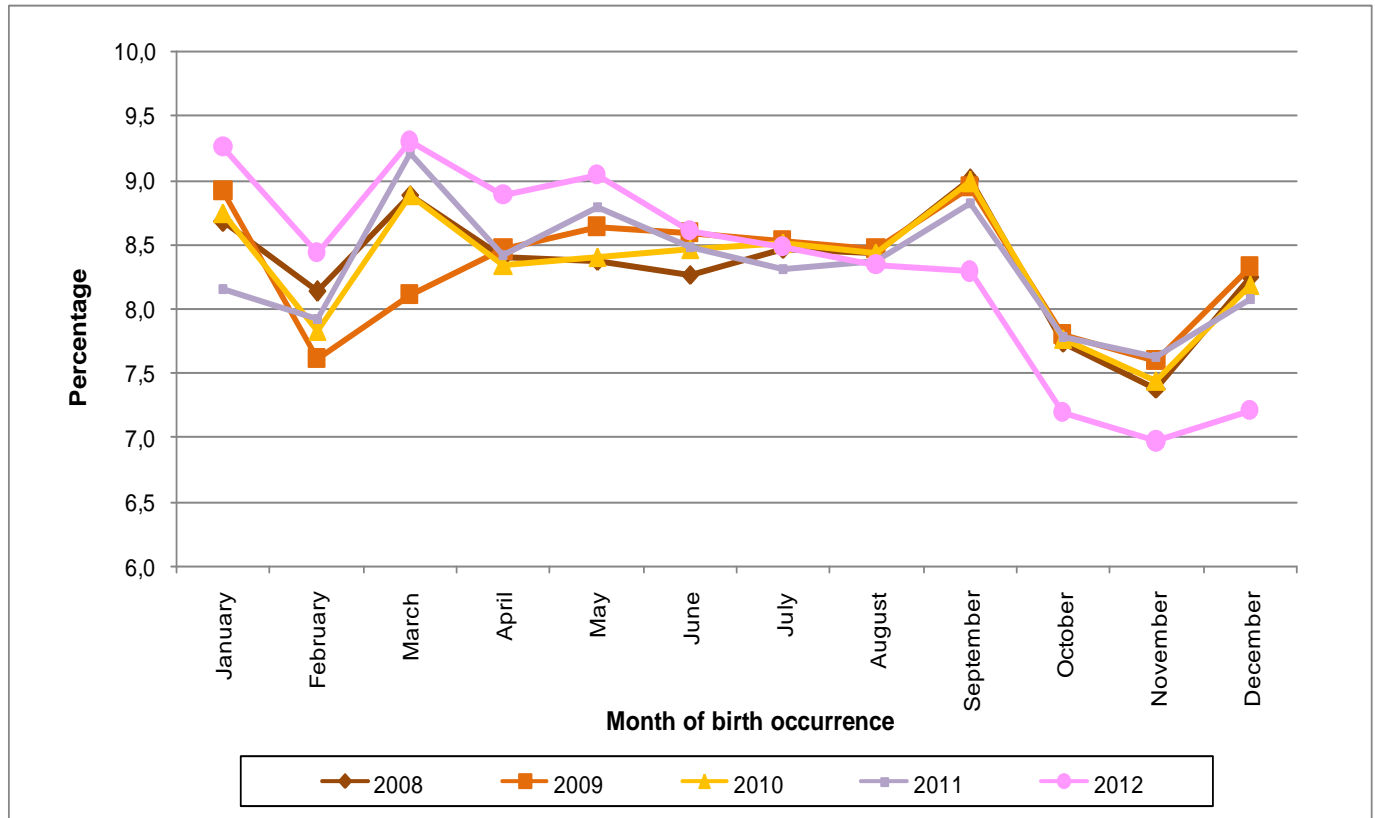
Month of birth

The percentage distribution of birth occurrences from 2008 to 2012 classified by month of birth are shown in Figure 9. Generally, the pattern of birth occurrences by month and year of birth has been the same throughout the observation period. The highest proportion of births occurred during the month of September for most years, with

the exception of 2012. In 2012, birth occurrences were highest in January and March and were lowest in November, October and December.

Additional information on birth occurrences from 1992 to 2012 by month of birth, sex and citizenship is given in Appendix G.

Figure 9: Percentage distribution of birth occurrences by year and month of birth, South Africa: 2008–2012



4. Concluding remarks

The 2012 statistical release provided information on birth registrations and occurrences in South Africa for 2012. Additionally, information for the period 1992–2011 was analysed to review trends on birth registrations and occurrences over time. A total of 1 168 403 births were registered in 2012. Of these, 79,3% were current registrations. This depicts an increase in current registrations, where a 3,5% increase was observed between 2011 and 2012.

The report also found that late registrations continued to decline and that generally, most late registrations were higher in the year preceding the observation period. For example, more births for 2011 were registered in 2012 and others in subsequent years. The analysis on late registrations shows that about half of late registrations were captured within the first five years of the year of birth occurrence. Although the Births and Deaths Registration Act requires births to be registered within 30 days, this may be triggered by the requirement to ensure that a child has a birth certificate by the time they enrol in school. Furthermore, details of fathers were missing in the majority of cases, a problem that has persisted over a long time. It is, therefore, important that officials at the Department of Home Affairs ensure that all the information required on the birth notification form is completed fully and accurately at the time of birth registration.

Differentials by age and sex showed that most births occurred among women aged 20–29 years and that there were slightly more male than female children for a great majority of years. Gauteng and KwaZulu-Natal had the highest number of birth occurrences, and most births occurred during the months of January, March and September.

References

Brass. W. 1975. Methods for estimating fertility and mortality from limited and defective data. Chapel Hill.N.C. Carolina Population Center, Laboratories for Population Studies.

Central Statistics Services. 1995. Standard Code List of Areas, 12th Edition, 09.90.03, Pretoria, Statistics South Africa.

Republic of South Africa.1992. Births and Deaths Registration Act, Act No. 51 of 1992.

Statistics South Africa. 2012. Recorded live births 2011. Pretoria, Statistics South Africa.

Statistics South Africa. 2013. Mid-year population estimates. Pretoria, Statistics South Africa.

World Health Organisation. 2013. Health statistics and health information systems. <http://www.who.int/healthinfo/statistics/indmaternalmortality/en/>.

Zlotnik. H. and Hill. K. 1981. The use of hypothetical cohorts in estimating demographic parameters under conditions of changing fertility and mortality. *Demography* Vol. 18 (1): 103–122.

Appendix A: Notice of birth form (DHA-24) – page 2

F. DECLARATION

I, _____, hereby declare that the information supplied is to the best of my knowledge and belief, true and correct, I understand that a false statement is punishable under section 31 of the Births and Deaths Registration Act of 1992.

Informant

<i>Initials and surname</i>	<i>Signature</i>	Date	Y Y Y Y	M M	D D														
		Place	<table border="1" style="width: 100%; height: 20px;"> <tr> <td></td><td></td><td></td><td></td><td></td><td></td><td></td><td></td><td></td><td></td><td></td><td></td><td></td><td></td><td></td> </tr> </table>																
Relationship to the child: <input type="checkbox"/> Father (Parent A) <input type="checkbox"/> Mother (Parent B) <input type="checkbox"/> Legal guardian <input type="checkbox"/> Social worker																			

G. FOR OFFICIAL USE ONLY - OFFICE OF ORIGIN

NOTICE OF BIRTH RECEIVED BY:

Identity number	<table border="1" style="width: 100%; height: 20px;"> <tr> <td></td><td></td><td></td><td></td><td></td><td></td><td></td><td></td><td></td><td></td><td></td><td></td><td></td><td></td><td></td> </tr> </table>																<table border="1" style="width: 100%; height: 20px;"> <tr> <td></td><td></td><td></td><td></td><td></td><td></td><td></td><td></td><td></td><td></td><td></td><td></td><td></td><td></td><td></td> </tr> </table>																<table border="1" style="width: 100%; height: 20px;"> <tr> <td></td><td></td><td></td><td></td><td></td><td></td><td></td><td></td><td></td><td></td><td></td><td></td><td></td><td></td><td></td> </tr> </table>															
Surname	<table border="1" style="width: 100%; height: 20px;"> <tr> <td></td><td></td><td></td><td></td><td></td><td></td><td></td><td></td><td></td><td></td><td></td><td></td><td></td><td></td><td></td><td></td><td></td><td></td><td></td><td></td> </tr> </table>																																															
First name	<table border="1" style="width: 100%; height: 20px;"> <tr> <td></td><td></td><td></td><td></td><td></td><td></td><td></td><td></td><td></td><td></td><td></td><td></td><td></td><td></td><td></td><td></td><td></td><td></td><td></td><td></td> </tr> </table>																																															
Persal number	<table border="1" style="width: 100%; height: 20px;"> <tr> <td></td><td></td><td></td><td></td><td></td><td></td><td></td><td></td><td></td><td></td><td></td><td></td><td></td><td></td><td></td><td></td><td></td><td></td><td></td><td></td> </tr> </table>																																															
Stat	Birth																																															
I	O	S	M																																													

Office stamp - Office of origin

DOCUMENTS SUBMITTED WITH THIS APPLICATION: PLEASE TICK

<p>Birth Registration within 30 Days:</p> <input type="checkbox"/> Confirmation of Birth <input type="checkbox"/> Certified copy of Father's/Parent A's ID document (if applicable) <input type="checkbox"/> Certified copy of Mother's/Parent B's ID document <input type="checkbox"/> Certified copy of Legal Guardian/Social Worker's ID document <input type="checkbox"/> Certified copy of Marriage Certificate of parents (if married) <input type="checkbox"/> BI 1658 if married religiously i.e. Moslem, Hindu <input type="checkbox"/> Medical Report: Same Sex Parents <input type="checkbox"/> Certified copy of Social Worker's Registration Certificate	<p>Birth Registration after 30 Days, additional documents:</p> <input type="checkbox"/> Proof of Paternity	<p>If foreign birth, additional documents:</p> <input type="checkbox"/> Certified copy of the Foreign birth certificate of the child <input type="checkbox"/> Citizenship determination form BI-529 (SA Parent) <input type="checkbox"/> Citizenship determination form BI-529 (Child)
---	---	---

Online verification performed and printouts attached for following persons:

Father (Parent A) Mother (Parent B) Legal guardian Social worker
 Date

Y	Y	Y	Y
---	---	---	---

M	M
---	---

D	D
---	---

 Signature _____

H. APPLICATION VERIFIED

Date

Y	Y	Y	Y
---	---	---	---

M	M
---	---

D	D
---	---

I hereby declare that I have verified the application and registration

Initials and surname _____
 Signature _____
 Identity number

--	--	--	--	--	--	--	--	--	--	--	--	--	--	--

 Persal number

--	--	--	--	--	--	--	--	--	--	--	--	--	--	--

Appendix B: Total birth registrations for 2012 by year of birth occurrence, province and district municipality

Province and district municipality	Grand Total	2012 (current)	Late registrations					2007 and below
			Total	2011	2010	2009	2008	
Total-South Africa	1 168 403	926 726	241 677	74 374	21 005	13 065	10 776	122 457
Western Cape								
Cape Winelands	13 845	12 689	1 156	605	163	87	72	229
Central Karoo	1 182	1 110	72	39	13	4	5	11
City of Cape Town	74 718	67 770	6 948	3 122	1 078	739	549	1 460
Eden	9 872	8 937	935	430	126	75	63	241
Overberg	3 162	2 765	397	195	48	31	24	99
West Coast	5 795	5 130	665	412	73	38	36	106
Total	108 574	98 401	10 173	4 803	1 501	974	749	2 146
Eastern Cape								
Alfred Nzo	14 313	11 618	2 695	1 149	386	210	223	727
Amatole	15 095	12 481	2 614	1 078	366	210	188	772
Buffalo city	15 993	14 704	1 289	682	188	123	75	221
Cacadu	7 228	6 099	1 129	568	134	96	77	254
Chris Hani	14 437	12 268	2 169	1 179	299	189	152	350
Joe Gqabi	6 081	4 914	1 167	500	130	113	86	338
Nelson Mandela Bay Metro	20 579	18 252	2 327	1 207	329	190	131	470
O.R. Tambo	36 521	29 908	6 613	2 959	1 013	541	426	1 674
Total	130 247	110 244	20 003	9 322	2 845	1 672	1 358	4 806
Northern Cape								
Frances Baard	9 256	8 516	740	294	93	64	51	238
John Taolo Gaetsewe	6 044	5 563	481	253	47	34	24	123
Namakwa	1 543	1 455	88	32	9	12	6	29
Pixley ka Seme	4 322	3 615	707	320	101	46	37	203
Siyanda	5 157	4 670	487	223	42	34	32	156
Total	26 322	23 819	2 503	1 122	292	190	150	749
Free State								
Fezile Dabi	8 981	7 683	1 298	443	162	125	102	466
Lejweleputswa	12 642	10 951	1 691	485	240	152	136	678
Mangaung	18 871	16 878	1 993	567	218	143	130	935
Thabo Mofutsanyane	15 942	14 285	1 657	580	192	144	127	614
Xhariep	1 461	1 153	308	89	39	38	19	123
Total	57 897	50 950	6 947	2 164	851	602	514	2 816

Appendix B: Total birth registrations for 2012 by year of birth occurrence, province and district municipality (concluded)

Province and district municipality	Grand Total	2012 (current)	Late registrations					
			Total	2011	2010	2009	2008	2007 and below
Total-South Africa	1 168 403	926 726	241 677	74 374	21 005	13 065	10 776	122 457
KwaZulu-Natal								
Amajuba	12 861	10 594	2 267	1 156	284	179	122	526
eThekweni	75 089	58 792	16 297	5 022	1 479	920	866	8 010
iLembe	8 893	7 122	1 771	810	214	139	133	475
Sisonke	14 021	10 995	3 026	1 124	369	283	250	1 000
Ugu	15 355	13 082	2 273	1 074	284	193	149	573
UMgungundlovu	19 409	16 091	3 318	1 226	381	277	250	1 184
Umkhanyakude	16 025	11 722	4 303	2 314	528	322	309	830
Umzinyathi	13 383	10 356	3 027	1 340	406	250	200	831
Uthukela	15 536	12 277	3 259	1 376	408	293	237	945
Uthungulu	24 462	19 086	5 376	2 711	664	428	364	1 209
Zululand	20 720	15 647	5 073	2 364	663	459	402	1 185
Total	235 754	185 764	49 990	20 517	5 680	3 743	3 282	16 768
North West								
Bojanala	38 879	33 461	5 418	2 632	714	438	375	1 259
Dr Kenneth Kaunda	15 621	13 405	2 216	955	321	194	178	568
Dr Ruth Segomotsi								
Mompoti	19 856	16 515	3 341	1 853	426	238	189	635
Ngaka Modiri Molema	11 482	9 234	2 248	1 050	277	183	130	608
Total	85 838	72 615	13 223	6 490	1 738	1 053	872	3 070
Gauteng								
City of Johannesburg	69 308	60 875	8 433	3 392	1 212	840	630	2 359
City of Tshwane	106 097	41 675	64 422	3 157	959	639	500	59 167
Ekurhuleni	60 884	53 469	7 415	3 181	1 002	655	554	2 023
Sedibeng	18 077	16 102	1 975	795	274	159	144	603
West Rand	16 587	14 336	2 251	876	306	187	193	689
Total	270 953	186 457	84 496	11 401	3 753	2 480	2 021	64 841
Mpumalanga								
Ehlanzeni	50 042	42 028	8 014	4 018	1 050	550	464	1 932
Gert Sibande	21 734	17 017	4 717	2 445	624	376	289	983
Nkangala	24 143	20 358	3 785	2 156	489	276	220	644
Total	95 919	79 403	16 516	8 619	2 163	1 202	973	3 559
 Limpopo								
Capricorn	35 906	31 785	4 121	2 345	502	280	184	810
Greater Sekhukhune	20 892	17 991	2 901	1 805	377	176	172	371
Mopani	28 884	25 769	3 115	1 583	341	214	161	816
Vhembe	32 349	27 789	4 560	2 786	584	290	207	693
Waterberg	17 408	15 105	2 303	1 327	343	169	112	352
Total	135 439	118 439	17 000	9 846	2 147	1 129	836	3 042
Foreign	20 599	172	20 427	36	12	7	11	20 361
Unspecified	861	462	399	54	23	13	10	299

Appendix C: Birth registrations by registration status, sex, province and district municipality, 2012

Province and district municipality	Total registrations			Current registrations			Late registrations					
	Total	Male	Female	Total	Male	Female	Before age 15			After Age 15		
							Total	Male	Female	Total	Male	Female
Total-South Africa	1 168 403	589 537	578 866	926 726	467 058	459 668	157 048	79 248	77 800	84 629	43 231	41 398
Western Cape												
Cape Winelands	13 845	6 917	6 928	12 689	6 340	6 349	1 148	573	575	8	4	4
Central Karoo	1 182	592	590	1 110	556	554	72	36	36	0	0	0
City of Cape Town	74 718	38 127	36 591	67 770	34 510	33 260	6 902	3 590	3 312	46	27	19
Eden	9 872	5 005	4 867	8 937	4 518	4 419	929	483	446	6	4	2
Overberg	3 162	1 581	1 581	2 765	1 381	1 384	395	200	195	2	0	2
West Coast	5 795	2 907	2 888	5 130	2 558	2 572	664	349	315	1	0	1
Total	108 574	55 129	53 445	98 401	49 863	48 538	10 110	5 231	4 879	63	35	28
Eastern Cape												
Alfred Nzo	14 313	7 167	7 146	11 618	5 795	5 823	2 678	1 361	1 317	17	11	6
Amatole	15 095	7 585	7 510	12 481	6 290	6 191	2 593	1 285	1 308	21	10	11
Buffalo city	15 993	8 081	7 912	14 704	7 422	7 282	1 284	655	629	5	4	1
Cacadu	7 228	3 618	3 610	6 099	3 038	3 061	1 121	575	546	8	5	3
Chris Hani	14 437	7 189	7 248	12 268	6 124	6 144	2 157	1 058	1 099	12	7	5
Joe Gqabi	6 081	3 087	2 994	4 914	2 482	2 432	1 161	603	558	6	2	4
Nelson Mandela												
Bay metro	20 579	10 575	10 004	18 252	9 394	8 858	2 318	1 173	1 145	9	8	1
O.R. Tambo	36 521	18 554	17 967	29 908	15 194	14 714	6 557	3 341	3 216	56	19	37
Total	130 247	65 856	64 391	110 244	55 739	54 505	19 869	10 051	9 818	134	66	68
Northern Cape												
Frances Baard	9 256	4 675	4 581	8 516	4 299	4 217	738	375	363	2	1	1
John Taolo Gaetsewe	6 044	2 995	3 049	5 563	2 754	2 809	476	240	236	5	1	4
Namakwa	1 543	757	786	1 455	709	746	88	48	40	0	0	0
Pixley ka Seme	4 322	2 162	2 160	3 615	1 804	1 811	703	356	347	4	2	2
Siyanda	5 157	2 603	2 554	4 670	2 368	2 302	485	233	252	2	2	0
Total	26 322	13 192	13 130	23 819	11 934	11 885	2 490	1 252	1 238	13	6	7
Free State												
Fezile Dabi	8 981	4 514	4 467	7 683	3 878	3 805	1 287	630	657	11	6	5
Lejweleputswa	12 642	6 330	6 312	10 951	5 481	5 470	1 678	843	835	13	6	7
Mangaung	18 871	9 482	9 389	16 878	8 495	8 383	1 931	954	977	62	33	29
Thabo Mofutsanyane	15 942	8 151	7 791	14 285	7 314	6 971	1 641	828	813	16	9	7
Xhariep	1 461	731	730	1 153	587	566	305	144	161	3	0	3
Total	57 897	29 208	28 689	50 950	25 755	25 195	6 842	3 399	3 443	105	54	51

Appendix C: Birth registrations by registration status, sex, province and district municipality, 2012 (concluded)

Province and district municipality	Total registrations			Current registrations			Late registrations					
	Total	Male	Female	Total	Male	Female	Before age 15			After Age 15		
							Total	Male	Female	Total	Male	Female
Total-South Africa	1 168 403	589 537	578 866	926 726	467 058	459 668	157 048	79 248	77 800	84 601	43 224	41 433
KwaZulu-Natal												
Amajuba	12 861	6 548	6 313	10 594	5 382	5 212	2 236	1 148	1 088	31	18	13
eThekweni	75 089	37 798	37 291	58 792	29 649	29 143	10 956	5 447	5 509	5 341	2 702	2 639
iLembe	8 893	4 445	4 448	7 122	3 569	3 553	1 758	870	888	13	6	7
Sisonke	14 021	7 082	6 939	10 995	5 517	5 478	2 994	1 542	1 452	32	23	9
Ugu	15 355	7 803	7 552	13 082	6 631	6 451	2 256	1 163	1 093	17	9	8
UMgungundlowu	19 409	9 763	9 646	16 091	8 086	8 005	3 294	1 666	1 628	24	11	13
Umkhanyakude	16 025	7 939	8 086	11 722	5 794	5 928	4 291	2 143	2 148	12	2	10
Umzinyathi	13 383	6 780	6 603	10 356	5 251	5 105	2 986	1 510	1 476	41	19	22
Uthukela	15 536	7 870	7 666	12 277	6 213	6 064	3 240	1 647	1 593	19	10	9
Uthungulu	24 462	12 359	12 103	19 086	9 672	9 414	5 335	2 670	2 665	41	17	24
Zululand	20 720	10 223	10 497	15 647	7 671	7 976	5 046	2 536	2 510	27	16	11
Total	235 754	118 610	117 144	185 764	93 435	92 329	44 392	22 342	22 050	5 598	2 833	2 765
North West												
Bojanala	38 879	19 615	19 264	33 461	16 894	16 567	5 387	2 703	2 684	31	18	13
Dr Kenneth Kaunda	15 621	7 914	7 707	13 405	6 773	6 632	2 205	1 134	1 071	11	7	4
Dr Ruth Segomotsi												
Mompoti	19 856	9 845	10 011	16 515	8 190	8 325	3 332	1 654	1 678	9	1	8
Ngaka Modiri Molema	11 482	5 742	5 740	9 234	4 622	4 612	2 231	1 114	1 117	17	6	11
Total	85 838	43 116	42 722	72 615	36 479	36 136	13 155	6 605	6 550	68	32	36
Gauteng												
City of Johannesburg	69 308	35 070	34 238	60 875	30 876	29 999	8 399	4 179	4 220	34	15	19
City of Tshwane	106 097	53 767	52 330	41 675	20 926	20 749	7 019	3 626	3 393	57 403	29 215	28 188
Ekurhuleni	60 884	30 638	30 246	53 469	26 882	26 587	7 373	3 729	3 644	42	27	15
Sedibeng	18 077	9 108	8 969	16 102	8 150	7 952	1 972	958	1 014	3	0	3
West Rand	16 587	8 328	8 259	14 336	7 215	7 121	2 237	1 105	1 132	14	8	6
Total	270 953	136 911	134 042	186 457	94 049	92 408	27 000	13 597	13 403	57 496	29 265	28 231
Mpumalanga												
Ehlanzeni	50 042	25 274	24 768	42 028	21 204	20 824	7 816	3 965	3 851	198	105	93
Gert Sibande	21 734	10 884	10 850	17 017	8 517	8 500	4 684	2 345	2 339	33	22	11
Nkangala	24 143	12 096	12 047	20 358	10 205	10 153	3 761	1 877	1 884	24	14	10
Total	95 919	48 254	47 665	79 403	39 926	39 477	16 261	8 187	8 074	255	141	114
Limpopo												
Capricorn	35 906	18 039	17 867	31 785	15 947	15 838	4 042	2 044	1 998	79	48	31
Greater Sekhukhune	20 892	10 595	10 297	17 991	9 126	8 865	2 895	1 465	1 430	6	4	2
Mopani	28 884	14 542	14 342	25 769	12 950	12 819	2 913	1 467	1 446	202	125	77
Vhembe	32 349	16 260	16 089	27 789	13 918	13 871	4 545	2 332	2 213	15	10	5
Waterberg	17 408	8 767	8 641	15 105	7 612	7 493	2 295	1 150	1 145	8	5	3
Total	135 439	68 203	67 236	118 439	59 553	58 886	16 690	8 458	8 232	310	192	118
Foreign	20599	10 622	9 977	172	91	81	94	49	45	20 333	10 482	9 851
Unspecified	861	436	425	462	234	228	145	77	68	254	125	129

Appendix D: Birth occurrences by year of birth and age of the mother, 2008–2012*

Age of the mother	Year of birth occurrence				
	2008	2009	2010	2011	2012
15–19	154 529	146 178	139 573	135 681	112 605
20–24	300 116	281 743	272 628	269 569	253 843
25–29	267 799	253 795	255 241	257 974	244 006
30–34	191 847	179 278	179 203	179 106	178 694
35–39	113 116	104 625	104 352	106 321	101 654
40–44	36 210	33 606	33 667	31 864	32 046
45–49	5 980	4 773	3 523	3 172	2 584
50–54	673	455	347	283	237
Unspecified/outside 15–54 age range	4 178	3 048	2 241	1 757	1 057
Total	1 074 448	1 007 501	990 775	985 727	926 726

* Figures include birth occurrences as at 28 February 2013.

Appendix E: Birth occurrences by province of birth occurrence and age of the mother, 2012*

Province of birth occurrence	Age of mother									Total
	15-19	20-24	25-29	30-34	35-39	40-44	45-49	50-54	Unsp	
Western Cape	9 875	23 738	27 716	21 479	11 869	3 383	195	9	137	98 401
Eastern Cape	17 930	31 460	26 379	18 502	11 215	4 050	401	71	236	110 244
Northern Cape	3 648	6 728	5 777	4 394	2 341	841	51	7	32	23 819
Free State	6 181	15 075	13 240	9 550	5 096	1 651	106	6	45	50 950
KwaZulu-Natal	26 672	56 897	47 669	31 050	17 470	5 272	473	67	194	185 764
North West	8 435	20 384	18 815	13 881	8 086	2 716	222	8	68	72 615
Gauteng	14 095	43 010	53 151	44 142	24 279	7 069	484	27	200	186 457
Mpumalanga	11 057	22 694	20 544	14 085	8 069	2 603	227	19	105	79 403
Limpopo	14 654	33 711	30 536	21 474	13 149	4 430	422	23	40	118 439
Foreign	16	35	57	30	21	11	2	0	0	172
Unspecified	42	111	122	107	59	20	1	0	0	462
Total	112 605	253 843	244 006	178 694	101 654	32 046	2 584	237	1 057	926 726

* Unspecified or outside the 15–54 age range.

Appendix F: Birth occurrences by year of birth and province and district municipality of birth occurrence, 2008–2012*

Province and district municipality	Year of birth				
	2008	2009	2010	2011	2012
Total - South Africa	1 074 448	1 007 501	990 775	985 727	926 726
Western Cape					
Cape Winelands	13 593	13 384	13 303	13 208	12 689
Central Karoo	1 250	1 184	1 078	1 104	1 110
City of Cape Town	76 867	73 470	71 582	70 058	67 770
Eden	10 540	9 965	9 608	9 402	8 937
Overberg	2 980	2 773	2 837	2 763	2 765
West Coast	6 132	5 983	5 694	5 735	5 130
Total	111 362	106 759	104 102	102 270	98 401
Eastern Cape					
Alfred Nzo	17 391	14 896	13 664	13 287	11 618
Amatole	14 943	13 932	12 469	12 871	12 481
Buffalo city	16 041	15 528	15 518	15 448	14 704
Cacadu	6 936	6 496	6 399	6 612	6 099
Chris Hani	17 139	15 051	13 894	13 651	12 268
Joe Gqabi	6 297	5 979	5 582	5 467	4 914
Nelson Mandela Bay Metro	23 364	21 268	19 899	19 533	18 252
O.R. Tambo	37 275	31 903	32 202	32 814	29 908
Total	139 386	125 053	119 627	119 683	110 244
Northern Cape					
Frances Baard	8 990	8 796	8 547	8 717	8 516
John Taolo Gaetsewe	5 522	4 985	5 261	5 616	5 563
Namakwa	1 531	1 564	1 501	1 401	1 455
Pixley ka Seme	4 431	4 193	4 086	3 706	3 615
Siyanda	4 493	4 616	4 630	4 502	4 670
Total	24 967	24 154	24 025	23 942	23 819
Free State					
Fezile Dabi	9 397	8 735	8 531	8 012	7 683
Lejweleputswa	12 804	11 778	11 569	11 324	10 951
Mangaung	17 638	16 906	17 625	17 255	16 878
Thabo Mofutsanyane	16 655	15 130	14 903	14 807	14 285
Xhariesp	1 735	1 459	1 492	1 337	1 153
Total	58 229	54 008	54 120	52 735	50 950

* Figures include updated birth occurrences as at 28 February 2013.

Appendix F: Birth occurrences by year of birth and province and district municipality of birth occurrence, 2008–2012 (concluded)*

Province and district municipality	Year of birth				
	2008	2009	2010	2011	2012
Total - South Africa	1 074 448	1 007 501	990 775	985 727	926 726
KwaZulu-Natal					
Amajuba	12 158	12 262	11 879	11 320	10 594
eThekweni	74 136	68 208	68 299	64 895	58 792
iLembe	12 638	12 314	9 501	8 468	7 122
Sisonke	12 148	11 577	11 874	11 976	10 995
Ugu	17 165	15 619	14 899	14 023	13 082
UMgungundlovu	18 145	17 607	17 317	17 210	16 091
Umkhanyakude	15 622	14 054	13 201	13 421	11 722
Umzinyathi	10 512	8 288	10 204	10 946	10 356
Uthukela	15 557	14 361	13 995	13 560	12 277
Uthungulu	25 201	22 967	21 284	21 322	19 086
Zululand	22 906	19 870	19 347	18 583	15 647
Total	236 188	217 127	211 800	205 724	185 764
North West					
Bojanala	38 593	36 190	36 154	35 541	33 461
Dr Kenneth Kaunda	15 293	14 654	13 825	13 714	13 405
Dr Ruth Segomotsi Mompati	18 865	18 106	17 613	17 675	16 515
Ngaka Modiri Molema	10 948	10 485	10 341	10 070	9 234
Total	83 699	79 435	77 933	77 000	72 615
Gauteng					
City of Johannesburg	68 875	65 684	64 113	63 034	60 875
City of Tshwane	40 390	41 109	43 248	42 816	41 675
Ekurhuleni	59 885	56 531	56 039	56 388	53 469
Sedibeng	17 097	17 276	17 450	16 796	16 102
West Rand	15 957	14 631	14 497	15 005	14 336
Total	202 204	195 231	195 347	194 039	186 457
Mpumalanga					
Ehlanzeni	46 413	43 362	42 321	43 880	42 028
Gert Sibande	19 581	18 832	18 741	18 425	17 017
Nkangala	22 114	21 910	20 489	21 605	20 358
Total	88 108	84 104	81 551	83 910	79 403
Limpopo					
Capricorn	31 882	30 275	32 065	33 203	31 785
Greater Sekhukhune	20 982	19 560	19 856	19 231	17 991
Mopani	26 432	25 392	25 462	26 970	25 769
Vhembe	30 717	28 552	28 606	29 665	27 789
Waterberg	16 111	15 531	15 510	16 511	15 105
Total	126 124	119 310	121 499	125 580	118 439
Foreign	4 044	2 182	606	283	172
Unspecified	137	138	165	561	462

* Figures include updated birth occurrences as at 28 February 2013.

Appendix G: Total birth occurrences by sex, month and citizenship, 1992–1994*

Year	Month	GRAND TOTAL	SA CITIZENS*		NON-CITIZENS*		OTHER**		TOTAL	
			Male	Female	Male	Female	Male	Female	Male	Female
1992	January	82 993	41 502	41 239	64	64	72	52	41 638	41 355
	February	82 718	41 515	40 988	53	62	57	43	41 625	41 093
	March	87 451	43 403	43 883	46	49	39	31	43 488	43 963
	April	82 817	41 289	41 336	60	61	36	35	41 385	41 432
	May	81 467	40 551	40 719	58	52	46	41	40 655	40 812
	June	85 007	42 404	42 437	52	52	38	24	42 494	42 513
	July	79 401	39 467	39 750	53	62	39	30	39 559	39 842
	August	81 984	40 719	41 107	43	64	20	31	40 782	41 202
	September	92 317	45 974	46 147	74	54	40	28	46 088	46 229
	October	77 246	38 525	38 531	58	55	48	29	38 631	38 615
	November	72 512	35 864	36 490	52	49	29	28	35 945	36 567
	December	81 399	40 711	40 535	42	53	29	29	40 782	40 617
	Total	987 312	491 924	493 162	655	677	493	401	493 072	494 240
1993	January	80 522	40 234	40 095	59	60	47	27	40 340	40 182
	February	72 103	36 192	35 775	44	48	22	22	36 258	35 845
	March	83 587	41 712	41 702	52	61	35	25	41 799	41 788
	April	78 013	39 066	38 808	50	37	24	28	39 140	38 873
	May	78 522	39 207	39 151	45	50	32	37	39 284	39 238
	June	83 020	41 632	41 233	56	42	27	30	41 715	41 305
	July	78 448	39 232	39 065	52	47	28	24	39 312	39 136
	August	81 997	41 158	40 700	49	48	17	25	41 224	40 773
	September	91 971	45 951	45 873	53	42	29	23	46 033	45 938
	October	78 703	39 279	39 274	43	54	27	26	39 349	39 354
	November	75 932	37 874	37 913	57	43	17	28	37 948	37 984
	December	85 352	42 891	42 315	42	57	25	22	42 958	42 394
	Total	968 170	484 428	481 904	602	589	330	317	485 360	482 810
1994	January	82 152	41 199	40 787	56	43	41	26	41 296	40 856
	February	74 415	37 291	37 010	47	26	27	14	37 365	37 050
	March	81 853	41 000	40 711	49	40	29	24	41 078	40 775
	April	83 149	41 433	41 560	55	45	26	30	41 514	41 635
	May	80 684	40 394	40 144	49	45	22	30	40 465	40 219
	June	84 003	41 852	41 986	50	53	32	30	41 934	42 069
	July	78 480	39 422	38 907	45	52	34	20	39 501	38 979
	August	82 244	41 180	40 921	35	47	28	33	41 243	41 001
	September	90 474	45 399	44 940	47	47	20	21	45 466	45 008
	October	79 074	39 665	39 256	47	52	23	31	39 735	39 339
	November	74 737	37 262	37 336	46	39	22	32	37 330	37 407
	December	84 728	42 469	42 147	29	33	35	15	42 533	42 195
	Total	975 993	488 566	485 705	555	522	339	306	489 460	486 533

*Figures include updated birth occurrences as at 30 June 2013.

** 'Other' refers to those people whose citizenship was under investigation and had not yet been resolved by 30 June 2013.

Appendix G.1: Total birth occurrences by sex, month and citizenship, 1995–1997*

Year	Month	GRAND TOTAL	SA CITIZENS*		NON-CITIZENS*		OTHER**		TOTAL	
			Male	Female	Male	Female	Male	Female	Male	Female
1995	January	81 092	40 578	40 375	28	44	29	38	40 432	40 457
	February	71 190	35 682	35 373	32	30	31	42	35 436	35 445
	March	79 467	39 827	39 483	48	39	40	30	39 571	39 552
	April	76 091	37 903	38 032	44	48	32	32	38 108	38 112
	May	78 832	39 654	39 023	46	49	25	35	39 094	39 107
	June	81 632	41 013	40 474	36	44	31	34	40 541	40 552
	July	77 935	38 766	39 023	35	34	36	41	39 094	39 098
	August	80 474	40 426	39 892	44	54	28	30	39 964	39 976
	September	89 096	44 470	44 446	49	40	46	45	44 541	44 531
	October	77 408	38 497	38 759	43	45	30	34	38 832	38 838
	November	72 904	36 476	36 306	27	33	32	30	36 365	36 369
	December	81 886	41 075	40 677	42	27	35	30	40 754	40 734
	Total	948 007	474 367	471 863	474	487	395	421	472 732	472 771
1996	January	84 851	42 346	42 361	35	38	35	36	42 416	42 435
	February	74 690	37 469	37 095	36	26	39	25	37 544	37 146
	March	82 249	40 918	41 220	33	29	26	23	40 977	41 272
	April	78 913	39 740	39 073	30	32	16	22	39 786	39 127
	May	80 564	40 267	40 177	38	33	20	29	40 325	40 239
	June	84 606	42 470	42 015	33	28	30	30	42 533	42 073
	July	80 187	40 056	40 025	32	31	22	21	40 110	40 077
	August	82 608	41 430	41 049	29	30	37	33	41 496	41 112
	September	91 439	45 714	45 592	36	24	39	34	45 789	45 650
	October	77 963	39 302	38 553	27	35	25	21	39 354	38 609
	November	73 156	36 520	36 562	16	22	20	16	36 556	36 600
	December	83 416	41 944	41 337	38	29	30	38	42 012	41 404
	Total	974 642	488 176	485 059	383	357	339	328	488 898	485 744
1997	January	83 027	41 545	41 395	16	22	19	30	41 580	41 447
	February	74 001	37 000	36 931	13	17	24	16	37 037	36 964
	March	84 591	42 349	42 136	23	25	33	25	42 405	42 186
	April	79 327	39 506	39 743	19	22	16	21	39 541	39 786
	May	79 159	39 545	39 534	24	19	17	20	39 586	39 573
	June	81 526	40 590	40 854	24	19	24	15	40 638	40 888
	July	80 395	40 255	40 066	23	15	14	22	40 292	40 103
	August	80 925	40 317	40 530	22	9	22	25	40 361	40 564
	September	88 964	44 675	44 217	17	12	21	22	44 713	44 251
	October	76 296	38 396	37 838	12	13	18	19	38 426	37 870
	November	71 246	35 794	35 376	15	12	24	25	35 833	35 413
	December	80 876	40 432	40 371	17	14	27	15	40 476	40 400
	Total	960 333	480 404	478 991	225	199	259	255	480 888	479 445

*Figures include updated birth occurrences as at 30 June 2013.

** 'Other' refers to those people whose citizenship was under investigation and had not yet been resolved by 30 June 2013.

Appendix G.2: Total birth occurrences by sex, month and citizenship, 1998–2000*

Year	Month	GRAND TOTAL	SA CITIZENS*		NON-CITIZENS*		OTHER**		TOTAL	
			Male	Female	Male	Female	Male	Female	Male	Female
1998	January	81 790	40 677	41 021	20	13	29	30	40 726	41 064
	February	73 950	36 963	36 917	11	15	32	12	37 006	36 944
	March	83 281	41 664	41 543	16	20	23	15	41 703	41 578
	April	78 019	38 700	39 254	19	10	13	23	38 732	39 287
	May	78 988	39 683	39 233	15	16	26	15	39 724	39 264
	June	80 149	40 071	40 022	16	13	20	7	40 107	40 042
	July	77 583	39 021	38 493	8	17	21	23	39 050	38 533
	August	79 252	39 380	39 797	17	14	21	23	39 418	39 834
	September	87 604	43 967	43 563	22	13	20	19	44 009	43 595
	October	75 508	37 769	37 662	17	15	21	24	37 807	37 701
	November	70 070	35 134	34 868	11	12	19	26	35 164	34 906
	December	78 298	39 063	39 196	12	6	10	11	39 085	39 213
	Total	944 492	472 092	471 569	184	164	255	228	472 531	471 961
1999	January	79 844	39 845	39 924	11	18	28	18	39 884	39 960
	February	70 994	35 630	35 323	9	12	11	9	35 650	35 344
	March	82 501	41 081	41 343	13	13	29	22	41 123	41 378
	April	81 653	40 636	40 951	16	14	16	20	40 668	40 985
	May	82 435	41 109	41 235	20	21	33	17	41 162	41 273
	June	82 775	41 347	41 359	11	14	25	19	41 383	41 392
	July	79 377	39 725	39 577	23	11	20	21	39 768	39 609
	August	80 315	40 203	40 031	14	18	21	28	40 238	40 077
	September	88 208	44 238	43 903	14	16	17	20	44 269	43 939
	October	76 456	38 020	38 363	20	19	18	16	38 058	38 398
	November	73 129	36 914	36 175	12	6	11	11	36 937	36 192
	December	81 882	40 930	40 895	19	9	9	20	40 958	40 924
	Total	959 569	479 678	479 079	182	171	238	221	480 098	479 471
2000	January	85 039	42 571	42 424	8	16	6	14	42 585	42 454
	February	79 096	39 723	39 331	16	5	11	10	39 750	39 346
	March	85 394	42 693	42 641	15	17	9	19	42 717	42 677
	April	80 842	40 396	40 405	9	5	11	16	40 416	40 426
	May	82 371	41 045	41 274	10	12	11	19	41 066	41 305
	June	82 801	41 508	41 264	6	11	4	7	41 518	41 283
	July	79 932	39 973	39 930	9	11	6	3	39 988	39 944
	August	80 942	40 691	40 224	6	11	6	4	40 703	40 239
	September	87 049	43 621	43 393	12	12	7	5	43 640	43 409
	October	76 897	38 625	38 232	14	10	8	6	38 647	38 250
	November	72 726	36 339	36 362	9	8	3	3	36 351	36 375
	December	78 031	39 089	38 917	14	16	2	1	39 105	38 926
	Total	971 124	486 274	484 397	128	134	84	107	486 486	484 634

*Figures include updated birth occurrences as at 30 June 2013.

** 'Other' refers to those people whose citizenship was under investigation and had not yet been resolved by 30 June 2013.

Appendix G.3: Total birth occurrences by sex, month and citizenship, 2001–2003*

Year	Month	GRAND TOTAL	SA CITIZENS*		NON-CITIZENS*		OTHER**		TOTAL	
			Male	Female	Male	Female	Male	Female	Male	Female
2001	January	86 049	43 126	42 892	12	10	6	3	43 144	42 905
	February	73 623	36 658	36 932	15	10	6	2	36 679	36 944
	March	84 099	42 224	41 848	8	11	2	6	42 234	41 865
	April	80 131	40 115	39 982	14	7	7	6	40 136	39 995
	May	81 338	40 541	40 768	11	7	8	3	40 560	40 778
	June	80 375	39 998	40 351	9	8	3	6	40 010	40 365
	July	78 277	39 456	38 788	15	9	5	4	39 476	38 801
	August	79 017	39 477	39 513	11	7	3	6	39 491	39 526
	September	85 555	42 998	42 537	7	8	4	1	43 009	42 546
	October	76 205	37 869	38 302	16	10	4	4	37 889	38 316
	November	71 975	36 244	35 706	10	6	6	3	36 260	35 715
	December	78 175	39 363	38 785	7	10	5	5	39 375	38 800
	Total	954 819	478 069	476 404	135	103	59	49	478 263	476 556
2002	January	85 957	43 137	42 783	12	10	6	9	43 155	42 802
	February	75 735	37 907	37 806	5	7	7	3	37 919	37 816
	March	82 479	41 033	41 411	8	7	10	10	41 051	41 428
	April	78 615	39 168	39 418	11	9	4	5	39 183	39 432
	May	81 174	40 434	40 718	8	10	1	3	40 443	40 731
	June	82 003	41 124	40 849	11	10	3	6	41 138	40 865
	July	81 438	40 596	40 819	4	7	9	3	40 609	40 829
	August	80 282	40 618	39 636	11	9	4	4	40 633	39 649
	September	87 779	44 138	43 610	8	16	3	4	44 149	43 630
	October	77 911	38 745	39 133	13	8	8	4	38 766	39 145
	November	72 176	36 237	35 915	6	8	5	5	36 248	35 928
	December	79 472	39 836	39 607	10	13	2	4	39 848	39 624
	Total	965 021	482 973	481 705	107	114	62	60	483 142	481 879
2003	January	84 299	42 369	41 908	10	7	3	2	42 382	41 917
	February	74 989	37 570	37 391	13	7	3	5	37 586	37 403
	March	85 614	42 880	42 711	8	7	1	7	42 889	42 725
	April	80 475	40 392	40 058	8	11	4	2	40 404	40 071
	May	81 651	41 008	40 614	14	8	5	2	41 027	40 624
	June	80 959	40 622	40 310	4	12	6	5	40 632	40 327
	July	78 623	39 470	39 137	7	4	3	2	39 480	39 143
	August	79 652	39 906	39 726	7	6	3	4	39 916	39 736
	September	87 933	44 280	43 628	12	4	5	4	44 297	43 636
	October	76 042	38 005	38 004	13	13	4	3	38 022	38 020
	November	70 404	35 342	35 036	7	7	7	5	35 356	35 048
	December	78 260	39 457	38 777	10	5	4	7	39 471	38 789
	Total	958 901	481 301	477 300	113	91	48	48	481 462	477 439

*Figures include updated birth occurrences as at 30 June 2012.

** 'Other' refers to those people whose citizenship was under investigation and had not yet been resolved by 30 June 2013.

Appendix G.4: Total birth occurrences by sex, month and citizenship, 2004–2006*

Year	Month	GRAND TOTAL	SA CITIZENS*		NON-CITIZENS*		OTHER**		TOTAL	
			Male	Female	Male	Female	Male	Female	Male	Female
2004	January	84 249	42 519	41 707	5	8	5	5	42 529	41 720
	February	77 249	39 075	38 147	7	13	5	2	39 087	38 162
	March	84 963	42 610	42 320	15	9	3	6	42 628	42 335
	April	81 693	41 117	40 553	10	4	4	5	41 131	40 562
	May	83 955	41 989	41 938	10	7	5	6	42 004	41 951
	June	85 195	42 647	42 526	10	5	5	2	42 662	42 533
	July	85 307	42 953	42 327	12	7	3	5	42 968	42 339
	August	88 049	44 341	43 677	8	8	9	6	44 358	43 691
	September	95 616	47 918	47 671	14	4	6	3	47 938	47 678
	October	82 458	41 320	41 115	13	8	1	1	41 334	41 124
	November	79 945	40 024	39 894	4	8	9	6	40 037	39 908
	December	86 229	43 419	42 787	7	7	6	3	43 432	42 797
	Total	1 014 908	509 932	504 662	115	88	61	50	510 108	504 800
2005	January	89 557	45 311	44 220	8	6	7	5	45 326	44 231
	February	81 118	40 789	40 304	9	7	4	5	40 802	40 316
	March	92 531	46 272	46 225	7	15	5	7	46 284	46 247
	April	88 843	44 485	44 335	8	9	4	2	44 497	44 346
	May	92 069	46 298	45 745	13	4	4	5	46 315	45 754
	June	90 415	45 191	45 205	5	7	4	3	45 200	45 215
	July	87 812	44 124	43 669	7	5	3	4	44 134	43 678
	August	87 820	44 364	43 430	7	5	7	7	44 378	43 442
	September	92 787	46 620	46 146	9	4	5	3	46 634	46 153
	October	81 857	41 315	40 515	5	7	5	10	41 325	40 532
	November	80 943	40 829	40 089	9	4	6	6	40 844	40 099
	December	89 842	45 209	44 609	7	10	4	3	45 220	44 622
	Total	1 055 594	530 807	524 492	94	83	58	60	530 959	524 635
2006	January	93 823	47 092	46 698	7	7	15	4	47 114	46 709
	February	84 928	42 445	42 463	8	7	3	2	42 456	42 472
	March	94 602	47 269	47 302	4	5	11	11	47 284	47 318
	April	90 517	45 295	45 189	7	8	12	6	45 314	45 203
	May	93 735	47 149	46 559	9	5	9	4	47 167	46 568
	June	92 035	46 189	45 820	8	7	7	4	46 204	45 831
	July	90 456	45 350	45 092	3	5	5	1	45 358	45 098
	August	90 742	45 450	45 265	11	6	4	6	45 465	45 277
	September	98 308	49 265	49 024	2	5	7	5	49 274	49 034
	October	85 500	43 012	42 462	9	5	7	5	43 028	42 472
	November	81 050	41 037	39 997	3	6	2	5	41 042	40 008
	December	87 752	44 362	43 360	8	5	10	7	44 380	43 372
	Total	1 083 448	543 915	539 231	79	71	92	60	544 086	539 362

*Figures include updated birth occurrences as at 30 June 2013.

** 'Other' refers to those people whose citizenship was under investigation and had not yet been resolved by 30 June 2013.

Appendix G.5: Total birth occurrences by sex, month and citizenship, 2007–2009*

Year	Month	GRAND TOTAL	SA CITIZENS*		NON-CITIZENS*		OTHER**		TOTAL	
			Male	Female	Male	Female	Male	Female	Male	Female
2007	January	95 414	47 861	47 528	8	5	4	8	47 873	47 541
	February	82 689	41 755	40 917	7	4	3	3	41 765	40 924
	March	94 022	47 331	46 660	8	5	10	8	47 349	46 673
	April	91 278	45 727	45 534	3	5	4	5	45 734	45 544
	May	94 014	47 058	46 927	9	8	4	8	47 071	46 943
	June	90 220	45 606	44 595	7	7	2	3	45 615	44 605
	July	89 561	44 898	44 638	8	2	10	5	44 916	44 645
	August	88 167	44 272	43 877	6	2	5	5	44 283	43 884
	September	93 486	47 115	46 344	4	6	5	12	47 124	46 362
	October	81 563	41 229	40 312	6	6	5	5	41 240	40 323
	November	79 236	39 815	39 406	5	1	4	5	39 824	39 412
	December	87 196	44 115	43 064	8	4	3	2	44 126	43 070
	Total	1 066 846	536 782	529 802	79	55	59	69	536 920	529 926
2008	January	93 647	47 113	46 517	4	2	3	8	47 120	46 527
	February	87 765	44 159	43 591	4	3	3	5	44 166	43 599
	March	95 982	48 020	47 946	2	1	6	7	48 028	47 954
	April	90 804	45 542	45 249	2	3	3	5	45 547	45 257
	May	90 487	45 319	45 150	4	2	6	6	45 329	45 158
	June	89 485	44 988	44 480	3	5	3	6	44 994	44 491
	July	91 801	45 895	45 888	1	5	5	7	45 901	45 900
	August	91 431	46 158	45 260	2	4	5	2	46 165	45 266
	September	98 056	49 556	48 486	3	6	3	2	49 562	48 494
	October	84 761	42 372	42 373	6	4	4	2	42 382	42 379
	November	81 739	41 254	40 476	1	1	4	3	41 259	40 480
	December	90 541	45 766	44 768	2	2	1	2	45 769	44 772
	Total	1 086 499	546 142	540 184	34	38	46	55	546 222	540 277
2009	January	93 231	47 061	46 157	5	1	4	3	47 070	46 161
	February	82 451	41 438	41 002	2	2	3	4	41 443	41 008
	March	93 386	47 054	46 320	3	2	4	3	47 061	46 325
	April	85 503	42 903	42 591	3	0	3	3	42 909	42 594
	May	87 348	43 616	43 720	6	1	2	3	43 624	43 724
	June	86 984	43 899	43 074	1	2	5	3	43 905	43 079
	July	86 263	43 189	43 065	1	1	6	1	43 196	43 067
	August	85 689	43 125	42 552	5	0	2	5	43 132	42 557
	September	90 511	45 590	44 907	2	1	6	5	45 598	44 913
	October	78 837	39 940	38 891	2	2	0	2	39 942	38 895
	November	76 906	38 854	38 042	1	0	6	3	38 861	38 045
	December	84 281	42 524	41 754	1	1	0	1	42 525	41 756
	Total	1 031 390	519 193	512 075	32	13	41	36	519 266	512 124

*Figures include updated birth occurrences as at 30 June 2013.

** 'Other' refers to those people whose citizenship was under investigation and had not yet been resolved by 30 June 2013.

Appendix G.6: Total birth occurrences by sex, month and citizenship, 2010–2012*

Year	Month	GRAND TOTAL	SA CITIZENS*		NON-CITIZENS*		OTHER**		TOTAL	
			Male	Female	Male	Female	Male	Female	Male	Female
2010	January	86 956	43 795	43 156	1	0	4	0	43 800	43 156
	February	77 830	39 205	38 620	0	0	4	1	39 209	38 621
	March	88 412	44 622	43 783	1	1	4	1	44 627	43 785
	April	83 074	41 804	41 264	0	0	4	2	41 808	41 266
	May	83 769	42 375	41 384	0	1	3	6	42 378	41 391
	June	84 350	42 480	41 865	0	1	1	3	42 481	41 869
	July	84 956	42 894	42 055	0	2	0	5	42 894	42 062
	August	84 277	42 761	41 511	0	1	3	1	42 764	41 513
	September	89 833	45 478	44 353	0	0	1	1	45 479	44 354
	October	77 672	39 028	38 640	0	1	1	2	39 029	38 643
	November	74 737	37 675	37 060	0	0	1	1	37 676	37 061
	December	82 623	41 567	41 049	3	0	3	1	41 573	41 050
	Total	998 489	503 684	494 740	5	7	29	24	503 718	494 771
2011	January	82 821	41 791	41 026	0	0	3	1	41 794	41 027
	February	78 933	39 957	38 973	0	0	1	2	39 958	38 975
	March	91 431	46 286	45 137	0	0	5	3	46 291	45 140
	April	83 617	41 859	41 755	0	0	3	0	41 862	41 755
	May	87 344	43 929	43 410	0	0	1	4	43 930	43 414
	June	84 321	42 497	41 820	0	0	2	2	42 499	41 822
	July	82 721	41 932	40 782	0	0	5	2	41 937	40 784
	August	83 322	41 965	41 353	0	0	3	1	41 968	41 354
	September	87 943	44 393	43 546	0	0	1	3	44 394	43 549
	October	77 606	38 748	38 853	0	0	4	1	38 752	38 854
	November	76 132	38 546	37 583	0	0	3	0	38 549	37 583
	December	80 703	40 807	39 895	0	0	1	0	40 808	39 895
	Total	996 894	502 710	494 133	0	0	32	19	502 742	494 152
2012	January	86 912	43 917	42 994	0	0	0	1	43 917	42 995
	February	79 286	39 877	39 400	0	1	4	4	39 881	39 405
	March	87 586	44 071	43 512	0	0	2	1	44 073	43 513
	April	83 929	42 242	41 683	0	0	3	1	42 245	41 684
	May	85 716	43 170	42 544	0	0	1	1	43 171	42 545
	June	82 042	41 358	40 680	0	0	3	1	41 361	40 681
	July	81 490	40 974	40 516	0	0	0	0	40 974	40 516
	August	81 494	41 295	40 195	0	0	2	2	41 297	40 197
	September	83 525	42 164	41 360	0	0	1	0	42 165	41 360
	October	73 108	36 802	36 306	0	0	0	0	36 802	36 306
	November	70 671	35 617	35 053	0	0	0	1	35 617	35 054
	December	77 099	39 099	37 999	0	0	1	0	39 100	37 999
	Total	972 858	490 586	482 242	0	1	17	12	490 603	482 255

*Figures include updated birth occurrences as at 30 June 2013.

** 'Other' refers to those people whose citizenship was under investigation and had not yet been resolved by 30 June 2013.

Explanatory Notes

Sources of data

The Department of Home Affairs (DHA) provides Statistics South Africa (Stats SA) with information on recorded live births. Two sets of birth statistics are provided: registration-based and occurrence-based data. Both these datasets come from the Nucleus Bureau of the DHA. When the officials at the various offices of the Department of Home Affairs capture the information about a birth, they do so directly onto the database at the Nucleus Bureau. These transactions are used to update the database of the birth register.

For the purpose of producing vital statistics, the following system is followed: each day, all the civil transactions carried out at all the Department of Home Affairs offices are written onto a cassette. At the end of every month, a combined set of cassettes is created, containing all the transactions done for the month. These transactions are downloaded and the birth transactions are extracted for processing at Stats SA. The year in which the births are registered is the registration year. Using this information, Stats SA provides the breakdown of the registered births according to the year in which the births occurred.

While births information sent to Stats SA is the same as that in the population register, there is a difference of format between the two. On the one hand, Stats SA's data are based on births registered during the year (registration-based), while on the other hand, entries in the population register reflect the date of birth. The date of registration of birth is not stored on the population registration file. For this reason, the population register can only be used to obtain birth data broken down by date of birth (occurrence-based).

By continuously updating the population register for late registration, the occurrence-based data from the population register get closer and closer to the true level of births. In a situation where birth registrations are complete (with very few late registrations), the occurrence-based perspective will be very similar to the registration-based perspective. However, if there is a large number of late registrations, the two perspectives will become widely dissimilar. With improvements in birth registration, the recorded data from the two sources will gradually converge.

The South African population register

The South African population register covers births, deaths, identity, marriages, divorces and movements of all South African citizens and permanent residents. The Births and Deaths Registration Act, 1992 (Act No. 51 of 1992) guides the registration of births and deaths throughout South Africa. The Act was subsequently amended in 1997 (Act No. 67 of 1997), in 1998 (Act No. 43 of 1998) and in 2010 (Act No.18 of 2010). Another Act pertinent to the population register is the Identification Act, 1997 (Act No. 68 of 1997). This Act repealed previous Identification Acts (Act No.72 of 1986, Act No. 21 of 1991, Act No. 4 of 1993, and Act No. 47 of 1995). Thus, each of the Acts dealing with any aspect of civil registration has implications for the information recorded into the population register.

From these Acts and amendments, the following persons and particulars are eligible to be included on the population register:

- All children born of South African citizens and permanent residents when the notice of the birth is given within one year after the birth of the child.
- All children born of South African citizens and permanent residents when the notice of the birth is given one year after the birth of the child together with the prescribed requirement for a late registration of birth.
- All South African citizens and permanent residents who, upon attainment of the age of 16, applied for and were granted identification cards (or books).
- All South African citizens and permanent residents who die at any age after birth.
- All South African citizens and permanent residents who depart permanently from South Africa.
- Persons whose particulars are not eligible for inclusion on the population register are listed below:
 - Non-South African citizens who sojourn temporarily in the country.
 - All South African citizens and permanent residents who died before notice of their birth had been given.

Municipal demarcation

The Department of Home Affairs captures information on places based on magisterial districts using the Twelfth Edition of the Standard Code List of Areas (Central Statistics Services, 1995). Stats SA re-classified the magisterial districts into district councils and metropolitan areas based on the 2010 municipal boundaries. Certain magisterial districts are situated in more than one district council, in which case such magisterial districts are allocated to the district council where the majority of the land area falls. The only exception was with Nigel in Gauteng province. The majority of the land area of Nigel magisterial district is in Sedibeng district council (which is mainly farm areas and therefore sparsely populated), while the majority of the population lives in Ekurhuleni metropolitan area. As such, Nigel was classified to Ekurhuleni and not Sedibeng. Maps for the old and the new classification are available from Stats SA on request.

Population group

As from 1991, no distinction is made between the different population groups on the data collected by the Department of Home Affairs. The statistics collected, therefore, refer to all population groups combined.

Definitions of concepts used

1.1 Live birth

The complete expulsion or extraction from its mother's womb of a product of conception, irrespective of the duration of pregnancy, which, after such separation, breathes or shows any other evidence of life, such as beating of the heart, pulsation of the umbilical cord, or definite movement of voluntary muscles, whether or not the umbilical cord has been cut or the placenta is attached. Each product of such a birth is considered live born (WHO, 1992).

1.2 Recorded live births

The number of births recorded (registered) in a specific year, irrespective of when the birth actually occurred. The births recorded in any given year include the births that occurred during that year plus other births that occurred in years prior to the year of registration. It should be noted that not all births are recorded (registered).

1.3 Late registration

This refers to births occurring in a given calendar year but registered in subsequent calendar years. In this release, late registrations are grouped into two: (i) births registered after one year of birth but less than 15 years after birth; and (ii) births registered from 15 years after birth.

1.4 Current live births

Births occurring in a specific year and registered within that same year.