



your leading partner in quality statistics

Statistical release P0211

Quarterly Labour Force Survey

Quarter 1, 2012

Embargoed until:

**08 May 2012
11:30**

Enquiries:

User Information Services
Tel: (012) 310 8600/4892/8390

Forthcoming issue:

Quarter 2, 2012

Expected release date

July 2012

Published by Statistics South Africa, Private Bag X44, Pretoria 0001

© Statistics South Africa, 2012

Users may apply or process this data, provided Statistics South Africa (Stats SA) is acknowledged as the original source of the data; that it is specified that the application and/or analysis is the result of the user's independent processing of the data; and that neither the basic data nor any reprocessed version or application thereof may be sold or offered for sale in any form whatsoever without prior permission from Stats SA.

Stats SA Library Cataloguing-in-Publication (CIP) Data

Quarterly Labour Force Survey Quarter 1, 2012/Statistics South Africa. Pretoria: Statistics South Africa, 2012

Quarterly

1. Labour supply – Statistics
 2. Labour supply (South Africa)
 3. Unemployment (South Africa)
 4. Informal sector (Economics) – South Africa
 5. Formal sector (Economics) – South Africa
- I. Statistics South Africa
II. Series
(LCSH 16)

A complete set of Stats SA publications is available at Stats SA Library and the following libraries:

National Library of South Africa, Pretoria Division
National Library of South Africa, Cape Town Division
Library of Parliament, Cape Town
Bloemfontein Public Library
Natal Society Library, Pietermaritzburg
Johannesburg Public Library
Eastern Cape Library Services, King William's Town
Central Regional Library, Polokwane
Central Reference Library, Nelspruit
Central Reference Collection, Kimberley
Central Reference Library, Mmabatho

This publication is available both in hard copy and on the Stats SA website www.statssa.gov.za.

The data and metadata set from the Quarterly Labour Force Survey will be available on CD-ROM. A charge may be made according to the pricing policy, which can be accessed on the website.

Stats SA also provides a subscription service.

Enquiries:

	Printing and Distribution	User Information Services
Tel:	(012) 310 8251	(012) 310 8600
Fax:	(012) 321 7381	(012) 310 8500/ 8495
Email:	distribution@statssa.gov.za	info@statssa.gov.za

Contents

	Page
List of tables in highlights of the results	iii
List of figures in highlights of the results	iii
List of tables	iv
1. Introduction	vi
2. Highlights of the results	vi
3. Employment	vii
4. The unemployed population	xiii
5. Characteristics of the not economically active population	xviii
6. Technical notes	xix
6.1. Response details	xix
6.2. Survey requirements and design	xix
6.3. Sample rotation	xix
6.4. Weighting	xx
6.5. Non-response adjustment	xx
6.6. Final survey weights	xx
6.7. Estimation	xx
6.8. Reliability of the survey estimates	xx
7. Definitions	xxi

List of tables in highlights of the results

	Page
Table A: Key labour market indicators.....	vi
Table B: Employment by industry.....	viii
Table C: Employment by province.....	iix
Table D: Employment by occupation.....	xii
Table E: Unemployed by sex.....	xv
Table F: Response rates by province.....	xix

List of figures in highlights of the results

Figure 1: Total employment, quarter 1:2008 to quarter 1:2012.....	vii
Figure 2: Quarter-to-quarter change in employment, quarter 1:2008 to quarter 1:2012.....	vii
Figure 3 : Year-on-year change in employment, quarter 1:2008 to quarter 1:2012.....	vii
Figure 4: Changes in the formal sector employment by industry.....	ix
Figure 5: Quarter-to-quarter changes in the formal sector employment.....	xvii
Figure 6: Year-on-year changes in the formal sector employment.....	xvii
Figure 7: Changes in the informal sector employment by industry.....	xi
Figure 8: Quarter-to-quarter changes in the informal sector employment.....	xvii
Figure 9: Year-on-year changes in the informal sector employment.....	xvii
Figure 10: Employee access to selected leave benefits.....	xviii
Figure 11: Employee access to other benefits.....	xviii
Figure 12: Nature of employment contract or agreement.....	xvii
Figure 13: Total unemployment, quarter 1:2008 to quarter 1:2012.....	xvii
Figure 14: Unemployment rate by sex.....	xvii
Figure 15: Unemployment rate by education level.....	xvii
Figure 16: Unemployment rate by province.....	xvi
Figure 17: Unemployment rate by population group.....	xvii
Figure 18: The not economically active.....	xviii

List of tables

	Page
Table 1: Population of working age (15–64 years)	1
Table 2: Labour force characteristics by sex – All population groups.....	2
Table 2: Labour force characteristics by sex – All population groups (concluded).....	3
Table 2.1: Labour force characteristics by population group	4
Table 2.1: Labour force characteristics by population group (concluded)	5
Table 2.2: Labour force characteristics by province	6
Table 2.2: Labour force characteristics by province (continued)	7
Table 2.2: Labour force characteristics by province (continued)	8
Table 2.2: Labour force characteristics by province (continued)	9
Table 2.2: Labour force characteristics by province (concluded)	10
Table 2.3: Labour force characteristics by province – Expanded definition of unemployment	11
Table 2.3: Labour force characteristics by province – Expanded definition of unemployment (continued) ..	12
Table 2.3: Labour force characteristics by province – Expanded definition of unemployment (continued) ..	13
Table 2.3: Labour force characteristics by province – Expanded definition of unemployment (concluded) ..	14
Table 3.1: Employed by industry and sex – South Africa	15
Table 3.2: Employed by industry and province.....	16
Table 3.2: Employed by industry and province (continued).....	17
Table 3.2: Employed by industry and province (continued).....	18
Table 3.2: Employed by industry and province (concluded)	19
Table 3.3: Employed by sector and industry – South Africa	20
Table 3.4: Employed by province and sector.....	21
Table 3.4: Employed by province and sector (concluded).....	22
Table 3.5: Employed by sex and occupation – South Africa	23
Table 3.6: Employed by sex and status in employment – South Africa.....	24
Table 3.7: Employed by sex and usual hours of work – South Africa.....	25
Table 3.8: Conditions of employment – South Africa.....	26
Table 3.8: Conditions of employment – South Africa (continued).....	27
Table 3.8: Conditions of employment – South Africa (continued).....	28
Table 3.8: Conditions of employment – South Africa (continued).....	29
Table 3.8: Conditions of employment – South Africa (continued).....	30
Table 3.8: Conditions of employment – South Africa (concluded).....	31
Table 3.9: Time-related underemployment – South Africa	32
Table 4: Characteristics of the unemployed – South Africa.....	33
Table 4: Characteristics of the unemployed – South Africa (concluded)	34
Table 5: Characteristics of the not economically active – South Africa	35
Table 6: Socio-demographic characteristics – South Africa	36
Table 6: Socio-demographic characteristics – South Africa (continued)	37
Table 6: Socio-demographic characteristics – South Africa (concluded)	38
Table 7: Involvement in non-market activities and labour market status by province.....	39
Table 7: Involvement in non-market activities and labour market status by province (continued).....	40
Table 7: Involvement in non-market activities and labour market status by province (concluded).....	41

Appendix 2A: Sampling variability for labour force characteristics by sex42

Appendix 2A: Sampling variability for labour force characteristics by sex (concluded)43

Appendix 2.1A: Sampling variability for labour force characteristics by population group.....44

Appendix 2.1A: Sampling variability for labour force characteristics by population group (concluded)45

Appendix 2.2A: Sampling variability for labour force characteristics by province46

Appendix 2.2A: Sampling variability for labour force characteristics by province (continued)47

Appendix 2.2A: Sampling variability for labour force characteristics by province (continued)48

Appendix 2.2A: Sampling variability for labour force characteristics by province (continued)49

Appendix 2.2A: Sampling variability for labour force characteristics by province (concluded)50

Appendix 3.1A: Sampling variability for the employed by industry and sex.....51

Appendix 3.2A: Sampling variability for the employed by province and sector52

Appendix 3.2A: Sampling variability for the employed by province and sector (concluded).....53

Appendix 3.3A: Sampling variability for the employed by sex and occupation54

Appendix 2B: Sampling variability for labour force characteristics by sex55

Appendix 2B: Sampling variability for labour force characteristics by sex (concluded)56

Appendix 2.1B: Sampling variability for labour force characteristics by population group.....57

Appendix 2.1B: Sampling variability for labour force characteristics by population group (concluded)58

Appendix 2.2B: Sampling variability for labour force characteristics by province59

Appendix 2.2B: Sampling variability for labour force characteristics by province (continued)60

Appendix 2.2B: Sampling variability for labour force characteristics by province (continued)61

Appendix 2.2B: Sampling variability for labour force characteristics by province (continued)62

Appendix 2.2B: Sampling variability for labour force characteristics by province (concluded)63

Appendix 3.1B: Sampling variability for the employed by industry and sex.....64

Appendix 3.2B: Sampling variability for the employed by province and sector65

Appendix 3.2B: Sampling variability for the employed by province and sector (concluded).....66

Appendix 3.3B: Sampling variability for the employed by sex and occupation67

1. Introduction

The Quarterly Labour Force Survey (QLFS) is a household-based sample survey conducted by Statistics South Africa (Stats SA). It collects data on the labour market activities of individuals aged 15 years and above who live in South Africa. However, this report only covers labour market activities of persons aged 15 to 64 years.

This report presents the key findings of the QLFS conducted from January to March 2012 (Q1:2012).

2. Highlights of the results

Table A: Key labour market indicators

	Jan–Mar 2011	Oct–Dec 2011	Jan–Mar 2012	Qtr-to- qtr change	Year-on- year change	Qtr-to- qtr change	Year-on- year change
	Thousand				Per cent		
Population 15–64 yrs	32 314	32 670	32 786	116	472	0,4	1,5
Labour force	17 482	17 741	17 948	207	466	1,2	2,7
Employed	13 118	13 497	13 422	-75	304	-0,6	2,3
Formal sector (non-agricultural)	9 219	9 616	9 509	-107	290	-1,1	3,1
Informal sector (non-agricultural)	2 179	2 134	2 106	-28	-73	-1,3	-3,4
Agriculture	603	630	656	26	53	4,1	8,8
Private households	1 118	1 118	1 151	33	33	3,0	3,0
Unemployed	4 364	4 244	4 526	282	162	6,6	3,7
Not economically active	14 832	14 929	14 838	-91	6	-0,6	0,0
Discouraged work-seekers	2 223	2 315	2 335	20	112	0,9	5,0
Other (not economically active)	12 609	12 614	12 503	-111	-106	-0,9	-0,8
Rates (%)							
Unemployment rate	25,0	23,9	25,2	1,3	0,2		
Employed/population ratio (absorption)	40,6	41,3	40,9	-0,4	0,3		
Labour force participation rate	54,1	54,3	54,7	0,4	0,6		

Due to rounding, numbers do not necessarily add up to totals.

The number of persons in the labour force increased by 207 000 between Q4:2011 and Q1:2012. Table A shows that employment decreased by 75 000 in Q1:2012 and the number of unemployed persons rose by 282 000 on a quarterly basis. Employment normally declines following seasonal gains in employment ahead of the December festive period. The number of the not economically active population decreased by 91 000 – an increase of 20 000 in the discouraged work-seekers and a decrease of 111 000 in the 'Other NEA'. This resulted in the unemployment rate increasing by 1,3 percentage points to 25,2%.

Formal sector employment declined by 107 000 jobs while Informal sector employment decreased by 28 000 jobs. Employment in Private households rose by 33 000, (the second consecutive quarterly rise) while in Agriculture, employment increased by 26 000 in Q1:2012.

Compared to a year ago, employment increased by 2,3% (304 000), unemployment increased by 3,7% (162 000), the number of discouraged work-seekers increased by 5,0% (112 000) and other (not economically active) decreased by 0,8% (106 000) resulting in the not economically active as a whole remaining virtually unchanged (a net increase of 6 000).

3. Employment

Figure 1: Total employment, quarter 1:2008 to quarter 1:2012

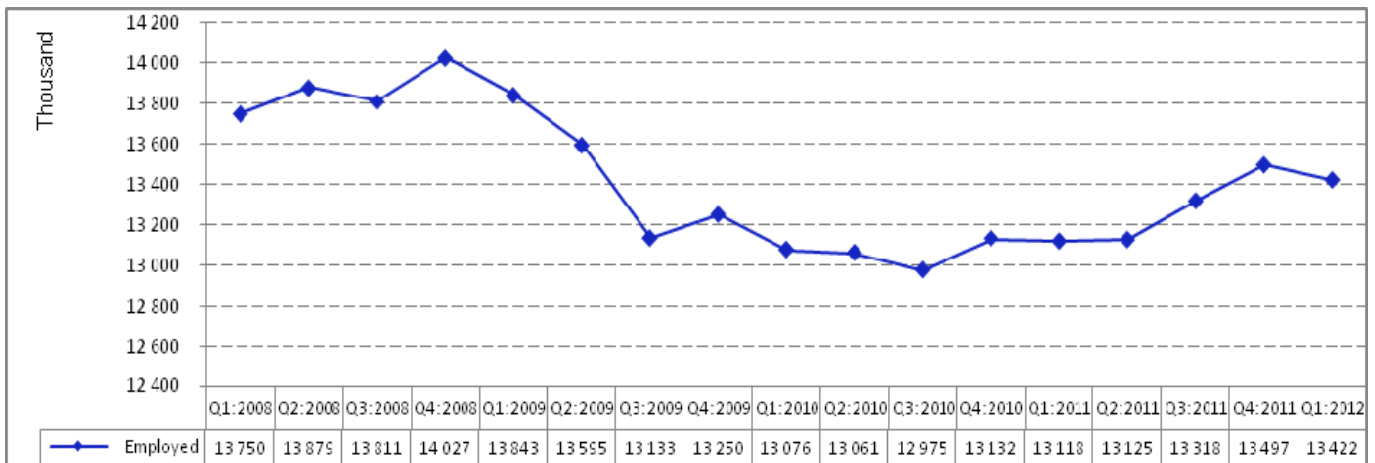


Figure 1 above shows that, since 2008, the rate of job creation was highest in the fourth quarter of each year. Employment remained constant in the three quarters to Q2:2011, after which employment growth accelerated up to Q4:2011. Employment declined by 75 000 jobs in Q1:2012 on a quarterly basis.

Figure 2: Quarter-to-quarter change in employment, quarter 1:2008 to quarter 1:2012

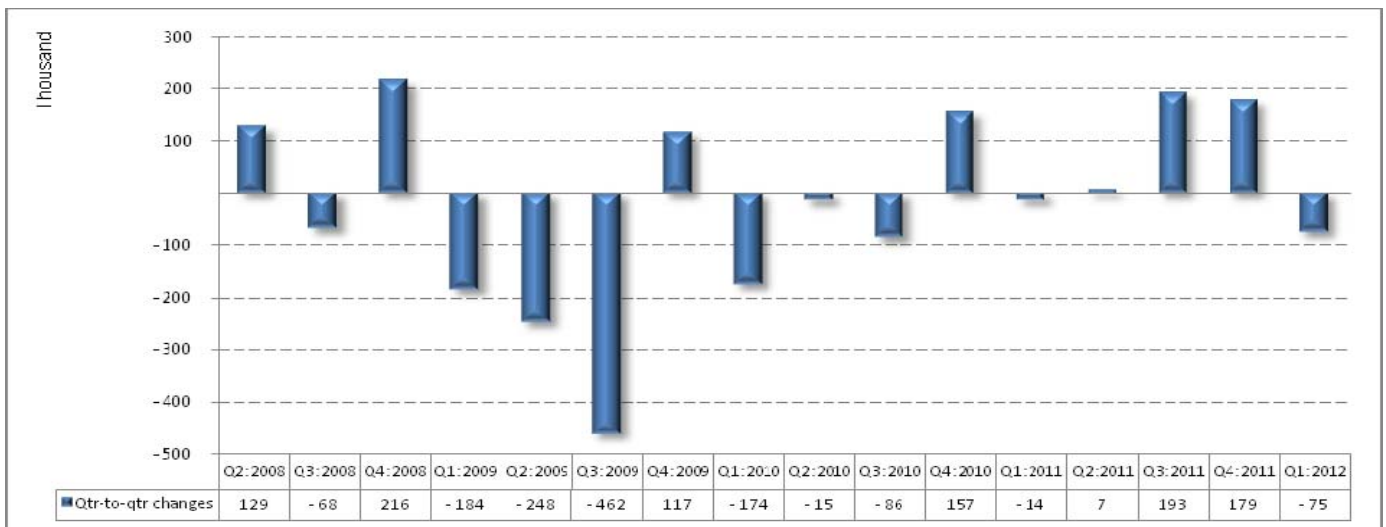


Figure 2 shows that after three successive quarters of an increase in employment, there was a decline in employment observed in Q1:2012. This is not surprising as it has always been the case that employment decreases in the first quarter of each year.

Figure 3: Year-on-year change in employment, quarter 1:2008 to quarter 1:2012



Employment expanded by 304 000 on an annual basis in Q1:2012. This is the third successive quarter in which a significant growth on a year-on-year basis was observed. The robust employment growth over the last two quarters on an annual basis implies that the economy has created 447 000 jobs (in Q1:2012) since the trough or lowest level in the number of employed persons in Q3:2010, a recovery of close on half of the million jobs lost over the period Q4:2008 to Q3:2010 (peak to trough).

Table B: Employment by industry

Industry	Jan–Mar 2011	Oct–Dec 2011	Jan–Mar 2012	Qtr-to-qtr change	Year-on-year change	Qtr-to-qtr change	Year-on-year change
	Thousand				Per cent		
Total	13 118	13 497	13 422	-75	304	-0,6	2,3
Agriculture	603	630	656	26	53	4,1	8,8
Mining [#]	313	327	336	9	23	2,8	7,3
Manufacturing	1 803	1 789	1 722	-67	-81	-3,7	-4,5
Utilities	97	81	91	10	-6	12,3	-6,2
Construction	1 031	1 057	986	-71	-45	-6,7	-4,4
Trade	2 962	3 060	3 057	-3	95	-0,1	3,2
Transport	727	788	783	-5	56	-0,6	7,7
Finance and other business services	1 631	1 739	1 741	2	110	0,1	6,7
Community and social services	2 828	2 902	2 891	-11	63	-0,4	2,2
Private households	1 118	1 118	1 151	33	33	3,0	3,0

Note: Total includes other industry.

[#]Mining is a very clustered industry, hence the industry might not have been adequately captured by the QLFS sample.

For more robust mining estimates please use the Quarterly Employment Statistics (QES).

*Due to rounding, numbers do not necessarily add up to totals.

Table B indicates that between Q4:2011 and Q1:2012, the largest employment losses were observed in the Construction (71 000) and Manufacturing (67 000) industries, while employment expanded in Private households (33 000) and Agriculture (26 000).

Compared to the same period last year, employment increased by 304 000 jobs, with Finance and other business services, Trade, and Community and social services together accounting for 88% of the rise in employment, contributing 110 000, 95 000 and 63 000 jobs respectively. Job losses were observed in Manufacturing and Construction industries, as employment declined by 81 000 and 45 000 respectively in these industries between Q1:2011 and Q1:2012.

Table C: Employment by province

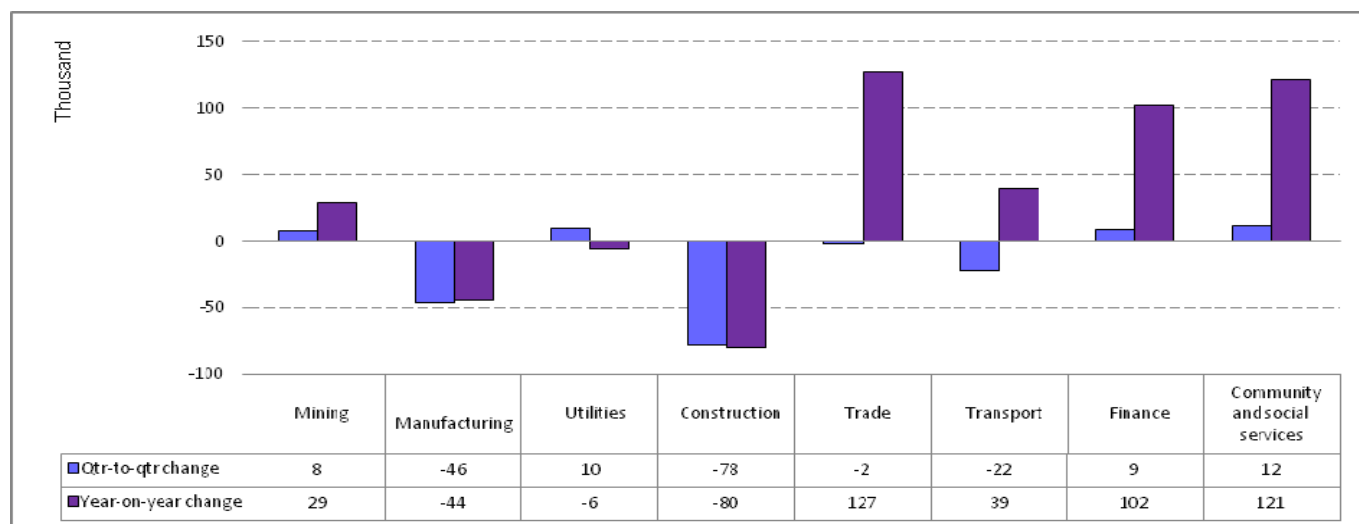
Province	Jan–Mar 2011	Oct–Dec 2011	Jan–Mar 2012	Qtr-to-qtr change	Year-on-year change	Qtr-to-qtr change	Year-on-year change
	Thousand				Per cent		
South Africa	13 118	13 497	13 422	-75	304	-0,6	2,3
Western Cape	1 784	1 842	1 847	5	63	0,3	3,5
Eastern Cape	1 325	1 326	1 279	-47	-46	-3,5	-3,5
Northern Cape	261	291	286	-5	25	-1,7	9,6
Free State	780	753	737	-16	-43	-2,1	-5,5
KwaZulu-Natal	2 429	2 562	2 519	-43	90	-1,7	3,7
North West	722	700	704	4	-18	0,6	-2,5
Gauteng	3 999	4 115	4 140	25	141	0,6	3,5
Mpumalanga	877	923	913	-10	36	-1,1	4,1
Limpopo	940	985	996	11	56	1,1	6,0

*Due to rounding, numbers do not necessarily add up to totals.

Table C shows that between Q4:2011 and Q1:2012, employment decreased in five of the nine provinces, with the highest declines observed in Eastern Cape (47 000), KwaZulu-Natal (43 000) and Free State (16 000). There were job gains in Gauteng (25 000) and Limpopo (11 000) over the same period.

Compared to a year ago, employment increased in six of the nine provinces, but declined in Eastern Cape (46 000), Free State (43 000) and North West (18 000).

Figure 4: Changes in the formal sector employment by industry

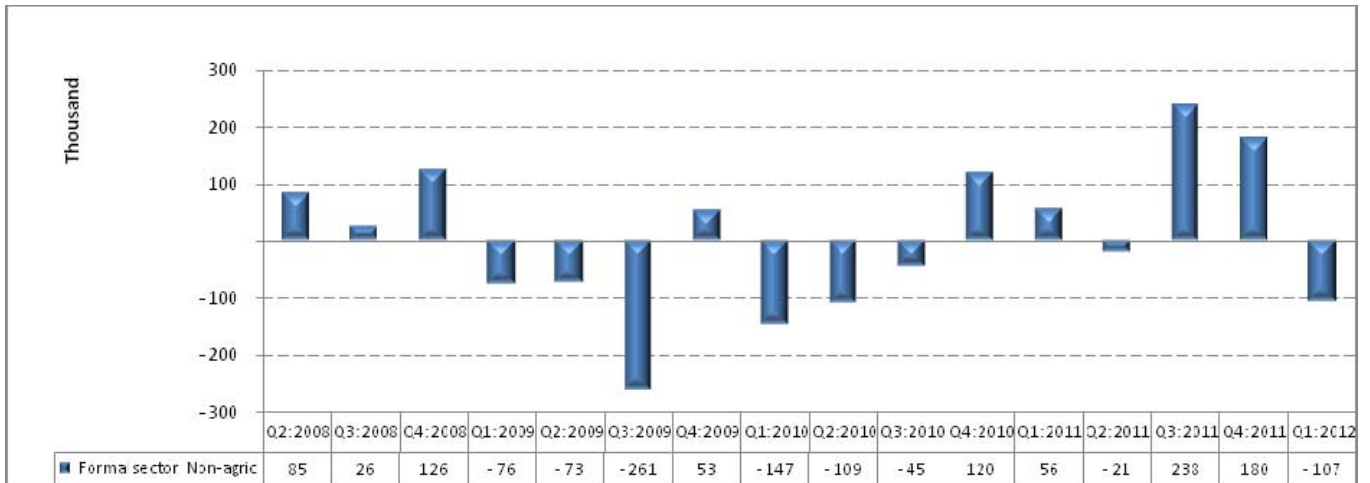


*Mining is a very clustered industry, hence the industry might not have been adequately captured by the QLFS sample. For more robust mining estimates please use the Quarterly Employment Statistics (QES)

In Q1:2012, formal sector employment accounted for 70,9% of total employment, a decline of 0,3 of a percentage point from the previous quarter. Between Q4:2011 and Q1:2012 the majority of formal sector job losses were in the Construction (78 000), Manufacturing (46 000) and Transport (22 000) industries. Job gains were observed in the Community and social services (12 000), Utilities (10 000) and Finance and other business services (9 000) industries over the same period.

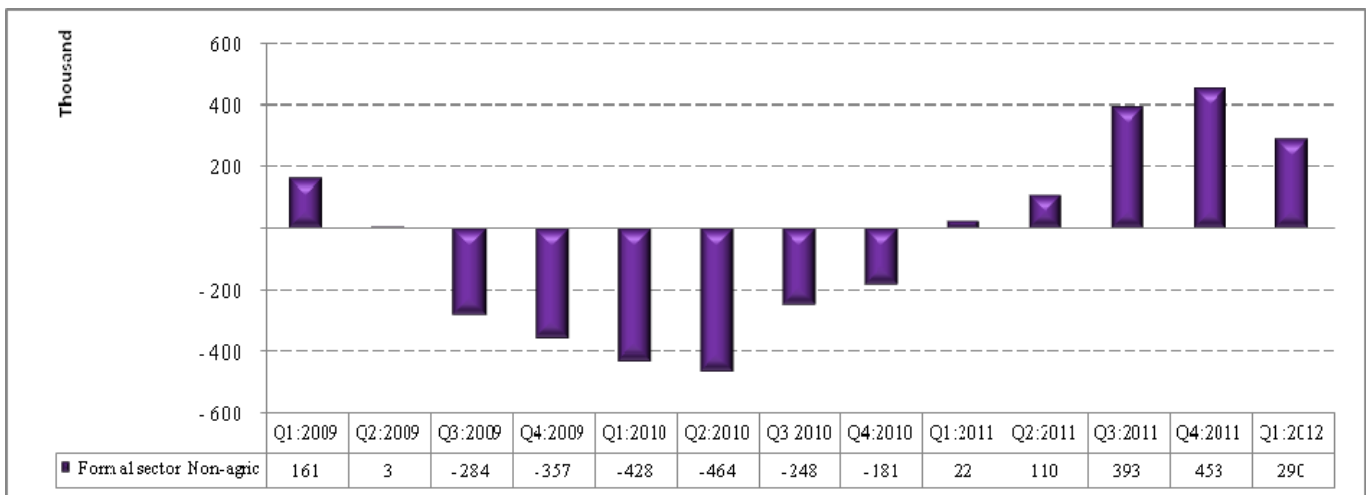
Compared to the same period last year, employment gains were recorded in five of the eight industries, in particular the Trade (127 000), Community and social services (121 000) and Finance and other business services (102 000) industries.

Figure 5: Quarter-to-quarter changes in the formal sector employment



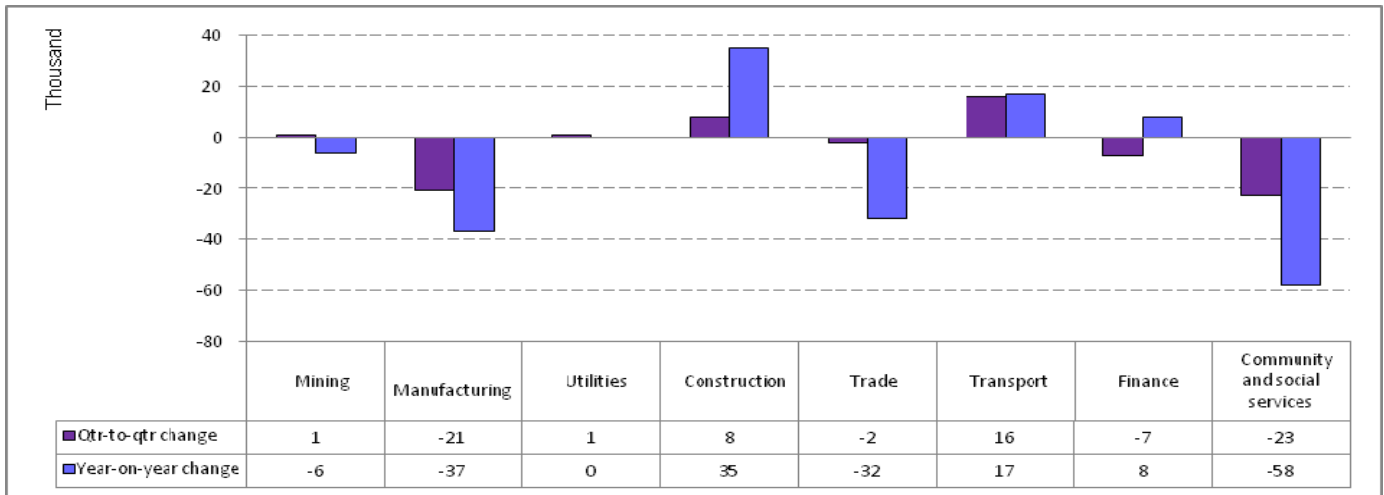
After two consecutive quarters of employment growth (238 000 jobs in Q3:2011 and 180 000 jobs in Q4:2011), the formal sector shed 107 000 jobs in Q1:2012 (Figure 5). With the exception of Q1:2011, the formal sector has been shedding jobs in the first quarter of each year.

Figure 6: Year-on-year changes in the formal sector employment



The number of persons employed in the formal sector has been rising since Q1:2011. Despite the fact that the pace of job creation in the sector has slowed down, compared to a year ago, 290 000 jobs were created in the formal sector in Q1:2012. However, this increase is lower than an annual increase of 453 000 observed in the last quarter of 2011.

Figure 7: Changes in the informal sector employment by industry

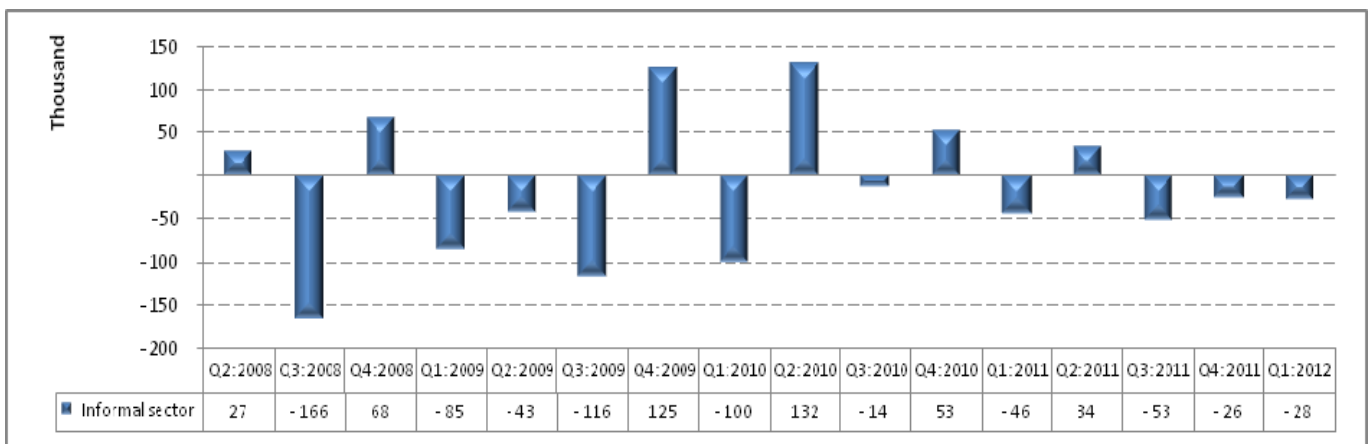


#Mining is a very clustered industry, hence the industry might not have been adequately captured by the QLFS sample. For more robust mining estimates please use the Quarterly Employment Statistics (QES)

Informal sector employment contracted by 28 000 jobs between Q4:2011 and Q1:2012. Figure 7 indicates that most informal sector jobs were lost in Community and social services (23 000) and Manufacturing (21 000). However, informal sector employment increased by 16 000 in the Transport industry quarter-to-quarter.

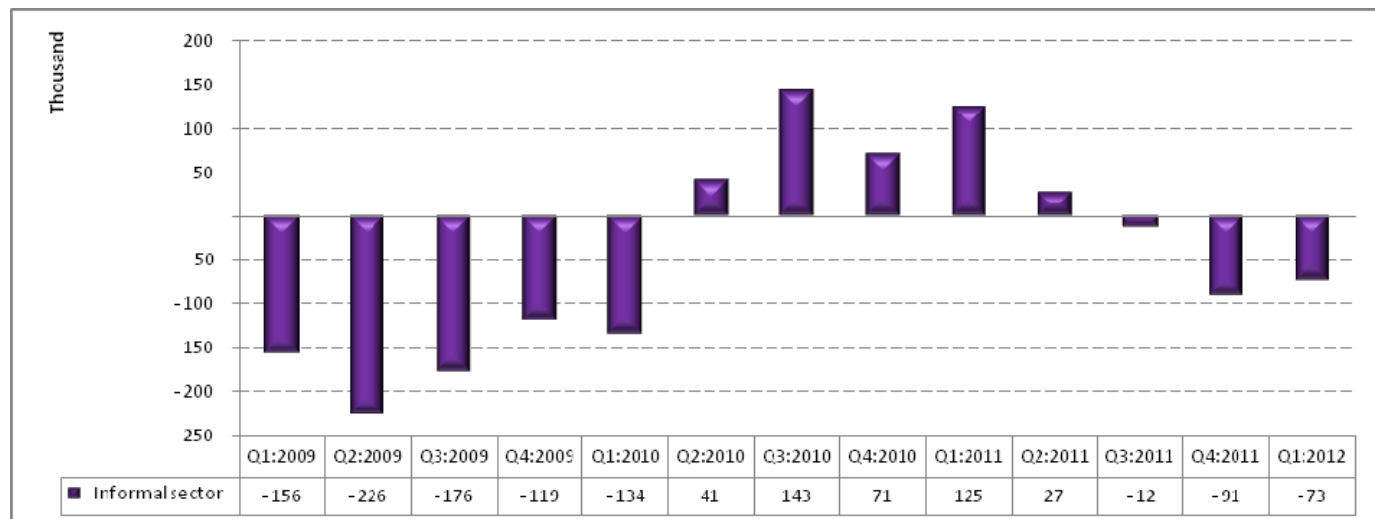
Compared to Q1:2011, the informal sector shed 73 000 jobs in Q1:2012. Job losses were concentrated in the Community and social services (58 000), Manufacturing (37 000) and Trade (32 000) industries. Employment in the Construction industry increased by 35 000 during this period.

Figure 8: Quarter-to-quarter changes in the informal sector employment



The informal sector employment on a quarterly basis remains volatile with three successive quarterly declines observed since Q3:2011.

Figure 9: Year-on-year changes in the informal sector employment



Following five successive periods of year-on-year growth since Q2:2010, employment in the informal sector contracted for three successive quarters over the period Q3:2011 to Q1:2012.

Table D: Employment by occupation

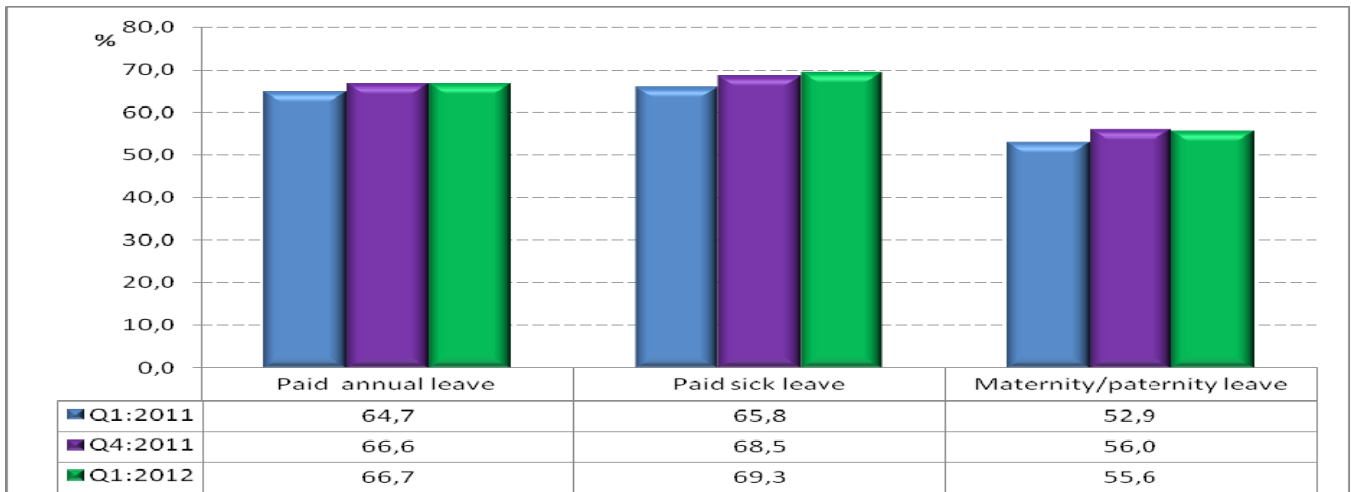
Occupation	Jan-Mar 2011	Oct-Dec 2011	Jan-Mar 2012	Qtr-to-qtr change	Year-on-year change	Qtr-to-qtr change	Year-on-year change
	Thousand				Per cent		
Total	13 118	13 497	13 422	-75	304	-0,6	2,3
Manager	1 136	1 130	1 102	-28	-34	-2,5	-3,0
Professional	750	745	747	2	-3	0,3	-0,4
Technician	1 461	1 498	1 532	34	71	2,3	4,9
Clerk	1 341	1 523	1 419	-104	78	-6,8	5,8
Sales and services	1 904	1 960	1 969	9	65	0,5	3,4
Skilled agriculture	75	67	61	-6	-14	-9,0	-18,7
Craft and related trade	1 621	1 637	1 605	-32	-16	-2,0	-1,0
Plant and machine operator	1 134	1 126	1 106	-20	-28	-1,8	-2,5
Elementary	2 821	2 933	2 983	50	162	1,7	5,7
Domestic worker	877	878	896	18	19	2,1	2,2

*Due to rounding, numbers do not necessarily add up to totals.

Between Q4:2011 and Q1:2012, the largest decrease in employment was observed in Clerical occupations which decreased by 104 000, followed by Craft and related trade (32 000) and Managerial (28 000) occupations. The largest job gains were observed among Elementary (50 000), Technician (34 000) and Domestic worker (18 000) occupations.

Compared to a year ago, the majority of jobs were created in Elementary (162 000), Clerical (78 000), and Technical (71 000) occupations. Employment declined in the Managerial (34 000), Plant and machine operator (28 000) and Craft and related trade (16 000) occupations.

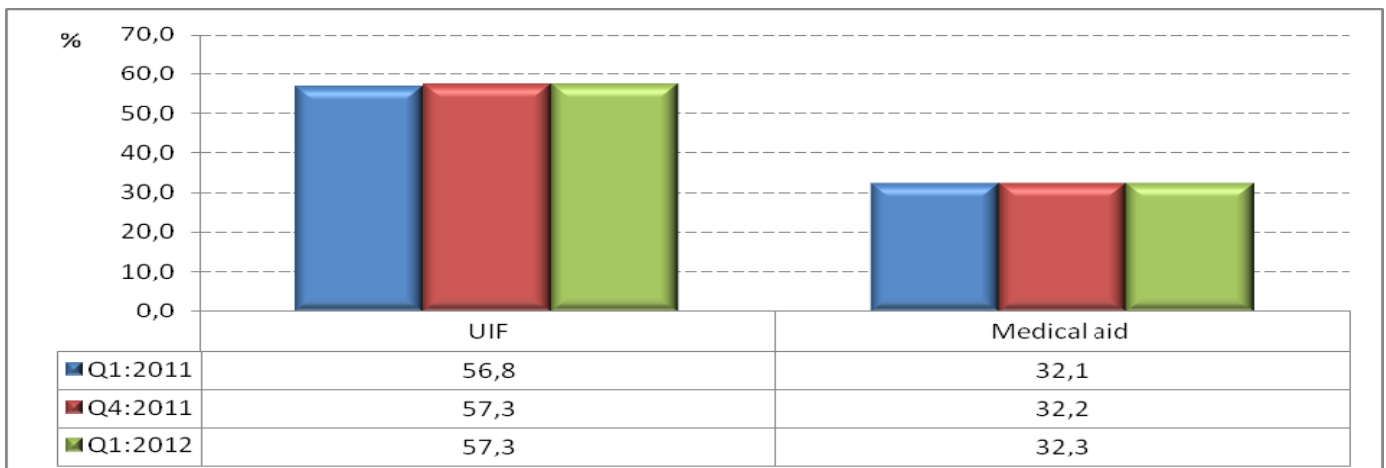
Figure 10: Employee access to selected leave benefits



Access to selected leave benefits has remained relatively consistent on a quarterly basis between Q4:2011 and Q1:2012. The paid sick leave benefit was the most available benefit offered by employers, with paid sick leave available to 69,3% of employees in Q1:2012. This was 0,8 of a percentage point improvement from the previous quarter. Between Q4:2011 and Q1:2012 the proportion of employees with paid annual leave remained virtually unchanged; while the maternity/paternity leave benefit decreased slightly by 0,4 of a percentage point.

Compared to the same quarter in 2011, the proportion of employees with paid annual leave benefits increased by 2,0 percentage points from 64,7%; there was a 3,5 percentage points increase in the proportion of employees with paid sick leave and an increase of 2,7 percentage points for the maternity/paternity leave benefit.

Figure 11: Employee access to other benefits



According to Figure 11, more than half of employees indicated that their employers paid Unemployment Insurance Fund (UIF) contributions for them and close to a third of employees were entitled to medical aid benefits from their employers. Between Q4:2011 and Q1:2012 there was no change in the proportion of employees for whom their employers paid UIF, and medical aid benefit coverage also remained unchanged.

However, compared to a year ago there was a slight improvement in the proportion of employees whose employers paid UIF for them (up by 0,5 of a percentage point) while the medical aid benefit increased by a marginal 0,2 of a percentage point.

Figure 12: Nature of employment contract or agreement , quarter 1:2008 to quarter 1:2012

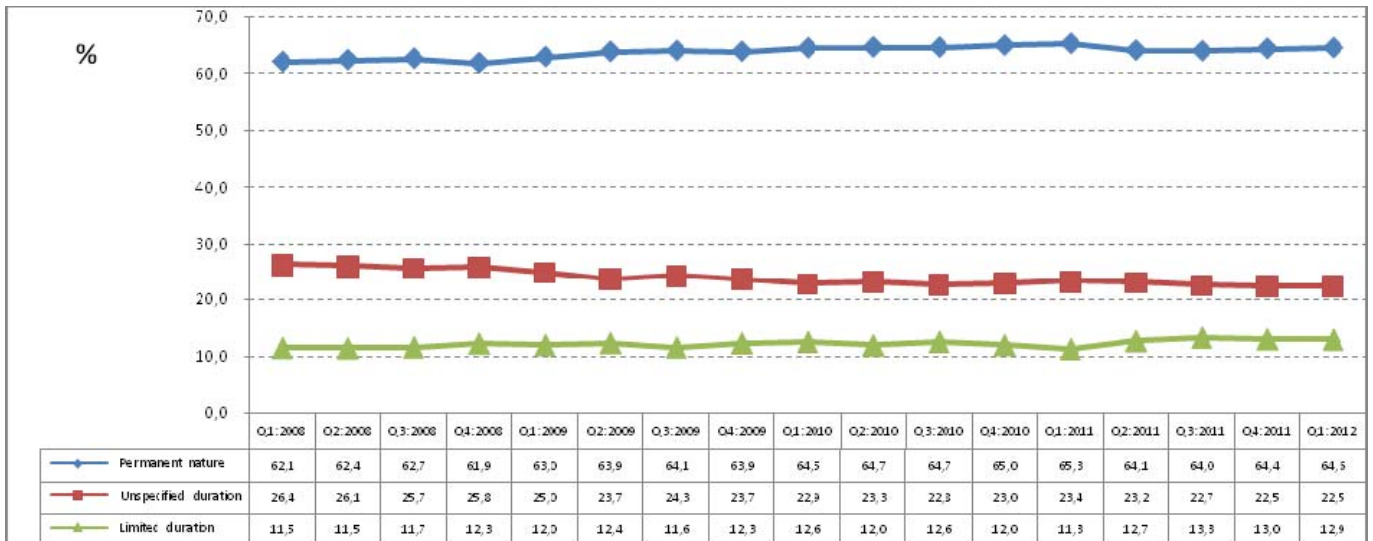
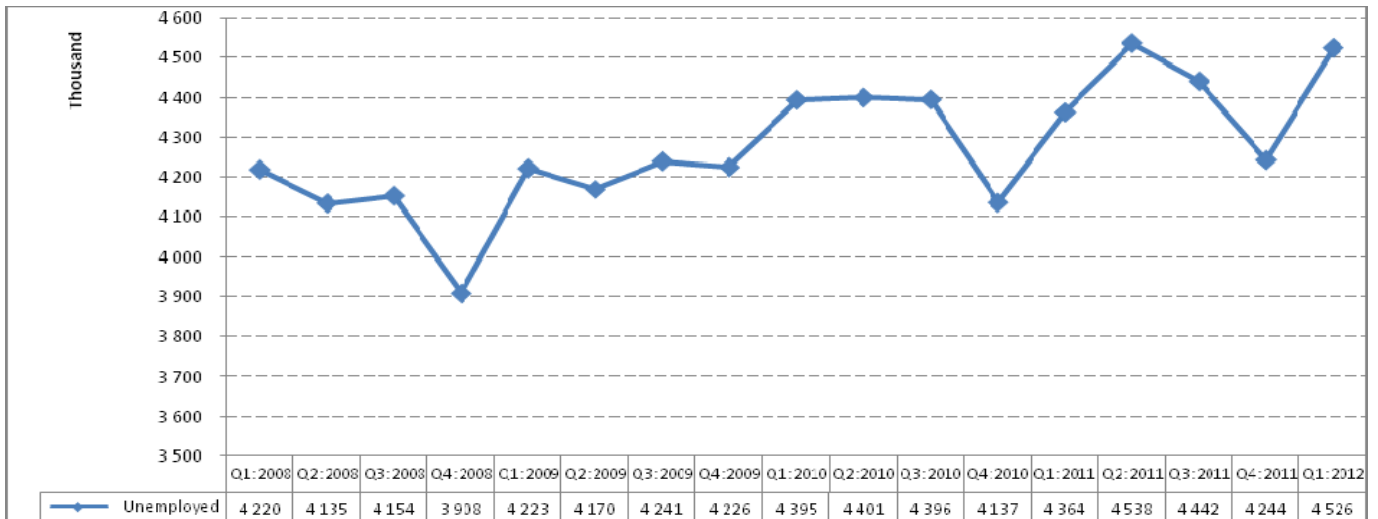


Figure 12 indicates that since Q1:2008, more than 60% of the employees had a permanent contract/agreement with their employer, while more than 11% had a contract of a limited duration with their employer. Between Q1:2008 and Q1:2012 there has been an increase of 2,5 percentage points in the proportion of employees with a permanent contract/agreement with their employer and 1,4 percentage points increase in the proportion that had a contract of a limited duration with their employer.

4. The unemployed population

Figure 13: Total unemployment, quarter 1:2008 to quarter 1:2012



In Q4:2008, there were approximately 3,9 million persons unemployed in South Africa. In the wake of the financial and economic crisis, the level of unemployment climbed rapidly, reaching a peak of 4,4 million in Q1:2010, and remaining around this level for the next two quarters. The number of unemployed rose to 4,5 million in Q2:2011, but declined during the second half of 2011. In Q1:2012, the number of unemployed persons rose by 282 000, reaching 4,5 million, which is the same level observed in Q2:2011.

Table E: The unemployed by sex

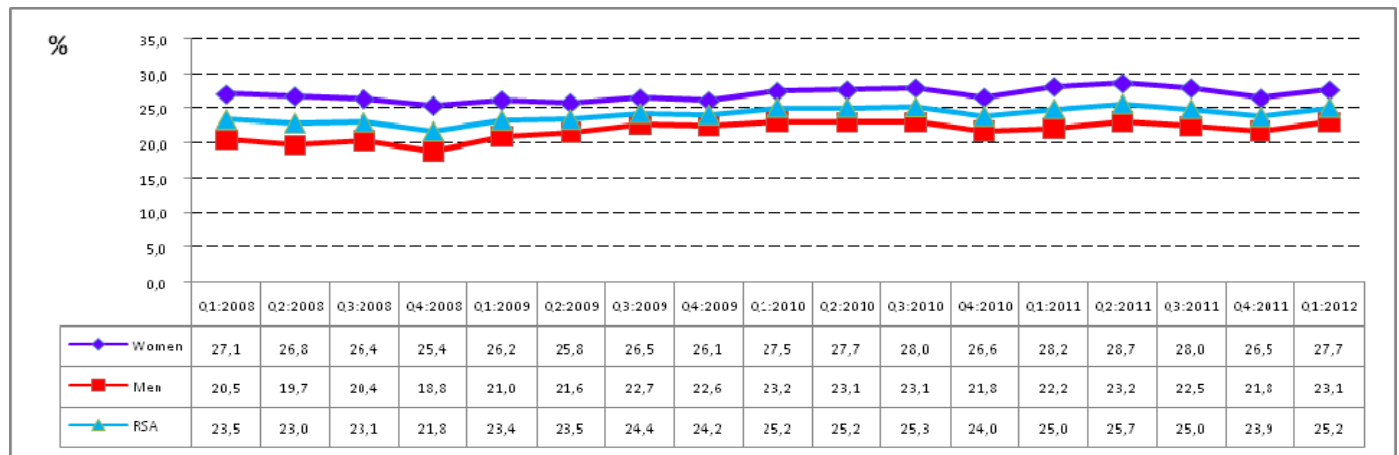
Unemployed	Jan–Mar 2011	Oct–Dec 2011	Jan–Mar 2012	Qtr-to-qtr change	Year-on-year change	Qtr-to-qtr change	Year-on-year change
	Thousand				Per cent		
Total	4 364	4 244	4 526	282	162	6,6	3,7
Women	2 237	2 129	2 265	136	28	6,4	1,3
Men	2 126	2 115	2 261	146	135	6,9	6,3

*Due to rounding, numbers do not necessarily add up to totals.

Unemployment increased by 282 000 (or 6,6%) between Q4:2011 and Q1:2012. Men accounted for 51,8% of the overall increase in unemployment while women accounted for 48,2%. The number of unemployed men and women increased by 146 000 (or 6,9%) and 136 000 (or 6,4%) respectively.

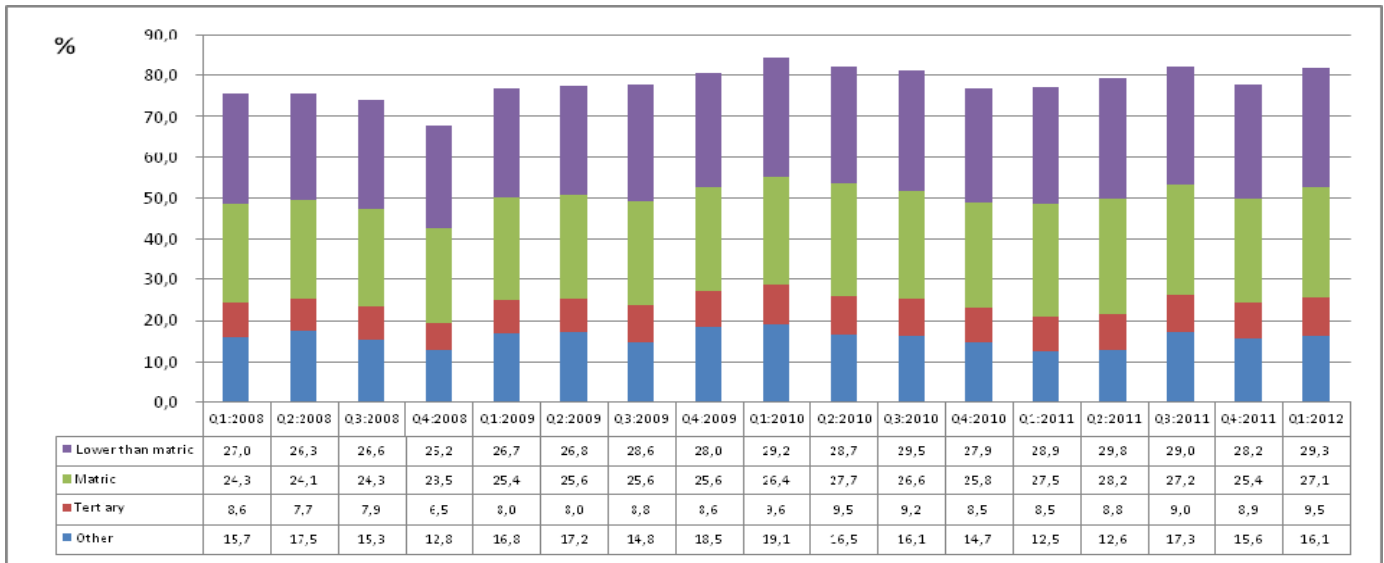
Year-on-year, men accounted for more than 80% of the increase in total unemployment of 162 000. The number of unemployed men increased by 135 000 or 6,3% while the number of unemployed women increased by 28 000 or 1,3%.

Figure 14: Unemployment rate by sex



Historically, women have been more likely to be unemployed than men. Data since 2008 confirm this trend: in Q1:2008, the unemployment rate for women was 27,1%, while the rate for men was 6,6 percentage points lower, and by Q4:2011 this gap had narrowed to 4,7 percentage points. Unemployment rate for women remained higher than the national average between Q1:2008 and Q1:2012, with the difference narrowing by 1,7 percentage points over this period. Q1:2012 saw an increase in the unemployment rate for both men and women, such that women were 1,2 times more likely to be unemployed than men.

Figure 15: Unemployment rate by education level



In general, lower unemployment rates are associated with higher levels of education. From Q1:2008 the unemployment rate for persons without matric was higher than for those with matric or a higher education level.

Figure 16: Unemployment rate by province

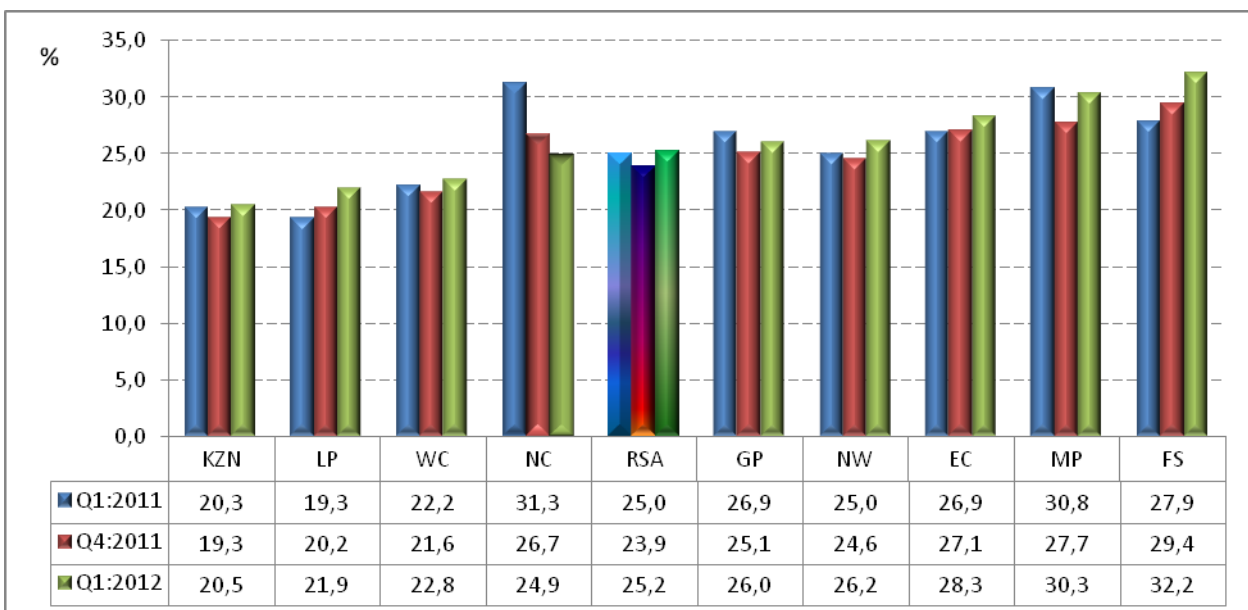


Figure 16 shows an increase in the unemployment rate in all provinces except in Northern Cape in Q1:2012 compared to Q4:2011. The biggest increase in the unemployment rate was observed in Free State (2,8 percentage points), Mpumalanga (2,6 percentage points) and Limpopo (1,7 percentage points).

In comparison to the same period last year, the unemployment rate increased by a marginal 0,2 of a percentage point. Free State, Limpopo and Eastern Cape made the largest contribution to the increase (increased by 4,3 percentage points, 2,6 percentage points and 1,4 percentage points respectively).

Figure 17: Unemployment rate by population group

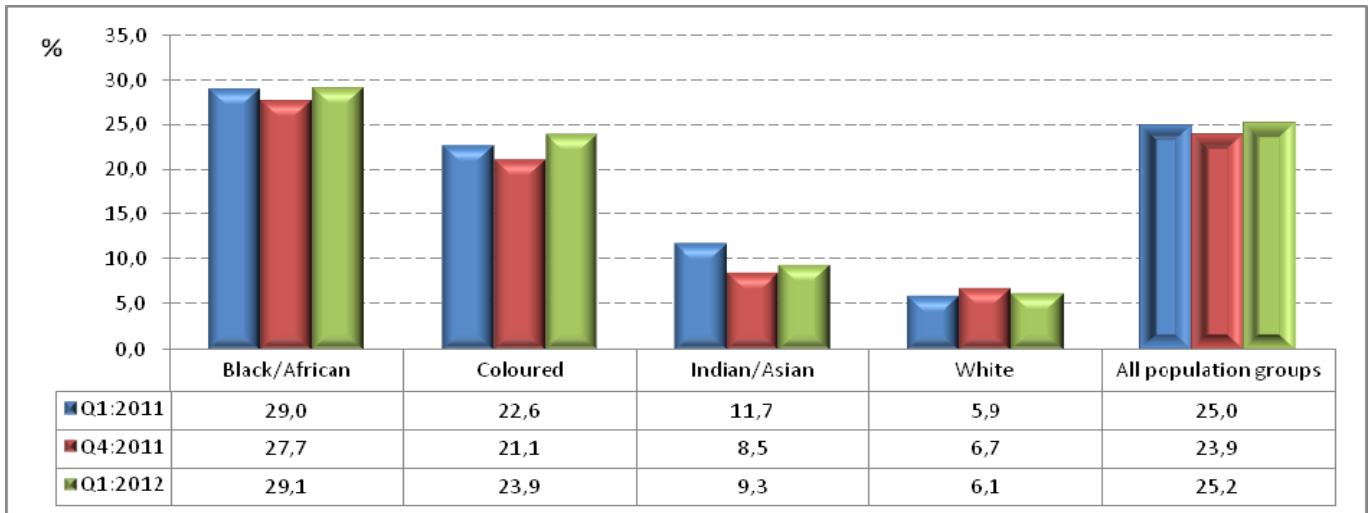


Figure 17 shows that between Q4:2011 and Q1:2012, the unemployment rate increased among the coloured (2,8 percentage points), black African (1,4 percentage points) and Indian/Asian population (0,8 of a percentage point), while it decreased among the white population (0,6 of a percentage point).

The year-on-year comparisons show an increase in the unemployment rate among the coloured population group while remaining virtually unchanged among the black African and white population groups. The Indian/Asian population group is the only group that recorded an annual decline in their unemployment rate, decreasing by 2,4 percentage points.

5. Characteristics of the not economically active population

Figure 18: The not economically active

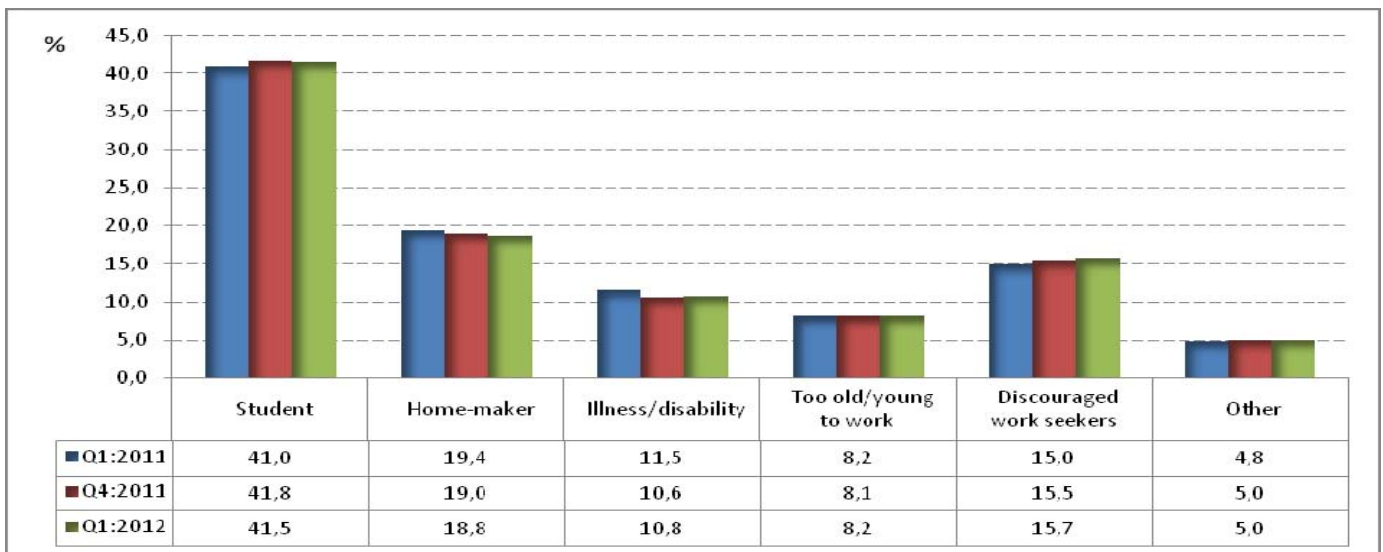


Figure 18 shows that in Q1:2012, students (41,5%) accounted for the biggest share of the not economically active population, followed by home-makers (18,8%), while discouraged work-seekers accounted for 15,7% of the not economically active (0,2 of a percentage point higher than in the previous quarter).

Compared to a year ago (Q1:2011), the share of students among the not economically active remained virtually unchanged; while the share of discouraged work-seekers increased by 0,7 of a percentage point.

PJ Lehohla
Statistician-General: Statistics South Africa

6. Technical notes

6.1. Response details

Table F: Response rates by province

Province	Jan–Mar 2012
	Per cent
Western Cape	84,2
Eastern Cape	97,8
Northern Cape	91,2
Free State	96,4
KwaZulu-Natal	97,4
North West	93,2
Gauteng	84,1
Mpumalanga	95,2
Limpopo	98,8
South Africa	92,6

6.2. Survey requirements and design

The Quarterly Labour Force Survey (QLFS) frame has been developed as a general-purpose household survey frame that can be used by all other household surveys irrespective of the sample size requirement of the survey. The sample size for the QLFS is roughly 30 000 dwellings per quarter.

The sample is based on information collected during the 2001 Population Census conducted by Stats SA. In preparation for the 2001 Census, the country was divided into 80 787 enumeration areas (EAs). Stats SA’s household-based surveys use a master sample of primary sampling units (PSUs) which comprise EAs that are drawn from across the country.

The sample is designed to be representative at provincial level and within provinces at metro/non-metro level. Within the metros, the sample is further distributed by geography type. The four geography types are: urban formal, urban informal, farms and tribal. This implies, for example, that within a metropolitan area the sample is representative at the different geography types that may exist within that metro.

The current sample size is 3 080 PSUs. It is divided equally into four subgroups or panels called rotation groups. The rotation groups are designed in such a way that each of these groups has the same distribution pattern as that which is observed in the whole sample. They are numbered from one to four and these numbers also correspond to the quarters of the year in which the sample will be rotated for the particular group.

The sample for the redesigned Labour Force Survey (i.e. the QLFS) is based on a stratified two-stage design with probability proportional to size (PPS) sampling of PSUs in the first stage, and sampling of dwelling units (DUs) with systematic sampling in the second stage.

6.3. Sample rotation

Each quarter, a ¼ of the sampled dwellings rotate out of the sample and are replaced by new dwellings from the same PSU or the next PSU on the list. Thus, sampled dwellings will remain in the sample for four consecutive quarters. It should be noted that the sampling unit is the dwelling, and the unit of observation is the household. Therefore, if a household moves out of a dwelling after being in the sample for, say two quarters, and a new household moves in, the new household will be enumerated for the next two quarters. If no household moves into the sampled dwelling, the dwelling will be classified as vacant (unoccupied).

6.4. Weighting

The sampling weights for the data collected from the sampled households are constructed in such a manner that the responses could be properly expanded to represent the entire civilian population of South Africa. The weights are the result of calculations involving several factors, including original selection probabilities, adjustment for non-response, and benchmarking to known population estimates from the Demographic division of Stats SA.

6.5. Non-response adjustment

In general, imputation is used for item non-response (i.e. blanks within the questionnaire) and edits failure (i.e. invalid or inconsistent responses). The eligible households in the sampled dwellings can be divided into two response categories: respondents and non-respondents; and weight adjustment is applied to account for the non-respondent households (e.g. refusal, no contact, etc.).

6.6. Final survey weights

The final survey weights are constructed using regression estimation to calibrate to the known population counts at the national level population estimates (which are supplied by the Demography division) cross-classified by 5-year age groups, gender and race, and provincial population estimates by broad age groups. The 5-year age groups are: 0–4, 5–9, 10–14, etc., and 65 years and over. The provincial-level age groups are: 0–14, 15–34, 35–64, and 65 years and over. The calibrated weights are constructed such that all persons in a household would have the same final weight.

6.7. Estimation

The final survey weights are used to obtain the estimates for various domains of interest, e.g. number of persons employed in agriculture in Western Cape, number of females employed in manufacturing, etc.

6.8. Reliability of the survey estimates

Because estimates are based on sample data, they differ from figures that would have been obtained from complete enumeration of the population using the same instrument. Results are subject to both sampling and non-sampling errors. Non-sampling errors include biases from inaccurate reporting, processing, and tabulation, etc., as well as errors from non-response and incomplete reporting. These types of errors cannot be measured readily. However, to the extent possible, non-sampling errors can be minimised through the procedures used for data collection, editing, quality control, and non-response adjustment. The variances of the survey estimates are used to measure sampling errors. The variance estimation methodology is discussed below.

(i) Variance estimation

The most commonly used methods for estimating variances of survey estimates from complex surveys such as the QLFS, are the Taylor-series Linearization, Jackknife Replication, Balanced Repeated Replication (BRR), and Bootstrap methods (Wolter, 2007)¹. The Fay's BRR method has been used for variance estimation in the QLFS because of its simplicity.

(ii) Coefficient of variation

It is more useful in many situations to assess the size of the standard error relative to the magnitude of the characteristic being measured (the standard error is defined as the square root of the variance). The **coefficient of variation** ($_{cv}$) provides such a measure. It is the **ratio of the standard error of the survey estimate to the value of the estimate itself expressed as a percentage**. It is very useful in comparing the precision of several different survey estimates, where their sizes or scale differ from one another.

(iii) P-value of an estimate of change

The p-value corresponding to an estimate of change is the probability of observing a value larger than the particular observed value under the hypothesis that there is no real change. If p-value < 0,01, the difference is highly significant; if p-value is between 0,01 and 0,05, the difference is significant; and if p-value > 0,05, the difference is not significant.

¹ Wolter KM, 2007. *Introduction to Variance Estimation, 2nd Edition*. New York: Springer-Verlag.

7. Definitions

Discouraged work-seeker is a person who was not employed during the reference period, wanted to work, was available to work/start a business but did not take active steps to find work during the last four weeks, provided that the main reason given for not seeking work was any of the following: no jobs available in the area; unable to find work requiring his/her skills; lost hope of finding any kind of work.

Economic activities are those that contribute to the production of goods and services in the country. There are two types of economic activities, and they are: (1) Market production activities (work done for others and usually associated with pay or profit); and (2) Non-market production activities (work done for the benefit of the household, e.g. subsistence farming).

Employed persons are those aged 15–64 years who, during the reference week: did any work for at least one hour; or had a job or business but were not at work (temporarily absent).

Employment-to-population ratio (labour absorption rate) is the proportion of the working-age population that is employed.

Informal employment identifies persons who are in precarious employment situations irrespective of whether or not the entity for which they work is in the formal or informal sector. Persons in informal employment therefore consist of all persons in the informal sector; employees in the formal sector; and persons working in private households who are not entitled to basic benefits such as pension or medical aid contributions from their employer, and who do not have a written contract of employment.

Informal sector: The informal sector has the following two components:

- i) Employees working in establishments that employ less than five employees, who do not deduct income tax from their salaries/wages; and
- ii) Employers, own-account workers and persons helping unpaid in their household business who are not registered for either income tax or value-added tax.

The **labour force** comprises all persons who are employed plus all persons who are unemployed.

Labour force participation rate is the proportion of the working-age population that is either employed or unemployed.

Long-term unemployment: Persons in long-term unemployment are those individuals among the unemployed who were without work and trying to find a job or start a business for one year or more.

Not economically active: Persons aged 15–64 years who are neither employed nor unemployed in the reference week.

Persons in **underemployment (time-related)** are employed persons who were willing and available to work additional hours, whose total number of hours actually worked during the reference period was below 35 hours per week.

Underutilised labour comprises three groups as follows: persons who are underemployed, persons who are unemployed, and persons who are discouraged.

Unemployed persons are those (aged 15–64 years) who:

- a) Were not employed in the reference week **and**;
- b) Actively looked for work or tried to start a business in the four weeks preceding the survey interview **and**;
- c) Were available for work, i.e. would have been able to start work or a business in the reference week **or**;
- d) Had not actively looked for work in the past four weeks but had a job or business to start at a definite date in the future and were available.

Unemployment rate is the proportion of the labour force that is unemployed.

The **working-age population** comprises all persons aged 15–64 years

Appendix 1

Table 1: Population of working age (15–64 years)									
	Jan–Mar 2011	Apr–Jun 2011	Jul–Sep 2011	Oct–Dec 2011	Jan–Mar 2012	Qtr-to-Qtr change	Year-on-year change	Qtr-to-Qtr change	Year-on- year change
	Thousand	Thousand	Thousand	Thousand	Thousand	Thousand	Thousand	Per cent	Per cent
Both sexes	32 314	32 435	32 555	32 670	32 786	116	472	0,4	1,5
Women	16 642	16 695	16 747	16 797	16 847	50	205	0,3	1,2
Men	15 672	15 740	15 808	15 873	15 939	66	267	0,4	1,7
Population groups	32 314	32 435	32 555	32 670	32 786	116	472	0,4	1,5
Black African	25 265	25 381	25 496	25 608	25 720	112	455	0,4	1,8
Coloured	3 021	3 030	3 038	3 046	3 055	9	34	0,3	1,1
Indian/Asian	922	926	930	934	938	4	16	0,4	1,7
White	3 106	3 098	3 090	3 081	3 073	-8	-33	-0,3	-1,1
South Africa	32 314	32 435	32 555	32 670	32 786	116	472	0,4	1,5
Western Cape	3 417	3 430	3 444	3 457	3 470	13	53	0,4	1,6
Eastern Cape	4 155	4 167	4 179	4 191	4 203	12	48	0,3	1,2
Northern Cape	717	719	721	723	725	2	8	0,3	1,1
Free State	1 867	1 870	1 874	1 877	1 881	4	14	0,2	0,7
KwaZulu-Natal	6 720	6 748	6 776	6 802	6 828	26	108	0,4	1,6
North West	2 031	2 037	2 043	2 049	2 055	6	24	0,3	1,2
Gauteng	7 763	7 793	7 821	7 847	7 873	26	110	0,3	1,4
Mpumalanga	2 316	2 326	2 336	2 346	2 356	10	40	0,4	1,7
Limpopo	3 329	3 345	3 362	3 378	3 394	16	65	0,5	2,0

Table 2: Labour force characteristics by sex – All population groups									
	Jan–Mar 2011	Apr–Jun 2011	Jul–Sep 2011	Oct–Dec 2011	Jan–Mar 2012	Qtr-to-Qtr change	Year-on-year change	Qtr-to-Qtr change	Year-on- year change
	Thousand	Thousand	Thousand	Thousand	Thousand	Thousand	Thousand	Per cent	Per cent
Both sexes									
Population 15–64 yrs	32 314	32 435	32 555	32 670	32 786	116	472	0,4	1,5
Labour Force	17 482	17 663	17 761	17 741	17 948	207	466	1,2	2,7
Employed	13 118	13 125	13 318	13 497	13 422	-75	304	-0,6	2,3
Formal sector (Non-agricultural)	9 219	9 198	9 436	9 616	9 509	-107	290	-1,1	3,1
Informal sector (Non-agricultural)	2 179	2 213	2 160	2 134	2 106	-28	-73	-1,3	-3,4
Agriculture	603	598	624	630	656	26	53	4,1	8,8
Private households	1 118	1 117	1 098	1 118	1 151	33	33	3,0	3,0
Unemployed	4 364	4 538	4 442	4 244	4 526	282	162	6,6	3,7
Not economically active	14 832	14 772	14 795	14 929	14 838	-91	6	-0,6	0,0
Discouraged work-seekers	2 223	2 207	2 204	2 315	2 335	20	112	0,9	5,0
Other(not economically active)	12 609	12 566	12 591	12 614	12 503	-111	-106	-0,9	-0,8
Rates (%)									
Unemployment rate	25,0	25,7	25,0	23,9	25,2	1,3	0,2		
Employed / population ratio (Absorption)	40,6	40,5	40,9	41,3	40,9	-0,4	0,3		
Labour force participation rate	54,1	54,5	54,6	54,3	54,7	0,4	0,6		
Women									
Population 15–64 yrs	16 642	16 695	16 747	16 797	16 847	50	205	0,3	1,2
Labour Force	7 926	8 018	8 064	8 050	8 167	117	241	1,5	3,0
Employed	5 688	5 717	5 807	5 920	5 902	-18	214	-0,3	3,8
Formal sector (Non-agricultural)	3 703	3 752	3 852	3 982	3 944	-38	241	-1,0	6,5
Informal sector (Non-agricultural)	915	912	891	874	857	-17	-58	-1,9	-6,3
Agriculture	208	191	205	198	213	15	5	7,6	2,4
Private households	863	863	860	866	888	22	25	2,5	2,9
Unemployed	2 237	2 301	2 257	2 129	2 265	136	28	6,4	1,3
Not economically active	8 716	8 677	8 683	8 748	8 681	-67	-35	-0,8	-0,4
Discouraged work-seekers	1 235	1 212	1 240	1 281	1 281	0	46	0,0	3,7
Other(not economically active)	7 481	7 465	7 443	7 467	7 399	-68	-82	-0,9	-1,1
Rates (%)									
Unemployment rate	28,2	28,7	28,0	26,5	27,7	1,2	-0,5		
Employed / population ratio (Absorption)	34,2	34,2	34,7	35,2	35,0	-0,2	0,8		
Labour force participation rate	47,6	48,0	48,2	47,9	48,5	0,6	0,9		

Due to rounding, numbers do not necessarily add up to totals.

Note: Employment refers to market production activities.

Table 2: Labour force characteristics by sex – All population groups (concluded)									
	Jan–Mar 2011	Apr–Jun 2011	Jul–Sep 2011	Oct–Dec 2011	Jan–Mar 2012	Qtr-to-Qtr change	Year-on-year change	Qtr-to-Qtr change	Year-on- year change
	Thousand	Thousand	Thousand	Thousand	Thousand	Thousand	Thousand	Per cent	Per cent
Men									
Population 15–64 yrs	15 672	15 740	15 808	15 873	15 939	66	267	0,4	1,7
Labour Force	9 556	9 645	9 697	9 692	9 781	89	225	0,9	2,4
Employed	7430	7408	7511	7577	7520	-57	90	-0,8	1,2
Formal sector (Non-agricultural)	5 516	5 446	5 584	5 634	5 565	-69	49	-1,2	0,9
Informal sector (Non-agricultural)	1 264	1 301	1 269	1 260	1 249	-11	-15	-0,9	-1,2
Agriculture	395	407	419	432	443	11	48	2,5	12,2
Private households	255	254	239	251	263	12	8	4,8	3,1
Unemployed	2 126	2 237	2 186	2 115	2 261	146	135	6,9	6,3
Not economically active	6 115	6 095	6 111	6 181	6 158	-23	43	-0,4	0,7
Discouraged work-seekers	988	995	963	1 034	1 054	20	66	1,9	6,7
Other(not economically active)	5 128	5 101	5 148	5 147	5 104	-43	-24	-0,8	-0,5
Rates (%)									
Unemployment rate	22,2	23,2	22,5	21,8	23,1	1,3	0,9		
Employed / population ratio (Absorption)	47,4	47,1	47,5	47,7	47,2	-0,5	-0,2		
Labour force participation rate	61,0	61,3	61,3	61,1	61,4	0,3	0,4		

Due to rounding, numbers do not necessarily add up to totals.

Note: Employment refers to market production activities.

Table 2.1: Labour force characteristics by population group									
	Jan–Mar 2011	Apr–Jun 2011	Jul–Sep 2011	Oct–Dec 2011	Jan–Mar 2012	Qtr-to-Qtr change	Year-on- year change	Qtr-to-Qtr change	Year-on- year change
	Thousand	Thousand	Thousand	Thousand	Thousand	Thousand	Thousand	Per cent	Per cent
South Africa									
Population 15–64 yrs	32 314	32 435	32 555	32 670	32 786	116	472	0,4	1,5
Labour Force	17 482	17 663	17 761	17 741	17 948	207	466	1,2	2,7
Employed	13 118	13 125	13 318	13 497	13 422	-75	304	-0,6	2,3
Unemployed	4 364	4 538	4 442	4 244	4 526	282	162	6,6	3,7
Not economically active	14 832	14 772	14 795	14 929	14 838	-91	6	-0,6	0,0
Rates (%)									
Unemployment rate	25,0	25,7	25,0	23,9	25,2	1,3	0,2		
Employed / population ratio (Absorption)	40,6	40,5	40,9	41,3	40,9	-0,4	0,3		
Labour force participation rate	54,1	54,5	54,6	54,3	54,7	0,4	0,6		
Black African									
Population 15–64 yrs	25 265	25 381	25 496	25 608	25 720	112	455	0,4	1,8
Labour Force	12 898	13 169	13 165	13 171	13 350	179	452	1,4	3,5
Employed	9 158	9 215	9 361	9 519	9 470	-49	312	-0,5	3,4
Unemployed	3 740	3 953	3 804	3 651	3 879	228	139	6,2	3,7
Not economically active	12 367	12 213	12 331	12 437	12 370	-67	3	-0,5	0,0
Rates (%)									
Unemployment rate	29,0	30,0	28,9	27,7	29,1	1,4	0,1		
Employed / population ratio (Absorption)	36,2	36,3	36,7	37,2	36,8	-0,4	0,6		
Labour force participation rate	51,1	51,9	51,6	51,4	51,9	0,5	0,8		
Coloured									
Population 15–64 yrs	3 021	3 030	3 038	3 046	3 055	9	34	0,3	1,1
Labour Force	1 931	1 822	1 957	1 926	1 955	29	24	1,5	1,2
Employed	1 495	1 402	1 495	1 520	1 488	-32	-7	-2,1	-0,5
Unemployed	436	420	463	406	468	62	32	15,3	7,3
Not economically active	1 090	1 208	1 081	1 121	1 099	-22	9	-2,0	0,8
Rates (%)									
Unemployment rate	22,6	23,1	23,6	21,1	23,9	2,8	1,3		
Employed / population ratio (Absorption)	49,5	46,3	49,2	49,9	48,7	-1,2	-0,8		
Labour force participation rate	63,9	60,1	64,5	63,2	64,0	0,8	0,1		

Due to rounding, numbers do not necessarily add up to totals.

Note: Employment refers to market production activities.

Table 2.1: Labour force characteristics by population group (concluded)									
	Jan–Mar 2011	Apr–Jun 2011	Jul–Sep 2011	Oct–Dec 2011	Jan–Mar 2012	Qtr-to-Qtr change	Year-on- year change	Qtr-to-Qtr change	Year-on- year change
	Thousand	Thousand	Thousand	Thousand	Thousand	Thousand	Thousand	Per cent	Per cent
Indian/Asian									
Population 15–64 yrs	922	926	930	934	938	4	16	0,4	1,7
Labour Force	548	557	528	533	551	18	3	3,4	0,5
Employed	484	497	471	487	500	13	16	2,7	3,3
Unemployed	64	60	57	45	51	6	-13	13,3	-20,3
Not economically active	374	369	402	402	388	-14	14	-3,5	3,7
Rates (%)									
Unemployment rate	11,7	10,8	10,8	8,5	9,3	0,8	-2,4		
Employed / population ratio (Absorption)	52,5	53,7	50,6	52,1	53,3	1,2	0,8		
Labour force participation rate	59,4	60,2	56,8	57,0	58,7	1,7	-0,7		
White									
Population 15–64 yrs	3 106	3 098	3 090	3 081	3 073	-8	-33	-0,3	-1,1
Labour Force	2 105	2 115	2 110	2 112	2 092	-20	-13	-0,9	-0,6
Employed	1 981	2 011	1 992	1 971	1 964	-7	-17	-0,4	-0,9
Unemployed	124	105	118	142	128	-14	4	-9,9	3,2
Not economically active	1 001	983	980	969	981	12	-20	1,2	-2,0
Rates (%)									
Unemployment rate	5,9	5,0	5,6	6,7	6,1	-0,6	0,2		
Employed / population ratio (Absorption)	63,8	64,9	64,5	64,0	63,9	-0,1	0,1		
Labour force participation rate	67,8	68,3	68,3	68,6	68,1	-0,5	0,3		

Due to rounding, numbers do not necessarily add up to totals.

Note: Employment refers to market production activities.

Table 2.2: Labour force characteristics by province									
	Jan–Mar 2011	Apr–Jun 2011	Jul–Sep 2011	Oct–Dec 2011	Jan–Mar 2012	Qtr-to-Qtr change	Year-on- year change	Qtr-to-Qtr change	Year-on- year change
	Thousand	Thousand	Thousand	Thousand	Thousand	Thousand	Thousand	Per cent	Per cent
South Africa									
Population 15–64 yrs	32 314	32 435	32 555	32 670	32 786	116	472	0,4	1,5
Labour Force	17 482	17 663	17 761	17 741	17 948	207	466	1,2	2,7
Employed	13 118	13 125	13 318	13 497	13 422	-75	304	-0,6	2,3
Unemployed	4 364	4 538	4 442	4 244	4 526	282	162	6,6	3,7
Not economically active	14 832	14 772	14 795	14 929	14 838	-91	6	-0,6	0,0
Discouraged work-seekers	2 223	2 207	2 204	2 315	2 335	20	112	0,9	5,0
Other	12 609	12 566	12 591	12 614	12 503	-111	-106	-0,9	-0,8
Rates (%)									
Unemployment rate	25,0	25,7	25,0	23,9	25,2	1,3	0,2		
Employed / population ratio (Absorption)	40,6	40,5	40,9	41,3	40,9	-0,4	0,3		
Labour force participation rate	54,1	54,5	54,6	54,3	54,7	0,4	0,6		
Western Cape									
Population 15–64 yrs	3 417	3 430	3 444	3 457	3 470	13	53	0,4	1,6
Labour Force	2 295	2 309	2 356	2 349	2 393	44	98	1,9	4,3
Employed	1 784	1 805	1 806	1 842	1 847	5	63	0,3	3,5
Unemployed	510	504	550	507	546	39	36	7,7	7,1
Not economically active	1 122	1 121	1 087	1 108	1 077	-31	-45	-2,8	-4,0
Discouraged work-seekers	19	34	30	46	28	-18	9	-39,1	47,4
Other	1 102	1 087	1 057	1 062	1 049	-13	-53	-1,2	-4,8
Rates (%)									
Unemployment rate	22,2	21,8	23,3	21,6	22,8	1,2	0,6		
Employed / population ratio (Absorption)	52,2	52,6	52,4	53,3	53,2	-0,1	1,0		
Labour force participation rate	67,1	67,3	68,4	67,9	69,0	1,1	1,9		

Due to rounding, numbers do not necessarily add up to totals.

Note: Employment refers to market production activities.

Table 2.2: Labour force characteristics by province (continued)									
	Jan–Mar 2011	Apr–Jun 2011	Jul–Sep 2011	Oct–Dec 2011	Jan–Mar 2012	Qtr-to-Qtr change	Year-on-year change	Qtr-to-Qtr change	Year-on- year change
	Thousand	Thousand	Thousand	Thousand	Thousand	Thousand	Thousand	Per cent	Per cent
Eastern Cape									
Population 15–64 yrs	4 155	4 167	4 179	4 191	4 203	12	48	0,3	1,2
Labour Force	1 812	1 840	1 781	1 821	1 783	-38	-29	-2,1	-1,6
Employed	1 325	1 309	1 298	1 326	1 279	-47	-46	-3,5	-3,5
Unemployed	487	531	483	494	504	10	17	2,0	3,5
Not economically active	2 343	2 327	2 399	2 370	2 420	50	77	2,1	3,3
Discouraged work-seekers	368	382	388	353	399	46	31	13,0	8,4
Other	1 975	1 945	2 011	2 018	2 020	2	45	0,1	2,3
Rates (%)									
Unemployment rate	26,9	28,9	27,1	27,1	28,3	1,2	1,4		
Employed / population ratio (Absorption)	31,9	31,4	31,1	31,6	30,4	-1,2	-1,5		
Labour force participation rate	43,6	44,2	42,6	43,4	42,4	-1,0	-1,2		
Northern Cape									
Population 15–64 yrs	717	719	721	723	725	2	8	0,3	1,1
Labour Force	381	371	387	397	382	-15	1	-3,8	0,3
Employed	261	264	278	291	286	-5	25	-1,7	9,6
Unemployed	119	107	109	106	95	-11	-24	-10,4	-20,2
Not economically active	336	348	334	326	343	17	7	5,2	2,1
Discouraged work-seekers	38	30	34	39	34	-5	-4	-12,8	-10,5
Other	299	318	300	287	310	23	11	8,0	3,7
Rates (%)									
Unemployment rate	31,3	28,8	28,2	26,7	24,9	-1,8	-6,4		
Employed / population ratio (Absorption)	36,4	36,7	38,6	40,2	39,4	-0,8	3,0		
Labour force participation rate	53,0	51,6	53,7	54,9	52,6	-2,3	-0,4		

Due to rounding, numbers do not necessarily add up to totals.

Note: Employment refers to market production activities.

Table 2.2: Labour force characteristics by province (continued)									
	Jan–Mar 2011	Apr–Jun 2011	Jul–Sep 2011	Oct–Dec 2011	Jan–Mar 2012	Qtr-to-Qtr change	Year-on-year change	Qtr-to-Qtr change	Year-on- year change
	Thousand	Thousand	Thousand	Thousand	Thousand	Thousand	Thousand	Per cent	Per cent
Free State									
Population 15–64 yrs	1 867	1 870	1 874	1 877	1 881	4	14	0,2	0,7
Labour Force	1 082	1 074	1 109	1 067	1 087	20	5	1,9	0,5
Employed	780	772	826	753	737	-16	-43	-2,1	-5,5
Unemployed	302	303	283	314	350	36	48	11,5	15,9
Not economically active	785	796	765	810	794	-16	9	-2,0	1,1
Discouraged work-seekers	87	94	104	87	69	-18	-18	-20,7	-20,7
Other	698	701	660	723	725	2	27	0,3	3,9
Rates (%)									
Unemployment rate	27,9	28,2	25,5	29,4	32,2	2,8	4,3		
Employed / population ratio (Absorption)	41,8	41,3	44,1	40,1	39,2	-0,9	-2,6		
Labour force participation rate	58,0	57,5	59,2	56,8	57,8	1,0	-0,2		
KwaZulu-Natal									
Population 15–64 yrs	6 720	6 748	6 776	6 802	6 828	26	108	0,4	1,6
Labour Force	3 049	3 137	3 103	3 176	3 168	-8	119	-0,3	3,9
Employed	2 429	2 500	2 510	2 562	2 519	-43	90	-1,7	3,7
Unemployed	620	638	593	614	649	35	29	5,7	4,7
Not economically active	3 671	3 611	3 672	3 626	3 660	34	-11	0,9	-0,3
Discouraged work-seekers	592	604	549	547	579	32	-13	5,9	-2,2
Other	3 079	3 007	3 124	3 079	3 081	2	2	0,1	0,1
Rates (%)									
Unemployment rate	20,3	20,3	19,1	19,3	20,5	1,2	0,2		
Employed / population ratio (Absorption)	36,1	37,0	37,0	37,7	36,9	-0,8	0,8		
Labour force participation rate	45,4	46,5	45,8	46,7	46,4	-0,3	1,0		

Due to rounding, numbers do not necessarily add up to totals.

Note: Employment refers to market production activities.

Table 2.2: Labour force characteristics by province (continued)									
	Jan–Mar 2011	Apr–Jun 2011	Jul–Sep 2011	Oct–Dec 2011	Jan–Mar 2012	Qtr-to-Qtr change	Year-on-year change	Qtr-to-Qtr change	Year-on- year change
	Thousand	Thousand	Thousand	Thousand	Thousand	Thousand	Thousand	Per cent	Per cent
North West									
Population 15–64 yrs	2 031	2 037	2 043	2 049	2 055	6	24	0,3	1,2
Labour Force	963	951	952	928	954	26	-9	2,8	-0,9
Employed	722	691	680	700	704	4	-18	0,6	-2,5
Unemployed	241	260	272	228	250	22	9	9,6	3,7
Not economically active	1 068	1 086	1 091	1 121	1 101	-20	33	-1,8	3,1
Discouraged work-seekers	178	233	241	262	251	-11	73	-4,2	41,0
Other	890	854	850	859	850	-9	-40	-1,0	-4,5
Rates (%)									
Unemployment rate	25,0	27,3	28,6	24,6	26,2	1,6	1,2		
Employed / population ratio (Absorption)	35,5	33,9	33,3	34,2	34,3	0,1	-1,2		
Labour force participation rate	47,4	46,7	46,6	45,3	46,4	1,1	-1,0		
Gauteng									
Population 15–64 yrs	7 763	7 793	7 821	7 847	7 873	26	110	0,3	1,4
Labour Force	5 467	5 523	5 517	5 493	5 596	103	129	1,9	2,4
Employed	3 999	3 965	3 983	4 115	4 140	25	141	0,6	3,5
Unemployed	1 469	1 558	1 533	1 379	1 456	77	-13	5,6	-0,9
Not economically active	2 295	2 270	2 305	2 354	2 277	-77	-18	-3,3	-0,8
Discouraged work-seekers	319	231	235	309	293	-16	-26	-5,2	-8,2
Other	1 976	2 039	2 069	2 045	1 984	-61	8	-3,0	0,4
Rates (%)									
Unemployment rate	26,9	28,2	27,8	25,1	26,0	0,9	-0,9		
Employed / population ratio (Absorption)	51,5	50,9	50,9	52,4	52,6	0,2	1,1		
Labour force participation rate	70,4	70,9	70,5	70,0	71,1	1,1	0,7		

Due to rounding, numbers do not necessarily add up to totals.

Note: Employment refers to market production activities.

Table 2.2: Labour force characteristics by province (concluded)									
	Jan–Mar 2011	Apr–Jun 2011	Jul–Sep 2011	Oct–Dec 2011	Jan–Mar 2012	Qtr-to-Qtr change	Year-on-year change	Qtr-to-Qtr change	Year-on- year change
	Thousand	Thousand	Thousand	Thousand	Thousand	Thousand	Thousand	Per cent	Per cent
Mpumalanga									
Population 15–64 yrs	2 316	2 326	2 336	2 346	2 356	10	40	0,4	1,7
Labour Force	1 267	1 271	1 285	1 277	1 310	33	43	2,6	3,4
Employed	877	884	911	923	913	-10	36	-1,1	4,1
Unemployed	390	387	374	354	397	43	7	12,1	1,8
Not economically active	1 049	1 055	1 051	1 069	1 046	-23	-3	-2,2	-0,3
Discouraged work-seekers	208	185	213	232	257	25	49	10,8	23,6
Other	841	870	839	837	789	-48	-52	-5,7	-6,2
Rates (%)									
Unemployment rate	30,8	30,4	29,1	27,7	30,3	2,6	-0,5		
Employed / population ratio (Absorption)	37,9	38,0	39,0	39,3	38,8	-0,5	0,9		
Labour force participation rate	54,7	54,6	55,0	54,4	55,6	1,2	0,9		
Limpopo									
Population 15–64 yrs	3 329	3 345	3 362	3 378	3 394	16	65	0,5	2,0
Labour Force	1 166	1 186	1 271	1 234	1 275	41	109	3,3	9,3
Employed	940	936	1 026	985	996	11	56	1,1	6,0
Unemployed	225	251	246	249	279	30	54	12,0	24,0
Not economically active	2 163	2 159	2 090	2 144	2 119	-25	-44	-1,2	-2,0
Discouraged work-seekers	415	413	410	441	424	-17	9	-3,9	2,2
Other	1 749	1 746	1 681	1 703	1 695	-8	-54	-0,5	-3,1
Rates (%)									
Unemployment rate	19,3	21,1	19,3	20,2	21,9	1,7	2,6		
Employed / population ratio (Absorption)	28,2	28,0	30,5	29,2	29,3	0,1	1,1		
Labour force participation rate	35,0	35,5	37,8	36,5	37,6	1,1	2,6		

Due to rounding, numbers do not necessarily add up to totals.

Note: Employment refers to market production activities.

Table 2.3: Labour force characteristics by province – Expanded definition of unemployment									
	Jan–Mar 2011	Apr–Jun 2011	Jul–Sep 2011	Oct–Dec 2011	Jan–Mar 2012	Qtr-to-Qtr change	Year-on-year change	Qtr-to-Qtr change	Year-on- year change
	Thousand	Thousand	Thousand	Thousand	Thousand	Thousand	Thousand	Per cent	Per cent
South Africa									
Population 15–64 yrs	32 314	32 435	32 555	32 670	32 786	116	472	0,4	1,5
Labour Force	20 650	20 804	20 822	20 893	21 167	274	517	1,3	2,5
Employed	13 118	13 125	13 318	13 497	13 422	- 75	304	-0,6	2,3
Unemployed	7 532	7 678	7 504	7 396	7 745	349	213	4,7	2,8
Not economically active	11 664	11 632	11 733	11 777	11 619	- 158	- 45	-1,3	-0,4
Rates (%)									
Unemployment rate	36,5	36,9	36,0	35,4	36,6	1,2	0,1		
Employed / population ratio (Absorption)	40,6	40,5	40,9	41,3	40,9	-0,4	0,3		
Labour force participation rate	63,9	64,1	64,0	64,0	64,6	0,6	0,7		
Western Cape									
Population 15–64 yrs	3 417	3 430	3 444	3 457	3 470	13	53	0,4	1,6
Labour Force	2 341	2 362	2 408	2 433	2 446	13	105	0,5	4,5
Employed	1 784	1 805	1 806	1 842	1 847	5	63	0,3	3,5
Unemployed	556	557	602	590	599	9	43	1,5	7,7
Not economically active	1 076	1 068	1 036	1 024	1 024		-52	0,0	-4,8
Rates (%)									
Unemployment rate	23,8	23,6	25,0	24,3	24,5	0,2	0,7		
Employed / population ratio (Absorption)	52,2	52,6	52,4	53,3	53,2	-0,1	1,0		
Labour force participation rate	68,5	68,9	69,9	70,4	70,5	0,1	2,0		
Eastern Cape									
Population 15–64 yrs	4 155	4 167	4 179	4 191	4 203	12	48	0,3	1,2
Labour Force	2 244	2 280	2 234	2 243	2 245	2	1	0,1	0,0
Employed	1 325	1 309	1 298	1 326	1 279	- 47	- 46	-3,5	-3,5
Unemployed	919	971	936	917	967	50	48	5,5	5,2
Not economically active	1 911	1 887	1 945	1 947	1 958	11	47	0,6	2,5
Rates (%)									
Unemployment rate	41,0	42,6	41,9	40,9	43,1	2,2	2,1		
Employed / population ratio (Absorption)	31,9	31,4	31,1	31,6	30,4	-1,2	-1,5		
Labour force participation rate	54,0	54,7	53,5	53,5	53,4	-0,1	-0,6		

Due to rounding, numbers do not necessarily add up to totals.

Note: Employment refers to market production activities.

Table 2.3: Labour force characteristics by province – Expanded definition of unemployment (continued)									
	Jan–Mar 2011	Apr–Jun 2011	Jul–Sep 2011	Oct–Dec 2011	Jan–Mar 2012	Qtr-to-Qtr change	Year-on-year change	Qtr-to-Qtr change	Year-on- year change
	Thousand	Thousand	Thousand	Thousand	Thousand	Thousand	Thousand	Per cent	Per cent
Northern Cape									
Population 15–64 yrs	717	719	721	723	725	2	8	0,3	1,1
Labour Force	441	422	435	448	432	- 16	- 9	-3,6	-2,0
Employed	261	264	278	291	286	- 5	25	-1,7	9,6
Unemployed	179	157	157	157	146	-11	- 33	-7,0	-18,4
Not economically active	276	297	286	275	293	18	17	6,5	6,2
Rates (%)									
Unemployment rate	40,7	37,3	36,1	35,0	33,8	-1,2	-6,9		
Employed / population ratio (Absorption)	36,4	36,7	38,6	40,2	39,4	-0,8	3,0		
Labour force participation rate	61,4	58,6	60,3	62,0	59,6	-2,4	-1,8		
Free State									
Population 15–64 yrs	1 867	1 870	1 874	1 877	1 881	4	14	0,2	0,7
Labour Force	1 222	1 225	1 253	1 197	1 207	10	- 15	0,8	-1,2
Employed	780	772	826	753	737	- 16	- 43	-2,1	-5,5
Unemployed	443	453	426	444	470	26	27	5,9	6,1
Not economically active	645	645	621	680	674	- 6	29	-0,9	4,5
Rates (%)									
Unemployment rate	36,2	37,0	34,0	37,1	38,9	1,8	2,7		
Employed / population ratio (Absorption)	41,8	41,3	44,1	40,1	39,2	-0,9	-2,6		
Labour force participation rate	65,5	65,5	66,8	63,8	64,2	0,4	-1,3		
KwaZulu-Natal									
Population 15–64 yrs	6 720	6 748	6 776	6 802	6 828	26	108	0,4	1,6
Labour Force	3 982	4 101	4 022	4 038	4 152	114	170	2,8	4,3
Employed	2 429	2 500	2 510	2 562	2 519	- 43	90	-1,7	3,7
Unemployed	1 552	1 602	1 512	1 476	1 633	157	81	10,6	5,2
Not economically active	2 738	2 647	2 754	2 764	2 676	- 88	-62	-3,2	-2,3
Rates (%)									
Unemployment rate	39,0	39,1	37,6	36,6	39,3	2,7	0,3		
Employed / population ratio (Absorption)	36,1	37,0	37,0	37,7	36,9	-0,8	0,8		
Labour force participation rate	59,2	60,8	59,4	59,4	60,8	1,4	1,6		

Due to rounding, numbers do not necessarily add up to totals.
 Note: Employment refers to market production activities.

Table 2.3: Labour force characteristics by province – Expanded definition of unemployment (continued)									
	Jan–Mar 2011	Apr–Jun 2011	Jul–Sep 2011	Oct–Dec 2011	Jan–Mar 2012	Qtr-to-Qtr change	Year-on- year change	Qtr-to-Qtr change	Year-on- year change
	Thousand	Thousand	Thousand	Thousand	Thousand	Thousand	Thousand	Per cent	Per cent
North West									
Population 15–64 yrs	2 031	2 037	2 043	2 049	2 055	6	24	0,3	1,2
Labour Force	1 254	1 286	1 264	1 272	1 292	20	38	1,6	3,0
Employed	722	691	680	700	704	4	- 18	0,6	-2,5
Unemployed	532	595	584	572	587	15	55	2,6	10,3
Not economically active	777	751	779	777	763	- 14	-14	-1,8	-1,8
Rates (%)									
Unemployment rate	42,4	46,3	46,2	45,0	45,5	0,5	3,1		
Employed / population ratio (Absorption)	35,5	33,9	33,3	34,2	34,3	0,1	-1,2		
Labour force participation rate	61,7	63,1	61,9	62,1	62,8	0,7	1,1		
Gauteng									
Population 15–64 yrs	7 763	7 793	7 821	7 847	7 873	26	110	0,3	1,4
Labour Force	5 866	5 821	5 827	5 867	5 942	75	76	1,3	1,3
Employed	3 999	3 965	3 983	4 115	4 140	25	141	0,6	3,5
Unemployed	1 867	1 857	1 844	1 752	1 802	50	- 65	2,9	-3,5
Not economically active	1 897	1 972	1 994	1 980	1 931	- 49	34	-2,5	1,8
Rates (%)									
Unemployment rate	31,8	31,9	31,6	29,9	30,3	0,4	-1,5		
Employed / population ratio (Absorption)	51,5	50,9	50,9	52,4	52,6	0,2	1,1		
Labour force participation rate	75,6	74,7	74,5	74,8	75,5	0,7	-0,1		
Mpumalanga									
Population 15–64 yrs	2 316	2 326	2 336	2 346	2 356	10	40	0,4	1,7
Labour Force	1 600	1 573	1 591	1 614	1 665	51	65	3,2	4,1
Employed	877	884	911	923	913	- 10	36	-1,1	4,1
Unemployed	722	689	680	691	752	61	30	8,8	4,2
Not economically active	717	753	745	732	691	- 41	-26	-5,6	-3,6
Rates (%)									
Unemployment rate	45,2	43,8	42,7	42,8	45,2	2,4	0,0		
Employed / population ratio (Absorption)	37,9	38,0	39,0	39,3	38,8	-0,5	0,9		
Labour force participation rate	69,0	67,6	68,1	68,8	70,7	1,9	1,7		

Due to rounding, numbers do not necessarily add up to totals.

Note: Employment refers to market production activities.

Table 2.3: Labour force characteristics by province – Expanded definition of unemployment (concluded)									
	Jan–Mar 2011	Apr–Jun 2011	Jul–Sep 2011	Oct–Dec 2011	Jan–Mar 2012	Qtr-to-Qtr change	Year-on- year change	Qtr-to-Qtr change	Year-on- year change
	Thousand	Thousand	Thousand	Thousand	Thousand	Thousand	Thousand	Per cent	Per cent
Limpopo									
Population 15–64 yrs	3 329	3 345	3 362	3 378	3 394	16	65	0,5	2,0
Labour Force	1 702	1 733	1 789	1 781	1 786	5	84	0,3	4,9
Employed	940	936	1 026	985	996	11	56	1,1	6,0
Unemployed	761	798	763	796	790	-6	29	-0,8	3,8
Not economically active	1 627	1 612	1 573	1 597	1 608	11	-19	0,7	-1,2
Rates (%)									
Unemployment rate	44,7	46,0	42,6	44,7	44,2	-0,5	-0,5		
Employed / population ratio (Absorption)	28,2	28,0	30,5	29,2	29,3	0,1	1,1		
Labour force participation rate	51,1	51,8	53,2	52,7	52,6	-0,1	1,5		

Due to rounding, numbers do not necessarily add up to totals.

Note: Employment refers to market production activities.

Table 3.1: Employed by industry and sex – South Africa									
	Jan–Mar 2011	Apr–Jun 2011	Jul–Sep 2011	Oct–Dec 2011	Jan–Mar 2012	Qtr-to-Qtr change	Year-on-year change	Qtr-to-Qtr change	Year-on-year change
	Thousand	Thousand	Thousand	Thousand	Thousand	Thousand	Thousand	Per cent	Per cent
Both sexes	13 118	13 125	13 318	13 497	13 422	-75	304	-0,6	2,3
Agriculture	603	598	624	630	656	26	53	4,1	8,8
Mining	313	282	324	327	336	9	23	2,8	7,3
Manufacturing	1 803	1 735	1 737	1 789	1 722	-67	-81	-3,7	-4,5
Utilities	97	93	73	81	91	10	-6	12,3	-6,2
Construction	1 031	1 043	1 086	1 057	986	-71	-45	-6,7	-4,4
Trade	2 962	2 944	3 012	3 060	3 057	-3	95	-0,1	3,2
Transport	727	777	756	788	783	-5	56	-0,6	7,7
Finance	1 631	1 704	1 768	1 739	1 741	2	110	0,1	6,7
Community and social services	2 828	2 831	2 836	2 902	2 891	-11	63	-0,4	2,2
Private households	1 118	1 117	1 098	1 118	1 151	33	33	3,0	3,0
Other	5	3	4	6	7	1	2	16,7	40,0
Women	5 688	5 717	5 807	5 920	5 902	-18	214	-0,3	3,8
Agriculture	208	191	205	198	213	15	5	7,6	2,4
Mining	37	32	31	34	43	9	6	26,5	16,2
Manufacturing	629	592	580	581	557	-24	-72	-4,1	-11,4
Utilities	31	22	13	14	14	0	-17	0,0	-54,8
Construction	108	119	112	118	107	-11	-1	-9,3	-0,9
Trade	1 397	1 376	1 414	1 469	1 452	-17	55	-1,2	3,9
Transport	130	148	140	167	162	-5	32	-3,0	24,6
Finance	662	747	781	743	748	5	86	0,7	13,0
Community and social services	1 621	1 628	1 672	1 729	1 715	-14	94	-0,8	5,8
Private households	863	863	860	866	888	22	25	2,5	2,9
Other	3	1	1	2	3	1	0	50,0	0,0
Men	7 430	7 408	7 511	7 577	7 520	-57	90	-0,8	1,2
Agriculture	395	407	419	432	443	11	48	2,5	12,2
Mining	276	249	292	294	293	-1	17	-0,3	6,2
Manufacturing	1 174	1 143	1 156	1 208	1 165	-43	-9	-3,6	-0,8
Utilities	66	71	60	67	77	10	11	14,9	16,7
Construction	923	925	975	939	880	-59	-43	-6,3	-4,7
Trade	1 565	1 568	1 599	1 592	1 606	14	41	0,9	2,6
Transport	597	629	616	621	621	0	24	0,0	4,0
Finance	969	957	987	996	993	-3	24	-0,3	2,5
Community and social services	1 207	1 203	1 164	1 173	1 176	3	-31	0,3	-2,6
Private households	255	254	239	251	263	12	8	4,8	3,1
Other	2	2	3	5	4	-1	2	-20,0	100,0

Table 3.2: Employed by industry and province									
	Jan–Mar 2011	Apr–Jun 2011	Jul–Sep 2011	Oct–Dec 2011	Jan–Mar 2012	Qtr-to-Qtr change	Year-on-year change	Qtr-to-Qtr change	Year-on- year change
	Thousand	Thousand	Thousand	Thousand	Thousand	Thousand	Thousand	Per cent	Per cent
Agriculture	603	598	624	630	656	26	53	4,1	8,8
Western Cape	121	100	113	94	127	33	6	35,1	5,0
Eastern Cape	64	61	67	64	47	-17	-17	-26,6	-26,6
Northern Cape	53	47	47	55	47	-8	-6	-14,5	-11,3
Free State	62	73	68	62	72	10	10	16,1	16,1
KwaZulu-Natal	108	99	97	95	91	-4	-17	-4,2	-15,7
North West	37	32	31	30	38	8	1	26,7	2,7
Gauteng	34	34	39	64	62	-2	28	-3,1	82,4
Mpumalanga	71	78	75	75	83	8	12	10,7	16,9
Limpopo	52	74	87	90	88	-2	36	-2,2	69,2
Mining	313	282	324	327	336	9	23	2,8	7,3
Western Cape	2	4	6	4	3	-1	1	-25,0	50,0
Eastern Cape	2		1						
Northern Cape	11	10	10	13	16	3	5	23,1	45,5
Free State	21	16	21	27	28	1	7	3,7	33,3
KwaZulu-Natal	14	6	16	13	18	5	4	38,5	28,6
North West	131	108	114	110	109	-1	-22	-0,9	-16,8
Gauteng	22	31	25	30	28	-2	6	-6,7	27,3
Mpumalanga	52	52	72	69	64	-5	12	-7,2	23,1
Limpopo	57	55	58	61	70	9	13	14,8	22,8
Manufacturing	1 803	1 735	1 737	1 789	1 722	-67	-81	-3,7	-4,5
Western Cape	290	277	276	320	294	-26	4	-8,1	1,4
Eastern Cape	183	201	171	155	158	3	-25	1,9	-13,7
Northern Cape	14	9	13	15	16	1	2	6,7	14,3
Free State	63	60	65	64	54	-10	-9	-15,6	-14,3
KwaZulu-Natal	389	397	400	428	386	-42	-3	-9,8	-0,8
North West	62	63	67	62	56	-6	-6	-9,7	-9,7
Gauteng	663	581	600	608	608	0	-55	0,0	-8,3
Mpumalanga	77	75	77	76	81	5	4	6,6	5,2
Limpopo	62	71	67	62	69	7	7	11,3	11,3

For all values of 10 000 or lower the sample size is too small for reliable estimates.
 Due to rounding, numbers do not necessarily add up to totals.

Table 3.2: Employed by industry and province (continued)									
	Jan–Mar 2011	Apr–Jun 2011	Jul–Sep 2011	Oct–Dec 2011	Jan–Mar 2012	Qtr-to-Qtr change	Year-on-year change	Qtr-to-Qtr change	Year-on- year change
	Thousand	Thousand	Thousand	Thousand	Thousand	Thousand	Thousand	Per cent	Per cent
Utilities	97	93	73	81	91	10	-6	12,3	-6,2
Western Cape	11	12	10	6	4	-2	-7	-33,3	-63,6
Eastern Cape	6	6	5	5	7	2	1	40,0	16,7
Northern Cape		2	3	3	4	1	4	33,3	
Free State	4	4	3	3	5	2	1	66,7	25,0
KwaZulu-Natal	19	18	8	7	9	2	-10	28,6	-52,6
North West	2	3	3	3	3	0	1	0,0	50,0
Gauteng	25	19	24	25	26	1	1	4,0	4,0
Mpumalanga	22	23	14	22	24	2	2	9,1	9,1
Limpopo	9	6	5	7	8	1	-1	14,3	-11,1
Construction	1 031	1 043	1 086	1 057	986	-71	-45	-6,7	-4,4
Western Cape	124	118	129	144	135	-9	11	-6,3	8,9
Eastern Cape	120	118	107	124	108	-16	-12	-12,9	-10,0
Northern Cape	14	13	21	19	19	0	5	0,0	35,7
Free State	56	54	108	49	47	-2	-9	-4,1	-16,1
KwaZulu-Natal	226	235	234	239	210	-29	-16	-12,1	-7,1
North West	45	45	41	49	46	-3	1	-6,1	2,2
Gauteng	284	313	259	259	265	6	-19	2,3	-6,7
Mpumalanga	69	69	76	78	64	-14	-5	-17,9	-7,2
Limpopo	93	78	111	95	92	-3	-1	-3,2	-1,1
Trade	2 962	2 944	3 012	3 060	3 057	-3	95	-0,1	3,2
Western Cape	388	406	397	406	391	-15	3	-3,7	0,8
Eastern Cape	295	286	296	308	327	19	32	6,2	10,8
Northern Cape	35	39	40	42	41	-1	6	-2,4	17,1
Free State	167	178	176	173	160	-13	-7	-7,5	-4,2
KwaZulu-Natal	536	555	605	614	570	-44	34	-7,2	6,3
North West	150	141	130	138	152	14	2	10,1	1,3
Gauteng	930	899	894	914	944	30	14	3,3	1,5
Mpumalanga	218	217	222	222	228	6	10	2,7	4,6
Limpopo	243	224	252	242	246	4	3	1,7	1,2

For all values of 10 000 or lower the sample size is too small for reliable estimates.
Due to rounding, numbers do not necessarily add up to totals.

Table 3.2: Employed by industry and province (continued)									
	Jan–Mar 2011	Apr–Jun 2011	Jul–Sep 2011	Oct–Dec 2011	Jan–Mar 2012	Qtr-to-Qtr change	Year-on-year change	Qtr-to-Qtr change	Year-on- year change
	Thousand	Thousand	Thousand	Thousand	Thousand	Thousand	Thousand	Per cent	Per cent
Transport	727	777	756	788	783	-5	56	-0,6	7,7
Western Cape	113	106	105	96	100	4	-13	4,2	-11,5
Eastern Cape	57	74	75	75	75	0	18	0,0	31,6
Northern Cape	14	11	10	10	10	0	-4	0,0	-28,6
Free State	36	31	33	35	27	-8	-9	-22,9	-25,0
KwaZulu-Natal	174	181	156	171	180	9	6	5,3	3,4
North West	21	24	22	26	26	0	5	0,0	23,8
Gauteng	244	278	278	298	263	-35	19	-11,7	7,8
Mpumalanga	34	39	42	39	48	9	14	23,1	41,2
Limpopo	33	34	35	39	55	16	22	41,0	66,7
Finance	1 631	1 704	1 768	1 739	1 741	2	110	0,1	6,7
Western Cape	239	286	288	281	293	12	54	4,3	22,6
Eastern Cape	125	139	138	147	126	-21	1	-14,3	0,8
Northern Cape	15	24	23	27	24	-3	9	-11,1	60,0
Free State	80	76	75	62	70	8	-10	12,9	-12,5
KwaZulu-Natal	259	274	287	277	276	-1	17	-0,4	6,6
North West	61	55	63	56	52	-4	-9	-7,1	-14,8
Gauteng	705	705	744	740	761	21	56	2,8	7,9
Mpumalanga	82	82	81	84	79	-5	-3	-6,0	-3,7
Limpopo	64	64	69	66	58	-8	-6	-12,1	-9,4
Community and social services	2 828	2 831	2 836	2 902	2 891	-11	63	-0,4	2,2
Western Cape	390	382	364	374	382	8	-8	2,1	-2,1
Eastern Cape	333	326	330	339	336	-3	3	-0,9	0,9
Northern Cape	79	83	83	79	83	4	4	5,1	5,1
Free State	199	197	197	192	181	-11	-18	-5,7	-9,0
KwaZulu-Natal	514	509	486	516	540	24	26	4,7	5,1
North West	152	151	151	165	161	-4	9	-2,4	5,9
Gauteng	760	769	805	830	824	-6	64	-0,7	8,4
Mpumalanga	172	164	163	163	149	-14	-23	-8,6	-13,4
Limpopo	227	249	257	244	234	-10	7	-4,1	3,1

For all values of 10 000 or lower the sample size is too small for reliable estimates.
Due to rounding, numbers do not necessarily add up to totals.

Table 3.2: Employed by industry and province (concluded)									
	Jan–Mar 2011	Apr–Jun 2011	Jul–Sep 2011	Oct–Dec 2011	Jan–Mar 2012	Qtr-to-Qtr change	Year-on-year change	Qtr-to-Qtr change	Year-on- year change
	Thousand	Thousand	Thousand	Thousand	Thousand	Thousand	Thousand	Per cent	Per cent
Private households	1 118	1 117	1 098	1 118	1 151	33	33	3,0	3,0
Western Cape	105	113	119	117	117	0	12	0,0	11,4
Eastern Cape	139	97	106	110	94	-16	-45	-14,5	-32,4
Northern Cape	25	26	27	28	25	-3	0	-10,7	0,0
Free State	90	83	82	85	92	7	2	8,2	2,2
KwaZulu-Natal	188	226	220	201	239	38	51	18,9	27,1
North West	61	67	59	61	60	-1	-1	-1,6	-1,6
Gauteng	328	336	312	341	354	13	26	3,8	7,9
Mpumalanga	81	87	90	95	94	-1	13	-1,1	16,0
Limpopo	101	81	84	78	76	-2	-25	-2,6	-24,8

For all values of 10 000 or lower the sample size is too small for reliable estimates. Due to rounding, numbers do not necessarily add up to totals.

Table 3.3: Employed by sector and industry – South Africa									
	Jan–Mar 2011	Apr–Jun 2011	Jul–Sep 2011	Oct–Dec 2011	Jan–Mar 2012	Qtr-to-Qtr change	Year-on- year change	Qtr-to-Qtr change	Year-on- year change
	Thousand	Thousand	Thousand	Thousand	Thousand	Thousand	Thousand	Per cent	Per cent
Total employed	13 118	13 125	13 318	13 497	13 422	-75	304	-0,6	2,3
Formal and informal sector (Non-agricultural)	11 397	11 411	11 596	11 750	11 615	-135	218	-1,1	1,9
Mining	313	282	324	327	336	9	23	2,8	7,3
Manufacturing	1 803	1 735	1 737	1 789	1 722	-67	-81	-3,7	-4,5
Utilities	97	93	73	81	91	10	-6	12,3	-6,2
Construction	1 031	1 043	1 086	1 057	986	-71	-45	-6,7	-4,4
Trade	2 962	2 944	3 012	3 060	3 057	-3	95	-0,1	3,2
Transport	727	777	756	788	783	-5	56	-0,6	7,7
Finance	1 631	1 704	1 768	1 739	1 741	2	110	0,1	6,7
Community and social services	2 828	2 831	2 836	2 902	2 891	-11	63	-0,4	2,2
Other	5	3	4	6	7	1	2	16,7	40,0
Formal sector (Non-agricultural)	9 219	9 198	9 436	9 616	9 509	-107	290	-1,1	3,1
Mining	306	280	323	327	335	8	29	2,4	9,5
Manufacturing	1 584	1 513	1 527	1 586	1 540	-46	-44	-2,9	-2,8
Utilities	96	90	71	80	90	10	-6	12,5	-6,3
Construction	739	730	783	737	659	-78	-80	-10,6	-10,8
Trade	1 935	1 938	1 979	2 064	2 062	-2	127	-0,1	6,6
Transport	536	567	572	597	575	-22	39	-3,7	7,3
Finance	1 505	1 549	1 618	1 598	1 607	9	102	0,6	6,8
Community and social services	2 513	2 529	2 559	2 622	2 634	12	121	0,5	4,8
Other	5	2	4	5	7	2	2	40,0	40,0
Informal sector (Non-agricultural)	2 179	2 213	2 160	2 134	2 106	-28	-73	-1,3	-3,4
Mining	7	1	1		1	1	-6		-85,7
Manufacturing	219	222	209	203	182	-21	-37	-10,3	-16,9
Utilities	1	4	2		1	1	0		0,0
Construction	293	314	303	320	328	8	35	2,5	11,9
Trade	1 027	1 006	1 033	997	995	-2	-32	-0,2	-3,1
Transport	191	210	184	192	208	16	17	8,3	8,9
Finance	126	155	150	141	134	-7	8	-5,0	6,3
Community and social services	315	301	277	280	257	-23	-58	-8,2	-18,4
Other		1		1					
Agriculture	603	598	624	630	656	26	53	4,1	8,8
Private households	1 118	1 117	1 098	1 118	1 151	33	33	3,0	3,0

For all values of 10 000 or lower the sample size is too small for reliable estimates.
 Due to rounding, numbers do not necessarily add up to totals.

Table 3.4: Employed by province and sector									
	Jan–Mar 2011	Apr–Jun 2011	Jul–Sep 2011	Oct–Dec 2011	Jan–Mar 2012	Qtr-to-Qtr change	Year-on- year change	Qtr-to-Qtr change	Year-on- year change
	Thousand	Thousand	Thousand	Thousand	Thousand	Thousand	Thousand	Per cent	Per cent
South Africa	13 118	13 125	13 318	13 497	13 422	-75	304	-0,6	2,3
Formal sector (Non-agricultural)	9 219	9 198	9 436	9 616	9 509	-107	290	-1,1	3,1
Informal sector (Non-agricultural)	2 179	2 213	2 160	2 134	2 106	-28	-73	-1,3	-3,4
Agriculture	603	598	624	630	656	26	53	4,1	8,8
Private households	1 118	1 117	1 098	1 118	1 151	33	33	3,0	3,0
Western Cape	1 784	1 805	1 806	1 842	1 847	5	63	0,3	3,5
Formal sector (Non-agricultural)	1 366	1 414	1 387	1 455	1 435	-20	69	-1,4	5,1
Informal sector (Non-agricultural)	192	178	188	176	168	-8	-24	-4,5	-12,5
Agriculture	121	100	113	94	127	33	6	35,1	5,0
Private households	105	113	119	117	117	0	12	0,0	11,4
Eastern Cape	1 325	1 309	1 298	1 326	1 279	-47	-46	-3,5	-3,5
Formal sector (Non-agricultural)	864	871	876	903	852	-51	-12	-5,6	-1,4
Informal sector (Non-agricultural)	258	279	249	250	286	36	28	14,4	10,9
Agriculture	64	61	67	64	47	-17	-17	-26,6	-26,6
Private households	139	97	106	110	94	-16	-45	-14,5	-32,4
Northern Cape	261	264	278	291	286	-5	25	-1,7	9,6
Formal sector (Non-agricultural)	152	162	170	178	186	8	34	4,5	22,4
Informal sector (Non-agricultural)	31	28	34	30	29	-1	-2	-3,3	-6,5
Agriculture	53	47	47	55	47	-8	-6	-14,5	-11,3
Private households	25	26	27	28	25	-3	0	-10,7	0,0
Free State	780	772	826	753	737	-16	-43	-2,1	-5,5
Formal sector (Non-agricultural)	495	480	544	488	472	-16	-23	-3,3	-4,6
Informal sector (Non-agricultural)	132	136	133	118	101	-17	-31	-14,4	-23,5
Agriculture	62	73	68	62	72	10	10	16,1	16,1
Private households	90	83	82	85	92	7	2	8,2	2,2
KwaZulu-Natal	2 429	2 500	2 510	2 562	2 519	-43	90	-1,7	3,7
Formal sector (Non-agricultural)	1 672	1 688	1 688	1 757	1 729	-28	57	-1,6	3,4
Informal sector (Non-agricultural)	462	487	505	509	460	-49	-2	-9,6	-0,4
Agriculture	108	99	97	95	91	-4	-17	-4,2	-15,7
Private households	188	226	220	201	239	38	51	18,9	27,1

For all values of 10 000 or lower the sample size is too small for reliable estimates.
Due to rounding, numbers do not necessarily add up to totals.

Table 3.4: Employed by province and sector (concluded)									
	Jan–Mar 2011	Apr–Jun 2011	Jul–Sep 2011	Oct–Dec 2011	Jan–Mar 2012	Qtr-to-Qtr change	Year-on- year change	Qtr-to-Qtr change	Year-on- year change
	Thousand	Thousand	Thousand	Thousand	Thousand	Thousand	Thousand	Per cent	Per cent
North West	722	691	680	700	704	4	-18	0,6	-2,5
Formal sector (Non-agricultural)	534	504	506	519	514	-5	-20	-1,0	-3,7
Informal sector (Non-agricultural)	89	87	85	89	92	3	3	3,4	3,4
Agriculture	37	32	31	30	38	8	1	26,7	2,7
Private households	61	67	59	61	60	-1	-1	-1,6	-1,6
Gauteng	3 999	3 965	3 983	4 115	4 140	25	141	0,6	3,5
Formal sector (Non-agricultural)	3 099	3 053	3 126	3 217	3 233	16	134	0,5	4,3
Informal sector (Non-agricultural)	538	543	506	492	491	-1	-47	-0,2	-8,7
Agriculture	34	34	39	64	62	-2	28	-3,1	82,4
Private households	328	336	312	341	354	13	26	3,8	7,9
Mpumalanga	877	884	911	923	913	-10	36	-1,1	4,1
Formal sector (Non-agricultural)	535	519	563	555	548	-7	13	-1,3	2,4
Informal sector (Non-agricultural)	191	201	183	197	189	-8	-2	-4,1	-1,0
Agriculture	71	78	75	75	83	8	12	10,7	16,9
Private households	81	87	90	95	94	-1	13	-1,1	16,0
Limpopo	940	936	1 026	985	996	11	56	1,1	6,0
Formal sector (Non-agricultural)	502	507	577	544	541	-3	39	-0,6	7,8
Informal sector (Non-agricultural)	286	274	278	273	290	17	4	6,2	1,4
Agriculture	52	74	87	90	88	-2	36	-2,2	69,2
Private households	101	81	84	78	76	-2	-25	-2,6	-24,8

For all values of 10 000 or lower the sample size is too small for reliable estimates.
 Due to rounding, numbers do not necessarily add up to totals.

Table 3.5: Employed by sex and occupation – South Africa									
	Jan–Mar 2011	Apr–Jun 2011	Jul–Sep 2011	Oct–Dec 2011	Jan–Mar 2012	Qtr-to-Qtr change	Year-on-year change	Qtr-to-Qtr change	Year-on- year change
	Thousand	Thousand	Thousand	Thousand	Thousand	Thousand	Thousand	Per cent	Per cent
Both sexes	13 118	13 125	13 318	13 497	13 422	-75	304	-0,6	2,3
Manager	1 136	1 124	1 130	1 130	1 102	-28	-34	-2,5	-3,0
Professional	750	762	763	745	747	2	-3	0,3	-0,4
Technician	1 461	1 469	1 440	1 498	1 532	34	71	2,3	4,9
Clerk	1 341	1 358	1 426	1 523	1 419	-104	78	-6,8	5,8
Sales and services	1 904	1 944	1 975	1 960	1 969	9	65	0,5	3,4
Skilled agriculture	75	71	61	67	61	-6	-14	-9,0	-18,7
Craft and related trade	1 621	1 576	1 655	1 637	1 605	-32	-16	-2,0	-1,0
Plant and machine operator	1 134	1 121	1 097	1 126	1 106	-20	-28	-1,8	-2,5
Elementary	2 821	2 824	2 894	2 933	2 983	50	162	1,7	5,7
Domestic worker	877	876	878	878	896	18	19	2,1	2,2
Women	5 688	5 717	5 807	5 920	5 902	-18	214	-0,3	3,8
Manager	361	352	349	340	357	17	-4	5,0	-1,1
Professional	328	351	373	343	321	-22	-7	-6,4	-2,1
Technician	811	823	796	838	854	16	43	1,9	5,3
Clerk	931	941	988	1 066	987	-79	56	-7,4	6,0
Sales and services	826	843	875	886	912	26	86	2,9	10,4
Skilled agriculture	22	18	20	21	22	1	0	4,8	0,0
Craft and related trade	203	193	185	186	188	2	-15	1,1	-7,4
Plant and machine operator	178	166	166	165	143	-22	-35	-13,3	-19,7
Elementary	1 188	1 189	1 211	1 233	1 248	15	60	1,2	5,1
Domestic worker	842	841	843	843	871	28	29	3,3	3,4
Men	7 430	7 408	7 511	7 577	7 520	-57	90	-0,8	1,2
Manager	775	772	781	790	745	-45	-30	-5,7	-3,9
Professional	421	411	390	402	427	25	6	6,2	1,4
Technician	650	647	643	660	678	18	28	2,7	4,3
Clerk	409	416	437	457	433	-24	24	-5,3	5,9
Sales and services	1 078	1 102	1 100	1 075	1 057	-18	-21	-1,7	-1,9
Skilled agriculture	53	52	41	46	40	-6	-13	-13,0	-24,5
Craft and related trade	1 418	1 383	1 471	1 452	1 417	-35	-1	-2,4	-0,1
Plant and machine operator	956	955	931	960	963	3	7	0,3	0,7
Elementary	1 633	1 635	1 683	1 700	1 735	35	102	2,1	6,2
Domestic worker	35	36	34	35	25	-10	-10	-28,6	-28,6

For all values of 10 000 or lower the sample size is too small for reliable estimates.
 Due to rounding, numbers do not necessarily add up to totals.

Table 3.6: Employed by sex and status in employment – South Africa									
	Jan–Mar 2011	Apr–Jun 2011	Jul–Sep 2011	Oct–Dec 2011	Jan–Mar 2012	Qtr-to-Qtr change	Year-on-year change	Qtr-to-Qtr change	Year-on- year change
	Thousand	Thousand	Thousand	Thousand	Thousand	Thousand	Thousand	Per cent	Per cent
Both sexes	13 118	13 125	13 318	13 497	13 422	-75	304	-0,6	2,3
Employee	11 061	11 056	11 263	11 460	11 406	-54	345	-0,5	3,1
Employer	726	748	713	704	669	-35	-57	-5,0	-7,9
Own-account worker	1 230	1 224	1 231	1 230	1 247	17	17	1,4	1,4
Unpaid household member	102	97	112	103	100	-3	-2	-2,9	-2,0
Women	5 688	5 717	5 807	5 920	5 902	-18	214	-0,3	3,8
Employee	4 870	4 892	5 001	5 125	5 122	-3	252	-0,1	5,2
Employer	173	168	158	148	129	-19	-44	-12,8	-25,4
Own-account worker	581	589	584	580	582	2	1	0,3	0,2
Unpaid household member	65	69	65	68	70	2	5	2,9	7,7
Men	7 430	7 408	7 511	7 577	7 520	-57	90	-0,8	1,2
Employee	6 191	6 164	6 262	6 335	6 284	-51	93	-0,8	1,5
Employer	553	580	555	556	540	-16	-13	-2,9	-2,4
Own-account worker	649	636	647	650	666	16	17	2,5	2,6
Unpaid household member	37	28	47	36	30	-6	-7	-16,7	-18,9

For all values of 10 000 or lower the sample size is too small for reliable estimates.
 Due to rounding, numbers do not necessarily add up to totals.

Table 3.7: Employed by sex and usual hours of work – South Africa									
	Jan–Mar 2011	Apr–Jun 2011	Jul–Sep 2011	Oct–Dec 2011	Jan–Mar 2012	Qtr-to-Qtr change	Year-on-year change	Qtr-to-Qtr change	Year-on- year change
	Thousand	Thousand	Thousand	Thousand	Thousand	Thousand	Thousand	Per cent	Per cent
Both sexes	13 118	13 125	13 318	13 497	13 422	-75	304	-0,6	2,3
Working less than 15 hours per week	220	234	227	238	218	-20	-2	-8,4	-0,9
Working 15–29 hours per week	768	744	779	774	811	37	43	4,8	5,6
Working 30–39 hours per week	920	963	957	932	989	57	69	6,1	7,5
Working 40–45 hours per week	7 168	7 177	7 389	7 424	7 377	-47	209	-0,6	2,9
Working more than 45 hours per week	4 044	4 008	3 966	4 129	4 027	-102	-17	-2,5	-0,4
Women	5 688	5 717	5 807	5 920	5 902	-18	214	-0,3	3,8
Working less than 15 hours per week	134	129	140	143	142	-1	8	-0,7	6,0
Working 15–29 hours per week	498	485	485	501	529	28	31	5,6	6,2
Working 30–39 hours per week	565	583	586	576	598	22	33	3,8	5,8
Working 40–45 hours per week	3 123	3 102	3 232	3 264	3 202	-62	79	-1,9	2,5
Working more than 45 hours per week	1 369	1 419	1 364	1 436	1 432	-4	63	-0,3	4,6
Men	7 430	7 408	7 511	7 577	7 520	-57	90	-0,8	1,2
Working less than 15 hours per week	86	106	87	95	76	-19	-10	-20,0	-11,6
Working 15–29 hours per week	269	258	293	273	282	9	13	3,3	4,8
Working 30–39 hours per week	355	380	371	356	391	35	36	9,8	10,1
Working 40–45 hours per week	4 045	4 075	4 157	4 159	4 175	16	130	0,4	3,2
Working more than 45 hours per week	2 675	2 589	2 602	2 693	2 595	-98	-80	-3,6	-3,0

For all values of 10 000 or lower the sample size is too small for reliable estimates.
Due to rounding, numbers do not necessarily add up to totals.

Table 3.8: Conditions of employment – South Africa									
	Jan–Mar 2011	Apr–Jun 2011	Jul–Sep 2011	Oct–Dec 2011	Jan–Mar 2012	Qtr-to-Qtr change	Year-on- year change	Qtr-to-Qtr change	Year-on- year change
	Thousand	Thousand	Thousand	Thousand	Thousand	Thousand	Thousand	Per cent	Per cent
Pension/retirement fund contribution									
Both sexes	11 061	11 056	11 263	11 460	11 406	-54	345	-0,5	3,1
Yes	5 208	5 188	5 355	5 537	5 513	-24	305	-0,4	5,9
No	5 721	5 721	5 740	5 769	5 726	-43	5	-0,7	0,1
Don't know	131	146	168	154	167	13	36	8,4	27,5
Women	4 870	4 892	5 001	5 125	5 122	-3	252	-0,1	5,2
Yes	2 123	2 119	2 246	2 315	2 288	-27	165	-1,2	7,8
No	2 692	2 707	2 688	2 743	2 760	17	68	0,6	2,5
Don't know	55	66	68	66	75	9	20	13,6	36,4
Men	6 191	6 164	6 262	6 335	6 284	-51	93	-0,8	1,5
Yes	3 085	3 070	3 110	3 222	3 225	3	140	0,1	4,5
No	3 029	3 014	3 052	3 025	2 966	-59	-63	-2,0	-2,1
Don't know	76	80	101	88	93	5	17	5,7	22,4
Entitled to any paid leave									
Both sexes	11 061	11 056	11 263	11 460	11 406	-54	345	-0,5	3,1
Yes	7 159	7 222	7 444	7 631	7 613	-18	454	-0,2	6,3
No	3 798	3 741	3 691	3 712	3 680	-32	-118	-0,9	-3,1
Don't know	104	93	129	118	112	-6	8	-5,1	7,7
Women	4 870	4 892	5 001	5 125	5 122	-3	252	-0,1	5,2
Yes	3 052	3 093	3 256	3 343	3 314	-29	262	-0,9	8,6
No	1 778	1 762	1 698	1 741	1 752	11	-26	0,6	-1,5
Don't know	39	37	47	41	55	14	16	34,1	41,0
Men	6 191	6 164	6 262	6 335	6 284	-51	93	-0,8	1,5
Yes	4 107	4 129	4 187	4 288	4 299	11	192	0,3	4,7
No	2 020	1 979	1 993	1 971	1 928	-43	-92	-2,2	-4,6
Don't know	64	56	82	76	57	-19	-7	-25,0	-10,9

For all values of 10 000 or lower the sample size is too small for reliable estimates.
Due to rounding, numbers do not necessarily add up to totals.

Table 3.8: Conditions of employment – South Africa (continued)									
	Jan–Mar 2011	Apr–Jun 2011	Jul–Sep 2011	Oct–Dec 2011	Jan–Mar 2012	Qtr-to-Qtr change	Year-on- year change	Qtr-to-Qtr change	Year-on- year change
	Thousand	Thousand	Thousand	Thousand	Thousand	Thousand	Thousand	Per cent	Per cent
Entitled to paid sick leave									
Both sexes	11 061	11 056	11 263	11 460	11 406	-54	345	-0,5	3,1
Yes	7 283	7 388	7 705	7 846	7 909	63	626	0,8	8,6
No	3 777	3 668	3 558	3 614	3 497	-117	-280	-3,2	-7,4
Women	4 870	4 892	5 001	5 125	5 122	-3	252	-0,1	5,2
Yes	3 144	3 202	3 394	3 471	3 487	16	343	0,5	10,9
No	1 726	1 690	1 607	1 654	1 635	-19	-91	-1,1	-5,3
Men	6 191	6 164	6 262	6 335	6 284	-51	93	-0,8	1,5
Yes	4 140	4 186	4 311	4 374	4 422	48	282	1,1	6,8
No	2 051	1 978	1 951	1 961	1 862	-99	-189	-5,0	-9,2
Entitled to maternity/paternity leave									
Both sexes	11 061	11 056	11 263	11 460	11 406	-54	345	-0,5	3,1
Yes	5 852	5 907	6 090	6 415	6 338	-77	486	-1,2	8,3
No	5 208	5 149	5 173	5 045	5 068	23	-140	0,5	-2,7
Women	4 870	4 892	5 001	5 125	5 122	-3	252	-0,1	5,2
Yes	2 644	2 701	2 789	2 961	2 910	-51	266	-1,7	10,1
No	2 226	2 191	2 212	2 163	2 211	48	-15	2,2	-0,7
Men	6 191	6 164	6 262	6 335	6 284	-51	93	-0,8	1,5
Yes	3 209	3 206	3 300	3 454	3 427	-27	218	-0,8	6,8
No	2 982	2 958	2 962	2 881	2 856	-25	-126	-0,9	-4,2

For all values of 10 000 or lower the sample size is too small for reliable estimates.
 Due to rounding, numbers do not necessarily add up to totals.

Table 3.8: Conditions of employment – South Africa (continued)									
	Jan–Mar 2011	Apr–Jun 2011	Jul–Sep 2011	Oct–Dec 2011	Jan–Mar 2012	Qtr-to-Qtr change	Year-on- year change	Qtr-to-Qtr change	Year-on- year change
	Thousand	Thousand	Thousand	Thousand	Thousand	Thousand	Thousand	Per cent	Per cent
UIF contribution									
Both sexes	11 061	11 056	11 263	11 460	11 406	-54	345	-0,5	3,1
Yes	6 288	6 265	6 479	6 563	6 541	-22	253	-0,3	4,0
No	4 666	4 687	4 670	4 748	4 738	-10	72	-0,2	1,5
Don't know	107	105	114	148	127	-21	20	-14,2	18,7
Women	4 870	4 892	5 001	5 125	5 122	-3	252	-0,1	5,2
Yes	2 557	2 563	2 667	2 688	2 684	-4	127	-0,1	5,0
No	2 262	2 280	2 289	2 363	2 378	15	116	0,6	5,1
Don't know	51	49	46	73	60	-13	9	-17,8	17,6
Men	6 191	6 164	6 262	6 335	6 284	-51	93	-0,8	1,5
Yes	3 730	3 702	3 812	3 875	3 857	-18	127	-0,5	3,4
No	2 404	2 407	2 381	2 385	2 360	-25	-44	-1,0	-1,8
Don't know	57	56	68	75	66	-9	9	-12,0	15,8
Medical aid benefits									
Both sexes	11 061	11 056	11 263	11 460	11 406	-54	345	-0,5	3,1
Yes	3 553	3 465	3 523	3 689	3 686	-3	133	-0,1	3,7
No	7 441	7 522	7 648	7 672	7 634	-38	193	-0,5	2,6
Don't know	67	69	92	99	86	-13	19	-13,1	28,4
Women	4 870	4 892	5 001	5 125	5 122	-3	252	-0,1	5,2
Yes	1 523	1 506	1 541	1 613	1 594	-19	71	-1,2	4,7
No	3 320	3 360	3 420	3 458	3 480	22	160	0,6	4,8
Don't know	26	26	40	54	48	-6	22	-11,1	84,6
Men	6 191	6 164	6 262	6 335	6 284	-51	93	-0,8	1,5
Yes	2 029	1 959	1 982	2 075	2 091	16	62	0,8	3,1
No	4 121	4 162	4 228	4 214	4 154	-60	33	-1,4	0,8
Don't know	41	43	52	46	39	-7	-2	-15,2	-4,9

For all values of 10 000 or lower the sample size is too small for reliable estimates.
Due to rounding, numbers do not necessarily add up to totals.

Table 3.8: Conditions of employment – South Africa (continued)									
	Oct–Dec 2010	Jan–Mar 2011	Apr–Jun 2011	Jul–Sep 2011	Oct–Dec 2011	Qtr-to-Qtr change	Year-on- year change	Qtr-to-Qtr change	Year-on- year change
	Thousand	Thousand	Thousand	Thousand	Thousand	Thousand	Thousand	Per cent	Per cent
Income tax (PAYE/ SITE) deduction									
Both sexes	11 061	11 056	11 263	11 460	11 406	-54	345	-0,5	3,1
Yes	6 006	6 046	6 338	6 527	6 390	-137	384	-2,1	6,4
No	4 923	4 877	4 784	4 781	4 861	80	-62	1,7	-1,3
Don't know	131	132	141	152	154	2	23	1,3	17,6
Women	4 870	4 892	5 001	5 125	5 122	-3	252	-0,1	5,2
Yes	2 457	2 490	2 654	2 742	2 667	-75	210	-2,7	8,5
No	2 370	2 354	2 293	2 323	2 387	64	17	2,8	0,7
Don't know	43	48	55	60	68	8	25	13,3	58,1
Men	6 191	6 164	6 262	6 335	6 284	-51	93	-0,8	1,5
Yes	3 550	3 556	3 684	3 785	3 723	-62	173	-1,6	4,9
No	2 554	2 524	2 492	2 458	2 474	16	-80	0,7	-3,1
Don't know	88	84	86	93	87	-6	-1	-6,5	-1,1
Condition of employment									
Both sexes	11 061	11 056	11 263	11 460	11 406	-54	345	-0,5	3,1
Written contract	8 661	8 791	8 993	9 149	9 163	14	502	0,2	5,8
Verbal agreement	2 400	2 265	2 270	2 311	2 243	-68	-157	-2,9	-6,5
Women	4 870	4 892	5 001	5 125	5 122	-3	252	-0,1	5,2
Written contract	3 723	3 829	3 930	4 035	4 029	-6	306	-0,1	8,2
Verbal agreement	1 147	1 064	1 071	1 090	1 093	3	-54	0,3	-4,7
Men	6 191	6 164	6 262	6 335	6 284	-51	93	-0,8	1,5
Written contract	4 938	4 963	5 063	5 114	5 134	20	196	0,4	4,0
Verbal agreement	1 253	1 201	1 199	1 221	1 150	-71	-103	-5,8	-8,2

For all values of 10 000 or lower the sample size is too small for reliable estimates.
 Due to rounding, numbers do not necessarily add up to totals.

Table 3.8: Conditions of employment – South Africa (continued)									
	Jan–Mar 2011	Apr–Jun 2011	Jul–Sep 2011	Oct–Dec 2011	Jan–Mar 2012	Qtr-to-Qtr change	Year-on- year change	Qtr-to-Qtr change	Year-on- year change
	Thousand	Thousand	Thousand	Thousand	Thousand	Thousand	Thousand	Per cent	Per cent
Nature of contract/agreement									
Both sexes	11 061	11 056	11 263	11 460	11 406	-54	345	-0,5	3,1
Limited duration	1 252	1 407	1 498	1 495	1 477	-18	225	-1,2	18,0
Permanent nature	7 225	7 088	7 208	7 384	7 364	-20	139	-0,3	1,9
Unspecified duration	2 583	2 561	2 557	2 581	2 565	-16	-18	-0,6	-0,7
Women	4 870	4 892	5 001	5 125	5 122	-3	252	-0,1	5,2
Limited duration	571	622	646	685	680	-5	109	-0,7	19,1
Permanent nature	3 080	3 043	3 138	3 225	3 217	-8	137	-0,2	4,4
Unspecified duration	1 219	1 227	1 217	1 215	1 225	10	6	0,8	0,5
Men	6 191	6 164	6 262	6 335	6 284	-51	93	-0,8	1,5
Limited duration	681	785	852	810	797	-13	116	-1,6	17,0
Permanent nature	4 145	4 045	4 070	4 159	4 147	-12	2	-0,3	0,0
Unspecified duration	1 364	1 334	1 340	1 366	1 340	-26	-24	-1,9	-1,8
Trade union membership									
Both sexes	11 061	11 056	11 263	11 460	11 406	-54	345	-0,5	3,1
Yes	3 194	3 185	3 265	3 363	3 327	-36	133	-1,1	4,2
No	7 617	7 661	7 772	7 876	7 842	-34	225	-0,4	3,0
Don't know	249	210	226	221	237	16	-12	7,2	-4,8
Women	4 870	4 892	5 001	5 125	5 122	-3	252	-0,1	5,2
Yes	1 283	1 271	1 334	1 368	1 344	-24	61	-1,8	4,8
No	3 476	3 553	3 578	3 665	3 680	15	204	0,4	5,9
Don't know	110	68	90	92	98	6	-12	6,5	-10,9
Men	6 191	6 164	6 262	6 335	6 284	-51	93	-0,8	1,5
Yes	1 911	1 914	1 932	1 995	1 984	-11	73	-0,6	3,8
No	4 141	4 108	4 194	4 212	4 161	-51	20	-1,2	0,5
Don't know	139	142	136	128	139	11		8,6	0,0

For all values of 10 000 or lower the sample size is too small for reliable estimates.
 Due to rounding, numbers do not necessarily add up to totals.

Table 3.8: Conditions of employment – South Africa (concluded)

	Jan–Mar 2011	Apr–Jun 2011	Jul–Sep 2011	Oct–Dec 2011	Jan–Mar 2012	Qtr-to-Qtr change	Year-on- year change	Qtr-to-Qtr change	Year-on- year change
	Thousand	Thousand	Thousand	Thousand	Thousand	Thousand	Thousand	Per cent	Per cent
How annual salary increment is negotiated									
Both sexes	11 061	11 056	11 263	11 460	11 406	-54	345	-0,5	3,1
Individual and employer	1 682	1 660	1 542	1 442	1 404	-38	-278	-2,6	-16,5
Union and employer	2 480	2 425	2 491	2 551	2 660	109	180	4,3	7,3
Bargaining council	1 073	1 057	1 052	1 031	1 054	23	-19	2,2	-1,8
Employer only	5 179	5 240	5 418	5 779	5 647	-132	468	-2,3	9,0
No regular increment	562	627	710	593	565	-28	3	-4,7	0,5
Other	85	47	49	65	75	10	-10	15,4	-11,8
Women	4 870	4 892	5 001	5 125	5 122	-3	252	-0,1	5,2
Individual and employer	744	719	661	634	592	-42	-152	-6,6	-20,4
Union and employer	955	913	996	989	1 032	43	77	4,3	8,1
Bargaining council	492	496	500	506	503	-3	11	-0,6	2,2
Employer only	2 371	2 453	2 502	2 671	2 679	8	308	0,3	13,0
No regular increment	270	295	321	296	284	-12	14	-4,1	5,2
Other	37	16	21	28	33	5	-4	17,9	-10,8
Men	6 191	6 164	6 262	6 335	6 284	-51	93	-0,8	1,5
Individual and employer	937	941	881	807	812	5	-125	0,6	-13,3
Union and employer	1 525	1 513	1 495	1 561	1 629	68	104	4,4	6,8
Bargaining council	580	561	553	525	552	27	-28	5,1	-4,8
Employer only	2 808	2 787	2 916	3 108	2 968	-140	160	-4,5	5,7
No regular increment	293	332	389	297	281	-16,00	-12,00	-5,40	-4,10
Other	48	31	28	37	42	5,00	-6,00	13,50	-12,50

For all values of 10 000 or lower the sample size is too small for reliable estimates.
Due to rounding, numbers do not necessarily add up to totals.

Table 3.9: Time-related underemployment – South Africa									
	Jan–Mar 2011	Apr–Jun 2011	Jul–Sep 2011	Oct–Dec 2011	Jan–Mar 2012	Qtr-to-Qtr change	Year-on- year change	Qtr-to-Qtr change	Year-on- year change
	Thousand	Thousand	Thousand	Thousand	Thousand	Thousand	Thousand	Per cent	Per cent
Both sexes	525	519	490	521	544	23	19	4,4	3,6
Women	327	304	297	306	313	7	-14	2,3	-4,3
Men	198	215	193	215	231	16	33	7,4	16,7
As percentage of the labour force (Both sexes)	3,0	2,9	2,8	2,9	3,0	0,1	0,0		
Women	4,1	3,8	3,7	3,8	3,8	0,0	-0,3		
Men	2,1	2,2	2,0	2,2	2,4	0,2	0,3		
As percentage of total employment (Both sexes)	4,0	4,0	3,7	3,9	4,1	0,2	0,1		
Women	5,7	5,3	5,1	5,2	5,3	0,1	-0,4		
Men	2,7	2,9	2,6	2,8	3,1	0,3	0,4		
Industry	525	519	490	521	544	23	19	4,4	3,6
Agriculture	13	6	10	11	14	3	1	27,3	7,7
Mining		0	0	1	0	-1		-100,0	
Manufacturing	27	39	37	50	32	-18	5	-36,0	18,5
Utilities									
Construction	45	56	55	48	57	9	12	18,8	26,7
Trade	101	106	83	98	126	28	25	28,6	24,8
Transport	13	15	10	10	19	9	6	90,0	46,2
Finance	33	31	45	35	33	-2	0	-5,7	0,0
Community and social services	68	68	74	77	68	-9	0	-11,7	0,0
Private households	225	196	176	191	196	5	-29	2,6	-12,9
Occupation	525	519	490	521	544	23	19	4,4	3,6
Manager	14	11	18	7	6	-1	-8	-14,3	-57,1
Professional	5	1	7	6	6	0	1	0,0	20,0
Technician	28	29	26	29	24	-5	-4	-17,2	-14,3
Clerk	20	20	20	14	16	2	-4	14,3	-20,0
Sales and services	51	46	43	48	55	7	4	14,6	7,8
Skilled agriculture	4	1	3	4	5	1	1	25,0	25,0
Craft and related trade	46	74	62	72	75	3	29	4,2	63,0
Plant and machine operator	12	14	10	14	15	1	3	7,1	25,0
Elementary	177	180	168	190	200	10	23	5,3	13,0
Domestic worker	167	142	133	138	142	4	-25	2,9	-15,0

For all values of 10 000 or lower the sample size is too small for reliable estimates.
 Due to rounding, numbers do not necessarily add up to totals.

Table 4: Characteristics of the unemployed – South Africa									
	Jan–Mar 2011	Apr–Jun 2011	Jul–Sep 2011	Oct–Dec 2011	Jan–Mar 2012	Qtr-to-Qtr change	Year-on- year change	Qtr-to- Qtr change	Year-on- year change
	Thousand	Thousand	Thousand	Thousand	Thousand	Thousand	Thousand	Per cent	Per cent
Unemployed	4 364	4 538	4 442	4 244	4 526	282	162	6,6	3,7
Job losers	1 325	1 359	1 339	1 288	1 400	112	75	8,7	5,7
Job leavers	270	255	264	260	275	15	5	5,8	1,9
New entrants	1 896	2 036	1 973	1 850	1 993	143	97	7,7	5,1
Re-entrants	189	188	218	236	164	- 72	- 25	-30,5	-13,2
Other	684	700	648	610	694	84	10	13,8	1,5
Unemployed	4 364	4 538	4 442	4 244	4 526	282	162	6,6	3,7
Long-term unemployment (1 year and more)	2 979	3 093	3 029	2 866	3 069	203	90	7,1	3,0
Short-term unemployment (less than 1 year)	1 385	1 444	1 413	1 378	1 457	79	72	5,7	5,2
Long-term unemployment (%)									
Proportion of the labour force	17,0	17,5	17,1	16,2	17,1	0,9	0,1		
Proportion of the unemployed	68,3	68,2	68,2	67,5	67,8	0,3	-0,5		
Those who have worked in the past 5 years									
Previous occupation	1 784	1 802	1 821	1 784	1 839	55	55	3,1	3,1
Manager	37	41	45	45	53	8	16	17,8	43,2
Professional	34	31	43	39	39		5	0,0	14,7
Technician	84	73	114	94	100	6	16	6,4	19,0
Clerk	213	205	222	218	235	17	22	7,8	10,3
Sales and services	264	297	275	262	270	8	6	3,1	2,3
Skilled agriculture	10	10	6	6	7	1	-3	16,7	-30,0
Craft and related trade	313	303	292	293	328	35	15	11,9	4,8
Plant and machine operator	143	123	155	154	147	-7	4	-4,5	2,8
Elementary	522	582	518	512	525	13	3	2,5	0,6
Domestic worker	164	136	150	161	137	-24	-27	-14,9	-16,5
Other		0							

For all values of 10 000 or lower the sample size is too small for reliable estimates.
 Due to rounding, numbers do not necessarily add up to totals.

Table 4: Characteristics of the unemployed – South Africa (concluded)									
	Jan–Mar 2011	Apr–Jun 2011	Jul–Sep 2011	Oct–Dec 2011	Jan–Mar 2012	Qtr-to-Qtr change	Year-on- year change	Qtr-to-Qtr change	Year-on- year change
	Thousand	Thousand	Thousand	Thousand	Thousand	Thousand	Thousand	Per cent	Per cent
Previous industry	1 784	1 802	1 821	1 784	1 839	55	55	3,1	3,1
Agriculture	98	108	81	80	70	-10	-28	-12,5	-28,6
Mining	28	30	31	24	21	-3	-7	-12,5	-25,0
Manufacturing	249	242	264	251	266	15	17	6,0	6,8
Utilities	12	8	7	12	9	-3	-3	-25,0	-25,0
Construction	289	276	278	256	298	42	9	16,4	3,1
Trade	414	450	420	440	429	-11	15	-2,5	3,6
Transport	77	95	97	94	91	-3	14	-3,2	18,2
Finance	215	222	234	223	228	5	13	2,2	6,0
Community and social services	194	183	204	204	231	27	37	13,2	19,1
Private households	209	187	206	199	197	-2	-12	-1,0	-5,7
Other		1		1					

For all values of 10 000 or lower the sample size is too small for reliable estimates.
 Due to rounding, numbers do not necessarily add up to totals.

Table 5: Characteristics of the not economically active – South Africa

	Jan–Mar 2011	Apr–Jun 2011	Jul–Sep 2011	Oct–Dec 2011	Jan–Mar 2012	Qtr-to-Qtr change	Year-on-year change	Qtr-to-Qtr change	Year-on- year change
	Thousand	Thousand	Thousand	Thousand	Thousand	Thousand	Thousand	Per cent	Per cent
Not economically active	14 832	14 772	14 795	14 929	14 838	-91	6	-0,6	0,0
Student	6 083	6 182	6 184	6 235	6 161	-74	78	-1,2	1,3
Home-maker	2 882	2 833	2 842	2 836	2 784	-52	-98	-1,8	-3,4
Illness/disability	1 708	1 670	1 618	1 585	1 608	23	-100	1,5	-5,9
Too old/young to work	1 216	1 197	1 249	1 215	1 213	-2	-3	-0,2	-0,2
Discouraged work seekers	2 223	2 207	2 204	2 315	2 335	20	112	0,9	5,0
Other	719	684	698	743	738	-5	19	-0,7	2,6
Inactivity rate by age (Both sexes)	45,9	45,5	45,4	45,7	45,3	-0,4	-0,6		
15–24 yrs	74,8	74,5	74,7	75,1	73,9	-1,2	-0,9		
25–54 yrs	27,9	27,7	27,5	27,8	27,7	-0,1	-0,2		
55–64 yrs	60,7	59,3	59,5	58,6	59,3	0,7	-1,4		
Inactivity rate by age (Women)	52,4	52,0	51,8	52,1	51,5	-0,6	-0,9		
15–24 yrs	76,2	76,1	77,2	77,3	76,4	-0,9	0,2		
25–54 yrs	37,1	36,5	36,1	36,6	36,1	-0,5	-1,0		
55–64 yrs	69,9	69,6	67,9	66,8	67,3	0,5	-2,6		
Inactivity rate by age (Men)	39,0	38,7	38,7	38,9	38,6	-0,3	-0,4		
15–24 yrs	73,4	72,9	72,2	73,0	71,5	-1,5	-1,9		
25–54 yrs	17,9	18,2	18,1	18,3	18,6	0,3	0,7		
55–64 yrs	49,7	47,0	49,5	48,7	49,6	0,9	-0,1		

Due to rounding, numbers do not necessarily add up to totals.

Table 6: Socio-demographic characteristics – South Africa									
	Jan–Mar 2011	Apr–Jun 2011	Jul–Sep 2011	Oct–Dec 2011	Jan–Mar 2012	Qtr-to-Qtr change	Year-on- year change	Qtr-to- Qtr change	Year-on- year change
	Thousand	Thousand	Thousand	Thousand	Thousand	Thousand	Thousand	Per cent	Per cent
Age group of the employed	13 118	13 125	13 318	13 497	13 422	-75	304	-0,6	2,3
15–24 yrs	1 304	1 318	1 297	1 306	1 305	-1	1	-0,1	0,1
25–34 yrs	4 333	4 314	4 417	4 522	4 491	-31	158	-0,7	3,6
35–44 yrs	3 847	3 800	3 847	3 921	3 899	-22	52	-0,6	1,4
45–54 yrs	2 519	2 529	2 596	2 553	2 551	-2	32	-0,1	1,3
55–64 yrs	1 116	1 164	1 162	1 196	1 175	-21	59	-1,8	5,3
Age group of the unemployed	4 364	4 538	4 442	4 244	4 526	282	162	6,6	3,7
15–24 yrs	1 289	1 309	1 319	1 267	1 393	126	104	9,9	8,1
25–34 yrs	1 868	1 933	1 851	1 737	1 819	82	-49	4,7	-2,6
35–44 yrs	780	861	857	813	862	49	82	6,0	10,5
45–54 yrs	356	364	341	349	366	17	10	4,9	2,8
55–64 yrs	71	72	75	79	86	7	15	8,9	21,1
Age group of the not economically active	14 832	14 772	14 795	14 929	14 838	-91	6	-0,6	0,0
15–24 yrs	7 698	7 682	7 711	7 770	7 658	-112	-40	-1,4	-0,5
25–34 yrs	2 437	2 425	2 439	2 481	2 465	-16	28	-0,6	1,1
35–44 yrs	1 477	1 490	1 493	1 508	1 528	20	51	1,3	3,5
45–54 yrs	1 386	1 372	1 331	1 368	1 354	-14	-32	-1,0	-2,3
55–64 yrs	1 834	1 803	1 821	1 802	1 834	32	0	1,8	0,0
Highest level of education of the employed	13 118	13 125	13 318	13 497	13 422	-75	304	-0,6	2,3
No schooling	337	331	360	350	373	23	36	6,6	10,7
Less than primary completed	1 063	1 052	1 151	1 090	1 073	-17	10	-1,6	0,9
Primary completed	587	607	590	590	601	11	14	1,9	2,4
Secondary not completed	4 416	4 313	4 455	4 523	4 469	-54	53	-1,2	1,2
Secondary completed	3 960	4 014	3 957	4 032	4 086	54	126	1,3	3,2
Tertiary	2 602	2 643	2 642	2 732	2 670	-62	68	-2,3	2,6
Other	154	166	163	179	151	-28	-3	-15,6	-1,9

Due to rounding, numbers do not necessarily add up to totals.

Table 6: Socio-demographic characteristics – South Africa (continued)									
	Jan–Mar 2011	Apr–Jun 2011	Jul–Sep 2011	Oct–Dec 2011	Jan–Mar 2012	Qtr-to-Qtr change	Year-on- year change	Qtr-to-Qtr change	Year-on- year change
	Thousand	Thousand	Thousand	Thousand	Thousand	Thousand	Thousand	Per cent	Per cent
Highest level of education of the unemployed	4 364	4 538	4 442	4 244	4 526	282	162	6,6	3,7
No schooling	68	71	81	67	80	13	12	19,4	17,6
Less than primary completed	306	316	302	287	305	18	-1	6,3	-0,3
Primary completed	200	195	205	205	193	-12	-7	-5,9	-3,5
Secondary not completed	2 023	2 096	2 085	2 014	2 119	105	96	5,2	4,7
Secondary completed	1 504	1 580	1 476	1 371	1 520	149	16	10,9	1,1
Tertiary	241	256	260	266	280	14	39	5,3	16,2
Other	22	24	34	33	29	-4	7	-12,1	31,8
Highest level of education of the not economically active	14 832	14 772	14 795	14 929	14 838	-91	6	-0,6	0,0
No schooling	834	845	813	773	797	24	-37	3,1	-4,4
Less than primary completed	1 888	1 901	1 885	1 899	1 787	-112	-101	-5,9	-5,3
Primary completed	1 074	1 114	1 147	1 174	1 017	-157	-57	-13,4	-5,3
Secondary not completed	7 773	7 875	7 876	8 019	7 839	-180	66	-2,2	0,8
Secondary completed	2 710	2 493	2 526	2 532	2 847	315	137	12,4	5,1
Tertiary	431	435	420	416	425	9	-6	2,2	-1,4
Other	121	109	128	116	126	10	5	8,6	4,1
Current marital status of the employed	13 118	13 125	13 318	13 497	13 422	-75	304	-0,6	2,3
Married	5 470	5 475	5 629	5 639	5 641	2	171	0,0	3,1
Living together like husband and wife	1 516	1 502	1 486	1 498	1 468	-30	-48	-2,0	-3,2
Widow/widower	416	437	420	428	430	2	14	0,5	3,4
Divorced or separated	455	454	431	469	476	7	21	1,5	4,6
Never married	5 262	5 257	5 353	5 463	5 407	-56	145	-1,0	2,8
Current marital status of the unemployed	4 364	4 538	4 442	4 244	4 526	282	162	6,6	3,7
Married	717	736	727	719	753	34	36	4,7	5,0
Living together like husband and wife	412	447	449	418	465	47	53	11,2	12,9
Widow/widower	50	49	63	63	58	-5	8	-7,9	16,0
Divorced or separated	72	79	81	79	80	1	8	1,3	11,1
Never married	3 112	3 226	3 123	2 964	3 169	205	57	6,9	1,8

Due to rounding, numbers do not necessarily add up to totals.

Table 6: Socio-demographic characteristics – South Africa (concluded)									
	Jan–Mar 2011	Apr–Jun 2011	Jul–Sep 2011	Oct–Dec 2011	Jan–Mar 2012	Qtr-to-Qtr change	Year-on- year change	Qtr-to-Qtr change	Year-on- year change
	Thousand	Thousand	Thousand	Thousand	Thousand	Thousand	Thousand	Per cent	Per cent
Current marital status of the not economically active	14 832	14 772	14 795	14 929	14 838	-91	6	-0,6	0,0
Married	3 011	2 979	2 921	2 913	2 957	44	-54	1,5	-1,8
Living together like husband and wife	718	676	675	731	712	-19	-6	-2,6	-0,8
Widow/widower	673	662	652	659	641	-18	-32	-2,7	-4,8
Divorced or separated	229	231	237	246	253	7	24	2,8	10,5
Never married	10 201	10 224	10 309	10 380	10 276	-104	75	-1,0	0,7

Due to rounding, numbers do not necessarily add up to totals.

Table 7: Involvement in non-market activities and labour market status by province									
	Jan–Mar 2011	Apr–Jun 2011	Jul–Sep 2011	Oct–Dec 2011	Jan–Mar 2012	Qtr-to-Qtr change	Year-on- year change	Qtr-to- Qtr change	Year- on-year change
	Thousand	Thousand	Thousand	Thousand	Thousand	Thousand	Thousand	Per cent	Per cent
South Africa									
Subsistence farming	2 285	1 740	1 921	1 796	2 077	281	-208	15,6	-9,1
Fetching water or collecting wood/dung	3 998	4 130	4 642	4 144	4 292	148	294	3,6	7,4
Produce other goods for household use	182	169	457	161	189	28	7	17,4	3,8
Construction or major repairs to own or household	259	288	606	330	321	-9	62	-2,7	23,9
Hunting or fishing for household use	38	37	320	42	46	4	8	9,5	21,1
Involvement in at least one activity	5 382	5 155	6 254	5 152	5 540	388	158	7,5	2,9
Employed	1 103	1 051	1 515	1 146	1 211	65	108	5,7	9,8
Unemployed	602	642	759	596	675	79	73	13,3	12,1
Not economically active	3 677	3 462	3 980	3 411	3 654	243	-23	7,1	-0,6
Eastern Cape									
Subsistence farming	711	508	493	521	523	2	-188	0,4	-26,4
Fetching water or collecting wood/dung	982	933	1 062	1 003	1 024	21	42	2,1	4,3
Produce other goods for household use	4	7	59	18	22	4	18	22,2	450,0
Construction or major repairs to own or household	85	105	142	118	104	-14	19	-11,9	22,4
Hunting or fishing for household use	4	11	41	5	6	1	2	20,0	50,0
Involvement in at least one activity	1 357	1 210	1 334	1 242	1 348	106	-9	8,5	-0,7
Employed	187	174	215	201	254	53	67	26,4	35,8
Unemployed	137	136	132	109	103	-6	-34	-5,5	-24,8
Not economically active	1 033	900	987	933	990	57	-43	6,1	-4,2
Northern Cape									
Subsistence farming	6	4	12	5	7	2	1	40,0	16,7
Fetching water or collecting wood/dung	90	75	74	66	85	19	-5	28,8	-5,6
Produce other goods for household use		1	10	0	1	1			
Construction or major repairs to own or household	0	1	8	1	1	0	1	0,0	
Hunting or fishing for household use	0	0	9	1	4	3	4	300,0	
Involvement in at least one activity	93	79	98	69	91	22	-2	31,9	-2,2
Employed	11	10	17	12	16	4	5	33,3	45,5
Unemployed	18	9	19	14	15	1	-3	7,1	-16,7
Not economically active	63	59	61	44	60	16	-3	36,4	-4,8

For all values of 10 000 or lower the sample size is too small for reliable estimates.
Due to rounding, numbers do not necessarily add up to totals.

Table 7: Involvement in non-market activities and labour market status by province (continued)									
	Jan–Mar 2011	Apr–Jun 2011	Jul–Sep 2011	Oct–Dec 2011	Jan–Mar 2012	Qtr-to-Qtr change	Year-on- year change	Qtr-to- Qtr change	Year-on- year change
	Thousand	Thousand	Thousand	Thousand	Thousand	Thousand	Thousand	Per cent	Per cent
Free State									
Subsistence farming	106	114	85	84	118	34	12	40,5	11,3
Fetching water or collecting wood/dung	34	52	80	21	40	19	6	90,5	17,6
Produce other goods for household use	8	10	27	3	4	1	-4	33,3	-50,0
Construction or major repairs to own or household	19	19	36	10	7	-3	-12	-30,0	-63,2
Hunting or fishing for household use	19	13	29	8	14	6	-5	75,0	-26,3
Involvement in at least one activity	155	174	192	106	162	56	7	52,8	4,5
Employed	69	71	74	48	58	10	-11	20,8	-15,9
Unemployed	28	27	34	13	34	21	6	161,5	21,4
Not economically active	57	77	84	45	70	25	13	55,6	22,8
KwaZulu-Natal									
Subsistence farming	853	631	685	742	853	111	0	15,0	0,0
Fetching water or collecting wood/dung	1 269	1 308	1 396	1 269	1 350	81	81	6,4	6,4
Produce other goods for household use	28	42	106	47	66	19	38	40,4	135,7
Construction or major repairs to own or household	89	120	213	133	132	-1	43	-0,8	48,3
Hunting or fishing for household use	10	10	57	11	10	-1	0	-9,1	0,0
Involvement in at least one activity	1 684	1 604	1 831	1 605	1 754	149	70	9,3	4,2
Employed	378	367	459	390	398	8	20	2,1	5,3
Unemployed	141	168	167	209	236	27	95	12,9	67,4
Not economically active	1 164	1 068	1 206	1 005	1 121	116	-43	11,5	-3,7
North West									
Subsistence farming	83	89	106	75	76	1	-7	1,3	-8,4
Fetching water or collecting wood/dung	294	294	333	232	211	-21	-83	-9,1	-28,2
Produce other goods for household use	2	4	18	1	1	0	-1	0,0	-50,0
Construction or major repairs to own or household'	4	2	11	1	1	0	-3	0,0	-75,0
Hunting or fishing for household use	1	1	23	0	0	0	-1		-100,0
Involvement in at least one activity	333	337	425	274	253	-21	-80	-7,7	-24,0
Employed	50	53	85	39	40	1	-10	2,6	-20,0
Unemployed	60	74	73	41	46	5	-14	12,2	-23,3
Not economically active	223	210	266	193	166	-27	-57	-14,0	-25,6

For all values of 10 000 or lower the sample size is too small for reliable estimates.
 Due to rounding, numbers do not necessarily add up to totals.

Table 7: Involvement in non-market activities and labour market status by province (concluded)									
	Jan–Mar 2011	Apr–Jun 2011	Jul–Sep 2011	Oct–Dec 2011	Jan–Mar 2012	Qtr-to-Qtr change	Year-on- year change	Qtr-to- Qtr change	Year-on- year change
	Thousand	Thousand	Thousand	Thousand	Thousand	Thousand	Thousand	Per cent	Per cent
Gauteng									
Subsistence farming	21	2	115	34	10	-24	-11	-70,6	-52,4
Fetching water or collecting wood/dung	22	19	126	41	69	28	47	68,3	213,6
Produce other goods for household use	75	59	105	60	63	3	-12	5,0	-16,0
Construction or major repairs to own or household	35	20	96	12	16	4	-19	33,3	-54,3
Hunting or fishing for household use	1		74	3					
Involvement in at least one activity	142	97	435	136	151	15	9	11,0	6,3
Employed	89	65	220	93	83	-10	-6	-10,8	-6,7
Unemployed	17	12	91	17	20	3	3	17,6	17,6
Not economically active	36	21	124	26	47	21	11	80,8	30,6
Mpumalanga									
Subsistence farming	191	157	161	135	158	23	-33	17,0	-17,3
Fetching water or collecting wood/dung	238	290	325	257	305	48	67	18,7	28,2
Produce other goods for household use	57	42	57	24	30	6	-27	25,0	-47,4
Construction or major repairs to own or household	14	10	33	14	16	2	2	14,3	14,3
Hunting or fishing for household use	1	1	15	1	1	0	0	0,0	0,0
Involvement in at least one activity	396	392	473	358	409	51	13	14,2	3,3
Employed	84	86	116	74	93	19	9	25,7	10,7
Unemployed	119	110	114	88	97	9	-22	10,2	-18,5
Not economically active	193	196	243	195	219	24	26	12,3	13,5
Limpopo									
Subsistence farming	283	199	212	180	302	122	19	67,8	6,7
Fetching water or collecting wood/dung	1 061	1 141	1 181	1 218	1 165	-53	104	-4,4	9,8
Produce other goods for household use	6	2	42	4	2	-2	-4	-50,0	-66,7
Construction or major repairs to own or household	9	10	48	32	37	5	28	15,6	311,1
Hunting or fishing for household use	1	1	44	9	11	2	10	22,2	1000,0
Involvement in at least one activity	1 178	1 207	1 300	1 306	1 298	-8	120	-0,6	10,2
Employed	206	194	247	257	230	-27	24	-10,5	11,7
Unemployed	76	105	99	97	108	11	32	11,3	42,1
Not economically active	895	908	954	952	960	8	65	0,8	7,3

For all values of 10 000 or lower the sample size is too small for reliable estimates.
 Due to rounding, numbers do not necessarily add up to totals.

Appendix 2A: Sampling variability for labour force characteristics by sex						
	Oct–Dec 2011 CV	Jan–Mar 2012 CV	Estimate	Lower 95%	Upper 95%	P-value
Both sexes						
Population 15–64 yrs						
Labour Force	0,5	0,5	207	35	377	0,02
Employed	0,7	0,7	-75	-228	77	0,33
Formal sector (Non-agricultural)	1,0	1,0	-107	-253	39	0,15
Informal sector (Non-agricultural)	2,5	2,5	-28	-114	60	0,54
Agriculture	6,9	6,4	26	-29	81	0,36
Private households	3,2	3,4	33	-29	96	0,30
Unemployed	1,9	1,9	282	136	428	0,00
Not economically active	0,6	0,6	-91	-262	80	0,30
Discouraged work-seekers	2,8	3,0	20	-110	150	0,77
Other(not economically active)	0,6	0,7	-111	-261	40	0,15
Rates (%)						
Unemployment rate	1,7	1,8	1,3	0,6	2,0	0,0
Employed / population ratio (Absorption)	0,7	0,7	-0,4	-0,8	0,1	0,1
Labour force participation rate	0,5	0,5	0,4	-0,1	1,0	0,1
Women						
Population 15–64 yrs						
Labour Force	0,8	0,8	117	-1	236	0,05
Employed	1,0	1,0	-18	-114	77	0,71
Formal sector (Non-agricultural)	1,4	1,4	-38	-120	45	0,37
Informal sector (Non-agricultural)	3,4	3,7	-17	-71	37	0,54
Agriculture	8,6	8,9	15	-13	43	0,29
Private households	3,2	3,4	22	-31	74	0,42
Unemployed	2,4	2,2	136	31	240	0,01
Not economically active	0,7	0,7	-67	-186	52	0,27
Discouraged work-seekers	3,4	3,1	0	-85	86	0,99
Other(not economically active)	0,8	0,8	-68	-183	48	0,25
Rates (%)						
Unemployment rate	2,1	2,0	1,2	0,2	2,4	0,0
Employed / population ratio (Absorption)	1,0	1,0	-0,2	-0,8	0,4	0,5
Labour force participation rate	0,8	0,8	0,6	-0,2	1,3	0,1

Appendix 2A: Sampling variability for labour force characteristics by sex (concluded)						
	Oct–Dec 2011 CV	Jan–Mar 2012 CV	Estimate	Lower 95%	Upper 95%	P-value
Men						
Population 15–64 yrs						
Labour Force	0,6	0,6	89	-23	202	0,12
Employed	0,8	0,9	-57	-167	53	0,31
Formal sector (Non-agricultural)	1,1	1,1	-69	-181	42	0,22
Informal sector (Non-agricultural)	3,2	3,1	-11	-78	57	0,76
Agriculture	7,6	6,6	11	-31	53	0,61
Private households	6,1	6,7	12	-21	45	0,48
Unemployed	2,4	2,5	146	48	245	0,00
Not economically active	0,9	1,0	-23	-136	89	0,68
Discouraged work-seekers	3,5	3,9	20	-60	99	0,64
Other(not economically active)	1,0	1,0	-43	-140	55	0,39
Rates (%)						
Unemployment rate	2,3	2,4	1,3	0,4	2,2	0,0
Employed / population ratio (Absorption)	0,8	0,9	-0,5	-1,3	0,1	0,1
Labour force participation rate	0,6	0,6	0,3	-0,4	1,0	0,4

Appendix 2.1A: Sampling variability for labour force characteristics by population group						
	Oct-Dec 2011 CV	Jan-Mar 2012 CV	Estimate	Lower 95%	Upper 95%	P-value
South Africa						
Population 15–64 yrs						
Labour Force	0,5	0,5	207	35	377	0,02
Employed	0,7	0,7	-75	-228	77	0,33
Unemployed	1,9	1,9	282	136	428	0,00
Not economically active	0,6	0,6	-91	-262	80	0,30
Rates (%)						
Unemployment rate	1,8	1,7	1,3	0,6	2,0	0,00
Employed / population ratio (Absorption)	0,7	0,7	-0,4	-0,8	0,1	0,11
Labour force participation rate	0,5	0,5	0,4	-0,1	1,0	0,10
Black African						
Population 15–64 yrs						
Labour Force	0,7	0,7	179	23	334	0,03
Employed	1,0	0,9	-49	-185	86	0,47
Unemployed	2,1	2,1	228	92	364	0,00
Not economically active	0,8	0,7	-67	-222	89	0,40
Rates (%)						
Unemployment rate	1,9	1,9	1,4	0,5	2,2	0,00
Employed / population ratio (Absorption)	1,0	0,9	-0,4	-0,9	0,2	0,19
Labour force participation rate	0,7	0,7	0,5	-0,1	1,1	0,13
Coloured						
Population 15–64 yrs						
Labour Force	1,2	1,1	29	-16	75	0,21
Employed	1,6	1,5	-32	-85	20	0,23
Unemployed	4,4	5,0	62	22	102	0,00
Not economically active	2,2	1,9	-22	-67	24	0,36
Rates (%)						
Unemployment rate	1,6	4,7	2,8	0,9	4,8	0,01
Employed / population ratio (Absorption)	4,4	1,5	-1,2	-2,9	0,5	0,18
Labour force participation rate	2,2	1,1	0,8	-0,7	2,3	0,30

Appendix 2.1A: Sampling variability for labour force characteristics by population group (concluded)						
	Oct–Dec 2011 CV	Jan–Mar 2012 CV	Estimate	Lower 95%	Upper 95%	P-value
Indian/Asian						
Population 15–64 yrs						
Labour Force	2,8	2,5	18	-6	42	0,13
Employed	2,6	3,4	13	-12	37	0,32
Unemployed	22,4	18,1	6	-20	31	0,66
Not economically active	3,9	3,3	-14	-38	10	0,24
Rates (%)						
Unemployment rate	20,9	18,5	0,8	-3,7	5,2	0,74
Employed / population ratio (Absorption)	2,6	3,4	1,2	-1,5	3,7	0,41
Labour force participation rate	2,8	2,5	1,7	-0,9	4,2	0,19
White						
Population 15–64 yrs						
Labour Force	1,0	1,3	-20	-68	28	0,42
Employed	1,2	1,5	-7	-47	34	0,75
Unemployed	12,1	10,1	-14	-42	15	0,35
Not economically active	2,2	2,7	12	-37	60	0,64
Rates (%)						
Unemployment rate	11,9	10,1	-0,6	-1,9	0,7	0,37
Employed / population ratio (Absorption)	1,2	1,5	0,1	-1,3	1,3	0,96
Labour force participation rate	1,0	1,3	-0,5	-2,0	1,1	0,56

Appendix 2.2A: Sampling variability for labour force characteristics by province						
	Oct–Dec 2011 CV	Jan–Mar 2012 CV	Estimate	Lower 95%	Upper 95%	P-value
South Africa						
Population 15–64 yrs						
Labour Force	0,5	0,5	207	35	377	0,02
Employed	0,7	0,7	-75	-228	77	0,33
Unemployed	1,9	1,9	282	136	428	0,00
Not economically active	0,6	0,6	-91	-262	80	0,30
Discouraged work-seekers	2,8	3,0	20	-110	150	0,77
Other	0,6	0,7	-111	-261	40	0,15
Rates (%)						
Unemployment rate	1,7	1,8	1,3	0,6	2,0	0,00
Employed / population ratio (Absorption)	0,7	0,7	-0,4	-0,8	0,1	0,11
Labour force participation rate	0,5	0,5	0,4	-0,1	1,0	0,10
Western Cape						
Population 15–64 yrs						
Labour Force	1,0	1,0	44	-13	101	0,13
Employed	1,6	1,6	5	-46	56	0,85
Unemployed	4,0	4,2	39	-3	81	0,07
Not economically active	2,1	2,3	-31	-88	27	0,29
Discouraged work-seekers	16,8	18,3	-18	-33	-3	0,02
Other	2,1	2,3	-13	-67	41	0,64
Rates (%)						
Unemployment rate	4,0	4,1	1,2	-0,3	2,8	0,12
Employed / population ratio (Absorption)	1,6	1,6	-0,1	-1,5	1,4	0,93
Labour force participation rate	1,0	1,0	1,0	-0,7	2,7	0,23

Appendix 2.2A: Sampling variability for labour force characteristics by province (continued)						
	Oct–Dec 2011 CV	Jan–Mar 2012 CV	Estimate	Lower 95%	Upper 95%	P-value
Eastern Cape						
Population 15–64 yrs						
Labour Force	2,7	2,4	-38	-100	25	0,24
Employed	2,7	2,6	-47	-96	1	0,05
Unemployed	8,0	6,7	10	-42	62	0,70
Not economically active	2,0	1,8	50	-13	112	0,12
Discouraged work-seekers	8,1	6,5	46	-3	96	0,07
Other	2,1	1,7	2	-63	68	0,94
Rates (%)						
Unemployment rate	6,5	5,5	1,2	-1,2	3,5	0,34
Employed / population ratio (Absorption)	2,7	2,6	-1,2	-2,4	-0,1	0,04
Labour force participation rate	2,7	2,4	-1,0	-2,5	0,5	0,18
Northern Cape						
Population 15–64 yrs						
Labour Force	2,3	2,3	-15	-36	6	0,15
Employed	3,4	3,1	-5	-20	11	0,56
Unemployed	8,0	7,0	-11	-30	9	0,29
Not economically active	2,8	2,6	17	-3	38	0,10
Discouraged work-seekers	11,1	13,1	-5	-16	6	0,40
Other	3,3	2,6	23	4	41	0,02
Rates (%)						
Unemployment rate	7,4	6,4	-1,8	-5,9	2,5	0,43
Employed / population ratio (Absorption)	3,4	3,1	-0,8	-2,9	1,4	0,49
Labour force participation rate	2,3	2,3	-2,3	-5,1	0,6	0,12

Appendix 2.2A: Sampling variability for labour force characteristics by province (continued)						
	Oct-Dec 2011 CV	Jan-Mar 2012 CV	Estimate	Lower 95%	Upper 95%	P-value
Free State						
Population 15–64 yrs						
Labour Force	1,8	1,4	20	-20	59	0,33
Employed	2,0	2,1	-16	-49	17	0,34
Unemployed	4,1	4,1	36	3	69	0,04
Not economically active	2,3	2,0	-16	-55	24	0,43
Discouraged work-seekers	16,3	9,2	-18	-45	9	0,19
Other	2,5	2,3	2	-29	33	0,90
Rates (%)						
Unemployment rate	3,3	3,7	2,8	0,2	5,3	0,04
Employed / population ratio (Absorption)	2,0	2,1	-0,9	-2,7	0,8	0,30
Labour force participation rate	1,8	1,4	1,0	-1,2	3,0	0,38
KwaZulu-Natal						
Population 15–64 yrs						
Labour Force	1,7	1,9	-8	-103	88	0,88
Employed	1,7	2,2	-43	-116	31	0,26
Unemployed	5,3	5,0	35	-25	95	0,26
Not economically active	1,4	1,7	34	-61	129	0,48
Discouraged work-seekers	5,2	6,6	32	-50	114	0,44
Other	1,7	2,0	2	-83	86	0,97
Rates (%)						
Unemployment rate	4,6	4,5	1,2	-0,5	2,7	0,16
Employed / population ratio (Absorption)	1,7	2,2	-0,8	-1,8	0,3	0,16
Labour force participation rate	1,7	1,9	-0,3	-1,7	1,1	0,68

Appendix 2.2A: Sampling variability for labour force characteristics by province (continued)						
	Oct-Dec 2011 CV	Jan-Mar 2012 CV	Estimate	Lower 95%	Upper 95%	P-value
North West						
Population 15–64 yrs						
Labour Force	2,7	2,7	26	-10	61	0,15
Employed	2,7	2,6	4	-22	31	0,75
Unemployed	7,2	7,0	22	-13	56	0,21
Not economically active	2,2	2,3	-20	-55	16	0,27
Discouraged work-seekers	5,7	6,4	-11	-41	17	0,44
Other	2,6	2,6	-9	-29	13	0,43
Rates (%)						
Unemployment rate	5,8	5,5	1,6	-1,4	4,6	0,30
Employed / population ratio (Absorption)	2,7	2,6	0,1	-1,2	1,4	0,87
Labour force participation rate	2,7	2,7	1,1	-0,6	2,9	0,20
Gauteng						
Population 15–64 yrs						
Labour Force	1,0	0,9	103	17	189	0,02
Employed	1,2	1,7	25	-72	122	0,61
Unemployed	3,7	3,9	77	-14	170	0,10
Not economically active	2,2	2,1	-77	-163	9	0,08
Discouraged work-seekers	10,4	10,6	-16	-62	31	0,50
Other	2,0	2,1	-61	-137	15	0,12
Rates (%)						
Unemployment rate	3,3	3,9	0,9	-0,6	2,5	0,24
Employed / population ratio (Absorption)	1,2	1,7	0,2	-1,1	1,4	0,81
Labour force participation rate	1,0	0,9	1,1	0,0	2,2	0,06

Appendix 2.2A: Sampling variability for labour force characteristics by province (concluded)						
	Oct–Dec 2011 CV	Jan–Mar 2012 CV	Estimate	Lower 95%	Upper 95%	P-value
Mpumalanga						
Population 15–64 yrs						
Labour Force	1,7	2,2	33	-23	90	0,24
Employed	2,3	2,1	-10	-48	28	0,61
Unemployed	5,8	8,0	43	-4	91	0,08
Not economically active	2,0	2,7	-23	-80	33	0,42
Discouraged work-seekers	7,8	6,5	25	-10	61	0,16
Other	2,7	3,1	-48	-102	4	0,07
Rates (%)						
Unemployment rate	5,2	6,4	2,6	-0,2	5,4	0,07
Employed / population ratio (Absorption)	2,3	2,1	-0,5	-2,2	1,0	0,48
Labour force participation rate	1,7	2,2	1,2	-1,2	3,6	0,33
Limpopo						
Population 15–64 yrs						
Labour Force	3,0	3,0	41	-17	99	0,17
Employed	3,8	3,6	11	-35	56	0,64
Unemployed	7,9	7,5	30	-7	67	0,11
Not economically active	1,7	1,8	-25	-83	34	0,41
Discouraged work-seekers	6,7	7,6	-17	-64	31	0,49
Other	2,1	1,9	-8	-69	54	0,80
Rates (%)						
Unemployment rate	7,7	6,9	1,7	-0,7	4,2	0,17
Employed / population ratio (Absorption)	3,8	3,6	0,1	-1,2	1,5	0,80
Labour force participation rate	3,0	3,0	1,1	-0,7	2,8	0,24

Appendix 3.1A: Sampling variability for the employed by industry and sex						
	Oct–Dec 2011 CV	Jan–Mar 2012 CV	Estimate	Lower 95%	Upper 95%	P-value
Both sexes	0,7	0,7	-75	-228	77	0,33
Agriculture	6,9	6,4	26	-29	81	0,36
Mining	9,9	8,0	9	-28	46	0,64
Manufacturing	2,8	2,6	-67	-145	11	0,09
Utilities	10,6	11,3	10	-5	25	0,17
Construction	3,7	3,6	-71	-137	-3	0,04
Trade	2,2	2,1	-3	-105	100	0,96
Transport	3,9	3,6	-5	-59	49	0,85
Finance	2,8	3,1	2	-80	83	0,97
Community and social services	2,1	2,0	-11	-98	76	0,80
Private households	3,2	3,4	33	-29	96	0,30
Women	1,0	1,0	-18	-114	77	0,71
Agriculture	8,6	8,9	15	-13	43	0,29
Mining	16,3	14,1	9	-2	21	0,10
Manufacturing	4,7	4,1	-24	-72	25	0,34
Utilities	32,6	28,8	0	-5	6	0,90
Construction	8,5	8,6	-11	-30	7	0,23
Trade	2,7	2,6	-17	-84	50	0,62
Transport	7,6	6,7	-5	-26	17	0,68
Finance	3,8	4,2	5	-41	50	0,85
Community and social services	2,4	2,2	-14	-77	50	0,67
Private households	3,2	3,4	22	-31	74	0,42
Men	0,8	0,9	-57	-167	53	0,31
Agriculture	7,6	6,6	11	-31	53	0,61
Mining	10,1	8,4	-1	-31	30	0,96
Manufacturing	3,0	3,2	-43	-104	17	0,16
Utilities	12,7	12,6	10	-4	24	0,16
Construction	3,9	3,7	-59	-124	7	0,08
Trade	2,9	2,8	14	-65	93	0,72
Transport	4,2	4,2	0	-49	48	0,98
Finance	3,6	3,9	-3	-67	61	0,93
Community and social services	2,8	2,9	3	-51	56	0,93
Private households	6,1	6,7	12	-21	45	0,48

Appendix 3.2A: Sampling variability for the employed by province and sector						
	Oct–Dec 2011 CV	Jan–Mar 2012 CV	Estimate	Lower 95%	Upper 95%	P-value
South Africa	0,7	0,7	-75	-228	77	0,33
Formal sector (Non-agricultural)	1,0	1,0	-107	-253	39	0,15
Informal sector (Non-agricultural)	2,5	2,5	-28	-114	60	0,54
Agriculture	6,9	6,4	26	-29	81	0,36
Private households	3,2	3,4	33	-29	96	0,30
Western Cape	1,6	1,6	5	-46	56	0,85
Formal sector (Non-agricultural)	2,2	2,0	-20	-73	33	0,46
Informal sector (Non-agricultural)	8,5	8,5	-8	-37	20	0,58
Agriculture	11,8	12,8	33	15	51	0,00
Private households	7,2	8,2	0	-12	12	1,00
Eastern Cape	2,7	2,6	-47	-96	1	0,05
Formal sector (Non-agricultural)	3,6	4,1	-51	-100	-2	0,04
Informal sector (Non-agricultural)	6,4	7,4	36	1	70	0,05
Agriculture	20,1	18,3	-17	-40	6	0,16
Private households	12,8	11,2	-16	-34	3	0,10
Northern Cape	3,4	3,1	-5	-20	11	0,56
Formal sector (Non-agricultural)	5,5	5,2	8	-11	27	0,42
Informal sector (Non-agricultural)	13,8	18,0	-1	-12	8	0,76
Agriculture	10,7	7,8	-8	-23	7	0,28
Private households	13,8	12,8	-3	-9	3	0,38
Free State	2,0	2,1	-16	-49	17	0,34
Formal sector (Non-agricultural)	2,7	2,9	-16	-38	5	0,13
Informal sector (Non-agricultural)	7,0	5,6	-17	-33	0	0,05
Agriculture	9,1	11,2	10	-5	25	0,18
Private households	8,7	6,7	7	-7	20	0,32
KwaZulu-Natal	1,7	2,2	-43	-116	31	0,26
Formal sector (Non-agricultural)	2,9	2,7	-28	-96	41	0,43
Informal sector (Non-agricultural)	6,0	5,6	-49	-87	-10	0,01
Agriculture	18,1	21,3	-4	-22	15	0,69
Private households	8,2	8,6	38	10	64	0,01

Appendix 3.2A: Sampling variability for the employed by province and sector (concluded)						
	Oct–Dec 2011 CV	Jan–Mar 2012 CV	Estimate	Lower 95%	Upper 95%	P-value
North West	2,7	2,6	4	-22	31	0,75
Formal sector (Non-agricultural)	3,7	3,5	-5	-34	24	0,73
Informal sector (Non-agricultural)	8,8	9,9	3	-11	17	0,71
Agriculture	21,5	18,2	8	2	14	0,01
Private households	11,6	10,3	-1	-9	7	0,78
Gauteng	1,2	1,7	25	-72	122	0,61
Formal sector (Non-agricultural)	1,8	2,0	16	-74	105	0,73
Informal sector (Non-agricultural)	5,6	6,1	1	-45	44	0,98
Agriculture	29,9	36,7	-2	-27	23	0,87
Private households	6,7	7,6	13	-32	57	0,59
Mpumalanga	2,3	2,1	-10	-48	28	0,61
Formal sector (Non-agricultural)	3,9	3,8	-7	-40	25	0,65
Informal sector (Non-agricultural)	6,0	7,5	-8	-33	17	0,52
Agriculture	13,0	13,4	8	-2	17	0,11
Private households	9,3	6,8	-1	-20	17	0,86
Limpopo	3,8	3,6	11	-35	56	0,64
Formal sector (Non-agricultural)	4,5	5,1	-3	-38	32	0,87
Informal sector (Non-agricultural)	6,1	5,8	17	-14	49	0,28
Agriculture	30,6	19,7	-2	-29	25	0,89
Private households	10,6	10,9	-2	-12	8	0,72

Appendix 3.3A: Sampling variability for the employed by sex and occupation						
	Oct–Dec 2011 CV	Jan–Mar 2012 CV	Estimate	Lower 95%	Upper 95%	P-value
Both sexes	0,7	0,7	-75	-228	77	0,33
Manager	3,1	3,7	-28	-87	31	0,35
Professional	4,5	4,2	2	-68	73	0,94
Technician	2,7	2,5	34	-28	97	0,28
Clerk	2,5	2,5	-104	-173	-33	0,00
Sales and services	2,3	2,3	9	-73	91	0,83
Skilled agriculture	12,2	12,4	-6	-22	10	0,49
Craft and related trade	2,7	3,6	-32	-110	45	0,41
Plant and machine operator	3,0	3,1	-20	-87	48	0,57
Elementary	2,1	2,1	50	-54	154	0,35
Domestic worker	3,3	3,3	18	-35	71	0,51
Women	1,0	1,0	-18	-114	77	0,71
Manager	5,7	6,0	17	-19	52	0,37
Professional	5,6	5,0	-22	-62	18	0,27
Technician	3,6	3,3	16	-32	64	0,51
Clerk	3,0	3,0	-79	-130	-27	0,00
Sales and services	3,1	2,9	26	-27	80	0,33
Skilled agriculture	22,3	22,5	1	-10	12	0,84
Craft and related trade	7,2	7,0	2	-26	30	0,89
Plant and machine operator	8,3	8,7	-22	-47	1	0,06
Elementary	2,9	2,9	15	-50	81	0,65
Domestic worker	3,3	3,3	28	-24	80	0,30
Men	0,8	0,9	-57	-167	53	0,31
Manager	3,7	3,9	-45	-96	7	0,09
Professional	5,2	5,8	25	-19	68	0,27
Technician	3,8	4,1	18	-25	62	0,41
Clerk	4,3	4,3	-24	-66	17	0,25
Sales and services	3,1	3,2	-18	-80	44	0,58
Skilled agriculture	12,7	14,3	-6	-18	4	0,23
Craft and related trade	2,8	4,0	-35	-109	40	0,37
Plant and machine operator	3,3	3,1	3	-58	64	0,92
Elementary	2,8	2,7	35	-48	117	0,41
Domestic worker	17,4	18,7	-10	-24	4	0,17

Appendix 2B: Sampling variability for labour force characteristics by sex						
	Jan–Mar 2011 CV	Jan–Mar 2012 CV	Estimate	Lower 95%	Upper 95%	P-value
Both sexes						
Population 15–64 yrs						
Labour Force	0,6	0,5	466	189	743	0,00
Employed	0,7	0,7	304	30	576	0,03
Formal sector (Non-agricultural)	1,0	1,0	290	13	567	0,04
Informal sector (Non-agricultural)	2,1	2,5	-73	-214	69	0,32
Agriculture	6,0	6,4	53	-54	159	0,33
Private households	3,3	3,4	33	-71	138	0,53
Unemployed	2,0	1,9	162	-81	405	0,19
Not economically active	0,7	0,6	6	-271	283	0,96
Discouraged work-seekers	2,9	3,0	112	-80	304	0,25
Other(not economically active)	0,7	0,7	-106	-358	147	0,41
Rates (%)						
Unemployment rate	1,8	1,8	0,2	-1,0	1,5	0,69
Employed / population ratio (Absorption)	0,7	0,7	0,3	-0,5	1,2	0,43
Labour force participation rate	0,6	0,5	0,6	-0,2	1,5	0,14
Women						
Population 15–64 yrs						
Labour Force	0,9	0,8	241	54	428	0,01
Employed	1,1	1,0	214	39	388	0,02
Formal sector (Non-agricultural)	1,5	1,4	241	82	400	0,00
Informal sector (Non-agricultural)	3,1	3,7	-58	-143	27	0,18
Agriculture	7,7	8,9	5	-42	53	0,83
Private households	3,5	3,4	25	-58	109	0,55
Unemployed	2,5	2,2	28	-119	174	0,71
Not economically active	0,8	0,7	-35	-223	151	0,71
Discouraged work-seekers	3,6	3,1	46	-73	165	0,45
Other(not economically active)	0,9	0,8	-82	-260	96	0,37
Rates (%)						
Unemployment rate	2,2	2,0	-0,5	-2,1	1,1	0,55
Employed / population ratio (Absorption)	1,1	1,0	0,8	-0,2	1,9	0,11
Labour force participation rate	0,9	0,8	0,9	-0,3	2,0	0,14

Appendix 2B: Sampling variability for labour force characteristics by sex (concluded)						
	Jan–Mar 2011 CV	Jan–Mar 2012 CV	Estimate	Lower 95%	Upper 95%	P-value
Men						
Population 15–64 yrs						
Labour Force	0,6	0,6	225	60	389	0,01
Employed	0,8	0,9	90	-89	268	0,32
Formal sector (Non-agricultural)	1,3	1,1	49	-135	233	0,60
Informal sector (Non-agricultural)	2,8	3,1	-15	-119	89	0,78
Agriculture	6,5	6,6	48	-28	123	0,22
Private households	6,4	6,7	8	-40	56	0,74
Unemployed	2,3	2,5	135	-14	283	0,08
Not economically active	1,0	1,0	43	-122	207	0,62
Discouraged work-seekers	3,6	3,9	66	-44	176	0,24
Other(not economically active)	1,0	1,0	-24	-172	125	0,75
Rates (%)						
Unemployment rate	2,2	2,4	0,9	-0,6	2,3	0,24
Employed / population ratio (Absorption)	0,8	0,9	-0,2	-1,4	0,9	0,69
Labour force participation rate	0,6	0,6	0,4	-0,7	1,4	0,46

Appendix 2.1B: Sampling variability for labour force characteristics by population group						
	Jan–Mar 2011 CV	Jan–Mar 2012 CV	Estimate	Lower 95%	Upper 95%	P-value
South Africa						
Population 15–64 yrs						
Labour Force	0,6	0,5	466	189	743	0,00
Employed	0,7	0,7	304	30	576	0,03
Unemployed	2,0	1,9	162	-81	405	0,19
Not economically active	0,7	0,6	6	-271	283	0,96
Rates (%)						
Unemployment rate	1,8	1,8	0,2	-1,0	1,5	0,69
Employed / population ratio (Absorption)	0,7	0,7	0,3	-0,5	1,2	0,43
Labour force participation rate	0,6	0,5	0,6	-0,2	1,5	0,14
Black African						
Population 15–64 yrs						
Labour Force	0,7	0,7	452	187	716	0,00
Employed	0,9	1,0	312	64	560	0,01
Unemployed	2,2	2,1	139	-93	372	0,24
Not economically active	0,8	0,8	3	-261	268	0,98
Rates (%)						
Unemployment rate	1,9	1,9	0,1	-1,5	1,6	0,94
Employed / population ratio (Absorption)	0,9	1,0	0,6	-0,4	1,5	0,25
Labour force participation rate	0,7	0,7	0,8	-0,2	1,9	0,11
Coloured						
Population 15–64 yrs						
Labour Force	1,1	1,2	24	-36	86	0,43
Employed	1,7	1,6	-7	-72	57	0,83
Unemployed	5,7	4,4	32	-30	94	0,31
Not economically active	1,9	2,2	9	-52	71	0,76
Rates (%)						
Unemployment rate	5,4	3,9	1,3	-1,6	4,3	0,37
Employed / population ratio (Absorption)	1,7	1,6	-0,8	-2,9	1,3	0,46
Labour force participation rate	1,1	1,2	0,1	-1,9	2,1	0,93

Appendix 2.1B: Sampling variability for labour force characteristics by population group (concluded)						
	Jan–Mar 2011 CV	Jan–Mar 2012 CV	Estimate	Lower 95%	Upper 95%	P-value
Indian/Asian						
Population 15–64 yrs						
Labour Force	2,3	2,8	3	-35	40	0,88
Employed	3,0	2,6	16	-21	53	0,40
Unemployed	17,6	22,4	-13	-44	19	0,42
Not economically active	3,4	3,9	14	-24	51	0,49
Rates (%)						
Unemployment rate	17,2	20,9	-2,4	-7,9	3,1	0,39
Employed / population ratio (Absorption)	3,0	2,6	0,8	-3,2	4,8	0,70
Labour force participation rate	2,3	2,8	-0,7	-4,8	3,3	0,73
White						
Population 15–64 yrs						
Labour Force	1,6	1,0	-13	-92	65	0,74
Employed	1,8	1,2	-17	-98	64	0,68
Unemployed	11,1	12,1	4	-40	47	0,87
Not economically active	3,4	2,2	-20	-99	59	0,62
Rates (%)						
Unemployment rate	11,0	11,9	0,2	-1,8	2,3	0,84
Employed / population ratio (Absorption)	1,8	1,2	0,1	-2,5	2,8	0,92
Labour force participation rate	1,6	1,0	0,3	-2,3	2,8	0,82

Appendix 2.2B: Sampling variability for labour force characteristics by province						
	Jan–Mar 2011 CV	Jan–Mar 2012 CV	Estimate	Lower 95%	Upper 95%	P-value
South Africa						
Population 15–64 yrs						
Labour Force	0,6	0,5	466	189	743	0,00
Employed	0,7	0,7	304	30	576	0,03
Unemployed	2,0	1,9	162	-81	405	0,19
Not economically active	0,7	0,6	6	-271	283	0,96
Discouraged work-seekers	2,9	3,0	112	-80	304	0,25
Other	0,7	0,7	-106	-358	147	0,41
Rates (%)						
Unemployment rate	1,8	1,8	0,2	-1,0	1,5	0,69
Employed / population ratio (Absorption)	0,7	0,7	0,3	-0,5	1,2	0,43
Labour force participation rate	0,6	0,5	0,6	-0,2	1,5	0,14
Western Cape						
Population 15–64 yrs						
Labour Force	1,3	1,0	98	27	170	0,01
Employed	1,8	1,6	63	-19	145	0,13
Unemployed	5,7	4,2	36	-38	108	0,34
Not economically active	2,7	2,3	-45	-116	27	0,22
Discouraged work-seekers	28,7	18,3	9	-6	24	0,25
Other	2,8	2,3	-53	-126	19	0,15
Rates (%)						
Unemployment rate	5,3	4,1	0,6	-2,4	3,5	0,71
Employed / population ratio (Absorption)	1,8	1,6	1,0	-1,4	3,4	0,41
Labour force participation rate	1,3	1,0	1,9	-0,3	3,9	0,09

Appendix 2.2B: Sampling variability for labour force characteristics by province (continued)						
	Jan–Mar 2011 CV	Jan–Mar 2012 CV	Estimate	Lower 95%	Upper 95%	P-value
Eastern Cape						
Population 15–64 yrs						
Labour Force	2,3	2,4	-29	-140	82	0,61
Employed	2,4	2,6	-46	-136	44	0,31
Unemployed	4,9	6,7	17	-60	94	0,66
Not economically active	1,7	1,8	77	-34	187	0,17
Discouraged work-seekers	7,7	6,5	31	-41	105	0,39
Other	2,2	1,7	45	-60	150	0,40
Rates (%)						
Unemployment rate	3,9	5,5	1,4	-2,2	5,0	0,44
Employed / population ratio (Absorption)	2,4	2,6	-1,5	-3,6	0,7	0,18
Labour force participation rate	2,3	2,4	-1,2	-3,8	1,5	0,38
Northern Cape						
Population 15–64 yrs						
Labour Force	1,9	2,3	1	-24	26	0,93
Employed	2,5	3,1	25	2	48	0,03
Unemployed	7,0	7,0	-24	-45	-3	0,03
Not economically active	2,2	2,6	7	-18	32	0,58
Discouraged work-seekers	13,8	13,1	-4	-17	9	0,56
Other	2,6	2,6	11	-12	34	0,35
Rates (%)						
Unemployment rate	5,9	6,4	-6,4	-11,2	-1,5	0,01
Employed / population ratio (Absorption)	2,5	3,1	3,0	-0,2	6,3	0,06
Labour force participation rate	1,9	2,3	-0,4	-3,9	3,1	0,80

Appendix 2.2B: Sampling variability for labour force characteristics by province (continued)						
	Jan–Mar 2011 CV	Jan–Mar 2012 CV	Estimate	Lower 95%	Upper 95%	P-value
Free State						
Population 15–64 yrs						
Labour Force	1,4	1,4	5	-42	52	0,84
Employed	2,1	2,1	-43	-90	5	0,08
Unemployed	4,7	4,1	48	4	91	0,03
Not economically active	1,9	2,0	9	-38	56	0,70
Discouraged work-seekers	9,8	9,2	-18	-41	5	0,13
Other	2,0	2,3	27	-23	77	0,29
Rates (%)						
Unemployment rate	4,3	3,7	4,3	0,6	7,9	0,02
Employed / population ratio (Absorption)	2,1	2,1	-2,6	-5,1	0,0	0,05
Labour force participation rate	1,4	1,4	-0,2	-2,7	2,3	0,89
KwaZulu-Natal						
Population 15–64 yrs						
Labour Force	2,0	1,9	119	-62	300	0,20
Employed	2,0	2,2	90	-64	244	0,25
Unemployed	7,1	5,0	29	-80	138	0,60
Not economically active	1,7	1,7	-11	-191	171	0,91
Discouraged work-seekers	5,0	6,6	-13	-113	89	0,81
Other	1,9	2,0	2	-180	184	0,99
Rates (%)						
Unemployment rate	6,1	4,5	0,2	-2,9	3,2	0,92
Employed / population ratio (Absorption)	2,0	2,2	0,8	-1,5	3,0	0,52
Labour force participation rate	2,0	1,9	1,0	-1,7	3,7	0,45

Appendix 2.2B: Sampling variability for labour force characteristics by province (continued)						
	Jan–Mar 2011 CV	Jan–Mar 2012 CV	Estimate	Lower 95%	Upper 95%	P-value
North West						
Population 15–64 yrs						
Labour Force	3,1	2,7	-9	-86	68	0,82
Employed	4,1	2,6	-18	-89	54	0,63
Unemployed	6,3	7,0	9	-41	58	0,73
Not economically active	2,8	2,3	33	-44	110	0,40
Discouraged work-seekers	7,8	6,4	73	31	115	0,00
Other	2,6	2,6	-40	-103	24	0,22
Rates (%)						
Unemployment rate	6,3	5,5	1,2	-3,5	5,8	0,63
Employed / population ratio (Absorption)	4,1	2,6	-1,2	-4,8	2,2	0,48
Labour force participation rate	3,1	2,7	-1,0	-4,8	2,8	0,60
Gauteng						
Population 15–64 yrs						
Labour Force	1,1	0,9	129	-9	266	0,07
Employed	1,3	1,7	141	-26	308	0,10
Unemployed	4,0	3,9	-13	-170	146	0,88
Not economically active	2,7	2,1	-18	-155	119	0,80
Discouraged work-seekers	12,2	10,6	-26	-128	77	0,62
Other	2,6	2,1	8	-116	131	0,90
Rates (%)						
Unemployment rate	3,4	3,9	-0,9	-3,5	1,8	0,54
Employed / population ratio (Absorption)	1,3	1,7	1,1	-1,1	3,2	0,33
Labour force participation rate	1,1	0,9	0,7	-1,1	2,4	0,47

Appendix 2.2B: Sampling variability for labour force characteristics by province (concluded)						
	Jan–Mar 2011 CV	Jan–Mar 2012 CV	Estimate	Lower 95%	Upper 95%	P-value
Mpumalanga						
Population 15–64 yrs						
Labour Force	1,8	2,2	43	-34	120	0,28
Employed	2,2	2,1	36	-16	87	0,18
Unemployed	6,6	8,0	7	-78	92	0,87
Not economically active	2,1	2,7	-3	-80	74	0,94
Discouraged work-seekers	8,1	6,5	49	0	97	0,05
Other	2,8	3,1	-52	-125	21	0,16
Rates (%)						
Unemployment rate	5,5	6,4	-0,5	-5,7	4,8	0,86
Employed / population ratio (Absorption)	2,2	2,1	0,9	-1,3	3,1	0,44
Labour force participation rate	1,8	2,2	0,9	-2,4	4,2	0,59
Limpopo						
Population 15–64 yrs						
Labour Force	3,3	3,0	109	0	219	0,05
Employed	3,6	3,6	56	-45	156	0,28
Unemployed	7,7	7,5	54	8	100	0,02
Not economically active	1,8	1,8	-44	-154	66	0,43
Discouraged work-seekers	4,9	7,6	9	-65	83	0,81
Other	1,9	1,9	-54	-153	46	0,29
Rates (%)						
Unemployment rate	6,9	6,9	2,6	-0,9	6,0	0,14
Employed / population ratio (Absorption)	3,6	3,6	1,1	-1,9	4,1	0,47
Labour force participation rate	3,3	3,0	2,6	-0,7	5,8	0,13

Appendix 3.1B: Sampling variability for the employed by industry and sex						
	Jan–Mar 2011 CV	Jan–Mar 2012 CV	Estimate	Lower 95%	Upper 95%	P-value
Both sexes	0,7	0,7	304	30	576	0,03
Agriculture	6,0	6,4	53	-54	159	0,33
Mining	8,1	8,0	23	-43	90	0,49
Manufacturing	3,0	2,6	-81	-222	60	0,26
Utilities	10,4	11,3	-6	-35	24	0,70
Construction	3,5	3,6	-45	-141	51	0,36
Trade	2,3	2,1	95	-93	283	0,32
Transport	4,1	3,6	56	-23	135	0,17
Finance	3,0	3,1	110	-44	264	0,16
Community and social services	2,1	2,0	63	-106	232	0,47
Private households	3,3	3,4	33	-71	138	0,53
Women	1,1	1,0	214	39	388	0,02
Agriculture	7,7	8,9	5	-42	53	0,83
Mining	11,4	14,1	6	-8	21	0,37
Manufacturing	5,3	4,1	-72	-154	11	0,09
Utilities	19,2	28,8	-17	-31	-3	0,02
Construction	8,5	8,6	-1	-25	22	0,90
Trade	2,8	2,6	55	-50	158	0,31
Transport	8,9	6,7	32	1	64	0,04
Finance	4,2	4,2	86	-1	174	0,05
Community and social services	2,3	2,2	94	-12	201	0,08
Private households	3,5	3,4	25	-58	109	0,55
Men	0,8	0,9	90	-89	268	0,32
Agriculture	6,5	6,6	48	-28	123	0,22
Mining	8,8	8,4	17	-45	79	0,59
Manufacturing	3,2	3,2	-9	-113	94	0,86
Utilities	12,7	12,6	11	-15	37	0,40
Construction	3,6	3,7	-43	-135	49	0,35
Trade	2,9	2,8	41	-89	171	0,53
Transport	4,4	4,2	24	-48	95	0,52
Finance	3,7	3,9	24	-81	128	0,66
Community and social services	3,1	2,9	-31	-134	72	0,55
Private households	6,4	6,7	8	-40	56	0,74

Appendix 3.2B: Sampling variability for the employed by province and sector						
	Jan–Mar 2011 CV	Jan–Mar 2012 CV	Estimate	Lower 95%	Upper 95%	P-value
South Africa	0,7	0,7	304	30	576	0,03
Formal sector (Non-agricultural)	1,0	1,0	290	13	567	0,04
Informal sector (Non-agricultural)	2,1	2,5	-73	-214	69	0,32
Agriculture	6,0	6,4	53	-54	159	0,33
Private households	3,3	3,4	33	-71	138	0,53
Western Cape	1,8	1,6	63	-19	145	0,13
Formal sector (Non-agricultural)	2,5	2,0	69	-17	154	0,11
Informal sector (Non-agricultural)	7,3	8,5	-24	-62	14	0,22
Agriculture	11,8	12,8	6	-29	42	0,73
Private households	9,7	8,2	12	-17	40	0,42
Eastern Cape	2,4	2,6	-46	-136	44	0,31
Formal sector (Non-agricultural)	3,6	4,1	-12	-113	89	0,81
Informal sector (Non-agricultural)	5,7	7,4	28	-26	81	0,31
Agriculture	26,5	18,3	-17	-56	21	0,38
Private households	10,9	11,2	-44	-79	-9	0,01
Northern Cape	2,5	3,1	25	2	48	0,03
Formal sector (Non-agricultural)	4,5	5,2	34	10	58	0,01
Informal sector (Non-agricultural)	14,1	18,0	-2	-16	11	0,69
Agriculture	11,3	7,8	-6	-22	8	0,39
Private households	9,7	12,8	0	-7	9	0,85
Free State	2,1	2,1	-43	-90	5	0,08
Formal sector (Non-agricultural)	2,3	2,9	-23	-63	17	0,26
Informal sector (Non-agricultural)	7,5	5,6	-31	-53	-9	0,01
Agriculture	13,2	11,2	10	-14	33	0,41
Private households	10,1	6,7	2	-21	24	0,90
KwaZulu-Natal	2,0	2,2	90	-64	244	0,25
Formal sector (Non-agricultural)	2,7	2,7	57	-73	187	0,39
Informal sector (Non-agricultural)	4,6	5,6	-2	-71	68	0,97
Agriculture	19,0	21,3	-17	-71	37	0,54
Private households	5,9	8,6	51	4	97	0,03

Appendix 3.2B: Sampling variability for the employed by province and sector (concluded)						
	Jan-Mar 2011 CV	Jan-Mar 2012 CV	Estimate	Lower 95%	Upper 95%	P-value
North West	4,1	2,6	-18	-89	54	0,63
Formal sector (Non-agricultural)	6,3	3,5	-20	-99	59	0,62
Informal sector (Non-agricultural)	10,0	9,9	3	-23	27	0,86
Agriculture	23,1	18,2	1	-21	23	0,93
Private households	11,3	10,3	-1	-16	15	0,91
Gauteng	1,3	1,7	141	-26	308	0,10
Formal sector (Non-agricultural)	1,9	2,0	134	-54	322	0,16
Informal sector (Non-agricultural)	5,1	6,1	-47	-123	31	0,24
Agriculture	37,1	36,7	28	-25	80	0,31
Private households	6,6	7,6	26	-43	95	0,47
Mpumalanga	2,2	2,1	36	-16	87	0,18
Formal sector (Non-agricultural)	3,0	3,8	13	-34	59	0,59
Informal sector (Non-agricultural)	6,8	7,5	-2	-37	34	0,92
Agriculture	10,4	13,4	12	-10	34	0,28
Private households	8,1	6,8	13	-4	29	0,13
Limpopo	3,6	3,6	56	-45	156	0,28
Formal sector (Non-agricultural)	4,7	5,1	39	-38	116	0,32
Informal sector (Non-agricultural)	5,7	5,8	4	-40	49	0,84
Agriculture	9,6	19,7	36	1	73	0,04
Private households	16,4	10,9	-25	-60	10	0,16

Appendix 3.3B: Sampling variability for the employed by sex and occupation						
	Jan–Mar 2011 CV	Jan–Mar 2012 CV	Estimate	Lower 95%	Upper 95%	P-value
Both sexes	0,7	0,7	304	30	576	0,03
Manager	3,7	3,0	-34	-142	73	0,53
Professional	4,5	5,6	-3	-111	106	0,97
Technician	2,7	2,7	71	-37	180	0,20
Clerk	3,3	2,7	78	-29	186	0,15
Sales and services	2,9	2,4	65	-78	210	0,37
Skilled agriculture	11,8	16,8	-14	-40	13	0,32
Craft and related trade	2,4	2,5	-16	-124	92	0,77
Plant and machine operator	3,2	3,0	-28	-121	66	0,56
Elementary	2,1	2,1	162	-8	332	0,06
Domestic worker	3,6	3,3	19	-66	103	0,66
Women	1,1	1,0	214	39	388	0,02
Manager	6,2	5,0	-4	-60	52	0,89
Professional	5,6	6,3	-7	-62	47	0,79
Technician	3,4	3,1	43	-33	119	0,26
Clerk	3,4	2,9	56	-20	131	0,15
Sales and services	3,6	3,1	86	7	167	0,03
Skilled agriculture	19,3	30,7	0	-16	16	0,98
Craft and related trade	8,3	7,1	-15	-57	26	0,47
Plant and machine operator	8,3	7,9	-35	-71	1	0,06
Elementary	2,9	2,7	60	-33	154	0,21
Domestic worker	3,6	3,4	29	-55	113	0,50
Men	0,8	0,9	90	-89	268	0,32
Manager	3,8	3,9	-30	-112	52	0,47
Professional	6,1	6,0	6	-65	76	0,89
Technician	3,9	3,9	28	-39	96	0,41
Clerk	5,9	4,7	24	-39	85	0,46
Sales and services	3,6	3,3	-21	-124	82	0,69
Skilled agriculture	13,1	15,8	-13	-32	4	0,14
Craft and related trade	2,7	2,7	-1	-109	108	0,99
Plant and machine operator	3,3	3,3	7	-74	89	0,86
Elementary	2,6	2,6	102	-18	221	0,10
Domestic worker	18,1	19,3	-10	-27	6	0,23