



stats sa

Department:
Statistics South Africa
REPUBLIC OF SOUTH AFRICA

Private Bag X44, Pretoria, 0001, South Africa, ISibalo House, Koch Street, Salvokop, Pretoria, 0002
www.statssa.gov.za, info@statssa.gov.za, Tel +27 12 310 8911

STATISTICAL RELEASE

P0142.7

Export and Import Unit Value Indices

February 2026

A new analytical index series – *Imports excluding crude, coke oven and refined petroleum products* – is included in Table B and the Excel time series file with effect from this statistical release.

Embargoed until:
9 April 2026
10:00

ENQUIRIES:
Andrew Rankhumise
Tel: 060 996 3240

FORTHCOMING ISSUE:
March 2026

EXPECTED RELEASE DATE:
14 May 2026

Contents

Key findings as at February 2026	2
Exports.....	2
Imports.....	2
Key figures and analytical series.....	3
Table A – Key figures	3
Table B – Analytical series	3
Detailed results	4
Main index numbers and rates of change (percentage).....	4
Table C – Exports.....	4
Table D – Imports	4
Detailed index numbers and rates of change and contributions.....	6
Table 1 – Exports	6
Table 2 – Imports.....	8
Explanatory notes.....	10
Glossary	10
General information.....	11

Key findings as at February 2026

Exports

The unit value index (UVI) for exported commodities shows an annual rate of change of 7,7% in February 2026. From January 2026 to February 2026 the UVI for exported commodities increased by 2,4% – see Table A.

The main positive contributor to the annual rate of 7,7% was metal products, machinery and equipment (23,2% and contributing 11,0 percentage points) – see Table 1 and Figure 4.1.

The main positive contributor to the monthly increase of 2,4% was metal products, machinery and equipment (4,6% and contributing 2,4 percentage points) – see Table 1 and Figure 4.2.

Imports

The UVI for imported commodities shows an annual rate of change of -8,8% in February 2026. From January 2026 to February 2026 the UVI for imported commodities decreased by 1,8% – see Table A.

The negative contributors to the annual rate of -8,8% were:

- other transportable goods (-11,3% and contributing -4,1 percentage points);
- crude petroleum (-26,3% and contributing -1,5 percentage points);
- food products (-21,2% and contributing -1,4 percentage points); and
- metal products, machinery and equipment (-2,9% and contributing -1,4 percentage points) – see Table 2 and Figure 5.1.

The main negative contributors to the monthly decrease of 1,8% were metal products, machinery and equipment (-1,8% and contributing -0,9 of a percentage point) and other transportable goods (-1,9% and contributing -0,7 of a percentage point) – see Table 2 and Figure 5.2.

Key figures and analytical series

Table A – Key figures

Product	Weight	Index (Dec 2024=100)			% change	
		Feb 2025	Jan 2026	Feb 2026	Feb 2026 vs. Jan 2026	Feb 2026 vs. Feb 2025
Exports	100,00	99,6	104,8	107,3	2,4	7,7
Imports	100,00	102,7	95,4	93,7	-1,8	-8,8

Table B – Analytical series

Product	Weight	Index (Dec 2024=100)			% change	
		Feb 2025	Jan 2026	Feb 2026	Feb 2026 vs. Jan 2026	Feb 2026 vs. Feb 2025
Exports excluding gold	91,37	99,6	102,2	104,9	2,6	5,3
Exports excluding ores and minerals	77,19	100,0	110,6	113,3	2,4	13,3
Exports excluding basic metals	73,63	100,2	96,4	96,4	0,0	-3,8
Imports excluding crude petroleum	94,33	102,4	96,7	95,0	-1,8	-7,2
Imports excluding crude, coke oven and refined petroleum products ¹	78,13	..	98,1	96,8	-1,3	..

¹ As this is a new index, there is no value for February 2025 and therefore no annual percentage change.


 Risenga Maluleke
 Statistician-General

Detailed results

Main index numbers and rates of change (percentage)

Table C – Exports

Base: Dec 2024=100

Year and type	Jan	Feb	Mar	Apr	May	Jun	Jul	Aug	Sep	Oct	Nov	Dec	Average ¹	
2024	Index	100,1	100,2	99,0	100,6	99,8	100,8	100,2	100,1	98,9	98,3	100,1	100,0	99,8
	Rate m/m	0,0	0,2	-1,2	1,6	-0,8	1,1	-0,6	-0,2	-1,2	-0,6	1,8	-0,1	..
	Rate y/y	-1,7	-3,6	-4,8	-1,9	-3,3	-0,1	2,3	1,3	-2,2	-3,9	-0,2	-0,1	-1,5
2025	Index	100,1	99,6	100,1	102,2	99,6	100,4	101,3	101,8	103,3	103,7	104,8	104,5	101,8
	Rate m/m	0,1	-0,5	0,5	2,1	-2,5	0,8	0,9	0,5	1,5	0,4	1,1	-0,3	..
	Rate y/y	0,0	-0,6	1,1	1,6	-0,2	-0,4	1,1	1,7	4,4	5,5	4,7	4,5	2,0
2026	Index	104,8	107,3
	Rate m/m	0,3	2,4
	Rate y/y	4,7	7,7

Table D – Imports

Base: Dec 2024=100

Year and type	Jan	Feb	Mar	Apr	May	Jun	Jul	Aug	Sep	Oct	Nov	Dec	Average ¹	
2024	Index	104,0	104,3	105,6	105,9	105,3	105,0	104,7	104,5	101,8	99,6	99,6	100,0	103,4
	Rate m/m	-0,9	0,3	1,2	0,3	-0,6	-0,2	-0,4	-0,1	-2,6	-2,1	0,0	0,4	..
	Rate y/y	4,4	4,3	4,3	3,3	2,2	0,4	0,8	0,8	-3,4	-7,2	-7,2	-4,7	-0,3
2025	Index	102,3	102,7	103,1	104,0	103,3	101,4	101,2	100,6	100,3	99,4	98,6	97,8	101,2
	Rate m/m	2,3	0,4	0,4	0,9	-0,7	-1,8	-0,2	-0,6	-0,3	-0,9	-0,8	-0,8	..
	Rate y/y	-1,6	-1,5	-2,4	-1,8	-1,9	-3,4	-3,3	-3,7	-1,5	-0,2	-1,0	-2,2	-2,1
2026	Index	95,4	93,7
	Rate m/m	-2,5	-1,8
	Rate y/y	-6,7	-8,8

¹ Annual average.

Figure 1 – Export and import unit value indices

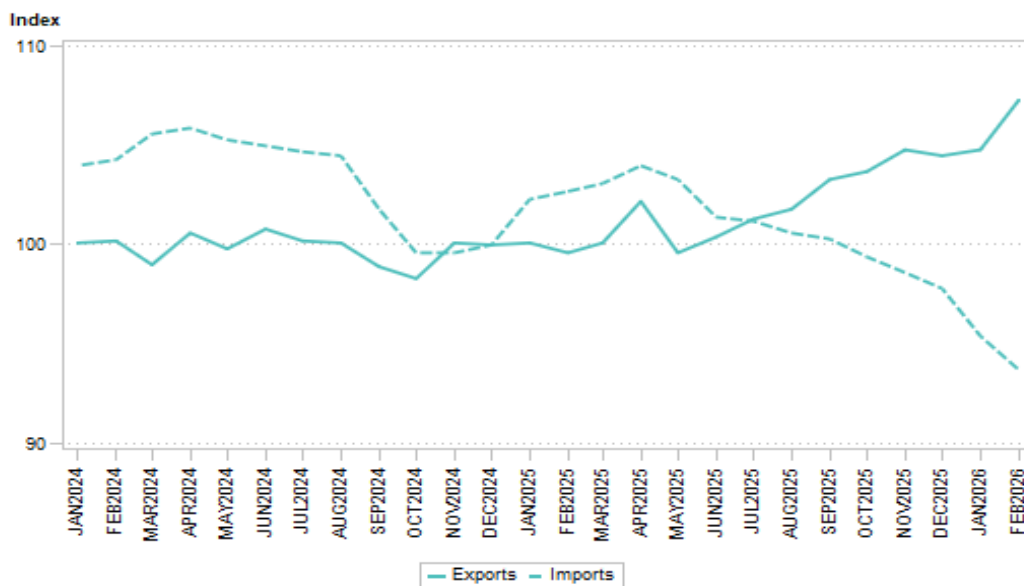


Figure 2 – Export UVI rates of change (percentage)

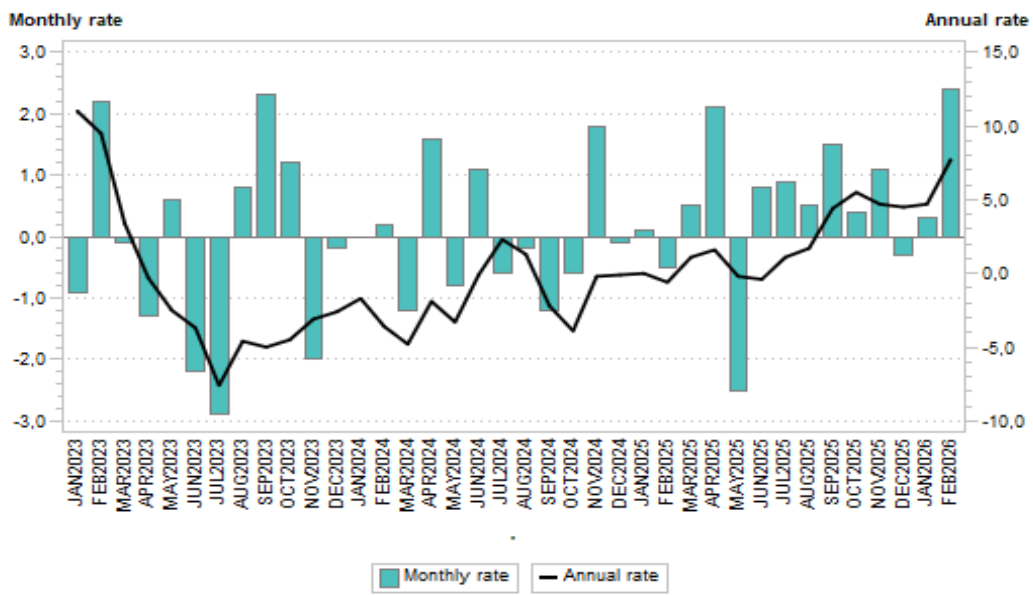
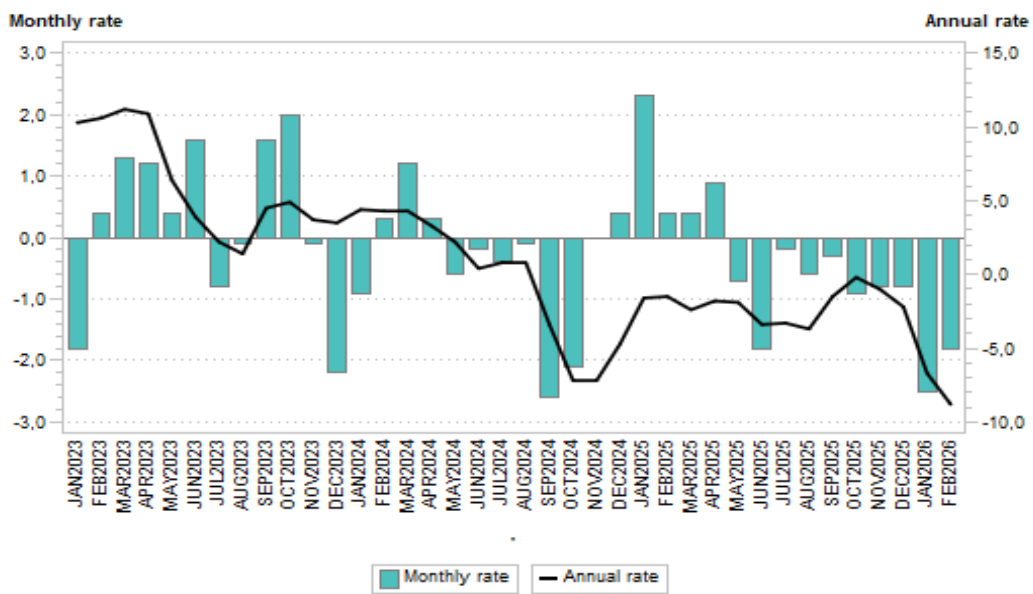


Figure 3 – Import UVI rates of change (percentage)



Detailed index numbers and rates of change and contributions

Table 1 – Exports

Product	Weight	Index (Dec 2024=100)			% change	
		Feb 2025	Jan 2026	Feb 2026	Feb 2026 vs. Jan 2026	Feb 2026 vs. Feb 2025
All items	100,00	99,6	104,8	107,3	2,4	7,7
Agriculture	7,38	103,4	96,2	93,4	-2,9	-9,7
Ores and minerals	22,81	98,3	85,7	87,4	2,0	-11,1
Coal	5,37	96,2	78,2	79,2	1,3	-17,7
Metal ores	17,44	99,1	88,6	90,6	2,3	-8,6
Iron ores and concentrates	6,01	101,9	87,8	85,3	-2,8	-16,3
Non-ferrous metal ores and concentrates	11,43	97,5	89,1	93,5	4,9	-4,1
Beverages	7,37	100,6	106,2	104,2	-1,9	3,6
Other transportable goods, except metal products, machinery and equipment	14,96	100,2	99,2	98,2	-1,0	-2,0
Coke oven and refined petroleum products	3,90	103,0	103,0	100,3	-2,6	-2,6
Basic chemicals	5,47	99,5	88,0	88,6	0,7	-11,0
Other chemical products	4,17	97,9	103,9	101,5	-2,3	3,7
Rubber and plastic products	1,42	99,5	116,5	117,1	0,5	17,7
Metal products, machinery and equipment	47,48	99,4	117,1	122,5	4,6	23,2
Basic metals	26,37	97,8	128,5	137,8	7,2	40,9
Basic iron and steel	2,23	86,2	87,2	83,6	-4,1	-3,0
Products of iron or steel	1,07	98,6	88,0	90,4	2,7	-8,3
Basic precious metals and metals clad with precious metals	19,40	99,9	143,0	157,8	10,3	58,0
Other semi-finished metal products	3,67	101,9	116,6	108,6	-6,9	6,6
Fabricated metal products	1,09	100,4	94,6	100,3	6,0	-0,1
General purpose machinery	2,36	104,1	106,6	106,9	0,3	2,7
Special purpose machinery	1,91	102,5	123,2	123,1	-0,1	20,1
Transport equipment: motor vehicles	13,83	100,4	103,7	104,0	0,3	3,6
Other machinery and equipment	1,92	103,6	77,7	78,2	0,6	-24,5

Figure 4.1 – Contributions to the annual percentage change in exports

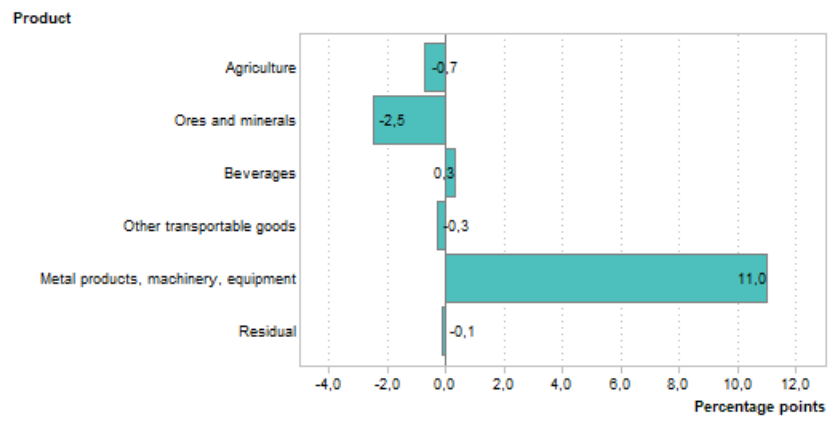


Figure 4.2 – Contributions to the monthly percentage change in exports

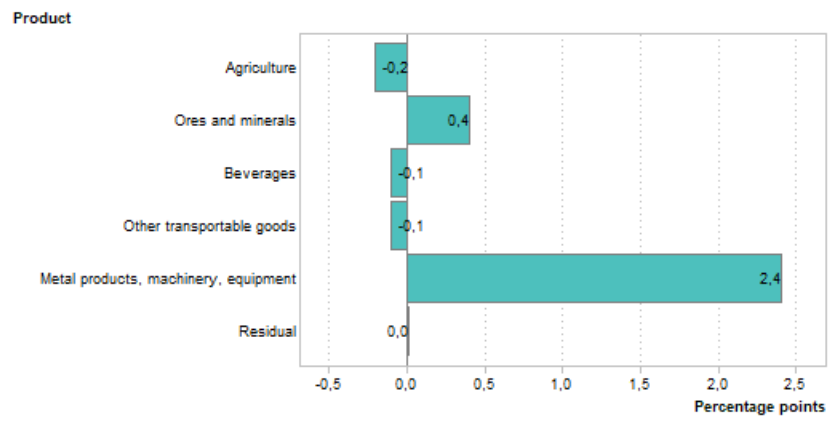


Table 2 – Imports

Product	Weight	Index (Dec 2024=100)			% change	
		Feb 2025	Jan 2026	Feb 2026	Feb 2026 vs. Jan 2026	Feb 2026 vs. Feb 2025
All items	100,00	102,7	95,4	93,7	-1,8	-8,8
Crude petroleum	5,67	106,5	80,6	78,5	-2,6	-26,3
Food products	6,66	101,4	81,1	79,9	-1,5	-21,2
Fats and oils	3,35	102,0	85,8	82,4	-4,0	-19,2
Grain mill products	3,31	100,8	76,2	77,1	1,2	-23,5
Clothing and footwear	5,09	96,0	97,8	97,2	-0,6	1,3
Clothing	3,34	94,7	96,6	95,9	-0,7	1,3
Footwear	1,75	98,5	100,1	99,7	-0,4	1,2
Other transportable goods, except metal products, machinery and equipment	35,88	103,1	93,2	91,4	-1,9	-11,3
Paper and paperboard	1,63	108,0	93,1	89,3	-4,1	-17,3
Coke oven and refined petroleum products	16,20	104,3	93,3	89,6	-4,0	-14,1
Basic chemicals	6,87	101,8	92,0	89,5	-2,7	-12,1
Pharmaceutical and other chemical products	7,85	100,8	92,1	95,1	3,3	-5,7
Pharmaceutical products	3,60	101,8	93,9	104,8	11,6	2,9
Other chemical products	4,25	99,9	90,7	86,6	-4,5	-13,3
Rubber and plastic products	3,16	102,5	97,1	95,6	-1,5	-6,7
Other transportable goods	0,17	101,0	113,8	115,6	1,6	14,5
Metal products, machinery and equipment	46,70	102,8	101,6	99,8	-1,8	-2,9
Basic metals	4,57	105,1	86,5	82,9	-4,2	-21,1
Fabricated metal products, except machinery and equipment	1,94	99,5	88,3	87,0	-1,5	-12,6
General purpose machinery	6,53	102,6	102,0	101,1	-0,9	-1,5
Special purpose machinery	6,79	104,4	104,7	104,3	-0,4	-0,1
Machinery for mining, quarrying and construction and parts thereof	2,99	105,3	105,3	103,8	-1,4	-1,4
Agricultural or forestry machinery and parts thereof	0,76	99,3	123,4	122,6	-0,6	23,5
Other machinery and parts thereof	3,04	105,0	99,2	99,8	0,6	-5,0
Office, accounting and computing machinery	3,15	101,8	97,1	99,0	2,0	-2,8
Electrical machinery and apparatus	4,77	102,3	131,2	124,0	-5,5	21,2
Radio, television and communication equipment and apparatus	5,75	103,0	95,5	93,6	-2,0	-9,1
Medical appliances, precision and optical instruments, watches and clocks	3,05	103,4	100,4	99,1	-1,3	-4,2
Transport equipment	10,15	101,2	100,2	99,1	-1,1	-2,1
Vehicles	9,58	101,3	100,3	99,2	-1,1	-2,1
Bodies and parts of vehicles	0,57	99,4	98,8	98,7	-0,1	-0,7

Figure 5.1 – Contributions to the annual percentage change in imports

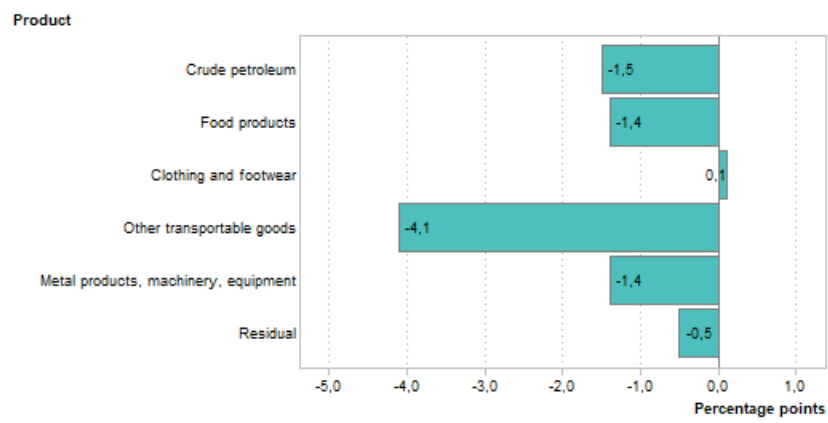
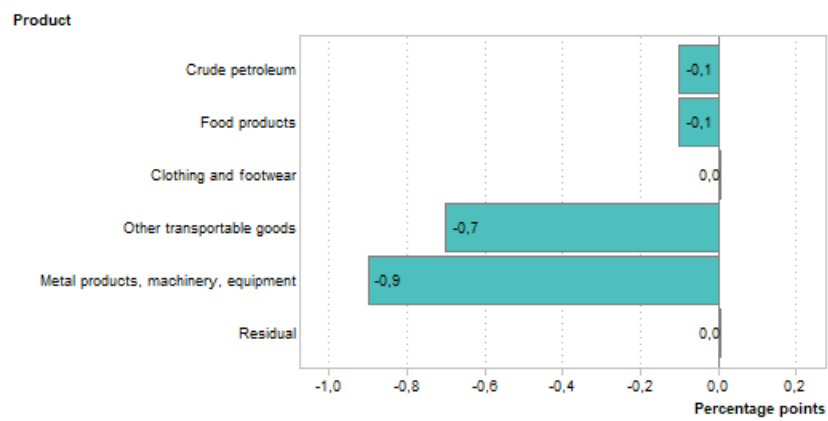


Figure 5.2 – Contributions to the monthly percentage change in imports



Explanatory notes

Purpose and results	The unit value index provides information on the trends in import and export unit values that are weighted with quantities of the current reference period. The calculation of unit value indices of commodities in exports and imports covers transactions reported by the South African Revenue Service (SARS). The results are used to compile export and import unit value indices, which are a measure of changes in export prices of locally produced commodities and changes in prices of imported commodities. Further information can be found in the XMUVI sources and methods document which can be accessed on the Statistics South Africa (Stats SA) website: https://www.statssa.gov.za/?page_id=16474 .
Source	South African Revenue Service (SARS).
Gold	<p>The export unit value index for gold is calculated from net gold values and quantities obtained quarterly from the South African Reserve Bank (SARB).</p> <p>The index changes quarterly and is published in this publication with a one-quarter lag (e.g. the November 2013 gold value and quantity will only be included in the December 2013 publication).</p>

Glossary

Chain linking	The construction of a continuous price series by multiplying together price indices that have been using different weights for different periods. The resulting index is referred to as a chained index (<i>Practical Guide to Producing Consumer Price Indices, 2009</i>). Linking is intended to ensure that the individual indices on all levels show the correct development through time, but leads to non-additivity (IMF, 2005).
Contributions	The contribution (percentage points) of a sub-index to the percentage change in the total index for a given period is calculated by multiplying the difference (i.e. change) in the sub-index by its weight and then dividing by the previous period's total index. In the case of annual percentage changes, the contributions are approximations owing to annual changes in weights.
Percentage change	The percentage change in an index for any given period is the change between that period's index value and the previous period's index value expressed as a percentage of the latter.

General information

Stats SA publishes approximately 300 different statistical releases each year. It is not economically viable to produce them in more than one of South Africa's 12 official languages. Since the releases are used extensively locally and by international economic and social-scientific communities, Stats SA releases are published in English only.

Stats SA has a copyright on this publication. Users may apply the information as they wish, provided that they acknowledge Stats SA as the source of the basic data wherever they process, apply, utilise, publish or distribute the data; and also that they specify that the relevant application and analysis (where applicable) result from their own processing of the data.

Advance release calendar

An advance release calendar is disseminated on www.statssa.gov.za.

Forthcoming issues

Issue	Expected release date
March 2026	14 May 2026
April 2026	11 June 2026
May 2026	9 July 2026

Stats SA products

A complete set of Stats SA publications is available at the Stats SA Library and the following libraries:

National Library of South Africa, Pretoria Division
 National Library of South Africa, Cape Town Division
 Natal Society Library, Pietermaritzburg
 Library of Parliament, Cape Town
 Bloemfontein Public Library
 Johannesburg Public Library
 Eastern Cape Library Services, Qonce
 Central Regional Library, Polokwane
 Central Reference Library, Mbombela
 Central Reference Collection, Kimberley
 Central Reference Library, Mmabatho

Stats SA also provides a subscription service.

Electronic services

A large range of data are available via online services. For more details about our electronic data services, contact (012) 310 8600.

You can visit us on the internet at: www.statssa.gov.za.

Enquiries

Technical enquiries	Andrew Rankhumise 060 996 3240
General enquiries	(012) 310 8600 / 8390 / 8351 / 4892 / 8496 / 8095 (user information services)
Email address	andrewr@statssa.gov.za (technical enquiries) info@statssa.gov.za (user information services)
Postal address	Private Bag X44, Pretoria, 0001

Produced by Stats SA