



**stats sa**

Department:  
Statistics South Africa  
**REPUBLIC OF SOUTH AFRICA**

Private Bag X44, Pretoria, 0001, South Africa, ISibalo House, Koch Street, Salvokop, Pretoria, 0002  
www.statssa.gov.za, info@statssa.gov.za, Tel +27 12 310 8911

## **STATISTICAL RELEASE**

### **P0044**

# Quarterly financial statistics (QFS)

Quarter ended December 2025

Embargoed until:  
31 March 2026  
09:00

ENQUIRIES:  
Richard Klaas  
Tel: 067 415 9760

FORTHCOMING ISSUE:  
Quarter ended March 2026

EXPECTED RELEASE DATE:  
30 June 2026



## Contents

<b>Key findings for the quarter ended December 2025</b> .....	<b>2</b>
Table A – Turnover by industry and percentage change .....	3
Table B – Turnover by industry and percentage contribution.....	3
Table C – Closing inventories by industry and percentage change .....	4
Figure 1 – Percentage contribution to total turnover by industry in the quarters ended September 2025 and December 2025 .....	5
Figure 2 – Comparison of turnover by industry in the quarters ended September 2025 and December 2025 .....	6
Figure 3 – Comparison of turnover by industry in the quarters ended December 2024 and December 2025.....	7
Figure 4 – Quarterly turnover of all industries covered by the QFS survey from June 2017 to December 2025 .....	8
Table 1 – Selected income and expenditure items: All industries covered by the QFS survey .....	9
Table 2 – Selected income and expenditure items: Mining and quarrying industry .....	11
Table 3 – Selected income and expenditure items: Manufacturing industry .....	13
Table 4 – Selected income and expenditure items: Electricity, gas and water supply industry .....	15
Table 5 – Selected income and expenditure items: Construction industry .....	17
Table 6 – Selected income and expenditure items: Trade industry .....	19
Table 7 – Selected income and expenditure items: Transport, storage and communication industry .....	21
Table 8 – Selected income and expenditure items: Real estate and other business services industry (excluding financial intermediation and insurance).....	23
Table 9 – Selected income and expenditure items: Community, social and personal services industry (excluding government and educational institutions).....	25
Table 10 – Comparison of selected operating ratios between September 2025 and December 2025.....	27
<b>Technical notes</b> .....	<b>29</b>
Table D – Estimates of turnover by industry within 95% confidence limits: September 2025 .....	29
Table E – Estimates of turnover by industry within 95% confidence limits: December 2025.....	29
Table F – DTIC cut-off points (adjusted by Statistics South Africa (Stats SA) for QFS) .....	30
<b>Explanatory notes</b> .....	<b>31</b>
<b>Glossary</b> .....	<b>36</b>
<b>General information</b> .....	<b>39</b>
<b>Technical enquiries</b> .....	<b>39</b>

## Key findings for the quarter ended December 2025

***The total turnover of quarterly financial statistics (QFS) industries<sup>1</sup> in the fourth quarter of 2025 was estimated at R3 918 699 million (R3,92 trillion), an increase of 4,9% compared with the third quarter of 2025 (R3 735 838 million or R3,74 trillion).***

Between the third and fourth quarters of 2025, turnover increased in seven of the eight industries covered by the survey. The largest percentage increase in turnover was recorded in mining and quarrying (+15,4%), followed by transport, storage and communication (+10,1%), trade (+5,9%), manufacturing (+3,5%), construction (+3,2%), real estate and other business services (excluding financial intermediation and insurance) (+1,8%) and community, social and personal services (excluding government and educational institutions) (+1,3%). A decrease was recorded in electricity, gas and water supply (-12,7%).

Total closing inventories at the end of the fourth quarter of 2025 were estimated at R1 439 486 million, a decrease of 3,0% compared with R1 484 709 million at the end of the third quarter of 2025. Decreases were recorded in trade (-8,8%), community, social and personal services (excluding government and educational institutions) (-7,4%), transport, storage and communication (-6,5%), construction (-4,3%) and manufacturing (-0,7%). Increases were recorded in electricity, gas and water supply (+7,8%), mining and quarrying (+4,6%) and real estate and other business services (excluding financial intermediation and insurance) (+4,3%).

Turnover was estimated at R3 918 699 million in the fourth quarter of 2025, an increase of 7,4% compared with R3 647 303 million in the fourth quarter of 2024. Seven of the eight industries covered by the survey reflected annual increases. The largest percentage increase in turnover was recorded in mining and quarrying (+23,0%), followed by transport, storage and communication (+13,6%), construction (+10,9%), manufacturing (+9,4%), trade (+4,3%), community, social and personal services (excluding government and educational institutions) (+3,0%) and real estate and other business services (excluding financial intermediation and insurance) (+2,7%). A decrease was recorded in electricity, gas and water supply (-6,6%).

<sup>1</sup> All industries in the South African economy, excluding agriculture, financial intermediation, insurance, government and educational institutions.



**Risenga Maluleke**  
**Statistician-General**

**Table A – Turnover by industry and percentage change**

Industry	Turnover December 2024	Turnover September 2025	Turnover December 2025	Difference between December 2025 and September 2025	Difference between December 2025 and December 2024
	R million	R million	R million	%	%
Mining and quarrying	275 282	293 212	338 467	15,4	23,0
Manufacturing	1 057 640	1 118 278	1 157 009	3,5	9,4
Electricity, gas and water supply	127 668	136 588	119 223	-12,7	-6,6
Construction	89 785	96 548	99 613	3,2	10,9
Trade	1 331 046	1 311 672	1 388 687	5,9	4,3
Transport, storage and communication	266 629	275 064	302 807	10,1	13,6
Real estate and other business services, excluding financial intermediation and insurance	403 464	407 044	414 221	1,8	2,7
Community, social and personal services, excluding government and educational institutions	95 789	97 432	98 672	1,3	3,0
<b>All industries</b>	<b>3 647 303</b>	<b>3 735 838</b>	<b>3 918 699</b>	<b>4,9</b>	<b>7,4</b>

**Table B – Turnover by industry and percentage contribution<sup>1</sup>**

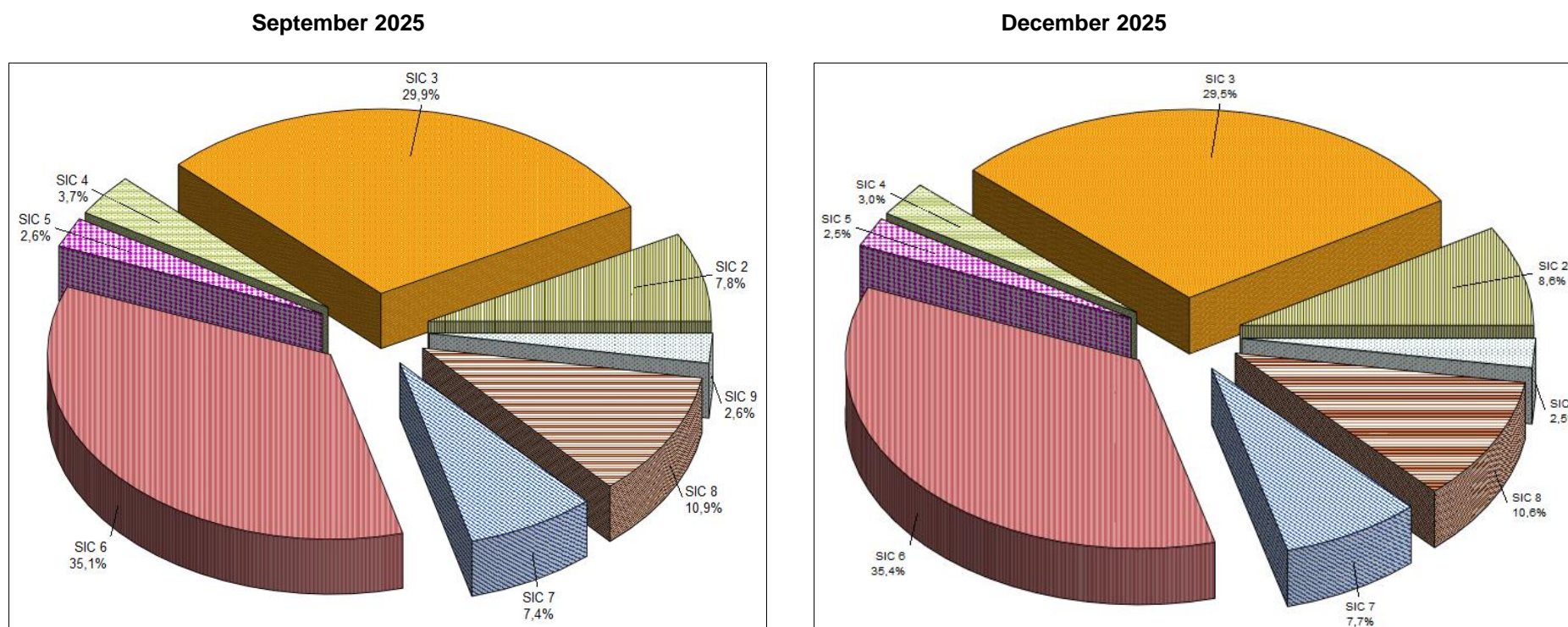
Industry	September 2025		December 2025	
	R million	% of total turnover	R million	% of total turnover
Mining and quarrying	293 212	7,8	338 467	8,6
Manufacturing	1 118 278	29,9	1 157 009	29,5
Electricity, gas and water supply	136 588	3,7	119 223	3,0
Construction	96 548	2,6	99 613	2,5
Trade	1 311 672	35,1	1 388 687	35,4
Transport, storage and communication	275 064	7,4	302 807	7,7
Real estate and other business services, excluding financial intermediation and insurance	407 044	10,9	414 221	10,6
Community, social and personal services, excluding government and educational institutions	97 432	2,6	98 672	2,5
<b>All industries</b>	<b>3 735 838</b>	<b>100,0</b>	<b>3 918 699</b>	<b>100,0</b>

<sup>1</sup> The aggregates of the SIC contributions may not add up to totals due to rounding-off.

**Table C – Closing inventories by industry and percentage change**

Industry	Inventories September 2025	Inventories December 2025	Difference between December 2025 and September 2025
	R million	R million	%
Mining and quarrying	176 367	184 484	4,6
Manufacturing	600 787	596 637	-0,7
Electricity, gas and water supply	50 626	54 580	7,8
Construction	27 873	26 670	-4,3
Trade	583 543	532 246	-8,8
Transport, storage and communication	21 958	20 540	-6,5
Real estate and other business services, excluding financial intermediation and insurance	21 437	22 368	4,3
Community, social and personal services, excluding government and educational institutions	2 118	1 961	-7,4
<b>All industries</b>	<b>1 484 709</b>	<b>1 439 486</b>	<b>-3,0</b>

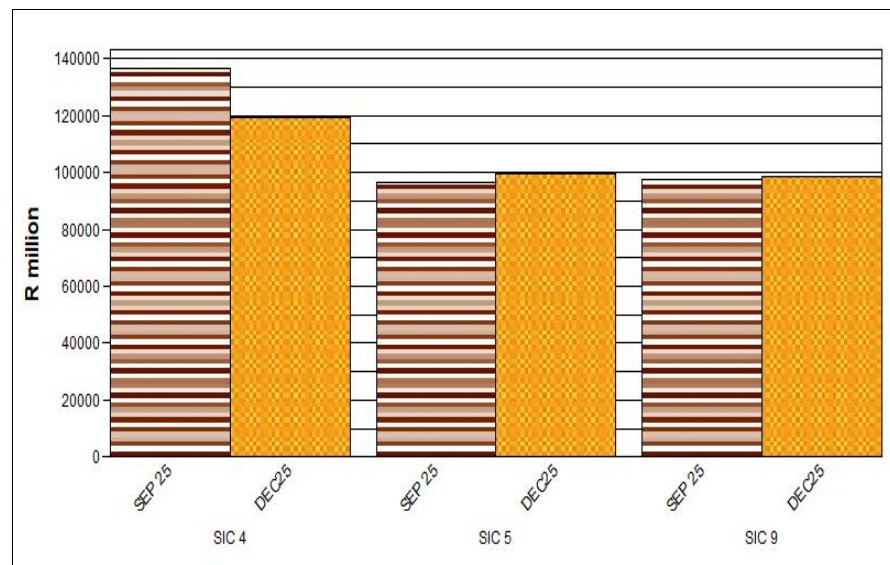
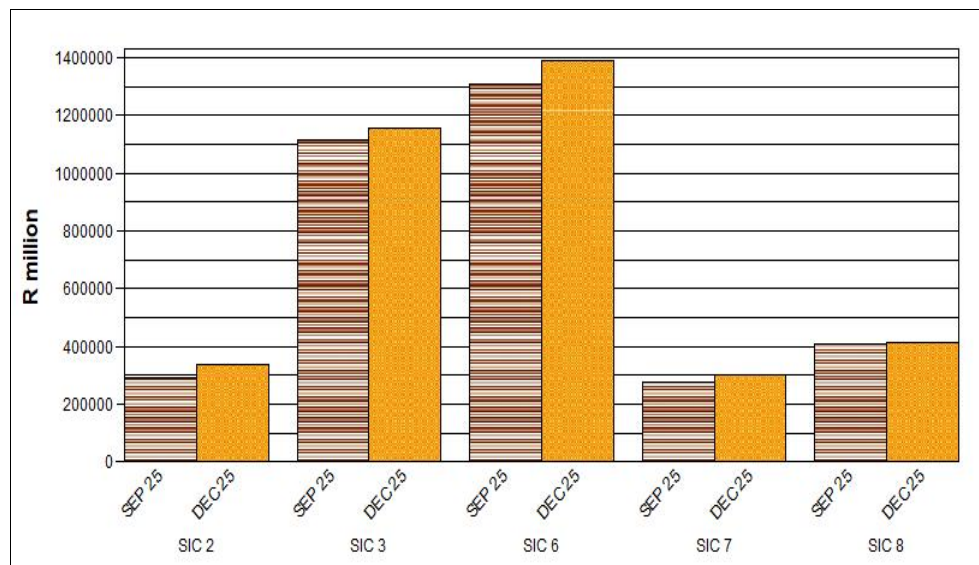
**Figure 1 – Percentage contribution to total turnover by industry in the quarters ended September 2025 and December 2025<sup>1</sup>**



- SIC 2 – Mining and quarrying industry**
- SIC 3 – Manufacturing industry**
- SIC 4 – Electricity, gas and water supply industry**
- SIC 5 – Construction industry**
- SIC 6 – Trade industry**
- SIC 7 – Transport, storage and communication industry**
- SIC 8 – Real estate and other business services industry (excluding financial intermediation and insurance)**
- SIC 9 – Community, social and personal services industry (excluding government and educational institutions)**

<sup>1</sup> The aggregates of the SIC contributions may not add up to totals due to rounding-off.

**Figure 2 – Comparison of turnover by industry in the quarters ended September 2025 and December 2025**



**SIC 2 – Mining and quarrying industry**

**SIC 3 – Manufacturing industry**

**SIC 6 – Trade industry**

**SIC 7 – Transport, storage and communication industry**

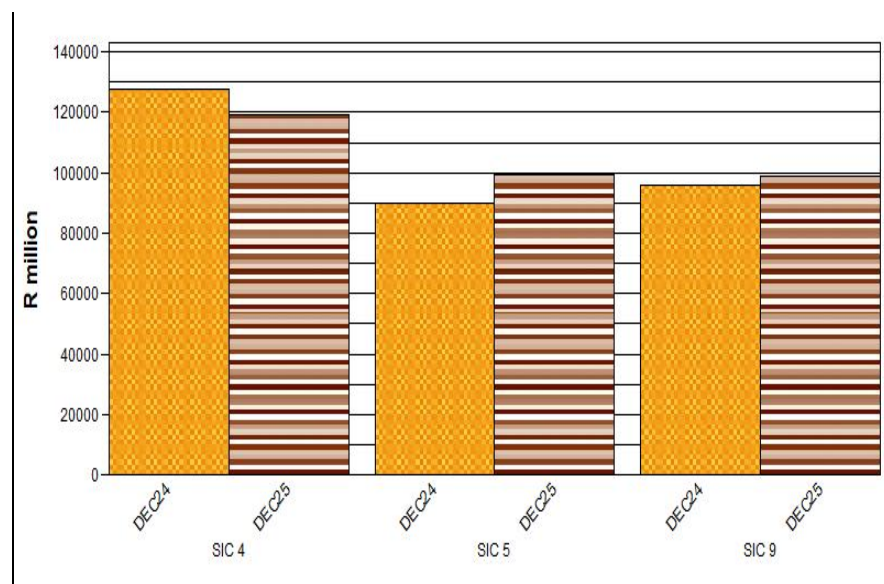
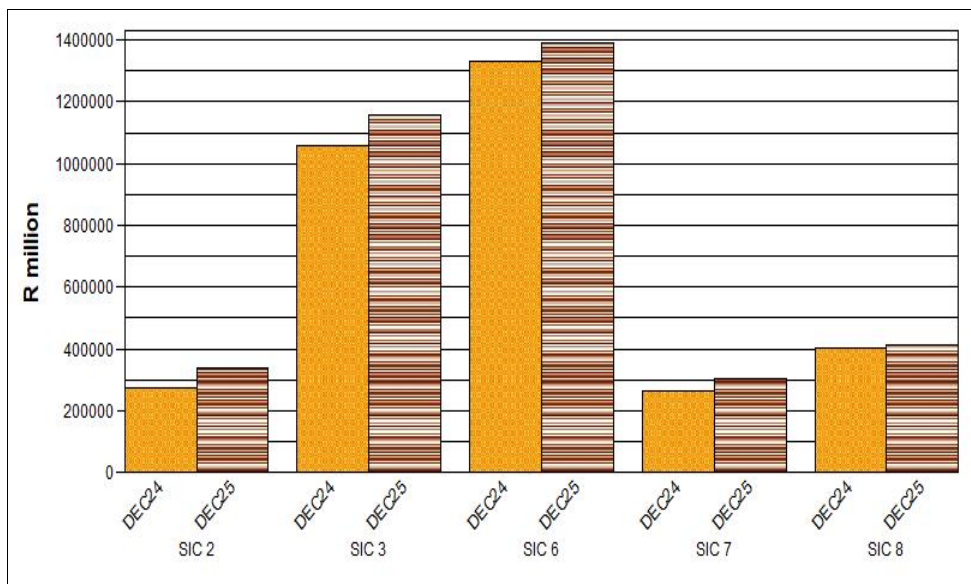
**SIC 8 – Real estate and other business services industry (excluding financial intermediation and insurance)**

**SIC 4 – Electricity, gas and water supply industry**

**SIC 5 – Construction industry**

**SIC 9 – Community, social and personal services industry (excluding government and educational institutions)**

**Figure 3 – Comparison of turnover by industry in the quarters ended December 2024 and December 2025**



**SIC 2 – Mining and quarrying industry**

**SIC 3 – Manufacturing industry**

**SIC 6 – Trade industry**

**SIC 7 – Transport, storage and communication industry**

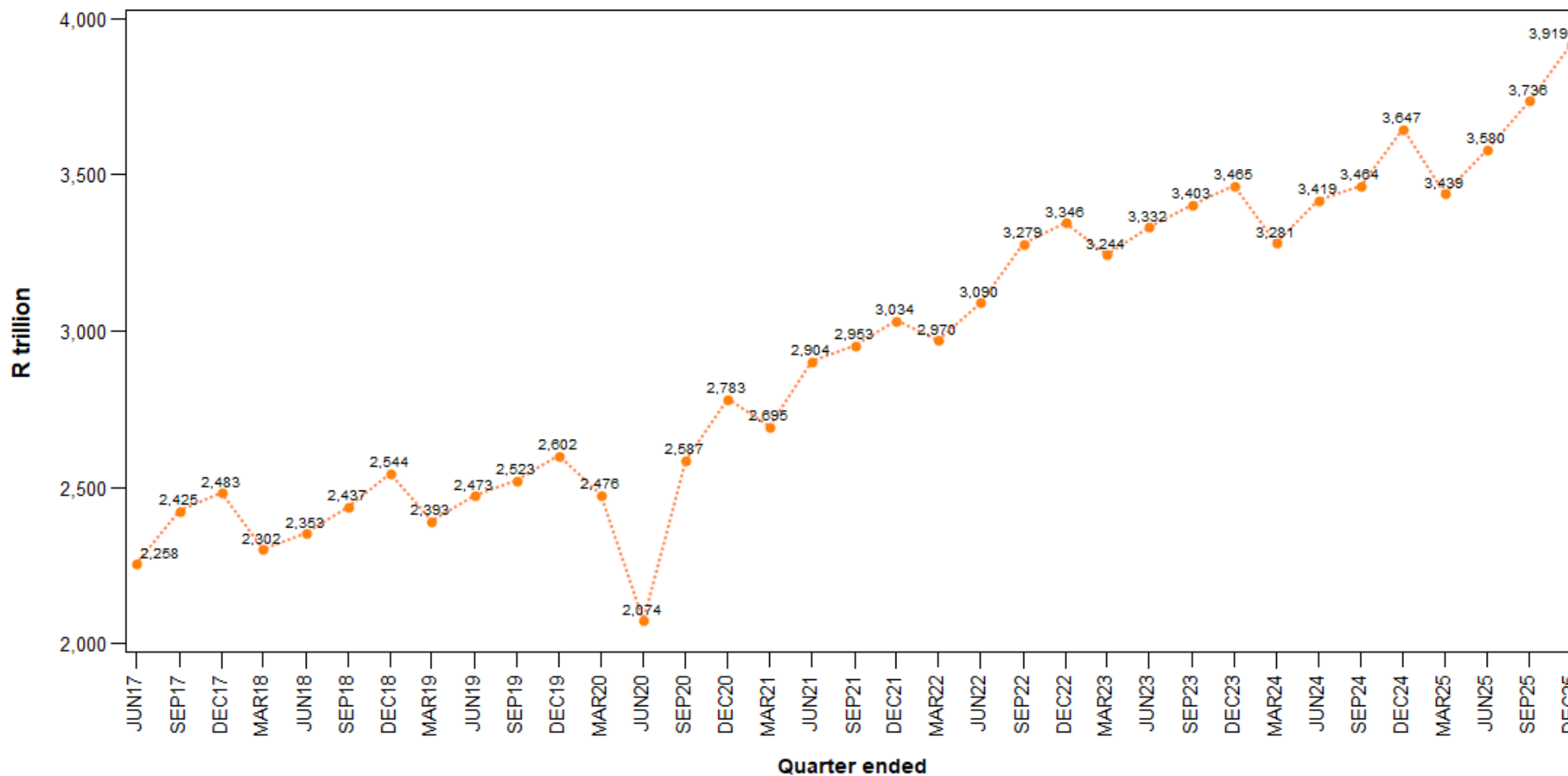
**SIC 8 – Real estate and other business services industry (excluding financial intermediation and insurance)**

**SIC 4 – Electricity, gas and water supply industry**

**SIC 5 – Construction industry**

**SIC 9 – Community, social and personal services industry (excluding government and educational institutions)**

**Figure 4 – Quarterly turnover of all industries covered by the QFS survey<sup>1</sup> from June 2017 to December 2025**



<sup>1</sup> All industries in the South African economy, excluding agriculture, financial intermediation, insurance, government and educational institutions.

**Table 1 – Selected income and expenditure items: All industries covered by the QFS survey<sup>1</sup>**

Item	Quarter ended					Quarter-on-quarter difference between December 2025 and September 2025	Year-on-year difference between December 2025 and December 2024
	R million						
	December 2024	March 2025 <sup>2</sup>	June 2025 <sup>2</sup>	September 2025 <sup>2</sup>	December 2025 <sup>3</sup>		
<b>Income items</b>						<b>R million</b>	<b>R million</b>
Turnover received	3 647 303	3 438 935	3 579 556	3 735 838	3 918 699	182 861	271 396
Interest received	32 280	29 697	28 739	29 301	32 629	3 328	349
Dividends received	27 172	19 047	26 773	41 673	42 572	899	15 400
Royalties, franchise fees, copyright, trade names and patent rights received	2 799	2 791	3 065	6 426	3 419	-3 007	620
Rental/leasing of land, buildings and other structures received	8 585	9 920	10 087	10 078	10 877	799	2 292
Hiring/leasing of plant, machinery, vehicles and other equipment received	7 678	6 351	6 812	6 903	4 296	-2 607	-3 382
Profit on assets/investments sold or revalued	132 213	48 252	44 587	57 027	35 348	-21 679	-96 865
Other income	86 588	75 760	77 876	117 927	132 319	14 392	45 731
<b>Total income (A)</b>	<b>3 944 618</b>	<b>3 630 753</b>	<b>3 777 495</b>	<b>4 005 173</b>	<b>4 180 159</b>	<b>174 986</b>	<b>235 541</b>
<b>Inventories</b>							
Opening value of raw materials	351 913	337 373	354 291	364 698	366 337	1 639	14 424
Opening value of work in progress	127 512	126 063	129 550	133 472	130 423	-3 049	2 911
Opening value of finished goods	936 277	928 010	905 174	925 515	892 953	-32 562	-43 324
<b>Total opening values (B)</b>	<b>1 415 702</b>	<b>1 391 446</b>	<b>1 389 015</b>	<b>1 423 685</b>	<b>1 389 713</b>	<b>-33 972</b>	<b>-25 989</b>
Closing value of raw materials	355 872	361 416	364 759	384 348	373 429	-10 919	17 557
Closing value of work in progress	127 073	131 200	134 777	141 591	128 759	-12 832	1 686
Closing value of finished goods	933 752	925 159	947 752	958 770	937 298	-21 472	3 546
<b>Total closing values (C)</b>	<b>1 416 697</b>	<b>1 417 775</b>	<b>1 447 288</b>	<b>1 484 709</b>	<b>1 439 486</b>	<b>-45 223</b>	<b>22 789</b>

<sup>1</sup> All industries in the South African economy, excluding agriculture, financial intermediation, insurance, government and educational institutions.

<sup>2</sup> Revised.

<sup>3</sup> Preliminary.

**Table 1 – Selected income and expenditure items: All industries covered by the QFS survey<sup>1</sup> (concluded)**

Item	Quarter ended					Quarter-on-quarter difference between December 2025 and September 2025	Year-on-year difference between December 2025 and December 2024
	R million						
	December 2024	March 2025 <sup>2</sup>	June 2025 <sup>2</sup>	September 2025 <sup>2</sup>	December 2025 <sup>3</sup>		
<b>Expenditure items</b>						<b>R million</b>	<b>R million</b>
Purchases	2 226 606	2 123 684	2 202 787	2 280 173	2 389 931	109 758	163 325
Employment costs <sup>4</sup>	457 108	456 794	467 342	488 901	528 255	39 354	71 147
Interest paid	90 285	87 384	91 850	94 562	89 951	-4 611	-334
Royalties, franchise fees, copyright, trade names and patent rights paid	18 562	16 749	16 558	17 169	20 441	3 272	1 879
Rental/leasing of land, buildings and other structures paid	89 894	90 143	92 987	94 368	96 733	2 365	6 839
Hiring/leasing of plant, machinery, vehicles and other equipment paid	13 631	13 346	14 265	16 715	16 034	-681	2 403
Depreciation	90 934	91 025	91 864	95 694	104 099	8 405	13 165
Losses on assets/investments sold or revalued	106 637	51 867	40 570	58 983	50 374	-8 609	-56 263
Other expenditure	540 330	512 459	535 065	568 904	605 581	36 677	65 251
<b>Total expenditure (D)</b>	<b>3 633 987</b>	<b>3 443 451</b>	<b>3 553 288</b>	<b>3 715 469</b>	<b>3 901 399</b>	<b>185 930</b>	<b>267 412</b>
Net profit or loss before taxation (E) <sup>5</sup>	311 626	213 631	282 480	350 728	328 533	-22 195	16 907
Company tax	61 745	46 116	51 496	57 063	56 865	-198	-4 880
Dividends payable	29 953	36 885	39 311	78 420	47 248	-31 172	17 295
Carrying value of property, plant and equipment as at the end of the quarter	3 649 159	2 998 610	3 733 597	3 132 018	3 184 232	52 214	-464 927

<sup>1</sup> All industries in the South African economy, excluding agriculture, financial intermediation, insurance, government and educational institutions.

<sup>2</sup> Revised.

<sup>3</sup> Preliminary.

<sup>4</sup> Refer to page 34 for comparability with the *Quarterly employment statistics* (QES) (statistical release P0277) survey.

<sup>5</sup> E=A-B+C-D.

**Table 2 – Selected income and expenditure items: Mining and quarrying industry**

Item	Quarter ended					Quarter-on-quarter difference between December 2025 and September 2025	Year-on-year difference between December 2025 and December 2024
	R million						
	December 2024	March 2025	June 2025	September 2025 <sup>1</sup>	December 2025 <sup>2</sup>		
<b>Income items</b>						<b>R million</b>	<b>R million</b>
Turnover received	275 282	250 700	277 521	293 212	338 467	45 255	63 185
Interest received	7 151	4 556	4 469	4 539	5 556	1 017	-1 595
Dividends received	5 670	7 218	7 321	20 803	22 841	2 038	17 171
Royalties, franchise fees, copyright, trade names and patent rights received	59	64	48	1 278	37	-1 241	-22
Rental/leasing of land, buildings and other structures received	497	218	291	477	1 380	903	883
Hiring/leasing of plant, machinery, vehicles and other equipment received	207	312	515	692	1 156	464	949
Profit on assets/investments sold or revalued	34 205	4 587	5 265	4 226	6 210	1 984	-27 995
Other income	8 019	4 096	3 724	6 813	7 370	557	-649
<b>Total income (A)</b>	<b>331 090</b>	<b>271 751</b>	<b>299 154</b>	<b>332 040</b>	<b>383 017</b>	<b>50 977</b>	<b>51 927</b>
<b>Inventories</b>							
Opening value of raw materials	31 304	30 540	31 343	30 917	39 807	8 890	8 503
Opening value of work in progress	50 649	51 071	49 196	51 976	59 053	7 077	8 404
Opening value of finished goods	87 248	79 484	82 863	82 192	83 197	1 005	-4 051
<b>Total opening values (B)</b>	<b>169 201</b>	<b>161 095</b>	<b>163 402</b>	<b>165 085</b>	<b>182 057</b>	<b>16 972</b>	<b>12 856</b>
Closing value of raw materials	30 306	30 888	30 942	33 605	40 947	7 342	10 641
Closing value of work in progress	50 848	49 402	52 296	58 859	59 232	373	8 384
Closing value of finished goods	81 897	82 822	82 641	83 903	84 305	402	2 408
<b>Total closing values (C)</b>	<b>163 051</b>	<b>163 112</b>	<b>165 879</b>	<b>176 367</b>	<b>184 484</b>	<b>8 117</b>	<b>21 433</b>

<sup>1</sup> Revised.<sup>2</sup> Preliminary.

**Table 2 – Selected income and expenditure items: Mining and quarrying industry (concluded)**

Item	Quarter ended					Quarter-on-quarter difference between December 2025 and September 2025	Year-on-year difference between December 2025 and December 2024
	R million						
	December 2024	March 2025	June 2025	September 2025 <sup>1</sup>	December 2025 <sup>2</sup>		
<b>Expenditure items</b>						<b>R million</b>	<b>R million</b>
Purchases	119 492	109 807	119 360	125 132	140 375	15 243	20 883
Employment costs <sup>3</sup>	49 789	48 136	51 148	50 997	54 337	3 340	4 548
Interest paid	7 632	6 036	6 969	6 240	7 033	793	-599
Royalties, franchise fees, copyright, trade names and patent rights paid	3 325	2 484	2 639	3 215	4 661	1 446	1 336
Rental/leasing of land, buildings and other structures paid	9 081	8 817	10 684	11 268	11 280	12	2 199
Hiring/leasing of plant, machinery, vehicles and other equipment paid	2 522	2 349	2 386	2 449	2 971	522	449
Depreciation	17 276	15 555	16 260	16 966	22 567	5 601	5 291
Losses on assets/investments sold or revalued	8 451	2 215	4 438	2 358	10 908	8 550	2 457
Other expenditure	59 567	52 323	60 024	60 882	65 564	4 682	5 997
<b>Total expenditure (D)</b>	<b>277 135</b>	<b>247 722</b>	<b>273 908</b>	<b>279 507</b>	<b>319 696</b>	<b>40 189</b>	<b>42 561</b>
Net profit or loss before taxation (E) <sup>4</sup>	47 805	26 046	27 723	63 815	65 748	1 933	17 943
Company tax	9 284	6 824	8 166	8 336	11 327	2 991	2 043
Dividends payable	2 561	8 742	17 599	21 731	26 402	4 671	23 841
Carrying value of property, plant and equipment as at the end of the quarter	667 691	646 035	659 709	711 010	698 538	-12 472	30 847

<sup>1</sup> Revised.<sup>2</sup> Preliminary.<sup>3</sup> Refer to page 34 for comparability with the *Quarterly employment statistics* (QES) (statistical release P0277) survey.<sup>4</sup> E=A-B+C-D.

**Table 3 – Selected income and expenditure items: Manufacturing industry**

Item	Quarter ended					Quarter-on-quarter difference between December 2025 and September 2025	Year-on-year difference between December 2025 and December 2024
	R million						
	December 2024	March 2025	June 2025	September 2025 <sup>1</sup>	December 2025 <sup>2</sup>		
<b>Income items</b>						<b>R million</b>	<b>R million</b>
Turnover received	1 057 640	1 008 446	1 049 885	1 118 278	1 157 009	38 731	99 369
Interest received	6 856	7 349	6 283	6 608	6 357	-251	-499
Dividends received	1 302	872	1 345	3 917	1 711	-2 206	409
Royalties, franchise fees, copyright, trade names and patent rights received	578	556	739	560	548	-12	-30
Rental/leasing of land, buildings and other structures received	2 220	2 220	2 022	1 917	1 382	-535	-838
Hiring/leasing of plant, machinery, vehicles and other equipment received	2 022	1 907	2 134	1 238	1 134	-104	-888
Profit on assets/investments sold or revalued	16 978	10 417	15 211	32 805	10 314	-22 491	-6 664
Other income	16 658	10 887	14 807	16 642	18 111	1 469	1 453
<b>Total income (A)</b>	<b>1 104 254</b>	<b>1 042 654</b>	<b>1 092 426</b>	<b>1 181 965</b>	<b>1 196 566</b>	<b>14 601</b>	<b>92 312</b>
<b>Inventories</b>							
Opening value of raw materials	222 365	203 520	215 120	223 968	218 416	-5 552	-3 949
Opening value of work in progress	65 496	63 456	69 016	70 403	60 384	-10 019	-5 112
Opening value of finished goods	283 080	265 230	267 239	274 367	288 606	14 239	5 526
<b>Total opening values (B)</b>	<b>570 941</b>	<b>532 206</b>	<b>551 375</b>	<b>568 738</b>	<b>567 406</b>	<b>-1 332</b>	<b>-3 535</b>
Closing value of raw materials	222 593	220 183	224 015	235 729	221 452	-14 277	-1 141
Closing value of work in progress	64 441	69 818	70 473	70 820	56 347	-14 473	-8 094
Closing value of finished goods	273 320	280 284	280 202	294 238	318 838	24 600	45 518
<b>Total closing values (C)</b>	<b>560 354</b>	<b>570 285</b>	<b>574 690</b>	<b>600 787</b>	<b>596 637</b>	<b>-4 150</b>	<b>36 283</b>

<sup>1</sup> Revised.<sup>2</sup> Preliminary.

**Table 3 – Selected income and expenditure items: Manufacturing industry (concluded)**

Item	Quarter ended					Quarter-on-quarter difference between December 2025 and September 2025	Year-on-year difference between December 2025 and December 2024
	R million						
	December 2024	March 2025	June 2025	September 2025 <sup>1</sup>	December 2025 <sup>2</sup>		
<b>Expenditure items</b>						<b>R million</b>	<b>R million</b>
Purchases	704 677	723 882	737 549	791 010	819 915	28 905	115 238
Employment costs <sup>3</sup>	101 890	101 522	105 923	107 584	117 689	10 105	15 799
Interest paid	15 862	15 483	15 733	15 822	15 830	8	-32
Royalties, franchise fees, copyright, trade names and patent rights paid	5 104	4 755	4 566	5 123	4 896	-227	-208
Rental/leasing of land, buildings and other structures paid	16 807	16 502	18 498	19 232	18 435	-797	1 628
Hiring/leasing of plant, machinery, vehicles and other equipment paid	2 425	2 313	2 459	2 648	2 331	-317	-94
Depreciation	18 793	18 168	19 369	18 916	19 783	867	990
Losses on assets/investments sold or revalued	16 555	13 913	12 775	32 385	8 806	-23 579	-7 749
Other expenditure	131 436	124 563	122 965	130 539	148 473	17 934	17 037
<b>Total expenditure (D)</b>	<b>1 013 549</b>	<b>1 021 101</b>	<b>1 039 837</b>	<b>1 123 259</b>	<b>1 156 158</b>	<b>32 899</b>	<b>142 609</b>
Net profit or loss before taxation (E) <sup>4</sup>	80 118	59 632	75 904	90 755	69 639	-21 116	-10 479
Company tax	13 907	9 198	10 326	11 397	12 955	1 558	-952
Dividends payable	6 698	7 680	4 640	10 664	3 697	-6 967	-3 001
Carrying value of property, plant and equipment as at the end of the quarter	690 168	663 471	682 839	680 612	736 263	55 651	46 095

<sup>1</sup> Revised.<sup>2</sup> Preliminary.<sup>3</sup> Refer to page 34 for comparability with the *Quarterly employment statistics (QES)* (statistical release P0277) survey.<sup>4</sup> E=A-B+C-D.

**Table 4 – Selected income and expenditure items: Electricity, gas and water supply industry**

Item	Quarter ended					Quarter-on-quarter difference between December 2025 and September 2025	Year-on-year difference between December 2025 and December 2024
	R million						
	December 2024	March 2025 <sup>1</sup>	June 2025 <sup>1</sup>	September 2025 <sup>1</sup>	December 2025 <sup>2</sup>		
<b>Income items</b>						<b>R million</b>	<b>R million</b>
Turnover received	127 668	108 216	121 329	136 588	119 223	-17 365	-8 445
Interest received	3 841	2 654	3 544	2 993	3 696	703	-145
Dividends received	481	692	790	1 782	4 566	2 784	4 085
Royalties, franchise fees, copyright, trade names and patent rights received	0	0	0	0	0	0	0
Rental/leasing of land, buildings and other structures received	284	235	239	194	238	44	-46
Hiring/leasing of plant, machinery, vehicles and other equipment received	0	0	0	0	0	0	0
Profit on assets/investments sold or revalued	64 452	10 458	7 001	3 155	5 292	2 137	-59 160
Other income	2 691	1 832	1 565	1 979	2 144	165	-547
<b>Total income (A)</b>	<b>199 417</b>	<b>124 087</b>	<b>134 468</b>	<b>146 691</b>	<b>135 159</b>	<b>-11 532</b>	<b>-64 258</b>
<b>Inventories</b>							
Opening value of raw materials	43 494	44 023	47 047	45 884	49 828	3 944	6 334
Opening value of work in progress	5	5	6	6	3	-3	-2
Opening value of finished goods	484	440	425	609	830	221	346
<b>Total opening values (B)</b>	<b>43 983</b>	<b>44 468</b>	<b>47 478</b>	<b>46 499</b>	<b>50 661</b>	<b>4 162</b>	<b>6 678</b>
Closing value of raw materials	43 771	47 047	45 767	50 064	53 726	3 662	9 955
Closing value of work in progress	5	6	7	3	3	0	-2
Closing value of finished goods	440	425	611	559	851	292	411
<b>Total closing values (C)</b>	<b>44 216</b>	<b>47 478</b>	<b>46 385</b>	<b>50 626</b>	<b>54 580</b>	<b>3 954</b>	<b>10 364</b>

<sup>1</sup> Revised.<sup>2</sup> Preliminary.

**Table 4 – Selected income and expenditure items: Electricity, gas and water supply industry (concluded)**

Item	Quarter ended					Quarter-on-quarter difference between December 2025 and September 2025	Year-on-year difference between December 2025 and December 2024
	R million						
	December 2024	March 2025 <sup>1</sup>	June 2025 <sup>1</sup>	September 2025 <sup>1</sup>	December 2025 <sup>2</sup>		
<b>Expenditure items</b>						<b>R million</b>	<b>R million</b>
Purchases	60 273	56 588	52 865	51 227	49 145	-2 082	-11 128
Employment costs <sup>3</sup>	10 323	13 528	12 488	12 158	15 917	3 759	5 594
Interest paid	14 206	13 115	15 403	13 504	16 619	3 115	2 413
Royalties, franchise fees, copyright, trade names and patent rights paid	0	0	0	0	33	33	33
Rental/leasing of land, buildings and other structures paid	466	377	358	382	430	48	-36
Hiring/leasing of plant, machinery, vehicles and other equipment paid	69	98	71	65	60	-5	-9
Depreciation	9 678	10 502	10 703	11 217	12 703	1 486	3 025
Losses on assets/investments sold or revalued	63 662	17 542	5 678	6 677	5 876	-801	-57 786
Other expenditure	28 151	18 491	20 624	24 688	25 506	818	-2 645
<b>Total expenditure (D)</b>	<b>186 828</b>	<b>130 241</b>	<b>118 190</b>	<b>119 918</b>	<b>126 289</b>	<b>6 371</b>	<b>-60 539</b>
Net profit or loss before taxation (E) <sup>4</sup>	12 822	-3 144	15 185	30 900	12 789	-18 111	-33
Company tax	756	614	3 082	6 370	1 075	-5 295	319
Dividends payable	2 845	1 772	4 646	2 128	1 528	-600	-1 317
Carrying value of property, plant and equipment as at the end of the quarter	747 492	149 321	842 010	155 150	197 181	42 031	-550 311

<sup>1</sup> Revised.<sup>2</sup> Preliminary.<sup>3</sup> Refer to page 34 for comparability with the *Quarterly employment statistics* (QES) (statistical release P0277) survey.<sup>4</sup> E=A-B+C-D.

**Table 5 – Selected income and expenditure items: Construction industry**

Item	Quarter ended					Quarter-on-quarter difference between December 2025 and September 2025	Year-on-year difference between December 2025 and December 2024
	R million						
	December 2024	March 2025	June 2025	September 2025 <sup>1</sup>	December 2025 <sup>2</sup>		
<b>Income items</b>						<b>R million</b>	<b>R million</b>
Turnover received	89 785	90 560	94 855	96 548	99 613	3 065	9 828
Interest received	610	643	611	580	623	43	13
Dividends received	149	134	431	143	140	-3	-9
Royalties, franchise fees, copyright, trade names and patent rights received	0	0	0	0	0	0	0
Rental/leasing of land, buildings and other structures received	485	481	488	505	181	-324	-304
Hiring/leasing of plant, machinery, vehicles and other equipment received	492	349	339	394	383	-11	-109
Profit on assets/investments sold or revalued	240	236	319	371	206	-165	-34
Other income	1 085	1 060	1 029	970	1 115	145	30
<b>Total income (A)</b>	<b>92 846</b>	<b>93 463</b>	<b>98 072</b>	<b>99 511</b>	<b>102 261</b>	<b>2 750</b>	<b>9 415</b>
<b>Inventories</b>							
Opening value of raw materials	20 527	20 687	19 653	18 502	18 758	256	-1 769
Opening value of work in progress	3 848	4 213	4 607	4 320	4 819	499	971
Opening value of finished goods	4 995	5 016	4 547	4 479	3 882	-597	-1 113
<b>Total opening values (B)</b>	<b>29 370</b>	<b>29 916</b>	<b>28 807</b>	<b>27 301</b>	<b>27 459</b>	<b>158</b>	<b>-1 911</b>
Closing value of raw materials	20 667	21 094	18 501	18 743	18 638	-105	-2 029
Closing value of work in progress	3 666	4 621	4 320	4 702	4 418	-284	752
Closing value of finished goods	5 031	4 938	4 543	4 428	3 614	-814	-1 417
<b>Total closing values (C)</b>	<b>29 364</b>	<b>30 653</b>	<b>27 364</b>	<b>27 873</b>	<b>26 670</b>	<b>-1 203</b>	<b>-2 694</b>

<sup>1</sup> Revised.<sup>2</sup> Preliminary.

**Table 5 – Selected income and expenditure items: Construction industry (concluded)**

Item	Quarter ended					Quarter-on-quarter difference between December 2025 and September 2025	Year-on-year difference between December 2025 and December 2024
	R million						
	December 2024	March 2025	June 2025	September 2025 <sup>1</sup>	December 2025 <sup>2</sup>		
<b>Expenditure items</b>						<b>R million</b>	<b>R million</b>
Purchases	58 337	58 567	58 314	61 841	63 559	1 718	5 222
Employment costs <sup>3</sup>	14 506	15 437	14 290	14 531	14 939	408	433
Interest paid	1 240	1 332	1 312	1 071	1 064	-7	-176
Royalties, franchise fees, copyright, trade names and patent rights paid	292	296	274	274	540	266	248
Rental/leasing of land, buildings and other structures paid	760	804	648	670	934	264	174
Hiring/leasing of plant, machinery, vehicles and other equipment paid	1 395	1 236	1 781	1 970	1 707	-263	312
Depreciation	1 217	1 149	1 145	1 234	1 224	-10	7
Losses on assets/investments sold or revalued	2 123	2 043	1 976	2 018	1 940	-78	-183
Other expenditure	11 868	12 045	13 454	13 909	13 482	-427	1 614
<b>Total expenditure (D)</b>	<b>91 738</b>	<b>92 909</b>	<b>93 194</b>	<b>97 518</b>	<b>99 389</b>	<b>1 871</b>	<b>7 651</b>
Net profit or loss before taxation (E) <sup>4</sup>	1 102	1 291	3 435	2 565	2 083	-482	981
Company tax	514	582	487	461	471	10	-43
Dividends payable	633	508	421	362	404	42	-229
Carrying value of property, plant and equipment as at the end of the quarter	36 345	38 717	35 813	37 350	34 292	-3 058	-2 053

<sup>1</sup> Revised.<sup>2</sup> Preliminary.<sup>3</sup> Refer to page 34 for comparability with the *Quarterly employment statistics* (QES) (statistical release P0277) survey.<sup>4</sup> E=A-B+C-D.

**Table 6 – Selected income and expenditure items: Trade industry**

Item	Quarter ended					Quarter-on-quarter difference between December 2025 and September 2025	Year-on-year difference between December 2025 and December 2024
	R million						
	December 2024	March 2025	June 2025	September 2025 <sup>1</sup>	December 2025 <sup>2</sup>		
<b>Income items</b>						<b>R million</b>	<b>R million</b>
Turnover received	1 331 046	1 242 231	1 271 505	1 311 672	1 388 687	77 015	57 641
Interest received	9 949	10 942	9 723	10 197	11 651	1 454	1 702
Dividends received	12 543	2 223	5 641	6 894	5 080	-1 814	-7 463
Royalties, franchise fees, copyright, trade names and patent rights received	890	784	1 046	3 077	1 124	-1 953	234
Rental/leasing of land, buildings and other structures received	1 574	1 557	1 868	1 860	1 487	-373	-87
Hiring/leasing of plant, machinery, vehicles and other equipment received	2 081	624	634	583	470	-113	-1 611
Profit on assets/investments sold or revalued	7 390	11 215	5 622	7 445	4 854	-2 591	-2 536
Other income	17 633	18 150	18 744	19 542	22 665	3 123	5 032
<b>Total income (A)</b>	<b>1 383 106</b>	<b>1 287 726</b>	<b>1 314 783</b>	<b>1 361 270</b>	<b>1 436 018</b>	<b>74 748</b>	<b>52 912</b>
<b>Inventories</b>							
Opening value of raw materials	26 477	30 749	33 298	37 963	32 204	-5 759	5 727
Opening value of work in progress	5 624	5 011	4 578	4 821	4 181	-640	-1 443
Opening value of finished goods	523 835	541 827	517 421	526 276	480 236	-46 040	-43 599
<b>Total opening values (B)</b>	<b>555 936</b>	<b>577 587</b>	<b>555 297</b>	<b>569 060</b>	<b>516 621</b>	<b>-52 439</b>	<b>-39 315</b>
Closing value of raw materials	30 650	34 493	37 864	38 565	30 979	-7 586	329
Closing value of work in progress	5 807	5 214	5 627	4 934	6 832	1 898	1 025
Closing value of finished goods	537 055	523 013	541 339	540 044	494 435	-45 609	-42 620
<b>Total closing values (C)</b>	<b>573 512</b>	<b>562 720</b>	<b>584 830</b>	<b>583 543</b>	<b>532 246</b>	<b>-51 297</b>	<b>-41 266</b>

<sup>1</sup> Revised.<sup>2</sup> Preliminary.

**Table 6 – Selected income and expenditure items: Trade industry (concluded)**

Item	Quarter ended					Quarter-on-quarter difference between December 2025 and September 2025	Year-on-year difference between December 2025 and December 2024
	R million						
	December 2024	March 2025	June 2025	September 2025 <sup>1</sup>	December 2025 <sup>2</sup>		
<b>Expenditure items</b>						<b>R million</b>	<b>R million</b>
Purchases	1 028 461	938 908	994 587	1 012 921	1 071 093	58 172	42 632
Employment costs <sup>3</sup>	99 430	95 920	102 659	104 239	106 206	1 967	6 776
Interest paid	13 591	14 229	14 978	16 087	14 027	-2 060	436
Royalties, franchise fees, copyright, trade names and patent rights paid	6 213	5 465	4 987	4 687	6 372	1 685	159
Rental/leasing of land, buildings and other structures paid	24 337	24 757	23 879	24 830	25 552	722	1 215
Hiring/leasing of plant, machinery, vehicles and other equipment paid	1 465	1 284	1 491	1 654	1 381	-273	-84
Depreciation	14 016	14 026	14 663	15 686	13 415	-2 271	-601
Losses on assets/investments sold or revalued	8 286	9 930	8 982	8 845	10 425	1 580	2 139
Other expenditure	106 063	103 992	111 324	115 785	121 085	5 300	15 022
<b>Total expenditure (D)</b>	<b>1 301 862</b>	<b>1 208 511</b>	<b>1 277 550</b>	<b>1 304 734</b>	<b>1 369 556</b>	<b>64 822</b>	<b>67 694</b>
Net profit or loss before taxation (E) <sup>4</sup>	98 820	64 348	66 766	71 019	82 087	11 068	-16 733
Company tax	19 958	12 192	12 697	13 483	13 340	-143	-6 618
Dividends payable	4 306	7 890	2 105	6 270	5 497	-773	1 191
Carrying value of property, plant and equipment as at the end of the quarter	278 125	270 344	271 274	270 358	251 839	-18 519	-26 286

<sup>1</sup> Revised.<sup>2</sup> Preliminary.<sup>3</sup> Refer to page 34 for comparability with the *Quarterly employment statistics* (QES) (statistical release P0277) survey.<sup>4</sup> E=A-B+C-D.

**Table 7 – Selected income and expenditure items: Transport, storage and communication industry**

Item	Quarter ended					Quarter-on-quarter difference between December 2025 and September 2025	Year-on-year difference between December 2025 and December 2024
	R million						
	December 2024	March 2025	June 2025	September 2025 <sup>1</sup>	December 2025 <sup>2</sup>		
<b>Income items</b>						<b>R million</b>	<b>R million</b>
Turnover received	266 629	252 523	265 462	275 064	302 807	27 743	36 178
Interest received	2 675	2 348	2 729	3 128	3 178	50	503
Dividends received	1 283	1 081	1 025	1 137	1 575	438	292
Royalties, franchise fees, copyright, trade names and patent rights received	75	131	1	39	8	-31	-67
Rental/leasing of land, buildings and other structures received	2 393	4 102	4 085	4 017	5 207	1 190	2 814
Hiring/leasing of plant, machinery, vehicles and other equipment received	2 800	3 080	3 117	3 928	1 032	-2 896	-1 768
Profit on assets/investments sold or revalued	2 551	1 943	3 163	2 075	2 580	505	29
Other income	8 534	9 152	8 249	8 868	16 328	7 460	7 794
<b>Total income (A)</b>	<b>286 940</b>	<b>274 360</b>	<b>287 831</b>	<b>298 256</b>	<b>332 715</b>	<b>34 459</b>	<b>45 775</b>
<b>Inventories</b>							
Opening value of raw materials	2 758	2 742	2 536	2 462	2 527	65	-231
Opening value of work in progress	300	280	333	230	314	84	14
Opening value of finished goods	17 952	16 839	14 380	18 491	19 034	543	1 082
<b>Total opening values (B)</b>	<b>21 010</b>	<b>19 861</b>	<b>17 249</b>	<b>21 183</b>	<b>21 875</b>	<b>692</b>	<b>865</b>
Closing value of raw materials	2 794	2 553	2 476	2 538	2 633	95	-161
Closing value of work in progress	267	333	233	281	308	27	41
Closing value of finished goods	16 855	14 395	18 512	19 139	17 599	-1 540	744
<b>Total closing values (C)</b>	<b>19 916</b>	<b>17 281</b>	<b>21 221</b>	<b>21 958</b>	<b>20 540</b>	<b>-1 418</b>	<b>624</b>

<sup>1</sup> Revised.<sup>2</sup> Preliminary.

**Table 7 – Selected income and expenditure items: Transport, storage and communication industry (concluded)**

Item	Quarter ended					Quarter-on-quarter difference between December 2025 and September 2025	Year-on-year difference between December 2025 and December 2024
	R million						
	December 2024	March 2025	June 2025	September 2025 <sup>1</sup>	December 2025 <sup>2</sup>		
<b>Expenditure items</b>						<b>R million</b>	<b>R million</b>
Purchases	116 634	101 871	106 765	106 177	117 303	11 126	669
Employment costs <sup>3</sup>	39 807	39 662	41 842	42 934	45 706	2 772	5 899
Interest paid	11 692	11 918	11 689	12 592	11 689	-903	-3
Royalties, franchise fees, copyright, trade names and patent rights paid	250	247	421	256	313	57	63
Rental/leasing of land, buildings and other structures paid	7 927	8 442	9 094	8 531	10 235	1 704	2 308
Hiring/leasing of plant, machinery, vehicles and other equipment paid	3 860	4 161	4 079	5 796	4 052	-1 744	192
Depreciation	18 999	20 683	19 145	20 318	22 870	2 552	3 871
Losses on assets/investments sold or revalued	2 429	1 657	1 603	1 234	8 145	6 911	5 716
Other expenditure	68 408	69 113	76 994	80 001	91 305	11 304	22 897
<b>Total expenditure (D)</b>	<b>270 006</b>	<b>257 754</b>	<b>271 632</b>	<b>277 839</b>	<b>311 618</b>	<b>33 779</b>	<b>41 612</b>
Net profit or loss before taxation (E) <sup>4</sup>	15 840	14 026	20 171	21 192	19 762	-1 430	3 922
Company tax	4 466	4 240	4 401	4 057	6 241	2 184	1 775
Dividends payable	2 681	2 977	1 356	32 069	1 998	-30 071	-683
Carrying value of property, plant and equipment as at the end of the quarter	702 951	714 281	718 559	734 304	782 715	48 411	79 764

<sup>1</sup> Revised.<sup>2</sup> Preliminary.<sup>3</sup> Refer to page 34 for comparability with the *Quarterly employment statistics (QES)* (statistical release P0277) survey.<sup>4</sup> E=A-B+C-D.

**Table 8 – Selected income and expenditure items: Real estate and other business services industry (excluding financial intermediation and insurance)**

Item	Quarter ended					Quarter-on-quarter difference between December 2025 and September 2025	Year-on-year difference between December 2025 and December 2024
	R million						
	December 2024	March 2025	June 2025	September 2025 <sup>1</sup>	December 2025 <sup>2</sup>		
<b>Income items</b>						<b>R million</b>	<b>R million</b>
Turnover received <sup>3</sup>	403 464	388 391	400 448	407 044	414 221	7 177	10 757
Interest received	0	0	0	0	0	0	0
Dividends received	5 567	6 585	10 043	6 857	6 434	-423	867
Royalties, franchise fees, copyright, trade names and patent rights received	946	1 030	971	1 207	1 439	232	493
Rental/leasing of land, buildings and other structures received	0	0	0	0	0	0	0
Hiring/leasing of plant, machinery, vehicles and other equipment received	0	0	0	0	0	0	0
Profit on assets/investments sold or revalued	6 065	9 153	7 706	6 667	5 620	-1 047	-445
Other income	26 863	25 723	24 257	54 815	55 897	1 082	29 034
<b>Total income (A)</b>	<b>442 905</b>	<b>430 882</b>	<b>443 425</b>	<b>476 590</b>	<b>483 611</b>	<b>7 021</b>	<b>40 706</b>
<b>Inventories</b>							
Opening value of raw materials	4 277	4 346	4 552	4 283	4 252	-31	-25
Opening value of work in progress	1 578	2 014	1 801	1 703	1 655	-48	77
Opening value of finished goods	17 338	17 793	16 940	17 740	15 893	-1 847	-1 445
<b>Total opening values (B)</b>	<b>23 193</b>	<b>24 153</b>	<b>23 293</b>	<b>23 726</b>	<b>21 800</b>	<b>-1 926</b>	<b>-1 393</b>
Closing value of raw materials	4 326	4 415	4 471	4 406	4 493	87	167
Closing value of work in progress	2 026	1 793	1 808	1 978	1 605	-373	-421
Closing value of finished goods	17 791	17 926	18 537	15 053	16 270	1 217	-1 521
<b>Total closing values (C)</b>	<b>24 143</b>	<b>24 134</b>	<b>24 816</b>	<b>21 437</b>	<b>22 368</b>	<b>931</b>	<b>-1 775</b>

<sup>1</sup> Revised.<sup>2</sup> Preliminary.<sup>3</sup> Turnover includes: interest, rent/leasing and hiring – refer to page 38 for more details.

**Table 8 – Selected income and expenditure items: Real estate and other business services industry (excluding financial intermediation and insurance) (concluded)**

Item	Quarter ended					Quarter-on-quarter difference between December 2025 and September 2025	Year-on-year difference between December 2025 and December 2024
	R million						
	December 2024	March 2025	June 2025	September 2025 <sup>1</sup>	December 2025 <sup>2</sup>		
<b>Expenditure items</b>						<b>R million</b>	<b>R million</b>
Purchases	117 942	112 595	112 556	113 260	109 907	-3 353	-8 035
Employment costs <sup>3</sup>	114 291	115 255	110 486	126 542	143 538	16 996	29 247
Interest paid	24 103	23 260	23 704	27 290	21 730	-5 560	-2 373
Royalties, franchise fees, copyright, trade names and patent rights paid	2 449	2 568	2 671	2 665	2 605	-60	156
Rental/leasing of land, buildings and other structures paid	26 191	26 123	25 352	24 725	24 915	190	-1 276
Hiring/leasing of plant, machinery, vehicles and other equipment paid	1 064	1 084	1 111	1 267	2 640	1 373	1 576
Depreciation	8 303	8 206	7 840	8 663	8 669	6	366
Losses on assets/investments sold or revalued	4 614	4 111	4 640	4 939	3 897	-1 042	-717
Other expenditure	100 451	96 110	93 383	103 511	98 583	-4 928	-1 868
<b>Total expenditure (D)</b>	<b>399 408</b>	<b>389 312</b>	<b>381 743</b>	<b>412 862</b>	<b>416 484</b>	<b>3 622</b>	<b>17 076</b>
Net profit or loss before taxation (E) <sup>4</sup>	44 447	41 551	63 205	61 439	67 695	6 256	23 248
Company tax	10 885	10 664	10 658	11 031	9 765	-1 266	-1 120
Dividends payable	8 848	5 804	7 282	3 947	6 245	2 298	-2 603
Carrying value of property, plant and equipment as at the end of the quarter	445 265	434 488	441 084	463 109	403 846	-59 263	-41 419

<sup>1</sup> Revised.<sup>2</sup> Preliminary.<sup>3</sup> Refer to page 34 for comparability with the *Quarterly employment statistics* (QES) (statistical release P0277) survey.<sup>4</sup> E=A-B+C-D.

**Table 9 – Selected income and expenditure items: Community, social and personal services industry (excluding government and educational institutions)**

Item	Quarter ended					Quarter-on-quarter difference between December 2025 and September 2025	Year-on-year difference between December 2025 and December 2024
	R million						
	December 2024	March 2025	June 2025	September 2025 <sup>1</sup>	December 2025 <sup>2</sup>		
<b>Income items</b>						<b>R million</b>	<b>R million</b>
Turnover received	95 789	97 868	98 551	97 432	98 672	1 240	2 883
Interest received	1 198	1 205	1 380	1 256	1 568	312	370
Dividends received	177	242	177	140	225	85	48
Royalties, franchise fees, copyright, trade names and patent rights received	251	226	260	265	263	-2	12
Rental/leasing of land, buildings and other structures received	1 132	1 107	1 094	1 108	1 002	-106	-130
Hiring/leasing of plant, machinery, vehicles and other equipment received	76	79	73	68	121	53	45
Profit on assets/investments sold or revalued	332	243	300	283	272	-11	-60
Other income	5 105	4 860	5 501	8 298	8 689	391	3 584
<b>Total income (A)</b>	<b>104 060</b>	<b>105 830</b>	<b>107 336</b>	<b>108 850</b>	<b>110 812</b>	<b>1 962</b>	<b>6 752</b>
<b>Inventories</b>							
Opening value of raw materials	711	766	742	719	545	-174	-166
Opening value of work in progress	12	13	13	13	14	1	2
Opening value of finished goods	1 345	1 381	1 359	1 361	1 275	-86	-70
<b>Total opening values (B)</b>	<b>2 068</b>	<b>2 160</b>	<b>2 114</b>	<b>2 093</b>	<b>1 834</b>	<b>-259</b>	<b>-234</b>
Closing value of raw materials	765	743	723	698	561	-137	-204
Closing value of work in progress	13	13	13	14	14	0	1
Closing value of finished goods	1 363	1 356	1 367	1 406	1 386	-20	23
<b>Total closing values (C)</b>	<b>2 141</b>	<b>2 112</b>	<b>2 103</b>	<b>2 118</b>	<b>1 961</b>	<b>-157</b>	<b>-180</b>

<sup>1</sup> Revised.<sup>2</sup> Preliminary.

**Table 9 – Selected income and expenditure items: Community, social and personal services industry (excluding government and educational institutions) (concluded)**

Item	Quarter ended					Quarter-on-quarter difference between December 2025 and September 2025	Year-on-year difference between December 2025 and December 2024
	R million						
	December 2024	March 2025	June 2025	September 2025 <sup>1</sup>	December 2025 <sup>2</sup>		
<b>Expenditure items</b>						<b>R million</b>	<b>R million</b>
Purchases	20 790	21 466	20 791	18 605	18 634	29	-2 156
Employment costs <sup>3</sup>	27 072	27 334	28 506	29 916	29 923	7	2 851
Interest paid	1 959	2 011	2 062	1 956	1 959	3	0
Royalties, franchise fees, copyright, trade names and patent rights paid	929	934	1 000	949	1 021	72	92
Rental/leasing of land, buildings and other structures paid	4 325	4 321	4 474	4 730	4 952	222	627
Hiring/leasing of plant, machinery, vehicles and other equipment paid	831	821	887	866	892	26	61
Depreciation	2 652	2 736	2 739	2 694	2 868	174	216
Losses on assets/investments sold or revalued	517	456	478	527	377	-150	-140
Other expenditure	34 386	35 822	36 297	39 589	41 583	1 994	7 197
<b>Total expenditure (D)</b>	<b>93 461</b>	<b>95 901</b>	<b>97 234</b>	<b>99 832</b>	<b>102 209</b>	<b>2 377</b>	<b>8 748</b>
Net profit or loss before taxation (E) <sup>4</sup>	10 672	9 881	10 091	9 043	8 730	-313	-1 942
Company tax	1 975	1 802	1 679	1 928	1 691	-237	-284
Dividends payable	1 381	1 512	1 262	1 249	1 477	228	96
Carrying value of property, plant and equipment as at the end of the quarter	81 122	81 953	82 309	80 125	79 558	-567	-1 564

<sup>1</sup> Revised.<sup>2</sup> Preliminary.<sup>3</sup> Refer to page 34 for comparability with the *Quarterly employment statistics* (QES) (statistical release P0277) survey.<sup>4</sup> E=A-B+C-D.

**Table 10 – Comparison of selected operating ratios between September 2025 and December 2025**

Industry	Turnover / Fixed assets <sup>3</sup>		Net profit before tax / Turnover <sup>4</sup>		Turnover / Closing inventories <sup>5</sup>		Net profit before tax / Fixed assets <sup>6</sup>	
	September 2025 <sup>1</sup>	December 2025 <sup>2</sup>	September 2025 <sup>1</sup>	December 2025 <sup>2</sup>	September 2025 <sup>1</sup>	December 2025 <sup>2</sup>	September 2025 <sup>1</sup>	December 2025 <sup>2</sup>
Mining and quarrying	0,4124	0,4845	0,2176	0,1943	1,6625	1,8347	0,0898	0,0941
Manufacturing	1,6430	1,5715	0,0812	0,0602	1,8614	1,9392	0,1333	0,0946
Electricity, gas and water supply	0,8804	0,6046	0,2262	0,1073	2,6980	2,1844	0,1992	0,0649
Construction	2,5850	2,9048	0,0266	0,0209	3,4639	3,7350	0,0687	0,0607
Trade	4,8516	5,5142	0,0541	0,0591	2,2478	2,6091	0,2627	0,3260
Transport, storage and communication	0,3746	0,3869	0,0770	0,0653	12,5268	14,7423	0,0289	0,0252
Real estate and other business services, excluding financial intermediation and insurance	0,8789	1,0257	0,1509	0,1634	18,9879	18,5185	0,1327	0,1676
Community, social and personal services, excluding government and educational institutions	1,2160	1,2403	0,0928	0,0885	46,0019	50,3172	0,1129	0,1097
<b>All industries</b>	<b>1,1928</b>	<b>1,2307</b>	<b>0,0939</b>	<b>0,0838</b>	<b>2,5162</b>	<b>2,7223</b>	<b>0,1120</b>	<b>0,1032</b>

<sup>1</sup> Revised.<sup>2</sup> Preliminary.<sup>3</sup> Turnover / Carrying value of property, plant and equipment at the end of the quarter.<sup>4</sup> Net profit or loss before taxation / Turnover.<sup>5</sup> Turnover / Closing value of inventories.<sup>6</sup> Net profit or loss before taxation / Carrying value of property, plant and equipment at the end of the quarter.

**Table 10 – Comparison of selected operating ratios between September 2025 and December 2025 (concluded)**

Industry	Cost of sales* / Average inventories <sup>3</sup>		Net profit before interest and income tax expenses / Interest expense <sup>4</sup>		Cash dividends / Net income <sup>5</sup>	
	September 2025 <sup>1</sup>	December 2025 <sup>2</sup>	September 2025 <sup>1</sup>	December 2025 <sup>2</sup>	September 2025 <sup>1</sup>	December 2025 <sup>2</sup>
Mining and quarrying	0,6669	0,7527	11,2268	10,3485	0,3917	0,4851
Manufacturing	1,2979	1,3585	6,7360	5,3992	0,1344	0,0652
Electricity, gas and water supply	0,9699	0,8595	3,2882	1,7695	0,0868	0,1304
Construction	2,2209	2,3776	3,3950	2,9577	0,1721	0,2506
Trade	1,7325	2,0126	5,4147	6,8521	0,1090	0,0800
Transport, storage and communication	4,8864	5,5942	2,6830	2,6906	1,8715	0,1478
Real estate and other business services, excluding financial intermediation and insurance	5,1170	4,9511	3,2513	4,1153	0,0783	0,1078
Community, social and personal services, excluding government and educational institutions	8,8245	9,7534	5,6232	5,4564	0,1755	0,2098
<b>All industries</b>	<b>1,5260</b>	<b>1,6543</b>	<b>4,7090</b>	<b>4,6524</b>	<b>0,2670</b>	<b>0,1739</b>

<sup>1</sup> Revised.<sup>2</sup> Preliminary.<sup>3</sup> Cost of sales\* / [(Opening inventories + Closing inventories) / 2].<sup>4</sup> (Net profit or loss before taxation + Interest paid) / Interest paid.<sup>5</sup> Dividends paid / (Net profit or loss before taxation – Company tax).

\* Cost of sales = (Opening inventories + Purchases – Closing inventories).

## Technical notes

### Confidence intervals

The 95% confidence intervals of a population parameter (turnover) are obtained as follows:

Lower limit

= lower 95% confidence limit of a population parameter  
= estimate – 1,96 \* Standard error (estimate);

and

Upper limit

= upper 95% confidence limit of a population parameter  
= estimate + 1,96 \* Standard error (estimate)

### Standard error (SE)

$$= \frac{\text{Upper limit (R million)} - \text{Lower limit (R million)}}{2 * 1,96}$$

### Relative standard error (RSE)

$$= \frac{\text{SE of estimate} * 100}{\text{Estimate}}$$

**Table D – Estimates of turnover by industry within 95% confidence limits: September 2025**

Industry	Lower limit	Estimate	Upper limit	Relative standard error (RSE)
	R million	R million	R million	%
Mining and quarrying	287 450	293 212	298 974	1,0
Manufacturing	1 082 947	1 118 278	1 153 609	1,6
Electricity, gas and water supply	134 028	136 588	139 148	1,0
Construction	80 607	96 548	112 489	8,4
Trade	1 219 121	1 311 672	1 404 223	3,6
Transport, storage and communication	265 466	275 064	284 662	1,8
Real estate and other business services, excluding financial intermediation and insurance	368 310	407 044	445 778	4,9
Community, social and personal services, excluding government and educational institutions	89 555	97 432	105 309	4,1
<b>All industries</b>	<b>3 542 852</b>	<b>3 735 838</b>	<b>3 928 824</b>	<b>2,6</b>

**Table E – Estimates of turnover by industry within 95% confidence limits: December 2025**

Industry	Lower limit	Estimate	Upper limit	Relative standard error (RSE)
	R million	R million	R million	%
Mining and quarrying	329 574	338 467	347 361	1,3
Manufacturing	1 115 735	1 157 009	1 198 283	1,8
Electricity, gas and water supply	116 716	119 223	121 730	1,1
Construction	79 520	99 613	119 705	10,3
Trade	1 304 310	1 388 687	1 473 064	3,1
Transport, storage and communication	290 417	302 807	315 197	2,1
Real estate and other business services, excluding financial intermediation and insurance	378 079	414 221	450 364	4,5
Community, social and personal services, excluding government and educational institutions	89 908	98 672	107 436	4,5
<b>All industries</b>	<b>3 718 303</b>	<b>3 918 699</b>	<b>4 119 095</b>	<b>2,6</b>

**Neyman optimal allocation**

Before drawing samples in each of the surveys, the population of enterprises on the statistical business register (SBR) was stratified. Strata were formed using a combination of the standard industrial classification variable and the measure of size variable for enterprises. The Neyman optimal allocation formula used to allocate samples to each stratum is given by the formula below.

$$n_h = \frac{N_h S_h}{\sum N_h S_h}$$

Where  $N_h$  and  $S_h$  are the stratum population size and the stratum variance, respectively.

**Table F – DTIC cut-off points (adjusted by Statistics South Africa (Stats SA) for QFS)**

Industry	Enterprise size			
	Large (Size-group 1) Lower limit turnover Rand	Medium (Size-group 2) Lower limit turnover Rand	Small (Size-group 3) Lower limit turnover Rand	Very small <sup>1</sup> (Size-group 4) Lower limit turnover Rand
Mining and quarrying	633 750 000	162 500 000	65 000 000	3 500 000
Manufacturing	828 750 000	211 250 000	81 250 000	3 500 000
Electricity, gas and water supply	828 750 000	211 250 000	82 875 000	3 500 000
Construction	422 500 000	97 500 000	48 750 000	3 500 000
Wholesale trade	1 040 000 000	520 000 000	97 500 000	3 500 000
Retail trade	633 750 000	308 750 000	65 000 000	3 500 000
Motor trade	633 750 000	308 750 000	65 000 000	3 500 000
Accommodation and catering	211 250 000	97 500 000	82 875 000	3 500 000
Transport, storage and communication	422 500 000	211 250 000	48 750 000	3 500 000
Real estate and other businesses services, excluding financial intermediation and insurance	422 500 000	211 250 000	48 750 000	3 500 000
Community, social and personal services, excluding government and educational institutions	211 250 000	97 500 000	16 250 000	3 500 000

Source: National Small Business Amendment Bill 2003, Department of Trade, Industry and Competition (DTIC)

<sup>1</sup> Enterprises with a turnover of less than R3 500 000 are excluded from this survey as from the 2025 sample.

## Explanatory notes

### Introduction

1 Stats SA conducts a quarterly sample survey to collect a range of financial statistics in respect of enterprises in the formal business sector of the South African economy, excluding agriculture, hunting, forestry and fishing, financial intermediation and insurance, government and educational institutions. This statistical release presents a selection of key findings and tables from Stats SA's *Quarterly financial statistics* (QFS) survey for the December 2024 quarter as well as the March, June, September and December 2025 quarters, which examines key variables as required by the Systems of National Accounts (SNA) 2008, and are mentioned below:

- turnover;
- interest received and paid;
- dividends received and dividends payable;
- royalties, franchise fees, copyright, trade names and trade and patent rights received and paid;
- income and expenditure in respect of rental/leasing of land, buildings and other structures, including payments for water and electricity services;
- income and expenditure in respect of hiring/leasing of plant, machinery, vehicles and other equipment;
- employment costs;
- profit and loss on assets/investments sold or revalued;
- depreciation provided for;
- purchases;
- other income and other expenditure;
- total income and total expenditure;
- net profit or loss before providing for company tax and dividends;
- company tax;
- inventories as at the beginning and end of the quarter; and
- carrying value of property, plant and equipment at the end of the quarter.

2 The statistical release also contains accounting ratios derived from estimates of selected key variables.

3 In order to improve the timeliness of the publication, some information for the current quarter may have been estimated due to late or non-submission by respondents. These estimates are revised as soon as the actual information is available.

4 Additional information regarding estimates of small, medium and large enterprises by industry per variable for the quarters ended September 2025 and December 2025 is available on the Stats SA website and can also be made available on request.

### Purpose of the survey

5 The QFS survey covers a sample of enterprises operating in the formal non-agricultural business sector of the South African economy, excluding financial intermediation, insurance, government and educational institutions. Results of the survey are used in compiling estimates of the gross domestic product (GDP) and its components, which in turn are used to develop and monitor government policies.

These statistics are also used by the private sector in the analysis of comparative business and industry performance. The results are published quarterly in the *Quarterly financial statistics* (QFS) statistical release P0044.

<b>Scope of the survey</b>	<b>6</b>	<p>This survey covers financial statistics of the following industries according to the <i>Standard Industrial Classification of All Economic Activities</i> (SIC), Fifth edition, January 1993:</p> <ul style="list-style-type: none"> <li>• mining and quarrying industry;</li> <li>• manufacturing industry;</li> <li>• electricity, gas and water supply industry;</li> <li>• construction industry;</li> <li>• trade industry;</li> <li>• transport, storage and communication industry;</li> <li>• real estate and business services industry, excluding financial intermediation and insurance; and</li> <li>• community, social and personal services industry, excluding government and educational institutions.</li> </ul>										
<b>Classification</b>	<b>7</b>	<p>The 1993 edition of the <i>Standard Industrial Classification of All Economic Activities</i> (SIC), Fifth edition, January 1993, was used to classify the statistical units in the survey. The SIC is based on the 1990 <i>International Standard Industrial Classification of All Economic Activities</i> (ISIC) with suitable adaptations for local conditions. Statistics in this publication are only presented at SIC major division (one digit) level. Each enterprise is classified as an industry which reflects the predominant activity of the enterprise. Estimates on lower digits SIC can be made available on request.</p>										
<b>Collection rate</b>	<b>8</b>	<table border="0" style="width: 100%;"> <tr> <td style="padding-left: 20px;">December 2024 quarter:</td> <td style="text-align: right;">79%</td> </tr> <tr> <td style="padding-left: 20px;">March 2025 quarter:</td> <td style="text-align: right;">79%</td> </tr> <tr> <td style="padding-left: 20px;">June 2025 quarter:</td> <td style="text-align: right;">81%</td> </tr> <tr> <td style="padding-left: 20px;">September 2025 quarter (revised):</td> <td style="text-align: right;">82%</td> </tr> <tr> <td style="padding-left: 20px;">December 2025 quarter (preliminary):</td> <td style="text-align: right;">76%</td> </tr> </table>	December 2024 quarter:	79%	March 2025 quarter:	79%	June 2025 quarter:	81%	September 2025 quarter (revised):	82%	December 2025 quarter (preliminary):	76%
December 2024 quarter:	79%											
March 2025 quarter:	79%											
June 2025 quarter:	81%											
September 2025 quarter (revised):	82%											
December 2025 quarter (preliminary):	76%											
<b>Statistical unit</b>	<b>9</b>	<p>For the purpose of this publication, the statistical unit in the <i>Quarterly financial statistics</i> survey is the enterprise. An enterprise is defined as a legal unit or a combination of legal units that includes and directly controls all functions necessary to carry out its production activities. The statistical units are derived from and linked to the South African Revenue Service (SARS) value-added tax (VAT) administrative data.</p>										
<b>Survey methodology and design</b>	<b>10</b>	<p>The survey is conducted on a quarterly basis. Questionnaires are sent to a sample of 5 079 enterprises. Questionnaires have to be returned to Stats SA within two weeks after the end of the quarter concerned. Telephone and electronic reminders are used to follow up on non-responding enterprises.</p>										
	<b>11</b>	<p>Samples are normally drawn each year and the resulting level changes in estimates are indicated when the new sample is implemented. A new sample was drawn in 2025 and implemented from the December 2025 quarter.</p>										

- 12** All enterprises are stratified by type of enterprise according to size groups based on the National Small Business Amendment Bill, 2003, size group allocations for industries as defined in the SIC.

All large enterprises, which comprise 65% of the number of enterprises in the sample, are completely enumerated, while simple random sampling is applied for medium-sized, small and very small enterprises. Enterprises with a VAT turnover of less than R3 500 000 are excluded from this survey. The data reported by the enterprises in the sample are weighted to represent all enterprises in the population.

**Reliability of estimates**

- 13** Data presented in this publication are based on information obtained from a sample of enterprises and are, therefore, subject to sampling variability. That is, the data may differ from the figures that would have been produced if the data had been obtained from all enterprises in the different industries in South Africa. Inaccuracies of this kind are referred to as sampling errors. See Table D and Table E (page 29) to determine the extent that estimates may vary.

- 14** Inaccuracies may occur because of imperfections in reporting by enterprises and errors made with the collection and processing of the data. Inaccuracies of this kind are referred to as non-sampling errors. Every effort is made to minimise non-sampling errors by designing the questionnaire carefully, conducting pilot studies, editing the data and implementing efficient operating procedures. Preliminary figures are indicated in the relevant tables.

**Reasons for fluctuations in data**

- 15** The fluctuations in the data can be attributed to:
- revisions to previous quarters made in the event of new or revised information being furnished by the respondents;
  - restructuring of large businesses;
  - exchange rate fluctuations;
  - changes in reporting due to new International Financial Reporting Standards (IFRS);
  - once-off items reflected in one or more quarters, but not reflected in other quarters;
  - year-end adjustments performed during the last quarter of the financial year;
  - seasonal factors;
  - items declared annually and not quarterly;
  - samples drawn annually (see paragraph 11 on page 32); and
  - response rates per industry and within sub-sectors.

**Standard error**

- 16** The estimates in this publication are based on a sample drawn from units in the surveyed population. The entire population is not surveyed. The published estimates are subject to sampling error. The most common way of quantifying such sampling error is to calculate the standard error for the published estimate or statistic (see Table D and Table E on page 29).

- Revised figures** 17 Revised figures are mainly due to late submission of data to Stats SA, or respondents reporting revisions or corrections to their figures. The reasons for routine revisions are outlined in the following schedule. Any unscheduled revisions will be promptly indicated in relevant tables to maintain transparency and accuracy.

Statistical release	Reason for revision	Period subject to revision
Dec-25	Additional information from respondents	Mar-25-Sep-25
Mar-26	Additional information from respondents	Dec-25
Jun-26	Additional information from respondents	Mar-26
Sep-26	Additional information from respondents	Jun-26

- Reference period** 18 The reference period for this publication is from 1 October 2025 to 31 December 2025.

- Related publications** 19 Users may also wish to refer to the following publications, which are available from Stats SA:

- *Annual financial statistics (P0021)*;
- *Electricity generated and available for distribution (P4141)*;
- *Food and beverages (P6420)*;
- *Gross domestic product (P0441)*;
- *Land transport (P7162)*;
- *Manufacturing: Production and sales (P3041.2)*;
- *Mining: Production and sales (P2041)*;
- *Motor trade sales (P6343.2)*;
- *Quarterly employment statistics (P0277)*;
- *Retail trade sales (P6242.1)*;
- *Selected building statistics of the private sector as reported by local government institutions (P5041.1)*;
- *Stats in brief*;
- *Tourist accommodation (P6410)*;
- *Wholesale trade sales (P6141.2)*; and
- *Quarterly capital expenditure (P0045)*.

- Rounding-off of figures** 20 The figures in the tables have, where necessary, been rounded off to the nearest three digits shown.

- Comparison of results with Quarterly employment statistics (QES) survey** 21 Employment costs estimates produced in this publication are based on information as defined by the International Accounting Standards 19 (IAS19) from an accounting perspective. The *Quarterly employment statistics (QES)* survey produces estimates for employment and earnings from a payroll perspective. The differences between the QFS employment costs and QES earnings can be attributed, but not limited, to the following factors:

- accounting and payroll timing differences in the recognition of employment-related transactions. The QFS employment costs are recognised on an accrual basis, while the QES earnings are recognised on a cash basis;
- classification differences between surveys;
- changes in accounting standards (International Financial Reporting Standards (IFRS) revisions in the QFS);
- different sampling frames;
- different sampling methodology and sampling specifications;
- information sources (information from the payroll administrator vs. information from the accounting officer); and
- restructuring of businesses.

<b>Adjustment of DTIC cut-off points</b>	<b>22</b>	The DTIC cut-off points sourced from the National Small Business Amendment Bill 2003 have been raised by a factor of 19,5 to comply with sample specifications.	
<b>Capital expenditure estimates</b>	<b>23</b>	This release excludes estimates for capital expenditure on new property, plant and equipment which are available in the <i>Quarterly capital expenditure</i> survey (P0045).	
<b>Symbols and abbreviations</b>	<b>24</b>	AFS	Annual financial statistics
		DTIC	Department of Trade, Industry and Competition
		GDP	Gross domestic product
		IAS	International Accounting Standards
		IFRS	International Financial Reporting Standards
		ISIC	International Standard Industrial Classification of All Economic Activities
		QES	Quarterly employment statistics
		QFS	Quarterly financial statistics
		RSE	Relative standard error
		SARS	South African Revenue Service
		SBR	Statistical Business Register
		SE	Standard error
		SIC	Standard Industrial Classification of All Economic Activities
		Stats SA	Statistics South Africa
		VAT	Value-added tax
		..	Not available

## Glossary

### **Carrying value of property, plant and equipment**

Carrying value of property, plant and equipment at the end of the quarter includes:

- land;
- residential buildings and non-residential buildings;
- construction works, roads and parking areas;
- computers and other IT equipment;
- motor vehicles and other transport equipment; and
- plant, machinery, furniture, fittings and other office equipment.

### **Company tax**

Company tax brought into account consists of taxes on incomes, profits and capital gains, excluding value-added tax (VAT). They are assessed on the actual or presumed incomes of enterprises and exclude employees' taxes, deferred tax and compulsory loan levies.

### **Employment costs**

Employment/staff costs according to IAS 19 are costs incurred in exchange for services rendered by employees. These costs are divided into four categories: short-term employee benefits, post-employment benefits, other long-term employee benefits and termination benefits.

Employment costs include (among other types of employment benefits):

- wages and salaries;
- compensated absences (paid vacation and sick leave);
- commissions paid;
- profit sharing plans;
- bonuses;
- medical and life insurance benefits during employment;
- housing benefits;
- free or subsidised goods or services given to employees;
- pension benefits;
- post-employment medical and life insurance benefits;
- long-service or sabbatical leave;
- jubilee benefits;
- deferred compensation programmes;
- severance, termination and redundancy payments to staff; and
- other employee-related costs not mentioned above.

<b>Enterprise</b>	An enterprise is a legal unit or a combination of legal units that includes and directly controls all functions necessary to carry out its production activities.
<b>Establishment</b>	An establishment is defined as an enterprise or part of an enterprise that is situated at a single location and in which only a single (non-ancillary) productive activity is carried out or in which the principal productive activity accounts for most of the value added.
<b>Industry</b>	An industry consists of a group of enterprises engaged in the same or similar kinds of economic activity, and is classified according to the <i>International Standard Industrial Classification of All Economic Activities (ISIC)</i> , Fifth edition, January 1993.
<b>International Financial Reporting Standards (IFRS)</b>	International Financial Reporting Standards (IFRS) are international accounting standards stating how particular types of transactions and other events should be reported in financial statements. IFRS are issued by the Accounting Standards Board. The purpose of IFRS is to improve transparency and comparability within financial reporting and introduce consistency in accounting.
<b>Inventories</b>	<p>Inventories consist of:</p> <ul style="list-style-type: none"><li>• outputs that are held by the enterprise that produced them prior to their being further processed, sold, delivered to other units or used in other ways; and</li><li>• products acquired from other enterprises that are intended to be used for intermediate consumption or for resale without further processing (factored goods).</li></ul> <p>Raw materials consist of components for processing, packing materials, fuel, consumable and maintenance stores.</p> <p>Work in progress consists of goods in the process of manufacturing or work that has been partially done, but which has not yet been completed at the beginning and end of the quarter.</p> <p>Finished goods include manufactured goods by own manufacturers and goods not produced by the enterprise but purchased for resale, not sold at the beginning and end of the quarter.</p>
<b>Net profit or loss</b>	Net profit or loss before drawings by proprietors or partners, company tax paid or provided for and dividends paid or provided for are taken into account is calculated as total income minus opening inventories plus closing inventories less total expenditure.

**Purchases**

Purchases includes:

- raw materials, components, etc., used in production;
- fuels;
- spare parts and building materials; and
- purchases and transfers-in of factored goods, intermediate products and partially completed goods from related enterprises.

Purchases excludes:

- subcontract and commission expenses;
- motor vehicle running expenditure, including parts and fuel;
- purchases of materials capitalised for “capital work done” by own employees; and
- containers and packaging materials.

**Turnover**

Turnover refers to the following items for all industries, excluding real estate and other business services (excluding financial intermediation and insurance):

- value of sales;
- amounts received for work done; and
- amounts received for services rendered.

Turnover refers to the following items for the real estate and other business services industry (excluding financial intermediation and insurance):

- value of sales;
- amounts received for work done;
- amounts received for services rendered;
- interest received;
- rent and or lease payments received for land and buildings; and
- rent, leasing and hiring received for machinery, vehicles and other equipment.

Turnover excludes:

- value-added tax (VAT); and
- net profit or loss on sales or revaluation of fixed assets (including profit or loss on foreign exchange).

**Value-added tax**

VAT is an indirect tax based on consumption of goods and services in the economy.

## General information

Stats SA publishes approximately 300 different statistical releases each year. It is not economically viable to produce them in more than one of South Africa's 12 official languages. Since the releases are used extensively locally and by international economic and social-scientific communities, Stats SA releases are published in English only.

Stats SA has copyright on this publication. Users may apply the information as they wish, provided that they acknowledge Stats SA as the source of the basic data wherever they process, apply, utilise, publish or distribute the data, and also that they specify that the relevant application and analysis where applicable result from their own processing of the data.

## Advance release calendar

An advance release calendar is disseminated on [www.statssa.gov.za](http://www.statssa.gov.za).

## Stats SA products

A complete set of Stats SA publications is available at the Stats SA Library and the following libraries:

National Library of South Africa, Pretoria Division  
National Library of South Africa, Cape Town Division  
Natal Society Library, Pietermaritzburg  
Library of Parliament, Cape Town  
Bloemfontein Public Library  
Johannesburg Public Library  
Eastern Cape Library Services, Qonce  
Central Regional Library, Polokwane  
Central Reference Library, Mbombela  
Central Reference Collection, Kimberley  
Central Reference Library, Mmabatho

Stats SA also provides a subscription service.

## Electronic services

A large range of data is available via online services. For more details about our electronic services, contact (012) 310 8600. You can visit us on the internet at: [www.statssa.gov.za](http://www.statssa.gov.za).

## Technical enquiries

Richard Klaas                      Telephone number: (012) 310 2185 / 067 415 9760  
Email: [richardk@statssa.gov.za](mailto:richardk@statssa.gov.za)

Khathutshelo Raluombe           Telephone number: (012) 310 8320 / 082 287 9295  
Email: [khathutshelor@statssa.gov.za](mailto:khathutshelor@statssa.gov.za)

User information services           Telephone number: (012) 310 8600  
Email address: [info@statssa.gov.za](mailto:info@statssa.gov.za)

Postal address:                      Private Bag X44, Pretoria, 0001

*Produced by Stats SA*