



**stats sa**

Department:  
Statistics South Africa  
**REPUBLIC OF SOUTH AFRICA**

Private Bag X44, Pretoria, 0001, South Africa, ISibalo House, Koch Street, Salvokop, Pretoria, 0002  
www.statssa.gov.za, info@statssa.gov.za, Tel +27 12 310 8911

## **STATISTICAL RELEASE**

### **P0043.1**

# Statistics of liquidations (Preliminary)

April 2026

Statistics South Africa regularly engages with the Companies and Intellectual Property Commission to ensure the accuracy of statistics. This allows for an assessment of the survey's scope and other areas of improvement. Following the discussions, the results presented in this publication are based on a revised time series. See note on page 3 for further details.

Embargoed until:  
27 May 2026  
14:30

ENQUIRIES:  
Joyce Essel-Mensah  
Tel: 082 888 2374

FORTHCOMING ISSUE:  
May 2026

EXPECTED RELEASE DATE:  
24 June 2026



## Contents

<b>Liquidations: results for April 2026</b> .....	<b>2</b>
Table A – Key growth rates in the number of liquidations .....	2
Figure 1 – Number of liquidations .....	2
<b>Note: Revisions to liquidations data for the period January 2000 to March 2026</b> .....	<b>3</b>
Figure 2 – Comparison of published and revised total liquidations data .....	3
<b>Tables</b> .....	<b>4</b>
Table 1 – Total liquidations according to industry (number).....	4
Table 1.1 – Liquidations of companies according to industry (number) .....	4
Table 1.2 – Liquidations of close corporations according to industry (number) .....	4
Table 2 – Total liquidations (number) .....	5
Table 2.1 – Compulsory liquidations (number) .....	5
Table 2.2 – Voluntary liquidations (number) .....	5
Table 3 – Total liquidations of companies (number).....	6
Table 3.1 – Compulsory liquidations of companies (number) .....	6
Table 3.2 – Voluntary liquidations of companies (number) .....	6
Table 4 – Total liquidations of close corporations (number).....	7
Table 4.1 – Compulsory liquidations of close corporations (number) .....	7
Table 4.2 – Voluntary liquidations of close corporations (number) .....	7
<b>Explanatory notes</b> .....	<b>8</b>
<b>Glossary</b> .....	<b>8</b>
<b>Technical enquiries</b> .....	<b>9</b>
<b>General information</b> .....	<b>10</b>

### Liquidations: results for April 2026

**Table A – Key growth rates in the number of liquidations**

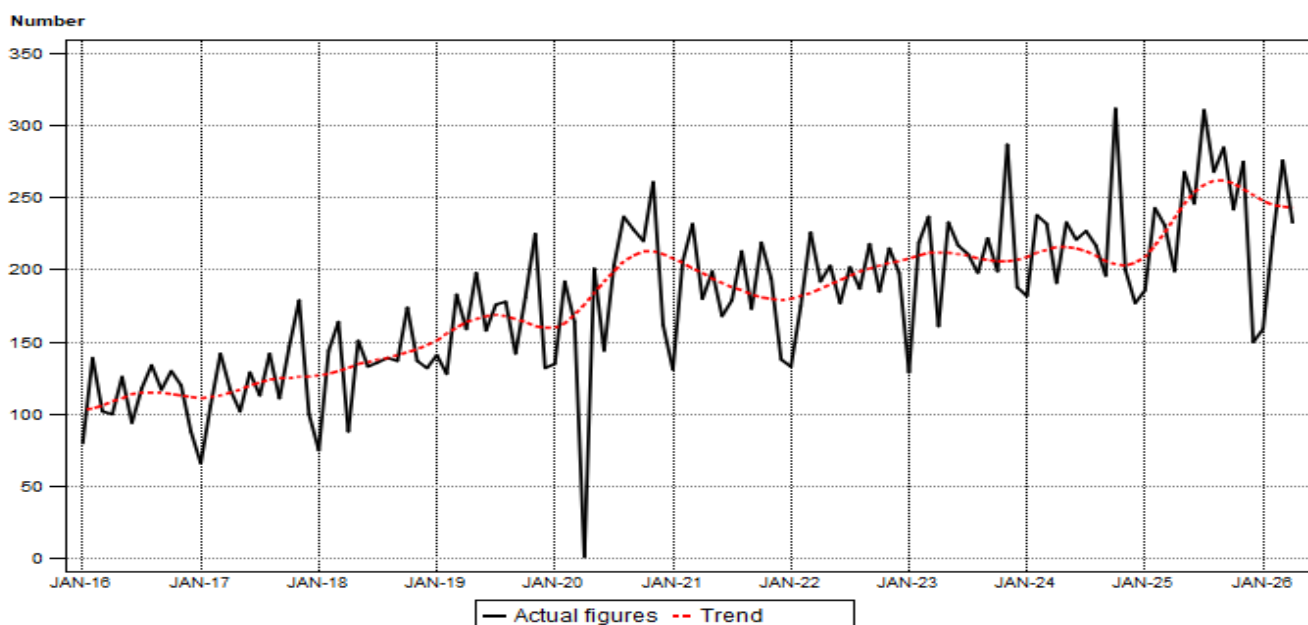
Number of liquidations Apr 2026	% change between Apr 2025 and Apr 2026	% change between Feb – Apr 2025 and Feb – Apr 2026	% change between Jan – Apr 2025 and Jan – Apr 2026
233	17,1	8,8	3,7

The total number of liquidations increased by 17,1% (from 199 to 233) in April 2026 compared with April 2025. Liquidations of companies increased by 23 cases and liquidations of close corporations increased by 11 cases during this period – see Table 1.1 and Table 1.2.

The number of liquidations increased by 8,8% (from 673 to 732) in the three months ended April 2026 compared with the three months ended April 2025.

An increase of 3,7% (from 859 to 891) in the number of liquidations was recorded in the first four months of 2026 compared with the first four months of 2025.

**Figure 1 – Number of liquidations**



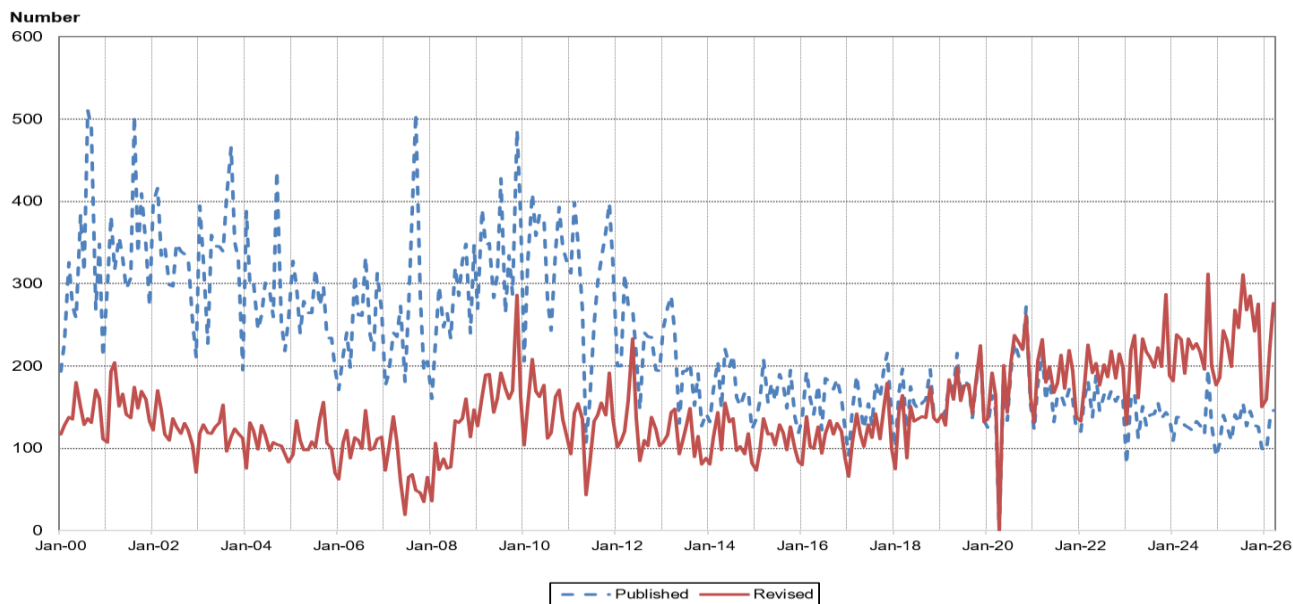
*Risenga Maluleke*  
**Risenga Maluleke**  
 Statistician-General

**Note: Revisions to liquidations data for the period January 2000 to March 2026**

Through ongoing engagements between Statistics South Africa (Stats SA) and the Companies and Intellectual Property Commission (CIPC), issues relating to duplicate entries and data extraction challenges were identified in previously submitted aggregated data. These issues resulted in the omission and duplication of certain records in the published series.

Consequently, significant revisions have been made to the historical liquidations data. Users are advised to consider these revisions when interpreting trends over time. The revised data are presented in Figure 2 below.

**Figure 2 – Comparison of published and revised total liquidations data**



## Tables

**Table 1 – Total liquidations according to industry (number)**

Industry	Jan – Apr 2026			Apr 2025			Mar 2026			Apr 2026		
	C	V	Total	C	V	Total	C	V	Total	C	V	Total
1.Agriculture, hunting, forestry and fishing	1	5	6	0	0	0	0	1	1	0	2	2
2.Mining and quarrying	0	1	1	0	1	1	0	0	0	0	0	0
3.Manufacturing	0	8	8	0	5	5	0	1	1	0	4	4
4.Electricity, gas and water	0	0	0	0	2	2	0	0	0	0	0	0
5.Construction	0	23	23	0	2	2	0	7	7	0	6	6
6.Trade, catering and accommodation	7	103	110	2	12	14	2	30	32	3	20	23
7.Transport, storage, communication	0	11	11	0	2	2	0	3	3	0	5	5
8.Financing, insurance, real estate, business services	9	110	119	2	39	41	4	34	38	2	22	24
9.Community, social, personal services	1	31	32	1	2	3	0	10	10	1	11	12
10.Unclassified	55	526	581	15	114	129	20	164	184	11	146	157
<b>Total number of liquidations</b>	<b>73</b>	<b>818</b>	<b>891</b>	<b>20</b>	<b>179</b>	<b>199</b>	<b>26</b>	<b>250</b>	<b>276</b>	<b>17</b>	<b>216</b>	<b>233</b>

**Table 1.1 – Liquidations of companies according to industry (number)**

Industry	Jan – Apr 2026			Apr 2025			Mar 2026			Apr 2026		
	C	V	Total	C	V	Total	C	V	Total	C	V	Total
1.Agriculture, hunting, forestry and fishing	1	1	2	0	0	0	0	0	0	0	1	1
2.Mining and quarrying	0	1	1	0	1	1	0	0	0	0	0	0
3.Manufacturing	0	5	5	0	2	2	0	0	0	0	2	2
4.Electricity, gas and water	0	0	0	0	0	0	0	0	0	0	0	0
5.Construction	0	7	7	0	0	0	0	3	3	0	1	1
6.Trade, catering and accommodation	4	36	40	0	4	4	1	6	7	2	7	9
7.Transport, storage, communication	0	4	4	0	0	0	0	2	2	0	2	2
8.Financing, insurance, real estate, business services	6	49	55	0	22	22	3	17	20	1	7	8
9.Community, social, personal services	0	3	3	0	0	0	0	0	0	0	1	1
10.Unclassified	53	515	568	15	110	125	19	160	179	11	142	153
<b>Total number of liquidations</b>	<b>64</b>	<b>621</b>	<b>685</b>	<b>15</b>	<b>139</b>	<b>154</b>	<b>23</b>	<b>188</b>	<b>211</b>	<b>14</b>	<b>163</b>	<b>177</b>

**Table 1.2 – Liquidations of close corporations according to industry (number)**

Industry	Jan – Apr 2026			Apr 2025			Mar 2026			Apr 2026		
	C	V	Total	C	V	Total	C	V	Total	C	V	Total
1.Agriculture, hunting, forestry and fishing	0	4	4	0	0	0	0	1	1	0	1	1
2.Mining and quarrying	0	0	0	0	0	0	0	0	0	0	0	0
3.Manufacturing	0	3	3	0	3	3	0	1	1	0	2	2
4.Electricity, gas and water	0	0	0	0	2	2	0	0	0	0	0	0
5.Construction	0	16	16	0	2	2	0	4	4	0	5	5
6.Trade, catering and accommodation	3	67	70	2	8	10	1	24	25	1	13	14
7.Transport, storage, communication	0	7	7	0	2	2	0	1	1	0	3	3
8.Financing, insurance, real estate, business services	3	61	64	2	17	19	1	17	18	1	15	16
9.Community, social, personal services	1	28	29	1	2	3	0	10	10	1	10	11
10.Unclassified	2	11	13	0	4	4	1	4	5	0	4	4
<b>Total number of liquidations</b>	<b>9</b>	<b>197</b>	<b>206</b>	<b>5</b>	<b>40</b>	<b>45</b>	<b>3</b>	<b>62</b>	<b>65</b>	<b>3</b>	<b>53</b>	<b>56</b>

C = Compulsory.

V = Voluntary.

**Table 2 – Total liquidations (number)**

Month	2020	2021	2022	2023	2024	2025	2026
January	135	131	133	129	182	186	159
February	192	206	175	219	238	243	223
March	164	232	226	237	232	231	276
April	0	180	192	161	191	199	233
May	201	199	203	233	233	268	
June	144	168	177	217	221	246	
July	203	179	202	211	227	311	
August	237	213	187	198	217	268	
September	228	173	218	222	196	285	
October	220	219	185	199	312	242	
November	261	194	215	287	200	275	
December	162	138	198	188	177	150	
<b>Total</b>	<b>2 147</b>	<b>2 232</b>	<b>2 311</b>	<b>2 501</b>	<b>2 626</b>	<b>2 904</b>	

**Table 2.1 – Compulsory liquidations (number)**

Month	2020	2021	2022	2023	2024	2025	2026
January	27	19	19	9	16	26	22
February	13	11	18	37	21	16	8
March	7	17	24	35	20	21	26
April	0	12	31	11	28	20	17
May	18	21	32	27	17	29	
June	9	13	14	27	22	16	
July	16	16	19	21	21	37	
August	10	14	11	11	16	38	
September	12	5	20	24	14	25	
October	27	24	27	21	31	27	
November	75	19	17	33	30	25	
December	16	8	10	9	11	11	
<b>Total</b>	<b>230</b>	<b>179</b>	<b>242</b>	<b>265</b>	<b>247</b>	<b>291</b>	

**Table 2.2 – Voluntary liquidations (number)**

Month	2020	2021	2022	2023	2024	2025	2026
January	108	112	114	120	166	160	137
February	179	195	157	182	217	227	215
March	157	215	202	202	212	210	250
April	0	168	161	150	163	179	216
May	183	178	171	206	216	239	
June	135	155	163	190	199	230	
July	187	163	183	190	206	274	
August	227	199	176	187	201	230	
September	216	168	198	198	182	260	
October	193	195	158	178	281	215	
November	186	175	198	254	170	250	
December	146	130	188	179	166	139	
<b>Total</b>	<b>1 917</b>	<b>2 053</b>	<b>2 069</b>	<b>2 236</b>	<b>2 379</b>	<b>2 613</b>	

**Table 3 – Total liquidations of companies (number)**

Month	2020	2021	2022	2023	2024	2025	2026
January	91	86	101	98	147	138	132
February	125	139	129	158	178	178	165
March	112	149	167	159	162	182	211
April	0	112	130	121	137	154	177
May	129	130	144	175	181	213	
June	101	116	124	166	167	193	
July	143	125	138	154	172	227	
August	165	150	138	131	153	213	
September	160	117	161	159	142	218	
October	144	155	125	149	229	176	
November	169	146	164	211	151	204	
December	113	100	149	144	133	121	
<b>Total</b>	<b>1 452</b>	<b>1 525</b>	<b>1 670</b>	<b>1 825</b>	<b>1 952</b>	<b>2 217</b>	

**Table 3.1 – Compulsory liquidations of companies (number)**

Month	2020	2021	2022	2023	2024	2025	2026
January	15	13	12	7	12	18	20
February	4	6	14	28	16	10	7
March	5	11	17	23	16	17	23
April	0	9	24	9	21	15	14
May	8	18	25	23	11	23	
June	9	10	11	24	16	12	
July	12	11	14	21	19	29	
August	8	10	8	7	14	32	
September	9	3	16	21	9	15	
October	16	22	20	16	26	17	
November	53	9	12	20	21	18	
December	12	6	6	6	8	8	
<b>Total</b>	<b>151</b>	<b>128</b>	<b>179</b>	<b>205</b>	<b>189</b>	<b>214</b>	

**Table 3.2 – Voluntary liquidations of companies (number)**

Month	2020	2021	2022	2023	2024	2025	2026
January	76	73	89	91	135	120	112
February	121	133	115	130	162	168	158
March	107	138	150	136	146	165	188
April	0	103	106	112	116	139	163
May	121	112	119	152	170	190	
June	92	106	113	142	151	181	
July	131	114	124	133	153	198	
August	157	140	130	124	139	181	
September	151	114	145	138	133	203	
October	128	133	105	133	203	159	
November	116	137	152	191	130	186	
December	101	94	143	138	125	113	
<b>Total</b>	<b>1 301</b>	<b>1 397</b>	<b>1 491</b>	<b>1 620</b>	<b>1 763</b>	<b>2 003</b>	

**Table 4 – Total liquidations of close corporations (number)**

Month	2020	2021	2022	2023	2024	2025	2026
January	44	45	32	31	35	48	27
February	67	67	46	61	60	65	58
March	52	83	59	78	70	49	65
April	0	68	62	40	54	45	56
May	72	69	59	58	52	55	
June	43	52	53	51	54	53	
July	60	54	64	57	55	84	
August	72	63	49	67	64	55	
September	68	56	57	63	54	67	
October	76	64	60	50	83	66	
November	92	48	51	76	49	71	
December	49	38	49	44	44	29	
<b>Total</b>	<b>695</b>	<b>707</b>	<b>641</b>	<b>676</b>	<b>674</b>	<b>687</b>	

**Table 4.1 – Compulsory liquidations of close corporations (number)**

Month	2020	2021	2022	2023	2024	2025	2026
January	12	6	7	2	4	8	2
February	9	5	4	9	5	6	1
March	2	6	7	12	4	4	3
April	0	3	7	2	7	5	3
May	10	3	7	4	6	6	
June	0	3	3	3	6	4	
July	4	5	5	0	2	8	
August	2	4	3	4	2	6	
September	3	2	4	3	5	10	
October	11	2	7	5	5	10	
November	22	10	5	13	9	7	
December	4	2	4	3	3	3	
<b>Total</b>	<b>79</b>	<b>51</b>	<b>63</b>	<b>60</b>	<b>58</b>	<b>77</b>	

**Table 4.2 – Voluntary liquidations of close corporations (number)**

Month	2020	2021	2022	2023	2024	2025	2026
January	32	39	25	29	31	40	25
February	58	62	42	52	55	59	57
March	50	77	52	66	66	45	62
April	0	65	55	38	47	40	53
May	62	66	52	54	46	49	
June	43	49	50	48	48	49	
July	56	49	59	57	53	76	
August	70	59	46	63	62	49	
September	65	54	53	60	49	57	
October	65	62	53	45	78	56	
November	70	38	46	63	40	64	
December	45	36	45	41	41	26	
<b>Total</b>	<b>616</b>	<b>656</b>	<b>578</b>	<b>616</b>	<b>616</b>	<b>610</b>	

## Explanatory notes

- Introduction** 1 Statistics South Africa (Stats SA) collects administrative information on liquidations from the Companies and Intellectual Property Commission (CIPC) and the Department of Trade, Industry and Competition (DTIC).
- 2 This statistical release reflects voluntary and compulsory liquidations of companies and close corporations.
- Purpose of the survey** 3 The aggregated data in this release are used by both the private and public sectors to measure economic performance and serve as an important indicator of the scope of unpaid debt in South Africa.
- Scope of the survey** 4 This survey covers the total number of companies and close corporations which were liquidated.
- Symbols and abbreviations** 5 Stats SA – Statistics South Africa  
CIPC – Companies and Intellectual Property Commission  
DTIC – Department of Trade, Industry and Competition  
C – Compulsory  
V – Voluntary
- Seasonal adjustment** 6 Seasonally adjusted estimates are generated each month using the X-12-ARIMA Seasonal Adjustment Program developed by the United States Census Bureau. Seasonal adjustment is a means of removing the estimated effects of normal seasonal variation from the series so that the effects of other influences on the series can be recognised more clearly. Seasonal adjustment does not aim to remove irregular or non-seasonal influences which may be present in any particular month.
- 7 Influences that are volatile or unsystematic can still make it difficult to interpret the movement of the series even after adjustment for seasonal variations. This means the month-to-month movements of seasonally adjusted estimates may not be reliable indicators of trend behaviour. The X-12-ARIMA procedure for liquidations is described in more detail on the Stats SA website:  
[click to download seasonal adjustment P0043 April 2018](#).
- Trend cycle** 8 The trend is the long-term pattern or movement of a time series. The X-12-ARIMA Seasonal Adjustment Program is used for smoothing seasonally adjusted estimates to estimate the underlying trend cycle.
- Revisions** 9 Stats SA regularly engages with the CIPC to ensure the accuracy of statistics. This allows for an assessment of the current survey's scope and other areas of improvement. These discussions may result in data revisions, as outlined in the schedule below.

Statistical release	Reason for revision	Period subject to revision
Apr-26	Additional information from CIPC	Jan-00 - Mar-26

## Glossary

- Compulsory liquidation** A compulsory liquidation takes place when the affairs of a company or close corporation are wound up by order of the court.
- Liquidation** Liquidation refers to the winding-up of the affairs of a company or close corporation when liabilities exceed assets and it can be resolved by voluntary action or by an order of the court.
- Voluntary liquidation** A voluntary liquidation takes place when a company or close corporation, by own choice, resolves to wind-up its affairs.

**Technical enquiries**

**Onica Mushwana** Telephone number: (012) 310 4897 / 066 310 3963  
Email: [onicama@statssa.gov.za](mailto:onicama@statssa.gov.za)

**Suzzie Mnguni** Telephone number: (012) 310 8134 / 066 314 3194  
Email: [suzziemn@statssa.gov.za](mailto:suzziemn@statssa.gov.za)

**Joyce Essel-Mensah** Telephone number: (012) 310 8255 / 082 888 2374  
Email: [joycee@statssa.gov.za](mailto:joycee@statssa.gov.za)

## General information

Stats SA publishes approximately 300 different statistical releases each year. It is not economically viable to produce them in more than one of South Africa's 12 official languages. Since the releases are used extensively locally and by international economic and social-scientific communities, Stats SA releases are published in English only.

Stats SA has copyright on this publication. Users may apply the information as they wish, provided that they acknowledge Stats SA as the source of the basic data wherever they process, apply, utilise, publish or distribute the data; and also that they specify that the relevant application and analysis (where applicable) result from their own processing of the data.

## Advance release calendar

A release calendar is disseminated on [www.statssa.gov.za](http://www.statssa.gov.za).

## Stats SA products

A complete set of Stats SA publications is available at the Stats SA library and the following libraries:

National Library of South Africa, Pretoria Division  
National Library of South Africa, Cape Town Division  
Natal Society Library, Pietermaritzburg  
Library of Parliament, Cape Town  
Bloemfontein Public Library  
Johannesburg Public Library  
Eastern Cape Library Services, Qonce  
Central Regional Library, Polokwane  
Central Reference Library, Mbombela  
Central Reference Collection, Kimberley  
Central Reference Library, Mmabatho

Stats SA also provides a subscription service.

## Electronic services

A large range of data is available via online services. For more details about our electronic services, contact Stats SA's user information service at (012) 310 8600.

You can visit us on the internet at: [www.statssa.gov.za](http://www.statssa.gov.za).

## General enquiries

User information services	Telephone number: (012) 310 8600 Email address: <a href="mailto:info@statssa.gov.za">info@statssa.gov.za</a>
Orders/subscription services	Telephone number: (012) 310 8619 Email address: <a href="mailto:millies@statssa.gov.za">millies@statssa.gov.za</a>
Postal address	Private Bag X44, Pretoria, 0001

*Produced by Stats SA*