

Statistical release

P0043

Statistics of liquidations and insolvencies (Preliminary)

April 2012

**Embargoed until:
28 May 2012
14:30**

Enquiries:

User Information Services
Tel: (012) 310 8600

Forthcoming issue:

May 2012

Expected release date:

25 June 2012

Contents

Liquidations: results for April 2012	2
Table A – Number of liquidations	2
Figure 1 – Number of liquidations	2
Insolvencies: results for March 2012	3
Table B – Number of insolvencies	3
Figure 2 – Number of insolvencies.....	3
Tables	4
Table 1 – Total liquidations according to industry (number)	4
Table 1.1 – Liquidations of companies according to industry (number).....	4
Table 1.2 – Liquidations of close corporations according to industry (number)	4
Table 2 – Total liquidations (number).....	5
Table 2.1 – Compulsory liquidations (number).....	5
Table 2.2 – Voluntary liquidations (number).....	5
Table 3 – Total liquidations of companies (number).....	6
Table 3.1 – Compulsory liquidations of companies (number).....	6
Table 3.2 – Voluntary liquidations of companies (number).....	6
Table 4 – Total liquidations of close corporations (number)	7
Table 4.1 – Compulsory liquidations of close corporations (number)	7
Table 4.2 – Voluntary liquidations of close corporations (number)	7
Table 5 – Insolvencies of individuals and partnerships (number).....	8
Explanatory notes	9
Glossary	9
General information	10

Liquidations: results for April 2012

Table A – Number of liquidations

Number of liquidations April 2012	% change between April 2011 and April 2012	% change between February to April 2011 and February to April 2012	% change between January to April 2011 and January to April 2012
230	-13,9	-36,8	-36,6

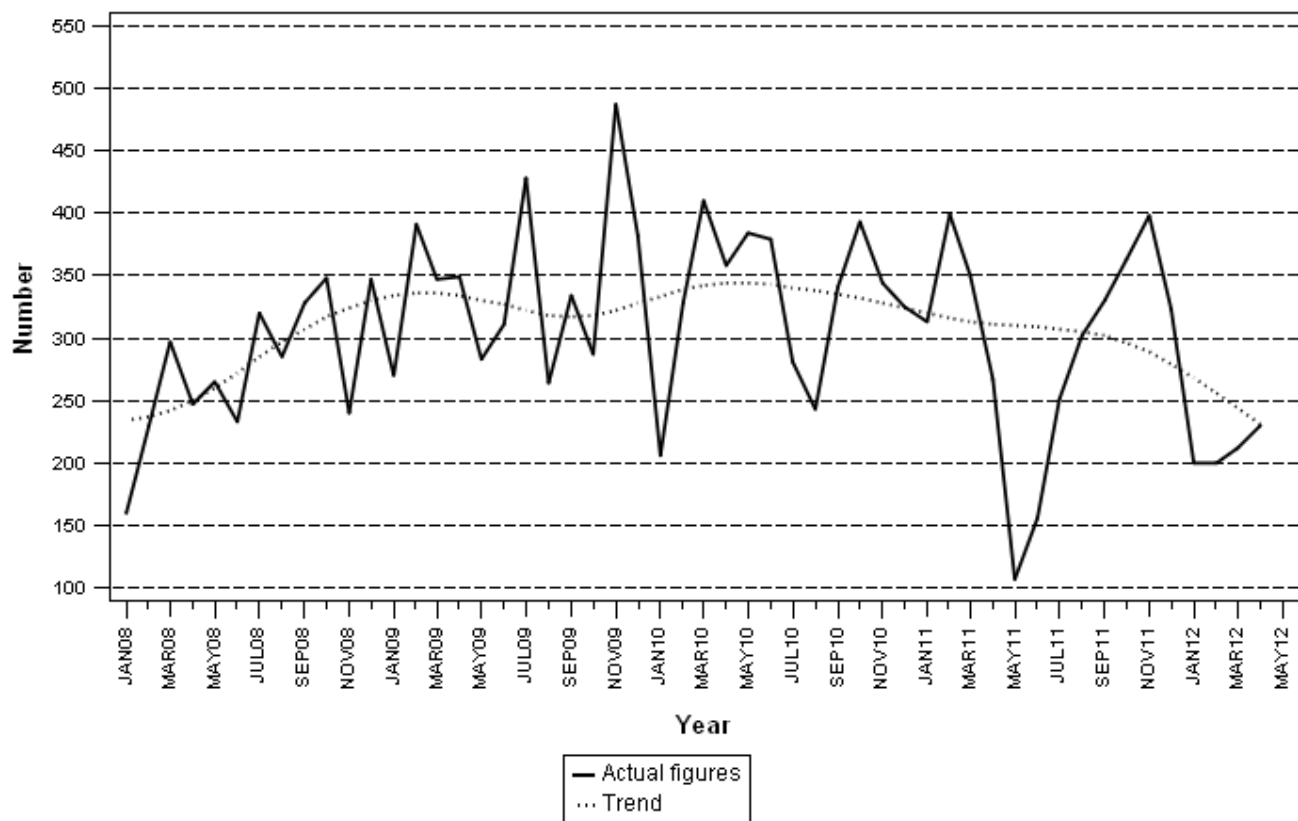
The number of liquidations for the first four months of 2012 declined by 36,6% compared with the same period of 2011. A year-on-year decrease of 13,9% was recorded for April 2012.

In April 2012, there were 25 fewer voluntary and 12 fewer compulsory liquidations recorded compared with April 2011. During this period close corporation liquidations decreased by 16,5%, while company liquidations decreased by 9,3%.

The largest year-on-year decreases for April 2012 related to businesses in the:

- financing, insurance, real estate and business services industry (22 fewer liquidations); and
- wholesale and retail trade, catering and accommodation industry (14 fewer liquidations).

Figure 1 – Number of liquidations



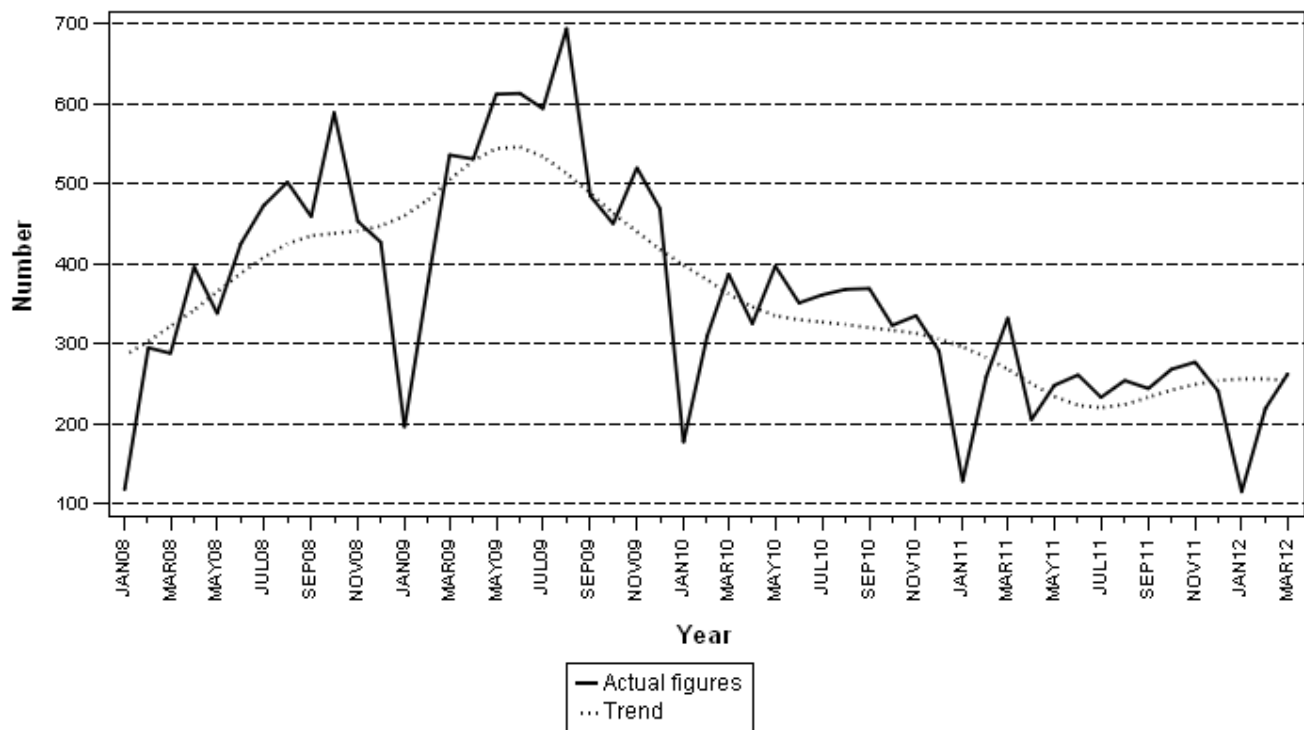
Insolvencies: results for March 2012

Table B – Number of insolvencies

Number of insolvencies March 2012	% change between March 2011 and March 2012	% change between January to March 2011 and January to March 2012
262	-21,1	-17,1

The number of insolvencies fell by 17,1% between the first quarter of 2011 and the first quarter of 2012. A year-on-year decrease of 21,1% was estimated for March 2012.

Figure 2 – Number of insolvencies



PJ Lehohla
Statistician-General

Tables

Table 1 – Total liquidations according to industry (number)

Industry	January - April 2012			April 2011			March 2012			April 2012		
	C	V	Total	C	V	Total	C	V	Total	C	V	Total
1.Agriculture, hunting, forestry and fishing	3	10	13	4	1	5	1	2	3	0	3	3
2.Mining and quarrying	1	2	3	0	1	1	0	1	1	0	0	0
3.Manufacturing	8	34	42	5	8	13	0	5	5	0	17	17
4.Electricity, gas and water	1	2	3	0	3	3	0	0	0	0	2	2
5.Construction	7	35	42	0	6	6	2	5	7	0	13	13
6.Wholesale and retail trade, catering and accommodation	21	146	167	4	75	79	4	26	30	2	63	65
7.Transport, storage, communication	22	77	99	0	9	9	8	31	39	0	5	5
8.Financing, insurance, real estate, business services	47	280	327	1	118	119	16	81	97	0	97	97
9.Community, social, personal services	19	127	146	2	30	32	6	24	30	2	26	28
Total number of liquidations	129	713	842	16	251	267	37	175	212	4	226	230

Table 1.1 – Liquidations of companies according to industry (number)

Industry	January - April 2012			April 2011			March 2012			April 2012		
	C	V	Total	C	V	Total	C	V	Total	C	V	Total
1.Agriculture, hunting, forestry and fishing	2	3	5	0	0	0	1	1	2	0	1	1
2.Mining and quarrying	1	0	1	0	0	0	0	0	0	0	0	0
3.Manufacturing	5	9	14	0	2	2	0	1	1	0	3	3
4.Electricity, gas and water	1	0	1	0	0	0	0	0	0	0	0	0
5.Construction	1	11	12	0	0	0	0	3	3	0	2	2
6.Wholesale and retail trade, catering and accommodation	15	64	79	0	36	36	2	12	14	2	25	27
7.Transport, storage, communication	2	7	9	0	5	5	0	1	1	0	2	2
8.Financing, insurance, real estate, business services	24	139	163	0	48	48	2	39	41	0	43	43
9.Community, social, personal services	8	42	50	0	6	6	4	8	12	0	10	10
Total number of liquidations	59	275	334	0	97	97	9	65	74	2	86	88

Table 1.2 – Liquidations of close corporations according to industry (number)

Industry	January - April 2012			April 2011			March 2012			April 2012		
	C	V	Total	C	V	Total	C	V	Total	C	V	Total
1.Agriculture, hunting, forestry and fishing	1	7	8	4	1	5	0	1	1	0	2	2
2.Mining and quarrying	0	2	2	0	1	1	0	1	1	0	0	0
3.Manufacturing	3	25	28	5	6	11	0	4	4	0	14	14
4.Electricity, gas and water	0	2	2	0	3	3	0	0	0	0	2	2
5.Construction	6	24	30	0	6	6	2	2	4	0	11	11
6.Wholesale and retail trade, catering and accommodation	6	82	88	4	39	43	2	14	16	0	38	38
7.Transport, storage, communication	20	70	90	0	4	4	8	30	38	0	3	3
8.Financing, insurance, real estate, business services	23	141	164	1	70	71	14	42	56	0	54	54
9.Community, social, personal services	11	85	96	2	24	26	2	16	18	2	16	18
Total number of liquidations	70	438	508	16	154	170	28	110	138	2	140	142

C = Compulsory.

V = Voluntary.

Table 2 – Total liquidations (number)

Month	2006	2007	2008	2009	2010	2011	2012
January	171	176	160	270	206	313	200
February	213	192	230	391	328	399	200
March	241	241	297	347	410	350	212
April	198	236	247	349	358	267	230
May	311	273	265	283	384	107	
June	262	181	233	311	379	156	
July	261	272	320	428	281	251	
August	333	387	285	264	243	302	
September	238	507	328	334	341	330	
October	219	286	348	287	393	363	
November	313	194	240	487	344	398	
December	266	206	347	382	325	323	
Year Total	3 026	3 151	3 300	4 133	3 992	3 559	

Table 2.1 – Compulsory liquidations (number)

Month	2006	2007	2008	2009	2010	2011	2012
January	37	12	29	54	3	45	61
February	15	15	15	26	19	26	27
March	31	12	41	10	23	12	37
April	9	32	22	41	17	16	4
May	20	13	26	26	30	30	
June	50	9	17	20	12	2	
July	16	14	13	37	35	8	
August	46	111	26	49	22	14	
September	22	47	22	2	20	18	
October	20	39	48	17	49	61	
November	56	13	15	12	20	74	
December	53	9	2	1	34	75	
Year Total	375	326	276	295	284	381	

Table 2.2 – Voluntary liquidations (number)

Month	2006	2007	2008	2009	2010	2011	2012
January	134	164	131	216	203	268	139
February	198	177	215	365	309	373	173
March	210	229	256	337	387	338	175
April	189	204	225	308	341	251	226
May	291	260	239	257	354	77	
June	212	172	216	291	367	154	
July	245	258	307	391	246	243	
August	287	276	259	215	221	288	
September	216	460	306	332	321	312	
October	199	247	300	270	344	302	
November	257	181	225	475	324	324	
December	213	197	345	381	291	248	
Year Total	2 651	2 825	3 024	3 838	3 708	3 178	

Table 3 – Total liquidations of companies (number)

Month	2006	2007	2008	2009	2010	2011	2012
January	85	99	87	114	96	156	97
February	107	96	117	229	161	199	75
March	127	114	108	152	177	145	74
April	100	143	104	148	176	97	88
May	131	157	108	109	203	36	
June	140	104	100	147	194	52	
July	145	129	170	201	128	81	
August	143	243	98	100	93	180	
September	122	416	177	162	136	190	
October	132	175	165	136	204	167	
November	183	94	111	161	174	152	
December	167	127	228	230	197	151	
Year Total	1 582	1 897	1 573	1 889	1 939	1 606	

Table 3.1 – Compulsory liquidations of companies (number)

Month	2006	2007	2008	2009	2010	2011	2012
January	18	4	8	18	3	18	37
February	4	4	15	11	12	16	11
March	23	5	10	8	19	12	9
April	5	19	8	27	13	0	2
May	5	3	17	9	24	3	
June	35	2	6	14	3	1	
July	6	4	4	20	25	4	
August	11	89	6	10	11	0	
September	18	34	3	1	3	18	
October	13	26	34	10	38	59	
November	43	7	10	3	15	42	
December	37	8	1	0	30	47	
Year Total	218	205	122	131	196	220	

Table 3.2 – Voluntary liquidations of companies (number)

Month	2006	2007	2008	2009	2010	2011	2012
January	67	95	79	96	93	138	60
February	103	92	102	218	149	183	64
March	104	109	98	144	158	133	65
April	95	124	96	121	163	97	86
May	126	154	91	100	179	33	
June	105	102	94	133	191	51	
July	139	125	166	181	103	77	
August	132	154	92	90	82	180	
September	104	382	174	161	133	172	
October	119	149	131	126	166	108	
November	140	87	101	158	159	110	
December	130	119	227	230	167	104	
Year Total	1 364	1 692	1 451	1 758	1 743	1 386	

Table 4 – Total liquidations of close corporations (number)

Month	2006	2007	2008	2009	2010	2011	2012
January	86	77	73	156	110	157	103
February	106	96	113	162	167	200	125
March	114	127	189	195	233	205	138
April	98	93	143	201	182	170	142
May	180	116	157	174	181	71	
June	122	77	133	164	185	104	
July	116	143	150	227	153	170	
August	190	144	187	164	150	122	
September	116	91	151	172	205	140	
October	87	111	183	151	189	196	
November	130	100	129	326	170	246	
December	99	79	119	152	128	172	
Year Total	1 444	1 254	1 727	2 244	2 053	1 953	

Table 4.1 – Compulsory liquidations of close corporations (number)

Month	2006	2007	2008	2009	2010	2011	2012
January	19	8	21	36	0	27	24
February	11	11	0	15	7	10	16
March	8	7	31	2	4	0	28
April	4	13	14	14	4	16	2
May	15	10	9	17	6	27	
June	15	7	11	6	9	1	
July	10	10	9	17	10	4	
August	35	22	20	39	11	14	
September	4	13	19	1	17	0	
October	7	13	14	7	11	2	
November	13	6	5	9	5	32	
December	16	1	1	1	4	28	
Year Total	157	121	154	164	88	161	

Table 4.2 – Voluntary liquidations of close corporations (number)

Month	2006	2007	2008	2009	2010	2011	2012
January	67	69	52	120	110	130	79
February	95	85	113	147	160	190	109
March	106	120	158	193	229	205	110
April	94	80	129	187	178	154	140
May	165	106	148	157	175	44	
June	107	70	122	158	176	103	
July	106	133	141	210	143	166	
August	155	122	167	125	139	108	
September	112	78	132	171	188	140	
October	80	98	169	144	178	194	
November	117	94	124	317	165	214	
December	83	78	118	151	124	144	
Year Total	1 287	1 133	1 573	2 080	1 965	1 792	

Table 5 – Insolvencies of individuals and partnerships (number)

Month	2006	2007	2008	2009	2010	1/ 2011	1/ 2012
January	86	79	118	196	177	128	115
February	146	175	295	378	310	259	219
March	164	173	288	536	387	332	262
April	105	155	396	531	325	205	
May	146	201	338	612	397	248	
June	144	163	425	613	351	261	
July	118	184	473	594	361	233	
August	185	213	502	694	368	254	
September	140	206	459	485	369	244	
October	172	231	589	450	323	268	
November	162	302	453	520	335	277	
December	112	232	427	469	291	241	
Year Total	1 680	2 314	4 763	6 078	3 994	2 950	

1/ Preliminary.

Explanatory notes

Introduction	1	Statistics South Africa (Stats SA) collects administrative information on liquidations from the Registrar of Companies and Close Corporations, Department of Trade and Industry, while information on insolvencies is gathered from Notices of the Master of the Supreme Court which appears in the Government Gazette.
	2	This statistical release reflects voluntary and compulsory liquidations of companies and close corporations and insolvencies of individuals and partnerships.
Purpose of the survey	3	The aggregated data in this release are used by the private and public sectors to measure economic performance and are also an important indicator of the scope of unpaid debt in South Africa.
	4	Due to insolvencies figures being available late, the data on insolvencies are published a month later than liquidations.
Scope of the survey	5	This survey covers the total number of: <ul style="list-style-type: none"> • companies and close corporations which were liquidated; and • individuals and partnerships placed under final sequestration.
Related publications	6	Users may also wish to refer to the following publications which are available from Stats SA: <ul style="list-style-type: none"> • <i>Bulletin of Statistics; and</i> • <i>SA Statistics.</i>
Symbols and abbreviations	7	Stats SA – Statistics South Africa

Glossary

Compulsory liquidation	A compulsory liquidation takes place when the affairs of a company or close corporation are wound up by order of the court.
Insolvency	Insolvency refers to an individual or partnership which is unable to pay its debt and is placed under final sequestration. The number of insolvencies does not refer to the number of persons involved, as a partnership which is unable to pay its debt is regarded as one insolvency, irrespective of the number of partners.
Liquidation	Liquidation refers to the winding-up of the affairs of a company or close corporation when liabilities exceed assets and it can be resolved by voluntary action or by an order of the court.
Voluntary liquidation	A voluntary liquidation takes place when a company or close corporation, by own choice, resolves to wind-up its affairs.

General information

Stats SA publishes approximately 300 different statistical releases each year. It is not economically viable to produce them in more than one of South Africa's eleven official languages. Since the releases are used extensively, not only locally but also by international economic and social-scientific communities, Stats SA releases are published in English only.

Stats SA has copyright on this publication. Users may apply the information as they wish, provided that they acknowledge Stats SA as the source of the basic data wherever they process, apply, utilise, publish or distribute the data; and also that they specify that the relevant application and analysis (where applicable) result from their own processing of the data.

Stats SA products

A complete set of Stats SA publications is available at the Stats SA library and the following libraries:

National Library of South Africa, Pretoria Division
National Library of South Africa, Cape Town Division
Natal Society Library, Pietermaritzburg
Library of Parliament, Cape Town
Bloemfontein Public Library
Johannesburg Public Library
Eastern Cape Library Services, King William's Town
Central Regional Library, Polokwane
Central Reference Library, Nelspruit
Central Reference Collection, Kimberley
Central Reference Library, Mmabatho

Stats SA also provides a subscription service.

Electronic services

A large range of data is available via on-line services. For more detail about our electronic services, contact Stats SA's user information service at (012) 310 8600.

You can visit us on the Internet at: www.statssa.gov.za

Enquiries

Telephone number: (012) 310 4897 (technical enquiries)
(012) 310 8600 (user information services)
(012) 310 8358 (orders/subscription services)

Fax number: (012) 310 8332 (technical enquiries)

email: onicama@statssa.gov.za (technical enquiries)
info@statssa.gov.za (user information services)
magdaj@statssa.gov.za (orders/subscription services)

Postal address: Private Bag X44, Pretoria, 0001

Produced by Stats SA