



your leading partner in quality statistics

Statistical release

P0021

Annual financial statistics

2011

**Embargoed until:
31 October 2012
13:00**

Enquiries:

Renscha Pietersen
Tel: +27(12) 310 8522

Forthcoming issue:

AFS 2012

Expected release date

31 October 2013

Contents

Key findings	3
Figure 1 - Comparison of turnover between 2010 and 2011.....	4
Figure 2 - Percentage contribution per industry to total turnover for 2010.....	5
Figure 3 - Percentage contribution per industry to total turnover for 2011.....	6
Figure 4 - Time series of turnover per industry from 2001 to 2011.....	7
Figure 5 - Time series of turnover per industry from 2001 to 2011.....	8
Notes	9
Table 1.1 - Selected income and expenditure items: All industries.....	10
Table 1.2 - Selected balance sheet items: All industries.....	12
Table 1.3 - Carrying value of property, plant and equipment and intangible assets: All industries.....	13
Table 2.1 - Selected income and expenditure items: Forestry and fishing.....	15
Table 2.2 - Selected balance sheet items: Forestry and fishing.....	17
Table 2.3 - Carrying value of property, plant and equipment and intangible assets: Forestry and fishing.....	18
Table 3.1 - Selected income and expenditure items: Mining and quarrying.....	20
Table 3.2 - Selected balance sheet items: Mining and quarrying.....	22
Table 3.3 - Carrying value of property, plant and equipment and intangible assets: Mining and quarrying.....	23
Table 4.1 - Selected income and expenditure items: Manufacturing.....	25
Table 4.2 - Selected balance sheet items: Manufacturing.....	27
Table 4.3 - Carrying value of property, plant and equipment and intangible assets: Manufacturing.....	28
Table 5.1 - Selected income and expenditure items: Electricity, gas and water supply.....	30
Table 5.2 - Selected balance sheet items: Electricity, gas and water supply.....	32
Table 5.3 - Carrying value of property, plant and equipment and intangible assets: Electricity, gas and water supply.....	33
Table 6.1 - Selected income and expenditure items: Construction.....	35
Table 6.2 - Selected balance sheet items: Construction.....	37
Table 6.3 - Carrying value of property, plant and equipment and intangible assets: Construction.....	38
Table 7.1 - Selected income and expenditure items: Trade.....	40
Table 7.2 - Selected balance sheet items: Trade.....	42
Table 7.3 - Carrying value of property, plant and equipment and intangible assets: Trade.....	43
Table 8.1 - Selected income and expenditure items: Transport, storage and communication.....	45
Table 8.2 - Selected balance sheet items: Transport, storage and communication.....	47
Table 8.3 - Carrying value of property, plant and equipment and intangible assets: Transport, storage and communication.....	48

Table 9.1 - Selected income and expenditure items: Real estate activities auxiliary to financial intermediation and other business services (excluding financial intermediation, insurance and business services not elsewhere classified)	50
Table 9.2 - Selected balance sheet items: Real estate activities auxiliary to financial intermediation and other business services (excluding financial intermediation, insurance and business services not elsewhere classified)	52
Table 9.3 - Carrying value of property, plant and equipment and intangible assets: Real estate activities auxiliary to financial intermediation and other business services (excluding financial intermediation, insurance and business services not elsewhere classified)	53
Table 10.1 - Selected income and expenditure items: Community, social and personal services (excluding government institutions)	55
Table 10.2 - Selected balance sheet items: Community, social and personal services (excluding government institutions)	57
Table 10.3 - Carrying value of property, plant and equipment and intangible assets: Community, social and personal services (excluding government institutions)	58
Table 11 - Comparison of selected operating ratios for 2010 and 2011	60
Table 12 . Comparison of selected concentration indices for size group 1 enterprises for 2010 and 2011	62
Technical notes	63
Table A - Estimates of turnover by industry within 95% confidence limits: 2010 and 2011	66
Table B - Turnover by industry for 2010 and 2011	67
Table C - Population size of enterprises and number of employees	68
Explanatory notes	69
Table D - DTI Cut-off points	71
Glossary	73
General information	77

Key findings

The AFS total turnover of all industries¹ increased by 9% from a revised R5,2 trillion in 2010 to a preliminary R5,7 trillion in 2011.

Eight of the nine industries reflected an increase in turnover between 2010 and 2011. The largest percentage increase (+26,0%) was reported in electricity, gas and water supply, followed by mining and quarrying (+25,4%), real estate, activities auxiliary to financial intermediation and other business services (excluding financial intermediation, insurance and business services not elsewhere classified) (+12,4%), trade (+11,1%), community, social and personal services (excluding government institutions) (+10,5%), transport, storage and communication (+9,2%), forestry and fishing (+4,9%) and manufacturing (+2,3%). A decrease was reported in construction (-0,5%).

Purchases amounted to R3 171 914 million (R3,2 trillion) in 2011, an increase of 9,9% compared with the revised estimate for 2010. An increase was reported by seven industries. Electricity, gas and water supply reported the largest increase (+23,6%), followed by mining and quarrying (+23,2%), real estate, activities auxiliary to financial intermediation and other business services (excluding financial intermediation, insurance and business services not elsewhere classified) (+21,0%), transport, storage and communication (+17,8%), trade (+11,8%), community, social and personal services (excluding government institutions) (+9,5%) and manufacturing (+4,3%). Decreases were reported for construction (-2,7%) and forestry and fishing (-4,5%).

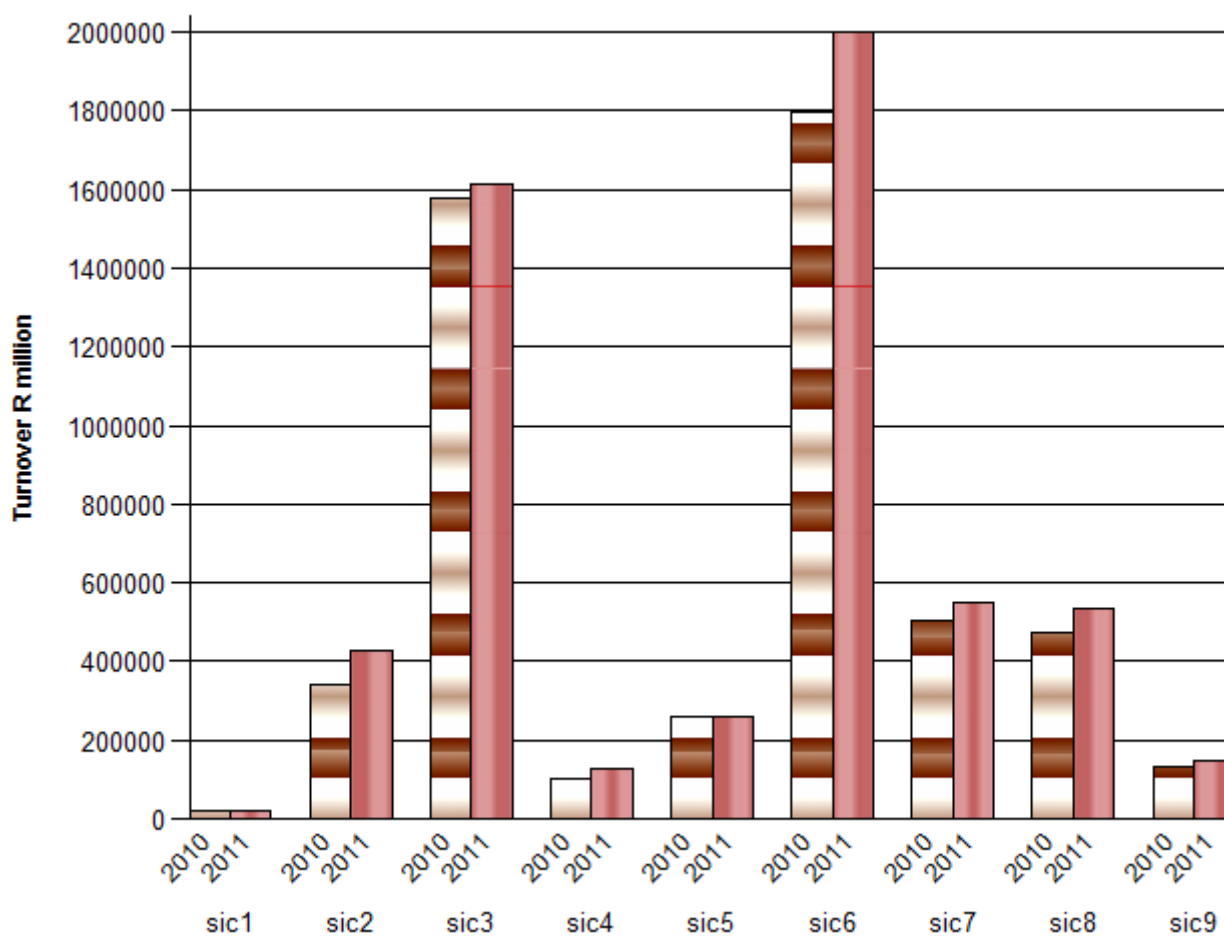
Employment costs amounted to R786 041 million in 2011, an increase of 7,8% compared with the revised estimate for 2010. Community, social and personal services (excluding government institutions) reported the largest increase (+14,3%), followed by forestry and fishing (+12,1%), trade (+12,0%), transport, storage and communication (+10,0%), electricity, gas and water supply (+10,0%), construction (+9,6%), mining and quarrying (+8,6%), real estate, activities auxiliary to financial intermediation and other business services (excluding financial intermediation, insurance and business services not elsewhere classified) (+6,9%) and manufacturing (+1,6%).

Capital expenditure on assets amounted to R376 947 million in 2011, an increase of 3,7% between 2010 and 2011. Six of the nine industries reflected an increase in capital expenditure on assets. The largest increase was reported in forestry and fishing (+50,9%), followed by construction (+26,3%), real estate, activities auxiliary to financial intermediation and other business services (excluding financial intermediation, insurance and business services not elsewhere classified) (+24,9%), trade (+18,2%), community, social and personal services (excluding government institutions) (+15,7%) and manufacturing (+7,2%). Decreases were reported for transport, storage and communication (-0,6%), electricity, gas and water supply (-1,2%) and mining and quarrying (-11,9%).

The carrying value of property, plant and equipment and intangible assets amounted to R2 158 459 million (R2,2 trillion) in 2011, an increase of 7,0% compared with the revised estimate for 2010. The largest increase was reported in electricity, gas and water supply (+23,7%), followed by community, social and personal services (excluding government institutions) (+19,0%), transport, storage and communication (+13,0%), trade (+6,7%), mining and quarrying (+5,8%) and manufacturing (+4,9%). Decreases were reported for forestry and fishing (-3,0%), real estate, activities auxiliary to financial intermediation and other business services (excluding financial intermediation, insurance and business services not elsewhere classified) (-3,0%) and construction (-3,5%).

¹All industries in the South African economy, excluding agriculture, financial intermediation, insurance, other business services not elsewhere classified and government institutions.

PJ Lehohla
Statistician-General

Figure 1 - Comparison of turnover between 2010 and 2011

SIC 1 - Forestry and fishing industry

SIC 2 - Mining and quarrying industry

SIC 3 - Manufacturing industry

SIC 4 - Electricity, gas and water supply industry

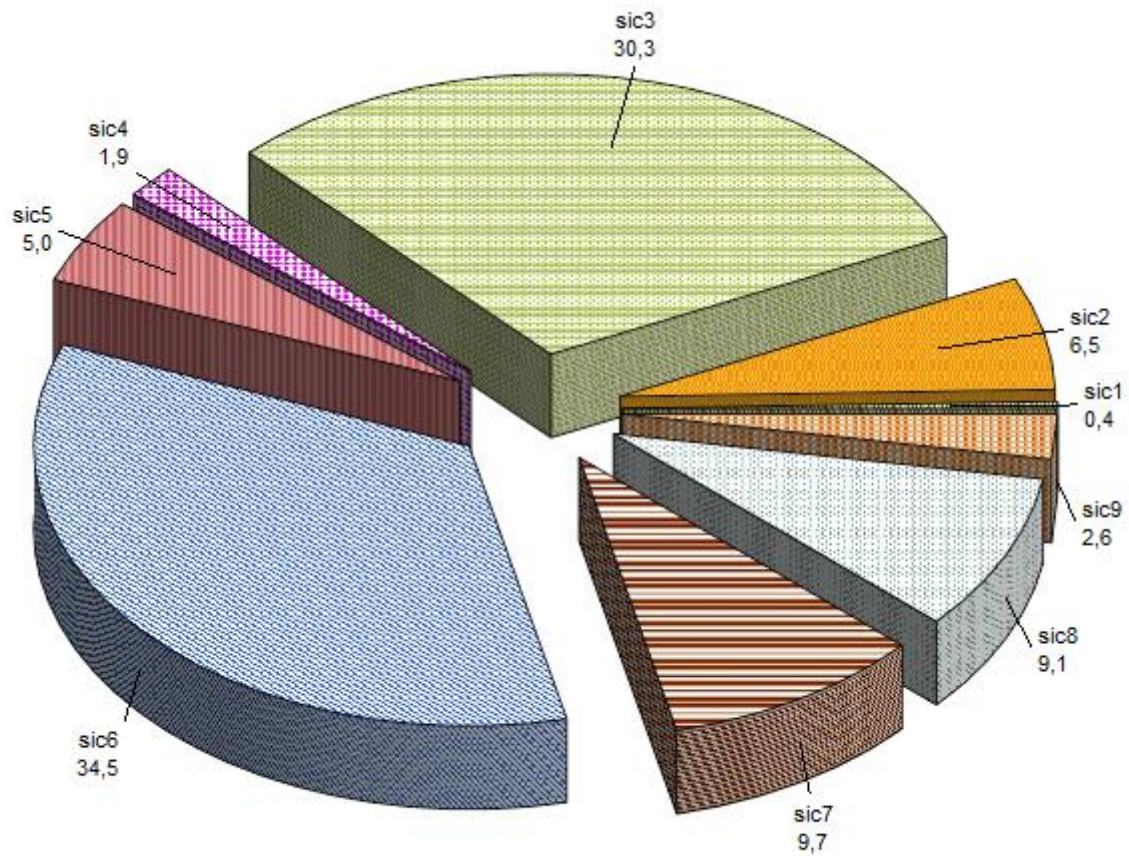
SIC 5 - Construction industry

SIC 6 - Trade industry

SIC 7 - Transport, storage and communication industry

SIC 8 - Real estate, activities auxiliary to financial intermediation and other business services industry
(excluding financial intermediation, insurance and business services not elsewhere classified)

SIC 9 - Community, social and personal services industry (excluding government institutions)

Figure 2 - Percentage contribution per industry to total turnover for 2010

SIC 1 - Forestry and fishing industry

SIC 2 - Mining and quarrying industry

SIC 3 - Manufacturing industry

SIC 4 - Electricity, gas and water supply industry
--

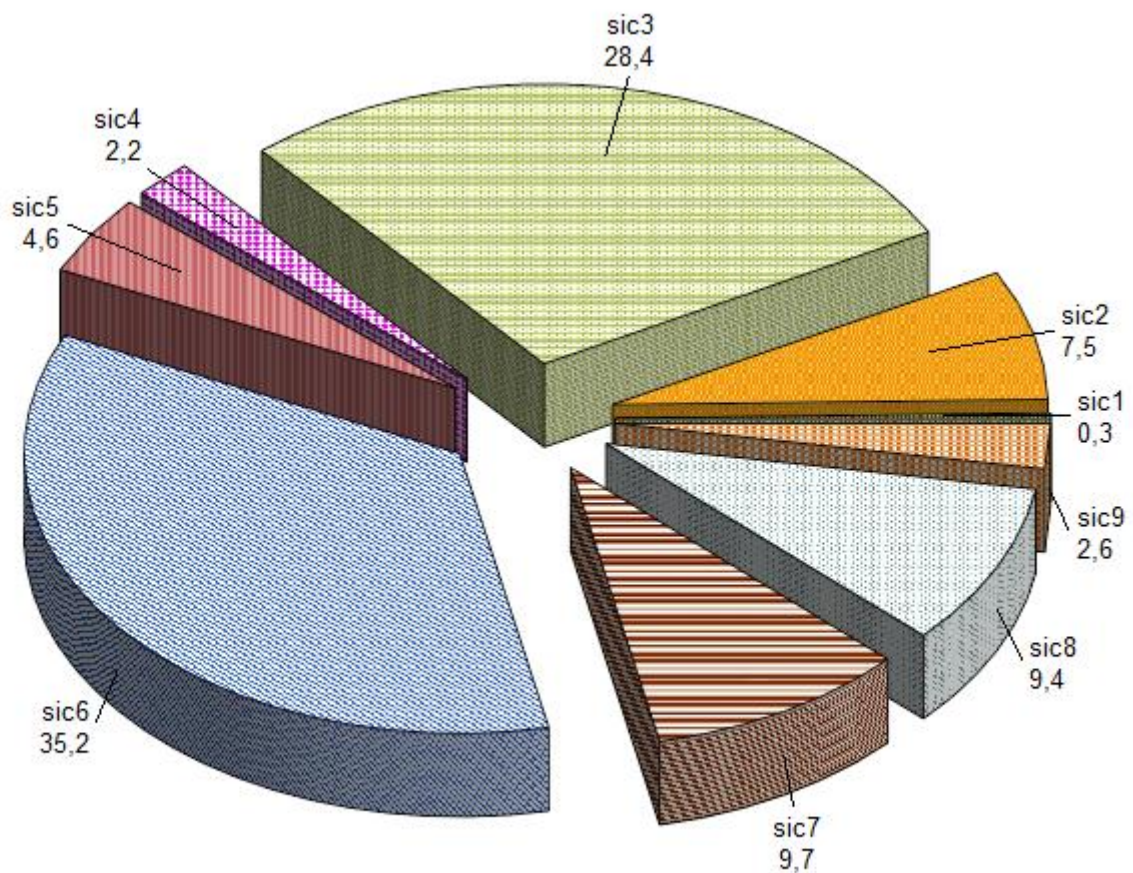
SIC 5 - Construction industry

SIC 6 - Trade industry

SIC 7 - Transport, storage and communication industry

SIC 8 - Real estate, activities auxiliary to financial intermediation and other business services industry (excluding financial intermediation, insurance and business services not elsewhere classified)
--

SIC 9 - Community, social and personal services industry (excluding government institutions)
--

Figure 3 - Percentage contribution per industry to total turnover for 2011

SIC 1 - Forestry and fishing industry

SIC 2 - Mining and quarrying industry

SIC 3 - Manufacturing industry

SIC 4 - Electricity, gas and water supply industry
--

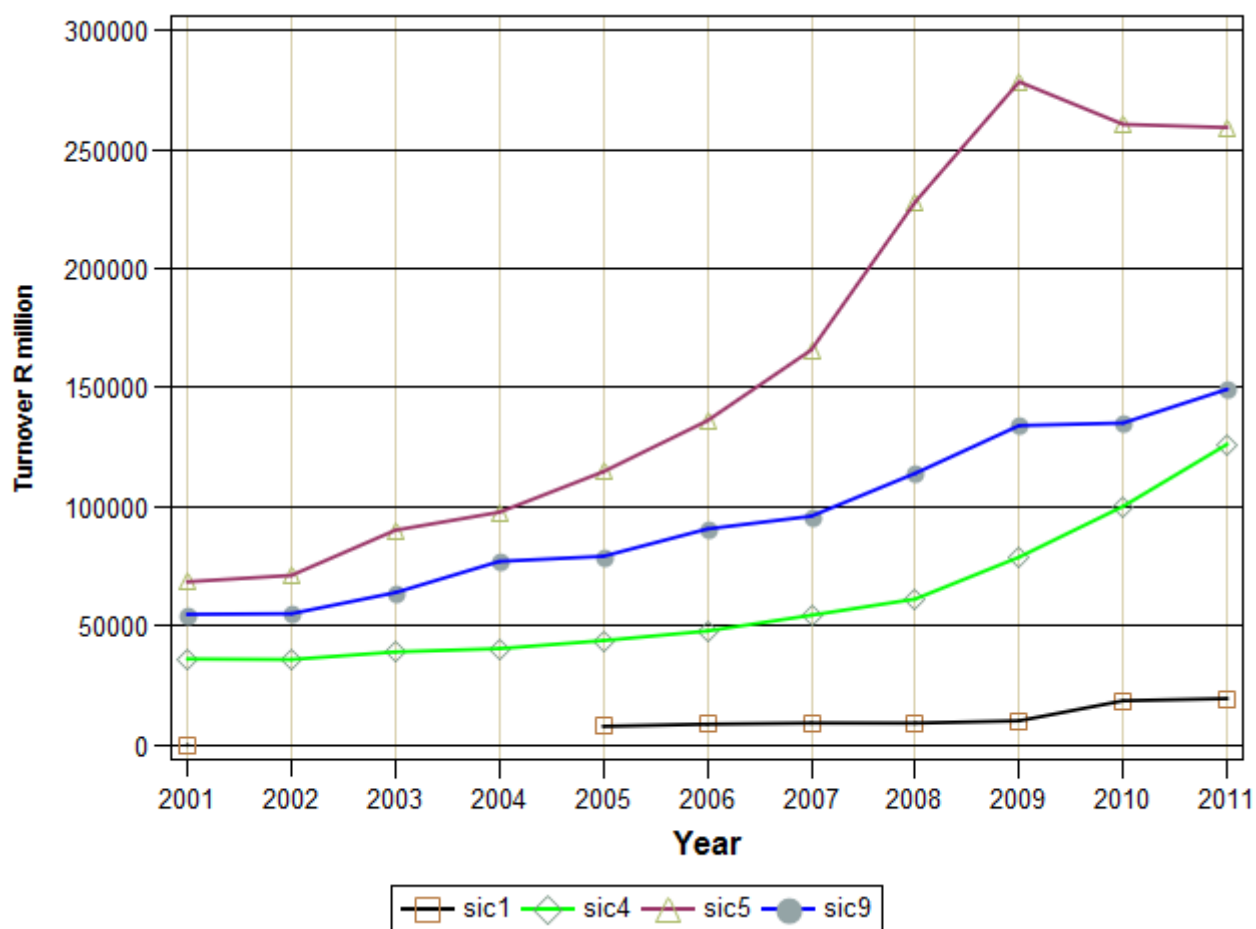
SIC 5 - Construction industry

SIC 6 - Trade industry

SIC 7 - Transport, storage and communication industry

SIC 8 - Real estate, activities auxiliary to financial intermediation and other business services industry (excluding financial intermediation, insurance and business services not elsewhere classified)
--

SIC 9 - Community, social and personal services industry (excluding government institutions)
--

Figure 4 - Time series of turnover per industry from 2001 to 2011

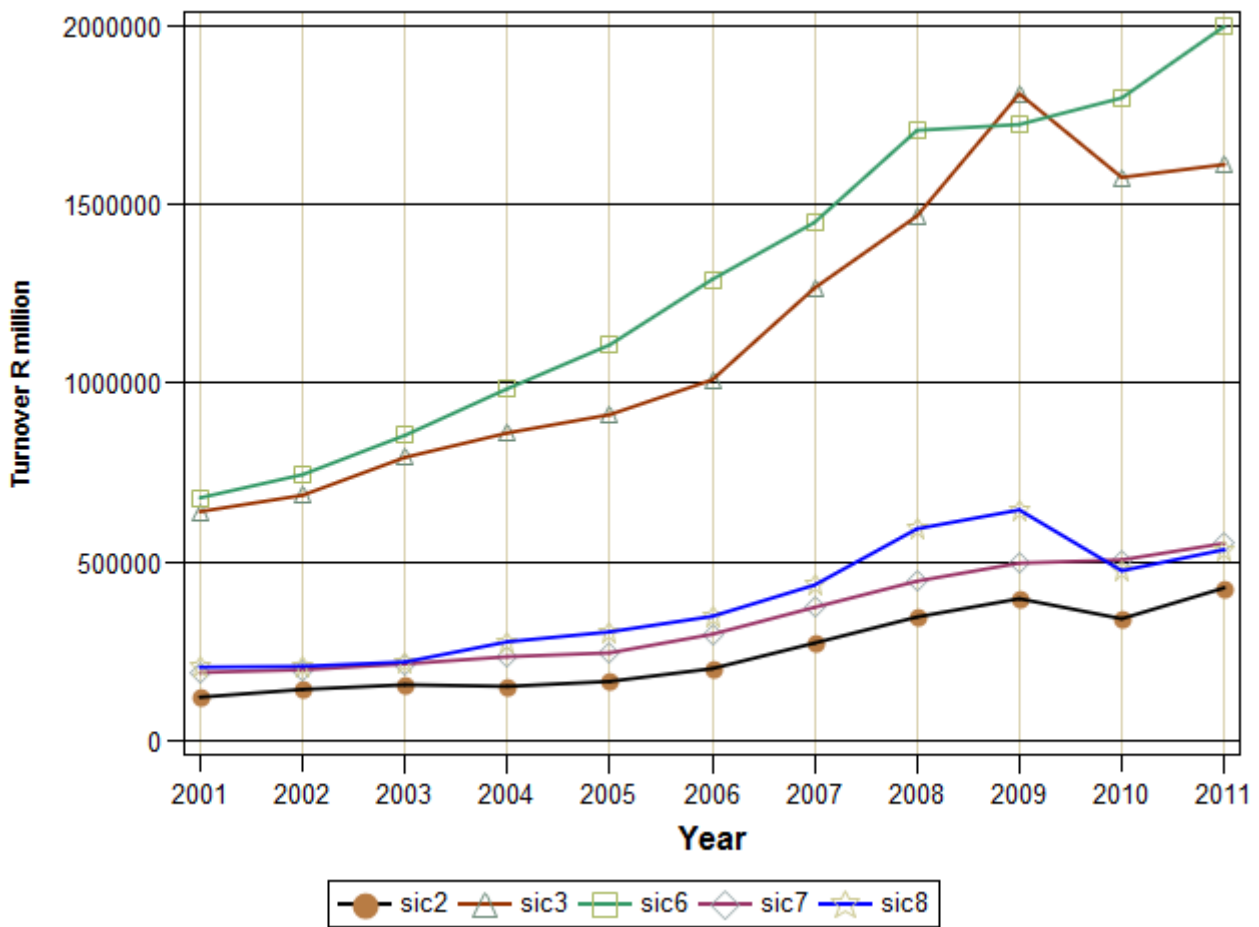
SIC 1 - Forestry and fishing industry

SIC 4 - Electricity, gas and water supply industry

SIC 5 - Construction industry

SIC 9 - Community, social and personal services industry (excluding government institutions)

Figure 5 - Time series of turnover per industry from 2001 to 2011



SIC 2 - Mining and quarrying industry

SIC 3 - Manufacturing industry

SIC 6 - Trade industry

SIC 7 - Transport, storage and communication industry

**SIC 8 - Real estate, activities auxiliary to financial intermediation and other business services industry
(excluding financial intermediation, insurance and business services not elsewhere classified)**

Notes

Forthcoming issue	Issue Annual financial statistics, 2012	Expected publication date 31 October 2013
Purpose of the survey	<p>The annual financial statistics (AFS) survey is designed to provide information on selected income and expenditure items, capital expenditure on assets, balance sheet items and the carrying value of property, plant and equipment and intangible assets at the end of the financial year for the South African-based activities of the enterprise. Information is collected for the financial years of enterprises that ended on any date between 1 July 2010 and 30 June 2011. Over and above serving the primary goal of providing inputs in the GDP estimates, the AFS can be used independently for sectoral analyses from both an accounting and econometric perspective. Other users include the South African Reserve Bank, government organisations, researchers and academics.</p>	
Improvements to this survey	<p>The following variables are published separately for the first time in this statistical release:</p> <ul style="list-style-type: none"> • government capital transfers; • computer expenses; • information technology security; and • capital work in progress (intangible assets). 	
Information available on Stats SA website www.statssa.gov.za	<p>Further information available on the Stats SA website for this publication includes:</p> <ul style="list-style-type: none"> • estimates on lower-level classification per industry; • small, medium and large enterprise estimates per industry; • income and expenditure structures per industry for small, medium and large enterprises; • accounting ratios for small, medium and large enterprises; • carrying value schedules for lower-level classification per industry; • estimates per organisational type per industry; and • time series data per industry. 	

Table 1.1 - Selected income and expenditure items: All industries¹

Item	All industries		
	2010 ²	2011 ³	Change between 2010 and 2011
	R million		
Income items			
Turnover	5 210 332	5 677 896	467 564
Dividends	27 386	44 179	16 793
Government subsidies and incentives	17 204	15 588	-1 616
Capital transfers received from government	562	301	-261
Interest	67 879	64 238	-3 641
Profit on financial and other assets: disposal of assets, realisation for cash and revaluation of assets	100 898	56 837	-44 061
Profit on financial and other liabilities: redemption, liquidation and revaluation	6 241	5 192	-1 049
Profit on foreign exchange as a result of variations in foreign exchange rates or transactions	26 367	17 921	-8 446
Provisions	2 191	3 021	830
Royalties, franchise fees, copyright, trade names and trade and patent rights	3 844	4 397	553
Other	73 688	81 562	7 874
Total income (A)	5 536 592	5 971 132	434 540
Inventories			
Opening value of raw materials	123 550	122 302	-1 248
Opening value of work in progress	59 006	60 233	1 227
Opening value of finished goods	309 582	293 574	-16 008
Total opening value (B)	492 138	476 109	-16 029
Closing value of raw materials	117 972	134 088	16 116
Closing value of work in progress	63 653	64 736	1 083
Closing value of finished goods	298 453	315 917	17 464
Total closing value (C)	480 078	514 741	34 663

¹All industries in the South African economy, excluding agriculture, financial intermediation, insurance, other business services not elsewhere classified and government institutions.

²Revised.

³Preliminary.

Table 1.1 - Selected income and expenditure items: All industries¹ (concluded)

Item	All industries		
	2010 ²	2011 ³	Change between 2010 and 2011
	R million		
Expenditure items			
Purchases	2 886 696	3 171 914	285 218
Advertising	39 911	42 007	2 096
Amortisation	11 791	13 141	1 350
Bank charges	8 521	9 379	858
Bursaries	641	723	82
Computer expenses	12 739	13 180	441
Containers and packaging materials	20 809	22 244	1 435
Depreciation provided for during the financial year	137 389	154 947	17 558
Employment costs	729 010	786 041	57 031
Excise and customs duty	83 686	88 342	4 656
Information technology security	1 405	1 819	414
Insurance premiums	22 750	23 172	422
Interest	137 805	144 920	7 115
Losses on foreign exchange as a result of variations in foreign exchange rates or transactions	37 356	26 485	-10 871
Losses on financial and other liabilities: redemption, liquidation or revaluation	4 197	3 869	-328
Losses on financial and other assets: disposal of assets, realisation for cash and revaluation of assets	54 468	59 648	5 180
Mineral rights leased	240	256	16
Motor vehicle running expenditure	30 171	32 876	2 705
Operational leasing and hire of plant, machinery, equipment and vehicles	35 718	35 609	-109
Paper, printing and stationery	7 419	7 605	186
Postal and courier services	3 338	3 400	62
Property taxes	5 681	5 885	204
Provisions	11 323	14 030	2 707
Railage and transport-out	64 605	69 599	4 994
Rental of land, buildings and other structures including water and electricity	118 473	136 973	18 500
Repair and maintenance	64 028	69 073	5 045
Royalties, franchise fees, copyright, trade names and trade and patent rights	21 039	24 812	3 773
Security services	11 338	12 148	810
Staff training	5 226	5 656	430
Subcontractors	179 199	190 858	11 659
Telecommunication services	22 103	22 446	343
Travelling, accommodation and entertainment	22 222	22 496	274
Other	293 972	331 110	37 138
Total expenditure (D)	5 085 269	5 546 663	461 394
Net profit before providing for company tax and dividends (E)⁴	439 263	463 101	23 838
Company tax paid or provided for during the financial year	109 277	142 688	33 411
Dividends paid or provided for during the financial year	148 003	120 898	-27 105
Net profit after providing for company tax and dividends	181 983	199 515	17 532

¹ All industries in the South African economy, excluding agriculture, financial intermediation, insurance, other business services not elsewhere classified and government institutions.

² Revised.

³ Preliminary.

⁴ E=A-B+C-D.

Table 1.2 - Selected balance sheet items: All industries¹

Balance sheet items	All industries		
	2010 ²	2011 ³	Change between 2010 and 2011
	R million		
Assets			
Non-current assets			
Property, plant and equipment and intangible assets	1 886 807	2 020 321	133 514
Goodwill	130 670	138 136	7 466
Long-term investments	509 554	649 898	140 344
Other non-current assets	385 489	404 484	18 995
Total non-current assets	2 912 520	3 212 839	300 319
Current assets			
Trade and other receivables	730 687	789 646	58 959
Cash and bank	416 254	441 965	25 711
Inventory	480 078	514 741	34 663
Other current assets	336 667	369 802	33 135
Total current assets	1 963 686	2 116 154	152 468
Total assets	4 876 206	5 328 993	452 787
Equity and liabilities			
Total equity	1 710 115	1 806 836	96 721
Non-current liabilities			
Long-term loans	943 353	1 018 972	75 619
Other non-current liabilities	629 339	771 588	142 249
Total non-current liabilities	1 572 692	1 790 560	217 868
Current liabilities			
Trade and other payables	785 346	862 847	77 501
Bank overdraft	85 117	99 562	14 445
Other current liabilities	722 936	769 188	46 252
Total current liabilities	1 593 399	1 731 597	138 198
Total liabilities	3 166 091	3 522 157	356 066
Total equity and liabilities	4 876 206	5 328 993	452 787

¹All industries in the South African economy, excluding agriculture, financial intermediation, insurance, other business services not elsewhere classified and government institutions.

²Revised.

³Preliminary.

Table 1.3 - Carrying value of property, plant and equipment and intangible assets: All industries¹

Type of asset	2010 ²					
	Carrying value at the beginning of the financial year	Additions	Disposal of assets(-), revaluations and other adjustments to carrying value	Transfers-in and/or transfers-out	Depreciation and amortisation	Carrying value at the end of the financial year
	(A)	(B)	(C)	(D)	(E)	(F) ³
	R million					
Land	108 126	7 233	-89	1 522	121	116 671
Residential buildings	41 221	4 285	1 805	707	295	47 723
Non-residential buildings	368 589	31 619	735	8 652	6 148	403 447
Construction works, roads and parking areas	51 850	8 047	-924	-525	4 039	54 409
Network equipment	48 028	7 979	-669	958	5 803	50 493
Computers and other IT equipment	27 867	9 892	-255	-429	9 390	27 685
Motor vehicles and other transport equipment	131 665	33 219	2 601	-3 047	27 214	137 224
Plant, machinery and other office equipment	630 133	129 758	-16 368	9 773	81 755	671 541
Capital work in progress	162 143	97 077	-5 870	-32 996	2 027	218 327
Other property, plant and equipment	28 416	6 107	-3 549	-628	3 379	26 967
Intangible assets						
Computer software and databases	15 456	8 983	1 023	184	4 613	21 033
Mineral exploration and evaluation	20 499	3 263	-18	-1 154	781	21 809
Patents and trademarks	33 903	3 583	-1 013	-118	1 255	35 100
Goodwill and marketing assets	127 784	8 065	-1 602	-1 415	2 299	130 533
Research and development	4 874	1 074	54	-43	347	5 612
Entertainment, literary and artistic originals	177	56	0	0	34	199
Contracts, leases and licences	3 264	1 775	-134	-56	1 955	2 894
Other intellectual property products	47 520	1 412	-177	-933	2 012	45 810
Total	1 851 515	363 427	-24 450	-19 548	153 467	2 017 477

¹All industries in the South African economy, excluding agriculture, financial intermediation, insurance, other business services not elsewhere classified and government institutions.

²Revised.

³F=A+B+C+D-E.

Table 1.3 - Carrying value of property, plant and equipment and intangible assets: All industries¹ (concluded)

Type of asset	2011 ²					
	Carrying value at the beginning of the financial year	Additions	Disposal of assets(-), revaluations and other adjustments to carrying value	Transfers-in and/or transfers-out	Depreciation and amortisation	Carrying value at the end of the financial year
	(A)	(B)	(C)	(D)	(E)	(F) ³
	R million					
Land	119 623	11 520	-1 318	244	1 074	128 995
Residential buildings	35 270	21 977	-1 063	85	2 171	54 098
Non-residential buildings	365 079	21 498	2 399	5 404	7 624	386 756
Construction works, roads and parking areas	124 530	48 006	-2 847	313	4 267	165 735
Network equipment	63 362	10 867	-861	1 365	9 553	65 180
Computers and other IT equipment	23 020	7 354	-692	511	9 016	21 177
Motor vehicles and other transport equipment	112 697	35 453	-4 920	-109	26 765	116 356
Plant, machinery and other office equipment	634 238	121 692	-15 862	16 458	86 724	669 802
Capital work in progress	133 962	72 916	-2 719	-59 498	1 819	142 842
Other property, plant and equipment	114 776	7 097	6 743	16 890	10 487	135 019
Intangible assets						
Computer software and databases	17 638	5 460	-47	1 004	5 219	18 836
Mineral exploration and evaluation	22 863	551	-236	377	868	22 687
Patents and trademarks	30 121	989	-223	-114	1 199	29 574
Goodwill and marketing assets	140 109	4 309	-3 993	-173	2 201	138 051
Research and development	5 596	989	48	-62	446	6 125
Entertainment, literary and artistic originals	1 546	3	-3	0	31	1 515
Contracts, leases and licences	6 911	2 308	-123	-180	2 007	6 909
Capital work in progress (intangible)	1 062	405	-126	-516	59	766
Other intellectual property products	46 701	3 553	-239	323	2 304	48 034
Total	1 999 104	376 947	-26 082	-17 678	173 834	2 158 457

¹All industries in the South African economy, excluding agriculture, financial intermediation, insurance, other business services not elsewhere classified and government institutions.

²Preliminary.

³F=A+B+C+D-E.

Table 2.1 - Selected income and expenditure items: Forestry and fishing

Item	Forestry and fishing		
	2010 ¹	2011 ²	Change between 2010 and 2011
	R million		
Income items			
Turnover	18 614	19 530	916
Dividends	223	150	-73
Government subsidies and incentives	0	2	2
Capital transfers received from government	0	0	0
Interest	547	601	54
Profit on financial and other assets: disposal of assets, realisation for cash and revaluation of assets	794	714	-80
Profit on financial and other liabilities: redemption, liquidation and revaluation	0	0	0
Profit on foreign exchange as a result of variations in foreign exchange rates or transactions	110	59	-51
Provisions	0	0	0
Royalties, franchise fees, copyright, trade names and trade and patent rights	0	0	0
Other	352	350	-2
Total income (A)	20 640	21 406	766
Inventories			
Opening value of raw materials	709	612	-97
Opening value of work in progress	107	94	-13
Opening value of finished goods	1 122	1 287	165
Total opening value (B)	1 938	1 993	55
Closing value of raw materials	614	510	-104
Closing value of work in progress	96	113	17
Closing value of finished goods	1 246	1 142	-104
Total closing value (C)	1 956	1 765	-191

¹Revised.²Preliminary.

Table 2.1 - Selected income and expenditure items: Forestry and fishing (concluded)

Item	Forestry and fishing		
	2010 ¹	2011 ²	Change between 2010 and 2011
	R million		
Expenditure items			
Purchases	8 707	8 314	-393
Advertising	123	133	10
Amortisation	12	13	1
Bank charges	24	27	3
Bursaries	4	4	0
Computer expenses	38	38	0
Containers and packaging materials	514	522	8
Depreciation provided for during the financial year	1 012	1 040	28
Employment costs ³	3 322	3 723	401
Excise and customs duty	27	27	0
Information technology security	3	3	0
Insurance premiums	211	209	-2
Interest	870	819	-51
Losses on foreign exchange as a result of variations in foreign exchange rates or transactions	123	67	-56
Losses on financial and other liabilities: redemption, liquidation or revaluation	2	1	-1
Losses on financial and other assets: disposal of assets, realisation for cash and revaluation of assets	453	146	-307
Mineral rights leased	0	0	0
Motor vehicle running expenditure	280	295	15
Operational leasing and hire of plant, machinery, equipment and vehicles	87	82	-5
Paper, printing and stationery	48	50	2
Postal and courier services	5	5	0
Property taxes	8	5	-3
Provisions	9	6	-3
Railage and transport-out	313	355	42
Rental of land, buildings and other structures including water and electricity	298	312	14
Repair and maintenance	964	987	23
Royalties, franchise fees, copyright, trade names and trade and patent rights	28	29	1
Security services	69	73	4
Staff training	31	32	1
Subcontractors	733	607	-126
Telecommunication services	82	80	-2
Travelling, accommodation and entertainment	69	75	6
Other	1 483	1 586	103
Total expenditure (D)	19 952	19 665	-287
Net profit before providing for company tax and dividends (E)⁴	706	1 513	807
Company tax paid or provided for during the financial year	185	452	267
Dividends paid or provided for during the financial year	415	413	-2
Net profit after providing for company tax and dividends	106	648	542

¹Revised.²Preliminary.³Refer to page 72 for comparability with the quarterly employment statistics (QES) survey.⁴E=A-B+C-D.

Table 2.2 - Selected balance sheet items: Forestry and fishing

Balance sheet items	Forestry and fishing		
	2010 ¹	2011 ²	Change between 2010 and 2011
	R million		
Assets			
Non-current assets			
Property, plant and equipment and intangible assets	12 691	12 313	-378
Goodwill	93	91	-2
Long-term investments	3 669	4 007	338
Other non-current assets	7 462	7 737	275
Total non-current assets	23 915	24 148	233
Current assets			
Trade and other receivables	2 940	3 224	284
Cash and bank	728	938	210
Inventory	1 956	1 765	-191
Other current assets	2 079	1 278	-801
Total current assets	7 703	7 205	-498
Total assets	31 618	31 353	-265
Equity and liabilities			
Total equity	14 903	15 032	129
Non-current liabilities			
Long-term loans	5 146	4 068	-1 078
Other non-current liabilities	4 902	5 296	394
Total non-current liabilities	10 048	9 364	-684
Current liabilities			
Trade and other payables	2 916	2 876	-40
Bank overdraft	280	129	-151
Other current liabilities	3 471	3 952	481
Total current liabilities	6 667	6 957	290
Total liabilities	16 715	16 321	-394
Total equity and liabilities	31 618	31 353	-265

¹Revised.²Preliminary.

Table 2.3 - Carrying value of property, plant and equipment and intangible assets: Forestry and fishing

Type of asset	2010 ¹					
	Carrying value at the beginning of the financial year	Additions	Disposal of assets(-), revaluations and other adjustments to carrying value	Transfers-in and/or transfers-out	Depreciation and amortisation	Carrying value at the end of the financial year
	(A)	(B)	(C)	(D)	(E)	(F) ²
	R million					
Land	861	0	-21	79	0	919
Residential buildings	57	1	0	0	4	54
Non-residential buildings	335	48	22	4	26	383
Construction works, roads and parking areas	102	9	0	-3	6	102
Network equipment	0	0	0	0	0	0
Computers and other IT equipment	32	12	0	0	25	19
Motor vehicles and other transport equipment	1 321	225	-61	-2	275	1 208
Plant, machinery and other office equipment	7 236	217	-273	486	783	6 883
Capital work in progress	587	320	-1	-633	6	267
Other property, plant and equipment	2 599	36	258	-333	4	2 556
Intangible assets						
Computer software and databases	5	2	0	0	1	6
Mineral exploration and evaluation	0	0	0	0	0	0
Patents and trademarks	208	0	0	0	6	202
Goodwill and marketing assets	94	1	0	0	1	94
Research and development	9	1	0	0	1	9
Entertainment, literary and artistic originals	0	0	0	0	0	0
Contracts, leases and licences	1	3	0	0	0	4
Other intellectual property products	89	0	-7	-2	2	78
Total	13 536	875	-83	-404	1 140	12 784

¹Revised.²F=A+B+C+D-E.

Table 2.3 - Carrying value of property, plant and equipment and intangible assets: Forestry and fishing (concluded)

Type of asset	2011 ¹					
	Carrying value at the beginning of the financial year	Additions	Disposal of assets(-), revaluations and other adjustments to carrying value	Transfers-in and/or transfers-out	Depreciation and amortisation	Carrying value at the end of the financial year
	(A)	(B)	(C)	(D)	(E)	(F) ²
	R million					
Land	854	91	3	33	22	959
Residential buildings	48	9	0	0	4	53
Non-residential buildings	425	20	-1	-5	19	420
Construction works, roads and parking areas	88	18	0	0	6	100
Network equipment	0	0	0	0	0	0
Computers and other IT equipment	18	7	0	0	10	15
Motor vehicles and other transport equipment	1 163	261	-38	3	255	1 134
Plant, machinery and other office equipment	6 644	494	-447	203	679	6 215
Capital work in progress	387	358	-36	-235	47	427
Other property, plant and equipment	2 534	44	16	0	4	2 590
Intangible assets						
Computer software and databases	6	0	0	0	2	4
Mineral exploration and evaluation	0	0	0	0	0	0
Patents and trademarks	204	0	0	0	0	204
Goodwill and marketing assets	86	14	-2	0	8	90
Research and development	9	1	0	0	1	9
Entertainment, literary and artistic originals	0	0	0	0	0	0
Contracts, leases and licences	92	1	0	0	33	60
Capital work in progress (intangible)	0	0	0	0	0	0
Other intellectual property products	124	2	0	0	2	124
Total	12 682	1 320	-505	-1	1 092	12 404

¹Preliminary.²F=A+B+C+D-E.

Table 3.1 - Selected income and expenditure items: Mining and quarrying

Item	Mining and quarrying		
	2010 ¹	2011 ²	Change between 2010 and 2011
	R million		
Income items			
Turnover	340 443	426 799	86 356
Dividends	9 029	25 203	16 174
Government subsidies and incentives	16	15	-1
Capital transfers received from government	0	0	0
Interest	7 189	6 419	-770
Profit on financial and other assets: disposal of assets, realisation for cash and revaluation of assets	8 580	16 677	8 097
Profit on financial and other liabilities: redemption, liquidation and revaluation	160	449	289
Profit on foreign exchange as a result of variations in foreign exchange rates or transactions	4 584	2 895	-1 689
Provisions	153	398	245
Royalties, franchise fees, copyright, trade names and trade and patent rights	11	35	24
Other	6 654	9 549	2 895
Total income (A)	376 819	488 439	111 620
Inventories			
Opening value of raw materials	13 024	13 829	805
Opening value of work in progress	10 767	13 694	2 927
Opening value of finished goods	18 796	18 112	-684
Total opening value (B)	42 587	45 635	3 048
Closing value of raw materials	13 783	15 628	1 845
Closing value of work in progress	13 444	14 516	1 072
Closing value of finished goods	18 096	20 184	2 088
Total closing value (C)	45 323	50 328	5 005

¹Revised.²Preliminary.

Table 3.1 - Selected income and expenditure items: Mining and quarrying (concluded)

Item	Mining and quarrying		
	2010 ¹	2011 ²	Change between 2010 and 2011
	R million		
Expenditure items			
Purchases	122 307	150 730	28 423
Advertising	260	274	14
Amortisation	918	760	-158
Bank charges	77	98	21
Bursaries	51	50	-1
Computer expenses	495	504	9
Containers and packaging materials	126	112	-14
Depreciation provided for during the financial year	26 424	29 283	2 859
Employment costs ³	73 554	79 885	6 331
Excise and customs duty	39	109	70
Information technology security	68	70	2
Insurance premiums	1 104	1 133	29
Interest	12 466	14 797	2 331
Losses on foreign exchange as a result of variations in foreign exchange rates or transactions	7 922	5 316	-2 606
Losses on financial and other liabilities: redemption, liquidation or revaluation	937	535	-402
Losses on financial and other assets: disposal of assets, realisation for cash and revaluation of assets	8 019	20 395	12 376
Mineral rights leased	240	252	12
Motor vehicle running expenditure	1 523	1 838	315
Operational leasing and hire of plant, machinery, equipment and vehicles	2 022	2 002	-20
Paper, printing and stationery	100	107	7
Postal and courier services	20	19	-1
Property taxes	22	24	2
Provisions	2 204	3 265	1 061
Railage and transport-out	16 111	16 871	760
Rental of land, buildings and other structures including water and electricity	12 513	15 928	3 415
Repair and maintenance	8 715	9 293	578
Royalties, franchise fees, copyright, trade names and trade and patent rights	1 241	3 227	1 986
Security services	496	484	-12
Staff training	454	477	23
Subcontractors	14 199	13 477	-722
Telecommunication services	371	351	-20
Travelling, accommodation and entertainment	630	673	43
Other	23 304	29 433	6 129
Total expenditure (D)	338 932	401 772	62 840
Net profit before providing for company tax and dividends (E)⁴	40 623	91 360	50 737
Company tax paid or provided for during the financial year	10 393	20 870	10 477
Dividends paid or provided for during the financial year	31 105	13 227	-17 878
Net profit after providing for company tax and dividends	-875	57 263	58 138

¹Revised.²Preliminary.³Refer to page 72 for comparability with the quarterly employment statistics (QES) survey.⁴E=A-B+C-D.

Table 3.2 - Selected balance sheet items: Mining and quarrying

Balance sheet items	Mining and quarrying		
	2010 ¹	2011 ²	Change between 2010 and 2011
	R million		
Assets			
Non-current assets			
Property, plant and equipment and intangible assets	344 069	365 029	20 960
Goodwill	7 379	6 770	-609
Long-term investments	96 727	100 711	3 984
Other non-current assets	68 417	68 096	-321
Total non-current assets	516 592	540 606	24 014
Current assets			
Trade and other receivables	78 505	94 353	15 848
Cash and bank	42 279	49 065	6 786
Inventory	45 323	50 328	5 005
Other current assets	26 621	24 039	-2 582
Total current assets	192 728	217 785	25 057
Total assets	709 320	758 391	49 071
Equity and liabilities			
Total equity	314 122	339 605	25 483
Non-current liabilities			
Long-term loans	125 415	122 668	-2 747
Other non-current liabilities	105 578	120 966	15 388
Total non-current liabilities	230 993	243 634	12 641
Current liabilities			
Trade and other payables	58 342	64 627	6 285
Bank overdraft	2 835	2 746	-89
Other current liabilities	103 028	107 779	4 751
Total current liabilities	164 205	175 152	10 947
Total liabilities	395 198	418 786	23 588
Total equity and liabilities	709 320	758 391	49 071

¹Revised.²Preliminary.

Table 3.3 - Carrying value of property, plant and equipment and intangible assets: Mining and quarrying

Type of asset	2010 ¹					
	Carrying value at the beginning of the financial year	Additions	Disposal of assets(-), revaluations and other adjustments to carrying value	Transfers-in and/or transfers-out	Depreciation and amortisation	Carrying value at the end of the financial year
	(A)	(B)	(C)	(D)	(E)	(F) ²
	R million					
Land	11 307	0	-118	-2	0	11 187
Residential buildings	461	170	1	12	44	600
Non-residential buildings	11 086	2 136	-72	3 020	698	15 472
Construction works, roads and parking areas	13 470	436	-43	-38	1 355	12 470
Network equipment	197	12	-41	0	10	158
Computers and other IT equipment	508	143	-16	-6	198	431
Motor vehicles and other transport equipment	6 829	1 457	-297	161	2 207	5 943
Plant, machinery and other office equipment	162 847	38 431	-3 662	6 104	19 143	184 577
Capital work in progress	54 294	33 887	-801	-22 788	857	63 735
Other property, plant and equipment	12 773	2 226	-1 763	141	1 118	12 259
Intangible assets						
Computer software and databases	501	132	-30	0	159	444
Mineral exploration and evaluation	20 462	3 261	-26	-1 154	776	21 767
Patents and trademarks	2 639	20	-91	8	51	2 525
Goodwill and marketing assets	7 365	15	0	0	1	7 379
Research and development	4 316	885	55	-27	255	4 974
Entertainment, literary and artistic originals	0	0	0	0	0	0
Contracts, leases and licences	20	0	0	0	1	19
Other intellectual property products	7 589	58	6	0	145	7 508
Total	316 664	83 269	-6 898	-14 569	27 018	351 448

¹Revised.²F=A+B+C+D-E.

Table 3.3 - Carrying value of property, plant and equipment and intangible assets: Mining and quarrying (concluded)

Type of asset	2011 ¹					
	Carrying value at the beginning of the financial year	Additions	Disposal of assets(-), revaluations and other adjustments to carrying value	Transfers-in and/or transfers-out	Depreciation and amortisation	Carrying value at the end of the financial year
	(A)	(B)	(C)	(D)	(E)	(F) ²
	R million					
Land	11 385	295	-361	11	208	11 122
Residential buildings	542	54	-35	46	39	568
Non-residential buildings	15 518	2 521	-28	852	1 171	17 692
Construction works, roads and parking areas	12 416	3 760	1 507	189	2 122	15 750
Network equipment	140	9	-4	0	27	118
Computers and other IT equipment	413	255	14	8	256	434
Motor vehicles and other transport equipment	6 255	3 376	-265	-45	2 613	6 708
Plant, machinery and other office equipment	183 568	31 472	-5 343	7 580	20 966	196 311
Capital work in progress	63 867	26 877	-1 834	-21 902	871	66 137
Other property, plant and equipment	11 429	1 666	-514	-157	1 227	11 197
Intangible assets						
Computer software and databases	476	181	-152	14	271	248
Mineral exploration and evaluation	22 840	515	-231	377	859	22 642
Patents and trademarks	2 195	0	-5	0	187	2 003
Goodwill and marketing assets	7 199	6	-433	-5	17	6 750
Research and development	4 570	618	-21	-63	188	4 916
Entertainment, literary and artistic originals	0	0	0	0	0	0
Contracts, leases and licences	21	0	0	0	3	18
Capital work in progress (intangible)	30	0	0	0	2	28
Other intellectual property products	7 642	1 728	-5	0	208	9 157
Total	350 506	73 333	-7 710	-13 095	31 235	371 799

¹Preliminary.²F=A+B+C+D-E.

Table 4.1 - Selected income and expenditure items: Manufacturing

Item	Manufacturing		
	2010 ¹	2011 ²	Change between 2010 and 2011
	R million		
Income items			
Turnover	1 576 393	1 612 505	36 112
Dividends	4 690	4 919	229
Government subsidies and incentives	2 172	1 846	-326
Capital transfers received from government	291	297	6
Interest	14 717	10 798	-3 919
Profit on financial and other assets: disposal of assets, realisation for cash and revaluation of assets	4 503	3 861	-642
Profit on financial and other liabilities: redemption, liquidation and revaluation	522	517	-5
Profit on foreign exchange as a result of variations in foreign exchange rates or transactions	9 456	7 291	-2 165
Provisions	689	973	284
Royalties, franchise fees, copyright, trade names and trade and patent rights	390	854	464
Other	17 895	19 856	1 961
Total income (A)	1 631 718	1 663 717	31 999
Inventories			
Opening value of raw materials	80 303	79 404	-899
Opening value of work in progress	25 971	26 967	996
Opening value of finished goods	106 905	83 858	-23 047
Total opening value (B)	213 179	190 229	-22 950
Closing value of raw materials	73 528	86 485	12 957
Closing value of work in progress	25 481	29 323	3 842
Closing value of finished goods	94 925	88 656	-6 269
Total closing value (C)	193 934	204 464	10 530

¹Revised.²Preliminary.

Table 4.1 - Selected income and expenditure items: Manufacturing (concluded)

Item	Manufacturing		
	2010 ¹	2011 ²	Change between 2010 and 2011
	R million		
Expenditure items			
Purchases	968 824	1 010 458	41 634
Advertising	14 363	13 448	-915
Amortisation	2 424	3 092	668
Bank charges	1 643	1 570	-73
Bursaries	184	270	86
Computer expenses	3 050	3 675	625
Containers and packaging materials	17 511	18 795	1 284
Depreciation provided for during the financial year	36 159	39 567	3 408
Employment costs ³	181 404	184 277	2 873
Excise and customs duty	25 357	22 466	-2 891
Information technology security	227	170	-57
Insurance premiums	6 473	5 585	-888
Interest	30 482	26 425	-4 057
Losses on foreign exchange as a result of variations in foreign exchange rates or transactions	10 305	8 683	-1 622
Losses on financial and other liabilities: redemption, liquidation or revaluation	960	1 109	149
Losses on financial and other assets: disposal of assets, realisation for cash and revaluation of assets	6 142	7 113	971
Mineral rights leased	0	0	0
Motor vehicle running expenditure	8 500	7 420	-1 080
Operational leasing and hire of plant, machinery, equipment and vehicles	6 618	5 847	-771
Paper, printing and stationery	1 651	1 528	-123
Postal and courier services	908	786	-122
Property taxes	837	897	60
Provisions	3 954	5 446	1 492
Railage and transport-out	26 506	29 996	3 490
Rental of land, buildings and other structures including water and electricity	27 203	32 110	4 907
Repair and maintenance	18 060	19 973	1 913
Royalties, franchise fees, copyright, trade names and trade and patent rights	6 918	7 124	206
Security services	1 902	1 469	-433
Staff training	1 216	1 234	18
Subcontractors	14 491	24 802	10 311
Telecommunication services	3 973	3 791	-182
Travelling, accommodation and entertainment	5 272	4 773	-499
Other	63 030	70 078	7 048
Total expenditure (D)	1 496 547	1 563 977	67 430
Net profit before providing for company tax and dividends (E)⁴	115 926	113 975	-1 951
Company tax paid or provided for during the financial year	33 269	53 643	20 374
Dividends paid or provided for during the financial year	45 098	34 107	-10 991
Net profit after providing for company tax and dividends	37 559	26 225	-11 334

¹Revised.²Preliminary.³Refer to page 72 for comparability with the quarterly employment statistics (QES) survey.⁴E=A-B+C-D.

Table 4.2 - Selected balance sheet items: Manufacturing

Balance sheet items	Manufacturing		
	2010 ¹	2011 ²	Change between 2010 and 2011
	R million		
Assets			
Non-current assets			
Property, plant and equipment and intangible assets	344 310	360 689	16 379
Goodwill	56 581	60 020	3 439
Long-term investments	74 842	70 190	-4 652
Other non-current assets	61 060	59 840	-1 220
Total non-current assets	536 793	550 739	13 946
Current assets			
Trade and other receivables	213 833	218 551	4 718
Cash and bank	97 797	91 351	-6 446
Inventory	193 934	204 464	10 530
Other current assets	53 514	56 450	2 936
Total current assets	559 078	570 816	11 738
Total assets	1 095 871	1 121 555	25 684
Equity and liabilities			
Total equity	410 253	410 010	-243
Non-current liabilities			
Long-term loans	161 673	146 134	-15 539
Other non-current liabilities	105 593	135 198	29 605
Total non-current liabilities	267 266	281 332	14 066
Current liabilities			
Trade and other payables	221 889	229 948	8 059
Bank overdraft	28 074	31 740	3 666
Other current liabilities	168 389	168 525	136
Total current liabilities	418 352	430 213	11 861
Total liabilities	685 618	711 545	25 927
Total equity and liabilities	1 095 871	1 121 555	25 684

¹Revised.²Preliminary.

Table 4.3 - Carrying value of property, plant and equipment and intangible assets: Manufacturing

Type of asset	2010 ¹					
	Carrying value at the beginning of the financial year	Additions	Disposal of assets(-), revaluations and other adjustment to carrying value	Transfers-in and/or transfers-out	Depreciation and amortisation	Carrying value at the end of the financial year
	(A)	(B)	(C)	(D)	(E)	(F) ²
	R million					
Land	8 997	0	27	-130	0	8 894
Residential buildings	1 482	95	-34	95	25	1 613
Non-residential buildings	42 978	3 702	-49	1 339	1 754	46 216
Construction works, roads and parking areas	4 247	1 745	-44	-2 190	212	3 546
Network equipment	86	47	-1	0	25	107
Computers and other IT equipment	2 373	1 090	-25	131	1 186	2 383
Motor vehicles and other transport equipment	16 023	5 083	-1 139	115	4 224	15 858
Plant, machinery and other office equipment	211 414	34 448	-3 337	5 453	29 406	218 572
Capital work in progress	20 624	11 261	-1 683	-6 731	846	22 625
Other property, plant and equipment	2 725	800	-152	-153	683	2 537
Intangible assets						
Computer software and databases	2 428	951	4	151	772	2 762
Mineral exploration and evaluation	37	2	8	0	5	42
Patents and trademarks	11 370	2 179	-120	-25	330	13 074
Goodwill and marketing assets	55 951	2 888	-776	-38	1 243	56 782
Research and development	81	38	-1	-7	22	89
Entertainment, literary and artistic originals	64	44	0	0	13	95
Contracts, leases and licences	37	50	-1	22	6	102
Other intellectual property products	5 479	661	14	-45	515	5 594
Total	386 396	65 084	-7 309	-2 013	41 267	400 891

¹Revised.²F=A+B+C+D-E.

Table 4.3 - Carrying value of property, plant and equipment and intangible assets: Manufacturing (concluded)

Type of asset	2011 ¹					
	Carrying value at the beginning of the financial year	Additions	Disposal of assets(-), revaluations and other adjustment to carrying value	Transfers-in and/or transfers-out	Depreciation and amortisation	Carrying value at the end of the financial year
	(A)	(B)	(C)	(D)	(E)	(F) ²
	R million					
Land	13 002	2 548	-181	450	356	15 463
Residential buildings	1 939	111	-402	10	228	1 430
Non-residential buildings	39 271	5 456	-990	802	1 885	42 654
Construction works, roads and parking areas	3 788	1 117	-644	-247	309	3 705
Network equipment	131	14	0	0	23	122
Computers and other IT equipment	2 328	997	-81	163	1 205	2 202
Motor vehicles and other transport equipment	14 341	5 122	-846	132	3 969	14 780
Plant, machinery and other office equipment	216 311	36 432	-6 523	6 506	30 773	221 953
Capital work in progress	24 960	13 196	-1 773	-7 394	124	28 865
Other property, plant and equipment	5 050	1 930	-324	-87	963	5 606
Intangible assets						
Computer software and databases	2 422	732	9	513	946	2 730
Mineral exploration and evaluation	23	36	-5	0	9	45
Patents and trademarks	8 291	221	-58	-5	243	8 206
Goodwill and marketing assets	60 294	1 230	-239	-60	1 243	59 982
Research and development	693	272	83	2	189	861
Entertainment, literary and artistic originals	804	2	0	0	3	803
Contracts, leases and licences	3 977	20	-23	0	114	3 860
Capital work in progress (intangible)	603	214	-137	-328	52	300
Other intellectual property products	7 218	122	-69	235	364	7 142
Total	405 446	69 772	-12 203	692	42 998	420 709

¹Preliminary.²F=A+B+C+D-E.

Table 5.1 - Selected income and expenditure items: Electricity, gas and water supply

Item	Electricity, gas and water supply		
	2010 ¹	2011 ²	Change between 2010 and 2011
	R million		
Income items			
Turnover	100 196	126 229	26 033
Dividends	167	15	-152
Government subsidies and incentives	464	366	-98
Capital transfers received from government	11	0	-11
Interest	2 350	3 095	745
Profit on financial and other assets: disposal of assets, realisation for cash and revaluation of assets	2 941	1 057	-1 884
Profit on financial and other liabilities: redemption, liquidation and revaluation	631	46	-585
Profit on foreign exchange as a result of variations in foreign exchange rates or transactions	33	17	-16
Provisions	87	1	-86
Royalties, franchise fees, copyright, trade names and trade and patent rights	0	0	0
Other	1 037	1 441	404
Total income (A)	107 917	132 267	24 350
Inventories			
Opening value of raw materials	6 796	7 640	844
Opening value of work in progress	4	2	-2
Opening value of finished goods	126	82	-44
Total opening value (B)	6 926	7 724	798
Closing value of raw materials	7 673	9 133	1 460
Closing value of work in progress	5	0	-5
Closing value of finished goods	63	107	44
Total closing value (C)	7 741	9 240	1 499

¹Revised.²Preliminary.

Table 5.1 - Selected income and expenditure items: Electricity, gas and water supply (concluded)

Item	Electricity, gas and water supply		
	2010 ¹	2011 ²	Change between 2010 and 2011
	R million		
Expenditure items			
Purchases	44 019	54 394	10 375
Advertising	193	217	24
Amortisation	281	357	76
Bank charges	36	36	0
Bursaries	101	101	0
Computer expenses	582	615	33
Containers and packaging materials	0	0	0
Depreciation provided for during the financial year	7 246	8 278	1 032
Employment costs ³	17 535	19 284	1 749
Excise and customs duty	0	0	0
Information technology security	7	3	-4
Insurance premiums	826	840	14
Interest	4 325	6 832	2 507
Losses on foreign exchange as a result of variations in foreign exchange rates or transactions	6 591	4 107	-2 484
Losses on financial and other liabilities: redemption, liquidation or revaluation	294	428	134
Losses on financial and other assets: disposal of assets, realisation for cash and revaluation of assets	1 912	2 541	629
Mineral rights leased	0	0	0
Motor vehicle running expenditure	528	542	14
Operational leasing and hire of plant, machinery, equipment and vehicles	762	657	-105
Paper, printing and stationery	102	98	-4
Postal and courier services	19	19	0
Property taxes	77	77	0
Provisions	134	5	-129
Railage and transport-out	40	45	5
Rental of land, buildings and other structures including water and electricity	1 466	1 745	279
Repair and maintenance	6 233	7 376	1 143
Royalties, franchise fees, copyright, trade names and trade and patent rights	18	0	-18
Security services	252	336	84
Staff training	198	214	16
Subcontractors	1 587	2 581	994
Telecommunication services	510	616	106
Travelling, accommodation and entertainment	569	576	7
Other	3 209	6 061	2 852
Total expenditure (D)	99 652	118 981	19 329
Net profit before providing for company tax and dividends (E)⁴	9 080	14 802	5 722
Company tax paid or provided for during the financial year	2 514	4 108	1 594
Dividends paid or provided for during the financial year	941	1 649	708
Net profit after providing for company tax and dividends	5 625	9 045	3 420

¹Revised.²Preliminary.³Refer to page 72 for comparability with the quarterly employment statistics (QES) survey.⁴E=A-B+C-D.

Table 5.2 - Selected balance sheet items: Electricity, gas and water supply

Balance sheet items	Electricity, gas and water supply		
	2010 ¹	2011 ²	Change between 2010 and 2011
	R million		
Assets			
Non-current assets			
Property, plant and equipment and intangible assets	220 544	272 728	52 184
Goodwill	9	3	-6
Long-term investments	4 854	16 436	11 582
Other non-current assets	8 424	8 117	-307
Total non-current assets	233 831	297 284	63 453
Current assets			
Trade and other receivables	14 360	17 370	3 010
Cash and bank	19 557	14 177	-5 380
Inventory	7 741	9 240	1 499
Other current assets	15 214	35 525	20 311
Total current assets	56 872	76 312	19 440
Total assets	290 703	373 596	82 893
Equity and liabilities			
Total equity	93 985	109 090	15 105
Non-current liabilities			
Long-term loans	43 942	75 093	31 151
Other non-current liabilities	98 696	135 179	36 483
Total non-current liabilities	142 638	210 272	67 634
Current liabilities			
Trade and other payables	24 626	27 243	2 617
Bank overdraft	34	40	6
Other current liabilities	29 420	26 951	-2 469
Total current liabilities	54 080	54 234	154
Total liabilities	196 718	264 506	67 788
Total equity and liabilities	290 703	373 596	82 893

¹Revised.²Preliminary.

Table 5.3 - Carrying value of property, plant and equipment and intangible assets: Electricity, gas and water supply

Type of asset	2010 ¹					
	Carrying value at the beginning of the financial year	Additions	Disposal of assets(-), revaluations and other adjustment to carrying value	Transfers-in and/or transfers-out	Depreciation and amortisation	Carrying value at the end of the financial year
	(A)	(B)	(C)	(D)	(E)	(F) ²
	R million					
Land	768	133	3	48	7	945
Residential buildings	142	7	9	621	28	751
Non-residential buildings	5 195	1 284	114	275	198	6 670
Construction works, roads and parking areas	2 430	914	-630	-1	29	2 684
Network equipment	179	25	1	-1	8	196
Computers and other IT equipment	81	27	51	-1	37	121
Motor vehicles and other transport equipment	2 948	1 513	0	-48	711	3 702
Plant, machinery and other office equipment	101 350	18 673	1 822	-31	6 026	115 788
Capital work in progress	51 438	37 116	-1 516	-278	190	86 570
Other property, plant and equipment	1 254	1	-116	0	22	1 117
Intangible assets						
Computer software and databases	517	465	4	0	252	734
Mineral exploration and evaluation	0	0	0	0	0	0
Patents and trademarks	1	0	0	0	0	1
Goodwill and marketing assets	0	0	0	0	0	0
Research and development	16	0	0	0	1	15
Entertainment, literary and artistic originals	0	0	0	0	0	0
Contracts, leases and licences	0	0	0	0	0	0
Other intellectual property products	1 080	212	-3	0	30	1 259
Total	167 399	60 370	-261	584	7 539	220 553

¹Revised.²F=A+B+C+D-E.

Table 5.3 - Carrying value of property, plant and equipment and intangible assets: Electricity gas and water supply (concluded)

Type of asset	2011 ¹					
	Carrying value at the beginning of the financial year	Additions	Disposal of assets(-), revaluations and other adjustment to carrying value	Transfers-in and/or transfers-out	Depreciation and amortisation	Carrying value at the end of the financial year
	(A)	(B)	(C)	(D)	(E)	(F) ²
R million						
Land	799	479	-1	-4	3	1 270
Residential buildings	85	1	-5	11	15	77
Non-residential buildings	7 288	718	-14	60	267	7 785
Construction works, roads and parking areas	84 545	36 747	-1	0	1	121 290
Network equipment	5 285	852	-7	270	176	6 224
Computers and other IT equipment	127	20	-4	5	34	114
Motor vehicles and other transport equipment	174	71	-3	1	45	198
Plant, machinery and other office equipment	112 886	18 778	1 030	149	7 633	125 210
Capital work in progress	2 046	1 474	-271	-1 073	0	2 176
Other property, plant and equipment	5 241	78	14	398	139	5 592
Intangible assets						
Computer software and databases	748	273	0	30	302	749
Mineral exploration and evaluation	0	0	0	0	0	0
Patents and trademarks	89	0	0	0	8	81
Goodwill and marketing assets	3	0	0	0	0	3
Research and development	112	0	0	0	5	107
Entertainment, literary and artistic originals	0	0	0	0	0	0
Contracts, leases and licences	0	0	0	0	0	0
Capital work in progress (intangible)	0	0	0	0	0	0
Other intellectual property products	1 748	160	0	14	67	1 855
Total	221 176	59 651	738	-139	8 695	272 731

¹Preliminary.²F=A+B+C+D-E.

Table 6.1 - Selected income and expenditure items: Construction

Item	Construction		
	2010 ¹	2011 ²	Change between 2010 and 2011
	R million		
Income items			
Turnover	260 498	259 150	-1 348
Dividends	627	682	55
Government subsidies and incentives	206	203	-3
Capital transfers received from government	2	3	1
Interest	2 559	2 338	-221
Profit on financial and other assets: disposal of assets, realisation for cash and revaluation of assets	1 369	1 284	-85
Profit on financial and other liabilities: redemption, liquidation and revaluation	34	33	-1
Profit on foreign exchange as a result of variations in foreign exchange rates or transactions	483	294	-189
Provisions	132	149	17
Royalties, franchise fees, copyright, trade names and trade and patent rights	0	0	0
Other	2 129	2 035	-94
Total income (A)	268 039	266 171	-1 868
Inventories			
Opening value of raw materials	2 921	2 880	-41
Opening value of work in progress	7 145	9 119	1 974
Opening value of finished goods	2 053	1 702	-351
Total opening value (B)	12 119	13 701	1 582
Closing value of raw materials	2 827	2 657	-170
Closing value of work in progress	6 422	9 921	3 499
Closing value of finished goods	2 213	1 831	-382
Total closing value (C)	11 462	14 409	2 947

¹Revised.²Preliminary.

Table 6.1 - Selected income and expenditure items: Construction (concluded)

Item	Construction		
	2010 ¹	2011 ²	Change between 2010 and 2011
	R million		
Expenditure items			
Purchases	115 889	112 761	-3 128
Advertising	317	351	34
Amortisation	136	141	5
Bank charges	381	432	51
Bursaries	15	20	5
Computer expenses	430	450	20
Containers and packaging materials	45	41	-4
Depreciation provided for during the financial year	6 200	7 020	820
Employment costs ³	45 311	49 647	4 336
Excise and customs duty	12	13	1
Information technology security	12	17	5
Insurance premiums	1 701	1 696	-5
Interest	3 737	2 427	-1 310
Losses on foreign exchange as a result of variations in foreign exchange rates or transactions	341	400	59
Losses on financial and other liabilities: redemption, liquidation or revaluation	12	11	-1
Losses on financial and other assets: disposal of assets, realisation for cash and revaluation of assets	1 401	1 572	171
Mineral rights leased	0	4	4
Motor vehicle running expenditure	3 418	3 705	287
Operational leasing and hire of plant, machinery, equipment and vehicles	4 950	5 550	600
Paper, printing and stationery	299	312	13
Postal and courier services	113	66	-47
Property taxes	52	33	-19
Provisions	332	333	1
Railage and transport-out	540	529	-11
Rental of land, buildings and other structures including water and electricity	2 066	2 187	121
Repair and maintenance	2 070	2 270	200
Royalties, franchise fees, copyright, trade names and trade and patent rights	68	66	-2
Security services	383	327	-56
Staff training	311	352	41
Subcontractors	43 744	48 705	4 961
Telecommunication services	1 128	1 223	95
Travelling, accommodation and entertainment	1 377	1 568	191
Other	10 350	10 719	369
Total expenditure (D)	247 141	254 948	7 807
Net profit before providing for company tax and dividends (E)⁴	20 241	11 931	-8 310
Company tax paid or provided for during the financial year	5 336	4 401	-935
Dividends paid or provided for during the financial year	2 487	3 785	1 298
Net profit after providing for company tax and dividends	12 418	3 745	-8 673

¹Revised.²Preliminary.³Refer to page 72 for comparability with the quarterly employment statistics (QES) survey.⁴E=A-B+C-D.

Table 6.2 - Selected balance sheet items: Construction

Balance sheet items	Construction		
	2010 ¹	2011 ²	Change between 2010 and 2011
	R million		
Assets			
Non-current assets			
Property, plant and equipment and intangible assets	34 945	32 974	-1 971
Goodwill	1 798	2 487	689
Long-term investments	9 089	7 988	-1 101
Other non-current assets	12 927	13 463	536
Total non-current assets	58 759	56 912	-1 847
Current assets			
Trade and other receivables	38 455	40 544	2 089
Cash and bank	28 685	26 489	-2 196
Inventory	11 462	14 409	2 947
Other current assets	13 185	16 957	3 772
Total current assets	91 787	98 399	6 612
Total assets	150 546	155 311	4 765
Equity and liabilities			
Total equity	44 942	49 348	4 406
Non-current liabilities			
Long-term loans	16 958	13 892	-3 066
Other non-current liabilities	15 798	16 480	682
Total non-current liabilities	32 756	30 372	-2 384
Current liabilities			
Trade and other payables	42 309	41 842	-467
Bank overdraft	4 357	5 545	1 188
Other current liabilities	26 182	28 204	2 022
Total current liabilities	72 848	75 591	2 743
Total liabilities	105 604	105 963	359
Total equity and liabilities	150 546	155 311	4 765

¹Revised.²Preliminary.

Table 6.3 - Carrying value of property, plant and equipment and intangible assets: Construction

Type of asset	2010 ¹					
	Carrying value at the beginning of the financial year	Additions	Disposal of assets(-), revaluations and other adjustment to carrying value	Transfers-in and/or transfers-out	Depreciation and amortisation	Carrying value at the end of the financial year
	(A)	(B)	(C)	(D)	(E)	(F) ²
	R million					
Land	766	0	-10	9	0	765
Residential buildings	2 151	374	-15	0	13	2 497
Non-residential buildings	1 875	303	-35	32	19	2 156
Construction works, roads and parking areas	91	13	0	117	13	208
Network equipment	4	1	0	2	1	6
Computers and other IT equipment	391	163	-5	13	174	388
Motor vehicles and other transport equipment	6 752	2 134	-482	654	2 149	6 909
Plant, machinery and other office equipment	22 838	5 290	-1 246	-703	4 535	21 644
Capital work in progress	65	14	-19	37	7	90
Other property, plant and equipment	164	118	0	-61	46	175
Intangible assets						
Computer software and databases	25	22	-3	0	11	33
Mineral exploration and evaluation	0	0	0	0	0	0
Patents and trademarks	53	0	0	0	19	34
Goodwill and marketing assets	1 967	103	0	-140	124	1 806
Research and development	6	0	0	0	0	6
Entertainment, literary and artistic originals	0	0	0	0	0	0
Contracts, leases and licences	1	7	0	0	0	8
Other intellectual property products	143	3	0	-120	8	18
Total	37 292	8 545	-1 815	-160	7 119	36 743

¹Revised.²F=A+B+C+D-E.

Table 6.3 - Carrying value of property, plant and equipment and intangible assets: Construction (concluded)

Type of asset	2011 ¹					
	Carrying value at the beginning of the financial year	Additions	Disposal of assets(-), revaluations and other adjustment to carrying value	Transfers-in and/or transfers-out	Depreciation and amortisation	Carrying value at the end of the financial year
	(A)	(B)	(C)	(D)	(E)	(F) ²
	R million					
Land	1 441	243	-23	-5	7	1 649
Residential buildings	347	58	-5	6	4	402
Non-residential buildings	2 339	346	-427	-21	30	2 207
Construction works, roads and parking areas	54	33	-4	-1	14	68
Network equipment	6	1	-1	0	2	4
Computers and other IT equipment	434	178	-18	12	179	427
Motor vehicles and other transport equipment	9 012	3 310	-911	-7	2 524	8 880
Plant, machinery and other office equipment	16 879	5 889	-624	-78	4 070	17 996
Capital work in progress	153	77	0	-36	93	101
Other property, plant and equipment	931	74	-3	-38	86	878
Intangible assets						
Computer software and databases	43	24	0	0	30	37
Mineral exploration and evaluation	0	0	0	0	0	0
Patents and trademarks	53	128	0	0	32	149
Goodwill and marketing assets	2 659	420	-549	-11	31	2 488
Research and development	0	0	0	0	0	0
Entertainment, literary and artistic originals	0	0	0	0	0	0
Contracts, leases and licences	27	1	0	0	21	7
Capital work in progress (intangible)	5	0	0	0	5	0
Other intellectual property products	169	14	4	5	24	168
Total	34 552	10 796	-2 561	-174	7 152	35 461

¹Preliminary.²F=A+B+C+D-E.

Table 7.1 - Selected income and expenditure items: Trade

Item	Trade		
	2010 ¹	2011 ²	Change between 2010 and 2011
	R million		
Income items			
Turnover	1 798 907	1 998 875	199 968
Dividends	3 022	2 528	-494
Government subsidies and incentives	111	112	1
Capital transfers received from government	0	0	0
Interest	14 842	15 177	335
Profit on financial and other assets: disposal of assets, realisation for cash and revaluation of assets	4 827	8 186	3 359
Profit on financial and other liabilities: redemption, liquidation and revaluation	225	246	21
Profit on foreign exchange as a result of variations in foreign exchange rates or transactions	6 917	4 129	-2 788
Provisions	503	855	352
Royalties, franchise fees, copyright, trade names and trade and patent rights	2 036	1 695	-341
Other	18 171	18 474	303
Total income (A)	1 849 561	2 050 277	200 716
Inventories			
Opening value of raw materials	11 747	11 566	-181
Opening value of work in progress	3 444	2 812	-632
Opening value of finished goods	162 815	170 358	7 543
Total opening value (B)	178 006	184 736	6 730
Closing value of raw materials	12 264	12 873	609
Closing value of work in progress	3 140	2 893	-247
Closing value of finished goods	163 079	184 145	21 066
Total closing value (C)	178 483	199 911	21 428

¹Revised.²Preliminary.

Table 7.1 - Selected income and expenditure items: Trade (concluded)

Item	Trade		
	2010 ¹	2011 ²	Change between 2010 and 2011
	R million		
Expenditure items			
Purchases	1 368 819	1 530 615	161 796
Advertising	14 063	15 461	1 398
Amortisation	1 881	1 970	89
Bank charges	4 092	4 782	690
Bursaries	11	11	0
Computer expenses	2 299	2 763	464
Containers and packaging materials	1 631	1 918	287
Depreciation provided for during the financial year	18 358	20 928	2 570
Employment costs ³	162 592	182 029	19 437
Excise and customs duty	7 129	7 634	505
Information technology security	416	437	21
Insurance premiums	5 088	5 690	602
Interest	22 969	22 818	-151
Losses on foreign exchange as a result of variations in foreign exchange rates or transactions	6 057	4 020	-2 037
Losses on financial and other liabilities: redemption, liquidation or revaluation	200	213	13
Losses on financial and other assets: disposal of assets, realisation for cash and revaluation of assets	9 835	7 846	-1 989
Mineral rights leased	0	0	0
Motor vehicle running expenditure	8 378	10 172	1 794
Operational leasing and hire of plant, machinery, equipment and vehicles	5 532	5 788	256
Paper, printing and stationery	2 225	2 240	15
Postal and courier services	976	1 087	111
Property taxes	977	1 298	321
Provisions	1 220	2 105	885
Railage and transport-out	8 783	9 750	967
Rental of land, buildings and other structures including water and electricity	41 308	46 396	5 088
Repair and maintenance	7 293	7 966	673
Royalties, franchise fees, copyright, trade names and trade and patent rights	3 828	4 133	305
Security services	3 096	3 463	367
Staff training	711	785	74
Subcontractors	6 037	6 190	153
Telecommunication services	5 295	5 450	155
Travelling, accommodation and entertainment	4 637	5 345	708
Other	56 159	62 338	6 179
Total expenditure (D)	1 781 895	1 983 641	201 746
Net profit before providing for company tax and dividends (E)⁴	68 143	81 811	13 668
Company tax paid or provided for during the financial year	20 997	22 894	1 897
Dividends paid or provided for during the financial year	14 331	17 812	3 481
Net profit after providing for company tax and dividends	32 815	41 105	8 290

¹Revised.²Preliminary.³Refer to page 72 for comparability with the quarterly employment statistics (QES) survey.⁴E=A-B+C-D.

Table 7.2 - Selected balance sheet items: Trade

Balance sheet items	Trade		
	2010 ¹	2011 ²	Change between 2010 and 2011
	R million		
Assets			
Non-current assets			
Property, plant and equipment and intangible assets	165 488	174 557	9 069
Goodwill	32 834	37 109	4 275
Long-term investments	47 773	52 422	4 649
Other non-current assets	48 944	62 584	13 640
Total non-current assets	295 039	326 672	31 633
Current assets			
Trade and other receivables	176 421	192 216	15 795
Cash and bank	79 261	91 557	12 296
Inventory	178 483	199 911	21 428
Other current assets	60 552	68 536	7 984
Total current assets	494 717	552 220	57 503
Total assets	789 756	878 892	89 136
Equity and liabilities			
Total equity	226 604	245 712	19 108
Non-current liabilities			
Long-term loans	131 644	153 381	21 737
Other non-current liabilities	56 860	65 890	9 030
Total non-current liabilities	188 504	219 271	30 767
Current liabilities			
Trade and other payables	212 934	245 804	32 870
Bank overdraft	28 235	32 433	4 198
Other current liabilities	133 479	135 672	2 193
Total current liabilities	374 648	413 909	39 261
Total liabilities	563 152	633 180	70 028
Total equity and liabilities	789 756	878 892	89 136

¹Revised.²Preliminary.

Table 7.3 - Carrying value of property, plant and equipment and intangible assets: Trade

Type of asset	2010 ¹					
	Carrying value at the beginning of the financial year	Additions	Disposal of assets(-), revaluations and other adjustment to carrying value	Transfers-in and/or transfers-out	Depreciation and amortisation	Carrying value at the end of the financial year
	(A)	(B)	(C)	(D)	(E)	(F) ²
	R million					
Land	12 019	0	469	81	0	12 569
Residential buildings	5 111	168	-76	-6	73	5 124
Non-residential buildings	46 148	4 269	-175	921	865	50 298
Construction works, roads and parking areas	5 290	1 146	-446	-89	552	5 349
Network equipment	106	17	0	1	29	95
Computers and other IT equipment	3 405	1 160	-95	-75	1 495	2 900
Motor vehicles and other transport equipment	18 330	7 260	-2 262	4	4 566	18 766
Plant, machinery and other office equipment	46 417	13 156	-2 422	98	10 766	46 483
Capital work in progress	1 636	865	-47	-942	39	1 473
Other property, plant and equipment	2 293	542	-98	-15	441	2 281
Intangible assets						
Computer software and databases	1 919	679	79	18	486	2 209
Mineral exploration and evaluation	0	0	0	0	0	0
Patents and trademarks	12 272	759	-787	-52	301	11 891
Goodwill and marketing assets	32 786	1 049	-710	126	415	32 836
Research and development	27	15	0	0	4	38
Entertainment, literary and artistic originals	8	2	0	0	0	10
Contracts, leases and licences	648	67	-7	0	85	623
Other intellectual property products	6 247	185	-183	-1	871	5 377
Total	194 662	31 339	-6 760	69	20 988	198 322

¹Revised.²F=A+B+C+D-E.

Table 7.3 - Carrying value of property, plant and equipment and intangible assets: Trade (concluded)

Type of asset	2011 ¹					
	Carrying value at the beginning of the financial year	Additions	Disposal of assets(-), revaluations and other adjustment to carrying value	Transfers-in and/or transfers-out	Depreciation and amortisation	Carrying value at the end of the financial year
	(A)	(B)	(C)	(D)	(E)	(F) ²
	R million					
Land	11 841	1 083	-145	4	47	12 736
Residential buildings	4 357	653	-370	0	32	4 608
Non-residential buildings	50 730	2 939	-286	610	1 110	52 883
Construction works, roads and parking areas	5 115	1 425	-217	72	754	5 641
Network equipment	70	62	-2	-10	26	94
Computers and other IT equipment	3 524	1 386	-88	27	1 732	3 117
Motor vehicles and other transport equipment	18 200	7 334	-2 406	13	4 987	18 154
Plant, machinery and other office equipment	50 692	17 870	-2 994	251	12 163	53 656
Capital work in progress	2 289	913	-86	-1 162	197	1 757
Other property, plant and equipment	2 620	565	-550	2	610	2 027
Intangible assets						
Computer software and databases	2 281	766	-50	159	602	2 554
Mineral exploration and evaluation	0	0	0	0	0	0
Patents and trademarks	11 884	390	-34	-98	194	11 948
Goodwill and marketing assets	36 883	1 146	-786	63	366	36 940
Research and development	80	84	-12	0	12	140
Entertainment, literary and artistic originals	11	1	-3	0	1	8
Contracts, leases and licences	818	172	-2	-181	65	742
Capital work in progress (intangible)	0	2	0	0	0	2
Other intellectual property products	5 451	261	-124	-21	908	4 659
Total	206 846	37 052	-8 155	-271	23 806	211 666

¹Preliminary.²F=A+B+C+D-E.

Table 8.1 - Selected income and expenditure items: Transport, storage and communication

Item	Transport, storage and communication		
	2010 ¹	2011 ²	Change between 2010 and 2011
	R million		
Income items			
Turnover	505 287	551 620	46 333
Dividends	2 218	2 718	500
Government subsidies and incentives	6 847	5 895	-952
Capital transfers received from government	0	0	0
Interest	5 584	4 467	-1 117
Profit on financial and other assets: disposal of assets, realisation for cash and revaluation of assets	55 700	3 233	-52 467
Profit on financial and other liabilities: redemption, liquidation and revaluation	24	11	-13
Profit on foreign exchange as a result of variations in foreign exchange rates or transactions	3 056	1 856	-1 200
Provisions	140	138	-2
Royalties, franchise fees, copyright, trade names and trade and patent rights	21	21	0
Other	11 892	11 281	-611
Total income (A)	590 769	581 240	-9 529
Inventories			
Opening value of raw materials	5 394	4 227	-1 167
Opening value of work in progress	786	502	-284
Opening value of finished goods	3 884	4 432	548
Total opening value (B)	10 064	9 161	-903
Closing value of raw materials	4 658	4 505	-153
Closing value of work in progress	561	720	159
Closing value of finished goods	3 862	6 040	2 178
Total closing value (C)	9 081	11 265	2 184

¹Revised.

²Preliminary.

Table 8.1 - Selected income and expenditure items: Transport, storage and communication (concluded)

Item	Transport, storage and communication		
	2010 ¹	2011 ²	Change between 2010 and 2011
	R million		
Expenditure items			
Purchases	119 251	140 478	21 227
Advertising	4 993	6 374	1 381
Amortisation	4 471	4 730	259
Bank charges	670	636	-34
Bursaries	32	31	-1
Computer expenses	1 889	1 967	78
Containers and packaging materials	174	185	11
Depreciation provided for during the financial year	27 517	31 515	3 998
Employment costs ³	72 268	79 497	7 229
Excise and customs duty	51 085	57 257	6 172
Information technology security	529	536	7
Insurance premiums	3 219	3 441	222
Interest	14 585	15 676	1 091
Losses on foreign exchange as a result of variations in foreign exchange rates or transactions	4 391	2 108	-2 283
Losses on financial and other liabilities: redemption, liquidation or revaluation	338	166	-172
Losses on financial and other assets: disposal of assets, realisation for cash and revaluation of assets	12 585	5 593	-6 992
Mineral rights leased	0	0	0
Motor vehicle running expenditure	3 422	3 832	410
Operational leasing and hire of plant, machinery, equipment and vehicles	9 104	9 454	350
Paper, printing and stationery	717	774	57
Postal and courier services	650	628	-22
Property taxes	660	723	63
Provisions	1 724	1 619	-105
Railage and transport-out	11 465	11 190	-275
Rental of land, buildings and other structures including water and electricity	11 413	12 979	1 566
Repair and maintenance	11 971	11 890	-81
Royalties, franchise fees, copyright, trade names and trade and patent rights	184	187	3
Security services	2 907	3 139	232
Staff training	743	992	249
Subcontractors	64 361	62 277	-2 084
Telecommunication services	4 596	4 779	183
Travelling, accommodation and entertainment	3 525	3 209	-316
Other	57 923	58 809	886
Total expenditure (D)	503 362	536 671	33 309
Net profit before providing for company tax and dividends (E)⁴	86 424	46 673	-39 751
Company tax paid or provided for during the financial year	17 208	13 626	-3 582
Dividends paid or provided for during the financial year	30 958	25 149	-5 809
Net profit after providing for company tax and dividends	38 258	7 898	-30 360

¹Revised.²Preliminary.³Refer to page 72 for comparability with the quarterly employment statistics (QES) survey.⁴E=A-B+C-D.

Table 8.2 - Selected balance sheet items: Transport, storage and communication

Balance sheet items	Transport, storage and communication		
	2010 ¹	2011 ²	Change between 2010 and 2011
	R million		
Assets			
Non-current assets			
Property, plant and equipment and intangible assets	305 238	345 110	39 872
Goodwill	4 944	5 329	385
Long-term investments	19 312	24 782	5 470
Other non-current assets	14 501	18 054	3 553
Total non-current assets	343 995	393 275	49 280
Current assets			
Trade and other receivables	88 527	91 558	3 031
Cash and bank	43 357	48 363	5 006
Inventory	9 081	11 265	2 184
Other current assets	24 744	28 946	4 202
Total current assets	165 709	180 132	14 423
Total assets	509 704	573 407	63 703
Equity and liabilities			
Total equity	154 730	172 444	17 714
Non-current liabilities			
Long-term loans	128 518	142 606	14 088
Other non-current liabilities	58 778	66 655	7 877
Total non-current liabilities	187 296	209 261	21 965
Current liabilities			
Trade and other payables	102 704	112 004	9 300
Bank overdraft	4 768	3 904	-864
Other current liabilities	60 206	75 794	15 588
Total current liabilities	167 678	191 702	24 024
Total liabilities	354 974	400 963	45 989
Total equity and liabilities	509 704	573 407	63 703

¹Revised.²Preliminary.

Table 8.3 - Carrying value of property, plant and equipment and intangible assets: Transport, storage and communication

Type of asset	2010 ¹					
	Carrying value at the beginning of the financial year	Additions	Disposal of assets(-), revaluations and other adjustment to carrying value	Transfers-in and/or transfers-out	Depreciation and amortisation	Carrying value at the end of the financial year
	(A)	(B)	(C)	(D)	(E)	(F) ²
	R million					
Land	7 400	326	-14	-468	89	7 155
Residential buildings	238	24	-1	12	6	267
Non-residential buildings	20 788	3 455	-45	1 174	1 504	23 868
Construction works, roads and parking areas	20 132	2 931	564	2 052	1 589	24 090
Network equipment	47 320	7 815	-635	957	5 666	49 791
Computers and other IT equipment	16 273	5 121	-175	-130	4 140	16 949
Motor vehicles and other transport equipment	60 376	9 822	9 450	-2 079	9 171	68 398
Plant, machinery and other office equipment	51 211	12 500	-7 386	109	5 008	51 426
Capital work in progress	30 520	12 651	-151	-1 366	5	41 649
Other property, plant and equipment	3 279	1 060	-1 535	-16	300	2 488
Intangible assets						
Computer software and databases	7 901	6 029	816	38	2 238	12 546
Mineral exploration and evaluation	0	0	0	0	0	0
Patents and trademarks	762	119	0	-1	188	692
Goodwill and marketing assets	4 764	1 582	-46	-1 312	24	4 964
Research and development	102	4	0	0	32	74
Entertainment, literary and artistic originals	0	0	0	0	0	0
Contracts, leases and licences	1 618	1 602	-109	-91	1 759	1 261
Other intellectual property products	5 318	53	-4	-513	290	4 564
Total	278 002	65 094	729	-1 634	32 009	310 182

¹Revised.²F=A+B+C+D-E.

Table 8.3 - Carrying value of property, plant and equipment and intangible assets: Transport, storage and communication (concluded)

Type of asset	2011 ¹					
	Carrying value at the beginning of the financial year	Additions	Disposal of assets(-), revaluations and other adjustment to carrying value	Transfers-in and/or transfers-out	Depreciation and amortisation	Carrying value at the end of the financial year
	(A)	(B)	(C)	(D)	(E)	(F) ²
	R million					
Land	5 452	185	399	143	50	6 129
Residential buildings	2 193	112	-2	0	108	2 195
Non-residential buildings	27 017	1 450	580	5 067	1 684	32 430
Construction works, roads and parking areas	8 150	3 879	-3 402	433	580	8 480
Network equipment	57 578	9 909	-830	1 105	9 252	58 510
Computers and other IT equipment	10 249	1 940	-362	261	2 111	9 977
Motor vehicles and other transport equipment	44 245	9 356	919	112	7 517	47 115
Plant, machinery and other office equipment	18 801	3 294	-399	1 720	3 522	19 894
Capital work in progress	37 971	28 562	1 369	-27 230	95	40 577
Other property, plant and equipment	80 749	1 462	8 270	16 806	6 358	100 929
Intangible assets						
Computer software and databases	9 066	2 450	228	273	2 356	9 661
Mineral exploration and evaluation	0	0	0	0	0	0
Patents and trademarks	473	16	-1	-5	111	372
Goodwill and marketing assets	5 410	25	-30	-6	71	5 328
Research and development	10	1	0	-3	2	6
Entertainment, literary and artistic originals	0	0	0	0	0	0
Contracts, leases and licences	1 154	1 708	-76	-3	1 654	1 129
Capital work in progress (intangible)	321	23	0	-169	0	175
Other intellectual property products	7 535	309	-1	143	454	7 532
Total	316 374	64 681	6 662	-1 353	35 925	350 439

¹Preliminary.²F=A+B+C+D-E.

Table 9.1 - Selected income and expenditure items: Real estate activities auxiliary to financial intermediation and other business services (excluding financial intermediation, insurance and business services not elsewhere classified)

Item	Real estate activities auxiliary to financial intermediation and other business services		
	2010 ¹	2011 ²	Change between 2010 and 2011
	R million		
Income items			
Turnover	474 836	533 863	59 027
Dividends	7 008	7 422	414
Government subsidies and incentives	5 019	5 077	58
Capital transfers received from government	252	1	-251
Interest	18 312	19 604	1 292
Profit on financial and other assets: disposal of assets, realisation for cash and revaluation of assets	21 217	21 127	-90
Profit on financial and other liabilities: redemption, liquidation and revaluation	4 632	3 877	-755
Profit on foreign exchange as a result of variations in foreign exchange rates or transactions	1 564	1 299	-265
Provisions	451	485	34
Royalties, franchise fees, copyright, trade names and trade and patent rights	727	1 113	386
Other	10 706	13 366	2 660
Total income (A)	544 724	607 234	62 510
Inventories			
Opening value of raw materials	2 097	1 513	-584
Opening value of work in progress	10 697	6 979	-3 718
Opening value of finished goods	12 233	11 793	-440
Total opening value (B)	25 027	20 285	-4 742
Closing value of raw materials	2 025	1 669	-356
Closing value of work in progress	14 436	7 164	-7 272
Closing value of finished goods	13 141	11 703	-1 438
Total closing value (C)	29 602	20 536	-9 066

¹Revised.²Preliminary.

Table 9.1 - Selected income and expenditure items: Real estate activities auxiliary to financial intermediation and other business services (excluding financial intermediation, insurance and business services not elsewhere classified) (concluded)

Item	Real estate activities auxiliary to financial intermediation and other business services		
	2010 ¹	2011 ²	Change between 2010 and 2011
	R million		
Expenditure items			
Purchases	104 934	127 003	22 069
Advertising	3 828	4 110	282
Amortisation	1 323	1 696	373
Bank charges	999	1 121	122
Bursaries	185	173	-12
Computer expenses	3 417	2 522	-895
Containers and packaging materials	776	651	-125
Depreciation provided for during the financial year	10 745	12 997	2 252
Employment costs ³	137 104	146 630	9 526
Excise and customs duty	34	833	799
Information technology security	99	536	437
Insurance premiums	3 159	3 570	411
Interest	43 877	50 495	6 618
Losses on foreign exchange as a result of variations in foreign exchange rates or transactions	1 439	1 541	102
Losses on financial and other liabilities: redemption, liquidation or revaluation	1 413	1 354	-59
Losses on financial and other assets: disposal of assets, realisation for cash and revaluation of assets	12 859	13 258	399
Mineral rights leased	0	0	0
Motor vehicle running expenditure	2 943	3 844	901
Operational leasing and hire of plant, machinery, equipment and vehicles	4 950	4 604	-346
Paper, printing and stationery	1 643	1 796	153
Postal and courier services	454	601	147
Property taxes	2 955	2 701	-254
Provisions	1 484	1 008	-476
Railage and transport-out	723	730	7
Rental of land, buildings and other structures including water and electricity	16 127	18 240	2 113
Repair and maintenance	6 494	6 734	240
Royalties, franchise fees, copyright, trade names and trade and patent rights	6 739	8 050	1 311
Security services	1 545	2 072	527
Staff training	1 267	1 289	22
Subcontractors	32 082	30 317	-1 765
Telecommunication services	4 681	4 706	25
Travelling, accommodation and entertainment	4 639	4 848	209
Other	52 530	64 105	11 575
Total expenditure (D)	467 447	524 135	56 688
Net profit before providing for company tax and dividends (E)⁴	81 852	83 350	1 498
Company tax paid or provided for during the financial year	16 318	18 751	2 433
Dividends paid or provided for during the financial year	19 611	22 446	2 835
Net profit after providing for company tax and dividends	45 923	42 153	-3 770

¹Revised.

²Preliminary.

³Refer to page 72 for comparability with the quarterly employment statistics (QES) survey.

⁴E=A-B+C-D.

Table 9.2 - Selected balance sheet items: Real estate activities auxiliary to financial intermediation and other business services (excluding financial intermediation, insurance and business services not elsewhere classified)

Balance sheet items	Real estate activities auxiliary to financial intermediation and other business services		
	2010 ¹	2011 ²	Change between 2010 and 2011
	R million		
Assets			
Non-current assets			
Property, plant and equipment and intangible assets	417 696	406 354	-11 342
Goodwill	17 559	15 834	-1 725
Long-term investments	242 148	359 628	117 480
Other non-current assets	156 230	158 231	2 001
Total non-current assets	833 633	940 047	106 414
Current assets			
Trade and other receivables	102 147	114 810	12 663
Cash and bank	91 047	104 982	13 935
Inventory	29 602	20 536	-9 066
Other current assets	134 705	132 460	-2 245
Total current assets	357 501	372 788	15 287
Total assets	1 191 134	1 312 835	121 701
Equity and liabilities			
Total equity	409 998	414 408	4 410
Non-current liabilities			
Long-term loans	305 351	332 896	27 545
Other non-current liabilities	173 467	213 947	40 480
Total non-current liabilities	478 818	546 843	68 025
Current liabilities			
Trade and other payables	105 165	123 110	17 945
Bank overdraft	14 511	21 078	6 567
Other current liabilities	182 642	207 396	24 754
Total current liabilities	302 318	351 584	49 266
Total liabilities	781 136	898 427	117 291
Total equity and liabilities	1 191 134	1 312 835	121 701

¹Revised.

²Preliminary.

Table 9.3 - Carrying value of property, plant and equipment and intangible assets: Real estate activities auxiliary to financial intermediation and other business services (excluding financial intermediation, insurance and business services not elsewhere classified)

Type of asset	2010 ¹					
	Carrying value at the beginning of the financial year	Additions	Disposal of assets(-), revaluations and other adjustment to carrying value	Transfers-in and/or transfers-out	Depreciation and amortisation	Carrying value at the end of the financial year
	(A)	(B)	(C)	(D)	(E)	(F) ²
	R million					
Land	61 178	6 774	-496	1 902	25	69 333
Residential buildings	28 682	3 267	1 986	-28	93	33 814
Non-residential buildings	226 963	15 450	880	1 837	812	244 318
Construction works, roads and parking areas	4 774	449	-306	-435	208	4 274
Network equipment	103	56	17	-1	59	116
Computers and other IT equipment	3 835	1 831	29	-379	1 726	3 590
Motor vehicles and other transport equipment	15 913	4 744	-2 310	-1 875	3 119	13 353
Plant, machinery and other office equipment	19 528	4 428	522	-1 988	3 953	18 537
Capital work in progress	1 830	628	-1 647	-20	53	738
Other property, plant and equipment	2 601	965	-26	-189	608	2 743
Intangible assets						
Computer software and databases	1 992	651	155	-29	625	2 144
Mineral exploration and evaluation	0	0	0	0	0	0
Patents and trademarks	3 043	403	-9	-48	210	3 179
Goodwill and marketing assets	16 150	1 472	-29	-81	259	17 253
Research and development	315	131	0	-9	31	406
Entertainment, literary and artistic originals	105	9	0	0	21	93
Contracts, leases and licences	266	21	-11	-1	62	213
Other intellectual property products	21 104	169	1	-30	93	21 151
Total	408 382	41 448	-1 244	-1 374	11 957	435 255

¹Revised.²F=A+B+C+D-E.

Table 9.3 - Carrying value of property, plant and equipment and intangible assets: Real estate activities auxiliary to financial intermediation and other business services (excluding financial intermediation, insurance and business services not elsewhere classified) (concluded)

Type of asset	2011 ¹					
	Carrying value at the beginning of the financial year	Additions	Disposal of assets(-), revaluations and other adjustment to carrying value	Transfers-in and/or transfers-out	Depreciation and amortisation	Carrying value at the end of the financial year
	(A)	(B)	(C)	(D)	(E)	(F) ²
R million						
Land	68 804	6 011	-1 018	-360	352	73 085
Residential buildings	21 750	20 655	-280	14	1 672	40 467
Non-residential buildings	207 206	7 355	3 610	-1 455	1 133	215 583
Construction works, roads and parking areas	8 444	803	-81	-47	329	8 790
Network equipment	118	14	-17	0	41	74
Computers and other IT equipment	5 027	2 186	-120	42	3 138	3 997
Motor vehicles and other transport equipment	15 769	5 380	-1 044	-348	3 975	15 782
Plant, machinery and other office equipment	19 368	4 502	-453	133	4 718	18 832
Capital work in progress	876	935	-97	-284	184	1 246
Other property, plant and equipment	4 240	906	-100	-30	753	4 263
Intangible assets						
Computer software and databases	2 401	924	-77	9	636	2 621
Mineral exploration and evaluation	0	0	0	0	0	0
Patents and trademarks	3 304	32	-125	-1	269	2 941
Goodwill and marketing assets	17 255	813	-1 742	0	282	16 044
Research and development	121	13	-2	2	49	85
Entertainment, literary and artistic originals	656	0	0	0	12	644
Contracts, leases and licences	217	299	-17	0	54	445
Capital work in progress (intangible)	103	166	11	-19	0	261
Other intellectual property products	16 578	783	-40	-53	240	17 028
Total	392 237	51 777	-1 592	-2 397	17 837	422 188

¹Preliminary.²F=A+B+C+D-E.

Table 10.1 - Selected income and expenditure items: Community, social and personal services (excluding government institutions)

Item	Community, social and personal services		
	2010 ¹	2011 ²	Change between 2010 and 2011
	R million		
Income items			
Turnover	135 158	149 325	14 167
Dividends	402	542	140
Government subsidies and incentives	2 369	2 072	-297
Capital transfers received from government	6	0	-6
Interest	1 779	1 739	-40
Profit on financial and other assets: disposal of assets, realisation for cash and revaluation of assets	967	698	-269
Profit on financial and other liabilities: redemption, liquidation and revaluation	13	13	0
Profit on foreign exchange as a result of variations in foreign exchange rates or transactions	164	81	-83
Provisions	36	22	-14
Royalties, franchise fees, copyright, trade names and trade and patent rights	659	679	20
Other	4 852	5 210	358
Total income items (A)	146 405	160 381	13 976
Inventories			
Opening value of raw materials	559	631	72
Opening value of work in progress	85	64	-21
Opening value of finished goods	1 648	1 950	302
Total opening value (B)	2 292	2 645	353
Closing value of raw materials	600	628	28
Closing value of work in progress	68	86	18
Closing value of finished goods	1 828	2 109	281
Total closing value (C)	2 496	2 823	327

¹Revised.²Preliminary.

Table 10.1 - Selected income and expenditure items: Community, social and personal services (excluding government institutions) (concluded)

Item	Community, social and personal services		
	2010 ¹	2011 ²	Change between 2010 and 2011
	R million		
Expenditure items			
Purchases	33 946	37 161	3 215
Advertising	1 771	1 639	-132
Amortisation	345	382	37
Bank charges	599	677	78
Bursaries	58	63	5
Computer expenses	539	646	107
Containers and packaging materials	32	20	-12
Depreciation provided for during the financial year	3 728	4 319	591
Employment costs ³	35 920	41 069	5 149
Excise and customs duty	3	3	0
Information technology security	44	47	3
Insurance premiums	969	1 008	39
Interest	4 494	4 631	137
Losses on foreign exchange as a result of variations in foreign exchange rates or transactions	187	243	56
Losses on financial and other liabilities: redemption, liquidation or revaluation	41	52	11
Losses on financial and other assets: disposal of assets, realisation for cash and revaluation of assets	1 262	1 184	-78
Mineral rights leased	0	0	0
Motor vehicle running expenditure	1 179	1 228	49
Operational leasing and hire of plant, machinery, equipment and vehicles	1 693	1 625	-68
Paper, printing and stationery	634	700	66
Postal and courier services	193	189	-4
Property taxes	93	127	34
Provisions	262	243	-19
Railage and transport-out	124	133	9
Rental of land, buildings and other structures	6 079	7 076	997
Repair and maintenance	2 228	2 584	356
Royalties, franchise fees, copyright, trade names and trade and patent rights	2 015	1 996	-19
Security services	688	785	97
Staff training	295	281	-14
Subcontractors	1 965	1 902	-63
Telecommunication services	1 467	1 450	-17
Travelling, accommodation and entertainment	1 504	1 429	-75
Other	25 984	27 981	1 997
Total expenditure (D)	130 341	142 873	12 532
Net profit before providing for company tax and dividends (E)⁴	16 268	17 686	1 418
Company tax paid or provided for during the financial year	3 057	3 943	886
Dividends paid or provided for during the financial year	3 057	2 310	-747
Net profit after providing for company tax and dividends	10 154	11 433	1 279

¹Revised.²Preliminary.³Refer to page 72 for comparability with the quarterly employment statistics (QES) survey.⁴E=A-B+C-D.

Table 10.2 - Selected balance sheet items: Community, social and personal services (excluding government institutions)

Balance sheet items	Community, social and personal services		
	2010 ¹	2011 ²	Change between 2010 and 2011
	R million		
Assets			
Non-current assets			
Property, plant and equipment and intangible assets	41 826	50 567	8 741
Goodwill	9 473	10 493	1 020
Long-term investments	11 140	13 734	2 594
Other non-current assets	7 524	8 362	838
Total non-current assets	69 963	83 156	13 193
Current assets			
Trade and other receivables	15 499	17 020	1 521
Cash and bank	13 543	15 043	1 500
Inventory	2 496	2 823	327
Other current assets	6 053	5 611	-442
Total current assets	37 591	40 497	2 906
Total assets	107 554	123 653	16 099
Equity and liabilities			
Total equity	40 578	51 187	10 609
Non-current liabilities			
Long-term loans	24 706	28 234	3 528
Other non-current liabilities	9 667	11 977	2 310
Total non-current liabilities	34 373	40 211	5 838
Current liabilities			
Trade and other payables	14 461	15 393	932
Bank overdraft	2 023	1 947	-76
Other current liabilities	16 119	14 915	-1 204
Total current liabilities	32 603	32 255	-348
Total liabilities	66 976	72 466	5 490
Total equity and liabilities	107 554	123 653	16 099

¹Revised.²Preliminary.

Table 10.3 - Carrying value of property, plant and equipment and intangible assets: Community, social and personal services (excluding government institutions)

Type of asset	2010 ¹					
	Carrying value at the beginning of the financial year	Additions	Disposal of assets(-), revaluations and other adjustment to carrying value	Transfers-in and/or transfers-out	Depreciation and amortisation	Carrying value at the end of the financial year
	(A)	(B)	(C)	(D)	(E)	(F) ²
	R million					
Land	4 830	0	71	3	0	4 904
Residential buildings	2 897	179	-65	1	9	3 003
Non-residential buildings	13 221	972	95	50	272	14 066
Construction works, roads and parking areas	1 314	404	-19	62	75	1 686
Network equipment	33	6	-10	0	5	24
Computers and other IT equipment	969	345	-19	18	409	904
Motor vehicles and other transport equipment	3 173	981	-298	23	792	3 087
Plant, machinery and other office equipment	7 292	2 615	-386	245	2 135	7 631
Capital work in progress	1 149	335	-5	-275	24	1 180
Other property, plant and equipment	728	359	-117	-2	157	811
Intangible assets						
Computer software and databases	168	52	-2	6	69	155
Mineral exploration and evaluation	0	0	0	0	0	0
Patents and trademarks	3 555	103	-6	0	150	3 502
Goodwill and marketing assets	8 707	955	-41	30	232	9 419
Research and development	2	0	0	0	1	1
Entertainment, literary and artistic originals	0	1	0	0	0	1
Contracts, leases and licences	673	25	-6	14	42	664
Other intellectual property products	471	71	-1	-222	58	261
Total	49 182	7 403	-809	-47	4 430	51 299

¹Revised.²F=A+B+C+D-E.

Table 10.3 - Carrying value of property, plant and equipment and intangible assets: Community social and personal services (excluding government institutions) (concluded)

Type of asset	2011 ¹					
	Carrying value at the beginning of the financial year	Additions	Disposal of assets(-), revaluations and other adjustment to carrying value	Transfers-in and/or transfers-out	Depreciation and amortisation	Carrying value at the end of the financial year
	(A)	(B)	(C)	(D)	(E)	(F) ²
	R million					
Land	6 045	585	9	-28	29	6 582
Residential buildings	4 009	324	36	-2	69	4 298
Non-residential buildings	15 285	693	-45	-506	325	15 102
Construction works, roads and parking areas	1 930	224	-5	-86	152	1 911
Network equipment	34	6	0	0	6	34
Computers and other IT equipment	900	385	-33	-7	351	894
Motor vehicles and other transport equipment	3 538	1 243	-326	30	880	3 605
Plant, machinery and other office equipment	9 089	2 961	-109	-6	2 200	9 735
Capital work in progress	1 413	524	9	-182	208	1 556
Other property, plant and equipment	1 982	372	-66	-4	347	1 937
Intangible assets						
Computer software and databases	195	110	-5	6	74	232
Mineral exploration and evaluation	0	0	0	0	0	0
Patents and trademarks	3 628	202	0	-5	155	3 670
Goodwill and marketing assets	10 320	655	-212	-154	183	10 426
Research and development	1	0	0	0	0	1
Entertainment, literary and artistic originals	75	0	0	0	15	60
Contracts, leases and licences	605	107	-5	4	63	648
Capital work in progress (intangible)	0	0	0	0	0	0
Other intellectual property products	236	174	-4	0	37	369
Total	59 285	8 565	-756	-940	5 094	61 060

¹Preliminary.²F=A+B+C+D-E.

Table 11 - Comparison of selected operating ratios for 2010 and 2011

Industry	Net profit margin ratio ¹		Assets turnover ratio ²		Dividends payout ratio ³		Debt to equity ratio ⁴		Debt to assets ratio ⁵	
	2010 ⁶	2011 ⁷	2010 ⁶	2011 ⁷	2010 ⁶	2011 ⁷	2010 ⁶	2011 ⁷	2011 ⁶	2010 ⁷
Forestry and fishing	0,03	0,05	0,59	0,62	0,80	0,39	1,12	1,09	0,53	0,52
Mining and quarrying	0,09	0,17	0,48	0,56	1,03	0,19	1,26	1,23	0,56	0,55
Manufacturing	0,05	0,04	1,44	1,44	0,55	0,57	1,67	1,74	0,63	0,63
Electricity, gas and water supply	0,07	0,08	0,34	0,34	0,14	0,15	2,09	2,42	0,68	0,71
Construction	0,06	0,03	1,73	1,67	0,17	0,50	2,35	2,15	0,70	0,68
Trade	0,03	0,03	2,28	2,27	0,30	0,30	2,49	2,58	0,71	0,72
Transport, storage and communication	0,14	0,06	0,99	0,96	0,45	0,76	2,29	2,33	0,70	0,70
Real estate activities auxiliary to financial intermediation other business services (excluding financial intermediation, insurance and business services not elsewhere classified)	0,14	0,12	0,40	0,41	0,30	0,35	1,91	2,17	0,66	0,68
Community, social and personal services (excluding government institutions)	0,10	0,09	1,26	1,21	0,23	0,17	1,65	1,42	0,62	0,59
All industries	0,06	0,06	1,07	1,07	0,45	0,38	1,85	1,95	0,65	0,66

¹Net profit after providing for company tax / Turnover.

²Turnover / Total assets.

³Dividends / Net profit after providing for company tax.

⁴Total liabilities / Total equity.

⁵Total liabilities / Total assets.

⁶Revised.

⁷Preliminary.

Table 11 - Comparison of selected operating ratios for 2010 and 2011 (concluded)

Industry	Current ratio ¹		Quick ratio ²		Net working capital ratio ³		Return on equity (ROE) ⁴		Return on assets (ROA) ⁵	
	2010 ⁶	2011 ⁷	2010 ⁶	2011 ⁷	2010 ⁶	2011 ⁷	2010 ⁶	2011 ⁷	2010 ⁶	2011 ⁷
Forestry and fishing	1,16	1,04	0,86	0,78	0,03	0,01	0,03	0,07	0,02	0,03
Mining and quarrying	1,17	1,24	0,90	0,96	0,04	0,06	0,10	0,21	0,04	0,09
Manufacturing	1,34	1,33	0,87	0,85	0,13	0,13	0,20	0,15	0,08	0,05
Electricity, gas and water supply	1,05	1,41	0,91	1,24	0,01	0,06	0,07	0,10	0,02	0,03
Construction	1,26	1,30	1,10	1,11	0,13	0,15	0,33	0,15	0,10	0,05
Trade	1,32	1,33	0,84	0,85	0,15	0,16	0,21	0,24	0,06	0,07
Transport, storage and communication	0,99	0,94	0,93	0,88	0,00	-0,02	0,45	0,19	0,14	0,06
Real estate activities auxiliary to financial intermediation other business services industry (excluding financial intermediation, insurance and business services not elsewhere classified)	1,18	1,06	1,08	1,00	0,05	0,02	0,16	0,16	0,06	0,05
Community, social and personal services industry (excluding government institutions)	1,15	1,26	1,08	1,17	0,05	0,07	0,33	0,27	0,12	0,11
All industries	1,23	1,22	0,93	0,92	0,08	0,07	0,19	0,18	0,07	0,06

¹Current assets / Current liabilities.²Quick assets / Current liabilities (Quick assets = current assets - inventories).³Net working capital / Total assets (Net working capital = current assets - current liabilities).⁴Net profit after providing for company tax / Total equity.⁵Net profit after providing for company tax / Total assets.⁶Revised.⁷Preliminary.

Table 12 – Comparison of selected concentration indices for size group 1 enterprises¹ for 2010 and 2011

Industry	CR (4)		Gini coefficient		Rosenbluth index		HHI	
	2010 ²	2011 ³	2010 ²	2011 ³	2010 ²	2011 ³	2010 ²	2011 ³
Forestry and fishing	0,5864	0,5744	0,8249	0,8096	0,0296	0,0330	0,1411	0,1309
Mining and quarrying	0,3011	0,3285	0,7964	0,4101	0,0241	0,0077	0,0389	0,0151
Manufacturing	0,1408	0,1454	0,7729	0,7622	0,0026	0,0029	0,0112	0,0112
Electricity, gas and water supply	0,8868	0,9080	0,8714	0,8535	0,2880	0,3413	0,5364	0,5832
Construction	0,2084	0,2202	0,6434	0,6413	0,0028	0,0038	0,0145	0,0181
Trade	0,1202	0,1204	0,7094	0,7040	0,0010	0,0012	0,0071	0,0072
Transport, storage and communication	0,2890	0,3024	0,8323	0,8286	0,0070	0,0074	0,0315	0,0331
Real estate activities auxiliary to financial intermediation other business services (excluding financial intermediation, insurance and business services not elsewhere classified)	0,1185	0,1350	0,6747	0,6712	0,0018	0,0022	0,0067	0,0082
Community, social and personal services (excluding government institutions)	0,2655	0,2614	0,7586	0,7451	0,0068	0,0078	0,0266	0,0267
All industries	0,0584	0,0618	0,7753	0,7739	0,0005	0,0005	0,0028	0,0031

¹All calculations for the concentration indices were performed using only the large enterprises (size group one enterprises). See Table D, page 71.

Technical notes are provided for the concentration indices. See pages 63 to 65.

²Revised.

³Preliminary.

Technical notes

Confidence intervals

The 95% confidence intervals of a population parameter (turnover) are obtained as follows:

Lower limit

= lower 95% confidence limit of a population parameter
= estimate - 1,96* standard error (estimate);

and

Upper limit

= upper 95% confidence limit of a population parameter
= estimate + 1,96* standard error (estimate).

Standard error (SE)

Standard error = $\frac{\text{Upper limit (R million)} - \text{Lower limit (R million)}}{2 * 1,96}$

Relative standard error (RSE)

$\text{RSE} = \frac{\text{SE (estimate)} * 100}{\text{estimate}}$

The estimates contained in this publication are based on information obtained from a sample drawn from units in the surveyed population. The estimates are subject to sampling variability. That is, they may differ from the figures that would have been produced if all units had been included in the survey.

One measure of the likely difference is given by the standard error (SE), which indicates the extent to which an estimate might have varied by chance because only a sample of units was included. The relative standard error (RSE) provides an immediate indication of the percentage errors likely to have occurred due to sampling.

Neyman optimal allocation

Enterprises on the business sampling frame are placed into strata, since a stratified sample design is used. Each stratum contains two parts of information, viz. the industrial sector (primary stratum) to which an enterprise belongs and the size group (secondary stratum) to which an enterprise is assigned. The industrial sector is derived from the SIC (Standard Industrial Classification) variable and the size group is based on a measure of size (turnover). The Neyman optimal allocation formula used to allocate samples to each stratum is given by the formula below:

$$n_h = \frac{N_h S_h}{\sum N_h S_h}$$

where N_h and S_h are the stratum population size and the stratum standard deviation, respectively.

Concentration indices

Concentration indices are economic measures used to identify market inequality in the private sector and determine if it is more pronounced at one point in time than another. Enterprise behaviour can also be illustrated using these indices. The purpose of the concentration indices is to discuss the significance of various measures and to distinguish the market conditions.

The m -firm concentration The m -firm concentration ratio (CR_m or C_m) provides a direct bearing of the ability of a small group of dominant enterprises to behave in a monopolistic way and be able to dictate price and output within an industry. If S is the combined size of all the enterprises in an industry (scaled in terms of turnover), s_i is the size of the i^{th} enterprise and there are n enterprises ranked from largest to smallest, the m -firm concentration ratio is computed as follows:

$$C_m = \frac{\left(\sum_{i=1}^m s_i\right)}{S},$$

where $m/n \leq C_m \leq 1$. From the above equation, we can see that C measures the proportion of the size of an industry accounted for by a specific number of the largest enterprises. The AFS provides the CR_4 for size group 1 only (large enterprises). The CR_4 gives us an indication of the proportion of the total size of an industry that is accounted for by the four largest enterprises.

The Gini coefficient

The Gini coefficient is a measure of inequality of income distribution. It is defined as a ratio with values between 0 and 1, and requires that no enterprise has a negative income or wealth. A low Gini coefficient represents a more equal income distribution, while a high Gini coefficient indicates more unequal distribution.

The usual formula for the Gini coefficient is:

$$G = \frac{1}{2\mu N^2} \sum_{i=1}^N \sum_{j=1}^N |y_i - y_j|,$$

where G is the Gini coefficient, μ the mean value of the distribution, N the sample size and y_i the income of the i^{th} sample unit.

The following formula for the Gini coefficient can also be used:

$$G = \frac{2}{\mu N^2} \sum_{i=1}^N r_i y_i - \frac{N+1}{N} = \frac{2}{\mu N^2} R - \frac{N+1}{N},$$

where r_i is the income rank of the i^{th} observation (in ascending order). During the first pass through the data the values G and μ are calculated. However, once μ is calculated, all μ_i may be calculated with a second pass through the data, where μ_i is the mean income of the distribution when the i^{th} observation is taken out of the sample. The relationship between μ_i and μ is given by the expression:

$$\mu_i = \frac{1}{N-1} (N\mu - y_i)$$

and

$$\mu = \frac{1}{N} [(N-1)\mu_i + y_i]$$

The Rosenbluth index

The Rosenbluth index gives considerable weight to the number of enterprises in an industry. A concentrated industry will facilitate collusion, and hence monopoly pricing. Conversely, the enterprises of an unconcentrated industry will behave competitively, leading to efficient pricing. It is a summary measure of concentration, which is defined as:

$$R = \left\{ 2 \sum_{i=1}^n (i.ms_i) - 1 \right\}^{-1},$$

where R is the reciprocal of the expected enterprise rank in the industry, ms_i is the market share of the i^{th} ranked enterprise and n the number of enterprises. The Rosenbluth index is directly related to inequality of enterprise size and inversely related to the number of enterprises. If enterprise size becomes more unequal, expected enterprise rank declines and concentration increases. Similarly, if the number of enterprises increases, expected enterprise rank increases and concentration decreases.

The Rosenbluth index can be shown to be a simple positive function of the Gini coefficient and a negative function of the number of enterprises:

$$R = \frac{1}{n(1-G)},$$

where G is the Gini coefficient. The Rosenbluth index ranges from a minimum of $1/n$, for n enterprises of equal size, to a maximum of 1, when there is only one enterprise.

Lower Rosenbluth indices imply that the entry and exit of enterprises is free-flowing without a restriction, and due to the large number of enterprises offering a similar product, the market power is not highly concentrated amongst a few enterprises, hence competition exists.

The Herfindahl-Hirschman index

The Herfindahl-Hirschman Index (HHI) is a summary measure which is the sum of the squared market shares of all enterprises in the industry, where market share is expressed as a proportion of industry size. The HHI is defined as follows:

$$HHI = \sum_{i=1}^n ms_i^2,$$

where $ms_i = (s_i / S)$ is the market share of the i^{th} ranked enterprise and n the number of enterprises ranked from largest to smallest and $1/n \leq HHI \leq 1$. This measure has an upper limit of 1 which is attained when there is only 1 enterprise present in an industry and a lower bound of $1/n$ under equal enterprise size.

The following formula for the Herfindahl-Hirschman Index can be used:

$$H = \frac{(c^2 + 1)}{n},$$

where c is the coefficient of variation of enterprise size (which is equal to the standard deviation divided by the mean $= \sigma / \mu$) and n is the number of enterprises.

HHI can be used as a warning sign of possible monopoly and to gauge the competitiveness of an industry. Lower HHIs lead to efficient pricing and better competition between enterprises. A concentrated industry would facilitate collusion, and hence monopoly pricing. Conversely, the enterprises of an unconcentrated industry would behave competitively, leading to efficient pricing.

Table A - Estimates of turnover by industry within 95% confidence limits: 2010 and 2011

Industry	2010 ¹				2011 ²			
	Lower limit R million	Estimates R million	Upper limit R million	RSE	Lower limit R million	Estimates R million	Upper limit R million	RSE
Forestry and fishing	18 200	18 614	19 028	1,1	18 439	19 530	20 622	2,9
Mining and quarrying	336 280	340 443	344 606	0,6	425 505	426 799	428 092	0,2
Manufacturing	1 562 585	1 576 393	1 590 201	0,4	1 603 023	1 612 505	1 621 987	0,3
Electricity, gas and water supply ³	-	100 196	-	-	125 713	126 229	126 745	0,2
Construction	252 829	260 498	268 167	1,5	251 023	259 150	267 277	1,6
Trade	1 762 981	1 798 907	1 834 833	1,0	1 964 373	1 998 875	2 033 375	0,9
Transport, storage and communication	501 326	505 287	509 248	0,4	544 453	551 620	558 785	0,7
Real estate activities auxiliary to financial intermediation other business services (excluding financial intermediation, insurance and business services not elsewhere classified)	469 252	474 836	480 420	0,6	521 685	533 863	546 046	1,2
Community, social and personal services (excluding government institutions)	130 740	135 158	139 576	1,7	144 970	149 325	153 679	1,5

¹Revised.²Preliminary.³A census was conducted for electricity, gas and water supply in 2010 resulting in no RSEs.(N=100%)

Table B - Turnover by industry for 2010 and 2011

Industry	2010 ¹		2011 ²	
	Turnover R million	% of total turnover	Turnover R million	% of total turnover
Forestry and fishing	18 614	0,4	19 530	0,3
Mining and quarrying	340 443	6,5	426 799	7,5
Manufacturing	1 576 393	30,3	1 612 505	28,4
Electricity, gas and water supply	100 196	1,9	126 229	2,2
Construction	260 498	5,0	259 150	4,6
Trade	1 798 907	34,5	1 998 875	35,2
Transport, storage and communication	505 287	9,7	551 620	9,7
Real estate activities auxiliary to financial intermediation other business services (excluding financial intermediation, insurance and business services not elsewhere classified)	474 836	9,1	533 863	9,4
Community, social and personal services (excluding government institutions)	135 158	2,6	149 325	2,6
All industries	5 210 332	100,0	5 677 896	100,0

¹Revised.²Preliminary.

Table C - Population size of enterprises and number of employees

Industry	2010 ¹		2011 ²	
	Population size of enterprises	Number of employees	Population size of enterprises	Number of employees
Forestry and fishing	1 772	52 789	1 759	50 520
Mining and quarrying	2 201	443 135	2 208	463 775
Manufacturing	53 119	1 461 884	51 806	1 281 667
Electricity, gas and water supply	998	51 497	496	57 117
Construction	38 294	522 953	37 832	515 745
Trade	116 211	1 861 160	114 839	1 911 976
Transport, storage and communication	17 675	393 990	17 308	388 586
Real estate activities auxiliary to financial intermediation other business services (excluding financial intermediation, insurance and business services not elsewhere classified)	98 385	1 185 544	104 124	1 202 326
Community, social and personal services (excluding government institutions)	26 888	346 279	27 165	436 259
All industries	355 543	6 319 231	357 537	6 307 971

¹Revised.²Preliminary.

Explanatory notes

Introduction

Stats SA conducts the annual financial statistics (AFS) survey to collect a range of financial data. For 2011, the AFS was collected in respect of forestry and fishing, mining and quarrying, electricity, gas and water supply, trade, transport, storage and communication, real estate, activities auxiliary to financial intermediation and other business services (excluding financial intermediation, insurance and business services not elsewhere classified) and community, social and personal services (excluding government institutions), while manufacturing and construction were collected via the economic large sample surveys (ELSS).

For 2010, the AFS was collected in respect of forestry and fishing, mining and quarrying, manufacturing, construction, trade and community, social and personal services (excluding government institutions), while electricity, gas and water supply, transport, storage and communication and real estate, activities auxiliary to financial intermediation and other business services (excluding financial intermediation and insurance) were collected via the economic large sample surveys (ELSS).

Information is collected for the financial years of enterprises that ended on any date between 1 July of a particular year and 30 June of the following year. The statistical release contains information regarding:

- income and expenditure items;
- inventories;
- net profit before providing for company tax and dividends;
- company tax paid or provided for during the financial year;
- dividends paid or provided for during the financial year;
- additions;
- disposals;
- balance sheet items;
- carrying value of property, plant and equipment and intangible assets at the end of the financial year;
- selected operating ratios;
- population size; and
- number of employees.

Purpose of the survey

The purpose of the AFS is to derive a set of measures of industry performance based on information available from the financial accounts of enterprises. Results of the survey are used in compiling estimates of the annual gross domestic product (GDP) and its components, which in turn are used to develop and monitor government policy. The statistics are also used by the private sector in analyses of comparative industry performance. Enterprises can assess their own performance against that of their industry, in terms of a range of operating ratios. The results are published annually in statistical release P0021: *Annual financial statistics*.

Scope of the survey

The AFS and ELSS cover financial statistics of the following industries according to the *Standard Industrial Classification of all Economic Activities (SIC), Fifth edition, January 2003*:

- forestry and fishing;
- mining and quarrying;
- manufacturing;
- electricity, gas and water supply;
- construction;
- trade;
- transport, storage and communication;
- real estate, activities auxiliary to financial intermediation and other business services (excluding financial intermediation, insurance and business services not elsewhere classified); and
- community, social and personal services (excluding government institutions).

Classification	The 1993 edition of the <i>Standard Industrial Classification of all Economic Activities (SIC), Fifth edition, January 2003</i> , was used to classify the enterprises in the surveys. The SIC is based on the <i>1990 International Standard Industrial Classification of all Economic Activities (ISIC)</i> with suitable adaptations for local conditions. Statistics in this publication are only presented at industry level i.e. one digit level (SIC major division). Each enterprise is classified to an industry which reflects the predominant activity of the enterprise.
Statistical unit	The statistical unit for the collection of information in this survey is the enterprise, defined as a legal unit (or combination of legal units) that includes and directly controls all functions necessary to carry out its activities.
Survey methodology and design	The survey is conducted annually. All enterprises are first stratified by the predominant type of activity according to the SIC, then by size using turnover as measure of size. Four size groups were specified for each industry. All enterprises in the size group representing the largest enterprises according to turnover were selected. These large enterprises accounted for about 51.8% of the total sample. For medium and small enterprises, samples were drawn by randomly selecting the allocated number of enterprises within the other size groups and each industry. A sample of 12 688 enterprises was drawn for the AFS and a sample of 14 143 was drawn for the ELSS. The data reported by enterprises in the sample are weighted to represent all enterprises in the population. Weights for size groups 2 to 4 can be large due to sample design and non-response.
Main reasons for fluctuations	<p>Fluctuations between the AFS 2010 and AFS 2011 estimates can be attributed to numerous factors, the more prominent being:</p> <ul style="list-style-type: none"> • the sample population and composition between 2010 and 2011 are not necessarily comparable; • revisions to the previous year made in the event of new or revised information being furnished by the respondents; • restructuring of large businesses; • exchange rate changes; • improvement in the classification of enterprises to different industries; • the cut-off points for different sectors may vary from year to year; and • restating of previous estimates due to International Financial Reporting Standards (IFRS). <p>Differences in accounting policy and practices across businesses and industries can also lead to some inconsistencies in the data used to compile the estimates. While much of the accounting process is subject to standards, there remains a great deal of flexibility available to businesses in the accounting policies and practices they adopt.</p> <p>The imprecision due to sampling variability, which is measured by the standard error, is not to be confused with inaccuracies that may occur because of inadequacies in available sources from which the population frame was compiled, imperfections in reporting by providers, errors made in collection and errors made in processing data. Inaccuracies of this kind are collectively referred to as non-sampling error and they may occur in any enumeration, whether it is a full count or a sample.</p> <p>While it is not possible to quantify non-sampling error, every effort is made to assist businesses to complete questionnaires accurately. Efficient and effective operating procedures and systems are used to compile the statistics.</p> <p>Opening (2011) and closing (2010) values of inventory and carrying values of property, plant and equipment and intangible assets do not necessarily correspond due to non-overlapping enterprises in the two samples. Thus, differences in closing 2010 inventory values and the opening 2011 inventory values will be reflected in all industries.</p> <p>The above factors are not meant to imply that analyses based on these data should be avoided, only that they should be borne in mind when interpreting the data presented in this publication.</p>

Table D - DTI Cut-off points

Industry	AFS 2011 - Enterprise size			
	Large (Size-group 1) Lower limits Rand	Medium (Size-group 2) Lower limits Rand	Small (Size-group 3) Lower limits Rand	Very small (Size-group 4) Lower limits Rand
Forestry and fishing	Turnover > 10m	Turnover > 6m, Turnover m10m	Turnover > 1m, Turnover m6m	Turnover m1m
Mining and quarrying	Turnover > 78m	Turnover > 20m, Turnover m78m	Turnover > 8m, Turnover m20m	Turnover m8m
Manufacturing	Turnover > 102m	Turnover > 26m, Turnover m102m	Turnover > 10m, Turnover m26m	Turnover m10m
Electricity, gas and water supply	Turnover > 102m	Turnover > 26m, Turnover m102m	Turnover > 10m, Turnover m26m	Turnover m10m
Construction	Turnover > 52m	Turnover > 12m, Turnover m52m	Turnover > 6m, Turnover m12m	Turnover m6m
Wholesale trade	Turnover > 128m	Turnover > 64m, Turnover m128m	Turnover > 12m, Turnover m64m	Turnover m12m
Retail and motor trade	Turnover > 78m	Turnover > 38m, Turnover m78m	Turnover > 8m, Turnover m38m	Turnover m8m
Accommodation and catering	Turnover > 26m	Turnover > 12m, Turnover m 26m	Turnover > 10,2m, Turnover m12m	Turnover m10,2m
Transport, storage and communication industry	Turnover > 52m	Turnover > 26m, Turnover m52m	Turnover > 6m, Turnover m26m	Turnover m6m
Real estate and other business services (excluding financial intermediation, insurance and business services not elsewhere classified)	Turnover > 52m	Turnover > 26m, Turnover m52m	Turnover > 6m, Turnover m26m	Turnover m6m
Community, social and personal services (excluding government institutions)	Turnover > 26m	Turnover > 12m, Turnover m26m	Turnover > 2m, Turnover m12m	Turnover m2m

Source: National Small Business Amendment Bill - DTI 2003 (Factor adjustment by Stats SA)

Comparison of results with the Quarterly financial statistics (QFS) survey and the monthly surveys

Comparison with other internal Stats SA surveys may not necessarily be comparable due to various factors, including:

- classification differences between survey periods;
- restructuring of businesses;
- different cut-off points for size groups; and
- different sampling specifications.

Comparability between AFS and ELSS surveys

Comparison between AFS and ELSS industries over consecutive years are not necessarily comparable due to various factors, including:

- sampling specifications;
- cut-off points for small, medium and large enterprises;
- statistical units used in the surveys; and
- survey objectives.

Comparison of results with Quarterly employment statistics (QES) survey

Employment costs estimates produced in this publication are based on information as defined by the International Accounting Standards 19 (IAS19) from an accounting perspective. The Quarterly employment statistics (QES) survey produces estimates for employment and earnings from the payroll perspective.

The differences between the AFS employment costs and QES earnings can be attributed but not limited to:

- Accounting and payroll timing differences in the recognition of employment-related transactions;
- Classification differences between surveys;
- Changes in accounting standards (International Financial Reporting Standards (IFRS) revisions in the AFS);
- Different sampling frames;
- Different sampling methodology and sampling specifications;
- Definitional issues;
- Information sources (information from the payroll administrator vs. information from the accounting officer); and
- Restructuring of businesses.

Rounding off

Where figures have been rounded off, discrepancies may occur between the sums of the component items and totals.

Symbols and abbreviations

AFS	Annual financial statistics
DTI	Department of Trade and Industry
ELSS	Economic large sample surveys
GDP	Gross domestic product
IFRS	International Financial Reporting Standards
ISIC	International Standard Industrial Classification
m	million
RSE	Relative standard error
SE	Standard error
SIC	Standard Industrial Classification of all Economic Activities
Stats SA	Statistics South Africa
VAT	Value added tax

Glossary

Additions	The acquisition of land, property, plant and equipment and intangible assets.
Carrying value of property, plant and equipment and intangible assets	<p>Carrying value of property, plant and equipment and intangible assets at the end of the financial year includes:</p> <ul style="list-style-type: none"> • land; • residential and non-residential buildings; • construction works, roads, parking areas and leasehold improvements; • network equipment; • computers and other information technology equipment; • motor vehicles and other transport equipment; • plant, machinery and other equipment; • capital work in progress; • other property, plant and equipment; and • intangible assets.
Company tax brought into account	Company tax brought into account consists of taxes on incomes, profits and capital gains, excluding value added tax (VAT). They are assessed on the actual or presumed incomes of enterprises and exclude employees' taxes and compulsory loan levies.
Current assets	<p>These are assets which can be converted into cash within a relatively short period. They include:</p> <ul style="list-style-type: none"> • trade and other receivables; • cash and bank; • inventory; and • other current assets.
Current liabilities	<p>Current liabilities are debts or obligations that are due within 12 months. They include:</p> <ul style="list-style-type: none"> • trade and other payables; • bank overdraft; and • other current liabilities.
Disposal	The sale or retirement of land, property, plant and equipment and intangible assets.
Dividends paid	Dividends paid include cash dividends and other dividends such as capitalisation issues or scrip dividends or capitalisation shares.
Enterprise	An enterprise is a legal unit or a combination of legal units that includes and directly controls all functions necessary to carry out its activities.
Equity	Equity is the residual interest in the enterprise's assets after deducting its liabilities.
Government institutions	<p>The AFS excludes general government institutions, which consist of:</p> <ul style="list-style-type: none"> • National government; • Provincial government; • Local government; • Extra-budgetary accounts and funds; • Public financial corporations; and • Higher education institutions.

Industry	An industry consists of a group of enterprises engaged in the same or similar kinds of economic activity, and is classified according to the <i>Standard Industrial Classification of all Economic Activities (SIC), Fifth edition, January 2003</i> .
Intangible assets	An intangible asset is an identifiable non-monetary asset without physical substance held for use in the production or supply of goods or services.
International Financial Reporting Standards (IFRS)	International Financial Reporting Standards (IFRS) are international accounting standards stating how particular types of transactions and other events should be reported in financial statements. IFRS are issued by the Accounting Standard Board. The purpose of IFRS is to improve transparency and comparability within financial reporting and introduce consistency in accounting.
Inventories	<p>Inventories at year end include:</p> <ul style="list-style-type: none">• raw materials or materials for processing, packaging materials, fuel, consumable and maintenance stores;• work in progress (partially completed); and• finished goods (own manufactures) and finished goods not produced by the enterprise but purchased for resale.
Net profit after tax	Net profit after tax is net profit or loss less company tax paid or provided for during the financial year.
Net profit before providing for company tax and dividends	Net profit before providing for company tax and dividends is calculated as total income less total expenditure less opening value of inventories plus closing value of inventories.
Non-current assets	<p>Non-current assets are assets not expected to be converted into cash, sold or exchanged within the normal operating cycle of the enterprise, 12 months. They include:</p> <ul style="list-style-type: none">• property, plant and equipment and intangible assets;• long-term investments; and• other non-current assets.
Non-current liabilities	<p>Non-current liabilities are liabilities with a future benefit of more than 12 months. They include:</p> <ul style="list-style-type: none">• long-term loans; and• other non-current liabilities.
Number of employees	<p>Number of employees includes:</p> <ul style="list-style-type: none">• persons paid a retainer, wage or salary;• managerial and executive employees;• full-time and part-time employees;• permanent, temporary and casual employees;• employees absent on paid or prepaid leave; and• employees on workers' compensation who continue to be paid through the payroll. <p>Number of employees excludes:</p> <ul style="list-style-type: none">• self-employed persons such as consultants, contractors and subcontractors;• non-salaried directors;• persons paid by commission only; and• employees based in South Africa but paid from abroad.

Other expenditure	<p>Other expenditure includes:</p> <ul style="list-style-type: none">• professional services, e.g. audit and other professional business services, legal expenses and data processing services;• donations and sponsorship; and• subscriptions etc.
Property, plant and equipment	<p>Property, plant and equipment are tangible assets that an enterprise holds for its own use and expects to use during more than one financial year.</p>
Purchases	<p>Purchases include:</p> <ul style="list-style-type: none">• raw materials, components and consumables used in production;• fuel and spare parts for vehicles and off-road vehicles;• purchases and transfers-in of finished goods, intermediate products and partially completed goods from related enterprises; and• goods for resale.
Rental of land, buildings and other structures	<p>Rental of land, buildings and other structures includes water and electricity services paid.</p>
Employment costs	<p>Employment costs include:</p> <ul style="list-style-type: none">• salaries and/or fees paid to directors, executives and managers;• commissions paid if a retainer, wage or salary was also paid;• employer's contribution to pension, provident, medical aid, sick pay and other funds;• payments made from South Africa to employees based abroad;• payments for all types of leave;• fringe benefits paid in cash;• allowances and penalty payments;• severance, termination and redundancy payments to staff;• bonuses; and• employee share-based payment expenses.
Security services	<p>Security services exclude information technology security systems, information technology security is collected separately.</p>
Total income	<p>Total income includes:</p> <ul style="list-style-type: none">• turnover;• dividends received;• government subsidies and incentives received (only from the South African government);• government capital transfers received (only from the South African government);• interest received;• profit on financial and other assets: disposal of assets, realisation for cash and revaluation of assets;• profit on financial and other liabilities: redemption, liquidation and revaluation;• profit on foreign exchange as a result of variations in foreign exchange rates;• provisions;• royalties, franchise fees, copyright, trade names and trade and patent rights received; and• other income.

Turnover

Turnover includes:

- sales of goods;
- services rendered;
- leasing and hiring of motor vehicles and other transport equipment under operating leases;
- leasing and hiring of plant, machinery and equipment;
- mineral rights leases; and
- rental and leasing of land, buildings and other structures under operating leases.

Turnover for only South African-based activities of the enterprise is reflected in this publication.

Value added tax (VAT)

AFS estimates exclude VAT.

General information

Stats SA publishes approximately 300 different releases each year. It is not economically viable to produce them in more than one of South Africa's eleven official languages. Since the releases are used extensively, not only locally but also by international economic and social-scientific communities, Stats SA releases are published in English only.

Stats SA has copyright on this publication. Users may apply the information as they wish, provided that they acknowledge Stats SA as the source of the basic data wherever they process, apply, utilise, publish or distribute the data; and also that they specify that the relevant application and analysis (where applicable) result from their own processing of the data.

Advance release calendar

An advance release calendar is disseminated on www.statssa.gov.za

Stats SA products

A complete set of Stats SA publications is available at the Stats SA Library and the following libraries:

National Library of South Africa, Pretoria Division
National Library of South Africa, Cape Town Division
Natal Society Library, Pietermaritzburg
Library of Parliament, Cape Town
Bloemfontein Public Library
Johannesburg Public Library
Eastern Cape Library Services, King William's Town
Central Regional Library, Polokwane
Central Reference Library, Nelspruit
Central Reference Collection, Kimberley
Central Reference Library, Mmabatho

Stats SA also provides a subscription service.

Electronic services

A large range of data is available via on-line services. For more details about our electronic services, contact Stats SA's user information services at (012) 310 8600.

You can visit us on the Internet at: www.statssa.gov.za

Enquiries

Telephone number:	(012) 310 8600 (user information services) (012) 310 8522 (technical enquiries) (012) 310 8161 (orders) (012) 310 4883 / 4885 / 8018 (library)
Fax number:	(012) 310 2129 (technical enquiries)
Email:	Info@statssa.gov.za (user information services) RenschaP@statssa.gov.za (technical enquiries) Distribution@statssa.gov.za (orders)
Postal address:	Private Bag X44, Pretoria, 0001

Produced by Stats SA