

Mbalo Brief

the missing piece of the puzzle

May 2026

SECONDARY INDUSTRIES

FEATURE ARTICLE

PRICES

TERTIARY INDUSTRIES

SECONDARY INDUSTRIES

GLOSSARY

TERTIARY INDUSTRIES

GLOSSARY

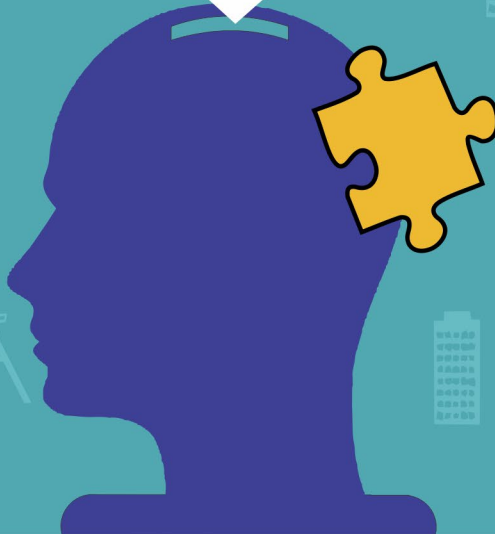
PRICES

PRIMARY INDUSTRIES

PRIMARY INDUSTRIES

FEATURE ARTICLE

INFO



Issue 04/2026

IMPROVING LIVES THROUGH DATA ECOSYSTEMS



stats sa

Department:
Statistics South Africa
REPUBLIC OF SOUTH AFRICA



Statistics South Africa
Private Bag X44
Pretoria 0001
South Africa

ISibalo House, Koch Street, Salvokop
Pretoria 0002

User information services: (012) 310 8600
Main switchboard: (012) 310 8911

Website: www.statssa.gov.za
Email: info@statssa.gov.za





Editor's Comment



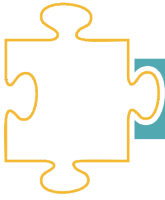
The COVID-19 pandemic has shown how quickly a virus can spread across borders and disrupt lives around the world. Thus, the Department of Health in South Africa is on high alert following the discovery of a rare but deadly case of hantavirus in the country. This is after three confirmed passenger deaths on a cruise ship from the hantavirus, with two of the deaths being linked to South Africa. As a result, this may have exposed workers in South Africa to the virus when

dealing with the patients. The Department believes that approximately 62 people may have come into contact with the infected passengers, with 42 people already traced and monitored for symptoms. South African authorities together with the World Health Organization (WHO) are currently monitoring the cases and continue with contact tracing to contain the spread of the virus. According to the WHO, hantavirus is a serious, often fatal, zoonotic disease transmitted to humans primarily through contact with infected rodents (mice, rats, voles) or their droppings, saliva, and urine or – rarely – through rodent bites. Although human-to-human transmission is rare, it is possible through 1 of the 38 strains of the hantavirus, *Andes virus*, which is predominantly found in South America. Infected individuals may experience flu-like symptoms to more severe and fatal symptoms, including kidney and heart failure. While the chances of contracting the virus remain low, early detection and prevention are important since there is no cure for the virus. To reduce exposure, homes should be sealed to prevent rodent entry, proper food storage, safe cleaning of rodent-infested areas, etc.

This month's feature article is based on the *Marriages and divorces, 2024* (statistical release P0307), published by Statistics South Africa (Stats SA) on 19 March 2026. Also, do not miss out on our monthly crossword puzzle and the April 2026 solutions. Articles in this issue draw on the results of industry surveys conducted for February and March 2026.

Enjoy the read!





Content

Editor's comment	i
Crossword puzzle	iii
Feature article on Marriages and divorces, 2024	1
Primary industries	13
Mining: Production and sales	13
Secondary industries	16
Manufacturing: Production and sales	16
Selected building statistics of the private sector	18
Electricity generated and available for distribution	21
Tertiary industries	23
Wholesale trade sales	23
Retail trade sales	25
Motor trade sales	27
Food and beverages	28
Tourist accommodation	30
International tourism	32
Statistics of civil cases for debt	37
Statistics of liquidations	39
Land transport	41
Prices	43
Producer price index (PPI)	43
Consumer price index (CPI)	45
Glossary	48



Crossword

		1										2		
	3													
							4							
						5		6						
							7							
					8									
			9											
		10												

Across

3. Where in South Africa would you find the town Coffee Bay?
4. What is the smallest bone in the human body called?
5. What is a promise made by a couple to each other during a wedding ceremony called?
7. In 2024, which type of marriage was popular in South Africa?
10. Which strain of the Hantavirus can be transmitted through human contact?

Down

1. Complete the following phrase: 'Till death do us.....' ?
2. A scientist who analyses data from satellites, radars and computer models to predicts weather patterns.
6. In western culture, what's a popular wedding dress colour?
8. True or false? Did more women than men initiate divorce in 2024?
9. What is the longest time a marriage lasted for before ending in divorce in 2024?

Solutions for April 2026 puzzle

Across

3. Freedom day
4. False
6. Pretoria

Down

1. Census
2. South Africa
3. Mexico



Feature article

Marriages and divorces, 2024

1. Introduction

Marriage has been traditionally viewed as a binding, lifetime commitment that can only be broken when one spouse dies. However, as societies become more liberal and modernised, perceptions of marriage have shifted. Things that may have been deemed unacceptable in the past, such as cohabiting, have become the norm among younger generations. Recent data suggest that fewer people are choosing to get married, and those who do often do so later in life. At the same time, the number of people getting divorced is on the rise due to economic pressures, changing expectations within relationships, and many other reasons. Understanding these shifts provides insight into how South African households are evolving.

This feature article is based on *Marriages and divorces, 2024* (statistical release P0307) published by Statistics South Africa (Stats SA) on 19 March 2026. The statistical release provides information on marriages and unions registered and divorces granted in South Africa for the period 2015 to 2024. This feature article will focus on legally recognised marriages in South Africa, namely civil marriages, customary marriages and civil unions using data collected by the Department of Home Affairs (DHA), as well as divorces granted by the Department of Justice and Constitutional Development (DoJ&CD) and Office of the Chief Justice in 2024. The full report can be accessed and downloaded from the Stats SA website on www.statssa.gov.za.

2. Registered marriages and unions

Number of registered marriages and unions in South Africa, 2015–2024

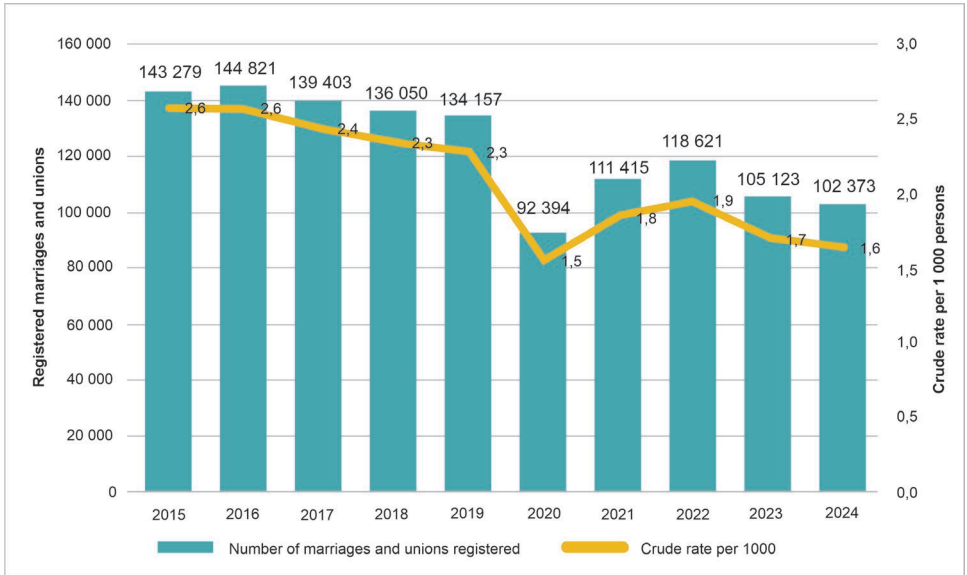


Figure 1 shows that 102 373 marriages and unions were registered in 2024, a decrease of 40 906 (28,5%) from those registered in 2015 (143 279). The 2024 figure of 102 373 marriages and unions shows a decrease of 2,6% from the 105 123 marriages registered in 2023. The highest number of marriages and unions was registered in 2016 (144 821), while the lowest was registered in 2020 (92 394) due to the COVID-19 pandemic, which resulted in the closure of wedding venues, gathering restrictions and health risks, although some couples opted for smaller ceremonies.

The crude marriage rate reflects the number of marriages and unions registered during the year per 1 000 people of the estimated resident population in South Africa. The crude marriage rate was 1,6 per thousand population in 2024, which fell by 1,0 per thousand population from 2,6 in 2015. Between 2015 and 2019, the average crude rate was 2,4 per thousand population; it declined to 1,7 per thousand population in the post-COVID-19 period (2021–2024).

3. Types of marriages

This section focuses on the different types of marriages which are legally recognised in South Africa, as well as trends in the number of marriages and unions, and demographic and other dynamics amongst married partners, including median age, population group, marital status at the time of marriage, etc.

3.1 Civil marriages

These are marriages registered according to the Marriage Act, 1961 (Act No. 25 of 1961). In the article, the term 'civil' is used to differentiate marriages that were solemnised by licensed Department of Home Affairs (DHA) marriage officers from marriages that were solemnised by religious marriage officers.

Trends in the registration of civil marriages, 2015–2024

In 2024, 97 510 civil marriages of South African citizens and permanent residents were registered at the Department of Home Affairs. The 2024 figure of 97 510 civil marriages shows a decrease of 1 779 (1,8%) from the 99 289 marriages registered in 2023. The figure further shows that the number of registered marriages consistently declined in the 10-year period (2015 to 2024) except for a slight increase of 0,6% between 2015 and 2016 and an increase of 5,0% between 2021 and 2022. During the period between 2015 and 2024, the highest number of marriages was recorded in 2016 (139 512) and the lowest number was recorded in 2020 (89 338).

Number of civil marriages by month of solemnisation, 2020–2024

Seasonal variation in the registration of civil marriages shows that generally, warmer months (beginning from September and peaking in December) are the most popular months for solemnising civil marriages in South Africa. In 2024, the highest number of marriages [11 249 (11,5%)] took place in December, and the lowest number of marriages, [5 950 (6,1%)] occurred in January. The national lockdown regulations caused by the COVID-19 pandemic had a negative impact on marriage solemnisation between 2020 and 2021, hence the slightly different pattern for the two years.

Number of civil marriages by province of registration and marital status of bridegrooms and brides at the time of marriage, 2024

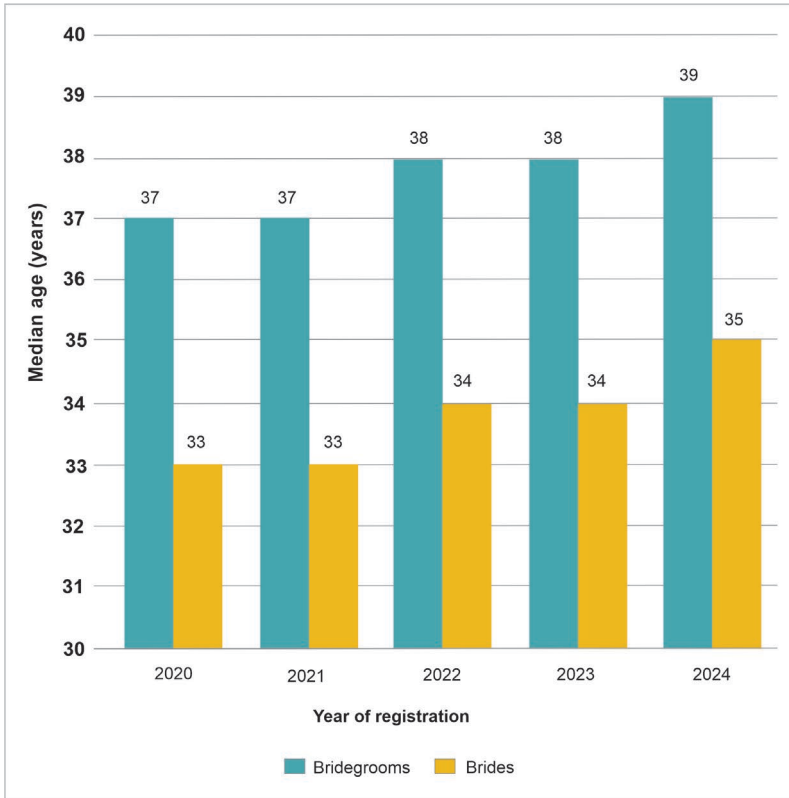
The majority of marriages in 2024 for both bridegrooms and brides were first-time marriages in all provinces. For bridegrooms, there were 77 463 (79,4%) never married men, 4 187 (4,3%) divorcees and 458 (0,5%) widowers. For the brides, there were 82 431 (84,5%) never-married women whilst 2 859 (2,9%) were divorcees, and 255 (0,3%) were widows. The marital status of 15 402 (15,8%) bridegrooms and 11 965 (12,3%) brides was unspecified.

The profile of those who were remarried showed that remarriages were more prevalent in divorcees compared to the widowed, with 4 187 (4,3%) bridegroom divorcees compared to 458 (0,5%) widowers, and 2 859 (2,9%) bride divorcees compared to 255 (0,3%) widows. Looking at the marital status in each province, a high proportion of marriages between bridegrooms and brides marrying for the first time was observed in Limpopo, at 5 122 (84,3%) and 5 553 (91,4%), respectively. There were more never married men (512) than never married women (494) who registered marriages outside the borders of South Africa.

Number of civil marriages by age differences between spouses at the time of marriage and marital status of husband, 2024

Men tend to marry younger women, as 73 104 (75,0%) of the 97 510 bridegrooms were older than their brides. However, 15 814 (16,2%) bridegrooms were younger than their brides and 8 592 (8,8%) were the same age as their brides. This observed age pattern is the same irrespective of the marital status of the bridegroom at the time of marriage. However, the magnitude differs by the marital status of the spouses at the time of marriage.

Figure 2 – Median age of bridegrooms and brides at the time of civil marriage, 2020–2024

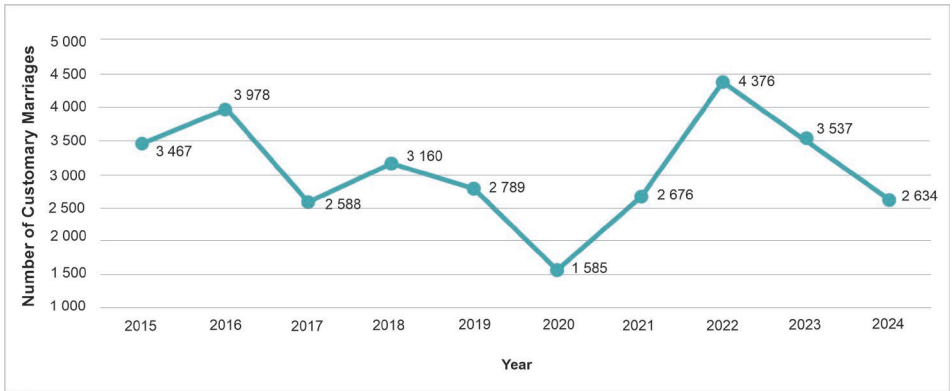


The median age of bridegrooms is consistently higher than the median age of brides. The median ages of bridegrooms and brides remained the same from 2020 to 2021 with 37 years and 33 years for bridegrooms and brides, respectively. The median ages of bridegrooms and brides in 2024 was 39 years and 35 years, respectively. Generally, there was a four to five-year age gap between the bridegroom and the bride.

3.2 Customary marriages

These are marriages that are negotiated, celebrated or concluded according to any of the systems of indigenous African customary law which exists in South Africa as prescribed in the Recognition of Customary Marriages Act, 1998 (Act No. 120 of 1998).

Figure 3 – Number of registered customary marriages in South Africa, 2015–2024



It is observed from Figure 3 that the number of registered customary marriages has been fluctuating over the 10-year period, 2015 to 2024. In 2024, 2 634 customary marriages were registered at the DHA, indicating a decrease of 25,5% from 3 537 customary marriages registered in 2023. The highest number of registered customary marriages was recorded in 2022 (4 376), whilst the lowest number was recorded in 2020 (1 585).

Number of registered customary marriages by province, 2023 and 2024

A comparison of registered customary marriages between 2023 and 2024 per province indicates a decrease for eight out of nine provinces. Registered customary marriages increased (93,8%) in Western Cape, from 32 records in 2023 to 62 records in 2024. Free State showed the highest decrease of 51,8% (from 85 marriages in 2023 to 41 marriages in 2024), followed by Eastern Cape with a decline of 39,1% (from 652 in 2023 to 397 in 2024). Although Limpopo had the highest marriages registered with 718 records in 2024, the figure represents a 23,8% decline from 942 registrations in 2023. KwaZulu-Natal is the second highest with 704 marriages registered in 2024.

Over half, 142 (54%) of customary marriages registered in 2024 were from these two provinces.

Age at the time of customary marriage

Median age of bridegrooms and brides at the time of customary marriage, 2020–2024

Similar to civil marriages, bridegrooms were generally older than brides, with an age difference of about six to seven years for customary marriages registered between 2020 and 2024. The median age of bridegrooms decreased from 36 years in 2020 to 35 years in 2024, whereas that of brides decreased from 30 years to 29 years during the same period.

Proportion of customary marriages registered by age group and sex, 2024

More bridegrooms (481 or 18,3%) were aged 30–34, and 21,5% (565) of the brides were aged 25–29 at the time of customary marriage. Marriages for children aged less than 18 were more likely for brides 160 (6,1%) than bridegrooms 15 (0,5%).

3.3 Civil unions

Civil union refers to the voluntary union of two persons who are both 18 years of age or older, which is solemnised and registered by way of either a marriage or a civil partnership, in accordance with the procedures prescribed in the Civil Union Act, 2006 (Act No. 17 of 2006). Spouse-1 and Spouse-2 are used because the data does not specify the sex of the spouse.

Trends in the registration of civil unions, 2015–2024

Number of registered civil unions in South Africa, 2015–2024

In 2024, 2 229 civil unions were registered in South Africa, a 3,0% decrease from 2 297 civil unions registered in 2023. The number of civil unions registered in South Africa increased between 2015 and 2022 (except for a decrease of 1 471 in 2020).

Number and percentage distribution of civil unions registered by province of registration, 2020–2024

The provincial distribution of civil unions registered in 2023 indicates that Gauteng, 943 (42,3%) and Western Cape, 751 (33,7%) were the provinces with the highest number of civil union registrations. In total, 76,0% of civil unions in 2024 were registered in these two provinces. The lowest number of registered civil unions was recorded in North West, 36 (1,6%) and Limpopo, 21 (0,9%).

Median age of spouses in civil unions, 2020–2024

The median ages of spouses-1 were higher than those of spouses-2. The median ages of spouses-1 remained the same at 35 years between 2020 and 2024, whereas the median ages of spouses-2 remained the same at 33 years between 2020 and 2023 and further increased by one year to 34 years in 2024.

4. Divorces

This section deals with divorces granted in 2024 as well as trends in the number of divorces published, demographic and other dynamics amongst divorced couples, including median age at the time of divorce, plaintiff in divorce proceeding, duration of marriage, etc.

Trends in divorces, 2015–2024

Number of published divorces in South Africa by population group, 2015–2024

The 2024 divorce data reported in Marriages and divorces (statistical release P0307) is based on 24 202 completed divorce forms that Statistics South Africa (Stats SA) received and processed. The number (24 202) indicates an increase of 1 972 (8,9%) divorces from the 22 230 cases processed in 2023. The total number of divorces increased between 2015 and 2017, and decreased between 2018 and 2020. The observed crude divorce rate was 39 divorces per 100 000 resident population in 2024.

In 2024, black African couples had the highest number of divorces compared to other population groups; this pattern has been the same for the 10-year period (2015 to 2024). A total of 13 284 (54,9%) of the 24 202 divorces

granted in 2024 were from the black African population group, followed by white 5 008 (20,7%), coloured 3 363 (13,9%), Indian/Asian 990 (4,1%) and divorces from marriages of different population groups (mixed) 716 (3,0%). The population group of 841 (3,5%) divorcees was not specified.

Figure 4 – Number of divorces and crude divorce rates by population group, 2024

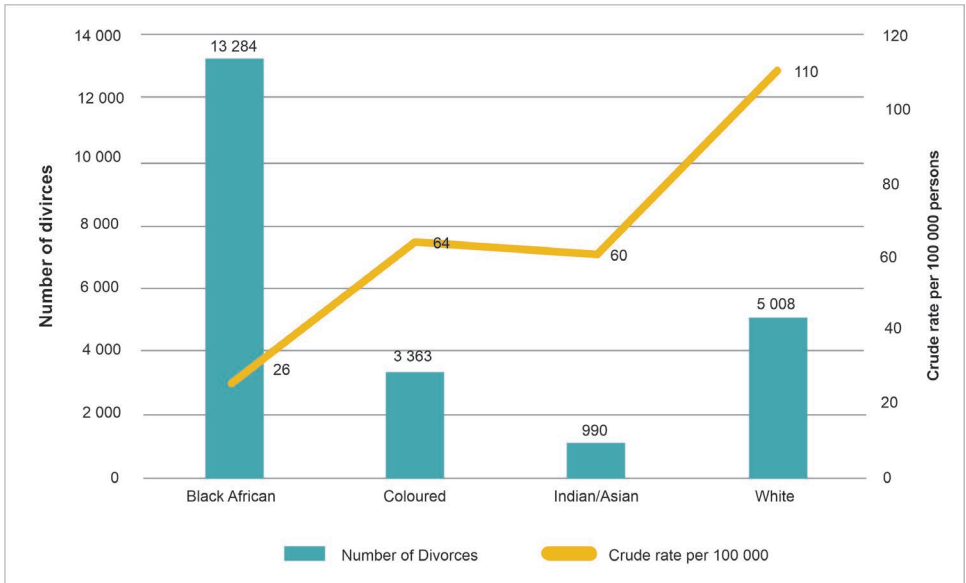


Figure 4 demonstrates the number of divorces and crude divorce rate by population group. The crude divorce rates by population groups show that the white population group had the highest rate of 110 per 100 000 estimated resident population, followed by the coloured and Indian/Asian population groups with 64 and 60 per 100 000, respectively. The black African population had 26 per 100 000 estimated resident population.

Number and percentage distribution of divorces by province of divorce registration and plaintiff, 2024

More wives [13 853 (57,2%)] than husbands [7 976 (33,0%)] initiated divorce proceedings and only 1 107 (4,6%) divorces were initiated by both husband and wife. The sex of the plaintiff was not specified in 1 266 (5,2%) cases. The provincial distribution indicates that Gauteng (7 256), Western Cape (4 259) and KwaZulu-Natal (3 344) were the provinces with the highest number of divorces granted. Together, these three provinces contributed 61,4% of the divorces granted in 2024. However, this could also be because these provinces have the largest populations.

Table 1– Number and percentage distribution of divorces by population group and way of solemnisation of the marriage, 2024

Population group	Number				%			
	Total	Religion	DHA	Unspecified	Total	Religion	DHA	Unspecified
Total	24 202	9 421	12 640	241	100,0	38,9	52,2	8,8
Black African	13 284	3 003	9 539	742	100,0	22,6	71,8	5,6
Coloured	3 363	2 072	947	344	100,0	61,6	28,2	10,21
Indian/Asian	990	364	488	138	100,0	36,8	49,3	13,9
White	5 008	3 371	949	688	100,0	67,3	18,9	13,71
Mixed	716	290	353	731	100,0	40,5	49,3	10,2
Unspecified	841	321	364	56	100,0	38,2	43,3	18,4

Data from Table 1 shows that 12 640 (52,2%) of the 2024 divorce cases were from marriages solemnised by DHA marriage officers and 9 421 (38,9%) by religious marriage officers. About 67,3% of divorces from the white population group and 61,6% of divorces from the coloured population group were from marriages that were solemnised by religious marriage officers. Most divorces from the black African and Indian/Asian population groups were from marriages that were solemnised by DHA marriage officers at 71,8% and 49,3%, respectively.

Median age of divorcees by sex and population group, 2024

The median age at the time of divorce in 2024 was 46 years for males and 42 years for females, indicating that, generally, divorced males were older than divorced females, with a difference of about four years. The pattern of median ages in 2024 by population group showed that black African males had the highest median age of 47 years, followed by white males with a

median age of 46 years. The coloured and Indian/Asian males had a median age of 44 years each. The difference in the median ages at the time of divorce between males and females was greater in the black African population group (five years) compared to the coloured and white population with three years, and the Indian/Asian population with two years.

Number of divorces by age group and duration of marriage (male divorcees), 2024

Statistics from the annual divorce data do not give a comprehensive picture of the number of marriages ending in divorce. However, there is data on the duration of marriages for divorces granted in 2024. Data show that the largest number [6 451 (26,7%)] of divorces were for marriages that lasted between five and nine years. This group is followed by marriages that lasted between 10 and 14 years [5 167 (21,3%)] and marriages that lasted for less than five years [3 650 (15,1%)]. Results further show that four in ten divorces, 10 101 (41,7%) of the 24 202 divorces granted in 2024, were from marriages that lasted for less than 10 years.

The highest number of male divorcees was from the age group 40 to 44, 4 532 (18,7%), followed by those in the age group 45 to 49, 4 384 (18,1%).

5. Conclusion

The marriages data suggests that fewer people are getting married, marked by a decline in registered marriages in 2024. Of the 102 373 registered marriages and unions in 2024, 97 510 were civil marriages, 2 634 customary marriages and 2 229 civil unions. Most civil marriages in 2024 were between spouses who were getting married for the first time, with women generally entering marriage at younger ages than men for both civil and customary marriages. Limpopo had the highest number of customary marriages compared to other provinces, whilst Gauteng and Western Cape had the highest number of registered civil unions.

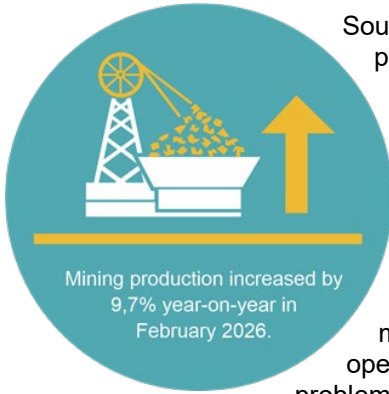
Regarding divorces, the data show that the number of divorce cases increased in 2024, and a majority of them were from the black African population. However, the white population group had the highest divorce crude rate. There were more wives who filed for divorce than husbands. Gauteng, Western Cape and KwaZulu-Natal were the provinces with the highest number of divorces granted. At the time of divorce, males were older

than females. Most marriages lasted for about five to nine years before ending in divorce.



Primary industries

Mining: Production and sales



South Africa's mining industry remains a vital part of the economy, contributing to employment, export earnings, infrastructure development, and industrial growth. While mining production and mineral sales have increased in certain areas, particularly in platinum group metals (PGMs) and other key minerals, the sector continues to face challenges, especially in coal mining. Coal production has been affected by aging mines, declining coal quality, rising operational costs, and major rail and logistics

problems linked to Transnet's infrastructure constraints. In addition, global shifts toward renewable energy and reduced international demand for coal are placing further pressure on the industry. These challenges have important economic consequences, including lower export earnings, threats to jobs in mining communities, and risks to energy security, as coal remains South Africa's primary source of electricity generation. Results published by Statistics South Africa (Stats SA) show that coal (-6,7%, contributing -2,0 percentage points) was one of the largest negative contributors to mining production in February 2026. Despite these difficulties, mining continues to play a critical role in supporting economic activity and remains central to South Africa's long-term development. Presented in this article is a summary of the *Mining: Production and sales* (statistical release P2041) for February 2026.



Mining production increased by 9,7% year-on-year in February 2026 (see Table A).

The largest positive contributors were:

- PGMs (52,3%, contributing 9,4 percentage points);
- chromium ore (26,9%, contributing 1,6 percentage points);
- manganese ore (17,8%, contributing 1,5 percentage points); and
- gold (12,8%, contributing 1,3 percentage points).

Iron ore (-12,4%, contributing -2,3 percentage points) and coal (-6,7%, contributing -2,0 percentage points) were the largest negative contributors.

Table A – Key growth rates in the volume of mining production for February 2026

	Sep-25	Oct-25	Nov-25	Dec-25	Jan-26	Feb-26
Year-on-year % change, unadjusted	1,5	6,1	-2,4	3,0	5,0	9,7
Month-on-month % change, seasonally adjusted	2,0	2,6	-5,2	-2,1	3,7	2,3
3-month % change, seasonally adjusted ¹	2,8	2,3	1,8	-0,6	-3,2	-1,7

¹ Percentage change between the previous 3 months and the 3 months ending in the month indicated. A full release on *Mining: Production and sales* (statistical release P2041) is available on the Stats SA website www.statssa.gov.za.

Mineral sales increased by 58,3% year-on-year in February 2026. The largest positive contributors were:

- gold (397,6%, contributing 32,2 percentage points);
- PGMs (132,1%, contributing 26,5 percentage points); and
- chromium ore (53,8%, contributing 4,2 percentage points).

'Other' non-metallic minerals (-55,9%, contributing -2,8 percentage points) and manganese ore (-22,9%, contributing -1,7 percentage points) were the largest negative contributors.

Table B – Key growth rates in mineral sales at current prices for February 2026

	Sep-25	Oct-25	Nov-25	Dec-25	Jan-26	Feb-26
Year-on-year % change, unadjusted	16,4	13,6	-0,1	47,8	31,6	58,3
Month-on-month % change, seasonally adjusted	8,7	-0,3	-1,5	21,8	-8,0	9,4
3-month % change, seasonally adjusted ¹	8,4	7,3	9,6	10,9	12,4	17,5

¹ Percentage change between the previous 3 months and the 3 months ending in the month indicated.

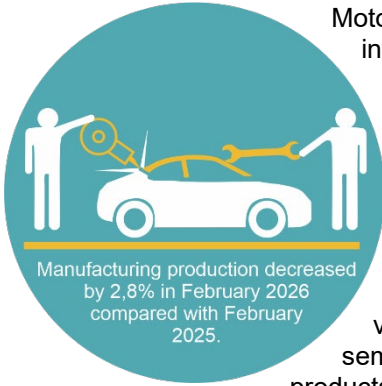
A full release on *Mining: Production and sales* (statistical release P2041) is available on the Stats SA website

www.statssa.gov.za.



Secondary industries

Manufacturing: Production and sales



Motor vehicle companies' competition is intensifying in South Africa as unpopular brands from countries such as China and India are making progress to compete against established brands such as Ford Motor Company and Mercedes-Benz. Mahindra, India's second-largest automaker, plans to upgrade its South African plant to take advantage of the rising domestic demand for affordable vehicles. Mahindra currently assembles semi-knocked-down (SKD) vehicles (vehicle products exported as partially assembled modules

or sub-assemblies rather than finished units) at its Durban plant and plans to introduce completely knocked-down (CKD) vehicles (fully assembled motor vehicle units). The introduction of CKD will assist the increase in the sale of new affordable vehicles as consumer purchasing power (financial ability of individuals or households to buy goods and services) no longer favours consumers to purchase luxurious motor vehicles. According to Statistics South Africa (Stats SA), manufacturing production decreased by 2,8% in February 2026 compared with February 2025 while seasonally adjusted manufacturing production decreased by 2,0% % in the three months ended February 2026 compared with the previous three months. Eight of the ten manufacturing divisions reported negative growth rates over this period and motor vehicles, parts and accessories and other transport equipment (-5,2%, contributing -0,4 of a percentage point) was one of the largest negative contributors to the decrease of 2,0%. This article summarises the results of the *Manufacturing: Production and sales* (statistical release P3041.2) for February 2026.



Manufacturing production decreased by 2,8% in February 2026 compared with February 2025 (see Table C).

Manufacturing production decreased by 2,8% in February 2026 compared with February 2025. The largest negative contributions were made by the following divisions:

- food and beverages (-4,5, contributing -1,1 percentage points);
- wood and wood products, paper, publishing and printing (-9,7%, contributing -1,0 percentage point); and
- basic iron and steel, non-ferrous metal products, metal products and machinery (-3,6%, contributing -0,8 of a percentage point).

Table C – Key growth rates in the volume of manufacturing production for February 2026

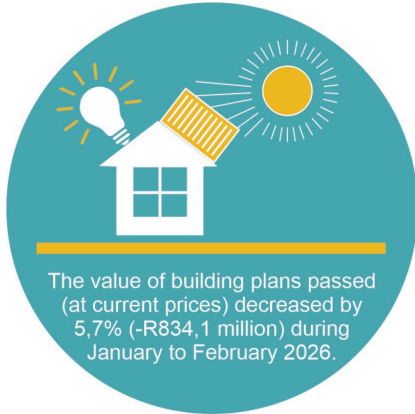
	Sep-25	Oct-25	Nov-25	Dec-25	Jan-26	Feb-26
Year-on-year % change, unadjusted	1,0	0,7	-2,1	-1,4	-0,1	-2,8
Month-on-month % change, seasonally adjusted	0,3	1,1	-2,3	-1,4	1,9	-2,2
3-month % change, seasonally adjusted ¹	0,1	0,2	0,1	-0,6	-1,8	-2,0

¹ Percentage change between the previous 3 months and the 3 months ending in the month indicated.

A full release on *Manufacturing: Production and sales* (Statistical release P3041.2) is available on the Stats SA website: www.statssa.gov.za.

Selected building statistics of the private sector

Over the past few years, increasing pressure to address climate change and promote clean energy has prompted South Africa to rethink how public



infrastructure is designed and maintained. The Department of Public Works and Infrastructure (DPWI) has intensified its efforts to reduce the environmental impact of state-owned buildings, improve energy efficiency and provide leadership in green building practices. During the Green Building Convention hosted by the Green Building Council of South Africa (GBCSA) in November 2025, the Minister of the Department of Public Works and Infrastructure (DPWI), Dean Macpherson, announced that the

department will pursue New Building 4-star and Green Star certifications and sustainable urban precinct ratings for its development. Minister Macpherson also highlighted that the department will begin to certify existing government buildings under the Existing Building Performance programme. In order to include sustainability expertise within the DPWI, the Minister added that key departmental officials are currently being trained as accredited green building professionals by the Green Building Council of South Africa Academy. The transition to green building practices will assist South Africa to try and reach its net zero emissions by 2050, a global target to balance the amount of greenhouse gases produced and limiting global warming to 1,5°C. Data published by Statistics South Africa (Stats SA) for January to February 2026 indicate that new residential buildings are booming as the sector increased by R317,2 million. This article summarises the results of the *Selected building statistics of the private sector* (statistical release P5041.1) for February 2026.



The value of building plans passed (at current prices) decreased by 5,7% (-R834,1 million) during January to February 2026 compared with January to February 2025 (see Table D).

Decreases were reported for non-residential buildings (-R709,3 million) and additions and alterations (-R442,0 million). An increase was reported for residential buildings (R317,2 million).

The largest negative contributors to the total decrease of 5,7% (-R834,1 million) were Western Cape (contributing -4,6 percentage points or -R668,5 million) and Mpumalanga (contributing -3,2 percentage points or -R460,4 million).

The largest positive contributors were Limpopo (contributing 1,1 percentage points or R166,4 million) and North West (contributing 0,9 of a percentage point or R132,7 million).

Buildings reported as completed at current prices

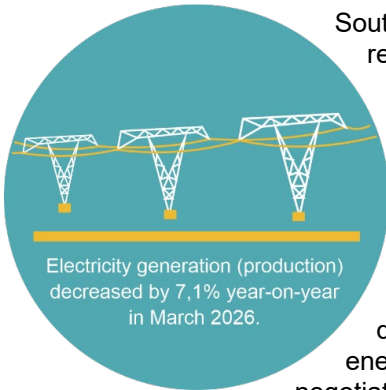
The value of buildings reported as completed at current prices decreased by 1,2% (-R76,3 million) during January to February 2026 compared with January to February 2025. A decrease was reported for non-residential buildings (-R1 272,9 million). Increases were reported for residential buildings (R833,5 million) and additions and alterations (R363,0 million).

Table D – Building plans passed by larger municipalities at current prices by type of building, January to February 2026

Type of building	Jan – Feb 2025	Jan – Feb 2026	Difference in value between Jan – Feb 2025 and Jan – Feb 2026	% change between Jan – Feb 2025 and Jan – Feb 2026
	R'000	R'000	R'000	
Residential buildings	6 590 234	6 907 471	317 237	4,8
- Dwelling houses	4 547 587	4 341 302	-206 285	-4,5
- Flats and townhouses	1 610 705	2 026 313	415 608	25,8
- Other residential buildings	431 942	539 856	107 914	25,0
Non-residential buildings	3 601 601	2 892 295	-709 306	-19,7
Additions and alterations	4 377 280	3 935 297	-441 983	-10,1
Total	14 569 115	13 735 063	-834 052	-5,7

A full release on *Selected building statistics of the private sector as reported by local government institutions* (statistical release P5041.1) is available on the Stats SA website: www.statssa.gov.za.

Electricity generated and available for distribution



South Africa has relaxed certain anti-trust regulations to help energy-intensive industries cope with rising electricity costs. The changes are aimed at supporting struggling sectors such as ferrochrome, steel, mining, and manufacturing, which rely heavily on electricity to operate. Under the new regulations introduced by Trade, Industry and Competition Minister, Parks Tau, companies in “industries in distress” are now allowed to cooperate on energy-related matters. This includes jointly negotiating electricity supply agreements, sharing

backup generation infrastructure, and working collectively with energy suppliers, provided they do not fix the prices of the goods they sell. Anti-trust laws normally prevent competitors from collaborating in ways that could reduce competition or harm consumers. However, the government believes temporary flexibility of this law is necessary as electricity prices have risen sharply over the past 15 years, placing severe pressure on large industrial users. Overall, the easing of anti-trust rules is intended to help protect industrial production, improve energy affordability, and support jobs in sectors heavily affected by high electricity costs. This article summarises the *Electricity generated and available for distribution* (statistical release P4141) for March 2026.



Electricity generation (production) decreased by 7,1% year-on-year in March 2026 (see Table E).

Table E – Key growth rates in the volume of electricity generated for March 2026

	Oct-25	Nov-25	Dec-25	Jan-26	Feb-26	Mar-25
Year-on-year % change, unadjusted	-5,2	-7,3	-7,8	-6,1	-3,9	-7,1
Month-on-month % change, seasonally adjusted	-0,7	-1,3	-1,4	1,4	-0,5	-1,6
3-month % change, seasonally adjusted ¹	-2,8	-3,0	-3,2	-2,7	-1,7	-0,8

¹ Percentage change between the previous 3 months and the 3 months ending in the month indicated.

A full release on *Electricity generated and available for distribution* (statistical release P4141) is available on the Stats SA website: www.statssa.gov.za.

Electricity distribution (consumption) decreased by 3,5% year-on-year in March 2026.

Table F – Key growth rates in the volume of electricity distributed for March 2026

	Oct-25	Nov-25	Dec-25	Jan-26	Feb-26	Mar-26
Year-on-year % change, unadjusted	-7,2	-7,7	-6,9	-6,1	-3,4	-3,5
Month-on-month % change, seasonally adjusted	-0,6	-0,4	0,4	0,1	-0,2	2,1
3-month % change, seasonally adjusted ¹	-3,7	-3,8	-2,9	-1,4	-0,1	0,8

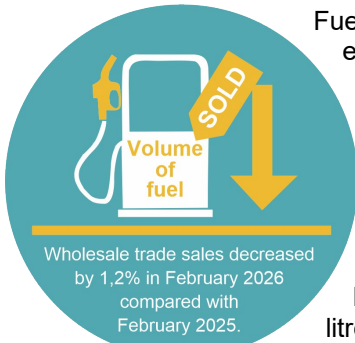
¹ Percentage change between the previous 3 months and the 3 months ending in the month indicated.

A full release on *Electricity generated and available for distribution* (statistical release P4141) is available on the Stats SA website: www.statssa.gov.za.



Tertiary industries

Wholesale trade sales



Fuel plays an important role in South Africa's economy because it powers transport, mining, agriculture, manufacturing and many daily business activities. However, recent trends show that the volume of fuel sold in South Africa has generally been decreasing over time. According to BusinessDay, petrol consumption peaked at 12 billion litres in 2015 and declined to 8,7 billion litres by 2024. Diesel consumption declined from 14 billion litres to 11,8 billion litres over the same period.

This decline reflects changes in economic activity, consumer behaviour and rising fuel costs. South Africa imports most of its crude oil and refined fuel products, which means local fuel prices are heavily influenced by international oil prices and the exchange rate. When global oil prices increase or the rand weakens against major currencies, petrol and diesel prices rise locally. As fuel becomes more expensive, consumers and businesses often reduce their fuel consumption to manage costs. A decrease in sales for solid, liquid and gaseous fuels and related products (-6,7%, contributing -1,5 percentage points) was one of the main negative contributors to the decrease in wholesale trade sales for February 2026. Presented in this article is a summary of the *Wholesale trade sales* (statistical release P6141.2) for February 2026.



Wholesale trade sales decreased by 1,2% in February 2026 compared with February 2025 (see Table G).

The main negative contributors were dealers in:

- machinery, equipment and supplies (-10,0%, contributing -1,8 percentage points); and
- solid, liquid and gaseous fuels and related products (-6,7%, contributing -1,5 percentage points).

The main positive contributor was dealers in food, beverages and tobacco (13,5%, contributing 1,9 percentage points).

Wholesale trade sales decreased by 0,6% in the three months ended February 2026 compared with the three months ended February 2025.

The main negative contributor was dealers in solid, liquid and gaseous fuels and related products (-8,9%, contributing -2,1 percentage points).

The main positive contributor was dealers in food, beverages and tobacco (11,9%, contributing 1,9 percentage points).

Table G – Key growth rates in wholesale trade sales for February 2026

	Sep-25	Oct-25	Nov-25	Dec-25	Jan-26	Feb-26
Year-on-year % change, unadjusted	1,4	-3,0	-0,7	0,7	-4,2	-1,1
Month-on-month % change, seasonally adjusted	-0,9	0,1	1,8	-1,1	-1,3	0,7
3-month % change, seasonally adjusted ¹	0,1	0,3	0,1	0,4	0,3	-0,6

¹ Percentage change between the previous 3 months and the 3 months ending in the month indicated. A full release on *Wholesale trade sales* (Statistical release 6141.2) is available on the Stats SA website: www.statssa.gov.za.

Retail trade sales



Retail trade sales increased by 1,6% year-on-year in February 2026.

Whether you call them preloved, second-hand or classic, vintage clothing (old-style of clothing) is back on the shelves and dominating the fashion trends. Clothing from previous eras has been brought back to life by celebrities who want to create a unique fashion trend, consumers who want a unique style, high-quality clothing and a popular alternative to buying new garments. Second-hand goods are governed by the Second-Hand Goods Act, 2009 (Act No. 6 of 2009) which aims to regulate

the businesses dealing with second-hand goods, promote ethical standards in second-hand goods trade and combat trade in stolen goods. This ongoing trend in the second-hand market is likely to contribute positively to the retail trade sector as it creates a more diverse retail environment. Data published by Statistics South Africa (Stats SA) indicate that retailer sales grew by 1,6% year-on-year in February 2026. Presented in this article is a summary of *Retail trade sales* (statistical release P6242.1) for February 2026.



Retail trade sales increased by 1,6% year-on-year in February 2026 (see Table H).

The largest positive contributors to this increase were:

- all 'other' retailers (9,4%, contributing 1,0 percentage point); and
- retailers in textiles, clothing, footwear and leather goods (3,9%, contributing 0,6 of a percentage point).

Retail trade sales increased by 2,8% in the three months ended February 2026 compared with the three months ended February 2025. The largest positive contributors to this increase were:

- all 'other' retailers (9,3%, contributing 1,0 percentage point);

- general dealers (2,0%, contributing 0,9 of a percentage point); and
- retailers in textiles, clothing, footwear and leather goods (3,3%, contributing 0,7 of a percentage point).

The only negative contributor was retailers in food, beverages and tobacco in specialised stores (-5,7%, contributing -0,5 of a percentage point).

Table H – Key growth rates in retail trade sales for February 2026

	Sep-25	Oct-25	Nov-25	Dec-25	Jan-26	Feb-26
Year-on-year % change, unadjusted	3,0	3,0	3,6	2,5	4,4	1,6
Month-on-month % change, seasonally adjusted	-0,1	1,0	0,6	-0,5	0,9	-1,0
3-month % change, seasonally adjusted ^{1/}	1,0	0,3	0,6	0,7	1,2	0,5

^{1/}Percentage change between the previous 3 months and the 3 months ending in the month indicated.

A full release on *Retail trade sales* (statistical release P6242.1) is available on the Stats SA website: www.statssa.gov.za.

Motor trade sales



Motor vehicle dealerships play a critical role in automotive sales process of manufactured motor vehicles. The automotive industry has been relying on motor vehicle dealerships for more than a century to sell new and used vehicles to consumers. According to Naamsa, the automotive business council, the total of new vehicle sales reached 47 979 units in April 2026, an increase of 13,0% from 42 467 units sold in April 2025.

Out of the total industry sales of 47 979 vehicles, an estimated 43 716 units or 91,1%, represented dealer sales while an estimated 5,1% represented sales to the vehicle rental industry, 2,2% to industry corporate fleets and 1,6% to government sales. In contrast, export volumes decreased to 30 939 units, a decrease of 4,0% from the 32 229 units shipped in April 2025. In February 2026, Statistics South Africa (Stats SA) reported that motor trade sales increased by 5,5% year-on-year and new vehicle sales was one of the main positive contributors with 17,4%, contributing 4,7 percentage points. Presented in this article is a summary of the *Motor trade sales* (statistical release P6343.2) for February 2026.



Motor trade sales increased by 5,5% year-on-year in February 2026 (see Table C).

The main positive contributors to this increase were:

- new vehicle sales (17,4%, contributing 4,7 percentage points); and
- used vehicle sales (6,1%, contributing 1,3 percentage points).

The main negative contributor was workshop income (-9,9%, contributing -0,4 of a percentage point).

Motor trade sales increased by 4,8% in the three months ended February 2026 compared with the three months ended February 2025. The main

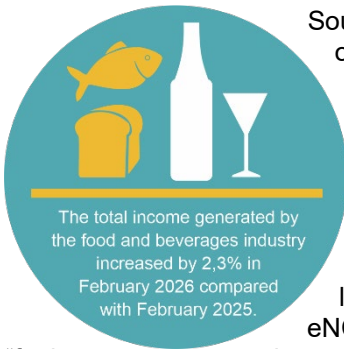
positive contributor to this increase was new vehicle sales (19,4%, contributing 5,0 percentage points).

Table C – Key growth rates in the volume of motor trade sales for February 2026

	Sep-25	Oct-25	Nov-25	Dec-25	Jan-26	Feb-26
Year-on-year % change, unadjusted	9,1	1,8	0,3	6,5	2,7	5,5
Month-on-month % change, seasonally adjusted	-0,6	0,7	0,8	0,4	-0,7	1,4
3-month % change, seasonally adjusted ¹	1,8	1,2	0,8	1,2	1,1	1,1

¹ Percentage change between the previous 3 months and the 3 months ending in the month indicated. A full release on *Motor trade sales* (statistical release P6343.2) is available on the Stats SA website: www.statssa.gov.za.

Food and beverages



South Africans are increasingly feeling the effects of the war in Iran through rising fuel prices, higher food costs, and more expensive restaurant meals. Since South Africa imports most of its fuel, local petrol and diesel prices are heavily influenced by international oil prices and global shipping conditions. Fuel is a critical cost within South Africa’s food supply chain because the country depends largely on road freight to transport goods.

eNCA, a television news channel, reported that “fuel prices remain a major risk to food inflation in South Africa because fuel forms a substantial part of food distribution costs.” As diesel prices increase, farmers and food producers face higher costs for operating machinery and transporting produce, distributors face higher logistics costs, etc. These rising expenses filter through the value chain, leading to higher food prices for restaurants, fast-food outlets, and takeaway businesses as food products form a major part of their operating costs and stock. As a result, many food service businesses are forced to increase menu prices to offset higher input and transportation costs. This may contribute to higher revenue values recorded for food sold by restaurants, fast-food chains, and takeaway outlets, as consumers pay more for meals and beverages. In February 2026, the total income generated by the food

and beverages industry increased by 2,3% in February 2026 compared with February 2025. Presented in this article is a summary of the *Food and beverages* (statistical release P6420) for February 2026.



The total income generated by the food and beverages industry increased by 2,3% in February 2026 compared with February 2025 (see Table J).

Positive annual growth rates were recorded for 'other' income (6,8%) and food sales (4,7%).

In February 2026, the positive contributors to the 2,3% year-on-year increase were restaurants and coffee shops (3,4%, contributing 1,6 percentage points) and takeaway and fast-food outlets (3,4%, contributing 1,3 percentage points).

Total income increased by 3,4% in the three months ended February 2026 compared with the three months ended February 2025. The positive contributors to this increase were takeaway and fast-food outlets (6,4%, contributing 2,5 percentage points) and restaurants and coffee shops (3,5%, contributing 1,7 percentage points).

Table J – Year-on-year percentage change in food and beverages income at constant 2019 prices by type of income for February 2026

Type of income	Sep-25	Oct-25	Nov-25	Dec-25	Jan-26	Feb-26
Food sales	7,8	8,5	8,3	6,9	8,7	4,7
Bar sales	-4,6	-5,3	-10,7	-22,8	-15,9	-14,5
Other income	8,4	13,3	16,3	-3,8	21,5	6,8
Total	6,3	7,0	6,1	2,5	5,7	2,3

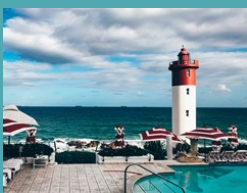
A full release on *Food and beverages* (statistical release P6420) is available on the Stats SA website: www.statssa.gov.za.

Tourist accommodation



What better way to experience a tourist destination than to immerse yourself in its history? In South Africa, a growing number of tourist establishments are breathing new life into old historic buildings and infrastructure and transforming them into modern luxury accommodation. One example is the Turbine Hotel and Spa, a five-star boutique hotel in Knysna, Western Cape, which was once a power station in the 1930s. Many of the power station's original industrial features, including turbines, generators, exposed machinery and steel

pipings, have been preserved and blended with modern decor to create a unique and comfortable experience for travellers. This transformation not only preserves a historical landmark and cultural heritage, but also promotes sustainable tourism by reducing the environmental impact associated with constructing a new hotel. As travellers increasingly seek authentic and environmentally conscious experiences, heritage-inspired accommodation establishments are becoming more attractive destinations. In February 2026, hotels were among the main contributors towards the 7,0% increase in total income generated by the tourist accommodation industry. Hotels increased by 2,6% and contributed 1,6 percentage points to overall growth, suggesting that hotels continue to play an important role in supporting growth in the tourist accommodation industry. Presented in this article is a summary of the results for *Tourist accommodation* (statistical release P6410) for February 2026.



Total income for the tourist accommodation industry increased by 7,0% in February 2026 compared with February 2025 (see Table K).

Income from accommodation increased by 8,9% year-on-year in February 2026, the result of a 5,4% increase in the number of stay unit nights sold and a 3,4% increase in the average income per stay unit night sold.

In February 2026, the main contributors to the 8,9% year-on-year increase in income from accommodation were:

- 'other' accommodation (23,3%, contributing 7,1 percentage points); and
- hotels (2,6%, contributing 1,6 percentage points).

Table K – Year-on-year percentage change in tourist accommodation statistics for February 2026

	Sep-25	Oct-25	Nov-25	Dec-25	Jan-26	Feb-26
Stay units available	0,0	0,0	0,0	0,1	0,1	0,0
Stay unit nights sold	0,7	10,1	7,8	2,1	0,9	5,4
Average income per stay unit night sold	2,2	4,7	3,6	2,0	1,8	3,4
Income from accommodation	2,9	15,3	11,7	4,1	2,7	8,9
Total income¹	1,9	12,7	10,6	3,7	-1,8	7,0

¹Includes restaurant and bar sales and 'other' income.

A full release on *Tourist accommodation* (statistical release P6410) is available on the Stats SA website: www.statssa.gov.za.

International tourism



Travellers who visit South Africa use various modes of travel (road, air and sea) to seek medical attention, for study, business and holiday. The funny and true part is that there are travellers who walk to enter and leave South Africa. Some travellers who are close to our port of entry can walk to the borders, where their information is collected and processed by immigration officers. And while at our borders, they can hitchhike or ferry a taxi

or
the

bus to their respective destinations. According to

Tourism Report of 2025, released by Statistics South Africa (Stats SA) on 26 March 2026, there were 2 482 029 visitors who used road to arrive in South Africa. The report states that 689 376 travellers from Lesotho used the road, followed by Mozambique (599 858), Eswatini (567 759), Botswana (376 297), Zimbabwe (150 622) and Namibia (104 329). In February 2026, road was also the most common mode of travel used by 1 751 418 (65,1%) of the 2 689 619 travellers, according to latest *International tourism* data released by Stats SA. This article summarises the results of *International tourism* (statistical release P0350) for March 2026.



A total of 3 037 756 travellers (arrivals, departures and transits) passed through South African ports in March 2026 (see Table L).

These travellers were made up of 723 364 South African residents and 2 314 392 foreign travellers. A further breakdown of the figures for South African residents indicates that there were 349 439 arrivals, 373 332 departures and 593 travellers in transit. The corresponding volumes for foreign arrivals, departures and travellers in transit were 1 200 534, 1 073 128 and 40 730, respectively.

A comparison between the movements in February 2026 and March 2026 indicates that the volume of arrivals, departures, and transits increased for both South African residents and foreign travellers. For South African

residents, the volume of arrivals increased by 17,9% (from 296 413 in February 2026 to 349 439 in March 2026), departures increased by 25,6% (from 297 220 in February 2026 to 373 332 in March 2026), and transits increased by 23,3% (from 481 in February 2026 to 593 in March 2026). For foreign travellers, arrivals increased by 6,6% (from 1 126 271 in February 2026 to 1 200 534 in March 2026), departures increased by 14,7% (from 935 359 in February 2026 to 1 073 128 in March 2026), and transits increased by 20,2% (from 33 875 in February 2026 to 40 730 in March 2026).

A comparison between the movements in March 2025 and March 2026 indicates that the volume of arrivals, departures and transits increased for both groups of travellers. For South African residents, the volume of arrivals increased by 1,6% (from 343 852 in March 2025 to 349 439 in March 2026), departures increased by 2,4% (from 364 598 in March 2025 to 373 332 in March 2026), and transits increased by 26,2% (from 470 in March 2025 to 593 in March 2026). For foreign travellers, arrivals increased by 8,4% (from 1 107 069 in March 2025 to 1 200 534 in March 2026), departures increased by 8,8% (from 986 507 in March 2025 to 1 073 128 in March 2026), and transits increased by 11,7% (from 36 470 in March 2025 to 40 730 in March 2026).

Mode of travel of travellers

In March 2026, road was the most common mode of travel used by 1 985 575 (65,4%) of the 3 037 756 travellers. The total number of air travellers was 998 792 (32,9%). Compared to air and road, a smaller number of travellers, 53 389 (1,8%), used sea into and out of South Africa. Information on arrivals of South African residents shows that 145 919 (41,8%) came by air, 186 969 (53,5%) came by road and 16 551 (4,7%) arrived by sea. For departures, 160 598 (43,0%) used air, 196 342 (52,6%) used road and 16 392 (4,4%) left by sea. All travellers in transit, 593 (100,0%) used air.

Visitors

In March 2026, 28 794 (2,4%) of foreign arrivals were classified as non-visitors, while 1 171 740 (97,6%) were classified as visitors. Visitors were categorised into three groups:

- i. Arrivals only – comprising visitors who entered the country in March 2026 but did not depart in March 2026 [458 936 (39,2%)].
- ii. Single trips – visitors who came to South Africa once in March 2026 and left in March 2026 [367 753 (31,4%)].

- iii. Multiple trips – visitors who came to and left South Africa more than once in March 2026 [345 051 (29,4%)].

Visitors were further grouped as same-day visitors and overnight visitors/tourists. In March 2026, there were 259 778 (22,2%) same-day visitors and 911 962 (77,8%) tourists. Between February 2026 and March 2026, the volume of same-day visitors increased by 10,3% (from 235 622 in February 2026 to 259 778 in March 2026), and that of tourists increased by 5,5% (from 864 534 in February 2026 to 911 962 in March 2026). Between March 2025 and March 2026, the volume of same-day visitors decreased by 2,9% (from 267 567 in March 2025 to 259 778 in March 2026), whereas that of tourists increased by 12,5% (from 810 442 in March 2025 to 911 962 in March 2026).

Tourists

Sex and age distribution of tourists

Sex

In March 2026, there were more male [535 948 (58,8%)] than female [376 014 (41,2%)] tourists. Male tourists constituted the majority of tourists for all three regions, SADC countries [409 390 (61,1%)], overseas countries [115 814 (51,8%)] and 'other' African countries [10 178 (60,5%)]. Similarly, the largest portion of female tourists was from SADC countries [261 108 (38,9%)], followed by overseas countries [107 827 (48,2%)] and 'other' African countries [6 649 (39,5%)].

Age

The age distribution indicates that out of all tourists, [4,1% (37 083)] were aged younger than 15; [8,4% (76 589)] were aged between 15 and 24; [24,1% (219 798)] were aged between 25 and 34; [28,8% (262 633)] were aged between 35 and 44; [18,8% (171 470)] were aged between 45 and 54; [9,5% (86 896)] were aged between 55 and 64; and [6,3% (57 493)] were aged 65 and older.

Purpose of visit of tourists

In March 2026, the distribution of overseas tourists was as follows: Europe, 152 188 (68,1%); North America, 37 728 (16,9%); Asia, 13 926 (6,2%); Australasia, 10 910 (4,9%); Central and South America, 7 767 (3,5%) and the Middle East, 1 122 (0,5%)

Mode of travel of tourists

In March 2026, 206 665 (92,4%) overseas tourists arrived in the country by air, whilst 13 779 (6,2%) came in by road and 3 197 (1,4%) arrived by sea. Tourists from the SADC countries, on the other hand, came predominantly by road, 613 601 (91,5%), 56 322 (8,4%) came by air and 575 (0,1%) came by sea. The number of tourists who came into South Africa by air from 'other' African countries was 14 721 (87,5%); while 2 093 (12,4%) used road transport and 13 (0,1%) arrived by sea. Most tourists who arrived by road came through Lebombo port (204 730) and Beit Bridge port (140 882). The majority of tourists who came by air entered through OR Tambo International Airport (164 405) and Cape Town International Airport (112 551). Tourists who arrived by sea came through Cape Town Harbour (3 096) and Durban Harbour (689).

Table L – Number of South African residents and foreign travellers by travel direction, March 2025

Travel direction	March	February	March	% Change	% Change
	2025	2026	2026	Feb 2026 – Mar 2026	Mar 2025 – Mar 2026
Total	2 838 966	2 689 619	3 037 756	12,9	7,0
South African residents	708 920	594 114	723 364	21,8	2,0
Arrivals	343 852	296 413	349 439	17,9	1,6
Departures	364 598	297 220	373 332	25,6	2,4
Transits	470	481	593	23,3	26,2
Foreign travellers	2 130 046	2 095 505	2 314 392	10,4	8,7
Arrivals	1 107 069	1 126 271	1 200 534	6,6	8,4
Departures	986 507	935 359	1 073 128	14,7	8,8
Transits	36 470	33 875	40 730	20,2	11,7

A full release on *International tourism* (statistical release P0350) is available on the Stats SA website: www.statssa.gov.za.

Statistics of civil cases for debt



To reduce the risk of civil summonses for debt being issued against them, many consumers have been proactively engaging with creditors to settle their debts on time and negotiate for payment plans. Evidence suggests that consumers have been settling their debts on time or having manageable repayment terms in place, as there were fewer civil summonses being issued. According to data published by Statistics South Africa (Stats SA) on 22 April 2026, the total number of civil summonses issued

for debt decreased by 2,5% in the three months ended February 2026 compared with the three months ended February 2025. Consumers should always engage creditors after receiving a formal warning for not paying debt on time or failure to pay in order to avoid legal action being taken against them for non-payment. Presented in this article is a summary of the results of *Statistics of civil cases for debt* (statistical release P0041) for February 2026.

The number of civil summonses issued for debt



The total number of civil summonses issued for debt decreased by 2,5% in the three months ended February 2026 compared with the three months ended February 2025 (see Table M).

The largest negative contributors to the 2,5% decrease in civil summonses issued were:

- services (contributing -3,4 percentage points); and
- money lent (contributing -1,8 percentage points).

'Other' debts (contributing 3,1 percentage points) was the largest positive contributor.

The number of civil judgements recorded for debt

The total number of civil judgements recorded for debt increased by 1,9% in the three months ended February 2026 compared with the three months ended February 2025.

The largest positive contributors to the 1,9% increase were civil judgements relating to:

- services (contributing 3,8 percentage points); and
- 'other' debts (contributing 1,4 percentage points).

The value of civil judgements recorded for debt

The total value of civil judgements recorded for debt increased by 4,9% in the three months ended February 2026 compared with the three months ended February 2025.

The largest positive contributors were:

- services (contributing 3,8 percentage points);
- money lent (contributing 3,3 percentage points); and
- 'other' debts (contributing 2,8 percentage points).

Rent (contributing -4,6 percentage points) was the largest negative contributor.

In February 2026, 9 256 civil judgements for debt amounting to R293,1 million were recorded. The largest contributors to the total value of judgements were:

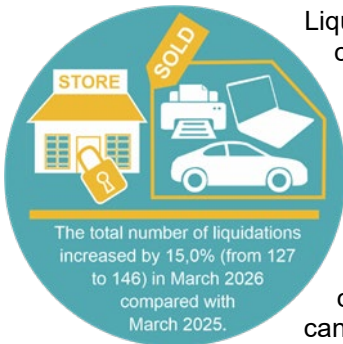
- 'other' debts (R74,6 million or 25,4%);
- money lent (R74,5 million or 25,4%);
- services (R62,8 million or 21,4%); and
- promissory notes (R40,4 million or 13,8%).

Table M – Key figures for February 2026

Actual estimates	Feb 2026	% change between Feb 2025 and Feb 2026	% change between Dec 2024 – Feb 2025 and Dec 2025 – Feb 2026
Number of civil summonses issued for debt	29 970	-5,4	-2,5
Number of civil judgements recorded for debt	9 256	2,4	1,9
Value of civil judgements recorded for debt (R million)	293,1	4,4	4,9

A full release on *Statistics of civil cases for debt* (Statistical release P0041) is available on the Stats SA website: www.statssa.gov.za.

Statistics of liquidations



Liquidation is a legal process in which a business closes down and sells its assets to repay creditors when it can no longer meet its financial obligations. During liquidation, company property such as buildings, equipment, and vehicles may be sold, and the money raised is used to pay debts owed to banks, suppliers, employees, and other creditors. Once the process is complete, the company usually ceases to exist. Liquidation can be voluntary, when owners decide to close the business, or compulsory, when creditors (those owed by

the business) apply to the court because the company cannot pay its debts. Results published by Statistics South Africa (Stats SA) show that the total number of liquidations increased by 15,0% (from 127 to 146) in March 2026 compared with March 2025. An increase in liquidations can have negative implications for the economy. When more businesses close, jobs are lost, reducing household income and consumer spending. This can weaken economic growth because people and businesses spend less money in the economy. Higher liquidations may also reduce investor confidence, as they may indicate financial instability as businesses become more cautious about expanding or hiring workers. In addition, suppliers and creditors may suffer financial losses when companies fail to pay outstanding debts, creating

pressure on other businesses. Presented in this article is a summary of the *Statistics of liquidations* (statistical release P0043.1) for March 2026.



The total number of liquidations increased by 15,0% (from 127 to 146) in March 2026 compared with March 2025 (see Table N).

Liquidations of close corporations increased by 14 cases, and liquidations of companies increased by five cases during this period.

The total number of liquidations increased by 1,1% (from 373 to 377) in the first quarter of 2026 compared with the first quarter of 2025.

Table N – Key growth rates in the number of liquidations for March 2026

Number of liquidations Mar 2026	% change between Mar 2025 and Mar 2026	% change between Jan – Mar 2025 and Jan – Mar 2026
146	15,0	1,1

A full release on *Statistics of liquidations* (statistical release P0043.1) is available on the Stats SA website: www.statssa.gov.za.

Land transport



While freight includes multiple networks such as air and sea, land transport remains the backbone of this network, connecting mines, farms, and factories to processing hubs, export terminals and wholesalers. It ensures that goods move efficiently between production areas and both domestic and international markets.

Freight transport in South Africa relies primarily on two modes: road and rail. Road transport is the most widely used, offering flexibility and accessibility for short- to medium-distance deliveries, particularly for manufactured and perishable goods. Rail transport is better suited for the long-distance movement of heavy, bulk commodities such as coal and iron ore. Three key industries dominate land freight in South Africa: mining, manufacturing, and agriculture. According to Statistics South Africa (Stats SA), primary mining and quarrying products accounted for the highest freight value, reaching R7 068 billion in February 2026. This was followed by manufactured food, beverages, and tobacco products at R2 017 billion, and agriculture and forestry primary products at R1 835 billion. Together, these sectors reflect the wide range of goods transported across the country and highlight the essential role of land transport in supporting economic activity. This article summarises the results of *Land transport* (statistical release P7162) for February 2026.

Freight transportation



The volume of goods transported (payload) decreased by 3,0% in February 2026 compared with February 2025 (see Table O).

The corresponding income increased by 1,1% over the same period.

Income from freight transportation increased by 3,0% in the three months ended February 2026 compared with the three months ended February 2025. The main positive contributors to this increase were:

- agriculture and forestry primary products (43,8%, contributing 3,0 percentage points); and
- parcels (26,2%, contributing 0,7 of a percentage point).

Table O – Year-on-year percentage change in freight transportation for February 2026

	Sep-25	Oct-25	Nov-25	Dec-25	Jan-26	Feb-26
Freight payload	3,8	3,0	-1,7	0,4	-2,9	-3,0
Freight income	6,4	6,6	3,4	5,0	3,1	1,1

A full release on *Land transport* (Statistical release P7162) is available on the Stats SA website: www.statssa.gov.za.

Passenger transportation

The number of passenger journeys increased by 3,9% in February 2026 compared with February 2025. The corresponding income increased by 7,4% over the same period.

Table P – Year-on-year percentage change in passenger transportation for February 2026

	Sep-25	Oct-25	Nov-25	Dec-25	Jan-26	Feb-26
Passenger payload	9,1	3,8	4,0	4,3	-2,4	3,9
Passenger income	8,1	15,6	17,5	12,0	4,4	7,4

A full release on *Land transport* (Statistical release P7162) is available on the Stats SA website: www.statssa.gov.za.



Prices

Producer price index (PPI)



South African producers are breathing a sigh of relief in this current era, described as the tariff-stricken era, after some agricultural products are due to have tariff-free access to China. As from 01 May 2026, China implemented a zero-tariff policy on imports from African countries. One of the South African agricultural products is Rooibos tea, a caffeine-free, health-focused beverage. The tariff-free status imposed on Rooibos tea came after its tariff reduction was introduced in 2024, when import duties were

decreased. The removal of tariffs on Rooibos will allow producers not to increase prices of imported goods, and will eventually increase the purchasing power for Chinese tea consumers. In February 2026, annual producer price inflation was 1,8%, the highest in seven months since July 2025 when it was 1,5%. This article summarises the results of the *Producer price index* (PPI) (statistical release P0142.1) for March 2026.



Annual producer price inflation (final manufacturing) was 2,3% in March 2026, compared with 1,8% in February 2026 (see Table Q).

The producer price index (PPI) increased by 1,1% month-on-month in March 2026.

The main positive contributors to the headline PPI annual inflation rate were food products, beverages and tobacco products (2,2%, contributing 0,7 of a percentage point) and furniture and other manufacturing (14,1%, contributing 0,6 of a percentage point).

Intermediate manufactured goods

The annual percentage change in the PPI for intermediate manufactured goods was 9,1% in March 2026, compared with 7,8% in February 2026. The index increased by 1,3% month-on-month.

The main positive contributors to the annual rate were basic and fabricated metals (21,9%, contributing 10,4 percentage points) and sawmilling and wood (8,8%, contributing 0,9 of a percentage point).

Electricity and water

The annual percentage change in the PPI for electricity and water was 17,9% in March 2026, compared with 15,4% in February 2026. The index decreased by 0,2% month-on-month.

The contributors to the annual rate were electricity (19,0%, contributing 15,6 percentage points) and water (11,6%, contributing 2,1 percentage points).

Mining

The annual percentage change in the PPI for mining was 33,0% in March 2026, compared with 30,3% in February 2026. The index increased by 3,5% month-on-month.

The positive contributors to the annual rate were:

- non-ferrous metal ores (57,7%, contributing 25,5 percentage points);
- gold and other metal ores (16,9%, contributing 4,8 percentage points);
and
- coal and gas (11,3%, contributing 2,4 percentage points).

The main positive contributors to the monthly rate were non-ferrous metal ores (3,2%, contributing 1,7 percentage points) and coal and gas (10,4%, contributing 1,7 percentage points).

Agriculture, forestry and fishing

The annual percentage change in the PPI for agriculture, forestry and fishing was -2,9% in March 2026, compared with -5,1% in February 2026. The index decreased by 0,2% month-on-month.

The negative contributor to the annual rate was agriculture (-5,0%, contributing -4,3 percentage points).

Table Q – Key PPI figures for March 2026

Product	Weight	Index (Dec 2023=100)			% change	
		Mar 2025	Feb 2026	Mar 2026	Mar 2026 vs. Feb 2026	Mar 2026 vs. Mar 2025
Final manufactured goods	100,00	102,2	103,4	104,5	1,1	2,3
Intermediate manufactured goods	100,00	110,2	118,7	120,2	1,3	9,1
Electricity and water	100,00	109,8	129,7	129,5	-0,2	17,9
Mining	100,00	104,7	134,6	139,3	3,5	33,0
Agriculture, forestry and fishing	100,00	98,6	95,9	95,7	-0,2	-2,9

A full release on the *Producer price index* (statistical release P0142.1) is available on the website: www.statssa.gov.za.

Consumer price index (CPI)



The consumer price index (CPI) is one of the most important indicators used in South Africa to measure inflation and changes in the cost of living. It tracks how the prices of goods and services purchased by households change over time. In 2025, Statistics South Africa (Stats SA) updated the CPI basket using information gathered from the 2022/23 Income and Expenditure Survey, which covered approximately 32 000 households across the country. As part of this update,

insurance and financial services were introduced as a separate top-level category with a weight of 10,4% in the CPI basket. Insurance services include expenses such as motor vehicle, household, and life insurance, as well as medical aid contributions. Financial services include monthly bank account charges, credit card fees, loan administration costs, and other banking-related transaction fees. The inclusion of this category provides a more accurate reflection of the overall cost of living, particularly for households that rely heavily on insurance and credit-related products. It also means that increases in insurance premiums and banking charges can contribute to higher inflation. In March 2026, insurance and financial services were among the main contributors to the annual inflation rate of 3,1% (recording 4,6%, contributing 0,5 of a percentage point). This article presents a summary of *the Consumer price index* (statistical release P0141) for March 2026.

Headline consumer price index (CPI) for all urban areas



Annual consumer price inflation was 3,1% in March 2026, up from 3,0% in February 2026. (see Table R).

The CPI increased by 0,6% month-on-month in March 2026.

The main contributors to the 3,1% annual inflation rate were:

- housing and utilities (5,1%, contributing 1,2 percentage points);
- food and non-alcoholic beverages (3,6%, contributing 0,6 of a percentage point); and
- insurance and financial services (4,6%, contributing 0,5 of a percentage point).

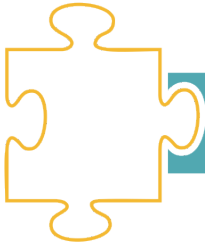
In March 2026, the annual inflation rate for:

- goods was 1,8%, down from 1,9% in February 2026; and
- services was 4,2%, up from 3,8% in February 2026.

Table R – Consumer price index: Index numbers and year-on-year rates

Year	Index /rate	Jan	Feb	Mar	Apr	May	Jun	Jul	Aug	Sep	Oct	Nov	Dec	Average ¹
2022	Index	86,3	86,8	87,7	88,2	88,8	89,8	91,1	91,3	91,4	91,7	92,0	92,3	89,8
	Rate	5,7	5,7	5,9	5,9	6,5	7,4	7,8	7,6	7,5	7,6	7,4	7,2	6,9
2023	Index	92,2	92,9	93,9	94,2	94,4	94,6	95,4	95,7	96,3	97,2	97,1	97,1	95,1
	Rate	6,9	7,0	7,1	6,8	6,3	5,4	4,7	4,8	5,4	5,9	5,5	5,1	6,0
2024	Index	97,2	98,1	98,9	99,1	99,3	99,4	99,8	99,9	100,0	99,9	99,9	100,0	99,3
	Rate	5,3	5,6	5,3	5,2	5,2	5,1	4,6	4,4	3,8	2,8	2,9	3,0	4,4
2025	Index	100,3	101,2	101,6	101,9	102,1	102,4	103,3	103,2	103,4	103,5	103,4	103,6	102,5
	Rate	3,2	3,2	2,7	2,8	2,8	3,0	3,5	3,3	3,4	3,6	3,5	3,6	3,2
2026	Index	103,8	104,2	104,8										
	Rate	3,5	3,0	3,1										

^{1/} Annual average. A full release on the *Consumer price index* (Statistical release P0141) is available on the Stats SA website: www.statssa.gov.za.



Glossary



Primary industries

Gigawatt-hour (gWh): one gigawatt-hour of electricity is equal to one million kilowatt-hours. A kilowatt-hour is the basic unit of electrical energy equal to one kilowatt of power supplied to or taken from an electric circuit steadily for one hour. One kilowatt-hour equals one thousand watt-hours.

Index of physical volume of manufacturing production: also known as a production index, is a statistical measure of the change in the volume of production. The production index of a major group is the ratio between the volume of production of a major group in a given period and the volume of production of the same major group in the base period.

Index of physical volume of mining production: a statistical measure of the change in the volume of production. The production index of a mineral group is the ratio between the volume of production of a mineral group in a given period and the volume of production of the same mineral group in the base period.

Index of the physical volume of electricity production: a statistical measure of the change in the volume of production of electricity in a given period and the volume of production of electricity in the base period.

Industry: a group of establishments engaged in the same or similar kinds of economic activity.

PGMs – Platinum group metals: include platinum; iridium; osmiridium, palladium; rhodium; ruthenium and osmium.

Sales: total value of sales and transfers-out of goods mined by the mining establishments and the amounts received for installation, erection or assembly or other services.



Additions and alterations: extensions to existing buildings as well as internal and external alterations of existing buildings.

Blocks of flats: a structure, usually multi-storey, consisting of a number of dwellings sharing the same residential address, and usually sharing a common entrance, foyer or staircase.

Dwelling houses: a free-standing, complete structure on a separate stand or a self-contained dwelling-unit, e.g. granny flat, on the same premises as the existing residence. Out-buildings and garages are included.

Other residential buildings: include institutions for the disabled, boarding houses, old age homes, hostels, hotels, motels, guest houses, holiday chalets, bed and breakfast accommodation, entertainment centres and casinos.

Residential buildings: dwelling houses, flats, townhouses and other residential buildings.



Tertiary industries

Acknowledgements of debt: a statement by a person/debtor in which he admits that he owes money to an individual or a company or a bank.

Acting household head: any member of the household acting on behalf of the head of the household.

Average income per stay unit night sold: average rate per stay unit (i.e. rate per room in a hotel or powered site in a caravan park) is calculated by dividing the total income from accommodation by the number of stay unit nights sold in the survey period.

Catering services: enterprises involved in the sale and supply of meals and drinks prepared on the premises on a contract basis and brought to other premises chosen by the person ordering them, to be served for immediate consumption to guests or customers. Include bars, taverns, other drinking places, ice-cream parlours, etc.

Civil judgements: decisions taken in a civil matter or a dispute between two people or parties.

Civil summonses: notices to appear before the court of law where a dispute between two parties or people has to be heard, i.e. not for criminal offence.

Day trip: a trip outside of the respondent's usual environment, where they leave and return within the same day (i.e. do not stay overnight).

Domestic tourism: a trip within the boundaries of South Africa but outside of the respondent's usual environment.

Note: The following categories are excluded from the definition of domestic visitor:

- persons travelling to another place within the country with the intention of setting up their usual residence in that place.
- Persons who travel to another place within the country and are remunerated from within the place visited.

- Persons who travel regularly or frequently between neighbouring localities as defined by the 'usual environment' rule.

Dwelling unit: structure or part of a structure or group structures occupied or meant to be occupied by one or more than one household.

Enterprise: a legal entity or a combination of legal units that includes and directly controls all functions necessary to carry out its sales activities.

Expenditure: the total consumption expenditure made by a visitor or on behalf of a visitor during his/her trip and stay at a destination.

Foreign traveller: a person who resides outside South Africa and visits the country temporarily.

Household: a group of persons who live together and provide themselves jointly with food and/or other essentials for living, or a single person who lives alone.

Household head: the main decision-maker, or the person who owns or rents the dwelling, or the person who is the main breadwinner.

Income from accommodation industry: income from amounts charged for rooms or equivalent. Other income is excluded (e.g. income from meals).

Income from bar sales: refers to income from liquor sales.

Income from food sales: refers to income from the sale of meals and non-alcoholic drinks.

Income from restaurant and bar sales: income from meals, banqueting and beverages and tobacco sales.

Insolvency: refers to an individual or partnership which is unable to pay its debt and is placed under final sequestration. The number of insolvencies does not refer to the number of persons involved, as a partnership which is unable to pay its debt is regarded as one insolvency, irrespective of the number of partners.

Liquidation: refers to the winding-up of the affairs of a company or close corporation when liabilities exceed assets and it can be resolved by voluntary action or by an order of the court.

Main purpose of trip: this is the purpose in the absence of which the trip would not have been made.

Microdata: data gathered on a small scale, such as data on an individual.

'Other' African countries: refers to all non SADC African countries.

Other income: includes all income not earned from food sales or bar sales.

Other SADC: refers to the thirteen countries, excluding South Africa, that belong to the Southern African Development Community.

Professional services: refer to medical doctors, dentists, advocates, attorney, auditors, accountants, architects, engineers, hospital services etc.

Promissory notes: written undertaking, signed by a person or party, to pay money to another person or to be the bearer of such a note on a specific date or on demand.

Restaurants and coffee shops: enterprises involved in the sale and provision of meals and drinks, ordered from a menu, prepared on the premises for immediate consumption and with provided seating.

Retailer: a retailer is an enterprise deriving more than 50% of its turnover from sales of goods to the general public for household use.

Retail trade: includes the resale (sale without transformation) of new and used goods and products to the general public for household use.

Stay unit: unit accommodation available to be charged out to guests, for example, a powered site in a caravan park or a room in a hotel.

Stay unit night sold: total number of stay units occupied on each night during the survey period.

Takeaway and fast-food outlets: enterprises involved in the sale and provision of meals and drinks, ordered from a menu, prepared on the premises for takeaway purposes in a packaged format, at a stand or in a location, with or without provided seating.

Total income: includes income from food sales, income from bar sales and other income.

Tourism: comprises the activities of persons travelling to, and staying in places outside their usual environment, for not more than one consecutive year, for leisure, business and other purposes not related to the exercise of an activity remunerated from within the place visited.

Tourist: a visitor who stays at least one night in the place visited.

Tourist accommodation: any facility that regularly (or occasionally) provides 'paid' or 'unpaid' overnight accommodation for tourists.

Traveller: any person on a trip between two or more countries or between two or more localities within his/her country of residence.

Voluntary liquidation: takes place when a company or close corporation, by own choice, resolves to wind-up its affairs.

Wholesale trade: includes the resale (sale without transformation) of new and used goods and products to other wholesalers, retailers, agricultural, industrial, commercial, institutional and professional users either directly or through agents on a fee or contract basis.



Annual percentage change: change in the index of the relevant month of the current year compared with the index of the same month in the previous year expressed as a percentage.

Consumer price index (CPI): an index that measures the price of a fixed basket of consumer goods and services.

Inflation rate: annual percentage change in the CPI for all items of the relevant month of the current year compared with the CPI for all items of the same month in the previous year expressed as a percentage.

Monthly percentage change: change in the index of the relevant month compared to the index of the previous month expressed as a percentage.

Year-on-year: a term used frequently in investment research and other reports to mean 'compared with the same period in the previous fiscal year'.

**Editorial & Layout**

Maune Lerobane
Wendy Ngoveni
Mandla Mahlangu
Ouma Hlongoane

Language Editors

Salomien Rudolph
Shalom Noxolo Piorkowski
Rinao Emmah Tshatsinde

Design & Layout

Thabo Kgaile

Printing & Distribution

Brian Seaba
Anneline Bezuidenhout
Millie Steenkamp
Enoch Baloyi
Piet Sibanyoni