

Headlines

Mining: winners and losers
of 2015
Page 1

Indicators

Consumer inflation rises
to 7,0%
Page 2

Infographics

Taking stock of abalone
Page 4

Christmas: Disrupting the normal Page 3

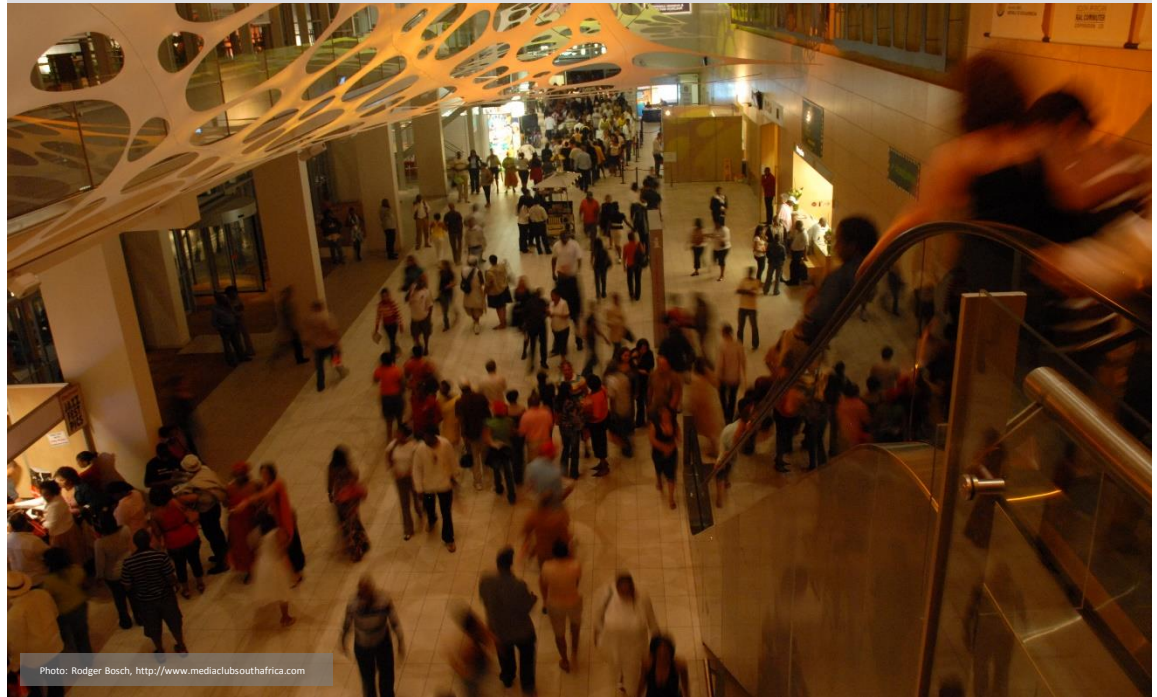


Photo: Rodger Bosch, <http://www.medioclubsouthafrica.com>

Economic headlines: March 2016

Ocean fish: measuring a valuable resource



Next time you dig into a delicious plate of fish and chips, take a moment to ponder the value of seafood as a resource. (Click [here](#) to read more.)

The economy: winners and losers of 2015



South Africa's economy grew by 1,3% in 2015, down from 1,5% in 2014. Agriculture was the main contributor to the slowdown. (Click [here](#) to read more.)

Mining: winners and losers of 2015



How did gold, coal, platinum and iron ore production do last year? (Click [here](#) to read more.)

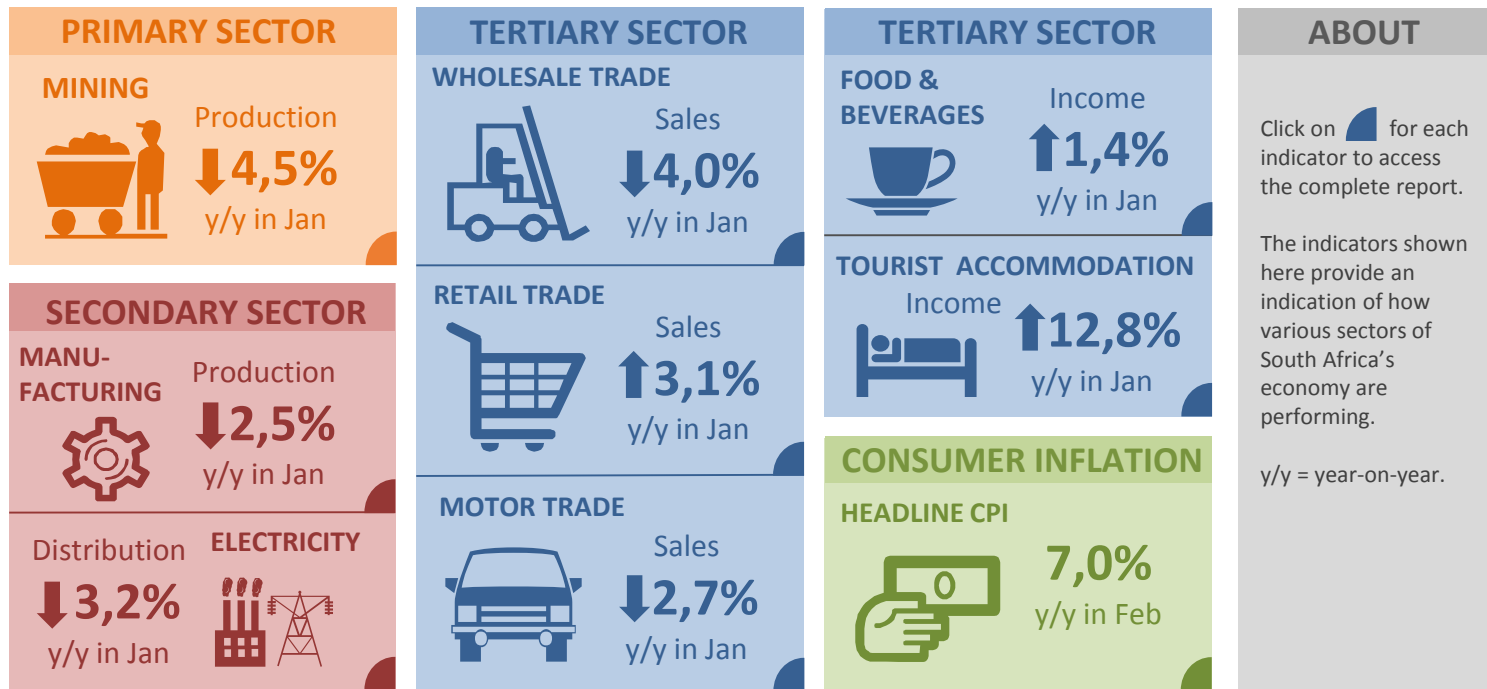
Community Survey 2016 kicks off



More than 11 000 fieldworkers have been deployed across the country to collect data from 1,3 million homes. (Click [here](#) to read more.)

Click [here](#) to browse more headlines.

Economic indicators: March 2016



The economics of Christmas: disrupting the normal

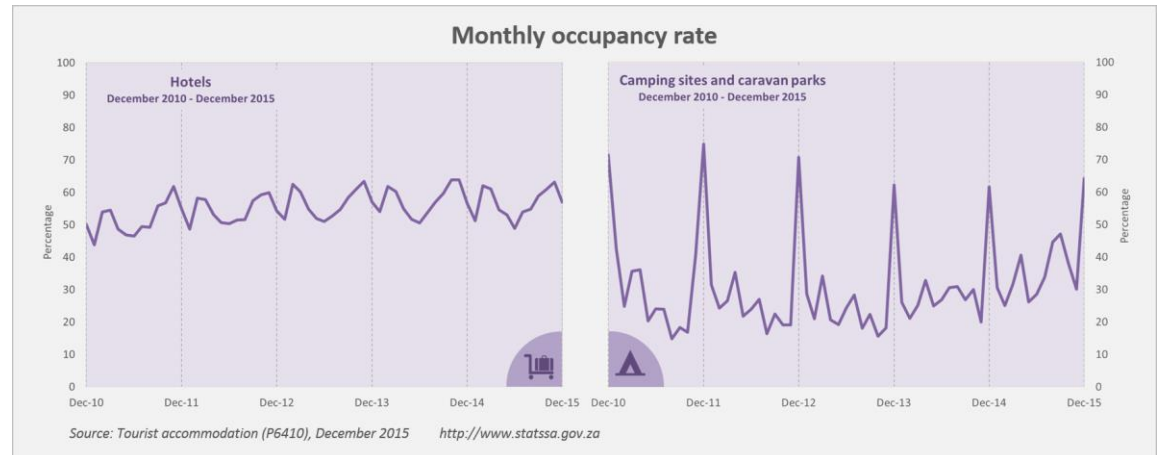
You are looking for a Christmas gift for Aunt Edna. As you browse the aisles, you think of how much you are looking forward to the trip down to the coast.

December is an unusual time for the country economically. Monthly statistics clearly show how your actions, together with the actions of thousands of other holidaymakers, disrupt the normal.

For example, it is a well-known fact that retail sales boom in December. But did you know that one type of retailer misses out on all the excitement? Hardware stores experience a fall in sales during December and January.

Another interesting fact is that hotels actually experience their lowest occupancy rates in December. At first glance, this might seem counterintuitive, until you consider that the main clientele of hotels throughout the year are corporate guests. Fewer business trips take place over the festive season. Camping and caravan sites, however, experience a hive of activity over the same period.

What other changes happen during the festive season? Click [here](#) to read more.

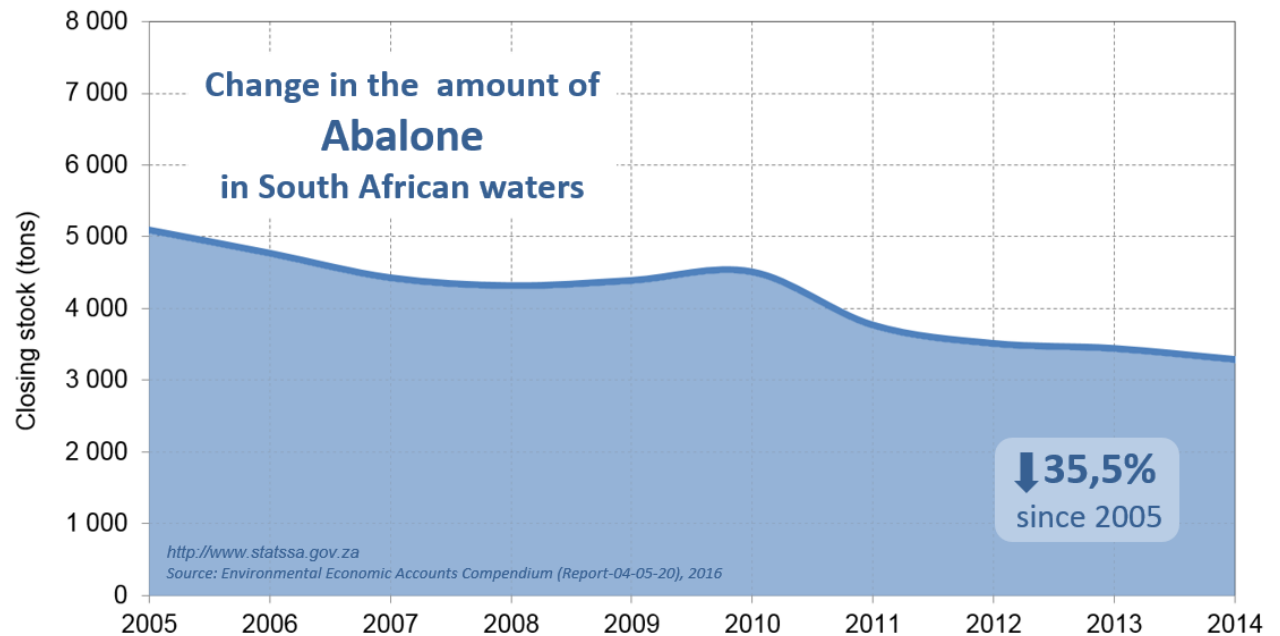


Infographic of the month

Abalone is a sea snail, known locally as 'perlemoen', meaning 'mother-of-pearl'. It has a high market value and is one of the most sought-after delicacies locally and abroad.

Abalone is heavily depleted, and data recently published in Stats SA's *Environmental Economic Accounts Compendium* show how the closing stock of the sea snail fell by 35,5% over a ten-year period, declining from an estimated 5 088 tons in 2005 to 3 282 tons in 2014. Total catches of abalone fell too, from 175 tons in 2005 to 55 tons in 2014, denoting a decline of 68,6%.

How are other marine species faring? Click [here](#) to find out.



Contact us

Head Office
De Bruyn Park Building
170 Thabo Sehume Street
Pretoria 0002

Private Bag X44
Pretoria 0001
South Africa

Main switchboard
Tel: +27(12) 310 8911
User Information Services
+27(12) 310 8600

Click [here](#) for contact details for provincial offices and subject experts.



Email: info@statssa.gov.za
Website: www.statssa.gov.za



Stats SA



@StatsSA

Statistics South Africa app:



Download on the
App Store

Read more editions of Stats Biz [here](#)



Statistics
South Africa

