

stats in brief

2011



Statistics
South Africa



your leading partner in quality statistics



Stats in brief, 2011

Pali Lehohla
Statistician-General

Statistics South Africa
2011

Stats in Brief, 2011 / Statistics South Africa

Published by Statistics South Africa
Private Bag X44
Pretoria
0001

ISBN: 978-0-621-40162-2

© Statistics South Africa, 2011

Users may apply or process this data, provided Statistics South Africa (Stats SA) is acknowledged as the original source of the data; that it is specified that the application and/or analysis is the result of the user's independent processing of the data; and that neither the basic data nor any reprocessed version or application thereof may be sold or offered for sale in any form whatsoever without prior permission from Stats SA.

A complete set of Stats SA publications is available at Stats SA Library and the following libraries:

National Library of South Africa, Pretoria Division
National Library of South Africa, Cape Town Division
Library of Parliament, Cape Town
Bloemfontein Public Library
Natal Society Library, Pietermaritzburg
Johannesburg Public Library
Eastern Cape Library Services, King William's Town
Central Regional Library, Polokwane
Central Reference Library, Nelspruit
Central Reference Collection, Kimberley
Central Reference Library, Mmabatho

This report is available on the Stats SA website: www.statssa.gov.za

Copies are obtainable from: Printing and Distribution, Statistics South Africa

Tel: (012) 310 8093
(012) 310 8619
(012) 310 8358
(012) 310 8161
Fax: (012) 321 7381
Email: inadp@statssa.gov.za
millies@statssa.gov.za

Stats in Brief presents data sourced from a range of Statistics South Africa's (Stats SA) publications produced throughout the year. No other external sources to Stats SA were used in the compilation of this edition.

The 2011 edition of this publication is based on information collected and published by Stats SA as at the end of August 2011. Data that had not been released prior to this date were, as a result, not updated.

Data on *Documented migration* is not updated as Stats SA is still sorting out the data acquisition processes with the Department of Home Affairs.

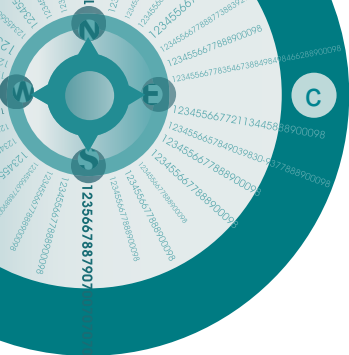
The feedback we receive from you as users of this publication is vital in ensuring that we continue to provide appropriate data that meet your expectations. We rely on you to ensure that we continue to provide you with relevant data that not only fulfil your needs, but is also presented in a concise and usable matter.

Abbreviations and symbols

LFS	=	Labour force survey
n/a	=	not applicable
n.e.c.	=	not elsewhere classified
RDP	=	Reconstruction and Development Programme
SA	=	South Africa(n)
..	=	Data not available
-	=	No response from respondents
0 or 0,0	=	Figure too small to publish
*	=	Revised
†	=	For all values of 10 000 or lower the sample size is too small for reliable estimates

Rounding

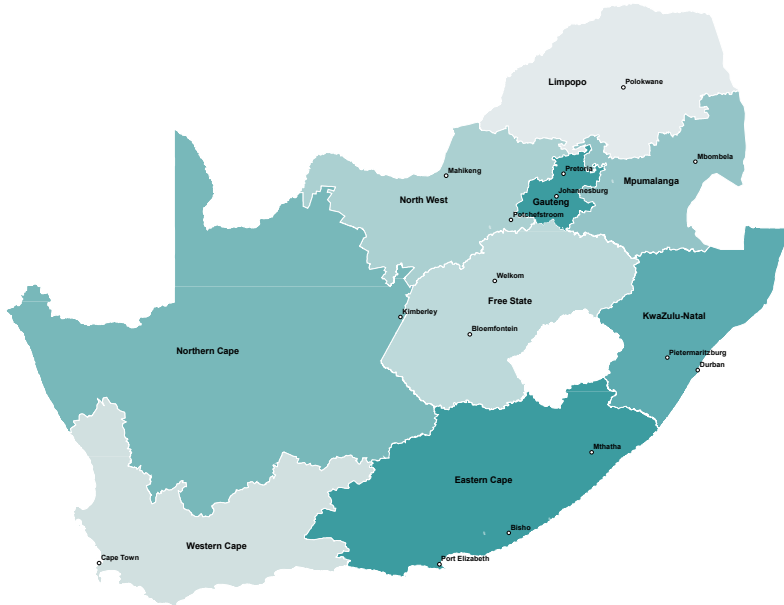
Figures are rounded off independent of one another. Details, therefore, may not add to totals because of rounding.



Contents

1.	Geography	1
2.	Demography	5
3.	Vital statistics	13
4.	Tourism	25
5.	Documented migration	33
6.	Labour statistics	39
7.	Prices	75
8.	Mining	83
9.	Manufacturing	87
10.	Construction	93
11.	Energy	97
12.	Transport	101
13.	Financial statistics: Private enterprises operating in the formal non-agriculture business sector	105
14.	Selected internal trade activities	119
15.	Social services and housing	125
16.	Debts	159
17.	National accounts	163
18.	Government finances	171

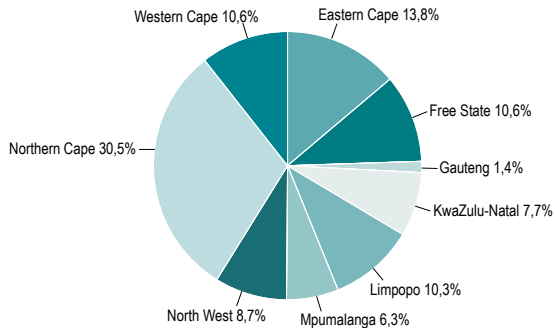
South Africa



1.1 Area of each province in square kilometres

Eastern Cape	Free State	Gauteng	KwaZulu-Natal	Limpopo	Mpumalanga	Northern Cape	North West	Western Cape	South Africa
168 966	129 825	16 548	94 361	125 755	76 495	372 889	106 512	129 462	1 220 813

1.2 Area by province in South Africa (percentages)



2.1 Mid-year population estimates of South Africa by population group, age group and gender, 2011 (thousands)

	Black African			Coloured			Indian or Asian			White			Total		
	Male	Female	Total	Male	Female	Total	Male	Female	Total	Male	Female	Total	Male	Female	Total
0-4	2 222	2 186	4 409	207	205	412	51	49	100	137	132	268	2 617	2 573	5 190
5-9	2 278	2 243	4 522	211	209	421	46	45	91	138	133	271	2 674	2 630	5 304
10-14	2 273	2 243	4 516	210	208	418	48	47	95	148	142	289	2 679	2 640	5 319
15-19	2 184	2 163	4 348	207	205	412	53	52	105	159	151	310	2 603	2 572	5 176
20-24	2 053	2 036	4 089	195	195	389	57	56	113	158	152	309	2 462	2 438	4 900
25-29	1 859	1 948	3 807	181	189	370	60	59	119	151	152	303	2 250	2 348	4 598
30-34	1 639	1 619	3 258	182	195	378	56	56	113	144	149	293	2 021	2 020	4 041
35-39	1 375	1 458	2 833	183	201	384	47	48	95	140	149	288	1 745	1 856	3 600
40-44	858	1 014	1 872	155	174	329	42	43	85	159	167	326	1 215	1 398	2 613
45-49	678	876	1 554	133	152	285	39	41	80	161	166	327	1 010	1 234	2 245
50-54	601	800	1 401	108	126	234	35	37	73	161	170	331	905	1 133	2 039
55-59	484	639	1 123	80	96	176	31	34	64	151	159	310	745	928	1 673
60-64	359	510	869	55	72	127	25	29	53	144	158	302	583	769	1 351
65-69	256	378	633	36	47	83	17	20	37	111	125	236	419	570	989
70-74	176	283	459	24	35	59	11	14	25	78	94	172	289	426	715
75-79	106	190	296	14	23	37	6	9	15	47	65	113	173	288	461
80+	70	148	218	9	17	26	4	8	12	42	76	118	125	249	374
Total	19 472	20 734	40 206	2 189	2 351	4 540	627	648	1 275	2 228	2 338	4 566	24 515	26 072	50 587

2.2 Provincial mid-year population estimates of South Africa by age group and gender, 2011 (thousands)

	Eastern Cape			Free State			Gauteng			KwaZulu-Natal			Limpopo		
	Male	Female	Total	Male	Female	Total	Male	Female	Total	Male	Female	Total	Male	Female	Total
0-4	359	355	714	131	130	261	519	506	1 025	613	608	1 221	325	320	645
5-9	388	385	774	130	130	260	541	516	1 057	617	612	1 229	311	308	619
10-14	381	374	755	147	145	292	505	487	992	611	602	1 212	331	335	666
15-19	417	407	824	143	142	285	451	441	892	599	597	1 196	341	343	684
20-24	367	368	735	139	136	276	477	462	940	548	548	1 096	296	301	598
25-29	291	311	602	126	130	257	528	522	1 050	481	518	999	235	265	499
30-34	217	233	450	107	111	218	594	525	1 119	400	423	823	175	208	383
35-39	171	206	377	92	104	196	552	501	1 053	335	376	710	132	182	314
40-44	119	163	282	70	82	152	380	367	747	215	273	488	90	132	222
45-49	103	153	256	59	72	131	304	311	615	176	244	420	75	121	196
50-54	101	156	257	53	65	118	266	281	548	154	220	374	67	107	174
55-59	88	130	218	45	55	100	208	223	431	130	178	308	58	93	151
60-64	71	109	179	35	45	79	155	175	330	107	157	265	48	77	125
65-69	54	84	139	24	32	57	107	127	233	75	114	189	35	57	92
70-74	45	79	124	15	22	37	65	80	145	51	86	136	27	49	77
75-79	29	53	83	9	16	25	36	50	86	29	56	85	17	39	56
80+	21	43	64	6	11	17	25	42	66	20	49	69	15	40	55
Total	3 222	3 608	6 830	1 332	1 428	2 760	5 713	5 615	11 328	5 160	5 659	10 819	2 578	2 976	5 555

Source: Stats SA, *Mid-year population estimates, 2011* (Statistical release P0302)

Provincial estimates are based on the latest available boundary information obtained from the Demarcation Board.

2.2 Provincial mid-year population estimates of South Africa by age group and gender, 2011 (thousands) (concl.)

	Mpumalanga			Northern Cape			North West			Western Cape			South Africa		
	Male	Female	Total	Male	Female	Total	Male	Female	Total	Male	Female	Total	Male	Female	Total
0-4	188	185	373	51	50	101	173	169	342	257	251	508	2 617	2 573	5 190
5-9	190	187	377	53	51	105	175	177	352	269	264	533	2 674	2 630	5 304
10-14	218	220	439	64	63	127	168	171	339	254	243	497	2 679	2 639	5 319
15-19	205	203	408	58	56	113	161	158	319	228	227	455	2 603	2 572	5 175
20-24	195	191	386	52	51	103	156	153	309	231	228	459	2 462	2 438	4 900
25-29	171	176	347	46	46	92	140	138	278	232	243	475	2 250	2 348	4 598
30-34	139	144	283	40	40	80	131	121	252	217	216	433	2 021	2 020	4 041
35-39	114	132	246	35	38	73	115	114	229	199	204	403	1 745	1 855	3 600
40-44	79	97	176	28	31	59	86	88	174	149	165	314	1 215	1 398	2 613
45-49	67	84	151	24	28	51	77	76	153	126	146	272	1 010	1 234	2 245
50-54	58	71	129	23	27	50	72	70	143	111	136	247	905	1 133	2 039
55-59	50	60	110	19	23	42	55	58	113	92	110	202	745	928	1 673
60-64	37	47	83	15	19	35	41	45	86	75	94	169	583	768	1 351
65-69	25	33	58	12	15	27	31	37	67	56	71	127	419	570	989
70-74	18	26	43	8	10	19	20	25	45	40	49	89	289	426	715
75-79	9	16	26	5	7	13	12	17	29	25	33	59	173	288	461
80+	8	15	23	4	6	9	9	15	23	18	29	47	125	249	374
Total	1 772	1 885	3 657	536	561	1 097	1 622	1 632	3 253	2 580	2 708	5 288	24 515	26 072	50 587

Source: Stats SA, *Mid-year population estimates, 2011* (Statistical release P0302)

Provincial estimates are based on the latest available boundary information obtained from the Demarcation Board.

2.3 Mid-year population estimates of South Africa by population group and gender, 2011 (thousands)

Population group	Male		Female		Total	
	Number	% of total population	Number	% of total population	Number	% of total population
African	19 472	79,4	20 734	79,5	40 206	79,5
Coloured	2 189	8,9	2 351	9,0	4 540	9,0
Indian or Asian	627	2,6	648	2,5	1 275	2,5
White	2 228	9,1	2 338	9,0	4 566	9,0
Total	24 515	100,0	26 072	100,0	50 587	100,0

2.4 Percentage distribution of the projected provincial share of the total South Africa population, 2001-2011

Province	2001	2002	2003	2004	2005	2006	2007	2008	2009	2010	2011
Eastern Cape	14,48	14,37	14,27	14,17	14,07	13,97	13,87	13,78	13,69	13,59	13,50
Free State	6,00	5,94	5,87	5,81	5,75	5,70	5,64	5,59	5,54	5,50	5,46
Gauteng	21,04	21,21	21,37	21,52	21,67	21,80	21,93	22,05	22,18	22,28	22,39
KwaZulu-Natal	21,26	21,27	21,28	21,30	21,31	21,33	21,34	21,35	21,36	21,38	21,39
Limpopo	11,08	11,05	11,03	11,02	11,00	10,99	10,99	10,98	10,98	10,98	10,98
Mpumalanga	7,47	7,44	7,42	7,39	7,37	7,34	7,32	7,30	7,27	7,25	7,23
Northern Cape	2,31	2,30	2,28	2,26	2,25	2,24	2,22	2,21	2,19	2,18	2,17
North West	6,62	6,60	6,57	6,55	6,53	6,51	6,49	6,48	6,46	6,44	6,43
Western Cape	9,74	9,82	9,91	9,98	10,05	10,12	10,20	10,26	10,33	10,40	10,45
Total	100,00	100,00	100,00	100,00	100,00	100,00	100,00	100,00	100,00	100,00	100,00

Source: Stats SA, *Mid-year population estimates, 2011* (Statistical release P0302)

Provincial estimates are based on the latest available boundary information obtained from the Demarcation Board.

2.5 Estimated annual population growth rates of South Africa, 2001-2011

		2001-2002	2002-2003	2003-2004	2004-2005	2005-2006	2006-2007	2007-2008	2008-2009	2009-2010	2010-2011
African	Male	1,66	1,64	1,61	1,58	1,55	1,53	1,50	1,47	1,44	1,42
	Female	1,41	1,38	1,36	1,33	1,30	1,27	1,24	1,21	1,18	1,15
	Total	1,53	1,50	1,48	1,45	1,42	1,39	1,36	1,34	1,31	1,28
Coloured	Male	1,48	1,43	1,38	1,33	1,28	1,23	1,18	1,13	1,08	1,03
	Female	1,47	1,42	1,38	1,33	1,29	1,24	1,20	1,15	1,11	1,06
	Total	1,47	1,43	1,38	1,33	1,28	1,23	1,19	1,14	1,09	1,04
Indian or Asian	Male	1,39	1,38	1,37	1,35	1,34	1,33	1,31	1,30	1,29	1,28
	Female	1,40	1,38	1,37	1,35	1,34	1,32	1,30	1,29	1,27	1,26
	Total	1,40	1,38	1,37	1,35	1,34	1,32	1,31	1,30	1,28	1,27
White	Male	-0,38	-0,40	-0,42	-0,44	-0,46	-0,47	-0,49	-0,51	-0,53	-0,55
	Female	-0,25	-0,27	-0,29	-0,30	-0,32	-0,34	-0,36	-0,37	-0,39	-0,41
	Total	-0,31	-0,33	-0,35	-0,37	-0,39	-0,40	-0,42	-0,44	-0,46	-0,48
Total	Male	1,42	1,40	1,37	1,35	1,32	1,30	1,27	1,25	1,22	1,20
	Female	1,25	1,22	1,19	1,17	1,14	1,11	1,09	1,06	1,03	1,00
	Total	1,33	1,30	1,28	1,25	1,23	1,20	1,18	1,15	1,12	1,10



Vital statistics

3.1	Recorded marriages by province, 1999-2009 (numbers)	15
3.2	Recorded divorces by province, 1999-2006 (numbers)	16
3.3	Number of minor children involved in recorded divorces by population group, 1999-2009	17
3.4	Registered live births occurrences by province, 2006-2010 (numbers)	18
3.5	Number of deaths by province and year of death, 1999-2008	19
3.6	Percentage distribution of registered deaths by age and year of death, 1999-2008	20
3.7	Percentage distribution of deaths by main group of underlying cause of death, 1999-2008	22
3.8	Leading underlying natural causes of death by year of death, 1999-2008	23

3.1 Recorded marriages by province, 1999-2009 (numbers)

Year	Eastern Cape	Free State	Gauteng	KwaZulu-Natal	Limpopo	Mpumalanga	Northern Cape	North West	Western Cape	Unspecified	Foreign	South Africa
1999	18 676	12 732	36 000	12 991	14 707	7 524	3 201	9 615	21 951	2 990	71	140 458
2000	13 180	11 591	37 036	20 327	10 373	8 316	3 356	10 359	23 524	5 205	124	143 391
2001	12 908	10 790	35 528	19 646	12 003	7 995	3 283	9 377	22 767	3 138	60	134 581
2002	19 278	13 359	45 400	24 272	14 970	10 139	3 790	13 483	26 852	5 214	245	177 002
2003	19 980	13 150	45 787	26 683	12 649	10 508	4 004	14 395	25 704	5 478	351	178 689
2004	22 401	13 323	44 279	26 513	11 377	9 796	4 500	13 500	26 712	3 716	404	176 521
2005	22 104	14 475	44 831	28 461	10 529	9 397	4 653	13 312	28 517	3 888	490	180 657
2006	22 775	13 466	49 995	30 239	10 131	9 556	4 641	13 758	29 612	3 217	470	184 860
2007	21 508	13 752	45 622	28 858	9 571	9 405	5 052	13 572	29 818	5 434	438	183 030
2008	21 164	13 593	46 226	29 361	10 581	9 713	4 843	13 916	30 523	5 643	959	186 522
2009	20 903	11 908	41 817	27 266	9 930	9 095	4 217	12 585	28 112	5 429	727	171 989

Source: Stats SA, *Marriages and divorces* (Report 03-07-01)
Marriages and divorces (Statistical release P0307)

Recorded marriages of all population groups are included. Certain types of marriages, for example, traditional and Muslim, were not officially recognised until 1999. These types of marriages are thus reflected in the figures from 2000 onwards.

3.2 Recorded divorces by province, 1999-2006 (numbers)

Year	Eastern Cape	Free State	Gauteng	KwaZulu-Natal	Limpopo	Mpumalanga	Northern Cape	North West	Western Cape	Unspecified	Foreign	South Africa
1999	3 317	1 929	14 005	4 741	1 027	1 132	843	1 574	7 143	1 580	15	37 098
2000	2 519	1 737	13 289	4 664	918	961	667	1 728	5 596	2 064	0	34 145
2001	2 733	1 661	12 545	4 796	1 035	1 221	611	1 815	5 840	2 787	13	32 257
2002	1 761	1 063	11 666	3 515	1 149	1 255	536	2 065	5 846	1 968	14	30 838
2003	2 555	1 808	10 885	4 090	1 031	1 108	622	1 840	5 549	2 065	13	31 566
2004	2 961	1 696	10 092	4 009	1 134	1 189	733	1 721	4 381	3 812	33	31 768
2005	1 928	1 662	12 302	3 960	996	1 170	520	1 874	5 381	2 639	52	32 484
2006	2 765	1 711	10 544	4 092	941	1 263	618	1 777	4 699	2 811	49	31 270

Source: Stats SA, *Marriages and divorces* (Report 03-07-01)

As of 2007 divorces were not published by provinces.

3.3 Number of minor children involved in recorded divorces by population group, 1999-2009

Year	Black African	Coloured	Indian or Asian	White	Mixed	Unspecified	Total
1999	9 134	5 946	2 805	15 579	353	11 513	45 330
2000	9 627	4 589	2 237	15 500	416	6 464	38 833
2001	9 640	5 377	1 951	14 854	420	5 561	37 803
2002	8 578	4 868	1 794	14 031	342	4 787	34 400
2003	8 882	5 069	1 702	11 986	435	5 350	33 424
2004	8 686	3 955	1 711	10 363	458	4 424	29 597
2005	9 609	4 308	1 699	10 278	432	6 068	32 394
2006	9 812	4 120	1 602	9 358	441	4 908	30 242
2007	9 346	4 350	1 644	8 489	560	4 091	28 480
2008	10 001	3 522	1 709	8 058	607	3 050	26 947
2009	10 404	4 736	1 415	8 163	2 047	1 530	28 295

Source: Stats SA, *Marriages and divorces* (Report 03-07-01)

Figures include minor children of all population groups as recorded in the law courts. The age of a minor child is defined as 0-16 years. All population groups are included.

3.4 Registered live birth occurrences by province 2006-2010 (numbers)

Province	2006	2007	2008	2009	2010
Eastern Cape	150 880	141 279	136 091	120 373	106 431
Free State	56 132	55 997	57 010	52 455	50 678
Gauteng	197 761	203 265	206 047	186 468	179 210
KwaZulu-Natal	242 350	230 098	229 207	207 617	184 471
Limpopo	126 835	125 196	119 176	112 295	109 128
Mpumalanga	77 721	79 035	90 322	84 233	70 011
Northern Cape	23 568	23 663	23 237	22 474	22 538
North West	72 980	67 588	72 882	78 561	69 706
Western Cape	107 634	107 208	109 476	104 030	96 883
Outside SA	4 424	4 886	4 015	2 145	534
Unspecified	136	195	118	120	101
South Africa	1 060 421	1 038 410	1 047 581	970 771	889 691

Source: Stats SA, *Recorded live births* (Statistical release P0305)

Data from 2006 to 2009 have been updated with data on late registrations as published in the 2007, 2008, 2009 and 2010 *Recorded live births* (Statistical release P0305). Birth occurrences refer to the number of births that occurred in a specific year and were registered at the Department of Home Affairs (DHA). The births pertain to the year in which they occur (year of birth). The birth occurrences are updated daily on the National Population Register due to late registrations of birth.

3.5 Number of deaths by province and year of death 1999-2008

Province	1999	2000	2001	2002	2003	2004	2005	2006	2007	2008
Eastern Cape	54 427	62 103	67 629	75 107	83 127	89 221	94 472	93 253	87 683	83 159
Free State	31 546	34 102	36 876	40 912	45 841	49 196	50 438	52 405	50 920	49 111
Gauteng	75 071	80 255	86 188	94 874	104 044	106 974	108 106	112 573	116 322	115 909
KwaZulu-Natal	86 220	96 098	106 097	117 808	130 783	133 264	139 812	141 551	139 018	134 907
Limpopo	29 164	31 384	35 028	38 771	44 847	46 756	48 903	54 138	53 032	53 319
Mpumalanga	25 817	28 279	31 595	35 257	41 258	42 801	45 591	48 102	48 256	47 651
Northern Cape	9 152	9 843	10 414	11 251	11 999	12 503	12 120	12 749	15 133	15 263
North West	32 312	35 434	39 730	44 227	49 971	51 224	52 590	52 664	45 335	45 390
Western Cape	37 959	38 497	41 036	43 556	44 560	44 224	45 555	44 719	46 806	46 728
Outside SA	151	160	287	286	349	545	544	624	589	636
Unspecified	1	0	2	1	0	1	0	0	0	0
South Africa	381 820	416 155	454 882	502 050	556 779	576 709	598 131	612 778	603 094	592 073

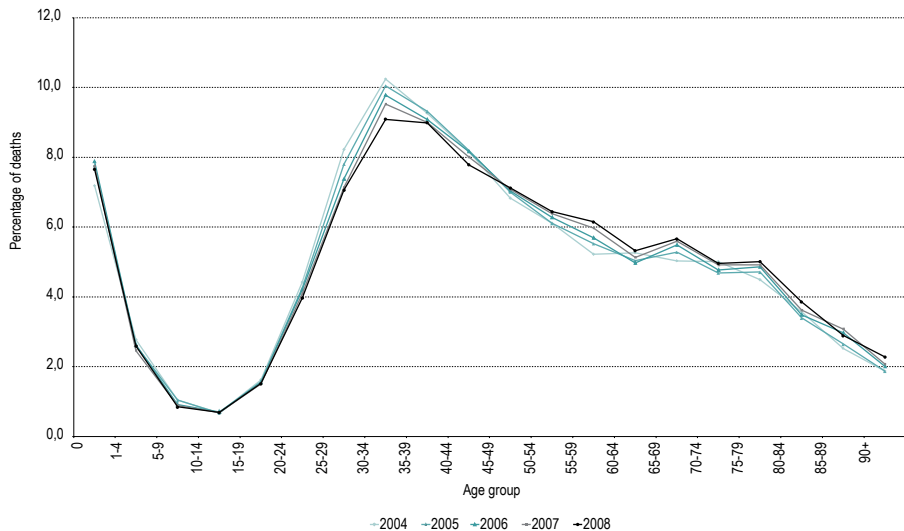
Source: Stats SA, *Mortality and causes of death in South Africa, 1999-2008: Findings from death notification* (Statistical releases P0309.3)

The completeness of the death register varies by year and province of death. Deaths are reported for the province in which the death took place, not for the usual province of residence.

3.6 Percentage distribution of registered deaths by age and year of death, 1999-2008

Age	1999	2000	2001	2002	2003	2004	2005	2006	2007	2008
0	7,5	6,9	6,6	6,8	6,9	7,2	7,8	7,9	7,7	7,7
1-4	2,6	2,5	2,5	2,4	2,4	2,8	2,6	2,6	2,5	2,6
5-9	0,9	0,9	0,8	0,9	0,9	1,0	1,0	0,9	0,9	0,8
10-14	0,8	0,7	0,7	0,7	0,7	0,7	0,7	0,7	0,7	0,7
15-19	2,0	1,9	1,9	1,8	1,7	1,6	1,6	1,5	1,5	1,5
20-24	4,5	4,5	4,4	4,4	4,4	4,4	4,2	4,2	4,1	4,0
25-29	7,0	7,4	8,0	8,4	8,3	8,2	7,8	7,4	7,1	7,1
30-34	7,5	8,3	8,7	9,5	10,0	10,2	10,0	9,8	9,5	9,1
35-39	7,2	7,7	8,1	8,7	8,8	9,3	9,3	9,1	9,0	9,0
40-44	6,3	6,8	7,1	7,4	7,8	8,2	8,2	8,2	8,0	7,8
45-49	6,2	6,2	6,3	6,4	6,6	6,8	7,0	7,0	7,1	7,1
50-54	5,7	5,9	6,0	6,0	6,0	6,1	6,1	6,3	6,4	6,4
55-59	6,0	5,5	5,2	5,1	5,1	5,2	5,5	5,7	6,0	6,1
60-64	6,0	6,1	6,0	5,8	5,5	5,3	5,0	5,0	5,1	5,3
65-69	6,6	5,9	5,7	5,4	5,1	5,0	5,3	5,5	5,6	5,7
70-74	6,6	6,6	6,4	5,8	5,5	5,0	4,7	4,8	4,9	5,0
75-79	5,9	5,3	5,0	4,8	4,7	4,5	4,7	4,9	4,9	5,0
80-84	5,0	5,1	5,1	4,7	4,2	3,6	3,4	3,5	3,6	3,9
85-89	3,3	3,1	2,9	2,5	2,8	2,5	2,6	3,0	3,1	2,9
90+	2,0	2,2	2,2	2,2	2,1	1,9	1,9	2,0	2,1	2,3
Unspecified	0,7	0,5	0,4	0,4	0,5	0,5	0,5	0,2	0,2	0,2
%Total	100,0	100,0	100,0	100,0	100,0	100,0	100,0	100,0	100,0	100,0
Total	381 820	416 155	454 882	502 050	556 779	576 709	598 131	612 778	603 094	592 073

3.6 Percentage distribution of registered deaths by age and year of death, 2004-2008



Source: Stats SA, *Mortality and causes of death in South Africa, 2004-2008: Findings from death notification* (Statistical releases P0309.3)

Percentages refer to number of deaths in each age group expressed in terms of the total number of deaths for that year.

3.7 Percentage distribution of deaths by main group of underlying cause of death, 1999-2008

Main groups of causes of death (CD-10)	1999	2000	2001	2002	2003	2004	2005	2006	2007	2008
	%	%	%	%	%	%	%	%	%	%
Certain infectious and parasitic diseases (A00-B99)	16,9	18,9	19,9	21,6	22,3	23,4	23,8	26,0	25,4	26,4
Neoplasms (C00-D48)	8,0	7,4	6,9	6,4	6,0	5,9	5,8	5,6	5,8	5,9
Diseases of the blood and immune mechanism (D50-D89)	2,8	3,2	3,2	3,2	3,3	3,4	3,3	3,2	3,2	3,1
Endocrine, nutritional and metabolic diseases (E00-E90)	4,7	4,7	4,6	4,5	4,4	4,3	4,5	4,7	4,9	4,9
Mental and behavioural disorders (F00-F99)	0,4	0,4	0,4	0,4	0,3	0,3	0,3	0,3	0,3	0,3
Diseases of the nervous system (G00-G99)	2,1	2,3	2,3	2,3	2,5	2,6	2,7	2,7	2,7	2,7
Diseases of the eye and adnexa (H00-H59)	0,0	0,0	0,0	0,0	0,0	0,0	0,0	0,0	0,0	0,0
Diseases of the ear and mastoid process (H60-H95)	0,0	0,0	0,0	0,0	0,0	0,0	0,0	0,0	0,0	0,0
Diseases of the circulatory system (I00-I99)	17,3	16,9	16,1	15,3	14,8	13,9	13,3	13,6	13,7	13,9
Diseases of the respiratory system (J00-J99)	10,2	10,9	12,3	12,6	13,5	13,4	13,2	14,2	13,8	13,1
Diseases of the digestive system (K00-K93)	2,8	2,8	2,9	2,8	2,7	2,9	2,7	2,7	2,7	2,6
Diseases of the skin and subcutaneous tissue (L00-L99)	0,3	0,3	0,3	0,3	0,3	0,3	0,2	0,2	0,2	0,2
Diseases of the musculoskeletal system, etc. (M00-M99)	0,4	0,4	0,4	0,4	0,3	0,4	0,4	0,3	0,3	0,3
Diseases of the genitourinary system (N00-N99)	1,3	1,4	1,4	1,3	1,4	1,3	1,4	1,4	1,4	1,4
Pregnancy, childbirth and puerperium (O00-O99)	0,2	0,2	0,2	0,2	0,2	0,2	0,2	0,2	0,3	0,3
Perinatal conditions (P00-P96) ¹	6,1	5,5	5,2	5,6	5,6	5,8	6,4	2,1	2,1	2,0
Congenital malformations (Q00-Q99)	0,4	0,4	0,4	0,3	0,3	0,3	0,3	0,3	0,3	0,3
Symptoms and signs not elsewhere classified (R00-R99)	12,2	12,4	12,6	12,6	12,6	12,3	12,4	13,6	13,9	13,6
External causes of morbidity and mortality (V01-Y98)	14,0	12,0	11,1	10,2	9,5	9,3	9,0	8,7	9,0	8,9
% Total	100,0	100,0	100,0	100,0	100,0	100,0	100,0	100,0	100,0	100,0
Total	381 820	416 155	454 882	502 050	556 779	576 709	598 131	612 778	603 094	592 073

Source: Stats SA, *Mortality and causes of death in South Africa, 1999-2008: Findings from death notification* (Statistical release P0309.3)

¹ Owing to changes in the coding of causes of deaths for infants (age 0), percentages of deaths due to this particular disease for 2006-2008 are not comparable with those for 2005 and below.

3.8 Leading underlying natural causes of death by year of death, 1999-2008

Causes of death (Based on the Tenth Revision, International Classification of Disease, 1992)	1999	2000	2001	2002	2003	2004	2005	2006	2007	2008
	%	%	%	%	%	%	%	%	%	%
Tuberculosis (A15-A19)	9,0	10,2	11,3	12,1	12,2	12,3	12,5	12,7	12,8	12,6
Other forms of heart disease (I30-I52)	5,3	5,2	5,0	4,5	4,3	4,2	4,0	4,4	4,3	4,4
Cerebrovascular diseases (I60-I69)	5,2	5,3	5,0	5,0	4,9	4,4	4,1	4,1	4,2	4,1
Influenza and pneumonia (J10-J18)	5,0	5,9	7,0	7,6	8,2	8,0	7,7	8,7	8,3	7,7
Chronic lower respiratory diseases (J40-J47)	3,3	3,2	3,3	3,0	2,9	2,7	2,7	2,6	2,5	2,4
Diabetes mellitus (E10-E14)	3,3	3,3	3,2	3,1	3,0	3,0	3,1	3,2	3,3	3,3
Ischaemic heart diseases (I20-I25)	3,0	2,8	2,6	2,5	2,4	2,2	2,2	2,1	2,1	2,0
Intestinal infectious diseases (A00-A09)	2,9	3,4	3,6	4,0	4,4	4,7	4,8	6,5	6,2	6,6
Human immunodeficiency virus [HIV] disease (B20-B24)	2,6	2,5	2,0	2,1	2,1	2,3	2,5	2,4	2,2	2,5
Hypertensive diseases (I10-I15)	2,5	2,5	2,4	2,2	2,1	2,1	2,0	2,1	2,2	2,4
Certain disorders involving the immune mechanism (D80-D89)	2,3	2,6	2,6	2,5	2,7	2,8	2,7	2,6	2,5	2,5
Respiratory and cardiovascular disorders specific to the perinatal period (P20-P29) ¹	2,1	2,1	2,1	2,2	2,3	2,3	2,6	1,1	1,0	1,0
Other natural causes	39,5	39,0	39,0	38,9	38,9	39,7	40,1	38,8	39,2	39,3
Non-natural causes	14,0	12,0	11,1	10,2	9,5	9,3	9,0	8,7	9,0	8,9
% Total	100,0	100,0	100,0	100,0	100,0	100,0	100,0	100,0	100,0	100,0
Total	381 820	416 155	454 882	502 050	556 779	576 709	598 131	612 778	603 094	592 073

Source: Stats SA, *Mortality and causes of death in South Africa, 1999-2005 and 2006-2008: Findings from death notification* (Statistical release P0309.3)

¹ Percentages of deaths due to perinatal conditions (P00-P96) are not comparable between 1999-2005 and 2006-2008. This is so because coding of causes of death for infants (age 0) changed during the processing of 2006 data as per the ICD-10 rules by WHO.

4.1 Arrivals and departures of foreign travellers and SA residents, 2003-2010 (thousands)

Year	Arrivals ¹			Departures ¹		
	Foreign travellers ²	SA residents ³	Total	Foreign travellers ²	SA residents ³	Total
2003 ⁴	6 640	1 254	7 894	5 955	1 164	7 119
2004	6 815	434	6 815	6 093	419	6 093
2005	7 518	2 112	7 518	6 728	2 192	6 728
2006	8 508	4 317	12 825	7 501	4 338	11 839
2007	9 208	4 449	13 657	8 023	4 433	12 456
2008	9 728	4 418	14 146	8 474	4 429	12 903
2009	10 098	4 487	14 585	8 680	4 423	13 103
2010	11 574	5 125	16 699	9 908	5 164	15 073

Source: Stats SA, *Tourism 2002-2010* (Report 03-51-02) and *Tourism and migration* (Statistical release P0351)

¹ All people entering or leaving South Africa through legal ports of entry.

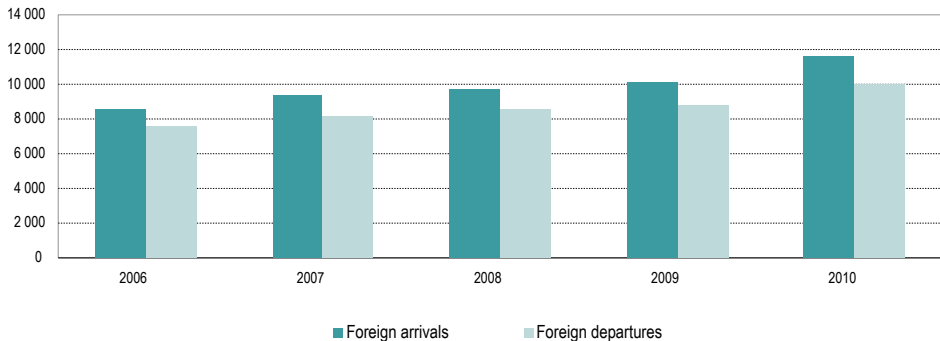
² Persons residing outside South Africa, who visit this country temporarily for business, holiday and/or study purposes, as well as for work (more than 90 days).

³ South African citizens and persons with permanent residence in South Africa, who leave the country temporarily.

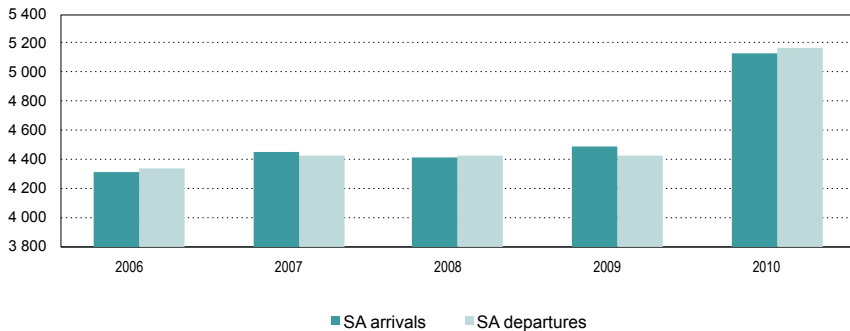
⁴ As from April 2003, statistics have not been collected on arrivals or departures of South African residents in terms of the Immigration Act, 2002 (Act No. 13 of 2002).

About two-thirds of the people coming into the country are foreign travellers and about one-third are South African residents.

4.2 Arrivals and departures of foreign travellers, 2006-2010 (thousands)



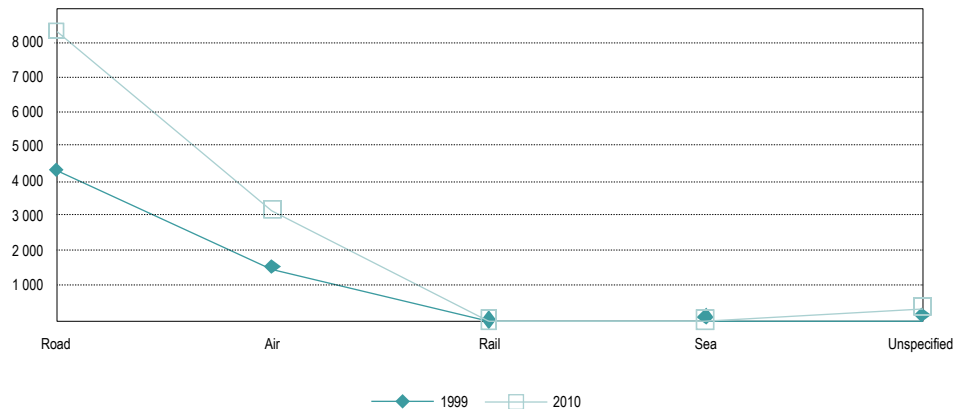
4.3 Arrivals and departures of South African residents, 2006-2010 (thousands)



Source: Stats SA, *Tourism 2006-2010* (Report 03-51-02) and *Tourism and migration* (Statistical release P0351)

Between April 2003 and January 2005, statistics on South African residents were no longer collected due to the new Immigration Act, 2002 (Act No. 13 of 2002).

4.4 Arrivals of foreign travellers by mode of travel, 1999 against 2010 (thousands)



Source: Stats SA, *Tourism 1999-2010* (Report 03-51-02) and *Tourism and migration* (Statistical release P0351)

Foreign visitors entering the country using road and rail transport do so through the South African borders with neighbouring countries - Lesotho, Namibia, Botswana, Zimbabwe, Mozambique and Swaziland. Ports of entry for air travel are mainly through the international airports at Cape Town, Durban and Johannesburg. Ports of entry for sea travel are mainly Cape Town, Durban, East London and Port Elizabeth.

4.5 Purpose of visit stated by foreign travellers, 2002-2010 (thousands)

Purpose of visit	2002	2003	2004	2005	2006	2007	2008	2009	2010
Holiday	5 596	5 853	6 091	6 811	7 858	8 572	9 081	9 484	10 671
Business	446	283	224	201	196	197	185	115	341
Transit	133	85	63	55	51	35	31	28	196
Border traffic	157	156	168	164	157	174	184	201	872
Work	58	72	83	94	104	117	137	164	178
Contract work	62	63	54	54	8	0
Study	94	123	137	133	127	112	109	106	93
Unspecified	4	5	5	2	3	0	244	0	53
Total	6 550	6 640	6 815	7 518	8 508	9 208	9 728	10 098	11 574



Documented migration

- | | | |
|-----|---|----|
| 5.1 | Documented immigrants and self-declared emigrants by region of previous permanent residence or destination, 2001-2005 (numbers) | 35 |
| 5.2 | Documented immigrants and self-declared emigrants by occupation group, 2001-2005 (numbers) | 36 |

5.1 Documented immigrants and self-declared emigrants by region of previous permanent residence or destination, 2001-2005 (numbers)

	Europe	Austra- lasia	Middle East	Asia	North America	Central and South America	Africa	Indian Ocean Islands	Unspeci- fied	Total
Documented immigrants										
2001	1 714	51	109	1 289	172	41	1 419	31	6	4 832
2002	1 847	65	103	1 738	184	60	2 472	61	15	6 545
2003	2 567	99	190	2 328	272	82	4 961	58	21	10 578
2004	2,638	85	149	2,225	269	74	5,235	26	13	10,714
2005 ¹	1,059	41	100	1,784	96	47	2,493	26	4	5,650
Self-declared emigrants										
2001	5 316	2 912	280	226	1 659	54	1 584	126	103	12 260
2002	4 637	2 523	323	218	1 430	43	1 461	144	111	10 890
2003	6 827	3 248	580	445	1 998	92	2 611	196	168	16 165
2004 ²	353	117	6	9	89	1	42	15	10	642

Sources: Stats SA, *Documented migration* (Report 03-51-03) and *Tourism and migration* (Statistical release P0351)

¹ Statistics of documented immigrants for 2005 are from January to June, those for July to December are unavailable.

² As from February 2004, statistics on self-declared emigrants were no longer collected due to the Immigration Act, 2002 (Act No. 13 of 2002).

Emigration in this context refers to South Africans leaving the country permanently. These figures are obtained from South Africa's three international airports, Johannesburg, Cape Town and Durban. The immigration figures are obtained from all legal ports of entry into South Africa. The four most frequent destinations for self-declared emigrants are Europe, North America, Australasia and Africa.

5.2a Documented immigrants by occupation group, 2001-2005 (numbers)

	2001	2002	2003	2004 ¹	2005 ²
Documented immigrants					
Professional	524	576	499	436	159
Managerial and administrative	258	382	416	484	229
Clerical and sales occupations	62	26	15	13	149
Transport and communications occupations	3	5	25	5	2
Service occupations	16	21	7	19	12
Farming and related occupations	-	2	15	2	-
Artisan and related occupations	11	14	10	13	5
Production and related workers	10	9	-	3	19
Occupation unspecified and n.e.c.	69	19	39	83	25
Not economically active	3 879	5 491	9 567	9 368	5050
Total	4 832	6 545	10 578	10 714	5650

Sources: Stats SA, *Documented migration* (Report 03-51-03) and *Tourism and migration* (Statistical release P0351)

¹ As from February 2004, statistics on self-declared emigrants were no longer collected due to the Immigration Act, 2002 (Act No. 13 of 2002).

² Statistics of documented immigrants for 2005 are from January to June, those for July to December are unavailable.

5.2b Self-declared emigrants by occupation group, 2001-2005 (numbers)

	2001	2002	2003	2004 ¹
Self-declared emigrants				
Professional	2 929	2 689	4 316	174
Managerial and administrative	954	1 146	1 729	59
Clerical and sales occupations	1 279	1 119	1 895	80
Transport and communications occupations	53	54	142	5
Service occupations	208	129	272	11
Farming and related occupations	33	25	34	1
Artisan and related occupations	304	253	366	13
Production and related workers	79	39	73	1
Occupation unspecified and n.e.c.	1 752	1 880	1 713	64
Not economically active	4 669	3 556	5 625	234
Total	12 260	10 890	16 165	642

Sources: Stats SA, *Documented migration* (Report 03-51-03) and *Tourism and migration* (Statistical release P0351)

¹As from February 2004, statistics on self-declared emigrants were no longer collected due to the Immigration Act, 2002 (Act No. 13 of 2002).



Labour statistics

6.1	Population of working age (15-64 years) by gender and labour market status according to the official definition of unemployment, 2001-2010 (thousands)	41
6.2	Population of working age (15-64 years) by population group and labour market status according to the official definition of unemployment, 2004-2010 (thousands)	44
6.3	The employed (15-64 years) by main occupation and province, 2004-2010 (thousands)	49
6.4	The employed (15-64 years) by main industry and province, 2004-2010 (thousands)	60
6.5	Number of employees and gross earnings by industry	71
6.6	Average monthly earnings, at current prices, by industry	74

Statistics South Africa has updated the entire series of LFS results to reflect the new population estimates released in February 2005. In addition, all rounds of the series have now been benchmarked to Census 2001, including the early rounds that were previously benchmarked to Census '96. The resulting estimates are now comparable for the entire series to date.

6.1 Population of working age (15-64 years) by gender and labour market status according to the official definition of unemployment, 2004-2010 (thousands)

Gender	Total	Not economically active	Economically active			Unemployment rate %
			Sub-total	Workers	Unemployed	
Male						
Mar '04	13 636	5 043	8 593	6 652	1 942	22,6
Sep '04	13 762	5 120	8 643	6 924	1 719	19,9
Mar '05	13 886	5 028	8 858	7 047	1 811	20,4
Sep '05	14 008	4 938	9 070	7 287	1 783	19,7
Mar '06	14 125	4 994	9 130	7 357	1 773	19,4
Sep '06	14 240	4 984	9 256	7 609	1 647	17,8
Mar '07	14 352	5 109	9 243	7 457	1 786	19,3
Sep '07	14 462	5 181	9 281	7 588	1 693	18,2
Mar '08	14 813	4 995	9 819	7 807	2 011	20,5
Jun '08	14 885	5 059	9 825	- 7 886	1 939	19,7
Sep '08	14 958	5 140	9 818	7 813	2 005	20,4
Dec '08	15 031	5 234	9 796	7 959	1 837	18,8
Mar '09	15 104	5 230	9 874	7 799	2 075	21,0
Jun '09	15 178	5 439	9 739	7 638	2 101	21,6
Sep '09	15 251	5 745	9 506	7 352	2 155	22,7
Dec '09	15 322	5 684	9 638	7 458	2 180	22,6
Mar '10	15 396	5 801	9 595	7 367	2 228	23,2
Jun '10	15 465	5 856	9 609	7 385	2 224	23,1
Sep '10	15 536	5 949	9 587	7 373	2 214	23,1
Dec '10	15 604	6 097	9 507	7 434	2 073	21,8
Mar '11	15 672	6 115	9 556	7 430	2 126	22,2
Jun '11	15 740	6 106	9 634	7 397	2 237	23,2

6.1 Population of working age (15-64 years) by gender and labour market status according to the official definition of unemployment, 2004-2010 (thousands) (cont.)

Gender	Total	Not economically active	Economically active			
			Sub- total	Workers	Unem- ployed	Unem- ployment rate %
Female						
Mar '04	15 197	7 737	7 460	5 171	2 289	30,7
Sep '04	15 318	8 037	7 281	5 341	1 940	26,6
Mar '05	15 434	7 795	7 639	5 456	2 183	28,6
Sep '05	15 548	7 583	7 965	5 748	2 218	27,8
Mar '06	15 654	7 564	8 090	5 880	2 211	27,3
Sep '06	15 759	7 554	8 204	5 992	2 212	27,0
Mar '07	15 856	7 655	8 201	5 868	2 333	28,4
Sep '07	15 952	8 001	7 951	6 020	1 931	24,3
Mar '08	15 958	7 807	8 151	5 943	2 208	27,1
Jun '08	16 015	7 826	8 189	5 993	2 196	26,8
Sep '08	16 074	7 927	8 147	5 998	2 149	26,4
Dec '08	16 133	7 994	8 139	6 068	2 071	25,4
Mar '09	16 192	8 001	8 192	6 044	2 148	26,2
Jun '09	16 252	8 226	8 026	5 957	2 068	25,8
Sep '09	16 311	8 443	7 867	5 782	2 086	26,5
Dec '09	16 367	8 529	7 839	5 792	2 046	26,1
Mar '10	16 422	8 545	7 877	5 710	2 167	27,5
Jun '10	16 481	8 628	7 853	5 675	2 177	27,7
Sep '10	16 537	8 752	7 784	5 601	2 183	28,0
Dec '10	16 589	8 827	7 762	5 698	2 064	26,6
Mar '11	16 642	8 716	7 926	5 688	2 237	28,2
Jun '11	16 695	8 666	8 029	5 717	2 312	28,8

6.1 Population of working age (15-64 years) by gender and labour market status according to the official definition of unemployment, 2004-2010 (thousands) (concl.)

Gender	Total	Not economically active	Economically active			Unemployment rate %
			Sub-total	Workers	Unemployed	
Total						
Mar '04	28 833	12 780	16 054	11 823	4 231	26,4
Sep '04	29 080	13 156	15 924	12 265	3 659	23,0
Mar '05	29 319	12 823	16 497	12 503	3 993	24,2
Sep '05	29 556	12 521	17 035	13 034	4 001	23,5
Mar '06	29 779	12 558	17 221	13 237	3 984	23,1
Sep '06	29 999	12 539	17 460	13 601	3 859	22,1
Mar '07	30 208	12 763	17 444	13 326	4 119	23,6
Sep '07	30 414	13 182	17 232	13 609	3 623	21,0
Mar '08	30 771	12 801	17 970	13 750	4 220	23,5
Jun '08	30 900	12 886	18 014	13 879	4 135	23
Sep '08	31 032	13 066	17 965	13 811	4 154	23,1
Dec '08	31 163	13 228	17 935	14 027	3 908	21,8
Mar '09	31 296	13 231	18 066	13 843	4 223	23,4
Jun '09	31 430	13 665	17 765	13 595	4 170	23,5
Sep '09	31 562	14 188	17 374	13 133	4 241	24,4
Dec '09	31 689	14 213	17 476	13 250	4 226	24,2
Mar '10	31 818	14 346	17 471	13 076	4 395	25,2
Jun '10	31 946	14 485	17 462	13 061	4 401	25,2
Sep '10	32 072	14 702	17 371	12 975	4 396	25,3
Dec '10	32 193	14 924	17 269	13 132	4 137	24,0
Mar '11	32 314	14 832	17 482	13 118	4 364	25,0
Jun '11	32 436	14 772	17 664	13 114	4 550	25,8

Sources: Stats SA, Labour force surveys 2004-2007 (Statistical release P0210) and Quarterly labour force surveys 2008-2010 (Statistical release P0211)

6,2 Population of working age (15-64 years) by population group and labour market status according to the official definition of unemployment, 2004-2010 (thousands)

Population group	Total	Not economically active	Economically active			Unemployment rate %
			Sub-total	Workers	Unemployed	
Black African						
Mar '04	22 069	10 443	11 626	7 945	3 681	31,7
Sep '04	22 295	10 885	11 409	8 376	3 033	26,6
Mar '05	22 515	10 506	12 009	8 572	3 437	28,6
Sep '05	22 731	10 288	12 443	9 106	3 337	26,8
Mar '06	22 935	10 226	12 710	9 271	3 439	27,1
Sep '06	23 137	10 253	12 884	9 580	3 303	25,6
Mar '07	23 328	10 402	12 927	9 362	3 565	27,6
Sep '07	23 517	10 874	12 643	9 619	3 024	23,9
Mar '08	23 802	10 551	13 250	9 576	3 674	27,7
Jun '08	23 922	10 568	13 354	9 759	3 596	26,9
Sep '08	24 046	10 739	13 306	9 670	3 637	27,3
Dec '08	24 170	10 859	13 311	9 871	3 440	25,8
Mar '09	24 295	10 962	13 334	9 664	3 670	27,5
Jun '09	24 421	11 318	13 103	9 470	3 633	27,7
Sep '09	24 546	11 748	12 798	9 134	3 664	28,6
Dec '09	24 668	11 810	12 858	9 193	3 665	28,5
Mar '10	24 796	11 988	12 808	9 021	3 787	29,6
Jun '10	24 913	12 067	12 846	9 071	3 775	29,4
Sep '10	25 033	12 245	12 788	8 975	3 813	29,8
Dec '10	25 149	12 425	12 724	9 149	3 575	28,1
Mar '11	25 265	12 367	12 898	9 158	3 740	29,0
Jun '11	25 381	12 224	13 157	9 194	3 963	30,1

6,2 Population of working age (15-64 years) by population group and labour market status according to the official definition of unemployment, 2004-2010 (thousands) (cont.)

Population group	Total	Not economically active	Economically active			Unemployment rate %
			Sub-total	Workers	Unemployed	
Coloured						
Mar '04	2 745	943	1 802	1 445	357	19,8
Sep '04	2 768	910	1 857	1 410	448	24,1
Mar '05	2 790	972	1 818	1 455	364	20,0
Sep '05	2 813	881	1 932	1 465	467	24,2
Mar '06	2 835	995	1 840	1 469	372	20,2
Sep '06	2 857	870	1 987	1 565	423	21,3
Mar '07	2 880	978	1 901	1 494	407	21,4
Sep '07	2 902	916	1 986	1 521	465	23,4
Mar '08	2 907	993	1 915	1 551	363	19,0
Jun '08	2 917	1 016	1 901	1 532	369	19,4
Sep '08	2 927	1 030	1 897	1 536	361	19,0
Dec '08	2 937	1 032	1 905	1 563	342	18,0
Mar '09	2 947	987	1 959	1 576	383	19,6
Jun '09	2 956	1 029	1 927	1 553	375	19,5
Sep '09	2 966	1 056	1 910	1 503	407	21,3
Dec '09	2 975	1 041	1 934	1 534	400	20,7
Mar '10	2 983	1 036	1 947	1 521	426	21,9
Jun '10	2 994	1 074	1 920	1 487	433	22,6
Sep '10	3 003	1 086	1 917	1 490	427	22,3
Dec '10	3 012	1 126	1 885	1 484	401	21,3
Mar '11	3 021	1 090	1 931	1 495	436	22,6
Jun '11	3 029	1 207	1 822	1 402	420	23,1

6,2 Population of working age (15-64 years) by population group and labour market status according to the official definition of unemployment, 2004-2010 (thousands) (cont.)

Population group	Total	Not economically active	Economically active			Unemployment rate %
			Sub-total	Workers	Unemployed	
Indian or Asian						
Mar '04	801	336	465	388	77	16,5
Sep '04	810	320	490	430	60	12,3
Mar '05	818	336	482	415	67	14,0
Sep '05	827	292	535	446	89	16,6
Mar '06	835	349	487	441	46	9,4
Sep '06	844	331	513	465	48	9,3
Mar '07	852	373	479	427	52	10,9
Sep '07	861	349	512	463	48	9,5
Mar '08	873	347	526	464	62	11,8
Jun '08	877	341	536	468	68	12,7
Sep '08	882	332	549	485	65	11,8
Dec '08	886	352	534	471	62	11,6
Mar '09	890	351	539	471	68	12,6
Jun '09	895	371	524	464	60	11,5
Sep '09	899	377	522	456	66	12,6
Dec '09	903	395	508	451	57	11,2
Mar '10	906	374	533	483	50	9,4
Jun '10	910	361	550	494	56	10,2
Sep '10	914	347	568	518	49	8,6
Dec '10	918	360	559	514	44	7,9
Mar '11	922	374	548	484	64	11,7
Jun '11	926	364	562	502	60	10,7

6,2 Population of working age (15-64 years) by population group and labour market status according to the official definition of unemployment, 2004-2010 (thousands) (cont.)

Population group	Total	Not economically active	Economically active			Unemployment rate %
			Sub-total	Workers	Unemployed	
White						
Mar '04	3 219	1 057	2 162	2 045	116	5,4
Sep '04	3 208	1 041	2 167	2 049	118	5,5
Mar '05	3 197	1 009	2 187	2 062	125	5,7
Sep '05	3 185	1 060	2 125	2 017	108	5,1
Mar '06	3 173	989	2 184	2 056	127	5,8
Sep '06	3 161	1 084	2 077	1 991	86	4,1
Mar '07	3 148	1 011	2 137	2 042	95	4,4
Sep '07	3 134	1 043	2 092	2 006	86	4,1
Mar '08	3 189	910	2 279	2 159	120	5,3
Jun '08	3 184	961	2 223	2 120	102	4,6
Sep '08	3 177	965	2 213	2 121	91	4,1
Dec '08	3 171	985	2 185	2 121	64	2,9
Mar '09	3 164	931	2 233	2 132	102	4,6
Jun '09	3 158	947	2 211	2 109	102	4,6
Sep '09	3 151	1 007	2 144	2 040	104	4,9
Dec '09	3 144	967	2 177	2 071	106	4,9
Mar '10	3 133	949	2 183	2 051	132	6,0
Jun '10	3 130	983	2 146	2 009	137	6,4
Sep '10	3 122	1 024	2 098	1 991	107	5,1
Dec '10	3 114	1 013	2 101	1 985	116	5,5
Mar '11	3 106	1 001	2 105	1 981	124	5,9
Jun '11	3 099	977	2 122	2 016	106	5,0

6.2 Population of working age (15-64 years) by population group and labour market status according to the official definition of unemployment, 2004-2010 (thousands) (concl.)

Population group	Total	Not economically active	Economically active			Unemployment rate %
			Sub-total	Workers	Unemployed	
Total						
Mar '04	28 833	12 780	16 054	11 823	4 231	26,4
Sep '04	29 080	13 156	15 924	12 265	3 659	23,0
Mar '05	29 319	12 823	16 497	12 503	3 993	24,2
Sep '05	29 556	12 521	17 035	13 034	4 001	23,5
Mar '06	29 779	12 558	17 221	13 237	3 984	23,1
Sep '06	29 999	12 539	17 460	13 601	3 859	22,1
Mar '07	30 208	12 763	17 444	13 326	4 119	23,6
Sep '07	30 414	13 182	17 232	13 609	3 623	21,0
Mar '08	30 771	12 801	17 970	13 750	4 220	23,5
Jun '08	30 900	12 886	18 014	13 879	4 135	23,1
Sep '08	31 032	13 066	17 965	13 811	4 154	23,1
Dec '08	31 163	13 228	17 935	14 027	3 908	21,8
Mar '09	31 296	13 231	18 066	13 843	4 223	23,4
Jun '09	31 430	13 665	17 765	13 595	4 170	23,5
Sep '09	31 562	14 188	17 374	13 133	4 241	24,4
Dec '09	31 689	14 213	17 476	13 250	4 226	24,2
Mar '10	31 818	14 346	17 471	13 076	4 395	25,2
Jun '10	31 946	14 485	17 462	13 061	4 401	25,2
Sep '10	32 072	14 702	17 371	12 975	4 396	25,3
Dec '10	32 193	14 924	17 269	13 132	4 137	24,0
Mar '11	32 314	14 832	17 482	13 118	4 364	25,0
Jun '11	32 435	14 772	17 663	13 114	4 550	25,8

6.3 The employed¹ (15-64 years) by main occupation and province, 2004-2010 (thousands)

Main occupation	Western Cape	Eastern Cape	Northern Cape	Free State	KwaZulu-Natal	North West	Gauteng	Mpumalanga	Limpopo	Total
Total										
Mar '04	1 678	981	330	842	2 219	757	3 388	844	784	11 823
Sep '04	1 716	1 178	281	792	2 255	790	3 552	834	867	12 265
Mar '05	1 665	1 310	283	786	2 322	830	3 672	837	798	12 503
Sep '05	1 803	1 272	288	826	2 369	860	3 894	875	847	13 034
Mar '06	1 800	1 511	315	790	2 471	854	3 799	901	795	13 237
Sep '06	1 915	1 335	308	816	2 626	824	4 029	897	851	13 601
Mar '07	1 869	1 251	317	818	2 553	860	3 890	904	864	13 326
Sep '07	1 881	1 329	301	846	2 471	857	4 054	943	928	13 609
Mar '08	1 814	1 327	307	831	2 599	825	4 225	912	910	13 750
Jun '08	1 802	1 377	297	824	2 657	825	4 276	921	900	13 879
Sep '08	1 775	1 329	307	825	2 641	789	4 271	947	926	13 811
Dec '08	1 844	1 367	318	823	2 683	822	4 308	960	900	14 027
Mar '09	1 880	1 326	280	808	2 573	813	4 266	963	935	13 843
Jun '09	1 815	1 372	287	770	2 514	782	4 191	924	940	13 595
Sep '09	1 790	1 278	257	757	2 526	729	3 952	908	936	13 133
Dec '09	1 817	1 291	292	791	2 476	728	3 996	910	949	13 250
Mar '10	1 837	1 267	270	770	2 488	719	3 944	882	898	13 076
Jun '10	1 793	1 274	260	778	2 436	722	3 950	899	947	13 061
Sep '10	1 754	1 306	276	768	2 401	714	3 958	890	905	12 975
Dec '10	1 772	1 328	278	785	2 439	740	3 953	876	962	13 132
Mar '11	1 784	1 325	261	780	2 429	722	3 999	877	940	13 118
Jun '11	1 805	1 309	264	772	2 500	691	3 965	884	936	13 125

6.3 The employed¹ (15-64 years) by main occupation and province, 2004-2010 (thousands) (cont.)

Main occupation	Western Cape	Eastern Cape	Northern Cape	Free State	KwaZulu-Natal	North West	Gauteng	Mpumalanga	Limpopo	Total
Legislators, senior officials and managers										
Mar '04	136	57	24	38	124	30	350	39	35	833
Sep '04	183	67	18	45	185	53	385	57	42	1 036
Mar '05	122	68	14	31	152	48	291	31	42	800
Sep '05	174	71	14	45	159	39	368	48	36	955
Mar '06	154	68	17	42	155	36	314	31	36	852
Sep '06	168	56	18	51	167	43	380	43	39	964
Mar '07	175	63	20	45	164	43	310	48	46	914
Sep '07	162	87	25	61	177	39	409	44	35	1 038
Mar '08	131	88	17	49	153	41	419	44	37	977
Jun '08	152	96	17	41	152	36	423	51	51	1 019
Sep '08	141	94	17	52	165	31	472	61	51	1 084
Dec '08	149	99	19	45	171	40	494	57	37	1 110
Mar '09	148	87	11	52	151	38	491	59	42	1 081
Jun '09	153	98	24	56	132	40	441	52	51	1 048
Sep '09	155	85	17	52	171	38	405	51	49	1 023
Dec '09	150	85	19	50	138	41	431	47	51	1 012
Mar '10	155	94	14	53	168	43	388	42	44	1 000
Jun '10	137	103	18	49	152	49	417	41	43	1 009
Sep '10	170	104	17	56	152	51	435	50	35	1 069
Dec '10	187	99	19	49	172	59	438	55	45	1 124
Mar '11	208	116	16	57	168	56	426	58	30	1 136
Jun '11	210	108	15	63	169	45	430	50	33	1 124

6.3 The employed¹ (15-64 years) by main occupation and province, 2004-2010 (thousands) (cont.)

Main occupation	Western Cape	Eastern Cape	Northern Cape	Free State	KwaZulu-Natal	North West	Gauteng	Mpumalanga	Limpopo	Total
Professionals										
Mar '04	65	25	†	22	75	19	172	16	29	428
Sep '04	48	26	†	17	69	21	111	18	21	336
Mar '05	53	40	†	26	70	38	160	20	20	431
Sep '05	63	43	†	25	63	25	166	14	35	439
Mar '06	82	49	†	19	79	30	182	22	29	501
Sep '06	62	41	†	26	89	48	144	17	24	458
Mar '07	64	45	†	31	100	24	165	25	26	486
Sep '07	91	58	†	40	100	53	223	31	36	640
Mar '08	123	64	12	37	134	24	312	23	26	755
Jun '08	122	60	11	40	123	32	360	23	33	803
Sep '08	112	50	13	40	106	38	326	24	28	737
Dec '08	122	65	12	38	105	29	330	33	26	760
Mar '09	129	68	11	36	118	38	351	29	29	809
Jun '09	102	54	†	21	99	25	289	36	38	670
Sep '09	113	65	†	21	113	27	315	28	30	722
Dec '09	93	51	†	30	115	36	274	29	26	661
Mar '10	111	66	†	35	103	29	289	32	23	695
Jun '10	119	47	†	34	147	26	318	37	21	756
Sep '10	130	47	†	32	116	26	292	34	19	705
Dec '10	129	54	†	29	134	38	318	28	23	762
Mar '11	120	54	†	30	117	34	333	27	28	750
Jun '11	142	67	†	24	104	32	332	24	29	762

6.3 The employed¹ (15-64 years) by main occupation and province, 2004-2010 (thousands) (cont.)

Main occupation	Western Cape	Eastern Cape	Northern Cape	Free State	KwaZulu-Natal	North West	Gauteng	Mpumalanga	Limpopo	Total
Technical and associate professionals										
Mar '04	168	128	29	82	260	69	389	77	82	1 285
Sep '04	203	159	26	102	269	77	427	57	92	1 412
Mar '05	192	149	26	86	257	74	411	59	78	1 333
Sep '05	205	147	30	90	288	96	467	69	83	1 475
Mar '06	216	142	24	75	269	71	415	61	84	1 359
Sep '06	280	151	26	93	290	58	429	68	105	1 499
Mar '07	208	141	24	82	255	89	429	65	87	1 381
Sep '07	201	156	26	100	327	74	429	77	109	1 498
Mar '08	171	136	28	88	285	68	498	79	100	1 452
Jun '08	180	172	28	81	289	70	466	84	98	1 469
Sep '08	201	149	28	86	284	78	505	83	87	1 500
Dec '08	219	150	31	80	289	81	493	93	97	1 532
Mar '09	219	150	28	77	277	66	492	97	108	1 515
Jun '09	205	158	26	79	298	69	560	85	94	1 573
Sep '09	213	144	31	74	280	80	501	86	108	1 518
Dec '09	211	169	31	71	294	73	497	91	109	1 547
Mar '10	213	160	32	81	300	63	482	93	91	1 515
Jun '10	211	161	33	79	270	60	439	87	93	1 433
Sep '10	200	160	32	74	273	51	448	87	94	1 418
Dec '10	216	178	29	74	291	66	432	91	92	1 469
Mar '11	224	177	24	78	285	68	420	86	98	1 461
Jun '11	240	168	31	69	279	71	419	96	96	1 469

6.3 The employed¹ (15-64 years) by main occupation and province, 2004-2010 (thousands) (cont.)

Main occupation	Western Cape	Eastern Cape	Northern Cape	Free State	KwaZulu-Natal	North West	Gauteng	Mpumalanga	Limpopo	Total
Clerks										
Mar '04	230	76	35	71	207	58	499	70	49	1 295
Sep '04	221	108	28	72	194	73	475	52	51	1 275
Mar '05	217	113	31	75	213	63	493	68	49	1 322
Sep '05	240	107	30	71	182	58	453	67	60	1 268
Mar '06	230	99	33	76	228	61	508	79	48	1 363
Sep '06	216	112	33	80	225	65	460	74	60	1 325
Mar '07	236	125	35	87	222	75	476	73	67	1 396
Sep '07	195	119	30	76	199	73	528	73	69	1 363
Mar '08	221	120	30	72	253	79	577	69	75	1 497
Jun '08	222	117	35	80	231	70	577	68	68	1 467
Sep '08	234	125	28	89	236	71	565	63	73	1 483
Dec '08	228	128	32	87	219	76	544	64	76	1 454
Mar '09	231	116	26	88	224	79	520	77	64	1 425
Jun '09	244	130	31	91	226	73	537	72	63	1 466
Sep '09	257	118	28	82	242	66	531	70	66	1 460
Dec '09	259	126	32	90	239	70	547	72	64	1 499
Mar '10	242	138	32	86	224	69	537	85	65	1 477
Jun '10	237	131	33	84	211	73	547	79	72	1 467
Sep '10	214	118	28	83	217	68	541	75	65	1 411
Dec '10	198	138	33	86	253	71	512	78	65	1 434
Mar '11	191	133	26	81	229	55	493	69	64	1 341
Jun '11	198	122	29	81	243	59	495	65	66	1 358

6.3 The employed¹ (15-64 years) by main occupation and province, 2004-2010 (thousands) (cont.)

Main occupation	Western Cape	Eastern Cape	Northern Cape	Free State	KwaZulu-Natal	North West	Gauteng	Mpumalanga	Limpopo	Total
Service workers and shop and market sales workers										
Mar '04	176	117	30	94	278	84	468	99	96	1 443
Sep '04	223	149	32	111	294	79	505	88	130	1 612
Mar '05	219	153	32	100	305	93	473	91	123	1 589
Sep '05	239	174	39	118	326	126	529	103	125	1 779
Mar '06	252	192	36	108	321	108	514	106	115	1 751
Sep '06	223	172	40	97	334	102	593	104	143	1 807
Mar '07	266	176	43	99	347	111	493	107	117	1 760
Sep '07	265	185	39	104	323	100	484	126	124	1 751
Mar '08	228	197	40	104	343	111	529	115	151	1 818
Jun '08	214	198	41	104	334	114	511	124	124	1 764
Sep '08	203	201	36	103	361	107	515	140	133	1 799
Dec '08	213	170	39	100	348	104	515	128	136	1 754
Mar '09	223	169	39	92	354	120	536	123	150	1 807
Jun '09	233	165	37	98	344	120	560	127	148	1 831
Sep '09	210	197	39	97	349	108	555	129	146	1 829
Dec '09	245	196	42	105	347	107	579	125	140	1 886
Mar '10	234	186	40	102	346	103	571	130	139	1 852
Jun '10	232	192	37	108	358	112	579	119	147	1 883
Sep '10	237	184	45	107	360	108	569	116	131	1 858
Dec '10	221	199	41	108	335	106	596	128	147	1 882
Mar '11	213	196	39	104	352	105	610	125	159	1 904
Jun '11	243	211	40	105	372	102	599	124	149	1 944

6.3 The employed¹ (15-64 years) by main occupation and province, 2004-2010 (thousands) (cont.)

Main occupation	Western Cape	Eastern Cape	Northern Cape	Free State	KwaZulu-Natal	North West	Gauteng	Mpumalanga	Limpopo	Total
Skilled agricultural and fishery workers										
Mar '04	†	21	†	†	21	†	†	†	†	74
Sep '04	†	29	†	†	39	†	†	†	†	98
Mar '05	†	36	†	†	49	†	†	†	†	102
Sep '05	†	26	†	†	39	†	†	†	†	93
Mar '06	†	83	†	†	63	†	†	†	†	160
Sep '06	†	38	†	†	69	†	†	†	†	128
Mar '07	†	23	†	†	64	†	†	†	†	103
Sep '07	†	16	†	†	54	†	†	†	†	107
Mar '08	17	12	†	†	31	11	14	14	†	125
Jun '08	12	†	†	†	24	†	16	12	†	97
Sep '08	11	†	†	†	26	†	14	11	†	100
Dec '08	15	13	†	†	22	†	15	14	12	111
Mar '09	11	14	11	†	24	†	17	15	17	119
Jun '09	†	†	†	†	14	†	17	†	†	83
Sep '09	13	†	†	†	15	†	16	†	†	72
Dec '09	17	†	†	†	17	†	11	†	†	85
Mar '10	12	†	†	†	18	†	18	†	†	90
Jun '10	23	†	†	†	26	†	16	12	†	115
Sep '10	14	†	†	†	25	†	†	†	†	76
Dec '10	14	†	†	†	22	†	†	†	†	73
Mar '11	18	†	†	†	19	†	†	†	†	75
Jun '11	†	†	†	†	16	†	†	†	†	71

6.3 The employed¹ (15-64 years) by main occupation and province, 2004-2010 (thousands) (cont.)

Main occupation	Western Cape	Eastern Cape	Northern Cape	Free State	KwaZulu-Natal	North West	Gauteng	Mpumalanga	Limpopo	Total
Craft and related trades workers										
Mar '04	221	102	38	130	274	115	450	142	101	1 573
Sep '04	213	146	39	116	284	112	448	171	101	1 629
Mar '05	224	147	36	127	352	133	561	161	106	1 847
Sep '05	244	170	35	119	340	118	555	170	117	1 869
Mar '06	244	194	41	141	376	143	557	174	101	1 970
Sep '06	248	190	41	122	431	129	628	168	114	2 070
Mar '07	224	155	41	134	379	149	642	165	117	2 005
Sep '07	237	193	38	128	368	133	581	171	135	1 984
Mar '08	278	148	36	123	383	134	600	162	126	1 989
Jun '08	258	161	32	121	352	142	616	164	141	1 988
Sep '08	277	144	34	120	341	129	576	158	137	1 916
Dec '08	253	155	36	113	360	139	574	162	139	1 930
Mar '09	249	136	27	128	332	127	580	155	130	1 862
Jun '09	235	157	27	111	349	143	541	150	118	1 831
Sep '09	207	126	22	91	303	140	467	138	125	1 619
Dec '09	218	117	26	98	320	126	457	133	121	1 615
Mar '10	227	111	23	92	332	126	474	127	115	1 627
Jun '10	230	116	23	88	296	92	460	134	151	1 590
Sep '10	211	131	32	87	303	102	456	139	146	1 607
Dec '10	212	128	27	91	280	103	431	138	154	1 566
Mar '11	204	129	29	93	308	107	474	142	135	1 621
Jun '11	187	120	24	95	327	106	460	123	134	1 576

6.3 The employed¹ (15-64 years) by main occupation and province, 2004-2010 (thousands) (cont.)

Main occupation	Western Cape	Eastern Cape	Northern Cape	Free State	KwaZulu-Natal	North West	Gauteng	Mpumalanga	Limpopo	Total
Plant and machine operators and assemblers										
Mar '04	153	55	32	101	229	106	310	61	40	1 087
Sep '04	111	88	24	90	234	88	338	71	73	1 118
Mar '05	122	75	25	98	226	82	340	75	68	1 110
Sep '05	119	84	19	87	251	107	336	73	76	1 153
Mar '06	107	85	20	78	237	96	312	74	67	1 075
Sep '06	138	99	21	83	257	93	331	78	63	1 163
Mar '07	131	74	23	69	269	79	347	69	65	1 126
Sep '07	139	94	25	89	252	87	404	83	54	1 226
Mar '08	129	105	15	63	275	94	347	83	55	1 166
Jun '08	145	85	18	64	294	99	345	76	59	1 184
Sep '08	138	98	25	67	303	92	377	80	55	1 233
Dec '08	136	95	18	71	285	96	395	85	58	1 238
Mar '09	164	88	18	62	289	102	395	82	52	1 252
Jun '09	140	115	20	61	285	97	370	82	51	1 221
Sep '09	136	89	15	63	283	71	341	91	46	1 135
Dec '09	131	101	15	64	265	70	344	80	57	1 127
Mar '10	132	93	17	53	271	79	314	80	51	1 091
Jun '10	141	80	14	59	254	82	317	78	61	1 087
Sep '10	134	117	14	55	264	90	347	84	57	1 162
Dec '10	132	95	12	54	251	89	367	66	60	1 125
Mar '11	131	90	21	60	252	86	357	78	60	1 134
Jun '11	132	97	17	52	260	75	338	86	64	1 121

6.3 The employed¹ (15-64 years) by main occupation and province, 2004-2010 (thousands) (cont.)

Main occupation	Western Cape	Eastern Cape	Northern Cape	Free State	KwaZulu-Natal	North West	Gauteng	Mpumalanga	Limpopo	Total
Elementary occupations										
Mar '04	431	293	100	229	531	200	557	274	288	2 902
Sep '04	412	303	80	174	448	218	590	246	286	2 756
Mar '05	418	426	89	179	485	223	671	265	254	3 010
Sep '05	404	344	86	199	561	207	727	249	254	3 031
Mar '06	413	489	109	183	522	235	711	273	263	3 198
Sep '06	455	384	93	192	572	210	759	265	238	3 168
Mar '07	450	351	96	197	537	213	742	266	266	3 119
Sep '07	471	327	87	172	491	221	693	258	278	2 999
Mar '08	436	365	97	223	562	209	654	260	263	3 069
Jun '08	399	402	84	213	665	196	683	258	260	3 160
Sep '08	371	353	99	190	612	177	635	260	288	2 985
Dec '08	407	389	100	207	662	189	652	252	260	3 119
Mar '09	409	386	85	203	567	182	601	253	275	2 961
Jun '09	389	388	93	182	573	159	593	243	309	2 929
Sep '09	381	365	71	206	580	144	565	235	305	2 852
Dec '09	390	343	90	210	560	149	616	261	318	2 936
Mar '10	411	313	77	201	550	154	629	221	300	2 856
Jun '10	370	337	63	202	553	170	610	243	279	2 828
Sep '10	348	347	69	202	530	158	616	234	278	2 782
Dec '10	372	337	79	213	546	159	602	221	299	2 829
Mar '11	387	312	74	203	550	166	618	221	289	2 821
Jun '11	346	332	75	221	550	151	612	243	295	2 824

6.3 The employed¹ (15-64 years) by main occupation and province, 2004-2010 (thousands) (concl.)

Main occupation	Western Cape	Eastern Cape	Northern Cape	Free State	KwaZulu-Natal	North West	Gauteng	Mpumalanga	Limpopo	Total
Domestic worker										
Mar '04	95	108	35	70	220	67	192	55	60	903
Sep '04	99	102	25	61	239	64	269	68	65	992
Mar '05	95	104	23	61	214	72	270	62	57	959
Sep '05	109	105	26	68	160	80	288	76	59	971
Mar '06	102	110	24	67	222	72	284	76	50	1 007
Sep '06	124	94	25	68	191	75	302	77	64	1 019
Mar '07	113	98	25	69	216	76	285	83	70	1 034
Sep '07	116	92	20	69	181	73	294	76	84	1 003
Mar '08	80	90	24	67	180	54	276	64	68	902
Jun '08	98	78	26	72	194	58	277	61	62	925
Sep '08	87	106	21	69	206	60	288	68	66	971
Dec '08	102	103	24	75	223	61	296	73	59	1 017
Mar '09	98	111	24	63	237	56	281	74	68	1 011
Jun '09	104	98	21	63	195	49	281	69	61	942
Sep '09	105	86	21	65	189	47	255	77	59	904
Dec '09	104	93	24	67	181	47	240	67	58	881
Mar '10	100	98	23	61	176	45	242	64	64	873
Jun '10	92	97	23	70	170	51	246	68	75	892
Sep '10	95	94	25	70	162	55	246	63	78	887
Dec '10	91	91	26	75	155	46	249	63	73	869
Mar '11	89	109	20	70	149	41	263	63	74	877
Jun '11	101	78	21	57	178	44	270	64	65	876

Source: Stats SA, *Labour force surveys 2004-2007* (Statistical release P0210) and *Quarterly labour force surveys 2008-2010* (Statistical release P0211)

¹ Includes employers, employees and self-employed. Totals include other and unspecified occupied.

† For all values of 10 000 or lower the sample size is too small for reliable estimates.

Totals include other and unspecified occupation.

6.4 The employed¹ (15-64 years) by main industry and province, 2004-2010 (thousands)

Main occupation	Western Cape	Eastern Cape	Northern Cape	Free State	KwaZulu-Natal	North West	Gauteng	Mpumalanga	Limpopo	Total
Total										
Mar '04	1 678	981	330	842	2 219	757	3 388	844	784	11 823
Sep '04	1 716	1 178	281	792	2 255	790	3 552	834	867	12 265
Mar '05	1 665	1 310	283	786	2 322	830	3 672	837	798	12 503
Sep '05	1 803	1 272	288	826	2 369	860	3 894	875	847	13 034
Mar '06	1 800	1 511	315	790	2 471	854	3 799	901	795	13 237
Sep '06	1 915	1 335	308	816	2 626	824	4 029	897	851	13 601
Mar '07	1 869	1 251	317	818	2 553	860	3 890	904	864	13 326
Sep '07	1 881	1 329	301	846	2 471	857	4 054	943	928	13 609
Mar '08	1 814	1 327	307	831	2 599	825	4 225	912	910	13 750
Jun '08	1 802	1 377	297	824	2 657	825	4 276	921	900	13 879
Sep '08	1 775	1 329	307	825	2 641	789	4 271	947	926	13 811
Dec '08	1 844	1 367	318	823	2 683	822	4 308	960	900	14 027
Mar '09	1 880	1 326	280	808	2 573	813	4 266	963	935	13 843
Jun '09	1 815	1 372	287	770	2 514	782	4 191	924	940	13 595
Sep '09	1 790	1 278	257	757	2 526	729	3 952	908	936	13 133
Dec '09	1 817	1 291	292	791	2 476	728	3 996	910	949	13 250
Mar '10	1 837	1 267	270	770	2 488	719	3 944	882	898	13 076
Jun '10	1 793	1 274	260	778	2 436	722	3 950	899	947	13 061
Sep '10	1 754	1 306	276	768	2 401	714	3 958	890	905	12 975
Dec '10	1 772	1 328	278	785	2 439	740	3 953	876	962	13 132
Mar '11	1 784	1 325	261	780	2 429	722	3 999	877	940	13 118
Jun '11	1 812	1 311	265	773	2 504	692	3 935	885	937	13 114

6.4 The employed¹ (15-64 years) by main industry and province, 2004-2010 (thousands) (cont.)

Main occupation	Western Cape	Eastern Cape	Northern Cape	Free State	KwaZulu-Natal	North West	Gauteng	Mpumalanga	Limpopo	Total
Agriculture, hunting, forestry and fishing										
Mar '04	168	89	61	94	178	50	23	76	88	828
Sep '04	116	102	43	61	151	59	58	91	93	773
Mar '05	128	183	33	51	154	57	31	92	50	778
Sep '05	108	88	42	59	151	61	48	79	66	702
Mar '06	137	219	47	51	182	53	46	89	62	886
Sep '06	133	147	48	52	198	56	51	88	61	833
Mar '07	122	79	47	48	179	48	45	80	56	703
Sep '07	143	90	42	61	174	52	44	95	69	770
Mar '08	174	75	67	85	133	56	62	77	73	803
Jun '08	157	86	48	80	168	44	68	77	67	794
Sep '08	115	75	66	83	155	56	69	84	73	776
Dec '08	126	81	55	72	168	61	67	81	62	773
Mar '09	140	84	43	89	138	46	60	83	62	744
Jun '09	140	87	61	88	107	42	43	81	70	718
Sep '09	123	74	41	85	116	35	45	75	65	660
Dec '09	128	67	51	75	111	38	26	68	59	624
Mar '10	172	62	46	75	120	38	32	67	46	658
Jun '10	149	54	32	75	114	40	31	78	55	630
Sep '10	136	76	40	67	119	35	34	74	58	640
Dec '10	122	66	54	64	121	31	27	74	67	627
Mar '11	121	64	53	62	108	37	34	71	52	603
Jun '11	100	61	47	73	99	32	32	78	73	596

6.4 The employed¹ (15-64 years) by main industry and province, 2004-2010 (thousands) (cont.)

Main occupation	Western Cape	Eastern Cape	Northern Cape	Free State	KwaZulu-Natal	North West	Gauteng	Mpumalanga	Limpopo	Total
Mining and quarrying										
Mar '04	†	†	26	94	†	136	118	70	20	473
Sep '04	†	†	22	61	†	104	33	24	44	295
Mar '05	†	†	28	69	†	125	46	36	56	374
Sep '05	†	†	21	67	†	109	30	29	49	311
Mar '06	†	†	21	67	†	136	34	37	59	362
Sep '06	†	†	18	55	†	127	34	31	44	316
Mar '07	†	†	25	74	12	144	43	43	61	411
Sep '07	†	†	16	49	13	117	37	36	48	323
Mar '08	†	†	14	23	†	149	28	61	45	333
Jun '08	†	†	14	28	†	151	31	70	41	347
Sep '08	†	†	15	28	†	128	30	56	48	315
Dec '08	†	†	15	31	†	125	33	63	44	325
Mar '09	†	†	11	34	†	135	38	61	43	338
Jun '09	†	†	11	33	13	118	30	61	55	325
Sep '09	†	†	†	28	†	105	33	61	53	304
Dec '09	†	†	11	38	†	113	21	53	53	301
Mar '10	†	†	†	34	†	120	20	57	51	303
Jun '10	†	†	12	31	†	111	27	59	64	315
Sep '10	†	†	12	32	†	106	38	58	46	303
Dec '10	†	†	†	29	13	123	23	50	48	298
Mar '11	†	†	11	21	14	131	22	52	57	313
Jun '11	†	†	10	16	†	108	31	52	57	284

6.4 The employed¹ (15-64 years) by main industry and province, 2004-2010 (thousands) (cont.)

Main occupation	Western Cape	Eastern Cape	Northern Cape	Free State	KwaZulu-Natal	North West	Gauteng	Mpumalanga	Limpopo	Total
Manufacturing										
Mar '04	359	128	26	82	414	69	584	93	69	1 824
Sep '04	311	169	17	90	407	75	596	114	65	1 842
Mar '05	284	169	16	90	394	69	693	99	73	1 887
Sep '05	293	159	13	87	415	68	599	122	77	1 833
Mar '06	338	193	18	78	406	68	699	117	64	1 981
Sep '06	316	166	19	86	433	58	629	101	55	1 864
Mar '07	285	182	19	78	462	83	685	115	70	1 979
Sep '07	290	167	18	91	406	81	739	96	54	1 941
Mar '08	325	175	14	103	447	81	725	75	69	2 015
Jun '08	316	176	14	89	436	74	738	87	72	2 003
Sep '08	314	195	15	76	405	68	724	87	70	1 955
Dec '08	318	210	13	79	406	75	726	88	73	1 988
Mar '09	302	200	12	83	397	74	706	86	69	1 929
Jun '09	291	205	10	75	424	88	680	80	68	1 922
Sep '09	282	163	15	74	407	83	597	75	75	1 771
Dec '09	286	160	13	80	397	68	626	81	80	1 792
Mar '10	275	140	11	71	419	64	645	70	60	1 755
Jun '10	272	135	12	71	372	74	633	81	55	1 705
Sep '10	261	159	11	66	371	69	630	81	66	1 713
Dec '10	283	163	12	62	371	77	667	80	69	1 783
Mar '11	290	183	14	63	389	62	663	77	62	1 803
Jun '11	279	201	†	60	396	63	580	75	71	1 735

6.4 The employed¹ (15-64 years) by main industry and province, 2004-2010 (thousands) (cont.)

Main occupation	Western Cape	Eastern Cape	Northern Cape	Free State	KwaZulu-Natal	North West	Gauteng	Mpumalanga	Limpopo	Total
Electricity, gas and water supply										
Mar '04	11	†	†	†	15	†	32	13	†	91
Sep '04	†	†	†	†	14	†	33	12	†	84
Mar '05	†	†	†	†	14	†	44	14	†	100
Sep '05	†	†	†	†	21	†	27	†	†	87
Mar '06	11	†	†	†	14	†	36	18	†	92
Sep '06	†	†	†	†	15	†	42	15	†	102
Mar '07	13	†	†	†	17	†	27	12	†	88
Sep '07	14	†	†	†	†	†	29	11	†	84
Mar '08	†	†	†	†	13	†	36	19	†	98
Jun '08	12	†	†	†	17	†	39	16	†	100
Sep '08	12	†	†	†	14	†	33	17	†	100
Dec '08	11	†	†	†	11	†	25	15	†	89
Mar '09	†	†	†	†	13	†	44	16	†	105
Jun '09	†	†	†	†	†	†	42	21	†	98
Sep '09	†	†	†	†	†	†	44	14	†	86
Dec '09	†	†	†	†	†	†	48	17	†	102
Mar '10	†	†	†	†	†	†	30	13	†	72
Jun '10	†	†	†	†	†	†	44	10	†	96
Sep '10	11	†	†	†	†	†	42	21	†	99
Dec '10	†	†	†	†	17	†	28	23	†	94
Mar '11	11	†	†	†	19	†	25	22	†	97
Jun '11	12	†	†	†	19	†	19	23	†	94

6.4 The employed¹ (15-64 years) by main industry and province, 2004-2010 (thousands) (cont.)

Main occupation	Western Cape	Eastern Cape	Northern Cape	Free State	KwaZulu-Natal	North West	Gauteng	Mpumalanga	Limpopo	Total
Construction										
Mar '04	135	84	14	40	124	31	148	55	55	685
Sep '04	147	111	16	44	134	41	255	82	51	882
Mar '05	148	85	16	53	152	44	255	75	47	875
Sep '05	165	99	13	43	163	52	345	76	44	999
Mar '06	140	120	18	53	175	39	283	63	38	929
Sep '06	149	152	20	56	200	60	323	84	59	1 103
Mar '07	140	108	22	54	161	53	332	90	48	1 010
Sep '07	181	155	25	62	174	48	271	94	84	1 093
Mar '08	177	127	19	62	215	53	311	96	78	1 137
Jun '08	173	115	15	53	224	52	357	79	96	1 164
Sep '08	176	100	21	57	232	54	308	84	91	1 123
Dec '08	185	112	27	66	251	62	331	90	96	1 219
Mar '09	187	91	21	66	227	47	337	94	90	1 158
Jun '09	173	112	23	55	242	48	319	88	89	1 149
Sep '09	159	107	11	59	244	55	283	88	91	1 097
Dec '09	171	115	18	58	238	55	280	84	106	1 127
Mar '10	144	110	15	47	243	52	280	65	105	1 060
Jun '10	153	113	18	50	236	43	272	68	95	1 049
Sep '10	141	120	20	51	231	38	308	72	94	1 076
Dec '10	130	129	18	54	225	43	274	74	109	1 056
Mar '11	124	120	14	56	226	45	284	69	93	1 031
Jun '11	119	119	13	54	235	46	304	69	78	1 035

6.4 The employed¹ (15-64 years) by main industry and province, 2004-2010 (thousands) (cont.)

Main occupation	Western Cape	Eastern Cape	Northern Cape	Free State	KwaZulu-Natal	North West	Gauteng	Mpumalanga	Limpopo	Total
Wholesale and retail										
Mar '04	308	207	64	170	447	163	819	226	217	2 621
Sep '04	367	266	55	183	515	182	819	210	279	2 874
Mar '05	362	328	61	173	560	185	816	213	239	2 937
Sep '05	470	354	66	201	634	209	982	223	285	3 424
Mar '06	436	395	72	187	631	197	961	235	263	3 377
Sep '06	494	323	70	196	690	176	1074	228	272	3 523
Mar '07	480	326	67	185	624	175	919	230	266	3 273
Sep '07	448	339	64	190	608	192	1031	256	283	3 410
Mar '08	386	306	52	194	599	173	964	261	245	3 180
Jun '08	370	322	56	206	593	174	964	236	212	3 132
Sep '08	407	314	58	191	632	164	952	254	233	3 205
Dec '08	397	344	55	179	608	181	973	237	225	3 199
Mar '09	425	319	49	166	527	188	922	229	232	3 057
Jun '09	397	325	43	161	531	180	909	213	246	3 006
Sep '09	396	290	40	163	532	135	886	214	249	2 903
Dec '09	389	282	44	171	531	144	877	231	264	2 933
Mar '10	400	305	46	161	528	144	834	212	250	2 882
Jun '10	387	311	45	166	513	148	866	213	256	2 903
Sep '10	369	328	42	181	509	164	907	214	233	2 947
Dec '10	379	313	39	169	523	162	922	219	250	2 975
Mar '11	388	295	35	167	536	150	930	218	243	2 962
Jun '11	408	287	39	178	558	141	914	217	224	2 965

6.4 The employed¹ (15-64 years) by main industry and province, 2004-2010 (thousands) (cont.)

Main occupation	Western Cape	Eastern Cape	Northern Cape	Free State	KwaZulu-Natal	North West	Gauteng	Mpumalanga	Limpopo	Total
Transport, storage and communication										
Mar '04	105	52	†	31	142	42	250	29	25	685
Sep '04	83	55	14	35	160	27	229	40	29	671
Mar '05	93	56	13	44	141	33	231	46	38	694
Sep '05	91	65	11	38	156	31	248	46	30	715
Mar '06	81	71	13	33	141	25	236	44	25	671
Sep '06	85	58	12	36	165	28	233	48	33	697
Mar '07	102	68	13	38	137	34	233	49	27	701
Sep '07	86	68	15	34	138	27	297	46	23	734
Mar '08	84	70	11	40	172	29	281	39	40	766
Jun '08	91	87	†	41	174	32	270	40	48	794
Sep '08	88	75	12	42	174	26	290	45	36	787
Dec '08	86	65	12	39	187	24	288	52	41	794
Mar '09	87	68	11	38	190	23	268	47	48	780
Jun '09	77	79	12	39	179	19	264	42	39	750
Sep '09	88	76	†	43	177	19	272	40	35	760
Dec '09	83	82	13	45	159	24	282	41	38	767
Mar '10	97	77	†	46	159	25	307	42	35	797
Jun '10	98	71	†	45	164	22	275	43	43	766
Sep '10	107	67	11	33	194	22	256	42	42	773
Dec '10	112	70	12	37	185	21	250	34	39	761
Mar '11	113	57	14	36	174	21	244	34	33	727
Jun '11	106	74	11	31	181	24	278	39	34	777

6.4 The employed¹ (15-64 years) by main industry and province, 2004-2010 (thousands) (cont.)

Main occupation	Western Cape	Eastern Cape	Northern Cape	Free State	KwaZulu-Natal	North West	Gauteng	Mpumalanga	Limpopo	Total
Financial insurance, real estate and business services										
Mar '04	186	57	17	51	199	36	552	60	29	1 186
Sep '04	232	72	16	50	169	64	574	48	46	1 271
Mar '05	206	87	13	45	199	64	567	63	44	1 289
Sep '05	218	83	17	57	197	63	637	71	45	1 387
Mar '06	223	86	16	58	219	65	559	58	41	1 326
Sep '06	247	90	18	50	209	48	617	70	46	1 395
Mar '07	239	94	20	64	243	61	629	64	55	1 470
Sep '07	251	108	18	61	230	72	584	79	45	1 447
Mar '08	242	122	22	61	292	71	768	65	57	1 700
Jun '08	247	141	23	64	301	67	735	88	58	1 724
Sep '08	244	106	25	72	269	62	744	88	57	1 669
Dec '08	250	103	26	69	275	63	746	91	51	1 672
Mar '09	273	108	21	66	284	66	790	97	61	1 766
Jun '09	249	131	19	68	287	68	794	92	53	1 760
Sep '09	259	131	20	61	313	67	745	81	57	1 735
Dec '09	259	131	24	55	306	67	817	87	64	1 812
Mar '10	256	116	18	58	275	66	760	88	45	1 681
Jun '10	256	116	22	68	312	60	744	83	63	1 723
Sep '10	252	102	26	73	279	62	677	89	64	1 625
Dec '10	244	110	22	83	266	55	675	82	58	1 594
Mar '11	239	125	15	80	259	61	705	82	64	1 631
Jun '11	287	139	24	76	274	56	686	82	64	1 688

6.4 The employed¹ (15-64 years) by main industry and province, 2004-2010 (thousands) (cont.)

Main occupation	Western Cape	Eastern Cape	Northern Cape	Free State	KwaZulu-Natal	North West	Gauteng	Mpumalanga	Limpopo	Total
Community, social and personal services										
Mar '04	276	228	70	181	438	133	639	148	193	2 305
Sep '04	307	265	62	170	420	134	626	118	181	2 285
Mar '05	319	267	68	165	439	145	644	120	177	2 343
Sep '05	304	270	66	176	430	157	599	116	180	2 299
Mar '06	311	275	71	165	444	147	591	140	179	2 325
Sep '06	315	268	68	191	484	157	617	131	202	2 434
Mar '07	343	269	70	181	478	156	625	125	193	2 440
Sep '07	309	284	74	202	502	154	662	137	218	2 540
Mar '08	321	326	75	169	492	133	710	138	215	2 579
Jun '08	325	341	81	171	505	143	719	146	222	2 652
Sep '08	309	321	64	181	484	145	752	144	222	2 623
Dec '08	344	318	80	193	484	141	754	149	220	2 683
Mar '09	336	304	79	170	503	147	750	157	228	2 675
Jun '09	355	308	79	166	476	146	766	158	233	2 686
Sep '09	349	321	83	159	489	158	718	163	218	2 658
Dec '09	364	331	85	168	490	154	708	164	198	2 661
Mar '10	363	332	84	188	501	142	698	183	205	2 695
Jun '10	360	336	84	178	482	154	733	178	204	2 710
Sep '10	364	330	85	173	470	146	744	168	198	2 678
Dec '10	377	356	79	191	510	168	770	160	215	2 826
Mar '11	390	333	79	199	514	152	760	172	227	2 828
Jun '11	385	326	83	198	509	152	757	164	248	2 821

6.4 The employed¹ (15-64 years) by main industry and province, 2004-2010 (thousands) (concl.)

Main occupation	Western Cape	Eastern Cape	Northern Cape	Free State	KwaZulu-Natal	North West	Gauteng	Mpumalanga	Limpopo	Total
Private households										
Mar '04	126	131	43	100	256	94	221	74	79	1 125
Sep '04	143	134	34	95	282	100	330	95	75	1 288
Mar '05	117	124	34	90	262	102	347	80	69	1 226
Sep '05	144	146	35	97	198	108	380	103	67	1 277
Mar '06	119	148	36	94	253	122	353	102	62	1 288
Sep '06	165	121	32	94	226	111	408	103	74	1 334
Mar '07	141	116	32	92	238	101	352	95	82	1 251
Sep '07	154	112	28	94	218	111	362	91	98	1 266
Mar '08	95	118	32	89	227	77	339	82	81	1 139
Jun '08	111	104	35	90	230	82	351	84	78	1 164
Sep '08	109	138	29	87	267	81	367	87	90	1 255
Dec '08	127	130	34	91	284	82	360	93	79	1 279
Mar '09	118	145	31	91	285	83	347	93	94	1 286
Jun '09	125	120	28	82	246	68	343	87	82	1 180
Sep '09	128	109	25	82	236	68	324	97	85	1 154
Dec '09	124	118	29	97	227	63	308	83	80	1 129
Mar '10	122	122	30	86	228	65	332	87	96	1 167
Jun '10	108	131	27	90	226	67	320	86	102	1 157
Sep '10	110	118	29	89	213	71	322	71	96	1 119
Dec '10	113	120	32	91	208	59	317	80	98	1 117
Mar '11	105	139	25	90	188	61	328	81	101	1 118
Jun '11	113	97	26	83	226	67	327	87	81	1 107

Source: Stats SA, *Labour force surveys 2004-2007* (Statistical release P0210) and *Quarterly labour force surveys 2008-2010* (Statistical release P0211)

¹ Includes employers, employees and self-employed. Totals include other and unspecified occupied.

† For all values of 10 000 or lower the sample size is too small for reliable estimates.

Totals include other and unspecified occupation.

6.5 Number of employees and gross earnings by industry

As from December 2004, Stats SA introduced a new employment statistics survey that covers employing enterprises in the formal non-agricultural business sector of the South African economy that are registered for Income Tax (IT), resulting in the extensive coverage of all small businesses. Previously the coverage was restricted to both employing and non-employing VAT registered enterprises with an annual turnover of R300 000 or more. By restricting the coverage to employing businesses, the new survey is able to provide estimates for employment and earnings as well as estimates for average monthly earnings and it is in accordance with the International Labour Organisation (ILO) definitions and concepts.

Introduction of the new sample from the June quarter 2006 enables Stats SA to provide users with survey results for the June and September 2006 quarters from the new sample.

Stats SA has been working for some years to improve the quality of its economic statistics. The latest series to benefit from these improvements are those for employment and average monthly earnings derived from the Quarterly Employment Statistics (QES) survey, a survey of formal non-agricultural businesses and other entities which are employers.

Considerable work has been undertaken over the last two years to improve the completeness of the list of employers in the economy held on Stats SA's Business Register, from which the samples for the survey are drawn. Greater use has been made of additional administrative sources of employer entities, particularly the lists maintained by the South African Revenue Service (SARS) of employers making contributions on behalf of their employees for Pay As You Earn (PAYE), and the Department of Labour's Unemployment Insurance Fund (UIF).

It is important to distinguish between the lift in the level of the series from improvements in the coverage of employers and the growth in employment shown by the series due to new employer entities entering the economy and continuing employers taking on additional staff. This break in series relates mainly to the level of employment, rather than the growth rate of employment. However, an outcome of not publishing data from a sample revised in 2005 has been that any new employer entity commencing operations from early 2004 onwards would not have had a chance of being selected until the reselection of the sample in March 2006. The effect is that the published series based on the 2004 sample show somewhat smaller growth than would have been shown from a sample revised in 2005.

Further factors affecting the growth of the series between 2004 and 2006 were the expansion of the formal sector as a result of legislative changes, growth resulting from small businesses moving from the informal to the formal sector and greater overall compliance by businesses leading to their registration for PAYE and/or UIF.

Employment and gross earnings - Unless otherwise indicated in a subscription, the following is applicable:

Employment refers to the number of people employed by the business, who received payment (in salaries; wages; commission, in addition to a retainer, salary or wage; piece rates; or payments in kind) for any part of the reference period. This excludes independent contractors and consultants; working proprietors; sole and joint owners; employees paid on a commission basis where a retainer, salary or wage was not paid; and employees based in South Africa but paid from abroad, e.g. embassy employees.

Source: Stats SA, *Quarterly employment statistics* (Statistical release P0277)

Due to rounding, industrial numbers do not necessarily add up to the total.

Annual employment data are shown as at 30 June of the relevant year, whereas quarterly data are shown as at the last pay-day of the relevant quarter.

Gross earnings are payments for ordinary, standard or agreed hours during the reference period for all permanent, temporary, casual, executive and managerial employees, before taxation and other deductions. Gross earnings include salaries and/or fees paid to all directors, executives and managers; employers' contributions to holiday, pension, provident and medical funds and contributions to the Unemployment Insurance and Compensation funds; payments paid from South Africa to employees based abroad, e.g. embassy employees; payments for all types of leave, except those paid on termination; fringe benefits paid in cash such as housing, mortgage and rent subsidies, transport allowances, and cell phone allowances; allowances and penalty payments relating to ordinary-time hours. Annual gross earnings data reflect the total for the relevant year, whereas quarterly data are the sum of the gross earnings for the three months of the relevant quarter.

Average monthly earnings at current prices are calculated by dividing the total gross earnings, excluding severance, termination and redundancy payments, for the reference month by the number of employees as at the end of the reference month.

Average monthly earnings at constant 2000 prices measure change in average monthly earnings after the direct effects of inflation have been eliminated. The deflator used to devalue the current average earnings is the consumer price index (2000=100).

6.5 Number of employees and gross earnings by industry

Industry	Number of employees 2010 (thousands)				Gross earnings 2010 (R millions)			
	Mar	Jun	Sep	Dec	Mar	Jun	Sep	Dec
Mining and quarrying	491	497	505	504	17 150	17 603	19 129	19 697
Manufacturing	1 187	1 170	1 159	1 164	36 788	37 362	38 403	43 991
Electricity, gas and water supply	56	57	57	58	3 872	3 975	4 858	4 923
Construction	418	413	406	399	10 620	11 378	11 455	13 101
Wholesale and retail trade; repair of motor vehicles, motor cycles and personal and household goods; hotels and restaurants	1 630	1 636	1 650	1 687	38 207	39 720	41 018	45 569
Transport, storage and communication	359	360	355	361	17 036	17 537	17 214	19 054
Financial intermediation, insurance, real estate and business services	1 742	1 769	1 783	1 812	73 438	72 587	75 285	80 634
Community, social and personal services	2 203	2 230	2 240	2 266	94 092	96 197	97 847	110 930
Total all industries	8 086	8 132	8 155	8 251	291 203	296 359	305 209	337 899

Source: Stats SA, *Quarterly employment statistics* (Statistical release P0277)

Due to rounding, industrial numbers do not necessarily add up to the total.

6.6 Average monthly earnings, at current prices, by industry

Industry	Including bonuses and overtime payments, 2010 (Rand)				Excluding bonuses and overtime payments, 2010 (Rand)			
	Feb	May	Aug	Nov	Feb	May	Aug	Nov
Mining and quarrying ¹	11 713	11 663	12 558	12 944
Manufacturing	9 828	10 273	10 553	11 017	9 234	9 626	9 888	10 108
Electricity, gas and water supply	23 018	23 161	23 506	25 777	21 522	21 531	22 118	23 068
Construction	8 179	8 850	8 964	9 168	7 677	8 381	8 403	8 339
Wholesale and retail trade; repair of motor vehicles, motor cycles and personal and household goods; hotels and restaurants	7 359	7 809	7 935	8 057	7 163	7 536	7 682	7 639
Transport, storage and communication	14 035	14 409	15 362	15 714	13 119	13 439	14 249	14 553
Financial intermediation, insurance, real estate and business services	12 469	12 853	12 995	13 098	12 164	12 507	12 682	12 656
Community, social and personal services	13 484	13 678	13 809	14 840	13 178	13 375	13 498	14 337
Average all industries	11 207	11 570	11 808	12 274

Source: Stats SA, *Quarterly employment statistics* (Statistical release P0277)

¹Data are obtained from the Minerals Bureau, Department of Mineral Resources. At this stage the Department of Mineral Resources is unable to provide data items with regard to bonuses and overtime payments separately.

Average monthly earnings at current prices are calculated by dividing the total gross earnings, excluding severance, termination and redundancy payments, for the reference month by the number of employees as at the end of the reference month.



Prices

7.1	Producer price index (PPI) (base year 2000=100) and consumer price index (CPI) (base year 2008=100) for all urban areas, 2002-2010	77
7.2	Annual inflation on a monthly basis in the CPI for all urban areas, 2010	78
7.3	Annual inflation on a monthly basis for the PPI, 2010	78
7.4	Percentage change in the average annual production price and consumer price indices, 2001-2010	79
7.5	Consumer price index (CPI) by province, 2001-2010 (base year 2008=100)	80
7.6	Consumer price index for food for all urban areas (base year 2008=100)	81
7.7	Relative price fluctuations (based on the consumer price index), 1980-2010	82

7.1 Production price index (PPI) (base year 2000) and consumer price index (CPI) for all urban areas, 2002-2010 (base year 2008=100)

	2002	2003	2004	2005	2006	2007	2008	2009	2010
Production price index ¹	123 8	125 9	126 7	130 6	140 6	154 7	³	³	³
Locally produced commodities	122 4	127 2	130 1	133 9	144 1	158 7	³	³	³
Imported commodities	127 1	121 8	117 1	121 3	130 7	143 2	166 7	146 2	150 6
Percentage change compared with the previous year ²	14,2	1,7	0,6	3,1	7,7	10,0	³	³	³
Consumer price index ⁴	72,1	76,3	77,4	80,0	83,8	89,7	100,0	107,1	111,7
Percentage change compared with the previous year (inflation rate) ⁵	9,2	5,8	1,4	3,4	4,7	7,1	11,5	7,1	4,3

Sources: Stats SA, *Production price index (PPI)* (Statistical release P0142.1) and *Consumer price index (CPI)* (Statistical release P0141)

¹ Average annual index (2000=100).

² Based on the average annual index.

³ This series has been discontinued since December 2007. This series has become PPI headline since January 2008.

⁴ Average annual index (2008=100).

⁵ Prior to 2008 the consumer indices were based on information for metropolitan areas only. From 2009 the indices were based on the information for all urban areas.

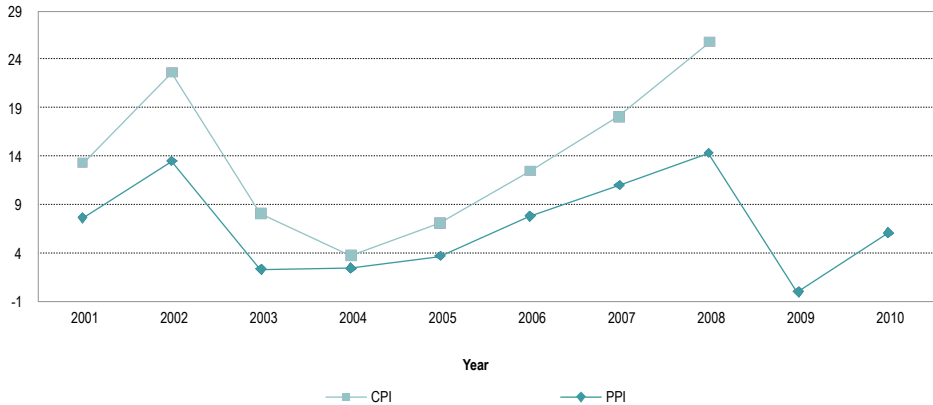
7.2 Annual inflation on a monthly basis in the CPI for all urban areas, 2010

	Jan	Feb	Mar	Apr	May	Jun	Jul	Aug	Sep	Oct	Nov	Dec
Index	109,5	110,2	111,1	111,3	111,5	111,5	112,2	112,3	112,4	112,6	112,8	113,0
%	+6,2	+5,7	+5,1	+4,8	+4,6	+4,2	+3,7	+3,5	+3,2	+3,4	+3,6	+3,5

7.3 Annual inflation on a monthly basis for the PPI, 2010

	Jan	Feb	Mar	Apr	May	Jun	Jul	Aug	Sep	Oct	Nov	Dec
Index	184,9	185,6	186,2	189,0	189,3	196,8	199,4	200,2	192,0	191,2	192,5	193,0
%	2,7	3,5	3,7	5,5	6,8	9,4	7,7	7,8	6,8	6,4	6,2	5,8

7.4 Percentage change in the average annual production price and consumer price indices, 2001-2010



7.5 Consumer price index (CPI) by province, 2002-2010 (base year 2008=100)

	Eastern Cape	Free State	Gauteng	KwaZulu-Natal	Mpumalanga	Northern Cape	Limpopo	North West	Western Cape	South Africa
Consumer price index (all items)										
2002	71,1	72,2	72,0	72,2	69,8	69,9	73,2	70,8	71,7	72,1
2003	75,6	75,9	76,5	76,6	74,4	74,5	77,0	75,7	76,0	76,3
2004	77,1	77,2	77,7	77,5	75,7	75,9	77,4	76,0	77,1	77,4
2005	79,5	79,9	80,5	79,6	78,7	79,0	79,7	79,1	79,7	80,0
2006	84,0	84,1	84,0	83,5	82,5	83,3	83,6	82,8	83,0	83,8
2007	89,8	89,9	89,9	89,6	89,2	89,2	89,8	88,8	89,3	89,7
2008	100,0	100,0	100,0	100,0	100,0	100,0	100,0	100,0	100,0	100,0
2009	107,7	107,1	106,9	107,6	108,2	107,0	106,9	107,3	107,1	107,1
2010	111,9	111,8	111,5	111,1	112,4	110,9	110,5	111,2	112,0	111,7
Percentage change compared with the previous year (inflation rate)										
2002	10,9%	7,2%	8,8%	9,9%	10,6%	9,6%	8,9%	9,4%	9,9%	9,2%
2003	6,3%	5,2%	6,2%	6,1%	6,7%	6,5%	5,1%	6,9%	5,9%	5,8%
2004	1,9%	1,7%	1,6%	1,1%	1,7%	1,8%	0,6%	0,4%	1,5%	1,4%
2005	3,2%	3,4%	3,6%	2,7%	3,9%	4,1%	3,0%	4,0%	3,4%	3,4%
2006	5,6%	5,3%	4,4%	4,9%	4,9%	5,5%	4,8%	4,7%	4,2%	4,7%
2007	6,9%	6,9%	7,0%	7,3%	8,1%	7,1%	7,5%	7,3%	7,6%	7,1%
2008	11,4%	11,3%	11,3%	11,6%	12,1%	12,1%	11,4%	12,6%	11,9%	11,5%
2009	7,7%	7,1%	6,9%	7,6%	8,2%	7,0%	6,9%	7,3%	7,1%	7,1%
2010	3,9%	4,4%	4,3%	3,3%	3,9%	3,6%	3,4%	3,6%	4,6%	4,3%

Source: Stats SA, *Consumer price index* (Statistical release P0141)

Percentage change compared with the previous year (inflation rate) is based on the annual average weighted index. From 1997 the indices are based on information for the main metropolitan areas, as well as other urban areas; prior to 1997 the indices were based on information for metropolitan areas only. From 2009 the indices were based on the information for all urban areas

7.6 Consumer price index for food for all urban areas (base year 2008=100)

	2002	2003	2004	2005	2006	2007	2008	2009	2010
Food price index ¹	64,2	69,4	71,0	72,6	77,8	85,8	100,0	109,2	110,1

Sources: Stats SA, *Consumer price index (CPI)* (Statistical releases P0141)

¹The food price index figures are only for metropolitan areas till 2008. From 2009 the food price index figures are for all urban areas.

7.7 Relative price fluctuations (based on the consumer price index), 1980-2010

	1980	1985	1990	1995	1996	1997	1998	1999	2000	2001	2002	2003	2004	2005	2006	2007	2008	2009	2010
1980	1,00																		
1985	1,91	1,00																	
1990	3,90	2,04	1,00																
1995	6,66	3,48	1,71	1,00															
1996	7,15	3,74	1,83	1,07	1,00														
1997	7,76	4,06	1,99	1,17	1,09	1,00													
1998	8,29	4,34	2,13	1,25	1,16	1,07	1,00												
1999	8,72	4,56	2,24	1,31	1,22	1,12	1,05	1,00											
2000	9,19	4,81	2,36	1,38	1,29	1,18	1,11	1,05	1,00										
2001	9,72	5,08	2,49	1,46	1,36	1,25	1,17	1,11	1,06	1,00									
2002	10,60	5,55	2,72	1,59	1,48	1,37	1,28	1,22	1,15	1,09	1,00								
2003	11,22	5,87	2,88	1,68	1,57	1,45	1,35	1,29	1,22	1,15	1,06	1,00							
2004	11,38	5,95	2,92	1,71	1,59	1,47	1,37	1,31	1,24	1,17	1,07	1,01	1,00						
2005	11,76	6,15	3,02	1,77	1,65	1,52	1,42	1,35	1,28	1,21	1,11	1,05	1,03	1,00					
2006	12,32	6,45	3,16	1,85	1,72	1,59	1,49	1,41	1,34	1,27	1,16	1,10	1,08	1,05	1,00				
2007	13,19	6,90	3,38	1,98	1,85	1,70	1,59	1,51	1,44	1,36	1,24	1,18	1,16	1,12	1,07	1,00			
2008	14,71	7,69	3,77	2,21	2,06	1,89	1,77	1,69	1,60	1,51	1,39	1,31	1,29	1,25	1,19	1,11	1,00		
2009	15,75	8,24	4,04	2,36	2,20	2,03	1,90	1,81	1,71	1,62	1,49	1,40	1,38	1,34	1,28	1,19	1,07	1,00	
2010	16,43	8,59	4,22	2,47	2,30	2,12	1,98	1,88	1,79	1,69	1,55	1,46	1,44	1,40	1,33	1,25	1,12	1,04	1,00

Source: Stats SA

The table indicates the average level of consumer prices in any specific year compared with a rand (100c) in different base years. For example, food and services that would have cost R1,00 in 1990, cost R4,22 in 2010, and food and services that would have cost R1,00 in 2000, cost R1,79 in 2010.

8.1 Index of the physical volume of mining production, 2001-2010 (base year 2005=100)

	2001	2002	2003	2004	2005	2006	2007	2008	2009	2010
Physical volume, including gold Actual indices	90,8	91,6	95,3	98,8	100,0	98,7	97,8	92,3	86,2	91,4
Physical volume, excluding gold Actual indices	82,8	83,4	89,4	95,8	100,0	100,1	100,2	96,5	90,1	97,1

8.2 Total value of mineral sales, 2001-2010 (R million)

	2001	2002	2003	2004	2005	2006	2007	2008	2009	2010
Mineral sales, including gold Actual values	115 358	137 505	117 527	125 058	142 818	193 590	224 438	300 715	241 365	301 469
Mineral sales, excluding gold Actual values	86 347	96 119	84 474	95 728	118 217	157 185	185 401	254 722	192 669	248 376

9.1 Index of the physical volume of manufacturing production by manufacturing division (actual indices), 2001-2010 (base year 2005=100)

	2001	2002	2003	2004	2005	2006	2007	2008	2009	2010
Manufacturing division										
Food and beverages	89.4	86.0	87.6	94.0	100.0	100.5	105.2	109.6	111.8	116.5
Textiles, clothing, leather and footwear	100.8	107.7	98.7	102.6	100.0	101.8	105.3	104.8	89.5	84.1
Wood and wood products; paper; publishing and printing	90.0	92.5	92.8	95.7	100.0	105.9	107.1	108.3	92.0	96.6
Petroleum, chemical products, rubber and plastic products	91.6	98.0	94.5	98.0	100.0	102.8	110.3	117.1	105.0	111.3
Glass and non-metallic mineral products	84.5	88.6	87.0	92.3	100.0	105.7	110.9	110.4	96.5	93.9
Basic iron and steel, non-ferrous metal products; metal products and machinery	93.2	100.7	99.6	102.0	100.0	106.7	111.7	105.6	85.9	89.3
Electrical machinery	109.6	109.8	106.6	101.9	100.0	106.3	111.1	124.9	121.2	127.6
Radio, television and communication apparatus; professional equipment	83.3	87.6	91.8	98.1	100.0	96.5	102.9	106.0	98.7	94.2
Motor vehicles, parts and accessories and other transport equipment	85.4	87.5	84.9	90.3	100.0	111.6	112.2	105.8	79.7	96.0
Furniture and other manufacturing divisions	93.1	97.1	91.2	93.8	100.0	105.3	114.2	118.2	94.5	91.8
Total	91.5	95.3	93.4	97.1	100.0	104.8	109.6	110.4	96.2	100.9

Source: Stats SA, *Manufacturing: Production and sales* (Statistical release P3041.2)

The sample of manufacturing production and sales is based on an updated version of Stats SA's business register, based on the database of units registered for value-added tax (VAT) and income tax (IT), obtained from the South African Revenue Service (SARS).

9.2 Value of sales of manufactured products by manufacturing division (actual values), 2001-2010 (R'000)

	2001	2002	2003	2004	2005	2006	2007	2008	2009	2010
Manufacturing division										
Food and beverages	106 627 076	128 428 619	132 005 645	143 997 359	149 089 525	161 572 815	188 920 723	229 317 894	239 997 619	247 861 866
Textiles, clothing, leather and footwear	34 439 900	40 223 250	38 854 742	40 297 464	39 711 208	41 020 859	43 842 143	44 982 015	39 358 324	37 440 194
Wood and wood products; paper, publishing and printing	60 399 726	71 009 873	74 011 476	76 772 978	82 561 960	91 406 153	99 904 200	110 643 861	102 039 074	108 331 794
Petroleum, chemical products, rubber and plastic products	130 154 841	159 955 127	149 709 924	162 492 913	173 792 027	200 188 274	236 945 442	313 037 428	262 540 179	281 192 361
Glass and non-metallic mineral products	19 126 296	22 595 414	24 001 597	27 464 412	30 836 495	34 106 679	38 306 812	41 442 579	40 112 675	41 053 595
Basic iron and steel, non-ferrous metal products; metal products and machinery	148 516 384	187 446 064	187 760 098	207 906 416	212 149 602	241 923 840	285 646 800	338 219 002	249 364 417	267 417 493
Electrical machinery	17 851 347	21 184 809	20 466 854	21 312 519	22 318 549	27 504 209	32 746 751	38 527 856	35 326 612	37 583 772
Radio, television and communication apparatus; professional equipment	8 529 905	10 498 287	11 075 270	11 774 654	12 262 794	12 252 598	13 367 984	14 077 694	13 518 475	13 079 544
Motor vehicles, parts and accessories and other transport equipment	89 675 853	111 366 057	107 837 949	118 467 828	135 835 300	160 797 252	180 278 434	195 740 098	142 178 315	162 365 788
Furniture and other manufacturing divisions	33 979 559	40 018 132	35 633 109	38 156 781	42 817 247	48 052 264	54 221 208	60 010 789	55 680 257	56 670 444
Total	649 300 887	792 725 632	781 356 664	848 643 324	901 374 707	1 018 824 943	1 174 180 497	1 385 999 216	1 180 115 947	1 252 996 851

Source: Stats SA, *Manufacturing: Production and sales* (Statistical release P3041.2)

The levels for manufacturing sales in this publication are slightly different from previously published data due to the implementation of a new sample drawn in April 2009. While in total there was very little difference between the levels of sales from the old and new samples for the overlap period, there were differences within the manufacturing divisions. The major reason for the change in the divisions' data is the improved classification of the register of Stats SA's businesses register as already alluded.

9.3 Utilisation of production capacity by manufacturing division, 2003-2010 (percentages)

	2003	2004 ¹	2005	2006	2007	2008	2009	2010	Weights ²
Food and beverages	76,9	79,6	81,9	82,8	82,4	81,5	80,6	80,8	15,4
Textiles, clothing, leather and footwear	81,3	86,0	81,8	84,0	83,1	82,1	77,2	75,8	4,9
Wood and wood products, paper, publishing and printing	85,5	86,2	86,7	87,4	87,1	86,8	82,3	82,6	10,2
Petroleum, chemical products, rubber and plastic products	80,7	83,8	84,3	82,4	84,8	84,6	80,6	81,0	22,1
Glass and non-metallic mineral products	83,8	88,4	90,0	88,6	88,7	87,0	81,8	78,8	4,8
Basic iron and steel, non-ferrous metal, metal products and machinery	84,4	86,0	87,7	87,0	86,3	82,2	72,9	77,8	22,9
Electrical machinery	82,3	86,0	81,6	80,3	80,6	82,9	82,7	81,7	2,5
Radio, television and communication apparatus; professional equipment	75,7	85,6	85,6	87,9	88,6	87,9	84,0	83,0	1,1
Motor vehicles, parts and accessories and other transport equipment	76,4	82,4	83,7	87,8	88,0	82,9	70,9	77,7	10,9
Furniture and other manufacturing industries	81,5	89,5	91,3	92,3	92,1	89,5	83,5	86,7	5,2
All manufacturing	81,3	84,4	85,3	85,5	85,7	83,9	78,1	80,0	100,0

Source: Stats SA, *Manufacturing: Utilisation of production capacity by large enterprises* (Statistical release P3043)

¹ Comparability break: From 2004 the results are from a new survey based on Stats SA's new business register.

² Weights based on value added results of the 2005 large sample survey of manufacturing.

10.1 Actual capital expenditure on new construction works by the public sector, according to type of new construction works, 2001-2010 (R thousands)

	2001	2002	2003	2004	2005	2006	2007	2008	2009	2010
Capital expenditure on new construction works										
Residential buildings	2 216 635	2 445 201	3 945 488	1 701 703	1 399 032	1 581 761	1 242 263	1 919 972	1 275 839	1 055 231
Non-residential buildings	3 099 252	3 613 595	5 112 066	5 870 531	5 941 299	6 386 824	8 444 282	4 932 733	5 273 689	5 475 194
Roads, streets and bridges	2 777 388	2 674 863	5 422 249	4 163 773	6 048 404	6 995 584	8 352 832	3 799 881	5 930 786	6 153 286
Water schemes and works	2 045 083	1 973 878	3 010 980	151 557	271 919	1 126 870	1 719 408	3 078 718	5 112 315	4 791 689
Water reservoirs and reticulation	1 734 776	2 632 354	2 914 584	924 514	284 662	456 380	354 812
Sewerage, sanitation and cleansing	1 160 844	772 493	1 374 151	1 131 283	2 232 542	2 094 218	2 538 829	2 234 539	1 991 306	1 836 327
Electricity supply	1 282 753	1 097 642	1 634 868	1 197 833	1 795 557	1 601 952	1 976 458	2 310 271	2 626 989	2 914 225
Community and social services	786 591	2 121 087	5 770 371	5 775 541	4 110 441
Street lighting	114 596	29 869	25 663	50 394	65 402
Sport facilities	6 131	3 232	236
Refuse sites	153 297	242 374	152 239	361 404	147 103
Other	6 641 635	7 675 289	15 985 429	15 475 879	17 194 079	24 063 394	30 307 609	43 286 450	81 127 967	90 962 903
Total	19 223 590	20 252 961	36 485 231	31 427 335	37 515 186	47 825 802	57 902 757	67 795 735	109 982 610	117 866 613

Source: Stats SA, *Capital expenditure by the public sector* (Statistical release P9101)

New construction works include residential buildings, non-residential buildings, roads, streets and bridges, sewerage, water works, electricity and other constructions

10.2 Actual capital expenditure by the national and provincial governments for the financial year ended 31 March on reconstruction and development programmes (RDP), according to type of new construction works, 2001-2006 (R thousands)

	Reconciliation and development projects					
	2001	2002	2003	2004	2005	2006
Capital expenditure on RDP						
Residential buildings	446 714	824 306	1 160 983	970 370	1 025 327	0
Non-residential buildings	62 455	4 399	8 172	2 881	4 500	0
Roads, streets, bridges and related constructions	9 561	75 324	13 707	1 000	0	0
Water schemes and works	107 174	94 115	109 215	584 205	242 743	100 015
Sewerage, sanitation and cleansing	19 107	22 701	22 904	126 114	143 947	96 471
Electricity supply	43	3 597	0	0	0	160
Other construction	195 541	97 650	93 121	16 515	0	0
Total	840 595	1 122 092	1 408 102	1 701 085	1 416 517	196 646

Source: Stats SA, *Capital expenditure by the public sector* (Statistical release P9101)

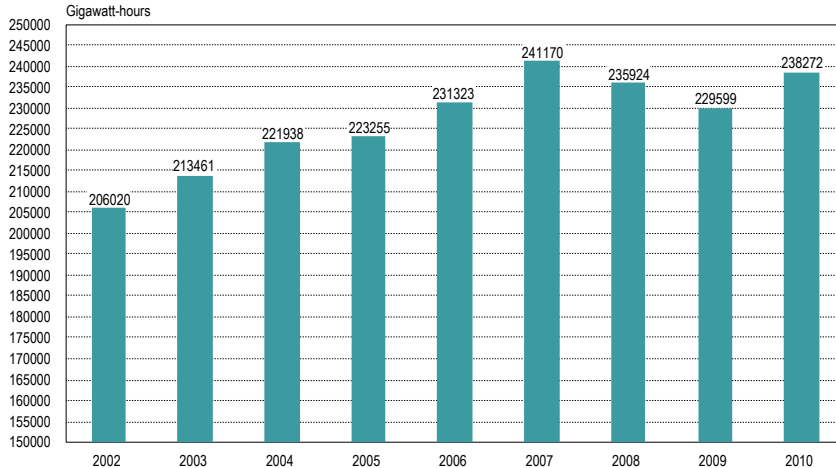
*Values for the RDP construction were incorporated into the values in the New Construction. They were left in order to avoid duplication by respondents



Energy

- | | | |
|------|---|-----|
| 11.1 | Electricity consumed in South Africa, 2002-2010 | 99 |
| 11.2 | Electricity consumption by province, 2002-2010 (gigawatt-hours) | 100 |

11.1 Electricity consumed in South Africa, 2002-2010



Source: Stats SA, *Electricity generated and available for distribution* (Statistical release P4141)

The figures on consumption by province exclude the energy used by Eskom for its own consumption as from 2002, while the figures on the graph in 11.1 include Eskom's own consumption as from 2002. Hence the difference in the data in Table 11.2 and on the graph in 11.1.

11.2 Electricity consumption by province, 2002-2010 (gigawatt-hours)

	Eastern Cape	Free State	Gauteng	KwaZulu- Natal	Limpopo	Mpuma- langa	Northern Cape	North West	Western Cape	South Africa
2002	6 992	9 405	52 007	37 629	8 571	25 518	4 175	26 601	19 700	190 598
2003	7 135	9 648	52 530	39 230	9 441	25 277	4 400	28 098	20 587	196 359
2004	7 510	9 625	54 970	42 264	9 791	25 925	4 502	28 187	21 491	204 267
2005	7 713	8 980	55 107	43 049	10 281	29 469	4 649	24 865	21 445	205 558
2006	8 261	9 141	59 728	43 174	11 520	31 388	4 727	24 419	22 382	214 740
2007	9 765	9 556	61 997	43 193	11 270	33 702	5 027	26 515	23 410	224 435
2008	9 432	9 186	60 473	41 241	11 421	33 613	4 768	25 494	23 245	218 873
2009	8 873	8 740	59 965	42 081	11 097	31 524	4 629	24 389	22 583	213 881
2010	9 646	8 972	61 507	42 125	12 199	34 483	4 719	25 930	23 093	222 674



Transport

12.1 Total freight and passenger transportation, 2008-2010

103

12.1 Total freight and passenger transportation, 2008-2010

		2005	2006	2007	2008	2009	2010
	Freight						
Rail	Payload (000 tons)	183 106	183 483	185 986
	Income (R million)	16 956	18 774	21 452
Road	Payload (000 tons)	478 835	426 823	449 765
	Income (R million)	53 763	48 996	52 501
Total	Payload (000 tons)	661 941	610 306	635 751
	Income (R million)	70 719	67 770	73 955
	Passenger						
Rail	Number of passengers (000)	613 435	643 893	519 801
	Income (R million)	1 788	1 853	1 763
Road	Number of passengers (000)	283 280	287 797	287 769
	Income (R million)	5 034	5 299	5 860
Total	Number of passengers (000)	896 715	931 690	807 573
	Income (R million)	6 822	7 152	7 624

Source: Stats SA, Land transport survey (Statistical release P7162)

This survey has been re-engineered and covers freight and passenger transport as from 2008.



Financial statistics:

Private enterprises operating in the formal non-agriculture business sector

13.1	Selected income and expenditure items: Forestry and fishing industry, 2003-2009 (R millions)	108
13.2	Selected income and expenditure items: Mining and quarrying industry, 2003-2009 (R millions)	109
13.3	Selected income and expenditure items: Manufacturing industry, 2003-2009 (R millions)	110
13.4	Selected income and expenditure items: Electricity, gas and water supply industry, 2003-2009 (R millions)	111
13.5	Selected income and expenditure items: Construction industry, 2003-2009 (R millions)	112
13.6	Selected income and expenditure items: Trade industry, 2003-2009 (R millions)	113
13.7	Selected income and expenditure items: Transport, storage and communication industry, 2003-2009 (R millions)	114
13.8	Selected income and expenditure items: Real estate and other business services industry (excluding financial intermediation and insurance), 2003-2009 (R millions)	115
13.9	Selected income and expenditure items: Community, social and personal services industry (excluding government institutions), 2003-2009 (R millions)	116
13.10	Comparison of operating ratios between 2003-2009	117

Notes for all tables

- ¹ Includes the value of sales; amounts received for work done; amounts received for services rendered; rent and/or lease payments received for land and buildings; rent, leasing and hiring received for machinery, vehicles and other equipment, and excludes value-added tax (VAT); net profit or loss on sales or revaluation of fixed assets (including profit or loss on foreign exchange); export freight charges; interest received and excise duty.
- ² Includes raw materials or materials for processing, packaging materials, fuel and consumable and maintenance stores; work in progress (partially completed); finished goods (own manufactures) and finished goods not produced by the enterprise but purchased for resale.
- ³ Is calculated as total income less total expenditure less opening stock plus closing stock.
- ⁴ Includes the erection of new buildings and works, additions to and alterations of existing buildings and works; capital work in progress capitalised; new plant and machinery, vehicles and equipment; and used plant and machinery, which was imported by or on behalf of the enterprise whether paid to outside contractors/ concerns, or which was done by the enterprise itself.

13.1 Selected income and expenditure items: Forestry and fishing industry 2005-2009 (R millions)

Item	2003	2004	2005	2006	2007	2008	2009
Income items							
Turnover ¹	7 880	8 799	9 256	9 220	9 430
Interest received	89	101	128	139	146
Other income	296	282	171	173	175
Total income	8 535	9 666	11 060	11 144	12 159
Opening value of inventories ²	463	505	508	390	763
Closing value of inventories ²	435	385	491	736	1 021
Expenditure items							
Purchases	3 126	3 250	3 363	3 232	3 434
Salaries and wages	1 511	1 772	1 454	1 807	1 851
Interest paid	155	136	122	127	140
Other expenditure	962	891	694	891	893
Total expenditure	7 452	8 317	7 829	8 488	8 790
Net profit before providing for company tax and dividends ³	1 055	1 229	..	3 002	3 627
Capital expenditure on new assets ⁴	409	505	259	330	457
Carrying value of property, plant and intangible assets at the end of the financial year	2 902	4 219	3 853	3 010	3 438

Source: Stats SA, *Economic activity survey* (Statistical release P0020) and *Annual financial statistics survey* (Statistical release P0021)

Comparable estimates for the fishing and forestry industry for the 2003 and 2004 surveys are not available as it was published for the first time in the 2005 survey.

Due to differences in sampling methods, sampling frames and coverages of industries, statistics of the Economic activity surveys prior to 2003 are not comparable to the 2003, 2004, 2005, 2006, 2007, 2008 and 2009 surveys.

Comparable estimates for the variable salaries and wages for the 2003 survey are not available as they were published for the first time in the 2004 survey.

13.2 Selected income and expenditure items: Mining and quarrying industry, 2003-2009 (R millions)

Item	2003	2004	2005	2006	2007	2008	2009
Income items							
Turnover ¹	155 652	151 001	164 988	200 748	272 431	345 340	399 352
Interest received	2 153	2 573	2 656	2 551	3 485	5 314	8 107
Other income	15 014	10 380	4 684	3 761	3 052	3 654	5 294
Total income	176 492	169 453	176 779	217 223	303 399	368 391	436 793
Opening value of inventories ²	12 848	13 584	16 613	19 209	21 962	25 778	30 039
Closing value of inventories ²	14 733	14 976	19 419	21 484	24 322	31 849	44 432
Expenditure items							
Purchases	41 929	47 062	50 047	53 926	74 886	106 949	132 977
Salaries and wages	..	39 755	39 839	45 550	52 382	59 047	69 552
Interest paid	5 378	5 574	5 418	5 293	7 322	9 489	11 396
Other expenditure	64 973	24 863	22 798	17 055	18 045	16 861	25 825
Total expenditure	146 811	154 822	161 756	178 314	219 787	264 895	342 169
Net profit before providing for company tax and dividends ³	31 567	16 023	17 829	41 184	85 972	109 567	109 017
Capital expenditure on new assets ⁴	28 640	23 365	27 046	22 690	33 938	60 752	74 867
Carrying value of property, plant and intangible assets at the end of the financial year	137 025	148 328	164 195	177 394	226 401	268 785	326 953

Source: Stats SA, *Economic activity survey* (Statistical release P0020) and *Annual financial statistics survey* (Statistical release P0021)

Comparable estimates for the variable salaries and wages for the 2003 survey are not available as they were published for the first time in the 2004 survey.

13.3 Selected income and expenditure items: Manufacturing industry, 2003-2009 (R millions)

Item	2003	2004	2005	2006	2007	2008	2009
Income items							
Turnover ¹	792 390	860 789	912 050	1 009 436	1 266 728	1 468 184	1 802 829
Interest received	5 922	6 826	6 915	9 077	8 955	12 312	14 651
Other income	20 034	17 012	11 638	12 616	11 481	14 851	17 521
Total income	822 452	891 951	953 906	1 050 274	1 310 167	1 527 046	1 869 081
Opening value of inventories ²	86 612	100 091	98 266	106 686	128 849	158 604	210 990
Closing value of inventories ²	97 549	100 980	108 028	122 458	158 811	204 248	218 367
Expenditure items							
Purchases	489 543	519 456	544 550	609 529	821 110	934 605	1 175 488
Salaries and wages	..	109 934	115 224	125 025	137 445	147 156	183 666
Interest paid	16 660	17 858	16 252	17 899	19 502	25 562	35 737
Other expenditure	167 469	65 798	63 124	63 642	58 391	72 494	81 477
Total expenditure	762 681	822 514	866 030	957 248	1 205 077	1 414 739	1 735 703
Net profit before providing for company tax and dividends ³	70 708	70 326	97 638	108 798	135 052	157 951	140 755
Capital expenditure on new assets ⁴	33 002	45 755	47 415	46 709	49 563	64 400	62 322
Carrying value of property, plant and intangible assets at the end of the financial year	165 291	208 570	234 455	250 371	282 570	337 414	380 954

Source: Stats SA, *Economic activity survey* (Statistical release P0020) and *Annual financial statistics survey* (Statistical release P0021)

Comparable estimates for the variable salaries and wages for the 2003 survey are not available as they were published for the first time in the 2004 survey.

13.4 Selected income and expenditure items: Electricity, gas and water supply industry, 2003-2009 (R millions)

Item	2003	2004	2005	2006	2007	2008	2009
Income items							
Turnover ¹	39 116	40 500	43 869	47 886	54 504	61 297	74 855
Interest received	3 088	3 983	3 479	3 008	3 045	3 166	3 875
Other income	1 661	7 577	9 049	1 210	985	915	1 063
Total income	44 136	52 452	56 989	54 837	64 074	68 856	80 860
Opening value of inventories ²	2 348	2 320	2 403	3 003	3 497	3 792	3 961
Closing value of inventories ²	2 438	2 404	3 035	3 467	3 769	3 996	6 880
Expenditure items							
Purchases	11 988	13 685	14 823	16 024	20 134	26 282	38 477
Salaries and wages	..	8 969	8 682	9 039	10 556	12 422	16 203
Interest paid	6 796	6 501	6 581	4 989	5 319	5 574	5 142
Other expenditure	11 042	6 711	9 396	3 549	2 622	2 715	3 866
Total expenditure	38 291	46 462	50 980	46 125	53 318	66 346	94 061
Net profit before providing for company tax and dividends ³	5 935	6 074	6 641	9 176	11 028	2 714	-10 282
Capital expenditure on new assets ⁴	5 286	9 196	10 453	11 498	18 674	26 577	49 771
Carrying value of property, plant and intangible assets at the end of the financial year	62 643	67 289	74 173	79 725	93 939	114 802	159 226

Source: Stats SA, *Economic activity survey* (Statistical release P0020) and *Annual financial statistics survey* (Statistical release P0021)

Comparable estimates for the variable salaries and wages for the 2003 survey are not available as they were published for the first time in the 2004 survey.

13.5 Selected income and expenditure items: Construction industry, 2003-2009 (R millions)

Item	2003	2004	2005	2006	2007	2008	2009
Income items							
Turnover ¹	90 184	97 723	114 722	136 106	165 812	227 908	266 846
Interest received	611	620	671	979	967	1 486	3 369
Other income	1 508	1 190	1 199	1 336	1 676	1 290	1 647
Total income	92 712	100 437	117 637	139 464	169 430	233 247	274 738
Opening value of inventories ²	3 731	6 048	4 955	6 268	7 561	9 802	12 467
Closing value of inventories ²	4 528	5 976	6 575	7 766	9 791	13 839	13 571
Expenditure items							
Purchases	47 429	48 770	61 453	69 645	78 318	113 446	128 000
Salaries and wages	..	16 172	19 287	21 744	26 819	34 890	41 305
Interest paid	1 129	1 170	1 306	1 516	1 301	2 462	4 236
Other expenditure	30 094	19 779	17 930	10 712	9 836	7 938	9 799
Total expenditure	88 984	96 396	113 234	132 820	163 281	220 012	252 679
Net profit before providing for company tax and dividends ³	4 525	3 969	6 023	8 142	8 379	17 272	23 163
Capital expenditure on new assets ⁴	2 710	2 252	3 038	5 117	6 117	8 243	9 223
Carrying value of property, plant and intangible assets at the end of the financial year	9 842	11 049	13 772	17 550	23 810	28 548	34 619

Source: Stats SA, *Economic activity survey* (Statistical release P0020) and *Annual financial statistics survey* (Statistical release P0021)

Comparable estimates for the variable salaries and wages for the 2003 survey are not available as they were published for the first time in the 2004 survey.

13.6 Selected income and expenditure items: Trade industry, 2003-2009 (R millions)

Item	2003	2004	2005	2006	2007	2008	2009
Income items							
Turnover ¹	854 181	984 753	1 107 593	1 290 618	1 450 456	1 708 074	1 909 014
Interest received	5 930	5 751	6 286	10 887	10 296	14 139	15 304
Other income	13 832	11 758	12 051	14 589	15 628	16 232	13 867
Total income	876 089	1 004 876	1 132 429	1 330 288	1 487 397	1 750 803	1 950 423
Opening value of inventories ²	66 669	76 575	95 504	113 634	119 282	138 471	168 341
Closing value of inventories ²	76 178	80 903	108 666	132 224	139 441	166 205	186 465
Expenditure items							
Purchases	652 597	742 576	833 237	988 649	1 120 471	1 337 891	1 490 416
Salaries and wages	..	79 689	92 071	110 044	124 647	138 737	153 653
Interest paid	11 065	11 349	11 035	12 692	13 860	20 100	18 711
Other expenditure	124 579	62 155	58 284	59 845	47 468	46 105	59 560
Total expenditure	850 903	967 307	1 084 672	1 279 133	1 426 667	1 692 404	1 888 568
Net profit before providing for company tax and dividends ³	34 696	41 897	60 919	69 745	80 889	86 133	79 979
Capital expenditure on new assets ⁴	11 992	16 655	16 222	20 539	28 713	31 198	29 365
Carrying value of property, plant and intangible assets at the end of the financial year	67 562	73 722	88 403	100 478	119 149	178 921	178 921

Source: Stats SA, *Economic activity survey* (Statistical release P0020) and *Annual financial statistics survey* (Statistical release P0021)

Comparable estimates for the variable salaries and wages for the 2003 survey are not available as they were published for the first time in the 2004 survey

13.7 Selected income and expenditure items: Transport, storage and communication industry, 2003-2009 (R millions)

Item	2003	2004	2005	2006	2007	2008	2009
Income items							
Turnover ¹	213 948	234 158	244 990	296 962	372 457	445 751	504 482
Interest received	3 031	2 617	2 604	2 434	3 544	4 900	5 230
Other income	4 965	7 889	5 789	4 803	6 261	6 743	9 386
Total income	226 037	254 550	268 546	311 541	395 360	470 118	533 268
Opening value of inventories ²	3 349	4 662	5 676	5 582	6 593	7 815	8 893
Closing value of inventories ²	2 588	4 685	6 195	6 321	7 840	8 643	10 068
Expenditure items							
Purchases	63 533	75 406	86 306	95 964	121 974	163 674	193 840
Salaries and wages	..	41 883	42 692	45 377	57 154	61 417	69 298
Interest paid	11 330	8 932	7 702	7 263	9 915	13 064	15 248
Other expenditure	75 681	44 937	36 488	31 502	39 796	34 725	42 197
Total expenditure	208 330	235 527	231 246	272 464	347 581	414 634	481 593
Net profit before providing for company tax and dividends ³	16 946	19 046	37 819	39 816	49 026	56 312	52 850
Capital expenditure on new assets ⁴	25 699	23 486	24 109	34 767	37 437	47 392	54 328
Carrying value of property, plant and intangible assets at the end of the financial year	139 189	138 038	142 741	154 634	172 231	224 564	260 094

Source: Stats SA, *Economic activity survey* (Statistical release P0020) and *Annual financial statistics survey* (Statistical release P0021)

Comparable estimates for the variable salaries and wages for the 2003 survey are not available as they were published for the first time in the 2004 survey.

13.8 Selected income and expenditure items: Real estate and other business services industry (excluding financial intermediation and insurance), 2003-2009 (R millions)

Item	2003	2004	2005	2006	2007	2008	2009
Income items							
Turnover ¹	219 263	275 888	303 685	347 142	434 883	592 224	642 726
Interest received	6 032	9 098	7 475	8 112	11 325	20 691	25 642
Other income	12 461	5 893	8 191	8 773	8 372	11 599	12 507
Total income	240 302	302 191	339 653	406 481	508 440	707 701	763 835
Opening value of inventories ²	4 881	9 020	9 408	10 271	19 551	24 855	26 925
Closing value of inventories ²	5 138	10 436	11 400	12 361	22 148	29 672	29 729
Expenditure items							
Purchases	32 057	73 484	79 436	74 123	125 457	201 638	224 166
Salaries and wages	..	75 001	84 923	105 648	113 954	153 247	164 929
Interest paid	19 258	22 976	25 005	20 286	26 663	42 429	45 237
Other expenditure	104 078	39 389	43 406	43 761	46 432	58 000	68 796
Total expenditure	197 302	257 138	287 261	331 515	406 690	574 289	638 015
Net profit before providing for company tax and dividends ³	43 257	46 469	54 384	77 056	104 347	138 229	128 624
Capital expenditure on new assets ⁴	14 800	15 105	14 363	25 436	25 830	42 563	34 092
Carrying value of property, plant and intangible assets at the end of the financial year	176 898	242 553	260 879	277 014	235 825	234 103	246 345

Source: Stats SA, *Economic activity survey* (Statistical release P0020) and *Annual financial statistics survey* (Statistical release P0021)

Comparable estimates for the variable salaries and wages for the 2003 survey are not available as they were published for the first time in the 2004 survey.

13.9 Selected income and expenditure items: Community, social and personal services industry (excluding government institutions), 2003-2009 (R millions)

Item	2003	2004	2005	2006	2007	2008	2009
Income items							
Turnover ¹	63 997	77 102	79 233	90 703	96 061	114 053	130 644
Interest received	935	928	981	875	1 228	1 544	2 060
Other income	4 677	2 714	2 374	2 728	4 985	7 479	6 811
Total income	70 951	82 361	84 341	96 303	107 208	129 602	143 601
Opening value of inventories ²	2 059	2 440	2 026	1 937	1 794	1 811	2 446
Closing value of inventories ²	2 401	2 495	1 971	2 061	2 365	2 028	2 852
Expenditure items							
Purchases	19 145	22 969	22 650	23 775	23 600	26 051	30 171
Salaries and wages	..	21 169	20 236	22 373	27 059	32 434	36 386
Interest paid	1 833	1 933	1 742	1 998	2 230	3 028	5 931
Other expenditure	31 685	15 897	15 637	18 913	22 098	25 291	25 388
Total expenditure	64 844	74 866	74 555	83 729	94 576	112 194	127 354
Net profit before providing for company tax and dividends ³	6 449	7 550	9 731	12 698	13 203	17 625	16 653
Capital expenditure on new assets ⁴	4 364	3 311	3 533	4 115	7 575	5 572	6 997
Carrying value of property, plant and intangible assets at the end of the financial year	27 496	32 408	34 334	33 228	85 326	49 185	58 776

Source: Stats SA, *Economic activity survey* (Statistical release P0020) and *Annual financial statistics survey* (Statistical release P0021)

Comparable estimates for the variable salaries and wages for the 2003 survey are not available as they were published for the first time in the 2004 survey.

13.10 Comparison of operating ratios between 2003-2009

	Turnover/Carrying value of assets ⁵				Profit/Turnover ⁶									
	2003	2004	2005	2006	2007	2008	2009	2003	2004	2005	2006	2007	2008	2009
Fishing and forestry industry	2,72	2,09	2,40	3,06	2,74	0,13	0,14	..	0,33	0,38
Mining and quarrying industry	1,14	1,02	1,00	1,13	1,20	1,28	1,22	0,20	0,11	0,11	0,21	0,32	0,32	0,27
Manufacturing industry	4,79	4,13	3,89	4,03	4,48	4,35	4,73	0,09	0,08	0,11	0,11	0,11	0,11	0,07
Electricity, gas and water supply	0,62	0,60	0,59	0,60	0,58	0,53	0,47	0,15	0,15	0,15	0,19	0,20	0,04	-0,14
Construction industry	9,16	8,84	8,33	7,76	6,96	7,98	7,71	0,05	0,04	0,05	0,06	0,05	0,08	0,08
Trade industry	12,64	13,36	12,53	12,84	12,17	10,09	10,67	0,04	0,04	0,06	0,05	0,06	0,05	0,04
Transport, storage and communication industry	1,54	1,70	1,72	1,92	2,16	1,98	1,94	0,08	0,08	0,15	0,13	0,13	0,13	0,10
Real estate and other business services industry (excluding financial intermediation and insurance)	1,24	1,14	1,16	1,25	1,84	2,53	2,61	0,20	0,17	0,18	0,22	0,24	0,23	0,20
Community, social and personal services industry (excluding government institutions)	2,33	2,38	2,31	2,73	1,13	2,32	2,22	0,10	0,10	0,12	0,14	0,14	0,15	0,13

Source: Stats SA, *Economic activity survey* (Statistical release P0020) and *Annual financial statistics survey* (Statistical release P0021)

⁵ Turnover divided by carrying value of non-current assets at the end of the financial year.

⁶ Net profit before tax divided by turnover.

Comparable estimates for the fishing and forestry industry for the 2003 and 2004 surveys are not available as it was published for the first time in the 2005 survey.

13.10 Comparison of operating ratios between 2003-2009 (concl.)

	Profitability ratio ⁷						
	2003	2004	2005	2006	2007	2008	2009
Fishing and forestry industry	0,10	0,10	..	0,24	0,30
Mining and quarrying industry	0,13	0,06	0,07	0,15	0,24	0,22	0,19
Manufacturing industry	0,06	0,06	0,08	0,08	0,08	0,08	0,05
Electricity, gas and water supply	0,11	0,10	0,10	0,14	0,15	0,05	-0,09
Construction industry	0,04	0,03	0,04	0,05	0,03	0,06	0,07
Trade industry	0,03	0,03	0,04	0,04	0,04	0,04	0,03
Transport, storage and communication industry	0,06	0,05	0,12	0,09	0,09	0,09	0,08
Real estate and other business services industry (excluding financial intermediation and insurance)	0,17	0,15	0,15	0,18	0,19	0,19	0,17
Community, social and personal services industry (excluding government institutions)	0,08	0,08	0,10	0,11	0,11	0,12	0,10

Source: Stats SA, *Economic activity survey* (Statistical release P0020) and *Annual financial statistics survey* (Statistical release P0021)

⁷ Net profit after tax divided by turnover.



Selected internal trade activities

14.1	Summary of internal trade statistics, 2006-2010 (R millions)	121
14.2	Summary of tourist accommodation statistics, 2006-2010	122
14.3	Food and beverages, 2006-2010	123

14.1 Summary of internal trade statistics, 2006-2010 (R millions)

	2006	2007	2008	2009	2010
Retail trade sales¹					
Sales at current prices	398 466	447 788	500 067	524 352	561 016
Sales at constant prices 2008 prices	468 329	498 641	500 066	481 908	506 822
Wholesale trade sales¹					
Sales at current prices	718 293	842 485	1 031 195	916 800	986 526
Sales at constant 2000 prices	498 469	526 799	566 586	512 787	526 956
Motor trade sales¹					
Sales at current prices	295 595	323 360	336 316	300 935	348 200

Sources: Stats SA, *Retail trade sales* (Statistical release P6242.1), *Wholesale trade sales* (Statistical release P6141.2) and *Motor trade sales* (Statistical release P6343.2)

¹ Stats SA introduced new wholesale trade sales, retail trade sales and motor trade sales samples utilising an upgraded business register commencing with the month of July 2010. The previous sample and the current one were run side by side from April to June 2010, which provided a set of factors that could be applied to the old series to revise previous estimates back to January 1998 for wholesale trade and motor trade and January 2002 for retail trade. The figures up to March 2010 are thus backcasted data based on the movements of the old series and the level of the new series.

14.2 Summary of tourist accommodation statistics, 2006-2010

	2006	2007	2008	2009	2010
Stay Units					
Average stay units available ('000)	108,3	108,6	107,5	107,6	109,8
Stay unit nights sold ('000)	18 179,0	18 996,9	20 141,8	18 470,2	17 964,8
Occupancy rate (%)	46,1	48,1	51,5	47,2	45,0
Income (R million)					
Income from accommodation	8 360,2	9 875,1	11 999,4	11 316,0	12 227,2
Income from restaurant and bar sales	3 031,1	3 380,4	4 027,0	3 780,8	3 879,1
Other income	2 116,8	2 551,6	4 970,2	3 864,4	4 017,5
Total income (R million)	13 508,1	15 807,1	20 996,6	18 961,2	20 123,8

Source: Stats SA, *Tourist accommodation* (Statistical release P6410)

The tourist accommodation survey, which started in September 2004 was introduced to replace the hotel trading statistics survey that was discontinued in March 2004. The tourist accommodation survey includes guest houses, hotels, lodges, self-catering accommodation, caravan parks and camping sites and other accommodation establishments.

¹ Stats SA introduced a new sample utilising an upgraded business register commencing with the month of July 2010.

The previous sample and the current one were run side by side from April to June 2010, which provided a set of factors that could be applied to the old series to revise previous estimates back to August 2005. The figures up to March 2010 are thus backcasted data based on the movements of the old series and the level of the new series

14.3 Food and beverages, 2006-2010

	2006	2007	2008	2009	2010
Total industry					
Total income	26 000,4	28 779,9	33 494,3	33 724,1	36 501,8
Income from food sales	22 664,3	24 841,3	29 368,7	29 870,4	31 890,6
Income from bar sales	2 880,9	3 332,7	3 363,8	3 242,0	3 852,8
Other income	455,2	605,9	761,8	611,7	758,4

Source: Stats SA, *Food and beverages* (Statistical release P6420)

The food and beverages survey is a monthly survey covering a sample of public and private enterprises involved in the preparation of meals and drinks for immediate consumption in South Africa. The purpose of this survey is to monitor trends in the food and beverages industry.

¹ Stats SA introduced a new sample utilising an upgraded business register commencing with the month of July 2010.

The previous sample and the current one were run side by side from April to June 2010, which provided a set of factors that could be applied to the old series to revise previous estimates back to August 2005. The figures up to March 2010 are thus backcasted data based on the movements of the old series and the level of the new series

15.1 Households by type of dwelling and province, 2004-2010 (thousands)

Type of dwelling	Eastern Cape	Free State	Gauteng	KwaZulu-Natal	Limpopo	Mpumalanga	Northern Cape	North West	Western Cape	South Africa
House on a separate stand or yard or on farm										
2004	622	501	1 450	1 034	892	568	230	607	746	6 651
2005	701	481	1 414	1 060	870	598	194	550	704	6 572
2006	865	531	1 605	1 175	943	646	219	547	780	7 310
2007	826	531	1 586	1 245	1 015	660	219	565	725	7 373
2008	882	628	1 967	1 354	1 056	711	235	611	1 018	8 463
2009	926	646	1 918	1 443	1 126	753	256	732	967	8 767
2010	880	697	2 096	1 540	1 199	792	263	707	920	9 094
Traditional dwelling/hut/structure made of traditional materials										
2004	633	43	14	483	132	41	†	†	†	1 358
2005	557	34	†	519	102	63	15	18	†	1 320
2006	470	30	†	525	96	63	13	16	†	1 221
2007	489	28	†	551	80	59	13	16	†	1 244
2008	532	29	†	624	84	62	19	27	†	1 385
2009	605	28	†	588	100	74	14	†	†	1 417
2010	619	26	†	582	77	53	13	11	†	1 385
Flat/apartment in a block of flats										
2004	22	25	274	193	†	27	†	16	124	694
2005	47	13	251	170	†	†	†	23	101	621
2006	38	†	187	226	43	†	14	14	79	619
2007	35	14	284	188	†	†	†	22	94	651
2008	48	12	208	227	17	13	†	†	78	620
2009	26	17	251	205	†	20	†	†	91	624
2010	41	15	232	222	†	†	†	†	121	656

15.1 Households by type of dwelling and province, 2004-2010 (thousands) (cont.)

Type of dwelling	Eastern Cape	Free State	Gauteng	KwaZulu-Natal	Limpopo	Mpumalanga	Northern Cape	North West	Western Cape	South Africa
Town/closter/semi-detached house (simplex/duplex/triplex)										
2004	43	†	192	73	†	†	†	†	137	459
2005	43	†	123	50	†	†	†	†	145	386
2006	17	†	105	32	†	†	†	†	130	295
2007	35	†	111	28	†	†	†	†	145	329
2008	22	†	120	†	†	†	†	†	28	186
2009	13	14	197	50	†	†	†	†	87	376
2010	22	†	120	10	†	†	†	†	28	186
House/flat/room in backyard										
2004	31	†	158	58	†	†	†	†	11	284
2005	29	24	275	55	†	17	†	18	14	444
2006	63	21	305	75	15	31	†	63	21	597
2007	55	21	290	98	31	31	†	48	13	590
2008	55	25	242	41	31	16	†	24	26	464
2009	30	19	248	31	21	15	†	38	29	434
2010	15	18	246	40	10	13	†	11	26	382

15.1 Households by type of dwelling and province, 2004-2010 (thousands) (cont.)

Type of dwelling	Eastern Cape	Free State	Gauteng	KwaZulu- Natal	Limpopo	Mpuma- langa	Northern Cape	North West	Western Cape	South Africa
Informal dwelling/shack in backyard										
2004	25	68	215	46	24	40	†	†	29	458
2005	19	38	262	43	18	24	†	38	63	515
2006	21	45	335	87	38	39	†	49	99	721
2007	39	36	363	34	33	31	†	64	119	728
2008	23	41	383	58	22	41	†	77	103	754
2009	22	58	308	47	30	17	†	39	119	648
2010	20	56	382	32	21	15	†	76	126	736
Informal dwelling/shack not in backyard										
2004	120	35	350	152	26	56	12	58	125	934
2005	126	103	404	286	50	95	20	149	148	1 381
2006	102	97	388	120	20	60	20	137	143	1 085
2007	120	105	405	172	29	72	17	129	143	1 191
2008	103	87	354	162	63	70	21	143	124	1 129
2009	104	69	481	176	39	64	17	114	134	1 197
2010	111	60	409	164	31	85	20	109	134	1 123

15.1 Households by type of dwelling and province, 2004-2010 (thousands) (concl.)

Type of dwelling	Eastern Cape	Free State	Gauteng	KwaZulu-Natal	Limpopo	Mpumalanga	Northern Cape	North West	Western Cape	South Africa
Room/flatlet not in backyard										
2004	41	20	43	161	62	70	†	125	56	580
2005	48	17	97	87	118	34	19	21	61	503
2006	23	†	63	85	52	24	†	19	43	324
2007	37	19	74	92	59	42	12	11	70	417
2008	14	†	45	40	20	23	†	†	17	177
2009	†	†	90	59	23	17	†	12	12	230
2010	67	†	75	73	49	33	†	51	50	406
Total										
2004	1 548	749	2 206	270	831	2 890	820	1 148	1 243	11 705
2005	1 579	767	2 277	277	852	3 001	848	1 181	1 279	12 061
2006	1 611	787	2 348	284	876	3 121	877	1 215	1 332	12 450
2007	1 642	801	2 420	286	897	3 227	908	1 256	1 372	12 808
2008	1 694	835	2 521	302	928	3 367	943	1 299	1 426	13 314
2009	1 738	861	2 615	311	954	3 531	978	1 346	1 478	13 812
2010	1 781	885	2 712	320	982	3 684	1 015	1 394	1 532	14 304

Source: Stats SA, *General household survey* (Statistical release P0318)

† For all values of 10 000 or lower the sample size is too small for reliable estimates.
Totals include other and unspecified type of dwelling.

15.2 Households by energy source for cooking by province, 2004-2010 (thousands)

Energy source for cooking	Eastern Cape	Free State	Gauteng	KwaZulu-Natal	Limpopo	Mpumalanga	Northern Cape	North West	Western Cape	South Africa
Electricity from mains										
2004	489	440	2 437	1 353	371	396	178	400	1 050	7 112
2005	617	475	2 429	1 426	430	389	182	511	1 127	7 585
2006	690	544	2 419	1 554	518	455	201	550	1 157	8 088
2007	790	584	2 536	1 634	524	502	206	589	1 236	8 600
2008	820	638	2 832	1 636	541	533	223	604	1 248	9 075
2009	936	678	3 040	1 792	596	586	247	654	1 293	9 822
2010	957	752	3 085	1 846	657	629	249	689	1 308	10 171
Gas										
2004	46	15	25	44	†	†	11	17	21	195
2005	53	21	15	48	13	†	12	22	33	224
2006	61	25	22	36	16	†	14	18	76	278
2007	62	20	52	48	11	†	12	26	52	291
2008	76	27	67	65	18	†	16	26	93	396
2009	67	25	36	49	†	†	13	24	80	311
2010	57	14	43	52	16	11	9	20	84	306
Paraffin										
2004	466	143	340	301	106	97	33	183	133	1 802
2005	491	152	473	302	107	129	40	201	99	1 994
2006	439	123	619	276	104	106	34	200	78	1 979
2007	431	118	564	238	93	100	35	171	67	1 816
2008	339	90	369	208	70	73	15	143	58	1 366
2009	313	89	372	171	76	47	15	136	79	1 298
2010	377	59	378	149	54	65	24	118	43	1 267

15.2 Households by energy source for cooking by province, 2004-2010 (thousands) (concl.)

Energy source for cooking	Eastern Cape	Free State	Gauteng	KwaZulu-Natal	Limpopo	Mpumalanga	Northern Cape	North West	Western Cape	South Africa
Wood										
2004	528	56	36	469	640	193	43	138	34	2 137
2005	400	40	15	465	604	190	34	107	18	1 873
2006	385	33	16	457	560	189	31	98	19	1 789
2007	347	34	15	465	609	195	37	98	15	1 815
2008	437	46	30	556	646	226	42	143	16	2 141
2009	395	44	39	572	657	238	34	133	17	2 129
2010	372	37	34	554	649	205	35	138	17	2 041
Coal										
2004	†	49	50	27	19	122	†	†	†	279
2005	†	38	66	27	25	121	†	†	†	286
2006	†	46	46	22	14	113	†	†	†	251
2007	†	37	80	33	15	99	†	†	†	273
2008	†	24	66	36	17	91	†	†	†	241
2009	†	23	36	17	†	94	†	†	†	182
2010	†	16	30	15	†	93	†	†	†	162
Total										
2004	1 548	749	2 206	270	831	2 890	820	1 148	1 243	11 705
2005	1 579	767	2 277	277	852	3 001	848	1 181	1 279	12 061
2006	1 611	787	2 348	284	876	3 121	877	1 215	1 332	12 450
2007	1 642	801	2 420	286	897	3 227	908	1 256	1 372	12 808
2008	1 694	835	2 521	302	928	3 367	943	1 299	1 426	13 314
2009	1 738	861	2 615	311	954	3 531	978	1 346	1 478	13 812
2010	1 781	885	2 712	320	982	3 684	1 015	1 394	1 532	14 304

Source: Stats SA, *General household survey* (Statistical release P0318)

† For all values of 10 000 or lower the sample size is too small for reliable estimates.

Totals include other and unspecified type of dwelling.

15.3 Households by energy source for heating by province, 2004-2010 (thousands)

Energy source for heating	Eastern Cape	Free State	Gauteng	KwaZulu-Natal	Limpopo	Mpumalanga	Northern Cape	North West	Western Cape	South Africa
Electricity from mains										
2004	274	315	2 264	1 173	337	326	142	342	845	6 017
2005	346	322	2 202	1 347	383	320	147	405	779	6 251
2006	359	326	2 229	1 449	465	350	144	351	746	6 419
2007	395	359	2 354	1 438	482	361	149	398	802	6 738
2008	390	346	2 501	1 409	404	405	148	358	1 035	6 996
2009	373	284	2 715	1 166	456	517	162	313	1 017	7 003
2010	275	316	2 632	1 171	421	399	140	418	753	6 524
Gas										
2004	†	17	37	18	†	†	†	†	11	108
2005	†	16	14	12	†	†	†	†	16	86
2006	13	22	37	17	†	†	†	†	17	118
2007	†	32	38	25	†	†	†	†	16	142
2008	17	39	84	16	†	11	†	11	36	222
2009	†	48	60	†	†	†	†	14	18	174
2010	11	37	73	†	†	18	†	†	43	212
Paraffin										
2004	464	147	199	118	60	30	21	74	134	1 247
2005	493	159	247	173	45	49	23	76	205	1 471
2006	562	187	383	165	44	35	20	61	225	1 683
2007	571	181	338	125	41	38	21	64	264	1 643
2008	515	174	209	100	33	25	16	68	149	1 288
2009	542	212	197	51	12	20	15	37	215	1 302
2010	562	224	131	66	15	17	15	56	203	1 288

15.3 Households by energy source for heating by province, 2004-2010 (thousands) (concl.)

Energy source for heating	Eastern Cape	Free State	Gauteng	KwaZulu-Natal	Limpopo	Mpumalanga	Northern Cape	North West	Western Cape	South Africa
Wood										
2004	673	104	68	564	632	220	76	220	128	2 685
2005	539	83	51	545	631	201	61	163	55	2 328
2006	549	70	72	538	600	207	72	174	90	2 370
2007	558	73	72	570	601	209	79	170	78	2 410
2008	608	108	126	659	701	253	93	235	61	2 843
2009	556	101	119	649	649	219	77	219	110	2 698
2010	663	94	124	630	713	227	93	192	127	2 864
Coal										
2004	†	93	160	39	25	163	†	47	†	539
2005	†	78	186	44	32	149	†	14	†	515
2006	16	92	200	49	21	152	†	18	†	558
2007	†	76	225	48	19	140	†	15	†	534
2008	13	61	188	67	24	128	†	18	†	503
2009	†	65	160	47	17	122	†	†	†	423
2010	†	48	141	21	11	139	†	†	†	376
Total										
2004	1 548	749	2 206	270	831	2 890	820	1 148	1 243	11 705
2005	1 579	767	2 277	277	852	3 001	848	1 181	1 279	12 061
2006	1 611	787	2 348	284	876	3 121	877	1 215	1 332	12 450
2007	1 642	801	2 420	286	897	3 227	908	1 256	1 372	12 808
2008	1 694	835	2 521	302	928	3 367	943	1 299	1 426	13 314
2009	1 738	861	2 615	311	954	3 531	978	1 346	1 478	13 812
2010	1 781	885	2 712	320	982	3 684	1 015	1 394	1 532	14 304

Source: Stats SA, *General household survey* (Statistical release P0318)

† For all values of 10 000 or lower the sample size is too small for reliable estimates.

Totals include other and unspecified type of dwelling.

15.4 Households by energy source for lighting by province, 2004-2010 (thousands)

Energy source for lighting	Eastern Cape	Free State	Gauteng	KwaZulu-Natal	Limpopo	Mpumalanga	Northern Cape	North West	Western Cape	South Africa
Electricity from mains										
2004	909	657	2 582	1 615	882	683	221	739	1 130	9 416
2005	1 045	669	2 560	1 654	975	685	242	726	1 214	9 769
2006	1 108	698	2 579	1 768	1 029	741	251	752	1 262	10 187
2007	1 139	716	2 698	1 864	1 102	777	257	765	1 322	10 640
2008	1 121	749	2 962	1 870	1 061	772	262	779	1 348	10 923
2009	1 199	782	3 111	1 999	1 130	836	276	801	1 354	11 488
2010	1 272	819	3 157	2 068	1 210	872	277	820	1 385	11 880
Paraffin										
2004	305	14	54	17	61	15	†	†	40	517
2005	253	19	32	42	33	25	†	18	26	453
2006	213	19	92	23	26	16	†	†	32	432
2007	265	18	43	19	22	19	†	†	19	415
2008	258	†	46	15	22	14	†	28	34	430
2009	250	†	44	12	27	†	†	35	51	437
2010	268	†	26	22	17	12	†	27	21	405

15.4 Households by energy source for lighting by province, 2004-2010 (thousands) (concl.)

Energy source for lighting	Eastern Cape	Free State	Gauteng	KwaZulu-Natal	Limpopo	Mpumalanga	Northern Cape	North West	Western Cape	South Africa
Candles										
2004	321	77	250	559	200	121	36	84	65	1 712
2005	276	79	408	572	164	136	26	107	38	1 806
2006	272	67	451	543	149	119	29	114	37	1 782
2007	239	74	494	533	127	109	30	124	26	1 757
2008	297	69	355	619	203	147	32	119	35	1 876
2009	278	72	366	596	183	129	29	108	65	1 825
2010	230	56	383	532	146	119	37	123	48	1 676
Total										
2004	1 548	749	2 206	270	831	2 890	820	1 148	1 243	11 705
2005	1 579	767	2 277	277	852	3 001	848	1 181	1 279	12 061
2006	1 611	787	2 348	284	876	3 121	877	1 215	1 332	12 450
2007	1 642	801	2 420	286	897	3 227	908	1 256	1 372	12 808
2008	1 694	835	2 521	302	928	3 367	943	1 299	1 426	13 314
2009	1 738	861	2 615	311	954	3 531	978	1 346	1 478	13 812
2010	1 781	885	2 712	320	982	3 684	1 015	1 394	1 532	14 304

Source: Stats SA, *General household survey* (Statistical release P0318)

† For all values of 10 000 or lower the sample size is too small for reliable estimates.

Totals include other and unspecified type of dwelling.

15.5 Households by energy source for cooking by population group, 2004-2010 (thousands)

Energy source for cooking	Black African	Other ¹	Total
Electricity from mains			
2004	4 358	2 754	7 112
2005	4 770	2 815	7 585
2006	5 253	2 835	8 088
2007	5 724	2 877	8 600
2008	6 206	2 869	9 075
2009	6 874	2 948	9 822
2010	7 221	2 950	10 171
Gas			
2004	155	40	195
2005	182	42	224
2006	215	63	278
2007	222	69	291
2008	262	133	396
2009	197	114	311
2010	176	129	306

15.5 Households by energy source for cooking by population group, 2004-2010 (thousands) (cont.)

Energy source for cooking	Black African	Other ¹	Total
Paraffin			
2004	1 755	47	1 802
2005	1 948	46	1 994
2006	1 930	49	1 979
2007	1 770	46	1 816
2008	1 342	24	1 366
2009	1 270	28	1 298
2010	1 241	26	1 267
Wood			
2004	2 066	70	2 137
2005	1 834	39	1 873
2006	1 749	40	1 789
2007	1 779	37	1 815
2008	2 103	39	2 141
2009	2 098	30	2 129
2010	2 004	36	2 041

15.5 Households by energy source for cooking by population group, 2004-2010 (thousands) (contl.)

Energy source for cooking	Black African	Other [†]	Total
Coal			
2004	275	†	279
2005	280	†	286
2006	248	†	251
2007	270	†	273
2008	237	†	241
2009	180	†	182
2010	159	†	162
Animal dung			
2004	38	†	38
2005	38	†	38
2006	37	†	37
2007	32	†	32
2008	32	†	33
2009	39	†	39
2010	42	†	43
Total			
2004	8 778	2 922	11 700
2005	9 107	2 956	12 063
2006	9 462	2 996	12 458
2007	9 835	3 040	12 875
2008	10 215	3 079	13 294
2009	10 680	3 132	13 812
2010	11 126	3 178	14 304

Source: Stats SA, *General household survey* (Statistical release P0318)

[†] Other includes coloured, Indian or Asian, white and unspecified population groups. These groups are aggregated due to the small sample size.

† For all values of 10 000 or lower the sample size is too small for reliable estimates.

Totals of energy source include other and unspecified.

15.6 Households by energy source for heating by population group, 2004-2010 (thousands)

Energy source for heating	Black African	Other ¹	Total
Electricity from mains			
2004	3 523	2 494	6 017
2005	3 763	2 489	6 251
2006	3 925	2 494	6 419
2007	4 180	2 558	6 738
2008	4 351	2 645	6 996
2009	4 396	2 606	7 003
2010	4 214	2 311	6 524
Gas			
2004	63	45	108
2005	57	29	86
2006	78	39	118
2007	79	63	142
2008	115	107	222
2009	84	90	174
2010	92	120	212
Paraffin			
2004	1 204	43	1 247
2005	1 421	49	1 471
2006	1 632	51	1 683
2007	1 591	52	1 643
2008	1 262	26	1 288
2009	1 271	31	1 302
2010	1 253	36	1 288

15.6 Households by energy source for heating by population group, 2004-2010 (thousands) (concl.)

Energy source for heating	Black African	Other [†]	Total
Wood			
2004	2 526	159	2 685
2005	2 236	92	2 328
2006	2 243	128	2 370
2007	2 288	123	2 410
2008	2 723	120	2 843
2009	2 578	120	2 698
2010	2 688	175	2 864
Coal			
2004	523	16	539
2005	501	14	515
2006	547	11	558
2007	523	11	534
2008	483	20	503
2009	411	13	423
2010	364	13	376
Total			
2004	8 778	2 922	11 700
2005	9 107	2 956	12 063
2006	9 462	2 996	12 458
2007	9 835	3 040	12 875
2008	10 215	3 079	13 294
2009	10 680	3 132	13 812
2010	11 126	3 178	14 304

Source: Stats SA, *General household survey* (Statistical release P0318)

[†] Other includes coloured, Indian or Asian, white and unspecified population groups. These groups are aggregated due to the small sample size.

† For all values of 10 000 or lower the sample size is too small for reliable estimates.

Totals of energy source include other and unspecified.

15.7 Households by energy source for lighting by population group, 2004-2010 (thousands)

Energy source for lighting	Black African	Other ¹	Total
Electricity from mains			
2004	6 595	2 821	9 416
2005	6 877	2 892	9 769
2006	7 261	2 926	10 187
2007	7 679	2 961	10 640
2008	7 909	3 015	10 923
2009	8 435	3 053	11 488
2010	8 798	3 081	11 880
Gas			
2004	20	†	22
2005	†	†	†
2006	†	†	†
2007	†	†	†
2008	17	†	21
2009	†	†	†
2010	†	†	†
Paraffin			
2004	498	19	517
2005	439	14	453
2006	420	13	432
2007	405	†	415
2008	420	†	430
2009	427	†	437
2010	390	15	405

15.7 Households by energy source for lighting by population group, 2004-2010 (thousands) (concl.)

Energy source for lighting	Black African	Other [†]	Total
Candles			
2004	1 640	72	1 712
2005	1 760	46	1 806
2006	1 731	51	1 782
2007	1 703	54	1 757
2008	1 834	42	1 876
2009	1 767	58	1 825
2010	1 626	50	1 676
Solar energy			
2004	15	†	19
2005	18	†	18
2006	26	†	27
2007	15	†	16
2008	16	†	20
2009	16	†	20
2010	13	†	15
Total			
2004	8 778	2 922	11 700
2005	9 107	2 956	12 063
2006	9 462	2 996	12 458
2007	9 835	3 040	12 875
2008	10 215	3 079	13 294
2009	10 680	3 132	13 812
2010	11 126	3 178	14 304

Source: Stats SA, *General household survey* (Statistical release P0318)

[†] Other includes coloured, Indian or Asian, white and unspecified population groups. These groups are aggregated due to the small sample size.

† For all values of 10 000 or lower the sample size is too small for reliable estimates.

Totals of energy source include other and unspecified.

15.8 Households by main source of water by province, 2004-2010 (thousands)

Main source of water	Eastern Cape	Free State	Gauteng	KwaZulu-Natal	Limpopo	Mpumalanga	Northern Cape	North West	Western Cape	South Africa
Piped (tap) water in dwelling										
2004	348	291	1 676	821	125	220	111	164	955	4 711
2005	421	283	1 633	897	151	208	109	221	949	4 871
2006	472	294	1 691	857	192	250	131	251	984	5 122
2007	453	329	1 759	948	198	286	125	247	978	5 323
2008	475	384	2 043	913	166	320	140	222	1 113	5 776
2009	477	382	2 098	919	156	276	146	217	1 137	5 808
2010	511	357	2 109	963	167	265	137	235	1 198	5 943
Piped (tap) water on site or in yard										
2004	252	353	980	527	343	337	116	331	181	3 420
2005	277	398	1 051	536	300	346	102	307	235	3 554
2006	270	413	1 101	594	343	332	92	342	263	3 749
2007	308	387	1 159	593	357	347	106	367	294	3 918
2008	291	384	962	623	363	319	82	378	198	3 601
2009	290	391	1 012	677	427	386	99	367	203	3 852
2010	288	445	1 131	719	448	440	93	400	199	4 161
Neighbour's tap										
2004	15	15	36	42	80	33	†	32	†	264
2005	23	13	35	57	65	42	†	21	†	263
2006	20	12	41	52	53	39	†	28	†	256
2007	24	15	29	46	70	44	†	35	†	272
2008	23	15	78	†	29	30	72	92	†	349
2009	36	†	39	89	94	53	†	37	15	374
2010	30	16	33	82	105	57	†	38	†	367

15.8 Households by main source of water by province, 2004-2010 (thousands) (cont.)

Main source of water	Eastern Cape	Free State	Gauteng	KwaZulu-Natal	Limpopo	Mpumalanga	Northern Cape	North West	Western Cape	South Africa
Rain-water tank on site										
2004	21	†	†	13	†	†	†	†	†	42
2005	27	†	†	†	†	†	†	†	†	35
2006	43	†	†	†	†	†	†	†	†	54
2007	41	†	†	†	†	†	†	†	†	66
2008	49	†	†	†	†	†	†	†	†	73
2009	38	†	†	†	†	†	†	†	†	49
2010	38	†	†	†	†	†	†	†	†	55
Public tap										
2004	374	51	159	372	317	133	21	207	90	1 724
2005	371	50	224	379	401	167	50	195	77	1 913
2006	378	50	234	420	396	158	46	175	70	1 927
2007	453	50	221	450	424	127	44	161	72	2 003
2008	414	33	258	464	451	122	48	207	92	2 088
2009	502	36	311	519	410	138	52	218	116	2 301
2010	486	34	298	526	446	126	63	211	114	2 303

15.8 Households by main source of water by province, 2004-2010 (thousands) (cont.)

Main source of water	Eastern Cape	Free State	Gauteng	KwaZulu-Natal	Limpopo	Mpumalanga	Northern Cape	North West	Western Cape	South Africa
Water-carrier/tanker										
2004	†	†	†	18	†	12	†	11	†	72
2005	†	†	25	25	22	14	†	19	†	118
2006	19	†	23	26	19	22	†	23	†	137
2007	†	†	25	29	19	18	†	23	†	127
2008	17	†	23	38	12	19	†	29	†	149
2009	†	†	16	55	19	36	†	28	†	177
2010	21	†	51	46	10	42	†	25	†	209
Borehole on site or communal										
2004	26	28	27	146	160	35	†	74	†	507
2005	21	18	22	119	145	26	†	84	†	449
2006	13	13	32	139	159	22	†	45	†	432
2007	†	17	38	101	99	32	†	60	†	366
2008	66	†	25	117	44	41	†	24	†	335
2009	16	28	44	79	113	50	†	80	†	419
2010	†	23	47	72	120	35	16	56	†	381
Dam/pool/stagnant water										
2004	28	†	†	18	†	†	†	†	†	65
2005	14	†	†	11	†	†	†	†	†	38
2006	15	†	†	†	†	†	†	†	†	32
2007	†	†	†	25	15	†	†	†	†	56
2008	11	†	†	17	†	†	†	†	†	41
2009	†	†	†	20	†	†	†	†	†	33
2010	†	†	†	23	†	†	†	†	†	46

15.8 Households by main source of water by province, 2004-2010 (thousands) (concl.)

Main source of water	Eastern Cape	Free State	Gauteng	KwaZulu-Natal	Limpopo	Mpumalanga	Northern Cape	North West	Western Cape	South Africa
Spring										
2004	149	†	†	29	26	†	†	†	†	208
2005	204	†	†	33	†	†	†	†	†	241
2006	112	†	†	47	†	†	†	†	†	168
2007	107	†	†	29	17	†	†	†	†	157
2008	126	†	†	65	†	†	†	†	†	206
2009	66	†	†	56	†	†	†	†	†	132
2010	156	†	†	74	†	†	†	†	†	235
Total										
2004	1 543	749	2 206	268	826	2 886	820	1 143	1 242	11 682
2005	1 578	766	2 274	274	850	2 993	836	1 162	1 278	12 011
2006	1 609	785	2 344	283	871	3 123	873	1 209	1 332	12 430
2007	1 646	807	2 423	291	895	3 234	897	1 248	1 358	12 799
2008	1 691	833	2 513	300	924	3 361	937	1 284	1 420	13 262
2009	1 737	857	2 610	311	950	3 525	978	1 304	1 477	13 749
2010	1 777	885	2 696	319	970	3 680	1 012	1 359	1 529	14 226

Source: Stats SA, *General household survey* (Statistical release P0318)

† For all values of 10 000 or lower the sample size is too small for reliable estimates.

Totals of energy source include other and unspecified.

15.9 Households with and without a telephone facility by population group and gender of the household head, 2004-2010 (thousands)

Population group and gender	Yes							No							Total							
	2004	2005	2006	2007	2008	2009	2010	2004	2005	2006	2007	2008	2009	2010	2004	2005	2006	2007	2008	2009	2010	
Black African																						
Male	2 421	3 018	3 673	4 147	4 598	5 116	5 609	2 712	2 312	1 884	1 651	1 457	1 203	994	5 133	5 330	5 557	5 798	6 055	6 319	6 603	
Female	1 608	2 103	2 560	2 928	3 212	3 638	3 929	2 046	1 676	1 353	1 127	994	723	595	3 655	3 779	3 913	4 056	4 207	4 361	4 523	
Total	4 029	5 121	6 233	7 075	7 810	8 754	9 538	4 758	3 988	3 237	2 779	2 451	1 926	1 589	8 787	9 109	9 470	9 854	10 262	10 680	11 126	
Coloured																						
Male	399	436	503	520	583	573	626	261	240	189	189	143	169	136	660	676	692	709	726	743	762	
Female	178	157	223	240	272	272	293	126	158	104	100	81	95	88	304	316	328	340	353	367	381	
Total	577	593	727	760	855	845	919	387	398	293	289	224	264	224	964	991	1 020	1 049	1 079	1 109	1 143	
Indian or Asian																						
Male	203	192	199	229	235	250	256	29	47	45	21	20	12	12	232	238	244	250	256	262	368	
Female	57	45	58	72	73	68	80	10	25	16	†	†	18	11	67	71	74	78	82	86	90	
Total	260	237	257	301	308	318	336	39	72	61	21	20	30	23	300	309	318	328	337	348	458	

15.9 Households with and without a telephone facility by population group and gender of the household head, 2004-2010 (thousands) (concl.)

Population group and gender	Yes							No							Total						
	2004	2005	2006	2007	2008	2009	2010	2004	2005	2006	2007	2008	2009	2010	2004	2005	2006	2007	2008	2009	2010
White																					
Male	1 250	1 193	1 252	1 250	1 238	1 242	1 247	50	110	53	55	67	63	57	1 300	1 303	1 304	1 305	1 305	1 305	1 304
Female	334	287	345	348	355	339	330	27	76	20	18	13	30	42	361	363	364	366	368	370	372
Total	1 584	1 480	1 597	1 598	1 593	1 581	1 577	77	186	73	73	80	93	99	1 661	1 666	1 668	1 671	1 673	1 675	1 676
All population groups																					
Male	4 273	4 838	5 627	6 145	6 654	7 181	7 738	3 053	2 709	2 170	1 916	1 688	1 448	1 199	7 325	7 547	7 797	8 061	8 342	8 629	8 937
Female	2 177	2 593	3 186	3 589	3 912	4 317	4 632	2 210	1 935	1 493	1 251	1 098	866	735	4 387	4 528	4 679	4 840	5 010	5 183	5 367
Total	6 450	7 431	8 813	9 734	10 566	11 498	12 370	5 262	4 644	3 663	3 167	2 785	2 314	1 934	11 712	12 075	12 476	12 901	13 351	13 812	14 304

Source: Stats SA, *General household survey* (Statistical release P0318)

† For all values of 10 000 or lower the sample size is too small for reliable estimates.

Totals of energy source include other and unspecified.

15.10 Households by sanitation facility and population group of the household head, 2004-2010 (thousands)

Sanitation facility	Population group of household head				Total
	Black African	Coloured	Indian or Asian	White	
Flush or chemical toilet					
2004	4 146	844	297	1 658	6 945
2005	4 433	911	299	1 652	7 295
2006	4 721	942	305	1 657	7 625
2007	4 988	966	318	1 647	7 919
2008	5 007	988	329	1 663	7 987
2009	5 169	1 036	346	1 669	8 219
2010	5 574	1 061	355	1 649	8 638
Pit latrine with ventilation pipe					
2004	802	21	†	†	824
2005	844	16	†	†	862
2006	902	18	†	†	923
2007	1 107	22	†	†	1 134
2008	1 308	19	†	†	1 328
2009	1 771	26	†	†	1 799
2010	1 716	16	†	†	1 734
Pit latrine without ventilation					
2004	2 643	34	†	†	2 679
2005	2 696	25	†	†	2 730
2006	2 814	25	†	†	2 850
2007	2 723	17	†	†	2 747
2008	2 910	25	†	†	2 937
2009	2 828	17	†	†	2 846
2010	2 577	16	†	†	2 595

15.11 Households by type of refuse removal by population group of the household head, 2004-2010 (thousands)

Refuse removal	Population group of household head				Total
	Black African	Coloured	Indian or Asian	White	
Removed by local authority at least once a week					
2004	4 143	781	290	1 482	6 696
2005	4 583	874	298	1 536	7 290
2006	4 845	890	307	1 521	7 563
2007	5 013	920	311	1 541	7 784
2008	4 966	925	327	1 527	7 745
2009	4 630	796	319	1 280	7 025
2010	5 074	958	325	1 420	7 777
Removed by local authority less often than once a week					
2004	165	†	†	26	191
2005	112	18	†	13	144
2006	136	23	†	26	186
2007	158	16	†	†	173
2008	207	24	†	16	248
2009	237	22	†	23	282
2010	243	25	†	56	324
Removed by community members					
2004	32	24	†	†	61
2005	33	16	†	†	57
2006	65	†	†	†	83
2007	50	16	†	†	76
2008	118	19	†	17	154
2009	41	17	†	12	70
2010	50	16	†	†	71

15.11 Households by type of refuse removal by population group of the household head, 2004-2010 (thousands) (concl.)

Refuse removal	Population group of household head				Total
	Black African	Coloured	Indian or Asian	White	
Communal refuse dump/communal container					
2004	342	54	†	14	411
2005	381	22	†	†	409
2006	269	21	†	16	308
2007	267	31	†	†	309
2008	229	†	†	13	251
2009	185	11	†	16	211
2010	201	15	†	23	241
Own refuse dump					
2004	3 661	71	†	108	3 843
2005	3 539	42	†	84	3 671
2006	3 464	51	†	75	3 594
2007	3 674	42	†	76	3 799
2008	4 056	66	†	73	4 198
2009	4 370	82	†	79	4 534
2010	4 217	56	†	78	4 355
Total					
2004	8 787	964	300	1 661	11 712
2005	9 109	991	309	1 665	12 074
2006	9 470	1 020	318	1 668	12 476
2007	9 854	1 049	328	1 671	12 902
2008	10 262	1 079	337	1 673	13 351
2009	10 650	1 104	347	1 665	13 766
2010	10 902	1 133	356	1 659	14 050

Source: Stats SA, *General household survey* (Statistical release P0318)

† For all values of 10 000 or lower the sample size is too small for reliable estimates.
Totals include other and unspecified population group of the head of the household.

15.12 Total number of consumer units receiving basic water services from municipalities: South Africa

Province	Number of consumer units receiving basic water services (2003)	Number of consumer units receiving basic water services (2004)	Number of consumer units receiving basic water services (2005)	Number of consumer units receiving basic water services (2006)	Number of consumer units receiving basic water services (2007)	Number of consumer units receiving basic water services (2008)	Number of consumer units receiving basic water services (2009)	Number of consumer units receiving basic water services (2010) ¹
Western Cape	1 026 538	1 066 982	845 012	866 554	917 684	991 085	989 763	1 035 445
Eastern Cape	765 943	985 873	1 163 962	1 183 307	1 213 142	1 524 805	1 325 184	1 501 421
Northern Cape	174 718	190 374	200 831	187 163	212 499	230 525	230 867	239 339
Free State	538 637	692 038	500 087	603 828	626 011	656 725	674 737	693 221
KwaZulu-Natal	1 169 448	1 540 245	1 705 659	1 577 319	1 941 653	1 800 759	1 781 515	1 864 591
North West	512 901	585 654	670 697	733 557	678 501	635 236	677 046	692 856
Gauteng	2 086 345	2 144 620	2 113 866	2 240 571	2 566 240	2 419 367	2 696 313	2 787 052
Mpumalanga	468 875	510 455	587 492	679 817	798 967	817 719	889 776	994 953
Limpopo	667 649	917 324	1 151 289	1 069 365	935 766	1 206 009	1 054 284	1 370 137
Total	7 411 054	8 633 565	8 938 895	9 141 481	9 890 463	10 282 230	10 319 485	11 179 015

Source: Stats SA, *Non-financial census of municipalities* (Statistical release P9115)¹2010 information is preliminary.

15.13 Total number of consumer units receiving basic electricity services from municipalities: South Africa

Province	Number of consumer units receiving basic electricity services (2003)	Number of consumer units receiving basic electricity services (2004)	Number of consumer units receiving basic electricity services (2005)	Number of consumer units receiving basic electricity services (2006)	Number of consumer units receiving basic electricity services (2007)	Number of consumer units receiving basic electricity services (2008)	Number of consumer units receiving basic electricity services (2009)	Number of consumer units receiving basic electricity services (2010) ¹
Western Cape	956 148	1 024 129	1 063 861	1 112 570	1 147 112	1 173 637	1 208 413	1 300 226
Eastern Cape	442 829	557 690	682 105	767 139	764 787	811 953	886 759	898 332
Northern Cape	103 727	124 927	155 140	166 431	176 723	227 033	223 443	237 307
Free State	361 802	422 305	528 110	571 911	562 068	576 790	599 639	628 508
KwaZulu-Natal	782 225	915 619	1 086 056	1 156 898	1 326 805	1 283 813	1 321 199	1 402 594
North West	126 724	280 460	459 128	519 439	645 899	579 004	588 213	636 406
Gauteng	1 055 888	1 776 926	1 403 713	1 674 008	1 690 155	1 802 607	1 705 839	1 825 856
Mpumalanga	307 263	331 432	498 901	457 338	533 456	559 499	598 380	657 635
Limpopo	91 043	486 197	670 111	663 932	790 060	1 072 824	1 145 576	1 185 502
Total	4 227 649	5 919 685	6 547 125	7 089 666	7 637 065	8 087 160	8 277 461	8 772 366

Source: Stats SA, *Non-financial census of municipalities* (Statistical release P9115)¹2010 information is preliminary.

15.14 Total number of consumer units receiving water services from municipalities: South Africa

Province	Number of consumer units receiving basic water services (2003)	Number of consumer units receiving free basic water services (2003)	%	Number of consumer units receiving basic water services (2004)	Number of consumer units receiving free basic water services (2004)	%	Number of consumer units receiving basic water services (2005)	Number of consumer units receiving free basic water services (2005)	%	Number of consumer units receiving basic water services (2006)	Number of consumer units receiving free basic water services (2006)	%
Western Cape	1 026 538	609 003	59,3	1 066 982	977 455	91,6	845 012	764 273	90,4	866 554	788 336	91,0
Eastern Cape	765 943	437 274	57,1	985 873	688 452	69,8	1 163 962	547 892	47,1	1 183 307	620 664	52,5
Northern Cape	174 718	128 949	73,8	190 374	104 522	54,9	200 831	101 683	50,6	187 163	87 341	46,7
Free State	538 637	491 158	91,2	692 038	500 899	72,4	500 087	406 474	81,3	603 828	494 760	81,9
KwaZulu-Natal	1 169 448	709 808	60,7	1 540 245	938 634	60,9	1 705 659	1 120 091	65,7	1 577 319	1 247 186	79,1
North West	512 901	419 185	81,7	585 654	391 391	66,8	670 697	393 541	58,7	733 557	459 583	62,7
Gauteng	2 086 345	1 706 174	81,8	2 144 620	2 083 478	97,1	2 113 866	2 066 391	97,8	2 240 571	2 240 085	100,0
Mpumalanga	468 875	330 431	70,5	510 455	367 984	72,1	587 492	429 132	73,0	679 817	507 365	74,6
Limpopo	667 649	370 791	55,5	917 324	539 640	58,8	1 151 289	565 811	49,1	1 069 365	504 916	47,2
Total	7 411 054	5 202 773	70,2	8 633 565	6 592 455	76,4	8 938 895	6 395 288	71,5	9 141 481	6 950 236	76,0

15.14 Total number of consumer units receiving water services from municipalities: South Africa (concl.)

Province	Number of consumer units receiving basic water services (2007)	Number of consumer units receiving free basic water services (2007)	%	Number of consumer units receiving basic water services (2008)	Number of consumer units receiving free basic water services (2008)	%	Number of consumer units receiving basic water services (2009)	Number of consumer units receiving free basic water services (2009)	%	Number of consumer units receiving basic water services (2010)*	Number of consumer units receiving free basic water services (2010)*	%
Western Cape	917 684	846 112	92,2	991 085	834 372	84,2	989 763	770 138	77,8	1 035 445	807 896	78,0
Eastern Cape	1 213 142	574 165	47,3	1 524 805	775 360	50,8	1 325 184	765 022	57,7	1 501 421	872 128	58,1
Northern Cape	212 499	87 432	41,1	230 525	111 207	48,2	230 867	101 675	44,0	239 339	103 692	43,3
Free State	626 011	569 622	91,0	656 725	402 978	61,4	674 737	471 326	69,9	693 221	360 937	52,1
KwaZulu-Natal	1 941 653	1 537 122	79,2	1 800 759	1 246 349	69,2	1 781 515	1 310 065	73,5	1 864 591	887 269	47,6
North West	678 501	497 481	73,3	635 236	332 448	52,3	677 046	307 445	45,4	692 856	290 007	41,9
Gauteng	2 566 240	2 060 021	80,3	2 419 367	1 461 966	60,4	2 696 313	1 496 021	55,5	2 787 052	1 734 844	62,2
Mpumalanga	798 967	517 861	64,8	817 719	342 915	41,9	889 776	378 290	42,5	994 953	389 752	39,2
Limpopo	935 766	535 471	57,2	1 206 009	567 194	47,0	1 054 284	577 408	54,8	1 370 137	733 184	53,5
Total	9 890 463	7 225 287	73,1	10 282 230	6 074 789	59,1	10 319 485	6 177 390	59,9	11 179 015	6 179 709	55,3

Source: Stats SA, *Non-financial census of municipalities* (Statistical release P9115)

*2010 information is preliminary.

15.15 Total number of consumer units receiving electricity services from municipalities: South Africa

Province	Number of consumer units receiving basic electricity services (2003)	Number of consumer units receiving free basic electricity services (2003)	%	Number of consumer units receiving basic electricity services (2004)	Number of consumer units receiving free basic electricity services (2004)	%	Number of consumer units receiving basic electricity services (2005)	Number of consumer units receiving free basic electricity services (2005)	%	Number of consumer units receiving basic electricity services (2006)	Number of consumer units receiving free basic electricity services (2006)	%
Western Cape	956 148	517 689	54,1	1 024 129	904 667	88,3	1 063 861	587 350	55,2	1 112 570	569 973	51,2
Eastern Cape	442 829	198 492	44,8	557 690	292 985	52,5	682 105	251 946	36,9	767 139	303 167	39,5
Northern Cape	103 727	46 221	44,6	124 927	57 548	46,1	155 140	58 936	38,0	166 431	68 620	41,2
Free State	361 802	282 280	78,0	422 305	340 585	80,6	528 110	361 306	68,4	571 911	408 934	71,5
KwaZulu-Natal	782 225	22 075	2,8	915 619	35 533	3,9	1 086 056	135 883	12,5	1 156 898	127 071	11,0
North West	126 724	29 906	23,6	280 460	77 237	27,5	459 128	100 748	21,9	519 439	118 862	22,9
Gauteng	1 055 888	886 650	84,0	1 776 926	1 362 757	76,7	1 403 713	1 239 487	88,3	1 674 008	1 398 011	83,5
Mpumalanga	307 263	166 085	54,1	331 432	199 855	60,3	498 901	149 215	29,9	457 338	213 486	46,7
Limpopo	91 043	42 153	46,3	486 197	76 308	15,7	670 111	113 674	17,0	663 932	143 264	21,6
Total	4 227 649	2 191 551	51,8	5 919 685	3 347 475	56,5	6 547 125	2 998 545	45,8	7 089 666	3 351 388	47,3

Source: Stats SA, *Non-financial census of municipalities* (Statistical release P9115)

*2010 information is preliminary.

15.15 Total number of consumer units 1 receiving basic electricity services from municipalities: South Africa (concl.)

Province	Number of consumer units receiving basic electricity services (2007)	Number of consumer units receiving free basic electricity services (2007)	%	Number of consumer units receiving basic electricity services (2008)	Number of consumer units receiving free basic electricity services (2008)	%	Number of consumer units receiving basic electricity services (2009)	Number of consumer units receiving free basic electricity services (2009)	%	Number of consumer units receiving basic electricity services (2010)*	Number of consumer units receiving free basic electricity services (2010) ¹	%
Western Cape	1 147 112	600 986	52,4	1 173 637	568 958	48,5	1 208 413	551 523	45,6	1 300 226	606 797	46,7
Eastern Cape	764 787	274 009	35,8	811 953	282 175	34,8	886 759	312 846	35,3	898 332	313 348	34,9
Northern Cape	176 723	62 994	35,6	227 033	100 021	44,1	223 443	104 510	46,8	237 307	104 041	43,8
Free State	562 068	404 418	72,0	576 790	345 545	59,9	599 639	377 451	62,9	628 508	326 357	51,9
KwaZulu-Natal	1 326 805	188 177	14,2	1 283 813	165 505	12,9	1 321 199	190 265	14,4	1 402 594	189 067	13,5
North West	645 899	163 850	25,4	579 004	119 919	20,7	588 213	131 973	22,4	636 406	144 744	22,7
Gauteng	1 690 155	876 730	51,9	1 802 607	706 822	39,2	1 705 839	724 178	42,5	1 825 856	757 602	41,5
Mpumalanga	533 456	194 102	36,4	559 499	220 106	39,3	598 380	234 183	39,1	657 635	272 584	41,4
Limpopo	790 060	126 621	16,0	1 072 824	271 992	25,4	1 145 576	314 479	27,5	1 185 502	323 219	27,3
Total	7 637 065	2 891 887	37,9	8 087 160	2 781 043	34,4	8 277 461	2 941 408	35,5	8 772 366	3 037 759	34,6

Source: Stats SA, *Non-financial census of municipalities* (Statistical release P9115)¹2010 information is preliminary.

16.1 Liquidations and insolvencies, 2003-2010 (numbers)

	2003	2004	2005	2006	2007	2008	2009	2010
Total liquidations	4 086	3 510	3 225	3 026	3 151	3 300	4 133	3 992
Compulsory liquidations	857	564	524	375	326	276	295	284
Voluntary liquidations	3 229	2 946	2 701	2 651	2 825	3 024	3 838	3 708
Companies	2 110	1 532	1 604	1 582	1 897	1 573	1 889	1 939
Compulsory liquidations	423	223	275	218	205	122	131	196
Voluntary liquidations	1 687	1 309	1 329	1 364	1 692	1 451	1 758	1 743
Close corporations	1 976	1 978	1 621	1 444	1 254	1 727	2 244	2 053
Compulsory liquidations	434	341	249	157	121	154	164	88
Voluntary liquidations	1 542	1 637	1 372	1 287	1 133	1 573	2 080	1 965
Total insolvencies	2 652	1 976	1 642	1 678	2 306	4 734	5 945	3 838

Source: Stats SA, *Statistics of liquidations and insolvencies* (Statistical release P0043)

Liquidations refer to corporate institutions such as companies and close corporations, while insolvencies refer to individuals and partnerships.

17.1 Gross domestic product (GDP) at constant 2005 prices, 2001-2010

	2001	2002	2003	2004	2005	2006 ¹	2007	2008	2009	2010 ¹
GDP at constant 2005 market prices (R millions)	1 336 962	1 386 435	1 427 322	1 492 330	1 571 082	1 659 122	1 751 499	1 814 134	1 783 617	1 834 435
Percentage change relative to previous year	2,7	3,7	2,9	4,6	5,3	5,6	5,6	3,6	-1,7	2,8

Source: Stats SA, *Gross domestic product: Annual estimates* (Statistical release P0441)

¹ Sum of four quarters.

The GDP has been revised from 2001 and the base year has been changed from 2000 to 2005.

17.2 Gross domestic product (GDP) at current prices, 2001-2010

	2001	2002	2003	2004	2005	2006 ¹	2007	2008	2009	2010 ¹
GDP at current market prices (R millions)	1 020 008	1 171 085	1 272 537	1 415 273	1 571 082	1 767 422	2 016 165	2 274 139	2 395 967	2 664 269

Source: Stats SA, *Gross domestic product: Annual estimates* (Statistical release P0441)

¹ Sum of four quarters.

The GDP has been revised from 2001 and the base year has been changed from 2000 to 2005.

17.3 Annualised percentage change of the GDP at market prices, 2006

	First quarter	Second quarter	Third quarter	Fourth quarter
%	6,2	6,7	5,8	6,4

17.4 Annualised percentage change of the GDP at market prices, 2007

	First quarter	Second quarter	Third quarter	Fourth quarter
%	6,5	3,1	5,1	6,2

17.5 Annualised percentage change of the GDP at market prices, 2008

	First quarter	Second quarter	Third quarter	Fourth quarter
%	2,9	4,7	0,9	-1,8

17.6 Annualised percentage change of the GDP at market prices, 2009

	First quarter	Second quarter	Third quarter	Fourth quarter
%	-5,9	-2,8	0,9	3,1

17.7 Annualised percentage change of the GDP at market prices, 2010

	First quarter	Second quarter	Third quarter	Fourth quarter
%	4,8	2,8	2,7	4,5

17.8 Gross domestic product (GDP) by industry at constant 2005 prices, 2001-2010 (R millions)

	2001	2002	2003	2004	2005	2006 ¹	2007	2008	2009	2010 ¹
Agriculture, forestry and fishing	33 639	35 826	36 070	36 380	37 402	35 359	36 301	42 154	40 891	41 247
Mining and quarrying	98 970	99 960	103 355	104 915	105 992	105 364	105 336	99 398	95 185	100 659
Manufacturing	229 701	236 133	232 581	243 965	259 101	275 782	290 246	297 900	266 932	280 190
Electricity, gas and water	27 539	28 503	29 344	31 335	33 010	34 139	35 294	34 198	33 635	34 311
Construction	27 711	29 321	31 575	34 451	38 558	42 582	48 971	53 644	57 630	58 523
Wholesale and retail trade; hotels and restaurants	164 572	168 357	172 845	182 175	195 012	206 636	217 607	219 359	213 939	218 570
Transport, storage and communication	108 944	118 749	126 287	132 459	139 472	146 607	156 289	161 672	162 722	167 462
Finance, real estate and business services	234 450	249 165	261 123	279 544	295 504	324 002	349 501	375 090	378 421	385 491
General government services	189 552	190 910	196 193	199 947	208 561	214 947	223 618	233 653	243 144	250 539
Personal services	77 438	79 346	83 756	85 219	88 455	93 073	98 247	102 107	101 837	102 493
All industries at basic prices	1 191 007	1 236 270	1 273 129	1 330 390	1 401 067	1 478 492	1 561 410	1 619 175	1 594 336	1 639 485
Taxes less subsidies on products	146 201	150 165	154 193	161 940	170 015	180 630	190 089	194 959	189 281	194 950
GDP at market prices	1 336 962	1 386 435	1 427 322	1 492 330	1 571 082	1 659 122	1 751 499	1 814 134	1 783 617	1 834 435

Source: Stats SA, *Gross domestic product: Annual estimates* (Statistical release P0441)¹ Sum of four quarters.

17.9 Gross domestic product (GDP) by industry at current prices, 2001-2010 (R millions)

	2001	2002	2003	2004	2005	2006 ¹	2007	2008	2009	2010 ¹
Agriculture, forestry and fishing	32 588	44 232	39 644	39 490	37 402	45 351	53 833	63 384	63 888	59 543
Mining and quarrying	77 214	92 730	85 770	91 198	105 992	132 301	156 970	201 381	198 180	230 402
Manufacturing	176 907	204 219	223 917	243 967	259 101	274 502	304 438	340 623	330 310	352 176
Electricity, gas and water	23 023	26 489	29 553	30 176	33 010	36 946	41 783	45 803	60 280	66 812
Construction	22 416	24 120	26 747	32 039	38 558	46 158	56 908	72 894	87 116	91 353
Wholesale and retail trade; hotels and restaurants	130 387	143 192	158 786	176 445	195 012	215 831	238 910	271 237	294 260	335 562
Transport, storage and communication	89 511	100 983	112 637	124 786	139 472	153 775	164 467	188 231	199 065	220 039
Finance, real estate and business services	177 531	207 711	231 176	261 285	295 504	339 311	405 520	442 121	467 126	511 332
General government services	142 325	157 547	174 106	190 563	208 561	230 116	259 783	299 373	340 837	385 417
Personal services	56 313	64 474	72 814	80 651	88 455	98 028	109 445	119 220	135 537	152 747
All industries at basic prices	928 216	1 065 696	1 155 150	1 270 600	1 401 067	1 572 319	1 792 056	2 044 267	2 176 597	2 405 383
Taxes less subsidies on products	91 792	105 389	117 387	144 673	170 015	195 103	224 109	229 872	219 370	258 886
GDP at market prices	1 020 008	1 171 085	1 272 537	1 415 273	1 571 082	1 767 422	2 016 165	2 274 139	2 395 967	2 664 269

Source: Stats SA, *Gross domestic product: Annual estimates* (Statistical release P0441)¹ Sum of four quarters.



Government finances

18.1	Actual capital expenditure of the public sector, 2000-2010 (R billions)	173
18.2	Expenditure incurred and income generated by municipalities 2001/2002-2009/2010 (R thousands)	177

18.1 Actual capital expenditure of the public sector, 2000-2010 (R billions)

Expenditure on new construction works											
Type of public sector institution	2000	2001	2002	2003	2004	2005	2006	2007	2008	2009*	2010
National government	1,51	1,71	1,91	3,94	3,22	3,07	2,85	2,4	3,02	3,3	0,74
Provincial government	2,33	2,48	3,22	6,65	7,69	8,75	10,11	11,8	4,81	12,14	18,5
Extra-budgetary funds	..	0,01	0,07	0,17	0,21	0,45	1,62	1,3	3,13	9,83	12,93
Municipalities	6,99	9,13	7,53	8,84	11,21	11,85	13,4	17,72	25,95	35,12	29,73
Universities and technikons	0,35	0,36	0,19	0,56	0,38	0,35	0,19	0,51	0,07	0,79	0,76
Public corporations	5,88	4,66	6,28	13,78	13,53	14,46	19,75	24,16	30,8	48,81	55,2
Total	17,06	18,44	19,20	33,94	36,24	88,93	47,92	57,89	67,78	109,99	117,86
Expenditure on transport equipment											
Type of public sector institution	2006	2007	2008	2009	2010						
National government	1,41	1,56	1,87	1,22	1,28						
Provincial government	0,49	0,55	0,51	0,53	0,59						
Extra-budgetary funds	0,46	0,32	0,50	0,42	0,50						
Municipalities	0,73	0,94	0,91	1,77	1,41						
Universities and technikons	0,00	0,05	0,07	0,06	0,06						
Public corporations	1,1	1,56	1,29	1,70	0,79						
Total	4,19	4,98	5,15	5,70	4,63						

Source: Stats SA, *Capital expenditure by the public sector* (Statistical release P9101)

The values of the District Municipalities and Local municipalities have been combined from 2000 to 2005 in order to ensure comparability with similar values from 2006 onwards. Transport equipment values were captured as part of Plant, machinery and equipment until 2005 and since 2006 were recorded separately as key asset class.

18.1 Actual capital expenditure of the public sector, 2000-2010 (R billions) (cont.)

		Expenditure on other fixed assets										
		2006	2007	2008	2009	2010						
Type of public sector institution												
National government		0,48	0,43	0,20	0,20	0,20						
Provincial government		0,07	0,19	0,16	0,09	0,13						
Extra-budgetary funds		0,04	0,19	0,44	0,49	0,45						
Municipalities		0,11	0,31	0,49	0,5	0,75						
Universities and technikons		0,08	0,16	0,19	0,2	0,25						
Public corporations		1,63	1,52	1,22	1,52	1,22						
Total		2,41	2,8	2,7	3,00	3,00						
		Total capital expenditure										
		2000	2001	2002	2003	2004	2005	2006	2007	2008	2009	2010
Type of public sector institution												
National government		1,73	1,96	3,45	5,9	5,06	5,34	7,2	6,52	7,97	9,95	8,63
Provincial government		2,7	2,77	3,78	8,33	10,71	11,73	14,14	15,61	17,06	21,92	24,97
Extra-budgetary funds		..	0,89	0,77	1,16	1,2	1,66	3,1	2,86	5,68	13,87	16,96
Municipalities		8,17	10,75	8,63	10,56	13,31	13,87	16,64	21,64	32,23	43,26	40,08
Universities and technikons		0,7	0,99	0,88	1,54	1,3	1,28	1,4	2,34	3,22	3,65	4,93
Public corporations		16,94	19,21	19,11	22,12	23,9	23,4	29,34	43,16	58,63	88,58	85,67
Total		30,24	36,57	36,62	49,61	55,48	57,28	71,82	92,13	124,79	181,23	181,24

18.1 Actual capital expenditure of the public sector, 2000-2010 (R billions) (cont.)

Expenditure on plant, machinery and equipment											
	2000	2001	2002	2003	2004	2005	2006	2007	2008	2009	2010
Type of public sector institution											
National government	0,2	0,1	1,34	2	1,83	2,24	2,4	1,72	1,35	1,76	1,91
Provincial government	0,36	0,26	0,42	1,07	2,74	2,36	2,6	2,32	2,11	2,64	2,52
Extra-budgetary funds	..	0,59	0,56	0,82	0,9	0,91	0,75	0,77	1,12	2,07	2,56
Municipalities	0,89	1,25	0,91	1,23	1,6	1,71	1,23	1,18	1,49	2,2	3,86
Universities and technikons	0,35	0,57	0,57	0,79	0,7	0,75	0,72	0,93	1,06	1,26	1,38
Public corporations	10,87	14,44	12,17	7,91	9,81	8,65	5,27	15,33	23,52	32,32	24,96
Total	12,67	17,21	15,97	13,82	17,58	16,62	12,97	22,25	30,65	42,25	37,19
Expenditure on land and existing buildings											
	2000	2001	2002	2003	2004	2005	2006	2007	2008	2009	2010
Type of public sector institution											
National government	0,02	0,15	0,2	0	0,00	0,00	0,06	0,41	1,52	3,47	4,5
Provincial government	0,01	0,03	0,14	0,6	0,27	0,62	0,88	0,74	9,47	6,52	3,21
Extra-budgetary funds	..	0,2	0,14	0,17	0,1	0,3	0,23	0,27	0,25	0,89	0,41
Municipalities	0,29	0,37	0,19	0,49	0,5	0,32	1,17	1,5	3,36	2,77	4,22
Universities and technikons	0	0,06	0,12	0,19	0,22	0,17	0,37	0,7	1,6	1,35	2,48
Public corporations	0,19	0,11	0,66	0,43	0,56	0,31	1,6	0,59	1,66	4,03	2,93
Total	0,51	0,92	1,45	1,88	1,65	1,72	4,31	4,21	17,86	19,03	17,75

18.1 Actual capital expenditure of the public sector, 2000-2010 (R billions) (concl.)

Type of public sector institution	Expenditure on leased assets and investment property		
	2008	2009	2010
National government	0	0	0
Provincial government	0	0	0
Extra-budgetary funds	0,24	0,16	0,11
Municipalities	0,05	0,92	0,11
Universities and technikons	0,22	0	0
Public corporations	0,14	0,21	0,57
Total	0,65	1,29	0,79

18.2 Expenditure incurred and income generated by municipalities 2001/2002-2009/2010 (R thousands)

Local government	Expenditure							
	Employee related costs	Remuneration of councillors	Interest paid	Bad debts	Contracted services	Repairs and maintenance	Purchases of electricity	Purchases of water
Eastern Cape								
2001/02	1 237 731	74 840	6 502	~	~	266 801	721 801	340 559
2002/03	1 781 199	101 136	11 645	~	~	309 215	821 800	316 861
2003/04	2 071 133	106 246	53 894	~	~	359 757	933 303	327 340
2004/05	2 229 444	117 431	112 723	~	~	258 123	973 988	364 082
2005/06	2 470 780	148 627	140 119	152 867	12 523	486 328	1 014 271	102 830
2006/07	3 293 042	244 078	148 012	237 126	92 447	578 234	1 119 596	128 632
2007/08	3 320 032	270 210	158 433	293 032	152 838	552 296	1 210 531	145 283
2008/09	3 669 650	299 293	209 521	731 276	186 295	693 562	1 630 476	230 038
2009/10*	4 390 326	331 166	269 518	802 087	217 807	803 680	2 166 287	234 327
Free State								
2001/02	845 422	56 510	74 509	~	~	63 515	469 187	233 467
2002/03	1 013 984	48 863	90 909	~	~	104 889	476 913	240 759
2003/04	1 147 682	63 624	137 037	~	~	121 700	544 503	288 718
2004/05	1 193 973	58 291	102 168	~	~	146 354	609 085	336 767
2005/06	1 419 006	78 233	85 511	60 966	58 265	192 221	351 205	329 092
2006/07	1 530 342	135 155	64 944	391 688	58 615	195 020	401 671	391 532
2007/08	1 689 590	144 555	72 113	812 938	303 486	245 726	793 050	450 189
2008/09	1 911 082	160 554	133 191	793 212	163 854	306 728	1 027 153	436 618
2009/10*	2 215 540	163 530	139 594	870 909	238 764	308 174	1 346 659	514 408

Source: Stats SA, *Financial census of municipalities* (Statistical release P9114) and *Financial statistics of consolidated general government* (Statistical release P9119.4)

~ Information was not collected separately for that period. Important points to note: Questionnaire was changed to the new municipal accounting standard in 2005/06; not all municipalities are on the new standard, only 98,6% as of 2009/10 financial year are converted.

* Information is preliminary.

18.2 Expenditure incurred and income generated by municipalities 2001/2002-2009/2010 (R thousands) (cont.)

Local government	Expenditure							
	Employee related costs	Remuneration of councillors	Interest paid	Bad debts	Contracted services	Repairs and maintenance	Purchases of electricity	Purchases of water
Gauteng								
2001/02	5 717 392	121 622	290 938	~	~	871 962	4 249 920	2 118 171
2002/03	6 725 858	146 605	940 927	~	~	1 069 938	4 574 825	2 413 907
2003/04	7 641 332	141 916	654 396	~	~	1 022 434	5 113 736	2 855 268
2004/05	8 261 473	107 937	1 948 625	~	~	672 544	5 426 143	3 094 865
2005/06	8 863 176	180 382	1 905 352	2 084 510	1 751 503	1 917 811	7 097 412	3 108 792
2006/07	9 943 643	228 963	1 468 607	2 723 645	1 686 432	1 746 274	6 592 930	3 463 361
2007/08	11 007 778	235 551	1 672 610	2 818 590	2 231 659	2 295 097	7 278 099	3 706 831
2008/09	13 394 787	278 259	2 109 725	4 292 159	2 583 705	3 257 098	9 778 376	4 060 461
2009/10*	15 294 105	297 545	2 651 518	4 640 099	2 812 318	3 244 481	12 938 246	4 315 195
KwaZulu-Natal								
2001/02	2 843 245	81 679	752 642	~	~	402 650	2 015 652	765 212
2002/03	3 666 722	98 464	781 315	~	~	608 079	2 125 362	791 422
2003/04	4 044 728	127 709	910 268	~	~	726 210	2 371 591	924 668
2004/05	4 221 460	125 578	958 459	~	~	757 857	2 508 761	1 012 364
2005/06	4 883 028	182 809	723 524	443 410	566 703	1 158 634	2 445 833	1 049 951
2006/07	5 185 520	309 695	710 777	513 585	738 432	1 239 742	2 785 528	1 170 580
2007/08	5 682 836	317 048	799 975	586 100	886 891	1 607 569	2 978 475	1 338 121
2008/09	6 935 060	369 254	900 838	785 353	1 395 762	2 052 062	4 088 022	1 414 693
2009/10*	7 833 515	397 116	735 721	1 248 732	1 576 350	2 519 144	5 069 826	1 560 324

Source: Stats SA, *Financial census of municipalities* (Statistical release P9114) and *Financial statistics of consolidated general government* (Statistical release P9119.4)

~ Information was not collected separately for that period. Important points to note: Questionnaire was changed to the new municipal accounting standard in 2005/06; not all municipalities are on the new standard, only 98,6% as of 2009/10 financial year are converted.

* Information is preliminary.

18.2 Expenditure incurred and income generated by municipalities 2001/2002-2009/2010 (R thousands) (cont.)

Local government	Expenditure							
	Employee related costs	Remuneration of councillors	Interest paid	Bad debts	Contracted services	Repairs and maintenance	Purchases of electricity	Purchases of water
Limpopo								
2001/02	530 970	56 485	41 516	~	~	45 398	236 953	102 884
2002/03	642 075	59 219	1 547	~	~	128 075	259 364	81 250
2003/04	768 584	53 520	35 875	~	~	135 166	278 236	96 275
2004/05	863 366	63 305	27 967	~	~	95 917	328 340	105 339
2005/06	926 211	92 543	52 708	52 213	19 260	208 863	345 926	100 379
2006/07	1 087 358	189 246	39 395	64 166	39 435	255 320	390 414	140 003
2007/08	1 435 695	205 364	37 813	137 613	52 136	440 656	392 252	125 761
2008/09	1 748 142	229 348	47 411	422 007	93 142	517 328	590 838	197 187
2009/10*	2 148 108	249 708	53 342	219 830	102 213	512 738	765 790	326 090
Mpumalanga								
2001/02	602 048	35 171	55 283	~	~	74 769	360 613	60 277
2002/03	764 303	41 774	47 668	~	~	107 409	370 113	30 705
2003/04	886 869	56 014	59 936	~	~	75 379	461 966	165 706
2004/05	931 813	75 371	46 557	~	~	156 287	499 907	173 695
2005/06	1 104 810	87 677	87 195	118 167	79 033	220 995	490 841	81 648
2006/07	1 306 951	140 208	69 969	167 895	99 149	277 529	576 900	80 133
2007/08	1 441 308	158 487	84 495	190 119	119 752	304 725	668 607	225 935
2008/09	1 746 177	173 002	104 851	621 753	198 607	398 870	1 024 999	242 340
2009/10*	2 120 568	166 885	108 974	447 599	298 966	451 907	1 257 188	326 104

Source: Stats SA, *Financial census of municipalities* (Statistical release P9114) and *Financial statistics of consolidated general government* (Statistical release P9119.4)

~ Information was not collected separately for that period. Important points to note: Questionnaire was changed to the new municipal accounting standard in 2005/06; not all municipalities are on the new standard, only 98,6% as of 2009/10 financial year are converted.

* Information is preliminary.

18.2 Expenditure incurred and income generated by municipalities 2001/2002-2009/2010 (R thousands) (cont.)

Local government	Expenditure							
	Employee related costs	Remuneration of councillors	Interest paid	Bad debts	Contracted services	Repairs and maintenance	Purchases of electricity	Purchases of water
Northern Cape								
2001/02	344 493	9 895	13 882	~	~	22 405	129 411	32 063
2002/03	414 376	17 070	3 367	~	~	87 424	160 066	37 530
2003/04	469 681	21 912	14 809	~	~	55 812	178 527	40 678
2004/05	500 102	19 196	18 992	~	~	60 499	192 411	44 767
2005/06	581 257	33 903	30 013	42 409	10 828	101 467	199 785	49 427
2006/07	647 121	65 170	17 493	61 338	16 494	99 200	236 332	38 669
2007/08	745 889	71 966	40 624	92 900	16 096	111 739	255 381	51 678
2008/09	878 422	77 614	53 489	214 540	24 716	137 944	340 140	53 511
2009/10*	1 028 410	91 808	42 711	260 236	21 456	154 970	454 065	84 251
North West								
2001/02	634 576	55 373	14 183	~	~	144 906	377 523	132 136
2002/03	744 119	55 742	33 047	~	~	80 705	444 937	145 883
2003/04	829 964	58 995	21 257	~	~	85 211	548 796	168 133
2004/05	900 281	74 988	52 153	~	~	73 530	587 623	191 951
2005/06	1 081 938	109 078	68 943	145 447	109 513	148 357	629 349	270 857
2006/07	1 299 268	149 887	138 276	258 888	149 752	174 378	709 452	407 334
2007/08	1 540 544	168 872	120 716	229 708	210 446	233 236	769 008	341 090
2008/09	1 582 626	166 353	128 254	883 962	248 778	259 294	841 334	401 275
2009/10*	1 825 861	185 806	128 975	780 807	293 862	234 387	1 341 315	476 163

Source: Stats SA, *Financial census of municipalities* (Statistical release P9114) and *Financial statistics of consolidated general government* (Statistical release P9119.4)

~ Information was not collected separately for that period. Important points to note: Questionnaire was changed to the new municipal accounting standard in 2005/06; not all municipalities are on the new standard, only 98,6% as of 2009/10 financial year are converted.

* Information is preliminary.

18.2 Expenditure incurred and income generated by municipalities 2001/2002-2009/2010 (R thousands) (cont.)

Local government	Expenditure							
	Employee related costs	Remuneration of councillors	Interest paid	Bad debts	Contracted services	Repairs and maintenance	Purchases of electricity	Purchases of water
Western Cape								
2001/02	3 408 598	34 776	87 479	~	~	567 924	1 248 676	124 559
2002/03	3 791 586	78 307	26 851	~	~	498 827	1 862 203	138 494
2003/04	4 157 525	90 715	424 135	~	~	773 860	2 090 224	190 400
2004/05	4 533 095	105 182	192 336	~	~	515 003	2 213 871	224 755
2005/06	4 172 602	126 642	498 903	1 066 702	604 555	1 193 402	2 315 027	243 178
2006/07	4 726 039	184 787	606 190	700 216	594 758	1 417 070	2 524 537	309 852
2007/08	5 854 894	193 085	453 503	850 912	771 537	1 304 894	2 751 367	317 698
2008/09	6 687 351	216 086	586 065	918 895	1 077 934	1 307 061	3 809 984	355 697
2009/10*	8 139 757	229 856	818 549	787 263	1 279 350	1 451 730	4 845 525	378 271
Total								
2001/02	16 164 475	526 351	1 336 934	~	~	2 460 330	9 809 736	3 909 328
2002/03	19 544 222	647 180	1 937 276	~	~	2 994 561	11 095 583	4 196 811
2003/04	22 017 498	720 651	2 311 607	~	~	3 355 529	12 520 882	5 057 186
2004/05	23 635 007	747 279	3 459 980	~	~	2 736 114	13 340 129	5 548 585
2005/06	25 502 808	1 039 894	3 592 268	4 166 691	3 212 183	5 628 078	14 889 649	5 336 154
2006/07	29 019 284	1 647 189	3 263 663	5 118 547	3 475 514	5 982 767	15 337 360	6 130 096
2007/08	32 718 566	1 765 138	3 440 282	6 011 912	4 744 841	7 095 938	17 096 770	6 702 586
2008/09	38 553 297	1 969 763	4 273 345	9 663 157	5 927 793	8 929 947	23 131 322	7 391 820
2009/10*	44 996 190	2 113 420	4 948 902	10 057 562	6 841 086	9 681 211	30 184 901	8 215 133

Source: Stats SA, *Financial census of municipalities* (Statistical release P9114) and *Financial statistics of consolidated general government* (Statistical release P9119.4)

~ Information was not collected separately for that period. Important points to note: Questionnaire was changed to the new municipal accounting standard in 2005/06; not all municipalities are on the new standard, only 98.6% as of 2009/10 financial year are converted.

* Information is preliminary.

18.2 Expenditure incurred and income generated by municipalities 2001/2002-2009/2010 (R thousands) (cont.)

Local government	Income								
	Property rates received	Sales of electricity and gas	Sales of water	Refuse removal charges	Sewerage and sanitation charges	Interest received	Fines	Licences and permits	Grants and subsidies received
Eastern Cape									
2001/02	618 840	1 234 096	364 845	~	~	1 898	304	21 900	555 226
2002/03	782 613	1 359 686	407 085	~	~	21 417	1 632	2 043	992 821
2003/04	861 691	1 565 278	449 044	~	~	68 730	15 198	26 827	1 624 638
2004/05	960 595	1 720 205	525 372	~	~	124 072	6 229	29 102	2 038 556
2005/06	1 034 961	1 791 692	592 682	269 411	378 746	323 056	34 658	30 838	2 702 352
2006/07	1 156 579	1 943 864	582 781	272 056	380 285	381 501	43 903	42 551	4 313 242
2007/08	1 265 322	2 119 627	640 903	430 411	295 344	554 074	46 832	53 898	5 792 790
2008/09	1 409 698	2 657 494	733 181	344 427	463 839	722 830	46 149	66 066	7 159 454
2009/10*	1 686 258	3 341 538	866 471	386 082	532 478	458 925	49 943	74 111	8 857 234
Free State									
2001/02	465 075	822 676	478 629	~	~	36 957	5 079	3 425	350 298
2002/03	525 093	829 261	508 682	~	~	26 914	4 607	136	760 780
2003/04	580 878	919 147	514 145	~	~	21 732	6 033	119	890 506
2004/05	659 814	1 001 204	610 477	~	~	94 695	11 507	86	934 692
2005/06	706 176	573 652	576 710	124 976	141 120	160 765	9 077	293	1 026 947
2006/07	738 943	605 348	662 910	186 375	317 720	243 429	56 350	581	1 765 834
2007/08	759 700	1 256 931	746 162	177 763	309 466	390 211	13 111	350	2 551 751
2008/09	830 796	1 511 124	774 952	221 322	370 392	358 931	10 987	480	2 859 186
2009/10*	993 135	1 997 733	852 945	221 418	401 310	254 699	8 175	837	3 543 402

Source: Stats SA, *Financial census of municipalities* (Statistical release P9114) and *Financial statistics of consolidated general government* (Statistical release P9119.4)

~ Information was not collected separately for that period. Important points to note: Questionnaire was changed to the new municipal accounting standard in 2005/06; not all municipalities are on the new standard, only 98,6% as of 2009/10 financial year are converted.

* Information is preliminary.

18.2 Expenditure incurred and income generated by municipalities 2001/2002-2009/2010 (R thousands) (cont.)

Local government	Income								
	Property rates received	Sales of electricity and gas	Sales of water	Refuse removal charges	Sewerage and sanitation charges	Interest received	Fines	Licences and permits	Grants and subsidies received
Gauteng									
2001/02	4 826 538	7 028 165	3 766 682	~	~	148 427	61 653	136 455	488 171
2002/03	5 383 052	7 777 894	4 041 591	~	~	158 918	62 982	55 953	1 304 129
2003/04	6 042 785	8 407 405	4 596 013	~	~	382 786	49 946	85 516	1 177 835
2004/05	6 588 961	9 047 356	5 261 418	~	~	810 723	218 170	43 579	2 847 879
2005/06	6 601 748	9 701 099	4 273 009	827 457	307 433	1 872 919	181 535	258 927	3 777 170
2006/07	7 014 941	10 647 092	5 079 966	1 165 199	1 982 166	1 804 941	393 933	103 257	7 598 049
2007/08	7 898 092	11 677 106	5 299 739	1 302 556	2 279 940	2 155 663	539 198	121 250	9 648 987
2008/09	8 197 794	14 723 797	5 697 643	1 677 012	2 428 859	2 153 900	578 372	124 583	11 368 209
2009/10*	9 988 447	19 778 738	6 358 319	1 840 637	2 665 887	1 443 562	430 686	146 741	14 227 862
KwaZulu-Natal									
2001/02	2 005 170	3 343 738	1 215 024	~	~	248 449	14 682	11 440	1 799 172
2002/03	2 824 527	3 189 417	1 186 571	~	~	230 347	8 986	12 240	1 496 403
2003/04	3 217 607	3 909 759	1 531 381	~	~	94 921	12 214	6 959	1 505 770
2004/05	3 815 424	4 307 509	1 754 420	~	~	128 338	57 913	23 117	1 957 920
2005/06	3 975 482	4 544 195	1 801 071	199 391	106 849	340 485	142 290	31 331	3 446 945
2006/07	4 396 725	4 897 348	2 054 871	328 853	303 320	609 136	177 035	43 460	5 288 430
2007/08	4 975 326	5 328 855	2 283 948	359 152	275 501	886 473	167 241	72 695	7 253 883
2008/09	5 242 006	6 500 714	2 392 092	407 966	349 327	1 112 809	195 832	79 151	9 066 058
2009/10*	5 767 725	8 032 528	2 638 840	611 329	388 686	646 268	131 101	95 109	10 198 441

Source: Stats SA, *Financial census of municipalities* (Statistical release P9114) and *Financial statistics of consolidated general government* (Statistical release P9119.4)

~ Information was not collected separately for that period. Important points to note: Questionnaire was changed to the new municipal accounting standard in 2005/06; not all municipalities are on the new standard, only 98.6% as of 2009/10 financial year are converted.

* Information is preliminary.

18.2 Expenditure incurred and income generated by municipalities 2001/2002-2009/2010 (R thousands) (cont.)

Local government	Income								
	Property rates received	Sales of electricity and gas	Sales of water	Refuse removal charges	Sewerage and sanitation charges	Interest received	Fines	Licences and permits	Grants and subsidies received
Limpopo									
2001/02	306 206	432 854	172 998	~	~	37 821	6 062	14 700	422 002
2002/03	220 201	494 217	217 064	~	~	12 262	139	8 126	579 432
2003/04	273 900	524 570	238 923	~	~	37 764	8 968	20 412	952 760
2004/05	300 926	586 198	272 918	~	~	49 707	9 654	19 475	978 315
2005/06	320 919	611 888	296 552	60 410	70 959	112 906	15 493	29 663	1 770 065
2006/07	350 196	701 928	293 988	87 504	75 866	228 259	23 843	61 702	2 778 366
2007/08	401 465	708 116	300 277	106 536	94 370	327 317	27 137	59 258	3 731 430
2008/09	454 588	904 280	395 256	123 515	114 745	382 207	24 731	76 458	4 963 416
2009/10*	555 960	1 170 933	487 745	134 992	121 349	275 143	20 032	87 500	5 924 878
Mpumalanga									
2001/02	350 010	572 889	184 904	~	~	25 974	2 941	15 712	121 220
2002/03	411 828	636 510	189 663	~	~	52 176	1 994	59 137	140 488
2003/04	471 588	655 796	290 210	~	~	54 363	6 794	11 137	385 474
2004/05	570 071	669 392	319 920	~	~	68 841	10 985	25 060	645 548
2005/06	538 553	784 527	328 474	138 360	129 767	175 207	29 621	23 881	905 885
2006/07	600 847	878 473	375 246	172 654	163 629	234 150	24 081	24 597	1 933 021
2007/08	689 118	1 015 462	362 910	168 162	169 726	354 572	18 318	16 246	2 432 495
2008/09	727 352	1 210 854	418 507	201 591	193 197	443 300	20 408	28 206	3 257 677
2009/10*	881 133	1 686 360	521 247	225 795	213 996	333 382	19 797	54 754	4 115 473

Source: Stats SA, *Financial census of municipalities* (Statistical release P9114) and *Financial statistics of consolidated general government* (Statistical release P9119.4)

~ Information was not collected separately for that period. Important points to note: Questionnaire was changed to the new municipal accounting standard in 2005/06; not all municipalities are on the new standard, only 98,6% as of 2009/10 financial year are converted.

* Information is preliminary.

18.2 Expenditure incurred and income generated by municipalities 2001/2002-2009/2010 (R thousands) (cont.)

Local government	Income								
	Property rates received	Sales of electricity and gas	Sales of water	Refuse removal charges	Sewerage and sanitation charges	Interest received	Fines	Licences and permits	Grants and subsidies received
Northern Cape									
2001/02	133 485	275 320	120 375	~	~	2 846	348	703	115 237
2002/03	151 171	289 360	138 576	~	~	2 510	13	1 295	145 048
2003/04	171 982	320 849	156 084	~	~	11 644	293	1 997	199 903
2004/05	208 579	348 354	170 283	~	~	13 782	3 893	14 952	245 121
2005/06	194 588	368 133	187 280	72 891	107 136	61 581	10 392	9 210	272 648
2006/07	209 744	410 893	222 208	80 971	112 295	83 769	18 121	10 359	572 328
2007/08	236 339	454 491	216 667	87 921	107 569	108 267	23 659	20 654	818 665
2008/09	271 463	565 328	274 064	93 940	126 863	103 753	19 336	23 677	1 133 613
2009/10*	362 787	787 023	293 508	105 219	144 334	97 451	26 062	22 614	1 470 506
North West									
2001/02	279 686	660 590	233 137	~	~	19 900	6 084	8 011	200 292
2002/03	324 158	681 359	270 922	~	~	23 024	6 398	9 636	274 616
2003/04	351 881	795 281	297 139	~	~	81 683	18 642	3 568	429 868
2004/05	395 739	845 528	327 561	~	~	91 158	14 316	14 883	460 070
2005/06	474 325	938 505	405 144	117 552	152 130	168 429	27 772	15 281	1 294 399
2006/07	586 763	1 151 142	709 313	182 980	179 123	280 643	39 354	36 605	2 196 882
2007/08	644 905	1 157 575	545 004	159 624	195 360	361 025	31 703	50 623	2 526 968
2008/09	664 120	1 370 462	593 714	184 564	187 198	426 159	58 633	37 015	3 118 335
2009/10*	845 765	1 909 719	618 906	220 297	257 114	390 507	54 837	40 291	3 369 688

Source: Stats SA, *Financial census of municipalities* (Statistical release P9114) and *Financial statistics of consolidated general government* (Statistical release P9119.4)

~ Information was not collected separately for that period. Important points to note: Questionnaire was changed to the new municipal accounting standard in 2005/06; not all municipalities are on the new standard, only 98.6% as of 2009/10 financial year are converted.

* Information is preliminary.

18.2 Expenditure incurred and income generated by municipalities 2001/2002-2009/2010 (R thousands) (concl.)

Local government	Income								
	Property rates received	Sales of electricity and gas	Sales of water	Refuse removal charges	Sewerage and sanitation charges	Interest received	Fines	Licences and permits	Grants and subsidies received
Western Cape									
2001/02	2 064 605	2 989 818	921 584	~	~	20 082	4 869	11 574	922 498
2002/03	2 490 785	3 234 365	1 033 977	~	~	20 561	5 624	7 065	187 198
2003/04	2 716 168	3 503 026	1 223 800	~	~	395 636	113 341	18 938	3 004 358
2004/05	3 166 191	3 761 872	1 372 624	~	~	438 348	157 145	132 558	1 425 351
2005/06	3 080 535	3 994 821	1 594 741	635 757	810 210	587 091	246 126	86 642	1 325 053
2006/07	3 276 347	4 352 600	1 613 272	748 238	959 264	751 549	262 124	77 711	2 798 100
2007/08	4 135 025	4 743 404	1 899 850	729 319	1 109 389	899 036	252 698	87 115	4 469 004
2008/09	4 656 581	6 197 683	1 986 405	856 448	1 123 309	1 064 445	292 228	70 881	7 313 944
2009/10*	5 504 667	8 130 276	2 278 089	901 859	1 219 735	788 990	252 977	72 154	6 900 989
Total									
2001/02	11 049 615	17 360 146	7 458 178	~	~	542 354	102 022	223 920	4 974 116
2002/03	13 113 428	18 492 069	7 994 131	~	~	548 129	92 375	155 631	5 880 915
2003/04	14 688 480	20 601 111	9 296 739	~	~	1 149 259	231 429	175 473	10 171 112
2004/05	16 666 300	22 287 618	10 614 993	~	~	1 819 664	489 812	302 812	11 533 452
2005/06	16 927 287	23 308 512	10 055 663	2 446 205	2 204 350	3 802 439	696 964	486 066	16 521 464
2006/07	18 331 085	25 588 688	11 594 555	3 224 830	4 473 668	4 617 377	1 038 744	400 823	29 244 252
2007/08	21 005 292	28 461 567	12 295 460	3 521 444	4 836 665	6 036 638	1 119 897	482 089	39 225 973
2008/09	22 454 398	35 641 736	13 265 814	4 110 785	5 357 729	6 768 334	1 246 676	506 517	50 239 892
2009/10*	26 585 877	46 834 848	14 916 070	4 647 628	5 944 889	4 688 927	993 610	594 111	58 608 473

Source: Stats SA, *Financial census of municipalities* (Statistical release P9114) and *Financial statistics of consolidated general government* (Statistical release P9119.4)

~ Information was not collected separately for that period. Important points to note: Questionnaire was changed to the new municipal accounting standard in 2005/06; not all municipalities are on the new standard, only 98,6% as of 2009/10 financial year are converted.

* Information is preliminary.