

# Electricity, gas and water supply industry, 2016

**Embargoed until:**  
5 July 2018  
14:30

Statistics South Africa

Report No. 41-01-02 (2016)

Risenga Maluleke  
Statistician-General

**Electricity, gas and water supply industry, 2016** / Statistics South Africa

Published by Statistics South Africa, Private Bag X44, Pretoria 0001

© Statistics South Africa, 2018

Users may apply or process this data, provided Statistics South Africa (Stats SA) is acknowledged as the original source of the data; that it is specified that the application and/or analysis is the result of the user's independent processing of the data; and that neither the basic data nor any reprocessed version or application thereof may be sold or offered for sale in any form whatsoever without prior permission from Stats SA.

Stats SA Library Cataloguing-in-Publication (CIP) Data

**Electricity, gas and water supply industry, 2016**/ Statistics South Africa. Pretoria: Statistics South Africa, 2018

**Report No. 41-01-02 (2016)**

**34 pages**

**ISBN: 978-0-621-46452-8**

A complete set of Stats SA publications is available at Stats SA Library and the following libraries:

National Library of South Africa, Pretoria Division  
National Library of South Africa, Cape Town Division  
Library of Parliament, Cape Town  
Bloemfontein Public Library  
Natal Society Library, Pietermaritzburg  
Johannesburg Public Library

Eastern Cape Library Services, King William's Town  
Central Regional Library, Polokwane  
Central Reference Library, Mbombela  
Central Reference Collection, Kimberley  
Central Reference Library, Mmabatho

This report is available on the Stats SA website: [www.statssa.gov.za](http://www.statssa.gov.za)

**For technical enquiries, please contact: Tshepo Pekane / Stanley Mashego / Mosa Tshekedi**

Tel.: 012 310 8191 / 012 310 6252 / 012 406 3034

Email: [tshepop@statssa.gov.za](mailto:tshepop@statssa.gov.za) / [stanleyma@statssa.gov.za](mailto:stanleyma@statssa.gov.za) / [mosat@statssa.gov.za](mailto:mosat@statssa.gov.za)

**Table of contents**

|     |   |    |
|-----|---|----|
| 1.  | Introduction .....  | 1  |
| 1.1 | Scope and coverage .....  | 1  |
| 1.2 | Data items .....  | 1  |
| 1.3 | Reference period .....  | 2  |
| 1.4 | Current prices .....  | 2  |
| 1.5 | Reliability of data .....   | 2  |
| 1.6 | Confidentiality .....   | 2  |
| 1.7 | Reporting unit .....  | 2  |
| 2.  | Summary of findings .....   | 3  |
| 2.1 | Income .....  | 3  |
|     | Table A – Income in the electricity, gas and water supply industry, 2006–2016 .....   | 3  |
|     | Table B – Profit margin in the electricity, gas and water supply industry, 2006–2016 .....  | 4  |
| 2.2 | Employment .....  | 5  |
|     | Table C – Employment in the electricity, gas and water supply industry, 2006–2016 .....   | 5  |
|     | Figure 1 – Income and employment by type of service (% contribution) in the electricity, gas and water supply industry, 2016 .....                          | 6  |
|     | Figure 2 – Gender ratios in the electricity, gas and water supply industry, 2016 .....  | 7  |
|     | Table D – Average salaries and wages in the electricity, gas and water supply industry, 2006–2016 .....   | 8  |
| 2.3 | Electricity, gas and water supply industry value added .....  | 9  |
|     | Figure 3 – Electricity, gas and water supply value added, annual percentage change (constant 2010 prices), 2007–2016 .....                                  | 9  |
|     | Figure 4 – Percentage contribution of electricity, gas and water supply value added (current prices), 2007–2016 .....                                       | 9  |
| 2.4 | Capital expenditure on new assets .....   | 10 |
|     | Table E – Capital expenditure on new assets in the electricity, gas and water supply industry, 2006–2016* .....   | 10 |
| 2.5 | Electricity generated and electricity available for distribution .....  | 11 |
|     | Table F – Electricity generated and electricity available for distribution in the generation, transmission and distribution of electricity, 2006–2016 ..... | 11 |

|  |    |
|--|----|
| 3. Tables .....  | 12 |
| Table 1 – Principal statistics in the electricity, gas and water supply industry, 2013 and 2016.....   | 12 |
| Table 2 – Principal statistics by type of service in the electricity, gas and water supply industry, 2016.....   | 13 |
| Table 3 – Income in the electricity, gas and water supply industry, 2013 and 2016 .....  | 13 |
| Table 4 – Income by type of service in the electricity, gas and water supply industry, 2016 .....  | 14 |
| Table 5 – Expenditure in the electricity, gas and water supply industry, 2013 and 2016 .....   | 14 |
| Table 6 – Expenditure by type of service in the electricity, gas and water supply industry, 2016 .....   | 15 |
| Table 7 – Capital expenditure on new assets by type of service in the electricity, gas and water supply industry, 2016.....                                | 15 |
| Table 8 – Employment in the electricity, gas and water supply industry as at the end of June 2013 and 2016.....  | 16 |
| Table 9 – Employment by type of service in the electricity, gas and water supply industry as at the end of June 2013 and 2016 .....                        | 17 |
| Table 10 – Employment by type of service and employee in the electricity, gas and water supply industry as at the end of June 2016.....                    | 17 |
| Table 11 – Electricity available for distribution in the electricity, gas and water supply industry, 2013 and 2016 .....                                   | 18 |
| Table 12 – Sales of electricity in the electricity, gas and water supply industry, 2013 and 2016 .....   | 19 |
| Table 13 – Purchases for generation, transmission and distribution of electricity in the electricity, gas and water supply industry, 2013 and 2016 .....   | 20 |
| Table 14 – Purchases for generation, transmission and distribution of electricity in the electricity, gas and water supply industry, 2016 .....            | 20 |
| Table 15 – Sales of gas in the electricity, gas and water supply industry, 2013 and 2016 .....   | 20 |
| Table 16 – Sales of gas by type of customer type in the electricity, gas and water supply industry, 2013 and 2016.....                                     | 21 |
| Table 17 – Purchases of gas in the electricity, gas and water supply industry, 2013 and 2016 .....   | 21 |
| Table 18 – Sales of water by customer type in the electricity, gas and water supply industry, 2013 and 2016 .....  | 22 |
| Table 19 – Purchases for collection, purification and distribution of water in the electricity, gas and water supply industry, 2013 and 2016 .....         | 23 |
| Table 20 – Income from sales of goods and services rendered by province in the electricity, gas and water supply industry, 2013 and 2016.....              | 23 |
| Table 21 – Salaries and wages by province in the electricity, gas and water supply industry, 2013 and 2016.....  | 24 |
| Table 22 – Employment by province in the electricity, gas and water supply industry for the last pay period ended on or before 30 June, 2013 and 2016..... | 24 |
| Table 23 – Information and communication technology (ICT) usage by type of service in the electricity, gas and water supply industry, 2016 .....           | 25 |
| Explanatory notes .....  | 26 |
| Table 24 – Size groups for the electricity, gas and water supply industry.....   | 26 |
| Glossary.....  | 28 |
| General information .....  | 30 |

## 1. Introduction

This publication presents estimates in respect of the 2016 electricity, gas and water supply industry large sample survey (LSS). The data for the number of employees were provided for working proprietors and employees who received salaries and wages for the last pay period ended on or before 30 June 2016.

The last electricity, gas and water supply LSS was conducted in 2013 (Report No. 41-01-02 (2013)).

### 1.1 Scope and coverage

The 2016 electricity, gas and water supply industry LSS covers enterprises registered for value-added tax (VAT) that are mainly engaged in the following activities classified according to the January 1993 edition of the *Standard Industrial Classification of all Economic Activities (SIC), Fifth edition, Report No. 09-09-02*:

- Generation, transmission and distribution of electricity (SIC 4111).
  - Generation (SIC 41111).
  - Distribution of purchased electric energy only (SIC 41112).
  - Generation and/ or distribution for own use (SIC 41113).
- Manufacturing and distribution of gaseous fuels through mains (SIC 41200).
- Steam and hot water supply (SIC 41300) [not included in the report due to non-response].
- Collection, purification and distribution of water (SIC 42000).

#### The following activities are excluded:

- Municipalities (included in SIC 91300).
- Enterprises which manufacture and distribute liquefied petroleum gas (LPG) (included in SIC 33210, SIC 61410, SIC 62399 and SIC 63500).
- Enterprises which are engaged in sanitation and other waste water treatment (included in SIC 94000).
- Enterprises which are involved in the collection, purification and distribution of water as a secondary activity or for own use.

### 1.2 Data items

The following categories of data items were collected: industrial classification, information and communication technology (ICT), details of employment, trading income, expenditure, profit or loss, details of services rendered, details of purchases and provincial distribution of selected statistics.

### 1.3 Reference period

The questionnaires were completed for the financial year of the enterprise which **ended on any date between 1 July 2015 and 30 June 2016**, according to the usual reporting schedule of the enterprise.

#### *Example*

- 1 October 2014 – 30 September 2015
- 1 January 2015 – 31 December 2015
- 1 February 2015 – 31 January 2016
- 1 March 2015 – 29 February 2016
- 1 April 2015 – 31 March 2016

### 1.4 Current prices

The rand values are at current prices.

### 1.5 Reliability of data

All estimates compiled for this industry are subject only to non-sampling errors because a census of the industry was conducted.

The following are some of the likely sources of non-sampling errors: sampling frame not up to date, wrong definitions and classification, phrasing of questions, non-response, processing and estimation. Every effort is made to minimise non-sampling errors by the careful design of questionnaires, testing them in pilot studies, editing reported data and implementing efficient operating procedures. Non-sampling errors occur in both sample surveys and censuses.

### 1.6 Confidentiality

According to section 17 of the Statistics Act, 1999 (Act No. 6 of 1999), completed questionnaires remain confidential to Statistics South Africa (Stats SA). Individual business information is never disclosed. Results are presented in aggregated form only.

### 1.7 Reporting unit

The statistical unit for the collection of information is an enterprise. An enterprise is a legal unit (or a combination of legal units) that includes and directly controls all functions necessary to carry out its activities. Each industry is classified to an industry that reflects its predominant activity.

## 2. Summary of findings

### 2.1 Income

**Table A – Income in the electricity, gas and water supply industry, 2006–2016**

| Type of service   | 2006          |                | 2010           |                | 2013           |                | 2016           |                |
|---|---------------|----------------|----------------|----------------|----------------|----------------|----------------|----------------|
|   | R million     | % contribution | R million      | % contribution | R million      | % contribution | R million      | % contribution |
| Generation, transmission and distribution of electricity      | 45 722        | 77,5           | 86 332         | 80,5           | 151 409        | 82,9           | 201 316        | 83,2           |
| Manufacturing and distribution of gaseous fuels through mains | 3 500         | 5,9            | 6 009          | 5,6            | 9 143          | 5,0            | 11 946         | 4,9            |
| Collection, purification and distribution of water            | 9 777         | 16,6           | 14 847         | 13,9           | 22 074         | 12,1           | 28 711         | 11,9           |
| <b>Total</b>  | <b>58 999</b> | <b>100,0</b>   | <b>107 188</b> | <b>100,0</b>   | <b>182 626</b> | <b>100,0</b>   | <b>241 973</b> | <b>100,0</b>   |

Source: Report No. 41-01-02

The total income for the electricity, gas and water supply industry in 2016 was R242,0 billion. The total income represents an increase of 9,8% per annum over the income reported in the corresponding survey of 2013 (R182,6 billion). Comparing 2013 and 2016, a large increase was reported for 'generation, transmission and distribution of electricity' (+R49,9 billion).

Since 2006, 'generation, transmission and distribution of electricity' gained the biggest percentage share (+5,7 percentage points) in income when compared with the results of 2016 (from a percentage contribution of 77,5% in 2006 to 83,2% in 2016). 'Collection, purification and distribution of water' lost the biggest percentage share (-4,7 percentage points) in the same period (from 16,6% in 2006 to 11,9% in 2016).

**Table B – Profit margin in the electricity, gas and water supply industry, 2006–2016**

| Type of service   | Net profit/loss after tax |              |               |               | Turnover      |               |                |                | Profit margin |            |            |            |
|---|---------------------------|--------------|---------------|---------------|---------------|---------------|----------------|----------------|---------------|------------|------------|------------|
|   | 2006                      | 2010         | 2013          | 2016          | 2006          | 2010          | 2013           | 2016           | 2006          | 2010       | 2013       | 2016       |
|   | R million                 |              |               |               |               |               |                |                | %             |            |            |            |
| Generation, transmission and distribution of electricity      | 5 044                     | 3 811        | 6 929         | 4 612         | 40 220        | 79 943        | 144 957        | 194 126        | 12,5          | 4,8        | 4,8        | 2,4        |
| Manufacturing and distribution of gaseous fuels through mains | 594                       | 1 261        | 2 121         | 3 187         | 3 488         | 5 972         | 9 006          | 11 244         | 17,0          | 21,1       | 23,6       | 28,3       |
| Collection, purification and distribution of water            | 1 162                     | 1 312        | 2 852         | 4 364         | 8 761         | 13 597        | 20 986         | 26 807         | 13,3          | 9,6        | 13,6       | 16,3       |
| <b>Total</b>  | <b>6 800</b>              | <b>6 384</b> | <b>11 902</b> | <b>12 163</b> | <b>52 469</b> | <b>99 512</b> | <b>174 948</b> | <b>232 178</b> | <b>13,0</b>   | <b>6,4</b> | <b>6,8</b> | <b>5,2</b> |

Source: Report No. 41-01-02

The profit margin in the electricity, gas and water supply industry fell from 13,0% in 2006 to 5,2% in 2016. This was driven by 'generation, transmission and distribution of electricity', which dropped from 12,5% to 2,4% over the same period. The profit margins in 'manufacturing and distribution of gaseous fuels through mains' and 'collection, purification and distribution of water' increased between 2006 and 2016.

The highest profit margin by type of service was 'manufacturing and distribution of gaseous fuels through mains' at 28,3% in 2016. 'Generation, transmission and distribution of electricity' is the only type of service which had profit margins lower than the overall profit margin in all four years surveyed.



## 2.2 Employment

**Table C – Employment in the electricity, gas and water supply industry, 2006–2016**

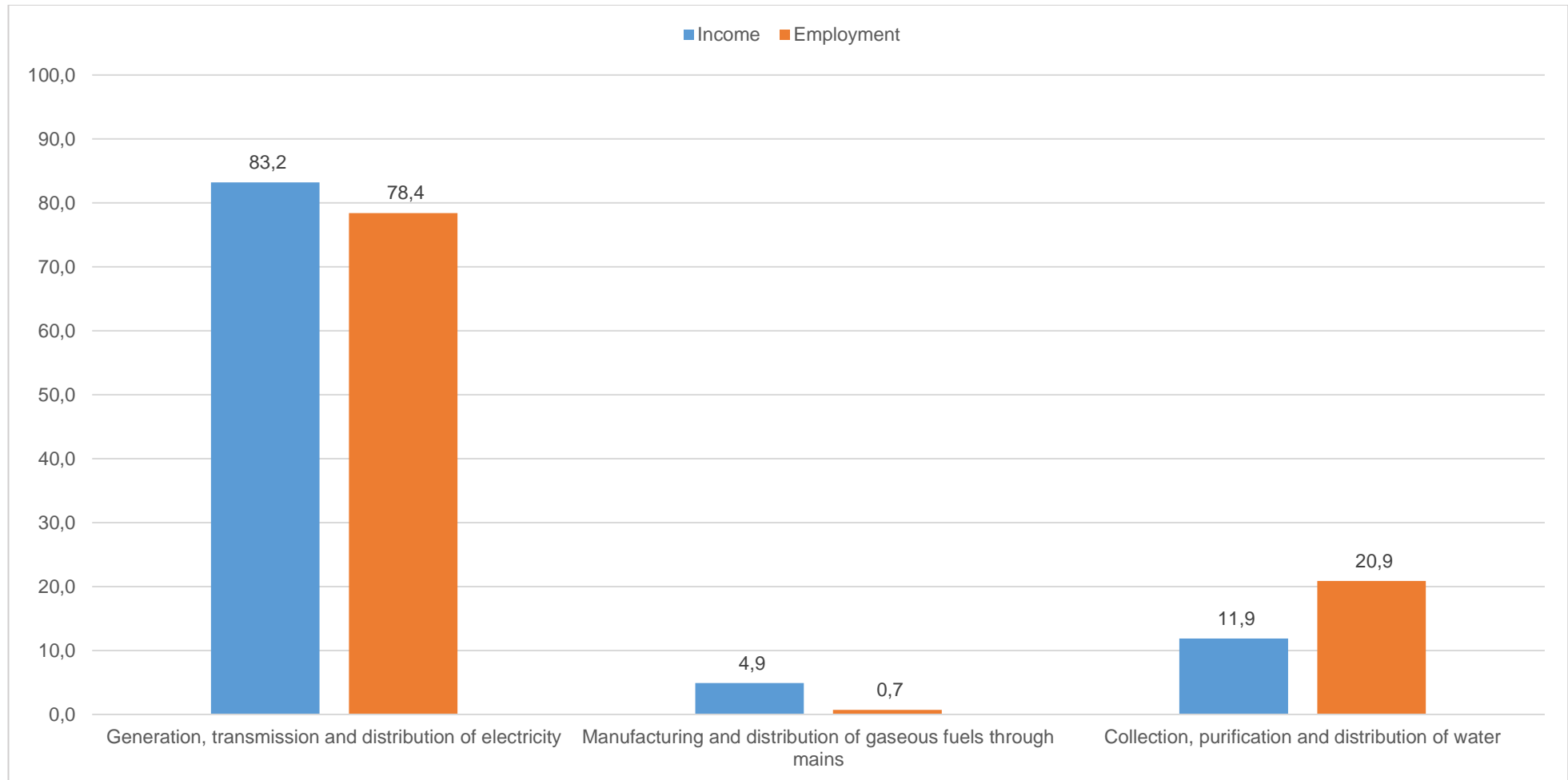
| Type of service   | 2006          |                | 2010          |                | 2013          |                | 2016          |                |
|---|---------------|----------------|---------------|----------------|---------------|----------------|---------------|----------------|
|   | Number        | % contribution | Number        | % contribution | Number        | % contribution | Number        | % contribution |
| Generation, transmission and distribution of electricity      | 31 990        | 76,0           | 39 756        | 77,6           | 46 060        | 78,8           | 46 287        | 78,4           |
| Manufacturing and distribution of gaseous fuels through mains | 311           | 0,7            | 415           | 0,8            | 432           | 0,7            | 423           | 0,7            |
| Collection, purification and distribution of water            | 9 816         | 23,3           | 11 066        | 21,6           | 11 993        | 20,5           | 12 319        | 20,9           |
| <b>Total</b>  | <b>42 117</b> | <b>100,0</b>   | <b>51 237</b> | <b>100,0</b>   | <b>58 485</b> | <b>100,0</b>   | <b>59 029</b> | <b>100,0</b>   |

Source: Report No. 41-01-02

The total number of persons employed in the electricity, gas and water supply industry as at the end of June 2016 was 59 029. 'Generation, transmission and distribution of electricity' employed the largest number of persons (46 287 or 78,4%), followed by 'collection, purification and distribution of water' (12 319 or 20,9%).

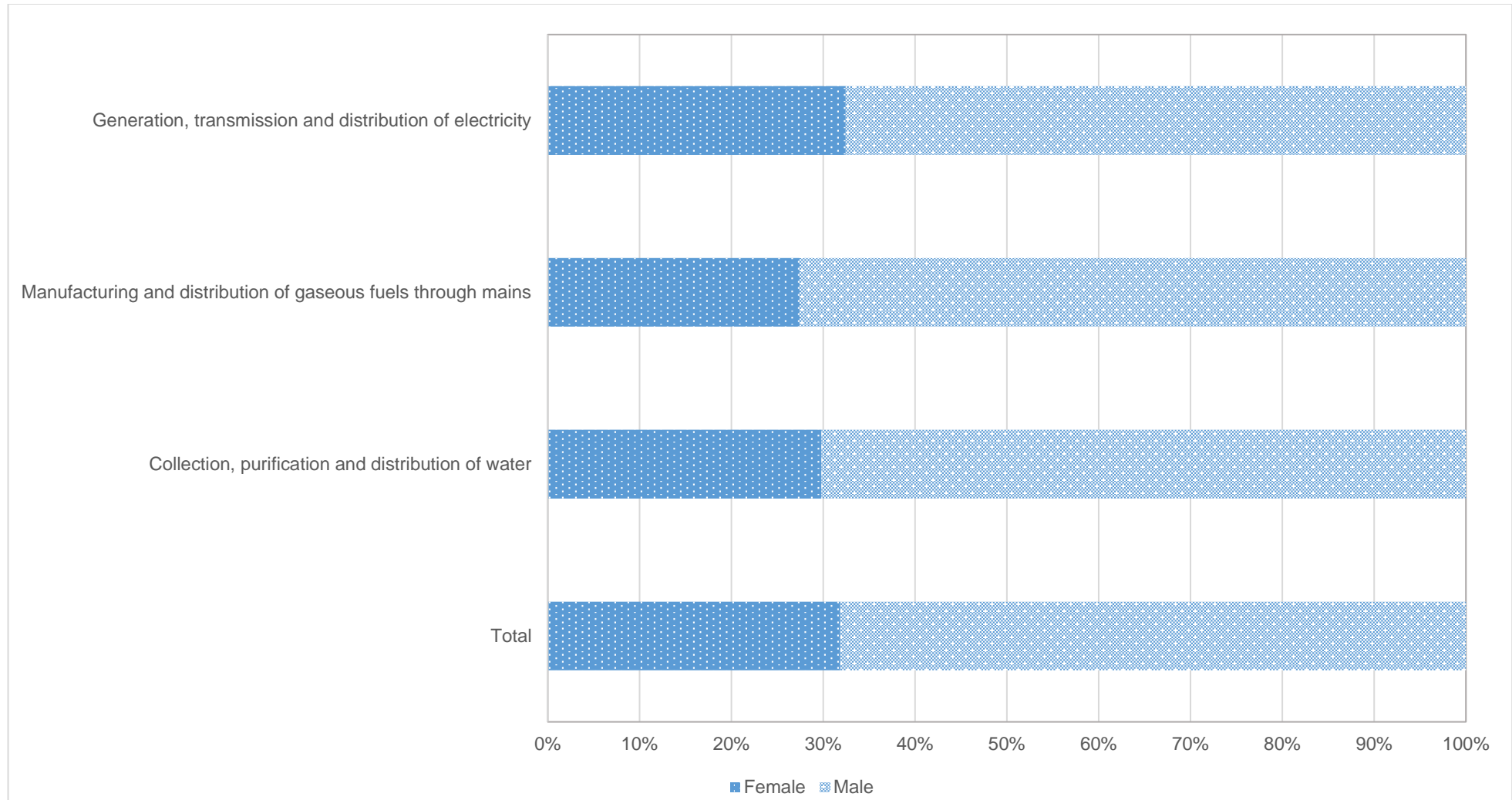
Formal employment increased from 42 117 in 2006 to 59 029 in 2016 (a gain of 16 912 jobs between 2006 and 2016). The highest growth in employment since 2006 was in 'generation, transmission and distribution of electricity' (+14 297) and 'collection, purification and distribution of water' (+2 503).

**Figure 1 – Income and employment by type of service (% contribution) in the electricity, gas and water supply industry, 2016**



The type of service with the highest proportion of employment compared with its proportion of income was 'collection, purification and distribution of water' (contributing 20,9% of employment and 11,9% of income). Although 'manufacturing and distribution of gaseous fuels through mains' contributed 4,9% of the total income of the electricity, gas and water supply industry in 2016, its contribution to employment was the most disproportionate at only 0,7%.

**Figure 2 – Gender ratios in the electricity, gas and water supply industry, 2016**



The proportion of females out of the total persons employed was 31,9%. The sector with the highest proportion of females employed was 'generation, transmission and distribution of electricity' (32,4%), whilst 'manufacturing and distribution of gaseous fuels through mains' had the highest proportion of males employed (72,6%).

**Table D – Average salaries and wages in the electricity, gas and water supply industry, 2006–2016**

| Type of service   | 2006               |                 |                            | 2010               |                 |                            | 2013               |                 |                            | 2016               |                 |                            |
|---|--------------------|-----------------|----------------------------|--------------------|-----------------|----------------------------|--------------------|-----------------|----------------------------|--------------------|-----------------|----------------------------|
|   | Salaries and wages | Total employees | Average salaries and wages | Salaries and wages | Total employees | Average salaries and wages | Salaries and wages | Total employees | Average salaries and wages | Salaries and wages | Total employees | Average salaries and wages |
|   | R million          | Number          | Rands                      | R million          | Number          | Rands                      | R million          | Number          | Rands                      | R million          | Number          | Rands                      |
| Generation, transmission and distribution of electricity      | 7 755              | 31 990          | 242 420                    | 14 775             | 39 756          | 371 642                    | 18 639             | 46 060          | 404 678                    | 25 581             | 46 287          | 552 665                    |
| Manufacturing and distribution of gaseous fuels through mains | 83                 | 311             | 266 881                    | 173                | 415             | 416 867                    | 244                | 432             | 565 225                    | 284                | 423             | 670 326                    |
| Collection, purification and distribution of water            | 1 599              | 9 816           | 162 897                    | 2 456              | 11 066          | 221 941                    | 3 274              | 11 993          | 273 014                    | 4 803              | 12 319          | 389 882                    |
| <b>Total</b>  | <b>9 437</b>       | <b>42 117</b>   | <b>224 066</b>             | <b>17 404</b>      | <b>51 237</b>   | <b>339 676</b>             | <b>22 158</b>      | <b>58 485</b>   | <b>378 863</b>             | <b>30 668</b>      | <b>59 029</b>   | <b>519 536</b>             |

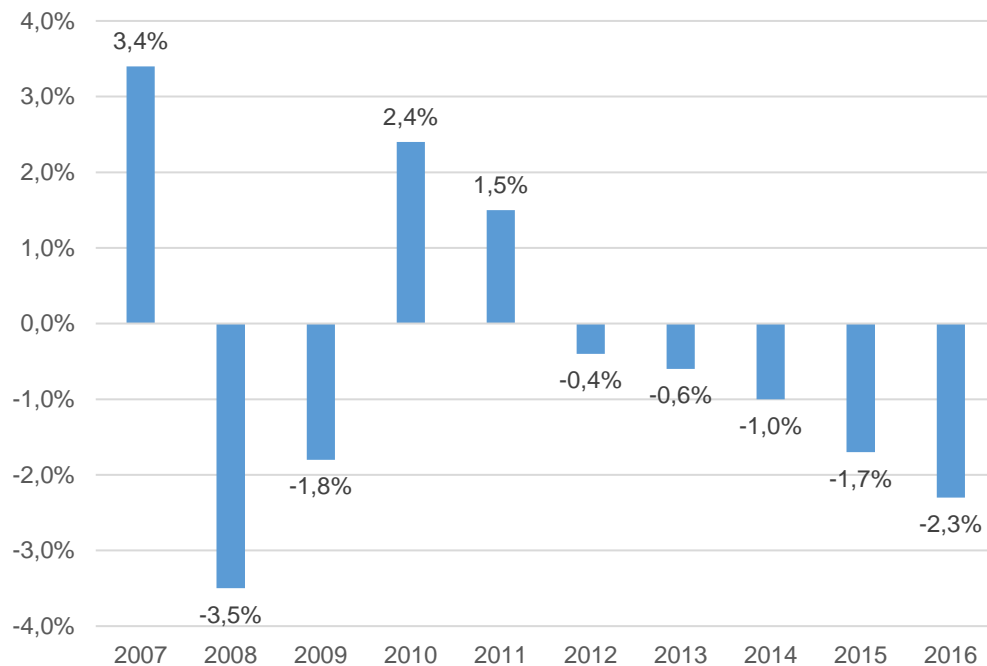
Source: Report No. 41-01-02

The average value of salaries and wages in the electricity, gas and water supply industry in 2016 was R519 536. The type of service with the highest average salaries and wages in 2016 was 'manufacturing and distribution of gaseous fuels through mains' (R670 326), followed by 'generation, transmission and distribution of electricity' (R552 665) and 'collection, purification and distribution of water' (R389 882).

Total average salaries and wages increased from R224 066 in 2006 to R519 536 in 2016, an annualised growth rate of 8,8%. The highest annualised growth rate for average salaries and wages between 2006 and 2016 was from 'manufacturing and distribution of gaseous fuels through mains' at 9,6%.

**2.3 Electricity, gas and water supply industry value added**

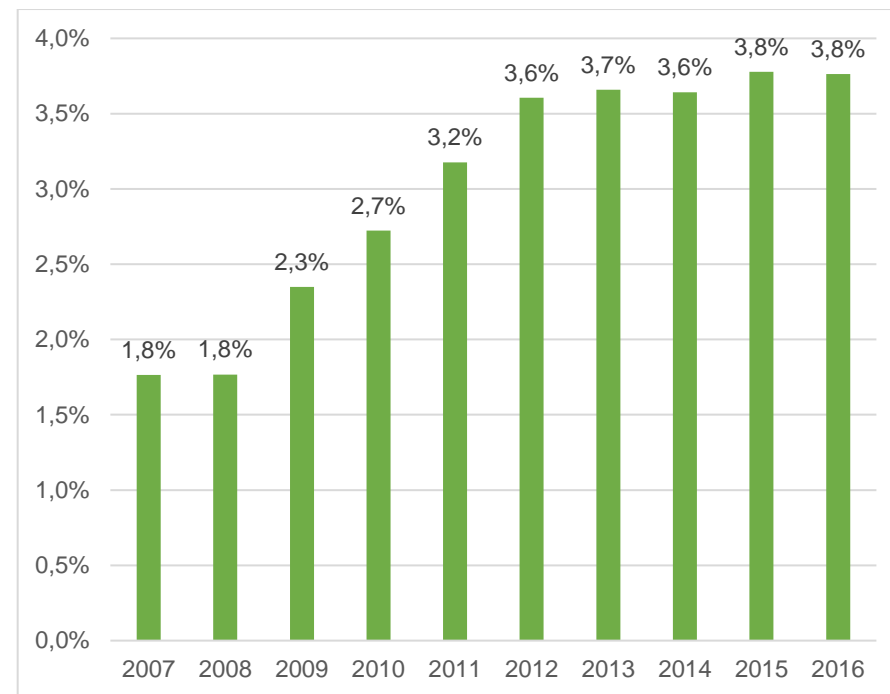
**Figure 3 – Electricity, gas and water supply value added, annual percentage change (constant 2010 prices), 2007–2016**



Source: P0441, GDP quarterly, annual and regional tables, 2017

Electricity, gas and water supply industry value added at constant 2010 prices decreased from R68 billion in 2006 to R65 billion in 2016. There were five years of consecutive negative annual growth during 2012–2016.

**Figure 4 – Percentage contribution of electricity, gas and water supply value added (current prices), 2007–2016**



Source: P0441, GDP quarterly, annual and regional tables, 2017

In the period 2007–2016, the average contribution of the electricity, gas and water supply industry to total value added was 3.0%. The contribution ranged from 1.8% in 2007 to 3.8% in 2016.

## 2.4 Capital expenditure on new assets

**Table E – Capital expenditure on new assets in the electricity, gas and water supply industry, 2006–2016\***

| Type of service   | 2006          |                | 2010          |                | 2016          |                |
|---|---------------|----------------|---------------|----------------|---------------|----------------|
|   | R million     | % contribution | R million     | % contribution | R million     | % contribution |
| Generation, transmission and distribution of electricity      | 11 407        | 89,9           | 57 697        | 95,7           | 67 898        | 90,5           |
| Manufacturing and distribution of gaseous fuels through mains | 94            | 0,7            | 193           | 0,3            | 116           | 0,2            |
| Collection, purification and distribution of water            | 1 182         | 9,3            | 2 418         | 4,0            | 7 028         | 9,4            |
| <b>Total</b>  | <b>12 683</b> | <b>100,0</b>   | <b>60 308</b> | <b>100,0</b>   | <b>75 042</b> | <b>100,0</b>   |

Source: Report No. 41-01-02

\*Capital expenditure was not collected in 2013.

The capital expenditure on new assets in 2016 (R75,0 billion) represents an increase of 3,7% per annum over the expenditure reported in the corresponding survey of 2010 (R60,3 billion). Comparing 2010 and 2016, the largest increase was reported for 'generation, transmission and distribution of electricity' (+R10,2 billion).

Capital expenditure on new assets is dominated by 'generation, transmission and distribution of electricity', with its contribution to the total ranging between 89,9% in 2006 and 95,7% in 2010. The contribution of 'manufacturing and distribution of gaseous fuels through mains' fell from 0,7% in 2006 to 0,2% in 2016.

**2.5 Electricity generated and electricity available for distribution****Table F – Electricity generated and electricity available for distribution in the generation, transmission and distribution of electricity, 2006–2016**

| Source of electricity   | 2006                 | 2010           | 2013           | 2016           |
|---|----------------------|----------------|----------------|----------------|
|   | Gigawatt-hours (GWh) |                |                |                |
| <b>Total electricity generated</b>                              | <b>233 249</b>       | <b>239 474</b> | <b>244 364</b> | <b>237 006</b> |
| Electricity supplied from other countries (imports)             | 10 310               | 10 048         | 7 698          | 9 757          |
| Electricity consumed in power stations and pump storage systems | (3 814)              | (3 934)        | (4 650)        | (5 384)        |
| Electricity supplied to other countries (exports)               | (13 122)             | (13 228)       | (13 791)       | (13 540)       |
| <b>Total electricity available for distribution</b>             | <b>226 623</b>       | <b>232 360</b> | <b>233 621</b> | <b>227 839</b> |

Total electricity generated increased from 233 249 GWh in 2006 to 244 364 GWh in 2013, but fell back to 237 006 GWh in 2016. Total electricity available for distribution followed a similar pattern.

**Risenga Maluleke**  
**Statistician-General**

## 3. Tables

Table 1 – Principal statistics in the electricity, gas and water supply industry, 2013 and 2016

| Type of service   | Total income   |                |                     | Total value of opening inventory opening inventory |               |                     | Total value of closing inventory |               |                     |
|---|----------------|----------------|---------------------|--|---------------|---------------------|----------------------------------|---------------|---------------------|
|   | 2013*          | 2016**         | Annualised % change | 2013*  | 2016**        | Annualised % change | 2013*                            | 2016**        | Annualised % change |
|   | R million      |                |                     | R million  |               |                     |                                  |               |                     |
| Generation, transmission and distribution of electricity      | 151 409        | 201 316        | 10,0                | 10 034   | 16 232        | 17,4                | 12 220                           | 18 003        | 13,8                |
| Manufacturing and distribution of gaseous fuels through mains | 9 143          | 11 946         | 9,3                 | 63   | 90            | 12,9                | 68                               | 87            | 8,4                 |
| Collection, purification and distribution of water            | 22 074         | 28 711         | 9,2                 | 291  | 290           | -0,1                | 362                              | 317           | -4,3                |
| <b>Total</b>  | <b>182 626</b> | <b>241 973</b> | <b>9,8</b>          | <b>10 388</b>                                      | <b>16 613</b> | <b>16,9</b>         | <b>12 651</b>                    | <b>18 407</b> | <b>13,3</b>         |

\* Revised figures.

\*\* Preliminary figures.

Table 1 – Principal statistics in the electricity, gas and water supply industry, 2013 and 2016 (concluded)

| Type of service   | Total expenditure |                |                     | Net profit before tax |               |                     | Total employees |               |                     |
|---|-------------------|----------------|---------------------|-----------------------|---------------|---------------------|-----------------|---------------|---------------------|
|   | 2013*             | 2016**         | Annualised % change | 2013*                 | 2016**        | Annualised % change | 2013*           | 2016**        | Annualised % change |
|   | R million         |                |                     | R million             |               |                     |                 |               |                     |
| Generation, transmission and distribution of electricity      | 144 445           | 195 911        | 10,7                | 9 151                 | 7 176         | -7,8                | 46 060          | 46 287        | 0,2                 |
| Manufacturing and distribution of gaseous fuels through mains | 6 182             | 7 750          | 7,8                 | 2 967                 | 4 193         | 12,2                | 432             | 423           | -0,7                |
| Collection, purification and distribution of water            | 19 266            | 24 330         | 8,1                 | 2 878                 | 4 407         | 15,3                | 11 993          | 12 319        | 0,9                 |
| <b>Total</b>  | <b>169 893</b>    | <b>227 991</b> | <b>10,3</b>         | <b>14 996</b>         | <b>15 776</b> | <b>1,7</b>          | <b>58 485</b>   | <b>59 029</b> | <b>0,3</b>          |

\* Revised figures.

\*\* Preliminary figures.



**Table 2 – Principal statistics by type of service in the electricity, gas and water supply industry, 2016**

| Type of service   | Total income   | Total value of opening inventory | Total value of closing inventory | Total expenditure | Net profit before tax | Total capital expenditure | Total employees |
|---|----------------|----------------------------------|----------------------------------|-------------------|-----------------------|---------------------------|-----------------|
|   | R million      |                                  |                                  |                   |                       |                           | Number          |
| Generation, transmission and distribution of electricity      | 201 316        | 16 232                           | 18 003                           | 195 911           | 7 176                 | 67 898                    | 46 287          |
| Manufacturing and distribution of gaseous fuels through mains | 11 946         | 90                               | 87                               | 7 750             | 4 193                 | 116                       | 423             |
| Collection, purification and distribution of water            | 28 711         | 291                              | 317                              | 24 330            | 4 407                 | 7 028                     | 12 319          |
| <b>Total</b>  | <b>241 973</b> | <b>16 613</b>                    | <b>18 407</b>                    | <b>227 991</b>    | <b>15 776</b>         | <b>75 042</b>             | <b>59 029</b>   |

\* Revised figures.

\*\* Preliminary figures.

**Table 3 – Income in the electricity, gas and water supply industry, 2013 and 2016**

| Income item          | 2013*          | 2016**         | 2013*          | 2016**       | Annualised % change |
|----------------------|----------------|----------------|----------------|--------------|---------------------|
|                      | R million      |                | % contribution |              |                     |
| Sales and services   | 174 948        | 231 934        | 95,8           | 95,9         | 9,9                 |
| Government subsidies | 1 127          | 1 511          | 0,6            | 0,6          | 10,3                |
| Other income         | 6 551          | 8 528          | 3,6            | 3,5          | 9,2                 |
| <b>Total income</b>  | <b>182 626</b> | <b>241 973</b> | <b>100,0</b>   | <b>100,0</b> | <b>9,8</b>          |

\* Revised figures.

\*\* Preliminary figures.

**Table 4 – Income by type of service in the electricity, gas and water supply industry, 2016**

| Type of service   | Sales of goods and services rendered | Government subsidies | Interest received | Rental, leasing and hiring income | Other income | Total income   |
|---|--------------------------------------|----------------------|-------------------|-----------------------------------|--------------|----------------|
|   | R million                            |                      |                   |                                   |              |                |
| Generation, transmission and distribution of electricity      | 193 899                              | 971                  | 3 431             | 227                               | 2 788        | 201 316        |
| Manufacturing and distribution of gaseous fuels through mains | 11 244                               | 46                   | 10                | 0                                 | 646          | 11 946         |
| Collection, purification and distribution of water            | 26 791                               | 494                  | 551               | 16                                | 859          | 28 711         |
| <b>Total</b>  | <b>231 934</b>                       | <b>1 511</b>         | <b>3 991</b>      | <b>244</b>                        | <b>4 294</b> | <b>241 973</b> |

**Table 5 – Expenditure in the electricity, gas and water supply industry, 2013 and 2016**

| Expenditure item                  | 2013*          | 2016**         | 2013*          | 2016**       | Annualised % change |
|-----------------------------------|----------------|----------------|----------------|--------------|---------------------|
|                                   | R million      |                | % contribution |              |                     |
| Purchases                         | 78 354         | 110 861        | 46,1           | 48,6         | 12,3                |
| Salaries and wages                | 22 158         | 30 668         | 13,0           | 13,5         | 11,4                |
| Subcontractors and labour brokers | 5 649          | 4 909          | 3,3            | 2,2          | -4,6                |
| Motor vehicle running expenditure | 827            | 991            | 0,5            | 0,4          | 6,2                 |
| Repair and maintenance            | 11 632         | 14 980         | 6,8            | 6,6          | 8,8                 |
| Custom and excise duties          | 8 053          | 8 225          | 4,7            | 3,6          | 0,7                 |
| Other expenditure                 | 43 220         | 57 357         | 25,4           | 25,2         | 9,9                 |
| <b>Total expenditure</b>          | <b>169 893</b> | <b>227 991</b> | <b>100,0</b>   | <b>100,0</b> | <b>10,3</b>         |

\* Revised figures.

\*\* Preliminary figures.

**Table 6 – Expenditure by type of service in the electricity, gas and water supply industry, 2016**

| Type of service   | Purchases      | Salaries and wages | Subcontractors and labour brokers | Motor vehicle running expenditure | Interest      | Losses on financial and other assets |
|---|----------------|--------------------|-----------------------------------|-----------------------------------|---------------|--------------------------------------|
|   | R million      |                    |                                   |                                   |               |                                      |
| Generation, transmission and distribution of electricity      | 91 329         | 25 581             | 4 835                             | 916                               | 16 876        | 1 722                                |
| Manufacturing and distribution of gaseous fuels through mains | 6 586          | 284                | 0                                 | 0                                 | 75            | 8                                    |
| Collection, purification and distribution of water            | 12 946         | 4 803              | 74                                | 75                                | 454           | 349                                  |
| <b>Total</b>  | <b>110 861</b> | <b>30 668</b>      | <b>4 909</b>                      | <b>991</b>                        | <b>17 405</b> | <b>2 079</b>                         |

**Table 6 – Expenditure by type of service in the electricity, gas and water supply industry, 2016 (concluded)**

| Type of service   | Repair and maintenance | Customs and excise duties | Depreciation and amortisation | Other expenditure | Total          |
|---|------------------------|---------------------------|-------------------------------|-------------------|----------------|
|   | R million              |                           |                               |                   |                |
| Generation, transmission and distribution of electricity      | 14 388                 | 8 225                     | 19 916                        | 12 123            | 195 911        |
| Manufacturing and distribution of gaseous fuels through mains | 69                     | 0                         | 139                           | 589               | 7 750          |
| Collection, purification and distribution of water            | 523                    | 0                         | 945                           | 4 161             | 24 330         |
| <b>Total</b>  | <b>14 980</b>          | <b>8 225</b>              | <b>21 000</b>                 | <b>16 873</b>     | <b>227 991</b> |

**Table 7 – Capital expenditure on new assets by type of service in the electricity, gas and water supply industry, 2016**

| Type of service   | Land, buildings and construction works | Plant and machinery | Computers and other equipment | Motor vehicles, fleet and other transport equipment | Computer software | Other capital expenditure | Total capital expenditure on assets |
|---|--|---------------------|-------------------------------|---|-------------------|---------------------------|-------------------------------------|
|   | R million                              |                     |                               |   |                   |                           |                                     |
| Generation, transmission and distribution of electricity      | 55 305                                 | 11 537              | 259                           | 290   | 178               | 329                       | <b>67 898</b>                       |
| Manufacturing and distribution of gaseous fuels through mains | 0                                      | 113                 | 1                             | 0   | 2                 | 0                         | <b>116</b>                          |
| Collection, purification and distribution of water            | 4 163                                  | 225                 | 42                            | 106   | 45                | 2 447                     | <b>7 028</b>                        |
| <b>Total</b>  | <b>59 468</b>                          | <b>11 875</b>       | <b>302</b>                    | <b>396</b>  | <b>225</b>        | <b>2 776</b>              | <b>75 042</b>                       |

**Table 8 – Employment in the electricity, gas and water supply industry as at the end of June 2013 and 2016**

| Employment status             | Gender        | 2013*         | 2016**        | Annualised change % |
|-------------------------------|---------------|---------------|---------------|---------------------|
|                               |               | Number        |               |                     |
| Permanent                     | Female        | 17 086        | 18 363        | 2,4                 |
|                               | Male          | 39 795        | 39 430        | -0,3                |
|                               | <b>Total</b>  | <b>56 881</b> | <b>57 793</b> | <b>0,5</b>          |
| Temporary                     | Female        | 472           | 381           | -6,9                |
|                               | Male          | 627           | 515           | -6,4                |
|                               | <b>Total</b>  | <b>1 099</b>  | <b>896</b>    | <b>-6,6</b>         |
| Casual                        | Female        | 82            | 63            | -8,5                |
|                               | Male          | 423           | 277           | -13,1               |
|                               | <b>Total</b>  | <b>505</b>    | <b>340</b>    | <b>-12,3</b>        |
| <b>Total</b>                  | <b>Female</b> | <b>17 640</b> | <b>18 807</b> | <b>2,2</b>          |
|                               | <b>Male</b>   | <b>40 845</b> | <b>40 222</b> | <b>-0,5</b>         |
|                               | <b>Total</b>  | <b>58 485</b> | <b>59 029</b> | <b>0,3</b>          |
| Employees from labour brokers |               | 175           | 145           | -6,0                |

\* Revised figures.

\*\* Preliminary figures.

**Table 9 – Employment by type of service in the electricity, gas and water supply industry as at the end of June 2013 and 2016**

| Type of service   | 2013*               | 2016**        | 2013*          | 2016**       | Annualised % change |
|---|---------------------|---------------|----------------|--------------|---------------------|
|   | Number of employees |               | % contribution |              |                     |
| Generation, transmission and distribution of electricity      | 46 060              | 46 287        | 78,8           | 78,4         | 0,2                 |
| Manufacturing and distribution of gaseous fuels through mains | 432                 | 423           | 0,7            | 0,7          | -0,7                |
| Collection, purification and distribution of water            | 11 993              | 12 319        | 20,5           | 20,9         | 0,9                 |
| <b>Total</b>  | <b>58 485</b>       | <b>59 029</b> | <b>100,0</b>   | <b>100,0</b> | <b>0,3</b>          |

\* Revised figures.

\*\* Preliminary figures.

**Table 10 – Employment by type of service and employee in the electricity, gas and water supply industry as at the end of June 2016**

| Type of service   | Permanent           |               |               | Temporary and casual |            |              | Total         | Employees from labour brokers |
|---|---------------------|---------------|---------------|----------------------|------------|--------------|---------------|-------------------------------|
|   | Female              | Male          | Total         | Female               | Male       | Total        |               |                               |
|   | Number of employees |               |               |                      |            |              |               |                               |
| Generation, transmission and distribution of electricity      | 14 999              | 31 246        | 46 245        | 18                   | 24         | 42           | 46 287        | 0                             |
| Manufacturing and distribution of gaseous fuels through mains | 116                 | 307           | 423           | 0                    | 0          | 0            | 423           | 0                             |
| Collection, purification and distribution of water            | 3 248               | 7 877         | 11 125        | 426                  | 768        | 1 194        | 12 319        | 145                           |
| <b>Total</b>  | <b>18 363</b>       | <b>39 430</b> | <b>57 793</b> | <b>444</b>           | <b>792</b> | <b>1 236</b> | <b>59 029</b> | <b>145</b>                    |

**Table 11 – Electricity available for distribution in the electricity, gas and water supply industry, 2013 and 2016**

| Source of electricity   | 2013*                | 2016**         | Annualised % change |
|---|----------------------|----------------|---------------------|
|   | Gigawatt-hours (GWh) |                |                     |
| Coal  | 215 691              | 203 054        | -2,0                |
| Natural gas   | 8 410                | 7 573          | -3,4                |
| Nuclear material  | 11 954               | 12 305         | 1,0                 |
| Diesel  | 1 904                | 4 007          | 28,1                |
| Water (hydroelectricity)  | 1 077                | 783            | -10,1               |
| Wind  | 18                   | 2 126          | 390,6               |
| Sun (solar electricity)   | 0                    | 2 151          | -                   |
| Electricity generated from pump storage stations                | 3 006                | 2 934          | -0,8                |
| Waste material (e.g. bagasse and wood waste)                    | 2 304                | 2 073          | -3,5                |
| <b>Total electricity generated</b>                              | <b>244 364</b>       | <b>237 006</b> | <b>-1,0</b>         |
| Electricity supplied from other countries (imports)             | 7 698                | 9 757          | 8,2                 |
| Electricity consumed in power stations and pump storage systems | (4 650)              | (5 384)        | 5,0                 |
| Electricity supplied to other countries (exports)               | (13 791)             | (13 540)       | -0,6                |
| <b>***Total electricity available for distribution</b>          | <b>233 621</b>       | <b>227 839</b> | <b>-0,8</b>         |

\* Revised figures.

\*\* Preliminary figures.

\*\*\* Electricity available for distribution includes: Total electricity generated + Electricity supplied from other countries (imports) - Electricity consumed in power stations and pump storage systems - Electricity supplied to other countries (exports).

**Table 12 – Sales of electricity in the electricity, gas and water supply industry, 2013 and 2016**

| Type of customer <sup>1</sup>                            | 2013*          | 2016**         | 2013           | 2016         | Annualised % change |
|--|----------------|----------------|----------------|--------------|---------------------|
|  | R million      |                | % contribution |              |                     |
| Redistributors <sup>2</sup> (mainly municipalities)      | 51 989         | 74 439         | 36,5           | 39,1         | 12,7                |
| Residential  | 15 997         | 17 175         | 11,2           | 9,0          | 2,4                 |
| Commercial   | 14 049         | 13 972         | 9,9            | 7,3          | -0,2                |
| Industrial   | 23 609         | 40 094         | 16,6           | 21,1         | 19,3                |
| Mining   | 17 620         | 24 028         | 12,4           | 12,6         | 10,9                |
| Agriculture  | 5 181          | 8 430          | 3,6            | 4,4          | 17,6                |
| Railway electric traction                                | 2 057          | 2 770          | 1,4            | 1,5          | 10,4                |
| International (exported)                                 | 5 892          | 8 100          | 4,1            | 4,3          | 11,2                |
| Other type of customer                                   | 6 120          | 1 452          | 4,3            | 0,8          | -38,1               |
| <b>Total electricity distributed by type of customer</b> | <b>142 514</b> | <b>190 460</b> | <b>100,0</b>   | <b>100,0</b> | <b>10,1</b>         |

\* Revised figures.

\*\* Preliminary figures.

<sup>1</sup>Eskom's classification was used for the categories of customers.

<sup>2</sup>Electricity redistributors are enterprises that buy electricity from generators for re-sale and they are mainly municipalities.

**Table 13 – Purchases for generation, transmission and distribution of electricity in the electricity, gas and water supply industry, 2013 and 2016**

| Input                        | Unit                     | 2013*       | 2016**        | Annualised<br>% change | 2013*         | 2016**        | Annualised<br>% change |
|------------------------------|--------------------------|-------------|---------------|------------------------|---------------|---------------|------------------------|
|                              |                          | Quantity    |               |                        | R million     |               |                        |
| Water                        | Thousands m <sup>3</sup> | 337 375     | 321 867       | -1,6                   | 1 691         | 2 092         | 7,4                    |
| Coal                         | Metric ton               | 155 096 402 | 116 459 102   | -9,1                   | 35 876        | 44 351        | 7,3                    |
| Diesel                       | Litres                   | 596 032 174 | 1 335 564 081 | 30,9                   | 5 024         | 8 938         | 21,2                   |
| Other inputs <sup>3</sup>    |                          |             |               |                        | 3 015         | 3 432         | 4,4                    |
| Other purchases <sup>4</sup> |                          |             |               |                        | 18 722        | 32 516        | 20,2                   |
| <b>Total purchases</b>       |                          |             |               |                        | <b>64 328</b> | <b>91 329</b> | <b>12,4</b>            |

\* Revised figures

\*\* Preliminary figures

<sup>3</sup>Other inputs include nuclear material, natural gas and liquid petroleum fuel products.<sup>4</sup>Other purchases include chemicals, environmental levy and electricity purchases.**Table 14 – Purchases for generation, transmission and distribution of electricity in the electricity, gas and water supply industry, 2016**

| Input   | Unit                     | Quantity      | R million     |
|---|--------------------------|---------------|---------------|
| Water   | Thousands m <sup>3</sup> | 321 867       | 2 092         |
| Coal  | Metric ton               | 116 459 102   | 44 351        |
| Diesel  | Litres                   | 1 335 564 081 | 8 938         |
| Electricity                                     | Gigawatt hours           | 40 693        | 32 176        |
| Other inputs                                    |                          |               | 3 432         |
| Other purchases                                 |                          |               | 340           |
| <b>Total purchases and transfer-in of goods</b> |                          |               | <b>91 329</b> |

**Table 15 – Sales of gas in the electricity, gas and water supply industry, 2013 and 2016**

| Type of gas <sup>5</sup>                     | 2013*              | 2016**             | Annualised %<br>change | 2013*        | 2016**        | Annualised %<br>change |
|--|--------------------|--------------------|------------------------|--------------|---------------|------------------------|
|  | Gigajoules         |                    |                        | R million    |               |                        |
| Natural gas                                  | 140 586 831        | 156 542 682        | 3,6                    | 7 057        | 9 135         | 9,0                    |
| Methane-rich gas                             | 28 632 386         | 27 652 468         | -1,2                   | 1 879        | 1 931         | 0,9                    |
| Synthetic gas                                | 968 866            | 131 094            | -48,7                  | 70           | 7             | -52,9                  |
| <b>Total gas distributed in South Africa</b> | <b>170 188 083</b> | <b>184 326 244</b> | <b>2,7</b>             | <b>9 006</b> | <b>11 073</b> | <b>7,1</b>             |

\* Revised figures

\*\* Preliminary figures

<sup>5</sup>Gas refers to gaseous fuels distributed through mains or pipeline network and includes natural gas, methane-rich gas and synthetic gas.



**Table 16 – Sales of gas by type of customer type in the electricity, gas and water supply industry, 2013 and 2016**

| Type of customer                                 | 2013*              | 2016**             | Annualised %<br>change | 2013*        | 2016**        | Annualised %<br>change |
|--|--------------------|--------------------|------------------------|--------------|---------------|------------------------|
|  | Gigajoules         |                    |                        | R million    |               |                        |
| Redistributors <sup>6</sup>                      | 10 167 539         | 11 003 562         | 2,7                    | 594          | 736           | 7,4                    |
| Households                                       | 207 967            | 263 945            | 8,3                    | 26           | 33            | 8,3                    |
| Commercial users and farmers                     | 49 649 902         | 51 288 324         | 1,1                    | 3 706        | 3 866         | 1,4                    |
| Industrial users                                 | 110 162 675        | 121 770 413        | 3,4                    | 4 680        | 6 438         | 11,2                   |
| <b>Total gas distributed by type of customer</b> | <b>170 188 083</b> | <b>184 326 244</b> | <b>2,7</b>             | <b>9 006</b> | <b>11 073</b> | <b>7,1</b>             |

\* Revised figures.

\*\* Preliminary figures.

<sup>6</sup>Gas redistributors are enterprises that buy gas from gas producers for re-sale.**Table 17 – Purchases of gas in the electricity, gas and water supply industry, 2013 and 2016**

| Type of gas                                  | 2013*              | 2016**             | Annualised %<br>change | 2013*        | 2016**       | Annualised %<br>change |
|--|--------------------|--------------------|------------------------|--------------|--------------|------------------------|
|  | Gigajoules         |                    |                        | R million    |              |                        |
| <b>Purchases of gas in South Africa</b>      |                    |                    |                        |              |              |                        |
| Natural gas                                  | 3 364 717          | 4 270 392          | 8,3                    | 231          | 293          | 8,3                    |
| Methane-rich gas                             | 29 277 619         | 27 411 300         | -2,2                   | 1 724        | 917          | -19,0                  |
| Synthetic gas                                | 973 051            | 126 697            | -49,3                  | 34           | 10           | -33,2                  |
| <b>Total purchases of gas</b>                | <b>33 615 387</b>  | <b>31 808 389</b>  | <b>-1,8</b>            | <b>1 989</b> | <b>1 220</b> | <b>-15,0</b>           |
| <b>Purchases of gas from other countries</b> |                    |                    |                        |              |              |                        |
| Natural gas imported                         | 137 933 986        | 153 558 795        | 3,6                    | 3 253        | 3 339        | 0,9                    |
| <b>Total purchases</b>                       | <b>171 549 373</b> | <b>185 367 184</b> | <b>2,6</b>             | <b>5 242</b> | <b>4 559</b> | <b>-4,5</b>            |

\* Revised figures.

\*\* Preliminary figures.

**Table 18 – Sales of water by customer type in the electricity, gas and water supply industry, 2013 and 2016**

| Type of customer                                    | 2013*         | 2016**        | 2013*          | 2016**       | Annualised % change |
|---|---------------|---------------|----------------|--------------|---------------------|
|   | R million     |               | % contribution |              |                     |
| Redistributors <sup>7</sup> (mainly municipalities) | 11 149        | 15 948        | 63,8           | 69,3         | 12,7                |
| Households  | 2 757         | 3 156         | 15,8           | 13,7         | 4,6                 |
| Commercial users                                    | 1 266         | 1 462         | 7,2            | 6,3          | 4,9                 |
| Industry  | 703           | 709           | 4,0            | 3,1          | 0,3                 |
| Mining  | 983           | 1 209         | 5,6            | 5,2          | 7,1                 |
| Agricultural users (farmers)                        | 449           | 312           | 2,6            | 1,4          | -11,5               |
| Other customers                                     | 173           | 236           | 1,0            | 1,0          | 10,7                |
| <b>Total water distributed</b>                      | <b>17 480</b> | <b>23 032</b> | <b>100,0</b>   | <b>100,0</b> | <b>9,6</b>          |

\* Revised figures.

\*\* Preliminary figures.

<sup>7</sup>Water redistributors are water service providers, water boards which buy water from other water boards for redistribution when they cannot meet their own demand, and companies contracted by municipalities to supply water on their behalf.

**Table 19 – Purchases for collection, purification and distribution of water in the electricity, gas and water supply industry, 2013 and 2016**

| Input   | 2013*        | 2016**        | 2013*          | 2016**       | Annualised % change |
|---|--------------|---------------|----------------|--------------|---------------------|
|   | R million    |               | % contribution |              |                     |
| Fuel  | 31           | 42            | 0,3            | 0,3          | 11,1                |
| Bulk/ raw water                                 | 7 637        | 10 980        | 86,3           | 84,8         | 12,9                |
| Water treatment chemicals                       | 394          | 580           | 4,4            | 4,5          | 13,8                |
| Parts and spares                                | 124          | 149           | 1,4            | 1,2          | 6,2                 |
| Other purchases and transfers-in                | 677          | 1 195         | 7,6            | 9,2          | 20,8                |
| <b>Total purchases and transfer-in of goods</b> | <b>8 863</b> | <b>12 946</b> | <b>100,0</b>   | <b>100,0</b> | <b>13,5</b>         |

\* Revised figures.

\*\* Preliminary figures.

**Table 20 – Income from sales of goods and services rendered by province in the electricity, gas and water supply industry, 2013 and 2016**

| Province      | 2013*          | 2016**         | 2013*          | 2016**       | Annualised % change |
|---------------|----------------|----------------|----------------|--------------|---------------------|
|               | R million      |                | % contribution |              |                     |
| Western Cape  | 14 639         | 21 679         | 8,4            | 9,3          | 14,0                |
| Eastern Cape  | 6 136          | 9 551          | 3,5            | 4,1          | 15,9                |
| Northern Cape | 4 109          | 6 406          | 2,3            | 2,8          | 15,9                |
| Free State    | 7 908          | 13 323         | 4,5            | 5,7          | 19,0                |
| KwaZulu-Natal | 22 949         | 27 355         | 13,1           | 11,8         | 6,0                 |
| North West    | 11 902         | 16 483         | 6,8            | 7,1          | 11,5                |
| Gauteng       | 79 901         | 100 997        | 45,7           | 43,6         | 8,1                 |
| Mpumalanga    | 15 677         | 20 860         | 9,0            | 9,0          | 10,0                |
| Limpopo       | 11 727         | 15 280         | 6,7            | 6,6          | 9,2                 |
| <b>Total</b>  | <b>174 948</b> | <b>231 934</b> | <b>100,0</b>   | <b>100,0</b> | <b>9,9</b>          |

\* Revised figures.

\*\* Preliminary figures.

**Table 21 – Salaries and wages by province in the electricity, gas and water supply industry, 2013 and 2016**

| Province      | 2013*         | 2016**        | 2013*          | 2016**       | Annualised % change |
|---------------|---------------|---------------|----------------|--------------|---------------------|
|               | R million     |               | % contribution |              |                     |
| Western Cape  | 1 749         | 2 635         | 7,9            | 8,6          | 14,6                |
| Eastern Cape  | 774           | 1 115         | 3,5            | 3,6          | 12,9                |
| Northern Cape | 251           | 502           | 1,1            | 1,6          | 26,0                |
| Free State    | 1 102         | 1 887         | 5,0            | 6,2          | 19,6                |
| KwaZulu-Natal | 1 616         | 2 114         | 7,3            | 6,9          | 9,4                 |
| North West    | 467           | 964           | 2,1            | 3,1          | 27,4                |
| Gauteng       | 9 571         | 13 711        | 43,2           | 44,7         | 12,7                |
| Mpumalanga    | 5 356         | 6 127         | 24,2           | 20,0         | 4,6                 |
| Limpopo       | 1 272         | 1 613         | 5,7            | 5,3          | 8,3                 |
| <b>Total</b>  | <b>22 158</b> | <b>30 668</b> | <b>100,0</b>   | <b>100,0</b> | <b>11,4</b>         |

\* Revised figures.

\*\* Preliminary figures.

**Table 22 – Employment by province in the electricity, gas and water supply industry for the last pay period ended on or before 30 June, 2013 and 2016**

| Province      | 2013*         | 2016**        | 2013*          | 2016**       | Annualised % change |
|---------------|---------------|---------------|----------------|--------------|---------------------|
|               | R million     |               | % contribution |              |                     |
| Western Cape  | 5 116         | 5 066         | 8,7            | 8,6          | -0,3                |
| Eastern Cape  | 3 243         | 3 121         | 5,5            | 5,3          | -1,3                |
| Northern Cape | 1 339         | 1 301         | 2,3            | 2,2          | -1,0                |
| Free State    | 3 743         | 3 960         | 6,4            | 6,7          | 1,9                 |
| KwaZulu-Natal | 5 005         | 4 952         | 8,6            | 8,4          | -0,4                |
| North West    | 1 995         | 2 322         | 3,4            | 3,9          | 5,2                 |
| Gauteng       | 22 175        | 22 162        | 38,0           | 37,5         | 0,0                 |
| Mpumalanga    | 12 098        | 12 026        | 20,7           | 20,4         | -0,2                |
| Limpopo       | 3 771         | 4 119         | 6,4            | 7,0          | 3,0                 |
| <b>Total</b>  | <b>58 485</b> | <b>59 029</b> | <b>100,0</b>   | <b>100,0</b> | <b>0,3</b>          |

\* Revised figures.

\*\* Preliminary figures.

**Table 23 – Information and communication technology (ICT) usage by type of service in the electricity, gas and water supply industry, 2016**

| Type of service   | Use computer     | Use internet | Use internet banking | Have website | Receive orders through the internet | Place orders through the internet | IT outsourced |
|---|------------------|--------------|----------------------|--------------|-------------------------------------|-----------------------------------|---------------|
|   | % of enterprises |              |                      |              |                                     |                                   |               |
| Generation, transmission and distribution of electricity      | 100,0            | 100,0        | 93,3                 | 62,2         | 17,8                                | 33,3                              | 73,3          |
| Manufacturing and distribution of gaseous fuels through mains | 100,0            | 100,0        | 100,0                | 100,0        | 0,0                                 | 0,0                               | 100,0         |
| Collection, purification and distribution of water            | 100,0            | 100,0        | 100,0                | 58,9         | 12,8                                | 27,6                              | 60,2          |
| <b>Total</b>  | <b>100,0</b>     | <b>100,0</b> | <b>96,6</b>          | <b>62,0</b>  | <b>14,9</b>                         | <b>29,6</b>                       | <b>68,4</b>   |

**Explanatory notes**

|                                   |  |
|-----------------------------------|--|
| <b>Background</b>                 | <p>The results presented in this publication have been derived from the 2016 electricity, gas and water supply industry large sample survey. This is a periodic survey which measures economic activity in the electricity, gas and water supply sector of the South African economy. This survey is based on a census of private and public enterprises operating in electricity, gas and water supply industry.</p> <p>The census was conducted from Stats SA's business register. The business register is based mainly on the value-added tax (VAT) database of the South African Revenue Service (SARS). Enterprises are legally bound to register for VAT.</p> |
| <b>Value-added tax (VAT)</b>      | All figures exclude value-added tax (VAT).   |
| <b>Reference period</b>           | The information was collected from enterprises for their financial year, which ended on any date between 1 July 2015 and 30 June 2016.   |
| <b>Purpose of the survey</b>      | Results of the survey are used within Stats SA for compiling the gross domestic product (GDP) and its components. These statistics are also used by government policy advisers in monitoring the performance and contribution of individual industries to the South African economy and the effectiveness of industry policies, and by private sector users in analyses of comparative business and industry performance.  |
| <b>Classification by industry</b> | The 1993 edition of the <i>Standard Industrial Classification of All Economic Activities</i> (SIC), Fifth Edition, Report No. 09-09-02, was used to classify the statistical units in the survey. The SIC is based on the 1990 <i>International Standard Industrial Classification of All Economic Activities</i> (ISIC) with suitable adaptations for local conditions. Statistics in this publication are presented at 5-digit SIC level (group). Each enterprise is classified to an industry which reflects its predominant activity.  |
| <b>Statistical unit</b>           | The statistical unit for the collection of the information is an enterprise. An enterprise is a legal unit (or a combination of legal units) that includes and directly controls all functions necessary to carry out its activities.  |
| <b>Size groups</b>                | The enterprises are divided into four size groups according to the value of turnover recorded for them on the Stats SA business register. Large enterprises are those with an annual recorded turnover of R153 million and above. Table 24 presents the size groups defined using the Department of Trade and Industry (DTI) cut-off points multiplied by three.   |

**Table 24 – Size groups for the electricity, gas and water supply industry**

| Size Group | VAT Turnover                                 |
|------------|--|
| 1          | Turnover $\geq$ R153 000 000                 |
| 2          | R39 000 000 $\leq$ Turnover $<$ R153 000 000 |
| 3          | R15 300 000 $\leq$ Turnover $<$ R39 000 000  |
| 4          | Turnover $<$ R15 300 000                     |

|                                      |  |     |                                  |     |                        |      |   |    |            |      |                               |     |   |     |                             |          |                         |     |                 |   |   |
|--------------------------------------|--|-----|----------------------------------|-----|------------------------|------|---|----|------------|------|-------------------------------|-----|---|-----|-----------------------------|----------|-------------------------|-----|-----------------|---|---|
| <b>Survey methodology and design</b> | <p>The census of enterprises in electricity, gas and water supply industry was conducted by post, email, fax, telephone and personal visits.</p> <p>A census was conducted from a frame of approximately 200 enterprises. The enterprises were first stratified at 5-digit level according to the SIC and then by size of enterprise. Turnover as recorded on the business register was used as the measure of size for stratification.</p>  |     |                                  |     |                        |      |   |    |            |      |                               |     |   |     |                             |          |                         |     |                 |   |   |
| <b>Collection rate</b>               | Collection rate = ((collected units + finalised investigations) / sample size) x 100. The collection rate was 90,0%.   |     |                                  |     |                        |      |   |    |            |      |                               |     |   |     |                             |          |                         |     |                 |   |   |
| <b>Turnover collection rate</b>      | Turnover collection rate = ((weighted collected units BR turnover + weighted finalised investigations BR turnover) / population turnover) x 100. The turnover collection rate was 99,7%.   |     |                                  |     |                        |      |   |    |            |      |                               |     |   |     |                             |          |                         |     |                 |   |   |
| <b>Weighting methodology</b>         | All the enterprises were each assigned a weight of one because all strata were completely enumerated (i.e. a census of the industry was conducted).  |     |                                  |     |                        |      |   |    |            |      |                               |     |   |     |                             |          |                         |     |                 |   |   |
| <b>Revisions to 2013 results</b>     | Revisions were made to previous results due to editing and new information obtained after the publications.  |     |                                  |     |                        |      |   |    |            |      |                               |     |   |     |                             |          |                         |     |                 |   |   |
| <b>Non-sampling errors</b>           | Inaccuracies may occur because of imperfections in reporting by enterprises and errors made in the collection and processing of the data. Inaccuracies of this kind are referred to as non-sampling errors. Every effort is made to minimise non-sampling errors by careful design of questionnaires, testing them in pilot studies, editing reported data and implementing efficient operating procedures. Non-sampling errors occur in both sample surveys and censuses.   |     |                                  |     |                        |      |   |    |            |      |                               |     |   |     |                             |          |                         |     |                 |   |   |
| <b>Rounding-off of figures</b>       | The figures in the tables have, where necessary, been rounded off to the nearest final digit shown. There may therefore be slight discrepancies between the sums of the constituent items and the totals shown.  |     |                                  |     |                        |      |   |    |            |      |                               |     |   |     |                             |          |                         |     |                 |   |   |
| <b>Symbols and abbreviations</b>     | <table border="0"> <tr> <td>DTI</td> <td>Department of Trade and Industry</td> </tr> <tr> <td>GDP</td> <td>Gross domestic product</td> </tr> <tr> <td>ISIC</td> <td>International Standard Industrial Classification of All Economic Activities</td> </tr> <tr> <td>IT</td> <td>Income tax</td> </tr> <tr> <td>SARS</td> <td>South African Revenue Service</td> </tr> <tr> <td>SIC</td> <td>Standard Industrial Classification of all Economic Activities</td> </tr> <tr> <td>SNA</td> <td>System of National Accounts</td> </tr> <tr> <td>Stats SA</td> <td>Statistics South Africa</td> </tr> <tr> <td>VAT</td> <td>Value added tax</td> </tr> <tr> <td>0</td> <td>Nil or less than half the final digit shown</td> </tr> </table> | DTI | Department of Trade and Industry | GDP | Gross domestic product | ISIC | International Standard Industrial Classification of All Economic Activities | IT | Income tax | SARS | South African Revenue Service | SIC | Standard Industrial Classification of all Economic Activities | SNA | System of National Accounts | Stats SA | Statistics South Africa | VAT | Value added tax | 0 | Nil or less than half the final digit shown |
| DTI                                  | Department of Trade and Industry   |     |                                  |     |                        |      |   |    |            |      |                               |     |   |     |                             |          |                         |     |                 |   |   |
| GDP                                  | Gross domestic product   |     |                                  |     |                        |      |   |    |            |      |                               |     |   |     |                             |          |                         |     |                 |   |   |
| ISIC                                 | International Standard Industrial Classification of All Economic Activities  |     |                                  |     |                        |      |   |    |            |      |                               |     |   |     |                             |          |                         |     |                 |   |   |
| IT                                   | Income tax   |     |                                  |     |                        |      |   |    |            |      |                               |     |   |     |                             |          |                         |     |                 |   |   |
| SARS                                 | South African Revenue Service  |     |                                  |     |                        |      |   |    |            |      |                               |     |   |     |                             |          |                         |     |                 |   |   |
| SIC                                  | Standard Industrial Classification of all Economic Activities  |     |                                  |     |                        |      |   |    |            |      |                               |     |   |     |                             |          |                         |     |                 |   |   |
| SNA                                  | System of National Accounts  |     |                                  |     |                        |      |   |    |            |      |                               |     |   |     |                             |          |                         |     |                 |   |   |
| Stats SA                             | Statistics South Africa  |     |                                  |     |                        |      |   |    |            |      |                               |     |   |     |                             |          |                         |     |                 |   |   |
| VAT                                  | Value added tax  |     |                                  |     |                        |      |   |    |            |      |                               |     |   |     |                             |          |                         |     |                 |   |   |
| 0                                    | Nil or less than half the final digit shown  |     |                                  |     |                        |      |   |    |            |      |                               |     |   |     |                             |          |                         |     |                 |   |   |

**Glossary**

|                                     |  |
|-------------------------------------|--|
| <b>Casual employees</b>             | Employees who fall neither within the 'permanent employees' category nor the 'temporary employees' category. Such employees are typically working daily or hourly.   |
| <b>Commercial customers (users)</b> | Include business enterprises in wholesale trade, retail trade, motor trade, repair of motor vehicles, motor cycles, personal and household goods, hotels and restaurants, transport, storage and communication and financial intermediation, insurance, real estate and business services.                                       |
| <b>Employees</b>                    | Persons employed by the business or organisation who received payment (in salaries, wages, commission, piece rates or payments in kind) for the last pay period ended on or before 30 June 2016.   |
| <b>Gas</b>                          | Gas is gaseous fuels distributed through mains or pipeline network and includes natural gas, methane-rich gas and synthetic gas.   |
| <b>Industrial customers (users)</b> | Industrial customers or users are business enterprises which are involved in the manufacturing or production of goods as a predominant activity.   |
| <b>Other expenditure</b>            | Other expenditure includes: <ul style="list-style-type: none"><li>○ depreciation and amortisation;</li><li>○ customs duties;</li><li>○ excise duties;</li><li>○ interest;</li><li>○ losses on financial and other assets;</li><li>○ repair and maintenance;</li><li>○ telecommunication services; and</li><li>○ other.</li></ul> |
| <b>Other income</b>                 | Other income includes: <ul style="list-style-type: none"><li>○ government subsidies and incentives received;</li><li>○ interest;</li><li>○ rental, leasing and hiring income;</li><li>○ customs duties;</li><li>○ excise duties; and</li><li>○ other.</li></ul>  |
| <b>Permanent employees</b>          | Employees appointed on an open-ended contract with no stipulated termination date or a fixed-term contract for periods of more than one year.  |
| <b>Statistical unit</b>             | A statistical unit is a unit of observation or measurement for which statistical data are collected and derived.   |
| <b>Stratum</b>                      | A stratum is constructed by concatenating the SIC classification and size group variables.   |
| <b>Temporary employees</b>          | Temporary employees are employees appointed on a short-term contract basis with a stipulated termination date for periods not exceeding one year.  |



|   |  |
|---|--|
| <b>Turnover</b>                                     | Turnover includes: <ul style="list-style-type: none"><li>○ value of sales of goods;</li><li>○ amount received for services rendered;</li><li>○ Income from rental, leasing and hiring.</li></ul>   |
| <b>Total electricity available for distribution</b> | Electricity available for distribution includes: <ul style="list-style-type: none"><li>○ total electricity generated</li><li>○ plus electricity supplied from other countries (imports)</li><li>○ minus electricity consumed in power stations and pump storage systems</li><li>○ minus electricity supplied to other countries (exports)</li></ul>              |
| <b>Unit of electricity</b>                          | A gigawatt-hour ( <b>GWh</b> ) of electricity is equal to one million kilowatt-hours. A kilowatt-hour is the basic unit of electrical energy equal to one kilowatt of power supplied to or taken from an electric circuit steadily for one hour. One kilowatt-hour equals one thousand watt-hours. A gigawatt-hour is also equal to one thousand megawatt hours. |
| <b>Unit of gas</b>                                  | A gigajoule ( <b>GJ</b> ) is the derived unit of energy in the International System of Units (SI) equal to one billion joules ( $10^9$ J). A joule is the basic unit of energy and it is the work done to produce one watt continuously for one second.  |
| <b>Unit of water</b>                                | A cubic metre ( <b>m<sup>3</sup></b> ) is the SI derived unit of volume. It is the volume of a cube with edges of one metre in length. One cubic metre is equal to exactly 1 000 litres. An alternative name, not widely used anymore, is the kilolitre.   |
| <b>Water redistributors</b>                         | Water redistributors are water service providers including municipalities and water boards which buy water from other water boards for redistribution when they cannot meet their own demand, and companies contracted by municipalities to supply water on their behalf.  |

