



Tourism, 2012

Report No. 03-51-02 (2012)

Preface

The report provides information on South African residents and foreign travellers who passed through all South African air, land and sea ports of entry or exit in 2012. It summarises data published in the monthly releases on Tourism and Migration from January to December 2012 highlighting annual numbers of travellers and tourists. Details on mode of travel, seasonal travel patterns, purpose of visit; length of stay of visit; and demographic characteristics of tourists who visited South Africa in 2012 is provided.

PJ Lehohla
THE STATISTICIAN-GENERAL - STATISTICS SOUTH AFRICA

PRETORIA
2013

Tourism, 2012 / Statistics South Africa

Published by Statistics South Africa, Private Bag X44, Pretoria 0001

© Statistics South Africa, 2013

Users may apply or process this data, provided Statistics South Africa (Stats SA) is acknowledged as the original source of the data; that it is specified that the application and/or analysis is the result of the user's independent processing of the data; and that neither the basic data nor any reprocessed version or application thereof may be sold or offered for sale in any form whatsoever without prior permission from Stats SA.

Stats SA Library Cataloguing-in-Publication (CIP) Data

Tourism, 2012 / Statistics South Africa. Pretoria: Statistics South Africa, 2013

Report no. 03-51-02 (2012)

58 pp

ISBN: 978-0-621-41568-5

A complete set of Stats SA publications is available at Stats SA Library and the following libraries:

National Library of South Africa, Pretoria Division
National Library of South Africa, Cape Town Division
Library of Parliament, Cape Town
Bloemfontein Public Library
Natal Society Library, Pietermaritzburg
Johannesburg Public Library
Eastern Cape Library Services, King William's Town
Central Regional Library, Polokwane
Central Reference Library, Nelspruit
Central Reference Collection, Kimberley
Central Reference Library, Mmabatho

This report is available on the Stats SA website: www.statssa.gov.za

Copies are obtainable from: Printing and Distribution, Statistics South Africa

Tel: (012) 310 8093 (012) 310 8251 (012) 310 8358 (012) 310 8161

Fax: (012) 321 7381

Email: inadp@statssa.gov.za annelineb@statssa.gov.za

CONTENTS

PREFACE.....2

1. KEY FINDINGS.....6

1.1 Introduction.....6

1.2 Data6

1.3 Number of travellers6

1.4 South African residents6

1.5 Foreign travellers.....7

1.6 Same day visitors7

1.7 Tourists.....7

 1.7.1 Region of residence.....8

 1.7.2 Mode of travel.....8

 1.7.3 Purpose of visit.....8

 1.7.4 Duration of stay9

 1.7.5 Sex and age distribution9

1.8 Summary9

2. FIGURES10

Figure 1. Number of arrivals and departures by year of travel, 2000–201210

Figure 2. Number of arrivals and departures of South African residents by year of travel, 2000–2012.....11

Figure 3. Number of arrivals and departures of foreign travellers by year of travel, 2000–201212

Figure 4. Number of tourists by month and year of travel, 2011 and 2012.....13

Figure 5. Number of tourists from eight leading overseas countries in 2012 compared to 201114

Figure 6. Number of tourists from eight leading SADC countries in 2012 compared to 201114

Figure 7. Number of tourists from eight leading ‘other’ African countries in 2012 compared to 2011.....14

Figure 8. Percentage distribution of tourists by region and purpose of visit, 201214

Figure 9a. Percentage distribution of tourists from overseas countries on holiday, 2012.....15

Figure 9b. Percentage distribution of tourists from overseas countries on business, 2012.....15

Figure 9c. Percentage distribution of tourists from overseas countries on study, 2012.....15

Figure 10a. Percentage distribution of tourists from SADC countries on holiday, 201215

Figure 10b. Percentage distribution of tourists from SADC countries on business, 201216

Figure 10c. Percentage distribution of tourists from SADC countries on study, 201216

Figure 11a. Percentage distribution of tourists from ‘other’ African countries on holiday, 201216

Figure 11b. Percentage distribution of tourists from ‘other’ African countries on business, 201216

Figure 11c. Percentage distribution of tourists from 'other' African countries on study, 2012	17
Figure 12. Average (median) number of days tourists spent by month of arrival, 2012	17
3. TABLES	18
Table 1. Number of foreign travellers and South African residents by year of travel, 2000–2012	18
Table 2. Number of arrivals and departures of South African residents by mode of travel and place of arrival or departure, 2012	19
Table 3. Number of foreign arrivals by purpose of visit and month of arrival, 2012.....	20
Table 4. Number of foreign arrivals and departures by mode of travel and place of arrival or departure, 2012	21
Table 5. Number of foreign arrivals by type of visitor and month of arrival, 2012.....	22
Table 6. Number of same day visitors by mode of travel, region of residence and purpose of visit, 2012	23
Table 7. Number of tourists by purpose of visit and month arrival, 2012.....	24
Table 8. Number of tourists by region of residence and month of arrival, 2012	25
Table 9. Number of tourists from eight leading overseas countries in 2012 and their percentage change from 2011	26
Table 10. Number of tourists from eight leading SADC countries in 2012 and their percentage change from 2011	26
Table 11. Number of tourists from eight leading 'other' African countries in 2012 and their percentage change from 2011	26
Table 12. Number of tourists from by mode of travel, place and month of arrival, 2012	27
Table 13. Number of tourists by region of residence and mode of travel, 2012	28
Table 14. Number of tourists by sex, age group and region of residence, 2012	29
4. APPENDICES.....	30
Appendix I. Ports of entry/exit in South Africa	30
Appendix II. Number of South African residents by mode of travel, place and month of arrival, 2012	31
Appendix III. Number of South African residents by mode of travel, place and month of departure, 2012.....	32
Appendix IV. Number of foreign arrivals by mode of travel, place and month of arrival, 2012	33
Appendix V. Number of foreign departures by mode of travel, place and month of departure, 2012	34
Appendix VI. Number of tourists by country of residence and month of arrival, 2012	35
Appendix VII. Number of tourists by country of residence and mode of travel, 2012	42
Appendix VIII. Number of tourists by country of residence and purpose of visit, 2012.....	49
Appendix IX. Number of tourists by sex, age group and month of arrival, 2012.....	56
5. DEFINITION OF TERMS	57
6. OTHER STATS SA REPORTS.....	58

1. KEY FINDINGS

1.1 Introduction

This annual report contains information on population movements into and out of South Africa covering the period from 1 January and 31 December 2012. It reports on arrivals and departures of South African residents and foreign travellers. A detailed analysis of the twelve months' movements of tourists and their demographic characteristics are provided.

The management of population movements across South African borders and immigration into South Africa fall under the jurisdiction of the Department of Home Affairs (DHA). The jurisdiction of this responsibility is enshrined in the various immigration acts, amendments, laws and regulations. Currently with respect to the collection of data on population movements in and out of South Africa, DHA operates with the Immigration Act 2002 (Act No. 13 of 2002) and its amendments. Changes and amendments in these legal frameworks affect both the flow of travellers as well as the methods of collecting data and the kind of information collected on travellers.

Administrative data collected from all the country's ports of entry constitute a comprehensive source of information on arrival and departure of tourists. The data provide the best national coverage (in terms of both space and time) on the population movements of South African residents and foreign travellers. Thus the data:

- can be used to estimate, monitor and understand salient characteristics of foreign travellers and volumes of South African residents travelling outside South Africa;
- can be used to estimate the number of tourists that visit South Africa and some characteristics of these tourists; and
- provide information that can be used to (a) assess the extent of government's progress in strengthening bilateral political and economic relations by assessing the number and characteristics of international tourists; and (b) benchmark surveys focusing on demand for local tourism services by foreign travellers.

1.2 Data

Data routinely collected by immigration officers at all land, air and sea ports of entry/exit (see Appendix 1) on all travellers (South African residents and foreign travellers) arriving into or departing from South Africa are captured into the DHA's population Movement Control System (MCS). Generally the data are collected directly from travel documents either by scanning them or by capturing information from the travel documents onto the port's electronic database. Individual ports regularly transmit the data into the national database at the head office of the DHA. Statistics South Africa (Stats SA) downloads the data covering a particular calendar month from the mainframe of the State Information Technology Agency (SITA), where the DHA stores its data. The data are processed and

used to publish information on tourism in the monthly *Tourism and Migration* release (P0351) in order to meet users' immediate needs. The cumulative data for twelve months are published in the *Tourism* report on an annual basis.

1.3 Number of travellers

This report covers the data on travellers that passed through South African ports of entry in 2012. The results present detailed information derived from the data published in the January 2012 to December 2012 *Tourism and Migration* monthly releases (P0351). In addition to the 2012 data, data from 2011 or earlier are presented to provide some comparison in observed trends and patterns.

Travellers are composed of arrivals into South Africa and departures from the country regardless of residency status. According to data presented in Figure 1 and Table 1, in 2012, a total of 35 291 559 travellers were recorded compared to 19 185 135 recorded in 2000. Similarly, there were 18 766 958 arrivals and 16 524 601 departures in 2012 compared to 9 884 953 and 9 300 182 of arrivals and departures respectively in 2000. Thus showing an increase of 84,0% for all travellers; 89,9% for arrivals and 77,7% for departures in 2000 compared to 2012. The overall pattern observed is that throughout the thirteen year period, there were more arrivals than departures in the country. Despite this general trend in the volume of travellers, a slight decline from 2000 to 2001 was observed. Likewise, a noticeable drop in volumes occurred in 2003 and 2004. Thereafter, the annual volumes have been increasing steadily since 2005.

1.4 South African residents

In 2012, 10 002 196 South African resident travellers were recorded. This volume shows an increase of 29,6% from the 7 718 469 South African resident travellers recorded in 2000. However, as observed from Figure 2 and Table 1, there were sharp declines in South African travellers in 2003 and 2004. These declines in the volume of South African travellers between 2003 and 2004 were mainly due to the changes in the Immigration Act (Act No.13 of 2002) regarding the recording of information on the international movements of South African residents. The Act resulted in information on arrival and departure of South African residents not being consistently collected (*i.e.* misinterpretation of the Act led to some immigration officers collecting while others were not collecting information on South African residents). Collection resumed after the implementation of the Immigration Amendment Act (Act No.19 of 2004). Notwithstanding the above observation, the data on South African residents further indicate that the difference between the annual arrival and departure volumes remained more or less the same throughout the period 2000 to 2012.

Table 2 further shows that during 2012, as many as 3 133 475 (63,0%) South African residents arrived in South Africa by road, followed by 1 812 898 (36,5%) air arrivals. A total of 25 050 (0,5%) arrived by sea. Due to the large number of road ports as observed

in Appendix I, border countries are used in the table instead of the specific land ports names. That is, data for all ports found on the border with a particular country are combined and the country name is used.

The highest number of South Africa residents arriving by road used Lesotho [845 064 (27,0%)] and Swaziland [765 872 (24,4%)] ports of entry. Out of the total number of South African residents arriving by air, 1 492 040 (82,3%) arrived through OR Tambo international airport; while 219 636 (12,1%) arrived through Cape Town international airport; 70 095 (3,9%) came through King Shaka international airport; and 31 127 (1,7%) used other airports. Out of those who arrived by sea, the majority [18 243 (72,8%)] arrived through the Durban harbour.

Road transport was the most common mode of travel used by South African residents departing South Africa, [3 181 899 (63,2%)] followed by air travel, [1 821 560 (36,2%)]. A total of 27 306 (0,5%) left by sea. Over half of the departing road users went through both Lesotho [865 880 (27,2%)] and Swaziland [774 987 (24,4%)] ports. Out of the total number of residents departing by air, 1 494 900 (82,1%) used OR Tambo international airport; while 223 733 (12,3%) left through Cape Town international airport; 71 456 (3,9%) left through King Shaka international airport and 31 471 (1,7%) left through other airports. Nearly 75,0% (20 371) of those departing by sea left the country through the Durban harbour.

The information on 2012 arrivals and departures of South African residents classified by month of travel is presented in Appendix II and Appendix III respectively. The result show that the highest number of arrivals [526 250 (10,6%)] were recorded in January followed by those recorded in December [520 238 (10,5%)] while the lowest number of arrivals was recorded in February [311 209 (6,3%)]. The highest number of departures was recorded in December [698 964 (13,9%)] and the lowest number in February [315 998 (6,3%)].

1.5 Foreign travellers

It is observed from Figure 3 and Table 1 that apart from the slight decline in arrivals and departures in 2001, the number of both foreign arrivals and departures increased between 2000 and 2012. About 13,8 million foreigners arrived in South Africa in 2012 and 11,5 million left the country. Unlike South African travellers, the volume of departures of foreign travellers has been lower than that of arrivals throughout the thirteen-year period, with a notable widening of the gap since 2006. With respect to growth, between 2011 and 2012, foreign arrivals grew by 10,4% (from 12 495 743 in 2011 to 13 795 530 in 2012) compared to a growth of 7,2% for foreign departures (from 10 725 213 in 2011 to 11 493 833) in 2012.

Table 3 indicates that during 2012, 10 275 728 (74,5%) foreigners came into South Africa by road. Most of the tourists who arrived by road entered through the Lesotho [3 255 657 (31,7%)] and Zimbabwe [2 817 068 (27,4%)] ports of entry. In addition to road users, 3 480 855 (25,2%) flew into the country, mainly through OR Tambo international airport. Those who came by sea were 38 374 (0,3%).

For departures it is noted that 8 626 050 (75,0%) travellers left by road, 2 835 909 (24,7%) by air and 31 539 (0,3%) by sea. The monthly distributions of foreign arrivals and departures by mode of travel and place of arrival and departure are provided in Appendices IV and V.

Most arrivals and departures were recorded in December and the least in February. A breakdown of the 2012 data (see Table 4) indicates that generally the lowest number of arrivals was recorded in February (1 006 429) and the highest in December (1 331 934). However, the number of foreign arrivals by month differed by purpose of visit. Most of those who came for business came in March (22 626); for holidays mostly in December (1 217 754); for study mostly in January (19 051) and July (15 289); and for work, mainly in January (45 143).

The main purpose of visit for foreign arrivals was holiday [12 161 828 (88,2%)]. Whereas 216 616 (1,6%) of the 2012 arrivals were on business; 344 108 (2,5%) and 95 547 (0,7%) of arrivals were workers and students respectively. Table 5 shows that in 2012, there were 726 496 (5,3%) non-visitors and 13 069 034 (94,7%) visitors. It is observed from the monthly distribution of the data that the volume of non-visitors was highest in January (87 580). March recorded the lowest number of non visitors (51 906) The visitors were made up of 3 880 666 (29,7%) same day visitors and 9 188 368 (70,3%) overnight visitors or tourists.

1.6 Same day visitors

As shown in Table 5 the monthly volume of same day visitors was quite uniform throughout the year. It ranged from 274 455 in January to 398 516 in December with a monthly average of about 323 389 visitors. It is observed from Table 6 that a great majority of the same day visitors [3 677 052 (94,8%)] came into the country by road; most of whom were from the SADC countries [3 586 173 (97,5%)]. Virtually all same day visitors [3 857 649 (99,4%)] came for holidays. The rest were business persons [11 563 (0,3%)], students [7 797 (0,2%)] and visitors in transit [3 657 (0,1%)].

1.7 Tourists

Data in Table 7 indicate that a total of 9 188 368 tourists came to South Africa in 2012. This 2012 volume shows an increase of 10,2% from the 8 339 354 tourists recorded in 2011. The monthly data on tourist arrivals by month as observed from Figure 4 and Table 7 indicate that in 2012 the least number of arrivals was recorded in June [653 686 (7,1%)] whilst January [887 066 (9,7%)] recorded the highest number of arrivals. Figure 4 further shows that the monthly arrivals in 2012 were higher than the monthly arrivals observed in 2011. However, the monthly patterns of both 2012 and 2011 were generally the same. In addition to the general patterns above, data in Table 7 indicate some diversity in the monthly arrival patterns regarding the types of tourists. Thus whereas the highest number of tourists on holidays was recorded in December [820 758 (9,9%)]; that of business persons were recorded in March [21 595 (10,5%)] and that of students recorded in January [18 141 (20,7%)].

1.7.1 Region of residence

Information on the region of residence and the month of arrival of tourists is given in Table 8. The breakdown of the number of tourists by region indicates that 70,2% (6 446 881) of the 9 188 368 tourists were residents from SADC countries. Residents from overseas countries made up 2 505 763 (27,3%) of the tourists. The remaining tourists were residents of 'other' African countries [209 576 (2,3%)] and those whose country of residence was not specified [26 148 (0,3%)]. Besides the overall pattern of arrival referred to earlier, there are regional differences in the monthly arrivals of tourists. Thus in 2012 the lowest and highest recorded arrivals of overseas were in June [155 464 (6,2%)] and December [243 718(9,7%)] respectively. January [658 157 (10,2%)] recorded the largest number of tourists from the SADC region with their lowest arrivals in February [445 557(6,9%)]. Furthermore, the least and the largest arrivals for tourists for 'other' African region occurred in February [1 544 (7,4%)] and December [19 449 (9,3%)] respectively. In addition to the above broad patterns, sub-regional and country differences can be observed from Table 8 and Appendix VI.

As presented in Figure 5 and Table 9, the eight leading countries for overseas tourists in 2012 were: United Kingdom (UK) [438 023 (17,5%)]; United State of America (USA) [326 644 (13,0%)]; Germany [266 333 (10,6%)]; China [132 327 (5,3%)]; France [122 244 (4,9%)]; Australia [120 315 (4,8%)]; The Netherlands [117 936 (4,7%)] and India [106 774 (4,3%)]. A comparison of the 2012 volumes with the 2011 volumes indicates that the number of tourists increased in all the overseas countries. China had the highest increase of 55,9% (from 84 862 tourists in 2011 to 132 327 tourists in 2012) while tourists from The Netherlands recorded the least increase of 3,6% (from 113 846 in 2011 to 117 936 in 2012).

Figure 6 and Table 10 show the eight leading countries for tourists from SADC region in 2012. These were: Zimbabwe [1 847 973 (28,7%)]; Lesotho [1 618 222 (25,1%)]; Mozambique [1 104 404 (17,1%)]; Swaziland [768 728 (11,9%)]; Botswana [452 159 (7,0%)]; Namibia 200 841 (3,1%); Zambia [169 555 (2,6%)] and Malawi [142 063 (2,2%)]. All the SADC countries, with the exception of Botswana, showed an increase in the number of tourists from 2011 to 2012. Zimbabwe had the highest increase of 19,0% (from 1 553 008 tourists in 2011 to 1 847 973 tourists in 2012) whereas Botswana declined by 5,4% (from 477 937 tourists in 2011 to 452 159 tourists in 2012).

The eight leading countries for tourists from 'other' African countries in 2012 were (see Figure 7 and Table 11): Nigeria [73 282 (35,0%)]; Kenya [32 992 (15,7%)]; Ghana [22 953 (11,0%)]; Uganda [15 522 (7,4%)]; Ethiopia [7 862 (3,8%)]; Egypt [7 308 (3,5%)]; Gabon [7 168 (3,4%)] and Cameroon [6 234 (3,0%)]. A comparison of the 2012 volumes with the 2011 volumes indicates that the number of tourists increased in seven countries (Ghana, Egypt, Cameroon, Gabon, Nigeria and Kenya) but declined in Ethiopia. Ghana had the highest increase of 23,8% (from 18 538 tourists in 2011 to 22 953 tourists in 2012) whereas Ethiopia declined by 13,8% (from 9 125 tourists in 2011 to 7 862 tourists in 2012).

1.7.2 Mode of travel

Table 12 provides information on the number of tourists by mode of travel, place and month of arrival. It is observed that a large number of tourists who came to South Africa in 2012 used road transport [6 239 659 (67,9%)], followed by those who came by air [2 936 871 (32,0%)] and tourists who arrived through the sea ports [11 651 (0,1%)]. The road users mainly came in through the Zimbabwe [1 823 282 (29,2%)] and the Lesotho [1 657 681 (26,6%)] ports of entry. Namibia had the least number of the 2012 tourists using its ports of entry. The highest and lowest volumes of tourists that passed through the Lesotho and Zimbabwe posts of entry were recorded in January and February respectively. However, the highest and lowest volumes of tourists that entered South Africa through the Namibia ports of entry were recorded in December and June respectively.

Out of the 2 936 871 tourists that flew into the country, a large number of them [2 410 261 (82,1%)] used OR Tambo international airport. Cape Town and King Shaka international airports were used by 484 520 (16,5%) and 30 564 (1,0%) tourists respectively. Most of the tourists that used the sea ports came in through the Cape Town 8 682 (74,5%) and Durban 2 500 (21,5%) harbours.

As observed from Table 13, a large number of overseas tourists flew [2 232 157 (89,1%)] into South Africa compared to 262 115 (10,5%) who came in by road and [10 722 (0,4%)] who came by sea. Similarly, tourists from 'other' African countries generally entered the country by air [189 323 (90,3%)] rather than by road [19 838 (9,5%)] or sea [334 (0,2%)] On the contrary, the mode of travel used by most tourists from the SADC countries was road [5 949 520 (92,3%)] compared to air [496 803 (7,7%)]. Detailed data on country of residence and mode of travel is presented in Appendix VII.

1.7.3 Purpose of visit

Besides information in Figure 8, reference has been made to data on the main types of tourists that visit the South Africa (see Table 7).using the purpose of visit to identify them. In 2012 most tourists came to South Africa for holidays [8 310 456 (90,4%)]. The remaining tourists were on transit [585 179 (6,4%)]; had come for business [205 037 (2,2%)] or were here to study [87 696 (1,0%)]

The 2012 data revealed some regional and country differentials with respect to the purpose of visit. For example, 10 118 (4,8%) tourists from 'other' African countries and 103 855 (4,1%) of tourists from overseas countries came for business compared to 89 830 (1,4%) from the SADC countries. In addition, students made up of 8 898 (4,2%) from 'other' African countries compared to 62 018 (1,0%) of tourists from SADC countries and 16 523 (0,7%) of overseas tourists. Detailed data on country of residence and purpose of visit is presented in Appendix VIII.

Data shown in Figures 9a and 9b reveal that most overseas tourists on holiday (18,6%) and business persons (21,0%) were UK residents. However, it is shown in Figure 9c that the highest proportion of overseas students came from USA (17,7%). As observed from

Figures 10a, majority of SADC tourists on holiday were from Zimbabwe (29,1%). Whereas the highest proportion of SADC tourists on business came from Namibia (25,9%); SADC students were mainly from Lesotho (18,9%), Swaziland (18,7%) and Zimbabwe (18,6%) as shown in Figure 10b and Figure 10c respectively. Regarding tourists from 'other' African countries (see Figures 11a, 11b and 11c), the majority of those on holiday were Nigeria residents (37,0%) whilst those on business were mainly residents of Kenya (23,6%) and the students were mostly from Nigeria (29,8%).

1.7.4 Duration of stay

The number of days tourists spent in South Africa is based on the tourists who arrived and left in the same month. Data in Figure 12 indicate that generally tourists from overseas and 'other' Africa countries spent on the average more days (about five days per month) in the country compared to SADC residents that spent an average of about three days in a month. The results further show that in June, overseas tourists spent on the average four days which was similar to the average number of days in March, May and November for tourists from 'other' Africa. Tourists from the SADC countries spent on the average only two days in February and November.

1.7.5 Sex and age distribution

In 2012 as shown in Table 14, there were more male [4 665 837 (50,8%)] than female [3 625 708 (39,5%)] tourists. A large number [896 823 (9,8%)] of tourists did not have information on sex. Although males constituted the majority of overseas, [1 320 534 (52,7%)] and SADC, [3 197 850 (49,6%)] tourists, the proportion of males was relatively higher among tourists from 'other' African countries 63,0% (132 047). Tourists from the SADC countries had the highest proportion of females 40,1% (2 583 463) whereas tourists from 'other' Africa had the lowest proportion 29,1% (60 948). The age distribution indicates that out of all the total number of tourists, (8 252 082 (89,8%)) were aged 15 to 64; 513 137 (5,6%) were aged less than 15 years; and 415 817 (4,5%) were aged 65 years and over. Taking regions into consideration, the age distribution shows that at least 82,0% of tourists from overseas, SADC and 'other' African countries, were aged between 15 and 64 years. The results further show a relatively higher proportion (10,7%) of the elderly among overseas residents compared with 2,2% and 1,7% of residents from SADC and 'other' African countries respectively. Detailed information on the number of tourists by sex, age group and month of arrival is presented in Appendix IX.

1.8 Summary

This report provided information collected by DHA immigration officers on South African residents and foreign travellers that passed through all South Africa air, land and sea ports of entry/exit in 2012. The report presented detailed information on the mode of travel, purpose of visit, length of stay and demographic characteristics of tourists (foreign).

A total of 35 291 559 travellers (both South African residents and foreign travellers) entered or departed South Africa in 2012 showing an increase of 3,5% from the 2011 volume of 34 105 393. South African resident departures decreased by 7,8% from

5 455 260 in 2011 to 5 030 768 in 2012. Conversely foreign arrivals increased by 10,4% from 12 495 743 in 2011 to 13 795 530 in 2012.

Due to limited data on South African residents, information on tourists is available only from foreign travellers. In 2012, foreign arrivals were made up of 726 496 (5,3%) non-visitors and 13 069 034 (94,7%) visitors. The visitors were further categorised into same day visitors [3 880 666 (29,7%)] and overnight visitors or tourists [9 188 368 (70,3%)].

The volume of tourists increased by 10,2% from 8 339 354 in 2011 to 9 188 368 in 2012. The distribution of tourists by region of residence followed the similar pattern as shown in previous years. Thus a high proportion (70,2%) of tourists was residents from the SADC countries; 27,3% and 2,3% from overseas and 'other' African countries respectively.

Likewise, the 2012 patterns of mode of travel and purpose of visit did not differ greatly from what was observed in 2011 and earlier years. Overseas and 'other' African tourists generally flew into the country whereas tourists from the SADC countries came in by road. Holiday continued to be the main reason for visiting South Africa. An overwhelmingly majority (90,4%) of tourists came for holidays whilst business persons and students constituted less than 4,0% of the 2012 tourists. Overseas business tourists were mainly UK residents and the students were mostly USA residents. Residents of Namibia and Zimbabwe made up the bulk of business tourists from the SADC countries. The students came mainly from Lesotho Swaziland and Zimbabwe. With regard to tourists 'other' Africa, those on holidays and study were mainly from Nigeria. Majority of tourists on business were from Kenya.

In 2012 tourists from overseas and 'other' Africa spent on average five days per month in South Africa compared to tourists from SADC who spent three days. Tourists continued to be predominantly male (50,8%) and about 89,8% of the 2012 tourists were in the productive age group of 15 to 64 years.

The overall patterns observed from the 2012 data on tourists generally followed what have previously been noted since 2009 when Stats SA started publishing information on tourists.

2. FIGURES

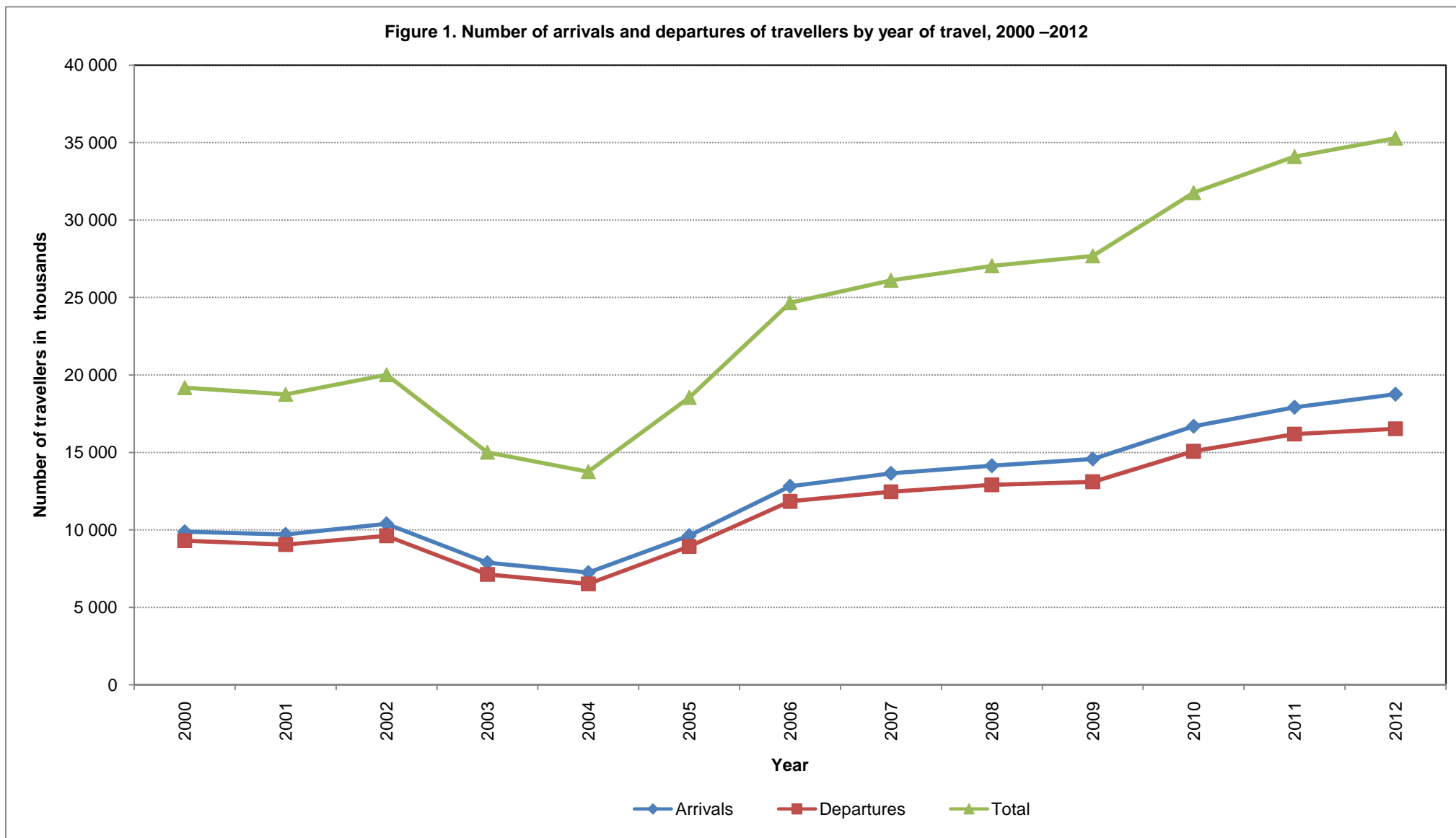


Figure 2. Number of arrivals and departures of South African residents by year of travel, 2000 –2012

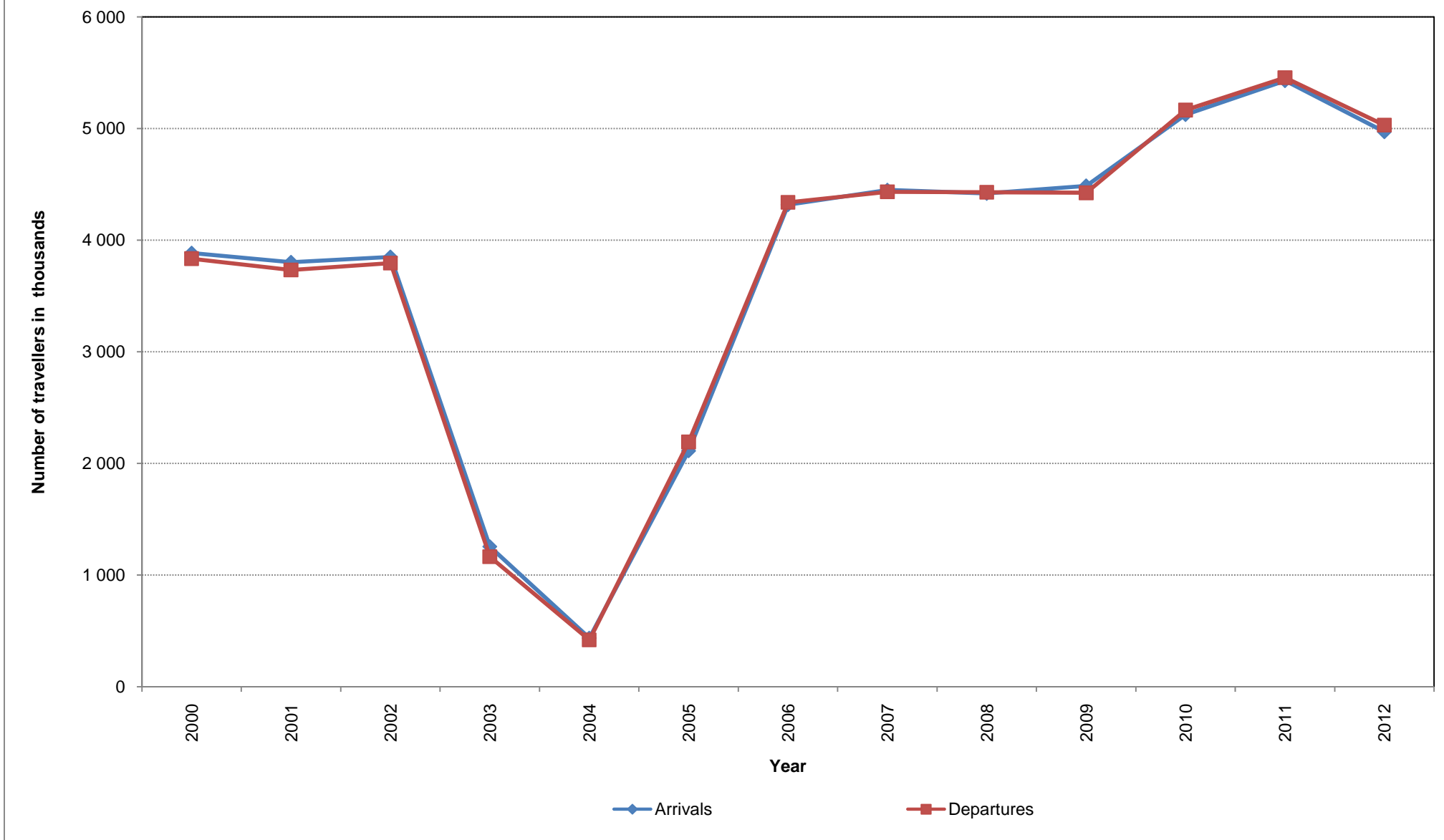


Figure 3. Number of arrivals and departures of foreign travellers by year of travel, 2000 –2012

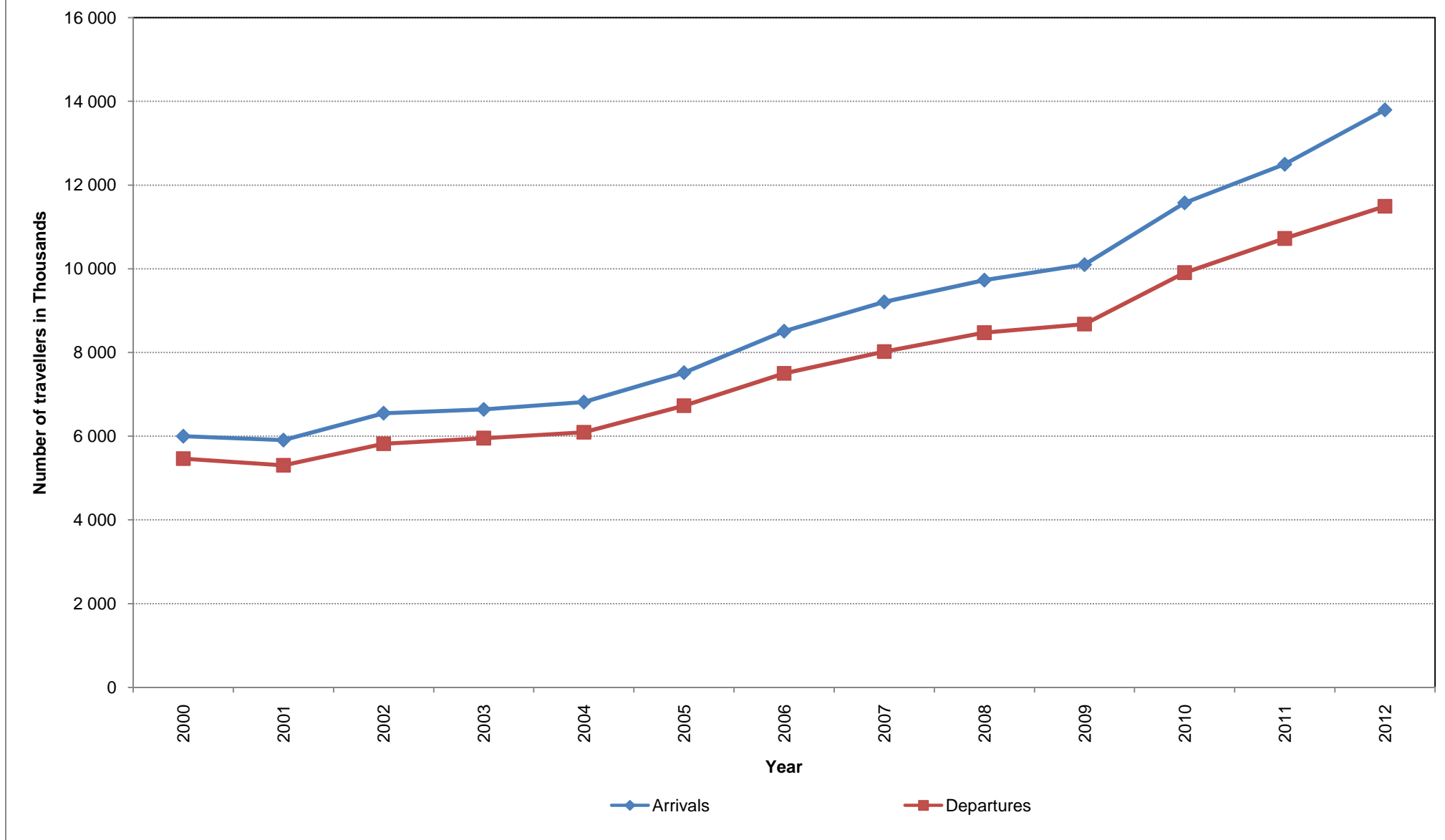


Figure 4. Number of tourists by month and year of travel, 2011 and 2012

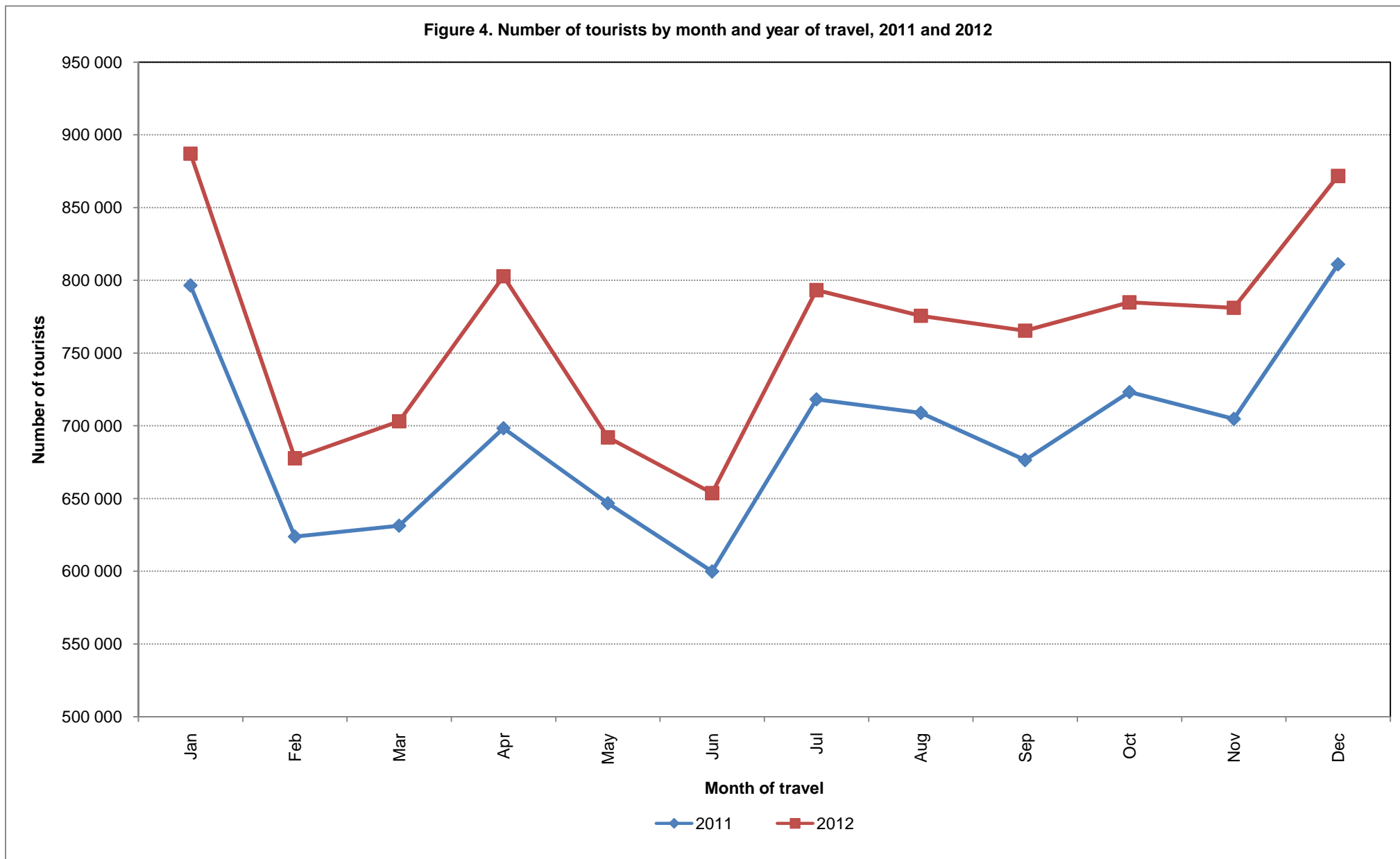


Figure 5. Number of tourists from eight leading overseas countries in 2012 compared to 2011

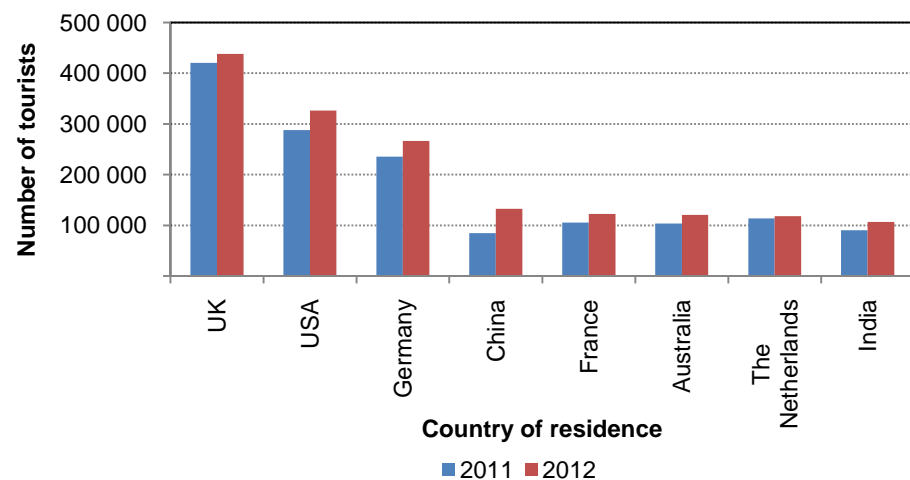


Figure 7. Number of tourists from eight leading 'other' African countries in 2012 compared to 2011

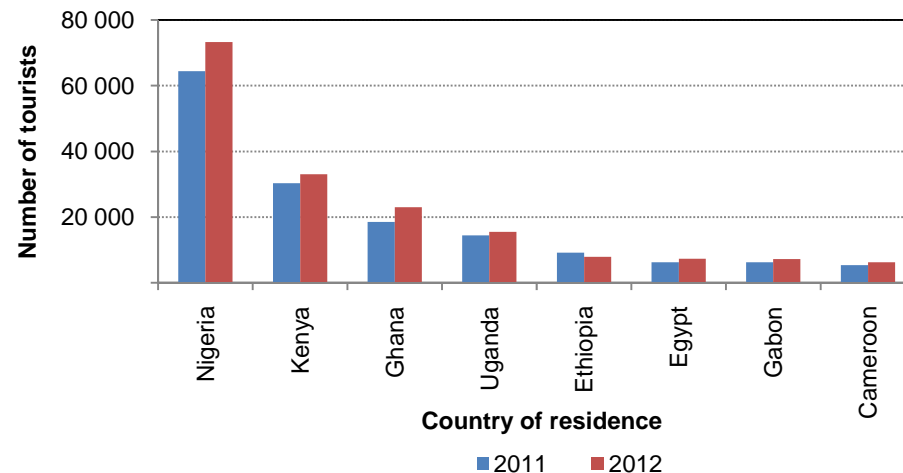


Figure 6. Number of tourists from eight leading SADC countries in 2012 compared to 2011

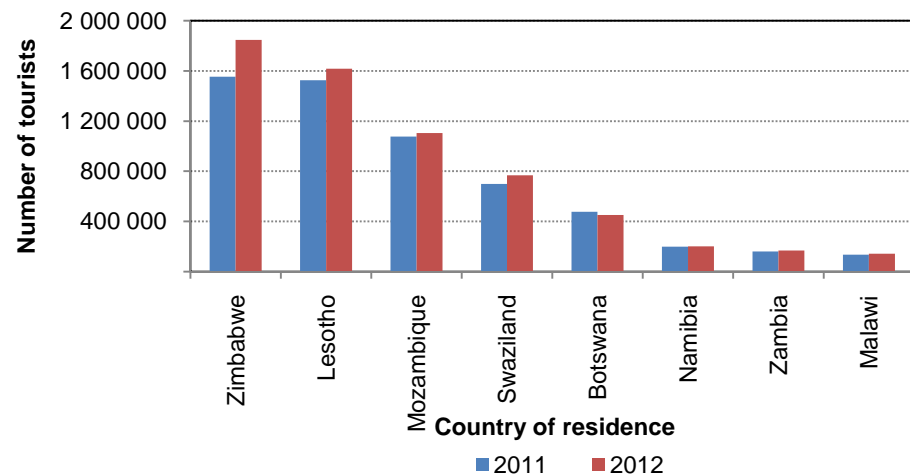


Figure 8. Percentage distribution of tourists by region and purpose of visit, 2012

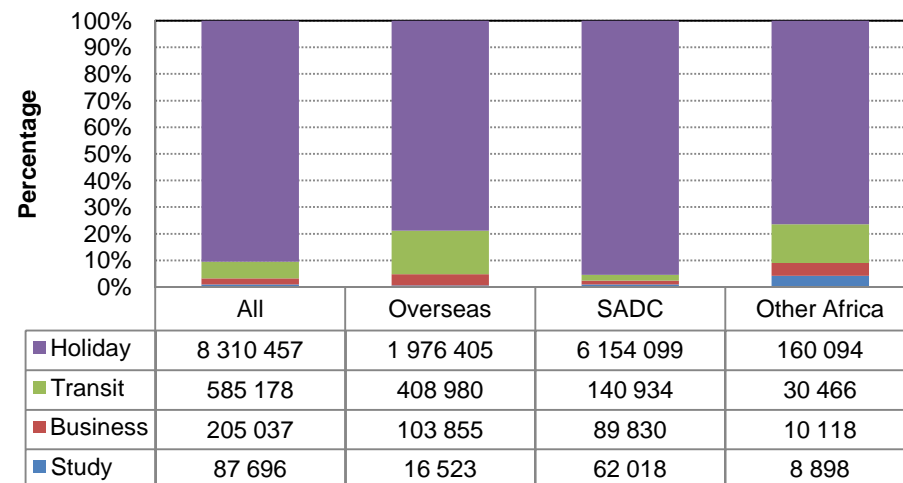


Figure 9a. Percentage distribution of tourists from overseas countries on holiday, 2012

N=1 976 405

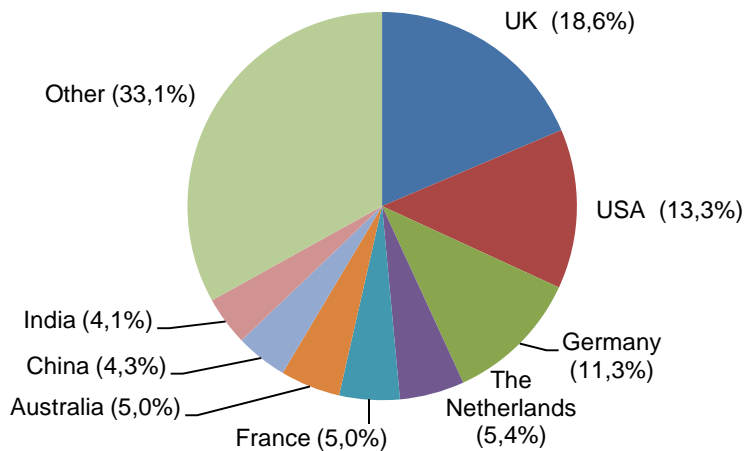


Figure 9c. Percentage distribution of tourists from overseas countries on study, 2012

N=16 523

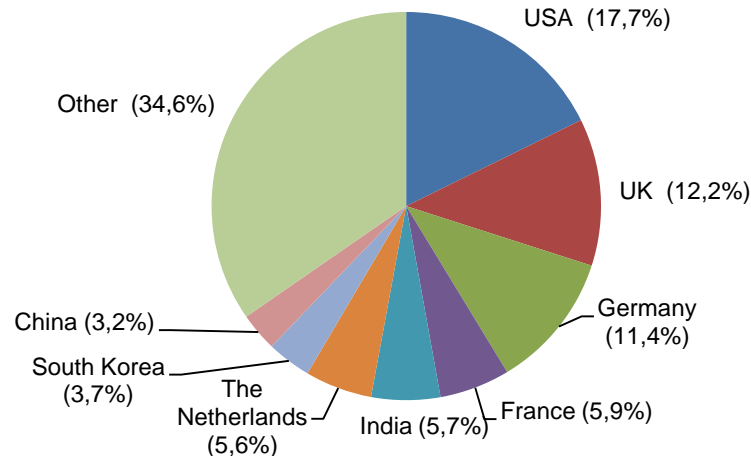


Figure 9b. Percentage distribution of tourists from overseas countries on business, 2012

N=103 855

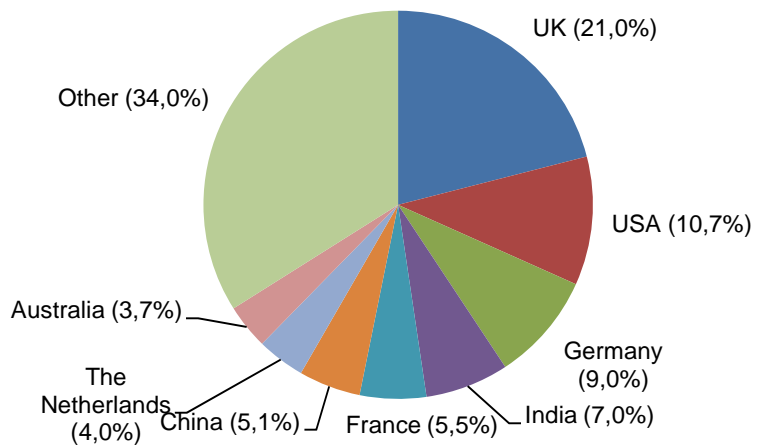


Figure 10a. Percentage distribution of tourists from SADC countries on holiday, 2012

N=6 154 099

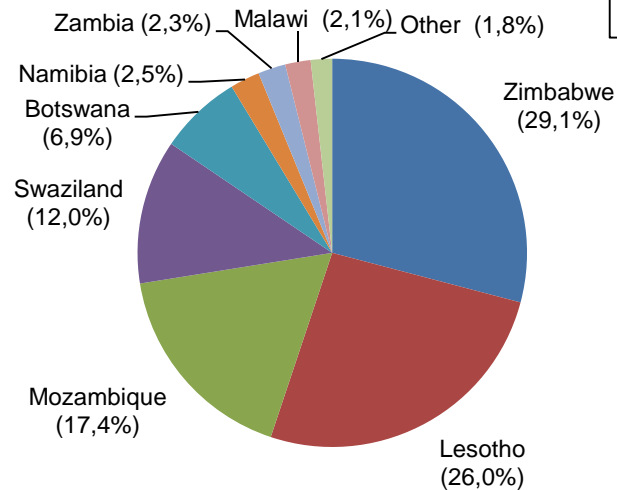


Figure 10b. Percentage distribution of tourists from SADC countries on business, 2012

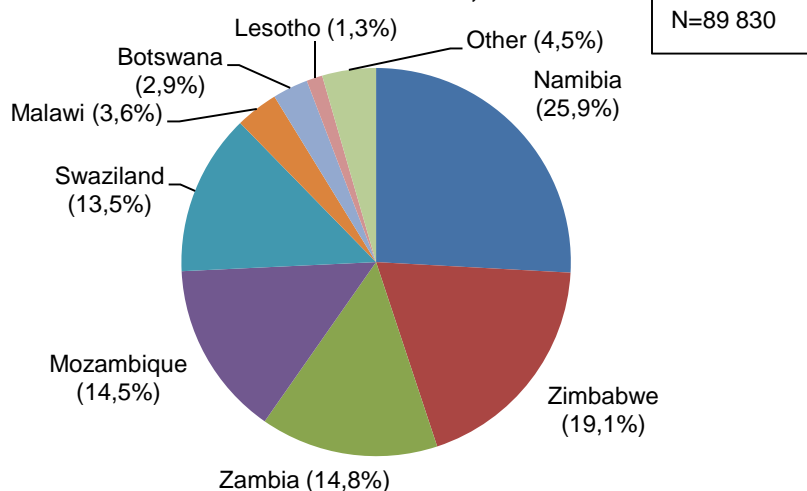


Figure 11a. Percentage distribution of tourists from 'other' African countries on holiday, 2012

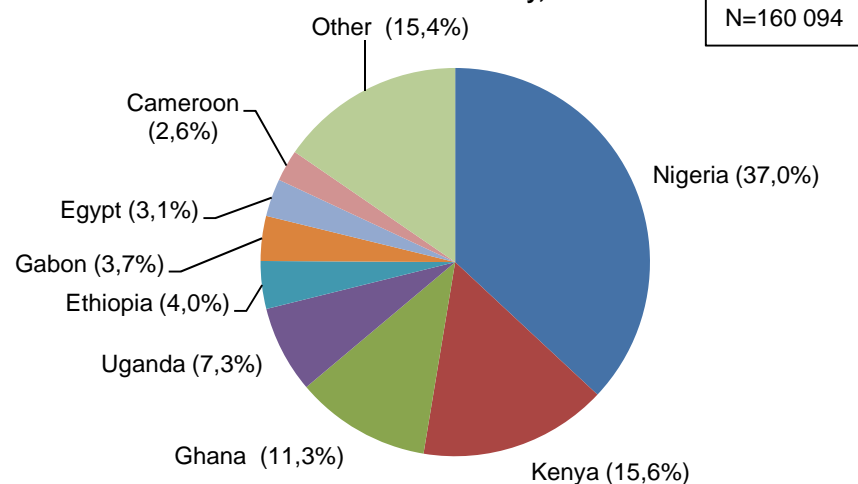


Figure 10c. Percentage distribution of tourists from SADC countries on study, 2012

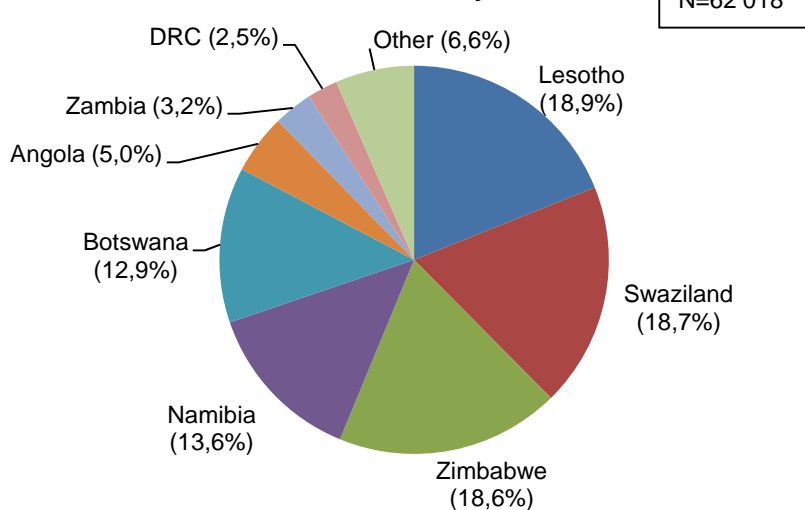
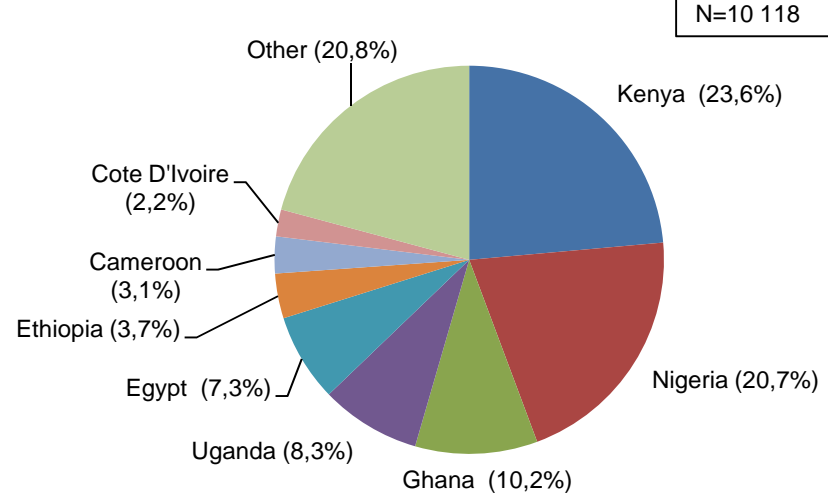
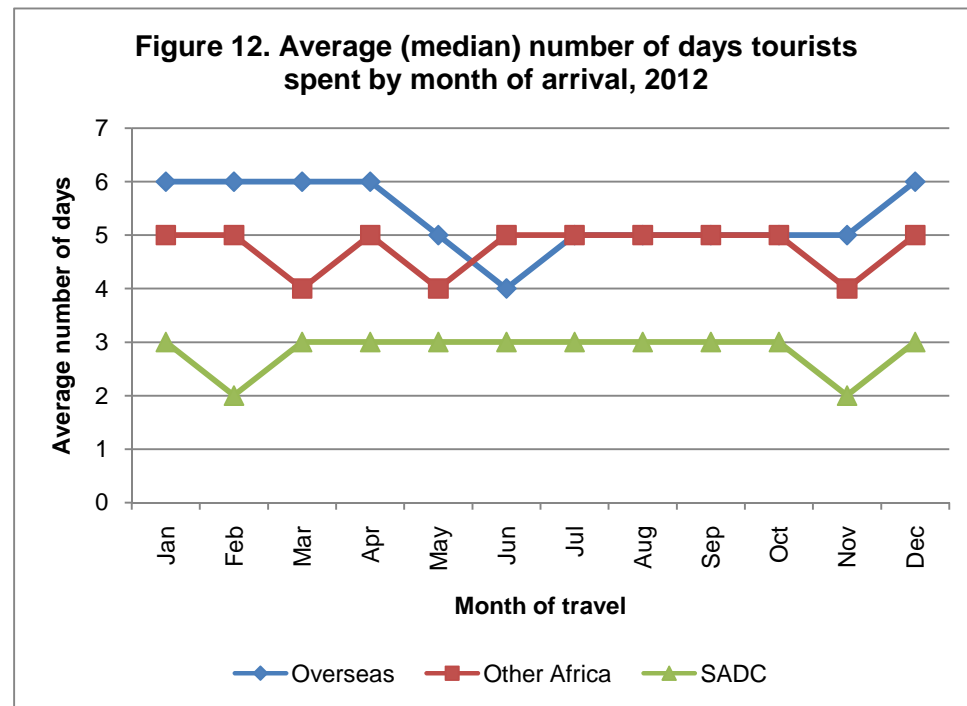
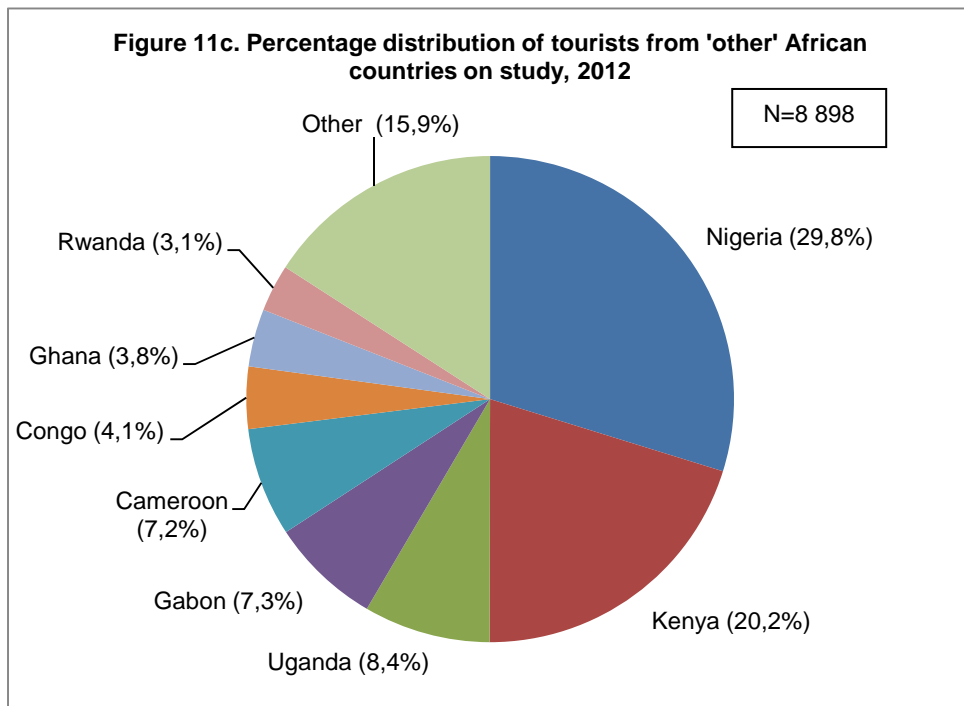


Figure 11b. Percentage distribution of tourists from 'other' African countries on business, 2012





3. TABLES

Table 1. Number of foreign travellers and South African residents by year of travel, 2000–2012									
YEAR	All travellers			South African residents			Foreign travellers		
	Arrivals	Departures	Total	Arrivals	Departures	Total	Arrivals	Departures	Total
2000	9 884 953	9 300 182	19 185 135	3 884 415	3 834 054	7 718 469	6 000 538	5 466 128	11 466 666
2001	9 710 483	9 040 275	18 750 758	3 802 459	3 733 058	7 535 517	5 908 024	5 307 217	11 215 241
2002	10 399 706	9 615 808	20 015 514	3 849 790	3 793 672	7 643 462	6 549 916	5 822 136	12 372 052
2003	7 894 158	7 119 038	15 013 196	1 254 063	1 163 839	2 417 902	6 640 095	5 955 199	12 595 294
2004	7 249 596	6 511 898	13 761 494	434 400	418 585	852 985	6 815 196	6 093 313	12 908 509
2005	9 630 617	8 920 258	18 550 875	2 112 300	2 191 599	4 303 899	7 518 317	6 728 659	14 246 976
2006	12 826 280	11 840 669	24 666 949	4 317 475	4 338 914	8 656 389	8 508 805	7 501 755	16 010 560
2007	13 656 529	12 456 288	26 112 817	4 448 832	4 433 492	8 882 324	9 207 697	8 022 796	17 230 493
2008	14 147 347	12 904 062	27 051 409	4 418 487	4 429 399	8 847 886	9 728 860	8 474 663	18 203 523
2009	14 585 617	13 104 237	27 689 854	4 487 311	4 423 987	8 911 298	10 098 306	8 680 250	18 778 556
2010	16 699 789	15 073 447	31 773 236	5 125 249	5 164 929	10 290 178	11 574 540	9 908 518	21 483 058
2011	17 924 920	16 180 473	34 105 393	5 429 177	5 455 260	10 884 437	12 495 743	10 725 213	23 220 956
2012	18 766 958	16 524 601	35 291 559	4 971 428	5 030 768	10 002 196	13 795 530	11 493 833	25 289 363

Table 2. Number of arrivals and departures of South African residents by mode of travel and place of arrival or departure, 2012				
Mode of travel and place of arrival or departure	Total number of arrivals	Total number of departures	Percentage of arrivals	Percentage of departures
Total	4 971 428	5 030 768		
Air	1 812 898	1 821 560	100	100
Cape Town International	219 636	223 733	12,1	12,3
King Shaka International	70 095	71 456	3,9	3,9
OR Tambo International	1 492 040	1 494 900	82,3	82,1
Other International	31 127	31 471	1,7	1,7
Road	3 133 475	3 181 899	100	100
Botswana	546 691	554 573	17,4	17,4
Lesotho	845 064	865 880	27,0	27,2
Mozambique	590 558	606 631	18,8	19,1
Namibia	148 572	151 218	4,7	4,8
Swaziland	765 872	774 987	24,4	24,4
Zimbabwe	236 718	228 610	7,6	7,2
Sea	25 050	27 306	100	100
Cape Town Harbour	6 657	6 894	26,6	25,2
Durban Harbour	18 243	20 371	72,8	74,6
Port Elizabeth Harbour	150	41	0,6	0,2
Unspecified	5	3	-	-

Table 3. Number of foreign arrivals and departures by mode of travel and place of arrival or departure, 2012			
Mode of travel and place of arrival or departure	Arrivals	Departures	Total
Total	13 795 530	11 493 833	25 289 363
Air	3 480 855	2 835 909	6 316 764
Cape Town International	534 556	531 360	1 065 916
King Shaka International	41 323	40 010	81 333
OR Tambo International	2 887 071	2 244 742	5 131 813
Other International	17 905	19 797	37 702
Road	10 275 728	8 626 050	18 901 778
Botswana	990 561	979 299	1 969 860
Lesotho	3 255 657	2 633 779	5 889 436
Mozambique	1 555 453	1 146 639	2 702 092
Namibia	148 682	153 121	301 803
Swaziland	1 508 307	1 396 183	2 904 490
Zimbabwe	2 817 068	2 317 029	5 134 097
Sea	38 374	31 539	69 913
Cape Town Harbour	25 860	17 871	43 731
Durban Harbour	10 087	12 157	22 244
Port Elizabeth Harbour	1 484	1 511	2 995
Other Harbours	943	-	943
Unspecified	573	335	908

Table 4. Number of foreign arrivals by purpose of visit and month of arrival, 2012													
Purpose of visit	Total	Month of arrival											
		Jan	Feb	Mar	Apr	May	Jun	Jul	Aug	Sep	Oct	Nov	Dec
Total	13 795 530	1 249 101	1 006 429	1 072 496	1 157 430	1 067 556	1 024 768	1 195 266	1 162 144	1 148 598	1 189 515	1 190 293	1 331 934
Business	216 616	15 904	22 540	22 626	16 732	20 786	16 744	18 824	15 623	19 059	18 584	19 228	9 966
Holiday	12 161 828	1 085 895	890 044	954 610	1 016 580	923 682	894 794	1 035 941	1 033 888	1 002 895	1 048 274	1 057 471	1 217 754
Study	95 547	19 051	10 686	5 166	9 066	5 906	4 229	15 289	6 293	6 407	6 329	3 767	3 358
Work	344 108	45 143	30 379	27 154	30 875	27 692	23 811	27 998	26 578	27 349	27 400	24 610	25 119
Transit	588 865	34 493	29 600	38 188	54 938	56 326	54 819	60 613	47 423	58 858	57 278	57 117	39 212
Unspecified	388 566	48 615	23 180	24 752	29 239	33 164	30 371	36 601	32 339	34 030	31 650	28 100	36 525

Table 5. Number of foreign arrivals by type of visitor and month of arrival, 2012													
Type of visitor	Total	Month of arrival											
		Jan	Feb	Mar	Apr	May	Jun	Jul	Aug	Sep	Oct	Nov	Dec
Total	13 795 530	1 249 101	1 006 429	1 072 496	1 157 430	1 067 556	1 024 768	1 195 266	1 162 144	1 148 598	1 189 515	1 190 293	1 331 934
Non Visitors	726 496	87 580	53 559	51 906	60 114	60 856	54 182	64 599	58 917	61 379	59 050	52 710	61 644
Visitors	13 069 034	1 161 521	952 870	1 020 590	1 097 316	1 006 700	970 586	1 130 667	1 103 227	1 087 219	1 130 465	1 137 583	1 270 290
Same day	3 880 666	274 455	275 196	317 523	294 482	314 654	316 900	337 422	327 607	321 821	345 603	356 487	398 516
Tourist	9 188 368	887 066	677 674	703 067	802 834	692 046	653 686	793 245	775 620	765 398	784 862	781 096	871 774

Table 6. Number of same day visitors by mode of travel, region of residence and purpose of visit, 2012					
Mode of travel and region of residence	Total	Purpose of visit			
		Business	Holiday	Study	Transit
Total	3 880 666	11 563	3 857 649	7 797	3 657
Air	201 983	3 797	194 597	339	3 250
Overseas	139 301	2 148	134 896	92	2 165
SADC	57 015	1 465	54 391	201	958
'Other' Africa	4 765	148	4 474	45	98
Unspecified	902	36	836	1	29
Road	3 677 052	7 766	3 661 778	7 456	52
Overseas	78 956	53	78 650	253	-
SADC	3 586 173	7 698	3 571 359	7 064	52
'Other' Africa	9 216	12	9 069	135	-
Unspecified	2 707	3	2 700	4	-
Sea	1 630	-	1 274	1	355
Overseas	1 481	-	1 146	-	335
SADC	110	-	99	1	10
'Other' Africa	33	-	28	-	5
Unspecified	6	-	1	-	5
Unspecified	1	-	-	1	-

Table 7. Number of tourist arrivals by purpose of visit and month of arrival, 2012

Purpose of visit	Total	Month of arrival											
		Jan	Feb	Mar	Apr	May	Jun	Jul	Aug	Sep	Oct	Nov	Dec
Total	9 188 368	887 066	677 674	703 067	802 834	692 046	653 686	793 245	775 620	765 398	784 862	781 096	871 774
Business	205 037	15 142	21 537	21 595	15 874	19 688	15 668	17 847	14 551	17 970	17 565	18 231	9 369
Holiday	8 310 456	819 565	616 676	638 839	723 833	611 012	580 003	700 674	708 286	682 990	704 690	703 130	820 758
Study	87 696	18 141	10 047	4 637	8 452	5 389	3 516	14 478	5 769	5 913	5 697	2 989	2 668
Transit	585 179	34 218	29 414	37 996	54 675	55 957	54 499	60 246	47 014	58 525	56 910	56 746	38 979

Table 8. Number of tourists by region of residence and month of arrival, 2012

Region	Total	Month of arrival											
		Jan	Feb	Mar	Apr	May	Jun	Jul	Aug	Sep	Oct	Nov	Dec
Total	9 188 368	887 066	677 674	703 067	802 834	692 046	653 686	793 245	775 620	765 398	784 862	781 096	871 774
Overseas	2 505 763	210 254	214 594	218 436	195 934	168 796	155 464	206 656	199 820	208 203	242 475	241 413	243 718
Europe	1 410 436	126 502	140 230	131 951	108 496	75 967	64 060	103 659	107 063	108 104	146 550	150 013	147 841
North America	393 446	25 768	27 209	35 199	29 016	35 151	35 360	39 969	34 127	33 690	34 311	29 901	33 745
Central and South America	119 913	12 503	9 946	8 403	10 143	9 011	8 150	11 798	7 906	10 141	10 822	9 715	11 375
Australasia	142 949	10 769	8 684	10 362	11 926	10 042	11 692	12 632	12 351	16 395	11 638	11 012	15 446
Middle East	40 715	3 089	3 306	4 173	2 889	2 718	3 782	3 510	3 748	3 934	3 349	3 039	3 178
Asia	398 304	31 623	25 219	28 348	33 464	35 907	32 420	35 088	34 625	35 939	35 805	37 733	32 133
Africa	6 656 457	674 697	460 998	482 434	604 695	520 930	496 189	584 590	573 893	555 093	540 085	537 080	625 773
SADC	6 446 881	658 157	445 557	466 137	587 913	505 027	479 442	567 269	555 848	535 699	521 290	518 218	606 324
'Other' Africa	209 576	16 540	15 441	16 297	16 782	15 903	16 747	17 321	18 045	19 394	18 795	18 862	19 449
East and Central Africa	81 270	7 142	6 040	6 083	6 178	6 100	5 976	6 797	6 970	7 490	7 084	7 303	8 107
West Africa	114 029	8 461	8 400	9 040	9 295	8 634	9 683	9 323	10 124	10 368	10 345	10 111	10 245
North Africa	14 277	937	1 001	1 174	1 309	1 169	1 088	1 201	951	1 536	1 366	1 448	1 097
Unspecified	26 148	2 115	2 082	2 197	2 205	2 320	2 033	1 999	1 907	2 102	2 302	2 603	2 283

Table 9. Number of tourists from eight leading overseas countries in 2012 and their percentage change from 2011			
Overseas	2011	2012	Percentage change
UK	420 483	438 023	4,2
USA	287 614	326 644	13,6
Germany	235 774	266 333	13,0
China	84 862	132 327	55,9
France	105 420	122 244	16,0
Australia	103 506	120 315	16,2
The Netherlands	113 846	117 936	3,6
India	90 367	106 774	18,2

Table 10. Number of tourists from eight leading SADC countries in 2012 and their percentage change from 2011			
SADC	2011	2012	Percentage change
Zimbabwe	1 553 008	1 847 973	19,0
Lesotho	1 526 597	1 618 222	6,0
Mozambique	1 076 753	1 104 404	2,6
Swaziland	700 119	768 728	9,8
Botswana	477 937	452 159	-5,4
Namibia	197 835	200 841	1,5
Zambia	160 302	169 555	5,8
Malawi	135 577	142 063	4,8

Table 11. Number of tourists from eight leading 'other' African countries in 2012 and their percentage change from 2011			
'Other' Africa	2011	2012	Percentage change
Nigeria	64 402	73 282	13,8
Kenya	30 279	32 992	9,0
Ghana	18 538	22 953	23,8
Uganda	14 450	15 522	7,4
Ethiopia	9 125	7 862	-13,8
Egypt	6 251	7 308	16,9
Gabon	6 199	7 168	15,6
Cameroon	5 357	6 234	16,4

Table 12. Number of tourists by mode of travel, place and month of arrival, 2012

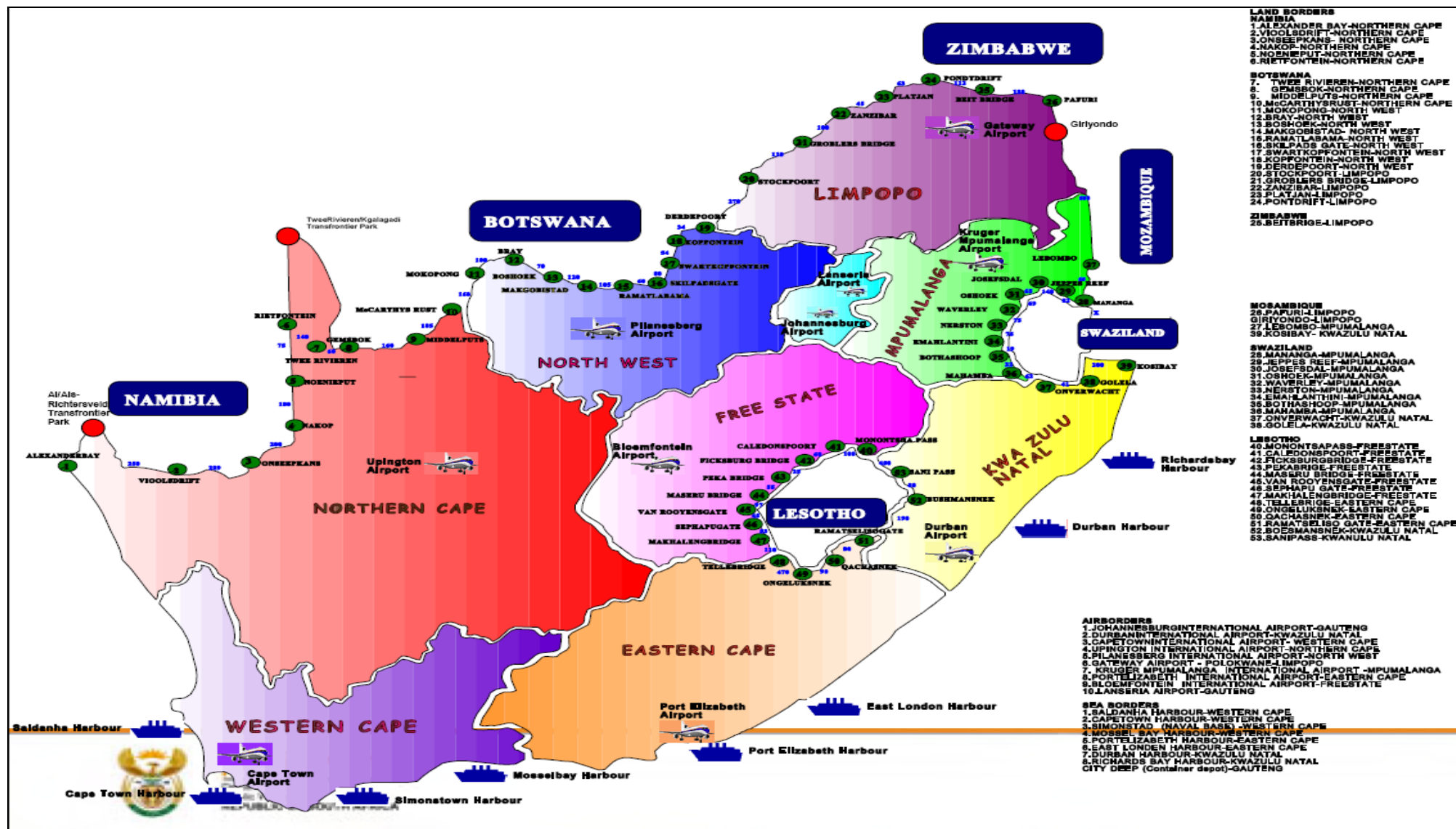
Mode of travel and place of arrival	Total	Month of arrival											
		Jan	Feb	Mar	Apr	May	Jun	Jul	Aug	Sep	Oct	Nov	Dec
Total	9 188 368	887 066	677 674	703 067	802 834	692 046	653 686	793 245	775 620	765 398	784 862	781 096	871 774
Air	2 936 871	241 882	242 362	250 244	233 733	209 591	196 587	247 028	230 952	248 833	276 497	274 167	284 995
Cape Town International	484 520	64 377	64 904	53 897	33 212	21 811	18 865	27 627	26 734	24 308	35 214	52 069	61 502
King Shaka International	30 564	2 046	2 566	2 839	2 337	1 940	1 775	2 766	2 263	2 383	2 892	2 729	4 028
OR Tambo International	2 410 261	174 631	174 173	192 669	197 308	184 705	174 608	215 628	200 840	221 065	237 261	218 540	218 833
Other International	11 526	828	719	839	876	1 135	1 339	1 007	1 115	1 077	1 130	829	632
Road	6 239 659	642 558	433 791	452 381	568 349	481 726	456 968	545 995	544 402	516 287	507 385	504 151	585 666
Botswana	638 855	47 891	40 530	46 281	62 623	44 327	44 273	54 639	57 878	58 402	49 646	55 471	76 894
Lesotho	1 657 681	177 589	112 174	122 620	156 725	133 293	125 080	149 695	123 688	134 503	137 070	134 569	150 675
Mozambique	1 064 685	116 643	84 889	81 475	79 447	86 819	80 825	96 975	92 954	89 324	87 705	87 781	79 848
Namibia	112 689	11 250	7 730	8 809	7 709	7 048	5 968	9 297	10 929	8 918	8 811	9 065	17 155
Swaziland	942 467	81 524	69 189	71 040	87 090	70 939	68 544	81 186	85 015	79 899	80 620	78 784	88 637
Zimbabwe	1 823 282	207 661	119 279	122 156	174 755	139 300	132 278	154 203	173 938	145 241	143 533	138 481	172 457
Sea	11 651	2 520	1 514	439	749	729	128	207	237	276	974	2 774	1 104
Cape Town Harbour	8 682	2 430	1 497	432	162	151	44	74	64	179	811	2 431	407
Durban Harbour	2 500	89	2	1	582	573	65	128	164	81	113	189	513
Port Elizabeth Harbour	17	1	1	4	5	-	-	-	5	-	-	-	1
Other Harbours	452	-	14	2	-	5	19	5	4	16	50	154	183
Unspecified	187	106	7	3	3	-	3	15	29	2	6	4	9

Table 13. Number of tourists by region of residence and mode of travel, 2012					
Region	Total	Mode of travel			
		Air	Road	Sea	Unspecified
Total	9 188 368	2 936 871	6 239 659	11 651	187
Overseas	2 505 763	2 232 857	262 115	10 722	69
Europe	1 410 436	1 238 067	165 838	6 518	13
North America	393 446	355 814	35 191	2 440	1
Central and South America	119 913	112 215	7 562	136	-
Australasia	142 949	132 302	10 190	456	1
Middle East	40 715	38 174	2 519	17	5
Asia	398 304	356 285	40 815	1 155	49
Africa	6 656 457	686 126	5 969 358	856	117
SADC	6 446 881	496 803	5 949 520	522	36
'Other' Africa	209 576	189 323	19 838	334	81
East and Central Africa	81 270	72 084	8 976	183	27
West Africa	114 029	103 650	10 202	128	49
North Africa	14 277	13 589	660	23	5
Unspecified	26 148	17 888	8 186	73	1

Table 14. Number of tourists by sex, age group and region of residence, 2012					
Sex and age group	Total	Region of residence			
		Overseas	SADC	'Other' Africa	Unspecified
All	9 188 368	2 505 763	6 446 881	209 576	26 148
0-14	513 137	170 459	329 726	12 339	613
15-64	8 252 082	2 066 050	5 967 554	193 718	24 760
65+	415 817	268 220	143 377	3 464	756
Unspecified	7 332	1 034	6 224	55	19
Male	4 665 837	1 320 534	3 197 850	132 047	15 406
0-14	232 931	81 306	145 811	5 544	270
15-64	4 235 432	1 108 439	2 987 927	124 351	14 715
65+	193 861	130 266	61 060	2 123	412
Unspecified	3 613	523	3 052	29	9
Female	3 625 708	972 687	2 583 463	60 948	8 610
0-14	233 463	75 404	152 247	5 550	262
15-64	3 208 502	788 025	2 358 062	54 320	8 095
65+	181 536	108 936	71 278	1 072	250
Unspecified	2 207	322	1 876	6	3
Unspecified	896 823	212 542	665 568	16 581	2 132
0-14	46 743	13 749	31 668	1 245	81
15-64	808 148	169 586	621 565	15 047	1 950
65+	40 420	29 018	11 039	269	94
Unspecified	1 512	189	1 296	20	7

4. APPENDICES

Appendix I. Ports of entry/exit in South Africa



Source: National Department of Home Affairs

Appendix II. Number of South African residents by mode of travel, place and month of arrival, 2012													
Mode of travel and place of arrival	Total	Month of arrival											
		Jan	Feb	Mar	Apr	May	Jun	Jul	Aug	Sep	Oct	Nov	Dec
Total	4 971 428	526 250	311 209	356 312	455 895	376 540	366 698	499 178	389 231	403 196	410 208	356 473	520 238
Air	1 812 898	177 495	109 825	137 949	157 789	140 215	141 307	194 929	138 035	154 939	158 434	129 782	172 199
Cape Town International	219 636	24 275	14 062	16 884	18 725	16 787	19 078	26 840	16 164	15 703	15 112	14 992	21 014
King Shaka International	70 095	6 941	5 140	5 733	5 995	5 715	5 471	7 868	4 680	5 264	6 044	4 467	6 777
OR Tambo International	1 492 040	143 881	88 428	112 680	130 615	114 861	113 991	157 329	114 039	131 298	134 645	107 713	142 560
Other International	31 127	2 398	2 195	2 652	2 454	2 852	2 767	2 892	3 152	2 674	2 633	2 610	1 848
Road	3 133 475	344 827	199 827	217 950	297 777	236 013	225 250	304 056	250 982	248 064	251 522	224 382	332 825
Botswana	546 691	54 901	34 527	37 299	55 390	39 402	40 923	52 831	44 410	47 886	44 195	38 803	56 124
Lesotho	845 064	93 487	60 391	62 822	79 864	59 728	60 069	70 004	67 099	61 665	67 188	71 197	91 550
Mozambique	590 558	75 934	35 141	39 996	52 927	47 206	42 729	65 530	46 404	42 980	45 942	38 594	57 175
Namibia	148 572	14 013	7 014	9 629	13 707	11 613	11 809	22 207	11 429	10 844	11 684	8 896	15 727
Swaziland	765 872	77 376	48 634	52 926	72 327	60 904	54 164	70 228	59 204	65 790	64 456	53 130	86 733
Zimbabwe	236 718	29 116	14 120	15 278	23 562	17 160	15 556	23 256	22 436	18 899	18 057	13 762	25 516
Sea	25 050	3 923	1 557	413	329	312	141	193	214	193	252	2 309	15 214
Cape Town Harbour	6 657	2 603	1 519	360	221	272	94	153	80	140	213	388	614
Durban Harbour	18 243	1 315	38	48	105	37	44	38	38	52	26	1 916	14 586
Port Elizabeth Harbour	150	5	-	5	3	3	3	2	96	1	13	5	14
Unspecified	5	5	-	-	-	-	-	-	-	-	-	-	-

Appendix III. Number of South African residents by mode of travel, place and month of departure, 2012													
Mode of travel and place of departure	Total	Month of departure											
		Jan	Feb	Mar	Apr	May	Jun	Jul	Aug	Sep	Oct	Nov	Dec
Total	5 030 768	349 970	315 998	398 979	457 250	357 713	459 348	405 004	413 092	427 123	381 828	365 499	698 964
Air	1 821 560	135 432	114 650	155 854	158 046	140 057	183 720	141 611	151 424	168 315	137 214	127 741	207 496
Cape Town International	223 733	19 495	14 416	20 818	18 907	18 966	27 247	17 652	17 352	17 785	12 728	13 427	24 940
King Shaka International	71 456	5 661	5 660	6 336	5 553	5 631	7 207	5 138	5 443	6 595	4 846	4 352	9 034
OR Tambo International	1 494 900	107 938	92 218	125 883	130 949	112 670	146 548	115 997	125 511	141 335	116 808	107 450	171 593
Other International	31 471	2 338	2 356	2 817	2 637	2 790	2 718	2 824	3 118	2 600	2 832	2 512	1 929
Road	3 181 899	211 771	199 571	242 878	298 421	217 478	275 451	263 091	261 507	258 516	244 499	233 946	474 770
Botswana	554 573	36 221	34 857	41 363	53 548	38 111	50 757	45 431	47 063	49 340	42 083	40 486	75 313
Lesotho	865 880	67 274	61 744	69 872	80 095	56 792	68 119	66 473	70 702	64 648	71 846	75 051	113 264
Mozambique	606 631	35 312	34 547	45 556	57 359	39 606	53 414	54 195	45 740	46 619	41 209	38 804	114 270
Namibia	151 218	8 640	7 141	12 182	13 835	10 650	20 246	14 432	11 575	12 843	9 409	9 367	20 898
Swaziland	774 987	55 247	47 773	57 434	73 202	57 545	62 787	63 414	63 809	65 637	64 591	56 371	107 177
Zimbabwe	228 610	9 077	13 509	16 471	20 382	14 774	20 128	19 146	22 618	19 429	15 361	13 867	43 848
Sea	27 306	2 764	1 777	247	783	178	177	302	161	292	115	3 812	16 698
Cape Town Harbour	6 894	2 579	1 734	178	694	148	133	264	103	239	89	313	420
Durban Harbour	20 371	182	36	68	84	29	43	36	54	53	23	3 497	16 266
Port Elizabeth Harbour	41	3	7	1	5	1	1	2	4	-	3	2	12
Unspecified	3	3	-	-	-	-	-	-	-	-	-	-	-

Appendix IV. Number of foreign arrivals by mode of travel, place and month of arrival, 2012													
Mode of travel and place of arrival	Total	Month of arrival											
		Jan	Feb	Mar	Apr	May	Jun	Jul	Aug	Sep	Oct	Nov	Dec
Total	13 795 530	1 249 101	1 006 429	1 072 496	1 157 430	1 067 556	1 024 768	1 195 266	1 162 144	1 148 598	1 189 515	1 190 293	1 331 934
Air	3 480 855	295 355	283 490	291 938	272 700	256 081	240 847	297 803	281 385	297 716	322 792	317 194	323 554
Cape Town International	534 556	69 908	68 545	57 836	36 471	25 640	23 000	32 592	31 010	28 035	39 213	56 471	65 835
King Shaka International	41 323	2 773	3 264	3 577	2 863	2 909	2 962	3 929	3 138	3 530	3 912	3 680	4 786
OR Tambo International	2 887 071	221 316	210 516	229 175	232 004	225 645	212 961	259 787	245 481	264 497	277 998	255 737	251 954
Other International	17 905	1 358	1 165	1 350	1 362	1 887	1 924	1 495	1 756	1 654	1 669	1 306	979
Road	10 275 728	948 729	719 552	778 167	882 299	809 129	781 887	895 155	878 847	848 890	863 421	866 539	1 003 113
Botswana	990 561	74 459	62 852	71 089	90 619	71 218	70 802	86 647	87 964	87 713	81 722	86 607	118 869
Lesotho	3 255 657	315 649	233 198	258 922	285 186	261 177	248 121	283 258	250 008	260 813	276 370	268 529	314 426
Mozambique	1 555 453	155 954	120 761	119 811	113 503	126 951	120 734	138 650	134 296	130 332	131 407	134 558	128 496
Namibia	148 682	14 815	10 229	11 141	9 686	9 214	8 416	12 532	14 195	12 264	11 971	12 194	22 025
Swaziland	1 508 307	131 228	110 512	117 632	133 106	117 044	112 794	128 952	132 893	124 308	124 576	124 252	151 010
Zimbabwe	2 817 068	256 624	182 000	199 572	250 199	223 525	221 020	245 116	259 491	233 460	237 375	240 399	268 287
Sea	38 374	4 622	3 378	2 386	2 428	2 340	2 015	2 274	1 866	1 986	3 279	6 548	5 252
Cape Town Harbour	25 860	3 767	2 429	1 743	1 005	1 155	1 056	1 107	858	1 611	2 849	5 710	2 570
Durban Harbour	10 087	779	805	583	1 105	1 124	753	1 031	861	168	196	398	2 284
Port Elizabeth Harbour	1 484	76	130	58	318	56	166	86	97	172	109	134	82
Other Harbours	943	-	14	2	-	5	40	50	50	35	125	306	316
Unspecified	573	395	9	5	3	6	19	34	46	6	23	12	15

Appendix V. Number of foreign departures by mode of travel, place and month of departure, 2012													
Mode of travel and place of departure	Total	Month of departure											
		Jan	Feb	Mar	Apr	May	Jun	Jul	Aug	Sep	Oct	Nov	Dec
Total	11 493 833	846 916	833 767	940 332	970 112	877 997	888 351	935 495	977 104	960 843	973 915	1 011 530	1 277 471
Air	2 835 909	266 882	238 610	260 278	246 357	200 469	193 946	204 426	246 186	217 960	241 343	261 657	257 795
Cape Town International	531 360	72 303	66 425	65 535	45 964	28 540	24 814	27 714	29 551	25 497	34 688	57 239	53 090
King Shaka International	40 010	3 393	3 104	3 248	3 645	3 422	2 932	3 212	3 800	3 175	3 215	3 624	3 240
OR Tambo International	2 244 742	189 725	167 899	189 867	195 049	166 517	164 289	171 600	211 045	187 505	201 548	199 465	200 233
Other International	19 797	1 461	1 182	1 628	1 699	1 990	1 911	1 900	1 790	1 783	1 892	1 329	1 232
Road	8 626 050	577 483	591 791	677 553	721 166	675 911	692 675	729 192	729 152	740 747	729 594	746 067	1 014 719
Botswana	979 299	65 851	60 810	70 674	87 974	70 588	72 122	85 092	82 858	86 936	85 579	83 884	126 931
Lesotho	2 633 779	214 791	193 113	217 216	228 998	203 749	202 699	223 099	209 053	208 785	225 561	217 465	289 250
Mozambique	1 146 639	74 539	83 216	88 402	86 473	87 611	94 264	97 001	93 527	98 624	97 155	105 824	140 003
Namibia	153 121	17 615	10 061	11 856	9 421	11 672	10 179	12 081	13 089	13 859	12 145	12 600	18 543
Swaziland	1 396 183	113 513	100 188	111 378	123 082	107 841	107 394	115 985	120 307	122 361	112 222	114 632	147 280
Zimbabwe	2 317 029	91 174	144 403	178 027	185 218	194 450	206 017	195 934	210 318	210 182	196 932	211 662	292 712
Sea	31 539	2 218	3 364	2 501	2 589	1 617	1 730	1 877	1 766	2 136	2 978	3 806	4 957
Cape Town Harbour	17 871	1 532	2 106	1 843	2 070	1 085	872	947	570	1 111	2 152	1 898	1 685
Durban Harbour	12 157	650	858	585	462	439	721	871	1 129	864	622	1 769	3 187
Port Elizabeth Harbour	1 511	36	400	73	57	93	137	59	67	161	204	139	85
Unspecified	335	333	2	-	-	-	-	-	-	-	-	-	-

Appendix VI. Number of tourists by country of residence and month of arrival, 2012													
Country	Total	Month of arrival											
		Jan	Feb	Mar	Apr	May	Jun	Jul	Aug	Sep	Oct	Nov	Dec
Total	9 188 368	887 066	677 674	703 067	802 834	692 046	653 686	793 245	775 620	765 398	784 862	781 096	871 774
Overseas	2 505 763	210 254	214 594	218 436	195 934	168 796	155 464	206 656	199 820	208 203	242 475	241 413	243 718
Europe	1 410 436	126 502	140 230	131 951	108 496	75 967	64 060	103 659	107 063	108 104	146 550	150 013	147 841
Albania	110	16	10	9	6	6	6	7	11	10	7	11	11
Andorra	52	-	2	1	7	4	2	-	4	4	12	2	14
Austria	25 179	2 455	2 709	2 087	1 683	1 093	826	1 649	1 724	1 779	3 221	3 400	2 553
Azores Island	1	-	-	-	-	-	-	-	-	1	-	-	-
Belarus	664	60	53	67	48	43	40	49	49	59	67	71	58
Belgium	44 125	3 407	3 877	3 842	3 453	2 219	1 751	4 144	3 342	3 675	5 132	4 981	4 302
Bosnia-Herzegovina	254	17	20	30	18	26	5	18	17	20	21	30	32
Bulgaria	2 838	239	199	245	291	169	180	229	193	194	211	290	398
Byelorussian SSR	1	-	-	-	-	-	-	-	-	1	-	-	-
Channel Island	2	-	-	-	-	-	-	-	-	1	-	-	1
Croatia	1 672	152	119	104	147	120	107	139	128	145	123	201	187
Czech Republic	6 922	611	841	749	630	271	299	406	417	457	679	1 032	530
Denmark	25 149	2 737	3 406	2 563	1 756	1 253	1 168	1 718	1 200	1 680	2 921	2 406	2 341
Estonia	776	85	118	94	46	31	42	30	30	29	74	104	93
Finland	10 203	998	1 196	972	688	566	536	466	386	689	949	1 446	1 311
France	122 244	9 183	11 184	10 929	10 361	7 815	5 330	10 512	11 359	8 169	13 379	13 535	10 488
Germany	266 333	22 451	25 878	29 439	18 694	12 928	9 386	14 981	17 239	22 171	31 080	34 444	27 642
Gibraltar	1	-	-	1	-	-	-	-	-	-	-	-	-
Greece	6 157	549	530	448	593	441	362	476	444	515	537	551	711
Hungary	3 253	332	373	254	233	270	182	195	220	207	273	375	339
Iceland	733	72	61	92	46	35	43	34	31	53	107	66	93
Ireland	28 862	2 923	2 549	2 617	2 237	1 695	1 839	2 175	1 992	2 006	2 353	2 990	3 486
Italy	61 318	4 664	3 856	3 645	4 376	3 707	3 586	5 484	10 743	5 441	5 257	5 007	5 552
Latvia	704	47	48	67	67	28	22	62	32	89	80	80	82
Liechtenstein	271	14	17	21	38	18	3	5	12	21	38	52	32
Lithuania	1 057	114	95	90	98	60	50	69	71	101	92	100	117
Luxembourg	1 488	73	117	125	102	64	31	104	267	120	167	145	173
Malta	567	45	52	24	41	32	31	54	92	35	44	79	38
Moldova	205	13	6	19	20	21	22	11	18	13	20	24	18

Appendix VI. Number of tourists by country of residence and month of arrival, 2012 (continued)													
Country	Total	Month of arrival											
		Jan	Feb	Mar	Apr	May	Jun	Jul	Aug	Sep	Oct	Nov	Dec
Monaco	68	1	10	3	-	1	1	5	9	4	5	15	14
Norway	23 156	2 221	3 275	2 620	1 545	875	1 010	1 417	1 064	1 541	2 090	2 917	2 581
Poland	11 722	1 272	1 057	1 059	765	668	563	745	844	1 108	1 088	1 607	946
Portugal	48 211	3 801	3 889	4 240	4 219	3 398	3 215	3 458	4 001	4 175	3 944	4 559	5 312
Romania	2 937	191	176	322	224	277	157	211	209	289	270	301	310
Russian Federation	13 350	1 319	1 005	1 167	1 213	806	714	918	910	1 253	1 115	1 429	1 501
San Marino	38	2	4	5	3	2	-	-	14	1	5	2	-
Slovakia	2 619	216	313	279	203	119	102	202	138	216	382	263	186
Slovenia	1 178	91	286	84	121	59	47	71	43	56	69	135	116
Spain	29 398	1 710	1 664	2 206	2 310	1 780	1 952	3 509	4 135	2 800	3 131	2 467	1 734
Sweden	40 856	4 715	5 737	3 805	2 590	1 636	1 337	1 443	1 373	2 026	4 409	4 932	6 853
Switzerland	51 807	4 601	4 839	4 043	4 196	2 465	1 672	3 451	2 653	4 665	7 196	6 775	5 251
The Netherlands	117 936	10 840	11 387	8 276	7 442	5 978	4 602	12 470	8 536	8 923	14 094	12 723	12 665
Turkey	13 457	1 534	1 415	1 016	1 454	928	627	938	827	1 118	1 781	967	852
UK	438 023	42 283	47 529	43 919	36 145	23 677	21 971	31 522	31 914	31 843	39 787	39 035	48 398
Ukraine	4 276	426	309	353	355	358	236	260	353	380	316	443	487
Vatican	27	6	-	2	2	-	1	4	2	1	3	2	4
Yugoslavia	235	16	19	18	30	25	4	17	17	20	21	19	29
North America	393 446	25 768	27 209	35 199	29 016	35 151	35 360	39 969	34 127	33 690	34 311	29 901	33 745
Canada	66 802	4 993	6 138	6 950	5 281	4 865	3 954	5 136	4 668	5 199	6 932	5 829	6 857
USA	326 644	20 775	21 071	28 249	23 735	30 286	31 406	34 833	29 459	28 491	27 379	24 072	26 888
Central and South America	119 913	12 503	9 946	8 403	10 143	9 011	8 150	11 798	7 906	10 141	10 822	9 715	11 375
Antigua And Barbuda	51	5	2	5	2	5	2	7	5	7	4	3	4
Argentina	17 514	2 501	2 403	1 801	1 241	1 240	855	1 421	1 170	1 130	1 190	1 270	1 292
Bahamas	153	8	3	15	16	7	6	22	18	14	27	9	8
Barbados	168	16	8	10	9	32	15	12	12	13	15	14	12
Belize	78	12	5	1	3	12	4	7	6	5	9	8	6
Bermuda	45	3	6	3	5	3		2	3	7	2	6	5
Bolivia	1 371	52	51	79	178	101	95	177	100	115	201	110	112
Br Virgin Island	3	-	-	-	-	-	1	-	1	-	1	-	-
Brazil	78 376	8 228	5 894	5 011	6 792	5 841	5 413	7 732	4 945	6 774	7 396	6 528	7 822
Chile	3 507	293	456	285	325	291	199	372	212	375	251	222	226
Colombia	2 627	202	118	125	156	144	206	331	176	314	348	235	272

Appendix VI. Number of tourists by country of residence and month of arrival, 2012 (continued)													
Country	Total	Month of arrival											
		Jan	Feb	Mar	Apr	May	Jun	Jul	Aug	Sep	Oct	Nov	Dec
Costa Rica	372	35	17	20	21	48	22	50	31	24	35	34	35
Cuba	1 801	210	143	84	158	171	149	228	96	131	115	86	230
Dominica	173	6	5	6	15	25	8	18	23	8	43	8	8
Ecuador	750	46	26	60	79	49	70	50	59	93	73	81	64
El Salvador	146	8	3	14	9	13	17	21	20	7	8	14	12
French Guinea	4	-	-	2	-	-	-	1	1	-	-	-	-
Grenada	31	4	4	2	-	5	2	3	3	2	1	3	2
Guatemala	278	12	18	14	21	28	35	28	13	23	32	31	23
Guyana (Guinea-British)	3	-	-	-	-	-	-	1	-	2	-	-	-
Haiti	98	12	8	5	5	6	12	14	8	10	7	4	7
Honduras	284	29	16	24	21	19	27	36	12	19	17	31	33
Jamaica	743	54	50	63	65	66	57	54	75	50	55	79	75
Mexico	3 477	210	212	241	346	272	320	474	253	266	254	249	380
Nicaragua	80	6	2	1	2	9	8	6	14	6	9	11	6
Panama	260	12	8	17	13	12	41	28	23	22	31	31	22
Paraguay	692	64	44	45	52	58	65	67	53	69	53	51	71
Peru	2 944	230	205	183	255	280	241	262	246	242	262	266	272
Puerto Rico	3	1	-	-	-	-	1	-	1	-	-	-	-
St Lucia	36	1	-	3	2	2	2	4	4	3	4	3	8
St Vincent And Grenadines	21	2	3	2	-	1	-	3	-	1	2	4	3
Suriname	69	1	2	7	3	19	3	8	4	8	2	3	9
Trinidad And Tobago	839	53	51	49	79	51	47	52	101	58	118	121	59
Turks And Caicos island	4	-	-	1	-	-	-	-	-	-	2	-	1
Uruguay	1 370	73	71	126	111	106	125	145	66	218	155	94	80
Venezuela	1 442	105	103	87	150	87	101	156	145	121	88	97	202
West Indies	100	9	9	12	9	8	1	6	7	4	12	9	14
Australasia	142 949	10 769	8 684	10 362	11 926	10 042	11 692	12 632	12 351	16 395	11 638	11 012	15 446
Australia	120 315	9 289	7 508	8 781	10 071	8 597	9 868	10 678	10 489	13 848	9 733	9 363	12 090
Bouvet Island	6	-	3	-	-	1	1	-	-	-	-	-	1
Cocos (Keeling) Island	3	-	-	-	-	2	-	1	-	-	-	-	-
Cook Islands	1	1	-	-	-	-	-	-	-	-	-	-	-
Federated States of Micron	3	-	-	1	-	2	-	-	-	-	-	-	-
Fiji	182	9	5	7	10	55	5	9	5	20	9	12	36
French Polynesia	3	1	-	-	1	-	-	1	-	-	-	-	-
French Southern Terr.	4	-	2	-	1	-	-	-	-	-	-	1	-

Appendix VI. Number of tourists by country of residence and month of arrival, 2012 (continued)													
Country	Total	Month of arrival											
		Jan	Feb	Mar	Apr	May	Jun	Jul	Aug	Sep	Oct	Nov	Dec
Kiribati	14	-	-	3	-	1	1	1	2	2	2	2	-
Marshall Islands	7	-	-	-	-	2	-	1	1	-	-	2	1
Nauru	6	2	-	-	1	1	-	-	-	1	-	1	-
New Zealand	22 209	1 457	1 159	1 556	1 830	1 344	1 804	1 931	1 844	2 509	1 873	1 610	3 292
Northern Mariana Island	6	-	1	2	-	-	-	-	1	-	-	-	2
Palau	1	-	-	1	-	-	-	-	-	-	-	-	-
Papua New Guinea	62	1	3	5	6	3	5	7	5	8	8	6	5
Samoa	53	-	-	1	1	23	1	3	2	2	2	6	14
Solomon Island	13	-	-	1	1	-	-	-	1	4	4	1	1
Tokelau	3	-	-	1	-	1	1	-	-	-	-	-	-
Tonga Island	27	8	-	1	3	8	-	-	-	1	-	5	1
Tuvalu	18	-	3	2	1	1	3	-	1	-	6	-	1
Vanuatu	13	1	-	-	-	1	3	-	-	2	1	3	2
Middle East	40 715	3 089	3 306	4 173	2 889	2 718	3 782	3 510	3 748	3 934	3 349	3 039	3 178
Bahrain	194	7	31	20	11	16	27	17	8	12	11	15	19
Cyprus	1 659	152	206	109	121	86	106	148	151	100	127	110	243
Iran	3 806	360	321	966	190	198	144	320	267	347	217	237	239
Iraq	296	20	15	45	22	38	22	16	19	30	20	29	20
Israel	20 640	1 452	1 920	2 041	1 629	1 418	1 144	1 755	1 793	2 443	1 564	1 755	1 726
Jordan	1 818	138	144	157	139	162	119	124	127	182	220	191	115
Kuwait	650	34	33	25	45	35	111	77	133	49	41	39	28
Lebanon	3 252	246	255	244	310	276	245	288	218	253	263	284	370
Oman	426	39	35	43	22	44	40	36	48	27	42	26	24
Palestine	241	18	21	13	14	19	15	25	20	27	26	23	20
Qatar	303	25	5	22	26	9	55	44	54	18	19	8	18
Saudi Arabia	5 305	514	198	338	167	294	1 342	471	643	278	641	195	224
Syria	573	29	45	51	49	40	42	47	41	68	56	47	58
United Arab Emirates	1 180	30	51	75	116	59	306	115	193	73	50	52	60
Yemen	372	25	26	24	28	24	64	27	33	27	52	28	14
Asia	398 304	31 623	25 219	28 348	33 464	35 907	32 420	35 088	34 625	35 939	35 805	37 733	32 133
Afghanistan	184	23	13	20	12	20	26	13	8	19	11	16	3
Armenia	163	11	8	8	25	15	13	22	12	8	7	6	28
Azerbaijan	237	14	14	13	22	22	13	23	15	18	22	32	29
Bangladesh	5 480	396	416	441	500	484	399	548	438	502	350	561	445

Appendix VI. Number of tourists by country of residence and month of arrival, 2012 (continued)													
Country	Total	Month of arrival											
		Jan	Feb	Mar	Apr	May	Jun	Jul	Aug	Sep	Oct	Nov	Dec
Bhutan	36	1	1	-	5	-	-	4	-	1	13	11	-
Brunei Darussalam	37	-	3	1	1	1	4	7	2	6	9	3	-
Cambodia	93	8	4	7	27	2	1	10	7	7	7	9	4
China	132 327	12 429	8 340	10 112	10 277	9 802	9 308	12 075	11 368	13 030	11 404	14 330	9 852
East Timor	1	-	1	-	-	-	-	-	-	-	-	-	-
Georgia	171	4	17	18	17	11	16	24	15	12	8	17	12
Guyana	254	24	13	16	35	12	11	22	15	16	32	46	12
Hong Kong	7	-	2	-	1	-	1	1	-	1	-	1	-
India	106 774	7 196	6 805	7 138	9 505	12 641	10 006	8 720	8 218	9 077	8 600	9 758	9 110
Indonesia	6 113	243	346	394	517	498	442	509	1 055	407	485	571	646
Japan	34 415	1 666	1 959	2 131	2 671	2 815	2 955	2 930	3 278	3 508	5 256	2 848	2 398
Kazakhstan	590	43	46	49	52	33	50	45	40	31	74	71	56
Korea Democratic People's	402	32	25	21	40	41	28	27	18	17	87	47	19
Laos	107	6	5	4	10	7	6	18	19	11	5	7	9
Macau	6	-	1	-	2	-	-	1	-	-	-	2	-
Malaysia	10 044	1 032	522	640	828	832	671	606	1 000	1 138	1 010	845	920
Maldives	35	1	1	2	3	11	-	1	3	3	2	5	3
Mongolia	180	23	4	31	12	9	8	14	24	13	22	15	5
Myanmar	459	19	17	49	22	39	44	57	47	43	56	34	32
Nepal	456	18	27	35	33	44	28	33	45	50	48	60	35
Pakistan	20 799	1 597	1 367	1 576	1 946	1 962	2 043	1 883	1 444	1 898	1 537	1 881	1 665
Philippines	16 238	1 194	867	1 132	1 787	1 575	1 393	1 369	1 356	1 385	1 425	1 449	1 306
Singapore	8 896	595	632	582	657	627	800	724	710	719	722	880	1 248
South Korea	19 817	2 312	1 858	1 441	1 522	1 151	1 275	2 151	1 992	1 429	1 434	1 597	1 655
Sri Lanka	4 440	457	226	338	458	352	354	419	329	350	329	336	492
Sumatra	1	-	-	-	-	-	-	-	-	-	-	1	-
Taiwan	10 686	1 369	795	678	679	778	858	1 202	816	976	1 109	787	639
Tajikistan	49	5	4	6	-	4	3	9	2	4	5	6	1
Thailand	8 693	437	441	537	839	664	607	586	1 599	718	792	777	696
Turkmenistan	48	2	11	3	4	7	5	5	-	-	4	4	3
Uzbekistan	184	11	13	13	15	12	19	9	19	11	22	14	26
Vietnam	9 882	455	415	912	940	1 436	1 033	1 021	731	531	918	706	784

Appendix VI. Number of tourists by country of residence and month of arrival, 2012 (continued)													
Country	Total	Month of arrival											
		Jan	Feb	Mar	Apr	May	Jun	Jul	Aug	Sep	Oct	Nov	Dec
Africa	6 656 457	674 697	460 998	482 434	604 695	520 930	496 189	584 590	573 893	555 093	540 085	537 080	625 773
SADC	6 446 881	658 157	445 557	466 137	587 913	505 027	479 442	567 269	555 848	535 699	521 290	518 218	606 324
Angola	47 714	6 206	4 534	3 654	3 739	3 046	2 983	3 840	3 430	3 954	3 980	4 283	4 065
Botswana	452 159	27 323	27 893	33 319	45 335	31 978	31 773	39 062	39 873	43 825	35 397	40 221	56 160
DRC	32 956	2 758	2 407	1 874	2 407	1 947	2 284	3 239	4 153	2 918	2 777	2 790	3 402
Lesotho	1 618 222	174 465	108 637	119 149	153 925	130 441	122 564	146 965	119 796	131 271	133 321	130 954	146 734
Madagascar	4 813	333	400	295	419	439	335	438	385	472	354	515	428
Malawi	142 063	13 769	9 992	10 247	11 199	11 892	10 535	13 373	12 052	13 061	12 224	12 038	11 681
Mauritius	18 233	1 651	1 412	1 266	1 656	1 317	1 318	1 692	1 361	1 591	1 509	1 784	1 676
Mozambique	1 104 404	122 959	88 166	83 624	82 853	90 281	84 031	100 369	94 321	92 949	90 191	90 817	83 843
Namibia	200 841	16 886	13 386	16 146	16 814	16 315	13 206	17 329	17 325	15 848	16 123	16 508	24 955
Seychelles	3 292	270	295	279	196	181	149	183	222	262	203	418	634
Swaziland	768 728	66 443	54 887	57 635	73 573	60 610	59 938	67 253	68 485	65 771	61 522	59 310	73 301
Tanzania	35 928	2 710	2 776	2 761	2 988	3 030	2 795	3 180	2 813	3 234	3 264	3 275	3 102
Zambia	169 555	13 694	11 480	12 539	14 357	13 739	13 626	14 828	14 644	14 028	14 557	14 730	17 333
Zimbabwe	1 847 973	208 690	119 292	123 349	178 452	139 811	133 905	155 518	176 988	146 515	145 868	140 575	179 010
'Other' Africa	209 576	16 540	15 441	16 297	16 782	15 903	16 747	17 321	18 045	19 394	18 795	18 862	19 449
East and Central Africa	81 270	7 142	6 040	6 083	6 178	6 100	5 976	6 797	6 970	7 490	7 084	7 303	8 107
Burundi	1 472	101	79	134	117	102	134	127	144	130	144	131	129
Cameroon	6 234	687	529	435	524	477	616	542	534	486	536	487	381
Central African Republic	191	9	5	11	9	24	19	10	16	23	20	24	21
Chad	414	37	26	20	25	43	31	28	53	41	43	46	21
Comoros	276	18	9	28	20	37	13	20	21	49	20	28	13
Congo	3 868	331	286	248	304	275	232	368	360	423	330	313	398
Djibouti	92	4	5	6	6	12	9	7	6	17	4	13	3
Equatorial Guinea	406	57	43	22	44	30	34	30	37	25	39	21	24
Eritrea	904	96	45	73	55	65	65	79	56	106	70	108	86
Ethiopia	7 862	560	607	685	544	578	592	686	744	782	650	780	654
Gabon	7 168	784	653	409	480	383	430	672	1 007	638	456	478	778
Kenya	32 992	2 651	2 244	2 511	2 516	2 564	2 323	2 510	2 471	3 165	3 149	3 221	3 667
Rwanda	3 429	270	222	279	309	270	247	291	306	248	326	324	337
Sao Tome and Principe	234	57	15	15	28	14	8	25	12	19	17	16	8
Somalia	206	11	12	23	19	14	17	19	24	20	24	16	7

Appendix VI. Number of tourists by country of residence and month of arrival, 2012 (concluded)													
Country	Total	Month of arrival											
		Jan	Feb	Mar	Apr	May	Jun	Jul	Aug	Sep	Oct	Nov	Dec
Uganda	15 522	1 469	1 260	1 184	1 178	1 212	1 206	1 383	1 179	1 318	1 256	1 297	1 580
West Africa	114 029	8 461	8 400	9 040	9 295	8 634	9 683	9 323	10 124	10 368	10 345	10 111	10 245
Ascension	1	-	-	-	-	-	1	-	-	-	-	-	-
Benin	1 553	79	93	97	105	114	176	138	136	164	166	164	121
Burkina Faso	816	49	47	67	63	75	74	69	41	95	82	88	66
Cape Verde Island	635	65	43	52	54	54	42	50	49	53	49	58	66
Côte D'Ivoire	2 415	149	145	150	151	159	239	196	218	241	298	275	194
Gambia	1 142	76	78	89	91	123	99	99	102	103	99	96	87
Ghana	22 953	1 649	1 534	1 956	1 853	1 773	1 964	1 881	1 929	2 176	2 083	2 134	2 021
Guinea	2 990	237	220	243	239	264	288	235	237	253	270	282	222
Guinea-Bissau	212	13	10	11	17	15	25	22	20	21	25	17	16
Liberia	708	48	48	47	62	64	58	56	36	67	70	112	40
Madeira Islands	1	-	-	-	-	-	-	-	-	-	-	-	1
Mali	1 268	86	86	91	98	107	88	104	117	116	149	129	97
Mauritania	241	21	21	12	16	25	21	21	17	26	33	20	8
Niger	369	28	31	28	25	37	22	29	24	30	36	51	28
Nigeria	73 282	5 659	5 666	5 741	6 051	5 340	6 149	5 980	6 795	6 469	6 406	6 162	6 864
Saint Helena	52	-	-	-	-	14	-	1	12	12	-	7	6
Senegal	3 600	188	243	334	337	325	280	290	253	366	358	335	291
Sierra Leone	991	50	89	69	79	74	84	86	74	89	128	99	70
Togo	800	64	46	53	54	71	73	66	64	87	93	82	47
North Africa	14 277	937	1 001	1 174	1 309	1 169	1 088	1 201	951	1 536	1 366	1 448	1 097
Algeria	1 539	65	73	85	119	113	106	120	94	159	194	205	206
Egypt	7 308	504	484	643	709	598	503	600	499	792	717	703	556
Libya	951	82	54	68	101	70	96	89	37	71	88	103	92
Morocco	1 611	98	156	117	117	136	93	109	140	239	144	164	98
The Sudan	1 665	115	167	152	132	167	201	165	65	147	121	154	79
Tunisia	1 182	68	66	109	129	83	88	117	114	127	101	114	66
Western Sahara	21	5	1	-	2	2	1	1	2	1	1	5	-
Unspecified	26 148	2 115	2 082	2 197	2 205	2 320	2 033	1 999	1 907	2 102	2 302	2 603	2 283

Appendix VII. Number of tourists by country of residence and mode of travel, 2012					
Country	Total	Mode of travel			
		Air	Road	Sea	Unspecified
Total	9 188 368	2 936 871	6 239 659	11 651	187
Overseas	2 505 763	2 232 857	262 115	10 722	69
Europe	1 410 436	1 238 067	165 838	6 518	13
Albania	110	109	1	-	-
Andorra	52	43	9	-	-
Austria	25 179	22 020	2 955	204	-
Azores Island	1	-	1	-	-
Belarus	664	658	6	-	-
Belgium	44 125	37 487	6 607	31	-
Bosnia-Herzegovina	254	244	10	-	-
Bulgaria	2 838	2 516	311	11	-
Byelorussian SSR	1	-	1	-	-
Channel Island	2	1	-	1	-
Croatia	1 672	1 495	147	30	-
Czech Republic	6 922	5 998	920	4	-
Denmark	25 149	22 771	2 292	85	1
Estonia	776	676	97	3	-
Finland	10 203	9 291	900	12	-
France	122 244	105 775	16 284	184	1
Germany	266 333	230 098	35 153	1 082	-
Gibraltar	1	1	-	-	-
Greece	6 157	5 689	454	13	1
Hungary	3 253	3 021	224	8	-
Iceland	733	646	86	1	-
Ireland	28 862	25 878	2 919	63	2
Italy	61 318	55 749	5 470	96	3
Latvia	704	659	39	6	-
Liechtenstein	271	253	18	-	-
Lithuania	1 057	960	89	8	-
Luxembourg	1 488	1 300	186	2	-
Malta	567	502	65	-	-
Moldova	205	194	9	2	-
Monaco	68	63	3	2	-

Appendix VII. Number of tourists by country of residence and mode of travel, 2012 (continued)					
Country	Total	Mode of travel			
		Air	Road	Sea	Unspecified
Norway	23 156	20 917	2 213	26	-
Poland	11 722	10 390	1 296	36	-
Portugal	48 211	31 536	16 640	34	1
Romania	2 937	2 758	143	36	-
Russian Federation	13 350	12 421	842	86	1
San Marino	38	34	4	-	-
Slovakia	2 619	2 201	418	-	-
Slovenia	1 178	1 080	96	2	-
Spain	29 398	26 779	2 568	51	-
Sweden	40 856	36 677	4 142	37	-
Switzerland	51 807	45 872	5 656	278	1
The Netherlands	117 936	95 460	22 203	273	-
Turkey	13 457	12 713	716	27	1
UK	438 023	400 779	33 518	3 725	1
Ukraine	4 276	4 105	113	58	-
Vatican	27	25	2	-	-
Yugoslavia	235	223	11	1	-
North America	393 446	355 814	35 191	2 440	1
Canada	66 802	58 539	8 000	263	-
USA	326 644	297 275	27 191	2 177	1
Central and South America	119 913	112 215	7 562	136	-
Antigua And Barbuda	51	43	8	-	-
Argentina	17 514	16 910	598	6	-
Bahamas	153	133	20	-	-
Barbados	168	153	15	-	-
Belize	78	72	6	-	-
Bermuda	45	41	4	-	-
Bolivia	1 371	1 288	83	-	-
Br Virgin Island	3	3	-	-	-
Brazil	78 376	73 129	5 201	46	-
Chile	3 507	3 229	265	13	-
Colombia	2 627	2 506	119	2	-
Costa Rica	372	289	82	1	-
Cuba	1 801	1 634	160	7	-

Appendix VII. Number of tourists by country of residence and mode of travel, 2012 (continued)					
Country	Total	Mode of travel			
		Air	Road	Sea	Unspecified
Dominica	173	159	13	1	-
Ecuador	750	693	56	1	-
El Salvador	146	137	5	4	-
French Guinea	4	1	3	-	-
Grenada	31	30	1	-	-
Guatemala	278	264	13	1	-
Guyana (Guinea-British)	3	2	1	-	-
Haiti	98	89	9	-	-
Honduras	284	220	43	21	-
Jamaica	743	599	144	-	-
Mexico	3 477	3 309	154	14	-
Nicaragua	80	69	10	1	-
Panama	260	247	13	-	-
Paraguay	692	663	29	-	-
Peru	2 944	2 681	254	9	-
Puerto Rico	3	1	2	-	-
St Lucia	36	28	8	-	-
St Vincent And Grenadines	21	19	1	1	-
Suriname	69	61	8	-	-
Trinidad And Tobago	839	767	71	1	-
Turks And Caicos island	4	4	-	-	-
Uruguay	1 370	1 314	55	1	-
Venezuela	1 442	1 347	92	3	-
West Indies	100	81	16	3	-
Australasia	142 949	132 302	10 190	456	1
Australia	120 315	111 448	8 465	402	-
Bouvet Island	6	6	-	-	-
Cocos (Keeling) Island	3	3	-	-	-
Cook Islands	1	1	-	-	-
Federated States of Micron	3	3	-	-	-
Fiji	182	177	4	1	-
French Polynesia	3	2	-	-	1
French Southern Terr.	4	4	-	-	-
Kiribati	14	14	-	-	-
Marshall Islands	7	7	-	-	-
Naura	6	5	1	-	-

Appendix VII. Number of tourists by country of residence and mode of travel, 2012(continued)					
Country	Total	Mode of travel			
		Air	Road	Sea	Unspecified
New Zealand	22 209	20 453	1 714	42	-
Northern Mariana Island	6	2	4	-	-
Palau	1	1	-	-	-
Papua New Guinea	62	62	-	-	-
Samoa	53	47	1	5	-
Solomon Island	13	13	-	-	-
Tokelau	3	3	-	-	-
Tonga Island	27	26	1	-	-
Tuvalu	18	12	-	6	-
Vanuatu	13	13	-	-	-
Middle East	40 715	38 174	2 519	17	5
Bahrain	194	192	2	-	-
Cyprus	1 659	1 426	232	1	-
Iran	3 806	3 685	121	-	-
Iraq	296	266	30	-	-
Israel	20 640	18 989	1 643	8	-
Jordan	1 818	1 694	123	1	-
Kuwait	650	617	32	1	-
Lebanon	3 252	2 968	283	1	-
Oman	426	424	2	-	-
Palestine	241	229	7	-	5
Qatar	303	301	2	-	-
Saudi Arabia	5 305	5 283	20	2	-
Syria	573	562	8	3	-
United Arab Emirates	1 180	1 179	1	-	-
Yemen	372	359	13	-	-
Asia	398 304	356 285	40 815	1 155	49
Afghanistan	184	137	47	-	-
Armenia	163	160	3	-	-
Azerbaijan	237	232	4	1	-
Bangladesh	5 480	3 549	1 860	50	21
Bhutan	36	32	3	1	-
Brunei Darussalam	37	36	1	-	-
Cambodia	93	84	4	5	-
China	132 327	123 735	8 450	141	1

Appendix VII. Number of tourists by country of residence and mode of travel, 2012 (continued)					
Country	Total	Mode of travel			
		Air	Road	Sea	Unspecified
East Timor	1	1	-	-	-
Georgia	171	170	-	1	-
Guyana	254	210	44	-	-
Hong Kong	7	4	2	1	-
India	106 774	90 697	15 802	270	5
Indonesia	6 113	5 781	154	178	-
Japan	34 415	33 103	1 281	31	-
Kazakhstan	590	577	13	-	-
Korea Democratic People's	402	379	23	-	-
Laos	107	69	38	-	-
Macau	6	5	1	-	-
Malaysia	10 044	9 584	426	34	-
Maldives	35	34	1	-	-
Mongolia	180	157	23	-	-
Myanmar	459	365	63	31	-
Nepal	456	441	15	-	-
Pakistan	20 799	15 617	5 115	50	17
Philippines	16 238	13 973	1 995	270	-
Singapore	8 896	8 616	274	6	-
South Korea	19 817	17 693	2 108	16	-
Sri Lanka	4 440	3 091	1 342	7	-
Sumatra	1	-	1	-	-
Taiwan	10 686	9 264	1 370	47	5
Tajikistan	49	47	2	-	-
Thailand	8 693	8 403	284	6	-
Turkmenistan	48	46	2	-	-
Uzbekistan	184	184	-	-	-
Vietnam	9 882	9 809	64	9	-
Africa	6 656 457	686 126	5 969 358	856	117
SADC	6 446 881	496 803	5 949 520	522	36
Angola	47 714	46 026	1 675	13	-
Botswana	452 159	43 641	408 473	44	1
DRC	32 956	25 031	7 916	9	-
Lesotho	1 618 222	9 523	1 608 635	63	1

Appendix VII. Number of tourists by country of residence and mode of travel, 2012 (continued)					
Country	Total	Mode of travel			
		Air	Road	Sea	Unspecified
Madagascar	4 813	4 644	115	51	3
Malawi	142 063	25 085	116 971	6	1
Mauritius	18 233	16 272	1 939	22	-
Mozambique	1 104 404	51 712	1 052 661	27	4
Namibia	200 841	70 159	130 521	157	4
Seychelles	3 292	3 217	75	-	-
Swaziland	768 728	11 672	757 047	8	1
Tanzania	35 928	20 966	14 940	5	17
Zambia	169 555	58 385	111 160	10	-
Zimbabwe	1 847 973	110 470	1 737 392	107	4
'Other' Africa	209 576	189 323	19 838	334	81
East and Central Africa	81 270	72 084	8 976	183	27
Burundi	1 472	1 393	78	1	-
Cameroon	6 234	5 643	570	20	1
Central African Republic	191	188	3	-	-
Chad	414	395	10	5	4
Comoros	276	259	17	-	-
Congo	3 868	3 700	116	39	13
Djibouti	92	89	2	1	-
Equatorial Guinea	406	394	12	-	-
Eritrea	904	817	87	-	-
Ethiopia	7 862	6 957	887	16	2
Gabon	7 168	7 033	67	68	-
Kenya	32 992	28 777	4 196	18	1
Rwanda	3 429	3 166	262	1	-
Sao Tome and Principe	234	230	4	-	-
Somalia	206	185	16	4	1
Uganda	15 522	12 858	2 649	10	5
West Africa	114 029	103 650	10 202	128	49
Ascension	1	1	-	-	-
Benin	1 553	1 453	97	3	-

Appendix VII. Number of tourists by country of residence and mode of travel, 2012 (concluded)					
Country	Total	Mode of travel			
		Air	Road	Sea	Unspecified
Burkina Faso	816	788	22	-	6
Cape Verde Island	635	562	73	-	-
Côte D'Ivoire	2 415	2 347	67	1	-
Gambia	1 142	1 053	89	-	-
Ghana	22 953	21 084	1 853	8	8
Guinea	2 990	1 716	1 256	4	14
Guinea-Bissau	212	180	32	-	-
Liberia	708	674	34	-	-
Madeira Islands	1	-	1	-	-
Mali	1 268	1 089	178	-	1
Mauritania	241	228	6	-	7
Niger	369	346	16	-	7
Nigeria	73 282	67 066	6 156	54	6
Saint Helena	52	6	-	46	-
Senegal	3 600	3 488	101	11	-
Sierra Leone	991	791	199	1	-
Togo	800	778	22	-	-
North Africa	14 277	13 589	660	23	5
Algeria	1 539	1 429	107	3	-
Egypt	7 308	6 979	310	16	3
Libya	951	870	77	2	2
Morocco	1 611	1 539	72	-	-
The Sudan	1 665	1 614	50	1	-
Tunisia	1 182	1 140	41	1	-
Western Sahara	21	18	3	-	-
Unspecified	26 148	17 888	8 186	73	1

Appendix VIII. Number of tourists by country of residence and purpose of visit, 2012					
Country	Total	Purpose of visit			
		Business	Holiday	Study	Transit
Total	9 188 368	205 037	8 310 457	87 696	585 178
Overseas	2 505 763	103 855	1 976 405	16 523	408 980
Europe	1 410 436	61 651	1 167 098	8 361	173 326
Albania	110	14	74	-	22
Andorra	52	1	47	-	4
Austria	25 179	864	20 377	124	3 814
Azores Island	1	-	1	-	-
Belarus	664	46	524	12	82
Belgium	44 125	1 750	37 373	299	4 703
Bosnia-Herzegovina	254	21	196	1	36
Bulgaria	2 838	148	2 080	18	592
Byelorussian SSR	1	-	1	-	-
Channel Island	2	-	2	-	-
Croatia	1 672	102	1 051	12	507
Czech Republic	6 922	276	5 786	17	843
Denmark	25 149	1 107	20 422	108	3 512
Estonia	776	35	620	5	116
Finland	10 203	622	7 809	51	1 721
France	122 244	5 726	99 115	968	16 435
Germany	266 333	9 359	223 115	1 878	31 981
Gibraltar	1	-	1	-	-
Greece	6 157	425	4 989	40	703
Hungary	3 253	227	2 587	14	425
Iceland	733	45	555	1	132
Ireland	28 862	1 462	24 672	160	2 568
Italy	61 318	3 218	48 236	220	9 644
Latvia	704	49	506	7	142
Liechtenstein	271	3	232	1	35
Lithuania	1 057	71	744	4	238
Luxembourg	1 488	38	1 212	1	237
Malta	567	37	476	1	53
Moldova	205	14	167	2	22

Appendix VIII. Number of tourists by country of residence and purpose of visit, 2012 (continued)					
Country	Total	Purpose of visit			
		Business	Holiday	Study	Transit
Monaco	68	3	56	3	6
Norway	23 156	827	18 392	379	3 558
Poland	11 722	542	9 443	38	1 699
Portugal	48 211	1 172	38 161	190	8 688
Romania	2 937	248	2 069	17	603
Russian Federation	13 350	942	10 190	85	2 133
San Marino	38	2	35	-	1
Slovakia	2 619	140	2 168	12	299
Slovenia	1 178	90	921	3	164
Spain	29 398	1 712	20 554	111	7 021
Sweden	40 856	1 968	33 848	254	4 786
Switzerland	51 807	1 072	40 401	240	10 094
The Netherlands	117 936	4 143	106 219	922	6 652
Turkey	13 457	1 032	11 125	112	1 188
UK	438 023	21 806	367 574	2 023	46 620
Ukraine	4 276	263	2 779	27	1 207
Vatican	27	-	18	-	9
Yugoslavia	235	29	174	1	31
North America	393 446	13 463	317 584	3 324	59 075
Canada	66 802	2 339	55 105	398	8 960
USA	326 644	11 124	262 479	2 926	50 115
Central and South America	119 913	2 135	71 805	805	45 168
Antigua And Barbuda	51	5	26	1	19
Argentina	17 514	254	12 523	52	4 685
Bahamas	153	8	121	5	19
Barbados	168	16	113	7	32
Belize	78	2	51	-	25
Bermuda	45	-	41	1	3
Bolivia	1 371	17	448	-	906
Br Virgin Island	3	-	3	-	-
Brazil	78 376	1 029	43 364	484	33 499
Chile	3 507	124	2 544	11	828
Colombia	2 627	81	1 885	81	580

Appendix VIII. Number of tourists by country of residence and purpose of visit, 2012 (continued)					
Country	Total	Purpose of visit			
		Business	Holiday	Study	Transit
Costa Rica	372	15	317	2	38
Cuba	1 801	26	703	27	1 045
Dominica	173	8	113	-	52
Ecuador	750	28	520	18	184
El Salvador	146	9	110	1	26
French Guinea	4	-	4	-	-
Grenada	31	1	22	1	7
Guatemala	278	28	164	-	86
Guyana (Guinea-British)	3	-	3	-	-
Haiti	98	6	49	3	40
Honduras	284	9	140	7	128
Jamaica	743	29	552	4	158
Mexico	3 477	238	2 828	29	382
Nicaragua	80	2	39	4	35
Panama	260	6	218	6	30
Paraguay	692	4	282	1	405
Peru	2 944	66	1 837	21	1 020
Puerto Rico	3	-	3	-	-
St Lucia	36	1	23	-	12
St Vincent And Grenadines	21	-	17	-	4
Suriname	69	-	56	2	11
Trinidad And Tobago	839	34	557	12	236
Turks And Caicos island	4	-	3	-	1
Uruguay	1 370	30	901	11	428
Venezuela	1 442	55	1 156	12	219
West Indies	100	4	69	2	25
Australasia	142 949	4 448	117 545	324	20 632
Australia	120 315	3 873	98 569	249	17 624
Bouvet Island	6	-	1	-	5
Cocos (Keeling) Island	3	-	2	1	-
Cook Islands	1	-	1	-	-
Federated States of Micron	3	-	-	-	3
Fiji	182	9	139	6	28
French Polynesia	3	1	1	-	1
French Southern Terr.	4	1	-	-	3

Appendix VIII. Number of tourists by country of residence and purpose of visit, 2012 (continued)					
Country	Total	Purpose of visit			
		Business	Holiday	Study	Transit
Kiribati	14	-	13	-	1
Marshall Islands	7	-	1	-	6
Nauru	6	-	2	-	4
New Zealand	22 209	553	18 704	61	2 891
Northern Mariana Island	6	-	4	2	-
Palau	1	-	1	-	-
Papua New Guinea	62	2	24	3	33
Samoa	53	1	47	1	4
Solomon Island	13	2	8	-	3
Tokelau	3	1		1	1
Tonga Island	27	2	14	-	11
Tuvalu	18	2	10	-	6
Vanuatu	13	1	4	-	8
Middle East	40 715	2 693	34 078	501	3 443
Bahrain	194	30	145	4	15
Cyprus	1 659	83	1 460	1	115
Iran	3 806	259	3 248	144	155
Iraq	296	36	219	15	26
Israel	20 640	1 110	17 512	58	1 960
Jordan	1 818	248	1 414	12	144
Kuwait	650	43	567	3	37
Lebanon	3 252	346	2 084	39	783
Oman	426	54	358	5	9
Palestine	241	23	180	12	26
Qatar	303	30	270		3
Saudi Arabia	5 305	222	4 921	121	41
Syria	573	80	422	16	55
United Arab Emirates	1 180	105	1 001	17	57
Yemen	372	24	277	54	17
Asia	398 304	19 465	268 295	3 208	107 336
Afghanistan	184	23	143	15	3
Armenia	163	11	59	1	92
Azerbaijan	237	19	142	3	73
Bangladesh	5 480	202	4 508	65	705

Appendix VIII. Number of tourists by country of residence and purpose of visit, 2012 (continued)					
Country	Total	Purpose of visit			
		Business	Holiday	Study	Transit
Bhutan	36	2	18	-	16
Brunei Darussalam	37	9	24	1	3
Cambodia	93	6	36	-	51
China	132 327	5 339	84 879	529	41 580
East Timor	1	-	1	-	-
Georgia	171	21	107	1	42
Guyana	254	9	174	9	62
Hong Kong	7	-	7	-	-
India	106 774	7 221	80 877	946	17 730
Indonesia	6 113	357	3 330	30	2 396
Japan	34 415	1 837	21 892	98	10 588
Kazakhstan	590	38	451	2	99
Korea Democratic People's	402	9	105	4	284
Laos	107	2	79	4	22
Macau	6	-	4	-	2
Malaysia	10 044	560	7 827	178	1 479
Maldives	35	2	28	-	5
Mongolia	180	10	143	3	24
Myanmar	459	10	230	8	211
Nepal	456	47	308	31	70
Pakistan	20 799	974	15 823	164	3 838
Philippines	16 238	300	7 059	161	8 718
Singapore	8 896	581	7 040	30	1 245
South Korea	19 817	996	14 025	607	4 189
Sri Lanka	4 440	182	2 635	80	1 543
Sumatra	1	-	-	1	-
Taiwan	10 686	280	7 398	76	2 932
Tajikistan	49	5	26	3	15
Thailand	8 693	306	7 594	133	660
Turkmenistan	48	2	26	-	20
Uzbekistan	184	18	134	3	29
Vietnam	9 882	87	1 163	22	8 610
Africa	6 656 457	99 948	6 314 193	70 916	171 400

Appendix VIII. Country of residence of tourists by purpose of visit, 2012 (continued)					
Country	Total	Purpose of visit			
		Business	Holiday	Study	Transit
SADC	6 446 881	89 830	6 154 099	62 018	140 934
Angola	47 714	866	33 377	3 070	10 401
Botswana	452 159	2 646	422 305	8 023	19 185
DRC	32 956	831	28 491	1 569	2 065
Lesotho	1 618 222	1 185	1 601 091	11 734	4 212
Madagascar	4 813	113	2 525	123	2 052
Malawi	142 063	3 191	130 623	1 037	7 212
Mauritius	18 233	993	13 241	600	3 399
Mozambique	1 104 404	13 068	1 067 941	1 190	22 205
Namibia	200 841	23 238	151 570	8 405	17 628
Seychelles	3 292	116	2 939	45	192
Swaziland	768 728	12 088	739 457	11 581	5 602
Tanzania	35 928	1 106	28 394	1 071	5 357
Zambia	169 555	13 276	141 056	2 012	13 211
Zimbabwe	1 847 973	17 113	1 791 089	11 558	28 213
'Other' Africa	209 576	10 118	160 094	8 898	30 466
East and Central Africa	81 270	4 471	61 455	4 991	10 353
Burundi	1 472	74	1 019	51	328
Cameroon	6 234	310	4 206	644	1 074
Central African Republic	191	14	140	7	30
Chad	414	19	299	45	51
Comoros	276	9	183	23	61
Congo	3 868	126	3 001	367	374
Djibouti	92	8	65	2	17
Equatorial Guinea	406	26	259	107	14
Eritrea	904	30	749	21	104
Ethiopia	7 862	377	6 355	233	897
Gabon	7 168	74	5 968	654	472
Kenya	32 992	2 386	25 052	1 801	3 753
Rwanda	3 429	154	2 281	279	715
Sao Tome and Principe	234	12	127	2	93
Somalia	206	9	126	7	64

Appendix VIII. Number of tourists by country of residence and purpose of visit, 2012 (concluded)					
Country	Total	Purpose of visit			
		Business	Holiday	Study	Transit
Uganda	15 522	843	11 625	748	2 306
West Africa	114 029	4 179	88 949	3 347	17 554
Ascension	1	-	1	-	-
Benin	1 553	85	1 241	49	178
Burkina Faso	816	96	484	16	220
Cape Verde Island	635	20	520	11	84
Côte D'Ivoire	2 415	227	1 696	97	395
Gambia	1 142	32	466	8	636
Ghana	22 953	1 028	18 018	341	3 566
Guinea	2 990	63	1 992	42	893
Guinea-Bissau	212	10	104	1	97
Liberia	708	61	474	27	146
Madeira Islands	1	-	1	-	-
Mali	1 268	81	824	27	336
Mauritania	241	28	141	1	71
Niger	369	35	255	10	69
Nigeria	73 282	2 099	59 171	2 651	9 361
Saint Helena	52	-	52	-	-
Senegal	3 600	209	2 335	25	1 031
Sierra Leone	991	49	697	30	215
Togo	800	56	477	11	256
North Africa	14 277	1 468	9 690	560	2 559
Algeria	1 539	119	1 108	50	262
Egypt	7 308	741	5 033	112	1 422
Libya	951	61	593	169	128
Morocco	1 611	216	1 036	43	316
The Sudan	1 665	182	1 176	171	136
Tunisia	1 182	149	729	15	289
Western Sahara	21	-	15	-	6
Unspecified	26 148	1 234	19 859	257	4 798

Appendix IX. Number of tourists by sex, age group and month of arrival, 2012													
Sex and age group	Total	Month of arrival											
		Jan	Feb	Mar	Apr	May	Jun	Jul	Aug	Sep	Oct	Nov	Dec
All	9 188 368	887 066	677 674	703 067	802 834	692 046	653 686	793 245	775 620	765 398	784 862	781 096	871 774
0-14	513 137	46 739	29 593	31 825	54 309	26 133	30 145	48 628	56 466	33 157	34 637	33 036	88 469
15-64	8 252 083	800 310	608 171	633 441	715 508	637 783	599 655	719 862	690 456	693 149	703 258	700 600	749 890
65+	415 816	39 292	39 369	37 228	32 322	27 499	23 353	24 132	28 084	38 481	46 368	46 864	32 824
Unspecified	7 332	725	541	573	695	631	533	623	614	611	599	596	591
Male	5 177 695	511 858	390 976	397 748	448 570	404 572	371 302	446 090	430 419	435 889	445 140	438 190	456 941
0-14	256 466	23 535	14 886	16 161	27 387	13 028	15 048	24 478	28 319	16 468	17 181	16 423	43 552
15-64	4 702 787	467 355	355 031	362 280	404 385	376 644	343 708	408 665	387 400	399 392	404 024	397 056	396 847
65+	214 434	20 573	20 781	19 006	16 407	14 552	12 236	12 605	14 374	19 684	23 597	24 391	16 228
Unspecified	4 008	395	278	301	391	348	310	342	326	345	338	320	314
Female	3 999 941	374 233	285 873	304 487	353 371	286 686	281 619	346 293	344 320	328 521	338 782	341 978	413 778
0-14	256 666	23 203	14 707	15 664	26 921	13 105	15 097	24 150	28 147	16 689	17 456	16 613	44 914
15-64	3 540 683	332 181	252 494	270 500	310 396	260 488	255 321	310 491	302 338	292 973	298 482	302 823	352 196
65+	200 123	18 587	18 477	18 106	15 815	12 871	11 044	11 445	13 624	18 676	22 659	22 343	16 476
Unspecified	2 469	262	195	217	239	222	157	207	211	183	185	199	192
Unspecified	10 732	975	825	832	893	788	765	862	881	988	940	928	1 055
0-14	5	1			1								3
15-64	8 613	774	646	661	727	651	626	706	718	784	752	721	847
65+	1 259	132	111	116	100	76	73	82	86	121	112	130	120
Unspecified	855	68	68	55	65	61	66	74	77	83	76	77	85

5. DEFINITION OF TERMS

Definitions used by the United Nations World Tourism Organisation (UNWTO)

- **Traveller** is someone who moves between different geographical locations for any purpose and any duration. Note: in this publication, the geographical locations are **countries**. Hence in this report, the term traveller refers to an international traveller.
- **Visitor** refers to any person travelling to a place other than that of his/her usual environment for less than 12 months and whose main purpose of the trip is other than the exercise of an activity remunerated from within the place visited.
- **Same-day visitor** is a visitor who visits a place for less than one night.
- **Tourist** (overnight visitor) is a visitor who stays at least one night in collective or private accommodation in the place visited for less than twelve months.
- **Tourism** comprises the activities of persons travelling to, and staying in places outside their usual environment, for not more than one uninterrupted year, for leisure, business and other purposes. The usual environment of a person consists of a certain area around his/her place of residence, plus all other places he/she frequently visits.

Definitions used specifically in this report

- **South African resident** refers to either a South African citizen or a non-South African citizen with a South African permanent residence permit.
- **Foreign traveller** refers to a traveller who is not a South African citizen or permanent resident.
- **Country** refers to individual countries within a region. (Note: The country of residence is used here and not the country from which the visitor travelled).
- **Region** refers to the following country classification: Overseas, SADC and 'Other' Africa. Overseas consists of Europe, North America, Central and South America, Australasia, the Middle East and Asia.
- **Overseas:** refers to all countries outside Africa
- **Africa** refers to all the countries in Africa (both mainland and island countries).
- **SADC** refers to the fourteen countries, excluding South Africa, that belong to the Southern African Development Community
- **'Other' Africa** refers to all countries in Africa that are not members of the SADC. They are grouped as: East and Central Africa, West Africa and North Africa.

Symbol used

- = Nil

Limitations

Stats SA is unable to provide tourism information on South African residents. This is because DHA does not collect data on purpose of travel and intended duration of stay from departures or purpose of travel and days spent away from arrivals.

Related publications

Tourism statistics are also published in the monthly Statistical Release P0351: *Tourism and Migration* and in the quarterly *Bulletin of Statistics* and *STATS in Brief*

6. OTHER STATS SA REPORTS

The following reports on tourism and migration have been published:

- No. 205 - South African residents travelling abroad 1952-1957
- No. 286 - Statistics of immigrants and emigrants 1924-1964
- No. 297 - Statistics of migration 1963 and earlier years
- No. 07-20-01 - External migration 1964
- No. 07-20-02 - External migration 1965
- No. 19-01-01 - Migration Statistics: Immigrants and Emigrants 1966 to 1969
- No. 19-02-01 - Migration Statistics: Tourists 1966 to 1969
- No. 19-01-02 - Migration Statistics: Tourists Immigrants and Emigrants 1970 and 1971
- No. 19-01-03 - Tourism and migration 1972-1975
- No. 19-01-04 - Tourism and migration 1976
- No. 19-01-05 - Tourism and migration 1977
- No. 19-01-06 - Tourism and migration 1978
- No. 19-01-07 - Tourism and migration 1979
- No. 19-01-08 - Tourism and migration 1980
- No. 19-01-09 - Tourism and migration 1981
- No. 19-01-10 - Tourism and migration 1982
- No. 19-01-11 - Tourism and migration 1983
- No. 19-01-12 - Tourism and migration 1984
- No. 19-01-13 - Tourism and migration 1985
- No. 19-01-14 - Tourism and migration 1986
- No. 03-51-02 (1987) - Tourism and migration
- No. 03-51-02 (1988) - Tourism and migration
- No. 03-51-02 (1989) - Tourism and migration
- No. 03-51-02 (1990) - Tourism and migration
- No. 03-51-02 (1991) - Tourism and migration
- No. 03-51-02 (1992) - Tourism and migration
- No. 03-51-02 (1993) - Tourism and migration
- No. 03-51-02 (1994) - Tourism and migration
- No. 03-51-02 (1995) - Tourism and migration
- No. 03-51-02 (1996) - Tourism and migration
- No. 03-51-02 (1997) - Tourism
- No. 03-51-02 (1998) - Tourism
- No. 03-51-02 (1999) - Tourism
- No. 03-51-02 (2000) - Tourism
- No. 03-51-02 (2001) - Tourism
- No. 03-51-02 (2002) -Tourism
- No. 03-51-02 (2003) -Tourism
- No. 03-51-02 (2004, 2005 and 2006) –Tourism
- No. 03-51-02 (2007) -Tourism
- No. 03-51-02 (2008) -Tourism
- No. 03-51-02 (2009) - Tourism
- No. 03-51-02 (2011) -Tourism