

Tourism, 2011

Report No. 03-51-02 (2011)

Preface

This report provides information collected by DHA immigration officers on South African residents and foreign travellers that passed through all South Africa air, land and sea ports of entry/exit in 2011. The report gives some results on the travel characteristics of non-visitors and same day visitors. It further presents detailed information on the mode of travel, seasonal travel patterns, purpose of visit, length of stay per month and demographic characteristics of tourists (foreign) who visited South Africa in 2011.

THE STATISTICIAN-GENERAL - STATISTICS SOUTH AFRICA

**PRETORIA
2012**

Tourism, 2011 / Statistics South Africa

Published by Statistics South Africa, Private Bag X44, Pretoria 0001

© Statistics South Africa, 2012

Users may apply or process this data, provided Statistics South Africa (Stats SA) is acknowledged as the original source of the data; that it is specified that the application and/or analysis is the result of the user's independent processing of the data; and that neither the basic data nor any reprocessed version or application thereof may be sold or offered for sale in any form whatsoever without prior permission from Stats SA.

Stats SA Library Cataloguing-in-Publication (CIP) Data

Tourism, 2011 / Statistics South Africa. Pretoria: Statistics South Africa, 2012

Report no. 03-51-02 (2011)

57 pp

ISBN 978-0-621-40796-9

A complete set of Stats SA publications is available at Stats SA Library and the following libraries:

National Library of South Africa, Pretoria Division
National Library of South Africa, Cape Town Division
Library of Parliament, Cape Town
Bloemfontein Public Library
Natal Society Library, Pietermaritzburg
Johannesburg Public Library
Eastern Cape Library Services, King William's Town
Central Regional Library, Polokwane
Central Reference Library, Nelspruit
Central Reference Collection, Kimberley
Central Reference Library, Mmabatho

This report is available on the Stats SA website: www.statssa.gov.za

Copies are obtainable from: Printing and Distribution, Statistics South Africa

Tel: (012) 310 8093

(012) 310 8251

(012) 310 8358

(012) 310 8161

Fax: (012) 321 7381

Email: inadp@statssa.gov.za

annelineb@statssa.gov.za

CONTENTS

1. KEY FINDINGS.....	6
1.1 Introduction	6
1.2 Data	6
1.3 Number of travellers.....	6
1.4 South African residents.....	6
1.5 Foreign travellers	7
1.6 Same day visitors.....	7
1.7 Tourists	7
1.7.1 Region of residence	7
1.7.2 Mode of travel	8
1.7.3 Purpose of visit	8
1.7.4 Duration of stay.....	9
1.7.5 Sex and age distribution.....	9
1.8 Summary.....	9
2. FIGURES	10
Figure 1. Number of arrivals and departures by year of travel, 2000–2011	10
Figure 2. Number of arrivals and departures of South African residents by year of travel, 2000–2011.....	11
Figure 3. Number of arrivals and departures of foreign travellers by year of travel, 2000–2011	12
Figure 4. Number of tourists by month and year of travel, 2010 and 2011.....	13
Figure 5. Number of tourists from eight leading overseas countries in 2010 and 2011.....	14
Figure 6. Number of tourists from eight leading SADC countries in 2010 and 2011	14
Figure 7. Number of tourists from eight leading 'other' African countries in 2010 and 2011	14
Figure 8. Percentage distribution of tourists by region and purpose of visit, 2011	14
Figure 9a. Percentage distribution of tourists from overseas countries on holiday, 2011.....	15
Figure 9b. Percentage distribution of tourists from overseas countries on business, 2011.....	15
Figure 9c. Percentage distribution of tourists from overseas countries on study, 2011.....	15
Figure 10a. Percentage distribution of tourists from SADC countries on holiday, 2011	15
Figure 10b. Percentage distribution of tourists from SADC countries on business, 2011	16
Figure 10c. Percentage distribution of tourists from SADC countries on study, 2011	16
Figure 11a. Percentage distribution of tourists from 'other' African countries on holiday, 2011	16
Figure 11b. Percentage distribution of tourists from 'other' African countries on business, 2011	16
Figure 11c. Percentage distribution of tourists from 'other' African countries on study, 2011	17
Figure 12. Average (median) number of days tourists spent by month of arrival, 2011	17
3. TABLES	18
Table 1. Number of foreign travellers and South African residents by year of travel, 2000–2011.....	18
Table 2. Number of arrivals and departures of South African residents by mode of travel and place of arrival or departure, 2011	19
Table 3. Number of foreign arrivals by purpose of visit and month of arrival, 2011.....	20
Table 4. Number of foreign arrivals and departures by mode of travel and place of arrival or departure, 2011	21
Table 5. Number of foreign arrivals by type of visitor and month of arrival, 2011.....	22
Table 6. Number of same day visitors by mode of travel, region of residence and purpose of visit, 2011	23
Table 7. Number of tourists by region of residence and month of arrival, 2011	24
Table 8. Number of tourists by mode of travel, place and month of arrival, 2011	25
Table 9. Number of tourists by region of residence and mode of travel, 2011	26
Table 10. Number of tourists from eight leading overseas countries in 2011 and their percentage change from 2010	27
Table 11. Number of tourists from eight leading SADC countries in 2011 and their percentage change from 2010.....	27
Table 12. Number of tourists from eight leading 'other' African countries in 2011 and their percentage change from 2010	27
Table 13. Number of tourists by sex, age group and region of residence, 2011	28

4. APPENDICES.....29

Appendix I. Ports of entry/exit in South Africa29

Appendix II. Number of South African residents by mode of travel, place and month of arrival, 201130

Appendix III. Number of South African residents by mode of travel, place and month of departure, 2011.....31

Appendix IV. Number of foreign arrivals by mode of travel, place and month of arrival, 201132

Appendix V. Number of foreign departures by mode of travel, place and month of departure, 201133

Appendix VI. Number of tourists by country of residence and month of arrival, 201134

Appendix VII. Number of tourists by country of residence and mode of travel, 201141

Appendix VIII. Number of tourists by country of residence and purpose of visit, 201148

Appendix IX. Number of tourists by sex, age group and month of arrival, 2011.....55

5. DEFINITION OF TERMS56

6. OTHER STATS SA REPORTS.....57

1. KEY FINDINGS

1.1 Introduction

This annual report contains information on population movements into and out of South Africa for the year 2011. It reports on arrivals and departures of South African residents and foreign travellers. A detailed analysis of the twelve month movements of tourists and their demographic characteristics are provided.

The management and control of population movements across South African borders and immigration into South Africa fall under the jurisdiction of the Department of Home Affairs (DHA). The jurisdiction of this responsibility is enshrined in the various immigration acts, amendments, laws and regulations. Currently with respect to the collection of data on population movements in and out of South Africa, DHA operates with the Immigration Act 2002 (Act N0 13 of 2002) and its amendments. Changes and amendments in these legal frameworks affect both the flow of travellers as well as the methods of collecting data and the kind of information collected on travellers.

Administrative data collected from all the country's ports of entry constitute a comprehensive source of information on arrival and departure of tourists. The data provide the best national coverage (in terms of both space and time) on the population movements of South African residents and foreign travellers. Thus the data:

- can be used to estimate, monitor and understand salient characteristics of foreign travellers and volumes of South African residents travelling outside South Africa;
- can be used to estimate the number of tourists that visit South Africa and some characteristics of these tourists; and
- provide information that can be used to (a) assess the extent of government's progress in strengthening bilateral political and economic relations by assessing the number of international tourists; and (b) benchmark surveys focusing on demand for local tourism services by foreign travellers.

1.2 Data

Data routinely collected by immigration officers at all land, air and sea ports of entry/exit on all travellers (South African residents and foreign travellers) arriving into or departing from South Africa are captured into the DHA's population Movement Control System (MCS). Generally the data are collected directly from travel documents either by scanning them or by capturing information from the travel documents onto the port's electronic database. Individual ports regularly transmit the data into the national database at the head office of the DHA. Statistics South Africa (Stats SA) downloads the data covering a particular calendar month from the mainframe of the State Information Technology Agency

(SITA), where the DHA stores its data. The data are processed and used to publish information on tourism in the monthly *Tourism and Migration* release (P0351) in order to meet users' immediate needs. The cumulative data for twelve months are published in the *Tourism* report on an annual basis.

1.3 Number of travellers

This report covers the data on travellers that passed through South African borders in 2011 (see Appendix I). The results present detailed information derived from the data published in the January 2011 to December 2011 *Tourism and Migration* release (P0351). In addition to the 2011 data, where relevant, data from 2010 or even beyond are presented to provide some comparison in observed trends and patterns.

Travellers are composed of arrivals into South Africa and departures from the country regardless of residency status. According to data presented in Figure 1 and Table 1, in 2011, a total of 34 105 393 travellers were recorded compared to only 19 185 135 recorded in 2000. Similarly, there were 17 924 920 arrivals and 16 180 473 departures in 2011 compared to 9 884 953 and 9 300 182 of arrivals and departures respectively in 2000. Thus showing an increased of 77,8% in travellers; 81,3% in arrivals and 74,0% in departures between 2000 and 2011. The overall pattern observed is that throughout the twelve year period, there were more arrivals than departures in the country. Despite this general trend in the volume of travellers, a slight decline from 2000 to 2001 was observed. Likewise, a noticeable drop in volumes occurred in 2003 and 2004. Thereafter, from 2005, the annual volumes have been increasing steadily.

1.4 South African residents

In 2011, 10 884 469 South African resident travellers were recorded. This volume shows an increase of 41,0% from the 7 718 469 South African resident travellers recorded in 2000. However, as observed from Figure 2 and Table 1, there were sharp declines in South African travellers in 2003 and 2004. These declines in the volume of South African travellers between 2003 and 2005 were mainly due to the changes in the Immigration Act (Act No.13 of 2002) regarding the recording of information on the international movements of South African residents. The Act resulted in information on arrival and departure of South African residents not being consistently collected (*i.e.* misinterpretation of the Act led to some immigration officers collecting while others were not collecting information on South African residents). Collection resumed after the implementation of the Immigration Amendment Act (Act No.19 of 2004). Notwithstanding the above observation, the data on South African residents further indicate that the difference between the arrival and departure volumes remained more or less the same throughout the period 2000 to 2011.

Table 2 further shows that during 2011, as many as 3 517 599 (64,8%) South African residents arrived in South Africa by road, followed by 1 853 321 (34,1%) air arrivals. A total of 58 243 (1,1%) arrived by sea and the mode of travel of residents 14 (0,0%) was not specified. Due to the large number of road ports as observed in Appendix I, border countries are used in the table instead of the specific land ports names. That is, data for all ports found on the border with a particular country are combined and the country name is used.

The highest number of South Africa residents arriving by road used Lesotho (30,0%) and Swaziland (23,1%) ports. Out of the total number of South African residents arriving by air, 1 521 090 (82,1%) arrived through OR Tambo international airport; while 234 263 (12,6%) arrived through Cape Town international airport; 62 545 (3,4%) came through King Shaka international airport; and 35 423 (1,9%) used other airports. Out of those who arrived by sea, a great majority (84,5%) arrived through the Durban harbour. Similarly, road transport was the most common mode of travel used by South African residents departing South Africa, [3 525 165 (64,6%)] followed by air travel, [1 871 341 (34,3%)]. A total of 58 754 (1,1%) left by sea. Over half of the departing road users went through both Lesotho (30,4%) and Swaziland (23,1%) ports. Out of the total number of residents departing by air, 1 531 821 (81,9%) used OR Tambo international airport; while 240 198 (12,8%) left through Cape Town international airport; 63 611 (3,4%) left through King Shaka international airport and 35 711 (1,9%) left through other airports. Nearly 90,0% of those departing by sea left the country through the Durban harbour.

The information on 2011 arrivals and departures of South African residents classified by month of travel is presented in Appendix II and Appendix III respectively. The result show that the highest number of arrivals (627 199) were recorded in January followed by those recorded in July (528 466) while the lowest number of arrivals was recorded in February (351 513). Similarly, the highest number of departures was recorded in December (691 738) followed by April (550 502) and the lowest number in February (359 714).

1.5 Foreign travellers

It is observed from Figure 3 and Table 1 that apart from the slight decline in arrivals and departures in 2001, the number of both foreign arrivals and departures increased between 2000 and 2011. About 12,5 million foreigners arrived in South Africa in 2011 and 10,7 million left the country. Unlike South African travellers, the volume of departures of foreign travellers has been lower than that of arrivals throughout the twelve-year period, with a notable widening of the gap since 2006. With respect to growth, between 2010 and 2011, foreign arrivals grew by 8,0%, from 11 574 540 in 2010 to 12 495 743 compared to a growth rate of 8,2% for foreign departures from 9 908 518 in 2010 to 10 725 213 in 2011.

A breakdown of the 2011 data (see Table 3) indicates that generally the lowest number of arrivals was recorded in February (913 162) and the highest in December (1 241 599). However, the number of foreign arrivals by month differed by purpose of visit. Most of those who came for business came in January; for holidays mostly in December and January; for study mostly in July and January; and for work, mainly in July, October and January.

For all the months, the main purpose of visit for foreign arrivals was holiday whereby at least 89,0% of arrivals each month came into the country for holiday. Whereas 1,6% of the 2011 arrivals were on business; 1,9% and 0,7% of arrivals were workers and students respectively.

Table 4 indicates that during 2011, 9 560 918 (76,5%) foreigners came into South Africa by road. Most of those who arrived by road were from Lesotho (34,4%) and Zimbabwe (24,3%). In addition, 2 902 230 (23,2%) flew into the country mainly to OR Tambo international airport. Those who came by sea were 32 099 (0,3%). For departures it is noted that 8 096 407 (75,5%) travellers left by road, 2 600 027 (24,2%) by air and 28 779 (0,3%) by sea. The monthly distributions of foreign arrivals and departures by mode of travel and place of arrival and departure are provided in Appendices IV and V. Most arrivals and departures were during December and the least in February.

In 2011, there were 398 253 (3,2%) non-visitors and 12 097 490 (96,8%) visitors (see Table 5). It is observed from the monthly distribution of the data that the volume of non-visitors was higher during the last five months of the year compared to the earlier months. October recorded the highest volume [54 005 (13,6%)] of non-visitors and February the lowest [14 895 (3,7%)]. The visitors were made up of 3 758 136 (31,1%) same day visitors and 8 339 354 (68,9%) overnight visitors or tourists.

1.6 Same day visitors

Table 5 further shows that the monthly volume of same day visitors was quite uniform throughout the year. It ranged from 274 368 in February to 379 972 in December with a monthly average of about 313 000 visitors. The majority of the same day visitors (94,1%) came into the country by road, most of whom were from the SADC countries (68,3%). Virtually all (99,4%) same day visitors came for holiday (see Table 6.) The rest were business persons [9 962 (0,3%)], students [9 027 (0,2%)] and visitors in transit [1 954 (0,1%)].

1.7 Tourists

A total of 8 339 354 tourists came to South Africa in 2011, showing an increase of 3,3% from the 8 073 552 tourists recorded in 2010. Figure 5 shows the number of tourists who came to South Africa in 2010 and 2011 by month of arrival. This monthly distribution shows that arrivals in 2011 were generally higher than the arrivals in 2010. The outstanding difference was in June when the volume of tourists in 2010 was higher than those in 2011 (721 311 tourists in 2010 compared to 599 800 in 2011).

1.7.1 Region of residence

Information on the region of residence and the month of arrival of tourists is given in Table 7. The breakdown of the number of tourists by region indicates that a high proportion (71,4%) of the 8 339 354 tourists were residents from SADC countries. Residents from overseas countries made up 26,1% of the tourists. The remaining tourists were residents

of 'other' African countries (2,2%) and those whose country of residence was not specified (0,3%).

The monthly distribution of tourists in 2011 shows that, overall, June recorded the lowest volume [599 800 (7,2%)] whilst December had the highest volume [811 104 (9,7%)]. However, regional differences show that the lowest number of tourists from overseas countries came in May and the highest number came in December while for Africa, the highest volume of tourists was recorded in January and the lowest in February. Exceptions for the overseas countries were North America and Middle East that recorded the highest number of tourists in July and Asia with the highest number of tourists recorded in November. The data for SADC countries show that February and January were the lowest and highest months for arrivals respectively. Conversely, tourists from 'other' African countries, specifically from East and Central Africa, and West Africa had the highest number of tourists recorded in November while most of those from North Africa arrived in March. Detailed information on country of residence and month of arrival is provided in Appendix VI.

As presented in Figure 5 and Table 10, the eight leading countries for overseas tourists in 2011 were: United Kingdom (UK), 420 483 (19,3%); United State of America (USA), 287 614 (13,2%); Germany, 235 774 (10,8%); The Netherlands, 113 846 (5,2%); France, 105 420 (4,8%); Australia, 103 506 (4,8%); India, 90 367 (4,2%) and China, 84 862 (3,9%). A comparison of the 2011 volumes with the 2010 volumes indicates that the number of tourists increased in the following four countries: China, India, Germany and USA. However, the number of tourists from France, The Netherlands, UK and Australia declined. China had the highest increase of 28,7% from 65 920 tourists in 2010 to 84 862 tourists in 2011. Conversely, tourist from France recorded the highest decline of 8,6% from 115 401 in 2010 to 105 420 in 2011.

Figure 6 and Table 11 show the eight leading countries for tourists from SADC region. These were: Zimbabwe, 1 553 008 (26,1%); Lesotho, 1 526 597 (25,7%); Mozambique, 1 076 753 (18,1%); Swaziland, 700 119 (11,8%); Botswana, 477 937 (8,0%); Namibia, 197 835 (3,3%); Zambia, 160 302 (2,7%) and Malawi, 135 577 (2,3%). Unlike the overseas countries, all the SADC countries, with the exception of Botswana, showed an increase in the number of tourists in 2011 compared to their volumes in 2010. Lesotho had the highest increase of 19,7% from 1 275 838 tourists in 2010 to 1 526 597 tourists in 2011 whereas Botswana declined by 5,7% from 507 042 tourists in 2010 to 477 937 tourists in 2011.

The eight leading countries for tourists from 'other' African countries were (see Figure 7 and Table 12): Nigeria, 64 402 (34,7%); Kenya, 30 279 (16,3%); Ghana, 18 538 (10,0%); Uganda, 14 450 (7,8%); Ethiopia, 9 125 (4,9%); Egypt, 6 251 (3,4%); Gabon, 6 199 (3,3%) and Cameroon, 5 357 (2,9%). A comparison of the 2011 volumes with the 2010 volumes indicates that the number of tourists increased in six countries (Nigeria, Uganda, Egypt, Kenya, Gabon and Ghana) but declined in Cameroon and Ethiopia. Nigeria had the highest increase of 37,5% from 46 853 tourists in 2010 to 64 402 tourists in 2011 whereas Cameroon declined by 17,1% from 6 461 tourists in 2010 to 5 357 tourists in 2011.

1.7.2 Mode of travel

Table 8 provides information on the number of tourists by mode of travel, place and month of arrival. It is observed that a large number of tourists who came to South Africa in 2011 used road transport [5 826 678 (69,9%)], followed by those who came by air [2 503 230 (30,0%)]. Those who used road entered mainly through Zimbabwe [1 567 651 (26,9%) and Lesotho [1 567 574 (26,9%)]. For Zimbabwe, the highest number of tourists crossed the border in December (157 744) and the lowest in February (104 255) while for Lesotho the highest number crossed in January (169 374) and the lowest in February (107 677).

With regard to air transportation, out of the 2 503 230 tourists that flew into the country, 1 993 829 (79,7%) used OR Tambo international airport. In addition, Cape Town and King Shaka international airports were used by 470 699 (18,8%) and 27 866 (1,1%) respectively. Other airports were used by 10 836 (0,04%). Tourists rarely came into South Africa by sea but those who do mainly come through Cape Town harbour and during February.

As observed from Table 9, a large proportion (88,1%) of overseas tourists flew into South Africa compared to 11,5% who came in by road and 0,4% who came by sea. Compared to other overseas countries, a slightly higher percentage of residents of Europe (12,7%) and Asia (11,8%) entered the country by road. Whereas tourists from the SADC countries mainly used road (93,2%) the majority (88,6%) of those from 'other' African countries flew into South Africa. Detailed data on country of residence and mode of travel is presented in Appendix VII.

1.7.3 Purpose of visit

Figure 8 show that, the majority of tourists came to South Africa for holidays (94,3%). Those on transit, business persons and students contributed 2,4%, 2,2% and 1,0% respectively to the 2011 tourists that came to South Africa. Some regional patterns were also observed in the 2011 data. For example, 3,6% of tourists from overseas countries came for business compared to 1,6% from the SADC countries and 4,5% from 'other' African countries. In addition, students made up 0,6% of overseas tourists compared to 1,0% of tourists from SADC countries and 3,8% from 'other' African countries. Detailed data on country of residence and purpose of visit is presented in Appendix VIII.

Data shown in Figures 9a and 9b reveal that most overseas tourists on holiday (19,8%) and business persons (20,1%) were UK residents. However, it is shown in Figure 9c that the highest proportion of overseas tourists who were students (16,6%) came from USA. Tourists from the SADC countries were more diverse than overseas residents (see Figures 10a, 10b and 10c). Persons on holiday were predominantly Zimbabwe (26,4%) and Lesotho residents (26,2%), whereas most of the business persons (25,7%) were residents of Mozambique (25,7%) and Namibia (25,0%). SADC students were mostly residents of Lesotho (22,0%) and Swaziland (20,7%). With respect to tourists from 'other'

African countries (see Figures 11a, 11b and 11c), the majority of those on holiday were Nigeria residents (36,7%) whilst those on business were mainly residents of Kenya (21,7%) and the students were mostly from Nigeria (27,2%) and Kenya (21,3%).

1.7.4 Duration of stay

The number of days tourists spent in South Africa is based on the tourists who arrived and left in the same month. Data in Figure 12 indicate that generally tourists from overseas countries spent on average more days (about five days per month) in the country compared to SADC residents that spent an average of about two days in a month. Residents from 'other' African countries on the average spent about four days per month. The data reveal that residents of the SADC region spent on average more days (about three days per month) in January, April and December. However, during the winter months of May, June and July as well as in the summer months of November and December they spent four days. SADC residents spent two days on the average but in January, April and December they spent three days in a month. Residents of 'other' African countries on the average spent four days but spent five days in October, November and December.

1.7.5 Sex and age distribution

In 2011 as shown in Table 10, there were more male [4 760 132 (57,0%)] than female [3 567 758 (42,8%)] tourists. Although males constituted the majority overseas (57,1%) and SADC residents (56,7%), the proportion of males was relatively higher (67,9%) among tourists from 'other' African countries. Conversely SADC had the highest proportion of female tourists (43,1%) and 'other' Africa had the lowest (32,0%). The age distribution shows that at least 82,0% of tourists from overseas, SADC and 'other' African countries, were aged between 15 and 64 years. Overall, there were very few tourists younger than 15 years (5,2%) and those aged 65 years and older (the elderly) (4,3%). The data show a relatively higher proportion (10,2%) of the elderly among overseas residents compared with 2,3% and 1,7% of residents from SADC and 'other' African countries respectively. Detailed information on the number of tourists by sex, age group and month of arrival is presented in Appendix IX.

1.8 Summary

This report provided information collected by DHA immigration officers on South African residents and foreign travellers that passed through all South Africa air, land and sea ports of entry/exit in 2011. The report presented detailed information on the mode of travel, purpose of visit, length of stay and demographic characteristics of tourists (foreign).

A total of 34 105 393 travellers (both South African residents and foreign travellers) entered or departed South Africa in 2011 showing an increase of 7,3% from the 2010 volume of 31 773 236. South African resident departures increased by 5,6% from 5 164 929 in 2010 to 5 455 260 in 2011. Similarly, foreign arrivals increased by 8,0% from 11 574 540 in 2010 to 12 495 743 in 2011. Due to limited data on South African residents, information on tourists is available only from foreign travellers. In 2011, foreign arrivals were made up of 398 253 (3,2%) non-visitors and 12 097 490 (96,8%) visitors. The visitors were further categorised into same day visitors [3 758 136 (31,1%)] and overnight visitors or tourists [8 339 354 (68,9)].

The volume of tourists increased by 3,3% from 8 073 552 in 2010 to 8 339 354 in 2011. The prominent difference between the 2010 and 2011 monthly distributions of tourists was the unprecedented high volume of tourists in June 2010 (721 311) compared to 599 800 in 2011. The distribution of tourists by region of residence followed the similar pattern as shown in previous years. Thus a high proportion (71,4%) of tourists was residents from the SADC countries; 26,1% and 2,2% from overseas and 'other' African countries respectively.

Likewise, the 2011 patterns of mode of travel and purpose of visit did not differ greatly from what was observed in 2010 and earlier years. Overseas and 'other' African tourists generally flew into the country whereas tourists from the SADC countries came in by road. Holiday continued to be the main reason for visiting South Africa. An overwhelmingly majority (94,3%) of tourists came for holidays whilst business persons and students constituted less than 5,0% of the 2011 tourists. Overseas business tourists were mainly UK residents and the students were mostly USA residents. Residents of Mozambique and Namibia made up the bulk of business tourists from the SADC countries. The students came mainly from Lesotho and Swaziland. With regard to 'other' Africa, business tourists and students were mostly from Kenya and Nigeria respectively.

In 2011 tourists from overseas spent on the average five days per month in South Africa compared to tourists from SADC and 'other' Africa that spent four days and two days respectively. Tourists continued to be predominantly male (57,8%) and about 80,0% of the 2011 tourists were in the productive age group of 15 to 64 years.

The overall patterns observed from the 2011 data on tourists generally followed what have previously been noted since 2009 when Stats SA started publishing information on tourists.

2. FIGURES

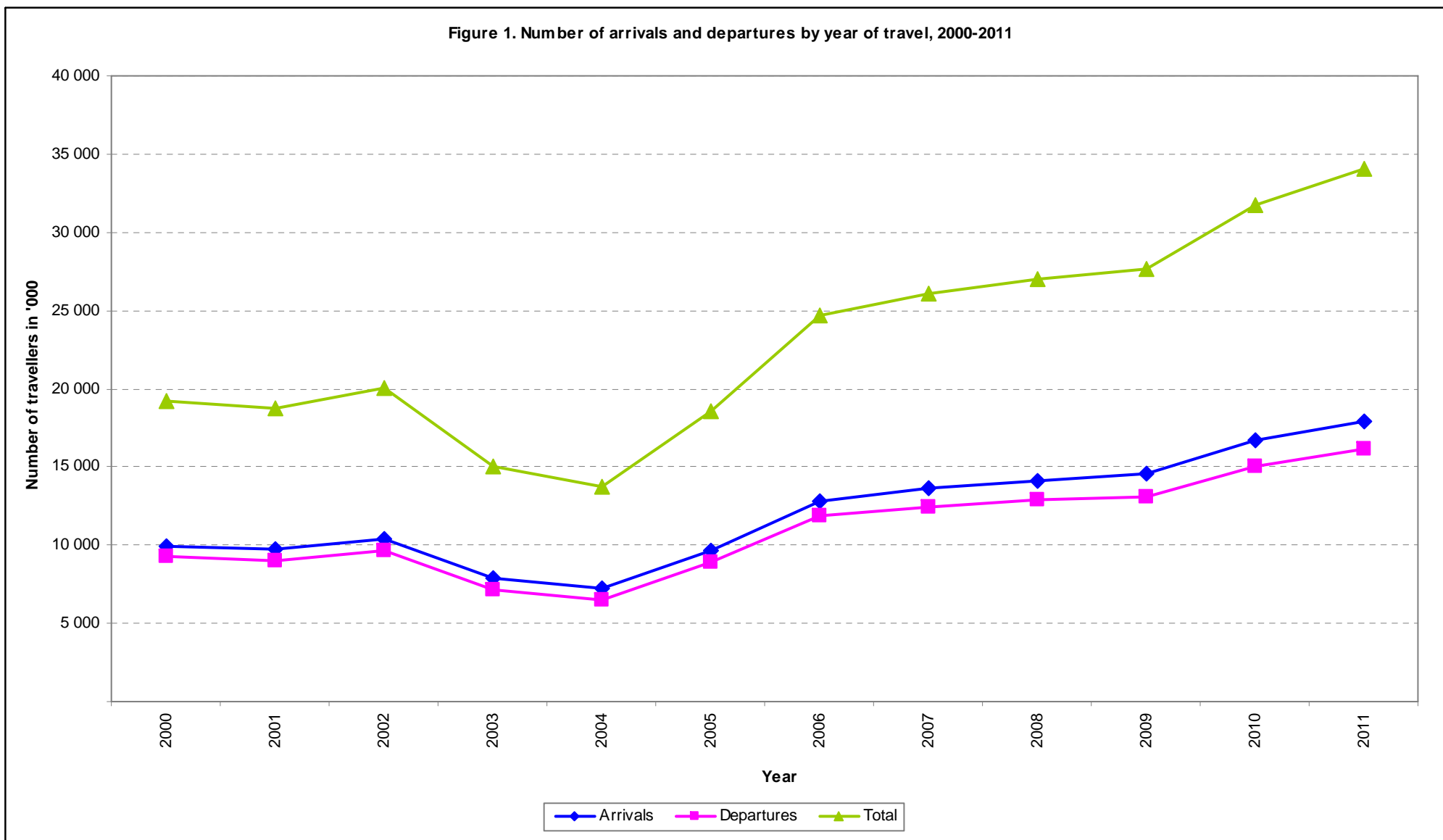


Figure 2. Number of arrivals and departures of South African residents by year of travel, 2000–2011

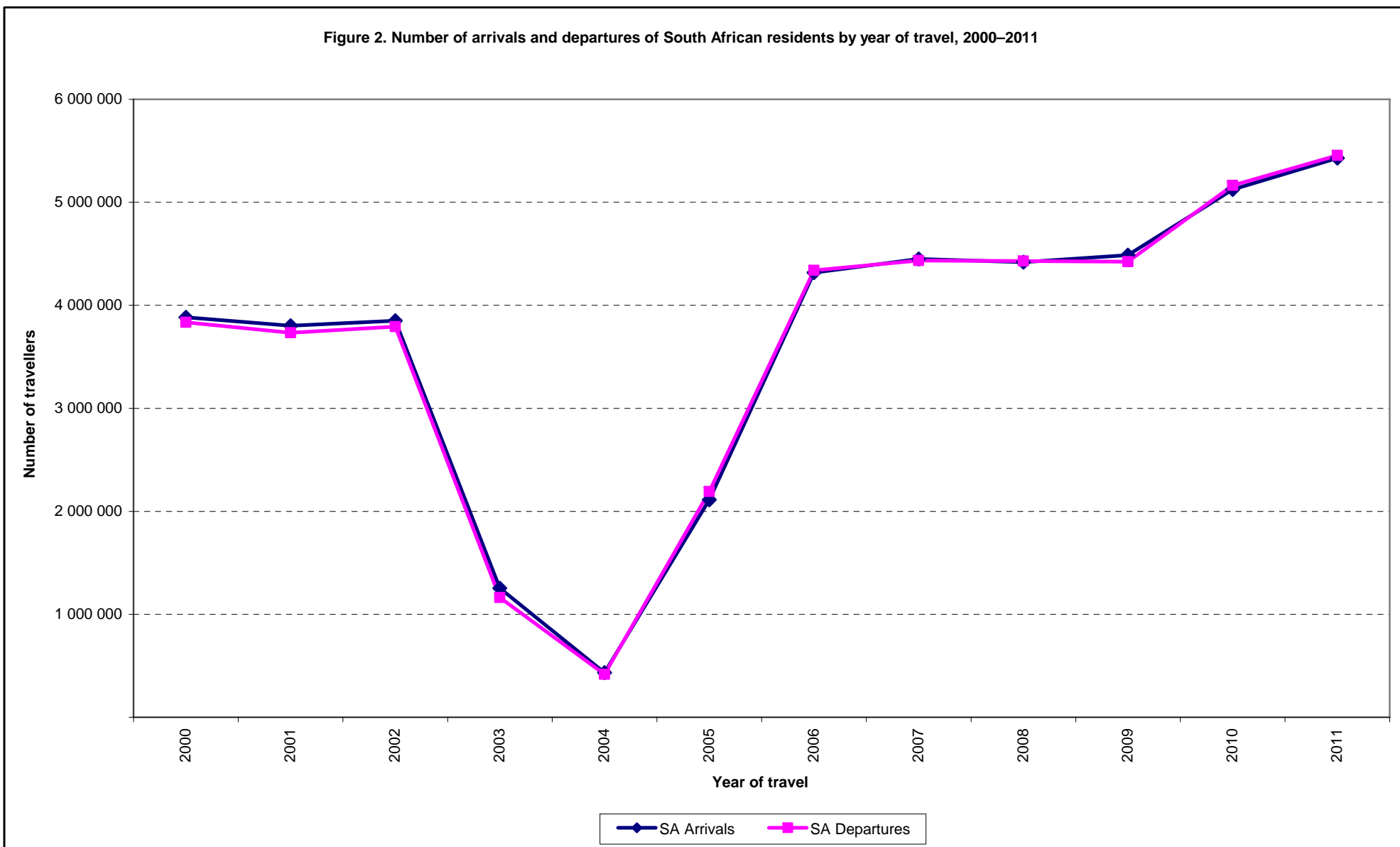


Figure 3. Number of arrivals and departures of foreign travellers by year of travel, 2000–2011

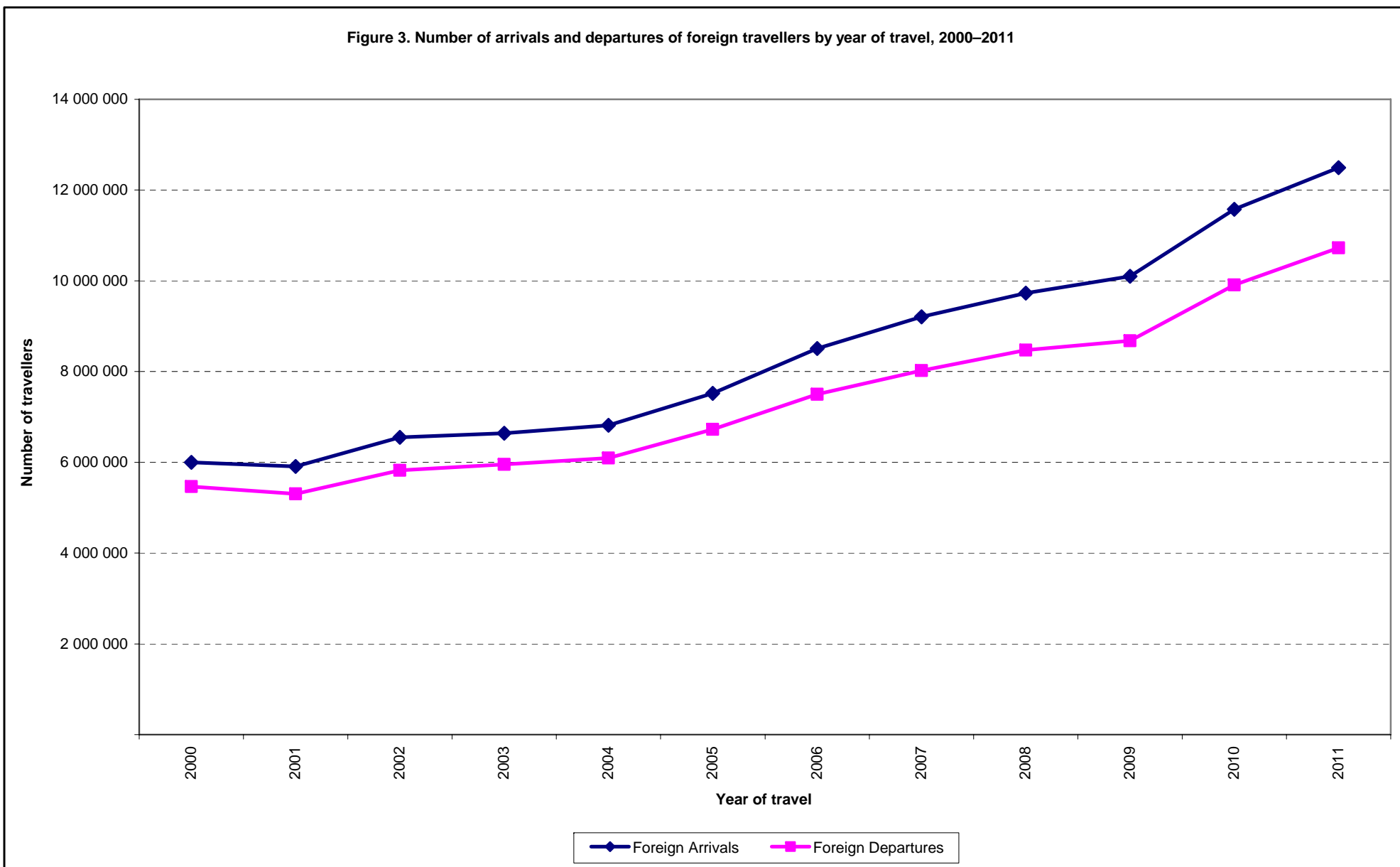
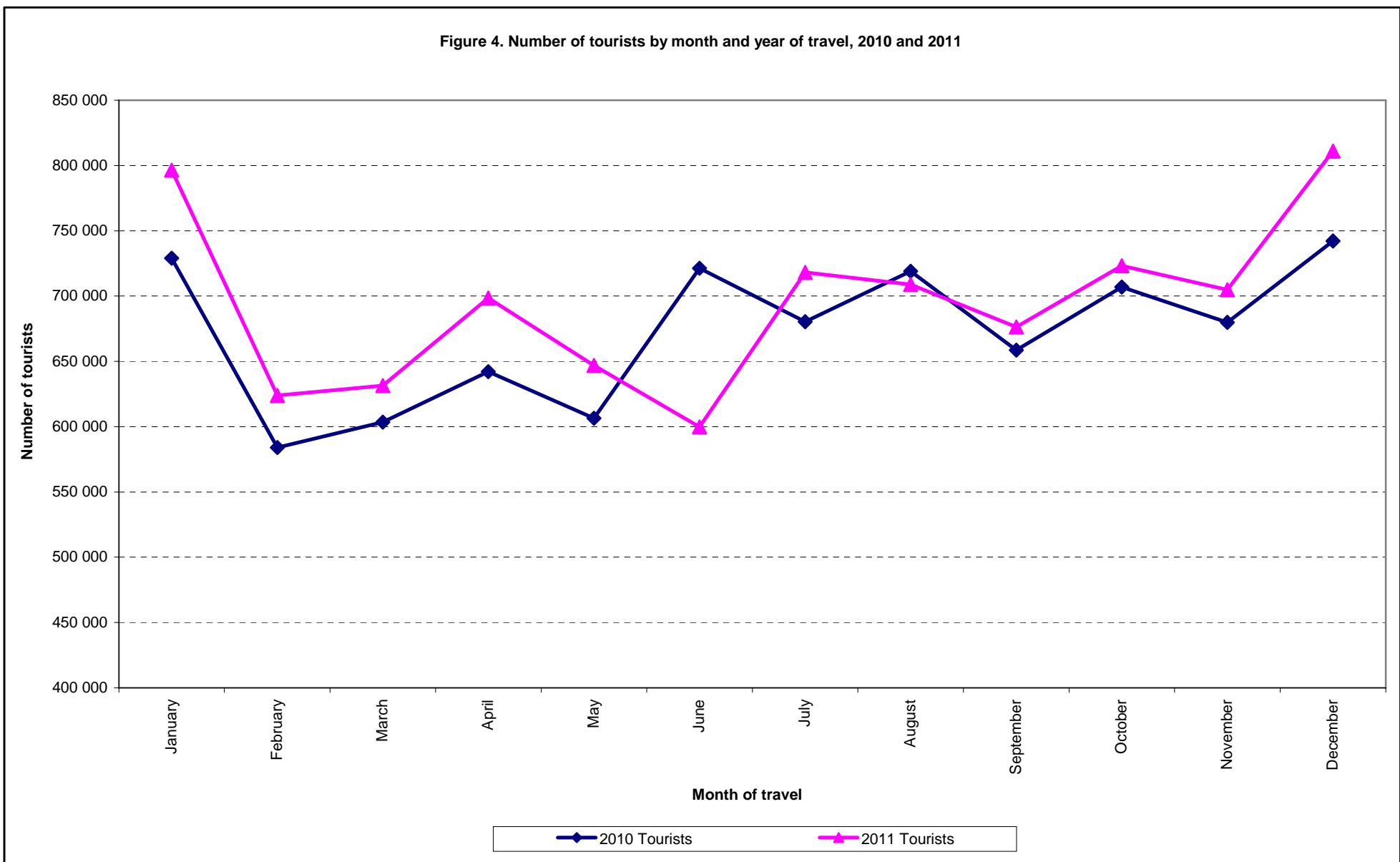


Figure 4. Number of tourists by month and year of travel, 2010 and 2011



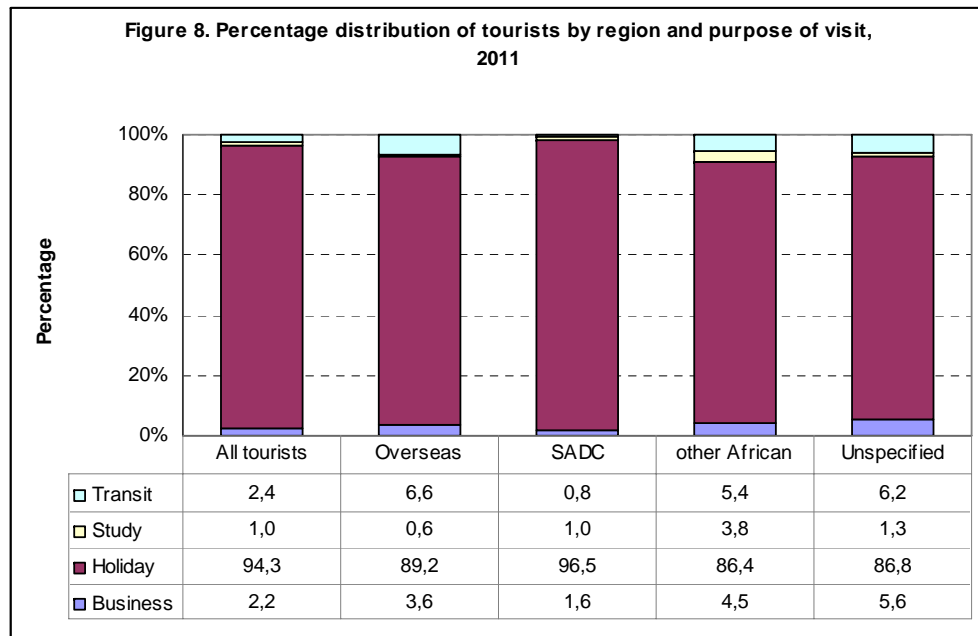
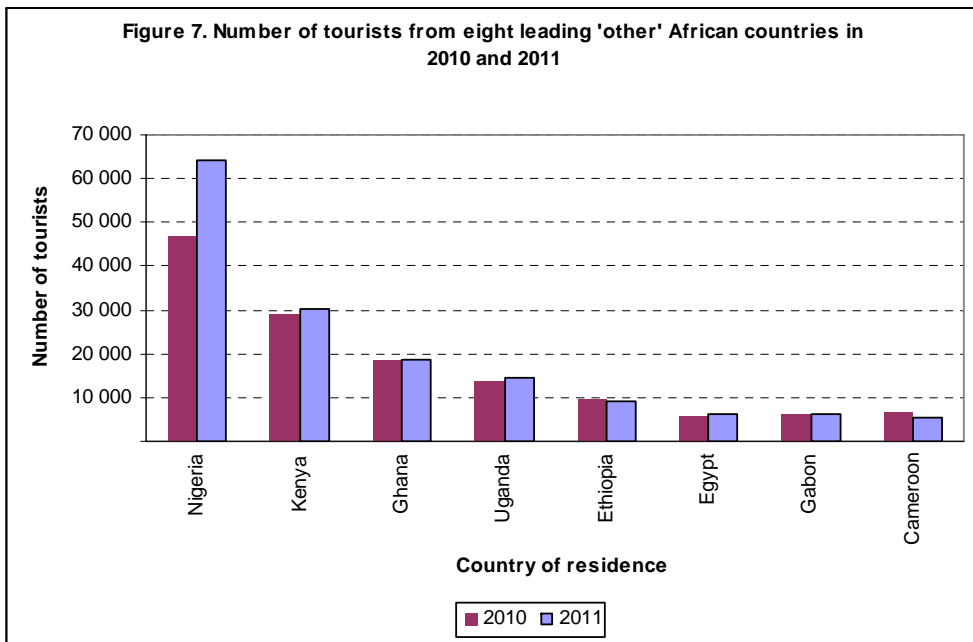
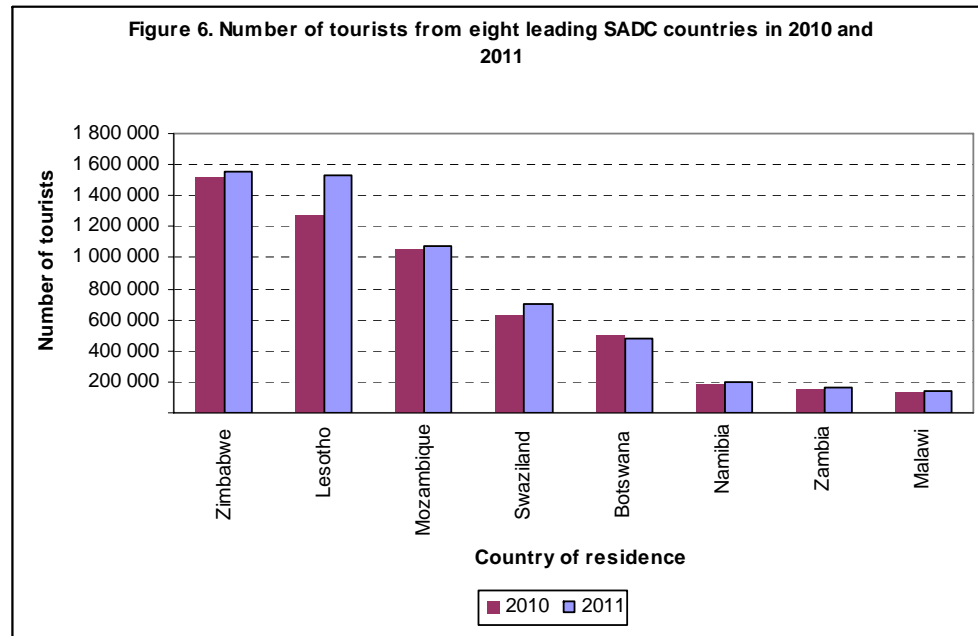
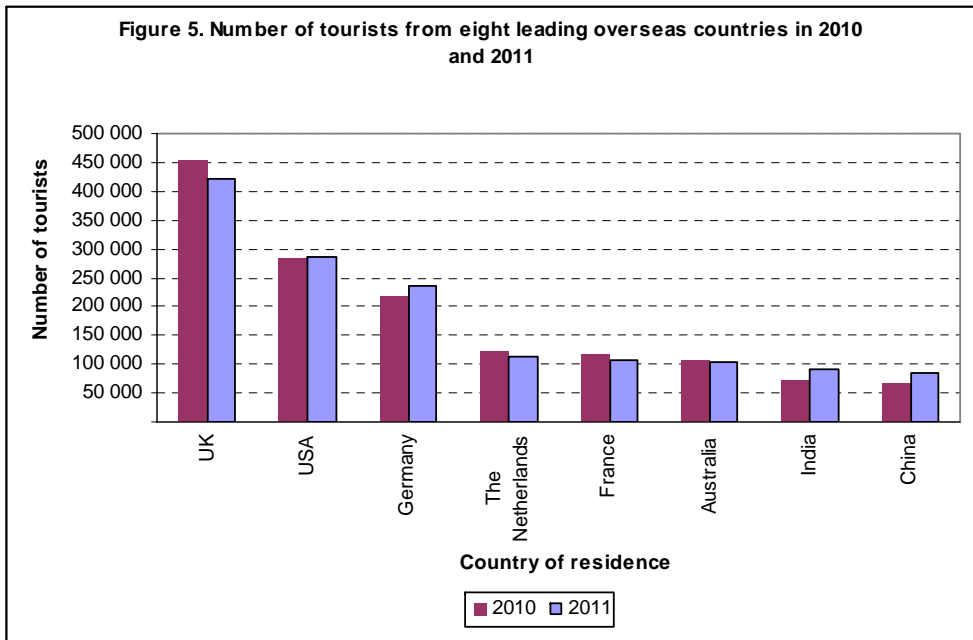


Figure 9a. Percentage distribution of tourists from overseas countries on holiday, 2011

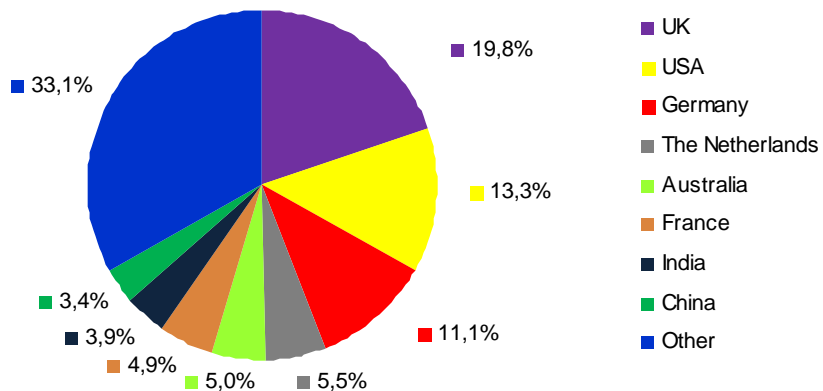


Figure 9b. Percentage distribution of tourists from overseas countries on business, 2011

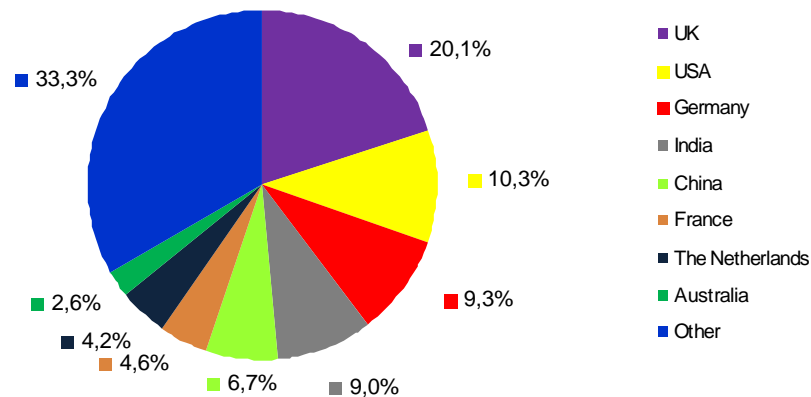


Figure 9c. Percentage distribution of tourists from overseas countries on study, 2011

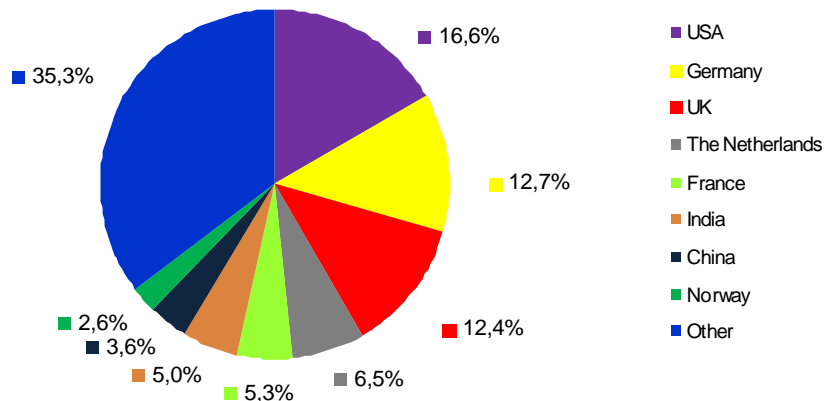
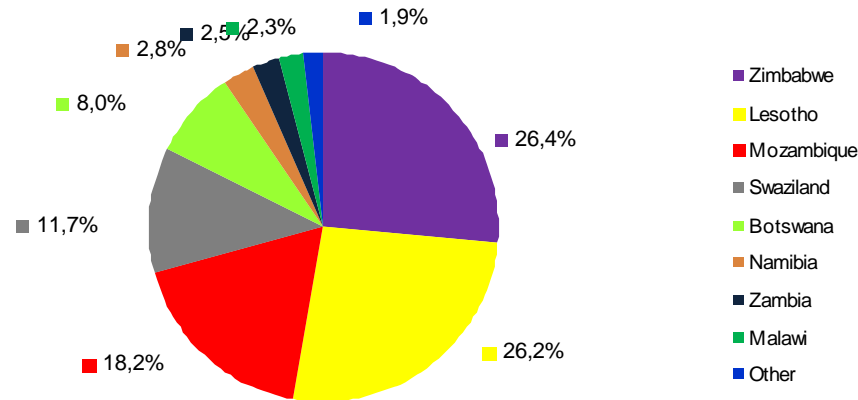


Figure 10a. Percentage distribution of tourists from SADC countries on holiday, 2011



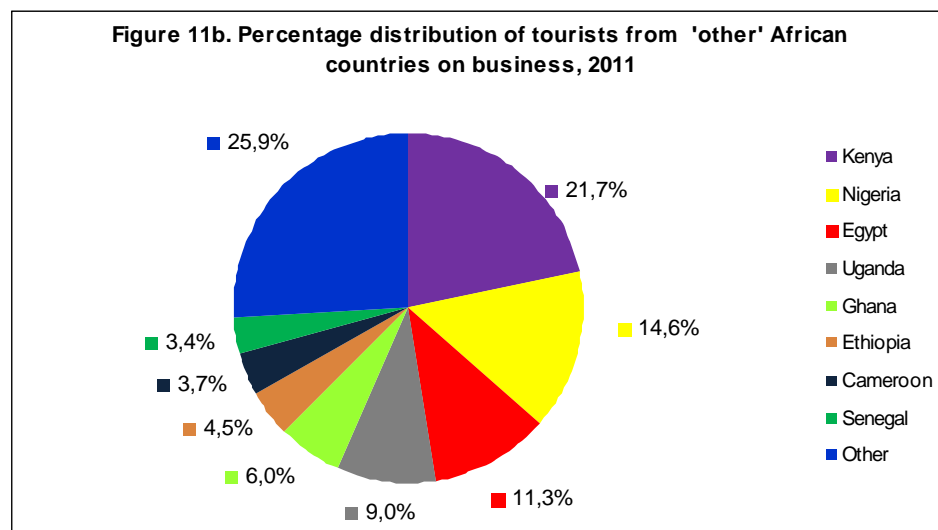
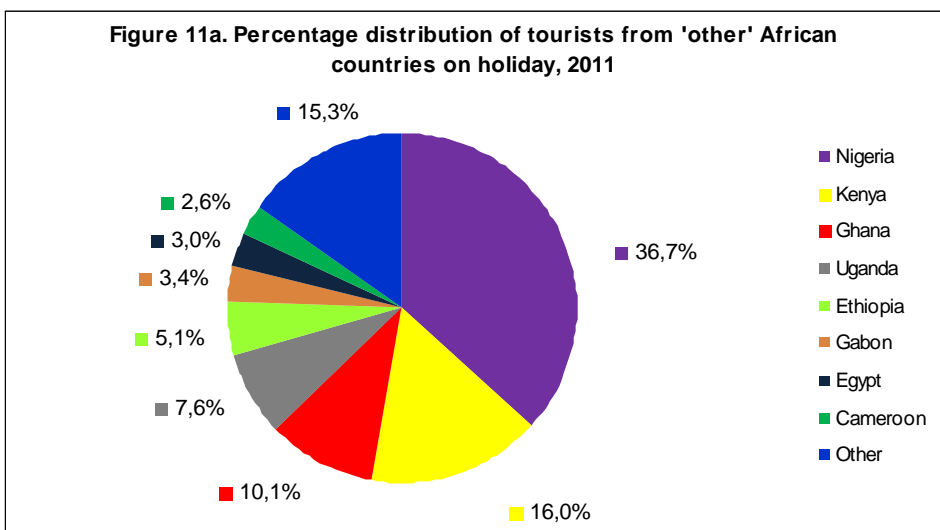
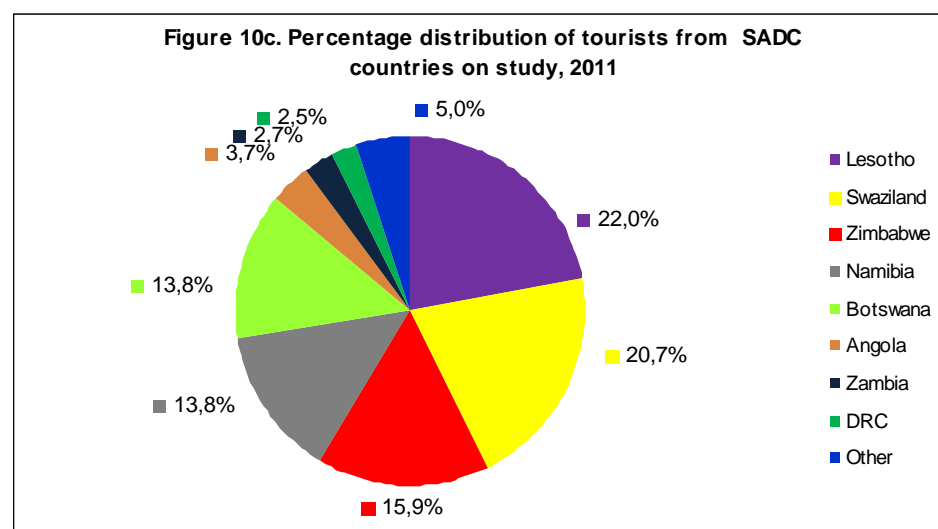
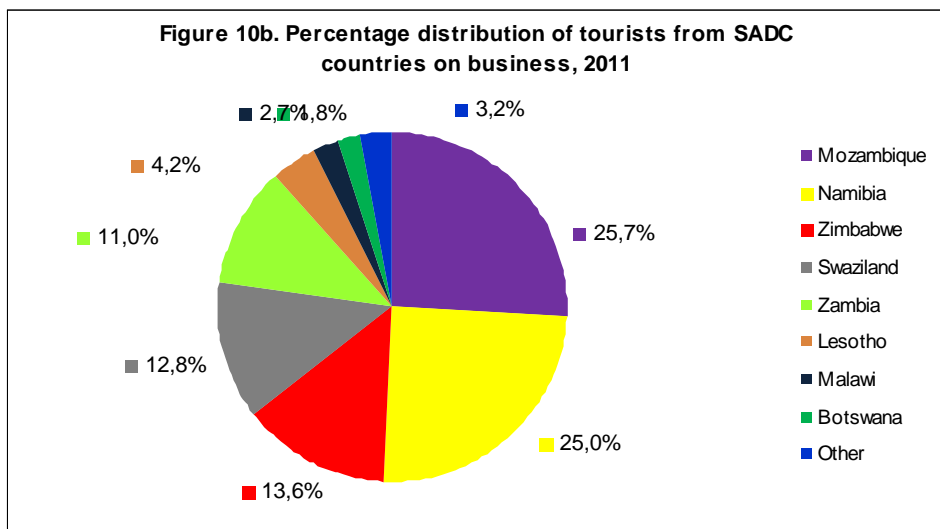


Figure 11c. Percentage distribution of tourists from 'other' African countries on study, 2011

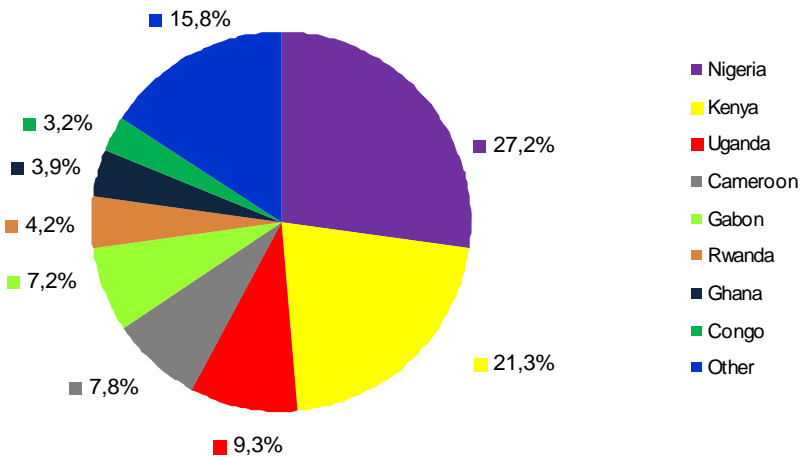
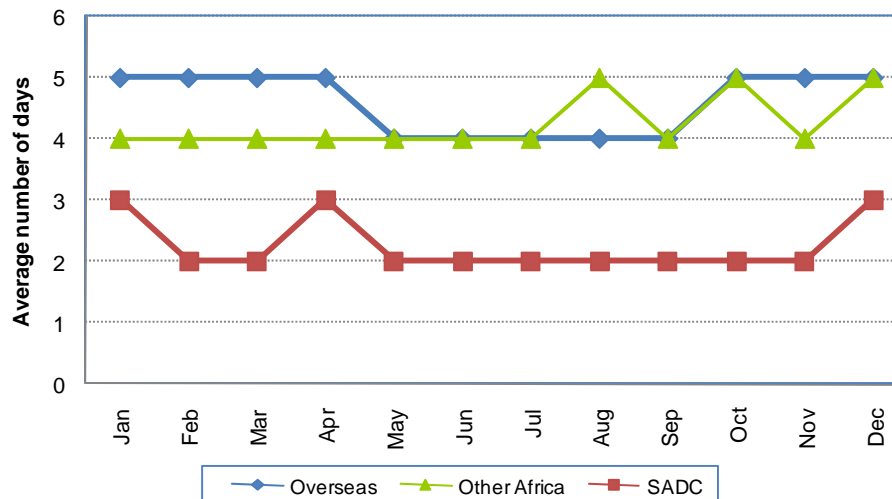


Figure 12. Average (median) number of days tourists spent by month of arrival, 2011



3. TABLES

YEAR	All travellers			South African residents			Foreign travellers		
	Arrivals	Departures	Total	Arrivals	Departures	Total	Arrivals	Departures	Total
2000	9 884 953	9 300 182	19 185 135	3 884 415	3 834 054	7 718 469	6 000 538	5 466 128	11 466 666
2001	9 710 483	9 040 275	18 750 758	3 802 459	3 733 058	7 535 517	5 908 024	5 307 217	11 215 241
2002	10 399 706	9 615 808	20 015 514	3 849 790	3 793 672	7 643 462	6 549 916	5 822 136	12 372 052
2003	7 894 158	7 119 038	15 013 196	1 254 063	1 163 839	2 417 902	6 640 095	5 955 199	12 595 294
2004	7 249 596	6 511 898	13 761 494	434 400	418 585	852 985	6 815 196	6 093 313	12 908 509
2005	9 630 617	8 920 258	18 550 875	2 112 300	2 191 599	4 303 899	7 518 317	6 728 659	14 246 976
2006	12 826 280	11 840 669	24 666 949	4 317 475	4 338 914	8 656 389	8 508 805	7 501 755	16 010 560
2007	13 656 529	12 456 288	26 112 817	4 448 832	4 433 492	8 882 324	9 207 697	8 022 796	17 230 493
2008	14 147 347	12 904 062	27 051 409	4 418 487	4 429 399	8 847 886	9 728 860	8 474 663	18 203 523
2009	14 585 617	13 104 237	27 689 854	4 487 311	4 423 987	8 911 298	10 098 306	8 680 250	18 778 556
2010	16 699 789	15 073 447	31 773 236	5 125 249	5 164 929	10 290 178	11 574 540	9 908 518	21 483 058
2011	17 924 920	16 180 473	34 105 393	5 429 177	5 455 260	10 884 437	12 495 743	10 725 213	23 220 956

Table 2. Number of arrivals and departures of South African residents by mode of travel and place of arrival or departure, 2011		
Mode of travel and place of arrival or departure	Total number of arrivals	Total number of departures
Total	5 429 177	5 455 260
Air	1 853 321	1 871 341
Cape Town International Airport	234 263	240 198
King Shaka International Airport	62 545	63 611
OR Tambo International Airport	1 521 090	1 531 821
Other Airports	35 423	35 711
Road	3 517 599	3 525 165
Botswana	578 420	590 402
Lesotho	1 053 558	1 071 093
Mozambique	614 663	594 060
Namibia	155 124	155 612
Swaziland	812 587	814 838
Zimbabwe	303 247	299 160
Sea	58 243	58 754
Cape Town Harbour	8 868	6 348
Durban Harbour	49 221	52 289
Port Elizabeth Harbour	154	117
Unspecified	14	-

Table 3. Number of foreign arrivals by purpose of visit and month of arrival, 2011

Purpose of visit	Total	Month of arrival											
		Jan	Feb	Mar	Apr	May	Jun	Jul	Aug	Sep	Oct	Nov	Dec
Total	12 495 743	1 129 054	913 162	942 748	1 020 453	982 056	920 061	1 068 352	1 069 990	1 033 426	1 094 813	1 080 029	1 241 599
Business	193 844	27 679	14 839	15 429	12 161	14 792	13 960	15 237	14 283	15 881	17 247	20 220	12 116
Holiday	11 605 231	1 061 978	871 112	898 219	973 333	926 835	844 087	984 339	968 482	926 172	996 665	993 371	1 160 638
Study	92 171	15 086	8 296	5 057	7 452	7 449	5 266	16 011	6 499	6 780	6 760	3 910	3 605
Work	240 588	22 336	14 097	16 269	18 201	21 615	18 993	23 753	21 784	21 572	22 754	19 409	19 805
Border traffic concession	243	55	35	52	29	4	1	13	22	25	1	3	3
Transit	206 242	1 364	4 020	6 611	7 402	10 778	37 119	28 227	27 665	31 586	20 136	16 617	14 717
Unspecified	157 424	556	763	1 111	1 875	583	635	772	31 255	31 410	31 250	26 499	30 715

Table 4. Number of foreign arrivals and departures by mode of travel and place of arrival or departure, 2011		
Mode of travel and place of arrival or departure	Arrivals	Departures
Total	12 495 743	10 725 213
Air	2 902 230	2 600 027
Cape Town International Airport	509 016	494 266
King Shaka International Airport	35 885	33 772
OR Tambo International Airport	2 339 435	2 052 779
Other airports	17 894	19 210
Road	9 560 918	8 096 407
Botswana	1 014 640	992 498
Lesotho	3 294 254	2 776 342
Mozambique	1 396 958	913 745
Namibia	161 384	163 410
Swaziland	1 373 596	1 275 028
Zimbabwe	2 320 086	1 975 384
Sea	32 099	28 779
Cape Town Harbour	19 706	15 342
Durban Harbour	7 930	7 527
Port Elizabeth Harbour	2 445	1 393
Other harbours	2 018	4 517
Unspecified	496	-

Table 5. Number of foreign arrivals by type of visitor and month of arrival, 2011

Type of visitor	Total	Month of arrival											
		Jan	Feb	Mar	Apr	May	Jun	Jul	Aug	Sep	Oct	Nov	Dec
Total	12 495 743	1 129 054	913 162	942 748	1 020 453	982 056	920 061	1 068 352	1 069 990	1 033 426	1 094 813	1 080 029	1 241 599
Non Visitors	398 253	22 947	14 895	17 432	20 105	22 200	19 629	24 538	53 061	53 007	54 005	45 911	50 523
Visitors	12 097 490	1 106 107	898 267	925 316	1 000 348	959 856	900 432	1 043 814	1 016 929	980 419	1 040 808	1 034 118	1 191 076
Same day	3 758 136	309 581	274 368	293 965	301 949	313 071	300 632	325 619	308 047	303 986	317 561	329 385	379 972
Tourists	8 339 354	796 526	623 899	631 351	698 399	646 785	599 800	718 195	708 882	676 433	723 247	704 733	811 104

Table 6. Number of same day visitors by mode of travel, region of residence and purpose of visit, 2011

Mode of travel and region	Total	Purpose of visit			
		Business	Holiday	Study	Transit
Total	3 758 136	9 962	3 737 193	9 027	1 954
Air	220 253	2 503	215 977	294	1 479
Overseas	150 408	1 446	147 883	68	1 011
SADC	64 487	883	62 978	190	436
'Other' Africa	4 316	129	4 123	35	29
Unspecified	1 042	45	993	1	3
Road	3 537 129	7 458	3 520 530	8 732	409
Overseas	77 067	67	76 708	279	13
SADC	3 447 256	7 369	3 431 160	8 332	395
'Other' Africa	9752	22	9613	116	1
Unspecified	3054	-	3049	5	-
Sea	750	1	683	1	65
Overseas	620	-	559	1	60
SADC	119	-	119	-	-
'Other' Africa	11	1	5	-	5
Unspecified	4	-	3	-	1

Table 7. Number of tourists by region of residence and month of arrival, 2011													
Region	Total	Month of arrival											
		Jan	Feb	Mar	Apr	May	Jun	Jul	Aug	Sep	Oct	Nov	Dec
Total	8 339 354	796 526	623 899	631 351	698 399	646 785	599 800	718 195	708 882	676 433	723 247	704 733	811 104
Overseas	2 176 719	179 493	190 865	175 876	172 145	135 922	139 063	183 426	176 696	173 497	208 141	215 235	226 360
Europe	1 286 027	117 476	129 438	108 819	106 581	66 436	60 346	93 938	100 894	93 756	130 456	137 584	140 303
North America	345 384	22 193	24 033	29 331	24 232	27 954	33 172	35 974	30 550	29 912	29 330	26 563	32 140
Central and South America	87 506	7 019	6 351	6 659	5 909	5 174	6 557	9 040	6 638	8 004	7 823	7 900	10 432
Australasia	122 784	9 821	8 357	7 895	10 709	8 530	10 094	11 616	10 205	12 188	9 490	10 267	13 612
Middle East	37 136	2 865	2 768	3 660	2 938	2 350	2 795	4 259	2 885	2 898	3 328	3 199	3 191
Asia	297 882	20 119	19 918	19 512	21 776	25 478	26 099	28 599	25 524	26 739	27 714	29 722	26 682
Africa	6 136 835	615 250	431 265	453 448	524 223	508 776	458 688	532 779	530 346	500 714	512 624	486 653	582 069
SADC	5 951 261	601 025	418 083	439 312	509 604	493 644	444 700	516 493	513 814	484 139	496 550	468 758	565 139
'Other' African	185 574	14 225	13 182	14 136	14 619	15 132	13 988	16 286	16 532	16 575	16 074	17 895	16 930
East and Central Africa	75 309	6 642	5 768	5 633	6 668	5 932	5 617	6 808	6 621	6 050	5 856	6 866	6 848
West Africa	97 292	6 363	6 689	7 108	6 679	8 170	7 269	8 441	9 188	9 261	9 145	9 738	9 241
North Africa	12 973	1 220	725	1 395	1 272	1 030	1 102	1 037	723	1 264	1 073	1 291	841
Unspecified	25 800	1 783	1 769	2 027	2 031	2 087	2 049	1 990	1 840	2 222	2 482	2 845	2 675

Table 8. Number of tourists by mode of travel, place and month of arrival, 2011

Mode of travel and place of arrival	Total	Month of arrival											
		Jan	Feb	Mar	Apr	May	Jun	Jul	Aug	Sep	Oct	Nov	Dec
Total	8 339 354	796 526	623 899	631 351	698 399	646 785	599 800	718 195	708 882	676 433	723 247	704 733	811 104
Air	2 503 230	201 550	210 649	199 777	195 126	166 848	173 984	217 105	204 157	204 583	233 636	239 618	256 197
Cape Town International Airport	470 699	54 240	57 977	45 857	35 719	18 499	15 970	26 397	23 849	25 690	39 579	59 689	67 233
King Shaka International Airport	27 866	1 701	2 124	2 097	2 505	1 804	1 899	2 846	2 173	1 706	2 424	3 173	3 414
OR Tambo International Airport	1 993 829	145 015	149 798	151 115	156 138	145 805	155 343	186 846	177 107	175 829	190 374	175 870	184 589
Other airports	10 836	594	750	708	764	740	772	1 016	1 028	1 358	1 259	886	961
Road	5 826 678	594 131	410 243	430 534	502 584	479 575	425 689	500 954	504 622	471 084	489 535	463 957	553 770
Botswana	654 675	49 861	48 963	53 076	68 744	49 896	44 873	56 316	51 124	58 780	51 021	51 576	70 445
Lesotho	1 567 574	169 374	107 677	118 252	132 529	133 262	120 650	136 980	123 675	120 960	137 128	125 010	142 077
Mozambique	1 043 334	143 673	80 787	75 232	76 883	85 524	77 086	89 879	88 237	84 332	80 711	81 025	79 965
Namibia	127 517	11 686	7 452	8 895	13 589	9 878	7 097	9 945	11 841	9 307	9 214	9 184	19 429
Swaziland	865 927	73 214	61 109	61 898	76 613	66 519	59 864	74 318	83 573	73 259	79 240	72 210	84 110
Zimbabwe	1 567 651	146 323	104 255	113 181	134 226	134 496	116 119	133 516	146 172	124 446	132 221	124 952	157 744
Sea	9 169	797	2 933	1 021	671	290	101	126	100	763	73	1 157	1 137
Cape Town Harbour	6 730	223	2 697	67	658	280	77	116	90	759	66	1 027	670
Durban Harbour	362	300	39	2	1	-	5	1	-	3	7	-	4
Port Elizabeth Harbour	945	6	2	935	-	1	-	-	-	1	-	-	-
Other harbours	1 132	268	195	17	12	9	19	9	10	-	-	130	463
Unspecified	276	48	74	19	18	72	26	10	3	3	3	1	-

Table 9. Number of tourists by region of residence and mode of travel, 2011					
Region	Total	Mode of travel			
		Air	Road	Sea	Unspecified
Total	8 339 354	2 503 230	5 826 678	9 169	277
Overseas	2 176 719	1 917 883	250 258	8 419	159
Europe	1 286 027	1 117 783	163 247	4 981	16
North America	345 384	309 749	33 529	2 104	2
Central and South America	87 506	80 490	6 946	66	4
Australasia	122 784	113 484	9 096	204	-
Middle East	37 136	34 885	2 230	18	3
Asia	297 882	261 492	35 210	1 046	134
Africa	6 136 835	568 078	5 567 904	735	118
SADC	5 951 261	403 631	5 547 025	577	28
'Other' African	185 574	164 447	20 879	158	90
East and Central Africa	75 309	64 636	10 585	35	53
West Africa	97 292	87 840	9 305	114	33
North Africa	12 973	11 971	989	9	4
Unspecified	25 800	17 269	8 516	15	-

Table 10. Number of tourists from eight leading overseas countries in 2011 and their percentage change from 2010

Overseas	2010	2011	PERCENT
UK	453 030	420 483	-7,2
USA	282 377	287 614	1,9
Germany	215 800	235 774	9,3
The Netherlands	124 088	113 846	-8,3
France	115 401	105 420	-8,6
Australia	107 905	103 506	-4,1
India	71 587	90 367	26,2
China	65 920	84 862	28,7

Table 11. Number of tourists from eight leading SADC countries in 2011 and their percentage change from 2010

SADC	2010	2011	PERCENT
Zimbabwe	1 513 714	1 553 008	2,6
Lesotho	1 275 838	1 526 597	19,7
Mozambique	1 051 502	1 076 753	2,4
Swaziland	632 490	700 119	10,7
Botswana	507 042	477 937	-5,7
Namibia	190 903	197 835	3,6
Zambia	157 692	160 302	1,7
Malawi	126 120	135 577	7,5

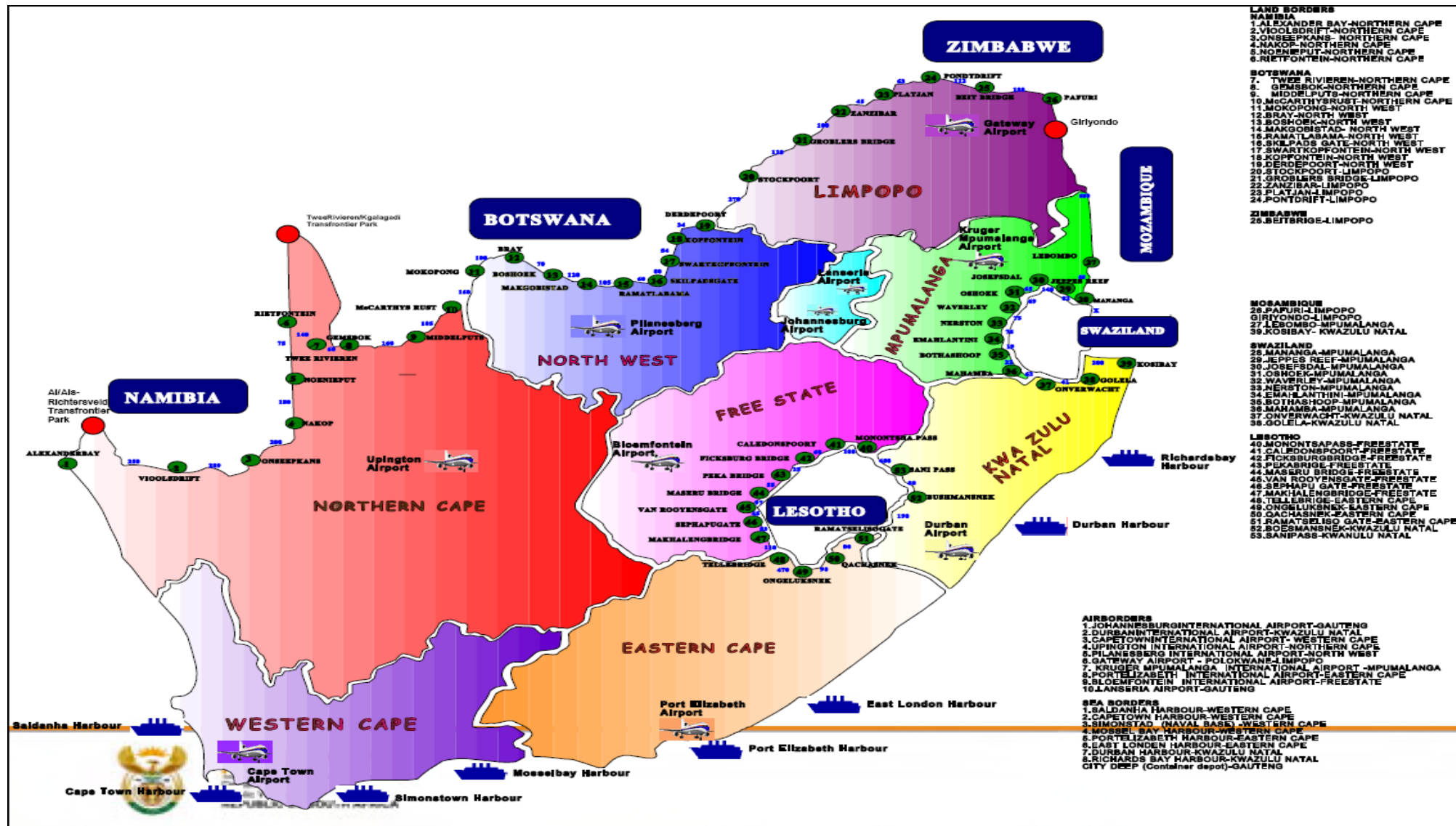
Table 12. Number of tourists from eight leading 'other' African countries in 2011 and their percentage change from 2010

Other Africa	2010	2011	PERCENT
Nigeria	46 853	64 402	37,5
Kenya	29 089	30 279	4,1
Ghana	18 435	18 538	0,6
Uganda	13 627	14 450	6,0
Ethiopia	9 397	9 125	-2,9
Egypt	5 967	6 251	4,8
Gabon	6 052	6 199	2,4
Cameroon	6 461	5 357	-17,1

Table 13. Number of tourists by sex, age group and region of residence, 2011						
Sex and age group	Total	Region of residence				
		Overseas	SADC	'Other' Africa	Unspecified	
All	8 339 354	2 176 719	5 951 261	185 574	25 800	
0-14	436 313	151 228	273 811	10 641	633	
15-64	7 532 125	1 801 430	5 534 469	171 786	24 440	
65+	362 172	222 880	135 501	3 080	711	
Unspecified	8 744	1 181	7 480	67	16	
Male	4 760 132	1 242 133	3 375 604	126 066	16 329	
0-14	219 162	78 526	135 028	5 319	289	
15-64	4 349 376	1 041 913	3 173 097	118 767	15 599	
65+	186 793	121 005	63 415	1 940	433	
Unspecified	4 801	689	4 064	40	8	
Female	3 567 758	932 003	2 566 853	59 460	9 442	
0-14	217 138	72 698	138 774	5 322	344	
15-64	3 173 300	757 615	2 353 890	52 977	8 818	
65+	174 197	101 299	71 482	1 139	277	
Unspecified	3 123	391	2 707	22	3	
Unspecified	11 464	2 583	8 804	48	29	
0-14	13	4	9	-	-	
15-64	9 449	1 902	7 482	42	23	
65+	1 182	576	604	1	1	
Unspecified	820	101	709	5	5	

4. APPENDICES

Appendix I. Ports of entry/exit in South Africa



Appendix II. Number of South African residents by mode of travel, place and month of arrival, 2011													
Mode of travel and place of arrival	Total	Month of arrival											
		Jan	Feb	Mar	Apr	May	Jun	Jul	Aug	Sep	Oct	Nov	Dec
Total	5 429 177	627 199	351 513	394 692	499 516	456 026	407 272	525 466	409 951	404 130	432 107	402 258	519 047
Air	1 853 321	193 054	109 280	133 309	164 218	161 435	144 075	198 693	136 924	154 541	159 311	128 160	170 321
Cape Town International Airport	234 263	24 896	13 476	16 274	20 015	19 088	17 804	28 625	16 854	18 475	18 352	16 885	23 519
King Shaka International Airport	62 545	6 896	3 142	5 042	6 012	5 664	4 428	6 846	4 226	4 621	5 317	4 515	5 836
OR Tambo International Airport	1 521 090	159 315	90 254	109 447	135 420	134 161	118 774	160 031	112 916	127 827	132 039	103 242	137 664
Other airports	35 423	1 947	2 408	2 546	2 771	2 522	3 069	3 191	2 928	3 618	3 603	3 518	3 302
Road	3 517 599	414 990	233 523	259 622	334 855	294 163	262 983	326 572	272 854	249 452	272 648	266 199	329 738
Botswana	578 420	54 802	38 278	41 062	56 446	48 662	44 846	57 120	46 372	43 621	48 176	41 878	57 157
Lesotho	1 053 558	122 466	82 694	89 357	99 622	88 775	82 132	90 227	83 478	76 417	77 857	71 067	89 466
Mozambique	614 663	102 396	39 284	42 759	57 950	52 256	44 590	55 928	42 921	39 637	45 213	36 614	55 115
Namibia	155 124	15 467	6 915	9 382	16 579	13 509	11 780	22 959	11 242	10 480	12 260	8 994	15 557
Swaziland	812 587	87 256	50 736	59 176	77 012	67 336	61 556	75 272	65 526	60 756	68 012	55 390	84 559
Zimbabwe	303 247	32 603	15 616	17 886	27 246	23 625	18 079	25 066	23 315	18 541	21 130	52 256	27 884
Sea	58 243	19 154	8 706	1 752	443	428	214	201	173	137	148	7 899	18 988
Cape Town Harbour	8 868	2 632	524	1 649	417	356	198	140	143	89	118	350	2 252
Durban Harbour	49 221	16 520	8 178	55	24	21	12	59	23	42	27	7 528	16 732
Port Elizabeth Harbour	154	2	4	48	2	51	4	2	7	6	3	21	4
Unspecified	14	1	4	9	-	-	-	-	-	-	-	-	-

Appendix III. Number of South African residents by mode of travel, place and month of departure, 2011													
Mode of travel and place of departure	Total	Month of departure											
		Jan	Feb	Mar	Apr	May	Jun	Jul	Aug	Sep	Oct	Nov	Dec
Total	5 455 260	422 214	359 714	427 094	550 502	403 602	484 417	452 390	424 168	430 348	403 918	405 155	691 738
Air	1 871 341	144 941	114 209	153 219	175 228	154 407	191 437	150 083	150 075	165 517	144 202	126 596	201 427
Cape Town International Airport	240 198	19 253	13 614	20 283	22 010	20 416	29 539	17 891	18 452	21 373	15 996	14 792	26 579
King Shaka International Airport	63 611	5 063	3 858	5 933	5 994	4 986	6 173	5 032	4 989	5 529	4 822	4 251	6 981
OR Tambo International Airport	1 531 821	118 532	94 420	124 321	144 553	126 297	152 562	124 227	123 550	134 660	119 880	104 018	164 801
Other airports	35 711	2 093	2 317	2 682	2 671	2 708	3 163	2 933	3 084	3 955	3 504	3 535	3 066
Road	3 525 165	261 592	236 388	272 018	375 084	248 253	292 745	302 124	273 758	264 576	259 408	268 913	470 306
Botswana	590 402	39 647	37 964	45 727	60 932	41 770	51 483	52 783	47 649	47 322	45 530	43 097	76 498
Lesotho	1 071 093	92 962	86 086	92 381	110 003	79 595	86 371	90 092	85 379	79 594	76 543	72 773	119 314
Mozambique	594 060	39 604	37 554	43 686	69 446	37 986	48 917	48 422	40 615	41 305	42 281	35 565	108 679
Namibia	155 612	9 225	7 354	10 885	18 747	10 916	19 454	15 759	11 048	11 164	11 216	9 171	20 673
Swaziland	814 838	64 388	52 083	60 199	84 043	59 969	65 170	72 724	65 876	65 347	64 352	56 507	104 180
Zimbabwe	299 160	15 766	15 347	19 140	31 913	18 017	21 350	22 344	23 191	19 844	19 486	51 800	40 962
Sea	58 754	15 681	9 117	1 857	190	942	235	183	335	255	308	9 646	20 005
Cape Town Harbour	6 348	663	276	1790	153	905	184	108	239	210	264	191	1 365
Durban Harbour	52 289	15 016	8 839	56	34	29	47	71	54	42	38	9 450	18 613
Port Elizabeth Harbour	117	2	2	11	3	8	4	4	42	3	6	5	27

Appendix IV. Number of foreign arrivals by mode of travel, place and month of arrival, 2011													
Mode of travel and place of arrival	Total	Month of arrival											
		Jan	Feb	Mar	Apr	May	Jun	Jul	Aug	Sep	Oct	Nov	Dec
Total	12 495 743	1 129 054	913 162	942 748	1 020 453	982 056	920 061	1 068 352	1 069 990	1 033 426	1 094 813	1 080 029	1 241 599
Air	2 902 230	230 360	232 161	224 701	220 478	192 994	199 133	248 376	253 022	250 115	278 548	277 992	294 350
Cape Town International Airport	509 016	56 735	60 068	48 580	37 554	20 138	17 533	28 678	28 581	30 560	44 163	64 188	72 238
King Shaka International Airport	35 885	2 064	2 522	2 731	2 976	2 287	2 393	3 279	3 209	2 736	3 438	4 051	4 199
OR Tambo International Airport	2 339 435	170 559	168 400	172 266	178 851	169 313	177 675	214 832	219 659	214 687	228 745	208 017	216 431
Other airports	17 894	1 002	1 171	1 124	1 097	1 256	1 532	1 587	1 573	2 132	2 202	1 736	1 482
Road	9 560 918	896 422	675 824	715 169	797 656	786 939	719 098	818 062	815 066	780 621	814 189	798 736	943 136
Botswana	1 014 640	79 796	75 126	80 151	96 877	79 044	72 950	89 478	83 144	88 004	79 676	80 740	109 654
Lesotho	3 294 254	325 212	238 170	256 368	269 791	271 963	254 310	280 795	258 448	261 646	283 049	276 464	318 038
Mozambique	1 396 958	168 162	107 055	102 095	104 797	110 809	99 643	112 747	120 160	117 826	115 827	117 063	120 774
Namibia	161 384	14 506	9 669	11 125	16 010	12 451	9 492	12 370	14 979	12 197	12 538	12 328	23 719
Swaziland	1 373 596	116 323	94 111	97 248	114 752	106 801	99 731	119 273	129 901	116 104	123 333	116 191	139 828
Zimbabwe	2 320 086	192 423	151 693	168 182	195 429	205 871	182 972	203 399	208 434	184 844	199 766	195 950	231 123
Sea	32 099	2 203	5 046	2 849	2 291	1 999	1 782	1 886	1 885	2 679	2 070	3 297	4 112
Cape Town Harbour	19 706	1 124	4 053	1 209	1 504	1 173	993	1 152	1 068	1 857	1 237	2 117	2 219
Durban Harbour	9 547	959	780	624	664	651	665	615	639	665	686	947	1 652
Port Elizabeth Harbour	2 445	71	40	992	82	143	91	91	168	156	144	227	240
Other harbours	401	49	173	24	41	32	33	28	10	1	3	6	1
Unspecified	496	69	131	29	28	124	48	28	17	11	6	4	1

Appendix V. Number of foreign departures by mode of travel, place and month of departure, 2011													
Mode of travel and place of departure	Total	Month of departure											
		Jan	Feb	Mar	Apr	May	Jun	Jul	Aug	Sep	Oct	Nov	Dec
Total	10 725 213	856 890	774 619	844 974	914 059	832 803	786 784	872 113	898 310	883 309	926 095	940 482	1 194 775
Air	2 600 027	235 261	208 509	231 076	217 411	186 586	164 365	189 685	227 143	204 267	230 930	250 798	253 996
Cape Town International Airport	494 266	57 711	56 505	58 547	40 919	24 859	18 671	21 616	29 766	27 841	38 340	61 809	57 682
King Shaka International Airport	33 772	2 936	2 170	2 528	2 814	2 493	2 031	3 170	3 386	2 570	2 880	3 372	3 422
OR Tambo International Airport	2 052 779	173 657	148 681	168 776	172 488	157 872	142 098	163 233	192 303	171 532	187 386	183 699	191 054
Other airports	19 210	957	1 153	1 225	1 190	1 362	1 565	1 666	1 688	2 324	2 324	1 918	1 838
Road	8 096 407	619 181	561 029	610 812	694 439	644 034	620 959	680 888	669 276	677 024	693 493	687 807	937 465
Botswana	992 498	79 510	72 323	74 619	91 566	76 674	72 790	87 375	80 304	81 696	81 960	78 799	114 882
Lesotho	2 776 342	236 704	205 520	220 714	237 528	217 953	211 325	237 240	213 979	223 867	232 725	233 978	304 809
Mozambique	913 745	65 478	66 804	68 829	71 924	66 494	61 446	64 622	74 628	81 740	83 824	83 640	124 316
Namibia	163 410	17 288	9 628	11 495	13 079	15 335	11 191	12 127	13 132	14 697	13 233	12 838	19 367
Swaziland	1 275 028	102 770	85 002	89 969	105 463	97 844	95 926	109 881	116 822	113 263	113 841	109 071	135 176
Zimbabwe	1 975 384	117 431	121 752	145 186	174 879	169 734	168 281	169 643	170 411	161 761	167 910	169 481	238 915
Sea	28 779	2 448	5 081	3 086	2 209	2 183	1 460	1 540	1 891	2 018	1 672	1 877	3 314
Cape Town Harbour	15 342	1 412	1 703	2 164	1 545	1 509	702	852	1 082	1 281	1 044	735	1 313
Durban Harbour	11 571	982	3 120	618	605	616	669	525	665	597	474	938	1 762
Port Elizabeth Harbour	1 393	47	45	51	59	58	89	163	144	140	154	204	239
Other harbours	473	7	213	253	-	-	-	-	-	-	-	-	-

Appendix VI. Number of tourists by country of residence and month of arrival, 2011													
Country	Total	Month of arrival											
		Jan	Feb	Mar	Apr	May	Jun	Jul	Aug	Sep	Oct	Nov	Dec
Total	8 339 354	796 526	623 899	631 351	698 399	646 785	599 800	718 195	708 882	676 433	723 247	704 733	811 104
Overseas	2 176 719	179 493	190 865	175 876	172 145	135 922	139 063	183 426	176 696	173 497	208 141	215 235	226 360
Europe	1 286 027	117 476	129 438	108 819	106 581	66 436	60 346	93 938	100 894	93 756	130 456	137 584	140 303
Albania	115	8	7	9	8	2	7	9	20	13	5	11	16
Andorra	32	6	-	4	5	3	2	1	6	-	1	2	2
Austria	21 841	2 070	2 548	1 730	1 687	959	768	1 325	1 545	1 454	2 294	2 964	2 497
Belarus	664	59	88	60	49	38	29	64	48	41	50	76	62
Belgium	40 478	3 106	3 702	3 032	3 524	1 921	1 699	3 929	3 030	3 047	4 980	4 658	3 850
Bosnia-Herzegovina	267	27	20	18	9	44	13	14	36	22	19	23	22
Bulgaria	2 233	254	202	172	191	137	142	145	137	176	165	204	308
Byelorussian SSR	1	-	-	-	-	-	-	-	-	1	-	-	-
Croatia	1 159	96	90	82	80	83	82	80	77	125	94	135	135
Czech Republic	6 169	600	667	621	482	336	282	309	372	461	681	902	456
Denmark	22 970	2 489	3 143	1 871	1 808	1 122	1 154	1 651	1 124	1 578	2 474	2 226	2 330
Estonia	676	48	68	104	43	23	64	18	21	29	51	119	88
Finland	10 090	1 213	1 296	817	647	512	535	486	436	605	942	1 277	1 324
France	105 420	9 036	10 071	9 639	7 926	6 456	5 063	9 109	9 595	6 625	11 285	11 231	9 384
Germany	235 774	21 313	23 521	22 680	18 626	10 552	9 204	13 122	15 760	18 563	28 634	29 849	23 950
Greece	5 822	559	431	384	545	443	340	366	439	589	475	529	722
Hungary	2 882	317	267	222	231	177	127	166	178	169	245	523	260
Iceland	598	56	50	43	58	32	31	40	50	41	63	59	75
Ireland	29 098	3 002	2 661	2 353	2 494	1 590	1 641	2 255	2 185	1 870	2 191	3 290	3 566
Isle Of Man	13	8	1	-	-	-	1	-	1	-	-	-	2
Isle Of Wight	1	-	-	-	-	-	-	-	-	-	-	-	1
Italy	54 628	4 222	3 532	3 318	3 177	2 969	3 285	4 485	10 251	4 912	4 484	4 296	5 697
Latvia	608	43	48	46	37	60	33	27	32	61	85	85	51
Liechtenstein	213	35	10	17	17	6	6	14	9	12	20	33	34
Lithuania	773	54	61	90	56	45	26	69	63	48	77	85	99
Luxembourg	1 271	65	80	62	194	40	37	50	252	94	107	108	182
Malta	550	32	50	22	34	20	33	47	47	132	39	44	50
Moldova	149	6	10	8	9	10	13	22	7	13	9	14	28
Monaco	93	8	9	9	3	4	2	12	12	1	2	18	13
Norway	20 556	2 078	2 436	1 749	1 959	1 015	1 141	1 304	849	1 269	1 991	2 307	2 458
Poland	9 962	975	859	1 047	674	542	519	570	741	808	943	1 412	872

Appendix VI. Number of tourists by country of residence and month of arrival, 2011 (continued)													
Country	Total	Month of arrival											
		Jan	Feb	Mar	Apr	May	Jun	Jul	Aug	Sep	Oct	Nov	Dec
Portugal	40 301	3 101	3 342	3 266	4 236	2 789	2 820	2 849	3 049	3 368	3 371	3 662	4 448
Romania	2 188	190	146	194	162	131	122	133	163	206	224	219	298
Russian Federation	10 487	956	731	898	861	677	544	648	676	679	1 070	1 336	1 411
San Marino	41	1	4	2	-	3	1	1	8	8	5	5	3
Slovakia	2 093	199	164	162	206	134	122	141	131	147	283	197	207
Slovenia	1 037	83	74	67	95	71	70	80	92	69	113	139	84
Spain	27 209	1 451	1 444	1 774	2 023	1 748	1 977	2 812	4 336	2 595	2 428	2 394	2 227
Sweden	38 754	5 292	5 530	3 443	2 430	1 547	1 547	1 384	1 351	1 810	3 643	4 805	5 972
Switzerland	40 728	3 768	3 920	2 974	3 311	1 788	1 539	2 747	2 275	3 272	5 460	5 018	4 656
The Netherlands	113 846	10 400	10 378	8 067	7 175	5 055	4 209	11 757	8 365	8 184	14 357	12 987	12 912
Turkey	10 348	884	1 128	871	952	668	602	720	696	687	700	1 689	751
UK	420 483	39 041	46 435	36 638	40 301	22 484	20 271	30 724	32 153	29 694	36 095	38 286	48 361
Ukraine	3 142	308	193	237	237	186	214	223	259	259	281	333	412
Vatican	10	-	2	-	1	-	-	1	1	-	2	2	1
Yugoslavia	254	17	19	17	18	14	29	29	16	19	18	32	26
North America	345 384	22 193	24 033	29 331	24 232	27 954	33 172	35 974	30 550	29 912	29 330	26 563	32 140
Canada	57 767	4 508	5 299	5 392	4 468	3 920	3 547	4 584	4 205	4 517	5 597	5 192	6 538
East Indian Islands	3	-	-	-	-	-	-	-	-	-	2	-	1
USA	287 614	17 685	18 734	23 939	19 764	24 034	29 625	31 390	26 345	25 395	23 731	21 371	25 601
Central and South America	87 506	7 019	6 351	6 659	5 909	5 174	6 557	9 040	6 638	8 004	7 823	7 900	10 432
Antigua And Barbuda	83	2	3	4	1	3	5	1	54		4	3	3
Argentina	13 817	1 471	2 154	1 436	865	661	616	1 122	887	1 064	1 112	1 136	1 293
Bahamas	137	8	3	13	5	7	3	15	28	25	13	8	9
Barbados	174	10	9	6	6	7	4	25	43	10	24	17	13
Belize	57		4	4	4	6	4	6	5	1	3	11	9
Bermuda	58	2	3	4	4	2	1	19	1	1	10	8	3
Bolivia	690	25	36	40	51	35	40	56	70	73	62	94	108
Brazil	54 183	4 331	2 954	3 856	3 497	3 214	4 235	5 780	4 062	5 215	5 072	4 864	7 103
Chile	3 210	233	390	274	217	211	258	338	210	265	284	285	245
Colombia	1 831	107	95	110	188	145	149	204	109	128	129	214	253
Costa Rica	401	22	22	32	25	36	32	31	27	48	30	55	41
Cuba	1 139	128	63	45	61	52	147	115	102	122	100	74	130
Dominica	109	4	8	11	4	10	5	8	9	12	7	18	13
Ecuador	626	26	37	77	49	43	37	54	56	57	68	76	46

Appendix VI. Number of tourists by country of residence and month of arrival, 2011 (continued)													
Country	Total	Month of arrival											
		Jan	Feb	Mar	Apr	May	Jun	Jul	Aug	Sep	Oct	Nov	Dec
El Salvador	93	6	6	10	4	6	9	8	7	10	2	12	13
Grenada	37	1	2	3	-	3	1	1	1	4	4	10	7
Guatemala	181	13	8	13	12	23	15	14	12	12	11	31	17
Guyana (Guinea-British)	1	-	-	-	-	-	-	-	-	-	-	-	-
Haiti	98	4	4	6	7	12	8	6	13	9	8	14	7
Honduras	188	10	3	6	23	9	33	25	8	18	10	22	21
Jamaica	663	55	33	31	41	46	55	91	60	56	70	51	74
Mexico	3 246	159	161	238	308	201	310	436	223	280	271	329	330
Nicaragua	80	7	2	3	4	6	3	6	6	7	6	17	13
Panama	262	15	8	13	17	9	12	93	20	14	16	37	8
Paraguay	530	34	26	49	29	30	63	42	57	40	49	50	61
Peru	2 185	152	151	158	173	156	191	217	213	181	181	180	232
Puerto Rico	3	-	-	-	-	-	-	-	1	-	1	-	1
St Lucia	43	1	2	5	2	1	9	4	1	2	1	6	9
St Vincent And Grenadines	36	1	1	2	-	3	3	2	11	2	-	3	8
Suriname	91	6	5	4	2	7	11	10	4	8	9	11	14
Trinidad And Tobago	693	24	28	55	32	61	76	62	84	66	70	39	96
Turks And Caicos islands	2	-	-	-	-	-	-	1	1	-	-	-	-
Uruguay	1 162	62	59	59	172	87	106	109	107	129	67	114	91
Venezuela	1 293	88	68	89	102	80	107	110	136	139	124	98	152
West Indies	104	12	3	3	4	2	9	28	10	6	5	13	9
Australasia	122 784	9 821	8 357	7 895	10 709	8 530	10 094	11 616	10 205	12 188	9 490	10 267	13 612
Australia	103 506	8 544	7 167	6 679	8 804	7 325	8 613	9 699	8 463	10 719	8 106	8 481	10 906
Bouvet Island	1	-	-	-	-	-	-	-	-	1	-	-	-
Cocos (Keeling) Islands	1	-	-	-	-	-	-	1	-	-	-	-	-
Federated States of Micron	4	-	-	-	-	-	-	-	-	-	-	4	-
Fiji	151	11	10	6	8	5	12	28	7	5	5	26	28
French Polynesia	4	-	-	-	-	-	-	-	1	-	-	1	2
French Southern Ter	3	-	-	-	1	2	-	-	-	-	-	-	-
Guam	2	1	-	-	-	-	-	-	-	-	-	-	1
Kiribati	12	-	2	-	-	2	-	-	-	1	1	5	1
Marshall Islands	9	-	-	-	-	-	-	1	-	-	-	4	4
Nauru	14	-	-	-	-	-	2	-	-	-	4	4	4
New Caledonia	2	2	-	-	-	-	-	-	-	-	-	-	-
New Zealand	18 859	1 256	1 174	1 200	1 885	1 191	1 450	1 877	1 711	1 447	1 360	1 695	2 613

Appendix VI. Number of tourists by country of residence and month of arrival, 2011 (continued)													
Country	Total	Month of arrival											
		Jan	Feb	Mar	Apr	May	Jun	Jul	Aug	Sep	Oct	Nov	Dec
Norfolk Island	1	-	-	-	-	-	-	-	1	-	-	-	-
Northern Mariana Island	1	-	-	-	-	-	-	-	-	-	-	-	1
Palau	3	-	-	-	-	-	-	-	-	-	-	3	-
Papua New Guinea	91	2	1	4	6	2	10	3	7	6	8	20	22
Samoa	48	2	1	2	3	1	1	3	5	-	2	5	23
Solomon Island	29	-	1	1	-	-	5	3	3	8	2	3	3
Tasmania	1	-	-	-	-	-	-	-	-	-	-	-	1
Tokelau	2	2	-	-	-	-	-	-	-	-	-	-	-
Tonga Island	24	1	1	3	2	2	-	1	7	-	-	5	2
Tuvalu	9	-	-	-	-	-	1	-	-	-	1	7	-
Vanuatu	7	-	-	-	-	-	-	-	-	1	1	4	1
Middle East	37 136	2 865	2 768	3 660	2 938	2 350	2 795	4 259	2 885	2 898	3 328	3 199	3 191
Bahrain	177	24	3	3	14	11	12	31	5	14	10	30	20
Cyprus	1 672	147	142	122	156	104	121	135	141	121	114	147	222
Iran	4 773	374	252	1 606	169	210	150	220	276	424	250	362	480
Iraq	285	44	21	10	37	15	15	24	13	21	43	29	13
Israel	17 751	1 489	1 509	1 217	1 680	1 235	1 067	1 497	1 771	1 332	1 847	1 518	1 589
Jordan	1 696	127	170	139	141	113	121	162	84	166	137	182	154
Kuwait	632	26	25	21	19	25	65	211	43	33	31	74	59
Lebanon	2 720	179	178	216	239	244	251	236	212	236	227	252	250
Oman	349	19	29	8	16	42	43	50	11	43	42	31	15
Palestine	245	16	13	25	16	17	26	40	11	24	19	11	27
Qatar	231	9	21	23	25	9	21	33	9	8	10	39	24
Saudi Arabia	4 733	215	303	152	270	193	713	1 295	250	315	501	323	203
Syria	498	65	17	32	67	32	33	31	26	37	37	72	49
United Arab Emirates	1 072	100	60	56	60	75	126	257	27	95	46	104	66
Yemen	302	31	25	30	29	25	31	37	6	29	14	25	20
Asia	297 882	20 119	19 918	19 512	21 776	25 478	26 099	28 599	25 524	26 739	27 714	29 722	26 682
Afghanistan	206	23	42	5	11	4	21	11	8	9	30	33	9
Armenia	100	9	5	7	12	2	8	8	7	10	9	15	8
Azerbaijan	160	38	4	4	7	24	7	11	14	11	10	16	14
Bangladesh	3 900	286	198	219	345	292	286	349	277	380	342	481	445
Bhutan	27	-	1	1	3	-	1	-	1	1	2	10	7
Borneo	1	-	-	-	-	-	-	-	-	-	-	-	1

Appendix VI. Number of tourists by country of residence and month of arrival, 2011 (continued)													
Country	Total	Month of arrival											
		Jan	Feb	Mar	Apr	May	Jun	Jul	Aug	Sep	Oct	Nov	Dec
Brunei Darussalam	26	-	-	3	2	-	2	3	-	3	-	12	1
Cambodia	91	10	2	3	8	5	11	3	5	3	4	31	6
China	84 862	4 968	7 344	6 090	5 365	5 676	6 343	7 894	7 720	7 770	7 258	10 935	7 499
East Timor	3	2	-	-	-	-	-	-	-	-	-	-	1
Georgia	194	28	8	13	13	14	13	11	15	26	14	28	11
Guyana	245	14	6	18	16	20	20	23	27	24	25	25	27
Hong Kong	21	4	2	3	-	1	-	3	1	3	-	-	4
India	90 367	6 415	5 449	5 308	7 193	10 333	9 281	8 609	6 511	7 940	8 191	7 470	7 667
Indonesia	4 279	228	179	162	180	381	299	377	812	425	305	396	535
Japan	26 284	1 331	1 404	1 608	2 017	2 190	2 221	2 233	2 687	2 605	3 955	2 104	1 929
Kazakhstan	619	77	55	64	36	25	25	39	20	42	39	124	73
Korea Democratic Peoples	254	7	26	10	7	11	48	33	40	15	17	18	22
Kyrgyzstan	7	-	-	1	1	-	-	-	-	1	-	-	4
Laos	74	4	3	6	5	6	8	2	3	3	4	23	7
Macau	1	-	-	-	-	-	-	1	-	-	-	-	-
Malaysia	10 337	608	588	723	833	1 237	882	624	940	830	855	1 077	1 140
Maldives	36	2	4		3	2	4	1	2	3	3	11	1
Mongolia	141	2	6	10	9	6	4	19	6	13	6	38	22
Myanmar	339	40	18	17	17	18	23	16	21	52	33	23	61
Nepal	490	61	30	20	37	29	50	30	26	43	25	85	54
Pakistan	16 221	1 331	990	1 257	1 412	1 353	1 460	1 641	1 144	1 500	1 302	1 348	1 483
Philippines	9 203	571	452	540	789	658	940	854	881	948	863	951	756
Singapore	7 874	387	504	602	370	531	889	454	616	607	691	957	1 266
South Korea	18 290	1 945	1 236	1 134	1 057	1 186	1 454	3 031	1 707	1 194	1 193	1 495	1 658
Sri Lanka	3 127	166	182	163	322	179	213	344	234	302	284	255	483
Taiwan	8 524	901	667	842	533	562	623	715	802	731	794	748	606
Tajikistan	53	3	-	1	-	9	7	6	2	4	5	9	7
Thailand	7 468	546	383	490	894	534	439	576	733	891	936	480	566
Turkmenistan	18	1	-	2	6	1	-	3	1	1	1	1	1
Uzbekistan	192	9	11	14	17	8	12	18	17	16	17	36	17
Vietnam	3 848	102	119	172	256	181	505	657	244	333	501	487	291
Africa	6 136 835	615 250	431 265	453 448	524 223	508 776	458 688	532 779	530 346	500 714	512 624	486 653	582 069
SADC	5 951 261	601 025	418 083	439 312	509 604	493 644	444 700	516 493	513 814	484 139	496 550	468 758	565 139
Angola	39 217	3 815	2 915	2 966	2 699	2 751	2 911	3 264	3 365	3 517	3 289	3 748	3 977

Appendix VI. Number of tourists by country of residence and month of arrival, 2011 (continued)													
Country	Total	Month of arrival											
		Jan	Feb	Mar	Apr	May	Jun	Jul	Aug	Sep	Oct	Nov	Dec
Botswana	477 937	34 174	36 541	37 924	52 430	36 094	33 186	41 570	36 129	44 597	36 708	36 774	51 810
DRC	32 582	3 018	2 781	2 372	3 041	2 726	1 988	3 204	4 051	2 149	2 650	1 932	2 670
Lesotho	1 526 597	165 921	104 132	115 422	128 270	130 224	117 867	134 496	120 244	117 858	133 157	121 049	137 957
Madagascar	2 962	223	187	205	174	187	343	276	210	312	343	247	255
Malawi	135 577	10 096	9 227	10 419	9 280	10 004	10 963	12 052	12 288	11 967	12 756	12 896	13 629
Mauritius	16 545	1 405	1 234	1 253	1 320	1 211	1 173	1 609	1 410	1 435	1 483	1 438	1 574
Mozambique	1 076 753	149 393	83 959	78 187	77 996	88 202	80 477	92 291	90 128	87 104	82 664	83 893	82 459
Namibia	197 835	15 937	12 289	14 619	19 638	15 802	13 264	16 330	17 205	16 144	15 971	14 575	26 061
Seychelles	3 182	244	421	246	222	232	175	234	199	199	289	400	321
Swaziland	700 119	56 297	47 584	49 261	64 584	56 227	51 169	60 653	67 904	59 937	61 398	54 746	70 359
Tanzania	28 645	2 146	2 099	2 031	1 981	2 544	2 244	2 716	2 294	2 679	2 725	2 594	2 592
Zambia	160 302	12 799	11 638	12 290	13 340	13 272	12 871	14 059	14 404	12 458	13 869	13 445	15 857
Zimbabwe	1 553 008	145 557	103 076	112 117	134 629	134 168	116 069	133 739	143 983	123 783	129 248	121 021	155 618
'Other' Africa	185 574	14 225	13 182	14 136	14 619	15 132	13 988	16 286	16 532	16 575	16 074	17 895	16 930
East and Central Africa	75 309	6 642	5 768	5 633	6 668	5 932	5 617	6 808	6 621	6 050	5 856	6 866	6 848
Burundi	1 010	78	65	89	70	88	73	94	80	101	76	113	83
Cameroon	5 357	534	432	399	434	443	385	497	451	412	463	499	408
Central African Republic	143	10	13	7	8	17	12	14	15	7	12	19	9
Chad	339	14	12	21	19	31	27	29	24	30	31	59	42
Comoros	198	12	14	17	10	12	26	16	15	16	20	29	11
Congo	3 337	314	239	270	249	242	221	368	335	239	296	277	287
Djibouti	97	4	4	7	4	10	12	16	6	10	7	11	6
Equatorial Guinea	319	40	18	6	16	28	33	19	21	34	67	19	18
Eritrea	666	60	65	45	60	73	35	60	53	48	63	60	44
Ethiopia	9 125	653	805	835	1 054	761	797	910	828	582	605	742	553
Gabon	6 199	603	518	441	470	417	316	636	898	461	365	471	603
Kenya	30 279	2 524	2 154	2 242	2 420	2 391	2 277	2 569	2 579	2 619	2 424	2 937	3 143
Reunion	3	2	-	-	-	-	-	-	-	-	1	-	-
Rwanda	2 838	295	238	200	197	212	227	291	235	234	227	245	237
Sao Tome and Principe	120	2	7	6	6	11	17	6	6	16	16	20	7
Somalia	829	7	117	59	559	13	7	14	11	12	10	11	9
Uganda	14 450	1 490	1 067	989	1 092	1 183	1 152	1 269	1 064	1 229	1 173	1 354	1 388

Appendix VI. Number of tourists by country of residence and month of arrival, 2011 (concluded)													
Country	Total	Month of arrival											
		Jan	Feb	Mar	Apr	May	Jun	Jul	Aug	Sep	Oct	Nov	Dec
West Africa	97 292	6 363	6 689	7 108	6 679	8 170	7 269	8 441	9 188	9 261	9 145	9 738	9 241
Benin	1 299	97	71	74	71	158	141	77	117	112	113	187	81
Burkina Faso	697	34	48	48	32	85	65	56	88	60	62	70	49
Cape Verde Island	534	41	36	39	48	33	48	45	52	57	39	53	43
Cote D'Ivoire	1 781	119	109	116	64	152	149	183	161	205	165	260	98
Gambia	805	28	37	47	74	64	104	81	70	96	88	68	48
Ghana	18 538	1 328	1 332	1 271	1 256	1 412	1 480	1 573	1 833	1 814	1 757	1 830	1 652
Guinea	2 127	133	152	145	141	138	194	238	155	192	217	228	194
Guinea-Bissau	198	11	16	10	12	13	31	16	12	16	30	24	7
Liberia	586	23	39	31	34	50	64	49	58	60	51	68	59
Madeira Islands	1	-	-	-	-	-	-	-	-	-	-	-	1
Mali	1 192	54	70	78	94	120	88	119	83	118	146	135	87
Mauritania	269	10	37	18	31	19	30	27	11	17	20	39	10
Niger	296	14	26	22	9	20	24	32	16	25	26	48	34
Nigeria	64 402	4 220	4 426	4 824	4 496	5 480	4 440	5 523	6 180	6 076	5 998	6 226	6 513
Saint Helena	80	14	-	1	10	26	-	16	-	-	-	6	7
Senegal	2 965	143	183	284	206	259	265	262	235	292	269	316	251
Sierra Leone	930	61	75	52	75	73	93	85	73	70	121	92	60
Togo	592	33	32	48	26	68	53	59	44	51	43	88	47
North Africa	12 973	1 220	725	1 395	1 272	1 030	1 102	1 037	723	1 264	1 073	1 291	841
Algeria	1 259	94	80	154	66	123	92	109	101	97	128	116	99
Egypt	6 251	620	292	699	702	449	522	465	317	640	506	636	403
Libya	977	207	87	82	56	67	73	59	46	81	52	98	69
Morocco	1 364	117	93	170	111	101	81	119	68	123	144	142	95
The Sudan	1 891	125	117	160	199	222	228	142	99	167	165	173	94
Tunisia	1 221	55	56	130	138	68	105	140	92	154	78	126	79
Western Sahara	10	2	-	-	-	-	1	3	-	2	-	-	2
Unspecified	25 800	1 783	1 769	2 027	2 031	2 087	2 049	1 990	1 840	2 222	2 482	2 845	2 675

Appendix VII. Number of tourists by country of residence and mode of travel, 2011					
Country	Total	Mode of travel			
		Air	Road	Sea	Unspecified
Total	8 339 354	2 503 230	5 826 678	9 169	277
Overseas	2 176 719	1 917 883	250 258	8 419	159
Europe	1 286 027	1 117 783	163 247	4 981	16
Albania	115	107	8	-	-
Andorra	32	28	4	-	-
Austria	21 841	19 241	2 490	109	1
Belarus	664	651	13	-	-
Belgium	40 478	33 895	6 550	33	-
Bosnia-Herzegovina	267	245	21	1	-
Bulgaria	2 233	1 927	293	11	2
Byelorussian SSR	1		1	-	-
Croatia	1 159	1 063	92	4	-
Czech Republic	6 169	5 272	895	1	1
Denmark	22 970	20 437	2 507	26	-
Estonia	676	611	64	1	-
Finland	10 090	8 908	1 178	4	-
France	105 420	90 348	14 921	150	1
Germany	235 774	202 171	32 974	626	3
Greece	5 822	5 355	453	14	-
Hungary	2 882	2 697	176	9	-
Iceland	598	545	51	2	-
Ireland	29 098	25 795	3 225	78	-
Isle Of Man	13	8	5	-	-
Isle Of Wight	1	1	-	-	-
Italy	54 628	48 773	5 774	81	-
Latvia	608	541	55	12	-
Liechtenstein	213	200	12	1	-
Lithuania	773	718	52	3	-
Luxembourg	1 271	1 108	162	1	-
Malta	550	459	87	3	1
Moldova	149	144	4	1	-
Monaco	93	91	2	-	-
Norway	20 556	18 264	2 258	33	1
Poland	9 962	8 864	1 076	21	1

Appendix VII. Number of tourists by country of residence and mode of travel, 2011 (continued)					
Country	Total	Mode of travel			
		Air	Road	Sea	Unspecified
Portugal	40 301	24 063	16 211	26	1
Romania	2 188	2 063	115	10	-
Russian Federation	10 487	9 689	765	32	1
San Marino	41	37	4	-	-
Slovakia	2 093	1 864	227	2	-
Slovenia	1 037	949	88	-	-
Spain	27 209	24 077	3 063	69	-
Sweden	38 754	34 262	4 469	23	-
Switzerland	40 728	35 617	4 895	216	-
The Netherlands	113 846	91 818	21 783	243	2
Turkey	10 348	9 788	559	1	-
UK	420 483	381 884	35 515	3 083	1
Ukraine	3 142	2 972	122	48	-
Vatican	10	9	1	-	-
Yugoslavia	254	224	27	3	-
North America	345 384	309 749	33 529	2 104	2
Canada	57 767	50 872	6 691	204	-
East Indian Islands	3	-	3	-	-
USA	287 614	258 877	26 835	1 900	2
Central and South America	87 506	80 490	6 946	66	4
Antigua And Barbuda	83	80	3	-	-
Argentina	13 817	13 260	547	10	-
Bahamas	137	132	5	-	-
Barbados	174	168	6	-	-
Belize	57	53	4	-	-
Bermuda	58	47	11	-	-
Bolivia	690	624	66	-	-
Brazil	54 183	49 600	4 565	18	-
Chile	3 210	2 933	257	20	-
Colombia	1 831	1 657	173	1	-
Costa Rica	401	334	67	-	-
Cuba	1 139	967	171	-	1
Dominica	109	99	10	-	-
Ecuador	626	575	47	3	1

Appendix VII. Number of tourists by country of residence and mode of travel, 2011 (continued)					
Country	Total	Mode of travel			
		Air	Road	Sea	Unspecified
El Salvador	93	88	5	-	-
Grenada	37	37	-	-	-
Guatemala	181	171	9	1	-
Guyana (Guinea-British)	1	1	-	-	-
Haiti	98	83	15	-	-
Honduras	188	143	43	2	-
Jamaica	663	514	149	-	-
Mexico	3 246	3 115	129	2	-
Nicaragua	80	64	16	-	-
Panama	262	224	36	2	-
Paraguay	530	479	51	-	-
Peru	2 185	1 925	257	3	-
Puerto Rico	3	1	2	-	-
St Lucia	43	41	2	-	-
St Vincent And Grenadines	36	36	-	-	-
Suriname	91	83	7	-	1
Trinidad And Tobago	693	640	53	-	-
Turks And Caicos islands	2	2	-	-	-
Uruguay	1 162	1 113	48	1	-
Venezuela	1 293	1 118	172	3	-
West Indies	104	83	20	-	1
Australasia	122 784	113 484	9 096	204	-
Australia	103 506	95 832	7 521	153	-
Bouvet Island	1	1	-	-	-
Cocos (Keeling) Island	1	-	1	-	-
Federated States of Micron	4	4	-	-	-
Fiji	151	145	6	-	-
French Polynesia	4	1	2	1	-
French Southern Ter	3	-	3	-	-
Guam	2	1	-	1	-
Kiribati	12	12	-	-	-
Marshall Islands	9	8	1	-	-
Nauru	14	14	-	-	-
New Caledonia	2	2	-	-	-
New Zealand	18 859	17 257	1 556	46	-

Appendix VII. Number of tourists by country of residence and mode of travel, 2011(continued)

Country	Total	Mode of travel			
		Air	Road	Sea	Unspecified
Norfolk Island	1		1	-	-
Northern Mariana Island	1	-	1	-	-
Palau	3	3		-	-
Papua New Guinea	91	90	1	-	-
Samoa	48	45	1	2	-
Solomon Island	29	29	-	-	-
Tasmania	1	-	-	1	-
Tokelau	2	-	2	-	-
Tonga Island	24	24	-	-	-
Tuvalu	9	9	-	-	-
Vanuatu	7	7	-	-	-
Middle East	37 136	34 885	2 230	18	3
Bahrain	177	171	6	-	-
Cyprus	1 672	1 502	167	3	-
Iran	4 773	4 677	96	-	-
Iraq	285	263	21	-	1
Israel	17 751	16 326	1 418	6	1
Jordan	1 696	1 590	106	-	-
Kuwait	632	610	22	-	-
Lebanon	2 720	2 416	304	-	-
Oman	349	344	5	-	-
Palestine	245	215	30	-	-
Qatar	231	230	1	-	-
Saudi Arabia	4 733	4 700	26	6	1
Syria	498	491	7	-	-
United Arab Emirates	1 072	1 060	12	-	-
Yemen	302	290	9	3	-
Asia	297 882	261 492	35 210	1 046	134
Afghanistan	206	155	50	1	-
Armenia	100	96	4	-	-
Azerbaijan	160	159	1	-	-
Bangladesh	3 900	2 407	1 450	10	33
Bhutan	27	26	1	-	-
Borneo	1	1	-	-	-

Appendix VII. Number of tourists by country of residence and mode of travel, 2011 (continued)					
Country	Total	Mode of travel			
		Air	Road	Sea	Unspecified
Brunei Darussalam	26	26	-	-	-
Cambodia	91	86	4	1	-
China	84 862	77 500	7 326	36	-
East Timor	3	-	3	-	-
Georgia	194	190	3	1	-
Guyana	245	201	44	-	-
Hong Kong	21	13	4	4	-
India	90 367	76 965	13 280	95	27
Indonesia	4 279	4 101	148	30	-
Japan	26 284	24 637	997	650	-
Kazakhstan	619	612	6	1	-
Korea Democratic Peoples	254	204	50	-	-
Kyrgyzstan	7	-	7	-	-
Laos	74	32	42	-	-
Macau	1	-	1	-	-
Malaysia	10 337	10 026	307	4	-
Maldives	36	36	-	-	-
Mongolia	141	134	7	-	-
Myanmar	339	266	58	15	-
Nepal	490	449	36	4	1
Pakistan	16 221	11 778	4 374	32	37
Philippines	9 203	6 911	2 201	89	2
Singapore	7 874	7 636	231	7	-
South Korea	18 290	16 475	1 804	9	2
Sri Lanka	3 127	2 020	1 097	9	1
Taiwan	8 524	7 112	1 350	40	22
Tajikistan	53	50	3	-	-
Thailand	7 468	7 214	241	4	9
Turkmenistan	18	17	1	-	-
Uzbekistan	192	183	9	-	-
Vietnam	3 848	3 774	70	4	-
Africa	6 136 835	568 078	5 567 904	735	118
SADC	5 951 261	403 631	5 547 025	577	28
Angola	39 217	37 600	1 606	8	3

Appendix VII. Number of tourists by country of residence and mode of travel, 2011 (continued)					
Country	Total	Mode of travel			
		Air	Road	Sea	Unspecified
Botswana	477 937	30 594	447 312	31	-
DRC	32 582	24 797	7 784	-	1
Lesotho	1 526 597	6 167	1 520 400	22	8
Madagascar	2 962	2 817	134	11	-
Malawi	135 577	21 504	114 064	8	1
Mauritius	16 545	14 168	2 376	1	-
Mozambique	1 076 753	32 585	1 044 116	49	3
Namibia	197 835	54 596	142 941	298	-
Seychelles	3 182	3 083	99	-	-
Swaziland	700 119	7 818	692 279	21	1
Tanzania	28 645	17 577	11 063	5	-
Zambia	160 302	54 260	106 030	12	-
Zimbabwe	1 553 008	96 065	1 456 821	111	11
'Other' Africa	185 574	164 447	20 879	158	90
East and Central Africa	75 309	64 636	10 585	35	53
Burundi	1 010	898	111	-	1
Cameroon	5 357	4 887	448	10	12
Central African Republic	143	132	11	-	-
Chad	339	332	7	-	-
Comoros	198	188	10	-	-
Congo	3 337	3 003	298	10	26
Djibouti	97	97	-	-	-
Equatorial Guinea	319	292	26	-	1
Eritrea	666	593	73	-	-
Ethiopia	9 125	7 770	1 351	-	4
Gabon	6 199	6 114	84	-	1
Kenya	30 279	25 965	4 300	12	2
Reunion	3	3	-	-	-
Rwanda	2 838	2 619	217	1	1
Sao Tome and Principe	120	117	3	-	-
Somalia	829	104	725	-	-
Uganda	14 450	11 522	2 921	2	5

Appendix VII. Number of tourists by country of residence and mode of travel, 2011 (concluded)					
Country	Total	Mode of travel			
		Air	Road	Sea	Unspecified
West Africa	97 292	87 840	9 305	114	33
Benin	1 299	1 212	86	-	1
Burkina Faso	697	674	23	-	-
Cape Verde Island	534	467	67	-	-
Cote D'Ivoire	1 781	1 743	38	-	-
Gambia	805	746	59	-	-
Ghana	18 538	16 890	1 642	4	2
Guinea	2 127	1 137	986	2	2
Guinea-Bissau	198	170	26	-	2
Liberia	586	535	51	-	-
Madeira Islands	1	-	-	1	-
Mali	1 192	960	232	-	-
Mauritania	269	259	10	-	-
Niger	296	288	8	-	-
Nigeria	64 402	58 594	5 748	34	26
Saint Helena	80	6	2	72	-
Senegal	2 965	2 876	88	1	-
Sierra Leone	930	708	222	-	-
Togo	592	575	17	-	-
North Africa	12 973	11 971	989	9	4
Algeria	1 259	1 165	94	-	-
Egypt	6 251	5 953	288	8	2
Libya	977	588	388	-	1
Morocco	1 364	1 298	64	1	1
The Sudan	1 891	1 795	96	-	-
Tunisia	1 221	1 163	58	-	-
Western Sahara	10	9	1	-	-
Unspecified	25 800	17 269	8 516	15	-

Appendix VIII. Number of tourists by country of residence and purpose of visit, 2011					
Country	Total	Purpose of visit			
		Business	Holiday	Study	Transit
Total	8 339 354	183 882	7 868 040	83 144	204 288
Overseas	2 176 719	77 835	1 941 284	13 743	143 857
Europe	1 286 027	44 130	1 172 964	7 369	61 564
Albania	115	8	98	1	8
Andorra	32	-	30	-	2
Austria	21 841	560	19 907	108	1 266
Belarus	664	39	595	5	25
Belgium	40 478	1 223	37 369	232	1 654
Bosnia-Herzegovina	267	30	227	5	5
Bulgaria	2 233	105	1 923	19	186
Byelorussian SSR	1	-	1	-	-
Croatia	1 159	110	879	7	163
Czech Republic	6 169	205	5 713	16	235
Denmark	22 970	810	20 832	93	1 235
Estonia	676	44	600	3	29
Finland	10 090	404	9 012	40	634
France	105 420	3 583	95 902	727	5 208
Germany	235 774	7 208	215 252	1 741	11 573
Greece	5 822	272	5 247	11	292
Hungary	2 882	152	2 584	13	133
Iceland	598	32	524	2	40
Ireland	29 098	1 141	26 725	167	1 065
Isle Of Man	13	1	11	-	1
Isle Of Wight	1	-	1	-	-
Italy	54 628	1 993	48 458	186	3 991
Latvia	608	24	521	2	61
Liechtenstein	213	8	196	-	9
Lithuania	773	57	655	4	57
Luxembourg	1 271	20	1 158	2	91
Malta	550	29	499	-	22
Moldova	149	10	128	3	8
Monaco	93	9	78	1	5
Norway	20 556	723	18 177	359	1 297
Poland	9 962	393	9 000	29	540

Appendix VIII. Number of tourists by country of residence and purpose of visit, 2011 (continued)					
Country	Total	Purpose of visit			
		Business	Holiday	Study	Transit
Portugal	40 301	623	37 197	149	2 332
Romania	2 188	227	1 770	17	174
Russian Federation	10 487	890	8 740	99	758
San Marino	41	1	37	-	3
Slovakia	2 093	115	1 881	9	88
Slovenia	1 037	99	878	8	52
Spain	27 209	858	23 707	113	2 531
Sweden	38 754	1 561	35 411	240	1 542
Switzerland	40 728	852	36 492	211	3 173
The Netherlands	113 846	3 298	107 125	894	2 529
Turkey	10 348	589	9 368	108	283
UK	420 483	15 612	385 334	1 707	17 830
Ukraine	3 142	189	2 519	30	404
Vatican	10	2	8	-	-
Yugoslavia	254	21	195	8	30
North America	345 384	9 691	309 984	2 609	23 100
Canada	57 767	1 683	52 697	322	3 065
East Indian Islands	3	-	3	-	-
USA	287 614	8 008	257 284	2 287	20 035
Central and South America	87 506	1 410	71 082	407	14 607
Antigua And Barbuda	83	5	74	1	3
Argentina	13 817	202	12 153	35	1 427
Bahamas	137	9	120	6	2
Barbados	174	8	160	3	3
Belize	57	3	51	-	3
Bermuda	58	4	52	-	2
Bolivia	690	11	488	-	191
Brazil	54 183	434	42 724	185	10 840
Chile	3 210	74	2 808	10	318
Colombia	1 831	106	1 553	35	137
Costa Rica	401	20	350	3	28
Cuba	1 139	23	699	34	383
Dominica	109	10	83	-	16
Ecuador	626	23	551	7	45

Appendix VIII. Number of tourists by country of residence and purpose of visit, 2011 (continued)					
Country	Total	Purpose of visit			
		Business	Holiday	Study	Transit
El Salvador	93	8	74	1	10
Grenada	37	5	31	-	1
Guatemala	181	18	142	1	20
Guyana (Guinea-British)	1	-	1	-	-
Haiti	98	14	71	1	12
Honduras	188	16	117	3	52
Jamaica	663	22	551	9	81
Mexico	3 246	235	2 803	23	185
Nicaragua	80	6	62	5	7
Panama	262	15	236	3	8
Paraguay	530	6	335	3	186
Peru	2 185	28	1 826	8	323
Puerto Rico	3	-	3	-	-
St Lucia	43	7	27	1	8
St Vincent And Grenadines	36	2	32	1	1
Suriname	91	5	79	2	5
Trinidad And Tobago	693	33	558	14	88
Turks And Caicos islands	2	-	2	-	-
Uruguay	1 162	13	993	3	153
Venezuela	1 293	36	1 183	9	65
West Indies	104	9	90	1	4
Australasia	122 784	2 497	114 104	228	5 955
Australia	103 506	2 049	96 133	187	5 137
Bouvet Island	1	-	1	-	-
Cocos (Keeling) Island	1	-	1	-	-
Federated States of Micron	4	3	1	-	-
Fiji	151	22	107	8	14
French Polynesia	4	-	3	1	-
French Southern Ter	3	1	2	-	-
Guam	2	-	2	-	-
Kiribati	12	2	7	-	3
Marshall Islands	9	3	5	-	1
Nauru	14	-	13	-	1
New Caledonia	2	-	2	-	-
New Zealand	18 859	367	17 676	32	784

Appendix VIII. Number of tourists by country of residence and purpose of visit, 2011 (continued)					
Country	Total	Purpose of visit			
		Business	Holiday	Study	Transit
Norfolk Island	1	-	1	-	-
Northern Mariana Island	1	-	1	-	-
Palau	3	2	1	-	-
Papua New Guinea	91	22	57	-	12
Samoa	48	7	39	-	2
Solomon Island	29	8	20	-	1
Tasmania	1	-	1	-	-
Tokelau	2	-	2	-	-
Tonga Island	24	4	20	-	-
Tuvalu	9	5	4	-	-
Vanuatu	7	2	5	-	-
Middle East	37 136	2 125	33 186	415	1 410
Bahrain	177	36	127	4	10
Cyprus	1 672	63	1 539	2	68
Iran	4 773	293	4 287	78	115
Iraq	285	43	218	17	7
Israel	17 751	645	16 352	27	727
Jordan	1 696	192	1 435	10	59
Kuwait	632	39	579	3	11
Lebanon	2 720	313	2 019	31	357
Oman	349	38	300	4	7
Palestine	245	33	194	17	1
Qatar	231	37	190	3	1
Saudi Arabia	4 733	175	4 411	132	15
Syria	498	85	398	7	8
United Arab Emirates	1 072	114	916	28	14
Yemen	302	19	221	52	10
Asia	297 882	17 982	239 964	2 715	37 221
Afghanistan	206	47	156	2	1
Armenia	100	13	68	2	17
Azerbaijan	160	15	101	7	37
Bangladesh	3 900	199	3 447	63	191
Bhutan	27	9	17	-	1
Borneo	1	-	-	1	-

Appendix VIII. Number of tourists by country of residence and purpose of visit, 2011 (continued)					
Country	Total	Purpose of visit			
		Business	Holiday	Study	Transit
Brunei Darussalam	26	5	18	1	2
Cambodia	91	9	75	-	7
China	84 862	5 193	66 096	498	13 075
East Timor	3	-	3	-	-
Georgia	194	18	151	3	22
Guyana	245	5	212	7	21
Hong Kong	21	1	17	-	3
India	90 367	6 983	75 389	681	7 314
Indonesia	4 279	379	3 191	29	680
Japan	26 284	1 082	21 482	79	3 641
Kazakhstan	619	46	544	13	16
Korea Democratic Peoples	254	2	111	2	139
Kyrgyzstan	7	-	7	-	-
Laos	74	7	63	1	3
Macau	1	-	1	-	-
Malaysia	10 337	412	9 236	118	571
Maldives	36	7	25	1	3
Mongolia	141	20	109	1	11
Myanmar	339	8	256	4	71
Nepal	490	53	405	6	26
Pakistan	16 221	900	13 691	140	1 490
Philippines	9 203	262	5 644	223	3 074
Singapore	7 874	383	6 969	18	504
South Korea	18 290	1 167	14 896	554	1 673
Sri Lanka	3 127	208	2 325	60	534
Taiwan	8 524	179	6 946	64	1 335
Tajikistan	53	11	38	1	3
Thailand	7 468	214	6 876	112	266
Turkmenistan	18	-	14	-	4
Uzbekistan	192	13	146	1	32
Vietnam	3 848	132	1 239	23	2 454
Africa	6 136 835	104 590	5 904 353	69 057	58 835
SADC	5 951 261	96 294	5 744 004	62 086	48 877
Angola	39 217	864	32 564	2 305	3 484

Appendix VIII. Country of residence of tourists by purpose of visit, 2011 (continued)					
Country	Total	Purpose of visit			
		Business	Holiday	Study	Transit
Botswana	477 937	1 697	461 249	8 543	6 448
DRC	32 582	1 045	29 381	1 546	610
Lesotho	1 526 597	4 005	1 507 476	13 651	1 465
Madagascar	2 962	87	2 138	60	677
Malawi	135 577	2 592	129 455	845	2 685
Mauritius	16 545	452	14 459	505	1 129
Mozambique	1 076 753	24 766	1 045 437	858	5 692
Namibia	197 835	24 117	159 070	8 555	6 093
Seychelles	3 182	40	3 011	20	111
Swaziland	700 119	12 335	673 058	12 829	1 897
Tanzania	28 645	563	25 573	825	1 684
Zambia	160 302	10 590	142 476	1 651	5 585
Zimbabwe	1 553 008	13 141	1 518 657	9 893	11 317
'Other' Africa	185 574	8 296	160 349	6 971	9 958
East and Central Africa	75 309	3 861	63 976	4 061	3 411
Burundi	1 010	80	805	43	82
Cameroon	5 357	306	4 245	544	262
Central African Republic	143	17	117	5	4
Chad	339	54	251	26	8
Comoros	198	8	139	30	21
Congo	3 337	160	2 871	225	81
Djibouti	97	15	69	1	12
Equatorial Guinea	319	22	222	65	10
Eritrea	666	29	598	15	24
Ethiopia	9 125	372	8 215	170	368
Gabon	6 199	90	5 469	505	135
Kenya	30 279	1 804	25 648	1 488	1 339
Reunion	3	-	3	-	-
Rwanda	2 838	147	2 192	292	207
Sao Tome and Principe	120	5	89	-	26
Somalia	829	5	810	1	13
Uganda	14 450	747	12 233	651	819

Appendix VIII. Number of tourists by country of residence and purpose of visit, 2011 (concluded)					
Country	Total	Purpose of visit			
		Business	Holiday	Study	Transit
West Africa	97 292	2 792	86 298	2 458	5 744
Benin	1 299	91	1 142	30	36
Burkina Faso	697	80	524	20	73
Cape Verde Island	534	14	474	5	41
Cote D'Ivoire	1 781	190	1 407	56	128
Gambia	805	45	462	17	281
Ghana	18 538	498	16 221	272	1 547
Guinea	2 127	70	1 648	46	363
Guinea-Bissau	198	19	142	3	34
Liberia	586	29	497	17	43
Madeira Islands	1	-	1	-	-
Mali	1 192	115	888	17	172
Mauritania	269	25	199	1	44
Niger	296	50	221	-	25
Nigeria	64 402	1 208	58 852	1 895	2 447
Saint Helena	80	-	79	-	1
Senegal	2 965	278	2 286	33	368
Sierra Leone	930	40	786	38	66
Togo	592	40	469	8	75
North Africa	12 973	1 643	10 075	452	803
Algeria	1 259	98	1 085	50	26
Egypt	6 251	935	4 859	56	401
Libya	977	41	779	123	34
Morocco	1 364	226	1 019	32	87
The Sudan	1 891	216	1 446	175	54
Tunisia	1 221	126	880	15	200
Western Sahara	10	1	7	1	1
Unspecified	25 800	1 457	22 403	344	1 596

Appendix IX. Number of tourists by sex, age group and month of arrival, 2011													
Sex and age group	Total	Month of arrival											
		Jan	Feb	Mar	Apr	May	Jun	Jul	Aug	Sep	Oct	Nov	Dec
All	8 339 354	796 526	623 899	631 351	698 399	646 785	599 800	718 195	708 882	676 433	723 247	704 733	811 104
0-14	436 313	35 547	23 918	22 297	48 737	24 188	25 795	42 325	47 543	26 855	31 604	27 506	79 998
15-64	7 532 125	726 334	563 851	575 976	621 788	598 117	553 342	653 647	635 642	616 061	650 591	637 811	698 965
65+	362 172	33 627	35 411	32 341	27 047	23 725	20 020	21 505	25 010	32 827	40 401	38 793	31 465
Unspecified	8 744	1 018	719	737	827	755	643	718	687	690	651	623	676
Male	4 760 132	485 811	363 124	365 720	387 416	375 562	347 573	405 797	402 702	387 276	410 605	399 943	428 603
0-14	219 162	17 947	12 064	11 334	24 696	12 244	12 937	21 359	23 714	13 488	15 783	13 542	40 054
15-64	4 349 376	449 415	331 935	337 203	348 576	350 656	323 756	372 985	365 927	356 546	374 016	365 749	372 612
65+	186 793	17 825	18 722	16 789	13 708	12 240	10 522	11 048	12 699	16 875	20 454	20 315	15 596
Unspecified	4 801	624	403	394	436	422	358	405	362	367	352	337	341
Female	3 567 758	309 632	259 868	264 682	309 917	270 286	251 407	311 505	305 262	288 261	311 725	303 832	381 381
0-14	217 138	17 596	11 852	10 961	24 039	11 944	12 858	20 965	23 829	13 367	15 820	13 964	39 943
15-64	3 173 300	276 021	231 202	237 997	272 320	246 682	228 891	279 913	268 947	258 779	275 819	271 288	325 441
65+	174 197	15 688	16 575	15 448	13 239	11 391	9 424	10 374	12 229	15 865	19 860	18 358	15 746
Unspecified	3 123	327	239	276	319	269	234	253	257	250	226	222	251
Unspecified	11 464	1 083	907	949	1 066	937	820	893	918	896	917	958	1 120
0-14	13	4	2	2	2	-	-	1	-	-	1	-	1
15-64	9 449	898	714	776	892	779	695	749	768	736	756	774	912
65+	1 182	114	114	104	100	94	74	83	82	87	87	120	123
Unspecified	820	67	77	67	72	64	51	60	68	73	73	64	84

5. DEFINITION OF TERMS

Definitions used by the United Nations World Tourism Organisation (UNWTO)

- **Traveller** is someone who moves between different geographical locations for any purpose and any duration. Note: in this publication, the geographical locations are **countries**. Hence in this report, the term traveller refers to an international traveller.
- **Visitor** refers to any person travelling to a place other than that of his/her usual environment for less than 12 months and whose main purpose of the trip is other than the exercise of an activity remunerated from within the place visited.
- **Same-day visitor** is a visitor who visits a place for less than one night.
- **Tourist** (overnight visitor) is a visitor who stays at least one night in collective or private accommodation in the place visited for less than twelve months.
- **Tourism** comprises the activities of persons travelling to, and staying in places outside their usual environment, for not more than one uninterrupted year, for leisure, business and other purposes. The usual environment of a person consists of a certain area around his/her place of residence, plus all other places he/she frequently visits.

Definitions used specifically in this report

- **South African resident** refers to either a South African citizen or a non-South African citizen with a South African permanent residence permit.
- **Foreign traveller** refers to a traveller who is not a South African citizen or permanent resident.
- **Country** refers to individual countries within a region. (Note: The country of residence is used here and not the country from which the visitor travelled).
- **Region** refers to the following country classification: Overseas, SADC and 'Other' Africa. Overseas consists of Europe, North America, Central and South America, Australasia, the Middle East and Asia.
- **Overseas:** refers to all countries outside Africa
- **Africa** refers to all the countries in Africa (both mainland and island countries).
- **SADC** refers to the fourteen countries, excluding South Africa, that belong to the Southern African Development Community
- **'Other' Africa** refers to all countries in Africa that are not members of the SADC. They are grouped as: East and Central Africa, West Africa and North Africa.

Symbol used

- = Nil

Limitations

Stats SA is unable to provide tourism information on South African residents. This is because DHA does not collect data on purpose of travel and intended duration of stay from departures or purpose of travel and days spent away from arrivals.

Related publications

Tourism statistics are also published in the monthly Statistical Release P0351: *Tourism and Migration* and in the quarterly *Bulletin of Statistics* and *STATS in Brief*

6. OTHER STATS SA REPORTS

The following reports on tourism and migration have been published:

- No. 205 - South African residents travelling abroad 1952-1957
- No. 286 - Statistics of immigrants and emigrants 1924-1964
- No. 297 - Statistics of migration 1963 and earlier years
- No. 07-20-01 - External migration 1964
- No. 07-20-02 - External migration 1965
- No. 19-01-01 - Migration Statistics: Immigrants and Emigrants 1966 to 1969
- No. 19-02-01 - Migration Statistics: Tourists 1966 to 1969
- No. 19-01-02 - Migration Statistics: Tourists Immigrants and Emigrants 1970 and 1971
- No. 19-01-03 - Tourism and migration 1972-1975
- No. 19-01-04 - Tourism and migration 1976
- No. 19-01-05 - Tourism and migration 1977
- No. 19-01-06 - Tourism and migration 1978
- No. 19-01-07 - Tourism and migration 1979
- No. 19-01-08 - Tourism and migration 1980
- No. 19-01-09 - Tourism and migration 1981
- No. 19-01-10 - Tourism and migration 1982
- No. 19-01-11 - Tourism and migration 1983
- No. 19-01-12 - Tourism and migration 1984
- No. 19-01-13 - Tourism and migration 1985
- No. 19-01-14 - Tourism and migration 1986
- No. 03-51-02 (1987) - Tourism and migration
- No. 03-51-02 (1988) - Tourism and migration
- No. 03-51-02 (1989) - Tourism and migration
- No. 03-51-02 (1990) - Tourism and migration
- No. 03-51-02 (1991) - Tourism and migration
- No. 03-51-02 (1992) - Tourism and migration
- No. 03-51-02 (1993) - Tourism and migration
- No. 03-51-02 (1994) - Tourism and migration
- No. 03-51-02 (1995) - Tourism and migration
- No. 03-51-02 (1996) - Tourism and migration
- No. 03-51-02 (1997) - Tourism
- No. 03-51-02 (1998) - Tourism
- No. 03-51-02 (1999) - Tourism
- No. 03-51-02 (2000) - Tourism
- No. 03-51-02 (2001) - Tourism
- No. 03-51-02 (2002) -Tourism
- No. 03-51-02 (2003) -Tourism
- No. 03-51-02 (2004, 2005 and 2006) –Tourism
- No. 03-51-02 (2007) -Tourism
- No. 03-51-02 (2008) -Tourism
- No. 03-51-02 (2009) - Tourism
- No. 03-51-02 (2010) -Tourism