



Tourism, 2010

Report No. 03-51-02 (2010)

Tourism, 2010

Statistics South Africa

Report No. 03-51-02 (2010)

Pali Lehohla
Statistician-General

Tourism, 2010 / Statistics South Africa

Published by Statistics South Africa, Private Bag X44, Pretoria 0001

© Statistics South Africa, 2011

Users may apply or process this data, provided Statistics South Africa (Stats SA) is acknowledged as the original source of the data; that it is specified that the application and/or analysis is the result of the user's independent processing of the data; and that neither the basic data nor any reprocessed version or application thereof may be sold or offered for sale in any form whatsoever without prior permission from Stats SA.

Stats SA Library Cataloguing-in-Publication (CIP) Data
Tourism, 2010 / Statistics South Africa. Pretoria : Statistics South Africa, 2010

Report no. 03-51-02 (2010)
45 pp

ISBN 978-0-621-39985-1

A complete set of Stats SA publications is available at Stats SA Library and the following libraries:

National Library of South Africa, Pretoria Division
National Library of South Africa, Cape Town Division
Library of Parliament, Cape Town
Bloemfontein Public Library
Natal Society Library, Pietermaritzburg
Johannesburg Public Library
Eastern Cape Library Services, King William's Town
Central Regional Library, Polokwane
Central Reference Library, Nelspruit
Central Reference Collection, Kimberley
Central Reference Library, Mmabatho

This report is available on the Stats SA website: www.statssa.gov.za

Copies are obtainable from: Printing and Distribution, Statistics South Africa

Tel: (012) 310 8093
(012) 310 8251
(012) 310 8358
(012) 310 8161
Fax: (012) 321 7381
inadp@statssa.gov.za
Email: annelneb@statssa.gov.za

TABLE OF CONTENTS	Page
EXPLANATORY NOTES	
1 Introduction	3
2 Data	3
3 Definition of terms	3
4 Abbreviations and symbols	4
5 Limitations	4
6 Related publications	4
KEY FINDINGS	
1 Number of travelers	5
2 South African residents	5
3 Foreign travelers	5
4 Same day visitors	6
5 Tourists	6
5.1 Region of residence	6
5.2 Mode of travel	6
5.3 Purpose of visit	6
5.4 Duration of stay	7
5.5 Sex and age distribution	7
FIGURES	
1 Number of foreign and South African travellers by year of travel, 1991–2010	8
2 Number of arrivals and departures of South African residents by year of travel, 1991 – 2010	9
3 Number of arrivals and departures of foreign travellers by year of travel, 1991–2010	10
4 Number of tourists coming to South Africa by month and year of arrival, 2009 and 2010	11
5 Number of tourists from eight leading overseas countries, 2010	12
6 Number of tourists from eight leading SADC countries, 2010	12
7 Number of tourists from eight leading 'other' African countries, 2010	12
8 Percentage distribution of tourists by region and purpose of visit, 2010	12
9a Percentage distribution of tourists from overseas countries on holiday, 2010	13
9b Percentage distribution of tourists from overseas countries on business, 2010	13
9c Percentage distribution of tourists from overseas countries on study, 2010	13
10a Percentage distribution of tourists from SADC countries on holiday, 2010	13
10b Percentage distribution of tourists from SADC countries on business, 2010	14
10c Percentage distribution of tourists from SADC countries on study, 2010	14
11a Percentage distribution of tourists from 'other' African countries on holiday, 2010	14
11b Percentage distribution of tourists from 'other' African countries on business, 2010	14
11c Percentage distribution of tourists from 'other' African countries on study, 2010	15
12 Average (median) number of days tourists spent by month of arrival, 2010	15
TABLES	
1 Number of foreign and South African travellers by year of travel, 1991–2010	16
2 Number of arrivals and departures of South African residents by mode of travel and place of arrival or departure, 2010	17
3 Number of foreign arrivals by purpose of visit and month of arrival, 2010	18
4 Number of foreign arrivals and departures by mode of travel and place of arrival or departure, 2010	19
5 Number of foreign arrivals by type of visitor and month of arrival, 2010	20
6 Number of same day visitors by mode of travel, region and purpose of visit, 2010	21
7 Number of tourists by region of residence and month of arrival, 2010	22
8 Number of tourists by mode of travel, place of arrival and month of arrival, 2010	23
9 Number of tourists by region of residence and mode of travel, 2010	24
10 Number of tourists by sex, age group and region, 2010	25
APPENDICES I - VIII	26
OTHER STATS SA REPORTS	55

EXPLANATORY NOTES

1. Introduction

This annual report contains information on population movements into and out of South Africa for the year 2010. It reports on arrival and departure of South African residents and foreign travellers. A detailed analysis of data on visitors – same day and overnight (tourists) is provided.

Legal movements across South African borders as well as legal immigration into South Africa fall under the jurisdiction of the Department of Home Affairs (DHA). Statistics South Africa (Stats SA) then processes and publishes this information.

Administrative data sources from the DHA, that is, information from all the country's ports of entry and applications for permanent residence constitute the only comprehensive source of information on foreign tourists and departures, documented immigrants and emigrants. The information from this source of data provides the best national coverage (in terms of both space and time) of the population movements of South African residents and foreign travellers. The data:

- can be used to estimate, monitor and understand salient characteristics of foreign travellers and volumes of South African residents travelling outside South Africa;
- can be used to estimate the number of tourists that visit South Africa and some characteristics of these tourists; and
- provide information that can be used to (a) assess the extent of government's progress in strengthening bilateral political and economic relations by assessing the number of international tourists; and (b) benchmark surveys focusing on demand for local tourism services by foreign travellers.

2. Data

Data routinely collected by immigration officers at all land, air and sea entry ports on all travellers (South African residents and foreign travellers) arriving into or departing from South Africa are captured into the DHA's population Movement Control System (MCS). Generally the data are collected directly from travel documents either by scanning or capturing onto the port's electronic database. Individual ports regularly transmit data into the national database at the head office of the DHA. Statistics South Africa (Stats SA) downloads the data covering a particular calendar month from the mainframe of the State Information Technology Agency (SITA), where the DHA stores its data.

3. Definition of terms

3.1 Definitions used by the United Nations World Tourism Organisation (UNWTO)

Traveller is someone who moves between different geographical locations for any purpose and any duration.

Visitor refers to any person travelling to a place other than that of his/her usual environment for less than 12 months and whose main purpose of the trip is other than the exercise of an activity remunerated from within the place visited.

Same-day visitor is a visitor who visits a place for less than one night.

Tourist (overnight visitor) is a visitor who stays at least one night in collective or private accommodation in the place visited.

Tourism comprises the activities of persons traveling to, and staying in places outside their usual environment, for not more than one uninterrupted year, for leisure, business and other purposes. The usual environment of a person consists of a certain area around his/her place of residence, plus all other places he/she frequently visits.

3.2 Definitions used specifically in this report

South African resident refers to either a South African citizen or a non-South African citizen with a South African permanent residence permit.

Foreign traveller refers to a traveller who is not a South African citizen or permanent resident.

Region refers to the following country classification: Overseas: Europe, North America, Central and South America, Australasia, the Middle East, Asia. Africa: SADC, East and Central Africa, West Africa and North Africa.

Country refers to individual countries within a region. (Note: The country of residence is used here and not the country from which the visitor travelled).

Africa refers to all the countries in Africa (both mainland and island countries).

SADC refers to the thirteen countries, excluding South Africa, that belong to the Southern African Development Community

'Other' African refers to all non SADC African countries

Overseas: refers to all countries outside Africa

4. Abbreviations and symbols

.. = Data not available
- = Nil or not applicable (when standing alone)
Dem = Democratic
Rep = Republic
UK = United Kingdom
USA = United States of America

5. Limitations

The information on the total number of arrivals and departures of South African residents is collected through the scanning of their passports. Thus data on country of final destination and purpose of visit are not available.

6. Related publications

Tourism statistics are also published in the monthly Statistical Release P0351: *Tourism and Migration* and in the quarterly *Bulletin of Statistics*.

KEY FINDINGS

1. Number of travellers

The Department of Home Affairs (DHA) is responsible for the management of legal population movements across all South African international borders. There are 72 ports of entry or exit composed of 11 international airports, 53 land ports and 8 sea ports. Statistics South Africa processes and publishes the arrival and departure data collected from these ports. This annual report presents information derived from the data for the year 2010. The information has been provided in an abridged form (monthly) in Stats SA's publication, *Tourism and Migration* release (P0351) in order to meet users' immediate need for the information.

The information provided in Figure 1 and Table 1 show that there have been remarkable increases in the number of travellers (both foreign and South African residents) that passed through South African ports of entry in the last twenty years (1991 to 2010). In 1991, 4 765 169 travellers crossed into or out of South Africa, composed of 3 422 231 foreign travellers and 1 342 938 South African residents. Ten years later in 2001, almost 19 million travellers were processed, increasing further to nearly 32 million in 2010. Throughout the years, there were more foreign travellers than South African residents travelling in or out of the country.

It is important to note that the volume of South African travellers between 2003 and 2005 was greatly affected by changes in the data collection system. The sudden drop in the number of arrivals and departures of SA residents during these years was mainly due to the changes in the Immigration Act (Act No.13 of 2002) regarding the recording of information on the international movements of South African residents. The act resulted in information on arrival and departure of SA residents not being collected. Collection through the scanning of passports resumed after implementation of the Immigration Amendment Act (Act No.19 of 2004).

2. South African residents

Table 1 and Figure 2 indicate that although the volumes of arrivals and departures for South African residents generally increased between 1991 and 2010 (with the exception of 2003-2005 as highlighted above), the difference between the two remained more or less the same. Thus in 1991 there were 665 854 and 677 084 arrivals and departures respectively. In 2001, both arrivals and departures increased to almost 4 million each, increasing further to about 5 million each by 2010.

Table 2 indicates that during 2010, as many as 3 272 034 (63,8%) South African residents arrived in South Africa by road, followed by 1 845 190 (36,0%) air arrivals. A total of 3 311 (0,1%), 1 233 (0,02%) and 3 481 (0,1%) arrived by sea, rail and unspecified mode of travel respectively. Due to the large number of road ports, border countries are used in the table instead of the specific land ports. That is, data for all ports found on the border

with a particular country are combined. About half of the residents arriving by road used Lesotho and Swaziland ports. Out of the total number of South African residents arriving by air, 1 411 500 (76,5%) arrived through OR Tambo international airport, while 210 503 (11,4%) arrived through Cape Town international airport; 50 433 (2,7%) came through King Shaka international airport and 172 754 (9,4%) came in through other international airports.

Similarly, road transport was the most common mode of travel used by South African residents departing South Africa - 3 281 493 (63,5%) followed by air travel, 1 878 270 (36,4%). A total of 3 583 (0,1%) left by sea, 1 505 (0,03%) left by rail and 78 (0,002%) left by unspecified mode of transport. About half of the departing road users went through Lesotho and Swaziland ports. Out of the total number of residents departing by air, 1 428 911 (76,1%) used OR Tambo international airport; while 210 990 (11,2%) left through Cape Town international airport; 53 019 (2,8%) left through King Shaka international airport and 185 350 (9,9%) left through other international airports.

The information on 2010 arrivals and departures of South African residents classified by mode of travel, place of entry or exit and month of travel is presented in Appendix I and Appendix II. The result show that the highest number of arrivals (555 061) were recorded in December and the lowest number recorded in February (285 392). Similarly, the highest number of departures was recorded in December (750 507) and the lowest number in February (284 032).

3. Foreign travellers

Figure 3 shows that the number of both foreign arrivals and departures increased between 1991 and 2010. From 1993, there were more foreign arrivals than departures, with the gap widening from 2006. It is noted that between 2001 and 2010, foreign arrivals grew annually by 7,0% on average, from 5 908 024 to 11 574 540 compared to an average annual growth rate of 13,4% between 1991 and 2000 (from 1 709 554 to 6 000 538).

A breakdown of the 2010 data (see Table 3) indicates that the lowest number of arrivals was recorded in February (816 363) and the highest in December (1 126 332). For all the months, the main purpose of visit for foreign arrivals was holiday whereby at least 86% each month came into the country for holidays. The number of foreign travellers coming into the country for business was significantly higher during June and July compared to other months. There was also a significant decline in the number of foreign arrivals using border traffic concession from June.

Table 4 indicates that during 2010, 8 342 515 (72,1%) foreigners arrived using road as the main mode of travel, followed by 3 178 090 (27,5%) using air, 18 324 (0,2%) using sea and 1 183 (0,01%) using rail. For departures, it is noted that 7 099 124 (71,6%) travellers left by road, 2 789 488 (28,2%) by air, 18 517 (0,2%) and 1 292 (0,01%) by sea and rail

respectively. The distribution of foreign arrivals and departures by mode of travel, place of arrival or departure by month is provided in Appendices III and IV, respectively. The 2010 foreign arrivals were made up of 11 303 087 (97,7%) visitors and 271 453 (2,3%) non visitors (see Table 5). The number of non visitors was relatively higher during the early months of the year, especially in January (38 048) while a higher number (1 112 197) of visitors arrived in December. Visitors were made up of 3 229 535 (28,6%) same day visitors and 8 073 552 (71,4%) overnight visitors or tourists.

4. Same day visitors

Table 5 further shows that the volume of same day visitors did not differ significantly throughout the year. It ranged from 203 131 in February to 369 956 in December. It is also observed from Table 6 that same day visitors were mainly from SADC countries and largely used road transport to enter the country. Virtually all same day visitors (96,6%) came for holidays. The rest were visitors in transit (0,2%); students (0,3%) and business persons (2,9%).

5. Tourists

A total of 8 073 552 tourists came in South Africa in 2010, showing an annual increase of 15,1% from the 7 011 865 tourists recorded in 2009. Figure 4 shows the number of tourists who came to South Africa in 2009 and 2010 by month of travel. It is observed that the overall number of tourists were higher in 2010 as compared to 2009 for all months. However, the pattern is largely similar by month, with the exception of June where there was an increase in the number of tourists between May and June 2010 whereas there was a decline in 2009 during the same months.

5.1 Region of residence

Information on the region of residence and the month of arrival of tourists is given in Table 7. A breakdown of the number of tourists indicates that a high proportion (68,9%) of the 8 073 552 tourists were residents of SADC countries. Residents of overseas countries made up 27,5% of the tourists. The remaining tourists were residents of 'other' African countries (2,2%) and those with unspecified region (1,4%). The flow of tourists in 2010 reveals that the lowest volume was recorded in February (584 009) whilst the highest was in December (742 241). However, regional differences show that the highest number of tourists from overseas countries came in June (12,5%) and the lowest in April (5,8%). With the exception of Europe, the highest number of tourists from overseas regions was recorded in June. Similarly tourists from 'other' African countries', specifically from West and North Africa recorded the highest number of tourists in June. Detailed information based on country of residence is provided in Appendix V.

As presented in Figure 5, the eight leading countries for overseas tourists in 2010 were: UK, 453 030 (20,4%); USA, 282 377 (12,7%); Germany, 215 800 (9,7%); The

Netherlands, 124 088 (5,6%); France, 115 401 (5,2%); Australia, 107 905 (4,9%); India, 71 587 (3,2%) and China, 65 920 (3,0%). Figure 6 shows the eight leading countries for tourists from SADC region. These were: Zimbabwe, 1 513 714 (27,2%); Lesotho, 1 275 838 (22,9%); Mozambique, 1 051 502 (18,9%); Swaziland, 632 490 (11,4%); Botswana, 507 042 (9,1%); Namibia, 190 903 (3,4%); Zambia, 157 692 (2,8%) and Malawi 126 120 (2,3%). The eight leading countries for tourists from 'other' African countries (see Figure 7) were Nigeria, 46 853 (26,5%); Kenya, 29 089 (16,4%); Ghana, 18 435 (10,4%); Uganda, 13 627 (7,7%); Ethiopia, 9 397 (5,3%); Cameroon, 6 461 (3,7%); Gabon, 6 052 (3,4%) and Egypt, 5 967 (3,4%).

5.2 Mode of travel

Table 8 provides information on the number of tourists by place of arrival, month of arrival and mode of travel used. It is observed that a large number of tourists who came to South Africa in 2010 used road transport (5 328 168), followed by those who came by air (2 738 910). Those who used road were mainly those who entered through Zimbabwe (1 419 619) and Lesotho (1 212 514). For Zimbabwe, the highest number of tourists crossed the border in January (151 272) and the lowest in May (71 372) while for Lesotho the highest number crossed in January (131 125) and the lowest in June (61 273). With regard to air transportation, out of the 2 738 910 tourists that flew into the country, 2 011 318 (73,4%) used OR Tambo international airport. Rail and sea transport were rarely used by tourists.

As observed from Table 9, a large proportion (89,2%) of overseas tourists flew into South Africa compared to 10,5% who came in by road. Even though very few residents of overseas countries used road transport, 11,7% and 10,9% of European and Asian residents respectively came in by road. In the case of tourists from Africa, 87,5% used road transport and 12,5% came by air. While those from SADC countries mainly used road (89,8%), the majority (87,3%) of those from 'other' African countries came to South Africa by air. Information for specific countries is given in Appendix VI.

5.3 Purpose of visit

Figure 8 shows that the majority of tourists came to South Africa for holidays (93,6%). The others came in for business (3,1%), were on transit (2,4%) or had come to study (1,0%). There was a slight variation by region. For example, while 2,6% of tourists from overseas countries came to South Africa for business, 4,0% from 'other' African countries came for the same reason. The number of tourists by country of residence and purpose of visit is shown in Appendix VII.

Data shown in Figures 9a, 9b and 9c reveal that the majority of overseas tourists on holiday (21,0%) and business persons (19,6%) were UK residents. However, the highest proportion of overseas tourists who were students (19,2%) came from USA. Tourists from SADC countries were more diverse (see Figures 10a, 10b and 10c). Persons on holiday (28,1%) were predominantly Zimbabwe residents, whereas the majority of the business

persons (42,4%) were Mozambique residents. SADC students were predominantly residents from Swaziland (19,3%) and Botswana (19,0%). With respect to tourists from 'other' African countries (see Figures 11a, 11b and 11c), the majority of those on holidays were Nigeria (27,1%) residents whilst those on business were residents from Kenya (24,4%); the students were from Nigeria (23,1%) and Kenya (22,9%). Detailed distribution of tourists for specific countries of residence and purpose of visit is given in Appendix VII.

5.4 Duration of stay of tourists

The number of days tourists spent in South Africa is based on the tourists who arrived and left in the same month. Data in Figure 12 indicates that on the average tourists from overseas and 'other' African countries spent more days (4 to 7) than residents from SADC countries (2 to 3) days. However, unlike the monthly pattern (the peaks and declines) shown by overseas residents, the patterns of duration of stay for residents from 'other' African countries and those from SADC countries were quite similar with the exception of the period between May and August. Furthermore, during the month of June, tourists from 'other' African (seven days) countries spent the highest number of days, followed by those from overseas (six days) and SADC (2 days) countries.

5.5 Sex and age distribution

In 2010 as shown in Table 10, there were more male (4 656 488) than female (3 404 489) tourists. Although males constituted slightly more than half of overseas and SADC residents, 68,5% of tourists from 'other' African countries were males. SADC had the highest proportion of female tourists (43,2%). The age distribution shows that at least 82,0% of tourists from overseas, SADC and 'other' African countries, were aged between 15 and 64 years. There were very few tourists younger than 15 years (4,8%) and those aged 65 years and older (the elderly) (4,1%). The data show a relatively higher proportion (9,3%) of the elderly among overseas residents compared with 2,2% and 1,6% of residents from SADC and 'other' African countries respectively. Detailed information based on region of residence is provided in Appendix VIII.



STATISTICIAN-GENERAL: STATISTICS SOUTH AFRICA
2011

PRETORIA

Figure 1. Number of foreign and South African travellers by year of travel, 1991–2010

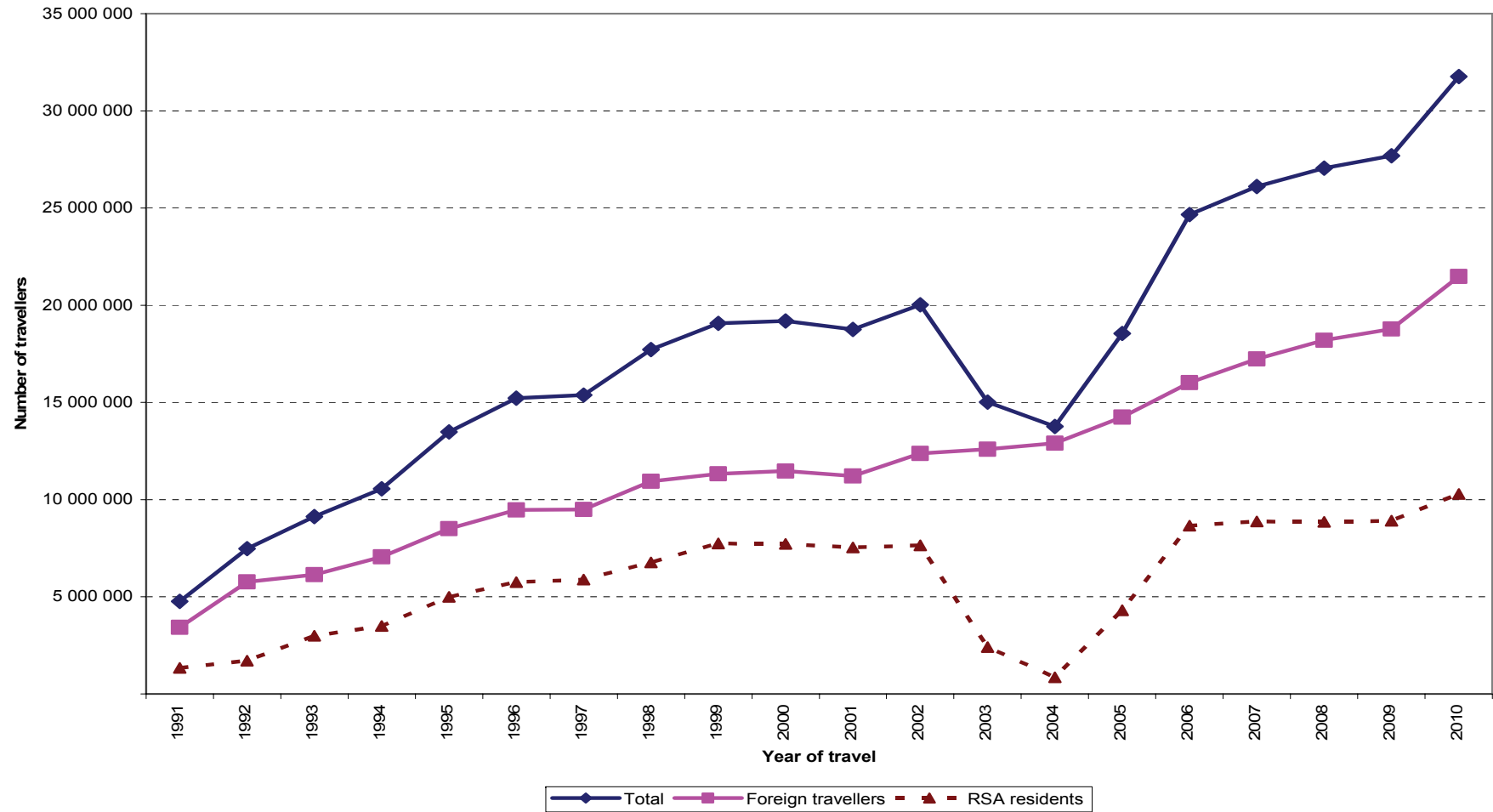


Figure 4. Number of tourists coming to South Africa by month and year of arrival, 2009 and 2010

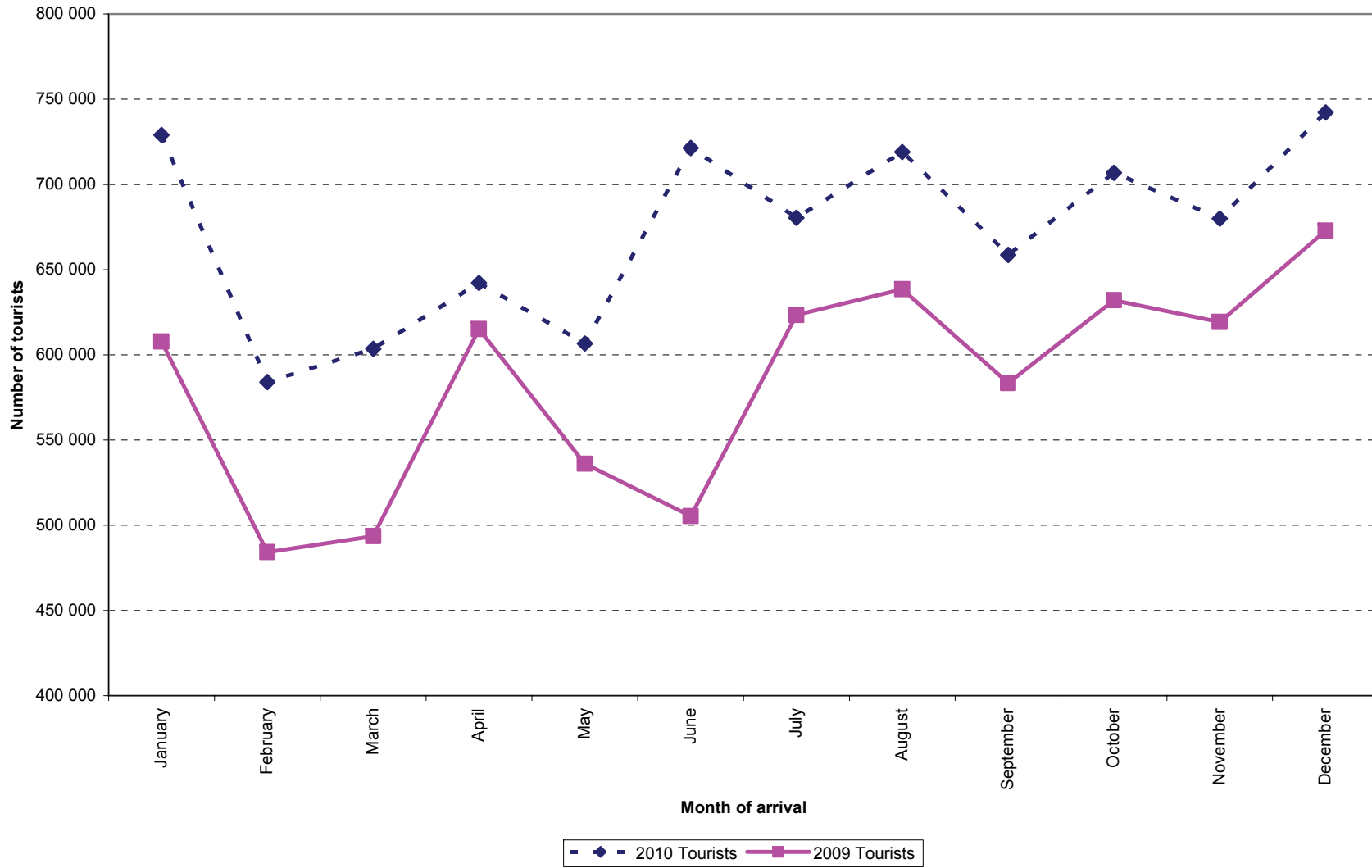


Figure 2. Number of arrivals and departures of South African residents by year of travel, 1991–2010

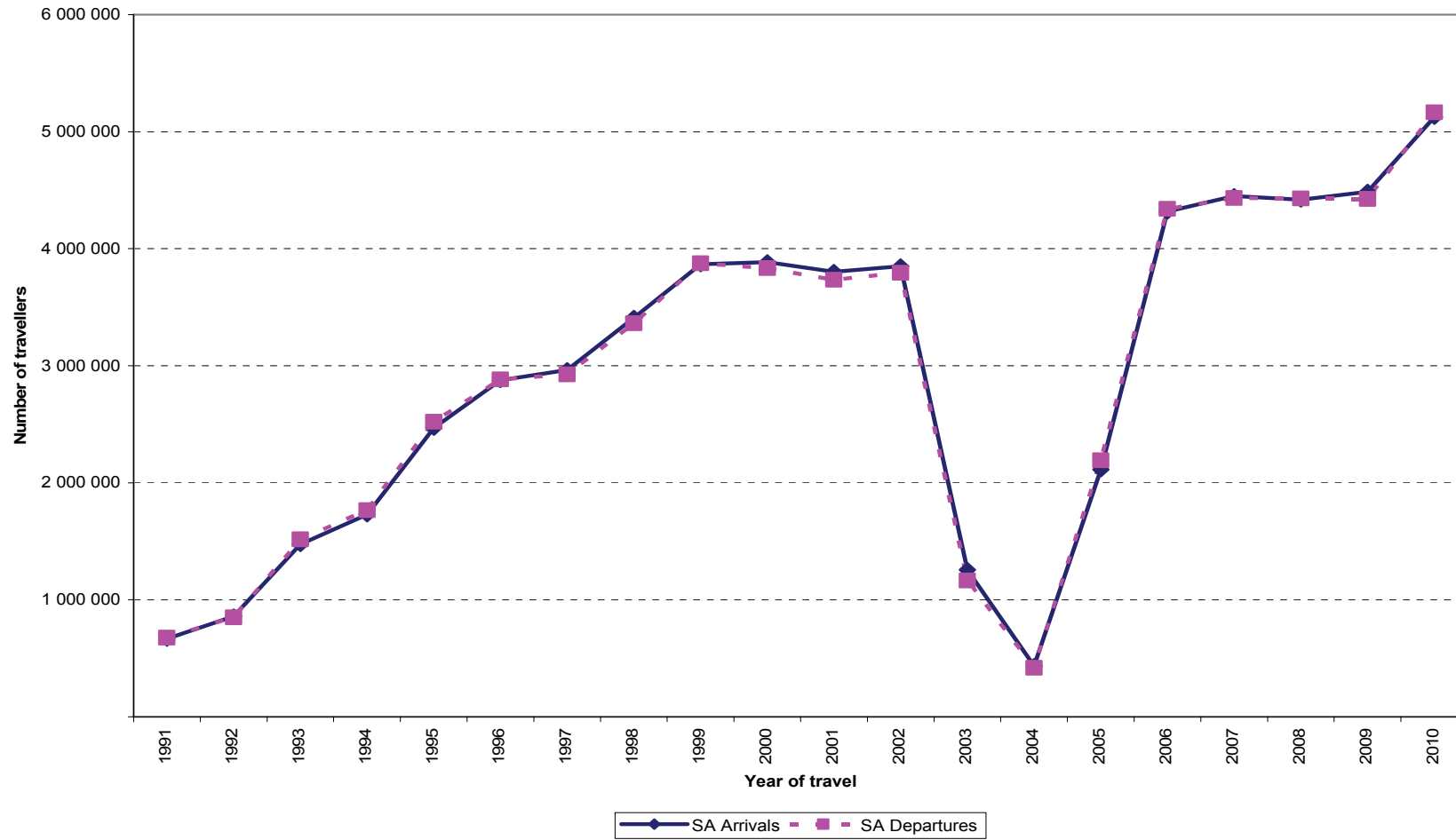


Figure 3. Number of arrivals and departures of foreign travellers by year of travel, 1991–2010

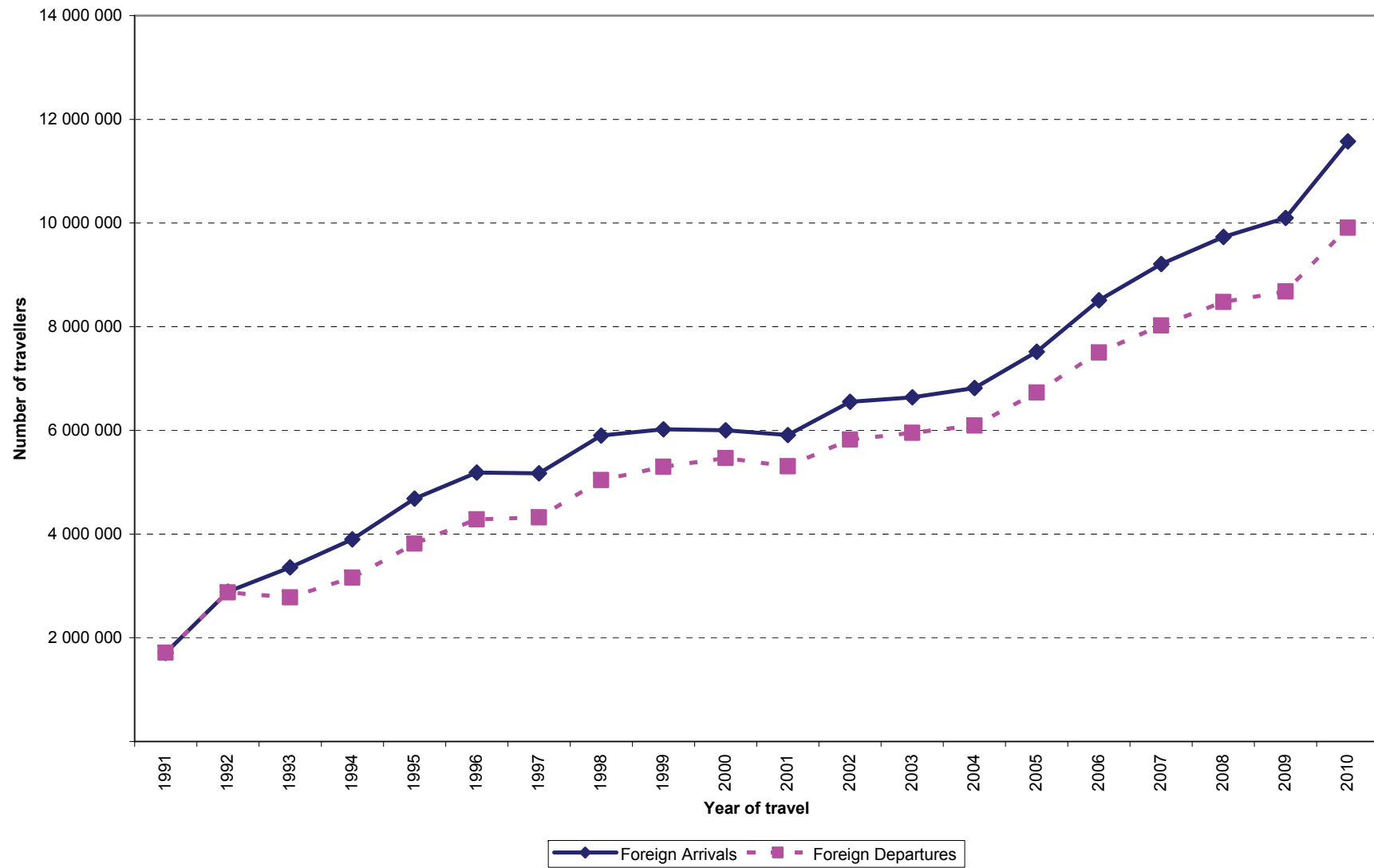


Figure 5. Number of tourists from eight leading overseas countries, 2010

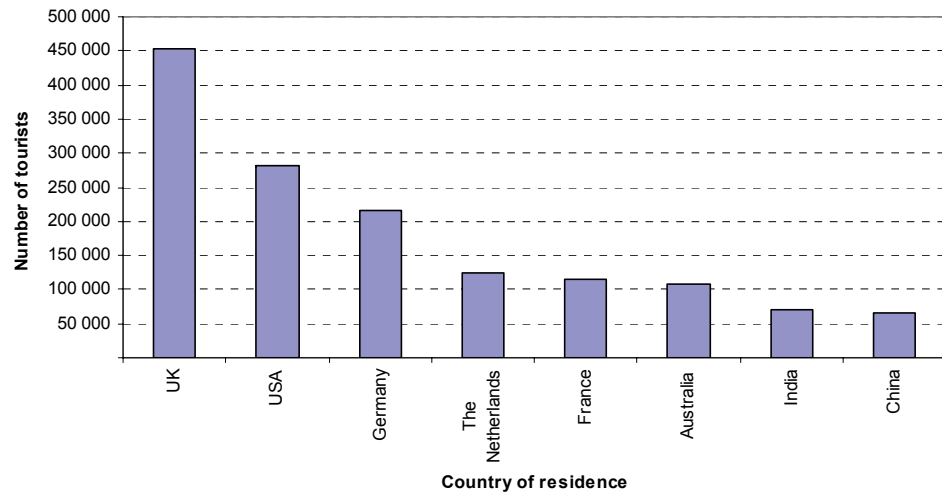


Figure 6. Number of tourists from eight leading SADC countries, 2010

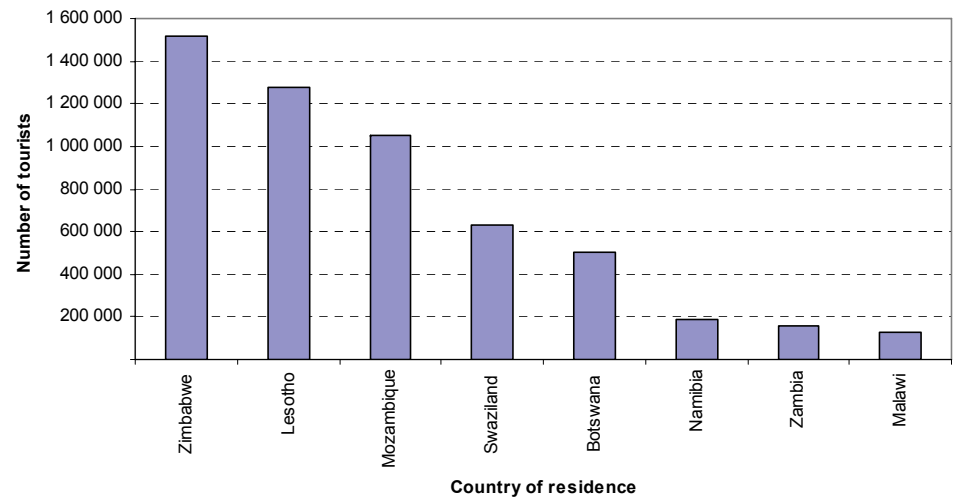


Figure 7. Number of tourists from eight leading 'other' African countries, 2010

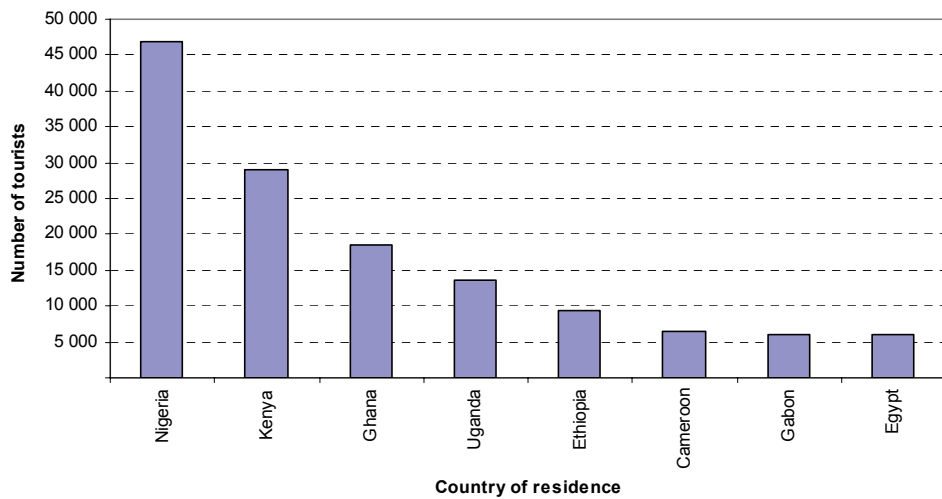


Figure 8. Percentage distribution of tourists by region and purpose of visit, 2010

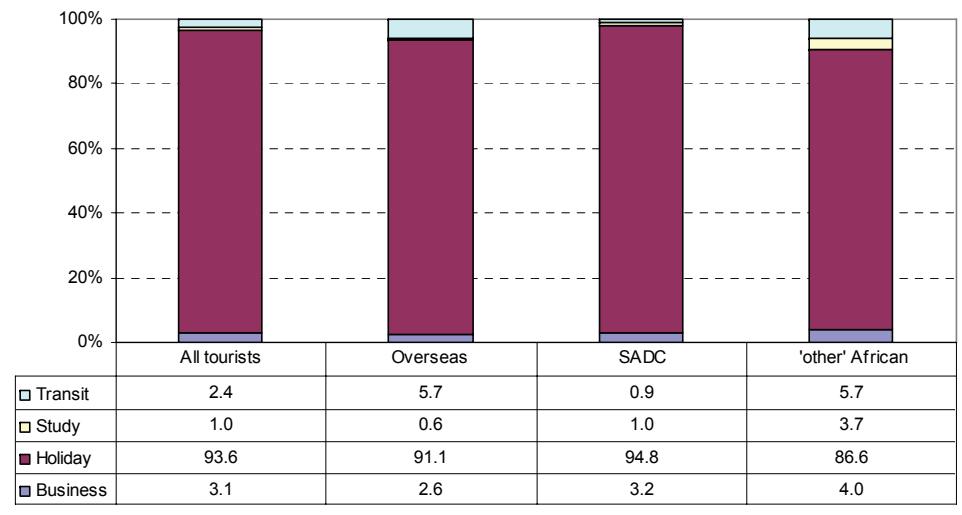


Figure 9a. Percentage distribution of tourists from overseas countries on holiday, 2010

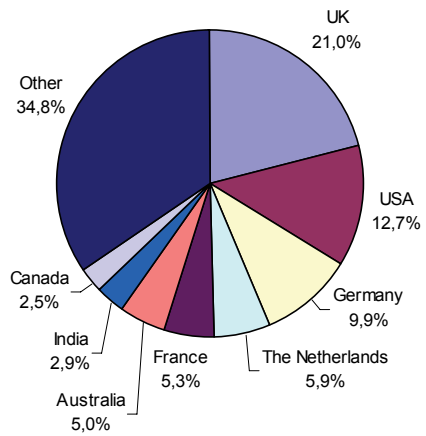


Figure 9b. Percentage distribution of tourists from overseas countries on business, 2010

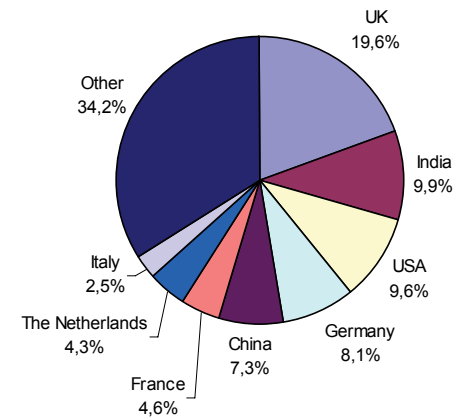


Figure 9c. Percentage distribution of tourists from overseas countries on study, 2010

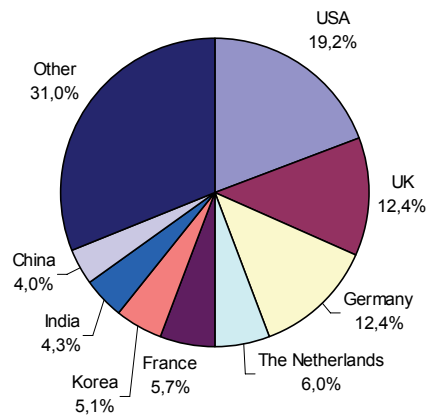


Figure 10a. Percentage distribution of tourists from SADC countries on holiday, 2010

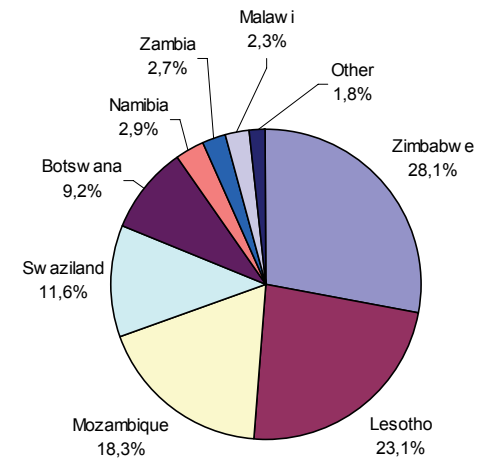


Figure 10b. Percentage distribution of tourists from SADC countries on business, 2010

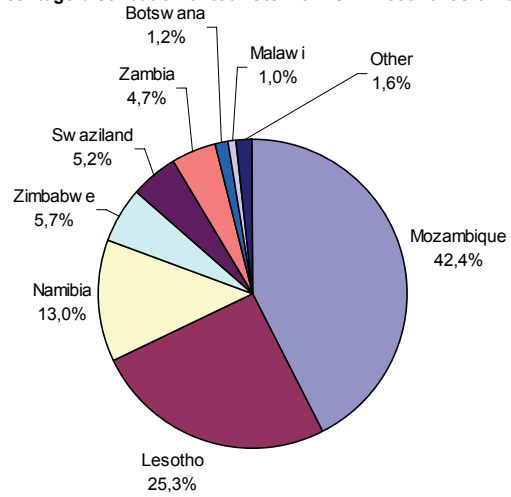


Figure 10c. Percentage distribution of tourists from SADC countries on study, 2010

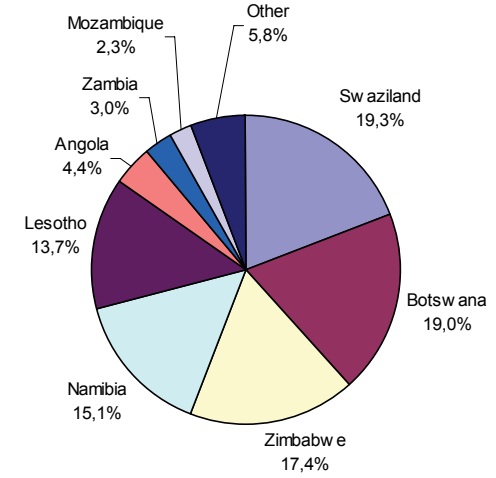


Figure 11a. Percentage distribution of tourists from 'other' African countries on holiday, 2010

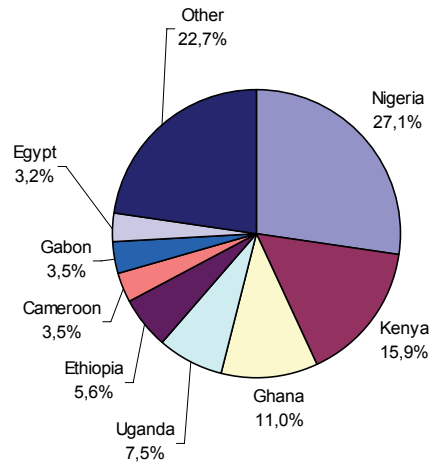


Figure 11b. Percentage distribution of tourists from 'other' African countries on business, 2010

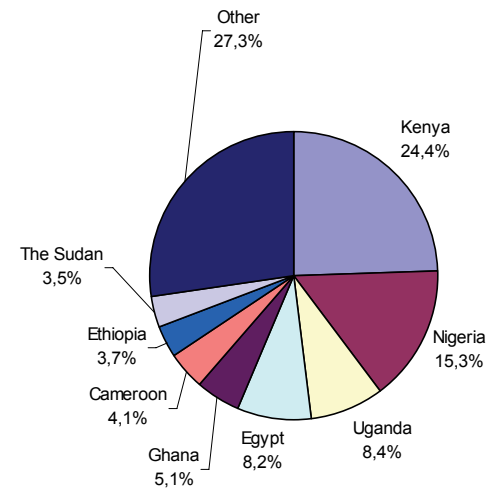


Figure 11c. Percentage distribution of tourists from 'other' African countries on study, 2010

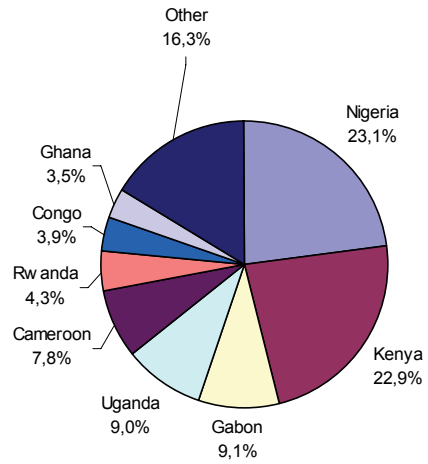


Figure 12. Average (Median) number of days tourists spent by month of arrival, 2010

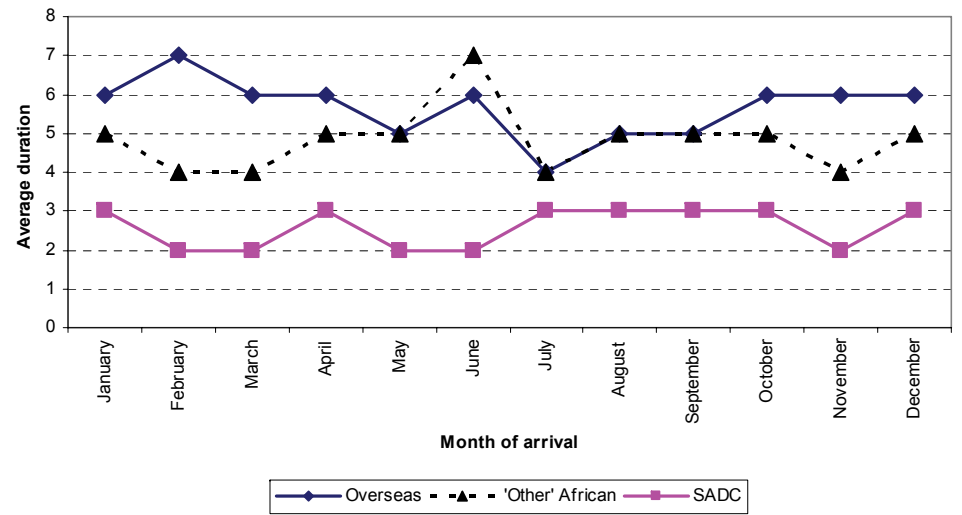


Table 1. Number of foreign and South African travellers by year of travel, 1991–2010

YEAR	Foreign travellers			South African travellers			All travellers		
	Arrivals	Departures	Total	Arrivals	Departures	Total	Arrivals	Departures	Total
1991	1 709 554	1 712 677	3 422 231	665 854	677 084	1 342 938	2 375 408	2 389 761	4 765 169
1992	2 891 721	2 875 329	5 767 050	858 317	848 864	1 707 181	3 750 038	3 724 193	7 474 231
1993	3 358 193	2 778 264	6 136 457	1 475 124	1 515 773	2 990 897	4 833 317	4 294 037	9 127 354
1994	3 896 547	3 159 151	7 055 698	1 727 868	1 765 753	3 493 621	5 624 415	4 924 904	10 549 319
1995	4 684 064	3 816 594	8 500 658	2 468 182	2 520 193	4 988 375	7 152 246	6 336 787	13 489 033
1996	5 186 221	4 282 269	9 468 490	2 875 093	2 881 817	5 756 910	8 061 314	7 164 086	15 225 400
1997	5 170 096	4 321 621	9 491 717	2 962 403	2 925 726	5 888 129	8 132 499	7 247 347	15 379 846
1998	5 898 236	5 042 420	10 940 656	3 408 445	3 362 607	6 771 052	9 306 681	8 405 027	17 711 708
1999	6 023 086	5 299 077	11 322 163	3 866 317	3 874 675	7 740 992	9 889 403	9 173 752	19 063 155
2000	6 000 538	5 466 128	11 466 666	3 884 415	3 834 054	7 718 469	9 884 953	9 300 182	19 185 135
2001	5 908 024	5 307 217	11 215 241	3 802 459	3 733 058	7 535 517	9 710 483	9 040 275	18 750 758
2002	6 549 916	5 822 136	12 372 052	3 849 790	3 793 672	7 643 462	10 399 706	9 615 808	20 015 514
2003	6 640 095	5 955 199	12 595 294	1 254 063	1 163 839	2 417 902	7 894 158	7 119 038	15 013 196
2004	6 815 196	6 093 313	12 908 509	434 400	418 585	852 985	7 249 596	6 511 898	13 761 494
2005	7 518 317	6 728 659	14 246 976	2 112 300	2 191 599	4 303 899	9 630 617	8 920 258	18 550 875
2006	8 508 805	7 501 755	16 010 560	4 317 475	4 338 914	8 656 389	12 826 280	11 840 669	24 666 949
2007	9 207 697	8 022 796	17 230 493	4 448 832	4 433 492	8 882 324	13 656 529	12 456 288	26 112 817
2008	9 728 860	8 474 663	18 203 523	4 418 487	4 429 399	8 847 886	14 147 347	12 904 062	27 051 409
2009	10 098 306	8 680 250	18 778 556	4 487 311	4 423 987	8 911 298	14 585 617	13 104 237	27 689 854
2010	11 574 540	9 908 518	21 483 058	5 125 249	5 164 929	10 290 178	16 699 789	15 073 447	31 773 236

Table 2. Number of arrivals and departures of South African residents by mode of travel and place of arrival or departure, 2010		
Mode of travel and place of arrival or departure	Arrivals	Departures
Total	5 125 249	5 164 929
Air	1 845 190	1 878 270
Cape Town	210 503	210 990
King Shaka	50 433	53 019
OR Tambo	1 411 500	1 428 911
Other airports	172 754	185 350
Rail	1 233	1 505
Road	3 272 034	3 281 493
Botswana	587 622	571 567
Lesotho	854 758	889 790
Mozambique	554 556	551 648
Namibia	164 917	161 436
Swaziland	807 115	811 910
Zimbabwe	295 136	287 803
Unspecified road ports	7 930	7 339
Sea	3 311	3 583
Unspecified	3 481	78

Table 3. Number of foreign arrivals by purpose of visit and month of arrival, 2010													
Purpose of visit	Total	Month of arrival											
		Jan	Feb	Mar	Apr	May	Jun	Jul	Aug	Sep	Oct	Nov	Dec
Total	11 574 540	991 326	816 363	862 333	890 590	855 222	997 960	1 021 406	1 044 418	960 976	1 003 661	1 003 953	1 126 332
Business	341 282	9 521	9 877	10 645	8 838	11 883	70 488	61 504	44 937	32 797	31 983	32 320	16 489
Holiday	10 671 547	919 539	766 888	811 035	836 056	810 507	877 517	886 078	942 967	879 616	922 195	935 493	1 083 656
Study	93 784	22 156	8 047	5 360	10 859	3 507	3 415	14 158	6 264	6 482	6 749	3 710	3 077
Work	178 840	19 788	12 597	14 690	15 109	14 009	14 034	15 330	17 450	15 241	13 891	13 806	12 895
Border traffic concession	87 254	18 260	16 624	18 662	17 147	14 189	1 891	154	115	70	73	44	25
Transit	196 474	2 062	2 328	1 938	2 558	819	30 172	43 756	31 937	26 284	27 977	17 668	8 975
Unspecified	5 359	-	2	3	23	308	443	426	748	486	793	912	1 215

Table 4. Number of foreign arrivals and departures by mode of travel and place of arrival or departure, 2010

Mode of travel and place of arrival or departure	Arrivals	Departures
Total	11 574 540	9 908 518
Air	3 178 090	2 789 488
Cape Town	507 663	490 501
King Shaka	39 122	32 764
OR Tambo	2 299 923	2 006 526
Other airports	331 382	259 697
Rail	1 183	1 292
Road	8 342 515	7 099 124
Botswana	980 317	946 273
Lesotho	2 626 538	2 213 726
Mozambique	1 188 707	823 123
Namibia	158 721	158 343
Swaziland	1 203 308	1 115 861
Zimbabwe	2 171 889	1 830 445
Unspecified road ports	13 035	11 353
Sea	18 324	18 517
Unspecified	34 428	97

Table 5. Number of foreign arrivals by type of visitor and month of arrival, 2010													
Type of visitor	Total	Month of arrival											
		Jan	Feb	Mar	Apr	May	Jun	Jul	Aug	Sep	Oct	Nov	Dec
Total	11 574 540	991 326	816 363	862 333	890 590	855 222	997 960	1 021 406	1 044 418	960 976	1 003 661	1 003 953	1 126 332
Non Visitors	271 453	38 048	29 223	33 355	32 279	28 506	16 368	15 910	18 313	15 797	14 757	14 762	14 135
Visitors	11 303 087	953 278	787 140	828 978	858 311	826 716	981 592	1 005 496	1 026 105	945 179	988 904	989 191	1 112 197
Same day	3 229 535	224 222	203 131	225 499	216 140	220 173	260 281	325 082	307 085	286 614	282 065	309 287	369 956
Overnight (Tourists)	8 073 552	729 056	584 009	603 479	642 171	606 543	721 311	680 414	719 020	658 565	706 839	679 904	742 241

Table 6. Number of same day visitors by mode of travel, region and purpose of visit, 2010					
Mode of travel and region	Total	Purpose of visit			
		Business	Holiday	Study	Transit
Total	3 229 535	94 779	3 119 206	9 649	5 901
Air	322 894	12 988	306 629	576	2 701
Overseas	144 645	1 316	141 484	104	1 741
SADC	169 900	11 398	157 302	387	813
'Other' African	5 199	206	4 828	44	121
Unspecified	3 150	68	3 015	41	26
Rail	226	-	226	-	-
Overseas	22	-	22	-	-
SADC	204	-	204	-	-
Road	2 906 003	81 791	2 812 078	9 073	3 061
Overseas	62 528	2 162	60 064	178	124
SADC	2 809 388	79 248	2 718 731	8 515	2 894
'Other' African	7 469	316	7 037	80	36
Unspecified	26 618	65	26 246	300	7
Sea	376	-	270	-	106
Overseas	372	-	266	-	106
SADC	2	-	2	-	-
'Other' African	2	-	2	-	-
Unspecified	36	-	3	-	33

Table 7. Number of tourists by region of residence and month of arrival, 2010													
Region	Total	Month of arrival											
		Jan	Feb	Mar	Apr	May	Jun	Jul	Aug	Sep	Oct	Nov	Dec
Total	8 073 552	729 056	584 009	603 479	642 171	606 543	721 311	680 414	719 020	658 565	706 839	679 904	742 241
Overseas	2 216 994	167 706	177 165	181 125	128 773	138 261	277 345	183 042	179 658	171 158	208 276	197 930	206 555
Europe	1 331 539	116 299	126 911	120 256	78 014	71 814	124 752	99 069	103 137	94 167	133 166	130 214	133 740
North America	337 652	20 070	18 984	26 138	20 227	27 108	50 902	32 068	32 491	27 193	29 670	24 794	28 007
Central and South America	120 329	5 892	5 028	5 696	4 293	6 506	47 188	11 731	6 177	6 536	7 317	5 897	8 068
Australasia	128 149	7 585	6 215	9 643	8 917	8 673	18 450	8 911	11 178	14 360	10 959	10 199	13 059
Middle East	39 364	2 311	3 010	4 120	2 279	2 288	5 139	5 054	2 923	2 977	3 020	3 300	2 943
Asia	259 961	15 549	17 017	15 272	15 043	21 872	30 914	26 209	23 752	25 925	24 144	23 526	20 738
Africa	5 741 177	555 110	403 586	419 326	508 501	407 268	421 074	494 815	537 034	485 090	496 071	479 327	533 975
SADC	5 564 174	541 423	391 259	406 395	495 420	393 579	398 085	480 667	521 959	471 429	480 766	464 444	518 748
'Other' African	177 003	13 687	12 327	12 931	13 081	13 689	22 989	14 148	15 075	13 661	15 305	14 883	15 227
East and Central Africa	80 569	7 433	6 285	6 403	6 487	6 059	7 428	6 592	7 199	6 205	6 655	6 914	6 909
West Africa	80 277	5 340	5 092	5 594	5 761	6 556	11 651	5 984	6 759	6 257	7 381	6 918	6 984
North Africa	16 157	914	950	934	833	1 074	3 910	1 572	1 117	1 199	1 269	1 051	1 334
Unspecified	115 381	6 240	3 258	3 028	4 897	61 014	22 892	2 557	2 328	2 317	2 492	2 647	1 711

Table 8. Number of tourists by mode of travel, place of arrival and month of arrival, 2010													
Mode of travel and place of arrival	Total	Month of arrival											
		Jan	Feb	Mar	Apr	May	Jun	Jul	Aug	Sep	Oct	Nov	Dec
Total	8 073 552	729 056	584 009	603 479	642 171	606 543	721 311	680 414	719 020	658 565	706 839	679 904	742 241
Air	2 738 910	194 581	197 600	204 659	155 392	259 934	414 120	213 476	208 553	201 133	236 142	218 835	234 485
Cape Town	483 716	58 880	59 124	54 651	27 104	22 046	39 749	28 357	22 735	26 645	35 674	51 578	57 173
King Shaka	34 689	2 336	2 781	3 869	1 351	3 132	7 219	3 109	1 958	1 988	2 241	1 866	2 839
OR Tambo	2 011 318	132 791	135 108	145 411	126 226	144 065	269 858	177 463	180 685	168 880	193 449	164 356	173 026
Other airports	209 187	574	587	728	711	90 691	97 294	4 547	3 175	3 620	4 778	1 035	1 447
Rail	870	89	120	88	81	180	50	81	93	61	26	1	-
Road	5 328 168	534 288	385 988	398 353	486 366	345 983	306 743	466 670	510 247	457 232	469 750	459 895	506 653
Botswana	467 621	32 535	32 241	33 669	62 024	34 586	26 909	38 200	36 777	41 630	35 544	38 910	54 596
Lesotho	1 212 514	131 125	78 659	85 029	103 297	62 674	61 273	111 216	121 791	108 330	117 410	117 091	114 619
Mozambique	941 369	111 116	84 792	78 176	74 908	40 895	39 167	91 236	94 001	81 292	84 080	81 142	80 564
Namibia	138 124	12 504	8 963	11 475	13 995	12 086	5 530	11 276	10 905	11 056	10 594	10 016	19 724
Swaziland	601 403	55 881	46 131	45 954	58 317	44 810	32 005	51 227	63 600	53 203	48 603	46 091	55 581
Zimbabwe	1 419 619	151 272	99 137	107 748	136 219	71 372	98 708	123 466	133 915	119 941	124 152	117 752	135 937
Unspecified road ports	547 518	39 855	36 065	36 302	37 606	79 560	43 151	40 049	49 258	41 780	49 367	48 893	45 632
Sea	4 877	97	263	368	125	184	387	166	109	36	895	1 144	1 103
Unspecified	727	1	38	11	207	262	11	21	18	103	26	29	-

Table 9. Number of tourists by region of residence and mode of travel, 2010						
Region	Total	Mode of travel				
		Air	Rail	Road	Sea	Unspecified
Total	8 073 552	2 738 910	870	5 328 168	4 877	727
Overseas	2 216 994	1 978 433	51	233 206	4 637	667
Europe	1 331 539	1 172 892	39	155 884	2 390	334
North America	337 652	304 945	8	30 915	1 745	39
Central and South America	120 329	113 560	-	6 720	33	16
Australasia	128 149	118 893	4	9 161	59	32
Middle East	39 364	37 183	-	2 162	12	7
Asia	259 961	230 960	-	28 364	398	239
Africa	5 741 177	719 296	819	5 020 781	223	58
SADC	5 564 174	564 825	818	4 998 419	60	52
'Other' African	177 003	154 471	1	22 362	163	6
East and Central Africa	80 569	67 454	-	13 072	42	1
West Africa	80 277	72 011	1	8 148	115	2
North Africa	16 157	15 006	-	1 142	6	3
Unspecified	115 381	41 181	-	74 181	17	2

Table 10. Number of tourists by sex, age group and region, 2010					
Sex and age group	Total	Region			
		Overseas	SADC	'Other' Africa	Unspecified
All	8 073 552	2 216 994	5 564 174	177 003	115 381
0-14	391 123	142 013	235 168	9 760	4 182
15-64	7 280 626	1 832 303	5 184 564	160 358	103 401
65+	332 922	205 964	122 110	2 774	2 074
Unspecified	68 881	36 714	22 332	4 111	5 724
Male	4 656 488	1 318 699	3 151 784	121 215	64 790
0-14	200 471	76 212	116 966	5 102	2 191
15-64	4 242 182	1 106 570	2 965 593	111 603	58 416
65+	174 392	114 279	57 008	1 836	1 269
Unspecified	39 443	21 638	12 217	2 674	2 914
Female	3 404 489	895 504	2 403 066	55 702	50 217
0-14	190 604	65 783	118 177	4 655	1 989
15-64	3 028 787	723 713	2 211 571	48 709	44 794
65+	157 424	91 167	64 533	937	787
Unspecified	27 674	14 841	8 785	1 401	2 647
Unspecified	12 575	2 791	9 324	86	374
0-14	48	18	25	3	2
15-64	9 657	2 020	7 400	46	191
65+	1 106	518	569	1	18
Unspecified	1 764	235	1 330	36	163

Appendix I. Number of South African residents by mode of travel, place of arrival and month of arrival, 2010													
Mode of travel and place of arrival	Total	Month of arrival											
		Jan	Feb	Mar	Apr	May	Jun	Jul	Aug	Sep	Oct	Nov	Dec
Total	5 125 249	510 940	285 392	327 444	418 434	345 695	407 623	474 118	465 993	460 444	466 104	408 001	555 061
Air	1 845 190	164 454	100 384	131 487	141 579	180 199	191 105	136 378	142 281	168 989	177 079	136 939	174 316
Cape Town	210 503	21 932	12 587	16 495	16 185	13 986	14 673	20 719	16 933	19 182	18 406	16 766	22 639
King Shaka	50 433	5 731	2 678	3 909	1 769	3 353	3 773	4 811	3 520	4 702	5 265	4 986	5 936
OR Tambo	1 411 500	134 862	83 164	108 903	121 311	105 391	99 654	103 384	114 345	137 777	146 812	112 782	143 115
Other airports	172 754	1 929	1 955	2 180	2 314	57 469	73 005	7 464	7 483	7 328	6 596	2 405	2 626
Rail	1 233	89	138	97	165	215	197	119	106	88	19	-	-
Road	3 272 034	345 725	183 740	194 883	275 873	164 527	216 163	337 237	323 300	291 297	288 818	270 563	379 908
Botswana	587 622	64 293	37 356	39 260	54 640	35 947	41 876	56 338	51 620	50 967	48 659	43 939	62 727
Lesotho	854 758	63 790	34 681	32 280	52 985	29 772	59 468	103 551	105 344	87 766	85 286	90 397	109 438
Mozambique	554 556	76 019	36 512	37 715	49 202	20 476	29 671	56 770	48 227	44 326	47 304	42 892	65 442
Namibia	164 917	15 871	7 646	10 661	15 647	11 315	17 165	22 655	11 879	13 686	12 432	10 034	15 926
Swaziland	807 115	83 476	51 323	55 477	74 486	46 723	47 372	73 356	78 137	70 355	69 992	63 197	93 221
Zimbabwe	295 136	41 691	15 773	18 968	28 166	19 699	20 038	23 729	27 513	23 476	24 469	19 537	32 077
Unspecified road ports	7 930	585	449	522	747	595	573	838	580	721	676	567	1 077
Sea	3 311	110	308	161	136	315	116	363	269	57	166	479	831
Unspecified	3 481	562	822	816	681	439	42	21	37	13	22	20	6

Appendix II. Number of South African residents by mode of travel, place of departure and month of departure, 2010													
Mode of travel and place of departure	Total	Month of departure											
		Jan	Feb	Mar	Apr	May	Jun	Jul	Aug	Sep	Oct	Nov	Dec
Total	5 164 929	331 143	284 032	364 913	389 148	340 263	485 042	425 710	469 512	483 727	431 075	409 857	750 507
Air	1 878 270	130 257	104 710	154 730	133 898	176 136	247 756	103 501	156 465	177 099	150 935	134 811	207 972
Cape Town	210 990	17 424	12 409	18 915	15 855	15 535	19 990	15 310	18 691	20 750	14 839	15 301	25 971
King Shaka	53 019	4 403	2 912	4 761	1 269	3 133	4 989	3 564	4 776	6 286	4 818	4 421	7 687
OR Tambo	1 428 911	106 230	87 391	128 847	114 384	102 998	122 216	80 694	128 472	146 119	127 005	112 556	171 999
Other Airports	185 350	2 200	1 998	2 207	2 390	54 470	100 561	3 933	4 526	3 944	4 273	2 533	2 315
Rail	1 505	73	127	109	144	251	329	166	122	130	54	-	-
Road	3 281 493	200 552	179 003	209 886	254 734	163 414	236 471	321 529	312 521	306 323	279 824	274 886	542 350
Botswana	571 567	38 021	37 272	42 847	51 749	36 452	45 026	49 575	49 476	52 927	46 460	43 948	77 814
Lesotho	889 790	37 757	34 224	36 321	49 645	28 401	63 952	109 060	103 512	94 445	89 850	96 464	146 159
Mozambique	551 648	38 441	32 744	37 758	40 977	21 211	31 993	52 204	44 682	44 018	41 068	40 698	125 854
Namibia	161 436	9 842	7 931	13 399	13 841	11 399	20 607	14 476	11 581	15 886	10 109	10 271	22 094
Swaziland	811 910	60 539	51 327	58 656	73 176	46 082	50 581	73 017	75 078	73 204	68 779	63 789	117 682
Zimbabwe	287 803	15 441	15 086	20 449	24 605	19 371	23 722	22 404	27 663	25 281	23 034	19 206	51 541
Unspecified road ports	7 339	511	419	456	741	498	590	793	529	562	524	510	1 206
Sea	3 583	261	192	177	370	460	486	514	404	175	199	160	185
Unspecified	78	-	-	11	2	2	-	-	-	-	63	-	-

Appendix III. Number of foreign arrivals by mode of travel, place of arrival and month of arrival, 2010													
Mode of travel and place of departure	Total	Month											
		Jan	Feb	Mar	Apr	May	Jun	Jul	Aug	Sep	Oct	Nov	Dec
Total	11 574 540	991 326	816 363	862 333	890 590	855 222	997 960	1 021 406	1 044 418	960 976	1 003 661	1 003 953	1 126 332
Air	3 178 090	223 889	220 414	232 450	180 334	326 762	495 866	239 696	247 922	233 865	269 309	246 764	260 819
Cape Town	507 663	61 020	61 164	56 978	28 672	23 739	41 229	30 000	25 119	28 563	37 384	54 313	59 482
King Shaka	39 122	2 625	2 968	4 221	1 407	3 360	8 057	3 453	2 279	2 398	2 742	2 381	3 231
OR Tambo	2 299 923	159 465	155 475	170 330	149 342	168 590	288 559	196 282	213 051	194 681	220 138	188 065	195 945
Other airports	331 382	779	807	921	913	131 073	158 021	9 961	7 473	8 223	9 045	2 005	2 161
Rail	1 183	117	146	125	121	229	67	120	120	92	35	11	-
Road	8 342 515	758 930	587 532	620 410	702 006	522 636	499 713	779 572	795 227	725 893	732 509	754 695	863 392
Botswana	980 317	79 896	68 973	73 256	105 920	73 919	60 484	83 868	78 063	83 881	78 245	83 457	110 355
Lesotho	2 626 538	222 123	160 745	173 562	187 191	122 127	142 582	273 574	275 217	248 368	252 405	270 507	298 137
Mozambique	1 188 707	129 197	107 645	97 940	93 288	49 765	50 582	119 979	115 610	101 873	104 676	107 034	111 118
Namibia	158 721	14 650	10 671	13 068	15 143	14 147	7 047	12 786	12 294	12 529	12 432	12 086	21 868
Swaziland	1 203 308	115 160	94 147	95 990	105 452	82 007	68 220	106 641	118 652	100 086	101 310	98 104	117 539
Zimbabwe	2 171 889	196 613	144 461	165 762	193 749	179 543	169 937	181 643	194 477	178 268	182 427	182 372	202 637
Unspecified road ports	13 035	1 291	890	832	1 263	1 128	861	1 081	914	888	1 014	1 135	1 738
Sea	18 324	1 008	1 252	1 497	1 284	1 195	2 020	1 869	1 018	959	1 710	2 415	2 097
Unspecified	34 428	7 382	7 019	7 851	6 845	4 400	294	149	131	167	98	68	24

Appendix IV. Number of foreign departures by mode of travel, place of departure and month of departure, 2010													
Mode of travel, place of departure	Total	Month of departure											
		Jan	Feb	Mar	Apr	May	Jun	Jul	Aug	Sep	Oct	Nov	Dec
Total	9 908 518	751 950	681 356	751 268	768 196	746 466	851 375	907 758	867 762	815 333	831 732	864 552	1 070 770
Air	2 789 488	231 658	209 741	229 897	200 378	291 743	379 805	211 717	208 833	185 729	209 993	221 508	208 486
Cape Town	490 501	62 201	59 705	61 328	36 082	26 995	32 581	31 256	25 667	25 470	30 785	52 837	45 594
King Shaka	32 764	3 028	1 898	2 976	1 156	3 105	6 027	3 042	2 551	2 100	2 376	2 491	2 014
OR Tambo	2 006 526	165 504	147 295	164 618	162 022	159 347	207 593	172 564	177 223	154 737	172 634	164 248	158 741
Other airports	259 697	925	843	975	1 118	102 296	133 604	4 855	3 392	3 422	4 198	1 932	2 137
Rail	1 292	94	144	112	175	254	99	145	146	103	20	-	-
Road	7 099 124	518 656	470 007	519 438	564 840	453 085	469 855	692 967	658 085	628 807	620 607	641 904	860 873
Botswana	946 273	80 349	65 296	71 484	100 478	75 005	62 454	77 258	73 642	77 115	78 172	79 883	105 137
Lesotho	2 213 726	130 365	118 105	131 584	130 304	90 766	132 348	253 739	240 479	224 869	222 163	234 304	304 700
Mozambique	823 123	66 785	71 962	65 688	60 363	35 078	43 163	91 726	73 907	66 442	67 863	74 077	106 069
Namibia	158 343	17 857	10 246	12 895	13 965	16 112	7 735	11 802	11 068	13 953	12 280	12 521	17 909
Swaziland	1 115 861	103 525	87 784	90 642	95 664	77 374	68 396	98 504	102 429	93 406	91 649	90 819	115 669
Zimbabwe	1 830 445	118 613	115 887	146 446	162 980	157 674	154 982	159 009	155 803	152 181	147 563	149 378	209 929
Unspecified road ports	11 353	1 162	727	699	1 086	1 076	777	929	757	841	917	922	1 460
Sea	18 517	1 542	1 464	1 821	2 776	1 359	1 616	2 929	698	694	1 067	1 140	1 411
Unspecified	97	-	-	-	27	25	-	-	-	-	45	-	-

Appendix V. Number of tourists by country of residence and month of arrival, 2010													
Country	Total	Month of arrival											
		Jan	Feb	Mar	Apr	May	Jun	Jul	Aug	Sep	Oct	Nov	Dec
Total	8 073 552	729 056	584 009	603 479	642 171	606 543	721 311	680 414	719 020	658 565	706 839	679 904	742 241
Overseas	2 216 994	167 706	177 165	181 125	128 773	138 261	277 345	183 042	179 658	171 158	208 276	197 930	206 555
Europe	1 331 539	116 299	126 911	120 256	78 014	71 814	124 752	99 069	103 137	94 167	133 166	130 214	133 740
Albania	223	30	16	13	15	12	33	53	9	6	13	16	7
Andorra	62	6	2	10	4	2	8	10	-	-	8	11	1
Austria	20 389	1 977	2 050	1 855	988	1 085	1 249	1 335	1 570	1 354	2 106	2 603	2 217
Azores Island	22	2	2	3	3	5	7	-	-	-	-	-	-
Belarus	566	50	37	38	38	24	45	40	36	36	80	79	63
Belgium	39 304	2 808	3 431	3 054	3 159	2 131	1 889	3 106	3 243	3 378	4 927	4 233	3 945
Bosnia-Herzegovina	267	17	9	17	13	16	57	34	13	20	15	27	29
Bulgaria	2 515	233	147	145	133	237	245	202	189	214	211	233	326
Byelorussian SSR	7	-	2	-	2	2	-	-	-	-	-	1	-
Channel Island	6	2	1	2	1	-	-	-	-	-	-	-	-
Crete	3	1	-	-	1	-	1	-	-	-	-	-	-
Croatia	1 266	95	73	92	64	96	198	111	133	79	108	99	118
Czech Republic	6 058	604	719	753	437	388	371	288	402	508	512	721	355
Denmark	24 212	2 686	3 275	2 435	1 058	1 246	2 655	1 389	1 192	1 498	2 792	2 137	1 849
Estonia	959	150	184	75	20	19	135	35	33	62	69	125	52
Faroe Island	23	4	-	6	7	5	-	-	1	-	-	-	-
Finland	10 511	1 104	1 135	875	458	489	1 401	532	464	706	908	1 156	1 283
France	115 401	8 506	10 752	9 860	7 773	6 887	11 451	8 741	10 478	7 297	12 995	11 808	8 853
Germany	215 800	18 987	21 863	24 432	10 695	6 315	14 413	14 258	14 445	16 291	24 895	26 228	22 978
Gibraltar	6	-	3	2	-	1	-	-	-	-	-	-	-
Greece	8 169	671	519	525	448	535	2 070	454	672	492	457	427	899
Hebrides	6	-	1	1	-	3	1	-	-	-	-	-	-
Hungary	3 115	311	302	241	147	181	322	257	191	198	284	449	232
Iceland	694	48	52	70	38	39	76	49	49	45	74	71	83
Ireland	30 518	3 107	2 866	2 994	1 828	1 880	2 006	1 967	2 180	2 200	2 662	3 174	3 654
Isle Of Guernsey	8	-	1	2	2	-	-	-	-	-	2	-	1
Isle Of Jersey	12	3	5	3	1	-	-	-	-	-	-	-	-
Isle Of Man	50	1	1	4	1	1	7	8	8	8	5	4	2
Italy	54 641	3 826	3 397	3 314	2 477	3 543	5 851	4 182	9 848	4 645	4 814	3 735	5 009
Latvia	646	50	41	66	28	42	55	36	36	72	84	81	55
Liechtenstein	200	16	20	13	12	10	24	17	7	11	26	27	17

Appendix V. Number of tourists by country of residence and month of arrival, 2010 (continued)													
Country	Total	Month of arrival											
		Jan	Feb	Mar	Apr	May	Jun	Jul	Aug	Sep	Oct	Nov	Dec
Lithuania	785	86	60	54	52	50	72	66	59	47	101	49	89
Luxembourg	1 259	104	101	151	49	41	80	75	207	63	145	92	151
Malta	568	44	59	53	31	30	62	58	48	72	59	20	32
Moldova	181	14	17	13	8	7	16	25	9	9	19	28	16
Monaco	61	6	11	2	4	4	10	1	5	2	1	3	12
Norway	19 330	2 048	2 365	2 255	882	791	1 860	1 265	914	1 150	1 877	1 935	1 988
Poland	9 970	974	890	869	514	485	927	794	796	785	905	1 265	766
Portugal	40 655	2 331	2 325	2 457	2 732	3 090	7 584	3 138	3 501	2 876	3 317	3 278	4 026
Romania	2 309	152	169	216	103	86	177	304	226	198	205	190	283
Russian Federation	11 551	1 135	789	914	556	748	1 263	1 391	833	798	1 114	915	1 095
San Marino	25	1	6	1	-	1	6	3	-	1	2	-	4
Shetland Islands	1	-	-	-	-	-	1	-	-	-	-	-	-
Sicily	4	-	3	1	-	-	-	-	-	-	-	-	-
Slovakia	3 730	165	150	193	145	154	1 817	133	167	172	202	278	154
Slovenia	2 211	91	103	123	54	47	1 171	89	93	93	106	100	141
Spain	31 902	1 293	1 403	1 974	1 421	1 964	5 584	5 211	4 445	2 514	2 271	2 071	1 751
Sweden	40 662	4 997	5 431	4 021	1 695	1 585	2 197	1 756	1 340	1 898	4 372	5 350	6 020
Switzerland	39 725	3 131	3 307	2 892	2 226	1 962	4 184	2 784	2 324	3 277	5 097	4 604	3 937
The Netherlands	124 088	10 882	11 200	8 513	6 802	6 508	10 760	13 743	7 968	9 018	14 796	11 982	11 916
Turkey	9 915	1 000	732	667	533	678	1 050	956	709	675	548	1 734	633
UK	453 030	42 246	46 585	43 776	30 176	28 011	40 903	29 779	34 068	31 028	39 642	38 539	48 277
Ukraine	3 469	254	248	173	158	352	365	358	203	359	309	312	378
Vatican	8	-	1	-	1	1	-	-	-	-	3	1	1
Yugoslavia	441	50	50	38	21	25	93	36	23	12	28	23	42
North America	337 652	20 070	18 984	26 138	20 227	27 108	50 902	32 068	32 491	27 193	29 670	24 794	28 007
Canada	55 263	4 103	4 095	4 587	3 341	4 007	6 008	4 378	4 140	3 937	5 668	4 986	6 013
East Indian Islands	3	1	2	-	-	-	-	-	-	-	-	-	-
Greenland	9	3	2	3	1	-	-	-	-	-	-	-	-
USA	282 377	15 963	14 885	21 548	16 885	23 101	44 894	27 690	28 351	23 256	24 002	19 808	21 994
Central and South America	120 329	5 892	5 028	5 696	4 293	6 506	47 188	11 731	6 177	6 536	7 317	5 897	8 068
Antigua And Barbuda	96	3		2	1	6	22	3	28	11	5	9	6
Argentina	21 701	1 417	1 341	1 692	598	1 259	8 945	1 454	881	1 134	1 185	882	913
Bahamas	142	9	7	11	5	12	41	12	14	7	6	9	9
Barbados	207	6	9	2	17	19	39	38	13	13	26	10	15
Belize	59	2	5	5	-	4	6	7	4	5	5	3	13

Appendix V. Number of tourists by country of residence and month of arrival, 2010 (continued)													
Country	Total	Month of arrival											
		Jan	Feb	Mar	Apr	May	Jun	Jul	Aug	Sep	Oct	Nov	Dec
Bermuda	73	6	11	7	12	12	4	1	1	2	6	7	4
Bolivia	722	28	37	52	26	42	152	94	45	49	79	46	72
Br Virgin Island	4	2	-	1	-	1	-	-	-	-	-	-	-
Brazil	53 756	3 208	2 494	2 368	2 506	3 298	14 100	5 619	3 241	3 791	4 278	3 601	5 252
Chile	7 260	252	315	203	183	323	4 186	467	262	285	321	240	223
Colombia	3 146	110	85	217	101	211	1 190	467	151	137	160	127	190
Costa Rica	921	20	21	42	31	59	484	88	51	19	33	31	42
Cuba	1 247	76	26	33	67	40	175	155	100	69	101	68	337
Dominica	116	4	-	3	2	8	36	20	8	2	14	7	12
Ecuador	1 004	33	23	64	33	56	339	176	86	37	64	59	34
El Salvador	391	6	12	20	15	7	179	108	5	6	20	5	8
Falkland Island (Malvinas)	2	1	-	-	-	1	-	-	-	-	-	-	-
French Guinea	38	9	12	9	6	1	-	1	-	-	-	-	-
Grenada	33	-	1	2	1	2	6	2	3	6	3	4	3
Guatemala	569	7	8	9	7	39	301	74	17	29	39	14	25
Guyana (Guinea-British)	5	-	2	1	2	-	-	-	-	-	-	-	-
Haiti	192	18	11	9	15	19	31	20	12	24	12	6	15
Honduras	1 330	7	8	12	8	15	1 181	36	15	7	14	10	17
Jamaica	695	33	31	46	51	61	128	72	64	44	67	62	36
Mexico	15 923	254	177	258	214	453	12 009	1 058	565	217	256	224	238
Nicaragua	88	5	4	17	4	-	36	11	3	-	2	1	5
Panama	378	6	9	11	18	6	156	91	17	14	22	11	17
Paraguay	1 170	18	39	40	11	48	660	125	51	40	62	38	38
Peru	2 731	126	130	159	135	237	642	343	227	186	217	168	161
Puerto Rico	4	-	1	-	-	-	-	1	1	-	1	-	-
St Lucia	41	2	1	12	1	1	7	2	-	2	3	8	2
St Vincent And Grenadines	43	1	2	3	4	3	4	3	3	3	9	5	3
Suriname	95	10	7	12	4	11	16	7	11	3	6	4	4
Trinidad And Tobago	585	14	16	16	20	24	170	70	54	39	56	66	40
Turks And Caicos Island	1	-	-	-	-	-	-	1	-	-	-	-	-
Uruguay	2 683	71	84	146	61	119	902	655	87	266	112	84	96
Venezuela	2 591	88	70	164	92	85	1 007	422	152	80	120	81	230
West Indies	287	40	29	48	42	24	34	28	5	9	13	7	8
Australasia	128 149	7 585	6 215	9 643	8 917	8 673	18 450	8 911	11 178	14 360	10 959	10 199	13 059
Australia	107 905	6 469	5 238	7 985	7 344	7 300	16 106	7 630	9 344	12 194	9 339	8 530	10 426

Appendix V. Number of tourists by country of residence and month of arrival, 2010 (continued)													
Country	Total	Month of arrival											
		Jan	Feb	Mar	Apr	May	Jun	Jul	Aug	Sep	Oct	Nov	Dec
Bouvet Island	3	1	1	-	-	-	-	-	1	-	-	-	-
Christmas Island	3	-	1	-	1	-	-	-	-	1	-	-	-
Cocos (Keeling) Island	27	6	5	1	6	5	1	-	-	1	-	1	1
Federated States of Micron	8	2		3	-	-	1	-	-	1	1	-	-
Fiji	119	6	7	5	11	-	13	14	3	7	9	14	30
French Polynesia	55	11	14	8	17	1	-	1	-	1	2	-	-
French Southern Ter	11	-	1	5	1	1	-	1	1	-	-	-	1
Guam	6	3	1		1	1	-	-	-	-	-	-	-
Kiribati	11	1	1	2	2	-	-	-	1	-	-	2	2
Marshall Islands	2	-	1	1	-	-	-	-	-	-	-	-	-
Nauru	2	-	1	-	1	-	-	-	-	-	-	-	-
New Guinea	4	1	-	2	1	-	-	-	-	-	-	-	-
New Zealand	19 801	1 076	927	1 618	1 519	1 363	2 307	1 244	1 815	2 150	1 570	1 633	2 579
Norfolk Island	1	-	1	-	-	-	-	-	-	-	-	-	-
Northern Mariana Island	15	2	4	-	3	1	1	3	1	-	-	-	-
Palau	1	-	-	-	-	-	-	1	-	-	-	-	-
Papua New Guinea	67	2	-	6	3	-	8	10	8	3	23	2	2
Pitcairn	2	-	-	1	-	1	-	-	-	-	-	-	-
Samoa	46	3	3	5	3	-	2	2	2	1	1	11	13
Solomon Island	12	-	-	-	1	-	3	3	-	-	2	3	-
Tasmania	2	-	2	-	-	-	-	-	-	-	-	-	-
Tokelau	7	2	3	1	-	-	-	-	1	-	-	-	-
Tonga Island	20	-	4	-	3	-	1	2	-	1	4	2	3
Tuvalu	4	-	-	-	-	-	-	-	-	-	2	-	2
Vanuatu	15	-	-	-	-	-	7	-	1	-	6	1	-
Middle East	39 364	2 311	3 010	4 120	2 279	2 288	5 139	5 054	2 923	2 977	3 020	3 300	2 943
Bahrain	294	11	8	20	17	12	46	66	16	9	30	40	19
Cyprus	1 972	130	132	112	97	155	332	201	190	93	151	113	266
Iran	4 566	225	466	1 348	144	157	266	338	360	374	168	336	384
Iraq	333	22	11	20	17	21	47	22	22	11	27	30	83
Israel	19 353	1 231	1 492	1 809	1 176	1 211	2 747	1 974	1 577	1 489	1 742	1 614	1 291
Jordan	1 938	126	135	189	116	155	243	270	120	121	159	178	126
Kuwait	651	36	34	19	17	20	92	215	21	43	62	59	33
Lebanon	3 183	150	190	180	161	183	560	481	295	219	278	215	271

Appendix V. Number of tourists by country of residence and month of arrival, 2010 (continued)													
Country	Total	Month of arrival											
		Jan	Feb	Mar	Apr	May	Jun	Jul	Aug	Sep	Oct	Nov	Dec
Oman	433	23	37	28	29	35	81	93	18	23	25	25	16
Palestine	305	17	25	13	9	14	35	38	19	24	30	15	66
Qatar	361	6	34	12	26	43	84	66	6	12	16	38	18
Saudi Arabia	3 570	182	278	175	274	152	288	871	174	442	156	418	160
Syria	707	23	37	35	36	36	90	155	49	24	45	73	104
United Arab Emirates	1 332	109	108	142	131	74	147	210	49	78	100	111	73
Yemen	366	20	23	18	29	20	81	54	7	15	31	35	33
Asia	259 961	15 549	17 017	15 272	15 043	21 872	30 914	26 209	23 752	25 925	24 144	23 526	20 738
Afghanistan	675	117	69	80	149	51	34	52	21	44	23	20	15
Armenia	133	3	5	10	7	16	45	16	4	6	16	3	2
Azerbaijan	280	21	2	9	3	9	39	90	17	38	24	12	16
Bangladesh	3 829	286	271	379	284	314	294	251	286	318	360	390	396
Bhutan	35	1	2	1	2	-	14	-	1	-	4	8	2
Borneo	4	3	-	-	-	-	1	-	-	-	-	-	-
Brunei Darussalam	58	5	4	2	5	3	16	5	1	5	6	6	-
Cambodia	173	4	5	2	2	7	50	10	23	17	27	21	5
China	65 920	3 733	5 582	3 779	3 893	4 954	6 553	6 173	5 921	7 209	5 697	7 524	4 902
East Timor	17	1	-	4	1	1	2	2	2	-	2	1	1
Georgia	251	10	7	46	8	27	29	48	17	20	13	7	19
Guyana	268	16	23	18	24	28	24	25	25	44	16	11	14
Hong Kong	2 389	350	984	331	276	17	121	105	85	64	47	5	4
India	71 587	3 961	3 852	3 822	4 498	8 317	6 561	7 043	6 506	7 057	6 291	7 130	6 549
Indonesia	5 158	185	171	194	160	224	713	882	630	832	348	281	538
Japan	27 577	1 186	1 248	1 862	1 380	1 935	5 793	2 100	2 745	2 677	3 737	1 552	1 362
Java	3	1	1	-	-	1	-	-	-	-	-	-	-
Kazakhstan	743	30	46	52	25	22	69	201	21	37	67	108	65
Korea	17 489	2 225	1 095	1 034	927	1 333	2 554	1 539	1 846	1 371	1 175	1 142	1 248
Korea Democratic Peoples R	420	15	6	11	9	28	169	37	28	29	5	15	68
Kyrgyzstan	37	7	11	7	3	4	1	1	1	1	-	-	1
Laos	72	3	-	3	-	2	12	11	10	7	10	7	7
Macau	74	8	7	5	1	8	9	8	13	4	8	2	1
Malaysia	9 175	405	490	487	415	519	1 256	1 027	673	1 488	806	887	722
Maldives	86	1	3	2	6	17	17	28	3	1	6	-	2
Mongolia	191	3	8	16	3	2	96	32	1	5	8	8	9
Myanmar	401	24	25	27	13	31	46	52	51	30	45	32	25
Nepal	543	15	36	13	28	26	58	47	28	35	58	27	172

Appendix V. Number of tourists by country of residence and month of arrival, 2010 (continued)													
Country	Total	Month of arrival											
		Jan	Feb	Mar	Apr	May	Jun	Jul	Aug	Sep	Oct	Nov	Dec
Pakistan	13 359	869	928	1 013	834	1 476	1 289	1 354	1 119	1 125	1 205	1 083	1 064
Philippines	9 553	291	260	340	394	410	1 339	1 779	1 139	859	1 032	980	730
Singapore	6 660	312	367	406	316	407	821	726	442	617	681	629	936
Sri Lanka	2 872	146	116	198	164	196	271	314	264	265	275	211	452
Sumatra	3	1	-	1	1	-	-	-	-	-	-	-	-
Taiwan	9 163	852	1 107	657	629	617	723	814	844	800	850	675	595
Tajikistan	44	4	1	5	-	3	6	4	4	1	6	7	3
Thailand	7 174	367	232	367	496	592	1 278	946	702	527	717	481	469
Turkmenistan	31	1	1	2	-	5	4	6	4	-	5	2	1
Uzbekistan	196	12	6	15	7	4	44	35	11	11	24	9	18
Vietnam	3 318	75	46	72	80	266	563	446	264	381	550	250	325
Africa	5 741 177	555 110	403 586	419 326	508 501	407 268	421 074	494 815	537 034	485 090	496 071	479 327	533 975
SADC	5 564 174	541 423	391 259	406 395	495 420	393 579	398 085	480 667	521 959	471 429	480 766	464 444	518 748
Angola	38 543	4 175	3 121	2 954	2 775	2 760	3 336	3 186	3 205	3 267	3 486	2 827	3 451
Botswana	507 042	34 459	34 119	35 672	63 985	41 310	35 224	41 495	39 541	44 558	38 506	41 316	56 857
DRC	31 285	2 521	2 126	2 183	2 422	2 533	1 945	2 393	3 802	2 295	2 581	2 545	3 939
Lesotho	1 275 838	131 421	78 984	85 482	103 624	87 504	85 018	113 876	124 462	111 321	121 402	117 776	114 968
Madagascar	3 075	155	244	204	220	214	430	315	270	209	332	273	209
Malawi	126 120	9 859	7 782	8 620	8 885	10 643	9 480	9 285	12 226	12 298	13 107	12 577	11 358
Mauritius	16 329	1 192	1 089	1 126	1 237	1 186	2 045	1 626	1 398	1 256	1 352	1 467	1 355
Mozambique	1 051 502	113 265	86 723	80 221	76 810	81 958	83 317	94 785	96 852	83 841	86 905	83 920	82 905
Namibia	190 903	15 584	12 130	15 455	17 957	17 683	11 934	15 508	15 502	15 653	15 486	14 118	23 893
Swaziland	632 490	56 328	46 534	46 429	58 735	55 919	45 591	52 079	64 484	53 967	49 599	46 817	56 008
Tanzania	19 641	1 339	1 334	1 223	1 275	1 624	1 890	1 872	1 662	1 581	1 649	2 129	2 063
Zambia	157 692	12 877	11 873	12 355	13 315	14 253	10 698	12 342	14 528	13 025	13 790	12 972	15 664
Zimbabwe	1 513 714	158 248	105 200	114 471	144 180	75 992	107 177	131 905	144 027	128 158	132 571	125 707	146 078
'Other' African	177 003	13 687	12 327	12 931	13 081	13 689	22 989	14 148	15 075	13 661	15 305	14 883	15 227
East and Central Africa	80 569	7 433	6 285	6 403	6 487	6 059	7 428	6 592	7 199	6 205	6 655	6 914	6 909
Burundi	891	67	66	74	73	77	74	63	100	65	78	70	84
Cameroon	6 461	635	443	411	387	506	1 380	484	511	430	537	404	333
Central African Republic	170	10	12	8	15	10	21	3	15	17	28	19	12
Chad	252	23	15	13	21	13	36	26	13	21	31	24	16
Comoros	209	21	11	12	9	29	21	20	16	21	10	27	12

Appendix V. Number of tourists by country of residence and month of arrival, 2010 (continued)													
Country	Total	Month of arrival											
		Jan	Feb	Mar	Apr	May	Jun	Jul	Aug	Sep	Oct	Nov	Dec
Congo	4 437	525	420	576	526	255	346	307	258	304	297	340	283
Djibouti	79	1	2	6	6	2	10	8	11	10	5	15	3
Equat Guinea	311	36	21	17	26	17	55	14	20	16	35	42	12
Eritrea	602	49	43	45	61	39	54	58	40	49	45	48	71
Ethiopia	9 397	871	820	841	858	671	607	703	893	741	792	807	793
Gabon	6 052	703	529	385	416	335	348	553	797	556	398	345	687
Kenya	29 089	2 298	1 947	1 931	1 996	2 355	2 849	2 631	2 605	2 314	2 520	2 754	2 889
Reunion	348	86	25	50	20	13	62	39	22	13	11	-	7
Rwanda	2 931	270	193	209	242	223	309	292	237	202	262	258	234
Sao Tome and Principe	133	9	9	9	13	5	12	23	8	10	11	16	8
Seychelles	2 861	208	226	230	236	226	121	114	273	238	318	396	275
Somalia	2 706	444	591	599	581	182	82	24	125	31	13	19	15
Tristan Da Cunha	13	3	2	-	-	1	-	6	-	-	1	-	-
Uganda	13 627	1 174	910	987	1 001	1 100	1 041	1 224	1 255	1 167	1 263	1 330	1 175
West Africa	80 277	5 340	5 092	5 594	5 761	6 556	11 651	5 984	6 759	6 257	7 381	6 918	6 984
Ascension	5	-	3	-	-	-	-	1	-	-	-	1	-
Benin	1 234	112	80	113	91	79	118	108	103	91	140	105	94
Burkina Faso	628	28	28	32	40	42	56	76	104	55	70	72	25
Cape Verde Island	554	48	41	39	49	45	54	29	45	55	41	68	40
Cote D'Ivoire	2 716	119	152	148	106	243	983	177	205	140	187	144	112
Gambia	748	29	40	33	29	52	103	92	62	81	110	86	31
Ghana	18 435	1 014	1 053	1 038	1 040	1 273	4 608	1 265	1 437	1 260	1 490	1 428	1 529
Guinea	1 931	110	78	83	89	134	245	247	156	193	229	209	158
Guinea-Bissau	230	23	11	26	40	18	22	29	10	16	14	14	7
Liberia	545	33	48	35	56	41	50	46	35	51	82	32	36
Madeira Islands	46	15	14	12	3	2	-	-	-	-	-	-	-
Mali	1 190	54	64	62	73	82	223	129	115	91	154	95	48
Mauritania	271	20	13	15	14	12	37	56	21	11	35	21	16
Niger	293	18	10	16	10	21	22	26	32	73	35	19	11
Nigeria	46 853	3 491	3 203	3 621	3 770	3 971	4 668	3 296	4 004	3 752	4 295	4 259	4 523
Saint Helena	119	6	5	6	4	26	10	22	20	-	18	2	-
Senegal	3 005	146	178	231	227	400	283	250	280	266	297	215	232
Sierra Leone	955	51	48	52	85	75	104	97	78	66	120	91	88
Togo	519	23	23	32	35	40	65	38	52	56	64	57	34

Appendix V. Number of tourists by country of residence and month of arrival, 2010 (concluded)													
Country	Total	Month of arrival											
		Jan	Feb	Mar	Apr	May	Jun	Jul	Aug	Sep	Oct	Nov	Dec
North Africa	16 157	914	950	934	833	1 074	3 910	1 572	1 117	1 199	1 269	1 051	1 334
Algeria	3 529	92	92	107	98	102	2 342	145	70	118	117	78	168
Egypt	5 967	357	474	456	403	504	677	677	515	481	586	424	413
Libya	1 711	130	69	66	86	97	255	188	161	174	148	151	186
Morocco	1 563	54	87	86	56	79	264	204	99	136	102	121	275
The Sudan	2 080	193	136	154	117	175	208	240	170	148	202	189	148
Tunisia	1 212	87	92	63	72	117	163	117	102	141	111	88	59
Western Sahara	95	1	-	2	1	-	1	1	-	1	3	-	85
Unspecified	115 381	6 240	3 258	3 028	4 897	61 014	22 892	2 557	2 328	2 317	2 492	2 647	1 711

Appendix VI. Number of tourists by country of residence and mode of travel, 2010						
Country	Total	Mode of travel				
		Air	Rail	Road	Sea	Unspecified
Total	8 073 552	2 738 910	870	5 328 168	4 877	727
Overseas	2 216 994	1 978 433	51	233 206	4 637	667
Europe	1 331 539	1 172 892	39	155 884	2 390	334
Albania	223	199	-	24	-	-
Andorra	62	54	-	8	-	-
Austria	20 389	18 067	-	2 153	169	-
Azores Island	22	12	-	10	-	-
Belarus	566	556	-	9	1	-
Belgium	39 304	32 924	1	6 346	28	5
Bosnia-Herzegovina	267	247	-	20	-	-
Bulgaria	2 515	2 253	-	256	5	1
Byelorussian SSR	7	6	-	1	-	-
Channel Island	6	5	-	1	-	-
Crete	3	3	-	-	-	-
Croatia	1 266	1 169	-	95	-	2
Czech Republic	6 058	5 195	-	858	5	-
Denmark	24 212	21 800	3	2 376	33	-
Estonia	959	823	-	136	-	-
Faroe Island	23	8	-	15	-	-
Finland	10 511	9 388	-	1 120	2	1
France	115 401	100 258	9	15 072	52	10
Germany	215 800	188 032	11	27 064	671	22
Gibraltar	6	5	-	1	-	-
Greece	8 169	7 525	-	627	4	13
Hebrides	6	5	-	1	-	-
Hungary	3 115	2 891	-	219	5	-
Iceland	694	635	-	58	1	-
Ireland	30 518	27 307	-	3 198	13	-
Isle Of Guernsey	8	7	-	1	-	-
Isle Of Jersey	12	10	-	2	-	-
Isle Of Man	50	46	-	4	-	-
Italy	54 641	49 362	-	5 225	54	-
Latvia	646	573	-	63	5	5
Liechtenstein	200	190	-	10	-	-

Appendix VI. Number of tourists by country of residence and mode of travel, 2010 (continued)						
Country	Total	Mode of travel				
		Air	Rail	Road	Sea	Unspecified
Lithuania	785	671	-	113	1	-
Luxembourg	1 259	1 102	-	156	1	-
Malta	568	505	-	62	-	1
Moldova	181	177	-	4	-	-
Monaco	61	49	-	12	-	-
Norway	19 330	17 267	-	2 053	6	4
Poland	9 970	8 865	3	1 075	11	16
Portugal	40 655	27 017	-	13 628	7	3
Romania	2 309	2 192	-	109	4	4
Russian Federation	11 551	10 889	-	621	14	27
San Marino	25	21	-	4	-	-
Shetland Islands	1	1	-	-	-	-
Sicily	4	2	-	2	-	-
Slovakia	3 730	3 405	-	323	2	-
Slovenia	2 211	2 075	-	136	-	-
Spain	31 902	29 248	-	2 634	18	2
Sweden	40 662	35 620	-	5 010	25	7
Switzerland	39 725	35 135	-	4 429	150	11
The Netherlands	124 088	100 785	3	23 008	276	16
Turkey	9 915	9 397	-	511	3	4
UK	453 030	415 251	9	36 801	814	155
Ukraine	3 469	3 323	-	111	10	25
Vatican	8	5	-	3	-	-
Yugoslavia	441	335	-	106	-	-
North America	337 652	304 945	8	30 915	1 745	39
Canada	55 263	48 585	4	6 428	241	5
East Indian Islands	3	2	-	1	-	-
Greenland	9	4	-	5	-	-
USA	282 377	256 354	4	24 481	1 504	34
Central and South America	120 329	113 560	-	6 720	33	16
Antigua And Barbuda	96	86	-	9	1	-
Argentina	21 701	20 875	-	825	-	1
Bahamas	142	142	-	-	-	-
Barbados	207	206	-	1	-	-
Belize	59	56	-	3	-	-

Appendix VI. Number of tourists by country of residence and mode of travel, 2010 (continued)						
Country	Total	Mode of travel				
		Air	Rail	Road	Sea	Unspecified
Bermuda	73	34	-	39	-	-
Bolivia	722	621	-	101	-	-
Br Virgin Island	4	3	-	1	-	-
Brazil	53 756	50 169	-	3 568	18	1
Chile	7 260	6 756	-	504	-	-
Colombia	3 146	2 974	-	167	5	-
Costa Rica	921	854	-	67	-	-
Cuba	1 247	1 122	-	125	-	-
Dominica	116	106	-	10	-	-
Ecuador	1 004	965	-	39	-	-
El Salvador	391	351	-	40	-	-
Falkland Island (Malvinas)	2	2	-	-	-	-
French Guinea	38	30	-	8	-	-
Grenada	33	32	-	1	-	-
Guatemala	569	556	-	13	-	-
Guyana (Guinea-British)	5	5	-	-	-	-
Haiti	192	147	-	45	-	-
Honduras	1 330	1 298	-	32	-	-
Jamaica	695	564	-	130	1	-
Mexico	15 923	15 655	-	262	6	-
Nicaragua	88	79	-	9	-	-
Panama	378	349	-	29	-	-
Paraguay	1 170	1 081	-	88	1	-
Peru	2 731	2 487	-	244	-	-
Puerto Rico	4	2	-	2	-	-
St Lucia	41	41	-	-	-	-
St Vincent And Grenadines	43	41	-	2	-	-
Suriname	95	81	-	14	-	-
Trinidad And Tobago	585	550	-	35	-	-
Turks And Caicos Island	1	1	-	-	-	-
Uruguay	2 683	2 637	-	45	1	-
Venezuela	2 591	2 454	-	137	-	-
West Indies	287	148	-	125	-	14
Australasia	128 149	118 893	4	9 161	59	32
Australia	107 905	100 412	2	7 416	47	28

Appendix VI. Number of tourists by country of residence and mode of travel, 2010 (continued)						
Country	Total	Mode of travel				
		Air	Rail	Road	Sea	Unspecified
Bouvet Island	3	2	-	1	-	-
Christmas Island	3	1	-	2	-	-
Cocos (Keeling) Island	27	6	-	21	-	-
Federated States of Micron	8	3	-	5	-	-
Fiji	119	109	-	10	-	-
French Polynesia	55	30	-	25	-	-
French Southern Ter	11	1	-	10	-	-
Guam	6	1	-	5	-	-
Kiribati	11	11	-	-	-	-
Marshall Islands	2	2	-	-	-	-
Nauru	2	1	-	-	-	1
New Guinea	4	3	-	1	-	-
New Zealand	19 801	18 134	2	1 650	12	3
Norfolk Island	1	1	-	-	-	-
Northern Mariana Island	15	11	-	4	-	-
Palau	1	1	-	-	-	-
Papua New Guinea	67	67	-	-	-	-
Pitcairn	2	2	-	-	-	-
Samoa	46	41	-	5	-	-
Solomon Island	12	12	-	-	-	-
Tasmania	2	2	-	-	-	-
Tokelau	7	2	-	5	-	-
Tonga Island	20	19	-	1	-	-
Tuvalu	4	4	-	-	-	-
Vanuatu	15	15	-	-	-	-
Middle East	39 364	37 183	-	2 162	12	7
Bahrain	294	293	-	1	-	-
Cyprus	1 972	1 798	-	174	-	-
Iran	4 566	4 485	-	74	3	4
Iraq	333	317	-	16	-	-
Israel	19 353	18 090	-	1 255	7	1
Jordan	1 938	1 736	-	202	-	-
Kuwait	651	617	-	34	-	-
Lebanon	3 183	2 903	-	280	-	-

Appendix VI. Number of tourists by country of residence and mode of travel, 2010 (continued)						
Country	Total	Mode of travel				
		Air	Rail	Road	Sea	Unspecified
Oman	433	422	-	9	2	-
Palestine	305	263	-	42	-	-
Qatar	361	360	-	1	-	-
Saudi Arabia	3 570	3 533	-	37	-	-
Syria	707	685	-	20	-	2
United Arab Emirates	1 332	1 325	-	7	-	-
Yemen	366	356	-	10	-	-
Asia	259 961	230 960	-	28 364	398	239
Afghanistan	675	189	-	486	-	-
Armenia	133	125	-	8	-	-
Azerbaijan	280	271	-	9	-	-
Bangladesh	3 829	2 583	-	1 241	4	1
Bhutan	35	35	-	-	-	-
Borneo	4	4	-	-	-	-
Brunei Darussalam	58	45	-	13	-	-
Cambodia	173	140	-	33	-	-
China	65 920	60 815	-	5 101	4	-
East Timor	17	13	-	4	-	-
Georgia	251	240	-	8	2	1
Guyana	268	189	-	79	-	-
Hong Kong	2 389	2 356	-	32	1	-
India	71 587	61 551	-	9 951	46	39
Indonesia	5 158	4 974	-	126	56	2
Japan	27 577	26 405	-	1 121	51	-
Java	3	3	-	-	-	-
Kazakhstan	743	734	-	9	-	-
Korea	17 489	15 947	-	1 536	1	5
Korea Democratic Peoples R	420	265	-	152	3	-
Kyrgyzstan	37	5	-	32	-	-
Laos	72	48	-	24	-	-
Macau	74	60	-	14	-	-
Malaysia	9 175	8 836	-	330	1	8
Maldives	86	77	-	9	-	-
Mongolia	191	186	-	5	-	-
Myanmar	401	345	-	43	2	11
Nepal	543	500	-	42	-	1

Appendix VI. Number of tourists by country of residence and mode of travel, 2010 (continued)						
Country	Total	Mode of travel				
		Air	Rail	Road	Sea	Unspecified
Pakistan	13 359	9 987	-	3 268	103	1
Philippines	9 553	7 771	-	1 552	90	140
Singapore	6 660	6 436	-	220	3	1
Sri Lanka	2 872	2 071	-	800	-	1
Sumatra	3	3	-	-	-	-
Taiwan	9 163	7 344	-	1 761	31	27
Tajikistan	44	43	-	1	-	-
Thailand	7 174	6 891	-	283	-	-
Turkmenistan	31	29	-	2	-	-
Uzbekistan	196	191	-	5	-	-
Vietnam	3 318	3 253	-	64	-	1
Africa	5 741 177	719 296	819	5 020 781	223	58
SADC	5 564 174	564 825	818	4 998 419	60	52
Angola	38 543	36 966	-	1 555	4	18
Botswana	507 042	38 731	689	467 621	1	-
DRC	31 285	24 679	-	6 606	-	-
Lesotho	1 275 838	63 321	-	1 212 514	2	1
Madagascar	3 075	2 963	-	112	-	-
Malawi	126 120	23 991	3	102 123	3	-
Mauritius	16 329	14 323	1	2 004	1	-
Mozambique	1 051 502	110 043	75	941 369	12	3
Namibia	190 903	52 756	11	138 124	12	-
Swaziland	632 490	31 069	17	601 403	1	-
Tanzania	19 641	13 426	-	6 214	1	-
Zambia	157 692	58 529	2	99 155	6	-
Zimbabwe	1 513 714	94 028	20	1 419 619	17	30
'Other' African	177 003	154 471	1	22 362	163	6
East and Central Africa	80 569	67 454	-	13 072	42	1
Burundi	891	759	-	132	-	-
Cameroon	6 461	6 018	-	440	3	-
Central African Republic	170	164	-	6	-	-
Chad	252	246	-	5	1	-
Comoros	209	199	-	9	1	-

Appendix VI. Number of tourists by country of residence and mode of travel, 2010 (continued)						
Country	Total	Mode of travel				
		Air	Rail	Road	Sea	Unspecified
Congo	4 437	3 591	-	844	2	-
Djibouti	79	75	-	4	-	-
Equat Guinea	311	248	-	63	-	-
Eritrea	602	525	-	77	-	-
Ethiopia	9 397	7 488	-	1 902	7	-
Gabon	6 052	6 014	-	38	-	-
Kenya	29 089	25 184	-	3 892	12	1
Reunion	348	347	-	1	-	-
Rwanda	2 931	2 681	-	250	-	-
Sao Tome and Principe	133	124	-	8	1	-
Seychelles	2 861	2 811	-	49	1	-
Somalia	2 706	171	-	2 535	-	-
Tristan Da Cunha	13	5	-	1	7	-
Uganda	13 627	10 804	-	2 816	7	-
West Africa	80 277	72 011	1	8 148	115	2
Ascension	5	2	-	3	-	-
Benin	1 234	1 134	-	100	-	-
Burkina Faso	628	617	-	11	-	-
Cape Verde Island	554	499	-	55	-	-
Cote D'Ivoire	2 716	2 677	-	39	-	-
Gambia	748	691	-	57	-	-
Ghana	18 435	16 757	-	1 676	1	1
Guinea	1 931	1 331	-	599	1	-
Guinea-Bissau	230	139	-	91	-	-
Liberia	545	515	-	30	-	-
Madeira Islands	46	29	-	17	-	-
Mali	1 190	992	-	198	-	-
Mauritania	271	263	-	8	-	-
Niger	293	288	-	5	-	-
Nigeria	46 853	41 888	1	4 941	22	1
Saint Helena	119	15	-	14	90	-
Senegal	3 005	2 905	-	99	1	-
Sierra Leone	955	767	-	188	-	-
Togo	519	502	-	17	-	-

Appendix VI. Number of tourists by country of residence and mode of travel, 2010 (concluded)						
Country	Total	Mode of travel				
		Air	Rail	Road	Sea	Unspecified
North Africa	16 157	15 006	-	1 142	6	3
Algeria	3 529	3 404	-	125	-	-
Egypt	5 967	5 687	-	272	5	3
Libya	1 711	1 253	-	458	-	-
Morocco	1 563	1 481	-	81	1	-
The Sudan	2 080	1 933	-	147	-	-
Tunisia	1 212	1 153	-	59	-	-
Western Sahara	95	95	-	-	-	-
Unspecified	115 381	41 181	-	74 181	17	2

Appendix VII. Number of tourists by country of residence and purpose of visit, 2010					
Country	Total	Purpose of visit			
		Business	Holiday	Study	Transit
Total	8 073 552	246 503	7 552 341	84 135	190 573
Overseas	2 216 994	56 940	2 019 193	13 440	127 421
Europe	1 331 539	31 169	1 235 616	6 992	57 762
Albania	223	10	207	1	5
Andorra	62	3	54	-	5
Austria	20 389	395	18 546	77	1 371
Azores Island	22	-	22	-	-
Belarus	566	41	488	2	35
Belgium	39 304	969	36 313	205	1 817
Bosnia-Herzegovina	267	12	240	1	14
Bulgaria	2 515	122	2 208	17	168
Byelorussian SSR	7	1	6	-	-
Channel Island	6	1	5	-	-
Crete	3	-	3	-	-
Croatia	1 266	73	1 070	7	116
Czech Republic	6 058	124	5 642	34	258
Denmark	24 212	516	22 419	54	1 223
Estonia	959	33	885	9	32
Faroe Island	23	1	20	2	-
Finland	10 511	323	9 576	61	551
France	115 401	2 605	106 229	762	5 805
Germany	215 800	4 599	199 675	1 668	9 858
Gibraltar	6	-	6	-	-
Greece	8 169	184	7 614	14	357
Hebrides	6	1	5	-	-
Hungary	3 115	121	2 849	6	139
Iceland	694	20	615	3	56
Ireland	30 518	761	28 691	117	949
Isle Of Guernsey	8	-	8	-	-
Isle Of Jersey	12	-	12	-	-
Isle Of Man	50	2	45	-	3
Italy	54 641	1 440	49 514	161	3 526
Latvia	646	29	582	4	31
Liechtenstein	200	5	181	1	13

Appendix VII. Number of tourists by country of residence and purpose of visit, 2010 (continued)					
Country	Total	Purpose of visit			
		Business	Holiday	Study	Transit
Lithuania	785	49	649	5	82
Luxembourg	1 259	26	1 132	1	100
Malta	568	21	528	4	15
Moldova	181	19	149	4	9
Monaco	61	1	60	-	-
Norway	19 330	507	17 439	348	1 036
Poland	9 970	271	9 184	28	487
Portugal	40 655	380	38 407	115	1 753
Romania	2 309	153	1 991	11	154
Russian Federation	11 551	674	9 894	107	876
San Marino	25	-	23	-	2
Shetland Islands	1	-	1	-	-
Sicily	4	-	4	-	-
Slovakia	3 730	69	3 591	7	63
Slovenia	2 211	73	2 050	5	83
Spain	31 902	566	28 869	85	2 382
Sweden	40 662	1 082	37 822	247	1 511
Switzerland	39 725	610	35 207	207	3 701
The Netherlands	124 088	2 446	118 246	806	2 590
Turkey	9 915	493	9 107	105	210
UK	453 030	11 139	424 262	1 673	15 956
Ukraine	3 469	183	2 870	24	392
Vatican	8	-	8	-	-
Yugoslavia	441	16	393	4	28
North America	337 652	6 546	308 541	2 890	19 675
Canada	55 263	1 088	51 302	310	2 563
East Indian Islands	3	-	3	-	-
Greenland	9	-	9	-	-
USA	282 377	5 458	257 227	2 580	17 112
Central and South America	120 329	1 167	108 251	432	10 479
Antigua And Barbuda	96	2	86	-	8
Argentina	21 701	146	20 299	34	1 222
Bahamas	142	11	125	2	4
Barbados	207	8	188	4	7
Belize	59	2	52	-	5

Appendix VII. Number of tourists by country of residence and purpose of visit, 2010 (continued)					
Country	Total	Purpose of visit			
		Business	Holiday	Study	Transit
Bermuda	73	-	71	2	-
Bolivia	722	7	589	3	123
Br Virgin Island	4	-	4	-	-
Brazil	53 756	317	46 125	138	7 176
Chile	7 260	100	6 862	18	280
Colombia	3 146	87	2 725	78	256
Costa Rica	921	22	876	1	22
Cuba	1 247	12	786	29	420
Dominica	116	9	95	1	11
Ecuador	1 004	19	930	8	47
El Salvador	391	5	377	-	9
Falkland Island (Malvinas)	2	-	2	-	-
French Guinea	38	-	38	-	-
Grenada	33	2	27	2	2
Guatemala	569	18	534	-	17
Guyana (Guinea-British)	5	2	3	-	-
Haiti	192	23	154	-	15
Honduras	1 330	15	1 275	3	37
Jamaica	695	14	640	9	32
Mexico	15 923	222	15 517	49	135
Nicaragua	88	-	81	1	6
Panama	378	12	357	2	7
Paraguay	1 170	9	1 055	4	102
Peru	2 731	22	2 437	17	255
Puerto Rico	4	-	4	-	-
St Lucia	41	4	34	-	3
St Vincent And Grenadines	43	2	39	1	1
Suriname	95	7	86	-	2
Trinidad And Tobago	585	19	478	12	76
Turks And Caicos Island	1	-	-	-	1
Uruguay	2 683	16	2 541	7	119
Venezuela	2 591	29	2 510	5	47
West Indies	287	4	249	2	32
Australasia	128 149	1 610	120 320	222	5 997
Australia	107 905	1 348	101 277	174	5 106

Appendix VII. Number of tourists by country of residence and purpose of visit, 2010 (continued)					
Country	Total	Purpose of visit			
		Business	Holiday	Study	Transit
Bouvet Island	3	-	3	-	-
Christmas Island	3	-	2	-	1
Cocos (Keeling) Island	27	-	27	-	-
Federated States of Micron	8	1	7	-	-
Fiji	119	6	103	2	8
French Polynesia	55	1	49	5	-
French Southern Ter	11	-	11	-	-
Guam	6	-	6	-	-
Kiribati	11	1	9	-	1
Marshall Islands	2	-	2	-	-
Nauru	2	-	1	-	1
New Guinea	4	-	4	-	-
New Zealand	19 801	222	18 697	37	845
Norfolk Island	1	-	1	-	-
Northern Mariana Island	15	-	10	4	1
Palau	1	1	-	-	-
Papua New Guinea	67	14	26	-	27
Pitcairn	2	-	2	-	-
Samoa	46	5	37	-	4
Solomon Island	12	-	11	-	1
Tasmania	2	-	2	-	-
Tokelau	7	-	7	-	-
Tonga Island	20	4	14	-	2
Tuvalu	4	1	3	-	-
Vanuatu	15	6	9	-	-
Middle East	39 364	1 871	35 783	323	1 387
Bahrain	294	42	240	6	6
Cyprus	1 972	30	1 867	5	70
Iran	4 566	270	4 157	68	71
Iraq	333	62	259	7	5
Israel	19 353	445	18 279	32	597
Jordan	1 938	127	1 750	13	48
Kuwait	651	23	605	2	21
Lebanon	3 183	273	2 404	25	481

Appendix VII. Number of tourists by country of residence and purpose of visit, 2010 (continued)					
Country	Total	Purpose of visit			
		Business	Holiday	Study	Transit
Oman	433	33	396	3	1
Palestine	305	20	258	12	15
Qatar	361	40	317	2	2
Saudi Arabia	3 570	165	3 266	106	33
Syria	707	64	610	5	28
United Arab Emirates	1 332	246	1 074	8	4
Yemen	366	31	301	29	5
Asia	259 961	14 577	210 682	2 581	32 121
Afghanistan	675	30	623	11	11
Armenia	133	8	91	-	34
Azerbaijan	280	24	237	1	18
Bangladesh	3 829	171	3 491	51	116
Bhutan	35	5	28	1	1
Borneo	4	-	3	1	-
Brunei Darussalam	58	3	51	1	3
Cambodia	173	6	146	2	19
China	65 920	4 131	50 862	535	10 392
East Timor	17	-	14	-	3
Georgia	251	38	193	4	16
Guyana	268	4	234	11	19
Hong Kong	2 389	28	2 354	2	5
India	71 587	5 658	58 590	573	6 766
Indonesia	5 158	352	3 978	23	805
Japan	27 577	667	23 971	62	2 877
Java	3	-	3	-	-
Kazakhstan	743	53	640	11	39
Korea	17 489	456	15 046	680	1 307
Korea Democratic Peoples R	420	1	335	13	71
Kyrgyzstan	37	-	37	-	-
Laos	72	8	58	1	5
Macau	74	3	69	-	2
Malaysia	9 175	334	8 115	108	618
Maldives	86	1	81	-	4
Mongolia	191	15	171	2	3
Myanmar	401	9	314	3	75
Nepal	543	35	476	9	23

Appendix VII. Country of residence of tourists by purpose of visit, 2010 (continued)					
Country	Total	Purpose of visit			
		Business	Holiday	Study	Transit
Pakistan	13 359	823	11 257	107	1 172
Philippines	9 553	493	4 951	78	4 031
Singapore	6 660	303	5 858	17	482
Sri Lanka	2 872	200	2 209	38	425
Sumatra	3	-	3	-	-
Taiwan	9 163	429	7 580	106	1 048
Tajikistan	44	10	26	4	4
Thailand	7 174	135	6 744	110	185
Turkmenistan	31	1	28	1	1
Uzbekistan	196	18	161	3	14
Vietnam	3 318	125	1 654	12	1 527
Africa	5 741 177	187 576	5 430 282	62 498	60 821
SADC	5 564 174	180 492	5 276 988	56 032	50 662
Angola	38 543	640	31 702	2 442	3 759
Botswana	507 042	2 221	487 753	10 671	6 397
DRC	31 285	849	28 589	1 145	702
Lesotho	1 275 838	45 678	1 218 462	7 698	4 000
Madagascar	3 075	59	2 423	62	531
Malawi	126 120	1 727	120 717	809	2 867
Mauritius	16 329	473	14 246	448	1 162
Mozambique	1 051 502	76 501	967 806	1 274	5 921
Namibia	190 903	23 431	153 701	8 478	5 293
Swaziland	632 490	9 321	610 050	10 815	2 304
Tanzania	19 641	837	16 221	790	1 793
Zambia	157 692	8 504	141 406	1 658	6 124
Zimbabwe	1 513 714	10 251	1 483 912	9 742	9 809
'Other' African	177 003	7 084	153 294	6 466	10 159
East and Central Africa	80 569	3 481	69 286	4 054	3 748
Burundi	891	57	718	45	71
Cameroon	6 461	289	5 420	507	245
Central African Republic	170	18	145	5	2
Chad	252	17	199	13	23
Comoros	209	8	163	30	8

Appendix VII. Number of tourists by country of residence and purpose of visit, 2010 (continued)					
Country	Total	Purpose of visit			
		Business	Holiday	Study	Transit
Congo	4 437	178	3 898	252	109
Djibouti	79	10	59	-	10
Equat Guinea	311	24	250	36	1
Eritrea	602	30	518	14	40
Ethiopia	9 397	259	8 607	170	361
Gabon	6 052	45	5 328	589	90
Kenya	29 089	1 727	24 335	1 482	1 545
Reunion	348	4	338	4	2
Rwanda	2 931	160	2 318	275	178
Sao Tome and Principe	133	5	98	4	26
Seychelles	2 861	40	2 674	39	108
Somalia	2 706	17	2 670	2	17
Tristan Da Cunha	13	-	11	2	-
Uganda	13 627	593	11 537	585	912
West Africa	80 277	2 252	70 504	2 006	5 515
Ascension	5	-	5	-	-
Benin	1 234	38	1 131	20	45
Burkina Faso	628	49	499	10	70
Cape Verde Island	554	11	512	8	23
Cote D'Ivoire	2 716	174	2 335	71	136
Gambia	748	33	420	5	290
Ghana	18 435	363	16 835	228	1 009
Guinea	1 931	51	1 423	67	390
Guinea-Bissau	230	11	171	3	45
Liberia	545	32	444	17	52
Madeira Islands	46	1	45	-	-
Mali	1 190	69	926	12	183
Mauritania	271	22	208	2	39
Niger	293	29	242	2	20
Nigeria	46 853	1 085	41 557	1 493	2 718
Saint Helena	119	-	119	-	-
Senegal	3 005	215	2 476	30	284
Sierra Leone	955	34	752	28	141
Togo	519	35	404	10	70

Appendix VII. Number of tourists by country of residence and purpose of visit, 2010 (concluded)					
Country	Total	Purpose of visit			
		Business	Holiday	Study	Transit
North Africa	16 157	1 351	13 504	406	896
Algeria	3 529	97	3 346	35	51
Egypt	5 967	584	4 849	56	478
Libya	1 711	131	1 265	119	196
Morocco	1 563	153	1 349	29	32
The Sudan	2 080	248	1 581	159	92
Tunisia	1 212	132	1 027	8	45
Western Sahara	95	6	87	-	2
Unspecified	115 381	1 987	102 866	8 197	2 331

Appendix VIII. Number of tourists by sex, age group and month of arrival, 2010													
Sex and age group	Total	Month of arrival											
		Jan	Feb	Mar	Apr	May	Jun	Jul	Aug	Sep	Oct	Nov	Dec
All	8 073 552	729 056	584 009	603 479	642 171	606 543	721 311	680 414	719 020	658 565	706 839	679 904	742 241
0-14	391 123	36 508	22 725	26 821	41 874	18 806	23 579	33 823	41 310	24 782	28 387	23 922	68 586
15-64	7 280 626	660 245	528 124	546 134	573 173	517 570	674 702	625 283	652 896	601 585	639 177	618 055	643 682
65+	332 922	31 979	32 862	30 212	22 500	19 559	18 863	18 169	23 576	31 142	38 224	36 863	28 973
Unspecified	68 881	324	298	312	4 624	50 608	4 167	3 139	1 238	1 056	1 051	1 064	1 000
Male	4 656 488	414 037	328 677	335 028	346 653	345 932	474 673	404 887	419 763	384 742	405 595	395 043	401 458
0-14	200 471	18 191	11 583	13 575	21 104	9 449	13 956	17 832	20 824	13 152	14 457	12 114	34 234
15-64	4 242 182	378 878	299 818	305 811	311 784	297 183	446 389	375 253	385 821	354 950	370 841	363 046	352 408
65+	174 392	16 814	17 139	15 496	11 194	10 214	11 935	9 959	12 361	16 030	19 701	19 287	14 262
Unspecified	39 443	154	137	146	2 571	29 086	2 393	1 843	757	610	596	596	554
Female	3 404 489	314 211	254 633	267 719	294 680	259 014	245 136	274 520	298 215	272 758	300 208	283 856	339 539
0-14	190 604	18 315	11 141	13 246	20 770	9 345	9 601	15 988	20 483	11 629	13 929	11 808	34 349
15-64	3 028 787	280 694	227 746	239 714	260 676	219 577	227 292	249 174	266 209	245 756	267 509	254 194	290 246
65+	157 424	15 077	15 633	14 638	11 240	9 253	6 827	8 145	11 122	15 018	18 409	17 474	14 588
Unspecified	27 674	125	113	121	1 994	20 839	1 416	1 213	401	355	361	380	356
Unspecified	12 575	808	699	732	838	1 597	1 502	1 007	1 042	1 065	1 036	1 005	1 244
0-14	48	2	1	-	-	12	22	3	3	1	1		3
15-64	9 657	673	560	609	713	810	1 021	856	866	879	827	815	1 028
65+	1 106	88	90	78	66	92	101	65	93	94	114	102	123
Unspecified	1 764	45	48	45	59	683	358	83	80	91	94	88	90

OTHER STATS SA REPORTS

The following reports on tourism and migration have been published:

- No. 205 - South African residents travelling abroad 1952-1957
- No. 286 - Statistics of immigrants and emigrants 1924-1964
- No. 297 - Statistics of migration 1963 and earlier years
- No. 07-20-01 - External migration 1964
- No. 07-20-02 - External migration 1965
- No. 19-01-01 - Migration Statistics: Immigrants and Emigrants 1966 to 1969
- No. 19-02-01 - Migration Statistics: Tourists 1966 to 1969
- No. 19-01-02 - Migration Statistics: Tourists Immigrants and Emigrants 1970 and 1971
- No. 19-01-03 - Tourism and migration 1972-1975
- No. 19-01-04 - Tourism and migration 1976
- No. 19-01-05 - Tourism and migration 1977
- No. 19-01-06 - Tourism and migration 1978
- No. 19-01-07 - Tourism and migration 1979
- No. 19-01-08 - Tourism and migration 1980
- No. 19-01-09 - Tourism and migration 1981
- No. 19-01-10 - Tourism and migration 1982
- No. 19-01-11 - Tourism and migration 1983
- No. 19-01-12 - Tourism and migration 1984
- No. 19-01-13 - Tourism and migration 1985
- No. 19-01-14 - Tourism and migration 1986
- No. 03-51-02 (1987) - Tourism and migration
- No. 03-51-02 (1988) - Tourism and migration
- No. 03-51-02 (1989) - Tourism and migration
- No. 03-51-02 (1990) - Tourism and migration
- No. 03-51-02 (1991) - Tourism and migration
- No. 03-51-02 (1992) - Tourism and migration
- No. 03-51-02 (1993) - Tourism and migration
- No. 03-51-02 (1994) - Tourism and migration
- No. 03-51-02 (1995) - Tourism and migration
- No. 03-51-02 (1996) - Tourism and migration
- No. 03-51-02 (1997) - Tourism
- No. 03-51-02 (1998) - Tourism
- No. 03-51-02 (1999) - Tourism
- No. 03-51-02 (2000) - Tourism
- No. 03-51-02 (2001) - Tourism
- No. 03-51-02 (2002) - Tourism
- No. 03-51-02 (2003) - Tourism
- No. 03-51-02 (2004, 2005 and 2006) - Tourism
- No. 03-51-02 (2007) - Tourism
- No. 03-51-02 (2008) - Tourism
- No. 03-51-02 (2009) - Tourism