



**Statistics
South Africa**

Preferred supplier of quality statistics



Tourism, 2009

Report No. 03-51-02

Statistics South Africa • Mbalo-mbalo dza Afrika Tshipembe • Tinhlayo-liko ta Afrika-Dzonga • Dipalopalo tsa Aforika Borwa • Ezezibalo zaseNingizimu Afrika
Dipalopalo tša Afrika Borwa • Dipalopalo tsa Afrika Borwa • Ubalo lwaseMzantsi Afrika • Telubalo eNingizimu Afrika • iNanimbalo leSewula Afrika • Statistiek Suid-Afrika

email: info@statssa.gov.za
www.statssa.gov.za

170 Andries Street • Private Bag X44, 0001 Pretoria, South Africa
Tel: +27(12) 310 8911, Fax: +27(12) 321 7381

Tourism, 2009 / Statistics South Africa

Published by Statistics South Africa, Private Bag X44, Pretoria 0001

© Statistics South Africa, 2010

Users may apply or process this data, provided Statistics South Africa (Stats SA) is acknowledged as the original source of the data; that it is specified that the application and/or analysis is the result of the user's independent processing of the data; and that neither the basic data nor any reprocessed version or application thereof may be sold or offered for sale in any form whatsoever without prior permission from Stats SA.

Stats SA Library Cataloguing-in-Publication (CIP) Data

Tourism, 2009 / Statistics South Africa. Pretoria: Statistics South Africa, 2010

Report no. 03-51-02 (2009)

44 p

ISBN **978-0-621-39291-3**

A complete set of Stats SA publications is available at Stats SA Library and the following libraries:

National Library of South Africa, Pretoria Division
National Library of South Africa, Cape Town Division
Library of Parliament, Cape Town
Bloemfontein Public Library
Natal Society Library, Pietermaritzburg
Johannesburg Public Library
Eastern Cape Library Services, King William's Town
Central Regional Library, Polokwane
Central Reference Library, Nelspruit
Central Reference Collection, Kimberley
Central Reference Library, Mmabatho

This report is available on the Stats SA website: www.statssa.gov.za

Copies are obtainable from: Printing and Distribution, Statistics South Africa

Tel: (012) 310 8093
(012) 310 8251
(012) 310 8358
(012) 310 8161
Fax: (012) 321 7381
Email: inadp@statssa.gov.za
annelineb@statssa.gov.za

TABLE OF CONTENTS		Page
EXPLANATORY NOTES		
1	Introduction	ii
2	Data	ii
3	Definition of terms	ii
4	Abbreviations and symbols	iii
5	Limitations	iii
6	Related publications	iii
KEY FINDINGS		
1	Number of travelers	1
2	South African residents	1
3	Foreign arrivals	1
4	Same day visitors	1
5	Tourists	1
5.1	Country of residence	1
5.2	Mode of travel	2
5.3	Purpose of visit	2
5.4	Duration of stay of tourists	2
5.5	Sex and age distribution	2
FIGURES		
1	Arrival and departure of foreign travelers, 1990-2009	3
2	Arrival and departure of South African residents, 1990-2009	4
3	Number of tourists from eight leading overseas countries, 2009	5
4	Number of tourists from eight leading SADC countries, 2009	5
5	Number of tourists from eight leading 'Other' African countries, 2009	5
6	Percentage distribution of tourists by region and purpose of visit, 2009	5
7a	Percentage distribution of tourists from overseas countries on holiday, 2009	6
7b	Percentage distribution of tourists from overseas countries on business, 2009	6
7c	Percentage distribution of tourists from overseas countries on study, 2009	6
8a	Percentage distribution of tourists from SADC countries on holiday, 2009	6
8b	Percentage distribution of tourists from SADC countries on business, 2009	7
8c	Percentage distribution of tourists from SADC countries on study, 2009	7
9a	Percentage distribution of tourists from 'Other' African countries on holiday, 2009	7
9b	Percentage distribution of tourists from 'Other' African countries on business, 2009	7
9c	Percentage distribution of tourists from 'Other' African countries on study, 2009	8
10	Average number of days tourists spent by month of arrival, 2009	8
TABLES		
1	Number of travellers (arrivals and departures), 1990-2009	9
2	Number of South African residents by place of entry and month of arrival, 2009	10
3	Number of South African residents by place of departure and month of departure, 2009	11
4	Number of foreign arrivals and departures by region and month, 2009	12
5	Number of foreign arrivals by month of arrival, 2009	13
6	Number of tourists by country of residence and month of arrival, 2009	14
7	Number of tourists by place of entry and month of arrival, 2009	22
8	Number of tourists by country of residence and mode of travel, 2009	23
9	Number of tourists by country of residence and purpose of visit, 2009	31
10	Number of tourists by sex, age group and region, 2009	39
Other Stats SA reports		40

EXPLANATORY NOTES

1. Introduction

This annual report contains information on population movements into and out of South Africa for the year 2009. It reports on arrival and departure of South African residents and foreign travellers. A detailed analysis of data on visitors – same day and overnight (tourists) is provided.

Legal movements across South African borders as well as legal immigration into South Africa fall under the jurisdiction of the Department of Home Affairs (DHA). Statistics South Africa (Stats SA) then processes and publishes this information.

Administrative data sources from the DHA, that is, information from all the country's ports of entry and applications for permanent residence constitute the only comprehensive source of information on foreign tourists and departures, documented immigrants and emigrants. The information from this source of data provides the best national coverage (in terms of both space and time) of the population movements of South African residents and foreign travellers. The data:

- can be used to estimate, monitor and understand salient characteristics of foreign travelers and volumes of South African residents travelling outside South Africa;
- can be used to estimate the number of tourists that visit South Africa and some characteristics of these tourists; and
- provide information that can be used to (a) assess the extent of government's progress in strengthening bilateral political and economic relations by assessing the number of international tourists; and (b) benchmark surveys focusing on demand for local tourism services by foreign travellers.

2. Data

Data routinely collected by immigration officers at all land, air and sea entry ports on all travelers (South African residents and foreign travellers) arriving into or departing from South Africa are captured into the DHA's population Movement Control System (MCS). Generally the data are collected directly from travel documents either by scanning or capturing onto the port's electronic database. Individual ports regularly transmit data onto the national database at the head office of the DHA. Statistics South Africa (Stats SA) downloads the data covering a particular calendar month from the mainframe of the State Information Technology Agency (SITA), where the DHA stores its data.

3. Definition of terms

3.1 Definitions used by the United Nations World Tourism Organisation (UNWTO)

Traveller is someone who moves between different geographical locations for any purpose and any duration.

Visitor refers to any person travelling to a place other than that of his/her usual environment for less than 12 months and whose main purpose of the trip is other than the exercise of an activity remunerated from within the place visited.

Same-day visitor is a visitor who visits a place for less than one night.

Tourist (overnight visitor) is a visitor who stays at least one night in collective or private accommodation in the place visited.

Tourism comprises the activities of persons travelling to, and staying in places outside their usual environment, for not more than one uninterrupted year, for leisure, business and other purposes. The usual environment of a person consists of a certain area around his/her place of residence, plus all other places he/she frequently visits.

3.2 Definitions used specifically in this report

South African resident: refers to either a South African citizen or a non-South African citizen with a South African permanent residence permit.

Foreign traveller: refers to a traveller who is not a South African citizen or permanent resident.

Region: refers to the following country classification: Overseas: Europe, North America, Central and South America, Australasia, the Middle East, Asia. Africa: SADC, East and Central Africa, West Africa and North Africa.

Country: refers to individual countries within a region. The country of residence is used. The country of residence should not be confused with the country from which the visitor travelled.

Africa: refers to all the countries in Africa (both mainland and island countries).

SADC: refers to the thirteen countries, excluding South Africa, that belong to the Southern African Development Community.

'Other' African: refers to all non SADC African countries.

Overseas: refers to all countries outside Africa

4. Abbreviations and symbols

..	= Data not available
-	= Nil or not applicable (when standing alone)
Dem	= Democratic
Rep	= Republic
UK	= United Kingdom
USA	= United States of America

5. Limitations

The information on the total number of arrivals and departures of South African residents is collected through the scanning of their passports. Thus data on country of final destination and purpose of visit are not available.

6. Related publications

Tourism statistics are also published in the quarterly *Bulletin of Statistics* and in the monthly Statistical Release P0351: *Tourism and Migration*.

KEY FINDINGS

1. Number of travellers

The Department of Home Affairs' (DHA) is responsible for the management of legal population movements across South African ports of entry or exit. The 79 ports of entry or exit are categorized as follows: 10 international airports; 55 road, 6 rail and 8 sea ports. Statistics South Africa processes and publishes the arrival and departure data collected from DHA. The annual report presents information derived from the data for the year 2009. The information has been provided in an abridged form (monthly) in Stats SA's publication, *Tourism and Migration* release (P0351) in order to meet users' immediate need for the information.

The data given in Table 1 show that there have been remarkable increases in the number of travellers (both foreign and South African residents) that passed through South African ports of entry in the last twenty years (1990 to 2009). In 1990 about 3 million travellers crossed into or out of South Africa. The volume is made up of about 2 million foreign and one million South African residents. Ten years later in 1999, almost 20 million travellers were processed. In 2009, the volume of travellers had increased to around 27 million.

2. South Africa residents

It is observed from the data (see Table 1 and Figure 2) on South African residents that although the volumes of arrivals and departures have increased, the difference between the two remained more or less the same. Thus in 1990 there were 613 076 and 616 016 arrivals and departures respectively. In 1999 both arrivals and departures have each increased to almost 4 million. It is important to note that in the early 2000's, the volume of South African travellers was greatly affected by changes in the data collection system. The sudden drop in the number of arrivals and departures of SA residents after 2002 was mainly due to the changes in the immigration Act (Act No.13 of 2002) regarding the recording of information on the international movements of South African residents. The act resulted in information on arrival and departure of SA residents not being collected. Collection through the scanning of passports resumed after implementation of Act no.19 of 2004. In 2009 (see Table 2) the highest volume of arrivals, 482 126, was recorded in January and the highest number of departures, 572 224, was recorded in December. The lowest number of arrivals and departures in 2009 was recorded in February.

Table 2 indicates that during 2009, as many as 2 824 979 (63,0%) South African residents arrived in South Africa by road, followed by 1 644 374 (36,6%) air arrivals. A total of 17 958 (0,4%) arrived by sea, rail and unspecified mode of travel. Out of the total number of South African residents arriving by air, 1 384 063 (84,2%) arrived through OR Tambo international airport, while 208 086 (12,7%) arrived through Cape Town international airport; 20 700 (1,3%) arrived through Durban international airport and 31 525 (1,9%) came in through other airports.

Similarly, road transport (see Table 3), was the most common mode of travel used by South African residents departing South Africa - 2 768 391 (62,6%) followed by air travel, 1 651 723 (37,3%). A total of 3 873 (0,1%) left by sea, rail and unspecified mode of transport. Out of the total number of residents departing by air, 1 394 122 (84,4%) used OR Tambo international airport, while 204 601 (12,4%) left through Cape Town international airport; 22 126 (1,3%) left through Durban international airport and 30 874 (1,9%) left through other airports.

3. Foreign arrivals

It is noted that between 2000 and 2009, foreign arrivals grew annually by 5,3% from 6 000 538 to 10 098 306 compared to an annual growth rate of 19,3% between 1990 and 1999. A break down of the 2009 data (see Table 4) indicates that the lowest number of arrivals was recorded in June (718 614) and the highest in December (940 836). The 2009 foreign arrivals were made up of 9 531 615 (94,4%) visitors and 566 691 non visitors (5,6%). The flow of non visitors was quite high during the early months of the year especially in March (102 787). Visitors were made up of 2 519 750 (26,4%) same day visitors and 7 011 865 (73,6%) overnight visitors or tourists (see Table 5).

4. Same day visitors

Data in Table 5 show that the volume of same day visitors did not differ significantly throughout the year. It ranged from 181 349 in February to 240 246 in December. Road transport was used by 91,6% of the 2 519 750 same day visitors whereas 8,4% travelled by air. Virtually all the visitors came for holiday. The rest were visitors in transit; students and business persons.

5. Tourists

5.1 Country of residence

Detailed information on the country of residence and the month of arrival of tourists is given in Table 6. A breakdown of the number of tourists indicates that a high proportion (70,4%) of the 7 011 865 tourists were residents of SADC countries. Residents of overseas countries made up 26,9% of the tourists. The remaining tourists were residents of East and Central Africa (1,1%), West Africa (1,0%) and North Africa (0,2%). The flow of tourists in 2009 reveals that the lowest volume was recorded in February (484 275) whilst the highest was in December (672 862). Although the above pattern is observed in the data from some countries, there was a wide variability in the seasonality of monthly arrival of tourists.

As presented in Figure 3, the eight leading countries for overseas tourists in 2009 were: UK, 446 369 (23,7%); USA, 230 324 (12,2%); Germany, 196 643 (10,4%);

The Netherlands, 114 431 (6,1%); France, 103 985 (5,5%); Australia, 82 753 (4,4%); India, 55 203 (2,9%) and Italy, 50 283 (2,7%). Figure 4 shows the eight leading countries for tourists from SADC region. These were: Zimbabwe, 1 227 631 (24,9%); Lesotho, 1 048 550 (21,2%); Mozambique, 983 739 (19,9%); Swaziland, 628 113 (12,7%); Botswana, 484 258 (9,8%); Namibia, 177 863 (3,6%); Zambia, 147 089 (3,0%) and Malawi 139 605 (2,8%). The eight leading countries for tourists from "other" African countries were: Nigeria, 42 651 (27,8%); Kenya, 25 581 (16,7%); Uganda, 12 257 (8,0%); Ghana, 11 395 (7,4%); Ethiopia, 10 651 (6,9%); Congo, 6 347 (4,1%); Gabon, 5 077 (3,3%) and Egypt, 4 999 (3,3%).

5.2 Mode of travel

Data presented in Table 7 show the mode of travel used and the place through which the tourists entered the country. Due to the large number of land ports (55 road and 6 rail), where road and rail could be used, border countries are used in the table instead of the specific land ports. That is, data for all ports found on the border with a particular country are combined. A large number of tourists who came to South Africa in 2009 used road transport (4 853 819). The ports of entry on the border with Zimbabwe (1 317 510) and the Lesotho (1 074 701) were the busiest. The heaviest volume (145 818) of tourists by month in Biet bridge (the only port of entry from Zimbabwe) was recorded in August and the lowest (73 828) volume was in March. The combined data from the Lesotho ports indicate that the largest number of tourists was recorded in January (110 119) and the lowest in February (65 774). With regard to air transportation, 2 152 069 tourists flew into the country, of those 1 655 930 (76,9%) used OR Tambo international airport, the busiest airport. Rail and sea transport were rarely used by tourists.

The detailed data given in Table 8 show that a large proportion (88,8%) of overseas tourists flew into South Africa compared to those who came in by road (10,9%). Even though very few residents of overseas countries used road transport, 11,8% and 10,7% of European and Asian residents respectively came in by road. In the case of tourists from Africa, 91,0% used road transport compared with 9,0% that came by air. Less than 1,0% of Lesotho residents entered South Africa by air.

5.3 Purpose of visit

Data in Table 9 and Figures 7a, 7b and 7c reveal that the majority of overseas tourists on holiday (23,8%) and business persons (21,0%) were UK residents. However, the highest proportion of overseas tourists who were students (18,3%) came from USA. Tourists from SADC countries were more diverse (see Figures 8a, 8b and 8c). Persons on holiday (25,0%) were predominantly Zimbabwe residents, whereas the majority of the business persons (35,4%) were Namibia residents. SADC students were predominantly residents from Botswana (23,0%). In respect to tourists from 'other' African countries (see Figures 9a, 9b and 9c), the majority of those on holiday were Nigeria residents (28,9%) whilst those on business (24,1%) and students (23,1%) were mainly residents from Kenya.

5.4 Duration of stay of tourists

The number of days tourists spent in South Africa (see Figure 10) is based on the tourists who arrived and left in the same month. Data in Figure 10 indicate that generally tourists from overseas countries spent the average 5-7 days in a month. These were followed by residents from 'other' African countries (4-5 days). SADC residents spent 2-3 days. The data reveal that residents from each of the three regions spent fewer days during the winter months of May and June.

5.5 Sex and age distribution

In 2009 as shown in Table 10, there were more male (3 851 121) than female (3 151 437) tourists. Although males constituted slightly more than half of overseas and SADC residents, 67,2% of tourists from 'other' African countries were males. SADC had a highest proportion female tourists (45,8%). The age distribution shows that at least 83,0% of tourists from overseas, SADC and 'other' African countries, were aged between 15 and 64 years. There were very few tourists younger than 15 years and those aged 65 years and older (the elderly). The data show a relatively higher proportion (9,7%) of the elderly among overseas residents compared with 2,3% and 1,6% of residents from SADC and 'other' African countries respectively.

STATISTICIAN-GENERAL: STATISTICS SOUTH AFRICA

Figure 1. Arrivals and departures of foreign travelers, 1990-2009

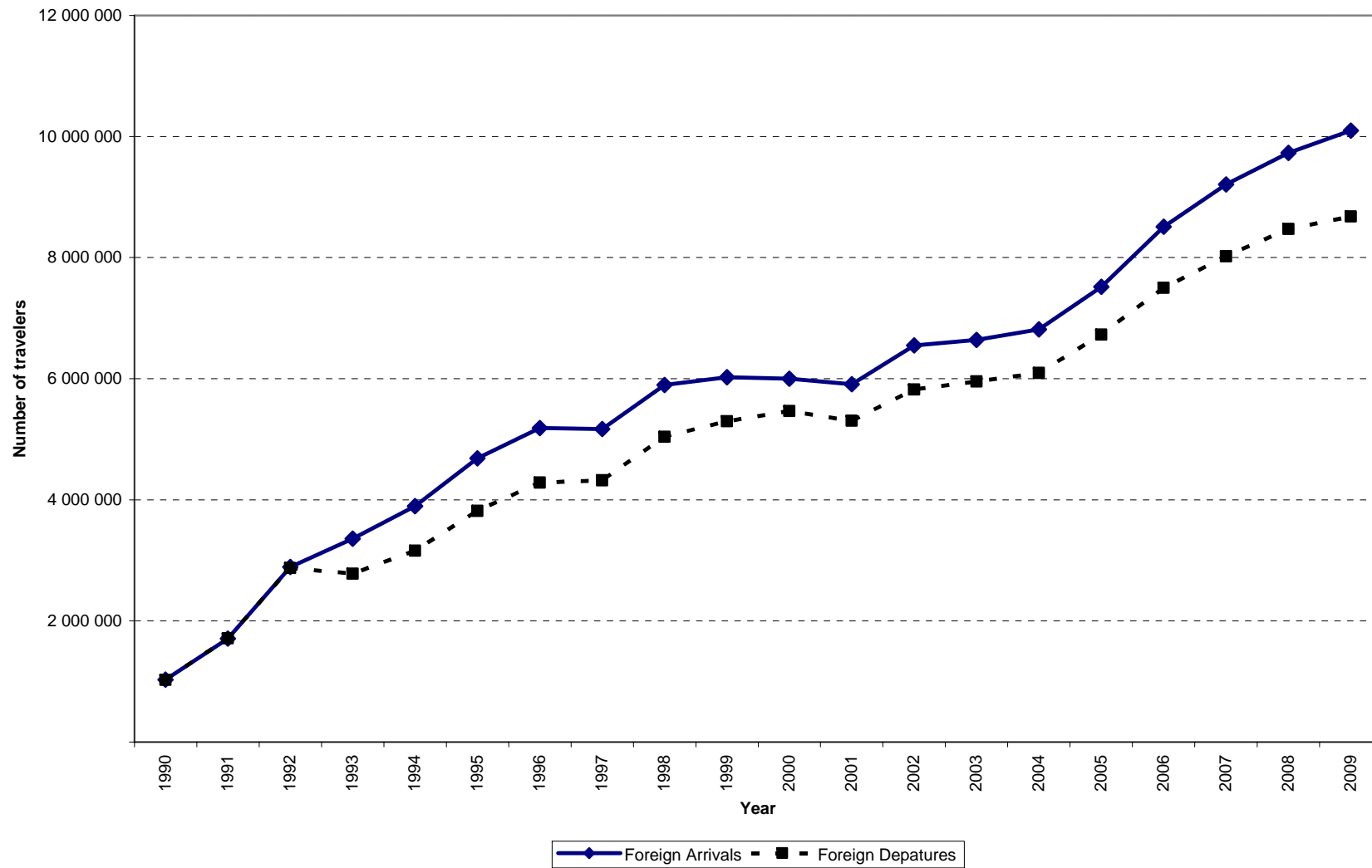


Figure 2. Arrivals and departures of South African residents, 1990-2009

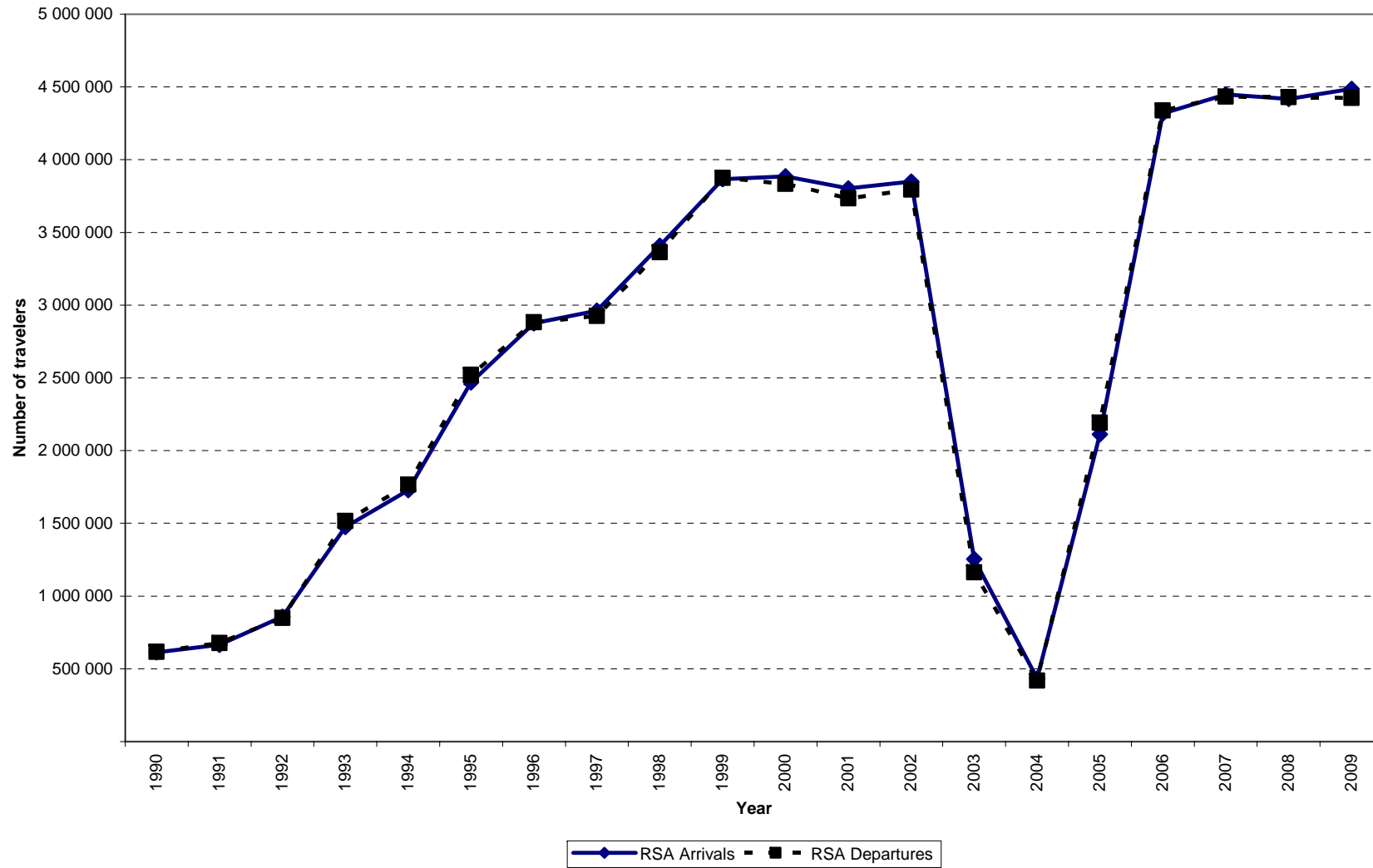


Figure 3. Number of tourists from eight leading overseas countries, 2009

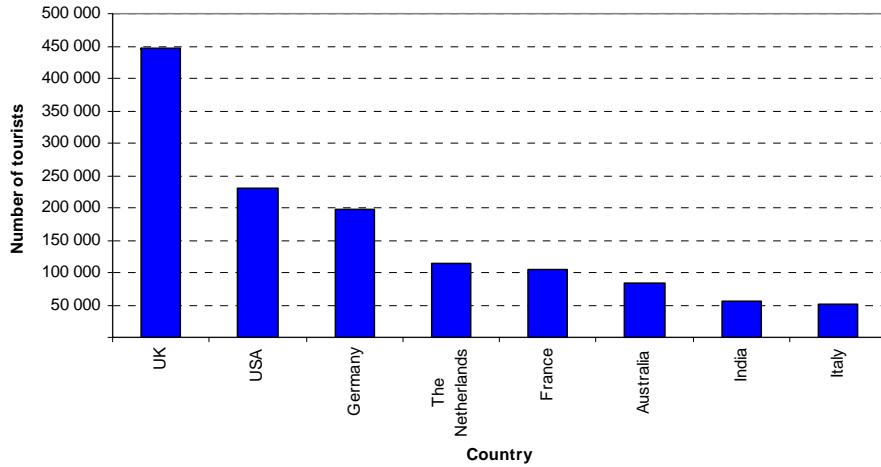


Figure 4. Number of tourists from eight leading SADC countries, 2009

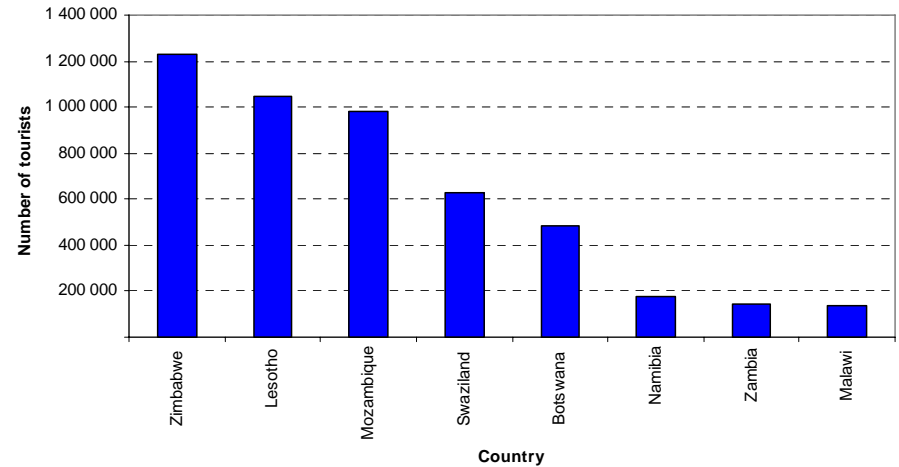


Figure 5. Number of tourists from eight leading 'Other' African countries, 2009

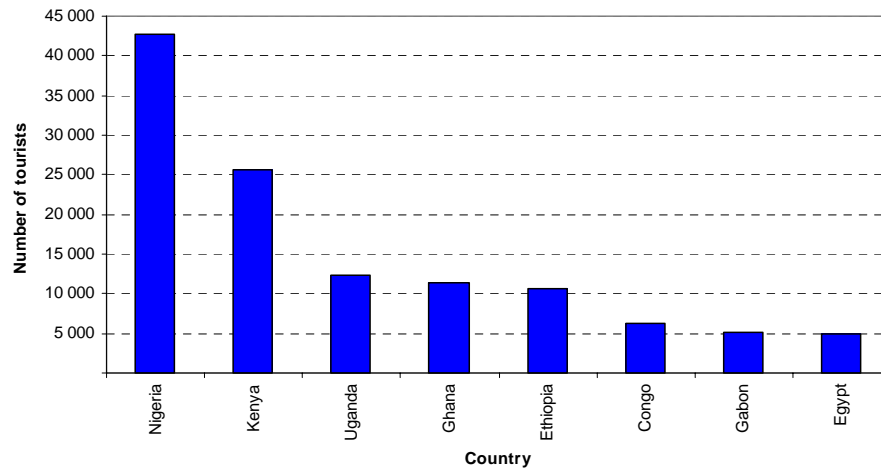


Figure 6. Percentage distribution of tourists by region and purpose of visit, 2009

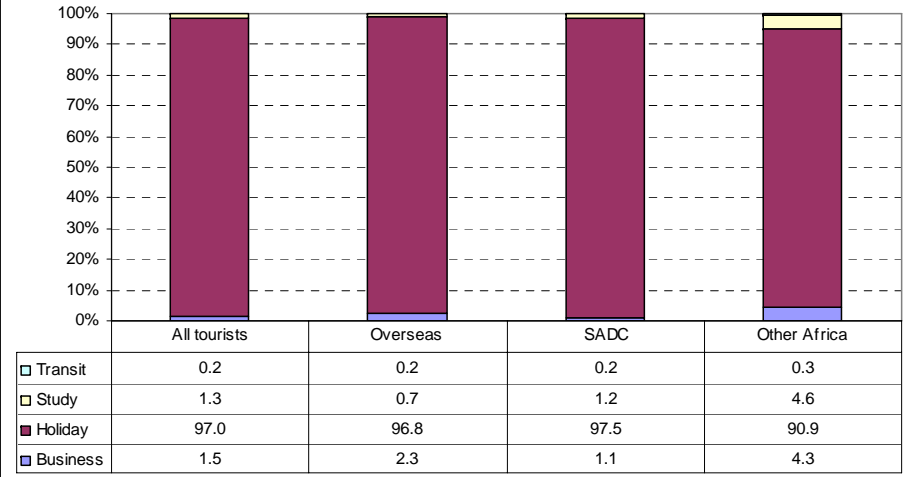


Figure 7a. Percentage distribution of tourists from overseas countries on holiday, 2009

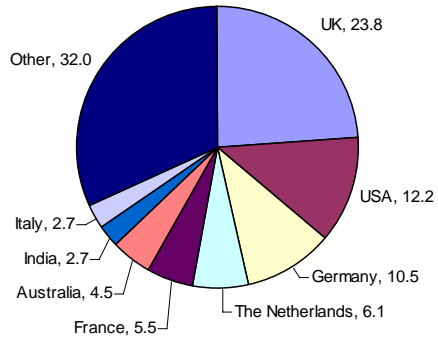


Figure 7b. Percentage distribution of tourists from overseas countries on business, 2009

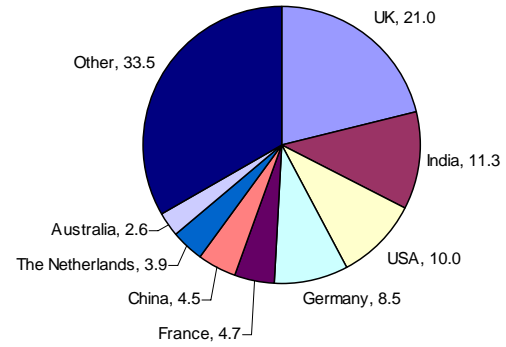


Figure 7c. Percentage distribution of tourists from overseas countries on study, 2009

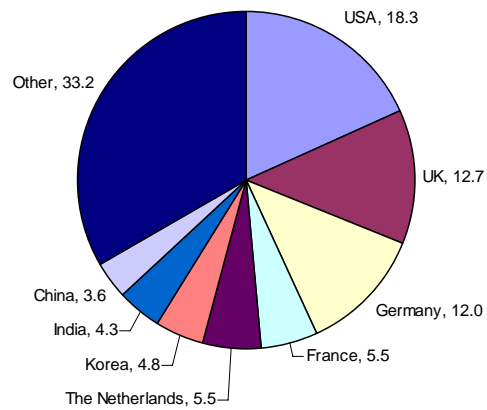


Figure 8a. Percentage distribution of tourists from SADC countries on holiday, 2009

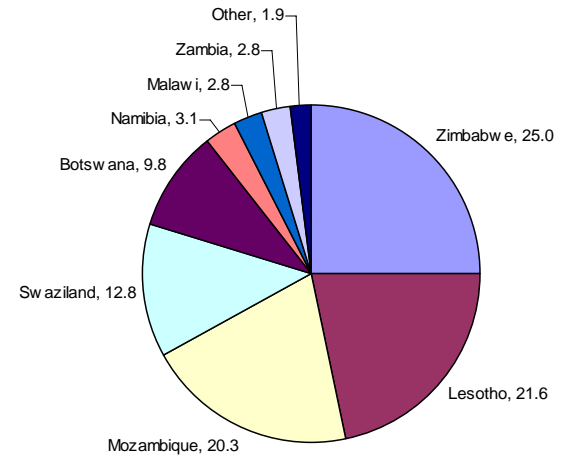


Figure 8b. Percentage distribution of tourists from SADC countries on business, 2009

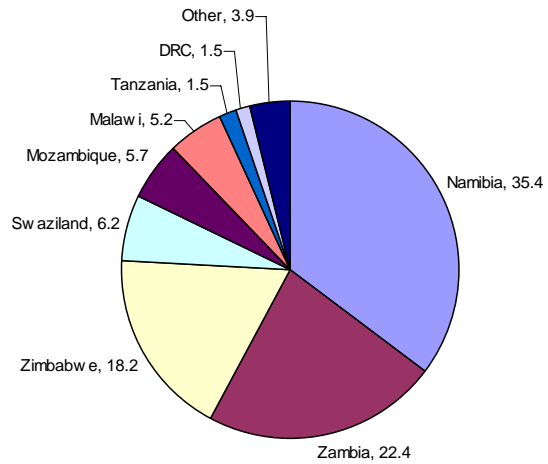


Figure 8c. Percentage distribution of tourists from SADC countries on study, 2009

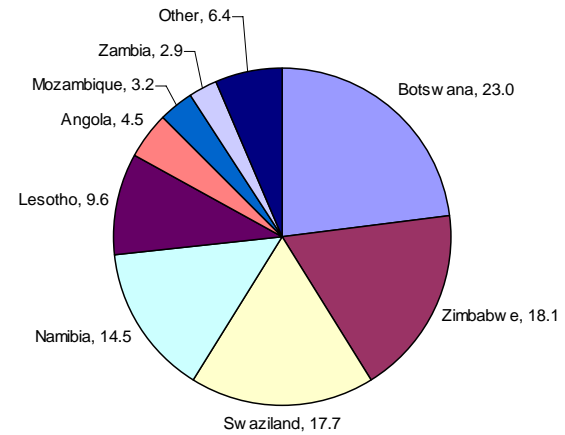


Figure 9a. Percentage distribution of tourists from 'Other' African countries on holiday, 2009

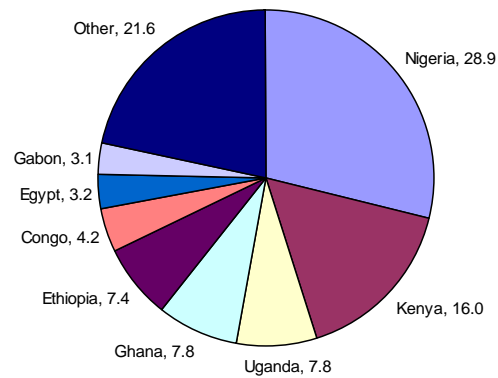


Figure 9b. Percentage distribution of tourists from 'Other' African countries on business, 2009

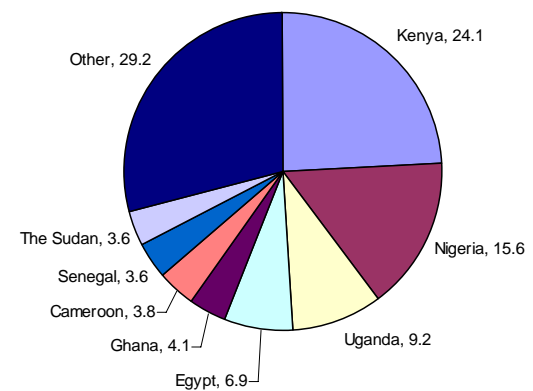


Figure 9c. Percentage distribution of tourists from 'Other' African countries on study, 2009

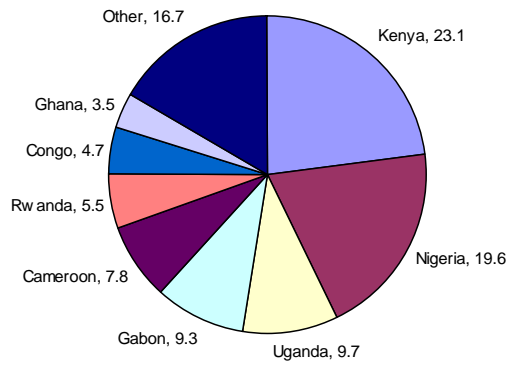


Figure 10. Average number of days tourists spent by month of arrival, 2009

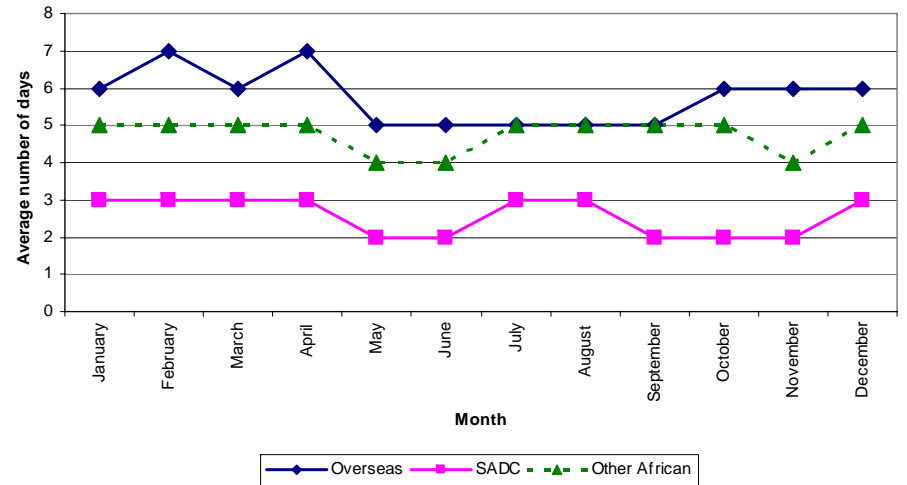


Table 1. Number of travellers (arrivals and departures), 1990-2009				
YEAR	ARRIVAL		DEPARTURE	
	Foreign	South African	Foreign	South African
	TOTAL	TOTAL	TOTAL	TOTAL
1990	1 029 094	613 076	1 024 410	616 016
1991	1 709 554	665 854	1 712 677	677 084
1992	2 891 721	858 317	2 875 329	848 864
1993	3 358 193	1 475 124	2 778 264	1 515 773
1994	3 896 547	1 727 868	3 159 151	1 765 753
1995	4 684 064	2 468 182	3 816 594	2 520 193
1996	5 186 221	2 875 093	4 282 269	2 881 817
1997	5 170 096	2 962 403	4 321 621	2 925 726
1998	5 898 236	3 408 445	5 042 420	3 362 607
1999	6 023 086	3 866 317	5 299 077	3 874 675
2000	6 000 538	3 884 415	5 466 128	3 834 054
2001	5 908 024	3 802 459	5 307 217	3 733 058
2002	6 549 916	3 849 790	5 822 136	3 793 672
2003	6 640 095	1 254 063	5 955 199	1 163 839
2004	6 815 196	434 400	6 093 313	418 585
2005	7 518 317	2 112 300	6 728 659	2 191 599
2006	8 508 805	4 317 475	7 501 755	4 338 914
2007	9 207 697	4 448 832	8 022 796	4 433 492
2008	9 728 860	4 418 487	8 474 663	4 429 399
2009	10 098 306	4 487 311	8 680 250	4 423 987

Table 2. Number of South African residents by place of entry and month of arrival, 2009

Place on entry	Grand Total	Month											
		Jan	Feb	Mar	Apr	May	Jun	Jul	Aug	Sep	Oct	Nov	Dec
Grand Total	4 487 311	482 126	260 753	310 862	414 887	337 142	314 806	446 725	388 535	374 993	373 807	332 355	450 320
Air	1 644 374	166 421	96 153	116 436	136 462	123 907	123 952	176 853	130 948	139 850	146 578	123 969	162 845
Cape Town	208 086	24 385	13 422	15 797	16 454	12 920	14 908	24 548	15 517	17 278	16 348	16 364	20 145
Durban	20 700	1 760	699	793	1 042	562	726	720	679	692	3 390	3 865	5 772
OR Tambo	1 384 063	138 080	79 573	96 924	116 588	107 437	105 510	148 431	111 864	119 421	124 120	101 425	134 690
Other airports	31 525	2 196	2 459	2 922	2 378	2 988	2 808	3 154	2 888	2 459	2 720	2 315	2 238
Rail	2 037	26	2	38	311	142	112	223	175	295	194	344	175
Road	2 824 979	314 022	163 106	192 747	276 779	212 226	189 991	268 376	255 983	233 527	225 630	206 707	285 885
Botswana	571 619	58 296	34 940	39 300	55 557	44 253	41 272	55 279	51 117	48 274	45 751	42 337	55 243
Lesotho	477 925	55 542	28 255	36 422	47 643	32 669	31 073	41 231	45 729	34 981	35 083	36 400	52 897
Mozambique	478 956	56 890	27 493	31 621	45 285	36 504	33 774	46 994	40 720	41 552	39 987	35 763	42 373
Namibia	155 406	15 638	7 455	9 487	15 671	12 025	11 086	23 183	12 220	12 341	12 193	8 144	15 963
Swaziland	761 346	71 642	44 656	51 951	71 926	59 854	50 017	68 305	71 636	66 173	63 718	59 997	81 471
Zimbabwe	302 852	40 705	16 935	18 539	30 187	19 871	16 790	26 713	29 964	25 503	24 534	20 434	32 677
Unspecified road ports	76 875	15 309	3 372	5 427	10 510	7 050	5 979	6 671	4 597	4 703	4 364	3 632	5 261
Sea	957	45	35	93	129	33	34	204	15	89	111	74	95
Unspecified	14 964	1 612	1 457	1 548	1 206	834	717	1 069	1 414	1 232	1 294	1 261	1 320

Table 3. Number of South African residents by place of departure and month of departure, 2009

Place on entry	Grand Total	Month											
		Jan	Feb	Mar	Apr	May	Jun	Jul	Aug	Sep	Oct	Nov	Dec
Grand Total	4 423 987	321 081	263 358	321 719	414 307	328 982	369 242	386 629	384 549	390 729	348 809	322 358	572 224
Air	1 651 723	131 691	101 354	132 603	141 943	126 287	155 769	136 552	139 835	147 133	128 424	125 529	184 603
Cape Town	204 601	19 623	13 120	17 348	17 351	15 107	21 373	17 376	15 838	17 451	14 064	14 252	21 698
Durban	22 126	1 178	815	905	1 001	552	811	732	779	785	3 915	3 782	6 871
OR Tambo	1 394 122	108 585	84 950	111 573	121 287	107 762	130 792	115 310	120 456	126 469	107 814	105 016	154 108
Other airports	30 874	2 305	2 469	2 777	2 304	2 866	2 793	3 134	2 762	2 428	2 631	2 479	1 926
Rail	2 204	12	2	43	326	156	165	221	126	458	253	261	181
Road	2 768 391	189 282	161 885	188 921	271 888	202 434	213 222	249 712	244 484	242 994	219 984	196 513	387 072
Botswana	567 132	38 570	34 088	41 170	55 227	42 585	46 965	51 510	50 221	49 701	44 838	41 026	71 231
Lesotho	478 206	34 978	29 713	34 081	47 243	31 663	34 289	43 963	43 284	36 175	38 233	33 707	70 877
Mozambique	436 566	28 778	25 928	29 965	40 979	31 848	34 079	39 183	37 386	42 395	34 906	32 629	58 490
Namibia	156 390	9 821	7 762	10 714	16 533	11 611	17 616	16 374	11 811	14 396	9 859	8 309	21 584
Swaziland	767 381	54 566	45 815	50 560	72 918	59 691	54 015	69 815	69 089	68 596	65 231	58 049	99 036
Zimbabwe	292 197	18 291	14 864	16 669	28 441	19 144	19 016	22 992	27 988	26 067	22 817	19 271	56 637
Unspecified road ports	70 519	4 278	3 715	5 762	10 547	5 892	7 242	5 875	4 705	5 664	4 100	3 522	9 217
Sea ports	1 156	89	77	143	115	88	53	141	93	136	132	53	36
Unspecified	513	7	40	9	35	17	33	3	11	8	16	2	332

Table 4. Number of foreign arrivals and departures by region and month, 2009

Country	Grand Total	Month											
		Jan	Feb	Mar	Apr	May	Jun	Jul	Aug	Sep	Oct	Nov	Dec
Arrivals													
Grand Total	10 098 306	920 338	756 524	791 935	848 997	764 700	718 614	879 884	895 738	826 403	889 529	864 808	940 836
Overseas	2 179 879	182 875	186 157	188 018	169 132	140 036	146 970	184 214	183 981	161 072	215 802	206 085	215 537
Other' Africa	177 257	14 876	13 379	14 999	14 369	14 408	13 327	14 562	15 645	14 000	16 296	15 850	15 546
SADC	7 638 678	713 085	549 924	581 681	657 561	602 508	550 732	669 779	686 853	642 637	648 105	634 838	700 975
Angola	40 306	4 428	3 533	3 325	3 123	3 354	2 626	3 145	3 096	3 190	3 614	3 414	3 458
Botswana	838 931	62 723	52 936	58 994	91 471	64 532	56 618	74 313	72 169	74 123	69 100	69 572	92 380
DRC	32 972	2 554	2 539	2 371	2 439	2 004	1 975	3 002	3 522	2 899	2 871	2 861	3 935
Lesotho	2 100 366	212 376	156 162	171 300	184 082	157 610	154 549	181 660	167 708	170 673	177 394	174 211	192 641
Madagascar	2 993	252	296	236	246	297	212	234	250	213	183	242	332
Malawi	153 280	14 897	12 392	13 403	12 071	10 824	10 834	14 629	15 966	13 334	13 632	11 780	9 518
Mauritius	16 073	1 485	1 240	1 278	1 515	1 266	987	1 459	1 223	1 160	1 499	1 451	1 510
Mozambique	1 363 178	151 808	112 490	116 096	115 619	110 968	104 925	122 109	114 797	109 300	107 750	107 202	90 114
Namibia	217 476	17 691	14 172	16 208	20 309	19 815	13 932	17 577	19 217	17 462	17 989	15 393	27 711
Swaziland	1 090 559	99 772	82 569	86 097	101 384	94 316	76 211	93 097	104 111	86 999	88 272	82 571	95 160
Tanzania	16 973	1 366	1 324	1 454	1 366	1 526	1 332	1 449	1 313	1 495	1 473	1 473	1 402
Zambia	165 776	15 147	13 379	13 797	14 357	13 579	10 179	13 270	14 255	13 547	13 986	14 068	16 212
Zimbabwe	1 599 795	128 586	96 892	97 122	109 579	122 417	116 352	143 835	169 226	148 242	150 342	150 600	166 602
Unspecified	102 492	9 502	7 064	7 237	7 935	7 748	7 585	11 329	9 259	8 694	9 326	8 035	8 778
Departures	8 680 250	724 312	634 641	706 636	755 014	670 077	601 460	729 231	782 521	712 579	763 144	753 416	847 219

Table 5. Number of foreign arrivals by month of arrival, 2009													
	Grand Total	Month											
		Jan	Feb	Mar	Apr	May	Jun	Jul	Aug	Sep	Oct	Nov	Dec
Grand Total	10 098 306	920 338	756 524	791 935	848 997	764 700	718 614	879 884	895 738	826 403	889 529	864 808	940 836
Non Visitors	566 691	99 498	90 900	102 787	29 695	29 064	27 772	34 154	32 026	30 467	31 846	30 754	27 728
Visitors	9 531 615	820 840	665 624	689 148	819 302	735 636	690 842	845 730	863 712	795 936	857 683	834 054	913 108
Same day	2 519 750	213 032	181 349	195 589	204 126	199 589	185 411	222 316	225 140	212 584	225 579	214 789	240 246
Overnight (Tourists)	7 011 865	607 808	484 275	493 559	615 176	536 047	505 431	623 414	638 572	583 352	632 104	619 265	672 862

Table 6. Number of tourists by country of residence and month of arrival, 2009													
Country	Grand Total	Month											
		Jan	Feb	Mar	Apr	May	Jun	Jul	Aug	Sep	Oct	Nov	Dec
Grand Total	7 011 865	607 808	484 275	493 559	615 176	536 047	505 431	623 414	638 572	583 352	632 104	619 265	672 862
Overseas	1 885 977	155 228	162 714	162 562	146 504	118 718	126 857	156 846	152 187	136 767	189 932	181 923	195 739
Europe	1 230 668	107 785	120 371	109 457	95 450	62 010	72 620	92 466	95 667	83 873	130 232	128 471	132 266
Albania	175	21	8	24	13	3	15	6	17	15	14	14	25
Andorra	66	12	3	1	11	5	2	6	11	4	6	2	3
Austria	17 210	1 704	1 890	1 411	1 307	734	624	1 061	1 262	1 081	1 848	2 287	2 001
Azores Island	49	2	3	2	3	2	5	6	6	5	4	5	6
Belarus	435	45	21	40	28	45	16	29	32	34	42	54	49
Belgium	36 720	2 760	2 934	2 581	2 999	1 647	1 543	3 904	2 777	3 225	4 809	4 237	3 304
Bosnia-Herzegovina	173	24	9	15	8	13	6	9	14	15	22	20	18
Bulgaria	1 927	196	177	168	136	80	80	180	108	102	192	219	289
Byelorussian SSR	14	2	1	3	1	-	3	2	-	-	-	2	-
Channel Island	7	-	3	1	1	-	1	-	1	-	-	-	-
Crete	5	1	-	1	-	-	-	-	-	1	-	2	-
Croatia	1 103	93	84	154	76	45	69	66	75	65	103	115	158
Czech Republic	5 889	522	586	573	536	272	200	295	354	437	847	826	441
Denmark	22 540	2 367	2 839	2 134	1 737	1 191	1 208	1 671	1 085	1 521	2 804	2 019	1 964
Estonia	754	67	47	107	57	57	48	28	20	61	83	60	119
Faroe Island	46	4	1	3	1	4	5	7	3	2	6	4	6
Finland	9 404	1 218	1 307	1 184	574	363	386	410	412	451	789	1 261	1 049
France	103 985	9 242	9 997	9 959	8 481	6 857	4 303	9 223	10 084	6 211	11 834	9 509	8 285
Germany	196 643	17 662	20 494	19 667	15 490	9 550	6 912	10 638	12 838	13 889	23 300	25 396	20 807
Gibraltar	14	1	-	5	2	1	-	-	1	-	2	1	1
Greece	7 291	607	521	578	677	485	442	536	661	596	570	605	1 013
Hebrides	12	-	1	2	2	-	2	-	-	1	2	1	1
Hungary	2 480	304	307	240	141	139	111	113	131	130	291	360	213
Iceland	492	42	53	67	41	27	25	26	23	43	50	50	45
Ireland	35 166	3 115	2 955	3 308	2 778	1 683	4 123	2 661	2 404	2 230	2 857	3 522	3 530
Isle Of Guernsey	30	3	6	-	5	1	1	-	-	-	7	2	5
Isle Of Jersey	65	13	11	3	10	4	5	2	2	2	5	4	4
Isle Of Man	45	11	7	4	2	2	-	1	1	1	7	4	5
Isle Of Wight	5	-	-	-	-	1	-	-	2	-	-	-	2
Italy	50 283	3 279	2 999	3 201	2 874	3 163	3 370	4 344	10 076	4 129	3 899	3 527	5 422
Latvia	693	47	79	80	43	27	24	40	28	34	99	110	82
Liechtenstein	237	8	13	21	26	8	13	20	24	9	47	23	25

Table 6. Number of tourists by country of residence and month of arrival, 2009 (continued)													
Country	Grand Total	Month											
		Jan	Feb	Mar	Apr	May	Jun	Jul	Aug	Sep	Oct	Nov	Dec
Lithuania	859	79	56	69	78	48	45	49	40	83	143	104	65
Luxembourg	1 309	73	89	95	93	49	54	93	225	79	211	125	123
Malta	473	53	54	22	30	17	55	37	39	64	34	27	41
Moldova	114	11	5	16	12	4	8	5	9	4	12	6	22
Monaco	94	9	17	8	5	9	5	9	1	8	9	7	7
Norway	18 140	2 078	2 483	1 857	1 484	634	805	1 069	840	1 239	1 745	2 097	1 809
Poland	9 257	925	938	909	612	386	418	524	716	800	1 042	1 287	700
Portugal	26 759	2 207	1 838	2 093	2 395	1 957	1 756	2 073	2 530	2 026	2 463	2 454	2 967
Romania	2 221	171	183	156	188	60	70	212	142	257	438	131	213
Russian Federation	8 893	1 163	743	717	782	633	478	548	508	559	808	993	961
San Marino	36	4	2	-	3	3	-	3	3	2	4	1	11
Sicily	22	2	-	2	3	-	1	2	5	2	1	3	1
Slovakia	1 964	221	196	155	181	112	86	89	104	150	287	214	169
Slovenia	958	47	98	70	94	37	56	76	65	65	103	112	135
Spain	25 725	1 150	1 227	1 658	1 854	1 677	2 320	3 068	4 275	2 277	2 600	1 971	1 648
Sweden	36 335	4 272	4 640	3 594	2 058	1 312	1 246	1 123	1 092	1 590	4 299	5 053	6 056
Switzerland	31 719	2 928	3 016	2 546	2 669	1 520	1 295	2 060	1 665	2 405	3 983	4 043	3 589
The Netherlands	114 431	8 358	9 470	7 574	7 810	5 119	4 079	12 299	9 453	9 272	15 612	13 641	11 744
Turkey	7 648	639	732	642	489	468	476	562	654	604	715	1 058	609
UK	446 369	39 675	46 910	41 479	36 233	21 370	35 636	33 013	30 628	27 869	40 829	40 505	52 222
Ukraine	2 233	211	223	160	208	100	117	176	120	154	253	290	221
Vatican	13	-	3	1	1	1	3	1	1	-	2	-	-
Yugoslavia	1 138	137	92	97	108	85	69	91	100	70	100	108	81
North America	275 715	18 654	17 935	23 906	20 293	22 899	25 502	28 951	24 138	21 122	24 076	20 616	27 623
Canada	45 330	3 671	3 898	4 547	3 563	3 020	2 924	3 695	3 169	3 256	4 536	4 015	5 036
East Indian Islands	25	3	1	5	-	2	4	1	-	7	1	-	1
Greenland	32	1	2	1	4	4	1	4	3	1	2	7	2
USA	230 324	14 978	14 034	19 353	16 726	19 873	22 573	25 250	20 966	17 857	19 536	16 594	22 584
West Indian Islands	4	1	-	-	-	-	-	1	-	1	1	-	-
Central and South America	57 530	4 598	3 900	4 436	4 393	3 987	4 605	5 699	4 048	4 624	5 886	4 704	6 650
Antigua And Barbuda	28	-	1	4	5	1	-	1	2	5	1	2	6
Argentina	9 787	956	849	831	887	722	522	1 022	621	703	917	667	1 090
Bahamas	78	2	4	6	3	9	14	5	5	10	12	3	5
Barbados	126	4	5	10	5	4	16	9	12	16	15	18	12
Belize	66	5	5	5	9	2	1	12	9	6	4	4	4

Table 6. Number of tourists by country of residence and month of arrival, 2009 (continued)

Country	Grand Total	Month											
		Jan	Feb	Mar	Apr	May	Jun	Jul	Aug	Sep	Oct	Nov	Dec
Bermuda	65	7	4	9	10	2	6	6	4	6	3	1	7
Bolivia	549	31	34	32	36	22	60	80	46	48	55	35	70
Br Virgin Island	26	1	1	2	2	1	2	5	3	4	5	-	-
Brazil	32 256	2 559	2 045	2 611	2 251	2 178	2 836	3 173	2 235	2 618	3 151	2 705	3 894
Chile	2 581	182	318	144	152	210	207	221	211	206	283	204	243
Colombia	1 582	105	65	106	86	84	106	130	119	170	225	234	152
Costa Rica	284	33	16	25	23	37	18	31	28	12	29	18	14
Cuba	577	109	41	30	41	75	46	59	38	38	38	19	43
Dominica	55	2	3	1	10	3	3	4	6	4	12	1	6
Ecuador	418	26	30	21	41	17	28	43	28	46	61	47	30
El Salvador	113	11	6	7	5	10	3	16	8	7	8	17	15
Falkland Island (Malvinas)	5	1	-	2	-	-	-	1	-	-	-	1	-
French Guinea	67	6	2	4	6	3	8	3	2	3	14	5	11
Grenada	20	5	1	1	3	1	1	1	2	2	1	2	-
Guatemala	182	9	12	9	9	15	21	17	8	19	26	20	17
Guyana (Guinea-British)	10	1	-	1	1	-	-	-	2	-	1	4	-
Haiti	179	9	9	9	12	10	10	24	20	19	21	13	23
Honduras	102	4	5	5	8	7	8	12	9	3	11	8	22
Jamaica	497	30	28	26	33	27	51	36	58	48	38	73	49
Mexico	2 674	134	113	181	221	154	221	364	195	203	376	197	315
Nicaragua	57	-	4	3	3	14	5	2	2	4	3	5	12
Panama	162	9	11	8	16	6	21	21	13	12	14	14	17
Paraguay	384	29	20	19	36	20	37	30	32	15	42	30	74
Peru	1 577	134	105	108	126	159	116	158	114	110	187	118	142
Puerto Rico	6	1	-	5	-	-	-	-	-	-	-	-	-
St Lucia	38	-	4	4	2	3	3	2	1	6	5	1	7
St Vincent And Grenadines	18	6	1	1	2	-	1	1	3	1	2	-	-
Suriname	64	7	4	3	6	3	2	4	8	9	9	6	3
Trinidad And Tobago	347	22	23	23	24	22	37	22	18	31	36	31	58
Turks And Caicos island	1	-	-	-	-	-	1	-	-	-	-	-	-
Uruguay	944	50	39	64	122	64	83	53	67	126	114	65	97
Us Virgin Island	1	-	-	-	-	-	-	-	-	1	-	-	-
Venezuela	1 245	80	68	96	145	78	93	108	96	90	123	96	172
West Indies	359	28	24	20	52	24	18	23	23	23	44	40	40
Australasia	101 479	7 318	6 829	7 926	9 115	7 661	7 813	9 464	8 377	9 185	8 366	8 336	11 089
Australia	82 753	6 168	5 616	6 586	7 308	6 168	6 313	7 571	6 593	7 640	7 029	6 886	8 875

Table 6. Number of tourists by country of residence and month of arrival, 2009 (continued)

Country	Grand Total	Month											
		Jan	Feb	Mar	Apr	May	Jun	Jul	Aug	Sep	Oct	Nov	Dec
Bouvet Island	3	2	-	-	-	-	-	1	-	-	-	-	-
Christmas Island	18	3	-	-	1	3	3	2	3	1	-	1	1
Cocos (Keeling) Island	16	1	2	1	1	1	1	1	1	2	2	1	2
Cook Islands	4	1	-	-	-	1	-	-	1	-	1	-	-
Federated States of Micron	12	1	2	1	1	-	-	1	-	-	1	1	4
Fiji	157	8	12	17	6	21	18	9	19	9	5	11	22
French Polynesia	140	11	4	16	15	9	18	14	10	6	10	11	16
French Southern Terr	37	3	4	5	5	3	2	3	5	2	1	-	4
Guam	24	4	2	1	2	1	1	3	1	2	3	3	1
Kiribati	4	-	1	-	1	-	-	-	1	1	-	-	-
Marshall Islands	7	-	-	-	-	-	-	-	1	-	3	2	1
Nauru	13	-	1	-	1	3	2	-	4	2	-	-	-
New Caledonia	4	1	-	1	-	1	-	-	-	-	1	-	-
New Guinea	15	1	1	-	-	1	1	1	1	1	6	-	2
New Zealand	18 042	1 096	1 169	1 279	1 748	1 436	1 440	1 833	1 724	1 501	1 287	1 394	2 135
Norfolk Island	4	-	-	-	2	-	-	-	-	-	-	1	1
Northern Mariana Island	29	6	5	3	3	2	1	1	4	2	-	-	2
Palau	9	-	-	1	-	1	-	-	2	2	3	-	-
Papua New Guinea	31	1	2	-	5	4	1	2	2	5	5	3	1
Pitcairn	4	2	-	-	-	-	-	1	-	-	-	1	-
Samoa	97	6	5	11	8	2	8	12	-	6	8	10	21
Solomon Island	12	-	-	-	1	1	-	3	3	1	-	3	-
Tasmania	13	-	-	2	-	1	2	1	1	2	-	3	1
Tokelau	6	1	-	-	2	-	-	1	1	-	1	-	-
Tonga Island	18	1	2	2	3	1	2	3	-	-	-	4	-
Tuvalu	1	-	-	-	-	1	-	-	-	-	-	-	-
Vanuatu	6	1	1	-	2	-	-	1	-	-	-	1	-
Middle East	33 654	2 089	2 473	3 585	2 588	1 761	2 318	4 562	3 418	2 535	2 922	2 860	2 543
Bahrain	174	14	17	10	4	12	16	41	7	12	15	13	13
Cyprus	1 585	163	125	130	100	119	96	109	215	71	122	109	226
Iran	4 037	158	165	1 260	98	169	155	293	361	405	374	319	280
Iraq	310	10	18	28	30	10	70	29	21	20	28	24	22
Israel	14 950	1 005	1 151	1 208	1 448	782	1 071	1 268	1 642	1 298	1 474	1 247	1 356
Jordan	1 509	135	129	169	100	97	127	145	99	98	152	133	125
Kuwait	550	28	22	18	32	15	44	219	70	20	28	24	30
Lebanon	1 933	156	184	198	168	154	151	136	120	130	189	203	144

Table 6. Number of tourists by country of residence and month of arrival, 2009 (continued)

Country	Grand Total	Month											
		Jan	Feb	Mar	Apr	May	Jun	Jul	Aug	Sep	Oct	Nov	Dec
Oman	298	11	23	62	28	36	16	33	10	15	20	25	19
Palestine	147	10	12	6	15	11	22	6	15	14	8	11	17
Qatar	399	52	30	39	29	26	35	70	26	19	7	33	33
Saudi Arabia	5 328	190	438	266	311	176	297	1 816	637	317	328	453	99
Syria	420	28	23	31	49	32	24	64	35	21	30	50	33
United Arab Emirates	1 728	116	98	125	149	104	176	299	146	83	131	184	117
Yemen	286	13	38	35	27	18	18	34	14	12	16	32	29
Asia	186 931	14 784	11 206	13 252	14 665	20 400	13 999	15 704	16 539	15 428	18 450	16 936	15 568
Afghanistan	998	85	64	72	83	79	75	83	105	96	92	73	91
Armenia	58	5	4	2	4	5	5	5	4	5	3	10	6
Azerbaijan	136	9	5	25	7	7	3	1	10	3	36	18	12
Bangladesh	2 943	156	205	196	231	282	228	215	316	238	323	262	291
Bhutan	9	-	-	1	-	-	-	-	-	4	3	-	1
Borneo	8	1	-	-	1	1	-	1	1	-	-	-	3
Brunei Darussalam	59	2	5	2	7	6	2	8	3	1	11	5	7
Cambodia	90	1	5	9	5	8	3	25	5	5	12	4	8
China	34 561	3 398	2 409	2 926	2 398	2 363	1 936	2 879	2 887	2 979	3 280	4 328	2 778
East Timor	17	2	-	-	1	1	2	2	6	-	3	-	-
Georgia	160	10	2	8	9	10	5	22	6	15	29	25	19
Guyana	283	31	12	11	16	30	18	26	25	26	33	26	29
Hong Kong	7 522	1 126	361	751	576	401	531	802	860	435	470	649	560
India	55 203	3 478	2 645	3 300	5 160	10 493	4 373	4 314	4 405	4 466	5 047	3 857	3 665
Indonesia	3 361	107	153	244	158	377	199	240	255	455	430	438	305
Japan	20 513	1 075	1 227	1 394	1 318	1 255	1 539	1 781	2 191	1 981	2 995	1 526	2 231
Java	10	1	-	-	2	-	-	1	2	1	2	1	-
Kazakhstan	517	44	128	17	56	15	13	24	25	32	58	55	50
Korea	14 311	1 418	1 055	990	869	898	1 231	1 568	1 621	1 032	949	1 259	1 421
Korea Democratic Peoples R	125	33	1	8	14	22	7	5	3	2	7	15	8
Kyrgyzstan	105	8	4	7	12	4	9	9	10	6	12	16	8
Laos	19	-	2	-	4	1	1	3	2	2	-	1	3
Macau	122	25	1	13	3	13	22	7	9	5	9	11	4
Malaysia	7 025	468	342	457	593	739	608	414	542	564	618	931	749
Maldives	38	3	3	1	4	6	5	3	2	3	7	-	1
Mongolia	89	7	4	15	1	8	3	2	6	13	6	5	19
Myanmar	232	14	16	9	11	49	6	17	21	13	30	21	25
Nepal	309	12	19	35	19	23	15	28	36	22	60	20	20

Table 6. Number of tourists by country of residence and month of arrival, 2009 (continued)													
Country	Grand Total	Month											
		Jan	Feb	Mar	Apr	May	Jun	Jul	Aug	Sep	Oct	Nov	Dec
Pakistan	9 596	625	757	792	757	759	837	1 004	825	757	909	771	803
Philippines	3 359	214	184	218	340	315	265	276	295	246	415	327	264
Singapore	6 663	395	394	376	520	1 014	548	407	373	516	535	792	793
Sri Lanka	1 805	106	100	86	212	162	103	147	120	200	174	146	249
Sumatra	9	1	-	-	1	-	4	1	-	-	1	1	-
Taiwan	9 897	1 422	627	750	731	598	754	823	764	834	1 113	762	719
Tajikistan	31	4	2	1	-	-	3	2	7	5	3	3	1
Thailand	5 300	443	374	428	477	326	531	431	589	370	621	402	308
Turkmenistan	28	-	2	1	3	-	1	2	3	2	7	6	1
Uzbekistan	140	7	8	17	10	6	11	14	16	8	15	15	13
Vietnam	1 280	48	86	90	52	124	103	112	189	86	132	155	103
Africa	5 089 414	448 711	319 479	329 102	465 441	414 608	376 280	461 630	482 967	443 578	438 756	434 804	474 058
SADC	4 936 064	436 647	308 312	316 556	452 855	402 027	364 645	448 795	469 192	431 359	424 428	420 898	460 350
Angola	37 254	4 083	3 243	2 993	2 902	3 148	2 440	2 883	2 861	2 939	3 404	3 156	3 202
Botswana	484 258	30 246	27 185	29 658	63 464	36 049	31 650	42 904	42 254	45 365	38 841	41 345	55 297
DRC	30 982	2 258	2 313	2 096	2 319	1 883	1 867	2 877	3 379	2 732	2 739	2 743	3 776
Lesotho	1 048 550	108 336	63 715	68 824	101 745	81 034	80 667	95 074	86 895	87 879	87 286	88 178	98 917
Madagascar	2 623	223	252	174	218	272	181	211	229	189	167	206	301
Malawi	139 605	12 985	10 731	11 413	11 214	9 984	9 964	13 679	14 887	12 435	12 699	10 888	8 726
Mauritius	13 625	1 229	1 075	1 021	1 282	1 074	840	1 267	1 002	976	1 279	1 249	1 331
Mozambique	983 739	110 764	72 384	71 651	85 355	82 063	77 175	91 618	84 949	81 006	79 309	80 084	67 381
Namibia	177 863	13 454	10 383	12 261	17 235	16 847	11 369	14 926	16 038	14 501	14 841	12 555	23 453
Swaziland	628 113	51 274	41 592	42 140	63 550	56 723	45 777	54 906	64 137	52 140	52 320	48 705	54 849
Tanzania	14 732	1 135	1 138	1 185	1 180	1 326	1 173	1 240	1 141	1 330	1 332	1 315	1 237
Zambia	147 089	12 530	11 281	11 577	13 161	12 400	9 095	11 904	12 794	12 193	12 542	12 823	14 789
Zimbabwe	1 227 631	88 130	63 020	61 563	89 230	99 224	92 447	115 306	138 626	117 674	117 669	117 651	127 091
'Other' Africa	153 350	12 064	11 167	12 546	12 586	12 581	11 635	12 835	13 775	12 219	14 328	13 906	13 708
East and Central Africa	75 574	6 352	5 450	5 946	6 002	6 414	5 340	6 339	6 645	6 058	6 641	7 073	7 314
Burundi	960	74	87	72	77	67	63	98	103	107	74	82	56
Cameroon	4 531	403	283	321	387	319	369	418	478	381	407	401	364
Central African Republic	120	7	7	5	5	22	8	4	17	7	8	12	18
Chad	251	11	19	17	15	21	18	12	30	21	39	25	23
Comoros	155	9	21	17	11	20	10	5	23	8	12	12	7

Table 6. Number of tourists by country of residence and month of arrival, 2009 (continued)													
Country	Grand Total	Month											
		Jan	Feb	Mar	Apr	May	Jun	Jul	Aug	Sep	Oct	Nov	Dec
Congo	6 347	547	538	473	651	575	447	511	559	561	505	430	550
Djibouti	78	6	6	11	2	9	1	4	5	6	14	9	5
Equat Guinea	343	37	17	18	13	61	13	27	42	18	41	37	19
Eritrea	579	36	43	34	43	71	31	50	49	47	64	60	51
Ethiopia	10 651	710	821	1 023	795	1 053	1 002	784	691	667	1 029	1 229	847
Gabon	5 077	557	406	312	360	339	216	444	659	399	345	364	676
Kenya	25 581	2 082	1 673	1 986	1 996	2 256	1 772	2 216	2 333	2 058	2 205	2 286	2 718
Reunion	596	83	65	109	71	50	36	54	25	26	25	16	36
Rwanda	2 841	295	263	232	243	185	195	268	264	222	231	247	196
Sao Tome and Principe	166	7	14	11	6	19	9	14	16	13	15	19	23
Seychelles	2 166	155	175	184	127	175	112	152	177	150	255	310	194
Somalia	2 863	182	204	192	211	115	166	121	206	365	340	432	329
Tristan Da Cunha	12	1	1	-	-	1	-	4	-	3	-	1	1
Uganda	12 257	1 150	807	929	989	1 056	872	1 153	968	999	1 032	1 101	1 201
West Africa	66 326	4 848	4 818	5 649	5 866	5 003	5 122	5 500	6 272	5 411	6 420	5 791	5 626
Ascension	17	1	2	-	1	2	2	1	-	-	3	2	3
Benin	1 293	97	97	100	146	113	81	118	114	107	139	99	82
Burkina Faso	588	26	31	55	57	59	41	50	46	66	76	53	28
Canary Isles	2	-	-	-	-	-	2	-	-	-	-	-	-
Cape Verde Island	602	70	45	59	40	60	46	41	53	54	51	40	43
Cote D'Ivoire	2 182	184	121	200	219	176	236	181	201	150	169	201	144
Gambia	631	31	35	52	49	59	47	55	61	43	112	56	31
Ghana	11 395	823	852	910	936	946	895	1 009	960	914	1 072	1 036	1 042
Guinea	1 334	110	106	92	82	102	82	125	128	119	148	135	105
Guinea-Bissau	174	12	10	7	14	11	15	10	19	13	18	21	24
Liberia	498	31	46	32	33	46	31	39	39	40	61	66	34
Madeira Islands	87	4	11	11	5	4	5	7	6	6	11	13	4
Mali	792	53	66	64	65	62	60	57	94	54	77	79	61
Mauritania	118	9	14	9	9	10	5	9	15	4	13	10	11
Niger	244	19	25	26	14	18	14	11	24	36	22	23	12
Nigeria	42 651	3 147	3 098	3 707	3 855	2 952	3 301	3 487	4 146	3 527	4 111	3 579	3 741
Saint Helena	143	6	2	2	5	24	8	19	14	1	6	48	8
Senegal	2 333	146	163	212	232	231	167	189	246	187	198	204	158
Sierra Leone	766	48	53	53	62	85	43	60	60	61	85	85	71
Togo	476	31	41	58	42	43	41	32	46	29	48	41	24

Table 6. Number of tourists by country of residence and month of arrival, 2009 (concluded)													
Country	Grand Total	Month											
		Jan	Feb	Mar	Apr	May	Jun	Jul	Aug	Sep	Oct	Nov	Dec
North Africa	11 450	864	899	951	718	1 164	1 173	996	858	750	1 267	1 042	768
Algeria	1 210	106	108	129	93	92	127	94	82	84	119	87	89
Egypt	4 999	427	360	407	283	447	656	431	343	316	543	484	302
Libya	1 181	60	56	55	50	316	85	73	83	86	152	78	87
Morocco	933	67	79	93	59	78	84	60	105	56	103	85	64
The Sudan	2 087	144	223	144	163	155	160	214	148	149	256	183	148
Tunisia	1 027	60	73	123	69	73	61	124	96	58	91	122	77
Western Sahara	13	-	-	-	1	3	-	-	1	1	3	3	1
Unspecified	36 474	3 869	2 082	1 895	3 231	2 721	2 294	4 938	3 418	3 007	3 416	2 538	3 065

Table 7. Number of tourists by place of entry and month of arrival, 2009													
Place of entry	Grand Total	Month											
		Jan	Feb	Mar	Apr	May	Jun	Jul	Aug	Sep	Oct	Nov	Dec
Grand Total	7 011 865	607 808	484 275	493 559	615 176	536 047	505 431	623 414	638 572	583 352	632 104	619 265	672 862
Air	2 152 069	179 849	184 467	185 183	167 562	144 615	150 091	179 433	170 606	157 303	207 862	200 566	224 532
Cape Town	476 398	55 925	59 309	54 046	31 822	18 170	19 224	27 736	25 711	26 716	44 650	55 772	57 317
Durban	11 251	304	228	332	376	162	279	280	374	253	2 763	2 345	3 555
OR Tambo	1 655 930	123 017	124 323	130 222	134 676	125 382	129 947	150 739	143 723	129 624	159 480	141 728	163 069
Other airports	8 490	603	607	583	688	901	641	678	798	710	969	721	591
Rail	2 546	63	39	29	157	76	82	220	119	210	775	665	111
Road	4 853 819	427 875	299 550	308 213	447 253	391 135	355 052	443 310	467 620	425 604	423 106	417 461	447 640
Botswana	612 176	39 130	33 726	36 627	74 268	46 693	41 559	55 449	57 008	56 776	50 950	52 534	67 456
Lesotho	1 074 701	110 119	65 774	70 567	104 490	82 744	81 943	96 752	89 442	90 156	90 137	90 941	101 636
Mozambique	894 241	87 237	67 225	66 165	78 792	75 410	72 631	84 140	79 261	74 762	73 517	74 067	61 034
Namibia	125 955	10 364	6 865	8 209	12 212	11 438	7 246	10 541	11 758	9 795	10 175	8 043	19 309
Swaziland	787 898	62 771	49 908	50 992	76 681	67 084	54 426	71 412	82 015	66 929	71 519	66 228	67 933
Zimbabwe	1 317 510	101 768	74 388	73 828	98 355	105 527	95 528	122 894	145 818	125 057	124 419	122 857	127 071
Unspecified road ports	41 338	16 486	1 664	1 825	2 455	2 239	1 719	2 122	2 318	2 129	2 389	2 791	3 201
Sea	1 221	21	37	124	174	125	46	197	24	100	159	111	103
Unspecified	2 210	-	182	10	30	96	160	254	203	135	202	462	476

Table 8. Number of tourists by country of residence and mode of travel, 2009						
Country	Grand Total	Mode of travel				
		Air	Rail	Road	Sea	Unspecified
Grand Total	7 011 865	2 152 069	2 546	4 853 819	1 221	2 210
Overseas	1 885 977	1 675 565	2 054	206 164	868	1 326
Europe	1 230 668	1 082 597	1 235	145 651	488	697
Albania	175	138	-	37	-	-
Andorra	66	53	-	13	-	-
Austria	17 210	15 430	35	1 737	1	7
Azores Island	49	16	-	33	-	-
Belarus	435	419	1	15	-	-
Belgium	36 720	30 203	10	6 487	3	17
Bosnia-Herzegovina	173	154	-	19	-	-
Bulgaria	1 927	1 641	-	286	-	-
Byelorussian SSR	14	11	-	3	-	-
Channel Island	7	4	-	3	-	-
Crete	5	5	-	-	-	-
Croatia	1 103	1 011	-	92	-	-
Czech Republic	5 889	5 167	4	708	10	-
Denmark	22 540	19 969	7	2 512	47	5
Estonia	754	686	-	68	-	-
Faroe Island	46	16	-	30	-	-
Finland	9 404	8 535	1	828	39	1
France	103 985	88 962	43	14 899	29	52
Germany	196 643	171 337	259	24 884	101	62
Gibraltar	14	8	-	6	-	-
Greece	7 291	6 595	5	681	3	7
Hebrides	12	9	-	3	-	-
Hungary	2 480	2 330	-	147	2	1
Iceland	492	392	-	100	-	-
Ireland	35 166	31 623	12	3 511	7	13
Isle Of Guernsey	30	27	-	3	-	-
Isle Of Jersey	65	50	-	15	-	-
Isle Of Man	45	39	-	6	-	-
Isle Of Wight	5	2	-	3	-	-
Italy	50 283	44 727	35	5 486	7	28
Latvia	693	617	-	76	-	-
Liechtenstein	237	189	-	48	-	-

Table 8. Number of tourists by country of residence and mode of travel, 2009 (continued)						
Country	Grand Total	Mode of travel				
		Air	Rail	Road	Sea	Unspecified
Lithuania	859	641	1	217	-	-
Luxembourg	1 309	1 066	3	240	-	-
Malta	473	421	-	52	-	-
Moldova	114	109	-	5	-	-
Monaco	94	87	-	5	2	-
Norway	18 140	16 258	3	1 865	13	1
Poland	9 257	8 119	4	1 124	7	3
Portugal	26 759	16 944	2	9 803	8	2
Romania	2 221	2 114	-	104	2	1
Russian Federation	8 893	8 244	6	614	19	10
San Marino	36	32	-	4	-	-
Sicily	22	13	1	8	-	-
Slovakia	1 964	1 796	1	167	-	-
Slovenia	958	827	1	129	1	-
Spain	25 725	22 657	13	3 008	11	36
Sweden	36 335	32 233	10	4 052	20	20
Switzerland	31 719	27 700	108	3 870	24	17
The Netherlands	114 431	90 200	71	24 110	25	25
Turkey	7 648	7 213	10	418	6	1
UK	446 369	412 569	587	32 731	94	388
Ukraine	2 233	2 103	1	122	7	-
Vatican	13	10	-	3	-	-
Yugoslavia	1 138	876	1	261	-	-
North America	275 715	249 219	561	25 386	149	400
Canada	45 330	40 245	76	4 922	33	54
East Indian Islands	25	22	-	3	-	-
Greenland	32	18	-	14	-	-
USA	230 324	208 931	485	20 446	116	346
West Indian Islands	4	3	-	1	-	-
Central and South America	57 530	52 423	40	5 024	11	32
Antigua And Barbuda	28	22	-	6	-	-
Argentina	9 787	9 371	4	411	-	1
Bahamas	78	73	-	5	-	-
Barbados	126	119	3	4	-	-
Belize	66	32	-	34	-	-

Table 8. Number of tourists by country of residence and mode of travel, 2009 (continued)						
Country	Grand Total	Mode of travel				
		Air	Rail	Road	Sea	Unspecified
Bermuda	65	31	-	34	-	-
Bolivia	549	485	-	64	-	-
Br Virgin Island	26	10	-	16	-	-
Brazil	32 256	29 430	10	2 795	8	13
Chile	2 581	2 371	1	208	-	1
Colombia	1 582	1 444	1	134	-	3
Costa Rica	284	243	-	40	-	1
Cuba	577	441	4	132	-	-
Dominica	55	49	-	6	-	-
Ecuador	418	386	-	31	-	1
El Salvador	113	58	-	55	-	-
Falkland Island (Malvinas)	5	4	1	-	-	-
French Guinea	67	51	-	16	-	-
Grenada	20	20	-	-	-	-
Guatemala	182	153	-	29	-	-
Guyana (Guinea-British)	10	9	-	1	-	-
Haiti	179	88	-	91	-	-
Honduras	102	74	-	28	-	-
Jamaica	497	410	-	87	-	-
Mexico	2 674	2 520	8	143	-	3
Nicaragua	57	51	-	6	-	-
Panama	162	137	-	22	-	3
Paraguay	384	321	-	63	-	-
Peru	1 577	1 410	-	161	2	4
Puerto Rico	6	6	-	-	-	-
St Lucia	38	32	-	6	-	-
St Vincent And Grenadines	18	15	-	3	-	-
Suriname	64	48	-	16	-	-
Trinidad And Tobago	347	314	-	32	-	1
Turks And Caicos island	1	1	-	-	-	-
Uruguay	944	887	1	55	1	-
Us Virgin Island	1	1	-	-	-	-
Venezuela	1 245	1 119	-	125	-	1
West Indies	359	187	7	165	-	-
Australasia	101 479	93 098	48	8 163	90	80
Australia	82 753	76 464	40	6 095	88	66

Table 8. Number of tourists by country of residence and mode of travel, 2009 (continued)

Country	Grand Total	Mode of travel				
		Air	Rail	Road	Sea	Unspecified
Bouvet Island	3	2	-	1	-	-
Christmas Island	18	3	-	15	-	-
Cocos (Keeling) Island	16	5	-	11	-	-
Cook Islands	4	2	-	2	-	-
Federated States of Micron	12	8	-	4	-	-
Fiji	157	152	-	5	-	-
French Polynesia	140	57	-	82	1	-
French Southern Terr	37	11	-	26	-	-
Guam	24	8	-	16	-	-
Kiribati	4	2	-	2	-	-
Marshall Islands	7	3	-	4	-	-
Nauru	13	13	-	-	-	-
New Caledonia	4	3	-	1	-	-
New Guinea	15	12	-	3	-	-
New Zealand	18 042	16 184	8	1 835	1	14
Norfolk Island	4	2	-	2	-	-
Northern Mariana Island	29	13	-	16	-	-
Palau	9	7	-	2	-	-
Papua New Guinea	31	30	-	1	-	-
Pitcairn	4	3	-	1	-	-
Samoa	97	63	-	34	-	-
Solomon Island	12	12	-	-	-	-
Tasmania	13	12	-	1	-	-
Tokelau	6	5	-	1	-	-
Tonga Island	18	15	-	3	-	-
Tuvalu	1	1	-	-	-	-
Vanuatu	6	6	-	-	-	-
Middle East	33 654	31 742	28	1 860	7	17
Bahrain	174	174	-	-	-	-
Cyprus	1 585	1 414	1	169	-	1
Iran	4 037	3 947	3	85	2	-
Iraq	310	289	-	21	-	-
Israel	14 950	13 896	13	1 029	-	12
Jordan	1 509	1 386	-	123	-	-
Kuwait	550	528	-	22	-	-
Lebanon	1 933	1 708	1	224	-	-

Table 8. Number of tourists by country of residence and mode of travel, 2009 (continued)						
Country	Grand Total	Mode of travel				
		Air	Rail	Road	Sea	Unspecified
Oman	298	296	-	2	-	-
Palestine	147	138	-	9	-	-
Qatar	399	397	-	2	-	-
Saudi Arabia	5 328	5 191	9	119	5	4
Syria	420	387	1	32	-	-
United Arab Emirates	1 728	1 725	-	3	-	-
Yemen	286	266	-	20	-	-
Asia	186 931	166 486	142	20 080	123	100
Afghanistan	998	302	-	696	-	-
Armenia	58	57	-	1	-	-
Azerbaijan	136	131	-	5	-	-
Bangladesh	2 943	1 592	5	1 344	2	-
Bhutan	9	9	-	-	-	-
Borneo	8	5	-	3	-	-
Brunei Darussalam	59	34	-	25	-	-
Cambodia	90	67	-	22	1	-
China	34 561	32 565	1	1 971	8	16
East Timor	17	13	-	4	-	-
Georgia	160	158	-	2	-	-
Guyana	283	132	-	151	-	-
Hong Kong	7 522	7 369	1	150	-	2
India	55 203	48 217	43	6 888	29	26
Indonesia	3 361	3 228	2	125	2	4
Japan	20 513	19 629	6	831	37	10
Java	10	9	-	1	-	-
Kazakhstan	517	504	-	13	-	-
Korea	14 311	13 019	3	1 270	4	15
Korea Democratic Peoples R	125	68	1	56	-	-
Kyrgyzstan	105	39	-	66	-	-
Laos	19	14	-	5	-	-
Macau	122	106	-	16	-	-
Malaysia	7 025	6 686	2	337	-	-
Maldives	38	35	-	2	-	1
Mongolia	89	80	-	9	-	-
Myanmar	232	197	3	30	-	2
Nepal	309	295	-	14	-	-

Table 8. Number of tourists by country of residence and mode of travel, 2009 (continued)						
Country	Grand Total	Mode of travel				
		Air	Rail	Road	Sea	Unspecified
Pakistan	9 596	6 738	64	2 786	1	7
Philippines	3 359	2 822	4	500	30	3
Singapore	6 663	6 429	4	227	-	3
Sri Lanka	1 805	1 209	1	595	-	-
Sumatra	9	9	-	-	-	-
Taiwan	9 897	8 275	1	1 609	9	3
Tajikistan	31	27	-	4	-	-
Thailand	5 300	5 083	1	209	-	7
Turkmenistan	28	25	-	3	-	-
Uzbekistan	140	134	-	6	-	-
Vietnam	1 280	1 175	-	104	-	1
Africa	5 089 414	457 139	481	4 630 665	258	871
SADC	4 936 064	326 452	302	4 608 352	201	757
Angola	37 254	35 402	4	1 826	4	18
Botswana	484 258	20 479	88	463 638	14	39
DRC	30 982	23 122	5	7 816	4	35
Lesotho	1 048 550	4 577	3	1 043 592	6	372
Madagascar	2 623	2 499	2	121	-	1
Malawi	139 605	21 652	10	117 913	8	22
Mauritius	13 625	12 409	-	1 212	1	3
Mozambique	983 739	24 106	17	959 546	14	56
Namibia	177 863	39 710	11	138 087	8	47
Swaziland	628 113	6 017	51	622 039	3	3
Tanzania	14 732	10 653	7	4 048	15	9
Zambia	147 089	45 021	18	101 978	24	48
Zimbabwe	1 227 631	80 805	86	1 146 536	100	104
'Other' African	153 350	130 687	179	22 313	57	114
East and Central Africa	75 574	61 127	39	14 304	41	63
Burundi	960	755	-	205	-	-
Cameroon	4 531	4 211	3	314	-	3
Central African Republic	120	109	-	11	-	-
Chad	251	241	-	8	-	2
Comoros	155	144	-	10	-	1

Table 8. Number of tourists by country of residence and mode of travel, 2009 (continued)						
Country	Grand Total	Mode of travel				
		Air	Rail	Road	Sea	Unspecified
Congo	6 347	5 002	2	1 336	-	7
Djibouti	78	65	-	13	-	-
Equat Guinea	343	237	-	106	-	-
Eritrea	579	498	2	79	-	-
Ethiopia	10 651	6 415	6	4 214	3	13
Gabon	5 077	4 947	2	127	-	1
Kenya	25 581	22 715	9	2 819	20	18
Reunion	596	592	-	4	-	-
Rwanda	2 841	2 602	-	233	1	5
Sao Tome and Principe	166	154	-	12	-	-
Seychelles	2 166	2 132	-	34	-	-
Somalia	2 863	92	1	2 770	-	-
Tristan Da Cunha	12	8	4	-	-	-
Uganda	12 257	10 208	10	2 009	17	13
West Africa	66 326	59 080	132	7 069	10	35
Ascension	17	5	-	12	-	-
Benin	1 293	1 161	-	131	-	1
Burkina Faso	588	575	-	13	-	-
Canary Isles	2	-	-	2	-	-
Cape Verde Island	602	504	-	96	-	2
Cote D'Ivoire	2 182	2 107	-	75	-	-
Gambia	631	503	-	127	-	1
Ghana	11 395	10 274	4	1 105	3	9
Guinea	1 334	768	-	564	2	-
Guinea-Bissau	174	92	-	82	-	-
Liberia	498	432	-	66	-	-
Madeira Islands	87	59	-	27	1	-
Mali	792	627	-	165	-	-
Mauritania	118	111	-	5	-	2
Niger	244	219	-	24	-	1
Nigeria	42 651	38 406	43	4 182	4	16
Saint Helena	143	32	81	30	-	-
Senegal	2 333	2 196	3	131	-	3
Sierra Leone	766	595	1	170	-	-
Togo	476	414	-	62	-	-

Table 8. Number of tourists by country of residence and mode of travel, 2009 (concluded)						
Country	Grand Total	Mode of travel				
		Air	Rail	Road	Sea	Unspecified
North Africa	11 450	10 480	8	940	6	16
Algeria	1 210	1 062	-	144	2	2
Egypt	4 999	4 724	6	263	2	4
Libya	1 181	926	-	254	1	-
Morocco	933	868	-	63	-	2
The Sudan	2 087	1 934	1	145	-	7
Tunisia	1 027	955	1	70	1	-
Western Sahara	13	11	-	1	-	1
Unspecified	36 474	19 365	11	16 990	95	13

Table 9. Number of tourists by country of residence and purpose of visit, 2009					
Country	Grand Total	Purpose of visit			
		Business	Holiday	Study	Transit
Grand Total	7 011 865	106 078	6 802 720	91 254	11 813
Overseas	1 885 977	43 552	1 825 644	13 416	3 365
Europe	1 230 668	24 370	1 198 158	6 917	1 223
Albania	175	10	161	4	-
Andorra	66	1	64	1	-
Austria	17 210	359	16 775	69	7
Azores Island	49	-	48	1	-
Belarus	435	25	406	3	1
Belgium	36 720	653	35 829	208	30
Bosnia-Herzegovina	173	14	154	5	-
Bulgaria	1 927	79	1 810	28	10
Byelorussian SSR	14	1	13	-	-
Channel Island	7	-	7	-	-
Crete	5	-	5	-	-
Croatia	1 103	100	994	7	2
Czech Republic	5 889	136	5 736	15	2
Denmark	22 540	403	22 043	80	14
Estonia	754	30	716	8	-
Faroe Island	46	9	36	1	-
Finland	9 404	221	9 123	56	4
France	103 985	2 051	101 067	740	127
Germany	196 643	3 689	191 261	1 611	82
Gibraltar	14	-	14	-	-
Greece	7 291	135	7 102	40	14
Hebrides	12	-	12	-	-
Hungary	2 480	45	2 425	9	1
Iceland	492	12	470	10	-
Ireland	35 166	502	34 491	148	25
Isle Of Guernsey	30	2	27	1	-
Isle Of Jersey	65	-	65	-	-
Isle Of Man	45	2	43	-	-
Isle Of Wight	5	-	5	-	-
Italy	50 283	999	49 058	154	72
Latvia	693	29	659	2	3
Liechtenstein	237	4	233	-	-

Table 9. Number of tourists by country of residence and purpose of visit, 2009 (continued)					
Country	Grand Total	Purpose of visit			
		Business	Holiday	Study	Transit
Lithuania	859	31	824	2	2
Luxembourg	1 309	10	1 296	-	3
Malta	473	15	457	1	-
Moldova	114	10	101	3	-
Monaco	94	1	93	-	-
Norway	18 140	406	17 395	313	26
Poland	9 257	247	8 975	28	7
Portugal	26 759	269	26 327	111	52
Romania	2 221	159	2 030	23	9
Russian Federation	8 893	522	8 227	91	53
San Marino	36	-	34	2	-
Sicily	22	-	22	-	-
Slovakia	1 964	49	1 903	11	1
Slovenia	958	51	901	6	-
Spain	25 725	469	25 122	77	57
Sweden	36 335	734	35 312	277	12
Switzerland	31 719	571	30 932	185	31
The Netherlands	114 431	1 683	111 904	736	108
Turkey	7 648	290	7 251	96	11
UK	446 369	9 158	435 078	1 710	423
Ukraine	2 233	131	2 036	32	34
Vatican	13	1	12	-	-
Yugoslavia	1 138	52	1 074	12	-
North America	275 715	5 223	267 225	2 753	514
Canada	45 330	874	44 112	294	50
East Indian Islands	25	-	25	-	-
Greenland	32	-	32	-	-
USA	230 324	4 349	223 052	2 459	464
West Indian Islands	4	-	4	-	-
Central and South America	57 530	936	55 734	438	422
Antigua And Barbuda	28	-	28	-	-
Argentina	9 787	138	9 520	38	91
Bahamas	78	8	66	4	-
Barbados	126	3	121	2	-
Belize	66	-	66	-	-

Table 9. Number of tourists by country of residence and purpose of visit, 2009 (continued)					
Country	Grand Total	Purpose of visit			
		Business	Holiday	Study	Transit
Bermuda	65	-	65	-	-
Bolivia	549	4	540	4	1
Br Virgin Island	26	-	26	-	-
Brazil	32 256	283	31 588	155	230
Chile	2 581	64	2 485	14	18
Colombia	1 582	101	1 407	67	7
Costa Rica	284	3	279	-	2
Cuba	577	21	491	46	19
Dominica	55	6	48	1	-
Ecuador	418	6	402	8	2
El Salvador	113	13	99	-	1
Falkland Island (Malvinas)	5	-	5	-	-
French Guinea	67	-	66	1	-
Grenada	20	-	14	5	1
Guatemala	182	4	177	1	-
Guyana (Guinea-British)	10	1	9	-	-
Haiti	179	13	158	6	2
Honduras	102	12	88	1	1
Jamaica	497	5	487	4	1
Mexico	2 674	154	2 490	24	6
Nicaragua	57	6	51	-	-
Panama	162	4	153	3	2
Paraguay	384	4	375	2	3
Peru	1 577	11	1 532	17	17
Puerto Rico	6	3	3	-	-
St Lucia	38	1	36	1	-
St Vincent And Grenadines	18	1	17	-	-
Suriname	64	1	63	-	-
Trinidad And Tobago	347	22	305	10	10
Turks And Caicos island	1	-	1	-	-
Uruguay	944	23	912	4	5
Us Virgin Island	1	-	1	-	-
Venezuela	1 245	14	1 212	17	2
West Indies	359	7	348	3	1
Australasia	101 479	1 317	99 772	215	175
Australia	82 753	1 134	81 332	151	136

Table 9. Number of tourists by country of residence and purpose of visit, 2009 (continued)					
Country	Grand Total	Purpose of visit			
		Business	Holiday	Study	Transit
Bouvet Island	3	1	2	-	-
Christmas Island	18	-	18	-	-
Cocos (Keeling) Island	16	-	16	-	-
Cook Islands	4	-	4	-	-
Federated States of Micron	12	-	12	-	-
Fiji	157	5	146	6	-
French Polynesia	140	3	132	5	-
French Southern Terr	37	3	34	-	-
Guam	24	-	24	-	-
Kiribati	4	-	4	-	-
Marshall Islands	7	-	7	-	-
Nauru	13	-	13	-	-
New Caledonia	4	-	4	-	-
New Guinea	15	1	13	1	-
New Zealand	18 042	150	17 805	48	39
Norfolk Island	4	-	4	-	-
Northern Mariana Island	29	2	27	-	-
Palau	9	2	6	1	-
Papua New Guinea	31	6	25	-	-
Pitcairn	4	-	4	-	-
Samoa	97	4	92	1	-
Solomon Island	12	2	10	-	-
Tasmania	13	-	12	1	-
Tokelau	6	-	6	-	-
Tonga Island	18	-	17	1	-
Tuvalu	1	-	1	-	-
Vanuatu	6	4	2	-	-
Middle East	33 654	1 562	31 575	466	51
Bahrain	174	15	156	3	-
Cyprus	1 585	18	1 555	12	-
Iran	4 037	240	3 724	70	3
Iraq	310	24	271	14	1
Israel	14 950	400	14 447	80	23
Jordan	1 509	67	1 423	13	6
Kuwait	550	21	523	6	-
Lebanon	1 933	292	1 629	9	3

Table 9. Number of tourists by country of residence and purpose of visit, 2009 (continued)					
Country	Grand Total	Purpose of visit			
		Business	Holiday	Study	Transit
Oman	298	9	286	3	-
Palestine	147	9	120	18	-
Qatar	399	28	368	3	-
Saudi Arabia	5 328	131	5 057	138	2
Syria	420	34	371	5	10
United Arab Emirates	1 728	248	1 420	57	3
Yemen	286	26	225	35	-
Asia	186 931	10 144	173 180	2 627	980
Afghanistan	998	28	938	30	2
Armenia	58	4	54	-	-
Azerbaijan	136	11	120	1	4
Bangladesh	2 943	152	2 750	27	14
Bhutan	9	4	5	-	-
Borneo	8	1	7	-	-
Brunei Darussalam	59	1	58	-	-
Cambodia	90	16	73	1	-
China	34 561	1 976	31 879	483	223
East Timor	17	1	16	-	-
Georgia	160	21	137	1	1
Guyana	283	2	268	13	-
Hong Kong	7 522	54	7 453	10	5
India	55 203	4 937	49 491	572	203
Indonesia	3 361	245	3 036	34	46
Japan	20 513	538	19 821	87	67
Java	10	-	10	-	-
Kazakhstan	517	38	474	5	-
Korea	14 311	264	13 320	649	78
Korea Democratic Peoples R	125	6	104	15	-
Kyrgyzstan	105	5	98	1	1
Laos	19	1	17	1	-
Macau	122	3	119	-	-
Malaysia	7 025	143	6 751	116	15
Maldives	38	3	31	2	2
Mongolia	89	3	86	-	-
Myanmar	232	18	189	4	21
Nepal	309	40	231	30	8

Table 9. Country of residence of tourists by purpose of visit (continued)					
Country	Grand Total	Purpose of visit			
		Business	Holiday	Study	Transit
Pakistan	9 596	573	8 879	119	25
Philippines	3 359	200	2 977	51	131
Singapore	6 663	254	6 384	11	14
Sri Lanka	1 805	126	1 627	39	13
Sumatra	9	-	9	-	-
Taiwan	9 897	279	9 351	198	69
Tajikistan	31	-	27	4	-
Thailand	5 300	111	5 064	110	15
Turkmenistan	28	-	28	-	-
Uzbekistan	140	6	132	2	-
Vietnam	1 280	80	1 166	11	23
Africa	5 089 414	61 666	4 954 378	64 967	8 403
SADC	4 936 064	55 145	4 815 046	57 950	7 923
Angola	37 254	661	33 775	2 615	203
Botswana	484 258	628	469 740	13 342	548
DRC	30 982	819	28 609	1 289	265
Lesotho	1 048 550	565	1 037 894	5 590	4 501
Madagascar	2 623	86	2 408	63	66
Malawi	139 605	2 892	135 645	977	91
Mauritius	13 625	204	12 897	471	53
Mozambique	983 739	3 116	978 518	1 850	255
Namibia	177 863	19 499	149 487	8 422	455
Swaziland	628 113	3 442	614 042	10 245	384
Tanzania	14 732	850	12 951	914	17
Zambia	147 089	12 341	132 989	1 664	95
Zimbabwe	1 227 631	10 042	1 206 091	10 508	990
'Other' Africa	153 350	6 521	139 332	7 017	480
East and Central Africa	75 574	3 203	67 533	4 614	224
Burundi	960	46	856	58	-
Cameroon	4 531	247	3 721	545	18
Central African Republic	120	19	98	3	-
Chad	251	19	219	12	1
Comoros	155	7	134	14	-

Table 9. Number of tourists by country of residence and purpose of visit, 2009 (continued)					
Country	Grand Total	Purpose of visit			
		Business	Holiday	Study	Transit
Congo	6 347	136	5 850	333	28
Djibouti	78	9	67	2	-
Equat Guinea	343	23	247	40	33
Eritrea	579	38	527	14	-
Ethiopia	10 651	216	10 248	180	7
Gabon	5 077	62	4 353	654	8
Kenya	25 581	1 574	22 314	1 623	70
Reunion	596	10	573	13	-
Rwanda	2 841	161	2 287	386	7
Sao Tome and Principe	166	15	145	3	3
Seychelles	2 166	14	2 106	46	-
Somalia	2 863	10	2 848	4	1
Tristan Da Cunha	12	-	9	3	-
Uganda	12 257	597	10 931	681	48
West Africa	66 326	2 092	62 055	1 963	216
Ascension	17	-	17	-	-
Benin	1 293	34	1 235	20	4
Burkina Faso	588	77	488	21	2
Canary Isles	2	-	2	-	-
Cape Verde Island	602	9	577	13	3
Cote D'Ivoire	2 182	179	1 902	89	12
Gambia	631	34	559	23	15
Ghana	11 395	267	10 850	249	29
Guinea	1 334	33	1 210	65	26
Guinea-Bissau	174	15	150	3	6
Liberia	498	26	454	16	2
Madeira Islands	87	-	86	-	1
Mali	792	70	685	27	10
Mauritania	118	6	110	1	1
Niger	244	30	207	6	1
Nigeria	42 651	1 015	40 228	1 376	32
Saint Helena	143	-	142	1	-
Senegal	2 333	232	2 018	22	61
Sierra Leone	766	42	688	27	9
Togo	476	23	447	4	2

Table 9. Number of tourists by country of residence and purpose of visit, 2009 (concluded)					
Country	Grand Total	Purpose of visit			
		Business	Holiday	Study	Transit
North Africa	11 450	1 226	9 744	440	40
Algeria	1 210	122	1 037	43	8
Egypt	4 999	450	4 455	86	8
Libya	1 181	75	1 022	72	12
Morocco	933	138	770	23	2
The Sudan	2 087	232	1 647	199	9
Tunisia	1 027	205	804	17	1
Western Sahara	13	4	9	-	-
Unspecified	36 474	860	22 698	12 871	45

Table 10. Number of tourists by sex, age group and region, 2009

Sex	Total	Overseas	SADC	'Other' Africa	Unspecified
All	7 011 865	1 885 977	4 936 064	153 350	36 474
0-14	391 679	127 472	251 610	8 767	3 830
15-64	6 318 905	1 575 793	4 569 031	142 111	31 970
65+	297 261	182 272	111 877	2 452	660
Unspecified	4 020	440	3 546	20	14
Male	3 851 121	1 061 166	2 667 270	103 011	19 674
0-14	197 116	66 093	124 526	4 483	2 014
15-64	3 501 491	895 695	2 491 618	96 948	17 230
65+	150 630	99 174	49 471	1 561	424
Unspecified	1 884	204	1 655	19	6
Female	3 151 437	822 889	2 261 502	50 308	16 738
0-14	194 556	61 379	127 077	4 284	1 816
15-64	2 809 588	678 638	2 071 136	45 134	14 680
65+	145 736	82 705	61 908	889	234
Unspecified	1 557	167	1 381	1	8
Unspecified	9 307	1 922	7 292	31	62
0-14	7		7	-	-
15-64	7 826	1 460	6 277	29	60
65+	895	393	498	2	2
Unspecified	579	69	510	-	-

OTHER STATS SA REPORTS

The following reports on tourism and migration have been published:

- No. 205 - South African residents travelling abroad 1952-1957
- No. 286 - Statistics of immigrants and emigrants 1924-1964
- No. 297 - Statistics of migration 1963 and earlier years
- No. 07-20-01 - External migration 1964
- No. 07-20-02 - External migration 1965
- No. 19-01-01 - Migration Statistics: Immigrants and Emigrants 1966 to 1969
- No. 19-02-01 - Migration Statistics: Tourists 1966 to 1969
- No. 19-01-02 - Migration Statistics: Tourists Immigrants and Emigrants 1970 and 1971
- No. 19-01-03 - Tourism and migration 1972-1975
- No. 19-01-04 - Tourism and migration 1976
- No. 19-01-05 - Tourism and migration 1977
- No. 19-01-06 - Tourism and migration 1978
- No. 19-01-07 - Tourism and migration 1979
- No. 19-01-08 - Tourism and migration 1980
- No. 19-01-09 - Tourism and migration 1981
- No. 19-01-10 - Tourism and migration 1982
- No. 19-01-11 - Tourism and migration 1983
- No. 19-01-12 - Tourism and migration 1984
- No. 19-01-13 - Tourism and migration 1985
- No. 19-01-14 - Tourism and migration 1986
- No. 03-51-02 (1987) - Tourism and migration
- No. 03-51-02 (1988) - Tourism and migration
- No. 03-51-02 (1989) - Tourism and migration
- No. 03-51-02 (1990) - Tourism and migration
- No. 03-51-02 (1991) - Tourism and migration
- No. 03-51-02 (1992) - Tourism and migration
- No. 03-51-02 (1993) - Tourism and migration
- No. 03-51-02 (1994) - Tourism and migration
- No. 03-51-02 (1995) - Tourism and migration
- No. 03-51-02 (1996) - Tourism and migration
- No. 03-51-02 (1997) - Tourism
- No. 03-51-02 (1998) - Tourism
- No. 03-51-02 (1999) - Tourism
- No. 03-51-02 (2000) - Tourism
- No. 03-51-02 (2001) - Tourism
- No. 03-51-02 (2002) -Tourism
- No. 03-51-02 (2003) -Tourism
- No. 03-51-02 (2004, 2005 and 2006) –Tourism
- No. 03-51-02 (2007) -Tourism
- No. 03-51-02 (2008) -Tourism