



The South Africa I know, the home I understand

Statistical release

P6420

Food and beverages (Preliminary)

May 2015

Embargoed until:

20 July 2015

13:00

Enquiries:

Keshnee Govender
(012) 310 8423

Forthcoming issue:

June 2015

Expected release date:

24 August 2015

Contents

| | |
|---|-----------|
| Results for May 2015 | 2 |
| Table A – Year-on-year percentage change in food and beverages income at current prices by type of income | 2 |
| Table B – Year-on-year percentage change in food and beverages income at current prices by type of enterprise | 2 |
| Table C – Food and beverages income at current prices for the latest three months by type of enterprise..... | 2 |
| Figure 1 – Food and beverages income at current prices: year-on-year percentage change | 3 |
| Figure 2 – Food and beverages income at current prices: year-on-year percentage change by type of enterprise | 3 |
| Tables | 4 |
| Table 1 – Food and beverages income at current prices (R million) | 4 |
| Table 2 – Year-on-year percentage change in food and beverages income at current prices | 4 |
| Table 3 – Food and beverages income at current prices by type of enterprise (R million) | 5 |
| Table 4 – Year-on-year percentage change in food and beverages income at current prices by type of enterprise | 5 |
| Table 5 – Contribution of each type of income to the year-on-year percentage change in food and beverages income at current prices (percentage points)..... | 6 |
| Survey information | 7 |
| Technical notes | 8 |
| Glossary | 9 |
| Technical enquiries | 9 |
| General information | 10 |

Results for May 2015

Table A – Year-on-year percentage change in food and beverages income at current prices by type of income

| Type of income | Dec-14 | Jan-15 | Feb-15 | Mar-15 | Apr-15 | May-15 |
|----------------|------------|-------------|------------|-------------|------------|------------|
| Food sales | 9,7 | 12,7 | 6,9 | 11,2 | 9,3 | 6,1 |
| Bar sales | -9,6 | -0,4 | 0,0 | 6,3 | -0,3 | -0,9 |
| Other income | 21,2 | 9,1 | -4,0 | 0,4 | -4,6 | -4,8 |
| Total | 7,3 | 11,0 | 5,8 | 10,3 | 7,8 | 5,1 |

Measured in nominal terms (current prices), total income generated by the food and beverages industry increased by 5,1% in May 2015 compared with May 2014. The only positive annual growth rate was recorded for food sales (6,1%) – see Table A.

Table B – Year-on-year percentage change in food and beverages income at current prices by type of enterprise

| Type of enterprise | Dec-14 | Jan-15 | Feb-15 | Mar-15 | Apr-15 | May-15 |
|--------------------------------|------------|-------------|------------|-------------|------------|------------|
| Restaurants and coffee shops | 6,4 | 8,8 | 6,1 | 7,2 | 5,1 | 5,0 |
| Takeaway and fast-food outlets | 8,6 | 16,6 | 7,8 | 11,7 | 12,4 | 7,2 |
| Catering services | 6,7 | 4,3 | 0,7 | 16,1 | 4,9 | 0,5 |
| Total | 7,3 | 11,0 | 5,8 | 10,3 | 7,8 | 5,1 |

In May 2015, the highest annual growth rates were recorded for takeaway and fast food outlets (7,2% and contributing 2,8 percentage points) and restaurants and coffee shops (5,0% and contributing 2,3 percentage points) – see Tables B and 5.

Table C – Food and beverages income at current prices for the latest three months by type of enterprise

| Type of enterprise | Mar – May 2014 (R million) | Weight | Mar – May 2015 (R million) | % change between Mar – May 2014 and Mar – May 2015 | Contribution (% points) to the total % change |
|--------------------------------|-------------------------------|--------------|-------------------------------|--|---|
| Restaurants and coffee shops | 5 162,5 | 46,4 | 5 460,6 | 5,8 | 2,7 |
| Takeaway and fast-food outlets | 4 161,7 | 37,4 | 4 593,3 | 10,4 | 3,9 |
| Catering services | 1 790,3 | 16,1 | 1 918,3 | 7,1 | 1,1 |
| Total | 11 114,5 | 100,0 | 11 972,2 | 7,7 | 7,7 |

Total income increased by 7,7% in the three months ended May 2015 compared with the three months ended May 2014. The main contributors to this increase were:

- takeaway and fast-food outlets (10,4% and contributing 3,9 percentage points); and
- restaurants and coffee shops (5,8% and contributing 2,7 percentage points) – see Table C.

Figure 1 – Food and beverages income at current prices: year-on-year percentage change

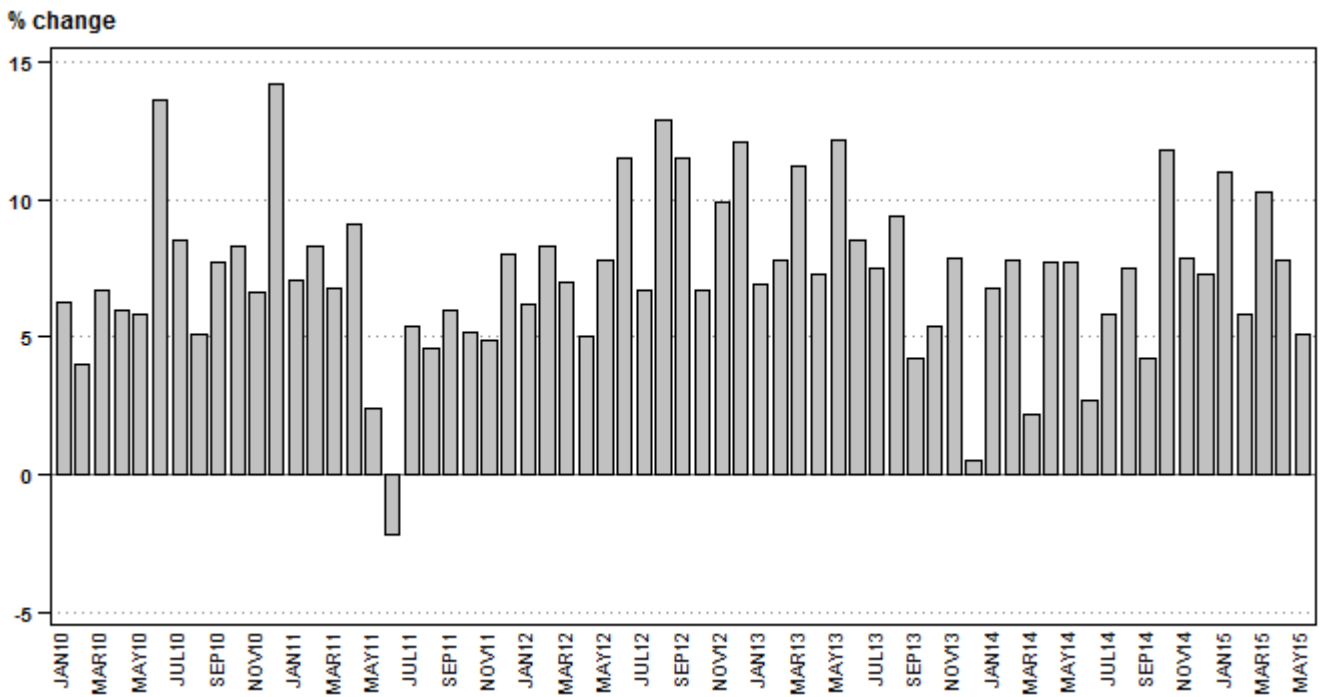
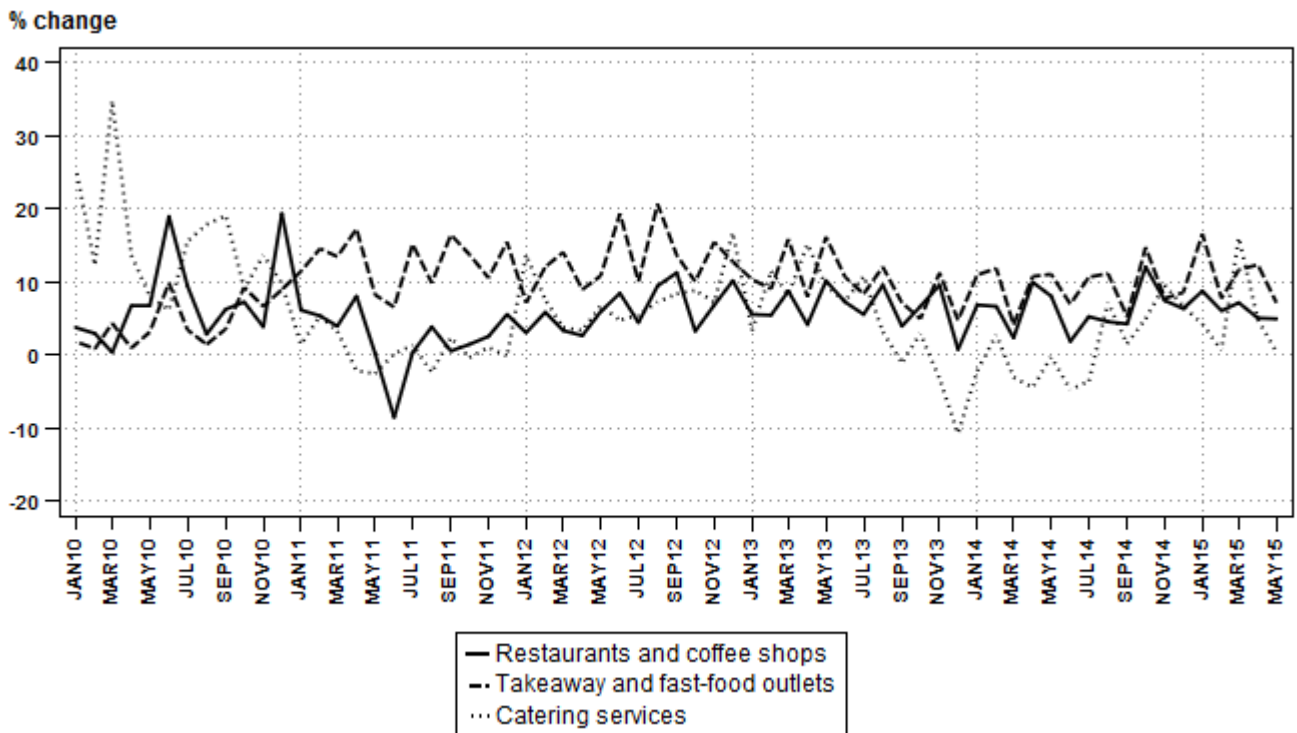


Figure 2 – Food and beverages income at current prices: year-on-year percentage change by type of enterprise



PJ Lehohla
Statistician-General

Tables

Table 1 – Food and beverages income at current prices (R million)

| Month | 2010 | 2011 | 2012 | 2013 | 2014 | 2015 1/ |
|--------------|-----------------|-----------------|-----------------|-----------------|-----------------|---------|
| Jan | 2 697,8 | 2 890,0 | 3 068,8 | 3 279,9 | 3 504,5 | 3 890,1 |
| Feb | 2 554,1 | 2 766,5 | 2 994,9 | 3 229,5 | 3 480,3 | 3 680,6 |
| Mar | 2 856,8 | 3 051,4 | 3 263,5 | 3 628,2 | 3 706,3 | 4 088,7 |
| Apr | 2 752,5 | 3 003,4 | 3 154,3 | 3 386,0 | 3 647,8 | 3 932,0 |
| May | 2 818,3 | 2 885,9 | 3 111,5 | 3 490,8 | 3 760,4 | 3 951,5 |
| Jun | 2 921,5 | 2 858,0 | 3 187,5 | 3 459,6 | 3 551,6 | |
| Jul | 2 890,9 | 3 046,7 | 3 249,8 | 3 494,3 | 3 695,3 | |
| Aug | 2 804,5 | 2 933,9 | 3 312,7 | 3 623,1 | 3 894,4 | |
| Sep | 2 856,9 | 3 027,6 | 3 377,1 | 3 518,6 | 3 666,0 | |
| Oct | 2 994,6 | 3 150,2 | 3 361,8 | 3 544,0 | 3 963,8 | |
| Nov | 3 079,6 | 3 230,9 | 3 552,2 | 3 833,3 | 4 136,8 | |
| Dec | 3 655,0 | 3 948,4 | 4 427,0 | 4 451,0 | 4 776,2 | |
| Total | 34 882,5 | 36 792,9 | 40 061,1 | 42 938,3 | 45 783,4 | |

1/ Figures for latest month are preliminary.

Table 2 – Year-on-year percentage change in food and beverages income at current prices

| Month | 2011 | 2012 | 2013 | 2014 | 2015 | 2015 year-to-date |
|--------------|------------|------------|------------|------------|------|-------------------|
| Jan | 7,1 | 6,2 | 6,9 | 6,8 | 11,0 | 11,0 |
| Feb | 8,3 | 8,3 | 7,8 | 7,8 | 5,8 | 8,4 |
| Mar | 6,8 | 7,0 | 11,2 | 2,2 | 10,3 | 9,1 |
| Apr | 9,1 | 5,0 | 7,3 | 7,7 | 7,8 | 8,7 |
| May | 2,4 | 7,8 | 12,2 | 7,7 | 5,1 | 8,0 |
| Jun | -2,2 | 11,5 | 8,5 | 2,7 | | |
| Jul | 5,4 | 6,7 | 7,5 | 5,8 | | |
| Aug | 4,6 | 12,9 | 9,4 | 7,5 | | |
| Sep | 6,0 | 11,5 | 4,2 | 4,2 | | |
| Oct | 5,2 | 6,7 | 5,4 | 11,8 | | |
| Nov | 4,9 | 9,9 | 7,9 | 7,9 | | |
| Dec | 8,0 | 12,1 | 0,5 | 7,3 | | |
| Total | 5,5 | 8,9 | 7,2 | 6,6 | | |

Table 3 – Food and beverages income at current prices by type of enterprise (R million)

| | | Dec-14 | Jan-15 | Feb-15 | Mar-15 | Apr-15 | May-15 1/ |
|--------------------------------|---------------------|----------------|----------------|----------------|----------------|----------------|----------------|
| Restaurants and coffee shops | Food sales | 1 887,5 | 1 497,2 | 1 365,6 | 1 517,4 | 1 486,9 | 1 476,3 |
| | Bar sales | 382,0 | 299,8 | 291,5 | 300,4 | 300,3 | 286,1 |
| | Other income | 45,8 | 32,2 | 32,9 | 35,8 | 27,8 | 29,6 |
| | Total | 2 315,3 | 1 829,2 | 1 690,0 | 1 853,6 | 1 815,0 | 1 792,0 |
| Takeaway and fast-food outlets | Food sales | 1 800,4 | 1 484,3 | 1 340,0 | 1 504,4 | 1 487,8 | 1 520,7 |
| | Bar sales | 19,6 | 20,0 | 19,1 | 23,4 | 20,8 | 19,4 |
| | Other income | 4,3 | 2,5 | 2,2 | 5,8 | 4,8 | 6,2 |
| | Total | 1 824,3 | 1 506,8 | 1 361,3 | 1 533,6 | 1 513,4 | 1 546,3 |
| Catering services | Food sales | 434,0 | 399,4 | 463,4 | 506,4 | 439,8 | 454,3 |
| | Bar sales | 151,4 | 110,0 | 118,0 | 143,0 | 117,5 | 112,8 |
| | Other income | 51,2 | 44,7 | 47,9 | 52,1 | 46,3 | 46,1 |
| | Total | 636,6 | 554,1 | 629,3 | 701,5 | 603,6 | 613,2 |
| Total industry | Food sales | 4 121,9 | 3 380,9 | 3 169,0 | 3 528,2 | 3 414,5 | 3 451,3 |
| | Bar sales | 553,0 | 429,8 | 428,6 | 466,8 | 438,6 | 418,3 |
| | Other income | 101,3 | 79,4 | 83,0 | 93,7 | 78,9 | 81,9 |
| | Total | 4 776,2 | 3 890,1 | 3 680,6 | 4 088,7 | 3 932,0 | 3 951,5 |

1/ Figures are preliminary.

Table 4 – Year-on-year percentage change in food and beverages income at current prices by type of enterprise

| | | Dec-14 | Jan-15 | Feb-15 | Mar-15 | Apr-15 | May-15 |
|--------------------------------|---------------------|-------------|-------------|-------------|-------------|-------------|-------------|
| Restaurants and coffee shops | Food sales | 10,0 | 9,4 | 6,6 | 8,3 | 6,0 | 5,3 |
| | Bar sales | -9,9 | 4,3 | 6,0 | 3,4 | 2,8 | 4,1 |
| | Other income | 31,2 | 27,8 | -7,8 | -3,0 | -10,9 | -2,6 |
| | Total | 6,4 | 8,8 | 6,1 | 7,2 | 5,1 | 5,0 |
| Takeaway and fast-food outlets | Food sales | 8,8 | 16,8 | 7,8 | 11,3 | 12,2 | 7,1 |
| | Bar sales | -10,1 | 9,9 | 14,4 | 38,5 | 31,6 | 7,8 |
| | Other income | 26,5 | -13,8 | -33,3 | 48,7 | 9,1 | 40,9 |
| | Total | 8,6 | 16,6 | 7,8 | 11,7 | 12,4 | 7,2 |
| Catering services | Food sales | 12,6 | 10,8 | 5,2 | 20,5 | 10,9 | 5,7 |
| | Bar sales | -8,7 | -12,8 | -14,0 | 8,6 | -11,0 | -12,9 |
| | Other income | 13,0 | 0,0 | 0,8 | -0,8 | -1,7 | -10,0 |
| | Total | 6,7 | 4,3 | 0,7 | 16,1 | 4,9 | 0,5 |
| Total industry | Food sales | 9,7 | 12,7 | 6,9 | 11,2 | 9,3 | 6,1 |
| | Bar sales | -9,6 | -0,4 | 0,0 | 6,3 | -0,3 | -0,9 |
| | Other income | 21,2 | 9,1 | -4,0 | 0,4 | -4,6 | -4,8 |
| | Total | 7,3 | 11,0 | 5,8 | 10,3 | 7,8 | 5,1 |

Table 5 – Contribution of each type of income to the year-on-year percentage change in food and beverages income at current prices (percentage points)

| | | Dec-14 | Jan-15 | Feb-15 | Mar-15 | Apr-15 | May-15 |
|--------------------------------|---------------------|---------------|---------------|---------------|---------------|---------------|---------------|
| Restaurants and coffee shops | Food sales | 3,8 | 3,7 | 2,4 | 3,1 | 2,3 | 2,0 |
| | Bar sales | -0,9 | 0,4 | 0,5 | 0,3 | 0,2 | 0,3 |
| | Other income | 0,2 | 0,2 | -0,1 | 0,0 | -0,1 | 0,0 |
| | Total | 3,1 | 4,2 | 2,8 | 3,4 | 2,4 | 2,3 |
| Takeaway and fast-food outlets | Food sales | 3,3 | 6,1 | 2,8 | 4,1 | 4,4 | 2,7 |
| | Bar sales | 0,0 | 0,1 | 0,1 | 0,2 | 0,1 | 0,0 |
| | Other income | 0,0 | 0,0 | 0,0 | 0,1 | 0,0 | 0,0 |
| | Total | 3,3 | 6,1 | 2,8 | 4,3 | 4,6 | 2,8 |
| Catering services | Food sales | 1,1 | 1,1 | 0,7 | 2,3 | 1,2 | 0,7 |
| | Bar sales | -0,3 | -0,5 | -0,6 | 0,3 | -0,4 | -0,4 |
| | Other income | 0,1 | 0,0 | 0,0 | 0,0 | 0,0 | -0,1 |
| | Total | 0,9 | 0,6 | 0,1 | 2,6 | 0,8 | 0,1 |
| Total industry | Food sales | 8,2 | 10,9 | 5,9 | 9,6 | 7,9 | 5,3 |
| | Bar sales | -1,3 | -0,1 | 0,0 | 0,7 | 0,0 | -0,1 |
| | Other income | 0,4 | 0,2 | -0,1 | 0,0 | -0,1 | -0,1 |
| | Total | 7,3 | 11,0 | 5,8 | 10,3 | 7,8 | 5,1 |

Survey information

| | |
|-----------------------------------|---|
| Introduction | The results presented in this publication are derived from the monthly survey of the food and beverages industry. This survey is based on a sample drawn from the 2014 business sampling frame (BSF) that contains businesses registered for value added tax (VAT). |
| Purpose of the survey | <p>The food and beverages survey is a monthly survey covering a sample of public and private enterprises involved in the preparation of meals and drinks for immediate consumption in South Africa. The purpose of this survey is to monitor trends in the food and beverages industry.</p> <p>The results of the food and beverage survey are used to compile estimates of the tourism satellite accounts (TSA) and the gross domestic product (GDP) and its components, which are used to develop and monitor government policy. These statistics are also used in the analysis of comparative business and industry performance.</p> |
| Scope of the survey | <p>This survey covers the following tax registered private and public enterprises, that are mainly engaged in providing food and beverages for immediate consumption:</p> <ul style="list-style-type: none">• restaurants and coffee shops;• takeaway and fast-food outlets; and• catering services. |
| Classification by industry | The 1993 edition of the <i>Standard Industrial Classification of all Economic Activities</i> (SIC), Fifth Edition, Report No 09-09-02, was used to classify the statistical units in the survey. The SIC is based on the 1990 <i>International Standard Industrial Classification of all Economic Activities</i> (ISIC) with suitable adaptations for local conditions. Each enterprise is classified to an industry which reflects its predominant activity. Statistics in this publication are presented at 5-digit SIC level. |
| Collection rate | The preliminary collection rate for the survey on food and beverages for May 2015 was 90,8%. The improved collection rate for April 2015 was 94,9%. |
| Statistical unit | The statistical unit for which information is compiled and published is an enterprise, defined as a legal unit or a combination of legal units that includes and directly controls all functions necessary to carry out its income activities. The statistical units are derived from and linked to the South African Revenue Service (SARS) administrative data. |
| Revised figures | Revised figures are mainly due to late submission of data to Stats SA, or respondents reporting revisions or corrections to their figures. Preliminary figures, as indicated in the relevant tables, are subject to change and when revised will not be indicated as such. Data are edited at the enterprise level. |
| Rounding-off of figures | Where figures have been rounded off, discrepancies may occur between sums of the component items and the totals. |
| Historical data | Historical food and beverages data are available on the Stats SA website. To access the data electronically, use the following link: http://www.statssa.gov.za/?page_id=1849 |
| Past publications | Past food and beverages releases are available on the Stats SA website. To access the releases electronically, use the following link: http://www.statssa.gov.za/?page_id=1866&PPN=P6420&SCH=5705 |

Technical notes

Survey methodology and design

The survey was conducted by mail, fax and telephone.

A sample of 900 enterprises was drawn from a population of 7 808 enterprises using stratified simple random sampling. The enterprises were first stratified at 5-digit level according to the SIC and then by size of enterprises. Large enterprises are completely enumerated. Turnover was used as the measure of size.

Class limits

The enterprises are divided into four size groups according to turnover. Large enterprises are enterprises with an annual turnover of R26 million and more. The cut-off points which define the size groups, namely large, medium, small and very small enterprises are given in Table D.

Table D – Measure of size classes (Rand)

| Enterprise size | Size group | Lower limits | Upper limits |
|-----------------|------------|--------------|--------------|
| Very small | 4 | 358 239 | 10 200 000 |
| Small | 3 | 10 200 001 | 12 000 000 |
| Medium | 2 | 12 000 001 | 26 000 000 |
| Large | 1 | 26 000 001 | |

Sample weighting

For those strata not completely enumerated, the weights to produce estimates are the inverse ratio of the sampling fraction, modified to take account of non-collection in the survey. Stratum estimates are calculated and then aggregated with the completely enumerated stratum to form subgroup estimates. These procedures are in line with international best practice.

Reliability of estimates

Data presented in this publication are based on information obtained from a sample and are, therefore, subject to sampling variability; that is, it may differ from the figures that would have been produced if the data had been obtained from all enterprises in the food and beverages industry in South Africa.

Relative standard error

One measure of the likely difference is given by the standard error (SE), which indicates the extent to which an estimate might have varied by chance because only a sample of enterprises was used. The relative standard error (RSE) provides an immediate indication of the percentage errors likely to have occurred due to sampling, and thus avoids the need to refer to the size of the estimate.

Table E – Estimate of total food and beverages industry income within 95% confidence limits – May 2015

| | Lower limit (R million) | Income (R million) | Upper limit (R million) | Relative standard error (RSE) % |
|---------------------|-------------------------|--------------------|-------------------------|---------------------------------|
| Total income | 3 755,7 | 3 951,5 | 4 524,1 | 4,7 |

Non-sampling errors

Inaccuracies may occur because of imperfections in reporting by enterprises and errors made in the collection and processing of the data. Inaccuracies of this kind are referred to as non-sampling errors. Every effort is made to minimise non-sampling errors by careful design of questionnaires, testing them in pilot studies, editing reported data and implementing efficient operating procedures. Non-sampling errors occur in both sample surveys and censuses.

Year-on-year percentage change

The year-on-year percentage change in a variable for any given period is the change between that period and the corresponding period of the previous year, expressed as a percentage of the latter.

| | | | | | | | | | | | | | | | |
|---|--|-----|-------------------------|-----|------------------------|------|-------------------------------|-----|---|----------|-------------------------|-----|----------------------------|-----|-----------------|
| Contribution (percentage points) | The contribution (percentage points) to the annual percentage change for any given period is calculated by multiplying the percentage change of each type of enterprise by its corresponding weight, divided by 100. The weight is the percentage contribution of each type of enterprise to total income in the corresponding period of the previous year. | | | | | | | | | | | | | | |
| Seasonal adjustment | Seasonally adjusted estimates will not be published until there are sufficient data points for this survey. As soon as sufficient data points are available, Stats SA will consider publishing seasonally adjusted estimates. | | | | | | | | | | | | | | |
| Glossary | | | | | | | | | | | | | | | |
| Enterprise | A legal unit or a combination of legal units that includes and directly controls all functions necessary to carry out its activities. | | | | | | | | | | | | | | |
| Industry | It is a group of enterprises engaged in the same or similar kinds of economic activity. Industries are defined in the <i>System of National Accounts (SNA)</i> in the same way as in the <i>Standard Industrial Classification of all Economic Activities, Fifth Edition</i> ; Report No 09-09-02 of January 1993 (SIC). | | | | | | | | | | | | | | |
| Income from food sales | Refers to income from the sale of meals and non-alcoholic drinks. | | | | | | | | | | | | | | |
| Income from bar sales | Refers to income from liquor sales. | | | | | | | | | | | | | | |
| Other income | Includes all income not earned from bar or food sales. | | | | | | | | | | | | | | |
| Symbols and abbreviations | <table border="0"> <tr> <td>BSF</td> <td>Business sampling frame</td> </tr> <tr> <td>GDP</td> <td>Gross domestic product</td> </tr> <tr> <td>SARS</td> <td>South African Revenue Service</td> </tr> <tr> <td>SIC</td> <td>Standard Industrial Classification of all Economic Activities</td> </tr> <tr> <td>Stats SA</td> <td>Statistics South Africa</td> </tr> <tr> <td>TSA</td> <td>Tourism satellite accounts</td> </tr> <tr> <td>VAT</td> <td>Value added tax</td> </tr> </table> | BSF | Business sampling frame | GDP | Gross domestic product | SARS | South African Revenue Service | SIC | Standard Industrial Classification of all Economic Activities | Stats SA | Statistics South Africa | TSA | Tourism satellite accounts | VAT | Value added tax |
| BSF | Business sampling frame | | | | | | | | | | | | | | |
| GDP | Gross domestic product | | | | | | | | | | | | | | |
| SARS | South African Revenue Service | | | | | | | | | | | | | | |
| SIC | Standard Industrial Classification of all Economic Activities | | | | | | | | | | | | | | |
| Stats SA | Statistics South Africa | | | | | | | | | | | | | | |
| TSA | Tourism satellite accounts | | | | | | | | | | | | | | |
| VAT | Value added tax | | | | | | | | | | | | | | |
| Restaurants and coffee shops | Enterprises involved in the sale and provision of meals and drinks, ordered from a menu, prepared on the premises for immediate consumption and with provided seating. | | | | | | | | | | | | | | |
| Takeaway and fast-food outlets | Enterprises involved in the sale and provision of meals and drinks, ordered from a menu, prepared on the premises for takeaway purposes in a packaged format, at a stand or in a location, with or without provided seating. | | | | | | | | | | | | | | |
| Catering services | Enterprises involved in the sale and supply of meals and drinks prepared on the premises on a contract basis and brought to other premises chosen by the person ordering them, to be served for immediate consumption to guests or customers. Catering services also include bars, taverns, other drinking places, ice-cream parlours, etc. | | | | | | | | | | | | | | |
| Technical enquiries | | | | | | | | | | | | | | | |
| Kgomotso Makolomako | Telephone number: (012) 337 6223 Email: kgomotsoma@statssa.gov.za | | | | | | | | | | | | | | |
| Keshnee Govender | Telephone number: (012) 310 8423 Email: keshneeg@statssa.gov.za | | | | | | | | | | | | | | |

General information

Stats SA publishes approximately 300 different statistical releases each year. It is not economically viable to produce them in more than one of South Africa's eleven official languages. Since the releases are used extensively, not only locally but also by international economic and social-scientific communities, Stats SA releases are published in English only.

Stats SA has copyright on this publication. Users may apply the information as they wish, provided that they acknowledge Stats SA as the source of the basic data wherever they process, apply, utilise, publish or distribute the data; and also that they specify that the relevant application and analysis (where applicable) result from their own processing of the data.

Stats SA products

A complete set of Stats SA publications is available at the Stats SA Library and the following libraries:

National Library of South Africa, Pretoria Division
National Library of South Africa, Cape Town Division
Natal Society Library, Pietermaritzburg
Library of Parliament, Cape Town
Bloemfontein Public Library
Johannesburg Public Library
Eastern Cape Library Services, King William's Town
Central Regional Library, Polokwane
Central Reference Library, Mbombela
Central Reference Collection, Kimberley
Central Reference Library, Mmabatho

Stats SA also provides a subscription service.

Electronic services

A large range of data is available via online services. For more detail about our electronic services, contact Stats SA's user information service at (012) 310 8600.

You can visit us on the internet at: www.statssa.gov.za

General enquiries

| | |
|------------------------------|---|
| User information services | Telephone number: (012) 310 8600 Email address: info@statssa.gov.za |
| Orders/subscription services | Telephone number: (012) 310 8044 Email address: magdaj@statssa.gov.za |
| Postal address | Private Bag X44, Pretoria, 0001 |

Produced by Stats SA