

STATISTICAL RELEASE

P6343.2

Motor trade sales (Preliminary)

December 2016

Embargoed until:
16 February 2017
11:30

ENQUIRIES:
Keshnee Naidoo
(012) 310 8423

FORTHCOMING ISSUE:
January 2017

EXPECTED RELEASE DATE:
16 March 2017

www.statssa.gov.za
info@statssa.gov.za
T +27 12 310 8911
F +27 12 310 8500

Private Bag X44, Pretoria, 0001, South Africa
ISibalo House, Koch Street, Salvokop, Pretoria, 0002

Contents

Sales at current prices: results for December 2016.....	2
Table A – Key growth rates in motor trade sales at current prices.....	2
Table B – Motor trade sales at current prices for the latest three months by type of activity.....	2
Figure 1 – Motor trade sales at current prices	3
Figure 2 – Motor trade sales at current prices: year-on-year percentage change	3
Tables.....	4
Table 1 – Motor trade sales at current prices (R million).....	4
Table 2 – Year-on-year percentage change in motor trade sales at current prices	4
Table 3 – Seasonally adjusted motor trade sales at current prices.....	4
Table 4 – Motor trade sales at current prices by type of activity (R million)	5
Table 5 – Year-on-year percentage change in motor trade sales at current prices by type of activity	5
Table 6 – Contribution of each type of activity to the year-on-year percentage change in motor trade sales at current prices	5
Survey information	6
Technical notes.....	7
Glossary.....	9
Technical enquiries	9
General information.....	10

Sales at current prices: results for December 2016

Table A – Key growth rates in motor trade sales at current prices

	Jul-16	Aug-16	Sep-16	Oct-16	Nov-16	Dec-16
Year-on-year % change, unadjusted	-1,4	3,9	-0,1	-0,7	4,1	0,7
Month-on-month % change, seasonally adjusted	2,2	-3,5	1,4	0,6	0,5	1,3
3-month % change, seasonally adjusted 1/	0,5	-1,4	-1,6	-2,0	0,3	1,1

1/ Percentage change between the previous 3 months and the 3 months ending in the month indicated.

Measured in nominal terms (current prices), motor trade sales increased by 1,6% year-on-year in 2016 compared with 2015. The largest contributors were:

- used vehicle sales (12,2% and contributing 2,1 percentage points); and
- sales of accessories (8,3% and contributing 1,5 percentage points).

In December 2016 motor trade sales increased by 0,7% year-on-year. The largest positive annual growth rates were recorded for used vehicle sales (10,5%), workshop income (4,8%) and fuel sales (3,6%) – see Table 5.

Seasonally adjusted motor trade sales increased by 1,3% in December 2016 compared with November 2016. This followed month-on-month changes of 0,5% in November 2016 and 0,6% in October 2016.

In the last quarter of 2016, seasonally adjusted motor trade sales increased by 1,1% compared with the previous quarter.

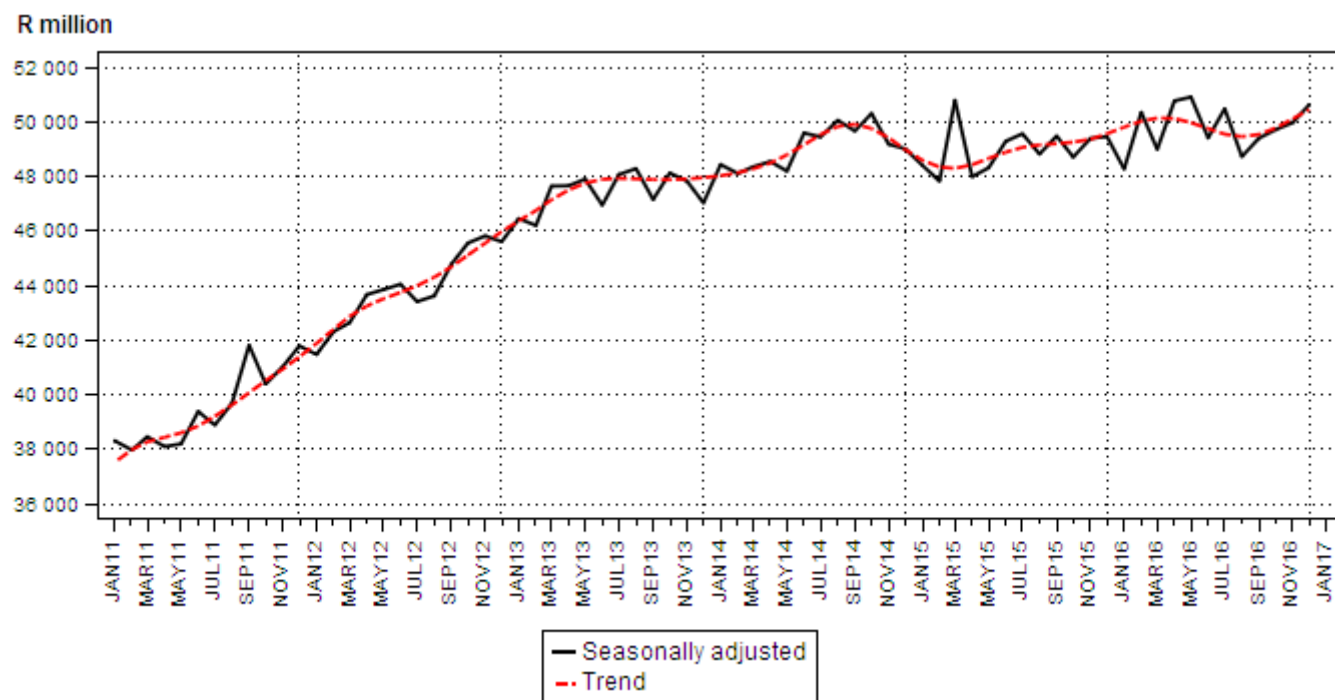
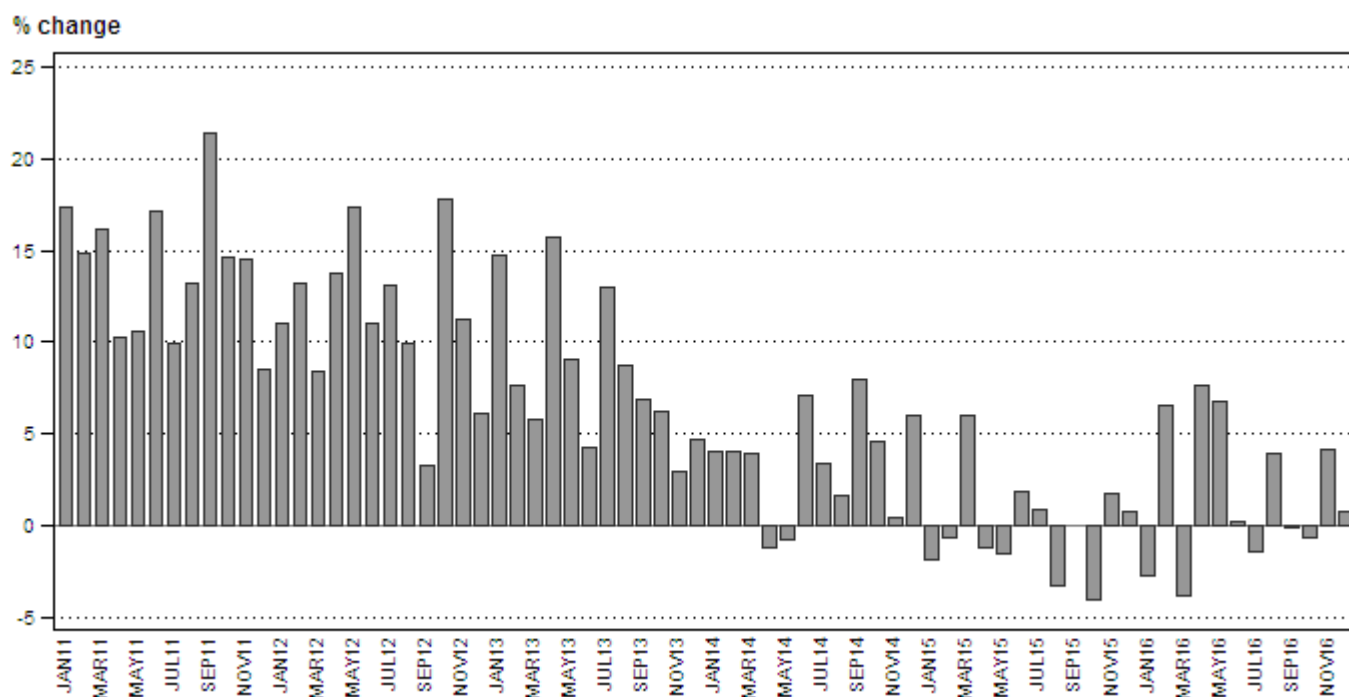
Table B – Motor trade sales at current prices for the latest three months by type of activity

Type of activity	Oct – Dec 2015 (R million)	Weight	Oct – Dec 2016 (R million)	% change between Oct – Dec 2015 and Oct – Dec 2016	Contribution (% points) to the total % change
New vehicle sales	41 257	27,6	38 265	-7,3	-2,0
Used vehicle sales	26 250	17,6	29 245	11,4	2,0
Workshop income	8 834	5,9	9 086	2,9	0,2
Income from the sales of accessories	27 606	18,5	28 858	4,5	0,8
Income from fuel sales	39 501	26,4	39 954	1,1	0,3
Income from convenience store sales 1/	5 976	4,0	6 061	1,4	0,1
Total	149 423	100,0	151 469	1,4	1,4

1/ Includes 'other' sales and trading income.

Motor trade sales increased by 1,4% in the last quarter of 2016 compared with the last quarter of 2015. The main contributors were:

- used vehicle sales (11,4% and contributing 2,0 percentage points);
- sales of accessories (4,5% and contributing 0,8 of a percentage point); and
- new vehicle sales (-7,3% and contributing -2,0 percentage points) – see Table B.

Figure 1 – Motor trade sales at current prices**Figure 2 – Motor trade sales at current prices: year-on-year percentage change**

PJ Lehohla
Statistician-General

Tables

Table 1 – Motor trade sales at current prices (R million)

Month	2010	2011	2012	2013	2014	2015	2016 1/
Jan	30 521	35 823	39 755	45 582	47 413	46 530	45 212
Feb	32 123	36 909	41 765	44 919	46 721	46 392	49 391
Mar	35 135	40 829	44 272	46 861	48 680	51 611	49 595
Apr	32 316	35 634	40 549	46 929	46 378	45 825	49 328
May	34 448	38 097	44 709	48 778	48 403	47 629	50 867
Jun	33 579	39 308	43 632	45 478	48 720	49 618	49 734
Jul	35 827	39 383	44 557	50 351	52 065	52 544	51 798
Aug	36 534	41 369	45 446	49 402	50 172	48 537	50 428
Sep	34 599	42 000	43 386	46 398	50 097	50 088	50 045
Oct	35 305	40 456	47 638	50 575	52 910	50 719	50 370
Nov	37 800	43 292	48 150	49 566	49 785	50 612	52 685
Dec	37 386	40 552	43 018	45 041	47 751	48 092	48 414
Total	415 573	473 652	526 877	569 880	589 095	588 197	597 867

1/ Figures for latest month are preliminary.

Table 2 – Year-on-year percentage change in motor trade sales at current prices

Month	2011	2012	2013	2014	2015	2016	2016 year-to-date
Jan	17,4	11,0	14,7	4,0	-1,9	-2,8	-2,8
Feb	14,9	13,2	7,6	4,0	-0,7	6,5	1,8
Mar	16,2	8,4	5,8	3,9	6,0	-3,9	-0,2
Apr	10,3	13,8	15,7	-1,2	-1,2	7,6	1,7
May	10,6	17,4	9,1	-0,8	-1,6	6,8	2,7
Jun	17,1	11,0	4,2	7,1	1,8	0,2	2,3
Jul	9,9	13,1	13,0	3,4	0,9	-1,4	1,7
Aug	13,2	9,9	8,7	1,6	-3,3	3,9	2,0
Sep	21,4	3,3	6,9	8,0	0,0	-0,1	1,7
Oct	14,6	17,8	6,2	4,6	-4,1	-0,7	1,5
Nov	14,5	11,2	2,9	0,4	1,7	4,1	1,7
Dec	8,5	6,1	4,7	6,0	0,7	0,7	1,6
Total	14,0	11,2	8,2	3,4	-0,2	1,6	

Table 3 – Seasonally adjusted motor trade sales at current prices

Month	R million				Month-on-month % change			
	2013	2014	2015	2016	2013	2014	2015	2016
Jan	46 453	48 433	48 404	48 273	1,9	3,0	-1,2	-2,4
Feb	46 203	48 108	47 830	50 342	-0,5	-0,7	-1,2	4,3
Mar	47 644	48 351	50 789	48 994	3,1	0,5	6,2	-2,7
Apr	47 655	48 545	47 987	50 766	0,0	0,4	-5,5	3,6
May	47 900	48 194	48 316	50 907	0,5	-0,7	0,7	0,3
Jun	46 947	49 589	49 288	49 413	-2,0	2,9	2,0	-2,9
Jul	48 067	49 446	49 561	50 478	2,4	-0,3	0,6	2,2
Aug	48 285	50 054	48 820	48 724	0,5	1,2	-1,5	-3,5
Sep	47 154	49 665	49 478	49 402	-2,3	-0,8	1,3	1,4
Oct	48 122	50 302	48 707	49 710	2,1	1,3	-1,6	0,6
Nov	47 832	49 179	49 391	49 970	-0,6	-2,2	1,4	0,5
Dec	47 029	49 010	49 459	50 628	-1,7	-0,3	0,1	1,3

Table 4 – Motor trade sales at current prices by type of activity (R million)

Type of activity	Jul-16	Aug-16	Sep-16	Oct-16	Nov-16	Dec-16 1/
New vehicle sales	12 929	12 722	12 625	12 656	13 337	12 272
Used vehicle sales	9 993	9 860	9 844	9 763	10 334	9 148
Workshop income	3 035	3 114	3 160	3 066	3 225	2 795
Income from the sales of accessories	9 746	9 925	9 981	9 809	10 421	8 628
Income from fuel sales	14 148	12 909	12 481	13 131	13 358	13 465
Income from convenience store sales 2/	1 948	1 898	1 954	1 945	2 010	2 106
Total	51 798	50 428	50 045	50 370	52 685	48 414

1/ Figures are preliminary.

2/ Includes 'other' sales and trading income.

Table 5 – Year-on-year percentage change in motor trade sales at current prices by type of activity

Type of activity	Jul-16	Aug-16	Sep-16	Oct-16	Nov-16	Dec-16
New vehicle sales	-10,6	-1,9	-10,4	-7,5	-4,6	-9,7
Used vehicle sales	2,4	13,8	11,0	8,1	15,5	10,5
Workshop income	0,4	11,1	5,9	-0,3	4,4	4,8
Income from the sales of accessories	3,4	12,2	7,4	3,0	8,1	2,3
Income from fuel sales	0,6	-4,0	-4,0	-2,2	2,1	3,6
Income from convenience store sales 1/	7,3	4,5	5,9	-1,5	7,0	-0,8
Total	-1,4	3,9	-0,1	-0,7	4,1	0,7

1/ Includes 'other' sales and trading income.

Table 6 – Contribution of each type of activity to the year-on-year percentage change in motor trade sales at current prices

Type of activity	Jul-16	Aug-16	Sep-16	Oct-16	Nov-16	Dec-16
New vehicle sales	-2,9	-0,5	-2,9	-2,0	-1,3	-2,7
Used vehicle sales	0,4	2,5	1,9	1,4	2,7	1,8
Workshop income	0,0	0,6	0,4	0,0	0,3	0,3
Income from the sales of accessories	0,6	2,2	1,4	0,6	1,5	0,4
Income from fuel sales	0,2	-1,1	-1,0	-0,6	0,5	1,0
Income from convenience store sales 1/	0,3	0,2	0,2	-0,1	0,3	0,0
Total	-1,4	3,9	-0,1	-0,7	4,1	0,7

1/ Includes 'other' sales and trading income.

Survey information

Introduction	<p>1 Statistics South Africa (Stats SA) conducts a monthly survey covering enterprises in the motor trade industry (see 4 below). This survey is based on a sample drawn from Stats SA's 2016 business sampling frame (BSF) that contains businesses registered at the South African Revenue Service (SARS) for value added tax (VAT). Stats SA continuously updates its BSF, which is linked to the SARS administrative data.</p> <p>2 In order to improve timeliness, some information for the latest month had to be estimated due to late response. These estimates will be revised in future statistical releases as soon as information becomes available. Published motor trade sales estimates exclude VAT.</p>
Purpose of the survey	<p>3 The results of the monthly motor trade sales survey are used to compile estimates of the gross domestic product (GDP) and its components, which are used in monitoring the state of the economy and formulation of economic policy. These statistics are also used in the analysis of comparative business and industry performance.</p>
Scope of the survey	<p>4 The survey collects information from a sample of enterprises in South Africa that are predominantly involved in motor trade. These enterprises include:</p> <ul style="list-style-type: none"> • motor vehicle dealers, filling stations and workshops; • motor cycle dealers; • spares and accessories; • tyre dealers; • automotive electricians; • radiator repairs; • panel beaters and spray painters; • 'other' specialised motor repair services; and • 'other' motor trade.
Classification	<p>5 The 1993 edition of the <i>Standard Industrial Classification of all Economic Activities</i> (SIC), Fifth Edition, Report No. 09-90-02, was used to classify the statistical units in the survey. The SIC is based on the 1990 <i>International Standard Industrial Classification of all Economic Activities</i> (ISIC) with suitable adaptations for local conditions. Each enterprise is classified to the industry which reflects its predominant activity. Statistics in this publication are presented at SIC group (four digits) level.</p>
Collection rate	<p>6 The preliminary collection rate for the survey on motor trade sales for December 2016 was 85,9%. The improved collection rate for November 2016 was 88,0%.</p>
Statistical unit	<p>7 The statistical unit for which information is compiled and published is the enterprise, defined as a legal unit or a combination of legal units that includes and directly controls all functions necessary to carry out its sales and service activities.</p>
Revised figures	<p>8 Revised figures are mainly due to late submission of data to Stats SA, or respondents reporting revisions or corrections to their figures. Preliminary figures, as indicated in the relevant tables, are subject to change and when revised will not be indicated as such.</p>
Related publications	<p>9 Users may also refer to the following publication available from Stats SA:</p> <ul style="list-style-type: none"> • <i>Stats in Brief</i> issued annually.

- Rounding-off of figures** 10 Where figures have been rounded off, discrepancies may occur between sums of the component items and the totals.
- Historical data** 11 Historical motor trade data are available on the Stats SA website. To access the data electronically, use the following link:
[Click to download historical data](#)
- Past publications** 12 Past motor trade releases are available on the Stats SA website. To access the releases electronically, use the following link:
[Click to download past releases](#)

Technical notes

- Survey methodology and design** 1 The survey is conducted monthly. Questionnaires are sent to a sample of 852 enterprises from a population of 10 788 enterprises. Completed questionnaires are required to be returned to Stats SA within 10 days after the end of the reference month. Email, fax and telephone reminders are used to follow up on non-respondents.
- 2 A stratified random sample was drawn in April 2016 from Stats SA's business sampling frame (BSF) at the SIC four-digit level. Strata were formed using a combination of Standard Industrial Classification and the measure of size classes for enterprises (see point 3 below).

The Neyman optimal allocation formula given below was used to allocate samples to each stratum.

$$n_h = n * (N_h * S_h) / [\sum (N_i * S_i)].$$

Neyman allocation formula not only allocates sample sizes to each stratum but also calculates the relative precision for each stratum as well as the relative precision for all strata. The relative precision for these strata was 4,0%.

- Class limits** 3 Each motor trade classification group (SIC at four digit level) is divided into four size groups. All large enterprises (size group one) are completely enumerated. Simple random sampling is applied to medium and small enterprises (size groups two, three and four). The total value of sales of the large enterprises (size group one) per classification group is added to the weighted totals of size groups two, three and four to reflect the total value of sales.

Measure of size classes (Rand)

Enterprise size	Size group	Lower limits	Upper limits
Very small	4	1 780 071	18 000 000
Small	3	18 000 001	85 500 000
Medium	2	85 500 001	175 500 000
Large	1	175 500 001	

- Sample weighting** 4 For those strata not completely enumerated, the weights to produce estimates are the inverse ratio of the sampling fraction, modified to take account of non-response in the survey. Stratum estimates are calculated and then aggregated with the completely enumerated stratum to form classification group estimates. These procedures are consistent with international best practice.

Seasonal adjustment	5	<p>Seasonally adjusted estimates are generated each month using the X-12-ARIMA Seasonal Adjustment Program developed by the US Bureau of the Census. Seasonal adjustment is a means of removing the estimated effects of normal seasonal variation from the series so that the effects of other influences on the series can be recognised more clearly. Seasonal adjustment does not aim to remove irregular or non-seasonal influences which may be present in any particular month. Influences that are volatile or unsystematic can still make it difficult to interpret the movement of the series even after adjustment for seasonal variations. Therefore the month-to-month movements of seasonally adjusted estimates may not be reliable indicators of trend behaviour. The X-12-ARIMA procedure for motor trade sales is described in more detail on the Stats SA website at:</p> <p>Click to Download Seasonal adjustment Motor Trade Sales July 2016</p>
Trend cycle	6	<p>The trend is the long-term pattern or movement of a time series. The X-12-ARIMA Seasonal Adjustment Program is used for smoothing seasonally adjusted estimates to estimates of the underlying trend cycle.</p>
Reliability of estimates	7	<p>Data presented in this publication are based on information obtained from a sample and are, therefore, subject to sampling variability; that is, they may differ from the figures that would have been produced if the data had been obtained from all enterprises in the motor trade industry in South Africa. Estimates are subject to sampling and non-sampling errors.</p>
	8	<p>Inaccuracies may occur because of imperfections in reporting by enterprises and errors made in the collection and processing of the data. Inaccuracies of this kind are referred to as non-sampling errors. Every effort is made to minimise non-sampling errors by careful design of questionnaires, testing them in pilot studies, editing reported data and implementing efficient operating procedures. Fluctuations may occur in consecutive months as a result of seasonal and economic factors.</p>
Month-on-month percentage change	9	<p>The month-on-month percentage change in a variable for any given month is the change between that month and the previous month, expressed as a percentage of the latter.</p>
Year-on-year percentage change	10	<p>The year-on-year percentage change in a variable for any given period is the change between that period and the corresponding period of the previous year, expressed as a percentage of the latter.</p>
Contribution (percentage points)	11	<p>The contribution (percentage points) to the year-on-year percentage change is calculated by multiplying the percentage change of each type of activity by its corresponding weight, divided by 100. The weight is the percentage contribution of each type of activity to total motor trade sales in the corresponding period of the previous year.</p>

Glossary

Enterprise An enterprise is a legal entity or a combination of legal units that includes and directly controls all functions necessary to carry out its sales activities.

Industry An industry is made up of enterprises engaged in the same or similar kinds of economic activity. Industries are defined in the *System of National Accounts* (SNA) in the same way as in the *Standard Industrial Classification of all Economic Activities* (SIC), Fifth Edition, Report No. 09-90-02 of January 1993.

Symbols and abbreviations	BSF	Business sampling frame
	GDP	Gross domestic product
	ISIC	International Standard Industrial Classification
	IT	Income tax
	Rm	Rand million
	SIC	Standard Industrial Classification of all Economic Activities
	SARS	South African Revenue Service
	Stats SA	Statistics South Africa
	VAT	Value added tax

Technical enquiries

Peter Makota Telephone number: (012) 310 4837
Email: petermak@statssa.gov.za

Keshnee Naidoo Telephone number: (012) 310 8423
Email: keshneen@statssa.gov.za

General information

Stats SA publishes approximately 300 different statistical releases each year. It is not economically viable to produce them in more than one of South Africa's eleven official languages. Since the releases are used extensively, not only locally but also by international economic and social-scientific communities, Stats SA releases are published in English only.

Stats SA has copyright on this publication. Users may apply the information as they wish, provided that they acknowledge Stats SA as the source of the basic data wherever they process, apply, utilise, publish or distribute the data; and also that they specify that the relevant application and analysis (where applicable) result from their own processing of the data.

Advance release calendar

A release calendar is disseminated on www.statssa.gov.za

Stats SA products

A complete set of Stats SA publications is available at the Stats SA Library and the following libraries:

National Library of South Africa, Pretoria Division
National Library of South Africa, Cape Town Division
Natal Society Library, Pietermaritzburg
Library of Parliament, Cape Town
Bloemfontein Public Library
Johannesburg Public Library
Eastern Cape Library Services, King William's Town
Central Regional Library, Polokwane
Central Reference Library, Mbombela
Central Reference Collection, Kimberley
Central Reference Library, Mmabatho

Stats SA also provides a subscription service.

Electronic services

A large range of data is available via online services. For more detail about our electronic services, contact Stats SA's user information service at (012) 310 8600.

You can visit us on the internet at: www.statssa.gov.za

General enquiries

User information services	Telephone number: (012) 310 8600 Email address: info@statssa.gov.za
---------------------------	---

Postal address	Private Bag X44, Pretoria, 0001
----------------	---------------------------------

Produced by Stats SA