



stats sa

Department:
Statistics South Africa
REPUBLIC OF SOUTH AFRICA

Private Bag X44, Pretoria, 0001, South Africa, ISibalo House, Koch Street, Salvokop, Pretoria, 0002
www.statssa.gov.za, info@statssa.gov.za, Tel +27 12 310 8911

STATISTICAL RELEASE

P6141.2

Wholesale trade sales (Preliminary)

November 2020

**Embargoed until:
21 January 2021
10:00**

ENQUIRIES:
Keshnee Naidoo
(083) 689 5341

FORTHCOMING ISSUE:
December 2020

EXPECTED RELEASE DATE:
18 February 2021

Contents

Sales at constant 2015 prices: results for November 2020	2
Table A – Key growth rates in wholesale trade sales at constant 2015 prices	2
Figure 1 – Wholesale trade sales at constant 2015 prices.....	2
Sales at current prices: results for November 2020.....	3
Table B – Key growth rates in wholesale trade sales at current prices	3
Table C – Wholesale trade sales at current prices for the latest three months by type of dealer	3
Tables	4
Table 1 – Wholesale trade sales at constant 2015 prices (R million).....	4
Table 2 – Year-on-year percentage change in wholesale trade sales at constant 2015 prices.....	4
Table 3 – Seasonally adjusted wholesale trade sales at constant 2015 prices	4
Table 4 – Wholesale trade sales at current prices (R million)	5
Table 5 – Year-on-year percentage change in wholesale trade sales at current prices	5
Table 6 – Seasonally adjusted wholesale trade sales at current prices	5
Table 7 – Wholesale trade sales at current prices by type of dealer (R million)	6
Table 8 – Year-on-year percentage change in wholesale trade sales at current prices by type of dealer	6
Table 9 – Contribution of type of dealer to the year-on-year percentage change in wholesale trade sales at current prices	6
Survey information.....	7
Technical notes	9
Glossary.....	11
Technical enquiries.....	11
General information	12

Sales at constant 2015 prices: results for November 2020

Table A – Key growth rates in wholesale trade sales at constant 2015 prices

	Jun-20	Jul-20	Aug-20	Sep-20	Oct-20	Nov-20
Year-on-year % change, unadjusted	-2,9	-5,0	-3,8	0,0	-4,6	-2,2
Month-on-month % change, seasonally adjusted	10,0	10,1	-1,1	0,3	-2,0	1,4
3-month % change, seasonally adjusted 1/	-19,9	5,4	18,9	25,8	8,1	1,9

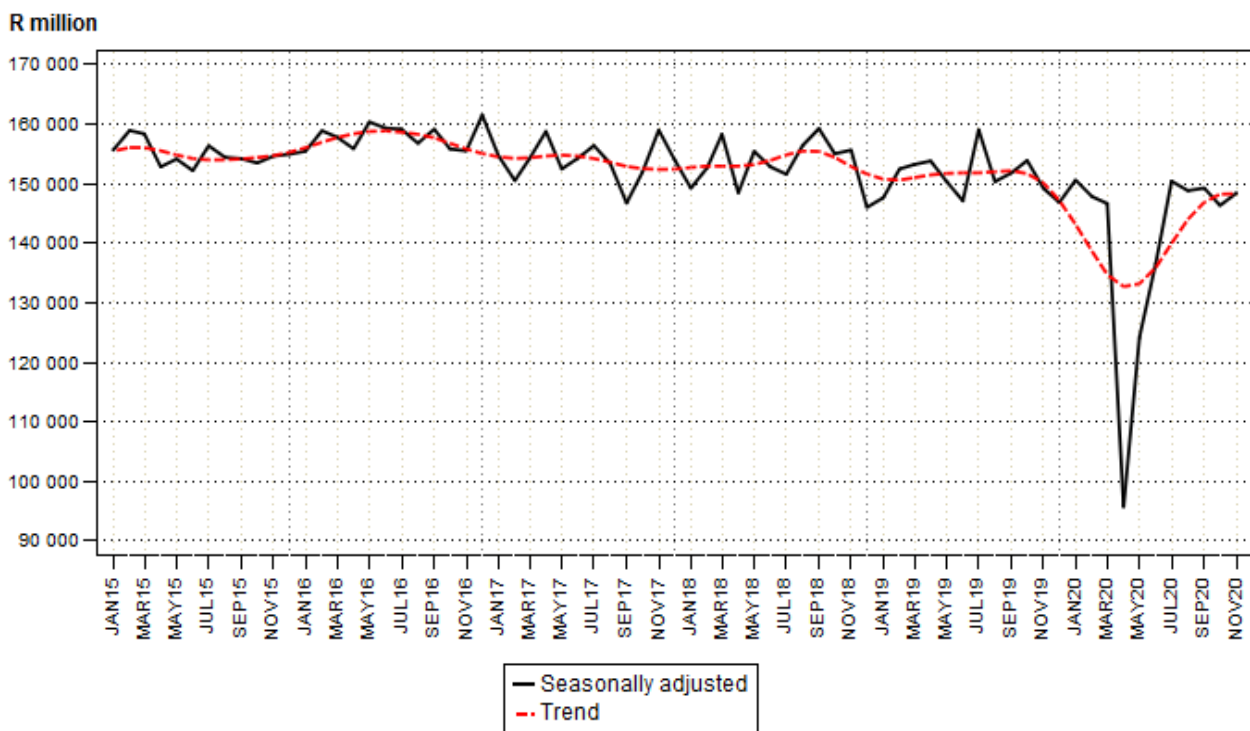
1/ Percentage change between the previous 3 months and the 3 months ending in the month indicated.

Measured in real terms (constant 2015 prices), wholesale trade sales decreased by 2,2% in November 2020 compared with November 2019.

Seasonally adjusted wholesale trade sales increased by 1,4% in November 2020 compared with October 2020. This followed month-on-month changes of -2,0% in October 2020 and 0,3% in September 2020.

In the three months ended November 2020, seasonally adjusted wholesale trade sales increased by 1,9% compared with the previous three months.

Figure 1 – Wholesale trade sales at constant 2015 prices



Sales at current prices: results for November 2020

Table B – Key growth rates in wholesale trade sales at current prices

	Jun-20	Jul-20	Aug-20	Sep-20	Oct-20	Nov-20
Year-on-year % change, unadjusted	-6,2	-5,5	-3,4	0,7	-3,8	-1,1
Month-on-month % change, seasonally adjusted	13,5	9,3	-0,3	1,0	-0,2	-0,2
3-month % change, seasonally adjusted 1/	-24,1	3,8	21,8	29,0	10,5	3,5

1/ Percentage change between the previous 3 months and the 3 months ending in the month indicated.

Measured in nominal terms (current prices), wholesale trade sales decreased by 1,1% in November 2020 compared with November 2019.

The main negative contributor was dealers in solid, liquid and gaseous fuels and related products (-25,0% and contributing -5,8 percentage points).

The main positive contributor to the annual change in November was dealers in 'other' household goods except precious stones (22,5% and contributing 2,8 percentage points) – see Tables 8 and 9.

Table C – Wholesale trade sales at current prices for the latest three months by type of dealer

Type of dealer	Sep – Nov 2019 (R million)	Weight	Sep – Nov 2020 (R million)	% change between Sep – Nov 2019 and Sep – Nov 2020	Contribution (% points) to the total % change
Fee or contract basis	27 221	4,5	36 367	33,6	1,5
Agricultural raw materials and livestock	41 167	6,7	46 736	13,5	0,9
Food, beverages and tobacco	95 950	15,7	96 871	1,0	0,2
Textiles, clothing and footwear	13 160	2,2	11 255	-14,5	-0,3
Other household goods except precious stones	72 198	11,8	84 991	17,7	2,1
Precious stones, jewellery and silverware	16 542	2,7	12 842	-22,4	-0,6
Solid, liquid and gaseous fuels and related products	141 809	23,2	109 643	-22,7	-5,3
Metals and metal ores	13 325	2,2	13 826	3,8	0,1
Construction and building materials	31 371	5,1	37 199	18,6	0,9
Other intermediate products, waste and scrap	34 339	5,6	36 642	6,7	0,4
Machinery, equipment and supplies	77 528	12,7	72 273	-6,8	-0,9
Other goods	45 351	7,4	42 139	-7,1	-0,5
Total	609 962	100,0	600 784	-1,5	-1,5

Wholesale trade sales decreased by 1,5% in the three months ended November 2020 compared with the three months ended November 2019. The main negative contributor was dealers in solid, liquid and gaseous fuels and related products (-22,7% and contributing -5,3 percentage points).

The main positive contributor was dealers in 'other' household goods except precious stones (17,7% and contributing 2,1 percentage points) – see Table C.

Risenga Maluleke
Statistician-General

Tables

Table 1 – Wholesale trade sales at constant 2015 prices (R million)

Month	2014	2015	2016	2017	2018	2019	2020 1/
Jan	138 998	140 072	136 357	137 680	134 431	133 237	136 671
Feb	147 556	152 922	161 677	143 550	144 651	143 661	145 705
Mar	148 636	162 436	160 352	159 717	159 536	153 783	148 743
Apr	141 316	139 052	145 691	140 879	136 514	143 745	83 339
May	146 670	149 704	158 174	152 460	155 382	150 487	120 608
Jun	148 766	154 044	159 454	158 058	155 273	145 369	141 209
Jul	144 792	155 319	154 867	151 509	150 834	160 884	152 909
Aug	150 604	151 976	159 571	156 465	159 676	153 354	147 477
Sep	158 911	161 670	167 498	152 801	160 136	154 279	154 247
Oct	165 663	166 035	164 736	164 298	169 544	168 419	160 755
Nov	161 774	169 476	172 520	174 022	172 804	164 061	160 517
Dec	155 228	155 912	161 392	150 131	140 494	144 045	
Total	1 808 914	1 858 618	1 902 289	1 841 570	1 839 275	1 815 324	

1/ Figures for latest month are preliminary.

Table 2 – Year-on-year percentage change in wholesale trade sales at constant 2015 prices

Month	2015	2016	2017	2018	2019	2020	2020 year-to-date
Jan	0,8	-2,7	1,0	-2,4	-0,9	2,6	2,6
Feb	3,6	5,7	-11,2	0,8	-0,7	1,4	2,0
Mar	9,3	-1,3	-0,4	-0,1	-3,6	-3,3	0,1
Apr	-1,6	4,8	-3,3	-3,1	5,3	-42,0	-10,4
May	2,1	5,7	-3,6	1,9	-3,2	-19,9	-12,4
Jun	3,5	3,5	-0,9	-1,8	-6,4	-2,9	-10,8
Jul	7,3	-0,3	-2,2	-0,4	6,7	-5,0	-9,9
Aug	0,9	5,0	-1,9	2,1	-4,0	-3,8	-9,1
Sep	1,7	3,6	-8,8	4,8	-3,7	0,0	-8,1
Oct	0,2	-0,8	-0,3	3,2	-0,7	-4,6	-7,7
Nov	4,8	1,8	0,9	-0,7	-5,1	-2,2	-7,1
Dec	0,4	3,5	-7,0	-6,4	2,5		
Total	2,7	2,3	-3,2	-0,1	-1,3		

Table 3 – Seasonally adjusted wholesale trade sales at constant 2015 prices

Month	R million				Month-on-month % change			
	2017	2018	2019	2020	2017	2018	2019	2020
Jan	154 672	149 260	147 648	150 616	-4,2	-3,1	1,1	2,6
Feb	150 531	152 693	152 483	147 846	-2,7	2,3	3,3	-1,8
Mar	154 248	158 315	153 232	146 666	2,5	3,7	0,5	-0,8
Apr	158 792	148 460	153 812	95 728	2,9	-6,2	0,4	-34,7
May	152 491	155 433	150 395	124 160	-4,0	4,7	-2,2	29,7
Jun	154 302	152 835	147 126	136 602	1,2	-1,7	-2,2	10,0
Jul	156 410	151 596	159 078	150 423	1,4	-0,8	8,1	10,1
Aug	153 382	156 417	150 363	148 835	-1,9	3,2	-5,5	-1,1
Sep	146 759	159 258	151 806	149 273	-4,3	1,8	1,0	0,3
Oct	151 933	155 033	153 899	146 349	3,5	-2,7	1,4	-2,0
Nov	159 015	155 650	149 226	148 419	4,7	0,4	-3,0	1,4
Dec	154 023	146 029	146 853		-3,1	-6,2	-1,6	

Table 4 – Wholesale trade sales at current prices (R million)

Month	2014	2015	2016	2017	2018	2019	2020 1/
Jan	138 966	132 824	140 664	149 796	155 500	160 366	172 681
Feb	148 477	145 340	167 909	157 920	166 393	172 810	183 401
Mar	151 465	159 202	166 178	175 902	181 678	187 642	185 731
Apr	144 483	138 746	153 668	155 084	157 693	178 663	101 674
May	149 741	150 562	167 088	169 166	182 054	188 309	145 181
Jun	152 156	156 371	170 734	174 665	184 468	182 647	171 324
Jul	148 916	158 135	167 361	167 530	181 177	200 851	189 865
Aug	153 967	153 293	170 398	173 748	192 524	191 785	185 335
Sep	162 066	162 769	177 849	172 129	194 427	192 740	193 996
Oct	168 125	169 187	176 422	186 969	210 584	211 576	203 441
Nov	162 481	172 870	187 122	199 923	214 427	205 646	203 347
Dec	153 497	159 318	175 335	174 465	171 892	181 345	
Total	1 834 340	1 858 617	2 020 728	2 057 297	2 192 817	2 254 380	

1/ Figures for latest month are preliminary.

Table 5 – Year-on-year percentage change in wholesale trade sales at current prices

Month	2015	2016	2017	2018	2019	2020	2020 year-to-date
Jan	-4,4	5,9	6,5	3,8	3,1	7,7	7,7
Feb	-2,1	15,5	-5,9	5,4	3,9	6,1	6,9
Mar	5,1	4,4	5,9	3,3	3,3	-1,0	4,0
Apr	-4,0	10,8	0,9	1,7	13,3	-43,1	-8,0
May	0,5	11,0	1,2	7,6	3,4	-22,9	-11,2
Jun	2,8	9,2	2,3	5,6	-1,0	-6,2	-10,3
Jul	6,2	5,8	0,1	8,1	10,9	-5,5	-9,6
Aug	-0,4	11,2	2,0	10,8	-0,4	-3,4	-8,7
Sep	0,4	9,3	-3,2	13,0	-0,9	0,7	-7,6
Oct	0,6	4,3	6,0	12,6	0,5	-3,8	-7,2
Nov	6,4	8,2	6,8	7,3	-4,1	-1,1	-6,6
Dec	3,8	10,1	-0,5	-1,5	5,5		
Total	1,3	8,7	1,8	6,6	2,8		

Table 6 – Seasonally adjusted wholesale trade sales at current prices

Month	R million				Month-on-month % change			
	2017	2018	2019	2020	2017	2018	2019	2020
Jan	170 886	176 395	182 336	195 421	-2,2	-0,4	3,5	6,8
Feb	166 351	176 011	183 281	192 060	-2,7	-0,2	0,5	-1,7
Mar	169 610	181 261	185 075	181 226	2,0	3,0	1,0	-5,6
Apr	174 201	169 385	193 909	112 393	2,7	-6,6	4,8	-38,0
May	168 615	182 008	187 929	149 405	-3,2	7,5	-3,1	32,9
Jun	171 986	184 370	186 505	169 577	2,0	1,3	-0,8	13,5
Jul	169 758	179 836	196 961	185 303	-1,3	-2,5	5,6	9,3
Aug	170 472	188 018	187 698	184 725	0,4	4,5	-4,7	-0,3
Sep	166 117	191 640	186 609	186 569	-2,6	1,9	-0,6	1,0
Oct	172 620	192 971	193 739	186 114	3,9	0,7	3,8	-0,2
Nov	180 381	192 410	187 466	185 695	4,5	-0,3	-3,2	-0,2
Dec	177 077	176 190	182 919		-1,8	-8,4	-2,4	

Table 7 – Wholesale trade sales at current prices by type of dealer (R million)

Type of dealer	Jun-20	Jul-20	Aug-20	Sep-20	Oct-20	Nov-20 1/
Fee or contract basis	8 046	9 062	9 950	11 260	14 035	11 072
Agricultural raw materials and livestock	15 367	16 585	13 691	15 701	14 612	16 423
Food, beverages and tobacco	28 743	28 602	32 190	31 965	32 195	32 711
Textiles, clothing and footwear	2 557	2 233	3 119	3 253	4 085	3 917
Other household goods except precious stones	25 368	27 592	27 655	25 988	28 167	30 836
Precious stones, jewellery and silverware	3 194	2 921	2 420	4 511	4 664	3 667
Solid, liquid and gaseous fuels and related products	29 580	39 035	36 649	37 872	35 841	35 930
Metals and metal ores	3 416	4 230	4 133	4 474	4 653	4 699
Construction and building materials	8 977	12 889	10 255	13 280	11 983	11 936
Other intermediate products, waste and scrap	7 504	8 650	9 457	11 388	12 893	12 361
Machinery, equipment and supplies	24 602	25 686	23 697	21 527	26 258	24 488
Other goods	13 969	12 381	12 118	12 778	14 054	15 307
Total	171 324	189 865	185 335	193 996	203 441	203 347

1/ Figures are preliminary.

Table 8 – Year-on-year percentage change in wholesale trade sales at current prices by type of dealer

Type of dealer	Jun-20	Jul-20	Aug-20	Sep-20	Oct-20	Nov-20
Fee or contract basis	-0,5	-2,4	24,0	29,8	46,5	23,5
Agricultural raw materials and livestock	16,7	15,9	13,2	20,4	9,9	10,8
Food, beverages and tobacco	3,9	-3,7	11,1	5,9	-2,6	0,0
Textiles, clothing and footwear	-3,6	-47,5	-21,4	-22,0	-17,2	-3,4
Other household goods except precious stones	19,3	27,1	24,1	10,4	20,0	22,5
Precious stones, jewellery and silverware	-23,8	-38,8	-48,1	-8,3	-28,9	-27,6
Solid, liquid and gaseous fuels and related products	-37,6	-22,0	-24,8	-16,3	-26,3	-25,0
Metals and metal ores	-18,1	-11,4	-4,5	2,6	0,9	8,0
Construction and building materials	-0,3	21,5	-8,0	44,4	7,2	8,5
Other intermediate products, waste and scrap	-5,3	-2,0	0,6	8,1	2,4	10,2
Machinery, equipment and supplies	6,4	-5,2	-1,9	-14,0	-4,9	-1,7
Other goods	-0,2	-19,9	-13,6	-7,6	-12,3	-1,2
Total	-6,2	-5,5	-3,4	0,7	-3,8	-1,1

Table 9 – Contribution of type of dealer to the year-on-year percentage change in wholesale trade sales at current prices

Type of dealer	Jun-20	Jul-20	Aug-20	Sep-20	Oct-20	Nov-20
Fee or contract basis	0,0	-0,1	1,0	1,3	2,1	1,0
Agricultural raw materials and livestock	1,2	1,1	0,8	1,4	0,6	0,8
Food, beverages and tobacco	0,6	-0,5	1,7	0,9	-0,4	0,0
Textiles, clothing and footwear	-0,1	-1,0	-0,4	-0,5	-0,4	-0,1
Other household goods except precious stones	2,2	2,9	2,8	1,3	2,2	2,7
Precious stones, jewellery and silverware	-0,5	-0,9	-1,2	-0,2	-0,9	-0,7
Solid, liquid and gaseous fuels and related products	-9,7	-5,5	-6,3	-3,8	-6,0	-5,8
Metals and metal ores	-0,4	-0,3	-0,1	0,1	0,0	0,2
Construction and building materials	0,0	1,1	-0,5	2,1	0,4	0,5
Other intermediate products, waste and scrap	-0,2	-0,1	0,0	0,4	0,1	0,6
Machinery, equipment and supplies	0,8	-0,7	-0,2	-1,8	-0,6	-0,2
Other goods	0,0	-1,5	-1,0	-0,5	-0,9	-0,1
Total	-6,2	-5,5	-3,4	0,7	-3,8	-1,1

Survey information

Introduction	<p>1 Statistics South Africa (Stats SA) conducts a monthly survey covering enterprises in the wholesale trade industry (see 4 below). This survey is based on a sample drawn from Stats SA's 2019 business sampling frame (BSF) that contains businesses registered at the South African Revenue Service (SARS) for value added tax (VAT) and income tax (IT). Stats SA continuously updates its BSF, which is linked to the SARS administrative data.</p> <p>2 In order to improve timeliness, some information for the latest month had to be estimated due to late response. These estimates will be revised in future statistical releases as soon as information becomes available. Published wholesale trade sales estimates exclude VAT.</p>
Purpose of the survey	<p>3 The results of the monthly wholesale trade sales survey are used to compile estimates of the gross domestic product (GDP) and its components, which are used in monitoring the state of the economy and formulation of economic policy. These statistics are also used in the analysis of comparative business and industry performance.</p>
Scope of the survey	<p>4 This survey covers wholesale enterprises according to the following types of dealers:</p> <ul style="list-style-type: none"> • Wholesale trade on a fee or contract basis – sales by commission agents, commodity brokers, auctioneers and 'other' wholesale trade on a fee or contract basis; • Wholesale trade in agricultural raw materials and livestock; • Wholesale trade in food, beverages and tobacco; • Wholesale trade in textiles, clothing and footwear; • Wholesale trade in 'other' household goods except precious stones. This group includes wholesale trade in household furniture, requisites and appliances, wholesale trade in books and stationery, wholesale trade in pharmaceuticals and toiletries and wholesale trade in 'other' household goods not elsewhere classified; • Wholesale trade in precious stones, jewellery and silverware; • Wholesale trade in solid, liquid and gaseous fuels and related products; • Wholesale trade in metals and metal ores; • Wholesale trade in construction materials, hardware, plumbing and heating equipment and supplies; • Wholesale trade in 'other' intermediate products, waste and scrap; • Wholesale trade in machinery, equipment and supplies; and • Wholesale trade in 'other' goods. This group covers general wholesale trade and 'other' wholesale trade not classified elsewhere.
Classification	<p>5 The 1993 edition of the <i>Standard Industrial Classification of all Economic Activities</i> (SIC), Fifth Edition, Report No. 09-90-02, was used to classify the statistical units in the survey. The SIC is based on the 1990 <i>International Standard Industrial Classification of all Economic Activities</i> (ISIC) with suitable adaptations for local conditions. Each enterprise is classified to the industry which reflects its predominant activity. Statistics in this publication are presented at SIC four digit level.</p>
Collection rate	<p>6 The preliminary collection rate for the survey on wholesale trade sales for November 2020 was 69,6%. The improved collection rate for October 2020 was 83,6%.</p>

Statistical unit	7	The statistical unit for which information is compiled and published is the enterprise, defined as a legal unit or a combination of legal units that includes and directly controls all functions necessary to carry out its sales activities. The statistical units are derived from and linked to the South African Revenue Service (SARS) administrative data.
Revised figures	8	Revised figures are mainly due to late submission of data to Stats SA, or respondents reporting revisions or corrections to their figures. Preliminary figures, as indicated in the relevant tables, are subject to change and when revised will not be indicated as such.
Related publications	9	Users may also refer to the following publication available from Stats SA: <ul style="list-style-type: none">• <i>Stats in Brief</i> issued annually.
Rounding-off of figures	10	Where figures have been rounded off, discrepancies may occur between sums of the component items and the totals.
Historical data	11	Historical wholesale trade sales data are available on the Stats SA website. To access the data electronically, use the following link: Click to download historical data
Past publications	12	Past wholesale trade sales releases are available on the Stats SA website. To access the releases electronically, use the following link: Click to download past releases

Technical notes

Survey methodology and design

- 1 The survey is conducted monthly. Questionnaires are sent to a sample of 1 423 enterprises from a population of 19 570 enterprises. Completed questionnaires are required to be returned to Stats SA within 10 days after the end of the reference month. Email, fax and telephone reminders are used to follow up on non-respondents.
- 2 A stratified random sample was drawn at the SIC four-digit level in April 2019 from Stats SA's business sampling frame (BSF). Strata were formed using a combination of Standard Industrial Classification and the measure of size classes for enterprises (see point 3 below).

The Neyman optimal allocation formula given below was used to allocate samples to each stratum:

$$n_h = n * (N_h * S_h) / [\sum (N_i * S_i)].$$

Neyman allocation formula not only allocates sample sizes to each stratum but also calculates the relative precision for each stratum as well as the relative precision for all strata. The relative precision for these strata was 5,8%.

Class limits

- 3 The wholesale sampling frame is divided into four size groups. All large enterprises (size group one) are completely enumerated. Simple random sampling is applied to the remaining size groups (medium, small and very small). The total value of sales of the large enterprises (size group one) is added to the weighted totals of size group two, three and four to reflect the total value of sales.

Measure of size classes (Rand)

Enterprise size	Size group	Lower limits	Upper limits
Very small	4	2 656 495	27 000 000
Small	3	27 000 001	144 000 000
Medium	2	144 000 001	288 000 000
Large	1	288 000 001	

Sample weighting

- 4 For those strata not completely enumerated, the weights to produce estimates are the inverse ratio of the sampling fraction, modified to take account of non-response in the survey. Stratum estimates are calculated and then aggregated with the completely enumerated stratum to form group estimates. These procedures are consistent with international best practice.

Seasonal adjustment

- 5 Seasonally adjusted estimates are generated each month using the X-12-ARIMA Seasonal Adjustment Program developed by the US Bureau of the Census. Seasonal adjustment is a means of removing the estimated effects of normal seasonal variation from the series so that the effects of other influences on the series can be more clearly recognised. Seasonal adjustment does not aim to remove irregular or non-seasonal influences which may be present in any particular month. Influences that are volatile or unsystematic can still make it difficult to interpret the movement of the series even after adjustment for seasonal variations. Therefore, the month-to-month movements of seasonally adjusted estimates may not be reliable indicators of trend behaviour. The X-12-ARIMA procedure for wholesale trade sales is described in more detail on the Stats SA website:
[Click to download seasonal adjustment wholesale trade sales August 2017](#)

Note: Owing to the impact of the COVID-19 lockdown, a transitory change adjustment was applied to April 2020. Transitory (temporary) change describes a temporary effect on the level of a series after a certain point in

time. The methodology will be reviewed as more data points are added to the time series.

Trend cycle

- 6 The trend is the long-term pattern or movement of a time series. The X-12-ARIMA Seasonal Adjustment Program is used for smoothing seasonally adjusted estimates to estimates of the underlying trend cycle.

Constant prices

- 7 Stats SA compiles its monthly estimates of wholesale trade sales at current prices from a survey of wholesalers in the formal sector. For January 1998 to December 2011, wholesale trade sales at constant prices were calculated using the 'all groups' PPI for domestic output, but excluding electricity and other utilities.

From January 2012, wholesale trade sales at constant prices are compiled as follows:

- (1) Deflate sales of dealers in agricultural raw materials and livestock using the PPI for agriculture.
- (2) Deflate sales of dealers in food, beverages and tobacco using the final manufacturing PPI for food products, beverages and tobacco.
- (3) Deflate sales of dealers in textiles, clothing and footwear using the final manufacturing PPI for textiles, clothing and footwear.
- (4) Deflate sales of dealers in solid, liquid and gaseous fuels and related products using the final manufacturing PPI for coal and petroleum products.
- (5) Deflate sales of dealers in machinery, equipment and supplies using the final manufacturing PPIs for general and special purpose machinery; household appliances and office machinery; and electrical machinery and communication and metering equipment.
- (6) Deflate the remaining wholesale trade sales using the headline PPI (final manufacturing) excluding the PPIs for food products, beverages and tobacco; textiles, clothing and footwear; coal and petroleum products; general and special purpose machinery; household appliances and office machinery; electrical machinery and communication and metering equipment; and transport equipment. The PPI for transport equipment is excluded because it measures producer prices of motor vehicles, which are not included in wholesale trade.

Total wholesale trade sales at constant prices is obtained by aggregating (1) to (6).

Reliability of estimates

- 8 Data presented in this publication are based on information obtained from a sample and are, therefore, subject to sampling variability; that is, they may differ from the figures that would have been produced if the data had been obtained from all enterprises in the wholesale industry in South Africa. Estimates are subject to sampling and non-sampling errors.
- 9 Inaccuracies may occur because of imperfections in reporting by enterprises and errors made in the collection and processing of the data. Inaccuracies of this kind are referred to as non-sampling errors. Every effort is made to minimise non-sampling errors by careful design of questionnaires, testing them in pilot studies, editing reported data and implementing efficient operating procedures. Fluctuations may occur in consecutive months as a result of seasonal and economic factors.

Month-on-month percentage change

- 10 The month-on-month percentage change in a variable for any given month is the change between that month and the previous month, expressed as a percentage of the latter.

Year-on-year percentage change

- 11 The year-on-year percentage change in a variable for any given period is the change between that period and the corresponding period of the previous year, expressed as a percentage of the latter.

Contribution (percentage points)	12	The contribution (percentage points) to the year-on-year percentage change is calculated by multiplying the percentage change of each type of wholesaler by its corresponding weight, divided by 100. The weight is the percentage contribution of each type of wholesaler to total wholesale trade sales in the corresponding period of the previous year.
---	-----------	---

Glossary

Enterprise	An enterprise is a legal entity or a combination of legal units that includes and directly controls all functions necessary to carry out its sales activities.	
Industry	An industry is made up of enterprises engaged in the same or similar kinds of economic activity. Industries are defined in the <i>System of National Accounts</i> (SNA) in the same way as in the <i>Standard Industrial Classification of All Economic Activities</i> (SIC), Fifth Edition, Report No. 09-90-02 of January 1993.	
Symbols and abbreviations	BSF	Business sampling frame
	GDP	Gross domestic product
	ISIC	International Standard Industrial Classification
	SIC	Standard Industrial Classification of all Economic Activities
	SARS	South African Revenue Service
	Stats SA	Statistics South Africa
	VAT	Value added tax
Wholesale trade	Wholesale trade includes the resale (sale without transformation) of new and used goods and products to other wholesalers, retailers, agricultural, industrial, commercial, institutional and professional users either directly or through agents on a fee or contract basis.	
Wholesaler	A wholesaler is an enterprise deriving 50% or more of its turnover from sales of goods to other businesses and institutions.	

Technical enquiries

Nthabiseng Sebeyi	Telephone number: (076) 937 2147 Email: nthabisengs@statssa.gov.za
Keshnee Naidoo	Telephone number: (083) 689 5341 Email: keshneen@statssa.gov.za

General information

Stats SA publishes approximately 300 different statistical releases each year. It is not economically viable to produce them in more than one of South Africa's eleven official languages. Since the releases are used extensively, not only locally but also by international economic and social-scientific communities. Stats SA releases are published in English only.

Stats SA has copyright on this publication. Users may apply the information as they wish, provided that they acknowledge Stats SA as the source of the basic data wherever they process, apply, utilise, publish or distribute the data; and also that they specify that the relevant application and analysis (where applicable) result from their own processing of the data.

Advance release calendar

A release calendar is disseminated on www.statssa.gov.za

Stats SA products

A complete set of Stats SA publications is available at the Stats SA Library and the following libraries:

National Library of South Africa, Pretoria Division
National Library of South Africa, Cape Town Division
Natal Society Library, Pietermaritzburg
Library of Parliament, Cape Town
Bloemfontein Public Library
Johannesburg Public Library
Eastern Cape Library Services, King William's Town
Central Regional Library, Polokwane
Central Reference Library, Mbombela
Central Reference Collection, Kimberley
Central Reference Library, Mmabatho

Stats SA also provides a subscription service.

Electronic services

A large range of data is available via online services. For more details about our electronic data services, contact Stats SA's user information service at (012) 310 8600.

You can visit us on the internet at: www.statssa.gov.za

General enquiries

User information services	Telephone number: (012) 310 8600 Email address: millies@statssa.gov.za
---------------------------	---

Postal address	Private Bag X44, Pretoria, 0001
----------------	---------------------------------

Produced by Stats SA