

**STATISTICAL RELEASE**  
**P5041.1**

**Selected building statistics of the private sector  
as reported by local government institutions  
(Preliminary)**

**December 2017**

**Embargoed until:  
15 February 2018  
13:00**

**ENQUIRIES:**  
Nicolai Claassen  
Tel: (012) 310 8007

**FORTHCOMING ISSUE:**  
January 2018

**EXPECTED RELEASE DATE:**  
15 March 2018

[www.statssa.gov.za](http://www.statssa.gov.za)  
[info@statssa.gov.za](mailto:info@statssa.gov.za)  
T +27 12 310 8911  
F +27 12 310 8500

Private Bag X44, Pretoria, 0001, South Africa  
ISibalo House, Koch Street, Salvokop, Pretoria, 0002



## Contents

<b>Results for January to December 2017.....</b>	<b>3</b>
<b>Tables</b>	
Table 1 Value and percentage change of recorded building plans passed by larger municipalities at current prices by type of building .....	9
Table 2 Seasonally adjusted value and percentage change of recorded building plans passed by larger municipalities at current prices by type of building .....	10
Table 3 Value and percentage change of recorded building plans passed by larger municipalities at constant 2015 prices by type of building .....	11
Table 4 Seasonally adjusted value and percentage change of recorded building plans passed by larger municipalities at constant 2015 prices by type of building .....	12
Table 5 Value and percentage change of buildings reported as completed to larger municipalities at current prices by type of building .....	13
Table 6 Seasonally adjusted value and percentage change of buildings reported as completed to larger municipalities at current prices by type of building .....	14
Table 7 Value and percentage change of buildings reported as completed to larger municipalities at constant 2015 prices by type of building .....	15
Table 8 Seasonally adjusted value and percentage change of buildings reported as completed to larger municipalities at constant 2015 prices by type of building .....	16
Table 9 Recorded building plans passed by larger municipalities at current prices by type of building: South Africa .....	17
Table 10 Recorded building plans passed by larger municipalities at current prices by type of building: Western Cape.....	18
Table 11 Recorded building plans passed by larger municipalities at current prices by type of building: Eastern Cape.....	19
Table 12 Recorded building plans passed by larger municipalities at current prices by type of building: Northern Cape .....	20
Table 13 Recorded building plans passed by larger municipalities at current prices by type of building: Free State.....	21
Table 14 Recorded building plans passed by larger municipalities at current prices by type of building: KwaZulu-Natal .....	22
Table 15 Recorded building plans passed by larger municipalities at current prices by type of building: North West.....	23
Table 16 Recorded building plans passed by larger municipalities at current prices by type of building: Gauteng .....	24
Table 17 Recorded building plans passed by larger municipalities at current prices by type of building: Mpumalanga .....	25
Table 18 Recorded building plans passed by larger municipalities at current prices by type of building: Limpopo .....	26
Table 19 Buildings reported as completed to larger municipalities at current prices by type of building: South Africa .....	27
Table 20 Buildings reported as completed to larger municipalities at current prices by type of building: Western Cape.....	28
Table 21 Buildings reported as completed to larger municipalities at current prices by type of building: Eastern Cape.....	29
Table 22 Buildings reported as completed to larger municipalities at current prices by type of building: Northern Cape .....	30
Table 23 Buildings reported as completed to larger municipalities at current prices by type of building: Free State.....	31
Table 24 Buildings reported as completed to larger municipalities at current prices by type of building: KwaZulu-Natal .....	32
Table 25 Buildings reported as completed to larger municipalities at current prices by type of building: North West.....	33

Table 26	Buildings reported as completed to larger municipalities at current prices by type of building: Gauteng .....	34
Table 27	Buildings reported as completed to larger municipalities at current prices by type of building: Mpumalanga .....	35
Table 28	Buildings reported as completed to larger municipalities at current prices by type of building: Limpopo .....	36
<b>Explanatory notes</b> .....		<b>37</b>
<b>Glossary</b> .....		<b>40</b>
<b>Technical enquiries</b> .....		<b>41</b>
<b>General information</b> .....		<b>42</b>

## Results for January to December 2017

**Table A – Recorded building plans passed by larger municipalities at current prices:  
January to December 2016 versus January to December 2017**

Estimates at current prices	January to December 2016	January to December 2017	Difference in value between January to December 2016 and January to December 2017	% change between January to December 2016 and January to December 2017
	1/	1/		
	R'000	R'000	R'000	
<b>Residential buildings</b>	<b>54 860 902</b>	<b>53 360 406</b>	<b>-1 500 496</b>	<b>-2,7</b>
-Dwelling-houses	33 354 039	33 621 682	267 643	0,8
-Flats and townhouses	19 274 352	18 855 770	-418 582	-2,2
-Other residential buildings	2 232 511	882 954	-1 349 557	-60,5
<b>Non-residential buildings</b>	<b>29 129 951</b>	<b>26 313 722</b>	<b>-2 816 229</b>	<b>-9,7</b>
<b>Additions and alterations</b>	<b>27 339 826</b>	<b>29 247 749</b>	<b>1 907 923</b>	<b>7,0</b>
<b>Total</b>	<b>111 330 679</b>	<b>108 921 877</b>	<b>-2 408 802</b>	<b>-2,2</b>

1/ 2016 and 2017 figures should be regarded as preliminary because of possible backlogs and incomplete reporting by municipalities.

### Total value of recorded building plans passed at current prices

The value of recorded building plans passed (at current prices) decreased by 2,2% (-R2 408,8 million) in 2017 compared with 2016.

Decreases were recorded for non-residential buildings (-9,7% or -R2 816,2 million) and residential buildings (-2,7% or -R1 500,5 million). An increase was recorded for additions and alterations (7,0% or R1 907,9 million) – see Table A.

**Table B – Recorded building plans passed by larger municipalities aggregated to provincial level:  
January to December 2016 versus January to December 2017**

Estimates at current prices	January to December 2016	January to December 2017	% contribution to the total value of building plans passed during January to December 2016	% change between January to December 2016 and January to December 2017	Contribution (% points) to the % change in the value of building plans passed between January to December 2016 and January to December 2017	Difference in value between January to December 2016 and January to December 2017
	1/	1/				
	R'000	R'000				R'000
Western Cape	29 914 282	31 237 233	26,9	4,4	1,2	1 322 951
Eastern Cape	4 846 002	6 151 029	4,4	26,9	1,2	1 305 027
Northern Cape	1 032 673	802 955	0,9	-22,2	-0,2	-229 718
Free State	3 384 250	3 287 290	3,0	-2,9	-0,1	-96 960
KwaZulu-Natal	22 718 456	22 794 705	20,4	0,3	0,1	76 249
North West	2 923 819	3 363 091	2,6	15,0	0,4	439 272
Gauteng	40 860 598	36 096 306	36,7	-11,7	-4,3	-4 764 292
Mpumalanga	3 921 506	3 194 150	3,5	-18,5	-0,7	-727 356
Limpopo	1 729 093	1 995 118	1,6	15,4	0,2	266 025
<b>Total</b>	<b>111 330 679</b>	<b>108 921 877</b>	<b>100,0</b>	<b>-2,2</b>	<b>-2,2</b>	<b>-2 408 802</b>

1/ 2016 and 2017 figures should be regarded as preliminary because of possible backlogs and incomplete reporting by municipalities.

2/ The contribution (percentage points) is calculated by multiplying the percentage change of each province between January to December 2016 and January to December 2017 by the percentage contribution of the corresponding province to the total value of building plans passed during January to December 2016, divided by 100.

The largest negative contribution to the total decrease of 2,2% (-R2 408,8 million) was made by Gauteng (contributing -4,3 percentage points or -R4 764,3 million) – see Table B.

**Table C – Recorded building plans passed by larger municipalities at constant 2015 prices: January to December 2016 versus January to December 2017**

Estimates at constant 2015 prices	January to December 2016	January to December 2017	Difference in value between January to December 2016 and January to December 2017	% change between January to December 2016 and January to December 2017
	1/	1/	R'000	
	R'000	R'000	R'000	
Residential buildings	51 502 207	47 420 629	-4 081 578	-7,9
Non-residential buildings	27 505 489	23 354 317	-4 151 172	-15,1
Additions and alterations	25 658 244	25 982 534	324 290	1,3
<b>Total</b>	<b>104 665 940</b>	<b>96 757 480</b>	<b>-7 908 460</b>	<b>-7,6</b>

1/ 2016 and 2017 figures should be regarded as preliminary because of possible backlogs and incomplete reporting by municipalities.

### Real value of recorded building plans passed

The real value of recorded building plans passed (at constant 2015 prices) decreased by 7,6% (-R7 908,5 million) year-on-year in 2017. Decreases were recorded for non-residential buildings (-15,1% or -R4 151,2 million) and residential buildings (-7,9% or -R4 081,6 million) – see Table C.

**Table D – Seasonally adjusted three-monthly key figures regarding recorded building plans passed by larger municipalities at constant 2015 prices**

Seasonally adjusted estimates at constant 2015 prices	July to September 2017	October to December 2017	% change between July to September 2017 and October to December 2017
	R'000	R'000	
Residential buildings	12 302 147	12 042 091	-2,1
Non-residential buildings 1/	6 297 169	7 174 746	13,9
Additions and alterations	6 592 328	6 732 476	2,1
<b>Total</b>	<b>25 191 644</b>	<b>25 949 313</b>	<b>3,0</b>

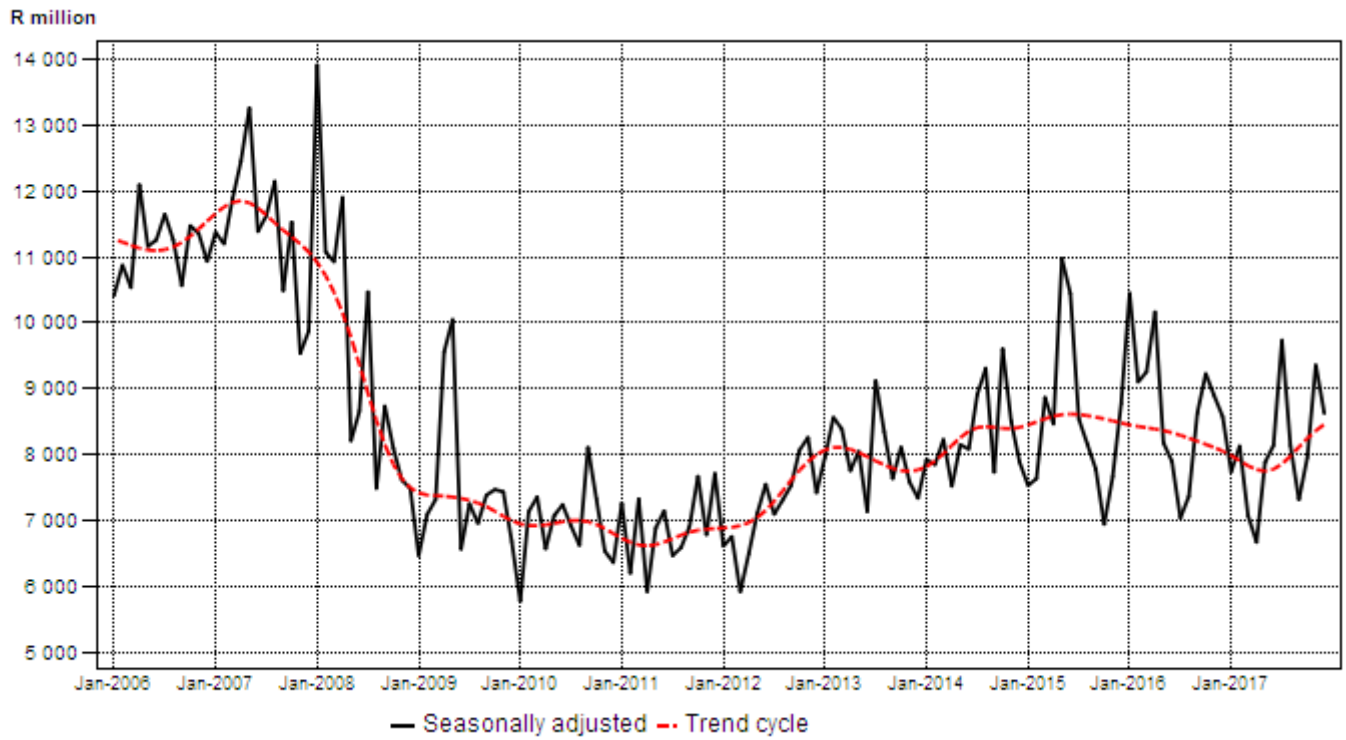
1/ Not seasonally adjusted because the presence of seasonality is not significant. See notes 10 and 11 on page 38.

### Seasonally adjusted real value of recorded building plans passed

The seasonally adjusted real value of recorded building plans passed increased by 3,0% in the fourth quarter of 2017 compared with the third quarter of 2017. Increases were recorded for non-residential buildings (13,9%) and additions and alterations (2,1%). A decrease was recorded for residential buildings (-2,1%) – see Table D.

**Figure 1 – Real value of recorded building plans passed by larger municipalities**

Constant 2015 prices



**Table E – Buildings reported as completed to larger municipalities at current prices:  
January to December 2016 versus January to December 2017**

Estimates at current prices	January to December 2016	January to December 2017	Difference in value between January to December 2016 and January to December 2017	% change between January to December 2016 and January to December 2017
	1/ R'000	1/ R'000	R'000	
<b>Residential buildings</b>	<b>34 979 082</b>	<b>38 722 516</b>	<b>3 743 434</b>	<b>10,7</b>
-Dwelling-houses	23 840 076	23 956 717	116 641	0,5
-Flats and townhouses	10 533 470	12 573 629	2 040 159	19,4
-Other residential buildings	605 536	2 192 170	1 586 634	262,0
<b>Non-residential buildings</b>	<b>15 955 307</b>	<b>22 902 179</b>	<b>6 946 872</b>	<b>43,5</b>
<b>Additions and alterations</b>	<b>10 482 848</b>	<b>11 601 916</b>	<b>1 119 068</b>	<b>10,7</b>
<b>Total</b>	<b>61 417 237</b>	<b>73 226 611</b>	<b>11 809 374</b>	<b>19,2</b>

1/ 2016 and 2017 figures should be regarded as preliminary because of possible backlogs and incomplete reporting by municipalities.

### Total value of buildings reported as completed at current prices

The value of buildings reported as completed (at current prices) increased by 19,2% (R11 809,4 million) in 2017 compared with 2016.

The largest percentage increase was recorded for non-residential buildings (43,5% or R6 946,9 million), followed by residential buildings (10,7% or R3 743,4 million) and additions and alterations (10,7% or R1 119,1 million) – see Table E.

**Table F – Buildings reported as completed to larger municipalities aggregated to provincial level:  
January to December 2016 versus January to December 2017**

Estimates at current prices	January to December 2016	January to December 2017	% contribution to the total value of buildings completed during January to December 2016	% change between January to December 2016 and January to December 2017	Contribution (% points) to the % change in the value of buildings completed between January to December 2016 and January to December 2017 2/	Difference in value between January to December 2016 and January to December 2017
	1/ R'000	1/ R'000				R'000
Western Cape	17 812 988	22 182 900	29,0	24,5	7,1	4 369 912
Eastern Cape	1 741 606	1 781 928	2,8	2,3	0,1	40 322
Northern Cape	528 389	468 449	0,9	-11,3	-0,1	-59 940
Free State	1 468 693	984 703	2,4	-33,0	-0,8	-483 990
KwaZulu-Natal	9 207 244	13 385 769	15,0	45,4	6,8	4 178 525
North West	1 832 191	1 726 453	3,0	-5,8	-0,2	-105 738
Gauteng	26 070 196	30 636 305	42,4	17,5	7,4	4 566 109
Mpumalanga	1 927 261	1 242 805	3,1	-35,5	-1,1	-684 456
Limpopo	828 669	817 299	1,3	-1,4	0,0	-11 370
<b>Total</b>	<b>61 417 237</b>	<b>73 226 611</b>	<b>100,0</b>	<b>19,2</b>	<b>19,2</b>	<b>11 809 374</b>

1/ 2016 and 2017 figures should be regarded as preliminary because of possible backlogs and incomplete reporting by municipalities.

2/ The contribution (percentage points) is calculated by multiplying the percentage change of each province between January to December 2016 and January to December 2017 by the percentage contribution of the corresponding province to the total value of buildings completed during January to December 2016, divided by 100.

Four provinces reported year-on-year increases in the value of buildings completed in 2017. The largest contributions were recorded for Gauteng (contributing 7,4 percentage points or R4 566,1 million), Western Cape (contributing 7,1 percentage points or R4 369,9 million) and KwaZulu-Natal (contributing 6,8 percentage points or R4 178,5 million) – see Table F.

**Table G – Buildings reported as completed to larger municipalities at constant 2015 prices: January to December 2016 versus January to December 2017**

Estimates at constant 2015 prices	January to December 2016	January to December 2017	Difference in value between January to December 2016 and January to December 2017	% change between January to December 2016 and January to December 2017
	1/	1/		
	R'000	R'000	R'000	
Residential buildings	32 789 449	34 399 189	1 609 740	4,9
Non-residential buildings	14 992 115	20 314 363	5 322 248	35,5
Additions and alterations	9 841 380	10 308 439	467 059	4,7
<b>Total</b>	<b>57 622 944</b>	<b>65 021 991</b>	<b>7 399 047</b>	<b>12,8</b>

1/ 2016 and 2017 figures should be regarded as preliminary because of possible backlogs and incomplete reporting by municipalities.

### Real value of buildings reported as completed

The real value of buildings reported as completed (at constant 2015 prices) increased by 12,8% (R7 399,0 million) year-on-year in 2017. All three major building categories recorded increases. The largest percentage increase was recorded for non-residential buildings (35,5% or R5 322,2 million), followed by residential buildings (4,9% or R1 609,7 million) and additions and alterations (4,7% or R467,1 million) – see Table G.

**Table H – Seasonally adjusted three-monthly key figures regarding buildings reported as completed to larger municipalities at constant 2015 prices**

Seasonally adjusted estimates at constant 2015 prices	July to September 2017	October to December 2017	% change between July to September 2017 and October to December 2017
	R'000	R'000	
Residential buildings	7 600 170	8 795 714	15,7
Non-residential buildings 1/	5 721 019	5 891 330	3,0
Additions and alterations	2 772 077	2 566 253	-7,4
<b>Total</b>	<b>16 093 266</b>	<b>17 253 297</b>	<b>7,2</b>

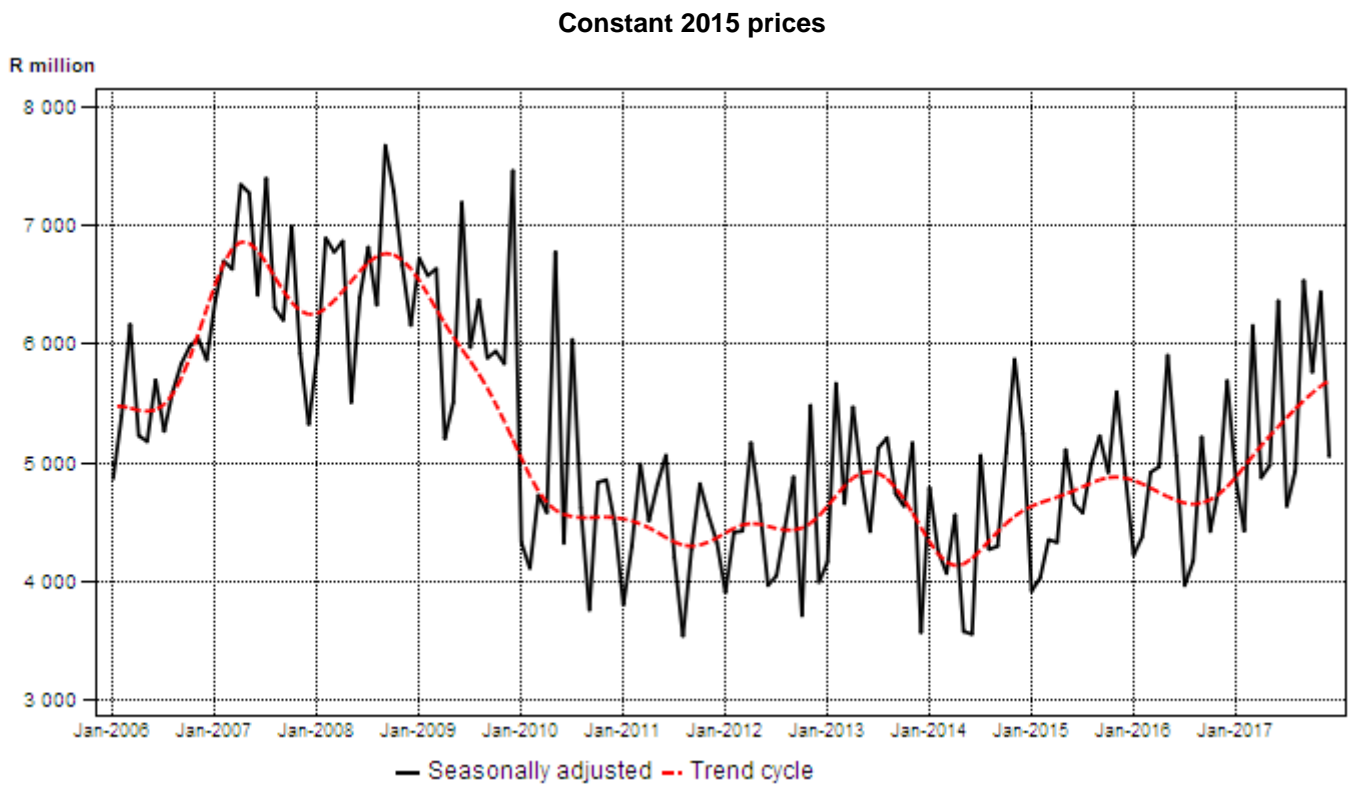
1/ Not seasonally adjusted because the presence of seasonality is not significant. See notes 10 and 11 on page 38.

### Seasonally adjusted real value of buildings reported as completed

The seasonally adjusted real value of buildings reported as completed increased by 7,2% in the fourth quarter of 2017 compared with the third quarter of 2017. Increases were recorded for residential buildings (15,7%) and non-residential buildings (3,0%). A decrease was recorded for additions and alterations (-7,4%) – see Table H.



**Figure 2 – Real value of buildings reported as completed to larger municipalities**



**Risenga Maluleke**  
**Statistician-General**

**Table 1 – Value and percentage change of recorded building plans passed by larger municipalities at current prices by type of building**

Year and month 2/		Residential buildings		Non-residential buildings		Additions and alterations		Total	
		R'000	% change 1/	R'000	% change 1/	R'000	% change 1/	R'000	% change 1/
2016	January	2 976 023	-12,8	4 542 292	560,9	1 451 533	-13,0	8 969 848	55,5
	February	4 592 411	20,1	2 663 172	103,2	2 125 304	-8,7	9 380 887	25,7
	March	4 600 728	8,1	2 647 828	23,1	2 056 047	-8,8	9 304 603	7,5
	April	5 484 971	29,6	2 837 576	46,3	2 388 049	20,6	10 710 596	31,4
	May	4 208 361	-0,2	2 252 898	-49,7	2 241 429	3,0	8 702 688	-19,9
	June	5 025 125	11,3	1 559 280	-61,0	2 415 528	9,1	8 999 933	-16,1
	July	3 762 166	-16,1	1 383 115	-33,4	2 532 825	-4,6	7 678 106	-16,7
	August	4 423 741	4,0	1 796 343	-7,2	2 291 169	-0,1	8 511 253	0,3
	September	4 802 689	2,1	2 513 194	66,5	2 707 391	20,4	10 023 274	18,5
	October	5 420 582	21,5	2 588 628	125,0	2 717 674	17,8	10 726 884	35,5
	November	4 827 911	10,5	2 823 103	100,5	2 458 564	15,0	10 109 578	27,7
	December	4 736 194	25,9	1 522 522	-24,1	1 954 313	-10,4	8 213 029	3,3
	<b>Total</b>	<b>54 860 902</b>	<b>8,6</b>	<b>29 129 951</b>	<b>18,2</b>	<b>27 339 826</b>	<b>3,4</b>	<b>111 330 679</b>	<b>9,6</b>
2017	January	3 161 447	6,2	1 894 083	-58,3	1 703 058	17,3	6 758 588	-24,7
	February	4 539 426	-1,2	2 277 683	-14,5	2 161 104	1,7	8 978 213	-4,3
	March	4 237 489	-7,9	1 675 826	-36,7	2 277 738	10,8	8 191 053	-12,0
	April	3 657 581	-33,3	969 046	-65,8	1 983 859	-16,9	6 610 486	-38,3
	May	4 647 680	10,4	1 983 293	-12,0	2 442 934	9,0	9 073 907	4,3
	June	4 775 996	-5,0	2 192 921	40,6	2 642 793	9,4	9 611 710	6,8
	July	5 620 477	49,4	2 714 249	96,2	2 626 367	3,7	10 961 093	42,8
	August	4 149 479	-6,2	2 874 162	60,0	2 958 451	29,1	9 982 092	17,3
	September	4 486 618	-6,6	1 498 229	-40,4	2 705 724	-0,1	8 690 571	-13,3
	October	5 263 206	-2,9	1 903 123	-26,5	2 993 633	10,2	10 159 962	-5,3
	November	4 575 624	-5,2	3 903 092	38,3	2 785 284	13,3	11 264 000	11,4
	December	4 245 383	-10,4	2 428 015	59,5	1 966 804	0,6	8 640 202	5,2
	<b>Total</b>	<b>53 360 406</b>	<b>-2,7</b>	<b>26 313 722</b>	<b>-9,7</b>	<b>29 247 749</b>	<b>7,0</b>	<b>108 921 877</b>	<b>-2,2</b>

1/ The percentage change is the change in the value of recorded building plans passed by municipalities of the relevant year/month compared with the value of recorded building plans passed by municipalities of the comparable period of the previous year expressed as a percentage.

2/ Preliminary figures.

**Table 2 – Seasonally adjusted value and percentage change of recorded building plans passed by larger municipalities at current prices by type of building**

Year and month		Residential buildings		Non-residential buildings 3/		Additions and alterations		Total	
		R'000	% change 1/	R'000	% change 1/	R'000	% change 1/	R'000	% change 1/
2016	January	4 019 779	-8,5	4 542 292	126,4	2 098 058	-17,2	10 660 129	19,3
	February	4 682 315	16,5	2 663 172	-41,4	2 150 237	2,5	9 495 724	-10,9
	March	4 852 473	3,6	2 647 828	-0,6	2 294 923	6,7	9 795 224	3,2
	April	5 399 570	11,3	2 837 576	7,2	2 371 091	3,3	10 608 237	8,3
	May	4 135 322	-23,4	2 252 898	-20,6	2 249 699	-5,1	8 637 919	-18,6
	June	4 484 746	8,4	1 559 280	-30,8	2 334 582	3,8	8 378 608	-3,0
	July	3 745 742	-16,5	1 383 115	-11,3	2 351 497	0,7	7 480 354	-10,7
	August	4 109 037	9,7	1 796 343	29,9	1 994 247	-15,2	7 899 627	5,6
	September	4 488 421	9,2	2 513 194	39,9	2 309 110	15,8	9 310 725	17,9
	October	4 822 411	7,4	2 588 628	3,0	2 554 774	10,6	9 965 813	7,0
	November	4 594 019	-4,7	2 823 103	9,1	2 231 644	-12,6	9 648 766	-3,2
	December	5 626 664	22,5	1 522 522	-46,1	2 404 210	7,7	9 553 396	-1,0
2017	January	4 298 300	-23,6	1 894 083	24,4	2 334 337	-2,9	8 526 720	-10,7
	February	4 495 266	4,6	2 277 683	20,3	2 212 859	-5,2	8 985 808	5,4
	March	3 907 571	-13,1	1 675 826	-26,4	2 239 609	1,2	7 823 006	-12,9
	April	4 148 320	6,2	969 046	-42,2	2 322 913	3,7	7 440 279	-4,9
	May	4 461 193	7,5	1 983 293	104,7	2 384 562	2,7	8 829 048	18,7
	June	4 354 056	-2,4	2 192 921	10,6	2 556 813	7,2	9 103 790	3,1
	July	5 723 133	31,4	2 714 249	23,8	2 421 759	-5,3	10 859 141	19,3
	August	3 751 405	-34,5	2 874 162	5,9	2 538 327	4,8	9 163 894	-15,6
	September	4 347 836	15,9	1 498 229	-47,9	2 461 451	-3,0	8 307 516	-9,3
	October	4 582 340	5,4	1 903 123	27,0	2 624 922	6,6	9 110 385	9,7
	November	4 285 411	-6,5	3 903 092	105,1	2 548 994	-2,9	10 737 497	17,9
	December	5 086 172	18,7	2 428 015	-37,8	2 485 078	-2,5	9 999 265	-6,9
	<b>Jul. – Sep. 17</b>	<b>13 822 374</b>		<b>7 086 640</b>		<b>7 421 537</b>		<b>28 330 551</b>	
<b>Oct. – Dec. 17 2/</b>	<b>13 953 923</b>	<b>1,0</b>	<b>8 234 230</b>	<b>16,2</b>	<b>7 658 994</b>	<b>3,2</b>	<b>29 847 147</b>	<b>5,4</b>	

1/ The percentage change is the change in the seasonally adjusted value of recorded building plans passed by municipalities of the relevant month compared with the seasonally adjusted value of recorded building plans passed by municipalities of the previous month expressed as a percentage.

2/ The percentage change is the change in the seasonally adjusted value of recorded building plans passed by municipalities for the latest three months compared with the seasonally adjusted value of recorded building plans passed by municipalities of the previous three months expressed as a percentage.

3/ Not seasonally adjusted because the presence of seasonality is not significant. See notes 10 and 11 on page 38.

**Table 3 – Value and percentage change of recorded building plans passed by larger municipalities at constant 2015 prices by type of building**

Year and month 2/		Residential buildings		Non-residential buildings		Additions and alterations		Total	
		R'000	% change 1/	R'000	% change 1/	R'000	% change 1/	R'000	% change 1/
2016	January	2 911 960	-15,8	4 444 513	537,6	1 420 287	-16,1	8 776 760	50,0
	February	4 403 079	13,3	2 553 377	91,7	2 037 684	-13,9	8 994 140	18,6
	March	4 398 402	2,3	2 531 384	16,5	1 965 628	-13,7	8 895 414	1,7
	April	5 203 957	22,6	2 692 197	38,4	2 265 701	14,1	10 161 855	24,3
	May	3 981 420	-5,7	2 131 408	-52,5	2 120 557	-2,6	8 233 385	-24,3
	June	4 705 173	4,5	1 460 000	-63,4	2 261 730	2,5	8 426 903	-21,2
	July	3 512 760	-21,2	1 291 424	-37,4	2 364 916	-10,3	7 169 100	-21,7
	August	4 126 624	-2,7	1 675 693	-13,2	2 137 285	-6,5	7 939 602	-6,1
	September	4 467 618	-4,8	2 337 855	55,1	2 518 503	12,2	9 323 976	10,4
	October	5 028 369	13,7	2 401 325	110,6	2 521 033	10,3	9 950 727	26,8
	November	4 441 500	2,7	2 597 151	86,3	2 261 788	6,8	9 300 439	18,7
	December	4 321 345	16,0	1 389 162	-30,1	1 783 132	-17,4	7 493 639	-4,8
	<b>Total</b>	<b>51 502 207</b>	<b>2,0</b>	<b>27 505 489</b>	<b>11,6</b>	<b>25 658 244</b>	<b>-2,9</b>	<b>104 665 940</b>	<b>3,1</b>
2017	January	2 874 043	-1,3	1 721 894	-61,3	1 548 235	9,0	6 144 172	-30,0
	February	4 096 955	-7,0	2 055 671	-19,5	1 950 455	-4,3	8 103 081	-9,9
	March	3 814 122	-13,3	1 508 394	-40,4	2 050 169	4,3	7 372 685	-17,1
	April	3 286 236	-36,9	870 661	-67,7	1 782 443	-21,3	5 939 340	-41,6
	May	4 138 629	3,9	1 766 067	-17,1	2 175 364	2,6	8 080 060	-1,9
	June	4 268 093	-9,3	1 959 715	34,2	2 361 745	4,4	8 589 553	1,9
	July	5 018 283	42,9	2 423 437	87,7	2 344 971	-0,8	9 786 691	36,5
	August	3 685 150	-10,7	2 552 542	52,3	2 627 399	22,9	8 865 091	11,7
	September	3 956 453	-11,4	1 321 190	-43,5	2 386 000	-5,3	7 663 643	-17,8
	October	4 608 762	-8,3	1 666 482	-30,6	2 621 395	4,0	8 896 639	-10,6
	November	3 982 266	-10,3	3 396 947	30,8	2 424 094	7,2	9 803 307	5,4
	December	3 691 637	-14,6	2 111 317	52,0	1 710 264	-4,1	7 513 218	0,3
	<b>Total</b>	<b>47 420 629</b>	<b>-7,9</b>	<b>23 354 317</b>	<b>-15,1</b>	<b>25 982 534</b>	<b>1,3</b>	<b>96 757 480</b>	<b>-7,6</b>

1/ The percentage change is the change in the value of recorded building plans passed by municipalities of the relevant year/month compared with the value of recorded building plans passed by municipalities of the comparable period of the previous year expressed as a percentage.

2/ Preliminary figures.

**Table 4 – Seasonally adjusted value and percentage change of recorded building plans passed by larger municipalities at constant 2015 prices by type of building**

Year and month		Residential buildings		Non-residential buildings 3/		Additions and alterations		Total	
		R'000	% change 1/	R'000	% change 1/	R'000	% change 1/	R'000	% change 1/
2016	January	3 962 169	-7,1	4 444 513	123,8	2 043 888	-19,0	10 450 570	19,1
	February	4 487 135	13,2	2 553 377	-42,5	2 061 962	0,9	9 102 474	-12,9
	March	4 615 201	2,9	2 531 384	-0,9	2 108 034	2,2	9 254 619	1,7
	April	5 216 780	13,0	2 692 197	6,4	2 253 815	6,9	10 162 792	9,8
	May	3 906 930	-25,1	2 131 408	-20,8	2 140 676	-5,0	8 179 014	-19,5
	June	4 213 656	7,9	1 460 000	-31,5	2 226 512	4,0	7 900 168	-3,4
	July	3 549 648	-15,8	1 291 424	-11,5	2 199 024	-1,2	7 040 096	-10,9
	August	3 852 141	8,5	1 675 693	29,8	1 842 609	-16,2	7 370 443	4,7
	September	4 120 858	7,0	2 337 855	39,5	2 174 437	18,0	8 633 150	17,1
	October	4 456 751	8,2	2 401 325	2,7	2 371 384	9,1	9 229 460	6,9
	November	4 243 130	-4,8	2 597 151	8,2	2 051 746	-13,5	8 892 027	-3,7
	December	4 984 972	17,5	1 389 162	-46,5	2 201 278	7,3	8 575 412	-3,6
2017	January	3 911 152	-21,5	1 721 894	24,0	2 108 904	-4,2	7 741 950	-9,7
	February	4 077 732	4,3	2 055 671	19,4	1 997 613	-5,3	8 131 016	5,0
	March	3 558 964	-12,7	1 508 394	-26,6	2 005 334	0,4	7 072 692	-13,0
	April	3 743 109	5,2	870 661	-42,3	2 059 687	2,7	6 673 457	-5,6
	May	3 999 982	6,9	1 766 067	102,8	2 118 073	2,8	7 884 122	18,1
	June	3 871 753	-3,2	1 959 715	11,0	2 308 915	9,0	8 140 383	3,3
	July	5 143 546	32,8	2 423 437	23,7	2 167 549	-6,1	9 734 532	19,6
	August	3 328 623	-35,3	2 552 542	5,3	2 258 545	4,2	8 139 710	-16,4
	September	3 829 978	15,1	1 321 190	-48,2	2 166 234	-4,1	7 317 402	-10,1
	October	3 991 870	4,2	1 666 482	26,1	2 300 524	6,2	7 958 876	8,8
	November	3 707 692	-7,1	3 396 947	103,8	2 255 938	-1,9	9 360 577	17,6
	December	4 342 529	17,1	2 111 317	-37,8	2 176 014	-3,5	8 629 860	-7,8
	<b>Jul. – Sep. 17</b>	<b>12 302 147</b>		<b>6 297 169</b>		<b>6 592 328</b>		<b>25 191 644</b>	
<b>Oct. – Dec. 17 2/</b>	<b>12 042 091</b>	<b>-2,1</b>	<b>7 174 746</b>	<b>13,9</b>	<b>6 732 476</b>	<b>2,1</b>	<b>25 949 313</b>	<b>3,0</b>	

1/ The percentage change is the change in the seasonally adjusted value of recorded building plans passed by municipalities of the relevant month compared with the seasonally adjusted value of recorded building plans passed by municipalities of the previous month expressed as a percentage.

2/ The percentage change is the change in the seasonally adjusted value of recorded building plans passed by municipalities for the latest three months compared with the seasonally adjusted value of recorded building plans passed by municipalities of the previous three months expressed as a percentage.

3/ Not seasonally adjusted because the presence of seasonality is not significant. See notes 10 and 11 on page 38.

**Table 5 – Value and percentage change of buildings reported as completed to larger municipalities at current prices by type of building**

Year and month 2/		Residential buildings		Non-residential buildings		Additions and alterations		Total	
		R'000	% change 1/	R'000	% change 1/	R'000	% change 1/	R'000	% change 1/
2016	January	2 208 305	21,4	578 503	-26,4	651 330	29,8	3 438 138	10,7
	February	2 459 034	17,8	1 029 861	1,0	869 860	28,7	4 358 755	15,2
	March	2 523 781	-1,7	1 810 745	110,9	878 230	-14,4	5 212 756	17,1
	April	2 316 846	-11,2	2 113 528	189,3	822 389	-8,9	5 252 763	23,8
	May	3 275 280	5,0	1 819 266	87,9	913 420	14,6	6 007 966	23,0
	June	3 105 362	19,4	1 325 164	25,4	930 103	-5,5	5 360 629	15,5
	July	2 339 251	-11,2	1 150 587	5,0	705 601	-17,2	4 195 439	-8,5
	August	2 511 205	-11,3	1 205 852	-15,1	791 833	-2,8	4 508 890	-11,0
	September	3 647 566	21,5	1 326 114	-19,5	983 917	16,6	5 957 597	8,5
	October	3 050 481	13,5	928 259	-45,2	1 022 162	33,4	5 000 902	-2,9
	November	3 026 831	-11,9	1 682 124	-14,7	1 040 884	19,4	5 749 839	-8,4
	December	4 515 140	61,4	985 304	-32,0	873 119	14,2	6 373 563	27,2
	<b>Total</b>	<b>34 979 082</b>	<b>8,7</b>	<b>15 955 307</b>	<b>8,6</b>	<b>10 482 848</b>	<b>7,0</b>	<b>61 417 237</b>	<b>8,3</b>
2017	January	2 359 273	6,8	1 324 149	128,9	755 314	16,0	4 438 736	29,1
	February	2 987 483	21,5	793 718	-22,9	839 781	-3,5	4 620 982	6,0
	March	3 590 701	42,3	2 469 283	36,4	1 096 654	24,9	7 156 638	37,3
	April	3 722 887	60,7	835 924	-60,4	688 546	-16,3	5 247 357	-0,1
	May	2 997 231	-8,5	1 458 694	-19,8	938 447	2,7	5 394 372	-10,2
	June	3 184 349	2,5	2 807 943	111,9	1 119 285	20,3	7 111 577	32,7
	July	2 791 841	19,3	1 418 931	23,3	878 502	24,5	5 089 274	21,3
	August	2 913 322	16,0	1 538 208	27,6	1 121 295	41,6	5 572 825	23,6
	September	3 017 108	-17,3	3 501 830	164,1	1 234 363	25,5	7 753 301	30,1
	October	3 332 642	9,2	2 668 765	187,5	831 585	-18,6	6 832 992	36,6
	November	3 663 759	21,0	3 257 545	93,7	1 141 897	9,7	8 063 201	40,2
	December	4 161 920	-7,8	827 189	-16,0	956 247	9,5	5 945 356	-6,7
	<b>Total</b>	<b>38 722 516</b>	<b>10,7</b>	<b>22 902 179</b>	<b>43,5</b>	<b>11 601 916</b>	<b>10,7</b>	<b>73 226 611</b>	<b>19,2</b>

1/ The percentage change is the change in the value of buildings reported as completed to municipalities of the relevant year/month compared with the value of buildings reported as completed to municipalities of the comparable period of the previous year expressed as a percentage.

2/ Preliminary figures.

**Table 6 – Seasonally adjusted value and percentage change of buildings reported as completed to larger municipalities at current prices by type of building**

Year and month		Residential buildings		Non-residential buildings 3/		Additions and alterations		Total	
		R'000	% change 1/	R'000	% change 1/	R'000	% change 1/	R'000	% change 1/
2016	January	2 907 250	9,8	578 503	-60,1	839 128	-5,2	4 324 881	-13,2
	February	2 679 980	-7,8	1 029 861	78,0	844 693	0,7	4 554 534	5,3
	March	2 468 735	-7,9	1 810 745	75,8	855 221	1,2	5 134 701	12,7
	April	2 348 409	-4,9	2 113 528	16,7	760 468	-11,1	5 222 405	1,7
	May	3 490 327	48,6	1 819 266	-13,9	929 426	22,2	6 239 019	19,5
	June	3 202 517	-8,2	1 325 164	-27,2	878 997	-5,4	5 406 678	-13,3
	July	2 339 459	-26,9	1 150 587	-13,2	738 964	-15,9	4 229 010	-21,8
	August	2 510 769	7,3	1 205 852	4,8	749 908	1,5	4 466 529	5,6
	September	3 379 564	34,6	1 326 114	10,0	912 212	21,6	5 617 890	25,8
	October	2 852 822	-15,6	928 259	-30,0	992 210	8,8	4 773 291	-15,0
	November	2 523 435	-11,5	1 682 124	81,2	988 157	-0,4	5 193 716	8,8
	December	4 294 111	70,2	985 304	-41,4	998 468	1,0	6 277 883	20,9
2017	January	3 074 177	-28,4	1 324 149	34,4	967 520	-3,1	5 365 846	-14,5
	February	3 269 229	6,3	793 718	-40,1	826 338	-14,6	4 889 285	-8,9
	March	3 528 000	7,9	2 469 283	211,1	823 729	-0,3	6 821 012	39,5
	April	3 732 211	5,8	835 924	-66,1	844 407	2,5	5 412 542	-20,6
	May	3 182 931	-14,7	1 458 694	74,5	944 491	11,9	5 586 116	3,2
	June	3 265 309	2,6	2 807 943	92,5	1 054 759	11,7	7 128 011	27,6
	July	2 823 502	-13,5	1 418 931	-49,5	924 252	-12,4	5 166 685	-27,5
	August	2 941 415	4,2	1 538 208	8,4	1 066 206	15,4	5 545 829	7,3
	September	2 785 637	-5,3	3 501 830	127,7	1 134 051	6,4	7 421 518	33,8
	October	3 113 421	11,8	2 668 765	-23,8	805 453	-29,0	6 587 639	-11,2
	November	3 058 289	-1,8	3 257 545	22,1	1 078 071	33,8	7 393 905	12,2
	December	3 946 143	29,0	827 189	-74,6	1 073 867	-0,4	5 847 199	-20,9
	<b>Jul. – Sep. 17</b>	<b>8 550 554</b>		<b>6 458 969</b>		<b>3 124 509</b>		<b>18 134 032</b>	
<b>Oct. – Dec. 17 2/</b>	<b>10 117 853</b>	<b>18,3</b>	<b>6 753 499</b>	<b>4,6</b>	<b>2 957 391</b>	<b>-5,3</b>	<b>19 828 743</b>	<b>9,3</b>	

1/ The percentage change is the change in the seasonally adjusted value of buildings reported as completed to municipalities of the relevant month compared with the seasonally adjusted value of buildings reported as completed to municipalities of the previous month expressed as a percentage.

2/ The percentage change is the change in the seasonally adjusted value of buildings reported as completed to municipalities for the latest three months compared with the seasonally adjusted value of buildings reported as completed to municipalities of the previous three months expressed as a percentage.

3/ Not seasonally adjusted because the presence of seasonality is not significant. See notes 10 and 11 on page 38.

**Table 7 – Value and percentage change of buildings reported as completed to larger municipalities at constant 2015 prices by type of building**

Year and month 2/		Residential buildings		Non-residential buildings		Additions and alterations		Total	
		R'000	% change 1/	R'000	% change 1/	R'000	% change 1/	R'000	% change 1/
2016	January	2 160 768	17,1	566 050	-29,0	637 309	25,3	3 364 127	6,8
	February	2 357 655	11,1	987 403	-4,7	833 998	21,4	4 179 056	8,7
	March	2 412 793	-7,0	1 731 114	99,6	839 608	-19,0	4 983 515	10,8
	April	2 198 146	-16,0	2 005 245	173,6	780 255	-13,9	4 983 646	17,1
	May	3 098 657	-0,8	1 721 160	77,6	864 163	8,3	5 683 980	16,2
	June	2 907 642	12,2	1 240 790	17,7	870 883	-11,2	5 019 315	8,5
	July	2 184 175	-16,5	1 074 311	-1,3	658 824	-22,2	3 917 310	-13,9
	August	2 342 542	-17,0	1 124 862	-20,6	738 650	-9,0	4 206 054	-16,7
	September	3 393 085	13,3	1 233 594	-24,9	915 272	8,7	5 541 951	1,1
	October	2 829 760	6,2	861 094	-48,7	948 202	24,9	4 639 056	-9,1
	November	2 784 573	-18,2	1 547 492	-20,7	957 575	11,0	5 289 640	-14,9
	December	4 119 653	48,8	899 000	-37,3	796 641	5,2	5 815 294	17,2
	<b>Total</b>	<b>32 789 449</b>	<b>1,9</b>	<b>14 992 115</b>	<b>2,2</b>	<b>9 841 380</b>	<b>0,5</b>	<b>57 622 944</b>	<b>1,8</b>
2017	January	2 144 794	-0,7	1 203 772	112,7	686 649	7,7	4 035 215	19,9
	February	2 696 284	14,4	716 352	-27,5	757 925	-9,1	4 170 561	-0,2
	March	3 231 954	34,0	2 222 577	28,4	987 087	17,6	6 441 618	29,3
	April	3 344 912	52,2	751 055	-62,5	618 640	-20,7	4 714 607	-5,4
	May	2 668 950	-13,9	1 298 926	-24,5	835 661	-3,3	4 803 537	-15,5
	June	2 845 710	-2,1	2 509 332	102,2	1 000 255	14,9	6 355 297	26,6
	July	2 492 715	14,1	1 266 903	17,9	784 377	19,1	4 543 995	16,0
	August	2 587 320	10,4	1 366 082	21,4	995 821	34,8	4 949 223	17,7
	September	2 660 589	-21,6	3 088 034	150,3	1 088 504	18,9	6 837 127	23,4
	October	2 918 250	3,1	2 336 922	171,4	728 183	-23,2	5 983 355	29,0
	November	3 188 650	14,5	2 835 113	83,2	993 818	3,8	7 017 581	32,7
	December	3 619 061	-12,2	719 295	-20,0	831 519	4,4	5 169 875	-11,1
	<b>Total</b>	<b>34 399 189</b>	<b>4,9</b>	<b>20 314 363</b>	<b>35,5</b>	<b>10 308 439</b>	<b>4,7</b>	<b>65 021 991</b>	<b>12,8</b>

1/ The percentage change is the change in the value of buildings reported as completed to municipalities of the relevant year/month compared with the value of buildings reported as completed to municipalities of the comparable period of the previous year expressed as a percentage.

2/ Preliminary figures.



**Table 8 – Seasonally adjusted value and percentage change of buildings reported as completed to larger municipalities at constant 2015 prices by type of building**

Year and month		Residential buildings		Non-residential buildings 3/		Additions and alterations		Total	
		R'000	% change 1/	R'000	% change 1/	R'000	% change 1/	R'000	% change 1/
2016	January	2 837 543	9,1	566 050	-60,5	817 727	-6,2	4 221 320	-14,0
	February	2 574 502	-9,3	987 403	74,4	812 256	-0,7	4 374 161	3,6
	March	2 369 746	-8,0	1 731 114	75,3	817 410	0,6	4 918 270	12,4
	April	2 234 016	-5,7	2 005 245	15,8	725 277	-11,3	4 964 538	0,9
	May	3 301 314	47,8	1 721 160	-14,2	881 398	21,5	5 903 872	18,9
	June	2 989 613	-9,4	1 240 790	-27,9	826 540	-6,2	5 056 943	-14,3
	July	2 197 658	-26,5	1 074 311	-13,4	691 271	-16,4	3 963 240	-21,6
	August	2 344 816	6,7	1 124 862	4,7	699 962	1,3	4 169 640	5,2
	September	3 135 328	33,7	1 233 594	9,7	847 454	21,1	5 216 376	25,1
	October	2 643 472	-15,7	861 094	-30,2	915 426	8,0	4 419 992	-15,3
	November	2 326 016	-12,0	1 547 492	79,7	906 197	-1,0	4 779 705	8,1
	December	3 885 756	67,1	899 000	-41,9	906 563	0,0	5 691 319	19,1
2017	January	2 788 051	-28,2	1 203 772	33,9	876 361	-3,3	4 868 184	-14,5
	February	2 957 058	6,1	716 352	-40,5	748 619	-14,6	4 422 029	-9,2
	March	3 187 991	7,8	2 222 577	210,3	744 295	-0,6	6 154 863	39,2
	April	3 361 270	5,4	751 055	-66,2	759 387	2,0	4 871 712	-20,8
	May	2 833 970	-15,7	1 298 926	72,9	843 318	11,1	4 976 214	2,1
	June	2 908 314	2,6	2 509 332	93,2	946 451	12,2	6 364 097	27,9
	July	2 537 011	-12,8	1 266 903	-49,5	826 317	-12,7	4 630 231	-27,2
	August	2 614 213	3,0	1 366 082	7,8	947 247	14,6	4 927 542	6,4
	September	2 448 946	-6,3	3 088 034	126,1	998 513	5,4	6 535 493	32,6
	October	2 723 538	11,2	2 336 922	-24,3	701 104	-29,8	5 761 564	-11,8
	November	2 669 130	-2,0	2 835 113	21,3	935 535	33,4	6 439 778	11,8
	December	3 403 046	27,5	719 295	-74,6	929 614	-0,6	5 051 955	-21,6
	<b>Jul. – Sep. 17</b>	<b>7 600 170</b>		<b>5 721 019</b>		<b>2 772 077</b>		<b>16 093 266</b>	
<b>Oct. – Dec. 17 2/</b>	<b>8 795 714</b>	<b>15,7</b>	<b>5 891 330</b>	<b>3,0</b>	<b>2 566 253</b>	<b>-7,4</b>	<b>17 253 297</b>	<b>7,2</b>	

1/ The percentage change is the change in the seasonally adjusted value of buildings reported as completed to municipalities of the relevant month compared with the seasonally adjusted value of buildings reported as completed to municipalities of the previous month expressed as a percentage.

2/ The percentage change is the change in the seasonally adjusted value of buildings reported as completed to municipalities for the latest three months compared with the seasonally adjusted value of buildings reported as completed to municipalities of the previous three months expressed as a percentage.

3/ Not seasonally adjusted because the presence of seasonality is not significant. See notes 10 and 11 on page 38.

**Table 9 – Recorded building plans passed by larger municipalities at current prices by type of building: South Africa**

			Dec. 2016	Nov. 2017	Dec. 2017	Jan. - Dec. 2016	Jan. - Dec. 2017	% change 1/	
Category of building	Type of building	Measuring unit							
<b>Residential buildings</b>	Dwelling-houses < 80 square metres	Number	1 224	1 088	2 596	17 318	20 253	16,9	
		square metres	57 368	55 397	133 896	837 353	983 760	17,5	
		R'000	295 547	317 794	533 181	4 014 458	4 795 440	19,5	
	Dwelling-houses >= 80 square metres	Number	1 095	1 313	1 117	15 899	15 270	-4,0	
		square metres	299 369	358 475	277 642	4 344 535	4 106 343	-5,5	
		R'000	2 084 574	2 560 681	2 024 572	29 339 581	28 826 242	-1,7	
	Flats and townhouses	Number	2 579	1 676	2 141	23 012	21 710	-5,7	
		square metres	264 447	178 574	184 397	2 379 301	2 345 555	-1,4	
		R'000	2 347 973	1 488 431	1 577 365	19 274 352	18 855 770	-2,2	
	Other residential buildings 2/	square metres	1 153	18 368	12 526	247 825	108 917	-56,1	
		R'000	8 100	208 718	110 265	2 232 511	882 954	-60,5	
	<b>Total residential buildings</b>		<b>R'000</b>	<b>4 736 194</b>	<b>4 575 624</b>	<b>4 245 383</b>	<b>54 860 902</b>	<b>53 360 406</b>	<b>-2,7</b>
<b>Non-residential buildings</b>	Office and banking space	square metres	15 173	52 153	23 644	619 662	474 258	-23,5	
		R'000	153 026	544 552	207 614	5 518 124	4 485 543	-18,7	
	Shopping space	square metres	21 938	229 289	117 199	1 149 822	852 998	-25,8	
		R'000	200 122	2 218 780	1 040 260	9 196 687	7 468 270	-18,8	
	Industrial and warehouse space	square metres	143 095	114 563	172 482	1 880 399	1 831 238	-2,6	
		R'000	855 907	817 964	1 109 956	10 426 469	11 095 278	6,4	
	Other non-residential buildings 3/	square metres	49 600	46 805	9 946	597 149	459 601	-23,0	
		R'000	313 467	321 796	70 185	3 988 671	3 264 631	-18,2	
	<b>Total non-residential buildings</b>		<b>R'000</b>	<b>1 522 522</b>	<b>3 903 092</b>	<b>2 428 015</b>	<b>29 129 951</b>	<b>26 313 722</b>	<b>-9,7</b>
	<b>Additions and alterations</b>	Dwelling-houses	square metres	210 660	256 698	201 977	3 031 820	2 983 563	-1,6
R'000			1 504 928	1 877 743	1 488 825	20 092 691	21 166 714	5,3	
Other buildings 4/		square metres	39 387	102 421	41 673	777 655	809 655	4,1	
		R'000	449 385	907 541	477 979	7 247 135	8 081 035	11,5	
<b>Total additions and alterations</b>		<b>R'000</b>	<b>1 954 313</b>	<b>2 785 284</b>	<b>1 966 804</b>	<b>27 339 826</b>	<b>29 247 749</b>	<b>7,0</b>	
<b>Recorded plans passed</b>	<b>Total at current prices</b>		<b>R'000</b>	<b>8 213 029</b>	<b>11 264 000</b>	<b>8 640 202</b>	<b>111 330 679</b>	<b>108 921 877</b>	<b>-2,2</b>

1/ The percentage change between cumulative figures for 2016 and 2017.

2/ Other residential buildings include institutions for the disabled, boarding houses, hostels and tourism accommodation e.g. hotels, motels, guest-houses, holiday chalets, bed-and-breakfast accommodation and casinos.

3/ Other non-residential space includes churches, sport and recreation clubs, schools, crèches, hospitals and all other non-residential space.

4/ Other buildings include other residential buildings, non-residential buildings and internal alterations. No square metres are collected for internal alterations.

**Table 10 – Recorded building plans passed by larger municipalities at current prices by type of building: Western Cape**

			Dec. 2016	Nov. 2017	Dec. 2017	Jan. - Dec. 2016	Jan. - Dec. 2017	% change 1/
Category of building	Type of building	Measuring unit						
Residential buildings	Dwelling-houses < 80 square metres	Number	645	265	408	7 152	6 137	-14,2
		square metres	28 105	12 340	26 129	326 518	290 689	-11,0
		R'000	158 730	60 347	179 990	1 827 488	1 768 401	-3,2
	Dwelling-houses >= 80 square metres	Number	350	468	439	4 639	5 292	14,1
		square metres	83 981	123 820	89 665	1 141 428	1 265 114	10,8
		R'000	565 524	842 898	624 243	7 595 002	8 554 841	12,6
	Flats and townhouses	Number	594	230	796	5 741	7 446	29,7
		square metres	73 060	32 069	58 854	720 497	776 357	7,8
		R'000	591 470	240 147	459 855	5 563 931	5 835 808	4,9
	Other residential buildings 2/	square metres	0	430	1 551	61 831	27 390	-55,7
		R'000	0	2 578	10 836	470 543	214 672	-54,4
	<b>Total residential buildings</b>	<b>R'000</b>	<b>1 315 724</b>	<b>1 145 970</b>	<b>1 274 924</b>	<b>15 456 964</b>	<b>16 373 722</b>	<b>5,9</b>
	Non-residential buildings	Office and banking space	square metres	2 650	1 497	13 369	125 176	124 891
R'000			25 774	10 509	104 139	1 042 456	1 081 747	3,8
Shopping space		square metres	0	1 577	78 128	177 759	146 600	-17,5
		R'000	0	8 160	682 634	1 440 276	1 216 136	-15,6
Industrial and warehouse space		square metres	65 276	32 930	71 510	377 336	369 311	-2,1
		R'000	430 848	247 958	492 650	2 513 935	2 609 007	3,8
Other non-residential buildings 3/		square metres	35 936	4 220	2 405	202 706	136 085	-32,9
		R'000	229 223	22 738	16 884	1 294 060	901 196	-30,4
<b>Total non-residential buildings</b>		<b>R'000</b>	<b>685 845</b>	<b>289 365</b>	<b>1 296 307</b>	<b>6 290 727</b>	<b>5 808 086</b>	<b>-7,7</b>
Additions and alterations	Dwelling-houses	square metres	60 339	76 616	56 710	882 474	881 040	-0,2
		R'000	392 252	510 797	384 046	5 634 891	5 782 409	2,6
	Other buildings 4/	square metres	11 354	32 489	9 812	242 755	295 232	21,6
		R'000	134 640	332 639	142 120	2 531 700	3 273 016	29,3
<b>Total additions and alterations</b>	<b>R'000</b>	<b>526 892</b>	<b>843 436</b>	<b>526 166</b>	<b>8 166 591</b>	<b>9 055 425</b>	<b>10,9</b>	
<b>Recorded plans passed</b>	<b>Total at current prices</b>	<b>R'000</b>	<b>2 528 461</b>	<b>2 278 771</b>	<b>3 097 397</b>	<b>29 914 282</b>	<b>31 237 233</b>	<b>4,4</b>

1/ The percentage change between cumulative figures for 2016 and 2017.

2/ Other residential buildings include institutions for the disabled, boarding houses, hostels and tourism accommodation e.g. hotels, motels, guest-houses, holiday chalets, bed-and-breakfast accommodation and casinos.

3/ Other non-residential space includes churches, sport and recreation clubs, schools, crèches, hospitals and all other non-residential space.

4/ Other buildings include other residential buildings, non-residential buildings and internal alterations. No square metres are collected for internal alterations.

**Table 11 – Recorded building plans passed by larger municipalities at current prices by type of building: Eastern Cape**

			Dec. 2016	Nov. 2017	Dec. 2017	Jan. - Dec. 2016	Jan. - Dec. 2017	% change 1/
Category of building	Type of building	Measuring unit						
Residential buildings	Dwelling-houses < 80 square metres	Number	61	194	12	1 303	1 776	36,3
		square metres	3 473	8 639	761	63 273	83 543	32,0
		R'000	19 290	58 645	4 428	279 611	431 149	54,2
	Dwelling-houses >= 80 square metres	Number	92	103	75	1 157	1 264	9,2
		square metres	20 645	21 895	16 495	253 937	296 402	16,7
		R'000	141 599	138 766	105 100	1 481 164	1 835 366	23,9
	Flats and townhouses	Number	12	20	90	857	484	-43,5
		square metres	1 591	3 429	8 414	76 367	55 235	-27,7
		R'000	10 337	23 300	54 036	433 345	340 261	-21,5
	Other residential buildings 2/	square metres	0	0	2 662	2 225	8 872	298,7
		R'000	0	0	15 972	9 526	52 896	455,3
<b>Total residential buildings</b>	<b>R'000</b>	<b>171 226</b>	<b>220 711</b>	<b>179 536</b>	<b>2 203 646</b>	<b>2 659 672</b>	<b>20,7</b>	
Non-residential buildings	Office and banking space	square metres	0	819	1 396	13 671	12 816	-6,3
		R'000	0	4 706	8 862	93 460	74 347	-20,5
	Shopping space	square metres	0	1 596	0	5 626	18 668	231,8
		R'000	0	8 145	0	31 430	104 078	231,1
	Industrial and warehouse space	square metres	3 621	4 640	1 186	116 504	138 129	18,6
		R'000	19 916	27 727	8 156	584 647	828 873	41,8
	Other non-residential buildings 3/	square metres	328	3 097	171	32 126	29 568	-8,0
		R'000	1 476	15 767	1 086	158 597	169 344	6,8
	<b>Total non-residential buildings</b>	<b>R'000</b>	<b>21 392</b>	<b>56 345</b>	<b>18 104</b>	<b>868 134</b>	<b>1 176 642</b>	<b>35,5</b>
	Additions and alterations	Dwelling-houses	square metres	17 097	26 450	16 897	268 902	286 873
R'000			103 845	177 107	105 223	1 429 138	1 782 935	24,8
Other buildings 4/		square metres	2 070	18 149	4 145	72 404	79 003	9,1
		R'000	10 045	120 272	31 520	345 084	531 780	54,1
<b>Total additions and alterations</b>	<b>R'000</b>	<b>113 890</b>	<b>297 379</b>	<b>136 743</b>	<b>1 774 222</b>	<b>2 314 715</b>	<b>30,5</b>	
<b>Recorded plans passed</b>	<b>Total at current prices</b>	<b>R'000</b>	<b>306 508</b>	<b>574 435</b>	<b>334 383</b>	<b>4 846 002</b>	<b>6 151 029</b>	<b>26,9</b>

1/ The percentage change between cumulative figures for 2016 and 2017.

2/ Other residential buildings include institutions for the disabled, boarding houses, hostels and tourism accommodation e.g. hotels, motels, guest-houses, holiday chalets, bed-and-breakfast accommodation and casinos.

3/ Other non-residential space includes churches, sport and recreation clubs, schools, crèches, hospitals and all other non-residential space.

4/ Other buildings include other residential buildings, non-residential buildings and internal alterations. No square metres are collected for internal alterations.

**Table 12 – Recorded building plans passed by larger municipalities at current prices by type of building: Northern Cape**

			Dec. 2016	Nov. 2017	Dec. 2017	Jan. - Dec. 2016	Jan. - Dec. 2017	% change 1/
Category of building	Type of building	Measuring unit						
<b>Residential buildings</b>	Dwelling-houses < 80 square metres	Number	1	1	4	33	36	9,1
		square metres	48	74	253	2 195	2 070	-5,7
		R'000	312	595	1 960	13 152	12 649	-3,8
	Dwelling-houses >= 80 square metres	Number	16	8	21	185	169	-8,6
		square metres	2 791	1 810	4 380	34 677	38 363	10,6
		R'000	16 667	13 479	30 050	219 395	270 052	23,1
	Flats and townhouses	Number	0	0	0	61	4	-93,4
		square metres	0	0	0	6 217	343	-94,5
		R'000	0	0	0	37 970	2 401	-93,7
	Other residential buildings 2/	square metres	0	0	0	822	780	-5,1
		R'000	0	0	0	5 343	5 070	-5,1
	<b>Total residential buildings</b>	<b>R'000</b>	<b>16 979</b>	<b>14 074</b>	<b>32 010</b>	<b>275 860</b>	<b>290 172</b>	<b>5,2</b>
<b>Non-residential buildings</b>	Office and banking space	square metres	226	0	1 613	11 053	2 630	-76,2
		R'000	1 467	0	11 291	65 502	16 025	-75,5
	Shopping space	square metres	0	1 103	0	6 401	7 159	11,8
		R'000	0	5 249	0	39 699	45 213	13,9
	Industrial and warehouse space	square metres	1 138	1 628	1 037	14 752	15 540	5,3
		R'000	7 398	11 396	6 180	87 806	107 288	22,2
	Other non-residential buildings 3/	square metres	0	0	0	17 959	4 305	-76,0
		R'000	0	0	0	141 258	27 621	-80,4
	<b>Total non-residential buildings</b>	<b>R'000</b>	<b>8 865</b>	<b>16 645</b>	<b>17 471</b>	<b>334 265</b>	<b>196 147</b>	<b>-41,3</b>
	<b>Additions and alterations</b>	Dwelling-houses	square metres	1 994	2 876	3 402	51 572	38 721
R'000			14 101	21 086	24 794	362 085	276 674	-23,6
Other buildings 4/		square metres	439	80	39	6 320	4 141	-34,5
		R'000	3 538	3 120	1 143	60 463	39 962	-33,9
<b>Total additions and alterations</b>	<b>R'000</b>	<b>17 639</b>	<b>24 206</b>	<b>25 937</b>	<b>422 548</b>	<b>316 636</b>	<b>-25,1</b>	
<b>Recorded plans passed</b>	<b>Total at current prices</b>	<b>R'000</b>	<b>43 483</b>	<b>54 925</b>	<b>75 418</b>	<b>1 032 673</b>	<b>802 955</b>	<b>-22,2</b>

1/ The percentage change between cumulative figures for 2016 and 2017.

2/ Other residential buildings include institutions for the disabled, boarding houses, hostels and tourism accommodation e.g. hotels, motels, guest-houses, holiday chalets, bed-and-breakfast accommodation and casinos.

3/ Other non-residential space includes churches, sport and recreation clubs, schools, crèches, hospitals and all other non-residential space.

4/ Other buildings include other residential buildings, non-residential buildings and internal alterations. No square metres are collected for internal alterations.

**Table 13 – Recorded building plans passed by larger municipalities at current prices by type of building: Free State**

			Dec. 2016	Nov. 2017	Dec. 2017	Jan. - Dec. 2016	Jan. - Dec. 2017	% change 1/
Category of building	Type of building	Measuring unit						
<b>Residential buildings</b>	Dwelling-houses < 80 square metres	Number	20	4	9	803	117	-85,4
		square metres	1 265	257	554	43 002	7 135	-83,4
		R'000	7 340	1 687	3 617	152 528	45 429	-70,2
	Dwelling-houses >= 80 square metres	Number	65	60	54	859	687	-20,0
		square metres	15 553	14 682	10 799	198 418	148 362	-25,2
		R'000	84 453	88 575	66 580	1 081 768	871 127	-19,5
	Flats and townhouses	Number	12	18	0	378	674	78,3
		square metres	359	1 148	0	43 308	77 975	80,0
		R'000	2 513	5 984	0	284 760	534 787	87,8
	Other residential buildings 2/	square metres	1 153	116	871	12 419	2 857	-77,0
		R'000	8 100	736	5 612	75 693	16 634	-78,0
<b>Total residential buildings</b>	<b>R'000</b>	<b>102 406</b>	<b>96 982</b>	<b>75 809</b>	<b>1 594 749</b>	<b>1 467 977</b>	<b>-7,9</b>	
<b>Non-residential buildings</b>	Office and banking space	square metres	0	0	0	15 929	6 130	-61,5
		R'000	0	0	0	124 819	50 054	-59,9
	Shopping space	square metres	1 037	37 960	79	12 505	43 932	251,3
		R'000	5 633	228 232	501	83 565	260 743	212,0
	Industrial and warehouse space	square metres	7 699	0	380	60 234	40 014	-33,6
		R'000	37 502	0	1 809	287 456	220 347	-23,3
	Other non-residential buildings 3/	square metres	342	1 067	378	15 391	13 186	-14,3
		R'000	1 539	7 257	3 326	102 585	91 513	-10,8
	<b>Total non-residential buildings</b>	<b>R'000</b>	<b>44 674</b>	<b>235 489</b>	<b>5 636</b>	<b>598 425</b>	<b>622 657</b>	<b>4,0</b>
	<b>Additions and alterations</b>	Dwelling-houses	square metres	12 544	14 525	9 784	153 517	137 953
R'000			66 893	90 908	61 237	802 341	805 993	0,5
Other buildings 4/		square metres	223	1 606	985	27 413	29 225	6,6
		R'000	5 335	11 595	9 634	388 735	390 663	0,5
<b>Total additions and alterations</b>	<b>R'000</b>	<b>72 228</b>	<b>102 503</b>	<b>70 871</b>	<b>1 191 076</b>	<b>1 196 656</b>	<b>0,5</b>	
<b>Recorded plans passed</b>	<b>Total at current prices</b>	<b>R'000</b>	<b>219 308</b>	<b>434 974</b>	<b>152 316</b>	<b>3 384 250</b>	<b>3 287 290</b>	<b>-2,9</b>

1/ The percentage change between cumulative figures for 2016 and 2017.

2/ Other residential buildings include institutions for the disabled, boarding houses, hostels and tourism accommodation e.g. hotels, motels, guest-houses, holiday chalets, bed-and-breakfast accommodation and casinos.

3/ Other non-residential space includes churches, sport and recreation clubs, schools, crèches, hospitals and all other non-residential space.

4/ Other buildings include other residential buildings, non-residential buildings and internal alterations. No square metres are collected for internal alterations.

**Table 14 – Recorded building plans passed by larger municipalities at current prices by type of building: KwaZulu-Natal**

			Dec. 2016	Nov. 2017	Dec. 2017	Jan. - Dec. 2016	Jan. - Dec. 2017	% change 1/
Category of building	Type of building	Measuring unit						
Residential buildings	Dwelling-houses < 80 square metres	Number	10	14	5	328	1 551	372,9
		square metres	671	762	328	16 761	71 411	326,1
		R'000	6 030	7 107	3 252	118 514	357 017	201,2
	Dwelling-houses >= 80 square metres	Number	78	123	107	1 339	1 279	-4,5
		square metres	26 552	35 457	32 161	415 788	387 415	-6,8
		R'000	251 470	334 199	306 519	3 687 941	3 660 263	-0,8
	Flats and townhouses	Number	531	318	250	3 853	3 183	-17,4
		square metres	61 441	39 383	25 116	393 401	440 427	12,0
		R'000	583 218	321 967	239 621	3 697 281	4 240 672	14,7
	Other residential buildings 2/	square metres	0	15 729	3 310	19 883	39 236	97,3
		R'000	0	187 180	36 869	187 618	407 638	117,3
<b>Total residential buildings</b>	<b>R'000</b>	<b>840 718</b>	<b>850 453</b>	<b>586 261</b>	<b>7 691 354</b>	<b>8 665 590</b>	<b>12,7</b>	
Non-residential buildings	Office and banking space	square metres	771	46 573	0	180 596	148 528	-17,8
		R'000	8 096	512 303	0	1 805 655	1 494 003	-17,3
	Shopping space	square metres	18 913	175 152	20 884	557 952	366 355	-34,3
		R'000	182 177	1 899 675	223 724	4 882 151	3 689 458	-24,4
	Industrial and warehouse space	square metres	38 795	16 518	51 974	437 656	411 683	-5,9
		R'000	227 017	97 592	319 624	2 471 864	2 452 789	-0,8
	Other non-residential buildings 3/	square metres	2 999	24 069	2 474	91 838	71 334	-22,3
		R'000	21 133	188 206	21 936	640 247	600 667	-6,2
	<b>Total non-residential buildings</b>	<b>R'000</b>	<b>438 423</b>	<b>2 697 776</b>	<b>565 284</b>	<b>9 799 917</b>	<b>8 236 917</b>	<b>-15,9</b>
	Additions and alterations	Dwelling-houses	square metres	30 866	31 791	28 743	366 096	389 427
R'000			304 756	323 814	282 751	3 300 999	3 817 852	15,7
Other buildings 4/		square metres	8 975	15 378	13 357	188 028	175 230	-6,8
		R'000	114 080	186 596	172 267	1 926 186	2 074 346	7,7
<b>Total additions and alterations</b>	<b>R'000</b>	<b>418 836</b>	<b>510 410</b>	<b>455 018</b>	<b>5 227 185</b>	<b>5 892 198</b>	<b>12,7</b>	
<b>Recorded plans passed</b>	<b>Total at current prices</b>	<b>R'000</b>	<b>1 697 977</b>	<b>4 058 639</b>	<b>1 606 563</b>	<b>22 718 456</b>	<b>22 794 705</b>	<b>0,3</b>

1/ The percentage change between cumulative figures for 2016 and 2017.

2/ Other residential buildings include institutions for the disabled, boarding houses, hostels and tourism accommodation e.g. hotels, motels, guest-houses, holiday chalets, bed-and-breakfast accommodation and casinos.

3/ Other non-residential space includes churches, sport and recreation clubs, schools, crèches, hospitals and all other non-residential space.

4/ Other buildings include other residential buildings, non-residential buildings and internal alterations. No square metres are collected for internal alterations.

**Table 15 – Recorded building plans passed by larger municipalities at current prices by type of building: North West**

			Dec. 2016	Nov. 2017	Dec. 2017	Jan. - Dec. 2016	Jan. - Dec. 2017	% change 1/
Category of building	Type of building	Measuring unit						
<b>Residential buildings</b>	Dwelling-houses < 80 square metres	Number	2	2	10	112	1 133	911,6
		square metres	130	115	701	6 757	52 380	675,2
		R'000	780	582	3 155	31 525	126 372	300,9
	Dwelling-houses >= 80 square metres	Number	46	47	43	908	763	-16,0
		square metres	11 455	12 880	11 964	230 553	193 553	-16,0
		R'000	56 227	69 078	66 031	1 189 124	1 035 357	-12,9
	Flats and townhouses	Number	55	108	1	932	2 043	119,2
		square metres	5 623	6 349	261	71 482	186 800	161,3
		R'000	26 243	34 425	1 175	372 260	1 115 461	199,6
	Other residential buildings 2/	square metres	0	0	0	3 961	1 593	-59,8
		R'000	0	0	0	22 148	7 915	-64,3
	<b>Total residential buildings</b>	<b>R'000</b>	<b>83 250</b>	<b>104 085</b>	<b>70 361</b>	<b>1 615 057</b>	<b>2 285 105</b>	<b>41,5</b>
<b>Non-residential buildings</b>	Office and banking space	square metres	620	1 188	0	7 772	3 623	-53,4
		R'000	3 100	5 940	0	44 335	20 030	-54,8
	Shopping space	square metres	0	4 202	3 077	31 250	24 208	-22,5
		R'000	0	22 324	14 650	172 805	127 277	-26,3
	Industrial and warehouse space	square metres	1 771	0	5 424	53 549	18 250	-65,9
		R'000	9 919	0	30 648	246 079	95 570	-61,2
	Other non-residential buildings 3/	square metres	2 456	1 294	0	13 200	5 945	-55,0
		R'000	12 158	7 821	0	69 367	30 837	-55,5
	<b>Total non-residential buildings</b>	<b>R'000</b>	<b>25 177</b>	<b>36 085</b>	<b>45 298</b>	<b>532 586</b>	<b>273 714</b>	<b>-48,6</b>
	<b>Additions and alterations</b>	Dwelling-houses	square metres	8 371	11 808	9 783	140 029	131 800
R'000			44 286	62 568	51 935	677 706	681 927	0,6
Other buildings 4/		square metres	1 261	687	541	14 753	18 406	24,8
		R'000	15 621	5 140	3 215	98 470	122 345	24,2
<b>Total additions and alterations</b>	<b>R'000</b>	<b>59 907</b>	<b>67 708</b>	<b>55 150</b>	<b>776 176</b>	<b>804 272</b>	<b>3,6</b>	
<b>Recorded plans passed</b>	<b>Total at current prices</b>	<b>R'000</b>	<b>168 334</b>	<b>207 878</b>	<b>170 809</b>	<b>2 923 819</b>	<b>3 363 091</b>	<b>15,0</b>

1/ The percentage change between cumulative figures for 2016 and 2017.

2/ Other residential buildings include institutions for the disabled, boarding houses, hostels and tourism accommodation e.g. hotels, motels, guest-houses, holiday chalets, bed-and-breakfast accommodation and casinos.

3/ Other non-residential space includes churches, sport and recreation clubs, schools, crèches, hospitals and all other non-residential space.

4/ Other buildings include other residential buildings, non-residential buildings and internal alterations. No square metres are collected for internal alterations.



**Table 16 – Recorded building plans passed by larger municipalities at current prices by type of building: Gauteng**

			Dec. 2016	Nov. 2017	Dec. 2017	Jan. - Dec. 2016	Jan. - Dec. 2017	% change 1/
Category of building	Type of building	Measuring unit						
<b>Residential buildings</b>	Dwelling-houses < 80 square metres	Number	414	529	2 125	6 351	8 554	34,7
		square metres	19 934	28 805	103 915	311 414	426 080	36,8
		R'000	85 140	167 280	330 449	1 311 337	1 815 394	38,4
	Dwelling-houses >= 80 square metres	Number	333	378	295	4 915	4 297	-12,6
		square metres	105 438	112 493	87 086	1 579 595	1 345 250	-14,8
		R'000	811 586	873 066	678 900	11 599 332	10 279 179	-11,4
	Flats and townhouses	Number	1 369	964	977	10 607	7 468	-29,6
		square metres	121 892	95 056	88 639	1 004 699	760 203	-24,3
		R'000	1 132 256	857 163	808 202	8 565 991	6 534 759	-23,7
	Other residential buildings 2/	square metres	0	1 182	4 132	135 821	13 080	-90,4
		R'000	0	13 880	40 976	1 411 479	99 680	-92,9
	<b>Total residential buildings</b>	<b>R'000</b>	<b>2 028 982</b>	<b>1 911 389</b>	<b>1 858 527</b>	<b>22 888 139</b>	<b>18 729 012</b>	<b>-18,2</b>
<b>Non-residential buildings</b>	Office and banking space	square metres	10 906	355	7 134	224 208	151 671	-32,4
		R'000	114 589	1 990	82 694	2 118 398	1 624 814	-23,3
	Shopping space	square metres	978	6 539	12 285	288 755	199 851	-30,8
		R'000	7 325	40 113	106 894	2 194 422	1 766 296	-19,5
	Industrial and warehouse space	square metres	22 875	53 996	28 462	728 466	767 653	5,4
		R'000	114 667	408 389	187 289	3 797 833	4 417 078	16,3
	Other non-residential buildings 3/	square metres	3 705	7 825	1 738	179 170	147 026	-17,9
		R'000	29 070	55 223	13 717	1 366 041	1 146 759	-16,1
	<b>Total non-residential buildings</b>	<b>R'000</b>	<b>265 651</b>	<b>505 715</b>	<b>390 594</b>	<b>9 476 694</b>	<b>8 954 947</b>	<b>-5,5</b>
	<b>Additions and alterations</b>	Dwelling-houses	square metres	69 514	78 287	64 054	955 200	934 025
R'000			533 742	614 355	513 617	6 882 301	7 096 144	3,1
Other buildings 4/		square metres	12 371	31 282	9 500	188 332	180 774	-4,0
		R'000	132 278	193 380	88 523	1 613 464	1 316 203	-18,4
<b>Total additions and alterations</b>	<b>R'000</b>	<b>666 020</b>	<b>807 735</b>	<b>602 140</b>	<b>8 495 765</b>	<b>8 412 347</b>	<b>-1,0</b>	
<b>Recorded plans passed</b>	<b>Total at current prices</b>	<b>R'000</b>	<b>2 960 653</b>	<b>3 224 839</b>	<b>2 851 261</b>	<b>40 860 598</b>	<b>36 096 306</b>	<b>-11,7</b>

1/ The percentage change between cumulative figures for 2016 and 2017.

2/ Other residential buildings include institutions for the disabled, boarding houses, hostels and tourism accommodation e.g. hotels, motels, guest-houses, holiday chalets, bed-and-breakfast accommodation and casinos.

3/ Other non-residential space includes churches, sport and recreation clubs, schools, crèches, hospitals and all other non-residential space.

4/ Other buildings include other residential buildings, non-residential buildings and internal alterations. No square metres are collected for internal alterations.

**Table 17 – Recorded building plans passed by larger municipalities at current prices by type of building: Mpumalanga**

			Dec. 2016	Nov. 2017	Dec. 2017	Jan. - Dec. 2016	Jan. - Dec. 2017	% change 1/
Category of building	Type of building	Measuring unit						
<b>Residential buildings</b>	Dwelling-houses < 80 square metres	Number	35	47	12	1 014	720	-29,0
		square metres	1 617	2 445	590	54 010	36 061	-33,2
		R'000	7 300	11 183	2 812	213 909	157 845	-26,2
	Dwelling-houses >= 80 square metres	Number	90	77	51	1 265	943	-25,5
		square metres	24 387	21 378	15 743	305 175	261 141	-14,4
		R'000	115 483	128 200	98 680	1 580 156	1 446 174	-8,5
	Flats and townhouses	Number	0	18	17	437	171	-60,9
		square metres	0	1 140	2 419	40 502	16 903	-58,3
		R'000	0	5 445	11 522	206 293	79 165	-61,6
	Other residential buildings 2/	square metres	0	911	0	9 286	4 712	-49,3
		R'000	0	4 344	0	42 016	23 366	-44,4
	<b>Total residential buildings</b>	<b>R'000</b>	<b>122 783</b>	<b>149 172</b>	<b>113 014</b>	<b>2 042 374</b>	<b>1 706 550</b>	<b>-16,4</b>
<b>Non-residential buildings</b>	Office and banking space	square metres	0	0	0	33 572	10 921	-67,5
		R'000	0	0	0	186 214	59 815	-67,9
	Shopping space	square metres	787	584	332	55 040	24 848	-54,9
		R'000	3 985	3 835	1 581	280 319	147 289	-47,5
	Industrial and warehouse space	square metres	1 920	1 118	12 509	72 784	43 449	-40,3
		R'000	8 640	6 037	63 600	343 714	231 258	-32,7
	Other non-residential buildings 3/	square metres	3 306	4 977	0	32 443	27 396	-15,6
		R'000	16 228	23 696	0	150 923	150 600	-0,2
	<b>Total non-residential buildings</b>	<b>R'000</b>	<b>28 853</b>	<b>33 568</b>	<b>65 181</b>	<b>961 170</b>	<b>588 962</b>	<b>-38,7</b>
	<b>Additions and alterations</b>	Dwelling-houses	square metres	7 868	9 979	9 425	150 706	128 830
R'000			34 928	53 961	48 870	693 172	642 452	-7,3
Other buildings 4/		square metres	2 642	1 186	2 998	29 279	18 256	-37,6
		R'000	32 088	39 283	25 827	224 790	256 186	14,0
<b>Total additions and alterations</b>	<b>R'000</b>	<b>67 016</b>	<b>93 244</b>	<b>74 697</b>	<b>917 962</b>	<b>898 638</b>	<b>-2,1</b>	
<b>Recorded plans passed</b>	<b>Total at current prices</b>	<b>R'000</b>	<b>218 652</b>	<b>275 984</b>	<b>252 892</b>	<b>3 921 506</b>	<b>3 194 150</b>	<b>-18,5</b>

1/ The percentage change between cumulative figures for 2016 and 2017.

2/ Other residential buildings include institutions for the disabled, boarding houses, hostels and tourism accommodation e.g. hotels, motels, guest-houses, holiday chalets, bed-and-breakfast accommodation and casinos.

3/ Other non-residential space includes churches, sport and recreation clubs, schools, crèches, hospitals and all other non-residential space.

4/ Other buildings include other residential buildings, non-residential buildings and internal alterations. No square metres are collected for internal alterations.

**Table 18 – Recorded building plans passed by larger municipalities at current prices by type of building: Limpopo**

			Dec. 2016	Nov. 2017	Dec. 2017	Jan. - Dec. 2016	Jan. - Dec. 2017	% change 1/
Category of building	Type of building	Measuring unit						
Residential buildings	Dwelling-houses < 80 square metres	Number	36	32	11	222	229	3,2
		square metres	2 125	1 960	665	13 423	14 391	7,2
		R'000	10 625	10 368	3 518	66 394	81 184	22,3
	Dwelling-houses >= 80 square metres	Number	25	49	32	632	576	-8,9
		square metres	8 567	14 060	9 349	184 964	170 743	-7,7
		R'000	41 565	72 420	48 469	905 699	873 883	-3,5
	Flats and townhouses	Number	6	0	10	146	237	62,3
		square metres	481	0	694	22 828	31 312	37,2
		R'000	1 936	0	2 954	112 521	172 456	53,3
	Other residential buildings 2/	square metres	0	0	0	1 577	10 397	559,3
		R'000	0	0	0	8 145	55 083	576,3
	<b>Total residential buildings</b>	<b>R'000</b>	<b>54 126</b>	<b>82 788</b>	<b>54 941</b>	<b>1 092 759</b>	<b>1 182 606</b>	<b>8,2</b>
Non-residential buildings	Office and banking space	square metres	0	1 721	132	7 685	13 048	69,8
		R'000	0	9 104	628	37 285	64 708	73,5
	Shopping space	square metres	223	576	2 414	14 534	21 377	47,1
		R'000	1 002	3 047	10 276	72 020	111 780	55,2
	Industrial and warehouse space	square metres	0	3 733	0	19 118	27 209	42,3
		R'000	0	18 865	0	93 135	133 068	42,9
	Other non-residential buildings 3/	square metres	528	256	2 780	12 316	24 756	101,0
		R'000	2 640	1 088	13 236	65 593	146 094	122,7
	<b>Total non-residential buildings</b>	<b>R'000</b>	<b>3 642</b>	<b>32 104</b>	<b>24 140</b>	<b>268 033</b>	<b>455 650</b>	<b>70,0</b>
	Additions and alterations	Dwelling-houses	square metres	2 067	4 366	3 179	63 324	54 894
R'000			10 125	23 147	16 352	310 058	280 328	-9,6
Other buildings 4/		square metres	52	1 564	296	8 371	9 388	12,1
		R'000	1 760	15 516	3 730	58 243	76 534	31,4
<b>Total additions and alterations</b>	<b>R'000</b>	<b>11 885</b>	<b>38 663</b>	<b>20 082</b>	<b>368 301</b>	<b>356 862</b>	<b>-3,1</b>	
<b>Recorded plans passed</b>	<b>Total at current prices</b>	<b>R'000</b>	<b>69 653</b>	<b>153 555</b>	<b>99 163</b>	<b>1 729 093</b>	<b>1 995 118</b>	<b>15,4</b>

1/ The percentage change between cumulative figures for 2016 and 2017.

2/ Other residential buildings include institutions for the disabled, boarding houses, hostels and tourism accommodation e.g. hotels, motels, guest-houses, holiday chalets, bed-and-breakfast accommodation and casinos.

3/ Other non-residential space includes churches, sport and recreation clubs, schools, crèches, hospitals and all other non-residential space.

4/ Other buildings include other residential buildings, non-residential buildings and internal alterations. No square metres are collected for internal alterations.

**Table 19 – Buildings reported as completed to larger municipalities at current prices by type of building: South Africa**

			Dec. 2016	Nov. 2017	Dec. 2017	Jan. - Dec. 2016	Jan. - Dec. 2017	% change 1/
Category of building	Type of building	Measuring unit						
<b>Residential buildings</b>	Dwelling-houses < 80 square metres	Number	1 428	971	1 012	15 562	14 169	-9,0
		square metres	70 479	50 597	51 568	754 023	694 088	-7,9
		R'000	311 930	285 455	265 883	3 344 829	3 361 915	0,5
	Dwelling-houses >= 80 square metres	Number	1 110	1 154	1 239	12 234	10 807	-11,7
		square metres	338 312	301 087	340 219	3 066 515	2 871 192	-6,4
		R'000	2 446 220	2 113 905	2 483 378	20 495 247	20 594 802	0,5
	Flats and townhouses	Number	2 161	1 385	1 225	13 731	14 048	2,3
		square metres	210 312	159 463	176 266	1 374 532	1 539 872	12,0
		R'000	1 681 210	1 264 399	1 355 727	10 533 470	12 573 629	19,4
	Other residential buildings 2/	square metres	14 060	0	4 860	70 248	229 216	226,3
		R'000	75 780	0	56 932	605 536	2 192 170	262,0
<b>Total residential buildings</b>	<b>R'000</b>	<b>4 515 140</b>	<b>3 663 759</b>	<b>4 161 920</b>	<b>34 979 082</b>	<b>38 722 516</b>	<b>10,7</b>	
<b>Non-residential buildings</b>	Office and banking space	square metres	17 584	201 946	9 878	504 926	625 690	23,9
		R'000	129 840	1 883 553	101 063	4 143 021	5 797 637	39,9
	Shopping space	square metres	34 365	59 507	22 940	516 164	967 611	87,5
		R'000	289 000	487 530	176 078	4 045 022	8 307 719	105,4
	Industrial and warehouse space	square metres	68 511	61 354	72 179	1 077 824	1 146 563	6,4
		R'000	401 412	379 224	405 869	5 859 837	6 645 512	13,4
	Other non-residential buildings 3/	square metres	28 058	65 638	16 153	307 146	271 584	-11,6
		R'000	165 052	507 238	144 179	1 907 427	2 151 311	12,8
	<b>Total non-residential buildings</b>	<b>R'000</b>	<b>985 304</b>	<b>3 257 545</b>	<b>827 189</b>	<b>15 955 307</b>	<b>22 902 179</b>	<b>43,5</b>
	<b>Additions and alterations</b>	Dwelling-houses	square metres	83 779	96 386	78 435	1 225 317	1 173 370
R'000			553 593	667 636	566 326	7 252 702	7 702 348	6,2
Other buildings 4/		square metres	36 825	48 353	36 258	376 880	396 664	5,2
		R'000	319 526	474 261	389 921	3 230 146	3 899 568	20,7
<b>Total additions and alterations</b>	<b>R'000</b>	<b>873 119</b>	<b>1 141 897</b>	<b>956 247</b>	<b>10 482 848</b>	<b>11 601 916</b>	<b>10,7</b>	
<b>Recorded buildings completed</b>	<b>Total at current prices</b>	<b>R'000</b>	<b>6 373 563</b>	<b>8 063 201</b>	<b>5 945 356</b>	<b>61 417 237</b>	<b>73 226 611</b>	<b>19,2</b>

1/ The percentage change between cumulative figures for 2016 and 2017.

2/ Other residential buildings include institutions for the disabled, boarding houses, hostels and tourism accommodation e.g. hotels, motels, guest-houses, holiday chalets, bed-and-breakfast accommodation and casinos.

3/ Other non-residential space includes churches, sport and recreation clubs, schools, crèches, hospitals and all other non-residential space.

4/ Other buildings include other residential buildings, non-residential buildings and internal alterations. No square metres are collected for internal alterations.

**Table 20 – Buildings reported as completed to larger municipalities at current prices by type of building: Western Cape**

			Dec. 2016	Nov. 2017	Dec. 2017	Jan. - Dec. 2016	Jan. - Dec. 2017	% change 1/	
Category of building	Type of building	Measuring unit							
<b>Residential buildings</b>	Dwelling-houses < 80 square metres	Number	513	225	429	4 679	5 074	8,4	
		square metres	21 524	10 524	20 071	208 163	234 573	12,7	
		R'000	114 293	65 237	106 111	1 018 978	1 310 041	28,6	
	Dwelling-houses >= 80 square metres	Number	333	447	454	3 499	3 896	11,3	
		square metres	80 390	99 949	108 778	810 936	901 021	11,1	
		R'000	504 785	676 672	736 269	5 089 060	5 980 722	17,5	
	Flats and townhouses	Number	857	862	429	4 305	3 806	-11,6	
		square metres	63 387	98 308	76 667	426 940	471 355	10,4	
		R'000	471 320	757 914	582 914	3 246 622	3 611 022	11,2	
	Other residential buildings 2/	square metres	12 798	0	0	20 325	68 156	235,3	
		R'000	67 635	0	0	124 053	543 888	338,4	
	<b>Total residential buildings</b>		<b>R'000</b>	<b>1 158 033</b>	<b>1 499 823</b>	<b>1 425 294</b>	<b>9 478 713</b>	<b>11 445 673</b>	<b>20,8</b>
<b>Non-residential buildings</b>	Office and banking space	square metres	9 233	0	1 014	148 919	131 791	-11,5	
		R'000	58 489	0	10 175	1 013 282	1 006 802	-0,6	
	Shopping space	square metres	5 774	23 584	11 693	77 611	189 939	144,7	
		R'000	27 138	186 834	84 810	535 184	1 517 280	183,5	
	Industrial and warehouse space	square metres	26 545	27 874	14 567	261 430	323 540	23,8	
		R'000	161 709	188 219	93 546	1 659 806	2 303 677	38,8	
	Other non-residential buildings 3/	square metres	18 953	51 745	3 188	130 066	107 693	-17,2	
		R'000	91 939	407 519	21 547	822 760	760 955	-7,5	
	<b>Total non-residential buildings</b>		<b>R'000</b>	<b>339 275</b>	<b>782 572</b>	<b>210 078</b>	<b>4 031 032</b>	<b>5 588 714</b>	<b>38,6</b>
	<b>Additions and alterations</b>	Dwelling-houses	square metres	37 475	43 541	37 753	543 063	573 759	5,7
R'000			214 999	268 553	241 694	2 798 706	3 327 773	18,9	
Other buildings 4/		square metres	15 363	13 187	23 111	155 051	173 500	11,9	
		R'000	138 183	142 655	263 408	1 504 537	1 820 740	21,0	
<b>Total additions and alterations</b>		<b>R'000</b>	<b>353 182</b>	<b>411 208</b>	<b>505 102</b>	<b>4 303 243</b>	<b>5 148 513</b>	<b>19,6</b>	
<b>Recorded buildings completed</b>	<b>Total at current prices</b>		<b>R'000</b>	<b>1 850 490</b>	<b>2 693 603</b>	<b>2 140 474</b>	<b>17 812 988</b>	<b>22 182 900</b>	<b>24,5</b>

1/ The percentage change between cumulative figures for 2016 and 2017.

2/ Other residential buildings include institutions for the disabled, boarding houses, hostels and tourism accommodation e.g. hotels, motels, guest-houses, holiday chalets, bed-and-breakfast accommodation and casinos.

3/ Other non-residential space includes churches, sport and recreation clubs, schools, crèches, hospitals and all other non-residential space.

4/ Other buildings include other residential buildings, non-residential buildings and internal alterations. No square metres are collected for internal alterations.

**Table 21 – Buildings reported as completed to larger municipalities at current prices by type of building: Eastern Cape**

			Dec. 2016	Nov. 2017	Dec. 2017	Jan. - Dec. 2016	Jan. - Dec. 2017	% change 1/	
Category of building	Type of building	Measuring unit							
<b>Residential buildings</b>	Dwelling-houses < 80 square metres	Number	11	55	11	1 213	412	-66,0	
		square metres	571	2 809	736	55 159	21 336	-61,3	
		R'000	2 295	14 083	4 528	237 389	103 082	-56,6	
	Dwelling-houses >= 80 square metres	Number	32	38	42	697	588	-15,6	
		square metres	8 163	7 919	10 693	135 595	121 020	-10,7	
		R'000	45 204	50 350	69 952	751 485	718 025	-4,5	
	Flats and townhouses	Number	20	2	0	373	83	-77,7	
		square metres	1 670	299	0	35 205	8 378	-76,2	
		R'000	11 287	1 898	0	197 513	49 608	-74,9	
	Other residential buildings 2/	square metres	0	0	0	5 865	4 056	-30,8	
		R'000	0	0	0	26 562	23 020	-13,3	
	<b>Total residential buildings</b>		<b>R'000</b>	<b>58 786</b>	<b>66 331</b>	<b>74 480</b>	<b>1 212 949</b>	<b>893 735</b>	<b>-26,3</b>
<b>Non-residential buildings</b>	Office and banking space	square metres	0	0	0	4 836	3 361	-30,5	
		R'000	0	0	0	27 800	15 173	-45,4	
	Shopping space	square metres	0	0	0	6 470	1 892	-70,8	
		R'000	0	0	0	32 182	9 025	-72,0	
	Industrial and warehouse space	square metres	0	1 969	298	10 228	20 734	102,7	
		R'000	0	12 499	1 891	50 678	107 236	111,6	
	Other non-residential buildings 3/	square metres	0	0	0	446	5 193	1 064,3	
		R'000	0	0	0	2 198	26 708	1 115,1	
	<b>Total non-residential buildings</b>		<b>R'000</b>	<b>0</b>	<b>12 499</b>	<b>1 891</b>	<b>112 858</b>	<b>158 142</b>	<b>40,1</b>
	<b>Additions and alterations</b>	Dwelling-houses	square metres	4 459	8 155	3 229	61 679	91 282	48,0
R'000			21 261	51 391	19 026	304 392	494 943	62,6	
Other buildings 4/		square metres	2 760	1 183	1 175	22 342	30 886	38,2	
		R'000	13 771	28 048	7 000	111 407	235 108	111,0	
<b>Total additions and alterations</b>		<b>R'000</b>	<b>35 032</b>	<b>79 439</b>	<b>26 026</b>	<b>415 799</b>	<b>730 051</b>	<b>75,6</b>	
<b>Recorded buildings completed</b>	<b>Total at current prices</b>		<b>R'000</b>	<b>93 818</b>	<b>158 269</b>	<b>102 397</b>	<b>1 741 606</b>	<b>1 781 928</b>	<b>2,3</b>

1/ The percentage change between cumulative figures for 2016 and 2017.

2/ Other residential buildings include institutions for the disabled, boarding houses, hostels and tourism accommodation e.g. hotels, motels, guest-houses, holiday chalets, bed-and-breakfast accommodation and casinos.

3/ Other non-residential space includes churches, sport and recreation clubs, schools, crèches, hospitals and all other non-residential space.

4/ Other buildings include other residential buildings, non-residential buildings and internal alterations. No square metres are collected for internal alterations.

**Table 22 – Buildings reported as completed to larger municipalities at current prices by type of building: Northern Cape**

			Dec. 2016	Nov. 2017	Dec. 2017	Jan. - Dec. 2016	Jan. - Dec. 2017	% change 1/	
Category of building	Type of building	Measuring unit							
<b>Residential buildings</b>	Dwelling-houses < 80 square metres	Number	0	0	0	5	2	-60,0	
		square metres	0	0	0	336	120	-64,3	
		R'000	0	0	0	1 891	764	-59,6	
	Dwelling-houses >= 80 square metres	Number	0	4	4	92	55	-40,2	
		square metres	0	1 262	905	17 709	12 929	-27,0	
		R'000	0	10 148	6 231	121 918	91 183	-25,2	
	Flats and townhouses	Number	0	0	0	5	17	240,0	
		square metres	0	0	0	761	1 928	153,4	
		R'000	0	0	0	5 006	13 449	168,7	
	Other residential buildings 2/	square metres	0	0	0	158	935	491,8	
		R'000	0	0	0	948	5 512	481,4	
	<b>Total residential buildings</b>		<b>R'000</b>	<b>0</b>	<b>10 148</b>	<b>6 231</b>	<b>129 763</b>	<b>110 908</b>	<b>-14,5</b>
<b>Non-residential buildings</b>	Office and banking space	square metres	0	265	0	325	3 704	1 039,7	
		R'000	0	1 262	0	1 463	20 419	1 295,7	
	Shopping space	square metres	320	0	0	860	1 426	65,8	
		R'000	1 920	0	0	4 351	11 222	157,9	
	Industrial and warehouse space	square metres	0	0	2 456	8 200	2 830	-65,5	
		R'000	0	0	17 192	53 301	20 034	-62,4	
	Other non-residential buildings 3/	square metres	170	0	0	1 197	16 448	1 274,1	
		R'000	1 105	0	0	6 578	132 258	1 910,6	
	<b>Total non-residential buildings</b>		<b>R'000</b>	<b>3 025</b>	<b>1 262</b>	<b>17 192</b>	<b>65 693</b>	<b>183 933</b>	<b>180,0</b>
	<b>Additions and alterations</b>	Dwelling-houses	square metres	746	2 091	349	38 762	18 437	-52,4
R'000			4 844	15 906	2 443	279 931	138 375	-50,6	
Other buildings 4/		square metres	344	248	416	6 040	4 200	-30,5	
		R'000	5 004	3 735	3 112	53 002	35 233	-33,5	
<b>Total additions and alterations</b>		<b>R'000</b>	<b>9 848</b>	<b>19 641</b>	<b>5 555</b>	<b>332 933</b>	<b>173 608</b>	<b>-47,9</b>	
<b>Recorded buildings completed</b>	<b>Total at current prices</b>	<b>R'000</b>	<b>12 873</b>	<b>31 051</b>	<b>28 978</b>	<b>528 389</b>	<b>468 449</b>	<b>-11,3</b>	

1/ The percentage change between cumulative figures for 2016 and 2017.

2/ Other residential buildings include institutions for the disabled, boarding houses, hostels and tourism accommodation e.g. hotels, motels, guest-houses, holiday chalets, bed-and-breakfast accommodation and casinos.

3/ Other non-residential space includes churches, sport and recreation clubs, schools, crèches, hospitals and all other non-residential space.

4/ Other buildings include other residential buildings, non-residential buildings and internal alterations. No square metres are collected for internal alterations.

**Table 23 – Buildings reported as completed to larger municipalities at current prices by type of building: Free State**

			Dec. 2016	Nov. 2017	Dec. 2017	Jan. - Dec. 2016	Jan. - Dec. 2017	% change 1/	
Category of building	Type of building	Measuring unit							
<b>Residential buildings</b>	Dwelling-houses < 80 square metres	Number	88	6	14	347	228	-34,3	
		square metres	5 294	315	855	19 627	12 993	-33,8	
		R'000	29 100	2 098	6 256	71 507	50 889	-28,8	
	Dwelling-houses >= 80 square metres	Number	21	14	11	316	194	-38,6	
		square metres	2 383	3 254	1 984	61 255	40 809	-33,4	
		R'000	12 999	23 343	13 009	329 447	254 575	-22,7	
	Flats and townhouses	Number	0	15	150	1 380	584	-57,7	
		square metres	0	1 801	3 760	79 795	39 507	-50,5	
		R'000	0	13 338	27 617	463 323	271 607	-41,4	
	Other residential buildings 2/	square metres	0	0	163	308	331	7,5	
		R'000	0	0	1 035	1 642	1 791	9,1	
	<b>Total residential buildings</b>		<b>R'000</b>	<b>42 099</b>	<b>38 779</b>	<b>47 917</b>	<b>865 919</b>	<b>578 862</b>	<b>-33,2</b>
<b>Non-residential buildings</b>	Office and banking space	square metres	0	0	0	6 572	2 573	-60,8	
		R'000	0	0	0	46 510	17 649	-62,1	
	Shopping space	square metres	0	0	0	18 668	983	-94,7	
		R'000	0	0	0	139 582	5 129	-96,3	
	Industrial and warehouse space	square metres	0	0	0	40 159	1 340	-96,7	
		R'000	0	0	0	197 716	7 315	-96,3	
	Other non-residential buildings 3/	square metres	0	5 074	492	980	10 231	944,0	
		R'000	0	37 578	3 123	4 650	77 991	1 577,2	
	<b>Total non-residential buildings</b>		<b>R'000</b>	<b>0</b>	<b>37 578</b>	<b>3 123</b>	<b>388 458</b>	<b>108 084</b>	<b>-72,2</b>
	<b>Additions and alterations</b>	Dwelling-houses	square metres	1 039	2 277	2 063	33 872	38 008	12,2
R'000			4 898	13 308	11 407	157 511	193 237	22,7	
Other buildings 4/		square metres	356	521	0	8 014	1 840	-77,0	
		R'000	2 229	4 653	3 431	56 805	104 520	84,0	
<b>Total additions and alterations</b>		<b>R'000</b>	<b>7 127</b>	<b>17 961</b>	<b>14 838</b>	<b>214 316</b>	<b>297 757</b>	<b>38,9</b>	
<b>Recorded buildings completed</b>	<b>Total at current prices</b>		<b>R'000</b>	<b>49 226</b>	<b>94 318</b>	<b>65 878</b>	<b>1 468 693</b>	<b>984 703</b>	<b>-33,0</b>

1/ The percentage change between cumulative figures for 2016 and 2017.

2/ Other residential buildings include institutions for the disabled, boarding houses, hostels and tourism accommodation e.g. hotels, motels, guest-houses, holiday chalets, bed-and-breakfast accommodation and casinos.

3/ Other non-residential space includes churches, sport and recreation clubs, schools, crèches, hospitals and all other non-residential space.

4/ Other buildings include other residential buildings, non-residential buildings and internal alterations. No square metres are collected for internal alterations.



**Table 24 – Buildings reported as completed to larger municipalities at current prices by type of building: KwaZulu-Natal**

			Dec. 2016	Nov. 2017	Dec. 2017	Jan. - Dec. 2016	Jan. - Dec. 2017	% change 1/	
Category of building	Type of building	Measuring unit							
<b>Residential buildings</b>	Dwelling-houses < 80 square metres	Number	8	9	8	225	129	-42,7	
		square metres	410	530	450	13 025	7 251	-44,3	
		R'000	2 041	5 712	4 907	108 716	67 696	-37,7	
	Dwelling-houses >= 80 square metres	Number	66	71	84	770	828	7,5	
		square metres	21 101	20 078	25 401	214 403	254 062	18,5	
		R'000	187 320	209 541	245 903	1 781 476	2 410 131	35,3	
	Flats and townhouses	Number	20	126	90	762	1 372	80,1	
		square metres	5 443	13 436	16 361	132 490	194 080	46,5	
		R'000	48 295	146 113	148 414	1 212 306	1 897 833	56,5	
	Other residential buildings 2/	square metres	0	0	4 697	33 346	19 489	-41,6	
		R'000	0	0	55 897	372 728	220 982	-40,7	
	<b>Total residential buildings</b>		<b>R'000</b>	<b>237 656</b>	<b>361 366</b>	<b>455 121</b>	<b>3 475 226</b>	<b>4 596 642</b>	<b>32,3</b>
<b>Non-residential buildings</b>	Office and banking space	square metres	0	0	0	102 320	71 435	-30,2	
		R'000	0	0	0	892 417	749 434	-16,0	
	Shopping space	square metres	11 687	8 637	1 941	184 373	527 089	185,9	
		R'000	122 714	64 913	16 775	1 746 566	4 803 957	175,1	
	Industrial and warehouse space	square metres	3 474	6 513	4 701	213 270	178 808	-16,2	
		R'000	19 456	41 469	26 803	1 141 477	1 023 601	-10,3	
	Other non-residential buildings 3/	square metres	0	5 121	0	19 820	21 667	9,3	
		R'000	0	41 480	0	123 497	195 660	58,4	
	<b>Total non-residential buildings</b>		<b>R'000</b>	<b>142 170</b>	<b>147 862</b>	<b>43 578</b>	<b>3 903 957</b>	<b>6 772 652</b>	<b>73,5</b>
	<b>Additions and alterations</b>	Dwelling-houses	square metres	8 784	9 284	7 949	137 488	127 750	-7,1
R'000			82 780	100 633	88 800	1 242 913	1 317 046	6,0	
Other buildings 4/		square metres	2 931	5 258	1 615	71 423	65 119	-8,8	
		R'000	37 664	74 333	22 774	585 148	699 429	19,5	
<b>Total additions and alterations</b>		<b>R'000</b>	<b>120 444</b>	<b>174 966</b>	<b>111 574</b>	<b>1 828 061</b>	<b>2 016 475</b>	<b>10,3</b>	
<b>Recorded buildings completed</b>	<b>Total at current prices</b>		<b>R'000</b>	<b>500 270</b>	<b>684 194</b>	<b>610 273</b>	<b>9 207 244</b>	<b>13 385 769</b>	<b>45,4</b>

1/ The percentage change between cumulative figures for 2016 and 2017.

2/ Other residential buildings include institutions for the disabled, boarding houses, hostels and tourism accommodation e.g. hotels, motels, guest-houses, holiday chalets, bed-and-breakfast accommodation and casinos.

3/ Other non-residential space includes churches, sport and recreation clubs, schools, crèches, hospitals and all other non-residential space.

4/ Other buildings include other residential buildings, non-residential buildings and internal alterations. No square metres are collected for internal alterations.

**Table 25 – Buildings reported as completed to larger municipalities at current prices by type of building: North West**

			Dec. 2016	Nov. 2017	Dec. 2017	Jan. - Dec. 2016	Jan. - Dec. 2017	% change 1/	
Category of building	Type of building	Measuring unit							
<b>Residential buildings</b>	Dwelling-houses < 80 square metres	Number	21	24	1	441	352	-20,2	
		square metres	1 240	1 436	60	26 890	20 465	-23,9	
		R'000	4 960	6 920	300	101 637	92 763	-8,7	
	Dwelling-houses >= 80 square metres	Number	35	124	107	1 110	770	-30,6	
		square metres	7 493	28 299	15 338	189 874	150 685	-20,6	
		R'000	40 791	146 627	80 474	896 683	793 249	-11,5	
	Flats and townhouses	Number	126	10	21	635	416	-34,5	
		square metres	7 069	924	1 527	48 442	41 885	-13,5	
		R'000	43 108	4 347	8 469	250 481	223 287	-10,9	
	Other residential buildings 2/	square metres	0	0	0	0	785	..	
		R'000	0	0	0	0	4 651	..	
	<b>Total residential buildings</b>		<b>R'000</b>	<b>88 859</b>	<b>157 894</b>	<b>89 243</b>	<b>1 248 801</b>	<b>1 113 950</b>	<b>-10,8</b>
<b>Non-residential buildings</b>	Office and banking space	square metres	0	0	0	7 360	6 983	-5,1	
		R'000	0	0	0	38 280	39 978	4,4	
	Shopping space	square metres	0	0	0	23 039	28 110	22,0	
		R'000	0	0	0	115 281	153 460	33,1	
	Industrial and warehouse space	square metres	0	635	0	11 393	19 756	73,4	
		R'000	0	3 175	0	58 460	94 659	61,9	
	Other non-residential buildings 3/	square metres	0	0	0	6 571	1 402	-78,7	
		R'000	0	0	0	31 487	7 010	-77,7	
	<b>Total non-residential buildings</b>		<b>R'000</b>	<b>0</b>	<b>3 175</b>	<b>0</b>	<b>243 508</b>	<b>295 107</b>	<b>21,2</b>
	<b>Additions and alterations</b>	Dwelling-houses	square metres	294	3 504	970	69 030	32 827	-52,4
R'000			1 232	16 270	5 912	297 223	156 110	-47,5	
Other buildings 4/		square metres	245	13 909	309	8 895	25 423	185,8	
		R'000	2 220	89 130	2 757	42 659	161 286	278,1	
<b>Total additions and alterations</b>		<b>R'000</b>	<b>3 452</b>	<b>105 400</b>	<b>8 669</b>	<b>339 882</b>	<b>317 396</b>	<b>-6,6</b>	
<b>Recorded buildings completed</b>	<b>Total at current prices</b>		<b>R'000</b>	<b>92 311</b>	<b>266 469</b>	<b>97 912</b>	<b>1 832 191</b>	<b>1 726 453</b>	<b>-5,8</b>

1/ The percentage change between cumulative figures for 2016 and 2017.

2/ Other residential buildings include institutions for the disabled, boarding houses, hostels and tourism accommodation e.g. hotels, motels, guest-houses, holiday chalets, bed-and-breakfast accommodation and casinos.

3/ Other non-residential space includes churches, sport and recreation clubs, schools, crèches, hospitals and all other non-residential space.

4/ Other buildings include other residential buildings, non-residential buildings and internal alterations. No square metres are collected for internal alterations.

**Table 26 – Buildings reported as completed to larger municipalities at current prices by type of building: Gauteng**

			Dec. 2016	Nov. 2017	Dec. 2017	Jan. - Dec. 2016	Jan. - Dec. 2017	% change 1/	
Category of building	Type of building	Measuring unit							
<b>Residential buildings</b>	Dwelling-houses < 80 square metres	Number	702	584	521	7 490	6 736	-10,1	
		square metres	37 219	30 875	27 723	371 109	337 758	-9,0	
		R'000	143 392	169 292	136 244	1 566 582	1 519 541	-3,0	
	Dwelling-houses >= 80 square metres	Number	518	399	450	4 601	3 752	-18,5	
		square metres	195 209	126 114	162 891	1 368 550	1 224 364	-10,5	
		R'000	1 546 898	911 421	1 252 724	10 285 170	9 467 759	-7,9	
	Flats and townhouses	Number	1 122	248	528	5 833	7 206	23,5	
		square metres	130 356	38 198	77 341	612 111	730 097	19,3	
		R'000	1 095 265	297 533	585 405	4 967 183	6 230 901	25,4	
	Other residential buildings 2/	square metres	1 262	0	0	8 901	128 661	1 345,5	
		R'000	8 145	0	0	73 378	1 359 092	1 752,2	
	<b>Total residential buildings</b>		<b>R'000</b>	<b>2 793 700</b>	<b>1 378 246</b>	<b>1 974 373</b>	<b>16 892 313</b>	<b>18 577 293</b>	<b>10,0</b>
<b>Non-residential buildings</b>	Office and banking space	square metres	8 351	201 681	8 432	221 439	400 529	80,9	
		R'000	71 351	1 882 291	88 603	2 055 013	3 922 003	90,9	
	Shopping space	square metres	13 944	23 909	9 306	154 475	197 137	27,6	
		R'000	126 666	217 919	74 493	1 214 619	1 704 470	40,3	
	Industrial and warehouse space	square metres	35 732	19 128	50 157	487 918	553 011	13,3	
		R'000	208 545	103 997	266 437	2 476 829	2 852 188	15,2	
	Other non-residential buildings 3/	square metres	8 935	1 023	12 473	131 877	98 015	-25,7	
		R'000	72 008	6 510	119 509	840 465	893 517	6,3	
	<b>Total non-residential buildings</b>		<b>R'000</b>	<b>478 570</b>	<b>2 210 717</b>	<b>549 042</b>	<b>6 586 926</b>	<b>9 372 178</b>	<b>42,3</b>
	<b>Additions and alterations</b>	Dwelling-houses	square metres	25 362	25 784	24 371	258 151	258 531	0,1
R'000			200 432	190 872	187 461	1 817 244	1 915 054	5,4	
Other buildings 4/		square metres	13 174	13 426	9 473	90 313	87 234	-3,4	
		R'000	105 896	125 398	83 639	773 713	771 780	-0,2	
<b>Total additions and alterations</b>		<b>R'000</b>	<b>306 328</b>	<b>316 270</b>	<b>271 100</b>	<b>2 590 957</b>	<b>2 686 834</b>	<b>3,7</b>	
<b>Recorded buildings completed</b>	<b>Total at current prices</b>		<b>R'000</b>	<b>3 578 598</b>	<b>3 905 233</b>	<b>2 794 515</b>	<b>26 070 196</b>	<b>30 636 305</b>	<b>17,5</b>

1/ The percentage change between cumulative figures for 2016 and 2017.

2/ Other residential buildings include institutions for the disabled, boarding houses, hostels and tourism accommodation e.g. hotels, motels, guest-houses, holiday chalets, bed-and-breakfast accommodation and casinos.

3/ Other non-residential space includes churches, sport and recreation clubs, schools, crèches, hospitals and all other non-residential space.

4/ Other buildings include other residential buildings, non-residential buildings and internal alterations. No square metres are collected for internal alterations.

**Table 27 – Buildings reported as completed to larger municipalities at current prices by type of building: Mpumalanga**

			Dec. 2016	Nov. 2017	Dec. 2017	Jan. - Dec. 2016	Jan. - Dec. 2017	% change 1/	
Category of building	Type of building	Measuring unit							
Residential buildings	Dwelling-houses < 80 square metres	Number	73	38	19	1 008	592	-41,3	
		square metres	3 464	2 322	1 157	50 251	29 394	-41,5	
		R'000	12 137	12 665	4 807	191 237	130 083	-32,0	
	Dwelling-houses >= 80 square metres	Number	80	35	72	872	485	-44,4	
		square metres	17 604	8 541	10 080	197 935	103 098	-47,9	
		R'000	78 256	55 556	56 566	899 414	555 597	-38,2	
	Flats and townhouses	Number	0	108	7	176	409	132,4	
		square metres	0	5 359	610	12 077	34 621	186,7	
		R'000	0	38 215	2 908	56 798	186 574	228,5	
	Other residential buildings 2/	square metres	0	0	0	1 001	0	-100,0	
		R'000	0	0	0	4 505	0	-100,0	
	<b>Total residential buildings</b>		<b>R'000</b>	<b>90 393</b>	<b>106 436</b>	<b>64 281</b>	<b>1 151 954</b>	<b>872 254</b>	<b>-24,3</b>
	Non-residential buildings	Office and banking space	square metres	0	0	0	9 265	2 965	-68,0
R'000			0	0	0	48 780	14 032	-71,2	
Shopping space		square metres	2 640	0	0	17 631	16 180	-8,2	
		R'000	10 562	0	0	95 718	77 259	-19,3	
Industrial and warehouse space		square metres	1 959	1 141	0	37 413	14 299	-61,8	
		R'000	8 479	8 208	0	183 517	74 705	-59,3	
Other non-residential buildings 3/		square metres	0	0	0	7 500	2 587	-65,5	
		R'000	0	0	0	32 304	13 469	-58,3	
<b>Total non-residential buildings</b>		<b>R'000</b>	<b>19 041</b>	<b>8 208</b>	<b>0</b>	<b>360 319</b>	<b>179 465</b>	<b>-50,2</b>	
Additions and alterations		Dwelling-houses	square metres	5 222	1 094	1 383	77 191	28 797	-62,7
	R'000		21 157	7 258	7 577	325 450	139 881	-57,0	
	Other buildings 4/	square metres	1 281	273	0	13 140	5 451	-58,5	
		R'000	12 918	3 968	2 769	89 538	51 205	-42,8	
	<b>Total additions and alterations</b>		<b>R'000</b>	<b>34 075</b>	<b>11 226</b>	<b>10 346</b>	<b>414 988</b>	<b>191 086</b>	<b>-54,0</b>
<b>Recorded buildings completed</b>	<b>Total at current prices</b>		<b>R'000</b>	<b>143 509</b>	<b>125 870</b>	<b>74 627</b>	<b>1 927 261</b>	<b>1 242 805</b>	<b>-35,5</b>

1/ The percentage change between cumulative figures for 2016 and 2017.

2/ Other residential buildings include institutions for the disabled, boarding houses, hostels and tourism accommodation e.g. hotels, motels, guest-houses, holiday chalets, bed-and-breakfast accommodation and casinos.

3/ Other non-residential space includes churches, sport and recreation clubs, schools, crèches, hospitals and all other non-residential space.

4/ Other buildings include other residential buildings, non-residential buildings and internal alterations. No square metres are collected for internal alterations.

**Table 28 – Buildings reported as completed to larger municipalities at current prices by type of building: Limpopo**

			Dec. 2016	Nov. 2017	Dec. 2017	Jan. - Dec. 2016	Jan. - Dec. 2017	% change 1/	
Category of building	Type of building	Measuring unit							
<b>Residential buildings</b>	Dwelling-houses < 80 square metres	Number	12	30	9	154	644	318,2	
		square metres	757	1 786	516	9 463	30 198	219,1	
		R'000	3 712	9 448	2 730	46 892	87 056	85,7	
	Dwelling-houses >= 80 square metres	Number	25	22	15	277	239	-13,7	
		square metres	5 969	5 671	4 149	70 258	63 204	-10,0	
		R'000	29 967	30 247	22 250	340 594	323 561	-5,0	
	Flats and townhouses	Number	16	14	0	262	155	-40,8	
		square metres	2 387	1 138	0	26 711	18 021	-32,5	
		R'000	11 935	5 041	0	134 238	89 348	-33,4	
	Other residential buildings 2/	square metres	0	0	0	344	6 803	1 877,6	
		R'000	0	0	0	1 720	33 234	1 832,2	
	<b>Total residential buildings</b>		<b>R'000</b>	<b>45 614</b>	<b>44 736</b>	<b>24 980</b>	<b>523 444</b>	<b>533 199</b>	<b>1,9</b>
<b>Non-residential buildings</b>	Office and banking space	square metres	0	0	432	3 890	2 349	-39,6	
		R'000	0	0	2 285	19 476	12 147	-37,6	
	Shopping space	square metres	0	3 377	0	33 037	4 855	-85,3	
		R'000	0	17 864	0	161 539	25 917	-84,0	
	Industrial and warehouse space	square metres	801	4 094	0	7 813	32 245	312,7	
		R'000	3 223	21 657	0	38 053	162 097	326,0	
	Other non-residential buildings 3/	square metres	0	2 675	0	8 689	8 348	-3,9	
		R'000	0	14 151	0	43 488	43 743	0,6	
	<b>Total non-residential buildings</b>		<b>R'000</b>	<b>3 223</b>	<b>53 672</b>	<b>2 285</b>	<b>262 556</b>	<b>243 904</b>	<b>-7,1</b>
	<b>Additions and alterations</b>	Dwelling-houses	square metres	398	656	368	6 081	3 979	-34,6
R'000			1 990	3 445	2 006	29 332	19 929	-32,1	
Other buildings 4/		square metres	371	348	159	1 662	3 011	81,2	
		R'000	1 641	2 341	1 031	13 337	20 267	52,0	
<b>Total additions and alterations</b>		<b>R'000</b>	<b>3 631</b>	<b>5 786</b>	<b>3 037</b>	<b>42 669</b>	<b>40 196</b>	<b>-5,8</b>	
<b>Recorded buildings completed</b>	<b>Total at current prices</b>		<b>R'000</b>	<b>52 468</b>	<b>104 194</b>	<b>30 302</b>	<b>828 669</b>	<b>817 299</b>	<b>-1,4</b>

1/ The percentage change between cumulative figures for 2016 and 2017.

2/ Other residential buildings include institutions for the disabled, boarding houses, hostels and tourism accommodation e.g. hotels, motels, guest-houses, holiday chalets, bed-and-breakfast accommodation and casinos.

3/ Other non-residential space includes churches, sport and recreation clubs, schools, crèches, hospitals and all other non-residential space.

4/ Other buildings include other residential buildings, non-residential buildings and internal alterations. No square metres are collected for internal alterations.

## Explanatory notes

- Introduction**
- 1 Statistics South Africa (Stats SA) conducts a monthly building statistics survey collecting information regarding building plans passed and buildings completed, financed by the private sector, from the largest local government institutions in South Africa. According to these institutions, they are not always notified about low-cost housing projects and, therefore, do not include the bulk of low-cost dwelling-houses in their reporting. Data regarding subsidised low-cost dwelling-houses can be obtained from the Department of Human Settlements.
  - 2 In order to improve timeliness of the publication, some information for the current month has been estimated due to late submission by respondents. These estimates will be revised in the next statistical release(s) as soon as actual information is available.
- Purpose of the survey**
- 3 The monthly survey data are used in monitoring the state of economy and formulation of economic policy. Furthermore, the results are important inputs to estimate the gross domestic product (GDP) and to calculate the Composite Leading Business Cycle Indicator. The data are extensively used by the private sector.
- Scope of the survey**
- 4 This survey covers local government institutions conducting activities for the private sector regarding -
    - passing of building plans; and
    - final inspection of completed buildings.
- Classification**
- 5 Building activities are classified in division 5 according to the 1993 edition of the *Standard Industrial Classification of all Economic Activities*, (SIC) Fifth Edition, Report No. 09-90-02. The SIC is based on the 1990 *International Standard Industrial Classification of all Economic Activities* (ISIC) with suitable adaptations for local conditions.
- Collection rate**
- 6 The preliminary collection rate for the survey on building statistics for December 2017 was 91,8%. The improved collection rate for November 2017 was 92,7%.
- Statistical unit**
- 7 The statistical unit for the collection of information is a local government institution. Local government institutions include district municipalities, metropolitan municipalities and local municipalities.
- Survey methodology and design**
- 8 Stats SA conducts a monthly survey of metropolitan municipalities and large local municipalities on building plans passed and buildings completed. An annual survey of the remaining municipalities is conducted regarding buildings completed. The monthly survey represents approximately 85 percent of the total value of buildings completed. Information regarding building plans passed and buildings completed for the private sector is collected by mail, fax and telephone.
- Constant prices**
- 9 The value of building plans passed and buildings completed at constant prices measures building activities in terms of ruling prices in a specific base year, which is currently 2015. The value of building plans passed at constant prices for each month is obtained by deflating the values at current prices with a price index known as the 'lump sum domestic buildings' as published in statistical release P0151: *Contract Price Adjustment Provisions (CPAP) Work Groups and Selected Materials Indices*. In order to be applicable, these indices (base December 2016=100) are converted to the base year 2015=100.

- Seasonal adjustment**    **10**    Seasonally adjusted estimates of building plans passed and buildings completed are generated each month, using the X-12-ARIMA Seasonal Adjustment Program developed by US Bureau of the Census Economic Research and Analyses Division, 1968.
- 11**    Seasonal adjustment is a means of removing the estimated effects of normal seasonal variation from the series so that the effects of other influences on the series can be more clearly recognised. Seasonal adjustment does not aim to remove irregular or non-seasonal influences which may be present in any particular month. Influences that are volatile or unsystematic can still make it difficult to interpret the movement of the series even after adjustment for seasonal variations. Therefore, the month-to-month movements of seasonally adjusted estimates may not be reliable indicators of trend behaviour. The X-12-ARIMA procedure for building statistics is described in more detail on the Stats SA website at [Click to download building statistics seasonal adjustment May 2017](#)
- Trend cycle**                **12**    The trend is a long-term pattern or movement of a time series. The X-12-ARIMA Seasonal Adjustment Program is used for smoothing seasonally adjusted data.
- Revised figures**            **13**    Revised figures are due to late submission of data to Stats SA, or to respondents reporting revisions or corrections to their figures. Figures for the latest two years are therefore preliminary. Data are edited at municipal level.
- 14**    Once a year the annual statistical release P5041.3: *Selected building statistics of the private sector as reported by local government institutions* is published with the revised and updated information at provincial and municipal level for the previous calendar year. Due to this comprehensive revision, the monthly statistical release P5041.1 reflects provincial revision where applicable.
- Related publications**      **15**    Users may also wish to refer to the following publications:
- P5041.3: *Selected building statistics of the private sector as reported by local government institutions* issued annually.
  - P9101.2: *Actual and expected expenditure on construction by the public sector per statistical region* issued annually.
  - *Building Statistics* (Report No. 50-11-01) issued annually.
- Rounding-off of figures**    **16**    Where necessary, the figures in the tables have been rounded off to the nearest digit shown.

**Symbols and abbreviations**

<b>17</b>	..	no meaningful percentage change between two specified periods available since either one or both of the totals are nil
	0	nil or figure too small to publish
	*	revised
	Stats SA	Statistics South Africa
	SIC	Standard Industrial Classification of all Economic Activities
	ISIC	International Standard Industrial Classification of all Economic Activities



## Glossary

<b>Additions and alterations</b>	Extensions to existing buildings as well as internal and external alterations of existing buildings.
<b>Blocks of flats</b>	High-density housing consisting of a number of self-contained dwelling-units, each with at least one living-room together with a kitchen and bathroom, conjoined to similar units in one building.
<b>Dwelling-house</b>	A free-standing, complete structure on a separate stand or a self-contained dwelling-unit, e.g. granny flat, on the same premises as an existing residence. Out-buildings and garages are included.
<b>Local government institutions</b>	Include – <ul style="list-style-type: none"> <li>• District municipalities;</li> <li>• Metropolitan municipalities; and</li> <li>• Local municipalities.</li> </ul>
<b>Municipality</b>	A generic term describing the “unit” of government in the local spheres responsible for local government in a geographically demarcated area and including district, metropolitan and local municipalities. It is an institution consisting of a municipal council (elected political representatives) and municipal administration (appointed officials).
<b>District municipality</b>	A municipality that has municipal executive and legislative authority in an area that includes more than one municipality, and which is described in section 155(1) of the Constitution as a category C municipality (refer to Local Government: Municipal Structure Act, 1998 (Act No. 117 of 1998)).
<b>Metropolitan municipality</b>	A municipality that has municipal executive and legislative authority in an area that includes more than one municipality, and which is described in section 155(1) of the Constitution as a category A municipality (refer to Local Government: Municipal Structure Act, 1998 (Act No. 117 of 1998)).
<b>Local municipality</b>	A municipality that shares municipal executive and legislative authority in its area with a district municipality within whose area it falls, which is described in section 155(1) of the constitution as a category B municipality.
<b>Non-residential buildings</b>	Factories and commercial, financial and other office buildings, as well as other buildings not used for residential purposes, such as churches, halls, clubs, schools and hospitals.
<b>Other residential buildings</b>	Institutions for the disabled, boarding houses, old people’s homes, hostels, hotels, motels, guesthouses, holiday chalets, bed-and-breakfast accommodation, entertainment centres and casinos.
<b>Percentage change</b>	<p>When using monthly actual values, the percentage change is the change in actual values of building activities (building plans passed or buildings completed) of the relevant month compared with the actual values of building activities (building plans passed or buildings completed) of the same month in the previous year expressed as a percentage.</p> <p>When using annual actual values, the percentage change is the change in the actual values of building activities (building plans passed or buildings completed) of the relevant year compared with the actual values of building activities (building plans passed or buildings completed) of the previous year expressed as a percentage.</p> <p>When using seasonally adjusted values, the percentage change is the change in the seasonally adjusted values of building activities (building plans passed or buildings completed) of the relevant month compared with the seasonally adjusted values of building activities (building plans passed or buildings completed) of the previous month expressed as a percentage.</p>

<b>Reference period</b>	One calendar month.
<b>Residential buildings</b>	Buildings that are used primarily as residences. Includes dwelling-houses, flats, townhouses and other residential buildings.
<b>Townhouses</b>	Multiple, medium-density dwelling-units including cluster housing, group housing, simplexes, duplexes, triplexes and other similar dwelling-units which are usually grouped together, with one level of each unit on ground level. This category excludes blocks of flats.

## Technical enquiries

**Suzzie Mnguni** Telephone number: (012) 310 8134  
Email: [suzziemn@statssa.gov.za](mailto:suzziemn@statssa.gov.za)

**Nicolai Claassen** Telephone number: (012) 310 8007  
Email: [nicolaic@statssa.gov.za](mailto:nicolaic@statssa.gov.za)

## General information

Stats SA publishes approximately 300 different statistical releases each year. It is not economically viable to produce them in more than one of South Africa's eleven official languages. Since the releases are used extensively, not only locally but also by international economic and social-scientific communities, Stats SA releases are published in English.

Stats SA has copyright on this publication. Users may apply the information as they wish, provided that they acknowledge Stats SA as the source of the basic data wherever they process, apply, utilise, publish or distribute the data and also that they specify that the relevant application and analysis (where applicable) result from their own processing of the data.

### Advance release calendar

An advance release calendar is disseminated on [www.statssa.gov.za](http://www.statssa.gov.za)

### Stats SA products

A complete set of Stats SA publications is available at the Stats SA Library and the following libraries:

National Library of South Africa, Pretoria Division  
National Library of South Africa, Cape Town Division  
Natal Society Library, Pietermaritzburg  
Library of Parliament, Cape Town  
Bloemfontein Public Library  
Johannesburg Public Library  
Eastern Cape Library Services, King William's Town  
Central Regional Library, Polokwane  
Central Reference Library, Mbombela  
Central Reference Collection, Kimberley  
Central Reference Library, Mmabatho

Stats SA also provides a subscription service.

### Electronic services

A large range of data is available via online services. For more details about our electronic services, contact Stats SA's user information service at (012) 310 8600.

You can visit us on the Internet at: [www.statssa.gov.za](http://www.statssa.gov.za)

### General enquiries

**User information services** Telephone number: (012) 310 8600  
Email address: [info@statssa.gov.za](mailto:info@statssa.gov.za)

**Postal address** Private Bag X44, Pretoria, 0001

*Produced by Stats SA*