

STATISTICAL RELEASE
P4141

Electricity generated and available for distribution
(Preliminary)

August 2018

Embargoed until:
4 October 2018
13:00

ENQUIRIES:
Nicolai Claassen
(012) 310 8007

FORTHCOMING ISSUE:
September 2018

EXPECTED RELEASE DATE:
1 November 2018

www.statssa.gov.za
info@statssa.gov.za
T +27 12 310 8911
F +27 12 310 8500

Private Bag X44, Pretoria, 0001, South Africa
ISibalo House, Koch Street, Salvokop, Pretoria, 0002



Contents

Electricity generated (produced) in South Africa: results for August 2018	2
Table A – Key growth rates in the volume of electricity generated	2
Figure 1 – Electricity generated in South Africa	2
Electricity distributed (consumed) in South Africa: results for August 2018	3
Table B – Key growth rates in the volume of electricity distributed	3
Figure 2 – Electricity distributed in South Africa: year-on-year percentage change	3
Table 1 – Index of the volume of electricity generated (Base: 2015=100)	4
Table 2 – Year-on-year percentage change in the volume of electricity generated	4
Table 3 – Seasonally adjusted index of the volume of electricity generated	4
Table 4 – Volume of electricity distributed in South Africa (gigawatt-hours)	5
Table 5 – Year-on-year percentage change in electricity distributed in South Africa	5
Table 6 – Seasonally adjusted volume of electricity distributed in South Africa	5
Table 7 – Volume of electricity by category (gigawatt-hours)	6
Table 8 – Year-to-date volume of electricity by category: year-on-year percentage change and difference	6
Table 9 – Volume of electricity delivered to provinces (gigawatt-hours)	6
Survey information	7
Technical notes	8
Glossary	9
Technical enquiries	9
General information	10

Electricity generated (produced) in South Africa: results for August 2018

Table A – Key growth rates in the volume of electricity generated

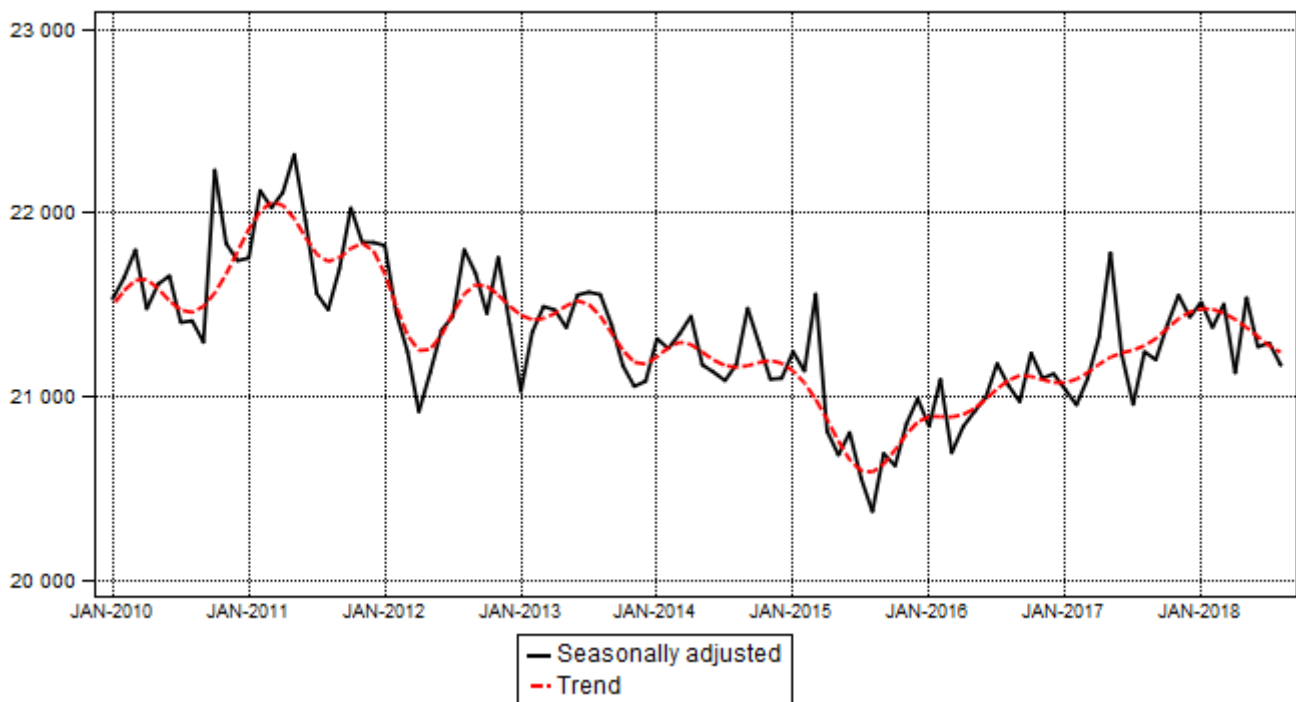
	Mar-18	Apr-18	May-18	Jun-18	Jul-18	Aug-18
Year-on-year % change, unadjusted	1,2	-0,5	-0,8	0,3	2,2	-0,4
Month-on-month % change, seasonally adjusted	0,6	-1,7	1,9	-1,2	0,1	-0,6
3-month % change, seasonally adjusted ¹	0,1	-0,7	-0,2	-0,7	0,1	-0,7

¹ Percentage change between the previous 3 months and the 3 months ending in the month indicated.

Electricity generation (production) decreased by 0,4% year-on-year in August 2018. Seasonally adjusted electricity generation decreased by 0,6% in August 2018 compared with July 2018. This followed month-on-month changes of 0,1% in July 2018 and -1,2% in June 2018. Seasonally adjusted electricity generation decreased by 0,7% in the three months ended August 2018 compared with the previous three months.

Figure 1 – Electricity generated in South Africa

Gigawatt-hours



Electricity distributed (consumed) in South Africa: results for August 2018

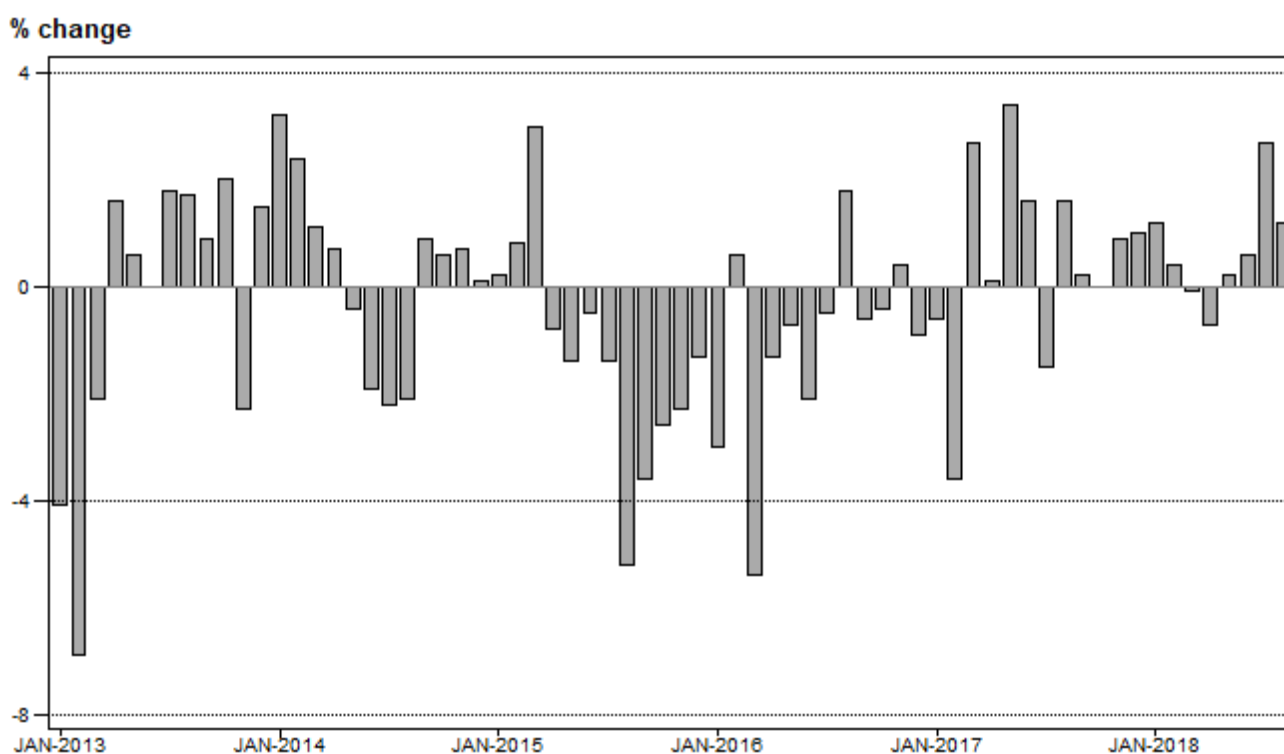
Table B – Key growth rates in the volume of electricity distributed

	Mar-18	Apr-18	May-18	Jun-18	Jul-18	Aug-18
Year-on-year % change, unadjusted	-0,1	-0,7	0,2	0,6	2,7	1,2
Month-on-month % change, seasonally adjusted	1,1	-1,4	2,7	-1,9	0,5	0,4
3-month % change, seasonally adjusted ¹	0,1	-0,2	0,7	0,4	1,0	-0,1

¹ Percentage change between the previous 3 months and the 3 months ending in the month indicated.

Electricity distribution (consumption) increased by 1,2% year-on-year in August 2018. Seasonally adjusted electricity distribution increased by 0,4% month-on-month in August 2018, following month-on-month changes of 0,5% in July 2018 and -1,9% in June 2018. Seasonally adjusted electricity distribution decreased by 0,1% in the three months ended August 2018 compared with the previous three months.

Figure 2 – Electricity distributed in South Africa: year-on-year percentage change



Risenga Maluleke
Statistician-General

Tables

Table 1 – Index of the volume of electricity generated (Base: 2015=100)

Month	2012	2013	2014	2015	2016	2017	2018 ¹
Jan	103,0	99,9	101,4	101,3	99,2	100,0	102,4
Feb	97,4	93,9	93,7	93,1	95,8	92,1	93,9
Mar	103,0	103,3	102,6	103,7	99,5	102,2	103,4
Apr	96,4	100,4	99,7	96,4	97,3	98,1	97,6
May	104,1	105,0	103,9	101,4	102,7	107,4	106,5
Jun	106,1	106,1	103,6	102,6	103,1	104,8	105,1
Jul	109,7	110,4	108,1	105,4	108,4	106,5	108,8
Aug	109,4	108,2	106,0	101,1	105,1	105,9	105,5
Sep	102,4	101,0	102,2	98,6	99,7	100,8	
Oct	104,9	103,7	104,2	101,0	103,2	104,5	
Nov	103,3	100,0	99,3	98,0	100,2	101,9	
Dec	97,6	96,9	97,5	97,3	98,1	99,6	
Total	103,1	102,4	101,9	100,0	101,0	102,0	

¹ Latest month is preliminary.

Table 2 – Year-on-year percentage change in the volume of electricity generated

Month	2013	2014	2015	2016	2017	2018	2018 year-to-date
Jan	-3,0	1,5	-0,1	-2,1	0,8	2,4	2,4
Feb	-3,6	-0,2	-0,6	2,9	-3,9	2,0	2,2
Mar	0,3	-0,7	1,1	-4,1	2,7	1,2	1,8
Apr	4,1	-0,7	-3,3	0,9	0,8	-0,5	1,2
May	0,9	-1,0	-2,4	1,3	4,6	-0,8	0,8
Jun	0,0	-2,4	-1,0	0,5	1,6	0,3	0,7
Jul	0,6	-2,1	-2,5	2,8	-1,8	2,2	0,9
Aug	-1,1	-2,0	-4,6	4,0	0,8	-0,4	0,8
Sep	-1,4	1,2	-3,5	1,1	1,1		
Oct	-1,1	0,5	-3,1	2,2	1,3		
Nov	-3,2	-0,7	-1,3	2,2	1,7		
Dec	-0,7	0,6	-0,2	0,8	1,5		
Total	-0,7	-0,5	-1,9	1,0	1,0		

Table 3 – Seasonally adjusted index of the volume of electricity generated

Month	Base: 2015=100				Month-on-month % change			
	2015	2016	2017	2018	2015	2016	2017	2018
Jan	101,8	99,9	100,9	103,1	0,7	-0,7	-0,4	0,4
Feb	101,3	101,1	100,5	102,5	-0,5	1,2	-0,4	-0,6
Mar	103,3	99,2	101,1	103,1	2,0	-1,9	0,6	0,6
Apr	99,8	99,9	102,2	101,3	-3,4	0,7	1,1	-1,7
May	99,1	100,3	104,4	103,2	-0,7	0,4	2,2	1,9
Jun	99,7	100,7	101,8	102,0	0,6	0,4	-2,5	-1,2
Jul	98,5	101,5	100,5	102,1	-1,2	0,8	-1,3	0,1
Aug	97,7	101,0	101,8	101,5	-0,8	-0,5	1,3	-0,6
Sep	99,2	100,5	101,6		1,5	-0,5	-0,2	
Oct	98,9	101,8	102,5		-0,3	1,3	0,9	
Nov	100,0	101,1	103,3		1,1	-0,7	0,8	
Dec	100,6	101,3	102,7		0,6	0,2	-0,6	

Table 4 – Volume of electricity distributed in South Africa (gigawatt-hours)

Month	2013	2014	2015	2016	2017	2018 ¹
Jan	18 860	19 457	19 491	18 902	18 786	19 020
Feb	17 493	17 917	18 060	18 167	17 511	17 584
Mar	19 202	19 415	19 998	18 910	19 416	19 389
Apr	18 762	18 895	18 739	18 504	18 522	18 400
May	19 991	19 907	19 620	19 481	20 143	20 183
Jun	20 270	19 891	19 797	19 377	19 696	19 817
Jul	21 119	20 661	20 368	20 266	19 972	20 507
Aug	20 689	20 255	19 209	19 549	19 853	20 087
Sep	19 271	19 450	18 757	18 646	18 675	
Oct	19 795	19 905	19 389	19 318	19 317	
Nov	18 984	19 126	18 684	18 756	18 919	
Dec	18 733	18 752	18 503	18 342	18 532	
Total	233 169	233 631	230 615	228 218	229 342	

¹ Latest month is preliminary.

Table 5 – Year-on-year percentage change in electricity distributed in South Africa

Month	2014	2015	2016	2017	2018	2018 year-to-date
Jan	3,2	0,2	-3,0	-0,6	1,2	1,2
Feb	2,4	0,8	0,6	-3,6	0,4	0,8
Mar	1,1	3,0	-5,4	2,7	-0,1	0,5
Apr	0,7	-0,8	-1,3	0,1	-0,7	0,2
May	-0,4	-1,4	-0,7	3,4	0,2	0,2
Jun	-1,9	-0,5	-2,1	1,6	0,6	0,3
Jul	-2,2	-1,4	-0,5	-1,5	2,7	0,6
Aug	-2,1	-5,2	1,8	1,6	1,2	0,7
Sep	0,9	-3,6	-0,6	0,2		
Oct	0,6	-2,6	-0,4	0,0		
Nov	0,7	-2,3	0,4	0,9		
Dec	0,1	-1,3	-0,9	1,0		
Total	0,2	-1,3	-1,0	0,5		

Table 6 – Seasonally adjusted volume of electricity distributed in South Africa

Month	Gigawatt-hours				Month-on-month % change			
	2015	2016	2017	2018	2015	2016	2017	2018
Jan	19 593	19 050	18 963	19 177	0,4	-0,7	-0,2	-0,3
Feb	19 511	19 055	18 974	19 099	-0,4	0,0	0,1	-0,4
Mar	19 970	18 869	19 215	19 306	2,4	-1,0	1,3	1,1
Apr	19 300	18 921	19 268	19 040	-3,4	0,3	0,3	-1,4
May	19 196	19 028	19 568	19 555	-0,5	0,6	1,6	2,7
Jun	19 181	18 848	19 071	19 190	-0,1	-0,9	-2,5	-1,9
Jul	19 108	19 016	18 874	19 278	-0,4	0,9	-1,0	0,5
Aug	18 580	18 791	19 094	19 352	-2,8	-1,2	1,2	0,4
Sep	18 952	18 867	18 921		2,0	0,4	-0,9	
Oct	19 111	19 205	19 093		0,8	1,8	0,9	
Nov	19 073	18 946	19 179		-0,2	-1,3	0,5	
Dec	19 190	18 998	19 228		0,6	0,3	0,3	

Table 7 – Volume of electricity by category (gigawatt-hours)

	Apr-18	May-18	Jun-18	Jul-18	Aug-18 ¹	Aug-18 year-on- year % change
Total - all producers						
Generated	20 345	22 192	21 914	22 678	21 990	-0,4
Inflow into South Africa	744	810	748	726	829	5,5
Consumed in power stations and auxiliary systems	1 658	1 757	1 677	1 687	1 563	-7,5
Outflow from South Africa	1 030	1 061	1 169	1 210	1 168	-11,9
Distributed in South Africa	18 400	20 183	19 817	20 507	20 087	1,2
Eskom						
Generated	18 619	20 389	20 034	20 659	19 949	-1,0
Inflow into South Africa	744	810	748	726	829	5,5
Consumed in power stations and auxiliary systems	1 596	1 686	1 603	1 611	1 475	-8,4
Outflow from South Africa	1 030	1 061	1 169	1 210	1 168	-11,9
Distributed in South Africa	16 736	18 451	18 010	18 563	18 134	0,7

¹ Preliminary.**Table 8 – Year-to-date volume of electricity by category: year-on-year percentage change and difference**

	Jan – Aug 2017 (GWh)	Jan – Aug 2018 (GWh)	% change between Jan – Aug 2017 and Jan – Aug 2018	Difference between Jan – Aug 2017 and Jan – Aug 2018 (GWh)
Total - all producers				
Generated	170 307	171 588	0,8	1 281
Inflow into South Africa	5 928	5 956	0,5	28
Consumed in power stations and auxiliary systems	12 631	13 165	4,2	534
Outflow from South Africa	9 703	9 391	-3,2	-312
Distributed in South Africa	153 899	154 987	0,7	1 088
Eskom				
Generated	156 641	156 485	-0,1	-156
Inflow into South Africa	5 928	5 956	0,5	28
Consumed in power stations and auxiliary systems	12 083	12 612	4,4	529
Outflow from South Africa	9 703	9 391	-3,2	-312
Distributed in South Africa	140 779	140 434	-0,2	-345

Table 9 – Volume of electricity delivered to provinces (gigawatt-hours)

Province	Apr-18	May-18	Jun-18	Jul-18	Aug-18 ¹	Aug-18 year-on- year % change
Western Cape	1 791	1 892	1 856	1 883	1 968	-0,4
Eastern Cape	687	769	760	792	810	2,9
Northern Cape	481	486	498	518	510	-2,7
Free State	758	849	870	919	868	-2,3
KwaZulu-Natal	3 400	3 684	3 612	3 718	3 756	0,4
North West	2 429	2 620	2 456	2 471	2 460	3,6
Gauteng	4 539	5 225	5 375	5 762	5 228	-2,5
Mpumalanga	2 740	3 030	2 847	2 882	2 831	3,5
Limpopo	1 209	1 260	1 191	1 222	1 173	5,3
Total	18 034	19 814	19 465	20 167	19 605	0,5

¹ Preliminary.

Survey information

- Introduction**
- 1 Statistics South Africa (Stats SA) conducts a monthly survey covering electricity undertakings and establishments (branches) in the electricity industry. This statistical release contains monthly information regarding the volume of electricity units:
- generated and distributed in South Africa;
 - flowing into and out from South Africa as measured by the metering systems at the South African borders; and
 - delivered to provinces.
- Both unadjusted and seasonally adjusted figures are published.
- 2 In accordance with international practice, the indices are usually re-based every five years to a new base year. The current base period of the index is 2015.
- 3 Some information for the current month may have been estimated due to late submission by respondents. These estimates will be revised in the next statistical release(s) as soon as actual information is available.
- Purpose of the survey**
- 4 The results of the monthly electricity survey are used to compile estimates of the gross domestic product (GDP) and its components, which are used in monitoring the state of the economy and formulation of economic policy.
- Scope of the survey**
- 5 This survey covers electricity undertakings and establishments conducting activities concerned with the generation and/or distribution of electricity (excluding the distribution of purchased electric energy). It includes electrical power installations, which, as subsidiary divisions of undertakings, produce electricity for regular use by these undertakings.
- Classification**
- 6 The 1993 edition of the *Standard Industrial Classification of all Economic Activities* (SIC), Fifth Edition, Report No. 09-90-02, was used to classify the statistical units in the survey. The SIC is based on the 1990 *International Standard Industrial Classification of all Economic Activities* (ISIC) with suitable adaptations for local conditions. Each statistical unit is classified to an industry which reflects the predominant activity of the electricity undertaking or establishment.
- Collection rate**
- 7 The collection rate for the survey on electricity generated and available for distribution for August 2018 was 96%. The improved collection rate for July 2018 was 100%.
- Statistical unit**
- 8 The statistical unit for the collection of information is the electricity undertaking or establishment. The electricity undertaking or establishment is the smallest economic unit that functions as a separate entity (see point 5).
- Revised figures**
- 9 Normally revised figures are due to:
- late submission of data to Stats SA; and
 - revisions or corrections by respondents to previous reported data.
- Data are edited at enterprise level.
- Rounding-off of figures**
- 10 Where figures have been rounded off, discrepancies may occur between sums of the component items and the totals.
- Historical data**
- 11 Historical electricity data are available on the Stats SA webpage. Click on the following link ([Time series data](#)) to access the data electronically.
- Past publications**
- 12 Past electricity releases are available on the Stats SA webpage. Click on the following link ([Past publications](#)) to access the releases electronically.

Technical notes

- | | | |
|-----------------------------------------------|---|-----------------------------------------------------------------------------------------------------------------------------------------------------------------------------------------------------------------------------------------------------------------------------------------------------------------------------------------------------------------------------------------------------------------------------------------------------------------------------------------------------------------------------------------------------------------------------------------------------------------------------------------------------------------------------------------------------------------------------------------------------------------------------------------------------------------------------------------------------------------------------------------------------------------------------------------------------------------------------------------------------------------------------------------------------------------------------------|
| Survey methodology and design | 1 | All statistical units are stratified by type of economic activity according to the <i>Standard Industrial Classification of all Economic Activities</i> (SIC) and measure of size, where measure of size is the volume of electricity generated by the electricity undertaking or establishment. All large undertakings or establishments (size group one) are completely enumerated. A sample is drawn from medium and small size undertakings and establishments by systematically selecting undertakings or establishments within each size category. An electricity undertaking or establishment with a total generating capacity of less than 500 kilowatts is excluded from the sample. |
| | 2 | The survey is conducted by electronic filing, email, fax and telephone. Information is collected from a sample of 24 electricity undertakings or establishments. As from September 2013, Eskom supplied additional data for independent power producers (IPPs) that were not in the original sample of 24 establishments. |
| Monthly index of electricity generated | 3 | The calculation of the monthly index of electricity generated is based on the volume of electricity units produced. |
| Benchmarking | 4 | <p>The index of the volume of electricity generated should provide an accurate reflection of the trend of activities of the relevant industry. The level of activities, as measured by the monthly electricity survey, is based on information received from a sample of electricity undertakings and establishments. These levels are weighted according to the original sample and designed to represent the population of electricity undertakings and establishments.</p> <p>The results of the 1995 Census of electricity, gas and steam served as a benchmark to verify or adjust the level of the monthly index of the volume of electricity generated collected through the monthly survey. The level adjustments were done on the volume index for July of the relevant census year (the 1995 census year covered the period 1 January to 31 December 1995 and therefore, the benchmarking was done using the index of July 1995 as reference point).</p> |
| Seasonal adjustment | 5 | <p>Seasonally adjusted estimates of all items are generated each month, using the X-12-ARIMA Seasonal Adjustment Program developed by US Bureau of the Census Economic Research and Analyses Division, 1968. Seasonal adjustment is a means of removing the estimated effects of normal seasonal variation from the series so that the effects of other influences on the series can be more clearly recognized. Seasonal adjustment does not aim to remove irregular or non-seasonal influences, which may be present in any particular month. Influences that are volatile or unsystematic can still make it difficult to interpret the movement of the series even after adjustment for seasonal variations. This means the month-to-month movements of seasonally adjusted estimates may not be reliable indicators of trend behaviour. The X12-ARIMA procedure for electricity generated and available for distribution is described in more detail on the Stats SA website at :</p> <p>Click to download Electricity seasonal adjustment September 2017</p> |
| Trend cycle | 6 | The trend is the long-term pattern or movement of a time series. The X-12-ARIMA Seasonal Adjustment Program is used for smoothing seasonally adjusted estimates to estimate the underlying trend cycle. |
| Month-on-month percentage change | 7 | The month-on-month percentage change in a variable for any given month is the change between that month and the previous month, expressed as a percentage of the latter. |
| Year-on-year percentage change | 8 | The year-on-year percentage change in a variable for any given period is the change between that period and the corresponding period of the previous year, expressed as a percentage of the latter. |

Glossary

Electricity undertaking	An undertaking concerned with the generation and distribution of electricity, including electrical power installations, which, as subsidiary divisions of undertakings, produce electricity for regular use by these undertakings.	
Index of the volume of electricity generated	A statistical measure of the change in the volume of electricity generated in a given period and the volume of electricity generated in the base period. The base period is 2015. The production in the base period is set at 100.	
Industry	An industry is made up of enterprises engaged in the same or similar kinds of economic activity. Industries are defined in the System of National Accounts (SNA) in the same way as in the <i>Standard Industrial Classification of all Economic Activities</i> (SIC), Fifth Edition, Report No. 09-90-02 of January 1993.	
Inflow into SA	Electricity flowing into South Africa as measured by the metering systems at the South African borders.	
Outflow from SA	Electricity flowing from South Africa as measured by the metering systems at the South African borders.	
Unit of electricity	One gigawatt-hour of electricity is equal to one million kilowatt-hours. A kilowatt-hour is the basic unit of electrical energy equal to one kilowatt of power supplied to or taken from an electric circuit steadily for one hour. One kilowatt-hour equals one thousand watt-hours.	
Symbols and abbreviations	GDP	Gross domestic product
	GWh	Gigawatt-hour
	ISIC	International Standard Industrial Classification
	SIC	Standard Industrial Classification of all Economic Activities
	SA	South Africa
	Stats SA	Statistics South Africa
	*	Revised figures

Technical enquiries

Tsholofelo Ditinti	Telephone number: (012) 310 6990 Email: tsholofelod@statssa.gov.za
Nicolai Claassen	Telephone number: (012) 310 8007 Email: nicolaic@statssa.gov.za

