



stats sa

Department:
Statistics South Africa
REPUBLIC OF SOUTH AFRICA

Private Bag X44, Pretoria, 0001, South Africa, ISibalo House, Koch Street, Salvokop, Pretoria, 0002
www.statssa.gov.za, info@statssa.gov.za, Tel +27 12 310 8911

STATISTICAL RELEASE

P2041

Mining: Production and sales (Preliminary)

October 2019

Embargoed until:
12 December 2019
11:00

ENQUIRIES:
Juan-Pierre Terblanche
012 310 2965

FORTHCOMING ISSUE:
November 2019

EXPECTED RELEASE DATE:
16 January 2020



Dipalopalo tsa Aforikaborwa • Dipalopalo tsa Afrika Borwa • Ezezibalo zaseNingizimu Afrika • Tshitatistika Afrika Tshipembe • Tinhlayohlayo Afrika-Dzonga
Statistieke Suid-Afrika • Dipalopalo tša Afrika Borwa • Telubalo taseNingizimu Afrika • EzeeNkcukacha maNani zoMzantsi Afrika • Iimbalobalo zeSewula Afrika

The South Africa I know, the home I understand



Contents

| | |
|--|-----------|
| Production: results for October 2019 | 2 |
| Table A – Key growth rates in the volume of mining production..... | 2 |
| Table B – Seasonally adjusted index of the volume of mining production for the latest three months by mineral group and mineral (Base: 2015=100)..... | 2 |
| Figure 1 – Volume of mining production (Base: 2015=100) | 3 |
| Figure 2 – Volume of mining production (Base: 2015=100): year-on-year percentage change..... | 3 |
| Sales: results for October 2019 | 4 |
| Table C – Key growth rates in mineral sales at current prices..... | 4 |
| Figure 3 – Total value of mineral sales at current prices | 4 |
| Tables | 5 |
| Table 1 – Index of the volume of mining production (Base: 2015=100)..... | 5 |
| Table 2 – Year-on-year percentage change in the volume of mining production..... | 5 |
| Table 3 – Seasonally adjusted volume of total mining production | 5 |
| Table 4 – Index of the volume of mining production by mineral group and mineral (Base: 2015=100)..... | 6 |
| Table 5 – Seasonally adjusted index of the volume of mining production by mineral group and mineral (Base: 2015=100)..... | 6 |
| Table 6 – Year-on-year percentage change in the volume of mining production by mineral group and mineral..... | 7 |
| Table 7 – Contribution of each mineral group and mineral to the year-on-year percentage change in the volume of mining production (percentage points) | 7 |
| Table 8 – Mineral sales at current prices (R million) | 8 |
| Table 9 – Year-on-year percentage change in mineral sales at current prices..... | 8 |
| Table 10 – Seasonally adjusted total mineral sales at current prices | 8 |
| Table 11 – Mineral sales at current prices by mineral group and mineral (R million) | 9 |
| Table 12 – Year-on-year percentage change in mineral sales at current prices by mineral group and mineral..... | 9 |
| Table 13 – Contribution of each mineral group and mineral to the year-on-year percentage change in mineral sales at current prices (percentage points) | 9 |
| Survey information | 10 |
| Technical notes | 11 |
| Glossary | 12 |
| Technical enquiries | 12 |
| General information | 13 |

Production: results for October 2019

Table A – Key growth rates in the volume of mining production

| | May-19 | Jun-19 | Jul-19 | Aug-19 | Sep-19 | Oct-19 |
|--|--------|--------|--------|--------|--------|--------|
| Year-on-year % change, unadjusted | 0,3 | -2,8 | 1,9 | -2,8 | -0,6 | -2,9 |
| Month-on-month % change, seasonally adjusted | 4,1 | 2,9 | -5,1 | -0,5 | 1,1 | 1,0 |
| 3-month % change, seasonally adjusted ¹ | 3,0 | 4,2 | 4,6 | 1,5 | -2,0 | -1,9 |

¹ Percentage change between the previous three months and the three months ending in the month indicated.

Mining production decreased by 2,9% year-on-year in October 2019. The largest negative contributors were:

- diamonds (-39,3% and contributing -2,3 percentage points);
- PGMs (-4,8% and contributing -1,2 percentage points); and
- manganese ore (-12,5% and contributing -0,8 of a percentage point).

The largest positive contributors were:

- iron ore (11,1% and contributing 1,0 percentage point);
- 'other' non-metallic minerals (14,2% and contributing 0,8 of a percentage point); and
- 'other' metallic minerals (34,9% and contributing 0,7 of a percentage point) – see Tables 6 and 7.

Seasonally adjusted mining production increased by 1,0% in October 2019 compared with September 2019. This followed month-on-month changes of 1,1% in September 2019 and -0,5% in August 2019.

Table B – Seasonally adjusted index of the volume of mining production for the latest three months by mineral group and mineral (Base: 2015=100)

| Mineral group and mineral | Weight | May – Jul 2019 | Aug – Oct 2019 | % change between May – Jul 2019 and Aug – Oct 2019 | Contribution (% points) to the % change in total mining production |
|--|---------------|----------------|----------------|--|--|
| Gold | 16,45 | 69,1 | 75,1 | 8,7 | 1,0 |
| Iron ore | 10,98 | 102,2 | 98,4 | -3,7 | -0,4 |
| Chromium ore | 3,74 | 113,5 | 113,7 | 0,2 | 0,0 |
| Copper ¹ | 0,93 | 55,3 | 68,0 | 23,0 | 0,1 |
| Manganese ore ² | 4,20 | 161,4 | 156,3 | -3,2 | -0,2 |
| PGMs | 23,66 | 100,7 | 94,1 | -6,6 | -1,6 |
| Nickel ² | 1,45 | 75,0 | 76,8 | 2,4 | 0,0 |
| Other metallic minerals ¹ | 2,09 | 124,1 | 125,6 | 1,2 | 0,0 |
| Diamonds ² | 3,75 | 95,2 | 94,0 | -1,3 | 0,0 |
| Coal | 24,72 | 104,9 | 101,2 | -3,5 | -0,9 |
| Building materials | 2,14 | 95,2 | 91,2 | -4,2 | -0,1 |
| Other non-metallic minerals ¹ | 5,89 | 109,2 | 111,9 | 2,5 | 0,2 |
| Total | 100,00 | 99,6 | 97,7 | -1,9 | -1,9 |

¹ Adjusted for calendar effects only. See notes 4, 5 and 6 on page 11.

² Unadjusted.

Seasonally adjusted mining production decreased by 1,9% in the three months ended October 2019 compared with the previous three months. The two largest negative contributors were PGMs (-6,6% and contributing -1,6 percentage points) and coal (-3,5% and contributing -0,9 of a percentage point). Gold (8,7% and contributing 1,0 percentage point) was a significant positive contributor – see Table B.

Figure 1 – Volume of mining production (Base: 2015=100)

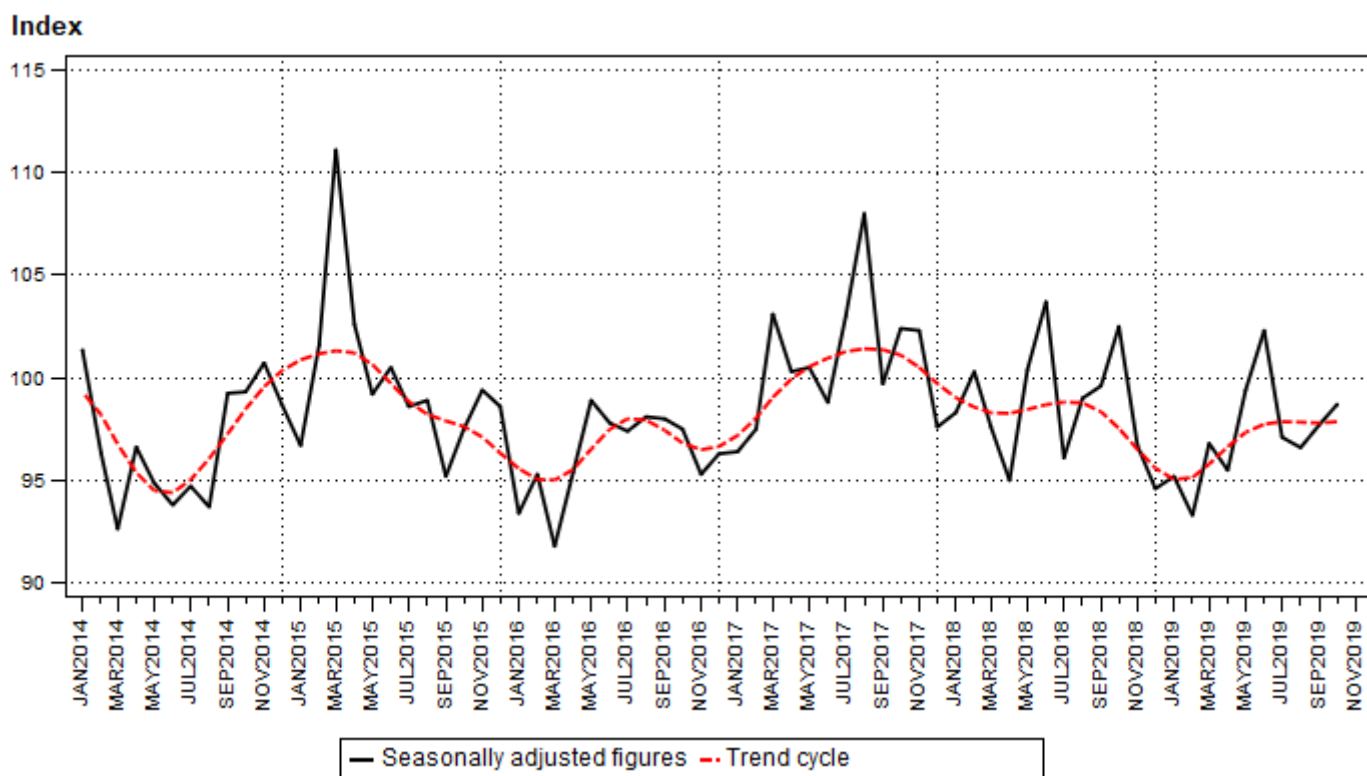
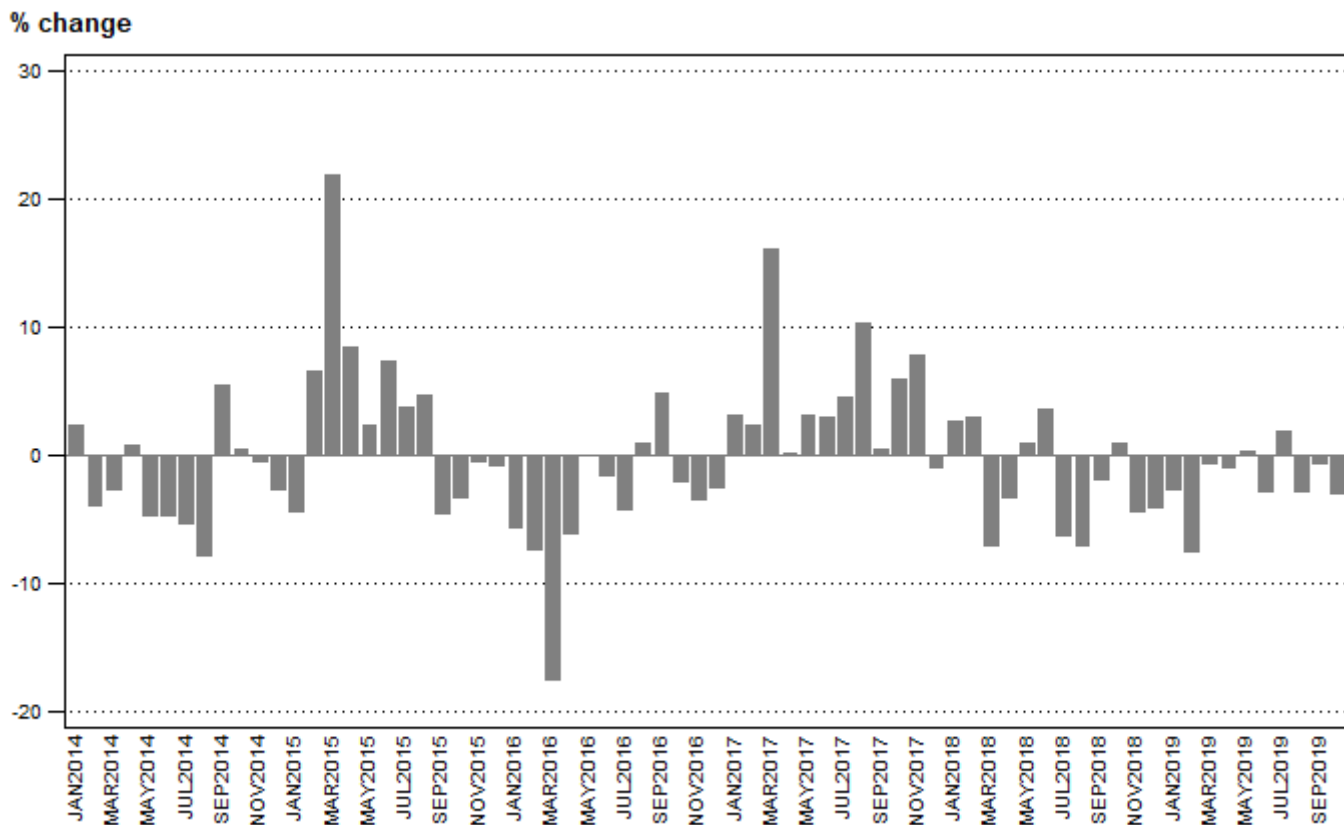


Figure 2 – Volume of mining production (Base: 2015=100): year-on-year percentage change



Sales: results for October 2019

Table C – Key growth rates in mineral sales at current prices

| | May-19 | Jun-19 | Jul-19 | Aug-19 | Sep-19 | Oct-19 |
|--|--------|--------|--------|--------|--------|--------|
| Year-on-year % change, unadjusted | 11,1 | 6,9 | 17,0 | 9,0 | 16,3 | 8,4 |
| Month-on-month % change, seasonally adjusted | -0,7 | -1,9 | 3,4 | -1,4 | 1,5 | -0,4 |
| 3-month % change, seasonally adjusted ¹ | 2,1 | 2,8 | 2,7 | -0,2 | 1,4 | 1,0 |

¹ Percentage change between the previous three months and the three months ending in the month indicated.

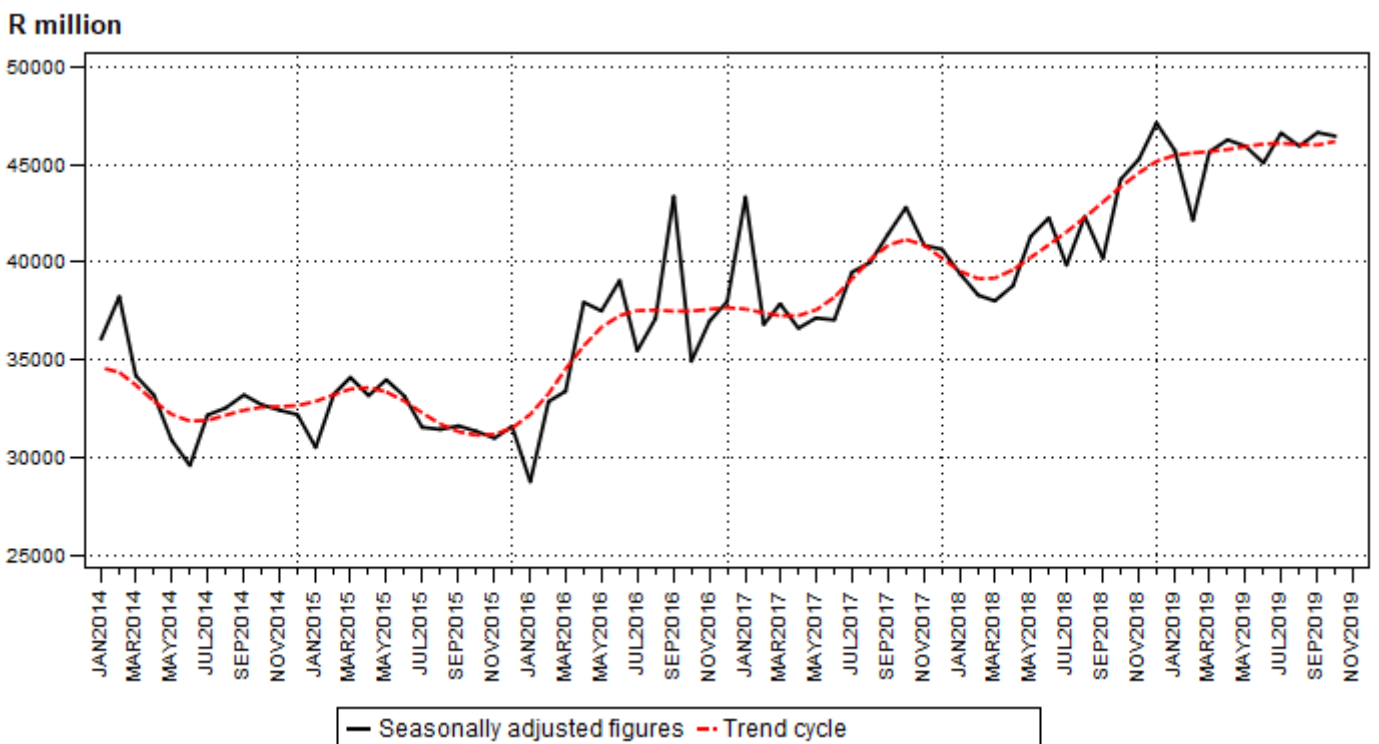
Mineral sales increased by 8,4% year-on-year in October 2019. The largest positive contributors were:

- PGMs (27,6% and contributing 6,5 percentage points);
- manganese ore (40,2% and contributing 2,7 percentage points); and
- gold (8,1% and contributing 1,2 percentage points) – see Tables 12 and 13.

Seasonally adjusted mineral sales at current prices decreased by 0,4% in October 2019 compared with September 2019. This followed month-on-month changes of 1,5% in September 2019 and -1,4% in August 2019.

In the three months ended October 2019 the seasonally adjusted value of mineral sales at current prices was 1,0% higher compared with the previous three months.

Figure 3 – Total value of mineral sales at current prices



Risenga Maluleke
Statistician-General

Tables

Table 1 – Index of the volume of mining production (Base: 2015=100)

| Month | 2013 | 2014 | 2015 | 2016 | 2017 | 2018 ¹ | 2019 ¹ |
|-------------|-------------|-------------|--------------|-------------|--------------|-------------------|-------------------|
| Jan | 89,4 | 91,5 | 87,6 | 82,7 | 85,3 | 87,6 | 85,2 |
| Feb | 88,0 | 84,6 | 90,1 | 83,4 | 85,4 | 87,9 | 81,3 |
| Mar | 92,5 | 90,1 | 109,7 | 90,6 | 105,1 | 97,7 | 97,1 |
| Apr | 91,9 | 92,6 | 100,4 | 94,3 | 94,5 | 91,4 | 90,6 |
| May | 101,3 | 96,6 | 98,8 | 98,8 | 101,9 | 102,8 | 103,1 |
| Jun | 103,0 | 98,2 | 105,4 | 103,8 | 106,8 | 110,6 | 107,5 |
| Jul | 104,8 | 99,2 | 102,9 | 98,6 | 103,1 | 96,7 | 98,5 |
| Aug | 105,4 | 97,2 | 101,8 | 102,8 | 113,4 | 105,5 | 102,5 |
| Sep | 98,4 | 103,7 | 99,0 | 103,9 | 104,3 | 102,3 | 101,7 |
| Oct | 104,0 | 104,4 | 101,1 | 99,0 | 104,8 | 105,9 | 102,8 |
| Nov | 104,2 | 103,7 | 103,3 | 99,8 | 107,6 | 102,9 | |
| Dec | 103,5 | 100,7 | 100,0 | 97,5 | 96,6 | 92,6 | |
| Year | 98,9 | 96,9 | 100,0 | 96,3 | 100,7 | 98,7 | |

¹ Preliminary.

Table 2 – Year-on-year percentage change in the volume of mining production

| Month | 2014 | 2015 | 2016 | 2017 | 2018 | 2019 | 2019 year-to-date |
|-------------|-------------|------------|-------------|------------|-------------|------|----------------------|
| Jan | 2,3 | -4,3 | -5,6 | 3,1 | 2,7 | -2,7 | -2,7 |
| Feb | -3,8 | 6,5 | -7,4 | 2,4 | 2,9 | -7,5 | -5,1 |
| Mar | -2,6 | 21,8 | -17,4 | 16,0 | -7,0 | -0,6 | -3,5 |
| Apr | 0,8 | 8,4 | -6,1 | 0,2 | -3,3 | -0,9 | -2,9 |
| May | -4,6 | 2,3 | 0,0 | 3,1 | 0,9 | 0,3 | -2,1 |
| Jun | -4,7 | 7,4 | -1,5 | 2,9 | 3,6 | -2,8 | -2,3 |
| Jul | -5,4 | 3,8 | -4,2 | 4,6 | -6,2 | 1,9 | -1,7 |
| Aug | -7,8 | 4,8 | 1,0 | 10,3 | -7,0 | -2,8 | -1,8 |
| Sep | 5,5 | -4,6 | 4,9 | 0,4 | -1,9 | -0,6 | -1,7 |
| Oct | 0,4 | -3,2 | -2,1 | 5,9 | 1,0 | -2,9 | -1,8 |
| Nov | -0,5 | -0,4 | -3,4 | 7,8 | -4,4 | | |
| Dec | -2,8 | -0,7 | -2,5 | -0,9 | -4,1 | | |
| Year | -2,0 | 3,2 | -3,7 | 4,6 | -2,0 | | |

Table 3 – Seasonally adjusted volume of total mining production

| Month | Index (Base: 2015=100) | | | | Month-on-month % change | | | |
|-------|------------------------|-------|-------|-------|-------------------------|------|------|------|
| | 2016 | 2017 | 2018 | 2019 | 2016 | 2017 | 2018 | 2019 |
| Jan | 93,4 | 96,4 | 98,3 | 95,2 | -5,3 | 0,1 | 0,7 | 0,6 |
| Feb | 95,3 | 97,5 | 100,3 | 93,3 | 2,0 | 1,1 | 2,0 | -2,0 |
| Mar | 91,8 | 103,1 | 97,6 | 96,8 | -3,7 | 5,7 | -2,7 | 3,8 |
| Apr | 95,4 | 100,3 | 95,0 | 95,5 | 3,9 | -2,7 | -2,7 | -1,3 |
| May | 98,9 | 100,5 | 100,4 | 99,4 | 3,7 | 0,2 | 5,7 | 4,1 |
| Jun | 97,8 | 98,8 | 103,7 | 102,3 | -1,1 | -1,7 | 3,3 | 2,9 |
| Jul | 97,4 | 103,0 | 96,1 | 97,1 | -0,4 | 4,3 | -7,3 | -5,1 |
| Aug | 98,1 | 108,0 | 99,0 | 96,6 | 0,7 | 4,9 | 3,0 | -0,5 |
| Sep | 98,0 | 99,7 | 99,6 | 97,7 | -0,1 | -7,7 | 0,6 | 1,1 |
| Oct | 97,5 | 102,4 | 102,5 | 98,7 | -0,5 | 2,7 | 2,9 | 1,0 |
| Nov | 95,3 | 102,3 | 96,7 | | -2,3 | -0,1 | -5,7 | |
| Dec | 96,3 | 97,6 | 94,6 | | 1,0 | -4,6 | -2,2 | |

Table 4 – Index of the volume of mining production by mineral group and mineral (Base: 2015=100) ¹

| Mineral group and mineral | Weight | May-19 | Jun-19 | Jul-19 | Aug-19 | Sep-19 | Oct-19 |
|-----------------------------|---------------|--------------|--------------|-------------|--------------|--------------|--------------|
| Gold | 16,45 | 66,8 | 76,2 | 75,1 | 81,2 | 81,9 | 83,2 |
| Iron ore | 10,98 | 105,6 | 122,0 | 98,5 | 95,1 | 110,0 | 97,7 |
| Chromium ore | 3,74 | 118,5 | 119,9 | 115,9 | 117,8 | 113,2 | 123,5 |
| Copper | 0,93 | 87,0 | 41,6 | 39,0 | 93,9 | 65,5 | 46,4 |
| Manganese ore | 4,20 | 164,3 | 172,1 | 147,8 | 179,7 | 144,3 | 145,0 |
| PGMs | 23,66 | 106,6 | 114,3 | 87,4 | 95,5 | 104,1 | 103,6 |
| Nickel | 1,45 | 78,9 | 73,5 | 72,5 | 79,2 | 69,6 | 81,6 |
| Other metallic minerals | 2,09 | 123,4 | 135,6 | 115,6 | 135,0 | 115,0 | 129,1 |
| Diamonds | 3,75 | 92,1 | 89,2 | 104,4 | 91,8 | 91,4 | 98,8 |
| Coal | 24,72 | 112,0 | 105,7 | 112,2 | 109,1 | 100,9 | 106,4 |
| Building materials | 2,14 | 102,3 | 101,1 | 107,6 | 102,1 | 97,6 | 101,4 |
| Other non-metallic minerals | 5,89 | 103,8 | 116,3 | 106,4 | 113,8 | 113,5 | 113,6 |
| Total | 100,00 | 103,1 | 107,5 | 98,5 | 102,5 | 101,7 | 102,8 |

¹ All index values in this table are preliminary. Annual averages and annual percentage changes are available on the following link: [Annual data](#)

Table 5 – Seasonally adjusted index of the volume of mining production by mineral group and mineral (Base: 2015=100)

| Mineral group and mineral | May-19 | Jun-19 | Jul-19 | Aug-19 | Sep-19 | Oct-19 | Month-on-month % change |
|--|-------------|--------------|-------------|-------------|-------------|-------------|-------------------------|
| Gold | 66,9 | 69,0 | 71,5 | 75,5 | 73,7 | 76,1 | 3,3 |
| Iron ore | 102,7 | 105,1 | 98,8 | 92,6 | 104,1 | 98,4 | -5,5 |
| Chromium ore | 114,5 | 113,5 | 112,4 | 113,8 | 110,8 | 116,6 | 5,2 |
| Copper ¹ | 85,5 | 42,8 | 37,5 | 92,4 | 66,7 | 44,9 | -32,7 |
| Manganese ore ² | 164,3 | 172,1 | 147,8 | 179,7 | 144,3 | 145,0 | 0,5 |
| PGMs | 100,8 | 107,5 | 93,9 | 85,7 | 95,7 | 101,0 | 5,5 |
| Nickel ² | 78,9 | 73,5 | 72,5 | 79,2 | 69,6 | 81,6 | 17,2 |
| Other metallic minerals ¹ | 121,6 | 137,0 | 113,8 | 133,2 | 116,4 | 127,3 | 9,4 |
| Diamonds ² | 92,1 | 89,2 | 104,4 | 91,8 | 91,4 | 98,8 | 8,1 |
| Coal | 106,0 | 104,4 | 104,4 | 102,1 | 101,2 | 100,4 | -0,8 |
| Building materials | 92,9 | 99,1 | 93,5 | 94,2 | 91,8 | 87,6 | -4,6 |
| Other non-metallic minerals ¹ | 101,1 | 117,3 | 109,2 | 110,0 | 116,2 | 109,4 | -5,9 |
| Total | 99,4 | 102,3 | 97,1 | 96,6 | 97,7 | 98,7 | 1,0 |

¹ Adjusted for calendar effects only. See notes 4, 5 and 6 on page 11.

² Unadjusted.

Table 6 – Year-on-year percentage change in the volume of mining production by mineral group and mineral

| Mineral group and mineral | May-19 | Jun-19 | Jul-19 | Aug-19 | Sep-19 | Oct-19 |
|-----------------------------|------------|-------------|------------|-------------|-------------|-------------|
| Gold | -24,2 | -16,0 | -13,5 | -5,1 | -2,5 | -1,2 |
| Iron ore | -4,7 | -1,9 | 9,7 | -7,8 | 8,2 | 11,1 |
| Chromium ore | -1,2 | -1,7 | -7,7 | 2,5 | -5,7 | -2,0 |
| Copper | 38,3 | -40,6 | -23,8 | 176,2 | 10,5 | -41,4 |
| Manganese ore | 36,6 | 26,2 | 16,9 | 34,3 | -8,9 | -12,5 |
| PGMs | 6,0 | -6,3 | 2,7 | -12,4 | -4,2 | -4,8 |
| Nickel | 1,0 | -13,1 | 18,9 | 0,4 | -8,7 | 1,5 |
| Other metallic minerals | 19,6 | 51,3 | 56,9 | 35,3 | 27,1 | 34,9 |
| Diamonds | -31,4 | -32,9 | -35,6 | -29,7 | -15,8 | -39,3 |
| Coal | 9,6 | -0,3 | 10,1 | -2,5 | 0,3 | -1,5 |
| Building materials | -2,0 | 1,9 | 3,4 | -2,0 | 2,5 | -10,3 |
| Other non-metallic minerals | -4,1 | 17,4 | 4,0 | 10,3 | 12,4 | 14,2 |
| Total | 0,3 | -2,8 | 1,9 | -2,8 | -0,6 | -2,9 |

Table 7 – Contribution of each mineral group and mineral to the year-on-year percentage change in the volume of mining production (percentage points)

| Mineral group and mineral | May-19 | Jun-19 | Jul-19 | Aug-19 | Sep-19 | Oct-19 |
|-----------------------------|------------|-------------|------------|-------------|-------------|-------------|
| Gold | -3,4 | -2,2 | -2,0 | -0,7 | -0,3 | -0,2 |
| Iron ore | -0,6 | -0,2 | 1,0 | -0,8 | 0,9 | 1,0 |
| Chromium ore | -0,1 | -0,1 | -0,4 | 0,1 | -0,2 | -0,1 |
| Copper | 0,2 | -0,2 | -0,1 | 0,5 | 0,1 | -0,3 |
| Manganese ore | 1,8 | 1,4 | 0,9 | 1,8 | -0,6 | -0,8 |
| PGMs | 1,4 | -1,6 | 0,6 | -3,0 | -1,1 | -1,2 |
| Nickel | 0,0 | -0,1 | 0,2 | 0,0 | -0,1 | 0,0 |
| Other metallic minerals | 0,4 | 0,9 | 0,9 | 0,7 | 0,5 | 0,7 |
| Diamonds | -1,5 | -1,5 | -2,2 | -1,4 | -0,6 | -2,3 |
| Coal | 2,4 | -0,1 | 2,6 | -0,7 | 0,1 | -0,4 |
| Building materials | 0,0 | 0,0 | 0,1 | 0,0 | 0,1 | -0,2 |
| Other non-metallic minerals | -0,3 | 0,9 | 0,2 | 0,6 | 0,7 | 0,8 |
| Total | 0,3 | -2,8 | 1,9 | -2,8 | -0,6 | -2,9 |

Table 8 – Mineral sales at current prices (R million)

| Month | 2013 | 2014 | 2015 | 2016 | 2017 | 2018 ¹ | 2019 ¹ |
|--------------|------------------|------------------|------------------|------------------|------------------|-------------------|-------------------|
| Jan | 28 977,1 | 32 608,8 | 27 714,6 | 25 021,7 | 37 903,7 | 34 450,1 | 41 094,2 |
| Feb | 30 361,5 | 35 488,2 | 30 712,0 | 30 250,9 | 33 691,7 | 34 916,9 | 38 259,6 |
| Mar | 34 761,4 | 35 172,2 | 34 751,6 | 35 051,0 | 39 473,2 | 39 802,5 | 45 669,6 |
| Apr | 31 865,2 | 31 647,7 | 32 675,8 | 36 202,7 | 34 917,1 | 37 057,7 | 44 422,1 |
| May | 30 402,1 | 30 932,4 | 32 812,7 | 36 489,3 | 36 288,4 | 41 710,5 | 46 335,5 |
| Jun | 35 088,5 | 31 630,8 | 35 668,4 | 43 040,2 | 40 672,0 | 45 044,8 | 48 130,4 |
| Jul | 32 847,9 | 31 517,7 | 30 620,3 | 33 169,6 | 37 150,3 | 37 135,0 | 43 429,8 |
| Aug | 35 523,4 | 32 124,1 | 31 313,7 | 36 902,6 | 40 890,3 | 42 967,8 | 46 851,3 |
| Sep | 34 731,0 | 35 345,8 | 33 416,7 | 47 602,2 | 44 264,9 | 42 985,9 | 49 995,5 |
| Oct | 34 544,7 | 34 101,5 | 33 004,9 | 35 817,0 | 43 966,4 | 45 768,6 | 49 602,1 |
| Nov | 34 122,6 | 32 274,1 | 30 901,0 | 36 800,3 | 42 104,9 | 46 651,3 | |
| Dec | 34 452,5 | 33 434,3 | 34 055,0 | 41 242,0 | 42 562,3 | 50 024,0 | |
| Total | 397 677,9 | 396 277,6 | 387 646,7 | 437 589,5 | 473 885,2 | 498 515,1 | |

¹ Preliminary.**Table 9 – Year-on-year percentage change in mineral sales at current prices**

| Month | 2014 | 2015 | 2016 | 2017 | 2018 | 2019 | 2019 year-to-date |
|--------------|-------------|-------------|-------------|------------|------------|------|----------------------|
| Jan | 12,5 | -15,0 | -9,7 | 51,5 | -9,1 | 19,3 | 19,3 |
| Feb | 16,9 | -13,5 | -1,5 | 11,4 | 3,6 | 9,6 | 14,4 |
| Mar | 1,2 | -1,2 | 0,9 | 12,6 | 0,8 | 14,7 | 14,5 |
| Apr | -0,7 | 3,2 | 10,8 | -3,6 | 6,1 | 19,9 | 15,9 |
| May | 1,7 | 6,1 | 11,2 | -0,6 | 14,9 | 11,1 | 14,8 |
| Jun | -9,9 | 12,8 | 20,7 | -5,5 | 10,8 | 6,9 | 13,3 |
| Jul | -4,0 | -2,8 | 8,3 | 12,0 | 0,0 | 17,0 | 13,8 |
| Aug | -9,6 | -2,5 | 17,8 | 10,8 | 5,1 | 9,0 | 13,1 |
| Sep | 1,8 | -5,5 | 42,5 | -7,0 | -2,9 | 16,3 | 13,5 |
| Oct | -1,3 | -3,2 | 8,5 | 22,8 | 4,1 | 8,4 | 12,9 |
| Nov | -5,4 | -4,3 | 19,1 | 14,4 | 10,8 | | |
| Dec | -3,0 | 1,9 | 21,1 | 3,2 | 17,5 | | |
| Total | -0,4 | -2,2 | 12,9 | 8,3 | 5,2 | | |

Table 10 – Seasonally adjusted total mineral sales at current prices

| Month | R million | | | | Month-on-month % change | | | |
|-------|-----------|----------|----------|----------|-------------------------|-------|------|------|
| | 2016 | 2017 | 2018 | 2019 | 2016 | 2017 | 2018 | 2019 |
| Jan | 28 738,5 | 43 324,3 | 39 394,8 | 45 724,0 | -9,0 | 14,1 | -3,1 | -3,0 |
| Feb | 32 843,5 | 36 794,8 | 38 295,5 | 42 141,7 | 14,3 | -15,1 | -2,8 | -7,8 |
| Mar | 33 378,6 | 37 851,6 | 38 004,4 | 45 641,8 | 1,6 | 2,9 | -0,8 | 8,3 |
| Apr | 37 932,7 | 36 603,4 | 38 783,0 | 46 257,5 | 13,6 | -3,3 | 2,0 | 1,3 |
| May | 37 489,7 | 37 128,9 | 41 306,1 | 45 933,7 | -1,2 | 1,4 | 6,5 | -0,7 |
| Jun | 39 050,3 | 37 030,7 | 42 253,4 | 45 077,1 | 4,2 | -0,3 | 2,3 | -1,9 |
| Jul | 35 451,2 | 39 474,0 | 39 843,1 | 46 606,8 | -9,2 | 6,6 | -5,7 | 3,4 |
| Aug | 37 098,6 | 39 970,5 | 42 325,7 | 45 936,1 | 4,6 | 1,3 | 6,2 | -1,4 |
| Sep | 43 361,9 | 41 448,9 | 40 181,4 | 46 629,1 | 16,9 | 3,7 | -5,1 | 1,5 |
| Oct | 34 913,1 | 42 794,1 | 44 225,4 | 46 449,5 | -19,5 | 3,2 | 10,1 | -0,4 |
| Nov | 36 975,2 | 40 846,9 | 45 256,8 | | 5,9 | -4,6 | 2,3 | |
| Dec | 37 973,1 | 40 654,2 | 47 114,8 | | 2,7 | -0,5 | 4,1 | |

Table 11 – Mineral sales at current prices by mineral group and mineral (R million) ¹

| Mineral group and mineral | May-19 | Jun-19 | Jul-19 | Aug-19 | Sep-19 | Oct-19 |
|-----------------------------|-----------------|-----------------|-----------------|-----------------|-----------------|-----------------|
| Gold | 4 546,3 | 5 857,3 | 7 890,7 | 7 436,6 | 7 716,7 | 7 537,6 |
| Iron ore | 6 420,4 | 6 150,8 | 6 998,9 | 6 125,3 | 5 255,1 | 4 554,4 |
| Chromium ore | 1 925,7 | 2 056,1 | 1 696,0 | 1 761,2 | 2 207,5 | 2 034,7 |
| Copper | 298,5 | 401,1 | 155,7 | 223,6 | 272,9 | 225,4 |
| Manganese ore | 3 928,5 | 4 715,9 | 3 179,8 | 3 251,1 | 5 278,5 | 4 340,0 |
| PGMs | 11 860,8 | 11 481,9 | 9 585,8 | 11 820,5 | 12 891,6 | 13 737,7 |
| Nickel | 622,7 | 521,0 | 486,4 | 672,6 | 604,6 | 752,6 |
| Other metallic minerals | 1 116,6 | 1 910,4 | 904,1 | 1 671,7 | 2 019,0 | 1 042,3 |
| Coal | 12 665,2 | 11 741,5 | 10 414,5 | 11 349,7 | 10 554,4 | 12 510,9 |
| Building materials | 1 039,8 | 1 042,6 | 1 075,0 | 1 043,5 | 1 035,9 | 1 046,1 |
| Other non-metallic minerals | 1 911,1 | 2 251,7 | 1 043,0 | 1 495,5 | 2 159,3 | 1 820,5 |
| Total | 46 335,5 | 48 130,4 | 43 429,8 | 46 851,3 | 49 995,5 | 49 602,1 |

¹ All values in this table are preliminary.

Table 12 – Year-on-year percentage change in mineral sales at current prices by mineral group and mineral

| Mineral group and mineral | May-19 | Jun-19 | Jul-19 | Aug-19 | Sep-19 | Oct-19 |
|-----------------------------|-------------|------------|-------------|------------|-------------|------------|
| Gold | -33,8 | -6,1 | 18,8 | 18,9 | 94,9 | 8,1 |
| Iron ore | 68,6 | 76,0 | 117,7 | 32,9 | 27,5 | 10,4 |
| Chromium ore | 4,4 | -2,7 | -9,6 | 0,1 | 23,9 | 25,2 |
| Copper | -4,4 | -9,4 | -24,1 | -4,1 | -44,0 | -40,1 |
| Manganese ore | -4,2 | 2,7 | -10,3 | -7,7 | 35,0 | 40,2 |
| PGMs | 37,9 | 9,9 | 38,5 | 25,9 | 22,2 | 27,6 |
| Nickel | -7,2 | -16,2 | -15,0 | 7,7 | 8,4 | 43,1 |
| Other metallic minerals | 16,1 | 70,7 | 2,2 | 68,1 | 40,4 | -19,5 |
| Coal | 5,9 | -1,3 | -5,6 | -8,4 | -14,0 | -6,4 |
| Building materials | 4,1 | 4,7 | 5,6 | 1,8 | 11,9 | -11,6 |
| Other non-metallic minerals | 21,6 | -26,9 | -14,4 | -30,7 | -27,6 | -25,3 |
| Total | 11,1 | 6,9 | 17,0 | 9,0 | 16,3 | 8,4 |

Table 13 – Contribution of each mineral group and mineral to the year-on-year percentage change in mineral sales at current prices (percentage points)

| Mineral group and mineral | May-19 | Jun-19 | Jul-19 | Aug-19 | Sep-19 | Oct-19 |
|-----------------------------|-------------|------------|-------------|------------|-------------|------------|
| Gold | -5,6 | -0,8 | 3,4 | 2,8 | 8,7 | 1,2 |
| Iron ore | 6,3 | 5,9 | 10,2 | 3,5 | 2,6 | 0,9 |
| Chromium ore | 0,2 | -0,1 | -0,5 | 0,0 | 1,0 | 0,9 |
| Copper | 0,0 | -0,1 | -0,1 | 0,0 | -0,5 | -0,3 |
| Manganese ore | -0,4 | 0,3 | -1,0 | -0,6 | 3,2 | 2,7 |
| PGMs | 7,8 | 2,3 | 7,2 | 5,7 | 5,4 | 6,5 |
| Nickel | -0,1 | -0,2 | -0,2 | 0,1 | 0,1 | 0,5 |
| Other metallic minerals | 0,4 | 1,8 | 0,1 | 1,6 | 1,4 | -0,6 |
| Coal | 1,7 | -0,3 | -1,7 | -2,4 | -4,0 | -1,9 |
| Building materials | 0,1 | 0,1 | 0,2 | 0,0 | 0,3 | -0,3 |
| Other non-metallic minerals | 0,8 | -1,8 | -0,5 | -1,5 | -1,9 | -1,3 |
| Total | 11,1 | 6,9 | 17,0 | 9,0 | 16,3 | 8,4 |

Survey information

- Introduction**
- 1 Statistics South Africa (Stats SA) publishes monthly mining production indices and mineral sales based on the information furnished by the Department of Mineral Resources and Energy (DMRE). Data in this release are presented by mineral group and mineral.
 - 2 In accordance with international practice, the indices are usually re-based every five years to a new base year. The current base year of the index of the volume of mining production is 2015=100. Both actual and seasonally adjusted figures are presented.
 - 3 The value of mineral sales is calculated, in general, on a free-on-rail/free-on-board basis.
 - 4 In order to improve timeliness, some information for the current month had to be estimated due to late response. These estimates will be revised in future statistical release(s) as soon as more up-to-date information is available.
- Purpose of the survey**
- 5 The monthly mining production and sales survey is conducted by the DMRE, covering all mining establishments operating in the South African economy. The results of this survey are used to calculate the volume of mining production indices in order to estimate the gross domestic product (GDP) and its components, which in turn are used to develop and monitor government policy.
- Scope of the survey**
- 6 This survey covers mining establishments conducting activities regarding the extracting, dressing and beneficiating of minerals occurring naturally, for example solids such as coal and ores.
- Classification**
- 7 The 1993 edition of the *Standard Industrial Classification of all Economic Activities* (SIC), Fifth Edition, Report No. 09-90-02, was used to classify the statistical units in the survey. The SIC is based on the 1990 *International Standard Industrial Classification of all Economic Activities* (ISIC) with suitable adaptations for local conditions. Each statistical unit is classified to an industry which reflects the predominant activity of the establishment. Statistics in this publication are presented by mineral group and mineral.
- Statistical unit**
- 8 The statistical unit for the collection of information is the mining establishment. An establishment is the smallest economic unit that functions as a separate entity.
- Rounding-off of figures**
- 9 The figures in the tables have, where necessary, been rounded off to the nearest digit shown. There may, therefore, be slight discrepancies between the sums of the constituent items and the totals shown.
- Historical data and past publications**
- 10 Historical mining data and past publications are available on the Stats SA website. Click on the following link ([Time series data](#)) or ([Past publications](#)) to access the data and releases electronically. Annual averages and annual percentage changes are available on the following link: [Annual data](#)

Technical notes

| | | |
|---|-----------|---|
| Index of the volume of mining production | 1 | The index of the volume of mining production, also known as the production index, is a statistical measure of the change in the volume of production. The production index of a mineral group is the ratio between the volume of production of a mineral group in a given period and the volume of production of the same mineral group in the base period. The current base period is 2015. The production in the base period is set at 100. |
| Index weighting | 2 | The weight of a mineral group is the ratio of its value added to the total value added of the mining industry. The weight of a mineral group reflects the importance of the mineral group in the total mining industry. The weights change over time due to quality improvements and changes in relative prices. New weights will be calculated annually. |
| | 3 | The weights, which are used to aggregate minerals to mineral groups and mineral groups to total mining, are derived from national accounts value added data. The latest weights (implemented in the August 2019 publication) are based on an average of value added data for the years 2015, 2016 and 2017. These weights are applicable from January 2017. |
| Seasonal adjustment | 4 | Seasonally adjusted estimates are generated each month using the X-12-ARIMA Seasonal Adjustment Program developed by the US Bureau of the Census, 1968. Seasonal adjustment is a means of removing the estimated effects of normal seasonal variation from the series so that the effects of other influences on the series can be recognised more clearly. Seasonal adjustment does not aim to remove irregular or non-seasonal influences which may be present in any particular month. |
| | 5 | Influences that are volatile or unsystematic can still make it difficult to interpret the movement of the series even after adjustment for seasonal variations. This means the month-to-month movements of seasonally adjusted estimates may not be reliable indicators of trend behaviour. The X-12-ARIMA procedure for mining production and sales is described in more detail on the Stats SA website at: Click to download seasonal adjustment for mining production and sales |
| Calendar effects | 6 | These are effects due to calendar variations. Such calendar effects include the number of working/trading days in a week, moving holidays such as Easter and the length of month (some months have more days than others). |
| Trend cycle | 7 | The trend is the long-term pattern or movement of a time series. The X-12-ARIMA Seasonal Adjustment Program is used for smoothing seasonally adjusted estimates to estimate the underlying trend cycle. |
| Reliability of estimates | 8 | Figures for the latest 2 calendar years are preliminary. |
| Month-on-month percentage change | 9 | The month-on-month percentage change in a variable for any given month is the change between that month and the previous month, expressed as a percentage of the latter. |
| Year-on-year percentage change | 10 | The year-on-year percentage change in a variable for any given period is the change between that period and the corresponding period of the previous year, expressed as a percentage of the latter. |
| Index contribution (percentage points) | 11 | The contribution (percentage points) of a mineral group or mineral to the percentage change in the total mining production for a given period is calculated by multiplying the difference in the index for each mineral group or mineral by the weight of the mineral group or mineral and then dividing by the previous period's total index. |

Sales contribution (percentage points) **12** The contribution (percentage points) to the percentage change in total sales for a given period is calculated by multiplying the percentage change of each mineral group or mineral with its percentage contribution to total mineral sales of the previous period, divided by 100.

Glossary

Free-on-rail Free-on-rail relates to goods sold on the local market where no railage or road transport costs are involved.

Free-on-board Free-on-board relates to goods destined for the export market. Railage, road transport and docking charges are involved but no charges are made for transport by sea.

Industry An industry consists of a group of establishments engaged in the same or similar kinds of economic activity. Industries are defined in the *System of National Accounts (SNA)* in the same way as in the *Standard Industrial Classification of all Economic Activities (SIC)*, Fifth Edition of January 1993.

PGMs – Platinum group metals Platinum group metals include platinum, iridium, osmiridium, palladium, rhodium, ruthenium and osmium.

Sales Sales are the total value of sales of primary minerals at the first point of saleability by the mining establishment.

Symbols and abbreviations

| | |
|----------|---|
| DMRE | Department of Mineral Resources and Energy |
| GDP | Gross domestic product |
| ISIC | International Standard Industrial Classification |
| PGMs | Platinum group metals |
| SIC | Standard Industrial Classification of all Economic Activities |
| SNA | System of National Accounts |
| Stats SA | Statistics South Africa |
| * | Revised |

Technical enquiries

JP Terblanche Telephone number: (012) 310 2965
Email: juan-pierret@statssa.gov.za

Mpuleng Galane Telephone number: (012) 444 3735
Email: mpuleng.galane@dmr.gov.za

General information

Stats SA publishes approximately 300 different statistical releases each year. It is not economically viable to produce them in more than one of South Africa's eleven official languages. Since the releases are used extensively, not only locally but also by international economic and social-scientific communities, Stats SA releases are published in English only.

Stats SA has copyright on this publication. Users may apply the information as they wish, provided that they acknowledge Stats SA as the source of the basic data wherever they process, apply, utilise, publish or distribute the data and also that they specify that the relevant application and analysis (where applicable) result from their own processing of the data.

Advance release calendar

An advance release calendar is disseminated on www.statssa.gov.za

Stats SA products

A complete set of Stats SA publications is available at the Stats SA Library and the following libraries:

National Library of South Africa, Pretoria Division
National Library of South Africa, Cape Town Division
Natal Society Library, Pietermaritzburg
Library of Parliament, Cape Town
Bloemfontein Public Library
Johannesburg Public Library
Eastern Cape Library Services, King William's Town
Central Regional Library, Polokwane
Central Reference Library, Mbombela
Central Reference Collection, Kimberley
Central Reference Library, Mmabatho

Stats SA also provides a subscription service.

Electronic services

A large range of data is available via online services. For more detail about our electronic services, contact Stats SA's user information service.

You can visit us on the internet at: www.statssa.gov.za

General enquiries

User information services Telephone number: (012) 310 8600
Email address: info@statssa.gov.za

Postal address Private Bag X44, Pretoria, 0001

Produced by Stats SA