



The South Africa I know, the home I understand

---

# Statistical release

## P2041

# Mining: Production and sales (Preliminary)

March 2016

**Embargoed until:**  
**12 May 2016**  
**11:30**

**Enquiries:**

Juan-Pierre Terblanche  
Tel: (012) 310 2965

**Forthcoming issue:**

April 2016

**Expected release date:**

9 June 2016

## Contents

<b>Production: results for March 2016</b> .....	<b>2</b>
Table A – Key growth rates in the volume of mining production .....	2
Table B – Seasonally adjusted index of the volume of mining production for the latest three months by mineral group and mineral (Base: 2010=100) .....	2
Figure 1 – Volume of mining production (Base: 2010=100) .....	3
Figure 2 – Volume of mining production (Base: 2010=100): year-on-year percentage change .....	3
<b>Sales: results for February 2016</b> .....	<b>4</b>
Table C – Key growth rates in mineral sales at current prices .....	4
<b>Tables</b> .....	<b>5</b>
Table 1 – Index of the volume of mining production (Base: 2010=100) .....	5
Table 2 – Year-on-year percentage change in the volume of mining production .....	5
Table 3 – Seasonally adjusted volume of total mining production .....	5
Table 4 – Index of the volume of mining production by mineral group and mineral (Base: 2010=100) .....	6
Table 5 – Seasonally adjusted index of the volume of mining production by mineral group and mineral (Base: 2010=100) .....	6
Table 6 – Year-on-year percentage change in the volume of mining production by mineral group and mineral .....	7
Table 7 – Contribution of each mineral group and mineral to the year-on-year percentage change in the volume of mining production (percentage points) .....	7
Table 8 – Mineral sales at current prices (R million) .....	8
Table 9 – Year-on-year percentage change in mineral sales at current prices .....	8
Table 10 – Seasonally adjusted total mineral sales at current prices .....	8
Table 11 – Mineral sales at current prices by mineral group and mineral (R million) .....	9
Table 12 – Year-on-year percentage change in mineral sales at current prices by mineral group and mineral .....	9
Table 13 – Contribution of each mineral group and mineral to the year-on-year percentage change in mineral sales at current prices (percentage points) .....	9
<b>Survey information</b> .....	<b>10</b>
<b>Technical notes</b> .....	<b>11</b>
<b>Glossary</b> .....	<b>12</b>
<b>Technical enquiries</b> .....	<b>12</b>
<b>General information</b> .....	<b>13</b>

## Production: results for March 2016

**Table A – Key growth rates in the volume of mining production**

	Oct-15	Nov-15	Dec-15	Jan-16	Feb-16	Mar-16
Year-on-year % change, unadjusted	-4,2	-1,2	-1,8	-5,8	-8,3	-18,0
Month-on-month % change, seasonally adjusted	1,1	1,7	-0,8	-5,5	2,1	-3,4
3-month % change, seasonally adjusted <sup>1/</sup>	-3,3	-3,6	-0,9	-1,1	-2,2	-5,2

<sup>1/</sup> Percentage change between the previous three months and the three months ending in the month indicated.

Mining production decreased by 18,0% year-on-year in March 2016. The largest negative contributions were:

- PGMs (-23,7% and contributing -4,5 percentage points);
- coal (-15,8% and contributing -4,0 percentage points);
- iron ore (-21,4% and contributing -3,7 percentage points);
- manganese ore (-24,3% and contributing -1,6 percentage points); and
- gold (-7,4% and contributing -1,2 percentage points) – see Tables 6 and 7.

Seasonally adjusted mining production decreased by 3,4% in March 2016 compared with February 2016. This followed month-on-month changes of 2,1% in February 2016 and -5,5% in January 2016.

**Table B – Seasonally adjusted index of the volume of mining production for the latest three months by mineral group and mineral (Base: 2010=100)**

Mineral group and mineral	Weight (2012)	Oct – Dec 2015	Jan – Mar 2016	% change between Oct – Dec 2015 and Jan – Mar 2016	Contribution (% points) to the % change in total mining production
Gold	21,10	77,5	80,1	3,4	0,5
Iron ore	14,46	116,4	104,2	-10,5	-1,8
Chromium ore	2,27	142,3	134,2	-5,7	-0,2
Copper <sup>1</sup>	1,41	94,4	67,1	-28,9	-0,4
Manganese ore <sup>1</sup>	2,97	199,6	176,6	-11,5	-0,7
PGMs	19,01	93,9	82,8	-11,8	-2,1
Nickel <sup>1</sup>	1,77	154,7	130,9	-15,4	-0,4
Other metallic minerals <sup>1</sup>	2,98	68,6	74,9	9,2	0,2
Diamonds <sup>1</sup>	2,75	104,5	79,1	-24,3	-0,7
Coal	26,45	95,5	98,1	2,7	0,7
Building materials	1,54	114,2	106,7	-6,6	-0,1
Other non-metallic minerals	3,29	72,5	68,1	-6,1	-0,1
<b>Total</b>	<b>100,00</b>	<b>98,6</b>	<b>93,5</b>	<b>-5,2</b>	<b>-5,2</b>

<sup>1</sup> Not seasonally adjusted, because the presence of seasonality is not significant. See notes 4 and 5 on page 11.

Seasonally adjusted mining production decreased by 5,2% in the first quarter of 2016 compared with the previous quarter. PGMs (contributing -2,1 percentage points) and iron ore (contributing -1,8 percentage points) were the largest negative contributors to the -5,2% quarterly growth – see Table B.

Figure 1 – Volume of mining production (Base: 2010=100)

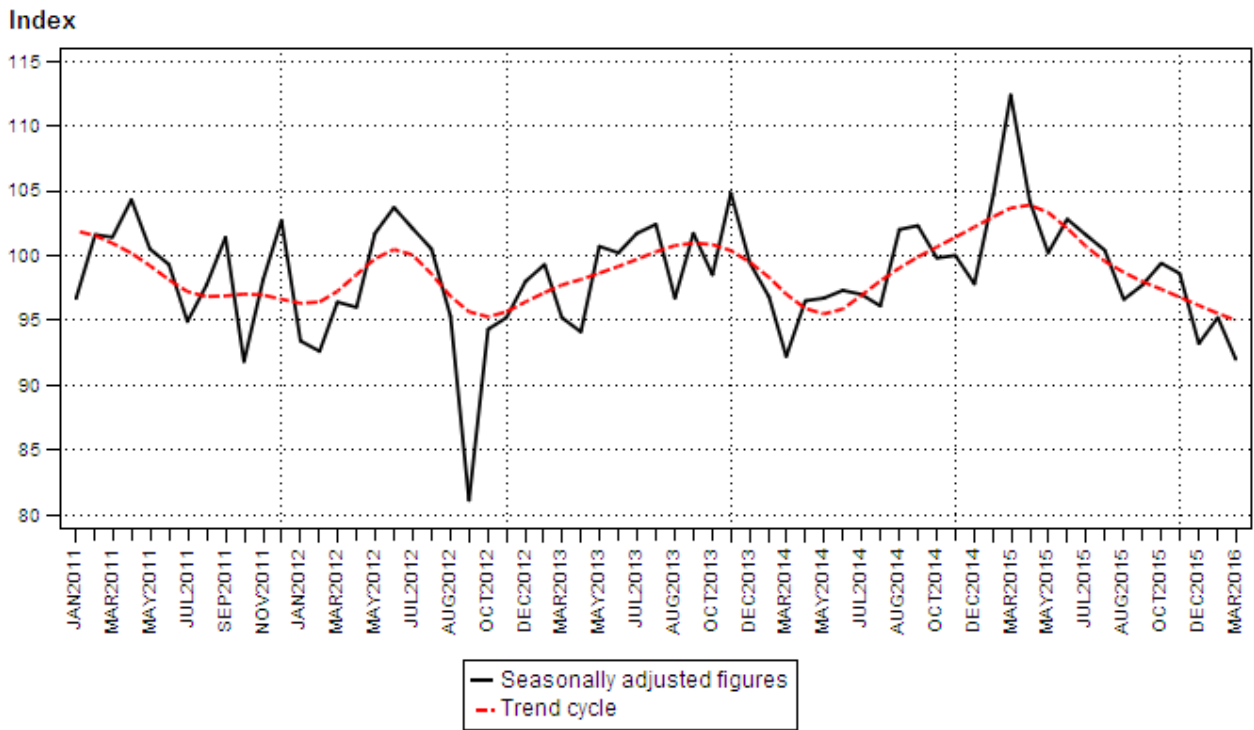
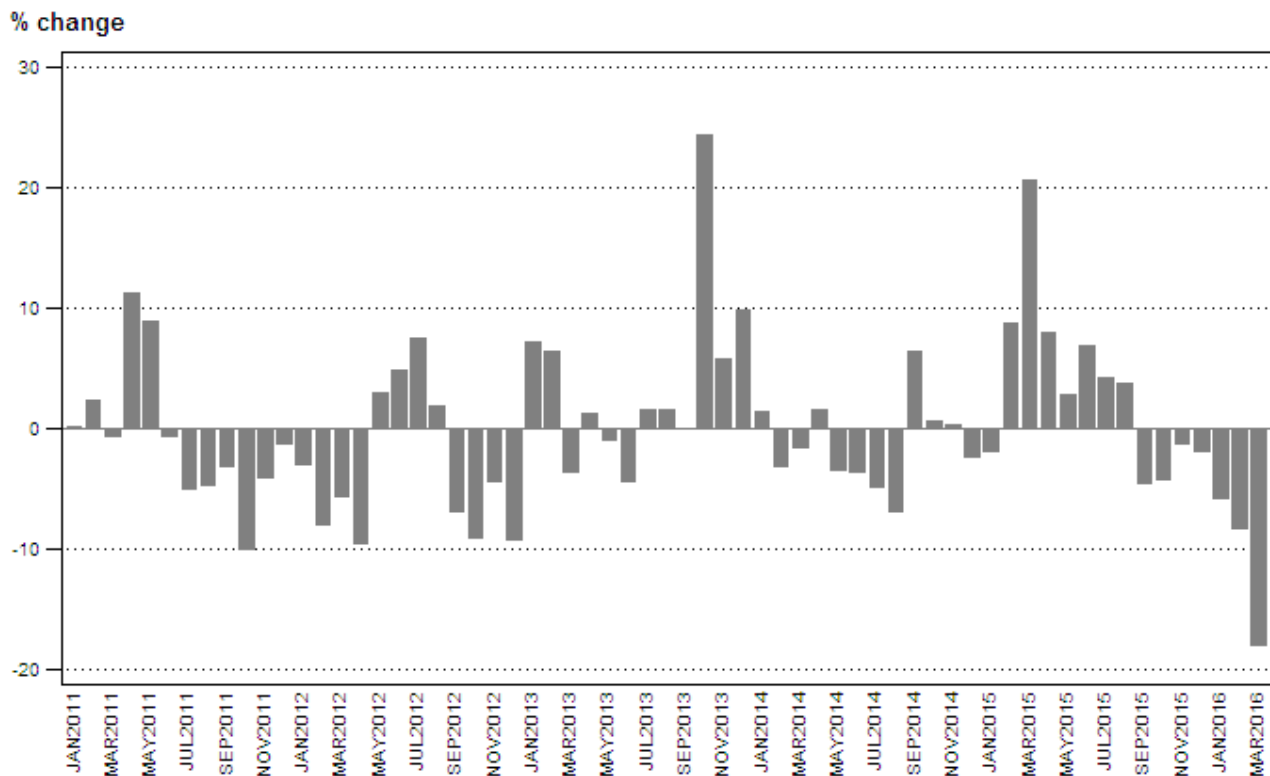


Figure 2 – Volume of mining production (Base: 2010=100): year-on-year percentage change



## Sales: results for February 2016

**Table C – Key growth rates in mineral sales at current prices**

	Sep-15	Oct-15	Nov-15	Dec-15	Jan-16	Feb-16
Year-on-year % change, unadjusted	-5,5	-2,6	-3,4	2,6	-1,9	1,6
Month-on-month % change, seasonally adjusted	1,9	1,2	-2,1	2,6	-4,1	4,1
3-month % change, seasonally adjusted <sup>1/</sup>	-5,7	-2,9	0,1	2,2	-0,3	0,1

<sup>1/</sup> Percentage change between the previous three months and the three months ending in the month indicated.

Mineral sales increased by 1,6% year-on-year in February 2016. The biggest positive contributor to the increase of 1,6% was gold (43,9% and contributing 6,2 percentage points). A significant negative contributor was iron ore (-31,5% and contributing -4,1 percentage points) – see Tables 12 and 13.

Seasonally adjusted mineral sales at current prices increased by 4,1% in February 2016 compared with January 2016. This followed month-on-month changes of -4,1% in January 2016 and 2,6% in December 2015.

**PJ Lehohla**  
**Statistician-General**

## Tables

**Table 1 – Index of the volume of mining production (Base: 2010=100)**

Month	2010	2011	2012	2013	2014	2015 1/	2016 1/
Jan	86,2	86,4	83,9	89,9	91,2	89,6	84,4
Feb	88,1	90,2	83,0	88,3	85,6	93,1	85,4
Mar	102,8	102,2	96,5	93,0	91,6	110,5	90,6
Apr	90,4	100,5	91,0	92,2	93,7	101,2	
May	91,5	99,6	102,6	101,6	98,0	100,7	
Jun	103,8	103,2	108,2	103,5	99,8	106,7	
Jul	101,7	96,6	103,8	105,4	100,3	104,5	
Aug	107,8	102,8	104,6	106,2	98,9	102,7	
Sep	109,5	106,1	98,8	98,8	105,1	100,4	
Oct	103,7	93,3	84,8	105,4	106,0	101,5	
Nov	108,5	104,0	99,4	105,2	105,5	104,2	
Dec	106,1	104,7	95,1	104,4	102,0	100,2	
<b>Year</b>	<b>100,0</b>	<b>99,1</b>	<b>96,0</b>	<b>99,5</b>	<b>98,1</b>	<b>101,3</b>	

1/ Preliminary.

**Table 2 – Year-on-year percentage change in the volume of mining production**

Month	2011	2012	2013	2014	2015	2016	2016 year-to-date
Jan	0,2	-2,9	7,2	1,4	-1,8	-5,8	-5,8
Feb	2,4	-8,0	6,4	-3,1	8,8	-8,3	-7,1
Mar	-0,6	-5,6	-3,6	-1,5	20,6	-18,0	-11,2
Apr	11,2	-9,5	1,3	1,6	8,0		
May	8,9	3,0	-1,0	-3,5	2,8		
Jun	-0,6	4,8	-4,3	-3,6	6,9		
Jul	-5,0	7,5	1,5	-4,8	4,2		
Aug	-4,6	1,8	1,5	-6,9	3,8		
Sep	-3,1	-6,9	0,0	6,4	-4,5		
Oct	-10,0	-9,1	24,3	0,6	-4,2		
Nov	-4,1	-4,4	5,8	0,3	-1,2		
Dec	-1,3	-9,2	9,8	-2,3	-1,8		
<b>Year</b>	<b>-0,9</b>	<b>-3,1</b>	<b>3,6</b>	<b>-1,4</b>	<b>3,3</b>		

**Table 3 – Seasonally adjusted volume of total mining production**

Month	Index (Base: 2010=100)				Month-on-month % change			
	2013	2014	2015	2016	2013	2014	2015	2016
Jan	98,0	99,4	97,8	93,2	2,9	-5,2	-2,2	-5,5
Feb	99,3	96,8	104,7	95,2	1,3	-2,6	7,1	2,1
Mar	95,2	92,2	112,4	92,0	-4,1	-4,8	7,4	-3,4
Apr	94,1	96,5	104,2		-1,2	4,7	-7,3	
May	100,7	96,7	100,2		7,0	0,2	-3,8	
Jun	100,2	97,3	102,8		-0,5	0,6	2,6	
Jul	101,7	97,0	101,6		1,5	-0,3	-1,2	
Aug	102,4	96,1	100,4		0,7	-0,9	-1,2	
Sep	96,7	102,0	96,6		-5,6	6,1	-3,8	
Oct	101,7	102,3	97,7		5,2	0,3	1,1	
Nov	98,5	99,8	99,4		-3,1	-2,4	1,7	
Dec	104,8	100,0	98,6		6,4	0,2	-0,8	

**Table 4 – Index of the volume of mining production by mineral group and mineral (Base: 2010=100) 1/**

Mineral group and mineral	Weight (2012)	Oct-15	Nov-15	Dec-15	Jan-16	Feb-16	Mar-16
Gold	21,10	78,7	85,8	82,7	60,7	78,0	78,3
Iron ore	14,46	114,8	122,5	116,2	99,0	90,9	102,5
Chromium ore	2,27	155,9	157,2	113,3	103,0	137,4	126,6
Copper	1,41	109,3	96,1	77,9	58,0	80,0	63,2
Manganese ore	2,97	231,5	186,1	181,2	160,8	182,4	186,6
PGMs	19,01	97,0	106,0	116,0	72,4	49,8	84,6
Nickel	1,77	145,9	156,9	161,2	136,3	130,8	125,7
Other metallic minerals	2,98	65,5	45,0	95,2	73,7	78,9	72,0
Diamonds	2,75	126,9	103,0	83,7	73,9	89,6	73,9
Coal	26,45	94,6	99,6	88,9	96,0	97,2	89,4
Building materials	1,54	135,8	130,3	76,8	82,9	103,0	99,1
Other non-metallic minerals	3,29	81,7	74,2	65,0	67,4	68,2	68,6
<b>Total</b>	<b>100,00</b>	<b>101,5</b>	<b>104,2</b>	<b>100,2</b>	<b>84,4</b>	<b>85,4</b>	<b>90,6</b>

1/ All index values in this table are preliminary.

**Table 5 – Seasonally adjusted index of the volume of mining production by mineral group and mineral (Base: 2010=100)**

Mineral group and mineral	Oct-15	Nov-15	Dec-15	Jan-16	Feb-16	Mar-16	Month-on-month % change
Gold	74,7	78,9	78,9	77,7	86,3	76,2	-11,7
Iron ore	113,2	119,3	116,7	102,4	104,6	105,5	0,9
Chromium ore	147,9	151,7	127,3	124,6	148,0	130,1	-12,1
Copper <sup>1</sup>	109,3	96,1	77,9	58,0	80,0	63,2	-21,0
Manganese ore <sup>1</sup>	231,5	186,1	181,2	160,8	182,4	186,6	2,3
PGMs	93,9	94,1	93,7	85,1	79,9	83,3	4,3
Nickel <sup>1</sup>	145,9	156,9	161,2	136,3	130,8	125,7	-3,9
Other metallic minerals <sup>1</sup>	65,5	45,0	95,2	73,7	78,9	72,0	-8,7
Diamonds <sup>1</sup>	126,9	103,0	83,7	73,9	89,6	73,9	-17,5
Coal	88,9	98,7	98,8	101,2	97,5	95,5	-2,1
Building materials	115,5	115,5	111,5	112,3	104,5	103,2	-1,2
Other non-metallic minerals	78,8	75,5	63,2	68,7	68,8	66,7	-3,1
<b>Total</b>	<b>97,7</b>	<b>99,4</b>	<b>98,6</b>	<b>93,2</b>	<b>95,2</b>	<b>92,0</b>	<b>-3,4</b>

<sup>1</sup> Not seasonally adjusted, because the presence of seasonality is not significant. See notes 4 and 5 on page 11.

**Table 6 – Year-on-year percentage change in the volume of mining production by mineral group and mineral**

Mineral group and mineral	Oct-15	Nov-15	Dec-15	Jan-16	Feb-16	Mar-16
Gold	-6,4	3,6	-2,8	26,2	11,3	-7,4
Iron ore	-18,4	-19,8	-14,6	-27,0	-32,3	-21,4
Chromium ore	8,3	7,2	-5,8	-13,2	8,4	-11,8
Copper	5,9	8,5	-14,9	-43,8	-6,9	-38,3
Manganese ore	3,7	-15,4	-21,9	-22,3	-20,0	-24,3
PGMs	26,6	23,8	20,1	3,3	-18,1	-23,7
Nickel	4,9	23,3	16,5	5,5	16,6	-16,6
Other metallic minerals	-17,9	-54,9	11,7	-3,3	-4,6	-27,5
Diamonds	20,3	2,7	-10,2	-16,0	13,0	-18,0
Coal	-14,6	0,4	-2,2	-0,3	0,1	-15,8
Building materials	-0,3	9,1	1,3	-2,5	-10,3	-19,6
Other non-metallic minerals	-4,8	-0,5	-7,4	-10,4	-6,6	-11,4
<b>Total</b>	<b>-4,2</b>	<b>-1,2</b>	<b>-1,8</b>	<b>-5,8</b>	<b>-8,3</b>	<b>-18,0</b>

**Table 7 – Contribution of each mineral group and mineral to the year-on-year percentage change in the volume of mining production (percentage points)**

Mineral group and mineral	Oct-15	Nov-15	Dec-15	Jan-16	Feb-16	Mar-16
Gold	-1,1	0,6	-0,5	3,0	1,8	-1,2
Iron ore	-3,5	-4,1	-2,8	-5,9	-6,7	-3,7
Chromium ore	0,3	0,2	-0,2	-0,4	0,3	-0,3
Copper	0,1	0,1	-0,2	-0,7	-0,1	-0,5
Manganese ore	0,2	-1,0	-1,5	-1,5	-1,5	-1,6
PGMs	3,7	3,7	3,6	0,5	-2,2	-4,5
Nickel	0,1	0,5	0,4	0,1	0,4	-0,4
Other metallic minerals	-0,4	-1,5	0,3	-0,1	-0,1	-0,7
Diamonds	0,6	0,1	-0,3	-0,4	0,3	-0,4
Coal	-4,0	0,1	-0,5	-0,1	0,0	-4,0
Building materials	0,0	0,2	0,0	0,0	-0,2	-0,3
Other non-metallic minerals	-0,1	0,0	-0,2	-0,3	-0,2	-0,3
<b>Total</b>	<b>-4,2</b>	<b>-1,2</b>	<b>-1,8</b>	<b>-5,8</b>	<b>-8,3</b>	<b>-18,0</b>



**Table 8 – Mineral sales at current prices (R million)**

Month	2010	2011	2012	2013	2014	2015 1/	2016 1/
Jan	19 185,1	25 341,3	28 079,4	28 977,1	32 608,8	27 681,7	27 169,0
Feb	20 408,4	27 573,2	29 335,5	30 361,5	35 488,2	30 394,0	30 879,8
Mar	23 860,1	31 547,4	30 912,0	34 761,4	35 172,2	34 521,0	
Apr	23 551,4	27 370,2	26 772,5	31 865,2	31 647,7	32 227,8	
May	25 535,2	27 870,5	31 257,0	30 402,1	30 932,4	32 455,8	
Jun	25 882,9	33 940,1	33 958,2	35 088,5	31 630,8	35 514,6	
Jul	25 588,6	27 947,7	30 899,0	32 847,9	31 517,7	30 433,1	
Aug	25 897,8	30 300,9	31 402,3	35 523,4	32 124,1	31 348,8	
Sep	27 994,7	35 700,1	30 367,0	34 731,0	35 345,8	33 407,2	
Oct	27 535,5	33 393,7	28 258,6	34 544,7	34 101,5	33 215,8	
Nov	27 114,9	35 268,1	29 921,3	34 122,6	32 274,1	31 192,8	
Dec	27 737,9	34 027,5	32 954,5	34 452,5	33 434,3	34 292,6	
<b>Total</b>	<b>300 292,5</b>	<b>370 280,7</b>	<b>364 117,3</b>	<b>397 677,9</b>	<b>396 277,6</b>	<b>386 685,2</b>	

1/ Preliminary.

**Table 9 – Year-on-year percentage change in mineral sales at current prices**

Month	2011	2012	2013	2014	2015	2016	2016 year-to-date
Jan	32,1	10,8	3,2	12,5	-15,1	-1,9	-1,9
Feb	35,1	6,4	3,5	16,9	-14,4	1,6	0,0
Mar	32,2	-2,0	12,5	1,2	-1,9		
Apr	16,2	-2,2	19,0	-0,7	1,8		
May	9,1	12,2	-2,7	1,7	4,9		
Jun	31,1	0,1	3,3	-9,9	12,3		
Jul	9,2	10,6	6,3	-4,0	-3,4		
Aug	17,0	3,6	13,1	-9,6	-2,4		
Sep	27,5	-14,9	14,4	1,8	-5,5		
Oct	21,3	-15,4	22,2	-1,3	-2,6		
Nov	30,1	-15,2	14,0	-5,4	-3,4		
Dec	22,7	-3,2	4,5	-3,0	2,6		
<b>Total</b>	<b>23,3</b>	<b>-1,7</b>	<b>9,2</b>	<b>-0,4</b>	<b>-2,4</b>		

**Table 10 – Seasonally adjusted total mineral sales at current prices**

Month	R million				Month-on-month % change			
	2013	2014	2015	2016	2013	2014	2015	2016
Jan	31 866,6	36 261,5	30 421,4	31 048,4	-0,6	6,7	-6,6	-4,1
Feb	32 014,2	37 264,0	31 835,7	32 326,6	0,5	2,8	4,6	4,1
Mar	33 597,1	33 439,6	33 376,2		4,9	-10,3	4,8	
Apr	33 178,1	33 089,9	32 671,6		-1,2	-1,0	-2,1	
May	31 020,9	31 134,7	33 923,1		-6,5	-5,9	3,8	
Jun	32 640,4	29 753,3	33 220,5		5,2	-4,4	-2,1	
Jul	33 916,7	31 757,3	31 012,1		3,9	6,7	-6,6	
Aug	34 474,3	32 458,0	31 241,7		1,6	2,2	0,7	
Sep	33 211,3	33 638,7	31 840,6		-3,7	3,6	1,9	
Oct	33 623,7	33 493,9	32 213,9		1,2	-0,4	1,2	
Nov	34 207,0	32 198,6	31 551,1		1,7	-3,9	-2,1	
Dec	33 986,5	32 578,0	32 370,3		-0,6	1,2	2,6	

**Table 11 – Mineral sales at current prices by mineral group and mineral (R million) 1/**

Mineral group and mineral	Sep-15	Oct-15	Nov-15	Dec-15	Jan-16	Feb-16
Gold	4 966,6	6 854,9	5 476,5	6 270,2	4 732,0	6 180,6
Iron ore	3 446,9	2 381,9	2 775,5	3 049,5	2 735,6	2 695,9
Chromium ore	1 549,8	1 138,0	1 363,5	1 101,0	766,7	932,6
Copper	482,2	431,3	426,1	513,6	350,8	275,3
Manganese ore	1 198,9	1 142,2	636,4	947,6	683,9	864,3
PGMs	8 677,4	7 361,5	8 130,9	8 112,2	5 821,1	6 391,1
Nickel	674,1	894,9	577,3	741,8	675,4	591,9
Other metallic minerals	845,7	505,8	846,4	1 009,6	446,4	539,9
Coal	8 570,6	9 167,9	8 934,6	9 751,6	8 430,5	8 336,1
Building materials	935,9	960,2	976,9	641,3	664,6	807,4
Other non-metallic minerals	2 059,1	2 377,2	1 048,7	2 154,1	1 862,0	3 264,7
<b>Total</b>	<b>33 407,2</b>	<b>33 215,8</b>	<b>31 192,8</b>	<b>34 292,6</b>	<b>27 169,0</b>	<b>30 879,8</b>

1/ All values in this table are preliminary.

**Table 12 – Year-on-year percentage change in mineral sales at current prices by mineral group and mineral**

Mineral group and mineral	Sep-15	Oct-15	Nov-15	Dec-15	Jan-16	Feb-16
Gold	-8,4	17,2	18,7	18,2	31,0	43,9
Iron ore	-22,2	-48,7	-39,3	-26,2	-37,8	-31,5
Chromium ore	36,9	1,2	26,3	-3,3	-31,6	-16,6
Copper	-10,4	-6,0	-10,1	34,8	-0,7	-26,4
Manganese ore	-10,8	-9,2	-55,7	-41,7	-60,0	-39,6
PGMs	17,6	10,4	16,8	-0,3	12,4	7,1
Nickel	-4,3	35,5	10,2	-22,2	4,1	-11,5
Other metallic minerals	-30,4	-35,4	-17,1	11,9	-22,6	-26,5
Coal	-9,2	1,5	1,6	7,3	4,1	0,5
Building materials	3,5	-1,9	13,4	-1,7	-4,9	-6,9
Other non-metallic minerals	-27,5	-10,1	-45,9	90,9	45,2	20,6
<b>Total</b>	<b>-5,5</b>	<b>-2,6</b>	<b>-3,4</b>	<b>2,6</b>	<b>-1,9</b>	<b>1,6</b>

**Table 13 – Contribution of each mineral group and mineral to the year-on-year percentage change in mineral sales at current prices (percentage points)**

Mineral group and mineral	Sep-15	Oct-15	Nov-15	Dec-15	Jan-16	Feb-16
Gold	-1,3	2,9	2,7	2,9	4,0	6,2
Iron ore	-2,8	-6,6	-5,6	-3,2	-6,0	-4,1
Chromium ore	1,2	0,0	0,9	-0,1	-1,3	-0,6
Copper	-0,2	-0,1	-0,1	0,4	0,0	-0,3
Manganese ore	-0,4	-0,3	-2,5	-2,0	-3,7	-1,9
PGMs	3,7	2,0	3,6	-0,1	2,3	1,4
Nickel	-0,1	0,7	0,2	-0,6	0,1	-0,3
Other metallic minerals	-1,0	-0,8	-0,5	0,3	-0,5	-0,6
Coal	-2,5	0,4	0,4	2,0	1,2	0,1
Building materials	0,1	-0,1	0,4	0,0	-0,1	-0,2
Other non-metallic minerals	-2,2	-0,8	-2,8	3,1	2,1	1,8
<b>Total</b>	<b>-5,5</b>	<b>-2,6</b>	<b>-3,4</b>	<b>2,6</b>	<b>-1,9</b>	<b>1,6</b>

## Survey information

<b>Introduction</b>	1	Statistics South Africa (Stats SA) publishes monthly mining production indices and mineral sales based on the information furnished by the Department of Mineral Resources (DMR). Data in this release are presented by mineral group and mineral.
	2	In accordance with international practice, the indices are usually re-based every five years to a new base year. The current base year of the index of the volume of mining production is 2010=100. Both actual and seasonally adjusted figures are presented.
	3	Due to mining production figures being available earlier than mineral sales figures, mining production indices are published one month earlier than mineral sales.
	4	The value of mineral sales is calculated, in general, on a free-on-rail/free-on-board basis.
	5	In order to improve timeliness, some information for the current month had to be estimated due to late response. These estimates will be revised in future statistical release(s) as soon as more up-to-date information is available.
<b>Purpose of the survey</b>	6	The monthly mining production and sales survey is conducted by the DMR, covering all mining establishments operating in the South African economy. The results of this survey are used to calculate the volume of mining production indices in order to estimate the gross domestic product (GDP) and its components, which in turn are used to develop and monitor government policy.
<b>Scope of the survey</b>	7	This survey covers mining establishments conducting activities regarding the extracting, dressing and beneficiating of minerals occurring naturally, for example solids such as coal and ores.
<b>Classification</b>	8	The 1993 edition of the <i>Standard Industrial Classification of all Economic Activities</i> (SIC), Fifth Edition, Report No. 09-90-02, was used to classify the statistical units in the survey. The SIC is based on the 1990 <i>International Standard Industrial Classification of all Economic Activities</i> (ISIC) with suitable adaptations for local conditions. Each statistical unit is classified to an industry which reflects the predominant activity of the establishment. Statistics in this publication are presented by mineral group and mineral.
<b>Statistical unit</b>	9	The statistical unit for the collection of information is the mining establishment. An establishment is the smallest economic unit that functions as a separate entity.
<b>Related publications</b>	10	Users may also wish to refer to the following publications which are available from Stats SA – <ul style="list-style-type: none"> <li>• <i>Bulletin of Statistics</i> issued quarterly; and</li> <li>• <i>South African Statistics</i> issued annually.</li> </ul>
<b>Rounding-off of figures</b>	11	The figures in the tables have, where necessary, been rounded off to the nearest digit shown. There may, therefore, be slight discrepancies between the sums of the constituent items and the totals shown.
<b>Historical data and past publications</b>	12	Historical mining data and past publications are available on the Stats SA website. Click on the following link ( <a href="#">Time series data</a> ) or ( <a href="#">Past publications</a> ) to access the data and releases electronically.

## Technical notes

- |   |           |   |
|---|-----------|---|
| <b>Index of the volume of mining production</b> | <b>1</b>  | The index of the volume of mining production, also known as the production index, is a statistical measure of the change in the volume of production. The production index of a mineral group is the ratio between the volume of production of a mineral group in a given period and the volume of production of the same mineral group in the base period. The current base period is 2010. The production in the base period is set at 100.   |
| <b>Index weighting</b>                          | <b>2</b>  | The weight of a mineral group is the ratio of the sales of a mineral group to the total sales of the mining industry. The weight of a mineral group reflects the importance of the mineral group in the total mining industry. The weights change over time due to quality improvements and changes in relative prices. New weights will be calculated annually.  |
|   | <b>3</b>  | The weights, which are used to aggregate minerals to mineral groups and mineral groups to total mining, are based on the value of sales derived from detailed information for a specific year supplied by the Department of Mineral Resources (DMR). The latest weights are based on 2012 data.   |
| <b>Seasonal adjustment</b>                      | <b>4</b>  | Seasonally adjusted estimates are generated each month using the X-12-ARIMA Seasonal Adjustment Program developed by the US Bureau of the Census, 1968. Seasonal adjustment is a means of removing the estimated effects of normal seasonal variation from the series so that the effects of other influences on the series can be recognised more clearly. Seasonal adjustment does not aim to remove irregular or non-seasonal influences which may be present in any particular month.   |
|   | <b>5</b>  | Influences that are volatile or unsystematic can still make it difficult to interpret the movement of the series even after adjustment for seasonal variations. This means the month-to-month movements of seasonally adjusted estimates may not be reliable indicators of trend behaviour. The X-12-ARIMA procedure for mining production and sales is described in more detail on the Stats SA website at:<br><a href="http://www.statssa.gov.za/publications/P2041/Seasonal_adjustment_X12.pdf">http://www.statssa.gov.za/publications/P2041/Seasonal_adjustment_X12.pdf</a> |
| <b>Trend cycle</b>                              | <b>6</b>  | The trend is the long-term pattern or movement of a time series. The X-12-ARIMA Seasonal Adjustment Program is used for smoothing seasonally adjusted estimates to estimate the underlying trend cycle.   |
| <b>Reliability of estimates</b>                 | <b>7</b>  | Figures for the latest 2 calendar years are preliminary.  |
| <b>Month-on-month percentage change</b>         | <b>8</b>  | The month-on-month percentage change in a variable for any given month is the change between that month and the previous month, expressed as a percentage of the latter.  |
| <b>Year-on-year percentage change</b>           | <b>9</b>  | The year-on-year percentage change in a variable for any given period is the change between that period and the corresponding period of the previous year, expressed as a percentage of the latter.   |
| <b>Index contribution (percentage points)</b>   | <b>10</b> | The contribution (percentage points) of a mineral group or mineral to the percentage change in the total mining production for a given period is calculated by multiplying the difference in the index for each mineral group or mineral by the weight of the mineral group or mineral and then dividing by the previous period's total index.  |
| <b>Sales contribution (percentage points)</b>   | <b>11</b> | The contribution (percentage points) to the percentage change in total sales for a given period is calculated by multiplying the percentage change of each mineral group or mineral with its percentage contribution to total mineral sales of the previous period, divided by 100.   |

**Glossary**

**Free-on-rail** Free-on-rail relates to goods sold on the local market where no railage or road transport costs are involved.

**Free-on-board** Free-on-board relates to goods destined for the export market. Railage, road transport and docking charges are involved but no charges are made for transport by sea.

**Industry** An industry consists of a group of establishments engaged in the same or similar kinds of economic activity. Industries are defined in the *System of National Accounts (SNA)* in the same way as in the *Standard Industrial Classification of all Economic Activities (SIC)*, Fifth Edition of January 1993.

**PGMs – Platinum group metals** Platinum group metals include platinum, iridium, osmiridium, palladium, rhodium, ruthenium and osmium.

**Sales** Sales are the total value of sales of primary minerals at the first point of saleability by the mining establishment.

**Symbols and abbreviations**

DMR	Department of Mineral Resources
GDP	Gross domestic product
ISIC	International Standard Industrial Classification
PGMs	Platinum group metals
SIC	Standard Industrial Classification of all Economic Activities
SNA	System of National Accounts
Stats SA	Statistics South Africa
*	Revised

**Technical enquiries**

**JP Terblanche** Telephone number: (012) 310 2965  
Email: [juan-pierret@statssa.gov.za](mailto:juan-pierret@statssa.gov.za)

**Martin Kohler** Telephone number: (012) 444 3734  
Email: [martin.kohler@dmr.gov.za](mailto:martin.kohler@dmr.gov.za)

## General information

Stats SA publishes approximately 300 different statistical releases each year. It is not economically viable to produce them in more than one of South Africa's eleven official languages. Since the releases are used extensively, not only locally but also by international economic and social-scientific communities, Stats SA releases are published in English only.

Stats SA has copyright on this publication. Users may apply the information as they wish, provided that they acknowledge Stats SA as the source of the basic data wherever they process, apply, utilise, publish or distribute the data and also that they specify that the relevant application and analysis (where applicable) result from their own processing of the data.

## Advance release calendar

An advance release calendar is disseminated on [www.statssa.gov.za](http://www.statssa.gov.za)

## Stats SA products

A complete set of Stats SA publications is available at the Stats SA Library and the following libraries:

National Library of South Africa, Pretoria Division  
National Library of South Africa, Cape Town Division  
Natal Society Library, Pietermaritzburg  
Library of Parliament, Cape Town  
Bloemfontein Public Library  
Johannesburg Public Library  
Eastern Cape Library Services, King William's Town  
Central Regional Library, Polokwane  
Central Reference Library, Mbombela  
Central Reference Collection, Kimberley  
Central Reference Library, Mmabatho

Stats SA also provides a subscription service.

## Electronic services

A large range of data is available via online services. For more detail about our electronic services, contact Stats SA's user information service at (012) 310 8600.

You can visit us on the Internet at: [www.statssa.gov.za](http://www.statssa.gov.za)

## General enquiries

User information services	Telephone number: (012) 310 8600 Email address: <a href="mailto:info@statssa.gov.za">info@statssa.gov.za</a>
Orders/subscription services	Telephone number: (012) 310 8044 Email address: <a href="mailto:magdaj@statssa.gov.za">magdaj@statssa.gov.za</a>
Postal address	Private Bag X44, Pretoria, 0001

*Produced by Stats SA*