

STATISTICAL RELEASE

P0351

Tourism and migration

March 2019

Embargoed until:
27 May 2019
09:00

ENQUIRIES:

User Information Services
Tel: (012) 310 8600 / 4892 / 8390

FORTHCOMING ISSUE:

April 2019

EXPECTED RELEASE DATE:

24 June 2019

www.statssa.gov.za
info@statssa.gov.za
T +27 12 310 8911
F +27 12 310 8500

Private Bag X44, Pretoria, 0001, South Africa
ISibalo House, Koch Street, Salvokop, Pretoria, 0002

Contents

Preface	3
1. Key findings	4
1.1 Travellers	4
1.1.1 Number of travellers	4
1.1.2 Mode of travel	5
1.2 Tourists	5
1.2.1 Mode of travel	5
1.2.2 Regional and national distribution	5
1.2.3 Purpose of visit	6
1.2.4 Sex and age distribution	7
1.2.5 Quarterly and annual trends	7
2. Figures	9
Figure 1 – Number of tourists from the ten leading overseas countries in March 2018 and March 2019	9
Figure 2 – Number of tourists from the ten leading Southern African Development Community (SADC) countries in March 2018 and March 2019	9
Figure 3 – Number of tourists from the ten leading 'other' African countries in March 2018 and March 2019	10
Figure 4 – Number of tourists from overseas countries by month: 2014 – 2019	10
Figure 5 – Number of tourists from SADC countries by month: 2014 – 2019	11
Figure 6 – Number of tourists from 'other' African countries by month: 2014 – 2019	11
3. Tables	12
Table 1 – Number of South African residents and foreign travellers by travel direction	12
Table 2 – Number of South African residents and foreign travellers by travel direction and mode of travel	13
Table 3 – Number of tourists by country of residence and mode of travel, March 2019	14
Table 4 – Number of tourists by country of residence and purpose of visit	18
Table 5 – Number of tourists from overseas, SADC and 'other' African regions by sex and age group	22
4. Annexures	23
4.1 Annexure A – Cumulative number of tourists' difference between Jan – Mar 2018 and Jan – Mar 2019 by country of residence	23
4.2 Annexure B – Number of tourists: Quarter 4, 2018 – Quarter 1, 2019 changes by country of residence and month of travel	27
4.3 Annexure C – Number of tourists: Quarter 1, 2018 – Quarter 1, 2019 changes by country of residence and month of travel	31

5.	Explanatory notes	35
5.1	Introduction	35
5.2	Purpose of the statistical release	35
5.3	Scope and coverage.....	35
5.4	Data	35
5.5	Limitations.....	36
5.5.1	Outbound tourists	36
5.5.2	Purpose of visit	36
5.6	Definition of terms.....	36
5.6.1	Definitions used by the United Nations World Tourism Organisation (UNWTO)	36
5.6.2	Definitions used specifically in this release	36
5.7	Symbols used	37
5.8	Rounding off	37
6.	General information	37

Preface

This monthly statistical release provides information on South African residents and foreign travellers who entered or left South Africa in March 2019. Specific focus is on foreign tourists who entered the country during this month. The tourists are classified by region and country of residence. Details of their mode of travel; the purpose of visit; age and sex distribution are also provided.

The March, June, September and December releases include summaries of the number of tourists for the current quarter and comparisons with previous periods.

Risenga Maluleke
Statistician-General

1. Key findings

1.1 Travellers

1.1.1 Number of travellers

The routine data collected by the Department of Home Affairs' (DHA) immigration officers at the ports of entry into South Africa shows that a total of 3 574 084 travellers (arrivals, departures and transits) passed through South African ports of entry in March 2019. As presented in Table 1 on page 12, these travellers were made up of 1 003 575 South African residents and 2 570 509 foreign travellers. A further breakdown of the figures for South African residents indicates that there were 487 479 arrivals, 515 398 departures and 698 travellers in transit. The corresponding volume for foreign arrivals, departures and transit travellers was 1 301 855, 1 210 297 and 58 357, respectively.

A comparison between the movements in March 2018 and March 2019 indicates that the volume of arrivals increased for South African residents and decreased for foreign travellers. The volume of departures decreased for both groups of travellers. Travellers in transit decreased for South African residents but increased for foreign travellers. For South African residents, the volume of arrivals increased by 14,6% (from 425 546 in March 2018 to 487 479 in March 2019), departures decreased by 1,5% (from 523 059 in March 2018 to 515 398 in March 2019), and transits decreased by 7,8% (from 757 in March 2018 to 698 in March 2019). For foreign travellers, arrivals decreased by 1,2% (from 1 317 875 in March 2018 to 1 301 855 in March 2019), departures decreased by 2,1% (from 1 236 166 in March 2018 to 1 210 297 in March 2019), and transits increased by 2,4% (from 56 981 in March 2018 to 58 357 in March 2019).

A comparison between the movements in February 2019 and March 2019 indicates that the volume of arrivals and departures increased for both South African residents and foreign travellers. Travellers in transit decreased for South African residents but increased for foreign travellers. For South African residents, the volume of arrivals increased by 35,3% (from 360 186 in February 2019 to 487 479 in March 2019), departures increased by 39,2% (from 370 186 in February 2019 to 515 398 in March 2019), and transits decreased by 0,6% (from 702 in February 2019 to 698 in March 2019). For foreign travellers, arrivals increased by 8,0% (from 1 205 901 in February 2019 to 1 301 855 in March 2019), departures increased by 14,7% (from 1 055 331 in February 2019 to 1 210 297 in March 2019), and transits increased by 23,0% (from 47 438 in February 2019 to 58 357 in March 2019).

Detailed information on the departure of travellers is not available in the movement control system. Data on the purpose of travel and the number of days South African residents intend to spend or spent abroad are not collected by the DHA. Hence, it is therefore not possible to categorise South African residents as tourists or non-tourists. However, some data are available on foreign arrivals for this categorisation.

As presented in Table 1 on page 12, in March 2019, 83 638 (6,4%) of foreign arrivals were classified as non-visitors while 1 218 217 (93,6%) were classified as visitors. The visitors were categorised into three groups:

- i. Arrivals only – comprising visitors who entered the country in March 2019 but did not depart in March 2019 [289 840 (23,8%)];
- ii. Single trips – visitors who came to South Africa once in March 2019 and left in March 2019 [459 658 (37,7%)]; and
- iii. Multiple trips – visitors who came to and left South Africa more than once in March 2019 [468 719 (38,5%)].

Visitors were further grouped as same-day visitors and overnight visitors (tourists). In March 2019, there were 379 521 (31,2%) same-day visitors and 838 696 (68,8%) tourists. Between March 2018 and March 2019, the volume of same-day visitors increased by 5,2% (from 360 645 in March 2018 to 379 521 in March 2019) and that of tourists decreased by 5,0% (from 882 749 in March 2018 to 838 696 in March 2019). Between February 2019 and March 2019, the volume of same-day visitors increased by 13,2% (from 335 382 in February 2019 to 379 521 in March 2019), and tourists increased by 5,2% (from 797 181 in February 2019 to 838 696 in March 2019).

1.1.2 Mode of travel

Information presented in Table 2 on page 13 shows that in March 2019, road transport was the most common mode of travel used by 2 421 364 (67,7%) of the 3 574 084 travellers. The total number of travellers who used air transport was 1 088 007 (30,4%). Compared to the use of air and land transport, a small number of travellers, 64 713 (1,8%) used sea transport. Information on arrivals of South African residents shows that 182 365 (37,4%) came by air, 282 388 (57,9%) came by road and 22 726 (4,7%) arrived by sea transport. For departures, 200 500 (38,9%) used air, 290 849 (56,4%) used road and 24 049 (4,7%) left by sea transport. All travellers in transit, 698 (100,0%) used air transport.

In the case of foreign travellers, 303 127 (23,3%) arrived by air, 989 847 (76,0%) came by road and 8 881 (0,7%) arrived by sea transport. When departing South Africa, 342 960 (28,3%) foreign travellers left by air, 858 280 (70,9%) left by road and 9 057 (0,7%) left by sea transport. All travellers in transit 58 357 (100,0%) used air transport. Table 2 on page 13 further shows that of the 379 521 same-day visitors, an overwhelming majority, 361 506 (95,3%) arrived in the country by road, 17 564 (4,6%) flew into the country; and 451 (0,1%) arrived by sea transport. Information on tourists shows that 565 869 (67,5%) used road transport, 270 321 (32,2%) came by air transport and 2 506 (0,3%) arrived by sea transport.

1.2 Tourists

1.2.1 Mode of travel

The country of residence of tourists is used to categorise them according to their respective countries and regions. Information on the specific region and country of residence of tourists and the mode of travel used to enter South Africa is provided in Table 3 on pages 14 to 17. In March 2019, 213 766 (90,3%) of the 236 647 overseas tourists arrived in the country by air transport, whilst 20 562 (8,7%) came in by road transport and 2 319 (1,0%) arrived by sea transport. Tourists from the Southern African Development Community (SADC) countries, on the other hand, came predominantly by road, 543 877 (92,6%), followed by air travel, 43 138 (7,3%) and sea transport, 174 (less than 0,1%). The number of tourists who came into South Africa by air from 'other' African countries was 12 332 (91,2%), with 1 174 (8,7%) using road transport and 13 (0,1%) using sea transport.

1.2.2 Regional and national distribution

In March 2019, the distribution of overseas tourists was as follows: Europe, 146 833 (62,0%); North America, 42 273 (17,9%); Asia, 24 066 (10,2%); Central and South America, 9 875 (4,2%); Australasia, 9 320 (3,9%) and the Middle East, 4 280 (1,8%).

Figure 1 on page 9 and Table 3 on pages 14 to 15 indicate that the ten leading overseas countries in terms of the number of tourists visiting South Africa in March 2019 were United Kingdom (UK), 42 772 (18,1%); United States of America (USA), 35 125 (14,8%); Germany, 33 940 (14,3%); France, 17 451 (7,4%); The Netherlands, 10 364 (4,4%); Australia, 8 099 (3,4%); China, 7 679 (3,2%); Canada, 7 148 (3,0%); India, 7 043 (3,0%) and Brazil, 6 423 (2,7%). Tourists from these ten countries constituted 74,4% of all tourists from overseas countries. A comparison of movements in the ten leading countries between March 2018 and March 2019 shows that the number of tourists increased for six of the ten leading countries (Brazil, China, The Netherlands, USA, India and Canada) and decreased for the other four (Germany, Australia, UK and France). Brazil had the largest increase of 19,8% (from 5 363 tourists in March 2018 to 6 423 in March 2019).

Virtually all tourists from Africa, 587 189 (97,7%), came from the SADC countries. The distribution of the remaining tourists from Africa is as follows: West Africa, 6 126 (1,0%); East and Central Africa, 5 979 (1,0%); and North Africa 1 414 (0,2%). The ten leading SADC countries in terms of the number of tourists visiting South Africa in March 2019 were: Zimbabwe, 168 117 (28,6%); Lesotho, 129 159 (22,0%); Mozambique, 101 110 (17,2%); Swaziland, 77 128 (13,1%); Botswana, 51 948 (8,8%); Namibia, 17 140 (2,9%); Malawi, 16 074 (2,7%); Zambia, 12 523 (2,1%); Angola, 5 608 (1,0%) and Tanzania, 3 197 (0,5%). (See Figure 2 on page 9 and Table 3 on pages 15 to 16). Tourists from these ten countries constituted 99,1% of all tourists from the SADC countries. A comparison between movements in March 2018 and March 2019 for the ten leading SADC countries shows that the number of tourists increased for six of the ten leading countries (Zimbabwe, Angola, Tanzania, Lesotho, Malawi and Mozambique) and decreased for the other four (Botswana, Namibia, Zambia and Swaziland). Zimbabwe showed the largest increase

of 4,9% (from 160 249 tourists in March 2018 to 168 117 in March 2019), while Botswana showed the largest decrease of 34,6% (from 79 447 tourists in March 2018 to 51 948 in March 2019).

The ten leading countries in terms of the number of tourists visiting South Africa in March 2019 from 'other' African countries, as shown in Figure 3 on page 10 and Table 3 on pages 16 to 17, were: Nigeria, 3 453 (25,5%); Kenya, 2 526 (18,7%); Ghana, 1 549 (11,5%); Uganda, 1 221 (9,0%); Egypt, 717 (5,3%); Ethiopia, 675 (5,0%); Cameroon, 439 (3,2%); Gabon, 417 (3,1%); Côte d'Ivoire, 221 (1,6%) and Congo, 212 (1,6%). Tourists from these ten countries constituted 84,5% of all tourists from 'other' African countries. A comparison between movements in March 2018 and March 2019 shows that the number of tourists increased for three of the ten leading countries (Uganda, Kenya and Egypt) and decreased for the other seven leading countries (Ethiopia, Nigeria, Côte d'Ivoire, Ghana, Congo, Gabon and Cameroon). Uganda showed the largest increase of 22,0% (from 1 001 tourists in March 2018 to 1 221 in March 2019), while Ethiopia showed the largest decrease of 26,1% (from 913 tourists in March 2018 to 675 in March 2019).

1.2.3 Purpose of visit

As observed in Table 4 on pages 18 to 21, in March 2019, the majority of tourists, 814 046 (97,1%), were in South Africa for holiday¹ compared to 19 473 (2,3%); 4 676 (0,6%) and 501 (0,1%) who were in South Africa for business, study and for medical treatment respectively.

Compared to other overseas regions, Europe had the highest numbers of tourists, 141 742 (62,3%) who came for holiday, 4 568 (56,0%) who came for business, 447 (49,1%) who came for study and 76 (66,7%) who came for medical treatment.

Within the overseas regions, Central and South America had the highest proportion of its tourists who came for holiday, 98,0% (9 679), followed by Australasia, 97,7% (9 107), North America, 97,1% (41 036), Europe, 96,5% (141 742), Asia, 91,7% (22 066), and the Middle East, 89,7% (3 840).

The Middle East, 8,2% (351) had the highest proportion of its tourists who came to South Africa for business, followed closely by Asia, 7,5% (1 793), Europe, 3,1% (4 568), North America, 2,6% (1 092), Australasia, 2,1% (197), and Central and South America, 1,5% (151).

The Middle East, 2,0% (87) had the highest proportion of its tourists who came to study, followed by Asia, 0,8% (195), Central and South America, 0,4% (40), Europe, 0,3% (447), North America, 0,3% (127), and Australasia 0,2% (15).

Europe and Central and South America had 0,1% of their tourists who came for medical treatment. For the other overseas regions, less than 0,1% of their tourists came for medical treatment.

The majority of African tourists, 585 338 (97,4%) came to South Africa for holiday. However, the following differences in terms of reasons for travel were observed between tourists from the SADC countries and 'other' African countries, namely:

- A higher proportion of tourists from SADC countries, 97,7% (573 833) were on holiday, compared to 85,1% (11 505) from 'other' African countries who came for the same purpose. Information on the regions of 'other' African countries shows that tourists on holiday constituted 88,2% (5 403); 82,6% (4 937); and 82,4% (1 165) for West Africa, East and Central Africa and North Africa respectively.
- Business persons constituted 9,9% (1 344) of tourists from 'other' African countries and 1,7% (9 881) from SADC countries. North Africa had the highest proportion, 13,4% (190) of its tourists who came to South Africa for business purposes, followed closely by East and Central Africa, 11,7% (701) and West Africa, 7,4% (453).
- Students constituted 4,5% (607) of tourists from 'other' African countries compared with 0,5% (3 152) from SADC countries. East and Central Africa, 5,0% (297) had the highest proportion of its tourists who came to South Africa for study purposes, followed by West Africa, 4,1% (252) and North Africa, 4,1% (58).

¹ The holiday category includes tourists who came for vacation, visiting friends and relatives, shopping and other personal reasons. See section 5.5.2 on page 36 for a more detailed discussion.

- Medical treatment tourists constituted 0,5% (63) of tourists from 'other' African countries, while those from SADC constituted 0,1% (323) of its tourists. East and Central Africa, 0,7% (44) had the highest proportion of its tourists who came for medical treatment, followed by West Africa, 0,3% (18) and North Africa, 0,1% (1).

1.2.4 Sex and age distribution

Table 5 on page 22 shows that in March 2019, there were 471 372 (56,2%) male and 367 324 (43,8%) female tourists. Overseas tourists were made up of 126 974 (53,7%) male tourists and 109 673 (46,3%) female tourists. There were 334 743 (57,0%) male and 252 446 (43,0%) female tourists from SADC countries. Tourists from 'other' African countries were made up of 8 821 (65,2%) male and 4 698 (34,8%) female tourists.

The ages of the tourists were categorised into seven broad groups. The results presented in Table 5 on page 22 show that the majority of tourists were aged between 35 and 44 years [232 760 (27,8%)], followed closely by the age group 25 to 34 years [225 964 (26,9%)]. Taking the regions of residence into consideration, the results show that the highest proportion of tourists from SADC countries [187 745 (32,0%)] and those from 'other' African countries [4 585 (33,9%)] were aged between 35 and 44 years whereas those from overseas countries [45 013 (19,0%)] were aged between 25 and 34 years. The second highest proportion of tourists from SADC countries [177 282 (30,2%)] and those from 'other' African countries [3 513 (26,0%)] were aged between 25 and 34 years, whereas those from overseas countries [43 938 (18,6%)] were aged between 55 and 64 years. The median ages of tourists from overseas, SADC and 'other' African countries were 46, 37 and 38 years respectively. The proportion of tourists aged less than 15 years was higher among tourists from overseas countries, 4,9% (11 656) compared to those from SADC countries, 3,3% (19 336) and to those from 'other' African countries, 2,9% (397).

A comparison of the three regions shows higher proportions of the elderly among both male and female tourists from overseas. Tourists aged 65 years and older comprised 15,5% (19 654) of male and 16,7% (18 347) of female tourists from overseas. This is in contrast to the pattern observed among tourists from the other two regions where tourists aged 65 years and older comprised less than 4,0% of both male and female tourists. From SADC countries, elderly tourists made up 2,3% (7 728) and 3,6% (9 083) of male and female tourists respectively; while in 'other' African countries elderly tourists made up 2,9% (259) and 3,4% (158) of male and female tourists respectively.

1.2.5 Quarterly and annual trends

Figures 4, 5, and 6 on pages 10 and 11 show monthly and yearly changes in number of tourists from overseas, SADC and 'other' African countries, respectively. For overseas countries (Figure 4 on page 10), the number of tourists to South Africa is generally highest in quarter one (January to March) and quarter four (October to December). Quarter two (April to June) is characterised by a large decrease in number of tourists, reaching its lowest in June, followed by a gradual increase into quarter three. According to the World Tourism Organisation (2018), the May to August period includes the peak tourism season in most of the world's major tourism destinations and source markets, which explains the significant reduction in number of tourists to South Africa during this period, as Figure 4 shows. Between quarter four of 2018 and quarter one of 2019 (Annexure B, pages 27 to 28) the number of tourists from overseas decreased by 2,4% (from 788 558 in quarter four, 2018 to 769 885 in quarter one, 2019). A year on year comparison between 2018 and 2019 for quarter one (Annexure C, pages 31 to 32) shows that the number of overseas tourists decreased by 6,3% (from 764 294 in quarter one, 2018 to 715 913 in quarter one, 2019).

For the SADC countries (Figure 5 on page 11), the months of January and December have the highest numbers of tourists, with a distinct peak in January and two smaller peaks in March/April, coinciding with the Christmas and Easter holiday breaks in the region, periods characterised by high volumes of travellers between South Africa and neighbouring SADC countries. The months of February, June and November have the lowest numbers of tourists compared to other months. Between quarter four in 2018 and quarter one in 2019 the number of tourists increased by 2,1% (from 1 884 709 in quarter four, 2018 to 1 923 960 in quarter one, 2019) (Annexure B, pages 28 to 29). Comparisons between 2018 and 2019 for quarter one show that the number of SADC tourists decreased by 1,9% (from 1 979 544 in quarter one, 2018 to 1 941 950 in quarter one, 2019) (Annexure C, pages 32 to 33).

In the case of the 'other' African countries (Figure 6 on page 11), generally, the months of August and November seem to attract higher numbers of tourists compared to other months. June attracts the lowest number of tourists compared to other months. Between quarter four in 2018 and quarter one in 2019 (Annexure B, pages 29 to 30), the number of tourists from 'other' African countries increased by 6,0% (from 43 907 in quarter four, 2018 to 46 541 in quarter one, 2019). West Africa had the largest increase of 10,1% (from 21 362 in quarter four, 2018 to 23 526 in

quarter one, 2019), followed by East and Central Africa which increased by 2,7% (from 18 322 in quarter four, 2018 to 18 825 in quarter one, 2019). North Africa dropped by 0,8% (from 4 223 in quarter four, 2018 to 4 190 in quarter one, 2019). A year on year comparison for quarter one (Annexure C, pages 33 to 34) shows that the number of tourists from 'other' African countries increased by 1,1% (from 42 129 in quarter one, 2018 to 42 604 in quarter one, 2019). North Africa increased by 12,6% (from 4 258 in quarter one, 2018 to 4 796 in quarter one, 2019), followed by tourists from East and Central Africa which increased by 4,0% (from 17 287 in quarter one, 2018 to 17 984 in quarter one, 2019). Tourists from West Africa decreased by 3,7% (from 20 584 in quarter one, 2018 to 19 824 in quarter one, 2019).

2. Figures

Figure 1 – Number of tourists from the ten leading overseas countries in March 2018 and March 2019

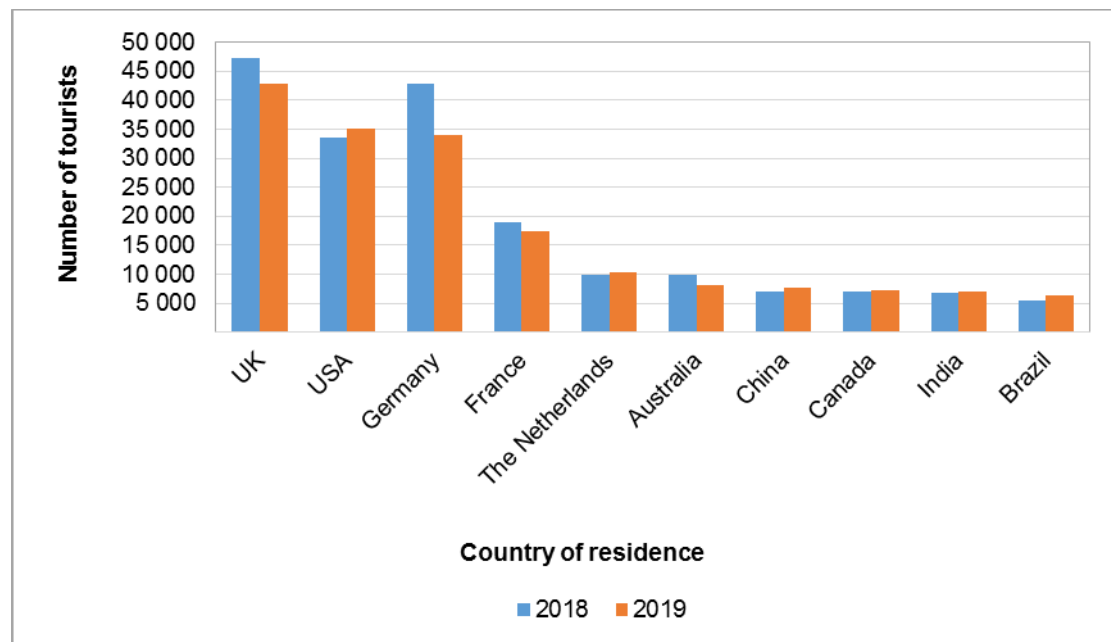


Figure 2 – Number of tourists from the ten leading Southern African Development Community (SADC) countries in March 2018 and March 2019

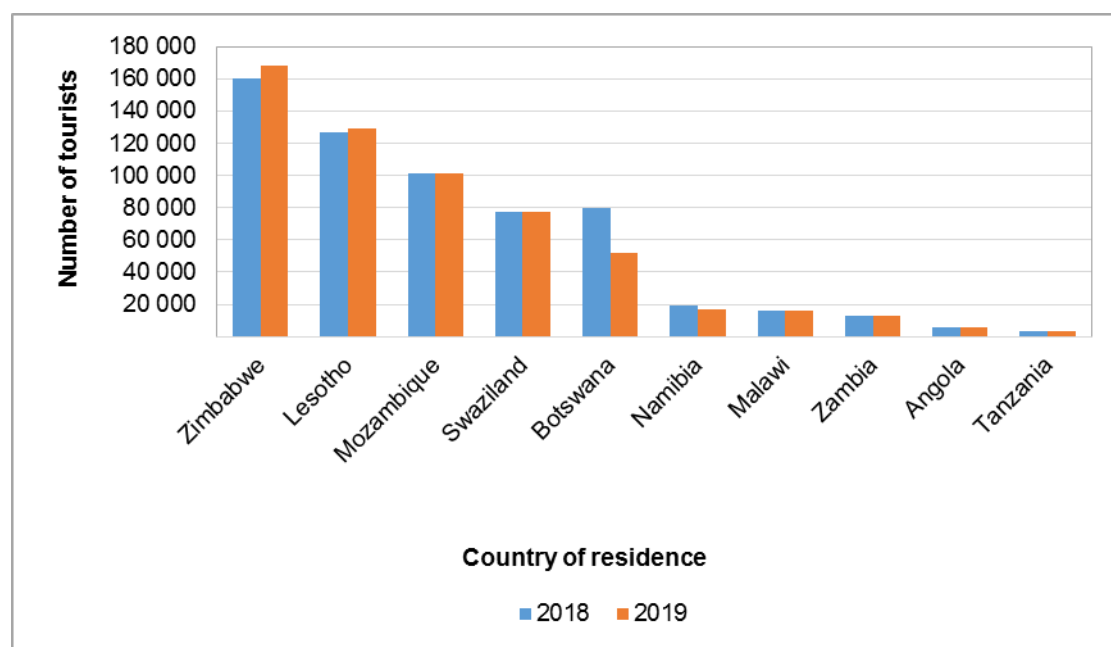


Figure 3 – Number of tourists from the ten leading 'other' African countries in March 2018 and March 2019

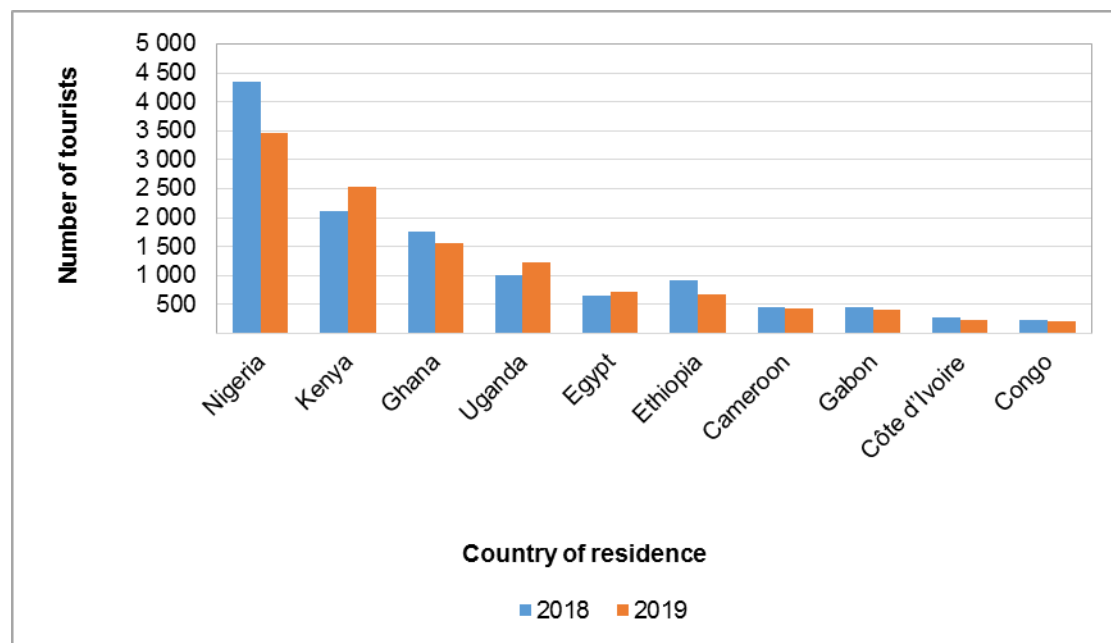


Figure 4 – Number of tourists from overseas countries by month: 2014 – 2019

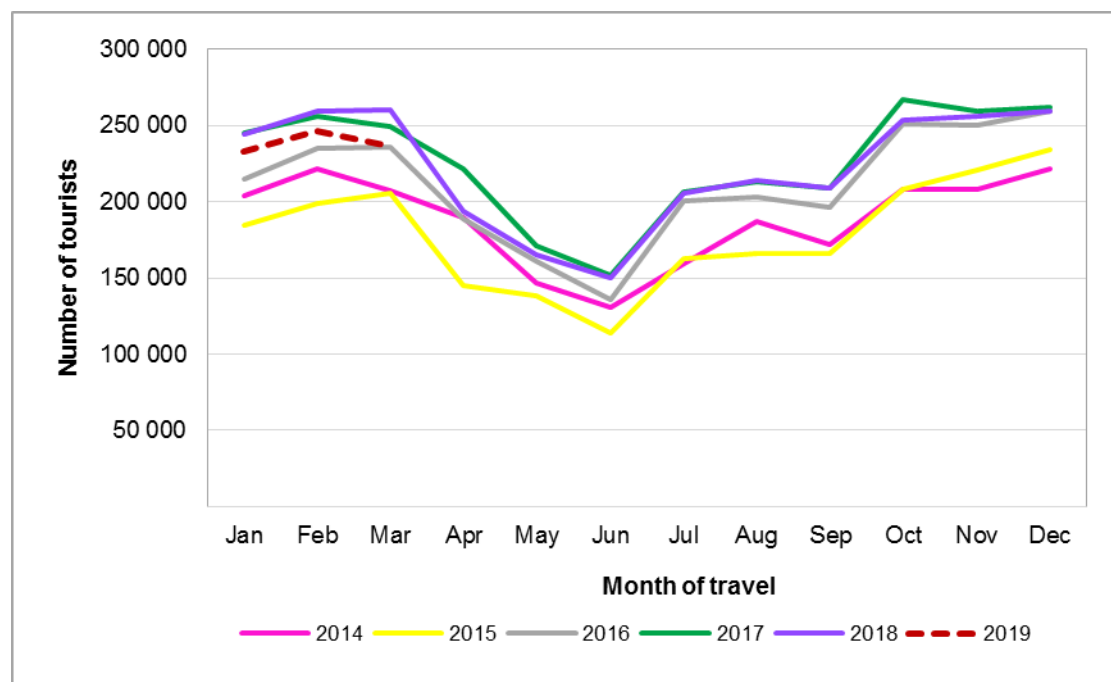
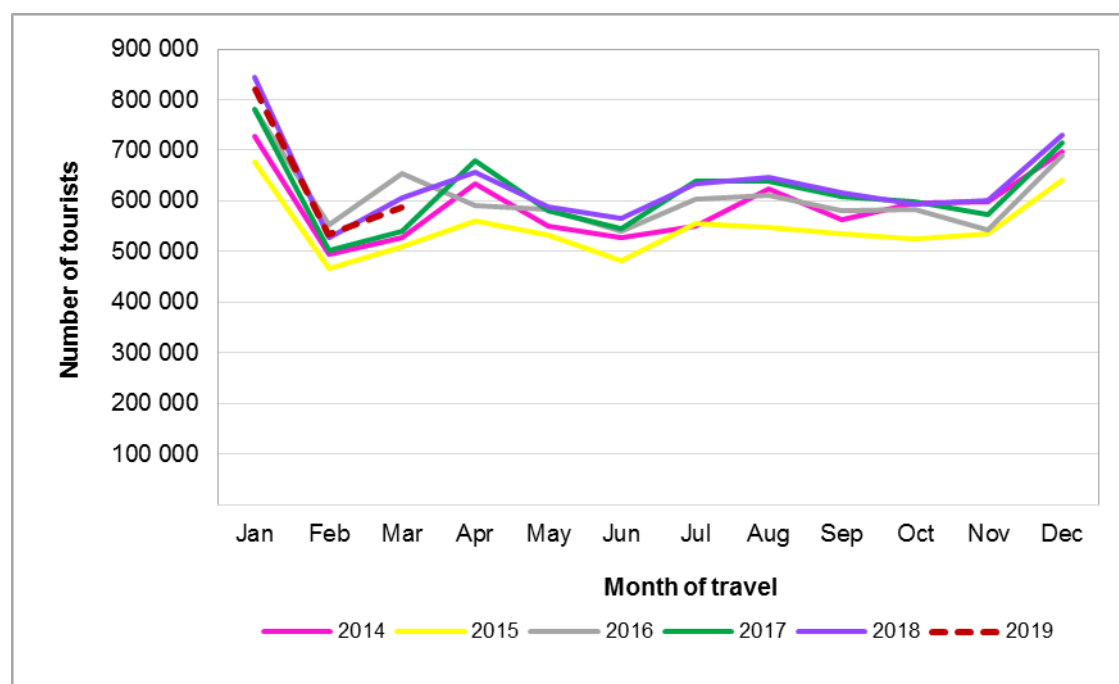
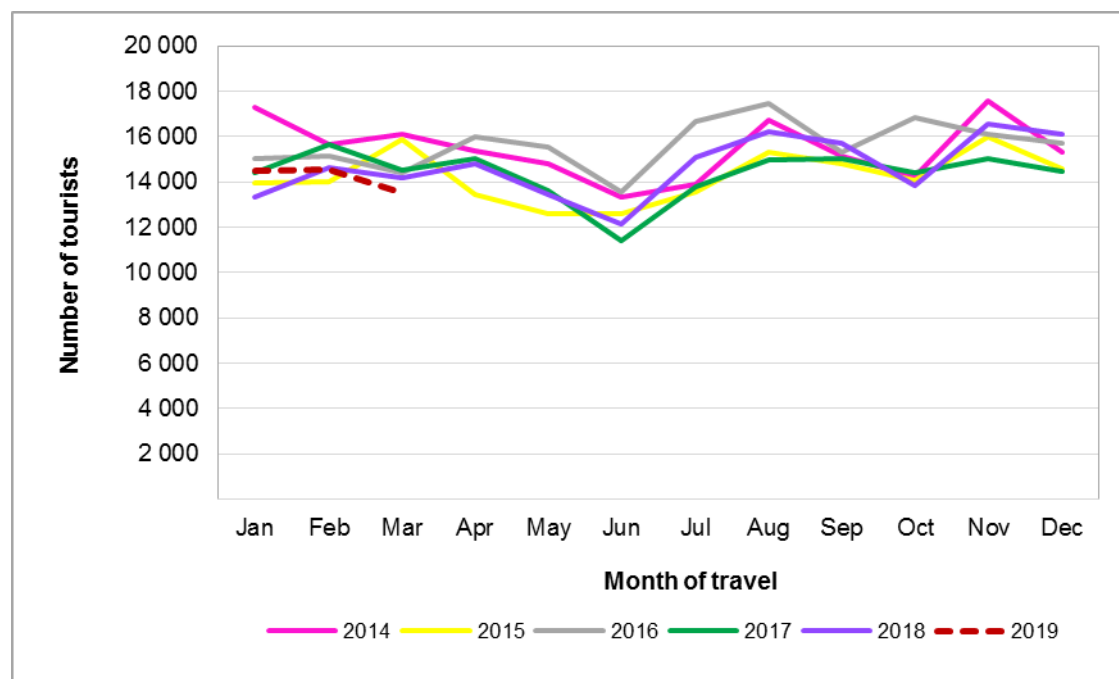


Figure 5 – Number of tourists from SADC countries by month: 2014 – 2019**Figure 6 – Number of tourists from 'other' African countries by month: 2014 – 2019**

3. Tables

Table 1 – Number of South African residents and foreign travellers by travel direction

Travel Direction	Mar 2018	Feb 2019	Mar 2019	% Change Feb 2019 – Mar 2019	% Change Mar 2018 – Mar 2019
Total	3 560 384	3 039 744	3 574 084	17,6%	0,4%
South African residents	949 362	731 074	1 003 575	37,3%	5,7%
Arrivals	425 546	360 186	487 479	35,3%	14,6%
Departures	523 059	370 186	515 398	39,2%	-1,5%
Transits	757	702	698	-0,6%	-7,8%
Foreign travellers	2 611 022	2 308 670	2 570 509	11,3%	-1,6%
Arrivals	1 317 875	1 205 901	1 301 855	8,0%	-1,2%
Departures	1 236 166	1 055 331	1 210 297	14,7%	-2,1%
Transits	56 981	47 438	58 357	23,0%	2,4%
Foreign arrivals	1 317 875	1 205 901	1 301 855	8,0%	-1,2%
Non-visitors	74 481	73 338	83 638	14,0%	12,3%
Visitors	1 243 394	1 132 563	1 218 217	7,6%	-2,0%
Visitors	1 243 394	1 132 563	1 218 217	7,6%	-2,0%
Arrivals only	336 159	327 483	289 840	-11,5%	-13,8%
Single trips	448 388	418 632	459 658	9,8%	2,5%
Multiple trips	458 847	386 448	468 719	21,3%	2,2%
Visitors	1 243 394	1 132 563	1 218 217	7,6%	-2,0%
Same-Day	360 645	335 382	379 521	13,2%	5,2%
Overnight (Tourists)	882 749	797 181	838 696	5,2%	-5,0%

Table 2 – Number of South African residents and foreign travellers by travel direction and mode of travel

Travel direction	Total	Air					Road	Sea
		Cape Town	King Shaka	O.R. Tambo	Other	Total		
Total	3 574 084	266 036	36 012	779 221	6 738	1 088 007	2 421 364	64 713
South African residents	1 003 575	65 427	23 685	290 846	3 605	383 563	573 237	46 775
Arrivals	487 479	31 034	10 874	138 847	1 610	182 365	282 388	22 726
Departures	515 398	34 392	12 811	151 302	1 995	200 500	290 849	24 049
Transit	698	1	-	697	-	698	-	-
Foreign travellers	2 570 509	200 609	12 327	488 375	3 133	704 444	1 848 127	17 938
Arrivals	1 301 855	91 896	5 795	204 243	1 193	303 127	989 847	8 881
Departures	1 210 297	108 610	6 532	225 878	1 940	342 960	858 280	9 057
Transit	58 357	103	-	58 254	-	58 357	-	-
Visitors	1 218 217	88 589	4 937	193 469	890	287 885	927 375	2 957
Same day	379 521	666	13	16 786	99	17 564	361 506	451
Tourist	838 696	87 923	4 924	176 683	791	270 321	565 869	2 506

Table 3 – Number of tourists by country of residence and mode of travel, March 2019

Country of residence	March		March 2019						
	2018	2019	Air					Road	Sea
			Cape town	King Shaka	O.R. Tambo	Other	Total		
Total	882 749	838 696	87 923	4 924	176 683	791	270 321	565 869	2 506
Overseas	260 514	236 647	79 753	4 195	129 314	504	213 766	20 562	2 319
Europe	167 370	146 833	59 275	3 181	69 580	157	132 193	13 878	762
Austria	2 929	2 802	1 637	43	924	1	2 605	194	3
Belgium	5 250	4 689	1 863	36	2 247	3	4 149	526	14
Denmark	3 139	2 263	589	34	1 475	1	2 099	160	4
France	19 058	17 451	5 619	178	8 442	18	14 257	3 124	70
Germany	42 756	33 940	16 042	257	14 316	13	30 628	3 270	42
Ireland	3 866	2 908	1 338	124	1 292	2	2 756	144	8
Italy	4 213	4 305	1 534	72	2 382	7	3 995	300	10
Portugal	3 341	2 987	630	23	1 304	1	1 958	1 019	10
Russian Federation	1 375	1 631	698	36	768	6	1 508	118	5
Spain	3 153	2 759	744	28	1 724	12	2 508	240	11
Sweden	5 010	3 796	1 696	73	1 745	2	3 516	272	8
Switzerland	5 095	4 658	2 322	51	1 810	10	4 193	449	16
The Netherlands	9 781	10 364	4 226	97	4 593	14	8 930	1 413	21
UK	47 238	42 772	16 760	1 930	21 625	59	40 374	1 890	508
Other	11 166	9 508	3 577	199	4 933	8	8 717	759	32
North America	40 560	42 273	11 768	397	25 612	232	38 009	2 964	1 300
Canada	7 031	7 148	2 305	84	3 884	36	6 309	727	112
USA	33 529	35 125	9 463	313	21 728	196	31 700	2 237	1 188
Central and South America	10 454	9 875	1 099	15	8 063	16	9 193	648	34
Argentina	2 571	1 520	43	1	1 367	-	1 411	105	4
Brazil	5 363	6 423	732	5	5 276	6	6 019	393	11
Chile	651	438	22	-	382	-	404	32	2
Other	1 869	1 494	302	9	1 038	10	1 359	118	17

Table 3 – Number of tourists by country of residence and mode of travel, March 2019 (continued)

Country of residence	March		March 2019						
	2018	2019	Air					Road	Sea
			Cape town	King Shaka	O.R. Tambo	Other	Total		
Australasia	11 375	9 320	1 414	82	7 270	27	8 793	408	119
Australia	9 949	8 099	1 005	52	6 556	27	7 640	346	113
New Zealand	1 397	1 191	399	25	701	-	1 125	60	6
Other	29	30	10	5	13	-	28	2	-
Middle East	6 362	4 280	1 246	25	2 809	5	4 085	189	6
Iran	1 486	566	235	5	311	-	551	15	-
Israel	3 486	1 984	311	1	1 538	4	1 854	125	5
Saudi Arabia	460	474	174	-	296	-	470	4	-
Other	930	1 256	526	19	664	1	1 210	45	1
Asia	24 393	24 066	4 951	495	15 980	67	21 493	2 475	98
China	7 029	7 679	1 351	74	5 910	4	7 339	281	59
India	6 769	7 043	1 370	247	4 523	38	6 178	857	8
Japan	2 613	2 333	394	25	1 731	10	2 160	169	4
Malaysia	711	485	209	13	209	-	431	51	3
Pakistan	1 229	1 167	103	63	610	-	776	391	-
Philippines	713	532	159	15	270	-	444	79	9
Singapore	558	591	284	1	290	3	578	11	2
South Korea	1 942	1 704	498	11	998	9	1 516	188	-
Taiwan	491	681	68	2	499	-	569	112	-
Thailand	604	554	137	8	389	3	537	14	3
Other	1 734	1 297	378	36	551	-	965	322	10
Africa	621 063	600 708	8 121	726	46 336	287	55 470	545 051	187
SADC	606 898	587 189	6 558	664	35 660	256	43 138	543 877	174
Angola	5 427	5 608	1 919	1	3 182	10	5 112	496	-
Botswana	79 447	51 948	238	119	2 734	29	3 120	48 822	6
DRC	2 550	2 644	149	3	1 967	9	2 128	516	-
Lesotho	126 417	129 159	1	7	560	14	582	128 550	27

Table 3 – Number of tourists by country of residence and mode of travel, March 2019 (continued)

Country of residence	March		March 2019						
	2018	2019	Air					Road	Sea
			Cape town	King Shaka	O.R. Tambo	Other	Total		
Madagascar	240	247	15	-	219	1	235	11	1
Malawi	15 979	16 074	11	2	1 857	3	1 873	14 201	-
Mauritius	1 549	1 677	236	62	1 291	-	1 589	83	5
Mozambique	101 133	101 110	8	4	2 728	11	2 751	98 355	4
Namibia	19 633	17 140	2 919	289	3 683	15	6 906	10 147	87
Seychelles	575	617	11	-	588	-	599	18	-
Swaziland	77 330	77 128	2	4	490	48	544	76 578	6
Tanzania	3 122	3 197	138	-	1 637	-	1 775	1 422	-
Zambia	13 247	12 523	53	135	3 241	6	3 435	9 088	-
Zimbabwe	160 249	168 117	858	38	11 483	110	12 489	155 590	38
'Other' African	14 165	13 519	1 563	62	10 676	31	12 332	1 174	13
East and Central Africa	5 591	5 979	898	15	4 499	20	5 432	544	3
Burundi	70	91	6	-	74	1	81	10	-
Cameroon	447	439	65	1	340	-	406	33	-
Central African Republic	10	3	1	-	2	-	3	-	-
Chad	36	28	1	-	26	-	27	1	-
Comoros	22	35	1	-	34	-	35	-	-
Congo	239	212	68	-	141	-	209	3	-
Djibouti	5	6	1	-	5	-	6	-	-
Equatorial Guinea	34	20	7	-	13	-	20	-	-
Eritrea	50	58	8	-	49	-	57	1	-
Ethiopia	913	675	93	10	502	1	606	68	1
Gabon	459	417	80	-	334	-	414	3	-
Kenya	2 104	2 526	403	3	1 898	6	2 310	215	1
Réunion	5	-	-	-	-	-	-	-	-
Rwanda	83	112	49	1	54	-	104	8	-
São Tomé and Príncipe	15	4	1	-	3	-	4	-	-
Somalia	98	132	18	-	21	-	39	93	-
Uganda	1 001	1 221	96	-	1 003	12	1 111	109	1

Table 3 – Number of tourists by country of residence and mode of travel, March 2019 (concluded)

Country of residence	March		March 2019						
	2018	2019	Air					Road	Sea
			Cape town	King Shaka	O.R. Tambo	Other	Total		
West Africa	7 334	6 126	413	26	5 119	2	5 560	558	8
Benin	133	154	12	1	135	-	148	6	-
Burkina Faso	55	83	14	3	59	-	76	7	-
Cape Verde Island	25	37	8	-	23	-	31	6	-
Côte d'Ivoire	269	221	27	3	185	-	215	6	-
Gambia	72	22	-	-	21	-	21	1	-
Ghana	1 760	1 549	60	7	1 373	1	1 441	106	2
Guinea	96	94	5	-	60	-	65	29	-
Guinea-Bissau	8	8	-	-	5	-	5	3	-
Liberia	55	60	1	-	51	-	52	8	-
Mali	114	73	7	-	46	-	53	20	-
Mauritania	23	28	12	-	16	-	28	-	-
Niger	16	26	8	-	18	-	26	-	-
Nigeria	4 349	3 453	220	6	2 877	1	3 104	343	6
Saint Helena	5	2	-	-	2	-	2	-	-
Senegal	238	202	24	6	160	-	190	12	-
Sierra Leone	37	54	5	-	40	-	45	9	-
Togo	79	60	10	-	48	-	58	2	-
North Africa	1 240	1 414	252	21	1 058	9	1 340	72	2
Algeria	85	104	18	2	76	8	104	-	-
Egypt	654	717	72	9	590	-	671	45	1
Libya	79	56	20	2	23	-	45	11	-
Morocco	129	169	42	2	120	-	164	5	-
South Sudan	65	79	6	-	72	-	78	1	-
The Sudan	155	159	70	-	80	-	150	8	1
Tunisia	70	129	24	6	96	1	127	2	-
Western Sahara	3	1	-	-	1	-	1	-	-
Unspecified	1 172	1 341	49	3	1 033	-	1 085	256	-

Table 4 – Number of tourists by country of residence and purpose of visit

Country of residence	March		Purpose of visit (March 2019)			
	2018	2019	Business	Holiday	Study	Medical treatment
Total	882 749	838 696	19 473	814 046	4 676	501
Overseas	260 514	236 647	8 152	227 470	911	114
Europe	167 370	146 833	4 568	141 742	447	76
Austria	2 929	2 802	103	2 692	6	1
Belgium	5 250	4 689	161	4 501	25	2
Denmark	3 139	2 263	79	2 177	4	3
France	19 058	17 451	498	16 860	92	1
Germany	42 756	33 940	786	33 066	84	4
Ireland	3 866	2 908	102	2 799	4	3
Italy	4 213	4 305	255	4 020	28	2
Portugal	3 341	2 987	73	2 899	13	2
Russian Federation	1 375	1 631	71	1 550	10	-
Spain	3 153	2 759	123	2 623	11	2
Sweden	5 010	3 796	135	3 648	11	2
Switzerland	5 095	4 658	104	4 540	13	1
The Netherlands	9 781	10 364	270	10 059	24	11
UK	47 238	42 772	1 300	41 363	73	36
Other	11 166	9 508	508	8 945	49	6
North America	40 560	42 273	1 092	41 036	127	18
Canada	7 031	7 148	176	6 961	9	2
USA	33 529	35 125	916	34 075	118	16
Central and South America	10 454	9 875	151	9 679	40	5
Argentina	2 571	1 520	17	1 501	2	-
Brazil	5 363	6 423	54	6 342	24	3
Chile	651	438	10	426	2	-
Other	1 869	1 494	70	1 410	12	2

Table 4 – Number of tourists by country of residence and purpose of visit (continued)

Country of residence	March		Purpose of visit (March 2019)			
	2018	2019	Business	Holiday	Study	Medical treatment
Australasia	11 375	9 320	197	9 107	15	1
Australia	9 949	8 099	162	7 924	12	1
New Zealand	1 397	1 191	33	1 156	2	-
Other	29	30	2	27	1	-
Middle East	6 362	4 280	351	3 840	87	2
Iran	1 486	566	39	520	7	-
Israel	3 486	1 984	64	1 912	7	1
Saudi Arabia	460	474	21	429	24	-
Other	930	1 256	227	979	49	1
Asia	24 393	24 066	1 793	22 066	195	12
China	7 029	7 679	486	7 176	15	2
India	6 769	7 043	747	6 219	71	6
Japan	2 613	2 333	117	2 193	20	3
Malaysia	711	485	36	440	9	-
Pakistan	1 229	1 167	62	1 087	18	-
Philippines	713	532	33	489	9	1
Singapore	558	591	32	558	1	-
South Korea	1 942	1 704	67	1 611	26	-
Taiwan	491	681	52	627	2	-
Thailand	604	554	11	537	6	-
Other	1 734	1 297	150	1 129	18	-
Africa	621 063	600 708	11 225	585 338	3 759	386
SADC	606 898	587 189	9 881	573 833	3 152	323
Angola	5 427	5 608	53	5 292	216	47
Botswana	79 447	51 948	465	51 210	217	56
DRC	2 550	2 644	114	2 320	160	50
Lesotho	126 417	129 159	1 150	127 369	639	1

Table 4 – Number of tourists by country of residence and purpose of visit (continued)

Country of residence	March		Purpose of visit (March 2019)			
	2018	2019	Business	Holiday	Study	Medical treatment
Madagascar	240	247	20	213	14	-
Malawi	15 979	16 074	256	15 756	53	9
Mauritius	1 549	1 677	88	1 560	22	7
Mozambique	101 133	101 110	2 123	98 867	94	26
Namibia	19 633	17 140	2 094	14 449	560	37
Seychelles	575	617	8	606	3	-
Swaziland	77 330	77 128	210	76 537	379	2
Tanzania	3 122	3 197	123	2 975	92	7
Zambia	13 247	12 523	1 207	11 202	96	18
Zimbabwe	160 249	168 117	1 970	165 477	607	63
'Other' African	14 165	13 519	1 344	11 505	607	63
East and Central Africa	5 591	5 979	701	4 937	297	44
Burundi	70	91	9	75	2	5
Cameroon	447	439	42	360	25	12
Central African Republic	10	3	-	3	-	-
Chad	36	28	3	21	4	-
Comoros	22	35	3	25	7	-
Congo	239	212	7	156	47	2
Djibouti	5	6	1	5	-	-
Equatorial Guinea	34	20	4	14	2	-
Eritrea	50	58	4	53	1	-
Ethiopia	913	675	72	580	18	5
Gabon	459	417	12	351	53	1
Kenya	2 104	2 526	367	2 073	77	9
Réunion	5	-	-	-	-	-
Rwanda	83	112	32	73	7	-
São Tomé and Príncipe	15	4	-	4	-	-
Somalia	98	132	23	107	1	1
Uganda	1 001	1 221	122	1 037	53	9

Table 4 – Number of tourists by country of residence and purpose of visit (concluded)

Country of residence	March		Purpose of visit (March 2019)			
	2018	2019	Business	Holiday	Study	Medical treatment
West Africa	7 334	6 126	453	5 403	252	18
Benin	133	154	12	141	1	-
Burkina Faso	55	83	16	63	4	-
Cape Verde Island	25	37	2	35	-	-
Côte d'Ivoire	269	221	34	183	3	1
Gambia	72	22	2	19	1	-
Ghana	1 760	1 549	149	1 353	41	6
Guinea	96	94	6	79	8	1
Guinea-Bissau	8	8	-	8	-	-
Liberia	55	60	3	55	1	1
Mali	114	73	9	63	1	-
Mauritania	23	28	11	17	-	-
Niger	16	26	3	22	1	-
Nigeria	4 349	3 453	171	3 095	181	6
Saint Helena	5	2	-	1	-	1
Senegal	238	202	21	177	4	-
Sierra Leone	37	54	4	46	2	2
Togo	79	60	10	46	4	-
North Africa	1 240	1 414	190	1 165	58	1
Algeria	85	104	9	91	4	-
Egypt	654	717	85	609	23	-
Libya	79	56	1	46	9	-
Morocco	129	169	38	129	2	-
South Sudan	65	79	11	67	-	1
The Sudan	155	159	29	111	19	-
Tunisia	70	129	17	111	1	-
Western Sahara	3	1	-	1	-	-
Unspecified	1 172	1 341	96	1 238	6	1

Table 5 – Number of tourists from overseas, SADC and 'other' African regions by sex and age group

Sex	Age group	March		Region (March 2019)			
		2018	2019	Overseas	SADC	'Other' African	Unspecified
All	Total	882 749	838 696	236 647	587 189	13 519	1 341
	0-14	45 764	31 389	11 656	19 336	397	-
	15-24	79 139	68 694	16 064	51 716	900	14
	25-34	233 008	225 964	45 013	177 282	3 513	156
	35-44	232 526	232 760	40 027	187 745	4 585	403
	45-54	142 453	138 147	41 948	93 145	2 579	475
	55-64	91 413	86 487	43 938	41 154	1 128	267
	65+	58 446	55 255	38 001	16 811	417	26
Male	Male	486 350	471 372	126 974	334 743	8 821	834
	0-14	22 987	15 752	5 970	9 588	194	-
	15-24	40 623	35 229	6 892	27 857	470	10
	25-34	127 299	124 284	22 550	99 513	2 125	96
	35-44	139 629	141 702	24 088	114 222	3 171	221
	45-54	80 266	81 176	24 648	54 374	1 849	305
	55-64	46 621	45 567	23 172	21 461	753	181
	65+	28 925	27 662	19 654	7 728	259	21
Female	Female	396 399	367 324	109 673	252 446	4 698	507
	0-14	22 777	15 637	5 686	9 748	203	-
	15-24	38 516	33 465	9 172	23 859	430	4
	25-34	105 709	101 680	22 463	77 769	1 388	60
	35-44	92 897	91 058	15 939	73 523	1 414	182
	45-54	62 187	56 971	17 300	38 771	730	170
	55-64	44 792	40 920	20 766	19 693	375	86
	65+	29 521	27 593	18 347	9 083	158	5

4. Annexures

4.1 Annexure A – Cumulative number of tourists' difference between Jan – Mar 2018 and Jan – Mar 2019 by country of residence

Country of residence	Jan – Mar 2018	Jan –Mar 2019	Difference between Jan – Mar 2018 and Jan – Mar 2019	% change between Jan – Mar 2018 and Jan – Mar 2019
Total	2 788 941	2 704 067	-84 874	-3,0%
Overseas	764 294	715 913	-48 381	-6,3%
Europe	511 171	467 791	-43 380	-8,5%
Austria	10 234	10 658	424	4,1%
Belgium	14 719	13 079	-1 640	-11,1%
Denmark	11 179	9 208	-1 971	-17,6%
France	53 439	48 292	-5 147	-9,6%
Germany	118 920	102 133	-16 787	-14,1%
Ireland	9 861	8 831	-1 030	-10,4%
Italy	13 656	13 525	-131	-1,0%
Norway	8 109	6 241	-1 868	-23,0%
Portugal	8 812	8 197	-615	-7,0%
Spain	7 871	7 327	-544	-6,9%
Sweden	20 056	16 612	-3 444	-17,2%
Switzerland	18 385	16 658	-1 727	-9,4%
The Netherlands	37 228	36 549	-679	-1,8%
UK	146 673	139 530	-7 143	-4,9%
Other	32 029	30 951	-1 078	-3,4%
North America	101 042	102 409	1 367	1,4%
Canada	18 624	19 224	600	3,2%
USA	82 418	83 185	767	0,9%
Central and South America	33 325	31 786	-1 539	-4,6%
Argentina	8 832	7 460	-1 372	-15,5%
Brazil	17 701	17 784	83	0,5%
Chile	2 365	2 293	-72	-3,0%
Other	4 427	4 249	-178	-4,0%

Annexure A – Cumulative number of tourists' difference between Jan – Mar 2018 and Jan – Mar 2019 by country of residence (continued)

Country of residence	Jan – Mar 2018	Jan – Mar 2019	Difference between Jan – Mar 2018 and Jan – Mar 2019	% change between Jan – Mar 2018 and Jan – Mar 2019
Australasia	29 225	26 634	-2 591	-8,9%
Australia	25 974	23 775	-2 199	-8,5%
New Zealand	3 189	2 793	-396	-12,4%
Other	62	66	4	6,5%
Middle East	14 773	11 908	-2 865	-19,4%
Israel	8 380	6 740	-1 640	-19,6%
Lebanon	753	832	79	10,5%
Saudi Arabia	1 697	1 431	-266	-15,7%
Other	3 943	2 905	-1 038	-26,3%
Asia	74 758	75 385	627	0,8%
Bangladesh	1 406	1 540	134	9,5%
China	24 680	25 589	909	3,7%
India	21 428	20 562	-866	-4,0%
Japan	6 018	6 920	902	15,0%
Pakistan	3 636	3 740	104	2,9%
Philippines	1 576	1 453	-123	-7,8%
Singapore	1 467	1 448	-19	-1,3%
South Korea	7 082	6 898	-184	-2,6%
Taiwan	1 401	1 814	413	29,5%
Thailand	1 557	1 467	-90	-5,8%
Other	4 507	3 954	-553	-12,3%
Africa	2 021 673	1 984 554	-37 119	-1,8%
SADC	1 979 544	1 941 950	-37 594	-1,9%
Angola	20 025	19 899	-126	-0,6%
Botswana	166 388	132 094	-34 294	-20,6%
DRC	7 263	7 985	722	9,9%
Lesotho	488 375	432 756	-55 619	-11,4%

Annexure A – Cumulative number of tourists' difference between Jan – Mar 2018 and Jan – Mar 2019 by country of residence (continued)

Country of residence	Jan – Mar 2018	Jan – Mar 2019	Difference between Jan – Mar 2018 and Jan – Mar 2019	% change between Jan – Mar 2018 and Jan – Mar 2019
Madagascar	648	628	-20	-3,1%
Malawi	47 386	48 212	826	1,7%
Mauritius	4 897	5 231	334	6,8%
Mozambique	356 725	369 984	13 259	3,7%
Namibia	48 138	45 004	-3 134	-6,5%
Seychelles	1 831	1 866	35	1,9%
Swaziland	210 522	209 393	-1 129	-0,5%
Tanzania	8 709	9 176	467	5,4%
Zambia	39 284	37 708	-1 576	-4,0%
Zimbabwe	579 353	622 014	42 661	7,4%
'Other' African	42 129	42 604	475	1,1%
East and Central Africa	17 287	17 984	697	4,0%
Burundi	206	251	45	21,8%
Cameroon	1 269	1 268	-1	-0,1%
Central African Republic	43	22	-21	-48,8%
Chad	97	82	-15	-15,5%
Comoros	56	67	11	19,6%
Congo	762	676	-86	-11,3%
Djibouti	33	26	-7	-21,2%
Equatorial Guinea	128	105	-23	-18,0%
Eritrea	183	195	12	6,6%
Ethiopia	2 362	1 920	-442	-18,7%
Gabon	1 594	1 596	2	0,1%
Kenya	6 657	7 311	654	9,8%
Réunion	13	9	-4	-30,8%
Rwanda	226	251	25	11,1%
São Tomé and Príncipe	28	11	-17	-60,7%
Somalia	197	441	244	123,9%
Uganda	3 433	3 753	320	9,3%

Annexure A – Cumulative number of tourists' difference between Jan – Mar 2018 and Jan – Mar 2019 by country of residence (concluded)

Country of residence	Jan – Mar 2018	Jan – Mar 2019	Difference between Jan – Mar 2018 and Jan – Mar 2019	% change between Jan – Mar 2018 and Jan – Mar 2019
West Africa	20 584	19 824	-760	-3,7%
Benin	338	406	68	20,1%
Burkina Faso	174	212	38	21,8%
Cape Verde Island	82	93	11	13,4%
Côte d'Ivoire	699	751	52	7,4%
Gambia	152	94	-58	-38,2%
Ghana	4 514	4 892	378	8,4%
Guinea	390	363	-27	-6,9%
Guinea-Bissau	38	34	-4	-10,5%
Liberia	145	189	44	30,3%
Mali	374	298	-76	-20,3%
Mauritania	67	57	-10	-14,9%
Niger	64	92	28	43,8%
Nigeria	12 663	11 427	-1 236	-9,8%
Saint Helena	46	19	-27	-58,7%
Senegal	570	528	-42	-7,4%
Sierra Leone	133	214	81	60,9%
Togo	135	155	20	14,8%
North Africa	4 258	4 796	538	12,6%
Algeria	239	484	245	102,5%
Egypt	2 404	2 475	71	3,0%
Libya	196	219	23	11,7%
Morocco	471	538	67	14,2%
South Sudan	199	205	6	3,0%
The Sudan	499	483	-16	-3,2%
Tunisia	247	389	142	57,5%
Western Sahara	3	3	-	0,0%
Unspecified	2 974	3 600	626	21,0%

4.2 Annexure B – Number of tourists: Quarter 4, 2018 – Quarter 1, 2019 changes by country of residence and month of travel

Country of residence	Quarter 4, 2018 – Quarter 1, 2019								% change 2018 – 2019
	Oct	Nov	Dec	Qtr 4 2018	Jan	Feb	Mar	Qtr 1 2019	
Total	880 168	848 966	991 579	2 720 713	862 046	875 172	1 007 155	2 744 373	0,9%
Overseas	267 025	259 805	261 728	788 558	253 945	256 537	259 403	769 885	-2,4%
Europe	176 969	180 402	167 732	525 103	166 610	171 540	167 239	505 389	-3,8%
Austria	3 085	3 860	3 160	10 105	3 419	3 859	3 534	10 812	7,0%
Belgium	5 755	5 665	5 116	16 536	5 847	5 963	5 259	17 069	3,2%
Denmark	3 232	2 762	2 420	8 414	3 032	2 473	2 370	7 875	-6,4%
France	25 221	22 354	14 364	61 939	23 352	20 063	13 690	57 105	-7,8%
Germany	46 290	45 558	32 560	124 408	42 644	42 851	33 328	118 823	-4,5%
Ireland	2 862	2 975	3 929	9 766	2 841	3 196	4 137	10 174	4,2%
Italy	5 659	4 835	5 762	16 256	5 688	5 033	6 402	17 123	5,3%
Norway	1 527	2 332	2 327	6 186	1 554	2 138	2 265	5 957	-3,7%
Portugal	2 895	3 611	3 444	9 950	2 912	2 968	3 230	9 110	-8,4%
Spain	4 144	3 312	2 854	10 310	3 971	3 578	3 016	10 565	2,5%
Sweden	4 773	6 401	8 527	19 701	4 233	5 829	8 967	19 029	-3,4%
Switzerland	7 651	7 536	6 410	21 597	7 326	7 698	5 965	20 989	-2,8%
The Netherlands	17 211	16 371	15 063	48 645	15 525	15 247	14 554	45 326	-6,8%
UK	38 350	40 489	50 636	129 475	35 864	39 672	50 016	125 552	-3,0%
Other	8 314	12 341	11 160	31 815	8 402	10 972	10 506	29 880	-6,1%
North America	36 277	32 520	41 116	109 913	36 500	34 244	41 623	112 367	2,2%
Canada	6 949	6 215	7 132	20 296	6 850	6 870	7 062	20 782	2,4%
USA	29 328	26 305	33 984	89 617	29 650	27 374	34 561	91 585	2,2%
Central and South America	9 341	8 281	11 132	28 754	9 655	9 555	10 282	29 492	2,6%
Argentina	1 214	881	920	3 015	1 248	1 437	1 360	4 045	34,2%
Brazil	5 976	5 482	8 096	19 554	6 108	5 979	6 723	18 810	-3,8%
Mexico	414	282	429	1 125	370	462	483	1 315	16,9%
Other	1 737	1 636	1 687	5 060	1 929	1 677	1 716	5 322	5,2%

Annexure B – Number of tourists: Quarter 4, 2018 – Quarter 1, 2019 changes by country of residence and month of travel (continued)

Country of residence	Quarter 4, 2018 – Quarter 1, 2019								% change 2018 – 2019
	Oct	Nov	Dec	Qtr 4 2018	Jan	Feb	Mar	Qtr 1 2019	
Australasia	10 711	8 351	15 005	34 067	10 094	9 137	13 882	33 113	-2,8%
Australia	9 060	7 284	12 758	29 102	8 758	8 143	11 819	28 720	-1,3%
New Zealand	1 618	1 048	2 202	4 868	1 319	966	2 013	4 298	-11,7%
Other	33	19	45	97	17	28	50	95	-2,1%
Middle East	4 214	4 255	3 609	12 078	3 142	4 096	3 512	10 750	-11,0%
Israel	2 554	2 356	1 972	6 882	1 750	2 566	1 883	6 199	-9,9%
Lebanon	241	270	331	842	238	336	315	889	5,6%
Saudi Arabia	542	499	408	1 449	373	412	570	1 355	-6,5%
Other	877	1 130	898	2 905	781	782	744	2 307	-20,6%
Asia	29 513	25 996	23 134	78 643	27 944	27 965	22 865	78 774	0,2%
Bangladesh	489	573	395	1 457	657	572	417	1 646	13,0%
China	9 076	9 000	5 276	23 352	9 204	9 274	5 685	24 163	3,5%
India	8 306	7 418	8 039	23 763	6 532	9 315	7 023	22 870	-3,8%
Japan	3 891	2 048	1 765	7 704	3 591	1 882	1 997	7 470	-3,0%
Malaysia	622	761	938	2 321	558	585	677	1 820	-21,6%
Pakistan	1 092	1 259	1 298	3 649	1 166	1 361	1 217	3 744	2,6%
Philippines	616	581	579	1 776	779	562	937	2 278	28,3%
Singapore	682	806	1 402	2 890	561	876	1 141	2 578	-10,8%
South Korea	1 930	1 663	1 834	5 427	1 517	1 359	1 714	4 590	-15,4%
Thailand	829	384	537	1 750	971	486	653	2 110	20,6%
Other	1 980	1 503	1 071	4 554	2 408	1 693	1 404	5 505	20,9%
Africa	611 835	587 931	728 850	1 928 616	606 922	617 076	746 503	1 970 501	2,2%
SADC	597 424	572 896	714 389	1 884 709	593 052	600 507	730 401	1 923 960	2,1%
Angola	3 407	3 667	7 293	14 367	4 654	5 151	6 791	16 596	15,5%
Botswana	54 029	53 622	94 194	201 845	53 027	57 004	90 167	200 198	-0,8%
DRC	2 104	2 134	4 117	8 355	2 352	2 458	4 815	9 625	15,2%
Lesotho	144 151	125 427	137 754	407 332	130 174	121 722	132 525	384 421	-5,6%

Annexure B – Number of tourists: Quarter 4, 2018 – Quarter 1, 2019 changes by country of residence and month of travel (continued)

Country of residence	Quarter 4, 2018 – Quarter 1, 2019								% change 2018 – 2019
	Oct	Nov	Dec	Qtr 4 2018	Jan	Feb	Mar	Qtr 1 2019	
Madagascar	189	214	141	544	160	262	191	613	12,7%
Malawi	16 415	15 381	15 032	46 828	17 654	17 911	15 514	51 079	9,1%
Mauritius	1 804	2 114	2 053	5 971	1 627	2 277	2 162	6 066	1,6%
Mozambique	109 904	112 832	112 326	335 062	106 964	109 669	116 668	333 301	-0,5%
Namibia	17 799	15 410	26 551	59 760	16 533	15 726	25 163	57 422	-3,9%
Seychelles	615	926	739	2 280	654	886	748	2 288	0,4%
Swaziland	73 529	70 167	84 289	227 985	73 659	74 540	88 699	236 898	3,9%
Tanzania	2 971	3 085	3 564	9 620	3 017	3 537	3 709	10 263	6,7%
Zambia	14 558	14 215	16 857	45 630	13 261	13 638	16 087	42 986	-5,8%
Zimbabwe	155 949	153 702	209 479	519 130	169 316	175 726	227 162	572 204	10,2%
'Other' African	14 411	15 035	14 461	43 907	13 870	16 569	16 102	46 541	6,0%
East and Central Africa	5 715	5 975	6 632	18 322	5 470	6 209	7 146	18 825	2,7%
Burundi	65	112	72	249	56	74	78	208	-16,5%
Cameroon	415	427	387	1 229	405	402	451	1 258	2,4%
Central African Republic	13	15	16	44	5	26	6	37	-15,9%
Chad	43	35	25	103	23	32	16	71	-31,1%
Comoros	17	24	9	50	21	25	15	61	22,0%
Congo	293	220	274	787	174	239	243	656	-16,6%
Djibouti	10	14	8	32	8	15	1	24	-25,0%
Equatorial Guinea	43	27	34	104	28	37	69	134	28,8%
Eritrea	54	50	61	165	35	49	72	156	-5,5%
Ethiopia	807	731	620	2 158	720	706	570	1 996	-7,5%
Gabon	437	344	879	1 660	345	417	598	1 360	-18,1%
Kenya	2 105	2 674	2 642	7 421	2 470	2 815	3 449	8 734	17,7%
Réunion	15	3	-	18	2	1	6	9	-50,0%
Rwanda	71	73	59	203	72	163	69	304	49,8%
São Tomé and Príncipe	8	10	3	21	7	15	3	25	19,0%
Somalia	79	54	47	180	209	152	201	562	212,2%
Uganda	1 240	1 162	1 496	3 898	890	1 041	1 299	3 230	-17,1%

Annexure B – Number of tourists: Quarter 4, 2018 – Quarter 1, 2019 changes by country of residence and month of travel (concluded)

Country of residence	Quarter 4, 2018 – Quarter 1, 2019								% change 2018 – 2019
	Oct	Nov	Dec	Qtr 4 2018	Jan	Feb	Mar	Qtr 1 2019	
West Africa	7 282	7 468	6 612	21 362	7 095	8 834	7 597	23 526	10,1%
Benin	163	203	96	462	128	147	131	406	-12,1%
Burkina Faso	132	87	35	254	48	81	35	164	-35,4%
Cape Verde Island	37	48	35	120	43	43	21	107	-10,8%
Côte d'Ivoire	229	199	163	591	229	287	163	679	14,9%
Gambia	39	48	45	132	23	55	25	103	-22,0%
Ghana	1 576	1 733	1 535	4 844	1 756	2 035	1 950	5 741	18,5%
Guinea	139	153	148	440	100	169	107	376	-14,5%
Guinea-Bissau	4	13	9	26	5	12	9	26	0,0%
Liberia	59	48	68	175	57	68	57	182	4,0%
Mali	148	152	106	406	102	117	105	324	-20,2%
Mauritania	31	31	15	77	11	29	11	51	-33,8%
Niger	29	40	17	86	17	44	19	80	-7,0%
Nigeria	4 240	4 291	4 079	12 610	4 271	5 353	4 730	14 354	13,8%
Saint Helena	26	30	12	68	13	12	7	32	-52,9%
Senegal	300	290	162	752	197	240	137	574	-23,7%
Sierra Leone	86	61	53	200	53	87	50	190	-5,0%
Togo	44	41	34	119	42	55	40	137	15,1%
North Africa	1 414	1 592	1 217	4 223	1 305	1 526	1 359	4 190	-0,8%
Algeria	102	148	62	312	103	123	107	333	6,7%
Egypt	731	853	703	2 287	646	693	723	2 062	-9,8%
Libya	84	88	57	229	69	86	104	259	13,1%
Morocco	142	163	130	435	172	218	107	497	14,3%
South Sudan	95	55	81	231	45	73	117	235	1,7%
The Sudan	161	195	120	476	180	224	144	548	15,1%
Tunisia	95	89	63	247	90	108	56	254	2,8%
Western Sahara	4	1	1	6	-	1	1	2	-66,7%
Unspecified	1 308	1 230	1 001	3 539	1 179	1 559	1 249	3 987	12,7%

4.3 Annexure C – Number of tourists: Quarter 1, 2018 – Quarter 1, 2019 changes by country of residence and month of travel

Country of residence	Quarter 1, 2018 – Quarter 1, 2019								
	Jan	Feb	Mar	Qtr 1 2018	Jan	Feb	Mar	Qtr 1 2019	% change 2018 – 2019
Total	1 103 940	802 252	882 749	2 788 941	1 068 190	797 181	838 696	2 704 067	-3,0%
Overseas	244 657	259 123	260 514	764 294	232 872	246 394	236 647	715 913	-6,3%
Europe	166 328	177 473	167 370	511 171	151 933	169 025	146 833	467 791	-8,5%
Austria	3 190	4 115	2 929	10 234	3 363	4 493	2 802	10 658	4,1%
Belgium	4 130	5 339	5 250	14 719	3 687	4 703	4 689	13 079	-11,1%
Denmark	3 917	4 123	3 139	11 179	3 132	3 813	2 263	9 208	-17,6%
France	15 681	18 700	19 058	53 439	13 595	17 246	17 451	48 292	-9,6%
Germany	35 434	40 730	42 756	118 920	31 501	36 692	33 940	102 133	-14,1%
Ireland	3 173	2 822	3 866	9 861	3 022	2 901	2 908	8 831	-10,4%
Italy	4 906	4 537	4 213	13 656	4 617	4 603	4 305	13 525	-1,0%
Norway	2 351	3 102	2 656	8 109	1 927	2 835	1 479	6 241	-23,0%
Portugal	2 641	2 830	3 341	8 812	2 437	2 773	2 987	8 197	-7,0%
Spain	2 500	2 218	3 153	7 871	2 325	2 243	2 759	7 327	-6,9%
Sweden	7 898	7 148	5 010	20 056	6 128	6 688	3 796	16 612	-17,2%
Switzerland	6 696	6 594	5 095	18 385	5 793	6 207	4 658	16 658	-9,4%
The Netherlands	13 665	13 782	9 781	37 228	12 888	13 297	10 364	36 549	-1,8%
UK	48 663	50 772	47 238	146 673	46 633	50 125	42 772	139 530	-4,9%
Other	11 483	10 661	9 885	32 029	10 885	10 406	9 660	30 951	-3,4%
North America	28 834	31 648	40 560	101 042	30 120	30 016	42 273	102 409	1,4%
Canada	5 380	6 213	7 031	18 624	5 927	6 149	7 148	19 224	3,2%
USA	23 454	25 435	33 529	82 418	24 193	23 867	35 125	83 185	0,9%
Central and South America	12 626	10 245	10 454	33 325	11 961	9 950	9 875	31 786	-4,6%
Argentina	3 142	3 119	2 571	8 832	3 417	2 523	1 520	7 460	-15,5%
Brazil	7 558	4 780	5 363	17 701	6 523	4 838	6 423	17 784	0,5%
Chile	599	1 115	651	2 365	632	1 223	438	2 293	-3,0%
Other	1 327	1 231	1 869	4 427	1 389	1 366	1 494	4 249	-4,0%

Annexure C – Number of tourists: Quarter 1, 2018 – Quarter 1, 2019 changes by country of residence and month of travel (continued)

Country of residence	Quarter 1, 2018 – Quarter 1, 2019								% change 2018 – 2019
	Jan	Feb	Mar	Qtr 1 2018	Jan	Feb	Mar	Qtr 1 2019	
Australasia	9 855	7 995	11 375	29 225	9 867	7 447	9 320	26 634	-8,9%
Australia	8 871	7 154	9 949	25 974	8 980	6 696	8 099	23 775	-8,5%
New Zealand	971	821	1 397	3 189	872	730	1 191	2 793	-12,4%
Other	13	20	29	62	15	21	30	66	6,5%
Middle East	4 158	4 253	6 362	14 773	3 562	4 066	4 280	11 908	-19,4%
Israel	2 194	2 700	3 486	8 380	2 189	2 567	1 984	6 740	-19,6%
Lebanon	249	256	248	753	216	240	376	832	10,5%
Saudi Arabia	803	434	460	1 697	455	502	474	1 431	-15,7%
Other	912	863	2 168	3 943	702	757	1 446	2 905	-26,3%
Asia	22 856	27 509	24 393	74 758	25 429	25 890	24 066	75 385	0,8%
Bangladesh	525	405	476	1 406	514	585	441	1 540	9,5%
China	6 506	11 145	7 029	24 680	7 962	9 948	7 679	25 589	3,7%
India	7 115	7 544	6 769	21 428	6 900	6 619	7 043	20 562	-4,0%
Japan	1 621	1 784	2 613	6 018	2 679	1 908	2 333	6 920	15,0%
Pakistan	1 230	1 177	1 229	3 636	1 356	1 217	1 167	3 740	2,9%
Philippines	444	419	713	1 576	441	480	532	1 453	-7,8%
Singapore	395	514	558	1 467	395	462	591	1 448	-1,3%
South Korea	3 201	1 939	1 942	7 082	3 046	2 148	1 704	6 898	-2,6%
Taiwan	344	566	491	1 401	568	565	681	1 814	29,5%
Thailand	394	559	604	1 557	416	497	554	1 467	-5,8%
Other	1 081	1 457	1 969	4 507	1 152	1 461	1 341	3 954	-12,3%
Africa	858 505	542 105	621 063	2 021 673	834 401	549 445	600 708	1 984 554	-1,8%
SADC	845 163	527 483	606 898	1 979 544	819 895	534 866	587 189	1 941 950	-1,9%
Angola	8 680	5 918	5 427	20 025	8 355	5 936	5 608	19 899	-0,6%
Botswana	43 427	43 514	79 447	166 388	39 709	40 437	51 948	132 094	-20,6%
DRC	2 403	2 310	2 550	7 263	2 588	2 753	2 644	7 985	9,9%
Lesotho	239 647	122 311	126 417	488 375	195 516	108 081	129 159	432 756	-11,4%

Annexure C – Number of tourists: Quarter 1, 2018 – Quarter 1, 2019 changes by country of residence and month of travel (continued)

Country of residence	Quarter 1, 2018 – Quarter 1, 2019								% change 2018 – 2019
	Jan	Feb	Mar	Qtr 1 2018	Jan	Feb	Mar	Qtr 1 2019	
Madagascar	164	244	240	648	192	189	247	628	-3,1%
Malawi	16 961	14 446	15 979	47 386	17 415	14 723	16 074	48 212	1,7%
Mauritius	1 559	1 789	1 549	4 897	1 716	1 838	1 677	5 231	6,8%
Mozambique	155 819	99 773	101 133	356 725	162 393	106 481	101 110	369 984	3,7%
Namibia	15 039	13 466	19 633	48 138	14 483	13 381	17 140	45 004	-6,5%
Seychelles	467	789	575	1 831	515	734	617	1 866	1,9%
Swaziland	71 113	62 079	77 330	210 522	69 643	62 622	77 128	209 393	-0,5%
Tanzania	2 815	2 772	3 122	8 709	3 021	2 958	3 197	9 176	5,4%
Zambia	13 061	12 976	13 247	39 284	13 056	12 129	12 523	37 708	-4,0%
Zimbabwe	274 008	145 096	160 249	579 353	291 293	162 604	168 117	622 014	7,4%
'Other' African	13 342	14 622	14 165	42 129	14 506	14 579	13 519	42 604	1,1%
East and Central Africa	5 454	6 242	5 591	17 287	5 871	6 134	5 979	17 984	4,0%
Burundi	69	67	70	206	71	89	91	251	21,8%
Cameroon	439	383	447	1 269	437	392	439	1 268	-0,1%
Central African Republic	14	19	10	43	6	13	3	22	-48,8%
Chad	32	29	36	97	18	36	28	82	-15,5%
Comoros	13	21	22	56	16	16	35	67	19,6%
Congo	268	255	239	762	220	244	212	676	-11,3%
Djibouti	6	22	5	33	9	11	6	26	-21,2%
Equatorial Guinea	48	46	34	128	37	48	20	105	-18,0%
Eritrea	85	48	50	183	83	54	58	195	6,6%
Ethiopia	663	786	913	2 362	631	614	675	1 920	-18,7%
Gabon	551	584	459	1 594	674	505	417	1 596	0,1%
Kenya	1 935	2 618	2 104	6 657	2 172	2 613	2 526	7 311	9,8%
Réunion	8	-	5	13	8	1	-	9	-30,8%
Rwanda	71	72	83	226	67	72	112	251	11,1%
São Tomé and Príncipe	7	6	15	28	4	3	4	11	-60,7%
Somalia	59	40	98	197	174	135	132	441	123,9%
Uganda	1 186	1 246	1 001	3 433	1 244	1 288	1 221	3 753	9,3%

Annexure C – Number of tourists: Quarter 1, 2018 – Quarter 1, 2019 changes by country of residence and month of travel (concluded)

Country of residence	Quarter 1, 2018 – Quarter 1, 2019								% change 2018 – 2019
	Jan	Feb	Mar	Qtr 1 2018	Jan	Feb	Mar	Qtr 1 2019	
West Africa	6 312	6 938	7 334	20 584	6 868	6 830	6 126	19 824	-3,7%
Benin	103	102	133	338	124	128	154	406	20,1%
Burkina Faso	50	69	55	174	43	86	83	212	21,8%
Cape Verde Island	31	26	25	82	26	30	37	93	13,4%
Côte d'Ivoire	189	241	269	699	200	330	221	751	7,4%
Gambia	33	47	72	152	27	45	22	94	-38,2%
Ghana	1 252	1 502	1 760	4 514	1 545	1 798	1 549	4 892	8,4%
Guinea	145	149	96	390	115	154	94	363	-6,9%
Guinea-Bissau	15	15	8	38	10	16	8	34	-10,5%
Liberia	34	56	55	145	56	73	60	189	30,3%
Mali	116	144	114	374	80	145	73	298	-20,3%
Mauritania	9	35	23	67	8	21	28	57	-14,9%
Niger	21	27	16	64	17	49	26	92	43,8%
Nigeria	4 093	4 221	4 349	12 663	4 374	3 600	3 453	11 427	-9,8%
Saint Helena	8	33	5	46	7	10	2	19	-58,7%
Senegal	140	192	238	570	153	173	202	528	-7,4%
Sierra Leone	48	48	37	133	49	111	54	214	60,9%
Togo	25	31	79	135	34	61	60	155	14,8%
North Africa	1 576	1 442	1 240	4 258	1 767	1 615	1 414	4 796	12,6%
Algeria	71	83	85	239	246	134	104	484	102,5%
Egypt	939	811	654	2 404	872	886	717	2 475	3,0%
Libya	55	62	79	196	116	47	56	219	11,7%
Morocco	173	169	129	471	187	182	169	538	14,2%
South Sudan	82	52	65	199	57	69	79	205	3,0%
The Sudan	177	167	155	499	159	165	159	483	-3,2%
Tunisia	79	98	70	247	128	132	129	389	57,5%
Western Sahara	-	-	3	3	2	-	1	3	0,0%
Unspecified	778	1 024	1 172	2 974	917	1 342	1 341	3 600	21,0%

5. Explanatory notes

NOTE TO USERS

Statistics South Africa (Stats SA) has made changes in the *Tourism and Migration* statistical release starting from the January 2014 statistics. This change has become necessary as a result of the implementation of the enhanced Movement Control System (e-MCS) at the country's ports of entry. Currently, the new system (e-MCS) is operational at over 95% of the country's ports of entry. The change affects the identification of Transit Travellers that are currently categorised under Direction instead of Purpose of Movement. With this revision, Table 1 and Table 2 in the release now include a category for Transit while all tables reporting on tourists exclude transit travellers.

5.1 Introduction

Legal movements across South African borders, as well as legal immigration into South Africa, fall under the jurisdiction of the Department of Home Affairs (DHA). Stats SA then processes, analyses and publishes this information.

Administrative data sources from the DHA, that is, information from all the country's ports of entry and applications for permanent residence, constitute the only comprehensive source of information on foreign arrivals and departures, documented immigrants and emigrants. The information from this source of data provides the best national coverage (both in terms of space and time) of the population movements of South African residents and foreign travellers. The data can be used for the following:

- To estimate, monitor and understand salient characteristics of foreign travellers and volumes of South African residents travelling outside South Africa.
- To provide information that can be used to (a) assess the extent of government's progress in strengthening bilateral political and economic relations by assessing the number of international tourist arrivals, and (b) benchmark surveys focusing on the demand for local tourism services by foreign travellers.

5.2 Purpose of the statistical release

This release reports on arrivals, departures and transit travellers of South African residents and foreign travellers. Detailed information on the age and sex distribution; mode of travel; national and regional distribution; and purpose of travel of overnight visitors or tourists are also provided.

5.3 Scope and coverage

The release covers data collected by DHA officials on travellers who departed from or entered the Republic of South Africa (RSA).

5.4 Data

Information published in this release is based on data obtained from the following data sources within the DHA:

- Data routinely collected by immigration officers at all road, air and sea entry ports on all travellers (South African residents and foreign travellers) arriving into or departing from South Africa are captured into the DHA's population Movement Control System (MCS). The counts/statistics relate to the number of individual movements, rather than to the number of people. Hence, the multiple movements of individual people during the calendar month are each counted separately. Generally, the data are collected directly from travel documents either by scanning or capturing onto the ports' electronic database. No forms or cards are used (except on rare occasions when the capturing system is down) to collect information from travellers. Individual ports regularly transmit data onto the national database at the head office of the DHA.
- Stats SA receives downloaded data covering a particular calendar month from the DHA.

- As part of data interrogation, data from O.R. Tambo International Airport, which has the highest volume of travellers, are compared with passenger statistics from the Airports Company of South Africa (ACSA). As expected, in any specific month, an increase in the volume of passengers reported by ACSA is also reflected in an increase in the volume of travellers recorded by DHA. A similar pattern has also been observed when the volume of travellers decreased. In March 2019, the DHA data was 1,4% higher than that of ACSA.

5.5 Limitations

5.5.1 Outbound tourists

The information on the total number of arrivals and departures of South African residents is collected from the scanning of passports. However, data on the country visited are not collected from passengers; country of final destination, the duration of stay; intended duration of stay and purpose of visit. With this limitation, it is impossible to identify the number of tourists from the data on South African residents.

5.5.2 Purpose of visit

The holiday category includes tourists who came for vacation, visiting friends and relatives, shopping and other personal reasons such as attending weddings. While it's possible to separate 'visiting friends and relatives' from the broad category of Holiday, shopping and other reasons for visiting South Africa are all combined with vacation in the DHA movement control system. Discussions are in progress with the Department of Home Affairs to capture vacation and shopping as separate categories for a clearer breakdown of tourists by purpose of visit.

5.6 Definition of terms

5.6.1 Definitions used by the United Nations World Tourism Organisation (UNWTO)

Traveller is someone who moves between different geographical locations for any purpose and any duration.

Visitor refers to any person travelling to a place other than that of his/her usual environment for less than 12 months and whose main purpose of the trip is other than the exercise of an activity remunerated from within the place visited.

Same-Day visitor is a visitor who visits a place for less than one night.

Tourist (overnight visitor) is a visitor who stays at least one night in collective or private accommodation in the place visited.

Tourism comprises the activities of persons travelling to, and staying in places outside their usual environment, for not more than one consecutive year, for leisure, business and other purposes. The usual environment of a person consists of a certain area around his/her place of residence, plus all the other places he/she frequently visits.

5.6.2 Definitions used specifically in this release

South African resident refers to either a South African citizen or a non-South African citizen with a South African permanent residence permit.

Foreign traveller refers to a traveller who is not a South African citizen or permanent resident.

Region refers to the following country classification:

- Overseas: Europe, North America, Central and South America, Australasia, the Middle East and Asia.
- Africa: SADC and 'other' Africa (East and Central Africa, West Africa and North Africa).

Country refers to individual countries within a region. The country of residence is used. The country of residence should not be confused with the country from which the visitor travelled.

Africa refers to all the countries in Africa (both mainland and island countries).

SADC refers to the fourteen countries, excluding South Africa, which belong to the Southern African Development Community.

'Other' African refers to all non-SADC African countries.

Overseas refers to all countries outside Africa.

Trip refers to the arrival and departure of a visitor in a specified month.

5.7 Symbols used

- = nil

< = less than

5.8 Rounding off

Percentages may not add up to 100 due to rounding.

6. General information

Stats SA publishes approximately 300 different statistical releases each year. It is not economically viable to produce them in more than one of South Africa's eleven official languages, since the releases are used extensively, not only locally but also by international economic and social-scientific communities. Stats SA releases are published in English.

Stats SA has copyright on this publication. Users may apply the information as they wish, provided that they acknowledge Stats SA as the source of the basic data wherever they process, apply, utilise, publish or distribute the data; and also that they specify that the relevant application and analysis (where applicable) result from their own processing of the data.

Advance release calendar

An advance release calendar is disseminated at www.statssa.gov.za

Stats SA products

A complete set of Stats SA publications is available at the Stats SA Library and the following libraries:

National Library of South Africa, Pretoria Division
National Library of South Africa, Cape Town Division
Natal Society Library, Pietermaritzburg
Library of Parliament, Cape Town
Bloemfontein Public Library
Johannesburg Public Library
Eastern Cape Library Services, King William's Town
Central Regional Library, Polokwane
Central Reference Library, Mbombela
Central Reference Collection, Kimberley
Central Reference Library, Mahikeng

Stats SA also provides a subscription service.

Electronic services

A large range of data are available via online services, CD and computer printouts. For more details about our electronic data, contact user information services.

You can visit us on the Internet at www.statssa.gov.za

Enquiries

Telephone: (012) 310 8600 (user information services)
(012) 406 3301 (technical enquiries)
(012) 310 8251 (orders)
(012) 310 4883/4885/8018 (library)

Fax: (012) 310 8500/ 8495 (user information services)
(012) 310 6937 (technical enquiries)

Email: RamadimetjaM@statssa.gov.za (technical enquiries)
info@statssa.gov.za (user information services)

Postal address: Private Bag X44, Pretoria, 0001

Produced by Stats SA