



**Statistics
South Africa**

Preferred supplier of quality statistics



Statistical release

P0305

Recorded live births

2009

**Embargoed until:
16 August 2010
14:30**

Enquiries:

User Information Services
(012) 310 8600

Forthcoming issue:

Recorded live births, 2010

Expected release date

August 2011

Statistics South Africa • Mbalo-mbalo ya Afrika Tshipembe • Tihlayo-tiko ta Afrika-Dzonga • Dipalopalo tsa Aforika Borwa • Ezezibalo zaseNingizimu Afrika
Dipalopalo tša Afrika Borwa • Dipalopalo tsa Afrika Borwa • Ubalo lwaseMzantsi Afrika • Telubalo eNingizimu Afrika • iNanimbalo leSewula Afrika • Statistiek Suid-Afrika

Published by Statistics South Africa, Private Bag X44, Pretoria 0001

© Statistics South Africa, 2010

Data from this publication may be produced, applied or processed, provided Statistics South Africa (Stats SA) is acknowledged as the original source of the data; that it is specified that the application and/or analysis is the result of the users independent processing of the data; and that neither the basic data nor any processed version or application thereof may be sold or offered for sale in any form whatsoever without the prior permission of Stats SA.

Stats SA publishes approximately 300 different statistical releases each year. It is not economically viable to produce them in more than one of South Africa's eleven official languages. Since the releases are used extensively, not only locally but also internationally, Stats SA releases are published in English only.

This publication is available on the Internet at www.statssa.gov.za.

Stats SA products

A complete set of Stats SA publications is available at the Stats SA Library and the following libraries:

- National Library of South Africa, Pretoria Division
- National Library of South Africa, Cape Town Division
- Natal Society Library, Pietermaritzburg
- Library of Parliament, Cape Town
- Bloemfontein Public Library
- Johannesburg Public Library
- Eastern Cape Library Services, King William's Town
- Central Regional Library, Polokwane
- Central Reference Library, Nelspruit
- Central Reference Collection, Kimberley
- Central Reference Library, Mafikeng

Stats SA also provides a subscription service.

Enquiries:

Printing and distribution
Tel: (012) 310 8251
Fax: (012) 321 7381
Email: distribution@statssa.gov.za

User information services
(012) 310 8600
(012) 310 8500/ 8495
info@statssa.gov.za

Preface

This statistical release presents information on recorded live births in South Africa, based on data from the national birth registration system at the Department of Home Affairs. The release reports on birth registrations and birth occurrences for 2009, and also provides information on trends and patterns of recorded live births from 1991. Estimates of the completeness of birth registration in the country for 2005–2009 are also provided.



Pali Lehohla
Statistician-General

Contents

Preface iii

Contents iv

List of tables v

List of figures v

Key findings 1

1. Introduction..... 1

2. Birth registrations..... 1

2.1 Completeness of birth registration..... 1

2.2 Trends in birth registration..... 3

2.3 Birth registrations by selected variables 5

3. Birth occurrences..... 8

3.1 Birth occurrences as at 28 February 2010 9

3.2 Birth occurrences as at 30 April 2010..... 12

4. Concluding remarks..... 15

References 16

Appendices 17

Appendix A: Notice of birth form (BI-24) 17

Appendix B: Total birth registrations by year of registration, province and district municipality 19

Appendix C: Total birth registrations by sex, province, district municipality and registration status, 2009 21

Appendix D: Birth occurrences by year of birth and age of mother, 2005–2009 23

Appendix E: Birth occurrences by province of registration and age of mother, 2009..... 23

Appendix F: Total birth occurrences by sex, month and citizenship, 1991–1993 24

Appendix F.1: Total birth occurrences by sex, month and citizenship, 1994–1996 25

Appendix F.2: Total birth occurrences by sex, month and citizenship, 1997–1999 26

Appendix F.3: Total birth occurrences by sex, month and citizenship, 2000–2002 27

Appendix F.4: Total birth occurrences by sex, month and citizenship, 2003–2005 28

Appendix F.5: Total birth occurrences by sex, month and citizenship, 2006–2008 29

Appendix F.6: Total birth occurrences by sex, month and citizenship, 2009 30

Explanatory notes..... 31

List of tables

Table 1: Birth registrations by status of registration, South Africa: 1991–2009 4

Table 2: Birth registrations by age of mother and status of registration, South Africa: 2009..... 5

Table 3: Birth occurrences by year of birth and reference period, South Africa: 1991–2009 9

Table 4: Birth occurrences (as at 28 February 2010) by year of occurrence and year of registration, South Africa: 1991–2009 10

Table 5: Number and percentage of births by age of the mother: 2009 11

Table 6: Birth occurrences (as at 30 April 2010) by sex, year of birth and citizenship, South Africa: 1991–2009..... 13

List of figures

Figure 1: Estimated completeness levels of birth registration, South Africa: 2005–2009 2

Figure 2: Birth registrations by status of registration, South Africa: 1991–2009 4

Figure 3: Birth registrations by age of mother and status of registration, South Africa: 2009..... 6

Figure 4: Birth registrations by province and status of registration, South Africa: 2009 7

Figure 5: Percentage of late birth registrations by province and year of birth registration, South Africa: 2007–2009 8

Figure 6: Median age of the mothers by year of birth: 1998–2009 11

Figure 7: Birth occurrences by province of registration, South Africa: 2009 12

Figure 8: Birth occurrences by year and month of birth, South Africa: 2000–2009 14

Key findings

1. Introduction

“Birth registration is the official recording of the birth of a child coordinated by a particular branch of government. It is a permanent and official record of a child’s existence” (UNICEF, 2002: 2). Subsequent to birth registration, birth certificates, which serve as legal records of birth and identification, are issued. The data from birth registration can be used to monitor fertility trends, population growth and population composition. Such information is essential for the planning and monitoring of governments’ economic and social development programmes. Furthermore, in South Africa, for example, having a birth certificate is necessary as it is required for children to access government’s social security and poverty alleviation benefits.

The registration of births in South Africa is governed by the Births and Deaths Registration Act, 1992 (Act No. 51 of 1992) and is administered by the Department of Home Affairs. The department uses form BI-24 to register births for persons aged below one year, form BI-24/1 for persons aged one year and older but less than 15 years, and form BI-24/15 for persons aged 15 years and older. A copy of the BI-24 form is provided in Appendix A. The information collected from the registration of births is used to compile statistics on recorded live births in the country. This statistical release uses information from the first page of the form only as information from the second page is not available.

The main purpose of this release is to present data on live births recorded at the Department of Home Affairs in 2009. Data for 1991 to 2008 are also presented to provide information on trends and patterns in the occurrence and registration of live births. The reporting of live births is divided into registration year (the year in which a birth was registered, regardless of when it occurred) and occurrence year (the year in which a birth actually occurred). This release also provides estimates of the completeness of birth registration in the country.

2. Birth registrations

2.1 Completeness of birth registration

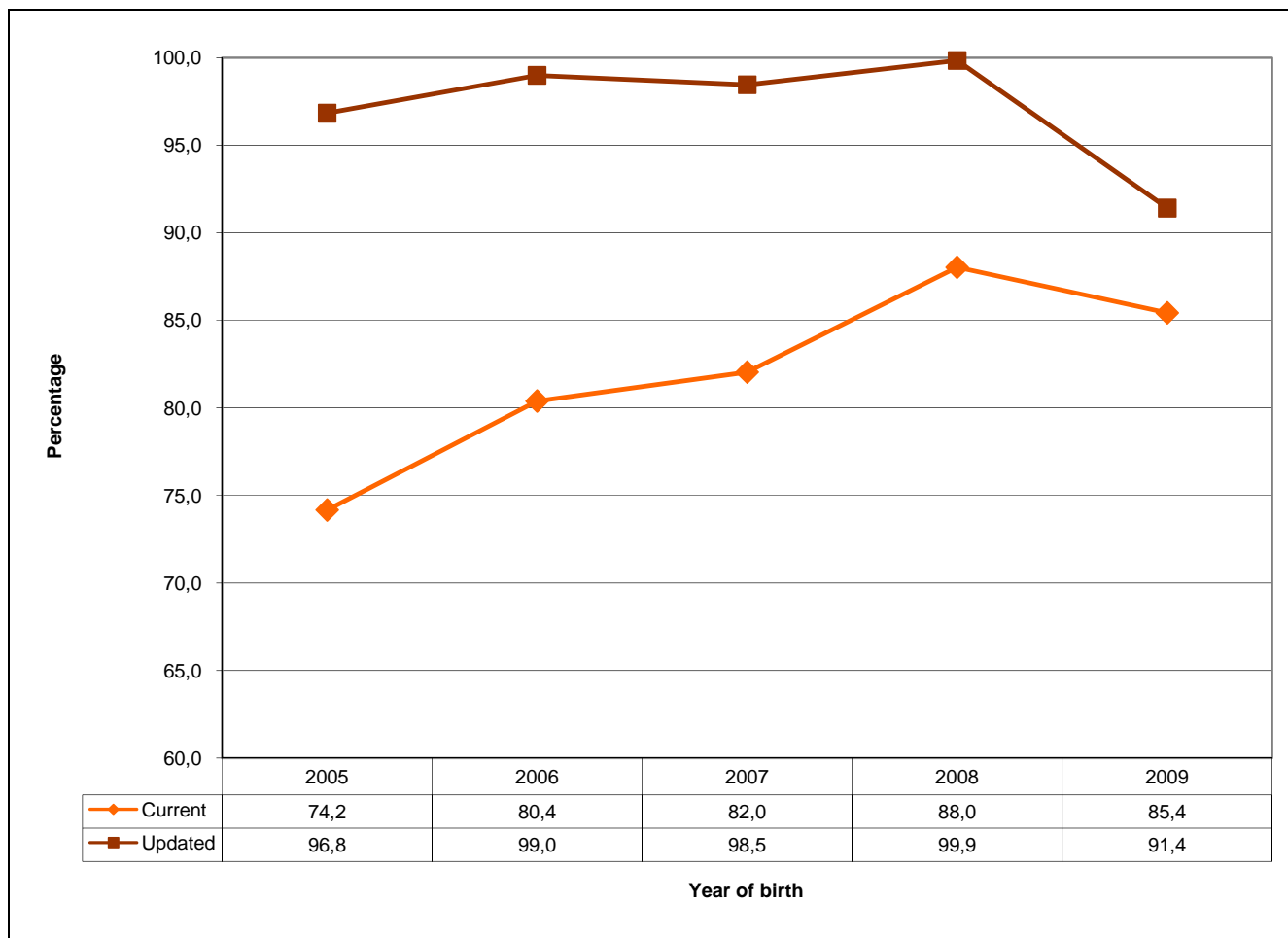
The estimation of completeness of the South African population register for recording vital events and other characteristics is an important undertaking that provides an indication of the efficiency of the Department of Home Affairs registration system. Furthermore, the number of births and deaths adjusted for incompleteness of registration can be used in the analysis of birth and death statistics and for estimating the overall population size of the country.

This release provides estimates of the level of completeness of birth registration in South Africa from 2005 to 2009. The estimation of the completeness of birth registration is based on the comparison of recorded live births from the population register to expected births estimated from the 2007 Community Survey (CS). The CS was used as a base population to project the population using the PROJCT programme in the MORTPAK software package for demographic measurement (United Nations, 2003). The PROJCT programme provides expected births for each projection period.

The 2007 CS population was projected backward to 2005 and forward to 2009, with the assumption of a slight mortality decline from 2007. In the previous release of Recorded live births (Stats SA, 2009a), it was assumed that there was a slight mortality increase, but recent evidence suggests a modest mortality decline from 2007 as reflected in death registration data (Stats SA, 2009b). The implication of the change in the assumption on mortality is that the estimates of birth registration completeness for 2005–2008 provided in the previous release are slightly different from the current estimates. Since the estimates of completeness are dependent on population projections that are continuously revised when new information about the population dynamics becomes available, the completeness of birth registration will also be revised accordingly.

Estimates of completeness of birth registration are provided for current births (births registered within the year of birth) and for updated births (recorded births as at 30 April 2010). The results presented in Figure 1 indicate that generally, the level of birth registration completeness (for current and updated births) increased from 2005 to 2008, with a decline observed in 2009. The completeness of births registered within the year of birth increased from 74,2% in 2005 to 88,0% in 2008, declining slightly to 85,4% in 2009. As expected, the completeness of registration for updated births was higher than that observed for current births for all years. It increased from 96,8% in 2005 to 99,9% in 2008 and then decreased to 91,4% in 2009. The completeness for 2009 updated birth registrations is lower since the 2009 births are still to be updated with relatively more late registrations. The gap between completeness levels of current and updated births decreased with time, indicating an improvement in current birth registrations.

Figure 1: Estimated completeness levels of birth registration, South Africa: 2005–2009



2.2 Trends in birth registration

Total birth registrations are all births registered at the Department of Home Affairs during a specific year, regardless of when they occurred. For any given year, the total number of registrations consists of both current registrations (for live births registered in the year in which they occurred) and late registrations (for live births registered later than the year of birth).

Table 1 and Figure 2 provide information on birth registrations for the period 1991 to 2009, classified by status of registration. A total of 1 254 707 births were registered in 2009, representing a decrease of 1,8% from 1 277 763 births registered in 2008. Total birth registrations increased consistently between 1992 and 2003, but decreased between 2003 and 2007, and then fluctuated. From 1991 to 2004, the number of late birth registrations was higher than the number of current registrations. This pattern was reversed in 2005, when most births were registered during the year of birth rather than later.

Similar to overall birth registrations, late birth registrations increased consistently between 1992 and 2003, after which they decreased. However, late birth registrations increased between 2007 and 2009 (by 6,2% between 2007 and 2008 and by 3,6% between 2008 and 2009). Further analysis of the data, taking into consideration the distribution of late registrations by year of birth showed a marked increase for those born between 1986 and 1992 (aged between 17 and 23 years in 2009). This increase was much higher in 2009 than it was in 2008. However, late registrations for 2008 were higher than those for 2009 from those born in 1993. This increase in late registrations in 2009 may be attributed to the demand for identity documents for those eligible for voting during the April 2009 national and provincial elections. Birth registration is a requirement for the application for an identity document.

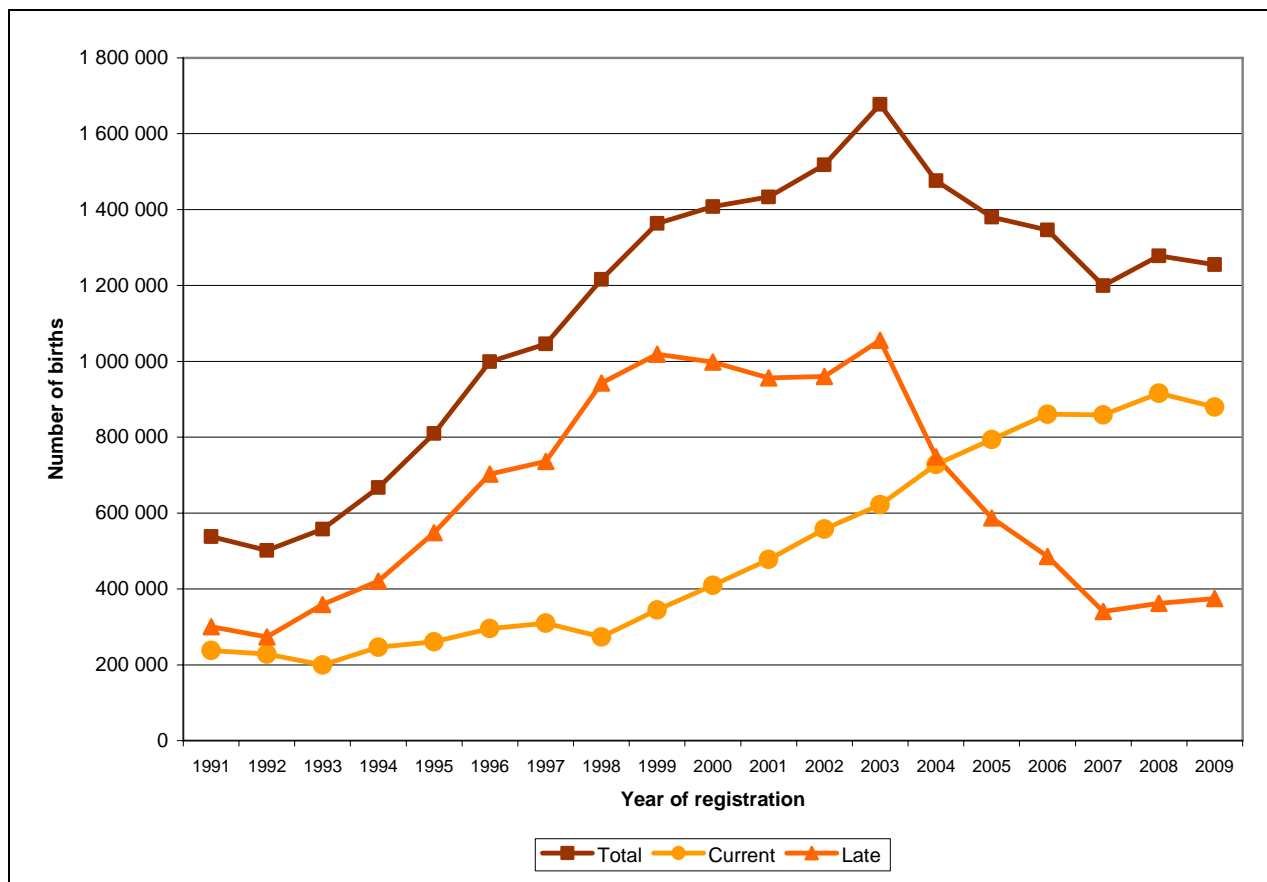
The number of births registered within the year of birth increased between 1999 and 2005, after which there were some fluctuations. Current birth registrations decreased by 0,2% between 2006 and 2007; increased by 6,6% between 2007 and 2008; and then decreased by 3,9% between 2008 and 2009.

The percentages of late birth registrations, as compared to current registrations, have been declining between 1998 and 2008. There was a slight increase in 2009. During 1998, over three-quarters of birth registrations (77,5%) were late, whereas just over one-quarter (28,3%) and nearly 30% (29,9%) were registered late in 2008 and 2009, respectively.

Table 1: Birth registrations by status of registration, South Africa: 1991–2009

Year of registration	Number of birth registrations			Percentage		
	Total	Current	Late	Total	Current	Late
1991	537 999	238 053	299 946	100,0	44,2	55,8
1992	501 461	228 445	273 016	100,0	45,6	54,4
1993	557 995	199 460	358 535	100,0	35,7	64,3
1994	667 107	246 345	420 762	100,0	36,9	63,1
1995	809 439	260 880	548 559	100,0	32,2	67,8
1996	998 798	295 719	703 079	100,0	29,6	70,4
1997	1 046 095	309 723	736 372	100,0	29,6	70,4
1998	1 216 337	273 180	943 157	100,0	22,5	77,5
1999	1 363 800	344 700	1 019 100	100,0	25,3	74,7
2000	1 407 833	409 707	998 126	100,0	29,1	70,9
2001	1 433 432	477 489	955 943	100,0	33,3	66,7
2002	1 517 671	557 573	960 098	100,0	36,7	63,3
2003	1 677 415	621 887	1 055 528	100,0	37,1	62,9
2004	1 475 809	728 283	747 526	100,0	49,3	50,7
2005	1 380 496	793 788	586 708	100,0	57,5	42,5
2006	1 346 119	860 263	485 856	100,0	63,9	36,1
2007	1 199 712	858 866	340 846	100,0	71,6	28,4
2008	1 277 763	915 674	362 089	100,0	71,7	28,3
2009	1 254 707	879 707	375 000	100,0	70,1	29,9

Figure 2: Birth registrations by status of registration, South Africa: 1991–2009



2.3 Birth registrations by selected variables

Age of the mother

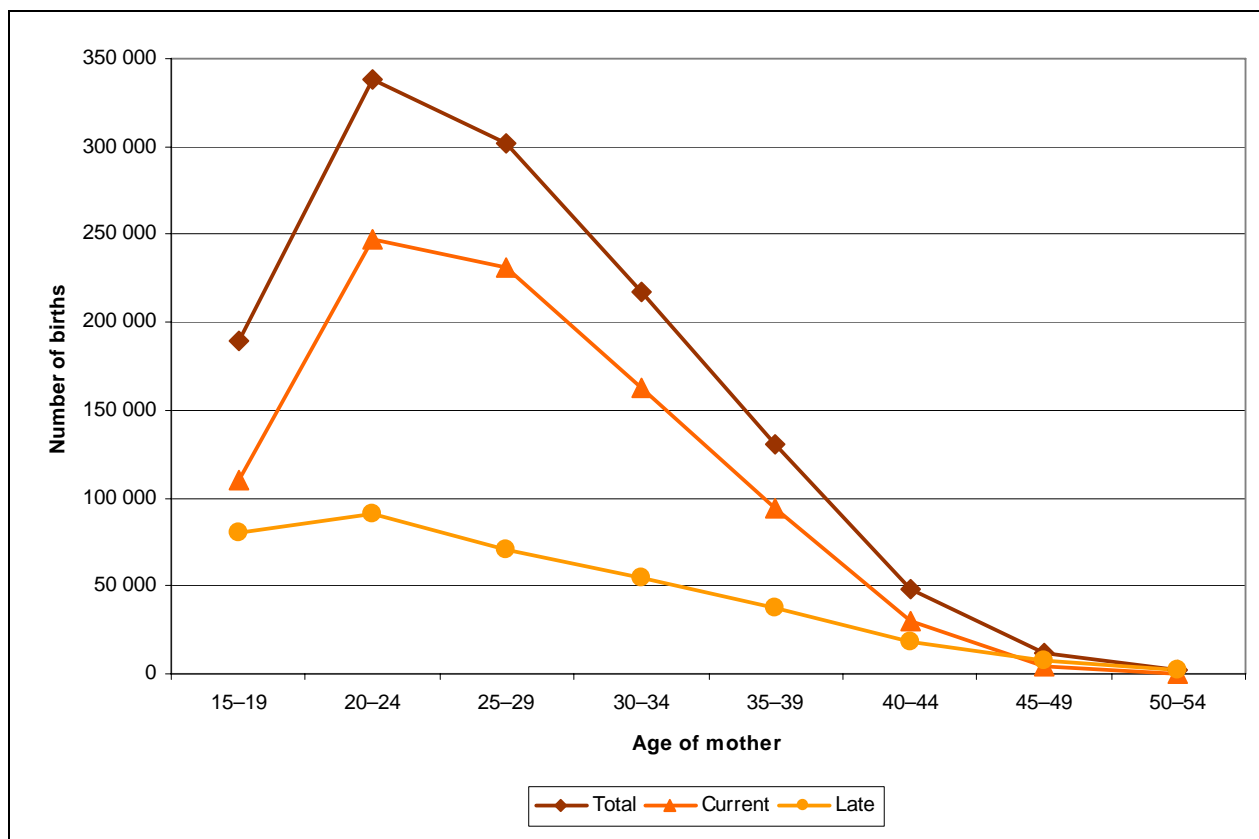
The Notice of Birth form (BI-24) makes provision for the inclusion of the details of the natural father and natural mother of a child. However, about two-thirds (67,6%) of the births registered in 2009 did not contain information on fathers, as has been the case in the previous years. As such, only information pertaining to the mothers will be reported on in this section.

Table 2 and Figure 3 show the distribution of births registered in 2009 by age of mother and status of registration. The majority of births occurring to older mothers (aged 45 and above) were registered late while the majority (over 70%) of those occurring to mothers aged 20–24 up to 35–39 were registered within the year of birth. For example, 76,5% of births to mothers aged 25–29 were registered within the year of birth as compared to 13,7% for those aged 50–54. Nearly 60% (57,9%) of births occurring to mothers aged 15–19 were registered within the year of birth.

Table 2: Birth registrations by age of mother and status of registration, South Africa: 2009

Age of mother	Number of birth registrations			Percentage		
	Total	Current	Late	Total	Current	Late
15–19	189 617	109 804	79 813	100,0	57,9	42,1
20–24	337 984	246 916	91 068	100,0	73,1	26,9
25–29	302 137	231 135	71 002	100,0	76,5	23,5
30–34	217 641	162 782	54 859	100,0	74,8	25,2
35–39	130 816	93 833	36 983	100,0	71,7	28,3
40–44	48 152	29 583	18 569	100,0	61,4	38,6
45–49	11 662	4 086	7 576	100,0	35,0	65,0
50–54	2 525	347	2 178	100,0	13,7	86,3
Unspecified / outside the 15–54 age range	14 173	1 221	12 952	100,0	8,6	91,4
Total	1 254 707	879 707	375 000	100,0	70,1	29,9

Figure 3: Birth registrations by age of mother and status of registration, South Africa: 2009*



*Excluding 14 173 births whose mothers' ages were not stated or were outside the age range of 15-54 years.

Province of birth

Figure 4 presents the distribution of all births registered in 2009 by province and status of registration. It is observed that the highest numbers of births were registered in KwaZulu-Natal and in Gauteng, where over 250 000 births were registered in each of these provinces in 2009. There were 292 367 births registered in KwaZulu-Natal (23,3% of all births) and 253 710 births registered in Gauteng (20,2% of all births). The lowest number of births registered was in Northern Cape (24 630; representing 2,0%). In all provinces, there were more current than late registrations. A large number of births (16 152) had unspecified information about province. Nearly all of these (99,4%) were late registrations.

Foreign births (which accounted for 0,5% of all births) represent registered births that occurred outside the country, where at least one of the parents was a South African citizen at the time of the child's birth. The birth may be notified at the South African Embassy or Mission in the country concerned or at the Department of Home Affairs in South Africa. The majority of foreign births were registered late.

Figure 4: Birth registrations by province and status of registration, South Africa: 2009

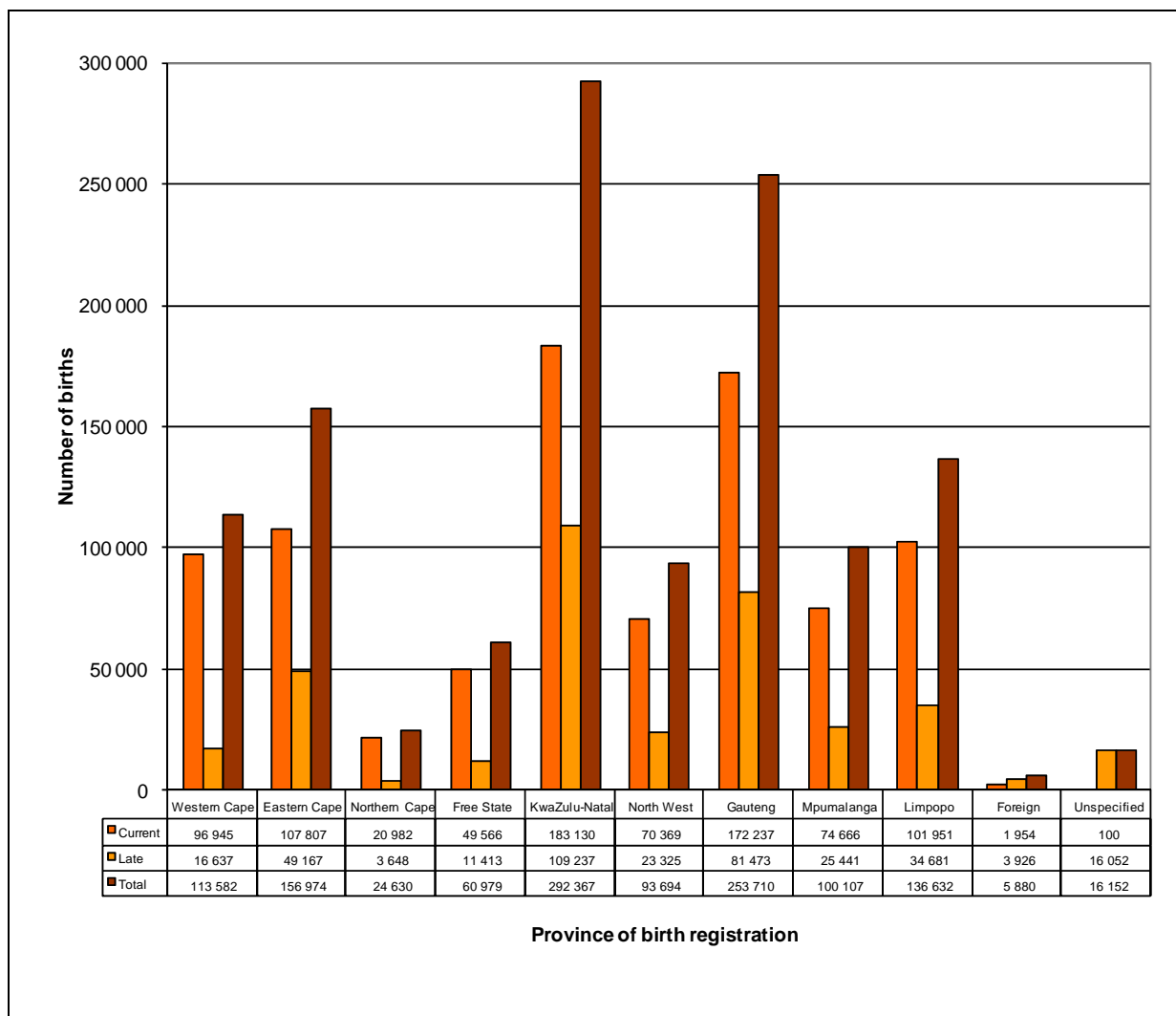
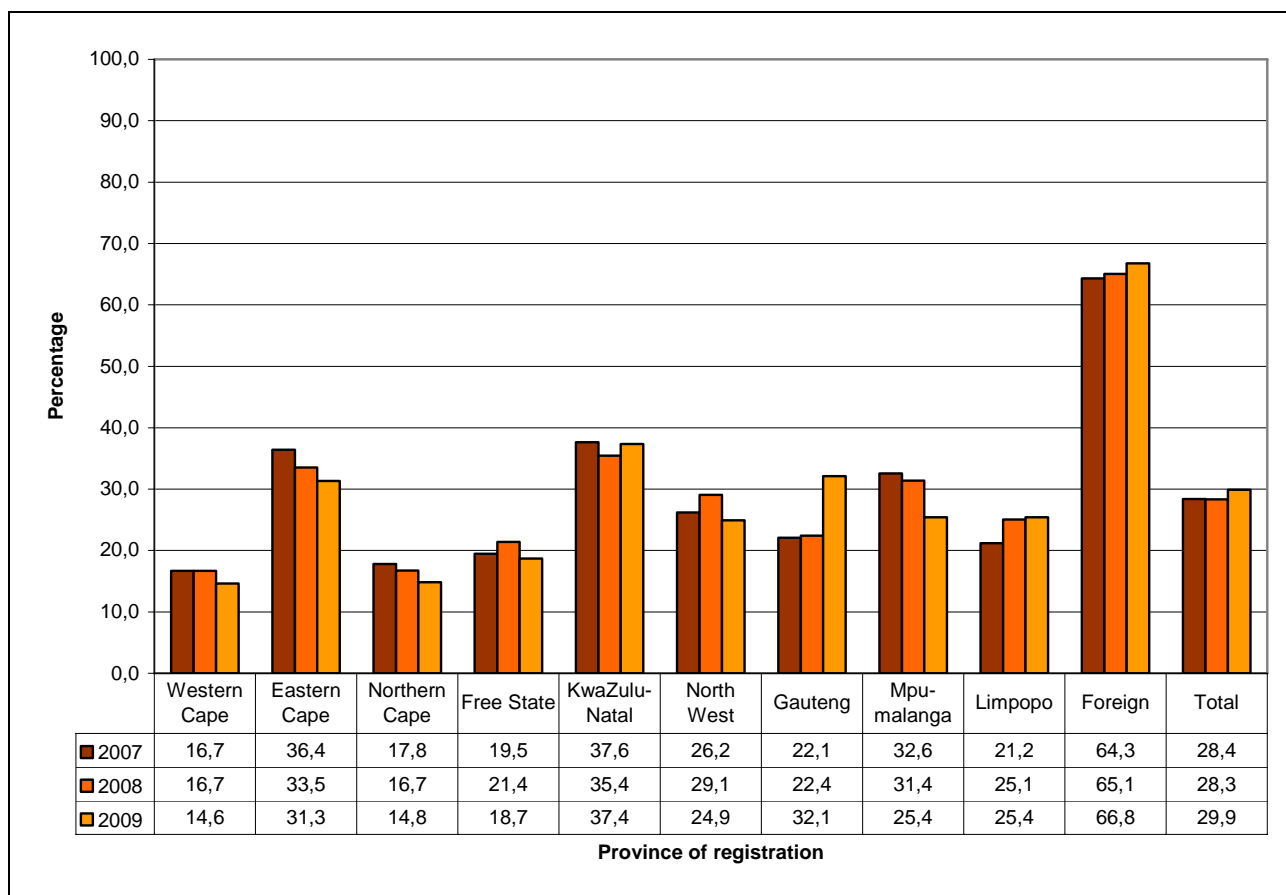


Figure 5 shows that the percentages of late registrations in 2009 (from the lowest to the highest) range from 14,6% in Western Cape to 31,3% in Eastern Cape, 32,1% in Gauteng and up to 37,4% in KwaZulu-Natal. The majority of foreign births (66,8%) were registered late. In three provinces: Western Cape, Northern Cape and Free State, less than 20% of the births were registered late. Overall, nearly 30% (29,9%) of births in the country were registered late.

The trends in late birth registrations between 2007 and 2009 show that there was a decrease in the proportions of late birth registrations in Western Cape, Eastern Cape, Northern Cape and Mpumalanga. However, there were increases in Gauteng (more so between 2008 and 2009), Limpopo and for foreign births. Free State, KwaZulu-Natal and North West did not show any consistent pattern over the three years.

Detailed information on total registrations by year of registration and status of registration, province and municipality is provided in Appendix B.

Figure 5: Percentage of late birth registrations by province and year of birth registration, South Africa: 2007–2009*



*Excluding births with unspecified province

Sex of the child

The distribution of total birth registrations in 2009 by sex indicates that there were slightly more male births registered (629 231) than female (625 476), yielding a sex ratio of 101 males per 100 female births registered. With the exception of KwaZulu-Natal and Gauteng which both had a sex ratio of 99 males per 100 females for each province, all other provinces had a sex ratio of between 100 and 103 males per 100 females. Detailed information on total registrations by sex, status of registration, province and municipality is provided in Appendix C.

3. Birth occurrences

Birth occurrences are all births that occur within a specific year and are registered at the Department of Home Affairs. They pertain to the year in which the birth actually occurred (year of birth). Each time a birth for any particular year is registered; birth occurrences for that specific year are updated to include those registered late. Therefore, information on birth occurrences varies each time data are extracted from the population register since they get updated continuously.

This section reports on birth occurrence based on registration-based data captured up to 28 February 2010 (this being the cut-off date for processing by Stats SA). It also reports on birth occurrences as extracted from the population register on 30 April 2010. The end of February information is received electronically from the Department of Home Affairs and the end of April information is provided as a print-out from the same department.

Total birth occurrences for the period 1991 to 2009 are provided in Table 3. It is observed that by 28 February 2010, 879 707 births that occurred in 2009 were registered, increasing to 937 531 births by 30 April 2010. This indicates that between 28 February 2010 and 30 April 2010, the population register was updated by 57 824 births that occurred in 2009 (6,6% increase).

For each year, birth occurrences increased between these two periods, showing the continuous update of the population register. The highest number of birth occurrences was recorded for the 2006 birth year. There was a decline in the number of birth occurrences between 2008 and 2009.

Table 3: Birth occurrences by year of birth and reference period, South Africa: 1991–2009

Year of birth	Birth occurrences (as at 28 Feb. 2010)	Updated birth occurrences (as at 30 Apr. 2010)
1991	900 369	947 212
1992	932 179	948 481
1993	920 611	940 622
1994	912 216	957 476
1995	913 810	936 849
1996	957 409	964 889
1997	951 187	951 632
1998	892 436	935 691
1999	922 599	951 381
2000	920 412	962 695
2001	915 379	946 513
2002	902 951	956 204
2003	907 970	948 083
2004	990 201	999 638
2005	1 028 628	1 033 695
2006	1 046 685	1 053 863
2007	1 019 087	1 027 386
2008	1 017 417	1 033 403
2009	879 707	937 531

3.1 Birth occurrences as at 28 February 2010

The birth occurrences for different years are composed of births registered within the year in which they occurred and those registered late. Table 4 shows the number of births that occurred during the period 1991 to 2009 by year of birth and year of registration. The figures in bold indicate all births that were registered within the year in which they occurred while those not in bold are late registrations, showing the year in which the late birth occurrences were eventually registered.

The overall number of birth occurrences between 1991 and 2009 fluctuated, with an average of about 944 000 births occurring per year. This average increases each year, due to the updating of the population register with late registrations, as well as registrations for the current year. During the same period in 2008, the average annual births was about 932 000.

From 1999 to 2006, the number of births that got registered during the year of birth (number in bold) increased consistently, but showed some fluctuations thereafter. There was a decrease between 2006 and 2007, an increase between 2007 and 2008 and another decrease between 2008 and 2009. In 2009, there were 879 707 birth occurrences, indicating a decrease of 13,5% from a total of 1 017 417 births that occurred in 2008. However, a relatively higher number of late registrations for 2009 are still expected to be registered.

Table 4: Birth occurrences (as at 28 February 2010) by year of occurrence and year of registration, South Africa: 1991–2009

Registr ation year	Occurrence year																		
	1991	1992	1993	1994	1995	1996	1997	1998	1999	2000	2001	2002	2003	2004	2005	2006	2007	2008	2009
1991	238 053																		
1992	50 124	228 445																	
1993	28 668	54 584	199 460																
1994	32 721	36 373	63 813	246 345															
1995	41 718	40 965	43 097	73 336	260 880														
1996	59 583	48 415	48 338	51 748	89 566	295 719													
1997	61 406	62 404	50 708	50 627	54 198	93 807	309 723												
1998	64 118	82 381	77 021	61 919	59 942	70 261	105 766	273 180											
1999	51 773	59 898	84 143	84 563	80 362	92 276	104 453	146 055	344 700										
2000	52 000	60 000	85 000	58 170	78 122	92 269	102 179	114 781	178 516	409 707									
2001	35 525	36 564	36 441	43 932	65 682	79 095	87 285	96 809	116 374	192 410	477 489								
2002	35 791	36 841	34 709	34 679	36 685	58 125	73 665	86 859	98 553	118 600	218 256	557 573							
2003	50 903	53 258	53 491	63 494	73 845	69 465	68 289	69 795	72 533	77 256	94 588	194 204	621 887						
2004	31 918	35 034	49 237	58 549	44 477	41 014	38 700	41 372	42 511	43 503	48 197	63 234	165 662	728 283					
2005	36 460	57 158	48 398	36 883	28 386	25 341	23 240	23 162	24 996	24 807	23 798	27 701	43 404	150 546	793 788				
2006	9 868	19 544	20 039	20 002	18 034	18 217	17 623	19 518	21 911	26 516	24 057	26 042	34 601	54 941	154 331	860 263			
2007	26	7 880	11 421	10 178	9 472	9 309	9 227	9 897	10 969	14 158	15 200	16 766	20 009	26 769	42 569	126 358	858 866		
2008	4 685	2 507	10 740	11 767	7 955	7 105	6 548	6 691	6 927	8 327	8 722	11 378	14 085	17 869	23 732	40 554	128 336	915 674	
2009	15 029	9 928	4 555	6 024	6 204	5 406	4 489	4 317	4 609	5 128	5 072	6 053	8 322	11 793	14 208	19 510	31 885	101 743	879 707
TOTAL	900 369	932 179	920 611	912 216	913 810	957 409	951 187	892 436	922 599	920 412	915 379	902 951	907 970	990 201	1 028 628	1 046 685	1 019 087	1 017 417	879 707

Age of the mother for births occurring in 2009

Table 5 shows the distribution of births occurring in 2009 by age of the mother. Most births occurred to women aged 20–24 (28,1%), followed by those aged 25–29 (26,3%), and then those aged 30–34 (18,5%). Births occurring in these age groups (20–34), represent 72,8% of all births occurring in 2009. About 12,5% of births occurred to women aged 15–19; while 3,9% of births occurred to women aged 40 years and older. An additional table, providing the number of births by age of mother for the past five years (2005–2009), updated for late registrations up to 28 February 2010, is provided in Appendix D.

Table 5: Number and percentage of births by age of the mother: 2009

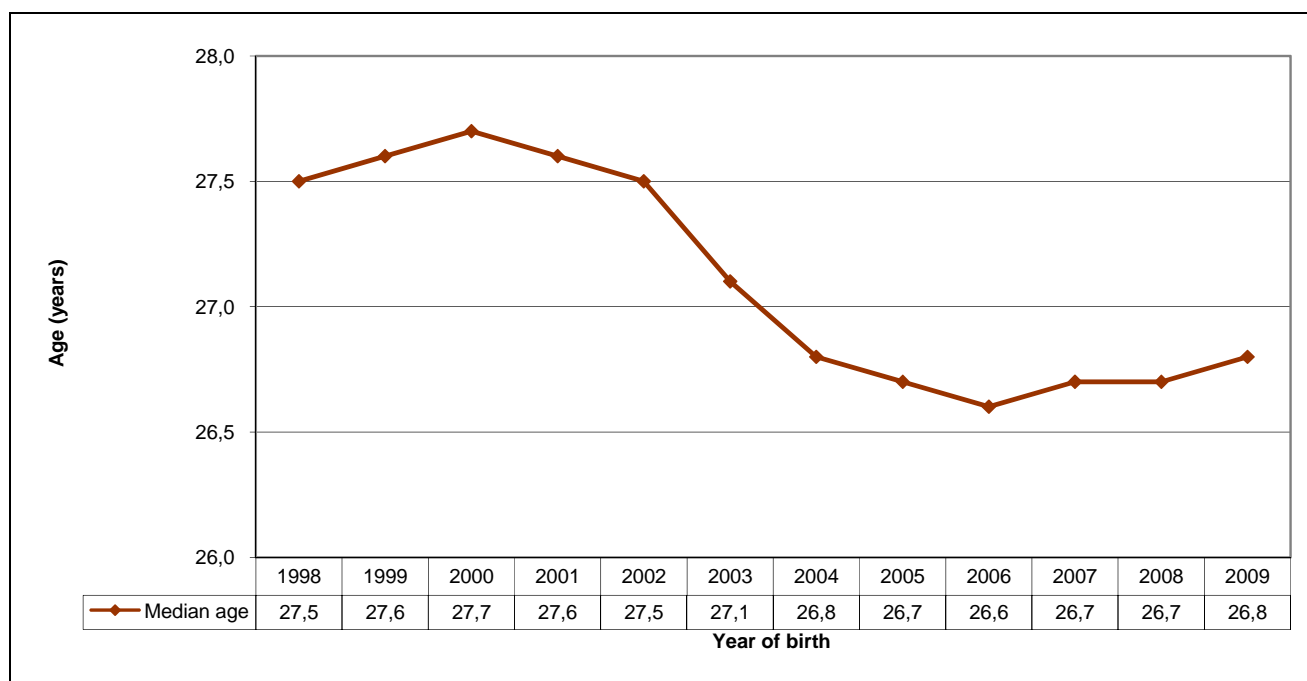
Age of mother	Number of births	Percentage
15–19	109 804	12,5
20–24	246 916	28,1
25–29	231 135	26,3
30–34	162 782	18,5
35–39	93 833	10,7
40–44	29 583	3,4
45–49	4 086	0,5
50–54	347	0,0
Unspecified / outside the 15–54 age range	1 221	0,1
Total	879 707	100,0

Median age of the mothers

Median age of mothers is the age that divides the mothers of children born in a specific year and were registered into two numerically equal groups; that is, half of the mothers are younger than this age and half are older. A higher median age indicates that, on average, childbearing occurs at older ages and vice versa for a lower median age.

The median ages of mothers for births occurring between 1998 and 2009 (updated with late registrations) are shown in Figure 6. It is observed that the median age was between 27,5 and 27,7 years during 1998 to 2002, after which it declined, reaching the lowest level in 2006 (26,6 years). The median age of mothers increased slightly from 2008 to 2009.

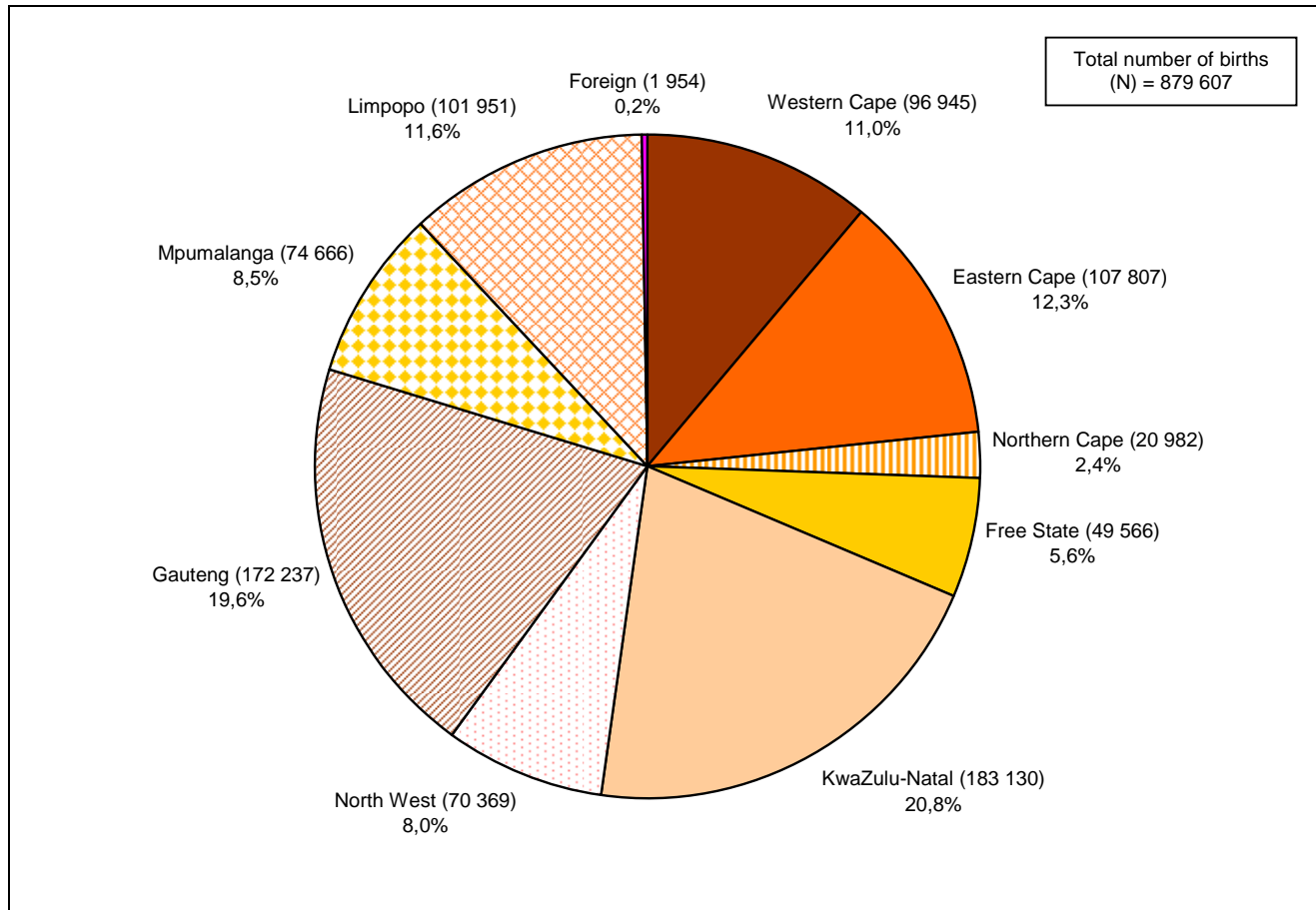
Figure 6: Median age of the mothers by year of birth: 1998–2009



Provincial distribution of births in 2009

The distribution of births that occurred in 2009, classified by province of registration, is given in Figure 7. The highest percentage of 2009 birth occurrences were registered in KwaZulu-Natal and Gauteng, where about 20% of births were registered in each of these provinces (20,8% in KwaZulu-Natal and 19,6% in Gauteng). The lowest proportions of birth occurrences were registered in Northern Cape (2,4%) and Free State (5,6%). Less than 1% of registered births took place outside South Africa. Birth occurrences by province and age of mother for 2009 are provided in Appendix E.

Figure 7: Birth occurrences by province of registration, South Africa: 2009*



*Excluding 100 births with unspecified province

3.2 Birth occurrences as at 30 April 2010

This sub-section provides birth occurrences by sex, citizenship, and month of birth as reflected in the population register on 30 April 2010. It should be noted that the figures from the population register vary each time data are extracted. Therefore, the magnitude of change in the number of births between any two periods of extraction will depend on the number of late birth registrations for each year.

The total number of birth occurrences per year, as shown in Table 6, indicates that birth occurrences fluctuated between 935 000 and one million (per year) over the period 1991–2009. The highest number of births occurred in 2006 and the average number of births per year by 30 April 2010 was about 970 000 (970 171). The average increased by about 10 000 per year compared to the figures observed in April 2009.

Sex

The overall number of birth occurrences provided in Table 6 shows that in general, there were slightly more male births than female births between 1991 and 2009. Sex ratios were between 100 and 101 males per 100 female births.

Citizenship

The majority of birth occurrences for all years were for South African citizens, comprising over 99% of all births in all years. The total number of births to non-South African citizens and those classified as 'other' appear to decrease over time.

Table 6: Birth occurrences (as at 30 April 2010) by sex, year of birth and citizenship, South Africa: 1991–2009

Year	Grand total			SA citizens			Non-SA citizens			Other*		
	Total	Male	Female	Total	Male	Female	Total	Male	Female	Total	Male	Female
1991	947 212	473 661	473 551	945 117	472 577	472 540	1 260	629	631	835	455	380
1992	948 481	473 937	474 544	946 660	473 037	473 623	1 044	526	518	777	374	403
1993	940 622	471 787	468 835	939 137	471 029	468 108	790	409	381	695	349	346
1994	957 476	480 211	477 265	956 216	479 559	476 657	544	277	267	716	375	341
1995	936 849	469 696	467 153	935 457	469 034	466 423	455	222	233	937	440	497
1996	964 889	483 869	481 020	963 756	483 309	480 447	436	201	235	697	359	338
1997	951 632	476 449	475 183	950 837	476 031	474 806	267	147	120	528	271	257
1998	935 691	468 074	467 617	934 965	467 678	467 287	255	140	115	471	256	215
1999	951 381	475 985	475 396	950 682	475 640	475 042	249	118	131	450	227	223
2000	962 695	482 170	480 525	962 362	482 014	480 348	183	92	91	150	64	86
2001	946 513	474 134	472 379	946 317	474 025	472 292	149	85	64	47	24	23
2002	956 204	478 656	477 548	956 021	478 566	477 455	135	68	67	48	22	26
2003	948 083	476 091	471 992	947 921	475 993	471 928	130	76	54	32	22	10
2004	999 638	502 474	497 164	999 504	502 393	497 111	102	67	35	32	14	18
2005	1 033 695	519 971	513 724	1 033 600	519 921	513 679	59	30	29	36	20	16
2006	1 053 863	529 209	524 654	1 053 778	529 166	524 612	50	25	25	35	18	17
2007	1 027 386	517 002	510 384	1 027 299	516 959	510 340	40	23	17	47	20	27
2008	1 033 403	519 480	513 923	1 033 343	519 443	513 900	14	11	3	46	26	20
2009	937 531	471 827	465 704	937 495	471 804	465 691	6	5	1	30	18	12

* Other refers to those people whose citizenship was under investigation and had not yet been resolved on 30 April 2010.

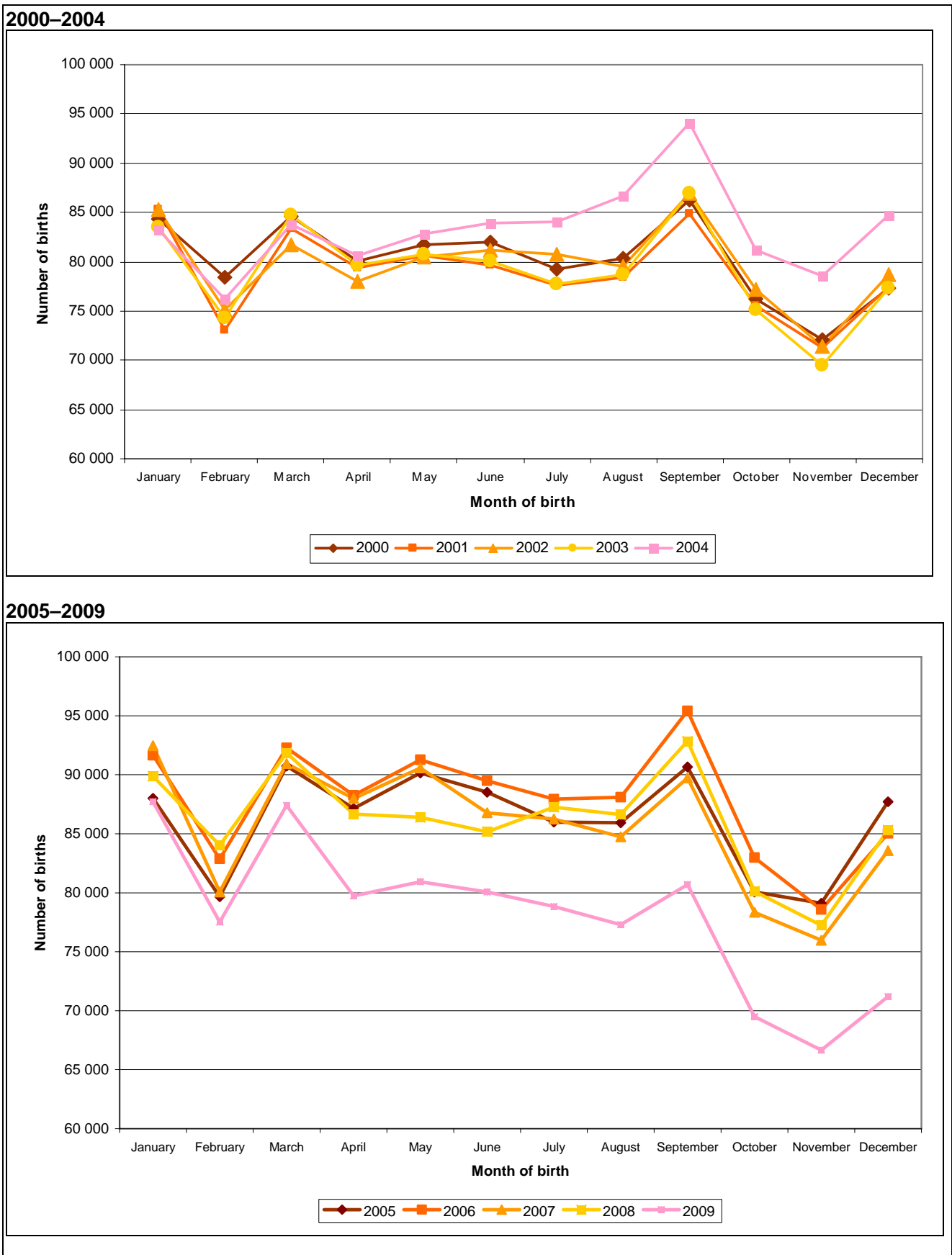
Month of birth

Figure 8 shows birth occurrences from 2000 to 2004 and from 2005 to 2009, classified by month of birth. These two periods have been included to provide a clearer picture of monthly variations when birth occurrences are almost complete for each year (2000 to 2004) and for the most recent period (2005 to 2009). While the pattern is still erratic for the most recent period included (due to births that are yet to be registered), the pattern for the nearly complete period is more consistent.

Focussing on the 2000–2004 period, it is observed that for all the years, most births occurred during the month of September. November and February were the least common months for birth occurrences. A roughly similar pattern is observed for the 2005 to 2009 period. However, it is noted that 2004 and 2009 appear to be outliers in their respective groups. There was a relatively higher increase (5,4%) in birth occurrences between 2003 and 2004 while the 2009 information has been affected by births that are still expected to be registered.

Detailed information of birth occurrences from 1991 to 2009 by month of birth, sex and citizenship is given in Appendix F.

Figure 8: Birth occurrences by year and month of birth, South Africa: 2000–2009



4. Concluding remarks

This statistical release provided information on birth registrations and occurrences in South Africa during the period 1991 to 2009. The completeness of birth registration in the country has improved over time. It is estimated that 91,4% of births that occurred in 2009 (as of 30 April 2010) have been registered and that since 2006, over 80% of births are registered within the year of birth.

While total birth registrations and current registrations decreased between 2008 and 2009 (1,8% and 3,9%, respectively), late registrations increased by 3,6%. Most birth registrations and occurrences in 2009 were recorded in KwaZulu-Natal and Gauteng and the majority of birth occurrences were to women aged 20–34. There were slightly more male than female children and most births occurred during September.

Although the completeness of birth registration has increased, coupled with more births being registered within the year of birth, there is still a need to increase efforts aimed at increasing birth registration in the country. In particular, provinces such as KwaZulu-Natal, Eastern Cape and more recently Gauteng, need more efforts as late registration of births is still high at over 30% in each of these provinces. Furthermore, details of fathers were missing in the majority of cases, a problem that has persisted over a long time. It is, therefore, important that officials at the Department of Home Affairs ensure that all the information required on the BI-24 upon birth registration is completed fully and accurately.

References

South Africa. Births and Deaths Registration Act, 1992 (Act No. 51 of 1992).

Statistics South Africa (Stats SA). 2007. Community Survey, 2007. Statistics South Africa, Pretoria, South Africa.

Statistics South Africa (Stats SA). 2009a. Recorded Live Births, 2008. Statistical Release P0305, Pretoria, Statistics South Africa.

Statistics South Africa (Stats SA). 2009b. Mortality and Causes of Death: Findings from Death Notification, 2007. Statistical Release P0309.3, Pretoria, Statistics South Africa.

United Nations (UN). 2003. MORTPAK FOR WINDOWS, POP/SW/MORTPAK/2003. United Nations, New York.

United Nations Children's Fund (UNICEF). 2002. "Birth Registration", Innocent Digest, No. 9: Innocenti Research Centre, Florence, Italy.

World Health Organization (WHO). 1992. International Statistical Classification of Diseases and Related Health Problems, 10th Revision. WHO, Geneva.

Appendix A: Notice of birth form (BI-24) - reverse side

REPUBLIC OF SOUTH AFRICA
NOTICE OF BIRTH

Must be completed in black ink. Please tick where applicable. Please refer to instruction booklet

INFORMATION FOR MEDICAL AND HEALTH USE ONLY

FILE No.: _____ DATE: _____

Place of birth: Public hospital <input type="checkbox"/>		Private hospital <input type="checkbox"/>		Doctor's office <input type="checkbox"/>		At home <input type="checkbox"/>		Clinic <input type="checkbox"/>		Other	
Facility name						Facility code <input type="text"/> <input type="text"/> <input type="text"/> <input type="text"/> <input type="text"/> <input type="text"/>					

MOTHER

Population group: African <input type="checkbox"/>		Coloured <input type="checkbox"/>		Indian <input type="checkbox"/>		White <input type="checkbox"/>		Other (specify)					
Education (Specify only highest class completed):													
None	Sub A Gr. 1	Sub B Gr. 2	Std. 1 Gr. 3	Std. 2 Gr. 4	Std. 3 Gr. 5	Std. 4 Gr. 6	Std. 5 Gr. 7	Std. 6 Gr. 8 Form 1	Std. 7 Gr. 9 Form 2 NTC 1	Std. 8 Gr. 10 Form 3 NTC 2	Std. 9 Gr. 11 Form 4 NTC 3	Std. 10 Gr. 12 Form 5	Univ. Tech.
Give full details of the kind of work the mother is doing													
What is the main activity of the mother's firm, institution or private employer? Describe the activity in as much detail as possible													

FATHER

Population group: African <input type="checkbox"/>		Coloured <input type="checkbox"/>		Indian <input type="checkbox"/>		White <input type="checkbox"/>		Other (specify)					
Education (Specify only highest class completed):													
None	Sub A Gr. 1	Sub B Gr. 2	Std. 1 Gr. 3	Std. 2 Gr. 4	Std. 3 Gr. 5	Std. 4 Gr. 6	Std. 5 Gr. 7	Std. 6 Gr. 8 Form 1	Std. 7 Gr. 9 Form 2 NTC 1	Std. 8 Gr. 10 Form 3 NTC 2	Std. 9 Gr. 11 Form 4 NTC 3	Std. 10 Gr. 12 Form 5	Univ. Tech.
Give full details of the kind of work the father is doing													
What is the main activity of the father's firm, institution or private employer? Describe the activity in as much detail as possible													

MATERNAL

Live birth <input type="checkbox"/>	Now living <input type="checkbox"/>	Now dead <input type="checkbox"/>	Date of previous live birth <input type="text"/> <input type="text"/> <input type="text"/> <input type="text"/> <input type="text"/> <input type="text"/>						
Antenatal visit <input type="checkbox"/> Y <input type="checkbox"/> N	Clinical estimate of gestation <input type="text"/> <input type="text"/> <input type="text"/> <input type="text"/>	Newly born birth weight g <input type="text"/> <input type="text"/> <input type="text"/> <input type="text"/>							
Mother transferred prior to delivery <input type="checkbox"/> Y <input type="checkbox"/> N	If yes, enter name of facility transferred from		Apgar score: 1 min <input type="text"/> <input type="text"/> 5 min <input type="text"/> <input type="text"/>						
Infant transferred? <input type="checkbox"/> Y <input type="checkbox"/> N	If yes, enter name of facility transferred from								
SELECTED RISK FACTORS FOR THIS PREGNANCY (Complete all items)		Tobacco use during pregnancy <input type="checkbox"/> Y <input type="checkbox"/> N	Average number of cigarettes per day <input type="text"/> <input type="text"/>		Weight gained during pregnancy in kg <input type="text"/> <input type="text"/>				
		Alcohol use during pregnancy <input type="checkbox"/> Y <input type="checkbox"/> N	Average number of drinks per week <input type="text"/> <input type="text"/>						
Hypertensive Disease	Eclampsia	Antepartum Haemorrhage	Anaemia	Diabetic	Cardiac Disease	Renal Disease	Infection	Other	
CONGENITAL ABNORMALITIES OF NEWBORN					<input type="checkbox"/> Y <input type="checkbox"/> N If yes, specify				
METHOD OF THIS DELIVERY (Mark all that apply):									
Vaginal	Vaginal birth after Previous C-section	Primary C-section	Repeat C-section	Forceps	Vacuum				
ABNORMAL CONDITIONS OF NEWBORN (All that apply)									
None	Anaemic (HCT <39HGB <13GL)	Neurological birth injury	Fetal alcohol syndrome	Hyaline membrane disease	Seizures	Meconium aspiration syndrome			
Assisted ventilation <30 min				Assisted >30 min					
Other (specify)									

Appendix B: Total birth registrations by year of registration, province and district municipality

Province and district municipality	Grand total	2009	Late registrations					2004 and below
			Total	2008	2007	2006	2005	
Total - South Africa	1 254 707	879 707	375 000	101 743	31 885	19 510	14 208	207 654
Western Cape								
Cape Winelands	14 290	12 098	2 192	854	215	101	70	952
Central Karoo	1 169	1 121	48	30	9	1	3	5
City of Cape Town	77 729	66 932	10 797	5 290	1 530	804	511	2 662
Eden	11 021	9 076	1 945	731	213	121	95	785
Overberg	3 047	2 368	679	257	66	47	26	283
West Coast	6 326	5 350	976	568	132	81	38	157
Total	113 582	96 945	16 637	7 730	2 165	1 155	743	4 844
Eastern Cape								
Alfred Nzo	15 064	9280	5 784	1 553	717	473	410	2 631
Amatole	49 294	33780	15 514	4 108	1 122	722	485	9 077
Cacadu	7 275	5517	1 758	735	251	166	100	506
Chris Hani	19 409	12901	6 508	2 156	796	551	387	2 618
Nelson Mandela Bay Metro	23 777	19371	4 406	1 665	516	315	217	1 693
O.R.Tambo	34 282	21819	12 463	3 332	1 022	582	424	7 103
Ukhahlamba	7 873	5139	2 734	1 008	325	218	131	1 052
Total	156 974	107 807	49 167	14 557	4 749	3 027	2 154	24 680
Northern Cape								
Frances Baard	9 590	8 178	1 412	461	152	86	72	641
Kgalagadi	5 327	4 502	825	320	70	54	35	346
Namakwa	1 762	1 596	166	100	15	9	2	40
Pixley ka Seme	2 712	2 262	450	197	41	31	10	171
Siyanda	5 239	4 444	795	298	82	35	34	346
Total	24 630	20 982	3 648	1 376	360	215	153	1 544
Free State								
Fezile Dabi	8 376	7 200	1 176	469	109	78	64	456
Lejweleputswa	12 462	10 276	2 186	738	238	138	123	949
Motheo	21 239	16 612	4 627	827	318	199	144	3 139
Thabo Mofutsanyane	17 047	14 263	2 784	830	230	144	109	1 471
Xhariep	1 855	1 215	640	129	69	46	53	343
Total	60 979	49 566	11 413	2 993	964	605	493	6 358

Appendix B: Total birth registrations by year of registration, province and district municipality (concluded)

Province and district municipality	Grand total	2009	Late registrations					2004 and below
			Total	2008	2007	2006	2005	
Total - South Africa	1 254 707	879 707	375 000	101 743	31 885	19 510	14 208	207 654
KwaZulu-Natal								
Amajuba	16 016	10 166	5 850	1 906	574	373	251	2 746
eThekweni	94 776	59 575	35 201	6 210	2 508	1 694	1 277	23 512
iLembe	14 894	10 209	4 685	1 674	731	429	318	1 533
Sisonke	9 273	5 987	3 286	971	361	243	189	1 522
Ugu	25 201	17 455	7 746	2 149	858	571	389	3 779
UMgungundlovu	24 793	16 141	8 652	1 691	673	450	370	5 468
Umkhanyakude	19 210	10 955	8 255	2 822	886	841	491	3 215
Umsinyathi	10 089	6 070	4 019	1 215	444	253	190	1 917
Uthukela	19 275	12 128	7 147	1 908	573	347	213	4 106
Uthungulu	26 819	18 640	8 179	3 725	1 114	538	428	2 374
Zululand	32 021	15 804	16 217	4 305	2 220	1 492	1 444	6 756
Total	292 367	183 130	109 237	28 576	10 942	7 231	5 560	56 928
North West								
Bojanala	40 081	31 321	8 760	3 834	903	532	297	3 194
Central	12 694	8 803	3 891	1 427	360	231	162	1 711
Dr Kenneth Kaunda	20 500	14 843	5 657	1 652	491	305	219	2 990
Dr Ruth Segomotsi Mompati	20 419	15 402	5 017	2 147	409	222	177	2 062
Total	93 694	70 369	23 325	9 060	2 163	1 290	855	9 957
Gauteng								
City of Johannesburg	73 000	58 932	14 068	4 610	1 472	852	628	6 506
City of Tshwane	76 156	30 092	46 064	1 704	503	351	232	43 274
Ekurhuleni	55 973	45 372	10 601	3 729	1 363	826	563	4 120
Metsweding	8 356	5 756	2 600	654	219	108	79	1 540
Sedibeng	25 444	21 011	4 433	1 610	523	302	249	1 749
West Rand	14 781	11 074	3 707	956	384	201	168	1 998
Total	253 710	172 237	81 473	13 263	4 464	2 640	1 919	59 187
Mpumalanga								
Ehlanzeni	51 273	37 448	13 825	5 864	1 537	866	623	4 935
Gert Sibande	20 609	15 236	5 373	3 069	643	347	264	1 050
Nkangala	28 225	21 982	6 243	3 124	710	368	259	1 782
Total	100 107	74 666	25 441	12 057	2 890	1 581	1 146	7 767
Limpopo								
Capricorn	42 721	27 264	15 457	2 507	674	373	254	11 649
Greater Sekhukhune	18 469	13 294	5 175	1 785	437	199	129	2 625
Mopani	20 370	16 908	3 462	1 514	348	186	123	1 291
Vhembe	38 773	30 699	8 074	3 691	905	516	353	2 609
Waterberg	16 299	13 786	2 513	1 306	358	196	113	540
Total	136 632	101 951	34 681	10 803	2 722	1 470	972	18 714
Foreign	5 880	1 954	3 926	1 300	450	287	205	1 684
Unspecified	16 152	100	16 052	28	16	9	8	15 991

Appendix C: Total birth registrations by sex, province, district municipality and registration status, 2009

Province and district municipality	Total registrations			Current registrations			Late registrations		
	Total	Male	Female	Total	Male	Female	Total	Male	Female
Total - South Africa	1 254 707	629 231	625 476	879 707	442 401	437 306	375 000	186 830	188 170
Western Cape									
Cape Winelands	14 290	7 188	7 102	12 098	6 125	5 973	2 192	1 063	1 129
Central Karoo	1 169	604	565	1 121	581	540	48	23	25
City of Cape Town	77 729	39 478	38 251	66 932	33 990	32 942	10 797	5 488	5 309
Eden	11 021	5 512	5 509	9 076	4 566	4 510	1 945	946	999
Overberg	3 047	1 549	1 498	2 368	1 212	1 156	679	337	342
West Coast	6 326	3 151	3 175	5 350	2 659	2 691	976	492	484
Total	113 582	57 482	56 100	96 945	49 133	47 812	16 637	8 349	8 288
Eastern Cape									
Alfred Nzo	15 064	7 583	7 481	9 280	4 690	4 590	5 784	2 893	2 891
Amatole	49 294	24 797	24 497	33 780	17 053	16 727	15 514	7 744	7 770
Cacadu	7 275	3 608	3 667	5 517	2 752	2 765	1 758	856	902
Chris Hani	19 409	9 768	9 641	12 901	6 484	6 417	6 508	3 284	3 224
Nelson Mandela Bay Metro	23 777	12 013	11 764	19 371	9 771	9 600	4 406	2 242	2 164
O.R.Tambo	34 282	17 369	16 913	21 819	11 130	10 689	12 463	6 239	6 224
Ukhahlamba	7 873	3 923	3 950	5 139	2 556	2 583	2 734	1 367	1 367
Total	156 974	79 061	77 913	107 807	54 436	53 371	49 167	24 625	24 542
Northern Cape									
Frances Baard	9 590	4 883	4 707	8 178	4 140	4 038	1 412	743	669
Kgalagadi	5 327	2 744	2 583	4 502	2 339	2 163	825	405	420
Namakwa	1 762	912	850	1 596	828	768	166	84	82
Pixley ka Seme	2 712	1 355	1 357	2 262	1 125	1 137	450	230	220
Siyanda	5 239	2 612	2 627	4 444	2 209	2 235	795	403	392
Total	24 630	12 506	12 124	20 982	10 641	10 341	3 648	1 865	1 783
Free State									
Fezile Dabi	8 376	4 219	4 157	7 200	3 635	3 565	1 176	584	592
Lejweleputswa	12 462	6 314	6 148	10 276	5 202	5 074	2 186	1 112	1 074
Motheo	21 239	10 614	10 625	16 612	8 382	8 230	4 627	2 232	2 395
Thabo Mofutsanyane	17 047	8 585	8 462	14 263	7 221	7 042	2 784	1 364	1 420
Xhariesep	1 855	922	933	1 215	620	595	640	302	338
Total	60 979	30 654	30 325	49 566	25 060	24 506	11 413	5 594	5 819

Appendix C: Total birth registrations by sex, province, district municipality and registration status, 2009 (concluded)

Province and district municipality	Total registrations			Current registrations			Late registrations		
	Total	Male	Female	Total	Male	Female	Total	Male	Female
Total - South Africa	1 254 707	629 231	625 476	879 707	442 401	437 306	375 000	186 830	188 170
KwaZulu-Natal									
Amajuba	16 016	7 936	8 080	10 166	5 007	5 159	5 850	2 929	2 921
eThekweni	94 776	47 398	47 378	59 575	29 789	29 786	35 201	17 609	17 592
iLembe	14 894	7 569	7 325	10 209	5 185	5 024	4 685	2 384	2 301
Sisonke	9 273	4 609	4 664	5 987	3 002	2 985	3 286	1 607	1 679
Ugu	25 201	12 661	12 540	17 455	8 685	8 770	7 746	3 976	3 770
UMgungundlovu	24 793	12 353	12 440	16 141	8 047	8 094	8 652	4 306	4 346
Umkhanyakude	19 210	9 742	9 468	10 955	5 618	5 337	8 255	4 124	4 131
Umzinyathi	10 089	4 932	5 157	6 070	2 928	3 142	4 019	2 004	2 015
Uthukela	19 275	9 665	9 610	12 128	6 134	5 994	7 147	3 531	3 616
Uthungulu	26 819	13 370	13 449	18 640	9 299	9 341	8 179	4 071	4 108
Zululand	32 021	15 529	16 492	15 804	7 830	7 974	16 217	7 699	8 518
Total	292 367	145 764	146 603	183 130	91 524	91 606	109 237	54 240	54 997
North West									
Bojanala	40 081	20 367	19 714	31 321	15 844	15 477	8 760	4 523	4 237
Central	12 694	6 409	6 285	8 803	4 440	4 363	3 891	1 969	1 922
Dr Kenneth Kaunda	20 500	10 262	10 238	14 843	7 446	7 397	5 657	2 816	2 841
Dr Ruth Segomotsi Mompoti	20 419	10 270	10 149	15 402	7 764	7 638	5 017	2 506	2 511
Total	93 694	47 308	46 386	70 369	35 494	34 875	23 325	11 814	11 511
Gauteng									
City of Johannesburg	73 000	36 655	36 345	58 932	29 544	29 388	14 068	7 111	6 957
City of Tshwane	76 156	37 690	38 466	30 092	15 260	14 832	46 064	22 430	23 634
Ekurhuleni	55 973	27 937	28 036	45 372	22 688	22 684	10 601	5 249	5 352
Metsweding	8 356	4 164	4 192	5 756	2 886	2 870	2 600	1 278	1 322
Sedibeng	25 444	12 652	12 792	21 011	10 477	10 534	4 433	2 175	2 258
West Rand	14 781	7 412	7 369	11 074	5 564	5 510	3 707	1 848	1 859
Total	253 710	126 510	127 200	172 237	86 419	85 818	81 473	40 091	41 382
Mpumalanga									
Ehlanzeni	51 273	25 733	25 540	37 448	18 766	18 682	13 825	6 967	6 858
Gert Sibande	20 609	10 345	10 264	15 236	7 647	7 589	5 373	2 698	2 675
Nkangala	28 225	14 145	14 080	21 982	10 988	10 994	6 243	3 157	3 086
Total	100 107	50 223	49 884	74 666	37 401	37 265	25 441	12 822	12 619
Limpopo									
Capricorn	42 721	21 531	21 190	27 264	13 678	13 586	15 457	7 853	7 604
Greater Sekhukhune	18 469	9 194	9 275	13 294	6 623	6 671	5 175	2 571	2 604
Mopani	20 370	10 234	10 136	16 908	8 516	8 392	3 462	1 718	1 744
Vhembe	38 773	19 467	19 306	30 699	15 420	15 279	8 074	4 047	4 027
Waterberg	16 299	8 281	8 018	13 786	7 020	6 766	2 513	1 261	1 252
Total	136 632	68 707	67 925	101 951	51 257	50 694	34 681	17 450	17 231
Foreign	5 880	3 010	2 870	1 954	989	965	3 926	2 021	1 905
Unspecified	16 152	8 006	8 146	100	47	53	16 052	7 959	8 093

Appendix D: Birth occurrences by year of birth and age of mother, 2005–2009*

Age of mother	Year of birth				
	2005	2006	2007	2008	2009
15-19	146 587	144 370	137 156	135 641	109 804
20-24	285 184	298 829	287 467	284 336	246 916
25-29	240 627	248 719	250 636	259 153	231 135
30-34	186 124	193 342	186 898	185 743	162 782
35-39	112 134	109 993	111 581	109 032	93 833
40-44	44 145	38 915	34 901	34 609	29 583
45-49	8 314	7 427	6 336	5 654	4 086
50-54	1 316	1 128	805	587	347
Unspecified / outside the 15–54 age range	4 197	3 962	3 307	2 662	1 221
Total	1 028 628	1 046 685	1 019 087	1 017 417	879 707

* Figures include updated birth occurrences as at 28 February 2010

Appendix E: Birth occurrences by province of registration and age of mother, 2009

Province of birth registration	Age of mother									Total
	15-19	20-24	25-29	30-34	35-39	40-44	45-49	50-54	Unsp.*	
Western Cape	10 447	25 313	27 070	19 930	10 994	2 848	204	5	134	96 945
Eastern Cape	16 277	31 933	25 935	17 753	10 943	3 975	664	87	240	107 807
Northern Cape	3 241	5 900	5 332	3 661	2 066	689	62	4	27	20 982
Free State	6 601	14 575	13 301	8 544	4 879	1 505	125	3	33	49 566
KwaZulu-Natal	25 532	56 231	46 232	30 487	17 019	5 560	1 470	182	417	183 130
North West	8 745	20 407	18 299	12 352	7 718	2 531	245	16	56	70 369
Gauteng	14 198	40 622	49 858	39 086	21 797	5 951	497	16	212	172 237
Mpumalanga	10 985	21 787	18 944	12 491	7 440	2 616	328	17	58	74 666
Limpopo	13 724	29 977	25 668	17 650	10 550	3 835	487	17	43	101 951
Foreign	43	145	475	809	409	69	4	0	0	1 954
Unspecified	11	26	21	19	18	4	0	0	1	100
Total	109 804	246 916	231 135	162 782	93 833	29 583	4 086	347	1 221	879 707

* Unspecified or outside the 15–54 age range

Appendix F: Total birth occurrences by sex, month and citizenship, 1991–1993*

Year	Month	Grand total	SA citizens		Non-SA citizens		Other**		Total	
			Male	Female	Male	Female	Male	Female	Male	Female
1991	January	82 560	41 159	41 169	73	67	49	43	41 281	41 279
	February	73 238	36 783	36 292	50	49	32	32	36 865	36 373
	March	81 420	40 495	40 744	57	53	37	34	40 589	40 831
	April	77 538	38 607	38 771	47	41	38	34	38 692	38 846
	May	78 956	39 303	39 450	51	64	51	37	39 405	39 551
	June	81 914	41 099	40 630	53	48	46	38	41 198	40 716
	July	76 081	38 018	37 899	56	46	32	30	38 106	37 975
	August	79 373	39 760	39 449	44	50	39	31	39 843	39 530
	September	90 734	45 041	45 508	55	63	36	31	45 132	45 602
	October	75 576	37 699	37 724	50	53	30	20	37 779	37 797
	November	70 728	35 049	35 535	48	42	30	24	35 127	35 601
	December	79 094	39 564	39 369	45	55	35	26	39 644	39 450
	Total		947 212	472 577	472 540	629	631	455	380	473 661
1992	January	79 820	39 912	39 713	50	56	43	46	40 005	39 815
	February	79 407	39 802	39 434	38	45	44	44	39 884	39 523
	March	83 993	41 667	42 184	34	40	35	33	41 736	42 257
	April	79 643	39 695	39 781	52	46	34	35	39 781	39 862
	May	78 466	39 096	39 218	45	40	29	38	39 170	39 296
	June	81 236	40 526	40 581	40	40	26	23	40 592	40 644
	July	76 459	38 010	38 279	48	47	39	36	38 097	38 362
	August	78 922	39 266	39 526	33	40	25	32	39 324	39 598
	September	88 568	44 257	44 145	61	42	32	31	44 350	44 218
	October	74 337	37 165	37 030	47	37	32	26	37 244	37 093
	November	69 660	34 570	34 966	39	41	18	26	34 627	35 033
	December	77 970	39 071	38 766	39	44	17	33	39 127	38 843
	Total		948 481	473 037	473 623	526	518	374	403	473 937
1993	January	78 184	39 090	38 957	42	42	29	24	39 161	39 023
	February	70 023	35 168	34 728	34	37	31	25	35 233	34 790
	March	80 974	40 395	40 440	40	33	33	33	40 468	40 506
	April	75 808	38 002	37 693	32	26	23	32	38 057	37 751
	May	76 380	38 129	38 116	35	33	34	33	38 198	38 182
	June	80 269	40 261	39 877	41	28	33	29	40 335	39 934
	July	76 354	38 206	38 031	33	33	27	24	38 266	38 088
	August	79 779	40 044	39 621	34	33	20	27	40 098	39 681
	September	89 414	44 729	44 567	31	28	32	27	44 792	44 622
	October	76 669	38 307	38 237	26	28	34	37	38 367	38 302
	November	73 892	36 948	36 833	34	28	21	28	37 003	36 889
	December	82 876	41 750	41 008	27	32	32	27	41 809	41 067
	Total		940 622	471 029	468 108	409	381	349	346	471 787

* Figures include updated birth occurrences as at 30 April 2010 (population register)

** Other refers to those people whose citizenship was under investigation and had not yet been resolved on 30 April 2010

Appendix F.1: Total birth occurrences by sex, month and citizenship, 1994–1996*

Year	Month	Grand total	SA citizens		Non-SA citizens		Other**		Total	
			Male	Female	Male	Female	Male	Female	Male	Female
1994	January	80 532	40 450	39 961	29	20	39	33	40 518	40 014
	February	72 972	36 563	36 321	19	15	36	18	36 618	36 354
	March	80 231	40 192	39 930	26	21	34	28	40 252	39 979
	April	81 322	40 575	40 649	22	15	28	33	40 625	40 697
	May	79 197	39 660	39 428	23	26	29	31	39 712	39 485
	June	82 194	40 951	41 127	28	27	33	28	41 012	41 182
	July	77 135	38 748	38 278	21	23	39	26	38 808	38 327
	August	80 768	40 472	40 192	19	27	22	36	40 513	40 255
	September	88 803	44 544	44 155	26	27	30	21	44 600	44 203
	October	77 682	39 032	38 544	20	29	24	33	39 076	38 606
	November	73 477	36 660	36 723	21	16	26	31	36 707	36 770
	December	83 163	41 712	41 349	23	21	35	23	41 770	41 393
	Total		957 476	479 559	476 657	277	267	375	341	480 211
1995	January	80 144	40 141	39 882	18	22	39	42	40 198	39 946
	February	70 360	35 292	34 957	17	17	36	41	35 345	35 015
	March	78 597	39 412	39 066	21	17	43	38	39 476	39 121
	April	75 290	37 489	37 687	15	16	43	40	37 547	37 743
	May	77 967	39 231	38 622	24	19	24	47	39 279	38 688
	June	80 618	40 530	39 966	23	26	41	32	40 594	40 024
	July	77 106	38 376	38 616	15	11	38	50	38 429	38 677
	August	79 542	39 977	39 462	10	26	28	39	40 015	39 527
	September	88 107	43 990	43 960	27	23	46	61	44 063	44 044
	October	76 473	38 064	38 303	22	20	26	38	38 112	38 361
	November	71 998	36 062	35 836	12	19	32	37	36 106	35 892
	December	80 647	40 470	40 066	18	17	44	32	40 532	40 115
	Total		936 849	469 034	466 423	222	233	440	497	469 696
1996	January	84 071	41 995	41 968	17	20	34	37	42 046	42 025
	February	73 969	37 106	36 761	21	17	43	21	37 170	36 799
	March	81 489	40 528	40 882	12	15	27	25	40 567	40 922
	April	78 119	39 336	38 706	14	25	17	21	39 367	38 752
	May	79 846	39 926	39 823	20	20	24	33	39 970	39 876
	June	83 646	42 019	41 540	16	16	29	26	42 064	41 582
	July	79 417	39 659	39 669	20	20	24	25	39 703	39 714
	August	81 772	41 005	40 653	13	27	41	33	41 059	40 713
	September	90 535	45 271	45 157	20	17	36	34	45 327	45 208
	October	77 157	38 870	38 198	18	20	27	24	38 915	38 242
	November	72 414	36 146	36 196	9	20	25	18	36 180	36 234
	December	82 454	41 448	40 894	21	18	32	41	41 501	40 953
	Total		964 889	483 309	480 447	201	235	359	338	483 869

* Figures include updated birth occurrences as at 30 April 2010 (population register)

** Other refers to those people whose citizenship was under investigation and had not yet been resolved on 30 April 2010

Appendix F.2: Total birth occurrences by sex, month and citizenship, 1997–1999*

Year	Month	Grand total	SA citizens		Non-SA citizens		Other**		Total	
			Male	Female	Male	Female	Male	Female	Male	Female
1997	January	82 372	41 227	41 071	10	13	21	30	41 258	41 114
	February	73 371	36 678	36 629	10	8	28	18	36 716	36 655
	March	83 866	41 954	41 814	14	14	41	29	42 009	41 857
	April	78 624	39 135	39 428	11	15	17	18	39 163	39 461
	May	78 495	39 230	39 203	14	14	16	18	39 260	39 235
	June	80 734	40 213	40 458	10	13	24	16	40 247	40 487
	July	79 664	39 866	39 738	17	7	14	22	39 897	39 767
	August	80 227	39 970	40 185	16	5	22	29	40 008	40 219
	September	88 183	44 300	43 820	12	10	19	22	44 331	43 852
	October	75 551	38 025	37 474	8	5	20	19	38 053	37 498
	November	70 557	35 451	35 041	11	6	25	23	35 487	35 070
	December	79 988	39 982	39 945	14	10	24	13	40 020	39 968
	Total		951 632	476 031	474 806	147	120	271	257	476 449
1998	January	81 088	40 324	40 678	18	10	31	27	40 373	40 715
	February	73 258	36 600	36 600	8	7	31	12	36 639	36 619
	March	82 536	41 297	41 177	10	16	23	13	41 330	41 206
	April	77 357	38 377	38 923	13	7	13	24	38 403	38 954
	May	78 222	39 309	38 844	12	11	26	20	39 347	38 875
	June	79 309	39 646	39 616	13	5	20	9	39 679	39 630
	July	76 873	38 657	38 157	4	15	21	19	38 682	38 191
	August	78 555	39 035	39 458	15	11	20	16	39 070	39 485
	September	86 825	43 571	43 194	15	10	18	17	43 604	43 221
	October	74 783	37 409	37 309	10	12	21	22	37 440	37 343
	November	69 416	34 813	34 541	11	6	21	24	34 845	34 571
	December	77 469	38 640	38 790	11	5	11	12	38 662	38 807
	Total		935 691	467 678	467 287	140	115	256	215	468 074
1999	January	79 131	39 478	39 593	8	12	23	17	39 509	39 622
	February	70 407	35 342	35 034	4	8	10	9	35 356	35 051
	March	81 843	40 744	41 025	10	13	32	19	40 786	41 057
	April	80 979	40 301	40 614	13	10	19	22	40 333	40 646
	May	81 742	40 743	40 926	13	15	28	17	40 784	40 958
	June	82 055	41 016	40 973	4	15	25	22	41 045	41 010
	July	78 723	39 399	39 257	18	7	19	23	39 436	39 287
	August	79 656	39 886	39 699	10	17	18	26	39 914	39 742
	September	87 445	43 867	43 522	9	9	17	21	43 893	43 552
	October	75 786	37 709	38 019	8	15	16	19	37 733	38 053
	November	72 493	36 616	35 844	6	4	11	12	36 633	35 860
	December	81 121	40 539	40 536	15	6	9	16	40 563	40 558
	Total		951 381	475 640	475 042	118	131	227	223	475 985

* Figures include updated birth occurrences as at 30 April 2010 (population register)

** Other refers to those people whose citizenship was under investigation and had not yet been resolved on 30 April 2010

Appendix F.3: Total birth occurrences by sex, month and citizenship, 2000–2002*

Year	Month	Grand total	SA citizens		Non-SA citizens		Other**		Total	
			Male	Female	Male	Female	Male	Female	Male	Female
2000	January	84 279	42 184	42 055	6	14	8	12	42 198	42 081
	February	78 431	39 376	39 029	5	1	9	11	39 390	39 041
	March	84 633	42 339	42 252	9	11	7	15	42 355	42 278
	April	80 125	40 017	40 077	8	4	9	10	40 034	40 091
	May	81 726	40 749	40 931	9	11	10	16	40 768	40 958
	June	81 994	41 085	40 883	6	8	5	4	41 096	40 895
	July	79 248	39 617	39 610	5	7	5	3	39 627	39 620
	August	80 301	40 364	39 916	6	6	3	5	40 373	39 927
	September	86 291	43 250	43 017	10	8	2	4	43 262	43 029
	October	76 260	38 299	37 940	9	6	4	2	38 312	37 948
	November	72 069	35 999	36 051	8	6	2	3	36 009	36 060
	December	77 343	38 735	38 587	11	9	0	1	38 746	38 597
	Total		962 695	482 014	480 348	92	91	64	86	482 170
2001	January	85 316	42 775	42 529	7	2	2	1	42 784	42 532
	February	73 030	36 363	36 648	11	5	3	0	36 377	36 653
	March	83 373	41 868	41 485	8	8	1	3	41 877	41 496
	April	79 437	39 758	39 659	7	6	4	3	39 769	39 668
	May	80 651	40 180	40 454	7	5	4	1	40 191	40 460
	June	79 664	39 660	39 990	6	5	1	2	39 667	39 997
	July	77 600	39 156	38 426	8	6	3	1	39 167	38 433
	August	78 357	39 162	39 178	7	4	1	5	39 170	39 187
	September	84 822	42 635	42 182	3	2	0	0	42 638	42 184
	October	75 488	37 526	37 937	9	10	2	4	37 537	37 951
	November	71 316	35 908	35 394	7	3	2	2	35 917	35 399
	December	77 459	39 034	38 410	5	8	1	1	39 040	38 419
	Total		946 513	474 025	472 292	85	64	24	23	474 134
2002	January	85 248	42 787	42 439	7	8	3	4	42 797	42 451
	February	75 069	37 593	37 465	3	6	1	1	37 597	37 472
	March	81 710	40 637	41 060	6	4	2	1	40 645	41 065
	April	77 954	38 814	39 119	8	9	2	2	38 824	39 130
	May	80 448	40 080	40 356	6	5	1	0	40 087	40 361
	June	81 212	40 704	40 493	5	3	1	6	40 710	40 502
	July	80 722	40 235	40 477	2	2	4	2	40 241	40 481
	August	79 518	40 241	39 261	8	5	1	2	40 250	39 268
	September	86 950	43 728	43 204	4	10	2	2	43 734	43 216
	October	77 196	38 418	38 760	10	5	2	1	38 430	38 766
	November	71 476	35 896	35 571	2	3	2	2	35 900	35 576
	December	78 701	39 433	39 250	7	7	1	3	39 441	39 260
	Total		956 204	478 566	477 455	68	67	22	26	478 656

* Figures include updated birth occurrences as at 30 April 2010 (population register)

** Other refers to those people whose citizenship was under investigation and had not yet been resolved on 30 April 2010

Appendix F.4: Total birth occurrences by sex, month and citizenship, 2003–2005*

Year	Month	Grand total	SA citizens		Non-SA citizens		Other**		Total	
			Male	Female	Male	Female	Male	Female	Male	Female
2003	January	83 501	41 981	41 507	6	6	1	0	41 988	41 513
	February	74 241	37 219	37 008	7	4	2	1	37 228	37 013
	March	84 692	42 445	42 236	4	6	1	0	42 450	42 242
	April	79 659	39 998	39 649	7	5	0	0	40 005	39 654
	May	80 782	40 596	40 168	9	5	3	1	40 608	40 174
	June	80 015	40 160	39 841	4	7	2	1	40 166	39 849
	July	77 762	39 005	38 745	4	4	2	2	39 011	38 751
	August	78 642	39 399	39 235	3	2	2	1	39 404	39 238
	September	86 907	43 778	43 114	9	0	4	2	43 791	43 116
	October	75 111	37 541	37 549	11	7	2	1	37 554	37 557
	November	69 482	34 901	34 568	5	5	2	1	34 908	34 574
	December	77 289	38 970	38 308	7	3	1	0	38 978	38 311
		Total	948 083	475 993	471 928	76	54	22	10	476 091
2004	January	83 173	41 969	41 198	3	3	0	0	41 972	41 201
	February	76 237	38 582	37 647	4	3	1	0	38 587	37 650
	March	83 840	42 063	41 760	10	2	1	4	42 074	41 766
	April	80 606	40 590	40 006	7	2	0	1	40 597	40 009
	May	82 788	41 415	41 356	6	3	3	5	41 424	41 364
	June	83 935	42 021	41 901	6	4	1	2	42 028	41 907
	July	83 991	42 301	41 677	7	3	1	2	42 309	41 682
	August	86 606	43 644	42 950	9	1	1	1	43 654	42 952
	September	94 071	47 161	46 902	3	2	1	2	47 165	46 906
	October	81 126	40 666	40 448	9	3	0	0	40 675	40 451
	November	78 542	39 320	39 212	0	6	4	0	39 324	39 218
	December	84 723	42 661	42 054	3	3	1	1	42 665	42 058
		Total	999 638	502 393	497 111	67	35	14	18	502 474
2005	January	87 997	44 507	43 480	1	3	3	3	44 511	43 486
	February	79 663	40 102	39 553	3	2	2	1	40 107	39 556
	March	90 730	45 371	45 347	0	7	2	3	45 373	45 357
	April	87 148	43 661	43 478	4	5	0	0	43 665	43 483
	May	90 150	45 343	44 798	3	2	3	1	45 349	44 801
	June	88 527	44 240	44 282	4	1	0	0	44 244	44 283
	July	85 981	43 207	42 766	3	1	1	3	43 211	42 770
	August	85 934	43 450	42 475	2	3	3	1	43 455	42 479
	September	90 671	45 589	45 075	4	1	2	0	45 595	45 076
	October	80 069	40 401	39 664	0	0	2	2	40 403	39 666
	November	79 119	39 932	39 180	3	1	2	1	39 937	39 182
	December	87 706	44 118	43 581	3	3	0	1	44 121	43 585
		Total	1 033 695	519 921	513 679	30	29	20	16	519 971

* Figures include updated birth occurrences as at 30 April 2010 (population register)

** Other refers to those people whose citizenship was under investigation and had not yet been resolved on 30 April 2010

Appendix F.5: Total birth occurrences by sex, month and citizenship, 2006–2008*

Year	Month	Grand total	SA citizens		Non-SA citizens		Other**		Total	
			Male	Female	Male	Female	Male	Female	Male	Female
2006	January	91 656	46 051	45 593	5	5	2	0	46 058	45 598
	February	82 868	41 402	41 457	3	4	1	1	41 406	41 462
	March	92 278	46 146	46 128	0	2	2	0	46 148	46 130
	April	88 267	44 160	44 094	1	4	5	3	44 166	44 101
	May	91 269	45 894	45 366	5	2	2	0	45 901	45 368
	June	89 492	44 899	44 590	2	0	0	1	44 901	44 591
	July	87 923	44 078	43 840	1	3	0	1	44 079	43 844
	August	88 105	44 150	43 951	1	0	0	3	44 151	43 954
	September	95 420	47 899	47 515	2	1	1	2	47 902	47 518
	October	82 982	41 702	41 275	2	1	1	1	41 705	41 277
	November	78 577	39 766	38 805	1	2	0	3	39 767	38 810
	December	85 026	43 019	41 998	2	1	4	2	43 025	42 001
		Total	1 053 863	529 166	524 612	25	25	18	17	529 209
2007	January	92 455	46 361	46 090	1	0	2	1	46 364	46 091
	February	80 071	40 409	39 660	1	1	0	0	40 410	39 661
	March	90 939	45 733	45 195	4	2	2	3	45 739	45 200
	April	87 992	44 057	43 930	1	1	2	1	44 060	43 932
	May	90 573	45 414	45 146	2	3	2	6	45 418	45 155
	June	86 772	43 862	42 904	2	2	0	2	43 864	42 908
	July	86 241	43 218	43 018	2	1	2	0	43 222	43 019
	August	84 739	42 584	42 149	2	0	2	2	42 588	42 151
	September	89 734	45 266	44 454	2	3	2	7	45 270	44 464
	October	78 333	39 611	38 715	0	2	2	3	39 613	38 720
	November	75 976	38 170	37 800	2	0	2	2	38 174	37 802
	December	83 561	42 274	41 279	4	2	2	0	42 280	41 281
		Total	1 027 386	516 959	510 340	23	17	20	27	517 002
2008	January	89 876	45 238	44 632	0	0	2	4	45 240	44 636
	February	84 027	42 298	41 722	1	2	3	1	42 302	41 725
	March	91 858	45 943	45 910	0	0	3	2	45 946	45 912
	April	86 663	43 469	43 186	2	0	3	3	43 474	43 189
	May	86 397	43 251	43 137	1	0	4	4	43 256	43 141
	June	85 171	42 828	42 338	1	1	2	1	42 831	42 340
	July	87 245	43 573	43 670	0	0	1	1	43 574	43 671
	August	86 633	43 736	42 892	1	0	3	1	43 740	42 893
	September	92 853	46 905	45 947	0	0	1	0	46 906	45 947
	October	80 126	40 091	40 028	3	0	2	2	40 096	40 030
	November	77 246	38 983	38 261	0	0	1	1	38 984	38 262
	December	85 308	43 128	42 177	2	0	1	0	43 131	42 177
		Total	1 033 403	519 443	513 900	11	3	26	20	519 480

* Figures include updated birth occurrences as at 30 April 2010 (population register)

** Other refers to those people whose citizenship was under investigation and had not yet been resolved on 30 April 2010

Appendix F.6: Total birth occurrences by sex, month and citizenship, 2009*

Year	Month	Grand total	SA citizens		Non-SA citizens		Other**		Total	
			Male	Female	Male	Female	Male	Female	Male	Female
2009	January	87 719	44 286	43 429	3	0	1	0	44 290	43 429
	February	77 507	39 009	38 493	1	1	2	1	39 012	38 495
	March	87 406	44 085	43 316	0	0	3	2	44 088	43 318
	April	79 729	40 026	39 701	0	0	2	0	40 028	39 701
	May	80 921	40 387	40 530	0	0	2	2	40 389	40 532
	June	80 069	40 403	39 664	0	0	1	1	40 404	39 665
	July	78 829	39 413	39 414	0	0	2	0	39 415	39 414
	August	77 296	38 867	38 425	1	0	1	2	38 869	38 427
	September	80 693	40 586	40 104	0	0	2	1	40 588	40 105
	October	69 498	35 153	34 344	0	0	0	1	35 153	34 345
	November	66 665	33 600	33 061	0	0	2	2	33 602	33 063
	December	71 199	35 989	35 210	0	0	0	0	35 989	35 210
		Total	937 531	471 804	465 691	5	1	18	12	471 827

* Figures include updated birth occurrences as at 30 April 2010 (population register)

** Other refers to those people whose citizenship was under investigation and had not yet been resolved on 30 April 2010

Explanatory notes

Sources of data

The Department of Home Affairs (DHA) provides Statistics South Africa (Stats SA) with information on recorded live births. Two sets of birth statistics are provided: registration-based and occurrence-based data. These data sets both come from the Nucleus Bureau of the DHA. When the officials at the various offices of the Department of Home Affairs capture the information about a birth, they do so directly onto the database at Nucleus Bureau. These transactions are used to update the database of the national population register.

For the purpose of producing vital statistics, the following system is followed: everyday all the civil transactions carried out at all the Department of Home Affairs offices are written onto a cassette. At the end of every month, a combined set of cassettes is created containing all the transactions done for the month. These transactions are downloaded and the birth transactions are extracted for processing at Stats SA. The year in which the births are registered is the registration year. Using this information, Stats SA provides the breakdown of the registered births according to the year in which the births occurred.

While birth information sent to Stats SA is the same as that in the population register, there is a difference of format between the two. On one hand, Stats SA's data are based on births registered during the year (registration-based), while on the other hand, entries in the population register reflect the date of birth. The date of registration of birth is not stored on the population registration file. For this reason, the population register can only be used to obtain births data broken down by date of birth (occurrence-based).

By continuously updating the population register for late registration, the occurrence-based data from the population register get closer and closer to the true level of births. In a situation where birth registrations are complete (with very few late registrations), the occurrence-based perspective (with births updated for late registrations) will be very similar to the registration-based perspective (with all birth registrations considered, irrespective of the year of birth). However, if there is a large number of late registrations, the two perspectives will become widely dissimilar. With improvements in birth registration, the recorded data from the two sources will gradually converge.

The South African population register

The South African population register covers births, deaths, identity, marriages, divorces and movements of all South African citizens and permanent residents. The Births and Deaths Registration Act, 1992 (Act No. 51 of 1992) guides the registration of births and deaths throughout South Africa. The Act was subsequently amended in 1997 (Act No. 67 of 1997) and in 1998 (Act No. 43 of 1998). Another Act pertinent to the population register is the Identification Act, 1997 (Act No. 68 of 1997). This Act repealed previous Identification Acts (Act No. 72 of 1986, Act No. 21 of 1991, Act No. 4 of 1993, and Act No. 47 of 1995). Thus, each of the Acts dealing with any aspect of civil registration has implications for the information recorded into the Population Register.

From these Acts and amendments, the following persons and particulars are eligible to be included on the population register:

- All children born of South African citizens and permanent residents when the notice of the birth is given within one year after the birth of the child.
- All children born of South African citizens and permanent residents when the notice of the birth is given one year after the birth of the child together with the prescribed requirement for a late registration of birth.
- All South African citizens and permanent residents who, upon attainment of the age of 16, applied for and were granted identification cards (or books).

- All South African citizens and permanent residents who die at any age after birth.
- All South African citizens and permanent residents who depart permanently from South Africa.

Persons whose particulars are not eligible for inclusion on the population register are listed below:

- Non-South African citizens who sojourn temporarily in the country.
- All South African citizens and permanent residents who died before notice of their birth had been given.

Municipal demarcation

Prior to 1994, there were about 1 300 municipalities throughout South Africa. These were reduced to 843 following the 1995/1996 local government elections. Subsequently, the Municipal Demarcation Act, 1998 (Act No. 27 of 1998) established the Municipal Demarcation Board and charged it with the responsibility of determining new municipal boundaries for the country. In this release, we have included district municipalities and updated the changes in municipal boundaries as of 2005.

Population group

As from 1991, no distinction is made between the different population groups on the data collected by the Department of Home Affairs. The statistics collected, therefore, refer to all population groups combined.

Definitions of concepts used

1.1 Live birth

The complete expulsion or extraction from its mother's womb of a product of conception, irrespective of the duration of pregnancy, which, after such separation, breathes or shows any other evidence of life, such as beating of the heart, pulsation of the umbilical cord, or definite movement of voluntary muscles, whether or not the umbilical cord has been cut or the placenta is attached. Each product of such a birth is considered live born (WHO, 1992).

1.2 Recorded live births

The number of births recorded (registered) in a specific year, irrespective of when the birth actually occurred. The births recorded in any given year include the births that occurred during that year plus other births that occurred in years prior to the year of registration. It should be noted that not all births are recorded (registered).

1.3 Late registration

Births occurring in a given calendar year but recorded in subsequent calendar years.

1.4 Current live births

Births occurring in a specific year and registered within that same year.