



**Statistics
South Africa**

Preferred supplier of quality statistics



Statistical release

P0302

Mid-year population estimates 2007

**Embargoed until:
9h30
3 July 2007**

Published by:
Statistics South Africa
Private Bag X44
Pretoria
South Africa
0001

© Copyright, 2007

Electronic services

For more information about our on-line electronic services, contact user information services at:
www.statssa.gov.za

Contact details

Telephone: (012) 310 8600/ 8390/ 8351/ 4892/ 8496/ 8095 (user information services)

(012) 310 8161 (orders)
(012) 310 8490 (library)

Fax: (012) 310 8500/ 8495 (user information services)
(012) 310 8339 (technical enquiries)

Email: info@statssa.gov.za (user information services)
distribution@statssa.gov.za (orders)

SUMMARY

- This release uses the cohort-component method to estimate the 2007 mid-year population of South Africa. Provincial estimates are based on the latest available boundary information obtained from the Demarcation Board.
- The 2007 mid-year population is estimated at approximately 47,9 million of which approximately 24,3 million (51%) is female.
- Kwazulu-Natal has the largest share of the South African population. About 21% of the population lives in this province.
- Life expectancy at birth is estimated at approximately 49 years for males and 52 years for females. Life expectancy at birth is highest in the Western Cape and lowest in Kwazulu-Natal.
- The estimated overall HIV-prevalence rate is approximately 11%. The HIV positive population is estimated at approximately 5,3 million.
- The infant mortality rate (IMR) is estimated at 45,2 per 1000.

Mid-year estimates for South Africa by population group and sex, 2007

Population group	Male		Female		Total	
	Number	% of total population	Number	% of total population	Number	% of total population
African	18 775 600	79,7	19 304 300	79,5	38 079 900	79,6
Coloured	2 081 500	8,8	2 163 500	8,9	4 245 000	8,9
Indian/Asian	574 900	2,4	598 800	2,5	1 173 700	2,5
White	2 130 600	9,1	2 221 500	9,1	4 352 100	9,1
Total	23 562 600	100,0	24 288 100	100,0	47 850 700	100,0

Percentage distribution of the estimated provincial share of the total population, 2007

Eastern Cape	Free State	Gauteng	KwaZulu-Natal	Limpopo	Mpumalanga	Northern Cape	North West	Western Cape	Total
14,4	6,2	20,2	20,9	11,3	7,4	2,3	7,1	10,1	100,0



Pali J Lehohla
Statistician-General
Statistics South Africa
3 July 2007

NATIONAL POPULATION ESTIMATES, 2007

Statistics South Africa (Stats SA) subscribes to the specification of the IMF's Special Data Dissemination Standard (SDDS) and publishes the population estimates for the country annually. The estimates cover all the residents of South Africa at the 2007 mid-year and are based on the latest available boundaries. The estimates were produced using the Spectrum model developed by the Futures Group in collaboration with UNAIDS, WHO, and UNICEF. The cohort-component method of estimation is used. The estimates given here may change as more information become available.

A revised set of national and provincial estimates from 2001 to 2007 and a description of the Statistics South Africa estimation methodology are available on the Statistics South Africa website.

Statistics South Africa estimates that fertility has declined from an average of 2,89 children per woman in 2001 to 2,69 children by 2007.

Only documented migrants are considered for the purpose of these estimates.

For 2007, life expectancy at birth is estimated at 48,4 years for males and 51,6 years for females. The life expectancy for both sexes is estimated at 50 years. This release assumes a mother-to-child transmission rate (the proportion of babies born to HIV-positive mothers who will also become HIV-positive) of 32% if no HIV treatment program is followed and 11% if such a program is in place. The estimates take the administration of nevirapine treatment to pregnant HIV-positive women and the promotion of alternative infant feeding options into account. The median time lapse from becoming HIV-positive until death due to AIDS is estimated to be 10 years for both males and females and a female-to-male HIV prevalence ratio of 1,2 was assumed for 2007. The estimated adult HIV-prevalence rates (the proportion of adults who are infected with HIV) are shown in Table 1. The total HIV prevalence rate was estimated at 11% in 2007. The HIV-positive population is estimated at 5,3 million. We estimate the infant mortality rate (IMR) at 45,2 per 1000.

Table 1: Estimated adult HIV-prevalence rates, 2007

Women 15–49	Women 20–64	Men 20–64	Adults 20–64	Adults 15–49	Total population
20,4	18,1	17,7	17,9	18,8	11,1

Table 2 summarises the mid-year estimates for 2007 by population group and sex. The mid-year population is estimated at approximately 47,9 million. Africans are in the majority (approximately 38,1 million) and constitute about 80 per cent of the total South African population. The white population is estimated at 4,4 million, the coloured population at 4,2 million and the Indian/Asian population at 1,2 million. Fifty-one per cent (approximately 24,3 million) of the population is female.

Table 2: Mid-year estimates by population group and sex, 2007

Population group	Male		Female		Total	
	Number	% of total pop	Number	% of total pop	Number	% of total pop
African	18 775 600	79,7	19 304 300	79,5	38 079 900	79,6
Coloured	2 081 500	8,8	2 163 500	8,9	4 245 000	8,9
Indian/Asian	574 900	2,4	598 800	2,5	1 173 700	2,5
White	2 130 600	9,1	2 221 500	9,1	4 352 100	9,1
Total	23 562 600	100,0	24 288 100	100,0	47 850 700	100,0

The implied rate of growth for the South African population has been declining steadily between 2001 and 2007 (see Table 3). The estimated overall growth rate declined from approximately 1,3% between 2001 and 2002 to about 1% for 2006 to 2007. The growth rate for females is slightly lower than that of males.

Table 3: Estimated annual population growth rates, 2001–2007

	2001–2002	2002–2003	2003–2004	2004–2005	2005–2006	2006–2007
Male	1,27	1,24	1,21	1,20	1,09	1,00
Female	1,23	1,20	1,16	1,14	1,02	0,93
Total	1,25	1,22	1,19	1,17	1,06	0,97

The detailed distribution of the 2007 mid-year population by age (in 5 year categories), sex and population group is shown in Table 4. For estimates in single years, follow the instructions on the Statistics South Africa website to access interpolation coefficients computed by the US Bureau of the Census from the basic Sprague formulas.

Approximately one third of the population is aged 0–14 years and approximately 8% of the population is 60 years and older.

Table 4: Mid-year population estimates by population group, age and sex, 2007

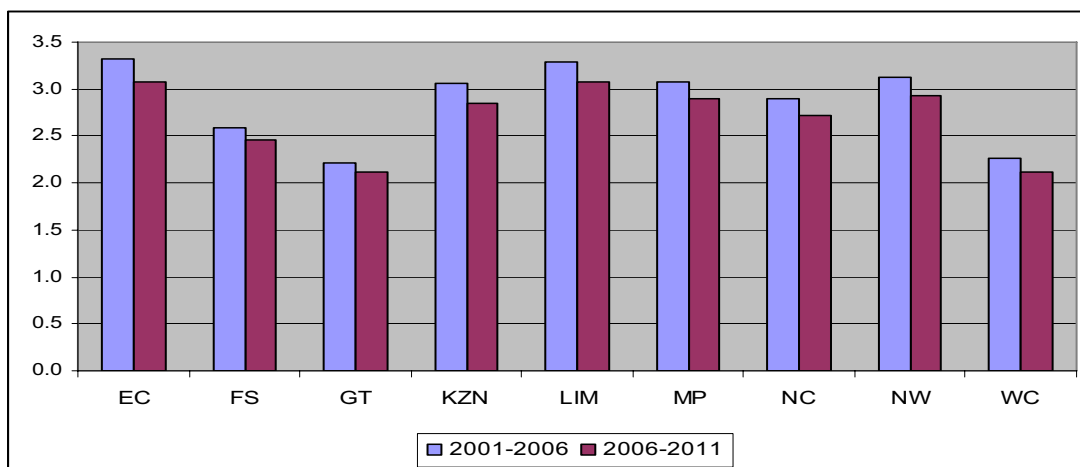
Age	African			Coloured			Indian/Asian			White			South Africa		
	Male	Female	Total	Male	Female	Total	Male	Female	Total	Male	Female	Total	Male	Female	Total
0-4	2 245 500	2 215 300	4 460 800	202 900	200 400	403 300	44 900	43 800	88 700	113 700	110 700	224 400	2 607 000	2 570 200	5 177 200
5-9	2 141 600	2 114 700	4 256 300	202 600	200 500	403 100	46 000	45 200	91 200	125 100	122 100	247 200	2 515 300	2 482 500	4 997 800
10-14	2 153 700	2 133 800	4 287 500	201 900	199 900	401 800	51 200	50 600	101 800	151 600	147 900	299 500	2 558 400	2 532 200	5 090 600
15-19	2 083 400	2 070 200	4 153 600	194 000	193 500	387 500	53 100	53 100	106 200	166 100	162 500	328 600	2 496 600	2 479 300	4 975 900
20-24	1 949 900	1 935 600	3 885 500	182 800	183 100	365 900	54 200	54 200	108 400	158 600	156 800	315 400	2 345 500	2 329 700	4 675 200
25-29	1 830 700	1 757 000	3 587 700	190 200	191 300	381 500	51 300	51 700	103 000	131 900	131 500	263 400	2 204 100	2 131 500	4 335 600
30-34	1 607 300	1 553 900	3 161 200	190 600	193 400	384 000	45 800	46 400	92 200	113 800	112 700	226 500	1 957 500	1 906 400	3 863 900
35-39	1 113 700	1 157 000	2 270 700	166 500	173 000	339 500	41 500	42 600	84 100	139 900	138 200	278 100	1 461 600	1 510 800	2 972 400
40-44	799 500	898 800	1 698 300	139 800	148 700	288 500	38 600	40 300	78 900	167 600	167 000	334 600	1 145 500	1 254 800	2 400 300
45-49	725 300	829 200	1 554 500	117 800	127 000	244 800	35 200	37 200	72 400	172 600	178 000	350 600	1 050 900	1 171 400	2 222 300
50-54	596 000	696 000	1 292 000	90 100	99 900	190 000	31 000	33 700	64 700	159 300	166 100	325 400	876 400	995 700	1 872 100
55-59	447 500	542 000	989 500	64 700	76 000	140 700	25 800	29 400	55 200	144 900	155 700	300 600	682 900	803 100	1 486 000
60-64	391 900	473 000	864 900	52 000	60 500	112 500	21 800	24 800	46 600	136 100	146 400	282 500	601 800	704 700	1 306 500
65-69	294 700	372 400	667 100	37 400	46 500	83 900	15 400	18 600	34 000	102 500	114 600	217 100	450 000	552 100	1 002 100
70-74	198 400	266 000	464 400	25 100	34 200	59 300	9 800	12 800	22 600	67 900	83 800	151 700	301 200	396 800	698 000
75-79	115 100	160 000	275 100	13 600	20 000	33 600	5 400	7 900	13 300	41 400	59 200	100 600	175 500	247 100	422 600
80+	81 400	129 400	210 800	9 500	15 600	25 100	3 900	6 500	10 400	37 600	68 300	105 900	132 400	219 800	352 200
Total	18 775 600	19 304 300	38 079 900	2 081 500	2 163 500	4 245 000	574 900	598 800	1 173 700	2 130 600	2 221 500	4 352 100	23 562 600	24 288 100	47 850 700

These numbers have been rounded off to the nearest hundred and may differ slightly from estimates presented in other tables.

PROVINCIAL POPULATION ESTIMATES, 2007

Provincial fertility estimates for the period 2001–2006 and 2006–2011 reveal that Gauteng and the Western Cape have the lowest level of fertility while the Eastern Cape and Limpopo provinces have the highest fertility levels (see Figure 1).

Figure 1: Provincial average Total Fertility Rates for the periods 2001–06 and 2006-11



Figures 2 and 3 show the average provincial life expectancies at birth for males and females for the periods 2001–2006 and 2006–2011. Western Cape has the highest average life expectancy at birth for both males and females. Kwazulu-Natal has the lowest life expectancy at birth.

Figure 2: Provincial average life expectancy at birth, 2001–2006 and 2006-11 (males)

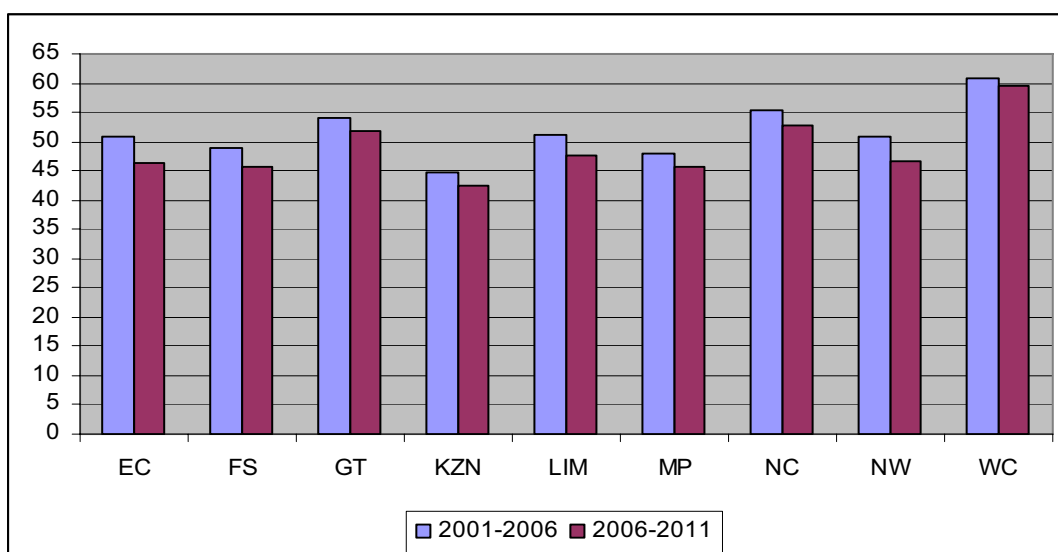
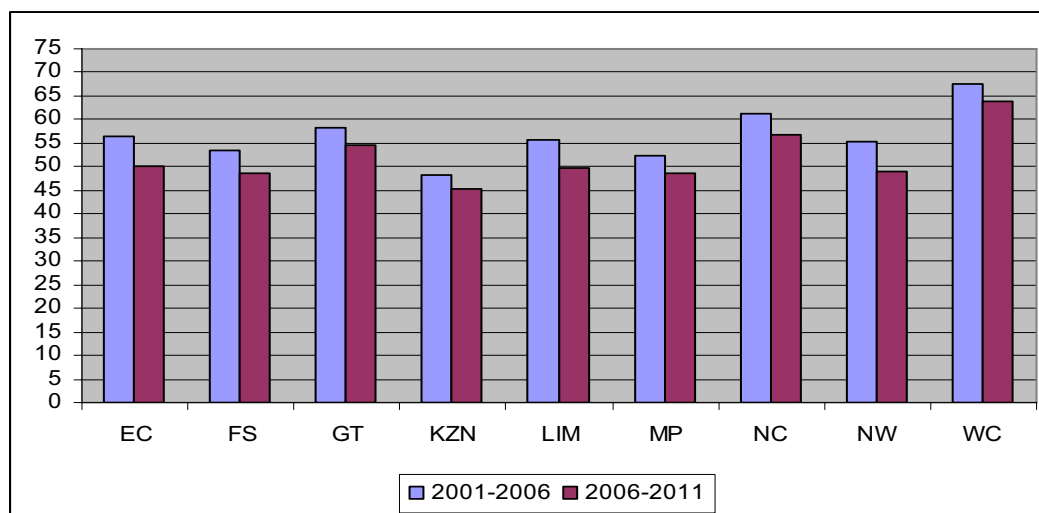


Figure 3: Provincial average life expectancy at birth, 2001–2006 and 2006–11 (females)

Estimated internal migration streams between provinces for 2001–2006 and 2006–2011 are shown in Tables 5 and 6.

Table 5: Estimated provincial migration streams (2001–2006)

Prov in 2001	Province in 2006									Emi	Immi	Net
	EC	FS	GT	KZN	LP	MP	NC	NW	WC			
EC	-	21232	108822	68971	8399	12540	5451	33117	195910	454442	132945	-321497
FS	13245	-	71553	11867	5926	8578	8531	26859	15951	162510	101475	-61035
GT	40317	28396	-	65960	49213	40097	8135	53548	65240	350905	862365	511459
KZN	20989	9300	116645	-	7748	19819	2419	10163	24949	212032	203291	-8741
LP	5349	5113	263231	9837	-	38370	2177	20832	6358	351267	117592	-233675
MP	5816	7374	109733	23000	25978	-	1907	10823	8101	192732	132050	-60682
NC	4727	10222	15351	2635	2531	1975	-	11816	35899	85156	56733	-28423
NW	7633	13464	138037	8589	14488	6857	15398	-	9068	213534	171713	-41821
WC	34869	6374	38993	12432	3309	3814	12715	4555	-	117060	361476	244416

Table 6: Estimated provincial migration streams (2006–2011)

Prov in 2006	Province in 2011									Emi	Immi	Net
	EC	FS	GT	KZN	LP	MP	NC	NW	WC			
EC	0	15341	137659	62160	6096	9089	5464	20626	158706	415141	119676	-295465
FS	12075	0	76909	10868	5964	8642	8586	21055	16062	160161	100208	-59953
GT	35706	31126	0	70419	43020	43933	7130	46956	64273	342563	815663	473100
KZN	15320	11068	112992	0	5949	16513	2563	5975	22309	192689	196696	4007
LP	3638	5219	201637	6683	0	39153	2220	21250	6486	286286	106406	-179880
MP	5429	7624	113605	19630	24444	0	1970	11194	8350	192246	130458	-61788
NC	3627	9473	17391	2437	2343	1826	0	10948	32425	80470	53366	-27104
NW	7779	13249	111948	9392	14897	7054	15894	0	9322	189535	143092	-46443
WC	36102	7108	43522	15107	3693	4248	9539	5088	0	124407	317933	193524

The percentage of the total population residing in each of the provinces from 2001 to 2007 is shown in Table 7. The provincial estimates show that KwaZulu-Natal has the largest share of the population, followed by Gauteng and Eastern Cape in 2007. Just over ten per cent of the population live in Western Cape. The Northern Cape has the smallest population. Free State has the second smallest share of the South African population, with about 6% of the total population residing in this province.

Table 7: Percentage distribution of the estimated provincial share of the total population, 2001–2007

Province	2001	2002	2003	2004	2005	2006	2007
Eastern Cape	15,1	15,0	14,9	14,8	14,7	14,5	14,4
Free State	6,5	6,4	6,4	6,3	6,3	6,2	6,2
Gauteng	19,2	19,4	19,6	19,7	19,9	20,1	20,2
Kwazulu-Natal	21,1	21,1	21,0	21,0	21,0	20,9	20,9
Limpopo	11,6	11,6	11,5	11,4	11,4	11,3	11,3
Mpumalanga	7,5	7,5	7,5	7,4	7,4	7,4	7,4
Northern Cape	2,4	2,3	2,3	2,3	2,3	2,3	2,3
North West	7,2	7,2	7,2	7,2	7,1	7,1	7,1
Western Cape	9,4	9,5	9,7	9,8	9,9	10,0	10,1
Total	100,0	100,0	100,0	100,0	100,0	100,0	100,0

Table 8 shows the detailed provincial mid-2007 population estimates by age and sex based on the new boundaries. Where necessary the totals by age were reconciled with the national totals, for males and females separately. Due to the rounding off of data in the tables to the nearest 100, the population totals by sex and age may not always correspond with the totals presented elsewhere.

Table 8: Provincial mid-year population estimates by age and sex, 2007

Age	Eastern Cape			Free State			Gauteng			Kwazulu-Natal			Limpopo		
	Male	Female	Total	Male	Female	Total	Male	Female	Total	Male	Female	Total	Male	Female	Total
0-4	390 600	389 200	779 800	149 200	147 600	296 800	470 800	457 300	928 100	575 300	571 300	1 146 600	328 800	324 200	653 000
5-9	377 900	372 100	750 000	149 400	147 800	297 200	430 200	421 400	851 600	561 000	555 300	1 116 300	323 300	321 400	644 700
10-14	427 700	420 500	848 200	153 100	151 300	304 400	384 800	379 500	764 300	583 600	577 900	1 161 500	353 800	353 000	706 800
15-19	426 100	418 300	844 400	156 000	152 900	308 900	375 700	376 800	752 500	561 500	556 000	1 117 500	342 100	340 600	682 700
20-24	341 100	343 400	684 500	146 200	143 400	289 600	462 500	439 900	902 400	513 800	516 400	1 030 200	268 400	279 300	547 700
25-29	262 900	268 100	531 000	131 800	130 000	261 800	566 700	492 900	1 059 600	450 800	450 600	901 400	204 800	228 300	433 100
30-34	207 600	225 600	433 200	116 000	118 000	234 000	559 100	468 200	1 027 300	382 500	388 400	770 900	158 300	194 400	352 700
35-39	152 600	184 600	337 200	92 900	98 600	191 500	414 300	363 300	777 600	265 600	296 400	562 000	113 500	148 400	261 900
40-44	123 900	162 500	286 400	76 100	82 700	158 800	309 600	289 900	599 500	202 500	247 200	449 700	88 800	125 000	213 800
45-49	123 300	166 900	290 200	71 400	76 500	147 900	274 900	266 800	541 700	181 700	228 100	409 800	80 300	113 900	194 200
50-54	109 600	147 500	257 100	61 100	66 800	127 900	219 500	220 500	440 000	153 700	191 400	345 100	69 800	99 600	169 400
55-59	88 800	120 800	209 600	47 300	54 100	101 400	163 800	169 400	333 200	126 200	162 400	288 600	56 900	81 100	138 000
60-64	83 300	110 800	194 100	41 600	47 000	88 600	137 600	143 100	280 700	110 000	141 900	251 900	51 000	69 800	120 800
65-69	73 500	105 600	179 100	29 300	34 400	63 700	92 400	96 500	188 900	80 700	111 200	191 900	41 400	60 400	101 800
70-74	55 200	79 200	134 400	20 200	26 100	46 300	55 800	62 400	118 200	51 100	78 000	129 100	29 200	49 400	78 600
75-79	33 400	48 200	81 600	10 900	14 500	25 400	30 000	35 900	65 900	29 800	50 400	80 200	19 600	36 000	55 600
80+	24 400	41 000	65 400	7 900	13 500	21 400	22 700	33 900	56 600	21 400	40 400	61 800	16 400	31 700	48 100
Total	3 301 900	3 604 300	6 906 200	1 460 400	1 505 200	2 965 600	4 970 400	4 717 700	9 688 100	4 851 200	5 163 300	10 014 500	2 546 400	2 856 500	5 402 900

All numbers have been rounded off to the nearest hundred and may therefore lead to small differences in the overall totals by age and sex.

Table 8: Provincial mid-year population estimates by age and sex, 2007 (continued)

Age	Mpumalanga			Northern Cape			North West			Western Cape			All provinces		
	Male	Female	Total	Male	Female	Total	Male	Female	Total	Male	Female	Total	Male	Female	Total
0-4	204 700	202 700	407 400	59 000	58 100	117 100	192 700	190 000	382 700	235 800	229 800	465 600	2 606 900	2 570 200	5 177 100
5-9	205 200	205 200	410 400	60 200	59 300	119 500	176 800	175 500	352 300	231 400	224 300	455 700	2 515 400	2 482 300	4 997 700
10-14	206 900	207 800	414 700	58 800	58 000	116 800	170 700	169 300	340 000	218 900	214 800	433 700	2 558 300	2 532 100	5 090 400
15-19	200 500	198 900	399 400	55 000	54 500	109 500	164 400	164 000	328 400	215 400	217 100	432 500	2 496 700	2 479 100	4 975 800
20-24	180 000	177 600	357 600	49 400	47 400	96 800	152 200	148 900	301 100	231 900	233 300	465 200	2 345 500	2 329 600	4 675 100
25-29	156 700	155 400	312 100	45 900	43 300	89 200	152 400	139 000	291 400	232 200	223 700	455 900	2 204 200	2 131 300	4 335 500
30-34	132 500	137 900	270 400	41 100	39 800	80 900	143 900	130 000	273 900	216 500	204 100	420 600	1 957 500	1 906 400	3 863 900
35-39	97 400	107 800	205 200	33 800	34 200	68 000	119 000	105 700	224 700	172 500	171 600	344 100	1 461 600	1 510 600	2 972 200
40-44	77 700	87 500	165 200	27 400	29 100	56 500	101 600	87 700	189 300	138 000	143 200	281 200	1 145 600	1 254 800	2 400 400
45-49	69 700	75 900	145 600	26 400	28 200	54 600	98 700	80 800	179 500	124 500	134 400	258 900	1 050 900	1 171 500	2 222 400
50-54	59 000	64 900	123 900	23 300	25 500	48 800	78 300	68 200	146 500	102 000	111 300	213 300	876 300	995 700	1 872 000
55-59	44 300	50 100	94 400	18 600	21 000	39 600	56 000	52 800	108 800	81 000	91 400	172 400	682 900	803 100	1 486 000
60-64	37 500	41 600	79 100	17 400	19 500	36 900	49 700	49 100	98 800	73 600	81 900	155 500	601 700	704 700	1 306 400
65-69	27 800	33 700	61 500	13 200	14 300	27 500	35 300	36 500	71 800	56 500	59 600	116 100	450 100	552 200	1 002 300
70-74	17 100	23 600	40 700	9 400	10 500	19 900	23 400	26 100	49 500	39 700	41 600	81 300	301 100	396 900	698 000
75-79	11 000	15 800	26 800	5 100	5 800	10 900	13 500	15 500	29 000	22 300	24 800	47 100	175 600	246 900	422 500
80+	8 900	13 000	21 900	3 900	5 800	9 700	10 500	16 000	26 500	16 200	24 500	40 700	132 300	219 800	352 100
Total	1 736 900	1 799 400	3 536 300	547 900	554 300	1 102 200	1 739 100	1 655 100	3 394 200	2 408 400	2 431 400	4 839 800	23 562 600	24 287 200	47 849 800

All numbers have been rounded off to the nearest hundred may therefore lead to small differences in the overall totals by age and sex.