



**Statistics
South Africa**

Preferred supplier of quality statistics



Statistical release

P0211

Quarterly Labour Force Survey

Quarter 4, 2009

Embargoed until:

**9 February 2010
11:30**

Enquiries:

User Information Services
Tel: (012) 310 8600 / 4892 / 8390

Forthcoming issue:

Quarter 1, 2010

Expected release date

April 2010

Statistics South Africa • Mbalo-mbalo ya Afrika Tshipembe • Tinhlayo-tiko ta Afrika-Dzonga • Dipalopalo tsa Aforika Borwa • Ezezibalo zaseNingizimu Afrika
Dipalopalo tša Afrika Borwa • Dipalopalo tsa Afrika Borwa • Ubalo lwaseMzantsi Afrika • Telubalo eNingizimu Afrika • iNanimbalo leSewula Afrika • Statistiek Suid-Afrika

Published by Statistics South Africa, Private Bag X44, Pretoria 0001

© Statistics South Africa, 2010

Users may apply or process this data, provided Statistics South Africa (Stats SA) is acknowledged as the original source of the data; that it is specified that the application and/or analysis is the result of the user's independent processing of the data; and that neither the basic data nor any reprocessed version or application thereof may be sold or offered for sale in any form whatsoever without prior permission from Stats SA.

Stats SA Library Cataloguing-in-Publication (CIP) Data

Quarterly Labour Force Survey Quarter 4, 2009/ Statistics South Africa. Pretoria: Statistics South Africa, 2010

Quarterly

1. Labour supply – Statistics
 2. Labour supply (South Africa)
 3. Unemployment (South Africa)
 4. Informal sector (Economics) – South Africa
 5. Formal sector (Economics) – South Africa
- I. Statistics South Africa
II. Series
(LCSH 16)

A complete set of Stats SA publications is available at Stats SA Library and the following libraries:

National Library of South Africa, Pretoria Division
National Library of South Africa, Cape Town Division
Library of Parliament, Cape Town
Bloemfontein Public Library
Natal Society Library, Pietermaritzburg
Johannesburg Public Library
Eastern Cape Library Services, King William's Town
Central Regional Library, Polokwane
Central Reference Library, Nelspruit
Central Reference Collection, Kimberley
Central Reference Library, Mmabatho

This publication is available both in hard copy and on the Stats SA website www.statssa.gov.za.

The data and metadata set from the Quarterly Labour Force Survey will be available on CD-ROM. A charge may be made according to the pricing policy, which can be accessed on the website.

Stats SA also provides a subscription service.

Enquiries:

	Printing and distribution	User information services
Tel:	(012) 310 8251	(012) 310 8600
Fax:	(012) 321 7381	(012) 310 8500/ 8495
Email:	distribution@statssa.gov.za	info@statssa.gov.za

Table of contents

	Page
List of tables in highlights of the results	iv
List of figures in highlights of the results	iv
List of tables	v
1. Introduction	vi
2. Highlights of the results	vi
3. Employment	vii
4. The unemployed population	x
5. Characteristics of the not economically active population	xii
6. Technical notes	xiii
6.1. Response details	xiii
6.2. Survey requirements and design	xiv
6.3. Sample rotation	xiv
6.4. Weighting	xiv
6.5. Non-response adjustment	xiv
6.6. Final survey weights	xv
6.7. Estimation	xv
6.8. Reliability of the survey estimates	xv
7. Definitions	xvi

List of tables in highlights of the results

	Page
Table A: Key labour market indicators.....	vi
Table B: Employment by industry	vii
Table C: Employment by province.....	vii
Table D: Employment by occupation	ix
Table E: Unemployed by sex.....	x
Table F: Characteristics of the unemployed	xi
Table G: The not economically active.....	xii
Table H: Response rates by province.....	xiii

List of figures in highlights of the results

Figure 1: Formal sector employment by industry.....	viii
Figure 2: Informal sector employment by industry	ix
Figure 3: Unemployment rate by province.....	x
Figure 4: Unemployment rate by population group.....	xi

List of tables

	Page
Table 1: Population of working age (15-64 years)	1
Table 2: Labour force characteristics by sex - All population groups	2
Table 2.1: Labour force characteristics by population group	3
Table 2.2: Labour force characteristics by province	4
Table 2.2: Labour force characteristics by province (concluded)	5
Table 3.1: Employed by industry and sex - South Africa	6
Table 3.2: Employed by industry and province.....	7
Table 3.2: Employed by industry and province (concluded)	8
Table 3.3: Employed by sector and industry - South Africa.....	9
Table 3.4: Employed by province and sector	10
Table 3.5: Employed by sex and occupation - South Africa	11
Table 3.6: Employed by sex and status in employment - South Africa.....	12
Table 3.7: Employed by sex and usual hours of work - South Africa.....	13
Table 3.8: Time-related underemployment - South Africa	14
Table 4: Characteristics of the unemployed - South Africa.....	15
Table 5: Characteristics of the not economically active - South Africa	16
Table 6: Socio-demographic characteristics - South Africa	17
Table 7: Involvement in non-market activities and labour market status by province	18
Table 7: Involvement in non-market activities and labour market status by province (concluded) .	19
Appendix 2A: Sampling variability for labour force characteristics by sex	20
Appendix 2.1A: Sampling variability for labour force characteristics by population group	21
Appendix 2.2A: Sampling variability for labour force characteristics by province	22
Appendix 2.2A: Sampling variability for labour force characteristics by province (Concluded).....	23
Appendix 3.1A: Sampling variability for the employed by industry and sex.....	24
Appendix 3.4A: Sampling variability for the employed by province and sector.....	25
Appendix 3.5A: Sampling variability for the employed by sex and occupation	26
Appendix 2B: Sampling variability for labour force characteristics by sex	27
Appendix 2.1B: Sampling variability for labour force characteristics by population group	28
Appendix 2.2B: Sampling variability for labour force characteristics by province	29
Appendix 2.2B: Sampling variability for labour force characteristics by province (Concluded).....	30
Appendix 3.1B: Sampling variability for the employed by industry and sex.....	31
Appendix 3.4B: Sampling variability for the employed by province and sector.....	32
Appendix 3.5B: Sampling variability for the employed by sex and occupation	33

1. Introduction

The Quarterly Labour Force Survey (QLFS) is a household-based sample survey conducted by Statistics South Africa (Stats SA). It collects data on the labour market activities of individuals aged 15 years and above who live in South Africa. However, this report will only cover labour market activities of persons aged between 15 and 64 years.

This report presents the key findings of the QLFS conducted in October–December, 2009 (Q4:2009).

2. Highlights of the results

Table A: Key labour market indicators

	Oct–Dec 2008	Jul–Sep 2009	Oct–Dec 2009	Qrt to Qrt change	Year-on- year change	Qrt to Qrt change	Year on year change
	Thousand				Per cent		
Population 15–64 yrs	30 894	31 172	31 261	89	367	0,3	1,2
Labour force	17 718	17 077	17 138	61	-580	0,4	-3,3
Employed	13 844	12 885	12 974	89	-870	0,7	-6,3
Formal sector (Non-agricultural)	9 537	9 073	9 114	41	-423	0,5	-4,4
Informal sector (Non-agricultural)	2 246	1 993	2 109	116	-137	5,8	-6,1
Agriculture	764	653	615	-38	-149	-5,8	-19,5
Private households	1 298	1 166	1 135	-31	-163	-2,7	-12,6
Unemployed	3 873	4 192	4 165	-27	292	-0,6	7,5
Not economically active	13 176	14 095	14 123	28	947	0,2	7,2
Discouraged work-seekers	1 168	1 632	1 686	54	518	3,3	44,3
Other (not economically active)	12 008	12 463	12 437	-26	429	-0,2	3,6
Rates (%)							
Unemployment rate	21,9	24,5	24,3	-0,2	2,4		
Employed / population ratio (Absorption)	44,8	41,3	41,5	0,2	-3,3		
Labour force participation rate	57,3	54,8	54,8	0,0	-2,5		

Due to rounding, numbers do not necessarily add up to totals.

The number of persons in the labour force increased slightly by 61 000 between Q3:2009 and Q4:2009. Table A shows that employment also increased significantly by 89 000 between Q3:2009 and Q4:2009 with the formal sector creating 41 000 jobs, the informal sector creating 116 000; while Agriculture and Private households lost 38 000 and 31 000 jobs respectively in the same period.

While there is a slight improvement in terms of job creation from Q3:2009, this did not translate to a big decrease in the number of unemployed persons (27 000), but rather a slight increase in the number of discouraged work-seekers (54 000). This resulted in the unemployment rate remaining virtually unchanged between Q3:2009 (24,5%) and Q4:2009 (24,3%).

Compared to Q4:2008, there was an annual decrease of 6,3% (870 000) in employment; an increase of 292 000 in the number of unemployed persons and an increase of 947 000 in the number of persons who are not economically active – 518 000 being discouraged work-seekers.

3. Employment

Table B: Employment by industry

	Oct–Dec 2008	Jul–Sep 2009	Oct–Dec 2009	Qrt to Qrt change	Year-on-year change	Qrt to Qrt change	Year-on-year change
	Thousand					Per cent	
Total	13 844	12 885	12 974	89	-870	0,7	-6,3
Agriculture	764	653	615	-38	-149	-5,8	-19,5
Mining	321	299	296	-3	-25	-1,0	-7,8
Manufacturing	1 944	1 723	1 742	19	-202	1,1	-10,4
Utilities	86	81	98	17	12	21,0	14,0
Construction	1 191	1 057	1 085	28	-106	2,6	-8,9
Trade	3 164	2 852	2 873	21	-291	0,7	-9,2
Transport	774	737	739	2	-35	0,3	-4,5
Finance	1 636	1 682	1 759	77	123	4,6	7,5
Community and social services	2 661	2 627	2 628	1	-33	0,0	-1,2
Private households	1 298	1 166	1 135	-31	-163	-2,7	-12,6

*Due to rounding, numbers do not necessarily add up to totals.

Table B indicates that between Q3:2009 and Q4:2009, 89 000 jobs were generated across all industries. Most of the job gains were in Finance, which accounted for 77 000 of the jobs gains, followed by Construction (28 000) and Trade (21 000). Job losses were experienced in Agriculture (38 000) and Private households (31 000).

The year-on-year comparisons show that job losses were experienced in all industries except Finance and Utilities with Trade accounting for 291 000 of the job losses, followed by Manufacturing (202 000), Private households (163 000) and Agriculture (149 000). There were job gains in Finance (123 000) and Utilities (12 000) although there was an overall decline of 870 000 in employment between Q4:2008 and Q4:2009.

Table C: Employment by province

	Oct–Dec 2008	Jul–Sep 2009	Oct–Dec 2009	Qrt to Qrt change	Year-on-year change	Oct–Dec 2009
	Thousand					% share
Total	13844	12885	12 974	89	-870	100,0
Western Cape	1931	1868	1 894	26	-37	14,6
Eastern Cape	1358	1258	1 263	5	-95	9,7
Northern Cape	316	255	290	35	-26	2,2
Free State	829	758	790	32	-39	6,1
KwaZulu-Natal	2631	2458	2 409	-49	-222	18,6
North West	895	789	786	-3	-109	6,1
Gauteng	4079	3719	3 749	30	-330	28,9
Mpumalanga	934	881	881	0	-53	6,8
Limpopo	870	899	910	11	40	7,0

*Due to rounding, numbers do not necessarily add up to totals.

Table C shows that between Q3:2009 and Q4:2009, there was a slight improvement in employment in most provinces except KwaZulu-Natal which lost 49 000 jobs and North West (which lost 3 000 jobs), while in Mpumalanga the situation remained virtually unchanged. The slight increases were observed in Northern Cape, Free State and Gauteng which accounted for 35 000; 32 000 and 30 000 job gains respectively.

The year-on-year comparisons (Q4:2008 and Q4:2009) show that Gauteng, KwaZulu-Natal and North West were the hardest hit provinces in terms of job losses, with Gauteng recording 330 000 job losses, KwaZulu-Natal recording 222 000 job losses, and North West accounting for 109 000 of the 870 000 job losses.

Figure 1: Formal sector employment by industry

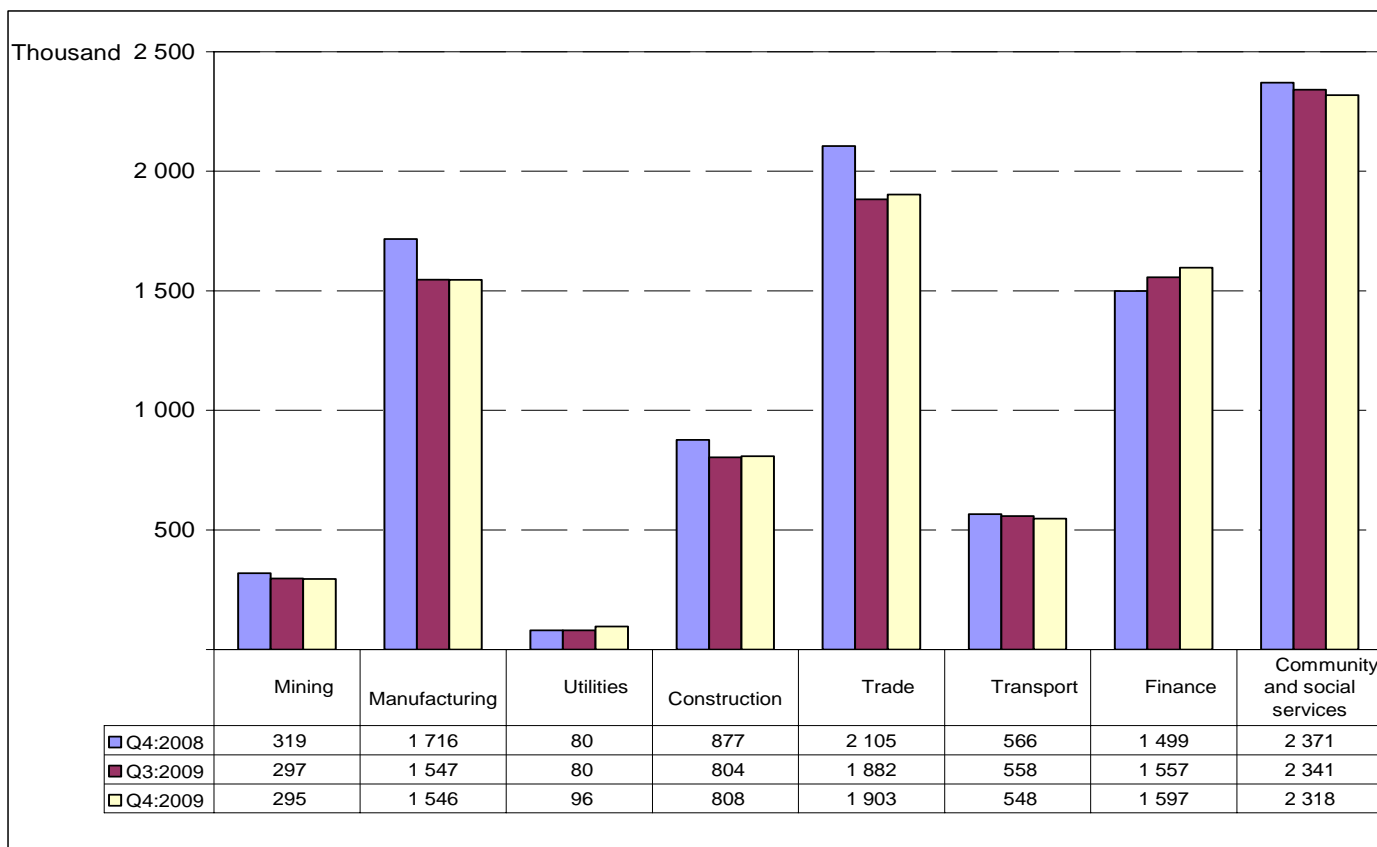
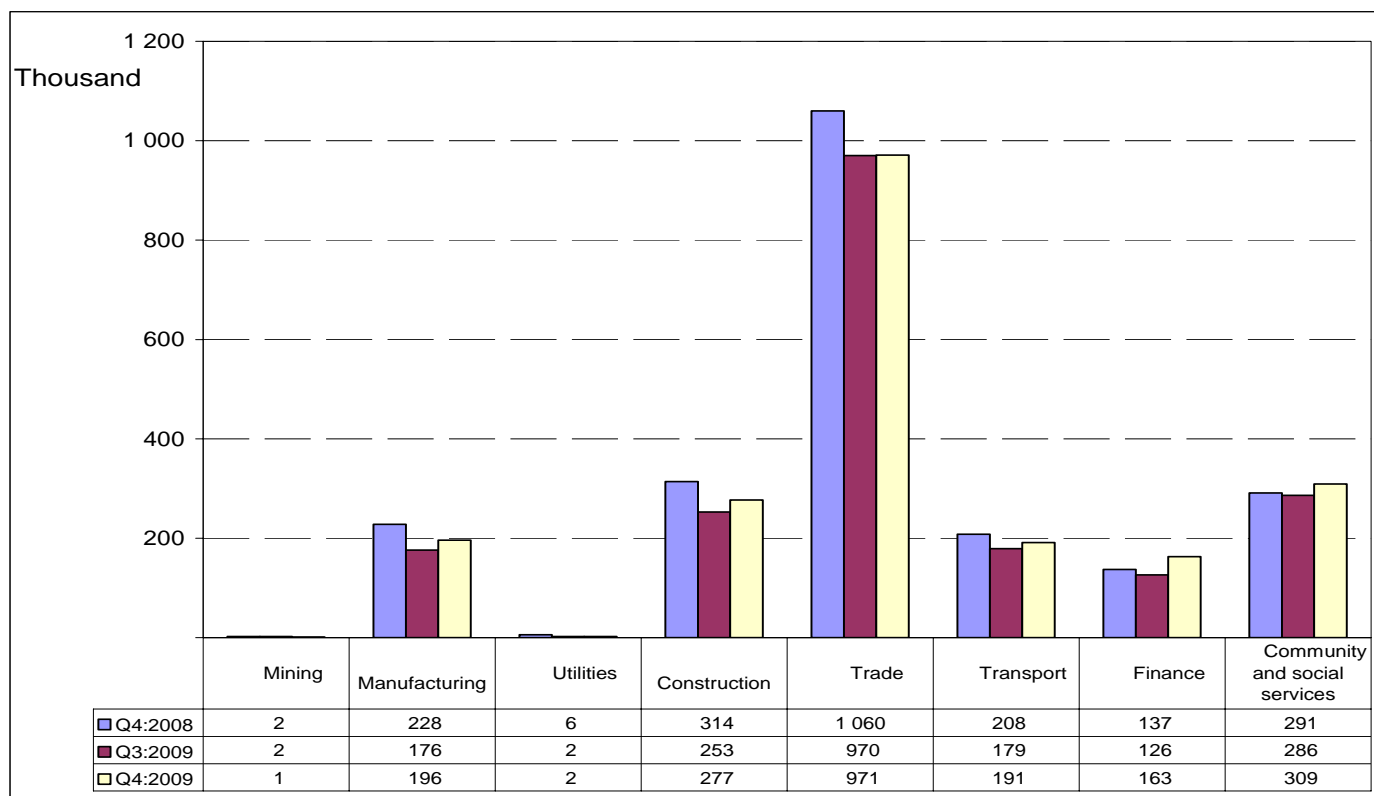


Figure 1 shows that there was an increase of 41 000 formal sector jobs between Q3:2009 and Q4:2009 with most of the jobs being in Finance (40 000), Trade (21 000) and Utilities (16 000). The Community and social services industry lost 23 000 formal sector jobs followed by Transport industry with 10 000 job losses in the same period.

The year-on-year comparisons show a net loss of 423 000 jobs in the formal sector, with Trade and Manufacturing being the hardest hit with the loss of 202 000 and 170 000 jobs respectively, although Finance experienced job gains.

Figure 2: Informal sector employment by industry



#QLFS mining figures are not robust and therefore the QES figures should be used

Figure 2 indicates that, all industries had an increase in the number of informal sector jobs except Mining, Utilities and Trade where there was virtually no change between Q3:2009 and Q4:2009. The informal sector created 116 000 across all industries overall.

Compared to Q4:2008, the informal sector lost 182 000 jobs with most of them being in Trade (89 000), Construction (37 000) and Manufacturing (32 000) Q4:2009. There was a slight increase in the number of informal sector jobs in the Finance (26 000) and Community and social services (18 000) industries.

Table D: Employment by occupation

	Oct-Dec 2008	Jul-Sep 2009	Oct-Dec 2009	Qrt to Qrt change	Year-on-year change	Qrt to Qrt change	Year-on-year change
	Thousand				Per cent		
Total	13 844	12 885	12 974	89	-870	0,7	-6,3
Manager	1 083	994	981	-13	-102	-1,3	-9,4
Professional	747	703	647	-56	-100	-8,0	-13,4
Technician	1 516	1 493	1 521	28	5	1,9	0,3
Clerk	1 434	1 431	1 462	31	28	2,2	2,0
Sales and services	1 732	1 792	1 844	52	112	2,9	6,5
Skilled agriculture	109	72	83	11	-26	15,3	-23,9
Craft and related trade	1 881	1 568	1 568	0	-313	0,0	-16,6
Plant and machine operator	1 207	1 097	1 083	-14	-124	-1,3	-10,3
Elementary	3 092	2 812	2 888	76	-204	2,7	-6,6
Domestic worker	1 042	924	898	-26	-144	-2,8	-13,8

*Due to rounding, numbers do not necessarily add up to totals.

Table D shows that while individuals from certain occupations lost jobs, some occupations gained, resulting in a net gain of 89 000 jobs. There was an increase in the number of individuals employed in Elementary occupations (76 000), Sales and services (52 000) Clerical (31 000) while a decrease was observed in Professional occupations (56 000) and Domestic workers (26 000).

The year-on-year comparisons show that almost all occupations experienced job losses with most of them being in Craft and related trade, Elementary and Domestic worker occupations (313 000, 204 000 and 144 000 respectively). Job gains were observed in the Sales and services (112 000) and clerical (28 000) occupations.

4. The unemployed population

Table E: Unemployed by sex

Unemployed	Oct-Dec 2008	Jul-Sep 2009	Oct-Dec 2009	Qrt to Qrt change	Year-on-year change	Qrt to Qrt change	Year-on-year change
	Thousand				Per cent		
Total	3 873	4 192	4 165	-27	292	-0,6	7,5
Women	2 070	2 080	2 033	-47	-37	-2,3	-1,8
Men	1 804	2 113	2 131	18	327	0,9	18,1

*Due to rounding, numbers do not necessarily add up to totals.

Table E shows that between Q3:2009 and Q4:2009 the number of unemployed women decreased by 47 000 while the number of unemployed men went up by 18 000 resulting in a minimal overall decline of 27 000 unemployed persons.

The year-on-year comparisons show that the number of unemployed persons increased by 292 000, with the annual increase of 18,1% (327 000) among men and a decrease of 1,8% (37 000) among women.

Figure 3: Unemployment rate by province

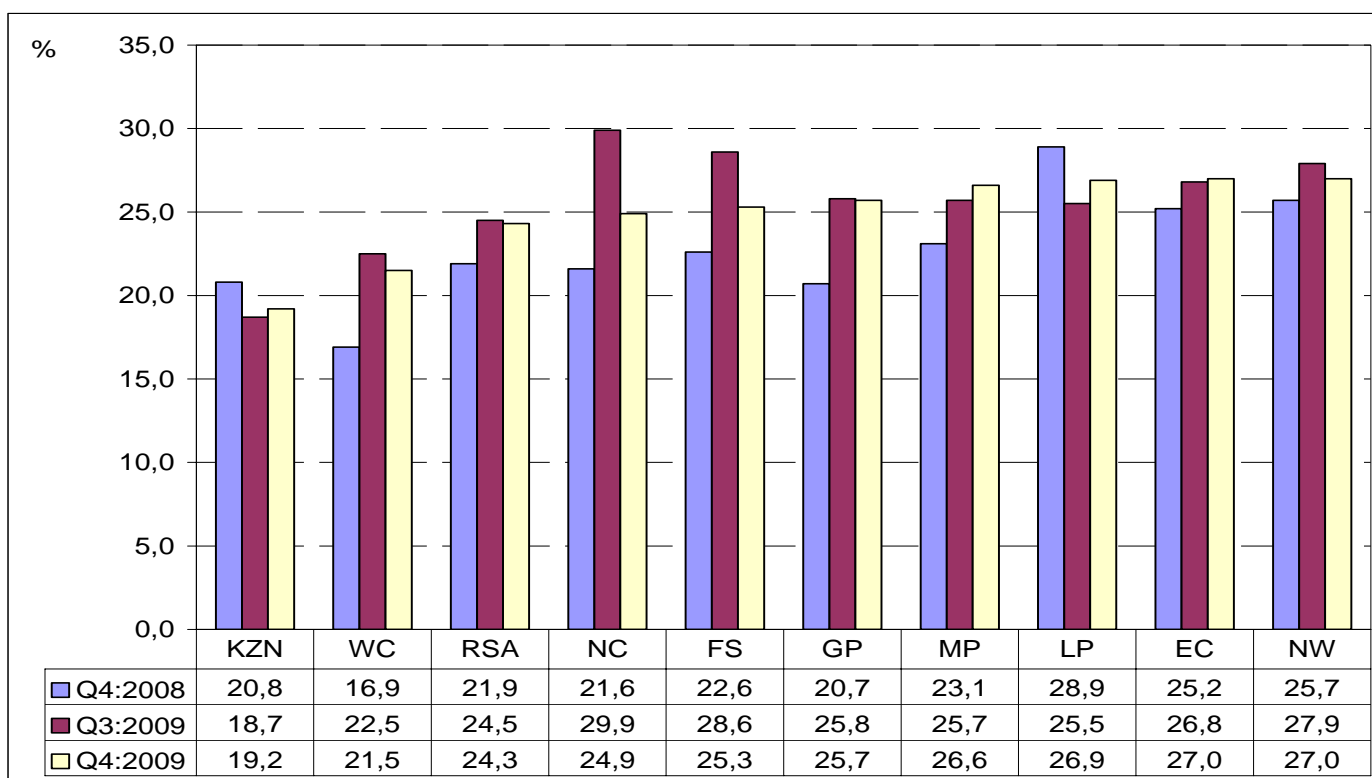


Figure 3 shows a slight decrease in the unemployment rate in some provinces while there was a slight increase in others in Q4:2009 compared to the unemployment rate of Q3:2009. The biggest decrease in the unemployment rate was observed in Northern Cape (5,0 percentage points) and Free State (3,3 percentage points). For Limpopo the unemployment rate increased by 1,4 percentage points between the two quarters. KwaZulu-Natal had the lowest unemployment rate (19,2%) recorded for Q4:2009.

The comparisons between Q4:2008 and Q4:2009 indicate that there was a substantial increase in the unemployment rate in most provinces. The highest increase was in Gauteng (up by 5,0 percentage points) followed by Western Cape (up by 4,6 percentage points) and Mpumalanga (up by 3,5 percentage points). Only Limpopo and KwaZulu-Natal experienced declines in the unemployment rate in the same period.

Figure 4: Unemployment rate by population group

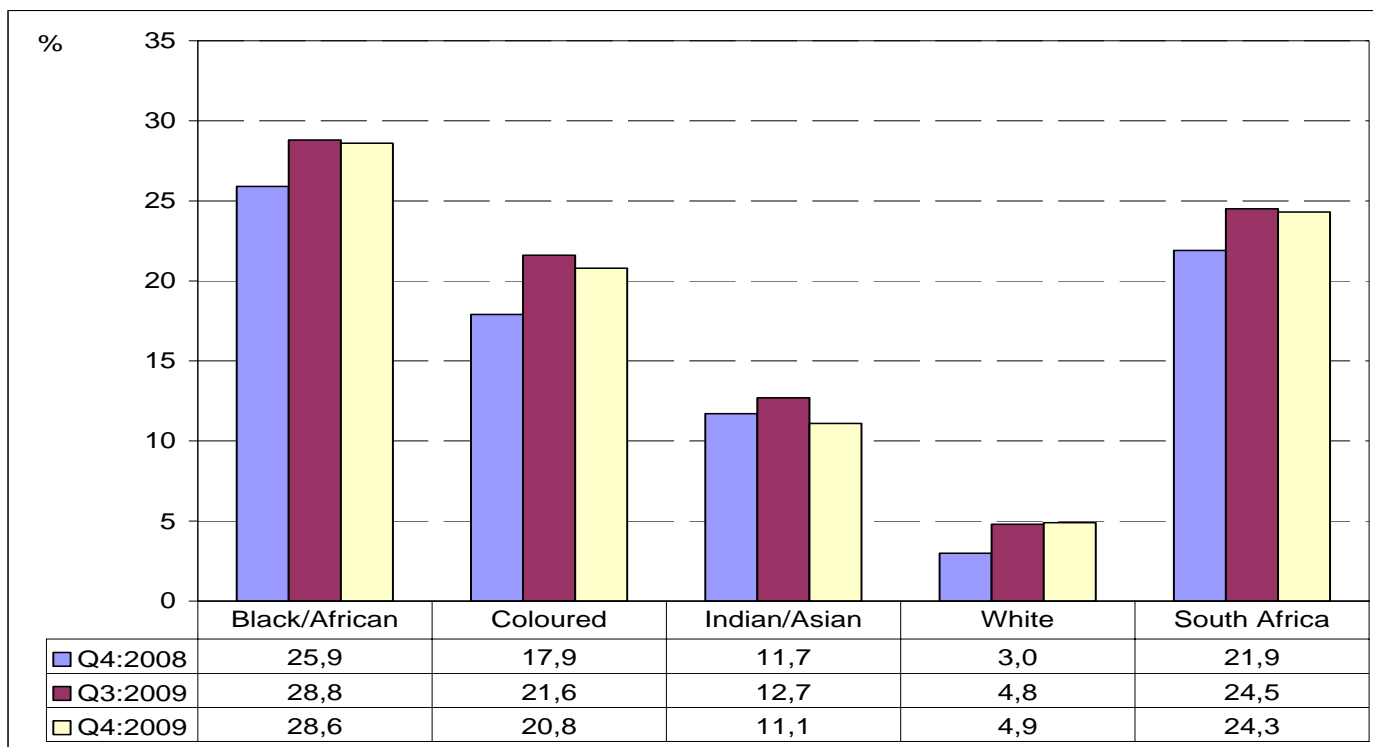


Figure 4 shows that between Q3:2009 and Q4:2009, the unemployment rate remained virtually unchanged for black African population and white population while it went down among Indian/Asian and coloured population where it went down by 1,6 percentage points and 0,8 of a percentage point respectively.

The year-on-year comparisons show that the unemployment rate increased substantially among all population groups except among Indian/Asian population where it decreased by 0,6 of a percentage point.

Table F: Characteristics of the unemployed

Unemployed	Oct-Dec 2008	Jul-Sep 2009	Oct-Dec 2009	Qrt to Qrt change	Year-on-year change	Qrt to Qrt change	Year-on-year change
	Thousand				Per cent		
Total	3 873	4 192	4 165	-27	292	-0,6	7,5
Job losers	1 202	1 477	1 429	-48	227	-3,2	18,9
Job leavers	342	338	333	-5	-9	-1,5	-2,6
New entrants	1 679	1 615	1 687	72	8	4,5	0,5
Re-entrants	177	193	184	-9	7	-4,7	4,0
Other	474	570	531	-39	57	-6,8	12,0

Table F shows that between Q3:2009 and Q4:2009 there was an increase in the number of new entrants (72 000) into unemployment while the number of job losers decreased by 48 000 in the same period.

Compared to a year ago, the number of unemployed persons increased by 292 000 in Q4:2009 of which 227 000 were job losers.

5. Characteristics of the not economically active population

Table G: The not economically active

Not economically active	Oct-Dec 2008	Jul-Sep 2009	Oct-Dec 2009	Qrt to Qrt change	Year-on-year change	Qrt to Qrt change	Year-on-year change
	Thousand				Per cent		
Total	13 176	14 095	14 123	28	947	0,2	7,2
Student	5 825	5 902	5 968	66	143	1,1	2,5
Home-maker	2 608	2 757	2 747	-10	139	-0,4	5,3
Illness/disability	1 789	1 821	1 773	-48	-16	-2,6	-0,9
Too old/young to work	1 026	1 109	1 119	10	93	0,9	9,1
Discouraged	1 168	1 632	1 686	54	518	3,3	44,3
Other	761	875	830	-45	69	-5,1	9,1

Due to rounding, numbers do not necessarily add up to totals.

Table G shows that between Q3:2009 and Q4:2009 the number of students who were not economically active increased by 66 000 and discouraged work-seekers increased by 54 000 persons. These increases were however off-set by decreases among those who were ill or disabled (48 000) and those falling into the “other” category resulting in a net gain of 28 000 not economically active persons.

The year-on-year changes indicate that overall there was an increase in the number of not economically active persons (947 000 or 7,2%) between Q4:2008 and Q4:2009. Discouraged work-seekers (518 000), students (143 000) and home-makers (139 000) made the largest contribution to the increase of 947 000 among the not economically active persons.



PJ Lehohla
Statistician-General: Statistics South Africa

6. Technical notes

6.1. Response details

Table H: Response rates by province

Province	Oct–Dec 2009
	Per cent
Western Cape	82,0
Eastern Cape	97,0
Northern Cape	91,6
Free State	95,8
KwaZulu-Natal	93,6
North West	95,2
Gauteng	77,4
Mpumalanga	96,7
Limpopo	98,5
South Africa	90,7

6.2. Survey requirements and design

The Quarterly Labour Force Survey (QLFS) frame has been developed as a general-purpose household survey frame that can be used by all other household surveys irrespective of the sample size requirement of the survey. The sample size for the QLFS is roughly 30 000 dwellings per quarter.

The sample is based on information collected during the 2001 Population Census conducted by Stats SA. In preparation for the 2001 Census, the country was divided into 80 787 enumeration areas (EAs). Stats SA's household-based surveys use a master sample of primary sampling units (PSUs) which comprises EAs that are drawn from across the country.

The sample is designed to be representative at provincial level and within provinces at metro/non-metro level. Within the metros, the sample is further distributed by geography type. The four geography types are: urban formal, urban informal, farms and tribal. This implies, for example, that within a metropolitan area the sample is representative at the different geography types that may exist within that metro.

The current sample size is 3 080 PSUs. It is divided equally into four subgroups or panels called rotation groups. The rotation groups are designed in such a way that each of these groups has the same distribution pattern as that which is observed in the whole sample. They are numbered from one to four and these numbers also correspond to the quarters of the year in which the sample will be rotated for the particular group.

The sample for the redesigned Labour Force Survey (i.e. the QLFS) is based on a stratified two-stage design with probability proportional to size (PPS) sampling of primary sampling units (PSUs) in the first stage, and sampling of dwelling units (DUs) with systematic sampling in the second stage.

6.3. Sample rotation

Each quarter, a $\frac{1}{4}$ of the sampled dwellings rotate out of the sample and are replaced by new dwellings from the same PSU or the next PSU on the list. Thus, sampled dwellings will remain in the sample for four consecutive quarters. It should be noted that the sampling unit is the dwelling, and the unit of observation is the household. Therefore, if a household moves out of a dwelling after being in the sample for, say two quarters and a new household moves in then the new household will be enumerated for the next two quarters. If no household moves into the sampled dwelling, the dwelling will be classified as vacant (unoccupied).

6.4. Weighting

The sampling weights for the data collected from the sampled households are constructed in such a manner that the responses could be properly expanded to represent the entire civilian population of South Africa. The weights are the result of calculations involving several factors, including original selection probabilities, adjustment for non-response, and benchmarking to known population estimates from the Demographic division of Stats SA.

6.5. Non-response adjustment

In general, imputation is used for item non-response (i.e. blanks within the questionnaire) and edit failure (i.e. invalid or inconsistent responses). The eligible households in the sampled dwellings can be divided into two response categories: respondents and non-respondents; and weight adjustment is applied to account for the non-respondent households (e.g. refusal, no contact, etc.).

6.6. Final survey weights

The final survey weights are constructed using regression estimation to calibrate to the known population counts at the national level population estimates (which are supplied by the Demography division) cross-classified by 5-year age groups, gender and race, and provincial population estimates by broad age groups. The 5-year age groups are: 0–4, 5–9, 10–14, etc, and 65 and over. The provincial level age groups are: 0–14, 15–34, 35–64, and 65 years and over. The calibrated weights are constructed such that all persons in a household would have the same final weight.

6.7. Estimation

The final survey weights are used to obtain the estimates for various domains of interest, e.g. number of persons employed in agriculture in the province of Western Cape, number of females employed in manufacturing, etc.

6.8. Reliability of the survey estimates

Because estimates are based on sample data, they differ from figures that would have been obtained from complete enumeration of the population using the same instrument. Results are subject to both sampling and non-sampling errors. Non-sampling errors include biases from inaccurate reporting, processing, and tabulation etc., as well as errors from non-response and incomplete reporting. These types of errors cannot be measured readily. However, to the extent possible, non-sampling errors can be minimised through the procedures used for data collection, editing, quality control, and non-response adjustment. The variances of the survey estimates are used to measure sampling errors. The variance estimation methodology is discussed below.

(i) Variance estimation

The most commonly used methods for estimating variances of survey estimates from complex surveys, such as the QLFS, are the Taylor-series Linearization, Jackknife Replication, Balanced Repeated Replication (BRR), and Bootstrap methods (Wolter, 2007)¹. The Fay's BRR method has been used for variance estimation in the QLFS because of its simplicity.

(ii) Coefficient of variation

It is more useful in many situations to assess the size of the standard error relative to the magnitude of the characteristic being measured (the standard error is defined as the square root of the variance). The **coefficient of variation** (cv) provides such a measure. It is the **ratio of the standard error of the survey estimate to the value of the estimate itself expressed as a percentage**. It is very useful in comparing the precision of several different survey estimates, where their sizes or scale differ from one another.

(iii) P-value of an estimate of change

The p-value corresponding to an estimate of change is the probability of observing a value larger than the particular observed value under the hypothesis that there is no real change. If p-value < 0,01 then the difference is highly significant; if p-value is between 0,01 and 0,05 then the difference is significant; and if p-value > 0,05 then the difference is not significant

¹ Wolter, K. M. (2007), *Introduction to Variance Estimation, 2nd Edition*, Springer-Verlag: New York.

7. Definitions

Discouraged work-seeker is a person who was not employed during the reference period, wanted to work, was available to work/start a business but did not take active steps to find work during the last four weeks, provided that the main reason given for not seeking work was any of the following: no jobs available in the area; unable to find work requiring his/her skills; lost hope of finding any kind of work.

Economic activities are those that contribute to the production of goods and services in the country. There are two types of economic activities, and they are: (1) Market production activities (work done for others and usually associated with pay or profit); and (2) Non-market production activities (work done for the benefit of the household e.g. subsistence farming)

Employed persons are those aged 15–64 years who, during the reference week: did any work for at least one hour; or had a job or business but were not at work (temporarily absent).

Employment-to-population ratio (labour absorption rate) is the proportion of the working age population that is employed.

Informal employment identifies persons who are in precarious employment situations irrespective of whether or not the entity for which they work is in the formal or informal sector. Persons in informal employment therefore consist of all persons in the informal sector; employees in the formal sector; and persons working in private households who are not entitled to basic benefits such as pension or medical aid contributions from their employer, and who do not have a written contract of employment.

Informal sector: The informal sector has the following two components:

- i) Employees working in establishments that employ less than five employees, who do not deduct income tax from their salaries/wages; and
- ii) Employers, own-account workers and persons helping unpaid in their household business who are not registered for either income tax or value-added tax.

The **labour force** comprises all persons who are employed plus all persons who are unemployed.

Labour force participation rate is the proportion of the working age population that is either employed or unemployed.

Long-term unemployment: Persons in long-term unemployment are those individuals among the unemployed who were without work and trying to find a job or start a business for one year or more.

Not economically active: Persons aged 15–64 years who are neither employed nor unemployed in the reference week.

Persons in **underemployment (time-related)** are employed persons who were willing and available to work additional hours, whose total number of hours actually worked during the reference period was below 35 hours per week.

Underutilised labour comprises three groups as follows: persons who are underemployed, persons who are unemployed, and persons who are discouraged.

Unemployed persons are those (aged 15–64 years) who:

- a) Were not employed in the reference week **and**;
- b) Actively looked for work or tried to start a business in the four weeks preceding the survey interview **and**;
- c) Were available for work i.e. would have been able to start work or a business in the reference week **or**;
- d) Had not actively looked for work in the past four weeks but had a job or business to start at a definite date in the future and were available.

Unemployment rate is the proportion of the labour force that is unemployed.

The **working-age population** comprises all persons aged 15–64 years.

Appendix 1

Table 1: Population of working age (15-64 years)							
	Oct-Dec 2008	Jul-Sep 2009	Oct-Dec 2009	Qrt to Qrt change	Year on year change	Qrt to Qrt change	Year on year change
	Thousand	Thousand	Thousand	Thousand	Thousand	Percent	Percent
Both sexes	30 894	31 172	31 261	89	367	0,3	1,2
Women	16 169	16 293	16 333	40	164	0,2	1,0
Men	14 725	14 879	14 928	49	203	0,3	1,4
Population groups	30 894	31 172	31 261	89	367	0,3	1,2
Black	23 958	24 215	24 298	83	340	0,3	1,4
Coloured	2 956	2 987	2 997	10	41	0,3	1,4
Indian	882	895	899	4	17	0,4	1,9
White	3 098	3 075	3 067	-8	-31	-0,3	-1,0
South Africa	30 894	31 172	31 261	89	367	0,3	1,2
Western Cape	3 473	3 506	3 516	10	43	0,3	1,2
Eastern Cape	3 973	4 010	4 021	11	48	0,3	1,2
Northern Cape	705	708	709	1	4	0,1	0,6
Free State	1 859	1 868	1 870	2	11	0,1	0,6
KwaZulu Natal	6 318	6 384	6 405	21	87	0,3	1,4
North West	2 175	2 187	2 190	3	15	0,1	0,7
Gauteng	7 113	7 167	7 184	17	71	0,2	1,0
Mpumalanga	2 195	2 218	2 225	7	30	0,3	1,4
Limpopo	3 082	3 126	3 140	14	58	0,4	1,9

Due to rounding, numbers do not necessarily add up to totals.

Table 2: Labour force characteristics by sex - All population groups

	Oct-Dec 2008	Jul-Sep 2009	Oct-Dec 2009	Qrt to Qrt change	Year on year change	Qrt to Qrt change	Year on year change
	Thousand	Thousand	Thousand	Thousand	Thousand	Percent	Percent
Both sexes						.	.
Population 15-64 yrs	30 894	31 172	31 261	89	367	0,3	1,2
Labour Force	17 718	17 077	17 138	61	-580	0,4	-3,3
Employed	13 844	12 885	12 974	89	-870	0,7	-6,3
Formal sector (Non-agricultural)	9 537	9 073	9 114	41	-423	0,5	-4,4
Informal sector (Non-agricultural)	2 246	1 993	2 109	116	-137	5,8	-6,1
Agriculture	764	653	615	-38	-149	-5,8	-19,5
Private households	1 298	1 166	1 135	-31	-163	-2,7	-12,6
Unemployed	3 873	4 192	4 165	-27	292	-0,6	7,5
Not economically active	13 176	14 095	14 123	28	947	0,2	7,2
Discouraged work-seekers	1 168	1 632	1 686	54	518	3,3	44,3
Other(not economically active)	12 008	12 463	12 437	-26	429	-0,2	3,6
Rates (%)							
Unemployment rate	21,9	24,5	24,3	-0,2	2,4		
Employed / population ratio (Absorption)	44,8	41,3	41,5	0,2	-3,3		
Labour force participation rate	57,3	54,8	54,8	0,0	-2,5		
Women							
Population 15-64 yrs	16 169	16 293	16 333	40	164	0,2	1,0
Labour Force	8 172	7 862	7 818	-44	-354	-0,6	-4,3
Employed	6 102	5 782	5 785	3	-317	0,1	-5,2
Formal sector (Non-agricultural)	3 833	3 726	3 741	15	-92	0,4	-2,4
Informal sector (Non-agricultural)	1 001	912	944	32	-57	3,5	-5,7
Agriculture	238	223	208	-15	-30	-6,7	-12,6
Private households	1 030	921	891	-30	-139	-3,3	-13,5
Unemployed	2 070	2 080	2 033	-47	-37	-2,3	-1,8
Not economically active	7 997	8 431	8 515	84	518	1,0	6,5
Discouraged work-seekers	681	925	990	65	309	7,0	45,4
Other(not economically active)	7 316	7 506	7 526	20	210	0,3	2,9
Rates (%)							
Unemployment rate	25,3	26,5	26,0	-0,5	0,7		
Employed / population ratio (Absorption)	37,7	35,5	35,4	-0,1	-2,3		
Labour force participation rate	50,5	48,3	47,9	-0,4	-2,6		
Men							
Population 15-64 yrs	14 725	14 879	14 928	49	203	0,3	1,4
Labour Force	9 546	9 215	9 321	106	-225	1,2	-2,4
Employed	7 742	7 102	7 189	87	-553	1,2	-7,1
Formal sector (Non-agricultural)	5 704	5 346	5 372	26	-332	0,5	-5,8
Informal sector (Non-agricultural)	1 245	1 081	1 166	85	-79	7,9	-6,3
Agriculture	526	430	407	-23	-119	-5,3	-22,6
Private households	268	245	244	-1	-24	-0,4	-9,0
Unemployed	1 804	2 113	2 131	18	327	0,9	18,1
Not economically active	5 180	5 664	5 608	-56	428	-1,0	8,3
Discouraged work-seekers	487	707	697	-10	210	-1,4	43,1
Other(not economically active)	4 693	4 957	4 911	-46	218	-0,9	4,6
Rates (%)							
Unemployment rate	18,9	22,9	22,9	0,0	4,0		
Employed / population ratio (Absorption)	52,6	47,7	48,2	0,5	-4,4		
Labour force participation rate	64,8	61,9	62,4	0,5	-2,4		

Due to rounding, numbers do not necessarily add up to totals.
 Note: Employment refers to market production activities.

Table 2.1: Labour force characteristics by population group							
	Oct-Dec 2008	Jul-Sep 2009	Oct-Dec 2009	Qrt to Qrt change	Year on year change	Qrt to Qrt change	Year on year change
	Thousand	Thousand	Thousand	Thousand	Thousand	Percent	Percent
South Africa							
Population 15-64 yrs	30 894	31 172	31 261	89	367	0,3	1,2
Labour Force	17 718	17 077	17 138	61	-580	0,4	-3,3
Employed	13 844	12 885	12 974	89	-870	0,7	-6,3
Unemployed	3 873	4 192	4 165	-27	292	-0,6	7,5
Not economically active	13 176	14 095	14 123	28	947	0,2	7,2
Rates (%)							
Unemployment rate	21,9	24,5	24,3	-0,2	2,4		
Employed / population ratio (Absorption)	44,8	41,3	41,5	0,2	-3,3		
Labour force participation rate	57,3	54,8	54,8	0,0	-2,5		
Black/African							
Population 15-64 yrs	23 958	24 215	24 298	83	340	0,3	1,4
Labour Force	13 141	12 544	12 568	24	-573	0,2	-4,4
Employed	9 737	8 936	8 968	32	-769	0,4	-7,9
Unemployed	3 404	3 609	3 600	-9	196	-0,2	5,8
Not economically active	10 817	11 670	11 730	60	913	0,5	8,4
Rates (%)							
Unemployment rate	25,9	28,8	28,6	-0,2	2,7		
Employed / population ratio (Absorption)	40,6	36,9	36,9	0,0	-3,7		
Labour force participation rate	54,9	51,8	51,7	-0,1	-3,2		
Coloured							
Population 15-64 yrs	2 956	2 987	2 997	10	41	0,3	1,4
Labour Force	1 914	1 927	1 950	23	36	1,2	1,9
Employed	1 571	1 510	1 544	34	-27	2,3	-1,7
Unemployed	343	417	406	-11	63	-2,6	18,4
Not economically active	1 041	1 060	1 048	-12	7	-1,1	0,7
Rates (%)							
Unemployment rate	17,9	21,6	20,8	-0,8	2,9		
Employed / population ratio (Absorption)	53,1	50,6	51,5	0,9	-1,6		
Labour force participation rate	64,7	64,5	65,1	0,6	0,4		
Indian/Asian							
Population 15-64 yrs	882	895	899	4	17	0,4	1,9
Labour Force	532	519	506	-13	-26	-2,5	-4,9
Employed	469	453	450	-3	-19	-0,7	-4,1
Unemployed	62	66	56	-10	-6	-15,2	-9,7
Not economically active	350	376	393	17	43	4,5	12,3
Rates (%)							
Unemployment rate	11,7	12,7	11,1	-1,6	-0,6		
Employed / population ratio (Absorption)	53,2	50,6	50,1	-0,5	-3,1		
Labour force participation rate	60,2	58,0	56,3	-1,7	-3,9		
White							
Population 15-64 yrs	3 098	3 075	3 067	-8	-31	-0,3	-1,0
Labour Force	2 130	2 087	2 115	28	-15	1,3	-0,7
Employed	2 067	1 986	2 012	26	-55	1,3	-2,7
Unemployed	63	101	103	2	40	2,0	63,5
Not economically active	968	988	952	-36	-16	-3,6	-1,7
Rates (%)							
Unemployment rate	3,0	4,8	4,9	0,1	1,9		
Employed / population ratio (Absorption)	66,7	64,6	65,6	1,0	-1,1		
Labour force participation rate	68,8	67,9	69,0	1,1	0,2		

Due to rounding, numbers do not necessarily add up to totals.
 Note: Employment refers to market production activities.

Table 2.2: Labour force characteristics by province

	Oct-Dec 2008	Jul-Sep 2009	Oct-Dec 2009	Qrt to Qrt change	Year on year change	Qrt to Qrt change	Year on year change
	Thousand	Thousand	Thousand	Thousand	Thousand	Percent	Percent
South Africa							
Population 15-64 yrs	30 894	31 172	31 261	89	367	0,3	1,2
Labour Force	17 718	17 077	17 138	61	-580	0,4	-3,3
Employed	13 844	12 885	12 974	89	-870	0,7	-6,3
Unemployed	3 873	4 192	4 165	-27	292	-0,6	7,5
Not economically active	13 176	14 095	14 123	28	947	0,2	7,2
Discouraged work-seekers	1 168	1 632	1 686	54	518	3,3	44,3
Other	12 008	12 463	12 437	-26	429	-0,2	3,6
Rates (%)							
Unemployment rate	21,9	24,5	24,3	-0,2	2,4		
Employed / population ratio (Absorption)	44,8	41,3	41,5	0,2	-3,3		
Labour force participation rate	57,3	54,8	54,8	0,0	-2,5		
Western Cape							
Population 15-64 yrs	3 473	3 506	3 516	10	43	0,3	1,2
Labour Force	2 323	2 409	2 413	4	90	0,2	3,9
Employed	1 931	1 868	1 894	26	-37	1,4	-1,9
Unemployed	392	542	518	-24	126	-4,4	32,1
Not economically active	1 150	1 096	1 103	7	-47	0,6	-4,1
Discouraged work-seekers	39	38	42	4	3	10,5	7,7
Other	1 111	1 058	1 061	3	-50	0,3	-4,5
Rates (%)							
Unemployment rate	16,9	22,5	21,5	-1,0	4,6		
Employed / population ratio (Absorption)	55,6	53,3	53,9	0,6	-1,7		
Labour force participation rate	66,9	68,7	68,6	-0,1	1,7		
Eastern Cape							
Population 15-64 yrs	3 973	4 010	4 021	11	48	0,3	1,2
Labour Force	1 817	1 718	1 732	14	-85	0,8	-4,7
Employed	1 358	1 258	1 263	5	-95	0,4	-7,0
Unemployed	458	460	468	8	10	1,7	2,2
Not economically active	2 157	2 292	2 290	-2	133	-0,1	6,2
Discouraged work-seekers	260	326	339	13	79	4,0	30,4
Other	1 897	1 966	1 950	-16	53	-0,8	2,8
Rates (%)							
Unemployment rate	25,2	26,8	27,0	0,2	1,8		
Employed / population ratio (Absorption)	34,2	31,4	31,4	0,0	-2,8		
Labour force participation rate	45,7	42,8	43,0	0,2	-2,7		
Northern Cape							
Population 15-64 yrs	705	708	709	1	4	0,1	0,6
Labour Force	403	365	386	21	-17	5,8	-4,2
Employed	316	255	290	35	-26	13,7	-8,2
Unemployed	87	109	96	-13	9	-11,9	10,3
Not economically active	302	343	323	-20	21	-5,8	7,0
Discouraged work-seekers	18	31	29	-2	11	-6,5	61,1
Other	284	313	294	-19	10	-6,1	3,5
Rates (%)							
Unemployment rate	21,6	29,9	24,9	-5,0	3,3		
Employed / population ratio (Absorption)	44,8	36,0	40,9	4,9	-3,9		
Labour force participation rate	57,2	51,4	54,4	3,0	-2,8		
Free State							
Population 15-64 yrs	1 859	1 868	1 870	2	11	0,1	0,6
Labour Force	1 071	1 061	1 059	-2	-12	-0,2	-1,1
Employed	829	758	790	32	-39	4,2	-4,7
Unemployed	242	304	268	-36	26	-11,8	10,7
Not economically active	789	806	811	5	22	0,6	2,8
Discouraged work-seekers	81	91	101	10	20	11,0	24,7
Other	707	715	711	-4	4	-0,6	0,6
Rates (%)							
Unemployment rate	22,6	28,6	25,3	-3,3	2,7		
Employed / population ratio (Absorption)	44,6	40,6	42,2	1,6	-2,4		
Labour force participation rate	57,6	56,9	56,6	-0,3	-1,0		

Due to rounding, numbers do not necessarily add up to totals.
 Note: Employment refers to market production activities.

Table 2.2: Labour force characteristics by province (concluded)

	Oct-Dec 2008	Jul-Sep 2009	Oct-Dec 2009	Qrt to Qrt change	Year on year change	Qrt to Qrt change	Year on year change
	Thousand	Thousand	Thousand	Thousand	Thousand	Percent	Percent
KwaZulu Natal							
Population 15-64 yrs	6 318	6 384	6 405	21	87	0,3	1,4
Labour Force	3 321	3 024	2 983	-41	-338	-1,4	-10,2
Employed	2 631	2 458	2 409	-49	-222	-2,0	-8,4
Unemployed	690	566	574	8	-116	1,4	-16,8
Not economically active	2 996	3 360	3 422	62	426	1,8	14,2
Discouraged work-seekers	224	481	452	-29	228	-6,0	101,8
Other	2 772	2 878	2 970	92	198	3,2	7,1
Rates (%)							
Unemployment rate	20,8	18,7	19,2	0,5	-1,6		
Employed / population ratio (Absorption)	41,6	38,5	37,6	-0,9	-4,0		
Labour force participation rate	52,6	47,4	46,6	-0,8	-6,0		
North West							
Population 15-64 yrs	2 175	2 187	2 190	3	15	0,1	0,7
Labour Force	1 205	1 094	1 076	-18	-129	-1,6	-10,7
Employed	895	789	786	-3	-109	-0,4	-12,2
Unemployed	310	306	290	-16	-20	-5,2	-6,5
Not economically active	970	1 092	1 115	23	145	2,1	14,9
Discouraged work-seekers	102	130	146	16	44	12,3	43,1
Other	868	962	969	7	101	0,7	11,6
Rates (%)							
Unemployment rate	25,7	27,9	27,0	-0,9	1,3		
Employed / population ratio (Absorption)	41,1	36,1	35,9	-0,2	-5,2		
Labour force participation rate	55,4	50,1	49,1	-1,0	-6,3		
Gauteng							
Population 15-64 yrs	7 113	7 167	7 184	17	71	0,2	1,0
Labour Force	5 141	5 013	5 046	33	-95	0,7	-1,8
Employed	4 079	3 719	3 749	30	-330	0,8	-8,1
Unemployed	1 062	1 294	1 297	3	235	0,2	22,1
Not economically active	1 972	2 154	2 138	-16	166	-0,7	8,4
Discouraged work-seekers	147	187	231	44	84	23,5	57,1
Other	1 825	1 967	1 907	-60	82	-3,1	4,5
Rates (%)							
Unemployment rate	20,7	25,8	25,7	-0,1	5,0		
Employed / population ratio (Absorption)	57,3	51,9	52,2	0,3	-5,1		
Labour force participation rate	72,3	69,9	70,2	0,3	-2,1		
Mpumalanga							
Population 15-64 yrs	2 195	2 218	2 225	7	30	0,3	1,4
Labour Force	1 214	1 185	1 200	15	-14	1,3	-1,2
Employed	934	881	881	0	-53	0,0	-5,7
Unemployed	280	304	319	15	39	4,9	13,9
Not economically active	981	1 033	1 026	-7	45	-0,7	4,6
Discouraged work-seekers	104	123	126	3	22	2,4	21,2
Other	877	910	900	-10	23	-1,1	2,6
Rates (%)							
Unemployment rate	23,1	25,7	26,6	0,9	3,5		
Employed / population ratio (Absorption)	42,6	39,7	39,6	-0,1	-3,0		
Labour force participation rate	55,3	53,4	53,9	0,5	-1,4		
Limpopo							
Population 15-64 yrs	3 082	3 126	3 140	14	58	0,4	1,9
Labour Force	1 223	1 207	1 245	38	22	3,1	1,8
Employed	870	899	910	11	40	1,2	4,6
Unemployed	353	308	335	27	-18	8,8	-5,1
Not economically active	1 859	1 918	1 895	-23	36	-1,2	1,9
Discouraged work-seekers	192	225	219	-6	27	-2,7	14,1
Other	1 667	1 693	1 676	-17	9	-1,0	0,5
Rates (%)							
Unemployment rate	28,9	25,5	26,9	1,4	-2,0		
Employed / population ratio (Absorption)	28,2	28,8	29,0	0,2	0,8		
Labour force participation rate	39,7	38,6	39,6	1,0	-0,1		

Due to rounding, numbers do not necessarily add up to totals.

Note: Employment refers to market production activities.

Table 3.1: Employed by industry and sex - South Africa							
	Oct-Dec 2008	Jul-Sep 2009	Oct-Dec 2009	Qrt to Qrt change	Year on year change	Qrt to Qrt change	Year on year change
	Thousand	Thousand	Thousand	Thousand	Thousand	Percent	Percent
Both sexes	13 844	12 885	12 974	89	-870	0,7	-6,3
Agriculture	764	653	615	-38	-149	-5,8	-19,5
Mining	321	299	296	-3	-25	-1,0	-7,8
Manufacturing	1 944	1 723	1 742	19	-202	1,1	-10,4
Utilities	86	81	98	17	12	21,0	14,0
Construction	1 191	1 057	1 085	28	-106	2,6	-8,9
Trade	3 164	2 852	2 873	21	-291	0,7	-9,2
Transport	774	737	739	2	-35	0,3	-4,5
Finance	1 636	1 682	1 759	77	123	4,6	7,5
Community and social services	2 661	2 627	2 628	1	-33	0,0	-1,2
Private households	1 298	1 166	1 135	-31	-163	-2,7	-12,6
Other	5	6	3	-3	-2	-50,0	-40,0
Women	6 102	5 782	5 785	3	-317	0,1	-5,2
Agriculture	238	223	208	-15	-30	-6,7	-12,6
Mining	41	41	34	-7	-7	-17,1	-17,1
Manufacturing	589	576	586	10	-3	1,7	-0,5
Utilities	26	15	15	0	-11	0,0	-42,3
Construction	112	133	138	5	26	3,8	23,2
Trade	1 609	1 420	1 413	-7	-196	-0,5	-12,2
Transport	138	161	170	9	32	5,6	23,2
Finance	754	747	758	11	4	1,5	0,5
Community and social services	1 562	1 540	1 567	27	5	1,8	0,3
Private households	1 030	921	891	-30	-139	-3,3	-13,5
Other	2	5	3	-2	1	-40,0	50,0
Men	7 742	7 102	7 189	87	-553	1,2	-7,1
Agriculture	526	430	407	-23	-119	-5,3	-22,6
Mining	280	258	262	4	-18	1,6	-6,4
Manufacturing	1 355	1 147	1 156	9	-199	0,8	-14,7
Utilities	60	66	83	17	23	25,8	38,3
Construction	1 078	924	947	23	-131	2,5	-12,2
Trade	1 555	1 431	1 460	29	-95	2,0	-6,1
Transport	636	576	569	-7	-67	-1,2	-10,5
Finance	881	936	1 001	65	120	6,9	13,6
Community and social services	1 099	1 087	1 061	-26	-38	-2,4	-3,5
Private households	268	245	244	-1	-24	-0,4	-9,0
Other	3	2	0	-2	-3	-100,0	-100,0

For all values of 10 000 or lower the sample size is too small for reliable estimates.
 Due to rounding, numbers do not necessarily add up to totals.

Table 3.2: Employed by industry and province							
	Oct-Dec 2008	Jul-Sep 2009	Oct-Dec 2009	Qrt to Qrt change	Year on year change	Qrt to Qrt change	Year on year change
	Thousand	Thousand	Thousand	Thousand	Thousand	Percent	Percent
Agriculture	764	653	615	-38	-149	-5,8	-19,5
Western Cape	131	127	132	5	1	3,9	0,8
Eastern Cape	79	73	66	-7	-13	-9,6	-16,5
Northern Cape	54	40	50	10	-4	25,0	-7,4
Free State	72	84	74	-10	2	-11,9	2,8
KwaZulu Natal	163	113	105	-8	-58	-7,1	-35,6
North West	64	37	40	3	-24	8,1	-37,5
Gauteng	63	42	24	-18	-39	-42,9	-61,9
Mpumalanga	79	74	66	-8	-13	-10,8	-16,5
Limpopo	59	63	57	-6	-2	-9,5	-3,4
Mining	321	299	296	-3	-25	-1,0	-7,8
Western Cape	2	3	3	0	1	0,0	50,0
Eastern Cape	3	4	1	-3	-2	-75,0	-66,7
Northern Cape	15	9	11	2	-4	22,2	-26,7
Free State	30	28	37	9	7	32,1	23,3
KwaZulu Natal	9	6	7	1	-2	16,7	-22,2
North West	132	111	118	7	-14	6,3	-10,6
Gauteng	30	31	20	-11	-10	-35,5	-33,3
Mpumalanga	59	58	50	-8	-9	-13,8	-15,3
Limpopo	42	49	50	1	8	2,0	19,0
Manufacturing	1 944	1 723	1 742	19	-202	1,1	-10,4
Western Cape	332	294	298	4	-34	1,4	-10,2
Eastern Cape	207	158	155	-3	-52	-1,9	-25,1
Northern Cape	13	15	13	-2	0	-13,3	0,0
Free State	79	73	81	8	2	11,0	2,5
KwaZulu Natal	400	397	388	-9	-12	-2,3	-3,0
North West	81	88	73	-15	-8	-17,0	-9,9
Gauteng	677	554	580	26	-97	4,7	-14,3
Mpumalanga	84	72	77	5	-7	6,9	-8,3
Limpopo	70	72	77	5	7	6,9	10,0
Utilities	86	81	98	17	12	21,0	14,0
Western Cape	11	4	8	4	-3	100,0	-27,3
Eastern Cape	2	3	4	1	2	33,3	100,0
Northern Cape	1	3	4	1	3	33,3	300,0
Free State	6	3	4	1	-2	33,3	-33,3
KwaZulu Natal	11	4	8	4	-3	100,0	-27,3
North West	8	4	3	-1	-5	-25,0	-62,5
Gauteng	23	40	45	5	22	12,5	95,7
Mpumalanga	15	13	16	3	1	23,1	6,7
Limpopo	9	7	6	-1	-3	-14,3	-33,3
Construction	1 191	1 057	1 085	28	-106	2,6	-8,9
Western Cape	194	165	177	12	-17	7,3	-8,8
Eastern Cape	110	104	111	7	1	6,7	0,9
Northern Cape	26	10	18	8	-8	80,0	-30,8
Free State	65	57	56	-1	-9	-1,8	-13,8
KwaZulu Natal	242	232	227	-5	-15	-2,2	-6,2
North West	66	58	57	-1	-9	-1,7	-13,6
Gauteng	311	264	258	-6	-53	-2,3	-17,0
Mpumalanga	86	82	80	-2	-6	-2,4	-7,0
Limpopo	91	85	100	15	9	17,6	9,9

For all values of 10 000 or lower the sample size is too small for reliable estimates.

Due to rounding, numbers do not necessarily add up to totals

Table 3.2: Employed by industry and province (concluded)							
	Oct-Dec 2008	Jul-Sep 2009	Oct-Dec 2009	Qrt to Qrt change	Year on year change	Qrt to Qrt change	Year on year change
	Thousand	Thousand	Thousand	Thousand	Thousand	Percent	Percent
Trade	3 164	2 852	2 873	21	-291	0,7	-9,2
Western Cape	415	413	406	-7	-9	-1,7	-2,2
Eastern Cape	340	284	275	-9	-65	-3,2	-19,1
Northern Cape	56	40	43	3	-13	7,5	-23,2
Free State	181	163	170	7	-11	4,3	-6,1
KwaZulu Natal	595	519	518	-1	-77	-0,2	-12,9
North West	198	147	155	8	-43	5,4	-21,7
Gauteng	928	837	826	-11	-102	-1,3	-11,0
Mpumalanga	234	209	226	17	-8	8,1	-3,4
Limpopo	218	239	254	15	36	6,3	16,5
Transport	774	737	739	2	-35	0,3	-4,5
Western Cape	88	91	86	-5	-2	-5,5	-2,3
Eastern Cape	63	74	79	5	16	6,8	25,4
Northern Cape	12	9	13	4	1	44,4	8,3
Free State	39	43	44	1	5	2,3	12,8
KwaZulu Natal	182	172	154	-18	-28	-10,5	-15,4
North West	26	21	25	4	-1	19,0	-3,8
Gauteng	273	256	263	7	-10	2,7	-3,7
Mpumalanga	51	38	39	1	-12	2,6	-23,5
Limpopo	40	33	36	3	-4	9,1	-10,0
Finance	1 636	1 682	1 759	77	123	4,6	7,5
Western Cape	262	270	272	2	10	0,7	3,8
Eastern Cape	102	128	128	0	26	0,0	25,5
Northern Cape	26	21	24	3	-2	14,3	-7,7
Free State	69	60	55	-5	-14	-8,3	-20,3
KwaZulu Natal	270	305	299	-6	29	-2,0	10,7
North West	68	71	72	1	4	1,4	5,9
Gauteng	704	694	765	71	61	10,2	8,7
Mpumalanga	87	78	83	5	-4	6,4	-4,6
Limpopo	49	55	62	7	13	12,7	26,5
Community and social services	2 661	2 627	2 628	1	-33	0,0	-1,2
Western Cape	361	365	383	18	22	4,9	6,1
Eastern Cape	319	319	326	7	7	2,2	2,2
Northern Cape	80	82	85	3	5	3,7	6,3
Free State	195	161	169	8	-26	5,0	-13,3
KwaZulu Natal	476	478	478	0	2	0,0	0,4
North West	158	175	171	-4	13	-2,3	8,2
Gauteng	712	678	667	-11	-45	-1,6	-6,3
Mpumalanga	146	159	158	-1	12	-0,6	8,2
Limpopo	214	210	190	-20	-24	-9,5	-11,2
Private households	1 298	1 166	1 135	-31	-163	-2,7	-12,6
Western Cape	134	134	129	-5	-5	-3,7	-3,7
Eastern Cape	133	110	119	9	-14	8,2	-10,5
Northern Cape	34	26	29	3	-5	11,5	-14,7
Free State	94	85	100	15	6	17,6	6,4
KwaZulu Natal	283	234	224	-10	-59	-4,3	-20,8
North West	94	77	72	-5	-22	-6,5	-23,4
Gauteng	354	316	297	-19	-57	-6,0	-16,1
Mpumalanga	94	98	85	-13	-9	-13,3	-9,6
Limpopo	79	84	79	-5	0	-6,0	0,0

Due to rounding, numbers do not necessarily add up to totals

Table 3.3: Employed by sector and industry - South Africa							
	Oct-Dec 2008	Jul-Sep 2009	Oct-Dec 2009	Qrt to Qrt change	Year on year change	Qrt to Qrt change	Year on year change
	Thousand	Thousand	Thousand	Thousand	Thousand	Percent	Percent
Total employed	13 844	12 885	12 974	89	-870	0,7	-6,3
Formal and informal sector (Non-agricultural)	11 782	11 066	11 223	157	-559	1,4	-4,7
Mining	321	299	296	-3	-25	-1,0	-7,8
Manufacturing	1 944	1 723	1 742	19	-202	1,1	-10,4
Utilities	86	81	98	17	12	21,0	14,0
Construction	1 191	1 057	1 085	28	-106	2,6	-8,9
Trade	3 164	2 852	2 873	21	-291	0,7	-9,2
Transport	774	737	739	2	-35	0,3	-4,5
Finance	1 636	1 682	1 759	77	123	4,6	7,5
Community and social services	2 661	2 627	2 628	1	-33	0,0	-1,2
Other	5	6	3	-3	-2	-50,0	-40,0
Formal sector (Non-agricultural)	9 537	9 073	9 114	41	-423	0,5	-4,4
Mining	319	297	295	-2	-24	-0,7	-7,5
Manufacturing	1 716	1 547	1 546	-1	-170	-0,1	-9,9
Utilities	80	80	96	16	16	20,0	20,0
Construction	877	804	808	4	-69	0,5	-7,9
Trade	2 105	1 882	1 903	21	-202	1,1	-9,6
Transport	566	558	548	-10	-18	-1,8	-3,2
Finance	1 499	1 557	1 597	40	98	2,6	6,5
Community and social services	2 371	2 341	2 318	-23	-53	-1,0	-2,2
Other	5	6	3	-3	-2	-50,0	-40,0
Informal sector (Non-agricultural)	2 246	1 993	2 109	116	-137	5,8	-6,1
Mining	2	2	1	-1	-1	-50,0	-50,0
Manufacturing	228	176	196	20	-32	11,4	-14,0
Utilities	6	2	2	0	-4	0,0	-66,7
Construction	314	253	277	24	-37	9,5	-11,8
Trade	1 060	970	971	1	-89	0,1	-8,4
Transport	208	179	191	12	-17	6,7	-8,2
Finance	137	126	163	37	26	29,4	19,0
Community and social services	291	286	309	23	18	8,0	6,2
Agriculture	764	653	615	-38	-149	-5,8	-19,5
Private households	1 298	1 166	1 135	-31	-163	-2,7	-12,6

For all values of 10 000 or lower the sample size is too small for reliable estimates.

Due to rounding, numbers do not necessarily add up to totals.

Table 3.4: Employed by province and sector							
	Oct-Dec 2008	Jul-Sep 2009	Oct-Dec 2009	Qrt to Qrt change	Year on year change	Qrt to Qrt change	Year on year change
	Thousand	Thousand	Thousand	Thousand	Thousand	Percent	Percent
South Africa	13 844	12 885	12 974	89	-870	0,7	-6,3
Formal sector (Non-agricultural)	9 537	9 073	9 114	41	-423	0,5	-4,4
Informal sector (Non-agricultural)	2 246	1 993	2 109	116	-137	5,8	-6,1
Agriculture	764	653	615	-38	-149	-5,8	-19,5
Private households	1 298	1 166	1 135	-31	-163	-2,7	-12,6
Western Cape	1 931	1 868	1 894	26	-37	1,4	-1,9
Formal sector (Non-agricultural)	1 460	1 419	1 441	22	-19	1,6	-1,3
Informal sector (Non-agricultural)	206	187	191	4	-15	2,1	-7,3
Agriculture	131	127	132	5	1	3,9	0,8
Private households	134	134	129	-5	-5	-3,7	-3,7
Eastern Cape	1 358	1 258	1 263	5	-95	0,4	-7,0
Formal sector (Non-agricultural)	843	803	799	-4	-44	-0,5	-5,2
Informal sector (Non-agricultural)	304	272	280	8	-24	2,9	-7,9
Agriculture	79	73	66	-7	-13	-9,6	-16,5
Private households	133	110	119	9	-14	8,2	-10,5
Northern Cape	316	255	290	35	-26	13,7	-8,2
Formal sector (Non-agricultural)	199	161	180	19	-19	11,8	-9,5
Informal sector (Non-agricultural)	30	29	31	2	1	6,9	3,3
Agriculture	54	40	50	10	-4	25,0	-7,4
Private households	34	26	29	3	-5	11,5	-14,7
Free State	829	758	790	32	-39	4,2	-4,7
Formal sector (Non-agricultural)	527	458	477	19	-50	4,1	-9,5
Informal sector (Non-agricultural)	136	130	139	9	3	6,9	2,2
Agriculture	72	84	74	-10	2	-11,9	2,8
Private households	94	85	100	15	6	17,6	6,4
KwaZulu Natal	2 631	2 458	2 409	-49	-222	-2,0	-8,4
Formal sector (Non-agricultural)	1 695	1 653	1 649	-4	-46	-0,2	-2,7
Informal sector (Non-agricultural)	490	458	431	-27	-59	-5,9	-12,0
Agriculture	163	113	105	-8	-58	-7,1	-35,6
Private households	283	234	224	-10	-59	-4,3	-20,8
North West	895	789	786	-3	-109	-0,4	-12,2
Formal sector (Non-agricultural)	609	570	570	0	-39	0,0	-6,4
Informal sector (Non-agricultural)	129	104	104	0	-25	0,0	-19,4
Agriculture	64	37	40	3	-24	8,1	-37,5
Private households	94	77	72	-5	-22	-6,5	-23,4
Gauteng	4 079	3 719	3 749	30	-330	0,8	-8,1
Formal sector (Non-agricultural)	3 160	2 971	2 946	-25	-214	-0,8	-6,8
Informal sector (Non-agricultural)	502	390	481	91	-21	23,3	-4,2
Agriculture	63	42	24	-18	-39	-42,9	-61,9
Private households	354	316	297	-19	-57	-6,0	-16,1
Mpumalanga	934	881	881	0	-53	0,0	-5,7
Formal sector (Non-agricultural)	556	527	526	-1	-30	-0,2	-5,4
Informal sector (Non-agricultural)	206	182	204	22	-2	12,1	-1,0
Agriculture	79	74	66	-8	-13	-10,8	-16,5
Private households	94	98	85	-13	-9	-13,3	-9,6
Limpopo	870	899	910	11	40	1,2	4,6
Formal sector (Non-agricultural)	489	509	525	16	36	3,1	7,4
Informal sector (Non-agricultural)	244	243	249	6	5	2,5	2,0
Agriculture	59	63	57	-6	-2	-9,5	-3,4
Private households	79	84	79	-5	0	-6,0	0,0

Due to rounding, numbers do not necessarily add up to totals.

Table 3.5: Employed by sex and occupation - South Africa

	Oct-Dec 2008	Jul-Sep 2009	Oct-Dec 2009	Qrt to Qrt change	Year on year change	Qrt to Qrt change	Year on year change
	Thousand	Thousand	Thousand	Thousand	Thousand	Percent	Percent
Both sexes	13 844	12 885	12 974	89	-870	0,7	-6,3
Manager	1 083	994	981	-13	-102	-1,3	-9,4
Professional	747	703	647	-56	-100	-8,0	-13,4
Technician	1 516	1 493	1 521	28	5	1,9	0,3
Clerk	1 434	1 431	1 462	31	28	2,2	2,0
Sales and services	1 732	1 792	1 844	52	112	2,9	6,5
Skilled agriculture	109	72	83	11	-26	15,3	-23,9
Craft and related trade	1 881	1 568	1 568	0	-313	0,0	-16,6
Plant and machine operator	1 207	1 097	1 083	-14	-124	-1,3	-10,3
Elementary	3 092	2 812	2 888	76	-204	2,7	-6,6
Domestic worker	1 042	924	898	-26	-144	-2,8	-13,8
Other	1					.	.
Women	6 102	5 782	5 785	3	-317	0,1	-5,2
Manager	333	303	287	-16	-46	-5,3	-13,8
Professional	368	326	294	-32	-74	-9,8	-20,1
Technician	817	802	840	38	23	4,7	2,8
Clerk	987	1 009	1 029	20	42	2,0	4,3
Sales and services	857	882	859	-23	2	-2,6	0,2
Skilled agriculture	25	15	23	8	-2	53,3	-8,0
Craft and related trade	265	194	211	17	-54	8,8	-20,4
Plant and machine operator	162	173	176	3	14	1,7	8,6
Elementary	1 285	1 185	1 199	14	-86	1,2	-6,7
Domestic worker	1 003	894	866	-28	-137	-3,1	-13,7
Men	7 742	7 102	7 189	87	-553	1,2	-7,1
Manager	750	691	694	3	-56	0,4	-7,5
Professional	379	377	352	-25	-27	-6,6	-7,1
Technician	699	691	681	-10	-18	-1,4	-2,6
Clerk	447	422	433	11	-14	2,6	-3,1
Sales and services	875	910	985	75	110	8,2	12,6
Skilled agriculture	84	57	60	3	-24	5,3	-28,6
Craft and related trade	1 616	1 374	1 357	-17	-259	-1,2	-16,0
Plant and machine operator	1 044	924	908	-16	-136	-1,7	-13,0
Elementary	1 807	1 627	1 689	62	-118	3,8	-6,5
Domestic worker	39	30	31	1	-8	3,3	-20,5
Other	1					.	.

For all values of 10 000 or lower the sample size is too small for reliable estimates. Due to rounding, numbers do not necessarily add up to totals.

Table 3.6: Employed by sex and status in employment - South Africa							
	Oct-Dec 2008	Jul-Sep 2009	Oct-Dec 2009	Qrt to Qrt change	Year on year change	Qrt to Qrt change	Year on year change
	Thousand	Thousand	Thousand	Thousand	Thousand	Percent	Percent
Both sexes	13 844	12 885	12 974	89	-870	0,7	-6,3
Employee	11 670	11 000	10 976	-24	-694	-0,2	-5,9
Employer	796	627	680	53	-116	8,5	-14,6
Own-account worker	1 264	1 141	1 202	61	-62	5,3	-4,9
Unpaid household member	114	116	116	0	2	0,0	1,8
Women	6 102	5 782	5 785	3	-317	0,1	-5,2
Employee	5 172	4 974	4 954	-20	-218	-0,4	-4,2
Employer	172	129	138	9	-34	7,0	-19,8
Own-account worker	675	592	605	13	-70	2,2	-10,4
Unpaid household member	83	86	88	2	5	2,3	6,0
Men	7 742	7 102	7 189	87	-553	1,2	-7,1
Employee	6 498	6 026	6 022	-4	-476	-0,1	-7,3
Employer	624	498	542	44	-82	8,8	-13,1
Own-account worker	589	549	597	48	8	8,7	1,4
Unpaid household member	31	30	28	-2	-3	-6,7	-9,7

Due to rounding, numbers do not necessarily add up to totals.

Table 3.7: Employed by sex and usual hours of work - South Africa							
	Oct-Dec 2008	Jul-Sep 2009	Oct-Dec 2009	Qrt to Qrt change	Year on year change	Qrt to Qrt change	Year on year change
	Thousand	Thousand	Thousand	Thousand	Thousand	Percent	Percent
Both sexes	13 844	12 885	12 974	89	-870	0,7	-6,3
Working less than 15 hours per week	293	272	258	-14	-35	-5,1	-11,9
Working 15-29 hours per week	767	812	813	1	46	0,1	6,0
Working 30-39 hours per week	1 044	971	928	-43	-116	-4,4	-11,1
Working 40-45 hours per week	7 271	6 864	6 827	-37	-444	-0,5	-6,1
Working more than 45 hours per week	4 470	3 966	4 148	182	-322	4,6	-7,2
Women	6 102	5 782	5 785	3	-317	0,1	-5,2
Working less than 15 hours per week	185	164	171	7	-14	4,3	-7,6
Working 15-29 hours per week	535	543	555	12	20	2,2	3,7
Working 30-39 hours per week	665	615	590	-25	-75	-4,1	-11,3
Working 40-45 hours per week	3 138	3 009	2 985	-24	-153	-0,8	-4,9
Working more than 45 hours per week	1 580	1 451	1 483	32	-97	2,2	-6,1
Men	7 742	7 102	7 189	87	-553	1,2	-7,1
Working less than 15 hours per week	108	108	87	-21	-21	-19,4	-19,4
Working 15-29 hours per week	232	269	258	-11	26	-4,1	11,2
Working 30-39 hours per week	378	356	338	-18	-40	-5,1	-10,6
Working 40-45 hours per week	4 133	3 855	3 842	-13	-291	-0,3	-7,0
Working more than 45 hours per week	2 890	2 515	2 665	150	-225	6,0	-7,8

Due to rounding, numbers do not necessarily add up to totals.

Table 3.8: Time-related underemployment - South Africa							
	Oct-Dec 2008	Jul-Sep 2009	Oct-Dec 2009	Qrt to Qrt change	Year on year change	Qrt to Qrt change	Year on year change
	Thousand	Thousand	Thousand	Thousand	Thousand	Percent	Percent
Both sexes	618	667	592	-75	-26	-11,2	-4,2
Women	397	423	376	-47	-21	-11,1	-5,3
Men	221	245	216	-29	-5	-11,8	-2,3
As percentage of the labour force (Both sexes)	3,5	3,9	3,5	-0,4	0,0		
Women	4,9	5,4	4,8	-0,6	-0,1		
Men	2,3	2,7	2,3	-0,4	0,0		
As percentage of total employment (Both sexes)	4,5	5,2	4,6	-0,6	0,1		
Women	6,5	7,3	6,5	-0,8	0,0		
Men	2,9	3,4	3,0	-0,4	0,1		
Industry	618	667	592	-75	-26	-11,2	-4,2
Agriculture	14	13	5	-8	-9	-61,5	-64,3
Mining	1					.	.
Manufacturing	42	43	30	-13	-12	-30,2	-28,6
Utilities	3					.	.
Construction	47	51	47	-4	0	-7,8	0,0
Trade	114	134	109	-25	-5	-18,7	-4,4
Transport	24	18	14	-4	-10	-22,2	-41,7
Finance	33	37	38	1	5	2,7	15,2
Community and social services	94	100	94	-6	0	-6,0	0,0
Private households	246	271	256	-15	10	-5,5	4,1
Occupation	618	667	592	-75	-26	-11,2	-4,2
Manager	10	14	4	-10	-6	-71,4	-60,0
Professional	13	11	5	-6	-8	-54,5	-61,5
Technician	49	42	39	-3	-10	-7,1	-20,4
Clerk	18	23	19	-4	1	-17,4	5,6
Sales and services	56	67	58	-9	2	-13,4	3,6
Skilled agriculture	3	3	3	0	0	0,0	0,0
Craft and related trade	66	56	48	-8	-18	-14,3	-27,3
Plant and machine operator	17	22	15	-7	-2	-31,8	-11,8
Elementary	202	223	206	-17	4	-7,6	2,0
Domestic worker	185	205	194	-11	9	-5,4	4,9
Other	1					.	.

For all values of 10 000 or lower the sample size is too small for reliable estimates.
 Due to rounding, numbers do not necessarily add up to totals.

Table 4: Characteristics of the unemployed - South Africa

	Oct-Dec 2008	Jul-Sep 2009	Oct-Dec 2009	Qrt to Qrt change	Year on year change	Qrt to Qrt change	Year on year change
	Thousand	Thousand	Thousand	Thousand	Thousand	Percent	Percent
Unemployed	3 873	4 192	4 165	-27	292	-0,6	7,5
Job losers	1 202	1 477	1 429	-48	227	-3,2	18,9
Job leavers	342	338	333	-5	-9	-1,5	-2,6
New entrants	1 679	1 615	1 687	72	8	4,5	0,5
Re-entrants	177	193	184	-9	7	-4,7	4,0
Other	474	570	531	-39	57	-6,8	12,0
Unemployed	3 873	4 192	4 165	-27	292	-0,6	7,5
Long-term unemployment (1 year and more)	2 369	2 489	2 468	-21	99	-0,8	4,2
Short-term unemployment (less than 1 year)	1 504	1 703	1 696	-7	192	-0,4	12,8
Long-term unemployment (%)							
Proportion of the labour force	13,4	14,6	14,4	-0,2	1,0		
Proportion of the unemployed	61,2	59,4	59,3	-0,1	-1,9		
Those who have worked in the past 5 years							
Previous occupation	1 720	2 008	1 947	-61	227	-3,0	13,2
Manager	33	32	40	8	7	25,0	21,2
Professional	27	23	29	6	2	26,1	7,4
Technician	67	86	78	-8	11	-9,3	16,4
Clerk	175	213	187	-26	12	-12,2	6,9
Sales and services	256	292	266	-26	10	-8,9	3,9
Skilled agriculture	6	8	9	1	3	12,5	50,0
Craft and related trade	297	393	373	-20	76	-5,1	25,6
Plant and machine operator	122	188	165	-23	43	-12,2	35,2
Elementary	560	614	629	15	69	2,4	12,3
Domestic worker	177	158	171	13	-6	8,2	-3,4
Previous industry	1 720	2 008	1 947	-61	227	-3,0	13,2
Agriculture	98	113	97	-16	-1	-14,2	-1,0
Mining	30	38	30	-8	0	-21,1	0,0
Manufacturing	238	312	307	-5	69	-1,6	29,0
Utilities	7	9	9	0	2	0,0	28,6
Construction	287	353	363	10	76	2,8	26,5
Trade	437	475	447	-28	10	-5,9	2,3
Transport	74	96	96	0	22	0,0	29,7
Finance	176	231	220	-11	44	-4,8	25,0
Community and social services	156	174	167	-7	11	-4,0	7,1
Private households	218	206	211	5	-7	2,4	-3,2
Other	1	1				.	.

For all values of 10 000 or lower the sample size is too small for reliable estimates.

Due to rounding, numbers do not necessarily add up to totals.

Table 5: Characteristics of the not economically active - South Africa							
	Oct-Dec 2008	Jul-Sep 2009	Oct-Dec 2009	Qrt to Qrt change	Year on year change	Qrt to Qrt change	Year on year change
	Thousand	Thousand	Thousand	Thousand	Thousand	Percent	Percent
Not economically active	13 176	14 095	14 123	28	947	0,2	7,2
Student	5 825	5 902	5 968	66	143	1,1	2,5
Home-maker	2 608	2 757	2 747	-10	139	-0,4	5,3
Illness/disability	1 789	1 821	1 773	-48	-16	-2,6	-0,9
Too old/young to work	1 026	1 109	1 119	10	93	0,9	9,1
Discouraged work seekers	1 168	1 632	1 686	54	518	3,3	44,3
Other	761	875	830	-45	69	-5,1	9,1
Inactivity rate by age (Both sexes)	42,6	45,2	45,2	0,0	2,6		
15-24 yrs	70,6	73,6	73,2	-0,4	2,6		
25-54 yrs	24,9	27,2	27,3	0,1	2,4		
55-64 yrs	57,4	59,6	59,7	0,1	2,3		
Inactivity rate by age (Women)	49,5	51,7	52,1	0,4	2,6		
15-24 yrs	73,2	75,9	75,9	0,0	2,7		
25-54 yrs	34,0	36,2	36,8	0,6	2,8		
55-64 yrs	68,0	70,2	69,8	-0,4	1,8		
Inactivity rate by age (Men)	35,2	38,1	37,6	-0,5	2,4		
15-24 yrs	67,9	71,4	70,6	-0,8	2,7		
25-54 yrs	14,5	17,1	16,6	-0,5	2,1		
55-64 yrs	44,0	46,2	46,8	0,6	2,8		

Due to rounding, numbers do not necessarily add up to totals.

Table 6: Socio-demographic characteristics - South Africa							
	Oct-Dec 2008	Jul-Sep 2009	Oct-Dec 2009	Qrt to Qrt change	Year on year change	Qrt to Qrt change	Year on year change
	Thousand	Thousand	Thousand	Thousand	Thousand	Percent	Percent
Age group of the employed	13 844	12 885	12 974	89	-870	0,7	-6,3
15-24 yrs	1 618	1 373	1 399	26	-219	1,9	-13,5
25-34 yrs	4 735	4 322	4 344	22	-391	0,5	-8,3
35-44 yrs	3 701	3 595	3 596	1	-105	0,0	-2,8
45-54 yrs	2 642	2 504	2 541	37	-101	1,5	-3,8
55-64 yrs	1 148	1 090	1 094	4	-54	0,4	-4,7
Age group of the unemployed	3 873	4 192	4 165	-27	292	-0,6	7,5
15-24 yrs	1 319	1 286	1 308	22	-11	1,7	-0,8
25-34 yrs	1 582	1 740	1 729	-11	147	-0,6	9,3
35-44 yrs	631	752	742	-10	111	-1,3	17,6
45-54 yrs	279	334	307	-27	28	-8,1	10,0
55-64 yrs	63	79	78	-1	15	-1,3	23,8
Age group of the not economically active	13 176	14 095	14 123	28	947	0,2	7,2
15-24 yrs	7 046	7 418	7 403	-15	357	-0,2	5,1
25-34 yrs	1 973	2 248	2 246	-2	273	-0,1	13,8
35-44 yrs	1 252	1 328	1 367	39	115	2,9	9,2
45-54 yrs	1 274	1 376	1 369	-7	95	-0,5	7,5
55-64 yrs	1 631	1 724	1 738	14	107	0,8	6,6
Highest level of education of the employed	13 844	12 885	12 974	89	-870	0,7	-6,3
No schooling	563	455	438	-17	-125	-3,7	-22,2
Less than primary completed	1 396	1 162	1 175	13	-221	1,1	-15,8
Primary completed	711	646	664	18	-47	2,8	-6,6
Secondary not completed	4 672	4 178	4 232	54	-440	1,3	-9,4
Secondary completed	3 895	3 820	3 932	112	37	2,9	0,9
Tertiary	2 439	2 454	2 388	-66	-51	-2,7	-2,1
Other	167	168	146	-22	-21	-13,1	-12,6
Highest level of education of the unemployed	3 873	4 192	4 165	-27	292	-0,6	7,5
No schooling	81	90	94	4	13	4,4	16,0
Less than primary completed	368	370	352	-18	-16	-4,9	-4,3
Primary completed	220	225	193	-32	-27	-14,2	-12,3
Secondary not completed	1 807	1 918	1 905	-13	98	-0,7	5,4
Secondary completed	1 202	1 322	1 364	42	162	3,2	13,5
Tertiary	171	239	224	-15	53	-6,3	31,0
Other	25	29	34	5	9	17,2	36,0
Highest level of education of the not economically active	13 176	14 095	14 123	28	947	0,2	7,2
No schooling	895	882	848	-34	-47	-3,9	-5,3
Less than primary completed	1 993	1 992	2 043	51	50	2,6	2,5
Primary completed	1 115	1 102	1 190	88	75	8,0	6,7
Secondary not completed	6 943	7 397	7 424	27	481	0,4	6,9
Secondary completed	1 848	2 237	2 155	-82	307	-3,7	16,6
Tertiary	295	360	368	8	73	2,2	24,7
Other	88	125	95	-30	7	-24,0	8,0
Current marital status of the employed	13 844	12 885	12 974	89	-870	0,7	-6,3
Married	5 610	5 376	5 331	-45	-279	-0,8	-5,0
Living together like husband and wife	1 587	1 515	1 488	-27	-99	-1,8	-6,2
Widow/widower	476	425	460	35	-16	8,2	-3,4
Divorced or separated	505	434	480	46	-25	10,6	-5,0
Never married	5 666	5 135	5 216	81	-450	1,6	-7,9
Current marital status of the unemployed	3 873	4 192	4 165	-27	292	-0,6	7,5
Married	590	713	684	-29	94	-4,1	15,9
Living together like husband and wife	423	504	424	-80	1	-15,9	0,2
Widow/widower	64	53	63	10	-1	18,9	-1,6
Divorced or separated	65	68	61	-7	-4	-10,3	-6,2
Never married	2 732	2 854	2 932	78	200	2,7	7,3
Current marital status of the not economically active	13 176	14 095	14 123	28	947	0,2	7,2
Married	2 730	2 873	2 914	41	184	1,4	6,7
Living together like husband and wife	690	739	730	-9	40	-1,2	5,8
Widow/widower	645	660	662	2	17	0,3	2,6
Divorced or separated	226	236	246	10	20	4,2	8,8
Never married	8 886	9 586	9 571	-15	685	-0,2	7,7

Due to rounding, numbers do not necessarily add up to totals.

Table 7: Involvement in non-market activities and labour market status by province

		Oct-Dec 2008	Jul-Sep 2009	Oct-Dec 2009	Qrt to Qrt change	Year on year change	Qrt to Qrt change	Year on year change
		Thousand	Thousand	Thousand	Thousand	Thousand	Percent	Percent
South Africa	Subsistence farming	1 476	1 232	1 506	274	30	22,2	2,0
	Fetching water or collecting wood/dung	3 184	3 038	2 854	-184	-330	-6,1	-10,4
	Produce other goods for household use	48	52	54	2	6	3,8	12,5
	Construction or major repairs to own or household'	261	144	131	-13	-130	-9,0	-49,8
	Hunting or fishing for household use	25	17	22	5	-3	29,4	-12,0
	Involvement in at least one activity	3 950	3 711	3 713	2	-237	0,1	-6,0
	Unemployed	655	548	589	41	-66	7,5	-10,1
	Not economically active	3 295	3 163	3 125	-38	-170	-1,2	-5,2
Eastern Cape	Subsistence farming	440	455	510	55	70	12,1	15,9
	Fetching water or collecting wood/dung	598	654	616	-38	18	-5,8	3,0
	Produce other goods for household use	3	2	7	5	4	250,0	133,3
	Construction or major repairs to own or household'	89	14	21	7	-68	50,0	-76,4
	Hunting or fishing for household use	1		1		0	.	0,0
	Involvement in at least one activity	833	928	933	5	100	0,5	12,0
	Unemployed	91	104	136	32	45	30,8	49,5
	Not economically active	742	823	797	-26	55	-3,2	7,4
Northern Cape	Subsistence farming	4	8	6	-2	2	-25,0	50,0
	Fetching water or collecting wood/dung	80	82	73	-9	-7	-11,0	-8,8
	Produce other goods for household use		0	0	0			
	Construction or major repairs to own or household'		0					
	Hunting or fishing for household use		0					
	Involvement in at least one activity	82	84	75	-9	-7	-10,7	-8,5
	Unemployed	15	19	13	-6	-2	-31,6	-13,3
	Not economically active	67	65	62	-3	-5	-4,6	-7,5
Free State	Subsistence farming	66	39	83	44	17	112,8	25,8
	Fetching water or collecting wood/dung	13	20	12	-8	-1	-40,0	-7,7
	Produce other goods for household use	3	7	6	-1	3	-14,3	100,0
	Construction or major repairs to own or household'	15	8	10	2	-5	25,0	-33,3
	Hunting or fishing for household use	3	7	7	0	4	0,0	133,3
	Involvement in at least one activity	82	57	99	42	17	73,7	20,7
	Unemployed	18	19	22	3	4	15,8	22,2
	Not economically active	64	38	77	39	13	102,6	20,3

For all values of 10 000 or lower the sample size is too small for reliable estimates.
 Due to rounding, numbers do not necessarily add up to totals.
 Western Cape had values lower than 10 000

Table 7: Involvement in non-market activities and labour market status by province (concluded)

		Oct-Dec 2008	Jul-Sep 2009	Oct-Dec 2009	Qrt to Qrt change	Year on year change	Qrt to Qrt change	Year on year change
		Thousand	Thousand	Thousand	Thousand	Thousand	Percent	Percent
KwaZulu Natal	Subsistence farming	631	450	545	95	-86	21,1	-13,6
	Fetching water or collecting wood/dung	1 068	997	840	-157	-228	-15,7	-21,3
	Produce other goods for household use	16	29	31	2	15	6,9	93,8
	Construction or major repairs to own or household'	107	98	65	-33	-42	-33,7	-39,3
	Hunting or fishing for household use	14	2	6	4	-8	200,0	-57,1
	Involvement in at least one activity	1 298	1 176	1 069	-107	-229	-9,1	-17,6
	Unemployed	205	157	143	-14	-62	-8,9	-30,2
	Not economically active	1 093	1 019	926	-93	-167	-9,1	-15,3
North West	Subsistence farming	49	105	99	-6	50	-5,7	102,0
	Fetching water or collecting wood/dung	182	256	238	-18	56	-7,0	30,8
	Produce other goods for household use	1	0	3	3	2	.	200,0
	Construction or major repairs to own or household'	1		1		0	.	0,0
	Hunting or fishing for household use		0	1	1		.	.
	Involvement in at least one activity	201	291	281	-10	80	-3,4	39,8
	Unemployed	51	74	65	-9	14	-12,2	27,5
	Not economically active	150	218	216	-2	66	-0,9	44,0
Gauteng	Subsistence farming	37	65	51	-14	14	-21,5	37,8
	Fetching water or collecting wood/dung	32	17	18	1	-14	5,9	-43,8
	Produce other goods for household use	8	3	3	0	-5	0,0	-62,5
	Construction or major repairs to own or household'	10	4	10	6	0	150,0	0,0
	Hunting or fishing for household use	1	3	4	1	3	33,3	300,0
	Involvement in at least one activity	85	91	78	-13	-7	-14,3	-8,2
	Unemployed	42	38	36	-2	-6	-5,3	-14,3
	Not economically active	42	54	42	-12	0	-22,2	0,0
Mpumalanga	Subsistence farming	135	55	97	42	-38	76,4	-28,1
	Fetching water or collecting wood/dung	199	208	179	-29	-20	-13,9	-10,1
	Produce other goods for household use	9	9	3	-6	-6	-66,7	-66,7
	Construction or major repairs to own or household'	29	13	14	1	-15	7,7	-51,7
	Hunting or fishing for household use	1	0	0	0	-1	.	-100,0
	Involvement in at least one activity	308	247	238	-9	-70	-3,6	-22,7
	Unemployed	59	51	59	8	0	15,7	0,0
	Not economically active	249	197	179	-18	-70	-9,1	-28,1
Limpopo	Subsistence farming	109	53	115	62	6	117,0	5,5
	Fetching water or collecting wood/dung	1 007	802	878	76	-129	9,5	-12,8
	Produce other goods for household use	8	1	0	-1	-8	-100,0	-100,0
	Construction or major repairs to own or household'	10	5	8	3	-2	60,0	-20,0
	Hunting or fishing for household use	4	1	3	2	-1	200,0	-25,0
	Involvement in at least one activity	1 053	828	939	111	-114	13,4	-10,8
	Unemployed	173	86	114	28	-59	32,6	-34,1
	Not economically active	880	742	825	83	-55	11,2	-6,3

For all values of 10 000 or lower the sample size is too small for reliable estimates. Due to rounding, numbers do not necessarily add up to totals.

Appendix 2A: Sampling variability for labour force characteristics by sex						
	Jul-Sep 2009 CV	Oct-Dec 2009 CV	Estimate	Lower 95%	Upper 95%	P-Value
Both sexes						
Population 15-64 yrs						
Labour Force	0,5	0,5	61	-128	251	0,53
Employed	0,7	0,6	89	-95	273	0,34
Formal sector (Non-agricultural)	0,9	0,9	41	-148	230	0,67
Informal sector (Non-agricultural)	2,5	2,3	116	13	219	0,03
Agriculture	5,3	4,9	-37	-115	41	0,35
Private households	3,1	3,1	-31	-114	53	0,47
Unemployed	1,6	1,7	-28	-201	145	0,75
Not economically active	0,7	0,6	28	-162	218	0,77
Discouraged work-seekers	3,7	3,5	54	-80	189	0,43
Other(not economically active)	0,7	0,6	-26	-203	150	0,77
Rates (%)						
Unemployment rate	1,5	1,5	-0,3	-1,2	0,7	0,59
Employed / population ratio (Absorption)	0,7	0,6	0,2	-0,4	0,8	0,58
Labour force participation rate	0,5	0,5	0,0	-0,6	0,7	0,90
Women						
Population 15-64 yrs						
Labour Force	0,8	0,8	-44	-184	95	0,53
Employed	0,9	0,9	3	-113	118	0,97
Formal sector (Non-agricultural)	1,3	1,4	15	-100	129	0,80
Informal sector (Non-agricultural)	3,4	3,2	31	-32	95	0,33
Agriculture	7,4	7,1	-15	-50	21	0,42
Private households	3,1	3,1	-29	-91	32	0,35
Unemployed	2,2	2,2	-47	-152	59	0,38
Not economically active	0,7	0,7	84	-56	224	0,24
Discouraged work-seekers	3,8	3,9	64	-19	148	0,13
Other(not economically active)	0,8	0,8	19	-117	156	0,78
Rates (%)						
Unemployment rate	1,9	2,0	-0,5	-1,6	0,7	0,44
Employed / population ratio (Absorption)	0,9	0,9	-0,1	-0,8	0,6	0,85
Labour force participation rate	0,8	0,8	-0,4	-1,2	0,5	0,37
Men						
Population 15-64 yrs						
Labour Force	0,6	0,5	106	-8	219	0,07
Employed	0,8	0,7	87	-44	217	0,19
Formal sector (Non-agricultural)	1,0	1,0	26	-104	156	0,69
Informal sector (Non-agricultural)	3,0	2,7	85	10	159	0,03
Agriculture	5,9	5,4	-23	-77	32	0,42
Private households	6,5	6,3	-1	-42	39	0,94
Unemployed	1,9	2,1	19	-90	127	0,73
Not economically active	0,9	0,9	-56	-170	58	0,33
Discouraged work-seekers	5,2	4,7	-10	-94	74	0,81
Other(not economically active)	0,9	0,9	-46	-149	57	0,38
Rates (%)						
Unemployment rate	1,8	2,0	-0,1	-1,2	1,06	0,92
Employed / population ratio (Absorption)	0,8	0,7	0,4	-0,5	1,3	0,34
Labour force participation rate	0,6	0,5	0,5	-0,3	1,3	0,20

Appendix 2.1A: Sampling variability for labour force characteristics by population group						
	Jul-Sep 2009 CV	Oct-Dec 2009 CV	Estimate	Lower 95%	Upper 95%	P-Value
South Africa						
Population 15-64 yrs						
Labour Force	0,5	0,5	61,3	-128,5	251,1	0,53
Employed	0,7	0,6	89,3	-94,8	273,4	0,34
Unemployed	1,6	1,7	-28,0	-201,3	145,3	0,75
Not economically active	0,7	0,6	28,0	-161,8	217,8	0,77
Rates (%)						
Unemployment rate	1,5	1,5	-0,3	-1,2	0,7	0,59
Employed / population ratio (Absorption)	0,7	0,6	0,2	-0,4	0,8	0,58
Labour force participation rate	0,5	0,5	0,0	-0,6	0,7	0,90
Black/African						
Population 15-64 yrs						
Labour Force	0,7	0,7	23,4	-155,4	202,2	0,80
Employed	0,8	0,8	32,4	-134,4	199,2	0,70
Unemployed	1,8	1,9	-9,0	-173,4	155,5	0,92
Not economically active	0,7	0,7	60,0	-118,8	238,8	0,51
Rates (%)						
Unemployment rate	1,5	1,6	-0,1	-1,3	1,0	0,83
Employed / population ratio (Absorption)	0,8	0,8	0,0	-0,7	0,7	0,99
Labour force participation rate	0,7	0,7	-0,1	-0,8	0,7	0,83
Coloured						
Population 15-64 yrs						
Labour Force	1,2	1,1	23,1	-15,0	61,2	0,23
Employed	1,9	1,5	34,0	-6,8	74,7	0,10
Unemployed	4,3	4,9	-10,9	-50,7	28,9	0,59
Not economically active	2,2	2,1	-12,9	-51,0	25,2	0,51
Rates (%)						
Unemployment rate	4,4	4,6	-0,8	-2,7	1,1	0,40
Employed / population ratio (Absorption)	1,9	1,5	1,0	-0,4	2,3	0,17
Labour force participation rate	1,2	1,1	0,6	-0,7	1,8	0,40
Indian/Asian						
Population 15-64 yrs						
Labour Force	2,7	2,3	-13,0	-36,6	10,6	0,28
Employed	4,2	3,1	-3,3	-38,2	31,6	0,85
Unemployed	11,6	13,6	-9,7	-30,5	11,1	0,36
Not economically active	3,7	2,9	17,0	-6,6	40,7	0,16
Rates (%)						
Unemployment rate	13,1	14,0	-0,8	-2,7	1,1	0,40
Employed / population ratio (Absorption)	4,2	3,1	1,0	-0,4	2,3	0,17
Labour force participation rate	2,7	2,3	0,6	-0,7	1,8	0,40
White						
Population 15-64 yrs						
Labour Force	1,2	1,2	27,8	-35,2	90,8	0,39
Employed	1,3	1,2	26,2	-30,7	83,2	0,37
Unemployed	10,5	10,7	1,6	-28,4	31,6	0,92
Not economically active	2,5	2,7	-36,1	-99,1	26,9	0,26
Rates (%)						
Unemployment rate	10,4	10,4	0,0	-1,4	1,4	0,99
Employed / population ratio (Absorption)	1,3	1,2	1,0	-0,8	2,9	0,28
Labour force participation rate	1,2	1,2	1,1	-1,0	3,1	0,30

Appendix 2.2A: Sampling variability for labour force characteristics by province						
	Jul-Sep 2009 CV	Oct-Dec 2009 CV	Estimate	Lower 95%	Upper 95%	P-Value
South Africa						
Population 15-64 yrs						
Labour Force	0,5	0,5	61	-128	251	0,53
Employed	0,7	0,6	89	-95	273	0,34
Unemployed	1,6	1,7	-28	-201	145	0,75
Not economically active	0,7	0,6	28	-162	218	0,77
Discouraged work-seekers	3,7	3,5	54	-80	189	0,43
Other(not economically active)	0,7	0,6	-26	-203	150	0,77
Rates (%)						
Unemployment rate	1,5	1,5	-0,3	-1,2	0,7	0,59
Employed / population ratio (Absorption)	0,7	0,6	0,2	-0,4	0,8	0,58
Labour force participation rate	0,5	0,5	0,0	-0,6	0,7	0,90
Western Cape						
Population 15-64 yrs						
Labour Force	1,2	1,1	3	-49	55	0,90
Employed	1,8	1,3	27	-28	81	0,34
Unemployed	4,4	3,5	-24	-68	21	0,29
Not economically active	2,7	2,4	7	-44	59	0,78
Discouraged work-seekers	31,2	24,8	5	-8	17	0,49
Other(not economically active)	2,5	2,3	3	-49	55	0,92
Rates (%)						
Unemployment rate	4,3	3,2	-1,0	-2,7	0,7	0,25
Employed / population ratio (Absorption)	1,8	1,3	0,6	-1,0	2,2	0,45
Labour force participation rate	1,2	1,1	-0,1	-1,6	1,4	0,88
Eastern Cape						
Population 15-64 yrs						
Labour Force	3,0	2,6	14	-59	88	0,70
Employed	2,8	2,3	6	-63	75	0,87
Unemployed	6,0	5,8	9	-40	58	0,73
Not economically active	2,2	2,0	-3	-76	71	0,95
Discouraged work-seekers	8,2	9,8	13	-33	59	0,58
Other(not economically active)	2,3	2,1	-16	-83	52	0,65
Rates (%)						
Unemployment rate	4,2	4,2	0,3	-2,3	2,9	0,83
Employed / population ratio (Absorption)	2,8	2,3	0,1	-1,7	1,8	0,96
Labour force participation rate	3,0	2,6	0,2	-1,6	2,1	0,80
Northern Cape						
Population 15-64 yrs						
Labour Force	3,5	3,3	21	0	42	0,05
Employed	3,3	4,2	35	10	60	0,01
Unemployed	8,2	9,5	-14	-26	-2	0,03
Not economically active	3,7	4,0	-20	-41	1	0,06
Discouraged work-seekers	17,0	20,4	-1	-13	10	0,85
Other(not economically active)	3,1	3,8	-19	-39	0	0,05
Rates (%)						
Unemployment rate	6,0	8,7	-5,2	-8,8	-1,7	0,00
Employed / population ratio (Absorption)	3,3	4,2	4,9	1,4	8,4	0,01
Labour force participation rate	3,5	3,3	2,9	-0,1	5,9	0,06
Free State						
Population 15-64 yrs						
Labour Force	1,5	1,6	-3	-28	23	0,84
Employed	1,7	1,6	33	7	58	0,01
Unemployed	4,6	4,4	-35	-62	-8	0,01
Not economically active	2,0	2,1	5	-21	31	0,70
Discouraged work-seekers	9,9	9,5	10	-9	29	0,31
Other(not economically active)	2,1	2,2	-5	-34	25	0,75
Rates (%)						
Unemployment rate	3,8	3,5	-3,3	-5,5	-1,0	0,00
Employed / population ratio (Absorption)	1,7	1,6	1,7	0,4	3,1	0,01
Labour force participation rate	1,5	1,6	-0,2	-1,6	1,2	0,76

Appendix 2.2A: Sampling variability for labour force characteristics by province (Concluded)						
	Jul-Sep 2009 CV	Oct-Dec 2009 CV	Estimate	Lower 95%	Upper 95%	P-Value
KwaZulu Natal						
Population 15-64 yrs						
Labour Force	1,7	1,7	-41	-140	58	0,41
Employed	2,1	2,0	-49	-138	41	0,28
Unemployed	4,6	5,2	8	-54	70	0,81
Not economically active	1,5	1,5	62	-36	161	0,21
Discouraged work-seekers	8,5	5,6	-29	-113	55	0,49
Other(not economically active)	1,7	1,6	92	5	179	0,04
Rates (%)						
Unemployment rate	4,4	4,8	0,5	-1,4	2,4	0,59
Employed / population ratio (Absorption)	2,1	2,0	-0,9	-2,3	0,5	0,21
Labour force participation rate	1,7	1,7	-0,8	-2,3	0,7	0,31
North West						
Population 15-64 yrs						
Labour Force	3,4	2,6	-19	-64	26	0,41
Employed	3,3	3,1	-3	-41	35	0,88
Unemployed	7,8	6,2	-16	-52	21	0,40
Not economically active	3,4	2,5	22	-23	67	0,33
Discouraged work-seekers	12,1	11,5	16	-11	42	0,24
Other(not economically active)	3,4	2,5	7	-31	44	0,73
Rates (%)						
Unemployment rate	5,9	5,3	-1,0	-3,8	1,9	0,50
Employed / population ratio (Absorption)	3,3	3,1	-0,2	-2,0	1,6	0,83
Labour force participation rate	3,4	2,6	-0,9	-3,0	1,1	0,37
Gauteng						
Population 15-64 yrs						
Labour Force	0,9	0,9	33	-83	149	0,58
Employed	1,1	1,4	30	-101	161	0,65
Unemployed	3,0	3,4	3	-110	115	0,96
Not economically active	2,0	2,2	-16	-131	100	0,79
Discouraged work-seekers	11,1	10,8	45	-18	107	0,16
Other(not economically active)	2,0	2,4	-60	-179	59	0,32
Rates (%)						
Unemployment rate	2,7	3,2	-0,1	-2,2	2,0	0,92
Employed / population ratio (Absorption)	1,1	1,4	0,3	-1,5	2,1	0,75
Labour force participation rate	0,9	0,9	0,3	-1,3	1,9	0,72
Mpumalanga						
Population 15-64 yrs						
Labour Force	2,4	1,8	15	-55	84	0,68
Employed	3,1	2,4	0	-63	62	1,00
Unemployed	4,3	4,8	15	-28	58	0,50
Not economically active	2,7	2,1	-7	-77	62	0,84
Discouraged work-seekers	7,8	10,6	3	-31	36	0,87
Other(not economically active)	3,0	2,3	-10	-76	56	0,76
Rates (%)						
Unemployment rate	4,3	4,5	0,9	-2,3	4,1	0,58
Employed / population ratio (Absorption)	3,1	2,4	-0,1	-3,0	2,7	0,92
Labour force participation rate	2,4	1,8	0,5	-2,6	3,6	0,76
Limpopo						
Population 15-64 yrs						
Labour Force	2,6	2,9	37	-65	140	0,47
Employed	2,6	2,6	11	-57	78	0,75
Unemployed	6,5	7,6	27	-48	101	0,49
Not economically active	1,7	1,9	-23	-126	80	0,66
Discouraged work-seekers	7,9	10,1	-5	-60	49	0,85
Other(not economically active)	1,7	1,9	-18	-111	76	0,71
Rates (%)						
Unemployment rate	5,0	5,7	1,4	-3,3	6,0	0,57
Employed / population ratio (Absorption)	2,6	2,6	0,2	-1,9	2,4	0,84
Labour force participation rate	2,6	2,9	1,0	-2,3	4,3	0,54

Appendix 3.1A: Sampling variability for the employed by industry and sex						
	Jul–Sep 2009 CV	Oct–Dec 2009 CV	Estimate	Lower 95%	Upper 95%	P-Value
Both sexes	0,7	0,6	89	-95	273	0,34
Agriculture	5,3	4,9	-37	-115	41	0,35
Mining	7,6	6,9	-3	-40	33	0,86
Manufacturing	2,5	2,6	18	-83	120	0,72
Utilities	19,1	15,4	16	-6	39	0,16
Construction	3,1	3,0	28	-46	102	0,46
Trade	2,0	2,0	22	-117	160	0,76
Transport	3,5	3,8	2	-58	62	0,95
Finance	2,5	2,4	77	-24	178	0,13
Community and social services	2,0	2,2	0	-140	141	1,00
Private households	3,1	3,1	-31	-114	53	0,47
Other						
Women	0,9	0,9	3	-113	118	0,97
Agriculture	7,4	7,1	-15	-50	21	0,42
Mining	13,0	12,7	-8	-19	3	0,18
Manufacturing	4,5	4,3	10	-48	68	0,73
Utilities	27,9	22,8	0	-10	10	1,00
Construction	9,1	8,1	5	-19	30	0,68
Trade	2,5	2,7	-7	-87	73	0,86
Transport	7,9	8,1	9	-21	39	0,56
Finance	3,4	3,7	12	-50	73	0,70
Community and social services	2,1	2,2	26	-54	107	0,52
Private households	3,1	3,1	-29	-91	32	0,35
Other						
Men	0,8	0,7	87	-44	217	0,19
Agriculture	5,9	5,4	-23	-77	32	0,42
Mining	8,0	7,0	4	-29	38	0,80
Manufacturing	3,0	3,1	8	-70	87	0,84
Utilities	20,5	16,1	16	-3	36	0,10
Construction	3,3	3,1	23	-49	95	0,54
Trade	2,8	2,5	29	-63	121	0,54
Transport	4,1	4,1	-7	-60	46	0,79
Finance	3,3	3,3	65	-12	142	0,10
Community and social services	3,1	3,3	-26	-116	64	0,57
Private households	6,5	6,3	-1	-42	39	0,94
Other						

Appendix 3.4A: Sampling variability for the employed by province and sector						
	Jul-Sep 2009 CV	Oct-Dec 2009 CV	Estimate	Lower 95%	Upper 95%	P-Value
South Africa	0,7	0,6	89	-95	273	0,34
Formal sector (Non-agricultural)	0,9	0,9	41	-148	230	0,67
Informal sector (Non-agricultural)	2,5	2,3	116	13	219	0,03
Agriculture	5,3	4,9	-37	-115	41	0,35
Private households	3,1	3,1	-31	-114	53	0,47
Western Cape	1,8	1,3	27	-28	81	0,34
Formal sector (Non-agricultural)	2,0	1,7	22	-25	70	0,36
Informal sector (Non-agricultural)	7,9	7,2	4	-27	35	0,78
Agriculture	9,6	8,8	5	-13	23	0,57
Private households	6,0	9,2	-5	-23	13	0,58
Eastern Cape	2,8	2,3	6	-63	75	0,87
Formal sector (Non-agricultural)	3,3	3,4	-5	-55	45	0,85
Informal sector (Non-agricultural)	8,1	7,1	8	-26	43	0,64
Agriculture	27,0	13,5	-7	-51	38	0,77
Private households	12,0	9,1	9	-8	26	0,31
Northern Cape	3,3	4,2	35	10	60	0,01
Formal sector (Non-agricultural)	4,0	6,2	19	-4	41	0,10
Informal sector (Non-agricultural)	12,2	11,2	2	-5	9	0,55
Agriculture	9,0	30,6	11	-22	43	0,52
Private households	11,1	9,8	3	-1	8	0,12
Free State	1,7	1,6	33	7	58	0,01
Formal sector (Non-agricultural)	3,4	4,0	19	-6	44	0,14
Informal sector (Non-agricultural)	6,5	6,7	9	-5	23	0,22
Agriculture	11,9	9,7	-10	-25	6	0,21
Private households	9,4	9,0	15	2	27	0,02
KwaZulu Natal	2,1	2,0	-49	-138	41	0,28
Formal sector (Non-agricultural)	2,4	2,7	-4	-83	74	0,91
Informal sector (Non-agricultural)	6,8	5,6	-27	-78	23	0,29
Agriculture	12,5	10,6	-7	-36	22	0,63
Private households	6,0	7,1	-10	-34	14	0,41
North West	3,3	3,1	-3	-41	35	0,88
Formal sector (Non-agricultural)	4,6	3,9	-1	-34	33	0,97
Informal sector (Non-agricultural)	6,7	7,2	1	-18	19	0,94
Agriculture	22,9	22,7	3	-7	12	0,59
Private households	9,3	9,1	-6	-20	8	0,43
Gauteng	1,1	1,4	30	-101	161	0,65
Formal sector (Non-agricultural)	1,7	1,8	-25	-174	124	0,75
Informal sector (Non-agricultural)	5,5	5,7	92	31	152	0,00
Agriculture	20,4	27,9	-18	-37	1	0,07
Private households	8,4	8,1	-19	-90	51	0,59
Mpumalanga	3,1	2,4	0	-63	62	1,00
Formal sector (Non-agricultural)	4,6	4,8	-1	-59	56	0,96
Informal sector (Non-agricultural)	5,2	4,9	22	-3	47	0,08
Agriculture	11,5	12,7	-8	-32	16	0,53
Private households	7,1	7,5	-13	-32	6	0,19
Limpopo	2,6	2,6	11	-57	78	0,75
Formal sector (Non-agricultural)	4,7	4,8	17	-48	81	0,62
Informal sector (Non-agricultural)	4,6	4,9	6	-31	42	0,76
Agriculture	17,3	12,7	-6	-30	17	0,61
Private households	11,1	7,5	-5	-31	20	0,69

Appendix 3.5A: Sampling variability for the employed by sex and occupation						
	Jul-Sep 2009 CV	Oct-Dec 2009 CV	Estimate	Lower 95%	Upper 95%	P-Value
Both sexes	0,7	0,6	89	-95	273	0,34
Manager	2,7	3,4	-13	-88	63	0,74
Professional	3,4	4,0	-56	-122	9	0,09
Technician	3,1	2,4	28	-89	145	0,64
Clerk	2,7	2,8	31	-63	125	0,52
Sales and services	2,5	2,7	52	-51	155	0,32
Skilled agriculture	12,6	13,0	11	-12	34	0,34
Craft and related trade	2,4	2,5	0	-85	85	1,00
Plant and machine operator	2,9	3,5	-14	-97	69	0,75
Elementary	1,9	1,9	76	-58	210	0,26
Domestic worker	3,1	3,2	-26	-88	36	0,41
Other						
Women	0,9	0,9	3	-113	118	0,97
Manager	6,0	7,0	-16	-62	29	0,48
Professional	5,4	5,4	-32	-76	12	0,16
Technician	3,3	3,2	38	-34	109	0,31
Clerk	3,1	3,3	21	-54	95	0,59
Sales and services	3,1	3,3	-23	-84	38	0,46
Skilled agriculture	21,5	22,2	8	-3	19	0,15
Craft and related trade	6,8	6,2	17	-15	50	0,29
Plant and machine operator	6,7	7,8	3	-28	35	0,84
Elementary	2,7	2,8	14	-65	94	0,73
Domestic worker	3,2	3,1	-28	-87	32	0,37
Other						
Men	0,8	0,7	87	-44	217	0,19
Manager	3,0	3,4	4	-50	57	0,90
Professional	4,7	5,3	-24	-66	17	0,25
Technician	4,2	3,0	-10	-81	61	0,79
Clerk	4,5	4,6	10	-40	61	0,69
Sales and services	3,4	3,4	75	-1	150	0,05
Skilled agriculture	13,6	13,4	3	-15	21	0,72
Craft and related trade	2,5	2,7	-18	-100	65	0,67
Plant and machine operator	3,3	3,7	-17	-91	58	0,66
Elementary	2,5	2,5	62	-41	165	0,24
Domestic worker	13,9	17,8	2	-12	15	0,81
Other						

Appendix 2B: Sampling variability for labour force characteristics by sex						
	Oct-Dec 2008 CV	Oct-Dec 2009 CV	Estimate	Lower 95%	Upper 95%	P-Value
Both sexes						
Population 15-64 yrs						
Labour Force	0,5	0,5	-579	-805	-353	0,00
Employed	0,6	0,6	-870	-1083	-657	0,00
Formal sector (Non-agricultural)	0,8	0,9	-423	-632	-215	0,00
Informal sector (Non-agricultural)	2,1	2,3	-136	-261	-11	0,03
Agriculture	4,6	4,9	-148	-230	-67	0,00
Private households	2,6	3,1	-163	-257	-69	0,00
Unemployed	1,8	1,7	291	110	473	0,00
Not economically active	0,7	0,6	946	720	1173	0,00
Discouraged work-seekers	3,7	3,5	518	383	653	0,00
Other(not economically active)	0,6	0,6	428	212	644	0,00
Rates (%)						
Unemployment rate	1,6	1,5	2,4	1,5	3,4	0,00
Employed / population ratio (Absorption)	0,6	0,6	-3,3	-4,0	-2,6	0,00
Labour force participation rate	0,5	0,5	-2,5	-3,3	-1,8	0,00
Women						
Population 15-64 yrs						
Labour Force	0,8	0,8	-354	-524	-185	0,00
Employed	0,8	0,9	-318	-463	-172	0,00
Formal sector (Non-agricultural)	1,2	1,4	-92	-221	37	0,16
Informal sector (Non-agricultural)	2,9	3,2	-57	-135	21	0,15
Agriculture	6,8	7,1	-30	-70	11	0,15
Private households	2,7	3,1	-139	-214	-64	0,00
Unemployed	2,4	2,2	-37	-162	89	0,57
Not economically active	0,8	0,7	518	349	688	0,00
Discouraged work-seekers	4,4	3,9	309	217	400	0,00
Other(not economically active)	0,8	0,8	210	47	372	0,01
Rates (%)						
Unemployment rate	2,0	2,0	0,7	-0,7	2,0	0,32
Employed / population ratio (Absorption)	0,8	0,9	-2,3	-3,2	-1,4	0,00
Labour force participation rate	0,8	0,8	-2,7	-3,7	-1,6	0,00
Men						
Population 15-64 yrs						
Labour Force	0,5	0,5	-225	-348	-103	0,00
Employed	0,6	0,7	-553	-693	-413	0,00
Formal sector (Non-agricultural)	1,0	1,0	-331	-476	-187	0,00
Informal sector (Non-agricultural)	2,7	2,7	-79	-161	3	0,06
Agriculture	4,8	5,4	-119	-178	-59	0,00
Private households	5,4	6,3	-24	-65	17	0,25
Unemployed	2,1	2,1	328	217	439	0,00
Not economically active	0,9	0,9	428	306	551	0,00
Discouraged work-seekers	4,7	4,7	210	133	286	0,00
Other(not economically active)	0,9	0,9	219	101	336	0,00
Rates (%)						
Unemployment rate	2,0	2,0	4,0	2,8	5,1	0,00
Employed / population ratio (Absorption)	0,6	0,7	-4,4	-5,4	-3,5	0,00
Labour force participation rate	0,5	0,5	-2,4	-3,2	-1,6	0,00

Appendix 2.1B: Sampling variability for labour force characteristics by population group						
	Oct-Dec 2008 CV	Oct-Dec 2009 CV	Estimate	Lower 95%	Upper 95%	P-Value
South Africa						
Population 15-64 yrs						
Labour Force	0,5	0,5	-579	-805	-353	0,00
Employed	0,6	0,6	-870	-1083	-657	0,00
Unemployed	1,8	1,7	291	110	473	0,00
Not economically active	0,7	0,6	946	720	1173	0,00
Rates (%)						
Unemployment rate	1,6	1,5	2,4	1,5	3,4	0,00
Employed / population ratio (Absorption)	0,6	0,6	-3,3	-4,0	-2,6	0,00
Labour force participation rate	0,5	0,5	-2,5	-3,3	-1,8	0,00
Black/African						
Population 15-64 yrs						
Labour Force	0,6	0,7	-573	-778	-369	0,00
Employed	0,7	0,8	-769	-956	-582	0,00
Unemployed	2,0	1,9	196	24	368	0,03
Not economically active	0,8	0,7	913	709	1118	0,00
Rates (%)						
Unemployment rate	1,7	1,6	2,7	1,6	3,9	0,00
Employed / population ratio (Absorption)	0,7	0,8	-3,7	-4,5	-3,0	0,00
Labour force participation rate	0,6	0,7	-3,1	-4,0	-2,3	0,00
Coloured						
Population 15-64 yrs						
Labour Force	1,2	1,1	35	-31	101	0,29
Employed	1,7	1,5	-27	-93	39	0,42
Unemployed	4,4	4,9	63	15	110	0,01
Not economically active	2,3	2,1	6	-59	72	0,85
Rates (%)						
Unemployment rate	4,5	4,6	2,9	0,6	5,2	0,01
Employed / population ratio (Absorption)	1,7	1,5	-1,7	-3,9	0,6	0,14
Labour force participation rate	1,2	1,1	0,3	-1,9	2,5	0,81
Indian/Asian						
Population 15-64 yrs						
Labour Force	2,2	2,3	-26	-60	8	0,13
Employed	2,2	3,1	-20	-53	13	0,24
Unemployed	8,4	13,6	-6	-27	15	0,56
Not economically active	3,3	2,9	43	9	77	0,01
Rates (%)						
Unemployment rate	7,6	14,0	-0,6	-4,5	3,3	0,7
Employed / population ratio (Absorption)	2,2	3,1	-3,2	-6,9	0,5	0,1
Labour force participation rate	2,2	2,3	-4,0	-7,8	-0,2	0,0
White						
Population 15-64 yrs						
Labour Force	0,9	1,2	-15	-78	47	0,64
Employed	1,0	1,2	-55	-117	8	0,09
Unemployed	8,2	10,7	39	16	63	0,00
Not economically active	2,0	2,7	-16	-79	46	0,61
Rates (%)						
Unemployment rate	8,2	10,4	1,9	0,8	3,0	0,00
Employed / population ratio (Absorption)	1,0	1,2	-1,1	-3,1	0,9	0,29
Labour force participation rate	0,9	1,2	0,2	-1,8	2,2	0,84

Appendix 2.2B: Sampling variability for labour force characteristics by province						
	Oct-Dec 2008 CV	Oct-Dec 2009 CV	Estimate	Lower 95%	Upper 95%	P-Value
Population 15-64 yrs						
Labour Force	0,5	0,5	-579	-805	-353	0,00
Employed	0,6	0,6	-870	-1083	-657	0,00
Unemployed	1,8	1,7	291	110	473	0,00
Not economically active	0,7	0,6	946	720	1173	0,00
Discouraged work-seekers	3,7	3,5	518	383	653	0,00
Other(not economically active)	0,6	0,6	428	212	644	0,00
Rates (%)						
Unemployment rate	1,6	1,5	2,4	1,5	3,4	0,00
Employed / population ratio (Absorption)	0,6	0,6	-3,3	-4,0	-2,6	0,00
Labour force participation rate	0,5	0,5	-2,5	-3,3	-1,8	0,00
Western Cape						
Population 15-64 yrs						
Labour Force	1,2	1,1	90	8	172	0,03
Employed	1,7	1,3	-37	-114	41	0,35
Unemployed	5,8	3,5	126	60	193	0,00
Not economically active	2,3	2,4	-46	-128	36	0,27
Discouraged work-seekers	17,6	24,8	3	-15	22	0,71
Other(not economically active)	2,3	2,3	-50	-126	27	0,20
Rates (%)						
Unemployment rate	5,7	3,2	4,6	2,1	7,2	0,00
Employed / population ratio (Absorption)	1,7	1,3	-1,7	-4,0	0,5	0,13
Labour force participation rate	1,2	1,1	1,7	-0,6	4,1	0,15
Eastern Cape						
Population 15-64 yrs						
Labour Force	2,9	2,6	-85	-202	32	0,16
Employed	1,8	2,3	-95	-170	-20	0,01
Unemployed	8,8	5,8	10	-58	79	0,77
Not economically active	2,4	2,0	133	16	250	0,03
Discouraged work-seekers	6,5	9,8	80	13	146	0,02
Other(not economically active)	2,3	2,1	53	-60	166	0,36
Rates (%)						
Unemployment rate	6,4	4,2	1,8	-0,9	4,5	0,18
Employed / population ratio (Absorption)	1,8	2,3	-2,8	-4,7	-0,9	0,00
Labour force participation rate	2,9	2,6	-2,7	-5,6	0,3	0,08
Northern Cape						
Population 15-64 yrs						
Labour Force	2,1	3,3	-17	-38	4	0,11
Employed	3,2	4,2	-26	-50	-2	0,04
Unemployed	6,5	9,5	9	-11	28	0,37
Not economically active	2,8	4,0	21	0	42	0,05
Discouraged work-seekers	17,2	20,4	12	1	22	0,03
Other(not economically active)	2,6	3,8	9	-9	28	0,33
Rates (%)						
Unemployment rate	6,9	8,7	3,2	-1,5	7,9	0,18
Employed / population ratio (Absorption)	3,2	4,2	-3,9	-7,3	-0,5	0,03
Labour force participation rate	2,1	3,3	-2,7	-5,7	0,2	0,07
Free State						
Population 15-64 yrs						
Labour Force	1,9	1,6	-12	-51	27	0,55
Employed	2,1	1,6	-38	-68	-8	0,01
Unemployed	5,5	4,4	27	-3	56	0,08
Not economically active	2,6	2,1	22	-16	61	0,26
Discouraged work-seekers	13,4	9,5	19	-3	41	0,09
Other(not economically active)	2,4	2,2	3	-42	49	0,89
Rates (%)						
Unemployment rate	4,7	3,5	2,8	0,5	5,1	0,02
Employed / population ratio (Absorption)	2,1	1,6	-2,3	-3,9	-0,7	0,01
Labour force participation rate	1,9	1,6	-1,0	-3,0	1,1	0,37

Appendix 2.2B: Sampling variability for labour force characteristics by province (Concluded)						
	Oct-Dec 2008 CV	Oct-Dec 2009 CV	Estimate	Lower 95%	Upper 95%	P-Value
KwaZulu Natal						
Population 15-64 yrs						
Labour Force	1,3	1,7	-338	-442	-235	0,00
Employed	1,5	2,0	-222	-324	-120	0,00
Unemployed	3,8	5,2	-116	-190	-43	0,00
Not economically active	1,5	1,5	426	323	529	0,00
Discouraged work-seekers	10,5	5,6	228	165	290	0,00
Other(not economically active)	1,7	1,6	198	88	309	0,00
Rates (%)						
Unemployment rate	3,3	4,8	-1,6	-3,7	0,7	0,17
Employed / population ratio (Absorption)	1,5	2,0	-4,0	-5,6	-2,4	0,00
Labour force participation rate	1,3	1,7	-6,0	-7,6	-4,4	0,00
North West						
Population 15-64 yrs						
Labour Force	3,3	2,6	-130	-194	-66	0,00
Employed	3,6	3,1	-109	-166	-52	0,00
Unemployed	5,6	6,2	-21	-62	21	0,33
Not economically active	4,1	2,5	145	81	209	0,00
Discouraged work-seekers	14,2	11,5	44	10	78	0,01
Other(not economically active)	3,9	2,5	101	38	164	0,00
Rates (%)						
Unemployment rate	4,4	5,3	1,2	-2,1	4,5	0,47
Employed / population ratio (Absorption)	3,6	3,1	-5,3	-7,9	-2,6	0,00
Labour force participation rate	3,3	2,6	-6,3	-9,2	-3,4	0,00
Gauteng						
Population 15-64 yrs						
Labour Force	0,9	0,9	-95	-219	29	0,13
Employed	1,2	1,4	-330	-474	-186	0,00
Unemployed	3,4	3,4	235	133	338	0,00
Not economically active	2,3	2,2	166	42	290	0,01
Discouraged work-seekers	11,2	10,8	84	18	151	0,01
Other(not economically active)	2,1	2,4	82	-32	196	0,16
Rates (%)						
Unemployment rate	3,3	3,2	5,1	3,1	7,0	0,00
Employed / population ratio (Absorption)	1,2	1,4	-5,2	-7,2	-3,2	0,00
Labour force participation rate	0,9	0,9	-2,0	-3,8	-0,3	0,02
Mpumalanga						
Population 15-64 yrs						
Labour Force	1,9	1,8	-14	-84	56	0,69
Employed	2,4	2,4	-53	-124	18	0,14
Unemployed	5,9	4,8	39	-10	87	0,12
Not economically active	2,4	2,1	44	-26	114	0,22
Discouraged work-seekers	9,6	10,6	21	-15	57	0,24
Other(not economically active)	2,4	2,3	23	-39	85	0,47
Rates (%)						
Unemployment rate	5,4	4,5	3,5	-0,3	7,3	0,07
Employed / population ratio (Absorption)	2,4	2,4	-3,0	-6,2	0,3	0,07
Labour force participation rate	1,9	1,8	-1,4	-4,6	1,8	0,39
Limpopo						
Population 15-64 yrs						
Labour Force	2,4	2,9	22	-58	102	0,21
Employed	2,6	2,6	40	-23	103	0,54
Unemployed	4,8	7,6	-18	-76	40	0,38
Not economically active	1,6	1,9	36	-44	115	0,26
Discouraged work-seekers	9,0	10,1	27	-20	75	0,83
Other(not economically active)	1,3	1,9	8	-67	84	0,32
Rates (%)						
Unemployment rate	3,8	5,7	-2,0	-5,8	1,9	0,32
Employed / population ratio (Absorption)	2,6	2,6	0,8	-1,3	2,8	0,46
Labour force participation rate	2,4	2,9	0,0	-2,6	2,5	0,98

Appendix 3.1B: Sampling variability for the employed by industry and sex						
	Oct-Dec 2008 CV	Oct-Dec 2009 CV	Estimate	Lower 95%	Upper 95%	P-Value
Both sexes	0,6	0,6	-870	-1083	-657	0,00
Agriculture	4,6	4,9	-148	-230	-67	0,00
Mining	6,9	6,9	-25	-70	20	0,27
Manufacturing	2,4	2,6	-203	-319	-86	0,00
Utilities	11,5	15,4	12	-23	47	0,50
Construction	2,7	3,0	-105	-193	-18	0,02
Trade	1,8	2,0	-291	-440	-143	0,00
Transport	3,2	3,8	-35	-104	33	0,31
Finance	2,6	2,4	124	15	232	0,03
Community and social services	1,8	2,2	-34	-179	112	0,65
Private households	2,6	3,1	-163	-257	-69	0,00
Other						
Women	0,8	0,9	-318	-463	-172	0,00
Agriculture	6,8	7,1	-30	-70	11	0,15
Mining	14,3	12,7	-7	-23	8	0,35
Manufacturing	3,9	4,3	-3	-63	56	0,91
Utilities	19,3	22,8	-11	-23	1	0,08
Construction	7,8	8,1	26	0	52	0,05
Trade	2,3	2,7	-196	-296	-96	0,00
Transport	7,0	8,1	32	1	64	0,05
Finance	3,7	3,7	4	-72	81	0,91
Community and social services	2,1	2,2	5	-88	97	0,92
Private households	2,7	3,1	-139	-214	-64	0,00
Other						
Men	0,6	0,7	-553	-693	-413	0,00
Agriculture	4,8	5,4	-119	-178	-59	0,00
Mining	7,8	7,0	-18	-61	26	0,42
Manufacturing	2,7	3,1	-199	-295	-103	0,00
Utilities	12,8	16,1	23	-7	52	0,13
Construction	2,8	3,1	-131	-212	-50	0,00
Trade	2,4	2,5	-95	-190	0	0,05
Transport	3,4	4,1	-68	-129	-7	0,03
Finance	3,2	3,3	119	35	204	0,01
Community and social services	2,6	3,3	-39	-132	55	0,42
Private households	5,4	6,3	-24	-65	17	0,25
Other						

Appendix 3.4B: Sampling variability for the employed by province and sector						
	Oct-Dec 2008 CV	Oct-Dec 2009 CV	Estimate	Lower 95%	Upper 95%	P-Value
South Africa	0,6	0,6	-870	-1083	-657	0,00
Formal sector (Non-agricultural)	0,8	0,9	-423	-632	-215	0,00
Informal sector (Non-agricultural)	2,1	2,3	-136	-261	-11	0,03
Agriculture	4,6	4,9	-148	-230	-67	0,00
Private households	2,6	3,1	-163	-257	-69	0,00
Western Cape	1,7	1,3	-37	-114	41	0,35
Formal sector (Non-agricultural)	2,6	1,7	-19	-97	59	0,64
Informal sector (Non-agricultural)	8,2	7,2	-15	-55	26	0,47
Agriculture	9,5	8,8	1	-26	29	0,93
Private households	5,2	9,2	-4	-29	20	0,72
Eastern Cape	1,8	2,3	-95	-170	-20	0,01
Formal sector (Non-agricultural)	2,6	3,4	-44	-101	12	0,12
Informal sector (Non-agricultural)	5,7	7,1	-24	-69	22	0,30
Agriculture	14,9	13,5	-13	-44	18	0,41
Private households	9,2	9,1	-14	-36	8	0,21
Northern Cape	3,2	4,2	-26	-50	-2	0,04
Formal sector (Non-agricultural)	3,9	6,2	-19	-43	6	0,14
Informal sector (Non-agricultural)	13,0	11,2	1	-9	11	0,81
Agriculture	14,6	30,6	-4	-26	19	0,76
Private households	9,0	9,8	-5	-12	2	0,19
Free State	2,1	1,6	-38	-68	-8	0,01
Formal sector (Non-agricultural)	3,6	4,0	-49	-88	-11	0,01
Informal sector (Non-agricultural)	7,4	6,7	3	-23	28	0,84
Agriculture	6,7	9,7	2	-13	18	0,77
Private households	8,6	9,0	6	-14	27	0,56
KwaZulu Natal	1,5	2,0	-222	-324	-120	0,00
Formal sector (Non-agricultural)	2,1	2,7	-46	-144	52	0,36
Informal sector (Non-agricultural)	4,6	5,6	-60	-127	7	0,08
Agriculture	13,8	10,6	-58	-108	-8	0,02
Private households	5,8	7,1	-59	-108	-9	0,02
North West	3,6	3,1	-109	-166	-52	0,00
Formal sector (Non-agricultural)	3,9	3,9	-39	-90	13	0,14
Informal sector (Non-agricultural)	8,6	7,2	-24	-50	1	0,06
Agriculture	21,3	22,7	-24	-40	-8	0,00
Private households	10,2	9,1	-22	-41	-3	0,03
Gauteng	1,2	1,4	-330	-474	-186	0,00
Formal sector (Non-agricultural)	1,7	1,8	-214	-361	-67	0,00
Informal sector (Non-agricultural)	4,6	5,7	-21	-89	47	0,55
Agriculture	12,9	27,9	-39	-60	-17	0,00
Private households	5,8	8,1	-57	-120	5	0,07
Mpumalanga	2,4	2,4	-53	-124	18	0,14
Formal sector (Non-agricultural)	4,3	4,8	-30	-91	30	0,33
Informal sector (Non-agricultural)	5,3	4,9	-2	-33	29	0,91
Agriculture	10,6	12,7	-13	-37	11	0,30
Private households	7,3	7,5	-8	-26	9	0,36
Limpopo	2,6	2,6	40	-23	103	0,21
Formal sector (Non-agricultural)	4,5	4,8	36	-24	97	0,24
Informal sector (Non-agricultural)	5,7	4,9	5	-29	40	0,77
Agriculture	10,9	12,7	-2	-21	17	0,83
Private households	8,7	7,5	0	-18	19	0,97

Appendix 3.5B: Sampling variability for the employed by sex and occupation						
	Oct–Dec 2008 CV	Oct–Dec 2009 CV	Estimate	Lower 95%	Upper 95%	P-Value
Both sexes	0,6	0,6	-870	-1083	-657	0,00
Manager	2,4	3,4	-102	-187	-17	0,02
Professional	3,7	4,0	-100	-173	-28	0,01
Technician	2,4	2,4	4	-99	108	0,93
Clerk	2,4	2,8	28	-75	131	0,59
Sales and services	2,4	2,7	112	-11	234	0,07
Skilled agriculture	8,8	13,0	-26	-54	1	0,06
Craft and related trade	2,1	2,5	-313	-415	-212	0,00
Plant and machine operator	2,7	3,5	-123	-225	-22	0,02
Elementary	1,6	1,9	-205	-341	-68	0,00
Domestic worker	2,7	3,2	-144	-222	-66	0,00
Other						
Women	0,8	0,9	-318	-463	-172	0,00
Manager	4,3	7,0	-46	-94	1	0,06
Professional	5,0	5,4	-73	-122	-25	0,00
Technician	2,9	3,2	23	-52	97	0,55
Clerk	2,7	3,3	42	-42	127	0,33
Sales and services	3,0	3,3	2	-72	76	0,96
Skilled agriculture	17,9	22,2	-2	-15	11	0,79
Craft and related trade	4,8	6,2	-54	-89	-19	0,00
Plant and machine operator	7,4	7,8	14	-25	52	0,49
Elementary	2,4	2,8	-86	-176	4	0,06
Domestic worker	2,7	3,1	-136	-209	-64	0,00
Other						
Men	0,6	0,7	-553	-693	-413	0,00
Manager	2,8	3,4	-55	-121	10	0,10
Professional	5,3	5,3	-27	-78	24	0,30
Technician	3,4	3,0	-18	-78	42	0,55
Clerk	4,2	4,6	-15	-67	38	0,59
Sales and services	3,2	3,4	110	25	194	0,01
Skilled agriculture	9,5	13,4	-25	-47	-3	0,03
Craft and related trade	2,3	2,7	-259	-354	-164	0,00
Plant and machine operator	2,9	3,7	-137	-229	-45	0,00
Elementary	2,1	2,5	-118	-228	-9	0,03
Domestic worker	14,4	17,8	-8	-24	8	0,34
Other						