



**Statistics
South Africa**

Preferred supplier of quality statistics



Statistical release

P0211

Quarterly Labour Force Survey

Quarter 3, 2010

Embargoed until:

**26 October 2010
11:30**

Enquiries:

User Information Services
Tel: (012) 310 8600 / 4892 / 8390

Forthcoming issue:

Quarter 4, 2010

Expected release date

February 2011

Statistics South Africa • Mbalo-mbalo ya Afrika Tshipembe • Tinhlayo-tiko ta Afrika-Dzonga • Dipalopalo tsa Aforika Borwa • Ezezibalo zaseNingizimu Afrika
Dipalopalo tša Afrika Borwa • Dipalopalo tsa Afrika Borwa • Ubalo lwaseMzantsi Afrika • Telubalo eNingizimu Afrika • iNanimbalo leSewula Afrika • Statistiek Suid-Afrika

Published by Statistics South Africa, Private Bag X44, Pretoria 0001

© Statistics South Africa, 2010

Users may apply or process this data, provided Statistics South Africa (Stats SA) is acknowledged as the original source of the data; that it is specified that the application and/or analysis is the result of the user's independent processing of the data; and that neither the basic data nor any reprocessed version or application thereof may be sold or offered for sale in any form whatsoever without prior permission from Stats SA.

Stats SA Library Cataloguing-in-Publication (CIP) Data

Quarterly Labour Force Survey Quarter 3, 2010/Statistics South Africa. Pretoria: Statistics South Africa, 2010

Quarterly

1. Labour supply – Statistics
 2. Labour supply (South Africa)
 3. Unemployment (South Africa)
 4. Informal sector (Economics) – South Africa
 5. Formal sector (Economics) – South Africa
- I. Statistics South Africa
 - II. Series
- (LCSH 16)

A complete set of Stats SA publications is available at Stats SA Library and the following libraries:

National Library of South Africa, Pretoria Division
National Library of South Africa, Cape Town Division
Library of Parliament, Cape Town
Bloemfontein Public Library
Natal Society Library, Pietermaritzburg
Johannesburg Public Library
Eastern Cape Library Services, King William's Town
Central Regional Library, Polokwane
Central Reference Library, Nelspruit
Central Reference Collection, Kimberley
Central Reference Library, Mmabatho

This publication is available both in hard copy and on the Stats SA website www.statssa.gov.za.

The data and metadata set from the Quarterly Labour Force Survey will be available on CD-ROM. A charge may be made according to the pricing policy, which can be accessed on the website.

Stats SA also provides a subscription service.

Enquiries:

	Printing and Distribution	User Information Services
Tel:	(012) 310 8251	(012) 310 8600
Fax:	(012) 321 7381	(012) 310 8500/ 8495
Email:	distribution@statssa.gov.za	info@statssa.gov.za

Table of contents

	Page
List of tables in highlights of the results	iii
List of figures in highlights of the results	iii
List of tables	iv
1. Introduction	vi
2. Highlights of the results	vi
3. Employment	vii
4. The unemployed population	xi
5. Characteristics of the not economically active population	xiii
6. Technical notes	xiv
6.1. Response details	xiv
6.2. Survey requirements and design	xv
6.3. Sample rotation	xv
6.4. Weighting	xv
6.5. Non-response adjustment	xv
6.6. Final survey weights	xvi
6.7. Estimation	xvi
6.8. Reliability of the survey estimates	xvi
7. Definitions	xvii

List of tables in highlights of the results

	Page
Table A: Key labour market indicators	vi
Table B: Employment by industry	vii
Table C: Employment by province	viii
Table D: Employment by occupation	x
Table E: The unemployed by sex	xi
Table F: Characteristics of the unemployed	xii
Table G: The not economically active.....	xiii
Table H: Response rates by province.....	xiv

List of figures in highlights of the results

Figure 1: Total employment, quarter 3: 2009 to quarter 3: 2010	vii
Figure 2: Quarter-to-quarter change in employment, quarter 3: 2009 to quarter 3: 2010.....	vii
Figure 3: Changes in formal sector employment by industry.....	ix
Figure 4: Changes in informal sector employment by industry.....	x
Figure 5: Unemployment rate by province.....	xi
Figure 6: Unemployment rate by population group.....	xii

List of tables

	Page
Table 1: Population of working age (15-64 years)	1
Table 2: Labour force characteristics by sex - All population groups	2
Table 2: Labour force characteristics by sex - All population groups (concluded).....	3
Table 2.1: Labour force characteristics by population group	4
Table 2.1: Labour force characteristics by population group (concluded)	5
Table 2.2: Labour force characteristics by province	6
Table 2.2: Labour force characteristics by province (continued)	7
Table 2.2: Labour force characteristics by province (continued)	8
Table 2.2: Labour force characteristics by province (continued)	9
Table 2.2: Labour force characteristics by province (concluded)	10
Table 2.3: Labour force characteristics by province (expanded definition of unemployment)	11
Table 3.1: Employed by industry and sex - South Africa	16
Table 3.2: Employed by industry and province.....	17
Table 3.2: Employed by industry and province (continued).....	18
Table 3.2: Employed by industry and province (continued).....	19
Table 3.2: Employed by industry and province (concluded)	20
Table 3.3: Employed by sector and industry - South Africa.....	21
Table 3.4: Employed by province and sector.....	22
Table 3.4: Employed by province and sector (concluded).....	23
Table 3.5: Employed by sex and occupation - South Africa	24
Table 3.6: Employed by sex and status in employment - South Africa.....	25
Table 3.7: Employed by sex and usual hours of work - South Africa	26
Table 3.8: Time-related underemployment - South Africa	27
Table 4: Characteristics of the unemployed - South Africa.....	28
Table 4: Characteristics of the unemployed - South Africa (concluded).....	29
Table 5: Characteristics of the not economically active - South Africa	30
Table 6: Socio-demographic characteristics - South Africa	31
Table 6: Socio-demographic characteristics - South Africa (continued)	32
Table 6: Socio-demographic characteristics - South Africa (concluded)	33
Table 7: Involvement in non-market activities and labour market status by province.....	34
Table 7: Involvement in non-market activities and labour market status by province (continued).....	35
Table 7: Involvement in non-market activities and labour market status by province (concluded).....	36

Appendix 2A: Sampling variability for labour force characteristics by sex.....37

Appendix 2A: Sampling variability for labour force characteristics by sex (Concluded).....38

Appendix 2.1A: Sampling variability for labour force characteristics by population group.....39

Appendix 2.1A: Sampling variability for labour force characteristics by population group (Concluded)40

Appendix 2.2A: Sampling variability for labour force characteristics by province (continued)41

Appendix 2.2A: Sampling variability for labour force characteristics by province (continued)42

Appendix 2.2A: Sampling variability for labour force characteristics by province (continued)43

Appendix 2.2A: Sampling variability for labour force characteristics by province (continued)44

Appendix 2.2A: Sampling variability for labour force characteristics by province (Concluded)45

Appendix 3.1A: Sampling variability for the employed by industry and sex.....46

Appendix 3.4A: Sampling variability for the employed by province and sector47

Appendix 3.4A: Sampling variability for the employed by province and sector (Concluded).....48

Appendix 3.5A: Sampling variability for the employed by sex and occupation.....49

Appendix 2B: Sampling variability for labour force characteristics by sex.....50

Appendix 2B: Sampling variability for labour force characteristics by sex (Concluded).....51

Appendix 2.1B: Sampling variability for labour force characteristics by population group.....52

Appendix 2.1B: Sampling variability for labour force characteristics by population group (Concluded)53

Appendix 2.2B: Sampling variability for labour force characteristics by province (continued)54

Appendix 2.2B: Sampling variability for labour force characteristics by province (continued)55

Appendix 2.2B: Sampling variability for labour force characteristics by province (continued)56

Appendix 2.2B: Sampling variability for labour force characteristics by province (continued)57

Appendix 2.2B: Sampling variability for labour force characteristics by province (Concluded)58

Appendix 3.1B: Sampling variability for the employed by industry and sex.....59

Appendix 3.4B: Sampling variability for the employed by province and sector60

Appendix 3.4B: Sampling variability for the employed by province and sector (Concluded).....61

Appendix 3.5B: Sampling variability for the employed by sex and occupation.....62

1. Introduction

The Quarterly Labour Force Survey (QLFS) is a household-based sample survey conducted by Statistics South Africa (Stats SA). It collects data on the labour market activities of individuals aged 15 years and above who live in South Africa. However, this report only covers labour market activities of persons aged 15 to 64 years.

This report presents the key findings of the QLFS conducted in July–September, 2010 (Q3:2010).

Please note that the figures that were previously published have been revised to align them with the new population estimates released by Stats SA in July 2010.

2. Highlights of the results

Table A: Key labour market indicators

	Jul–Sep 2009	Apr–Jun 2010	Jul–Sep 2010	Qtr-to- qtr change	Year-on- year change	Qtr-to- qtr change	Year-on- year change
	Thousand				Per cent		
Population 15–64 yrs	31 562	31 946	32 072	126	510	0,4	1,6
Labour force	17 374	17 462	17 371	-91	-3	-0,5	0,0
Employed	13 133	13 061	12 975	-86	-158	-0,7	-1,2
Formal sector (non-agricultural)	9 291	9 088	9 043	-45	-248	-0,5	-2,7
Informal sector (non-agricultural)	2 029	2 186	2 172	-14	143	-0,6	7,0
Agriculture	660	630	640	10	-20	1,6	-3,0
Private households	1 154	1 157	1 119	-38	-35	-3,3	-3,0
Unemployed	4 241	4 401	4 396	-5	155	-0,1	3,7
Not economically active	14 188	14 485	14 702	217	514	1,5	3,6
Discouraged work-seekers	1 654	1 938	2 033	95	379	4,9	22,9
Other (not economically active)	12 534	12 547	12 669	122	135	1,0	1,1
Rates (%)							
Unemployment rate	24,4	25,2	25,3	0,1	0,9		
Employed / population ratio (absorption)	41,6	40,9	40,5	-0,4	-1,1		
Labour force participation rate	55,0	54,7	54,2	-0,5	-0,8		

Due to rounding, numbers do not necessarily add up to totals.

The number of persons in the labour force decreased by 91 000 between Q2:2010 and Q3:2010. Table A shows that employment also decreased by 86 000 between Q2:2010 and Q3:2010 with the informal sector and the formal sector losing 45 000 and 14 000 jobs respectively; while Agriculture gained 10 000, and Private households lost some 38 000 jobs.

The number of unemployed persons remained virtually unchanged between Q2:2010 and Q3:2010, while the number of discouraged work-seekers increased by 95 000, resulting in the unemployment rate also remaining unchanged between Q2:2010 (25,2%) and Q3:2010 (25,3%).

Compared to Q3:2009, there was an annual decrease of 1,2% (158 000) in employment, an increase of 3,7% (155 000) in the number of unemployed persons, and an increase of 3,6% (514 000) in the number of persons who are not economically active – 379 000 of which are discouraged work-seekers.

3. Employment

Figure 1: Total employment, quarter 3: 2009 to quarter 3: 2010

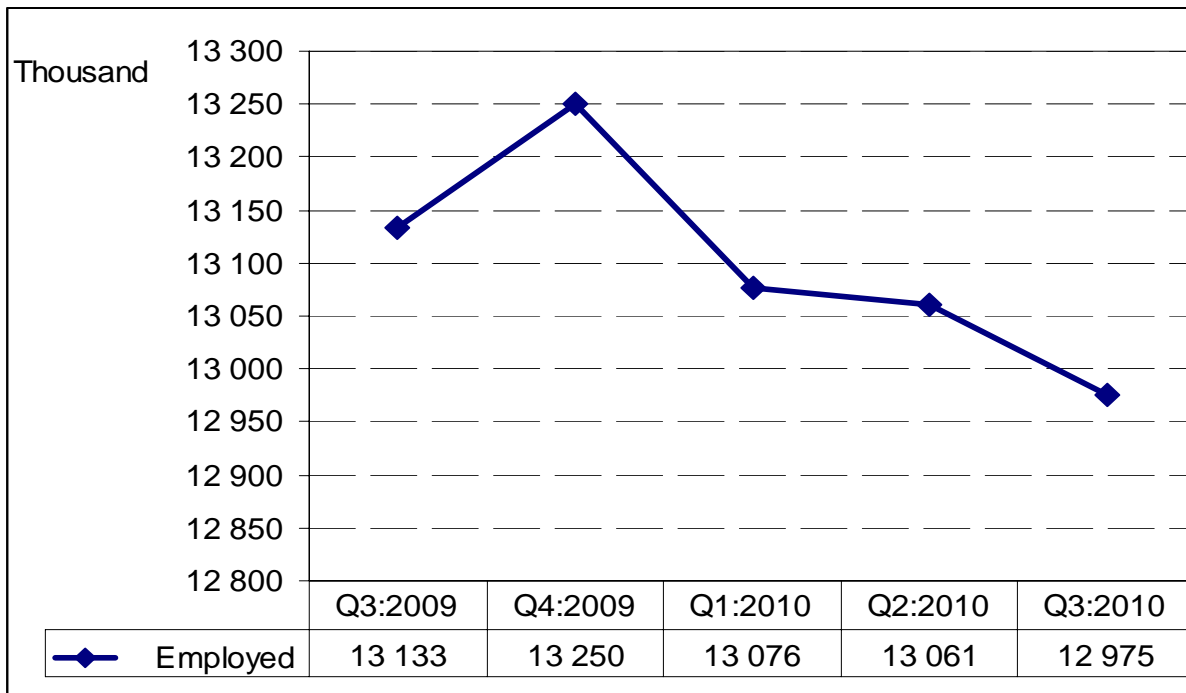


Figure 1 shows that the number of employed persons increased from 13,1 million in Q3:2009 to 13,3 million in Q4:2009 after which there was a decline in the three quarters that followed, to about 13 million in Q3:2010. The changes are reflected in Figure 2 (below), where an increase was only observed between Q3:2009 and Q4:2009.

Figure 2: Quarter-to-quarter change in employment, quarter 3: 2009 to quarter 3: 2010

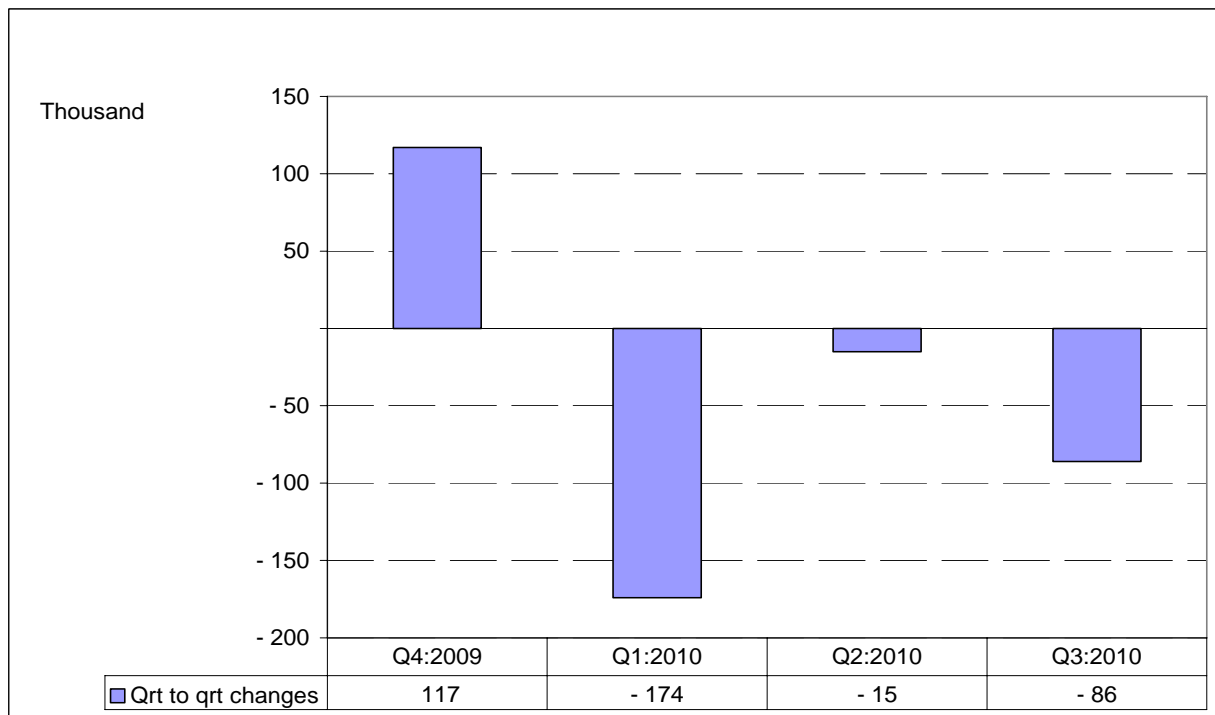


Table B: Employment by industry

	Jul-Sep 2009	Apr-Jun 2010	Jul-Sep 2010	Qtr-to-qtr change	Year-on- year change	Qtr-to- qtr change	Year-on- year change
	Thousand				Per cent		
Total	13 133	13 061	12 975	-86	-158	-0,7	-1,2
Agriculture	660	630	640	10	-20	1,6	-3,0
Mining	304	315	303	-12	-1	-3,8	-0,3
Manufacturing	1 771	1 705	1 713	8	-58	0,5	-3,3
Utilities	86	96	99	3	13	3,1	15,1
Construction	1 097	1 049	1 076	27	-21	2,6	-1,9
Trade	2 903	2 903	2 947	44	44	1,5	1,5
Transport	760	766	773	7	13	0,9	1,7
Finance	1 735	1 723	1 625	-98	-110	-5,7	-6,3
Community and social services	2 658	2 710	2 678	-32	20	-1,2	0,8
Private households	1 154	1 157	1 119	-38	-35	-3,3	-3,0

*Due to rounding, numbers do not necessarily add up to totals.

Table B indicates that between Q2:2010 and Q3:2010, some industries lost jobs while others created jobs, resulting in a net loss of 86 000 jobs across all industries. Most of the job losses were in Finance, which accounted for 98 000 of the job losses, followed by Private households (38 000), and Community and social services (32 000). Job gains were observed in Trade (44 000), Construction (27 000) and Agriculture (10 000).

The year-on-year comparisons show that job losses were experienced in most industries except in Trade; Community & social services; Transport, and Utilities.

Table C: Employment by province

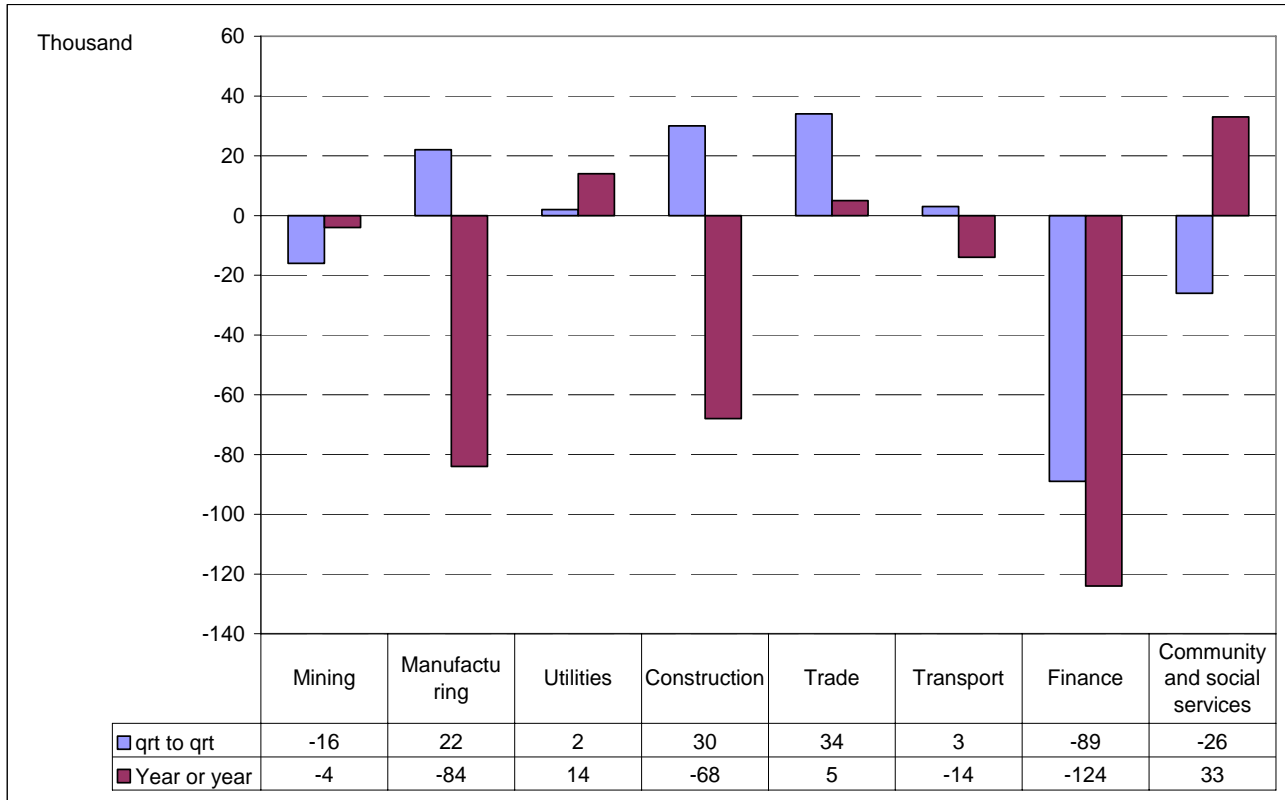
	Jul-Sep 2009	Apr-Jun 2010	Jul-Sep 2010	Qtr-to-qtr change	Year-on- year change	Qtr-to-qtr change	Year-on- year change
	Thousand				Per cent		
Total	13 133	13 061	12 975	-86	-158	-0,7	-1,2
Western Cape	1 790	1 793	1 754	-39	-36	-2,2	-2,0
Eastern Cape	1 278	1 274	1 306	32	28	2,5	2,2
Northern Cape	257	260	276	16	19	6,2	7,4
Free State	757	778	768	-10	11	-1,3	1,5
KwaZulu-Natal	2 526	2 436	2 401	-35	-125	-1,4	-4,9
North West	729	722	714	-8	-15	-1,1	-2,1
Gauteng	3 952	3 950	3 958	8	6	0,2	0,2
Mpumalanga	908	899	890	-9	-18	-1,0	-2,0
Limpopo	936	947	905	-42	-31	-4,4	-3,3

*Due to rounding, numbers do not necessarily add up to totals.

Table C shows that between Q2:2010 and Q3:2010, job losses were experienced in most provinces except Eastern Cape, Northern Cape and Gauteng, which gained 32 000, 16 000 and 8 000 jobs respectively. The biggest job losses were recorded in Limpopo (42 000), followed by Western Cape (39 000) and KwaZulu-Natal (35 000).

The year-on-year comparisons (Q3:2009 and Q3:2010) show that KwaZulu-Natal, Western Cape and Limpopo were the hardest hit provinces in terms of job losses, with KwaZulu-Natal recording 125 000 job losses, Western Cape recording 36 000 Limpopo recording 31 000 job losses out of the 158 000 job losses.

Figure 3: Changes in formal sector employment by industry

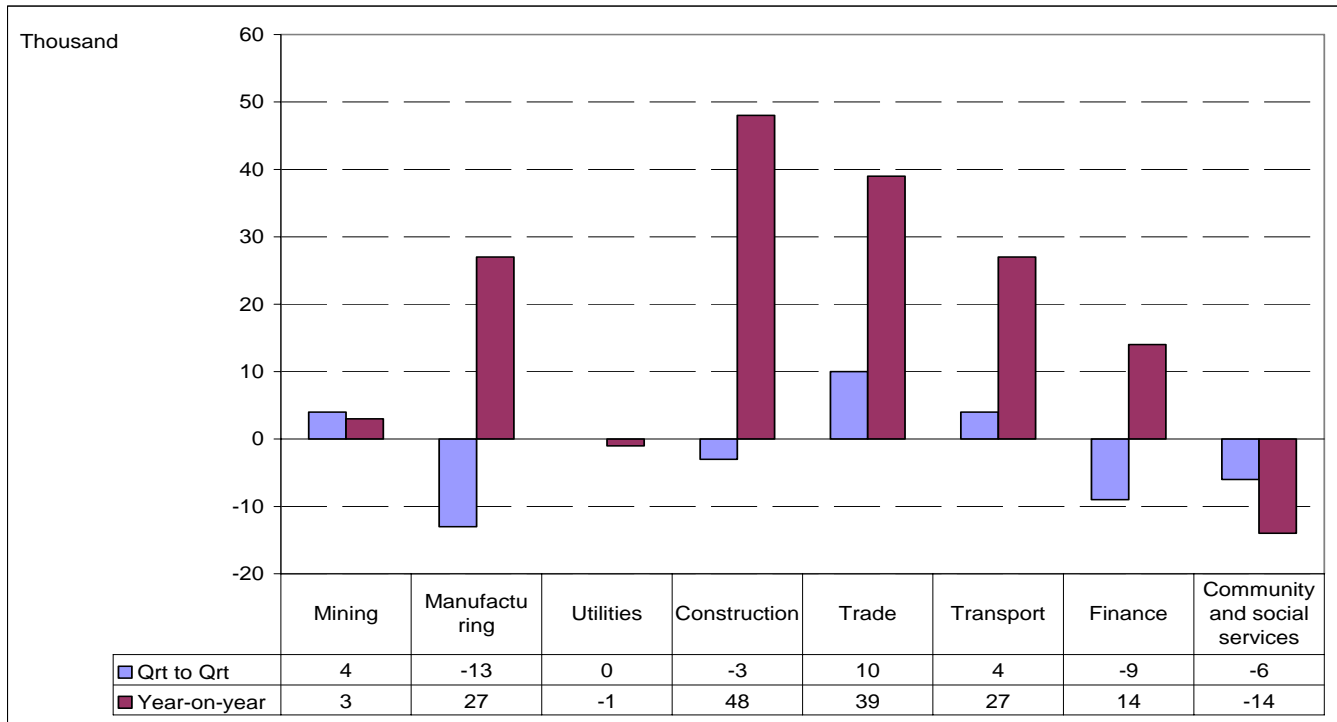


#QLFS mining figures are not robust and therefore the QES figures should be used.

Figure 3 shows that the formal sector lost 45 000 jobs between Q2:2010 and Q3:2010 with most of the jobs lost being in Finance (89 000), Community and social services (26 000) and Mining (16 000). All other industries recorded job gains where Trade recorded 34 000 jobs that were created, Construction (30 000), and Manufacturing (22 000) formal sector jobs in the same period.

The year-on-year comparisons show a net loss of 248 000 jobs in the formal sector, with Finance, Manufacturing and Construction being the hardest hit with the loss of 124 000, 84 000 and 68 000 jobs respectively.

Figure 4: Changes in informal sector employment by industry



#QLFS mining figures are not robust and therefore the QES figures should be used.

Figure 4 indicates that most industries lost informal sector jobs between Q2:2010 and Q3:2010 while a few created some jobs. Most job losses were in Manufacturing (13 000), Finance (9 000) and Community and social services (6 000); while jobs were created in Trade (10 000), Mining (4 000) and Transport (4 000) resulting in a net loss of 14 000 jobs across all industries over a quarter,

Compared to Q3:2009, the informal sector gained 143 000 jobs in Q3:2010 with most of them being in Construction (48 000), Trade (39 000), Manufacturing (27 000) and Transport (27 000). Job losses were only recorded in Community and social services (14 000) while there was virtually no change in Utilities in the same period.

Table D: Employment by occupation

	Jul-Sep 2009	Apr-Jun 2010	Jul-Sep 2010	Qtr-to-qtr change	Year-on-year change	Qtr-to-qtr change	Year-on-year change
	Thousand				Per cent		
Total	13 133	13 061	12 975	-86	-158	-0,7	-1,2
Manager	1 023	1 009	1 069	60	46	5,9	4,5
Professional	722	756	705	-51	-17	-6,7	-2,4
Technician	1 518	1 433	1 418	-15	-100	-1,0	-6,6
Clerk	1 460	1 467	1 411	-56	-49	-3,8	-3,4
Sales and services	1 829	1 883	1 858	-25	29	-1,3	1,6
Skilled agriculture	72	115	76	-39	4	-33,9	5,6
Craft and related trade	1 619	1 590	1 607	17	-12	1,1	-0,7
Plant and machine operator	1 135	1 087	1 162	75	27	6,9	2,4
Elementary	2 852	2 828	2 782	-46	-70	-1,6	-2,5
Domestic worker	904	892	887	-5	-17	-0,6	-1,9

*Due to rounding, numbers do not necessarily add up to totals.

Table D shows that individuals in most of the occupations lost jobs. Most of the job losses were in Clerical (56 000), Professional (51 000) and Elementary (46 000) occupations. Plant and machine operator, Manager and Craft and related trade were the only occupations that experienced job gains, with 75 000, 60 000 and 17 000 job gains recorded respectively between Q2:2010 and Q3:2010.

The year-on-year comparisons show that almost all occupations experienced job losses resulting in a net loss of 158 000 jobs. Most of the job losses were in the Technician (100 000), Elementary (70 000) and Clerical (49 000) occupations. Some job gains were observed in the Managerial (46 000), Sales and services (29 000) and Plant and machine operator (27 000) occupations.

4. The unemployed population

Table E: The unemployed by sex

Unemployed	Jul-Sep 2009	Apr-Jun 2010	Jul-Sep 2010	Qtr-to-qtr change	Year-on-year change	Qtr-to-qtr change	Year-on-year change
	Thousand				Per cent		
Total	4 241	4 401	4 396	-5	155	-0,1	3,7
Women	2 086	2 177	2 183	6	97	0,3	4,7
Men	2 155	2 224	2 214	-10	59	-0,4	2,7

*Due to rounding, numbers do not necessarily add up to totals.

Table E shows that between Q2:2010 and Q3:2010, the number of unemployed persons remained virtually unchanged, even when disaggregated by sex, with the number increasing by merely 6 000 among women and decreasing by only 10 000 among men. This resulted in a net decrease of 5 000 unemployed persons in Q3:2010.

The year-on-year comparisons show that the number of unemployed persons increased by 155 000, with an annual increase of 2,7% among men and 4,7% among women.

Figure 5: Unemployment rate by province

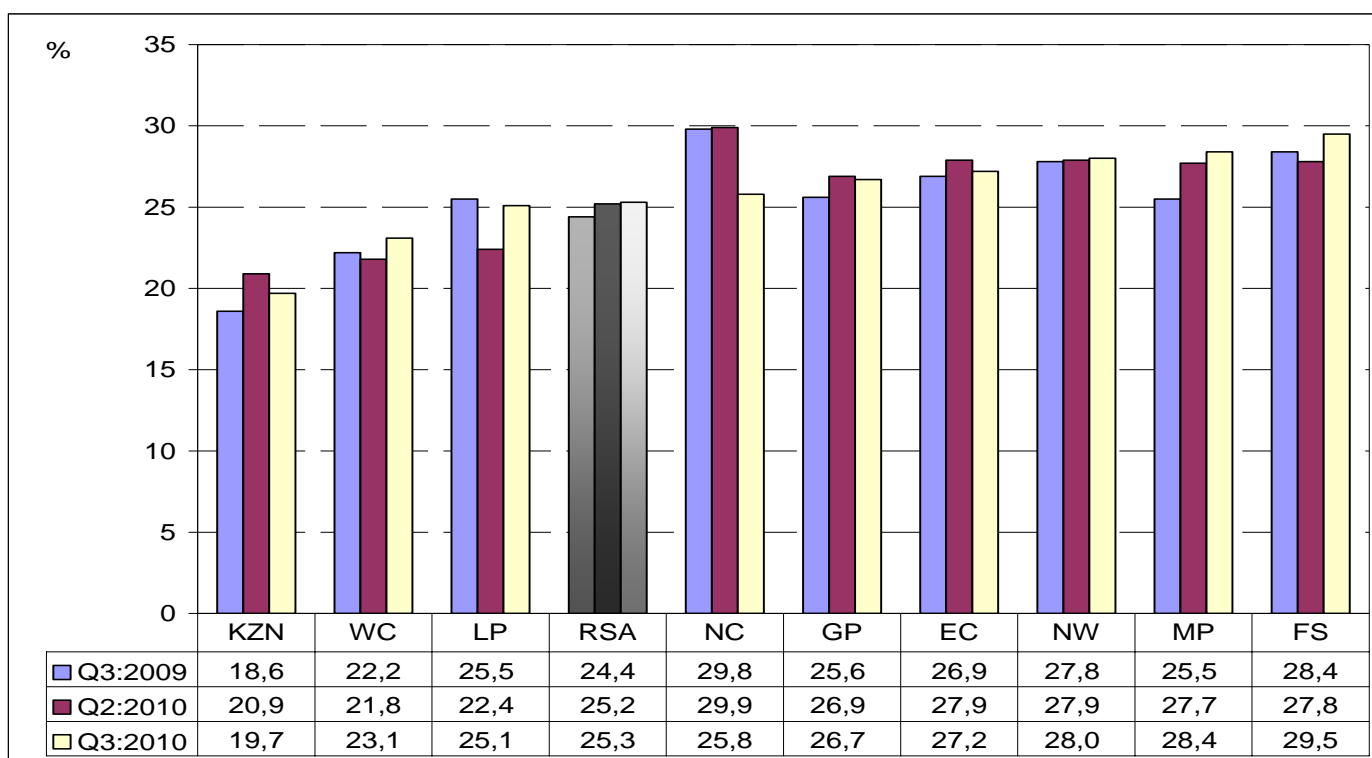


Figure 5 shows a decrease in the unemployment rate in four of the nine provinces in Q3:2010 compared to Q2:2010. The biggest decrease in the unemployment rate was observed in Northern Cape (4,1 percentage points) and KwaZulu-Natal (1,2 percentage points). There was an increase in the unemployment rate in Limpopo, Free State and Western Cape (up by 2,7 percentage points, 1,7 percentage points and 1,3 percentage points respectively) between the two quarters. KwaZulu-Natal had the lowest unemployment rate (19,7%) recorded in the third quarter of 2010.

The comparisons between Q3:2009 and Q3:2010 indicate that there was a substantial increase in the unemployment rate in Mpumalanga (up by 2,9 percentage points), Gauteng and Free State (up by 1,1 percentage points each). The provinces that experienced declines in the unemployment rate in the same period were Northern Cape (down by 4,0 percentage points) and Limpopo (down by 0,4 of a percentage point).

Figure 6: Unemployment rate by population group

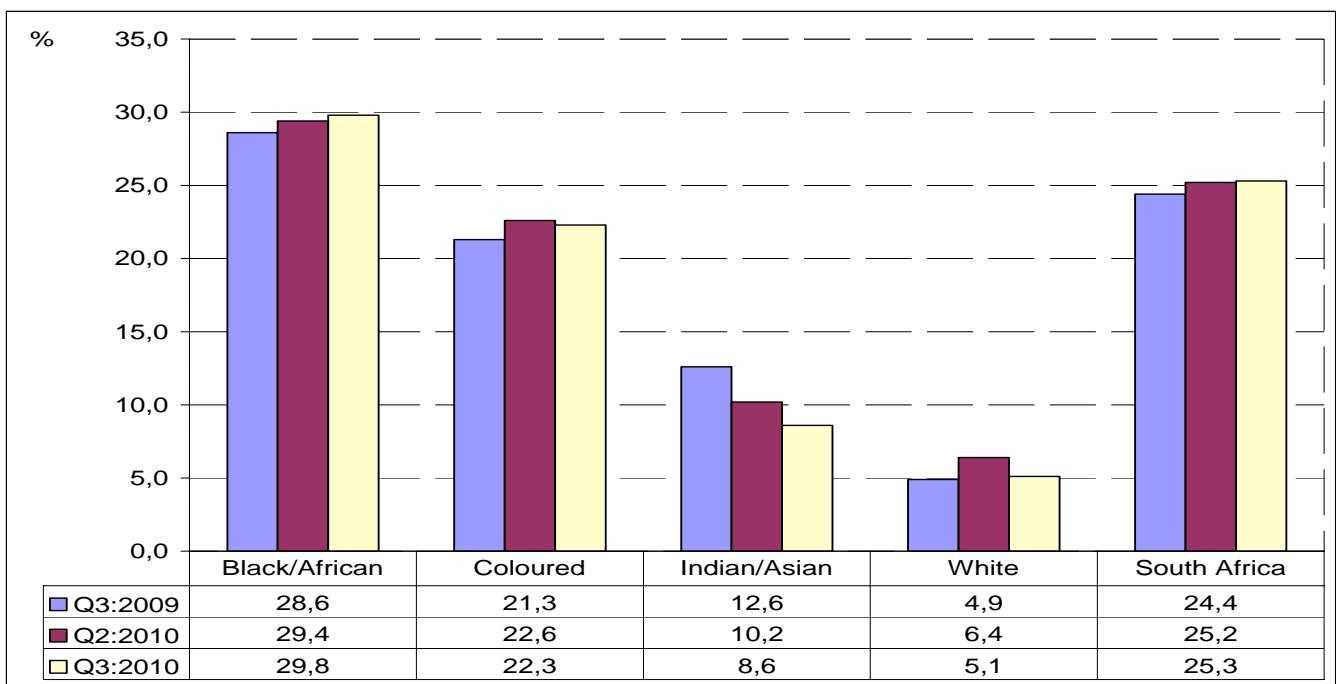


Figure 6 shows that between Q2:2010 and Q3:2010, the unemployment rate decreased among the Indian/Asian, white and coloured populations (up by 1,6, 1,3 percentage points and 0,3 of a percentage point respectively), but increased by 0,4 of a percentage point among the black Africans.

The year-on-year comparisons show that the unemployment rate increased substantially among all population groups except among the Indian/Asian population where it decreased by 4,0 percentage points.

Table F: Characteristics of the unemployed

	Jul-Sep 2009	Apr-Jun 2010	Jul-Sep 2010	Qtr-to-qtr change	Year-on-year change	Qtr-to-qtr change	Year-on-year change
Unemployed	Thousand				Per cent		
Total	4 241	4 401	4 396	-5	155	-0,1	3,7
Job losers	1 488	1 471	1 376	-95	-112	-6,5	-7,5
Job leavers	340	290	260	-30	-80	-10,3	-23,5
New entrants	1 633	1 819	1 944	125	311	6,9	19,0
Re-entrants	195	206	184	-22	-11	-10,7	-5,6
Other	584	615	632	17	48	2,8	8,2

Table F shows that between Q2:2010 and Q3:2010 there was an increase in the number of new entrants (125 000) while decreases were observed among job losers (95 000), job leavers (30 000) and re-entrants (22 000).

Compared to a year ago, the number of new entrants increased by 311 000 while the number of job losers, job leavers and re-entrants into unemployment decreased by 112 000, 80 000 and 11 000 respectively in Q3:2010.

5. Characteristics of the not economically active population

Table G: The not economically active

Not economically active	Jul-Sep 2009	Apr-Jun 2010	Jul-Sep 2010	Qtr-to-qtr change	Year-on-year change	Qtr-to-qtr change	Year-on-year change
	Thousand				Per cent		
Total	14 188	14 485	14 702	217	514	1,5	3,6
Student	5 942	6 009	6 096	87	154	1,4	2,6
Homemaker	2 787	2 894	2 897	3	110	0,1	3,9
Illness/disability	1 826	1 805	1 807	2	-19	0,1	-1,0
Too old/young to work	1 106	1 122	1 156	34	50	3,0	4,5
Discouraged	1 654	1 938	2 033	95	379	4,9	22,9
Other	873	717	714	-3	-159	-0,4	-18,2

Due to rounding, numbers do not necessarily add up to totals.

Table G shows that between Q2:2010 and Q3:2010, the number of discouraged work-seekers, students who were not economically active, and those who were too old or too young to work increased by 95 000, 87 000, and 34 000 respectively.

The year-on-year changes indicate that there was an overall increase in the number of economically inactive persons (514 000 or 3,6%) of which 379 000 or 22,9% were discouraged work-seekers, 154 000 were students and 110 000 were homemakers. The number of persons who were inactive because of illness or disability decreased by 19 000 in the same period.



PJ Lehohla
Statistician-General: Statistics South Africa

6. Technical notes

6.1. Response details

Table H: Response rates by province

Province	Jul-Sep 2010
	Per cent
Western Cape	89,8
Eastern Cape	98,9
Northern Cape	93,1
Free State	98,0
KwaZulu-Natal	95,5
North West	97,9
Gauteng	85,2
Mpumalanga	94,7
Limpopo	99,3
South Africa	94,1

6.2. Survey requirements and design

The Quarterly Labour Force Survey (QLFS) frame has been developed as a general-purpose household survey frame that can be used by all other household surveys irrespective of the sample size requirement of the survey. The sample size for the QLFS is roughly 30 000 dwellings per quarter.

The sample is based on information collected during the 2001 Population Census conducted by Stats SA. In preparation for the 2001 Census, the country was divided into 80 787 enumeration areas (EAs). Stats SA's household-based surveys use a master sample of primary sampling units (PSUs) which comprises EAs that are drawn from across the country.

The sample is designed to be representative at provincial level and within provinces at metro/non-metro level. Within the metros, the sample is further distributed by geography type. The four geography types are: urban formal, urban informal, farms and tribal. This implies, for example, that within a metropolitan area the sample is representative at the different geography types that may exist within that metro.

The current sample size is 3 080 PSUs. It is divided equally into four subgroups or panels called rotation groups. The rotation groups are designed in such a way that each of these groups has the same distribution pattern as that which is observed in the whole sample. They are numbered from one to four and these numbers also correspond to the quarters of the year in which the sample will be rotated for the particular group.

The sample for the redesigned Labour Force Survey (i.e. the QLFS) is based on a stratified two-stage design with probability proportional to size (PPS) sampling of PSUs in the first stage, and sampling of dwelling units (DUs) with systematic sampling in the second stage.

6.3. Sample rotation

Each quarter, a $\frac{1}{4}$ of the sampled dwellings rotate out of the sample and are replaced by new dwellings from the same PSU or the next PSU on the list. Thus, sampled dwellings will remain in the sample for four consecutive quarters. It should be noted that the sampling unit is the dwelling, and the unit of observation is the household. Therefore, if a household moves out of a dwelling after being in the sample for, say two quarters, and a new household moves in, the new household will be enumerated for the next two quarters. If no household moves into the sampled dwelling, the dwelling will be classified as vacant (unoccupied).

6.4. Weighting

The sampling weights for the data collected from the sampled households are constructed in such a manner that the responses could be properly expanded to represent the entire civilian population of South Africa. The weights are the result of calculations involving several factors, including original selection probabilities, adjustment for non-response, and benchmarking to known population estimates from the Demographic division of Stats SA.

6.5. Non-response adjustment

In general, imputation is used for item non-response (i.e. blanks within the questionnaire) and edit failure (i.e. invalid or inconsistent responses). The eligible households in the sampled dwellings can be divided into two response categories: respondents and non-respondents; and weight adjustment is applied to account for the non-respondent households (e.g. refusal, no contact, etc.).

6.6. Final survey weights

The final survey weights are constructed using regression estimation to calibrate to the known population counts at the national level population estimates (which are supplied by the Demography division) cross-classified by 5-year age groups, gender and race, and provincial population estimates by broad age groups. The 5-year age groups are: 0–4, 5–9, 10–14, etc., and 65 and over. The provincial-level age groups are: 0–14, 15–34, 35–64, and 65 years and over. The calibrated weights are constructed such that all persons in a household would have the same final weight.

6.7. Estimation

The final survey weights are used to obtain the estimates for various domains of interest, e.g. number of persons employed in agriculture in the province of Western Cape, number of females employed in manufacturing, etc.

6.8. Reliability of the survey estimates

Because estimates are based on sample data, they differ from figures that would have been obtained from complete enumeration of the population using the same instrument. Results are subject to both sampling and non-sampling errors. Non-sampling errors include biases from inaccurate reporting, processing, and tabulation, etc., as well as errors from non-response and incomplete reporting. These types of errors cannot be measured readily. However, to the extent possible, non-sampling errors can be minimised through the procedures used for data collection, editing, quality control, and non-response adjustment. The variances of the survey estimates are used to measure sampling errors. The variance estimation methodology is discussed below.

(i) Variance estimation

The most commonly used methods for estimating variances of survey estimates from complex surveys such as the QLFS, are the Taylor-series Linearization, Jackknife Replication, Balanced Repeated Replication (BRR), and Bootstrap methods (Wolter, 2007)¹. The Fay's BRR method has been used for variance estimation in the QLFS because of its simplicity.

(ii) Coefficient of variation

It is more useful in many situations to assess the size of the standard error relative to the magnitude of the characteristic being measured (the standard error is defined as the square root of the variance). The **coefficient of variation** (cv) provides such a measure. It is the **ratio of the standard error of the survey estimate to the value of the estimate itself expressed as a percentage**. It is very useful in comparing the precision of several different survey estimates, where their sizes or scale differ from one another.

(iii) P-value of an estimate of change

The p-value corresponding to an estimate of change is the probability of observing a value larger than the particular observed value under the hypothesis that there is no real change. If p-value < 0,01, the difference is highly significant; if p-value is between 0,01 and 0,05, the difference is significant; and if p-value > 0,05, the difference is not significant.

¹ Wolter KM, 2007. *Introduction to Variance Estimation, 2nd Edition*. New York: Springer-Verlag.

7. Definitions

Discouraged work-seeker is a person who was not employed during the reference period, wanted to work, was available to work/start a business but did not take active steps to find work during the last four weeks, provided that the main reason given for not seeking work was any of the following: no jobs available in the area; unable to find work requiring his/her skills; lost hope of finding any kind of work.

Economic activities are those that contribute to the production of goods and services in the country. There are two types of economic activities, and they are: (1) Market production activities (work done for others and usually associated with pay or profit); and (2) Non-market production activities (work done for the benefit of the household, e.g. subsistence farming).

Employed persons are those aged 15–64 years who, during the reference week: did any work for at least one hour; or had a job or business but were not at work (temporarily absent).

Employment-to-population ratio (labour absorption rate) is the proportion of the working-age population that is employed.

Informal employment identifies persons who are in precarious employment situations irrespective of whether or not the entity for which they work is in the formal or informal sector. Persons in informal employment therefore consist of all persons in the informal sector; employees in the formal sector; and persons working in private households who are not entitled to basic benefits such as pension or medical aid contributions from their employer, and who do not have a written contract of employment.

Informal sector: The informal sector has the following two components:

- i) Employees working in establishments that employ less than five employees, who do not deduct income tax from their salaries/wages; and
- ii) Employers, own-account workers and persons helping unpaid in their household business who are not registered for either income tax or value-added tax.

The **labour force** comprises all persons who are employed plus all persons who are unemployed.

Labour force participation rate is the proportion of the working-age population that is either employed or unemployed.

Long-term unemployment: Persons in long-term unemployment are those individuals among the unemployed who were without work and trying to find a job or start a business for one year or more.

Not economically active: Persons aged 15–64 years who are neither employed nor unemployed in the reference week.

Persons in **underemployment (time-related)** are employed persons who were willing and available to work additional hours, whose total number of hours actually worked during the reference period was below 35 hours per week.

Underutilised labour comprises three groups as follows: persons who are underemployed, persons who are unemployed, and persons who are discouraged.

Unemployed persons are those (aged 15–64 years) who:

- a) Were not employed in the reference week **and**;
- b) Actively looked for work or tried to start a business in the four weeks preceding the survey interview **and**;
- c) Were available for work, i.e. would have been able to start work or a business in the reference week **or**;
- d) Had not actively looked for work in the past four weeks but had a job or business to start at a definite date in the future and were available.

Unemployment rate is the proportion of the labour force that is unemployed.

The **working-age population** comprises all persons aged 15–64 years.

Appendix 1

Table 1: Population of working age (15-64 years)									
	Jul-Sep 2009	Oct-Dec 2009	Jan-Mar 2010	Apr-Jun 2010	Jul-Sep 2010	Qrt-to-Qrt change	Year-on-year change	Qrt-to-qrt change	Year-on-year change
	Thousand	Thousand	Thousand	Thousand	Thousand	Thousand	Thousand	Percent	Percent
Both sexes	31 562	31 689	31 818	31 946	32 072	126	510	0,4	1,6
Women	16 311	16 367	16 422	16 481	16 537	56	226	0,3	1,4
Men	15 251	15 322	15 396	15 465	15 536	71	285	0,5	1,9
Population groups	31 562	31 689	31 818	31 946	32 072	126	510	0,4	1,6
Black	24 546	24 668	24 796	24 913	25 033	120	487	0,5	2,0
Coloured	2 966	2 975	2 983	2 994	3 003	9	37	0,3	1,2
Indian	899	903	906	910	914	4	15	0,4	1,7
White	3 151	3 144	3 133	3 130	3 122	-8	-29	-0,3	-0,9
RSA	31 562	31 689	31 818	31 946	32 072	126	510	0,4	1,6
Western Cape	3 335	3 349	3 363	3 376	3 390	14	55	0,4	1,6
Eastern Cape	4 072	4 087	4 102	4 117	4 131	14	59	0,3	1,4
Northern Cape	706	707	709	711	713	2	7	0,3	1,0
Free State	1 845	1 849	1 853	1 856	1 860	4	15	0,2	0,8
KwaZulu Natal	6 544	6 574	6 604	6 635	6 664	29	120	0,4	1,8
North West	1 995	2 001	2 007	2 013	2 019	6	24	0,3	1,2
Gauteng	7 583	7 612	7 642	7 672	7 702	30	119	0,4	1,6
Mpumalanga	2 257	2 267	2 277	2 287	2 297	10	40	0,4	1,8
Limpopo	3 225	3 243	3 261	3 279	3 296	17	71	0,5	2,2

Due to rounding, numbers do not necessarily add up to totals.

Table 2: Labour force characteristics by sex - All population groups									
	Jul-Sep 2009	Oct-Dec 2009	Jan-Mar 2010	Apr-Jun 2010	Jul-Sep 2010	Qrt-to-Qrt change	Year-on-year change	Qrt-to-qrt change	Year-on- year change
	Thousand	Thousand	Thousand	Thousand	Thousand	Thousand	Thousand	Percent	Percent
Both sexes									
Population 15-64 yrs	31 562	31 689	31 818	31 946	32 072	126	510	0,4	1,6
Labour Force	17 374	17 476	17 471	17 462	17 371	-91	-3	-0,5	0,0
Employed	13 133	13 250	13 076	13 061	12 975	-86	-158	-0,7	-1,2
Formal sector (Non- agricultural)	9 291	9 344	9 197	9 088	9 043	-45	-248	-0,5	-2,7
Informal sector (Non-agricultural)	2 029	2 154	2 054	2 186	2 172	-14	143	-0,6	7,0
Agriculture	660	624	658	630	640	10	-20	1,6	-3,0
Private households	1 154	1 129	1 167	1 157	1 119	-38	-35	-3,3	-3,0
Unemployed	4 241	4 226	4 395	4 401	4 396	-5	155	-0,1	3,7
Not economically active	14 188	14 213	14 346	14 485	14 702	217	514	1,5	3,6
Discouraged work-seekers	1 654	1 710	1 870	1 938	2 033	95	379	4,9	22,9
Other(not economically active)	12 534	12 503	12 476	12 547	12 669	122	135	1,0	1,1
Rates (%)									
Unemployment rate	24,4	24,2	25,2	25,2	25,3	0,1	0,9		
Employed / population ratio (Absorption)	41,6	41,8	41,1	40,9	40,5	-0,4	-1,1		
Labour force participation rate	55,0	55,1	54,9	54,7	54,2	-0,5	-0,8		
Women									
Population 15-64 yrs	16 311	16 367	16 422	16 481	16 537	56	226	0,3	1,4
Labour Force			7 877	7 853	7 784	-69	-83	-0,9	-1,1
Employed	5 782	5 792	5 710	5 675	5 601	-74	-181	-1,3	-3,1
Formal sector (Non-agricultural)	3 757	3 772	3 704	3 629	3 619	-10	-138	-0,3	-3,7
Informal sector (Non-agricultural)	905	940	879	934	902	-32	-3	-3,4	-0,3
Agriculture	221	208	243	215	202	-13	-19	-6,0	-8,6
Private households	899	873	884	897	879	-18	-20	-2,0	-2,2
Unemployed	2 086	2 046	2 167	2 177	2 183	6	97	0,3	4,7
Not economically active	8 443	8 529	8 545	8 628	8 752	124	309	1,4	3,7
Discouraged work-seekers	929	996	1 052	1 078	1 156	78	227	7,2	24,4
Other(not economically active)	7 514	7 533	7 493	7 550	7 597	47	83	0,6	1,1
Rates (%)									
Unemployment rate	26,5	26,1	27,5	27,7	28,0	0,3	1,5		
Employed / population ratio (Absorption)	35,4	35,4	34,8	34,4	33,9	-0,5	-1,5		
Labour force participation rate	48,2	47,9	48,0	47,6	47,1	-0,5	-1,1		

Due to rounding, numbers do not necessarily add up to totals.

Note: Employment refers to market production activities.

Table 2: Labour force characteristics by sex - All population groups (concluded)									
	Jul-Sep 2009	Oct-Dec 2009	Jan-Mar 2010	Apr-Jun 2010	Jul-Sep 2010	Qrt-to-Qrt change	Year-on-year change	Qrt-to-qrt change	Year-on- year change
	Thousand	Thousand	Thousand	Thousand	Thousand	Thousand	Thousand	Percent	Percent
Men									
Population 15-64 yrs	15 251	15 322	15 396	15 465	15 536	71	285	0,5	1,9
Labour Force	9 506	9 638	9 595	9 609	9 587	-22	81	-0,2	0,9
Employed	7 352	7 458	7 367	7 385	7 373	-12	21	-0,2	0,3
Formal sector (Non-agricultural)	5 534	5 571	5 493	5 459	5 424	-35	-110	-0,6	-2,0
Informal sector (Non-agricultural)	1 124	1 215	1 175	1 252	1 270	18	146	1,4	13,0
Agriculture	439	416	415	415	438	23	-1	5,5	-0,2
Private households	255	256	284	259	241	-18	-14	-6,9	-5,5
Unemployed	2 155	2 180	2 228	2 224	2 214	-10	59	-0,4	2,7
Not economically active	5 745	5 684	5 801	5 856	5 949	93	204	1,6	3,6
Discouraged work-seekers	725	714	818	860	877	17	152	2,0	21,0
Other(not economically active)	5 020	4 970	4 983	4 996	5 072	76	52	1,5	1,0
Rates (%)									
Unemployment rate	22,7	22,6	23,2	23,1	23,1	0,0	0,4		
Employed / population ratio (Absorption)	48,2	48,7	47,9	47,8	47,5	-0,3	-0,7		
Labour force participation rate	62,3	62,9	62,3	62,1	61,7	-0,4	-0,6		

Due to rounding, numbers do not necessarily add up to totals.

Note: Employment refers to market production activities.

Table 2.1: Labour force characteristics by population group									
	Jul-Sep 2009	Oct-Dec 2009	Jan-Mar 2010	Apr-Jun 2010	Jul-Sep 2010	Qrt-to-Qrt change	Year-on-year change	Qrt-to-qrt change	Year-on- year change
	Thousand	Thousand	Thousand	Thousand	Thousand	Thousand	Thousand	Percent	Percent
South Africa									
Population 15-64 yrs	31 562	31 689	31 818	31 946	32 072	126	510	0,4	1,6
Labour Force	17 374	17 476	17 471	17 462	17 371	-91	-3	-0,5	0,0
Employed	13 133	13 250	13 076	13 061	12 975	-86	-158	-0,7	-1,2
Unemployed	4 241	4 226	4 395	4 401	4 396	-5	155	-0,1	3,7
Not economically active	14 188	14 213	14 346	14 485	14 702	217	514	1,5	3,6
Rates (%)									
Unemployment rate	24,4	24,2	25,2	25,2	25,3	0,1	0,9		
Employed / population ratio (Absorption)	41,6	41,8	41,1	40,9	40,5	-0,4	-1,1		
Labour force participation rate	55,0	55,1	54,9	54,7	54,2	-0,5	-0,8		
Black/African									
Population 15-64 yrs	24 546	24 668	24 796	24 913	25 033	120	487	0,5	2,0
Labour Force	12 798	12 858	12 808	12 846	12 788	-58	-10	-0,5	-0,1
Employed	9 134	9 193	9 021	9 071	8 975	-96	-159	-1,1	-1,7
Unemployed	3 664	3 665	3 787	3 775	3 813	38	149	1,0	4,1
Not economically active	11 748	11 810	11 988	12 067	12 245	178	497	1,5	4,2
Rates (%)									
Unemployment rate	28,6	28,5	29,6	29,4	29,8	0,4	1,2		
Employed / population ratio (Absorption)	37,2	37,3	36,4	36,4	35,9	-0,5	-1,3		
Labour force participation rate	52,1	52,1	51,7	51,6	51,1	-0,5	-1,0		
Coloured									
Population 15-64 yrs	2 966	2 975	2 983	2 994	3 003	9	37	0,3	1,2
Labour Force	1 910	1 934	1 947	1 920	1 917	-3	7	-0,2	0,4
Employed	1 503	1 534	1 521	1 487	1 490	3	-13	0,2	-0,9
Unemployed	407	400	426	433	427	-6	20	-1,4	4,9
Not economically active	1 056	1 041	1 036	1 074	1 086	12	30	1,1	2,8
Rates (%)									
Unemployment rate	21,3	20,7	21,9	22,6	22,3	-0,3	1,0		
Employed / population ratio (Absorption)	50,7	51,6	51,0	49,7	49,6	-0,1	-1,1		
Labour force participation rate	64,4	65,0	65,3	64,1	63,8	-0,3	-0,6		

Due to rounding, numbers do not necessarily add up to totals.

Note: Employment refers to market production activities.

Table 2.1: Labour force characteristics by population group (concluded)									
	Jul-Sep 2009	Oct-Dec 2009	Jan-Mar 2010	Apr-Jun 2010	Jul-Sep 2010	Qrt-to-Qrt change	Year-on-year change	Qrt-to-qrt change	Year-on- year change
	Thousand	Thousand	Thousand	Thousand	Thousand	Thousand	Thousand	Percent	Percent
Indian/Asian									
Population 15-64 yrs	899	903	906	910	914	4	15	0,4	1,7
Labour Force	522	508	533	550	568	18	46	3,3	8,8
Employed	456	451	483	494	518	24	62	4,9	13,6
Unemployed	66	57	50	56	49	-7	-17	-12,5	-25,8
Not economically active	377	395	374	361	347	-14	-30	-3,9	-8,0
Rates (%)									
Unemployment rate	12,6	11,2	9,4	10,2	8,6	-1,6	-4,0		
Employed / population ratio (Absorption)	50,7	49,9	53,3	54,3	56,7	2,4	6,0		
Labour force participation rate	58,1	56,3	58,8	60,4	62,0	1,6	3,9		
White									
Population 15-64 yrs	3 151	3 144	3 133	3 130	3 122	-8	-29	-0,3	-0,9
Labour Force	2 144	2 177	2 183	2 146	2 098	-48	-46	-2,2	-2,1
Employed	2 040	2 071	2 051	2 009	1 991	-18	-49	-0,9	-2,4
Unemployed	104	106	132	137	107	-30	3	-21,9	2,9
Not economically active	1 007	967	949	983	1 024	41	17	4,2	1,7
Rates (%)									
Unemployment rate	4,9	4,9	6,0	6,4	5,1	-1,3	0,2		
Employed / population ratio (Absorption)	64,7	65,9	65,5	64,2	63,8	-0,4	-0,9		
Labour force participation rate	68,0	69,2	69,7	68,6	67,2	-1,4	-0,8		

Due to rounding, numbers do not necessarily add up to totals.

Note: Employment refers to market production activities.

Table 2.2: Labour force characteristics by province									
	Jul-Sep 2009	Oct-Dec 2009	Jan-Mar 2010	Apr-Jun 2010	Jul-Sep 2010	Qrt-to-Qrt change	Year-on-year change	Qrt-to-qrt change	Year-on- year change
	Thousand	Thousand	Thousand	Thousand	Thousand	Thousand	Thousand	Percent	Percent
South Africa									
Population 15-64 yrs	31 562	31 689	31 818	31 946	32 072	126	510	0,4	1,6
Labour Force	17 374	17 476	17 471	17 462	17 371	-91	-3	-0,5	0,0
Employed	13 133	13 250	13 076	13 061	12 975	-86	-158	-0,7	-1,2
Unemployed	4 241	4 226	4 395	4 401	4 396	-5	155	-0,1	3,7
Not economically active	14 188	14 213	14 346	14 485	14 702	217	514	1,5	3,6
Discouraged work-seekers	1 654	1 710	1 870	1 938	2 033	95	379	4,9	22,9
Other	12 534	12 503	12 476	12 547	12 669	122	135	1,0	1,1
Rates (%)									
Unemployment rate	24,4	24,2	25,2	25,2	25,3	0,1	0,9		
Employed / population ratio (Absorption)	41,6	41,8	41,1	40,9	40,5	-0,4	-1,1		
Labour force participation rate	55,0	55,1	54,9	54,7	54,2	-0,5	-0,8		
Western Cape									
Population 15-64 yrs	3 335	3 349	3 363	3 376	3 390	14	55	0,4	1,6
Labour Force	2 302	2 310	2 305	2 294	2 281	-13	-21	-0,6	-0,9
Employed	1 790	1 817	1 837	1 793	1 754	-39	-36	-2,2	-2,0
Unemployed	512	494	468	501	527	26	15	5,2	2,9
Not economically active	1 033	1 039	1 058	1 082	1 109	27	76	2,5	7,4
Discouraged work-seekers	37	40	48	55	38	-17	1	-30,9	2,7
Other	997	998	1 010	1 027	1 071	44	74	4,3	7,4
Rates (%)									
Unemployment rate	22,2	21,4	20,3	21,8	23,1	1,3	0,9		
Employed / population ratio (Absorption)	53,7	54,3	54,6	53,1	51,7	-1,4	-2,0		
Labour force participation rate	69,0	69,0	68,5	68,0	67,3	-0,7	-1,7		

Due to rounding, numbers do not necessarily add up to totals.

Note: Employment refers to market production activities.

Table 2.2: Labour force characteristics by province (continued)									
	Jul-Sep 2009	Oct-Dec 2009	Jan-Mar 2010	Apr-Jun 2010	Jul-Sep 2010	Qrt-to-Qrt change	Year-on-year change	Qrt-to-qrt change	Year-on- year change
	Thousand	Thousand	Thousand	Thousand	Thousand	Thousand	Thousand	Percent	Percent
Eastern Cape									
Population 15-64 yrs	4 072	4 087	4 102	4 117	4 131	14	59	0,3	1,4
Labour Force	1 749	1 768	1 808	1 767	1 793	26	44	1,5	2,5
Employed	1 278	1 291	1 267	1 274	1 306	32	28	2,5	2,2
Unemployed	471	477	541	493	487	-6	16	-1,2	3,4
Not economically active	2 322	2 319	2 294	2 350	2 337	-13	15	-0,6	0,6
Discouraged work-seekers	333	348	363	382	344	-38	11	-9,9	3,3
Other	1 989	1 971	1 931	1 969	1 993	24	4	1,2	0,2
Rates (%)									
Unemployment rate	26,9	27	29,9	27,9	27,2	-0,7	0,3		
Employed / population ratio (Absorption)	31,4	31,6	30,9	30,9	31,6	0,7	0,2		
Labour force participation rate	43,0	43,3	44,1	42,9	43,4	0,5	0,4		
Northern Cape									
Population 15-64 yrs	706	707	709	711	713	2	7	0,3	1,0
Labour Force	366	387	372	371	372	1	6	0,3	1,6
Employed	257	292	270	260	276	16	19	6,2	7,4
Unemployed	109	95	102	111	96	-15	-13	-13,5	-11,9
Not economically active	340	320	337	340	341	1	1	0,3	0,3
Discouraged work-seekers	30	29	47	39	37	-2	7	-5,1	23,3
Other	310	291	290	301	304	3	-6	1,0	-1,9
Rates (%)									
Unemployment rate	29,8	24,5	27,4	29,9	25,8	-4,1	-4,0		
Employed / population ratio (Absorption)	36,4	41,3	38,1	36,6	38,7	2,1	2,3		
Labour force participation rate	51,8	54,7	52,5	52,2	52,2	0,0	0,4		

Due to rounding, numbers do not necessarily add up to totals.

Note: Employment refers to market production activities.

Table 2.2: Labour force characteristics by province (continued)									
	Jul-Sep 2009	Oct-Dec 2009	Jan-Mar 2010	Apr-Jun 2010	Jul-Sep 2010	Qrt-to-Qrt change	Year-on-year change	Qrt-to-qrt change	Year-on- year change
	Thousand	Thousand	Thousand	Thousand	Thousand	Thousand	Thousand	Percent	Percent
Free State									
Population 15-64 yrs	1 845	1 849	1 853	1 856	1 860	4	15	0,2	0,8
Labour Force	1 058	1 056	1 054	1 078	1 091	13	33	1,2	3,1
Employed	757	791	770	778	768	-10	11	-1,3	1,5
Unemployed	301	265	284	300	322	22	21	7,3	7,0
Not economically active	787	793	798	778	769	-9	-18	-1,2	-2,3
Discouraged work-seekers	88	99	101	85	85	0	-3	0,0	-3,4
Other	699	695	698	692	684	-8	-15	-1,2	-2,1
Rates (%)									
Unemployment rate	28,4	25,1	26,9	27,8	29,5	1,7	1,1		
Employed / population ratio (Absorption)	41,0	42,8	41,6	41,9	41,3	-0,6	0,3		
Labour force participation rate	57,3	57,1	56,9	58,1	58,6	0,5	1,3		
KwaZulu-Natal									
Population 15-64 yrs	6 544	6 574	6 604	6 635	6 664	29	120	0,4	1,8
Labour Force	3 105	3 068	3 084	3 081	2 990	-91	-115	-3,0	-3,7
Employed	2 526	2 476	2 488	2 436	2 401	-35	-125	-1,4	-4,9
Unemployed	579	592	596	645	588	-57	9	-8,8	1,6
Not economically active	3 439	3 506	3 520	3 553	3 674	121	235	3,4	6,8
Discouraged work-seekers	495	467	503	504	563	59	68	11,7	13,7
Other	2 944	3 038	3 017	3 050	3 111	61	167	2,0	5,7
Rates (%)									
Unemployment rate	18,6	19,3	19,3	20,9	19,7	-1,2	1,1		
Employed / population ratio (Absorption)	38,6	37,7	37,7	36,7	36,0	-0,7	-2,6		
Labour force participation rate	47,4	46,7	46,7	46,4	44,9	-1,5	-2,5		

Due to rounding, numbers do not necessarily add up to totals.

Note: Employment refers to market production activities.

Table 2.2: Labour force characteristics by province (continued)									
	Jul-Sep 2009	Oct-Dec 2009	Jan-Mar 2010	Apr-Jun 2010	Jul-Sep 2010	Qrt-to-Qrt change	Year-on-year change	Qrt-to-qrt change	Year-on- year change
	Thousand	Thousand	Thousand	Thousand	Thousand	Thousand	Thousand	Percent	Percent
North West									
Population 15-64 yrs	1 995	2 001	2 007	2 013	2 019	6	24	0,3	1,2
Labour Force	1 010	996	977	1 003	991	-12	-19	-1,2	-1,9
Employed	729	728	719	722	714	-8	-15	-1,1	-2,1
Unemployed	281	268	257	280	277	-3	-4	-1,1	-1,4
Not economically active	985	1 005	1 030	1 011	1 029	18	44	1,8	4,5
Discouraged work-seekers	120	134	130	150	138	-12	18	-8,0	15,0
Other	865	871	901	860	891	31	26	3,6	3,0
Rates (%)									
Unemployment rate	27,8	26,9	26,3	27,9	28,0	0,1	0,2		
Employed / population ratio (Absorption)	36,5	36,4	35,8	35,9	35,4	-0,5	-1,1		
Labour force participation rate	50,6	49,8	48,6	49,8	49,1	-0,7	-1,5		
Gauteng									
Population 15-64 yrs	7 583	7 612	7 642	7 672	7 702	30	119	0,4	1,6
Labour Force	5 310	5 359	5 402	5 404	5 402	-2	92	0,0	1,7
Employed	3 952	3 996	3 944	3 950	3 958	8	6	0,2	0,2
Unemployed	1 358	1 363	1 458	1 454	1 444	-10	86	-0,7	6,3
Not economically active	2 273	2 253	2 240	2 268	2 300	32	27	1,4	1,2
Discouraged work-seekers	196	242	248	254	312	58	116	22,8	59,2
Other	2 077	2 012	1 991	2 014	1 988	-26	-89	-1,3	-4,3
Rates (%)									
Unemployment rate	25,6	25,4	27,0	26,9	26,7	-0,2	1,1		
Employed / population ratio (Absorption)	52,1	52,5	51,6	51,5	51,4	-0,1	-0,7		
Labour force participation rate	70,0	70,4	70,7	70,4	70,1	-0,3	0,1		

Due to rounding, numbers do not necessarily add up to totals.

Note: Employment refers to market production activities.

Table 2.2: Labour force characteristics by province (concluded)									
	Jul-Sep 2009	Oct-Dec 2009	Jan-Mar 2010	Apr-Jun 2010	Jul-Sep 2010	Qrt-to-Qrt change	Year-on-year change	Qrt-to-qrt change	Year-on- year change
	Thousand	Thousand	Thousand	Thousand	Thousand	Thousand	Thousand	Percent	Percent
Mpumalanga									
Population 15-64 yrs	2 257	2 267	2 277	2 287	2 297	10	40	0,4	1,8
Labour Force	1 218	1 234	1 241	1 243	1 243	0	25	0,0	2,1
Employed	908	910	882	899	890	-9	-18	-1,0	-2,0
Unemployed	310	324	359	344	353	9	43	2,6	13,9
Not economically active	1 040	1 033	1 036	1 044	1 055	11	15	1,1	1,4
Discouraged work-seekers	124	126	165	182	193	11	69	6,0	55,6
Other	916	907	871	862	862	0	-54	0,0	-5,9
Rates (%)									
Unemployment rate	25,5	26,3	28,9	27,7	28,4	0,7	2,9		
Employed / population ratio (Absorption)	40,2	40,1	38,7	39,3	38,7	-0,6	-1,5		
Labour force participation rate	54,0	54,4	54,5	54,4	54,1	-0,3	0,1		
Limpopo									
Population 15-64 yrs	3 225	3 243	3 261	3 279	3 296	17	71	0,5	2,2
Labour Force	1 256	1 298	1 228	1 221	1 208	-13	-48	-1,1	-3,8
Employed	936	949	898	947	905	-42	-31	-4,4	-3,3
Unemployed	320	349	330	274	303	29	-17	10,6	-5,3
Not economically active	1 969	1 945	2 033	2 058	2 088	30	119	1,5	6,0
Discouraged work-seekers	231	225	266	287	321	34	90	11,8	39,0
Other	1 738	1 720	1 767	1 771	1 767	-4	29	-0,2	1,7
Rates (%)									
Unemployment rate	25,5	26,9	26,9	22,4	25,1	2,7	-0,4		
Employed / population ratio (Absorption)	29,0	29,3	27,5	28,9	27,5	-1,4	-1,5		
Labour force participation rate	38,9	40,0	37,7	37,2	36,7	-0,5	-2,2		

Due to rounding, numbers do not necessarily add up to totals.

Note: Employment refers to market production activities.

Table 2.3: Labour force characteristics by province (expanded definition of unemployment)									
	Jul-Sep 2009	Oct-Dec 2009	Jan-Mar 2010	Apr-Jun 2010	Jul-Sep 2010	Qrt-to-Qrt change	Year-on- year change	Qrt-to-qrt change	Year-on- year change
	Thousand	Thousand	Thousand	Thousand	Thousand	Thousand	Thousand	Percent	Percent
South Africa									
Population 15-64 yrs	31 562	31 689	31 818	31 946	32 072	126	511	0,4	1,6
Labour Force	19 965	20 084	20 228	20 333	20 396	63	431	0,3	2,2
Employed	13 133	13 250	13 076	13 061	12 975	- 86	- 158	-0,7	-1,2
Unemployed	6 832	6 834	7 151	7 273	7 421	148	589	2,0	8,6
Not economically active	11 597	11 606	11 590	11 614	11 677	63	80	0,5	0,7
Rates (%)									
Unemployment rate	34,2	34,0	35,4	35,8	36,4	0,6	2,2		
Employed / population ratio (Absorption)	41,6	41,8	41,1	40,9	40,5	-0,4	-1,2		
Labour force participation rate	63,3	63,4	63,6	63,6	63,6	-0,1	0,3		
Western Cape									
Population 15-64 yrs	3 335	3 349	3 363	3 376	3 390	14	54	0,4	1,6
Labour Force	2 373	2 379	2 391	2 380	2 354	- 26	- 18	-1,1	-0,8
Employed	1 790	1 817	1 837	1 793	1 754	- 39	- 36	-2,2	-2,0
Unemployed	583	562	554	587	600	13	17	2,1	2,9
Not economically active	963	970	971	996	1 036	39	73	3,8	7,6
Rates (%)									
Unemployment rate	24,6	23,6	23,2	24,7	25,5	0,8	0,9		
Employed / population ratio (Absorption)	53,7	54,2	54,6	53,1	51,8	-1,3	-1,9		
Labour force participation rate	71,1	71,0	71,1	70,5	69,4	-1,0	-1,7		

Due to rounding, numbers do not necessarily add up to totals.

Note: Employment refers to market production activities.

Table 2.3: Labour force characteristics by province (expanded definition of unemployment) (continued)									
	Jul-Sep 2009	Oct-Dec 2009	Jan-Mar 2010	Apr-Jun 2010	Jul-Sep 2010	Qrt-to-Qrt change	Year-on- year change	Qrt-to-qrt change	Year-on- year change
	Thousand	Thousand	Thousand	Thousand	Thousand	Thousand	Thousand	Percent	Percent
Eastern Cape									
Population 15-64 yrs	4 072	4 087	4 102	4 117	4 131	14	59	0,3	1,4
Labour Force	2 151	2 153	2 222	2 218	2 191	- 27	39	-1,2	1,8
Employed	1 278	1 291	1 267	1 274	1 306	32	28	2,5	2,2
Unemployed	873	862	955	945	884	- 60	11	-6,8	1,3
Not economically active	1 920	1 934	1 880	1 899	1 940	41	20	2,1	1,0
Rates (%)									
Unemployment rate	40,6	40,0	43,0	42,6	40,4	-2,2	-0,2		
Employed / population ratio (Absorption)	31,4	31,6	30,9	30,9	31,6	0,7	0,2		
Labour force participation rate	52,8	52,7	54,2	53,9	53,0	-0,8	0,2		
Northern Cape									
Population 15-64 yrs	706	707	709	711	713	2	7	0,3	1,0
Labour Force	420	435	436	428	432	4	12	0,9	2,8
Employed	257	292	270	260	276	16	19	6,2	7,4
Unemployed	163	143	165	167	155	- 12	- 8	-7,8	-4,7
Not economically active	286	272	273	283	281	- 2	- 4	-0,7	-1,5
Rates (%)									
Unemployment rate	38,8	32,9	38,0	39,1	36,0	-3,2	-2,8		
Employed / population ratio (Absorption)	36,5	41,3	38,1	36,6	38,8	2,1	2,3		
Labour force participation rate	59,5	61,5	61,4	60,2	60,5	0,4	1,0		

Due to rounding, numbers do not necessarily add up to totals.

Note: Employment refers to market production activities.

Table 2.3: Labour force characteristics by province (expanded definition of unemployment) (continued)									
	Jul-Sep 2009	Oct-Dec 2009	Jan-Mar 2010	Apr-Jun 2010	Jul-Sep 2010	Qrt-to-Qrt change	Year-on- year change	Qrt-to-qrt change	Year-on- year change
	Thousand	Thousand	Thousand	Thousand	Thousand	Thousand	Thousand	Percent	Percent
Free State									
Population 15-64 yrs	1 845	1 849	1 853	1 856	1 860	4	15	0,2	0,8
Labour Force	1 210	1 211	1 211	1 219	1 229	10	19	0,8	1,5
Employed	757	791	770	778	768	- 10	11	-1,3	1,5
Unemployed	453	420	441	441	461	20	8	4,3	1,7
Not economically active	635	638	642	637	631	- 6	- 4	-1,0	-0,6
Rates (%)									
Unemployment rate	37,4	34,7	36,4	36,2	37,5	1,3	0,1		
Employed / population ratio (Absorption)	41,0	42,8	41,6	41,9	41,3	-0,6	0,3		
Labour force participation rate	65,6	65,5	65,4	65,7	66,1	0,4	0,5		
KwaZulu Natal									
Population 15-64 yrs	6 544	6 574	6 604	6 635	6 664	29	120	0,4	1,8
Labour Force	3 879	3 846	3 900	3 957	3 916	- 41	37	-1,1	1,0
Employed	2 526	2 475	2 488	2 436	2 401	- 35	- 125	-1,4	-4,9
Unemployed	1 353	1 371	1 412	1 521	1 514	- 6	161	-0,4	11,9
Not economically active	2 665	2 728	2 705	2 677	2 748	71	83	2,6	3,1
Rates (%)									
Unemployment rate	34,9	35,6	36,2	38,4	38,7	0,2	3,8		
Employed / population ratio (Absorption)	38,6	37,6	37,7	36,7	36,0	-0,7	-2,6		
Labour force participation rate	59,3	58,5	59,0	59,6	58,8	-0,9	-0,5		

Due to rounding, numbers do not necessarily add up to totals.

Note: Employment refers to market production activities.

Table 2.3: Labour force characteristics by province (expanded definition of unemployment) (continued)									
	Jul-Sep 2009	Oct-Dec 2009	Jan-Mar 2010	Apr-Jun 2010	Jul-Sep 2010	Qrt-to-Qrt change	Year-on- year change	Qrt-to- qrt change	Year- on-year change
	Thousand	Thousand	Thousand	Thousand	Thousand	Thousand	Thousand	Percent	Percent
North West									
Population 15-64 yrs	1 995	2 001	2 007	2 013	2 019	6	24	0,3	1,2
Labour Force	1 225	1 200	1 194	1 231	1 243	12	18	1,0	1,4
Employed	729	728	719	722	714	- 8	- 15	-1,1	-2,1
Unemployed	497	472	474	508	529	21	32	3,9	6,5
Not economically active	769	801	813	783	776	- 6	7	-0,8	0,9
Rates (%)									
Unemployment rate	40,5	39,3	39,7	41,3	42,5	1,2	2,0		
Employed / population ratio (Absorption)	36,5	36,4	35,8	35,9	35,4	-0,5	-1,2		
Labour force participation rate	61,4	60,0	59,5	61,1	61,5	0,4	0,1		
Gauteng									
Population 15-64 yrs	7 583	7 612	7 642	7 672	7 702	30	119	0,4	1,6
Labour Force	5 576	5 714	5 717	5 728	5 808	80	232	1,4	4,2
Employed	3 952	3 996	3 944	3 950	3 958	8	6	0,2	0,2
Unemployed	1 624	1 718	1 773	1 778	1 850	72	226	3,9	13,9
Not economically active	2 007	1 899	1 925	1 944	1 894	- 50	- 113	-2,6	-5,6
Rates (%)									
Unemployment rate	29,1	30,1	31,0	31,0	31,9	0,8	2,7		
Employed / population ratio (Absorption)	52,1	52,5	51,6	51,5	51,4	-0,1	-0,7		
Labour force participation rate	73,5	75,1	74,8	74,7	75,4	0,7	1,9		

Due to rounding, numbers do not necessarily add up to totals.

Note: Employment refers to market production activities.

Table 2.3: Labour force characteristics by province (expanded definition of unemployment) (concluded)									
	Jul-Sep 2009	Oct-Dec 2009	Jan-Mar 2010	Apr-Jun 2010	Jul-Sep 2010	Qrt-to-Qrt change	Year-on- year change	Qrt-to- qrt change	Year- on-year change
	Thousand	Thousand	Thousand	Thousand	Thousand	Thousand	Thousand	Percent	Percent
Mpumalanga									
Population 15-64 yrs	2 257	2 267	2 277	2 287	2 297	10	40	0,4	1,8
Labour Force	1 486	1 480	1 538	1 543	1 567	25	81	1,6	5,4
Employed	908	910	882	899	890	- 9	- 18	-1,0	-2,0
Unemployed	578	570	656	644	677	34	99	5,0	17,1
Not economically active	771	787	739	744	730	- 15	- 41	-2,0	-5,3
Rates (%)									
Unemployment rate	38,9	38,5	42,6	41,7	43,2	1,5	4,3		
Employed / population ratio (Absorption)	40,2	40,1	38,7	39,3	38,7	-0,6	-1,5		
Labour force participation rate	65,9	65,3	67,5	67,5	68,2	0,8	2,4		
Limpopo									
Population 15-64 yrs	3 225	3 243	3 261	3 279	3 296	17	72	0,5	2,2
Labour Force	1 644	1 666	1 620	1 629	1 656	27	12	1,6	0,7
Employed	936	949	898	947	905	- 42	- 31	-4,4	-3,3
Unemployed	708	716	722	682	751	69	43	9,1	6,0
Not economically active	1 581	1 577	1 641	1 650	1 641	- 9	60	-0,6	3,8
Rates (%)									
Unemployment rate	43,1	43,0	44,6	41,9	45,3	3,5	2,3		
Employed / population ratio (Absorption)	29,0	29,3	27,5	28,9	27,5	-1,4	-1,6		
Labour force participation rate	51,0	51,4	49,7	49,7	50,2	0,5	-0,8		

Due to rounding, numbers do not necessarily add up to totals.

Note: Employment refers to market production activities.

Table 3.1: Employed by industry and sex - South Africa									
	Jul-Sep 2009	Oct-Dec 2009	Jan-Mar 2010	Apr-Jun 2010	Jul-Sep 2010	Qrt-to-Qrt change	Year-on-year change	Qrt-to-qrt change	Year-on-year change
	Thousand	Thousand	Thousand	Thousand	Thousand	Thousand	Thousand	Percent	Percent
Both sexes	13 133	13 250	13 076	13 061	12 975	-86	-158	-0,7	-1,2
Agriculture	660	624	658	630	640	10	-20	1,6	-3,0
Mining	304	301	303	315	303	-12	-1	-3,8	-0,3
Manufacturing	1 771	1 792	1 755	1 705	1 713	8	-58	0,5	-3,3
Utilities	86	102	72	96	99	3	13	3,1	15,1
Construction	1 097	1 127	1 060	1 049	1 076	27	-21	2,6	-1,9
Trade	2 903	2 933	2 882	2 903	2 947	44	44	1,5	1,5
Transport	760	767	797	766	773	7	13	0,9	1,7
Finance	1 735	1 812	1 681	1 723	1 625	-98	-110	-5,7	-6,3
Community and social services	2 658	2 661	2 695	2 710	2 678	-32	20	-1,2	0,8
Private households	1 154	1 129	1 167	1 157	1 119	-38	-35	-3,3	-3,0
Other	7	3	6	6	1	-5	-6	-83,3	-85,7
Women	5 782	5 792	5 710	5 675	5 601	-74	-181	-1,3	-3,1
Agriculture	221	208	243	215	202	-13	-19	-6,0	-8,6
Mining	41	33	34	35	33	-2	-8	-5,7	-19,5
Manufacturing	578	591	566	569	574	5	-4	0,9	-0,7
Utilities	15	15	12	19	25	6	10	31,6	66,7
Construction	137	141	125	114	116	2	-21	1,8	-15,3
Trade	1 423	1 419	1 402	1 421	1 398	-23	-25	-1,6	-1,8
Transport	163	174	176	143	155	12	-8	8,4	-4,9
Finance	765	773	697	692	670	-22	-95	-3,2	-12,4
Community and social services	1 535	1 563	1 569	1 565	1 549	-16	14	-1,0	0,9
Private households	899	873	884	897	879	-18	-20	-2,0	-2,2
Other	5	3	3	6	1	-5	-4	-83,3	-80,0
Men	7 352	7 458	7 367	7 385	7 373	-12	21	-0,2	0,3
Agriculture	439	416	415	415	438	23	-1	5,5	-0,2
Mining	263	268	269	280	270	-10	7	-3,6	2,7
Manufacturing	1 193	1 201	1 190	1 135	1 139	4	-54	0,4	-4,5
Utilities	71	87	60	77	74	-3	3	-3,9	4,2
Construction	960	985	935	935	960	25	0	2,7	0,0
Trade	1 479	1 514	1 480	1 482	1 549	67	70	4,5	4,7
Transport	596	593	621	623	618	-5	22	-0,8	3,7
Finance	971	1 039	984	1 031	955	-76	-16	-7,4	-1,6
Community and social services	1 123	1 098	1 126	1 145	1 129	-16	6	-1,4	0,5
Private households	255	256	284	259	241	-18	-14	-6,9	-5,5
Other	2	0	3	1					

Table 3.2: Employed by industry and province									
	Jul-Sep 2009	Oct-Dec 2009	Jan-Mar 2010	Apr-Jun 2010	Jul-Sep 2010	Qrt-to-Qrt change	Year-on-year change	Qrt-to-qrt change	Year-on- year change
	Thousand	Thousand	Thousand	Thousand	Thousand	Thousand	Thousand	Percent	Percent
Agriculture	660	624	658	630	640	10	-20	1,6	-3,0
Western Cape	123	128	172	149	136	-13	13	-8,7	10,6
Eastern Cape	74	67	62	54	76	22	2	40,7	2,7
Northern Cape	41	51	46	32	40	8	-1	25,0	-2,4
Free State	85	75	75	75	67	-8	-18	-10,7	-21,2
KwaZulu Natal	116	111	120	114	119	5	3	4,4	2,6
North West	35	38	38	40	35	-5	0	-12,5	0,0
Gauteng	45	26	32	31	34	3	-11	9,7	-24,4
Mpumalanga	75	68	67	78	74	-4	-1	-5,1	-1,3
Limpopo	65	59	46	55	58	3	-7	5,5	-10,8
Mining	304	301	303	315	303	-12	-1	-3,8	-0,3
Western Cape	3	3	1	1	3	2	0	200,0	0,0
Eastern Cape	5	1	1	2	2	0	-3	0,0	-60,0
Northern Cape	9	11	9	12	12	0	3	0,0	33,3
Free State	28	38	34	31	32	1	4	3,2	14,3
KwaZulu Natal	6	7	9	8	7	-1	1	-12,5	16,7
North West	105	113	120	111	106	-5	1	-4,5	1,0
Gauteng	33	21	20	27	38	11	5	40,7	15,2
Mpumalanga	61	53	57	59	58	-1	-3	-1,7	-4,9
Limpopo	53	53	51	64	46	-18	-7	-28,1	-13,2
Manufacturing	1 771	1 792	1 755	1 705	1 713	8	-58	0,5	-3,3
Western Cape	282	286	275	272	261	-11	-21	-4,0	-7,4
Eastern Cape	163	160	140	135	159	24	-4	17,8	-2,5
Northern Cape	15	13	11	12	11	-1	-4	-8,3	-26,7
Free State	74	80	71	71	66	-5	-8	-7,0	-10,8
KwaZulu Natal	407	397	419	372	371	-1	-36	-0,3	-8,8
North West	83	68	64	74	69	-5	-14	-6,8	-16,9
Gauteng	597	626	645	633	630	-3	33	-0,5	5,5
Mpumalanga	75	81	70	81	81	0	6	0,0	8,0
Limpopo	75	80	60	55	66	11	-9	20,0	-12,0

For all values of 10 000 or lower the sample size is too small for reliable estimates.
 Due to rounding, numbers do not necessarily add up to totals.

Table 3.2: Employed by industry and province (continued)									
	Jul-Sep 2009	Oct-Dec 2009	Jan-Mar 2010	Apr-Jun 2010	Jul-Sep 2010	Qrt-to-Qrt change	Year-on-year change	Qrt-to-qrt change	Year-on- year change
	Thousand	Thousand	Thousand	Thousand	Thousand	Thousand	Thousand	Percent	Percent
Utilities	86	102	72	96	99	3	13	3,1	15,1
Western Cape	4	8	7	8	11	3	7	37,5	175,0
Eastern Cape	3	4	2	6	4	-2	1	-33,3	33,3
Northern Cape	4	4	1	2	1	-1	-3	-50,0	-75,0
Free State	3	4	4	6	3	-3	0	-50,0	0,0
KwaZulu Natal	4	9	5	8	9	1	5	12,5	125,0
North West	3	3	3	3	2	-1	-1	-33,3	-33,3
Gauteng	44	48	30	44	42	-2	-2	-4,5	-4,5
Mpumalanga	14	17	13	10	21	11	7	110,0	50,0
Limpopo	8	6	7	9	7	-2	-1	-22,2	-12,5
Construction	1 097	1 127	1 060	1 049	1 076	27	-21	2,6	-1,9
Western Cape	159	171	144	153	141	-12	-18	-7,8	-11,3
Eastern Cape	107	115	110	113	120	7	13	6,2	12,1
Northern Cape	11	18	15	18	20	2	9	11,1	81,8
Free State	59	58	47	50	51	1	-8	2,0	-13,6
KwaZulu Natal	244	238	243	236	231	-5	-13	-2,1	-5,3
North West	55	55	52	43	38	-5	-17	-11,6	-30,9
Gauteng	283	280	280	272	308	36	25	13,2	8,8
Mpumalanga	88	84	65	68	72	4	-16	5,9	-18,2
Limpopo	91	106	105	95	94	-1	3	-1,1	3,3
Trade	2 903	2 933	2 882	2 903	2 947	44	44	1,5	1,5
Western Cape	396	389	400	387	369	-18	-27	-4,7	-6,8
Eastern Cape	290	282	305	311	328	17	38	5,5	13,1
Northern Cape	40	44	46	45	42	-3	2	-6,7	5,0
Free State	163	171	161	166	181	15	18	9,0	11,0
KwaZulu Natal	532	531	528	513	509	-4	-23	-0,8	-4,3
North West	135	144	144	148	164	16	29	10,8	21,5
Gauteng	886	877	834	866	907	41	21	4,7	2,4
Mpumalanga	214	231	212	213	214	1	0	0,5	0,0
Limpopo	249	264	250	256	233	-23	-16	-9,0	-6,4

For all values of 10 000 or lower the sample size is too small for reliable estimates.
 Due to rounding, numbers do not necessarily add up to totals.

Table 3.2: Employed by industry and province (continued)									
	Jul-Sep 2009	Oct-Dec 2009	Jan-Mar 2010	Apr-Jun 2010	Jul-Sep 2010	Qrt-to-Qrt change	Year-on-year change	Qrt-to-qrt change	Year-on-year change
	Thousand	Thousand	Thousand	Thousand	Thousand	Thousand	Thousand	Percent	Percent
Transport	760	767	797	766	773	7	13	0,9	1,7
Western Cape	88	83	97	98	107	9	19	9,2	21,6
Eastern Cape	76	82	77	71	67	-4	-9	-5,6	-11,8
Northern Cape	9	13	9	6	11	5	2	83,3	22,2
Free State	43	45	46	45	33	-12	-10	-26,7	-23,3
KwaZulu Natal	177	159	159	164	194	30	17	18,3	9,6
North West	19	24	25	22	22	0	3	0,0	15,8
Gauteng	272	282	307	275	256	-19	-16	-6,9	-5,9
Mpumalanga	40	41	42	43	42	-1	2	-2,3	5,0
Limpopo	35	38	35	43	42	-1	7	-2,3	20,0
Finance	1 735	1 812	1 681	1 723	1 625	-98	-110	-5,7	-6,3
Western Cape	259	259	256	256	252	-4	-7	-1,6	-2,7
Eastern Cape	131	131	116	116	102	-14	-29	-12,1	-22,1
Northern Cape	20	24	18	22	26	4	6	18,2	30,0
Free State	61	55	58	68	73	5	12	7,4	19,7
KwaZulu Natal	313	306	275	312	279	-33	-34	-10,6	-10,9
North West	67	67	66	60	62	2	-5	3,3	-7,5
Gauteng	745	817	760	744	677	-67	-68	-9,0	-9,1
Mpumalanga	81	87	88	83	89	6	8	7,2	9,9
Limpopo	57	64	45	63	64	1	7	1,6	12,3
Community and social services	2 658	2 661	2 695	2 710	2 678	-32	20	-1,2	0,8
Western Cape	349	364	363	360	364	4	15	1,1	4,3
Eastern Cape	321	331	332	336	330	-6	9	-1,8	2,8
Northern Cape	83	85	84	84	85	1	2	1,2	2,4
Free State	159	168	188	178	173	-5	14	-2,8	8,8
KwaZulu Natal	489	490	501	482	470	-12	-19	-2,5	-3,9
North West	158	154	142	154	146	-8	-12	-5,2	-7,6
Gauteng	718	708	698	733	744	11	26	1,5	3,6
Mpumalanga	163	164	183	178	168	-10	5	-5,6	3,1
Limpopo	218	198	205	204	198	-6	-20	-2,9	-9,2

For all values of 10 000 or lower the sample size is too small for reliable estimates.
 Due to rounding, numbers do not necessarily add up to totals.

Table 3.2: Employed by industry and province (concluded)									
	Jul-Sep 2009	Oct-Dec 2009	Jan-Mar 2010	Apr-Jun 2010	Jul-Sep 2010	Qrt-to-Qrt change	Year-on-year change	Qrt-to-qrt change	Year-on-year change
	Thousand	Thousand	Thousand	Thousand	Thousand	Thousand	Thousand	Percent	Percent
Private households	1 154	1 129	1 167	1 157	1 119	-38	-35	-3,3	-3,0
Western Cape	128	124	122	108	110	2	-18	1,9	-14,1
Eastern Cape	109	118	122	131	118	-13	9	-9,9	8,3
Northern Cape	25	29	30	27	29	2	4	7,4	16,0
Free State	82	97	86	90	89	-1	7	-1,1	8,5
KwaZulu Natal	236	227	228	226	213	-13	-23	-5,8	-9,7
North West	68	63	65	67	71	4	3	6,0	4,4
Gauteng	324	308	332	320	322	2	-2	0,6	-0,6
Mpumalanga	97	83	87	86	71	-15	-26	-17,4	-26,8
Limpopo	85	80	96	102	96	-6	11	-5,9	12,9

For all values of 10 000 or lower the sample size is too small for reliable estimates.
 Due to rounding, numbers do not necessarily add up to totals.

Table 3.3: Employed by sector and industry - South Africa									
	Jul-Sep 2009	Oct-Dec 2009	Jan-Mar 2010	Apr-Jun 2010	Jul-Sep 2010	Qrt-to-Qrt change	Year-on-year change	Qrt-to-qrt change	Year-on-year change
	Thousand	Thousand	Thousand	Thousand	Thousand	Thousand	Thousand	Percent	Percent
Total employed	13 133	13 250	13 076	13 061	12 975	-86	-158	-0,7	-1,2
Formal and informal sector (Non-agricultural)	11 320	11 498	11 251	11 274	11 215	-59	-105	-0,5	-0,9
Mining	304	301	303	315	303	-12	-1	-3,8	-0,3
Manufacturing	1 771	1 792	1 755	1 705	1 713	8	-58	0,5	-3,3
Utilities	86	102	72	96	99	3	13	3,1	15,1
Construction	1 097	1 127	1 060	1 049	1 076	27	-21	2,6	-1,9
Trade	2 903	2 933	2 882	2 903	2 947	44	44	1,5	1,5
Transport	760	767	797	766	773	7	13	0,9	1,7
Finance	1 735	1 812	1 681	1 723	1 625	-98	-110	-5,7	-6,3
Community and social services	2 658	2 661	2 695	2 710	2 678	-32	20	-1,2	0,8
Other	7	3	6	6	1	-5	-6	-83,3	-85,7
Formal sector (Non-agricultural)	9 291	9 344	9 197	9 088	9 043	-45	-248	-0,5	-2,7
Mining	302	300	301	314	298	-16	-4	-5,1	-1,3
Manufacturing	1 592	1 594	1 559	1 486	1 508	22	-84	1,5	-5,3
Utilities	84	100	70	96	98	2	14	2,1	16,7
Construction	834	839	792	736	766	30	-68	4,1	-8,2
Trade	1 919	1 944	1 920	1 890	1 924	34	5	1,8	0,3
Transport	575	569	594	558	561	3	-14	0,5	-2,4
Finance	1 609	1 645	1 532	1 574	1 485	-89	-124	-5,7	-7,7
Community and social services	2 369	2 349	2 423	2 428	2 402	-26	33	-1,1	1,4
Other	7	3	6	6	1	-5	-6	-83,3	-85,7
Informal sector (Non-agricultural)	2 029	2 154	2 054	2 186	2 172	-14	143	-0,6	7,0
Mining	2	1	2	1	5	4	3	400,0	150,0
Manufacturing	178	198	197	218	205	-13	27	-6,0	15,2
Utilities	2	2	2	1	1	0	-1	0,0	-50,0
Construction	262	287	268	313	310	-3	48	-1,0	18,3
Trade	984	989	961	1 013	1 023	10	39	1,0	4,0
Transport	185	198	203	208	212	4	27	1,9	14,6
Finance	126	167	150	149	140	-9	14	-6,0	11,1
Community and social services	290	312	272	282	276	-6	-14	-2,1	-4,8
Agriculture	660	624	658	630	640	10	-20	1,6	-3,0
Private households	1 154	1 129	1 167	1 157	1 119	-38	-35	-3,3	-3,0

For all values of 10 000 or lower the sample size is too small for reliable estimates.
 Due to rounding, numbers do not necessarily add up to totals.

Table 3.4: Employed by province and sector									
	Jul-Sep 2009	Oct-Dec 2009	Jan-Mar 2010	Apr-Jun 2010	Jul-Sep 2010	Qrt-to-Qrt change	Year-on- year change	Qrt-to-qrt change	Year-on- year change
	Thousand	Thousand	Thousand	Thousand	Thousand	Thousand	Thousand	Percent	Percent
South Africa	13 133	13 250	13 076	13 061	12 975	-86	-158	-0,7	-1,2
Formal sector (Non-agricultural)	9 291	9 344	9 197	9 088	9 043	-45	-248	-0,5	-2,7
Informal sector (Non-agricultural)	2 029	2 154	2 054	2 186	2 172	-14	143	-0,6	7,0
Agriculture	660	624	658	630	640	10	-20	1,6	-3,0
Private households	1 154	1 129	1 167	1 157	1 119	-38	-35	-3,3	-3,0
Western Cape	1 790	1 817	1 837	1 793	1 754	-39	-36	-2,2	-2,0
Formal sector (Non-agricultural)	1 360	1 381	1 351	1 326	1 318	-8	-42	-0,6	-3,1
Informal sector (Non-agricultural)	180	183	192	210	190	-20	10	-9,5	5,6
Agriculture	123	128	172	149	136	-13	13	-8,7	10,6
Private households	128	124	122	108	110	2	-18	1,9	-14,1
Eastern Cape	1 278	1 291	1 267	1 274	1 306	32	28	2,5	2,2
Formal sector (Non-agricultural)	818	817	823	794	817	23	-1	2,9	-0,1
Informal sector (Non-agricultural)	277	289	260	295	295	0	18	0,0	6,5
Agriculture	74	67	62	54	76	22	2	40,7	2,7
Private households	109	118	122	131	118	-13	9	-9,9	8,3
Northern Cape	257	292	270	260	276	16	19	6,2	7,4
Formal sector (Non-agricultural)	162	181	169	177	173	-4	11	-2,3	6,8
Informal sector (Non-agricultural)	29	31	26	25	35	10	6	40,0	20,7
Agriculture	41	51	46	32	40	8	-1	25,0	-2,4
Private households	25	29	30	27	29	2	4	7,4	16,0
Free State	757	791	770	778	768	-10	11	-1,3	1,5
Formal sector (Non-agricultural)	461	481	492	489	490	1	29	0,2	6,3
Informal sector (Non-agricultural)	129	138	117	125	122	-3	-7	-2,4	-5,4
Agriculture	85	75	75	75	67	-8	-18	-10,7	-21,2
Private households	82	97	86	90	89	-1	7	-1,1	8,5
KwaZulu Natal	2 526	2 476	2 488	2 436	2 401	-35	-125	-1,4	-4,9
Formal sector (Non-agricultural)	1 703	1 695	1 722	1 675	1 651	-24	-52	-1,4	-3,1
Informal sector (Non-agricultural)	471	443	417	421	419	-2	-52	-0,5	-11,0
Agriculture	116	111	120	114	119	5	3	4,4	2,6
Private households	236	227	228	226	213	-13	-23	-5,8	-9,7

For all values of 10 000 or lower the sample size is too small for reliable estimates.
 Due to rounding, numbers do not necessarily add up to totals.

Table 3.4: Employed by province and sector (concluded)									
	Jul-Sep 2009	Oct-Dec 2009	Jan-Mar 2010	Apr-Jun 2010	Jul-Sep 2010	Qrt-to-Qrt change	Year-on- year change	Qrt-to-qrt change	Year-on- year change
	Thousand	Thousand	Thousand	Thousand	Thousand	Thousand	Thousand	Percent	Percent
North West	729	728	719	722	714	-8	-15	-1,1	-2,1
Formal sector (Non-agricultural)	529	530	527	515	507	-8	-22	-1,6	-4,2
Informal sector (Non-agricultural)	97	97	89	100	101	1	4	1,0	4,1
Agriculture	35	38	38	40	35	-5	0	-12,5	0,0
Private households	68	63	65	67	71	4	3	6,0	4,4
Gauteng	3 952	3 996	3 944	3 950	3 958	8	6	0,2	0,2
Formal sector (Non-agricultural)	3 172	3 153	3 088	3 057	3 065	8	-107	0,3	-3,4
Informal sector (Non-agricultural)	411	510	492	542	537	-5	126	-0,9	30,7
Agriculture	45	26	32	31	34	3	-11	9,7	-24,4
Private households	324	308	332	320	322	2	-2	0,6	-0,6
Mpumalanga	908	910	882	899	890	-9	-18	-1,0	-2,0
Formal sector (Non-agricultural)	552	551	541	546	557	11	5	2,0	0,9
Informal sector (Non-agricultural)	184	207	188	189	187	-2	3	-1,1	1,6
Agriculture	75	68	67	78	74	-4	-1	-5,1	-1,3
Private households	97	83	87	86	71	-15	-26	-17,4	-26,8
Limpopo	936	949	898	947	905	-42	-31	-4,4	-3,3
Formal sector (Non-agricultural)	535	554	483	510	465	-45	-70	-8,8	-13,1
Informal sector (Non-agricultural)	250	256	274	279	286	7	36	2,5	14,4
Agriculture	65	59	46	55	58	3	-7	5,5	-10,8
Private households	85	80	96	102	96	-6	11	-5,9	12,9

For all values of 10 000 or lower the sample size is too small for reliable estimates.
 Due to rounding, numbers do not necessarily add up to totals.

Table 3.5: Employed by sex and occupation - South Africa									
	Jul-Sep 2009	Oct-Dec 2009	Jan-Mar 2010	Apr-Jun 2010	Jul-Sep 2010	Qrt-to-Qrt change	Year-on-year change	Qrt-to-qrt change	Year-on-year change
	Thousand	Thousand	Thousand	Thousand	Thousand	Thousand	Thousand	Percent	Percent
Both sexes	13 133	13 250	13 076	13 061	12 975	-86	-158	-0,7	-1,2
Manager	1 023	1 012	1 000	1 009	1 069	60	46	5,9	4,5
Professional	722	661	695	756	705	-51	-17	-6,7	-2,4
Technician	1 518	1 547	1 515	1 433	1 418	-15	-100	-1,0	-6,6
Clerk	1 460	1 499	1 477	1 467	1 411	-56	-49	-3,8	-3,4
Sales and services	1 829	1 886	1 852	1 883	1 858	-25	29	-1,3	1,6
Skilled agriculture	72	85	90	115	76	-39	4	-33,9	5,6
Craft and related trade	1 619	1 615	1 627	1 590	1 607	17	-12	1,1	-0,7
Plant and machine operator	1 135	1 127	1 091	1 087	1 162	75	27	6,9	2,4
Elementary	2 852	2 936	2 856	2 828	2 782	-46	-70	-1,6	-2,5
Domestic worker	904	881	873	892	887	-5	-17	-0,6	-1,9
Women	5 782	5 792	5 710	5 675	5 601	-74	-181	-1,3	-3,1
Manager	308	294	286	278	328	50	20	18,0	6,5
Professional	333	298	321	336	327	-9	-6	-2,7	-1,8
Technician	802	841	820	805	773	-32	-29	-4,0	-3,6
Clerk	1 026	1 049	1 027	1 003	969	-34	-57	-3,4	-5,6
Sales and services	888	863	856	843	826	-17	-62	-2,0	-7,0
Skilled agriculture	15	24	19	36	22	-14	7	-38,9	46,7
Craft and related trade	193	210	202	175	177	2	-16	1,1	-8,3
Plant and machine operator	171	176	144	148	171	23	0	15,5	0,0
Elementary	1 172	1 188	1 190	1 196	1 150	-46	-22	-3,8	-1,9
Domestic worker	873	849	844	855	858	3	-15	0,4	-1,7
Men	7 352	7 458	7 367	7 385	7 373	-12	21	-0,2	0,3
Manager	714	718	714	731	741	10	27	1,4	3,8
Professional	389	363	374	420	378	-42	-11	-10,0	-2,8
Technician	716	706	694	628	645	17	-71	2,7	-9,9
Clerk	435	450	450	464	441	-23	6	-5,0	1,4
Sales and services	940	1 023	996	1 040	1 032	-8	92	-0,8	9,8
Skilled agriculture	57	61	71	78	54	-24	-3	-30,8	-5,3
Craft and related trade	1 426	1 405	1 425	1 415	1 430	15	4	1,1	0,3
Plant and machine operator	964	951	948	939	991	52	27	5,5	2,8
Elementary	1 679	1 748	1 666	1 632	1 632	0	-47	0,0	-2,8
Domestic worker	31	33	29	38	29	-9	-2	-23,7	-6,5

For all values of 10 000 or lower the sample size is too small for reliable estimates.
 Due to rounding, numbers do not necessarily add up to totals.

Table 3.6: Employed by sex and status in employment - South Africa									
	Jul-Sep 2009	Oct-Dec 2009	Jan-Mar 2010	Apr-Jun 2010	Jul-Sep 2010	Qrt-to-Qrt change	Year-on-year change	Qrt-to-qrt change	Year-on-year change
	Thousand	Thousand	Thousand	Thousand	Thousand	Thousand	Thousand	Percent	Percent
Both sexes	13 133	13 250	13 076	13 061	12 975	-86	-158	-0,7	-1,2
Employee	11 214	11 205	11 096	11 032	10 935	-97	-279	-0,9	-2,5
Employer	641	700	685	688	711	23	70	3,3	10,9
Own-account worker	1 159	1 226	1 187	1 221	1 218	-3	59	-0,2	5,1
Unpaid household member	120	119	108	120	110	-10	-10	-8,3	-8,3
Women	5 782	5 792	5 710	5 675	5 601	-74	-181	-1,3	-3,1
Employee	4 979	4 963	4 903	4 865	4 783	-82	-196	-1,7	-3,9
Employer	130	140	155	136	167	31	37	22,8	28,5
Own-account worker	584	599	570	599	587	-12	3	-2,0	0,5
Unpaid household member	89	90	81	75	65	-10	-24	-13,3	-27,0
Men	7 352	7 458	7 367	7 385	7 373	-12	21	-0,2	0,3
Employee	6 235	6 242	6 193	6 167	6 153	-14	-82	-0,2	-1,3
Employer	511	560	530	552	544	-8	33	-1,4	6,5
Own-account worker	574	627	617	622	631	9	57	1,4	9,9
Unpaid household member	31	29	27	45	45	0	14	0,0	45,2

For all values of 10 000 or lower the sample size is too small for reliable estimates.
 Due to rounding, numbers do not necessarily add up to totals.

Table 3.7: Employed by sex and usual hours of work - South Africa									
	Jul-Sep 2009	Oct-Dec 2009	Jan-Mar 2010	Apr-Jun 2010	Jul-Sep 2010	Qrt-to-Qrt change	Year-on-year change	Qrt-to-qrt change	Year-on- year change
	Thousand	Thousand	Thousand	Thousand	Thousand	Thousand	Thousand	Percent	Percent
Both sexes	13 133	13 250	13 076	13 061	12 975	-86	-158	-0,7	-1,2
Working less than 15 hours per week	274	258	244	239	230	-9	-44	-3,8	-16,1
Working 15-29 hours per week	819	820	773	820	745	-75	-74	-9,1	-9,0
Working 30-39 hours per week	978	937	969	930	964	34	-14	3,7	-1,4
Working 40-45 hours per week	7 007	6 979	7 077	7 180	7 131	-49	124	-0,7	1,8
Working more than 45 hours per week	4 054	4 256	4 013	3 891	3 904	13	-150	0,3	-3,7
Women	5 782	5 792	5 710	5 675	5 601	-74	-181	-1,3	-3,1
Working less than 15 hours per week	162	169	144	147	139	-8	-23	-5,4	-14,2
Working 15-29 hours per week	541	553	518	549	495	-54	-46	-9,8	-8,5
Working 30-39 hours per week	607	584	607	586	609	23	2	3,9	0,3
Working 40-45 hours per week	3 023	3 001	3 005	3 036	3 051	15	28	0,5	0,9
Working more than 45 hours per week	1 449	1 485	1 435	1 357	1 308	-49	-141	-3,6	-9,7
Men	7 352	7 458	7 367	7 385	7 373	-12	21	-0,2	0,3
Working less than 15 hours per week	112	89	100	92	92	0	-20	0,0	-17,9
Working 15-29 hours per week	279	267	255	271	250	-21	-29	-7,7	-10,4
Working 30-39 hours per week	371	353	363	344	355	11	-16	3,2	-4,3
Working 40-45 hours per week	3 984	3 978	4 072	4 144	4 080	-64	96	-1,5	2,4
Working more than 45 hours per week	2 606	2 771	2 577	2 534	2 596	62	-10	2,4	-0,4

For all values of 10 000 or lower the sample size is too small for reliable estimates.
 Due to rounding, numbers do not necessarily add up to totals.

Table 3.8: Time-related underemployment - South Africa									
	Jul-Sep 2009	Oct-Dec 2009	Jan-Mar 2010	Apr-Jun 2010	Jul-Sep 2010	Qrt-to-Qrt change	Year-on- year change	Qrt-to-qrt change	Year-on- year change
	Thousand	Thousand	Thousand	Thousand	Thousand	Thousand	Thousand	Percent	Percent
Both sexes	677	601	596	558	527	-31	-150	-5,6	-22,2
Women	421	375	370	346	327	-19	-94	-5,5	-22,3
Men	256	226	226	212	200	-12	-56	-5,7	-21,9
As percentage of the labour force (Both sexes)	3,9	3,4	3,4	3,2	3,0	-0,2	-0,9		
Women	5,4	4,8	4,7	4,4	4,2	-0,2	-1,2		
Men	2,7	2,3	2,4	2,2	2,1	-0,1	-0,6		
As percentage of total employment (Both sexes)	5,2	4,5	4,6	4,3	4,1	-0,2	-1,1		
Women	7,3	6,5	6,5	6,1	5,8	-0,3	-1,5		
Men	3,5	3,0	3,1	2,9	2,7	-0,2	-0,8		
Industry	677	601	596	558	527	-31	-150	-5,6	-22,2
Agriculture	14	6	6	14	11	-3	-3	-21,4	-21,4
Mining			0	0				.	.
Manufacturing	44	31	35	33	24	-9	-20	-27,3	-45,5
Utilities				0				.	.
Construction	53	48	53	60	57	-3	4	-5,0	7,5
Trade	137	111	115	103	116	13	-21	12,6	-15,3
Transport	19	14	23	15	14	-1	-5	-6,7	-26,3
Finance	38	38	32	28	23	-5	-15	-17,9	-39,5
Community and social services	102	95	90	85	80	-5	-22	-5,9	-21,6
Private households	270	258	241	221	203	-18	-67	-8,1	-24,8
Occupation	677	601	596	558	527	-31	-150	-5,6	-22,2
Manager	15	5	8	5	7	2	-8	40,0	-53,3
Professional	11	5	11	11	8	-3	-3	-27,3	-27,3
Technician	43	41	34	30	28	-2	-15	-6,7	-34,9
Clerk	24	20	30	32	11	-21	-13	-65,6	-54,2
Sales and services	68	58	67	57	62	5	-6	8,8	-8,8
Skilled agriculture	3	3	4	6	0	-6	-3	-100,0	-100,0
Craft and related trade	57	49	57	66	65	-1	8	-1,5	14,0
Plant and machine operator	24	16	11	11	9	-2	-15	-18,2	-62,5
Elementary	228	211	214	180	177	-3	-51	-1,7	-22,4
Domestic worker	204	193	160	161	159	-2	-45	-1,2	-22,1

Table 4: Characteristics of the unemployed - South Africa									
	Jul-Sep 2009	Oct-Dec 2009	Jan-Mar 2010	Apr-Jun 2010	Jul-Sep 2010	Qrt-to-Qrt change	Year-on- year change	Qrt-to-qrt change	Year-on- year change
	Thousand	Thousand	Thousand	Thousand	Thousand	Thousand	Thousand	Percent	Percent
Unemployed	4 241	4 226	4 395	4 401	4 396	-5	155	-0,1	3,7
Job losers	1 488	1 451	1 432	1 471	1 376	-95	-112	-6,5	-7,5
Job leavers	340	337	289	290	260	-30	-80	-10,3	-23,5
New entrants	1 633	1 704	1 815	1 819	1 944	125	311	6,9	19,0
Re-entrants	195	189	214	206	184	-22	-11	-10,7	-5,6
Other	584	545	646	615	632	17	48	2,8	8,2
Unemployed	4 241	4 226	4 395	4 401	4 396	-5	155	-0,1	3,7
Long-term unemployment (1 year and more)	2 524	2 507	2 798	2 812	2 891	79	367	2,8	14,5
Short-term unemployment (less than 1 year)	1 717	1 720	1 598	1 589	1 505	-84	-212	-5,3	-12,3
Long-term unemployment (%)									
Proportion of the labour force	14,5	14,3	16,0	16,1	16,6	0,5	2,1		
Proportion of the unemployed	59,5	59,3	63,7	63,9	65,8	1,9	6,3		
Those who have worked in the past 5 years									
Previous occupation	2 024	1 977	1 935	1 967	1 820	-147	-204	-7,5	-10,1
Manager	32	42	46	46	42	-4	10	-8,7	31,3
Professional	24	30	34	27	22	-5	-2	-18,5	-8,3
Technician	88	79	109	112	85	-27	-3	-24,1	-3,4
Clerk	212	189	222	222	231	9	19	4,1	9,0
Sales and services	293	271	285	283	262	-21	-31	-7,4	-10,6
Skilled agriculture	8	9	7	12	11	-1	3	-8,3	37,5
Craft and related trade	399	382	410	351	348	-3	-51	-0,9	-12,8
Plant and machine operator	191	169	171	178	138	-40	-53	-22,5	-27,7
Elementary	617	637	519	564	524	-40	-93	-7,1	-15,1
Domestic worker	158	170	132	171	157	-14	-1	-8,2	-0,6
Other			1					.	.

For all values of 10 000 or lower the sample size is too small for reliable estimates.
 Due to rounding, numbers do not necessarily add up to totals.

Table 4: Characteristics of the unemployed - South Africa (concluded)									
	Jul-Sep 2009	Oct-Dec 2009	Jan-Mar 2010	Apr-Jun 2010	Jul-Sep 2010	Qrt-to-Qrt change	Year-on- year change	Qrt-to-qrt change	Year-on- year change
	Thousand	Thousand	Thousand	Thousand	Thousand	Thousand	Thousand	Percent	Percent
Previous industry	2 024	1 977	1 935	1 967	1 820	-147	-204	-7,5	-10,1
Agriculture	112	98	101	103	112	9	0	8,7	0,0
Mining	37	30	38	33	25	-8	-12	-24,2	-32,4
Manufacturing	315	312	303	294	269	-25	-46	-8,5	-14,6
Utilities	10	9	8	7	9	2	-1	28,6	-10,0
Construction	358	371	329	319	309	-10	-49	-3,1	-13,7
Trade	475	453	488	488	448	-40	-27	-8,2	-5,7
Transport	98	101	92	95	76	-19	-22	-20,0	-22,4
Finance	233	224	231	215	218	3	-15	1,4	-6,4
Community and social services	175	168	178	198	161	-37	-14	-18,7	-8,0
Private households	207	212	166	216	193	-23	-14	-10,6	-6,8
Other	1		1	1				.	.

For all values of 10 000 or lower the sample size is too small for reliable estimates.
 Due to rounding, numbers do not necessarily add up to totals.

Table 5: Characteristics of the not economically active - South Africa									
	Jul-Sep 2009	Oct-Dec 2009	Jan-Mar 2010	Apr-Jun 2010	Jul-Sep 2010	Qrt-to-Qrt change	Year-on-year change	Qrt-to-qrt change	Year-on- year change
	Thousand	Thousand	Thousand	Thousand	Thousand	Thousand	Thousand	Percent	Percent
Not economically active	14 188	14 213	14 346	14 485	14 702	217	514	1,5	3,6
Student	5 942	6 005	5 874	6 009	6 096	87	154	1,4	2,6
Home-maker	2 787	2 773	2 784	2 894	2 897	3	110	0,1	3,9
Illness/disability	1 826	1 775	1 826	1 805	1 807	2	-19	0,1	-1,0
Too old/young to work	1 106	1 118	1 166	1 122	1 156	34	50	3,0	4,5
Discouraged work seekers	1 654	1 710	1 870	1 938	2 033	95	379	4,9	22,9
Other	873	832	826	717	714	-3	-159	-0,4	-18,2
Inactivity rate by age (Both sexes)	45,0	44,9	45,1	45,3	45,8	0,5	0,8		
15-24 yrs	73,7	73,2	73,6	73,2	74,1	0,9	0,4		
25-54 yrs	27,0	27,1	27,2	27,9	28,2	0,3	1,2		
55-64 yrs	59,2	59,4	59,9	59,3	60,0	0,7	0,8		
Inactivity rate by age (Women)	51,8	52,1	52,0	52,4	52,9	0,5	1,1		
15-24 yrs	76,0	75,9	76,5	75,9	76,8	0,9	0,8		
25-54 yrs	36,1	36,7	36,3	37,3	37,9	0,6	1,8		
55-64 yrs	70,3	70,1	70,2	69,2	68,7	-0,5	-1,6		
Inactivity rate by age (Men)	37,7	37,1	37,7	37,9	38,3	0,4	0,6		
15-24 yrs	71,4	70,5	70,7	70,5	71,4	0,9	0,0		
25-54 yrs	17,1	16,5	17,3	17,7	17,7	0,0	0,6		
55-64 yrs	46,0	46,6	47,7	47,4	49,6	2,2	3,6		

Due to rounding, numbers do not necessarily add up to totals.

Table 6: Socio-demographic characteristics - South Africa									
	Jul-Sep 2009	Oct-Dec 2009	Jan-Mar 2010	Apr-Jun 2010	Jul-Sep 2010	Qrt-to-Qrt change	Year-on- year change	Qrt-to-qrt change	Year-on- year change
	Thousand	Thousand	Thousand	Thousand	Thousand	Thousand	Thousand	Percent	Percent
Age group of the employed	13 133	13 250	13 076	13 061	12 975	-86	-158	-0,7	-1,2
15-24 yrs	1 381	1 409	1 341	1 336	1 295	-41	-86	-3,1	-6,2
25-34 yrs	4 416	4 436	4 387	4 361	4 365	4	-51	0,1	-1,2
35-44 yrs	3 710	3 724	3 722	3 716	3 707	-9	-3	-0,2	-0,1
45-54 yrs	2 523	2 572	2 534	2 540	2 501	-39	-22	-1,5	-0,9
55-64 yrs	1 104	1 108	1 092	1 108	1 106	-2	2	-0,2	0,2
Age group of the unemployed	4 241	4 226	4 395	4 401	4 396	-5	155	-0,1	3,7
15-24 yrs	1 285	1 312	1 348	1 405	1 364	-41	79	-2,9	6,1
25-34 yrs	1 766	1 760	1 809	1 764	1 791	27	25	1,5	1,4
35-44 yrs	771	762	810	778	801	23	30	3,0	3,9
45-54 yrs	336	312	341	355	354	-1	18	-0,3	5,4
55-64 yrs	82	81	88	100	87	-13	5	-13,0	6,1
Age group of the not economically active	14 188	14 213	14 346	14 485	14 702	217	514	1,5	3,6
15-24 yrs	7 462	7 440	7 506	7 487	7 596	109	134	1,5	1,8
25-34 yrs	2 298	2 305	2 326	2 419	2 415	-4	117	-0,2	5,1
35-44 yrs	1 344	1 386	1 386	1 472	1 504	32	160	2,2	11,9
45-54 yrs	1 361	1 345	1 363	1 350	1 397	47	36	3,5	2,6
55-64 yrs	1 723	1 738	1 765	1 757	1 790	33	67	1,9	3,9
Highest level of education of the employed	13 133	13 250	13 076	13 061	12 975	-86	-158	-0,7	-1,2
No schooling	457	442	421	396	387	-9	-70	-2,3	-15,3
Less than primary completed	1 183	1 196	1 127	1 120	1 101	-19	-82	-1,7	-6,9
Primary completed	653	673	617	653	626	-27	-27	-4,1	-4,1
Secondary not completed	4 248	4 312	4 265	4 315	4 304	-11	56	-0,3	1,3
Secondary completed	3 903	4 033	4 019	3 902	3 938	36	35	0,9	0,9
Tertiary	2 516	2 444	2 452	2 471	2 437	-34	-79	-1,4	-3,1
Other	173	150	174	203	183	-20	10	-9,9	5,8

Due to rounding, numbers do not necessarily add up to totals.

Table 6: Socio-demographic characteristics - South Africa (continued)									
	Jul-Sep 2009	Oct-Dec 2009	Jan-Mar 2010	Apr-Jun 2010	Jul-Sep 2010	Qrt-to-Qrt change	Year-on- year change	Qrt-to-qrt change	Year-on- year change
	Thousand	Thousand	Thousand	Thousand	Thousand	Thousand	Thousand	Percent	Percent
Highest level of education of the unemployed	4 241	4 226	4 395	4 401	4 396	-5	155	-0,1	3,7
No schooling	91	96	83	67	79	12	-12	17,9	-13,2
Less than primary completed	374	355	352	347	370	23	-4	6,6	-1,1
Primary completed	227	196	220	192	213	21	-14	10,9	-6,2
Secondary not completed	1 934	1 927	2 000	2 001	2 028	27	94	1,3	4,9
Secondary completed	1 340	1 388	1 439	1 496	1 424	-72	84	-4,8	6,3
Tertiary	244	230	260	258	248	-10	4	-3,9	1,6
Other	30	34	41	40	35	-5	5	-12,5	16,7
Highest level of education of the not economically active	14 188	14 213	14 346	14 485	14 702	217	514	1,5	3,6
No schooling	873	843	836	844	837	-7	-36	-0,8	-4,1
Less than primary completed	1 993	2 042	1 876	1 941	2 067	126	74	6,5	3,7
Primary completed	1 100	1 190	997	1 156	1 178	22	78	1,9	7,1
Secondary not completed	7 449	7 472	7 552	7 586	7 628	42	179	0,6	2,4
Secondary completed	2 283	2 198	2 586	2 442	2 440	-2	157	-0,1	6,9
Tertiary	363	372	380	396	424	28	61	7,1	16,8
Other	126	96	119	120	127	7	1	5,8	0,8
Current marital status of the employed	13 133	13 250	13 076	13 061	12 975	-86	-158	-0,7	-1,2
Married	5 541	5 498	5 503	5 498	5 461	-37	-80	-0,7	-1,4
Living together like husband and wife	1 577	1 553	1 610	1 510	1 482	-28	-95	-1,9	-6,0
Widow/widower	411	446	440	472	442	-30	31	-6,4	7,5
Divorced or separated	429	473	430	447	467	20	38	4,5	8,9
Never married	5 175	5 281	5 093	5 133	5 121	-12	-54	-0,2	-1,0
Current marital status of the unemployed	4 241	4 226	4 395	4 401	4 396	-5	155	-0,1	3,7
Married	732	707	728	711	733	22	1	3,1	0,1
Living together like husband and wife	522	443	475	494	416	-78	-106	-15,8	-20,3
Widow/widower	52	61	49	46	59	13	7	28,3	13,5
Divorced or separated	67	62	89	77	79	2	12	2,6	17,9
Never married	2 867	2 953	3 054	3 074	3 109	35	242	1,1	8,4

Due to rounding, numbers do not necessarily add up to totals.

Table 6: Socio-demographic characteristics - South Africa (concluded)									
	Jul-Sep 2009	Oct-Dec 2009	Jan-Mar 2010	Apr-Jun 2010	Jul-Sep 2010	Qrt-to-Qrt change	Year-on- year change	Qrt-to-qrt change	Year-on- year change
	Thousand	Thousand	Thousand	Thousand	Thousand	Thousand	Thousand	Percent	Percent
Current marital status of the not economically active	14 188	14 213	14 346	14 485	14 702	217	514	1,5	3,6
Married	2 936	2 969	2 915	2 933	2 938	5	2	0,2	0,1
Living together like husband and wife	761	756	791	783	740	-43	-21	-5,5	-2,8
Widow/widower	633	636	613	634	631	-3	-2	-0,5	-0,3
Divorced or separated	231	241	229	246	227	-19	-4	-7,7	-1,7
Never married	9 627	9 611	9 799	9 889	10 164	275	537	2,8	5,6

Due to rounding, numbers do not necessarily add up to totals.

Table 7: Involvement in non-market activities and labour market status by province									
	Jul-Sep 2009	Oct-Dec 2009	Jan-Mar 2010	Apr-Jun 2010	Jul-Sep 2010	Qrt-to-Qrt change	Year-on-year change	Qrt-to-qrt change	Year-on-year change
	Thousand	Thousand	Thousand	Thousand	Thousand	Thousand	Thousand	Percent	Percent
South Africa									
Subsistence farming	1 248	1 523	1 468	1 325	1 529	204	281	15,4	22,5
Fetching water or collecting wood/dung	3 063	2 886	2 943	2 858	4 539	1 681	1 476	58,8	48,2
Produce other goods for household use	54	54	87	84	220	136	166	161,9	307,4
Construction or major repairs to own or household'	148	134	139	145	402	257	254	177,2	171,6
Hunting or fishing for household use	18	24	32	19	78	59	60	310,5	333,3
Involvement in at least one activity	3 746	3 756	3 738	3 484	4 331	847	585	24,3	15,6
Unemployed	553	600	615	526	665	139	112	26,4	20,3
Not economically active	3 193	3 155	3 123	2 958	3 667	709	474	24,0	14,8
Eastern Cape									
Subsistence farming	465	518	483	505	502	-3	37	-0,6	8,0
Fetching water or collecting wood/dung	663	621	655	747	1 164	417	501	55,8	75,6
Produce other goods for household use	2	7	5	4	5	1	3	25,0	150,0
Construction or major repairs to own or household'	14	22	13	42	84	42	70	100,0	500,0
Hunting or fishing for household use		1	3		3			.	.
Involvement in at least one activity	942	945	948	981	1 135	154	193	15,7	20,5
Unemployed	107	137	137	110	128	18	21	16,4	19,6
Not economically active	834	808	811	871	1 007	136	173	15,6	20,7
Northern Cape									
Subsistence farming	8	5	3	2	10	8	2	400,0	25,0
Fetching water or collecting wood/dung	80	70	82	77	108	31	28	40,3	35,0
Produce other goods for household use	0	0	0		1		1	.	.
Construction or major repairs to own or household'	0			0	2	2	2	.	.
Hunting or fishing for household use	0		0		1		1	.	.
Involvement in at least one activity	82	72	84	78	91	13	9	16,7	11,0
Unemployed	19	13	24	17	14	-3	-5	-17,6	-26,3
Not economically active	63	59	60	61	77	16	14	26,2	22,2

For all values of 10 000 or lower the sample size is too small for reliable estimates.

Due to rounding, numbers do not necessarily add up to totals.

Western Cape had values lower than 10 000.

Table 7: Involvement in non-market activities and labour market status by province (continued)									
	Jul-Sep 2009	Oct-Dec 2009	Jan-Mar 2010	Apr-Jun 2010	Jul-Sep 2010	Qrt-to-Qrt change	Year-on- year change	Qrt-to- qrt change	Year-on- year change
	Thousand	Thousand	Thousand	Thousand	Thousand	Thousand	Thousand	Percent	Percent
Free State									
Subsistence farming	38	80	61	42	84	42	46	100,0	121,1
Fetching water or collecting wood/dung	19	12	13	13	49	36	30	276,9	157,9
Produce other goods for household use	7	6	5	5	5	0	-2	0,0	-28,6
Construction or major repairs to own or household'	8	10	5	8	9	1	1	12,5	12,5
Hunting or fishing for household use	7	7	11	10	17	7	10	70,0	142,9
Involvement in at least one activity	55	96	74	53	81	28	26	52,8	47,3
Unemployed	18	21	15	11	19	8	1	72,7	5,6
Not economically active	37	75	59	42	62	20	25	47,6	67,6
KwaZulu Natal									
Subsistence farming	464	564	506	429	515	86	51	20,0	11,0
Fetching water or collecting wood/dung	1 026	870	896	855	1 323	468	297	54,7	28,9
Produce other goods for household use	31	32	51	62	88	26	57	41,9	183,9
Construction or major repairs to own or household'	101	67	89	66	202	136	101	206,1	100,0
Hunting or fishing for household use	2	7	5	3	47	44	45	1466,7	2250,0
Involvement in at least one activity	1 210	1 106	1 095	1 011	1 202	191	-8	18,9	-0,7
Unemployed	162	151	149	148	146	-2	-16	-1,4	-9,9
Not economically active	1 048	955	946	862	1 056	194	8	22,5	0,8
North West									
Subsistence farming	96	90	75	65	81	16	-15	24,6	-15,6
Fetching water or collecting wood/dung	233	219	236	166	324	158	91	95,2	39,1
Produce other goods for household use	0	2	3	6	5	-1	5	-16,7	.
Construction or major repairs to own or household'		1		2	3	1		50,0	.
Hunting or fishing for household use	0	1	1	0	1	1	1	.	.
Involvement in at least one activity	264	258	262	205	296	91	32	44,4	12,1
Unemployed	68	61	76	60	73	13	5	21,7	7,4
Not economically active	197	197	186	144	223	79	26	54,9	13,2

For all values of 10 000 or lower the sample size is too small for reliable estimates.
 Due to rounding, numbers do not necessarily add up to totals.

Table 7: Involvement in non-market activities and labour market status by province (concluded)									
	Jul-Sep 2009	Oct-Dec 2009	Jan-Mar 2010	Apr-Jun 2010	Jul-Sep 2010	Qrt-to-Qrt change	Year-on- year change	Qrt-to- qrt change	Year-on- year change
	Thousand	Thousand	Thousand	Thousand	Thousand	Thousand	Thousand	Percent	Percent
Gauteng									
Subsistence farming	69	54	28	40	47	7	-22	17,5	-31,9
Fetching water or collecting wood/dung	18	19	12	17	59	42	41	247,1	227,8
Produce other goods for household use	4	3	14	1	46	45	42	4500,0	1050,0
Construction or major repairs to own or household	5	11	9	8	53	45	48	562,5	960,0
Hunting or fishing for household use	4	5	4		4		0	.	0,0
Involvement in at least one activity	97	82	63	57	87	30	-10	52,6	-10,3
Unemployed	40	38	36	29	34	5	-6	17,2	-15,0
Not economically active	57	44	27	28	53	25	-4	89,3	-7,0
Mpumalanga									
Subsistence farming	54	95	115	87	118	31	64	35,6	118,5
Fetching water or collecting wood/dung	204	176	178	161	279	118	75	73,3	36,8
Produce other goods for household use	9	3	4	3	52	49	43	1633,3	477,8
Construction or major repairs to own or household	14	14	14	13	25	12	11	92,3	78,6
Hunting or fishing for household use	0	0	0	0	0	0	0	.	.
Involvement in at least one activity	243	235	242	214	334	120	91	56,1	37,4
Unemployed	50	60	57	63	108	45	58	71,4	116,0
Not economically active	193	175	185	151	227	76	34	50,3	17,6
Limpopo									
Subsistence farming	54	116	195	153	147	-6	93	-3,9	172,2
Fetching water or collecting wood/dung	820	898	868	823	1 168	345	348	41,9	42,4
Produce other goods for household use	1	0	5	2	15	13	14	650,0	1400,0
Construction or major repairs to own or household	5	8	6	6	19	13	14	216,7	280,0
Hunting or fishing for household use	1	3	3	5	3	-2	2	-40,0	200,0
Involvement in at least one activity	847	961	961	885	1 050	165	203	18,6	24,0
Unemployed	88	118	118	86	120	34	32	39,5	36,4
Not economically active	758	843	843	799	930	131	172	16,4	22,7

For all values of 10 000 or lower the sample size is too small for reliable estimates.
 Due to rounding, numbers do not necessarily add up to totals.

Appendix 2A: Sampling variability for labour force characteristics by sex						
	Apr-Jun 2010 CV	Jul-Sep 2010 CV	Estimate	Lower 95%	Upper 95%	P-value
Both sexes						
Population 15-64 yrs						
Labour Force	1,0	0,6	-91	-421	240	0,59
Employed	1,0	0,7	-86	-337	164	0,50
Formal sector (Non-agricultural)	1,3	0,9	-45	-247	156	0,66
Informal sector (Non-agricultural)	2,3	2,2	-14	-110	84	0,79
Agriculture	4,4	4,9	10	-44	65	0,71
Private households	3,3	3,7	-38	-107	31	0,28
Unemployed	2,1	2,2	-5	-176	166	0,96
Not economically active	0,8	0,7	217	-3	437	0,05
Discouraged work-seekers	3,3	3,1	95	-29	218	0,14
Other(not economically active)	0,8	0,7	122	-63	307	0,19
Rates (%)						
Unemployment rate	1,7	1,9	0,1	-0,7	0,9	0,78
Employed / population ratio (Absorption)	0,7	0,7	-0,4	-0,9	0,1	0,09
Labour force participation rate	0,6	0,6	-0,5	-1,1	0,1	0,09
Women						
Population 15-64 yrs						
Labour Force	1,0	0,9	-69	-225	88	0,39
Employed	1,2	1,0	-74	-190	42	0,21
Formal sector (Non-agricultural)	1,6	1,4	-10	-100	79	0,82
Informal sector (Non-agricultural)	3,1	2,9	-32	-89	25	0,27
Agriculture	5,9	7,2	-13	-41	16	0,38
Private households	3,3	3,3	-18	-77	39	0,52
Unemployed	2,4	2,8	6	-114	125	0,93
Not economically active	0,8	0,8	124	-24	272	0,10
Discouraged work-seekers	3,9	3,6	78	-7	162	0,07
Other(not economically active)	0,9	0,9	47	-86	179	0,49
Rates (%)						
Unemployment rate	2,0	2,4	0,3	-0,9	1,5	0,62
Employed / population ratio (Absorption)	1,0	1,0	-0,5	-1,2	0,1	0,07
Labour force participation rate	0,8	0,9	-0,5	-1,4	0,2	0,15

Appendix 2A: Sampling variability for labour force characteristics by sex (concluded)						
	Apr-Jun 2010 CV	Jul-Sep 2010 CV	Estimate	Lower 95%	Upper 95%	P-value
Men						
Population 15-64 yrs						
Labour Force	1,1	0,6	-22	-238	193	0,84
Employed	1,2	0,8	-12	-185	161	0,89
Formal sector (Non-agricultural)	1,5	1,1	-35	-182	112	0,64
Informal sector (Non-agricultural)	3,0	3,0	18	-57	94	0,63
Agriculture	5,3	5,7	23	-19	65	0,29
Private households	7,2	8,5	-18	-51	14	0,26
Unemployed	2,5	2,5	-10	-113	93	0,85
Not economically active	1,1	1,0	93	-25	211	0,12
Discouraged work-seekers	4,0	3,9	17	-49	83	0,61
Other(not economically active)	1,1	1,0	76	-26	178	0,15
Rates (%)						
Unemployment rate	2,1	2,3	-0,0	-0,9	0,8	0,91
Employed / population ratio (Absorption)	0,8	0,8	-0,3	-1,0	0,4	0,40
Labour force participation rate	0,6	0,6	-0,4	-1,1	0,3	0,24

Appendix 2.1A: Sampling variability for labour force characteristics by population group						
	Apr-Jun 2010 CV	Jul-Sep 2010 CV	Estimate	Lower 95%	Upper 95%	P-value
South Africa						
Population 15-64 yrs						
Labour Force	1,0	0,6	-91	-421	240	0,59
Employed	1,0	0,7	-86	-337	164	0,50
Unemployed	2,1	2,2	-5	-176	166	0,96
Not economically active	0,8	0,7	217	-3	437	0,05
Rates (%)						
Unemployment rate	1,7	1,9	0,1	-0,7	0,9	0,78
Employed / population ratio (Absorption)	0,7	0,7	-0,4	-0,9	0,1	0,09
Labour force participation rate	0,6	0,6	-0,5	-1,1	0,1	0,09
Black/African						
Population 15-64 yrs						
Labour Force	1,2	0,8	-58	-362	247	0,71
Employed	1,3	0,9	-96	-320	129	0,40
Unemployed	2,4	2,4	38	-129	204	0,66
Not economically active	0,9	0,8	178	-35	391	0,10
Rates (%)						
Unemployment rate	1,8	2,0	0,4	-0,5	1,4	0,38
Employed / population ratio (Absorption)	0,9	0,9	-0,5	-1,2	0,1	0,07
Labour force participation rate	0,7	0,8	-0,5	-1,2	0,2	0,18
Coloured						
Population 15-64 yrs						
Labour Force	1,2	1,1	-3	-41	35	0,87
Employed	1,8	1,8	3	-33	38	0,87
Unemployed	4,6	5,2	-6	-44	32	0,76
Not economically active	2,3	2,0	12	-29	53	0,56
Rates (%)						
Unemployment rate	4,5	5,1	-0,3	-2,0	1,5	0,76
Employed / population ratio (Absorption)	1,8	1,8	-0,1	-1,3	1,2	0,93
Labour force participation rate	1,2	1,1	-0,3	-1,6	1,0	0,64

Appendix 2.1A: Sampling variability for labour force characteristics by population group (concluded)						
	Apr-Jun 2010 CV	Jul-Sep 2010 CV	Estimate	Lower 95%	Upper 95%	P-value
Indian/Asian						
Population 15-64 yrs						
Labour Force	2,3	1,5	18	-4	40	0,11
Employed	2,2	2,0	24	3	45	0,02
Unemployed	14,7	11,7	-7	-21	8	0,38
Not economically active	3,3	2,5	-14	-35	7	0,20
Rates (%)						
Unemployment rate	13,6	11,8	-1,6	-3,9	1,0	0,25
Employed / population ratio (Absorption)	2,0	2,0	2,4	0,3	4,6	0,03
Labour force participation rate	2,1	1,5	1,6	-0,5	3,9	0,13
White						
Population 15-64 yrs						
Labour Force	1,5	1,5	-48	-92	-4	0,03
Employed	1,4	1,5	-18	-66	30	0,47
Unemployed	9,6	12,5	-30	-55	-5	0,02
Not economically active	3,1	3,1	41	1	79	0,04
Rates (%)						
Unemployment rate	9,1	12,1	-1,3	-2,5	-0,1	0,03
Employed / population ratio (Absorption)	1,3	1,5	-0,4	-1,8	1,0	0,56
Labour force participation rate	1,4	1,5	-1,4	-2,6	-0,1	0,03

Appendix 2.2A: Sampling variability for labour force characteristics by province						
	Apr-Jun 2010 CV	Jul-Sep 2010 CV	Estimate	Lower 95%	Upper 95%	P-value
South Africa						
Population 15-64 yrs						
Labour Force	1,0	0,6	-91	-421	240	0,59
Employed	1,0	0,7	-86	-337	164	0,50
Unemployed	2,1	2,2	-5	-176	166	0,96
Not economically active	0,8	0,7	217	-3	437	0,05
Discouraged work-seekers	3,3	3,1	95	-29	218	0,14
Other	0,8	0,7	122	-63	307	0,19
Rates (%)						
Unemployment rate	1,7	1,9	0,1	-0,7	0,9	0,78
Employed / population ratio (Absorption)	0,7	0,7	-0,4	-0,9	0,1	0,09
Labour force participation rate	0,6	0,6	-0,5	-1,1	0,1	0,09
Western Cape						
Population 15-64 yrs						
Labour Force	1,1	1,3	-13	-77	51	0,69
Employed	1,5	1,9	-39	-88	11	0,13
Unemployed	4,3	5,4	26	-40	91	0,45
Not economically active	2,4	2,7	27	-37	90	0,41
Discouraged work-seekers	14,6	23,9	-17	-38	5	0,12
Other	2,5	2,7	44	-19	106	0,17
Rates (%)						
Unemployment rate	4,1	5,1	1,3	-1,2	3,7	0,32
Employed / population ratio (Absorption)	1,5	1,9	-1,4	-2,8	0,1	0,07
Labour force participation rate	1,1	1,3	-0,7	-2,5	1,2	0,49

Appendix 2.2A: Sampling variability for labour force characteristics by province (continued)						
	Apr-Jun 2010 CV	Jul-Sep 2010 CV	Estimate	Lower 95%	Upper 95%	P-value
Eastern Cape						
Population 15-64 yrs						
Labour Force	2,3	3,1	26	-58	111	0,53
Employed	3,1	2,7	32	-36	101	0,35
Unemployed	5,5	7,3	-6	-67	56	0,85
Not economically active	1,7	2,3	-13	-97	71	0,76
Discouraged work-seekers	6,2	6,1	-38	-84	9	0,11
Other	2,0	2,5	24	-51	100	0,52
Rates (%)						
Unemployment rate	5,1	5,3	-0,7	-3,6	2,2	0,62
Employed / population ratio (Absorption)	3,1	2,7	0,7	-1,0	2,3	0,42
Labour force participation rate	2,3	3,1	0,5	-1,5	2,5	0,63
Northern Cape						
Population 15-64 yrs						
Labour Force	2,5	2,6	1	-21	23	0,92
Employed	3,6	3,7	16	-3	35	0,10
Unemployed	5,7	6,7	-15	-25	-5	0,00
Not economically active	2,8	2,8	1	-21	23	0,95
Discouraged work-seekers	13,9	15,4	-2	-12	8	0,68
Other	3,2	3,0	3	-16	21	0,77
Rates (%)						
Unemployment rate	5,5	6,5	-4,1	-6,4	-1,8	0,00
Employed / population ratio (Absorption)	3,6	3,7	2,1	-0,5	4,8	0,11
Labour force participation rate	2,5	2,6	0,0	-3,1	3,1	0,99

Appendix 2.2A: Sampling variability for labour force characteristics by province (continued)						
	Apr-Jun 2010 CV	Jul-Sep 2010 CV	Estimate	Lower 95%	Upper 95%	P-value
Free State						
Population 15-64 yrs						
Labour Force	1,3	1,7	13	-20	45	0,46
Employed	1,8	2,2	-10	-34	14	0,41
Unemployed	4,0	4,6	22	-5	50	0,11
Not economically active	1,8	2,4	-9	-41	24	0,60
Discouraged work-seekers	9,4	11,8	0	-15	15	0,99
Other	2,2	2,5	-8	-40	23	0,59
Rates (%)						
Unemployment rate	2,2	4,0	1,7	-0,3	3,8	0,09
Employed / population ratio (Absorption)	3,7	2,2	-0,6	-1,9	0,7	0,34
Labour force participation rate	1,8	1,7	0,5	-1,2	2,3	0,54
KwaZulu Natal						
Population 15-64 yrs						
Labour Force	1,5	1,8	-91	-174	-9	0,03
Employed	1,4	1,8	-35	-106	36	0,33
Unemployed	6,1	7,7	-57	-106	-7	0,03
Not economically active	1,5	1,5	121	30	212	0,01
Discouraged work-seekers	5,7	5,3	59	-1	121	0,05
Other	1,6	1,5	61	-24	146	0,16
Rates (%)						
Unemployment rate	5,2	6,7	-1,2	-2,7	0,2	0,09
Employed / population ratio (Absorption)	1,5	1,8	-0,7	-1,8	0,4	0,21
Labour force participation rate	1,6	1,8	-1,5	-2,8	-0,4	0,01

Appendix 2.2A: Sampling variability for labour force characteristics by province (continued)						
	Apr-Jun 2010 CV	Jul-Sep 2010 CV	Estimate	Lower 95%	Upper 95%	P-value
North West						
Population 15-64 yrs						
Labour Force	2,9	3,0	-12	-54	30	0,58
Employed	3,2	3,7	-8	-41	25	0,62
Unemployed	5,9	6,5	-3	-33	26	0,82
Not economically active	2,8	2,9	18	-19	55	0,35
Discouraged work-seekers	8,3	11,1	-12	-40	15	0,38
Other	2,9	3,0	31	-3	64	0,07
Rates (%)						
Unemployment rate	4,8	5,7	0,1	-2,5	2,4	0,98
Employed / population ratio (Absorption)	3,0	3,7	-0,5	-1,9	0,9	0,47
Labour force participation rate	2,7	3,0	-0,7	-2,4	0,9	0,38
Gauteng						
Population 15-64 yrs						
Labour Force	1,5	1,3	-2	-161	159	0,99
Employed	1,8	1,4	8	-128	145	0,90
Unemployed	3,9	4,7	-10	-109	90	0,85
Not economically active	2,9	3,0	32	-82	145	0,58
Discouraged work-seekers	14,6	13,2	58	-4	121	0,07
Other	2,7	2,7	-26	-115	62	0,55
Rates (%)						
Unemployment rate	3,4	4,0	-0,2	-1,8	1,4	0,83
Employed / population ratio (Absorption)	1,6	1,4	-0,1	-1,6	1,4	0,90
Labour force participation rate	1,2	1,3	-0,3	-1,7	1,2	0,69

Appendix 2.2A: Sampling variability for labour force characteristics by province (concluded)						
	Apr-Jun 2010 CV	Jul-Sep 2010 CV	Estimate	Lower 95%	Upper 95%	P-value
Mpumalanga						
Population 15-64 yrs						
Labour Force	3,5	2,1	-0	-80	78	0,98
Employed	3,7	2,8	-9	-68	49	0,75
Unemployed	5,9	7,2	9	-33	50	0,69
Not economically active	3,9	2,5	11	-63	85	0,78
Discouraged work-seekers	10,0	6,7	11	-28	50	0,58
Other	3,8	2,7	0	-56	55	0,99
Rates (%)						
Unemployment rate	4,5	6,3	0,7	-1,7	3,1	0,57
Employed / population ratio (Absorption)	2,9	2,8	-0,6	-2,4	1,2	0,53
Labour force participation rate	2,4	2,1	-0,3	-2,5	1,9	0,81
Limpopo						
Population 15-64 yrs						
Labour Force	4,2	2,6	-13	-93	69	0,76
Employed	5,3	3,8	-42	-107	23	0,20
Unemployed	6,4	6,4	29	-9	68	0,13
Not economically active	3,3	1,5	30	-96	155	0,64
Discouraged work-seekers	8,0	5,6	34	-10	79	0,13
Other	3,4	1,7	-4	-109	100	0,94
Rates (%)						
Unemployment rate	6,9	6,6	2,7	0,1	5,2	0,04
Employed / population ratio (Absorption)	4,8	3,8	-1,4	-3,1	0,2	0,09
Labour force participation rate	3,5	2,6	-0,5	-2,4	1,3	0,55

Appendix 3.1A: Sampling variability for the employed by industry and sex						
	Apr-Jun 2010 CV	Jul-Sep 2010 CV	Estimate	Lower 95%	Upper 95%	P-value
Both sexes	1,0	0,7	-86	-337	164	0,50
Agriculture	4,4	4,9	10	-44	65	0,71
Mining	10,2	6,3	-12	-64	40	0,65
Manufacturing	2,6	2,9	8	-85	102	0,86
Utilities	11,4	11,1	3	-22	27	0,83
Construction	3,6	4,0	27	-48	103	0,47
Trade	2,1	2,0	44	-76	164	0,47
Transport	4,3	4,2	7	-47	60	0,81
Finance	2,8	2,8	-98	-186	-11	0,03
Community and social services	2,3	2,1	-32	-122	57	0,47
Private households	3,3	3,7	-38	-107	31	0,28
Other						
Women	1,2	1,0	-74	-190	42	0,21
Agriculture	5,9	7,2	-13	-41	16	0,38
Mining	13,6	14,6	-2	-13	9	0,74
Manufacturing	4,5	4,6	5	-49	58	0,86
Utilities	22,2	19,3	6	-6	18	0,30
Construction	9,8	11,1	2	-26	31	0,88
Trade	2,7	2,6	-23	-97	51	0,54
Transport	8,3	7,6	12	-15	38	0,38
Finance	3,6	3,8	-22	-76	32	0,42
Community and social services	2,6	2,5	-16	-79	47	0,62
Private households	3,3	3,3	-18	-77	39	0,52
Other						
Men	1,2	0,8	-12	-185	161	0,89
Agriculture	5,3	5,7	23	-19	65	0,29
Mining	10,7	6,5	-10	-58	38	0,68
Manufacturing	2,9	2,9	4	-66	73	0,92
Utilities	12,4	11,9	-3	-22	14	0,69
Construction	3,7	3,9	25	-39	89	0,44
Trade	2,9	2,5	67	-11	145	0,09
Transport	4,8	4,5	-5	-47	37	0,81
Finance	3,9	3,6	-76	-147	-5	0,04
Community and social services	3,2	3,1	-16	-77	44	0,59
Private households	7,2	8,5	-18	-51	14	0,26

Appendix 3.4A: Sampling variability for the employed by province and sector						
	Apr-Jun 2010 CV	Jul-Sep 2010 CV	Estimate	Lower 95%	Upper 95%	P-value
South Africa	1,0	0,7	-86	-337	164	0,50
Formal sector (Non-agricultural)	1,3	0,9	-45	-247	156	0,66
Informal sector (Non-agricultural)	2,3	2,2	-14	-110	84	0,79
Agriculture	4,4	4,9	10	-44	65	0,71
Private households	3,3	3,7	-38	-107	31	0,28
Western Cape	1,5	1,9	-39	-88	11	0,13
Formal sector (Non-agricultural)	2,2	2,6	-8	-65	50	0,80
Informal sector (Non-agricultural)	6,7	5,7	-20	-52	11	0,21
Agriculture	8,6	6,2	-13	-42	16	0,39
Private households	10,1	7,9	2	-20	24	0,86
Eastern Cape	3,1	2,7	32	-36	101	0,35
Formal sector (Non-agricultural)	4,7	4,2	23	-40	86	0,48
Informal sector (Non-agricultural)	5,7	5,8	0	-39	40	0,99
Agriculture	12,8	14,9	22	4	41	0,02
Private households	9,9	9,4	-13	-36	10	0,27
Northern Cape	3,6	3,7	16	-3	35	0,10
Formal sector (Non-agricultural)	4,8	5,0	-4	-16	9	0,56
Informal sector (Non-agricultural)	10,9	12,3	10	3	18	0,01
Agriculture	11,0	12,6	8	-4	18	0,21
Private households	11,8	13,5	2	-8	13	0,66
Free State	1,8	2,2	-10	-34	14	0,41
Formal sector (Non-agricultural)	4,1	3,5	1	-28	30	0,93
Informal sector (Non-agricultural)	8,1	7,9	-3	-19	13	0,72
Agriculture	9,5	9,2	-8	-17	1	0,07
Private households	10,4	11,0	-1	-14	13	0,95
KwaZulu Natal	1,4	1,8	-35	-106	36	0,33
Formal sector (Non-agricultural)	2,2	2,3	-24	-80	31	0,39
Informal sector (Non-agricultural)	4,4	4,7	-2	-43	40	0,94
Agriculture	12,9	16,3	5	-21	30	0,74
Private households	7,1	9,4	-13	-52	25	0,49

Appendix 3.4A: Sampling variability for the employed by province and sector (concluded)						
	Apr-Jun 2010 CV	Jul-Sep 2010 CV	Estimate	Lower 95%	Upper 95%	P-value
North West	3,2	3,7	-8	-41	25	0,62
Formal sector (Non-agricultural)	4,9	5,5	-8	-35	19	0,56
Informal sector (Non-agricultural)	8,8	8,1	1	-16	18	0,92
Agriculture	17,3	19,0	-5	-15	5	0,32
Private households	7,8	9,2	4	-7	15	0,50
Gauteng	1,8	1,4	8	-128	145	0,90
Formal sector (Non-agricultural)	2,2	1,8	8	-108	124	0,89
Informal sector (Non-agricultural)	5,2	5,5	-5	-52	42	0,83
Agriculture	29,6	36,5	3	-9	15	0,63
Private households	7,2	8,8	2	-33	39	0,89
Mpumalanga	3,7	2,8	-9	-68	49	0,75
Formal sector (Non-agricultural)	3,8	3,1	11	-24	45	0,54
Informal sector (Non-agricultural)	6,7	5,8	-2	-25	22	0,90
Agriculture	12,8	13,7	-4	-26	19	0,75
Private households	9,8	7,6	-15	-31	1	0,06
Limpopo	5,3	3,8	-42	-107	23	0,20
Formal sector (Non-agricultural)	7,9	5,4	-45	-102	12	0,13
Informal sector (Non-agricultural)	6,9	6,4	7	-26	39	0,69
Agriculture	13,3	11,9	3	-11	17	0,67
Private households	12,4	12,4	-6	-25	11	0,46

Appendix 3.5A: Sampling variability for the employed by sex and occupation						
	Apr-Jun 2010 CV	Jul-Sep 2010 CV	Estimate	Lower 95%	Upper 95%	P-value
Both sexes	1,0	0,7	-86	-337	164	0,50
Manager	3,6	3,4	60	-14	135	0,11
Professional	3,9	4,1	-51	-114	11	0,11
Technician	2,8	2,7	-15	-86	57	0,69
Clerk	2,5	2,7	-56	-125	13	0,11
Sales and services	2,9	2,6	-25	-119	69	0,60
Skilled agriculture	10,8	14,3	-39	-65	-13	0,00
Craft and related trade	2,9	2,6	17	-69	101	0,71
Plant and machine operator	3,8	3,6	75	4	145	0,04
Elementary	2,2	2,1	-46	-159	68	0,43
Domestic worker	3,2	3,2	-5	-63	52	0,85
Other						
Women	1,2	1,0	-74	-190	42	0,21
Manager	5,6	5,5	50	16	85	0,00
Professional	5,1	5,9	-9	-46	27	0,60
Technician	3,7	3,2	-32	-86	23	0,25
Clerk	3,0	3,1	-34	-86	18	0,20
Sales and services	3,2	3,4	-17	-71	36	0,52
Skilled agriculture	16,4	24,5	-14	-26	-4	0,01
Craft and related trade	6,6	7,3	2	-27	31	0,89
Plant and machine operator	9,1	8,0	23	-2	49	0,07
Elementary	3,0	3,1	-46	-111	21	0,18
Domestic worker	3,3	3,3	3	-54	60	0,92
Other						
Men	1,2	0,8	-12	-185	161	0,89
Manager	4,5	3,7	10	-47	67	0,73
Professional	5,2	4,9	-42	-81	-2	0,04
Technician	4,2	4,3	17	-36	70	0,53
Clerk	5,0	4,4	-23	-65	21	0,31
Sales and services	3,7	3,4	-8	-73	57	0,81
Skilled agriculture	11,8	15,2	-24	-46	-3	0,03
Craft and related trade	2,9	2,8	15	-66	95	0,73
Plant and machine operator	3,9	3,7	52	-13	116	0,12
Elementary	3,1	2,9	0	-93	92	1,00
Domestic worker	13,2	15,9	-9	-20	2	0,12
Other						

Appendix 2B: Sampling variability for labour force characteristics by sex						
	Jul-Sep 2009 CV	Jul-Sep 2010 CV	Estimate	Lower 95%	Upper 95%	P-value
Both sexes						
Population 15-64 yrs						
Labour Force	0,5	0,6	-3	-252	245	0,98
Employed	0,7	0,7	-158	-388	70	0,17
Formal sector (Non-agricultural)	0,9	0,9	-248	-449	-47	0,02
Informal sector (Non-agricultural)	2,5	2,2	143	18	269	0,03
Agriculture	5,4	4,9	-20	-106	67	0,65
Private households	3,2	3,7	-35	-131	62	0,48
Unemployed	1,6	2,2	155	-57	369	0,15
Not economically active	0,7	0,7	514	265	762	0,00
Discouraged work-seekers	3,7	3,1	379	232	526	0,00
Other(not economically active)	0,7	0,7	135	-85	354	0,23
Rates (%)						
Unemployment rate	1,5	1,9	0,9	-0,2	2,0	0,10
Employed / population ratio (Absorption)	0,7	0,7	-1,1	-1,9	-0,4	0,00
Labour force participation rate	0,5	0,6	-0,8	-1,7	-0,1	0,03
Women						
Population 15-64 yrs						
Labour Force	0,9	0,9	-83	-279	112	0,40
Employed	1,1	1,0	-181	-337	-24	0,02
Formal sector (Non-agricultural)	1,4	1,4	-138	-266	-10	0,03
Informal sector (Non-agricultural)	3,4	2,9	-3	-77	71	0,94
Agriculture	7,6	7,2	-19	-58	20	0,34
Private households	3,3	3,3	-20	-99	59	0,62
Unemployed	2,2	2,8	97	-50	244	0,20
Not economically active	0,8	0,8	309	121	497	0,00
Discouraged work-seekers	3,8	3,6	227	131	323	0,00
Other(not economically active)	0,8	0,9	83	-92	257	0,35
Rates (%)						
Unemployment rate	1,9	2,4	1,5	0,0	3,1	0,05
Employed / population ratio (Absorption)	0,9	1,0	-1,5	-2,5	-0,7	0,00
Labour force participation rate	0,8	0,9	-1,1	-2,3	0,0	0,04

Appendix 2B: Sampling variability for labour force characteristics by sex (concluded)						
	Jul-Sep 2009 CV	Jul-Sep 2010 CV	Estimate	Lower 95%	Upper 95%	P-value
Men						
Population 15-64 yrs						
Labour Force	0,7	0,6	81	-83	243	0,33
Employed	1,0	0,8	21	-149	192	0,80
Formal sector (Non-agricultural)	1,1	1,1	-110	-263	43	0,16
Informal sector (Non-agricultural)	3,1	3,0	146	50	243	0,00
Agriculture	6,0	5,7	-1	-66	65	0,98
Private households	6,7	8,5	-14	-57	28	0,50
Unemployed	2,0	2,5	59	-65	183	0,35
Not economically active	1,0	1,0	204	69	340	0,00
Discouraged work-seekers	5,3	3,9	152	67	237	0,00
Other(not economically active)	0,9	1,0	52	-67	172	0,39
Rates (%)						
Unemployment rate	1,9	2,3	0,4	-0,8	1,7	0,50
Employed / population ratio (Absorption)	0,8	0,8	-0,7	-1,7	0,2	0,14
Labour force participation rate	0,6	0,6	-0,6	-1,5	0,3	0,17

Appendix 2.1B: Sampling variability for labour force characteristics by population group						
	Jul-Sep 2009 CV	Jul-Sep 2010 CV	Estimate	Lower 95%	Upper 95%	P-value
South Africa						
Population 15-64 yrs						
Labour Force	0,5	0,6	-3	-252	245	0,98
Employed	0,7	0,7	-158	-388	70	0,17
Unemployed	1,6	2,2	155	-57	369	0,15
Not economically active	0,7	0,7	514	265	762	0,00
Rates (%)						
Unemployment rate	1,5	1,9	0,9	-0,2	2,0	0,10
Employed / population ratio (Absorption)	0,7	0,7	-1,1	-1,9	-0,4	0,00
Labour force participation rate	0,5	0,6	-0,8	-1,7	-0,1	0,03
Black/African						
Population 15-64 yrs						
Labour Force	0,7	0,8	-10	-231	212	0,93
Employed	0,8	0,9	-159	-356	38	0,11
Unemployed	1,8	2,4	149	-51	349	0,14
Not economically active	0,8	0,8	497	271	722	0,00
Rates (%)						
Unemployment rate	1,5	2,0	1,2	-0,2	2,5	0,08
Employed / population ratio (Absorption)	0,8	0,9	-1,3	-2,2	-0,6	0,00
Labour force participation rate	0,7	0,8	-1,0	-2,0	-0,2	0,02
Coloured						
Population 15-64 yrs						
Labour Force	1,3	1,1	7	-45	59	0,80
Employed	1,9	1,8	-13	-75	49	0,69
Unemployed	4,5	5,2	20	-28	67	0,41
Not economically active	2,3	2,0	30	-19	79	0,22
Rates (%)						
Unemployment rate	4,5	5,1	1,0	-1,5	3,4	0,44
Employed / population ratio (Absorption)	1,9	1,8	-1,1	-3,1	1,0	0,31
Labour force participation rate	1,2	1,1	-0,6	-2,2	1,1	0,50

Appendix 2.1B: Sampling variability for labour force characteristics by population group (concluded)						
	Jul-Sep 2009 CV	Jul-Sep 2010 CV	Estimate	Lower 95%	Upper 95%	P-value
Indian/Asian						
Population 15-64 yrs						
Labour Force	2,8	1,5	46	17	74	0,00
Employed	4,2	2,0	62	28	96	0,00
Unemployed	11,6	11,7	-17	-33	0	0,05
Not economically active	3,8	2,5	-30	-58	-2	0,04
Rates (%)						
Unemployment rate	13,0	11,8	-4,0	-7,2	-0,7	0,02
Employed / population ratio (Absorption)	4,1	2,0	6,0	2,2	9,6	0,00
Labour force participation rate	2,7	1,5	3,9	0,9	7,0	0,01
White						
Population 15-64 yrs						
Labour Force	1,2	1,5	-46	-117	25	0,21
Employed	1,3	1,5	-49	-117	19	0,15
Unemployed	10,6	12,5	3	-32	39	0,84
Not economically active	2,7	3,1	17	-57	91	0,65
Rates (%)						
Unemployment rate	10,5	12,1	0,2	-1,4	1,9	0,74
Employed / population ratio (Absorption)	1,4	1,5	-0,9	-3,2	1,2	0,38
Labour force participation rate	1,2	1,5	-0,8	-3,2	1,5	0,48

Appendix 2.2B: Sampling variability for labour force characteristics by province						
	Jul-Sep 2009 CV	Jul-Sep 2010 CV	Estimate	Lower 95%	Upper 95%	P-value
South Africa						
Population 15-64 yrs						
Labour Force	0,5	0,6	-3	-252	245	0,98
Employed	0,7	0,7	-158	-388	70	0,17
Unemployed	1,6	2,2	155	-57	369	0,15
Not economically active	0,7	0,7	514	265	762	0,00
Discouraged work-seekers	3,7	3,1	379	232	526	0,00
Other	0,7	0,7	135	-85	354	0,23
Rates (%)						
Unemployment rate	1,5	1,9	0,9	-0,2	2,0	0,10
Employed / population ratio (Absorption)	0,7	0,7	-1,1	-1,9	-0,4	0,00
Labour force participation rate	0,5	0,6	-0,8	-1,7	-0,1	0,03
Western Cape						
Population 15-64 yrs						
Labour Force	1,3	1,3	-21	-94	52	0,57
Employed	1,9	1,9	-36	-122	52	0,43
Unemployed	4,5	5,4	15	-40	69	0,61
Not economically active	2,8	2,7	76	2	149	0,04
Discouraged work-seekers	31,7	23,9	1	-22	25	0,90
Other	2,6	2,7	74	1	147	0,05
Rates (%)						
Unemployment rate	4,4	5,1	0,9	-1,6	3,3	0,50
Employed / population ratio (Absorption)	1,9	1,9	-2,0	-4,5	0,7	0,15
Labour force participation rate	1,3	1,3	-1,7	-3,9	0,5	0,12

Appendix 2.2B: Sampling variability for labour force characteristics by province (continued)						
	Jul-Sep 2009 CV	Jul-Sep 2010 CV	Estimate	Lower 95%	Upper 95%	P-value
Eastern Cape						
Population 15-64 yrs						
Labour Force	3,0	3,1	44	-63	151	0,42
Employed	2,8	2,7	28	-52	109	0,49
Unemployed	6,0	7,3	16	-59	91	0,68
Not economically active	2,3	2,3	15	-92	122	0,78
Discouraged work-seekers	8,3	6,1	11	-44	66	0,70
Other	2,4	2,5	4	-99	108	0,94
Rates (%)						
Unemployment rate	4,2	5,3	0,3	-3,1	3,6	0,90
Employed / population ratio (Absorption)	2,8	2,7	0,2	-1,7	2,2	0,82
Labour force participation rate	3,0	3,1	0,4	-2,2	3,1	0,74
Northern Cape						
Population 15-64 yrs						
Labour Force	3,4	2,6	6	-21	34	0,65
Employed	3,2	3,7	19	0	38	0,04
Unemployed	8,2	6,7	-13	-32	6	0,18
Not economically active	3,7	2,8	1	-27	29	0,94
Discouraged work-seekers	16,9	15,4	7	-5	19	0,25
Other	3,1	3,0	-6	-33	20	0,66
Rates (%)						
Unemployment rate	6,1	6,5	-4,0	-7,7	-0,2	0,04
Employed / population ratio (Absorption)	3,2	3,7	2,3	-0,3	5,0	0,09
Labour force participation rate	3,4	2,6	0,4	-3,6	4,3	0,86

Appendix 2.2B: Sampling variability for labour force characteristics by province (continued)						
	Jul-Sep 2009 CV	Jul-Sep 2010 CV	Estimate	Lower 95%	Upper 95%	P-value
Free State						
Population 15-64 yrs						
Labour Force	1,5	1,7	33	-12	78	0,15
Employed	1,7	2,2	11	-27	49	0,57
Unemployed	4,5	4,6	21	-22	65	0,32
Not economically active	2,1	2,4	-18	-63	27	0,43
Discouraged work-seekers	10,1	11,8	-3	-28	22	0,81
Other	2,1	2,5	-15	-59	29	0,50
Rates (%)						
Unemployment rate	3,8	4,0	1,1	-2,3	4,6	0,51
Employed / population ratio (Absorption)	1,7	2,2	0,3	-1,8	2,3	0,80
Labour force participation rate	1,5	1,7	1,3	-1,1	3,7	0,29
KwaZulu Natal						
Population 15-64 yrs						
Labour Force	1,7	1,8	-115	-245	13	0,08
Employed	2,1	1,8	-125	-247	-2	0,05
Unemployed	4,5	7,7	9	-82	100	0,85
Not economically active	1,5	1,5	235	107	364	0,00
Discouraged work-seekers	8,4	5,3	68	-16	154	0,11
Other	1,7	1,5	167	47	287	0,01
Rates (%)						
Unemployment rate	4,4	6,7	1,1	-1,8	3,8	0,47
Employed / population ratio (Absorption)	2,1	1,8	-2,6	-4,4	-0,7	0,01
Labour force participation rate	1,7	1,8	-2,5	-4,5	-0,6	0,01

Appendix 2.2B: Sampling variability for labour force characteristics by province (continued)						
	Jul-Sep 2009 CV	Jul-Sep 2010 CV	Estimate	Lower 95%	Upper 95%	P-value
North West						
Population 15-64 yrs						
Labour Force	3,4	3,0	-19	-74	36	0,50
Employed	3,4	3,7	-15	-60	30	0,53
Unemployed	7,7	6,5	-4	-55	46	0,86
Not economically active	3,5	2,9	44	-11	99	0,12
Discouraged work-seekers	12,3	11,1	18	-18	54	0,32
Other	3,5	3,0	26	-22	73	0,29
Rates (%)						
Unemployment rate	5,9	5,7	0,2	-4,1	4,3	0,97
Employed / population ratio (Absorption)	3,4	3,7	-1,1	-3,4	1,1	0,31
Labour force participation rate	3,4	3,0	-1,5	-4,3	1,2	0,27
Gauteng						
Population 15-64 yrs						
Labour Force	0,8	1,3	92	-58	242	0,23
Employed	1,1	1,4	6	-128	141	0,93
Unemployed	3,0	4,7	86	-55	227	0,23
Not economically active	2,0	3,0	27	-123	177	0,72
Discouraged work-seekers	11,1	13,2	116	37	195	0,00
Other	2,0	2,7	-89	-219	40	0,18
Rates (%)						
Unemployment rate	2,7	4,0	1,1	-1,1	3,4	0,32
Employed / population ratio (Absorption)	1,1	1,4	-0,7	-2,5	1,0	0,42
Labour force participation rate	0,8	1,3	0,1	-1,8	2,1	0,91

Appendix 2.2B: Sampling variability for labour force characteristics by province (concluded)						
	Jul-Sep 2009 CV	Jul-Sep 2010 CV	Estimate	Lower 95%	Upper 95%	P-value
Mpumalanga						
Population 15-64 yrs						
Labour Force	2,4	2,1	25	-48	98	0,50
Employed	3,1	2,8	-18	-81	45	0,57
Unemployed	4,4	7,2	43	-12	98	0,12
Not economically active	2,8	2,5	15	-58	88	0,69
Discouraged work-seekers	7,9	6,7	69	41	97	0,00
Other	3,1	2,7	-54	-123	14	0,12
Rates (%)						
Unemployment rate	4,4	6,3	2,9	-0,8	6,7	0,13
Employed / population ratio (Absorption)	3,1	2,8	-1,5	-4,3	1,3	0,29
Labour force participation rate	2,4	2,1	0,1	-3,1	3,3	0,93
Limpopo						
Population 15-64 yrs						
Labour Force	2,7	2,6	-48	-110	15	0,13
Employed	2,6	3,8	-31	-94	32	0,33
Unemployed	6,7	6,4	-17	-66	33	0,51
Not economically active	1,7	1,5	119	57	182	0,00
Discouraged work-seekers	8,0	5,6	90	50	131	0,00
Other	1,8	1,7	29	-26	83	0,30
Rates (%)						
Unemployment rate	5,2	6,6	-0,4	-4,1	3,3	0,84
Employed / population ratio (Absorption)	2,6	3,8	-1,5	-3,5	0,3	0,11
Labour force participation rate	2,7	2,6	-2,2	-4,2	-0,4	0,02

Appendix 3.1B: Sampling variability for the employed by industry and sex						
	Jul-Sep 2009 CV	Jul-Sep 2010 CV	Estimate	Lower 95%	Upper 95%	P-value
Both sexes	0,7	0,7	-158	-388	70	0,17
Agriculture	5,4	4,9	-20	-106	67	0,65
Mining	7,8	6,3	-1	-44	43	0,97
Manufacturing	2,5	2,9	-58	-174	59	0,34
Utilities	20,1	11,1	13	-24	50	0,48
Construction	3,2	4,0	-21	-118	77	0,68
Trade	2,1	2,0	44	-107	196	0,57
Transport	3,6	4,2	13	-64	91	0,74
Finance	2,5	2,8	-110	-232	10	0,07
Community and social services	2,1	2,1	20	-111	150	0,77
Private households	3,2	3,7	-35	-131	62	0,48
Women	1,1	1,0	-181	-337	-24	0,02
Agriculture	7,6	7,2	-19	-58	20	0,34
Mining	13,0	14,6	-8	-22	7	0,30
Manufacturing	4,7	4,6	-4	-71	63	0,91
Utilities	29,1	19,3	10	-3	23	0,12
Construction	9,5	11,1	-21	-55	12	0,22
Trade	2,5	2,6	-25	-115	65	0,58
Transport	8,1	7,6	-8	-42	24	0,61
Finance	3,4	3,8	-95	-164	-26	0,01
Community and social services	2,2	2,5	14	-78	105	0,77
Private households	3,3	3,3	-20	-99	59	0,62
Men	1,0	0,8	21	-149	192	0,80
Agriculture	6,0	5,7	-1	-66	65	0,98
Mining	8,3	6,5	7	-32	46	0,73
Manufacturing	3,0	2,9	-54	-146	39	0,26
Utilities	21,6	11,9	3	-29	35	0,85
Construction	3,3	3,9	0	-88	90	0,99
Trade	2,9	2,5	70	-41	180	0,22
Transport	4,1	4,5	22	-44	88	0,52
Finance	3,4	3,6	-16	-109	78	0,74
Community and social services	3,2	3,1	6	-82	94	0,90
Private households	6,7	8,5	-14	-57	28	0,50

Appendix 3.4B: Sampling variability for the employed by province and sector						
	Jul-Sep 2009 CV	Jul-Sep 2010 CV	Estimate	Lower 95%	Upper 95%	P-value
South Africa	0,7	0,7	-158	-388	70	0,17
Formal sector (Non-agricultural)	0,9	0,9	-248	-449	-47	0,02
Informal sector (Non-agricultural)	2,5	2,2	143	18	269	0,03
Agriculture	5,4	4,9	-20	-106	67	0,65
Private households	3,2	3,7	-35	-131	62	0,48
Western Cape	1,9	1,9	-36	-122	52	0,43
Formal sector (Non-agricultural)	2,0	2,6	-42	-120	36	0,30
Informal sector (Non-agricultural)	8,0	5,7	10	-25	46	0,56
Agriculture	9,8	6,2	13	-12	40	0,29
Private households	6,3	7,9	-18	-38	2	0,07
Eastern Cape	2,8	2,7	28	-52	109	0,49
Formal sector (Non-agricultural)	3,3	4,2	-1	-69	66	0,97
Informal sector (Non-agricultural)	8,2	5,8	18	-30	67	0,46
Agriculture	27,5	14,9	2	-43	47	0,93
Private households	12,2	9,4	9	-28	46	0,62
Northern Cape	3,2	3,7	19	0	38	0,04
Formal sector (Non-agricultural)	4,1	5,0	11	-8	30	0,25
Informal sector (Non-agricultural)	12,4	12,3	6	-5	17	0,32
Agriculture	9,1	12,6	-1	-13	11	0,88
Private households	11,0	13,5	4	-8	15	0,52
Free State	1,7	2,2	11	-27	49	0,57
Formal sector (Non-agricultural)	3,5	3,5	29	-7	66	0,11
Informal sector (Non-agricultural)	6,4	7,9	-7	-34	18	0,56
Agriculture	12,1	9,2	-18	-37	1	0,06
Private households	9,7	11,0	7	-19	33	0,59
KwaZulu Natal	2,1	1,8	-125	-247	-2	0,05
Formal sector (Non-agricultural)	2,4	2,3	-52	-152	47	0,30
Informal sector (Non-agricultural)	6,7	4,7	-52	-115	11	0,11
Agriculture	12,5	16,3	3	-49	53	0,93
Private households	6,1	9,4	-23	-70	25	0,35

Appendix 3.4B: Sampling variability for the employed by province and sector (concluded)						
	Jul-Sep 2009 CV	Jul-Sep 2010 CV	Estimate	Lower 95%	Upper 95%	P-value
North West	3,4	3,7	-15	-60	30	0,53
Formal sector (Non-agricultural)	4,8	5,5	-22	-69	24	0,35
Informal sector (Non-agricultural)	6,8	8,1	4	-15	24	0,66
Agriculture	21,7	19,0	0	-10	11	0,97
Private households	9,4	9,2	3	-15	21	0,73
Gauteng	1,1	1,4	6	-128	141	0,93
Formal sector (Non-agricultural)	1,7	1,8	-107	-239	26	0,11
Informal sector (Non-agricultural)	5,5	5,5	126	56	195	0,00
Agriculture	20,7	36,5	-11	-32	11	0,33
Private households	8,6	8,8	-2	-60	56	0,95
Mpumalanga	2,8	2,8	-18	-81	45	0,57
Formal sector (Non-agricultural)	3,1	3,1	5	-41	51	0,83
Informal sector (Non-agricultural)	5,8	5,8	3	-21	27	0,79
Agriculture	13,7	13,7	-1	-27	25	0,94
Private households	7,6	7,6	-26	-41	-10	0,00
Limpopo	3,8	3,8	-31	-94	32	0,33
Formal sector (Non-agricultural)	5,4	5,4	-70	-124	-16	0,01
Informal sector (Non-agricultural)	6,4	6,4	36	-4	76	0,08
Agriculture	11,9	11,9	-7	-26	11	0,45
Private households	12,4	12,4	11	-12	32	0,36

Appendix 3.5B: Sampling variability for the employed by sex and occupation						
	Jul-Sep 2009 CV	Jul-Sep 2010 CV	Estimate	Lower 95%	Upper 95%	P-value
Both sexes	0,7	0,7	-158	-388	70	0,17
Manager	2,6	3,4	46	-44	137	0,31
Professional	3,5	4,1	-17	-92	58	0,65
Technician	3,2	2,7	-100	-223	24	0,11
Clerk	2,8	2,7	-49	-154	55	0,35
Sales and services	2,5	2,6	29	-97	156	0,65
Skilled agriculture	12,7	14,3	4	-25	32	0,79
Craft and related trade	2,4	2,6	-12	-121	96	0,82
Plant and machine operator	3,0	3,6	27	-75	129	0,60
Elementary	1,9	2,1	-70	-221	82	0,37
Domestic worker	3,3	3,2	-17	-95	61	0,66
Women	1,1	1,0	-181	-337	-24	0,02
Manager	6,0	5,5	20	-29	69	0,42
Professional	5,6	5,9	-6	-61	47	0,81
Technician	3,3	3,2	-29	-95	38	0,40
Clerk	3,2	3,1	-57	-141	28	0,19
Sales and services	3,1	3,4	-62	-141	16	0,12
Skilled agriculture	21,8	24,5	7	-5	19	0,26
Craft and related trade	6,8	7,3	-16	-52	20	0,37
Plant and machine operator	6,8	8,0	0	-37	37	0,99
Elementary	2,7	3,1	-22	-106	62	0,61
Domestic worker	3,4	3,3	-15	-92	62	0,70
Men	1,0	0,8	21	-149	192	0,80
Manager	3,0	3,7	27	-46	100	0,47
Professional	4,8	4,9	-11	-61	40	0,68
Technician	4,2	4,3	-71	-154	11	0,09
Clerk	4,5	4,4	6	-45	58	0,80
Sales and services	3,4	3,4	92	6	178	0,04
Skilled agriculture	13,6	15,2	-3	-26	20	0,79
Craft and related trade	2,5	2,8	4	-101	109	0,94
Plant and machine operator	3,4	3,7	27	-63	117	0,56
Elementary	2,5	2,9	-47	-166	71	0,43
Domestic worker	14,1	15,9	-2	-14	9	0,70