



**Statistics
South Africa**

Preferred supplier of quality statistics



Statistical release

P0211

Quarterly Labour Force Survey

Quarter 3, 2009

Embargoed until:

**29 October 2009
11:30**

Enquiries:

User Information Services
Tel: (012) 310 8600 / 4892 / 8390

Forthcoming issue:

Quarter 4, 2009

Expected release date

February 2010

Statistics South Africa • Mbalo-mbalo ya Afrika Tshipembe • Tinhlayo-tiko ta Afrika-Dzonga • Dipalopalo tsa Aforika Borwa • Ezezibalo zaseNingizimu Afrika
Dipalopalo tša Afrika Borwa • Dpalopalo tsa Afrika Borwa • Ubalo lwaseMzantsi Afrika • Telubalo eNingizimu Afrika • iNanimbalo leSewula Afrika • Statistiek Suid-Afrika

Published by Statistics South Africa, Private Bag X44, Pretoria 0001

© Statistics South Africa, 2009

Users may apply or process this data, provided Statistics South Africa (Stats SA) is acknowledged as the original source of the data; that it is specified that the application and/or analysis is the result of the user's independent processing of the data; and that neither the basic data nor any reprocessed version or application thereof may be sold or offered for sale in any form whatsoever without prior permission from Stats SA.

Stats SA Library Cataloguing-in-Publication (CIP) Data

Quarterly Labour Force Survey Quarter 3, 2009/ Statistics South Africa. Pretoria: Statistics South Africa, 2009

Quarterly

1. Labour supply – Statistics
 2. Labour supply (South Africa)
 3. Unemployment (South Africa)
 4. Informal sector (Economics) – South Africa
 5. Formal sector (Economics) – South Africa
- I. Statistics South Africa
II. Series
(LCSH 16)

A complete set of Stats SA publications is available at Stats SA Library and the following libraries:

National Library of South Africa, Pretoria Division
National Library of South Africa, Cape Town Division
Library of Parliament, Cape Town
Bloemfontein Public Library
Natal Society Library, Pietermaritzburg
Johannesburg Public Library
Eastern Cape Library Services, King William's Town
Central Regional Library, Polokwane
Central Reference Library, Nelspruit
Central Reference Collection, Kimberley
Central Reference Library, Mmabatho

This publication is available both in hard copy and on the Stats SA website www.statssa.gov.za.

The data and metadata set from the Quarterly Labour Force Survey will be available on CD-ROM. A charge may be made according to the pricing policy, which can be accessed on the website.

Stats SA also provides a subscription service.

Enquiries:

	Printing and distribution	User information services
Tel:	(012) 310 8251	(012) 310 8600
Fax:	(012) 321 7381	(012) 310 8500/ 8495
Email:	distribution@statssa.gov.za	info@statssa.gov.za

Table of contents

	Page
List of tables in highlights of the results	iv
List of figures in highlights of the results	iv
List of tables	v
1. Introduction	vi
2. Highlights of the results	vi
3. Employment	vii
4. The unemployed population	x
5. Characteristics of the not economically active population	xii
6. Technical notes	xiii
6.1. Response details	xiii
6.2. Survey requirements and design	xiv
6.3. Sample rotation	xiv
6.4. Weighting	xiv
6.5. Non-response adjustment	xiv
6.6. Final survey weights	xv
6.7. Estimation	xv
6.8. Reliability of the survey estimates	xv
7. Definitions	xvi

List of tables in highlights of the results

	Page
Table A: Key labour market indicators	vi
Table B: Employment by industry	vii
Table C: Employment by province	vii
Table D: Employment by occupation	ix
Table E: Unemployed by sex	x
Table F: Characteristics of the unemployed	xi
Table G: The not economically active	xii
Table H: Response rates by province	xiii

List of figures in highlights of the results

Figure 1: Formal sector employment by industry	viii
Figure 2: Informal sector employment by industry	ix
Figure 3: Unemployment rate by province	x
Figure 4: Unemployment rate by population group	xi

List of tables

	Page
Table 1: Population of working age (15–64 years)	1
Table 2: Labour force characteristics by sex – All population groups.....	2
Table 2.1: Labour force characteristics by population group	3
Table 2.2: Labour force characteristics by province	4
Table 2.2: Labour force characteristics by province (concluded).....	5
Table 3.1: Employed by industry and sex – South Africa	6
Table 3.2: Employed by industry and province	7
Table 3.2: Employed by industry and province (concluded)	8
Table 3.3: Employed by sector and industry – South Africa	9
Table 3.4: Employed by province and sector.....	10
Table 3.5: Employed by sex and occupation – South Africa	11
Table 3.6: Employed by sex and status in employment – South Africa.....	12
Table 3.7: Employed by sex and usual hours of work – South Africa.....	13
Table 3.8: Time-related underemployment – South Africa	14
Table 4: Characteristics of the unemployed – South Africa.....	15
Table 5: Characteristics of the not economically active – South Africa	16
Table 6: Socio-demographic characteristics – South Africa	17
Table 7: Involvement in non-market activities and labour market status by province.....	18
Table 7: Involvement in non-market activities and labour market status by province (concluded).....	19
Appendix 2A: Sampling variability for labour force characteristics by sex.....	20
Appendix 2.1A: Sampling variability for labour force characteristics by population group.....	21
Appendix 2.2A: Sampling variability for labour force characteristics by province.....	22
Appendix 2.2A: Sampling variability for labour force characteristics by province (concluded)	23
Appendix 3.1A: Sampling variability for the employed by industry and sex.....	24
Appendix 3.4A: Sampling variability for the employed by province and sector.....	25
Appendix 3.5A: Sampling variability for the employed by sex and occupation.....	26
Appendix 2B: Sampling variability for labour force characteristics by sex.....	27
Appendix 2.1B: Sampling variability for labour force characteristics by population group.....	28
Appendix 2.2B: Sampling variability for labour force characteristics by province	29
Appendix 2.2B: Sampling variability for labour force characteristics by province (concluded)	30
Appendix 3.1B: Sampling variability for the employed by industry and sex.....	31
Appendix 3.4B: Sampling variability for the employed by province and sector.....	32
Appendix 3.5B: Sampling variability for the employed by sex and occupation.....	33

1. Introduction

The Quarterly Labour Force Survey (QLFS) is a household-based sample survey conducted by Statistics South Africa (Stats SA). It collects data on the labour market activities of individuals aged 15 years and above who live in South Africa. However, this report will only cover labour market activities of persons aged between 15 and 64 years.

This report presents the key findings of the QLFS conducted in July–September, 2009 (Q3:2009).

2. Highlights of the results

Table A: Key labour market indicators

	Jul–Sep 2008	Apr–Jun 2009	Jul–Sep 2009	Qrt to Qrt change	Year-on- year change	P-value (Qrt to Qrt)
	Thousand					
Population 15–64 yrs	30 801	31 080	31 172	92	371	-
Labour force	17 777	17 495	17 077	- 418	- 700	0,00
Employed	13 655	13 369	12 885	- 484	- 770	0,00
Formal sector (Non-agricultural)	9 439	9 356	9 073	- 283	- 366	0,00
Informal sector (Non-agricultural)	2 175	2 109	1 993	- 116	- 182	0,03
Agriculture	767	710	653	- 57	- 114	0,13
Private households	1 274	1 194	1 166	- 28	- 108	0,41
Unemployed	4 122	4 125	4 192	67	70	0,43
Not economically active	13 024	13 585	14 095	510	1 071	0,00
Discouraged work-seekers	1 071	1 517	1 632	115	561	0,05
Other (not economically active)	11 953	12 068	12 463	395	510	0,00
Rates (%)						
Unemployment rate	23,2	23,6	24,5	0,9	1,3	0,02
Employed / population ratio (Absorption)	44,3	43,0	41,3	-1,7	-3,0	0,00
Labour force participation rate	57,7	56,3	54,8	-1,5	-2,9	0,00

Due to rounding, numbers do not necessarily add up to totals.

The number of persons in the labour force decreased by 418 000 from 17,5 million in Q2:2009 to 17,1 million in Q3:2009. Table A shows that employment decreased significantly by 3,6% between Q2:2009 and Q3:2009. A total of 484 000 jobs were lost between the two quarters, with most job losses recorded in the formal sector (283 000), followed by the informal sector (116 000).

While employment fell by a substantial 484 000 from Q2:2009, this decline did not translate to a significant increase in the number of unemployed persons, but rather to the increase in the number of persons who are not economically active (510 000) with a sizeable proportion (22,5%) of them being discouraged work-seekers; the number of unemployed persons increased by 67 000. This resulted in a significant increase in the unemployment rate between Q2:2009 and Q3:2009.

Compared to Q3:2008, there was an annual decrease of 5,6% (770 000) in employment; an increase of 70 000 in the number of unemployed persons and a massive increase of 1 071 000 in the number of persons who are not economically active – 561 000 being discouraged work-seekers.

3. Employment

Table B: Employment by industry

	Jul-Sep 2008	Apr-Jun 2009	Jul-Sep 2009	Qrt to Qrt change	Year-on- year change	Qrt to Qrt change	Year-on- year change
	Thousand				Per cent		
Total	13 655	13 369	12 885	-484	-770	-3,6	-5,6
Agriculture	767	710	653	-57	-114	-8,0	-14,9
Mining	314	319	299	-20	-15	-6,3	-4,8
Manufacturing	1 917	1 873	1 723	-150	-194	-8,0	-10,1
Utilities	99	93	81	-12	-18	-12,9	-18,2
Construction	1 102	1 117	1 057	-60	-45	-5,4	-4,1
Trade	3 176	2 962	2 852	-110	-324	-3,7	-10,2
Transport	769	727	737	10	-32	1,4	-4,2
Finance	1 632	1 710	1 682	-28	50	-1,6	3,1
Community and social services	2 603	2 664	2 627	-37	24	-1,4	0,9
Private households	1 274	1 194	1 166	-28	-108	-2,3	-8,5

*Due to rounding, numbers do not necessarily add up to totals.

Table B indicates that between Q2:2009 and Q3:2009, 484 000 jobs were lost across all industries except Transport. Most of the job losses were in Manufacturing, which accounted for 150 000 of the job losses, followed by Trade (110 000), Construction (60 000) and Agriculture (57 000).

The year-on-year comparisons also show that job losses were experienced in all industries except Finance and Community and social services with Trade accounting for 324 000 of the job losses, followed by Manufacturing (194 000), Agriculture (114 000) and Private households (108 000). There were some job gains in Finance (50 000) and Community and social services (24 000) although there was an overall decline of 770 000 in employment between Q3:2008 and Q3:2009.

Table C: Employment by province

	Jul-Sep 2008	Apr-Jun 2009	Jul-Sep 2009	Qrt to Qrt change	Year-on-year change	Jul-Sep 2009
	Thousand					% share
Total	13 655	13 369	12 885	-484	-770	100,0
Western Cape	1 865	1 898	1 868	-30	3	14,5
Eastern Cape	1 315	1 353	1 258	-95	-57	9,8
Northern Cape	308	283	255	-28	-53	2,0
Free State	842	773	758	-15	-84	5,9
KwaZulu-Natal	2 583	2 457	2 458	1	-125	19,1
North West	868	849	789	-60	-79	6,1
Gauteng	4 063	3 953	3 719	-234	-344	28,9
Mpumalanga	924	897	881	-16	-43	6,8
Limpopo	888	906	899	-7	11	7,0

*Due to rounding, numbers do not necessarily add up to totals.

Table C shows that between Q2:2009 and Q3:2009, employment decreased in most provinces except KwaZulu-Natal where it remained virtually unchanged. Gauteng, Eastern Cape and North West accounted for more than 80% of the 484 000 job losses recording 234 000, 95 000 and 60 000 job losses respectively.

The year-on-year comparisons (Q3:2008 and Q3:2009) show that Gauteng and KwaZulu-Natal were the hardest hit provinces in terms of job losses, with Gauteng recording 344 000 job losses and KwaZulu-Natal accounting for 125 000 of the 770 000 job losses.

Figure 1: Formal sector employment by industry

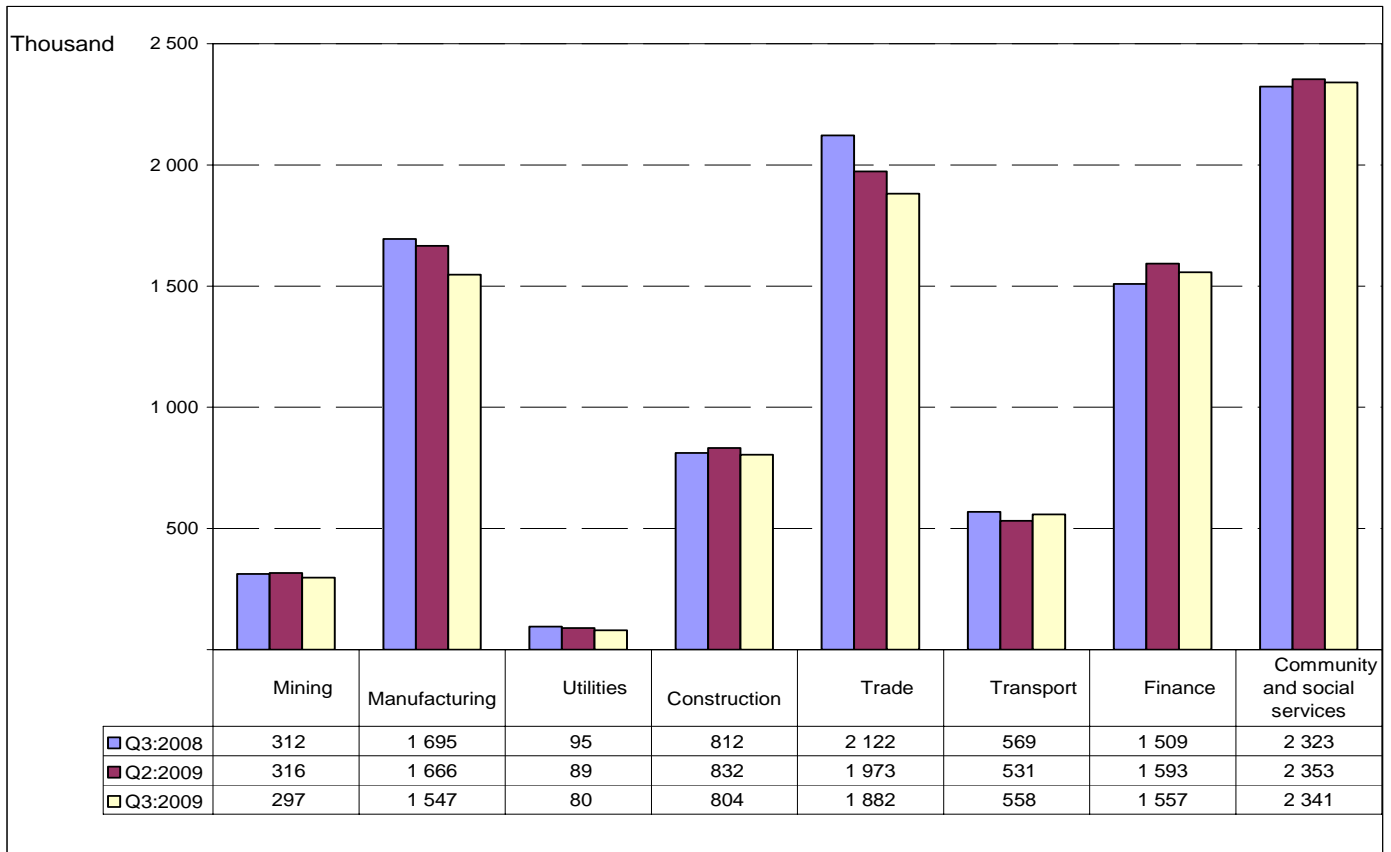


Figure 1 shows that there was a decrease of 283 000 formal sector jobs between Q2:2009 and Q3:2009 with the most affected industries being Manufacturing (119 000), Trade (91 000) and Finance (36 000). The Transport industry experienced a gain of 27 000 formal sector jobs in the same period.

The year-on-year comparisons show a net loss of 366 000 jobs in the formal sector, with Trade and Manufacturing being the hardest hit with the loss of 240 000 and 148 000 jobs respectively, although Finance as well as Community and social services experienced job gains.

Figure 2: Informal sector employment by industry

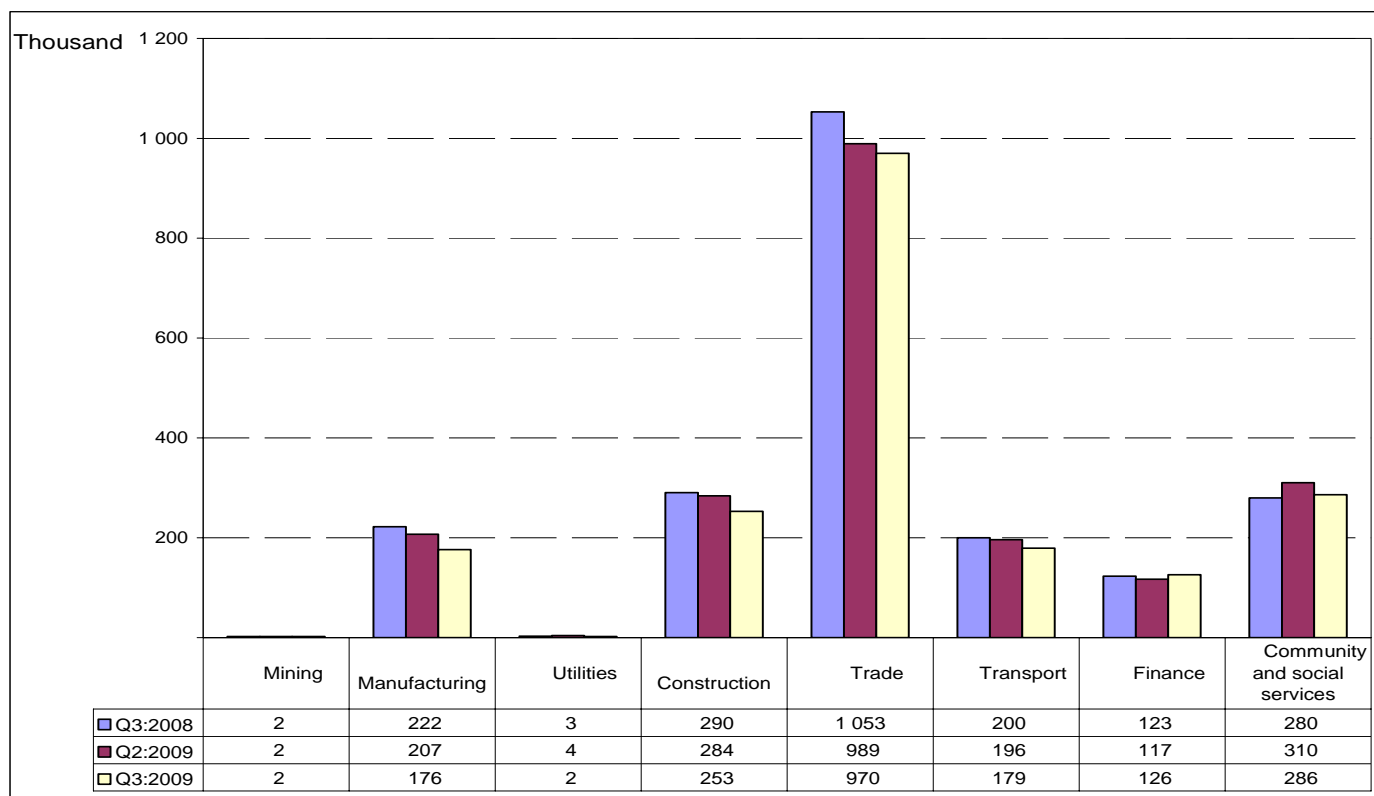


Figure 2 indicates that, similar to the formal sector, the informal sector also shed 116 000 jobs between Q2:2009 and Q3:2009, especially in the Manufacturing (31 000), Construction (31 000) and Community and social services (24 000) industries.

Compared to Q3:2008, the informal sector lost 182 000 jobs with most of them being in Trade (83 000), Manufacturing (46 000) and Construction (37 000) in Q3:2009. There was a slight increase in the number of informal sector jobs in the Community and social services (6 000) industry.

Table D: Employment by occupation

	Jul-Sep 2008	Apr-Jun 2009	Jul-Sep 2009	Qrt to Qrt change	Year-on-year change	Qrt to Qrt change	Year-on-year change
	Thousand			Per cent			
Total	13 655	13 369	12 885	-484	-770	-3,6	-5,6
Manager	1 054	1 022	994	-28	-60	-2,7	-5,7
Professional	727	654	703	49	-24	7,5	-3,3
Technician	1 485	1 550	1 493	-57	8	-3,7	0,5
Clerk	1 462	1 440	1 431	-9	-31	-0,6	-2,1
Sales and services	1 780	1 804	1 792	-12	12	-0,7	0,7
Skilled agriculture	99	83	72	-11	-27	-13,3	-27,3
Craft and related trade	1 881	1 779	1 568	-211	-313	-11,9	-16,6
Plant and machine operator	1 208	1 186	1 097	-89	-111	-7,5	-9,2
Elementary	2 960	2 889	2 812	-77	-148	-2,7	-5,0
Domestic worker	996	963	924	-39	-72	-4,0	-7,2

*Due to rounding, numbers do not necessarily add up to totals.

Table D shows a decrease in the number of individuals employed in various occupations, with the biggest quarterly decrease recorded in Craft and related trade occupations where 211 000 jobs were lost. This was followed by Plant and machine operator (89 000), Elementary (77 000) and Technician (57 000) occupations.

The year-on-year comparisons show that the shed jobs were mostly in Craft and related trade, Elementary, and Plant and machine operator occupations (313 000, 148 000 and 111 000 respectively).

4. The unemployed population

Table E: Unemployed by sex

Unemployed	Jul-Sep 2008	Apr-Jun 2009	Jul-Sep 2009	Qrt to Qrt change	Year-on-year change	Qrt to Qrt change	Year-on-year change
	Thousand				Per cent		
Total	4 122	4 125	4 192	67	70	1,6	1,7
Women	2 150	2 065	2 080	15	- 70	0,7	-3,3
Men	1 972	2 060	2 113	53	141	2,6	7,2

*Due to rounding, numbers do not necessarily add up to totals.

Table E shows that between Q2:2009 and Q3:2009 the number of unemployed persons increased by 67 000 from 4,1 million to 4,2 million. The decrease was observed among both men and women (53 000 and 15 000 respectively).

The year-on-year comparisons show that the number of unemployed persons increased by 70 000, with the annual increase of 7,2% (141 000) among men and a decrease of 3,3% (70 000) among women.

Figure 3: Unemployment rate by province

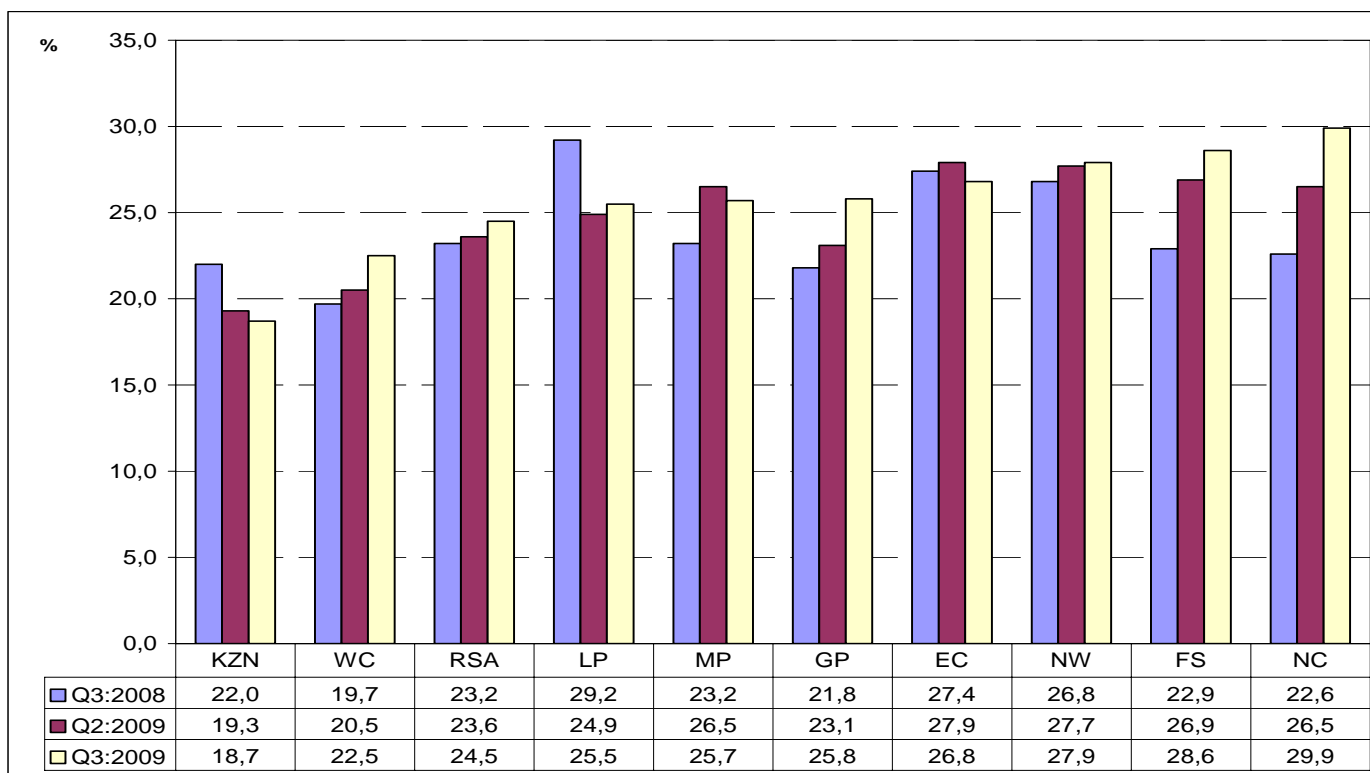


Figure 3 shows an increase in the unemployment rate in all provinces in Q3:2009 compared to the unemployment rate of Q2:2009. The biggest increase in the unemployment rate was observed in Northern Cape (3,4 percentage points), Gauteng (2,7 percentage points) and Western Cape (2,0 percentage points). KwaZulu-Natal had the lowest unemployment rate (18,7%).

The comparisons between Q3:2008 and Q3:2009 indicate that there was a substantial increase in the unemployment rate in most provinces. The highest increase was in Northern Cape (up by 7,3 percentage points) followed by Free State (up by 5,7 percentage points) and Gauteng (up by 4,0 percentage points). Some provinces experienced declines in the unemployment rate in the same period.

Figure 4: Unemployment rate by population group

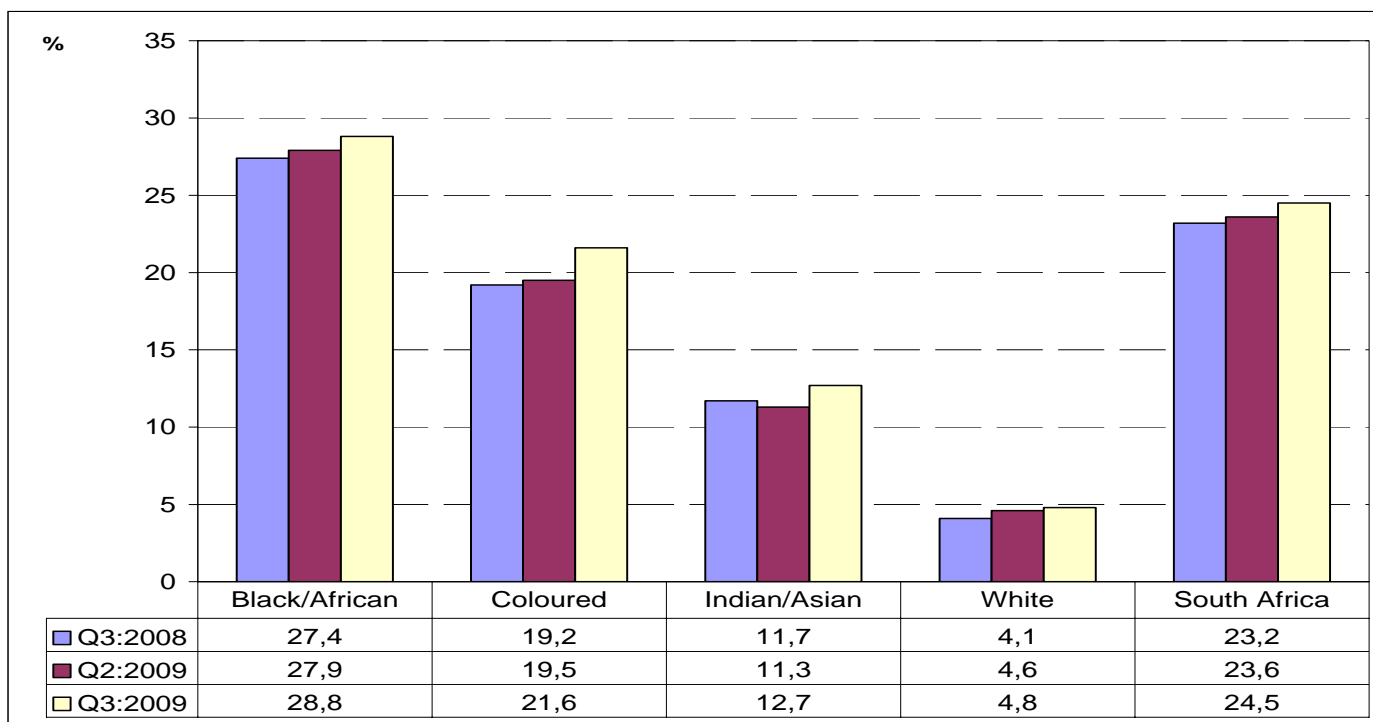


Figure 4 shows that between Q2:2009 and Q3:2009, the unemployment rate increased across all population groups with the coloured population being the most affected where the rate went up by 2,1 percentage points.

The year-on-year comparisons show a similar picture where the unemployment rate increased among all population groups with the coloured and black African population groups being the hardest hit with increases of 2,4 and 1,4 percentage points respectively.

Table F: Characteristics of the unemployed

Unemployed	Jul-Sep 2008	Apr-Jun 2009	Jul-Sep 2009	Qrt to Qrt change	Year-on-year change	Qrt to Qrt change	Year-on-year change
	Thousand				Per cent		
Total	4 122	4 125	4 192	67	70	1,6	1,7
Job losers	1 268	1 427	1 477	50	209	3,5	16,5
Job leavers	386	345	338	-7	-48	-2,0	-12,4
New entrants	1 745	1 670	1 615	-55	-130	-3,3	-7,4
Re-entrants	185	173	193	20	8	11,6	4,3
Other	538	510	570	60	32	11,8	5,9

Table F shows that between Q2:2009 and Q3:2009 there was an increase in the number of job losers and re-entrants into unemployment while the number of new entrants into unemployment decreased by 55 000 in the same period.

While there was an increase in the number of job losers (209 000) in Q3:2009 compared to Q3:2008, this was offset by a decline among new entrants (130 000) and job leavers (48 000), resulting in a net gain of 70 000 in the number of unemployed persons over this period.

5. Characteristics of the not economically active population

Table G: The not economically active

Not economically active	Jul-Sep 2008	Apr-Jun 2009	Jul-Sep 2009	Qrt to Qrt change	Year-on-year change	Qrt to Qrt change	Year-on-year change
	Thousand				Per cent		
Total	13 024	13 585	14 095	510	1 071	3,8	8,2
Student	5 718	5 693	5 902	209	184	3,7	3,2
Home-maker	2 579	2 652	2 757	105	178	4,0	6,9
Illness/disability	1 822	1 799	1 821	22	-1	1,2	-0,1
Too old/young to work	1 014	1 062	1 109	47	95	4,4	9,4
Discouraged	1 071	1 517	1 632	115	561	7,6	52,4
Other	820	862	875	13	55	1,5	6,7

Due to rounding, numbers do not necessarily add up to totals.

Table G shows that the not economically active population increased by 510 000 persons between Q2:2009 and Q3:2009, with students accounting for 209 000 and the discouraged work-seekers accounting for 115 000 of such persons.

The year-on-year changes indicate that overall there was an increase in the number of not economically active persons (1 071 000 or 8,2%) between Q3:2008 and Q3:2009. Discouraged work-seekers (561 000), students (184 000) and home-makers (178 000) made the largest contribution to the increase of 1 071 000 among the not economically active persons.



PJ Lehohla
Statistician-General: Statistics South Africa

6. Technical notes

6.1. Response details

Table H: Response rates by province

Province	Jul-Sep 2009
	Per cent
Western Cape	78,9
Eastern Cape	96,5
Northern Cape	90,8
Free State	94,5
KwaZulu-Natal	93,7
North West	94,6
Gauteng	78,3
Mpumalanga	96,6
Limpopo	97,9
South Africa	90,1

6.2. Survey requirements and design

The Quarterly Labour Force Survey (QLFS) frame has been developed as a general-purpose household survey frame that can be used by all other household surveys irrespective of the sample size requirement of the survey. The sample size for the QLFS is roughly 30 000 dwellings per quarter.

The sample is based on information collected during the 2001 Population Census conducted by Stats SA. In preparation for the 2001 Census, the country was divided into 80 787 enumeration areas (EAs). Stats SA's household-based surveys use a master sample of primary sampling units (PSUs) which comprises EAs that are drawn from across the country.

The sample is designed to be representative at provincial level and within provinces at metro/non-metro level. Within the metros, the sample is further distributed by geography type. The four geography types are: urban formal, urban informal, farms and tribal. This implies, for example, that within a metropolitan area the sample is representative at the different geography types that may exist within that metro.

The current sample size is 3 080 PSUs. It is divided equally into four subgroups or panels called rotation groups. The rotation groups are designed in such a way that each of these groups has the same distribution pattern as that which is observed in the whole sample. They are numbered from one to four and these numbers also correspond to the quarters of the year in which the sample will be rotated for the particular group.

The sample for the redesigned Labour Force Survey (i.e. the QLFS) is based on a stratified two-stage design with probability proportional to size (PPS) sampling of primary sampling units (PSUs) in the first stage, and sampling of dwelling units (DUs) with systematic sampling in the second stage.

6.3. Sample rotation

Each quarter, a $\frac{1}{4}$ of the sampled dwellings rotate out of the sample and are replaced by new dwellings from the same PSU or the next PSU on the list. Thus, sampled dwellings will remain in the sample for four consecutive quarters. It should be noted that the sampling unit is the dwelling, and the unit of observation is the household. Therefore, if a household moves out of a dwelling after being in the sample for, say two quarters and a new household moves in then the new household will be enumerated for the next two quarters. If no household moves into the sampled dwelling, the dwelling will be classified as vacant (unoccupied).

6.4. Weighting

The sampling weights for the data collected from the sampled households are constructed in such a manner that the responses could be properly expanded to represent the entire civilian population of South Africa. The weights are the result of calculations involving several factors, including original selection probabilities, adjustment for non-response, and benchmarking to known population estimates from the Demographic division of Stats SA.

6.5. Non-response adjustment

In general, imputation is used for item non-response (i.e. blanks within the questionnaire) and edit failure (i.e. invalid or inconsistent responses). The eligible households in the sampled dwellings can be divided into two response categories: respondents and non-respondents; and weight adjustment is applied to account for the non-respondent households (e.g. refusal, no contact, etc.).

6.6. Final survey weights

The final survey weights are constructed using regression estimation to calibrate to the known population counts at the national level population estimates (which are supplied by the Demography division) cross-classified by 5-year age groups, gender and race, and provincial population estimates by broad age groups. The 5-year age groups are: 0–4, 5–9, 10–14, etc, and 65 and over. The provincial level age groups are: 0–14, 15–34, 35–64, and 65 years and over. The calibrated weights are constructed such that all persons in a household would have the same final weight.

6.7. Estimation

The final survey weights are used to obtain the estimates for various domains of interest, e.g. number of persons employed in agriculture in the province of Western Cape, number of females employed in manufacturing, etc.

6.8. Reliability of the survey estimates

Because estimates are based on sample data, they differ from figures that would have been obtained from complete enumeration of the population using the same instrument. Results are subject to both sampling and non-sampling errors. Non-sampling errors include biases from inaccurate reporting, processing, and tabulation etc., as well as errors from non-response and incomplete reporting. These types of errors cannot be measured readily. However, to the extent possible, non-sampling errors can be minimised through the procedures used for data collection, editing, quality control, and non-response adjustment. The variances of the survey estimates are used to measure sampling errors. The variance estimation methodology is discussed below.

(i) Variance estimation

The most commonly used methods for estimating variances of survey estimates from complex surveys, such as the QLFS, are the Taylor-series Linearization, Jackknife Replication, Balanced Repeated Replication (BRR), and Bootstrap methods (Wolter, 2007)¹. The Fay's BRR method has been used for variance estimation in the QLFS because of its simplicity.

(ii) Coefficient of variation

It is more useful in many situations to assess the size of the standard error relative to the magnitude of the characteristic being measured (the standard error is defined as the square root of the variance). The **coefficient of variation** (cv) provides such a measure. It is the **ratio of the standard error of the survey estimate to the value of the estimate itself expressed as a percentage**. It is very useful in comparing the precision of several different survey estimates, where their sizes or scale differ from one another.

(iii) P-value of an estimate of change

The p-value corresponding to an estimate of change is the probability of observing a value larger than the particular observed value under the hypothesis that there is no real change. If p-value < 0,01 then the difference is highly significant; if p-value is between 0,01 and 0,05 then the difference is significant; and if p-value > 0,05 then the difference is not significant

¹ Wolter, K. M. (2007), *Introduction to Variance Estimation, 2nd Edition*, Springer-Verlag: New York.

7. Definitions

Discouraged work-seeker is a person who was not employed during the reference period, wanted to work, was available to work/start a business but did not take active steps to find work during the last four weeks, provided that the main reason given for not seeking work was any of the following: no jobs available in the area; unable to find work requiring his/her skills; lost hope of finding any kind of work.

Economic activities are those that contribute to the production of goods and services in the country. There are two types of economic activities, and they are: (1) Market production activities (work done for others and usually associated with pay or profit); and (2) Non-market production activities (work done for the benefit of the household e.g. subsistence farming)

Employed persons are those aged 15–64 years who, during the reference week: did any work for at least one hour; or had a job or business but were not at work (temporarily absent).

Employment-to-population ratio (labour absorption rate) is the proportion of the working age population that is employed.

Informal employment identifies persons who are in precarious employment situations irrespective of whether or not the entity for which they work is in the formal or informal sector. Persons in informal employment therefore consist of all persons in the informal sector; employees in the formal sector; and persons working in private households who are not entitled to basic benefits such as pension or medical aid contributions from their employer, and who do not have a written contract of employment.

Informal sector: The informal sector has the following two components:

- i) Employees working in establishments that employ less than five employees, who do not deduct income tax from their salaries/wages; and
- ii) Employers, own-account workers and persons helping unpaid in their household business who are not registered for either income tax or value-added tax.

The **labour force** comprises all persons who are employed plus all persons who are unemployed.

Labour force participation rate is the proportion of the working age population that is either employed or unemployed.

Long-term unemployment: Persons in long-term unemployment are those individuals among the unemployed who were without work and trying to find a job or start a business for one year or more.

Not economically active: Persons aged 15–64 years who are neither employed nor unemployed in the reference week.

Persons in **underemployment (time-related)** are employed persons who were willing and available to work additional hours, whose total number of hours actually worked during the reference period was below 35 hours per week.

Underutilised labour comprises three groups as follows: persons who are underemployed, persons who are unemployed, and persons who are discouraged.

Unemployed persons are those (aged 15–64 years) who:

- a) Were not employed in the reference week **and**;
- b) Actively looked for work or tried to start a business in the four weeks preceding the survey interview **and**;
- c) Were available for work i.e. would have been able to start work or a business in the reference week **or**;
- d) Had not actively looked for work in the past four weeks but had a job or business to start at a definite date in the future and were available.

Unemployment rate is the proportion of the labour force that is unemployed.

The **working-age population** comprises all persons aged 15–64 years.

Appendix 1

Table 1: Population of working age (15–64 years)							
	Jul–Sep 2008	Apr–Jun 2009	Jul–Sep 2009	Qrt to Qrt change	Year-on-year change	Qrt to Qrt change	Year-on-year change
	Thousand	Thousand	Thousand	Thousand	Thousand	Per cent	Per cent
Both sexes	30 801	31 080	31 172	92	371	0,3	1,2
Women	16 127	16 252	16 293	41	166	0,3	1,0
Men	14 674	14 828	14 879	51	205	0,3	1,4
Population groups	30 801	31 080	31 172	92	371	0,3	1,2
Black	23 872	24 129	24 215	86	343	0,4	1,4
Coloured	2 945	2 977	2 987	10	42	0,3	1,4
Indian	878	891	895	4	17	0,4	1,9
White	3 106	3 083	3 075	-8	-31	-0,3	-1,0
RSA	30 801	31 080	31 172	92	371	0,3	1,2
Western Cape	3 462	3 495	3 506	11	44	0,3	1,3
Eastern Cape	3 961	3 998	4 010	12	49	0,3	1,2
Northern Cape	704	707	708	1	4	0,1	0,6
Free State	1 857	1 865	1 868	3	11	0,2	0,6
KwaZulu-Natal	6 295	6 362	6 384	22	89	0,3	1,4
North West	2 171	2 183	2 187	4	16	0,2	0,7
Gauteng	7 095	7 149	7 167	18	72	0,3	1,0
Mpumalanga	2 188	2 210	2 218	8	30	0,4	1,4
Limpopo	3 068	3 111	3 126	15	58	0,5	1,9

Due to rounding, numbers do not necessarily add up to totals.

Table 2: Labour force characteristics by sex – All population groups

	Jul–Sep 2008	Apr–Jun 2009	Jul–Sep 2009	Qrt to Qrt change	Year-on- year change	Qrt to Qrt change	Year-on- year change
	Thousand	Thousand	Thousand	Thousand	Thousand	Per cent	Per cent
Both sexes							
Population 15–64 yrs	30 801	31 080	31 172	92	371	0,3	1,2
Labour Force	17 777	17 495	17 077	-418	-700	-2,4	-3,9
Employed	13 655	13 369	12 885	-484	-770	-3,6	-5,6
Formal sector (Non-agricultural)	9 439	9 356	9 073	-283	-366	-3,0	-3,9
Informal sector (Non-agricultural)	2 175	2 109	1 993	-116	-182	-5,5	-8,4
Agriculture	767	710	653	-57	-114	-8,0	-14,9
Private households	1 274	1 194	1 166	-28	-108	-2,3	-8,5
Unemployed	4 122	4 125	4 192	67	70	1,6	1,7
Not economically active	13 024	13 585	14 095	510	1 071	3,8	8,2
Discouraged work-seekers	1 071	1 517	1 632	115	561	7,6	52,4
Other(not economically active)	11 953	12 068	12 463	395	510	3,3	4,3
Rates (%)							
Unemployment rate	23,2	23,6	24,5	0,9	1,3		
Employed / population ratio (Absorption)	44,3	43,0	41,3	-1,7	-3,0		
Labour force participation rate	57,7	56,3	54,8	-1,5	-2,9		
Women							
Population 15–64 yrs	16 127	16 252	16 293	41	166	0,3	1,0
Labour Force	8 184	8 037	7 862	-175	-322	-2,2	-3,9
Employed	6 034	5 973	5 782	-191	-252	-3,2	-4,2
Formal sector (Non-agricultural)	3 777	3 840	3 726	-114	-51	-3,0	-1,4
Informal sector (Non-agricultural)	994	965	912	-53	-82	-5,5	-8,2
Agriculture	257	217	223	6	-34	2,8	-13,2
Private households	1 006	951	921	-30	-85	-3,2	-8,4
Unemployed	2 150	2 065	2 080	15	-70	0,7	-3,3
Not economically active	7 943	8 215	8 431	216	488	2,6	6,1
Discouraged work-seekers	652	880	925	45	273	5,1	41,9
Other(not economically active)	7 291	7 334	7 506	172	215	2,3	2,9
Rates (%)							
Unemployment rate	26,3	25,7	26,5	0,8	0,2		
Employed / population ratio (Absorption)	37,4	36,8	35,5	-1,3	-1,9		
Labour force participation rate	50,7	49,5	48,3	-1,2	-2,4		
Men							
Population 15–64 yrs	14 674	14 828	14 879	51	205	0,3	1,4
Labour Force	9 593	9 457	9 215	-242	-378	-2,6	-3,9
Employed	7 621	7 397	7 102	-295	-519	-4,0	-6,8
Formal sector (Non-agricultural)	5 662	5 517	5 346	-171	-316	-3,1	-5,6
Informal sector (Non-agricultural)	1 181	1 144	1 081	-63	-100	-5,5	-8,5
Agriculture	510	494	430	-64	-80	-13,0	-15,7
Private households	267	243	245	2	-22	0,8	-8,2
Unemployed	1 972	2 060	2 113	53	141	2,6	7,2
Not economically active	5 081	5 371	5 664	293	583	5,5	11,5
Discouraged work-seekers	420	637	707	70	287	11,0	68,3
Other(not economically active)	4 662	4 734	4 957	223	295	4,7	6,3
Rates (%)							
Unemployment rate	20,6	21,8	22,9	1,1	2,3		
Employed / population ratio (Absorption)	51,9	49,9	47,7	-2,2	-4,2		
Labour force participation rate	65,4	63,8	61,9	-1,9	-3,5		

Due to rounding, numbers do not necessarily add up to totals.

Note: Employment refers to market production activities.

Table 2.1: Labour force characteristics by population group							
	Jul–Sep 2008	Apr–Jun 2009	Jul–Sep 2009	Qrt to Qrt change	Year-on- year change	Qrt to Qrt change	Year-on- year change
	Thousand	Thousand	Thousand	Thousand	Thousand	Per cent	Per cent
South Africa							
Population 15–64 yrs	30 801	31 080	31 172	92	371	0,3	1,2
Labour Force	17 777	17 495	17 077	-418	-700	-2,4	-3,9
Employed	13 655	13 369	12 885	-484	-770	-3,6	-5,6
Unemployed	4 122	4 125	4 192	67	70	1,6	1,7
Not economically active	13 024	13 585	14 095	510	1 071	3,8	8,2
Rates (%)							
Unemployment rate	23,2	23,6	24,5	0,9	1,3		
Employed / population ratio (Absorption)	44,3	43,0	41,3	-1,7	-3,0		
Labour force participation rate	57,7	56,3	54,8	-1,5	-2,9		
Black/African							
Population 15–64 yrs	23 872	24 129	24 215	86	343	0,4	1,4
Labour Force	13 172	12 877	12 544	-333	-628	-2,6	-4,8
Employed	9 567	9 290	8 936	-354	-631	-3,8	-6,6
Unemployed	3 604	3 587	3 609	22	5	0,6	0,1
Not economically active	10 700	11 252	11 670	418	970	3,7	9,1
Rates (%)							
Unemployment rate	27,4	27,9	28,8	0,9	1,4		
Employed / population ratio (Absorption)	40,1	38,5	36,9	-1,6	-3,2		
Labour force participation rate	55,2	53,4	51,8	-1,6	-3,4		
Coloured							
Population 15–64 yrs	2 945	2 977	2 987	10	42	0,3	1,4
Labour Force	1 906	1 942	1 927	-15	21	-0,8	1,1
Employed	1 541	1 563	1 510	-53	-31	-3,4	-2,0
Unemployed	365	379	417	38	52	10,0	14,2
Not economically active	1 039	1 035	1 060	25	21	2,4	2,0
Rates (%)							
Unemployment rate	19,2	19,5	21,6	2,1	2,4		
Employed / population ratio (Absorption)	52,3	52,5	50,6	-1,9	-1,7		
Labour force participation rate	64,7	65,2	64,5	-0,7	-0,2		
Indian/Asian							
Population 15–64 yrs	878	891	895	4	17	0,4	1,9
Labour Force	547	521	519	-2	-28	-0,4	-5,1
Employed	483	461	453	-8	-30	-1,7	-6,2
Unemployed	64	59	66	7	2	11,9	3,1
Not economically active	331	370	376	6	45	1,6	13,6
Rates (%)							
Unemployment rate	11,7	11,3	12,7	1,4	1,0		
Employed / population ratio (Absorption)	55,0	51,7	50,6	-1,1	-4,4		
Labour force participation rate	62,3	58,4	58,0	-0,4	-4,3		
White							
Population 15–64 yrs	3 106	3 083	3 075	-8	-31	-0,3	-1,0
Labour Force	2 152	2 155	2 087	-68	-65	-3,2	-3,0
Employed	2 063	2 056	1 986	-70	-77	-3,4	-3,7
Unemployed	89	100	101	1	12	1,0	13,5
Not economically active	954	928	988	60	34	6,5	3,6
Rates (%)							
Unemployment rate	4,1	4,6	4,8	0,2	0,7		
Employed / population ratio (Absorption)	66,4	66,7	64,6	-2,1	-1,8		
Labour force participation rate	69,3	69,9	67,9	-2,0	-1,4		

Due to rounding, numbers do not necessarily add up to totals.
 Note: Employment refers to market production activities.

Table 2.2: Labour force characteristics by province

	Jul-Sep 2008	Apr-Jun 2009	Jul-Sep 2009	Qrt to Qrt change	Year-on-year change	Qrt to Qrt change	Year-on-year change
	Thousand	Thousand	Thousand	Thousand	Thousand	Per cent	Per cent
South Africa							
Population 15–64 yrs	30 801	31 080	31 172	92	371	0,3	1,2
Labour Force	17 777	17 495	17 077	-418	-700	-2,4	-3,9
Employed	13 655	13 369	12 885	-484	-770	-3,6	-5,6
Unemployed	4 122	4 125	4 192	67	70	1,6	1,7
Not economically active	13 024	13 585	14 095	510	1 071	3,8	8,2
Discouraged work-seekers	1 071	1 517	1 632	115	561	7,6	52,4
Other	11 953	12 068	12 463	395	510	3,3	4,3
Rates (%)							
Unemployment rate	23,2	23,6	24,5	0,9	1,3		
Employed / population ratio (Absorption)	44,3	43,0	41,3	-1,7	-3,0		
Labour force participation rate	57,7	56,3	54,8	-1,5	-2,9		
Western Cape							
Population 15–64 yrs	3 462	3 495	3 506	11	44	0,3	1,3
Labour Force	2 322	2 388	2 409	21	87	0,9	3,7
Employed	1 865	1 898	1 868	-30	3	-1,6	0,2
Unemployed	457	490	542	52	85	10,6	18,6
Not economically active	1 140	1 107	1 096	-11	-44	-1,0	-3,9
Discouraged work-seekers	26	33	38	5	12	15,2	46,2
Other	1 114	1 074	1 058	-16	-56	-1,5	-5,0
Rates (%)							
Unemployment rate	19,7	20,5	22,5	2,0	2,8		
Employed / population ratio (Absorption)	53,9	54,3	53,3	-1,0	-0,6		
Labour force participation rate	67,1	68,3	68,7	0,4	1,6		
Eastern Cape							
Population 15–64 yrs	3 961	3 998	4 010	12	49	0,3	1,2
Labour Force	1 811	1 877	1 718	-159	-93	-8,5	-5,1
Employed	1 315	1 353	1 258	-95	-57	-7,0	-4,3
Unemployed	496	524	460	-64	-36	-12,2	-7,3
Not economically active	2 150	2 120	2 292	172	142	8,1	6,6
Discouraged work-seekers	234	302	326	24	92	7,9	39,3
Other	1 917	1 818	1 966	148	49	8,1	2,6
Rates (%)							
Unemployment rate	27,4	27,9	26,8	-1,1	-0,6		
Employed / population ratio (Absorption)	33,2	33,8	31,4	-2,4	-1,8		
Labour force participation rate	45,7	46,9	42,8	-4,1	-2,9		
Northern Cape							
Population 15–64 yrs	704	707	708	1	4	0,1	0,6
Labour Force	398	385	365	-20	-33	-5,2	-8,3
Employed	308	283	255	-28	-53	-9,9	-17,2
Unemployed	90	102	109	7	19	6,9	21,1
Not economically active	306	322	343	21	37	6,5	12,1
Discouraged work-seekers	31	34	31	-3	0	-8,8	0,0
Other	275	288	313	25	38	8,7	13,8
Rates (%)							
Unemployment rate	22,6	26,5	29,9	3,4	7,3		
Employed / population ratio (Absorption)	43,8	40,0	36,0	-4,0	-7,8		
Labour force participation rate	56,5	54,5	51,4	-3,1	-5,1		
Free State							
Population 15–64 yrs	1 857	1 865	1 868	3	11	0,2	0,6
Labour Force	1 092	1 059	1 061	2	-31	0,2	-2,8
Employed	842	773	758	-15	-84	-1,9	-10,0
Unemployed	250	285	304	19	54	6,7	21,6
Not economically active	764	806	806	0	42	0,0	5,5
Discouraged work-seekers	70	95	91	-4	21	-4,2	30,0
Other	694	712	715	3	21	0,4	3,0
Rates (%)							
Unemployment rate	22,9	26,9	28,6	1,7	5,7		
Employed / population ratio (Absorption)	45,3	41,4	40,6	-0,8	-4,7		
Labour force participation rate	58,8	56,7	56,9	0,2	-1,9		

Due to rounding, numbers do not necessarily add up to totals.
 Note: Employment refers to market production activities.

Table 2.2: Labour force characteristics by province (concluded)

	Jul-Sep 2008	Apr-Jun 2009	Jul-Sep 2009	Qrt to Qrt change	Year-on-year change	Qrt to Qrt change	Year-on-year change
	Thousand	Thousand	Thousand	Thousand	Thousand	Per cent	Per cent
KwaZulu-Natal							
Population 15-64 yrs	6 295	6 362	6 384	22	89	0,3	1,4
Labour Force	3 312	3 043	3 024	-19	-288	-0,6	-8,7
Employed	2 583	2 457	2 458	1	-125	0,0	-4,8
Unemployed	729	586	566	-20	-163	-3,4	-22,4
Not economically active	2 984	3 319	3 360	41	376	1,2	12,6
Discouraged work-seekers	211	448	481	33	270	7,4	128,0
Other	2 772	2 871	2 878	7	106	0,2	3,8
Rates (%)							
Unemployment rate	22,0	19,3	18,7	-0,6	-3,3		
Employed / population ratio (Absorption)	41,0	38,6	38,5	-0,1	-2,5		
Labour force participation rate	52,6	47,8	47,4	-0,4	-5,2		
North West							
Population 15-64 yrs	2 171	2 183	2 187	4	16	0,2	0,7
Labour Force	1 185	1 174	1 094	-80	-91	-6,8	-7,7
Employed	868	849	789	-60	-79	-7,1	-9,1
Unemployed	317	325	306	-19	-11	-5,8	-3,5
Not economically active	987	1 009	1 092	83	105	8,2	10,6
Discouraged work-seekers	98	117	130	13	32	11,1	32,7
Other	889	892	962	70	73	7,8	8,2
Rates (%)							
Unemployment rate	26,8	27,7	27,9	0,2	1,1		
Employed / population ratio (Absorption)	40,0	38,9	36,1	-2,8	-3,9		
Labour force participation rate	54,6	53,8	50,1	-3,7	-4,5		
Gauteng							
Population 15-64 yrs	7 095	7 149	7 167	18	72	0,3	1,0
Labour Force	5 194	5 141	5 013	-128	-181	-2,5	-3,5
Employed	4 063	3 953	3 719	-234	-344	-5,9	-8,5
Unemployed	1 131	1 188	1 294	106	163	8,9	14,4
Not economically active	1 901	2 008	2 154	146	253	7,3	13,3
Discouraged work-seekers	156	160	187	27	31	16,9	19,9
Other	1 745	1 848	1 967	119	222	6,4	12,7
Rates (%)							
Unemployment rate	21,8	23,1	25,8	2,7	4,0		
Employed / population ratio (Absorption)	57,3	55,3	51,9	-3,4	-5,4		
Labour force participation rate	73,2	71,9	69,9	-2,0	-3,3		
Mpumalanga							
Population 15-64 yrs	2 188	2 210	2 218	8	30	0,4	1,4
Labour Force	1 202	1 221	1 185	-36	-17	-2,9	-1,4
Employed	924	897	881	-16	-43	-1,8	-4,7
Unemployed	279	324	304	-20	25	-6,2	9,0
Not economically active	985	989	1 033	44	48	4,4	4,9
Discouraged work-seekers	82	110	123	13	41	11,8	50,0
Other	903	879	910	31	7	3,5	0,8
Rates (%)							
Unemployment rate	23,2	26,5	25,7	-0,8	2,5		
Employed / population ratio (Absorption)	42,2	40,6	39,7	-0,9	-2,5		
Labour force participation rate	55,0	55,2	53,4	-1,8	-1,6		
Limpopo							
Population 15-64 yrs	3 068	3 111	3 126	15	58	0,5	1,9
Labour Force	1 260	1 206	1 207	1	-53	0,1	-4,2
Employed	888	906	899	-7	11	-0,8	1,2
Unemployed	372	300	308	8	-64	2,7	-17,2
Not economically active	1 807	1 905	1 918	13	111	0,7	6,1
Discouraged work-seekers	164	219	225	6	61	2,7	37,2
Other	1 644	1 685	1 693	8	49	0,5	3,0
Rates (%)							
Unemployment rate	29,5	24,9	25,5	0,6	-4,0		
Employed / population ratio (Absorption)	28,9	29,1	28,8	-0,3	-0,1		
Labour force participation rate	41,1	38,8	38,6	-0,2	-2,5		

Due to rounding, numbers do not necessarily add up to totals.

Note: Employment refers to market production activities.

Table 3.1: Employed by industry and sex – South Africa							
	Jul–Sep 2008	Apr–Jun 2009	Jul–Sep 2009	Qrt to Qrt change	Year-on-year change	Qrt to Qrt change	Year-on- year change
	Thousand	Thousand	Thousand	Thousand	Thousand	Per cent	Per cent
Both sexes	13 655	13 369	12 885	-484	-770	-3,6	-5,6
Agriculture	767	710	653	-57	-114	-8,0	-14,9
Mining	314	319	299	-20	-15	-6,3	-4,8
Manufacturing	1 917	1 873	1 723	-150	-194	-8,0	-10,1
Utilities	99	93	81	-12	-18	-12,9	-18,2
Construction	1 102	1 117	1 057	-60	-45	-5,4	-4,1
Trade	3 176	2 962	2 852	-110	-324	-3,7	-10,2
Transport	769	727	737	10	-32	1,4	-4,2
Finance	1 632	1 710	1 682	-28	50	-1,6	3,1
Community and social services	2 603	2 664	2 627	-37	24	-1,4	0,9
Private households	1 274	1 194	1 166	-28	-108	-2,3	-8,5
Other	3	2	6	4	3	200,0	100,0
Women	6 034	5 973	5 782	-191	-252	-3,2	-4,2
Agriculture	257	217	223	6	-34	2,8	-13,2
Mining	33	41	41	0	8	0,0	24,2
Manufacturing	608	621	576	-45	-32	-7,2	-5,3
Utilities	29	24	15	-9	-14	-37,5	-48,3
Construction	110	127	133	6	23	4,7	20,9
Trade	1 577	1 473	1 420	-53	-157	-3,6	-10,0
Transport	149	151	161	10	12	6,6	8,1
Finance	725	781	747	-34	22	-4,4	3,0
Community and social services	1 538	1 588	1 540	-48	2	-3,0	0,1
Private households	1 006	951	921	-30	-85	-3,2	-8,4
Other	2	0	5	5	3	.	150,0
Men	7 621	7 397	7 102	-295	-519	-4,0	-6,8
Agriculture	510	494	430	-64	-80	-13,0	-15,7
Mining	281	278	258	-20	-23	-7,2	-8,2
Manufacturing	1 309	1 252	1 147	-105	-162	-8,4	-12,4
Utilities	69	69	66	-3	-3	-4,3	-4,3
Construction	992	990	924	-66	-68	-6,7	-6,9
Trade	1 598	1 489	1 431	-58	-167	-3,9	-10,5
Transport	620	576	576	0	-44	0,0	-7,1
Finance	908	929	936	7	28	0,8	3,1
Community and social services	1 065	1 075	1 087	12	22	1,1	2,1
Private households	267	243	245	2	-22	0,8	-8,2
Other	1	2	2	0	1	0,0	100,0

For all values of 10 000 or lower the sample size is too small for reliable estimates.
 Due to rounding, numbers do not necessarily add up to totals.

Table 3.2: Employed by industry and province							
	Jul-Sep 2008	Apr-Jun 2009	Jul-Sep 2009	Qrt to Qrt change	Year-on-year change	Qrt to Qrt change	Year-on-year change
	Thousand	Thousand	Thousand	Thousand	Thousand	Per cent	Per cent
Agriculture	767	710	653	-57	-114	-8,0	-14,9
Western Cape	119	146	127	-19	8	-13,0	6,7
Eastern Cape	74	86	73	-13	-1	-15,1	-1,4
Northern Cape	64	57	40	-17	-24	-29,8	-37,5
Free State	83	87	84	-3	1	-3,4	1,2
KwaZulu-Natal	151	103	113	10	-38	9,7	-25,2
North West	59	45	37	-8	-22	-17,8	-37,3
Gauteng	65	40	42	2	-23	5,0	-35,4
Mpumalanga	82	79	74	-5	-8	-6,3	-9,8
Limpopo	69	68	63	-5	-6	-7,4	-8,7
Mining	314	319	299	-20	-15	-6,3	-4,8
Western Cape	1	2	3	1	2	50,0	200,0
Eastern Cape	2	1	4	3	2	300,0	100,0
Northern Cape	15	11	9	-2	-6	-18,2	-40,0
Free State	27	33	28	-5	1	-15,2	3,7
KwaZulu-Natal	8	11	6	-5	-2	-45,5	-25,0
North West	135	125	111	-14	-24	-11,2	-17,8
Gauteng	28	28	31	3	3	10,7	10,7
Mpumalanga	54	58	58	0	4	0,0	7,4
Limpopo	45	50	49	-1	4	-2,0	8,9
Manufacturing	1 917	1 873	1 723	-150	-194	-8,0	-10,1
Western Cape	329	304	294	-10	-35	-3,3	-10,6
Eastern Cape	191	200	158	-42	-33	-21,0	-17,3
Northern Cape	15	10	15	5	0	50,0	0,0
Free State	77	74	73	-1	-4	-1,4	-5,2
KwaZulu-Natal	397	415	397	-18	0	-4,3	0,0
North West	74	94	88	-6	14	-6,4	18,9
Gauteng	682	633	554	-79	-128	-12,5	-18,8
Mpumalanga	83	77	72	-5	-11	-6,5	-13,3
Limpopo	68	65	72	7	4	10,8	5,9
Utilities	99	93	81	-12	-18	-12,9	-18,2
Western Cape	12	6	4	-2	-8	-33,3	-66,7
Eastern Cape	4	4	3	-1	-1	-25,0	-25,0
Northern Cape	1	3	3	0	2	0,0	200,0
Free State	7	3	3	0	-4	0,0	-57,1
KwaZulu-Natal	14	8	4	-4	-10	-50,0	-71,4
North West	6	4	4	0	-2	0,0	-33,3
Gauteng	31	38	40	2	9	5,3	29,0
Mpumalanga	18	20	13	-7	-5	-35,0	-27,8
Limpopo	5	7	7	0	2	0,0	40,0
Construction	1 102	1 117	1 057	-60	-45	-5,4	-4,1
Western Cape	186	181	165	-16	-21	-8,8	-11,3
Eastern Cape	98	109	104	-5	6	-4,6	6,1
Northern Cape	21	22	10	-12	-11	-54,5	-52,4
Free State	58	55	57	2	-1	3,6	-1,7
KwaZulu-Natal	224	233	232	-1	8	-0,4	3,6
North West	58	51	58	7	0	13,7	0,0
Gauteng	292	297	264	-33	-28	-11,1	-9,6
Mpumalanga	81	84	82	-2	1	-2,4	1,2
Limpopo	85	84	85	1	0	1,2	0,0

For all values of 10 000 or lower the sample size is too small for reliable estimates.
 Due to rounding, numbers do not necessarily add up to totals

Table 3.2: Employed by industry and province (concluded)

	Jul-Sep 2008	Apr-Jun 2009	Jul-Sep 2009	Qrt to Qrt change	Year-on-year change	Qrt to Qrt change	Year-on- year change
	Thousand	Thousand	Thousand	Thousand	Thousand	Per cent	Per cent
Trade	3 176	2 962	2 852	-110	-324	-3,7	-10,2
Western Cape	430	416	413	-3	-17	-0,7	-4,0
Eastern Cape	309	320	284	-36	-25	-11,3	-8,1
Northern Cape	58	42	40	-2	-18	-4,8	-31,0
Free State	196	162	163	1	-33	0,6	-16,8
KwaZulu-Natal	617	521	519	-2	-98	-0,4	-15,9
North West	182	194	147	-47	-35	-24,2	-19,2
Gauteng	910	860	837	-23	-73	-2,7	-8,0
Mpumalanga	250	210	209	-1	-41	-0,5	-16,4
Limpopo	224	236	239	3	15	1,3	6,7
Transport	769	727	737	10	-32	1,4	-4,2
Western Cape	91	79	91	12	0	15,2	0,0
Eastern Cape	72	77	74	-3	2	-3,9	2,8
Northern Cape	12	12	9	-3	-3	-25,0	-25,0
Free State	43	39	43	4	0	10,3	0,0
KwaZulu-Natal	169	173	172	-1	3	-0,6	1,8
North West	28	21	21	0	-7	0,0	-25,0
Gauteng	276	249	256	7	-20	2,8	-7,2
Mpumalanga	44	40	38	-2	-6	-5,0	-13,6
Limpopo	34	37	33	-4	-1	-10,8	-2,9
Finance	1 632	1 710	1 682	-28	50	-1,6	3,1
Western Cape	256	259	270	11	14	4,2	5,5
Eastern Cape	104	128	128	0	24	0,0	23,1
Northern Cape	26	19	21	2	-5	10,5	-19,2
Free State	73	67	60	-7	-13	-10,4	-17,8
KwaZulu-Natal	264	280	305	25	41	8,9	15,5
North West	69	74	71	-3	2	-4,1	2,9
Gauteng	704	743	694	-49	-10	-6,6	-1,4
Mpumalanga	84	88	78	-10	-6	-11,4	-7,1
Limpopo	54	51	55	4	1	7,8	1,9
Community and social services	2 603	2 664	2 627	-37	24	-1,4	0,9
Western Cape	325	372	365	-7	40	-1,9	12,3
Eastern Cape	321	307	319	12	-2	3,9	-0,6
Northern Cape	65	78	82	4	17	5,1	26,2
Free State	186	169	161	-8	-25	-4,7	-13,4
KwaZulu-Natal	475	465	478	13	3	2,8	0,6
North West	165	164	175	11	10	6,7	6,1
Gauteng	710	729	678	-51	-32	-7,0	-4,5
Mpumalanga	141	154	159	5	18	3,2	12,8
Limpopo	214	226	210	-16	-4	-7,1	-1,9
Private households	1 274	1 194	1 166	-28	-108	-2,3	-8,5
Western Cape	115	132	134	2	19	1,5	16,5
Eastern Cape	140	122	110	-12	-30	-9,8	-21,4
Northern Cape	31	28	26	-2	-5	-7,1	-16,1
Free State	91	85	85	0	-6	0,0	-6,6
KwaZulu-Natal	265	245	234	-11	-31	-4,5	-11,7
North West	92	79	77	-2	-15	-2,5	-16,3
Gauteng	363	334	316	-18	-47	-5,4	-12,9
Mpumalanga	87	88	98	10	11	11,4	12,6
Limpopo	90	81	84	3	-6	3,7	-6,7

Due to rounding, numbers do not necessarily add up to totals

Table 3.3: Employed by sector and industry – South Africa

	Jul-Sep 2008	Apr-Jun 2009	Jul-Sep 2009	Qrt to Qrt change	Year-on- year change	Qrt to Qrt change	Year- on-year change
	Thousand	Thousand	Thousand	Thousand	Thousand	Per cent	Per cent
Total employed	13 655	13 369	12 885	-484	-770	-3,6	-5,6
Formal and informal sector (Non-agricultural)	11 614	11 465	11 066	-399	-548	-3,5	-4,7
Mining	314	319	299	-20	-15	-6,3	-4,8
Manufacturing	1 917	1 873	1 723	-150	-194	-8,0	-10,1
Utilities	99	93	81	-12	-18	-12,9	-18,2
Construction	1 102	1 117	1 057	-60	-45	-5,4	-4,1
Trade	3 176	2 962	2 852	-110	-324	-3,7	-10,2
Transport	769	727	737	10	-32	1,4	-4,2
Finance	1 632	1 710	1 682	-28	50	-1,6	3,1
Community and social services	2 603	2 664	2 627	-37	24	-1,4	0,9
Other	3	2	6	4	3	200,0	100,0
Formal sector (Non-agricultural)	9 439	9 356	9 073	-283	-366	-3,0	-3,9
Mining	312	316	297	-19	-15	-6,0	-4,8
Manufacturing	1 695	1 666	1 547	-119	-148	-7,1	-8,7
Utilities	95	89	80	-9	-15	-10,1	-15,8
Construction	812	832	804	-28	-8	-3,4	-1,0
Trade	2 122	1 973	1 882	-91	-240	-4,6	-11,3
Transport	569	531	558	27	-11	5,1	-1,9
Finance	1 509	1 593	1 557	-36	48	-2,3	3,2
Community and social services	2 323	2 353	2 341	-12	18	-0,5	0,8
Other	3	2	6	4	3	200,0	100,0
Informal sector (Non-agricultural)	2 175	2 109	1 993	-116	-182	-5,5	-8,4
Mining	2	2	2	0	0	0,0	0,0
Manufacturing	222	207	176	-31	-46	-15,0	-20,7
Utilities	3	4	2	-2	-1	-50,0	-33,3
Construction	290	284	253	-31	-37	-10,9	-12,8
Trade	1 053	989	970	-19	-83	-1,9	-7,9
Transport	200	196	179	-17	-21	-8,7	-10,5
Finance	123	117	126	9	3	7,7	2,4
Community and social services	280	310	286	-24	6	-7,7	2,1
Other	0					.	.
Agriculture	767	710	653	-57	-114	-8,0	-14,9
Private households	1 274	1 194	1 166	-28	-108	-2,3	-8,5

For all values of 10 000 or lower the sample size is too small for reliable estimates.

Due to rounding, numbers do not necessarily add up to totals.

Table 3.4: Employed by province and sector							
	Jul-Sep 2008	Apr-Jun 2009	Jul-Sep 2009	Qrt to Qrt change	Year-on- year change	Qrt to Qrt change	Year-on- year change
	Thousand	Thousand	Thousand	Thousand	Thousand	Per cent	Per cent
South Africa	13 655	13 369	12 885	-484	-770	-3,6	-5,6
Formal sector (Non-agricultural)	9 439	9 356	9 073	-283	-366	-3,0	-3,9
Informal sector (Non-agricultural)	2 175	2 109	1 993	-116	-182	-5,5	-8,4
Agriculture	767	710	653	-57	-114	-8,0	-14,9
Private households	1 274	1 194	1 166	-28	-108	-2,3	-8,5
Western Cape	1 865	1 898	1 868	-30	3	-1,6	0,2
Formal sector (Non-agricultural)	1 457	1 423	1 419	-4	-38	-0,3	-2,6
Informal sector (Non-agricultural)	174	198	187	-11	13	-5,6	7,5
Agriculture	119	146	127	-19	8	-13,0	6,7
Private households	115	132	134	2	19	1,5	16,5
Eastern Cape	1 315	1 353	1 258	-95	-57	-7,0	-4,3
Formal sector (Non-agricultural)	806	857	803	-54	-3	-6,3	-0,4
Informal sector (Non-agricultural)	296	287	272	-15	-24	-5,2	-8,1
Agriculture	74	86	73	-13	-1	-15,1	-1,4
Private households	140	122	110	-12	-30	-9,8	-21,4
Northern Cape	308	283	255	-28	-53	-9,9	-17,2
Formal sector (Non-agricultural)	185	172	161	-11	-24	-6,4	-13,0
Informal sector (Non-agricultural)	28	26	29	3	1	11,5	3,6
Agriculture	64	57	40	-17	-24	-29,8	-37,5
Private households	31	28	26	-2	-5	-7,1	-16,1
Free State	842	773	758	-15	-84	-1,9	-10,0
Formal sector (Non-agricultural)	540	470	458	-12	-82	-2,6	-15,2
Informal sector (Non-agricultural)	127	131	130	-1	3	-0,8	2,4
Agriculture	83	87	84	-3	1	-3,4	1,2
Private households	91	85	85	0	-6	0,0	-6,6
KwaZulu-Natal	2 583	2 457	2 458	1	-125	0,0	-4,8
Formal sector (Non-agricultural)	1 674	1 662	1 653	-9	-21	-0,5	-1,3
Informal sector (Non-agricultural)	493	447	458	11	-35	2,5	-7,1
Agriculture	151	103	113	10	-38	9,7	-25,2
Private households	265	245	234	-11	-31	-4,5	-11,7
North West	868	849	789	-60	-79	-7,1	-9,1
Formal sector (Non-agricultural)	605	617	570	-47	-35	-7,6	-5,8
Informal sector (Non-agricultural)	112	108	104	-4	-8	-3,7	-7,1
Agriculture	59	45	37	-8	-22	-17,8	-37,3
Private households	92	79	77	-2	-15	-2,5	-16,3
Gauteng	4 063	3 953	3 719	-234	-344	-5,9	-8,5
Formal sector (Non-agricultural)	3 134	3 110	2 971	-139	-163	-4,5	-5,2
Informal sector (Non-agricultural)	500	468	390	-78	-110	-16,7	-22,0
Agriculture	65	40	42	2	-23	5,0	-35,4
Private households	363	334	316	-18	-47	-5,4	-12,9
Mpumalanga	924	897	881	-16	-43	-1,8	-4,7
Formal sector (Non-agricultural)	547	533	527	-6	-20	-1,1	-3,7
Informal sector (Non-agricultural)	207	198	182	-16	-25	-8,1	-12,1
Agriculture	82	79	74	-5	-8	-6,3	-9,8
Private households	87	88	98	10	11	11,4	12,6
Limpopo	888	906	899	-7	11	-0,8	1,2
Formal sector (Non-agricultural)	491	511	509	-2	18	-0,4	3,7
Informal sector (Non-agricultural)	237	246	243	-3	6	-1,2	2,5
Agriculture	69	68	63	-5	-6	-7,4	-8,7
Private households	90	81	84	3	-6	3,7	-6,7

Due to rounding, numbers do not necessarily add up to totals.

Table 3.5: Employed by sex and occupation – South Africa

	Jul–Sep 2008	Apr–Jun 2009	Jul–Sep 2009	Qrt to Qrt change	Year-on-year change	Qrt to Qrt change	Year-on- year change
	Thousand	Thousand	Thousand	Thousand	Thousand	Per cent	Per cent
Both sexes	13 655	13 369	12 885	-484	-770	-3,6	-5,6
Manager	1 054	1 022	994	-28	-60	-2,7	-5,7
Professional	727	654	703	49	-24	7,5	-3,3
Technician	1 485	1 550	1 493	-57	8	-3,7	0,5
Clerk	1 462	1 440	1 431	-9	-31	-0,6	-2,1
Sales and services	1 780	1 804	1 792	-12	12	-0,7	0,7
Skilled agriculture	99	83	72	-11	-27	-13,3	-27,3
Craft and related trade	1 881	1 779	1 568	-211	-313	-11,9	-16,6
Plant and machine operator	1 208	1 186	1 097	-89	-111	-7,5	-9,2
Elementary	2 960	2 889	2 812	-77	-148	-2,7	-5,0
Domestic worker	996	963	924	-39	-72	-4,0	-7,2
Other	1					.	.
Women	6 034	5 973	5 782	-191	-252	-3,2	-4,2
Manager	309	325	303	-22	-6	-6,8	-1,9
Professional	357	296	326	30	-31	10,1	-8,7
Technician	829	824	802	-22	-27	-2,7	-3,3
Clerk	1 009	1 019	1 009	-10	0	-1,0	0,0
Sales and services	843	895	882	-13	39	-1,5	4,6
Skilled agriculture	30	17	15	-2	-15	-11,8	-50,0
Craft and related trade	280	239	194	-45	-86	-18,8	-30,7
Plant and machine operator	188	180	173	-7	-15	-3,9	-8,0
Elementary	1 227	1 247	1 185	-62	-42	-5,0	-3,4
Domestic worker	962	931	894	-37	-68	-4,0	-7,1
Other	0					.	.
Men	7 621	7 397	7 102	-295	-519	-4,0	-6,8
Manager	745	697	691	-6	-54	-0,9	-7,2
Professional	370	358	377	19	7	5,3	1,9
Technician	656	727	691	-36	35	-5,0	5,3
Clerk	453	421	422	1	-31	0,2	-6,8
Sales and services	937	909	910	1	-27	0,1	-2,9
Skilled agriculture	70	67	57	-10	-13	-14,9	-18,6
Craft and related trade	1 600	1 540	1 374	-166	-226	-10,8	-14,1
Plant and machine operator	1 021	1 006	924	-82	-97	-8,2	-9,5
Elementary	1 734	1 642	1 627	-15	-107	-0,9	-6,2
Domestic worker	34	32	30	-2	-4	-6,3	-11,8
Other	1					.	.

For all values of 10 000 or lower the sample size is too small for reliable estimates.
Due to rounding, numbers do not necessarily add up to totals.

Table 3.6: Employed by sex and status in employment – South Africa							
	Jul–Sep 2008	Apr–Jun 2009	Jul–Sep 2009	Qrt to Qrt change	Year-on-year change	Qrt to Qrt change	Year-on- year change
	Thousand	Thousand	Thousand	Thousand	Thousand	Per cent	Per cent
Both sexes	13 655	13 369	12 885	-484	-770	-3,6	-5,6
Employee	11 527	11 292	11 000	-292	-527	-2,6	-4,6
Employer	763	722	627	-95	-136	-13,2	-17,8
Own-account worker	1 237	1 233	1 141	-92	-96	-7,5	-7,8
Unpaid household member	127	122	116	-6	-11	-4,9	-8,7
Women	6 034	5 973	5 782	-191	-252	-3,2	-4,2
Employee	5 105	5 099	4 974	-125	-131	-2,5	-2,6
Employer	176	156	129	-27	-47	-17,3	-26,7
Own-account worker	663	627	592	-35	-71	-5,6	-10,7
Unpaid household member	91	90	86	-4	-5	-4,4	-5,5
Men	7 621	7 397	7 102	-295	-519	-4,0	-6,8
Employee	6 422	6 193	6 026	-167	-396	-2,7	-6,2
Employer	588	566	498	-68	-90	-12,0	-15,3
Own-account worker	575	606	549	-57	-26	-9,4	-4,5
Unpaid household member	36	32	30	-2	-6	-6,3	-16,7

Due to rounding, numbers do not necessarily add up to totals.

Table 3.7: Employed by sex, usual hours of work – South Africa							
	Jul–Sep 2008	Apr–Jun 2009	Jul–Sep 2009	Qrt to Qrt change	Year-on- year change	Qrt to Qrt change	Year-on- year change
	Thousand	Thousand	Thousand	Thousand	Thousand	Per cent	Per cent
Both sexes	13 655	13 369	12 885	-484	-770	-3,6	-5,6
Working less than 15 hours per week	300	284	272	-12	-28	-4,2	-9,3
Working 15–29 hours per week	811	843	812	-31	1	-3,7	0,1
Working 30–39 hours per week	1 039	972	971	-1	-68	-0,1	-6,5
Working 40–45 hours per week	6 965	7 187	6 864	-323	-101	-4,5	-1,5
Working more than 45 hours per week	4 540	4 083	3 966	-117	-574	-2,9	-12,6
Women	6 034	5 973	5 782	-191	-252	-3,2	-4,2
Working less than 15 hours per week	201	182	164	-18	-37	-9,9	-18,4
Working 15–29 hours per week	550	566	543	-23	-7	-4,1	-1,3
Working 30–39 hours per week	642	629	615	-14	-27	-2,2	-4,2
Working 40–45 hours per week	3 011	3 110	3 009	-101	-2	-3,2	-0,1
Working more than 45 hours per week	1 630	1 485	1 451	-34	-179	-2,3	-11,0
Men	7 621	7 397	7 102	-295	-519	-4,0	-6,8
Working less than 15 hours per week	99	102	108	6	9	5,9	9,1
Working 15–29 hours per week	261	277	269	-8	8	-2,9	3,1
Working 30–39 hours per week	397	343	356	13	-41	3,8	-10,3
Working 40–45 hours per week	3 954	4 077	3 855	-222	-99	-5,4	-2,5
Working more than 45 hours per week	2 910	2 598	2 515	-83	-395	-3,2	-13,6

Due to rounding, numbers do not necessarily add up to totals.

Table 3.8: Time-related underemployment – South Africa							
	Jul–Sep 2008	Apr–Jun 2009	Jul–Sep 2009	Qrt to Qrt change	Year-on-year change	Qrt to Qrt change	Year-on-year change
	Thousand	Thousand	Thousand	Thousand	Thousand	Per cent	Per cent
Both sexes	627	651	667	16	40	2,5	6,4
Women	398	420	423	3	25	0,7	6,3
Men	228	230	245	15	17	6,5	7,5
As percentage of the labour force (Both sexes)	3,5	3,7	3,9	0,2	0,4		
Women	4,9	5,2	5,4	0,2	0,5		
Men	2,4	2,4	2,7	0,3	0,3		
As percentage of total employment (Both sexes)	4,6	4,9	5,2	0,3	0,6		
Women	6,6	7,0	7,3	0,3	0,7		
Men	3,0	3,1	3,4	0,3	0,4		
Industry	627	651	667	16	40	2,5	6,4
Agriculture	22	16	13	-3	-9	-18,8	-40,9
Mining	0					.	.
Manufacturing	40	41	43	2	3	4,9	7,5
Utilities	1					.	.
Construction	54	56	51	-5	-3	-8,9	-5,6
Trade	131	131	134	3	3	2,3	2,3
Transport	19	20	18	-2	-1	-10,0	-5,3
Finance	40	34	37	3	-3	8,8	-7,5
Community and social services	95	98	100	2	5	2,0	5,3
Private households	225	253	271	18	46	7,1	20,4
Occupation	627	651	667	16	40	2,5	6,4
Manager	15	10	14	4	-1	40,0	-6,7
Professional	15	16	11	-5	-4	-31,3	-26,7
Technician	35	50	42	-8	7	-16,0	20,0
Clerk	24	28	23	-5	-1	-17,9	-4,2
Sales and services	68	59	67	8	-1	13,6	-1,5
Skilled agriculture	4	4	3	-1	-1	-25,0	-25,0
Craft and related trade	68	58	56	-2	-12	-3,4	-17,6
Plant and machine operator	20	15	22	7	2	46,7	10,0
Elementary	207	207	223	16	16	7,7	7,7
Domestic worker	170	203	205	2	35	1,0	20,6

For all values of 10 000 or lower the sample size is too small for reliable estimates.
 Due to rounding, numbers do not necessarily add up to totals.

Table 4: Characteristics of the unemployed – South Africa

	Jul–Sep 2008	Apr–Jun 2009	Jul–Sep 2009	Qrt to Qrt change	Year-on- year change	Qrt to Qrt change	Year- on-year change
	Thousand	Thousand	Thousand	Thousand	Thousand	Per cent	Per cent
Unemployed	4 122	4 125	4 192	67	70	1,6	1,7
Job losers	1 268	1 427	1 477	50	209	3,5	16,5
Job leavers	386	345	338	-7	-48	-2,0	-12,4
New entrants	1 745	1 670	1 615	-55	-130	-3,3	-7,4
Re-entrants	185	173	193	20	8	11,6	4,3
Other	538	510	570	60	32	11,8	5,9
Unemployed	4 122	4 125	4 192	67	70	1,6	1,7
Long-term unemployment (1 year and more)	2 415	2 484	2 489	5	74	0,2	3,1
Short-term unemployment (less than 1 year)	1 707	1 641	1 703	62	-4	3,8	-0,2
Long-term unemployment (%)							
Proportion of the labour force	13,6	14,2	14,6	0,4	1,0		
Proportion of the unemployed	58,6	60,2	59,4	-0,8	0,8		
Those who have worked in the past 5 years							
Previous occupation	1 839	1 946	2 008	62	169	3,2	9,2
Manager	36	30	32	2	-4	6,7	-11,1
Professional	27	25	23	-2	-4	-8,0	-14,8
Technician	81	81	86	5	5	6,2	6,2
Clerk	178	193	213	20	35	10,4	19,7
Sales and services	262	306	292	-14	30	-4,6	11,5
Skilled agriculture	6	7	8	1	2	14,3	33,3
Craft and related trade	331	356	393	37	62	10,4	18,7
Plant and machine operator	143	174	188	14	45	8,0	31,5
Elementary	576	595	614	19	38	3,2	6,6
Domestic worker	196	180	158	-22	-38	-12,2	-19,4
Other	0	0				.	.
Previous industry	1 839	1 946	2 008	62	169	3,2	9,2
Agriculture	116	124	113	-11	-3	-8,9	-2,6
Mining	26	27	38	11	12	40,7	46,2
Manufacturing	274	316	312	-4	38	-1,3	13,9
Utilities	11	12	9	-3	-2	-25,0	-18,2
Construction	275	329	353	24	78	7,3	28,4
Trade	457	459	475	16	18	3,5	3,9
Transport	95	95	96	1	1	1,1	1,1
Finance	169	207	231	24	62	11,6	36,7
Community and social services	172	146	174	28	2	19,2	1,2
Private households	240	230	206	-24	-34	-10,4	-14,2
Other	2	0	1	1	-1	.	-50,0

For all values of 10 000 or lower the sample size is too small for reliable estimates.

Due to rounding, numbers do not necessarily add up to totals.

Table 5: Characteristics of the not economically active – South Africa

	Jul-Sep 2008	Apr-Jun 2009	Jul-Sep 2009	Qrt to Qrt change	Year-on-year change	Qrt to Qrt change	Year-on- year change
	Thousand	Thousand	Thousand	Thousand	Thousand	Per cent	Per cent
Not economically active	13 024	13 585	14 095	510	1 071	3,8	8,2
Student	5 718	5 693	5 902	209	184	3,7	3,2
Home-maker	2 579	2 652	2 757	105	178	4,0	6,9
Illness/disability	1 822	1 799	1 821	22	-1	1,2	-0,1
Too old/young to work	1 014	1 062	1 109	47	95	4,4	9,4
Discouraged work seekers	1 071	1 517	1 632	115	561	7,6	52,4
Other	820	862	875	13	55	1,5	6,7
Inactivity rate by age (Both sexes)	42,3	43,7	45,2	1,5	2,9		
15–24 yrs	69,8	71,4	73,6	2,2	3,8		
25–54 yrs	24,8	26,1	27,2	1,1	2,4		
55–64 yrs	56,8	58,1	59,6	1,5	2,8		
Inactivity rate by age (Women)	49,3	50,5	51,7	1,2	2,4		
15–24 yrs	72,7	74,1	75,9	1,8	3,2		
25–54 yrs	34,1	35,4	36,2	0,8	2,1		
55–64 yrs	67,4	68,5	70,2	1,7	2,8		
Inactivity rate by age (Men)	34,6	36,2	38,1	1,9	3,5		
15–24 yrs	67,0	68,8	71,4	2,6	4,4		
25–54 yrs	14,3	15,6	17,1	1,5	2,8		
55–64 yrs	43,4	45,0	46,2	1,2	2,8		

Due to rounding, numbers do not necessarily add up to totals.

Table 6: Socio-demographic characteristics – South Africa

	Jul-Sep 2008	Apr-Jun 2009	Jul-Sep 2009	Qrt to Qrt change	Year-on-year change	Qrt to Qrt change	Year-on-year change
	Thousand	Thousand	Thousand	Thousand	Thousand	Per cent	Per cent
Age group of the employed	13 655	13 369	12 885	-484	-770	-3,6	-5,6
15–24 yrs	1 602	1 489	1 373	-116	-229	-7,8	-14,3
25–34 yrs	4 663	4 480	4 322	-158	-341	-3,5	-7,3
35–44 yrs	3 618	3 674	3 595	-79	-23	-2,2	-0,6
45–54 yrs	2 630	2 586	2 504	-82	-126	-3,2	-4,8
55–64 yrs	1 142	1 140	1 090	-50	-52	-4,4	-4,6
Age group of the unemployed	4 122	4 125	4 192	67	70	1,6	1,7
15–24 yrs	1 400	1 382	1 286	-96	-114	-6,9	-8,1
25–34 yrs	1 652	1 678	1 740	62	88	3,7	5,3
35–44 yrs	722	685	752	67	30	9,8	4,2
45–54 yrs	269	317	334	17	65	5,4	24,2
55–64 yrs	80	64	79	15	-1	23,4	-1,3
Age group of the not economically active	13 024	13 585	14 095	510	1 071	3,8	8,2
15–24 yrs	6 950	7 175	7 418	243	468	3,4	6,7
25–34 yrs	1 970	2 146	2 248	102	278	4,8	14,1
35–44 yrs	1 212	1 286	1 328	42	116	3,3	9,6
45–54 yrs	1 289	1 307	1 376	69	87	5,3	6,7
55–64 yrs	1 604	1 671	1 724	53	120	3,2	7,5
Highest level of education of the employed	13 655	13 369	12 885	-484	-770	-3,6	-5,6
No schooling	580	490	455	-35	-125	-7,1	-21,6
Less than primary completed	1 444	1 256	1 162	-94	-282	-7,5	-19,5
Primary completed	720	704	646	-58	-74	-8,2	-10,3
Secondary not completed	4 492	4 455	4 178	-277	-314	-6,2	-7,0
Secondary completed	3 921	3 871	3 820	-51	-101	-1,3	-2,6
Tertiary	2 341	2 466	2 454	-12	113	-0,5	4,8
Other	157	128	168	40	11	31,3	7,0
Highest level of education of the unemployed	4 122	4 125	4 192	67	70	1,6	1,7
No schooling	93	94	90	-4	-3	-4,3	-3,2
Less than primary completed	396	383	370	-13	-26	-3,4	-6,6
Primary completed	236	203	225	22	-11	10,8	-4,7
Secondary not completed	1 906	1 863	1 918	55	12	3,0	0,6
Secondary completed	1 264	1 342	1 322	-20	58	-1,5	4,6
Tertiary	199	213	239	26	40	12,2	20,1
Other	28	27	29	2	1	7,4	3,6
Highest level of education of the not economically active	13 024	13 585	14 095	510	1 071	3,8	8,2
No schooling	894	916	882	-34	-12	-3,7	-1,3
Less than primary completed	1 941	1 911	1 992	81	51	4,2	2,6
Primary completed	1 116	1 080	1 102	22	-14	2,0	-1,3
Secondary not completed	6 865	7 143	7 397	254	532	3,6	7,7
Secondary completed	1 799	2 104	2 237	133	438	6,3	24,3
Tertiary	301	334	360	26	59	7,8	19,6
Other	108	97	125	28	17	28,9	15,7
Current marital status of the employed	13 655	13 369	12 885	-484	-770	-3,6	-5,6
Married	5 603	5 464	5 376	-88	-227	-1,6	-4,1
Living together like husband and wife	1 514	1 562	1 515	-47	1	-3,0	0,1
Widow/widower	491	446	425	-21	-66	-4,7	-13,4
Divorced or separated	500	501	434	-67	-66	-13,4	-13,2
Never married	5 547	5 396	5 135	-261	-412	-4,8	-7,4
Current marital status of the unemployed	4 122	4 125	4 192	67	70	1,6	1,7
Married	641	662	713	51	72	7,7	11,2
Living together like husband and wife	452	458	504	46	52	10,0	11,5
Widow/widower	55	56	53	-3	-2	-5,4	-3,6
Divorced or separated	85	67	68	1	-17	1,5	-20,0
Never married	2 889	2 882	2 854	-28	-35	-1,0	-1,2
Current marital status of the not economically active	13 024	13 585	14 095	510	1 071	3,8	8,2
Married	2 705	2 766	2 873	107	168	3,9	6,2
Living together like husband and wife	711	671	739	68	28	10,1	3,9
Widow/widower	634	642	660	18	26	2,8	4,1
Divorced or separated	233	230	236	6	3	2,6	1,3
Never married	8 741	9 276	9 586	310	845	3,3	9,7

Due to rounding, numbers do not necessarily add up to totals.

Table 7: Involvement in non-market activities and labour market status by province

		Jul-Sep 2008	Apr-Jun 2009	Jul-Sep 2009	Qrt to Qrt change	Year-on- year change	Qrt to Qrt change	Year-on- year change
		Thousand	Thousand	Thousand	Thousand	Thousand	Per cent	Per cent
South Africa	Subsistence farming	1 214	1 386	1 232	-154	18	-11,1	1,5
	Fetching water or collecting wood/dung	3 260	2 965	3 038	73	-222	2,5	-6,8
	Produce other goods for household use	66	55	52	-3	-14	-5,5	-21,2
	Construction or major repairs to own or household'	222	154	144	-10	-78	-6,5	-35,1
	Hunting or fishing for household use	15	11	17	6	2	54,5	13,3
	Involvement in at least one activity	3 920	3 712	3 711	-1	-209	0,0	-5,3
	Unemployed	692	560	548	-12	-144	-2,1	-20,8
Not economically active	3 228	3 151	3 163	12	-65	0,4	-2,0	
Eastern Cape	Subsistence farming	453	519	455	-64	2	-12,3	0,4
	Fetching water or collecting wood/dung	796	589	654	65	-142	11,0	-17,8
	Produce other goods for household use	6	2	2	0	-4	0,0	-66,7
	Construction or major repairs to own or household'	66	4	14	10	-52	250,0	-78,8
	Hunting or fishing for household use	2	1				.	.
	Involvement in at least one activity	1 021	908	928	20	-93	2,2	-9,1
	Unemployed	131	129	104	-25	-27	-19,4	-20,6
Not economically active	890	780	823	43	-67	5,5	-7,5	
Northern Cape	Subsistence farming	4	3	8	5	4	166,7	100,0
	Fetching water or collecting wood/dung	76	81	82	1	6	1,2	7,9
	Produce other goods for household use		1	0	-1		-100,0	.
	Construction or major repairs to own or household'	1	0	0	0	-1	.	-100,0
	Hunting or fishing for household use	0	0	0	0	0	.	.
	Involvement in at least one activity	79	84	84	0	5	0,0	6,3
	Unemployed	20	20	19	-1	-1	-5,0	-5,0
Not economically active	59	63	65	2	6	3,2	10,2	
Free State	Subsistence farming	23	34	39	5	16	14,7	69,6
	Fetching water or collecting wood/dung	14	16	20	4	6	25,0	42,9
	Produce other goods for household use	1	8	7	-1	6	-12,5	600,0
	Construction or major repairs to own or household'	4	9	8	-1	4	-11,1	100,0
	Hunting or fishing for household use	1	5	7	2	6	40,0	600,0
	Involvement in at least one activity	41	56	57	1	16	1,8	39,0
	Unemployed	8	12	19	7	11	58,3	137,5
Not economically active	32	44	38	-6	6	-13,6	18,8	

For all values of 10 000 or lower the sample size is too small for reliable estimates.
 Due to rounding, numbers do not necessarily add up to totals.
 Western Cape had values lower than 10 000

Table 7: Involvement in non-market activities and labour market status by province (concluded)

		Jul-Sep 2008	Apr-Jun 2009	Jul-Sep 2009	Qrt to Qrt change	Year-on- year change	Qrt to Qrt change	Year-on- year change
		Thousand	Thousand	Thousand	Thousand	Thousand	Per cent	Per cent
KwaZulu-Natal	Subsistence farming	441	531	450	-81	9	-15,3	2,0
	Fetching water or collecting wood/dung	1 014	1 080	997	-83	-17	-7,7	-1,7
	Produce other goods for household use	38	23	29	6	-9	26,1	-23,7
	Construction or major repairs to own or household'	117	113	98	-15	-19	-13,3	-16,2
	Hunting or fishing for household use	6	3	2	-1	-4	-33,3	-66,7
	Involvement in at least one activity	1 207	1 252	1 176	-76	-31	-6,1	-2,6
	Unemployed	200	165	157	-8	-43	-4,8	-21,5
	Not economically active	1 007	1 087	1 019	-68	12	-6,3	1,2
North West	Subsistence farming	53	76	105	29	52	38,2	98,1
	Fetching water or collecting wood/dung	178	204	256	52	78	25,5	43,8
	Produce other goods for household use	1	2	0	-2	-1	-100,0	-100,0
	Construction or major repairs to own or household'	2	1				.	.
	Hunting or fishing for household use	1		0		-1	.	-100,0
	Involvement in at least one activity	194	237	291	54	97	22,8	50,0
	Unemployed	49	56	74	18	25	32,1	51,0
	Not economically active	146	181	218	37	72	20,4	49,3
Gauteng	Subsistence farming	69	78	65	-13	-4	-16,7	-5,8
	Fetching water or collecting wood/dung	36	19	17	-2	-19	-10,5	-52,8
	Produce other goods for household use	2	10	3	-7	1	-70,0	50,0
	Construction or major repairs to own or household'	4	11	4	-7	0	-63,6	0,0
	Hunting or fishing for household use			3			.	.
	Involvement in at least one activity	110	115	91	-24	-19	-20,9	-17,3
	Unemployed	59	44	38	-6	-21	-13,6	-35,6
	Not economically active	52	71	54	-17	2	-23,9	3,8
Mpumalanga	Subsistence farming	102	55	55	0	-47	0,0	-46,1
	Fetching water or collecting wood/dung	243	187	208	21	-35	11,2	-14,4
	Produce other goods for household use	14	6	9	3	-5	50,0	-35,7
	Construction or major repairs to own or household'	22	9	13	4	-9	44,4	-40,9
	Hunting or fishing for household use	0	1	0	-1	0	-100,0	.
	Involvement in at least one activity	331	228	247	19	-84	8,3	-25,4
	Unemployed	65	42	51	9	-14	21,4	-21,5
	Not economically active	267	186	197	11	-70	5,9	-26,2
Limpopo	Subsistence farming	62	88	53	-35	-9	-39,8	-14,5
	Fetching water or collecting wood/dung	891	783	802	19	-89	2,4	-10,0
	Produce other goods for household use	4	4	1	-3	-3	-75,0	-75,0
	Construction or major repairs to own or household'	5	7	5	-2	0	-28,6	0,0
	Hunting or fishing for household use	5	1	1	0	-4	0,0	-80,0
	Involvement in at least one activity	920	826	828	2	-92	0,2	-10,0
	Unemployed	150	92	86	-6	-64	-6,5	-42,7
	Not economically active	771	734	742	8	-29	1,1	-3,8

For all values of 10 000 or lower the sample size is too small for reliable estimates. Due to rounding, numbers do not necessarily add up to totals.

Appendix 2A: Sampling variability for labour force characteristics by sex						
	Apr–Jun 2009 CV	Jul–Sep 2009 CV	Estimate	Lower 95%	Upper 95%	P-Value
Both sexes						
Population 15–64 yrs						
Labour Force	0,5	0,5	-418	-607	-228	0,00
Employed	0,6	0,7	-484	-652	-318	0,00
Formal sector (Non-agricultural)	0,8	0,9	-283	-422	-145	0,00
Informal sector (Non-agricultural)	2,1	2,5	-116	-217	-14	0,03
Agriculture	5,1	5,3	-57	-133	17	0,13
Private households	3,1	3,1	-28	-96	40	0,41
Unemployed	2,0	1,6	67	-100	235	0,43
Not economically active	0,7	0,7	510	321	698	0,00
Discouraged work-seekers	3,3	3,7	115	-2	230	0,05
Other(not economically active)	0,7	0,7	395	234	557	0,00
Rates (%)						
Unemployment rate	1,7	1,5	0,9	0,1	1,8	0,02
Employed / population ratio (Absorption)	0,6	0,7	-1,7	-2,2	-1,2	0,00
Labour force participation rate	0,5	0,5	-1,5	-2,1	-0,9	0,00
Women						
Population 15–64 yrs						
Labour Force	0,8	0,8	-175	-307	-43	0,01
Employed	0,8	0,9	-191	-297	-84	0,00
Formal sector (Non-agricultural)	1,3	1,3	-114	-195	-31	0,01
Informal sector (Non-agricultural)	2,9	3,4	-53	-114	8	0,09
Agriculture	6,7	7,4	6	-27	39	0,71
Private households	3,2	3,1	-30	-86	25	0,28
Unemployed	2,7	2,2	15	-102	132	0,80
Not economically active	0,7	0,7	216	84	349	0,00
Discouraged work-seekers	3,5	3,8	45	-27	116	0,22
Other(not economically active)	0,8	0,8	172	55	289	0,00
Rates (%)						
Unemployment rate	2,3	1,9	0,8	-0,5	2,0	0,23
Employed / population ratio (Absorption)	0,8	0,9	-1,3	-1,9	-0,6	0,00
Labour force participation rate	0,7	0,8	-1,2	-2,0	-0,4	0,00
Men						
Population 15–64 yrs						
Labour Force	0,6	0,6	-242	-352	-133	0,00
Employed	0,7	0,8	-295	-409	-180	0,00
Formal sector (Non-agricultural)	1,0	1,0	-171	-280	-61	0,00
Informal sector (Non-agricultural)	2,7	3,0	-63	-140	14	0,11
Agriculture	5,5	5,9	-64	-120	-7	0,03
Private households	6,1	6,5	2	-32	36	0,90
Unemployed	2,2	1,9	53	-45	150	0,29
Not economically active	1,0	0,9	293	186	401	0,00
Discouraged work-seekers	4,4	5,2	70	-6	145	0,07
Other(not economically active)	1,0	0,9	223	129	318	0,00
Rates (%)						
Unemployment rate	2,0	1,8	1,1	0,2	2,1	0,02
Employed / population ratio (Absorption)	0,7	0,8	-2,2	-2,9	-1,4	0,00
Labour force participation rate	0,5	0,6	-1,9	-2,6	-1,1	0,00

Appendix 2.1A: Sampling variability for labour force characteristics by population group						
	Apr–Jun 2009 CV	Jul–Sep 2009 CV	Estimate	Lower 95%	Upper 95%	P-Value
South Africa						
Population 15–64 yrs						
Labour Force	0,5	0,5	-418	-607	-228	0,00
Employed	0,6	0,7	-484	-652	-318	0,00
Unemployed	2,0	1,7	67	-100	235	0,43
Not economically active	0,7	0,7	510	321	698	0,00
Rates (%)						
Unemployment rate	1,7	1,5	0,9	0,1	1,8	0,02
Employed / population ratio (Absorption)	0,6	0,7	-1,7	-2,2	-1,2	0,00
Labour force participation rate	0,5	0,5	-1,5	-2,1	-0,9	0,00
Black/African						
Population 15–64 yrs						
Labour Force	0,7	0,7	-333	-505	-161	0,00
Employed	0,8	0,8	-354	-499	-209	0,00
Unemployed	2,2	1,8	22	-137	179	0,79
Not economically active	0,8	0,7	418	243	593	0,00
Rates (%)						
Unemployment rate	1,8	1,5	0,9	-0,1	2,0	0,09
Employed / population ratio (Absorption)	0,8	0,8	-1,6	-2,2	-1,0	0,00
Labour force participation rate	0,7	0,7	-1,6	-2,3	-0,9	0,00
Coloured						
Population 15–64 yrs						
Labour Force	1,2	1,2	-15	-68	38	0,58
Employed	1,7	1,9	-53	-105	-1	0,05
Unemployed	4,6	4,3	38	1	75	0,05
Not economically active	2,0	2,2	25	-20	71	0,27
Rates (%)						
Unemployment rate	4,6	4,4	2,1	0,3	3,9	0,02
Employed / population ratio (Absorption)	1,6	1,9	-1,9	-3,6	-0,4	0,02
Labour force participation rate	1,0	1,2	-0,7	-2,2	0,8	0,34
Indian/Asian						
Population 15–64 yrs						
Labour Force	2,7	2,7	-2	-24	21	0,88
Employed	2,9	4,2	-8	-41	25	0,63
Unemployed	9,6	11,6	7	-14	26	0,53
Not economically active	3,4	3,7	6	-13	25	0,53
Rates (%)						
Unemployment rate	9,1	13,1	1,4	-2,7	5,3	0,53
Employed / population ratio (Absorption)	2,4	4,2	-1,1	-4,4	2,1	0,48
Labour force participation rate	2,2	2,7	-0,4	-2,3	1,3	0,60
White						
Population 15–64 yrs						
Labour Force	1,1	1,2	-68	-121	-14	0,01
Employed	1,1	1,3	-70	-121	-18	0,01
Unemployed	9,8	10,5	1	-24	28	0,89
Not economically active	2,3	2,5	60	9	110	0,02
Rates (%)						
Unemployment rate	9,7	10,4	0,2	-1,0	1,4	0,69
Employed / population ratio (Absorption)	1,0	1,3	-2,1	-3,6	-0,5	0,01
Labour force participation rate	0,9	1,2	-2,0	-3,6	-0,4	0,01

Appendix 2.2A: Sampling variability for labour force characteristics by province						
	Apr–Jun 2009 CV	Jul–Sep 2009 CV	Estimate	Lower 95%	Upper 95%	P-Value
South Africa						
Population 15–64 yrs						
Labour Force	0,5	0,5	-418	-607	-228	0,00
Employed	0,6	0,7	-484	-652	-318	0,00
Unemployed	2,0	1,6	67	-100	235	0,43
Not economically active	0,7	0,7	510	321	698	0,00
Discouraged work-seekers	3,3	3,7	115	-2	230	0,05
Other(not economically active)	0,7	0,7	395	234	557	0,00
Rates (%)						
Unemployment rate	1,7	1,5	0,9	0,1	1,8	0,02
Employed / population ratio (Absorption)	0,6	0,7	-1,7	-2,2	-1,2	0,00
Labour force participation rate	0,5	0,5	-1,5	-2,1	-0,9	0,00
Western Cape						
Population 15–64 yrs						
Labour Force	1,1	1,2	21	-33	76	0,44
Employed	1,4	1,8	-30	-93	33	0,35
Unemployed	3,9	4,4	52	4	100	0,04
Not economically active	2,4	2,7	-11	-66	44	0,70
Discouraged work-seekers	29,0	31,2	5	-12	21	0,58
Other(not economically active)	2,3	2,7	-16	-62	32	0,52
Rates (%)						
Unemployment rate	3,7	4,3	2,0	0,0	3,9	0,05
Employed / population ratio (Absorption)	1,4	1,8	-1,0	-2,8	0,8	0,27
Labour force participation rate	1,1	1,2	0,4	-1,2	2,0	0,61
Eastern Cape						
Population 15–64 yrs						
Labour Force	3,4	3,0	-159	-267	-53	0,00
Employed	2,7	2,8	-95	-164	-26	0,01
Unemployed	8,9	6,0	-64	-152	23	0,15
Not economically active	2,9	2,2	172	68	275	0,00
Discouraged work-seekers	8,7	8,2	24	-20	67	0,29
Other(not economically active)	2,9	2,3	148	58	238	0,00
Rates (%)						
Unemployment rate	6,3	4,2	-1,1	-4,8	2,5	0,53
Employed / population ratio (Absorption)	2,6	2,8	-2,4	-4,2	-0,8	0,00
Labour force participation rate	3,3	3,0	-4,1	-6,7	-1,6	0,00
Northern Cape						
Population 15–64 yrs						
Labour Force	4,5	3,5	-20	-48	8	0,16
Employed	5,5	3,3	-28	-62	6	0,11
Unemployed	10,3	8,2	7	-7	23	0,31
Not economically active	5,3	3,7	21	-6	48	0,13
Discouraged work-seekers	26,4	17,0	-3	-14	8	0,57
Other(not economically active)	4,5	3,1	25	-1	50	0,06
Rates (%)						
Unemployment rate	9,2	6,0	3,4	-1,2	8,4	0,14
Employed / population ratio (Absorption)	5,5	3,3	-4,0	-8,8	0,8	0,10
Labour force participation rate	4,5	3,5	-3,1	-6,8	0,9	0,14
Free State						
Population 15–64 yrs						
Labour Force	1,9	1,5	2	-21	27	0,82
Employed	2,3	1,7	-15	-38	7	0,18
Unemployed	4,4	4,6	19	-4	41	0,11
Not economically active	2,5	2,0	0	-24	23	0,98
Discouraged work-seekers	11,2	9,9	-4	-19	11	0,63
Other(not economically active)	2,2	2,1	3	-17	24	0,74
Rates (%)						
Unemployment rate	3,9	3,8	1,7	-0,2	3,5	0,08
Employed / population ratio (Absorption)	2,3	1,7	-0,8	-2,1	0,3	0,14
Labour force participation rate	1,8	1,5	0,2	-1,1	1,3	0,90

Appendix 2.2A: Sampling variability for labour force characteristics by province (concluded)						
	Apr–Jun 2009 CV	Jul–Sep 2009 CV	Estimate	Lower 95%	Upper 95%	P-Value
KwaZulu-Natal						
Population 15–64 yrs						
Labour Force	1,7	1,7	-19	-121	83	0,72
Employed	1,8	2,1	1	-91	94	0,98
Unemployed	4,3	4,6	-20	-77	36	0,48
Not economically active	1,5	1,5	41	-60	142	0,43
Discouraged work-seekers	5,3	8,5	33	-44	112	0,40
Other(not economically active)	1,6	1,7	7	-72	86	0,86
Rates (%)						
Unemployment rate	3,8	4,4	-0,6	-2,2	1,1	0,52
Employed / population ratio (Absorption)	1,8	2,1	-0,1	-1,6	1,3	0,88
Labour force participation rate	1,7	1,7	-0,4	-2,1	1,1	0,57
North West						
Population 15–64 yrs						
Labour Force	3,1	3,4	-80	-136	-23	0,01
Employed	3,7	3,3	-60	-106	-15	0,01
Unemployed	6,2	7,8	-19	-66	28	0,43
Not economically active	3,5	3,4	83	26	141	0,00
Discouraged work-seekers	11,5	12,1	13	-19	46	0,40
Other(not economically active)	3,5	3,4	70	19	120	0,01
Rates (%)						
Unemployment rate	5,4	5,9	0,2	-3,2	3,8	0,88
Employed / population ratio (Absorption)	3,5	3,3	-2,8	-4,8	-0,8	0,01
Labour force participation rate	2,9	3,4	-3,7	-6,2	-1,3	0,00
Gauteng						
Population 15–64 yrs						
Labour Force	1,1	0,9	-128	-233	-24	0,02
Employed	1,3	1,1	-234	-326	-142	0,00
Unemployed	4,1	3,0	106	5	207	0,04
Not economically active	2,5	2,0	146	55	238	0,00
Discouraged work-seekers	13,1	11,1	27	-19	73	0,25
Other(not economically active)	2,5	2,0	119	33	205	0,01
Rates (%)						
Unemployment rate	3,7	2,7	2,7	1,0	4,4	0,00
Employed / population ratio (Absorption)	1,2	1,1	-3,4	-4,6	-2,2	0,00
Labour force participation rate	1,0	0,9	-2,0	-3,2	-0,7	0,00
Mpumalanga						
Population 15–64 yrs						
Labour Force	2,3	2,2	-36	-74	2	0,06
Employed	3,0	3,1	-16	-63	32	0,52
Unemployed	5,1	4,3	-20	-53	12	0,21
Not economically active	2,7	2,7	44	6	82	0,02
Discouraged work-seekers	8,8	7,8	13	-8	34	0,22
Other(not economically active)	2,6	3,0	31	-8	70	0,12
Rates (%)						
Unemployment rate	4,9	4,3	-0,8	-3,6	1,8	0,50
Employed / population ratio (Absorption)	3,0	3,1	-0,9	-3,0	1,3	0,43
Labour force participation rate	2,2	2,4	-1,8	-3,5	-0,2	0,03
Limpopo						
Population 15–64 yrs						
Labour Force	2,5	2,6	1	-39	42	0,95
Employed	2,6	2,6	-7	-47	34	0,74
Unemployed	9,0	6,5	8	-33	49	0,70
Not economically active	1,6	1,7	13	-35	62	0,59
Discouraged work-seekers	7,6	7,9	6	-31	42	0,78
Other(not economically active)	1,9	1,7	8	-45	61	0,77
Rates (%)						
Unemployment rate	7,5	5,0	0,6	-2,4	3,7	0,68
Employed / population ratio (Absorption)	2,5	2,6	-0,3	-1,6	0,9	0,58
Labour force participation rate	2,4	2,6	-0,2	-1,4	1,2	0,83

Appendix 3.1A: Sampling variability for the employed by industry and sex						
	Apr–Jun 2009 CV	Jul–Sep 2009 CV	Estimate	Lower 95%	Upper 95%	P-Value
Both sexes	0,6	0,7	-484	-652	-318	0,00
Agriculture	5,1	5,3	-57	-133	17	0,13
Mining	7,5	7,6	-20	-55	16	0,28
Manufacturing	2,7	2,5	-150	-228	-71	0,00
Utilities	18,7	19,1	-12	-34	11	0,31
Construction	3,0	3,1	-60	-130	12	0,10
Trade	1,8	2,0	-110	-215	-4	0,04
Transport	3,8	3,5	10	-50	70	0,74
Finance	2,4	2,5	-28	-102	48	0,47
Community and social services	1,7	2,0	-37	-133	61	0,47
Private households	3,1	3,1	-28	-96	40	0,41
Women	0,8	0,9	-191	-297	-84	0,00
Agriculture	6,7	7,4	6	-27	39	0,71
Mining	14,4	13,0	0	-13	15	0,93
Manufacturing	4,1	4,5	-45	-85	-5	0,03
Utilities	21,4	27,9	-9	-20	3	0,13
Construction	7,6	9,1	6	-18	31	0,59
Trade	2,2	2,5	-53	-117	12	0,11
Transport	7,4	7,9	10	-19	40	0,50
Finance	3,4	3,4	-34	-82	14	0,16
Community and social services	2,1	2,1	-48	-116	20	0,17
Private households	3,2	3,1	-30	-86	25	0,28
Men	0,7	0,8	-295	-409	-180	0,00
Agriculture	5,5	5,9	-64	-120	-7	0,03
Mining	8,0	8,0	-20	-54	13	0,24
Manufacturing	3,2	3,0	-105	-175	-34	0,00
Utilities	21,1	20,5	-3	-22	16	0,75
Construction	3,2	3,3	-66	-133	1	0,05
Trade	2,4	2,8	-58	-137	22	0,16
Transport	4,1	4,1	0	-48	48	0,99
Finance	3,6	3,3	7	-51	64	0,82
Community and social services	2,7	3,1	12	-45	68	0,69
Private households	6,1	6,5	2	-32	36	0,90

Appendix 3.4A: Sampling variability for the employed by province and sector						
	Apr–Jun 2009 CV	Jul–Sep 2009 CV	Estimate	Lower 95%	Upper 95%	P-Value
South Africa	0,6	0,7	-484	-652	-318	0,00
Formal sector (Non-agricultural)	0,8	0,9	-283	-422	-145	0,00
Informal sector (Non-agricultural)	2,1	2,5	-116	-217	-14	0,03
Agriculture	5,1	5,3	-57	-133	17	0,13
Private households	3,1	3,1	-28	-96	40	0,41
Western Cape	1,4	1,8	-30	-93	33	0,35
Formal sector (Non-agricultural)	1,9	2,0	-4	-55	48	0,90
Informal sector (Non-agricultural)	8,2	7,9	-11	-44	23	0,53
Agriculture	12,0	12,0	-19	-60	22	0,37
Private households	8,7	6,0	2	-22	27	0,82
Eastern Cape	2,7	3,3	-95	-164	-26	0,01
Formal sector (Non-agricultural)	3,6	3,3	-54	-113	5	0,07
Informal sector (Non-agricultural)	5,3	8,1	-15	-53	23	0,43
Agriculture	18,3	27,0	-13	-38	10	0,26
Private households	10,5	12,0	-12	-31	7	0,21
Northern Cape	5,5	3,3	-28	-62	6	0,11
Formal sector (Non-agricultural)	3,4	4,0	-11	-23	1	0,06
Informal sector (Non-agricultural)	12,2	12,2	3	-5	11	0,52
Agriculture	30,3	9,0	-17	-54	19	0,35
Private households	8,4	11,1	-2	-7	3	0,40
Free State	2,3	1,7	-15	-38	7	0,18
Formal sector (Non-agricultural)	4,1	3,4	-12	-37	13	0,34
Informal sector (Non-agricultural)	6,4	6,5	-1	-16	14	0,87
Agriculture	11,2	11,9	-3	-18	13	0,79
Private households	8,1	9,4	0	-14	14	1,00
KwaZulu-Natal	1,8	2,1	1	-91	94	0,98
Formal sector (Non-agricultural)	2,3	2,4	-9	-83	66	0,83
Informal sector (Non-agricultural)	4,6	6,8	11	-46	69	0,70
Agriculture	10,2	12,5	10	-19	38	0,51
Private households	7,2	6,0	-11	-52	29	0,58
North West	3,7	3,3	-60	-106	-15	0,01
Formal sector (Non-agricultural)	4,2	4,6	-47	-93	-1	0,05
Informal sector (Non-agricultural)	7,2	6,7	-4	-23	13	0,59
Agriculture	23,4	22,9	-8	-17	2	0,13
Private households	10,2	9,3	-2	-13	10	0,81
Gauteng	1,3	1,1	-234	-326	-142	0,00
Formal sector (Non-agricultural)	1,7	1,7	-139	-226	-52	0,00
Informal sector (Non-agricultural)	5,4	5,5	-78	-135	-22	0,01
Agriculture	13,1	20,4	2	-15	19	0,84
Private households	6,7	8,4	-18	-56	20	0,35
Mpumalanga	3,0	3,1	-16	-63	32	0,52
Formal sector (Non-agricultural)	4,8	4,6	-6	-49	38	0,80
Informal sector (Non-agricultural)	6,8	5,2	-16	-35	3	0,09
Agriculture	11,5	11,5	-5	-19	9	0,51
Private households	8,3	7,1	10	-1	22	0,06
Limpopo	2,6	2,6	-7	-47	34	0,74
Formal sector (Non-agricultural)	5,4	4,7	-2	-33	28	0,87
Informal sector (Non-agricultural)	4,9	4,6	-3	-29	24	0,85
Agriculture	11,3	17,3	-5	-25	15	0,64
Private households	11,9	11,1	3	-11	17	0,67

Appendix 3.5A: Sampling variability for the employed by sex and occupation						
	Apr–Jun 2009 CV	Jul–Sep 2009 CV	Estimate	Lower 95%	Upper 95%	P-Value
Both sexes	0,6	0,7	-484	-652	-318	0,00
Manager	2,9	2,7	-28	-88	32	0,36
Professional	3,4	3,4	49	-11	108	0,11
Technician	2,6	3,1	-57	-137	22	0,16
Clerk	2,6	2,7	-9	-83	65	0,81
Sales and services	2,3	2,5	-12	-98	75	0,79
Skilled agriculture	9,8	12,6	-11	-32	9	0,27
Craft and related trade	2,3	2,4	-211	-291	-131	0,00
Plant and machine operator	2,9	2,9	-89	-152	-25	0,01
Elementary	1,9	1,9	-77	-187	33	0,17
Domestic worker	3,3	3,1	-39	-98	18	0,18
Women	0,8	0,9	-191	-297	-84	0,00
Manager	5,1	6,0	-22	-57	12	0,20
Professional	4,8	5,4	30	-13	74	0,17
Technician	2,7	3,3	-22	-74	31	0,42
Clerk	3,0	3,1	-10	-65	44	0,70
Sales and services	2,9	3,1	-13	-71	45	0,65
Skilled agriculture	19,8	21,5	-2	-9	7	0,72
Craft and related trade	5,7	6,8	-45	-74	-16	0,00
Plant and machine operator	7,0	6,7	-7	-29	14	0,49
Elementary	2,4	2,7	-62	-123	-1	0,05
Domestic worker	3,4	3,2	-37	-93	19	0,20
Men	0,7	0,8	-295	-409	-180	0,00
Manager	3,4	3,0	-6	-55	43	0,82
Professional	4,9	4,7	19	-16	53	0,30
Technician	3,9	4,2	-36	-87	15	0,17
Clerk	4,6	4,5	1	-39	43	0,94
Sales and services	3,1	3,4	1	-55	58	0,97
Skilled agriculture	10,8	13,6	-10	-27	7	0,25
Craft and related trade	2,5	2,5	-166	-240	-92	0,00
Plant and machine operator	3,2	3,3	-82	-142	-20	0,01
Elementary	2,5	2,5	-15	-103	73	0,74
Domestic worker	14,8	13,9	-2	-13	8	0,63

Appendix 2B: Sampling variability for labour force characteristics by sex						
	Jul-Sep 2008 CV	Jul-Sep 2009 CV	Estimate	Lower 95%	Upper 95%	P-Value
Both sexes						
Population 15–64 yrs						
Labour Force	0,4	0,5	-700	-915	-484	0,00
Employed	0,6	0,7	-770	-978	-562	0,00
Formal sector (Non-agricultural)	0,8	0,9	-366	-562	-171	0,00
Informal sector (Non-agricultural)	2,2	2,5	-182	-312	-51	0,01
Agriculture	5,2	5,3	-114	-206	-23	0,01
Private households	2,6	3,1	-108	-193	-23	0,01
Unemployed	1,8	1,6	70	-114	255	0,45
Not economically active	0,6	0,7	1 071	855	1 286	0,00
Discouraged work-seekers	4,2	3,7	561	428	693	0,00
Other(not economically active)	0,6	0,7	510	309	711	0,00
Rates (%)						
Unemployment rate	1,6	1,5	1,3	0,4	2,3	0,01
Employed / population ratio (Absorption)	0,6	0,7	-3,0	-3,7	-2,3	0,00
Labour force participation rate	0,4	0,5	-2,9	-3,6	-2,2	0,00
Women						
Population 15–64 yrs						
Labour Force	0,7	0,8	-322	-475	-169	0,00
Employed	0,8	0,9	-252	-384	-119	0,00
Formal sector (Non-agricultural)	1,3	1,3	-51	-168	68	0,40
Informal sector (Non-agricultural)	2,6	3,4	-82	-160	-4	0,04
Agriculture	7,0	7,4	-34	-80	12	0,15
Private households	2,6	3,1	-85	-154	-17	0,01
Unemployed	2,3	2,2	-70	-196	55	0,27
Not economically active	0,7	0,7	488	335	641	0,00
Discouraged work-seekers	4,4	3,8	273	193	354	0,00
Other(not economically active)	0,8	0,8	215	68	362	0,00
Rates (%)						
Unemployment rate	1,9	1,9	0,2	-1,2	1,5	0,79
Employed / population ratio (Absorption)	0,8	0,9	-1,9	-2,7	-1,1	0,00
Labour force participation rate	0,7	0,8	-2,4	-3,4	-1,6	0,00
Men						
Population 15–64 yrs						
Labour Force	0,4	0,6	-378	-500	-255	0,00
Employed	0,7	0,8	-519	-661	-375	0,00
Formal sector (Non-agricultural)	1,0	1,0	-316	-458	-174	0,00
Informal sector (Non-agricultural)	3,1	3,0	-100	-192	-8	0,03
Agriculture	5,7	5,9	-80	-146	-15	0,02
Private households	5,8	6,5	-22	-66	22	0,32
Unemployed	2,3	1,9	141	26	256	0,02
Not economically active	0,8	0,9	583	460	705	0,00
Discouraged work-seekers	5,5	5,2	287	210	365	0,00
Other(not economically active)	0,8	0,9	295	185	406	0,00
Rates (%)						
Unemployment rate	2,2	1,8	2,3	1,2	3,5	0,00
Employed / population ratio (Absorption)	0,7	0,8	-4,2	-5,2	-3,2	0,00
Labour force participation rate	0,4	0,6	-3,5	-4,3	-2,6	0,00

Appendix 2.1B: Sampling variability for labour force characteristics by population group						
	Jul-Sep 2008 CV	Jul-Sep 2009 CV	Estimate	Lower 95%	Upper 95%	P-Value
South Africa						
Population 15–64 yrs						
Labour Force	0,4	0,5	- 700	- 915	- 484	0,00
Employed	0,6	0,7	- 770	- 978	- 562	0,00
Unemployed	1,8	1,6	70	- 114	255	0,45
Not economically active	0,6	0,7	1 071	855	1 286	0,00
Rates (%)						
Unemployment rate	1,6	1,5	1,3	0,4	2,3	0,01
Employed / population ratio (Absorption)	0,6	0,7	-3,0	-3,7	-2,3	0,00
Labour force participation rate	0,4	0,5	-2,9	-3,6	-2,2	0,00
Black/African						
Population 15–64 yrs						
Labour Force	0,5	0,7	- 628	- 821	- 434	0,00
Employed	0,7	0,8	- 631	- 807	- 457	0,00
Unemployed	1,9	1,8	5	- 171	180	0,96
Not economically active	0,7	0,7	970	777	1 163	0,00
Rates (%)						
Unemployment rate	1,7	1,5	1,4	0,2	2,6	0,02
Employed / population ratio (Absorption)	0,7	0,8	-3,2	-3,9	-2,5	0,00
Labour force participation rate	0,5	0,7	-3,4	-4,2	-2,6	0,00
Coloured						
Population 15–64 yrs						
Labour Force	1,0	1,2	21	- 33	75	0,45
Employed	1,7	1,9	- 31	- 105	42	0,40
Unemployed	5,8	4,3	52	6	98	0,03
Not economically active	1,8	2,2	21	- 33	75	0,44
Rates (%)						
Unemployment rate	5,8	4,4	2,4	0,0	5,0	0,05
Employed / population ratio (Absorption)	1,7	1,9	-1,7	-4,3	0,7	0,16
Labour force participation rate	1,0	1,2	-0,2	-2,0	1,6	0,82
Indian/Asian						
Population 15–64 yrs						
Labour Force	1,9	2,7	- 28	- 62	5	0,09
Employed	2,3	4,2	- 30	- 74	13	0,17
Unemployed	7,3	11,6	2	- 16	20	0,86
Not economically active	3,1	3,7	45	12	79	0,01
Rates (%)						
Unemployment rate	7,4	13,1	1,0	-2,8	4,8	0,62
Employed / population ratio (Absorption)	2,3	4,2	-4,4	-9,3	0,5	0,08
Labour force participation rate	1,9	2,7	-4,3	-8,1	-0,7	0,02
White						
Population 15–64 yrs						
Labour Force	1,1	1,2	- 65	- 138	10	0,09
Employed	1,1	1,3	- 77	- 150	- 4	0,04
Unemployed	10,0	10,5	12	- 14	39	0,36
Not economically active	2,4	2,5	34	- 40	108	0,37
Rates (%)						
Unemployment rate	9,8	10,4	0,7	-0,5	2,0	0,25
Employed / population ratio (Absorption)	1,1	1,3	-1,8	-4,2	0,5	0,13
Labour force participation rate	1,1	1,2	-1,4	-3,8	0,99	0,25

Appendix 2.2B: Sampling variability for labour force characteristics by province						
	Jul-Sep 2008 CV	Jul-Sep 2009 CV	Estimate	Lower 95%	Upper 95%	P-Value
Population 15–64 yrs						
Labour Force	0,4	0,5	-700	-915	-484	0,00
Employed	0,6	0,7	-770	-978	-562	0,00
Unemployed	1,8	1,6	70	-114	255	0,45
Not economically active	0,6	0,7	1 071	855	1 286	0,00
Discouraged work-seekers	4,2	3,7	561	428	693	0,00
Other(not economically active)	0,6	0,7	510	309	711	0,00
Rates (%)						
Unemployment rate	1,6	1,5	1,3	0,4	2,3	0,01
Employed / population ratio (Absorption)	0,6	0,7	-3,0	-3,7	-2,3	0,00
Labour force participation rate	0,4	0,5	-2,9	-3,6	-2,2	0,00
Western Cape						
Population 15–64 yrs						
Labour Force	0,9	1,2	87	17	158	0,02
Employed	1,5	1,8	3	-82	88	0,95
Unemployed	4,6	4,4	85	26	145	0,01
Not economically active	1,9	2,7	-44	-114	26	0,22
Discouraged work-seekers	15,0	31,2	12	-8	32	0,24
Other(not economically active)	1,8	2,5	-56	-119	7	0,08
Rates (%)						
Unemployment rate	4,6	4,3	2,8	0,3	5,3	0,03
Employed / population ratio (Absorption)	1,5	1,8	-0,6	-3,0	1,8	0,63
Labour force participation rate	0,9	1,2	1,6	-0,4	3,7	0,11
Eastern Cape						
Population 15–64 yrs						
Labour Force	2,5	3,0	-93	-216	28	0,13
Employed	2,4	2,8	-57	-160	46	0,28
Unemployed	9,1	6,0	-36	-131	58	0,45
Not economically active	2,1	2,2	142	20	264	0,02
Discouraged work-seekers	8,9	8,2	92	24	162	0,01
Other(not economically active)	2,1	2,3	49	-66	164	0,40
Rates (%)						
Unemployment rate	7,3	4,2	-0,6	-5,1	3,8	0,78
Employed / population ratio (Absorption)	2,4	2,8	-1,8	-4,4	0,8	0,17
Labour force participation rate	2,5	3,0	-2,9	-5,9	0,2	0,06
Northern Cape						
Population 15–64 yrs						
Labour Force	3,0	3,5	-33	-63	-3	0,03
Employed	4,3	3,3	-53	-83	-22	0,00
Unemployed	6,7	8,2	19	2	36	0,03
Not economically active	3,9	3,7	37	8	68	0,01
Discouraged work-seekers	25,8	17,0	0	-18	17	0,96
Other(not economically active)	3,0	3,1	38	17	59	0,00
Rates (%)						
Unemployment rate	7,4	6,0	7,3	3,1	11,5	0,00
Employed / population ratio (Absorption)	4,3	3,3	-7,8	-12,0	-3,3	0,00
Labour force participation rate	3,0	3,5	-5,1	-9,3	-0,8	0,02
Free State						
Population 15–64 yrs						
Labour Force	1,6	1,5	-31	-58	-4	0,03
Employed	2,0	1,7	-84	-120	-49	0,00
Unemployed	4,3	4,6	54	23	83	0,00
Not economically active	2,4	2,0	42	15	69	0,00
Discouraged work-seekers	13,3	9,9	21	1	41	0,04
Other(not economically active)	2,3	2,1	21	-15	57	0,25
Rates (%)						
Unemployment rate	3,9	3,8	5,7	3,0	8,3	0,00
Employed / population ratio (Absorption)	2,0	1,7	-4,7	-6,7	-2,9	0,00
Labour force participation rate	1,6	1,5	-1,9	-3,5	-0,5	0,01

Appendix 2.2B: Sampling variability for labour force characteristics by province (concluded)						
	Jul-Sep 2008 CV	Jul-Sep 2009 CV	Estimate	Lower 95%	Upper 95%	P-Value
KwaZulu-Natal						
Population 15–64 yrs						
Labour Force	1,4	1,7	-288	-401	-175	0,00
Employed	1,5	2,1	-125	-219	-30	0,01
Unemployed	4,4	4,6	-163	-239	-88	0,00
Not economically active	1,5	1,5	376	263	489	0,00
Discouraged work-seekers	10,8	8,5	270	194	346	0,00
Other(not economically active)	1,6	1,7	106	2	211	0,05
Rates (%)						
Unemployment rate	3,8	4,4	-3,3	-5,4	-1,2	0,00
Employed / population ratio (Absorption)	1,5	2,1	-2,5	-4,0	-1,0	0,00
Labour force participation rate	1,4	1,7	-5,2	-7,0	-3,5	0,00
North West						
Population 15–64 yrs						
Labour Force	2,8	3,4	-91	-144	-37	0,00
Employed	3,9	3,3	-79	-127	-31	0,00
Unemployed	5,0	7,8	-11	-62	39	0,66
Not economically active	3,3	3,4	105	53	159	0,00
Discouraged work-seekers	11,9	12,1	32	-1	67	0,06
Other(not economically active)	3,3	3,4	73	23	124	0,01
Rates (%)						
Unemployment rate	5,3	5,9	1,1	-2,7	5,0	0,55
Employed / population ratio (Absorption)	3,9	3,3	-3,9	-6,1	-1,7	0,00
Labour force participation rate	2,8	3,4	-4,5	-7,0	-2,1	0,00
Gauteng						
Population 15–64 yrs						
Labour Force	0,9	0,9	-181	-290	-71	0,00
Employed	1,3	1,1	-344	-464	-224	0,00
Unemployed	3,2	3,0	163	69	258	0,00
Not economically active	2,3	2,0	253	143	362	0,00
Discouraged work-seekers	12,7	11,1	31	-20	82	0,24
Other(not economically active)	2,4	2,0	222	114	329	0,00
Rates (%)						
Unemployment rate	3,2	2,7	4,0	2,3	5,8	0,00
Employed / population ratio (Absorption)	1,3	1,1	-5,4	-7,1	-3,7	0,00
Labour force participation rate	0,9	0,9	-3,3	-4,8	-1,7	0,00
Mpumalanga						
Population 15–64 yrs						
Labour Force	1,6	2,4	-17	-68	34	0,51
Employed	2,4	3,1	-43	-103	18	0,17
Unemployed	5,0	4,3	25	-5	55	0,10
Not economically active	2,0	2,7	48	-3	98	0,07
Discouraged work-seekers	13,6	7,8	41	17	65	0,00
Other(not economically active)	1,9	3,0	7	-47	61	0,81
Rates (%)						
Unemployment rate	5,0	4,3	2,5	-0,3	5,3	0,09
Employed / population ratio (Absorption)	2,4	3,1	-2,5	-5,2	0,3	0,08
Labour force participation rate	1,6	2,4	-1,6	-3,8	0,8	0,19
Limpopo						
Population 15–64 yrs						
Labour Force	2,4	2,6	-53	-139	33	0,23
Employed	2,5	2,6	11	-54	76	0,74
Unemployed	5,1	6,5	-64	-117	-11	0,02
Not economically active	1,7	1,7	111	25	196	0,01
Discouraged work-seekers	8,5	7,9	61	20	101	0,00
Other(not economically active)	1,6	1,7	49	-31	131	0,23
Rates (%)						
Unemployment rate	3,9	5,0	-4,0	-7,4	-0,7	0,02
Employed / population ratio (Absorption)	2,5	2,6	-0,1	-2,3	1,9	0,87
Labour force participation rate	2,4	2,6	-2,5	-5,2	0,3	0,08

Appendix 3.1B: Sampling variability for the employed by industry and sex						
	Jul-Sep 2008 CV	Jul-Sep 2009 CV	Estimate	Lower 95%	Upper 95%	P-Value
Both sexes	0,6	0,7	-770	-978	-562	0,00
Agriculture	5,2	5,3	-114	-206	-23	0,01
Mining	7,0	7,6	-15	-62	32	0,53
Manufacturing	2,7	2,5	-194	-312	-75	0,00
Utilities	11,5	19,1	-18	-54	20	0,36
Construction	2,9	3,1	-45	-130	41	0,30
Trade	1,8	2,0	-324	-483	-165	0,00
Transport	4,0	3,5	-32	-110	45	0,42
Finance	2,8	2,5	50	-62	162	0,38
Community and social services	1,9	2,0	24	-113	162	0,72
Private households	2,6	3,1	-108	-193	-23	0,01
Women	0,8	0,9	-252	-384	-119	0,00
Agriculture	7,0	7,4	-34	-80	12	0,15
Mining	14,7	13,0	8	-6	23	0,26
Manufacturing	4,3	4,5	-32	-103	38	0,37
Utilities	19,3	27,9	-14	-29	1	0,06
Construction	7,6	9,1	23	-2	49	0,07
Trade	2,1	2,5	-157	-254	-59	0,00
Transport	8,1	7,9	12	-24	49	0,50
Finance	3,7	3,4	22	-44	88	0,52
Community and social services	2,1	2,1	2	-80	85	0,95
Private households	2,6	3,1	-85	-154	-17	0,01
Men	0,7	0,8	-519	-661	-375	0,00
Agriculture	5,7	5,9	-80	-146	-15	0,02
Mining	7,6	8,0	-23	-68	21	0,30
Manufacturing	3,0	3,0	-162	-253	-69	0,00
Utilities	12,0	20,5	-3	-34	27	0,84
Construction	3,0	3,3	-68	-150	14	0,10
Trade	2,6	2,8	-167	-281	-53	0,00
Transport	4,3	4,1	-44	-113	24	0,20
Finance	3,4	3,3	28	-52	108	0,49
Community and social services	2,9	3,1	22	-64	109	0,61
Private households	5,8	6,5	-22	-66	22	0,32

Appendix 3.4B: Sampling variability for the employed by province and sector						
	Jul-Sep 2008 CV	Jul-Sep 2009 CV	Estimate	Lower 95%	Upper 95%	P-Value
South Africa	0,6	0,7	-770	-978	-562	0,00
Formal sector (Non-agricultural)	0,8	0,9	-366	-562	-171	0,00
Informal sector (Non-agricultural)	2,2	2,5	-182	-312	-51	0,01
Agriculture	5,2	5,3	-114	-206	-23	0,01
Private households	2,6	3,1	-108	-193	-23	0,01
Western Cape	1,5	1,8	3	-82	88	0,95
Formal sector (Non-agricultural)	2,0	2,0	-38	-116	39	0,33
Informal sector (Non-agricultural)	8,5	7,9	13	-27	53	0,52
Agriculture	10,0	10,0	8	-18	35	0,54
Private households	8,0	6,0	19	-2	42	0,08
Eastern Cape	2,4	3,3	-57	-160	46	0,28
Formal sector (Non-agricultural)	3,2	3,3	-3	-81	76	0,95
Informal sector (Non-agricultural)	8,2	8,1	-24	-80	32	0,41
Agriculture	19,1	27,0	-1	-41	38	0,94
Private households	9,8	12,0	-30	-59	0	0,05
Northern Cape	4,3	3,3	-53	-83	-22	0,00
Formal sector (Non-agricultural)	4,2	4,0	-24	-41	-7	0,01
Informal sector (Non-agricultural)	13,2	12,2	1	-9	11	0,86
Agriculture	20,6	9,0	-24	-52	3	0,08
Private households	10,7	11,1	-5	-16	6	0,35
Free State	2,0	1,7	-84	-120	-49	0,00
Formal sector (Non-agricultural)	4,1	3,4	-82	-121	-43	0,00
Informal sector (Non-agricultural)	6,6	6,5	3	-18	23	0,82
Agriculture	10,6	11,9	1	-26	28	0,93
Private households	6,8	9,4	-6	-24	12	0,52
KwaZulu-Natal	1,5	2,1	-125	-219	-30	0,01
Formal sector (Non-agricultural)	2,9	2,4	-21	-122	81	0,69
Informal sector (Non-agricultural)	4,5	6,8	-35	-112	41	0,37
Agriculture	15,2	12,5	-38	-82	5	0,09
Private households	5,3	6,0	-31	-67	6	0,10
North West	3,9	3,3	-79	-127	-31	0,00
Formal sector (Non-agricultural)	3,3	4,6	-35	-80	12	0,14
Informal sector (Non-agricultural)	8,9	6,7	-8	-32	14	0,45
Agriculture	25,6	22,9	-22	-48	4	0,09
Private households	9,6	9,3	-15	-26	-2	0,02
Gauteng	1,3	1,1	-344	-464	-224	0,00
Formal sector (Non-agricultural)	1,8	1,7	-163	-283	-44	0,01
Informal sector (Non-agricultural)	4,9	5,5	-110	-172	-49	0,00
Agriculture	17,7	20,4	-23	-55	9	0,15
Private households	5,6	8,4	-47	-105	11	0,11
Mpumalanga	2,4	3,1	-43	-103	18	0,17
Formal sector (Non-agricultural)	3,6	4,6	-20	-78	39	0,51
Informal sector (Non-agricultural)	6,1	5,2	-25	-57	6	0,11
Agriculture	8,2	11,5	-8	-23	7	0,29
Private households	9,0	7,1	11	-8	29	0,25
Limpopo	2,5	2,6	11	-54	76	0,74
Formal sector (Non-agricultural)	4,6	4,7	18	-54	89	0,62
Informal sector (Non-agricultural)	5,6	4,6	6	-27	38	0,73
Agriculture	13,1	17,3	-6	-35	22	0,67
Private households	7,1	11,1	-6	-28	16	0,59

Appendix 3.5B: Sampling variability for the employed by sex and occupation						
	Jul-Sep 2008 CV	Jul-Sep 2009 CV	Estimate	Lower 95%	Upper 95%	P-Value
Both sexes	0,6	0,7	-770	-978	-562	0,00
Manager	2,8	2,7	-60	-129	9	0,09
Professional	3,8	3,4	-24	-103	54	0,54
Technician	2,5	3,1	8	-100	115	0,89
Clerk	2,4	2,7	-31	-124	61	0,51
Sales and services	2,1	2,5	12	-94	117	0,83
Skilled agriculture	10,5	12,6	-27	-54	0	0,05
Craft and related trade	2,2	2,4	-313	-416	-209	0,00
Plant and machine operator	3,0	2,9	-111	-196	-27	0,01
Elementary	1,9	1,9	-148	-287	-10	0,04
Domestic worker	2,7	3,1	-72	-140	-4	0,04
Women	0,8	0,9	-252	-384	-119	0,00
Manager	4,8	6,0	-6	-49	36	0,78
Professional	4,9	5,4	-31	-85	23	0,27
Technician	3,0	3,3	-27	-99	46	0,48
Clerk	2,9	3,1	0	-78	77	0,98
Sales and services	3,1	3,1	39	-32	110	0,28
Skilled agriculture	20,3	21,5	-15	-27	-2	0,03
Craft and related trade	5,6	6,8	-86	-126	-47	0,00
Plant and machine operator	7,6	6,7	-15	-51	21	0,41
Elementary	2,4	2,7	-42	-122	39	0,31
Domestic worker	2,7	3,2	-68	-136	-1	0,05
Men	0,7	0,8	-519	-661	-375	0,00
Manager	3,2	3,0	-54	-113	5	0,07
Professional	5,0	4,7	7	-42	54	0,80
Technician	3,8	4,2	35	-30	99	0,30
Clerk	4,4	4,5	-31	-85	24	0,27
Sales and services	2,8	3,4	-27	-100	45	0,46
Skilled agriculture	11,0	13,6	-13	-34	8	0,24
Craft and related trade	2,3	2,5	-226	-322	-130	0,00
Plant and machine operator	2,9	3,3	-97	-167	-26	0,01
Elementary	2,3	2,5	-107	-212	-2	0,05
Domestic worker	14,1	13,9	-4	-17	9	0,56